

Northeast Regional Climate Center

Mid-Atlantic Climate

CONTENTS



CLIMATE DIVISION MAPS.....	1
AUGUST WEATHER HIGHLIGHTS	2
DAILY AVERAGE TEMPERATURES AND THE 30-YEAR NORMAL.....	7
MONTHLY TEMPERATURE MAPS.....	9
MONTHLY PRECIPITATION MAPS	10
PRELIMINARY MONTHLY SUMMARIZED DATA AUGUST 2012	11
PRELIMINARY MONTHLY DEGREE DATA AUGUST 2012	13

AUGUST 2012

VOLUME 112 NUMBER 8

Website: <http://www.nrcc.cornell.edu>

Address: **Phone:** (607)255.1751

1123 Bradfield Hall **Fax:** (607)255.2106

Cornell University **Email:** nrcc@cornell.edu

Ithaca, NY 14853

NRCC Staff:

Dr. Arthur DeGaetano
Director
Mr. William Noon
Computer Analyst

Mr. Keith Eggleston
Regional Climatologist
Ms. Jessica Rennells
Assistant Climatologist

Ms. Kathryn Vreeland
Assistant Climatologist
Ms. Tara Fardellone
Publication Design

Mrs. Pamela Vitale
Administrative Assistant

State Climatologists:

David Legates
210 Newark Hall
Department of Geography
Newark, DE 19716
302-831-2294

Konstantin Y. Vinnikov
Dept of Atmospheric and Oceanic Sci.
University of Maryland
College Park, MD 20742
301-405-5382

David Robinson
Department of Geography
Rutgers University
Piscataway, NJ 08854
732-445-4741

CLIMATE DIVISION MAPS

New Jersey



New Jersey Climate Divisions

- 1 Northern
- 2 Southern
- 3 Coastal

Delaware



Delaware Climate Divisions

- 1 Northern
- 2 Southern

Maryland



Maryland Climate Divisions

- 1 Southern Eastern Shore
- 2 Central Eastern Shore
- 3 Lower Southern
- 4 Upper Southern
- 5 Northern Eastern Shore
- 6 Northern Central
- 7 Appalachian Mountain
- 8 Allegheny Plateau

AUGUST WEATHER HIGHLIGHTS

Temperatures in the Mid-Atlantic region averaged warmer than normal during August. The regional average was 75.3 degrees, which was 1.4 degrees above normal. This was 0.9 degrees warmer than August 2011, but 0.8 degrees cooler than the same month in 2010. Temperature departures among the states were +1.0 degrees in Maryland, +1.7 degrees in New Jersey, and +1.9 degrees in Delaware. The Maryland Science Center in Baltimore reported the high temperature this month, 99 degrees, on the 5th. The low was 46 degrees at Oakland, MD on the 30th.

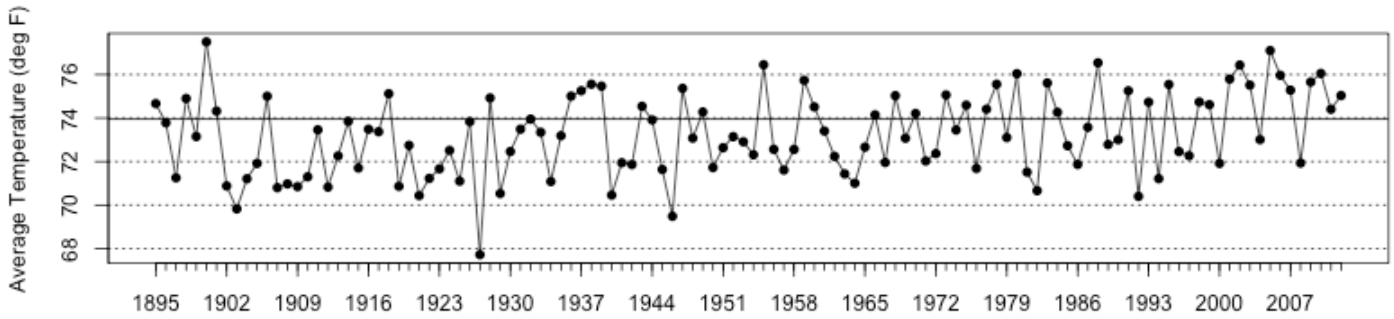
For the first time since December 2011, the Mid-Atlantic region averaged wetter than normal. August's rainfall total of 4.79 inches was 120% of normal. This month's total paled in comparison to last year's record-breaking rainfall of 12.21 inches, but was 1.31 inches wetter than August 2010. Each of the states in the region averaged wetter than normal, although a few climate divisions were on the dry side of normal. Delaware ended up with 102% of normal precipitation, New Jersey, 112%, and Maryland, 132%. Maryland's wettest climate division, the Central Eastern Shore, was home to the wettest location this month, Royal Oak. The observer there reported a total of 8.56 inches.

The US Drought Monitor issued August 28, 2012 indicated that conditions improved slightly in Delaware, but the southern two thirds of the state were still in D1 (moderate) or D2 (severe) drought. In addition, slight improvements were seen in Maryland, where most areas of D2 drought surrounding Chesapeake Bay on July 31 improved to D1 on August 28.

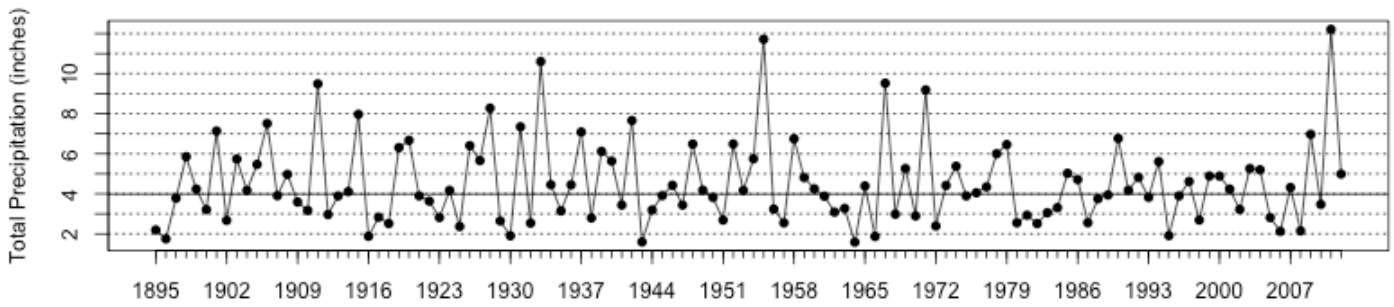
Daily Precipitation Records (inches)

<u>Station</u>	<u>Date</u>	<u>New</u>	<u>Previous</u>
Baltimore, MD	26	3.36	1.73 in 1974

Mid Atlantic Average August Temperatures



Mid Atlantic August Precipitation Totals



The 2012 values depicted on these graphs are based on preliminary data.

A Warm Month In Yet Another Hot Summer: August and Summer 2012 Report

Dr. David A. Robinson, New Jersey State Climatologist
NJ Agricultural Experiment Station, Rutgers University

The persistent warmth that has enveloped New Jersey for well over a year continued in August. There were no record hot maximum temperatures, and in fact the hottest NJ could muster was three days where one or more locations topped out at 95°. However, on twelve days the maximum reached at least 90° somewhere in the state. The statewide average temperature of 75.1° was 1.7° above the 1981-2010 average and ranked as the 11th warmest August of the past 118 since 1895 (Table 1). Combined with July's ranking as 5th warmest and with the dead on average temperature for June (the only month that has not been above average since February 2011), this tied for the 6th warmest summer on record. More on summer conditions later in this narrative, but first an examination of August.

Rank	Year	Aug. Avg. Temp
1	2005	77.4°
2	1955	76.2°
2	2002	76.2°
4	1900	76.0°
5	2001	75.8°
6	2009	75.6°
7	1988	75.5°
8	1980	75.4°
8	2003	75.4°
8	2010	75.4°
11	2012	75.1°
11	1937	75.1°
13	1938	75.0°
13	2006	75.0°
15	1939	74.9°

Table 1. The fifteen warmest Augusts across New Jersey since 1895.

Eight of the first eleven days of the month saw maximum temperatures of at least 90°, this based on observations from 53 [NJ Weather and Climate Network](#) stations, along with Newark, Trenton, and Atlantic City airport National Weather Service stations. Hawthorne (Passaic County) and Newark (Essex) reached 93° on the 2nd. Hawthorne topped out at 95° on the 3rd and 4th. The 5th was the hottest day of the month, with Greenwich (Cumberland) and Newark at 95° and ten stations reaching 94°. New Brunswick (Middlesex) got to 90° on the 6th and 8th, joined by Hawthorne on the 8th. Hawthorne was up to 93° on the 9th and 90° on the 11th. The 17th saw Cherry Hill (Camden) and Newark top out at 91°, with nine stations at 90°. A week later, the 24th saw Hawthorne and Mansfield (Burlington) reach 90°, followed by 90° at New Brunswick on the 28th. The final day of August was the second warmest afternoon of the month with Newark at 94°, four stations at 93°, and eleven at 92°.

The thermometer dropped to 55° or lower at one or more NJ location on fourteen August mornings. Three of these days saw afternoon temperatures make it to 90° at other locations in NJ, and on the 31st Pequest (Warren) started the day at 47° and reached 90° during the afternoon. The 7th saw 54° at Basking Ridge (Somerset). Walpack (Sussex) was 55° on the 13th and Pequest 55° on the 14th. The 17th through 24th saw conditions cool enough for at least one location to be under 55° each morning. The lowest reading

on the 17th was 54° at Basking Ridge, followed by the next day at Walpack at 51°, Pequest and Basking Ridge 47° (19th), Pequest 52° (20th), High Point Monument 54° (21st), Pequest 51° (22nd), Basking Ridge 53° (23rd), and Pequest 54° (24th). Walpack and Pequest fell to 50° on the 29th. The 30th was the coolest morning of August, with Pequest bottoming out at 45°, Basking Ridge 46°, Walpack 47°, and 21 other stations between 49°-55°. Hope (Warren) and Pequest ended the month with 47° lows on the 31st.

August precipitation averaged 4.79" across NJ, which is 0.58" above average. This ranks as the 46th wettest of the past 118 Augusts. As also seen in July, local totals varied widely, even in adjacent counties. Lebanon (Hunterdon) was wettest at 7.35", followed by 7.16" at both Cape May (Cape May) and South Brunswick (Middlesex). 24 stations received between 6.00" and 7.35". On the dry side, Palisades Park (Bergen) saw 2.08", Wantage (Sussex) 2.18", Oxford Township (Warren) 2.49", and White Township (Warren) 2.53". On nine days, over 2.00" fell at one or more locations.

Nine [Community Collaborative Rain, Hail and Snow Network](#) stations received more than 2.00" on the 1st, topped by Lebanon with 3.92" and Upper Deerfield (Cumberland) with 3.07". The heavy totals were observed in thunderstorms over portions of Hunterdon, Somerset, Middlesex, and Cumberland counties. While localized storms only brought 0.69" to Cherry Hill (Camden) and 0.68" to Long Hill Township (Morris) on the 4th, trees and wires came down in Camden and nearby Burlington counties.

A squall line traversed the state during the afternoon and evening of the 5th, bringing one of the most widespread rainfalls of the month. Tabernacle (Burlington) caught 2.72", Berlin (Camden) 2.69", and Folsom (Atlantic) 2.51", with twelve other stations over 2.00". Reports of downed trees and wires were received from Sussex, Passaic, Middlesex, and Monmouth counties. Gusts of 70 mph and 60 mph were recorded at Sandy Hook (Monmouth) and Newark Airport (Essex), respectively. Hillsborough (Somerset) received a gust of 39 mph, which was the highest gust at a NJ Weather and Climate Network station during the month. This is an unusual situation, given that most every month sees gusts exceeding 40 mph at one or more of these stations.

Scattered strong thunderstorms during the afternoon and evening of the 9th downed trees in Hunterdon and Mercer counties and dropped heavy rain in Mercer and Monmouth counties. Belmar (Monmouth) received 2.17", Wall (Monmouth) 2.15", and Hopewell (Mercer) 1.85". Widespread storms from late morning into the afternoon of the 10th brought the heaviest rain to northern and coastal regions. Eleven stations received at least 2.00", topped by 2.69" and 2.40" at two Oakland (Bergen) stations and 2.50" in Cranbury (Middlesex). Storms on the 11th over the far south, central west, and far northwest brought 2.96" to Woodland Township (Burlington) and 1.93" and 1.78" to two Woodbine (Cape May) stations.

Occasional storms occurred from the daytime hours of the 14th into the afternoon of the 15th. Totals included 2.28" in Wayne (Passaic), 2.10" at Carneys Point (Salem), and 1.91" at Cedar Grove (Essex). Afternoon storms on the 15th brought 0.25"-0.50" diameter hail to locations in Monmouth and Sussex counties and downed trees in Passaic, Monmouth, and Cumberland counties. Tragically, a 41 year old Long Branch man was stuck and killed by lightning while fishing with his son in that coastal community. This is New Jersey's second lightning death of the summer.

Rain from late evening on the 17th to the morning of the 18th totaled 1.10" at Oakland (Bergen) and 0.86" at Kingwood (Hunterdon). Heavy rain fell over much of Cape May County from late evening on the 25th to early morning on the 26th. Cape May was drenched with 5.05", 3.89" fell in Wildwood Crest, and 3.31" at Stone Harbor. There was a sharp cutoff in the rain just further north with Middle Township at 2.30" and Upper Township with 1.55" but only 0.42" and 0.49" at two Woodbine stations. Little or no rain fell north of Cumberland and Atlantic counties. The last rain event of August occurred during the daytime hours of the 27th. Heaviest totals were found from central and northern coastal communities into central areas and up into the northern Highlands. Eight stations saw more than 2.00", topped by 2.99" at West Creek (Ocean), Toms River (Ocean) 2.52", Long Branch (Monmouth) 2.48", and Wanaque (Passaic) 2.49". Trees were reported down in Ocean County.

On the flip side, "top 10" days with sunny, mild conditions, and low humidity occurred statewide on the 12th-13th and 29th-30th. Barometric pressure topped out at 30.30"-30.35" on the 26th and was at a monthly low of 29.70"-29.75" on the 10th.

Summer Overview

As mentioned earlier, this was another warm summer in a warm year. The average temperature from June through August was 74.4°, which is 1.6° above average and ties with 2002 as the 6th warmest (Table 2). Eight of the top ten have occurred since 1999 and five of the top ten in the past seven summers. July 18th will go in the books as the hottest day of the summer, with the temperature exceeding 100° at a number of locations. The first eight months of 2012 averaged 58.1°, which is 3.5° above average. This is a substantial 0.9° above January-August 1998, the second warmest such interval. 2010 ranked 4th and 2011 8th warmest.

Rank	Year	Summer Avg. Temp.
1	2010	76.2°
2	2005	75.6°
3	2011	75.2°
4	1949	74.6°
5	1999	74.5°
6	2002	74.4°
6	2012	74.4°
8	2006	74.3°
9	1955	74.1°
10	2008	74.0°

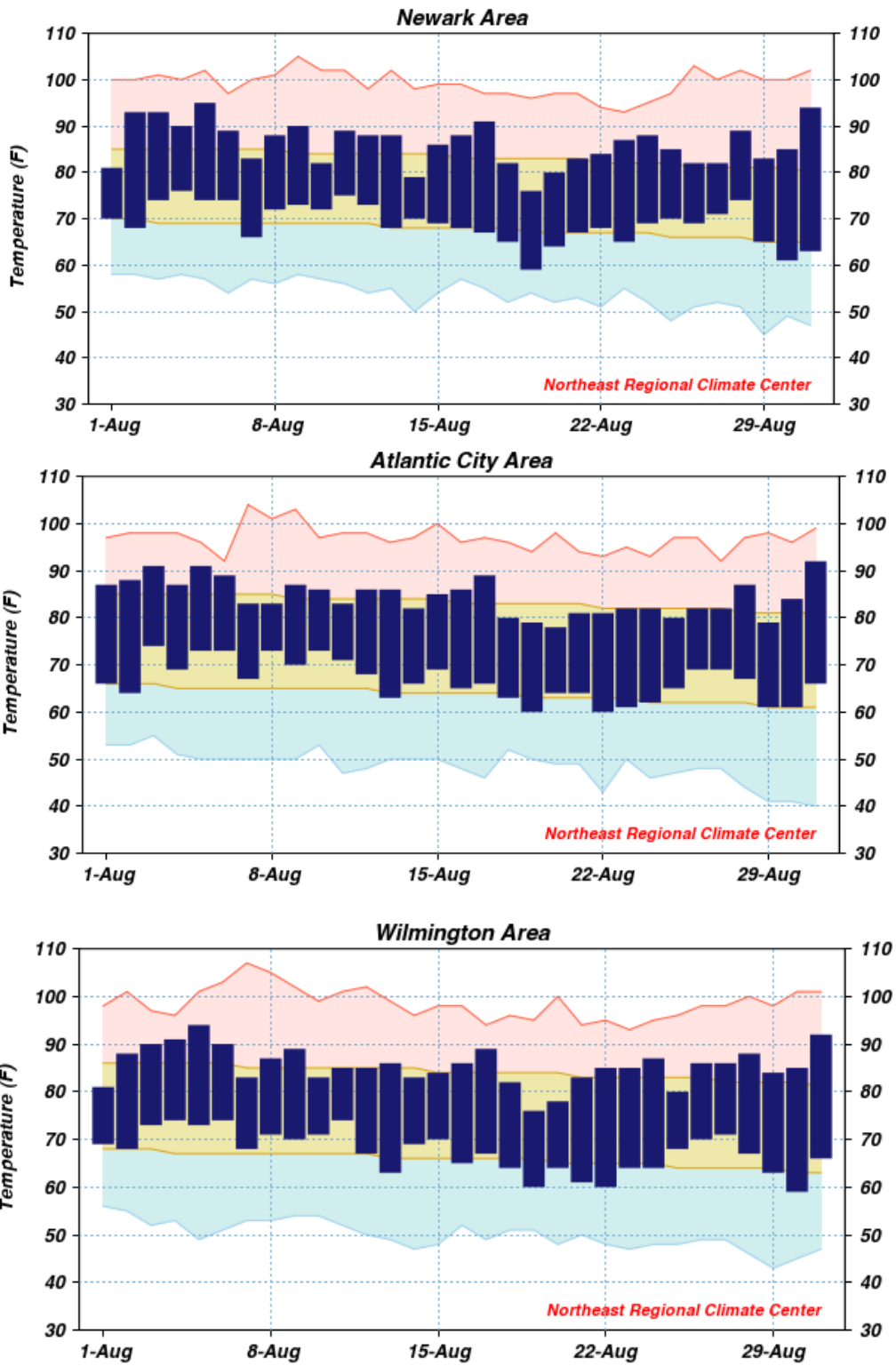
Table 2. The ten warmest summers (June-August) across New Jersey since 1895.

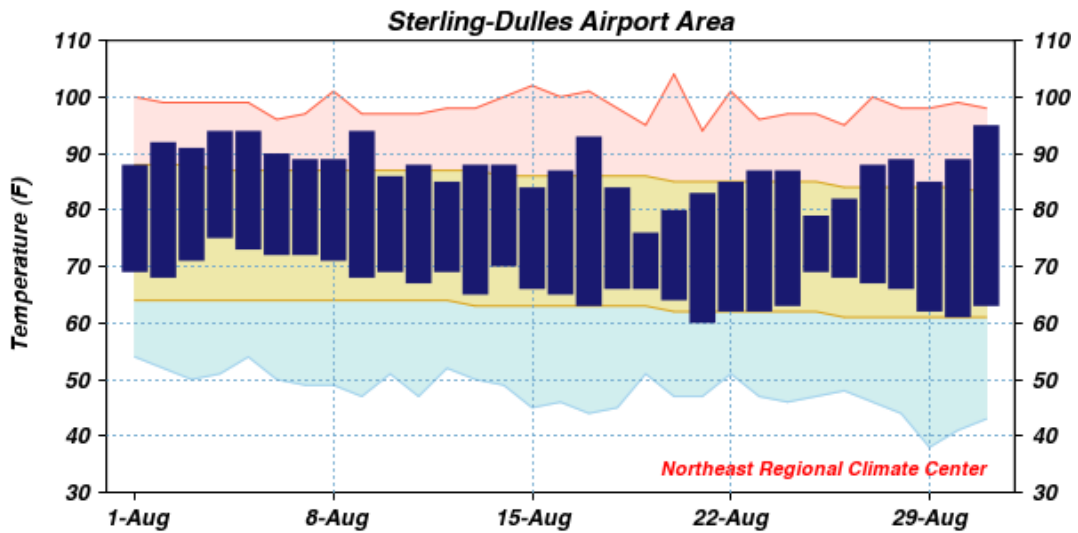
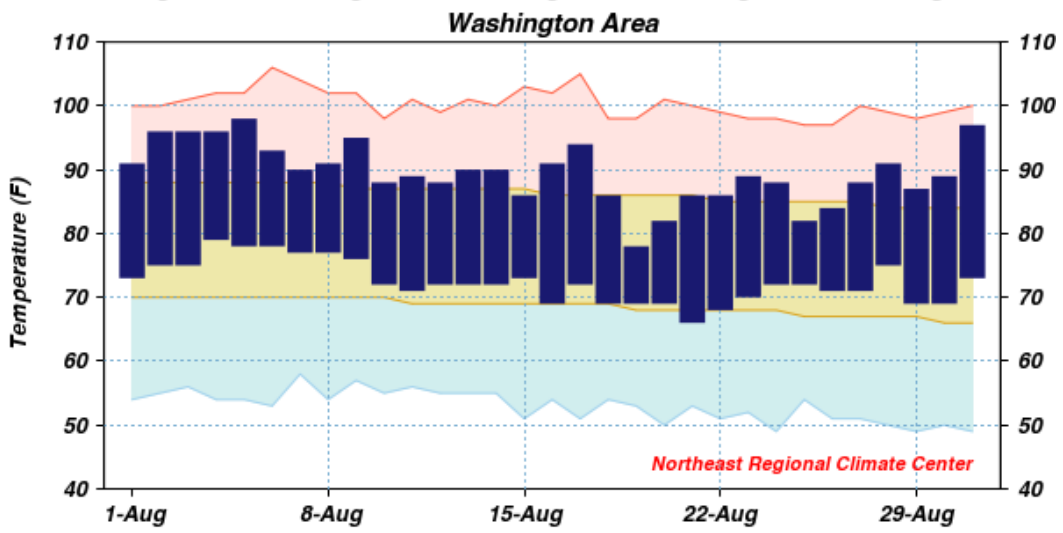
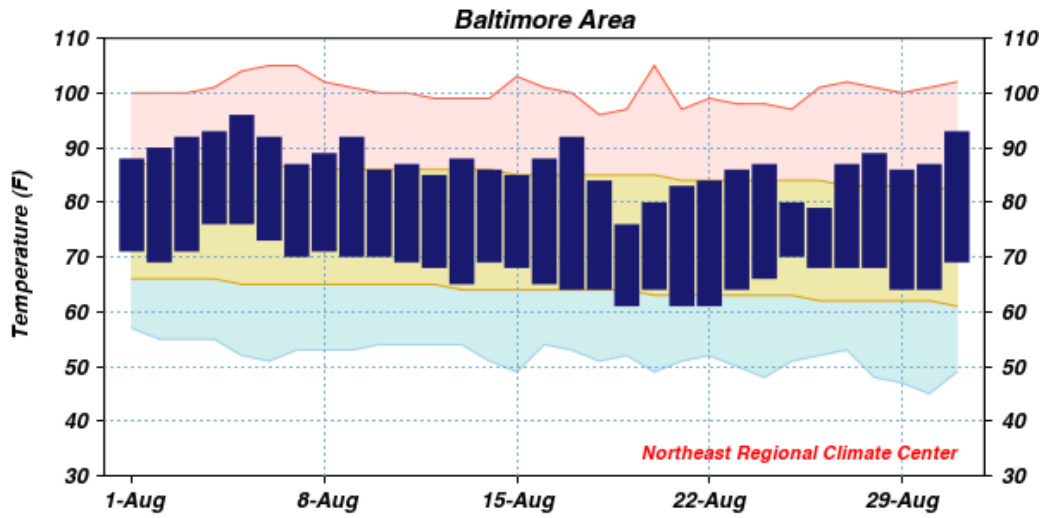
Precipitation for the three summer months averaged 12.96" statewide. This is 0.21" above average and ranks as the 55th wettest (64th driest) summer. Coastal counties received average to somewhat above average amounts while the regions centered on Morris County in the north and Camden County in the southwest had totals as much as 3.00" below average. For the year through August an average 26.10" fell statewide, which is 5.28" below average and becomes the 16th driest first eight months on record.

Of the 28 weekend days and two holidays from Memorial Day weekend through August 25th-26th, five Jersey shore locations monitored by the state climate office (Sea Girt (Monmouth), Seaside Heights (Ocean), Harvey Cedars (Ocean), Atlantic City Marina (Atlantic), and Cape May (Cape May)) had more than 0.02" of rain (enough to just wet the ground) fall between the hours of 8AM and 8PM on four, four, two, four, and three days, respectively. Examining Sea Girt solar radiation observations, there were nine partly- to mostly-cloudy days, seventeen partly cloudy days, and four clear days. The respective numbers at Cape May were six, twenty-three, and one.

Daily maximum temperatures were in the 70°s and 80°s at all five stations on all weekends and holidays except June 17th, when they were in the 60°s at all stations, and on July 1st, 4th, and 7th when the 90°s were reached at most locations. The 7th saw the high temperature reach 97° or 98° at the five stations.

DAILY AVERAGE TEMPERATURES AND THE 30-YEAR NORMAL



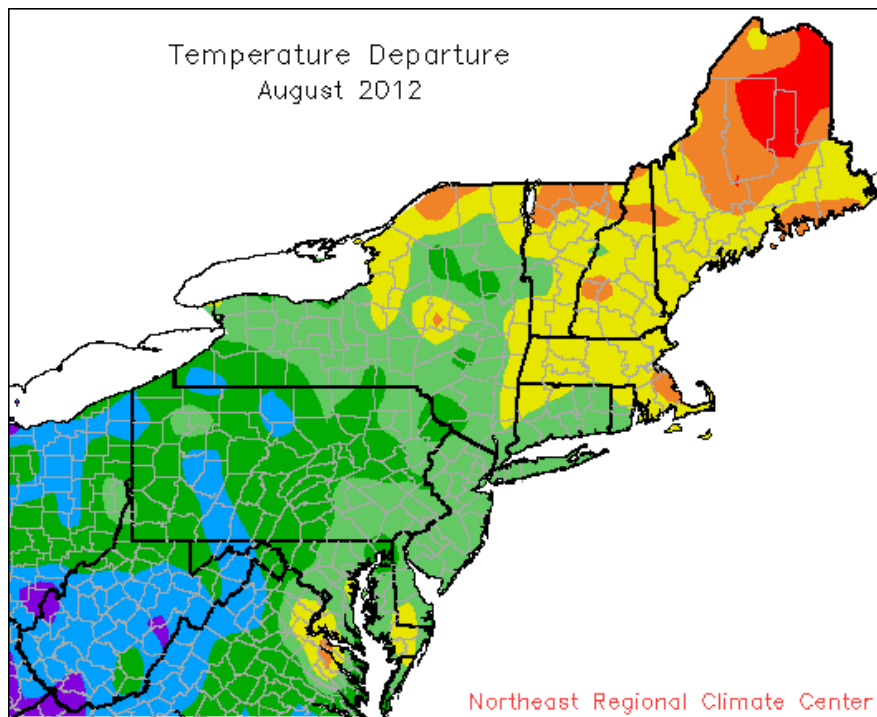
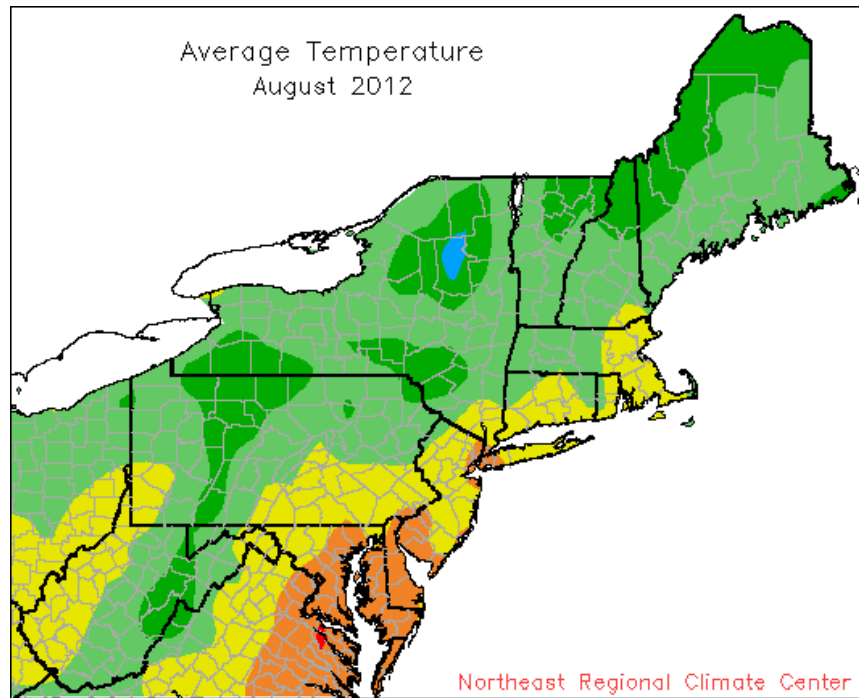


Area between normal max and min temperatures has tan shading.

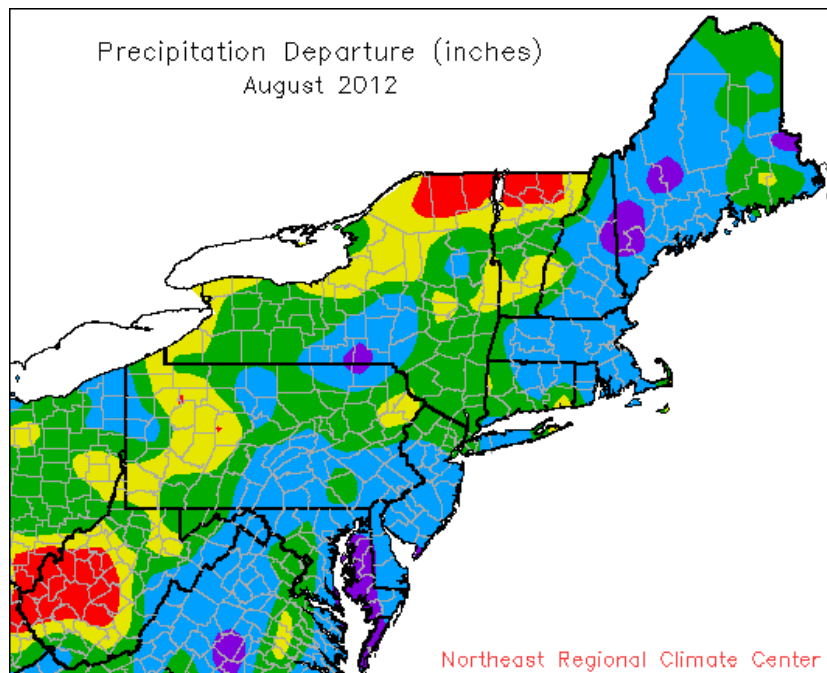
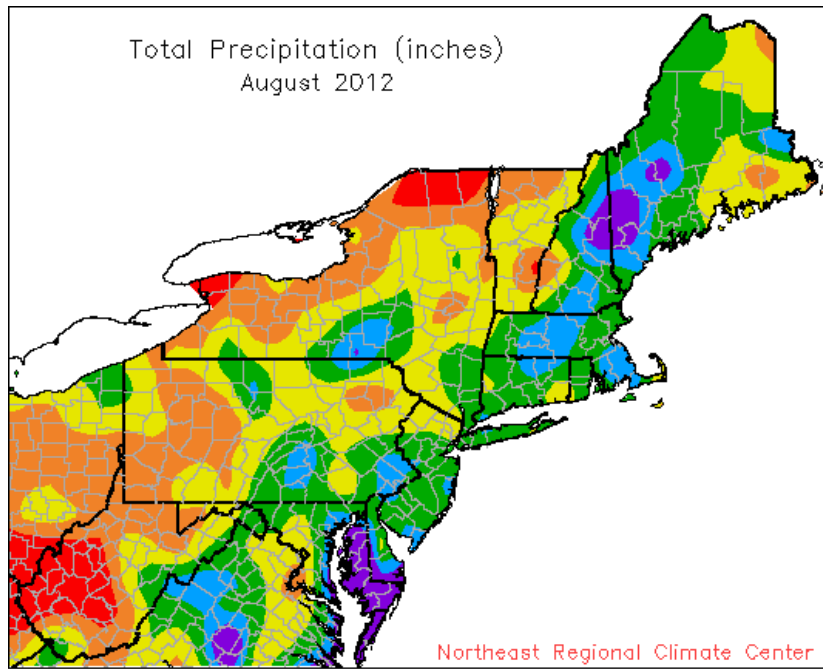
Red line connects record high temperatures.

Light blue line connects record low temperatures.

MONTHLY TEMPERATURE MAPS



MONTHLY PRECIPITATION MAPS



PRELIMINARY MONTHLY SUMMARIZED DATA AUGUST 2012

STATION	TEMPERATURE (F)						PRECIPITATION (INCHES)											
	MONTHLY AVERAGES				EXTREMES		NUMBER OF DAYS				MONTHLY TOTALS			EXTREMES		SNOWFALL		
	AVG MAX	AVG MIN	MON AVG	DEPRT	MON MAX	DAY MIN	MAX 90+	MIN 70-	65+	50-	MON TOT	DEPRT	DAYS 0.1+	DLY MAX	DAY	MON TOT	DLY MAX	
-DE: NORTHERN-																		
BEAR 2 SW	85.0	66.0	75.5	1.0	93	5	58	30	3	0	20	0	4.10	0.33	7	1.21	5	0
WILMINGTON NEW CAS	85.5	67.3	76.4	1.2	94	5	59	30	5	0	21	0	2.81	-0.44	8	0.75	5	0
WILMINGTON PORTER R	84.1	68.1	76.1	1.5	95	5	62	22+	3	0	26	0						0
-DIVISION-			76.0	1.1									3.45	-0.02				
-DE: SOUTHERN-																		
DOVER	86.0	69.0	77.5	1.4	94	5+	62	19	5	0	26	0						NM
-DIVISION-			77.5	2.1														
-STATE-			77.2	1.9									0.76	-3.49				0
-MD: SOUTHEASTERN-																		
SALISBURY WICOMICO	88.2	69.4	78.8	3.9	95	9+	61	19	13	0	27	0	4.31	-0.12	7	1.96	25	0
SNOW HILL 4 N	86.7	66.9	76.8	1.1	97	4	57	19	5	0	20	0	6.52	1.62	8	3.30	26	NM
SALISBURY 2N	86.0	68.9	77.5		95	9	61	19	6	0	22	0	8.51		6	2.80	25	NM
-DIVISION-			77.7	2.1									6.45	1.80				
-MD: CENTRAL EAST-																		
ROYAL OAK 2 SSW	87.4	69.2	78.3	1.4	95	5	61	23	8	0	25	0	8.56	4.29	9	5.04	26	NM
-DIVISION-			78.3	1.8									8.56	4.44				
-MD: LOWER SOUTHE-																		
MECHANICSVILLE 5 N	83.4	66.1	74.7	1.0	92	10	61	23+	5	0	16	0						0
SOLOMONS	85.1	72.5	78.8	0.3	93	6	67	21	5	0	31	0						NM
-DIVISION-			76.8	1.6														
-MD: UPPER SOUTHE-																		
BALTIMORE WASH INT	87.0	67.6	77.3	2.2	96	5	61	22+	8	0	22	0	5.82	2.53	7	3.36	26	0
BELTSVILLE	86.1	67.3	76.7	0.9	94	10+	60	21	6	0	21	0	2.18	-1.09	6	0.42	27+	0
DALECARLIA RSVR	86.2	68.7	77.4	0.6	95	10+	63	29+	8	1	26	0	3.45	-0.41	10	0.85	20	0
LAUREL 3 W	87.5	68.9	78.2	1.1	95	31	60	21	8	0	27	0	2.75	-0.68	7	0.67	5	NM
MD SCI CTR BALTIMO	90.1	74.5	82.3	3.3	99	5	67	21	19	0	31	0	5.89	2.50	6	3.37	26	NM
NATL ARBORETUM DC	88.7	69.6	79.2	1.2	97	6+	62	21	16	0	29	0	2.41	-1.00	8	0.81	11	NM
OXON HILL	87.4	68.7	78.1	1.2	96	5	63	22+	7	0	27	0	2.96	-0.66	7	1.11	11	0
UPPER MARLBORO 3 N	87.4	67.0	77.2	2.1	94	10+	60	22	9	0	22	0	2.33	-1.39	7	0.89	27	NM
-DIVISION-			78.3	2.3									3.47	-0.12				
-MD: NORTHEASTERN-																		
STEVENSVILLE	85.6	70.8	78.2	2.0	92	6+	57	21	5	0	30	0						0
-DIVISION-			78.2	2.6														
-MD: NORTHERN CEN-																		
BRIGHTON DAM	83.8	67.2	75.5		90	7+	59	24	2	0	22	0						0
CONOWINGO DAM	83.7	65.1	74.4	-2.1	93	6	59	31+	2	0	19	0	4.77	0.86	10	1.04	18	NM
DAMASCUS 3 SSW	82.4	65.7	74.0	1.0	92	5	58	21	2	0	19	0	4.41	0.12	9	1.85	9	NM
EMMITTSBURG 2 SE	82.4	62.9	72.7	0.0	90	4	57	22+	1	1	10	0	4.05	0.65	9	0.92	11	0
MILLERS 4 NE	83.5	62.9	73.2	1.2	91	3	55	19	2	0	13	0	5.04	1.32	11	1.92	26	0
SMITHSBURG *	82.3	60.9	71.6	-1.5	91	6	51	31										0
WESTMINSTER	85.1	65.8	75.5	2.2	92	6+	57	22+	5	0	19	0	2.15	-1.57	6	0.67	27	0
-DIVISION-			73.8	-0.1									4.08	0.51				
-MD: APPALACHIAN -																		
CUMBERLAND 2	87.1	61.6	74.4	-1.0	95	9+	55	30+	8	0	10	0	2.42	-0.75	8	0.73	10	NM
FROSTBURG 2	78.4	57.7	68.0	0.2	86	4	51	23+	0	0	2	0	2.43	-1.17	7	0.75	10	NM
SHARPSBURG 5 S	85.3	61.8	73.6	0.8	92	5+	56	19	6	0	8	0	4.64	1.41	5	3.13	27	NM
-DIVISION-			72.0	0.3									3.16	-0.00				
-MD: ALLEGHENY PL-																		
OAKLAND 1 SE	79.5	55.0	67.2	0.3	86	4	46	30	0	0	2	7	2.70	-1.08	6	0.85	1	0
SAVAGE RIVER DAM *	80.0	57.7	68.8	-0.3	86	9+	51	31+					1.83	-1.50	5	0.71	10	NM
SINES DEEP CREEK	76.9	53.5	65.2		82	10+	46	31+	0	1	0	10	2.35		7	0.61	6	NM
KITZMILLER 1 W	81.3	59.4	70.3		89	4	53	22+	0	0	3	0						NM
-DIVISION-			67.9	0.0									2.29	-1.39				
-STATE-			75.3	1.0									3.94	0.17				0

STATION	TEMPERATURE (F)							PRECIPITATION (INCHES)											
	MONTHLY AVERAGES				EXTREMES		NUMBER OF DAYS				MONTHLY TOTALS			EXTREMES		SNOWFALL			
	AVG MAX	AVG MIN	MON AVG	DEPRT AVG	MON MAX	DAY MIN	MON MAX	DAY MIN	90+	70-	65+	50-	MON TOT	DEPRT 0.1+	DAYS 0.1+	DLY MAX	DAY MAX	MON TOT	DLY MAX
-NJ: NORTHERN-																			
BELVIDERE BRG *	83.4	60.7	72.2	0.6	90	5	52	30+					3.60	-0.30	7	1.25	12		0
BLACKWELLS MILLS													4.23	0.24	6	1.48	2	NM	
BOONTON 1 SE	85.3	63.2	74.2	1.9	93	5	55	20+	5	0	12	0	2.53	-1.47	5	0.96	11		0
BOUND BROOK 2 W													3.93	-0.10	7	0.92	18	NM	
CANISTEAR RESERVOI													2.93	-1.25	6	0.90	11	NM	
CANOE BROOK	84.8	64.7	74.8	2.0	93	5	55	30	4	0	15	0	5.52	1.10	6	1.73	2		0
CHATHAM 2 W	87.8	63.2	75.5	2.4	94	18+	55	31+	15	0	13	0	6.26	2.14	7	2.02	2		0
CRANFORD	86.8	63.9	75.4	1.9	95	6	53	30	9	0	12	0	3.94	0.15	7	1.31	2		0
FLEMINGTON 5 NNW	84.3	62.8	73.5	1.4	93	6	53	30+	4	0	12	0	6.81	3.14	7	2.34	2		0
HARRISON	86.0	68.5	77.2	1.1	95	3	58	30	8	0	26	0	3.07	-1.11	7	0.67	28	NM	
LAMBERTVILLE													6.80	2.74	9	1.40	10	NM	
NEWARK INTL AP	86.2	69.0	77.6	1.8	95	5	59	19	7	0	27	0	2.56	-1.14	7	0.59	9		0
OAK RIDGE													2.77	-1.33	5	0.74	6	NM	
PHILLIPSBURG EAST*	84.7	63.2	73.9	1.8	93	6	54	19					3.94		11	0.55	15	NM	
POTTERSVILLE 2 NNW	79.0	63.5	71.2		90	5+	56	30	2	1	13	0	4.94	0.70	8	0.95	18	NM	
RINGWOOD	86.6	61.0	73.8		95	4	49	30	8	0	8	2						NM	
SUSSEX 2 NW	82.5	59.6	71.1	1.7	91	5	48	30	2	0	4	2							0
WERTSVILLE 4 NE *	83.5	63.1	73.3	1.2	91	6	55	30+										NM	
RIEGELSVILLE													6.73		8	3.60	6		0
TOCKS ISLAND	81.8	62.1	72.0		88	5+	54	31+	0	0	10	0						NM	
-DIVISION-			74.0	2.1									4.32	0.18					
-NJ: SOUTHERN-																			
ATLANTIC CITY INTL	84.5	66.5	75.5	1.1	92	31	60	22+	3	0	20	0	5.59	1.48	7	1.43	27		0
ESTELL MANOR	84.3	65.6	75.0	1.1	91	6+	58	19	2	0	15	0	5.25	0.53	9	1.06	6	NM	
FREHOLD MARLBORO	85.0	64.7	74.9	1.1	93	6+	55	19	5	0	15	0	6.01	1.91	8	2.18	6	NM	
HAMMONTON 1 NE	85.8	66.8	76.3	1.8	94	6	59	20	6	0	20	0	5.52	1.28	8	2.60	6		0
HIGHTSTOWN 2 W	85.8	63.0	74.4	1.4	94	6+	52	19	5	0	12	0	5.72	1.48	7	1.92	11		0
INDIAN MILLS	85.5	64.0	74.8	1.5	92	3	54	30+	5	0	15	0	4.25	-0.62	5	1.98	6		0
MAYS LANDING 1 W													5.22		6	1.84	14	NM	
MILLVILLE MUNI AP*	85.1	66.0	75.5	1.6	91	5	59	22					3.68	-0.28	10	0.73	18	NM	
MOORESTOWN *	86.6	64.1	75.4	0.9	93	5+	47	3+										NM	
NEW BRUNSWICK 3 SE	86.2	64.8	75.5	1.8	94	6	54	19	8	0	16	0	4.13	-0.02	7	1.15	11		0
SEABROOK FARMS	85.2	68.6	76.9	1.5	92	6+	61	30	3	0	26	0	6.54	2.43	9	2.70	2		0
SOMERDALE 4 SW	85.0	66.0	75.5		95	5	57	19	5	0	18	0	4.39	0.43	7	1.51	6	NM	
ATSION	83.8	64.2	74.0		92	7+	52	22	4	0	15	0	3.70		6	1.60	6	NM	
TRENTON MERCER CO	84.0	65.8	74.9	1.0	92	5	56	30	3	0	19	0	4.19	0.09	12	1.02	9	NM	
PHILADELPHIA MT HO	85.0	65.9	75.5		94	6	58	30+	4	0	18	0	4.36		6	1.44	11		0
-DIVISION-			75.3	1.5									4.87	0.57					
-NJ: COASTAL-																			
ATLANTIC CITY	79.8	72.4	76.1	1.1	87	29	66	19	0	0	31	0	4.44	0.52	6	1.72	12	NM	
BRANT BEACH HVN	83.5	72.2	77.9	2.6	88	5	66	19	0	0	31	0	3.11	-0.60	6	1.03	6	NM	
CAPE MAY 2 NW	84.8	68.5	76.7	1.6	91	31+	63	23+	2	0	24	0	6.95	3.33	7	3.80	25		0
LONG BRANCH OAKHUR	82.4	66.3	74.4	1.2	88	29+	59	31+	0	0	20	0	5.89	0.87	6	1.92	16	NM	
-DIVISION-			76.3	1.9									5.10	1.00					
-STATE-			74.9	1.7									4.68	0.46					0

* = One to four days of missing temperature data + = This value also occurred on one or more previous dates this month.

All means are for the years 1981-2010. NM = Snowfall is not measured.

These data are considered preliminary, published data from the National Climatic Data Center may differ somewhat from the values shown here.

PRELIMINARY MONTHLY DEGREE DATA AUGUST 2012

STATION	HEATING DEGREE DAYS (BASE 65)				COOLING DEGREE DAYS (BASE 65)				GROWING DEGREE DAYS (BASE 50)			
	MONTH	MONTH	SEASON	SEASON	MONTH	MONTH	SEASON	SEASON	MONTH	MONTH	SEASON	SEASON
-DE: NORTHERN-												
BEAR 2 SW	0	-1	0	-1	333	39	1095	185	798	40	3110	374
WILMINGTON NEW CAST	0	-2	0	-2	361	45	1218	225	826	46	3262	399
WILMINGTON PORTER RS	0	-2	0	-2	352	54			817	56	3160	375
-DE: SOUTHERN-												
DOVER	0	-1	0	-1	395	50	1321	213	860	51	3419	364
-MD: SOUTHEASTERN SHORE-												
SALISBURY WICOMICO	0	-1	0	-2	436	128	1478	495	901	129	3648	769
SNOW HILL 4 N	0	-1	0	-1	375	42			840	43		
SALISBURY 2N	0		0		396				861		3561	
-MD: CENTRAL EASTERN SHORE-												
ROYAL OAK 2 SSW	0	-1	0	-1	417	47	1442	241	882	48	3671	458
-MD: LOWER SOUTHERN-												
MECHANICSVILLE 5 NE	0	-3	0	-3	309	36			774	39		
SOLOMONS	0	0	0	0	435	18	1472	172	900	18	3683	365
-MD: UPPER SOUTHERN-												
BALTIMORE WASH INTL	0	-1	0	-1	391	75	1371	361	856	76	3529	629
BELTSVILLE	0	-2	0	-2	371	35	1239	172	836	36	3351	384
DALECARLIA RSVR	0	-2	0	-2	393	25	1332	133	858	27	3516	326
LAUREL 3 W	0	-1	0	-1	417	41	1436	240	882	42	3633	470
MD SCI CTR BALTIMOR	0	0	0	0	544	112			1009	112		
NATL ARBORETUM DC	0	-1			447	44			912	44		
OXON HILL	0	0	0	0	414	45	1395	206	879	45	3576	383
UPPER MARLBORO 3 NN	0	-3	0	-3	386	72	1322	288	851	75	3452	509
-MD: NORTHEASTERN SHORE-												
STEVENSVILLE	0	0	0	0	418	71	1316	265	883	71	3434	463
-MD: NORTHERN CENTRAL-												
BRIGHTON DAM	0				333				798			
CONOWINGO DAM	0	-1	0	-1	300	-58			765	-56	2989	-26
DAMASCUS 3 SSW	0	-5	0	-6	290	38			755	42		
EMMITSBURG 2 SE	0	-6	0	-7	247	1	870	110	712	7	2870	327
MILLERS 4 NE	0	-6	0	-7	263	40	951	247	728	46	3047	547
WESTMINSTER	0	-5	1	-5	331	67			796	72	3099	358
-MD: APPALACHIAN MOUNTAIN-												
CUMBERLAND 2	0	-2	0	-2	298	-26	1100	75	763	-24	3208	245
FROSTBURG 2	7	-25	11	-40	111	-8	481	115	569	17	2334	394
SHARPSBURG 5 S	0	-5	0	-6	272	27			737	32	2901	332
-MD: ALLEGHENY PLATEAU-												
OAKLAND 1 SE	17	-20	18	-42	94	-4			542	16		
SINES DEEP CREEK	35				48				478			
KITZMILLER 1 W	0		0		175				640			

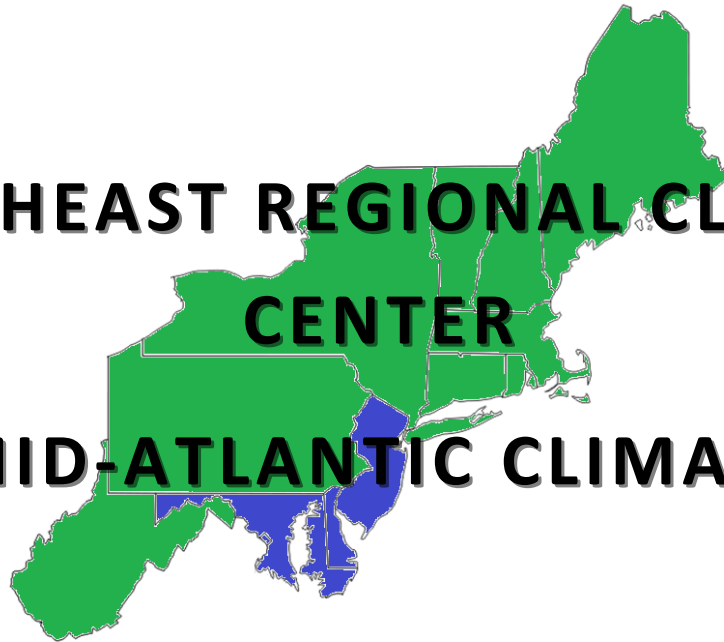
STATION	HEATING DEGREE DAYS (BASE 65)				COOLING DEGREE DAYS (BASE 65)				GROWING DEGREE DAYS (BASE 50)			
	MONTH	MONTH	SEASON	SEASON	MONTH	MONTH	SEASON	SEASON	MONTH	MONTH	SEASON	SEASON
-NJ: NORTHERN-												
BOONTON 1 SE	0	-6	1	-7	295	63			760	69	2898	454
CANOE BROOK	0	-6	1	-7	309	61			774	67		
CHATHAM 2 W	0	-6			334	79			799	85		
CRANFORD	0	-4			330	64			795	68		
FLEMINGTON 5 NNW	0	-8	1	-10	271	43			736	51		
HARRISON	0	-1			387	42			852	43		
NEWARK INTL AP	0	-1	0	-1	400	64	1271	237	865	65	3334	447
POTTERSVILLE 2 NNW	1		2		201		692		665		2624	
RINGWOOD	0		2		283				748			
SUSSEX 2 NW	6	-14	7	-23	202	46			661	60		
TOCKS ISLAND	1		2		224		762		688		2660	
-NJ: SOUTHERN-												
ATLANTIC CITY INTL	0	-3	0	-3	333	38	1059	150	798	40	3045	338
ESTELL MANOR	0	-2	0	-3	317	41	1042	189	782	43	3014	357
FREEHOLD MARLBORO	0	-3	0	-4	314	38			779	41		
HAMMONTON 1 NE	0	-2	0	-3	360	64	1153	214	825	66	3155	398
HIGHTSTOWN 2 W	0	-6			299	47			764	53		
INDIAN MILLS	0	-4	0	-5	310	50			775	54	3071	434
NEW BRUNSWICK 3 SE	0	-3	0	-4	335	62	1055	221	800	65	3032	430
SEABROOK FARMS	0	-1	0	-1	378	53			843	54		
SOMERDALE 4 SW	0		0		332		1132		797		3073	
ATSION	0		0		286				751			
TRENTON MERCER CO A	0	-3	0	-3	314	35	1097	241	779	38	3187	541
PHILADELPHIA MT HOL	0		0		332		1117		797		3113	
-NJ: COASTAL-												
ATLANTIC CITY	0	-1	0	-1	350	41	1050	203	815	42	3027	407
BRANT BEACH HVN	0	-1	0	-1	408	88			873	89		
CAPE MAY 2 NW	0	-1	0	-1	369	55	1166	263	834	56	3197	477
LONG BRANCH OAKHURS	0	-3	0	-4	298	40			763	42		

The heating season begins July 1 and ends June 30. The cooling season begins January 1 and ends December 31.
The growing season begins March 1 and ends October 31. All departures are calculated from the 1981 - 2010 mean.
These data are considered preliminary, published data from the National Climatic Data Center may differ somewhat from the values shown here.

NORTHEAST REGIONAL CLIMATE

CENTER

MID-ATLANTIC CLIMATE



**Northeast
Regional
Climate
Center**



1123 Bradfield Hall
Cornell University
Ithaca, NY 14853-1901