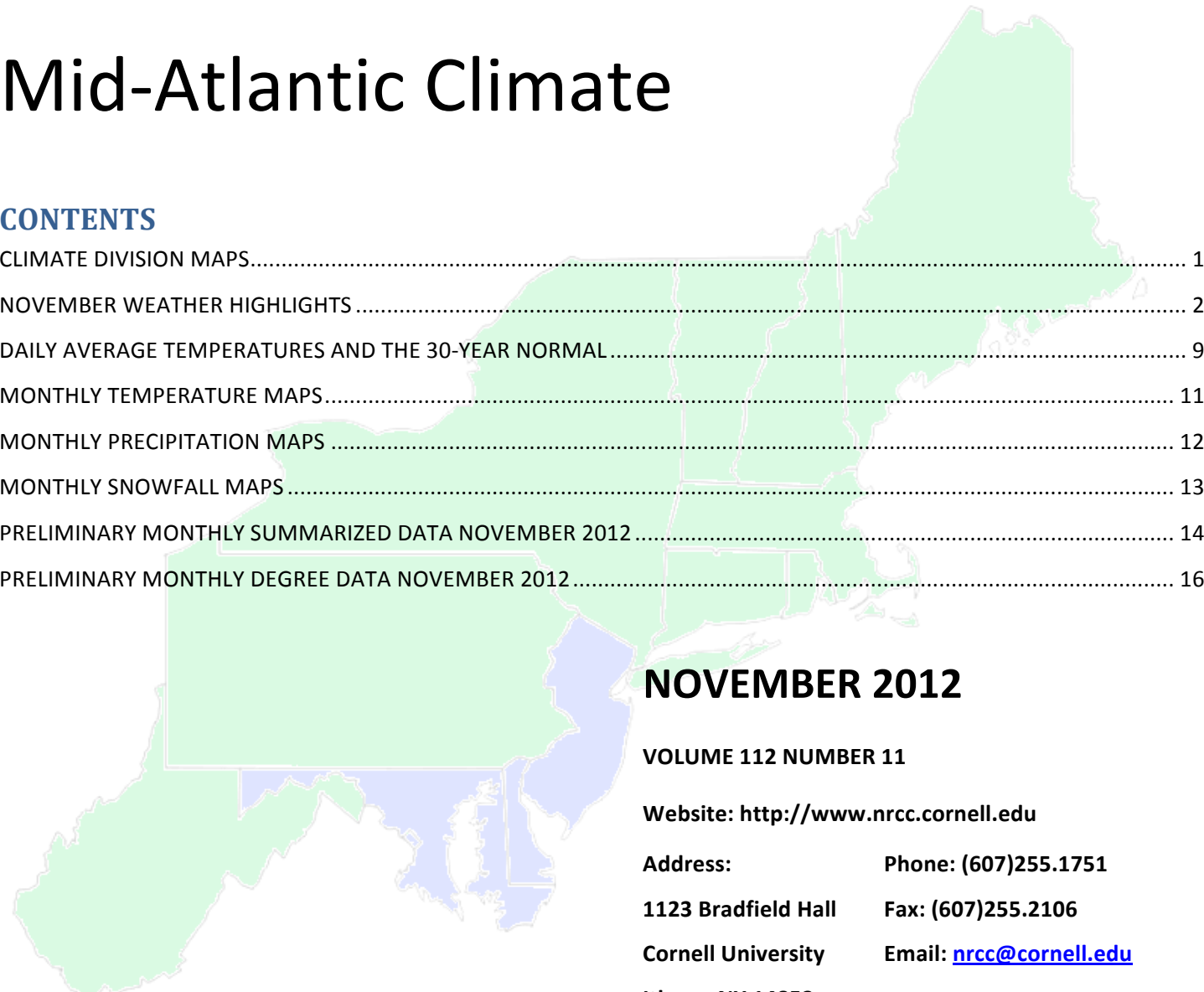


Northeast Regional Climate Center

Mid-Atlantic Climate

CONTENTS



CLIMATE DIVISION MAPS.....	1
NOVEMBER WEATHER HIGHLIGHTS	2
DAILY AVERAGE TEMPERATURES AND THE 30-YEAR NORMAL.....	9
MONTHLY TEMPERATURE MAPS.....	11
MONTHLY PRECIPITATION MAPS	12
MONTHLY SNOWFALL MAPS.....	13
PRELIMINARY MONTHLY SUMMARIZED DATA NOVEMBER 2012	14
PRELIMINARY MONTHLY DEGREE DATA NOVEMBER 2012.....	16

NOVEMBER 2012

VOLUME 112 NUMBER 11

Website: <http://www.nrcc.cornell.edu>

Address: Phone: (607)255.1751

1123 Bradfield Hall Fax: (607)255.2106

Cornell University Email: nrcc@cornell.edu

Ithaca, NY 14853

NRCC Staff:

Dr. Arthur DeGaetano
Director
Mr. William Noon
Computer Analyst

Mr. Keith Eggleston
Regional Climatologist
Ms. Jessica Rennells
Assistant Climatologist

Mrs. Samantha Borisoff
Assistant Climatologist
Ms. Tara Fardellone
Publication Design

Mrs. Pamela Vitale
Administrative Assistant

State Climatologists:

David Legates
210 Newark Hall
Department of Geography
Newark, DE 19716
302-831-2294

Konstantin Y. Vinnikov
Dept of Atmospheric and Oceanic Sci.
University of Maryland
College Park, MD 20742
301-405-5382

David Robinson
Department of Geography
Rutgers University
Piscataway, NJ 08854
732-445-4741

CLIMATE DIVISION MAPS

New Jersey Climate Divisions

- 1 Northern
- 2 Southern
- 3 Coastal



Delaware Climate Divisions

- 1 Northern
- 2 Southern



Maryland Climate Divisions

- 1 Southern Eastern Shore
- 2 Central Eastern Shore
- 3 Lower Southern
- 4 Upper Southern
- 5 Northern Eastern Shore
- 6 Northern Central
- 7 Appalachian Mountain
- 8 Allegheny Plateau



NOVEMBER WEATHER HIGHLIGHTS

The average temperature of 42.0 degrees, 4.2 degrees below normal, made it the 18th coolest November since 1895 for the Mid-Atlantic. All states, and all divisions, reported cooler than average temperatures. In terms of departure from normal, Delaware was the coolest at 4.9 degrees below normal. November 2012 was the 11th coolest on record and the coolest November since 1996 for the state. Both Maryland and New Jersey were 4.1 degrees below normal. New Jersey had its 17th coolest November while Maryland had its 18th coolest. Salisbury, located in Maryland's Southeastern Shore, was the warm spot, reaching a high of 75 degrees on the 12th. The cool spot was Millville, located in New Jersey's Southern division, which dropped to 19 degrees on the 29th.

On the heels of one of the wettest months on record, October, the Mid-Atlantic had one of its driest months on record. Receiving only 1.06 inches of precipitation (30% of normal), the Mid-Atlantic had its 9th driest November in 118 years. All states and their divisions were drier than average. Maryland had its 4th driest November at 22% of normal and its Allegheny Plateau division had its driest November on record with 13% of normal precipitation. Delaware received 35% of normal precipitation, making it their 13th driest November, and New Jersey received 40% of normal, making it their 12th driest. For a list of divisions ranks, see the table below. Frostburg, MD, received only 0.35 inches of precipitation, making it the site of the lowest monthly precipitation. Precipitation totals were greatest in New Jersey in part because of a beginning of the month Nor'easter. The greatest monthly precipitation was reported in Indian Mills, NJ, which received 2.11 inches of precipitation, while Estell Manor had the greatest daily precipitation with 1.21 inches (in the form of 4 inches of snow) on the 8th. As for snowfall, Canoe Brook, NJ, received a monthly snowfall maximum of 8.2 inches while a daily snowfall maximum of 7.2 inches fell in Hightstown, NJ, on the 8th.

Climate Division Rank (driest since 1895)

Maryland

--Allegheny Plateau	1 st
--Lower Southern	3 rd
--Southeastern Shore	3 rd
--Northeastern Shore	5 th
--Appalachian Mtn.	5 th
--Central Eastern Shore	9 th
--Upper Southern	9 th
--North Central	11 th

New Jersey

--Northern	8 th
--Coastal	17 th
--Southern	21 st

Delaware

--Northern	12 th
--Southern	15 th

At the start of November, the Mid-Atlantic was still dealing with the aftermath of Sandy. Damage to fuel terminals and power outages caused twelve northern counties of New Jersey to institute gas rationing for 10 days. As per the Associated Press, the estimated cost of recovering and rebuilding from Sandy increased to \$37 billion in New Jersey. A Nor'easter dropped snow on areas still trying to clean up from Sandy on the 7th and 8th. Some inland areas of New Jersey received over a foot of snow and a few snowfall records were set across the Mid-Atlantic. Wind gusts near 35 mph downed already vulnerable trees and power lines and caused new power outages in places where people had just gotten power back. According to the Department of Energy website, "All customers who are able to receive electricity and who lost power due to Sandy and the Nor'easter have had their electricity restored. As of December 3, in New Jersey there are less than 19,000 customers who are unable to accept electric service."

Daily Low Maximum Temperature Record (°F)

<u>Station</u>	<u>Date</u>	<u>New</u>	<u>Previous</u>
Washington Dulles, DC	8	43	43 in 1967

Daily Minimum Temperature Record (°F)

<u>Station</u>	<u>Date</u>	<u>New</u>	<u>Previous</u>
Newark, NJ	6	27	29 in 1953

Daily Precipitation Record (inches)

<u>Station</u>	<u>Date</u>	<u>New</u>	<u>Previous</u>
Washington Dulles, DC	13	0.87	0.78 in 2008

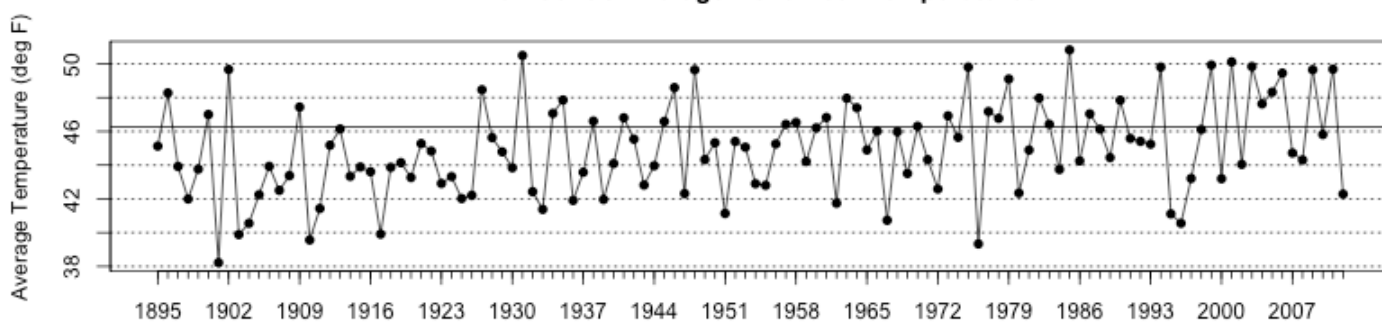
Daily Snowfall Records (inches)

<u>Station</u>	<u>Date</u>	<u>New</u>	<u>Previous</u>
Atlantic City, NJ	7	2.5	2.0 in 1953
Newark, NJ	7	5.7	Trace in 1981
Washington National, DC	8	Trace	Trace in 1991
Newark, NJ	8	0.5	Trace in 2010
Washington Dulles, DC	13	Trace	Trace in 1995
Wilmington, DE	25	Trace	Trace in 2010

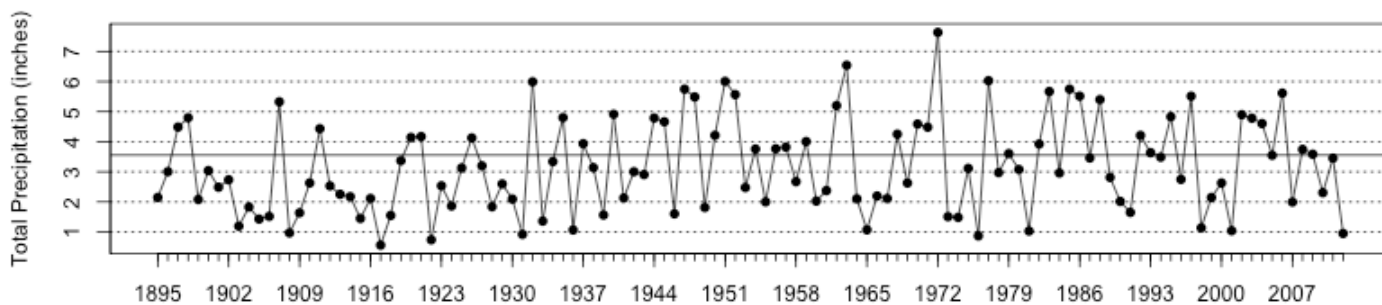
November Single Storm Snowfall Record (inches)

<u>Station</u>	<u>New</u>	<u>Previous</u>
Newark, NJ	6.2	5.7 in 1989

Mid Atlantic Average November Temperatures



Mid Atlantic November Precipitation Totals



The 2012 values depicted on these graphs are based on preliminary data.

The Streak is Broken: November 2012 Report

Just About Every Condition Imaginable: Fall 2012 Report

Dr. David A. Robinson, New Jersey State Climatologist
NJ Agricultural Experiment Station, Rutgers University

November Overview

The last month of climatological fall proved to be a rather wintery one across New Jersey. Measurable snow fell on two occasions over portions of the state, and for the first time since January 2011 the statewide average monthly temperature was below normal. Despite the cooler-than-average temperatures and the early-month snowstorm, conditions for the most part were rather tranquil, thus of no great hindrance to the recovery efforts from Sandy.

The average monthly temperature of 41.6° was 4.0° below average, making November 2012 the 19th coolest on record (back to 1895). Chilly conditions were persistent, with about three out of four days below average; there were no extremely cold episodes. The 10th-13th was the only warm interval of the month, with highs into the 60°s and low 70°s in many areas. Dennis Township (Cape May County) and Greenwich (Salem) reached 63° on the 10th. Red Lion (Burlington), Sicklerville (Camden), and Cherry Hill (Camden) led the way with 72° on the 11th. The 12th was the mildest day of the month, with 72° reached at Red Lion, Cherry Hill, and Piney Hollow (Gloucester). Elsewhere, 13 stations in the 54 station [NJ Weather and Climate Network](#) topped out at 70° or 71°, while High Point (Sussex) only got to 57°. Mullica (Atlantic), Cherry Hill, and Hammonton (Atlantic) were warmest at 64° on the 13th. The only other day of the month at or above 60° was the 23rd, with 62° in Red Lion and 60° at five locations.

Most locations saw low temperatures dip into the 20°s on a number of November mornings. On 11 days, cold air drainage led to lows in the upper teens at several valley locations. This occurred when overnight skies were clear and winds calm. The usual cold locations of Walpack (Sussex) and Pequest (Warren) took cold honors on most occasions. The 6th saw lows of 16° at these two spots, with 17° at Basking Ridge (Somerset) and 18° in Kingwood (Hunterdon). It wasn't until the 17th that the teens returned, with 19° at Walpack. The 18th saw Walpack at 18° and Pequest at 19°, with Walpack down to 17° on the 19th. Walpack fell to 16° on the 21st, 19° (along with Pequest) on the 22nd, and 19° on the 23rd. Berkeley Township (Ocean) bottomed out at 19° on the 26th, Pequest 18°, Walpack 19° on the 28th, and Pequest 17°, Walpack, and Kingwood 18° on the 29th. The 30th was the coldest morning of the month statewide, with Pequest and Berkeley Township down to 18°, Walpack at 19°, and 23 NJWxNet stations between 20°-25°.

It took until late in the month for three NJWxNet coastal stations to fall to the freezing point for the first time this fall. Harvey Cedars (Ocean) reached 32° on the 25th, West Cape May (Cape May) 28° on the 28th, and Atlantic City Marina (Atlantic) 32° on the 29th. Of all the stations in the state, West Cape May had the longest growing season this year, with a 261-day freeze-free interval from March 12th through November 27th. On the opposite end, Pequest's growing season was only 153 days, running from May 12th through October 11th.

November was a rather dry month, with only three precipitation events of note. The statewide average of 1.44" was 2.20" below normal and ranks as the 12th driest on record (tied with 1965; Table 1). The most precipitation (rain and melted snow) was 2.56" at Asbury Park (Monmouth). This was followed by 2.38" in Lacey Township (Ocean) and the Monmouth County communities of Howell (2.22") and Rumson (2.20"). The least precipitation was the 0.77" observed in Parsippany-Troy Hills (Morris), followed by the Hunterdon County communities of Clinton (0.80"), Stockton (0.82"), and Frenchtown (0.84").

Rank	Year	Nov. Prcp
1	1917	0.51"
2	1976	0.59"
3	1922	0.83"
4	1931	0.83"
5	1908	0.87"
6	2001	1.00"
7	1933	1.08"
8	1936	1.10"
9	1903	1.15"
10	1998	1.31"
11	1973	1.43"
12	2012	1.44"
12	1965	1.44"
14	1906	1.47"
14	1946	1.47"

Table 1. The 15 driest Novembers across New Jersey since 1895.

Snowfall for the month accumulated in two events, an unusual circumstance, though not in all locations each time. Examining historic monthly snowfall data for NJ as a whole and for individual regions from 1895-present, November 2012 was the sixth snowiest on record. The 3.4" was 2.6" above normal and the snowiest since 1989 (Table 2). The North region received 4.8" for the month, while Central came in at 5.1" and South at 1.8". This was the snowiest November for the North since 1938, when two separate events in the last week of the month produced heavy snow across the state (all regions averaged over 12.0"). The Central and South totals were the snowiest since 5.3", 5.5", respectively, in 1989.

Rank	Year	Snowfall
1	1898	15.0"
2	1938	13.4"
3	1953	5.1"
4	1989	5.0"
5	1967	4.2"
6	2012	3.4"
7	1978	2.7"
8	1935	2.5"
9	1906	2.1"
10	1955	2.0"

Table 2. The ten snowiest Novembers across New Jersey since 1895.

There were only three precipitation events in November that saw liquid totals exceeding 0.10" at one or more locations. The first was during the daylight hours of the 7th into the early morning of the 8th. A mix of rain and snow fell across most of the state, the largest totals in Monmouth and Ocean counties. The western portions of Sussex and Warren counties only saw flurries or very light snow accumulations. The most rain/melted snow was the 1.88" observed in Brick (Ocean), followed by Asbury Park (Monmouth) with 1.83", Lacey Township's (Ocean) 1.62", and Freehold's (Monmouth) 1.54". Snowfall was heavy in inland portions of Monmouth

and Ocean counties, peaking at an incredible 13.0" in Freehold, followed by 12.0" in Allaire (Monmouth), Jackson Township (Ocean), and Manchester Township (Ocean) (maximum county totals are posted in Table 3). To only begin to appreciate the exceptional nature of these totals, 20 miles to the northwest in New Brunswick (Middlesex), where complete daily records exist back to 1893, the 4.8" from this event marked the largest early season total on record. To find a larger total, you have to go to November 23, 1989, when 6.1" fell (the October 2011 storm brought 3.0"). In several respects, it was fortunate that the eastern half of the state was in the snow for this storm (often found on the far western side of a coastal storm), as this meant the strong nor'easter was far enough offshore to keep the heavy surf away from the vulnerable coast. Winds gusted to 40 mph at Sea Girt (Monmouth), with 12 other NJWxNet stations recording gusts between 30-38 mph. While not as strong a storm as feared, the event slowed Sandy recovery efforts and placed more homes and businesses back into the dark, joining others that had yet to have power return since the October 29th storm.

County	Snowfall	Town
Atlantic	4.0"	Estell Manor & Folsom
Bergen	7.6"	Tenafly
Burlington	5.0"	Chesterfield Twp
Camden	3.5"	Voorhees
Cape May	2.4"	Woodbine
Cumberland	2.5"	South Vineland
Essex	6.2"	Newark Airport
Gloucester	3.0"	Franklin Twp
Hudson	6.0"	Jersey City
Hunterdon	3.2"	Wertsville
Mercer	7.2"	Hightstown
Middlesex	7.8"	Cheesequake
Monmouth	13.0"	Freehold Twp
Morris	7.5"	Long Hill Twp
Ocean	12.0"	Jackson Twp & Manchester Twp
Passaic	5.3"	Little Falls Twp
Salem	3.5"	Pittsgrove Twp
Somerset	7.5"	Warren Twp
Sussex	3.8"	Vernon Twp
Union	7.5"	Berkeley Heights
Warren	3.0"	Hackettstown

Table 3. Maximum reported snowfall in NJ's 21 counties from the November 7-8 snowstorm.

Rain fell most heavily during the morning of the 13th on the two northwestern counties that saw little precipitation from the event on the 7th. Meanwhile, little rain fell near the coast. Montague (Sussex) and Blairstown (Warren) received 0.85", while two other Blairstown stations caught 0.84" and 0.80". The final November storm during the daylight hours and early evening of the 27th again brought snow, with accumulations limited to areas roughly north of Route 1 in Mercer and Middlesex counties. Rain and melted

snow totaled approximately 0.20" to 0.70" statewide, with the largest totals in Moorestown (Burlington) and Ringwood (Passaic), both with 0.77", and 0.72" in the Mercer county towns of Princeton and Ewing. At least one snowfall observation of 4.0" or more was noted in eight counties, including Sussex, Warren, Morris, Passaic, Bergen, Essex, Hunterdon, and Somerset. Topping the list was 6.0" in West Milford (Passaic) and 5.0" at both Lake Hopatcong (Morris) and Randolph Township (Morris).

Barometric pressure was highest on November 17th and 18th, ranging from about 30.65"-30.70". It was lowest on the 1st at 29.50"-29.55" as the remnants of Sandy slowly departed the Northeast. Wind gusts equaled or exceeded 40 mph on six days, but aside from the aforementioned 40 mph gust at Sea Girt on the 7th, such gusts were only observed at the Sussex County locations of High Point Monument and Wantage. Wantage got to 41 mph on the 4th, with the Monument and Wantage gusting to 50 mph and 46 mph, respectively, on the 8th. Both peaked at 48 mph on the 13th, when no other station saw a gust greater than 30 mph. The Monument also gusted to 43 mph on the 24th and 40 mph on the 25th.

Fall Overview

As is often seen in a transition season, conditions can vary widely over the course of three months. Perhaps never has this rung more true than in fall 2012 across New Jersey. Actually, just within the last week of October and the first week of November, the state experienced its most devastating storm on record and one of its largest early season snowstorms. No counties were impacted worse by both storms than Monmouth and Ocean, with coastal communities devastated by an unprecedented storm surge on October 29th and inland towns buried under as much as 13" of snow on November 7th. Toss in some early season heat and the first sub-average temperature month since January 2011 (November) and this was indeed a memorable season.

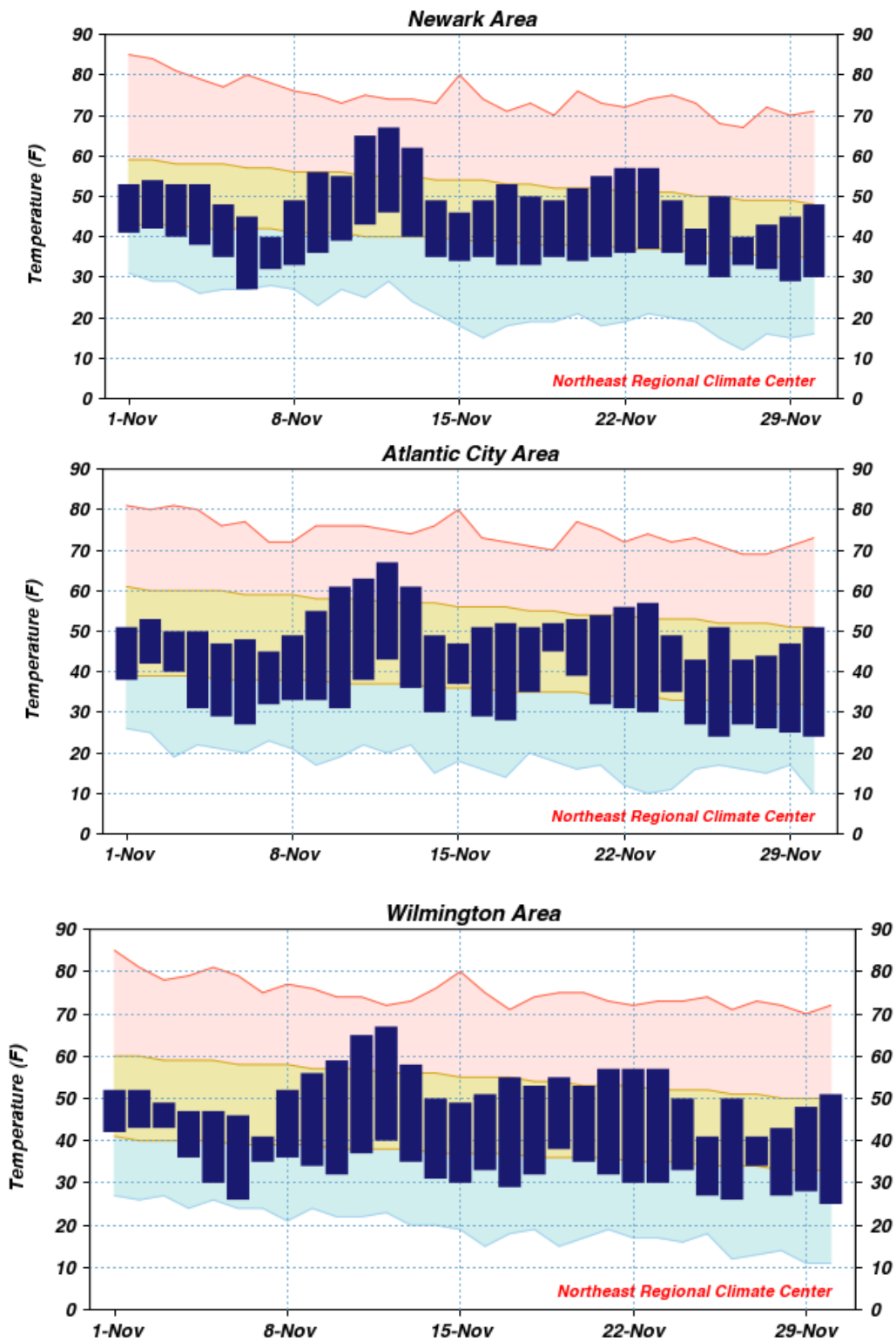
The average temperature of 55.3° was 0.2° below average and tied with 1960 and 1934 as the 43rd warmest of the past 118 falls. Despite the cooler fall, all a function of the chilly November, the first 11 months of 2012 are New Jersey's warmest on record (Table 4).

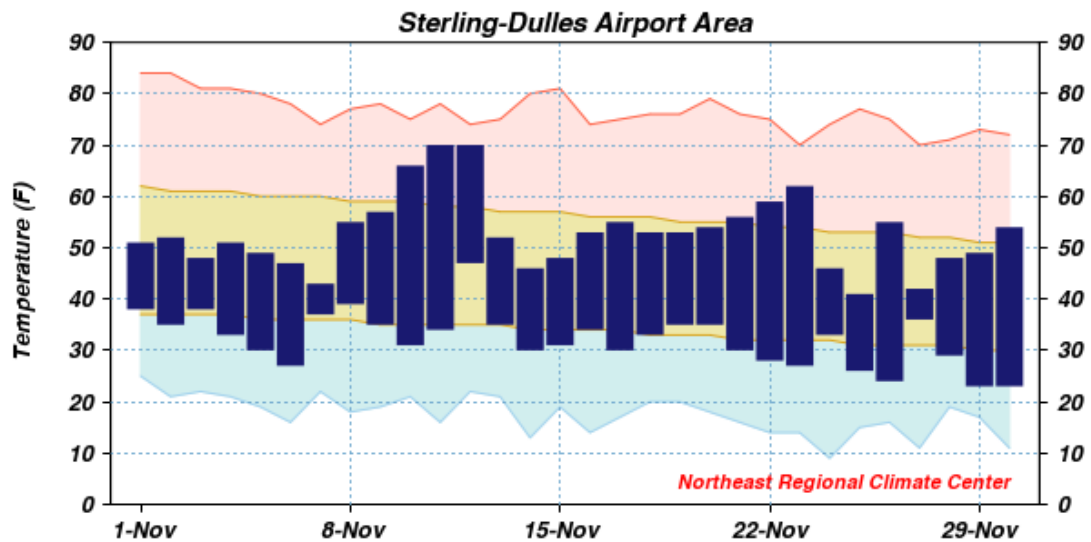
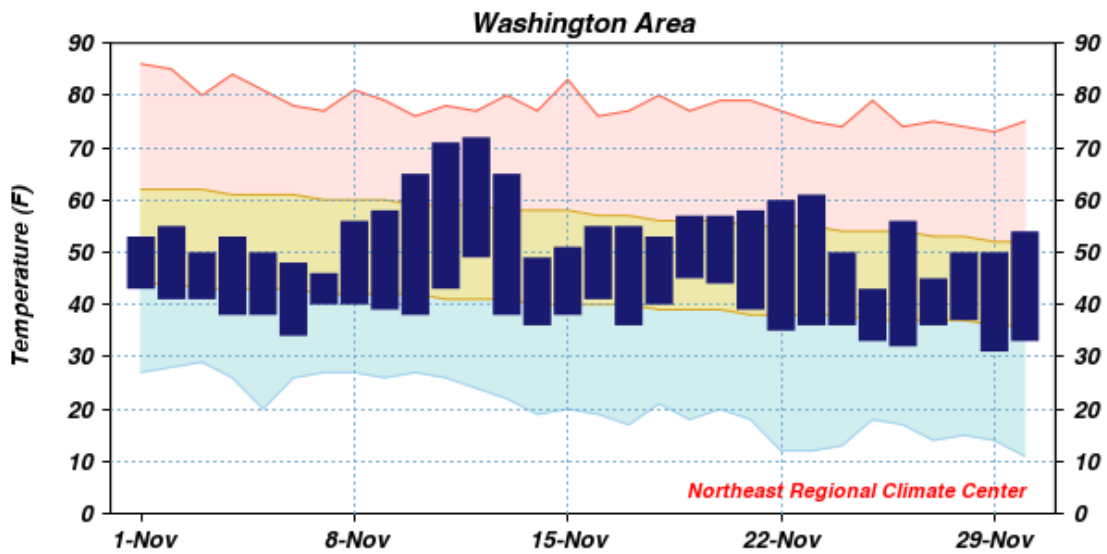
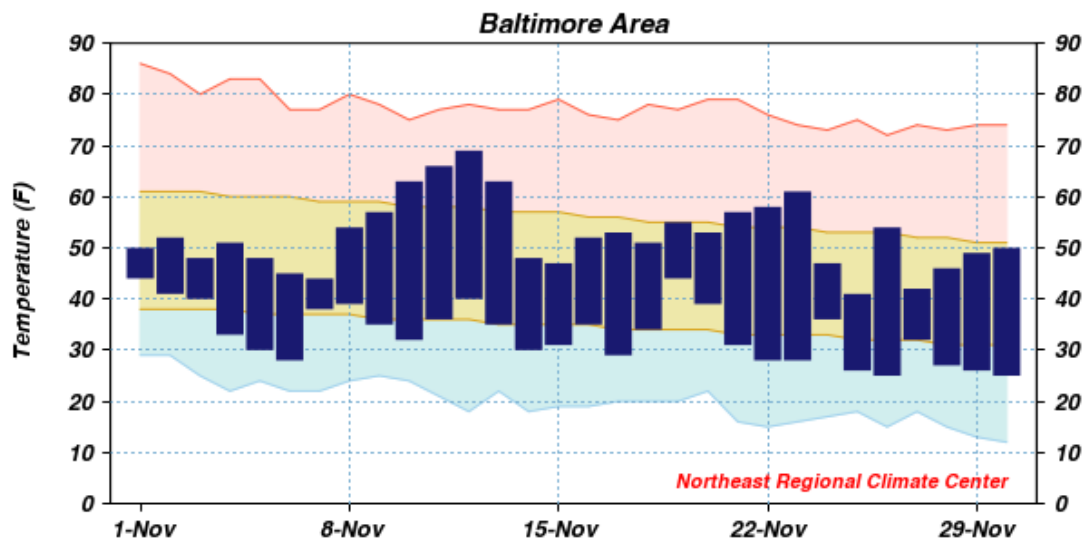
Rank	Year	Jan-Nov Avg. Temp.
1	2012	57.4°
2	2010	57.0°
2	1998	57.0°
4	2002	56.7°
5	2006	56.5°
5	2011	56.5°
7	1949	56.4°
8	1991	56.2°
9	1990	56.0°
10	1999	55.9°

Table 4. The ten warmest January to November intervals across New Jersey since 1895.

Precipitation during fall 2012 average 11.90" across NJ. This was 0.26" above average and ranked as the 45th wettest fall on record. January through November precipitation totaled 37.84", which is 5.18" below average and the 34th driest. For the fall, Stone Harbor (Cape May) received the most precipitation, with 18.40" accumulating. The next three highest totals included White Township (Warren) with 18.26", West Milford (Passaic) with 17.77", and Middle Twp (Cape May) with 17.09". Much drier conditions were observed in the northeast quadrant, with Maplewood (Essex) only receiving 6.39", Palisades Park (Bergen) 7.19", and North Arlington (Bergen) 6.84".

DAILY AVERAGE TEMPERATURES AND THE 30-YEAR NORMAL



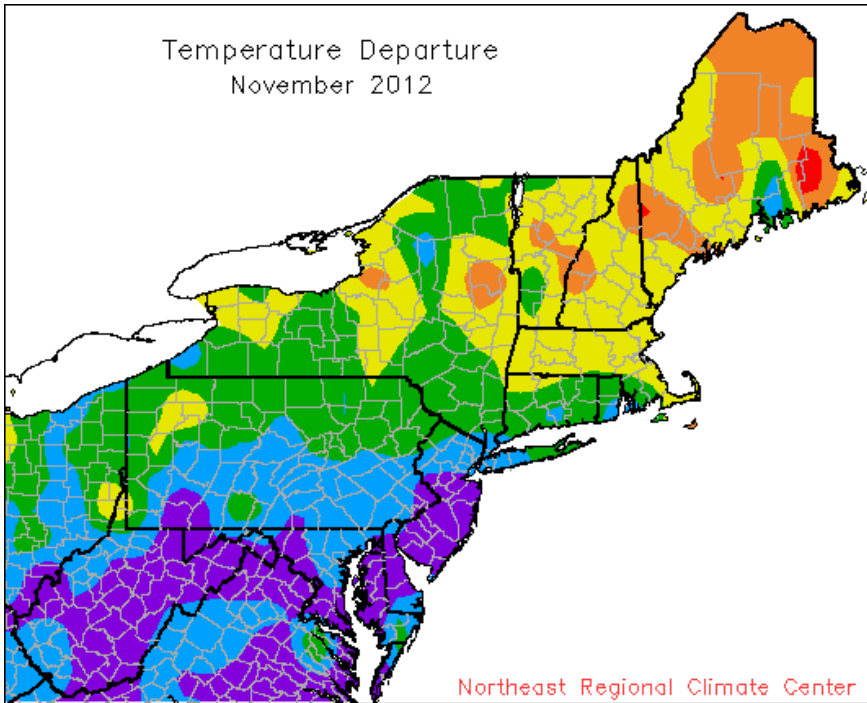
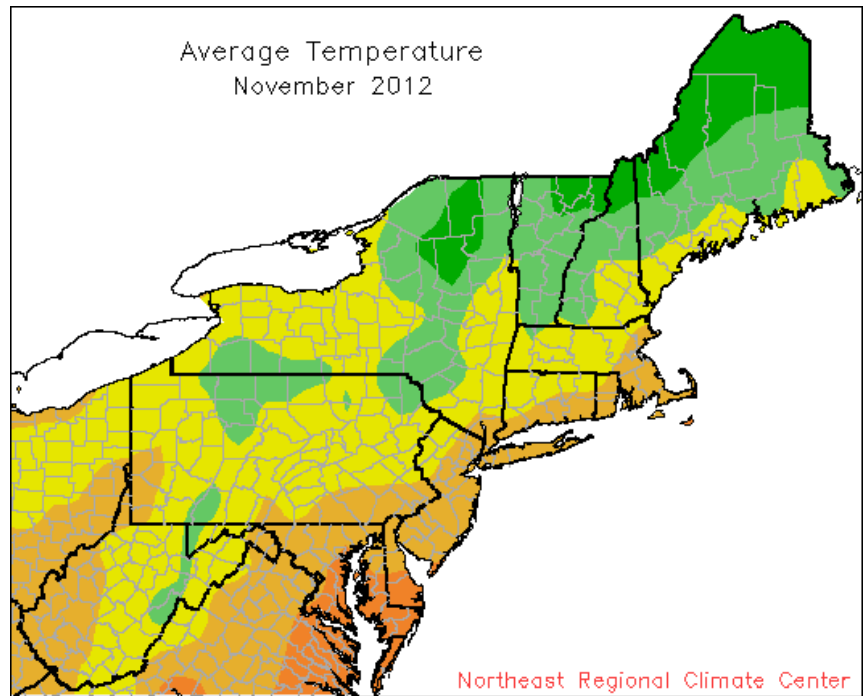


Area between normal max and min temperatures has tan shading.

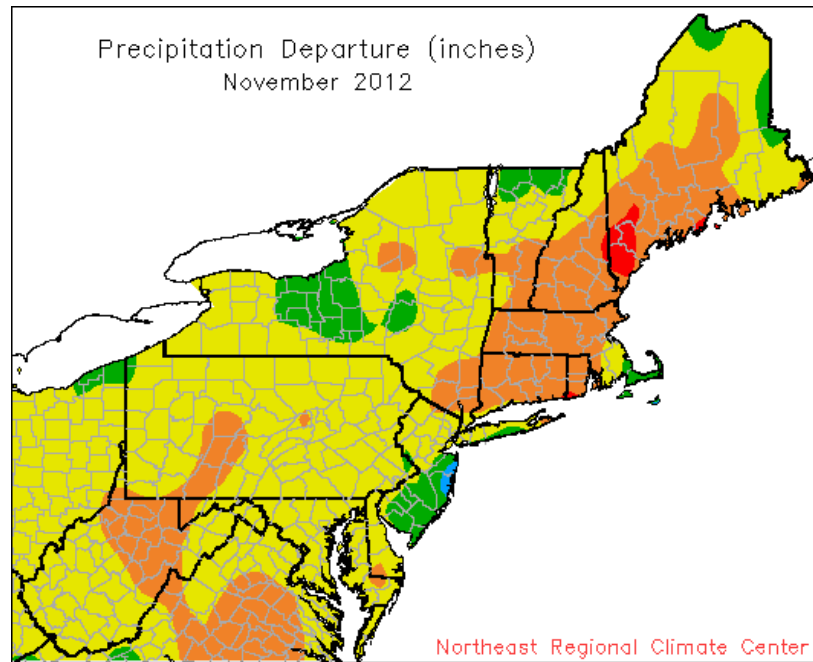
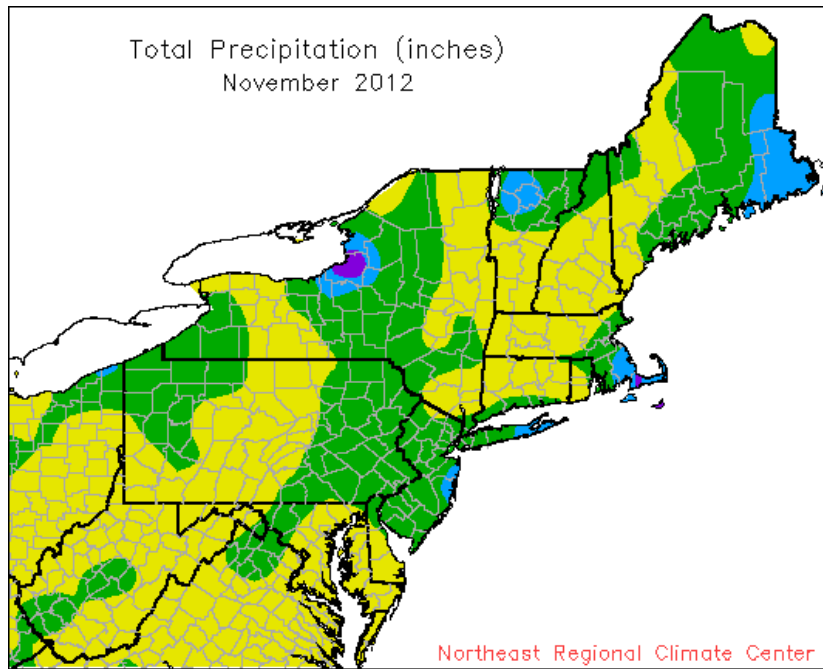
Red line connects record high temperatures.

Light blue line connects record low temperatures.

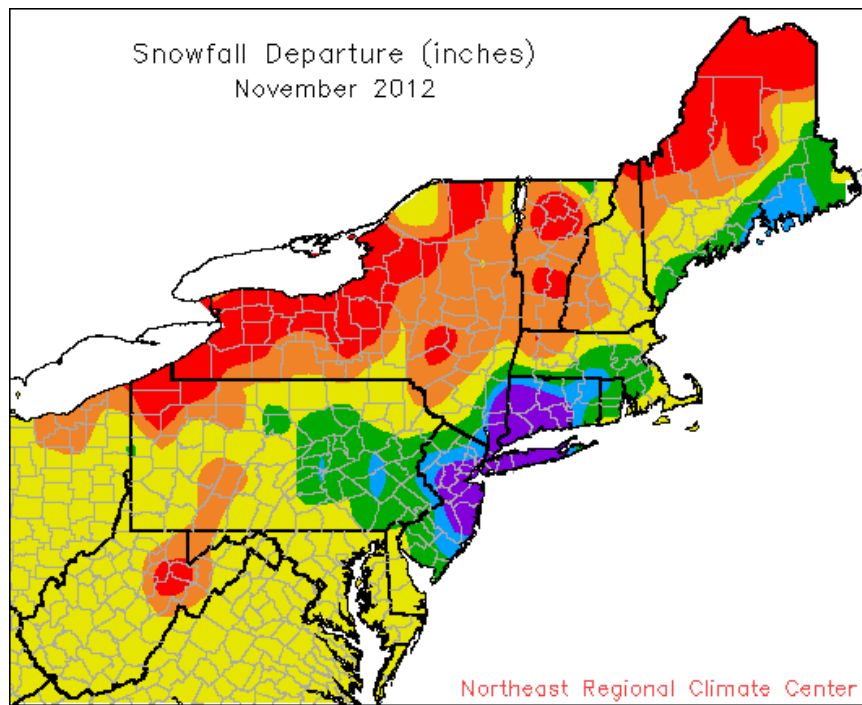
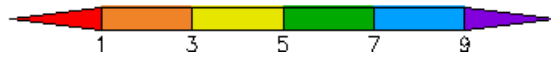
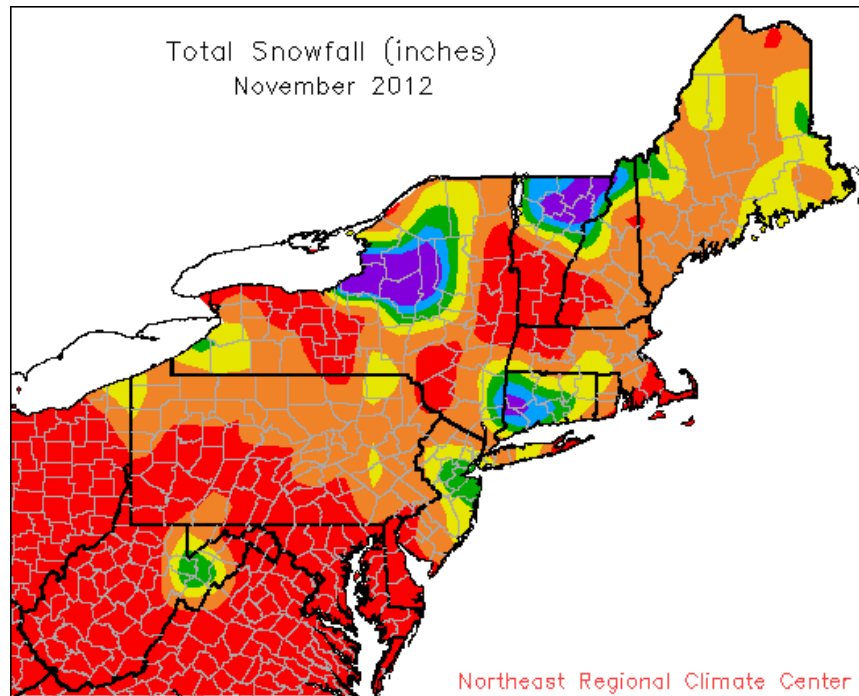
MONTHLY TEMPERATURE MAPS



MONTHLY PRECIPITATION MAPS



MONTHLY SNOWFALL MAPS



PRELIMINARY MONTHLY SUMMARIZED DATA NOVEMBER 2012

STATION	TEMPERATURE (F)							PRECIPITATION (INCHES)											
	MONTHLY AVERAGES				EXTREMES			NUMBER OF DAYS				MONTHLY TOTALS			EXTREMES		SNOWFALL		
	AVG MAX	AVG MIN	MON AVG	DEPRT AVG	MON MAX	DAY MIN	MON DAY	MAX 50+	MIN 32-	0 -	MON TOT	DEPRT	DAYS 0.1+	DLY MAX	DAY	MON TOT	DLY MAX		
-DE: NORTHERN-																			
BEAR 2 SW	51.8	31.8	41.8	-3.5	71	12	22	29	19	0	16	0	0.96	-2.51	3	0.54	27	T	T
WILMINGTON NEW CAS	51.7	33.0	42.4	-4.2	67	12	25	30	20	0	15	0	0.98	-2.12	3	0.61	27	T	T
WILMINGTON PORTER R	49.4	35.6	42.5	-3.7	67	13+	28	26	12	0	6	0	1.39	-2.09	3	0.56	27	0	0
-DIVISION-			42.2	-4.1									1.11	-2.22			0	0	
-DE: SOUTHERN-																			
DOVER	52.2	34.6	43.4	-5.8	72	12	24	29	22	0	9	0	1.28	-2.20	4	0.55	7		
-DIVISION-			43.4	-5.1									1.28	-2.33					
-STATE-			43.1	-4.9									1.24	-2.30			0	0	
-MD: SOUTHEASTERN-																			
SALISBURY WICOMICO	56.4	36.3	46.4	-1.8	75	12	24	29	26	0	9	0	0.44	-2.99	1	0.27	7	0	0
SNOW HILL 4 N	56.3	34.4	45.3	-4.7	73	12	22	29	26	0	13	0	0.51	-3.01	1	0.26	7	NM	
SALISBURY 2N	54.3	35.9	45.1		73	12	25	29	23	0	9	0	0.67		2	0.29	7	NM	
-DIVISION-			45.6	-3.7									0.54	-2.85			0	0	
-MD: CENTRAL EAST-																			
ROYAL OAK 2 SSW	52.7	36.2	44.4	-5.6	71	12	27	26	21	0	9	0	0.93	-2.72	4	0.27	27	0	0
-DIVISION-			44.4	-4.4									0.93	-2.56			0	0	
-MD: LOWER SOUTHE-																			
MECHANICSVILLE 5 N	52.8	31.7	42.3	-4.8	72	13	25	30+	18	0	20	0							
SOLOMONS *	51.6	40.4	46.1	-5.6	63	13+	33	25					0.57		3	0.16	8	NM	
-DIVISION-			44.2	-3.9									0.57	-2.99					
-MD: UPPER SOUTHE-																			
BALTIMORE WASH INT	52.5	33.2	42.9	-3.6	69	12	25	30+	19	0	15	0	0.71	-2.59	2	0.44	13	T	T
BELTSVILLE	52.5	34.0	43.3	-3.5	71	13+	25	29+	17	0	9	0	0.67	-2.57	1	0.47	13	0	0
DALECARLIA RSVR	51.2	34.4	42.8	-4.8	71	13+	26	29+	17	0	11	0	0.87	-2.75	2	0.66	13	0	0
LAUREL 3 W	53.5	36.3	44.9	-2.9	72	12+	30	7	21	0	6	0	0.71	-3.50	2	0.52	13	NM	
MD SCI CTR BALTIMO	55.3	42.3	48.8	-1.5	71	12	36	30+	26	0	0	0	0.64	-2.33	2	0.39	13	NM	
NATL ARBORETUM DC*	53.3	35.4	44.3	-4.5	72	13+	27	30+											
OXON HILL	52.5	35.7	44.1	-4.3	71	13+	28	30+	19	0	6	0							
-DIVISION-			44.4	-3.1									0.72	-2.86			0	0	
-MD: NORTHEASTERN-																			
STEVENSVILLE	50.9	35.9	43.4	-5.8	67	12	25	7+	19	0	7	0	0.78		4	0.26	28	0	0
-DIVISION-			43.4	-3.9									0.78	-2.53			0	0	
-MD: NORTHERN CEN-																			
ABERDEEN PHILLIPS	51.6	34.8	43.2	-3.8	70	13	25	26	18	0	11	0	0.83	-2.59	5	0.27	28	0	0
BRIGHTON DAM *	49.8	31.1	40.5		69	13	22	29					0.66		2	0.54	13		
CONOWINGO DAM	48.4	32.4	40.4	-5.8	66	13	24	26	13	0	17	0	0.87	-2.67	4	0.30	28		
CYLBURN	50.1	33.9	42.0	-3.7	67	13	26	26	17	0	15	0	0.92		4	0.52	13	NM	
DAMASCUS 3 SSW	49.1	33.0	41.1	-4.1	67	12	26	29+	9	0	16	0	1.16	-2.76	2	0.92	13		
EMMITSBURG 2 SE	49.8	30.3	40.0	-3.9	67	13	21	26	15	0	20	0	1.10	-2.51	3	0.61	13	0	0
FREDERICK 2 NNE	51.4	31.5	41.4	-3.8	68	13+	24	26	18	0	17	0	1.09	-2.61	3	0.73	13	0	0
MILLERS 4 NE	50.7	32.6	41.7	-2.7	68	11	23	6	16	0	14	0	1.08	-2.51	2	0.63	13	0.1	0.1 27
SMITHSBURG *	47.6	27.4	37.5	-6.5	66	13	22	26+										NM	
-DIVISION-			40.9	-4.5									0.96	-2.62			0	0	
-MD: APPALACHIAN -																			
CUMBERLAND 2	52.4	31.3	41.9	-3.5	72	13	24	6	16	0	19	0	0.39	-2.59	2	0.20	27	NM	
FROSTBURG 2	44.3	28.7	36.5	-4.0	65	13+	22	7+	6	1	26	0	0.35	-3.32	2	0.22	27		
SHARPSBURG 5 S	51.0	28.1	39.6	-4.9	68	12	23	30+	13	0	26	0	1.16	-2.24	2	0.78	13		
-DIVISION-			39.3	-4.1									0.63	-2.67					
-MD: ALLEGHENY PL-																			
OAKLAND 1 SE *	45.6	26.2	35.9	-3.4	70	12	20	16+											
SINES DEEP CREEK *	43.1	25.4	34.3		64	13	20	30											
KITZMILLER 1 W	47.3	28.5	37.9		70	12	23	29+	10	1	22	0						NM	
-DIVISION-			36.0	-4.5									0.45	-3.06					
-STATE-			42.2	-4.1									0.77	-2.73			0	0	

STATION	TEMPERATURE (F)							PRECIPITATION (INCHES)											
	MONTHLY AVERAGES				EXTREMES		NUMBER OF DAYS			MONTHLY TOTALS			EXTREMES		SNOWFALL				
	AVG MAX	AVG MIN	MON AVG	DEPRT AVG	MON MAX	DAY MIN	MON MAX	DAY MIN	50+ MAX	32- MIN	32- MIN	0- MIN	MON TOT	DEPRT 0.1+	DAYS MAX	DLY MAX	DAY MAX	MON TOT	DLY MAX
-NJ: NORTHERN-																			
BELVIDERE BRG *	49.0	28.4	38.7	-4.2	67	13	22	30+					0.92	-2.65	3	0.50	13	T	T
BOONTON 1 SE *	48.7	32.8	40.7	-2.5	66	13	23	6											
BOUND BROOK 2 W													1.33	-2.34	3	0.62	8	NM	
CANISTEAR RESERVOI													0.95	-3.00	5	0.27	28	0	
CANOE BROOK	48.8	31.9	40.3	-3.4	67	13	20	22	12	0	18	0	1.18	-2.88	3	0.51	28	8.2	6.0 8
CRANFORD	51.9	30.8	41.3	-4.0	70	13	22	6	20	0	21	0	1.52	-2.56	4	0.87	8	7.8	5.3 8
FLEMINGTON 5 NNW	49.2	30.3	39.7	-3.6	70	13	21	30	13	0	20	0	1.07	-2.75	3	0.46	28		
HARRISON	49.6	36.0	42.8	-3.9	66	13	29	7+	15	0	4	0	1.30	-2.69	2	0.67	8		
NEWARK INTL AP	51.1	35.4	43.3	-3.5	67	12	27	6	16	0	6	0	1.62	-2.03	2	1.03	7	6.6	5.7 7
OAK RIDGE													0.88	-3.08	4	0.30	13	0	
PHILLIPSBURG EAST*	48.4	31.8	40.1	-3.4	68	13	25	30+											
RINGWOOD	49.8	31.3	40.6		67	12	21	7+	14	0	21	0						NM	
SUSSEX 2 NW	48.0	31.2	39.6	-1.3	67	12	22	6	9	0	16	0							
WAYNE	50.6	33.1	41.9		67	13	26	29+	19	0	16	0	0.70		3	0.43	28	2.2	2.2 8
WERTSVILLE 4 NE *	48.3	32.0	40.2	-3.9	69	13	24	6											
TOCKS ISLAND	48.5	31.2	39.8		66	12	24	7+	12	0	18	0						NM	
-DIVISION-			40.7	-3.2									1.19	-2.72				5	
-NJ: SOUTHERN-																			
ATLANTIC CITY INTL	51.7	32.6	42.1	-4.7	67	12	24	30+	19	0	17	0	1.34	-1.93	3	0.86	7	2.5	2.5 7
ESTELL MANOR	52.1	32.4	42.3	-3.8	71	13	22	29+	20	0	15	0	1.95	-1.68	4	1.21	8		
HIGHTSTOWN 2 W	50.2	30.3	40.2	-5.1	71	13	21	6	14	0	21	0	1.82	-1.74	3	0.94	8	7.2	7.2 8
INDIAN MILLS	51.4	31.1	41.3	-4.3	70	12+	22	30+	17	0	19	0	2.11	-1.55	4	0.89	8	4.0	3.0 8
MAYS LANDING 1 W													1.33		4	0.44	8	NM	
MILLVILLE MUNI AP	51.5	30.5	41.0	-4.8	68	12	19	29	19	0	17	0	1.45	-1.91	3	0.82	7	NM	
NEW BRUNSWICK 3 SE	51.0	32.0	41.5	-3.9	71	13	25	29+	17	0	19	0	1.68	-2.15	3	0.84	8	5.6	4.8 8
SEABROOK FARMS	50.8	35.6	43.2		70	13	26	30+	17	0	8	0	1.41		3	0.74	8	0	
SOMERDALE 4 SW	47.7	30.9	39.3		68	13	20	29	9	0	18	0	1.56	-1.80	4	0.83	8		
TRENTON MERCER CO	50.2	32.7	41.5	-4.2	70	12	25	30+	15	0	14	0	1.18	-2.13	3	0.60	27	NM	
PHILADELPHIA MT H*	50.4	33.1	41.8		72	13	24	26											
-DIVISION-			41.4	-4.9									1.61	-1.89				3.9	
-NJ: COASTAL-																			
ATLANTIC CITY	50.0	40.0	45.0	-4.4	64	13	34	29+	14	0	0	0	1.53	-1.82	4	0.96	8	NM	
CAPE MAY 2 NW	53.4	37.3	45.3	-3.7	65	12	27	29+	23	0	5	0	1.22	-2.07	3	0.77	7	T	T
-DIVISION-			45.2	-3.2									1.38	-1.95				0	
-STATE-			41.4	-4.1									1.44	-2.20				4	

*= One to four days of missing temperature data + = This value also occurred on one or more previous dates this month.
All means are for the years 1981-2010. NM = Snowfall is not measured.

These data are considered preliminary, published data from the National Climatic Data Center may differ somewhat from the values shown here.

PRELIMINARY MONTHLY DEGREE DATA NOVEMBER 2012

STATION	HEATING DEGREE DAYS (BASE 65)				COOLING DEGREE DAYS (BASE 65)				GROWING DEGREE DAYS (BASE 50)			
	MONTH	MONTH	SEASON	SEASON	MONTH	MONTH	SEASON	SEASON	MONTH	MONTH	SEASON	SEASON
-DE: NORTHERN-												
BEAR 2 SW	689	96	1008	35	0	0	1246	227				
WILMINGTON NEW CAST	672	118	947	49	0	0	1387	242				
WILMINGTON PORTER RS	669	106			0	0						
-DE: SOUTHERN-												
DOVER	640	161	870	132	0	-3	1532	216				
-MD: SOUTHEASTERN SHORE-												
SALISBURY WICOMICO	550	45	744	-74	0	-3	1732	579				
SNOW HILL 4 N	581	127	797	88	0	-4						
SALISBURY 2N	591				0							
-MD: CENTRAL EASTERN SHORE-												
ROYAL OAK 2 SSW	610	157	833	148	0	-3	1665	242				
-MD: LOWER SOUTHERN-												
MECHANICSVILLE 5 NE	674	135	1023	107	0	-2						
-MD: UPPER SOUTHERN-												
BALTIMORE WASH INTL	657	100	913	9	0	-1	1569	405				
BELTSVILLE	645	98	927	43	0	-1	1433	195				
DALECARLIA RSVR	657	133	949	135	0	-2	1509	101				
LAUREL 3 W	596	78	830	35	0	-1	1662	269				
MD SCI CTR BALTIMOR	479	37	607	-44	0	-1						
OXON HILL	618	119	857	84	0	-2	1598	215				
-MD: NORTHEASTERN SHORE-												
STEVENSVILLE	638	162	852	158	0	0	1511	285				
-MD: NORTHERN CENTRAL-												
ABERDEEN PHILLIPS F	648	109			0	-1						
CONOWINGO DAM	730	164	1082	208	0	0						
CYLBURN	683	102			0	0						
DAMASCUS 3 SSW	710	115	1082	81	0	-1						
EMMITSBURG 2 SE	739	106	1168	89	0	0	972	113				
FREDERICK 2 NNE	697	103			0	0						
MILLERS 4 NE	691	71	1033	-24	0	0	1073	278				
-MD: APPALACHIAN MOUNTAIN-												
CUMBERLAND 2	685	96			0	-1						
FROSTBURG 2	849	114	1464	53	0	0	550	143				
SHARPSBURG 5 S	755	139	1174	145	0	-1						
-MD: ALLEGHENY PLATEAU-												
KITZMILLER 1 W	808		1361		0							
-NJ: NORTHERN-												
CANOE BROOK	733	95	1075	-30	0	0						
CRANFORD	701	111			0	0						
FLEMINGTON 5 NNW	751	100	1126	-14	0	0						
HARRISON	657	106			0	-1						
NEWARK INTL AP	647	100	874	6	0	-1	1450	258				
RINGWOOD	723		1109		0							
SUSSEX 2 NW	756	34	1219	-140	0	0						
WAYNE	687				0							
TOCKS ISLAND	746		1181		0		834					
-NJ: SOUTHERN-												
ATLANTIC CITY INTL	680	131	966	59	0	-1	1218	163				
ESTELL MANOR	676	109	998	32	0	-2	1202	228				
HIGHTSTOWN 2 W	734	142			0	-1						
INDIAN MILLS	707	123	1011	22	0	-1						
MILLVILLE MUNI AP	710	133			0	-1						
NEW BRUNSWICK 3 SE	699	112	1000	-1	0	0	1206	253				
SEABROOK FARMS	645		883		0							
SOMERDALE 4 SW	766		1162		0		1244					
TRENTON MERCER CO A	700	121	1007	31	0	0	1234	269				

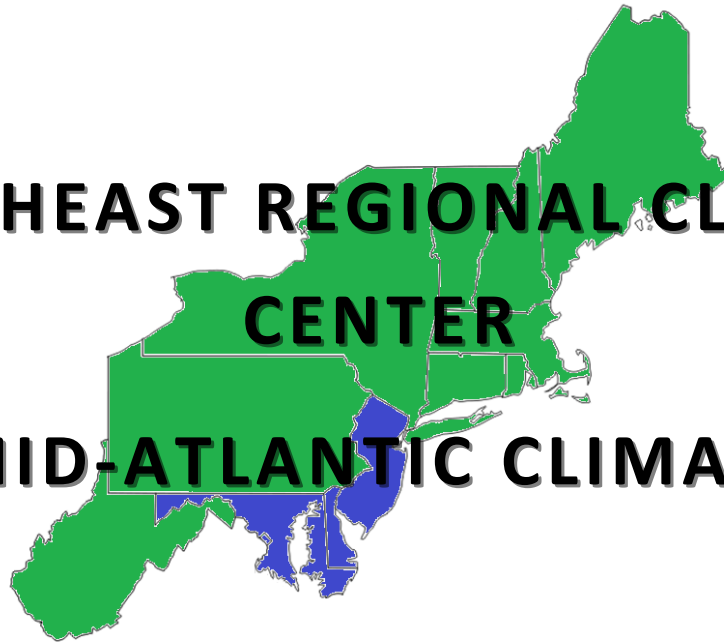
STATION	HEATING DEGREE DAYS (BASE 65)				COOLING DEGREE DAYS (BASE 65)				GROWING DEGREE DAYS (BASE 50)			
	MONTH	MONTH	SEASON	SEASON	MONTH	MONTH	SEASON	SEASON	MONTH	MONTH	SEASON	SEASON
-NJ: COASTAL-												
ATLANTIC CITY	592	122	758	45	0	0	1262	242				
CAPE MAY 2 NW	582	100	771	29	0	-1	1365	277				

The heating season begins July 1 and ends June 30. The cooling season begins January 1 and ends December 31.
 The growing season begins March 1 and ends October 31. All departures are calculated from the 1981 - 2010 mean.
 These data are considered preliminary, published data from the National Climatic Data Center may differ somewhat from the values shown here.

NORTHEAST REGIONAL CLIMATE

CENTER

MID-ATLANTIC CLIMATE



**Northeast
Regional
Climate
Center**



1123 Bradfield Hall
Cornell University
Ithaca, NY 14853-1901