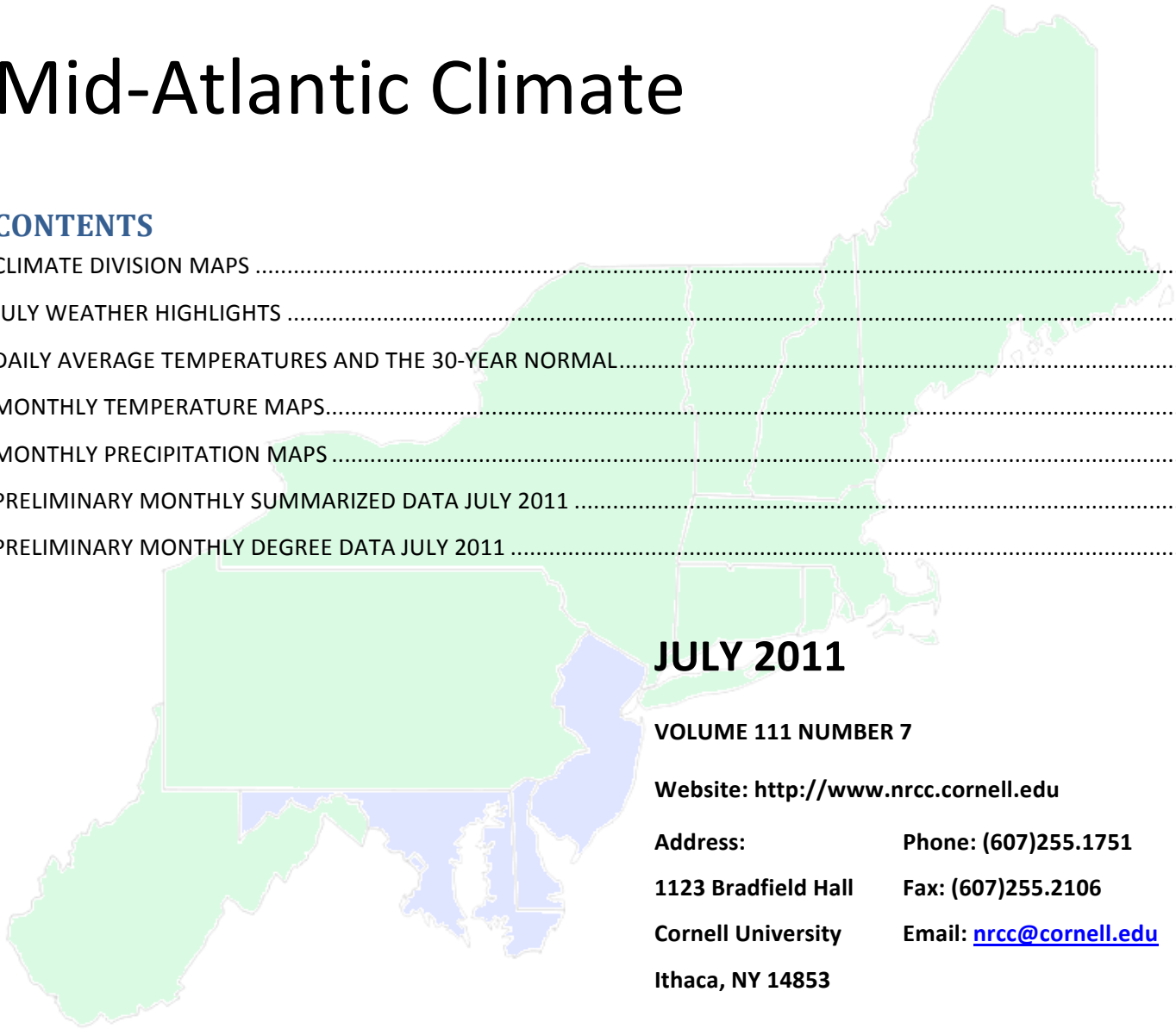


# Northeast Regional Climate Center

## Mid-Atlantic Climate

### CONTENTS

CLIMATE DIVISION MAPS .....	1
JULY WEATHER HIGHLIGHTS .....	2
DAILY AVERAGE TEMPERATURES AND THE 30-YEAR NORMAL.....	8
MONTHLY TEMPERATURE MAPS.....	10
MONTHLY PRECIPITATION MAPS .....	11
PRELIMINARY MONTHLY SUMMARIZED DATA JULY 2011 .....	12
PRELIMINARY MONTHLY DEGREE DATA JULY 2011 .....	14



**JULY 2011**

**VOLUME 111 NUMBER 7**

**Website:** <http://www.nrcc.cornell.edu>

**Address:** **Phone:** (607)255.1751

**1123 Bradfield Hall** **Fax:** (607)255.2106

**Cornell University** **Email:** [nrcc@cornell.edu](mailto:nrcc@cornell.edu)

**Ithaca, NY 14853**

#### NRCC Staff:

**Dr. Arthur DeGaetano**  
Director  
**Mr. William Noon**  
Computer Analyst

**Mr. Keith Eggleston**  
Regional Climatologist  
**Ms. Jessica Rennells**  
Assistant Climatologist

**Ms. Kathryn Vreeland**  
Assistant Climatologist  
**Ms. Tara Fardellone**  
Publication Design

**Mrs. Pamela Vitale**  
Administrative Assistant

#### State Climatologists:

**David Legates**  
210 Newark Hall  
Department of Geography  
Newark, DE 19716  
302-831-2294

**Konstantin Y. Vinnikov**  
Dept of Atmospheric and Oceanic Sci.  
University of Maryland  
College Park, MD 20742  
301-405-5382

**David Robinson**  
Department of Geography  
Rutgers University  
Piscataway, NJ 08854  
732-445-4741

# CLIMATE DIVISION MAPS



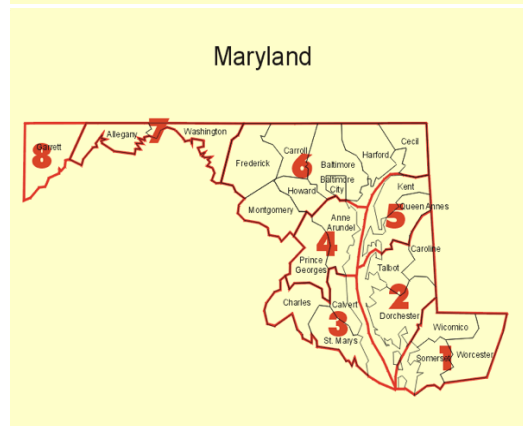
## New Jersey Climate Divisions

- 1 Northern
- 2 Southern
- 3 Coastal



## Delaware Climate Divisions

- 1 Northern
- 2 Southern



## Maryland Climate Divisions

- 1 Southeastern Shore
- 2 Central Eastern Shore
- 3 Lower Southern
- 4 Upper Southern
- 5 Northeastern Shore
- 6 Northern Central
- 7 Appalachian Mountain
- 8 Allegheny Plateau

## JULY WEATHER HIGHLIGHTS

With an average temperature of 79.4 degrees, July 2011 was the warmest July since 1895 in the Mid-Atlantic region. It was also the warmest July in 117 years in Delaware and Maryland. New Jersey missed tying the top spot by 0.1 degree. The region had a temperature departure of +4.3 degrees. Departures among the states were +3.9 degrees in Maryland, +4.5 degrees in New Jersey, and +5.1 degrees in Delaware. A heat wave during the third week of the month pushed the mercury into the upper 90's and 100's throughout the Mid-Atlantic, establishing several new temperature records, including a slew of daily high minimum records. See below. The highest temperature in the region was 108 degrees, recorded on the 22<sup>nd</sup> at downtown Baltimore, MD and Newark Airport. The coolest reading this month was 48 degrees on the 1<sup>st</sup> at Oakland, MD.

The Mid-Atlantic averaged 3.44 inches of rain, which was 81% of normal. Each of the states averaged below normal, with departures of 75% in Maryland, 86% in New Jersey, and 98% in Delaware. The wettest location this month was Atsion, in southern Burlington County, NJ. Their monthly total was 8.06 inches. Drought conditions continued in Maryland and Delaware. According to the August 2, 2011 US Drought Monitor, most of Maryland and central Delaware were experiencing moderate (D1) drought, and southeastern Maryland and southern Delaware were in severe (D2) drought.

### New Temperature Records (degrees F)

#### Daily Maximum

<u>Station</u>	<u>Date</u>	<u>New</u>	<u>Previous</u>
Newark, NJ	12	99	98 in 1966
Newark, NJ	21	103	102 in 1991
Wilmington, DE	22	102	101 in 1957
Baltimore, MD	22	106	101 in 1957
Atlantic City, NJ	22	105	98 in 1998
Newark, NJ	22	108	101 in 1957
Atlantic City, NJ	22	105	100 in 1991
Washington Dulles	23	99	99 in 1991
Washington National	23	102	101 in 1991
Wilmington, DE	23	100	99 in 1991
Baltimore, MD	23	102	102 in 1991
Newark, NJ	23	102	100 in 1955
Wilmington, DE	24	98	97 in 2010
Atlantic City, NJ	24	100	99 in 2010
Washington Dulles	29	103	97 in 1993
Washington National	29	104	99 in 1993
Baltimore, MD	29	101	99 in 1954

#### All-time Maximum

<u>Station</u>	<u>Date</u>	<u>New</u>	<u>Previous</u>
Washington Dulles	22	105	104 on July 16, 1988
Newark, NJ	22	108	105 on August 9, 2001

#### Daily High Minimum

<u>Station</u>	<u>Date</u>	<u>New</u>	<u>Previous</u>
Washington National	13	77	76 in 1993
Washington Dulles	20	75	75 in 1994

Washington Dulles	23	76	73 in 1978
Washington National	23	84**	81 in 1978
Washington National	24	84**	81 in 2010
Washington National	29	80	80 in 1949
Washington Dulles	30	76	75 in 1963
Washington National	30	81	78 in 2008

\*\* tied for all-time high minimum

#### **Warmest July**

<u>Station</u>	<u>New</u>	<u>Previous</u>
Atlantic City, NJ	81.0	79.8 in 2010
Newark, NJ	82.7	82.5 in 1993
Baltimore, MD	81.7	81.5 in 2010
Washington National	84.5	83.1 in 2010
Washington Dulles	81.0	79.7 in 1993

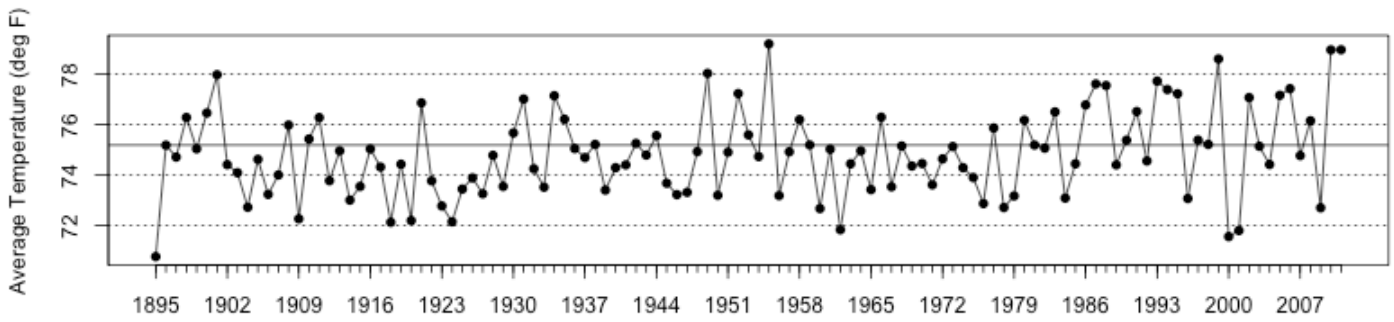
#### **Warmest Month**

<u>Station</u>	<u>New</u>	<u>Previous</u>
Washington Dulles	81.0	79.7 in 1993
Washington National	84.5	83.1 in 2010

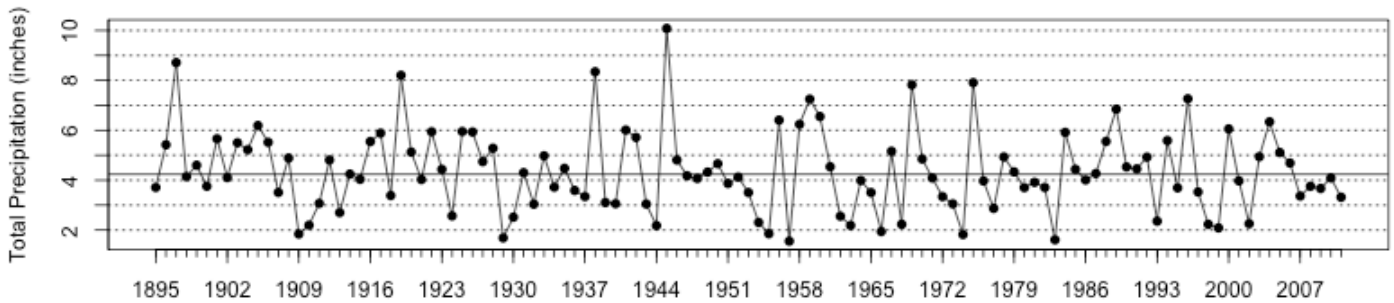
#### **Daily Precipitation Records (inches)**

<u>Station</u>	<u>Date</u>	<u>New</u>	<u>Previous</u>
Wilmington, DE	8	2.48	2.33 in 1964
Atlantic City, NJ	8	2.28	2.04 in 1964

**Mid Atlantic Average July Temperatures**



**Mid Atlantic July Precipitation Totals**



The 2011 values depicted on these graphs are based on preliminary data.

## Yet Another Hot Month: July 2011

Dr. David A. Robinson, New Jersey State Climatologist  
NJ Agricultural Experiment Station, Rutgers University

The first two days of July were quite sunny, with seasonably warm daytime and comfortable nighttime temperatures and low humidity levels. There were other such "top ten" days in the month too, for instance the 9<sup>th</sup>, 10<sup>th</sup>, 15<sup>th</sup>, 16<sup>th</sup> and 27<sup>th</sup>. Most other days were, shall we say, more "challenging", with bouts of extreme heat, an extended period of dry weather, and some occasions with drenching, dangerous thunderstorms.

Interestingly, the driest area in June, Burlington County, was one of the wettest in July, while the situation was reversed in northeast NJ. Tabernacle (Burlington County) received 8.16" at one station and 7.15" at another. Woodland (Burlington) had 7.66", Wantage (Sussex) 7.54", and Woodbine (Cape May) 7.52". On the dry side, Glen Rock (Bergen) only saw 1.95", Harrison (Hudson) 1.96", Saddle Brook (Bergen) 2.09", and 2.82" and Tenafly (Bergen) 2.16".

Before looking into the storms of the month, we will look further at temperatures. Maximum temperatures reached 90° or higher on 26 July days at one or more of the approximately 50 stations monitored. The highest temperature in the state stayed between 86° and 89° on the 1<sup>st</sup>, 3<sup>rd</sup>, 14<sup>th</sup>, 25<sup>th</sup> and 27<sup>th</sup>. On eleven days the maximum equaled or exceeded 95°. The 7<sup>th</sup> saw Cherry Hill (Camden) reach 96°, with Hawthorne (Passaic) at that mark on the 12<sup>th</sup> and Jersey City (Hudson) there on the 18<sup>th</sup>. Sicklerville got to 97° on the 19<sup>th</sup>.

Torrid heat baked NJ from the 21<sup>st</sup> to 23<sup>rd</sup>. The first day saw Hillsborough (Somerset), Haworth (Bergen), and Hawthorne reach 100°. Only the coast saw temperatures below 90°, with the Atlantic City Marina (Atlantic) coolest at 80°. The 22<sup>nd</sup> will go down as one of the five or ten hottest NJ days since widespread records began in the 1890s. The century mark was equaled or exceeded in every one of NJ's 21 counties, a very rare occurrence indeed! (See Table 2) The 108° at Newark Airport was the highest observed there since the station originated in 1931. This is only 2° below the all-time state record at Runyon (Middlesex) on July 10, 1936. New Brunswick's (Middlesex) 105° was 1 degree below their all-time record on August 7, 1918 (July 6, 2010 and several other dates also saw 105°). Of the stations monitored, 34 reached the century mark. At 92°, Bivalve (Cumberland), next to Delaware Bay, had the lowest maximum. All minimums on the 22<sup>nd</sup> were at least 72°, with Newark only down to 86° and several non-urban stations at 81°.

County	Location	Max. Temp.
Atlantic	Atlantic City AP (Pomona)	105°
Bergen	Teterboro AP	104°
Burlington	Oswego Lake & Mansfield	102°
Camden	Somerdale	104°
Cape May	Cape May	102°
Cumberland	Seabrook Farms	102°
Essex	Newark Airport	108°
Gloucester	Piney Hollow & Bethel Mill Park	101°
Hudson	Harrison	107°
Hunterdon	Flemington	103°
Mercer	Trenton	106°
Middlesex	New Brunswick	105°

Monmouth	Freehold-Marlboro	104°
Morris	Chatham Township	104°
Ocean	Berkeley Township & West Creek	102°
Passaic	Hawthorne	103°
Salem	Carneys Point	104°
Somerset	Hillsborough	104°
Sussex	Andover	101°
Union	Berkeley Heights	104°
Warren	Pequest	101°

Table 2. Maximum temperature New Jersey's 21 counties on the afternoon of July 22, 2011.

The heat continued on 23<sup>rd</sup>, with Atlantic City Airport leading the way at 105°, Somerdale (Camden) second warmest at 103°, and Atlantic City Marina surprisingly coming in as third warmest at 102° (tied with Estell Manor (Atlantic), Cape May, and Newark Airport). Nine stations reached 101° and thirteen got to 100°. Again, no station maxed out below 90°. The morning low was again 86° at Newark Airport, 84° at Atlantic City Airport, 83° at Harrison, and 82° at three other stations. The atmosphere never made it above 100° the remainder of the month, however Atlantic City Airport reached 100° and Sicklerville (Camden) reached 98° on the 24<sup>th</sup>, and South Harrison (Gloucester) made it to 96° on the 29<sup>th</sup>, 95° on the 30<sup>th</sup>, and 96° on the 31<sup>st</sup>.

Despite the month's heat, minimum temperatures fell into the 40's or 50's on fifteen days. On twelve of those days, lows at traditionally cooler valley locations in the north fell to 55° or lower. The coolest morning of July was the 1<sup>st</sup> with Pequest (Warren) at 46°, Walpack (Sussex) down to 48°, and Basking Ridge (Somerset) at 49°. Walpack took low honors on the 2<sup>nd</sup> (52°), 6<sup>th</sup> (54°), 9<sup>th</sup> (55°), 10<sup>th</sup> (52°, shared with Pequest), 13<sup>th</sup> (55°), 14<sup>th</sup> (49°), 15<sup>th</sup> (50°), 16<sup>th</sup> (54°, shared with Pequest), 17<sup>th</sup> (52°), and 31<sup>st</sup> (55°). Pequest took the honors on the 5<sup>th</sup> at 53°.

The bulk of July's rain fell in thunderstorms during the first and last weeks. Limited rain fell in the middle half of the month when temperatures were warmest, leading to a bit of a flash drought. Some locations went seventeen consecutive days without a drop of rain, bringing the flow of some rivers to below median levels for the first time since May. Storms on the 3<sup>rd</sup> into the 4<sup>th</sup> brought 2.52" to Berkeley Township (Ocean), 2.47" to Montague (Sussex), and 2.06" to Hillsborough (Somerset). While most areas did not see this much, there was a fair soaking in all but the southwest corner of the state in storms that occurred in the pre-dawn, mid-day, and evening hours. Trees and power lines were reported down in portions of Cape May, Ocean, and Warren counties. The early storms produced pea-size hail in Wantage (Sussex), the mid-day ones pea-size hail in Holland (Hunterdon), and hail up to an inch in diameter was reported in Jackson Township (Ocean) and Manalapan (Monmouth) in the evening.

The 6<sup>th</sup> saw storms in the Rt. 195 corridor, with Mansfield (Burlington) receiving 2.80" and Wall Township (Monmouth) 1.00". Stone Harbor (Cape May) also had 1.47". Tree and wire damage was reported in Mercer, Burlington, and Monmouth counties. More storms on the 7<sup>th</sup> brought 3.69" to Oswego Lake (Burlington), 2.49" to Chesterfield Township (Burlington), and 2.03" and 1.88" to stations in Hamilton Township (Mercer). Again, trees and wires went down in Camden, Gloucester, Burlington, Monmouth, and Ocean counties and rice to quarter-size hail were reported in Tabernacle (Burlington), Readington Township (Hunterdon), Whitehouse Station (Hunterdon), and Hillsborough (Somerset). South Jersey was drenched on the 8<sup>th</sup> with 4.05" in Woodland Township (Burlington), 3.84" and 3.77" at two Medford Township (Burlington) locations, 3.82" at Berlin (Camden), and 3.13" in Estell Manor (Atlantic). There were power outages in Cape May (Cape May), while winds felled trees in six northern and central Jersey counties.

During the mid-month dry spell, light rain producing storms resulted in tree damage in Essex, Passaic and Bergen counties. The northern border areas received 0.44" in West Milford (Passaic) and 0.35" at Wantage (Sussex) on the 18<sup>th</sup>, and the southern third saw 1.69" in Buena Vista Township (Atlantic), 1.57" at Mantua Township (Gloucester), and 1.56" in Woodbine (Cape May) on the 19<sup>th</sup>.

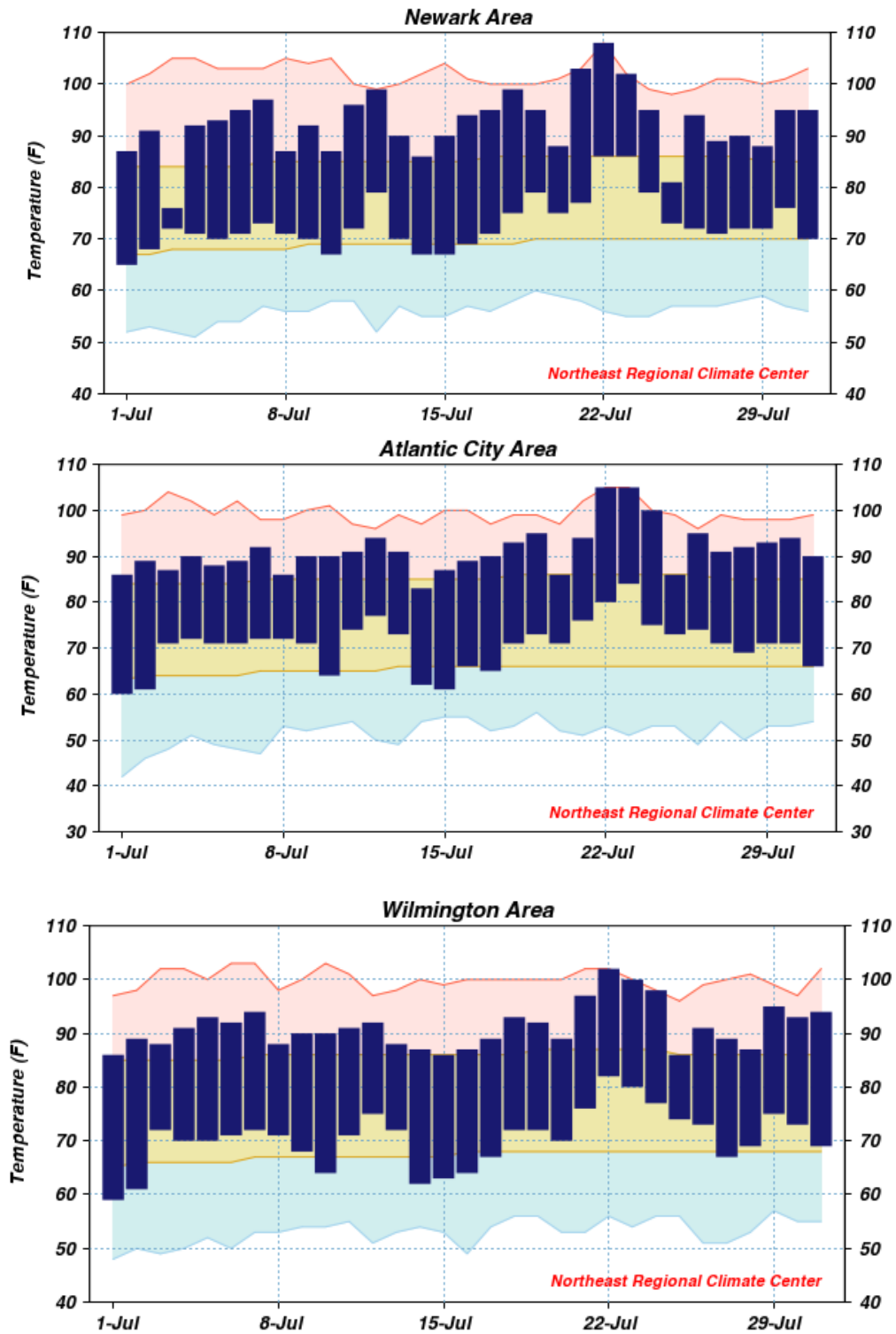
Almost daily storms roamed parts of the state during the final week, with the 24<sup>th</sup> bringing Sea Isle City (Cape May) 2.45" and Woodbine 1.95". The northwest was wettest on the 25<sup>th</sup>, with Stockton (Hunterdon) coming in with 1.80", Bethlehem Township (Hunterdon) at 1.76" and Greenwich Township (Warren) with 1.74". Areas north of Rt. 80 saw the rain on the 26<sup>th</sup>, especially in Sussex County with 0.71" at Hardyston Township, and 0.69" and 0.68" at locations in Wantage. The final storms of the month on the 29<sup>th</sup> into the 30<sup>th</sup> brought rain statewide, the heaviest falling in Ocean (Lavellette: 2.35") and Monmouth (Howell: 2.34") counties.

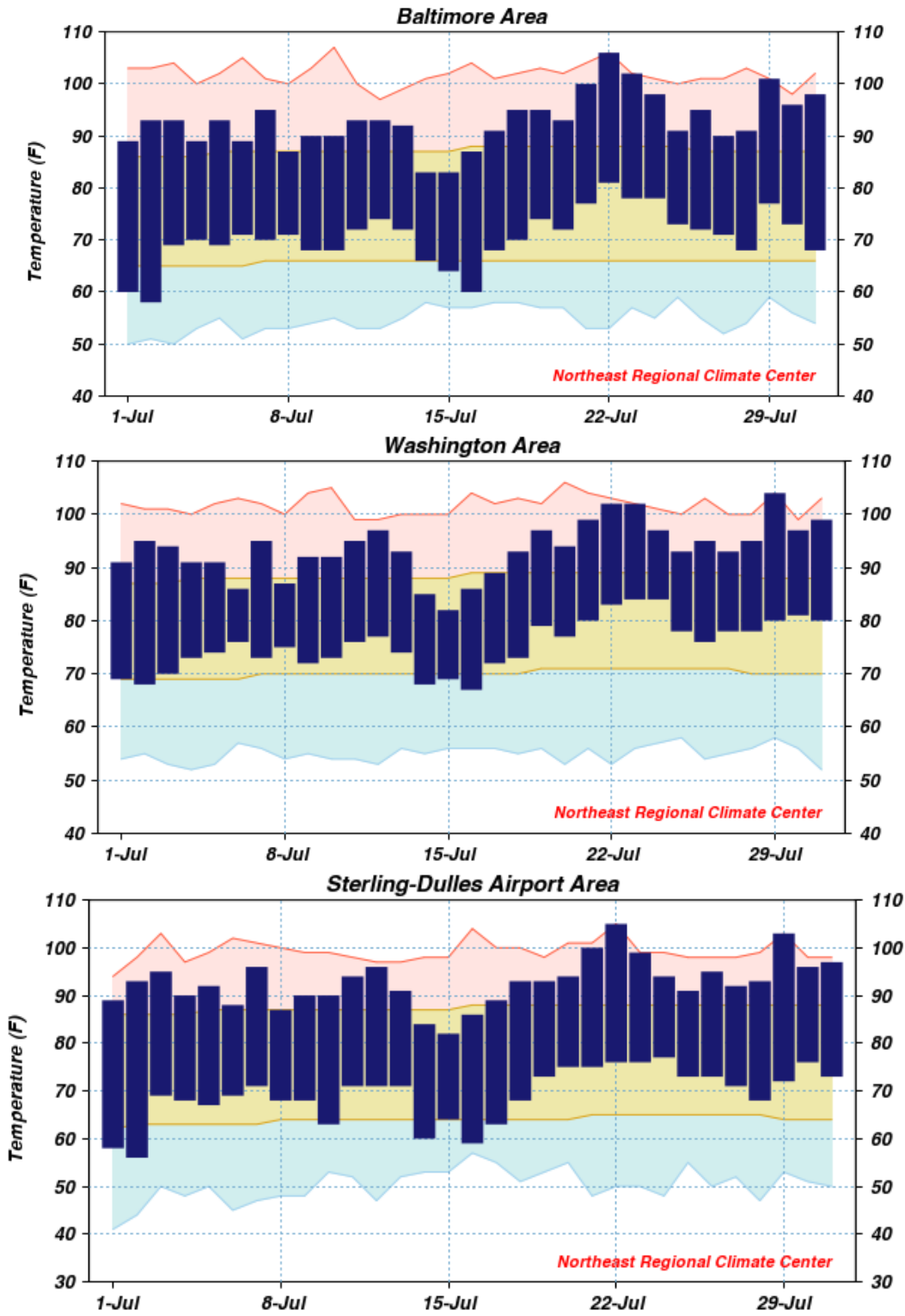
Fog was heavy in some locations on the morning of the 4<sup>th</sup>, especially in central NJ. Coastal locations reported fog on the 21<sup>st</sup> and 22<sup>nd</sup>, with Highlands locations a bit fogged in on the mornings of the 24<sup>th</sup>, 26<sup>th</sup> and 29<sup>th</sup>.

The local strong winds accompanying some thunderstorms happened to miss the many anemometers scattered throughout the state. Only the Atlantic City Marina (Atlantic) recorded a gust as high as 40 mph, this occurring on the 11<sup>th</sup>. The 29<sup>th</sup> was the windiest day, with a 38 mph gust at Cream Ridge (Monmouth) and seven other stations with gusts exceeding 30 mph. Barometric pressure was at a maximum on the 17<sup>th</sup>, with readings from 30.25"-30.30" and lowest on the 26<sup>th</sup> at 29.60"-29.65".



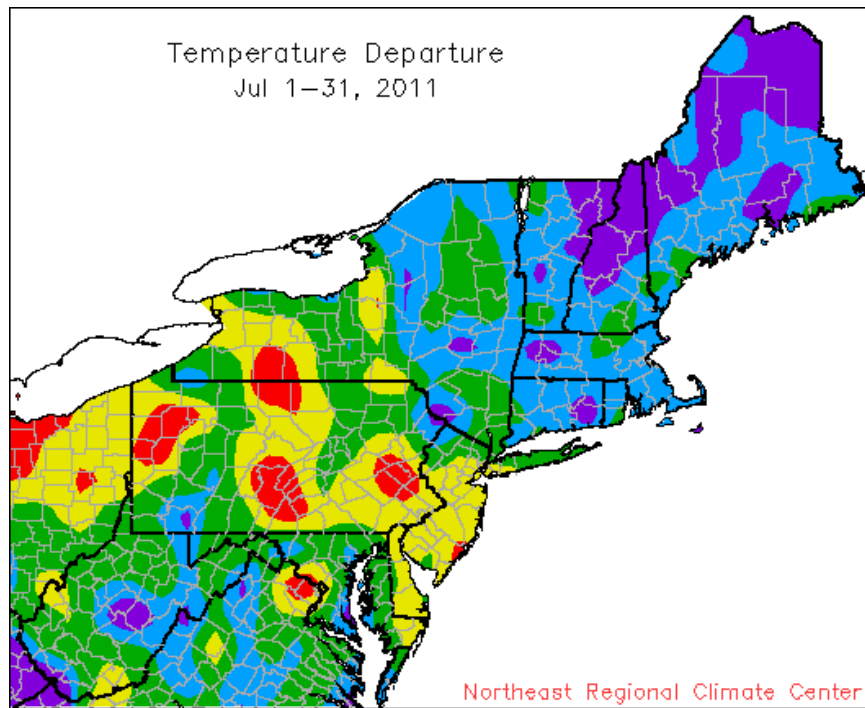
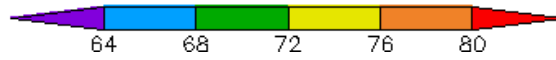
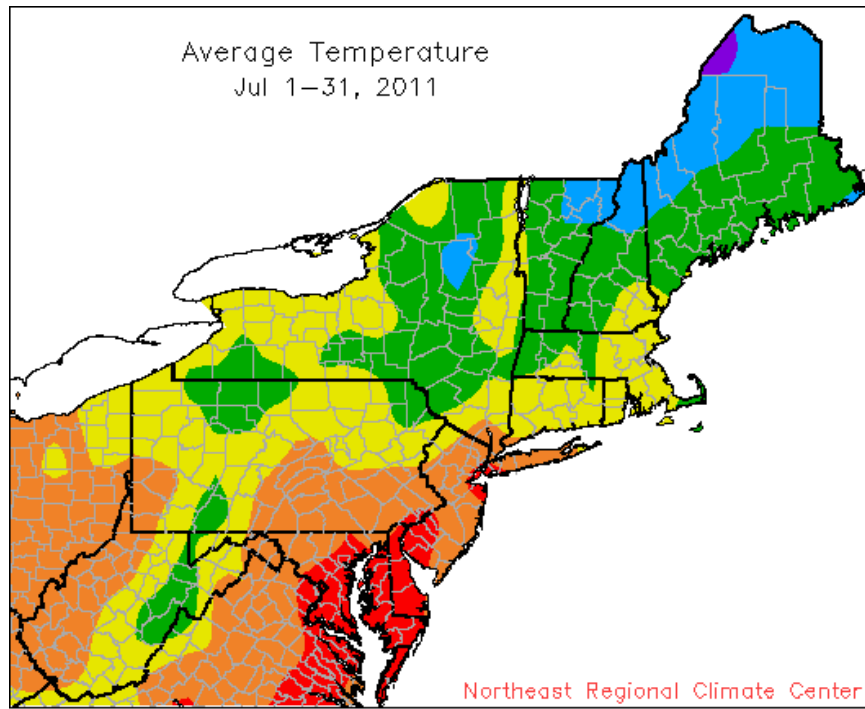
# DAILY AVERAGE TEMPERATURES AND THE 30-YEAR NORMAL



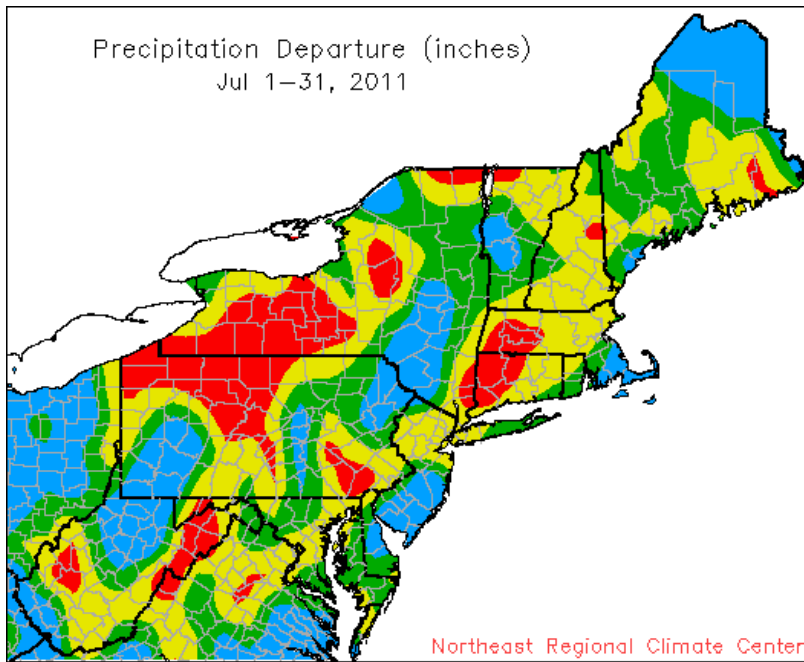
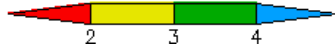
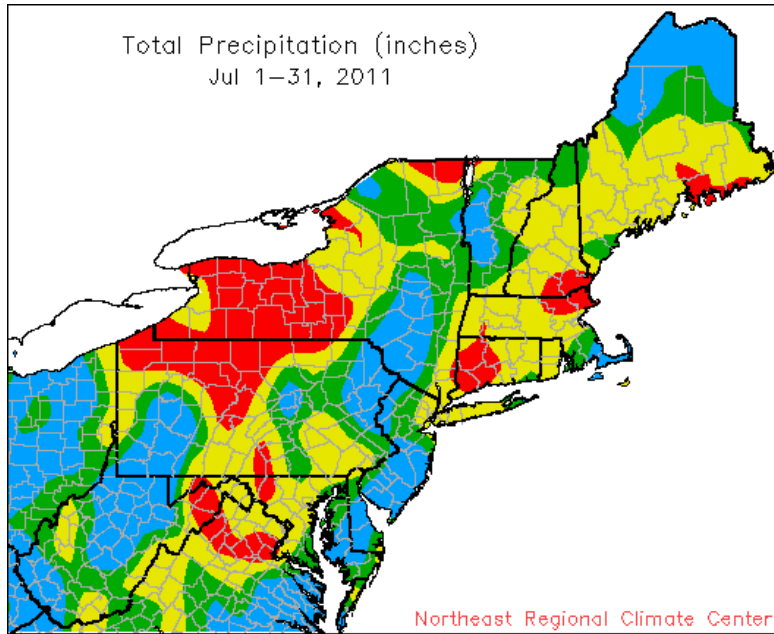


Area between normal max and min temperatures has tan shading.  
 Red line connects record high temperatures.  
 Light blue line connects record low temperatures.

# MONTHLY TEMPERATURE MAPS



# MONTHLY PRECIPITATION MAPS



# PRELIMINARY MONTHLY SUMMARIZED DATA JULY 2011

STATION	TEMPERATURE (F)							PRECIPITATION (INCHES)										
	MONTHLY AVERAGES				EXTREMES		NUMBER OF DAYS				MONTHLY TOTALS			EXTREMES		SNOWFALL		
	AVG MAX	AVG MIN	MON AVG	DEPRT	MON MAX	DAY MIN	MON 90+	DAY 70-	MON 65+	DAY 50-	MON TOT	DEPRT	DAYS 0.1+	DLY MAX	DAY	MON TOT	DLY MAX	
-DE: NORTHERN-																		
BEAR 2 SW	90.4	68.4	79.4		100	23+	57	1	15	0	24	0	5.48		4	2.95	8	0
WILMINGTON NEW CAS	91.2	70.4	80.8	4.2	102	22	59	1	18	0	25	0	3.73	-0.55	4	2.48	8	0
WILMINGTON PORTER R	89.6	70.8	80.2		101	22	61	17	15	0	29	0	0.88		2	0.78	8	0
-DIVISION-			80.1	3.9									3.36	-1.14				
-DE: SOUTHERN-																		
DOVER *	92.4	71.5	82.0	4.2	101	22	62	15										0
-DIVISION-			82.0	5.5									4.16	0.24				
-STATE-			81.6	5.1									3.98	-0.06				0
-MD: SOUTHEASTERN-																		
SALISBURY WICOMICO	92.5	70.4	81.5	4.2	103	23	57	15	27	0	26	0	3.79	-0.75	6	1.08	8	0
-DIVISION-			81.5	4.8									3.79	-0.52				
-MD: CENTRAL EAST-																		
-DIVISION-			80.8	3.1									3.04	-1.15				
-MD: LOWER SOUTHE-																		
MECHANICSVILLE 5 N	87.8	68.5	78.2	1.6	97	24+	58	16	9	0	25	0	4.11	-0.37	8	1.41	26	0
SOLOMONS	89.5	74.5	82.0		99	23	69	16+	14	0	31	0	4.02		4	2.23	25	NM
-DIVISION-			80.1	3.8									4.07	-0.15				
-MD: UPPER SOUTHE-																		
BALTIMORE WASH INT	92.9	70.4	81.7	5.2	106	22	58	2	24	0	27	0	2.77	-1.08	7	0.83	8	0
BELTSVILLE	90.7	69.6	80.2	3.3	102	23	59	16+	18	0	26	0	2.78	-1.31	6	1.18	9	0
DALECARLIA RSVR	92.0	71.2	81.6	4.0	103	30	62	16+	24	0	27	0	2.58	-1.68	6	1.45	3	0
BALTIMORE DOWNTOWN	96.3	78.0	87.1		108	22	72	16+	30	0	31	0	4.06		6	1.52	7	NM
NATL ARBORETUM DC	94.3	72.5	83.4	5.5	106	30	62	2	28	0	28	0	2.16	-2.05	6	0.66	4	NM
OXON HILL	91.5	70.7	81.1		101	30+	62	16	21	0	25	0	3.50		6	1.14	9	0
-DIVISION-			82.5	5.4									2.98	-1.16				
-MD: NORTHEASTERN-																		
STEVENSVILLE	89.5	73.3	81.4		100	23	66	2+	17	0	31	0	3.36		5	1.86	9	0
-DIVISION-			81.4	4.8									3.36	-0.69				
-MD: NORTHERN CEN-																		
ABERDEEN PHILLIPS	91.4	70.1	80.7	3.7	103	23	60	2	20	0	24	0	2.57	-1.64	6	1.13	9	0
CONOWINGO DAM													2.92	-1.28	4	0.99	26	NM
CYLBURN	87.1	68.9	78.0		98	23	59	2+	9	0	25	0						NM
DAMASCUS	89.3	68.6	79.0		100	22	58	1	16	0	27	0	2.49		4	1.03	3	NM
EMMITSBURG 2 SE	88.0	66.1	77.1	2.1	99	23	55	1	12	0	21	0	3.98	0.34	5	1.75	3	NM
MILLERS 4 NE	90.0	66.5	78.3	4.4	102	22	55	2	15	0	21	0	1.99	-1.58	4	0.74	8	0
WESTMINSTER POL BR	90.5	68.3	79.4	3.6	102	23	57	1	19	0	24	0	3.81	0.10	6	1.37	9	0
-DIVISION-			78.8	3.5									2.97	-0.99				
-MD: APPALACHIAN -																		
FROSTBURG 2	84.2	62.0	73.1	4.6	95	23	54	2+	5	0	10	0	0.96	-2.95	2	0.43	9	NM
SHARPSBURG 5 S	90.7	63.4	77.0		101	30	54	2	19	0	14	0						NM
WILLIAMSPORT *	90.7	65.8	78.2		102	30	56	2										0
-DIVISION-			76.1	3.3									0.96	-2.68				
-MD: ALLEGHENY PL-																		
OAKLAND 1 SE	83.2	59.0	71.1	2.7	93	23	48	1	2	0	7	3	3.50	-1.73	7	0.90	25	0
KITZMILLER 1 W	85.3	64.2	74.7		97	23	54	1	5	0	15	0						NM
-DIVISION-			72.9	4.3									3.50	-1.37				
-STATE-			79.4	3.9									3.08	-1.04				0
-NJ: NORTHERN-																		
BELVIDERE BRG													3.17	-1.29	6	1.24	4	0
BOONTON 1 SE	88.9	66.3	77.6	4.0	102	23	56	1	13	0	16	0	2.70	-1.97	7	0.82	26	0
BOUND BROOK 2 W	90.1	70.9	80.5		104	23	61	1	17	0	26	0	3.02	-1.79	6	1.01	9	0
CANOE BROOK	89.0	67.5	78.3	4.3	103	23	55	1	14	0	21	0	3.47	-1.26	8	1.17	9	0
CRANFORD	88.3	69.5	78.9	4.4	105	23	59	1	11	0	25	0	3.07	-2.12	6	1.10	9	0
FLEMINGTON 5 NNW	89.6	65.4	77.5	4.1	103	23	53	1	16	0	16	0	3.61	-1.14	7	1.09	26	NM

STATION	TEMPERATURE (F)									PRECIPITATION (INCHES)									
	MONTHLY AVERAGES				EXTREMES			NUMBER OF DAYS			MONTHLY TOTALS			EXTREMES		SNOWFALL			
	AVG MAX	AVG MIN	MON AVG	DEPRT AVG	MON MAX	DAY MIN	MON MAX	DAY MIN	90+ MAX	70- MIN	65+ MAX	50- MIN	MON TOT	DEPRT MAX	DAYS 0.1+	DLY MAX	DAY MAX	MON TOT	DLY MAX
HARRISON	90.5	71.2	80.8		107	23	61	1	20	0	29	0	1.96		4	0.72	4	NM	
LAMBERTVILLE													2.87	-2.19	5	1.15	26	NM	
NEWARK INTL AP	92.5	72.8	82.7	5.5	108	22	65	1	22	0	31	0	2.04	-2.64	7	0.47	29		0
PHILLIPSBURG EAST*	88.6	66.8	77.7		102	23	56	1											0
PLAINFIELD	91.4	69.8	80.6	5.7	104	22	61	9	23	0	25	0	3.22	-2.17	5	1.57	3		0
POTTSVILLE 2 NN*	84.8	65.4	75.1		102	23	56	2+											NM
SUSSEX 2 NW	85.6	62.7	74.2	3.0	98	23	50	1	6	0	12	1							0
WAYNE	88.9	70.3	79.6		102	23	60	1	13	0	26	0	2.94		7	0.64	9		0
WERTSVILLE 4 NE *	88.0	66.4	77.2		101	23	56	1											NM
TOCKS ISLAND	85.1	64.6	74.8		96	23	54	1	4	0	15	0							NM
-DIVISION-			78.3	5.1									2.89	-1.83					
-NJ: SOUTHERN-																			
ATLANTIC CITY INTL	91.3	70.6	81.0	5.7	105	23+	60	1	20	0	26	0	4.15	0.29	4	2.28	8		0
ESTELL MANOR	90.7	67.6	79.2		102	24+	56	15+	16	0	24	0	6.26		5	2.87	9		0
FREEHOLD MARLBORO	89.7	67.3	78.5	3.8	104	23	56	1	16	0	24	0	3.38	-0.88	5	1.44	30		NM
HAMMONTON 1 NE	90.5	68.8	79.7	3.7	102	23	58	2	15	0	24	0							0
HIGHTSTOWN 2 W	90.0	66.7	78.3	4.2	101	23	55	1	16	0	20	0	5.60	0.64	7	2.50	9		0
INDIAN MILLS													6.74	2.38	8	2.28	9		0
MILLVILLE MUNI AP	90.0	68.5	79.3	3.0	100	22	57	15	15	0	24	0	5.22	1.63	5	1.96	19		NM
MOORESTOWN *	91.1				102	22													NM
NEW BRUNSWICK 3 SE	90.2	66.7	78.5	3.7	105	23	55	1	16	0	21	0	3.09	-1.88	6	1.45	9		0
SEABROOK FARMS	91.2	71.1	81.1	4.8	102	23	61	1	17	0	26	0	5.18	0.88	5	1.82	20		0
SOMERDALE 4 SW	92.6	67.4	80.0		104	23	56	1	22	0	23	0	3.17		7	1.57	9		NM
ATSION	88.8	66.8	77.8		99	23	56	15+	13	0	21	0	8.06		8	1.99	9		NM
TRENTON MERCER CO	91.8	70.0	80.9		106	22	61	1	17	0	26	0	1.92		5	0.50	25		NM
PHILADELPHIA MT HO	89.1	68.2	78.6		100	24+	58	1	11	0	24	0	3.76		8	1.22	9		0
-DIVISION-			79.4	4.1									4.53	0.17					
-NJ: COASTAL-																			
ATLANTIC CITY	83.1	72.5	77.8	2.6	99	24	66	15	5	0	31	0	3.87	0.51	5	1.73	9		0
BRANT BEACH HVN *	86.2	71.4	78.8		98	24	64	14											NM
CAPE MAY 2 NW	89.4	69.7	79.5	4.0	102	23+	60	15	13	0	27	0	2.88	-0.51	5	1.34	8		0
-DIVISION-			78.7	4.0									3.38	-0.52					
-STATE-			78.9	4.4									3.84	-0.61					0

\*= One to four days of missing temperature data + = This value also occurred on one or more previous dates this month.

All means are for the years 1971-2000. NM = Snowfall is not measured.

These data are considered preliminary, published data from the National Climatic Data Center may differ somewhat from the values shown here.

# PRELIMINARY MONTHLY DEGREE DATA JULY 2011

STATION	HEATING DEGREE DAYS (BASE 65)				COOLING DEGREE DAYS (BASE 65)				GROWING DEGREE DAYS (BASE 50)			
	MONTH	MONTH	SEASON	SEASON	MONTH	MONTH	SEASON	SEASON	MONTH	MONTH	SEASON	SEASON
-DE: NORTHERN-												
BEAR 2 SW	0		0		452		852		917		2355	
WILMINGTON NEW CAST	0	-1	0	-1	496	128	926	270	961	132	2442	391
WILMINGTON PORTER RS	0		0		477				942			
-DE: SOUTHERN-												
-DE: SOUTHERN-												
-MD: SOUTHEASTERN SHORE-												
SALISBURY WICOMICO	0	0	0	0	520	139	1064	407	985	139	2660	544
-MD: CENTRAL EASTERN SHORE-												
-MD: CENTRAL EASTERN SHORE-												
-MD: LOWER SOUTHERN-												
MECHANICSVILLE 5 NE	0	0	0	0	414	57	799	162	879	57	2308	166
SOLOMONS	0		0		535				1000			
-MD: UPPER SOUTHERN-												
BALTIMORE WASH INTL	0	0	0	0	526	154	1039	345	991	141	2615	455
BELTSVILLE	0	0	0	0	478	110	960	316	943	110	2508	445
DALECARLIA RSVR	0	0	0	0	521	131	1052	322	986	131	2675	425
BALTIMORE DOWNTOWN	0		0		693				1158			
NATL ARBORETUM DC	0	0	0	0	575	176			1040	176		
OXON HILL	0		0		507		1026		972		2615	
-MD: NORTHEASTERN SHORE-												
STEVENSVILLE	0		0		517		1031		982		2604	
-MD: NORTHERN CENTRAL-												
ABERDEEN PHILLIPS F	0	0	0	0	498	126			963	126		
CYLBURN	0		0		414				879			
DAMASCUS	0		0		440				905		2314	
EMMITSBURG 2 SE	0	0	0	0	381	72	698	158	846	72	2127	205
MILLERS 4 NE	0	-1	0	-1	418	143	762	287	883	144	2260	448
WESTMINSTER POL BRK	0	0	0	0	452	117			917	117		
-MD: APPALACHIAN MOUNTAIN-												
FROSTBURG 2	1	-28	1	-28	263	126	391	176	727	154	1666	390
SHARPSBURG 5 S	0		0		381		688		846		2123	
-MD: ALLEGHENY PLATEAU-												
OAKLAND 1 SE	7	-14	7	-14	203	78	324	127	661	91	1595	299
KITZMILLER 1 W	0		0		309		529		774		1918	
-NJ: NORTHERN-												
BOONTON 1 SE	0	-1	0	-1	399	132			864	133		
BOUND BROOK 2 W	0		0		489		895		954		2348	
CANOE BROOK	0	-2	0	-2	421	140			886	141		
CRANFORD	0	0	0	0	439	143			904	144		
FLEMINGTON 5 NNW	0	-2	0	-2	395	133			860	135		
HARRISON	0		0		498				963			
NEWARK INTL AP	0	-1	0	-1	552	158	972	260	1017	154	2481	347
PLAINFIELD	0	-2	0	-2	492	185	846	328	957	187	2286	447
SUSSEX 2 NW	0	-6	0	-6	290	92			755	97		
WAYNE	0		0		456		816		921		2248	

STATION	HEATING DEGREE DAYS (BASE 65)				COOLING DEGREE DAYS (BASE 65)				GROWING DEGREE DAYS (BASE 50)			
	MONTH	MONTH	SEASON	SEASON	MONTH	MONTH	SEASON	SEASON	MONTH	MONTH	SEASON	SEASON
TOCKS ISLAND	0		0		313		535		778		1873	
-NJ: SOUTHERN-												
ATLANTIC CITY INTL	0	-1	0	-1	502	180	915	375	967	185	2429	596
ESTELL MANOR	0		0		446		847		911		2339	
FREEHOLD MARLBORO	0	0	0	0	426	127			891	127		
HAMMONTON 1 NE	0	0	0	0	460	120	887	328	925	120	2377	461
HIGHTSTOWN 2 W	0	0	0	0	420	138			885	138		
MILLVILLE MUNI AP	0	0	0	0	453	104			918	104		
NEW BRUNSWICK 3 SE	0	0	0	0	426	122			891	122		
SEABROOK FARMS	0	0	0	0	506	157	978	384	971	157	2500	535
SOMERDALE 4 SW	0		0		475		874		940		2309	
ATSION	0		0		405				870			
TRENTON MERCER CO A	0		0		501		911		966		2424	
PHILADELPHIA MT HOL	0		0		432		803		897		2262	
-NJ: COASTAL-												
ATLANTIC CITY	0	0	0	0	406	90	696	208	871	90	2100	306
CAPE MAY 2 NW	0	0	0	0	457	133	844	330	922	133	2334	501

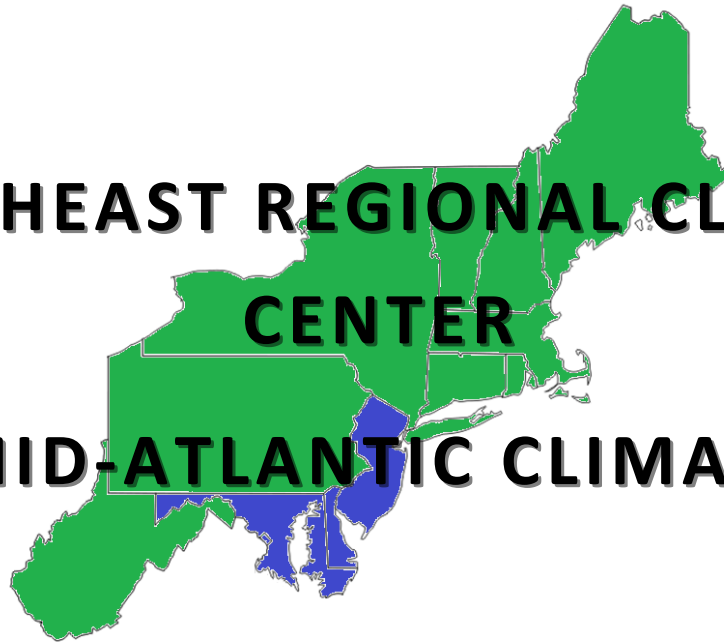
The heating season begins July 1 and ends June 30. The cooling season begins January 1 and ends December 31.  
The growing season begins March 1 and ends October 31. All departures are calculated from the 1971 - 2000 mean.  
These data are considered preliminary, published data from the National Climatic Data Center may differ somewhat from the values shown here.



**NORTHEAST REGIONAL CLIMATE**

**CENTER**

**MID-ATLANTIC CLIMATE**



**Northeast  
Regional  
Climate  
Center**



1123 Bradfield Hall  
Cornell University  
Ithaca, NY 14853-1901