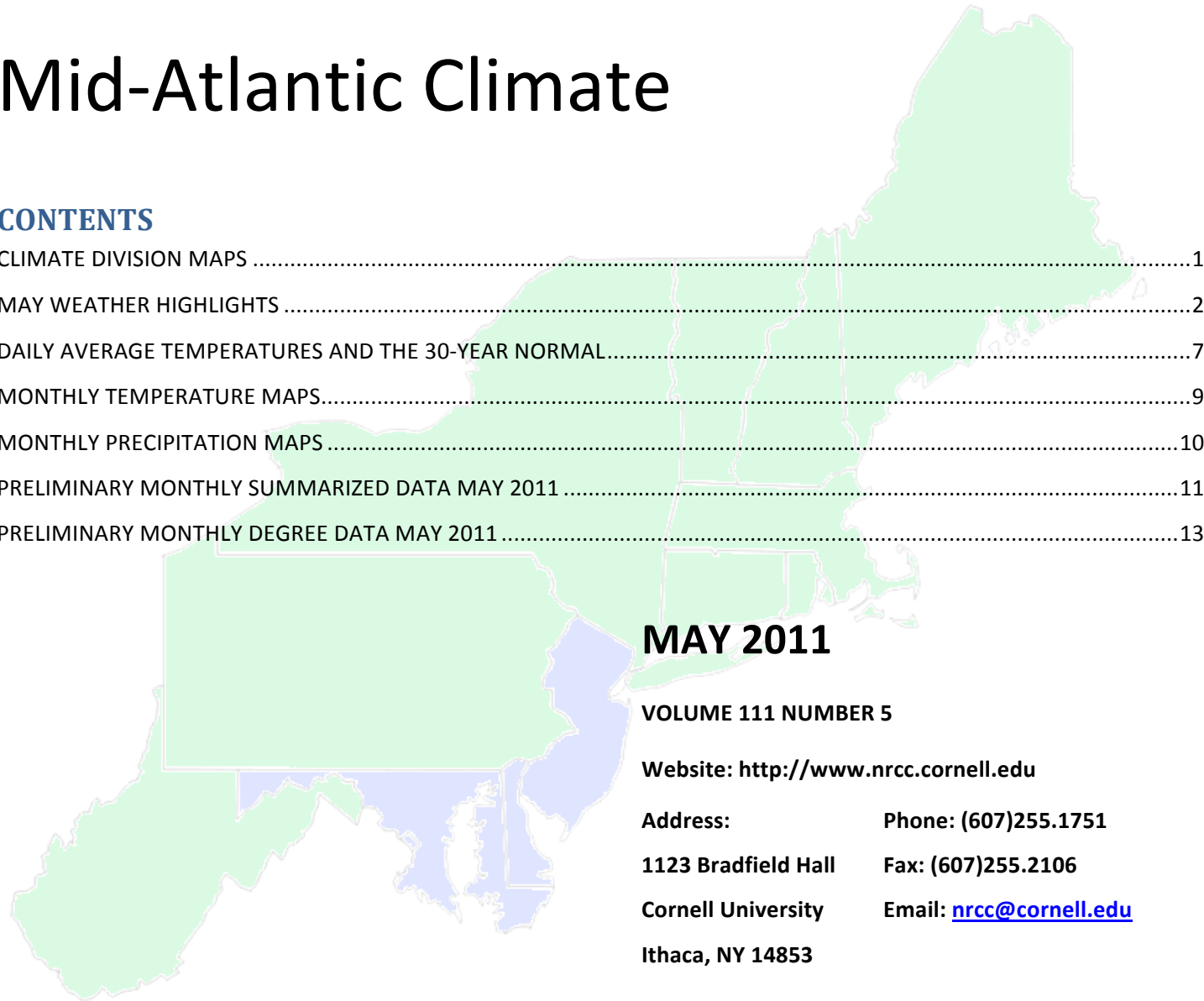


Northeast Regional Climate Center

Mid-Atlantic Climate

CONTENTS

CLIMATE DIVISION MAPS	1
MAY WEATHER HIGHLIGHTS	2
DAILY AVERAGE TEMPERATURES AND THE 30-YEAR NORMAL.....	7
MONTHLY TEMPERATURE MAPS.....	9
MONTHLY PRECIPITATION MAPS	10
PRELIMINARY MONTHLY SUMMARIZED DATA MAY 2011	11
PRELIMINARY MONTHLY DEGREE DATA MAY 2011	13



MAY 2011

VOLUME 111 NUMBER 5

Website: <http://www.nrcc.cornell.edu>

Address: **Phone:** (607)255.1751

1123 Bradfield Hall **Fax:** (607)255.2106

Cornell University **Email:** nrcc@cornell.edu

Ithaca, NY 14853

NRCC Staff:

Dr. Arthur DeGaetano
Director
Mr. William Noon
Computer Analyst

Mr. Keith Eggleston
Regional Climatologist
Ms. Jessica Rennells
Assistant Climatologist

Ms. Kathryn Vreeland
Assistant Climatologist
Ms. Tara Fardellone
Publication Design

Mrs. Pamela Vitale
Administrative Assistant

State Climatologists:

David Legates
210 Newark Hall
Department of Geography
Newark, DE 19716
302-831-2294

Konstantin Y. Vinnikov
Dept of Atmospheric and Oceanic Sci.
University of Maryland
College Park, MD 20742
301-405-5382

David Robinson
Department of Geography
Rutgers University
Piscataway, NJ 08854
732-445-4741

CLIMATE DIVISION MAPS

New Jersey



New Jersey Climate Divisions

- 1 Northern
- 2 Southern
- 3 Coastal

Delaware



Delaware Climate Divisions

- 1 Northern
- 2 Southern

Maryland



Maryland Climate Divisions

- 1 Southeastern Shore
- 2 Central Eastern Shore
- 3 Lower Southern
- 4 Upper Southern
- 5 Northeastern Shore
- 6 Northern Central
- 7 Appalachian Mountain
- 8 Allegheny Plateau

MAY WEATHER HIGHLIGHTS

With an average temperature of 65.2 degrees, it was the 8th warmest May since 1895 and the warmest May since 2004. This month was the 4th consecutive month with temperatures that were warmer than normal in the Mid-Atlantic region. Delaware's average of 67.5 degrees made this month that state's 3rd warmest in 117 years. In addition, it was the 10th warmest May in Maryland and the 11th warmest May in New Jersey. Overall, the regional average temperature was 3.5 degrees warmer than normal; Delaware's average was +4.7 degrees; New Jersey's, +3.4 degrees; and Maryland's, +3.3 degrees. Downtown Baltimore was the warmest location in the region in May, with a high of 99 degrees on the 30th. Oakland, MD had the low, 33 degrees on the 5th and 6th.

After six months with above normal precipitation totals, the region was drier than normal in May. The average rainfall of 3.51 inches was 82% of normal. Each of the states were also drier than normal, with departures from normal of 85% in New Jersey, 83% in Delaware and 80% in Maryland. Of the 13 climate divisions in the region, only the Appalachian Mountain and Allegheny Plateau divisions in Maryland and the Northern climate division in New Jersey were wetter than normal. Below normal precipitation since January in Maryland's Southeastern Shore climate division and Delaware's Southern climate division has led to moderate drought (D1) conditions in those regions.

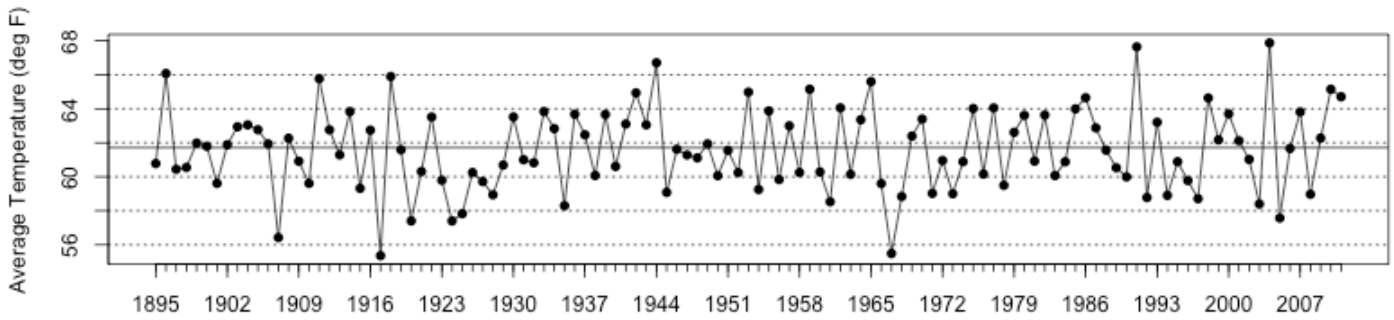
Daily Maximum Temperature Records

<u>Station</u>	<u>Date</u>	<u>New</u>	<u>Previous</u>
Baltimore, MD	30	98	98 in 1991
Washington Dulles	31	94	94 in 1991
Wilmington, DE	31	96	96 in 1895
Baltimore, MD	31	97	96 in 1991

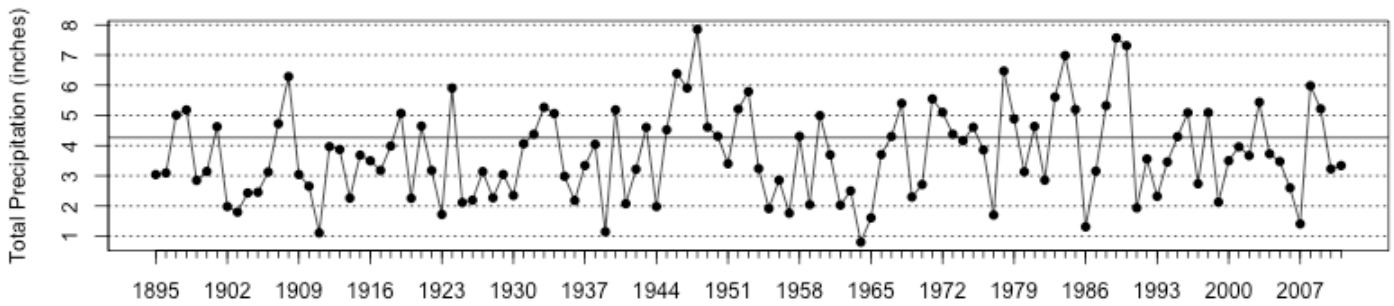
Daily Minimum Temperature Records

<u>Station</u>	<u>Date</u>	<u>New</u>	<u>Previous</u>
Baltimore, MD	6	40	40 in 1925

Mid Atlantic Average May Temperatures



Mid Atlantic May Precipitation Totals



The 2011 values depicted on these graphs are based on preliminary data.

Mixed Precipitation Signals: May 2011 and a Spring 2011 Overview

Dr. David A. Robinson, New Jersey State Climatologist
NJ Agricultural Experiment Station, Rutgers University

A dismal mid month period left many believing that May was a rather wet month. Truth be told, this depends on where you reside in the state, as some northern areas were almost twice as wet as average while the extreme south had just over half of average precipitation. The preliminary statewide average is 3.72". This is 0.58" below average, but somewhat above the median at 49th wettest of the past 117 years. Morris County led the way with 8.19" and 8.10" received at two CoCoRaHS stations in Rockaway Township. Elsewhere in the county, Harding Township totaled 8.16", Boonton 7.94" Morris Township 7.91" and two Denville stations came in at 7.85" and 7.78". Totals fell off to near average levels in central NJ. In the far south, Upper Deerfield (Cumberland County) only received 1.96" and in Cape May County, Sea Isle City had 2.26" and Middle, Lower and Upper Townships caught 2.33", 2.36" and 2.37" respectively.

The first rain of the month fell in the northwest corner of the state on the 3rd. In Sussex County, Montague received 0.67", High Point 0.42" and Walpack 0.37". All of the state caught at least 0.25" on the 4th with southern coastal areas seeing as much as 1.20" and 1.13" at two Berkeley Township (Ocean) locations and 1.12" in Woodland Township (Burlington).

Conditions were quite dry from the 5th through the 13th before persistent clouds accompanied by off and on rain of varying intensities arrived on the 14th. Before conditions began to brighten and dry out on the 24th, as much as 6.45" and 6.47" had fallen at two Rockaway Township (Morris) locations. Of the 113 CoCoRaHS stations that reported every one of the 9 days between the 14th and 24th, 13 received between 5.00" and 6.47", 19 caught from 4.00" to 4.99", 28 had 3.00" to 3.99" and only Wildwood Crest (Cape May) with 0.71" came in under an inch. Notable totals during this period included 4.40" at Harding Township (Morris) and 4.39" in Morris Township from the 14th to 17th.

It is difficult to subdivide totals during that period, as rains frequently came and went across NJ. However a late afternoon thunderstorm on the 15th deposited pea-size hail in Washington Township (Mercer). Wires were reported down from strong winds in Fredon Township (Sussex). Localized rains of close to 2.00" in two hours on the 16th led to flash flooding of basements, roads and streams in Bernards Township in northern Somerset County.

Late on the 18th Harrison (Hudson) saw 2.35", Saddle Brook (Bergen) 2.23" and Boonton (Morris) 2.14". A severe late afternoon thunderstorm on the 19th was concentrated in west central counties. Two stations in Liberty Township (Warren) reported hail the size of grapes and even some stones the size of golf balls, with grape size (approx. 1/2") in Franklin Township (Warren). Rain totaled 1.82" in Washington (Warren) and 1.68" at Holland Township (Hunterdon). This precipitation, on top of rains of previous days, led to flooding of streams and roads in Warren and Hunterdon counties. Later that evening, Woodbine (Cape May) received pea-size hail.

The north coast saw the most rain on the 20th with three Brick Township (Ocean) stations measuring 0.95", 0.89" and 0.83". The northern tier received most on the 21st, with 0.54" in Hawthorne (Passaic) and 0.46" at Wantage (Sussex). The episode ended with the northern half of the state getting wet on the 23rd, especially Warren County, where Washington received 1.84" and White Township 1.70". Flash flooding occurred as a result of the one hour downpour and trees were reported down in southeast Warren County.

Overall, during this damp period, thunderstorms occurred somewhere in the state on the 15th to 19th, the 21st and 23rd. Heavy fog appeared at times on the 16th (Ocean and Cape May), 19th (Cape May), 21st (Hunterdon and Camden), 22nd (Morris), 23rd (Warren) and 24th (Hunterdon and Mercer). The persistent heavy rain in the Highlands region resulted in the Passaic River in Little Falls (Passaic) cresting several inches above flood stage on the 20th and 21st, the third consecutive month that flooding occurred in the central Passaic basin. The Rockaway River at Boonton crested just over a foot above flood stage early on the 20th when the Ramapo River at Mahwah just reached flood stage.

The northwest corner was clipped with thunderstorms on the 26th, with 0.63" in Allamuchy Township (Warren) and 0.58" at Andover Township. Hail as large as 1.5" in diameter pelted Milford (Hunterdon), with pea-size hail in Greenwich Township (Warren), while trees were reported down in the Warren County communities of Allamuchy Township, Independence Township and Washington. Thunderstorms on the 28th brought central Jersey as much as 0.41" in Franklin and Montgomery Townships in Somerset County. Two other Montgomery stations caught 0.32" and 0.24". Early morning thunderstorms on Memorial Day (30th) deposited 0.61" in Hackettstown (Warren) and 0.41" in Rockaway Township (Morris), Mt. Olive (Morris) and Little Falls (Passaic).

Other than tree and wire felling winds in isolated severe thunderstorms during May, particularly in Warren County, it was not too windy a month. Gusts exceeding 40 mph were only observed on the 4th and 5th at Wantage (Sussex) (47 mph and 44 mph respectively) and the 30th at High Point Monument (Sussex) (42 mph). Overall, the 5th was the windiest day, with a dozen NJWxNet stations gusting between 30 and 37 mph. The highest barometric pressures of May were between 30.35" and 30.40" on the 1st and 2nd, and lowest at 29.45" to 29.50" on the 15th.

The preliminary statewide average May temperature of 63.3° was 2.8° above average and ranked as the 13th warmest since 1895 (table 1). This continues an almost unbroken streak of above average months, with 13 of the past 15 falling into that category.

Rank	Year	May Temp
1	2004	66.2°
2	1991	66.1°
3	1944	65.1°
4	1896	64.9°
5	1965	64.4°
6	2010	64.2°
7	1911	64.1°
8	1918	64.1°
9	1942	64.0°
10	1959	63.9°
11	1998	63.7°
12	1986	63.4°
13	2011	63.3°
14	1975	63.3°
15	2007	63.2°

Table 1. The 15 warmest Mays across New Jersey since 1895.

Despite the overall warmth, the first half of the month provided a few cool days with chilly mornings. The temperature fell to 31° at Berkeley Township (Ocean) and 32° at Walpack (Sussex) on the 1st. The 6th had the coldest morning of the month, with Walpack at 29°, Berkeley Township and Pequest (Warren) at 30° and Oswego Lake (Burlington) at 32°. The warm spot was West Cape May (Cape May), with a low of 54°. The last freeze of the season occurred at Walpack (32°) on the 10th, seven months to the day from the first freeze in NJ back in October 2010. The warmest morning of the month was the 30th, when Walpack (62°) was the coolest spot and Bivalve (Cumberland) (71°) the warmest.

With a rather cool start to May and then the persistent clouds of mid month, the first heat of the month did not arrive until the last week. The 26th brought the first 90° maximum temperatures to the state, with Sicklerville (Camden) coming in at 92° and nine other NJWxNet stations at 90° or 91°. The next day saw Hillsborough (Somerset) at 90°. The Memorial Day weekend was quite summer like, with temperatures in the 80's most places, topping out at 93° in Sicklerville and Woodbine (Cape May) on the 30th and between 90°-92° at seven other locations. The monthly maximum of 95° was reached at Sicklerville on the 31st, with Upper Deerfield coming in at 93° and eight other spots at 90° or 91°.

Spring 2011

The spring season brought warmth and an abundance of rain to New Jersey. The preliminary average temperature of 52.9° was 2.2° above average. This ranks as the 10th warmest since 1895, with 7 of the top 13 occurring in the past 21 years (table 2).

Rank	Year	Spring Temp
1	2010	55.3°
2	1921	54.7°
3	1991	54.0°
4	1945	53.9°
5	1977	53.7°
6	2004	53.7°
7	1998	53.5°
8	1903	53.2°

9	1985	53.1°
10	2011	52.9°
11	2000	52.8°
12	1946	52.7°
13	2002	52.6°
14	1955	52.4°
15	1942	52.4°

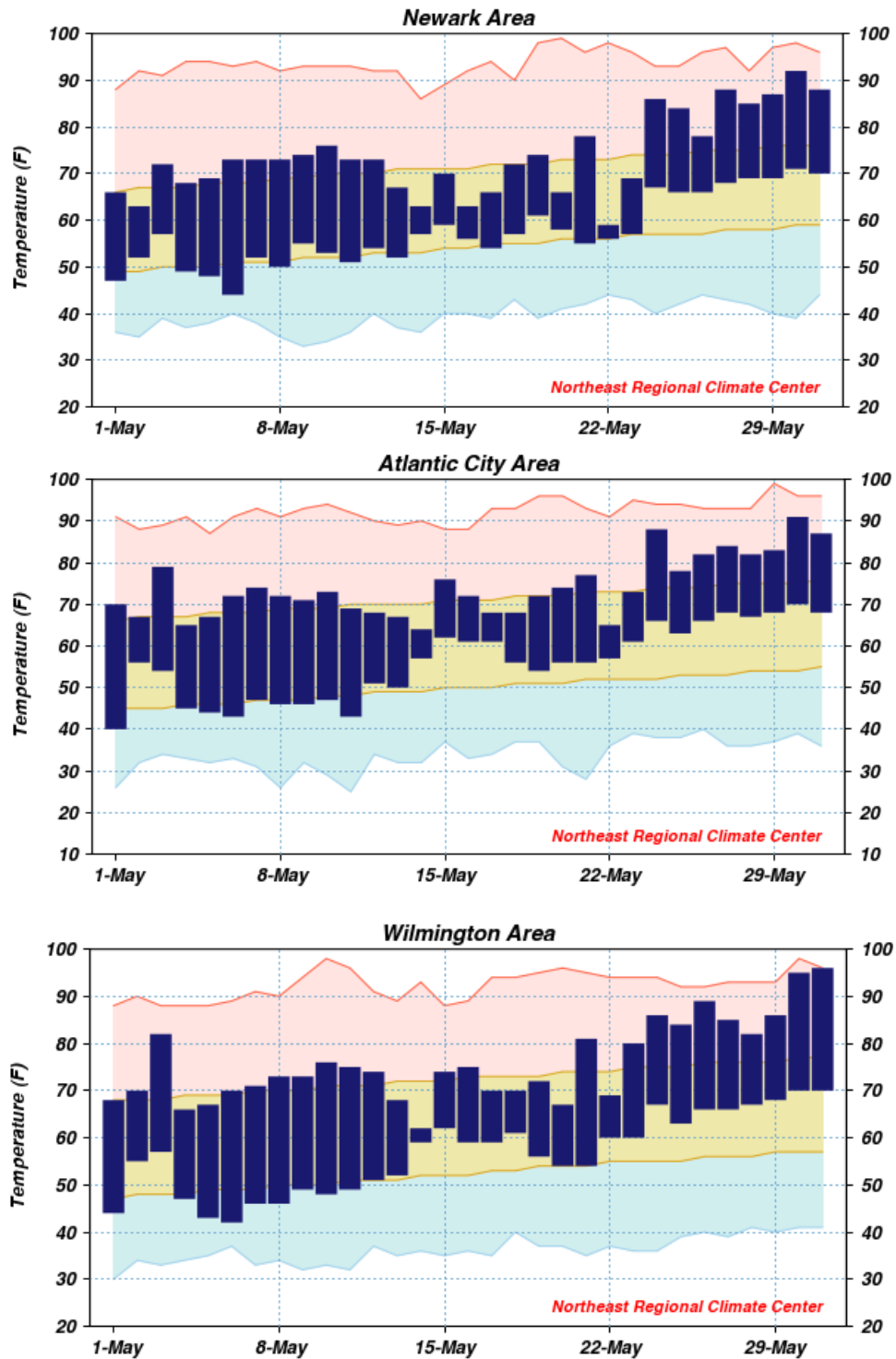
Table 1. The 15 warmest springs across New Jersey since 1895

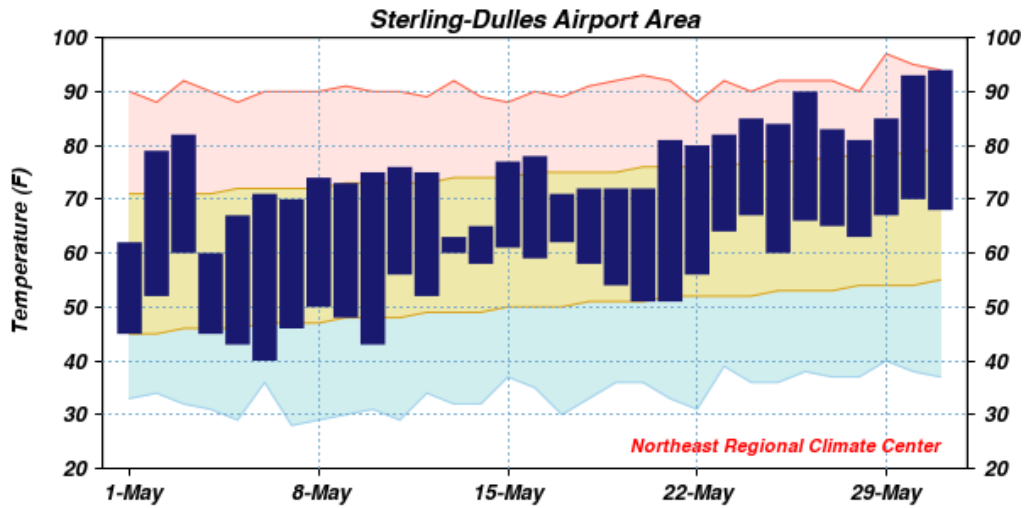
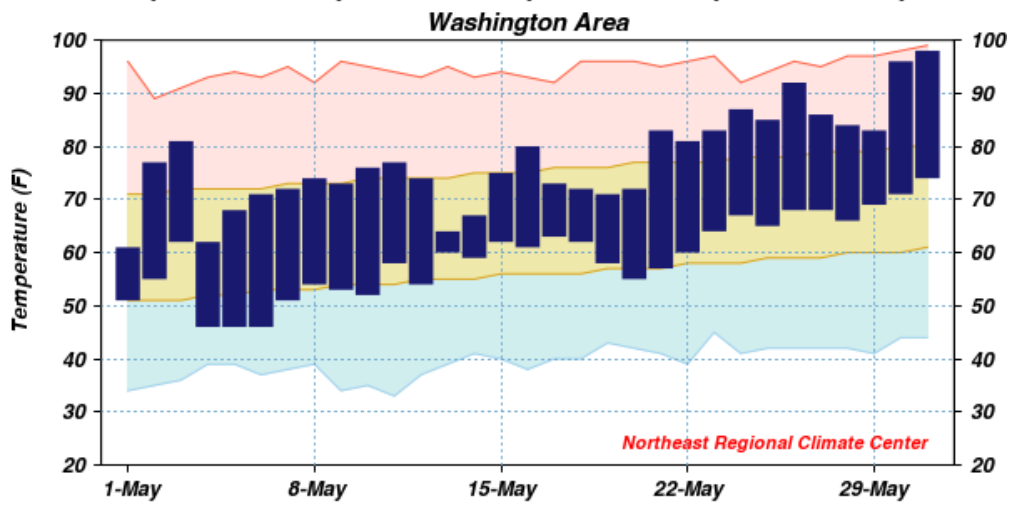
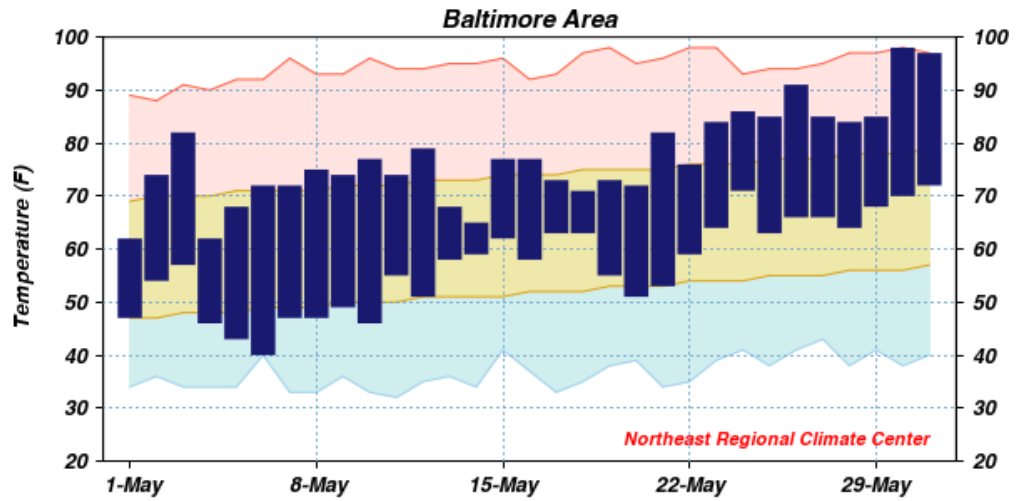
Spring 2011 brought a preliminary statewide average precipitation of 15.09". This is 3.50" above average and the 15th wettest on record. Most of the precipitation fell as rain, although several March events deposited as much as 16.0" in Rockaway Township (Morris) and 13.9" at Blairstown (Warren). Rockaway came away the "winner" in the precipitation department as well, with two CoCoRaHS stations reporting totals of 25.97" and 24.62". Other hefty seasonal totals included the Morris County townships of Mine Hill (24.19"), Harding (24.17") and Randolph (23.91"). Conversely, conditions were dry for the season in extreme southern sections. Cape May County totals were as low as 8.16" in Wildwood Crest, with other locations coming in at 8.35" (Dennis Township), 8.90" (Middle Township), 9.44" (Lower Township) and 9.50" (Sea Isle City). Maximum seasonal totals from CoCoRaHS or NWS Cooperative stations with complete records in the 21 counties are shown in table 3. With the arrival of summer, the abundant spring precipitation in northern counties has elevated reservoirs, ground water and streamflow to normal or above normal status. Such is not the case in southern areas; however there is no major concern of water deficits at this time.

County	Location	Spring precipitation
Atlantic	Buena Vista Township	12.60"
Bergen	Saddle Brook	21.16"
Burlington	Burlington	13.34"
Camden	Somerdale	13.78"
Cape May	Woodbine	11.17"
Cumberland	Upper Deerfield	10.76"
Essex	Newark Airport	16.48"
Gloucester	Franklin Township	13.67"
Hudson	Harrison	17.94"
Hunterdon	Franklin Township	21.07"
Mercer	Ewing Township	14.93"
Middlesex	New Brunswick	16.02"
Monmouth	Eatontown	13.54"
Morris	Randolph Township	23.91"
Ocean	Point Pleasant Beach	12.57"
Passaic	Hawthorne	22.44"
Salem	Woodstown	12.54"
Somerset	Bedminster Township	19.17"
Sussex	Hardyston Township	19.17"
Union	New Providence	17.70"
Warren	Mansfield Township	19.90"

Table 3. Maximum spring 2011 precipitation by county for communities with complete records.

DAILY AVERAGE TEMPERATURES AND THE 30-YEAR NORMAL



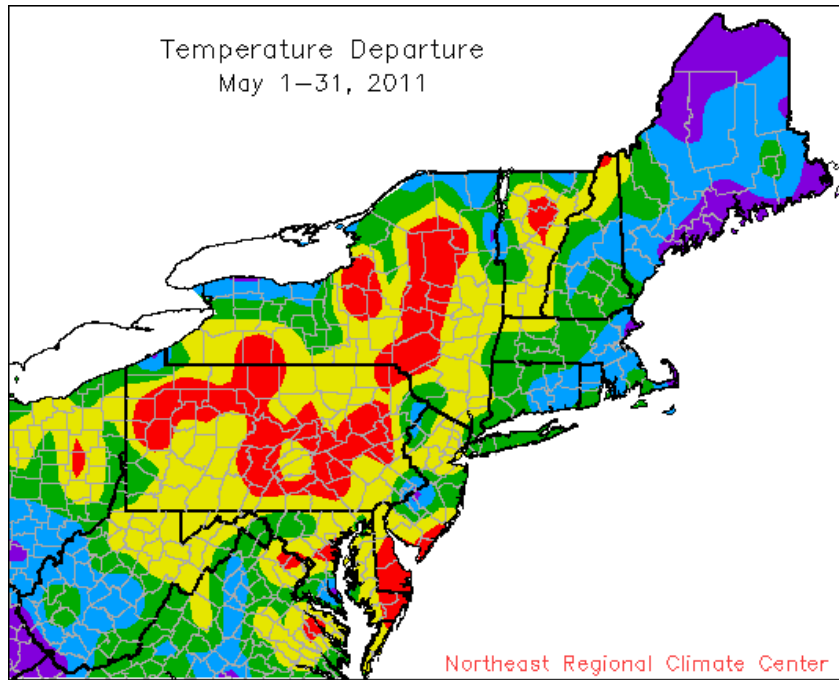
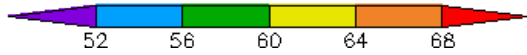
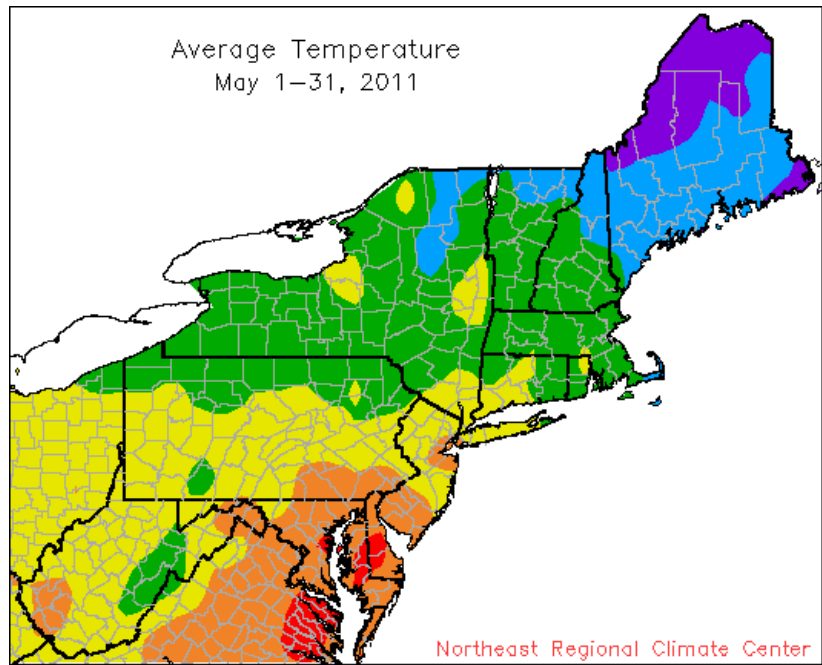


Area between normal max and min temperatures has tan shading.

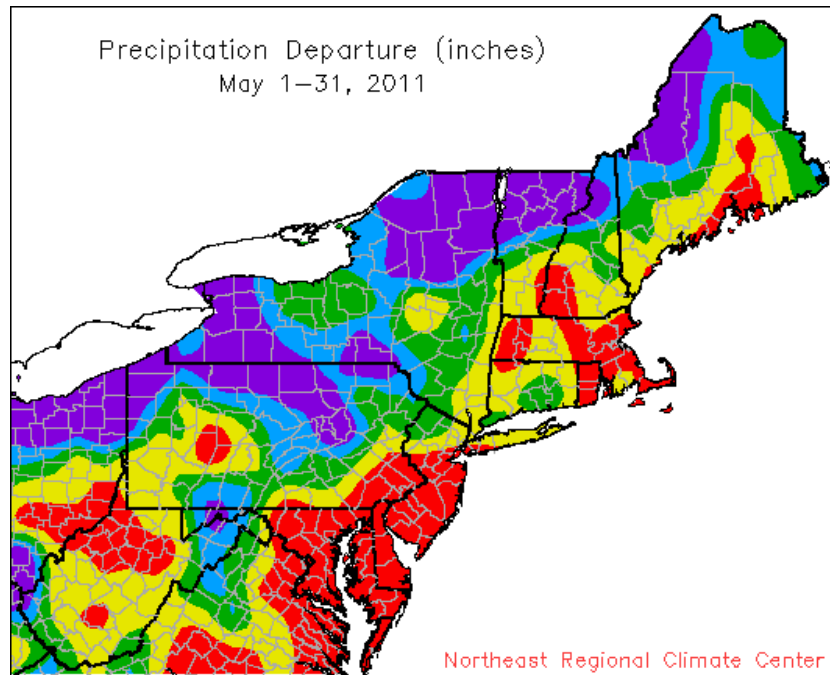
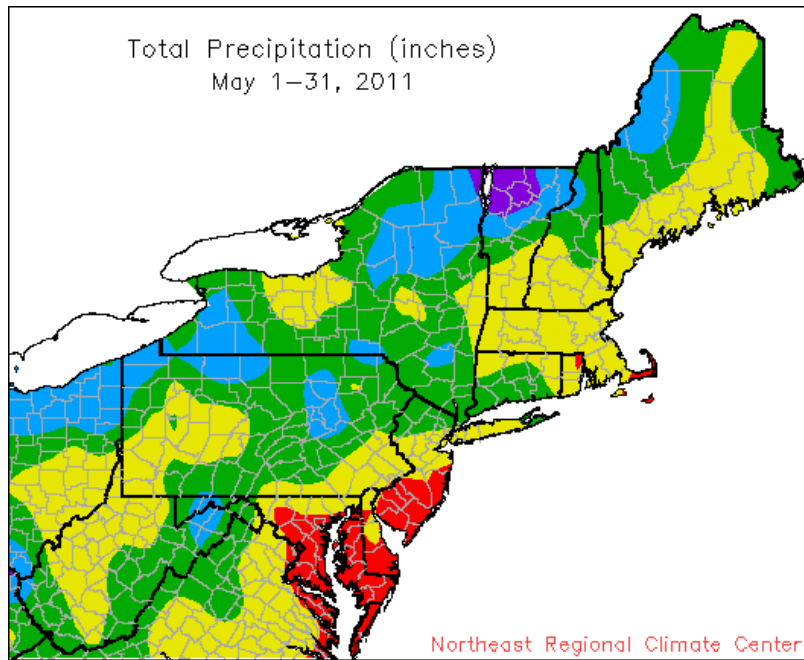
Red line connects record high temperatures.

Light blue line connects record low temperatures.

MONTHLY TEMPERATURE MAPS



MONTHLY PRECIPITATION MAPS



PRELIMINARY MONTHLY SUMMARIZED DATA MAY 2011

STATION	TEMPERATURE (F)							PRECIPITATION (INCHES)												
	MONTHLY AVERAGES				EXTREMES		NUMBER OF DAYS				MONTHLY TOTALS			EXTREMES		SNOWFALL				
	AVG MAX	AVG MIN	MON AVG	DEPRT	MON MAX	DAY MIN	90+	70-	65+	50-	MON TOT	DEPRT	DAYS 0.1+	DLY MAX	DAY	MON TOT	DLY MAX			
-DE: NORTHERN-																				
BEAR 2 SW	76.3	55.5	65.9		94	31	38	6		3	7	4	10		3.63		7	1.28	19	0
WILMINGTON NEW CAS	76.0	56.5	66.2	3.7	96	31	42	6		2	11	7	9		3.23	-0.92	8	0.97	15	0
WILMINGTON PORTER R	74.8	56.5	65.7		92	31	45	5		2	10	6	7		4.58		10	1.39	15	0
-DIVISION-			65.9	3.3											3.81	-0.61				
-DE: SOUTHERN-																				
DOVER	78.5	57.6	68.0	3.7	93	30	46	6+		5	3	8	10		3.37	-0.92	7	1.42	19	NM
-DIVISION-			68.0	5.1											3.37	-0.75				
-STATE-			67.5	4.7											3.47	-0.72				0
-MD: SOUTHEASTERN-																				
SALISBURY WICOMICO	78.5	56.2	67.3	3.9	95	31+	39	1		4	5	7	11		1.68	-2.19	5	0.70	4	NM
-DIVISION-			67.3	4.1											1.68	-1.94				
-MD: CENTRAL EAST-																				
-DIVISION-			67.3	3.0											2.19	-1.72				
-MD: LOWER SOUTHE-																				
MECHANICSVILLE 5 N	74.5	54.3	64.4	0.5	92	31	42	6+		1	10	4	12		2.87	-1.35	6	0.83	14	NM
SOLOMONS *	74.8	61.0	67.7		92	31	46	5		2	10				3.41		7	1.54	16	NM
-DIVISION-			66.1	2.7											3.14	-1.00				
-MD: UPPER SOUTHE-																				
BALTIMORE WASH INT	77.4	57.0	67.2	4.3	98	30	40	6		3	5	6	8		2.42	-1.47	7	0.62	4	0
BELTSVILLE	76.1	57.0	66.5	3.5	95	31	40	6		2	7	7	9		2.52	-2.02	9	0.50	17	0
DALECARLIA RSVR	77.6	58.4	68.0	3.1	93	31	42	5		3	6	7	6		2.61	-1.81	9	0.86	16	0
BALTIMORE DOWNTOWN	80.1	63.5	71.8		99	30	48	5		3	3	13	2		2.06		5	0.60	4	NM
NATL ARBORETUM DC	79.5	57.7	68.6	4.5	94	31	44	6		2	4	8	7		2.15	-2.14	5	0.69	15	NM
OXON HILL	77.2	57.4	67.3		96	31	43	6		2	6	6	5		1.98		6	0.57	15	NM
-DIVISION-			68.2	4.6											2.29	-2.15				
-MD: NORTHEASTERN-																				
STEVENSVILLE	75.6	59.9	67.7		92	31	46	6		2	5	9	5		2.37		4	0.96	15	0
-DIVISION-			67.7	4.7											2.37	-1.78				
-MD: NORTHERN CEN-																				
ABERDEEN PHILLIPS	75.3	56.7	66.0	2.1	94	31	43	6		2	7	7	9							0
CATOCTIN MTN PK	73.7	54.3	64.0	2.4	97	31	40	5		2	12	5	11							NM
CONOWINGO DAM															3.12	-1.46	10	0.54	4	NM
CYLBURN	72.2	55.6	63.9		88	31	41	6		0	14	5	9							NM
DAMASCUS	74.6	55.9	65.3		91	31	41	6		2	8	6	11		3.87		11	1.39	15	NM
EMMITSBURG 2 SE	73.1	54.2	63.7	1.5	91	31	39	6		1	12	2	10		3.73	-0.79	10	0.75	15	NM
MILLERS 4 NE	75.6	54.2	64.9	3.6	92	31	39	6		2	11	5	11		4.36	0.08	8	1.85	19	0
WESTMINSTER POL BR	74.9	55.0	64.9	1.8	93	31	40	6		2	11	5	10		2.86	-1.71	7	0.57	18	0
-DIVISION-			64.7	2.4											3.70	-0.92				
-MD: APPALACHIAN -																				
CUMBERLAND 2 *	78.1	53.2	65.7	3.5	95	31	40	7+												NM
FROSTBURG 2	70.1	50.2	60.1	3.9	86	30	35	6		0	17	1	15		8.32	3.56	9	2.16	18	NM
SHARPSBURG 5 S	75.0	52.5	63.7		93	31	36	6+		2	10	2	12							NM
WILLIAMSPORT	75.6	53.8	64.7		95	31	40	7		2	8	1	8		5.74		12	1.20	16	0
-DIVISION-			63.6	3.3											7.03	2.82				
-MD: ALLEGHENY PL-																				
OAKLAND 1 SE	70.5	49.0	59.7	3.0	87	31	33	6+		0	14	0	17		5.58	0.74	11	1.75	18	0
KITZMILLER 1 W	72.5	52.2	62.4		88	31	36	5		0	13	0	11							NM
-DIVISION-			61.1	4.6											5.58	1.04				
-STATE-			65.7	3.3											3.42	-0.85				0
-NJ: NORTHERN-																				
BELVIDERE BRG	70.2	47.6	58.9	0.3	88	31	36	10+		0	20	2	19		6.20	1.92	10	1.74	16	0
BLACKWELLS MILLS															4.27	-0.17	10	0.75	16+	NM
BOONTON 1 SE *	73.0	53.9	63.5	3.5	89	31	38	6												0
BOUND BROOK 2 W	74.0	56.1	65.0		91	27	42	7+		1	9	5	7		5.31	1.08	10	1.20	16	0

STATION	TEMPERATURE (F)								PRECIPITATION (INCHES)										
	MONTHLY AVERAGES				EXTREMES			NUMBER OF DAYS			MONTHLY TOTALS			EXTREMES	SNOWFALL				
	AVG MAX	AVG MIN	MON AVG	DEPRT AVG	MON MAX	DAY MIN	MON MAX	DAY MIN	90+ MAX	70- MIN	65+ MAX	50- MIN	MON TOT	DEPRT MAX	DAYS 0.1+	DLY MAX	DAY MAX	MON TOT	DLY MAX
CANOE BROOK	77.5	54.2	65.8	5.7	95	31	37	6	7	8	4	11	5.04	0.30	7	1.30	19	0	
CHARLOTTEBURG RSV*	69.9	51.6	60.8	3.0	85	31+	41	1					7.39	2.60	10	1.77	19	NM	
CHATHAM 2 W	72.2	52.7	62.4		88	31+	41	6	0	13	2	13	3.68		8	0.94	19	0	
CRANFORD	72.5	55.8	64.1	4.0	90	31	45	5	1	14	4	7	3.28	-1.64	9	0.90	19	0	
FLEMINGTON 5 NNW *	73.8	52.5	63.2	3.7	89	31+	36	6										NM	
HARRISON	72.0	56.3	64.1		90	31	47	6+	1	15	6	6	5.96		10	2.35	19	NM	
LAMBERTVILLE													3.90	-0.69	10	0.89	15	NM	
NEWARK INTL AP	73.8	57.4	65.6	2.9	92	30	44	6	1	12	8	5	4.78	0.32	8	2.26	18	0	
PHILLIPSBURG EAST*	73.7	53.2	63.4		89	31+	39	6										0	
PLAINFIELD	74.5	54.1	64.3	2.8	89	31+	37	6	0	9	4	12	3.27	-1.44	5	0.95	15	0	
POTTERSVILLE 2 NNW	70.5	54.4	62.5		88	31+	41	6	0	18	3	8	4.99	-0.22	11	0.88	24	0	
SUSSEX 2 NW	71.2	50.5	60.8	3.1	86	31+	35	6	0	17	1	14	6.09	1.63	12	1.78	19	0	
WAYNE	72.2	56.1	64.1		88	31+	42	6	0	14	4	5	4.58		7	1.62	19	0	
-NJ: NORTHERN-																			
WERTSVILLE 4 NE *	73.3	52.8	63.0		88	31+	41	1										NM	
TOCKS ISLAND	71.4	52.8	62.1		87	31	37	6	0	18	2	11						NM	
-DIVISION-			63.2	3.8									5.05	0.33					
-NJ: SOUTHERN-																			
ATLANTIC CITY INTL	74.1	55.8	65.0	4.5	91	30	40	1	1	11	7	10	3.33	-0.05	5	0.91	4	0	
ESTELL MANOR	76.1	53.4	64.8		93	31	38	6	1	7	2	11	2.16		8	0.77	5	0	
FREEHOLD MARLBORO	73.1	52.9	63.0	2.2	89	28	39	6+	0	12	4	13	2.84	-1.03	9	0.57	5	NM	
HAMMONTON 1 NE	76.1	54.7	65.4	3.5	93	31+	40	7	2	9	5	12						0	
HIGHTSTOWN 2 W	74.8	52.1	63.5	3.2	92	27	36	6	2	8	4	13	3.75	-0.67	10	0.81	19	0	
INDIAN MILLS	76.7	51.1	63.9	1.5	92	31+	34	9+	2	5	4	14	3.05	-1.10	7	1.11	18	0	
MILLVILLE MUNI AP*	76.0	54.1	65.1	3.2	94	31+	39	6+										NM	
NEW BRUNSWICK 3 SE	73.3	53.5	63.4	2.8	90	31	37	6	1	12	3	11	3.17	-1.40	9	0.64	19	0	
SEABROOK FARMS	75.2	56.4	65.8	3.6	95	31	44	6	2	10	6	10	1.95	-2.12	7	0.43	5	0	
SOMERDALE 4 SW	76.0	52.8	64.4		94	31	36	6	2	8	3	12	2.59		8	0.41	20	NM	
ATSION	75.0	53.4	64.2		93	31	34	6	1	8	2	10	3.20		6	1.01	5	NM	
TRENTON MERCER CO	75.8	55.7	65.7		92	31	40	6	2	8	6	9	3.73		9	0.72	15	NM	
PHILADELPHIA MT HO	74.5	54.6	64.5		90	31+	38	6	2	9	4	10	2.52		7	0.40	5	0	
-DIVISION-			64.5	3.2									2.94	-1.11					
-NJ: COASTAL-																			
ATLANTIC CITY	66.0	58.1	62.0	1.5	81	31	47	5	0	23	7	3	1.97	-1.19	6	0.64	5	NM	
BRANT BEACH HVN	68.5	56.2	62.4		85	31	46	5	0	22	2	4	2.21		6	0.70	19	NM	
CAPE MAY 2 NW	73.3	56.8	65.0	4.1	92	30	44	1	1	12	8	8	1.89	-1.76	5	0.78	4	0	
-DIVISION-			63.1	3.3									2.02	-1.77					
-STATE-			63.9	3.4									3.65	-0.63					0

*= One to four days of missing temperature data + = This value also occurred on one or more previous dates this month.

All means are for the years 1971-2000. NM = Snowfall is not measured.

These data are considered preliminary, published data from the National Climatic Data Center may differ somewhat from the values shown here.

PRELIMINARY MONTHLY DEGREE DATA MAY 2011

STATION	HEATING DEGREE DAYS (BASE 65)				COOLING DEGREE DAYS (BASE 65)				GROWING DEGREE DAYS (BASE 50)			
	MONTH	MONTH	SEASON	SEASON	MONTH	MONTH	SEASON	SEASON	MONTH	MONTH	SEASON	SEASON
-DE: NORTHERN-												
BEAR 2 SW	81		4834		117		151		501		760	
WILMINGTON NEW CAST	75	-57	4825	-48	122	60	152	79	512	115	753	181
WILMINGTON PORTER RS	81				108				492		724	
-DE: SOUTHERN-												
DOVER	55	-45	4274	69	159	82	213	132	569	126	918	268
-MD: SOUTHEASTERN SHORE-												
SALISBURY WICOMICO	73	-31	4372	125	151	99	208	154	543	129	889	284
-MD: CENTRAL EASTERN SHORE-												
-MD: CENTRAL EASTERN SHORE-												
-MD: LOWER SOUTHERN-												
MECHANICSVILLE 5 NE	101	7	4725	433	87	29	148	84	451	21	751	90
-MD: UPPER SOUTHERN-												
BALTIMORE WASH INTL	64	-56	4541	-163	141	70	185	99	542	122	846	211
BELTSVILLE	74	-45	4593	-105	128	73	182	126	519	116	826	257
DALECARLIA RSVR	42	-46	4500	123	143	59	208	117	566	104	927	227
BALTIMORE DOWNTOWN	17		3891		236		307		684		1093	
NATL ARBORETUM DC	33	-75			152	72			584	145		
OXON HILL	54				133				544		885	
-MD: NORTHEASTERN SHORE-												
STEVENSVILLE	50				142		175		557		840	
-MD: NORTHERN CENTRAL-												
ABERDEEN PHILLIPS F	78	-29			115	44			502	71	755	124
CATOCTIN MTN PK	111	-43			87	39			441	77		
CYLBURN	111		5078		86		124		441		683	
DAMASCUS	91				108				482		760	
EMMITSBURG 2 SE	113	-26	5285	265	79	27	115	62	431	50	646	114
MILLERS 4 NE	95	-62	5094	-50	100	58	135	92	470	116	732	248
WESTMINSTER POL BRK	102	-21			105	41			469	60	695	113
-MD: APPALACHIAN MOUNTAIN-												
FROSTBURG 2	182	-108			38	20			330	103	468	191
SHARPSBURG 5 S	112				82				437		659	
WILLIAMSPORT	83				83		105		465		670	
-MD: ALLEGHENY PLATEAU-												
OAKLAND 1 SE	190	-83	6642	351	35	20	44	29	323	92	473	177
KITZMILLER 1 W	133		5885		59		77		396		571	
-NJ: NORTHERN-												
BELVIDERE BRG	221	1	6091	78	42	21	48	27	288	12	408	76
BOUND BROOK 2 W	89				95		118		471		668	
CANOE BROOK	84	-96			116	89			497	181		
CHATHAM 2 W	141				69				393			
CRANFORD	95	-83			74	49	106	81	444	128	647	248
HARRISON	100		4969		82		100		447		624	

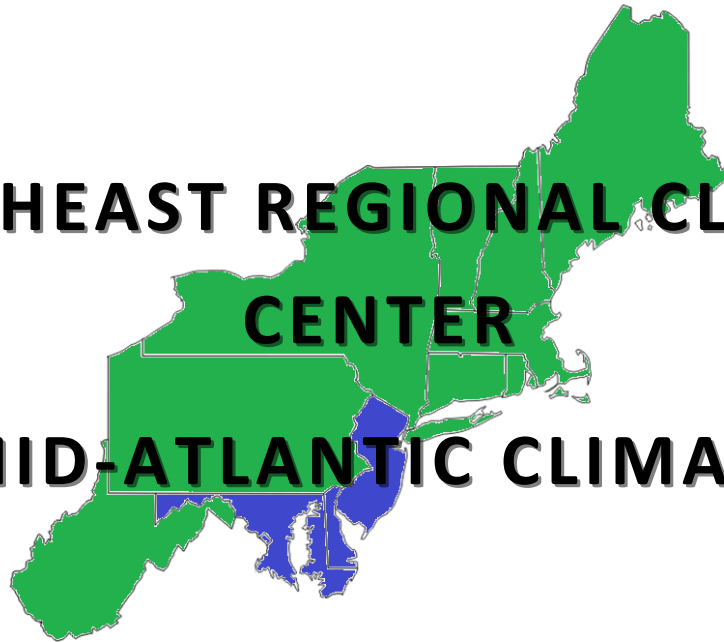
STATION	HEATING DEGREE DAYS (BASE 65)				COOLING DEGREE DAYS (BASE 65)				GROWING DEGREE DAYS (BASE 50)			
	MONTH	MONTH	SEASON	SEASON	MONTH	MONTH	SEASON	SEASON	MONTH	MONTH	SEASON	SEASON
NEWARK INTL AP	74	-52	4651	-179	103	33	129	47	494	77	723	129
PLAINFIELD	105	-47			91	49			451	93		
POTTERSVILLE 2 NNW	133		5572		62		83		394		543	
SUSSEX 2 NW	171	-71			50	37			349	100		
WAYNE	99				76		93		442		611	
TOCKS ISLAND	143		5850		60		74		385		518	
-NJ: SOUTHERN-												
ATLANTIC CITY INTL	93	-94	4690	-391	100	56	126	76	472	142	725	262
ESTELL MANOR	99		4845		103		149		472		740	
FREEHOLD MARLBORO	126	-38			74	42			413	77		
HAMMONTON 1 NE	92	-45			112	74	152	113	485	117	735	242
HIGHTSTOWN 2 W	122	-51			81	55			425	104	633	224
INDIAN MILLS	121	-9	5051	193	93	46	136	88	437	53	708	184
NEW BRUNSWICK 3 SE	120	-46			79	52			424	95		
SEABROOK FARMS	77	-56	4571	-267	109	64	149	103	497	119	764	252
SOMERDALE 4 SW	106		5450		95		133		456		660	
ATSION	107				89				448			
TRENTON MERCER CO A	80		4816		110		148		495		747	
PHILADELPHIA MT HOL	95		5213		90		136		460		692	
-NJ: COASTAL-												
ATLANTIC CITY	125	-42	4488	26	40	15	41	16	380	54	522	88
BRANT BEACH HVN	118				44				391			
-NJ: COASTAL-												
CAPE MAY 2 NW	80	-77	4469	-131	91	62	97	68	476	136	685	237

The heating season begins July 1 and ends June 30. The cooling season begins January 1 and ends December 31.
The growing season begins March 1 and ends October 31. All departures are calculated from the 1971 - 2000 mean.
These data are considered preliminary, published data from the National Climatic Data Center may differ somewhat from the values shown here.

NORTHEAST REGIONAL CLIMATE

CENTER

MID-ATLANTIC CLIMATE



**Northeast
Regional
Climate
Center**



1123 Bradfield Hall
Cornell University
Ithaca, NY 14853-1901