



CLIMATOLOGICAL DATA

VIRGINIA

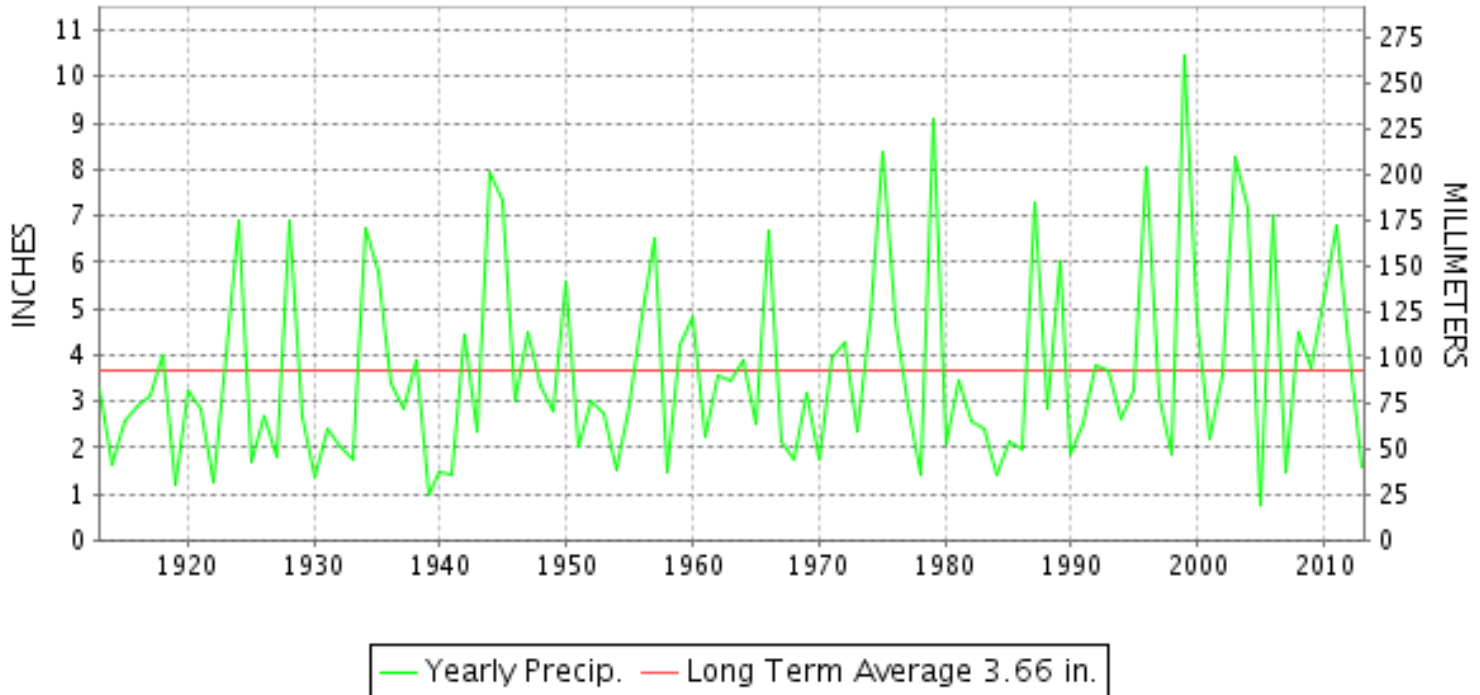
SEPTEMBER 2013

VOLUME 123 NUMBER 09

ISSN 0364-5630

GHCND Ver: 3.12-upd-2013122706

SEPTEMBER PRECIPITATION BY YEAR



TEMPERATURE AND PRECIPITATION EXTREMES

VIRGINIA

HIGHEST TEMPERATURE	95	SEPTEMBER 02+	3 STATIONS
LOWEST TEMPERATURE	35	SEPTEMBER 19++	3 STATIONS
GREATEST TOTAL PRECIPITATION	5.51		LEBANON
LEAST TOTAL PRECIPITATION	0.41		TYE RIVER 1 SE
GREATEST 1 DAY PRECIPITATION	1.95	SEPTEMBER 13	ABINGDON 3S

"I certify that this is an official publication of the National Oceanic and Atmospheric Administration (NOAA) It is compiled using information from weather observing sites supervised by NOAA/National Weather Service and received at the National Climatic Data Center(NCDC), Asheville, North Carolina 28801."

Director
National Climatic Data Center

noaa

National
Oceanic and
Atmospheric Administration

National
Environmental Satellite, Data
and Information Service

National
Climatic Data Center
Asheville, North Carolina

MONTHLY STATION AND DIVISION SUMMARY

STATION	TEMPERATURE (°F)											PRECIPITATION (IN)																													
	AVERAGE MAXIMUM	AVERAGE MINIMUM	AVERAGE	DEPARTURE FROM NORMAL	HIGHEST	DATE	LOWEST	DATE	HEATING DEG. DAYS	COOLING DEG. DAYS	NO. OF DAYS				TOTAL	DEPARTURE FROM NORMAL	GREATEST 24 HOURS	DATE	ICE PELLETS, SNOW			NO. OF DAYS																			
											MAX		MIN						TOTAL	MAX DEPTH ON GROUND	DATE	.10 OR MORE	.50 OR MORE	1.00 OR MORE																	
											>=90	<=32	<=32	<=0																											
PALMYRA 3S	M	M	M								0	0	0	0	M				0.0																						
PETERSBURG	81.0M	58.1M	69.5M	-1.1	92	02	47	25+	39E	182E	6	0	0	0	M 0.41	-3.85	0.40	02	M 0.0	0				1	0	0															
RICHMOND INTL AP	81.6	59.9	70.8	0.2	93	12+	49	18	13	194	6	0	0	0	1.39	-2.74	0.81	21	0.0	0				2	1	0															
SANDSTON	M	M	M		89	11+	44	19+	67E	140E	0	0	0	0	M				0.0																						
WINTERPOCK 4 W															M				0.0																						
--DIVISIONAL DATA-----> WESTERN PIEDMONT 03			68.4	-0.1B											1.28	-2.75B																									
ALTAVISTA															1.29			22	0.0					2	2	0															
APPOMATTOX	78.4	55.9	67.1	-0.5	91	12	43	18	54	128	2	0	0	0	0.92	-3.38	0.38	02	0.0				3	0	0																
BEDFORD 4 NW															2.95			22	0.0				4	4	1																
BROOKNEAL	80.0	54.2	67.1	3.7	91	13+	42	18	53	123	3	0	0	0	0.93	-2.95	0.48	22	0.0	0			2	0	0																
CHARLOTTE COURT HOUSE	78.8M	55.9M	67.3M	-1.1	92	12	44	19	48E	130E	3	0	0	0	0.45	-3.63	0.27	02	0.0	0			2	0	0																
CHARLOTTESVILLE 2W	77.5	56.6	67.1	-1.7	91	12	45	19+	58	126	3	0	0	0	1.34	-3.56	0.86	01	0.0	0			2	1	0																
CHATHAM	76.7M	52.6	64.7M	-1.4	89	12	41	19	83E	84E	0	0	0	0	1.50	-2.95	0.70	22	0.0	0			3	2	0																
CONCORD 4 SSW															0.80			22	0.0				2	0	0																
DANVILLE REGIONAL AP	80.1	58.2	69.1	-0.8	90	11	47	18	24	154	1	0	0	0	1.15	-2.84	0.45	20	0.0	0			3	0	0																
FREE UNION	76.0	52.3	64.2		89	12	39	19+	103	85	0	0	0	0	1.64		0.96	01	0.0				2	2	0																
HOLCOMB ROCK															2.86		1.31	02	0.0	0			3	2	2																
HUDDLESTON 4 SW															1.77		0.82	01	0.0				3	2	0																
LYNCHBURG INTL AP	78.9	55.8	67.4	0.4	92	11	44	18	43	120	3	0	0	0	0.48	-3.40	0.45	21	0.0	0			1	0	0																
MARTINSVILLE FLTR PLT	79.0	54.0	66.5	-0.1	89	13+	45	16+	50	104	0	0	0	0	2.05	-2.51	1.02	22	0.0	0			5	2	1																
MEADOWS OF DAN 5 SW	M	M	M												2.63		1.07	22	0.0	0			6	2	1																
MONTEBELLO FISH CULTURAL STN	76.8M	49.0M	62.9M		84	17+	35	19+	111E	60E	0	0	0	0	MA 1.24		0.12	01	0.0				1	0	0																
MONTECELLO	73.9	56.4	65.1	-0.8	86	13+	44	19+	93	102	0	0	0	0	1.09	-3.38	0.69	02	0.0				2	1	0																
PEDLAR DAM															1.20		1.09	22	0.0	0			1	1	1																
ROCKY MT	78.5	54.5	66.5	0.1	90	13	45	16+	58	109	1	0	0	0	2.44	-2.15	1.15	22	0.0	0			4	2	1																
SOUTH BOSTON	81.2	56.5	68.8	0.4	92	13	46	19	34	157	6	0	0	0	1.04	-2.94	0.91	22	0.0	0			1	1	0																
STUART	78.3	55.7	67.0	-1.1	87	02+	48	29+	40	107	0	0	0	0	3.94	-0.70	1.92	12	0.0	0			5	2	1																
TYE RIVER 1 SE	77.7	55.5	66.6	-1.2	91	12	41	18	64	119	3	0	0	0	0.41	-3.75	0.41	22	0.0				1	0	0																
WOOLWINE															0.88		0.51	22	0.0	0			3	1	0																
--DIVISIONAL DATA-----> NORTHERN 04			66.5	-1.1B											1.53	-2.85B																									
BOSTON 4 SE	76.5	52.1	64.3	-0.9	90	14+	38	19+	121	108	4	0	0	0	0.84	-3.51	0.84	13	0.0	0			1	1	0																
EDINBURG	76.9	49.6	63.3	-1.4	91	12	36	19+	132	85	1	0	0	0	0.86	-2.54	0.66	22	0.0				2	1	0																
FRONT ROYAL	76.5	53.0	64.8	-1.8	91	12+	40	25	108	106	2	0	0	0	1.23	-3.27	0.69	22	0.0				3	1	0																
LINCOLN	78.5	49.4	64.0	-1.6	95	12	35	19+	126	105	6	0	0	0	0.90		0.80	22	0.0				2	1	0																
LURAY 5 E	76.5	51.9	64.2	-2.3	90	12+	39	18	112	93	2	0	0	0	1.09	-3.44	0.65	22	0.0	0			3	1	0																
MADISON	77.1	54.6	65.8	-0.7	90	13+	43	18	77	110	2	0	0	0	A 1.75	-2.63	1.05	13	0.0	0			2	2	1																

VIRGINIA
201309

MONTHLY STATION AND DIVISION SUMMARY

STATION	TEMPERATURE (°F)											PRECIPITATION (IN)												
	AVERAGE MAXIMUM	AVERAGE MINIMUM	AVERAGE	DEPARTURE FROM NORMAL	HIGHEST	DATE	LOWEST	DATE	HEATING DEG. DAYS	COOLING DEG. DAYS	NO. OF DAYS				TOTAL	DEPARTURE FROM NORMAL	GREATEST 24 HOURS	DATE	ICE PELLETS, SNOW			NO. OF DAYS		
											MAX		MIN						TOTAL	MAX DEPTH ON GROUND	DATE	.10 OR MORE	.50 OR MORE	1.00 OR MORE
											>=90	<=32	<=32	<=0										
MANASSAS	79.1M	53.9M	66.5M	-2.1	94	12	41	24+	72E	128E	4	0	0	0	1.73		0.85	22	0.0			4	2	0
MT WEATHER	73.9	55.2	64.6	-1.0	88	12	45	18+	100	95	0	0	0	0	0.79	-3.73	0.58	22	0.0			2	1	0
PIEDMONT RSCH STN	76.5	55.2	65.9	-2.1	90	12	44	18	74	105	1	0	0	0	2.03	-2.00	1.45	13	0.0			2	2	1
SOMERSET	77.6	53.5	65.6	-1.7	91	12	39	18	89	115	1	0	0	0	2.45	-1.79	1.02	13	0.0			4	3	1
SPERRYVILLE	75.9M	52.2M	64.1M	-2.6	89	12	40	29+	114E	93E	0	0	0	0	A 0.74	-4.23	0.61	22	0.0			1	1	0
STERLING RCS	79.4	52.8	66.1	-0.7	95	12	39	18	85	126	6	0	0	0	1.30	-2.70	0.90	22	0.0	0		2	1	0
VIENNA	75.3	52.1	63.7	-2.4	91	12	41	19+	116	84	1	0	0	0	1.60	-2.58	0.94	22	0.0			2	2	0
WASHGTN DULLES INTL AP	79.4	54.3	66.8	-1.1	94	11	40	18	67	133	6	0	0	0	1.61	-2.31	1.30	21	0.0	0		2	1	1
WASHINGTON REAGAN AP	80.9	61.7	71.3	0.3	94	11	51	24	9	204	6	0	0	0	1.22	-2.50	0.87	21	0.0	0		3	1	0
WINCHESTER	77.9M	53.6M	65.7M	-0.4	93	12	41	19+	93E	123E	4	0	0	0	A 0.88	-2.86	0.76	22	0.0			1	1	0
WINCHESTER 7 SE	78.6	M	M		93	12+	36	19+	158E	75E	6	0	0	0	1.01	-2.90	0.80	22	0.0	0		2	1	0
WOODSTOCK 2 NE	77.3	51.2	64.3	-0.5	91	12+	39	19+	108	91	2	0	0	0	0.86	-3.02	0.53	22	0.0			3	1	0
--DIVISIONAL DATA-----> CENTRAL MOUNTAIN 05			65.4	-0.6B										1.27	-2.80B									
BUCHANAN														1.67	-2.08	0.81	22	0.0				3	2	0
BUENA VISTA														0.83		0.55	22	0.0				2	1	0
COVINGTON FLTR PLT	78.3	54.2	66.3	0.0	90	11	42	16+	60	105	1	0	0	1.51	-1.73	0.73	22	M 0.0	0		3	1	0	
CRAIGSVILLE 2 S									M							0.0								
DALE ENTERPRISE	76.9	51.6	64.3	-0.3	91	12	40	19+	108	93	3	0	0	0	0.69	-2.85	0.65	22	0.0	0		1	1	0
GATHRIGHT DAM	73.3	52.9	63.1	-0.9	85	12	44	24+	104	57	0	0	0	0	1.24	-2.13	0.76	22	M 0.0	0		2	1	0
GLASGOW 1 SE														1.22		0.70	22	0.0				2	1	0
HOT SPRINGS	73.4	51.5	62.5	-0.2	85	12	41	24	123	56	0	0	0	0	1.41	-2.24	0.95	22	0.0			2	1	0
LEXINGTON	78.7	53.1	65.9	-0.8	90	13+	43	19+	70	105	2	0	0	0	1.03	-2.49	0.53	22	0.0			2	1	0
MILLGAP	73.8	46.8	60.3	0.7	85	12	35	24+	173	40	0	0	0	0	2.23	-1.36	1.05	21	0.0	0		4	2	1
MTN GROVE														1.08		0.70	22	0.0				3	1	0
MUSTOE 1 SW	M	M	M								0	0	0	0	1.69	-1.97	0.72	21	M 0.0			5	1	0
NEW CASTLE														1.53		0.70	22	0.0				3	1	0
ROANOKE 8 N	78.5	55.8	67.1	-0.9	90	13+	47	18+	45	117	2	0	0	0	2.63	-1.51	1.32	01	0.0	0		3	3	1
ROANOKE INTL AP	78.3	57.3	67.8	-0.3	91	12	48	29+	35	127	2	0	0	0	1.13	-2.76	0.64	20	0.0	0		2	1	0
STAUNTON WATER TRMTMT PLT	76.4	53.3	64.9	-0.3	87	13+	41	18	92	95	0	0	0	0	1.26	-2.53	0.66	02	M 0.0	0		2	1	0
WAYNESBORO WTP	77.0	51.4	64.2	-0.7	89	12+	41	19+	110	94	0	0	0	0	0.77	-3.93	0.69	22	0.0	0		1	1	0
--DIVISIONAL DATA-----> SOUTHWESTERN MOUNTAIN 06			64.6	-0.5B										1.37	-2.22B									
ABINGDON 3S	76.6M	54.7M	65.6M	0.0	86	11+	45	14	48E	73E	0	0	0	0	M 3.71	0.36	1.95	13	M 0.0	0		3	3	2
BIG STONE GAP	78.9	56.4	67.7	0.5	87	11+	47	24+	35	120	0	0	0	0	3.94	0.06	1.05	22	0.0	0		7	5	1
BLACKSBURG NWSO	74.7	51.3	63.0	-0.1	85	11	41	14	111	61	0	0	0	0	1.35	-1.75	0.79	22	0.0	0		3	1	0
BURKES GARDEN	70.6	47.0	58.8	-0.8	81	01	37	18+	202	21	0	0	0	0	2.67	-0.64	0.66	22	0.0	0		6	3	0

MONTHLY STATION AND DIVISION SUMMARY

STATION	TEMPERATURE (°F)										PRECIPITATION (IN)													
	AVERAGE MAXIMUM	AVERAGE MINIMUM	AVERAGE	DEPARTURE FROM NORMAL	HIGHEST	DATE	LOWEST	DATE	HEATING DEG. DAYS	COOLING DEG. DAYS	NO. OF DAYS				TOTAL	DEPARTURE FROM NORMAL	GREATEST 24 HOURS	DATE	ICE PELLETS, SNOW			NO. OF DAYS		
											MAX		MIN						TOTAL	MAX DEPTH ON GROUND	DATE	.10 OR MORE	.50 OR MORE	1.00 OR MORE
											>=90	<=32	<=32	<=0										
CHRISTIANSBURG	73.4M	53.0	63.2M	-1.2	84	11	42	29	107E	56E	0	0	0	0	1.69	-1.79	0.86	22	0.0	0		4	1	0
CLINTWOOD 1 W	73.7	52.9	63.3	-0.1	82	13+	42	16+	94	53	0	0	0	0	3.08	-0.20	0.79	26	0.0	0		7	4	0
COPPER HILL	70.6M	52.8M	61.7M		80	11+	43	15+	131E	40E	0	0	0	0	M 1.65		0.68	22	0.0	0		3	1	0
GALAX RADIO WBRF	74.4	51.9	63.1	0.2	84	13	41	14	105	57	0	0	0	0	2.38	-1.45	1.45	22	0.0			4	1	1
GALAX WTP	73.7	50.8	62.3	-0.1	84	01	42	15+	121	46	0	0	0	0	2.83		1.46	22	0.0	0		7	1	1
GRUNDY	75.3	58.7	67.0	1.4	86	01	50	15+	43	110	0	0	0	0	3.05	-0.09	1.30	20	0.0	0		5	2	1
JOHN FLANNAGAN LAKE	M	M	M		88	11	47	24+	38E	129E	0	0	0	0	MA 3.80		1.25	20	0.0	0		3	3	1
LAFAYETTE 1 NE														2.21		0.77	22	0.0				3	3	0
LEBANON	76.3	53.1	64.7	-0.1	86	11+	45	24+	70	68	0	0	0	0	5.51	2.42	1.83	03	0.0	0		6	4	2
NORA 4 SSE	72.0	55.5	63.8	-1.4	81	13+	43	24+	92	62	0	0	0	0	4.80	1.49	1.91	03	0.0	0		7	4	1
NORTH FORK LAKE	M	M	M		88	11	46	23	38E	98E	0	0	0	0	MA 4.59		0.74	13	0.0			4	2	0
PULASKI 2 E	76.5	51.4	63.9	-0.2	85	13+	42	30+	105	82	0	0	0	0	1.77	-1.29	0.53	22+	0.0	0		5	2	0
RADFORD 3 N	74.8M	53.0	63.9M	0.6	87	11	44	23+	96E	68E	0	0	0	0	1.88	-1.13	0.81	22	0.0	0		4	2	0
RICHLANDS	75.7	53.3	64.5	0.1	87	11	44	16+	74	66	0	0	0	0	2.22	-0.91	0.76	20	M 0.0	0		5	2	0
SALTVILLE 1N	77.3M	54.0	65.6M	0.1	87	11	44	14	52E	84E	0	0	0	0	3.87	0.59	1.37	02	0.0			5	3	2
STAFFORDSVILLE 3 ENE	74.4	52.9	63.7	0.0	85	13	43	16+	100	68	0	0	0	0	1.59	-1.50	0.66	22	0.0			5	1	0
WILLIS														1.84		1.31	21	0.0				2	1	1
WISE 3E	73.9	54.6	64.2	0.0	83	10	43	23	76	57	0	0	0	2.69	-0.91	0.78	21	0.0	0		7	1	0	
--DIVISIONAL DATA----->			63.9	0.3B										2.74	-0.73B									

VIRGINIA
201309

DAILY PRECIPITATION (INCHES)

STATION	TOTAL	DAY OF MONTH																																	
		01	02	03	04	05	06	07	08	09	10	11	12	13	14	15	16	17	18	19	20	21	22	23	24	25	26	27	28	29	30	31			
VIRGINIA																																			
TIDEWATER 01																																			
DISPUTANTA	M	-	-	-								-	-	-	-	-	-	-	-	-	-	-	0.83												
EASTVILLE	M												0.50			-																			
EMPORIA 1 WNW	2.24		1.32		0.10																		0.80				0.02								
FREDERICKSBURG SEWAGE	1.13		0.23	T									0.05				0.01						0.84												
HAMPTON UNIV	M	-	-	-	-	-	-	-	-	-	-	-	-	-	-	-	-	-	-	-	-	-	-	-	-	-	-	-	-	-	-	-	-		
HOLLAND 1 E	M	-	-	-	-	-	-	-	-	-	-	-	-	-	-	-	-	-	-	-	-	-	-	-	-	-	-	-	-	-	-	-	-		
HOPEWELL	1.30		0.45																																
NORFOLK INTL AP	0.93	0.12	T	0.23									0.01			0.03						0.05	0.49						T						
NORFOLK SOUTH	1.56	0.15	0.04	0.88												0.02						0.03	0.44												
NORTH	M	-	-	-	-	-	-	-	-	-	-	-	-	-	-	-	-	-	-	-	-	-	-	-	-	-	-	-	-	-	-	-	-		
PAINTER 2W	M	-	-	-	-	-	-	-	-	-	-	-	-	-	-	-	0.01						0.54												
STONY CREEK 2 N	M	-	-	-	-	-	-	-	-	-	-	-	-	-	-	-	-	-	-	-	-	-	-	-	-	-	-	-	-	-	-	-	-		
SUFFOLK LAKE KILBY	M 1.03	0.10	0.04	0.17												0.05						0.05	0.62												
WAKEFIELD 1NW	0.73	0.03																					0.37	0.33											
WALKERTON 2 NW	M	-	-	-	-	-	-	-	-	-	-	-	-	-	-	-	-	-	-	-	-	-	-	-	-	-	-	-	-	-	-	-	-	-	
WALLACETON LK DRUMMOND	M	-	-	-	-	-	-	-	-	-	-	-	-	-	-	-	-	-	-	-	-	-	-	-	-	-	-	-	-	-	-	-	-	-	
WALLOPS ISLAND NASA TEST FACIL	1.30	0.14										0.57	0.01			T						0.54	0.04												
WARSAW 2 NW	M	-	-	-	-	-	-	-	-	-	-	-	-	-	-	-	-	-	-	-	-	-	-	-	-	-	-	-	-	-	-	-	-	-	
WEST POINT 2 NW	M	-	0.09	-	-	-	-	-	-	-	-	-	-	0.88	-	-	-	-	-	-	-	-	-	-	-	-	-	-	-	0.03					
WILLIAMSBURG 2 N	0.86	0.17										0.14										0.35	0.20												
EASTERN PIEDMONT 02																																			
ALBERTA 5N	M 0.16		0.16																																
AMELIA COURTHOUSE 1	M	-	-	-	-	-	-	-	-	-	-	-	-	-	-	-	-	-	-	-	-	-	-	-	-	-	-	-	-	-	-	-	-	-	
ASHLAND	M 0.80	0.05																				0.03	0.72												
BREMO BLUFF	1.54	0.54										0.47										0.53													
BUCKINGHAM	0.60		0.18		0.10																														
CAMP PICKETT	M 0.46	-	-						0.01									0.01																	
CHASE CITY	M	-	-	-	-	-	-	-	-	-	-	-	-	-	-	-	-	-	-	-	-	-	-	-	-	-	-	-	-	-	-	-	-	-	-
CLARKSVILLE	0.93		0.50																																
CORBIN	M	-	-	-	-	-	-	-	-	-	-	-	-	-	-	-	-	-	-	-	-	-	-	-	-	-	-	-	-	-	-	-	-	-	-
CROZIER	1.94	0.10	0.11						0.40				0.40										0.93												
FARMVILLE 2 N	M 0.28	-	0.28																																
GREENBAY 3 NE	M 1.61		1.06																																
JOHN H KERR DAM	M 0.67		0.19																																
LOUISA	M 0.99	-	-							0.02			0.51	0.01									0.03	0.42											
PALMYRA 3S	M	-	-	-	-	-	-	-	-	-	-	-	-	-	-	-	-	-	-	-	-	-	-	-	-	-	-	-	-	-	-	-	-	-	-
PETERSBURG	M 0.41		0.40															0.01																	
RICHMOND INTL AP	1.39	0.06											0.48				T						0.81	0.04											
SANDSTON	M	-	-	-																															
WINTERPOCK 4 W	M	-	-	-	-	-	-	-	-	-	-	-	-	-	-	-	-	-	-	-	-	-	-	-	-	-	-	-	-	-	-	-	-	-	-

VIRGINIA
201309

DAILY PRECIPITATION (INCHES)

STATION	TOTAL	DAY OF MONTH																																					
		01	02	03	04	05	06	07	08	09	10	11	12	13	14	15	16	17	18	19	20	21	22	23	24	25	26	27	28	29	30	31							
WESTERN PIEDMONT 03																																							
ALTAVISTA	1.29	0.54																			0.09	0.64					0.02												
APPOMATTOX	0.92	0.10	0.38															T		0.03	0.05	0.34					0.02												
BEDFORD 4 NW	2.95	0.62	0.62																			0.66	1.04				0.01												
BROOKNEAL	0.93	0.32	0.09															0.02									0.02												
CHARLOTTE COURT HOUSE	0.45		0.27																																				
CHARLOTTESVILLE 2W	1.34	0.86	0.04															T				T	0.44																
CHATHAM	1.50	0.51																				0.25	0.70				0.04												
CONCORD 4 SSW	0.80	0.22	0.06															0.01				0.03	0.48				T												
DANVILLE REGIONAL AP	1.15	0.21										0.03									0.45	0.42			0.04														
FREE UNION	1.64	0.96	0.05	0.02									T					T									0.03	0.01											
HOLCOMB ROCK	2.86	0.42	1.31															T				0.07	1.06																
HUDDLESTON 4 SW	1.77	0.82																0.03				0.28	0.61				0.03												
LYNCHBURG INTL AP	0.48	0.02							T								T				T	0.01	0.45			T	T	T											
MARTINSVILLE FLTR PLT	2.05	0.11																			0.50	0.32	1.02				0.10												
MEADOWS OF DAN 5 SW	2.63	0.19	0.30	0.02								0.60										0.25	1.07				0.20												
MONTEBELLO FISH CULTURAL STN	MA 1.24	0.12											*	0.00 _a	*	*	0.00 _a				*	*	1.10 _a	*	0.00 _a	*	0.02 _a	-			-								
MONTECELLO	1.09		0.69		T	T																				T											T		
PEDLAR DAM	1.20	T	0.08											0.03								T	1.09				T												
ROCKY MT	2.44	0.32	0.04								T										0.27	0.60	1.15			0.04	0.02												
SOUTH BOSTON	1.04	0.09																			0.01	0.91				0.03													
STUART	3.94	0.38	0.06									1.92	0.17									0.41	0.92				0.08												
TYE RIVER 1 SE	0.41																					T	0.41																
WOOLWINE	0.88	0.02	0.15									0.04									0.02	0.03	0.51				0.11												
NORTHERN 04																																							
BOSTON 4 SE	0.84												0.84																										
EDINBURG	0.86												0.10	0.03																									
FRONT ROYAL	1.23		0.41										0.03																										
LINCOLN	0.90														0.10																								
LURAY 5 E	1.09		0.11											0.27																									
MADISON	A 1.75	*	* 0.10 _a							T				1.05																									
MANASSAS	1.73		0.25											0.53																									
MT WEATHER	0.79			0.04					T					0.17																									
PIEDMONT RSCH STN	2.03	0.07												1.45																									
SOMERSET	2.45	0.37	0.02											1.02																									
SPERRYVILLE	A 0.74	0.01	0.02											0.07													*	0.00 _a											
STERLING RCS	1.30		0.04											0.29																									
VIENNA	1.60			0.08										0.58																									
WASHGTN DULLES INTL AP	1.61	0.03	0.18										0.04	T																									
WASHINGTON REAGAN AP	1.22	0.01	0.11										0.18	T																									
WINCHESTER	A 0.88								T					T	*	0.00 _a	0.04	0.08																					
WINCHESTER 7 SE	1.01								0.01					0.05																									

VIRGINIA
201309

DAILY PRECIPITATION (INCHES)

STATION	TOTAL	DAY OF MONTH																																
		01	02	03	04	05	06	07	08	09	10	11	12	13	14	15	16	17	18	19	20	21	22	23	24	25	26	27	28	29	30	31		
WOODSTOCK 2 NE	0.86											0.03	0.17		0.02		0.10	0.01				0.53												
CENTRAL MOUNTAIN 05																																		
BUCHANAN	1.67	0.33	0.53										T									0.81					T							
BUENA VISTA	0.83	0.04	0.19										0.02									0.55					0.03							
COVINGTON FLTR PLT	1.51	0.06		0.42								0.17	0.02							0.06	T	0.05	0.73											
CRAIGSVILLE 2 S	M	-	-	-	-	-	-	-	-	-	-	-	-	-	-	-	-	-	-	-	-	-	-	-	-	-	-	-	-	-	-	-	-	
DALE ENTERPRISE	0.69		0.02										0.02									0.65												
GATHRIGHT DAM	1.24	0.01		0.29									0.08								0.07		0.76				0.03							
GLASGOW 1 SE	1.22	0.07	0.45										T				T					T	0.70				T							
HOT SPRINGS	1.41	0.07		0.25									0.03							0.04	0.02	0.95				0.05				T				
LEXINGTON	1.03	0.04	0.39	0.02									0.03				0.02			T		0.53				T								
MILLGAP	2.23	0.02		0.04									0.22									1.05	0.62				0.28							
MTN GROVE	1.08	0.08		0.10									0.10								0.03	0.01	0.70				0.06							
MUSTOE 1 SW	1.69			0.05								0.19	0.01			0.02					0.41	0.72				0.11	0.18							
NEW CASTLE	1.53	0.30	0.04																	T	0.01	0.45	0.70				0.03							
ROANOKE 8 N	2.63	1.32	0.03														0.03				0.02	0.53	0.64				0.06							
ROANOKE INTL AP	1.13	T								T		T				T					0.64	0.47				0.02	T							
STAUNTON WATER TRMTMT PLT	1.26	0.07	0.66	0.02		0.01		T					0.01										0.46	0.02			0.01							
WAYNESBORO WTP	0.77		0.05																				0.69				0.03							
SOUTHWESTERN MOUNTAIN 06																																		
ABINGDON 3S	M 3.71	-	1.01										1.95	0.02							0.02	0.07	0.60				0.04							
BIG STONE GAP	3.94	0.50	0.07	0.73								0.02	0.58			0.04				0.50		0.02	1.05			0.18	0.25							
BLACKSBURG NWSO	1.35	0.22	0.03								T		T	T		T				T	0.24	0.04	0.79				0.03							
BURKES GARDEN	2.67	0.28	0.23	0.27	0.03								0.50				0.03					0.55	0.02	0.66			0.08	0.02						
CHRISTIANSBURG	1.69	0.48	0.10										T									0.15	0.05	0.86			0.05							
CLINTWOOD 1 W	3.08	0.05	0.50	0.10	T				T				T	0.14					T		0.15	0.72	0.02	0.61			0.79							
COPPER HILL	M 1.65	0.03	0.05								0.08											0.38	0.36	0.68			0.07							
GALAX RADIO WBRF	2.38		0.41			0.01					0.01		0.24									0.08	0.03	1.45			0.15							
GALAX WTP	2.83	0.45	0.13										0.36									0.13	0.13	1.46			0.17							
GRUNDY	3.05		0.14	0.02									0.02	0.85								0.03	1.30	0.02	0.44		0.23							
JOHN FLANNAGAN LAKE	MA 3.80	*	* 0.54 _a						-	-			0.57	0.07	*	* 0.01 _a	*	*	*	0.32 _a	1.25	*	* 0.52 _a			0.52			-	-	-			
LAFAYETTE 1 NE	2.21	0.02											0.02						0.02			0.71	0.58	0.77			0.09							
LEBANON	5.51	1.32	0.77	1.83	0.02								0.08	0.29							0.04	0.42	0.74											
NORA 4 SSE	4.80	0.09	0.21	1.91									0.87	0.19	T						0.08	0.52	T	0.77			0.14							
NORTH FORK LAKE	MA 4.59	*	* 1.74 _a					*	*	0.03 _a		0.06	0.01	0.74	-	-	-	0.02			0.43	0.35	*	* 0.65 _a	-		0.56		*	*	0.00 _a			
PULASKI 2 E	1.77	0.17	0.20	0.53								0.06	0.01	0.20						T			0.01	0.53			0.06							
RADFORD 3 N	1.88	0.73	0.10										T	0.20									0.01	0.81			0.03							
RICHLANDS	2.22	0.21	0.15	0.03									0.02	0.35	0.02							0.07	0.76	0.01	0.51			0.07				0.01		
SALTVILLE 1N	3.87	0.33	1.37	0.07									0.12	0.07	0.01							1.24	0.60			0.06								
STAFFORDSVILLE 3 ENE	1.59	0.07	0.21										0.21	0.16				0.01				0.03	0.18	0.66	0.02		0.03	0.01						
WILLIS	1.84		0.32										0.09	0.04									1.31				0.08							

VIRGINIA
201309

DAILY PRECIPITATION (INCHES)

STATION	TOTAL	DAY OF MONTH																															
		01	02	03	04	05	06	07	08	09	10	11	12	13	14	15	16	17	18	19	20	21	22	23	24	25	26	27	28	29	30	31	
WISE 3E	2.69	0.45	T	0.45							0.08		0.11			T		0.41	0.06		0.78	0.13				0.05	0.17						

VIRGINIA
201309

DAILY TEMPERATURES (°F)

STATION	OB. TIME	MAX/MIN	DAY OF MONTH																															AVERAGE
			01	02	03	04	05	06	07	08	09	10	11	12	13	14	15	16	17	18	19	20	21	22	23	24	25	26	27	28	29	30	31	
VIRGINIA TIDEWATER 01 DISPUTANTA	07	MAX MIN				85 64	81 60	86 60	78 54	80 55	86 61	82 67	89 67										76 57	75 51	68 43				74 50	70 51	73 49	M M		
EASTVILLE	07	MAX MIN	86 74	89 75	84 75	81 67	78 68	84 61	86 65	78 69	83 71	80 71	86 71	88 75		74 52	77 55	68 55																M M
EMPORIA 1 WNW	08	MAX MIN		91 70	90 71	85 68	85 64	88 64	83 58	82 58	88 58	86 67	91 67	91 68	90 68	83 58	76 50	81 50	85 57	75 48		79 52	81 52	73 58	74 52	72 52	76 51	76 55	79 53	76 53	74 53	76 53	81.6 58.1	
FREDERICKSBURG SEWAGE	07	MAX MIN	89 69	89 69	87 71	87 62	87 60	86 57	77 55	88 55	88 63	79 65	91 70	91 65	79 52	71 47	78 47	73 54	68 44	73 44	79 49	82 54	76 57	73 50	67 45	73 47	75 48	75 51	75 52	68 49	73 49	78.9 55.2		
HAMPTON UNIV	17	MAX MIN																															M M	
HOLLAND 1 E	08	MAX MIN																															M M	
HOPEWELL	16	MAX MIN	91 73	92 74	90 74	85 68	86 65	87 65	80 60	86 64	87 70	91 72	91 71	91 70	79 58	79 51	82 62	75 59	72 51	76 53	80 58	80 60	76 63	77 55	73 49	76 51	75 61	74 56	73 58	73 58	82 56	81.7 61.9		
NORFOLK INTL AP	24	MAX MIN	92 73	89 72	87 71	82 69	86 67	79 67	79 60	88 63	83 71	90 68	91 71	92 72	82 62	76 57	84 63	70 61	74 58	74 55	78 57	86 59	74 65	68 53	71 52	74 53	75 60	74 65	73 64	73 63	74 63	72 57	79.6 63.3	
NORFOLK SOUTH	24	MAX MIN	91 73	88 72	87 69	82 67	87 65	78 62	80 56	86 62	83 69	89 67	91 70	89 71	78 57	71 53	76 62	83 59	67 55	71 51	74 54	77 55	82 65	72 51	67 49	70 51	73 58	73 62	72 63	71 61	73 56	78.4 61.2		
NORTH	07	MAX MIN																															M M	
PAINTER 2W	16	MAX MIN		86 73	85 74				80 53	86 62	86 66	87 67	90 70		77 59	74 49	79 61	70 55	71 50			78 52	77 64	73 51	68 45	75 47					74 49	M M		
STONY CREEK 2 N	08	MAX MIN																			72 49	74 46	78 49							74 52	72 52	75 52	M M	
SUFFOLK LAKE KILBY	24	MAX MIN	87 68	87 72	85 69	83 68	87 68	80 61	76 58	87 60	87 68	88 66	88 64		83 68	74 58	78 56	83 60	71 54	73 47		78 56	76 60	69 51					71 56	72 45	74 48	79.9 60.0		
WAKEFIELD 1NW	24	MAX MIN	92 72	90 71	85 67	84 63	88 60	81 57	80 53	87 60	83 67	90 68	91 69	90 67	83 60	74 50	79 45	84 58	72 48	74 45	77 48	81 54	79 55	78 54	70 46	74 42	76 46	77 54	76 50	70 49	72 51	76 49	80.4 55.9	
WALKERTON 2 NW	18	MAX MIN																																M M
WALLACETON LK DRUMMOND	08	MAX MIN																																M M
WALLOPS ISLAND NASA TEST FACIL	24	MAX MIN	86 76	85 73	91 69	84 66	88 67	79 59	80 56	89 66	82 67	87 72	91 72	90 71	83 65	74 56	75 51	83 60	69 52	73 51	75 50	76 51	80 55	80 58	70 50	73 49	78 51	76 60	74 58	73 59	74 55	74 53	79.7 59.9	
WARSAW 2 NW	18	MAX MIN																																M M
WEST POINT 2 NW	17	MAX MIN		92 72	90 72							93 71	92 69	88 63						73 48	76 50	79 55	79 57				78 49	77 56	75 53				M M	
WILLIAMSBURG 2 N	24	MAX MIN	91 73	88 73	85 70	82 65	86 64	78 61	79 59	87 59	81 69	89 68	90 68	90 70	80 65	77 55	81 51	69 60	72 52	76 51	79 54	80 60	77 58	69 50	73 49	76 49	75 58	74 55	70 55	74 55	74 52	79.2 59.3		

VIRGINIA
201309

DAILY TEMPERATURES (°F)

STATION	OB. TIME	MAX/MIN	DAY OF MONTH																															AVERAGE	
			01	02	03	04	05	06	07	08	09	10	11	12	13	14	15	16	17	18	19	20	21	22	23	24	25	26	27	28	29	30	31		
EASTERN PIEDMONT 02 AMELIA COURTHOUSE 1	08	MAX		90	88																													69	73
		MIN		68	70																													50	50
ASHLAND	18	MAX	87	86	83	81	83	79	77							75	73	68	70	75	78	77	72	68	69	73	78	72	68	71	73				
		MIN	69	72	70	63	61	59	55							47	59	53	43	49	55	67	58	50	45	47	55	51	50	51	49				
CAMP PICKETT	08	MAX			89	86	82	86	79	80	86	82	90	91	90	81	72	79	83	83	73		78	72	75	70							76	74	
		MIN			70	65	60	60	54	54	60	67	67	66	66	55	45	46	55	44	45			60	60	52	50							51	50
CHASE CITY	17	MAX																																	
		MIN																																	
CLARKSVILLE	07	MAX	88	90	89	91	84	88	88	83	90	86	91	93	92	86	77	82	86	77	79	75	75	74	79	74	76	76	80	75	73	77			
		MIN	68	68	68	68	62	61	57	62	65	68	68	69	69	57	51	51	58	50	49	59	60	62	57	56	54	56	53	53	53	51			
CORBIN	09	MAX																																	
		MIN																																	
CROZIER	07	MAX	86	91	88	86	80	85	79	78	86	80	88	90	88	79	72	73	72	72	74	75	80	70	74	69	72	75	76	72	68	74			
		MIN	65	66	68	60	58	54	53	59	60	64	66	66	66	64	49	45	46	49	41	42	51	56	55	50	46	46	48	47	48	47	47		
FARMVILLE 2 N	07	MAX		95	92	90	85	86	80		91	79	89	91	90	85		80	79	69	71	72	83		75	69		71	75	73	72	72			
		MIN		67	70	64	60	60	54		61	65	65	68	67	55		46	51	44	45	53	52		54	52		57	49	49	50	48			
GREENBAY 3 NE	09	MAX	87	90	87	85	80	85	77	80	86	79	90	90	90	81	65	79	79	79	72	72	76	71	74	68	74		76	70	67	73			
		MIN	67	70	70	63	59	58	54	61	61	68	70	69	67	54	45	53	51	42	42	53	60	59	52	50	48		48	48	48	47			
JOHN H KERR DAM	08	MAX	87	89	89	88	86	88	83	81	91	87	93	89	91	86	76	80	85	75	76	75	81	76	78	72	74		80	76	72	76			
		MIN	73	72	73	70	64	64	60	62	69	72	75	74	73	59	51	55	57	49	52	62	65	64	58	54	54		52	50	53	53			
LOUISA	18	MAX			87	84	86			80	88	83	90	91	90	79	76	76	74	69	72	75	79	73	74	70	73	73	77	72	70	74	76		
		MIN			66	57	56			49	57	62	64	67	68	62	46	42	57	47	36	45	50	59	53	44	42	43	55	44	49	44	44		
PALMYRA 3S	06	MAX																																	
		MIN																																	
PETERSBURG	08	MAX	88	92	90	86	83	87	80	81	87	82	91	91	90	90	73	78	84	71	73	79	82		76	71	74	75	76	74	71	73			
		MIN	69	72	73	69	63	63	58	58	63	69	69	69	69	59	49	48	54	47	47	52	60		56	48	47	48	52	51	51	52			
RICHMOND INTL AP	24	MAX	92	91	88	84	89	81	81	90	81	93	93	93	83	74	80	84	72	74	78	81	79	79	72	76	79	79	76	72	77	78			
		MIN	71	73	71	66	64	63	59	65	70	69	71	70	64	55	51	60	52	49	52	57	58	60	52	50	50	58	55	54	55	54			
SANDSTON	07	MAX		89	87	85	81	84	77	77	85	79	89																						
		MIN		70	70	64	59	60	55	55	61	66	67																						
WESTERN PIEDMONT 03 APPOMATTOX	07	MAX	87	88	89	87	82	85	77	81	87	81	90	91	89	82	72	78	75	70	72	73	73	69	74	70	74	70	75	72	66	72			
		MIN	66	66	68	62	59	58	54	56	62	66	68	67	64	49	48	49	50	43	47	56	60	52	50	50	51	54	50	50	51	50			
BROOKNEAL	07	MAX	88	89	88	88	83	88	80	82	87	83	90	91	91	83	73	80	79	73	71	72	75	73	76	73	75	75	77	74	69	73			
		MIN	65	65	68	64	56	56	52	52	57	65	65	65	64	50	44	45	49	42	43	55	61	53	53	50	50	50	46	48	47	46			
CHARLOTTE COURT HOUSE	07	MAX			86	88	83	86				83	91	92	90																				
		MIN			68	66	60	61					66	67	67	67																			
CHARLOTTESVILLE 2W	08	MAX	89	87	89	86	81	85	77	80	87	76	90	91	90	77	68	76	68	67	71	77	74	66	73	69	72	72	75	72	65	74			
		MIN	66	66	70	59	59	57	56	56	65	64	67	70	66	51	50	51	53	45	45	55	59	56	49	50	52	52	53	53	52	52			
CHATHAM	07	MAX	86	86	85	85	80	81	77	78	84	78	87	89	87	78																			
		MIN	63	64	64	59	54	54	51	51	54	62	61	62	63	47	44	44	48	42	41	58	62	53	52	51	48	48	45	44	45	44			

VIRGINIA
201309

DAILY TEMPERATURES (°F)

STATION	OB. TIME	MAX/MIN	DAY OF MONTH																															AVERAGE
			01	02	03	04	05	06	07	08	09	10	11	12	13	14	15	16	17	18	19	20	21	22	23	24	25	26	27	28	29	30	31	
DANVILLE REGIONAL AP	24	MAX	89	89	89	83	87	81	81	89	85	89	90	89	84	75	80	84	75	73	75	69	75	78	72	78	69	76	76	71	74	78	80.1	
		MIN	67	68	65	62	60	57	56	61	67	66	68	69	62	53	49	59	51	47	57	64	65	57	54	56	52	54	50	50	49	58.2		
FREE UNION	08	MAX	86	85	85	83	79	83	76	78	85	74	88	89	88	77	69	74	67	67	69	74	73	66	71	69	73	71	74	72	63	73	76.0	
		MIN	64	64	66	56	54	53	52	52	61	62	62	67	62	46	44	44	51	39	39	52	57	51	44	44	48	48	46	46	50	46	52.3	
LYNCHBURG INTL AP	24	MAX	88	89	89	82	87	79	80	88	82	91	92	91	82	74	77	75	71	71	72	74	69	77	71	76	72	76	74	68	73	77	78.9	
		MIN	64	67	64	60	53	57	54	58	67	64	67	66	59	50	46	52	50	44	58	60	56	53	53	50	53	53	48	52	49	47	55.8	
MARTINSVILLE FLTR PLT	07	MAX	88	86	88	88	84	86	78	81	86	82	89	87	89	80	74	78	78	73	69	74	69	71	75	72	76	76	75	75	70	72	79.0	
		MIN	64	64	64	56	55	54	53	56	58	62	62	64	60	46	45	45	48	48	53	59	64	51	51	51	51	51	46	46	47	47	54.0	
MEADOWS OF DAN 5 SW	07	MAX																															M	
		MIN																																M
MONTEBELLO FISH CULTURAL STN	07	MAX	84	80	83	81	78	81	81	79	82	72	84		84		84	84	66	62			71		67		72		71		67	M		
		MIN	56	63	62	50	47	48	47	55	55	59	59		59		39	39	35	35			46		44		46		42		42	M		
MONTICELLO	08	MAX	83	85	84	85	85	80	71	83	73	86	86	86	72	63	73	66	64	66	73	73	66	69	64	68	67	71	70	63	68	73.9		
		MIN	66	69	70	60	60	57	55	60	63	63	66	68	65	50	49	59	53	44	44	53	57	56	49	49	49	51	53	51	52	50	56.4	
ROCKY MT	07	MAX	88	86	87	88	83	86	79	82	85	81	86	88	90	79	75	79	76	71	68	73	67	68	74	74	76	76	74	70	71	78.5		
		MIN	66	66	66	55	55	57	55	56	58	62	65	66	64	48	45	45	47	47	50	59	63	52	52	50	51	51	47	46	46	46	54.5	
SOUTH BOSTON	07	MAX	87	90	90	91	84	89	82	83	88	84	91	91	92	87	74	81	88	74	73	74	73	75	77	72	76	74	77	74	71	74	81.2	
		MIN	65	66	69	64	60	59	55	55	59	65	65	66	67	55	48	47	54	47	46	57	62	59	56	53	51	51	49	49	47	48	56.5	
STUART	07	MAX	87	87	86	85	82	86	86	80	86	82	86	86	85	78	74	77	78	71	66	73	73	70	75	71	76	75	75	74	68	72	78.3	
		MIN	64	63	65	60	58	57	54	60	61	62	64	64	63	50	48	48	52	52	54	54	54	55	53	54	53	52	50	48	48	50	55.7	
TYE RIVER 1 SE	07	MAX	86	87	86	85	80	85	75	80	85	79	90	91	90	82	70	76	72	70	72	75	74	68	73	70	74	71	75	75	66	70	77.7	
		MIN	67	67	68	61	57	55	53	54	60	67	68	70	66	49	46	47	52	41	42	58	60	52	51	50	51	55	49	50	47	55.5		
NORTHERN 04																																		
BOSTON 4 SE	07	MAX	87	87	88	84	80	85	75	79	86	79	90	90	90	90	68	74	72	66	69	73	76	67	71	65	54	71	73	70	65	71	76.5	
		MIN	64	68	66	55	53	53	49	55	61	62	63	67	61	46	44	46	51	38	38	50	62	51	46	41	44	52	45	44	45	44	52.1	
EDINBURG	07	MAX	85	87	87	83	79	82	74	82	89	80	89	91	88	74	67	76	66	67	71	75	81	71	71	65	72	73	74	72	63	73	76.9	
		MIN	63	64	65	51	51	49	48	48	59	61	65	65	61	44	41	41	49	36	36	51	51	42	41	43	42	42	42	43	42	49.6		
FRONT ROYAL	07	MAX	87	88	88	82	80	82	74	81	85	85	91	91	87	74	66	75	67	67	69	70	78	69	71	65	71	73	73	70	64	72	76.5	
		MIN	67	66	68	56	56	52	51	51	62	60	67	69	65	48	46	45	51	42	41	50	55	56	51	43	40	45	48	47	47	46	53.0	
LINCOLN	07	MAX	91	91	91	84	82	82	75	81	86	79	94	95	94	77	68	78	70	67	73	79	81	69	73	64	71	74	74	71	67	73	78.5	
		MIN	64	64	66	53	52	49	48	48	60	60	64	66	64	47	39	39	47	35	35	44	50	50	46	38	38	40	47	48	40	42	49.4	
LURAY 5 E	08	MAX	85	87	88	83	80	83	75	81	85	78	90	90	89	74	66	76	65	66	71	75	78	70	70	64	72	74	74	72	63	71	76.5	
		MIN	62	65	65	53	52	49	50	57	61	62	66	65	59	43	43	48	48	39	45	53	59	50	46	42	44	48	46	48	45	45	51.9	
MADISON	08	MAX	87	85	87	84	80	86	74	79	88	76	89	90	90	77	69	75	71	67	71	75	76	68	72	67	72	72	75	72	65	73	77.1	
		MIN	66	67	68	56	55	55	52	54	63	64	68	68	63	49	46	49	53	43	44	53	57	55	48	48	48	49	49	50	50	48	54.6	
MANASSAS	07	MAX			92	86	84			81	89	79	92	94	92	80	71	77	73	69	72	78		80	80	68	75	74	76	72	69	74	79.1	
		MIN			69	59	59			51	52	64	70	71	72	64	53	44	51	50	41	41	51		54	50	41	46	48	51	53	49	48	53.9
MT WEATHER	07	MAX	85	86	85	79	78	81	71	77	82	78	87	88	87	72	63	72	65	65	68	73	76	63	67	62	68	71	71	67	62	69	73.9	
		MIN	68	68	67	57	57	53	53	58	58	57	72	71	61	45	46	55	46	45	49	55	58	53	48	46	47	52	54	53	52	53	55.2	
PIEDMONT RSCH STN	08	MAX	87	87	87	84	79	84	74	78	86	76	88	90	88	76	68	74	72	67	69	72	75	68	72	66	72	72	74	72	65	72	76.5	
		MIN	66	66	69	57	59	56	54	55	64	63	66	66	64	49	49	54	52	44	48	52	55	54	48	48	49	50	50	51	51	48	55.2	
SOMERSET	07	MAX	89	87	88	86	81	86	75	80	89	78	89	91	89	77	68	76	71	68	70	75	76	68	73	67	73	75	72	66	73	77.6		

VIRGINIA
201309

DAILY TEMPERATURES (°F)

STATION	OB. TIME	MAX/MIN	DAY OF MONTH																															AVERAGE
			01	02	03	04	05	06	07	08	09	10	11	12	13	14	15	16	17	18	19	20	21	22	23	24	25	26	27	28	29	30	31	
SPERRYVILLE	06	MIN	66	67	67	55	54	57	51	55	64	64	68	67	64	47	45	49	51	39	44	52	54	58	45	44	45	46	46	48	47	46	53.5	
		MAX	85	85	87	83	79	83	75	79	85	76	88	89	88	75	66	74	68	67	69	74	76	66	69	65		73	74	68	60	75	75.9	
STERLING RCS	07	MIN	63	63	68	55	54	52	51	55	63	61	61	67	66	50	45	45	48	41	40	48	53	55	46	43		46	47	47	40	41	52.2	
		MAX	91	92	91	86	83	84	77	82	88	79	94	95	94	78	69	80	72	68	72	79	82	73	72	66	73	76	76	70	67	74	79.4	
VIENNA	07	MIN	66	66	69	56	56	53	49	49	62	61	70	69	66	50	42	43	49	39	42	48	54	56	50	41	42	47	47	52	45	46	52.8	
		MAX	85	85	85	79	80	79	77	83	83	75	88	91	87	72	66	72	67	69	69	74	76	70	67	62	69	71	72	67	70	70	75.3	
WASHGTN DULLES INTL AP	24	MIN	66	65	66	54	54	53	49	50	58	58	68	69	61	50	44	44	47	41	41	50	53	54	50	42	42	45	50	45	45	52.1		
		MAX	92	91	86	83	85	77	82	90	80	93	94	93	80	71	77	73	70	71	79	80	74	74	67	74	77	78	71	69	74	76	79.4	
WASHINGTON REAGAN AP	24	MIN	67	69	67	56	57	55	49	63	63	70	71	69	57	47	42	54	45	40	46	52	61	55	46	41	44	51	49	52	45	45	54.3	
		MAX	93	92	87	85	88	78	82	91	81	92	94	93	82	73	78	77	72	74	78	82	80	76	69	75	78	77	75	73	77	76	80.9	
WINCHESTER	07	MIN	72	73	70	65	67	61	60	69	65	73	76	73	62	56	54	63	54	52	56	61	64	58	54	51	54	59	59	60	54	56	61.7	
		MAX	89	89	90	83	82	81	77	83	87	78	92	93	92		67	78	68	69	71	76	72	69	70	65	74	75	76	73	67	72	77.9	
WINCHESTER 7 SE	08	MIN	68	69	69	56	57	53	51	58	59	59	70	70	64		46	49	47	41	41	49	56	55	51	42	42	46	48	48	45	45	53.6	
		MAX	88	88	90	90	83	84	77	84	90	77	93	93	92	77	68	75	70	68	70	76	79	69	73	66	75	74	77	73	66	73	78.6	
WOODSTOCK 2 NE	07	MIN	47	47	47	47	47	47	47	47	60	60	60	69		42	45	48	36	36		53	50		37	37							M	
		MAX	86	86	88	82	80	81	76	81	86	80	91	91	87	74	67	76	67	68	71	76	80	71	71	66	73	75	75	76	65	73	77.3	
CENTRAL MOUNTAIN 05 COVINGTON FLTR PLT	07	MIN	64	64	66	54	54	49	49	50	60	61	65	67	61	46	44	44	50	39	39	51	55	51	47	40	41	44	45	44	47	46	51.2	
		MAX	88	80	88	84	82	83	79	84	84	84	90	88	86	75	73	76	71	71	70	77	74	74	74	74	74	77	67	77	73	73	73	78.3
DALE ENTERPRISE	07	MIN	65	66	66	55	55	56	54	54	54	62	63	66	65	43	42	42	48	48	49	59	61	54	47	48	52	55	49	49	50	49	54.2	
		MAX	88	85	87	83	80	83	74	82	86	80	90	91	90	74	65	76	65	68	70	78	82	68	70	64	73	74	73	68	68	72	76.9	
GATHRIGHT DAM	07	MIN	62	64	64	52	49	50	50	55	58	63	64	65	58	43	42	50	46	40	40	54	56	50	48	47	47	47	44	44	51	45	51.6	
		MAX	82	77	81	78	77	78	73	78	80	76	82	85	81	70	67	72	67	67	66	72	73	66	68	68	73	67	73	71	64	68	73.3	
HOT SPRINGS	07	MIN	64	64	64	53	53	53	53	54	57	61	64	64	60	45	45	46	46	46	47	57	57	51	44	44	50	54	48	48	48	48	52.9	
		MAX	83	77	82	78	75	77	73	77	79	76	82	85	82	71	67	72	67	67	66	72	74	67	69	68	71	70	72	70	63	69	73.4	
LEXINGTON	07	MIN	63	64	63	51	51	50	52	53	58	62	63	63	59	43	42	44	44	44	45	56	61	48	42	41	50	50	46	46	46	46	51.5	
		MAX	87	86	87	87	82	86	77	81	86	78	89	90	90	79	72	77	74	73	73	76	75	69	74	72	75	73	76	74	69	73	78.7	
MILLGAP	07	MIN	66	66	66	54	53	54	52	52	59	62	62	65	61	46	44	44	45	43	43	58	62	53	46	46	50	53	46	45	51	47	53.1	
		MAX	83	78	81	76	78	77	73	78	82	76	84	85	79	68	69	73	62	68	67	77	75	64	67	70	77	68	73	73	63	69	73.8	
MUSTOE 1 SW	24	MIN	61	62	60	48	43	42	46	46	52	57	61	59	52	37	37	38	39	39	40	54	57	47	35	35	45	47	40	39	42	43	46.8	
		MAX																																M
ROANOKE 8 N	07	MIN	88	86	86	86	83	85	78	82	85	89	89	90	90	77	74	78	76	71	69	74	69	68	74	72	76	68	76	75	68	73	78.5	
		MAX	64	65	65	57	57	58	55	54	60	65	65	66	64	48	47	47	52	47	48	60	62	52	51	53	54	56	51	50	50	50	55.8	
ROANOKE INTL AP	24	MIN	86	88	88	83	87	78	82	88	79	89	90	91	80	75	77	75	72	69	74	68	68	75	71	76	68	76	74	69	74	78	78.3	
		MAX	65	68	67	56	60	58	54	60	64	65	67	71	57	49	48	56	49	48	61	62	56	50	54	55	55	58	49	55	48	53	57.3	
STAUNTON WATER TRMTMT PLT	08	MIN	85	83	84	82	79	82	76	80	87	87	87	87	87	74	69	74	62	68	69	76	75	67	72	68	74	72	75	73	67	72	76.4	
		MAX	63	64	64	53	53	53	53	57	63	63	67	67	59	45	44	47	48	41	45	58	61	49	43	45	49	51	47	48	52	46	53.3	
WAYNESBORO WTP	07	MIN	86	86	87	84	80	85	75	80	87	78	89	89	88	75	67	77	67	68	69	75	75	69	71	67	73	73	75	72	70	77.0		
		MAX	63	63	65	54	53	53	52	52	59	63	63	66	61	47	43	43	41	41	41	55	62	54	43	42	42	42	42	45	45	47	51.4	
SOUTHWESTERN MOUNTAIN 06																																		

VIRGINIA
201309

DAILY TEMPERATURES (°F)

STATION	OB. TIME	MAX/MIN	DAY OF MONTH																															AVERAGE	
			01	02	03	04	05	06	07	08	09	10	11	12	13	14	15	16	17	18	19	20	21	22	23	24	25	26	27	28	29	30	31		
ABINGDON 3S	22	MAX		77	81	79	80	81	81	81	80	86	86	82	81	84	72	76	72	72	69	72	79	68	71	74	76	66	75	75	73	71		76.6	
		MIN		66	63	53	53	55	56	56	60	60	65	64	61	45	48	51	53	52	53	58	61	49	47	48	49	55	50	50	55		54.7		
BIG STONE GAP	08	MAX	83	82	81	82	87	84	85	83	82	86	87	84	86	74	74	78	74	79	61	78	82	66	73	77	80	68	78	81	78	73		78.9	
		MIN	69	69	66	58	55	56	57	57	62	55	66	67	63	48	48	49	53	53	53	61	63	52	47	47	52	60	52	51	50	54		56.4	
BLACKSBURG NWSO	07	MAX	83	79	82	81	78	80	77	81	83	78	85	84	83	72	68	73	71	67	66	71	73	68	69	70	74	67	73	72	64	68		74.7	
		MIN	61	62	63	52	52	53	52	51	56	59	61	62	60	41	43	44	42	43	45	56	62	46	44	48	51	52	46	46	43	44		51.3	
BURKES GARDEN	07	MAX	81	74	77	73	74	74	75	75	77	77	80	78	77	65	65	70	64	61	64	65	75	63	64	68	70	61	68	70	66	66		70.6	
		MIN	55	57	62	47	45	42	49	50	54	54	54	58	59	38	37	38	37	37	46	57	59	44	38	38	41	45	43	42	39	44		47.0	
CHRISTIANSBURG	07	MAX	83	78	80	80	77	77	75	79	81	76	84	82		73	72	73	72	65	65	70	72	68	68	68	71	65	72	71	62	69		73.4	
		MIN	62	63	64	55	54	55	54	54	60	60	62	63	62	44	45	47	45	45	47	57	60	49	47	49	51	52	48	47	42	47		53.0	
CLINTWOOD 1 W	07	MAX	80	74	81	77	75	77	78	79	77	81	82	81	82	69	66	73	70	75	61	70	75	65	67	68	74	67	70	73	73	71		73.7	
		MIN	63	63	63	56	54	53	51	52	58	60	60	65	60	42	42	42	51	49	49	59	60	51	46	46	49	54	51	44	45	50		52.9	
COPPER HILL	07	MAX	80	78	79	77	77	77	68	77	77	71	80	78	78	68	66	68	68	61	59	67	67	63	66	67	67	62	67	64				70.6	
		MIN	62	62	63	54	52	54	52	53	56	61	62	62	59	43	43	48	49	46	44	54	59	49	47	48	48	52	48	47				52.8	
GALAX RADIO WBRF	07	MAX	80	79	81	81	80	82	75	78	80	79	82	82	84	73	71	72	75	61	64	69	79	66	70	72	74	64	73	73	64	69		74.4	
		MIN	61	59	63	50	49	52	51	55	57	61	61	61	58	41	43	50	46	50	53	57	62	47	43	45	48	51	46	47	44	45		51.9	
GALAX WTP	07	MAX	84	80	81	80	80	80	76	77	78	78	81	82	83	72	69	71	74	62	64	69	79	66	67	68	73	63	71	71	63	69		73.7	
		MIN	61	58	59	51	49	50	52	52	54	57	60	61	60	42	42	43	46	46	51	57	58	48	44	46	47	49	46	46	43	47		50.8	
GRUNDY	07	MAX	86	77	83	81	80	78	79	80	78	85	84	79	84	72	69	74	68	75	62	68	78	66	69	71	75	68	73	75	73	69		75.3	
		MIN	68	68	69	62	62	62	59	59	64	66	66	68	65	50	50	52	53	53	54	61	63	57	52	53	53	58	56	51	52	55		58.7	
JOHN FLANNAGAN LAKE	07	MAX			87	78	79	80			84	87	88	81	85						78												M		
		MIN			65	59	57	56			56	64	65	67	63																			M	
LEBANON	07	MAX	80	77	82	78	80	79	80	81	81	86	86	81	82	72	71	76	72	73	69	72	80	68	69	73	76	69	75	76	74	70		76.3	
		MIN	63	63	63	53	52	52	53	53	59	60	61	62	62	45	45	45	48	48	50	59	58	51	45	45	48	56	49	48	47	50		53.1	
NORA 4 SSE	07	MAX	75	72	77	77	75	76	77	79	76	80	81	78	81	67	65	71	68	70	59	69	75	63	65	69	73	64	69	73	71	66		72.0	
		MIN	64	64	62	54	54	56	60	62	65	65	65	66	59	45	45	53	49	50	54	57	61	50	43	43	55	55	53	53	52	52		55.5	
NORTH FORK LAKE	08	MAX			87	78	79	79			83	86	88	81	85																			M	
		MIN			63	56	54	53			54	62	63	65	63																			M	
PULASKI 2 E	07	MAX	85	80	84	82	82	82	78	84	83	82	85	85	85	73	71	76	72	64	68	72	79	69	71	73	73	75	72	73	67	70		76.5	
		MIN	63	63	65	53	53	52	55	55	59	59	63	59	59	43	43	43	43	43	43	43	52	62	48	44	44	52	44	48	47	42	42		51.4
RADFORD 3 N	07	MAX	85	80	82	81	80	79	77	82	83	78	87	82		72	72	73	72	64	66	72	74	68	68	71	74	66	73	74	65	70		74.8	
		MIN	62	63	65	52	51	54	52	54	58	62	62	63	62	44	45	47	45	45	47	58	63	49	44	47	51	53	48	50	45	48		53.0	
RICHLANDS	07	MAX	85	76	82	79	79	80	81	79	86	87	82	76	70	73	76	69	73	70	69	78	66	65	80	78	70	74	76	66	66		75.7		
		MIN	63	64	66	55	53	52	52	54	57	61	65	60	47	44	44	48	47	49	60	61	47	48	45	54	54	49	46	47	54		53.3		
SALTVILLE 1N	07	MAX	81	75	83	81	80	81	81	81	81	86	87	82	83		74	77	73	72	72	67	79	74	71	75	77	69	77	77	74	72		77.3	
		MIN	64	65	65	55	54	53	54	54	60	61	62	64	62	44	45	47	49	49	49	49	61	60	54	47	47	48	55	50	46	46	49		54.0
STAFFORDSVILLE 3 ENE	07	MAX	84	77	83	82	77	79	76	82	82	77	84	84	85	70	67	74	70	64	67	71	75	67	69	70	73	66	71	72	65	70		74.4	
		MIN	63	63	64	54	52	53	53	54	55	61	62	63	63	46	43	43	47	46	46	58	62	52	45	48	51	52	50	49	44	45		52.9	
WISE 3E	17	MAX	76	79	76	77	75	77	78	78	81	83	80	81	79	66	73	70	73	69	74	77	71	65	68	73	64	70	73	72	69	69		73.9	
		MIN	65	64	62	51	50	53	52	58	58	63	64	64	59	44	46	54	49	55	61	57	59	49	43	47	55	56	47	50	53	49		54.6	

VIRGINIA
201309

SNOWFALL AND SNOW ON GROUND (INCHES)

STATION		DAY OF MONTH																														
		01	02	03	04	05	06	07	08	09	10	11	12	13	14	15	16	17	18	19	20	21	22	23	24	25	26	27	28	29	30	31
VIRGINIA																																
TIDEWATER 01																																
DISPUTANTA	SNOWFALL																															
EASTVILLE	SNOWFALL																															
EMPORIA 1 WNW	SNOWFALL																															
FREDERICKSBURG SEWAGE	SNOWFALL																															
HAMPTON UNIV	SNOWFALL																															
HOLLAND 1 E	SNOWFALL																															
HOPEWELL	SNOWFALL	-	-	-	-	-	-	-	-	-	-	-	-	-	-	-	-	-	-	-	-	-	-	-	-	-	-	-	-	-	-	
	SN ON GND	-	-	-	-	-	-	-	-	-	-	-	-	-	-	-	-	-	-	-	-	-	-	-	-	-	-	-	-	-	-	
NORFOLK INTL AP	SNOWFALL																															
	SN ON GND																															
NORFOLK SOUTH	SNOWFALL																															
NORTH	SNOWFALL																															
PAINTER 2W	SNOWFALL																															
STONY CREEK 2 N	SNOWFALL	-	-	-	-	-	-	-	-	-	-	-	-	-	-	-	-	-	-	-	-	-	-	-	-	-	-	-	-	-	-	
	SN ON GND	-	-	-	-	-	-	-	-	-	-	-	-	-	-	-	-	-	-	-	-	-	-	-	-	-	-	-	-	-	-	
SUFFOLK LAKE KILBY	SNOWFALL																															
	SN ON GND																															
WAKEFIELD 1NW	SNOWFALL																															
	SN ON GND																															
WALKERTON 2 NW	SNOWFALL																															
WALLACETON LK DRUMMOND	SNOWFALL																															
WALLOPS ISLAND NASA TEST FACIL	SNOWFALL																															
	SN ON GND																															
WARSAW 2 NW	SNOWFALL																															
WEST POINT 2 NW	SNOWFALL			-	-	-	-	-	-	-	-	-	-	-	-	-	-	-	-	-	-	-	-	-	-	-	-	-	-	-	-	
	SN ON GND			-	-	-	-	-	-	-	-	-	-	-	-	-	-	-	-	-	-	-	-	-	-	-	-	-	-	-	-	
WILLIAMSBURG 2 N	SNOWFALL																															

Snowfall: Includes snow and ice. Values for NWS stations (J index note) are Mid-Mid (LST).

Snow on ground: Includes snow, sleet, ice, and hail. Values for NWS stations (J index note) are observed at 12 UTC (GMT).

Water Equivalent: Given for NWS stations (J index note) only, when snow depth is 2 inches or more, and is measured at 18 UTC (GMT)

VIRGINIA
201309

PAN EVAPORATION AND WIND

STATION		DAY OF MONTH																															TOTAL OR AVERAGE		
		01	02	03	04	05	06	07	08	09	10	11	12	13	14	15	16	17	18	19	20	21	22	23	24	25	26	27	28	29	30	31			
VIRGINIA EASTERN PIEDMONT 02 JOHN H KERR DAM	WIND	-	-	-	-	-	-	-	-	-	-	-	-	-	-	-	-	-	-	-	-	-	-	-	-	-	-	-	-	-	-	-	-	-	M M M M
	EVAP	-	-	-	-	-	-	-	-	-	-	-	-	-	-	-	-	-	-	-	-	-	-	-	-	-	-	-	-	-	-	-	-		
	MAX	-	-	-	-	-	-	-	-	-	-	-	-	-	-	-	-	-	-	-	-	-	-	-	-	-	-	-	-	-	-	-	-		
	MIN	-	-	-	-	-	-	-	-	-	-	-	-	-	-	-	-	-	-	-	-	-	-	-	-	-	-	-	-	-	-	-	-		

Evaporation: Is measured in hundreths of inches.

Wind: Is measured in miles.

Max and Min: The maximum and minimum temperatures (Fahrenheit) of the water in the evaporation pan.

STATION INDEX

STATION	INDEX NO.	DIVISION	COUNTY	LATITUDE	LONGITUDE	ELEVATION (IN FEET)	OBSERVATION TIME AND TABLES			
							LOCAL STD TIME			
							TEMP	PRECIP	EVAP	SPECIAL SEE (NOTES)
VIRGINIA										
ABINGDON 3S	0021	06	WASHINGTON	36 40	81 58W	1920	22	22		H
ALBERTA 5N	0079	02	BRUNSWICK	36 56	77 54W	376		08		H
ALTAVISTA	0166	03	CAMPBELL	37 7	79 17W	529		07		CH
AMELIA COURTHOUSE 1	0187	02	AMELIA	37 21	77 59W	345	08	08		H
APPOMATTOX	0243	03	APPOMATTOX	37 20	78 50W	850	07	07		H
ASHLAND	0327	02	HANOVER	37 45	77 29W	220	18	18		H
BEDFORD 4 NW	0561	03	BEDFORD	37 23	79 34W	1228		07		CH
BIG STONE GAP	0735	06	WISE	36 52	82 46W	1464	08	08		H
BLACKSBURG NWSO	0766	06	MONTGOMERY	37 12	80 25W	2100	07	07		CH
BOSTON 4 SE	0860	04	CULPEPER	38 33	78 6W	590	07	07		H
BREMO BLUFF	0993	02	FLUVANNA	37 43	78 17W	225		24		CH
BROOKNEAL	1082	03	CAMPBELL	37 4	78 57W	408	07	07		H
BUCHANAN	1121	05	BOTETOURT	37 31	79 41W	880		07		H
BUCKINGHAM	1136	02	BUCKINGHAM	37 30	78 32W	552		07		H
BUENA VISTA	1159	05	ROCKBRIDGE	37 44	79 22W	840		07		H
BURKES GARDEN	1209	06	TAZEWELL	37 6	81 20W	3068	07	07		H
CAMP PICKETT	1322	02	NOTTOWAY	37 2	77 57W	330	08	08		CH
CHARLOTTE COURT HOUSE	1585	03	CHARLOTTE	37 3	78 39W	569	07	07		H
CHARLOTTESVILLE 2W	1593	03	ALBEMARLE	38 2	78 31W	866	08	08		H
CHASE CITY	1606	02	MECKLENBURG	36 47	78 29W	510	17	17		H
CHATHAM	1614	03	PITTSYLVANIA	36 49	79 25W	651	07	07		CH
CHRISTIANSBURG	1692	06	MONTGOMERY	37 8	80 24W	2100	07	07		H
CLARKSVILLE	1746	02	MECKLENBURG	36 37	78 33W	330	07	07		H
CLINTWOOD 1 W	1825	06	DICKENSON	37 9	82 29W	1780	07	07		H
CONCORD 4 SSW	1955	03	CAMPBELL	37 17	78 58W	815		07		H
COPPER HILL	1999	06	FLOYD	37 5	80 9W	2690	07	07		H
CORBIN	2009	02	CAROLINE	38 12	77 22W	220	09	09		H
COVINGTON FLTR PLT	2044	05	ALLEGHANY	37 49	79 59W	1230	07	07		H
CRAIGSVILLE 2 S	2064	05	AUGUSTA	38 3	79 23W	1758		07		H
CROZIER	2142	02	GOOCHLAND	37 40	77 53W	350	07	07		H
DALE ENTERPRISE	2208	05	ROCKINGHAM	38 27	78 56W	1358	07	07		H
DANVILLE REGIONAL AP R	2250	03	PITTSYLVANIA	36 34	79 20W	571	24	24		H
DISPUTANTA	2400	01	PRINCE GEORGE	37 7	77 12W	15	07	07		H
EASTVILLE	2635	01	NORTHAMPTON	37 23	75 58W	10	07	07		H
EDINBURG	2663	04	SHENANDOAH	38 48	78 35W	928	07	07		H
EMPORIA 1 WNW	2790	01	GREENSVILLE	36 42	77 34W	100	08	08		H
FARMVILLE 2 N	2941	02	CUMBERLAND	37 20	78 23W	450	07	07		H
FREDERICKSBURG SEWAGE	3204	01	FREDERICKSBURG	38 17	77 27W	15	07	07		H
FREE UNION	3213	03	ALBEMARLE	38 5	78 35W	590	08	07		H
FRONT ROYAL	3229	04	WARREN	38 54	78 11W	930	07	07		H
GALAX RADIO WBRF	3267	06	CARROLL	36 40	80 55W	2385	07	07		H
GALAX WTP	3272	06	CARROLL	36 39	80 55W	2360	07	07		CH
GATHRIGHT DAM	3310	05	ALLEGHANY	37 57	79 57W	1770	07	07		CH
GLASGOW 1 SE	3375	05	ROCKBRIDGE	37 37	79 26W	737		07		H
GREENBAY 3 NE	3565	02	PRINCE EDWARD	37 11	78 17W	500	09	09		H
GRUNDY	3640	06	BUCHANAN	37 17	82 5W	1170	07	07		H
HAMPTON UNIV	3713	01	HAMPTON	37 1	76 20W	10	17	17		H
HOLCOMB ROCK	4039	03	BEDFORD	37 33	79 24W	620		07		H
HOLLAND 1 E	4044	01	SUFFOLK	36 41	76 46W	80	08	08		H
HOPEWELL	4101	01	PRINCE GEORGE	37 18	77 17W	40	16	16		H
HOT SPRINGS	4128	05	BATH	37 60	79 50W	2236	07	07		H
HUDDLESTON 4 SW	4148	03	BEDFORD	37 8	79 32W	898		07		H
JOHN FLANNAGAN LAKE	4410	06	DICKENSON	37 14	82 21W	1460	07	07		H
JOHN H KERR DAM	4414	02	MECKLENBURG	36 36	78 18W	250	08	08	08	CH
LAFAYETTE 1 NE	4676	06	MONTGOMERY	37 14	80 12W	1320		07		H
LEBANON	4777	06	RUSSELL	36 54	82 2W	1912	07	07		H
LEXINGTON	4876	05	ROCKBRIDGE	37 47	79 26W	1097	07	07		H
LINCOLN	4909	04	LOUDOUN	39 5	77 42W	500	07	07		H
LOUISA	5050	02	LOUISA	38 3	78 0W	420	18	18		H
LURAY 5 E	5096	04	PAGE	38 40	78 22W	1400	08	08		H
LYNCHBURG INTL AP R	5120	03	CAMPBELL	37 19	79 12W	940	24	24		HJ
MADISON	5150	04	MADISON	38 22	78 15W	577	08	08		H
MANASSAS	5204	04	MANASSAS	38 44	77 30W	245	07	07		H
MARTINSVILLE FLTR PLT	5300	03	HENRY	36 42	79 52W	760	07	07		H
MEADOWS OF DAN 5 SW	5453	03	PATRICK	36 40	80 27W	2225	07	07		H

STATION INDEX

STATION	INDEX NO.	DIVISION	COUNTY	LATITUDE	LONGITUDE	ELEVATION (IN FEET)	OBSERVATION TIME AND TABLES			
							LOCAL STD TIME			
							TEMP	PRECIP	EVAP	SPECIAL SEE (NOTES)
MILLGAP	5595	05	HIGHLAND	38 18	79 43W	2421	07	07		CH
MONTEBELLO FISH CULTURAL STN	5690	03	NELSON	37 51	79 8W	2667	07	07		H
MONTICELLO	5700	03	ALBEMARLE	38 1	78 27W	758	08	08		H
MT WEATHER	5851	04	LOUDOUN	39 4	77 53W	1659	07	07		H
MTN GROVE	5756	05	BATH	38 6	79 53W	1775		07		H
MUSTOE 1 SW	5880	05	HIGHLAND	38 20	79 40W	2380	24	24		H
NEW CASTLE	6012	05	CRAIG	37 18	80 3W	1258		07		H
NORA 4 SSE	6125	06	DICKENSON	37 1	82 19W	2650	07	07		H
NORFOLK INTL AP R	6139	01	NORFOLK (CITY)	36 54	76 12W	30	24	24		HJ
NORFOLK SOUTH	6147	01	NORFOLK (CITY)	36 52	76 14W	100	24	24		H
NORTH	6161	01	MATHEWS	37 26	76 26W	10	07	07		H
NORTH FORK LAKE	6173	06	WISE	37 7	82 38W	1675	08	08		H
PAINTER 2W	6475	01	ACCOMACK	37 35	75 49W	30	16	16		CH
PALMYRA 3S	6491	02	FLUVANNA	37 49	78 16W	410	06	06		H
PEDLAR DAM	6593	03	AMHERST	37 40	79 17W	1024		07		H
PETERSBURG	6656	02	PETERSBURG	37 14	77 24W	15	08	08		H
PIEDMONT RSCH STN	6712	04	ORANGE	38 14	78 7W	520	08	08		CH
PULASKI 2 E	6955	06	PULASKI	37 3	80 47W	1850	07	07		CH
RADFORD 3 N	6999	06	PULASKI	37 12	80 35W	1800	07	07		H
RICHLANDS	7174	06	TAZEWELL	37 6	81 48W	1910	07	07		H
RICHMOND INTL AP R	7201	02	HENRICO	37 30	77 19W	164	24	24		HJ
ROANOKE 8 N	7278	05	ROANOKE	37 22	79 58W	1190	07	07		H
ROANOKE INTL AP R	7285	05	ROANOKE	37 19	79 58W	1175	24	24		HJ
ROCKY MT	7338	03	FRANKLIN	36 59	79 54W	1315	07	07		CH
SALTVILLE 1N	7506	06	SMYTH	36 53	81 46W	1733	07	07		H
SANDSTON	7541	02	HENRICO	37 33	77 17W	165	07	07		H
SOMERSET	7904	04	ORANGE	38 15	78 16W	510	07	07		H
SOUTH BOSTON	7925	03	HALIFAX	36 42	78 53W	329	07	07		H
SPERRYVILLE	7985	04	RAPPAHANNOCK	38 39	78 14W	750	06	06		H
STAFFORDSVILLE 3 ENE	8022	06	GILES	37 16	80 43W	1950	07	07		CH
STAUNTON WATER TRMTMT PLT	8062	05	AUGUSTA	38 10	79 5W	169	08	08		H
STERLING RCS	8084	04	LOUDOUN	38 59	77 29W	288	07	07		H
STONY CREEK 2 N	8129	01	SUSSEX	36 58	77 24W	105	08	08		H
STUART	8170	03	PATRICK	36 38	80 15W	1375	07	07		H
SUFFOLK LAKE KILBY	8192	01	SUFFOLK	36 44	76 36W	22	24	24		H
TYE RIVER 1 SE	8600	03	NELSON	37 38	78 56W	720	07	07		H
VIENNA	8737	04	FAIRFAX	38 54	77 16W	418	07	07		H
WAKEFIELD 1NW	8800	01	SUSSEX	36 59	77 0W	113	24	24		CH
WALKERTON 2 NW	8829	01	KING AND QUEEN	37 45	77 2W	50	18	18		H
WALLACETON LK DRUMMOND	8837	01	CHESAPEAKE	36 36	76 26W	20	08	08		H
WALLOPS ISLAND NASA TEST FACIL R	8849	01	ACCOMACK	37 56	75 28W	46	24	24		HJ
WARSAW 2 NW	8894	01	RICHMOND	37 59	76 47W	140	18	18		H
WASHGTN DULLES INTL AP R	8903	04	LOUDOUN	38 56	77 28W	290	24	24		HJ
WASHINGTON REAGAN AP R	8906	04	ARLINGTON	38 51	77 2W	10	24	24		HJ
WAYNESBORO WTP	8941	05	WAYNESBORO	38 5	78 53W	1270	07	07		H
WEST POINT 2 NW	9025	01	KING WILLIAM	37 34	76 48W	20	17	17		H
WILLIAMSBURG 2 N	9151	01	YORK	37 18	76 42W	70	24	24		CH
WILLIS	9169	06	FLOYD	36 55	80 30W	2810		07		CH
WINCHESTER	9181	04	FREDERICK	39 11	78 9W	720	07	07		H
WINCHESTER 7 SE	9186	04	FREDERICK	39 11	78 7W	680	08	08		H
WINTERPOCK 4 W	9213	02	CHESTERFIELD	37 19	77 39W	300		07		H
WISE 3E	9215	06	WISE	36 60	82 32W	2549	17	17		CH
WOODSTOCK 2 NE	9263	04	SHENANDOAH	38 54	78 28W	675	07	07		H
WOOLWINE	9272	03	PATRICK	36 47	80 17W	1500		07		CH

REFERENCE NOTES

STATION NAMES: Name of the city, town or locality. Figures and letters following the station names indicate the distance in miles and direction from the post office or town community center.

DIVISIONS: Areas within a state of similar climatological characteristics. Division averages are calculated using data from stations that record temperature and/or precipitation. Station Precipitation totals flagged with an 'F' or 'M' are excluded from the Divisional Average calculations of precipitation. Stations with monthly Temperature averages flagged with an 'F' or 'M' are included in the Divisional Average if there are no more than 9 flagged or missing daily values in the month, else they are excluded from the divisional average for temperature.

NORMALS: The average value of the meteorological element over a time period. Effective 1 January 2012, the averaging period is 1981 to 2010. The normals for National Weather Service localities have been adjusted so as to be representative for the current observation site.

MONTHLY DEGREE DAY TOTALS: One heating (cooling) degree day is accumulated for each whole degree that the daily mean temperature is below (above) 65 degrees Fahrenheit.

PRECIPITATION: Values shown in hundredths of inches are water equivalent totals, i.e., total of liquid and melted frozen precipitation. In the "Monthly Summarized Data" table the total snow and sleet values shown in tenths of inches are unmelted amounts. The max depth on ground values of snow and sleet shown in whole inches are cumulative unmelted amounts. The number of days with .10, .50, 1.00 or more refers to water equivalents.

PRECIPITATION QUALITY CONTROL: The NCDC quality control process may flag precipitation data that are spatially inconsistent, exceed climatological limits, or are inconsistent with prevailing weather patterns.

TEMPERATURE: Original temperature values are given in the "Daily Temperature" table. Summary temperature information (averages, departures, extremes, monthly degree day totals) is based on the values labeled MAX/MIN.

WIND: (As shown in the "Evaporation and Wind" table) the total wind movement in miles over the evaporation pan as determined by an anemometer recorder located 6-8 inches above the pan.

SYMBOLS AND LETTERS USED IN THE STATION INDEX TABLE

C Station is equipped with recording rain gage (R) but values in this bulletin are from a non-recording rain gage unless indicated by an R.

G Observations appear in the "Soil Temperatures" table.

H Observations appear in the "Snowfall and Snow on the Ground" table.

J Station also published as a Local Climatological Data publication.

VAR Observation time varies.

SR Observation time near sunrise.

SS Observation time near sunset.

SYMBOLS AND LETTERS USED IN THE DATA TABLES

(DAILY DATA ARE FOR THE 24 HOURS IMMEDIATELY PRECEDING OBSERVATION TIME.)

BLANK Entries in the "Monthly Summarized Data" table indicate no record.

BLANK Entries in the "Daily Precipitation" and "Snowfall and Snow on the Ground" tables indicate zero.

BLANK Entries in the "Daily Temperature" table indicate a missing record

- No record. Data not recorded or not received in time for publication.

+ Precipitation or temperature extremes occurred on one or more previous dates during the month.

* Rain gage not read. Precipitation is included in the amount following the asterisks.

Time distribution may not be known. A * preceding the monthly total indicates precipitation amount is being carried forward to next month's total, and may include amounts from the previous month(s).

a As a subscript, indicates accumulated total.

A Amount of precipitation is the total of observer's entries for the current month. It may include precipitation that occurred during the previous month. Refer to earlier bulletin to determine date of last reading. (Hawaii stations)

B Divisional Departure from normals are computed using 1971-2000 normals.

E Normalized HDD/CDD Calculation. E is appended to the HDD/CDD Calculation when 1-9 individual daily TMAX and/or TMIN values are missing and a Normalized HDD/CDD Calculation is provided. M appears alone if 10 or more daily values are missing.

F Monthly calculation flagged value. F is appended to average and/or total values computed which exclude one or more daily data values that have been flagged by the GHCN-Daily Dataset

M Insufficient or partial data. M is appended to average and/or total values computed with 1-9 daily values missing. M appears alone if 10 or more daily values are missing, (8 or more for wind and evaporation).

N Indicates snow fall or Snowdepth totals are computed with one or more missing days.

R Amounts from recording rain gage.

T Trace. An amount too small to measure.

SEASONAL TABLES: Monthly and seasonal snowfall and heating degree days for the 12 months ending with the June data are published in the July issue of this bulletin. Cooling degree days for the calendar year are published in the "Climatological Data Annual Summary."

Information concerning the history of changes in locations, exposure, etc. of substations is kept on file at the National Climatic Data Center. Historical information of regular National Weather Service Offices may be obtained from the "Local Climatological Data" annual publication. The contents of this publication may be reprinted or otherwise used freely, with proper credit to the National Climatic Data Center. The data are also available digitally.

Effective with the January 2011 Data-Month, COOP Observer Names are no longer included in the Monthly and Annual Climatological Data Publications. This information is not published to ensure the privacy of personal information pursuant to Section 208 of the E-Government Act of 2002 (44 USC 3601).

As of the 2011 Data-Year, Station and Climate Division Maps are no longer being included in the CD Publications. NCDC's Product Development Branch provides updated Station Maps for various data networks via the Historical Observing Metadata Repository: <http://www.ncdc.noaa.gov/homr>.

The GHCN-Daily Quality Control Flags shown below are displayed as superscripts with the data. For more Information on Global Historical Climatology Network - Daily and flags, see: <http://www.ncdc.noaa.gov/oa/climate/ghcn-daily/> and Comprehensive Automated Quality Assurance of Daily Surface Observations. Durre, Imke, Matthew J. Menne, Byron E. Gleason, Tamara G. Houston, Russell S. Vose, 2010: J. Appl. Meteor. Climatol., 49, 1615-1633. doi: 10.1175/2010JAMC2375.1

Blank = Passed All checks

D = failed duplicate check

G = failed gap check

I = failed internal consistency check

K = failed streak/frequent-value check

L = failed check on length of multiday period

M = failed megaconsistency check

N = failed naught check

O = failed climatological outlier check

R = failed lagged range check

S = failed spatial consistency check

T = failed temporal consistency check

W = temperature too warm for snow

X = failed bounds check

Z = flagged as a result of an official Datzilla investigation

Beginning with the January 2013 CD Publication, monthly mean temperature calculations have changed to the National Data Stewardship Team standard. Monthly maximum and minimum temperatures are not rounded until after the monthly mean temperature is calculated. This is the most accurate outcome, but may be slightly different from the mean derived from rounded monthly maximum and minimum.

Processing Updates and Errata: The 2011 CD Publications were reproduced in May 2013. This update included the addition of late reports and corrections based on additional investigations of reported data issues through NCDC's Datzilla system. In addition, divisional averages for precipitation were recalculated using the method described in DIVISIONS above. Previous editions of the 2011 Publications included all precipitation stations regardless of missing data in the calculation of divisional averages. HDD/CDD values were recalculated to match the legacy method of calculation (truncation of monthly HDD/CDD values instead of rounding).

NOAA\National Climatic Data Center
Attn: User Engagement & Services Branch
151 Patton Avenue
Asheville, NC 28801-5001

Customer Services Number: (828) 271-4800, option 2
TDD : (828) 271-4010
Fax number: (828) 271-4876

NCDC now offers free online access to the *Climatological Data* publication.
Go to : www.ncdc.noaa.gov and choose Most Popular.