



# CLIMATOLOGICAL DATA

## VIRGINIA

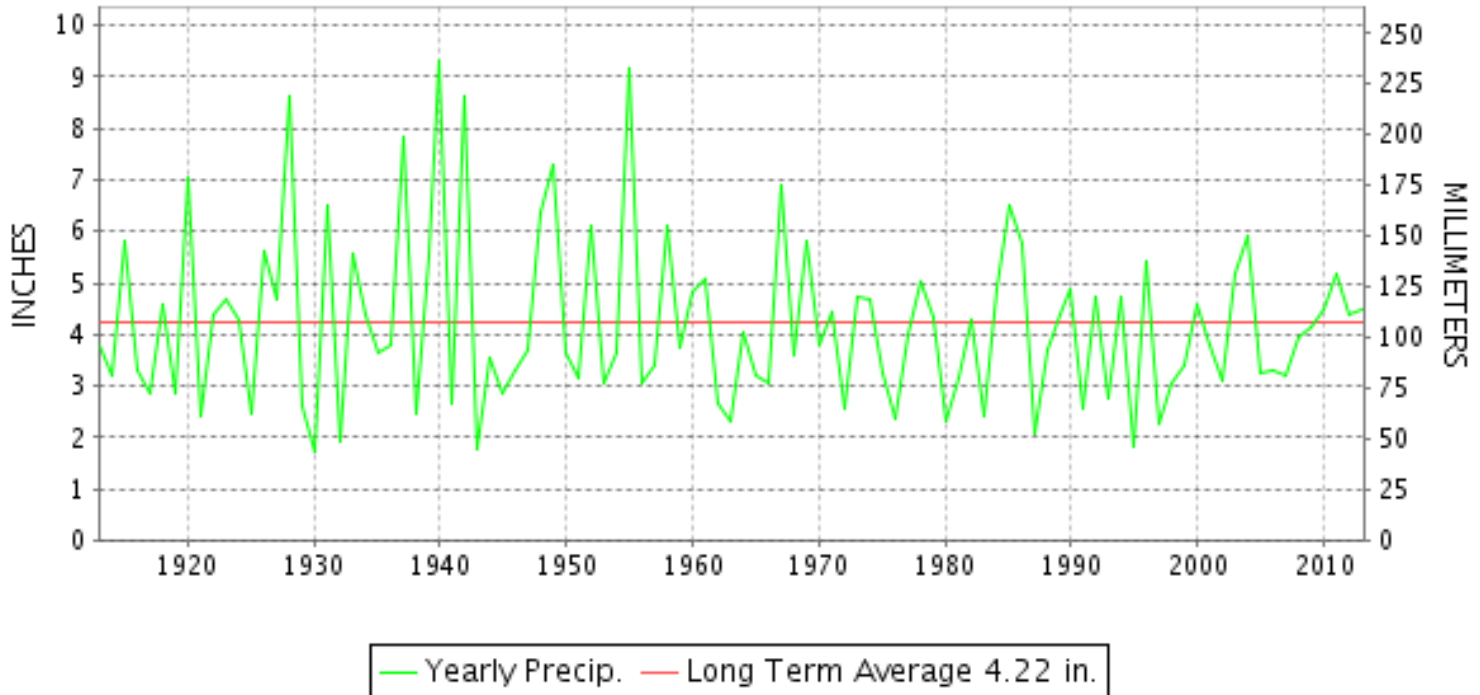
**AUGUST 2013**

VOLUME 123 NUMBER 08

ISSN 0364-5630

GHCND Ver: 3.12-upd-2013122706

### AUGUST PRECIPITATION BY YEAR



#### TEMPERATURE AND PRECIPITATION EXTREMES

**VIRGINIA**

HIGHEST TEMPERATURE	99	AUGUST 09	WILLIAMSBURG 2 N
LOWEST TEMPERATURE	39	AUGUST 15	MUSTOE 1 SW
GREATEST TOTAL PRECIPITATION	8.70		CROZIER
LEAST TOTAL PRECIPITATION	0.98		WINCHESTER
GREATEST 1 DAY PRECIPITATION	3.12	AUGUST 10	GRUNDY

"I certify that this is an official publication of the National Oceanic and Atmospheric Administration (NOAA) It is compiled using information from weather observing sites supervised by NOAA/National Weather Service and received at the National Climatic Data Center(NCDC), Asheville, North Carolina 28801."

Director  
National Climatic Data Center

**noaa**

National  
Oceanic and  
Atmospheric Administration

National  
Environmental Satellite, Data  
and Information Service

National  
Climatic Data Center  
Asheville, North Carolina







## MONTHLY STATION AND DIVISION SUMMARY

STATION	TEMPERATURE (°F)											PRECIPITATION (IN)												
	AVERAGE MAXIMUM	AVERAGE MINIMUM	AVERAGE	DEPARTURE FROM NORMAL	HIGHEST	DATE	LOWEST	DATE	HEATING DEG. DAYS	COOLING DEG. DAYS	NO. OF DAYS				TOTAL	DEPARTURE FROM NORMAL	GREATEST 24 HOURS	DATE	ICE PELLETS, SNOW			NO. OF DAYS		
											MAX		MIN						TOTAL	MAX DEPTH ON GROUND	DATE	.10 OR MORE	.50 OR MORE	1.00 OR MORE
											>=90	<=32	<=32	<=0										
CHRISTIANSBURG	76.6	59.4	68.0	-3.4	84	30	49	17+	21	122	0	0	0	0	2.72	-0.58	0.60	18	0.0	0		8	3	0
CLINTWOOD 1 W	77.4	60.2	68.8	-1.7	84	29	49	16+	11	133	0	0	0	0	4.40	0.75	1.02	13	0.0	0		11	3	1
COPPER HILL	73.0M	58.1M	65.6M		81	12	49	17+	43E	68E	0	0	0	0	M 3.67		1.93	18	M 0.0	0		9	1	1
GALAX RADIO WBRF	77.4	59.3	68.4	-1.4	86	30	46	16+	22	134	0	0	0	0	4.10	0.06	1.21	13	0.0			10	3	1
GALAX WTP	76.2	58.2	67.2	-2.0	85	10	46	17+	36	111	0	0	0	0	4.33		1.02	19	M 0.0	0		12	3	1
GRUNDY	78.3	62.9	70.6	-1.6	86	31+	53	16+	3	184	0	0	0	0	7.50	3.64	3.12	10	0.0	0		10	4	2
JOHN FLANNAGAN LAKE	M	M	M		85	30	49	16	12E	186E	0	0	0	0	MA 5.05		1.44	13	0.0	0		4	2	1
LAFAYETTE 1 NE														2.57		0.75	18	0.0				7	1	0
LEBANON	79.9	59.6	69.8	-1.2	86	31	48	16+	8	166	0	0	0	0	5.33	1.66	1.14	12	0.0	0		12	4	1
NORA 4 SSE	75.9	61.1	68.5	-2.8	83	29+	49	15	16	132	0	0	0	0	4.03	-0.25	0.80	12	0.0	0		9	4	0
NORTH FORK LAKE	M	M	M		86	29+	49	15	12E	184E	0	0	0	0	MA 3.76		1.08	13	0.0			6	1	1
PULASKI 2 E	80.3M	60.1	70.2M	-0.9	87	31+	47	16+	9E	193E	0	0	0	0	2.84	-0.25	0.75	01	0.0	0		10	1	0
RADFORD 3 N	78.7	59.8	69.3	-1.7	85	30+	47	15	17	158	0	0	0	0	2.62	-0.78	0.64	01	0.0	0		8	2	0
RICHLANDS	79.7	59.1	69.4	-1.5	88	12	47	16+	10	155	0	0	0	0	7.75	3.62	1.67	13	M 0.0	0		12	7	1
SALTVILLE 1N	79.7	59.6F	69.7F	-2.3	87	30	47	25	12	161	0	0	0	0	5.02	0.84	0.83	13	0.0			12	4	0
STAFFORDSVILLE 3 ENE	78.2	59.3	68.7	-1.7	86	30	46	15	23	145	0	0	0	0	3.34	0.10	1.01	30	0.0			7	2	1
WILLIS														3.27		0.63	13	0.0				8	3	0
WISE 3E	76.4	61.0	68.7	-1.3	82	30+	49	15	8	130	0	0	0	0	3.65	-0.40	0.60	13	0.0			11	2	0
--DIVISIONAL DATA----->			68.8	-1.0B											4.27	0.70B								

VIRGINIA  
201308

## DAILY PRECIPITATION (INCHES)

STATION	TOTAL	DAY OF MONTH																																
		01	02	03	04	05	06	07	08	09	10	11	12	13	14	15	16	17	18	19	20	21	22	23	24	25	26	27	28	29	30	31		
<b>VIRGINIA</b>																																		
<b>TIDEWATER 01</b>																																		
DISPUTANTA	M	-	-	0.72		0.01	-	-	-	-	-	-	-	-	-	-	-	-	0.06	0.07			-	-	-	-	-	-	-	-	-	1.64		
EASTVILLE	M 5.35		2.85	0.30		-	1.20		-		0.01			-	-	-		0.25	0.40			0.15		0.18							0.01			
EMPORIA 1 WNW	5.08	1.65	0.15		0.03		0.13				0.10	0.64	0.07					0.11	0.17	0.10		0.03		1.77						0.10	0.03			
FREDERICKSBURG SEWAGE	MA 5.72	0.18	1.28			0.02	0.41	0.01	-	-	0.28		0.15	0.03		0.01		2.10	0.40	0.04		0.48		0.33					*	*	*	0.00 <sub>a</sub>		
HAMPTON UNIV	M	-	-	-	-	-	-	-	-	-	-	-	-	-	-	-	-	-	-	-	-	-	-	-	-	-	-	-	-	-	-	-	-	
HOLLAND 1 E	M	-	-	-	-	-	-	-	-	-	-	-	-	-	-	-	-	-	-	-	-	-	-	-	-	-	-	-	-	-	-	-	-	
HOPEWELL	6.10	0.49	0.81			0.61					0.21							0.61	0.13			0.38	0.15	0.91					0.01	1.79				
NORFOLK INTL AP	5.04	0.67		0.46		0.53				1.03	0.43		0.01	T		T	0.55	0.56	0.01		0.33	0.24							0.18	0.04				
NORFOLK SOUTH	5.34	0.60		0.63		0.46				1.30	0.47	0.12	0.02			0.02	0.50	0.50	0.02		0.25	0.17							0.11	0.17				
NORTH	M	-	-	-	-	-	-	-	-	-	-	-	-	-	-	-	-	-	-	-	-	-	-	-	-	-	-	-	-	-	-	-	-	
PAINTER 2W	M	0.03	-	-	-	1.06	0.05	-	-	-	0.02			0.09					0.77	0.06					0.13									
STONY CREEK 2 N	M	2.25	-	-	-	0.04	-	-	-	-	-	-	-	-	-	-	-	-	-	0.33														
SUFFOLK LAKE KILBY	M 3.95	0.75	0.01	0.82		0.32					0.05		0.04	0.45	0.02		1.00	0.06	0.03				0.40											
WAKEFIELD 1NW	M 5.23	0.78		1.11		0.60					0.39	0.01		0.01			0.25	0.20	0.10		0.29								1.48	0.01				
WALKERTON 2 NW	M	-	-	-	-	-	-	-	-	-	-	-	-	-	-	-	-	-	-	-	-	-	-	-	-	-	-	-	-	-	-	-	-	
WALLACETON LK DRUMMOND	M	-	-	-	-	-	-	-	-	-	-	-	-	-	-	-	-	-	-	-	-	-	-	-	-	-	-	-	-	-	-	-	-	
WALLOPS ISLAND NASA TEST FACIL	1.74	0.08		T		0.29	0.07		0.07	0.06	T		T	T			T	0.62	0.01			0.08	T						0.46				T	
WARSAW 2 NW	M	-	-	-	-	-	-	-	-	-	-	-	-	-	-	-	-	-	-	-	-	-	-	-	-	-	-	-	-	-	-	-	-	
WEST POINT 2 NW	M	0.68	-	-	-	1.82	0.03	-	-	-	-	-	-	-	-	-	-	0.55	0.23	-		0.18	0.15	-	-	-	-	-	0.20	0.31				
WILLIAMSBURG 2 N	5.32	0.67				1.37					1.36	0.08					0.18	0.44	0.11		0.06		0.39	0.04					0.58	0.04				
<b>EASTERN PIEDMONT 02</b>																																		
ALBERTA 5N	M 2.52	0.82	0.23									0.24	-	0.07					0.25	0.05	0.07		0.06		0.52				0.12	0.09				
AMELIA COURTHOUSE 1	M	-	-	-	-	-	-	-	-	-	-	0.02																						
ASHLAND	M 5.04	-	-	-	-	1.01		0.09		0.49	0.02							1.14	0.14				1.08	0.13					0.18	0.76				
BREMO BLUFF	7.50	1.78				2.10	0.05			0.68	0.04						0.02	1.38	0.11				0.43						0.28				0.63	
BUCKINGHAM	3.48	0.06	0.22				0.75				0.17	0.36		0.02				0.82	0.31	0.10		0.03		0.52					0.12					
CAMP PICKETT	M	1.80	0.40				0.01																											
CHASE CITY	M	-	-	-	-	-	-	-	-	-	-	-	-	-	-	-	-	-	-	-	-	-	-	-	-	-	-	-	-	-	-	-	-	
CLARKSVILLE	M 3.30	0.60										0.10	0.10	0.20	0.23				0.25	0.10			0.15	1.27	0.30									
CORBIN	M	-	-	-	-	-	-	-	-	-	-	-	-	-	-	-	-	-	1.83	-	0.04		0.51	-	-	-	-	-	-	-	-	-		
CROZIER	8.70	0.38	1.06			0.52	0.02			0.01	1.42		0.24					0.72	0.52			0.40		2.26				0.82	0.33					
FARMVILLE 2 N	M 3.09	0.57	1.20	-	-			0.03				0.41	0.03						0.13	0.21				0.44						0.07				
GREENBAY 3 NE	M 2.28	0.84	-			0.02	-				0.15	0.06	0.06	0.03				0.30	0.22					0.47					0.03	0.10				
JOHN H KERR DAM	M 1.04	0.32		0.02							0.06		0.14	0.04				0.16	0.08	0.07	0.03	0.09		0.03										
LOUISA	M 6.50	0.75									0.43	0.05		0.01				2.40	0.03				1.44				1.39							
PALMYRA 3S	M	-	-	-	-	-	-	-	-	-	-	-	-	-	-	-	-	-	-	-	-	-	-	-	-	-	-	-	-	-	-	-	-	
PETERSBURG	6.11	2.94	1.02			0.03	0.15				0.14							0.45	0.18	0.11		0.75	0.01	0.02					0.31					
RICHMOND INTL AP	7.61	0.76		T		1.39	T			0.45	T		0.02	0.01			0.35	0.54	0.21		0.02	T	1.78				0.01	2.07				T		
SANDSTON	M	-	-	-	-	-	-	-	-	-	-	-	-	-	-	-	-	-	0.53	-	-	-	-	-	-	-	-	-	-	-	-	-	-	
WINTERPOCK 4 W	M	-	-	-	-	-	-	-	-	-	-	-	-	-	-	-	-	-	0.31	-	-	-	-	-	-	-	-	-	-	-	-	-	-	

VIRGINIA  
201308

## DAILY PRECIPITATION (INCHES)

STATION	TOTAL	DAY OF MONTH																																
		01	02	03	04	05	06	07	08	09	10	11	12	13	14	15	16	17	18	19	20	21	22	23	24	25	26	27	28	29	30	31		
<b>WESTERN PIEDMONT 03</b>																																		
ALTAVISTA	4.61	0.05	0.02			0.01	0.10		0.03	0.24		0.05	0.18	0.05					2.08	0.20	0.21	0.02	0.33	0.29	0.60		0.02		0.01	0.12				
APPOMATTOX	3.05	0.15						0.15	0.01		0.15	0.30	0.05	0.08					0.70	0.26	0.07			0.88						0.25				
BEDFORD 4 NW	3.51	0.24						0.53	0.20	0.14	T	0.22	0.02	0.18					1.17	0.23			0.05	0.28					0.25					
BROOKNEAL	2.77	0.36	0.03				0.16		0.02	0.09		0.19	0.15	0.02					0.75	0.23	0.12	0.02		0.02	0.52				0.09					
CHARLOTTE COURT HOUSE	2.08	1.07	0.09	0.03					T			0.02	T						0.01	0.45	0.14								0.27					
CHARLOTTESVILLE 2W	6.32	0.32	0.37	T	0.04				T	T	0.03		1.79	0.01	0.03	0.30			1.25	0.45	0.02	0.01			0.89			T	0.81					
CHATHAM	4.59	0.25				0.10			0.44	0.31	0.92	0.23							1.40	0.25	0.15		0.03		0.19				0.27					
CONCORD 4 SSW	3.98	0.15					0.02	0.06	0.07		1.33	0.26	0.05	0.08					1.02	0.22	0.11		0.06		0.38				0.17					
DANVILLE REGIONAL AP	3.66	T			T					0.04	0.41	0.96	0.10					1.32	0.31	0.24		0.07		0.19			0.01					0.01		0.01
FREE UNION	A 5.59	*	*	*	0.66 <sub>a</sub>		0.01	T	0.01	0.04		0.76	0.21	0.03	0.22				1.12	0.47	0.01		0.40	0.02	1.05			0.03	0.52	0.03				
HOLCOMB ROCK	5.47	0.27							0.24	1.07	0.05		0.06	0.03					1.60	0.61			0.08	0.84	0.31				0.31					
HUDDLESTON 4 SW	4.63	0.18	0.02				0.17	0.02	0.05	0.25		0.72	0.23	0.10					1.83	0.28	0.12		0.31	0.17					0.16	0.02				
LYNCHBURG INTL AP	3.55	0.02				0.04	0.11	0.20	T	0.62	0.29	0.02	0.05					0.44	0.76	0.16		T	0.04	0.29				0.20	0.01				0.30	
MARTINSVILLE FLTR PLT	5.00	0.25		0.12		0.09		0.20	0.10	0.06	0.07	0.42	0.35						1.30	0.44	0.11		0.08	0.10	1.27				0.04				0.30	
MEADOWS OF DAN 5 SW	4.24	0.29		0.42		0.23	0.04	0.08	0.05	0.98		0.24	0.70						0.43	0.50	0.07	0.01	0.17									0.03		
MONTEBELLO FISH CULTURAL STN	MA 5.57	0.10	0.17	*	*	* 0.00 <sub>a</sub>	0.60	0.10	*	* 0.45 <sub>a</sub>	*	* 0.00 <sub>a</sub>	*	* 0.00 <sub>a</sub>	*	* 0.00 <sub>a</sub>	*	* 0.00 <sub>a</sub>	*	3.40 <sub>a</sub>	*	*	*	*	*	* 0.10 <sub>a</sub>	*	0.00 <sub>a</sub>	0.65	-	-			
MONTECELLO	7.21	0.18	0.56		0.02		T	T	0.02		2.00	0.29	0.12	0.67	T	T			0.20	1.83	0.02	T			0.93		0.01	*	0.35	0.01				
PEDLAR DAM	6.12	0.30	T	T		T	0.12	0.12	0.21	T	0.72	0.12	T	0.04					2.90	0.58	0.03	T		0.25	0.41				0.32					
ROCKY MT	3.64	0.18		0.03			0.05	0.08	0.10		0.07	0.15	0.27	0.13	T			0.85	1.05	0.30	0.08	0.02	0.08	0.02	0.02			0.10	0.05	0.01				
SOUTH BOSTON	4.11	2.36	0.06							0.04	0.30	0.41	0.11						0.40	0.25	0.08	0.01	0.04	0.02	0.03									
STUART	6.47	0.33	0.10	0.26		0.11		0.02	1.10	1.25	0.02	1.09	0.35	0.27					0.60	0.57	0.11		0.02	0.22	0.05									
TYE RIVER 1 SE	6.76	0.12				0.35	0.61	0.85	0.22		0.08	1.85	T						1.63	0.18			0.11	0.05	0.45				0.26					
WOOLWINE	5.17	0.20	0.05	0.10				0.02	0.02	1.41	T	0.15	1.01	0.10					1.01	0.45	0.20	0.02	0.04	0.04	0.09							0.26		
<b>NORTHERN 04</b>																																		
BOSTON 4 SE	5.94		1.40			0.29	0.05		0.07		0.08								1.87	0.12			0.40		0.84				0.41	0.41				
EDINBURG	4.41	0.36	0.98	0.04		0.11	0.07	0.04	0.04	0.10		0.31	0.13						0.38	0.08	0.10		0.13	0.01	1.01			0.03	0.47	0.02				
FRONT ROYAL	3.37	0.90	0.25	0.04		0.01	0.03	0.02	0.04	0.01	0.02	0.15	0.58	0.01					0.13				0.12	0.71	0.01		0.01	0.01	0.22	0.11				
LINCOLN	1.67						0.72																0.51						0.44					
LURAY 5 E	5.35	0.26	1.72	T	0.03	0.20	0.18		0.06	0.03	0.19	0.12	0.25						0.41	0.13	0.03		0.15	1.02	0.02			0.10	0.39	0.02				
MADISON	A 6.39		1.22				*	*	1.25 <sub>a</sub>									*	*	1.25 <sub>a</sub>	*	*	0.50	0.73	*	*	1.10 <sub>a</sub>	0.04	T	0.30				
MANASSAS	M	0.40	0.05	0.05		-	-				-	-	-	-	-	-	-	-	0.30				0.28	0.22					0.18	-	-			
MT WEATHER	2.97	0.47	0.04	0.29		0.03	0.06	0.08	0.04	T		0.80	0.23						0.07	0.05			0.10	0.50				T	0.08	0.13				
PIEDMONT RSCH STN	7.08	0.19	0.56			0.01		0.01			1.52		0.02	0.39					1.66	0.43			0.06	2.00			T	0.01	0.22					
SOMERSET	A 5.76	0.47	0.20	0.01	*	*	*	*	*	*	*	*	*	*	*	*	*	*	*	*	*	3.62 <sub>a</sub>	0.02	0.08	0.03	0.91		0.16	0.02	0.22	0.02			
SPERRYVILLE	A 3.14	0.22	*	*	*	*	*	*	*	*	0.10 <sub>a</sub>	0.07	0.07	0.04					0.32	0.17	*	*	*	*	1.90 <sub>a</sub>		0.02	0.01	0.22					
STERLING RCS	1.64	0.33	T	0.22			0.17	T	0.04			0.14							0.04	0.03			0.12	0.35			T	0.01	0.19					
VIENNA	1.53	0.33		0.01	0.03	0.02		0.02	0.13			0.20	0.21						0.03	0.09			0.04	0.30				0.01	0.11					
WASHGTON DULLES INTL AP	1.95	0.07	0.05			0.01	T	0.25		T	T	0.02	0.75						0.06			0.10	0.41				0.05	0.18	T					
WASHINGTON REAGAN AP	1.34	0.41	0.03			0.07	T	T		0.01	T	0.44							0.19			0.07	T	0.11			T	0.01	T					
WINCHESTER	A 0.98	*	*	*	*	*	*	*	*	*	*	*	*	*	*	*	*	*	*	*	*	0.11 <sub>a</sub>	0.01		0.05	0.48		*	0.09	0.24				
WINCHESTER 7 SE	MA 2.36	0.55	0.02	0.18		0.05	0.12	0.16	0.08	0.02	0.01		0.15	0.14					0.07	0.07	0.01		0.05	0.02	0.54	*	0.02 <sub>a</sub>	0.10	-					

VIRGINIA  
201308

## DAILY PRECIPITATION (INCHES)

STATION	TOTAL	DAY OF MONTH																																	
		01	02	03	04	05	06	07	08	09	10	11	12	13	14	15	16	17	18	19	20	21	22	23	24	25	26	27	28	29	30	31			
WOODSTOCK 2 NE	4.02	0.33			0.18			0.02	0.03	T	T	0.05		0.15	0.38				0.13	0.05	0.36		0.07		1.88				0.02	0.37					
<b>CENTRAL MOUNTAIN 05</b>																																			
BUCHANAN	2.64	0.16						T	T	0.16	0.10	T	0.31	T					0.51	0.13			0.06		0.19			T	1.02						
BUENA VISTA	3.41	0.23					0.10	0.01	0.19			0.31	0.07	T	0.02				1.02	0.39		0.03		0.09	0.55				0.40						
COVINGTON FLTR PLT	3.78	0.54	0.03					0.02	0.75	0.12	0.10	0.03	0.05	0.09					0.23	0.23			0.04		0.06			0.01	1.48						
CRAIGSVILLE 2 S	M	-	-	-	-	-	-	-	-	-	-	-	-	-	-	-	-	-	-	-	-	-	-	-	-	-	-	-	-	-	-	-	-	-	-
DALE ENTERPRISE	4.16	0.23	0.18		0.02		0.02	0.01	0.01	0.04		0.37		0.10					0.40	0.15	0.03		0.58	0.35	1.06				0.55					0.06	
GATHRIGHT DAM	4.21	0.45	T					0.10	0.70	0.05	0.38	0.55	0.03	0.06					0.26	0.12	0.02		0.05				0.05	1.38	0.01						
GLASGOW 1 SE	3.38	0.19				0.02	T	0.05	0.22		0.04	0.34	0.02	0.01					1.05	0.37	0.01		0.01	0.32	0.40				0.33						
HOT SPRINGS	3.41	0.45	0.02		T		0.01		0.09	0.53	0.02	0.28	0.05	0.02	0.11				0.20	0.16	0.02		0.25	0.35	0.02			0.07	0.76						
LEXINGTON	2.66	0.18	0.02					0.20	0.16	0.17		0.06	0.16	0.02	0.05				0.40	0.34	0.02		0.03	0.02	0.34			T	0.47	0.02					
MILLGAP	4.29	0.19	0.02			0.07	0.11	0.22	0.60	0.52	0.30	0.06	0.01	0.05					0.15	0.31			0.23		0.30			0.43	0.72						
MTN GROVE	5.67	0.40				0.05	0.32	0.34	0.75	0.04		0.75	T	0.12							0.48		1.17					0.75	0.50						
MUSTOE 1 SW	4.17	0.15		T		0.16	0.11	0.26	0.09	0.58	0.37	0.02	0.06						0.46	0.02		0.35	0.05	0.32			T	1.16	0.01				T		
NEW CASTLE	3.32	0.53	0.06		T			0.12	0.66		0.03	0.01	0.02	0.10					0.50	0.12	0.01		0.81	0.02	0.02			0.30	0.01						
ROANOKE 8 N	4.61	0.23						1.08	0.27	0.03		0.87	0.06	0.77					0.58	0.13	0.03		0.19		0.06			0.19	0.12						
ROANOKE INTL AP	2.55	0.11					0.04	0.26	T		0.47	0.02	0.03				0.29		0.47	0.07		0.20	T	T			0.09	0.19	T	0.31					
STAUNTON WATER TRMTMT PLT	4.33	0.12	0.03			0.10		0.01	0.05	0.01	1.14	0.05	T	T					0.78	0.26	0.02	0.01	0.11	0.14	0.56			0.09	0.80	0.05					
WAYNESBORO WTP	5.96	0.20	0.21		0.08		0.14		0.19	0.02	0.91	0.51	0.02	0.04					0.88	0.85			0.24	0.06	1.23				0.38						
<b>SOUTHWESTERN MOUNTAIN 06</b>																																			
ABINGDON 3S	4.82	0.87			0.05			0.36		1.10	0.15		1.83	0.15					0.13	0.10															0.08
BIG STONE GAP	5.51	0.37		0.03				0.62	0.67	0.80	1.45	0.32	0.10						0.10	0.02	0.12		0.02	0.65	0.24										
BLACKSBURG NWSO	2.08	0.69		T		0.02	T	0.12	0.03		0.05	0.10	0.17						0.52	0.22	T		0.10	T				T	0.06						
BURKES GARDEN	5.17	0.40	0.18	0.02	0.45			0.30	0.02	0.18	0.44	0.10	1.70	0.21					0.12	0.46	0.05	0.02	0.15	0.03	0.24			0.02	0.08						
CHRISTIANSBURG	2.72	0.57	0.02						0.11		0.01	0.15	0.23	0.11					0.60	0.24	0.03		0.58		0.05				0.02						
CLINTWOOD 1 W	4.40	0.47	T	T	0.13			0.04	0.12	0.38	0.66	0.28	1.02	0.59					0.02	0.04	0.18	0.22	0.05	0.10	0.07			0.03							
COPPER HILL	M 3.67	0.14			0.01			0.03	-	-	0.18	0.30	0.14						1.93	0.31	0.08		0.25	0.10	0.16			0.04							
GALAX RADIO WBRF	4.10	0.11	0.01		0.18			0.15		0.24	0.05	1.21	0.03						0.53	0.91	0.17	0.04	0.21		0.15		0.01	0.01					0.08	0.01	
GALAX WTP	4.33	0.16			0.18	0.15	T	0.15	0.01	0.08	0.01	0.01	0.77	0.36					0.55	1.02	0.23	T	0.22	0.18	0.18				0.07						
GRUNDY	7.50	0.04	0.01		0.62			0.05	T	3.12	0.27	0.86	1.32	0.19					0.01	0.36	0.01		0.23	0.20	0.21				T						
JOHN FLANNAGAN LAKE	MA 5.05	-	0.01	-	-	0.10		0.12	0.07	*	*	2.21 <sub>a</sub>	1.44	0.80				*	*	*	0.24 <sub>a</sub>	-	-	-	*		*	0.05 <sub>a</sub>	-			0.01	-		
LAFAYETTE 1 NE	2.57	0.39	0.01				T	T	0.05	0.27	0.01	0.12	0.09	0.45				0.01	0.75	0.19	0.01		0.18	T	T			0.04							
LEBANON	5.33	0.42	0.02					0.14	0.04	0.78	0.74	1.14	0.47	0.64					0.11	0.22	0.04	0.28	0.11		0.18										
NORA 4 SSE	4.03	0.64	T	T	0.15			0.07	0.45	0.14	0.31	0.80	0.52	0.32					0.07	0.03	T	0.51	0.02	T	T		T								
NORTH FORK LAKE	MA 3.76	-	-	*	*	0.08 <sub>a</sub>		0.31	0.16	*	*	1.03 <sub>a</sub>	1.08	0.47				-	-	-	-	0.43	0.03		*		*	0.01 <sub>a</sub>			0.16		-		
PULASKI 2 E	2.84	0.75	0.08		0.08	0.10			0.17	0.08	0.02		0.16	0.10					0.35	0.30	0.16		0.23		0.08				0.04				0.04		
RADFORD 3 N	2.62	0.64	0.06					0.29	0.02	0.08	0.09	0.12	0.17						0.59	0.23	0.02		0.15		0.06				0.10						
RICHLANDS	7.75	0.75		0.05				0.08		0.55	0.83	0.71	1.67	0.31					0.76	0.25	0.21	0.02	0.47	0.47	0.58				0.03						
SALTVILLE 1N	5.02	0.68		0.49				0.63	T	0.20	0.30	0.37	0.83	0.33					0.62	0.22			0.17	0.15				0.03							
STAFFORDSVILLE 3 ENE	3.34	0.41						T	0.21	0.23	0.02	0.05	0.17	0.08					0.27	0.67	0.04	0.08	0.06		0.03	0.01							1.01		
WILLIS	3.27	0.26	0.17		0.06			0.05		0.19			0.63	0.25					0.59	0.56	0.03	0.07	0.31		0.08									0.02	



VIRGINIA  
201308

### DAILY PRECIPITATION (INCHES)

STATION	TOTAL	DAY OF MONTH																															
		01	02	03	04	05	06	07	08	09	10	11	12	13	14	15	16	17	18	19	20	21	22	23	24	25	26	27	28	29	30	31	
WISE 3E	3.65	0.45	0.03		0.28			0.10	0.49	0.08	0.53	0.30	0.08	0.60	0.11				0.18		0.20		0.04	0.05							0.03		0.10

VIRGINIA  
201308

## DAILY TEMPERATURES (°F)

STATION	OB. TIME	MAX/MIN	DAY OF MONTH																															AVERAGE				
			01	02	03	04	05	06	07	08	09	10	11	12	13	14	15	16	17	18	19	20	21	22	23	24	25	26	27	28	29	30	31					
<b>VIRGINIA TIDEWATER 01 DISPUTANTA</b>	07	MAX MIN			87 67	87 67	81 59	81 59					88 70	91 71	87 65	74 55					70 64	73 64	84 64	87 67							88 61	81 70	84 62	84 62	M M			
EASTVILLE	07	MAX MIN	82 70	80 69	84 73	85 72	81 66	80 67	72 67	83 72		87 77	85 72	84 77	85 69	74 62	76 61	75 64	78 69	73 65	73 66	79 70	84 71	84 75	81 65	80 62	78 59	79 59	85 73	81 74	82 68	81 70	82 68	81 70	80.5 68.5			
EMPORIA 1 WNW	08	MAX MIN	83 69	85 67	88 69	87 71	85 62	85 62	79 69	87 72	89 72	92 72	93 73	89 73	91 70	88 59	76 56	78 57	76 66	76 66	73 65	83 70	88 69	89 68	88 83	89 81	88 83	87 61	87 54	87 54	85 62	85 72		85 65	81.8 65.7			
FREDERICKSBURG SEWAGE	07	MAX MIN	84 66	85 64	87 66	83 64	82 59	81 66	71 66	86 69		93 72	81 67	82 68	88 69	88 55	76 55	78 55	78 59	75 62	69 62	74 65	85 68	88 69	87 59	75 58	82 57	80 61	85 61					85 66	81.8 63.3			
HAMPTON UNIV	17	MAX MIN																																		M M		
HOLLAND 1 E	08	MAX MIN																																		M M		
HOPEWELL	16	MAX MIN	82 71	87 70	87 70	87 71	83 63	82 67	87 69	88 73	91 76	92 76	84 75	90 76	87 66	77 62	77 59	79 67	77 66	73 67	83 69	88 71	88 74	89 71	82 63	82 64	84 56	89 66	89 75	89 75	85 68	85 68	88 71	88 69	84.9 69.1			
NORFOLK INTL AP	24	MAX MIN	83 67	87 68	89 71	82 72	81 65	72 67	87 71	87 73	93 77	88 75	87 75	88 75	90 77	78 69	77 69	76 71	76 68	77 68	76 68	80 70	86 73	89 71	84 68	79 62	77 58	91 66	87 75	81 73	82 68	91 69	87 68	81 69	82 69	83.3 70.0		
NORFOLK SOUTH	24	MAX MIN	81 66	86 66	87 69	81 67	80 62	70 66	86 67	86 71	92 75	88 73	87 73	88 72	90 75	76 64	77 61	75 70	75 69	79 66	76 67	81 68	85 72	89 67	84 65	80 61	77 55	84 66	90 66	85 74	80 71	85 66	85 68	89 68	82.9 67.6			
NORTH	07	MAX MIN																																		M M		
PAINTER 2W	16	MAX MIN	80 71					76 65	82 68		89 75	89 78	82 68	85 72	87 73	86 69	75 56	77 55	77 65	74 67	73 63	82 66			78 60	77 56	80 53	88 65	88 71						M M			
STONY CREEK 2 N	08	MAX MIN	83 69			82 66	82 61	88 61																												86 62	M M	
SUFFOLK LAKE KILBY	24	MAX MIN	80 67	85 68	84 69	84 67	84 61	87 65	86 68	86 67	89 69	90 74	90 72	88 69	87 68	75 60						80 68	86 69	87 66	85 65	81 64	81 59	81 53							87 66	82.8 65.9		
WAKEFIELD 1NW	24	MAX MIN	83 67	89 66	88 69	83 63	83 58	74 65	88 68	88 70	93 74	91 74	89 73	90 73	89 72	76 57	79 55	76 53	76 65	73 65	74 65	84 64	89 67	90 71		82 59	80 55	84 48	88 62	84 72	84 65	86 62	89 69	84.1 64.9				
WALKERTON 2 NW	18	MAX MIN																																		87 73	89 70	M M
WALLACETON LK DRUMMOND	08	MAX MIN																																			M M	
WALLOPS ISLAND NASA TEST FACIL	24	MAX MIN	80 73	89 70	90 70	85 65	80 64	73 68	84 70	85 74	93 77	90 72	84 69	87 74	88 75	79 61	78 59	80 57	81 65	75 65	77 65	82 70	86 69	89 73	84 71	83 64	80 59	85 57	90 73	89 73	83 68	84 66	86 70	83.8 67.9				
WARSAW 2 NW	18	MAX MIN																																			M M	
WEST POINT 2 NW	17	MAX MIN	82 70				83 59	82 64	87 66						84 59	78 57	76 56	79 64	74 65	74 64			88 68	90 70	85 63			85 54	90 65	84 72	84 67	84 64	85 69	89 69	M M			
WILLIAMSBURG 2 N	24	MAX MIN	82 70	87 68	87 70	82 65	82 61	72 66	87 67	88 74	99 75	87 73	85 71	89 73	87 75	76 60	77 59	80 59	71 66	75 66	82 68	87 69	88 69	81 66	82 62	78 59	83 56	89 64	85 73	85 69	85 66	84 70	87 66	83.2 66.9				



VIRGINIA  
201308

## DAILY TEMPERATURES (°F)

STATION	OB. TIME	MAX/MIN	DAY OF MONTH																															AVERAGE	
			01	02	03	04	05	06	07	08	09	10	11	12	13	14	15	16	17	18	19	20	21	22	23	24	25	26	27	28	29	30	31		
DANVILLE REGIONAL AP	24	MAX	86	87	89	86	81	83	85	86	93	93	89	91	88	78	77	73	70	73	77	83	84	89	85	83	80	84	89	84	86	86	88	84.1	
		MIN	68	65	69	67	65	67	68	72	73	73	71	70	71	62	58	56	59	66	65	65	69	72	67	60	58	54	63	69	71	66	67	66.0	
FREE UNION	08	MAX	76	84	84	78	81	77	77	82	79	88	80	77	85	83	75	75	73	74	65	73	82	84	85	71	79	79	83	86	73	81	83	79.1	
		MIN	63	62	62	61	55	55	63	68	68	70	67	67	68	57	49	50	51	54	60	62	64	64	64	54	54	55	57	62	68	63	64	60.7	
LYNCHBURG INTL AP	24	MAX	88	86	88	85	80	83	83	83	91	91	88	90	83	78	76	74	70	69	75	83	84	89	84	81	81	84	88	79	85	85	89	83.0	
		MIN	66	61	63	63	59	66	66	69	72	70	70	69	70	58	52	52	56	63	63	64	65	64	59	55	57	53	61	69	68	67	65	63.1	
MARTINSVILLE FLTR PLT	07	MAX	77	86	85	88	83	80	82	83	84	90	89	85	90	84	77	76	73	65	74	76	83	84	88	85	80	80	83	87	86	85	85	82.4	
		MIN	66	61	61	66	60	61	65	67	69	70	68	70	68	65	53	50	51	55	64	61	63	63	63	55	54	54	55	59	66	65	64	61.7	
MEADOWS OF DAN 5 SW	07	MAX																																M	
		MIN																																	M
MONTEBELLO FISH CULTURAL STN	07	MAX	73	81			81	76	76	80			83			84		69		67	76	80	80				82		81	74			M		
		MIN	57	57			48	61	61	68			64			42		43		57	58	58	59				47		52	67			M		
MONTICELLO	08	MAX	77	82	82	78	78	76	76	81	79	88	88	78	86	82	70	73	74	72	64	72	81	83	84	83	76	76	81	85	76	79	81	78.7	
		MIN	62	64	65	64	57	58	65	67	67	71	67	67	67	60	54	54	55	57	59	59	64	67	67	56	56	58	60	60	70	67	66	62.3	
ROCKY MT	07	MAX	74	86	86	87	83	78	83	79	85	88	89	86	89	83	78	76	73	69	72	76	82	82	87	85	81	79	84	85	81	85	85	81.8	
		MIN	65	63	65	66	59	60	68	69	69	71	71	68	69	65	54	49	50	56	62	63	56	63	63	55	55	54	55	65	70	65	65	62.2	
SOUTH BOSTON	07	MAX	82	85	86	87	87	82	81	85	85	92	91	90	90	86	75	76	74	74	70	74	82	83	87	85	82	80	83	91	82	84	87	83.2	
		MIN	68	64	65	68	63	64	67	68	71	72	71	71	70	69	56	55	55	60	64	64	65	68	69	58	57	53	53	63	68	65	65	64.2	
STUART	07	MAX	74	82	83	84	83	78	79	78	82	86	86	86	87	82	78	74	74	69	71	74	83	80	83	83	80	80	83	86	86	86	84	80.8	
		MIN	66	60	64	66	61	61	61	68	69	69	66	66	67	62	55	52	51	55	57	62	62	62	62	56	56	55	55	59	59	67	66	61.2	
TYE RIVER 1 SE	07	MAX	76	85	84	80	83	78	80	81	81	90	98	82	87	85	75	75	76	72	69	75	82	85	86	80	80	79	84	86	76	83	85	81.2	
		MIN	62	64	63	64	57	58	64	69	70	71	67	68	69	64	51	52	54	56	63	65	61	62	67	54	55	57	58	63	69	67	66	62.3	
<b>NORTHERN 04</b>																																			
BOSTON 4 SE	07	MAX	79	82	85	79	82	77	75	84	83	91	91	88	87	84	74	74	75	76	67	73	84	85	86	76	80	78	84	81	75	82	84	80.7	
		MIN	59	61	62	62	53	63	67	70	71	70	68	66	68	57	49	50	52	60	59	63	63	65	64	54	54	57	63	67	70	63	67	61.8	
EDINBURG	07	MAX	78	81	84	75	78	78	77	84	83	88	81	85	87	84	72	76	78	76	67	80	84	86	84	70	78	80	83	84	77	81	85	80.1	
		MIN	58	59	59	59	52	52	61	65	68	68	66	66	66	53	47	47	48	49	58	62	62	62	64	56	51	52	57	66	68	61	61	58.8	
FRONT ROYAL	07	MAX	81	83	84	73	79	79	77	82	80	86	82	82	85	84	72	75	77	77	66	75	83	86	85	72	78	80	84	84	77	82	86	79.9	
		MIN	61	62	61	61	55	55	62	67	70	70	67	68	67	55	51	51	52	53	60	62	62	66	66	55	54	56	63	70	69	65	64	61.3	
LINCOLN	07	MAX	79	84	86	72	78	78	78	85	85	86	83	86	86	85	73	76	78	80	70	76	86	89	86	72	80	82	87	88	76	84	87	81.3	
		MIN	59	62	61	61	52	57	63	67	70	70	65	68	68	56	48	47	48	52	56	59	62	65	66	54	57	56	58	68	70	62	62	60.3	
LURAY 5 E	08	MAX	79	81	83	75	78	78	77	84	88	87	82	84	86	83	71	74	75	74	65	79	84	85	86	70	78	78	83	84	76	81	86	79.8	
		MIN	64	59	60	58	52	62	63	66	69	68	66	64	67	55	48	49	51	59	59	62	63	62	62	52	54	55	61	67	68	61	65	60.4	
MADISON	08	MAX	81	82	86	79	82	79	76	83	81	93	79	81	87	85	77	74	75	74	67	73	84	84	85	70	80	79	85	87	76	82	84	80.3	
		MIN	65	62	64	63	55	59	56	70	72	71	68	68	70	58	51	52	55	57	59	64	65	65	65	55	58	60	64	67	70	64	68	62.6	
MANASSAS	07	MAX	81	86	87	83	83		83	86	86	94								80	72	75	87	88	90	77	83	81	88				M		
		MIN	66	65	68	65	57		67	71	75	76								61	61	65	70	71	70	59	61	67	69	73	73			M	
MT WEATHER	07	MAX	75	77	80	70	74	75	74	76	75	81	78	80	82	80	69	71	75	75	64	70	80	83	81	69	75	77	81	82	70	78	82	76.1	
		MIN	64	63	65	60	57	59	60	65	68	68	67	68	65	52	54	54	54	59	59	59	66	67	59	59	60	65	68	67	67	66	61	61.8	
PIEDMONT RSCH STN	08	MAX	80	82	84	81	80	77	75	82	84	90	79	80	86	85	74	74	75	74	65	72	83	85	85	72	79	79	83	87	76	82	83	79.8	
		MIN	65	65	64	63	58	62	64	68	70	72	64	68	70	59	54	55	57	59	58	61	65	66	68	58	58	58	63	66	71	65	67	63.3	
SOMERSET	07	MAX	82	84	85	83	79	79	85	84	93	79	82	87	87	76	76	76	75	67	74	84	69	85	88	71	80	80	84	89	76	83	84	80.8	

VIRGINIA  
201308

## DAILY TEMPERATURES (°F)

STATION	OB. TIME	MAX/MIN	DAY OF MONTH																															AVERAGE
			01	02	03	04	05	06	07	08	09	10	11	12	13	14	15	16	17	18	19	20	21	22	23	24	25	26	27	28	29	30	31	
SPERRYVILLE	06	MIN	65	63	65	59	53	62	65	69	71	69	68	69	70	55	48	49	53	57	60	63	65	65	66	54	55	58	63	65	70	65	65	62.1
		MAX	77										74	81	84	81	71	74	75	75	67					69	78	83	86	75	80	83	M	
STERLING RCS	07	MIN	60									68	65	65	58	51	51	51	55	59					55	57	57	58	66	69	61	61	61	M
		MAX	81	84	86	77	80	80	76	85	85	89	84	85	87	86	74	78	78	80	70	76	87	89	86	75	82	82	87	89	79	85	86	82.2
VIENNA	07	MIN	65	65	64	62	56	62	66	66	74	74	68	69	70	58	51	52	54	57	58	60	64	67	68	60	57	58	61	69	71	66	68	63.2
		MAX	74	80	81	73	74	75	68	78	81	84	80	80	85	81	67	72	74	74	66	69	82	84	81	70	78	77	82	85	72	79	82	77.0
WASHGTN DULLES INTL AP	24	MIN	59	62	62	60	53	53	64	65	69	70	66	65	54	50	50	51	53	57	57	60	65	65	56	56	57	58	63	65	66	66	66	60.1
		MAX	85	86	80	82	81	74	85	86	89	85	84	89	86	75	78	78	80	72	75	88	89	88	76	83	82	87	90	79	86	87	90	83.1
WASHINGTON REAGAN AP	24	MIN	68	64	65	60	55	67	69	73	75	69	69	68	69	56	53	53	55	61	59	61	66	68	60	59	57	62	70	72	71	67	70	64.2
		MAX	83	88	82	83	82	74	85	87	93	84	86	92	89	78	80	81	81	74	75	89	89	91	79	85	83	90	94	83	87	88	92	84.7
WINCHESTER	07	MIN	70	71	70	68	63	69	72	76	78	75	74	74	71	62	60	62	63	67	65	69	73	74	66	64	65	64	73	75	74	72	73	69.4
		MAX																		68	77	86	87	87	71	81	83	87	86	74	83	87	M	
WINCHESTER 7 SE	08	MIN	60	-99 <sup>G</sup>	54	-99 <sup>G</sup>	44	-99 <sup>G</sup>	77	82	80	85	85	85	89	86	74	75	79	78	70	77	86	87	86	73		80	86	85		85	87	M
		MAX	77	86	86	72	81	81	77	82	80	85	85	85	89	86	74	75	79	78	70	77	86	87	86	73							87	81.4
WOODSTOCK 2 NE	07	MIN	60	-99 <sup>G</sup>	54	-99 <sup>G</sup>	44	-99 <sup>G</sup>	77	82	80	85	85	89	86	74	75	79	78	70	77	86	87	86	73		80	86	85		85	87	M	
		MAX	79	82	84	76	78	78	79	85	82	87	83	86	87	83	72	76	78	78	69	80	85	86	85	71	80	81	83	84	70	83	85	80.5
CENTRAL MOUNTAIN 05 COVINGTON FLTR PLT	07	MIN	63	60	60	58	52	53	62	65	68	69	66	65	67	53	49	49	50	50	60	61	64	64	65	56	54	55	59	66	67	63	63	59.9
		MAX	74	83	83	84	80	80	86	80	82	88	87	81	85	81	74	73	77	75	73	79	85	85	86	80	79	81	84	85	85	86	86	81.5
DALE ENTERPRISE	07	MIN	62	53	60	60	54	54	63	66	68	68	68	67	57	49	50	54	55	61	65	65	62	62	62	56	54	55	56	60	67	65	65	60.3
		MAX	78	80	85	81	80	79	81	81	82	89	80	84	88	80	71	75	77	77	65	79	85	86	83	70	76	81	84	86	78	74	85	80.0
GATHRIGHT DAM	07	MIN	63	58	59	57	51	51	62	67	69	67	67	63	64	64	46	47	48	55	57	62	63	60	61	51	51	58	59	67	68	60	60	59.2
		MAX	68	77	77	79	74	76	81	77	80	82	82	77	81	78	69	69	72	71	69	74	80	80	80	77	76	76	79	81	80	82	80	76.9
HOT SPRINGS	07	MIN	60	59	59	59	53	54	63	67	67	68	65	66	56	47	47	50	53	59	62	62	60	60	55	55	54	54	62	67	63	62	59.2	
		MAX	68	77	77	79	73	73	78	76	77	81	80	77	82	76	67	69	72	69	69	73	79	80	78	75	74	74	76	80	78	80	80	75.7
LEXINGTON	07	MIN	61	56	56	57	51	51	62	65	66	68	65	65	54	45	45	48	50	59	61	61	57	57	51	51	52	52	61	67	61	61	61	57.5
		MAX	75	85	84	83	83	79	84	79	82	89	89	86	87	85	77	74	76	75	70	78	85	84	87	80	81	81	83	86	82	85	85	81.9
MILLGAP	07	MIN	62	61	61	60	54	55	65	69	69	69	69	69	63	48	48	49	52	62	63	65	65	65	56	53	54	60	66	65	65	65	60.8	
		MAX	76	76	77	75	72	74	78	76	77	80	81	77	81	75	66	70	74	70	69	77	80	79	79	74	77	76	79	77	80	81	80	76.2
MUSTOE 1 SW	24	MIN	45	55	53	54	44	45	57	63	65	65	62	62	52	41	41	45	46	57	54	54	57	58	49	47	48	49	58	63	60	60	53.9	
		MAX	74	76	76	72	72	76	74	77	79	78	75	80	77	66	68	71	69	67	74	78	78	78	73	76	75	78	77	77	78	77	80	75.0
ROANOKE 8 N	07	MIN	59	55	53	49	43	57	63	65	66	61	60	61	60	44	39	41	44	56	58	54	56	58	43	47	46	45	55	61	61	61	54.0	
		MAX	74	84	85	85	84	84	83	79	83	88	88	87	89	82	75	76	71	70	76	84	82	85	85	80	81	85	85	83	87	86	82.2	
ROANOKE INTL AP	24	MIN	65	62	63	64	62	62	61	70	70	70	71	68	68	65	55	52	52	59	62	64	67	63	64	60	58	56	65	70	68	67	63.2	
		MAX	85	85	87	85	80	84	82	84	88	91	89	90	83	78	77	76	72	71	77	83	83	87	85	81	84	80	85	86	88	85	88	83.2
STAUNTON WATER TRMTMT PLT	08	MIN	66	64	64	66	61	68	70	72	70	72	71	69	69	61	52	53	56	62	64	66	68	65	64	58	57	57	67	71	72	68	68	64.9
		MAX	76	81	82	79	78	77	78	80	81	87	83	81	85	82	73	73	76	75	69	77	83	83	82	74	79	80	82	84	74	83	82	79.3
WAYNESBORO WTP	07	MIN	62	60	65	59	53	57	63	67	70	69	66	66	69	56	47	49	51	53	58	62	64	61	64	53	55	57	60	69	67	61	62	60.5
		MAX	78	83	84	81	80	77	78	82	82	89	85	81	80	84	72	74	75	75	65	78	84	84	83	77	78	78	83	87	78	82	86	80.1
SOUTHWESTERN MOUNTAIN 06	07	MIN	64	60	60	58	51	53	65	68	68	68	67	66	66	60	48	47	50	52	60	62	63	63	62	59	53	53	55	63	68	61	61	59.8
		MAX	78	83	84	81	80	77	78	82	82	89	85	81	80	84	72	74	75	75	65	78	84	84	83	77	78	78	83	87	78	82	86	80.1

VIRGINIA  
201308

## DAILY TEMPERATURES (°F)

STATION	OB. TIME	MAX/MIN	DAY OF MONTH																															AVERAGE
			01	02	03	04	05	06	07	08	09	10	11	12	13	14	15	16	17	18	19	20	21	22	23	24	25	26	27	28	29	30	31	
ABINGDON 3S	22	MAX	72	81	80	81	80	81	82	81	80	83	80	82	81	76	73	76	80	75	78	79	84	81	81	81	80	81	80	79	83	87	85	80.1
		MIN	63	61	61	64	58	61	66	61	66	69	67	69	65	58	51	54	57	61	62	63	64	62	63	60	53	54	60	62	68	65	68	61.8
BIG STONE GAP	08	MAX	76	82	81	84	83	83	83	78	79	85	82	82	82	75	81	79	81	74	79	82	86	82	82	83	85	83	83	83	87	90	87	82.0
		MIN	63	63	62	63	59	61	64	70	71	69	70	70	59	53	54	54	60	60	66	66	66	66	66	63	55	55	55	63	70	67	67	62.9
BLACKSBURG NWSO	07	MAX	68	79	79	80	77	76	79	77	79	82	83	82	83	77	72	72	73	68	71	75	81	79	82	81	78	76	79	81	81	82	81	77.8
		MIN	61	58	58	61	58	59	63	67	66	66	65	64	65	55	47	47	47	50	59	61	62	59	60	52	51	51	51	65	68	61	61	58.6
BURKES GARDEN	07	MAX	63	74	75	76	73	75	75	75	77	78	76	77	77	71	66	67	71	65	72	73	76	74	76	74	72	72	75	75	79	80	79	73.8
		MIN	46	53	52	58	51	51	57	58	64	65	63	61	60	54	41	41	45	57	60	57	57	51	50	49	47	45	45	62	67	63	58	54.5
CHRISTIANSBURG	07	MAX	67	77	77	79	78	75	77	76	79	81	82	80	82	75	73	70	72	68	69	73	81	78	79	77	76	75	78	80	80	84	78	76.6
		MIN	60	59	59	62	58	58	63	66	67	67	65	65	64	57	49	49	49	53	59	62	62	61	61	55	52	52	52	63	67	63	62	59.4
CLINTWOOD 1 W	07	MAX	68	76	77	81	78	79	79	75	77	82	78	80	77	75	69	73	77	70	76	76	78	78	79	78	78	77	80	78	84	82	83	77.4
		MIN	62	60	61	62	58	58	60	64	65	66	67	68	67	56	49	49	56	58	62	64	64	59	59	62	52	52	52	60	66	65	62	60.2
COPPER HILL	07	MAX	67	77	75	76	74	69	75	71	76			81	79	75	69	66	66	61	66	70	73	75	78	75	71	70	76	76	77	78	76	73.0
		MIN	60	59	59	62	56	55	61	64	65			64	63	57	50	49	49	52	58	60	59	60	59	54	53	53	61	65	63	62	58.1	
GALAX RADIO WBRF	07	MAX	68	82	82	80	79	76	75	72	73	83	83	82	83	78	73	69	72	66	71	71	79	80	80	80	76	75	80	81	83	86	83	77.4
		MIN	61	57	58	61	55	64	66	66	68	64	63	63	63	56	46	46	51	59	62	61	63	60	60	56	49	49	56	63	67	63	63	59.3
GALAX WTP	07	MAX	66	75	80	81	78	76	75	71	77	85	82	83	82	79	71	67	70	65	71	70	79	78	81	68	75	74	79	80	83	84	78	76.2
		MIN	61	58	58	60	56	56	65	66	65	65	64	64	64	59	48	46	46	52	60	61	61	61	59	57	49	49	49	56	63	64	62	58.2
GRUNDY	07	MAX	68	78	77	80	79	78	78	81	78	84	76	82	78	74	70	76	78	71	73	75	80	79	81	80	81	78	79	79	86	84	86	78.3
		MIN	63	64	63	63	60	60	62	62	67	68	68	70	68	59	53	53	58	59	64	65	65	63	63	65	56	57	60	66	69	68	68	62.9
JOHN FLANNAGAN LAKE	07	MAX		79			82	81	82	80	80			80	79	77	71	77																M
		MIN		61			59	59	61	66	66			67	65	57	50	49																
LEBANON	07	MAX	68	78	81	81	81	82	82	79	80	84	79	83	82	78	71	77	79	73	79	78	84	78	82	80	79	84	81	80	84	85	86	79.9
		MIN	60	59	60	61	57	58	63	66	66	66	64	63	65	56	48	48	52	56	62	63	63	58	59	58	52	53	58	61	66	65	63	59.6
NORA 4 SSE	07	MAX	65	77	76	79	77	76	76	72	74	79	75	79	76	78	67	71	77	68	73	72	77	76	81	78	77	75	78	78	83	83	81	75.9
		MIN	58	60	60	63	57	59	64	66	66	66	66	65	64	54	49	51	56	57	60	61	64	62	65	60	58	59	60	65	68	66	65	61.1
NORTH FORK LAKE	08	MAX					82	81	81	78	80			86	81	77	71	76																M
		MIN					58	58	62	65	66			65	67	58	49	50																
PULASKI 2 E	07	MAX	68	79	81	83	80	80	82	77	81	85	83	84	85	81			75	69	72	77	80	81	82	82	82	82	78	82	82	87	87	80.3
		MIN	63	60	60	61	58	59	65	66	68	67	67	67	67	60	47	47	48	53	60	63	63	61	61	56	51	50	51	63	69	66	66	60.1
RADFORD 3 N	07	MAX	68	79	80	81	79	77	81	78	82	85	85	84	84	78	71	73	74	66	70	76	83	80	82	81	77	76	80	81	83	85	82	78.7
		MIN	63	60	59	61	58	60	63	67	66	67	65	67	65	58	47	50	51	53	61	63	64	60	61	53	52	52	54	63	65	63	63	59.8
RICHLANDS	07	MAX	67	80	80	81	79	81	81	79	80	84	81	88	82	77	71	76	79	73	74	77	83	79	81	80	81	81	81	80	84	85	85	79.7
		MIN	61	59	59	62	56	56	60	64	65	65	66	66	65	56	47	47	51	61	60	61	61	59	60	59	50	50	61	68	63	63	59.1	
SALTVILLE 1N	07	MAX	66	81	79	82	82	82	81	80	80	85	77	81	81	75	74	76	79	73	78	78	84	80	82	80	77	77	82	83	84	87	86	79.7
		MIN	60	60	60	61	58	59	62	66	66	67	67	68	66	58	50	50	53	56	56	62	62	60	60	58	47	48	54 <sup>1</sup>	54	67	64	64	59.6
STAFFORDSVILLE 3 ENE	07	MAX	66	79	80	83	77	78	80	79	80	84	84	82	83	77	70	71	74	69	71	75	81	78	82	80	76	76	79	81	82	86	81	78.2
		MIN	62	59	59	59	57	57	63	68	66	66	66	64	64	58	46	48	49	51	60	63	63	60	60	56	51	51	53	61	67	66	64	59.3
WISE 3E	17	MAX	74	76	78	75	77	77	74	72	80	79	77	78	74	71	71	74	73	73	73	77	77	79	77	77	76	77	78	81	82	82	80	76.4
		MIN	64	56	59	63	56	60	67	67	68	65	65	67	65	54	49	55	56	61	63	60	63	61	61	59	52	53	59	67	69	62	65	61.0

VIRGINIA  
201308

## SNOWFALL AND SNOW ON GROUND (INCHES)

STATION		DAY OF MONTH																															
		01	02	03	04	05	06	07	08	09	10	11	12	13	14	15	16	17	18	19	20	21	22	23	24	25	26	27	28	29	30	31	
<b>VIRGINIA</b>																																	
<b>TIDEWATER 01</b>																																	
DISPUTANTA	SNOWFALL																																
EASTVILLE	SNOWFALL																																
EMPORIA 1 WNW	SNOWFALL																																
FREDERICKSBURG SEWAGE	SNOWFALL																																
HAMPTON UNIV	SNOWFALL																																
HOLLAND 1 E	SNOWFALL																																
HOPEWELL	SNOWFALL		-	-	-	-		-	-	-	-	-	-		-						-	-	-	-	-	-	-				-	-	
	SN ON GND		-	-	-	-		-	-	-	-	-	-		-					-	-	-	-	-	-	-	-			-	-		
NORFOLK INTL AP	SNOWFALL																																
	SN ON GND																																
NORFOLK SOUTH	SNOWFALL																																
NORTH	SNOWFALL																																
PAINTER 2W	SNOWFALL																																
STONY CREEK 2 N	SNOWFALL		-	-				-	-	-	-	-	-	-	-						-	-	-	-	-	-	-	-	-	-	-	-	
	SN ON GND		-	-				-	-	-	-	-	-	-	-						-	-	-	-	-	-	-	-	-	-	-	-	
SUFFOLK LAKE KILBY	SNOWFALL																																
	SN ON GND																																
WAKEFIELD 1NW	SNOWFALL																																
	SN ON GND																																
WALKERTON 2 NW	SNOWFALL	-	-	-	-	-	-	-	-	-	-	-	-	-	-	-	-	-	-	-	-	-	-	-	-	-	-	-	-	-	-	-	
	SN ON GND	-	-	-	-	-	-	-	-	-	-	-	-	-	-	-	-	-	-	-	-	-	-	-	-	-	-	-	-	-	-	-	
WALLACETON LK DRUMMOND	SNOWFALL																																
WALLOPS ISLAND NASA TEST FACIL	SNOWFALL																																
	SN ON GND																																
WARSAW 2 NW	SNOWFALL																																
WEST POINT 2 NW	SNOWFALL		-	-	-			-	-	-	-	-	-	-							-												
	SN ON GND		-	-	-			-	-	-	-	-	-	-							-												
WILLIAMSBURG 2 N	SNOWFALL																																

Snowfall: Includes snow and ice. Values for NWS stations (J index note) are Mid-Mid (LST).

Snow on ground: Includes snow, sleet, ice, and hail. Values for NWS stations (J index note) are observed at 12 UTC (GMT).

Water Equivalent: Given for NWS stations (J index note) only, when snow depth is 2 inches or more, and is measured at 18 UTC (GMT)

VIRGINIA  
201308

## PAN EVAPORATION AND WIND

STATION		DAY OF MONTH																															TOTAL OR AVERAGE	
		01	02	03	04	05	06	07	08	09	10	11	12	13	14	15	16	17	18	19	20	21	22	23	24	25	26	27	28	29	30	31		
VIRGINIA EASTERN PIEDMONT 02 JOHN H KERR DAM	WIND	-	-	-	-	-	-	-	-	-	-	-	-	-	-	-	-	-	-	-	-	-	-	-	-	-	-	-	-	-	-	-	-	M
	EVAP	-	-	-	-	-	-	-	-	-	-	-	-	-	-	-	-	-	-	-	-	-	-	-	-	-	-	-	-	-	-	-	-	M
	MAX	-	-	-	-	-	-	-	-	-	-	-	-	-	-	-	-	-	-	-	-	-	-	-	-	-	-	-	-	-	-	-	-	M
	MIN	-	-	-	-	-	-	-	-	-	-	-	-	-	-	-	-	-	-	-	-	-	-	-	-	-	-	-	-	-	-	-	-	-

Evaporation: Is measured in hundreths of inches.

Wind: Is measured in miles.

Max and Min: The maximum and minimum temperatures (Fahrenheit) of the water in the evaporation pan.



# STATION INDEX

STATION	INDEX NO.	DIVISION	COUNTY	LATITUDE	LONGITUDE	ELEVATION (IN FEET)	OBSERVATION TIME AND TABLES			
							LOCAL STD TIME			
							TEMP	PRECIP	EVAP	SPECIAL SEE (NOTES)
VIRGINIA										
ABINGDON 3S	0021	06	WASHINGTON	36 40	81 58W	1920	22	22		H
ALBERTA 5N	0079	02	BRUNSWICK	36 56	77 54W	376		08		H
ALTAVISTA	0166	03	CAMPBELL	37 7	79 17W	529		07		CH
AMELIA COURTHOUSE 1	0187	02	AMELIA	37 21	77 59W	345	08	08		H
APPOMATTOX	0243	03	APPOMATTOX	37 20	78 50W	850	07	07		H
ASHLAND	0327	02	HANOVER	37 45	77 29W	220	18	18		H
BEDFORD 4 NW	0561	03	BEDFORD	37 23	79 34W	1228		07		CH
BIG STONE GAP	0735	06	WISE	36 52	82 46W	1464	08	08		H
BLACKSBURG NWSO	0766	06	MONTGOMERY	37 12	80 25W	2100	07	07		CH
BOSTON 4 SE	0860	04	CULPEPER	38 33	78 6W	590	07	07		H
BREMO BLUFF	0993	02	FLUVANNA	37 43	78 17W	225		24		CH
BROOKNEAL	1082	03	CAMPBELL	37 4	78 57W	408	07	07		H
BUCHANAN	1121	05	BOTETOURT	37 31	79 41W	880		07		H
BUCKINGHAM	1136	02	BUCKINGHAM	37 30	78 32W	552		07		H
BUENA VISTA	1159	05	ROCKBRIDGE	37 44	79 22W	840		07		H
BURKES GARDEN	1209	06	TAZEWELL	37 6	81 20W	3068	07	07		H
CAMP PICKETT	1322	02	NOTTOWAY	37 2	77 57W	330	08	08		CH
CHARLOTTE COURT HOUSE	1585	03	CHARLOTTE	37 3	78 39W	569	07	07		H
CHARLOTTESVILLE 2W	1593	03	ALBEMARLE	38 2	78 31W	866	08	08		H
CHASE CITY	1606	02	MECKLENBURG	36 47	78 29W	510	17	17		H
CHATHAM	1614	03	PITTSYLVANIA	36 49	79 25W	651	07	07		CH
CHRISTIANSBURG	1692	06	MONTGOMERY	37 8	80 24W	2100	07	07		H
CLARKSVILLE	1746	02	MECKLENBURG	36 37	78 33W	330	07	07		H
CLINTWOOD 1 W	1825	06	DICKENSON	37 9	82 29W	1780	07	07		H
CONCORD 4 SSW	1955	03	CAMPBELL	37 17	78 58W	815		07		H
COPPER HILL	1999	06	FLOYD	37 5	80 9W	2690	07	07		H
CORBIN	2009	02	CAROLINE	38 12	77 22W	220	09	09		H
COVINGTON FLTR PLT	2044	05	ALLEGHANY	37 49	79 59W	1230	07	07		H
CRAIGSVILLE 2 S	2064	05	AUGUSTA	38 3	79 23W	1758		07		H
CROZIER	2142	02	GOOCHLAND	37 40	77 53W	350	07	07		H
DALE ENTERPRISE	2208	05	ROCKINGHAM	38 27	78 56W	1358	07	07		H
DANVILLE REGIONAL AP R	2250	03	PITTSYLVANIA	36 34	79 20W	571	24	24		H
DISPUTANTA	2400	01	PRINCE GEORGE	37 7	77 12W	15	07	07		H
EASTVILLE	2635	01	NORTHAMPTON	37 23	75 58W	10	07	07		H
EDINBURG	2663	04	SHENANDOAH	38 48	78 35W	928	07	07		H
EMPORIA 1 WNW	2790	01	GREENSVILLE	36 42	77 34W	100	08	08		H
FARMVILLE 2 N	2941	02	CUMBERLAND	37 20	78 23W	450	07	07		H
FREDERICKSBURG SEWAGE	3204	01	FREDERICKSBURG	38 17	77 27W	15	07	07		H
FREE UNION	3213	03	ALBEMARLE	38 5	78 35W	590	08	07		H
FRONT ROYAL	3229	04	WARREN	38 54	78 11W	930	07	07		H
GALAX RADIO WBRF	3267	06	CARROLL	36 40	80 55W	2385	07	07		H
GALAX WTP	3272	06	CARROLL	36 39	80 55W	2360	07	07		CH
GATHRIGHT DAM	3310	05	ALLEGHANY	37 57	79 57W	1770	07	07		CH
GLASGOW 1 SE	3375	05	ROCKBRIDGE	37 37	79 26W	737		07		H
GREENBAY 3 NE	3565	02	PRINCE EDWARD	37 11	78 17W	500	09	09		H
GRUNDY	3640	06	BUCHANAN	37 17	82 5W	1170	07	07		H
HAMPTON UNIV	3713	01	HAMPTON	37 1	76 20W	10	17	17		H
HOLCOMB ROCK	4039	03	BEDFORD	37 33	79 24W	620		07		H
HOLLAND 1 E	4044	01	SUFFOLK	36 41	76 46W	80	08	08		H
HOPEWELL	4101	01	PRINCE GEORGE	37 18	77 17W	40	16	16		H
HOT SPRINGS	4128	05	BATH	37 60	79 50W	2236	07	07		H
HUDDLESTON 4 SW	4148	03	BEDFORD	37 8	79 32W	898		07		H
JOHN FLANNAGAN LAKE	4410	06	DICKENSON	37 14	82 21W	1460	07	07		H
JOHN H KERR DAM	4414	02	MECKLENBURG	36 36	78 18W	250	08	08	08	CH
LAFAYETTE 1 NE	4676	06	MONTGOMERY	37 14	80 12W	1320		07		H
LEBANON	4777	06	RUSSELL	36 54	82 2W	1912	07	07		H
LEXINGTON	4876	05	ROCKBRIDGE	37 47	79 26W	1097	07	07		H
LINCOLN	4909	04	LOUDOUN	39 5	77 42W	500	07	07		H
LOUISA	5050	02	LOUISA	38 3	78 0W	420	18	18		H
LURAY 5 E	5096	04	PAGE	38 40	78 22W	1400	08	08		H
LYNCHBURG INTL AP R	5120	03	CAMPBELL	37 19	79 12W	940	24	24		HJ
MADISON	5150	04	MADISON	38 22	78 15W	577	08	08		H
MANASSAS	5204	04	MANASSAS	38 44	77 30W	245	07	07		H
MARTINSVILLE FLTR PLT	5300	03	HENRY	36 42	79 52W	760	07	07		H
MEADOWS OF DAN 5 SW	5453	03	PATRICK	36 40	80 27W	2225	07	07		H

# STATION INDEX

STATION	INDEX NO.	DIVISION	COUNTY	LATITUDE	LONGITUDE	ELEVATION (IN FEET)	OBSERVATION TIME AND TABLES			
							LOCAL STD TIME			
							TEMP	PRECIP	EVAP	SPECIAL SEE (NOTES)
MILLGAP	5595	05	HIGHLAND	38 18	79 43W	2421	07	07		CH
MONTEBELLO FISH CULTURAL STN	5690	03	NELSON	37 51	79 8W	2667	07	07		H
MONTICELLO	5700	03	ALBEMARLE	38 1	78 27W	758	08	08		H
MT WEATHER	5851	04	LOUDOUN	39 4	77 53W	1659	07	07		H
MTN GROVE	5756	05	BATH	38 6	79 53W	1775		07		H
MUSTOE 1 SW	5880	05	HIGHLAND	38 20	79 40W	2380	24	24		H
NEW CASTLE	6012	05	CRAIG	37 18	80 3W	1258		07		H
NORA 4 SSE	6125	06	DICKENSON	37 1	82 19W	2650	07	07		H
NORFOLK INTL AP R	6139	01	NORFOLK (CITY)	36 54	76 12W	30	24	24		HJ
NORFOLK SOUTH	6147	01	NORFOLK (CITY)	36 52	76 14W	100	24	24		H
NORTH	6161	01	MATHEWS	37 26	76 26W	10	07	07		H
NORTH FORK LAKE	6173	06	WISE	37 7	82 38W	1675	08	08		H
PAINTER 2W	6475	01	ACCOMACK	37 35	75 49W	30	16	16		CH
PALMYRA 3S	6491	02	FLUVANNA	37 49	78 16W	410	06	06		H
PEDLAR DAM	6593	03	AMHERST	37 40	79 17W	1024		07		H
PETERSBURG	6656	02	PETERSBURG	37 14	77 24W	15	08	08		H
PIEDMONT RSCH STN	6712	04	ORANGE	38 14	78 7W	520	08	08		CH
PULASKI 2 E	6955	06	PULASKI	37 3	80 47W	1850	07	07		CH
RADFORD 3 N	6999	06	PULASKI	37 12	80 35W	1800	07	07		H
RICHLANDS	7174	06	TAZEWELL	37 6	81 48W	1910	07	07		H
RICHMOND INTL AP R	7201	02	HENRICO	37 30	77 19W	164	24	24		HJ
ROANOKE 8 N	7278	05	ROANOKE	37 22	79 58W	1190	07	07		H
ROANOKE INTL AP R	7285	05	ROANOKE	37 19	79 58W	1175	24	24		HJ
ROCKY MT	7338	03	FRANKLIN	36 59	79 54W	1315	07	07		CH
SALTVILLE 1N	7506	06	SMYTH	36 53	81 46W	1733	07	07		H
SANDSTON	7541	02	HENRICO	37 33	77 17W	165	07	07		H
SOMERSET	7904	04	ORANGE	38 15	78 16W	510	07	07		H
SOUTH BOSTON	7925	03	HALIFAX	36 42	78 53W	329	07	07		H
SPERRYVILLE	7985	04	RAPPAHANNOCK	38 39	78 14W	750	06	06		H
STAFFORDSVILLE 3 ENE	8022	06	GILES	37 16	80 43W	1950	07	07		CH
STAUNTON WATER TRMTMT PLT	8062	05	AUGUSTA	38 10	79 5W	169	08	08		H
STERLING RCS	8084	04	LOUDOUN	38 59	77 29W	288	07	07		H
STONY CREEK 2 N	8129	01	SUSSEX	36 58	77 24W	105	08	08		H
STUART	8170	03	PATRICK	36 38	80 15W	1375	07	07		H
SUFFOLK LAKE KILBY	8192	01	SUFFOLK	36 44	76 36W	22	24	24		H
TYE RIVER 1 SE	8600	03	NELSON	37 38	78 56W	720	07	07		H
VIENNA	8737	04	FAIRFAX	38 54	77 16W	418	07	07		H
WAKEFIELD 1NW	8800	01	SUSSEX	36 59	77 0W	113	24	24		CH
WALKERTON 2 NW	8829	01	KING AND QUEEN	37 45	77 2W	50	18	18		H
WALLACETON LK DRUMMOND	8837	01	CHESAPEAKE	36 36	76 26W	20	08	08		H
WALLOPS ISLAND NASA TEST FACIL R	8849	01	ACCOMACK	37 56	75 28W	46	24	24		HJ
WARSAW 2 NW	8894	01	RICHMOND	37 59	76 47W	140	18	18		H
WASHGTN DULLES INTL AP R	8903	04	LOUDOUN	38 56	77 28W	290	24	24		HJ
WASHINGTON REAGAN AP R	8906	04	ARLINGTON	38 51	77 2W	10	24	24		HJ
WAYNESBORO WTP	8941	05	WAYNESBORO	38 5	78 53W	1270	07	07		H
WEST POINT 2 NW	9025	01	KING WILLIAM	37 34	76 48W	20	17	17		H
WILLIAMSBURG 2 N	9151	01	YORK	37 18	76 42W	70	24	24		CH
WILLIS	9169	06	FLOYD	36 55	80 30W	2810		07		CH
WINCHESTER	9181	04	FREDERICK	39 11	78 9W	720	07	07		H
WINCHESTER 7 SE	9186	04	FREDERICK	39 11	78 7W	680	08	08		H
WINTERPOCK 4 W	9213	02	CHESTERFIELD	37 19	77 39W	300		07		H
WISE 3E	9215	06	WISE	36 60	82 32W	2549	17	17		CH
WOODSTOCK 2 NE	9263	04	SHENANDOAH	38 54	78 28W	675	07	07		H
WOOLWINE	9272	03	PATRICK	36 47	80 17W	1500		07		CH

# REFERENCE NOTES

**STATION NAMES:** Name of the city, town or locality. Figures and letters following the station names indicate the distance in miles and direction from the post office or town community center.

**DIVISIONS:** Areas within a state of similar climatological characteristics. Division averages are calculated using data from stations that record temperature and/or precipitation. Station Precipitation totals flagged with an 'F' or 'M' are excluded from the Divisional Average calculations of precipitation. Stations with monthly Temperature averages flagged with an 'F' or 'M' are included in the Divisional Average if there are no more than 9 flagged or missing daily values in the month, else they are excluded from the divisional average for temperature.

**NORMALS:** The average value of the meteorological element over a time period. Effective 1 January 2012, the averaging period is 1981 to 2010. The normals for National Weather Service localities have been adjusted so as to be representative for the current observation site.

**MONTHLY DEGREE DAY TOTALS:** One heating (cooling) degree day is accumulated for each whole degree that the daily mean temperature is below (above) 65 degrees Fahrenheit.

**PRECIPITATION:** Values shown in hundredths of inches are water equivalent totals, i.e., total of liquid and melted frozen precipitation. In the "Monthly Summarized Data" table the total snow and sleet values shown in tenths of inches are unmelted amounts. The max depth on ground values of snow and sleet shown in whole inches are cumulative unmelted amounts. The number of days with .10, .50, 1.00 or more refers to water equivalents.

**PRECIPITATION QUALITY CONTROL:** The NCDC quality control process may flag precipitation data that are spatially inconsistent, exceed climatological limits, or are inconsistent with prevailing weather patterns.

**TEMPERATURE:** Original temperature values are given in the "Daily Temperature" table. Summary temperature information (averages, departures, extremes, monthly degree day totals) is based on the values labeled MAX/MIN.

**WIND:** (As shown in the "Evaporation and Wind" table) the total wind movement in miles over the evaporation pan as determined by an anemometer recorder located 6-8 inches above the pan.

## SYMBOLS AND LETTERS USED IN THE STATION INDEX TABLE

C Station is equipped with recording rain gage (R) but values in this bulletin are from a non-recording rain gage unless indicated by an R.

G Observations appear in the "Soil Temperatures" table.

H Observations appear in the "Snowfall and Snow on the Ground" table.

J Station also published as a Local Climatological Data publication.

VAR Observation time varies.

SR Observation time near sunrise.

SS Observation time near sunset.

## SYMBOLS AND LETTERS USED IN THE DATA TABLES

(DAILY DATA ARE FOR THE 24 HOURS IMMEDIATELY PRECEDING OBSERVATION TIME.)

BLANK Entries in the "Monthly Summarized Data" table indicate no record.

BLANK Entries in the "Daily Precipitation" and "Snowfall and Snow on the Ground" tables indicate zero.

BLANK Entries in the "Daily Temperature" table indicate a missing record

- No record. Data not recorded or not received in time for publication.

+ Precipitation or temperature extremes occurred on one or more previous dates during the month.

\* Rain gage not read. Precipitation is included in the amount following the asterisks.

Time distribution may not be known. A \* preceding the monthly total indicates precipitation amount is being carried forward to next month's total, and may include amounts from the previous month(s).

a As a subscript, indicates accumulated total.

A Amount of precipitation is the total of observer's entries for the current month. It may include precipitation that occurred during the previous month. Refer to earlier bulletin to determine date of last reading. (Hawaii stations)

B Divisional Departure from normals are computed using 1971-2000 normals.

E Normalized HDD/CDD Calculation. E is appended to the HDD/CDD Calculation when 1-9 individual daily TMAX and/or TMIN values are missing and a Normalized HDD/CDD Calculation is provided. M appears alone if 10 or more daily values are missing.

F Monthly calculation flagged value. F is appended to average and/or total values computed which exclude one or more daily data values that have been flagged by the GHCN-Daily Dataset

M Insufficient or partial data. M is appended to average and/or total values computed with 1-9 daily values missing. M appears alone if 10 or more daily values are missing, (8 or more for wind and evaporation).

N Indicates snow fall or Snowdepth totals are computed with one or more missing days.

R Amounts from recording rain gage.

T Trace. An amount too small to measure.

**SEASONAL TABLES:** Monthly and seasonal snowfall and heating degree days for the 12 months ending with the June data are published in the July issue of this bulletin. Cooling degree days for the calendar year are published in the "Climatological Data Annual Summary."

Information concerning the history of changes in locations, exposure, etc. of substations is kept on file at the National Climatic Data Center. Historical information of regular National Weather Service Offices may be obtained from the "Local Climatological Data" annual publication. The contents of this publication may be reprinted or otherwise used freely, with proper credit to the National Climatic Data Center. The data are also available digitally.

Effective with the January 2011 Data-Month, COOP Observer Names are no longer included in the Monthly and Annual Climatological Data Publications. This information is not published to ensure the privacy of personal information pursuant to Section 208 of the E-Government Act of 2002 (44 USC 3601).

As of the 2011 Data-Year, Station and Climate Division Maps are no longer being included in the CD Publications. NCDC's Product Development Branch provides updated Station Maps for various data networks via the Historical Observing Metadata Repository: <http://www.ncdc.noaa.gov/homr>.

The GHCN-Daily Quality Control Flags shown below are displayed as superscripts with the data. For more Information on Global Historical Climatology Network - Daily and flags, see: <http://www.ncdc.noaa.gov/oa/climate/ghcn-daily/> and Comprehensive Automated Quality Assurance of Daily Surface Observations. Durre, Imke, Matthew J. Menne, Byron E. Gleason, Tamara G. Houston, Russell S. Vose, 2010: J. Appl. Meteor. Climatol., 49, 1615-1633. doi: 10.1175/2010JAMC2375.1

Blank = Passed All checks

D = failed duplicate check

G = failed gap check

I = failed internal consistency check

K = failed streak/frequent-value check

L = failed check on length of multiday period

M = failed megaconsistency check

N = failed naught check

O = failed climatological outlier check

R = failed lagged range check

S = failed spatial consistency check

T = failed temporal consistency check

W = temperature too warm for snow

X = failed bounds check

Z = flagged as a result of an official Datzilla investigation

Beginning with the January 2013 CD Publication, monthly mean temperature calculations have changed to the National Data Stewardship Team standard. Monthly maximum and minimum temperatures are not rounded until after the monthly mean temperature is calculated. This is the most accurate outcome, but may be slightly different from the mean derived from rounded monthly maximum and minimum.

Processing Updates and Errata: The 2011 CD Publications were reproduced in May 2013. This update included the addition of late reports and corrections based on additional investigations of reported data issues through NCDC's Datzilla system. In addition, divisional averages for precipitation were recalculated using the method described in DIVISIONS above. Previous editions of the 2011 Publications included all precipitation stations regardless of missing data in the calculation of divisional averages. HDD/CDD values were recalculated to match the legacy method of calculation (truncation of monthly HDD/CDD values instead of rounding).

NOAA\National Climatic Data Center  
Attn: User Engagement & Services Branch  
151 Patton Avenue  
Asheville, NC 28801-5001

Customer Services Number: (828) 271-4800, option 2  
TDD : (828) 271-4010  
Fax number: (828) 271-4876

NCDC now offers free online access to the *Climatological Data* publication.  
Go to : [www.ncdc.noaa.gov](http://www.ncdc.noaa.gov) and choose Most Popular.