



CLIMATOLOGICAL DATA

VIRGINIA

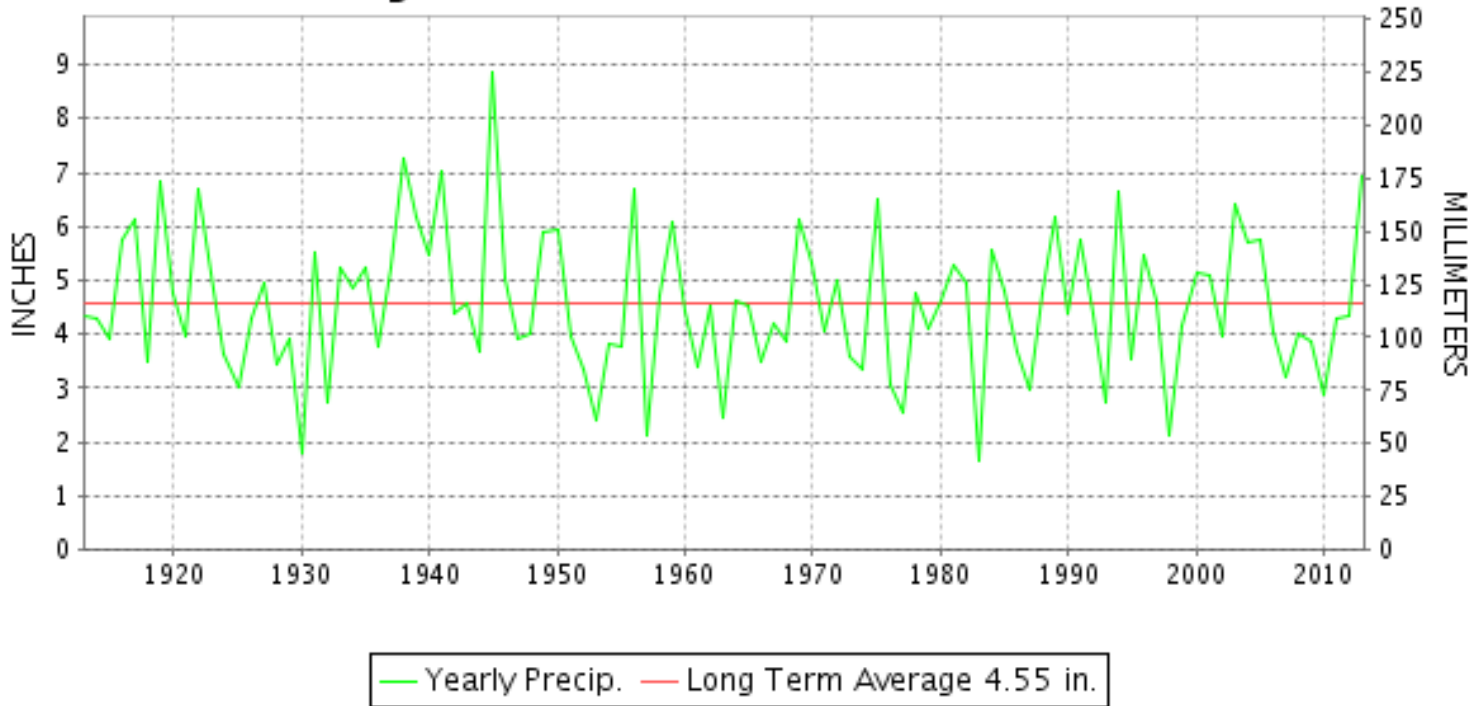
JULY 2013

VOLUME 123 NUMBER 07

ISSN 0364-5630

GHCND Ver: 3.12-upd-2013103005

JULY PRECIPITATION BY YEAR



TEMPERATURE AND PRECIPITATION EXTREMES

VIRGINIA

HIGHEST TEMPERATURE	98	JULY 19+	2 STATIONS
LOWEST TEMPERATURE	44	JULY 30+	MUSTOE 1 SW
GREATEST TOTAL PRECIPITATION	17.50		GALAX WTP
LEAST TOTAL PRECIPITATION	2.33		WOODSTOCK 2 NE
GREATEST 1 DAY PRECIPITATION	5.50	JULY 12	CHASE CITY

"I certify that this is an official publication of the National Oceanic and Atmospheric Administration (NOAA) It is compiled using information from weather observing sites supervised by NOAA/National Weather Service and received at the National Climatic Data Center(NCDC), Asheville, North Carolina 28801."

Director
National Climatic Data Center

noaa

National
Oceanic and
Atmospheric Administration

National
Environmental Satellite, Data
and Information Service

National
Climatic Data Center
Asheville, North Carolina

MONTHLY STATION AND DIVISION SUMMARY

STATION	TEMPERATURE (°F)										PRECIPITATION (IN)													
	AVERAGE MAXIMUM	AVERAGE MINIMUM	AVERAGE	DEPARTURE FROM NORMAL	HIGHEST	DATE	LOWEST	DATE	HEATING DEG. DAYS	COOLING DEG. DAYS	NO. OF DAYS				TOTAL	DEPARTURE FROM NORMAL	GREATEST 24 HOURS	DATE	ICE PELLETS, SNOW			NO. OF DAYS		
											MAX		MIN						TOTAL	MAX DEPTH ON GROUND	DATE	.10 OR MORE	.50 OR MORE	1.00 OR MORE
											>=90	<=32	<=32	<=0										
PALMYRA 3S	85.4	68.3	76.8	2.7	92	20+	55	26	0	373	6	0	0	0	5.76	1.40	1.91	03	0.0			9	3	2
PETERSBURG	87.1F	70.6	78.8F	-0.4	94	19	61	26	0	429	7	0	0	0	4.60	0.14	0.77	17	M 0.0	0		11	5	0
RICHMOND INTL AP	88.9	72.1	80.5	1.2	96	17+	63	26	0	490	16	0	0	0	5.88	1.37	1.84	10	0.0	0		12	3	2
SANDSTON	88.3	70.1	79.2	0.6	95	20	61	27+	0	449	16	0	0	0	MA 3.38	-0.91	0.62	29	0.0			7	1	0
WINTERPOCK 4 W															6.23		1.86	11	0.0			10	5	2
--DIVISIONAL DATA-----> WESTERN PIEDMONT 03			77.9	1.1B										5.98	1.62B									
ALTAVISTA														3.25		1.15	12	0.0				9	2	1
APPOMATTOX	85.4	67.6	76.5	0.6	92	19+	58	30	0	362	7	0	0	0	6.98	2.16	2.73	01	0.0			10	4	2
BEDFORD 4 NW														6.12		1.38	03	0.0				13	3	2
BROOKNEAL	86.5	68.3	77.4	5.3	94	19+	57	31+	0	393	8	0	0	0	6.06	1.70	1.47	12	0.0	0		12	4	2
CHARLOTTE COURT HOUSE	86.1	68.8	77.4	0.6	93	20+	59	30	0	393	6	0	0	0	12.47	8.23	5.21	12	0.0	0		11	8	4
CHARLOTTESVILLE 2W	85.5	68.7	77.1	-0.1	93	20+	60	26	0	382	7	0	0	0	7.01	1.69	1.98	12	0.0	0		14	5	2
CHATHAM	82.9	66.1	74.5	-0.2	91	17	55	31	0	301	2	0	0	0	6.46	1.97	1.27	12	0.0	0		14	5	2
CONCORD 4 SSW														5.56		2.66	01	0.0				7	2	2
DANVILLE REGIONAL AP	86.3	70.0	78.2	-0.1	94	18	60	30	0	417	8	0	0	0	11.50	6.83	2.99	12	0.0	0		19	6	3
FREE UNION	83.0	65.6	74.3		90	21+	56	26	0	296	2	0	0	0	M 6.11		2.54	12	0.0			9	4	1
HOLCOMB ROCK														6.49		1.10	03	0.0	0			14	5	2
HUDDLESTON 4 SW														4.37		1.04	03	0.0				11	2	1
LYNCHBURG INTL AP	85.8	67.9	76.9	1.6	93	18+	55	30	0	377	8	0	0	0	3.41	-0.95	1.01	02	0.0	0		7	2	1
MARTINSVILLE FLTR PLT	85.6M	66.6	76.1M	0.7	93	17	56	30	0	352E	5	0	0	0	4.61	0.14	1.01	08	0.0	0		11	5	1
MEADOWS OF DAN 5 SW	M	M	M								0	0	0	0	14.91		3.20	03	0.0	0		18	7	5
MONTEBELLO FISH CULTURAL STN	M	M	M		89	22	48	30	9E	184E	0	0	0	0	A 7.22		3.00	12	0.0			5	3	2
MONTICELLO	84.4	67.5	76.0	0.7	92	22+	59	26	0	347	6	0	0	0	9.62	4.13	1.84	04	0.0			12	9	3
PEDLAR DAM														6.80		1.57	03	0.0	0			13	6	1
ROCKY MT	84.2	66.2	75.2	0.3	91	17	56	31+	0	322	5	0	0	0	6.59	1.72	1.53	03	0.0	0		14	4	1
SOUTH BOSTON	85.9	68.6	77.3	0.5	95	19	59	30	0	388	6	0	0	0	7.07	2.74	1.34	04	0.0	0		13	5	3
STUART	83.5	65.8	74.7	-0.6	91	19	58	30	0	306	3	0	0	0	8.42	2.85	2.70	03	0.0	0		14	6	2
TYE RIVER 1 SE	84.3	67.1	75.7	-0.4	93	17	57	30	0	342	6	0	0	0	6.03	1.99	1.25	03	0.0			10	5	4
WOOLWINE														12.09		2.33	04	0.0	0			17	7	4
--DIVISIONAL DATA-----> NORTHERN 04			76.2	0.3B										7.41	2.78B									
BOSTON 4 SE	85.3	66.1	75.7	1.3	93	20+	53	27+	0	339	8	0	0	0	6.69	1.49	4.04	12	0.0	0		5	4	1
EDINBURG	84.1	63.8	74.0	0.9	94	19	52	29+	1	285	5	0	0	0	3.00	-0.67	1.14	12	0.0			5	2	2
FRONT ROYAL	84.8	66.5	75.7	0.7	94	19	55	27+	0	340	6	0	0	0	3.21	-0.09	1.06	23	0.0			6	2	1
LINCOLN	86.2	65.6	75.9	1.0	95	20+	54	26	0	348	9	0	0	0	A 3.97		1.60	23	0.0			6	2	1
LURAY 5 E	84.3	64.0	74.2	-0.3	93	20	52	26	1	292	6	0	0	0	6.49	2.38	2.79	12	0.0	0		9	4	2
MADISON	85.6M	68.5M	77.1M	1.3	92	20+	56	26	0	382E	7	0	0	0	MA 4.64	0.43	1.30	12	M 0.0	0		6	4	1

VIRGINIA
201307

MONTHLY STATION AND DIVISION SUMMARY

STATION	TEMPERATURE (°F)											PRECIPITATION (IN)												
	AVERAGE MAXIMUM	AVERAGE MINIMUM	AVERAGE	DEPARTURE FROM NORMAL	HIGHEST	DATE	LOWEST	DATE	HEATING DEG. DAYS	COOLING DEG. DAYS	NO. OF DAYS				TOTAL	DEPARTURE FROM NORMAL	GREATEST 24 HOURS	DATE	ICE PELLETS, SNOW			NO. OF DAYS		
											MAX		MIN						TOTAL	MAX DEPTH ON GROUND	DATE	.10 OR MORE	.50 OR MORE	1.00 OR MORE
											>=90	<=32	<=32	<=0										
MANASSAS	89.5M	71.3M	80.4M	2.2	97	20+	60	26	0	483E	13	0	0	0	MA 5.76		2.00	12	0.0			6	1	1
MT WEATHER	80.4	66.1	73.2	-0.8	89	20+	54	26	0	261	0	0	0	0	4.16	0.35	2.00	23	0.0			9	2	1
PIEDMONT RSCH STN	84.7	68.2	76.4	0.0	93	19	58	30+	0	363	6	0	0	0	5.94	1.24	1.50	03	0.0			8	5	2
SOMERSET	86.5	67.8	77.1	1.8	94	20+	54	26	0	381	9	0	0	0	3.96	-1.74	1.70	03	0.0			8	2	1
SPERRYVILLE	83.0M	65.6M	74.3M	-0.3	91	21+	55	26	0	295E	3	0	0	0	A 2.48	-1.84	0.90	22	0.0			7	1	0
STERLING RCS	87.5	68.7	78.1	2.2	95	20+	58	26	0	414	11	0	0	0	4.27	0.57	1.89	12	0.0	0		7	2	1
VIENNA	82.1	65.9	74.0	-0.6	90	20+	57	31+	0	287	3	0	0	0	4.55	0.36	1.27	12	0.0			9	3	2
WARRENTON 3 SE	M	M	M								0	0	0	0	M				0.0					
WASHGTN DULLES INTL AP	86.9	69.6	78.3	1.6	96	18	58	26	0	419	9	0	0	0	7.27	3.60	3.71	11	0.0	0		8	4	2
WASHINGTON REAGAN AP	88.3	74.2	81.2	1.4	97	17	65	25	0	511	11	0	0	0	4.43	0.70	1.39	12	0.0	0		8	4	2
WINCHESTER	M	M	M								0	0	0	0	M				0.0					
WINCHESTER 7 SE	86.6M	61.6M	74.1M	0.0	97	19+	49	26+	1E	286E	7	0	0	0	M 3.24	-0.35	1.80	23	M 0.0	0		4	2	1
WOODSTOCK 2 NE	85.2	65.8	75.5	2.0	94	19	53	26	0	332	7	0	0	0	2.33	-1.47	0.92	12	0.0			4	2	0
--DIVISIONAL DATA-----> CENTRAL MOUNTAIN 05			76.2	1.7B											4.48	0.57B								
BUCHANAN															6.62	2.09	2.35	03	0.0			13	3	1
BUENA VISTA															9.35		2.60	03	0.0			12	7	3
COVINGTON FLTR PLT	84.5	64.0	74.2	-0.4	92	20+	53	31+	0	293	3	0	0	0	6.70	2.73	1.85	04	M 0.0	0		12	4	1
CRAIGSVILLE 2 S															M				0.0					
DALE ENTERPRISE	83.3	63.6	73.5	0.0	93	19	53	30+	1	269	3	0	0	0	7.26	3.26	5.35	12	0.0	0		6	2	1
GATHRIGHT DAM	79.8	63.0	71.4	-0.6	88	17	52	30	2	209	0	0	0	0	4.76	0.86	1.28	04	M 0.0	0		12	1	1
GLASGOW 1 SE															10.14		2.98	03	0.0			15	8	3
HOT SPRINGS	79.7	61.7	70.7	-0.1	88	20	51	31+	10	191	0	0	0	0	6.06	1.85	1.80	04	0.0			13	3	1
LEXINGTON	85.0	65.9	75.5	0.3	92	20+	54	31+	0	331	7	0	0	0	6.43	2.31	2.02	03	0.0			12	4	1
MILLGAP	78.4	58.5	68.4	1.0	86	20+	45	31+	18	134	0	0	0	0	4.21	-0.46	1.61	22	0.0	0		12	1	1
MTN GROVE															M				0.0					
MUSTOE 1 SW	76.9	58.9	67.9	0.1	85	19+	44	30+	23	120	0	0	0	0	M				M 0.0					
NEW CASTLE															9.48		4.90	04	0.0			14	5	1
ROANOKE 8 N	84.9	67.2	76.1	0.8	93	17	56	30	0	350	6	0	0	0	10.57	5.39	3.35	04	0.0	0		12	6	2
ROANOKE INTL AP	85.1	68.9	77.0	0.3	94	16	56	30	0	382	7	0	0	0	12.73	8.69	3.88	10	0.0	0		11	5	5
STAUNTON WATER TRMTMT PLT	82.5	64.8	73.6	0.0	91	17	54	30	0	275	4	0	0	0	3.61	-0.29	0.82	22	M 0.0	0		11	2	0
WAYNESBORO WTP	83.9M	64.9M	74.4M	0.9	93	20	54	31+	0	299E	4	0	0	0	A 4.22	-0.01	1.06	23+	M 0.0	0		6	3	2
--DIVISIONAL DATA-----> SOUTHWESTERN MOUNTAIN 06			73.0	-0.4B											7.30	3.33B								
ABINGDON 3S	82.3	63.7	73.0	0.0	89	19+	54	29	0	256	0	0	0	0	5.79	0.76	2.10	04	M 0.0	0		10	4	2
BIG STONE GAP	83.2	64.1	73.7	-0.7	92	17	53	29	0	280	1	0	0	0	4.65	-0.64	0.65	08	0.0	0		16	3	0
BLACKSBURG NWSO	80.6	62.1	71.4	0.2	89	17	51	31+	3	209	0	0	0	0	8.01	3.75	3.00	04	0.0	0		11	6	1

VIRGINIA
201307

MONTHLY STATION AND DIVISION SUMMARY

STATION	TEMPERATURE (°F)										PRECIPITATION (IN)													
	AVERAGE MAXIMUM	AVERAGE MINIMUM	AVERAGE	DEPARTURE FROM NORMAL	HIGHEST	DATE	LOWEST	DATE	HEATING DEG. DAYS	COOLING DEG. DAYS	NO. OF DAYS				TOTAL	DEPARTURE FROM NORMAL	GREATEST 24 HOURS	DATE	ICE PELLETS, SNOW			NO. OF DAYS		
											MAX		MIN						TOTAL	MAX DEPTH ON GROUND	DATE	.10 OR MORE	.50 OR MORE	1.00 OR MORE
											>=90	<=32	<=32	<=0										
BURKES GARDEN	76.8	57.8	67.3	-0.1	83	20+	46	31+	22	101	0	0	0	0	6.03	1.55	1.50	28	0.0	0		14	3	2
CHRISTIANSBURG	79.3	62.9	71.1	-1.3	88	19+	55	30+	0	199	0	0	0	0	7.57	3.22	1.72	04	0.0	0		13	6	3
CLINTWOOD 1 W	80.3	60.5	70.4	-0.7	87	17	51	31+	6	181	0	0	0	0	4.05	-0.70	0.70	08	0.0	0		10	2	0
COPPER HILL	76.8M	61.3M	69.0M		88	18	51	31+	13E	150E	0	0	0	0	M 11.75		4.37	14	M 0.0	0		8	6	3
GALAX RADIO WBRF	79.5	61.6M	70.5M	-0.5	88	17	52	30+	0	180E	0	0	0	0	M 17.01	12.77	2.64	04	0.0			13	9	8
GALAX WTP	79.0	61.3	70.1	-0.3	87	17	52	30	0	165	0	0	0	0	17.50		2.65	04	M 0.0	0		17	10	6
GRUNDY	79.7	63.6	71.7	-1.1	85	18+	56	30	0	212	0	0	0	0	5.38	0.18	1.20	24	0.0	0		9	5	2
JOHN FLANNAGAN LAKE	M	M	M		90	17	54	31+	0	264E	1	0	0	0	M				M 0.0	0				
LAFAYETTE 1 NE														10.50		3.54	04	0.0				13	7	2
LEBANON	82.1	61.1	71.6	-0.3	89	19+	51	30+	1	212	0	0	0	0	5.66	1.09	1.20	04	0.0	0		14	5	1
NORA 4 SSE	77.5	62.3	69.9	-1.8	84	19+	53	29	0	161	0	0	0	0	8.44	3.69	2.61	02	0.0	0		13	4	2
NORTH FORK LAKE	M	M	M		89	22+	51	30	2E	246E	0	0	0	0	MA 2.43		0.56	11	0.0			4	1	0
PULASKI 2 E	83.0	62.5	72.8	0.5	90	17	52	31	1	249	1	0	0	0	8.94	5.01	2.50	04	M 0.0	0		13	7	2
RADFORD 3 N	80.9	63.1	72.0	-0.4	89	17	53	30+	0	224	0	0	0	0	9.12	4.90	1.80	04	0.0	0		13	7	3
RICHLANDS	81.9	61.7	71.8	0.3	89	17	52	31+	1	220	0	0	0	0	5.32	1.00	2.00	04	M 0.0	0		10	3	1
SALTVILLE 1N	82.9M	62.7	72.8M	-0.1	90	19+	53	29	0	248E	3	0	0	0	6.27	1.24	1.62	04	0.0			13	2	2
STAFFORDSVILLE 3 ENE	80.4	62.6	71.5	0.0	88	17	53	31+	0	208	0	0	0	0	11.91	7.82	2.23	04	0.0			13	7	3
TROUT DALE 3 SSE	M	M	M								0	0	0	0	M				0.0					
WILLIS														12.10		3.55	03	0.0	0			15	6	3
WISE 3E	78.3	61.4	69.8	-1.1	84	16	49	29	7	163	0	0	0	0	6.19	0.89	2.61	18	0.0	0		10	3	1
WYTHEVILLE 1 S	M	M	M		84	11	57	01	0	221E	0	0	0	0	M				M 0.0	0				
--DIVISIONAL DATA----->			71.1	-0.1B										7.97	3.68B									

VIRGINIA
201307

DAILY PRECIPITATION (INCHES)

STATION	TOTAL	DAY OF MONTH																																
		01	02	03	04	05	06	07	08	09	10	11	12	13	14	15	16	17	18	19	20	21	22	23	24	25	26	27	28	29	30	31		
VIRGINIA																																		
TIDEWATER 01																																		
DISPUTANTA	5.67	0.95	0.87	0.84				0.07		0.23		1.07	0.02				0.03					0.16	0.02		1.16						0.25			
EASTVILLE	A 4.11	0.01	0.38	1.30					0.01			0.70	0.25					*	*	0.01 _a		0.10	0.05		1.20			*	0.10 _a					
EMPORIA 1 WNW	5.81	0.75	0.20	0.69	0.12				0.20	0.34		1.46	0.03	0.47								0.05	0.14		1.03						0.33			
FREDERICKSBURG SEWAGE	2.55	0.71	0.32	0.18	0.06				0.18		0.11	0.16	0.41	0.04	0.29	T							0.04						T	0.05				
HAMPTON UNIV	M	-	-	-	-	-	-	-	-	-	-	-	-	-	-	-	-	-	-	-	-	-	-	-	-	-	-	-	-	-	-	-	-	-
HOLLAND 1 E	3.18		0.08	0.46	0.04					0.27		1.30																					0.04	
HOPEWELL	5.24	0.60	0.42	0.04	0.01							0.81	0.53	0.45			0.02						0.12		0.09		0.45				0.04		0.39	
NORFOLK INTL AP	8.19	0.39	1.39	0.18					T			1.23	0.48	0.11								0.03	3.27		0.10				T			T		
NORFOLK SOUTH	6.00	0.27	1.03	0.02					T		T	0.92	0.58	0.13								T	1.15					T				T		
NORTH	M	-	-	-	-	-	-	-	-	-	-	-	-	-	-	-	-	-	-	-	-	-	-	-	-	-	-	-	-	-	-	-	-	
PAINTER 2W	3.31	0.14	0.05	0.60				0.02			0.94	0.25	0.02										0.21	0.01		0.64				0.43				
STONY CREEK 2 N	8.04	2.45	0.12	0.33				0.05	0.17	0.17		2.67				0.23						0.13	0.04		1.12	0.01						0.10		
SUFFOLK LAKE KILBY	4.95	0.42	0.32	T	0.03			0.08		T	0.62	0.11	0.42	0.02		0.04						0.04	0.71	0.04	T	1.70			0.37			0.03		
WAKEFIELD INW	8.21	1.63	0.72	0.38				0.15	0.07		2.84	0.80	0.26			0.01						0.05	0.01		0.20	0.04		T	0.07	0.24		0.74		
WALKERTON 2 NW	4.72	0.45	0.52	0.30				0.14		0.05	1.02	0.34										0.54	0.06			0.06			1.10			0.15		
WALLACETON LK DRUMMOND	6.48	0.05	0.23	0.92	0.60			0.10	0.22		2.61	0.57	0.10	0.25		0.70						0.13				0.13						0.21		
WALLOPS ISLAND NASA TEST FACIL	5.74	0.01	0.24	0.10				0.01	0.59	0.81	1.06	1.12	0.01									0.07	T	0.25	1.07	0.13		0.06	0.21					
WARSAW 2 NW	6.21	1.08	0.50		0.57			0.10		0.01	0.47	0.31	0.31									1.40	0.45	0.03						0.95		0.03		
WEST POINT 2 NW	3.61	0.68	0.48	0.02				0.10	T		0.49	0.44	0.16										0.67	0.02		0.07					0.48			
WILLIAMSBURG 2 N	7.07	1.83	0.77	0.16				0.03	0.53		0.10	0.98	0.12									0.49	1.03			0.86				0.07		0.10		
EASTERN PIEDMONT 02																																		
ALBERTA 5N	6.37	1.01	0.66	0.19	0.08			0.19	0.09	T	0.75	2.33	T	0.05									0.33	T		0.15	T		T	0.42				
AMELIA COURTHOUSE 1	5.65	1.46		0.16				0.10		0.01	1.42	1.18	0.02									0.01	1.18	0.01		0.01				0.09				
ASHLAND	4.69	0.58	0.27	1.02							0.73	0.74	0.20				0.04						0.39			0.10	0.06	0.14	0.01	0.38			0.03	
BREMO BLUFF	7.27	0.52	0.64	1.98						0.78	0.27	0.82	0.11												0.06				0.14	0.14			0.02	
BUCKINGHAM	7.46	0.28	0.19	1.55	0.29			0.16	0.01		0.29	2.43	0.92	0.52			0.08	0.07				0.02	0.22			0.27			0.02	0.14		0.14		
CAMP PICKETT	7.39	0.90	1.75	0.20				0.22			0.52	2.10	0.02	0.19									0.77			0.02					0.70			
CHASE CITY	11.53	0.14	0.74	0.30	0.10			0.46			0.65	5.50	0.09	0.07									0.77	0.08		0.11				1.56				
CLARKSVILLE	M 5.58	-	0.55	0.40	0.15	-		1.10	-	0.15		2.00	0.10	0.30									0.70						0.03	0.10				
CORBIN	2.51	0.21	0.22	0.13	0.12			0.07		0.03	0.53	0.26		0.11									0.08								0.75			
CROZIER	M 6.89	1.32	0.72	0.34	0.54			0.03	0.01		1.66	1.02											0.03								0.92			
FARMVILLE 2 N	M 8.66	0.70	0.56	0.43	0.33	-		0.06			1.77	4.17	0.05	0.10									0.12		0.03	0.03		-	0.01	0.01				
GREENBAY 3 NE	5.37	0.51	0.32	0.23	0.33			0.43			1.04	1.34		0.09									0.82			0.11					0.15			
JOHN H KERR DAM	5.23	0.07	0.93	0.21	0.12			0.79	0.01	0.04		1.19		0.77									0.24	0.12		0.02			0.02	0.67				
LOUISA	3.81	0.19	0.70	0.86	0.01			0.21		0.17	0.21	0.78		0.02									0.01	0.01				0.31	0.32	0.01				
PALMYRA 3S	5.76	0.20	0.24	1.91	0.38			0.09	0.01		1.47	0.80										0.04	0.36	0.11						0.15				
PETERSBURG	4.60	0.21	0.62	0.33				0.11	0.15	0.01	0.55	0.32	0.16	0.05									0.52	0.08		0.63	0.02		0.01	0.06				
RICHMOND INTL AP	5.88	0.28	0.30	0.21				0.18	T	1.84	0.12	0.44	0.18										0.15			0.04			0.63	0.01			0.30	
SANDSTON	MA 3.38	0.22	0.29	*	0.49 _a			0.15			0.27	0.17	0.33										*	0.76 _a				0.08	0.62	-	-			
WINTERPOCK 4 W	6.23	0.57	1.23	0.15	0.10			0.20	0.03		1.86	0.68	0.04	0.09				0.64	T				0.22	0.01		0.04	0.01			0.36				

VIRGINIA
201307

DAILY PRECIPITATION (INCHES)

STATION	TOTAL	DAY OF MONTH																																	
		01	02	03	04	05	06	07	08	09	10	11	12	13	14	15	16	17	18	19	20	21	22	23	24	25	26	27	28	29	30	31			
WESTERN PIEDMONT 03																																			
ALTAVISTA	3.25			0.25	0.26	0.10	0.01		0.30			0.22	1.15	0.01	0.10	0.02			0.08																0.50
APPOMATTOX	6.98	2.73	0.05	0.89	0.12	0.05			0.29			0.29	0.51		0.32				0.24			T	0.33				1.07					0.03	0.06		
BEDFORD 4 NW	6.12	0.25	0.09	1.38	0.34	0.26	0.48		0.48			0.20	1.32		0.16	0.08						0.14	0.62	0.02					0.14	0.16					
BROOKNEAL	6.06	0.10	0.07	0.72	0.27	0.33		0.05	0.35			0.15	1.47		0.10				0.02	0.14		0.40	1.15	0.02		0.02				0.03	0.67				
CHARLOTTE COURT HOUSE	12.47	0.50	0.41	1.42	0.87				0.17			1.05	5.21	0.20									1.19			0.50				0.03	0.92				
CHARLOTTESVILLE 2W	7.01	T	0.10	1.07	0.40	0.10	0.02		0.12	0.69	T	0.95	1.98	0.10	0.19				0.07	0.27		T	0.10			0.28			0.01	0.56					
CHATHAM	6.46	0.14	0.15	0.39	0.20	0.08	0.19	0.11	1.15			0.23	1.27	0.05	0.12								0.65			0.80			0.10	0.83					
CONCORD 4 SSW	5.56	2.66	0.05	0.29	0.34	0.08	0.01		0.35			0.32	1.08	0.01	0.06				0.03				0.07							0.21					
DANVILLE REGIONAL AP	11.50	0.22	0.47	0.45	0.28	0.01	0.10	0.45	0.13	0.85	0.24	1.44	2.99	0.23			T		0.02				1.12			0.81	0.10		0.19	0.20	0.22		0.98		
FREE UNION	M 6.11		0.07	0.85	0.17	0.06	0.34		0.11	0.29	0.03	0.17	2.54	0.05	0.73				0.03	0.07			T	0.05	0.03		0.52			-	-	-	-		
HOLCOMB ROCK	6.49	0.08	0.09	1.10	1.00	0.40	0.51		0.32			0.61	0.04	0.04	0.28						0.53		0.24	0.26	0.41	0.19		0.09	0.13	0.17					
HUDDLESTON 4 SW	4.37		0.47	1.04	0.43	0.18	0.08	0.12	0.58			0.28	0.14	0.03	0.46						0.05			0.13	0.02	0.05	0.02			0.29					
LYNCHBURG INTL AP	3.41	0.07	1.01	0.47	0.27	0.32		0.02	0.32		0.50	0.08	0.08	0.05	T	T			0.15			T	T	0.01	T	T		0.02	T				0.04		
MARTINSVILLE FLTR PLT	4.61	0.05	0.08	0.58	0.52	0.68	0.10	0.12	1.01			0.05	0.02	0.10	0.05						0.15			0.02	0.02		0.27			0.59	0.20				
MEADOWS OF DAN 5 SW	14.91	0.12	0.11	3.20	2.85	0.33	0.33	0.43	1.59	0.03		0.22	0.03		0.38	0.21					0.76	0.02		0.43	0.45		1.12			1.50	0.58	0.22			
MONTEBELLO FISH CULTURAL STN	A 7.22	*	0.38 _a	1.10	*	0.71 _a	*	*	0.25 _a	0.01		0.20	3.00	*	*	*	*	0.20 _a	0.01	*	*	*	0.40 _a	0.20	0.76			*	*	0.00 _a					
MONTICELLO	9.62	0.27	0.14	1.59	1.84				0.71 _a	0.68		0.51	0.90		0.91				T	T			0.06	0.01		1.10			0.40	0.50					
PEDLAR DAM	6.80	0.07	0.03	1.57	0.64	0.60	0.56		0.14	0.26		0.87	0.50		0.09				T	0.47	T		0.09	0.14	0.09	0.21			0.03	0.16	0.28				
ROCKY MT	6.59	0.05	T	1.53	0.57	0.73	0.21	0.02	0.39			0.81	0.27	0.03	0.20	0.26				0.02	T		0.11	0.34	0.23	T	0.32			0.46	0.04				
SOUTH BOSTON	7.07	0.20	0.21	0.24	1.34	0.03			0.27		0.12	0.28	1.32	0.05	0.12	0.01							0.54	1.15		0.07			0.45	0.67					
STUART	8.42	0.07		2.70	1.04	0.75	0.10	0.30	0.41		0.05	0.05	0.10		0.21	0.15						0.08	0.03	0.35	0.01	0.55			0.50	0.80	0.17				
TYE RIVER 1 SE	6.03			1.25	0.21		0.12					0.52	0.19	T						0.14	0.11		0.08	T		1.18			1.11	1.12					
WOOLWINE	12.09	0.40	0.03	1.70	2.33	0.78	0.13	0.10	0.41		0.10	0.32	1.57		0.47	0.55							0.20	0.25		0.92			0.02	1.30	0.06				
NORTHERN 04																																			
BOSTON 4 SE	6.69			0.46	0.58	0.02			0.54				4.04	0.07																					
EDINBURG	3.00		0.02		0.04				1.06	0.02	0.03	0.02	1.14	0.23	0.03									0.19	0.03					0.02					
FRONT ROYAL	3.21		0.04	0.02	0.12	0.40			0.05			0.75	0.30	0.02										0.44	1.06					0.01					
LINCOLN	A 3.97						*	*	*	*	*	*	*	*	2.03 _a											1.60					0.34				
LURAY 5 E	6.49	0.01	0.35	0.26		0.05			0.68			0.01	2.79	0.34	0.12								0.53	1.16	0.13				0.05				0.01		
MADISON	MA 4.64	0.05	0.10	0.70					0.90		*	0.50 _a	1.30											0.93						0.16	-	-			
MANASSAS	MA 5.76	0.35	-	*	2.20 _a				0.15	-	*	0.15 _a	2.00	0.20	0.05									0.16	0.05			-	-	0.45					
MT WEATHER	4.16	0.03			0.20				0.45		0.01	0.01	0.78	0.14	0.10									0.22	2.00	0.10				0.02	0.10				
PIEDMONT RSCH STN	5.94	0.02		1.50	0.35				0.58			0.44	0.95		0.02									0.52						1.13	0.43				
SOMERSET	3.96	0.05	0.16	1.70	0.27				0.26	0.06	T	0.02	0.70	0.09	0.30									0.16	0.02					0.12	0.04	0.01			
SPERRYVILLE	A 2.48	0.35	0.10	0.33	0.20	0.02			0.20	0.02		0.02	*	0.10 _a	0.15									0.90						0.05	0.04				
STERLING RCS	4.27	0.03	0.01	0.25	0.36				0.24	0.02	0.04	0.03	1.89	0.22	0.03															0.97	0.18				
VIENNA	4.55	0.33	0.04	0.61	1.14				0.14	0.23		0.02	1.27	0.21										0.26	0.07					0.23					
WARRENTON 3 SE	M																																		
WASHGTN DULLES INTL AP	7.27	0.01	0.09	0.62				0.08	0.11	T	T	3.71	1.14	0.01									0.13	0.22						0.92	0.09		0.14		
WASHINGTON REAGAN AP	4.43	0.60	0.17	0.15				0.04	0.04	T	0.57	T	1.39	0.07							1.04		T	0.10	T				0.26	T			T		
WINCHESTER	M	-	-	-	-	-	-	-	-	-	-	-	-	-	-	-	-	-	-	-	-	-	-	-	-	-	-	-	-	-	-	-	-	-	

VIRGINIA
201307

DAILY PRECIPITATION (INCHES)

STATION	TOTAL	DAY OF MONTH																																
		01	02	03	04	05	06	07	08	09	10	11	12	13	14	15	16	17	18	19	20	21	22	23	24	25	26	27	28	29	30	31		
WINCHESTER 7 SE	M 3.24	0.02	0.11	0.02	0.08				0.36	0.01	0.01	0.04	0.60	0.07	0.03							0.06	1.80	0.02	-			0.01					T	
WOODSTOCK 2 NE	2.33		0.02		0.01				0.21				0.92	0.23	0.08						0.05		0.81											
CENTRAL MOUNTAIN 05																																		
BUCHANAN	6.62	T		2.35	0.59	0.91	0.34		0.37			0.12	0.38		0.10					0.41	0.05		0.36	0.15				0.18	0.31					
BUENA VISTA	9.35	0.22	0.35	2.60	0.66	1.43	0.02		0.46	0.70		0.64	0.48	0.02	0.02								1.00	0.50				0.21	0.04					
COVINGTON FLTR PLT	6.70	0.15	0.03	0.41	1.85	0.22	0.03		0.34	0.02		0.47	0.19	0.02	0.09				0.78	0.02			0.33	0.05	0.96			0.14	0.55	0.03			0.02	
CRAIGSVILLE 2 S	M	0.03	0.02	0.41	0.42	0.25	T	0.22	0.01	0.29		0.05	0.06	-	-	-	-	-	-	-	-	-	-	-	-	0.33	-	-	-	-	-	-	-	
DALE ENTERPRISE	7.26	0.06	0.02	0.13		0.11			0.40	0.02	0.02	0.01	5.35	0.05	0.15								0.05	0.77	0.02				0.08			0.02		
GATHRIGHT DAM	4.76	0.34	0.07	0.22	1.28	0.08	0.22		0.31			0.25	0.45	0.02	0.05					0.49	0.02		0.37	0.05	0.19			0.11	0.22	0.02			T	
GLASGOW 1 SE	10.14	1.38	0.54	2.98	0.65	0.71	0.07		0.18			1.14	0.04	0.01	0.19	0.13				0.60	0.05		0.20	0.11	0.54			0.08	0.27	0.27				
HOT SPRINGS	6.06	0.38	0.03	0.28	1.80	0.13	0.05		0.53	0.01		0.48	0.23		0.17				0.31	0.73		0.30	0.08	0.16		0.01	0.06	0.32					T	
LEXINGTON	6.43	0.40	0.11	2.02	0.33	0.69	0.02		0.10	0.43		0.55	0.68	0.04	0.06				0.02				0.20	0.45		0.03		0.27	0.03					
MILLGAP	4.21	0.09		0.12	0.45	0.13	0.20		0.15	0.02	0.05	0.07	0.48	0.24	0.02					0.15		0.13	1.61	0.11	0.04			0.01	0.14					
MTN GROVE	M	-	-	-	-	-	-	-	-	-	-	-	-	-	-	-	-	-	-	0.18	0.15		T	0.05	1.40	0.10		0.24	0.10	T			T	
MUSTOE 1 SW	M	0.17	0.23	0.62	0.25	0.29	0.00 ^L	0.17 ^L	0.16	0.06	0.16	0.54	0.48	0.11	0.03	0.00 ^L	0.05 ^L	0.00 ^L	0.00 ^L	0.24 ^L	0.03	1.20	0.15	0.01	0.00 ^L	0.00 ^L	0.00 ^L	0.20 ^L	0.02	0.00 ^L	0.00 ^L	0.10 ^L		
NEW CASTLE	9.48	0.79	0.50	0.77	4.90	0.23	0.11		0.56			0.36		0.17	0.03					0.17	0.01		0.08	0.25	0.11			0.21	0.23					
ROANOKE 8 N	10.57	0.18		2.73	3.35	0.78			0.37			0.84	0.75		0.28					0.61			0.19					0.12	0.32					
ROANOKE INTL AP	12.73	0.01	2.79	1.69	1.66	0.01	0.02	0.26			3.88	0.14		0.37	0.01	T	1.15						0.16	0.01				0.43	T				0.14	
STAUNTON WATER TRMTMT PLT	3.61	0.01	0.32	0.34	0.15	0.11	0.01		0.22			0.05	0.63	0.04	0.42	0.01						0.01	0.13	0.82	0.17	T	0.05		0.12					
WAYNESBORO WTP	A 4.22	0.06	0.03	0.73	0.37	0.02			0.16	0.03		0.06	1.06	0.02	0.09					0.05			0.21	1.06	*	0.18 _a		0.07	0.02					
SOUTHWESTERN MOUNTAIN 06																																		
ABINGDON 3S	5.79	0.12	0.10	0.05	2.10	0.10	0.02	0.07	0.05				0.05								1.28	0.23	0.50		0.10	0.80			0.17				0.05	
BIG STONE GAP	4.65	0.17	0.07	0.10	0.21	0.22	0.07	0.10	0.65			0.11	0.02		0.32	0.14					0.55	0.59	0.11	0.09	0.33	0.32	0.04		0.27				0.17	
BLACKSBURG NWSO	8.01	0.61	0.09	0.60	3.00	0.21	0.03	0.05	0.82		T	0.48		0.13	0.16					0.01	T		0.04	0.09	0.11	0.06	0.02		0.74	0.73	0.03		T	
BURKES GARDEN	6.03	0.22	0.22	0.05	1.37	0.25	0.04	0.13	0.06		0.03	0.04	0.09	0.22	0.25	0.22				0.01	0.21	0.22	0.02		0.06	0.14		0.50	1.50	0.02			0.02	
CHRISTIANSBURG	7.57	0.30	0.05	1.08	1.72	0.18	0.29	0.10	1.19		T	0.68		0.03	0.10	0.13				T		0.01	0.03	0.23	0.02			0.58	0.85				T	
CLINTWOOD 1 W	4.05	0.30	0.07	0.02	0.26	0.08	0.03	0.43	0.70		T	0.55	T		0.02						0.22	T	0.47	T	0.03	0.35	T		0.42				0.10	
COPPER HILL	M 11.75	0.75	0.05	1.35	2.74	0.98	0.03	0.05	-	-	-	-	-	-	4.37	0.08						0.03		0.57		0.05		0.25	0.45					
GALAX RADIO WBRF	M 17.01	2.16	1.20	1.27	2.64	0.80	-	-	1.40	0.01		0.31	1.75	2.36		0.03	0.01				0.04		0.13		0.40	0.01		1.98	0.46	0.01			0.04	
GALAX WTP	17.50	2.24	0.75	1.62	2.65	0.84	0.21	0.40	0.87			0.40	1.72	2.15	0.39	0.13						0.05		0.03	0.38	0.26	0.01	0.01	1.60	0.77			0.02	
GRUNDY	5.38	1.00	0.96	0.04	0.26		0.07	0.02	0.14			0.18	0.55								0.77	T		0.10	0.07	1.20			T				0.02	
JOHN FLANNAGAN LAKE	M	0.69	0.83	0.14	0.25	-	-	-	-	-		0.98		-	-						0.17	-	-	0.14	0.25	-		-	-	-	0.19			0.04
LAFAYETTE 1 NE	10.50	0.12	0.01	1.72	3.54	0.41	0.10	0.06	0.60			0.50	0.97		0.40	0.10				0.46			0.09	0.09				0.53	0.80					
LEBANON	5.66	0.26	0.22	0.53	1.20	0.18	0.11	0.12	0.63			0.69			0.01						0.56			0.02	0.42	0.38	0.12		0.08	0.10				0.03
NORA 4 SSE	8.44	1.36	2.61	0.05	0.60	0.29	0.04	0.44	0.35		0.09	0.76	0.06		0.10	T					0.38	0.09	0.48	0.02	0.33	0.20		T	T	0.15			0.04	
NORTH FORK LAKE	MA 2.43	0.27 _a	0.30	0.03	-	-	-	-	-			0.56		*	*	0.04 _a					0.30	*	*	*	0.70 _a	0.23	T	-	*	*	0.00 _a			-
PULASKI 2 E	8.94	0.25	0.17	0.44	2.50	0.28	0.05	0.02	1.11			0.50	0.01	0.44		0.06						0.06		0.07	0.57	0.43	0.64	0.05	0.60	0.65	0.03			0.01
RADFORD 3 N	9.12	0.32	0.13	1.02	1.80	0.26	0.02	0.04	0.68			1.68		0.02	0.02	0.01						0.60		0.35	0.38	0.18	0.01	0.69	0.91					
RICHLANDS	5.32	0.12	0.22	0.03	2.00	0.05		0.35	0.83			0.01	0.04	0.12	0.01	T					0.08	0.09		0.14	0.04	0.11	0.51	0.02	0.02	0.47			0.06	
SALTVILLE 1N	6.27	0.13	0.43	0.03	1.62	0.39		0.29	0.41			0.43				0.13						0.13	0.01		1.39	0.22	0.14	0.09	0.07	0.33	T			0.03
STAFFORDSVILLE 3 ENE	11.91	0.32	0.08	0.35	2.23	0.32	0.12		0.98			1.95		0.85	0.02	0.01					0.03	0.80	0.01	2.20	0.02	0.45	0.03	0.40	0.71				0.01	

VIRGINIA
201307

DAILY PRECIPITATION (INCHES)

STATION	TOTAL	DAY OF MONTH																														
		01	02	03	04	05	06	07	08	09	10	11	12	13	14	15	16	17	18	19	20	21	22	23	24	25	26	27	28	29	30	31
TROUT DALE 3 SSE	M	-	-	-	-	-	-	-	-	-	-	-	-	-	-	-	-	-	-	-	-	-	-	-	-	-	-	-	-	-	-	-
WILLIS	12.10	0.71	0.07	3.55	1.74	0.40	0.31	0.34	0.35				0.21	0.14	0.08		0.15	0.05	0.02		0.41	0.78	0.54				1.87	0.38				
WISE 3E	6.19	0.39	0.09	0.31	0.31	0.13	T	0.89			0.03	0.05		0.06					2.61	0.10	0.03	0.50	0.39	0.03							0.07	0.20
WYTHEVILLE 1 S	M	0.65	0.11	0.10	-	-	0.01	0.01	0.47	-	-	1.83		-	-	-	-	-	-	-	-	-	-	-	-	-	-	-	-	-	-	-

VIRGINIA
201307

DAILY TEMPERATURES (°F)

STATION	OB. TIME	MAX/MIN	DAY OF MONTH																															AVERAGE
			01	02	03	04	05	06	07	08	09	10	11	12	13	14	15	16	17	18	19	20	21	22	23	24	25	26	27	28	29	30	31	
VIRGINIA TIDEWATER 01 DISPUTANTA	07	MAX	84	81	83	87	88	88	88	88	86	89	89	84	78	84	88	91	94	93	93	92	90	89	88	89	89	79	83	84	86	83	83	86.8
		MIN	59	70	70	63	69	69	70	71	70	72	72	68	68	69	70	70	68	71	73	74	73	70	70	70	69	60	60	66	68	62	62	68.3
EASTVILLE	07	MAX	82	80	85	85	85	89	88	87	84	86	87	80	77	84	84	87	90	86	91	90	90	89	84	86	86	76	79	85	79	80	82	84.6
		MIN	75	75	72	75	77	77	78	78	76	77	78	73	72	73	76	77	77	76	80	79	78	75	76	78	70	66	66	68	74	65	67	74.3
EMPORIA 1 WNW	08	MAX	84	81	84	87	89	90	89	89	86	89	89	83	77	85	88	92	95	95	94	94	89	88	88	88	92	82	84	86	87	85	86	87.6
		MIN	70	72	71	72	71	72	71	71	71	72	74	67	68	71	70	71	72	72	73	73	70	71	72	70	62	63	66	71	64	65	70.0	
FREDERICKSBURG SEWAGE	07	MAX	89	85	81	87	90	90	91	91	90	89	90	83	76	83	88	92	93	94	95	96	94	92	91	91	85	81	85	87	88	83	84	88.2
		MIN	70	71	70	72	71	70	75	71	70	71	71	66	67	68	69	70	74	74	75	78	72	70	71	71	68	61	61	67	65	62	64	69.5
HAMPTON UNIV	17	MAX																																M
		MIN																																
HOLLAND 1 E	08	MAX	83	85	87	88	91	92	91	92	87	89	91	88	81	89	90	92	95	95	93	95	91	92	92	90	92	81	85	90	88	89	89	89.5
		MIN	67	70	68	68	68	68	67	70	68	70	70	66	66	70	70	76	68	68	74	70	69	70	67	66	59	59	70	70	69	60	60	68.1
HOPEWELL	16	MAX	85	83	88	89	90	90	90	89	89	88	82	84	89	92	95	93	94	94	91	90	89	89	89	82	81	85	85	87	84	84	88.0	
		MIN	74	72	74	75	73	75	74	74	74	76	74	72	72	75	74	75	74	77	77	77	76	75	75	74	68	64	68	71	72	67	68	73.1
NORFOLK INTL AP	24	MAX	84	88	87	90	91	92	92	87	90	92	87	82	87	88	89	92	92	93	94	91	92	89	90	93	78	83	83	88	83	84	84	88.2
		MIN	76	72	73	74	73	74	75	76	75	76	73	73	72	76	73	77	77	74	77	77	76	74	76	74	69	67	66	71	72	67	72	73.5
NORFOLK SOUTH	24	MAX	83	87	86	89	91	90	90	85	88	89	86	80	88	88	90	93	91	92	92	89	90	89	89	90	76	82	83	87	81	85	83	87.2
		MIN	73	71	70	72	72	73	73	75	74	75	71	70	70	73	70	74	74	72	76	76	74	73	74	73	67	66	64	69	70	65	69	71.5
NORTH	07	MAX																																M
		MIN																																
PAINTER 2W	16	MAX	81	83	84	86	87	89	89	88	88	89	84	78	84	86	90	92	94	95	95	92	89	89	88	89	87	81	83	84	83	84	80	86.8
		MIN	73	73	70	74	71	76	73	76	73	77	74	72	69	73	69	76	72	71	75	79	78	73	75	72	67	65	64	68	69	61	64	71.7
STONY CREEK 2 N	08	MAX	86	81	83	88	89	91	89	90	87	88	90	83	77	85	90	92	95	93	93	92	90	89	89	90	80	84	86	87	84	86	87.6	
		MIN	72	70	72	71	72	70	71	71	72	71	74	68	68	70	72	71	72	71	73	75	75	72	71	73	70	61	61	65	70	68	62	70.1
SUFFOLK LAKE KILBY	24	MAX	81	85	85	89	90	89	88	83	87	88	84	79	89	89	93	94	95	95	87	89	87	87	88	78	83	84	84	84	85	82	87.0	
		MIN	73	71	71	74	75	77	76	74	73	70	72	72	73	73	73	73	74	73	78	74	73	73	75	72	69	69	60	61	67	65	69	71.7
WAKEFIELD 1NW	24	MAX	80	85	89	91	91	90	90	87	89	90	82	79	86	88	92	95	94	94	92	90	90	90	90	90	79	85	87	88	84	85	83	87.9
		MIN	71	70	70	72	71	72	72	72	72	74	71	69	69	71	70	71	70	72	75	75	72	70	74	71	65	61	64	68	65	61	64	69.8
WALKERTON 2 NW	18	MAX	85	84	92	89	91	92	92	90	91	92	84	81	90	92	95	95	94	95	98	96	95	92	91	92	89	83	87	88	88	86	85	90.1
		MIN	73	75	78	75	75	81	76	74	75	75	75	73	74	71	74	78	74	74	76	78	79	73	75	72	69	64	67	72	71	63	65	73.4
WALLACETON LK DRUMMOND	08	MAX	85	84	88	89	90	93	92	90	90	92	89	82	90	90	94	95	95	95	96	93	91	92	94	91	95	83	87	88	90	89	88	90.2
		MIN	67	67	65	64	64	63	65	66	66	65	68	65	62	64	62	64	66	64	66	66	69	68	69	68	66	64	58	68	72	67	59	68
WALLOPS ISLAND NASA TEST FACIL	24	MAX	82	83	84	85	87	91	92	88	84	91	84	78	86	87	92	93	94	94	92	93	89	87	90	91	79	81	84	83	86	84	83	87.0
		MIN	73	72	73	72	73	75	76	74	73	71	72	71	70	75	74	77	75	76	78	82	76	74	76	73	68	67	68	72	68	64	65	72.7
WARSAW 2 NW	18	MAX	83	84	89	90	88	89	88	86	88	91	90	81	86	90	93	93	95	96	95	94	92	89	90	89	83	82	85	87	84	85	85	88.4
		MIN	71	72	70	71	72	74	74	72	73	74	79	68	65	72	70	73	70	71	75	76	71	68	73	69	65	60	66	68	67	59	61	70.0
WEST POINT 2 NW	17	MAX	83	86	89	90	91	91	89	91	92	81	79	87	91	94	94	95	95	94	94	92	89	91	89	85	85	86	89	86	85	84	88.9	
		MIN	71	71	72	74	72	74	74	73	73	73	72	70	69	73	71	73	73	74	76	77	71	69	74	72	67	63	67	70	67	63	64	71.0
WILLIAMSBURG 2 N	24	MAX	82	86	88	89	90	90	90	90	89	90	81	80	88	88	91	93	94	94	92	90	90	90	90	89	78	84	85	86	83	83	82	87.6
		MIN	72	72	72	74	73	74	75	74	73	76	73	72	70	70	71	71	74	74	76	78	71	71	75	74	70	67	68	73	69	67	66	72.1

VIRGINIA
201307

DAILY TEMPERATURES (°F)

STATION	OB. TIME	MAX/MIN	DAY OF MONTH																															AVERAGE
			01	02	03	04	05	06	07	08	09	10	11	12	13	14	15	16	17	18	19	20	21	22	23	24	25	26	27	28	29	30	31	
EASTERN PIEDMONT 02 AMELIA COURTHOUSE 1	08	MAX	88	88	79	84	87	88	88	88	86	87	88	82	82	82	88	91	93	92	93	92	91	89	87	89	88	78	82	84	86	86	82	86.7
		MIN	69	69	71	71	70	72	71	70	70	71	70	66	66	68	69	72	72	72	74	75	73	69	72	70	66	59	64	64	66	62	64	68.9
ASHLAND	18	MAX	82	79	87	87	87	87	87	86	87	87	79	79	80	82	89	91	89	92	92	90	87	86	87	84	83	83	83	85	83	81	81	85.2
		MIN	70	72	72	71	71	71	74	71	72	72	70	65	66	71	70	73	73	73	74	76	74	70	73	70	66	58	64	69	65	60	64	69.7
CAMP PICKETT	08	MAX	86	82	77	85	87	87	87	87	87	87	88	79	73	83	87	89	92	91	91	91	88	87	87	87	86	78	81	83	85	85	83	85.4
		MIN	69	70	71	72	70	71	71	71	71	71	70	66	67	67	71	70	71	71	72	75	73	69	69	69	65	59	60	60	67	62	63	68.5
CHASE CITY	17	MAX	85	83	82	84	87	87	86	86	85	86	87	79	74	80	87	89	91	91	92	90	87	88	85	88	89	79	82	82	85	83	84	85.3
		MIN	71	70	73	73	71	71	69	71	71	72	72	66	68	67	69	69	71	72	72	74	73	70	72	70	65	61	64	70	66	59	63	69.2
CLARKSVILLE	07	MAX		83	76	85		89	88	87		85	88	78	74	80	87	89	95		94	91	88	89	87	89		82	83	85	87	85	87	85.8
		MIN		70	72	72		72	70	70		71	71	66	66	70	71	70	71		75	74	73	71	72	70		63	67	68	68	67	67	69.9
CORBIN	09	MAX	84	81	84	90	90	90	90	86	88	90	83	77	84	89	92	92	93	94	95	93	90	89	89	84	80	84	86	87	82	82	81	87.1
		MIN	69	72	70	72	71	72	73	70	71	71	71	66	66	69	70	72	72	73	75	77	71	70	73	69	65	58	64	67	64	59	62	69.2
CROZIER	07	MAX	85	82	78	83	87	87	86	85	87	88	82	73	82	88	90	89	90	92		90	88	86	88	84	80	82	83	87	81	83	85.1	
		MIN	66	69	70	71	69	71	72	69	69	71	69	64	64	68	67	70	70	70	72		70	68	69	68	66	56	59	69	64	58	62	67.3
FARMVILLE 2 N	07	MAX	88	82	76	82	88	88	87	87	86	87	89	82	71	82	86	91	92	90	92	91	89	89	86	89	85	78	82	82	85	82	82	85.4
		MIN	67	70	71	70	69	69	71	70	70	70	70	66	66	67	69	69	71	72	72	73	72	70	70	69	67	58	58	64	67	59	59	67.9
GREENBAY 3 NE	09	MAX	85	85	75	82	86	87	87	87	84	86	89	80	72	80	86	91	92	90	92	89	87	88	85	87	86	78	82	81	85	81	84	84.8
		MIN	69	69	71	71	70	71	70	70	71	71	69	66	67	68	68	70	70	71	73	73	73	68	72	69	64	58	65	68	65	58	64	68.5
JOHN H KERR DAM	08	MAX	88	86	80	88	90	93	93	89	89	93	82	77	81	90	93	97	96	98	96	93	91	92	92	95	83	86	88	87	87	90	89.5	
		MIN	71	72	73	75	75	76	76	72	72	77	76	68	68	70	72	72	76	76	79	78	77	72	75	75	68	63	69	73	71	61	69	72.5
LOUISA	18	MAX	83	81	85	88	88	89	89	86	87	90	86	79	84	88	94	93	94	95	93	92	89	87	91	90	81	84	83	86	83	82	82	87.2
		MIN	69	73	71	72	70	70	72	69	69	73	71	66	63	70	67	70	70	70	73	76	69	71	72	67	64	53	61	69	62	56	61	68.0
PALMYRA 3S	06	MAX	84	83	78	83	88	87	87	88	85	86	88	83	73	82	87	90	92	91	92	92	91	89	86	87	85	78	82	82	85	81	81	85.4
		MIN	70	71	72	71	68	70	73	70	70	72	72	66	65	68	68	70	72	72	73	76	68	72	73	68	65	55	62	64	66	57	59	68.3
PETERSBURG	08	MAX	87	82	84	89	89	89	89	89	86	88	90	82	77	84	89	92	74 ^s	93	94	92	90	89	88	90	88	79	83	85	86	84	85	87.1
		MIN	71	72	71	73	71	72	72	73	72	73	71	71	68	70	73	73	71	71	71	73	76	75	71	72	73	70	61	62	67	70	65	65
RICHMOND INTL AP	24	MAX	85	84	90	90	91	91	89	90	91	83	79	84	90	93	96	96	95	94	94	92	89	91	89	82	86	86	86	89	86	86	84	88.9
		MIN	73	73	73	74	72	74	74	74	74	72	73	70	70	73	73	76	75	76	77	78	73	72	74	73	67	63	67	71	69	65	67	72.1
SANDSTON	07	MAX	88	85	82	89	90	91	92	90	89	90	91	82	78	85	90	93	93	93	93	95	93	92	90	90	87	79	84	87	88	84	83	88.3
		MIN	72	72	71	72	71	72	73	73	73	73	71	71	68	69	69	70	72	73	74	75	76	71	72	72	68	61	61	64	69	62	63	70.1
WESTERN PIEDMONT 03 APPOMATTOX	07	MAX	84	83	76	83	87	87	86	87	85	88	88	84	70	81	86	90	92	91	92	91	90	90	89	88	87	81	82	78	86	83	82	85.4
		MIN	67	69	70	70	69	70	70	68	69	70	69	64	64	67	70	71	71	71	72	73	70	68	69	70	64	61	63	66	64	58	60	67.6
BROOKNEAL	07	MAX	87	85	79	82	88	88	87	88	87	90	86	84	74	79	86	92	94	93	94	93	89	91	88	90	89	82	84	79	86	84	85	86.5
		MIN	71	71	72	71	69	69	71	71	70	70	71	67	68	68	68	68	69	71	71	71	71	71	70	69	66	64	64	66	66	57	57	68.3
CHARLOTTE COURT HOUSE	07	MAX	89	84	78	82	88	89	87	88	85	89	87	84	73	78	86	91	93	92	93	93	92	89	88	88	87	82	81	80	85	83	85	86.1
		MIN	67	70	72	71	71	71	69	70	70	71	70	67	67	69	70	71	72	72	73	72	71	70	70	71	66	63	64	68	65	59	60	68.8
CHARLOTTESVILLE 2W	08	MAX	85	82	75	83	86	86	88	87	87	87	88	84	69	83	87	92	92	91	93	93	92	90	87	89	85	79	82	77	84	82	84	85.5
		MIN	69	70	69	70	70	71	70	67	68	72	70	64	64	68	71	73	75	75	76	73	71	70	71	72	63	60	63	67	62	63	64	68.7
CHATHAM	07	MAX	83	81	76	77	84	85	85	84	83	87	84	82	72	76	84	87	91	90	89	89	88	88	84	85	84	78	80	80	73	80	80	82.9
		MIN	67	68	70	71	67	67	67	68	68	69	69	68	67	68	65	65	65	68	68	69	67	68	69	66	64	61	62	64	64	56	55	66.1

DAILY TEMPERATURES (°F)

STATION	OB. TIME	MAX/MIN	DAY OF MONTH																															AVERAGE	
			01	02	03	04	05	06	07	08	09	10	11	12	13	14	15	16	17	18	19	20	21	22	23	24	25	26	27	28	29	30	31		
DANVILLE REGIONAL AP	24	MAX	83	79	85	87	88	88	87	88	89	88	83	76	79	89	90	93	93	94	92	90	91	87	90	89	82	83	79	86	84	84	79	86.3	
		MIN	70	71	73	72	72	69	71	71	72	71	72	69	70	72	70	69	74	72	74	74	72	71	73	69	65	63	68	69	63	60	70	70.0	
FREE UNION	08	MAX	84	80	75	81	84	85	87	86	84	81	86	82	68	79	85	89	89	87	90	89	90	88	85	84	82	77	81	74	82	80	80	83.0	
		MIN	65	69	69	69	67	68	67	65	66	68	70	64	64	65	67	67	69	72	71	72	68	69	69	66	60	56	57	63	58	57	58	65.6	
LYNCHBURG INTL AP	24	MAX	84	78	79	86	87	87	87	86	87	88	87	74	81	87	92	93	93	93	92	91	90	88	90	89	82	83	75	86	83	84	77	85.8	
		MIN	68	69	71	71	69	69	70	69	69	71	70	67	68	71	69	68	73	70	69	73	69	69	71	68	67	61	64	66	59	55	63	67.9	
MARTINSVILLE FLTR PLT	07	MAX	86	83	77	79	85	87	87	85	87	89	87	84		78	87	89	93	90	92	92	88	88	89	90	88	81	83	72	85	85	82	85.6	
		MIN	68	68	70	71	68	68	69	67	68	69	69	69	66	68	67	64	64	68	69	70	69	69	70	66	64	61	64	67	61	56	58	66.6	
MEADOWS OF DAN 5 SW	07	MAX																																M	
		MIN																																M	
MONTEBELLO FISH CULTURAL STN	07	MAX		81	78		69				83	82	83	84	79					87	86			89	81	84	80	77			81	78	77	M	
		MIN		63	65		62			61	62	64	64	62						62	65			63	64	64	57	51			50	48	49	M	
MONTICELLO	08	MAX	84	80	76	81	86	85	87	87	83	83	86	86	85	79	85	89	90	91	91	92	90	92	85	86	84	79	79	77	81	77	79	84.4	
		MIN	68	69	69	69	69	68	70	67	67	70	70	64	63	65	70	71	73	74	74	74	71	70	71	73	62	59	60	61	60	61	62	67.5	
ROCKY MT	07	MAX	85	85	75	78	84	85	86	83	86	88	86	83	76	77	84	88	91	90	90	90	89	87	88	87	79	83	72	80	83	82	84.2		
		MIN	65	65	69	70	71	67	69	66	67	70	69	67	67	67	67	66	68	70	69	71	68	61	69	68	64	61	63	66	60	56	56	66.2	
SOUTH BOSTON	07	MAX	87	82	76	83	87	89	86	87	87	87	87	81	72	78	87	89	93	94	95	91	90	88	85	89	91	82	81	82	85	86	86	85.9	
		MIN	70	70	72	71	69	70	69	71	71	69	70	67	67	69	68	69	69	73	73	73	73	70	70	70	66	63	63	65	67	59	62	68.6	
STUART	07	MAX	85	81	82	77	84	81	84	80	85	85	87	81	78	77	84	88	90	90	91	89	88	85	86	85	86	79	82	76	83	81	80	83.5	
		MIN	68	67	69	69	69	67	70	66	66	67	68	67	66	68	67	65	65	68	68	69	67	67	68	65	63	61	62	60	59	58	60	65.8	
TYE RIVER 1 SE	07	MAX	84	82	76	80	85	85	87	88	86	85	86	85	70	80	85	90	93	90	91	92	90	89	85	88	86	77	82	75	82	80	80	84.3	
		MIN	67	69	71	72	69	70	70	67	68	69	69	64	65	67	67	68	72	69	70	73	69	70	69	67	62	63	64	65	61	57	58	67.1	
NORTHERN 04																																			
BOSTON 4 SE	07	MAX	85	81	79	83	86	88	90	90	84	86	85	85	75	82	87	91	91	92	93	93	92	88	85	88	82	77	81	80	83	80	81	85.3	
		MIN	69	70	70	71	69	70	71	66	67	71	70	64	62	70	68	67	68	70	71	71	67	69	68	66	61	53	53	64	59	55	59	66.1	
EDINBURG	07	MAX	84	82	80	80	86	87	89	88	84	83	83	82	70	81	85	90	90	89	94	93	92	86	86	87	80	75	81	78	83	78	81	84.1	
		MIN	65	68	68	66	66	67	67	64	65	67	69	63	63	65	64	66	69	71	71	67	66	66	67	65	58	52	54	60	52	53	54	63.8	
FRONT ROYAL	07	MAX	86	81	80	82	86	88	89	89	85	86	86	83	69	83	87	91	90	91	94	93	91	86	85	86	80	80	82	78	83	79	81	84.8	
		MIN	65	70	71	70	70	71	71	67	67	69	71	64	64	66	68	68	71	73	73	73	69	68	69	68	59	55	55	65	58	57	57	66.5	
LINCOLN	07	MAX	86	83	83	87	89	91	91	91	86	86	87	83	74	82	89	92	91	92	95	95	92	88	88	84	80	76	82	84	83	82	81	86.2	
		MIN	65	70	71	70	68	66	66	66	67	70	65	65	65	69	67	70	70	70	72	69	69	69	65	65	61	54	59	56	56	59	59	65.6	
LURAY 5 E	08	MAX	83	82	79	84	87	88	89	89	83	85	84	84	70	81	86	90	90	90	92	93	91	86	85	86	86	76	80	76	81	78	79	84.3	
		MIN	67	68	68	66	65	66	66	63	65	68	67	63	61	67	65	67	67	69	70	66	64	66	67	64	58	52	60	64	54	53	59	64.0	
MADISON	08	MAX	85	81	78	85	87	88	89	88	85	86	87	84	74	81	87	92	91	91	90	92	91	87	86	91	83	79	82	79	83			85.6	
		MIN	70	71	70	71	71	72	72	67	69	70	72	65	63	68	71	70	72	71	74	73	68	70	72	68	63	56	60	68	60			68.5	
MANASSAS	07	MAX	85			87	90	90	92	91	88			88	77	86	90	95	96	96	97	97	95	95	89	90	86	82				84	83	89.5	
		MIN	72			73	74	74	75	72	72			73	66	68	72	73	75	76	76	76	73	73	73	72	63	60				63	63	71.3	
MT WEATHER	07	MAX	81	76	76	78	82	82	85	84	81	80	80	78	69	77	82	86	87	87	89	89	87	84	82	82	76	76	77	75	77	75	71	80.4	
		MIN	66	67	67	67	69	68	71	66	67	70	68	61	62	65	70	72	73	73	74	72	69	68	67	66	55	54	59	65	59	61	66.1		
PIEDMONT RSCH STN	08	MAX	83	82	77	82	87	86	87	87	84	85	88	83	73	81	87	91	92	92	93	92	91	88	85	88	82	77	81	79	82	80	80	84.7	
		MIN	68	70	70	69	69	71	72	67	68	71	71	65	63	69	71	74	75	75	73	75	68	69	70	69	63	58	63	66	61	58	62	68.2	
SOMERSET	07	MAX	85	83	79	85	88	89	89	88	87	85	90	84	72	82	88	93	92	92	94	94	93	91	88	90	84	79	83	81	86	83	83	86.5	

VIRGINIA
201307

DAILY TEMPERATURES (°F)

STATION	OB. TIME	MAX/MIN	DAY OF MONTH																															AVERAGE
			01	02	03	04	05	06	07	08	09	10	11	12	13	14	15	16	17	18	19	20	21	22	23	24	25	26	27	28	29	30	31	
SPERRYVILLE	06	MIN	69	70	70	70	72	70	71	68	69	71	72	65	64	68	69	71	72	72	74	74	69	71	72	68	64	54	62	64	63	57	57	67.8
		MAX	84	79	76	83	85	86	88	86	83	85	77		71	81	85	88	89	89	90	91	91	86	84	85	80	75	80	76	80	79	78	83.0
STERLING RCS	07	MIN	66	69	70	69	68	67	67	66	66	68	71		63	63	67	67	70	72	71	70	67	67	68	67	62	55	56	62	60	57	57	
		MAX	87	83	83	86	89	89	92	91	91	87	89	85	85	86	90	93	93	94	95	95	92	90	89	86	83	78	82	85	83	80	81	87.5
VIENNA	07	MIN	71	71	71	71	71	74	71	69	69	71	72	66	66	69	69	74	74	74	76	73	69	69	70	70	61	58	61	67	61	59	63	
		MAX	80	78	77	82	85	85	89	85	79	79	83	80	68	80	89	88	90	89	90	90	87	87	83	80	77	72	80	81	77	78	77	
WARRENTON 3 SE	08	MIN	67	67	68	68	70	70	70	67	67	69	62	62	65	69	69	71	71	72	73	68	68	68	65	59	57	57	63	59	57	57		
		MAX																																M
WASHGTN DULLES INTL AP	24	MIN																															M	
		MAX	83	83	86	89	88	92	90	87	86	89	87	75	84	89	93	94	94	96	95	92	90	89	86	84	79	83	84	81	82	79	86.9	
WASHINGTON REAGAN AP	24	MIN	71	73	71	74	73	73	70	70	70	74	69	67	69	73	70	74	74	73	77	75	71	71	72	69	62	58	65	66	62	60	63	
		MAX	84	84	87	89	90	92	92	87	86	90	87	76	86	89	96	96	97	95	95	94	93	89	89	86	82	84	86	84	84	85	82	88.3
WINCHESTER	07	MIN	74	74	74	76	76	77	74	73	75	75	75	70	72	75	75	80	80	80	81	80	78	76	76	74	65	67	72	72	68	66	71	
		MAX																																
WINCHESTER 7 SE	08	MIN																																M
		MAX	86	82	82	83	87	88	91	88	86	85	86	85	73	82	88	93	94	97	97	94	92	89	89	88		79	83	78	86	86	81	86.6
WOODSTOCK 2 NE	07	MIN	66	66	66	67	67	69	53	54	54	53	70	53	64	67	65	67	71	71	55		65	68	64	49		49	56	60	62	60	55	
		MAX	86	83	80	80	86	88	90	88	84	84	84	82	69	83	88	91	92	93	94	93	91	88	87	86	80	78	82	83	86	83	80	85.2
CENTRAL MOUNTAIN 05 COVINGTON FLTR PLT	07	MIN	64	68	68	67	68	68	67	64	65	68	70	63	63	66	66	66	69	71	72	69	67	67	66	57	53	54	65	65	67	69	65.8	
		MAX	85	85	76	76	83	86	88	87	89	87	87	83	76	82	85	90	92	89	86	92	87	84	87	86	87	82	85	73	83	79	82	84.5
DALE ENTERPRISE	07	MIN	58	64	66	66	65	66	66	64	64	65	66	65	64	65	68	67	68	70	69	69	67	68	67	65	61	56	57	65	57	53	53	
		MAX	85	81	77	78	84	87	88	87	83	82	82	80	72	80	86	88	88	87	93	92	92	88	85	86	79	74	82	73	83	79	80	83.3
GATHRIGHT DAM	07	MIN	65	67	68	63	66	68	66	63	65	67	68	61	60	64	64	66	67	69	69	68	64	67	66	65	59	53	60	64	53	53	55	
		MAX	82	78	75	75	81	81	82	81	79	82	80	78	73	75	81	85	88	84	87	87	83	79	81	81	80	80	79	70	77	73	77	79.8
HOT SPRINGS	07	MIN	62	63	66	66	66	66	66	62	65	66	63	63	65	65	66	66	67	68	67	64	65	65	64	60	57	57	62	55	52	53	53	
		MAX	83	79	77	74	81	80	84	83	79	82	81	79	71	74	81	85	86	84	86	88	85	83	81	80	79	75	78	68	76	73	75	79.7
LEXINGTON	07	MIN	61	63	66	65	65	64	64	62	62	65	65	62	61	64	64	65	65	66	66	67	63	65	65	64	57	54	54	54	52	51	51	
		MAX	85	85	76	79	86	86	87	86	86	87	86	86	73	81	86	90	92	90	91	92	90	90	88	88	87	81	82	73	83	83	81	85.0
MILLGAP	07	MIN	65	67	68	69	68	68	68	66	66	67	69	66	65	66	67	68	68	71	71	71	67	67	68	66	65	62	63	66	56	54	54	
		MAX	82	77	72	74	79	78	81	81	77	80	77	71	72	74	80	86	86	85	86	86	83	79	80	79	79	75	78	68	75	73	76	78.4
MUSTOE 1 SW	24	MIN	54	60	63	64	64	61	60	59	60	61	62	57	61	61	58	59	62	62	63	62	63	62	64	60	54	50	51	60	47	45	45	
		MAX	76	72	72	77	76	81	79	76	77	76	76	70	74	79	84	85	83	85	85	82	77	79	79	79	75	66	74	73	74	69	76.9	
ROANOKE 8 N	07	MIN	60	63	64	64	63	60	59	63	60	63	62	57	60	61	56	59	60	62	61	62	63	62	60	53	49	59	54	44	44	55	58.9	
		MAX	85	85	75	78	86	86	86	85	85	89	88	84	75	78	85	90	93	91	92	92	91	89	88	87	87	82	82	72	83	81	82	84.9
ROANOKE INTL AP	24	MIN	67	67	68	70	69	68	69	66	67	69	69	67	67	68	70	69	71	71	71	70	70	71	69	69	67	62	64	67	59	56	57	
		MAX	82	75	78	85	85	86	84	85	88	90	87	78	79	84	90	94	92	93	92	91	88	89	89	88	83	83	73	85	82	84	75	85.1
STAUNTON WATER TRMTMT PLT	08	MIN	69	69	70	71	71	69	69	67	71	71	68	68	68	71	71	71	72	72	73	73	71	73	72	71	66	62	68	68	59	56	66	
		MAX	84	81	74	76	82	84	85	85	81	89	80	83	70	78	84	90	91	87	90	90	85	86	85	86	83	78	80	71	81	77	80	82.5
WAYNESBORO WTP	07	MIN	65	67	67	67	67	68	69	63	68	69	68	61	62	65	65	68	69	70	72	73	65	65	67	67	59	55	55	65	54	59	64.8	
		MAX	84	83	75	80	86	86	88	88	83	83	85	85	69	81	86	91	90	88	91	93	88	88	84		83	78	81	75	83	81	80	
		MIN	65	69	69	69	67	68	68	64	64	67	69	63	64	65	67	67	68	70	70	66	67	68		62	56	56	66	56	54	54	64.9	

VIRGINIA
201307

DAILY TEMPERATURES (°F)

STATION	OB. TIME	MAX/MIN	DAY OF MONTH																															AVERAGE	
			01	02	03	04	05	06	07	08	09	10	11	12	13	14	15	16	17	18	19	20	21	22	23	24	25	26	27	28	29	30	31		
SOUTHWESTERN MOUNTAIN 06																																			
ABINGDON 3S	22	MAX	84	82	83	73	82	85	85	78	83	86	83	78	80	83	83	86	89	88	89	84	84	81	82	83	82	79	83	79	79	77	78	82.3	
		MIN	62	63	64	66	64	65	66	67	63	66	66	63	62	67	64	61	66	67	66	65	65	66	68	68	60	55	65	63	54	55	62	63.7	
BIG STONE GAP	08	MAX	84	83	85	79	81	81	84	75	83	87	85	82	82	85	84	87	92	89	88	86	87	79	82	86	83	81	83	81	80	78	78	83.2	
		MIN	55	64	64	64	65	67	67	66	66	67	68	65	62	62	64	64	65	69	69	68	69	70	69	69	64	57	60	64	53	55	57	64.1	
BLACKSBURG NWSO	07	MAX	84	78	75	74	82	82	82	81	82	84	82	79	73	75	82	86	89	87	87	86	85	81	82	82	80	79	80	71	78	75	77	80.6	
		MIN	61	64	65	65	64	63	66	63	63	65	65	64	63	64	64	62	63	66	67	65	64	65	65	64	63	52	54	62	53	51	51	62.1	
BURKES GARDEN	07	MAX	80	75	75	67	76	79	78	76	78	80	80	75	75	72	76	80	83	81	83	83	80	79	77	77	75	73	78	71	74	71	75	76.8	
		MIN	50	59	61	61	64	63	63	57	58	60	62	59	59	61	65	57	56	61	60	60	61	61	61	62	56	48	48	60	46	46	46	57.8	
CHRISTIANSBURG	07	MAX	81	77	74	70	79	79	80	80	80	83	82	80	73	72	80	84	88	88	88	85	83	83	81	80	78	77	78	68	77	74	76	79.3	
		MIN	63	63	64	64	64	65	66	61	61	66	66	64	62	63	65	63	63	65	65	67	66	66	65	65	63	55	57	63	59	55	57	62.9	
CLINTWOOD 1 W	07	MAX	83	80	81	77	79	79	82	74	82	83	80	80	77	82	83	84	87	86	85	80	84	80	82	82	79	76	80	78	77	75	73	80.3	
		MIN	58	62	62	63	63	64	64	60	60	64	65	65	56	56	61	61	62	63	64	64	64	64	65	66	58	53	53	62	51	51	51	60.5	
COPPER HILL	07	MAX	76	72	70	70	77	76	76								79	76	80	85	88	82	83	82	80	80	78	77	71	75	66	77	73	71	76.8
		MIN	62	61	64		64	64	64								61	64	63	63	63	65	66	65	64	63	61	55	56	61	55	51	51	61.3	
GALAX RADIO WBRF	07	MAX	78	77	74	73	76	77	79	79	82	84	81	79	78	74	79	83	88	84	86	84	85	82	79	83	82	77	78	71	79	79	73	79.5	
		MIN	62	64	64	64	63	64	67	60	62	63	64	60	59	63		58	66	62	64	65	63	64	64		56	56	62	62	52	52	62	61.6	
GALAX WTP	07	MAX	78	76	73	73	77	78	78	79	82	83	82	79	77	73	78	82	87	85	85	84	82	80	79	82	80	78	77	71	78	78	74	79.0	
		MIN	60	62	65	65	63	64	66	61	61	63	64	61	60	61	65	59	59	62	63	64	63	64	64	62	63	58	59	60	53	52	55	61.3	
GRUNDY	07	MAX	81	77	78	74	80	79	83	71	79	82	79	81	75	81	83	82	85	85	83	82	84	82	82	82	76	75	81	77	76	78	79.7		
		MIN	61	63	64	63	64	66	65	64	65	68	69	67	58	58	63	64	66	68	68	68	68	68	68	66	62	57	57	64	57	56	57	63.6	
JOHN FLANNAGAN LAKE	07	MAX	85	84	84	78						87	83	82			86	89	90	89	89													M	
		MIN	62	63	63	64						67	68	66			57	63	65	68	68													M	
LEBANON	07	MAX	84	84	83	71	83	84	83	75	82	86	83	80	79	80	81	89	88	86	89	85	86	82	83	84	80	78	83	79	80	77	78	82.1	
		MIN	57	63	64	60	60	64	66	61	61	61	67	64	59	66	63	59	59	65	65	65	65	64	65	68	62	52	53	63	51	51	52	61.1	
NORA 4 SSE	07	MAX	78	77	77	69	77	77	78	71	79	82	75	78	74	76	76	81	84	84	84	79	81	80	76	80	80	73	76	77	76	73	73	77.5	
		MIN	61	60	62	60	62	64	63	62	62	67	64	62	59	62	65	67	68	65	66	66	66	66	64	65	65	58	57	60	59	53	56	60	62.3
NORTH FORK LAKE	08	MAX	85	82	83						84	86	83	82			83	86	89	88														M	
		MIN	60	62	62						61	64	67	66			58	63	63	66														M	
PULASKI 2 E	07	MAX	83	80	79	72	82	83	84	83	84	89	87	80	82	83	84	86	90	88	86	89	89	85	84	84	81	81	83	74	81	81	76	83.0	
		MIN	60	65	67	65	65	65	65	63	63	63	63	63	64	63	64	62	62	67	66	67	66	66	66	67	63	54	55	61	54	53	52	62.5	
RADFORD 3 N	07	MAX	84	80	74	71	81	82	81	83	84	86	82	79	74	72	82	88	89	87	88	87	85	81	83	83	80	78	81	72	78	76	77	80.9	
		MIN	64	66	65	64	65	64	67	61	64	64	66	63	62	63	65	61	65	66	68	67	64	68	67	62	63	53	56	64	59	53	56	63.1	
RICHLANDS	07	MAX	84	82	83	73	82	84	85	75	83	86	82	81	79	81	83	87	89	88	88	85	83	81	82	83	81	77	83	77	78	76	79	81.9	
		MIN	57	63	63	62	64	64	64	64	64	64	67	65	59	60	62	61	61	66	66	66	66	66	66	68	65	61	53	52	62	53	52	52	61.7
SALTVILLE 1N	07	MAX	85	83	82	73	81	85	84		83	86	83	79	81	82	84	88	90	90	90	86	86	82	81	83	83	80	83	77	80	78	80	82.9	
		MIN	63	63	64	63	64	64	66	64	64	66	67	65	61	62	64	61	61	67	67	66	66	66	68	67	60	54	55	65	53	54	55	62.7	
STAFFORDSVILLE 3 ENE	07	MAX	82	79	74	72	80	81	82	81	84	86	79	78	76	73	81	85	88	87	86	85	86	82	80	82	79	79	82	71	79	76	77	80.4	
		MIN	60	65	66	65	66	64	66	63	63	64	65	62	60	62	66	63	63	67	68	68	66	66	67	63	61	54	55	63	55	53	53	62.6	
TROUT DALE 3 SSE	07	MAX																																M	
		MIN																																	M

VIRGINIA
201307

DAILY TEMPERATURES (°F)

STATION	OB. TIME	MAX/MIN	DAY OF MONTH																												AVERAGE		
			01	02	03	04	05	06	07	08	09	10	11	12	13	14	15	16	17	18	19	20	21	22	23	24	25	26	27	28		29	30
WISE 3E	17	MAX	78	79	77	76	76	78	78	78	82	80	77	76	80	80	82	84	82	83	83	82	79	76	79	79	75	78	78	75	73	73	70
		MIN	60	60	63	61	64	64	64	62	62	68	64	62	57	64	63	60	63	64	55	66	66	66	65	67	60	52	63	60	49	51	59
WYTHEVILLE 1 S	07	MAX	83	80	78			83	83	83			84	79																			
		MIN	57	63	63			63	64	61			65	61																			

TOTAL SNOWFALL AND NUMBER OF DAYS WITH ONE INCH OR MORE ON GROUND

VIRGINIA
201307

STATION	JUL		AUG		SEP		OCT		NOV		DEC		JAN		FEB		MAR		APR		MAY		JUN		TOTAL		TOTAL PRECIPITATION
	SNOWFALL	1 IN ON GD	SNOWFALL	1 IN ON GD	SNOWFALL	1 IN ON GD	SNOWFALL	1 IN ON GD	SNOWFALL	1 IN ON GD	SNOWFALL	1 IN ON GD	SNOWFALL	1 IN ON GD	SNOWFALL	1 IN ON GD	SNOWFALL	1 IN ON GD	SNOWFALL	1 IN ON GD	SNOWFALL	1 IN ON GD	SNOWFALL	1 IN ON GD	SNOWFALL	1 IN ON GD	
VIRGINIA																											
TIDEWATER 01																											
DISPUTANTA														1			1								0.0	2	61.88
EASTVILLE													M 2.1	2			M 1.5	1						M 3.6	3	M 37.21	
EMPORIA 1 WNW													M 2.0	2	M 0.5									M 2.5	2	M 59.59	
FREDERICKSBURG SEWAGE													MT	2	MT		M 4.6							M 4.6	2	M 34.46	
HAMPTON UNIV																								0.0	0	12.67	
HOLLAND 1 E													M 3.0											M 3.0	0	27.78	
HOPEWELL	M 0.0		M 0.0		M 0.0		M 0.0		M 0.0		M 0.0		M 2.2	2	M 0.0		M 1.5		M 0.0		M 0.0		M 0.0		M 3.7	2	M 57.14
NORFOLK INTL AP	M 0.0												1.6		M 0.2		MT							M 1.8	0	46.65	
NORFOLK SOUTH													M 1.6	2	M 0.2		MT							M 1.8	2	M 51.93	
NORTH													M 0.0											M 0.0	0	27.17	
PAINTER 2W													M 1.5											M 1.5	0	58.96	
STONY CREEK 2 N													3.5		M 0.0		1.0	1						M 4.5	3	31.35	
SUFFOLK LAKE KILBY													3.0	1	1.0	1	0.1							4.1	2	55.88	
WAKEFIELD 1NW			M 0.0		M 0.0						M 0.0		3.1	3	0.7		M 0.8	1						M 4.6	4	53.90	
WALKERTON 2 NW			M 0.0		M 0.0								M 0.3		0.1	1	4.3	3			M 0.0		M 0.0		M 4.7	4	M 45.40
WALLACETON LK DRUMMOND																								M 0.0	0	M 52.77	
WALLOPS ISLAND NASA TEST FACIL	M 0.0						M 0.0		M 0.0				F 7.4	3	M 1.0	1	MT							M 1.0	4	51.88	
WARSAW 2 NW													M 3.5	2	M 0.5		M 2.5							M 6.5	2	M 35.04	
WEST POINT 2 NW													3.0	1	0.2		3.2							6.4	1	30.39	
WILLIAMSBURG 2 N													M 1.4	1	MT		M 2.5	1						M 3.9	2	60.38	
EASTERN PIEDMONT 02																											
AMELIA COURTHOUSE 1	M 0.0		M 0.0		M 0.0		M 0.0		M 0.0		M 0.0		M 3.0	2			M 2.5	2							M 5.5	4	M 20.19
ASHLAND													M 6.0	4	MT		M 9.5	3	MT						M 15.5	7	M 37.55
CAMP PICKETT													M 0.0	1	MT			1							M 0.0	2	M 48.21
CHASE CITY															M 1.5		M 1.1								M 2.6	0	38.74
CLARKSVILLE			M 0.0		M 0.0		M 0.0						4.2	2	2.0	1									M 6.2	3	M 53.88
CORBIN													M 3.6	3			M 12.5	5							M 16.1	8	40.68
CROZIER											M 0.0		M 2.0	1			M 10.5	4							M 12.5	5	M 44.36
FARMVILLE 2 N													M 4.0	2			M 5.0	3							M 9.0	5	M 47.30
GREENBAY 3 NE													M 1.0	2			M 4.0								M 5.0	2	M 39.88
JOHN H KERR DAM																									0.0	0	M 42.10
LOUISA													M 2.9	3	M 0.3		M 19.6	6							M 22.8	9	41.97
PALMYRA 3S													M 1.2				M 10.8	3	M 0.0						M 12.0	3	39.20
PETERSBURG			M 0.0		M 0.0		M 0.0		M 0.0		M 0.0		M 0.0	1	M 0.0		M 0.0		M 0.0		M 0.0		M 0.0		M 0.0	1	M 52.74
RICHMOND INTL AP	M 0.0						M 0.0						3.2	2	MT		M 5.4	1	T						M 8.6	3	45.35
SANDSTON													M 3.2	4	MT		M 3.9	1							M 7.1	5	6.90
WESTERN PIEDMONT 03																											
BROOKNEAL													1.6	2	0.8	2	0.7	1	T						3.1	5	43.97
CHARLOTTESVILLE 2W							T						3.6	4	2.8	1	21.8	8	T						28.9	15	48.82
CHATHAM		MT											3.1	2	T		0.3		T						3.4	2	49.70
DANVILLE REGIONAL AP	M 0.0												1.1	1	0.6		T								M 1.7	1	M 38.91
FREE UNION													M 1.3														
LYNCHBURG #2													M 2.3	3	M 3.2	1	M 18.1	5	M 0.3						M 25.2	9	27.08
LYNCHBURG INTL AP	M 0.0												0.2		T										M 0.2	0	14.06
MARTINSVILLE FLTR PLT													2.8	3	0.6		9.5	3							M 13.0	6	39.48
MEADOWS OF DAN 5 SW	M 0.0		M 0.0		M 0.0								2.5	2	T		0.5		T						3.0	2	47.46
MONTEBELLO FISH CULTURAL STN	M 0.0		M 0.0		M 0.0		M 6.4	2					M 0.5	1	0.3		1.0	1	2.0	1					M 3.8	3	63.07
MONTICELLO			M 0.0		M 0.0								M 7.7	3			M 9.2	1							M 26.5	8	M 33.75
ROCKY MT													M 0.4				M 23.0	7							M 28.4	8	47.96
													3.0	3			3.3	1	1.5	1					7.8	5	49.84

TOTAL SNOWFALL AND NUMBER OF DAYS WITH ONE INCH OR MORE ON GROUND

VIRGINIA
201307

STATION	JUL		AUG		SEP		OCT		NOV		DEC		JAN		FEB		MAR		APR		MAY		JUN		TOTAL		TOTAL PRECIPITATION		
	SNOWFALL	1 IN ON GD	SNOWFALL	1 IN ON GD	SNOWFALL	1 IN ON GD	SNOWFALL	1 IN ON GD	SNOWFALL	1 IN ON GD	SNOWFALL	1 IN ON GD	SNOWFALL	1 IN ON GD	SNOWFALL	1 IN ON GD	SNOWFALL	1 IN ON GD	SNOWFALL	1 IN ON GD	SNOWFALL	1 IN ON GD	SNOWFALL	1 IN ON GD	SNOWFALL	1 IN ON GD		TOTAL	
SOUTH BOSTON													1.7	1	0.5	1	T									2.2	2	44.42	
STUART													T		0.5	1	0.3			1.0						1.8	1	58.59	
TYE RIVER 1 SE														2		1	5.0									5.0	M 3	36.40	
NORTHERN 04																													
BOSTON 4 SE	M 0.0							M 0.0		M 0.0		M 0.3	1	1.4	1	4.8	1	M 16.4	3			M 0.0				M 22.9	M 6	M 32.67	
EDINBURG											4.9	7	M 1.2	6	M 1.0		M 21.0	8								M 28.1	M 21	43.78	
FRONT ROYAL	M 0.0		M 0.0		M 0.0		M 0.0		M 0.0		M 2.2	1	M 1.2	2	M 1.3		M 22.0	4								M 26.7	M 7	M 22.85	
LINCOLN											M 5.0	6	M 1.0	2	M 2.0	2	M 5.0	2								M 13.0	M 12	M 21.74	
LURAY 5 E											3.8	6	1.2	8	0.7	1	23.5	12								29.2	M 27	43.44	
MADISON							M 0.0						2.0	1	M 4.0	1			M 0.0		M 0.0					M 6.0	M 2	0.50	
MANASSAS															M 0.1	1										M 0.1	M 1	M 9.86	
MT WEATHER											M 7.2	7	M 2.4	8	M 6.3	5	M 18.7	8								M 34.6	M 28	M 39.42	
PIEDMONT RSCH STN											1.5		1.9	1	3.4	1	M 22.5	5								M 29.3	M 7	30.03	
SOMERSET											M 1.0	1	M 1.4	1	M 1.9	1	M 18.3	5								M 22.6	M 8	53.14	
SPERRYVILLE											M 5.0	6	M 4.1	4	M 3.3	2	M 16.3	5		M T						M 28.7	M 17	M 30.79	
STERLING RCS	M 0.0		M 0.0		M 0.0		M 0.0		T		2.2		1.8	2	M 1.3	1	M 7.2	4								M 12.5	M 7	M 40.58	
VIENNA											M 1.1		M 1.0	2	M 0.4		M 7.5	2								M 10.0	M 4	M 27.95	
WARRENTON 3 SE																										0.0	0	0.00	
WASHGTN DULLES INTL AP									T		2.2		1.8	2	1.3		7.4	2				M 0.0				M 12.7	4	39.66	
WASHINGTON REAGAN AP									T		0.2		0.9		0.4		1.6	1								3.1	1	41.88	
WINCHESTER																										0.0	0	22.29	
WINCHESTER 7 SE	M 0.0				M 0.0		M 0.0		M 0.0		M 3.6	7	2.5	2	0.3		M 11.5	4	M 0.0							M 17.9	M 13	M 43.13	
WOODSTOCK 2 NE											M 1.8	5	M 1.3	4	M T		M 19.8	6								M 22.9	M 15	M 46.97	
CENTRAL MOUNTAIN 05																													
COVINGTON FLTR PLT	M 0.0		M 0.0		M 0.0		M 0.0		M 0.0		M 2.0	6	3.0	3	1.5	1	6.6	3	1.0	1	M 0.0		M 0.0			M 12.1	M 8	43.38	
DALE ENTERPRISE			M 0.0		M 0.0		M 0.0		M 0.0				0.2	3	0.2		23.0	8								M 25.4	M 17	M 28.80	
GATHRIGHT DAM	M 0.0		M 0.0		M 0.0		M 0.0		M 0.0		2.5	6	2.5	3	3.7	4	11.0	4	1.6	1	M 0.0		M 0.0			M 21.3	M 18	38.67	
HOT SPRINGS											5.0	5	3.5	3	4.0	6	18.0	9	3.0	1						33.5	24	41.24	
MILLGAP							0.3		0.1		9.0	6	4.6	14	8.6	8	18.9	11	1.0	1						42.5	40	27.78	
MUSTOE 1 SW	M 0.0						T		T		8.2	8	4.1	10	M 8.8	4	23.2	10	M 1.1	1	M 0.0		M 0.0			M 45.4	M 33	M 44.72	
ROANOKE 8 N	M 0.0		M 0.0		M 0.0		M 0.0		M 0.0				3.8	4	3.1	1	7.0	3	2.0	1						M 15.9	M 9	48.99	
ROANOKE INTL AP	M 0.0		T				T				0.3		5.0	2	4.0	1	8.0	3	1.0	1						M 18.3	7	42.25	
STAUNTON WATER TRMTMT PLT	M 0.0		M 0.0		M 0.0		M 0.0		M 0.0		M 3.1	6	M 0.6	2	M 1.4	2	M 21.5	8	M 0.0		M 0.0		M 0.0			M 26.6	M 18	40.98	
WAYNESBORO WTP	M 0.0										T		T		M T		F 17.0	2								M 0.0	M 2	M 50.45	
SOUTHWESTERN MOUNTAIN 06																													
ABINGDON 3S	M 0.0		M 0.0		M 0.0		M T		M 0.0		M 0.0		M 2.0	2	3.0	3	M 0.5	1	M 0.0		M 0.0		M 0.0			M 5.5	M 6	M 39.33	
BIG STONE GAP															M 4.0	3	0.5										M 4.5	M 3	67.00
BLACKSBURG NWSO			T				0.6				1.9	3	9.2	9	5.9	5	4.9	2	5.4	1			T			27.9	20	44.75	
BURKES GARDEN		T					8.4	3	T	3	5.5	3	14.0	11	14.7	9	12.2	13	3.8	1						58.6	43	50.49	
CHRISTIANSBURG							M T				0.7		11.0	6	5.3	3	6.1	4	5.0	1						28.1	M 14	42.61	
CLINTWOOD 1 W							7.0	2	T	1	3.4	4	7.2	10	9.8	8	13.1	10	T							40.5	35	51.79	
COPPER HILL	M 0.0						M 1.0	2			3.2	6	11.5	14	M 5.3	4	9.3	7	4.0	1						M 34.3	M 34	M 43.11	
GALAX RADIO WBRF											0.4		9.7	12	2.2	1	0.1		1.6	1						14.0	14	52.67	
GALAX WTP	M 0.0		M 0.0		M 0.0		M T				T		10.0	3	2.0	2	0.1		M 2.0	1	M 0.0					M 14.1	M 6	53.73	
GRUNDY	M 0.0		M 0.0				1.0	1			0.4		4.3	5	4.0	7	1.4	3								M 11.1	M 16	41.24	
JOHN FLANNAGAN LAKE							M 1.0	1			1		1	1	M 3.0	1	M 1.5	1					M 0.0			M 5.5	M 4	M 2.63	
LEBANON	M 0.0				M 0.0		5.0	1	M 0.0		M 0.0		M 8.5	3	4.0	5	M 2.8	3								M 20.3	M 12	51.53	
NORA 4 SSE							13.4	3	T	2	3.6	3	12.0	8	M 12.7	9	15.1	9	M 0.0							M 56.8	M 34	M 43.65	
NORTH FORK LAKE	M 0.0						M 4.0	1	M 0.0		M 0.0		M T	1	M 2.0	1	M 2.5	4								M 8.5	M 7	0.00	
PULASKI 2 E	M 0.0		M 0.0		M 0.0		M T				T		9.1	4	1.6	1	4.5	3	M 3.3	1	M 0.0					M 18.5	M 9	M 41.48	
RADFORD 3 N							M T				0.5		9.0	5	4.9	3	3.3	2	5.0	1			T			22.7	M 11	M 41.79	

TOTAL SNOWFALL AND NUMBER OF DAYS WITH ONE INCH OR MORE ON GROUND

VIRGINIA
201307

STATION	JUL		AUG		SEP		OCT		NOV		DEC		JAN		FEB		MAR		APR		MAY		JUN		TOTAL		TOTAL PRECIPITATION	
	SNOWFALL	1 IN ON GD	SNOWFALL	1 IN ON GD	SNOWFALL	1 IN ON GD	SNOWFALL	1 IN ON GD	SNOWFALL	1 IN ON GD	SNOWFALL	1 IN ON GD	SNOWFALL	1 IN ON GD	SNOWFALL	1 IN ON GD	SNOWFALL	1 IN ON GD	SNOWFALL	1 IN ON GD	SNOWFALL	1 IN ON GD	SNOWFALL	1 IN ON GD	SNOWFALL	1 IN ON GD		
RICHLANDS	M 0.0		M 0.0				M 9.0	2			T		8.3	4	5.1	3	4.6	3		T		M 0.0		M 0.0		M 27.0	M 12	52.07
SALTVILLE 1N							M 1.4	1			T		3.8	2	3.8	4	1.5	1		M 0.5						M 11.0	M 8	54.28
STAFFORDSVILLE 3 ENE					M 0.0		M T				0.1		10.9	8	5.4	6	6.4	3		5.2	1					28.0	M 18	39.08
TROUT DALE 3 SSE							3.0	2	M 0.0		3.0	1	13.0	10	10.1	5	13.4	6		M 3.0	1					M 45.5	M 25	56.01
WISE 3E							M 17.5	2		1	M 5.5	1	M 12.6	10	8.5	6	16.1	7								M 60.2	M 27	M 60.53
WYTHEVILLE 1 S											T		11.0	7	4.5	3	3.6	3		2.0	1					21.1	14	44.25

MONTHLY AND SEASONAL HEATING DEGREE DAYS

STATION	JUL	AUG	SEP	OCT	NOV	DEC	JAN	FEB	MAR	APR	MAY	JUN	TOTAL	SEASONAL NORM
VIRGINIA														
TIDEWATER 01														
DISPUTANTA	0	0	41	230	652	627	804	774	755	265	123	0	4271	
EASTVILLE	0	0	8	150	515E	553	768	700	696	281	103	0	3774E	
EMPORIA 1 WNW	0	0	15	192	565E	571E	755	709	682	219	99	0	3807E	3839
FREDERICKSBURG SEWAGE	0	0	29E	238E	644	660	808E	768	739E	291	137	0	4314E	
HAMPTON UNIV	0	0	1	101	476	357E	656E						M 1591E	
HOLLAND 1 E	0	0	18	148	565	560	794	697	717	230	100	0	3829	3820
HOPEWELL	0	0	5	142	492	479	648E	620E	588	155	62E	0	3191E	3334
NORFOLK INTL AP	0	0	4	138	487	471	665	610	612	212	67	0	3266	3368
NORFOLK SOUTH	0	0	13E	158E	529	517	705	663	652	234	81	0	3552E	
NORTH	0	0	30	197	606	614	771E						M 2218E	
PAINTER 2W	0	0	16	147	535	552	746	689	683	266	103	0	3737	3698
STONY CREEK 2 N	0	0	31	209	610	593	792E	719	691	237	106	0	3988E	3926
SUFFOLK LAKE KILBY	0	0	19	197	545	503	716	665	644	210	83	0	3582	3467
WAKEFIELD 1NW	0	0	28	208	595	571	749	703	689	231	110	0	3884	3652
WALKERTON 2 NW	0	0	0	113	471	475	587E	537	505	119	50	0	2857E	3908
WALLACETON LK DRUMMOND	0	0	29E	220	616	591	786	713E	723	262E	113	1E	4054E	
WALLOPS ISLAND NASA TEST FACIL	0	0	10	158	520	554	754	701	679	284	101	0	3761	
WARSAW 2 NW	0	0	24E	163E	645E	439E	726E	747E	691E		71E	0	M 3506E	3902
WEST POINT 2 NW	0	0	11	190	579	606	758	704	657	219	91	0	3815	3619
WILLIAMSBURG 2 N	0	0	3	136	500	506	676	641	615	207	66	0	3350	3629
EASTERN PIEDMONT 02														
AMELIA COURTHOUSE 1	0	0	20E	214E	602E	585E	785E	787E	723E	236E	112E	0	4064E	4364
ASHLAND	0	0	23	197	607	613	754	720	691	228	103	0	3936	4170
CAMP PICKETT	0	0	35	280E	645	639	797	771	759	247	144	0	4317E	4272
CHASE CITY	0	0	31	208	573	561		686	676			0	M 2735	4188
CLARKSVILLE	0	1E	27E	193E	563	587	717	711	674	204	94E	0	3771E	
CORBIN	0	0	35	232	614	639	763	761	725	274	124	0	4167	4252
CROZIER	0	0	42	250	675	698E	822E	796	779E	301	143E	0	4506E	4335
FARMVILLE 2 N	0	0	45	250	650	644	794	779	756	254E	152	0	4324E	4023
GREENBAY 3 NE	0	1	33	244	656E	622	776E	759	755	246	144	0	4236E	
JOHN H KERR DAM	0	0	16	174	554	555	711	690	660	195	95	0	3650	3806
LOUISA	0	0	49	250	658	670	791	751	709	254	128	0	4260	4779
PALMYRA 3S	0	0	73	290	696	722	862	837	813	332		0	M 4625	
PETERSBURG	0	0	22	195E	623E	589	755	740	700E	222	123E	0	3969E	
RICHMOND INTL AP	0	0	11	191	553	559	724	690	664	213	85	0	3690	3919
SANDSTON	0	0	37	245	653	648	819	768	752	280	118	1	4321	
WESTERN PIEDMONT 03														
BROOKNEAL	0	0	38	254	687	676	796	791	755	276	146	0	4419	4726
CHARLOTTESVILLE 2W	0	0	28	244	605	656	810	785	744	268	148	3	4291	4103
CHATHAM	0	0	78	298	720	728	837	835	803	332	202E	0	4833E	4628
DANVILLE REGIONAL AP	0	0	22	220	585	574	704	690	660	214	109	0	3778	
FREE UNION	0	1	68	298	692	746	880	845	808E	337	198	4	4877E	
LYNCHBURG #2	0	0	63	283	688	704	834E						M 2572E	
LYNCHBURG INTL AP	0	0	46	273	650	669	786	751	719	248	150	1	4293	4354
MARTINSVILLE FLTR PLT	0	0	52	274	689	699	786	790	768	313	139	0	4510	4734
MEADOWS OF DAN 5 SW	0	0	72	303	653	702	794	792	779E	498E			M 4593E	
MONTEBELLO FISH CULTURAL STN		21E	142E	488E	821E	834E	948	987E	1006E	447E	312E	32E	M 6038E	
MONTICELLO	0	0	50	276	652	699	843	812	772	298	162	3	4567	4428
ROCKY MT	0	0	47	286	657	702	789	779	746	286	145	2	4439	4444
SOUTH BOSTON	0	0	31	232	629	619	742	745	714	250E	131	0	4093E	4252
STUART	0	1	40	250	629	663	755	752	754	305	150	3	4302	
TYE RIVER 1 SE	0	0	33	229	617		783	751	710	261		1	M 3385	4425
NORTHERN 04														
BOSTON 4 SE	0	0	83	296	690E	745E	896	833	784E	353	180E	2	4862E	
EDINBURG	0	0	103	351	769	810	912	934	868	421	217	10	5395	
FRONT ROYAL	0	0	61	300	710	730E	860	865E	826E	317E	190	2E	4861E	
LINCOLN	0	0	98	335	764	829	932	902	817	375	182	6	5240	5031
LURAY 5 E	0	0	84	320	698	722	872	875	840	337	202	9	4959	4548
MADISON	0	0	47	230	591	634	757	807E		244E	146	2	M 3458E	
MANASSAS	0	0	33E	246	670	687E	853E	943E				0	M 3432E	
MT WEATHER	3	1E	75	338	731	774E	953	946	899	401	226E	19	5366E	5716
PIEDMONT RSCH STN	0	0	47	267	651	714	864	836	784	308	171E	1	4643E	4643
SOMERSET	0	0	59	281	681	720	863	823	781	315	172	2	4697	
SPERRYVILLE	0	0	66	297	667	748E	895	859E	812E	312E	210E	7E	4873E	
STERLING RCS	0	0	60	283	733	809	933	869E	813E	326	178	2	5006E	5237
VIENNA	0	0	77	325	759E	789	920E	901	843	384	217	6	5221E	
WASHGTN DULLES INTL AP	0	0	51	262	666	709	848	828	762	288	146	0	4560	4925
WASHINGTON REAGAN AP	0	0	5	163	543	603	759	741	651	217	83	0	3765	4055
WINCHESTER	0	0	80	319	709	667E							M 1775E	5103
WINCHESTER 7 SE	0	0	85	340	769	814	919	906	913E	461	266E	96E	5569E	5204
WOODSTOCK 2 NE	0	0	86E	337E	733E	793	895	888	855E	366	214	6	5173E	5099
CENTRAL MOUNTAIN 05														
COVINGTON FLTR PLT	0	0	71	296	697	713	872	838	819	323	164	1	4794	4920
DALE ENTERPRISE	0	0	96E	346E	749E	768	893	916	886	372	217	6	5249E	5333
GATHRIGHT DAM	0	1E	113	380	741E	804	960	926	923	364	203	12	5427E	5215

MONTHLY AND SEASONAL HEATING DEGREE DAYS

STATION	JUL	AUG	SEP	OCT	NOV	DEC	JAN	FEB	MAR	APR	MAY	JUN	TOTAL	SEASONAL NORM
HOT SPRINGS	0	6	143	405	772	817	984	959	943	397	232	18	5676	5585
MILLGAP	2	25	204	506	871	919	1059	1043	1050	519	324	47	6569	
MUSTOE 1 SW		37	219	506	841	918	1025			484	291		M 4321	
ROANOKE 8 N	0	0	35E	258	629	683	799	781	761	292	158	1	4397E	
ROANOKE INTL AP	0	0	34	256	597	625	716	714	699	242	117	1	4001	4284
STAUNTON WATER TRMTMT PLT	0	0	70	323	686	707	860	874	855	342	198	12	4927	5447
WAYNESBORO WTP	0	1	63	308	722E	729	880	850	842	345	201	7	4948E	
SOUTHWESTERN MOUNTAIN 06														
ABINGDON 3S	0	0	70E	352E	684E	724E	786E	786	795E	327E	153E	2E	4679E	4940
BIG STONE GAP	0	0	61	335	649	701	849	761	825	319	138	0	4638	
BLACKSBURG NWSO	0	2	113	406	784	834	940	922	924	414	221	10	5570	5559
BURKES GARDEN	3	53E	214	546	899	897	976	979	1051	519	324	51	6512E	6320
CHRISTIANSBURG	0	4	102	388	736	761	890	900	898	379	210	8	5276	
CLINTWOOD 1 W	0	3	135	418	771	797	935	870	890	397	175	5	5396	
COPPER HILL	2E	15	138	464E	784	803	939	950E	967	440	267	30	5799E	
GALAX RADIO WBRF	1	1	110	399	764	794	902	857	898	413	204	5	5348	5728
GALAX WTP	0	3	135	414	787	817	896	880	913	450E	231	20	5546E	
GRUNDY	0	0	86	358	712	735	895	825	834	352	150	4	4951	4535
JOHN FLANNAGAN LAKE	0	0	104E	321E	720E	747E	928E	812E	908E	343E	214E	12E	5109E	
LEBANON	0	4	93	390E	753	722	873	843	874	382	186	5	5125E	5106
NORA 4 SSE	1	0	105	397	722	790	959	922E	977	428E	205	11	5517E	
NORTH FORK LAKE	0	0	103E	354E	755E	731E	913E	852E	896E	351E	150E	0	5105E	
PULASKI 2 E	0	3	76	374E	729	757	844	840	863	353E	191E	2	5032E	5293
RADFORD 3 N	0	4	95	387	761	802	897	882	878	376	197	7	5286	
RICHLANDS	0	1	98	385	754	778	902	849	889	399	169	1	5225	5290
SALTVILLE 1N	0	0	80	371	741	764	866	844	859	375E	168	1	5069E	5082
STAFFORDSVILLE 3 ENE	0	6E	100	393	775	804	907	889	887	397	215	8	5381E	5438
TROUT DALE 3 SSE	5	29	173	473	811	844	902	949	960	494E	289	32	5961E	
WISE 3E	1	12	113	374	685	690E	869	832	851		170	7	M 4604E	4901
WYTHEVILLE 1 S	0	3	107	413	789	812	901	872	902	414	199	9	5421	5542

VIRGINIA
201307

SNOWFALL AND SNOW ON GROUND (INCHES)

STATION		DAY OF MONTH																															
		01	02	03	04	05	06	07	08	09	10	11	12	13	14	15	16	17	18	19	20	21	22	23	24	25	26	27	28	29	30	31	
VIRGINIA																																	
TIDEWATER 01																																	
DISPUTANTA	SNOWFALL																																
EASTVILLE	SNOWFALL																																
EMPORIA 1 WNW	SNOWFALL																																
FREDERICKSBURG SEWAGE	SNOWFALL																																
HAMPTON UNIV	SNOWFALL																																
HOLLAND 1 E	SNOWFALL																																
HOPEWELL	SNOWFALL					-	-	-	-	-	-	-	-	-	-	-	-	-	-	-	-	-	-	-	-	-	-	-	-	-	-	-	
	SN ON GND					-	-	-	-	-	-	-	-	-	-	-	-	-	-	-	-	-	-	-	-	-	-	-	-	-	-	-	
NORFOLK INTL AP	SNOWFALL																																
	SN ON GND		-																														
NORFOLK SOUTH	SNOWFALL																																
NORTH	SNOWFALL																																
PAINTER 2W	SNOWFALL																																
STONY CREEK 2 N	SNOWFALL																																
	SN ON GND																																
SUFFOLK LAKE KILBY	SNOWFALL																																
	SN ON GND																																
WAKEFIELD 1NW	SNOWFALL																																
	SN ON GND																																
WALKERTON 2 NW	SNOWFALL																																
	SN ON GND																																
WALLACETON LK DRUMMOND	SNOWFALL																																
WALLOPS ISLAND NASA TEST FACIL	SNOWFALL																																
	SN ON GND																																
WARSAW 2 NW	SNOWFALL																																
WEST POINT 2 NW	SNOWFALL																																
	SN ON GND																																
WILLIAMSBURG 2 N	SNOWFALL																																

Snowfall: Includes snow and ice. Values for NWS stations (J index note) are Mid-Mid (LST).

Snow on ground: Includes snow, sleet, ice, and hail. Values for NWS stations (J index note) are observed at 12 UTC (GMT).

Water Equivalent: Given for NWS stations (J index note) only, when snow depth is 2 inches or more, and is measured at 18 UTC (GMT)

VIRGINIA
201307

PAN EVAPORATION AND WIND

STATION		DAY OF MONTH																															TOTAL OR AVERAGE		
		01	02	03	04	05	06	07	08	09	10	11	12	13	14	15	16	17	18	19	20	21	22	23	24	25	26	27	28	29	30	31			
VIRGINIA EASTERN PIEDMONT 02 JOHN H KERR DAM	WIND	-	-	-	-	-	-	-	-	-	-	-	-	-	-	-	-	-	-	-	-	-	-	-	-	-	-	-	-	-	-	-	-	-	M
	EVAP	-	-	-	-	-	-	-	-	-	-	-	-	-	-	-	-	-	-	-	-	-	-	-	-	-	-	-	-	-	-	-	-	-	M
	MAX	-	-	-	-	-	-	-	-	-	-	-	-	-	-	-	-	-	-	-	-	-	-	-	-	-	-	-	-	-	-	-	-	-	M
	MIN	-	-	-	-	-	-	-	-	-	-	-	-	-	-	-	-	-	-	-	-	-	-	-	-	-	-	-	-	-	-	-	-	-	M

Evaporation: Is measured in hundreths of inches.

Wind: Is measured in miles.

Max and Min: The maximum and minimum temperatures (Fahrenheit) of the water in the evaporation pan.

STATION INDEX

STATION	INDEX NO.	DIVISION	COUNTY	LATITUDE	LONGITUDE	ELEVATION (IN FEET)	OBSERVATION TIME AND TABLES			
							LOCAL STD TIME			
							TEMP	PRECIP	EVAP	SPECIAL SEE (NOTES)
VIRGINIA										
ABINGDON 3S	0021	06	WASHINGTON	36 40	81 58W	1920	22	22		H
ALBERTA 5N	0079	02	BRUNSWICK	36 56	77 54W	376		08		H
ALTAVISTA	0166	03	CAMPBELL	37 7	79 17W	529		07		CH
AMELIA COURTHOUSE 1	0187	02	AMELIA	37 21	77 59W	345	08	08		H
APPOMATTOX	0243	03	APPOMATTOX	37 20	78 50W	850	07	07		H
ASHLAND	0327	02	HANOVER	37 45	77 29W	220	18	18		H
BEDFORD 4 NW	0561	03	BEDFORD	37 23	79 34W	1228		07		CH
BIG STONE GAP	0735	06	WISE	36 52	82 46W	1464	08	08		H
BLACKSBURG NWSO	0766	06	MONTGOMERY	37 12	80 25W	2100	07	07		CH
BOSTON 4 SE	0860	04	CULPEPER	38 33	78 6W	590	07	07		H
BREMO BLUFF	0993	02	FLUVANNA	37 43	78 17W	225		24		CH
BROOKNEAL	1082	03	CAMPBELL	37 4	78 57W	408	07	07		H
BUCHANAN	1121	05	BOTETOURT	37 31	79 41W	880		07		H
BUCKINGHAM	1136	02	BUCKINGHAM	37 30	78 32W	552		07		H
BUENA VISTA	1159	05	ROCKBRIDGE	37 44	79 22W	840		07		H
BURKES GARDEN	1209	06	TAZEWELL	37 6	81 20W	3068	07	07		H
CAMP PICKETT	1322	02	NOTTOWAY	37 2	77 57W	330	08	08		CH
CHARLOTTE COURT HOUSE	1585	03	CHARLOTTE	37 3	78 39W	569	07	07		H
CHARLOTTESVILLE 2W	1593	03	ALBEMARLE	38 2	78 31W	866	08	08		H
CHASE CITY	1606	02	MECKLENBURG	36 47	78 29W	510	17	17		H
CHATHAM	1614	03	PITTSYLVANIA	36 49	79 25W	651	07	07		CH
CHRISTIANSBURG	1692	06	MONTGOMERY	37 8	80 24W	2100	07	07		H
CLARKSVILLE	1746	02	MECKLENBURG	36 37	78 33W	330	07	07		H
CLINTWOOD 1 W	1825	06	DICKENSON	37 9	82 29W	1780	07	07		H
CONCORD 4 SSW	1955	03	CAMPBELL	37 17	78 58W	815		07		H
COPPER HILL	1999	06	FLOYD	37 5	80 9W	2690	07	07		H
CORBIN	2009	02	CAROLINE	38 12	77 22W	220	09	09		H
COVINGTON FLTR PLT	2044	05	ALLEGHANY	37 49	79 59W	1230	07	07		H
CRAIGSVILLE 2 S	2064	05	AUGUSTA	38 3	79 23W	1758		07		H
CROZIER	2142	02	GOOCHLAND	37 40	77 53W	350	07	07		H
DALE ENTERPRISE	2208	05	ROCKINGHAM	38 27	78 56W	1358	07	07		H
DANVILLE REGIONAL AP R	2250	03	PITTSYLVANIA	36 34	79 20W	571	24	24		H
DISPUTANTA	2400	01	PRINCE GEORGE	37 7	77 12W	15	07	07		H
EASTVILLE	2635	01	NORTHAMPTON	37 23	75 58W	10	07	07		H
EDINBURG	2663	04	SHENANDOAH	38 48	78 35W	928	07	07		H
EMPORIA 1 WNW	2790	01	GREENSVILLE	36 42	77 34W	100	08	08		H
FARMVILLE 2 N	2941	02	CUMBERLAND	37 20	78 23W	450	07	07		H
FREDERICKSBURG SEWAGE	3204	01	FREDERICKSBURG	38 17	77 27W	15	07	07		H
FREE UNION	3213	03	ALBEMARLE	38 5	78 35W	590	08	07		H
FRONT ROYAL	3229	04	WARREN	38 54	78 11W	930	07	07		H
GALAX RADIO WBRF	3267	06	CARROLL	36 40	80 55W	2385	07	07		H
GALAX WTP	3272	06	CARROLL	36 39	80 55W	2360	07	07		CH
GATHRIGHT DAM	3310	05	ALLEGHANY	37 57	79 57W	1770	07	07		CH
GLASGOW 1 SE	3375	05	ROCKBRIDGE	37 37	79 26W	737		07		H
GREENBAY 3 NE	3565	02	PRINCE EDWARD	37 11	78 17W	500	09	09		H
GRUNDY	3640	06	BUCHANAN	37 17	82 5W	1170	07	07		H
HAMPTON UNIV	3713	01	HAMPTON	37 1	76 20W	10	17	17		H
HOLCOMB ROCK	4039	03	BEDFORD	37 33	79 24W	620		07		H
HOLLAND 1 E	4044	01	SUFFOLK	36 41	76 46W	80	08	08		H
HOPEWELL	4101	01	PRINCE GEORGE	37 18	77 17W	40	16	16		H
HOT SPRINGS	4128	05	BATH	37 60	79 50W	2236	07	07		H
HUDDLESTON 4 SW	4148	03	BEDFORD	37 8	79 32W	898		07		H
JOHN FLANNAGAN LAKE	4410	06	DICKENSON	37 14	82 21W	1460	07	07		H
JOHN H KERR DAM	4414	02	MECKLENBURG	36 36	78 18W	250	08	08	08	CH
LAFAYETTE 1 NE	4676	06	MONTGOMERY	37 14	80 12W	1320		07		H
LEBANON	4777	06	RUSSELL	36 54	82 2W	1912	07	07		H
LEXINGTON	4876	05	ROCKBRIDGE	37 47	79 26W	1097	07	07		H
LINCOLN	4909	04	LOUDOUN	39 5	77 42W	500	07	07		H
LOUISA	5050	02	LOUISA	38 3	78 0W	420	18	18		H
LURAY 5 E	5096	04	PAGE	38 40	78 22W	1400	08	08		H
LYNCHBURG INTL AP R	5120	03	CAMPBELL	37 19	79 12W	940	24	24		HJ
MADISON	5150	04	MADISON	38 22	78 15W	577	08	08		H
MANASSAS	5204	04	MANASSAS	38 44	77 30W	245	07	07		H
MARTINSVILLE FLTR PLT	5300	03	HENRY	36 42	79 52W	760	07	07		H
MEADOWS OF DAN 5 SW	5453	03	PATRICK	36 40	80 27W	2225	07	07		H

STATION INDEX

STATION	INDEX NO.	DIVISION	COUNTY	LATITUDE	LONGITUDE	ELEVATION (IN FEET)	OBSERVATION TIME AND TABLES			
							LOCAL STD TIME			
							TEMP	PRECIP	EVAP	SPECIAL SEE (NOTES)
MILLGAP	5595	05	HIGHLAND	38 18	79 43W	2421	07	07		CH
MONTEBELLO FISH CULTURAL STN	5690	03	NELSON	37 51	79 8W	2667	07	07		H
MONTICELLO	5700	03	ALBEMARLE	38 1	78 27W	758	08	08		H
MT WEATHER	5851	04	LOUDOUN	39 4	77 53W	1659	07	07		H
MTN GROVE	5756	05	BATH	38 6	79 53W	1775		07		H
MUSTOE 1 SW	5880	05	HIGHLAND	38 20	79 40W	2380	24	24		H
NEW CASTLE	6012	05	CRAIG	37 18	80 3W	1258		07		H
NORA 4 SSE	6125	06	DICKENSON	37 1	82 19W	2650	07	07		H
NORFOLK INTL AP R	6139	01	NORFOLK (CITY)	36 54	76 12W	30	24	24		HJ
NORFOLK SOUTH	6147	01	NORFOLK (CITY)	36 52	76 14W	100	24	24		H
NORTH	6161	01	MATHEWS	37 26	76 26W	10	07	07		H
NORTH FORK LAKE	6173	06	WISE	37 7	82 38W	1675	08	08		H
PAINTER 2W	6475	01	ACCOMACK	37 35	75 49W	30	16	16		CH
PALMYRA 3S	6491	02	FLUVANNA	37 49	78 16W	410	06	06		H
PEDLAR DAM	6593	03	AMHERST	37 40	79 17W	1024		07		H
PETERSBURG	6656	02	PETERSBURG	37 14	77 24W	15	08	08		H
PIEDMONT RSCH STN	6712	04	ORANGE	38 14	78 7W	520	08	08		CH
PULASKI 2 E	6955	06	PULASKI	37 3	80 47W	1850	07	07		CH
RADFORD 3 N	6999	06	PULASKI	37 12	80 35W	1800	07	07		H
RICHLANDS	7174	06	TAZEWELL	37 6	81 48W	1910	07	07		H
RICHMOND INTL AP R	7201	02	HENRICO	37 30	77 19W	164	24	24		HJ
ROANOKE 8 N	7278	05	ROANOKE	37 22	79 58W	1190	07	07		H
ROANOKE INTL AP R	7285	05	ROANOKE	37 19	79 58W	1175	24	24		HJ
ROCKY MT	7338	03	FRANKLIN	36 59	79 54W	1315	07	07		CH
SALTVILLE 1N	7506	06	SMYTH	36 53	81 46W	1733	07	07		H
SANDSTON	7541	02	HENRICO	37 33	77 17W	165	07	07		H
SOMERSET	7904	04	ORANGE	38 15	78 16W	510	07	07		H
SOUTH BOSTON	7925	03	HALIFAX	36 42	78 53W	329	07	07		H
SPERRYVILLE	7985	04	RAPPAHANNOCK	38 39	78 14W	750	06	06		H
STAFFORDSVILLE 3 ENE	8022	06	GILES	37 16	80 43W	1950	07	07		CH
STAUNTON WATER TRMTMT PLT	8062	05	AUGUSTA	38 10	79 5W	169	08	08		H
STERLING RCS	8084	04	LOUDOUN	38 59	77 29W	288	07	07		H
STONY CREEK 2 N	8129	01	SUSSEX	36 58	77 24W	105	08	08		H
STUART	8170	03	PATRICK	36 38	80 15W	1375	07	07		H
SUFFOLK LAKE KILBY	8192	01	SUFFOLK	36 44	76 36W	22	24	24		H
TROUT DALE 3 SSE	8547	06	GRAYSON	36 39	81 24W	2839	07	07		CH
TYE RIVER 1 SE	8600	03	NELSON	37 38	78 56W	720	07	07		H
VIENNA	8737	04	FAIRFAX	38 54	77 16W	418	07	07		H
WAKEFIELD 1NW	8800	01	SUSSEX	36 59	77 0W	113	24	24		CH
WALKERTON 2 NW	8829	01	KING AND QUEEN	37 45	77 2W	50	18	18		H
WALLACETON LK DRUMMOND	8837	01	CHESAPEAKE	36 36	76 26W	20	08	08		H
WALLOPS ISLAND NASA TEST FACIL R	8849	01	ACCOMACK	37 56	75 28W	46	24	24		HJ
WARRENTON 3 SE	8888	04	FAUQUIER	38 41	77 46W	500	08	08		H
WARSAW 2 NW	8894	01	RICHMOND	37 59	76 47W	140	18	18		H
WASHGTN DULLES INTL AP R	8903	04	LOUDOUN	38 56	77 28W	290	24	24		HJ
WASHINGTON REAGAN AP R	8906	04	ARLINGTON	38 51	77 2W	10	24	24		HJ
WAYNESBORO WTP	8941	05	WAYNESBORO	38 5	78 53W	1270	07	07		H
WEST POINT 2 NW	9025	01	KING WILLIAM	37 34	76 48W	20	17	17		H
WILLIAMSBURG 2 N	9151	01	YORK	37 18	76 42W	70	24	24		CH
WILLIS	9169	06	FLOYD	36 55	80 30W	2810		07		CH
WINCHESTER	9181	04	FREDERICK	39 11	78 9W	720	07	07		H
WINCHESTER 7 SE	9186	04	FREDERICK	39 11	78 7W	680	08	08		H
WINTERPOCK 4 W	9213	02	CHESTERFIELD	37 19	77 39W	300		07		H
WISE 3E	9215	06	WISE	36 60	82 32W	2549	17	17		CH
WOODSTOCK 2 NE	9263	04	SHENANDOAH	38 54	78 28W	675	07	07		H
WOOLWINE	9272	03	PATRICK	36 47	80 17W	1500		07		CH
WYTHEVILLE 1 S	9301	06	WYTHE	36 56	81 6W	2093	07	07		CH

REFERENCE NOTES

STATION NAMES: Name of the city, town or locality. Figures and letters following the station names indicate the distance in miles and direction from the post office or town community center.

DIVISIONS: Areas within a state of similar climatological characteristics. Division averages are calculated using data from stations that record temperature and/or precipitation. Station Precipitation totals flagged with an 'F' or 'M' are excluded from the Divisional Average calculations of precipitation. Stations with monthly Temperature averages flagged with an 'F' or 'M' are included in the Divisional Average if there are no more than 9 flagged or missing daily values in the month, else they are excluded from the divisional average for temperature.

NORMALS: The average value of the meteorological element over a time period. Effective 1 January 2012, the averaging period is 1981 to 2010. The normals for National Weather Service localities have been adjusted so as to be representative for the current observation site.

MONTHLY DEGREE DAY TOTALS: One heating (cooling) degree day is accumulated for each whole degree that the daily mean temperature is below (above) 65 degrees Fahrenheit.

PRECIPITATION: Values shown in hundredths of inches are water equivalent totals, i.e., total of liquid and melted frozen precipitation. In the "Monthly Summarized Data" table the total snow and sleet values shown in tenths of inches are unmelted amounts. The max depth on ground values of snow and sleet shown in whole inches are cumulative unmelted amounts. The number of days with .10, .50, 1.00 or more refers to water equivalents.

PRECIPITATION QUALITY CONTROL: The NCDC quality control process may flag precipitation data that are spatially inconsistent, exceed climatological limits, or are inconsistent with prevailing weather patterns.

TEMPERATURE: Original temperature values are given in the "Daily Temperature" table. Summary temperature information (averages, departures, extremes, monthly degree day totals) is based on the values labeled MAX/MIN.

WIND: (As shown in the "Evaporation and Wind" table) the total wind movement in miles over the evaporation pan as determined by an anemometer recorder located 6-8 inches above the pan.

SYMBOLS AND LETTERS USED IN THE STATION INDEX TABLE

C Station is equipped with recording rain gage (R) but values in this bulletin are from a non-recording rain gage unless indicated by an R.

G Observations appear in the "Soil Temperatures" table.

H Observations appear in the "Snowfall and Snow on the Ground" table.

J Station also published as a Local Climatological Data publication.

VAR Observation time varies.

SR Observation time near sunrise.

SS Observation time near sunset.

SYMBOLS AND LETTERS USED IN THE DATA TABLES

(DAILY DATA ARE FOR THE 24 HOURS IMMEDIATELY PRECEDING OBSERVATION TIME.)

BLANK Entries in the "Monthly Summarized Data" table indicate no record.

BLANK Entries in the "Daily Precipitation" and "Snowfall and Snow on the Ground" tables indicate zero.

BLANK Entries in the "Daily Temperature" table indicate a missing record

- No record. Data not recorded or not received in time for publication.

+ Precipitation or temperature extremes occurred on one or more previous dates during the month.

* Rain gage not read. Precipitation is included in the amount following the asterisks.

Time distribution may not be known. A * preceding the monthly total indicates precipitation amount is being carried forward to next month's total, and may include amounts from the previous month(s).

a As a subscript, indicates accumulated total.

A Amount of precipitation is the total of observer's entries for the current month. It may include precipitation that occurred during the previous month. Refer to earlier bulletin to determine date of last reading. (Hawaii stations)

B Divisional Departure from normals are computed using 1971-2000 normals.

E Normalized HDD/CDD Calculation. E is appended to the HDD/CDD Calculation when 1-9 individual daily TMAX and/or TMIN values are missing and a Normalized HDD/CDD Calculation is provided. M appears alone if 10 or more daily values are missing.

F Monthly calculation flagged value. F is appended to average and/or total values computed which exclude one or more daily data values that have been flagged by the GHCN-Daily Dataset

M Insufficient or partial data. M is appended to average and/or total values computed with 1-9 daily values missing. M appears alone if 10 or more daily values are missing, (8 or more for wind and evaporation).

N Indicates snow fall or Snowdepth totals are computed with one or more missing days.

R Amounts from recording rain gage.

T Trace. An amount too small to measure.

SEASONAL TABLES: Monthly and seasonal snowfall and heating degree days for the 12 months ending with the June data are published in the July issue of this bulletin. Cooling degree days for the calendar year are published in the "Climatological Data Annual Summary."

Information concerning the history of changes in locations, exposure, etc. of substations is kept on file at the National Climatic Data Center. Historical information of regular National Weather Service Offices may be obtained from the "Local Climatological Data" annual publication. The contents of this publication may be reprinted or otherwise used freely, with proper credit to the National Climatic Data Center. The data are also available digitally.

Effective with the January 2011 Data-Month, COOP Observer Names are no longer included in the Monthly and Annual Climatological Data Publications. This information is not published to ensure the privacy of personal information pursuant to Section 208 of the E-Government Act of 2002 (44 USC 3601).

As of the 2011 Data-Year, Station and Climate Division Maps are no longer being included in the CD Publications. NCDC's Product Development Branch provides updated Station Maps for various data networks via the Historical Observing Metadata Repository: <http://www.ncdc.noaa.gov/homr>.

The GHCN-Daily Quality Control Flags shown below are displayed as superscripts with the data. For more Information on Global Historical Climatology Network - Daily and flags, see: <http://www.ncdc.noaa.gov/oa/climate/ghcn-daily/> and Comprehensive Automated Quality Assurance of Daily Surface Observations. Durre, Imke, Matthew J. Menne, Byron E. Gleason, Tamara G. Houston, Russell S. Vose, 2010: J. Appl. Meteor. Climatol., 49, 1615-1633. doi: 10.1175/2010JAMC2375.1

Blank = Passed All checks

D = failed duplicate check

G = failed gap check

I = failed internal consistency check

K = failed streak/frequent-value check

L = failed check on length of multiday period

M = failed megaconsistency check

N = failed naught check

O = failed climatological outlier check

R = failed lagged range check

S = failed spatial consistency check

T = failed temporal consistency check

W = temperature too warm for snow

X = failed bounds check

Z = flagged as a result of an official Datzilla investigation

Beginning with the January 2013 CD Publication, monthly mean temperature calculations have changed to the National Data Stewardship Team standard. Monthly maximum and minimum temperatures are not rounded until after the monthly mean temperature is calculated. This is the most accurate outcome, but may be slightly different from the mean derived from rounded monthly maximum and minimum.

Processing Updates and Errata: The 2011 CD Publications were reproduced in May 2013. This update included the addition of late reports and corrections based on additional investigations of reported data issues through NCDC's Datzilla system. In addition, divisional averages for precipitation were recalculated using the method described in DIVISIONS above. Previous editions of the 2011 Publications included all precipitation stations regardless of missing data in the calculation of divisional averages. HDD/CDD values were recalculated to match the legacy method of calculation (truncation of monthly HDD/CDD values instead of rounding).

NOAA\National Climatic Data Center
Attn: User Engagement & Services Branch
151 Patton Avenue
Asheville, NC 28801-5001

Customer Services Number: (828) 271-4800, option 2
TDD : (828) 271-4010
Fax number: (828) 271-4876

NCDC now offers free online access to the *Climatological Data* publication.
Go to : www.ncdc.noaa.gov and choose Most Popular.