



CLIMATOLOGICAL DATA VIRGINIA



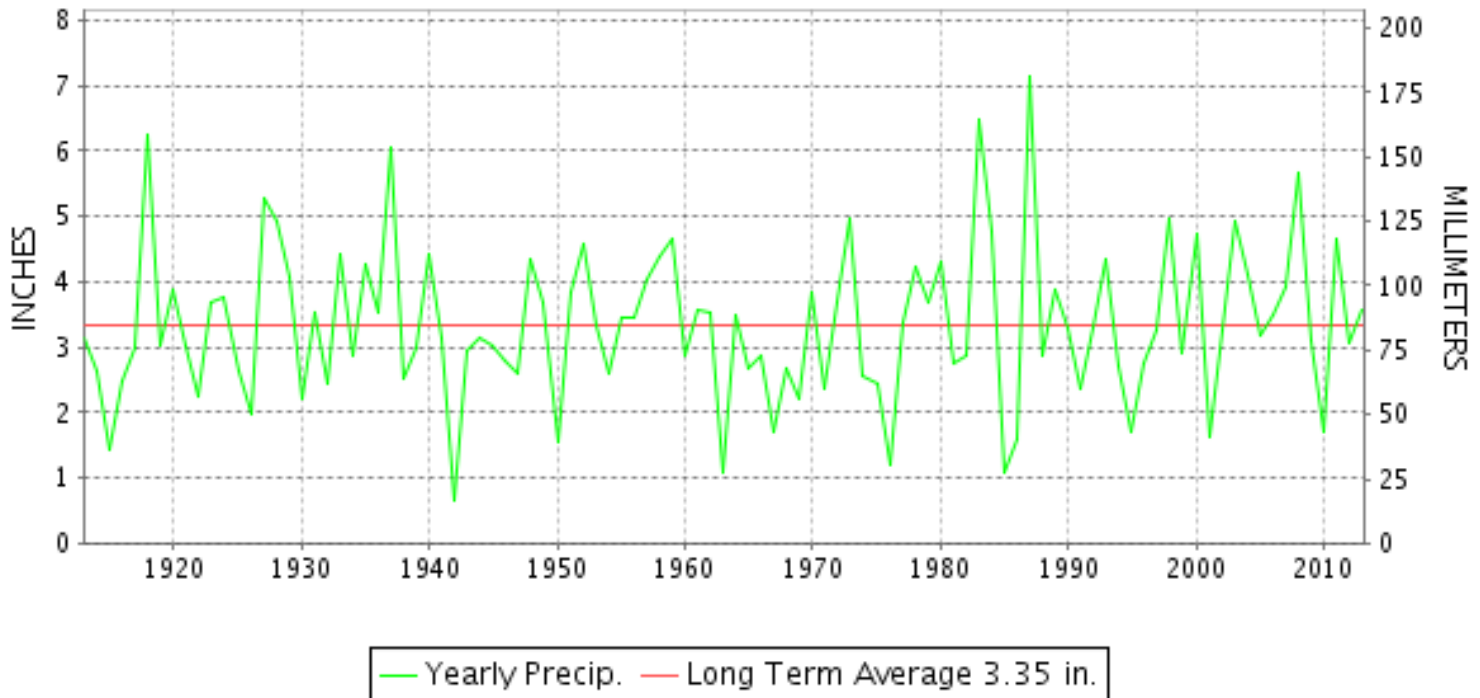
APRIL 2013

VOLUME 123 NUMBER 04

ISSN 0364-5630

GHCND Ver: 3.11-upd-2013080705

APRIL PRECIPITATION BY YEAR



TEMPERATURE AND PRECIPITATION EXTREMES

VIRGINIA

HIGHEST TEMPERATURE	93	APRIL 11	FREE UNION
LOWEST TEMPERATURE	15	APRIL 04	MILLGAP
GREATEST TOTAL PRECIPITATION	5.77		BIG STONE GAP
LEAST TOTAL PRECIPITATION	1.53		LURAY 5 E
GREATEST 1 DAY PRECIPITATION	2.70	APRIL 12	MONTEBELLO FISH CULTURAL STN
GREATEST TOTAL SNOWFALL	5.4		BLACKSBURG NWSO
GREATEST DEPTH OF SNOW OR ICE	5		STAFFORDSVILLE 3 ENE

"I certify that this is an official publication of the National Oceanic and Atmospheric Administration (NOAA) It is compiled using information from weather observing sites supervised by NOAA/National Weather Service and received at the National Climatic Data Center(NCDC), Asheville, North Carolina 28801."

Director
National Climatic Data Center

noaa

National
Oceanic and
Atmospheric Administration

National
Environmental Satellite, Data
and Information Service

National
Climatic Data Center
Asheville, North Carolina

MONTHLY STATION AND DIVISION SUMMARY

STATION	TEMPERATURE (°F)										PRECIPITATION (IN)													
	AVERAGE MAXIMUM	AVERAGE MINIMUM	AVERAGE	DEPARTURE FROM NORMAL	HIGHEST	DATE	LOWEST	DATE	HEATING DEG. DAYS	COOLING DEG. DAYS	NO. OF DAYS				TOTAL	DEPARTURE FROM NORMAL	GREATEST 24 HOURS	DATE	ICE PELLETS, SNOW			NO. OF DAYS		
											MAX		MIN						TOTAL	MAX DEPTH ON GROUND	DATE	.10 OR MORE	.50 OR MORE	1.00 OR MORE
											>=90	<=32	<=32	<=0										
PALMYRA 3S	69.5	40.4	55.0	1.3	92	11	22	03	332	37	1	0	8	0	3.06	0.03	0.79	20	M 0.0	0		7	3	0
PETERSBURG	71.5	46.7	59.1	1.2	90	11	29	04+	222	54	1	0	2	0	4.09	0.86	1.49	20	M 0.0	0		6	3	1
RICHMOND INTL AP	71.4	48.3	59.8	1.6	91	10	30	03	213	65	1	0	3	0	2.88	-0.39	0.94	29	T	0		6	3	0
SANDSTON	69.9	44.0	57.0	0.3	91	11	28	04+	280	46	1	0	4	0	A 3.48	0.07	1.22	05	0.0			4	3	1
WINTERPOCK 4 W															M 3.96		1.08	20	0.0			8	3	1
--DIVISIONAL DATA-----> WESTERN PIEDMONT 03			58.0	2.1B											3.74	0.41B								
ALTAVISTA															3.36		0.95	05	0.0	0		6	4	0
APPOMATTOX	69.1M	44.4M	56.7M	1.3	88	11	29	04	276E	35E	0	0	3	0	4.16	0.74	0.90	05	T	0		7	5	0
BEDFORD 4 NW															3.90		1.05	12	1.0	1	05	7	3	1
BROOKNEAL	71.3	41.5	56.4	5.2	90	11	24	03	276	24	1	0	5	0	3.20	-0.51	1.37	05	T	0		5	3	1
CHARLOTTE COURT HOUSE	70.5	44.5	57.5	1.9	89	11	29	03	255	38	0	0	2	0	3.50	-0.01	1.17	05	0.0	0		6	3	1
CHARLOTTESVILLE 2W	68.8	46.0	57.4	0.2	92	11	29	04	268	47	1	0	2	0	3.26	-0.14	0.93	12	T	0		7	3	0
CHATHAM	68.8	39.6	54.2	0.3	87	11	24	04	332	18	0	0	9	0	3.74	0.19	1.40	05	T	0		6	3	1
CONCORD 4 SSW															3.56		0.84	05	T	0		7	4	0
DANVILLE REGIONAL AP	71.3	46.9	59.1	0.8	88	10	29	03	214	46	0	0	1	0	M 3.04	-0.42	0.92	12	M 0.0	0		6	3	0
FREE UNION	68.8	40.3	54.5		93	11	23	03	337	30	1	0	7	0	2.63		0.72	12	M 0.3	0		6	2	0
HOLCOMB ROCK															4.47		1.27	20	1.0	T	05	7	4	1
HUDDLESTON 4 SW															3.23		0.95	05	2.0	T	05	6	3	0
LYNCHBURG INTL AP	69.9	45.9	57.9	2.5	91	10	25	03	248	40	1	0	3	0	3.38	0.07	0.88	19	0.1	T	04	7	3	0
MARTINSVILLE FLTR PLT	70.1	39.8	54.9	-0.3	88	11	24	04+	313	20	0	0	11	0	3.99	0.50	1.20	05	T	0		5	3	2
MEADOWS OF DAN 5 SW	M	M	M		83	10	29	04+	498E	0	0	0	6	0	4.96		2.14	12	2.0	1	05	5	3	3
MONTEBELLO FISH CULTURAL STN	62.9M	37.4M	50.2M		85	11	21	04+	447E	10E	0	0	12	0	M 5.26		2.70	12	0.0			6	2	2
MONTECELLO	67.1	44.6	55.9	1.6	88	11	29	05+	298	31	0	0	3	0	2.43	-0.82	0.84	20	0.0			4	3	0
PEDLAR DAM															4.15		1.34	20	1.0	1	05	7	3	1
ROCKY MT	69.8	42.3	56.1	1.4	90	11	27	02	286	28	1	0	5	0	4.31	0.54	1.59	12	1.5	1	05	6	4	2
SOUTH BOSTON	71.0M	44.1M	57.6M	1.8	88	11	29	04	250E	35E	0	0	3	0	2.94	-0.54	0.88	05	0.0	0		6	3	0
STUART	68.7	42.0	55.3	-0.9	87	11	27	04+	305	21	0	0	5	0	4.22	0.23	1.24	05	1.0	0		6	4	2
TYE RIVER 1 SE	70.5	44.1	57.3	1.5	90	11	27	03	261	37	1	0	5	0	3.80	0.39	0.82	05	0.0			7	3	0
WOOLWINE															5.04		1.38	12	2.0	2	05	7	4	2
--DIVISIONAL DATA-----> NORTHERN 04			56.1	0.4B											3.73	0.00B								
BOSTON 4 SE	67.1	40.6	53.9	0.8	90	11	22	04	353	29	1	0	6	0	2.14	-1.30	0.92	12	0.0	0		4	2	0
EDINBURG	65.4	36.7	51.1	-0.3	87	11	20	04	421	12	0	0	14	0	1.93	-0.88	0.83	20	0.0			5	2	0
FRONT ROYAL	67.2M	43.8M	55.5M	1.2	91	11	24	04	317E	36E	1	0	4	0	M 1.46	-1.80	0.80	13	0.0			2	1	0
LINCOLN	65.7	39.8	52.8	0.9	91	11	19	04	375	15	1	0	8	0	2.29		1.03	19	0.0			3	2	2
LURAY 5 E	67.4	41.5	54.4	-0.2	89	11	21	04	337	27	0	0	6	0	1.53	-1.91	0.62	12	0.0	0		3	1	0
MADISON	M	M	M		78	25	40	26	244E	0	0	0	0	0	M				M 0.0	0				

VIRGINIA
201304

MONTHLY STATION AND DIVISION SUMMARY

STATION	TEMPERATURE (°F)										PRECIPITATION (IN)													
	AVERAGE MAXIMUM	AVERAGE MINIMUM	AVERAGE	DEPARTURE FROM NORMAL	HIGHEST	DATE	LOWEST	DATE	HEATING DEG. DAYS	COOLING DEG. DAYS	NO. OF DAYS				TOTAL	DEPARTURE FROM NORMAL	GREATEST 24 HOURS	DATE	ICE PELLETS, SNOW			NO. OF DAYS		
											MAX		MIN						TOTAL	MAX DEPTH ON GROUND	DATE	.10 OR MORE	.50 OR MORE	1.00 OR MORE
											>=90	<=32	<=32	<=0										
BURKES GARDEN	60.2	34.7	47.5	-0.4	78	11	19	04	519	0	0	0	14	0	5.56	1.88	2.39	12	3.8	3	05	9	3	2
CHRISTIANSBURG	63.3	41.4	52.3	-0.4	83	11	27	04+	379	7	0	0	8	0	4.05	0.77	1.38	12	5.0	4	05	6	2	2
CLINTWOOD 1 W	67.2	36.1	51.6	-0.3	86	11	22	03	397	1	0	0	11	0	4.65	0.57	1.01	17	T	0		9	5	1
COPPER HILL	60.4	40.2	50.3		82	11	26	06+	440	6	0	0	8	0	4.22		1.49	12	4.0	2	05	6	3	1
GALAX RADIO WBRF	63.1	39.0	51.1	0.2	82	11	24	03	413	1	0	0	9	0	4.62	1.08	1.92	12	1.6	2	05	7	3	2
GALAX WTP	62.2M	37.4M	49.8M	-0.2	80	11	26	03+	450E	0	0	0	11	0	4.94		2.05	12	M 2.0	2	05	6	4	2
GRUNDY	67.7	38.8	53.3	0.5	87	11	26	04+	352	7	0	0	8	0	4.17	0.11	0.73	18+	0.0	0		8	5	0
JOHN FLANNAGAN LAKE	M	M	M		86	11	23	01	343E	14E	0	0	7	0	MA 5.03		1.01	18	0.0			6	4	1
LAFAYETTE 1 NE															3.31		0.91	05	4.2	3	05	8	2	0
LEBANON	65.7	38.7	52.2	0.3	82	11	23	04	382	5	0	0	10	0	4.33	0.90	0.91	05	0.0	0		9	3	0
NORA 4 SSE	60.3M	41.0M	50.6M	0.3	78	11	26	04+	428E	6E	0	0	7	0	A 4.92	1.71	1.15	12	M 0.0	0		7	3	1
NORTH FORK LAKE	M	M	M		84	11	25	04	351E	4E	0	0	6	0	M				0.0					
PULASKI 2 E	66.2M	40.0	53.1M	1.2	85	11	24	04	353E	6E	0	0	8	0	3.68	0.73	1.19	05	M 3.3	3	05	8	3	1
RADFORD 3 N	64.6	40.2	52.4	2.2	85	11	25	02	376	4	0	0	7	0	3.13	0.06	0.97	05	5.0	4	05	8	2	0
RICHLANDS	66.0	36.9	51.5	0.0	82	11	22	02+	399	0	0	0	11	0	4.11	0.32	0.89	17	T	0		8	5	0
SALTVILLE 1N	66.9M	37.4M	52.2M	-0.7	84	11	25	04+	375E	0	0	0	8	0	4.16	0.54	0.94	05	M 0.5	0		9	4	0
STAFFORDSVILLE 3 ENE	64.5	38.8	51.7	0.1	85	11	27	07+	397	3	0	0	10	0	3.64	0.29	1.09	12	5.2	5	05	8	2	1
TROUT DALE 3 SSE	61.0	35.7M	48.3M		82	11	23	04+	494E	0	0	0	15	0	5.48		2.19	12	M 3.0	1	05	8	3	1
WILLIS															4.18		1.35	12	1.8	2	05	6	4	2
WISE 3E	M	M	M												M				0.0					
WYTHEVILLE 1 S	65.4	36.5	51.0	1.1	82	11	22	04+	414	2	0	0	12	0	3.91	0.69	1.24	12	2.0	2	05	7	2	2
--DIVISIONAL DATA----->			51.5	0.2B											4.33	0.63B								

VIRGINIA
201304

DAILY PRECIPITATION (INCHES)

STATION	TOTAL	DAY OF MONTH																															
		01	02	03	04	05	06	07	08	09	10	11	12	13	14	15	16	17	18	19	20	21	22	23	24	25	26	27	28	29	30	31	
VIRGINIA																																	
TIDEWATER 01																																	
DISPUTANTA	4.40	0.37			1.04								0.39		0.01				0.26											1.13	0.30		
EASTVILLE	3.52	0.30			0.82								0.05																	0.50	1.30		
EMPORIA 1 WNW	3.90	0.37			1.23								0.28		0.17	T														0.79	0.52		
FREDERICKSBURG SEWAGE	2.34				0.84							0.06			T	0.06	0.01	0.01	0.03	0.70						0.02				0.31	0.30		
HAMPTON UNIV	M	-	-	-	-	-	-	-	-	-	-	-	-	-	-	-	-	-	-	-	-	-	-	-	-	-	-	-	-	-	-		
HOLLAND 1 E	3.45	0.36			0.86							0.08				0.10														0.63	0.54		
HOPEWELL	4.59				0.90							0.12	0.12		0.10														0.01	1.51			
NORFOLK INTL AP	3.21			0.44	0.48							0.22			T					0.30	0.40		0.02						0.02	1.31	0.02		
NORFOLK SOUTH	3.57	0.01		0.40	0.56							0.34			T					0.34	0.48		0.07	T				0.03	1.30	0.04			
NORTH	M	-	-	-	-	-	-	-	-	-	-	-	-	-	-	-	-	-	-	-	-	-	-	-	-	-	-	-	-	-	-		
PAINTER 2W	3.66	0.03			0.90							0.12									0.81		0.03						1.62	0.15			
STONY CREEK 2 N	4.40			0.43	1.13				0.02			0.05			0.50							0.90			0.01				1.14	0.22			
SUFFOLK LAKE KILBY	3.51	0.02		0.49	0.30							0.40	0.49		0.05	0.02	0.66	0.10	0.35	0.12		0.04	0.02		0.01			0.04	0.85	0.05			
WAKEFIELD 1NW	3.69	T		0.81	0.42							0.14			0.06		0.01	T	0.47	0.13		0.01	T					0.12	1.42	0.10			
WALKERTON 2 NW	3.30				1.03							0.50			T					0.76			T						0.99	0.02			
WALLACETON LK DRUMMOND	M 4.15	0.27		-	0.87							0.65			0.02	0.06					1.15			0.10	0.03				0.60	0.40			
WALLOPS ISLAND NASA TEST FACIL	3.77	T		0.18	0.70							0.14			T					0.40	0.62								T	1.53	0.20		
WARSAW 2 NW	M	-	-	-	-	-	-	-	-	-	-	-	-	-	-	-	-	-	-	-	-	-	-	-	-	-	-	-	-	-	-		
WEST POINT 2 NW	3.98				0.76							0.13	0.37		0.02	T			0.04		1.36								1.27	0.03			
WILLIAMSBURG 2 N	3.96			0.26	0.60							0.41			0.02	T			T	0.49	0.36		T	T				0.05	1.68	0.09			
EASTERN PIEDMONT 02																																	
ALBERTA 5N	5.49	0.31			1.54							0.20	0.01		0.17	0.01			0.16	0.02	1.73								1.19	0.15			
AMELIA COURTHOUSE 1	3.80	0.18			0.96							1.00			0.25						0.58								0.82	0.01			
ASHLAND	3.99			0.01	0.90							0.84			0.06					1.08	0.11							T	0.99	T			
BREMO BLUFF	3.84			0.62	0.62							1.12			0.25					0.55								0.03	0.63	0.02			
BUCKINGHAM	3.28	0.11			0.79							0.60			0.28	0.13					0.69								0.26	0.42			
CAMP PICKETT	4.23				1.24							0.14			0.33				0.12		1.53								0.62	0.25			
CHASE CITY	M	-	-	-	-	-	-	-	-	-	-	-	-	-	-	-	-	-	-	-	-	-	-	-	-	-	-	-	-	-	-		
CLARKSVILLE	4.13	0.43			1.10							0.60			0.10						1.00								0.70	0.20			
CORBIN	3.39	0.04			0.85							0.43	0.33		0.35				0.01	0.02	0.79								0.46	0.11			
CROZIER	4.00	0.12			1.05							0.32		0.08	0.11	0.03			0.90		0.61								0.78				
FARMVILLE 2 N	M 3.33	0.28	-		0.85		-					0.50	0.30	-	0.29						0.42	-						-	0.56	0.13			
GREENBAY 3 NE	3.42				1.08							0.76			0.23						0.63								0.71	0.01			
JOHN H KERR DAM	M 3.79	0.38		-	0.88						-	0.35	0.15		0.07						0.86								0.97	0.13			
LOUISA	3.09				0.65							0.99			0.08						0.57					0.02			0.59	0.19			
PALMYRA 3S	3.06	0.11			0.77							0.25	0.42		0.18						0.79								0.02	0.52			
PETERSBURG	4.09	0.35			0.94	0.01						0.28			0.14	0.03			0.04		1.49								0.77	0.04			
RICHMOND INTL AP	2.88	T		0.62	0.23							0.24			0.04				T	0.53	0.17		0.01	0.03				0.05	0.94	0.02			
SANDSTON	A 3.48				1.22						*	*	*	*	*	*	0.44 _a		T		0.78		*	*	0.02 _a				0.70	0.32			
WINTERPOCK 4 W	M 3.96	0.32	-		0.89							0.11	0.19		0.14	0.03					0.02								0.85	0.33			

VIRGINIA
201304

DAILY PRECIPITATION (INCHES)

STATION	TOTAL	DAY OF MONTH																														
		01	02	03	04	05	06	07	08	09	10	11	12	13	14	15	16	17	18	19	20	21	22	23	24	25	26	27	28	29	30	31
WESTERN PIEDMONT 03																																
ALTAVISTA	3.36	0.02		0.01	0.95							0.63			0.25			0.01	0.12	0.60									0.02	0.75		
APPOMATTOX	4.16	0.30			0.90							0.61			0.37			0.76		0.57												
BEDFORD 4 NW	3.90	0.18			0.87							1.05	0.17		0.38	0.08				0.73					0.04				0.04	0.36		
BROOKNEAL	3.20				1.37							0.51			0.27					0.36			0.03					0.04	0.59	0.03		
CHARLOTTE COURT HOUSE	3.50	0.11			1.17							0.27	0.83		T					0.27			T						0.76	0.09		
CHARLOTTESVILLE 2W	3.26	0.04			0.51							0.93	0.01		0.26	0.13	0.03	0.04	0.09	0.68			T		0.05				0.35	0.14		
CHATHAM	3.74	0.21			1.40							0.53			0.25	T			0.04	0.40								0.02	0.84	0.05		
CONCORD 4 SSW	3.56	0.23			0.84							0.66			0.35	0.01				0.26	0.55		0.01					0.01	0.62	0.02		
DANVILLE REGIONAL AP	M 3.04	0.01		0.58	0.29							0.92		T	0.16					-							T	0.67	0.41			
FREE UNION	2.63	0.03			0.49							0.72	T		0.23	0.13	T	0.01	0.04	0.69					0.05			0.18	0.06			
HOLCOMB ROCK	4.47	0.32	T		0.69							0.94	0.09		0.51	0.17	0.05			1.27					0.05				0.38	T		
HUDDLESTON 4 SW	3.23	0.07			0.95							0.18	0.65		0.16	0.09				0.32									0.08	0.69	0.04	
LYNCHBURG INTL AP	3.38			0.68	0.12							0.85		T	0.30			0.05	0.88					0.01				0.24	0.25	T		
MARTINSVILLE FLTR PLT	3.99	0.06			1.20							1.04			0.20					0.45								0.08	0.90	0.06		
MEADOWS OF DAN 5 SW	4.96	0.07			1.24							2.14			0.24	0.18				1.09												
MONTEBELLO FISH CULTURAL STN	M 5.26											2.70			0.20			0.25	1.55			-			0.22				0.32	0.02		
MONTICELLO	2.43	0.01			0.50							0.62			0.03	0.01			0.84						0.06				0.33	0.03		
PEDLAR DAM	4.15	0.19			0.71							0.69	0.08		0.41	0.08	T	T	1.34						0.13			T	0.48	0.04		
ROCKY MT	4.31				1.15							1.59	0.05		0.25	0.03			0.55									0.10	0.56	0.03		
SOUTH BOSTON	2.94	0.25			0.88	0.01						0.34	0.02		0.17	0.20			0.51				0.03						0.65	0.08		
STUART	4.22	0.02			1.24							0.97			0.22	0.20			0.50										0.02	1.05		
TYE RIVER 1 SE	3.80				0.82							0.73	0.25		0.49			0.75	0.34										0.42			
WOOLWINE	5.04	0.06			1.30							1.38			0.23	0.41	0.02	T	0.79						0.05			0.02	0.61	0.17		
NORTHERN 04																																
BOSTON 4 SE	2.14				0.28							0.92			0.08			0.01	0.69										0.11	0.05		
EDINBURG	1.93	0.07			0.10							0.61	0.01		0.01	0.01	0.10		0.83						0.02				0.11	0.06		
FRONT ROYAL	M 1.46	0.03			-							0.01	0.80		0.01	0.08			0.43						0.02				0.02	0.06		
LINCOLN	2.29												1.00						1.03											0.26		
LURAY 5 E	1.53	0.02			0.23							0.62	0.01		0.05	0.03	0.03		0.39										0.09	0.06		
MADISON	M	-	-	-	-	-	-	-	-	-	-	-	-	-	-	-	-	-	-	-	-	-	-	-	-	T	-	-	0.15	0.12		
MANASSAS	M	-	-	-	-	-	-	-	-	-	-	-	-	-	-	-	-	-	-	-	-	-	-	-	-	-	-	-	-	-	-	
MT WEATHER	1.99	0.07			0.20							0.10	0.40		T	0.03	0.20		0.45						0.06				0.15	0.28		
PIEDMONT RSCH STN	2.57	0.05			0.54							0.75			0.01				0.78						0.04				0.34	0.06		
SOMERSET	2.47	0.05	0.02		0.47							0.62	0.01		0.16	0.03		0.03	0.13	0.59									0.22	0.14		
SPERRYVILLE	M 2.20	-	-	-	0.30							0.04	0.53			0.23	0.03		0.72						0.03				0.06	0.26		
STERLING RCS	2.12	0.05			0.20							0.14	0.38		T	0.06	T	0.02	1.02						T				0.10	0.15		
VIENNA	2.12				0.27							0.35	0.11				0.11	0.01	0.16	0.87					0.01				0.10	0.13		
WARRENTON 3 SE	M	-	-	-	-	-	-	-	-	-	-	-	-	-	-	-	-	-	-	-	-	-	-	-	-	-	-	-	-	-	-	
WASHGTN DULLES INTL AP	2.30			0.16	0.10							0.56			T		0.06	0.09	1.20										0.04	0.09	T	
WASHINGTON REAGAN AP	2.76	T		0.14	0.12							0.80			T		T	0.06	1.37	0.01					T	0.01			T	0.23	0.02	
WINCHESTER	M	-	-	-	-	-	-	-	-	-	-	-	-	-	-	-	-	-	-	-	-	-	-	-	-	-	-	-	-	-	-	

VIRGINIA
201304

DAILY PRECIPITATION (INCHES)

STATION	TOTAL	DAY OF MONTH																														
		01	02	03	04	05	06	07	08	09	10	11	12	13	14	15	16	17	18	19	20	21	22	23	24	25	26	27	28	29	30	31
WINCHESTER 7 SE	1.83	0.18	0.01			0.02						0.20	0.22				0.35		0.01	0.53					0.06					0.14	0.11	
WOODSTOCK 2 NE	1.77	0.11			0.07							0.65	0.07				0.07			0.65									0.12	0.03		
CENTRAL MOUNTAIN 05																																
BUCHANAN	3.47				0.70							1.25			0.52	T			T	0.58					0.22			T	0.20			
BUENA VISTA	2.74	0.08	0.02		0.63							0.76			0.28	0.07		0.01		0.57				0.10			0.01	0.21	T			
COVINGTON FLTR PLT	2.81	0.10			0.57							0.73			0.26	0.07				0.79				0.02				T	0.27			
CRAIGSVILLE 2 S	M	0.16	0.02	-	-	0.52	-	-	-	-	-	1.21	-	-	0.46	0.10	0.03	0.01	0.68	-	-	-	-	0.06	-	-	0.05	0.34	1.36			
DALE ENTERPRISE	2.30	0.15			0.32		0.06					0.60	0.05		0.15	0.10	0.04			0.60				0.03			0.05	0.13	0.02			
GATHRIGHT DAM	3.34	0.10	T		0.56							0.95	T		0.46	0.12	T		T	0.68				0.06			0.07	0.26	0.08			
GLASGOW 1 SE	3.72	0.19			0.67	T						0.91	0.01		0.58	0.14	0.01	T		0.73				0.16			0.01	0.30	0.01			
HOT SPRINGS	3.90	0.08			0.59							0.89			0.70	0.19	0.05			1.00				0.08			T	0.27	0.05			
LEXINGTON	2.99	0.19			0.55							0.70			0.47	0.11	0.01			0.43				0.18				0.33	0.02			
MILLGAP	3.11	0.29	0.01		0.36							0.83			0.39	0.13	0.13			0.42				0.04				0.34	0.17			
MTN GROVE	4.19	0.20	T		1.00							0.95			0.65	T	0.15		T	0.48				0.14			0.05	0.32	0.25			
MUSTOE 1 SW	3.22	0.05		0.28	0.09							0.84			0.48	0.02	0.15		0.54				0.09				0.35	0.30	0.03			
NEW CASTLE	3.76	0.03			0.96							0.85	0.01		0.45	0.15	0.01			0.71				0.20			0.06	0.29	0.04			
ROANOKE 8 N	4.22	0.09			0.56							2.26			0.30	0.04				0.50				0.08			0.13	0.26				
ROANOKE INTL AP	2.94	T		0.63	0.07					0.05	1.16			T	0.26	T	T	T	0.43				0.03			T	0.29	0.02				
STAUNTON WATER TRMTMT PLT	2.44				0.38						0.74				0.43	T	0.10			0.38				0.06			T	0.27	0.08			
WAYNESBORO WTP	3.19				0.36	0.02					1.03	0.02			0.17	0.15	0.06			1.11				0.06				0.18	0.03			
SOUTHWESTERN MOUNTAIN 06																																
ABINGDON 3S	M 4.26			0.75	0.15						0.06	0.87			0.07		1.15	-	0.52	-			0.15	0.04		0.10	0.40					
BIG STONE GAP	5.77	0.07			0.67							1.00			0.12		0.57	0.70		1.40				0.23			0.70	0.25	0.06			
BLACKSBURG NWSO	3.80	0.20	T		0.98							1.12	0.04		0.27	0.07	0.13	T	0.01	0.45			0.09			0.11	0.33					
BURKES GARDEN	5.56	T			1.07							2.39	0.03		0.24	0.03	0.21	0.28	0.02	0.66				0.16			0.21	0.23	0.03			
CHRISTIANSBURG	4.05	0.08			1.20							1.38	0.13		0.20	0.08	0.03	0.02	T	0.49				0.05			0.39					
CLINTWOOD 1 W	4.65	0.01	T		0.56					T		0.70			0.11		1.01	0.50		0.90				0.15			T	0.41	0.24	0.06		
COPPER HILL	4.22	0.09			0.83							1.49			0.25	0.23				0.75							0.08	0.48	0.02			
GALAX RADIO WBRF	4.62	0.15			1.06							1.92			0.10	0.02	0.04		0.01	0.45							0.52	0.33	0.02			
GALAX WTP	4.94	0.06			1.10							2.05			0.14	0.05	0.06	0.01	0.03	0.52				0.04			0.14	0.73	0.01			
GRUNDY	4.17	0.02	T		0.57							0.66	0.04		0.17		0.73	0.73		0.61				0.13			0.42	0.04	0.05			
JOHN FLANNAGAN LAKE	MA 5.03	0.42			0.52	-	-	-		-		0.70	*	*	0.21 _a		0.79	1.01		*		*	0.76 _a	0.10		*	*	0.47 _a	0.05			
LAFAYETTE 1 NE	3.31	0.15			0.91							0.85	0.07		0.20	0.10	0.06		0.01	0.48				0.03			0.10	0.33	0.02			
LEBANON	4.33	0.03	0.02		0.91	0.02						0.80	0.07		0.18		0.49	0.62		0.44				0.24			0.23	0.28				
NORA 4 SSE	A 4.92	0.20	0.02		0.69							1.15	T		0.13	*	*	*	1.33 _a	0.73				0.14			0.40	0.05	0.08			
NORTH FORK LAKE	M	-			0.56	-	-					0.66	*	*	0.11 _a		1.03	-	-	*		*	0.76 _a	-	-	-	-	-	-	-	0.06	
PULASKI 2 E	3.68	0.05	T		1.19							0.72			0.30	0.22	0.04		0.03	0.03				0.53			0.13	0.34	0.10			
RADFORD 3 N	3.13	0.12			0.97							0.80	0.10		0.26	0.12	0.21			0.48				0.07								
RICHLANDS	4.11	0.01			0.78							0.63	0.05		0.09		0.89	0.60		0.59				0.12		0.05	0.17	0.11	0.02			
SALTVILLE 1N	4.16	T	0.04		0.94							0.90	0.02		0.11		0.50	0.53		0.37				0.11			0.30	0.34				
STAFFORDSVILLE 3 ENE	3.64	0.10	0.04		0.77							1.09	0.02		0.33	0.19	0.18	0.02	0.01	0.34				0.07			0.06	0.40	0.02			

VIRGINIA
201304

DAILY PRECIPITATION (INCHES)

STATION	TOTAL	DAY OF MONTH																														
		01	02	03	04	05	06	07	08	09	10	11	12	13	14	15	16	17	18	19	20	21	22	23	24	25	26	27	28	29	30	31
TROUT DALE 3 SSE	5.48	0.09	0.05			0.92						2.19			0.19	0.04	0.04	0.42	0.15	0.39						0.01			0.24	0.75		
WILLIS	4.18					1.02						1.35	0.05			0.20	T		0.02	0.58						0.04			0.12	0.80		
WISE 3E	M	-	-	-	-	-	-	-	-	-	-	-	-	-	-	-	-	-	-	-	-	-	-	-	-	-	-	-	-	-	-	-
WYTHEVILLE 1 S	3.91	0.07	0.04			1.20						1.24	0.03		0.23	0.06	0.20	0.07								0.27			0.17	0.33		

VIRGINIA
201304

DAILY TEMPERATURES (°F)

STATION	OB. TIME	MAX/MIN	DAY OF MONTH																															AVERAGE
			01	02	03	04	05	06	07	08	09	10	11	12	13	14	15	16	17	18	19	20	21	22	23	24	25	26	27	28	29	30	31	
VIRGINIA TIDEWATER 01 DISPUTANTA	07	MAX	63	73	57	56	52	64	59	72	81	86	90	86	82	74	78	70	77	85	81	84	63	59	58	60	78	66	71	72	67	68	71.1	
		MIN	45	29	28	29	31	37	31	31	50	57	60	60	50	32	42	52	56	57	59	48	39	34	35	41	48	39	42	43	44	56	43.5	
EASTVILLE	07	MAX	61	65	52	52	48	53	52	64	76	80	84	80	77	62	67	64	69	75	74	78	56	55	53	55	70	59	63	66	66	58	64.5	
		MIN	46	39	34	33	34	40	38	43	55	61	62	63	51	52	55	53	54	59	60	51	44	40	44	46	49	43	45	45	55	48.0		
EMPORIA 1 WNW	08	MAX	65	72	57	58	54	65	62	72	79	85	89	82	80	73	80	69	77	84	84	83	64	60	59	65	77	68	72	72	67	71	71.5	
		MIN	45	35	34	34	35	35	34	39	48	48	63	63	55	48	48	54	55	57	57	51	43	37	37	44	47	42	42	51	57	46.0		
FREDERICKSBURG SEWAGE	07	MAX	54	68	65	55	50	65	58	73	82	87	91	88	82	73	72	62	78	82	80	80	63	56	57	61	79	68	69	73	65	60	69.9	
		MIN	36	20	24	21	27	39	36	37	53	59	61	56	46	42	42	52	53	59	59	47	40	35	35	43	46	40	41	44	46	52	43.0	
HAMPTON UNIV	17	MAX																															M	
		MIN																																M
HOLLAND 1 E	08	MAX	65	73	58	58	56	62	56	73	81	87	90	86	85	82	81	70	77	86	82	85	60	59	57	63	78	66	73	73	69	69	72.0	
		MIN	45	34	30	29	37	32	29	41	56	58	58	64	68	64	68	56	52	57	57	49	39	35	46	38	52	35	38	38	52	54	47.0	
HOPEWELL	16	MAX	72	70	57	58	63	64	70	80	86	90	89	84	82	75	76	77	83	83	83	64	58	58	78	78	70	71	72	65	68	73.6		
		MIN	50	36	33	36	40	44	37	59	59	65	68	55	47	54	53	61	65	63	52	46	40	48	48	52	45	49	49	56	58	50.9		
NORFOLK INTL AP	24	MAX	72	58	54	50	59	51	71	80	84	89	85	81	70	70	67	74	82	79	84	66	54	55	56	76	64	65	67	67	65	64	68.6	
		MIN	49	40	42	40	42	40	41	55	62	66	63	69	54	48	58	59	58	62	65	50	45	45	44	44	46	44	49	45	57	56	51.3	
NORFOLK SOUTH	24	MAX	71	56	54	51	59	51	70	78	84	88	84	80	69	72	67	74	82	79	82	64	54	54	55	75	64	66	68	67	64	65	68.2	
		MIN	48	39	38	38	42	37	36	53	61	65	63	67	52	47	57	55	57	60	62	46	43	43	44	42	45	39	44	41	56	56	49.2	
NORTH	07	MAX																															M	
		MIN																																M
PAINTER 2W	16	MAX	67	67	52	51	56	57	61	77	82	85	86	82	74	69	66	69	78	73	76	73	55	53	53	66	65	67	68	64	62	60	67.1	
		MIN	47	32	29	31	39	40	35	55	62	60	62	63	50	47	53	49	57	56	61	49	43	35	46	44	51	38	40	40	54	54	47.4	
STONY CREEK 2 N	08	MAX	64	72	57	57	52	64	60	72	81	87	90	85	82	73	79	69	78	86	81	84	65	60	59	62	79	68	71	72	66	69	71.5	
		MIN	43	36	32	30	32	39	36	32	47	59	63	62	57	50	43	52	57	57	60	50	45	40	35	45	43	44	37	45	45	55	45.7	
SUFFOLK LAKE KILBY	24	MAX	73	58	57	53	60	55	70	77	84	87	83	79	70	77	67	75	83	78	82	65	62	55	60	74	65	69	71	67	67	68	69.7	
		MIN	51	39	38	37	41	38	37	52	61	63	62	66	53	48	55	57	56	59	60	37	43	42	46	42	46	42	42	45	55	57	49.0	
WAKEFIELD 1NW	24	MAX	73	58	58	53	65	58	71	80	86	90	85	81	74	80	71	76	84	82	85	65	60	58	63	78	67	72	73	70	68	67	71.7	
		MIN	46	31	31	27	39	34	31	52	60	64	62	66	52	44	52	57	59	61	62	41	35	32	44	42	44	38	40	42	55	57	46.7	
WALKERTON 2 NW	18	MAX	73	60	58	56	68	63	74	88	92	91	87	84	80	77	72	76	83	83	84	76	69	73	65	80	75	73	75	70	66	71	74.7	
		MIN	52	41	43	43	47	48	38	55	64	65	64	58	45	56	59	58	61	63	54	48	37	49	45	53	52	49	45	56	54	57	52.0	
WALLACETON LK DRUMMOND	08	MAX	68	73	62		57	63	60	70	78	88	85	80	71	80	71	76	87	82	84	60	62	60	63	78	70	73	72	74	70	72.2		
		MIN	43	29	28		33	28	25	42	53	56	56	62	45	39	48	51	42	51	52	45	50	28	45	34	42	30	33	36	33	49	41.7	
WALLOPS ISLAND NASA TEST FACIL	24	MAX	69	54	54	47	61	50	60	74	83	88	79	69	66	72	60	69	77	72	73	65	55	56	58	61	65	66	67	66	59	59	65.1	
		MIN	43	31	30	28	40	40	41	48	57	59	59	58	50	50	54	53	57	57	59	49	42	38	44	41	46	40	43	42	55	56	47.0	
WARSAW 2 NW	18	MAX																															M	
		MIN																																M
WEST POINT 2 NW	17	MAX	72	65	57	54	64	63	71	82	87	91	87	83	80	73	70	74	80	80	83	81	61	55	61	78	75	70	71	69	61	63	72.0	
		MIN	29	27	28	27	33	34	48	60	63	62	66	48	45	52	52	52	57	58	61	47	40	35	47	42	48	40	45	44	53	55	46.6	
WILLIAMSBURG 2 N	24	MAX	74	59	58	52	66	57	72	82	86	91	86	83	72	74	67	76	83	80	87	67	56	58	62	77	68	68	70	68	65	68	71.1	
		MIN	49	35	34	33	41	42	37	54	64	67	65	67	54	50	54	54	61	60	60	47	44	38	46	44	44	40	43	42	54	58	49.4	

VIRGINIA
201304

DAILY TEMPERATURES (°F)

STATION	OB. TIME	MAX/MIN	DAY OF MONTH																															AVERAGE
			01	02	03	04	05	06	07	08	09	10	11	12	13	14	15	16	17	18	19	20	21	22	23	24	25	26	27	28	29	30	31	
EASTERN PIEDMONT 02 AMELIA COURTHOUSE 1	08	MAX	57	71	71	58	48	65		72	80	86	90	85	83		77	67	76	82	79	81	63	60	59	69	78	67	69	72	63			71.4
		MIN	43	30	27	27	35	38		31	58	61	62	63	46		44	50	56	60	63	46	41	32	40	44	50	40	47	49	53			45.8
ASHLAND	18	MAX	73	59	58	55	65	63	72	82	87	91	87	82	80	74	71	77	81	79	81	65	61	58	62	78	74	69	71	69	63	64		71.7
		MIN	39	28	26	27	36	39	34	53	58	64	61	64	45	41	52	54	60	58	63	46	39	34	46	44	47	39	47	47	52	54		46.6
CAMP PICKETT	08	MAX	61	72	55	57	57	64	60	71	79	85	88	82	83	73	79	69	74	83	79	81	63	59	58	64	76	76	69	72	63	69		70.7
		MIN	43	29	27	28	28	37	32	32	50	58	58	64	48	42	42	51	53	58	61	47	41	34	41	44	53	39	41	49	52	54		44.5
CHASE CITY	17	MAX																																M
		MIN																																M
CLARKSVILLE	07	MAX	66	72	59	60	50	67	62	73	80	85	89	81	83	74	80	70	74	84	84	81	65	60	62	67	75	70	71	73	61	71		71.6
		MIN	38	35	35	35	35	38	36	46	57	59	62	65	53	46	45	54	58	59	54	48	43	37	38	47	49	41	43	55	53	56		47.3
CORBIN	09	MAX	68	53	55	51	65	59	71	82	86	91	87	81	75	71	62	77	81	81	81	66	55	56	60	79	71	68	72	66	60	60		69.7
		MIN	37	26	26	25	36	36	33	52	62	66	63	59	43	39	51	52	61	59	63	44	35	32	45	43	46	36	44	47	52	54		45.6
CROZIER	07	MAX	55	57	48	64	68	57	58	71	80	85	89	84	81	71	75	65	74	81	79	79	63	57	58	62	76	66	72	56	72	62		68.8
		MIN	36	24	27	30	24	30	34	34	60	64	65	63	45	39	44	49	52	56	61	46	39	31	37	41	47	36	45	52	43	53		43.6
FARMVILLE 2 N	07	MAX	58		57	57	48	65		73	81	86	89	83	82		79	67	75	82	80	79		58	60	66	78	67	69		60	63		70.5
		MIN	41		27	26	32	36		32	47	58	64	44	47		44	54	56	47	58	46		35	35	44	48	37	37		49	52		43.8
GREENBAY 3 NE	09	MAX	61	70	55	57	48	64	60	71	80	85	89	83	82	72	79	79	75	84	79	79	63	58	59	65	77	68	70	73	60	63		70.3
		MIN	41	29	25	32	35	36	31	38	59	62	62	62	46	43	53	53	57	61	63	46	40	31	42	46	50	36	48	50	53	51		46.0
JOHN H KERR DAM	08	MAX	66	74	58	61	51	67	65	68	74	82	83	77	84	75	79	69	75	84	75	83	65	60	60	69	77	70	69	72	64	70		70.9
		MIN	46	33	35	35	36	35	35	39	56	62	64	65	50	43	53	56	60	63	64	47	44	37	40	46	53	40	48	55	55	57		48.4
LOUISA	18	MAX	66	59	57	56	66	66	73	81	86	91	90	82	81	74	73	74	84	81	78	78	64	59	64	77	76	69	72	71	63	64		72.5
		MIN	36	24	20	22	36	33	32	50	60	63	55	62	40	37	51	53	57	60	65	44	34	27	46	37	42	32	42	46	52	54		43.7
PALMYRA 3S	06	MAX	54	67	54	56	48	65	59	74	82	87	92	86	82	73	76	62	74	83	80	79	63	56	59	64	79	67	68	73	60	64		69.5
		MIN	33	25	22	23	25	29	29	30	43	58	58	58	42	38	39	52	55	58	61	45	36	30	34	38	39	33	34	43	48	53		40.4
PETERSBURG	08	MAX	62	72	56	58	53	65	60	71	81	86	90	84	82	73	78	69	77	84	82	83	82	58	57	61	78	68	70	72	66	67		71.5
		MIN	46	34	29	29	36	40	35	33	52	61	64	64	53	44	45	52	58	59	62	51	45	39	40	46	47	42	41	48	50	55		46.7
RICHMOND INTL AP	24	MAX	73	57	58	51	65	60	73	81	87	91	86	84	74	77	67	76	82	81	83	65	59	59	62	79	68	71	72	66	66	68		71.4
		MIN	45	32	30	31	38	39	34	50	59	65	63	67	50	44	53	58	60	60	63	47	40	36	46	45	47	41	49	45	54	57		48.3
SANDSTON	07	MAX	57	70	55	56	52	64	58	71	83	88	91	87	84	73	76	65	78	81	81	83	62	58	57	51	79	66	70	72	66	63		69.9
		MIN	44	31	28	28	29	38	34	34	49	58	62	62	48	43	43	51	56	58	62	47	40	33	33	42	43	39	40	43	46	56		44.0
WESTERN PIEDMONT 03 APPOMATTOX	07	MAX	60	66	54	56	46	64	61	72	80	84	88	83	80	72	78	64	75	82	78	75	62	58	61	67	76	68		57	68		69.1	
		MIN	44	33	31	29	32	37	35	38	45	56	59	61	48	49	49	52	56	60	62	42	38	33	35	35	43	38		50	52		44.4	
BROOKNEAL	07	MAX	64	68	56	58	49	65	63	74	81	86	90	84	83	75	81	69	77	85	80	77	65	61	63	69	76	70	71	73	58	69		71.3
		MIN	37	28	24	25	33	30	34	34	42	48	53	54	43	39	39	55	53	55	62	48	37	32	34	41	42	34	34	53	52	50		41.5
CHARLOTTE COURT HOUSE	07	MAX	63	69	57	59	48	66	64	70	80	86	89	84	80	76	84	67	76	85	78	78	65	56	60	68	77	68	65	72	59	67		70.5
		MIN	40	33	29	30	34	38	35	38	43	54	61	63	50	43	44	54	56	58	63	43	39	33	34	45	48	38	39	45	52	53		44.5
CHARLOTTESVILLE 2W	08	MAX	53	64	53	56	47	65	58	72	82	86	92	87	82	73	76	60	72	83	79	73	62	55	58	65	78	68	69	74	57	64		68.8
		MIN	42	33	33	29	30	35	37	40	54	65	64	60	50	50	51	51	53	59	59	43	38	35	37	45	43	45	47	49	51	51		46.0
CHATHAM	07	MAX	63	70	56	56	45	62	61	71	79	84	87	83	81	74	78	66	76	79	78	77	61	57	57	66	75	66	67	70	55	64		68.8
		MIN	40	27	25	24	32	29	28	32	39	39	56	59	41	38	37	53	53	54	58	42	33	35	35	34	40	32	32	43	50	49		39.6

VIRGINIA
201304

DAILY TEMPERATURES (°F)

STATION	OB. TIME	MAX/MIN	DAY OF MONTH																															AVERAGE
			01	02	03	04	05	06	07	08	09	10	11	12	13	14	15	16	17	18	19	20	21	22	23	24	25	26	27	28	29	30	31	
DANVILLE REGIONAL AP	24	MAX	71	59	59	49	66	64	73	80	86	88	82	84	75	81	70	78	80	80	79	65	61	63	68	76	70	70	71	57	68	66	71.3	
		MIN	46	34	29	36	37	33	37	49	54	59	61	59	43	41	55	59	55	65	57	39	38	37	48	45	44	36	48	54	53	55	46.9	
FREE UNION	08	MAX	53	64	54	56	46	66	60	72	82	87	93	87	80	73	76	60	73	84	78	74	63	54	59	66	78	67	69	73	54	63	68.8	
		MIN	36	26	23	24	26	33	33	33	42	53	56	56	41	40	45	50	53	56	58	43	31	28	29	39	40	35	37	42	50	50	40.3	
LYNCHBURG INTL AP	24	MAX	65	54	58	45	65	61	72	80	86	91	84	80	74	79	65	76	83	78	75	63	58	60	68	76	68	69	71	57	68	67	69.9	
		MIN	41	30	25	32	35	35	37	44	55	57	60	59	41	43	54	57	58	62	53	41	39	36	44	46	46	39	49	53	51	54	45.9	
MARTINSVILLE FLTR PLT	07	MAX	63	67	58	57	44	64	65	72	79	85	88	82	82	76	80	64	79	80	79	77	63	61	63	70	74	71	69	69	55	66	70.1	
		MIN	34	26	24	24	31	29	30	35	39	45	53	59	40	36	37	53	53	55	58	44	32	31	32	42	42	31	32	47	51	49	39.8	
MEADOWS OF DAN 5 SW	07	MAX	62	62	53	56	41	60	63	67	76	83																						M
		MIN	32	29	29	29	32	32	34	37	41	45																						M
MONTEBELLO FISH CULTURAL STN	07	MAX	55	50	45	48	39	60	61	65	73	81	85	78	72	72	70	55	71	74	66	63	54		53	64	69	62	63	64	49	64	62.9	
		MIN	36	26	21	21	22	24	24	34	45	56	55	54	41	37	45	47	51	56	56	33	27		25	25	32	31	32	40	44	45	37.4	
MONTICELLO	08	MAX	61	63	52	54	46	63	56	70	78	83	88	83	79	72	73	59	70	81	76	81	60	53	56	63	75	64	66	70	56	61	67.1	
		MIN	38	34	31	29	29	34	35	35	49	61	63	59	50	51	51	50	54	59	58	45	38	35	33	43	43	45	42	46	48	51	44.6	
ROCKY MT	07	MAX	62	63	55	57	44	65	63	72	80	86	90	83	79	80	79	61	76	82	79	73	62	60	61	71	74	69	68	68	69	64	69.8	
		MIN	41	27	28	31	32	30	33	33	45	51	59	60	45	43	44	52	52	56	56	40	35	33	33	46	42	35	35	53	50	50	42.3	
SOUTH BOSTON	07	MAX	64	71	58	59	49	65	62	75	79	85	88	81	83	76	83	69	75	82	80	79	64	60	62	67	75	69	72		58	69	71.0	
		MIN	45	32	30	29	35	33	35	35	46	56	62	64	46	41	41	55	53	53	64	48	41	35	35	43	43	37	37		53	53	44.1	
STUART	07	MAX	60	65	56	58	42	62	65	71	77	83	87	80	80	75	78	60	80	80	78	70	63	60	61	70	71	71	69	67	55	66	68.7	
		MIN	37	30	27	27	32	33	32	34	42	47	54	60	40	39	40	52	57	56	58	40	35	35	35	46	43	37	37	51	51	53	42.0	
TYE RIVER 1 SE	07	MAX	58	68	56	60	48	68	62	74	80	82	90	85	81	75	79	64	75	85	80	75	65	59	62	70	78	70	71	72	57	65	70.5	
		MIN	34	33	27	28	29	38	37	38	52	58	61	59	47	48	50	53	54	60	59	41	37	31	32	43	44	37	38	47	53	54	44.1	
NORTHERN 04																																		
BOSTON 4 SE	07	MAX	51	63	52	55	46	66	56	71	80	85	90	86	80	71	69	61	72	80	77	75	61	54	57	58	78	65	66	71	57	61	67.1	
		MIN	36	29	23	22	23	34	38	37	37	61	57	54	41	40	42	50	53	57	58	45	36	29	29	34	39	35	39	44	45	52	40.6	
EDINBURG	07	MAX	48	59	47	49	48	62	59	69	77	82	87	86	77	69	69	60	75	77	75	75	55	50	54	60	76	62	66	72	55	63	65.4	
		MIN	36	31	23	20	21	28	29	41	42	57	51	48	42	30	31	47	50	50	56	36	28	24	26	32	34	27	29	37	46	50	36.7	
FRONT ROYAL	07	MAX	52	59	49	52		66	56	71	81	86	91	84	79	71	68	62	72	76	76	74	60	53	56	59	78	66	65	70	55	61	67.2	
		MIN	40	32	28	24		34	32	39	56	65	60	55	49	40	41	52	54	57	58	44	35	35	38	37	42	40	39	41	51	51	43.8	
LINCOLN	07	MAX	49	63	47	50	49	64	56	70	81	85	91	86	72	65	65	65	75	72	77	75	57	52	56	57	77	62	62	71	60	60	65.7	
		MIN	32	32	21	19	23	25	35	39	45	53	53	52	41	41	54	54	54	55	43	35	35	30	30	41	41	44	35	40	40	53	39.8	
LURAY 5 E	08	MAX	55	59	48	50	48	63	58	72	79	84	89	85	78	69	70	63	77	81	76	77	59	53	56	65	79	67	66	71	58	66	67.4	
		MIN	35	28	22	21	27	27	33	40	52	55	54	55	40	38	43	52	54	57	62	41	30	34	41	41	41	35	40	47	49	50	41.5	
MADISON	08	MAX																																M
		MIN																																M
MANASSAS	07	MAX																																M
		MIN																																M
MT WEATHER	07	MAX	48	56	44	47	43	61	53	66	76	81	87	81	70	65	62	62	71	69	73	68	56	51	55	55	73	60	62	68	53	55	62.4	
		MIN	39	29	28	26	27	30	31	35	57	63	60	49	43	41	43	49	50	55	55	38	31	32	36	36	38	39	43	46	46	49	41.5	
PIEDMONT RSCH STN	08	MAX	60	63	51	54	46	64	57	71	79	84	87	84	80	71	60	71	81	78	76	60	54	57	61	78	65	66	71	58	62	67.3		
		MIN	39	32	26	26	28	36	36	38	52	58	60	48	46	44	42	54	58	58	49	40	35	36	43	44	39	39	46	46	51	43.6		
SOMERSET	07	MAX	53	64	52	55	46	66	57	71	80	85	89	85	81	72	71	61	72	81	77	76	62	53	57	60	76	67	67	70	57	63	67.5	

VIRGINIA
201304

DAILY TEMPERATURES (°F)

STATION	OB. TIME	MAX/MIN	DAY OF MONTH																															AVERAGE
			01	02	03	04	05	06	07	08	09	10	11	12	13	14	15	16	17	18	19	20	21	22	23	24	25	26	27	28	29	30	31	
SPERRYVILLE	06	MIN	39	28	22	23	28	32	36	43	51	59	59	58	44	40	51	51	54	59	59	44	36	29	42	39	43	33	44	49	51	52	43.3	
		MAX					46	65	56	68	78	85	90	84	78	70	68	60	69	78	74	72	60	55	56	59	75	65	65	70	55	60	67.7	
STERLING RCS	07	MIN					21	30	33	35	45	57	57	55	47	40	40	49	52	58	59	43	31	31	34	40	40	38	34	42	50	50	42.7	
		MAX	50	63	48	51	48	65	57	71	82	86	91	87	77	69	66	64	77	76	79	79	59	54	56	59	79	79	64	71	63	60	67.7	
VIENNA	07	MIN	34	27	25	21	25	32	37	38	53	55	57	52	40	39	46	55	56	59	60	45	35	33	35	40	43	40	39	44	47	53	42.2	
		MAX	49	63	46	48	45	62	52	69	78	84	88	84	75	66	64	61	73	75	75	75	56	52	53	57	75	60	61	68	62	53	64.3	
WARRENTON 3 SE	08	MIN	38	34	26	24	24	34	35	35	37	62	60	51	40	38	39	53	53	56	58	44	34	32	32	43	42	38	38	39	44	51	41.1	
		MAX																																M
WASHGTN DULLES INTL AP	24	MIN																															M	
		MAX	64	50	52	49	66	57	71	81	85	89	86	79	70	67	64	76	77	78	78	60	55	56	61	78	64	65	70	63	61	60	67.7	
WASHINGTON REAGAN AP	24	MIN	36	31	24	22	37	36	39	50	59	58	55	53	40	39	55	56	55	59	51	45	39	33	45	41	45	40	40	46	53	54	44.5	
		MAX	68	51	54	50	67	59	71	80	86	91	86	75	70	69	63	74	81	78	79	62	56	57	63	79	65	68	73	68	62	62	68.9	
WINCHESTER	07	MIN	41	39	33	31	39	40	42	53	60	63	57	53	49	48	57	56	61	61	52	48	42	41	48	48	47	47	49	51	54	56	48.9	
		MAX																																M
WINCHESTER 7 SE	08	MIN																															M	
		MAX	49	57	48	49	47	65	56	71	80	85	90	84	77	70	67	63	74	73	75	73	59	53	56	59	77	66	63	70	56	62	65.8	
WOODSTOCK 2 NE	07	MIN	34	-21 ^G	-32 ^G	-32 ^G	19	29	29	40	52	51	52	51	44	35	37	53	53	54	54	42	32	30	31	35	38	32	36	36	48	51	40.7	
		MAX	49	60	47	50	48	64	59	71	80	83	89	85	78	69	69	64	77	76	75	74	58	54	58	63	78	64	66	72	56	63	66.6	
CENTRAL MOUNTAIN 05 COVINGTON FLTR PLT	07	MIN	37	26	24	22	23	30	31	40	44	52	54	53	44	37	37	52	56	56	59	41	35	28	31	34	41	36	36	38	47	50	39.8	
		MAX	57	58	51	53	45	64	66	76	81	86	90	86	75	71	77	63	79	82	75	69	69	60	64	74	72	67	72	71	65	70	69.6	
DALE ENTERPRISE	07	MIN	35	28	24	23	28	28	31	40	43	47	48	51	50	37	37	51	56	54	64	37	30	31	33	38	39	33	34	42	51	51	39.8	
		MAX	54	57	48	51	44	62	62	68	76	81	87	83	75	70	72	60	73	81	73	71	59	52	56	66	75	64	65	70	56	66	65.9	
GATHRIGHT DAM	07	MIN	34	29	23	21	22	32	38	38	42	52	53	54	42	36	39	49	54	59	59	38	31	29	31	40	37	34	36	50	49	49	40.0	
		MAX	54	51	44	48	43	58	62	72	77	82	86	83	70	65	74	58	78	79	74	68	68	68	60	71	77	62	67	69	53	67	66.3	
HOT SPRINGS	07	MIN	36	27	23	23	26	30	31	38	42	47	49	52	46	38	39	50	55	56	60	38	31	32	34	38	38	35	37	44	48	49	39.7	
		MAX	51	51	45	48	42	58	61	71	76	81	85	83	71	67	73	56	75	79	72	66	54	56	59	70	76	62	67	71	52	68	64.9	
MILLGAP	07	MIN	36	29	22	22	28	28	28	34	44	49	52	52	43	39	38	49	54	55	61	34	30	33	33	34	35	34	34	43	48	47	38.9	
		MAX	49	47	40	44	40	56	59	69	74	79	84	79	68	61	70	54	74	76	70	65	51	56	58	68	73	60	64	67	49	65	62.3	
MUSTOE 1 SW	24	MIN	31	28	17	15	18	20	19	28	31	40	41	41	43	36	36	48	50	52	60	34	21	22	24	25	27	23	23	33	46	46	32.6	
		MAX	44	41	43	40	56	56	67	72	77	83	78	69	63	69	54	71	75	67	63	51	54	55	67	72	59	63	66	53	64	66	61.9	
ROANOKE 8 N	07	MIN	31	25	17	20	30	22	29	33	44	43	43	45	40	34	47	50	51	47	41	29	25	25	27	34	31	27	34	45	45	50	35.5	
		MAX	58	60	52	55	42	63	62	72	82	85	89	84	74	73	78	61	77	80	77	70	60	57	61	68	76	67	69	67	55	68	68.1	
ROANOKE INTL AP	24	MIN	39	32	30	30	32	35	34	41	47	51	58	60	51	43	44	52	56	59	62	42	38	35	36	46	41	39	39	49	50	51	44.1	
		MAX	61	54	56	43	65	62	73	80	87	90	85	76	74	79	63	76	80	77	71	61	57	61	69	78	68	68	67	58	68	69	69.2	
STAUNTON WATER TRMTMT PLT	08	MIN	39	35	32	33	34	34	41	49	57	65	66	56	53	48	53	56	62	60	49	42	34	35	47	47	39	38	49	52	51	57	47.1	
		MAX	53	58	49	52	43	63	63	69	76	81	87	83	75	75	73	56	73	80	72	69	59	56	52	66	74	64	65	69	52	67	65.8	
WAYNESBORO WTP	07	MIN	40	28	26	25	28	30	30	42	54	64	59	57	45	45	48	49	54	58	58	36	32	30	38	41	38	38	43	45	47	48	42.5	
		MAX	59	60	50	53	45	63	59	72	79	85	89	84	78	71	74	59	73	84	75	71	60	56	57	67	77	66	67	71	55	68	67.6	
SOUTHWESTERN MOUNTAIN 06		MIN	33	26	23	23	26	30	29	42	43	51	56	55	41	39	39	52	54	58	60	42	31	31	34	43	40	34	34	44	50	51	40.5	
		MAX																																M

VIRGINIA
201304

DAILY TEMPERATURES (°F)

STATION	OB. TIME	MAX/MIN	DAY OF MONTH																															AVERAGE	
			01	02	03	04	05	06	07	08	09	10	11	12	13	14	15	16	17	18	19	20	21	22	23	24	25	26	27	28	29	30	31		
ABINGDON 3S	22	MAX	57	51	53	43	56	69	69	76	79	82	81	63	66	74	70	79	67		71		62	64	71	72	61	66	60	57	69	78		66.6	
		MIN	43	28	25	33	33	30	38	41	46	50	51	45	36	37	51	47	58		46		31	37	38	43	34	33	49	48	50	48		41.0	
BIG STONE GAP	08	MAX	58	58	53	55	49	66	70	71	75	80	83	82	63	68	74	78	82	71	81	70	59	66	70	73	69	63	69	69	59	66		68.3	
		MIN	40	29	29	28	38	34	36	43	44	45	50	53	39	39	42	48	48	52	45	32	32	36	38	38	39	35	38	38	52	48		40.3	
BLACKSBURG NWSO	07	MAX	54	54	48	50	39	57	62	67	74	79	83	78	68	67	72	56	77	72	74	66	55	55	58	68	70	61	63	63	53	65		63.6	
		MIN	39	29	24	24	29	27	28	34	40	45	47	52	45	36	36	48	54	52	52	35	29	32	34	42	33	33	34	49	47	47		38.5	
BURKES GARDEN	07	MAX	52	48	43	46	35	51	60	63	75	75	78	76	60	61	67	53	75	65	69	65	49	52	55	66	69	69	61	58	52	59		60.2	
		MIN	35	29	25	19	29	24	28	34	35	35	42	41	41	32	35	47	52	53	55	29	23	25	29	28	33	28	26	45	45	39		34.7	
CHRISTIANSBURG	07	MAX	56	55	48	50	38	57	62	65	73	78	83	76	68	67	71	56	75	72	72	66	55	55	57	67	70	61	64	63	52	66		63.3	
		MIN	40	29	27	27	28	32	33	45	45	50	58	55	45	44	47	48	54	57	58	35	31	32	32	41	34	34	38	48	47	48		41.4	
CLINTWOOD 1 W	07	MAX	55	54	50	51	48	60	70	72	75	82	86	83	64	67	76	75	83	73	80	62	57	64	69	74	71	63	66	63	59	64		67.2	
		MIN	33	26	22	23	29	28	28	35	38	42	46	47	38	33	33	45	46	47	48	31	29	29	33	34	35	31	31	48	49	45		36.1	
COPPER HILL	07	MAX	53	53	46	47	33	53	55	63	70	77	82	74	68	66	69	52	68	71	68	62	62	49	52	61	68	60	58	59	49	64		60.4	
		MIN	40	27	26	26	26	26	36	37	49	53	59	54	43	42	45	46	52	56	57	33	33	30	30	39	35	32	36	47	45	45		40.2	
GALAX RADIO WBRF	07	MAX	59	56	50	53	36	57	62	66	73	80	82	75	68	67	70	55	72	71	71	63	57	56	59	67	68	64	64	53	55	64		63.1	
		MIN	34	26	24	29	30	28	38	36	42	46	50	53	44	34	45	50	53	38	58	33	29	31	31	40	34	31	40	47	48	48		39.0	
GALAX WTP	07	MAX	59	55	49	52	36	54	59	64	72	78	80	74	68	65	70	54	70	71	70	63	55	55	58	65	67	62	63		51	64		62.2	
		MIN	40	26	26	28	30	29	29	36	36	41	46	49	46	33	34	49	53	48	50	35	29	29	32	35	36	31	31		48	49		37.4	
GRUNDY	07	MAX	55	54	51	52	49	61	70	72	76	81	87	82	65	68	76	72	83	68	81	71	59	66	70	74	72	64	66	63	60	64		67.7	
		MIN	39	29	26	26	31	30	30	38	42	46	48	51	37	37	37	46	46	52	52	33	31	31	36	36	41	33	34	48	49	48		38.8	
JOHN FLANNAGAN LAKE	07	MAX	60	56	49	51	47						86	83			76	74	84	76	81			70	71	75	71	63		66	64		M		
		MIN	23	30	25	25	30					42		50	52			35	49	49	51	51			30	36	36	39	32			46		M	
LEBANON	07	MAX	56	56	50	50	44	58	68	69	75	79	82	80	62	67	74	69	79	69	77	71	56	61	64	71	72	61	65	62	59	65		65.7	
		MIN	35	26	24	23	36	29	29	38	39	44	48	52	39	35	35	54	55	54	57	32	30	31	35	35	39	32	32	50	49	43		38.7	
NORA 4 SSE	07	MAX	52	51	47	47	41	55	61	64	70	74	78	76	59	63	69				70	64	52	57	62	64	64	58	63	55	52	59		60.3	
		MIN	40	26	26	26	31	34	40	49	53	57	60	53	40	40	48				60	30	30	32	39	42	35	34	41	47	45	49		41.0	
NORTH FORK LAKE	08	MAX		56	49	51	47				72	73	80	84	82			75	74	83												64		M	
		MIN		28	26	25	30				30	40	45	46	50			35	50	49												47		M	
PULASKI 2 E	07	MAX	58	58	50	53	39	59	64	71	77	82	85	79	67	70	78	59	77	74	74	68	68	57	58	72	74		66	60	55	67		66.2	
		MIN	43	31	26	24	32	29	29	40	41	48	51	53	48	39	39	50	56	51	50	37	30	29	33	33	38	35	37	50	49	49		40.0	
RADFORD 3 N	07	MAX	55	58	49	51	41	56	62	69	75	81	85	79	69	68	72	57	77	73	73	67	55	55	58	69	73	64	64	63	54	65		64.6	
		MIN	39	25	26	28	30	27	33	39	43	46	49	52	48	36	44	50	55	50	53	37	29	32	34	41	37	34	40	48	49	51		40.2	
RICHLANDS	07	MAX	58	58	50	51	43	59	68	69	74	79	82	80	64	66	74	66	80	70	77	71	55	62	64	71	72	61	66	66	60	65		66.0	
		MIN	22	22	24	23	34	28	31	39	40	43	46	48	41	34	43	49	48	49	50	31	29	41	34	34	39	31	31	31	48	44		36.9	
SALTVILLE 1N	07	MAX	59	55	52	52	42	60	69	70	76	80	84	81	64	68	74	66	80	68	77	70			65	72	73	63	67	62	58	67		66.9	
		MIN	30	29	25	25	32	28	29	36	37	42	46	47	39	35	35	45	45	50	50	34	33		33	34	36	32	34	50	49	44		37.4	
STAFFORDSVILLE 3 ENE	07	MAX	55	55	49	51	40	56	63	70	77	81	85	79	70	68	73	56	77	72	73	69	55	56	58	69	73	61	65	62	55	63		64.5	
		MIN	39	32	29	27	30	28	27	37	41	44	48	51	46	36	36	49	55	52	52	37	29	29	33	33	37	31	32	46	49	50		38.8	
TROUT DALE 3 SSE	07	MAX	57	52	47	48	34	53	60	65	72	77	82	73	62	62	67	53	75	67	69	64	51	55	58	67	71	58	63	56	50	62		61.0	
		MIN	23	29	29	23	28	25	28	31	33	36	47	52	43	30	34	47	50	50	52	32	25	31	30	29	33	28		44	45	48		35.7	
WISE 3E	17	MAX																																M	
		MIN																																	M

VIRGINIA
201304

DAILY TEMPERATURES (°F)

STATION	OB. TIME	MAX/MIN	DAY OF MONTH																															AVERAGE
			01	02	03	04	05	06	07	08	09	10	11	12	13	14	15	16	17	18	19	20	21	22	23	24	25	26	27	28	29	30	31	
WYTHEVILLE 1 S	07	MAX MIN	58 34	54 29	50 22	52 22	39 31	58 28	64 27	69 34	77 36	80 41	82 45	79 46	63 45	66 35	73 34	57 50	79 54	72 47	73 47	69 34	69 28	59 29	60 29	71 29	75 34	62 30	67 30	63 47	55 50	68 48	65.4 36.5	

VIRGINIA
201304

SNOWFALL AND SNOW ON GROUND (INCHES)

STATION		DAY OF MONTH																														
		01	02	03	04	05	06	07	08	09	10	11	12	13	14	15	16	17	18	19	20	21	22	23	24	25	26	27	28	29	30	31
VIRGINIA																																
TIDEWATER 01																																
DISPUTANTA	SNOWFALL																															
EASTVILLE	SNOWFALL																															
EMPORIA 1 WNW	SNOWFALL																															
FREDERICKSBURG SEWAGE	SNOWFALL																															
HAMPTON UNIV	SNOWFALL																															
HOLLAND 1 E	SNOWFALL																															
HOPEWELL	SNOWFALL	-	-	-	-	-	-	-	-	-	-	-	-	-	-	-	-	-	-	-	-	-	-	-	-	-	-	-	-	-	-	
	SN ON GND	-	-	-	-	-	-	-	-	-	-	-	-	-	-	-	-	-	-	-	-	-	-	-	-	-	-	-	-	-	-	
NORFOLK INTL AP	SNOWFALL																															
	SN ON GND																															
NORFOLK SOUTH	SNOWFALL																															
NORTH	SNOWFALL																															
PAINTER 2W	SNOWFALL																															
STONY CREEK 2 N	SNOWFALL																															
	SN ON GND																															
SUFFOLK LAKE KILBY	SNOWFALL																															
	SN ON GND																															
WAKEFIELD 1NW	SNOWFALL																															
	SN ON GND																															
WALKERTON 2 NW	SNOWFALL																															
	SN ON GND																															
WALLACETON LK DRUMMOND	SNOWFALL																															
WALLOPS ISLAND NASA TEST FACIL	SNOWFALL																															
	SN ON GND																															
WARSAW 2 NW	SNOWFALL																															
WEST POINT 2 NW	SNOWFALL																															
	SN ON GND																															
WILLIAMSBURG 2 N	SNOWFALL																															
EASTERN PIEDMONT 02																																
ASHLAND	SNOWFALL	-	-	-	T	-	-	-	-	-	-	-	-	-	-	-	-	-	-	-	-	-	-	-	-	-	-	-	-	-	-	
	SN ON GND	-	-	-	-	-	-	-	-	-	-	-	-	-	-	-	-	-	-	-	-	-	-	-	-	-	-	-	-	-	-	
BREMO BLUFF	SNOWFALL	-	-	-																												
	SN ON GND	-	-	-																												
BUCKINGHAM	SNOWFALL																															
	SN ON GND																															
CAMP PICKETT	SNOWFALL																															
CHASE CITY	SNOWFALL																															
CLARKSVILLE	SNOWFALL																															
	SN ON GND																															
CORBIN	SNOWFALL																															
	SN ON GND																															

Snowfall: Includes snow and ice. Values for NWS stations (J index note) are Mid-Mid (LST).

Snow on ground: Includes snow, sleet, ice, and hail. Values for NWS stations (J index note) are observed at 12 UTC (GMT).

Water Equivalent: Given for NWS stations (J index note) only, when snow depth is 2 inches or more, and is measured at 18 UTC (GMT)

VIRGINIA
201304

SNOWFALL AND SNOW ON GROUND (INCHES)

STATION		DAY OF MONTH																																			
		01	02	03	04	05	06	07	08	09	10	11	12	13	14	15	16	17	18	19	20	21	22	23	24	25	26	27	28	29	30	31					
CROZIER	SNOWFALL																																				
	SN ON GND																																				
FARMVILLE 2 N	SNOWFALL																																				
GREENBAY 3 NE	SNOWFALL																																				
JOHN H KERR DAM	SNOWFALL																																				
LOUISA	SNOWFALL																																				
PALMYRA 3S	SNOWFALL	-	-	-	-	-	-	-	-	-	-	-	-	-	-	-	-	-	-	-	-	-	-	-	-	-	-	-	-	-	-	-	-	-			
	SN ON GND	-	-	-	-	-	-	-	-	-	-	-	-	-	-	-	-	-	-	-	-	-	-	-	-	-	-	-	-	-	-	-	-	-			
PETERSBURG	SNOWFALL																																				
	SN ON GND																																				
RICHMOND INTL AP	SNOWFALL				T																																
	SN ON GND																																				
SANDSTON	SNOWFALL																																				
WINTERPOCK 4 W	SNOWFALL																																				
WESTERN PIEDMONT 03																																					
APPOMATTOX	SNOWFALL					T																															
	SN ON GND																																				
BEDFORD 4 NW	SNOWFALL					1.0																															
	SN ON GND					1																															
BROOKNEAL	SNOWFALL					T																															
	SN ON GND																																				
CHARLOTTE COURT HOUSE	SNOWFALL																																				
	SN ON GND																																				
CHARLOTTESVILLE 2W	SNOWFALL					T																															
	SN ON GND																																				
CHATHAM	SNOWFALL					T																															
	SN ON GND																																				
CONCORD 4 SSW	SNOWFALL					T																															
	SN ON GND																																				
DANVILLE REGIONAL AP	SNOWFALL																																				
	SN ON GND																																				
FREE UNION	SNOWFALL	-	-	-	-	0.3	-	-	-	-	-	-	-	-	-	-	-	-	-	-	-	-	-	-	-	-	-	-	-	-	-	-	-	-	-	-	
	SN ON GND	-	-	-	-		-	-	-	-	-	-	-	-	-	-	-	-	-	-	-	-	-	-	-	-	-	-	-	-	-	-	-	-	-	-	
HOLCOMB ROCK	SNOWFALL																																				
	SN ON GND					1.0																															
HUDDLESTON 4 SW	SNOWFALL																																				
	SN ON GND																																				
LYNCHBURG INTL AP	SNOWFALL					0.1																															
	SN ON GND																																				
MARTINSVILLE FLTR PLT	SNOWFALL																																				
	SN ON GND																																				
MEADOWS OF DAN 5 SW	SNOWFALL																																				
	SN ON GND					2.0																															

Snowfall: Includes snow and ice. Values for NWS stations (J index note) are Mid-Mid (LST).

Snow on ground: Includes snow, sleet, ice, and hail. Values for NWS stations (J index note) are observed at 12 UTC (GMT).

Water Equivalent: Given for NWS stations (J index note) only, when snow depth is 2 inches or more, and is measured at 18 UTC (GMT)

VIRGINIA
201304

SNOWFALL AND SNOW ON GROUND (INCHES)

STATION		DAY OF MONTH																														
		01	02	03	04	05	06	07	08	09	10	11	12	13	14	15	16	17	18	19	20	21	22	23	24	25	26	27	28	29	30	31
MONTEBELLO FISH CULTURAL STN	SN ON GND					1																										
	SNOWFALL																															
MONTICELLO	SNOWFALL																															
	SNOWFALL					1.0																										
PEDLAR DAM	SNOWFALL																															
	SN ON GND					1																										
ROCKY MT	SNOWFALL																															
	SN ON GND					1.5																										
SOUTH BOSTON	SN ON GND					1																										
	SNOWFALL																															
STUART	SN ON GND																															
	SNOWFALL					1.0																										
TYE RIVER 1 SE	SN ON GND																															
	SNOWFALL																															
WOOLWINE	SNOWFALL					2.0																										
	SN ON GND					2																										
NORTHERN 04	WTR EQUIV	-	-	-	-	0.9	-	-	-	-	-	-	-	-	-	-	-	-	-	-	-	-	-	-	-	-	-	-	-	-	-	
	SNOWFALL	-	-	-	-	T	-	-	-	-	-	-	-	-	-	-	-	-	-	-	-	-	-	-	-	-	-	-	-	-	-	
SPERRYVILLE	SN ON GND	-	-	-	-		-	-	-	-	-	-	-	-	-	-	-	-	-	-	-	-	-	-	-	-	-	-	-	-	-	
	SNOWFALL	-	-	-	-		-	-	-	-	-	-	-	-	-	-	-	-	-	-	-	-	-	-	-	-	-	-	-	-	-	
STERLING RCS	SN ON GND	-	-	-	-		-	-	-	-	-	-	-	-	-	-	-	-	-	-	-	-	-	-	-	-	-	-	-	-	-	
	SNOWFALL	-	-	-	-		-	-	-	-	-	-	-	-	-	-	-	-	-	-	-	-	-	-	-	-	-	-	-	-	-	
VIENNA	WTR EQUIV	-	-	-	-	-	-	-	-	-	-	-	-	-	-	-	-	-	-	-	-	-	-	-	-	-	-	-	-	-	-	
	SNOWFALL	-	-	-	-		-	-	-	-	-	-	-	-	-	-	-	-	-	-	-	-	-	-	-	-	-	-	-	-	-	
WARRENTON 3 SE	SNOWFALL	-	-	-	-		-	-	-	-	-	-	-	-	-	-	-	-	-	-	-	-	-	-	-	-	-	-	-	-	-	
	SNOWFALL	-	-	-	-		-	-	-	-	-	-	-	-	-	-	-	-	-	-	-	-	-	-	-	-	-	-	-	-	-	
WASHGTN DULLES INTL AP	SNOWFALL	-	-	-	-		-	-	-	-	-	-	-	-	-	-	-	-	-	-	-	-	-	-	-	-	-	-	-	-	-	
	SN ON GND	-	-	-	-		-	-	-	-	-	-	-	-	-	-	-	-	-	-	-	-	-	-	-	-	-	-	-	-	-	
WASHINGTON REAGAN AP	SNOWFALL	-	-	-	-		-	-	-	-	-	-	-	-	-	-	-	-	-	-	-	-	-	-	-	-	-	-	-	-	-	
	SN ON GND	-	-	-	-		-	-	-	-	-	-	-	-	-	-	-	-	-	-	-	-	-	-	-	-	-	-	-	-	-	
WINCHESTER	SNOWFALL	-	-	-	-		-	-	-	-	-	-	-	-	-	-	-	-	-	-	-	-	-	-	-	-	-	-	-	-	-	
	SNOWFALL	-	-	-	-		-	-	-	-	-	-	-	-	-	-	-	-	-	-	-	-	-	-	-	-	-	-	-	-	-	
WINCHESTER 7 SE	SNOWFALL	-	-	-	-		-	-	-	-	-	-	-	-	-	-	-	-	-	-	-	-	-	-	-	-	-	-	-	-	-	
	SN ON GND	-	-	-	-		-	-	-	-	-	-	-	-	-	-	-	-	-	-	-	-	-	-	-	-	-	-	-	-	-	
WOODSTOCK 2 NE	WTR EQUIV	-	-	-	-		-	-	-	-	-	-	-	-	-	-	-	-	-	-	-	-	-	-	-	-	-	-	-	-	-	
	SNOWFALL	-	-	-	-		-	-	-	-	-	-	-	-	-	-	-	-	-	-	-	-	-	-	-	-	-	-	-	-	-	
CENTRAL MOUNTAIN 05	SNOWFALL	-	-	-	-		-	-	-	-	-	-	-	-	-	-	-	-	-	-	-	-	-	-	-	-	-	-	-	-	-	
	SNOWFALL	-	-	-	-	0.5	-	-	-	-	-	-	-	-	-	-	-	-	-	-	-	-	-	-	-	-	-	-	-	-	-	
BUCHANAN	SN ON GND	-	-	-	-	1	-	-	-	-	-	-	-	-	-	-	-	-	-	-	-	-	-	-	-	-	-	-	-	-	-	
	SNOWFALL	-	-	-	-		-	-	-	-	-	-	-	-	-	-	-	-	-	-	-	-	-	-	-	-	-	-	-	-	-	
BUENA VISTA	SNOWFALL	-	-	-	-	T	-	-	-	-	-	-	-	-	-	-	-	-	-	-	-	-	-	-	-	-	-	-	-	-	-	
	SN ON GND	-	-	-	-	T	-	-	-	-	-	-	-	-	-	-	-	-	-	-	-	-	-	-	-	-	-	-	-	-	-	
COVINGTON FLTR PLT	SNOWFALL	-	-	-	-	1.0	-	-	-	-	-	-	-	-	-	-	-	-	-	-	-	-	-	-	-	-	-	-	-	-	-	
	SN ON GND	-	-	-	-	1	-	-	-	-	-	-	-	-	-	-	-	-	-	-	-	-	-	-	-	-	-	-	-	-	-	
CRAIGSVILLE 2 S	SNOWFALL	-	-	-	-	0.1	-	-	-	-	-	-	-	-	-	-	-	-	-	-	-	-	-	-	-	-	-	-	-	-	-	
	SN ON GND	-	-	-	-	1	-	-	-	-	-	-	-	-	-	-	-	-	-	-	-	-	-	-	-	-	-	-	-	-	-	
DALE ENTERPRISE	SNOWFALL	-	-	-	-		-	-	-	-	-	-	-	-	-	-	-	-	-	-	-	-	-	-	-	-	-	-	-	-	-	

Snowfall: Includes snow and ice. Values for NWS stations (J index note) are Mid-Mid (LST).

Snow on ground: Includes snow, sleet, ice, and hail. Values for NWS stations (J index note) are observed at 12 UTC (GMT).

Water Equivalent: Given for NWS stations (J index note) only, when snow depth is 2 inches or more, and is measured at 18 UTC (GMT)

VIRGINIA
201304

SNOWFALL AND SNOW ON GROUND (INCHES)

STATION		DAY OF MONTH																															
		01	02	03	04	05	06	07	08	09	10	11	12	13	14	15	16	17	18	19	20	21	22	23	24	25	26	27	28	29	30	31	
GATHRIGHT DAM	SN ON GND						-																										
	WTR EQUIV																						-										
GLASGOW 1 SE	SNOWFALL					1.6																											
	SN ON GND					2																											
HOT SPRINGS	SNOWFALL					0.7																											
	SN ON GND					T																											
LEXINGTON	SNOWFALL					3.0																											
	SN ON GND					3																											
MILLGAP	SNOWFALL					T																											
	SN ON GND					T																											
MTN GROVE	SNOWFALL					1.0																											
	SN ON GND					1																											
MUSTOE 1 SW	WTR EQUIV																																
	SNOWFALL					T																											
NEW CASTLE	SN ON GND					1.1																											
	SNOWFALL	T				1																											
ROANOKE 8 N	SN ON GND					T																											
	SNOWFALL					2.5																											
ROANOKE INTL AP	SN ON GND					2																											
	SNOWFALL					2.0																											
STAUNTON WATER TRMTMT PLT	SN ON GND					2																											
	SNOWFALL					2																											
WAYNESBORO WTP	SN ON GND					1.0																											
	SNOWFALL					1																											
SOUTHWESTERN MOUNTAIN 06	SN ON GND					1																											
	SNOWFALL					1																											
BLACKSBURG NWSO	SN ON GND					-																											
	SNOWFALL					-																											
BURKES GARDEN	SN ON GND					-																											
	SNOWFALL					-																											
CHRISTIANSBURG	SN ON GND					-																											
	SNOWFALL					-																											
CLINTWOOD 1 W	SN ON GND					-																											
	SNOWFALL					-																											
COPPER HILL	SN ON GND					-																											
	SNOWFALL					-																											
GALAX RADIO WBRF	SN ON GND					-																											
	SNOWFALL					-																											

Snowfall: Includes snow and ice. Values for NWS stations (J index note) are Mid-Mid (LST).

Snow on ground: Includes snow, sleet, ice, and hail. Values for NWS stations (J index note) are observed at 12 UTC (GMT).

Water Equivalent: Given for NWS stations (J index note) only, when snow depth is 2 inches or more, and is measured at 18 UTC (GMT)

VIRGINIA
201304

SNOWFALL AND SNOW ON GROUND (INCHES)

STATION		DAY OF MONTH																														
		01	02	03	04	05	06	07	08	09	10	11	12	13	14	15	16	17	18	19	20	21	22	23	24	25	26	27	28	29	30	31
GALAX WTP	SNOWFALL					2.0													-				-	-	-							-
	SN ON GND					2													-				-	-	-							-
GRUNDY	SNOWFALL																															
	SN ON GND																															
JOHN FLANNAGAN LAKE	SNOWFALL																															
	SN ON GND					4.2																										
LAFAYETTE 1 NE	SNOWFALL																															
	SN ON GND					3																										
LEBANON	SNOWFALL																															
	SN ON GND																															
NORA 4 SSE	SNOWFALL																															
	SN ON GND																															
NORTH FORK LAKE	SNOWFALL																															
	SN ON GND					3.3																										
PULASKI 2 E	SNOWFALL																															
	SN ON GND					3																										
RADFORD 3 N	SNOWFALL																															
	SN ON GND					5.0																										
RICHLANDS	SNOWFALL																															
	SN ON GND					4																										
SALTVILLE 1N	SNOWFALL																															
	SN ON GND					0.5																										
STAFFORDSVILLE 3 ENE	SNOWFALL																															
	SN ON GND					5.2																										
TROUT DALE 3 SSE	SNOWFALL																															
	SN ON GND					5																										
WILLIS	SNOWFALL																															
	SN ON GND					3.0																										
WISE 3E	SNOWFALL																															
	SN ON GND					1																										
WYTHEVILLE 1 S	SNOWFALL																															
	SN ON GND					1.8																										
WYTHEVILLE 1 S	SNOWFALL																															
	SN ON GND					2																										
WYTHEVILLE 1 S	SNOWFALL																															
	SN ON GND					2.0																										
WYTHEVILLE 1 S	SNOWFALL																															
	SN ON GND					2																										

Snowfall: Includes snow and ice. Values for NWS stations (J index note) are Mid-Mid (LST).

Snow on ground: Includes snow, sleet, ice, and hail. Values for NWS stations (J index note) are observed at 12 UTC (GMT).

Water Equivalent: Given for NWS stations (J index note) only, when snow depth is 2 inches or more, and is measured at 18 UTC (GMT)

VIRGINIA
201304

PAN EVAPORATION AND WIND

STATION		DAY OF MONTH																														TOTAL OR AVERAGE			
		01	02	03	04	05	06	07	08	09	10	11	12	13	14	15	16	17	18	19	20	21	22	23	24	25	26	27	28	29	30		31		
VIRGINIA EASTERN PIEDMONT 02 JOHN H KERR DAM	WIND	-	-	-	-	-	-	-	-	-	-	-	-	-	-	-	-	-	-	-	-	-	-	-	-	-	-	-	-	-	-	-	-	-	M M M M
	EVAP	-	-	-	-	-	-	-	-	-	-	-	-	-	-	-	-	-	-	-	-	-	-	-	-	-	-	-	-	-	-	-	-		
	MAX	-	-	-	-	-	-	-	-	-	-	-	-	-	-	-	-	-	-	-	-	-	-	-	-	-	-	-	-	-	-	-	-		
	MIN	-	-	-	-	-	-	-	-	-	-	-	-	-	-	-	-	-	-	-	-	-	-	-	-	-	-	-	-	-	-	-	-		

Evaporation: Is measured in hundreths of inches.

Wind: Is measured in miles.

Max and Min: The maximum and minimum temperatures (Fahrenheit) of the water in the evaporation pan.

STATION INDEX

STATION	INDEX NO.	DIVISION	COUNTY	LATITUDE	LONGITUDE	ELEVATION (IN FEET)	OBSERVATION TIME AND TABLES			
							LOCAL STD TIME			
							TEMP	PRECIP	EVAP	SPECIAL SEE (NOTES)
VIRGINIA										
ABINGDON 3S	0021	06	WASHINGTON	36 40	81 58W	1920	22	22		H
ALBERTA 5N	0079	02	BRUNSWICK	36 56	77 54W	376		08		H
ALTAVISTA	0166	03	CAMPBELL	37 7	79 17W	529		07		CH
AMELIA COURTHOUSE 1	0187	02	AMELIA	37 21	77 59W	345	08	08		H
APPOMATTOX	0243	03	APPOMATTOX	37 20	78 50W	850	07	07		H
ASHLAND	0327	02	HANOVER	37 45	77 29W	220	18	18		H
BEDFORD 4 NW	0561	03	BEDFORD	37 23	79 34W	1228		07		CH
BIG STONE GAP	0735	06	WISE	36 52	82 46W	1464	08	08		H
BLACKSBURG NWSO	0766	06	MONTGOMERY	37 12	80 25W	2100	07	07		CH
BOSTON 4 SE	0860	04	CULPEPER	38 33	78 6W	590	07	07		H
BREMO BLUFF	0993	02	FLUVANNA	37 43	78 17W	225		24		CH
BROOKNEAL	1082	03	CAMPBELL	37 4	78 57W	408	07	07		H
BUCHANAN	1121	05	BOTETOURT	37 31	79 41W	880		07		H
BUCKINGHAM	1136	02	BUCKINGHAM	37 30	78 32W	552		07		H
BUENA VISTA	1159	05	ROCKBRIDGE	37 44	79 22W	840		07		H
BURKES GARDEN	1209	06	TAZEWELL	37 6	81 20W	3068	07	07		H
CAMP PICKETT	1322	02	NOTTOWAY	37 2	77 57W	330	08	08		CH
CHARLOTTE COURT HOUSE	1585	03	CHARLOTTE	37 3	78 39W	569	07	07		H
CHARLOTTESVILLE 2W	1593	03	ALBEMARLE	38 2	78 31W	866	08	08		H
CHASE CITY	1606	02	MECKLENBURG	36 47	78 29W	510	17	17		H
CHATHAM	1614	03	PITTSYLVANIA	36 49	79 25W	651	07	07		CH
CHRISTIANSBURG	1692	06	MONTGOMERY	37 8	80 24W	2100	07	07		H
CLARKSVILLE	1746	02	MECKLENBURG	36 37	78 33W	330	07	07		H
CLINTWOOD 1 W	1825	06	DICKENSON	37 9	82 29W	1780	07	07		H
CONCORD 4 SSW	1955	03	CAMPBELL	37 17	78 58W	815		07		H
COPPER HILL	1999	06	FLOYD	37 5	80 9W	2690	07	07		H
CORBIN	2009	02	CAROLINE	38 12	77 22W	220	09	09		H
COVINGTON FLTR PLT	2044	05	ALLEGHANY	37 49	79 59W	1230	07	07		H
CRAIGSVILLE 2 S	2064	05	AUGUSTA	38 3	79 23W	1758		07		H
CROZIER	2142	02	GOOCHLAND	37 40	77 53W	350	07	07		H
DALE ENTERPRISE	2208	05	ROCKINGHAM	38 27	78 56W	1358	07	07		H
DANVILLE REGIONAL AP R	2250	03	PITTSYLVANIA	36 34	79 20W	571	24	24		H
DISPUTANTA	2400	01	PRINCE GEORGE	37 7	77 12W	15	07	07		H
EASTVILLE	2635	01	NORTHAMPTON	37 23	75 58W	10	07	07		H
EDINBURG	2663	04	SHENANDOAH	38 48	78 35W	928	07	07		H
EMPORIA 1 WNW	2790	01	GREENSVILLE	36 42	77 34W	100	08	08		H
FARMVILLE 2 N	2941	02	CUMBERLAND	37 20	78 23W	450	07	07		H
FREDERICKSBURG SEWAGE	3204	01	FREDERICKSBURG	38 17	77 27W	15	07	07		H
FREE UNION	3213	03	ALBEMARLE	38 5	78 35W	590	08	07		H
FRONT ROYAL	3229	04	WARREN	38 54	78 11W	930	07	07		H
GALAX RADIO WBRF	3267	06	CARROLL	36 40	80 55W	2385	07	07		H
GALAX WTP	3272	06	CARROLL	36 39	80 55W	2360	07	07		CH
GATHRIGHT DAM	3310	05	ALLEGHANY	37 57	79 57W	1770	07	07		CH
GLASGOW 1 SE	3375	05	ROCKBRIDGE	37 37	79 26W	737		07		H
GREENBAY 3 NE	3565	02	PRINCE EDWARD	37 11	78 17W	500	09	09		H
GRUNDY	3640	06	BUCHANAN	37 17	82 5W	1170	07	07		H
HAMPTON UNIV	3713	01	HAMPTON	37 1	76 20W	10	17	17		H
HOLCOMB ROCK	4039	03	BEDFORD	37 33	79 24W	620		07		H
HOLLAND 1 E	4044	01	SUFFOLK	36 41	76 46W	80	08	08		H
HOPEWELL	4101	01	PRINCE GEORGE	37 18	77 17W	40	16	16		H
HOT SPRINGS	4128	05	BATH	37 60	79 50W	2236	07	07		H
HUDDLESTON 4 SW	4148	03	BEDFORD	37 8	79 32W	898		07		H
JOHN FLANNAGAN LAKE	4410	06	DICKENSON	37 14	82 21W	1460	07	07		H
JOHN H KERR DAM	4414	02	MECKLENBURG	36 36	78 18W	250	08	08	08	CH
LAFAYETTE 1 NE	4676	06	MONTGOMERY	37 14	80 12W	1320		07		H
LEBANON	4777	06	RUSSELL	36 54	82 2W	1912	07	07		H
LEXINGTON	4876	05	ROCKBRIDGE	37 47	79 26W	1097		07		H
LINCOLN	4909	04	LOUDOUN	39 5	77 42W	500	07	07		H
LOUISA	5050	02	LOUISA	38 3	78 0W	420	18	18		H
LURAY 5 E	5096	04	PAGE	38 40	78 22W	1400	08	08		H
LYNCHBURG INTL AP R	5120	03	CAMPBELL	37 19	79 12W	940	24	24		HJ
MADISON	5150	04	MADISON	38 22	78 15W	577	08	08		H
MANASSAS	5204	04	MANASSAS	38 44	77 30W	245	07	07		H
MARTINSVILLE FLTR PLT	5300	03	HENRY	36 42	79 52W	760	07	07		H
MEADOWS OF DAN 5 SW	5453	03	PATRICK	36 40	80 27W	2225	07	07		H

STATION INDEX

STATION	INDEX NO.	DIVISION	COUNTY	LATITUDE	LONGITUDE	ELEVATION (IN FEET)	OBSERVATION TIME AND TABLES			
							LOCAL STD TIME			
							TEMP	PRECIP	EVAP	SPECIAL SEE (NOTES)
MILLGAP	5595	05	HIGHLAND	38 18	79 43W	2421	07	07		CH
MONTEBELLO FISH CULTURAL STN	5690	03	NELSON	37 51	79 8W	2667	07	07		H
MONTICELLO	5700	03	ALBEMARLE	38 1	78 27W	758	08	08		H
MT WEATHER	5851	04	LOUDOUN	39 4	77 53W	1659	07	07		H
MTN GROVE	5756	05	BATH	38 6	79 53W	1775		07		H
MUSTOE 1 SW	5880	05	HIGHLAND	38 20	79 40W	2380	24	24		H
NEW CASTLE	6012	05	CRAIG	37 18	80 3W	1258		07		H
NORA 4 SSE	6125	06	DICKENSON	37 1	82 19W	2650	07	07		H
NORFOLK INTL AP R	6139	01	NORFOLK (CITY)	36 54	76 12W	30	24	24		HJ
NORFOLK SOUTH	6147	01	NORFOLK (CITY)	36 52	76 14W	100	24	24		H
NORTH	6161	01	MATHEWS	37 26	76 26W	10	07	07		H
NORTH FORK LAKE	6173	06	WISE	37 7	82 38W	1675	08	08		H
PAINTER 2W	6475	01	ACCOMACK	37 35	75 49W	30	16	16		CH
PALMYRA 3S	6491	02	FLUVANNA	37 49	78 16W	410	06	06		H
PEDLAR DAM	6593	03	AMHERST	37 40	79 17W	1024		07		H
PETERSBURG	6656	02	PETERSBURG	37 14	77 24W	15	08	08		H
PIEDMONT RSCH STN	6712	04	ORANGE	38 14	78 7W	520	08	08		CH
PULASKI 2 E	6955	06	PULASKI	37 3	80 47W	1850	07	07		CH
RADFORD 3 N	6999	06	PULASKI	37 12	80 35W	1800	07	07		H
RICHLANDS	7174	06	TAZEWELL	37 6	81 48W	1910	07	07		H
RICHMOND INTL AP R	7201	02	HENRICO	37 30	77 19W	164	24	24		HJ
ROANOKE 8 N	7278	05	ROANOKE	37 22	79 58W	1190	07	07		H
ROANOKE INTL AP R	7285	05	ROANOKE	37 19	79 58W	1175	24	24		HJ
ROCKY MT	7338	03	FRANKLIN	36 59	79 54W	1315	07	07		CH
SALTVILLE 1N	7506	06	SMYTH	36 53	81 46W	1733	07	07		H
SANDSTON	7541	02	HENRICO	37 33	77 17W	165	07	07		H
SOMERSET	7904	04	ORANGE	38 15	78 16W	510	07	07		H
SOUTH BOSTON	7925	03	HALIFAX	36 42	78 53W	329	07	07		H
SPERRYVILLE	7985	04	RAPPAHANNOCK	38 39	78 14W	750	06	06		H
STAFFORDSVILLE 3 ENE	8022	06	GILES	37 16	80 43W	1950	07	07		CH
STAUNTON WATER TRMTMT PLT	8062	05	AUGUSTA	38 10	79 5W	169	08	08		H
STERLING RCS	8084	04	LOUDOUN	38 59	77 29W	288	07	07		H
STONY CREEK 2 N	8129	01	SUSSEX	36 58	77 24W	105	08	08		H
STUART	8170	03	PATRICK	36 38	80 15W	1375	07	07		H
SUFFOLK LAKE KILBY	8192	01	SUFFOLK	36 44	76 36W	22	24	24		H
TROUT DALE 3 SSE	8547	06	GRAYSON	36 39	81 24W	2839	07	07		CH
TYE RIVER 1 SE	8600	03	NELSON	37 38	78 56W	720	07	07		H
VIENNA	8737	04	FAIRFAX	38 54	77 16W	418	07	07		H
WAKEFIELD 1NW	8800	01	SUSSEX	36 59	77 0W	113	24	24		CH
WALKERTON 2 NW	8829	01	KING AND QUEEN	37 45	77 2W	50	18	18		H
WALLACETON LK DRUMMOND	8837	01	CHESAPEAKE	36 36	76 26W	20	08	08		H
WALLOPS ISLAND NASA TEST FACIL R	8849	01	ACCOMACK	37 56	75 28W	46	24	24		HJ
WARRENTON 3 SE	8888	04	FAUQUIER	38 41	77 46W	500	08	08		H
WARSAW 2 NW	8894	01	RICHMOND	37 59	76 47W	140	18	18		H
WASHGTN DULLES INTL AP R	8903	04	LOUDOUN	38 56	77 28W	290	24	24		HJ
WASHINGTON REAGAN AP R	8906	04	ARLINGTON	38 51	77 2W	10	24	24		HJ
WAYNESBORO WTP	8941	05	WAYNESBORO	38 5	78 53W	1270	07	07		H
WEST POINT 2 NW	9025	01	KING WILLIAM	37 34	76 48W	20	17	17		H
WILLIAMSBURG 2 N	9151	01	YORK	37 18	76 42W	70	24	24		CH
WILLIS	9169	06	FLOYD	36 55	80 30W	2810		07		CH
WINCHESTER	9181	04	FREDERICK	39 11	78 9W	720	07	07		H
WINCHESTER 7 SE	9186	04	FREDERICK	39 11	78 7W	680	08	08		H
WINTERPOCK 4 W	9213	02	CHESTERFIELD	37 19	77 39W	300		07		H
WISE 3E	9215	06	WISE	36 60	82 32W	2549	17	17		CH
WOODSTOCK 2 NE	9263	04	SHENANDOAH	38 54	78 28W	675	07	07		H
WOOLWINE	9272	03	PATRICK	36 47	80 17W	1500		07		CH
WYTHEVILLE 1 S	9301	06	WYTHE	36 56	81 6W	2093	07	07		CH

REFERENCE NOTES

STATION NAMES: Name of the city, town or locality. Figures and letters following the station names indicate the distance in miles and direction from the post office or town community center.

DIVISIONS: Areas within a state of similar climatological characteristics. Division averages are calculated using data from stations that record temperature and/or precipitation. Station Precipitation totals flagged with an 'F' or 'M' are excluded from the Divisional Average calculations of precipitation. Stations with monthly Temperature averages flagged with an 'F' or 'M' are included in the Divisional Average if there are no more than 9 flagged or missing daily values in the month, else they are excluded from the divisional average for temperature.

NORMALS: The average value of the meteorological element over a time period. Effective 1 January 2012, the averaging period is 1981 to 2010. The normals for National Weather Service localities have been adjusted so as to be representative for the current observation site.

MONTHLY DEGREE DAY TOTALS: One heating (cooling) degree day is accumulated for each whole degree that the daily mean temperature is below (above) 65 degrees Fahrenheit.

PRECIPITATION: Values shown in hundredths of inches are water equivalent totals, i.e., total of liquid and melted frozen precipitation. In the "Monthly Summarized Data" table the total snow and sleet values shown in tenths of inches are unmelted amounts. The max depth on ground values of snow and sleet shown in whole inches are cumulative unmelted amounts. The number of days with .10, .50, 1.00 or more refers to water equivalents.

PRECIPITATION QUALITY CONTROL: The NCDC quality control process may flag precipitation data that are spatially inconsistent, exceed climatological limits, or are inconsistent with prevailing weather patterns.

TEMPERATURE: Original temperature values are given in the "Daily Temperature" table. Summary temperature information (averages, departures, extremes, monthly degree day totals) is based on the values labeled MAX/MIN.

WIND: (As shown in the "Evaporation and Wind" table) the total wind movement in miles over the evaporation pan as determined by an anemometer recorder located 6-8 inches above the pan.

SYMBOLS AND LETTERS USED IN THE STATION INDEX TABLE

C Station is equipped with recording rain gage (R) but values in this bulletin are from a non-recording rain gage unless indicated by an R.

G Observations appear in the "Soil Temperatures" table.

H Observations appear in the "Snowfall and Snow on the Ground" table.

J Station also published as a Local Climatological Data publication.

VAR Observation time varies.

SR Observation time near sunrise.

SS Observation time near sunset.

SYMBOLS AND LETTERS USED IN THE DATA TABLES

(DAILY DATA ARE FOR THE 24 HOURS IMMEDIATELY PRECEDING OBSERVATION TIME.)

BLANK Entries in the "Monthly Summarized Data" table indicate no record.

BLANK Entries in the "Daily Precipitation" and "Snowfall and Snow on the Ground" tables indicate zero.

BLANK Entries in the "Daily Temperature" table indicate a missing record

- No record. Data not recorded or not received in time for publication.

+ Precipitation or temperature extremes occurred on one or more previous dates during the month.

* Rain gage not read. Precipitation is included in the amount following the asterisks.

Time distribution may not be known. A * preceding the monthly total indicates precipitation amount is being carried forward to next month's total, and may include amounts from the previous month(s).

a As a subscript, indicates accumulated total.

A Amount of precipitation is the total of observer's entries for the current month. It may include precipitation that occurred during the previous month. Refer to earlier bulletin to determine date of last reading. (Hawaii stations)

B Divisional Departure from normals are computed using 1971-2000 normals.

E Normalized HDD/CDD Calculation. E is appended to the HDD/CDD Calculation when 1-9 individual daily TMAX and/or TMIN values are missing and a Normalized HDD/CDD Calculation is provided. M appears alone if 10 or more daily values are missing.

F Monthly calculation flagged value. F is appended to average and/or total values computed which exclude one or more daily data values that have been flagged by the GHCN-Daily Dataset

M Insufficient or partial data. M is appended to average and/or total values computed with 1-9 daily values missing. M appears alone if 10 or more daily values are missing, (8 or more for wind and evaporation).

N Indicates snow fall or Snowdepth totals are computed with one or more missing days.

R Amounts from recording rain gage.

T Trace. An amount too small to measure.

SEASONAL TABLES: Monthly and seasonal snowfall and heating degree days for the 12 months ending with the June data are published in the July issue of this bulletin. Cooling degree days for the calendar year are published in the "Climatological Data Annual Summary."

Information concerning the history of changes in locations, exposure, etc. of substations is kept on file at the National Climatic Data Center. Historical information of regular National Weather Service Offices may be obtained from the "Local Climatological Data" annual publication. The contents of this publication may be reprinted or otherwise used freely, with proper credit to the National Climatic Data Center. The data are also available digitally.

Effective with the January 2011 Data-Month, COOP Observer Names are no longer included in the Monthly and Annual Climatological Data Publications. This information is not published to ensure the privacy of personal information pursuant to Section 208 of the E-Government Act of 2002 (44 USC 3601).

As of the 2011 Data-Year, Station and Climate Division Maps are no longer being included in the CD Publications. NCDC's Product Development Branch provides updated Station Maps for various data networks via the Historical Observing Metadata Repository: <http://www.ncdc.noaa.gov/homr>.

The GHCN-Daily Quality Control Flags shown below are displayed as superscripts with the data. For more Information on Global Historical Climatology Network - Daily and flags, see: <http://www.ncdc.noaa.gov/oa/climate/ghcn-daily/> and Comprehensive Automated Quality Assurance of Daily Surface Observations. Durre, Imke, Matthew J. Menne, Byron E. Gleason, Tamara G. Houston, Russell S. Vose, 2010: J. Appl. Meteor. Climatol., 49, 1615-1633. doi: 10.1175/2010JAMC2375.1

Blank = Passed All checks

D = failed duplicate check

G = failed gap check

I = failed internal consistency check

K = failed streak/frequent-value check

L = failed check on length of multiday period

M = failed megaconsistency check

N = failed naught check

O = failed climatological outlier check

R = failed lagged range check

S = failed spatial consistency check

T = failed temporal consistency check

W = temperature too warm for snow

X = failed bounds check

Z = flagged as a result of an official Datzilla investigation

Beginning with the January 2013 CD Publication, monthly mean temperature calculations have changed to the National Data Stewardship Team standard. Monthly maximum and minimum temperatures are not rounded until after the monthly mean temperature is calculated. This is the most accurate outcome, but may be slightly different from the mean derived from rounded monthly maximum and minimum.

Processing Updates and Errata: The 2011 CD Publications were reproduced in May 2013. This update included the addition of late reports and corrections based on additional investigations of reported data issues through NCDC's Datzilla system. In addition, divisional averages for precipitation were recalculated using the method described in DIVISIONS above. Previous editions of the 2011 Publications included all precipitation stations regardless of missing data in the calculation of divisional averages. HDD/CDD values were recalculated to match the legacy method of calculation (truncation of monthly HDD/CDD values instead of rounding).

These and other publications are available from the National Climatic Data Center

Hourly Precipitation Data

This publication contains hourly precipitation amounts obtained from recording rain gages located at National Weather Service, Federal Aviation Administration, and cooperative observer stations. Published data are displayed in inches and tenths or inches and hundredths at local standard time. HPD includes maximum precipitation for nine (9) time periods from 15 minutes to 24 hours, for selected stations.

Climatological Data

Monthly editions contain station daily maximum and minimum temperatures and precipitation. Some Stations provide daily snowfall, snow depth, evaporation, and soil temperature data. Each edition also contains monthly summaries for heating and cooling degree days (65 degree F base). The July issue contains a recap of monthly heating degree days and snow data for the preceding July through June.

The Annual issue contains monthly and annual averages of temperature, precipitation, temperature extremes, freeze data, soil temperatures, evaporation, and a recap of monthly cooling degree days.

Storm Data

Monthly issues contain a chronological listing, by states, of occurrences of storms and unusual weather phenomena. Reports contain information on storm paths, deaths, injuries, and property damage. An "Outstanding storms of the month" section highlights severe weather events with photographs, illustrations, and narratives. The December issue includes annual tornado, lightning, flash flood, and tropical cyclone summaries.

Monthly Climatic Data for the World

This publication contains monthly means for temperature, pressure, precipitation, vapor pressure, and sunshine for approximately 2,000 surface data collection stations worldwide and monthly mean upper air temperatures, dew point depressions, and wind velocities for approximately 500 observing sites.

Local Climatological Data

LCD publications summarize temperature, relative humidity, precipitation, cloudiness, wind speed and direction observations for several hundred cities in the U.S. and its territories. Each monthly publication also contains 3 hourly weather observations for that month and a hourly summary of precipitation. Annual LCD publications contain a summary of the past calendar year as well as historical averages and extremes.

For Information Call:

(828) 271-4800 Option 2

(828) 271-4010 (TDD)

(828) 271-4876 (Fax)

NOAA\National Climatic Data Center
Attn: User Engagement & Services Branch
151 Patton Avenue
Asheville, NC 28801-5001

Customer Services Number: (828) 271-4800, option 2
TDD : (828) 271-4010
Fax number: (828) 271-4876

NCDC now offers free online access to the *Climatological Data* publication.
Go to : www.ncdc.noaa.gov and choose Most Popular.