



# CLIMATOLOGICAL DATA

## VIRGINIA

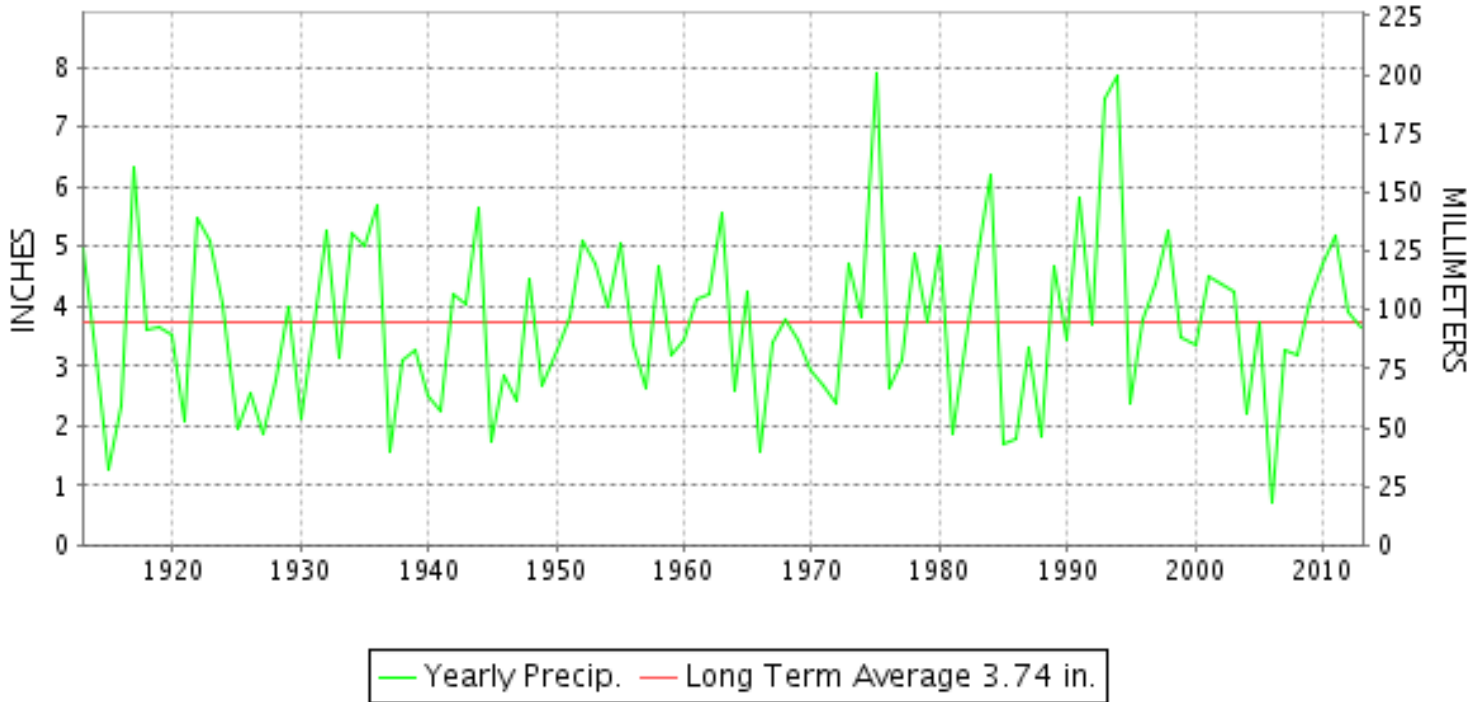
MARCH 2013

VOLUME 123 NUMBER 03

ISSN 0364-5630

GHCND Ver: 3.11-upd-2013073005

### MARCH PRECIPITATION BY YEAR



#### TEMPERATURE AND PRECIPITATION EXTREMES

##### VIRGINIA

HIGHEST TEMPERATURE	80	MARCH 16	LYNCHBURG INTL AP
LOWEST TEMPERATURE	6	MARCH 10+	MILLGAP
GREATEST TOTAL PRECIPITATION	7.33		BOSTON 4 SE
LEAST TOTAL PRECIPITATION	1.90		MTN GROVE
GREATEST 1 DAY PRECIPITATION	6.00	MARCH 07	DALE ENTERPRISE
GREATEST TOTAL SNOWFALL	23.5		LURAY 5 E
GREATEST DEPTH OF SNOW OR ICE	16		2 STATIONS

"I certify that this is an official publication of the National Oceanic and Atmospheric Administration (NOAA) It is compiled using information from weather observing sites supervised by NOAA/National Weather Service and received at the National Climatic Data Center(NCDC), Asheville, North Carolina 28801."

Director  
National Climatic Data Center

noaa

National  
Oceanic and  
Atmospheric Administration

National  
Environmental Satellite, Data  
and Information Service

National  
Climatic Data Center  
Asheville, North Carolina



# MONTHLY STATION AND DIVISION SUMMARY

STATION	TEMPERATURE (°F)											PRECIPITATION (IN)												
	AVERAGE MAXIMUM	AVERAGE MINIMUM	AVERAGE	DEPARTURE FROM NORMAL	HIGHEST	DATE	LOWEST	DATE	HEATING DEG. DAYS	COOLING DEG. DAYS	NO. OF DAYS				TOTAL	DEPARTURE FROM NORMAL	GREATEST 24 HOURS	DATE	ICE PELLETS, SNOW			NO. OF DAYS		
											MAX		MIN						TOTAL	MAX DEPTH ON GROUND	DATE	.10 OR MORE	.50 OR MORE	1.00 OR MORE
											>=90	<=32	<=32	<=0										
PALMYRA 3S	51.0	25.9	38.5	-5.3	71	17	18	23+	813	0	0	0	30	0	4.44	0.73	1.69	07	M 10.8	6	07	7	4	1
PETERSBURG	53.6M	30.8M	42.2M	-6.2	70	17+	24	22	700E	0	0	0	17	0	M 2.65	-1.49	0.77	13	M 0.0	0		6	3	0
RICHMOND INTL AP	53.6	33.2	43.4	-5.2	71	16	24	05	664	0	0	0	12	0	5.57	1.53	2.10	06	M 5.4	3	25	9	4	1
SANDSTON	51.1F	29.9	40.5F	-6.2	69	17	24	05+	752	0	0	0	22	0	A 6.14	1.99	0.71	25	M 3.9	M 4	26	5	2	0
WINTERPOCK 4 W															3.71	1.10	06	M 3.7			7	2	1	
--DIVISIONAL DATA-----> WESTERN PIEDMONT 03			41.5	-5.4B										4.36	0.20B									
ALTAVISTA														2.62		0.92	06	1.0	T	25	7	2	0	
APPOMATTOX	50.7	29.7	40.2	-5.5	77	17	21	05+	760	0	0	0	25	0	3.29	-0.68	0.96	06	8.5	4	25	7	3	0
BEDFORD 4 NW														4.22		1.00	06	10.5	6	25	7	4	1	
BROOKNEAL	52.9	27.7	40.3	-1.3	79	17	19	04	755	0	0	0	25	0	3.04	-0.90	0.80	25	0.7	1	25	7	3	0
CHARLOTTE COURT HOUSE	52.5	29.5	41.0	-5.3	79	17	21	23+	739	0	0	0	25	0	3.06	-0.96	0.74	13	3.0	1	25	5	4	0
CHARLOTTESVILLE 2W	49.5	32.0	40.8	-6.0	68	17	23	04	744	0	0	1	16	0	5.29	1.44	2.14	06	21.8	16	28	8	3	2
CHATHAM	51.8	25.9	38.9	-5.8	77	17	16	23	803	0	0	0	29	0	2.87	-1.18	0.78	06	0.3	0		6	3	0
CONCORD 4 SSW														3.64		0.95	06	7.3	3	25	7	4	0	
DANVILLE REGIONAL AP	55.8	31.2	43.5	-5.2	79	16	20	04	660	0	0	0	21	0	2.55	-1.56	0.72	12	T			5	2	0
FREE UNION	50.0M	27.0	38.5M		67	17	20	04	808E	0	0	1	29	0	4.48		1.30	06	M 18.1	M 8	26	8	3	1
HOLCOMB ROCK														5.59		1.75	12	14.4	7	25	9	4	2	
HUDDLESTON 4 SW														2.83		1.00	25	6.0	3	26	6	2	1	
LYNCHBURG INTL AP	53.1	30.1	41.6	-4.3	80	16	19	22+	719	0	0	0	22	0	3.31	-0.27	0.71	24+	9.5	5	24	9	3	0
MARTINSVILLE FLTR PLT	52.5	27.3	39.9	-6.1	79	17	16	23+	768	0	0	0	25	0	2.93	-1.22	0.90	06	0.5	0		6	3	0
MEADOWS OF DAN 5 SW	50.7M	28.5	39.6M		77	17	21	22	779E	0	0	0	28	0	3.95		1.79	12	1.0	1	25	5	3	1
MONTEBELLO FISH CULTURAL STN	42.1M	22.5M	32.3M		64	17	15	23+	1006E	0	0	6	28	0	M 3.51		2.05	12	M 9.2	9	06	4	2	2
MONTECELLO	48.5	31.1	39.8	-4.6	66	17	23	04	772	0	0	0	19	0	4.56	0.91	0.99	06	M 23.0	16	07	7	6	0
PEDLAR DAM														4.44		1.49	12	10.6	5	27	8	4	1	
ROCKY MT	51.3	30.3	40.8	-4.6	78	17	21	23+	746	0	0	0	21	0	3.41	-0.85	0.93	25	3.3	3	26	6	3	0
SOUTH BOSTON	54.1	29.3	41.7	-4.9	77	17	23	23+	714	0	0	0	24	0	2.98	-1.17	0.88	25	T	0		7	2	0
STUART	51.7	29.2	40.5	-6.4	78	17	18	23	754	0	0	0	23	0	3.45	-0.63	1.25	12	0.3	0		6	3	1
TYE RIVER 1 SE	53.7	29.9	41.8	-4.3	72	17	19	04	710	0	0	0	23	0	3.48	-0.26	0.85	12	5.0			7	4	0
WOOLWINE														4.29		1.48	12	1.5	1	25	7	3	2	
--DIVISIONAL DATA-----> NORTHERN 04			40.1	-6.4B										3.65	-0.58B									
BOSTON 4 SE	49.8M	29.0M	39.4M	-3.8	63	17	22	24+	784E	0	0	0	27	0	A 7.33	3.63	2.06	12	M 16.4	9	06	5	3	3
EDINBURG	46.1	27.3	36.7	-4.8	61	11	22	24+	868	0	0	1	29	0	2.72	-0.20	0.60	25	M 21.0	M 9	27	7	2	0
FRONT ROYAL	46.8M	29.5M	38.2M	-5.0	61	11	23	06+	826E	0	0	0	24	0	A 3.94	0.18	0.80	07	M 22.0	15	07	8	4	0
LINCOLN	47.7	29.0	38.4	-3.3	63	11	24	23+	817	0	0	0	25	0	A 2.86		1.21	13	M 5.0	3	25	2	2	1
LURAY 5 E	46.9	28.5	37.7	-6.6	62	17+	21	23+	840	0	0	0	26	0	3.01	-0.87	0.68	07	23.5	15	07	6	4	0
MADISON	M	M	M											M					0.0					

VIRGINIA  
201303

## MONTHLY STATION AND DIVISION SUMMARY

STATION	TEMPERATURE (°F)										PRECIPITATION (IN)																							
	AVERAGE MAXIMUM	AVERAGE MINIMUM	AVERAGE	DEPARTURE FROM NORMAL	HIGHEST	DATE	LOWEST	DATE	HEATING DEG. DAYS	COOLING DEG. DAYS	NO. OF DAYS				TOTAL	DEPARTURE FROM NORMAL	GREATEST 24 HOURS	DATE	ICE PELLETS, SNOW			NO. OF DAYS												
											MAX		MIN						TOTAL	MAX DEPTH ON GROUND	DATE	.10 OR MORE	.50 OR MORE	1.00 OR MORE										
											>=90	<=32	<=32	<=0																				
MANASSAS	M	M	M							0	0	0	0	M				0.0																
MT WEATHER	43.5	28.1	35.8	-4.9	58	11	21	06+	899	0	0	3	26	0	3.98	0.42	0.86	06	M 18.7	12	07	8	3	0										
PIEDMONT RSCH STN	48.7	30.1	39.4	-5.6	63	17+	22	04	784	0	0	1	24	0	A 4.09	0.58	0.71	19	M 22.5	5	07	5	2	0										
SOMERSET	50.0	29.1	39.5	-5.0	64	17+	22	23	781	0	0	0	28	0	5.15	1.42	1.45	06	M 18.3	M 9	11	8	4	2										
SPERRYVILLE	47.7M	29.4M	38.6M	-5.0	61	11	23	24	812E	0	0	1	24	0	MA 3.35	-0.67	0.86	13	M 16.3	M 7	27	6	3	0										
STERLING RCS	48.1M	29.1M	38.6M	-4.1	63	11	23	24+	813E	0	0	0	26	0	A 3.55	-0.05	0.96	13	M 7.2	3	25	7	2	0										
VIENNA	45.5	29.6	37.6	-5.2	59	16	23	19	843	0	0	0	24	0	3.08	-0.74	0.95	07	M 7.5	1	07	6	3	0										
WARRENTON 3 SE	M	M	M							0	0	0	0	0	M				0.0															
WASHGTN DULLES INTL AP	49.2	31.3	40.2	-4.0	62	10	22	23	762	0	0	0	19	0	3.16	-0.22	1.16	12	7.4	3	25	4	2	1										
WASHINGTON REAGAN AP	51.5	36.1	43.8	-3.0	63	10	28	22	651	0	0	0	7	0	2.80	-0.68	1.03	06	1.6	1	25	4	3	1										
WINCHESTER	M	M	M							0	0	0	0	0	M				0.0															
WINCHESTER 7 SE	47.5M	27.9MF	37.7MF	-3.3	61	11	20	24+	913E	0	0	1	20	0	A 3.22	-0.20	0.65	06	M 11.5	6	06	8	3	0										
WOODSTOCK 2 NE	46.8M	27.4M	37.1M	-4.0	65	12	22	10	855E	0	0	0	26	0	M 2.59	-0.67	0.65	06	M 19.8	M 6	27	6	2	0										
--DIVISIONAL DATA-----> CENTRAL MOUNTAIN 05			38.6	-4.5B											3.76	0.19B																		
BUCHANAN														3.73	0.19	1.36	06	7.1	4	26	6	4	2											
BUENA VISTA														3.85		1.30	06	8.5	4	25	8	2	1											
COVINGTON FLTR PLT	47.7	29.2	38.4	-5.7	75	17	18	23+	819	0	0	1	23	0	2.14	-1.14	0.64	06	6.6	5	25	5	1	0										
CRAIGSVILLE 2 S														M				M 15.7	F M 2	19														
DALE ENTERPRISE	45.7	26.5	36.1	-4.9	61	17	19	09+	886	0	0	1	28	0	F 7.76	4.84	6.00	07	23.0	10	07	6	2	1										
GATHRIGHT DAM	43.4	26.8	35.1	-6.8	69	17	14	23+	923	0	0	3	29	0	2.65	-0.63	0.78	06	11.0	6	27	7	3	0										
GLASGOW 1 SE														4.44		1.24	06	10.6	5	25	8	4	1											
HOT SPRINGS	43.2	25.5	34.3	-6.6	68	17	15	23	943	0	0	3	29	0	3.85	-0.24	1.47	06	18.0	12	14	6	4	1										
LEXINGTON														4.73	1.58	1.58	06	16.7	7	10	8	3	2											
MILLGAP	40.2	21.6	30.9	-7.2	57	11	6	10+	1050	0	0	6	30	0	2.86	-1.01	0.84	06	18.9	9	21	8	1	0										
MTN GROVE														1.90		0.75	12	6.5	6	28	4	2	0											
MUSTOE 1 SW	M	M	M							0	0	0	0	0	3.42	-0.74	0.60	06	23.2	10	31	9	1	0										
NEW CASTLE														3.77		0.94	12	5.0	3	25	7	4	0											
ROANOKE 8 N	49.4	31.0	40.2	-5.6	75	17	20	22	761	0	0	0	22	0	3.29	-0.44	0.91	06	7.0	4	25	6	4	0										
ROANOKE INTL AP	51.4	33.1	42.2	-5.1	77	16	22	22	699	0	0	0	13	0	3.40	-0.06	0.83	24	8.0	5	24	7	3	0										
STAUNTON WATER TRMTMT PLT	46.1	28.2	37.1	-6.1	63	17	17	04	855	0	0	0	27	0	3.63	0.38	1.22	06	M 21.5	M 13	27	7	3	1										
WAYNESBORO WTP	47.9	27.3	37.6	-4.7	68	17	20	05+	842	0	0	0	29	0	6.93	3.20	2.70	06	F 17.0	F 10	26	8	4	3										
--DIVISIONAL DATA-----> SOUTHWESTERN MOUNTAIN 06			36.9	-6.8B											3.64	0.06B																		
ABINGDON 3S	47.7M	30.4M	39.1M	-5.4	70	10	14	22	795E	0	0	1	17	0	M 5.22	1.18	1.06	05	M 0.5	1	06	12	5	1										
BIG STONE GAP	48.0	28.2	38.1	-7.6	72	17	17	23+	825	0	0	1	25	0	5.80	1.11	1.55	06	0.5	T	02	9	5	2										
BLACKSBURG NWSO	44.4	25.5	34.9	-6.7	70	17	16	23+	924	0	0	3	29	0	3.12	-0.52	0.84	12	4.9	4	28	7	3	0										

VIRGINIA  
201303

## MONTHLY STATION AND DIVISION SUMMARY

STATION	TEMPERATURE (°F)											PRECIPITATION (IN)												
	AVERAGE MAXIMUM	AVERAGE MINIMUM	AVERAGE	DEPARTURE FROM NORMAL	HIGHEST	DATE	LOWEST	DATE	HEATING DEG. DAYS	COOLING DEG. DAYS	NO. OF DAYS				TOTAL	DEPARTURE FROM NORMAL	GREATEST 24 HOURS	DATE	ICE PELLETS, SNOW			NO. OF DAYS		
											MAX		MIN						TOTAL	MAX DEPTH ON GROUND	DATE	.10 OR MORE	.50 OR MORE	1.00 OR MORE
											>=90	<=32	<=32	<=0										
BURKES GARDEN	39.2	22.4	30.8	-8.3	65	17	11	23+	1051	0	0	10	29	0	4.11	0.09	0.84	06	12.2	5	29	9	3	0
CHRISTIANSBURG	44.1	27.4	35.7	-7.6	71	17	16	23	898	0	0	4	26	0	3.03	-0.25	0.73	25	6.1	5	29	6	3	0
CLINTWOOD 1 W	46.4	25.7	36.0	-6.4	75	17	12	23+	890	0	0	4	27	0	4.71	0.84	1.10	19	13.1	3	28	9	3	2
COPPER HILL	41.7	25.4	33.5	-6.9	69	17	13	23	967	0	0	7	28	0	3.00	0.92	0.92	06	9.3	5	28	9	2	0
GALAX RADIO WBRF	45.2	26.5	35.8	-6.2	72	17	12	22	898	0	0	3	26	0	2.45	-1.34	1.11	25	0.1	T	27	4	2	1
GALAX WTP	44.7	25.8	35.3	-5.5	71	17	14	22	913	0	0	3	29	0	3.02		1.03	25	0.1	T	25	6	3	1
GRUNDY	47.7	28.0	37.8	-5.9	73	17	15	23+	834	0	0	3	24	0	3.59	0.16	0.97	19	1.4	1	26	8	3	0
JOHN FLANNAGAN LAKE	M	M	M		73	11	14	25+	908E	0	0	3	16	0	M				M 1.5	1	26			
LAFAYETTE 1 NE															2.86		0.75	06	3.2	2	25	6	3	0
LEBANON	46.1	26.9	36.5	-6.7	69	17	13	23+	874	0	0	4	25	0	4.01	0.17	0.94	19	M 2.8	1	26	6	4	0
NORA 4 SSE	41.3	25.2	33.2	-8.2	66	17	14	22	977	0	0	8	28	0	4.62	0.72	1.05	19	15.1	4	28	9	4	1
NORTH FORK LAKE	M	M	M		73	18	13	25	896E	0	0	1	17	0	MA 4.64		1.40	06	M 2.5	M 2	26	4	2	1
PULASKI 2 E	46.0	27.7	36.9	-6.0	71	17	16	22	863	0	0	3	27	0	2.61	-0.58	0.72	12	4.5	4	25	5	2	0
RADFORD 3 N	45.2	27.5	36.4	-4.5	73	17	17	22	878	0	0	3	27	0	2.75	-0.23	0.82	12	3.3	2	28	8	1	0
RICHLANDS	45.8	26.4	36.1	-6.0	71	11	12	23	889	0	0	5	26	0	3.92	-0.02	0.96	19	4.6	2	26	9	3	0
SALTVILLE 1N	46.5	27.5	37.0	-6.8	69	11	13	22	859	0	0	3	25	0	4.05	0.19	1.07	06	1.5	1	27	6	4	2
STAFFORDSVILLE 3 ENE	45.1	27.1	36.1	-6.6	73	17	19	23+	887	0	0	4	28	0	2.34	-1.09	0.60	12	6.4	3	28	7	2	0
TROUT DALE 3 SSE	42.0	25.8	33.9		67	17	17	29+	960	0	0	6	27	0	4.20		0.94	25	13.4	5	25	9	3	0
WILLIS															3.09		0.96	25	1.4	1	27	7	3	0
WISE 3E	45.9	28.6	37.2	-7.5	67	16+	11	22	851	0	0	4	21	0	4.76	0.64	0.95	05	16.1	3	28	10	5	0
WYTHEVILLE 1 S	45.0	26.4	35.7	-5.4	69	17	13	23+	902	0	0	3	26	0	2.92	-0.32	0.88	25	3.6	1	28	6	3	0
--DIVISIONAL DATA----->			35.8	-7.5B											3.57	-0.49B								

VIRGINIA  
201303

## DAILY PRECIPITATION (INCHES)

STATION	TOTAL	DAY OF MONTH																															
		01	02	03	04	05	06	07	08	09	10	11	12	13	14	15	16	17	18	19	20	21	22	23	24	25	26	27	28	29	30	31	
<b>VIRGINIA</b>																																	
<b>TIDEWATER 01</b>																																	
DISPUTANTA	2.85					0.92	0.41					0.14	0.81				0.29	0.28															
EASTVILLE	M 3.71					1.02	-	-	-	-	0.30	0.05	0.33				0.36	0.60	0.20							0.80	0.05						
EMPORIA 1 WNW	2.84					0.53	0.23					0.23	0.44				0.20	0.08	0.07							1.00	0.06						
FREDERICKSBURG SEWAGE	2.38					0.13	0.40					0.07	0.73				0.05	0.26	0.31	0.01						0.37	0.05						
HAMPTON UNIV	M	-	-	-	-	-	-	-	-	-	-	-	-	-	-	-	-	-	-	-	-	-	-	-	-	-	-	-	-	-	-	-	-
HOLLAND 1 E	2.68					0.49	0.40					0.34	0.06				0.17	0.10	0.08					0.02		0.97	0.05						
HOPEWELL	4.44					1.78	0.06					0.89				0.12	0.22	0.30	0.11						0.08	0.58							0.30
NORFOLK INTL AP	2.50					0.18	0.75					0.23				0.21		0.17	0.02			T			0.57	0.14							0.23
NORFOLK SOUTH	2.60					0.18	0.75					0.31	T			0.21	T	0.14	0.03			T			0.62	0.13	T		T			0.23	
NORTH	M	-	-	-	-	-	-	-	-	-	-	-	-	-	-	-	-	-	-	-	-	-	-	-	-	-	-	-	-	-	-	-	-
PAINTER 2W	5.21					1.63	0.49					0.51				0.07	0.46	0.82								0.67	0.19						0.37
STONY CREEK 2 N	3.04					0.68	0.44					0.21	0.58					0.37	0.12						0.52				0.12				
SUFFOLK LAKE KILBY	3.10					0.12	0.58					0.35				0.19		0.12	0.05			T			0.81	0.11							0.77
WAKEFIELD 1NW	3.25					0.32	0.66					0.37				0.30	0.07	0.24				T			0.79	0.12							0.38
WALKERTON 2 NW	6.02					2.63						1.02	0.01			0.22	0.28	0.66	0.22						0.10	0.65							0.23
WALLACETON LK DRUMMOND	2.83					0.67	0.32					0.30	0.40				0.15	0.05	0.06							0.85	0.03						
WALLOPS ISLAND NASA TEST FACIL	4.67			T		0.05	2.42	0.01				0.69				0.10	0.15	0.34	0.01			0.01			0.08	0.40		T	T				0.41
WARSAW 2 NW	FA 4.60					2.50	0.66					0.67				0.00 <sup>L</sup>	0.00 <sup>L</sup>	0.73 <sup>L</sup>	0.10						0.62	0.01							0.04
WEST POINT 2 NW	5.02					1.78	0.04					0.57	T			0.10	0.55	0.72	0.20			T			0.06	0.73							0.27
WILLIAMSBURG 2 N	3.91					0.31	0.94					0.48				0.30	0.10	0.44							0.74	0.25	T						0.35
<b>EASTERN PIEDMONT 02</b>																																	
ALBERTA 5N	4.20					T	0.64	0.59				0.18	1.16	T			0.32	0.23	0.13				T		0.95	T	T						T
AMELIA COURTHOUSE 1	A 6.93			*	0.00 <sub>a</sub>	3.00	1.94				* 0.00 <sub>a</sub>	0.30	0.28			0.12	0.33	0.30	0.20						0.23	0.01							0.22
ASHLAND	4.38					1.96						0.40				0.40	0.10	0.75	0.09			T			0.10	0.45	T						0.13
BREMO BLUFF	4.70					0.38	1.57					0.45				0.40	0.54	0.43				0.02			0.62	0.20							0.09
BUCKINGHAM	3.96					0.70	1.14					0.10	0.37			0.03	0.28	0.40	0.28				0.02		0.63	0.01							
CAMP PICKETT	4.04					0.80	0.80					0.30	0.50				0.30	0.23	0.30							0.81							
CHASE CITY	3.74					0.72	0.45					0.25	0.48				0.13						0.50		0.91								0.30
CLARKSVILLE	2.40					0.50	0.25					0.20	0.20				0.10		0.20						0.95								
CORBIN	3.59					1.20	0.44					0.20	0.44				0.07	0.10	0.64						0.50								
CROZIER	M 3.56					1.07	0.35					0.18	0.27			-	0.26	0.86	0.06						0.51								
FARMVILLE 2 N	M 3.48					0.92	0.64					0.17	0.64				0.36	0.18	0.26						0.22								0.09
GREENBAY 3 NE	3.16					0.05	1.04					0.01	0.33	0.30			0.07	0.24	0.26	0.22			T	0.05		0.40	0.01					0.18	
JOHN H KERR DAM	M 2.05					0.39	-					0.18	0.44				0.06	0.04	0.09						0.78								0.07
LOUISA	4.44					2.20						0.73				0.34	0.07	0.25	0.22						0.13	0.44							0.06
PALMYRA 3S	4.44					0.51	1.69						0.49				0.25	0.63	0.25						0.61	0.01							
PETERSBURG	M 2.65	-				-	0.65	0.02				0.15	0.77				0.18	0.25	-	0.01					0.62								
RICHMOND INTL AP	5.57					0.41	2.10					0.79	T			0.43	0.20	0.53	T			0.01			0.58	0.19							0.33
SANDSTON	A 6.14	T				*	3.14 <sub>a</sub>					0.34	0.54	0.03		T	0.43	*	0.84 <sub>a</sub>					0.01		0.71	0.10						
WINTERPOCK 4 W	3.71					1.10	0.41					0.17	0.41				0.36	0.39						0.01		0.85	0.01						

VIRGINIA  
201303

## DAILY PRECIPITATION (INCHES)

STATION	TOTAL	DAY OF MONTH																															
		01	02	03	04	05	06	07	08	09	10	11	12	13	14	15	16	17	18	19	20	21	22	23	24	25	26	27	28	29	30	31	
<b>WESTERN PIEDMONT 03</b>																																	
ALTAVISTA	2.62					0.92	0.37				0.01	0.55					0.03	0.24	0.14					0.01	0.10								0.25
APPOMATTOX	3.29				T	0.96	0.31					0.64				0.09	0.20	0.33	0.16		T				0.01	0.51	0.05						0.04
BEDFORD 4 NW	4.22	0.01			0.01	1.00						0.89	0.17			0.05	0.05	0.78	0.23								0.83						0.20
BROOKNEAL	3.04					0.76	0.19					0.55				0.03	0.05	0.29	0.19								0.80						0.18
CHARLOTTE COURT HOUSE	3.06				T	0.62	0.52					0.07	0.74				0.03	0.31	0.02							0.70						0.05	
CHARLOTTESVILLE 2W	5.29					2.14	0.15					1.12	0.41			0.06	0.22	0.30	0.29							0.57	0.03	T				T	
CHATHAM	2.87					0.78	0.06					0.73	0.15				0.03	0.20	0.23							0.60	T					0.09	
CONCORD 4 SSW	3.64				0.01	0.95	0.50					0.40	0.09			0.04	0.50	0.25	0.16		0.01					0.69						0.04	
DANVILLE REGIONAL AP	2.55				0.42	0.30					0.01	0.72	T			T	0.03	0.06							0.66	0.05						0.30	
FREE UNION	4.48					1.30	0.64					0.84	0.29			0.05	0.25	0.39	0.27							0.41	0.04						
HOLCOMB ROCK	5.59				T	1.09	0.31					1.75	0.38			0.03	0.10	0.67	0.30							0.86	0.10						
HUDDLESTON 4 SW	2.83					0.78	0.05					0.27	0.06				0.04	0.20	0.18							1.00						0.25	
LYNCHBURG INTL AP	3.31				0.67	0.32					0.01	0.71	T			0.13	0.21	0.15							0.71	0.10						0.30	
MARTINSVILLE FLTR PLT	2.93					0.90						0.68	0.06				0.02	0.23	0.25						0.01	0.57						0.21	
MEADOWS OF DAN 5 SW	3.95					0.77						1.79					0.01	0.05	0.23						0.03	0.83						0.24	
MONTEBELLO FISH CULTURAL STN	M 3.51			-		1.00						2.05				0.13	0.33	-															
MONTICELLO	4.56					0.99	0.83				0.58	0.65					0.02	0.24	0.62		T					0.63						T	
PEDLAR DAM	4.44				T	0.77	0.37					1.49	0.30	T		T	0.12	0.50	0.19							0.70	T					T	
ROCKY MT	3.41			0.01	0.02	0.88						0.75	0.02			0.01	0.02	0.35	0.22							0.93						0.20	
SOUTH BOSTON	2.98					0.69	0.19					0.22	0.46				0.04	0.15	0.32	0.02		0.02				0.88	0.01						
STUART	3.45					0.80						1.25					0.01	0.11	0.25						0.05	0.75						0.23	
TYE RIVER 1 SE	3.48					0.76						0.85					0.11	0.14	0.75	0.25						0.62						T	
WOOLWINE	4.29	T			T	1.10						1.48	0.06				0.13	0.25	0.20						T	0.95		T				0.12	
<b>NORTHERN 04</b>																																	
BOSTON 4 SE	A 7.33					1.59	*	1.59 <sub>a</sub>				2.06						1.36	0.34							0.39							
EDINBURG	2.72					0.58	0.35					0.20	0.36			0.01	0.06	0.29	0.23							0.60	0.04						
FRONT ROYAL	A 3.94					0.70	0.80	0.55				0.05	0.31				0.04	0.10	0.32							0.60	0.47	*	0.00 <sub>a</sub>				
LINCOLN	A 2.86						0.64						1.21				*	*	*	*	*	*	*	*	*	*	1.01 <sub>a</sub>						
LURAY 5 E	3.01		T			0.51	0.68					0.65				0.07		0.45	0.10							0.55						T	
MADISON	M	-	-	-	-	-	-	-	-	-	-	-	-	-	-	-	-	-	-	-	-	-	-	-	-	-	-	-	-	-	-	-	
MANASSAS	M	-	-	-	-	-	-	-	-	-	-	-	-	-	-	-	-	-	-	-	-	-	-	-	-	-	-	-	-	-	-	-	
MT WEATHER	3.98					0.86	0.78					0.25	0.74					0.17	0.35							0.45	0.34						
PIEDMONT RSCH STN	A 4.09					*	2.02 <sub>a</sub>					0.29	0.63					0.01	0.71							0.32	0.11						
SOMERSET	5.15	T	T			1.45	1.07					0.39	0.70	0.01		0.11	0.08	0.35	0.35							0.55	0.09					T	
SPERRYVILLE	MA 3.35		T	T		0.77	*	*	*	0.00 <sub>a</sub>		-	0.86				0.15	0.40	0.48							0.62	0.07	T	T	T			
STERLING RCS	A 3.55	*	T <sub>a</sub>	T		0.41	0.77	T				0.13	0.96				0.04	0.04	0.46			T			0.33	0.41							
VIENNA	3.08					0.81	0.95					0.14				0.02		0.20	0.39							0.57							
WARRENTON 3 SE	M	-	-	-	-	-	-	-	-	-	-	-	-	-	-	-	-	-	-	-	-	-	-	-	-	-	-	-	-	-	-	-	
WASHGTN DULLES INTL AP	3.16	T	T			0.03	0.92	T			T	1.16	T			0.03		0.46							0.05	0.44	T	T				0.07	
WASHINGTON REAGAN AP	2.80					T	1.03				T	0.83	T			0.03		0.32							0.04	0.52		0.01	T			0.02	
WINCHESTER	M	-	-	-	-	-	-	-	-	-	-	-	-	-	-	-	-	-	-	-	-	-	-	-	-	-	-	-	-	-	-	-	

VIRGINIA  
201303

## DAILY PRECIPITATION (INCHES)

STATION	TOTAL	DAY OF MONTH																																	
		01	02	03	04	05	06	07	08	09	10	11	12	13	14	15	16	17	18	19	20	21	22	23	24	25	26	27	28	29	30	31			
WINCHESTER 7 SE	A 3.22			*	0.00 <sub>a</sub>		0.65	0.43				0.17	0.62			0.03	0.09	0.18	0.30	*	0.00 <sub>a</sub>	*	0.00 <sub>a</sub>			0.54	0.21	*	0.00 <sub>a</sub>						
WOODSTOCK 2 NE	M 2.59						0.65	0.30				0.07	0.47	-				0.25	0.24							0.60	0.01								
<b>CENTRAL MOUNTAIN 05</b>																																			
BUCHANAN	3.73					T	1.36					1.00		T		T	T	0.56	0.18							0.52							0.11		
BUENA VISTA	3.85					T	1.30	0.39				0.40	0.16			0.02	0.24	0.36	0.18							0.80							T		
COVINGTON FLTR PLT	2.14						0.64					0.40	0.02	0.01		T	0.06	0.31	0.21							0.46	T						0.03		
CRAIGSVILLE 2 S	M	-	-	-	-	-	1.54		-	-	-	0.51	0.17	-	-	0.09	0.13	0.30	0.25	-	-	-	-	-	-	-	-	-	-	-	-	-	0.01		
DALE ENTERPRISE	F 7.76						10.00 <sup>o</sup>	6.00				0.75	0.28			0.06	0.22	0.20	0.20							4.50 <sup>o</sup>	0.05								
GATHRIGHT DAM	2.65							T				0.53			0.11	0.14	0.23	0.19							0.60		0.02						0.05		
GLASGOW 1 SE	4.44	T				T	1.24	0.22				0.98	0.17	T		0.02	0.18	0.52	0.25							0.86	T						T		
HOT SPRINGS	3.85	T					1.47					0.53	0.03	T		0.04	0.66	0.25	0.15		T					0.70		T	T				0.02		
LEXINGTON	4.73						1.58	0.19				1.19	0.13			0.05	0.24	0.34	0.24							0.69	0.06						0.02		
MILLGAP	2.86	0.05		T			0.84	0.01	T			0.45	0.15	T		0.10	0.19	0.30	0.14			0.01				0.48	0.08	0.06	T				T		
MTN GROVE	1.90	T	T		T		0.26	T				0.75	T			0.08	0.11	T	T		T					0.70	T	T	T				T		
MUSTOE 1 SW	3.42	0.02	T	T		0.49	0.60				0.09		0.04	T		0.38	0.25	0.31		0.04	0.01				0.37	0.25	0.11	0.07					0.39		
NEW CASTLE	3.77						0.80	0.80				0.94		0.01		0.03	0.01	0.20	0.21							0.61							0.16		
ROANOKE 8 N	3.29					T	0.91					0.73			0.02		0.57	0.13							0.76	T						0.17			
ROANOKE INTL AP	3.40			T		0.75	0.18				0.03	0.47	T	T		0.06	0.59	0.19			T				0.83	0.04	T	T					0.26		
STAUNTON WATER TRMTMT PLT	3.63						1.22	0.21				0.86			0.04	0.16	0.40	0.23							0.50	0.01						T			
WAYNESBORO WTP	6.93						2.70	1.20				1.27	0.55		T	0.24	0.35	0.22							0.40										
<b>SOUTHWESTERN MOUNTAIN 06</b>																																			
ABINGDON 3S	M 5.22	0.12	0.06	0.04		1.06	0.09				0.60	0.20			0.11	0.20	0.90	0.15	-	-			-	0.60	0.42	0.10	0.05	-				-	0.52		
BIG STONE GAP	5.80	0.04	0.20			0.05	1.55	0.13				0.70			0.09	0.06		1.13						0.32	0.76	0.05					0.20	0.52			
BLACKSBURG NWSO	3.12	T	T	0.01	T	T	0.55	T	T			0.84	T	0.01	T	0.01	0.15	0.52	0.23		T	T			0.49	0.05	0.01	T					0.25		
BURKES GARDEN	4.11	0.07	0.04	0.04	0.01		0.84	0.07	0.02			0.49	0.03	0.04			0.21	0.07	0.59		0.10				0.20	0.75	0.08	0.15	T					0.31	
CHRISTIANSBURG	3.03					T	0.61	T				0.62		0.01		0.08	0.24	0.45		T				0.08	0.73	T	T						0.20		
CLINTWOOD 1 W	4.71	0.11	0.16	0.06	0.02	T	1.03	0.02	T			0.31	T	0.02		T	0.14	0.01	1.10		0.06	T			0.07	0.96	0.20	0.04						0.40	
COPPER HILL	3.00			T	0.01		0.92					0.41			0.11	0.03	0.23	0.16						0.01	0.77	0.10	0.10	0.01						0.14	
GALAX RADIO WBRF	2.45											0.98					0.16	0.19							1.11	0.01									
GALAX WTP	3.02				T		0.55	T				0.97	T			0.03	0.11	0.15						0.06	1.03	T	0.01	T					0.11		
GRUNDY	3.59	0.06	0.05	0.03	0.01		0.76	0.06				0.32	T	0.01		0.10	0.02	0.97		T				0.10	0.68	0.02	0.13	T					0.27		
JOHN FLANNAGAN LAKE	M	0.05	*	*	0.16 <sub>a</sub>	0.01	0.86	0.12		-	-	0.22	0.01			-	-	0.09	1.01		-				-	0.90	0.19	0.03	-	-	-	-	-		
LAFAYETTE 1 NE	2.86	T				T	0.75					0.74		T		0.02	0.02	0.51	0.18			T			0.42	0.01						0.21			
LEBANON	4.01	0.01	0.03	0.03			0.88	0.04				0.62		0.06		0.01	0.25	0.07	0.94		0.01	T			0.02	0.72	0.08					0.02	0.22		
NORA 4 SSE	4.62	0.05	0.15	0.08	0.05	T	0.87	0.12	0.01			0.59	T	0.04	T	T	0.19	0.03	1.05		0.01	T			0.09	0.71	0.26	0.09						0.23	
NORTH FORK LAKE	MA 4.64	0.01	*	*	0.28 <sub>a</sub>	0.01	1.40	-	-	-		0.29			*	*	0.16 <sub>a</sub>	0.95		0.05	*	*		*	1.23 <sub>a</sub>	0.20	0.06					-	-		
PULASKI 2 E	2.61	0.01		T		0.01	0.06					0.72		T		0.04	0.40	0.35		0.03					0.70	0.03						0.26			
RADFORD 3 N	2.75				T		0.42	T				0.82		0.02		T	0.10	0.28	0.27		0.01				0.10	0.44	0.01	T	T					0.28	
RICHLANDS	3.92	0.03	0.03	0.02	0.02		0.86	0.05				0.43		0.04		0.16	0.08	0.96		0.01				0.17	0.60	0.14	0.10						0.22		
SALTVILLE 1N	4.05	0.03	T	T			1.07	0.05				0.65		0.03		0.04		0.80						0.01	1.00	0.14	0.03						0.20		
STAFFORDSVILLE 3 ENE	2.34	T		T	0.01	T	0.26	T				0.60		0.03		T	0.13	0.24	0.29		0.05	T				0.51	0.06	0.02	T						0.14



VIRGINIA  
201303

## DAILY PRECIPITATION (INCHES)

STATION	TOTAL	DAY OF MONTH																														
		01	02	03	04	05	06	07	08	09	10	11	12	13	14	15	16	17	18	19	20	21	22	23	24	25	26	27	28	29	30	31
TROUT DALE 3 SSE	4.20			0.01	0.01		0.92	0.02				0.56	0.02	0.02		0.01	0.07	0.32	0.42	0.03	0.13				0.27	0.94	0.10	0.08				0.27
WILLIS	3.09	T	T		T		0.64	T				0.66		0.02			0.10	0.24	0.18		0.02				0.03	0.96	T	0.04	T			0.20
WISE 3E	4.76	0.13	0.12	0.07	0.02	0.95	0.51	0.03					T	T		0.05	0.08	0.87	0.27		0.03				0.56	0.50	0.17	0.03				0.37
WYTHEVILLE 1 S	2.92			0.01	0.01		0.58					0.58	0.01	0.02			0.01	0.24	0.32	0.02	0.01					0.88	0.05	0.02	T			0.16

VIRGINIA  
201303

## DAILY TEMPERATURES (°F)

STATION	OB. TIME	MAX/MIN	DAY OF MONTH																															AVERAGE	
			01	02	03	04	05	06	07	08	09	10	11	12	13	14	15	16	17	18	19	20	21	22	23	24	25	26	27	28	29	30	31		
<b>VIRGINIA TIDEWATER 01 DISPUTANTA</b>	07	MAX MIN	52 32	49 33	40 25	45 21	48 21	52 27	40 32	52 28	60 28	64 26	69 26	68 37	56 30	52 25	59 24	68 39	41 34	44 35	66 24	58 28	42 20	51 20	57 24	41 32	42 27	51 27	53 26	55 27	58 28	64 28	53.2 27.7		
EASTVILLE	07	MAX MIN	44 40	44 37	39 32	39 31	42 32	45 38	48 37	47 38	49 38	43 38	55 33	59 44	64 40	51 36	46 32	54 33	61 39	42 33	48 36	53 41	51 37	39 32	45 30	50 30	43 33	40 36	47 39	50 40	49 40	53 40	58 40	48.3 36.3	
EMPORIA 1 WNW	08	MAX MIN	52 34	47 35	40 29	47 28	50 28	53 33	53 33	50 30	52 29	63 29	65 38	69 38	55 29	55 22	59 29	74 43	45 35	44 36	66 36	56 32	42 24	52 23	58 30	40 33	45 31	50 31	52 30	56 30	59 32	65 35	54.3 31.4		
FREDERICKSBURG SEWAGE	07	MAX MIN	48 38	46 28	38 21	42 25	47 25	50 32	44 32	48 28	48 28	60 27	65 28	65 43	63 32	52 31	51 16	61 29	63 32	63 32	39 32	63 31	55 26	40 25	50 25	55 32	42 30	41 28	50 28	52 28	53 28	57 33	61 33	52.0 29.4	
HAMPTON UNIV	17	MAX MIN																																	M M
HOLLAND 1 E	08	MAX MIN	52 30	49 34	42 28	46 25	48 21	53 34	44 30	52 31	51 33	61 33	65 31	72 43	71 31	57 27	51 21	60 34	76 38	47 34	47 36	65 30	56 25	42 20	52 21	57 27	43 30	46 25	50 30	53 28	55 25	58 28	55 32	54.1 29.2	
HOPEWELL	16	MAX MIN	48 38	45 35	45 30	49 29	50 28	53 28	53 34	50 38	60 41	62 30	67 41	69 59	70 35	53 30	61 31	71 47	44 39	44 36	63 40	66 34	57 33	51 27	57 29	58 38	40 33	50 32	53 34	55 34	58 35	64 34	64 47	56.6 35.0	
NORFOLK INTL AP	24	MAX MIN	50 38	42 36	44 33	47 32	48 27	49 38	49 41	49 39	51 35	52 32	67 40	69 47	56 42	51 31	58 45	72 39	46 38	47 38	63 42	55 37	42 34	51 31	56 30	43 34	43 36	50 36	54 39	53 39	55 41	61 36	66 49	52.9 37.2	
NORFOLK SOUTH	24	MAX MIN	49 36	41 34	42 31	45 30	48 26	47 36	51 39	48 36	52 33	57 28	67 37	68 47	55 39	48 32	57 27	71 46	52 38	47 36	62 41	53 37	40 32	50 27	54 29	42 33	44 35	50 32	52 36	52 35	55 36	61 37	64 44	52.4 35.0	
NORTH	07	MAX MIN																																	M M
PAINTER 2W	16	MAX MIN	48 38	43 36	41 30	42 30	46 33	47 36	46 35	45 37	52 37	53 25	59 37	60 50	49 39	52 34	57 31	55 41	45 33	52 33	56 32	53 33	45 30	51 27	51 29	40 32	49 36	50 38	51 38	54 36	61 35	60 40	50.7 34.8		
STONY CREEK 2 N	08	MAX MIN	50 36	47 34	40 29	47 29	49 27	52 27	44 33	51 32	51 31	61 28	66 27	70 35	69 34	56 29	52 27	59 40	72 36	55 35	43 36	66 35	57 35	43 24	51 23	59 25	41 30	45 32	49 31	52 31	54 32	58 31	64 30	54.0 30.9	
SUFFOLK LAKE KILBY	24	MAX MIN	48 33	41 36	45 29	48 27	52 33	46 37	52 33	49 33	59 35	62 28	68 37	55 47	51 40	57 30	73 35	53 47	46 38	64 40	53 38	42 34	51 21	55 26	44 31	46 34	50 31	53 33	53 30	56 33	62 32	62 45	53.7 34.1		
WAKEFIELD 1NW	24	MAX MIN	47 31	40 34	46 26	49 22	53 25	46 33	53 34	51 29	62 31	66 26	71 35	69 46	56 31	53 25	59 24	69 45	54 37	44 35	66 38	56 29	41 24	52 19	58 24	42 28	43 32	51 28	52 28	57 28	58 27	65 29	63 43	54.6 30.5	
WALKERTON 2 NW	18	MAX MIN	51 44	47 38	48 37	52 33	53 41	45 38	54 40	53 45	64 37	67 49	71 60	69 55	55 45	61 47	69 29	63 41	44 42	67 32	64 31	56 28	53 30	58 31	46 28	45 38	54 40	55 43	59 35	61 43	66 41	59 47	57 50	57.1 39.8	
WALLACETON LK DRUMMOND	08	MAX MIN	53 26	53 30	45 22	48 21	51 24	56 30	45 29	57 27	55 26	64 30	65 26	68 32	70 30	60 25	54 21	60 23	75 36	48 31	50 33	62 30	55 19	44 29	54 29	44 27	48 24	53 27	57 24	57 27	62 24	65 31	56.0 26.7		
WALLOPS ISLAND NASA TEST FACIL	24	MAX MIN	47 37	44 33	43 29	44 31	50 31	48 36	50 37	47 37	59 35	49 29	61 38	57 45	54 34	48 33	55 35	56 41	42 35	51 35	57 41	54 29	43 31	46 29	53 26	43 33	42 36	52 34	54 38	51 37	57 37	59 37	50.8 35.0		
WARSAW 2 NW	18	MAX MIN	48		43 30	48 24	51 25	43 33	51 31	48		62 28	65 42	63 52	58 29	50 24	59		40 32	61 35	62 30	55 32		57 25		40 31	53 32	52 30	58 27	53 35	63 29	53.4 31.1			
WEST POINT 2 NW	17	MAX MIN	48 34	43 25	48 23	48 32	50 32	44 32	53 34	61 34	61 27	67 38	67 43	58 28	51 24	58 37	66 37	65 37	41 31	64 34	60 33	54 26	49 34	56 29	54 31	39 37	50 31	53 29	52 31	60 30	64 40	61 40	54.7 32.5		
WILLIAMSBURG 2 N	24	MAX MIN	50 39	43 33	45 31	49 29	52 28	47 38	54 39	52 37	63 34	61 31	70 36	58 50	53 32	60 29	70 47	51 39	45 37	66 40	58 34	45 32	51 28	58 30	44 30	40 35	52 32	55 32	56 33	57 35	65 35	64 42	55.0 34.9		

VIRGINIA  
201303

## DAILY TEMPERATURES (°F)

STATION	OB. TIME	MAX/MIN	DAY OF MONTH																															AVERAGE
			01	02	03	04	05	06	07	08	09	10	11	12	13	14	15	16	17	18	19	20	21	22	23	24	25	26	27	28	29	30	31	
<b>EASTERN PIEDMONT 02</b> AMELIA COURTHOUSE 1	08	MAX	49	43		46	50	49	40	48	49		65	67	70	55	51	59	73	40	37	65	56	44	50	57	39	41	48	51	53	59	64	52.3
		MIN	32	33		22	28	32	30	29	29		27	40	31	27	29	35	38	33	33	28	28	21	26	33	31	30	29	27	32	32	41	30.6
ASHLAND	18	MAX	47	40	44	48	51	44	48	47	58	63	67	67	59	51	55	69	51	37	64	64	60	50	56	55	38	49	52	54	58	64	60	53.9
		MIN	31	30	24	20	24	31	31	33	32	28	41	55	30	27	26	37	34	32	32	29	31	23	24	32	31	29	28	29	34	30	45	31.1
CAMP PICKETT	08	MAX	48	48	38	46	49	52	37	48	50	60	65	67	68	53	51	59	74	40	38	65	56	42	50	57	38	46	47	52	53	58	64	52.2
		MIN	31	30	26	23	22	32	30	26	28	26	26	39	30	25	25	40	33	34	30	30	21	22	28	31	27	28	26	27	30	30	28.4	
CHASE CITY	17	MAX	50	46	42	48	51	52	42	52	56	63	66	68	54	54	61	76	45	41	66	57	45	52	59	41	49	51	54	56	61	65	54.5	
		MIN	31	36	29	24	26	35	31	27	28	30	36	37	32	29	28	28	43	37	37	29	29	24	27	32	34	31	30	28	28	33	41	31.3
CLARKSVILLE	07	MAX	49	45	45	47	51	50	41	49	55	65	65	68	68	54	52	46	76	45	40	66	66	44	51	59	59	47	49	52	56	62	67	54.5
		MIN	32	35	28	24	26	32	31	28	30	29	37	39	31	30	29	31	31	35	35	36	36	23	23	34	32	32	32	30	31	33	38	31.4
CORBIN	09	MAX	45	39	42	47	50	43	47	46	60	64	65	61	52	48	57	63	54	35	62	55	51	49	55	44	37	49	50	51	57	61	54	51.4
		MIN	36	27	25	25	25	32	34	35	32	27	41	48	29	27	24	36	34	31	32	32	31	25	25	31	32	30	26	29	36	29	44	31.3
CROZIER	07	MAX	48		37	45	49	48	40	46	59	50	64	65	70	52	51		69	38	35	63	55	41	49	55	39	39	48	52	54	57	62	51.0
		MIN	31		25	22	23	25	28	27	24	26	26	41	31	28	25		36	31	31	33	32	22	22	31	31	27	25	28	30	29	30	28.3
FARMVILLE 2 N	07	MAX	47	43	39	46	50	48	38	48	50	60	67	66	67	53	51	59	77	40	36	64	55	55	49	57	38	45	48	51	54	59	45	51.8
		MIN	29	33	25	21	21	31	28	29	27	27	27	38	32	28	27	30	40	32	33	27	27	21	21	28	31	30	30	28	29	32	32	28.8
GREENBAY 3 NE	09	MAX	46	42	38	45	49	49	38	46	49	59	65	66	66	52	50	58	76	40	36	63	55	43	49	57	38	45	46	51	53	58	63	51.3
		MIN	31	32	24	20	26	31	28	24	26	27	33	39	29	28	27	27	39	33	33	29	30	21	25	31	31	31	29	27	29	31	43	29.5
JOHN H KERR DAM	08	MAX	53	48	42	48	51	51	42	51	58	64	69	67	71	55	54	62	75	46	40 <sup>1</sup>	69	57	45	51	58	38	48	52	54	59	63	67	55.6
		MIN	34	35	28	23	29	33	29	29	27	28	38	32	29	29	32	44	35	35	33	34	24	27	32	32	33	33	32	31	34	37	31.8	
LOUISA	18	MAX	44	39	46	50	51	46	47	49	61	65	64	65	62	52	59	69	58	37	65	60	54	52	56	55	39	49	52	52	59	63	62	54.3
		MIN	31	31	24	17	22	33	28	27	26	28	34	55	26	26	22	38	34	34	33	28	31	23	22	30	33	31	27	26	30	26	38	29.5
PALMYRA 3S	06	MAX	47	42	39	46	50	49	39	46	47	59	65	65	68	53	52	58	71	38	33	63	55	41	50	55	40	39	48	51	53	57	63	51.0
		MIN	28	30	22	20	21	27	27	28	25	24	24	31	28	26	23	25	37	32	32	26	26	18	18	22	31	26	26	24	25	26	26	25.9
PETERSBURG	08	MAX		48	39	46	49		40	52	51	60	65	69	70	56	52	59	70	41		65	56	42	51	58	41	41	50	52	54	59	64	53.6
		MIN		35	27	26	26		33	33	33	29	28	40	34	30	27	27	40	34		33	32	24	25	26	32	29	29	33	34	32	32	30.8
RICHMOND INTL AP	24	MAX	48	40	46	49	50	43	51	50	62	64	68	70	54	52	60	71	45	40	66	57	45	51	56	42	39	51	53	55	60	64	59	53.6
		MIN	37	33	26	27	24	33	36	35	36	29	38	43	32	31	27	43	35	34	36	31	29	27	27	33	33	31	35	35	36	33	44	33.2
SANDSTON	07	MAX	48	47	39	43	47	50	40	40	48	59	63	68	65	53 <sup>1</sup>	49	59	69	40	39	64	56	42	49	55	41	37	49	53	53	57	63	51.1
		MIN	35	33	26	24	24	25	32	32	35	28	29	29	31	29	27	27	38	33	33	26	34	26	26	27	32	29	29	33	33	32	31	29.9
<b>WESTERN PIEDMONT 03</b> APPOMATTOX	07	MAX	45	41	38	44	49	45	40	48	52	61	65	62	63	50	49	58	77	38	34	62	54	37	48	58	36	43	48	50	54	59	63	50.7
		MIN	28	31	24	21	21	31	31	30	30	30	33	39	32	27	26	30	38	31	30	31	28	22	24	27	29	29	31	31	35	35	36	29.7
BROOKNEAL	07	MAX	47	44	41	44	49	51	46	50	54	62	66	66	63	52	51	62	79	43	38	64	57	42	51	56	39	48	46	50	54	61	65	52.9
		MIN	26	30	22	19	21	33	29	26	25	25	27	33	28	27	26	28	41	34	35	25	26	20	20	30	30	28	27	26	26	30	36	27.7
CHARLOTTE COURT HOUSE	07	MAX	47	42	41	45	50	50	43	49	50	63	66	65	65	52	50	64	79	43	37	64	57	41	51	57	37	46	48	50	54	58	62	52.5
		MIN	30	32	25	21	22	32	30	28	28	29	30	34	31	26	27	28	41	34	33	30	30	21	21	32	31	31	30	30	30	34	35	29.5
CHARLOTTESVILLE 2W	08	MAX	45	41	37	44	50	48	39	43	45	59	64	59	64	50	50	59	68	37	32	62	54	37	51	57	39	39	44	49	50	57	62	49.5
		MIN	36	31	26	23	26	30	31	33	35	35	39	40	36	27	28	34	36	31	31	31	29	24	25	33	30	31	33	33	35	40	40	32.0
CHATHAM	07	MAX	47	47	41	42	42	48	46	46	52	59	64	64	63	53	49	61	77	48	36	63	56	40	51	55	38	47	47	50	53	59	63	51.8
		MIN	25	26	21	19	22	31	30	26	23	25	27	31	28	26	23	22	35	35	32	27	24	20	16	28	30	30	23	21	24	31	25.9	

VIRGINIA  
201303

# DAILY TEMPERATURES (°F)

STATION	OB. TIME	MAX/MIN	DAY OF MONTH																															AVERAGE
			01	02	03	04	05	06	07	08	09	10	11	12	13	14	15	16	17	18	19	20	21	22	23	24	25	26	27	28	29	30	31	
DANVILLE REGIONAL AP	24	MAX	45	45	46	52	52	48	50	56	63	69	67	66	54	52	64	79	60	40	67	57	47	52	57	39	49	51	52	56	62	67	65	55.8
FREE UNION	08	MIN	29	32	27	20	30	34	35	32	28	28	38	40	28	28	27	39	38	36	36	29	29	21	27	32	33	31	27	27	26	32	48	31.2
		MAX	45	41	38	45	50	49	39	44	46	59	65	57	65	50	51	60	67	40	31	61	53	38				38	45	50	52	59	63	50.0
LYNCHBURG INTL AP	24	MIN	33	31	23	20	21	31	31	31	27	25	25	30	29	27	24	24	35	31	30	28	27	21	21	23	30	26	27	27	28	26	26	27.0
		MAX	43	39	43	51	50	45	49	53	64	67	62	60	50	51	61	80	59	35	62	55	41	49	58	44	43	48	49	53	60	64	58	53.1
MARTINSVILLE FLTR PLT	07	MIN	27	28	19	21	33	33	35	32	27	32	37	40	30	27	31	39	35	33	32	30	23	19	23	32	27	28	32	26	31	28	43	30.1
		MAX	46	43	43	39	51	52	46	47	53	63	67	63	62	51	50	63	79	50	37	63	56	39	53	57	37	46	48	46	53	61	65	52.5
MEADOWS OF DAN 5 SW	07	MIN	33	29	28	27	24	24	35	32	22	22	26	33	28	27	24	24	35	35	34	29	31	16	16	29	31	31	26	23	22	21	30	27.3
		MAX	53	54		35	50	52	41	42	50	61	64	64	57	46	48	58	77	50	36	59	52	35	49	51	37	42	43	44	50	58	62	50.7
MONTEBELLO FISH CULTURAL STN	07	MIN	31	28	26	24	25	31	30	28	28	29	31	31	30	26	27	27	34	33	30	27	21	22	33	31	30	29	27	28	28	32	28.5	
		MAX	35	31		33	41	31	29	39	40	56	45	50	52	37	41	51	64		44	52	52	28	41	50	33	31	37	32	42	50	55	42.1
MONTICELLO	08	MIN	27	22		15	15	25	25	25	16	16	16	31	29	18	18	26	36		25	26	21	15	15	24	22	23	24	24	26	24	24	22.5
		MAX	44	40	37	42	48	47	38	42	42	55	61	63	63	49	48	57	66	40	37	61	52	37	48	53	39	37	44	48	50	56	61	48.5
ROCKY MT	07	MIN	35	31	26	23	24	30	30	31	34	33	36	36	36	28	28	33	36	30	30	30	33	24	24	32	30	31	32	32	34	36	36	31.1
		MAX	44	41	39	37	50	50	45	46	54	62	68	59	57	47	48	65	78	46	48	60	54	35	53	56	38	41	46	46	52	60	65	51.3
SOUTH BOSTON	07	MIN	35	27	33	24	28	33	33	36	26	26	28	38	37	29	28	41	32	32	36	29	21	21	32	30	30	30	30	25	26	35	30.3	
		MAX	49	44	43	46	51	51	44	50	56	64	67	66	67	53	52	62	77	47	39	66	56	44	51	56	39	49	51	53	56	62	65	54.1
STUART	07	MIN	28	33	26	23	26	33	29	28	28	28	28	34	31	31	25	25	40	35	35	29	29	23	23	30	32	29	28	28	29	30	33	29.3
		MAX	47	42	43	40	54	53	45	47	53	66	46	60	62	48	51	62	78	51	36	63	55	39	52	56	38	44	46	47	54	61	63	51.7
TYE RIVER 1 SE	07	MIN	37	29	25	24	24	33	30	30	29	28	28	37	34	28	26	27	37	35	31	28	26	19	18	33	31	31	30	26	26	31	35	29.2
		MAX	50	44	46	48	53	48	42	52	56	65	67	61	65	58	54	62	72	40	35	63	56	43	52	60	40	45	50	55	57	62	65	53.7
NORTHERN 04 BOSTON 4 SE	07	MIN	33	34	23	19	20	29	30	34	31	32	33	48	32	25	26	30	36	31	29	30	29	21	22	29	29	30	32	33	31	32	34	29.9
		MAX	55	42	37	42	47	50		45	45	57	62	58	61	49	47	60	63	38	33	59	53	37	50	56	40	43	48	49	51	56	61	49.8
EDINBURG	07	MIN	32	24	26	25	26	28		35	29	28	27	46	28	30	24	35	32	30	30	31	28	22	23	22	29	30	31	31	31	26	30	29.0
		MAX	42	37	33	37	44	52	39	42	43	56	61	58	54	46	43	60	60	36	33	54	49	32	46	54	38	34	43	43	47	55	59	46.1
FRONT ROYAL	07	MIN	34	26	25	22	23	30	30	32	22	22	25	37	29	25	24	24	32	30	29	31	26	23	22	29	29	30	30	32	25	26	27.3	
		MAX	42	40	34	37	45	50	37	43	42	58	61	57	55	46	44	58	57	37	33	58	50	35	48	54	39	36		46	48	55	60	46.8
LINCOLN	07	MIN	34	28	27	24	23	23	31	33	27	26	30	40	32	29	28	28	35	30	29	31	28	26	25	25	29	30		30	38	33	32	29.5
		MAX	45	43	35	40	41	50	40	44	47	57	63	59	56	48	44	58	58	38	34	59	52	34	45	52	41	38	49	47	48	55	59	47.7
LURAY 5 E	08	MIN	35	28	26	26	26	30	32	33	24	24	25	39	33	29	26	26	29	30	30	32	25	25	24	29	26	31	34	32	34	27	29	29.0
		MAX	41	41	33	39	44	52	39	44	42	57	62	58	57	46	44	58	62	37	33	56	50	33	47	53	39	40	43	43	47	54	60	46.9
MADISON	08	MIN	35	27	27	21	25	30	31	33	21	27	29	37	27	26	23	33	32	29	31	29	26	22	21	27	29	30	28	30	32	28	38	28.5
		MAX																																
MANASSAS	07	MIN																																M
		MAX																																
MT WEATHER	07	MIN																																M
		MAX	38	36	32	36	39	48	33	42	42	52	58	52	52	44	40	54	53	34	31	54	46	31	43	50	37	37	44	43	42	50	55	43.5
PIEDMONT RSCH STN	08	MIN	32	26	24	22	21	29	30	28	29	35	36	30	25	25	28	31	27	26	30	24	22	23	25	28	28	30	32	33	35	35	28.1	
		MAX	45	42	36	42	47	50	40	44	45	56	63	61	62	49	47	58	63	38	32	60	52	37	50	54	39	37	45	49	50	56	61	48.7
SOMERSET	07	MIN	37	25	25	22	28	29	31	32	28	30	32	38	29	29	27	28	34	31	30	31	29	23	25	27	30	31	34	30	34	35	38	30.1
		MAX	47	42	38	43	49	51	41	45	47	59	63	61	64	51	48	59	64	38	33	61	54	38	51	56	39	37	52	50	51	57	61	50.0

VIRGINIA  
201303

# DAILY TEMPERATURES (°F)

STATION	OB. TIME	MAX/MIN	DAY OF MONTH																															AVERAGE
			01	02	03	04	05	06	07	08	09	10	11	12	13	14	15	16	17	18	19	20	21	22	23	24	25	26	27	28	29	30	31	
SPERRYVILLE	06	MIN	39	24	26	24	25	32	32	32	24	27	30	37	30	29	28	30	35	31	31	32	29	24	22	25	31	28	27	28	30	29	31	29.1
		MAX	44	39	35	40	46	50				59	61	59	48	45	59	53	37	32	57	51	35	48	55	44	37	46	46	47	55	60	47.7	
		MIN	37	29	28	25	24	31				31	31	31	29	26	25	32	30	29	31	30	27	24	23	29	32	36	36	30	29	30	29.4	
STERLING RCS	07	MAX		42	35	40	42	50	37	46	48	59	63	59	56	48	44	57	60	39	35	58	51	35	47	53	41	38	48	49	48	55	59	48.1
		MIN		30	27	26	27	30	32	34	32	26	26	43	30	29	26	27	28	30	29	26	28	24	23	23	27	31	31	33	36	29	31	29.1
VIENNA	07	MAX	44	41	34	38	41	36	44	44	47	58	58	58	52	47	42	59	57	38	35	56	39	33	44	51	35	35	46	46	45	52	56	45.5
		MIN	37	29	27	26	26	26	31	32	33	33	42	42	30	30	26	26	27	29	23	33	26	25	24	24	25	30	30	31	31	32	33	29.6
WARRENTON 3 SE	08	MAX																																M
		MIN																																M
WASHGTN DULLES INTL AP	24	MAX	44	37	42	43	51	38	47	49	60	62	59	58	50	45	57	61	40	37	59	52	37	48	54	42	39	49	49	49	56	60	51	49.2
		MIN	35	29	28	27	27	33	33	35	32	26	42	40	29	31	28	35	30	31	34	34	26	25	22	27	32	31	35	30	34	30	38	31.3
WASHINGTON REAGAN AP	24	MAX	46	39	44	46	53	41	52	52	62	63	62	60	52	47	59	61	43	40	60	54	42	50	55	44	39	51	52	50	60	61	56	51.5
		MIN	38	32	30	30	32	34	37	38	34	37	44	42	36	34	33	41	37	33	39	39	31	28	32	34	33	35	39	40	42	41	45	36.1
WINCHESTER	07	MAX																																M
		MIN																																M
WINCHESTER 7 SE	08	MAX	42	39		38	42	49	38	44	45	58	61	56	55	55	40	58	55	37	32		50		48	54	38	38		47	48	56	60	47.5
		MIN	34	29		24	24	31	31	33	22	22	24	44	27	27	-20 <sup>T</sup>	26	33	29	29		26		20	20	25	30		31	-5 <sup>S</sup>	-15 <sup>S</sup>	28	27.9
WOODSTOCK 2 NE	07	MAX	42	40	33	39	44	53	40	42	43	58	55	65	56		47	58	55	37	33	57	50	34	46	54	38	37	44	45	46	55	59	46.8
		MIN	35	27	26	23	24	26	31	34	24	22	29	28	29		26	25	32	27	27	28	26	24	23	23	26	27	30	34	33	26	28	27.4
<b>CENTRAL MOUNTAIN 05</b>																																		
COVINGTON FLTR PLT	07	MAX	38	38	34	32	46	48	40	41	48	61	63	58	51	43	45	61	75	49	37	49	52	33	46	56	40	39	45	43	46	57	64	47.7
		MIN	34	30	27	24	24	31	30	35	24	25	28	42	31	27	25	25	39	35	34	28	26	18	18	25	31	31	31	33	36	29	29	29.2
DALE ENTERPRISE	07	MAX	42	38	40	40	47	48	37	39	41	53	60	55	60	46	44	58	61	37	31	56	50	35	47	36	35	36	42	44	48	54	58	45.7
		MIN	33	27	20	19	22	29	29	31	19	25	25	42	27	23	23	25	33	29	29	31	23	20	20	21	27	28	28	29	31	25	28	26.5
GATHRIGHT DAM	07	MAX	35	34	30	28	41	44	36	37	40	56	59	55	45	39	40	56	69	45	39	51	47	28	41	50	37	35	39	37	41	51	59	43.4
		MIN	31	26	24	22	22	28	27	31	22	23	29	36	29	23	22	23	39	31	31	31	22	14	14	23	29	29	29	31	32	29	29	26.8
HOT SPRINGS	07	MAX	34	34	31	30	41	44	33	35	38	53	57	53	47	41	40	56	68	44	44	53	47	28	41	51	34	35	38	36	41	53	58	43.2
		MIN	29	24	21	19	19	27	27	29	16	16	29	40	29	22	21	26	37	29	28	26	20	19	15	22	28	28	27	28	30	29	29	25.5
MILLGAP	07	MAX	31	30	26	26	37	45	40	35	35	54	57	52	47	37	37	53	56	39	32	47	43	24	38	48	34	34	38	34	36	47	55	40.2
		MIN	27	22	20	16	16	24	26	27	6	6	19	31	27	20	20	26	33	28	27	27	19	14	13	12	24	24	26	26	26	20	19	21.6
MUSTOE 1 SW	24	MAX																																M
		MIN																																M
ROANOKE 8 N	07	MAX	42	40	40	36	49	48	41	41	50	61	64	56	54	45	47	64	75	46	36	59	57	34	48	56	40	41	46	43	50	58	64	49.4
		MIN	36	32	27	25	26	32	32	36	29	29	30	43	34	28	28	29	42	33	32	30	28	20	22	32	30	30	34	34	30	31	36	31.0
ROANOKE INTL AP	24	MAX	41	37	36	50	49	39	44	52	61	65	58	56	47	48	65	77	59	36	60	55	37	50	58	43	41	45	45	52	60	65	61	51.4
		MIN	36	31	26	26	33	33	36	36	27	31	44	40	32	29	33	44	36	33	35	33	24	22	30	32	31	36	34	36	31	33	44	33.1
STAUNTON WATER TRMTMT PLT	08	MAX	42	36	34	38	48	46	35	39	45	54	61	54	57	46	45	57	63	36	36	55	50	34	47	55	36	37	40	44	45	55	60	46.1
		MIN	32	27	21	17	21	28	29	29	24	27	40	44	31	24	24	30	34	28	28	29	30	19	25	28	25	26	28	30	32	30	33	28.2
WAYNESBORO WTP	07	MAX	42	39	35	41	48	48	48	41	42	53	62	57	58	47	47	59	68	43	33	57	51	34	49	56	38	39	43	45	46	55	61	47.9
		MIN	32	30	25	20	20	30	30	30	21	21	26	44	30	26	25	26	36	30	30	26	25	22	22	21	29	29	29	29	29	27	27	27.3
<b>SOUTHWESTERN MOUNTAIN 06</b>																																		

VIRGINIA  
201303

## DAILY TEMPERATURES (°F)

STATION	OB. TIME	MAX/MIN	DAY OF MONTH																															AVERAGE
			01	02	03	04	05	06	07	08	09	10	11	12	13	14	15	16	17	18	19	20	21	22	23	24	25	26	27	28	29	30	31	
			ABINGDON 3S	22	MAX MIN	36 30	34 25	29 22	45 21	47 32	39 26	33 28	44 29	65 24	70 40	58 48	50 34	40 26	42 23	56 24	68 37	58 45	60 38	53 36			44 14		46 38	41 28	36 28	38 29		
BIG STONE GAP	08	MAX MIN	36 31	40 31	33 24	33 19	49 19	46 27	31 28	33 26	46 26	65 38	71 37	64 37	50 29	40 26	46 27	62 28	72 39	54 35	55 26	55 22	51 17	35 17	47 17	55 37	49 30	36 29	35 30	41 25	48 26	50 28	60 28	48.0 28.2
BLACKSBURG NWSO	07	MAX MIN	36 29	36 26	30 21	27 20	42 20	46 26	35 26	34 29	44 20	58 28	64 36	53 31	51 22	38 22	42 22	58 27	70 41	47 29	37 28	53 27	48 21	30 16	44 16	51 28	35 26	34 27	37 27	39 28	45 24	54 24	58 25	44.4 25.5
BURKES GARDEN	07	MAX MIN	27 25	30 23	25 16	23 16	36 21	43 21	24 22	27 17	36 19	56 39	61 28	50 18	41 17	33 26	36 26	52 32	65 31	44 25	46 16	46 25	43 16	43 11	38 22	45 26	33 29	30 24	29 23	32 22	39 19	48 17	54 22	39.2 22.4
CHRISTIANSBURG	07	MAX MIN	35 30	35 26	29 21	27 20	43 20	49 27	36 26	34 29	44 25	57 28	63 41	54 43	48 32	39 22	42 21	56 29	71 35	46 33	37 29	53 28	47 21	26 17	44 16	50 31	32 26	35 27	37 28	43 29	58 29	44.1 27.4		
CLINTWOOD 1 W	07	MAX MIN	33 30	37 27	30 24	29 16	44 17	47 27	30 27	33 25	40 21	64 21	72 32	62 36	45 28	37 24	43 23	75 24	49 46	55 33	52 33	49 22	29 20	46 12	50 12	48 31	37 31	36 30	39 24	48 22	58 22	59 27	46.4 25.7	
COPPER HILL	07	MAX MIN	41 37	32 24	28 18	24 17	39 17	42 25	36 22	32 26	41 24	52 26	55 40	50 41	51 31	37 20	39 18	54 25	69 45	46 28	35 25	50 27	45 22	25 14	41 13	48 29	32 24	32 24	34 25	35 24	42 27	50 32	55 32	41.7 25.4
GALAX RADIO WBRF	07	MAX MIN	24 29	37 27	35 21	32 19	47 25	48 25	30 25	35 28	43 21	60 29	60 37	54 40	48 26	39 21	42 23	61 33	72 36	58 31	50 30	39 21	53 20	49 12	30 21	48 28	35 28	36 26	37 26	38 22	48 27	53 23	58 28	45.2 26.5
GALAX WTP	07	MAX MIN	35 30	36 28	36 21	30 20	45 21	47 26	31 26	35 27	44 21	58 29	58 42	54 26	51 22	39 22	41 22	60 24	71 44	50 31	41 30	49 26	29 21	47 14	47 17	35 28	37 27	37 27	36 27	43 23	53 23	57 28	44.7 25.8	
GRUNDY	07	MAX MIN	34 31	39 29	31 23	30 24	44 24	51 28	31 29	34 29	43 23	67 24	72 35	63 37	46 28	36 30	44 25	61 27	73 39	49 38	56 35	53 24	51 23	46 15	46 15	52 34	48 30	35 31	37 28	40 24	49 24	57 30	60 28	47.7 28.0
JOHN FLANNAGAN LAKE	07	MAX MIN	32 30				46 20	46 20	29 27	34 27		73 24	62 36	46 27	35 24	44 24		66 26	54 36	51 26	28 26			28 14		52 14	34 29	34 29						M M
LEBANON	07	MAX MIN	35 30	37 29	31 20	29 21	46 23	49 26	29 28	33 28	42 21	66 21	68 39	60 36	49 26	38 24	43 23	57 27	69 43	51 42	54 38	53 25	49 21	32 13	44 13	49 34	48 31	35 28	36 29	39 25	47 21	54 22	58 27	46.1 26.9
NORA 4 SSE	07	MAX MIN	28 24	30 23	24 16	24 15	41 16	44 22	24 21	27 21	36 23	57 29	64 48	54 30	45 28	35 18	39 27	54 66	66 43	49 49	49 46	46 27	27 41	41 45	43 33	33 28	28 35	35 43	43 43	52 43	53 52	41.3 25.2		
NORTH FORK LAKE	08	MAX MIN	32 29			36 16	46 16	45 26				71 22	61 36	46 29	36 23	43 23		73 26	56 26	52 26	49 20					52 13	34 28	35 29	38 25	48 23				M M
PULASKI 2 E	07	MAX MIN	44 31	44 30	32 23	29 22	46 22	49 29	33 27	34 30	45 22	59 22	63 28	56 47	51 35	44 24	58 28	71 45	48 33	37 32	55 30	49 23	31 16	47 18	52 24	33 28	37 28	38 29	39 29	45 25	56 27	61 30	46.0 27.7	
RADFORD 3 N	07	MAX MIN	35 32	38 29	30 22	27 22	44 28	48 28	33 31	34 22	42 27	58 33	64 40	56 29	50 23	36 24	42 33	59 34	73 31	48 30	41 27	54 21	50 17	30 19	45 28	52 29	34 30	36 30	38 30	39 22	47 26	59 32	45.2 27.5	
RICHLANDS	07	MAX MIN	34 30	38 28	31 21	41 23	46 26	51 26	29 26	32 28	41 21	67 37	71 48	59 38	48 23	38 23	43 23	56 56	70 42	48 39	49 36	52 23	48 13	29 12	47 32	44 29	35 28	35 29	38 28	46 22	55 22	58 28	45.8 26.4	
SALTVILLE 1N	07	MAX MIN	37 31	40 31	34 23	32 23	47 25	44 27	31 30	35 22	44 24	67 34	69 40	58 28	50 25	38 24	45 27	54 45	65 55	55 49	49 55	53 53	31 23	47 13	50 14	40 33	36 32	36 29	39 26	48 21	55 21	59 28	46.5 27.5	
STAFFORDSVILLE 3 ENE	07	MAX MIN	37 32	37 28	29 23	28 22	43 22	46 28	32 28	34 31	43 22	58 22	64 29	56 43	49 33	41 23	42 23	60 31	73 34	47 32	40 31	54 30	29 20	45 19	51 19	38 26	36 29	37 30	39 29	45 25	55 24	60 25	45.1 27.1	
TROUT DALE 3 SSE	07	MAX MIN	32 26	34 26	30 17	27 17	43 19	44 22	28 23	29 23	34 24	61 27	58 37	48 42	47 29	36 18	38 19	58 37	67 51	51 34	34 50	46 46	41 36	36 46	46 34	32 32	33 33	36 36	41 25	50 17	58 18	42.0 25.8		
WISE 3E	17	MAX MIN	33 27	31 22	24 17	42 13	43 33	42 22	28 24	36 21	62 23	67 48	65 50	54 31	43 26	38 20	54 27	67 46	63 40	51 40	48 33	45 25	41 18	43 11	48 33	46 38	43 24	32 28	33 25	42 28	50 24	54 27	45.9 28.6	

VIRGINIA  
201303

## DAILY TEMPERATURES (°F)

STATION	OB. TIME	MAX/MIN	DAY OF MONTH																															AVERAGE
			01	02	03	04	05	06	07	08	09	10	11	12	13	14	15	16	17	18	19	20	21	22	23	24	25	26	27	28	29	30	31	
WYTHEVILLE 1 S	07	MAX MIN	35 31	37 26	33 22	30 21	45 21	48 26	31 26	35 29	45 20	63 20	64 33	55 47	49 28	38 22	43 23	56 30	69 41	49 34	36 34	54 24	49 21	29 13	45 13	50 27	35 30	35 28	38 29	39 29	45 21	54 21	60 28	45.0 26.4

VIRGINIA  
201303

## SNOWFALL AND SNOW ON GROUND (INCHES)

STATION		DAY OF MONTH																															
		01	02	03	04	05	06	07	08	09	10	11	12	13	14	15	16	17	18	19	20	21	22	23	24	25	26	27	28	29	30	31	
<b>VIRGINIA</b>																																	
<b>TIDEWATER 01</b>																																	
DISPUTANTA	SNOWFALL																																
	SN ON GND	-	-	-	-	-	-	-	-	-	-	-	-	-	-	-	-	-	-	-	-	-	-	-	-	-	2	-	-	-	-	-	-
EASTVILLE	SNOWFALL	-	-	-	-	-	-	-	-	-	-	-	-	-	-	-	-	-	-	-	-	-	-	-	-	1.5	-	-	-	-	-	-	
	SN ON GND	-	-	-	-	-	-	-	-	-	-	-	-	-	-	-	-	-	-	-	-	-	-	-	-	1	-	-	-	-	-	-	
EMPORIA 1 WNW	SNOWFALL																																
FREDERICKSBURG SEWAGE	SNOWFALL	-	-	-	-	-	3.0	-	-	-	-	-	-	-	-	-	0.1	-	-	-	-	-	-	-	-	1.5	-	-	-	-	-	-	
HAMPTON UNIV	SNOWFALL																																
HOLLAND 1 E	SNOWFALL																																
HOPEWELL	SNOWFALL																									1.5	-	-	-	-	-	-	
	SN ON GND																																
NORFOLK INTL AP	SNOWFALL																						T			T							
NORFOLK SOUTH	SNOWFALL	-	-	-	-	-	-	-	-	-	-	-	-	-	-	-	-	-	-	-	-	-	T		T								
	SN ON GND	-	-	-	-	-	-	-	-	-	-	-	-	-	-	-	-	-	-	-	-	-	-	-	-	-	-	-	-	-	-	-	
NORTH	SNOWFALL																																
PAINTER 2W	SNOWFALL																																
STONY CREEK 2 N	SNOWFALL																										1.0						
	SN ON GND																									1							
SUFFOLK LAKE KILBY	SNOWFALL																																
	SN ON GND																						0.1		T								
WAKEFIELD 1NW	SNOWFALL						T																										
	SN ON GND																						T			0.8	T						
WALKERTON 2 NW	SNOWFALL																																
	SN ON GND						0.3												1.0									3.0					
WALLACETON LK DRUMMOND	SNOWFALL																																
WALLOPS ISLAND NASA TEST FACIL	SNOWFALL		T				T	-									T	T							T	-							
	SN ON GND																																
WARSAW 2 NW	SNOWFALL	-	-	-	-	-	-	-	-	-	-	-	-	-	-	-	-	1.0	-	-	-	-	-	-	-	1.5	-	-	-	-	-	-	
	SN ON GND	-	-	-	-	-	-	-	-	-	-	-	-	-	-	-	-	-	-	-	-	-	-	-	-	-	-	-	-	-	-	-	
WEST POINT 2 NW	SNOWFALL																																
	SN ON GND						T											0.2					T			T	3.0						
WILLIAMSBURG 2 N	SNOWFALL	-	-	-	-	-	-	-	-	-	-	-	-	-	-	-	-	-	-	-	-	-	-	-	-	2.5	-	-	-	-	-	-	
	SN ON GND	-	-	-	-	-	-	-	-	-	-	-	-	-	-	-	-	-	-	-	-	-	-	-	-	1	-	-	-	-	-	-	
<b>EASTERN PIEDMONT 02</b>																																	
ALBERTA 5N	SNOWFALL						0.8	3.0																									
	SN ON GND						1	T																			1						
AMELIA COURTHOUSE 1	SNOWFALL	-	-	-	-	-	2.5	-	-	-	-	-	-	-	-	-	-	-	-	-	-	-	-	-	-	-	-	-	-	-	-	-	
	SN ON GND	-	-	-	-	-	3	-	-	-	-	-	-	-	-	-	-	-	-	-	-	-	-	-	-	-	-	-	-	-	-	-	
ASHLAND	SNOWFALL	-	-	-	-	-	3.5	-	-	-	-	-	-	-	-	-	-	2.5	-	-	-	T	-	-	-	0.5	3.0	-	-	-	-	-	
	SN ON GND	-	-	-	-	-	3	T	T	T	-	-	-	-	-	-	-	1	-	-	-	-	-	-	-	1	T	-	-	-	-	-	
BREMO BLUFF	SNOWFALL	-	-	-	-	-	3.0																										

Snowfall: Includes snow and ice. Values for NWS stations (J index note) are Mid-Mid (LST).

Snow on ground: Includes snow, sleet, ice, and hail. Values for NWS stations (J index note) are observed at 12 UTC (GMT).

Water Equivalent: Given for NWS stations (J index note) only, when snow depth is 2 inches or more, and is measured at 18 UTC (GMT)



VIRGINIA  
201303

## SNOWFALL AND SNOW ON GROUND (INCHES)

STATION		DAY OF MONTH																																
		01	02	03	04	05	06	07	08	09	10	11	12	13	14	15	16	17	18	19	20	21	22	23	24	25	26	27	28	29	30	31		
BUCKINGHAM	SN ON GND	-	-				2					-	-										-	-	-									
	SNOWFALL						1.0	5.5																0.1			4.0							
CAMP PICKETT	SN ON GND						1	3	1																	2	1							
	SNOWFALL																																	
CHASE CITY	SN ON GND	-	-	-	-	-	-	-	-	-	-	-	-	-	-	-	-	-	-	-	-	-	-	-	-	1	-	-	-	-	-	-		
	SNOWFALL	-	-	-	-	-	0.6	-	-	-	-	-	-	-	-	-	-	-	-	-	-	-	-	0.5	-	-	-	-	-	-	-	-	-	
CLARKSVILLE	SN ON GND																																	
	SNOWFALL																																	
CORBIN	SN ON GND	-	-	-	-	-	6.5	2.5	-	-	-	-	-	-	-	-	-	1.5	-	-	-	-	-	-	-	2.0	-	-	-	-	-	-		
	SNOWFALL	-	-	-	-	-	7	4	2	-	-	-	-	-	-	-	-	2	-	-	-	-	-	-	-	2	-	-	-	-	-	-		
CROZIER	SN ON GND						5.0	2.0										1.0								2.5								
	SNOWFALL																																	
FARMVILLE 2 N	SN ON GND	-	-	-	-	-	5	2										1								2								
	SNOWFALL	-	-	-	-	-	T	3.0	-	-	-	-	-	-	-	-	-	-	-	-	-	-	-	-	-	2.0	-	-	-	-	-	-		
GREENBAY 3 NE	SN ON GND	-	-	-	-	-	1	3																		2								
	SNOWFALL	-	-	-	-	-		1.0	-	-	-	-	-	-	-	-	-	-	-	-	-	-	-	-	-	3.0	-	-	-	-	-	-		
JOHN H KERR DAM	SN ON GND						13.6	-	-	-	-	-	-	-	-	-	-	1.2	-	-	-	-	-	-	3.4	1.4	-	-	-	-	-	-		
	SNOWFALL																																	
LOUISA	SN ON GND	-	-	-	-	-	9	6	4	1	-	-	-	-	-	-	-	-	-	-	-	-	-	-	3	1	-	-	-	-	-	-		
	SNOWFALL	-	-	-	-	-	2.5	3.8										1.0								3.5	-	-	-	-	-	-	-	
PALMYRA 3S	SN ON GND	-	-	-	-	-		6	3	1	-	-	-	-	-	-	-	-	-	-	-	-	-	-	-									
	SNOWFALL	-	-	-	-	-																												
PETERSBURG	SN ON GND	-	-	-	-	-																												
	SNOWFALL	-	-	-	-	-																												
RICHMOND INTL AP	SN ON GND						1.5											T	T				T		3.8	0.1								
	SNOWFALL																																	
SANDSTON	SN ON GND	-	-	-	-	-		T	-	-	-	-	-	-	-	-	-	-	-	-	-	-	-	T	-	-	3.9	-	-	-	-	-		
	SNOWFALL	-	-	-	-	-		T	-	-	-	-	-	-	-	-	-	-	-	-	-	-	-	-	-	4	T	-	-	-	-	-	-	
WINTERPOCK 4 W	SN ON GND	-	-	-	-	-																		T	-	-	4	T	-	-	-	-	-	
	SNOWFALL	-	-	-	-	-																		T	-	-	3.0	0.7	-	-	-	-	-	-
WESTERN PIEDMONT 03	SN ON GND																																	
	SNOWFALL																																	
ALTAVISTA	SN ON GND																																	
	SNOWFALL																																	
APPOMATTOX	SN ON GND					T	2.6	1.4																T		4.0	0.5							
	SNOWFALL						3	1																		4	1							
BEDFORD 4 NW	SN ON GND						4.5																			6.0								
	SNOWFALL						5	1																		6	3							
BROOKNEAL	SN ON GND						0.2																			0.5								
	SNOWFALL						T																			1								
CHARLOTTE COURT HOUSE	SN ON GND						1.0	1.0																		1.0								
	SNOWFALL						1	1																		1								
CHARLOTTESVILLE 2W	SN ON GND						15.5	1.0										0.5	T							4.8	T	T						
	SNOWFALL						16	12	7	4	2	T						1	T							5	2	T	T					
CHATHAM	SN ON GND	-	-	-	-	-	-	-	1.7	-	-	-	-	-	-	-	-	-	-	-	-	-	-	-	-	0.6	-	-	-	-	-	-	-	
	SNOWFALL						T	T																		0.3	T							

Snowfall: Includes snow and ice. Values for NWS stations (J index note) are Mid-Mid (LST).

Snow on ground: Includes snow, sleet, ice, and hail. Values for NWS stations (J index note) are observed at 12 UTC (GMT).

Water Equivalent: Given for NWS stations (J index note) only, when snow depth is 2 inches or more, and is measured at 18 UTC (GMT)

VIRGINIA  
201303

## SNOWFALL AND SNOW ON GROUND (INCHES)

STATION		DAY OF MONTH																																		
		01	02	03	04	05	06	07	08	09	10	11	12	13	14	15	16	17	18	19	20	21	22	23	24	25	26	27	28	29	30	31				
CONCORD 4 SSW	SN ON GND						1.3	3.0																												
	SNOWFALL						1	1																												
DANVILLE REGIONAL AP	SN ON GND						T																		T											
	SNOWFALL																																			
FREE UNION	SN ON GND						8.2	2.9											0.9																	
	SNOWFALL	-	-	-	-	-	8	5	1	T	T	-	-	-	-	-	-	-	1	T	-	-	-	-	-	-	-	-	-	-	-	-	-			
HOLCOMB ROCK	SN ON GND						3.0	3.0											0.3																	
	SNOWFALL						3	T																												
HUDDLESTON 4 SW	SN ON GND						1.1	-	-	-	-	-	-	-	-	-	-	-	-	-	-	-	-	-	-	-	-	-	-	-	-	-	-			
	SNOWFALL						1.0																													
LYNCHBURG INTL AP	SN ON GND						1																													
	SNOWFALL					0.8	2.2																													
MARTINSVILLE FLTR PLT	SN ON GND						1																													
	SNOWFALL																																			
MEADOWS OF DAN 5 SW	SN ON GND																																			
	SNOWFALL																																			
MONTEBELLO FISH CULTURAL STN	SN ON GND						9.2	-	-	-	-	-	-	-	-	-	-	-	-	-	-	-	-	-	-	-	-	-	-	-	-	-	-	-		
	SNOWFALL	-	-	-	-	-	9	-	-	-	-	-	-	-	-	-	-	-	-	-	-	-	-	-	-	-	-	-	-	-	-	-	-	-	-	
MONTICELLO	SN ON GND						7.0	9.0	-	-	-	-	-	-	-	-	-	-	1.0	-	-	-	-	-	-	-	-	-	-	-	-	-	-	-	-	
	SNOWFALL	-	-	-	-	-	7	16	8	4	-	-	-	-	-	-	-	-	1	-	-	-	-	-	-	-	-	-	-	-	-	-	-	-	-	
PEDLAR DAM	SN ON GND						1.5	2.0																												
	SNOWFALL						1	1	T																											
ROCKY MT	SN ON GND						0.3																													
	SNOWFALL																																			
SOUTH BOSTON	SN ON GND						T																													
	SNOWFALL																																			
STUART	SN ON GND																																			
	SNOWFALL																																			
TYE RIVER 1 SE	SN ON GND																																			
	SNOWFALL																																			
WOOLWINE	SN ON GND																																			
	SNOWFALL																																			
NORTHERN 04	SN ON GND																																			
	SNOWFALL																																			
BOSTON 4 SE	SN ON GND						9.2	-																												
	SNOWFALL						9	-																												
EDINBURG	SN ON GND						9.2	-																												
	SNOWFALL						8.7	2.8																												
FRONT ROYAL	SN ON GND						9	6	4	3	T																									
	SNOWFALL	-	-	-	-	-	7.0	8.0	-	-	-	-	-	-	-	-	-	-	1.0	-	-	-	-	-	-	-	-	-	-	-	-	-	-	-	-	-
	SN ON GND						-	15	5	-	-	-	-	-	-	-	-	-	1	-	-	-	-	-	-	-	-	-	-	-	-	-	-	-	-	

Snowfall: Includes snow and ice. Values for NWS stations (J index note) are Mid-Mid (LST).

Snow on ground: Includes snow, sleet, ice, and hail. Values for NWS stations (J index note) are observed at 12 UTC (GMT).

Water Equivalent: Given for NWS stations (J index note) only, when snow depth is 2 inches or more, and is measured at 18 UTC (GMT)

VIRGINIA  
201303

## SNOWFALL AND SNOW ON GROUND (INCHES)

STATION		DAY OF MONTH																															
		01	02	03	04	05	06	07	08	09	10	11	12	13	14	15	16	17	18	19	20	21	22	23	24	25	26	27	28	29	30	31	
LINCOLN	SNOWFALL	-	-	-	-	-	-	-	-	-	-	-	-	-	-	-	2.0	-	-	-	-	-	-	-	-	-	3.0	-	-	-	-	-	-
	SN ON GND	-	-	-	-	-	-	-	-	-	-	-	-	-	-	-	2	-	-	-	-	-	-	-	-	-	3	-	-	-	-	-	-
LURAY 5 E	SNOWFALL	-	-	-	-	6.0	9.0	-	-	-	-	-	-	-	-	-	-	2.0	-	-	-	-	-	-	-	-	6.5	-	-	-	-	-	
	SN ON GND	-	-	-	-	6	15	12	9	5	2	1	-	-	-	-	-	2	1	-	-	-	-	-	-	6	3	1	-	-	-		
	WTR EQUIV	-	-	-	-	6.0	15.0	-	-	-	-	-	-	-	-	-	-	2.0	-	-	-	-	-	-	-	6.5	-	-	-	-	-	-	
MADISON MANASSAS MT WEATHER	SNOWFALL	-	-	-	-	6.0	6.0	-	-	-	-	-	-	-	-	-	-	1.7	-	-	-	-	-	-	-	5.0	-	-	-	-	-	-	
	SN ON GND	-	-	-	-	6	12	7	4	2	-	-	-	-	-	-	-	2	-	-	-	-	-	-	-	5	5	-	-	-	-	-	
	WTR EQUIV	-	-	-	-	-	-	7.0	-	-	-	-	-	-	-	-	-	-	-	-	-	-	-	-	-	5.0	-	-	-	-	-	-	
PIEDMONT RSCH STN	SNOWFALL	-	-	-	-	-	15.0	-	-	-	-	-	-	-	-	-	-	2.0	-	-	-	-	-	-	-	4.5	1.0	-	-	-	-	-	
	SN ON GND	-	-	-	-	-	5	4	-	-	-	-	-	-	-	-	-	2	-	-	-	-	-	-	-	4	1	-	-	-	-	-	
SOMERSET	SNOWFALL	-	-	-	-	9.0	3.5	-	-	-	-	-	-	-	-	-	-	1.3	-	-	-	-	-	-	-	4.5	-	-	-	-	-	-	
	SN ON GND	-	-	-	-	9	-	2	T	T	T	-	-	-	-	-	-	1	-	-	-	-	-	-	-	5	1	-	-	-	-	-	
	WTR EQUIV	-	-	-	-	-	-	-	-	-	-	-	-	-	-	-	-	1.3	-	-	-	-	-	-	-	4.5	1.0	-	-	-	-	-	
SPERRYVILLE	SNOWFALL	-	T	T	-	7.5	-	-	-	-	-	-	-	-	-	-	-	2.2	0.8	-	-	-	-	-	-	5.8	T	T	T	-	-	-	
	SN ON GND	-	-	-	-	7	-	-	-	T	-	-	-	-	-	-	-	2	1	-	-	-	-	-	-	5	2	T	-	-	-	-	
STERLING RCS	SNOWFALL	-	T	T	-	1.5	1.6	T	-	-	-	-	-	-	-	-	-	0.6	0.2	-	0.1	-	-	-	-	3.2	T	-	-	-	-	-	
	SN ON GND	-	-	-	-	2	2	-	-	-	-	-	-	-	-	-	-	1	-	-	-	-	-	-	-	3	-	-	-	-	-	-	
	WTR EQUIV	-	-	-	-	-	-	-	-	-	-	-	-	-	-	-	-	-	-	-	-	-	-	-	-	-	-	-	-	-	-	-	
VIENNA	SNOWFALL	-	-	-	-	1.5	2.0	-	-	-	-	-	-	-	-	-	-	0.5	-	-	-	-	-	-	-	-	3.5	-	-	-	-	-	-
	SN ON GND	-	-	-	-	1	1	-	-	-	-	-	-	-	-	-	-	1	-	-	-	-	-	-	-	-	-	-	-	-	-	-	-
WARRENTON 3 SE	SNOWFALL	-	-	-	-	-	-	-	-	-	-	-	-	-	-	-	-	-	-	-	-	-	-	-	-	-	-	-	-	-	-	-	
WASHGTN DULLES INTL AP	SNOWFALL	T	T	-	T	3.3	-	T	-	-	-	-	-	-	-	-	-	0.8	-	-	0.1	-	-	T	3.2	T	-	-	-	-	-	-	
	SN ON GND	-	-	-	T	2	-	-	-	-	-	-	-	-	-	-	-	-	-	-	-	-	-	-	3	-	-	-	-	-	-	-	-
WASHINGTON REAGAN AP	SNOWFALL	-	-	-	T	0.2	-	-	-	-	-	-	-	-	-	-	-	T	-	-	T	-	-	T	1.4	-	-	-	-	-	-	-	-
	SN ON GND	-	-	-	-	-	-	-	-	-	-	-	-	-	-	-	-	-	-	-	-	-	-	-	1	-	-	-	-	-	-	-	-
WINCHESTER	SNOWFALL	-	-	-	-	6.5	-	-	-	-	-	-	-	-	-	-	-	-	-	-	-	-	-	-	-	5.0	-	-	-	-	-	-	
WINCHESTER 7 SE	SNOWFALL	-	-	-	-	6	3	1	-	-	-	-	-	-	-	-	-	-	-	-	-	-	-	-	-	5	-	-	-	-	-	-	
	SN ON GND	-	-	-	-	-	-	-	-	-	-	-	-	-	-	-	-	-	-	-	-	-	-	-	-	5.0	-	-	-	-	-	-	
	WTR EQUIV	-	-	-	-	-	-	-	-	-	-	-	-	-	-	-	-	-	-	-	-	-	-	-	-	5.0	-	-	-	-	-	-	
WOODSTOCK 2 NE	SNOWFALL	-	-	-	-	9.2	3.0	-	-	-	-	-	-	-	-	-	-	1.6	-	-	-	-	-	-	-	6.0	-	-	-	-	-	-	
	SN ON GND	-	-	-	-	-	6	2	T	-	-	-	-	-	-	-	-	2	1	-	-	-	-	-	-	6	2	T	-	-	-	-	
CENTRAL MOUNTAIN 05 BUCHANAN	SNOWFALL	-	-	-	-	3.0	-	-	-	-	-	-	-	-	-	-	-	-	-	-	-	-	-	-	-	4.1	-	-	-	-	-	-	
	SN ON GND	-	-	-	-	3	-	-	-	-	-	-	-	-	-	-	-	-	-	-	-	-	-	-	4	T	-	-	-	-	-	-	
BUENA VISTA	SNOWFALL	-	-	-	T	3.0	1.5	-	-	-	-	-	-	-	-	-	-	-	-	-	-	-	-	-	4.0	-	-	-	-	-	-	-	
	SN ON GND	-	-	-	-	3	2	T	-	-	-	-	-	-	-	-	-	-	-	-	-	-	-	-	4	-	-	-	-	-	-	-	
COVINGTON FLTR PLT	SNOWFALL	-	-	-	-	1.5	-	-	-	-	-	-	-	-	0.1	-	-	-	-	-	-	-	-	-	5.0	T	-	-	-	-	-	-	
	SN ON GND	-	-	-	-	2	-	-	-	-	-	-	-	-	-	-	-	-	-	-	-	-	-	-	5	2	-	-	-	-	-	-	
CRAIGSVILLE 2 S	SNOWFALL	-	-	-	-	15.4	-	-	-	-	-	-	-	-	-	-	-	0.3	-	-	-	-	-	-	-	-	-	-	-	-	-	-	
	SN ON GND	-	-	-	-	15.4	-	-	-	-	-	-	-	-	-	-	-	2	T	-	-	-	-	-	-	-	-	-	-	-	-	-	

Snowfall: Includes snow and ice. Values for NWS stations (J index note) are Mid-Mid (LST).

Snow on ground: Includes snow, sleet, ice, and hail. Values for NWS stations (J index note) are observed at 12 UTC (GMT).

Water Equivalent: Given for NWS stations (J index note) only, when snow depth is 2 inches or more, and is measured at 18 UTC (GMT)

VIRGINIA  
201303

## SNOWFALL AND SNOW ON GROUND (INCHES)

STATION		DAY OF MONTH																														
		01	02	03	04	05	06	07	08	09	10	11	12	13	14	15	16	17	18	19	20	21	22	23	24	25	26	27	28	29	30	31
DALE ENTERPRISE	SNOWFALL					10.0	6.0											2.5								4.5						
	SN ON GND					-	10	8	6	3								2	1							4	3					
	WTR EQUIV					10.0	10.0	8.0	6.0	3.0								2.5	1.0							4.5	2.0	0.5				
GATHRIGHT DAM	SNOWFALL					5.8																			5.0		0.2					
	SN ON GND					6	2	T																	5	1	T					
GLASGOW 1 SE	SNOWFALL	T			T	2.4	2.6							T											5.6	T						
	SN ON GND					2	1																		5	2						
HOT SPRINGS	SNOWFALL					12.0																			6.0		T	T				
	SN ON GND					12	10	10	8	6					T										6	4	2	2				
LEXINGTON	SNOWFALL					7.4	3.0																		6.3	T						
	SN ON GND					7	5	3	2	T															6	2						
MILLGAP	SNOWFALL	0.5		T		8.6	0.1	T					0.2	0.1				0.4	0.5			0.4		5.0	0.9	2.0	0.2					
	SN ON GND	1	T	T		9	6	5	4	2	T		T	T				T	T			T		5	3	4	2		2			
	WTR EQUIV																															
MTN GROVE	SNOWFALL					0.5	T							T				T							6.0	T		T				
	SN ON GND					1	T												T						6	6	2	T				
MUSTOE 1 SW	SNOWFALL	0.2	T	T		3.5	7.3						0.5	T			T	1.0		0.5	0.1		3.9	2.8	2.2	1.2						
	SN ON GND	T	T	T		4	10	6	4	2	T	T		T	T		T	T	T	T	T		4	6	5	4	2	T	T	T		
NEW CASTLE	SNOWFALL					1.5																			3.5							
	SN ON GND					2																			3							
ROANOKE 8 N	SNOWFALL					2.0																			5.0							
	SN ON GND					1																			4	1						
ROANOKE INTL AP	SNOWFALL			T		2.0	0.5						T	T								T		5.0	0.5		T	T				
	SN ON GND					2																		5	1							
STAUNTON WATER TRMTMT PLT	SNOWFALL					-	13.0	2.0							-	-		0.5				-			6.0							
	SN ON GND					-	13	12	8	5	2				-	-		1	T			-			6	2	T					
WAYNESBORO WTP	SNOWFALL					10.5	6.0											0.5														
	SN ON GND					10	6											T														
	WTR EQUIV					2.7	1.2											-														
<b>SOUTHWESTERN MOUNTAIN 06</b>																																
ABINGDON 3S	SNOWFALL			T		0.5																										
	SN ON GND					1																										
BIG STONE GAP	SNOWFALL	T	0.5																													
	SN ON GND		T																													
BLACKSBURG NWSO	SNOWFALL	T	T	0.1	T	T	0.3	T	T					0.1	T					T		T	T		3.7	0.6	0.1	T				
	SN ON GND			T		T	T							T											4	1	T	T				
BURKES GARDEN	SNOWFALL	0.5	T	1.4	0.5	0.4	0.5	0.2						0.3								2.4		T	3.0	1.0	2.0	T				
	SN ON GND	2	2	3	2	T	1	1	1					T								2	1		3	3	5	4	T			
CHRISTIANSBURG	SNOWFALL				T	0.5	T							0.1										T	5.5	T	T					
	SN ON GND				T	T																		T	5	3	2	1	T			
CLINTWOOD 1 W	SNOWFALL	1.0	1.5	2.0	0.5	1.5	0.3	T					T	0.7								1.3	T		T	3.5	0.8					

Snowfall: Includes snow and ice. Values for NWS stations (J index note) are Mid-Mid (LST).

Snow on ground: Includes snow, sleet, ice, and hail. Values for NWS stations (J index note) are observed at 12 UTC (GMT).

Water Equivalent: Given for NWS stations (J index note) only, when snow depth is 2 inches or more, and is measured at 18 UTC (GMT).

## SNOWFALL AND SNOW ON GROUND (INCHES)

STATION		DAY OF MONTH																														
		01	02	03	04	05	06	07	08	09	10	11	12	13	14	15	16	17	18	19	20	21	22	23	24	25	26	27	28	29	30	31
COPPER HILL	SN ON GND	1	1	3	1	T	2	1	1	T				T								1	T			T	2	1	T			
	SNOWFALL			T			2.2																		T	5.0	1.0	1.0	0.1			
	SN ON GND						2	1																		5	5	5	5	3		
GALAX RADIO WBRF	SNOWFALL																									0.1		T				
	SN ON GND																									T		T				
GALAX WTP	SNOWFALL				T		T	T																		T		0.1				
	SN ON GND																									T		T				
GRUNDY	SNOWFALL	0.1	0.1	0.3	T		0.3	T					T	0.4									T				0.2	T				
	SN ON GND	1	1	1	T		T	T																			T					
JOHN FLANNAGAN LAKE	SNOWFALL	-	-	-	-	-	-	-	-	-	-	-	-	-	-	-	-	-	-	-	-	-	-	-	-	-	1.5	-	-	-	-	
	SN ON GND	-	-	-	-	-	-	-	-	-	-	-	-	-	-	-	-	-	-	-	-	-	-	-	-	-	1	-	-	-	-	
LAFAYETTE 1 NE	SNOWFALL	T				T	0.3							T												2.8	0.1					
	SN ON GND						T																			2						
LEBANON	SNOWFALL		0.1	0.5			-																			1.2	1.0					
	SN ON GND			1			-																			1	1					
NORA 4 SSE	SNOWFALL	0.4	1.4	2.6	1.1		1.0	1.9	T				T	0.4	T								0.2	T		0.4	3.9	1.8				
	SN ON GND	1	2	4	3		1	2	1	T				T	T										T	T	2	2	T			
NORTH FORK LAKE	SNOWFALL	T	-	-	-	-	1.0	-	-	-	-	-	-	-	-	-	-	-	-	-	-	-	-	-	-	T	1.5	T	-	-	-	
	SN ON GND	-	-	-	1	-	1	-	-	-	-	-	-	-	-	-	-	-	-	-	-	-	-	-	-	T	2	1		-	-	
PULASKI 2 E	SNOWFALL	0.1		T			T							T												4.0	0.3					
	SN ON GND			T																						4	2	1				
RADFORD 3 N	SNOWFALL				T		T	T						0.2											T	3.0	0.1	T	T			
	SN ON GND				T		T							T											T	2	1	T	T			
RICHLANDS	SNOWFALL		0.1	0.2	0.1		0.4	0.4						0.1									0.1			0.2	2.0	1.0				
	SN ON GND			T	T		T	1						T												T	2	1				
SALTVILLE 1N	SNOWFALL	T	T	T			T	0.5						T												0.3	0.7	T				
	SN ON GND	T	T	T			T	T						T												T	1	T				
STAFFORDSVILLE 3 ENE	SNOWFALL	T		T	T		T	T						0.1									1.6	T		3.0	1.5	0.2	T			
	SN ON GND			T	T		T							T											2	3	2	T	T			
TROUT DALE 3 SSE	SNOWFALL			T	T		3.0	0.2						0.2											T	5.0	2.0	1.0				
	SN ON GND			T	T		3	1						T											2	5	2	1				
WILLIS	SNOWFALL						T																			1.0	T	0.3				
	SN ON GND																									2	5	2	1			
WISE 3E	SNOWFALL	1.5	1.8	2.1	T		3.3	0.4					T	T												1	1	T				
	SN ON GND	T	2	3	T		3	2	T																		4.2	2.1	0.7			
WYTHEVILLE 1 S	SNOWFALL			T	T		T							0.2												2.0	1.0	0.3	T			
	SN ON GND			T	T		T							T												1	1	1	T			

Snowfall: Includes snow and ice. Values for NWS stations (J index note) are Mid-Mid (LST).

Snow on ground: Includes snow, sleet, ice, and hail. Values for NWS stations (J index note) are observed at 12 UTC (GMT).

Water Equivalent: Given for NWS stations (J index note) only, when snow depth is 2 inches or more, and is measured at 18 UTC (GMT)

VIRGINIA  
201303

## PAN EVAPORATION AND WIND

STATION		DAY OF MONTH																															TOTAL OR AVERAGE		
		01	02	03	04	05	06	07	08	09	10	11	12	13	14	15	16	17	18	19	20	21	22	23	24	25	26	27	28	29	30	31			
VIRGINIA EASTERN PIEDMONT 02 JOHN H KERR DAM	WIND	-	-	-	-	-	-	-	-	-	-	-	-	-	-	-	-	-	-	-	-	-	-	-	-	-	-	-	-	-	-	-	-	-	M
	EVAP	-	-	-	-	-	-	-	-	-	-	-	-	-	-	-	-	-	-	-	-	-	-	-	-	-	-	-	-	-	-	-	-	-	M
	MAX	-	-	-	-	-	-	-	-	-	-	-	-	-	-	-	-	-	-	-	-	-	-	-	-	-	-	-	-	-	-	-	-	-	M
	MIN	-	-	-	-	-	-	-	-	-	-	-	-	-	-	-	-	-	-	-	-	-	-	-	-	-	-	-	-	-	-	-	-	-	M

Evaporation: Is measured in hundreths of inches.

Wind: Is measured in miles.

Max and Min: The maximum and minimum temperatures (Fahrenheit) of the water in the evaporation pan.

# STATION INDEX

STATION	INDEX NO.	DIVISION	COUNTY	LATITUDE	LONGITUDE	ELEVATION (IN FEET)	OBSERVATION TIME AND TABLES			
							LOCAL STD TIME			
							TEMP	PRECIP	EVAP	SPECIAL SEE (NOTES)
VIRGINIA										
ABINGDON 3S	0021	06	WASHINGTON	36 40	81 58W	1920	22	22		H
ALBERTA 5N	0079	02	BRUNSWICK	36 56	77 54W	376		08		H
ALTAVISTA	0166	03	CAMPBELL	37 7	79 17W	529		07		CH
AMELIA COURTHOUSE 1	0187	02	AMELIA	37 21	77 59W	345	08	08		H
APPOMATTOX	0243	03	APPOMATTOX	37 20	78 50W	850	07	07		H
ASHLAND	0327	02	HANOVER	37 45	77 29W	220	18	18		H
BEDFORD 4 NW	0561	03	BEDFORD	37 23	79 34W	1228		07		CH
BIG STONE GAP	0735	06	WISE	36 52	82 46W	1464	08	08		H
BLACKSBURG NWSO	0766	06	MONTGOMERY	37 12	80 25W	2100	07	07		CH
BOSTON 4 SE	0860	04	CULPEPER	38 33	78 6W	590	07	07		H
BREMO BLUFF	0993	02	FLUVANNA	37 43	78 17W	225		24		CH
BROOKNEAL	1082	03	CAMPBELL	37 4	78 57W	408	07	07		H
BUCHANAN	1121	05	BOTETOURT	37 31	79 41W	880		07		H
BUCKINGHAM	1136	02	BUCKINGHAM	37 30	78 32W	552		07		H
BUENA VISTA	1159	05	ROCKBRIDGE	37 44	79 22W	840		07		H
BURKES GARDEN	1209	06	TAZEWELL	37 6	81 20W	3068	07	07		H
CAMP PICKETT	1322	02	NOTTOWAY	37 2	77 57W	330	08	08		CH
CHARLOTTE COURT HOUSE	1585	03	CHARLOTTE	37 3	78 39W	569	07	07		H
CHARLOTTESVILLE 2W	1593	03	ALBEMARLE	38 2	78 31W	866	08	08		H
CHASE CITY	1606	02	MECKLENBURG	36 47	78 29W	510	17	17		H
CHATHAM	1614	03	PITTSYLVANIA	36 49	79 25W	651	07	07		CH
CHRISTIANSBURG	1692	06	MONTGOMERY	37 8	80 24W	2100	07	07		H
CLARKSVILLE	1746	02	MECKLENBURG	36 37	78 33W	330	07	07		H
CLINTWOOD 1 W	1825	06	DICKENSON	37 9	82 29W	1780	07	07		H
CONCORD 4 SSW	1955	03	CAMPBELL	37 17	78 58W	815		07		H
COPPER HILL	1999	06	FLOYD	37 5	80 9W	2690	07	07		H
CORBIN	2009	02	CAROLINE	38 12	77 22W	220	09	09		H
COVINGTON FLTR PLT	2044	05	ALLEGHANY	37 49	79 59W	1230	07	07		H
CRAIGSVILLE 2 S	2064	05	AUGUSTA	38 3	79 23W	1758		07		H
CROZIER	2142	02	GOOCHLAND	37 40	77 53W	350	07	07		H
DALE ENTERPRISE	2208	05	ROCKINGHAM	38 27	78 56W	1358	07	07		H
DANVILLE REGIONAL AP R	2250	03	PITTSYLVANIA	36 34	79 20W	571	24	24		H
DISPUTANTA	2400	01	PRINCE GEORGE	37 7	77 12W	15	07	07		H
EASTVILLE	2635	01	NORTHAMPTON	37 23	75 58W	10	07	07		H
EDINBURG	2663	04	SHENANDOAH	38 48	78 35W	928	07	07		H
EMPORIA 1 WNW	2790	01	GREENSVILLE	36 42	77 34W	100	08	08		H
FARMVILLE 2 N	2941	02	CUMBERLAND	37 20	78 23W	450	07	07		H
FREDERICKSBURG SEWAGE	3204	01	FREDERICKSBURG	38 17	77 27W	15	07	07		H
FREE UNION	3213	03	ALBEMARLE	38 5	78 35W	590	08	07		H
FRONT ROYAL	3229	04	WARREN	38 54	78 11W	930	07	07		H
GALAX RADIO WBRF	3267	06	CARROLL	36 40	80 55W	2385	07	07		H
GALAX WTP	3272	06	CARROLL	36 39	80 55W	2360	07	07		CH
GATHRIGHT DAM	3310	05	ALLEGHANY	37 57	79 57W	1770	07	07		CH
GLASGOW 1 SE	3375	05	ROCKBRIDGE	37 37	79 26W	737		07		H
GREENBAY 3 NE	3565	02	PRINCE EDWARD	37 11	78 17W	500	09	09		H
GRUNDY	3640	06	BUCHANAN	37 17	82 5W	1170	07	07		H
HAMPTON UNIV	3713	01	HAMPTON	37 1	76 20W	10	17	17		H
HOLCOMB ROCK	4039	03	BEDFORD	37 33	79 24W	620		07		H
HOLLAND 1 E	4044	01	SUFFOLK	36 41	76 46W	80	08	08		H
HOPEWELL	4101	01	PRINCE GEORGE	37 18	77 17W	40	16	16		H
HOT SPRINGS	4128	05	BATH	37 60	79 50W	2236	07	07		H
HUDDLESTON 4 SW	4148	03	BEDFORD	37 8	79 32W	898		07		H
JOHN FLANNAGAN LAKE	4410	06	DICKENSON	37 14	82 21W	1460	07	07		H
JOHN H KERR DAM	4414	02	MECKLENBURG	36 36	78 18W	250	08	08	08	CH
LAFAYETTE 1 NE	4676	06	MONTGOMERY	37 14	80 12W	1320		07		H
LEBANON	4777	06	RUSSELL	36 54	82 2W	1912	07	07		H
LEXINGTON	4876	05	ROCKBRIDGE	37 47	79 26W	1097		07		H
LINCOLN	4909	04	LOUDOUN	39 5	77 42W	500	07	07		H
LOUISA	5050	02	LOUISA	38 3	78 0W	420	18	18		H
LURAY 5 E	5096	04	PAGE	38 40	78 22W	1400	08	08		H
LYNCHBURG INTL AP R	5120	03	CAMPBELL	37 19	79 12W	940	24	24		HJ
MADISON	5150	04	MADISON	38 22	78 15W	577	08	08		H
MANASSAS	5204	04	MANASSAS	38 44	77 30W	245	07	07		H
MARTINSVILLE FLTR PLT	5300	03	HENRY	36 42	79 52W	760	07	07		H
MEADOWS OF DAN 5 SW	5453	03	PATRICK	36 40	80 27W	2225	07	07		H

# STATION INDEX

STATION	INDEX NO.	DIVISION	COUNTY	LATITUDE	LONGITUDE	ELEVATION (IN FEET)	OBSERVATION TIME AND TABLES			
							LOCAL STD TIME			
							TEMP	PRECIP	EVAP	SPECIAL SEE (NOTES)
MILLGAP	5595	05	HIGHLAND	38 18	79 43W	2421	07	07		CH
MONTEBELLO FISH CULTURAL STN #	5690	03	NELSON	37 51	79 8W	2667	07	07		H
MONTICELLO	5700	03	ALBEMARLE	38 1	78 27W	758	08	08		H
MT WEATHER	5851	04	LOUDOUN	39 4	77 53W	1659	07	07		H
MTN GROVE	5756	05	BATH	38 6	79 53W	1775		07		H
MUSTOE 1 SW	5880	05	HIGHLAND	38 20	79 40W	2380	24	24		H
NEW CASTLE	6012	05	CRAIG	37 18	80 3W	1258		07		H
NORA 4 SSE	6125	06	DICKENSON	37 1	82 19W	2650	07	07		H
NORFOLK INTL AP R	6139	01	NORFOLK (CITY)	36 54	76 12W	30	24	24		HJ
NORFOLK SOUTH	6147	01	NORFOLK (CITY)	36 52	76 14W	100	24	24		H
NORTH	6161	01	MATHEWS	37 26	76 26W	10	07	07		H
NORTH FORK LAKE	6173	06	WISE	37 7	82 38W	1675	08	08		H
PAINTER 2W	6475	01	ACCOMACK	37 35	75 49W	30	16	16		CH
PALMYRA 3S	6491	02	FLUVANNA	37 49	78 16W	410	06	06		H
PEDLAR DAM	6593	03	AMHERST	37 40	79 17W	1024		07		H
PETERSBURG	6656	02	PETERSBURG	37 14	77 24W	15	08	08		H
PIEDMONT RSCH STN	6712	04	ORANGE	38 14	78 7W	520	08	08		CH
PULASKI 2 E	6955	06	PULASKI	37 3	80 47W	1850	07	07		CH
RADFORD 3 N	6999	06	PULASKI	37 12	80 35W	1800	07	07		H
RICHLANDS	7174	06	TAZEWELL	37 6	81 48W	1910	07	07		H
RICHMOND INTL AP R	7201	02	HENRICO	37 30	77 19W	164	24	24		HJ
ROANOKE 8 N	7278	05	ROANOKE	37 22	79 58W	1190	07	07		H
ROANOKE INTL AP R	7285	05	ROANOKE	37 19	79 58W	1175	24	24		HJ
ROCKY MT	7338	03	FRANKLIN	36 59	79 54W	1315	07	07		CH
SALTVILLE 1N	7506	06	SMYTH	36 53	81 46W	1733	07	07		H
SANDSTON	7541	02	HENRICO	37 33	77 17W	165	07	07		H
SOMERSET	7904	04	ORANGE	38 15	78 16W	510	07	07		H
SOUTH BOSTON	7925	03	HALIFAX	36 42	78 53W	329	07	07		H
SPERRYVILLE	7985	04	RAPPAHANNOCK	38 39	78 14W	750	06	06		H
STAFFORDSVILLE 3 ENE	8022	06	GILES	37 16	80 43W	1950	07	07		CH
STAUNTON WATER TRMTMT PLT	8062	05	AUGUSTA	38 10	79 5W	169	08	08		H
STERLING RCS	8084	04	LOUDOUN	38 59	77 29W	288	07	07		H
STONY CREEK 2 N	8129	01	SUSSEX	36 58	77 24W	105	08	08		H
STUART	8170	03	PATRICK	36 38	80 15W	1375	07	07		H
SUFFOLK LAKE KILBY	8192	01	SUFFOLK	36 44	76 36W	22	24	24		H
TROUT DALE 3 SSE	8547	06	GRAYSON	36 39	81 24W	2839	07	07		CH
TYE RIVER 1 SE	8600	03	NELSON	37 38	78 56W	720	07	07		H
VIENNA	8737	04	FAIRFAX	38 54	77 16W	418	07	07		H
WAKEFIELD 1NW	8800	01	SUSSEX	36 59	77 0W	113	24	24		CH
WALKERTON 2 NW	8829	01	KING AND QUEEN	37 45	77 2W	50	18	18		H
WALLACETON LK DRUMMOND	8837	01	CHESAPEAKE	36 36	76 26W	20	08	08		H
WALLOPS ISLAND NASA TEST FACIL R	8849	01	ACCOMACK	37 56	75 28W	46	24	24		HJ
WARRENTON 3 SE	8888	04	FAUQUIER	38 41	77 46W	500	08	08		H
WARSAW 2 NW	8894	01	RICHMOND	37 59	76 47W	140	18	18		H
WASHGTN DULLES INTL AP R	8903	04	LOUDOUN	38 56	77 28W	290	24	24		HJ
WASHINGTON REAGAN AP R	8906	04	ARLINGTON	38 51	77 2W	10	24	24		HJ
WAYNESBORO WTP	8941	05	WAYNESBORO	38 5	78 53W	1270	07	07		H
WEST POINT 2 NW	9025	01	KING WILLIAM	37 34	76 48W	20	17	17		H
WILLIAMSBURG 2 N	9151	01	YORK	37 18	76 42W	70	24	24		CH
WILLIS	9169	06	FLOYD	36 55	80 30W	2810		07		CH
WINCHESTER	9181	04	FREDERICK	39 11	78 9W	720	07	07		H
WINCHESTER 7 SE	9186	04	FREDERICK	39 11	78 7W	680	08	08		H
WINTERPOCK 4 W	9213	02	CHESTERFIELD	37 19	77 39W	300		07		H
WISE 3E	9215	06	WISE	36 60	82 32W	2549	17	17		CH
WOODSTOCK 2 NE	9263	04	SHENANDOAH	38 54	78 28W	675	07	07		H
WOOLWINE	9272	03	PATRICK	36 47	80 17W	1500		07		CH
WYTHEVILLE 1 S	9301	06	WYTHE	36 56	81 6W	2093	07	07		CH



# REFERENCE NOTES

**STATION NAMES:** Name of the city, town or locality. Figures and letters following the station names indicate the distance in miles and direction from the post office or town community center.

**DIVISIONS:** Areas within a state of similar climatological characteristics. Division averages are calculated using data from stations that record temperature and/or precipitation. Station Precipitation totals flagged with an 'F' or 'M' are excluded from the Divisional Average calculations of precipitation. Stations with monthly Temperature averages flagged with an 'F' or 'M' are included in the Divisional Average if there are no more than 9 flagged or missing daily values in the month, else they are excluded from the divisional average for temperature.

**NORMALS:** The average value of the meteorological element over a time period. Effective 1 January 2012, the averaging period is 1981 to 2010. The normals for National Weather Service localities have been adjusted so as to be representative for the current observation site.

**MONTHLY DEGREE DAY TOTALS:** One heating (cooling) degree day is accumulated for each whole degree that the daily mean temperature is below (above) 65 degrees Fahrenheit.

**PRECIPITATION:** Values shown in hundredths of inches are water equivalent totals, i.e., total of liquid and melted frozen precipitation. In the "Monthly Summarized Data" table the total snow and sleet values shown in tenths of inches are unmelted amounts. The max depth on ground values of snow and sleet shown in whole inches are cumulative unmelted amounts. The number of days with .10, .50, 1.00 or more refers to water equivalents.

**PRECIPITATION QUALITY CONTROL:** The NCDC quality control process may flag precipitation data that are spatially inconsistent, exceed climatological limits, or are inconsistent with prevailing weather patterns.

**TEMPERATURE:** Original temperature values are given in the "Daily Temperature" table. Summary temperature information (averages, departures, extremes, monthly degree day totals) is based on the values labeled MAX/MIN.

**WIND:** (As shown in the "Evaporation and Wind" table) the total wind movement in miles over the evaporation pan as determined by an anemometer recorder located 6-8 inches above the pan.

## SYMBOLS AND LETTERS USED IN THE STATION INDEX TABLE

C Station is equipped with recording rain gage (R) but values in this bulletin are from a non-recording rain gage unless indicated by an R.

G Observations appear in the "Soil Temperatures" table.

H Observations appear in the "Snowfall and Snow on the Ground" table.

J Station also published as a Local Climatological Data publication.

VAR Observation time varies.

SR Observation time near sunrise.

SS Observation time near sunset.

## SYMBOLS AND LETTERS USED IN THE DATA TABLES

(DAILY DATA ARE FOR THE 24 HOURS IMMEDIATELY PRECEDING OBSERVATION TIME.)

BLANK Entries in the "Monthly Summarized Data" table indicate no record.

BLANK Entries in the "Daily Precipitation" and "Snowfall and Snow on the Ground" tables indicate zero.

BLANK Entries in the "Daily Temperature" table indicate a missing record

- No record. Data not recorded or not received in time for publication.

+ Precipitation or temperature extremes occurred on one or more previous dates during the month.

\* Rain gage not read. Precipitation is included in the amount following the asterisks.

Time distribution may not be known. A \* preceding the monthly total indicates precipitation amount is being carried forward to next month's total, and may include amounts from the previous month(s).

a As a subscript, indicates accumulated total.

A Amount of precipitation is the total of observer's entries for the current month. It may include precipitation that occurred during the previous month. Refer to earlier bulletin to determine date of last reading. (Hawaii stations)

B Divisional Departure from normals are computed using 1971-2000 normals.

E Normalized HDD/CDD Calculation. E is appended to the HDD/CDD Calculation when 1-9 individual daily TMAX and/or TMIN values are missing and a Normalized HDD/CDD Calculation is provided. M appears alone if 10 or more daily values are missing.

F Monthly calculation flagged value. F is appended to average and/or total values computed which exclude one or more daily data values that have been flagged by the GHCN-Daily Dataset

M Insufficient or partial data. M is appended to average and/or total values computed with 1-9 daily values missing. M appears alone if 10 or more daily values are missing, (8 or more for wind and evaporation).

N Indicates snow fall or Snowdepth totals are computed with one or more missing days.

R Amounts from recording rain gage.

T Trace. An amount too small to measure.

**SEASONAL TABLES:** Monthly and seasonal snowfall and heating degree days for the 12 months ending with the June data are published in the July issue of this bulletin. Cooling degree days for the calendar year are published in the "Climatological Data Annual Summary."

Information concerning the history of changes in locations, exposure, etc. of substations is kept on file at the National Climatic Data Center. Historical information of regular National Weather Service Offices may be obtained from the "Local Climatological Data" annual publication. The contents of this publication may be reprinted or otherwise used freely, with proper credit to the National Climatic Data Center. The data are also available digitally.

Effective with the January 2011 Data-Month, COOP Observer Names are no longer included in the Monthly and Annual Climatological Data Publications. This information is not published to ensure the privacy of personal information pursuant to Section 208 of the E-Government Act of 2002 (44 USC 3601).

As of the 2011 Data-Year, Station and Climate Division Maps are no longer being included in the CD Publications. NCDC's Product Development Branch provides updated Station Maps for various data networks via the Historical Observing Metadata Repository: <http://www.ncdc.noaa.gov/homr>.

The GHCN-Daily Quality Control Flags shown below are displayed as superscripts with the data. For more Information on Global Historical Climatology Network - Daily and flags, see: <http://www.ncdc.noaa.gov/oa/climate/ghcn-daily/> and Comprehensive Automated Quality Assurance of Daily Surface Observations. Durre, Imke, Matthew J. Menne, Byron E. Gleason, Tamara G. Houston, Russell S. Vose, 2010: J. Appl. Meteor. Climatol., 49, 1615-1633. doi: 10.1175/2010JAMC2375.1

Blank = Passed All checks

D = failed duplicate check

G = failed gap check

I = failed internal consistency check

K = failed streak/frequent-value check

L = failed check on length of multiday period

M = failed megaconsistency check

N = failed naught check

O = failed climatological outlier check

R = failed lagged range check

S = failed spatial consistency check

T = failed temporal consistency check

W = temperature too warm for snow

X = failed bounds check

Z = flagged as a result of an official Datzilla investigation

Beginning with the January 2013 CD Publication, monthly mean temperature calculations have changed to the National Data Stewardship Team standard. Monthly maximum and minimum temperatures are not rounded until after the monthly mean temperature is calculated. This is the most accurate outcome, but may be slightly different from the mean derived from rounded monthly maximum and minimum.

Processing Updates and Errata: The 2011 CD Publications were reproduced in May 2013. This update included the addition of late reports and corrections based on additional investigations of reported data issues through NCDC's Datzilla system. In addition, divisional averages for precipitation were recalculated using the method described in DIVISIONS above. Previous editions of the 2011 Publications included all precipitation stations regardless of missing data in the calculation of divisional averages. HDD/CDD values were recalculated to match the legacy method of calculation (truncation of monthly HDD/CDD values instead of rounding).

NOAA\National Climatic Data Center  
Attn: User Engagement & Services Branch  
151 Patton Avenue  
Asheville, NC 28801-5001

Customer Services Number: (828) 271-4800, option 2  
TDD : (828) 271-4010  
Fax number: (828) 271-4876

NCDC now offers free online access to the *Climatological Data* publication.  
Go to : [www.ncdc.noaa.gov](http://www.ncdc.noaa.gov) and choose Most Popular.