



CLIMATOLOGICAL DATA

VIRGINIA

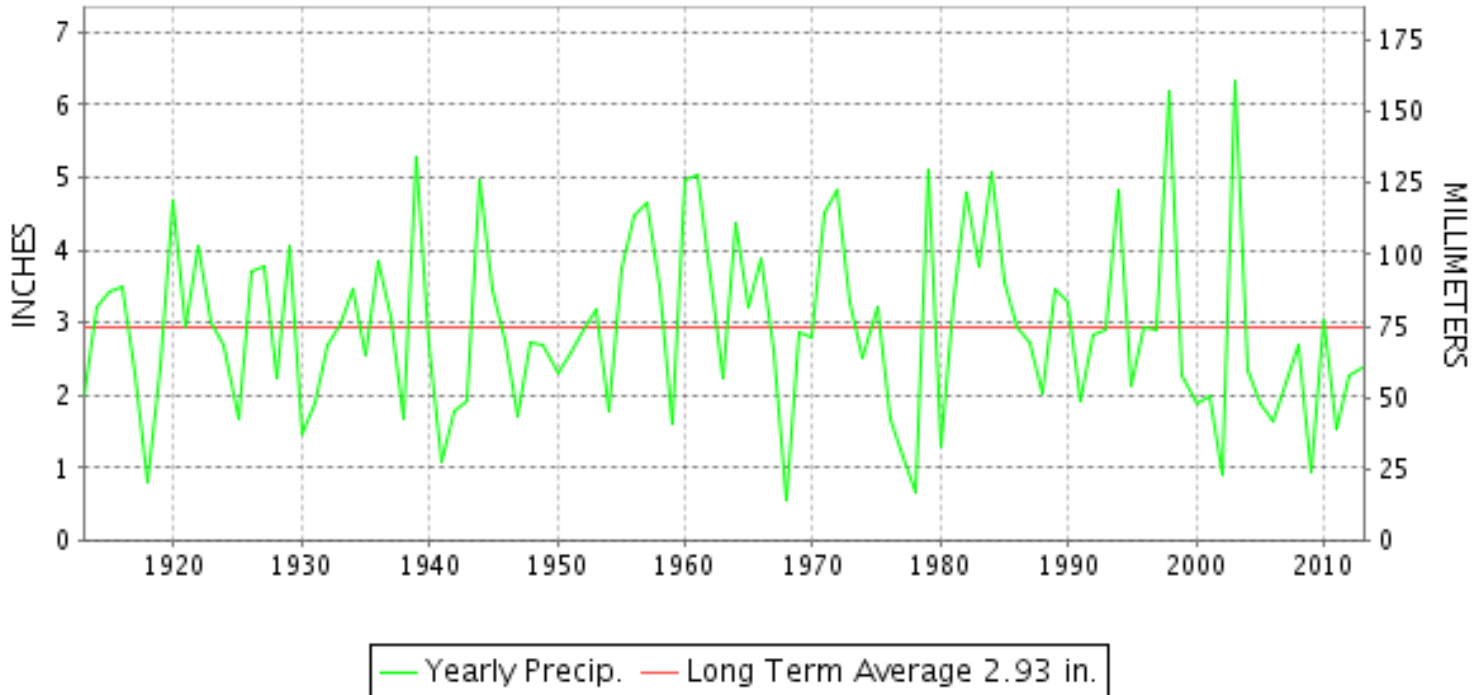
FEBRUARY 2013

VOLUME 123 NUMBER 02

ISSN 0364-5630

GHCND Ver: 3.03-upd-2013062705

FEBRUARY PRECIPITATION BY YEAR



TEMPERATURE AND PRECIPITATION EXTREMES

VIRGINIA

HIGHEST TEMPERATURE	67	FEBRUARY 01	BIG STONE GAP
LOWEST TEMPERATURE	-1	FEBRUARY 03+	MILLGAP
GREATEST TOTAL PRECIPITATION	5.02		NORFOLK SOUTH
LEAST TOTAL PRECIPITATION	0.68		TYE RIVER 1 SE
GREATEST 1 DAY PRECIPITATION	3.04	FEBRUARY 08	BOSTON 4 SE
GREATEST TOTAL SNOWFALL	14.7		BURKES GARDEN
GREATEST DEPTH OF SNOW OR ICE	10		CRAIGSVILLE 2 S

"I certify that this is an official publication of the National Oceanic and Atmospheric Administration (NOAA) It is compiled using information from weather observing sites supervised by NOAA/National Weather Service and received at the National Climatic Data Center(NCDC), Asheville, North Carolina 28801."

Director
National Climatic Data Center

noaa

National
Oceanic and
Atmospheric Administration

National
Environmental Satellite, Data
and Information Service

National
Climatic Data Center
Asheville, North Carolina

MONTHLY STATION AND DIVISION SUMMARY

STATION	TEMPERATURE (°F)											PRECIPITATION (IN)												
	AVERAGE MAXIMUM	AVERAGE MINIMUM	AVERAGE	DEPARTURE FROM NORMAL	HIGHEST	DATE	LOWEST	DATE	HEATING DEG. DAYS	COOLING DEG. DAYS	NO. OF DAYS				TOTAL	DEPARTURE FROM NORMAL	GREATEST 24 HOURS	DATE	ICE PELLETS, SNOW			NO. OF DAYS		
											MAX		MIN						TOTAL	MAX DEPTH ON GROUND	DATE	.10 OR MORE	.50 OR MORE	1.00 OR MORE
											>=90	<=32	<=32	<=0										
PALMYRA 3S	46.5	23.3	34.9	-1.4	62	16	12	19+	837	0	0	1	25	0	1.93	-0.87	1.22	27	0.0			5	1	1
PETERSBURG	48.9	27.6	38.3	-2.6	62	16+	17	19+	740	0	0	0	22	0	2.89	0.21	1.27	08	M 0.0	0		7	2	1
RICHMOND INTL AP	49.6	30.6	40.1	-0.8	63	15+	17	18+	690	0	0	0	18	0	2.60	-0.16	1.01	08	M T	0		7	2	1
SANDSTON	47.3	27.4	37.4	-2.1	62	12	15	19+	768	0	0	0	23	0	3.51	0.49	1.01	08	M T	0		7	3	2
WINTERPOCK 4 W															2.63		1.25	08	0.0			7	2	1
--DIVISIONAL DATA-----> WESTERN PIEDMONT 03			38.1	-1.0B										2.55	-0.64B									
ALTAVISTA														1.98		1.06	27	T	0			3	2	1
APPOMATTOX	45.4	26.2	35.8	-2.8	60	16	14	02	807	0	0	2	25	0	2.41	-0.67	0.92	27	5.3	5	22	6	2	0
BEDFORD 4 NW														1.72		0.81	27	0.3	T	22	4	2	0	
BROOKNEAL	47.6	25.6	36.6	2.8	61	16	13	18	791	0	0	1	23	0	2.39	-0.75	0.90	27	0.8	1	22	5	2	0
CHARLOTTE COURT HOUSE	47.4	27.6	37.5	-1.3	60	16	17	03+	763	0	0	0	23	0	1.89	-1.20	0.86	27	7.0	7	18	3	2	0
CHARLOTTESVILLE 2W	45.3	28.1	36.7	-2.4	61	16+	17	02	785	0	0	2	21	0	1.82	-1.25	1.15	27	2.8	3	22	3	1	1
CHATHAM	46.5	23.3	34.9	-2.6	61	16	11	19+	835	0	0	0	27	0	2.09	-0.92	0.78	27	T	T	22	6	2	0
CONCORD 4 SSW														2.19		0.87	27	3.0	3	17	4	2	0	
DANVILLE REGIONAL AP	50.6	29.6	40.1	-0.8	62	24+	14	18	690	0	0	0	17	0	2.65	-0.36	0.89	26	0.6	T	17	8	2	0
FREE UNION	45.8	23.3	34.5		61	13	12	19+	845	0	0	2	26	0	1.51		1.06	27	M 3.2	M 3	08	2	1	1
HOLCOMB ROCK														1.93		1.28	27	1.0	1	22	3	1	1	
HUDDLESTON 4 SW														1.90		1.00	27	T	T	22	4	2	1	
LYNCHBURG INTL AP	47.7	28.2	37.9	-0.3	63	15	13	02	751	0	0	0	20	0	1.57	-1.36	0.71	26	0.6	T	07	3	1	0
MARTINSVILLE FLTR PLT	48.4	24.8	36.6	-1.8	60	25+	12	19+	790	0	0	1	24	0	2.94	-0.20	1.42	27	T	T	22	6	2	1
MEADOWS OF DAN 5 SW	46.0	27.0	36.5		57	13	18	18+	792	0	0	2	26	0	2.55		1.26	27	0.3	T	17	6	1	1
MONTEBELLO FISH CULTURAL STN	39.5M	19.4M	29.4M		55	12	7	02	987E	0	0	5	25	0	FMA 1.50		0.90	27	0.0			3	2	0
MONTEBELLO	44.6	27.0	35.8	-0.4	58	16	15	03+	812	0	0	3	25	0	1.62	-1.16	1.12	27	M 2.0	2	08	2	1	1
PEDLAR DAM														1.35		0.87	27	1.4	T	22	2	1	0	
ROCKY MT	47.7	26.3	37.0	-1.3	60	12	14	20+	779	0	0	1	24	0	2.44	-0.64	1.30	27	0.0	T	22	5	1	1
SOUTH BOSTON	49.6	26.8	38.2	-1.2	63	16	15	18	745	0	0	0	23	0	2.88	-0.24	0.97	08	0.5	1	17	9	2	0
STUART	48.6	27.3	37.9	-1.9	60	25	16	19+	752	0	0	0	23	0	2.77	-0.48	1.35	27	0.5	1	23	7	1	1
TYE RIVER 1 SE	49.1	26.7	37.9	-1.1	62	16	13	18	751	0	0	0	22	0	0.68	-2.33	0.25	08	0.0	M 1	17	4	0	0
WOOLWINE														3.05		2.10	27	1.9	1	23	5	1	1	
--DIVISIONAL DATA-----> NORTHERN 04			36.5	-2.4B										2.11	-1.18B									
BOSTON 4 SE	46.5	23.6	35.1	-0.3	60	12	11	02	833	0	0	2	26	0	4.67	2.09	3.04	08	4.8	4	08	3	2	2
EDINBURG	41.6	21.4	31.5	-2.4	60	13	9	03+	934	0	0	3	27	0	1.15	-0.66	0.73	27	M 1.0	M T	17	2	1	0
FRONT ROYAL	42.9M	24.7M	33.8M	-2.4	65	12	13	02	865E	0	0	4	25	0	A 1.40	-1.25	1.12	27	M 1.3	M T	16	2	1	1
LINCOLN	41.5	23.5	32.5	-1.1	58	16	11	02	902	0	0	4	26	0	A 1.69	1.69	0.96	26	M 2.0	1	08	3	1	0
LURAY 5 E	43.4	23.6	33.5	-3.0	63	12	8	02	875	0	0	3	26	0	1.45	-1.21	0.96	27	0.7	1	08	3	1	0
MADISON	M	M	M		55	07	16	02	807E	0	0	0	7	0	M				M 4.0	M 4	08			

VIRGINIA
201302

MONTHLY STATION AND DIVISION SUMMARY

STATION	TEMPERATURE (°F)										PRECIPITATION (IN)													
	AVERAGE MAXIMUM	AVERAGE MINIMUM	AVERAGE	DEPARTURE FROM NORMAL	HIGHEST	DATE	LOWEST	DATE	HEATING DEG. DAYS	COOLING DEG. DAYS	NO. OF DAYS				TOTAL	DEPARTURE FROM NORMAL	GREATEST 24 HOURS	DATE	ICE PELLETS, SNOW			NO. OF DAYS		
											MAX		MIN						TOTAL	MAX DEPTH ON GROUND	DATE	.10 OR MORE	.50 OR MORE	1.00 OR MORE
											>=90	<=32	<=32	<=0										
MANASSAS	M	M	M		47	07	14	03+	943E	0	0	2	9	0	M				M 0.1	1	03			
MT WEATHER	38.5	23.4	30.9	-2.4	56	12	10	02	946	0	0	6	27	0	2.34	-0.62	1.20	27	M 6.3	2	09	5	1	1
PIEDMONT RSCH STN	44.4	25.5	34.9	-2.4	59	16	13	02	836	0	0	3	24	0	1.67	-1.08	1.18	27	3.4	1	22	3	1	1
SOMERSET	45.2	25.5	35.3	-1.2	60	16	13	02	823	0	0	2	24	0	1.87	-0.90	1.16	27	M 1.9	M 1	20	3	1	1
SPERRYVILLE	43.7M	24.3M	34.0M	-2.2	64	12	11	02	859E	0	0	4	25	0	A 1.95	-0.89	1.44	27	M 3.3	M 2	08	2	1	1
STERLING RCS	42.4M	25.0M	33.7M	-0.9	58	16	11	02	869E	0	0	4	25	0	A 1.73	-1.04	0.92	27	M 1.3	M 1	14	5	1	0
VIENNA	40.9	24.3	32.6	-3.1	57	16+	12	02	901	0	0	5	26	0	1.36	-1.45	0.73	27	M 0.4	0		4	1	0
WARRENTON 3 SE	M	M	M							0	0	0	0	0	M				0.0					
WASHGTN DULLES INTL AP	43.2	27.4	35.3	-0.9	58	15+	13	02	828	0	0	3	22	0	1.63	-1.11	0.71	26	1.3	T	03	5	1	0
WASHINGTON REAGAN AP	45.1	31.6	38.3	-0.7	60	15	18	02	741	0	0	0	13	0	1.67	-0.95	0.62	26	0.4	T	03	5	1	0
WINCHESTER	M	M	M							0	0	0	0	0	M				0.0					
WINCHESTER 7 SE	41.9	22.8	32.3	-1.2	66	12	10	02	906	0	0	5	27	0	1.36	-1.11	0.78	27	0.3	0		4	1	0
WOODSTOCK 2 NE	42.9	23.1	33.0	-0.1	65	12	12	03+	888	0	0	4	26	0	1.05	-1.54	0.62	27	M T	M T	14	3	1	0
--DIVISIONAL DATA-----> CENTRAL MOUNTAIN 05			33.8	-1.3B											1.80	-0.85B								
BUCHANAN															1.14	-1.66	0.90	27	1.4	1	22	2	1	0
BUENA VISTA															1.49		1.13	27	0.5	1	22	2	1	1
COVINGTON FLTR PLT	45.4	24.2	34.8	-1.7	64	12	11	03+	838	0	0	2	25	0	0.90	-1.47	0.46	27	1.5	2	22	2	0	0
CRAIGSVILLE 2 S															M				M 1.4	M 10	23			
DALE ENTERPRISE	42.1	21.9	32.0	-0.9	61	12	11	19+	916	0	0	3	27	0	1.17	-1.05	0.62	27	0.2	0		3	1	0
GATHRIGHT DAM	40.9	22.4	31.6	-2.5	59	12	5	02	926	0	0	6	26	0	1.00	-1.60	0.36	27	3.7	2	22	4	0	0
GLASGOW 1 SE															1.86		1.34	27	1.5	1	22	2	1	1
HOT SPRINGS	40.0	21.0	30.5	-2.5	58	12	7	03+	959	0	0	7	28	0	1.83	-1.20	0.74	27	4.0	2	28	5	1	0
LEXINGTON															1.42	-1.23	0.98	27	1.6	1	22	2	1	0
MILLGAP	38.0	17.0	27.5	-2.6	56	24+	-1	03+	1043	0	0	7	27	2	1.45	-1.53	0.62	27	8.6	2	28	5	1	0
MTN GROVE															0.72		0.50	27	T	T	19	2	1	0
MUSTOE 1 SW	M	M	M												M 1.90	-1.35	0.76	26	M 8.8	M 2	27	5	1	0
NEW CASTLE															1.45		0.74	27	2.8	3	08	4	1	0
ROANOKE 8 N	46.6	27.1	36.9	-1.8	62	12	14	02	781	0	0	1	22	0	1.75	-0.89	1.10	27	3.1	3	22	2	1	1
ROANOKE INTL AP	48.0	30.5	39.2	-0.4	63	11	16	02	714	0	0	1	18	0	2.08	-0.81	1.27	26	4.0	2	07	4	1	1
STAUNTON WATER TRMTMT PLT	43.1	24.0	33.6	-2.0	60	13	12	02	874	0	0	2	25	0	1.11	-1.44	0.88	27	M 1.4	M 1	22	1	1	0
WAYNESBORO WTP	44.2	24.5	34.3	-0.6	64	12	12	19+	850	0	0	2	23	0	1.57	-1.35	1.10	27	M T	M T	03	3	1	1
--DIVISIONAL DATA-----> SOUTHWESTERN MOUNTAIN 06			33.4	-2.2B											1.40	-1.34B								
ABINGDON 3S	45.9	27.3	36.6	-0.2	58	10	13	02+	786	0	0	1	19	0	1.93	-1.81	0.40	13	3.0	3	02	8	0	0
BIG STONE GAP	49.3	25.8	37.6	-0.2	67	01	14	02	761	0	0	2	25	0	2.75	-1.65	0.46	11	M 4.0	4	04	9	0	0
BLACKSBURG NWSO	41.4	22.1	31.8	-2.4	56	12	8	03+	922	0	0	6	26	0	1.36	-1.45	0.46	27	5.9	3	28	5	0	0

VIRGINIA
201302

MONTHLY STATION AND DIVISION SUMMARY

STATION	TEMPERATURE (°F)										PRECIPITATION (IN)													
	AVERAGE MAXIMUM	AVERAGE MINIMUM	AVERAGE	DEPARTURE FROM NORMAL	HIGHEST	DATE	LOWEST	DATE	HEATING DEG. DAYS	COOLING DEG. DAYS	NO. OF DAYS				TOTAL	DEPARTURE FROM NORMAL	GREATEST 24 HOURS	DATE	ICE PELLETS, SNOW			NO. OF DAYS		
											MAX		MIN						TOTAL	MAX DEPTH ON GROUND	DATE	.10 OR MORE	.50 OR MORE	1.00 OR MORE
											>=90	<=32	<=32	<=0										
BURKES GARDEN	38.3	21.4	29.8	-1.8	52	24	6	02	979	0	0	6	26	0	2.50	-0.96	0.60	27	14.7	6	22	9	1	0
CHRISTIANSBURG	41.3	23.9	32.6	-3.2	57	12	11	02	900	0	0	4	25	0	1.58	-1.25	0.58	27	5.3	1	28	5	1	0
CLINTWOOD 1 W	45.4	22.1	33.7	-0.9	60	24+	10	03+	870	0	0	4	26	0	2.08	-1.57	0.44	22	9.8	4	16	10	0	0
COPPER HILL	39.4M	22.3M	30.8M		55	12	9	02	950E	0	0	7	25	0	M 1.94		0.85	27	M 5.3	3	08	4	2	0
GALAX RADIO WBRF	43.8	24.4	34.1	-0.7	58	12	11	18+	857	0	0	3	25	0	2.77	-0.52	0.89	27	2.2	1	23	6	2	0
GALAX WTP	43.2	23.6	33.4	-0.9	59	12	11	02	880	0	0	4	26	0	2.61	2.61	1.32	27	2.0	1	22	5	1	1
GRUNDY	46.0	24.6	35.3	-1.0	61	11	12	02	825	0	0	4	26	0	1.25	-1.84	0.30	22	4.0	3	03	5	0	0
JOHN FLANNAGAN LAKE	M	M	M		63	25	10	04	812E	0	0	1	18	0	M				M 3.0	M 1	28			
LAFAYETTE 1 NE															1.24		0.61	27	2.8	1	22	3	1	0
LEBANON	45.5	23.7	34.6	-1.3	59	24+	11	02	843	0	0	4	24	0	1.86	-1.57	0.42	27	4.0	2	03	6	0	0
NORA 4 SSE	40.7M	22.9M	31.8M	-1.7	55	24	4	02	922E	0	0	6	24	0	M 2.01	-1.61	0.31	14	M 12.7	M 3	17	9	0	0
NORTH FORK LAKE	M	M	M		61	26	8	04	852E	0	0	1	11	0	M				M 2.0	2	04			
PULASKI 2 E	44.2	25.3	34.8	-0.9	59	12	11	02	840	0	0	4	25	0	1.81	-0.88	0.85	27	1.6	1	23	5	1	0
RADFORD 3 N	42.5	24.2	33.3	-0.8	59	12	9	02	882	0	0	4	25	0	1.60	-1.14	0.55	27	4.9	1	28	5	1	0
RICHLANDS	45.5	23.4	34.4	-0.8	61	24	10	02	849	0	0	4	25	0	1.41	-1.50	0.33	27	5.1	4	17	5	0	0
SALTVILLE 1N	45.8	23.5	34.6	-1.5	60	11	13	03+	844	0	0	3	25	0	1.77	-1.70	0.33	27	3.8	3	28	6	0	0
STAFFORDSVILLE 3 ENE	42.9	23.3	33.1	-1.9	59	12	8	03+	889	0	0	4	26	0	1.50	-1.23	0.59	27	5.4	2	28	6	1	0
TROUT DALE 3 SSE	41.5	20.3	30.9		56	12	4	03+	949	0	0	5	26	0	2.33		1.10	27	10.1	5	28	5	1	1
WILLIS															1.63		0.77	27	2.4	1	28	4	1	0
WISE 3E	44.4	25.7	35.0	-1.8	56	23	4	01	832	0	0	5	22	0	1.92	-2.06	0.43	26	8.5	4	17	8	0	0
WYTHEVILLE 1 S	44.1	23.2	33.6	-0.3	56	24	11	03	872	0	0	3	27	0	2.01	-0.79	0.92	27	4.5	2	22	5	1	0
--DIVISIONAL DATA----->			33.6	-1.6B											1.90	-1.48B								

VIRGINIA
201302

DAILY PRECIPITATION (INCHES)

STATION	TOTAL	DAY OF MONTH																															
		01	02	03	04	05	06	07	08	09	10	11	12	13	14	15	16	17	18	19	20	21	22	23	24	25	26	27	28	29	30	31	
VIRGINIA																																	
TIDEWATER 01																																	
DISPUTANTA	3.19							1.43	0.13		0.03		0.02	0.12			0.32						0.23	0.12						0.79			
EASTVILLE	4.55							1.62	0.50		0.08	0.03	0.07			0.30				0.05			0.42	0.18						1.30			
EMPORIA 1 WNW	3.73							1.71	0.09		0.10	0.03	0.07	0.14			0.33						0.04	0.45						0.77			
FREDERICKSBURG SEWAGE	MA 1.41	-		*	0.00 _a			0.26	T		0.10			T		0.15			0.01	0.09			0.04	0.08					0.68	T			
HAMPTON UNIV	M	-	-	-	-	-	-	-	-	-	-	-	-	-	-	-	-	-	-	-	-	-	-	-	-	-	-	-	-	-	-	-	
HOLLAND 1 E	4.09							1.90	0.03		0.10	0.03	0.06	0.14			0.22			0.04			0.50	0.21					0.86				
HOPEWELL	M 3.14			0.01				1.60			0.05	0.09	0.07			0.18	0.07		0.01				0.34				0.41		0.30	0.01			
NORFOLK SOUTH	5.02	T		0.01				0.15	2.18		0.08		0.11			0.51	T		0.08			0.10	0.69	0.01		1.10							
NORTH	M	-	-	-	-	-	-	-	-	-	-	-	-	-	-	-	-	-	-	-	-	-	-	-	-	-	-	-	-	-	-	-	
PAINTER 2W	4.88							2.14			0.12		0.01	0.10		0.10	0.19		0.07	0.04			0.62	0.01		0.20	1.27	0.01					
STONY CREEK 2 N	3.26							1.56			0.07			0.20				0.33		0.07						0.29			0.74				
SUFFOLK LAKE KILBY	4.47			T				0.35	1.78		0.10		0.12			0.37			0.12			0.08	0.60	T		0.93	0.02						
WAKEFIELD 1NW	3.84	T						0.59	1.16		0.08		0.16			0.37			0.07			0.04	0.35	0.02		1.00	T						
WALKERTON 2 NW	2.66							0.99	0.04			0.21	0.04	0.10		0.21	0.20		0.10			0.04				0.28	0.45						
WALLACETON LK DRUMMOND	M 5.54		-	0.06				1.90	0.15		0.06	0.06	0.05	0.13		0.35			0.48				0.68	0.42			1.20						
WALLOPS ISLAND NASA TEST FACIL	4.63	T			T			0.01	2.25		0.23		0.32			0.28	T		0.12			0.07	0.50	0.03		0.82		T					
WARSAW 2 NW	1.81			0.01				0.70			0.09		0.02	0.09		0.17			0.04				0.11			0.16	0.42						
WEST POINT 2 NW	2.84	T	T	T				1.39			0.04		0.05	0.04		0.13	0.03		0.06			0.05	0.24			0.50	0.28	0.03					
WILLIAMSBURG 2 N	4.27							0.38	1.53		0.04		0.09			0.33			0.09			0.05	0.34	0.06		1.36		T					
EASTERN PIEDMONT 02																																	
ALBERTA 5N	2.72					T		1.39	T		0.07	T	0.01	0.09		0.01	0.20			0.09		T	0.10	0.13			0.63						
AMELIA COURTHOUSE 1	M							0.83			0.09	-	-	-	-	-	-	-	-	-	-	-	-	-	-	-	-	-	-	-	-		
ASHLAND	1.82	T	T	T				0.65			0.07		0.06	0.06		0.19			0.10			0.03	0.16			0.31	0.19						
BREMO BLUFF	2.14		0.05	0.03				0.05	0.25		0.03	0.10		0.09		0.13		0.03	0.18			0.04	0.02			1.13		0.01					
BUCKINGHAM	2.00			0.01				0.25			0.10	0.01		0.07		0.31			0.05			0.01	0.03				1.16						
CAMP PICKETT	2.85							1.35	0.04		0.07		0.19			0.02	0.22		0.10				0.11	0.19			0.56						
CHASE CITY	4.01							1.21			0.18		0.09			0.27	1.50			0.46			0.20	0.08					0.02				
CLARKSVILLE	5.00							1.10				0.15	0.05	0.15		0.15	2.00			0.50			0.20	0.15				0.55					
CORBIN	1.71							0.41			0.14	0.02		0.15						0.24						0.10		0.65					
CROZIER	1.80							0.52			0.10		0.09			0.08				0.19			0.10					0.72					
FARMVILLE 2 N	2.22							0.50			0.11	T		0.07		0.05	0.28			0.22			T	0.05			0.92	0.02					
GREENBAY 3 NE	1.97							0.78	T		0.10	T	0.01	0.09		0.11	0.11			0.14			0.01	0.11	0.05		0.46						
JOHN H KERR DAM	2.68							1.21			0.04	0.01	0.07	0.05		0.02	0.25	0.05	0.06	0.05			0.15	0.12			0.59	0.01					
LOUISA	1.50		0.02					0.11			0.11		0.04	0.03		0.13			0.10			0.01				0.56	0.39						
PALMYRA 3S	1.93			0.02	0.01			0.15				0.11		0.11		0.07	0.02			0.15			0.04	0.03			1.22						
PETERSBURG	2.89							1.27	0.15		0.09	0.02		0.17			0.20			0.05			0.10	0.20			0.62	0.02					
RICHMOND INTL AP	2.60	T	T	T				0.15	1.01		0.05		0.12		T	0.18			0.10			0.07	0.18	0.01		0.73	T	T					
SANDSTON	3.51							1.01			1.00	0.01		0.15		0.03	0.18					0.03	0.19	0.07			0.67	0.03					
WINTERPOCK 4 W	2.63							1.25			0.09			0.10		0.10	0.20					0.10					0.58						
WESTERN PIEDMONT 03																																	

VIRGINIA
201302

DAILY PRECIPITATION (INCHES)

STATION	TOTAL	DAY OF MONTH																																		
		01	02	03	04	05	06	07	08	09	10	11	12	13	14	15	16	17	18	19	20	21	22	23	24	25	26	27	28	29	30	31				
ALTAVISTA	1.98							0.60		0.01	0.15	0.01	0.09		0.01	0.44						T	0.03	0.02									1.06			
APPOMATTOX	2.41	T		T				0.50			0.14	0.02	0.11		0.10							0.08	0.02	0.03	0.05		T					0.92				
BEDFORD 4 NW	1.72	0.03		T				0.52			0.12	0.01	0.12									0.03	0.03	0.05								0.81				
BROOKNEAL	2.39							0.53			0.13		0.02	0.09		0.03	0.36	0.10				0.08	0.01	0.06	0.05							0.90	0.03			
CHARLOTTE COURT HOUSE	1.89							0.08	0.02		0.03	0.02	0.01	0.02		0.02	0.64					0.12		0.03	0.04							0.86	T			
CHARLOTTESVILLE 2W	1.82	T		T				0.34			0.06		0.04		0.04						T	0.17	T	0.02	T							1.15				
CHATHAM	2.09	T						0.53			0.20		0.03	0.21			T						T	0.14	0.10		0.04					0.78	0.06			
CONCORD 4 SSW	2.19			0.01				0.54			0.15	0.02	0.09			0.35						0.08	0.02	0.04	0.01							0.87	0.01			
DANVILLE REGIONAL AP	2.65	T		T			0.50	0.25		0.04	0.10	0.05	0.27			0.12					0.17		0.09	0.16			0.89					0.01	T			
FREE UNION	1.51	T		T	T			0.28	T		0.04			0.05		T					0.02	0.04	0.02	T								1.06				
HOLCOMB ROCK	1.93	T		T	T			0.33			0.11			0.05		0.05	T	T				0.09	T	0.02								1.28				
HUDDLESTON 4 SW	1.90	T						0.55			0.15		0.03	0.10									T	0.02									1.00			
LYNCHBURG INTL AP	1.57	T	0.01				0.21	0.27		0.07	0.06		0.05		T	0.06				0.08			0.04	0.01			0.71					T				
MARTINSVILLE FLTR PLT	2.94							0.50	0.02		0.22	0.03	0.12	0.15		0.05						0.05	0.08	0.08	0.12		0.01	1.42				0.09				
MEADOWS OF DAN 5 SW	2.55							0.42			0.18		0.19	0.15			T						0.24	0.09			0.02						1.26			
MONTEBELLO FISH CULTURAL STN FMA	1.50					* 0.00 _a					* 0.00 _a			* 0.00 _a	0.50	3.50 ^S							0.10										0.90			
MONTICELLO	1.62	T		T				0.26			0.05			0.06		0.04						0.09											1.12			
PEDLAR DAM	1.35	0.03		T	T			0.20			0.09			0.02		0.07	T					0.07		T	T								0.87			
ROCKY MT	2.44	T	0.02					0.45	0.11		0.24		0.03	0.11	0.03	0.03							0.07		0.01								1.30	0.04		
SOUTH BOSTON	2.88							0.97			0.20	0.03	0.12	0.18		0.08	0.35					0.14	0.02	0.16	0.11								0.52			
STUART	2.77	0.02						0.38			0.20	0.20	0.20	0.20		0.03						0.10	0.25	0.02			0.02						1.35			
TYE RIVER 1 SE	0.68			T				0.25			0.12					0.02	0.11						T											0.18		
WOOLWINE	3.05	T						0.29			0.15		0.03	0.15									0.06	0.20	0.03	0.03		T					2.10	0.01		
NORTHERN 04																																				
BOSTON 4 SE	4.67			0.02				3.04						0.10																				1.51		
EDINBURG	1.15	0.01						0.03			0.02		0.08		0.27	T								0.01										0.73		
FRONT ROYAL	A 1.40					0.01		* 0.02 _a			0.06		0.10		0.03							0.04		0.01									1.12	0.01		
LINCOLN	A 1.69	*	* 0.00 _a					* 0.00 _a				0.34											0.34		0.05		0.96									
LURAY 5 E	1.45	0.01						0.07			0.05		0.12		0.23	0.01						T		T										0.96		
MADISON	M			T	T			0.35			0.10	-	-	-	-	-	-	-	-	-	-	-	-	-	-	-	-	-	-	-	-	-	-			
MANASSAS	M			0.10				-	-	-	-	-	-	-	-	-	-	-	-	-	-	-	-	-	-	-	-	-	-	-	-	-	-	-		
MT WEATHER	2.34	0.06		0.01	0.04			0.17			0.08		0.22		0.25									0.01	0.30									1.20		
PIEDMONT RSCH STN	1.67	T			0.02			0.28			0.10		0.05				T					0.04		T	T									1.18		
SOMERSET	1.87	0.01		0.02	0.02			0.31			0.09	0.01		0.08		0.06						0.11		T	T	T								1.16		
SPERRYVILLE	A 1.95	T	0.05	T	0.04			0.27	T		0.05			* 0.00 _a	0.05							0.04		0.01										1.44		
STERLING RCS	A 1.73	0.01		T	T		T	* 0.17 _a	T		0.13		0.24		0.10	T		T				0.10	T		0.02	0.03								0.92	0.01	
VIENNA	1.36							0.17 _a			0.22		0.14		0.07									0.01	0.01										0.73	0.01
WARRENTON 3 SE	M	-	-	-	-	-	-	-	-	-	-	-	-	-	-	-	-	-	-	-	-	-	-	-	-	-	-	-	-	-	-	-	-	-		
WASHGTON DULLES INTL AP	1.63	0.01	T	0.01		T	T	0.19	T		0.13		0.26		0.10	T	T				0.07	T		0.06	0.04			0.71	0.04	0.01				0.01		
WASHINGTON REAGAN AP	1.67	0.01	0.02	T		T	T	0.20			0.28		0.19		0.10	0.02						0.07		0.06	0.08			0.62	0.01	0.01				0.01		
WINCHESTER	M	-	-	-	-	-	-	-	-	-	-	-	-	-	-	-	-	-	-	-	-	-	-	-	-	-	-	-	-	-	-	-	-	-		
WINCHESTER 7 SE	1.36			0.01	0.02			0.07			0.10			0.16		0.22																			0.78	

VIRGINIA
201302

DAILY PRECIPITATION (INCHES)

STATION	TOTAL	DAY OF MONTH																																
		01	02	03	04	05	06	07	08	09	10	11	12	13	14	15	16	17	18	19	20	21	22	23	24	25	26	27	28	29	30	31		
WOODSTOCK 2 NE	1.05	T							0.06	T		0.02			0.14		0.18				0.02			0.01				0.62						
CENTRAL MOUNTAIN 05																																		
BUCHANAN	1.14	T		T					0.24		T			T		T				T			T	T				0.90						
BUENA VISTA	1.49	0.01							0.17		0.05			0.07		T					0.03		T	0.03				1.13						
COVINGTON FLTR PLT	0.90	0.07		0.13					0.04		0.03			0.04				0.01		0.07			0.05				0.46							
CRAIGSVILLE 2 S	M 0.02	-	0.13	-	-	-	-		T	-	-	0.02	-	-	0.06	-	0.01	-	-	0.03	-	-	0.03	T	-	-	0.66	-						
DALE ENTERPRISE	1.17	0.01							0.20		0.05				0.18		0.02		0.01	0.02			0.03	0.03			0.62							
GATHRIGHT DAM	1.00	0.05		0.14		0.03			0.02		0.03	0.03		0.13		T			0.12			0.04	T			0.36	0.05							
GLASGOW 1 SE	1.86	T		0.01					0.28		0.05			0.03		0.05	T		T	0.06		0.02	0.02	T		1.34								
HOT SPRINGS	1.83	0.02		0.06					0.06		0.02	0.05		0.13		0.09	T		0.02	0.14		0.10	0.40			0.74	T							
LEXINGTON	1.42	0.04		0.02					0.14		0.03			0.07		0.01			T	0.07		0.03	0.02			0.98	0.01							
MILLGAP	1.45	0.21	T	0.06	T	0.08	T		T	T		0.03		0.12		0.10	0.01		0.04	0.10		0.01	0.03			0.62	0.04							
MTN GROVE	0.72	0.05			0.02	T			T			0.10		0.05		T	T		T	T		T				0.50	T							
MUSTOE 1 SW	M 1.90	0.11	0.06	0.04	0.06	0.02	0.01		0.06		0.05	0.02		0.15		0.12	0.02	0.02		0.18		-	0.08			0.76	0.08	0.06						
NEW CASTLE	1.45	0.02							0.37		0.02			0.14				T		0.02	0.01		0.12	0.01		0.74								
ROANOKE 8 N	1.75	T		0.01					0.46		0.07			0.08						T			0.02	0.01		1.10								
ROANOKE INTL AP	2.08	T	0.03	T				0.27	0.20		0.03	0.02		0.15		0.02		T		0.04		0.05	T			1.27		T						
STAUNTON WATER TRMTMT PLT	1.11	0.01		0.01					0.08		0.01			0.03				0.02		0.04		0.03				0.88								
WAYNESBORO WTP	1.57	0.06		0.02					0.09		0.02			0.10		0.17										1.10	0.01							
SOUTHWESTERN MOUNTAIN 06																																		
ABINGDON 3S	1.93		0.36	0.13					0.08		0.15	0.03		0.40		0.14				0.14	0.03		0.25			0.15	0.07							
BIG STONE GAP	2.75	0.08		0.06	0.06					0.08		0.46	0.02	0.07	0.31		0.10	0.02		0.35	0.12		0.40	0.02		0.13	0.30	0.17						
BLACKSBURG NWSO	1.36	0.05	T	0.21	T		T		0.16		0.08	T	T	0.14		T	T		0.01	0.02		0.21	0.01			0.46	0.01							
BURKES GARDEN	2.50	0.07	T	0.16	0.10	T			0.03	0.13		0.27	0.03		0.29		0.15	0.18	T	T	0.05	0.32	0.03			0.60	0.09							
CHRISTIANSBURG	1.58	0.02	T	0.12	0.01				0.38		0.09		0.01	0.14			0.03		0.01	0.02		0.15	0.01	T		0.58	0.01							
CLINTWOOD 1 W	2.08	0.16		0.12	0.04				T	0.13		0.20	0.02	0.19		0.11	0.07	T	0.14			0.44			0.02	0.27	0.17							
COPPER HILL	M 1.94	-		0.09	0.02				0.57		0.08			0.14		0.03						0.14	0.02			0.85	T							
GALAX RADIO WBRF	2.77	0.04		0.07					0.38		0.15		0.31	0.09				0.03		0.02		0.27	0.02			0.50	0.89							
GALAX WTP	2.61	T		0.09					0.38		0.15		0.26	0.07					0.02	0.01		0.28	0.02			0.01	1.32	T						
GRUNDY	1.25	0.03		0.14	T				T	0.04		0.16	0.01	0.09		0.23	0.01		0.03	0.01		0.30				0.18	0.02							
JOHN FLANNAGAN LAKE	M 0.15	-	-	0.21					-	-	0.28		0.01	0.11		-	-	-	0.25			0.37	-	-		0.01	-	0.07						
LAFAYETTE 1 NE	1.24	T	T	0.05	T				0.25		0.08		0.02	0.07		0.02			T			0.11	0.03			0.61								
LEBANON	1.86	0.03		0.14	0.02				0.03	0.02		0.22	0.04		0.34		0.27	0.04				0.19	0.02			0.42	0.08							
NORA 4 SSE	M 2.01	0.14		0.15	0.07	-			T	0.03		0.15	T	0.02	0.31		0.13	0.14	T	0.08		0.26	T			0.08	0.23	0.22						
NORTH FORK LAKE	M 0.11	*	*	0.18 _a				-	-	-	-	-	-	0.02	0.22		-	*	*	0.25 _a	0.05	-	-	-	*	*	0.01 _a	0.17	0.17					
PULASKI 2 E	1.81	T							0.34		0.10			0.24				0.02		T	T		0.22	0.03			0.85	0.01						
RADFORD 3 N	1.60	0.02	T	0.13	0.02				0.35		0.08		0.02	0.19			0.04		0.01	0.02		0.17	T			T	0.55	T						
RICHLANDS	1.41	0.03	0.01	0.15	0.05				0.02	0.01		0.14		0.02	0.27		0.03	0.01		0.03		0.21				0.02	0.33	0.08						
SALTVILLE 1N	1.77	0.08		0.26	0.06				0.02		0.13	0.04	0.03	0.19		0.12	0.04		0.07	0.05		0.24	0.02			0.05	0.33	0.04						
STAFFORDSVILLE 3 ENE	1.50	0.04		0.16	0.02				0.24		0.12			0.11		0.03	0.06					0.13	T			0.59	T							
TROUT DALE 3 SSE	2.33	0.01	0.01	0.41	0.19				0.02		0.06	0.01	0.11	0.07		0.02	0.20					0.06	0.01			0.02	1.10	0.01						

VIRGINIA
201302

DAILY PRECIPITATION (INCHES)

STATION	TOTAL	DAY OF MONTH																															
		01	02	03	04	05	06	07	08	09	10	11	12	13	14	15	16	17	18	19	20	21	22	23	24	25	26	27	28	29	30	31	
WILLIS	1.63	0.03		0.08	T			0.31			0.10		0.06			0.08	T					0.17											
WISE 3E	1.92	0.12	0.03	0.17			T	0.03			0.13		0.25		0.03	T	0.03		0.18			0.32					0.43	0.09	0.11				
WYTHEVILLE 1 S	2.01	0.02		0.20	0.01			0.26			0.05	0.01	0.03	0.17		0.01	0.07			0.03		0.19	0.01				0.01	0.92	0.02				

VIRGINIA
201302

DAILY TEMPERATURES (°F)

STATION	OB. TIME	MAX/MIN	DAY OF MONTH																															AVERAGE
			01	02	03	04	05	06	07	08	09	10	11	12	13	14	15	16	17	18	19	20	21	22	23	24	25	26	27	28	29	30	31	
			ABINGDON 3S	22	MAX MIN	34 13	29 13	33 28	37 14	44 30	51 26	50 30	50 34	48 23	53 28	49 44	46 27	47 35	52 28	33 26	33 18	54 17	46 33	40 25	50 17	55 38	56 36	52 33	52 25	51 34	45 36	36 31		
BIG STONE GAP	08	MAX MIN	67 15	27 14	30 18	35 18	38 19	53 27	54 26	59 28	59 28	55 33	61 29	56 29	53 27	44 27	49 27	50 22	36 19	36 19	55 24	48 22	41 24	53 42	56 29	61 28	53 31	58 37	54 32	40 32				49.3
BLACKSBURG NWSO	07	MAX MIN	33 15	21 8	31 8	32 19	38 19	44 31	50 25	35 30	47 23	43 19	49 24	56 34	53 34	40 28	48 23	53 23	31 13	25 11	50 12	46 23	38 19	44 19	32 27	51 30	49 22	40 24	37 28	42 29				41.4
BURKES GARDEN	07	MAX MIN	28 12	18 6	26 16	28 13	36 15	40 31	43 23	40 33	42 21	40 17	49 34	50 31	47 31	40 24	41 25	46 22	24 9	23 9	46 22	24 20	33 17	43 30	41 17	52 30	43 19	41 20	37 25	35 26				38.3
CHRISTIANSBURG	07	MAX MIN	33 16	21 11	26 13	33 19	38 20	45 35	49 30	34 29	48 23	43 23	49 27	57 35	52 34	40 28	47 28	53 13	30 13	25 17	49 24	47 20	40 19	34 27	50 30	50 25	40 25	37 28	42 29				41.3	
CLINTWOOD 1 W	07	MAX MIN	35 10	22 10	31 10	33 16	42 16	49 28	50 28	58 28	48 27	46 24	60 24	60 27	52 27	39 25	47 25	47 16	32 14	31 14	51 22	46 15	36 16	46 35	58 26	60 22	46 22	52 22	52 36	41 30				45.4
COPPER HILL	07	MAX MIN		31 9	31 12	32 17	36 17	43 34	45 27	31 26	41 21	41 21	45 27	55 33	48 32	39 27	45 25	50 26	28 11	21 10	46 15	44 22	36 18	42 17	31 22	46 31	46 24	33 24	37 25	41 28				39.4
GALAX RADIO WBRF	07	MAX MIN	36 13	31 11	33 14	35 17	39 25	45 27	52 25	39 32	48 25	55 21	58 34	51 35	42 36	50 27	52 23	32 14	29 11	48 29	46 24	41 18	52 26	37 27	51 28	46 24	51 27	40 32	41 30	42 30				43.8
GALAX WTP	07	MAX MIN	36 18	33 11	32 13	36 20	39 22	45 27	50 26	42 28	47 27	46 21	49 29	52 36	42 29	48 23	53 23	30 14	28 12	47 13	48 26	43 20	50 20	32 28	50 31	50 25	37 25	40 29	45 29				43.2	
GRUNDY	07	MAX MIN	36 16	23 12	30 16	32 19	40 25	50 31	51 29	58 30	47 27	46 25	61 28	60 28	52 27	39 27	49 27	48 18	33 15	32 15	53 26	48 18	37 36	45 18	59 36	60 29	49 25	53 37	54 37	42 32				46.0
JOHN FLANNAGAN LAKE	07	MAX MIN	34 13			32 10	44 20	50 32	53 29	59 31			60 26	58 28	39 27	49 26				53 15	46 24	35 17	43 17			63 24	57 24	40 30					M	
LEBANON	07	MAX MIN	35 15	24 11	29 14	33 14	40 14	46 26	51 26	54 39	50 27	48 28	59 33	55 26	51 26	46 26	47 25	53 16	29 14	31 14	53 25	46 16	40 16	47 42	55 30	59 24	50 24	53 36	49 31	40 31				45.5
NORA 4 SSE	07	MAX MIN	30 9	19 4	25 14	29 16		41 31	48 30	51 37	45 22	44 22	54 38	52 31	47 31	39 25	40 23	44 23	28 11	26 11	45 23	40 15	36 15	41 35	50 27	55 25	45 24	47 30	45 33				40.7	
NORTH FORK LAKE	08	MAX MIN	35 12			32 8	43 17	50 30													53 15	39 23	49 23					61 17	53 37	41 29				M
PULASKI 2 E	07	MAX MIN	34 16	26 11	31 26	36 23	40 22	45 36	52 27	53 27	49 28	48 21	51 24	59 36	54 31	50 30	54 28	30 15	28 15	52 14	47 26	42 22	46 22	36 30	53 32	46 25	44 24	39 29	44 32				44.2	
RADFORD 3 N	07	MAX MIN	35 15	20 9	31 14	35 22	40 24	46 37	50 26	36 32	46 25	44 19	50 22	59 36	55 29	41 22	50 36	31 25	25 13	49 18	49 25	40 20	45 29	34 29	50 31	51 23	42 26	40 30	42 32				42.5	
RICHLANDS	07	MAX MIN	36 13	31 10	28 23	33 14	40 17	46 29	51 28	51 32	49 26	50 23	60 40	56 26	52 28	44 26	47 25	27 15	30 12	53 12	48 24	38 15	47 15	57 37	61 29	46 22	55 25	46 34	39 30				45.5	
SALTVILLE 1N	07	MAX MIN	35 17	26 13	29 13	36 14	38 14	46 25	52 28	49 31	51 26	49 24	60 30	54 29	53 29	45 28	48 23	53 23	32 18	33 15	54 25	48 17	41 16	50 37	52 34	58 24	52 25	53 44	44 31				45.8	
STAFFORDSVILLE 3 ENE	07	MAX MIN	34 16	22 8	32 8	35 21	40 22	46 30	50 26	37 32	47 25	44 19	51 24	59 35	52 36	42 30	50 24	55 24	32 14	26 11	53 25	50 20	39 20	44 34	34 52	50 42	42 39	39 43					42.9	
TROUT DALE 3 SSE	07	MAX MIN	33 11	20 4	28 4	32 16	43 14	42 26	48 24	40 27	45 24	46 18	48 29	56 34	51 33	42 24	47 19	26 12	26 10	49 23	44 13	48 30	38 31	51 34	54 53	48 48	42 37	37 43					41.5	
WISE 3E	17	MAX MIN	30 4	28 10	29 24	39 11	41 34	48 30	53 31	48 38	48 22	54 29	52 40	48 33	44 25	47 28	32 21	28 13	49 18	47 32	49 28	47 19	41 15	42 33	53 43	56 27	51 25	52 32	46 26	34 32				44.4

VIRGINIA
201302

DAILY TEMPERATURES (°F)

STATION	OB. TIME	MAX/MIN	DAY OF MONTH																															AVERAGE		
			01	02	03	04	05	06	07	08	09	10	11	12	13	14	15	16	17	18	19	20	21	22	23	24	25	26	27	28	29	30	31			
WYTHEVILLE 1 S	07	MAX MIN	34 18	34 12	32 11	33 17	38 17	44 29	49 26	43 29	49 26	48 20	53 28	55 30	52 33	45 29	48 23	53 23	31 15	29 15	54 16	46 26	41 20	51 21	37 32	56 29	51 22	46 22	39 29	43 31						44.1 23.2

VIRGINIA
201302

SNOWFALL AND SNOW ON GROUND (INCHES)

STATION		DAY OF MONTH																															
		01	02	03	04	05	06	07	08	09	10	11	12	13	14	15	16	17	18	19	20	21	22	23	24	25	26	27	28	29	30	31	
VIRGINIA																																	
TIDEWATER 01																																	
DISPUTANTA	SNOWFALL																																
EASTVILLE	SNOWFALL																																
EMPORIA 1 WNW	SNOWFALL	-	-	-	-	-	-	-	-	-	-	-	-	-	-	-	-	0.5	-	-	-	-	-	-	-	-	-	-	-	-	-		
	SN ON GND	-	-	-	-	-	-	-	-	-	-	-	-	-	-	-	-	T	-	-	-	-	-	-	-	-	-	-	-	-	-		
FREDERICKSBURG SEWAGE	SNOWFALL	T	-	-	-	-	-	-	-	-	-	-	-	-	-	-	-	-	-	-	-	-	-	-	-	-	-	-	-	-	-		
HAMPTON UNIV	SNOWFALL																																
HOLLAND 1 E	SNOWFALL																																
HOPEWELL	SNOWFALL				-	-	-	-	-	-	-	-	-	-	-	-	-	-	-	-	-	-	-	-	-	-	-	-	-	-	-	-	
	SN ON GND				-	-	-	-	-	-	-	-	-	-	-	-	-	-	-	-	-	-	-	-	-	-	-	-	-	-	-	-	
NORFOLK SOUTH	SNOWFALL	T	-	-	-	-	-	-	-	-	-	-	-	-	-	-	0.2	T	-	-	-	-	-	-	-	-	-	-	-	-	-	-	
	SN ON GND	-	-	-	-	-	-	-	-	-	-	-	-	-	-	-	T	-	-	-	-	-	-	-	-	-	-	-	-	-	-	-	
NORTH	SNOWFALL																																
PAINTER 2W	SNOWFALL																																
STONY CREEK 2 N	SNOWFALL																																
	SN ON GND																																
SUFFOLK LAKE KILBY	SNOWFALL																	1.0															
	SN ON GND																1	T															
WAKEFIELD 1NW	SNOWFALL	T															0.7																
	SN ON GND																T																
WALKERTON 2 NW	SNOWFALL																																
	SN ON GND																																
WALLACETON LK DRUMMOND	SNOWFALL																																
WALLOPS ISLAND NASA TEST FACIL	SNOWFALL	T															1.0	T															
	SN ON GND																1																
WARSAW 2 NW	SNOWFALL	-	-	-	-	-	-	-	-	-	-	-	-	-	-	-	0.5	-	-	-	-	-	-	-	-	-	-	-	-	-	-	-	
	SN ON GND	-	-	-	-	-	-	-	-	-	-	-	-	-	-	-	-	-	-	-	-	-	-	-	-	-	-	-	-	-	-	-	
WEST POINT 2 NW	SNOWFALL	T	T	T																													
	SN ON GND																																
WILLIAMSBURG 2 N	SNOWFALL	-	-	-	-	-	-	-	-	-	-	-	-	-	-	-	T	-	-	-	-	-	T	-	-	-	-	-	-	-	-	-	
	SN ON GND	-	-	-	-	-	-	-	-	-	-	-	-	-	-	-	T	-	-	-	-	-	-	-	-	-	-	-	-	-	-	-	
EASTERN PIEDMONT 02																																	
ALBERTA 5N	SNOWFALL																																
	SN ON GND																																
AMELIA COURTHOUSE 1	SNOWFALL																																
ASHLAND	SNOWFALL	T	T	T	-	-	-	-	-	-	-	-	-	-	-	-	T	-	-	-	-	-	T	-	-	-	-	-	-	-	-	-	
	SN ON GND																																
BREMO BLUFF	SNOWFALL	-	T	T	-	-	-	-	-	-	-	-	-	-	-	-	-	-	-	-	-	-	-	-	-	-	-	-	-	-	-	-	
	SN ON GND	-	T	-	-	-	-	-	-	-	-	-	-	-	-	-	-	-	-	-	-	-	-	-	-	-	-	-	-	-	-	-	
BUCKINGHAM	SNOWFALL				0.1																												
	SN ON GND																																

Snowfall: Includes snow and ice. Values for NWS stations (J index note) are Mid-Mid (LST).

Snow on ground: Includes snow, sleet, ice, and hail. Values for NWS stations (J index note) are observed at 12 UTC (GMT).

Water Equivalent: Given for NWS stations (J index note) only, when snow depth is 2 inches or more, and is measured at 18 UTC (GMT)

VIRGINIA
201302

SNOWFALL AND SNOW ON GROUND (INCHES)

STATION		DAY OF MONTH																														
		01	02	03	04	05	06	07	08	09	10	11	12	13	14	15	16	17	18	19	20	21	22	23	24	25	26	27	28	29	30	31
CAMP PICKETT	SNOWFALL	-	-	-	-	-	-	-	-	-	-	-	-	-	-	-	-	T	-	-	-	-	-	-	-	-	-	-	-	-	-	
	SN ON GND	-	-	-	-	-	-	-	-	-	-	-	-	-	-	-	-	T	T	-	-	-	-	-	-	-	-	-	-	-	-	
CHASE CITY	SNOWFALL	-	-	-	-	-	-	-	-	-	-	-	-	-	-	-	-	1.5	-	-	-	-	-	-	-	-	-	-	-	-		
	SN ON GND	-	-	-	-	-	-	-	-	-	-	-	-	-	-	-	-	2.0	-	-	-	-	-	-	-	-	-	-	-	-		
CLARKSVILLE	SNOWFALL	-	-	-	-	-	-	-	-	-	-	-	-	-	-	-	-	-	-	-	-	-	-	-	-	-	-	-	-	-		
	SN ON GND	-	-	-	-	-	-	-	-	-	-	-	-	-	-	-	-	-	-	-	-	-	-	-	-	-	-	-	-	-		
CORBIN	SNOWFALL	-	-	-	-	-	-	-	-	-	-	-	-	-	-	-	-	-	-	-	-	-	-	-	-	-	-	-	-	-		
	SN ON GND	-	-	-	-	-	-	-	-	-	-	-	-	-	-	-	-	-	-	-	-	-	-	-	-	-	-	-	-	-		
CROZIER	SNOWFALL	-	-	-	-	-	-	-	-	-	-	-	-	-	-	-	-	-	-	-	-	-	-	-	-	-	-	-	-	-		
	SN ON GND	-	-	-	-	-	-	-	-	-	-	-	-	-	-	-	-	-	-	-	-	-	-	-	-	-	-	-	-	-		
FARMVILLE 2 N	SNOWFALL	-	-	-	-	-	-	-	-	-	-	-	-	-	-	-	-	-	-	-	-	-	-	-	-	-	-	-	-	-		
	SN ON GND	-	-	-	-	-	-	-	-	-	-	-	-	-	-	-	-	-	-	-	-	-	-	-	-	-	-	-	-	-		
GREENBAY 3 NE	SNOWFALL	-	-	-	-	-	-	-	-	-	-	-	-	-	-	-	-	-	-	-	-	-	-	-	-	-	-	-	-	-		
	SN ON GND	-	-	-	-	-	-	-	-	-	-	-	-	-	-	-	-	-	-	-	-	-	-	-	-	-	-	-	-	-		
JOHN H KERR DAM	SNOWFALL	-	-	-	-	-	-	-	-	-	-	-	-	-	-	-	-	-	-	-	-	-	-	-	-	-	-	-	-	-		
	SN ON GND	-	-	-	-	-	-	-	-	-	-	-	-	-	-	-	-	-	-	-	-	-	-	-	-	-	-	-	-	-		
LOUISA	SNOWFALL	-	0.2	-	-	-	-	-	0.1	-	-	-	-	-	-	-	-	-	-	-	-	-	-	-	-	-	-	-	-	-		
	SN ON GND	-	-	-	-	-	-	-	-	-	-	-	-	-	-	-	-	-	-	-	-	-	-	-	-	-	-	-	-	-		
PALMYRA 3S	SNOWFALL	-	-	-	-	-	-	-	-	-	-	-	-	-	-	-	-	-	-	-	-	-	-	-	-	-	-	-	-	-		
	SN ON GND	-	-	-	-	-	-	-	-	-	-	-	-	-	-	-	-	-	-	-	-	-	-	-	-	-	-	-	-	-		
PETERSBURG	SNOWFALL	-	-	-	-	-	-	-	-	-	-	-	-	-	-	-	-	-	-	-	-	-	-	-	-	-	-	-	-	-		
	SN ON GND	-	-	-	-	-	-	-	-	-	-	-	-	-	-	-	-	-	-	-	-	-	-	-	-	-	-	-	-	-		
RICHMOND INTL AP	SNOWFALL	T	T	T	-	-	-	-	-	-	-	-	-	-	-	-	T	-	-	-	-	-	-	-	-	-	-	-	-	-		
	SN ON GND	-	-	-	-	-	-	-	-	-	-	-	-	-	-	-	-	-	-	-	-	-	-	-	-	-	-	-	-	-		
SANDSTON	SNOWFALL	-	-	-	-	-	-	-	-	-	-	-	-	-	-	-	-	T	-	-	-	-	-	-	-	-	-	-	-	-		
	SN ON GND	-	-	-	-	-	-	-	-	-	-	-	-	-	-	-	-	-	-	-	-	-	-	-	-	-	-	-	-	-		
WINTERPOCK 4 W	SNOWFALL	-	-	-	-	-	-	-	-	-	-	-	-	-	-	-	-	-	-	-	-	-	-	-	-	-	-	-	-	-		
	SN ON GND	-	-	-	-	-	-	-	-	-	-	-	-	-	-	-	-	-	-	-	-	-	-	-	-	-	-	-	-	-		
WESTERN PIEDMONT 03	SNOWFALL	-	-	-	-	-	-	-	-	-	-	-	-	-	-	-	-	-	-	-	-	-	-	-	-	-	-	-	-	-		
	SN ON GND	-	-	-	-	-	-	-	-	-	-	-	-	-	-	-	-	-	-	-	-	-	-	-	-	-	-	-	-	-		
ALTAVISTA	SNOWFALL	-	-	-	-	-	-	-	-	-	-	-	-	-	-	-	-	-	-	-	-	-	-	-	-	-	-	-	-	-		
	SN ON GND	-	-	-	-	-	-	-	-	-	-	-	-	-	-	-	-	-	-	-	-	-	-	-	-	-	-	-	-	-		
APPOMATTOX	SNOWFALL	T	-	T	-	-	-	-	-	-	-	-	-	-	-	-	0.1	5.2	-	-	-	-	-	-	-	-	-	-	-	-		
	SN ON GND	-	-	-	-	-	-	-	-	-	-	-	-	-	-	-	-	5	4	T	-	-	-	-	-	-	-	-	-	-		
BEDFORD 4 NW	SNOWFALL	T	-	T	-	-	-	-	0.3	-	-	-	-	-	-	-	-	-	-	-	-	-	-	-	-	-	-	-	-	-		
	SN ON GND	T	-	-	-	-	-	-	T	-	-	-	-	-	-	-	-	-	-	-	-	-	-	-	-	-	-	-	-	-		
BROOKNEAL	SNOWFALL	-	-	-	-	-	-	-	-	-	-	-	-	-	-	-	-	0.5	0.3	-	-	-	-	-	-	-	-	-	-	-		
	SN ON GND	-	-	-	-	-	-	-	-	-	-	-	-	-	-	-	-	1	1	-	-	-	-	-	-	-	-	-	-	-		
CHARLOTTE COURT HOUSE	SNOWFALL	-	-	-	-	-	-	-	-	-	-	-	-	-	-	-	-	7.0	7	-	-	-	-	-	-	-	-	-	-	-		
	SN ON GND	-	-	-	-	-	-	-	-	-	-	-	-	-	-	-	-	7	7	-	-	-	-	-	-	-	-	-	-	-		
CHARLOTTESVILLE 2W	SNOWFALL	0.1	-	0.2	-	-	-	-	2.5	-	-	-	-	-	-	-	-	-	-	-	-	-	-	-	-	-	-	-	-			
	SN ON GND	T	-	T	-	-	-	-	3	-	-	-	-	-	-	-	-	-	-	-	-	-	-	-	-	-	-	-	-			
CHATHAM	WTR EQUIV	-	-	-	-	-	-	-	0.3	-	-	-	-	-	-	-	-	-	-	-	-	-	-	-	-	-	-	-	-			
	SNOWFALL	T	-	-	-	-	-	-	-	-	-	-	-	-	-	-	-	-	-	-	-	-	-	-	-	-	-	-	-	-		
CONCORD 4 SSW	SNOWFALL	-	-	-	-	-	-	-	-	-	-	-	-	-	-	-	-	-	-	-	-	-	-	-	-	-	-	-	-	-		
	SN ON GND	-	-	-	-	-	-	-	-	-	-	-	-	-	-	-	-	-	-	-	-	-	-	-	-	-	-	-	-	-		
DANVILLE REGIONAL AP	SNOWFALL	-	-	-	-	-	-	-	-	-	-	-	-	-	-	-	-	-	-	-	-	-	-	-	-	-	-	-	-	-		
	SN ON GND	T	-	-	-	-	-	-	-	-	-	-	-	-	-	-	-	-	-	-	-	-	-	-	-	-	-	-	-	-		
FREE UNION	SNOWFALL	-	-	-	-	-	-	-	-	-	-	-	-	-	-	-	-	-	-	-	-	-	-	-	-	-	-	-	-	-		
	SN ON GND	-	-	-	-	-	-	-	-	-	-	-	-	-	-	-	-	-	-	-	-	-	-	-	-	-	-	-	-	-		

Snowfall: Includes snow and ice. Values for NWS stations (J index note) are Mid-Mid (LST).

Snow on ground: Includes snow, sleet, ice, and hail. Values for NWS stations (J index note) are observed at 12 UTC (GMT).

Water Equivalent: Given for NWS stations (J index note) only, when snow depth is 2 inches or more, and is measured at 18 UTC (GMT)

VIRGINIA
201302

SNOWFALL AND SNOW ON GROUND (INCHES)

STATION		DAY OF MONTH																													
		01	02	03	04	05	06	07	08	09	10	11	12	13	14	15	16	17	18	19	20	21	22	23	24	25	26	27	28	29	30
HOLCOMB ROCK	SN ON GND	T	-	T	-	-	-	-	3	-	-	-	-	-	-	-	-	-	-	-	-	-	-	-	-	-	-	-	-	-	-
	SNOWFALL	T		T	T				1.0								T	T		T		T	T								
HUDDLESTON 4 SW	SN ON GND	T		T					1														T	T							
	WTR EQUIV	T	-	T	-	-	-	-	0.3	-	-	-	-	-	-	-	-	-	-	-	-	-	T	-	-	-	-	-	-	-	
LYNCHBURG INTL AP	SNOWFALL	T																													
	SN ON GND		T					0.2	0.3							T															
MARTINSVILLE FLTR PLT	SNOWFALL																														
	SN ON GND																														
MEADOWS OF DAN 5 SW	SNOWFALL																														
	SN ON GND																														
MONTEBELLO FISH CULTURAL STN	SNOWFALL																														
	SN ON GND																														
MONTICELLO	SNOWFALL								2.0	-	-	-	-	-	-	-	-	-	-	-	-	-	-	-	-	-	-	-	-		
	SN ON GND								2	-	-	-	-	-	-	-	-	-	-	-	-	-	-	-	-	-	-	-	-		
PEDLAR DAM	SNOWFALL	0.3		0.2	T				0.6												0.3		T	T							
	SN ON GND	T		T					T														T								
ROCKY MT	SNOWFALL																														
	SN ON GND																														
SOUTH BOSTON	SNOWFALL																														
	SN ON GND																														
STUART	SNOWFALL																														
	SN ON GND																														
TYE RIVER 1 SE	SNOWFALL																														
	SN ON GND	-	-	T	-	-	-	-	T	-	-	-	-	-	-	-	-	1	-	-	-	-	-	-	-	-	-	-	-		
WOOLWINE	SNOWFALL	0.2							0.5																						
	SN ON GND	T							1																						
NORTHERN 04 BOSTON 4 SE	WTR EQUIV	T	-	-	-	-	-	-	0.3	-	-	-	-	-	-	-	-	-	-	-	-	-	-	-	-	-	-	-	-		
	SNOWFALL				0.9				3.9																						
EDINBURG	SN ON GND								4																						
	WTR EQUIV				0.9				3.9																						
FRONT ROYAL	SNOWFALL	0.4							0.2																						
	SN ON GND	T							T																						
LINCOLN	SNOWFALL	-	-	-	-	-	-	-	-	-	-	-	-	1.0	-	0.3	-	-	-	-	-	-	-	-	-	-	-	-	-		
	SN ON GND	-	-	-	-	-	-	-	-	-	-	-	-	-	-	T	-	-	-	-	-	-	-	-	-	-	-	-	-		
LURAY 5 E	SNOWFALL	1.0	-	-	-	-	-	-	1.0	-	-	-	-	-	-	-	-	-	-	-	-	-	-	-	-	-	-	-	-		
	SN ON GND	1	-	-	-	-	-	-	1	-	-	-	-	-	-	-	-	-	-	-	-	-	-	-	-	-	-	-	-		
MADISON	SNOWFALL	0.2							0.5																						
	SN ON GND	1							1																						
MADISON	WTR EQUIV	0.2	-	-	-	-	-	-	0.5	-	-	-	-	-	-	-	-	-	-	-	-	-	-	-	-	-	-	-	-		
	SNOWFALL			T	T				4.0																						

Snowfall: Includes snow and ice. Values for NWS stations (J index note) are Mid-Mid (LST).

Snow on ground: Includes snow, sleet, ice, and hail. Values for NWS stations (J index note) are observed at 12 UTC (GMT).

Water Equivalent: Given for NWS stations (J index note) only, when snow depth is 2 inches or more, and is measured at 18 UTC (GMT)

VIRGINIA
201302

SNOWFALL AND SNOW ON GROUND (INCHES)

STATION		DAY OF MONTH																														
		01	02	03	04	05	06	07	08	09	10	11	12	13	14	15	16	17	18	19	20	21	22	23	24	25	26	27	28	29	30	31
MANASSAS	SN ON GND			T				4																								
	SNOWFALL	-	-	0.1	-	-	-	-	-	-	-	-	-	-	-	-	-	-	-	-	-	-	-	-	-	-	-	-	-	-	-	
MT WEATHER	SN ON GND	-	-	1	-	-	-	-	-	-	-	-	-	-	-	-	-	-	-	-	-	-	-	-	-	-	-	-	-	-		
	SNOWFALL	1.8	-	0.3	-	-	-	2.2	-	-	-	-	-	1.0	-	1.0	-	-	-	-	-	-	-	-	-	-	-	-	-	-		
PIEDMONT RSCH STN	SN ON GND	2	-		-	-	-	2	2	-	-	-	-	1	-	1	-	-	-	-	-	-	-	-	-	-	-	-	-	-		
	WTR EQUIV	-	-	-	0.5	-	-	-	-	-	-	-	-	-	-	1.0	-	-	-	-	-	-	-	-	-	-	-	-	-	-		
SOMERSET	SNOWFALL	T			1.0			1.9									0.5				T		T									
	SN ON GND							1													T		T									
SPERRYVILLE	SNOWFALL	T	-	0.4	-	-	-	1.5	-	-	-	-	-	-	-	-	-	-	-	-	T	-	-	-	-	-	-	-	-	-		
	SN ON GND	T	-	T	T	-	-	1	-	-	-	-	-	-	-	-	-	-	-	-	T	-	-	-	-	-	-	-	-	-		
STERLING RCS	SNOWFALL	T	0.5	T	0.5	-	-	2.3	T	-	-	-	-	-	-	T	-	T	-	T	-	-	T	-	-	-	-	-	-	-		
	SN ON GND	T	T	T	1	T	-	2	-	-	-	-	-	-	-	-	-	-	-	-	-	-	-	-	-	-	-	-	-	-		
VIENNA	SNOWFALL	0.6		T	T		T	-	0.3	T				0.4		T	T	T		T	T		T									
	WTR EQUIV	1		T	T		-	T	-	-	-	-	-	T		-	-	-	-	-	-	-	-	-	-	-	-	-	-	-		
WARRENTON 3 SE	SNOWFALL	-	-	-	-	-	-	-	-	-	-	-	-	0.4	-	-	-	-	-	-	-	-	-	-	-	-	-	-	-	-		
	WTR EQUIV	-	-	-	-	-	-	-	-	-	-	-	-	-	-	-	-	-	-	-	-	-	-	-	-	-	-	-	-	-		
WASHGTN DULLES INTL AP	SNOWFALL	0.6	T	T		T		0.3	T				0.4		T	T	T		T	T		T										
	SN ON GND			T																												
WASHINGTON REAGAN AP	SNOWFALL	0.2	0.2	T									T		T	T			T			T										
	SN ON GND	T		T																												
WINCHESTER	SNOWFALL							0.3																								
	SN ON GND																															
WOODSTOCK 2 NE	WTR EQUIV																															
	SNOWFALL	T	-	-	-	-	-	T	-	-	-	-	-	T	-	-	-	-	-	-	-	-	-	-	-	-	-	-	-	-		
CENTRAL MOUNTAIN 05	SN ON GND	-	-	-	-	-	-	T	-	-	-	-	-	T	-	-	-	-	-	-	-	-	-	-	-	-	-	-	-			
	SN ON GND																															
BUCHANAN	SNOWFALL	T		T				1.4														T										
	SN ON GND	T		T				1														T										
BUENA VISTA	SNOWFALL	T						0.5														T										
	SN ON GND	T						1														T										
COVINGTON FLTR PLT	SNOWFALL			1.5																		T										
	SN ON GND			2																		T										
CRAIGSVILLE 2 S	SNOWFALL	T	-	1.0	-	-	-	T	-	-	-	-	-	T	-	-	-	-	0.2	-	-	0.2	-	-	-	-	-	-	-	-		
	SN ON GND	T	-	10	-	-	-	T	-	-	-	-	-	T	-	-	-	-	2	-	-	T	T	-	-	-	-	-	-	-		
DALE ENTERPRISE	SNOWFALL							0.2																								
	SN ON GND																															
GATHRIGHT DAM	WTR EQUIV							-	-	-	-	-	-	-	-	-	-	-	-	-	-	-	-	-	-	-	-	-	-	-		
	SNOWFALL	1.0		1.5				T												0.7		T								0.5		

Snowfall: Includes snow and ice. Values for NWS stations (J index note) are Mid-Mid (LST).

Snow on ground: Includes snow, sleet, ice, and hail. Values for NWS stations (J index note) are observed at 12 UTC (GMT).

Water Equivalent: Given for NWS stations (J index note) only, when snow depth is 2 inches or more, and is measured at 18 UTC (GMT)

SNOWFALL AND SNOW ON GROUND (INCHES)

STATION		DAY OF MONTH																																		
		01	02	03	04	05	06	07	08	09	10	11	12	13	14	15	16	17	18	19	20	21	22	23	24	25	26	27	28	29	30	31				
GLASGOW 1 SE	SN ON GND	1	T	2	1	T														T			T											1		
	SNOWFALL	T		0.3								1.2						T					T	T												
	SN ON GND			T								1											T													
HOT SPRINGS	SNOWFALL	1.0		2.0														T			1.0	T														
	SN ON GND	1	T	2	2	1	1											T			1														T	
LEXINGTON	SNOWFALL	0.3		0.2								1.1								T				T										T		
	SN ON GND	T		T								1											T												T	
MILLGAP	SNOWFALL	2.2	T	0.9	0.2	1.3	T									0.4		1.3	0.3		0.4	1.1												0.1		
	SN ON GND	2	1	2	1	1	T								T		1	1	1	T			T												T	
MTN GROVE	WTR EQUIV																																		-	
	SNOWFALL				T	T											T						T													
	SN ON GND				T	T	T										T						T													
MUSTOE 1 SW	SNOWFALL	1.5	0.9	0.5	0.8	T	T					0.2		0.6		0.7	0.2	0.2		2.0			-	0.4						0.1	0.7					
	SN ON GND	1	2	2	2	T	T	T	T	T				T	T	T	T	T	T	T	T	T	T	T	T	-	-	-	-	-	-	-	-	-	T	
	WTR EQUIV	-	-	-	-	-	-	-	-	-	-	-	-	-	-	-	-	-	-	-	-	-	-	-	-	-	-	-	-	-	-	-	-	-	-	
NEW CASTLE	SNOWFALL	T																																	2.8	
	SN ON GND	T										3																							1	
	SNOWFALL	T		0.1									3.0																						3	
ROANOKE 8 N	SN ON GND	T											3																							
	SNOWFALL	T																																		
	SN ON GND	T																																		
ROANOKE INTL AP	SNOWFALL	T	0.4	T				2.0	1.5										T																	
	SN ON GND		T					2																												
STAUNTON WATER TRMTMT PLT	SNOWFALL	T		T	-	-	-	-	0.6										0.5		T	-	-	0.3	-	-	-	-	-	-	-	-	-	-		
	SN ON GND				-	-	-	-	1											1			-	-	T	-	-	-	-	-	-	-	-	-	-	
WAYNESBORO WTP	SNOWFALL	T		T																																
	SN ON GND	T		T																																
	WTR EQUIV	-		-																																
SOUTHWESTERN MOUNTAIN 06																																				
ABINGDON 3S	SNOWFALL		3.0																																	
BIG STONE GAP	SN ON GND		3	2	2																															
	SNOWFALL	-	-	3.0	1.0					-	-	-	-	-	-	-	-	-	-	-	-	-	-	-	-	-	-	-	-	-	-	-	-	-	-	
BLACKSBURG NWSO	SN ON GND	-	-	3	4	2																														
	SNOWFALL	0.9	T	2.6	T							0.8																								0.2
BURKES GARDEN	SN ON GND	1		3	1							1																								
	SNOWFALL	2.0	T	5.0	1.0	T																														
CHRISTIANSBURG	SN ON GND	2	T	5	6	3	1																													
	SNOWFALL	0.2	T	2.0	T							1.5																								
CLINTWOOD 1 W	SN ON GND	T	T	1	T	T						1																								
	SNOWFALL	2.7		2.4	1.0																															
COPPER HILL	SN ON GND	3	2	4	4	2	T																													
	SNOWFALL	-		0.9	0.2																															
	SN ON GND	-		1																																

Snowfall: Includes snow and ice. Values for NWS stations (J index note) are Mid-Mid (LST).

Snow on ground: Includes snow, sleet, ice, and hail. Values for NWS stations (J index note) are observed at 12 UTC (GMT).

Water Equivalent: Given for NWS stations (J index note) only, when snow depth is 2 inches or more, and is measured at 18 UTC (GMT)

SNOWFALL AND SNOW ON GROUND (INCHES)

STATION		DAY OF MONTH																														
		01	02	03	04	05	06	07	08	09	10	11	12	13	14	15	16	17	18	19	20	21	22	23	24	25	26	27	28	29	30	31
GALAX RADIO WBRF	SNOWFALL	0.2		1.0														0.1	0.1			0.6	0.2									
	SN ON GND	T		1	T													T	T			T	T									
GALAX WTP	SNOWFALL			1.0																	T	1.0									T	
	SN ON GND			1																	T	T	1									
GRUNDY	SNOWFALL	1.0		2.8												0.1	0.1															
	SN ON GND	1	1	3	2	1										1	1															
JOHN FLANNAGAN LAKE	SNOWFALL	-	-	-	2.0	-	-	-	-	-	-	-	-	-	-	-	-	-	-	-	-	-	-	-	-	-	-	-	-	-	1.0	
	SN ON GND	1	-	-	-	-	-	-	-	-	-	-	-	-	-	-	-	-	-	-	-	-	-	-	-	-	-	-	-	-	T	
LAFAYETTE 1 NE	SNOWFALL	T	T	0.8	T					1.4													0.6									
	SN ON GND	T		1						1													T									
LEBANON	SNOWFALL	0.5		1.5												0.2	1.3														0.5	
	SN ON GND	1		2	1												1	1													1	
NORA 4 SSE	SNOWFALL	2.4		3.3	0.8	-									T	0.8	2.8	T	0.7										T	1.9		
	SN ON GND	2	1	3	3	-	T								T	1	3	1	1											2		
NORTH FORK LAKE	SNOWFALL	1.5	-	-	-	-	-	-	-	-	-	-	-	-	-	-	-	-	-	-	-	-	-	-	-	-	-	-	-	0.5		
	SN ON GND	-	-	-	2	-	-	-	-	-	-	-	-	-	-	-	-	-	-	-	-	-	-	-	-	-	-	-	-	-		
PULASKI 2 E	SNOWFALL	T								0.5							0.5		T	T	T	0.5								0.1		
	SN ON GND	T								T							T	T	T	T	T	1	T									
RADFORD 3 N	SNOWFALL	0.2	T	2.0	T					1.5							T		T	T	T	1.0				T	0.2	T				
	SN ON GND	T	T	1	T	T				1									T	T	T	1								T		
RICHLANDS	SNOWFALL	T	0.1	3.7	1.0											0.1	0.1													0.1		
	SN ON GND	T		4	4	1										T	T															
SALTVILLE 1N	SNOWFALL	0.7		2.6	0.2											T	0.3													T		
	SN ON GND	1		3	3	1										T	T													T		
STAFFORDSVILLE 3 ENE	SNOWFALL	0.5		2.0	0.2					1.6							1.0					0.1								T		
	SN ON GND	1	T	2	2	1				2							1	T				T								T		
TROUT DALE 3 SSE	SNOWFALL	1.0	T	4.0	2.0											T	3.0					0.1								T		
	SN ON GND	1	T	4	5	2										T	2					T								T		
WILLIS	SNOWFALL	0.3		1.0						0.4													0.4							0.3		
	SN ON GND	T		1	T					T													T							T		
WISE 3E	SNOWFALL	2.5	0.6	2.5									0.3			0.2	0.4											T	2.0			
	SN ON GND	2	2	4	2	1	T						T				T												1			
WYTHEVILLE 1 S	SNOWFALL	0.5		2.0	1.0											T	1.0					T								T		
	SN ON GND	T	T	2	1											T	1					T										

Snowfall: Includes snow and ice. Values for NWS stations (J index note) are Mid-Mid (LST).

Snow on ground: Includes snow, sleet, ice, and hail. Values for NWS stations (J index note) are observed at 12 UTC (GMT).

Water Equivalent: Given for NWS stations (J index note) only, when snow depth is 2 inches or more, and is measured at 18 UTC (GMT)

VIRGINIA
201302

PAN EVAPORATION AND WIND

STATION		DAY OF MONTH																															TOTAL OR AVERAGE			
		01	02	03	04	05	06	07	08	09	10	11	12	13	14	15	16	17	18	19	20	21	22	23	24	25	26	27	28	29	30	31				
VIRGINIA EASTERN PIEDMONT 02 JOHN H KERR DAM	WIND	-	-	-	-	-	-	-	-	-	-	-	-	-	-	-	-	-	-	-	-	-	-	-	-	-	-	-	-	-	-	-	-	-	-	-
	EVAP	-	-	-	-	-	-	-	-	-	-	-	-	-	-	-	-	-	-	-	-	-	-	-	-	-	-	-	-	-	-	-	-	-	-	-
	MAX	-	-	-	-	-	-	-	-	-	-	-	-	-	-	-	-	-	-	-	-	-	-	-	-	-	-	-	-	-	-	-	-	-	-	-
	MIN	-	-	-	-	-	-	-	-	-	-	-	-	-	-	-	-	-	-	-	-	-	-	-	-	-	-	-	-	-	-	-	-	-	-	-

Evaporation: Is measured in hundredths of inches.

Wind: Is measured in miles.

Max and Min: The maximum and minimum temperatures (Fahrenheit) of the water in the evaporation pan.

STATION INDEX

STATION	INDEX NO.	DIVISION	COUNTY	LATITUDE	LONGITUDE	ELEVATION (IN FEET)	OBSERVATION TIME AND TABLES			
							LOCAL STD TIME			
							TEMP	PRECIP	EVAP	SPECIAL SEE (NOTES)
VIRGINIA										
ABINGDON 3S	0021	06	WASHINGTON	36 40	81 58W	1920	22	22		H
ALBERTA 5N	0079	02	BRUNSWICK	36 56	77 54W	376		08		H
ALTAVISTA	0166	03	CAMPBELL	37 7	79 17W	529		07		CH
AMELIA COURTHOUSE 1	0187	02	AMELIA	37 21	77 59W	345	08	08		H
APPOMATTOX	0243	03	APPOMATTOX	37 20	78 50W	850	07	07		H
ASHLAND	0327	02	HANOVER	37 45	77 29W	220	18	18		H
BEDFORD 4 NW	0561	03	BEDFORD	37 23	79 34W	1228		07		CH
BIG STONE GAP	0735	06	WISE	36 52	82 46W	1464	08	08		H
BLACKSBURG NWSO	0766	06	MONTGOMERY	37 12	80 25W	2100	07	07		CH
BOSTON 4 SE	0860	04	CULPEPER	38 33	78 6W	590	07	07		H
BREMO BLUFF	0993	02	FLUVANNA	37 43	78 17W	225		24		CH
BROOKNEAL	1082	03	CAMPBELL	37 4	78 57W	408	07	07		H
BUCHANAN	1121	05	BOTETOURT	37 31	79 41W	880		07		H
BUCKINGHAM	1136	02	BUCKINGHAM	37 30	78 32W	552		07		H
BUENA VISTA	1159	05	ROCKBRIDGE	37 44	79 22W	840		07		H
BURKES GARDEN	1209	06	TAZEWELL	37 6	81 20W	3068	07	07		H
CAMP PICKETT	1322	02	NOTTOWAY	37 2	77 57W	330	08	08		CH
CHARLOTTE COURT HOUSE	1585	03	CHARLOTTE	37 3	78 39W	569	07	07		H
CHARLOTTESVILLE 2W	1593	03	ALBEMARLE	38 2	78 31W	866	08	08		H
CHASE CITY	1606	02	MECKLENBURG	36 47	78 29W	510	17	17		H
CHATHAM	1614	03	PITTSYLVANIA	36 49	79 25W	651	07	07		CH
CHRISTIANSBURG	1692	06	MONTGOMERY	37 8	80 24W	2100	07	07		H
CLARKSVILLE	1746	02	MECKLENBURG	36 37	78 33W	330	07	07		H
CLINTWOOD 1 W	1825	06	DICKENSON	37 9	82 29W	1780	07	07		H
CONCORD 4 SSW	1955	03	CAMPBELL	37 17	78 58W	815		07		H
COPPER HILL	1999	06	FLOYD	37 5	80 9W	2690	07	07		H
CORBIN	2009	02	CAROLINE	38 12	77 22W	220	09	09		H
COVINGTON FLTR PLT	2044	05	ALLEGHANY	37 49	79 59W	1230	07	07		H
CRAIGSVILLE 2 S	2064	05	AUGUSTA	38 3	79 23W	1758		07		H
CROZIER	2142	02	GOOCHLAND	37 40	77 53W	350	07	07		H
DALE ENTERPRISE	2208	05	ROCKINGHAM	38 27	78 56W	1358	07	07		H
DANVILLE REGIONAL AP R	2250	03	PITTSYLVANIA	36 34	79 20W	571	24	24		H
DISPUTANTA	2400	01	PRINCE GEORGE	37 7	77 12W	15	07	07		H
EASTVILLE	2635	01	NORTHAMPTON	37 23	75 58W	10	07	07		H
EDINBURG	2663	04	SHENANDOAH	38 48	78 35W	928	07	07		H
EMPORIA 1 WNW	2790	01	GREENSVILLE	36 42	77 34W	100	08	08		H
FARMVILLE 2 N	2941	02	CUMBERLAND	37 20	78 23W	450	07	07		H
FREDERICKSBURG SEWAGE	3204	01	FREDERICKSBURG	38 17	77 27W	15	07	07		H
FREE UNION	3213	03	ALBEMARLE	38 5	78 35W	590	08	07		H
FRONT ROYAL	3229	04	WARREN	38 54	78 11W	930	07	07		H
GALAX RADIO WBRF	3267	06	CARROLL	36 40	80 55W	2385	07	07		H
GALAX WTP	3272	06	CARROLL	36 39	80 55W	2360	07	07		CH
GATHRIGHT DAM	3310	05	ALLEGHANY	37 57	79 57W	1770	07	07		CH
GLASGOW 1 SE	3375	05	ROCKBRIDGE	37 37	79 26W	737		07		H
GREENBAY 3 NE	3565	02	PRINCE EDWARD	37 11	78 17W	500	09	09		H
GRUNDY	3640	06	BUCHANAN	37 17	82 5W	1170	07	07		H
HAMPTON UNIV	3713	01	HAMPTON	37 1	76 20W	10	17	17		H
HOLCOMB ROCK	4039	03	BEDFORD	37 33	79 24W	620		07		H
HOLLAND 1 E	4044	01	SUFFOLK	36 41	76 46W	80	08	08		H
HOPEWELL	4101	01	PRINCE GEORGE	37 18	77 17W	40	16	16		H
HOT SPRINGS	4128	05	BATH	37 60	79 50W	2236	07	07		H
HUDDLESTON 4 SW	4148	03	BEDFORD	37 8	79 32W	898		07		H
JOHN FLANNAGAN LAKE	4410	06	DICKENSON	37 14	82 21W	1460	07	07		H
JOHN H KERR DAM	4414	02	MECKLENBURG	36 36	78 18W	250	08	08	08	CH
LAFAYETTE 1 NE	4676	06	MONTGOMERY	37 14	80 12W	1320		07		H
LEBANON	4777	06	RUSSELL	36 54	82 2W	1912	07	07		H
LEXINGTON	4876	05	ROCKBRIDGE	37 47	79 26W	1097		07		H
LINCOLN	4909	04	LOUDOUN	39 5	77 42W	500	07	07		H
LOUISA	5050	02	LOUISA	38 3	78 0W	420	18	18		H
LURAY 5 E	5096	04	PAGE	38 40	78 22W	1400	08	08		H
LYNCHBURG INTL AP R	5120	03	CAMPBELL	37 19	79 12W	940	24	24		HJ
MADISON	5150	04	MADISON	38 22	78 15W	577	08	08		H
MANASSAS	5204	04	MANASSAS	38 44	77 30W	245	07	07		H
MARTINSVILLE FLTR PLT	5300	03	HENRY	36 42	79 52W	760	07	07		H
MEADOWS OF DAN 5 SW	5453	03	PATRICK	36 40	80 27W	2225	07	07		H

STATION INDEX

STATION	INDEX NO.	DIVISION	COUNTY	LATITUDE	LONGITUDE	ELEVATION (IN FEET)	OBSERVATION TIME AND TABLES			
							LOCAL STD TIME			
							TEMP	PRECIP	EVAP	SPECIAL SEE (NOTES)
MILLGAP	5595	05	HIGHLAND	38 18	79 43W	2421	07	07		CH
MONTEBELLO FISH CULTURAL STN #	5690	03	NELSON	37 51	79 8W	2667	07	07		H
MONTICELLO	5700	03	ALBEMARLE	38 1	78 27W	758	08	08		H
MT WEATHER	5851	04	LOUDOUN	39 4	77 53W	1659	07	07		H
MTN GROVE	5756	05	BATH	38 6	79 53W	1775		07		H
MUSTOE 1 SW	5880	05	HIGHLAND	38 20	79 40W	2380	24	24		H
NEW CASTLE	6012	05	CRAIG	37 18	80 3W	1258		07		H
NORA 4 SSE	6125	06	DICKENSON	37 1	82 19W	2650	07	07		H
NORFOLK INTL AP	6139	01	NORFOLK (CITY)	36 54	76 12W	30	24			J
NORFOLK SOUTH	6147	01	NORFOLK (CITY)	36 52	76 14W	100	24	24		H
NORTH	6161	01	MATHEWS	37 26	76 26W	10	07	07		H
NORTH FORK LAKE	6173	06	WISE	37 7	82 38W	1675	08	08		H
PAINTER 2W	6475	01	ACCOMACK	37 35	75 49W	30	16	16		CH
PALMYRA 3S	6491	02	FLUVANNA	37 49	78 16W	410	06	06		H
PEDLAR DAM	6593	03	AMHERST	37 40	79 17W	1024		07		H
PETERSBURG	6656	02	PETERSBURG	37 14	77 24W	15	08	08		H
PIEDMONT RSCH STN	6712	04	ORANGE	38 14	78 7W	520	08	08		CH
PULASKI 2 E	6955	06	PULASKI	37 3	80 47W	1850	07	07		CH
RADFORD 3 N	6999	06	PULASKI	37 12	80 35W	1800	07	07		H
RICHLANDS	7174	06	TAZEWELL	37 6	81 48W	1910	07	07		H
RICHMOND INTL AP R	7201	02	HENRICO	37 30	77 19W	164	24	24		HJ
ROANOKE 8 N	7278	05	ROANOKE	37 22	79 58W	1190	07	07		H
ROANOKE INTL AP R	7285	05	ROANOKE	37 19	79 58W	1175	24	24		HJ
ROCKY MT	7338	03	FRANKLIN	36 59	79 54W	1315	07	07		CH
SALTVILLE 1N	7506	06	SMYTH	36 53	81 46W	1733	07	07		H
SANDSTON	7541	02	HENRICO	37 33	77 17W	165	07	07		H
SOMERSET	7904	04	ORANGE	38 15	78 16W	510	07	07		H
SOUTH BOSTON	7925	03	HALIFAX	36 42	78 53W	329	07	07		H
SPERRYVILLE	7985	04	RAPPAHANNOCK	38 39	78 14W	750	06	06		H
STAFFORDSVILLE 3 ENE	8022	06	GILES	37 16	80 43W	1950	07	07		CH
STAUNTON WATER TRMTMT PLT	8062	05	AUGUSTA	38 10	79 5W	169	08	08		H
STERLING RCS	8084	04	LOUDOUN	38 59	77 29W	288	07	07		H
STONY CREEK 2 N	8129	01	SUSSEX	36 58	77 24W	105	08	08		H
STUART	8170	03	PATRICK	36 38	80 15W	1375	07	07		H
SUFFOLK LAKE KILBY	8192	01	SUFFOLK	36 44	76 36W	22	24	24		H
TROUT DALE 3 SSE	8547	06	GRAYSON	36 39	81 24W	2839	07	07		CH
TYE RIVER 1 SE	8600	03	NELSON	37 38	78 56W	720	07	07		H
VIENNA	8737	04	FAIRFAX	38 54	77 16W	418	07	07		H
WAKEFIELD 1NW	8800	01	SUSSEX	36 59	77 0W	113	24	24		CH
WALKERTON 2 NW	8829	01	KING AND QUEEN	37 45	77 2W	50	18	18		H
WALLACETON LK DRUMMOND	8837	01	CHESAPEAKE	36 36	76 26W	20	08	08		H
WALLOPS ISLAND NASA TEST FACIL R	8849	01	ACCOMACK	37 56	75 28W	46	24	24		HJ
WARRENTON 3 SE	8888	04	FAUQUIER	38 41	77 46W	500	08	08		H
WARSAW 2 NW	8894	01	RICHMOND	37 59	76 47W	140	18	18		H
WASHGTN DULLES INTL AP R	8903	04	LOUDOUN	38 56	77 28W	290	24	24		HJ
WASHINGTON REAGAN AP R	8906	04	ARLINGTON	38 51	77 2W	10	24	24		HJ
WAYNESBORO WTP	8941	05	WAYNESBORO	38 5	78 53W	1270	07	07		H
WEST POINT 2 NW	9025	01	KING WILLIAM	37 34	76 48W	20	17	17		H
WILLIAMSBURG 2 N	9151	01	YORK	37 18	76 42W	70	24	24		CH
WILLIS	9169	06	FLOYD	36 55	80 30W	2810		07		CH
WINCHESTER	9181	04	FREDERICK	39 11	78 9W	720	07	07		H
WINCHESTER 7 SE	9186	04	FREDERICK	39 11	78 7W	680	08	08		H
WINTERPOCK 4 W	9213	02	CHESTERFIELD	37 19	77 39W	300		07		H
WISE 3E	9215	06	WISE	36 60	82 32W	2549	17	17		CH
WOODSTOCK 2 NE	9263	04	SHENANDOAH	38 54	78 28W	675	07	07		H
WOOLWINE	9272	03	PATRICK	36 47	80 17W	1500		07		CH
WYTHEVILLE 1 S	9301	06	WYTHE	36 56	81 6W	2093	07	07		CH

REFERENCE NOTES

STATION NAMES: Name of the city, town or locality. Figures and letters following the station names indicate the distance in miles and direction from the post office or town community center.

DIVISIONS: Areas within a state of similar climatological characteristics. Division averages are calculated using data from stations that record temperature and/or precipitation. Station Precipitation totals flagged with an 'F' or 'M' are excluded from the Divisional Average calculations of precipitation. Stations with monthly Temperature averages flagged with an 'F' or 'M' are included in the Divisional Average if there are no more than 9 flagged or missing daily values in the month, else they are excluded from the divisional average for temperature.

NORMALS: The average value of the meteorological element over a time period. Effective 1 January 2012, the averaging period is 1981 to 2010. The normals for National Weather Service localities have been adjusted so as to be representative for the current observation site.

MONTHLY DEGREE DAY TOTALS: One heating (cooling) degree day is accumulated for each whole degree that the daily mean temperature is below (above) 65 degrees Fahrenheit.

PRECIPITATION: Values shown in hundredths of inches are water equivalent totals, i.e., total of liquid and melted frozen precipitation. In the "Monthly Summarized Data" table the total snow and sleet values shown in tenths of inches are unmelted amounts. The max depth on ground values of snow and sleet shown in whole inches are cumulative unmelted amounts. The number of days with .10, .50, 1.00 or more refers to water equivalents.

PRECIPITATION QUALITY CONTROL: The NCDC quality control process may flag precipitation data that are spatially inconsistent, exceed climatological limits, or are inconsistent with prevailing weather patterns.

TEMPERATURE: Original temperature values are given in the "Daily Temperature" table. Summary temperature information (averages, departures, extremes, monthly degree day totals) is based on the values labeled MAX/MIN.

WIND: (As shown in the "Evaporation and Wind" table) the total wind movement in miles over the evaporation pan as determined by an anemometer recorder located 6-8 inches above the pan.

SYMBOLS AND LETTERS USED IN THE STATION INDEX TABLE

C Station is equipped with recording rain gage (R) but values in this bulletin are from a non-recording rain gage unless indicated by an R.

G Observations appear in the "Soil Temperatures" table.

H Observations appear in the "Snowfall and Snow on the Ground" table.

J Station also published as a Local Climatological Data publication.

VAR Observation time varies.

SR Observation time near sunrise.

SS Observation time near sunset.

SYMBOLS AND LETTERS USED IN THE DATA TABLES

(DAILY DATA ARE FOR THE 24 HOURS IMMEDIATELY PRECEDING OBSERVATION TIME.)

BLANK Entries in the "Monthly Summarized Data" table indicate no record.

BLANK Entries in the "Daily Precipitation" and "Snowfall and Snow on the Ground" tables indicate zero.

BLANK Entries in the "Daily Temperature" table indicate a missing record

- No record. Data not recorded or not received in time for publication.

+ Precipitation or temperature extremes occurred on one or more previous dates during the month.

* Rain gage not read. Precipitation is included in the amount following the asterisks.

Time distribution may not be known. A * preceding the monthly total indicates precipitation amount is being carried forward to next month's total, and may include amounts from the previous month(s).

a As a subscript, indicates accumulated total.

A Amount of precipitation is the total of observer's entries for the current month. It may include precipitation that occurred during the previous month. Refer to earlier bulletin to determine date of last reading. (Hawaii stations)

B Divisional Departure from normals are computed using 1971-2000 normals.

E Normalized HDD/CDD Calculation. E is appended to the HDD/CDD Calculation when 1-9 individual daily TMAX and/or TMIN values are missing and a Normalized HDD/CDD Calculation is provided. M appears alone if 10 or more daily values are missing.

F Monthly calculation flagged value. F is appended to average and/or total values computed which exclude one or more daily data values that have been flagged by the GHCN-Daily Dataset

M Insufficient or partial data. M is appended to average and/or total values computed with 1-9 daily values missing. M appears alone if 10 or more daily values are missing, (8 or more for wind and evaporation).

N Indicates snow fall or Snowdepth totals are computed with one or more missing days.

R Amounts from recording rain gage.

T Trace. An amount too small to measure.

SEASONAL TABLES: Monthly and seasonal snowfall and heating degree days for the 12 months ending with the June data are published in the July issue of this bulletin. Cooling degree days for the calendar year are published in the "Climatological Data Annual Summary."

Information concerning the history of changes in locations, exposure, etc. of substations is kept on file at the National Climatic Data Center. Historical information of regular National Weather Service Offices may be obtained from the "Local Climatological Data" annual publication. The contents of this publication may be reprinted or otherwise used freely, with proper credit to the National Climatic Data Center. The data are also available digitally.

Effective with the January 2011 Data-Month, COOP Observer Names are no longer included in the Monthly and Annual Climatological Data Publications. This information is not published to ensure the privacy of personal information pursuant to Section 208 of the E-Government Act of 2002 (44 USC 3601).

As of the 2011 Data-Year, Station and Climate Division Maps are no longer being included in the CD Publications. NCDC's Product Development Branch provides updated Station Maps for various data networks via the Historical Observing Metadata Repository: <http://www.ncdc.noaa.gov/homr>.

The GHCN-Daily Quality Control Flags shown below are displayed as superscripts with the data. For more Information on Global Historical Climatology Network - Daily and flags, see: <http://www.ncdc.noaa.gov/oa/climate/ghcn-daily/> and Comprehensive Automated Quality Assurance of Daily Surface Observations. Durre, Imke, Matthew J. Menne, Byron E. Gleason, Tamara G. Houston, Russell S. Vose, 2010: J. Appl. Meteor. Climatol., 49, 1615-1633. doi: 10.1175/2010JAMC2375.1

Blank = Passed All checks

D = failed duplicate check

G = failed gap check

I = failed internal consistency check

K = failed streak/frequent-value check

L = failed check on length of multiday period

M = failed megaconsistency check

N = failed naught check

O = failed climatological outlier check

R = failed lagged range check

S = failed spatial consistency check

T = failed temporal consistency check

W = temperature too warm for snow

X = failed bounds check

Z = flagged as a result of an official Datzilla investigation

Beginning with the January 2013 CD Publication, monthly mean temperature calculations have changed to the National Data Stewardship Team standard. Monthly maximum and minimum temperatures are not rounded until after the monthly mean temperature is calculated. This is the most accurate outcome, but may be slightly different from the mean derived from rounded monthly maximum and minimum.

Processing Updates and Errata: The 2011 CD Publications were reproduced in May 2013. This update included the addition of late reports and corrections based on additional investigations of reported data issues through NCDC's Datzilla system. In addition, divisional averages for precipitation were recalculated using the method described in DIVISIONS above. Previous editions of the 2011 Publications included all precipitation stations regardless of missing data in the calculation of divisional averages. HDD/CDD values were recalculated to match the legacy method of calculation (truncation of monthly HDD/CDD values instead of rounding).

NOAA\National Climatic Data Center
Attn: User Engagement & Services Branch
151 Patton Avenue
Asheville, NC 28801-5001

Customer Services Number: (828) 271-4800, option 2
TDD : (828) 271-4010
Fax number: (828) 271-4876

NCDC now offers free online access to the *Climatological Data* publication.
Go to : www.ncdc.noaa.gov and choose Most Popular.