



CLIMATOLOGICAL DATA

VIRGINIA

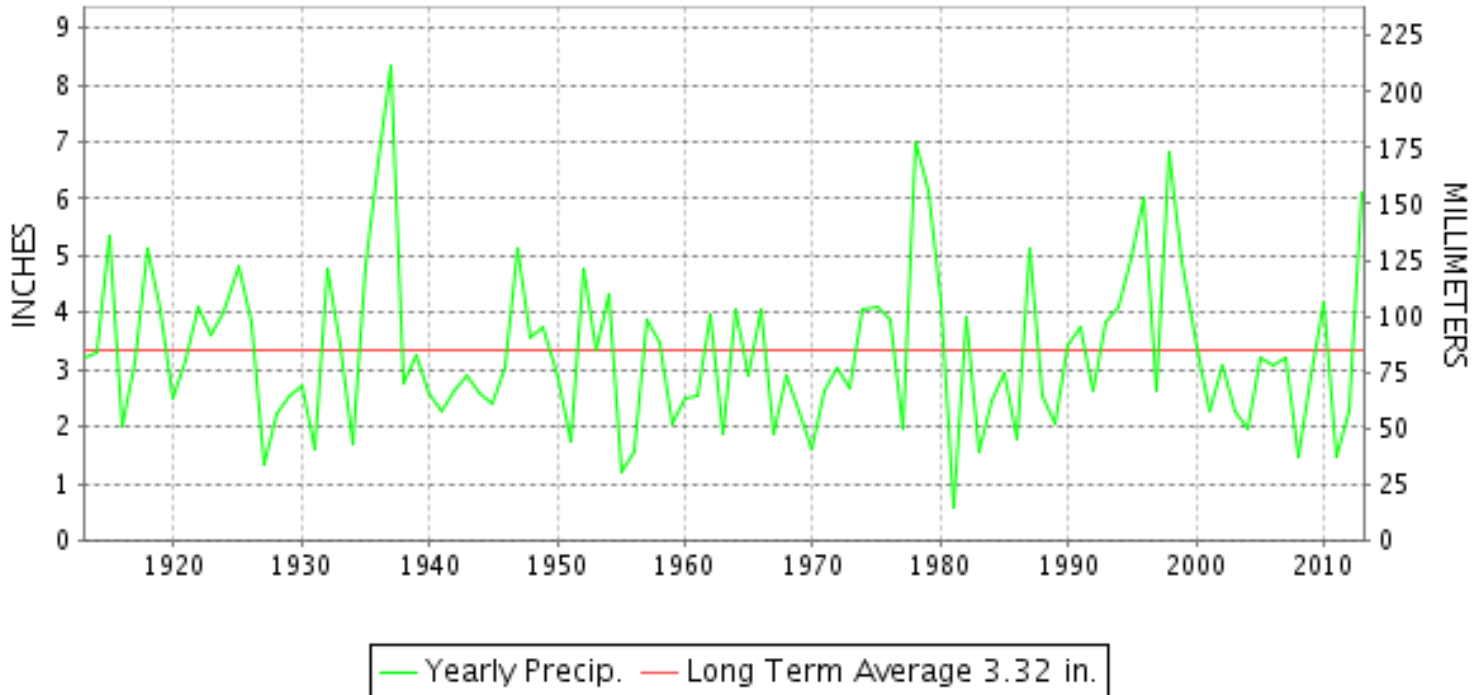
JANUARY 2013

VOLUME 123 NUMBER 01

ISSN 0364-5630

GHCND Ver: 3.03-upd-2013062705

JANUARY PRECIPITATION BY YEAR



TEMPERATURE AND PRECIPITATION EXTREMES

VIRGINIA

HIGHEST TEMPERATURE	76	JANUARY 30+	4 STATIONS
LOWEST TEMPERATURE	-4	JANUARY 25	MILLGAP
GREATEST TOTAL PRECIPITATION	11.81		MEADOWS OF DAN 5 SW
LEAST TOTAL PRECIPITATION	2.53		WASHINGTON REAGAN AP
GREATEST 1 DAY PRECIPITATION	4.45	JANUARY 31	WILLIS
GREATEST TOTAL SNOWFALL	14.0		BURKES GARDEN
GREATEST DEPTH OF SNOW OR ICE	12		BURKES GARDEN

"I certify that this is an official publication of the National Oceanic and Atmospheric Administration (NOAA) It is compiled using information from weather observing sites supervised by NOAA/National Weather Service and received at the National Climatic Data Center(NCDC), Asheville, North Carolina 28801."

Director
National Climatic Data Center

noaa

National
Oceanic and
Atmospheric Administration

National
Environmental Satellite, Data
and Information Service

National
Climatic Data Center
Asheville, North Carolina

MONTHLY STATION AND DIVISION SUMMARY

STATION	TEMPERATURE (°F)											PRECIPITATION (IN)												
	AVERAGE MAXIMUM	AVERAGE MINIMUM	AVERAGE	DEPARTURE FROM NORMAL	HIGHEST	DATE	LOWEST	DATE	HEATING DEG. DAYS	COOLING DEG. DAYS	NO. OF DAYS				TOTAL	DEPARTURE FROM NORMAL	GREATEST 24 HOURS	DATE	ICE PELLETS, SNOW			NO. OF DAYS		
											MAX		MIN						TOTAL	MAX DEPTH ON GROUND	DATE	.10 OR MORE	.50 OR MORE	1.00 OR MORE
											>=90	<=32	<=32	<=0										
PALMYRA 3S	48.1	25.8	36.9	3.0	75	30	7	24	862	0	0	4	22	0	4.48	1.60	1.06	16	M 1.2	0		6	5	1
PETERSBURG	50.4	30.5	40.4	2.6	76	31+	14	26	755	0	0	2	18	0	6.74	3.48	1.87	15	M 0.0	1	18	9	5	2
RICHMOND INTL AP	50.4	32.2	41.3	3.4	74	29	14	23	724	1	0	2	15	0	5.33	2.29	1.56	17	3.2	2	19	9	4	1
SANDSTON	47.6	29.2	38.4	1.9	72	31	13	24+	819	0	0	4	21	0	A 5.89	2.52	1.51	18	M 3.2	M 2	28	6	3	2
WINTERPOCK 4 W															6.82		2.03	15	M 4.0			8	5	3
--DIVISIONAL DATA-----> WESTERN PIEDMONT 03			39.7	3.8B											5.69	1.85B								
ALTAVISTA															7.75		2.37	16	2.5	2	26	8	4	3
APPOMATTOX	47.5	29.0	38.3	3.2	71	30	14	25+	820	0	0	3	19	0	6.00	2.86	1.56	16	5.5	5	21	8	4	3
BEDFORD 4 NW															7.73		3.07	31	1.1	1	26	6	4	4
BROOKNEAL	50.1	28.1	39.1	7.8	74	14	12	24+	796	0	0	3	19	0	8.49	4.82	2.35	16	1.6	1	26	9	4	4
CHARLOTTE COURT HOUSE	50.2	29.5	39.8	3.8	73	14	14	25	772	0	0	3	20	0	7.17	3.50	2.25	16	4.0	3	18	9	5	3
CHARLOTTESVILLE 2W	47.0	30.2	38.6	2.7	73	30	14	24+	810	0	0	4	19	0	5.61	2.51	2.26	31	3.6	2	28	6	4	2
CHATHAM	48.9	26.6	37.8	3.2	72	14+	13	25+	837	0	0	2	20	0	9.14	5.36	2.30	15	3.1	1	26	10	5	4
CONCORD 4 SSW															7.22		1.81	18	3.8	3	27	8	4	4
DANVILLE REGIONAL AP	52.5	31.7	42.1	4.4	76	13	16	25	704	2	0	1	17	0	7.16	3.74	2.55	17	1.1	1	25	9	5	2
FREE UNION	47.3	25.5	36.4		75	30	6	24	880	0	0	4	22	0	A 5.31		2.68	31	M 2.3	M 2	28	1	1	1
HOLCOMB ROCK															7.36		3.26	31	1.5	1	26	7	4	3
HUDDLESTON 4 SW															7.24		2.60	16	4.8	4	26	8	4	3
LYNCHBURG #2	M	M	M		60	10	21	08+	834E	0	0	0	9	0	M				M 0.0	0				
LYNCHBURG INTL AP	49.5	29.3	39.4	4.3	74	29	12	23	786	0	0	3	21	0	6.06	2.92	1.81	17	2.8	2	19	8	4	2
MARTINSVILLE FLTR PLT	51.0	27.9	39.5	4.0	73	13	15	26+	786	0	0	1	18	0	9.80	6.31	2.64	15	2.5	2	27	9	5	3
MEADOWS OF DAN 5 SW	49.4	28.9	39.1		71	30+	16	24+	794	0	0	3	21	0	11.81		3.16	31	M 0.5	M 1	27	8	5	4
MONTEBELLO FISH CULTURAL STN	43.9	24.4	34.1		69	30	5	25+	948	0	0	6	26	0	6.47		3.72	31	M 7.7	6	18	5	3	2
MONTECELLO	46.0	29.2	37.6	4.1	71	30	13	26	843	0	0	4	19	0	5.50	3.14	2.34	31	M 3.0			7	4	2
PEDLAR DAM															7.27		3.67	31	1.4	T	27	6	4	3
ROCKY MT	49.3	29.4	39.3	3.7	71	30+	15	25+	789	0	0	3	19	0	9.05	5.68	2.40	16	3.0	2	27	9	4	4
SOUTH BOSTON	51.4	30.2	40.8	4.4	73	30+	16	25	742	0	0	1	19	0	7.87	4.26	2.18	15	1.7	T	26	8	5	3
STUART	50.7	30.2	40.4	3.6	73	30	16	23	755	0	0	2	18	0	10.52	6.65	2.90	15	T	T	18	9	5	4
TYE RIVER 1 SE	50.8	28.3	39.5	3.4	75	30	11	23	783	0	0	2	20	0	6.41	3.20	2.50	31	0.0	M 2	24	6	4	3
WOOLWINE															9.67		3.02	16	1.0	1	27	9	4	3
--DIVISIONAL DATA-----> NORTHERN 04			38.9	3.1B											7.68	3.84B								
BOSTON 4 SE	45.5	26.3	35.9	3.2	72	30	5	24	896	0	0	4	22	0	5.01	2.31	2.53	31	1.4	1	26	5	3	2
EDINBURG	45.5	25.3	35.4	4.3	72	30	8	24+	912	0	0	5	25	0	4.14	2.06	2.71	31	M 1.2	M 2	26	4	2	1
FRONT ROYAL	45.9	27.9	36.9	4.0	71	31+	11	24	860	0	0	5	24	0	3.84	1.40	2.70	31	M 1.2	M 1	25	5	1	1
LINCOLN	43.4	26.0	34.7	3.4	70	31+	11	24	932	0	0	5	24	0	MA 5.73	5.73	4.00	31	M 1.0	1	24	2	1	1
LURAY 5 E	45.9	27.4	36.6	3.7	73	30	7	25	872	0	0	4	21	0	3.15	0.47	1.65	31	1.2	2	01	4	2	1

VIRGINIA
201301

MONTHLY STATION AND DIVISION SUMMARY

STATION	TEMPERATURE (°F)											PRECIPITATION (IN)													
	AVERAGE MAXIMUM	AVERAGE MINIMUM	AVERAGE	DEPARTURE FROM NORMAL	HIGHEST	DATE	LOWEST	DATE	HEATING DEG. DAYS	COOLING DEG. DAYS	NO. OF DAYS				TOTAL	DEPARTURE FROM NORMAL	GREATEST 24 HOURS	DATE	ICE PELLETS, SNOW			NO. OF DAYS			
											MAX		MIN						TOTAL	MAX DEPTH ON GROUND	DATE	.10 OR MORE	.50 OR MORE	1.00 OR MORE	
											>=90	<=32	<=32	<=0											
MADISON	48.8	32.0	40.4	7.1	73	30	13	25	757	0	0	2	17	0	FA 3.35	0.63	3.00	31	2.0	M 2	28	4	1	1	
MANASSAS	46.6M	28.0M	37.3M	3.8	74	31	10	24+	853E	0	0	4	18	0	FMA 2.80	2.80	1.60	31	0.0			3	2	2	
MT WEATHER	41.9	26.1	34.0	3.3	66	30	8	24+	953	0	0	6	22	0	5.68	2.80	3.95	31	M 2.4	2	27	5	2	1	
PIEDMONT RSCH STN	46.1	27.7	36.9	2.6	73	30	8	23	864	0	0	4	21	0	4.19	1.43	2.00	31	1.9	2	28	6	2	2	
SOMERSET	46.7	27.3	37.0	3.5	74	30	6	25	863	0	0	5	22	0	5.16	2.27	2.72	31	M 1.4	M 1	28	6	3	2	
SPERRYVILLE	45.3	26.4	35.8	2.7	71	30	9	24	895	0	0	4	24	0	4.51	1.44	2.83	31	M 4.1	M 3	28	6	2	1	
STERLING RCS	43.8	25.7	34.8	2.8	72	31	9	25	933	0	0	5	23	0	4.38	1.53	2.83	31	1.8	1	27	5	2	1	
VIENNA	44.3M	25.9M	35.1M	2.5	70	30	9	23	920E	0	0	4	26	0	M 2.68	-0.45	1.32	30	M 1.0	1	25	5	1	1	
WARRENTON 3 SE	M	M	M								0	0	0	0	M				0.0						
WASHGTON DULLES INTL AP	46.0	28.7	37.4	4.2	72	30	9	23	848	0	0	4	21	0	3.70	1.02	2.00	30	1.8	1	28	6	2	1	
WASHINGTON REAGAN AP	47.5	33.1	40.3	4.3	72	30	15	23	759	0	0	4	14	0	2.53	-0.28	0.86	30	0.9	T	28	5	2	0	
WINCHESTER	M	M	M								0	0	0	0	M				0.0						
WINCHESTER 7 SE	45.1	25.2	35.1	4.2	71	31	8	25	919	0	0	5	24	0	4.15	1.96	2.23	31	2.5	2	24	7	2	1	
WOODSTOCK 2 NE	45.7	26.0	35.9	5.4	73	30	10	24	895	0	0	4	25	0	4.04	1.37	2.47	31	M 1.3	M 1	26	3	3	1	
--DIVISIONAL DATA----->			36.4	4.6B											4.19	1.02B									
CENTRAL MOUNTAIN 05																									
BUCHANAN															6.94	4.04	2.95	31	3.9	3	20	6	4	3	
BUENA VISTA															6.58		3.00	31	2.3	2	26	6	4	3	
COVINGTON FLTR PLT	47.0	26.2	36.6	3.1	75	30	13	25+	872	0	0	3	24	0	4.73	2.23	2.10	31	3.0	2	27	6	2	2	
CRAIGSVILLE 2 S															M				M 0.4	M 3	28				
DALE ENTERPRISE	46.1	25.8	36.0	5.6	72	30	8	26	893	0	0	4	24	0	FA 2.72	0.43	2.33	31	0.2	1	03	3	1	1	
GATHRIGHT DAM	42.8	24.9	33.9	2.5	70	30	10	25+	960	0	0	5	23	0	4.71	1.93	2.22	31	2.5	2	31	7	2	2	
GLASGOW 1 SE															7.69		3.55	31	3.8	3	20	6	4	3	
HOT SPRINGS	41.6	24.3	33.0	3.0	68	30	7	25	984	0	0	5	24	0	4.74	1.28	2.23	31	3.5	2	28	9	2	2	
LEXINGTON															6.34	3.55	2.56	31	3.4	3	18	6	4	3	
MILLGAP	42.1	19.0	30.6	2.9	69	30	-4	25	1059	0	0	6	24	1	4.21	0.96	2.32	31	4.6	4	31	4	3	1	
MTN GROVE															4.05		2.30	31	0.5	T	26	8	2	1	
MUSTOE 1 SW	41.5	21.9	31.7	3.6	67	29	-1	25+	1025	0	0	5	24	2	4.67	1.29	2.31	30	4.1	3	31	7	3	1	
NEW CASTLE															5.65		1.81	31	4.5	4	27	6	4	3	
ROANOKE 8 N	49.0	29.1	39.0	3.7	73	30+	17	26+	799	0	0	3	22	0	6.84	3.82	2.36	31	3.8	3	27	7	4	4	
ROANOKE INTL AP	50.3	33.0	41.7	5.1	74	29	17	23	716	0	0	2	15	0	7.21	4.29	2.65	30	5.0	3	18	7	4	3	
STAUNTON WATER TRMTMT PLT	46.2	28.0	37.1	4.5	73	30	8	25	860	0	0	4	22	0	3.52	0.85	1.85	31	M 0.6	1	24	4	2	2	
WAYNESBORO WTP	47.3	25.5	36.4	3.6	73	30	6	24	880	0	0	4	22	0	4.99	2.20	2.53	31	T	T	24	6	3	2	
--DIVISIONAL DATA----->			35.6	3.3B											5.52	2.36B									
SOUTHWESTERN MOUNTAIN 06																									
ABINGDON 3S	48.3M	30.5M	39.4M	6.3	69	13+	16	23	786E	0	0	1	17	0	M 8.07	4.40	2.00	30	M 2.0	4	18	8	5	4	
BIG STONE GAP	46.3	28.5	37.4	3.4	68	13	17	23	849	0	0	2	21	0	8.96	4.77	2.40	31	0.0			12	5	3	

VIRGINIA
201301

MONTHLY STATION AND DIVISION SUMMARY

STATION	TEMPERATURE (°F)											PRECIPITATION (IN)												
	AVERAGE MAXIMUM	AVERAGE MINIMUM	AVERAGE	DEPARTURE FROM NORMAL	HIGHEST	DATE	LOWEST	DATE	HEATING DEG. DAYS	COOLING DEG. DAYS	NO. OF DAYS				TOTAL	DEPARTURE FROM NORMAL	GREATEST 24 HOURS	DATE	ICE PELLETS, SNOW			NO. OF DAYS		
											MAX		MIN						TOTAL	MAX DEPTH ON GROUND	DATE	.10 OR MORE	.50 OR MORE	1.00 OR MORE
											>=90	<=32	<=32	<=0										
BLACKSBURG NWSO	44.4	24.6	34.5	3.0	71	13	11	28+	940	0	0	3	23	0	7.74	4.66	2.12	31	9.2	7	31	7	4	4
BURKES GARDEN	42.5	23.9	33.2	4.3	66	13	6	25+	976	0	0	10	24	0	8.16	4.21	2.10	31	14.0	12	31	9	5	4
CHRISTIANSBURG	45.1	27.1	36.1	3.3	69	14+	12	25+	890	0	0	3	22	0	9.26	6.50	2.77	31	11.0	9	31	6	4	4
CLINTWOOD 1 W	44.2	25.0	34.6	3.5	69	13	10	24+	935	0	0	4	22	0	6.81	3.20	1.96	31	7.2	6	31	11	5	3
COPPER HILL	42.7	26.1	34.4		67	13	8	25+	939	0	0	7	23	0	8.90		3.00	31	11.5	10	18	7	4	4
GALAX RADIO WBRF	45.7	25.7	35.7	4.0	66	30	11	25	902	0	0	3	23	0	10.83	7.47	3.06	31	9.7	9	31	9	4	4
GALAX WTP	46.3	25.4	35.8	4.8	67	30	11	24	896	0	0	4	24	0	9.85	9.85	3.07	31	10.0	10	28	9	4	4
GRUNDY	44.7	27.1	35.9	3.0	71	13	12	24+	895	0	0	5	23	0	5.92	2.73	1.96	31	4.3	3	31	10	3	2
JOHN FLANNAGAN LAKE	M	M	M		72	14	12	24+	928E	0	0	3	14	0	M				0.0	3	18			
LAFAYETTE 1 NE															8.31		2.75	31	6.4	4	28	6	4	4
LEBANON	46.8	26.5	36.6	3.6	71	14+	11	24+	873	0	0	2	22	0	8.19	5.15	2.41	31	M 8.5	9	18	9	5	4
NORA 4 SSE	41.2	26.5	33.9	3.8	65	13	8	23+	959	0	0	7	23	0	7.73	4.12	1.86	31	12.0	11	31	10	5	3
NORTH FORK LAKE	M	M	M		69	14	11	24+	913E	0	0	3	15	0	MA 6.64		2.20	31	M T	M 4	31	9	4	2
PULASKI 2 E	47.3	27.7	37.5	4.5	71	30+	12	25	844	0	0	2	20	0	6.95	4.10	1.69	16	9.1	9	28	6	4	4
RADFORD 3 N	45.4	26.2	35.8	5.5	71	13	11	19	897	0	0	3	23	0	6.87	3.94	1.99	31	9.0	7	31	7	4	4
RICHLANDS	45.9	25.4	35.7	3.7	71	13	10	24+	902	0	0	5	23	0	7.17	4.12	2.06	31	8.3	8	27	9	4	3
SALTVILLE 1N	46.6	26.9	36.8	3.9	71	13	15	23	866	0	0	3	21	0	8.44	4.84	2.25	31	3.8	3	27	10	4	4
STAFFORDSVILLE 3 ENE	45.4	25.6	35.5	3.9	70	14	11	25	907	0	0	2	23	0	6.10	3.20	1.95	31	10.9	8	28	7	4	3
TROUT DALE 3 SSE	46.6	24.9	35.7		70	13	8	25	902	0	0	2	23	0	8.85		2.11	16	13.0	11	31	8	4	4
WILLIS															11.52		4.45	31	9.6	9	26	7	3	3
WISE 3E	44.5	29.1	36.8	3.7	68	12	9	22	869	0	0	5	21	0	8.99	5.11	2.11	30	M 12.6	M 11	31	10	5	4
WYTHEVILLE 1 S	46.4	25.0	35.7	5.0	70	14+	10	19	901	0	0	2	23	0	7.49	4.59	1.70	18	11.0	9	28	7	4	4
--DIVISIONAL DATA----->			35.9	3.9B											8.24	4.70B								

VIRGINIA
201301

DAILY PRECIPITATION (INCHES)

STATION	TOTAL	DAY OF MONTH																																
		01	02	03	04	05	06	07	08	09	10	11	12	13	14	15	16	17	18	19	20	21	22	23	24	25	26	27	28	29	30	31		
VIRGINIA																																		
TIDEWATER 01																																		
DISPUTANTA	6.98		0.55			0.05						0.11	0.03	0.02	1.64	2.66	0.96	0.32													0.02			0.62
EASTVILLE	4.40	0.06	0.36	0.01		0.06						0.07			1.18	0.55	0.55	0.90						0.01	0.02	0.20		0.02	0.11			0.30		
EMPORIA 1 WNW	5.76		0.53			0.04	T					0.07	0.07	T	1.68	0.13	0.61	1.04								1.00		0.33	0.03	T		0.23		
FREDERICKSBURG SEWAGE	3.20					0.01						0.08		0.03	0.38	1.08	0.31	0.41						T	T	T		0.02	0.08			0.80		
HAMPTON UNIV	M	-	-	-		0.05				-	-	-	-	-	-	-	-	-	-	-	-	-	-	-	-	-	-	-	-	-	-	-	-	
HOLLAND 1 E	3.67		0.50	0.03		0.05						0.04		0.03	0.36	0.20	0.60	0.99									0.40						0.47	
HOPEWELL	M 6.96	0.07	0.34				-				0.09		0.04	1.01	1.56	0.59	1.01	0.94								0.15	0.40		0.20			0.56		
NORFOLK INTL AP	2.76	0.16	0.22			0.02					0.03			0.19	0.36	0.10	1.19	0.08							T	0.05			0.02			0.34		
NORFOLK SOUTH	3.09	0.20	0.25			0.02					0.02	T	T	0.19	0.32	0.10	1.32	0.07						T	0.15	T		0.03			0.42			
NORTH	M	0.02	0.36	-	-	0.06					-	-	-	-	-	-	-	-	-	-	-	-	-	-	-	-	-	-	-	-	-	-		
PAINTER 2W	4.46	0.15	0.23			0.07					0.06	0.01		0.22	1.22	0.48	0.70	0.67						0.02		0.10		0.09				0.44		
STONY CREEK 2 N	8.32		0.52							0.07				0.15	1.55	0.90		1.94									2.50				0.01	0.68		
SUFFOLK LAKE KILBY	2.76	0.25	0.25			0.05					0.02	T		0.24	0.27	0.07	0.71	0.06						T	0.45			0.03				0.36		
WAKEFIELD 1NW	5.79	0.24	0.28			0.04					0.04			1.85	0.81	0.34	1.53	0.02						T	0.17			0.06				0.41		
WALKERTON 2 NW	M 4.59	0.24				T	0.04	T	0.07	T	0.06			0.38	1.02	0.90	0.84	0.67						0.02	0.02			0.33				-		
WALLACETON LK DRUMMOND	3.18		0.62			0.06						0.05			0.19	0.35	0.95										0.41			0.05		0.50		
WALLOPS ISLAND NASA TEST FACIL	3.61	0.06	0.05			0.02					0.07			0.51	0.60	0.37	0.96	0.16						0.13	0.13			0.08				0.47		
WARSAW 2 NW	3.55										0.01			0.19	0.81	0.76	0.78	0.29							0.11	0.08		0.14				0.38		
WEST POINT 2 NW	5.55	0.07	0.23			0.04					0.04	0.02	0.02	0.90	1.06	0.69	0.95	0.57							0.05	0.13	0.02	0.18				0.58		
WILLIAMSBURG 2 N	6.44	0.23	0.24			0.06					0.09	0.02	0.02	1.62	0.85	0.71	1.45	0.02							0.04	0.13		0.15				0.81		
EASTERN PIEDMONT 02																																		
ALBERTA 5N	7.04	0.01	0.51			0.03					T	0.18		T	1.84	1.25	0.86	1.45									T	0.15		0.06	0.01		0.69	
AMELIA COURTHOUSE 1	MA 7.24	-	0.43			-	0.04				0.01	0.18	*	0.03 _a	1.87	1.18	0.50	1.78		-							0.08		0.22		0.02	0.90		
ASHLAND	4.91	0.02	0.16			0.03					0.10		T	0.41	0.84	0.92	0.91	0.73							0.05	0.06			0.20		T	0.48		
BREMO BLUFF	M 4.89	0.11	0.08			0.02				-	-	-	-	0.41	1.32	0.48	1.49											0.24		0.44		0.30		
BUCKINGHAM	5.62		0.27			0.03						0.07	0.01	0.01	0.81	1.22	0.32	1.44									0.12		0.03	0.19		1.10		
CAMP PICKETT	M 6.69	0.10	0.40	-		T						0.20			2.30	2.15	0.82	-									0.01		0.01	-		0.70		
CHASE CITY	M	-	-	-	-	-	-	-	-	-	-	-	-	-	-	-	-	-	-	-	-	-	-	-	-	-	-	-	-	-	-	-		
CLARKSVILLE	6.56		0.60			0.05					0.05	0.16		1.65	0.30	0.30	0.70	1.50										0.50				0.75		
CORBIN	4.24					0.03						0.12		0.08	0.36	1.14	0.44	0.58							0.10		0.05		0.24		1.10			
CROZIER	M 5.09	0.01	0.18	-	-	-						0.15			0.90	0.90	0.60	1.19							0.01		0.01					1.14		
FARMVILLE 2 N	M 7.23	T	0.47			0.01						0.21	0.04		1.42	1.79	0.41	1.80	-							T	0.08		T	0.22		0.78		
GREENBAY 3 NE	6.57	0.05	0.45			0.03					T	0.04			1.78	1.23	0.57	1.45										0.02				0.78		
JOHN H KERR DAM	M 4.11		0.38			0.01					0.03	0.12			1.21	-	0.68	1.04	0.40									0.22		0.02		-		
LOUISA	4.04					0.02					0.06		0.01	0.13	0.80	0.72	1.04	0.07										0.21		0.02	0.88			
PALMYRA 3S	4.48		0.05									0.06	0.01		0.82	1.06	0.58	0.95							0.01	0.01	0.01	0.20	0.02			0.70		
PETERSBURG	6.74	0.01	0.29			0.04						0.09	0.01	0.01	1.87	0.91	0.78	1.47									0.13		0.14	0.11		0.88		
RICHMOND INTL AP	5.33	0.15	0.11			0.03					0.03			0.95	0.93	0.48	1.56	T						T	T	0.12		0.21		0.02	0.74			
SANDSTON	A 5.89	0.01	0.31			0.03						0.04		0.02	1.31	*	1.50 _a	1.51								0.01		0.11		0.03	0.21		0.80	
WINTERPOCK 4 W	6.82	0.03	0.36	0.02		0.03						0.08	0.02		2.03	1.13	0.64	1.45							T		0.11		0.16	0.06		0.70		

VIRGINIA
201301

DAILY PRECIPITATION (INCHES)

STATION	TOTAL	DAY OF MONTH																														
		01	02	03	04	05	06	07	08	09	10	11	12	13	14	15	16	17	18	19	20	21	22	23	24	25	26	27	28	29	30	31
WESTERN PIEDMONT 03																																
ALTAVISTA	7.75	0.02	0.28			0.01						0.06		0.02	1.56	2.37	0.44	1.77								0.12		0.25		0.01	0.84	
APPOMATTOX	6.00	0.16	0.30			0.05						0.05		0.09	1.05	1.56	0.46	0.84								0.09		0.22	0.02		1.11	
BEDFORD 4 NW	7.73	0.03	0.02			0.03						0.03		0.05	1.06	1.58	0.48	1.20								0.10		0.08			3.07	
BROOKNEAL	8.49	0.04	0.35								0.03	0.11		0.04	1.90	2.35	0.42	1.79								0.14		0.21	0.02		1.09	
CHARLOTTE COURT HOUSE	7.17	0.03	T			0.02					T	0.21	0.02	0.06	1.83	2.25	0.63	0.54								0.20		0.10	0.25		1.03	
CHARLOTTESVILLE 2W	5.61					0.03						0.06	0.02	0.05	0.69	1.25	0.21	0.76							0.05		0.01	0.21	0.01	T	2.26	
CHATHAM	9.14	0.04	0.38			0.03					0.05	0.12		T	2.30	2.18	0.75	1.63								0.25		0.21	0.14		1.06	
CONCORD 4 SSW	7.22	0.11	0.29	0.01		0.04						0.06	0.02	0.09	1.21	1.64	0.45	1.81								0.08		0.26	0.03		1.12	
DANVILLE REGIONAL AP	7.16	0.12	0.06		T	0.04					0.17			1.46	0.97	0.63	2.55									0.13		0.01	T	0.79	0.23	
FREE UNION	A 5.31					0.07						0.06	T		*	*	*	2.34 _a							0.07		0.01	0.06	0.02		2.68	
HOLCOMB ROCK	7.36		0.05			0.02						0.04		T	0.83	1.43	0.31	1.08								0.13		0.02	0.19	T	3.26	
HUDDLESTON 4 SW	7.24	0.01	0.25			0.01						0.05		0.04	1.05	2.60	0.35	1.85								0.13		0.05	0.15		0.70	
LYNCHBURG #2	M	0.02	0.17			0.04						-	-	-	-	-	-	-	-	-	-	-	-	-	-	-	-	-	-	-	-	
LYNCHBURG INTL AP	6.06	0.23	0.08		T	0.03					0.02	T		0.69	1.59	0.48	1.81								0.08			0.21		0.74	0.10	
MARTINSVILLE FLTR PLT	9.80		0.33	0.10		0.05					0.05	0.10		0.04	2.64	2.32	0.75	2.37								0.13		0.05		0.02	0.85	
MEADOWS OF DAN 5 SW	11.81		0.56			0.01					0.04	0.08		0.32	2.52	2.32	0.46	2.02								0.22		0.07		0.03	3.16	
MONTEBELLO FISH CULTURAL STN	6.47	0.03					0.08							0.09	0.09	1.22	0.30	0.74							0.01		0.02	0.15	0.02		3.72	
MONTICELLO	5.50		T									0.01		0.03	0.60	1.27	0.12	0.79							0.09		0.02	0.10	0.13		2.34	
PEDLAR DAM	7.27	T	T	T		0.02						0.02		T	0.86	1.17	0.24	1.06								0.06		0.13	0.04	T	3.67	
ROCKY MT	9.05		0.18	0.02	T	0.04					0.05	0.04	0.01	0.12	1.60	2.40	0.43	2.00	0.04							0.14		0.14	0.04	T	1.80	
SOUTH BOSTON	7.87	0.02	0.41			0.04					0.02	0.29	0.01		2.18	0.83	0.68	2.05								0.18		0.05	0.02		1.09	
STUART	10.52		0.25	0.02		0.02	0.02				0.15	0.08		0.10	2.90	2.17	0.58	2.13										0.02	0.17		1.91	
TYE RIVER 1 SE	6.41		T			T						T	T	0.05	1.12	1.21	0.35	0.95								0.02		0.21			2.50	
WOOLWINE	9.67	0.02	0.25			0.05					0.04	0.11	0.01	0.12	1.97	3.02	0.32	0.95								0.20		0.02	0.01	0.01	2.57	
NORTHERN 04																																
BOSTON 4 SE	5.01														0.34	0.76	1.13									0.03		0.03		0.19		2.53
EDINBURG	4.14											0.01			0.49	0.73	0.06									0.03		0.01	0.10		2.71	
FRONT ROYAL	3.84											0.05			0.06	0.47	0.17									0.10	0.02	0.04	0.02	0.21		2.70
LINCOLN	MA 5.73									*	*	*	*	*	*	1.44 _a										-			0.29		4.00	
LURAY 5 E	3.15													T	0.37	0.85										0.06		0.02	0.19	0.01	1.65	
MADISON	FA 3.35	0.00 ^L	2.25 ^L _a											0.10												0.15		0.10	T		3.00	
MANASSAS	FMA 2.80											-	0.00 ^L	0.00 ^L	1.20 ^L _a	-										1.00		0.20		1.60		
MT WEATHER	5.68											0.05	T	0.01	0.37	0.90	0.07									0.10		0.12	0.07	0.04	3.95	
PIEDMONT RSCH STN	4.19					T						0.03		0.02	0.47	1.10	0.16	0.17								0.03		0.12	0.09		2.00	
SOMERSET	5.16					0.02						0.03	0.03	0.03	0.51	1.12	0.18	0.20	0.02							0.06	T	0.21	T	0.03	2.72	
SPERRYVILLE	4.51											0.04			0.28	0.88	0.10	0.02								0.12	T	0.03	T	0.04	0.17	2.83
STERLING RCS	4.38		T			T				0.01		0.03	0.01	0.02	0.29	0.80	0.10									0.06	T	0.02	T	0.07	0.14	2.83
VIENNA	M 2.68											0.08		-	0.23	0.47	0.08									0.05		0.15			0.30	
WARRENTON 3 SE	M	-	-	-	-	-	-	-	-	-	-	-	-	-	-	-	-	-	-	-	-	-	-	-	-	-	-	-	-	-	-	-
WASHGTN DULLES INTL AP	3.70		T			T				0.02		0.02		0.01	0.12	0.63	0.29	T								T	0.05	0.03	T	0.21	2.00	0.32
WASHINGTON REAGAN AP	2.53				0.01	T				0.01		0.01		T	0.09	0.79	0.29	0.01								T	0.03	0.02	T		0.86	0.28

VIRGINIA
201301

DAILY PRECIPITATION (INCHES)

STATION	TOTAL	DAY OF MONTH																															
		01	02	03	04	05	06	07	08	09	10	11	12	13	14	15	16	17	18	19	20	21	22	23	24	25	26	27	28	29	30	31	
WINCHESTER	M	-	-	-	-	-	-	-	-	-	-	-	-	-	-	-	-	-	-	-	-	-	-	-	-	-	-	-	-	-	-	-	-
WINCHESTER 7 SE	4.15											0.10																					2.23
WOODSTOCK 2 NE	4.04											T													0.07		0.08		0.10	0.10			2.47
CENTRAL MOUNTAIN 05																																	
BUCHANAN	6.94	T	T			T					T	0.07	T	0.07	0.96	1.20	0.18	1.29									0.04		0.18	T	T	2.95	
BUENA VISTA	6.58					0.02						0.01		T	0.70	1.23	0.30	1.10									0.02		0.19	0.01	T	3.00	
COVINGTON FLTR PLT	4.73	T				0.01						0.04		0.08	0.48	1.17	0.20	0.42									0.05		0.18			2.10	
CRAIGSVILLE 2 S	M	-	-	-	-	0.02	-	-	-	-	-	0.04	-	0.07	0.46	1.07	0.14	0.12	-	-	-	-	-	-	0.02	-	0.03	-	0.16	T	1.43	2.52	
DALE ENTERPRISE	FA 2.72										0.01	0.02			0.35 ^L	0.78 ^L	0.04 ^L							0.20		-	0.03	-	0.10	0.05	0.01	2.33	
GATHRIGHT DAM	4.71	0.03				T						0.08		0.14	0.45	1.16	0.12	0.25							T		0.07		0.19	T		2.22	
GLASGOW 1 SE	7.69		T			0.01						0.03		T	0.93	1.23	0.29	1.37									0.06		0.20	0.02	T	3.55	
HOT SPRINGS	4.74	T										0.12		0.11	0.47	1.05	0.17	0.17							0.02		0.18		0.21	0.01		2.23	
LEXINGTON	6.34					0.02						0.04		0.02	0.69	1.26	0.28	1.21									0.05		0.21			2.56	
MILLGAP	4.21	T									T	0.04		0.02	0.61	0.79	0.05	T							0.09		0.17	0.04				2.32	
MTN GROVE	4.05	T	T									0.12			0.38	0.50	0.15	0.15							0.12	T	0.05		0.28	T		2.30	
MUSTOE 1 SW	4.67										0.09				0.53	0.83	0.25	0.02						0.08	0.03	0.13			0.22	0.08	2.31	0.10	
NEW CASTLE	5.65					0.02								0.09	0.01	0.91	1.12	0.16	1.26								0.09		0.17	0.01		1.81	
ROANOKE 8 N	6.84		0.05												0.02	1.06	1.43	0.19	1.41								0.10		0.20	0.02		2.36	
ROANOKE INTL AP	7.21	0.02	T			T	T				0.05			0.60	1.88	0.42	1.38									0.11		0.10		2.65	T		
STAUNTON WATER TRMTMT PLT	3.52					0.01									0.39	1.10	T	0.03						0.04		T		0.10				1.85	
WAYNESBORO WTP	4.99	0.02				0.02						0.02			0.50	1.07	0.13	0.43						0.03		0.01		0.15	0.07	0.01		2.53	
SOUTHWESTERN																																	
MOUNTAIN 06																																	
ABINGDON 3S	M 8.07	0.03	0.16			0.05				0.20		0.10	0.06		1.35	1.85	0.80	1.25								0.08		0.03	0.03	2.00	0.08		
BIG STONE GAP	8.96	0.25	0.25								0.19		0.21	0.02	1.07	0.83	1.90	0.30	0.95	0.02							0.35		0.03	0.18	0.01	2.40	
BLACKSBURG NWSO	7.74	T	0.05	T		0.01						T	0.08	T	0.11	1.47	1.66	0.29	1.68						T	T	0.17		0.08	0.02	T	2.12	
BURKES GARDEN	8.16	0.03	0.29	0.03		0.02					0.03	T	0.03		0.18	0.85	1.38	1.15	1.42						T	T	0.46		0.06	0.13		2.10	
CHRISTIANSBURG	9.26	0.03	0.07			T						0.01	0.09	0.01	0.05	1.51	1.98	0.38	2.06							0.20		0.07	0.03	T	2.77		
CLINTWOOD 1 W	6.81	0.07	0.21	T							0.10	T	0.02	T	0.50	0.76	1.05	0.46	1.00						T	T	0.34	T	0.14	0.20		1.96	
COPPER HILL	8.90	T				0.06							0.03		0.10	1.15	2.43	0.41	1.57								0.15		T			3.00	
GALAX RADIO WBRF	10.83		0.11									0.04	0.01		0.33	2.92	1.77	0.30	1.95								0.12				0.22	3.06	
GALAX WTP	9.85		0.11	T	0.01								0.03	T	0.24	2.08	2.26	0.30	1.51								0.13		T		0.10	3.07	
GRUNDY	5.92	0.18	0.13								0.03		T		0.45	0.49	1.15	0.41	0.61								0.27		0.06	0.18	T	1.96	
JOHN FLANNAGAN LAKE	M	-	0.20			*	*	0.15 _a				-	-	-	-	0.52	0.45	1.40	0.28	0.60							-	-	0.33	0.10		1.71	
LAFAYETTE 1 NE	8.31	T	0.05			0.01						0.03	0.06	0.01	0.09	1.43	1.64	0.34	1.65								T	0.15		0.07	0.03		2.75
LEBANON	8.19	0.09	0.25			0.04						0.06	0.04		0.42	1.23	1.37	0.51	1.26								0.34		0.03	0.14		2.41	
NORA 4 SSE	7.73	0.08	0.21	0.01								0.10	0.02	0.05	T	0.52	0.88	1.58	0.49	1.56						T	T	0.24		T	0.13	T	1.86
NORTH FORK LAKE	MA 6.64	-	0.29			*	*	T _a				0.15	-	-	-	0.60	0.46	1.35	0.38	0.60	*	*	*	0.03 _a			*	*	0.41 _a	0.16	0.01		2.20
PULASKI 2 E	6.95	0.01	0.06									T		0.07	0.05	1.30	1.69	0.47	1.64								0.17		T	T		1.49	
RADFORD 3 N	6.87	0.02	0.04			T						0.01	0.10		0.05	1.26	1.37	0.20	1.53								0.22		0.08	T	T	1.99	
RICHLANDS	7.17	0.08	0.23			0.02						0.07		0.01	0.34	0.85	1.54	0.34	1.03								0.37		0.05	0.18		2.06	
SALTVILLE 1N	8.44	0.06	0.23	T		T						0.02	T	0.13	0.46	1.31	1.69	0.40	1.29								0.41		0.01	0.18		2.25	

VIRGINIA
201301

DAILY PRECIPITATION (INCHES)

STATION	TOTAL	DAY OF MONTH																														
		01	02	03	04	05	06	07	08	09	10	11	12	13	14	15	16	17	18	19	20	21	22	23	24	25	26	27	28	29	30	31
STAFFORDSVILLE 3 ENE	6.10	0.01	0.03				0.01					0.05	0.01	0.18	0.93	1.28	0.22	1.10	T								0.22		0.09	0.02		1.95
TROUT DALE 3 SSE	8.85	0.01	0.40							0.02	0.02	0.15		0.06	1.92	2.11	0.23	1.77								T	0.28		0.01	0.01	1.86	
WILLIS	11.52		0.19			0.03					0.02	0.06		0.25		3.97	0.47	1.75									0.25		0.03	0.05	4.45	
WISE 3E	8.99	0.17	0.02						0.11	T	0.08	0.02		0.79	1.35	1.52	1.86									0.35			0.19	2.11	0.42	
WYTHEVILLE 1 S	7.49	0.01	0.08	T						0.01	0.01	0.08		0.12	1.42	1.68	0.35	1.70									0.35		0.01		1.67	

VIRGINIA
201301

DAILY TEMPERATURES (°F)

STATION	OB. TIME	MAX/MIN	DAY OF MONTH																															AVERAGE
			01	02	03	04	05	06	07	08	09	10	11	12	13	14	15	16	17	18	19	20	21	22	23	24	25	26	27	28	29	30	31	
VIRGINIA TIDEWATER 01 DISPUTANTA	07	MAX	45	46	41	40	46	49	51	50	51	68	58	52	56	64	63	43	46	46	40	52	61	56	34	35	29	27	34	38	54	75	74	49.2
		MIN	21	36	32	21	21	24	27	23	24	34	36	38	51	54	41	38	38	31	24	24	25	25	13	13	11	10	12	17	30	44	46	28.5
EASTVILLE	07	MAX	46	45	40	39	43	46	45	49	47	60	53	60	50	62	60	46	50	44	41	48	54	51	31	30	27	29	35	37	47	63	71	46.7
		MIN	29	35	30	30	36	34	37	30	31	39	36	40	43	45	43	40	40	33	28	30	32	29	22	23	19	19	25	25	34	45	49	33.3
EMPORIA 1 WNW	08	MAX	47	48	48	40	47	52	53	53	52	69	62	51	59	69	65	44	47	48	45	53	60	58	35	37	32	26	34	40	53	74	73	50.8
		MIN	24	38	34	26	25	28	29	26	26	34	34	34	50	51	43	40	39	32	29	29	29	17	17	14	14	14	19	31	31	50	30.2	
FREDERICKSBURG SEWAGE	07	MAX	45	45	40	41	46	48	53	46	53	60	56	44	46	63	61	61	45	44	41	55	62	62	28	29	28	24	39	40	52	74	73	48.5
		MIN		36	29	20	20		29	23	23	29	30	37	41	45	39	36	36	29	28	34	26	23	11	11	12	12	24	27	32	39	48	28.6
HAMPTON UNIV	17	MAX				47	45	48	49	55	67																							M
		MIN				31	33	41	34	32	41																							
HOLLAND 1 E	08	MAX	46	48	42	42	46	52	50	52	57	70	59	60	60	65	67	48	50	47	44	56	61	60	35	36	32	29	37	41	42	46	65	49.8
		MIN	30	35	31	20	22	32	29	22	31	38	28	43	48	51	40	29	38	29	20	30	25	26	11	18	10	11	14	21	32	30	45	28.7
HOPEWELL	16	MAX	49	48	42	48	50	54		54	67	66	59	59	63	65	59	49	53	44	55	62	59	59	36	36	36	36	40	56	75	74	73	54.2
		MIN	42	38	34	29	28	28		28	28	41	36	36	36	36	44	42	42	37	30	39	30	28	18	18	18	18	18	31	47	60	46	33.5
NORFOLK INTL AP	24	MAX	49	44	38	46	46	49	49	55	69	58	61	58	67	68	48	51	47	43	56	62	57	42	33	35	31	35	37	53	70	76	70	51.7
		MIN	44	38	27	26	32	38	31	29	36	39	36	47	47	46	44	42	36	28	26	37	39	28	23	26	23	23	27	27	50	52	38	35.0
NORFOLK SOUTH	24	MAX	48	43	38	45	45	49	48	57	66	54	60	57	66	66	47	49	46	42	55	60	56	41	32	33	30	33	36	52	69	75	68	50.5
		MIN	43	36	26	25	29	37	30	27	35	36	33	48	47	44	42	40	33	28	25	38	32	26	21	24	21	21	27	27	48	51	37	33.5
NORTH	07	MAX	47	46			45	47	49	49	57	63																						M
		MIN	27	36			25	27	33	26	27	36																						
PAINTER 2W	16	MAX	46	44	37	44	43	47	47	54	63	60	52	57	53	65	58	45	48	40	51	59	56	48	29	28	28	35	36	45	67	69	63	48.9
		MIN	41	34	29	25	34	31	34	26	36	42	32	46	38	50	42	38	38	32	25	41	29	26	15	20	14	17	17	23	44	43	47	32.5
STONY CREEK 2 N	08	MAX	46	47	44	40	47	51	53	50	51	70	60	50	57	67	64	46	46	47	41	53	60	57	42	35	31	27	38	39	55	75		49.6
		MIN	21	37	33	29	29	29	29	26	22	33	34	30	50	54	43	38	38	32	27	27	27	26	15	14	14	11	11	15	26	42		28.7
SUFFOLK LAKE KILBY	24	MAX	46	44	40	47	50	51	57	65	56	59	56	66	65	47	49	47	43	54	60	60	42	35	35	28	34	38	51	72	73	73		51.4
		MIN	42	36	28	27	27	27	29	28	38	31	32	38	52	44	36	40	31	28	26	27	30	23	19	19	17	19	23	27	51	54	38	31.8
WAKEFIELD 1NW	24	MAX	46	43	40	47	51	51	51	54	68	61	53	57	64	65	44	46	46	43	52	61	57	39	35	30	28	34	39	51	75	74	71	50.8
		MIN	41	33	25	21	23	32	26	23	35	31	30	52	53	44	41	39	32	26	26	35	26	19	13	13	12	12	18	26	45	57	30	30.3
WALKERTON 2 NW	18	MAX	50	47	46	51	62	57	58	67	70	74	70	52	55	67	54	50	49	43	59	63	57	47	37	34	32	45	45	54	75	73		54.8
		MIN	40	35	24	28	31	33	39	47	53	51	43	39	27	40	45	44	34	32	37	40	43	23	30	21	27	27	30	37	46	59		36.8
WALLACETON LK DRUMMOND	08	MAX	46	50	44	44	49	54	50	55	63	70	60	60	70	70	48	50	50	50	60	64	60	40	36	35	30	36	45	50	75	75		53.2
		MIN	20	31	28	18	20	24	23	19	22	30	23	36	43	42	38	38	37	25	17	25	24	22	11	17	9	11	11	17	26	42	44	25.6
WALLOPS ISLAND NASA TEST FACIL	24	MAX	48	43	38	44	48	51	52	54	64	58	57	60	54	67	47	52	46	40	52	60	48	34	29	27	29	36	38	52	66	64	62	49.0
		MIN	41	31	28	25	33	36	31	29	37	41	33	44	42	47	43	40	34	27	28	41	31	18	13	13	12	19	16	24	47	46	37	31.8
WARSAW 2 NW	18	MAX			48	47		53	49	53	63	61			63	62	52	45	44															51.6
		MIN			22	21	24		36	26	32	38	32			52	39	36	35															
WEST POINT 2 NW	17	MAX	45	44	38	47	49	52	50	52	65	62	49	51	59	65	52	45	45	39	53	60	55	48	32	30	27	39	39	49	70	74	71	50.2
		MIN	38	35	24	27	24	32	27	24	34	32	30	47	46	51	40	37	31	26	27	34	25	17	12	16	13	15	23	27	43	54	37	30.6
WILLIAMSBURG 2 N	24	MAX	48	42	40	48	50	52	52	54	67	57	55	59	65	68	49	48	48	43	54	62	57	40	40	32	32	36	42	53	73	76	72	52.1
		MIN	41	34	27	25	28	36	30	28	37	37	34	53	53	48	45	42	35	29	29	39	30	23	18	21	16	19	26	32	45	57	37	34.0

VIRGINIA
201301

DAILY TEMPERATURES (°F)

STATION	OB.TIME	MAX/MIN	DAY OF MONTH																															AVERAGE		
			01	02	03	04	05	06	07	08	09	10	11	12	13	14	15	16	17	18	19	20	21	22	23	24	25	26	27	28	29	30	31			
EASTERN PIEDMONT 02																																				
AMELIA COURTHOUSE 1	08	MAX		48	42	40	46		53	49	49	68	57	52		72	72		45	46	39		59	55	31	34	30	28	36	38	56	75	70	49.6		
		MIN		35	32	24	27		31	26	33	36	32	39		47	39		37	29	26		25	23	12	12	13	14	22	27	27	49	43	29.2		
ASHLAND	18	MAX	47	44	40	46	48	52	47	50	64	57	50	50	67	64	46	45	45	37	52	60	53	43	32	30	25	39	39	53	73	72	71	49.7		
		MIN	40	35	31	24	25	34	31	25	31	33	33	43	48	45	38	35	32	28	25	38	25	22	10	18	11	21	23	26	42	57	35	31.1		
CAMP PICKETT	08	MAX	47	47	41	38	46	50	53	51	49	70	61	50	57	72	63	42	45	46	41	53	60	60	32	35	31	24	34	39	55	74	70	49.5		
		MIN	22	23	32	23	23	27	29	25	26	33	36	39	39	54	40	37	37	30	26	28	25	25	13	13	12	13	16	16	31	43	44	28.4		
CHASE CITY	17	MAX																																	M	
		MIN																																	M	
CLARKSVILLE	07	MAX	51	46	45	40	49	50	54	52	51	68	60	60	68	74	63	43	47	48	47	55	60	58	35	39	35	26	34	42	53	74	70	51.5		
		MIN	28	39	36	28	28	34	32	26	27	33	39	39	49	48	42	39	39	31	26	29	27	26	21	21	17	18	20	21	32	46	44	31.8		
CORBIN	09	MAX	45	41	39	45	48	52	46	52	62	60	47	48	62	63	49	42	43	40	54	61	52	48	29	28	24	37	38	51	73	72	71	49.1		
		MIN	39	31	27	21	25	30	33	26	31	39	34	41	46	48	38	35	33	29	27	39	26	19	8	17	9	21	27	26	45	60	37	31.2		
CROZIER	07	MAX	45	45					43	48	49	63	58	45	52	70	62	40	43	44	39	52	60	53	29	32	29	24	38	37	53	74	69	48.0		
		MIN	26	34					31	27	28	31	32	38	43	52	37	35	36	28	27	29	23	21	9	10	10	17	17	21	31	31	43	28.4		
FARMVILLE 2 N	07	MAX	48	46	41	40	47	50	53	49	49	68	59	45	61	73	63	40	45	46	42	51	59	54	31	35	31	25	41	38	56	74	69	49.3		
		MIN	25	35	32	24	23	27	31	25	25	35	35	36	45	49	38	36	36	29	26	26	25	24	12	12	13	14	17	24	32	43	44	29.0		
GREENBAY 3 NE	09	MAX	45	47	41	40	45	49	51	49	53	66	59	49	64	71	71	40	45			48	57	53	30	33	29	24	33	37	55	72	69	49.1		
		MIN	35	36	32	25	24	32	27	26	30	36	36	37	39	46	38	36	37			32	25	24	11	22	11	15	18	24	32	47	41	30.1		
JOHN H KERR DAM	08	MAX	50	47	43	41	48	52	54	54	51	70	63	49	64	71	62	46	48	49	46	55	63	58	36	40	34	26	34	42	52	72	68	52.2		
		MIN	34	39	35	29	28	29	30	26	27	36	37	42	49	54	42	40	40	30	29	34	28	26	18	21	15	19	17	19	35	49	48	32.4		
LOUISA	18	MAX	48	42	41	46	50	53	47	50	60	60	48	49	66	62	47	43	44	41	53	61	54	46	30	30	24	39	41	51	75	71	69	49.7		
		MIN	36	32	26	19	24	28	27	20	24	27	30	41	46	47	38	35	33	27	27	33	21	18	5	11	9	22	22	24	45	59	37	28.8		
PALMYRA 3S	06	MAX	45	48	42	41	47	50	54	49	48	61	59	43	49	67	63	39	43	45	39	52	62	54	30	32	29	24	38	38	51	75	74	48.1		
		MIN	20	35	31	20	18	21	28	19	19	25	29	37	38	46	37	35	35	27	24	26	23	21	8	7	8	9	20	24	32	35	42	25.8		
PETERSBURG	08	MAX	47	47	42	39	47	50	53	49	51	67	58	54	55	67	63	44	47	48	48	59	61	56	34	36	31	26	34	40	56	76	76	50.4		
		MIN	23	37	34	23	24	25	31	25	25	36	32	39	51	54	41	38	38	34	29	39	27	26	17	15	15	14	15	21	31	43	43	30.5		
RICHMOND INTL AP	24	MAX	47	44	40	47	50	54	50	51	67	60	49	54	63	64	45	46	46	41	53	61	55	34	34	32	27	39	40	55	74	72	69	50.4		
		MIN	40	35	26	25	23	37	31	27	36	36	34	48	52	45	40	37	33	28	28	34	29	21	14	19	15	16	23	30	43	59	35	32.2		
SANDSTON	07	MAX	44	46	42	39	45	47	52	47	51	65	57	49	53	62	63	42	45	45	37	50	58	52	30	31	28	26	37	37	52	71	72	47.6		
		MIN	24	36	31	21	21	25	32	24	23	35	32	37	47	52	40	36	36	31	26	27	27	26	13	13	14	14	20	20	31	43	48	29.2		
WESTERN PIEDMONT 03																																				
APPOMATTOX	07	MAX	46	45	43	38	43	48	50	47	47	64	58	42	64	70	61	40	45	45	39	48	55	54	27	33	29	25	39	36	55	71	67	47.5		
		MIN	27	34	31	25	25	26	33	27	29	33	35	37	41	52	37	35	35	27	26	26	28	20	14	14	14	15	21	23	31	42	37	29.0		
BROOKNEAL	07	MAX	48	49	46	40	46	50	52	49	51	67	60	44	68	74	63	43	46	47	42	52	58	56	30	36	32	26	39	38	57	72	71	50.1		
		MIN	24	38	33	21	20	25	26	21	21	28	33	39	44	52	40	38	38	29	22	24	24	23	12	12	13	16	18	24	33	39	42	28.1		
CHARLOTTE COURT HOUSE	07	MAX	48	49	47	46	43	51	54	51	49	64	61	49	69	73	62	41	46	46	41	53	58	56	30	36	32	28	37	39	57	72	69	50.2		
		MIN	26	37	34	24	24	24	32	23	24	30	34	37	45	52	39	37	37	29	26	26	27	24	17	17	14	17	19	21	31	44	42	29.5		
CHARLOTTESVILLE 2W	08	MAX	44	48	41	39	46	49	51	47	50	58	59	42	54	64	61	38	43	42	42	51	59	53	28	31	27	22	36	37	54	73	68	47.0		
		MIN	30	34	30	29	29	32	36	29	29	37	40	38	39	48	36	34	34	30	27	29	32	18	14	14	15	16	20	24	31	45	37	30.2		
CHATHAM	07	MAX	43	47	47	40	46	48	52	46	50	65	58	47	72	72	61	40	45	45	46	48	57	53	32	35	33	26	38	36	51	68	70	48.9		
		MIN	21	37	33	18	18	24	25	19	19	27	33	37	46	48	40	36	37	27	21	20	20	22	13	14	13	14	17	17	31	40	39	26.6		

VIRGINIA
201301

DAILY TEMPERATURES (°F)

STATION	OB. TIME	MAX/MIN	DAY OF MONTH																															AVERAGE	
			01	02	03	04	05	06	07	08	09	10	11	12	13	14	15	16	17	18	19	20	21	22	23	24	25	26	27	28	29	30	31		
DANVILLE REGIONAL AP	24	MAX	48	49	41	50	52	55	52	53	68	61	46	70	76	64	47	49	49	44	53	61	59	40	39	35	27	39	41	53	73	73	59	52.5	
		MIN	40	36	26	22	24	36	28	23	32	40	40	44	49	47	40	39	33	26	23	30	25	22	22	18	16	19	20	34	40	60	30	31.7	
FREE UNION	08	MAX	45	48	40	40	46	50	50	48	53	61	59	43	52	64	59	38	42	42	44	55	59	52	28	31	28	22	35	37	51	75	68	47.3	
		MIN	24	34	29	22	23	24	28	20	20	24	29	38	38	45	36	34	34	26	20	20	26	18	7	6	9	11	15	15	30	45	39	25.5	
LYNCHBURG #2	07	MAX	45	49	45	42	45	49	51	49	53	60	59																						M
		MIN	23	36	31	24	21	21	29	21	22	28	33																						M
LYNCHBURG INTL AP	24	MAX	47	45	41	45	50	51	49	52	61	59	47	70	71	61	44	44	46	43	51	57	54	32	34	30	24	41	35	56	74	68	54	49.5	
		MIN	38	31	28	23	22	32	27	22	29	33	39	37	50	44	37	36	32	24	22	31	25	19	12	18	13	17	18	31	38	54	26	29.3	
MARTINSVILLE FLTR PLT	07	MAX	45	49	47	61	47	50	53	50	54	64	60	51	73	72	61	42	48	45	43	52	57	56	33	37	33	25	39	37	56	71	51	51.0	
		MIN	24	40	33	34	17	21	22	19	20	29	34	39	49	48	42	38	38	27	21	22	22	15	15	15	15	16	16	34	38	39	27.9		
MEADOWS OF DAN 5 SW	07	MAX	42	48	48	48	43	50	51	48	50	57	64	55	71	66	59	59	59	43	40	49	52	49	25	36	30	26	38	38	51	71	64	49.4	
		MIN	27	34	34	24	24	24	28	27	26	26	26	42	42	53	44	38	39	28	27	26	28	20	16	16	18	18	20	21	31	34	34	28.9	
MONTEBELLO FISH CULTURAL STN	07	MAX	37	38	33	34	35	43	41	42	47	54	57	61	67	64	64	56	55	35	35	46	46	43	18	23	19	25	32	30	53	69	58	43.9	
		MIN	21	30	22	20	20	24	25	24	23	23	32	48	47	47	55	31	31	22	16	19	22	8	5	5	5	11	9	13	30	40	28	24.4	
MONTICELLO	08	MAX	45	46	40	58	44	47	47	44	49	57	56	42	50	63	61	38	42	42	39	49	56	51	25	29	24	21	35	35	51	71	68	46.0	
		MIN	28	35	29	29	29	31	32	28	28	34	39	38	38	40	35	34	34	30	25	27	34	21	14	14	13	20	23	28	41	40	29.2		
ROCKY MT	07	MAX	46	52	43	43	48	50	48	49	56	63	57	49	66	71	60	41	48	43	44	53	54	50	29	35	30	43	27	35	57	71	67	49.3	
		MIN	26	29	33	27	29	31	28	21	21	39	39	41	49	56	41	36	37	29	25	29	25	19	15	16	15	17	17	33	33	37	29.4		
SOUTH BOSTON	07	MAX	48	46	45	45	49	51	53	52	52	68	60	51	69	73	64	43	47	47	45	53	61	58	35	38	37	26	39	40	54	73	70	51.4	
		MIN	26	39	36	21	22	23	30	22	24	30	34	39	51	53	42	38	38	32	24	24	26	25	21	21	16	17	19	22	33	44	45	30.2	
STUART	07	MAX	46	48	46	44	47	49	54	50	56	61	61	50	70	68	61	51	50	46	44	54	57	55	32	39	33	32	37	39	53	73	66	50.7	
		MIN	23	39	35	20	20	31	28	24	24	39	39	40	50	53	43	37	38	29	26	27	25	21	16	18	18	18	20	28	34	37	35	30.2	
TYE RIVER 1 SE	07	MAX	47	50	48	45	49	50	54	51	55	60	60	44	65	71	62	44	46	45	46	55	60	56	32	36	34	25	43	46	51	75	69	50.8	
		MIN	25	33	29	27	28	30	32	23	24	28	40	37	38	50	36	34	35	27	24	25	29	17	11	12	15	16	15	16	35	48	37	28.3	
NORTHERN 04																																			
BOSTON 4 SE	07	MAX	37	41	38	39	45	46	50	45	52	53	57	45	51	59	59	38	40	43	41	56	59	49	25	27	28	23	35	37	53	72	69	45.5	
		MIN	27	33	21	17	19	20	26	21	24	25	32	32	39	39	36	33	33	28	28	27	18	6	5	9	15	21	28	31	48	40	26.3		
EDINBURG	07	MAX	39	40	40	39	42	44	43	41	57	57	56	48	64	68	59	37	42	43	39	55	53	47	23	25	24	22	32	39	51	72	70	45.5	
		MIN	23	31	19	17	26	26	27	19	19	25	31	33	39	38	35	32	32	31	25	29	22	13	8	8	9	13	20	22	31	44	36	25.3	
FRONT ROYAL	07	MAX	43	41	37	40	41	44	45	41	54	58	53	53	58	68	66	37	43	42	38	58	55	46	22	24	26	22	32	38	57	71	71	45.9	
		MIN	24	31	24	22	30	29	30	29	28	29	36	36	36	44	35	32	32	32	27	27	27	15	12	11	12	13	19	23	30	49	42	27.9	
LINCOLN	07	MAX	41	42	35	37	40	42	48	43	52	50	52	44	53	53	56	44	44	43	35	55	55	43	21	25	24	21	32	36	38	70	70	43.4	
		MIN	31	29	18	18	26	26	18	19	25	32	35	40	37	37	37	31	31	25	27	24	15	12	11	12	13	20	26	31	35	39	26.0		
LURAY 5 E	08	MAX	35	44	43	39	41	44	45	40	54	58	58	51	68	71	57	36	43	43	39	58	55	47	23	24	24	33	39	54	73	60	45.9		
		MIN	29	28	20	23	24	26	28	24	28	31	34	38	42	53	34	33	34	29	23	32	24	13	8	11	7	16	23	23	35	40	35	27.4	
MADISON	08	MAX	44	48	41	42	48	50	54	48	54	57	58	47	54	60	60	42	44	46	45	56	61	52	32	33	34	27	43	43	49	73	69	48.8	
		MIN	29	38	32	28	29	30	32	29	30	32	36	39	42	48	40	38	38	37	32	33	33	26	20	15	13	14	23	23	37	48	47	32.0	
MANASSAS	07	MAX	41	42	40	39	45	46	52	45	56	50	57	44	52	62	60	39		43	39	56	60	50	25	26	28	24	35	38	57	73	74	46.6	
		MIN	22	33	25	20	21	26	37	24	28	28	33	40																					
MT WEATHER	07	MAX	41	41	32	35	38	40	42	38	47	55	51	47	54	62	57	35	42	38	34	53	52	40	20	20	24	19	27	34	53	66	63	41.9	
		MIN	26	25	20	20	27	27	33	30	30	35	34	34	38	43	33	29	30	25	25	27	23	10	8	8	12	11	18	18	27	50	34	26.1	
PIEDMONT RSCH STN	08	MAX	42	45	38	39	45	48	51	45	51	58	57	42	48	62	38	42	42	41	51	60	51	26	29	27	22	36	38	50	73	70	46.1		

VIRGINIA
201301

DAILY TEMPERATURES (°F)

STATION	OB. TIME	MAX/MIN	DAY OF MONTH																															AVERAGE
			01	02	03	04	05	06	07	08	09	10	11	12	13	14	15	16	17	18	19	20	21	22	23	24	25	26	27	28	29	30	31	
SOMERSET	07	MIN	22	34	29	21	21	26	27	26	28	28	34	38	39	47	36	34	34	31	27	27	29	19	8	12	10	11	21	24	32	42	41	27.7
		MAX	45	46	38	30	47	49	52	47	53	60	57	43	49	64	60	39	41	43	42	54	60	51	27	30	26	25	37	39	50	74	70	46.7
SPERRYVILLE	06	MIN	27	34	28	20	27	28	28	21	25	28	32	37	39	47	36	34	35	31	25	30	25	18	9	11	6	11	17	23	32	43	40	27.3
		MAX	33	41	39	39	43	46	46	44	53	56	57	46	59	56	58	38	41	42	41	57	57	49	24	27	27	22	34	37	57	71	65	45.3
STERLING RCS	07	MIN	25	32	24	20	25	26	27	23	21	27	32	32	36	42	36	33	32	34	20	20	26	18	12	9	11	12	21	24	29	44	44	26.4
		MAX	34	41	35	37	42	44	50	43	52	52	46	44	54	59	58	39	42	42	36	55	58	46	22	25	25	22	32	37	42	71	72	43.8
VIENNA	07	MIN	20	29	21	17	26	26	26	21	24	25	31	33	40	44	37	33	33	32	27	28	28	16	10	11	9	14	20	20	35	42	25.7	
		MAX	37	40	35	40	42	49	42	40	51	49	50	40	58	58	36	38	40	53	52	55	43	21	24	24	32	36	47	67	70	61	44.3	
WARRENTON 3 SE	08	MIN	25	29	20	22	23	26	26	28	29	29	33	32	38	35	31	32	30	28	28	30	15	9	10	14	15	20	21	30	43	26	25.9	
		MAX																																M
WASHGTN DULLES INTL AP	24	MIN	43	38	39	44	45	51	45	53	50	55	45	54	57	59	40	41	44	38	56	58	48	29	26	27	22	33	39	46	70	72	59	46.0
		MAX	28	28	21	22	28	27	24	23	26	37	31	41	43	40	35	34	37	29	29	35	29	16	9	13	12	22	20	31	35	56	29	28.7
WASHINGTON REAGAN AP	24	MIN	45	40	38	46	46	52	49	53	54	57	46	51	55	63	42	43	46	40	54	62	47	32	28	29	25	37	38	46	69	72	66	47.5
		MAX	38	30	30	27	31	34	34	30	34	43	38	43	43	42	37	37	40	31	33	38	32	19	15	19	19	24	27	33	41	52	32	33.1
WINCHESTER	07	MIN																															M	
		MAX																																M
WINCHESTER 7 SE	08	MIN	40	41	41	39	40	45	44	42	55	53	55	49	54	61	54	54	42	42	38	57	54	43	22	25	26	21	30	37	52	70	71	45.1
		MAX	26	28	16	16	25	27	28	20	19	26	33	37	39	38	36	32	28	24	29	32	21	14	11	10	8	12	18	17	30	41	39	25.2
WOODSTOCK 2 NE	07	MIN	40	38	39	40	42	43	44	42	55	56	57	47	64	69	59	37	44	43	38	57	54	44	23	26	26	23	33	40	49	73	72	45.7
		MAX	24	30	20	19	25	28	28	23	24	29	32	35	36	40	34	29	32	31	25	27	23	14	11	10	11	14	20	24	31	41	37	26.0
CENTRAL MOUNTAIN 05 COVINGTON FLTR PLT	07	MIN	42	44	38	41	39	46	44	45	54	54	51	51	69	70	56	45	46	40	41	55	53	47	23	31	27	33	34	40	55	75	69	47.0
		MAX	21	35	23	23	25	26	29	20	21	20	31	31	40	43	44	38	38	30	20	20	23	15	13	13	13	14	17	18	32	46	30	26.2
DALE ENTERPRISE	07	MIN	37	40	40	40	42	45	45	42	54	57	55	45	70	67	61	38	45	45	40	54	54	45	26	28	25	21	36	40	54	72	66	46.1
		MAX	23	32	20	19	22	25	25	25	30	30	38	39	51	34	32	33	28	26	27	22	11	10	10	12	8	17	17	30	44	35	25.8	
GATHRIGHT DAM	07	MIN	40	39	35	37	34	42	40	40	48	50	49	43	67	65	52	41	45	36	37	50	47	42	18	26	21	30	30	36	53	70	64	42.8
		MAX	20	33	21	21	25	24	29	22	22	22	31	37	38	41	38	35	36	27	19	19	23	10	10	11	10	11	16	16	31	45	30	24.9
HOT SPRINGS	07	MIN	39	39	34	35	33	40	38	37	44	49	49	43	66	66	51	40	45	37	36	47	47	40	17	25	19	28	30	35	51	68	63	41.6
		MAX	18	31	19	19	23	21	27	21	21	29	32	36	39	46	40	35	35	25	19	19	22	10	8	8	7	9	13	13	31	47	30	24.3
MILLGAP	07	MIN	40	37	34	35	31	43	37	42	50	53	49	42	68	65	55	39	44	37	39	51	44	38	15	21	18	27	28	36	51	69	68	42.1
		MAX	9	30	12	10	20	16	24	12	12	19	23	35	34	41	37	34	34	26	13	12	19	7	5	6	-4	3	5	3	30	34	28	19.0
MUSTOE 1 SW	24	MIN	37	35	35	33	40	37	40	47	51	49	38	66	65	55	38	42	40	37	48	45	39	17	23	19	27	31	34	46	67	59	48	41.5
		MAX	31	21	13	22	17	25	18	14	20	25	30	34	42	37	33	33	30	19	15	24	17	5	6	-1	-1	21	8	28	36	35	23	21.9
ROANOKE 8 N	07	MIN	45	49	40	44	41	48	50	47	54	60	59	60	73	71	58	43	48	42	40	49	53	51	27	37	29	32	38	35	56	73	67	49.0
		MAX	25	38	33	28	27	27	29	23	22	30	30	30	44	56	42	37	37	30	24	23	29	19	17	17	17	19	19	32	45	36	29.1	
ROANOKE INTL AP	24	MIN	52	42	45	45	50	50	48	54	61	59	49	73	71	66	48	49	48	39	50	56	51	30	34	37	24	41	36	57	74	69	52	50.3
		MAX	41	34	33	29	30	36	28	23	30	39	40	41	56	48	38	38	33	28	24	38	30	19	17	19	18	23	20	32	54	52	33	33.0
STAUNTON WATER TRMTMT PLT	08	MIN	39	42	39	40	40	45	44	45	51	57	57	50	69	65	65	36	46	41	40	50	53	46	23	28	24	29	38	37	53	73	66	46.2
		MAX	24	31	22	22	22	28	28	33	35	35	40	43	55	35	32	33	28	28	31	30	11	9	10	8	15	18	18	31	53	31	28.0	
WAYNESBORO WTP	07	MIN	43	46	40	39	42	47	46	43	54	60	56	45	72	69	61	38	48	44	41	52	55	48	24	30	25	27	39	36	57	73	66	47.3
		MAX	25	35	27	24	28	27	27	22	23	27	30	38	37	51	37	34	34	26	22	22	25	15	7	6	10	13	13	16	16	37	36	25.5

VIRGINIA
201301

DAILY TEMPERATURES (°F)

STATION	OB. TIME	MAX/MIN	DAY OF MONTH																															AVERAGE
			01	02	03	04	05	06	07	08	09	10	11	12	13	14	15	16	17	18	19	20	21	22	23	24	25	26	27	28	29	30	31	
SOUTHWESTERN MOUNTAIN 06 ABINGDON 3S	22	MAX	41	41	40	35	44	38	48	54	48	60	60	69	69	58	47	54	44	36		47	47		35	36	30	33	43	60	68	66	49	48.3
		MIN	33	32	25	19	18	33	29	24	31	40	49	48	42	40	39	44	32	22		18	18		16	17	18	28	21	34	41	45	29	30.5
BIG STONE GAP	08	MAX	37	41	36	45	39	44	43	53	54	48	62	62	68	59	46	41	48	38	37	45	53	43	29	38	31	33	34	46	49	66	67	46.3
		MIN	23	34	30	20	20	20	28	23	23	32	43	54	46	44	37	37	37	20	19	19	23	18	17	21	19	24	22	22	36	42	30	28.5
BLACKSBURG NWSO	07	MAX	38	43	34	37	35	44	44	45	51	53	55	44	71	69	54	41	48	35	34	44	47	42	22	34	23	32	33	34	60	68	63	44.4
		MIN	20	31	28	23	23	25	26	18	18	27	37	37	44	47	38	33	34	24	12	12	23	12	11	11	11	14	11	11	30	46	27	24.6
BURKES GARDEN	07	MAX	38	41	29	32	29	42	34	43	47	53	59	59	66	65	54	50	53	32	30	41	39	35	16	31	21	31	30	42	52	61	61	42.5
		MIN	13	27	24	20	20	24	23	16	15	29	31	42	50	52	35	39	32	22	6	26	20	9	7	10	6	14	13	13	37	43	24	23.9
CHRISTIANSBURG	07	MAX	40	44	34	39	38	44	39	44	51	55	55	51	69	69	55	40	52	36	36	45	46	43	22	35	24	32	36	34	59	68	62	45.1
		MIN	22	31	28	22	24	26	27	25	28	34	39	37	50	55	37	33	34	24	19	18	26	13	12	12	12	14	15	16	30	47	29	27.1
CLINTWOOD 1 W	07	MAX	38	39	33	36	34	40	43	43	52	51	57	66	69	66	42	37	42	33	36	43	49	41	23	40	25	32	30	45	55	66	65	44.2
		MIN	18	29	25	18	17	17	29	19	19	28	39	46	44	41	33	33	33	24	18	18	20	13	10	10	15	22	18	18	35	40	27	25.0
COPPER HILL	07	MAX	37	41	41	33	33	42	38	41	47	56	53	54	67	66	55	37	53	36	29	43	42	42	18	30	23	27	32	29	56	65	59	42.7
		MIN	19	29	26	21	20	23	27	24	29	38	36	33	54	54	37	30	33	23	21	24	27	12	9	8	8	11	15	15	29	46	29	26.1
GALAX RADIO WBRF	07	MAX	41	50	36	38	36	46	44	45	51	55	58	59	61	65	56	44	58	37	35	43	45	42	24	37	23	31	35	41	54	66	60	45.7
		MIN	28	32	29	21	20	22	25	19	22	29	38	39	43	55	41	36	37	23	13	15	21	13	12	14	11	14	15	16	31	36	27	25.7
GALAX WTP	07	MAX	41	50	36	40	37	46	45	45	49	56	58	58	63	65	65	44	57	39	39	47	45	44	24	38	26	31	36	31	52	67	60	46.3
		MIN	22	33	30	23	22	22	27	18	19	30	39	39	43	56	41	36	30	24	12	12	22	15	12	11	13	14	16	16	30	31	28	25.4
GRUNDY	07	MAX	35	38	35	39	35	40	43	44	53	46	58	65	71	69	43	38	43	36	36	45	50	42	25	32	28	31	40	59	67	69	44.7	
		MIN	22	31	27	20	20	20	31	22	22	31	41	45	45	43	35	34	35	28	22	22	23	15	12	12	17	21	20	31	43	30	27.1	
JOHN FLANNAGAN LAKE	07	MAX		38	32	35			43	47	55				72	41	35	41	34				49	24	39	25			41	60	69	67	M	
		MIN		20	25	20				22	22					41	33	32	33	26				13	12	12	17			20	32	41	28	M
LEBANON	07	MAX	40	41	44	39	35	42	40	45	53	50	64	65	71	71	44	45	50	54	38	44	46	41	23	33	27	33	33	46	59	67	67	46.8
		MIN	22	31	21	17	17	17	29	21	21	29	39	54	48	44	35	37	35	27	12	12	20	15	11	11	20	23	19	20	41	44	29	26.5
NORA 4 SSE	07	MAX	33	37	27	33	33	39	38	44	47	46	60	57	65	62	39	48	47	30	31	36	45	35	20	33	21	28	28	39	54	61	62	41.2
		MIN	24	27	22	19	19	23	24	24	33	39	40	51	55	38	29	29	29	22	22	29	25	8	8	11	13	19	19	21	34	44	23	26.5
NORTH FORK LAKE	08	MAX		38	31	38			43	48	55	51			69	41	37	41	34				50	25	40	27			53	57	67	65	M	
		MIN		22	26	20			18	21	20	31				40	33	31	33	25				13	11	11	16			20	42	40	27	M
PULASKI 2 E	07	MAX	42	47	37	41	41	46	40	48	55	58	57	47	58	71	56	56	56	38	41	46	48	42	24	36	25	35	39	38	62	71	65	47.3
		MIN	29	34	30	26	25	24	29	20	21	29	35	38	45	52	40	36	36	26	22	22	22	15	14	15	12	16	16	17	33	47	33	27.7
RADFORD 3 N	07	MAX	39	46	34	38	36	45	42	46	51	54	57	44	71	69	49	43	49	36	37	46	50	44	22	37	23	32	36	34	63	67	67	45.4
		MIN	21	32	29	24	27	28	28	17	19	29	40	39	42	49	38	36	35	26	11	15	23	12	13	15	12	16	13	18	31	44	31	26.2
RICHLANDS	07	MAX	38	40	32	39	34	44	41	50	54	48	66	64	71	69	45	44	51	36	37	45	48	42	24	35	26	32	30	46	59	68	66	45.9
		MIN	23	31	28	17	16	17	29	19	19	29	38	52	44	44	36	36	35	27	16	17	20	14	10	10	15	22	18	18	18	42	28	25.4
SALTVILLE 1N	07	MAX	39	42	36	41	36	45	40	50	55	46	64	55	71	67	50	46	53	38	38	46	49	43	27	36	28	32	37	44	60	67	65	46.6
		MIN	20	33	32	20	18	18	29	19	18	27	37	46	43	43	39	43	38	28	18	18	21	16	15	16	17	20	19	19	33	40	30	26.9
STAFFORDSVILLE 3 ENE	07	MAX	39	43	35	38	36	44	43	44	50	53	57	47	69	70	50	43	50	36	35	49	48	44	24	37	25	34	35	36	60	67	65	45.4
		MIN	18	32	28	25	25	25	29	20	19	26	35	40	43	49	37	37	36	24	14	14	20	13	12	13	11	16	15	14	31	45	29	25.6
TROUT DALE 3 SSE	07	MAX	45	51	33	37	36	47	41	48	52	60	58	54	70	69	54	50	60	38	34	47	43	37	24	36	27	38	33	35	58	69	60	46.6
		MIN	18	32	29	21	18	17	27	20	16	23	42	40	44	50	40	38	36	22	18	19	30	14	11	10	8	13	11	15	30	35	25	24.9

VIRGINIA
201301

DAILY TEMPERATURES (°F)

STATION	OB. TIME	MAX/MIN	DAY OF MONTH																															AVERAGE
			01	02	03	04	05	06	07	08	09	10	11	12	13	14	15	16	17	18	19	20	21	22	23	24	25	26	27	28	29	30	31	
WISE 3E	17	MAX	39	35	34	31	41	38	46	50	51	64	60	68	63	58	38	48	37	34	41	45	37	27	30	36	28	30	45	47	64	62	52	44.5
		MIN	32	26	24	19	17	32	24	25	34	39	50	58	57	36	30	31	27	21	20	33	22	9	12	15	12	21	17	36	46	52	24	29.1
WYTHEVILLE 1 S	07	MAX	41	44	36	40	37	47	38	47	54	54	62	49	70	70	53	43	55	40	39	44	44	40	24	35	27	34	37	40	59	69	67	46.4
		MIN	23	30	29	23	23	21	29	17	17	24	35	40	42	39	40	39	39	15	10	12	20	16	14	15	12	17	19	17	31	36	30	25.0

VIRGINIA
201301

SNOWFALL AND SNOW ON GROUND (INCHES)

STATION		DAY OF MONTH																														
		01	02	03	04	05	06	07	08	09	10	11	12	13	14	15	16	17	18	19	20	21	22	23	24	25	26	27	28	29	30	31
VIRGINIA																																
	TIDEWATER 01																															
DISPUTANTA	SNOWFALL																															
	SN ON GND	-	-	-	-	-	-	-	-	-	-	-	-	-	-	-	-	2	-	-	-	-	-	-	-	-	-	-	-	-	-	-
EASTVILLE	SNOWFALL	-	-	-	-	-	-	-	-	-	-	-	-	-	-	-	-	-	-	-	-	-	-	-	0.1	0.2	1.8	-	-	-	-	-
	SN ON GND	-	-	-	-	-	-	-	-	-	-	-	-	-	-	-	-	-	-	-	-	-	-	-	-	-	2	1	-	-	-	-
EMPORIA 1 WNW	SNOWFALL	-	-	-	-	-	-	-	-	-	-	-	-	-	-	-	-	1.0	-	-	-	-	-	-	-	-	1.0	-	-	-	-	-
	SN ON GND	-	-	-	-	-	-	-	-	-	-	-	-	-	-	-	-	1	T	-	-	-	-	-	-	-	1	-	-	-	-	-
FREDERICKSBURG SEWAGE	SNOWFALL	-	-	-	-	-	-	-	-	-	-	-	-	-	-	-	-	-	-	-	-	-	-	-	T	T	T	T	-	-	-	-
	SN ON GND	-	-	-	-	-	-	-	-	-	-	-	-	-	-	-	-	-	-	-	-	-	-	-	2	-	1	T	-	-	-	-
HAMPTON UNIV	SNOWFALL	-	-	-	-	-	-	-	-	-	-	-	-	-	-	-	-	-	-	-	-	-	-	-	-	-	-	-	-	-	-	-
HOLLAND 1 E	SNOWFALL	-	-	-	-	-	-	-	-	-	-	-	-	-	-	-	-	-	-	-	-	-	-	-	-	-	3.0	-	-	-	-	-
HOPEWELL	SNOWFALL	-	-	-	-	-	-	-	-	-	-	-	-	-	-	-	-	1.5	-	-	-	-	-	-	-	0.7	-	-	-	-	-	-
	SN ON GND	-	-	-	-	-	-	-	-	-	-	-	-	-	-	-	-	-	-	-	-	-	-	-	-	1	1	-	-	-	-	-
NORFOLK INTL AP	SNOWFALL	-	-	-	-	-	-	-	-	-	-	-	-	-	-	-	-	T	T	-	-	-	-	-	T	1.6	T	-	-	-	-	-
NORFOLK SOUTH	SNOWFALL	-	-	-	-	-	-	-	-	-	-	-	-	-	-	-	T	T	-	-	-	-	-	T	1.6	T	-	-	-	-	-	-
	SN ON GND	-	-	-	-	-	-	-	-	-	-	-	-	-	-	-	-	-	-	-	-	-	-	-	2	1	T	-	-	-	-	-
NORTH	SNOWFALL	-	-	-	-	-	-	-	-	-	-	-	-	-	-	-	-	-	-	-	-	-	-	-	-	-	-	-	-	-	-	-
	SN ON GND	-	-	-	-	-	-	-	-	-	-	-	-	-	-	-	-	-	-	-	-	-	-	-	-	-	-	-	-	-	-	-
PAINTER 2W	SNOWFALL	-	-	-	-	-	-	-	-	-	-	-	-	-	-	-	-	-	-	-	-	-	-	-	-	-	-	-	-	-	-	-
STONY CREEK 2 N	SNOWFALL	-	-	-	-	-	-	-	-	-	-	-	-	-	-	-	-	-	-	-	-	-	-	-	-	-	-	1.5	-	-	-	-
	SN ON GND	-	-	-	-	-	-	-	-	-	-	-	-	-	-	-	-	-	-	-	-	-	-	-	-	-	2.5	-	-	-	-	-
	SN ON GND	-	-	-	-	-	-	-	-	-	-	-	-	-	-	-	-	-	1	-	-	-	-	-	-	-	2	-	-	-	-	-
SUFFOLK LAKE KILBY	SNOWFALL	-	-	-	-	-	-	-	-	-	-	-	-	-	-	-	0.5	-	-	-	-	-	-	T	2.5	-	-	-	-	-	-	-
	SN ON GND	-	-	-	-	-	-	-	-	-	-	-	-	-	-	-	T	-	-	-	-	-	-	-	2	T	T	-	-	-	-	-
WAKEFIELD 1NW	SNOWFALL	-	-	-	-	-	-	-	-	-	-	-	-	-	-	-	1.2	T	-	-	-	-	-	T	1.9	-	-	-	-	-	-	-
	SN ON GND	-	-	-	-	-	-	-	-	-	-	-	-	-	-	1	T	-	-	-	-	-	-	2	1	-	-	-	-	-	-	-
WALKERTON 2 NW	SNOWFALL	-	-	-	-	-	-	-	-	-	-	-	-	-	-	-	-	0.1	-	-	-	-	-	0.1	0.1	-	-	-	-	-	-	-
	SN ON GND	-	-	-	-	-	-	-	-	-	-	-	-	-	-	-	-	-	-	-	-	-	-	-	-	-	-	-	-	-	-	-
WALLACETON LK DRUMMOND	SNOWFALL	-	-	-	-	-	-	-	-	-	-	-	-	-	-	-	-	-	-	-	-	-	-	-	-	-	-	-	-	-	-	-
WALLOPS ISLAND NASA TEST FACIL	SNOWFALL	-	-	-	-	-	-	-	-	-	-	-	-	-	-	-	0.8	0.6	-	-	-	-	-	4.0	2.0	1	-	-	-	-	-	-
	SN ON GND	-	-	-	-	-	-	-	-	-	-	-	-	-	-	-	1	-	-	-	-	-	3	1	5 ¹	3	-	-	-	-	-	-
WARSAW 2 NW	SNOWFALL	-	-	-	-	-	-	-	-	-	-	-	-	-	-	-	-	1.0	-	-	-	-	-	2.0	-	0.5	-	-	-	-	-	-
	SN ON GND	-	-	-	-	-	-	-	-	-	-	-	-	-	-	-	-	-	-	-	-	-	2	2	-	-	-	-	-	-	-	-
WEST POINT 2 NW	SNOWFALL	-	-	-	-	-	-	-	-	-	-	-	-	-	-	-	T	1.0	-	-	-	-	-	0.5	1.3	0.2	-	-	-	-	-	-
	SN ON GND	-	-	-	-	-	-	-	-	-	-	-	-	-	-	-	-	T	-	-	-	-	-	T	1	T	-	-	-	-	-	-
WILLIAMSBURG 2 N	SNOWFALL	-	-	-	-	-	-	-	-	-	-	-	-	-	-	-	0.1	T	-	-	-	-	-	T	1.3	-	-	-	-	-	-	-
	SN ON GND	-	-	-	-	-	-	-	-	-	-	-	-	-	-	-	T	T	-	-	-	-	-	-	1	-	-	-	-	-	-	-
EASTERN PIEDMONT 02																																
ALBERTA 5N	SNOWFALL	-	-	-	-	-	-	-	-	-	-	-	-	-	-	-	-	4.0	-	-	-	-	-	T	1.9	-	-	-	-	-	-	-
	SN ON GND	-	-	-	-	-	-	-	-	-	-	-	-	-	-	-	4	2	T	-	-	-	-	-	2	2	2	T	-	-	-	-
AMELIA COURTHOUSE 1	SNOWFALL	-	-	-	-	-	-	-	-	-	-	-	-	-	-	-	-	2.0	-	-	-	-	-	-	-	-	1.0	-	-	-	-	-
	SN ON GND	-	-	-	-	-	-	-	-	-	-	-	-	-	-	-	2	-	-	-	-	-	-	-	-	1	-	-	-	-	-	-

Snowfall: Includes snow and ice. Values for NWS stations (J index note) are Mid-Mid (LST).

Snow on ground: Includes snow, sleet, ice, and hail. Values for NWS stations (J index note) are observed at 12 UTC (GMT).

Water Equivalent: Given for NWS stations (J index note) only, when snow depth is 2 inches or more, and is measured at 18 UTC (GMT)

VIRGINIA
201301

SNOWFALL AND SNOW ON GROUND (INCHES)

STATION		DAY OF MONTH																																			
		01	02	03	04	05	06	07	08	09	10	11	12	13	14	15	16	17	18	19	20	21	22	23	24	25	26	27	28	29	30	31					
ASHLAND	SNOWFALL	-	-	-	-	-	-	-	-	-	-	-	-	-	-	-	0.5	3.0	-	-	-	-	-	-	1.5	1.0	-	-	T	-	-	-					
	SN ON GND	-	-	-	-	-	-	-	-	-	-	-	-	-	-	-	1	1	T	T	T	T	T	-	1	1	T	T	T	-	-	-					
BREMO BLUFF	SNOWFALL	-	-	-	-	-	-	-	-	-	-	-	-	-	-	-	-	-	-	-	-	-	-	-	-	-	-	-	-	-	-						
	SN ON GND	-	-	-	-	-	-	-	-	-	-	-	-	-	-	-	-	-	-	-	-	-	-	-	-	1	-	-	-	-	-	-					
BUCKINGHAM	SNOWFALL	-	-	-	-	-	-	-	-	-	-	-	-	-	-	-	-	2.5	-	-	-	-	-	-	-	-	-	-	-	-	-	-					
	SN ON GND	-	-	-	-	-	-	-	-	-	-	-	-	-	-	-	-	2	1	T	-	-	-	-	-	-	1.5	1	-	-	-	-					
CAMP PICKETT	SNOWFALL	-	-	-	-	-	-	-	-	-	-	-	-	-	-	-	-	-	-	-	-	-	-	-	-	-	-	-	-	-	-	-					
	SN ON GND	-	-	-	-	-	-	-	-	-	-	-	-	-	-	-	-	-	-	-	-	-	-	-	-	-	1	T	T	-	-	-					
CHASE CITY	SNOWFALL	-	-	-	-	-	-	-	-	-	-	-	-	-	-	-	-	-	-	-	-	-	-	-	-	-	-	-	-	-	-	-					
CLARKSVILLE	SNOWFALL	-	-	-	-	-	-	-	-	-	-	-	-	-	-	-	-	-	3.2	-	-	-	-	-	-	-	-	-	-	-	-	-	-				
	SN ON GND	-	-	-	-	-	-	-	-	-	-	-	-	-	-	-	-	2	-	-	-	-	-	-	-	-	1	-	-	-	-	-	-				
CORBIN	SNOWFALL	-	-	-	-	-	-	-	-	-	-	-	-	-	-	-	-	-	-	-	-	-	-	-	2.6	-	1.0	-	-	-	-	-	-				
	SN ON GND	-	-	-	-	-	-	-	-	-	-	-	-	-	-	-	-	-	-	-	-	-	-	-	3	1	1	-	-	-	-	-	-				
CROZIER	SNOWFALL	-	-	-	-	-	-	-	-	-	-	-	-	-	-	-	-	1.0	-	-	-	-	-	-	-	-	1.0	-	-	-	-	-	-				
	SN ON GND	-	-	-	-	-	-	-	-	-	-	-	-	-	-	-	-	-	-	-	-	-	-	-	-	-	1	-	-	-	-	-	-				
FARMVILLE 2 N	SNOWFALL	-	-	-	-	-	-	-	-	-	-	-	-	-	-	-	-	-	3.0	-	-	-	-	-	-	-	1.0	-	-	-	-	-	-				
	SN ON GND	-	-	-	-	-	-	-	-	-	-	-	-	-	-	-	-	3	-	-	-	-	-	-	-	1	-	-	-	-	-	-	-				
GREENBAY 3 NE	SNOWFALL	-	-	-	-	-	-	-	-	-	-	-	-	-	-	-	-	-	-	-	-	-	-	-	-	-	1.0	-	-	-	-	-	-				
	SN ON GND	-	-	-	-	-	-	-	-	-	-	-	-	-	-	-	-	-	-	-	-	-	-	-	-	-	1	1	-	-	-	-	-				
JOHN H KERR DAM	SNOWFALL	-	-	-	-	-	-	-	-	-	-	-	-	-	-	-	-	-	-	-	-	-	-	-	2.1	-	-	-	-	-	-	-	-				
LOUISA	SNOWFALL	-	-	-	-	-	-	-	-	-	-	-	-	-	-	-	0.8	-	-	-	-	-	-	-	-	-	-	-	-	-	-	-	-				
	SN ON GND	-	-	-	-	-	-	-	-	-	-	-	-	-	-	-	1	-	-	-	-	-	-	-	-	1	1	-	-	-	-	-	-	-			
PALMYRA 3S	SNOWFALL	-	-	-	-	-	-	-	-	-	-	-	-	-	-	-	-	-	0.8	-	-	-	-	-	-	0.2	0.1	0.1	-	-	-	-	-	-			
	SN ON GND	-	-	-	-	-	-	-	-	-	-	-	-	-	-	-	-	-	-	-	-	-	-	-	-	-	-	-	-	-	-	-	-	-			
PETERSBURG	SNOWFALL	-	-	-	-	-	-	-	-	-	-	-	-	-	-	-	-	-	-	-	-	-	-	-	-	-	-	-	-	-	-	-	-	-			
	SN ON GND	-	-	-	-	-	-	-	-	-	-	-	-	-	-	-	-	1	-	-	-	-	-	-	-	-	-	-	-	-	-	-	-	-	-		
RICHMOND INTL AP	SNOWFALL	-	-	-	-	-	-	-	-	-	-	-	-	-	-	-	1.6	T	-	-	-	-	-	T	0.2	1.4	-	-	-	-	-	-	-	-			
	SN ON GND	-	-	-	-	-	-	-	-	-	-	-	-	-	-	-	-	2	T	-	-	-	-	-	-	-	1	-	-	-	-	-	-	-	-		
SANDSTON	SNOWFALL	-	-	-	-	-	-	-	-	-	-	-	-	-	-	-	-	-	1.7	-	-	-	-	-	0.1	-	1.4	-	-	-	-	-	-	-			
	SN ON GND	-	-	-	-	-	-	-	-	-	-	-	-	-	-	-	-	-	2	1	T	-	-	-	T	-	1	1	T	-	-	-	-	-	-		
WINTERPOCK 4 W	SNOWFALL	-	-	-	-	-	-	-	-	-	-	-	-	-	-	-	-	-	2.5	-	-	-	-	-	T	-	1.5	-	-	-	-	-	-	-	-		
WESTERN PIEDMONT 03	SNOWFALL	-	-	-	-	-	-	-	-	-	-	-	-	-	-	-	-	-	-	-	-	-	-	-	-	-	-	-	-	-	-	-	-	-	-		
ALTAVISTA	SNOWFALL	-	-	-	-	-	-	-	-	-	-	-	-	-	-	-	-	-	2.0	-	-	-	-	-	-	-	0.5	-	-	-	-	-	-	-	-		
	SN ON GND	-	-	-	-	-	-	-	-	-	-	-	-	-	-	-	-	2	1	T	-	-	-	-	-	T	-	-	-	-	-	-	-	-	-		
APPOMATTOX	SNOWFALL	-	-	-	-	-	-	-	-	-	-	-	-	-	-	-	-	-	4.6	-	-	-	-	-	-	-	0.9	-	-	-	-	-	-	-	-		
	SN ON GND	-	-	-	-	-	-	-	-	-	-	-	-	-	-	-	-	5	4	2	T	-	-	-	-	1	-	-	-	-	-	-	-	-	-	-	
BEDFORD 4 NW	SNOWFALL	-	-	-	-	-	-	-	-	-	-	-	-	-	-	-	-	-	0.1	-	-	-	-	-	-	-	1.0	-	-	-	-	-	-	-	-	-	
	SN ON GND	-	-	-	-	-	-	-	-	-	-	-	-	-	-	-	-	-	T	-	-	-	-	-	-	-	1	-	-	-	-	-	-	-	-	-	
BROOKNEAL	SNOWFALL	-	-	-	-	-	-	-	-	-	-	-	-	-	-	-	-	-	0.7	-	-	-	-	-	-	-	0.9	-	-	-	-	-	-	-	-	-	
	SN ON GND	-	-	-	-	-	-	-	-	-	-	-	-	-	-	-	-	-	1	T	-	-	-	-	-	-	1	-	-	-	-	-	-	-	-	-	-
CHARLOTTE COURT HOUSE	SNOWFALL	-	-	-	-	-	-	-	-	-	-	-	-	-	-	-	-	-	3.0	-	-	-	-	-	-	-	1.0	-	-	-	-	-	-	-	-	-	-
	SN ON GND	-	-	-	-	-	-	-	-	-	-	-	-	-	-	-	-	-	3	2	1	-	-	-	-	-	1	-	-	-	-	-	-	-	-	-	-

Snowfall: Includes snow and ice. Values for NWS stations (J index note) are Mid-Mid (LST).

Snow on ground: Includes snow, sleet, ice, and hail. Values for NWS stations (J index note) are observed at 12 UTC (GMT).

Water Equivalent: Given for NWS stations (J index note) only, when snow depth is 2 inches or more, and is measured at 18 UTC (GMT)

VIRGINIA
201301

SNOWFALL AND SNOW ON GROUND (INCHES)

STATION		DAY OF MONTH																															
		01	02	03	04	05	06	07	08	09	10	11	12	13	14	15	16	17	18	19	20	21	22	23	24	25	26	27	28	29	30	31	
CHARLOTTESVILLE 2W	SNOWFALL																	1.2							2.0	0.3							
	SN ON GND																	1	T						2	1	1	T	T				
CHATHAM	SNOWFALL																	1.6									1.5						
	SN ON GND																	1	T								1						
CONCORD 4 SSW	SNOWFALL																	3.0									0.8						
	SN ON GND																	3	2	T							1	T					
DANVILLE REGIONAL AP	SNOWFALL																1.0									0.1							
	SN ON GND																1									T							
FREE UNION	SNOWFALL	-	-	-	-	-	-	-	-	-	-	-	-	-	-	-	-	-	-	-	-	-	-	-	2.2	-	0.1	-	T	-	-	-	
	SN ON GND	-	-	-	-	-	-	-	-	-	-	-	-	-	-	-	-	-	-	-	-	-	-	-	2	1	1	T	T	-	-	-	
HOLCOMB ROCK	SNOWFALL						T												T								1.5						
	SN ON GND																										1						
HUDDLESTON 4 SW	SNOWFALL																	4.0									0.8						
	SN ON GND																	4	1	T							T						
LYNCHBURG #2	SNOWFALL																										-						
	SN ON GND																										-						
LYNCHBURG INTL AP	SNOWFALL																	2.0								0.8							
	SN ON GND																	2	1	T						1							
MARTINSVILLE FLTR PLT	SNOWFALL																	2.5									T						
	SN ON GND																	2	1								T	T					
MEADOWS OF DAN 5 SW	SNOWFALL																										0.5						
	SN ON GND																										1	T					
MONTEBELLO FISH CULTURAL STN	SNOWFALL	-	-	-	-	-	-	-	-	-	-	-	-	-	-	-	-	5.5	-	-	-	-	-	-	1.2	-	1.0	-	-	-	-	-	
	SN ON GND	-	-	-	-	-	-	-	-	-	-	-	-	-	-	-	-	6	-	-	-	-	-	-	1	-	1	-	-	-	-	-	
MONTICELLO	SNOWFALL	-	-	-	-	-	-	-	-	-	-	-	-	-	-	-	-	0.5	-	-	-	-	-	-	2.0	-	0.5	-	-	-	-	-	
PEDLAR DAM	SNOWFALL						T											0.5									0.9						
	SN ON GND																	T									T	T					
ROCKY MT	SNOWFALL																	2.0									1.0						
	SN ON GND																	2	1								1	T					
SOUTH BOSTON	SNOWFALL																	1.5									0.2						
	SN ON GND																	2	T								T						
STUART	SNOWFALL																		T														
	SN ON GND																		T														
TYE RIVER 1 SE	SNOWFALL																																
	SN ON GND																			2	-	-	-	-	T	-	1	-	-	-	-	-	
WOOLWINE	SNOWFALL																		T								1.0						
	SN ON GND																		T							1	T						
NORTHERN 04																																	
BOSTON 4 SE	SNOWFALL																								1.4		T						
	SN ON GND																								1		T						
	WTR EQUIV																																
EDINBURG	SNOWFALL																								1.0		0.2						

Snowfall: Includes snow and ice. Values for NWS stations (J index note) are Mid-Mid (LST).

Snow on ground: Includes snow, sleet, ice, and hail. Values for NWS stations (J index note) are observed at 12 UTC (GMT).

Water Equivalent: Given for NWS stations (J index note) only, when snow depth is 2 inches or more, and is measured at 18 UTC (GMT)

VIRGINIA
201301

SNOWFALL AND SNOW ON GROUND (INCHES)

STATION		DAY OF MONTH																														
		01	02	03	04	05	06	07	08	09	10	11	12	13	14	15	16	17	18	19	20	21	22	23	24	25	26	27	28	29	30	31
FRONT ROYAL	SN ON GND	2	1	1	1	1	T	T	T	T															1	T	T					
	SNOWFALL	-	-	-	-	-	-	-	-	-	-	-	-	-	-	-	-	-	-	-	-	-	-	-	1.0	0.2	-	-	-	-	-	-
LINCOLN	SN ON GND	1	-	-	-	-	-	-	-	-	-	-	-	-	-	-	-	-	-	-	-	-	-	-	1	T	-	-	-	-	-	
	SNOWFALL	-	-	-	-	-	-	-	-	-	-	-	-	-	-	-	-	-	-	-	-	-	-	-	1.0	-	-	-	-	-	-	-
LURAY 5 E	SN ON GND	1	-	-	-	-	-	-	-	-	-	-	-	-	-	-	-	-	-	-	-	-	-	-	1	-	-	-	-	-	-	
	SNOWFALL																								1.2			T				
MADISON	SN ON GND	2	1	1	1	1																		1	1	1						
	SNOWFALL	-	-	-	-	-	-	-	-	-	-	-	-	-	-	-	-	-	-	-	-	-	-	-	1.2	-	-	-	-	-	-	-
MANASSAS	SN ON GND	-	-	-	-	-	-	-	-	-	-	-	-	-	-	-	-	-	-	-	-	-	-	-	2.0				T			
	SNOWFALL																								2	T			T			
MT WEATHER	SN ON GND	-	-	-	-	-	-	-	-	-	-	-	-	-	-	-	-	-	-	-	-	-	-	-	1.4	-	1.0	-	-	-	-	
	SNOWFALL	1	-	-	-	1	1	1	-	-	-	-	-	-	-	-	-	-	-	-	-	-	-	-	1	-	2	2	1	-	-	
PIEDMONT RSCH STN	SN ON GND	-	0.2	-	-	-	-	-	-	-	-	-	-	-	-	-	-	-	-	-	-	-	-	-	1.0	-	-	-	-	-	-	
	SNOWFALL																								1.8				0.1			
SOMERSET	SN ON GND	-	-	-	-	-	-	-	-	-	-	-	-	-	-	-	-	-	-	-	-	-	-	-	2							
	SNOWFALL	-	-	-	-	-	-	-	-	-	-	-	-	-	-	-	-	-	-	-	-	-	-	-	1.4	-	-	-	-	-	-	-
SPERRYVILLE	SN ON GND	-	-	-	-	-	-	-	-	-	-	-	-	-	-	-	-	-	-	-	-	-	-	-	1	T	T	T	T			
	SNOWFALL	-	-	-	-	-	-	-	-	-	-	-	-	-	-	-	-	-	-	-	-	-	-	-	3.0	T	1.1	T	T	-	-	
STERLING RCS	SN ON GND	T	T	T	T	T	T	T	T															3	2	2	1	T				
	SNOWFALL		T				T																		1.2	0.3	0.3	T	T	T		
VIENNA	SN ON GND	-	-	-	-	-	-	-	-	-	-	-	-	-	-	-	-	-	-	-	-	-	-	-	1	T	1	T				
	SNOWFALL	-	-	-	-	-	-	-	-	-	-	-	-	-	-	-	-	-	-	-	-	-	-	-	1.0	-	-	-	-	-	-	-
WARRENTON 3 SE	SN ON GND	-	-	-	-	-	-	-	-	-	-	-	-	-	-	-	-	-	-	-	-	-	-	1	1	-	-	-	-	-	-	
WASHGTON DULLES INTL AP	SNOWFALL																								T	1.5	0.3	T		T		
	SN ON GND		T				T																		1	1			T			
WASHINGTON REAGAN AP	SNOWFALL																								T	0.4	0.4	T		0.1		
	SN ON GND					T																			T	0.4	T		T			
WINCHESTER	SNOWFALL																															
WINCHESTER 7 SE	SNOWFALL																								1.5		1.0					
	SN ON GND																								2		1					
WOODSTOCK 2 NE	SNOWFALL																								1.5		1.0					
	SN ON GND	-	-	-	-	-	-	-	-	-	-	-	-	-	-	-	-	-	-	-	-	-	-	-	1.2	-	0.1	-	-	-	-	
CENTRAL MOUNTAIN 05	SN ON GND	1	1	T	T																				1		1					
	SNOWFALL																															
BUCHANAN	SNOWFALL						T																									
	SN ON GND																															
BUENA VISTA	SNOWFALL																															
	SN ON GND																															
COVINGTON FLTR PLT	SNOWFALL																															
	SN ON GND																															

Snowfall: Includes snow and ice. Values for NWS stations (J index note) are Mid-Mid (LST).

Snow on ground: Includes snow, sleet, ice, and hail. Values for NWS stations (J index note) are observed at 12 UTC (GMT).

Water Equivalent: Given for NWS stations (J index note) only, when snow depth is 2 inches or more, and is measured at 18 UTC (GMT)

VIRGINIA
201301

SNOWFALL AND SNOW ON GROUND (INCHES)

STATION	DAY OF MONTH																														
	01	02	03	04	05	06	07	08	09	10	11	12	13	14	15	16	17	18	19	20	21	22	23	24	25	26	27	28	29	30	31
CRAIGSVILLE 2 S	SN ON GND																	2	1							1	T				
	SNOWFALL	-	-	-	-	-	-	-	-	-	-	-	-	-	-	-	-	0.2	-	-	-	-	-	T	-	0.2	-	T	-	-	-
DALE ENTERPRISE	SN ON GND	-	-	-	-	-	-	-	-	-	-	-	-	-	-	-	-	T	-	-	-	-	-	T	-	3	-	T	-	-	
	SNOWFALL																							0.2							
GATHRIGHT DAM	SN ON GND	1	1	1																											
	WTR EQUIV	1.0	1.0	1.0	0.5																			-	0.2						
GLASGOW 1 SE	SNOWFALL	T															2.0						T		0.5					T	
	SN ON GND	1	T	T													2	1						T	T	T					T
HOT SPRINGS	SNOWFALL																3.0								0.8						
	SN ON GND																3	2	T						1						
LEXINGTON	SNOWFALL	T															1.0							0.5	2.0						
	SN ON GND	T	T	T	T	T	T										1							T	2	1	T				
MILLGAP	SNOWFALL																2.6								0.8						
	SN ON GND																3	2	1						1						
MTN GROVE	SNOWFALL	0.1					0.1										0.3							2.5	1.5						0.1
	SN ON GND	4	3	3	3	3	2	2	2	2	T	T	T				T							3	1	2	1	1			T
MUSTOE 1 SW	WTR EQUIV																														
	SNOWFALL		T														T	0.5						T	T	T					
NEW CASTLE	SN ON GND		T														T	T						T	T	T					
	SNOWFALL																T							2.5	0.7	0.7					0.2
ROANOKE 8 N	SN ON GND	2	2	2	1	1	1	T	T	T	T	T	T				T						2	3	3	1	T	T	T		T
	SNOWFALL																4.0										0.5				
ROANOKE INTL AP	SN ON GND																4	3	2	1	T				T	T	T				
	SNOWFALL																2.8									1.0					
STAUNTON WATER TRMTMT PLT	SN ON GND					T											3	2	1	T					1	T					
	SNOWFALL																3.5								1.5						T
WAYNESBORO WTP	SN ON GND																3	T							2						
	SNOWFALL																T														
SOUTHWESTERN MOUNTAIN 06	SN ON GND	1	-	-	-																				1						
	SNOWFALL																								T						
ABINGDON 3S	SN ON GND																														
	SNOWFALL																														
BIG STONE GAP	SN ON GND																														
	SNOWFALL				T												7.2							T	T	1.9					0.1
BLACKSBURG NWSO	SN ON GND	T															7	6	4	3	2	1	T	T	2	2	1	T		T	
	SNOWFALL																12.0							T	T	2.0					T
BURKES GARDEN	SN ON GND		T														12	7	5	4	4	4	4	3	2	4	3	1			T
	SNOWFALL																9.0									2.0		T			T
CHRISTIANSBURG	SN ON GND																														
	SNOWFALL																														

Snowfall: Includes snow and ice. Values for NWS stations (J index note) are Mid-Mid (LST).

Snow on ground: Includes snow, sleet, ice, and hail. Values for NWS stations (J index note) are observed at 12 UTC (GMT).

Water Equivalent: Given for NWS stations (J index note) only, when snow depth is 2 inches or more, and is measured at 18 UTC (GMT)

VIRGINIA
201301

SNOWFALL AND SNOW ON GROUND (INCHES)

STATION		DAY OF MONTH																															
		01	02	03	04	05	06	07	08	09	10	11	12	13	14	15	16	17	18	19	20	21	22	23	24	25	26	27	28	29	30	31	
CLINTWOOD 1 W	SN ON GND					T												9	7	4	2	T	T			2	1	T			T		
	SNOWFALL		0.2	T														6.2														T	
COPPER HILL	SN ON GND		T															6	4	3	2	1	1	1	1	1	1	1	1	1	T		
	SNOWFALL																	10.0														T	
GALAX RADIO WBRF	SN ON GND	2	1	T	T	T												10	8	5	4	3	3	3	3	3	5	4	3	1			
	SNOWFALL																	9.2														T	
GALAX WTP	SN ON GND																	9	8	6	5	4	4	3	3	4	4	4	4	2		T	
	SNOWFALL																	10.0														T	
GRUNDY	SN ON GND																	10	5	3	T						T	T	T				
	SNOWFALL																	3.5														T	
JOHN FLANNAGAN LAKE	SN ON GND																	3	2	1	1	T	T	T	T	1	T	T				T	
	SNOWFALL																	3															T
LAFAYETTE 1 NE	SN ON GND	-	-	-	-	-	-	-	-	-	-	-	-	-	-	-	-	3	-	-	-	-	-	-	-	-	-	-	-	-	-	-	
	SNOWFALL																	4.8															
LEBANON	SN ON GND																	4	4	2	T												
	SNOWFALL																	8.5															
NORA 4 SSE	SN ON GND																	9	6	4	-												
	SNOWFALL	T	0.2	0.1														10.8							T	T	0.5						0.4
NORTH FORK LAKE	SN ON GND	T	T	T														11	9	7	4	3	3	2	T	1	T	T				T	
	SNOWFALL	-	T	-	-	-	-	-	-	-	-	-	-	-	-	-	-	-	-	-	-	-	-	-	-	-	-	-	-	-	-	-	
PULASKI 2 E	SN ON GND	-	T	-	-	-	-	-	-	-	-	-	-	-	-	-	-	4	-	-	-	-	-	-	-	-	-	-	-	-	-	-	
	SNOWFALL																	8.5															
RADFORD 3 N	SN ON GND																	9	6	3	T	T	T										
	SNOWFALL																	7.0															
RICHLANDS	SN ON GND																	7	5	2	T	T	T										
	SNOWFALL																	7.9															
SALTVILLE 1N	SN ON GND																	8	6	3	1	T											
	SNOWFALL																	3.0															
STAFFORDSVILLE 3 ENE	SN ON GND																	3	1	T													
	SNOWFALL																	8.0	T														
TROUT DALE 3 SSE	SN ON GND																	8	8	5	3	1	1	T	T	2	T	T					
	SNOWFALL																	11.0															
WILLIS	SN ON GND																	11	9	4	2	2	1		T	2	2	2	2	1			
	SNOWFALL																	9.4															
WISE 3E	SN ON GND																	9	8	6	4	2	1	T									
	SNOWFALL	-	T	-	-	-	-	-	-	-	-	-	-	-	-	-	-	11.3															
WYTHEVILLE 1 S	SN ON GND	-		-	-	-	-	-	-	-	-	-	-	-	-	-	-	11	10	9	8	6	5	4	3	3	2	T	-	-	-	-	
	SNOWFALL																	9.0															
	SN ON GND																	9	7	5	2	1	T										

Snowfall: Includes snow and ice. Values for NWS stations (J index note) are Mid-Mid (LST).

Snow on ground: Includes snow, sleet, ice, and hail. Values for NWS stations (J index note) are observed at 12 UTC (GMT).

Water Equivalent: Given for NWS stations (J index note) only, when snow depth is 2 inches or more, and is measured at 18 UTC (GMT)

VIRGINIA
201301

PAN EVAPORATION AND WIND

STATION		DAY OF MONTH																															TOTAL OR AVERAGE		
		01	02	03	04	05	06	07	08	09	10	11	12	13	14	15	16	17	18	19	20	21	22	23	24	25	26	27	28	29	30	31			
VIRGINIA EASTERN PIEDMONT 02 JOHN H KERR DAM	WIND	-	-	-	-	-	-	-	-	-	-	-	-	-	-	-	-	-	-	-	-	-	-	-	-	-	-	-	-	-	-	-	-	-	M
	EVAP	-	-	-	-	-	-	-	-	-	-	-	-	-	-	-	-	-	-	-	-	-	-	-	-	-	-	-	-	-	-	-	-	-	M
	MAX	-	-	-	-	-	-	-	-	-	-	-	-	-	-	-	-	-	-	-	-	-	-	-	-	-	-	-	-	-	-	-	-	-	M
	MIN	-	-	-	-	-	-	-	-	-	-	-	-	-	-	-	-	-	-	-	-	-	-	-	-	-	-	-	-	-	-	-	-	-	M

Evaporation: Is measured in hundreths of inches.

Wind: Is measured in miles.

Max and Min: The maximum and minimum temperatures (Fahrenheit) of the water in the evaporation pan.

STATION INDEX

STATION	INDEX NO.	DIVISION	COUNTY	LATITUDE	LONGITUDE	ELEVATION (IN FEET)	OBSERVATION TIME AND TABLES			
							LOCAL STD TIME			
							TEMP	PRECIP	EVAP	SPECIAL SEE (NOTES)
VIRGINIA										
ABINGDON 3S	0021	06	WASHINGTON	36 40	81 58W	1920	22	22		H
ALBERTA 5N	0079	02	BRUNSWICK	36 56	77 54W	376		08		H
ALTAVISTA	0166	03	CAMPBELL	37 7	79 17W	529		07		CH
AMELIA COURTHOUSE 1	0187	02	AMELIA	37 21	77 59W	345	08	08		H
APPOMATTOX	0243	03	APPOMATTOX	37 20	78 50W	850	07	07		H
ASHLAND	0327	02	HANOVER	37 45	77 29W	220	18	18		H
BEDFORD 4 NW	0561	03	BEDFORD	37 23	79 34W	1228		07		CH
BIG STONE GAP	0735	06	WISE	36 52	82 46W	1464	08	08		H
BLACKSBURG NWSO	0766	06	MONTGOMERY	37 12	80 25W	2100	07	07		CH
BOSTON 4 SE	0860	04	CULPEPER	38 33	78 6W	590	07	07		H
BREMO BLUFF	0993	02	FLUVANNA	37 43	78 17W	225		24		CH
BROOKNEAL	1082	03	CAMPBELL	37 4	78 57W	408	07	07		H
BUCHANAN	1121	05	BOTETOURT	37 31	79 41W	880		07		H
BUCKINGHAM	1136	02	BUCKINGHAM	37 30	78 32W	552		07		H
BUENA VISTA	1159	05	ROCKBRIDGE	37 44	79 22W	840		07		H
BURKES GARDEN	1209	06	TAZEWELL	37 6	81 20W	3068	07	07		H
CAMP PICKETT	1322	02	NOTTOWAY	37 2	77 57W	330	08	08		CH
CHARLOTTE COURT HOUSE	1585	03	CHARLOTTE	37 3	78 39W	569	07	07		H
CHARLOTTESVILLE 2W	1593	03	ALBEMARLE	38 2	78 31W	866	08	08		H
CHASE CITY	1606	02	MECKLENBURG	36 47	78 29W	510	17	17		H
CHATHAM	1614	03	PITTSYLVANIA	36 49	79 25W	651	07	07		CH
CHRISTIANSBURG	1692	06	MONTGOMERY	37 8	80 24W	2100	07	07		H
CLARKSVILLE	1746	02	MECKLENBURG	36 37	78 33W	330	07	07		H
CLINTWOOD 1 W	1825	06	DICKENSON	37 9	82 29W	1780	07	07		H
CONCORD 4 SSW	1955	03	CAMPBELL	37 17	78 58W	815		07		H
COPPER HILL	1999	06	FLOYD	37 5	80 9W	2690	07	07		H
CORBIN	2009	02	CAROLINE	38 12	77 22W	220	09	09		H
COVINGTON FLTR PLT	2044	05	ALLEGHANY	37 49	79 59W	1230	07	07		H
CRAIGSVILLE 2 S	2064	05	AUGUSTA	38 3	79 23W	1758		07		H
CROZIER	2142	02	GOOCHLAND	37 40	77 53W	350	07	07		H
DALE ENTERPRISE	2208	05	ROCKINGHAM	38 27	78 56W	1358	07	07		H
DANVILLE REGIONAL AP R	2250	03	PITTSYLVANIA	36 34	79 20W	571	24	24		H
DISPUTANTA	2400	01	PRINCE GEORGE	37 7	77 12W	15	07	07		H
EASTVILLE	2635	01	NORTHAMPTON	37 23	75 58W	10	07	07		H
EDINBURG	2663	04	SHENANDOAH	38 48	78 35W	928	07	07		H
EMPORIA 1 WNW	2790	01	GREENSVILLE	36 42	77 34W	100	08	08		H
FARMVILLE 2 N	2941	02	CUMBERLAND	37 20	78 23W	450	07	07		H
FREDERICKSBURG SEWAGE	3204	01	FREDERICKSBURG	38 17	77 27W	15	07	07		H
FREE UNION	3213	03	ALBEMARLE	38 5	78 35W	590	08	07		H
FRONT ROYAL	3229	04	WARREN	38 54	78 11W	930	07	07		H
GALAX RADIO WBRF	3267	06	CARROLL	36 40	80 55W	2385	07	07		H
GALAX WTP	3272	06	CARROLL	36 39	80 55W	2360	07	07		CH
GATHRIGHT DAM	3310	05	ALLEGHANY	37 57	79 57W	1770	07	07		CH
GLASGOW 1 SE	3375	05	ROCKBRIDGE	37 37	79 26W	737		07		H
GREENBAY 3 NE	3565	02	PRINCE EDWARD	37 11	78 17W	500	09	09		H
GRUNDY	3640	06	BUCHANAN	37 17	82 5W	1170	07	07		H
HAMPTON UNIV	3713	01	HAMPTON	37 1	76 20W	10	17	17		H
HOLCOMB ROCK	4039	03	BEDFORD	37 33	79 24W	620		07		H
HOLLAND 1 E	4044	01	SUFFOLK	36 41	76 46W	80	08	08		H
HOPEWELL	4101	01	PRINCE GEORGE	37 18	77 17W	40	16	16		H
HOT SPRINGS	4128	05	BATH	37 60	79 50W	2236	07	07		H
HUDDLESTON 4 SW	4148	03	BEDFORD	37 8	79 32W	898		07		H
JOHN FLANNAGAN LAKE	4410	06	DICKENSON	37 14	82 21W	1460	07	07		H
JOHN H KERR DAM	4414	02	MECKLENBURG	36 36	78 18W	250	08	08	08	CH
LAFAYETTE 1 NE	4676	06	MONTGOMERY	37 14	80 12W	1320		07		H
LEBANON	4777	06	RUSSELL	36 54	82 2W	1912	07	07		H
LEXINGTON	4876	05	ROCKBRIDGE	37 47	79 26W	1097		07		H
LINCOLN	4909	04	LOUDOUN	39 5	77 42W	500	07	07		H
LOUISA	5050	02	LOUISA	38 3	78 0W	420	18	18		H
LURAY 5 E	5096	04	PAGE	38 40	78 22W	1400	08	08		H
LYNCHBURG #2	5117	03	CAMPBELL	37 23	79 14W	736	07	07		H
LYNCHBURG INTL AP R	5120	03	CAMPBELL	37 19	79 12W	940	24	24		HJ
MADISON	5150	04	MADISON	38 22	78 15W	577	08	08		H
MANASSAS	5204	04	MANASSAS	38 44	77 30W	245	07	07		H
MARTINSVILLE FLTR PLT	5300	03	HENRY	36 42	79 52W	760	07	07		H

STATION INDEX

STATION	INDEX NO.	DIVISION	COUNTY	LATITUDE	LONGITUDE	ELEVATION (IN FEET)	OBSERVATION TIME AND TABLES			
							LOCAL STD TIME			
							TEMP	PRECIP	EVAP	SPECIAL SEE (NOTES)
MEADOWS OF DAN 5 SW	5453	03	PATRICK	36 40	80 27W	2225	07	07		H
MILLGAP	5595	05	HIGHLAND	38 18	79 43W	2421	07	07		CH
MONTEBELLO FISH CULTURAL STN #	5690	03	NELSON	37 51	79 8W	2667	07	07		H
MONTECELLO	5700	03	ALBEMARLE	38 1	78 27W	758	08	08		H
MT WEATHER	5851	04	LOUDOUN	39 4	77 53W	1659	07	07		H
MTN GROVE	5756	05	BATH	38 6	79 53W	1775		07		H
MUSTOE 1 SW	5880	05	HIGHLAND	38 20	79 40W	2380	24	24		H
NEW CASTLE	6012	05	CRAIG	37 18	80 3W	1258		07		H
NORA 4 SSE	6125	06	DICKENSON	37 1	82 19W	2650	07	07		H
NORFOLK INTL AP R	6139	01	NORFOLK (CITY)	36 54	76 12W	30	24	24		HJ
NORFOLK SOUTH	6147	01	NORFOLK (CITY)	36 52	76 14W	100	24	24		H
NORTH	6161	01	MATHEWS	37 26	76 26W	10	07	07		H
NORTH FORK LAKE	6173	06	WISE	37 7	82 38W	1675	08	08		H
PAINTER 2W	6475	01	ACCOMACK	37 35	75 49W	30	16	16		CH
PALMYRA 3S	6491	02	FLUVANNA	37 49	78 16W	410	06	06		H
PEDLAR DAM	6593	03	AMHERST	37 40	79 17W	1024		07		H
PETERSBURG	6656	02	PETERSBURG	37 14	77 24W	15	08	08		H
PIEDMONT RSCH STN	6712	04	ORANGE	38 14	78 7W	520	08	08		CH
PULASKI 2 E	6955	06	PULASKI	37 3	80 47W	1850	07	07		CH
RADFORD 3 N	6999	06	PULASKI	37 12	80 35W	1800	07	07		H
RICHLANDS	7174	06	TAZEWELL	37 6	81 48W	1910	07	07		H
RICHMOND INTL AP R	7201	02	HENRICO	37 30	77 19W	164	24	24		HJ
ROANOKE 8 N	7278	05	ROANOKE	37 22	79 58W	1190	07	07		H
ROANOKE INTL AP R	7285	05	ROANOKE	37 19	79 58W	1175	24	24		HJ
ROCKY MT	7338	03	FRANKLIN	36 59	79 54W	1315	07	07		CH
SALTVILLE 1N	7506	06	SMYTH	36 53	81 46W	1733	07	07		H
SANDSTON	7541	02	HENRICO	37 33	77 17W	165	07	07		H
SOMERSET	7904	04	ORANGE	38 15	78 16W	510	07	07		H
SOUTH BOSTON	7925	03	HALIFAX	36 42	78 53W	329	07	07		H
SPERRYVILLE	7985	04	RAPPAHANNOCK	38 39	78 14W	750	06	06		H
STAFFORDSVILLE 3 ENE	8022	06	GILES	37 16	80 43W	1950	07	07		CH
STAUNTON WATER TRMTMT PLT	8062	05	AUGUSTA	38 10	79 5W	169	08	08		H
STERLING RCS	8084	04	LOUDOUN	38 59	77 29W	288	07	07		H
STONY CREEK 2 N	8129	01	SUSSEX	36 58	77 24W	105	08	08		H
STUART	8170	03	PATRICK	36 38	80 15W	1375	07	07		H
SUFFOLK LAKE KILBY	8192	01	SUFFOLK	36 44	76 36W	22	24	24		H
TROUT DALE 3 SSE	8547	06	GRAYSON	36 39	81 24W	2839	07	07		CH
TYE RIVER 1 SE	8600	03	NELSON	37 38	78 56W	720	07	07		H
VIENNA	8737	04	FAIRFAX	38 54	77 16W	418	07	07		H
WAKEFIELD 1NW	8800	01	SUSSEX	36 59	77 0W	113	24	24		CH
WALKERTON 2 NW	8829	01	KING AND QUEEN	37 45	77 2W	50	18	18		H
WALLACETON LK DRUMMOND	8837	01	CHESAPEAKE	36 36	76 26W	20	08	08		H
WALLOPS ISLAND NASA TEST FACIL R	8849	01	ACCOMACK	37 56	75 28W	46	24	24		HJ
WARRENTON 3 SE	8888	04	FAUQUIER	38 41	77 46W	500	08	08		H
WARSAW 2 NW	8894	01	RICHMOND	37 59	76 47W	140	18	18		H
WASHGTON DULLES INTL AP R	8903	04	LOUDOUN	38 56	77 28W	290	24	24		HJ
WASHINGTON REAGAN AP R	8906	04	ARLINGTON	38 51	77 2W	10	24	24		HJ
WAYNESBORO WTP	8941	05	WAYNESBORO	38 5	78 53W	1270	07	07		H
WEST POINT 2 NW	9025	01	KING WILLIAM	37 34	76 48W	20	17	17		H
WILLIAMSBURG 2 N	9151	01	YORK	37 18	76 42W	70	24	24		CH
WILLIS	9169	06	FLOYD	36 55	80 30W	2810		07		CH
WINCHESTER	9181	04	FREDERICK	39 11	78 9W	720	07	07		H
WINCHESTER 7 SE	9186	04	FREDERICK	39 11	78 7W	680	08	08		H
WINTERPOCK 4 W	9213	02	CHESTERFIELD	37 19	77 39W	300		07		H
WISE 3E	9215	06	WISE	36 60	82 32W	2549	17	17		CH
WOODSTOCK 2 NE	9263	04	SHENANDOAH	38 54	78 28W	675	07	07		H
WOOLWINE	9272	03	PATRICK	36 47	80 17W	1500		07		CH
WYTHEVILLE 1 S	9301	06	WYTHE	36 56	81 6W	2093	07	07		CH

REFERENCE NOTES

STATION NAMES: Name of the city, town or locality. Figures and letters following the station names indicate the distance in miles and direction from the post office or town community center.

DIVISIONS: Areas within a state of similar climatological characteristics. Division averages are calculated using data from stations that record temperature and/or precipitation. Station Precipitation totals flagged with an 'F' or 'M' are excluded from the Divisional Average calculations of precipitation. Stations with monthly Temperature averages flagged with an 'F' or 'M' are included in the Divisional Average if there are no more than 9 flagged or missing daily values in the month, else they are excluded from the divisional average for temperature.

NORMALS: The average value of the meteorological element over a time period. Effective 1 January 2012, the averaging period is 1981 to 2010. The normals for National Weather Service localities have been adjusted so as to be representative for the current observation site.

MONTHLY DEGREE DAY TOTALS: One heating (cooling) degree day is accumulated for each whole degree that the daily mean temperature is below (above) 65 degrees Fahrenheit.

PRECIPITATION: Values shown in hundredths of inches are water equivalent totals, i.e., total of liquid and melted frozen precipitation. In the "Monthly Summarized Data" table the total snow and sleet values shown in tenths of inches are unmelted amounts. The max depth on ground values of snow and sleet shown in whole inches are cumulative unmelted amounts. The number of days with .10, .50, 1.00 or more refers to water equivalents.

PRECIPITATION QUALITY CONTROL: The NCDC quality control process may flag precipitation data that are spatially inconsistent, exceed climatological limits, or are inconsistent with prevailing weather patterns.

TEMPERATURE: Original temperature values are given in the "Daily Temperature" table. Summary temperature information (averages, departures, extremes, monthly degree day totals) is based on the values labeled MAX/MIN.

WIND: (As shown in the "Evaporation and Wind" table) the total wind movement in miles over the evaporation pan as determined by an anemometer recorder located 6-8 inches above the pan.

SYMBOLS AND LETTERS USED IN THE STATION INDEX TABLE

C Station is equipped with recording rain gage (R) but values in this bulletin are from a non-recording rain gage unless indicated by an R.

G Observations appear in the "Soil Temperatures" table.

H Observations appear in the "Snowfall and Snow on the Ground" table.

J Station also published as a Local Climatological Data publication.

VAR Observation time varies.

SR Observation time near sunrise.

SS Observation time near sunset.

SYMBOLS AND LETTERS USED IN THE DATA TABLES

(DAILY DATA ARE FOR THE 24 HOURS IMMEDIATELY PRECEDING OBSERVATION TIME.)

BLANK Entries in the "Monthly Summarized Data" table indicate no record.

BLANK Entries in the "Daily Precipitation" and "Snowfall and Snow on the Ground" tables indicate zero.

BLANK Entries in the "Daily Temperature" table indicate a missing record

- No record. Data not recorded or not received in time for publication.

+ Precipitation or temperature extremes occurred on one or more previous dates during the month.

* Rain gage not read. Precipitation is included in the amount following the asterisks.

Time distribution may not be known. A * preceding the monthly total indicates precipitation amount is being carried forward to next month's total, and may include amounts from the previous month(s).

a As a subscript, indicates accumulated total.

A Amount of precipitation is the total of observer's entries for the current month. It may include precipitation that occurred during the previous month. Refer to earlier bulletin to determine date of last reading. (Hawaii stations)

B Divisional Departure from normals are computed using 1971-2000 normals.

E Normalized HDD/CDD Calculation. E is appended to the HDD/CDD Calculation when 1-9 individual daily TMAX and/or TMIN values are missing and a Normalized HDD/CDD Calculation is provided. M appears alone if 10 or more daily values are missing.

F Monthly calculation flagged value. F is appended to average and/or total values computed which exclude one or more daily data values that have been flagged by the GHCN-Daily Dataset

M Insufficient or partial data. M is appended to average and/or total values computed with 1-9 daily values missing. M appears alone if 10 or more daily values are missing, (8 or more for wind and evaporation).

N Indicates snow fall or Snowdepth totals are computed with one or more missing days.

R Amounts from recording rain gage.

T Trace. An amount too small to measure.

SEASONAL TABLES: Monthly and seasonal snowfall and heating degree days for the 12 months ending with the June data are published in the July issue of this bulletin. Cooling degree days for the calendar year are published in the "Climatological Data Annual Summary."

Information concerning the history of changes in locations, exposure, etc. of substations is kept on file at the National Climatic Data Center. Historical information of regular National Weather Service Offices may be obtained from the "Local Climatological Data" annual publication. The contents of this publication may be reprinted or otherwise used freely, with proper credit to the National Climatic Data Center. The data are also available digitally.

Effective with the January 2011 Data-Month, COOP Observer Names are no longer included in the Monthly and Annual Climatological Data Publications. This information is not published to ensure the privacy of personal information pursuant to Section 208 of the E-Government Act of 2002 (44 USC 3601).

As of the 2011 Data-Year, Station and Climate Division Maps are no longer being included in the CD Publications. NCDC's Product Development Branch provides updated Station Maps for various data networks via the Historical Observing Metadata Repository: <http://www.ncdc.noaa.gov/homr>.

The GHCN-Daily Quality Control Flags shown below are displayed as superscripts with the data. For more Information on Global Historical Climatology Network - Daily and flags, see: <http://www.ncdc.noaa.gov/oa/climate/ghcn-daily/> and Comprehensive Automated Quality Assurance of Daily Surface Observations. Durre, Imke, Matthew J. Menne, Byron E. Gleason, Tamara G. Houston, Russell S. Vose, 2010: J. Appl. Meteor. Climatol., 49, 1615-1633. doi: 10.1175/2010JAMC2375.1

Blank = Passed All checks

D = failed duplicate check

G = failed gap check

I = failed internal consistency check

K = failed streak/frequent-value check

L = failed check on length of multiday period

M = failed megaconsistency check

N = failed naught check

O = failed climatological outlier check

R = failed lagged range check

S = failed spatial consistency check

T = failed temporal consistency check

W = temperature too warm for snow

X = failed bounds check

Z = flagged as a result of an official Datzilla investigation

Beginning with the January 2013 CD Publication, monthly mean temperature calculations have changed to the National Data Stewardship Team standard. Monthly maximum and minimum temperatures are not rounded until after the monthly mean temperature is calculated. This is the most accurate outcome, but may be slightly different from the mean derived from rounded monthly maximum and minimum.

Processing Updates and Errata: The 2011 CD Publications were reproduced in May 2013. This update included the addition of late reports and corrections based on additional investigations of reported data issues through NCDC's Datzilla system. In addition, divisional averages for precipitation were recalculated using the method described in DIVISIONS above. Previous editions of the 2011 Publications included all precipitation stations regardless of missing data in the calculation of divisional averages. HDD/CDD values were recalculated to match the legacy method of calculation (truncation of monthly HDD/CDD values instead of rounding).

NOAA\National Climatic Data Center
Attn: User Engagement & Services Branch
151 Patton Avenue
Asheville, NC 28801-5001

Customer Services Number: (828) 271-4800, option 2
TDD : (828) 271-4010
Fax number: (828) 271-4876

NCDC now offers free online access to the *Climatological Data* publication.
Go to : www.ncdc.noaa.gov and choose Most Popular.