



CLIMATOLOGICAL DATA

VIRGINIA

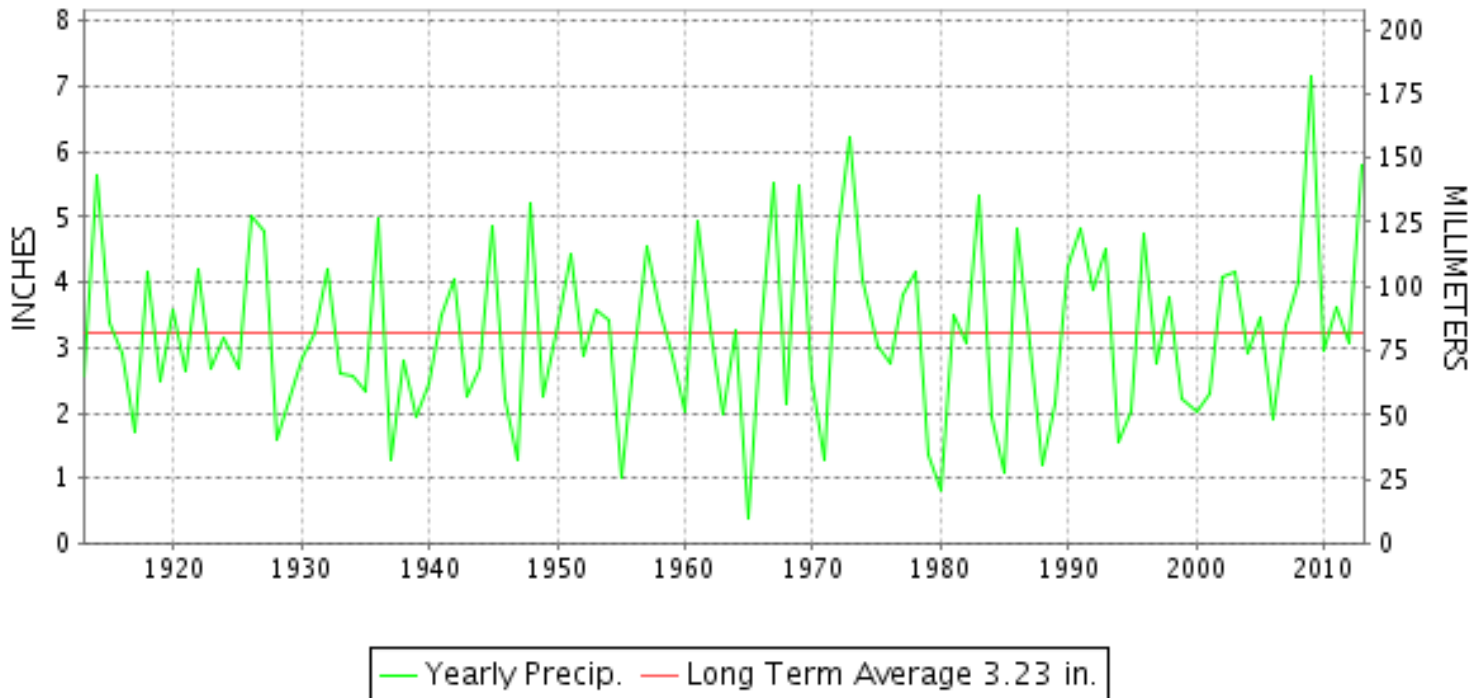
DECEMBER 2013

VOLUME 123 NUMBER 12

ISSN 0364-5630

GHCND Ver: 3.12-upd-2014041505

DECEMBER PRECIPITATION BY YEAR



TEMPERATURE AND PRECIPITATION EXTREMES

VIRGINIA

HIGHEST TEMPERATURE	81	DECEMBER 23+	2 STATIONS
LOWEST TEMPERATURE	3	DECEMBER 25	BURKES GARDEN
GREATEST TOTAL PRECIPITATION	8.61		BIG STONE GAP
LEAST TOTAL PRECIPITATION	3.21		LINCOLN
GREATEST 1 DAY PRECIPITATION	2.50	DECEMBER 09	FRONT ROYAL
GREATEST TOTAL SNOWFALL	12.6		WINCHESTER
GREATEST DEPTH OF SNOW OR ICE	7		LINCOLN

"I certify that this is an official publication of the National Oceanic and Atmospheric Administration (NOAA) It is compiled using information from weather observing sites supervised by NOAA/National Weather Service and received at the National Climatic Data Center(NCDC), Asheville, North Carolina 28801."

Director
National Climatic Data Center

noaa

National
Oceanic and
Atmospheric Administration

National
Environmental Satellite, Data
and Information Service

National
Climatic Data Center
Asheville, North Carolina

VIRGINIA
201312

MONTHLY STATION AND DIVISION SUMMARY

STATION	TEMPERATURE (°F)											PRECIPITATION (IN)												
	AVERAGE MAXIMUM	AVERAGE MINIMUM	AVERAGE	DEPARTURE FROM NORMAL	HIGHEST	DATE	LOWEST	DATE	HEATING DEG. DAYS	COOLING DEG. DAYS	NO. OF DAYS				TOTAL	DEPARTURE FROM NORMAL	GREATEST 24 HOURS	DATE	ICE PELLETS, SNOW			NO. OF DAYS		
											MAX		MIN						TOTAL	MAX DEPTH ON GROUND	DATE	.10 OR MORE	.50 OR MORE	1.00 OR MORE
											>=90	<=32	<=32	<=0										
PETERSBURG	54.7	32.5	43.6	2.6	78	23	20	26	659	4	0	0	19	0	6.82	3.62	1.24	30	M 0.0	0		11	6	2
RICHMOND INTL AP	53.6	34.1	43.8	2.8	76	22	21	26	651	4	0	0	18	0	6.11	2.85	1.35	29	T 0	0		9	5	1
SANDSTON	50.9	32.0	41.5	2.8	75	23	19	26	725	3	0	1	21	0	A 5.13	1.71	0.43	18	0.0			1	0	0
WINTERPOCK 4 W															6.59		1.21	23	0.0			11	6	2
--DIVISIONAL DATA-----> WESTERN PIEDMONT 03			42.3	2.9B										5.86	2.68B									
ALTAVISTA														5.58		0.91	09	0.0	0			10	7	0
APPOMATTOX	49.7M	32.7M	41.2M	2.9	71	07	16	25	723E	0	0	2	18	0	5.74	2.31	1.17	09	T 0	0		10	5	2
BEDFORD 4 NW														6.20		1.42	07	T 0	0			9	4	2
BROOKNEAL	52.4M	28.4	40.4M	5.9	77	07	17	26+	755E	0	0	0	26	0	5.87	2.52	1.08	23	T 0	0		11	7	1
CHARLOTTE COURT HOUSE	52.0	32.3M	42.2M	3.2	75	07	19	25	698E	1E	0	0	19	0	4.85	1.39	1.01	30	T 0	0		8	5	1
CHARLOTTESVILLE 2W	49.6	32.6	41.1	2.2	69	22	17	25	730	0	0	1	19	0	5.67	2.32	1.25	07	0.2	T	31	9	5	2
CHATHAM	51.4M	27.3M	39.4M	2.3	73	07	14	26	787E	0	0	1	24	0	6.09	2.65	1.09	30	0.0	0		10	6	2
CONCORD 4 SSW														4.74		1.02	09	T 0	0			10	5	1
DANVILLE REGIONAL AP	55.0	32.9	44.0	3.9	78	06	17	25	648	3	0	0	19	0	5.22	1.96	1.32	22	M 0.0	0		9	5	1
FREE UNION	50.1M	27.6M	38.8M		69	23+	14	26+	797E	0	0	1	23	0	5.69		1.26	07	M 0.4	M T	14	9	5	2
HOLCOMB ROCK														6.98		1.75	23	0.3	0			12	4	3
HUDDLESTON 4 SW														5.86		1.13	07	T T	09			8	5	1
LYNCHBURG INTL AP	51.4	30.8	41.1	3.5	73	06	14	25	736	0	0	0	21	0	5.69	2.45	1.08	29	T 0	0		9	5	1
MARTINSVILLE FLTR PLT	53.0	27.0	40.0	2.3	76	07	14	26	769	0	0	0	24	0	5.45	2.06	1.43	23	0.0	0		10	4	1
MEADOWS OF DAN 5 SW	M	M	M											6.23		2.00	23	0.0	0			8	7	1
MONTEBELLO FISH CULTURAL STN	M	M	M		66	06	9	26+	1013E	0	0	3	15	0	M									
MONTEBELLO FISH CULTURAL STN	48.5	31.4	40.0	3.3	68	22	17	26+	768	0	0	2	21	0	5.21	2.17	1.68	29	M 0.3	M T	10	8	4	2
PEDLAR DAM														6.62		1.67	23	T 0	0			10	5	1
ROCKY MT	52.8M	29.3M	41.0M	3.1	74	07	15	26+	736E	0	0	0	20	0	5.41	1.92	1.50	23	0.0	T	09	11	4	1
SOUTH BOSTON	53.5	30.2	41.9	2.6	76	07	18	26	712	2	0	0	22	0	5.08	1.72	0.98	23	0.0	0		12	5	0
STUART	53.1	31.4	42.3	3.1	72	07	17	25	699	0	0	0	20	0	6.15	2.64	2.23	23	0.0	0		10	4	1
TYE RIVER 1 SE	52.4M	30.6	41.5M	2.9	70	22	14	25	725E	0	0	0	20	0	6.07	2.51	1.55	29	0.0			7	4	4
WOOLWINE														6.02		1.90	23	0.0	0			11	4	2
--DIVISIONAL DATA-----> NORTHERN 04			41.1	2.2B										5.75	2.50B									
BOSTON 4 SE	47.8	27.3	37.5	2.1	69	23+	9	02	844	0	0	2	24	0	5.50	2.52	1.89	29	1.7	1	10	6	4	2
EDINBURG	46.9	26.0	36.5	2.4	69	22+	14	25+	877	0	0	1	26	0	5.05	2.73	1.34	07	M 8.8	M 4	15	9	5	1
FRONT ROYAL	46.5	29.5	38.0	1.7	73	23+	17	26+	831	1	0	3	23	0	5.00	2.18	2.50	09	M 7.0	3	11	7	2	2
LINCOLN	45.2	25.8	35.5	0.7	70	22	9	13	908	0	0	4	26	0	A 3.21		0.86	23	M 8.0	7	10	4	1	0
LURAY 5 E	48.6	28.5	38.5	1.6	72	22	13	25	812	0	0	1	22	0	5.03	1.98	1.25	09	6.0	5	11	9	4	1
MADISON	M	M	M		51	16	29	13+	846E	0	0	0	6	0	M				M 2.2	M T	14			
MANASSAS	49.3M	31.5M	40.4M	3.3	73	23+	17	11	760E	4E	0	1	16	0	MA 5.00		1.00	07	M 5.2	2	10	4	2	1

VIRGINIA
201312

MONTHLY STATION AND DIVISION SUMMARY

STATION	TEMPERATURE (°F)											PRECIPITATION (IN)												
	AVERAGE MAXIMUM	AVERAGE MINIMUM	AVERAGE	DEPARTURE FROM NORMAL	HIGHEST	DATE	LOWEST	DATE	HEATING DEG. DAYS	COOLING DEG. DAYS	NO. OF DAYS				TOTAL	DEPARTURE FROM NORMAL	GREATEST 24 HOURS	DATE	ICE PELLETS, SNOW			NO. OF DAYS		
											MAX		MIN						TOTAL	MAX DEPTH ON GROUND	DATE	.10 OR MORE	.50 OR MORE	1.00 OR MORE
											>=90	<=32	<=32	<=0										
MT WEATHER	43.2	29.4	36.3	1.9	64	23+	14	26+	881	0	0	4	21	0	5.45	2.50	1.25	07	M 8.0	4	11	11	4	2
PIEDMONT RSCH STN	48.8	29.8	39.3	1.8	71	23	15	26+	791	1	0	2	23	0	A 4.77	1.70	2.04	06	T	0		2	1	1
SOMERSET	49.7	29.8	39.7	3.0	70	22	14	25	776	0	0	1	22	0	5.90	2.77	1.21	07	M T	M T	14	10	5	2
SPERRYVILLE	47.7	28.2	38.0	1.4	70	23+	16	26+	831	0	0	2	23	0	5.96	2.58	2.15	09	M 2.9	2	11	7	5	2
STERLING RCS	46.0	27.7	36.8	1.2	71	22	14	13	865	0	0	3	24	0	5.39	2.30	1.11	07	FM 4.9	2	14	8	4	3
VIENNA	45.6	29.6	37.6	1.2	70	23	18	26+	843	0	0	4	22	0	3.95	0.68	0.85	30	M 3.0	2	10	9	4	0
WASHGTN DULLES INTL AP	48.0	30.4	39.2	2.6	71	22	17	13+	793	2	0	3	22	0	5.58	2.62	1.27	29	4.7	2	14	9	5	1
WASHINGTON REAGAN AP	49.8	34.7	42.3	2.6	72	22+	22	25	696	0	0	0	15	0	5.53	2.48	1.31	29	1.5	T	11	9	5	1
WINCHESTER	45.0	28.6	36.8	1.5	70	22	17	25	868	0	0	3	23	0	5.54	2.86	1.57	07	M 12.6	6	10	10	4	2
WINCHESTER 7 SE	45.7	26.0M	35.8M	1.9	72	22	10	26	887E	0	0	3	18	0	4.95	2.48	1.67	07	8.0	6	10	10	2	2
WOODSTOCK 2 NE	46.0M	24.1M	35.0M	1.0	71	22	11	12+	922E	0	0	2	23	0	M 2.51	-0.14	0.55	29	M 5.2	4	11	7	2	0
--DIVISIONAL DATA-----> CENTRAL MOUNTAIN 05			37.8	1.8B										5.12	2.10B									
BUENA VISTA														5.79		1.35	23	0.5	T	14	9	5	3	
COVINGTON FLTR PLT	50.3	27.8	39.0	2.5	69	22	13	26	797	0	0	0	21	0	5.53	2.82	1.27	23	1.0	1	14	11	4	2
CRAIGSVILLE 2 S														M										
DALE ENTERPRISE	48.4	28.4	38.4	4.7	67	23	12	26+	816	0	0	1	20	0	7.08	4.47	1.50	30	4.7	2	15	8	7	4
GATHRIGHT DAM	45.2M	27.0	36.1M	2.2	66	22	10	26+	888E	0	0	3	23	0	6.09	3.13	1.36	07	2.0	2	14	10	4	4
GLASGOW 1 SE														6.32		1.58	23	0.3	T	14	10	5	2	
HOT SPRINGS	43.6	26.1	34.9	2.1	66	22	11	26+	924	0	0	3	25	0	6.35	3.00	1.58	07	3.0	3	14	10	4	2
LEXINGTON	48.8	27.7	38.3	1.6	68	22	13	26+	824	0	0	1	25	0	6.12	3.01	1.44	23	0.5	1	14	8	5	3
MILLGAP	43.3	21.3	32.3	2.2	64	22	6	26+	1006	0	0	5	26	0	6.53	3.18	1.92	07	9.3	4	18	11	5	3
MTN GROVE														6.66		1.54	30	1.0	1	14	7	4	4	
MUSTOE 1 SW	42.5	22.6	32.5	1.8	64	22	6	25	1001	0	0	7	28	0	7.21	3.90	2.04	06	F 9.7	5	14	9	5	2
NEW CASTLE														6.34		1.70	23	0.0	0		8	4	4	
ROANOKE 8 N	51.0	30.5	40.7	2.0	70	07	15	26	747	0	0	1	22	0	4.82	1.59	1.18	23	0.0	0		8	4	2
ROANOKE INTL AP	52.0	32.6	42.3	3.3	71	06	15	25	695	0	0	0	17	0	4.38	1.44	0.97	29	T	0		8	3	0
STAUNTON WATER TRMTMT PLT	47.3	30.4	38.9	3.1	66	22+	12	26+	804	0	0	0	21	0	5.91	3.17	1.31	09	1.6	1	15	8	4	4
WAYNESBORO WTP	49.2	28.7	39.0	3.6	69	23	13	25	798	0	0	1	23	0	3.46	0.52	0.84	07	M T	0		9	3	0
--DIVISIONAL DATA-----> SOUTHWESTERN MOUNTAIN 06			37.5	1.6B										5.91	3.11B									
ABINGDON 3S	47.6	29.4	38.5	2.7	71	22	15	25	814	0	0	1	20	0	5.82	1.93	1.22	29	M 0.0	0		10	5	2
BIG STONE GAP	47.7F	27.7	37.7F	0.8	69	22	14	13+	849	0	0	1	21	0	8.61	3.52	2.05	09	0.0	0		10	6	4
BLACKSBURG NWSO	47.4	26.0	36.7	2.9	67	07	10	26	870	0	0	2	24	0	5.26	2.31	1.88	23	T	0		7	4	1
BURKES GARDEN	43.2	25.7	34.5	2.9	63	22	3	25	939	0	0	5	24	0	5.21	1.41	1.49	29	1.6	1	25	8	5	1
CHRISTIANSBURG	47.1	28.4	37.7	2.0	67	07	12	26+	835	0	0	1	23	0	5.01	2.03	1.79	23	T	T	09	8	3	2
CLINTWOOD 1 W	45.9	25.2	35.5	1.4	69	06	12	26+	906	0	0	5	27	0	6.99	3.33	1.53	07	1.4	1	13	10	5	3

VIRGINIA
201312

MONTHLY STATION AND DIVISION SUMMARY

STATION	TEMPERATURE (°F)										PRECIPITATION (IN)													
	AVERAGE MAXIMUM	AVERAGE MINIMUM	AVERAGE	DEPARTURE FROM NORMAL	HIGHEST	DATE	LOWEST	DATE	HEATING DEG. DAYS	COOLING DEG. DAYS	NO. OF DAYS				TOTAL	DEPARTURE FROM NORMAL	GREATEST 24 HOURS	DATE	ICE PELLETS, SNOW			NO. OF DAYS		
											MAX		MIN						TOTAL	MAX DEPTH ON GROUND	DATE	.10 OR MORE	.50 OR MORE	1.00 OR MORE
											>=90	<=32	<=32	<=0										
COPPER HILL	44.7	28.2	36.4		65	07+	10	25	878	0	0	3	22	0	4.54		1.57	23	0.8	T	18	9	4	1
GALAX RADIO WBRF	47.5	27.8M	37.7M	3.2	68	07	10	25	841E	0	0	2	21	0	M 5.27	2.00	2.07	23	0.0	0		7	4	1
GALAX WTP	47.7	26.9	37.3	3.1	68	07	11	25	851	0	0	1	24	0	5.35		1.96	23	0.0	0		10	3	1
GRUNDY	47.3M	27.9	37.6M	2.0	72	22	15	26+	842E	0	0	1	22	0	6.81	3.54	1.47	29	0.6	T	12	10	6	3
JOHN FLANNAGAN LAKE	MMF	M	M		69	06	14	26	844E	0	0	1	15	0	MA 5.86		1.45	30	M 0.5	0		3	2	1
LAFAYETTE 1 NE															5.18		1.68	23	0.2	T	09	8	4	1
LEBANON	48.8	27.2	38.0	2.6	72	22	12	26+	830	0	0	1	22	0	5.63	2.21	1.05	23	0.0	0		10	5	1
NORA 4 SSE	43.6	29.7	36.7	2.8	66	22	14	25	871	0	0	6	21	0	6.79	3.05	1.38	09	1.8	1	10	10	6	3
NORTH FORK LAKE	M	M	M		70	30	11	02	948E	0	0	2	11	0	MA 3.45		0.32	10	M T	M T	11	1	0	0
PULASKI 2 E	48.5M	28.2M	38.4M	3.0	66	22+	12	26	817E	0	0	0	19	0	M 2.15	-0.65	1.44	09	M 0.0	0		3	1	1
RADFORD 3 N	48.1	27.5	37.8	4.1	67	07	11	25	835	0	0	1	23	0	M 5.37	2.43	1.74	23	T	T	09	7	3	3
RICHLANDS	48.7	25.5	37.1	2.5	71	22	12	26+	857	0	0	1	27	0	5.57	2.12	1.16	29	T	0		9	5	1
SALTVILLE 1N	47.5	26.9	37.2	1.8	67	05	14	26+	855	0	0	1	19	0	5.67	2.01	1.33	23	M 0.0	0		9	4	2
STAFFORDSVILLE 3 ENE	47.6	26.5	37.1	2.6	67	22	10	26+	858	0	0	1	23	0	4.38	1.54	1.40	23	T	0		7	4	2
WILLIS															6.23		1.91	23	0.0	0		10	5	1
WISE 3E	47.0	30.2	38.6	2.5	65	23+	9	25	809	0	0	1	20	0	7.35	3.54	1.50	29	4.9	1	24	9	7	4
--DIVISIONAL DATA----->			37.3	2.0B											5.91	2.64B								

VIRGINIA
201312

DAILY PRECIPITATION (INCHES)

STATION	TOTAL	DAY OF MONTH																															
		01	02	03	04	05	06	07	08	09	10	11	12	13	14	15	16	17	18	19	20	21	22	23	24	25	26	27	28	29	30	31	
VIRGINIA																																	
TIDEWATER 01																																	
DISPUTANTA	6.40				0.17	0.02		0.64	0.17	0.43	0.32				1.39			0.25						0.40	1.02					0.45	1.14		
EASTVILLE	A 5.27				0.10	0.02	0.01	0.45	0.02	0.50	0.75	0.21			*	*	*	*	*	*	*	*	*	*	*	2.30 _a	0.02			0.01	0.90		
EMPORIA 1 WNW	6.37				0.11		0.02	0.48	T	0.28	0.75	0.31			0.95			0.10						0.52	1.00			0.35	1.43	0.05			
FREDERICKSBURG SEWAGE	5.92							1.17		1.14	0.31	0.21			0.48			0.25					T	0.55	0.50			0.39	0.92				
HOLLAND 1 E	5.31				0.07			0.77	0.11	0.38	1.00	0.20			0.81									0.61	0.96					0.40			
HOPEWELL	M 6.87				0.14	0.10		0.55	0.58	0.53	0.37	0.03			0.30	0.95		0.23					0.30	1.26	0.19		-			1.34			
NORFOLK INTL AP	4.75				0.05			0.46	0.37	0.16	0.93				0.86	0.02		T	T				0.01	0.92	0.17		T			0.80			
NORFOLK SOUTH	5.32				0.08	T		0.47	0.53	0.19	0.99				0.87	0.02		T	T				T	1.13	0.20		T			0.84			
NORTH	M	-	-	-	-	-	-	-	-	-	-	-	-	-	-	-	-	-	-	-	-	-	-	-	-	-	-	-	-	-	-	-	
PAINTER 2W	6.76				0.04	0.02		0.52	0.42	0.73	0.56				0.11	1.03		0.33					0.07	1.50	0.50					0.93			
STONY CREEK 2 N	FMA 3.66				0.17		0.03			1.07	0.67	0.24			1.01									0.47	0.00 ^L	0.00 ^L	0.00 ^L	0.00 ^L	0.00 ^L	0.00 ^L	2.75 ^L _a	-	
SUFFOLK LAKE KILBY	7.11				0.07	0.02		0.63	0.48	0.15	1.11				0.88	0.02		T					0.04	1.84	0.66		T			1.18	0.02	0.01	
WAKEFIELD 1NW	6.55				0.16	0.15	T	0.66	0.39	0.40	0.60				1.11	0.04		0.16					0.17	1.21	0.01		T			1.47		T	
WALKERTON 2 NW	6.26				0.05	T	T	0.40	0.92	0.45	0.29				0.63	0.36			0.53				0.73	0.53						1.37			
WALLACETON LK DRUMMOND	4.95				0.10	0.03		0.10	0.07	0.40	0.75	0.30			0.12	1.00	0.03								0.90					0.25	0.85	0.05	
WALLOPS ISLAND NASA TEST FACIL	5.74				0.01	0.01	T	0.34	0.72	0.46	0.31				1.10	0.05		0.35	0.04				0.05	1.25	0.07					0.98		T	
WARSAW 2 NW	5.14		0.01				0.11		1.01	0.66	0.27				0.62	0.15			0.40						0.61					1.30			
WEST POINT 2 NW	5.91				0.13	0.07	0.03	0.30	0.93	0.30	0.28				0.38	0.72		0.30					0.41	0.87						1.18		0.01	
WILLIAMSBURG 2 N	6.58				0.15			0.61	0.80	0.54	0.39				1.09	0.04		0.46					0.20	1.08				T	1.22		T		
EASTERN PIEDMONT 02																																	
ALBERTA 5N	6.48				0.07	T	0.18	0.68	0.09	0.27	0.36	0.26			1.05			0.25						1.13	0.48					0.63	1.03		
AMELIA COURTHOUSE 1	4.08				0.10		0.16	0.44		0.87	0.23	0.23			0.87								0.01	0.06						0.50	0.61		
ASHLAND	5.86					T	0.10	0.50	0.73	0.74	0.40				0.57	0.17			0.52				0.40	0.37						1.36		T	
BREMO BLUFF	5.44						0.02	0.69		1.03	0.09	0.51			0.52				0.08					0.72	0.45					0.26	1.07		
BUCKINGHAM	5.40				0.01		0.20	0.58	0.10	1.28	0.15	0.42			0.42				0.10					0.49	0.45					0.42	0.78		
CAMP PICKETT	6.05				0.08	0.01	0.11	0.43	0.10	0.55	0.14				1.25				0.35					0.88	0.50					0.48	1.17		
CHASE CITY	M	-	-	-	-	-	-	-	-	-	-	-	-	-	-	-	-	-	-	-	-	-	-	-	-	-	-	-	-	-	-	-	
CLARKSVILLE	6.16				0.30		0.12	0.70	0.05	0.25	0.28	0.29			0.90			0.14						0.96	0.30					0.67	1.20		
CORBIN	6.46	0.18					0.02	1.18	0.10	1.44	0.34		0.16		0.53			0.15						0.71	0.43					0.42	0.80		
CROZIER	M 5.55						0.16	0.55	0.09	1.02	0.42				0.75				0.33					0.82	0.12			-		0.45	0.84		
FARMVILLE 2 N	M 6.01				T		T	0.60	T	1.90	0.66	0.05			-	0.97			0.38					-	0.23				T	1.22		T	
GREENBAY 3 NE	6.43						0.35	0.29	0.35	0.12	1.15				0.07	0.85			0.35				1.45	0.14					0.64	0.67			
JOHN H KERR DAM	M 5.52				0.27	0.04	0.01	0.66	0.03	0.31	0.77	0.34			0.91				0.13					-	0.31				0.70	1.02	0.02		
LOUISA	5.17						0.84	0.44	0.22	0.70	0.31				0.28	0.15		0.01	0.09				0.24	0.58						1.31			
PALMYRA 3S	5.69						0.01	1.33	0.05	0.73	0.70	0.13			0.46				0.12					0.57	0.25					0.57	0.77		
PETERSBURG	6.82				0.08	0.02	0.13	0.50		0.93	0.30	0.29			1.22				0.23					0.84	0.88					0.16	1.24		
RICHMOND INTL AP	6.11				0.06	0.05	T	0.36	0.97	0.37	0.24				0.98	T		0.46					0.67	0.60					1.35		T		
SANDSTON	A 5.13			*	*	*	0.16 _a	*	*	*	1.93 _a									0.43				*	1.22 _a				*	1.39 _a			
WINTERPOCK 4 W	6.59				0.07	0.02	0.13	0.51	0.05	0.93	0.10	0.25			0.95				0.39					1.21	0.54					0.34	1.10		
WESTERN PIEDMONT 03																																	

VIRGINIA
201312

DAILY PRECIPITATION (INCHES)

STATION	TOTAL	DAY OF MONTH																														
		01	02	03	04	05	06	07	08	09	10	11	12	13	14	15	16	17	18	19	20	21	22	23	24	25	26	27	28	29	30	31
ALTAVISTA	5.58					0.01	0.82	0.13	0.91	0.30					0.75			0.20					0.80	0.55					0.01	0.60	0.50	
APPOMATTOX	5.74					T	0.10	0.69	0.03	1.17	0.34	0.07			T	0.50			0.22				T	1.07	0.37					0.83	0.35	
BEDFORD 4 NW	6.20						0.11	1.42	0.03	0.75	0.41	0.04				0.42			0.03			0.04	1.26	0.34					0.90	0.45		
BROOKNEAL	5.87				0.02	0.03	0.06	0.51	0.10	0.96	0.33	0.18				0.51			0.40				1.08	0.56					0.59	0.54		
CHARLOTTE COURT HOUSE	4.85				T	0.01	0.53		0.06	0.92	0.04				0.47			0.32					0.53	0.84					0.12	1.01		
CHARLOTTESVILLE 2W	5.67					T	0.02	1.25	T	0.96	0.29	0.10			0.01	0.43			0.01			0.01	0.71	0.11		0.01		1.01	0.75	T		
CHATHAM	6.09						0.10	0.45	0.03	0.95	0.20	0.23				0.57						0.09	1.03	0.85				0.50	1.09			
CONCORD 4 SSW	4.74						0.10	0.71	0.02	1.02	0.31	0.12				0.43			0.22				0.75	0.55				0.50		0.01		
DANVILLE REGIONAL AP	5.22			0.01	0.11	0.10	T	0.22	0.06	0.02	0.69			0.77			0.06		0.22			1.32	0.76				0.11	0.99		T		
FREE UNION	5.69						0.04	1.26	T	1.04	0.22	0.12			0.05	0.33			0.02			T	0.76	0.11				0.95	0.79			
HOLCOMB ROCK	6.98						0.15	1.14		0.75	0.25	0.27			0.10	0.41			0.13			0.07	1.75	0.42				0.45	1.09			
HUDDLESTON 4 SW	5.86						0.01	1.13	0.02	0.88	0.48	0.38				0.50			0.05			0.01	0.96	0.42				0.08	0.94			
LYNCHBURG INTL AP	5.69					0.03	0.63	0.25	0.91	0.38	0.53			0.45			0.09					0.43	0.87			0.04	1.08		T			
MARTINSVILLE FLTR PLT	5.45						0.02	0.42	0.35	0.65	0.36	0.26				0.64						0.03	1.43	0.33				0.60	0.36			
MEADOWS OF DAN 5 SW	6.23					0.02	0.82	0.73	0.26	0.54	0.55				0.02	0.52							2.00					0.73	0.04			
MONTEBELLO FISH CULTURAL STN	M	-	-	-	*	0.16 _a	1.35		1.00	0.35					2.00	-					-	-		2.12			-	-	-	-	-	-
MONTICELLO	5.21						T	1.07	0.02	0.93	0.22	0.20				0.39			T			T	0.55	0.15				1.68				
PEDLAR DAM	6.62						0.99	T	0.95	0.19	0.21			0.09	0.37			0.46				0.05	1.67	0.14				0.60	0.90			
ROCKY MT	5.41			T			0.20	0.46	0.32	0.90	0.48	0.18			0.50							0.12	1.50	0.15				0.60				
SOUTH BOSTON	5.08				0.12	0.02	0.16	0.71	0.05	0.25	0.22	0.32				0.66			0.18				0.98	0.28				0.51	0.60	0.02		
STUART	6.15			0.04	0.02	0.24	0.40	0.38	0.60	0.30	0.17				0.56			0.01					2.23	0.23				0.88	0.09			
TYE RIVER 1 SE	6.07					T	0.03	1.12	T	1.03	0.42				0.48							T	1.25	0.14				1.55	0.05			
WOOLWINE	6.02						0.13	0.34	0.31	0.70	0.30	0.28				0.62			0.07			0.10	1.90	0.04				1.02	0.21			
NORTHERN 04																																
BOSTON 4 SE	5.50					0.05	0.80		1.43	0.21												0.71	0.41					1.89				
EDINBURG	5.05					0.04	1.34	0.02	0.91	0.25	0.15				0.06	0.19						0.10	0.57					0.60	0.82			
FRONT ROYAL	5.00					0.02	1.25		2.50	0.07	0.30				0.20	0.13			T				0.30	0.03				0.08	0.12			
LINCOLN	A 3.21								0.35	0.10	0.25	*	*	1.65 _a									0.86									
LURAY 5 E	5.03					0.18	0.81	T	1.25	0.43					0.05	0.11						0.14	0.90					0.76	0.40			
MADISON	M	-	-	-	-	-	-	-	2.70 ^L	0.00 ^L	0.30 ^L	*	*	*	0.33 _a			T		-	-	-	-	-	-	-	-	-	-	-	-	-
MANASSAS	MA 5.00					-	1.00		-	*	*	*	*	1.25 _a				0.10					0.90	0.30				*	1.45 _a			
MT WEATHER	5.45				0.01	0.10	1.25	0.01	1.10	0.40	0.12				T	0.27							0.32	0.52	0.10			0.35	0.90			
PIEDMONT RSCH STN	A 4.77					2.04									0.32								*	0.82 _a				*	1.59 _a			
SOMERSET	5.90			0.02	0.01	0.11	1.21	0.02	1.07	0.21	0.11				0.03	0.31			T			T	0.84	0.12				0.86	0.96	0.02		
SPERRYVILLE	5.96					0.03	1.00		2.15	T	0.30					0.27			0.01				0.55	0.02			T	0.91	0.72			
STERLING RCS	5.39					T	1.11	T	0.91	0.07	0.28				0.32			0.02					1.08	0.26		T		0.26	1.08			
VIENNA	3.95					0.03	0.70	0.01	0.25	0.34	0.10					0.60			0.01				0.01	0.69	0.21			0.15	0.85			
WASHGTN DULLES INTL AP	5.58					T	0.97	0.19	0.77	0.43	0.30				0.32			0.02	T			0.51	0.80					1.27				
WASHINGTON REAGAN AP	5.53					T	0.63	0.16	0.82	0.69	0.35				0.46			0.02	T			0.24	0.85	T			1.31					
WINCHESTER	5.54						0.28	1.57		1.01	0.30	0.11				0.26						0.10	0.51	0.02				0.42	0.96			
WINCHESTER 7 SE	4.95				0.03	0.45	1.67		0.14	0.37	0.10				0.01	0.28						0.14	0.39	0.04		T		0.27	1.06			
WOODSTOCK 2 NE	M 2.51					-	-	-	-	-	0.24	0.32			0.07	0.20						0.18	0.43					0.55	0.52			

VIRGINIA
201312

DAILY PRECIPITATION (INCHES)

STATION	TOTAL	DAY OF MONTH																																
		01	02	03	04	05	06	07	08	09	10	11	12	13	14	15	16	17	18	19	20	21	22	23	24	25	26	27	28	29	30	31		
CENTRAL MOUNTAIN 05																																		
BUENA VISTA	5.79					0.01	1.34	T	1.01	0.18	0.14			0.12	0.22			0.01				0.01	1.35	0.07					0.55	0.78				
COVINGTON FLTR PLT	5.53					0.13	0.70	0.10	1.13	0.25	0.01			0.17	0.16			0.07					1.27	0.29					0.90	0.35				
CRAIGSVILLE 2 S	M	-	-	-	-	-	-	-	-	-	-	-	-	-	-	-	-	-	-	-	-	-	-	-	-	-	-	-	-	-	-	-		
DALE ENTERPRISE	7.08					0.01	0.95		0.50	1.00	1.00			0.75	0.35								1.00	0.01					1.50	0.01				
GATHRIGHT DAM	6.09					0.11	1.36		1.09	0.22				0.15	0.22			0.07				0.36	1.08						1.03	0.40				
GLASGOW 1 SE	6.32					0.04	1.11	0.02	0.87	0.26	0.14			0.08	0.43			0.14				T	1.58	0.14					0.73	0.78				
HOT SPRINGS	6.35					0.11	1.58	T	0.83	0.27	0.07			0.12	0.02			0.14				0.40	1.35	0.04					0.98	0.44				
LEXINGTON	6.12					0.02	1.22	T	1.12	0.26	0.16			0.09	0.28			0.09				T	1.44	0.06					0.78	0.60				
MILLGAP	6.53					0.10	1.92	T	1.06	0.23	0.14			0.12	0.39	T		0.13				0.01	1.07						0.80	0.56				
MTN GROVE	6.66					0.45	1.50	T	1.25	T	0.32			T				0.28					1.32						1.54					
MUSTOE 1 SW	7.21				0.01	2.04		0.96	0.26	0.36				0.51	T	T	0.19	0.03			0.01	0.79	0.48	T		T			1.57					
NEW CASTLE	6.34						1.50		1.00	0.16				0.01	0.27			0.14					0.17	1.70					1.38	0.01				
ROANOKE 8 N	4.82					0.10	1.02	0.05	0.63	0.30				0.05	0.33			0.05				0.07	1.18						0.67	0.37				
ROANOKE INTL AP	4.38				0.01	0.93	0.07	0.33	0.21	0.33				0.33	T		0.05					0.43	0.66	T				0.06	0.97					
STAUNTON WATER TRMTMT PLT	5.91					0.07	1.19	T	1.31	0.26	0.02			0.08	0.24			T				0.12	1.17						1.09	0.36				
WAYNESBORO WTP	3.46					0.12	0.84		0.60	0.27	0.22			0.03	0.15	0.02		0.03				0.03	0.83	0.13					0.06	0.13				
SOUTHWESTERN MOUNTAIN 06																																		
ABINGDON 3S	5.82					0.37	0.51	0.05	0.56	0.34				0.07	0.40			0.06					1.10	0.90	0.10	0.04			1.22	0.10				
BIG STONE GAP	8.61		0.04		0.02	0.69	1.02	0.47	2.05	0.25	0.03			0.04	0.44						0.08	1.25	0.53					1.55	0.15					
BLACKSBURG NWSO	5.26					0.06	0.86	0.02	0.53	0.20	0.04			T	0.35	T		0.04				0.05	1.88	0.02	T			0.76	0.45		T			
BURKES GARDEN	5.21					0.05	0.69	0.01	0.61	0.26	0.04			0.05	0.50	0.02		0.19				0.30	0.86	0.03	0.04			1.49	0.04	0.03				
CHRISTIANSBURG	5.01					0.24	0.79	0.15	0.18	0.29				0.02	0.29			0.05				0.07	1.79	0.06				1.08	T					
CLINTWOOD 1 W	6.99					0.72	1.53	0.12	1.33	0.34	T			T	0.20	0.02		0.05				0.80	0.42	T	0.01			1.30	0.14	0.01				
COPPER HILL	4.54					0.09	0.25	0.18	0.57	0.25				0.20	0.23			0.08				0.01	1.57					0.52	0.59					
GALAX RADIO WBRF	M 5.27			0.02		0.17	0.48		0.68	0.51					0.49			-					2.07					0.85						
GALAX WTP	5.35				T	T	0.18	0.45	0.14	0.65	0.47	0.01			0.48			0.12				0.09	1.96					0.66	0.14					
GRUNDY	6.81					0.62	1.38	0.17	1.20	0.44	T			0.03	0.19	T		0.08				0.60	0.51	0.01				1.47	0.11					
JOHN FLANNAGAN LAKE	MA 5.86	*	0.05 _a			0.94	*	*	2.80 _a	0.42				*	*	0.20 _a						-	-	-	-	-		-	-	1.45				
LAFAYETTE 1 NE	5.18					0.16	0.93	0.05	0.50	0.39	0.04				0.29			0.05					0.02	1.68	0.02				0.65	0.40				
LEBANON	5.63					0.04	0.89	0.15	0.78		0.11				0.90							0.37	1.05	0.16				0.89	0.29					
NORA 4 SSE	6.79					0.51	1.13	0.11	1.38	0.43	T				0.43	0.02	T	0.07				0.54	0.65	0.07	0.03			1.28	0.14	T				
NORTH FORK LAKE	MA 3.45	*	1.53 _a	-	-	-	-	-	-	0.32	0.01			*	*	0.30 _a						*	*	*	*	*	*	*	*	*	1.29 _a			
PULASKI 2 E	M 2.15					0.05	-	-	1.44	0.18					0.45			0.01					T	-				-	0.02					
RADFORD 3 N	M 5.37					0.17	-	-	1.52	0.20				0.04	0.28			0.06					0.11	1.74	0.02				1.23	T				
RICHLANDS	5.57					0.09	0.90	0.34	0.78	0.45					0.58	0.03		0.12				0.14	0.87	0.03				1.16	0.07	0.01				
SALTVILLE 1N	5.67					0.09	0.86	0.07	0.58	0.39	T				0.40	0.01		0.20				0.18	1.33	0.01				1.26	0.29					
STAFFORDSVILLE 3 ENE	4.38						0.61	0.01	0.63	0.15					0.33			0.04					1.40						1.03	0.18				
WILLIS	6.23			0.03		0.50	0.75	0.14	0.57	0.47	0.05				0.37	T		0.16				0.08	1.91	0.03				0.71	0.46					
WISE 3E	7.35					0.01	1.03	0.55	1.23	0.59	0.27			0.52	0.07		0.01	0.04				0.03	1.30	0.13	0.05				1.50	0.02				

VIRGINIA
201312

DAILY TEMPERATURES (°F)

STATION	OB. TIME	MAX/MIN	DAY OF MONTH																															AVERAGE	
			01	02	03	04	05	06	07	08	09	10	11	12	13	14	15	16	17	18	19	20	21	22	23	24	25	26	27	28	29	30	31		
ASHLAND	18	MIN	21	26	33	38	38	57	38		30	32	23	23	24	30	34	31	29	28	27	41	46	46	60	31	19	19	22	25	36	37	29	32.4	
		MAX	52	56	58	59	64	68	49	38	38	37	45	36	47	42	53	45	53	45	63	66	71	73	65	48	37	48	51	60	53	51	49	52.3	
CAMP PICKETT	08	MIN	22	28	34	41	51	45	38	30	30	31	22	25	23	29	35	29	28	30	27	46	54	60	48	31	19	20	23	25	41	35	29	33.2	
		MAX	45	57	58	60	60	65	76	45	32	43	40	46	41	49	44	53	48	58	44	62	64	71	74	74	44	36	50	51	59	55	55	53.5	
CHASE CITY	17	MIN	21	21	26	31	48	56	38	31	30	32	23	23	22	23	35	28	28	27	25	32	45	52	60	33	20	17	21	22	25	34	30	30.9	
		MAX																																	M
CLARKSVILLE	07	MIN	49	57	57	61	57	67	77	48	34	44	46	50	50	51	45	53	52	62	47	65	67	71	76	66	46	53	53	52	61	51	52	55.5	
		MAX	23	23	27	33	49	49	41	33	32	33	24	24	23	22	35	29	28	28	29	33	40	51	60	37	23	22	22	22	27	36	35	32.0	
CORBIN	09	MIN	51	55	57	60	66	67	44	36	35	36	44	34	46	39	51	41	45	43	62	64	71	74	64	46	34	47	52	58	50	47	48	50.5	
		MAX	21	30	37	39	54	44	36	28	30	30	20	24	20	30	35	27	27	28	26	45	55	61	46	30	17	20	23	27	41	35	27	32.7	
CROZIER	07	MIN	40	52	54	57	58	66	65	42	32	36	37	47	38	47	38	52	45	53	44	61	64	71	71	63	42	33		51	59	49	50	50.6	
		MAX	20	21	31	35	46	50	37	28	29	29	22	22	25	28	34	28	26	27	26	31	47	53	59	30	17	21	22	33	36	28	31.4		
FARMVILLE 2 N	07	MIN	45	58	59	59	71	66	79	44	32	39	45	47	41	42	40	51	46	54	46	63	72	70		71	45	36	52	53	58	51	51	52.9	
		MAX	21	21	26	32	43	55	37	30	30	31	23	22	22	23	34	28	27	27	27	30	44	53		30	19	18	23	23	26	35	29	29.6	
GREENBAY 3 NE	09	MIN	41	51	57	59	59	66	75	44	33	39	41	44	40	47	40	51	46	54	43	61	64	70	73	64	42	35	48	49	57	51	51	51.5	
		MAX	21	27	31	36	40	57	38	29	29	32	22	24	29	31	34	30	27	28	27	43	46	53	60	30	17	19	23	27	33	35	28	32.5	
JOHN H KERR DAM	08	MIN	48	57	62	61	58	67	76	47	36	45	44	51	46	52	46	54	54	61	48	62	65	69		65	47	40	53	53	61	56	53	54.6	
		MAX	24	27	30	33	51	57	40	32	31	36	26	28	25	32	37	34	30	31	29	38	48	53		35	20	19	23	23	27	37	35	33.0	
LOUISA	18	MIN	55	48	58	60	64	67	43	36	39	38	44	39	48	38	52	44	48	44	63	64	70	72	63	50	34	49	51	59	59	49	48	51.5	
		MAX	17	31	30	36	50	43	35	29	30	34	22	23	25	29	34	27	24	23	23	42	52	61	50	26	14	16	20	23	39	33	25	31.2	
PALMYRA 3S	06	MIN	41	57	50	57	59	66	67	44	32	39	40	45	39	48	38	52	47	51	44	63	63	71	71	63	42	34	50	53	60	51	49	51.2	
		MAX	17	20	25	33	42	54	36	29	28	32	18	20	21	22	31	28	26	26	23	28	44	55	61	27	14	15	19	19	19	33	26	28.7	
PETERSBURG	08	MIN	46	55	58	61	58	65	77	45	34	44	39	46	40	49	49	55	49	59	59	63	67	73	78	67	45	35	51	52	61	58	58	54.7	
		MAX	25	25	27	30	48	57	39	33	31	33	24	23	24	26	26	30	31	32	29	33	42	53	60	37	22	20	24	23	26	38	36	32.5	
RICHMOND INTL AP	24	MIN	55	59	59	58	66	71	45	35	42	39	46	39	48	47	54	48	54	46	63	66	72	76	67	45	35	50	52	62	56	55	51	53.6	
		MAX	27	30	32	47	53	45	35	32	33	29	26	24	23	35	36	30	31	30	29	41	50	62	43	28	22	21	25	27	43	38	30	34.1	
SANDSTON	07	MIN	41	48	56	57	57	64	69	44	33	40	37	43	35	45	46	52	45	52	43	61	65	70	75	65	42	32	47	48	59	55	53	50.9	
		MAX	26	25	27	31	45	53	38	32	31	32	25	24	23	26	33	31	30	30	27	29	44	50	61	35	22	19	21	23	24	40	34	32.0	
WESTERN PIEDMONT 03																																			
APPOMATTOX	07	MIN	40	54		57	58	64	71	44	32	36	43	43	37	45	39	48	45	52	42	59	61	69	69	61	39	32	48	49	55	51	48	49.7	
		MAX	24	28	37	36	45	56	37	29	27	31	22	26	24	26	32	28	28	28	29	31	42	51	59	27	16								37
BROOKNEAL	07	MIN	43	55	56	57	62	68	77		34	39	45	45	38	48	38	49	47	55	44	62	63	71	71	64	42	35	51	51	57	54	50	52.4	
		MAX	19	19	23	31	45	56	42	32	31	32	20	21	19	19	32	24	24	24	25	25	30	46	58	30	17	17	19	19	20	31	29	28.4	
CHARLOTTE COURT HOUSE	07	MIN	44	56	59	58	61	67	75	44	34	38	45	46	40	46	43	46	48	56	45	63	65	69	69	64	41	36	52	51	48	54	49	52.0	
		MAX	20	26	27	34	48	56	39	32	29	32	24	25	25	27	37	27	28	28	29	32	39	50	62	33	19	21	25						34
CHARLOTTESVILLE 2W	08	MIN	39	53	47	57	60	63	64	42	32	36	38	44	38	48	40	49	42	52	43	61	60	69	68	61	42	33	49	52	58	52	47	49.6	
		MAX	24	25	38	40	44	54	35	28	26	31	27	27	27	30	30	32	27	27	31	33	40	50	58	30	17	18	24	33	38	39	28	32.6	
CHATHAM	07	MIN	42	54	54	54	60	66	73	44	32	39	46	45	40	48	36	51	47	59	44	59	62	69	71	61	43	38	49	51	55			49	51.4
		MAX	17	16	21	29	46	57	42	32	31	31	17	17	17	17	32	23	23	25	22	23	33	48	58	30	15	14	19	19	18				28
DANVILLE REGIONAL AP	24	MIN	57	58	60	59	68	78	53	40	44	50	49	43	50	40	50	51	63	48	64	67	73	72	65	45	38	51	52	60	54	52	50	55.0	
		MAX	20	27	32	48	56	53	40	32	33	29	25	24	22	36	30	27	29	28	28	39	47	62	42	28	17	18	24	24	39	33	29	32.9	

VIRGINIA
201312

DAILY TEMPERATURES (°F)

STATION	OB. TIME	MAX/MIN	DAY OF MONTH																															AVERAGE	
			01	02	03	04	05	06	07	08	09	10	11	12	13	14	15	16	17	18	19	20	21	22	23	24	25	26	27	28	29	30	31		
FREE UNION	08	MAX	39	55	47	56	60	65	62	44	31	38	39	45	39	47	33	49		52	43	64	62	69	69	59	41	34	49	53	59	53	47	50.1	
		MIN	17	18	31	33	37	50	35	26	26	31	22	22	22	23	30		23	23	27	27	30	42	56	26	14	14	20	20	21	36	25	27.6	
LYNCHBURG INTL AP	24	MAX	56	53	58	61	64	73	45	36	40	44	45	38	46	38	48	46	56	44	63	62	66	69	62	41	34	49	51	57	52	48	47	51.4	
		MIN	19	25	32	43	55	43	36	28	30	26	20	24	24	32	31	30	26	27	28	37	46	59	39	23	14	18	21	21	37	35	25	30.8	
MARTINSVILLE FLTR PLT	07	MAX	44	56	56	56	63	67	76	50	33	43	49	47	42	48	37	47	50	60	47	62	62	69	71	63	42	36	52	51	58	57	48	53.0	
		MIN	16	18	22	29	47	57	45	32	30	33	18	18	16	16	33	22	23	25	21	22	22	44	58	27	15	14	19	18	19	31	26	27.0	
MEADOWS OF DAN 5 SW	07	MAX																																M	
		MIN																																	M
MONTEBELLO FISH CULTURAL STN	07	MAX			46			66	63	36	48	53	32	36	34	37	42		36	44				62	63		30	30					M		
		MIN			17			33	34	24	24	29	18	17	18	20	29		25	22	22					22	9	9						M	
MONTECELLO	08	MAX	37	52	45	54	58	64	64	42	31	36	36	42	35	44	40	47	42	50	42	62	58	68	65	65	41	31	46	48	56	51	51	48.5	
		MIN	23	23	37	38	42	53	34	28	26	25	25	26	26	27	30	30	27	27	30	32	39	48	58	30	17	17	21	29	36	42	28	31.4	
ROCKY MT	07	MAX	45	57	53	58	64	69	74	50	33	44	46	48	48	50	44	44	52		47	63	55	68	68	58	44	40	45	53	56	55		52.8	
		MIN	18	18	23	33	46	54	40	31	28	31	26	28	22	22	22	34	28		23	26	40	46	58	31	15	15	20	21	21			29.3	
SOUTH BOSTON	07	MAX	45	55	57	57	58	67	76	47	35	43	44	47	43	50	40	52	51	60	47	63	65	71	73	65	46	37	50	53	59	51	52	53.5	
		MIN	21	21	25	31	46	56	42	32	31	33	23	22	21	22	36	27	27	27	25	26	33	47	60	38	21	18	21	22	31	31		30.2	
STUART	07	MAX	50	51	55	51	64	65	72	50	34	48	49	49	45	50	39	47	47	60	48	62	58	67	68	61	43	38	52	52	58	59	54	53.1	
		MIN	20	28	27	34	49	57	44	31	30	33	22	25	23	25	33	27	28	28	26	28	40	49	57	29	17	20	23	23	28	35	35	31.4	
TYE RIVER 1 SE	07	MAX	42	55	50	60	66	67	68	45	35	45	46	47	40	48	44	50	47	58	46	65		70	68	60	44	35	52	54	60	55	50	52.4	
		MIN	19	20	32	35	43	56	37	29	30	33	24	25	26	28	34	31	25	26	28	35	37	50	57	27	14	15	23	21	22	39	27	30.6	
NORTHERN 04																																			
BOSTON 4 SE	07	MAX	37	48	47	54	60	64	47	41	32	33	33	41	33	42	37	47	40	45	43	62	59	69	69	59	40	31	47	51	57	57	56	47.8	
		MIN	18	9	32	28	39	45	15	13	23	29	16	19	21	21	32	30	25	25	23	26	47	56	59	27	14	15	20	22	37	34	26	27.3	
EDINBURG	07	MAX	37	49	46	55	61	69	51	38	29	43	38	40	33	39	33	41	49	47	41	61	58	69	63	56	38	33	45	50	55	46	42	46.9	
		MIN	16	17	29	30	31	41	34	23	22	29	15	14	17	21	27	30	27	27	23	23	29	41	55	25	14	15	22	23	27	37	23	26.0	
FRONT ROYAL	07	MAX	35	45	46	54	57	67	51	38	30	34	38	38	31	41	35	43	35	42	40	62	62	73	73	59	36	31	45	49	56	49	45	46.5	
		MIN	18	22	33	31	33	50	34	24	22	28	22	21	19	25	28	32	29	29	26	29	41	51	59	29	17	17	24	25	31	38	27	29.5	
LINCOLN	07	MAX	35	43	45	54	56	66	48	40	30	38	36	31	28	41	34	42	34	38	38	55	54	70	65	58	39	31	44	51	60	48	48	45.2	
		MIN	16	21	31	29	31	46	35	24	24	24	15	15	9	10	29	28	26	26	20	21	36	49	57	29	18	19	19	23	27	22	22	25.8	
LURAY 5 E	08	MAX	37	48	53	56	61	71	71	39	42	43	36	40	33	40	38	42	39	50	41	63	63	72	64	57	36	31	46	50	55	47	42	48.6	
		MIN	21	24	31	35	39	44	34	24	24	23	15	19	15	23	31	28	26	29	24	29	43	57	54	24	13	16	22	24	33	36	24	28.5	
MADISON	08	MAX																																	M
		MIN																																	M
MANASSAS	07	MAX	37	48	47		58	71	54	42	31	33	37																					49.3	
		MIN	20	21	36	36	36	54	35	27	27	27	17																						31.5
MT WEATHER	07	MAX	31	42	43	51	53	62	44	37	29	35	34	36	28	38	34	40	33	37	43	54	59	64	64	57	37	28	42	47	55	43	39	43.2	
		MIN	21	29	35	35	39	43	30	21	20	27	19	18	17	22	29	27	27	26	26	42	48	49	55	26	14	14	21	30	40	36	24	29.4	
PIEDMONT RSCH STN	08	MAX	38	49	44	56	59	65	65	43	31	35	37	43	37	47	36	48	42	46	42	62	60	70	71	63	41	32	48	51	57	47	47	48.8	
		MIN	20	19	35	35	42	53	35	28	26	31	22	22	23	28	30	29	26	25	27	32	41	50	60	29	15	15	22	25	24	27	27	29.8	
SOMERSET	07	MAX	39	50	45	55	61	66	65	42	32	37	37	43	38	48	39	49	43	40	46	63	61	70	69	69	42	33	49	52	59	51	48	49.7	
		MIN	18	20	32	33	42	52	35	27	26	32	21	26	23	30	30	33	24	26	27	30	37	50	59	26	14	15	23	23	26	37	26	29.8	
SPERRYVILLE	06	MAX	36	48	47	54	60	65	56	42	32	34	38	40	34	42	38	46	39	43	43	60	58	70	70	61	40	32	47	52	57	51	45	47.7	

VIRGINIA
201312

DAILY TEMPERATURES (°F)

STATION	OB. TIME	MAX/MIN	DAY OF MONTH																															AVERAGE
			01	02	03	04	05	06	07	08	09	10	11	12	13	14	15	16	17	18	19	20	21	22	23	24	25	26	27	28	29	30	31	
STERLING RCS	07	MIN	21	24	35	35	35	49	37	26	25	29	20	17	16	20	32	25	27	24	23	25	32	44	55	28	16	16	23	26	27	38	25	28.2
		MAX	36	46	47	55	55	69	50	40	30	33	36	38	30	40	35	44	35	38	40	58	57	71	70	59	39	30	45	50	57	48	44	46.0
		MIN	19	19	32	32	33	50	35	26	24	29	16	17	14	19	31	24	30	25	21	24	39	51	58	30	18	17	21	21	23	34	27	27.7
VIENNA	07	MAX	35	47	46	54	54	67	64	38	30	32	33	38	28	40	36	43	33	37	39	59	58	69	70	61	37	29	42	49	56	46	43	45.6
		MIN	19	21	36	35	36	49	33	26	25	29	18	18	20	24	31	27	30	27	25	24	44	52	60	29	18	18	23	23	32	37	28	29.6
		MAX	47	49	57	56	69	65	42	31	34	37	39	32	41	37	47	38	39	42	60	58	70	71	63	40	32	46	50	57	49	45	45	48.0
WASHINGTON DULLES INTL AP	24	MIN	19	38	32	32	54	38	31	26	30	25	17	17	29	29	29	32	25	23	42	51	62	38	22	19	21	21	27	37	33	26	30.4	
		MAX	48	50	56	57	69	64	45	34	38	40	43	35	45	42	51	39	40	44	61	60	72	72	64	43	33	45	50	57	51	48	49	49.8
		MIN	30	41	41	40	49	41	33	29	32	31	25	27	25	34	33	33	35	32	30	44	51	57	41	26	22	27	30	30	42	35	31	34.7
WINCHESTER	07	MAX	40	43	43	56	56	68	44	38	30	36	37	38	30	38	35	40	33	40	40	57	66	70	63	57	38	30	44	42	52	48	42	45.0
		MIN	19	20	33	32	32	41	33	24	22	29	18	18	18	22	27	22	28	28	24	36	45	56	56	29	17	22	25	24	28	36	23	28.6
		MAX	35	46	44	55	57	70	45	40	30	36	37	38	31	38	33	43	33	41	40	61	57	72	65	57	38	31	45	50	57	48	43	45.7
WINCHESTER 7 SE	08	MIN	16	17	29	28	28	42	33	23	23	11	11			29		28		20	33		49	51	28	16	10	19		34		23	26.0	
		MAX	37	46	45	57						42	38	40	32	41	31	42	36	44	41	62	54	71	66	57	37	33	45	51	56	48	43	46.0
		MIN	17	18	30	30						20	11	11	13	21	26	28	29	27	19	20	29	39	54	27	16	15	21	21	25	37	23	24.1
WOODSTOCK 2 NE	07	MAX	40	43	43	56	56	68	44	38	30	36	37	38	30	38	35	40	33	40	40	57	66	70	63	57	38	30	44	42	52	48	42	45.0
		MIN	19	20	33	32	32	41	33	24	22	29	18	18	18	22	27	22	28	28	24	36	45	56	56	29	17	22	25	24	28	36	23	28.6
		MAX	35	46	44	55	57	70	45	40	30	36	37	38	31	38	33	43	33	41	40	61	57	72	65	57	38	31	45	50	57	48	43	45.7
CENTRAL MOUNTAIN 05 COVINGTON FLTR PLT	07	MIN	16	17	29	28	28	42	33	23	23	11	11			29		28		20	33		49	51	28	16	10	19		34		23	26.0	
		MAX	37	46	45	57						42	38	40	32	41	31	42	36	44	41	62	54	71	66	57	37	33	45	51	56	48	43	46.0
		MIN	17	18	30	30						20	11	11	13	21	26	28	29	27	19	20	29	39	54	27	16	15	21	21	25	37	23	24.1
DALE ENTERPRISE	07	MAX	40	53	55	57	63	63	59	59	35	47	47	47	34	44	44	40	40	48	42	62	61	69	68	55	37	37	45	51	56	56	44	50.3
		MIN	19	19	36	36	35	40	37	33	29	33	23	22	20	19	31	32	26	28	20	21	29	41	53	28	15	13	20	20	19	37	29	27.8
		MAX	39	52	51	56	61	66	56	38	38	50	39	39	33	40	33	43	38	50	42	62	66	66	67	58	31	45	51	53	44	49	44	48.4
GATHRIGHT DAM	07	MIN	21	39	33	35	37	50	33	23	29	15	18	18	24	28	33	24	24	26	26	33	62	54	24	12	12	20	20	21	36	28	28.4	
		MAX	36	48	51	53	58	61	57	40	42	42	38	28	39	39	36	36	42	35	56	60	66	57	52	31	32	38	45	50	47		45.2	
		MIN	19	20	35	34	37	40	36	29	27	31	22	21	19	19	29	30	25	27	22	22	30	39	50	28	10	10	20	20	21	36	28	27.0
HOT SPRINGS	07	MAX	35	46	49	52	57	64	58	40	34	40	34	35	28	36	36	36	35	42	34	53	56	66	59	53	32	30	38	43	48	45	38	43.6
		MIN	19	19	32	32	38	40	35	27	25	31	18	18	18	18	27	27	26	24	21	23	31	40	52	25	11	11	19	19	21	38	25	26.1
		MAX	39	51	50	57	59	67	62	43	32	45	41	42	34	44	40	43	42	52	41	63	61	68	66	56	37	33	46	50	54	51	45	48.8
LEXINGTON	07	MIN	17	17	32	32	40	46	39	30	27	31	23	22	22	26	30	32	25	25	21	21	29	42	56	26	13	13	18	18	18	38	29	27.7
		MAX	35	47	47	52	59	63	53	35	31	47	32	37	26	39	38	35	35	38	33	53	53	64	58	58	28	32	36	45	51	44	38	43.3
		MIN	12	12	25	28	29	38	33	20	25	25	18	7	15	20	27	25	25	24	10	10	24	33	49	20	6	6	12	12	13	35	23	21.3
MILLGAP	24	MAX	47	47	50	59	61	56	36	31	36	32	36	27	38	33	37	32	39	33	54	52	61	64	51	30	30	36	45	49	44	38	32	42.5
		MIN	12	29	27	32	43	35	22	22	28	20	10	13	15	25	27	26	26	15	13	24	31	48	26	10	6	12	13	14	31	27	18	22.6
		MAX	40	57	52	57	60	66	70	45	32	48	41	48	37	47	45	44	47	55	44	66	62	69	66	57	38	35	47	52	56	52	46	51.0
ROANOKE 8 N	07	MIN	21	21	32	36	36	50	40	32	28	32	28	26	24	28	34	29	29	28	30	38	41	55	29	16	15	23	19	26	40	29	30.5	
		MAX	56	52	57	60	66	71	48	38	52	41	48	38	48	39	45	48	57	45	66	62	70	68	59	40	35	48	52	58	53	46	45	52.0
		MIN	21	32	33	43	49	48	38	28	31	30	28	26	27	34	34	32	29	32	35	41	41	57	35	19	15	19	23	27	39	34	30	32.6
ROANOKE INTL AP	24	MAX	36	50	50	56	60	66	62	38	33	50	38	40	33	41	38	41	38	51	41	60	60	66	61	54	36	33	43	49	54	47	42	47.3
		MIN	21	26	38	40	44	44	34	25	24	24	23	21	20	26	30	29	29	27	28	41	44	52	53	24	12	12	26	30	30	37	28	30.4
		MAX	37	51	52	57	61	67	62	40	33	53	53	41	35	42	35	44	41	52	40	61	64	68	69	58	37	32	45	48	53	50	44	49.2
STAUNTON WATER TRMTMT PLT	08	MIN	19	20	37	38	38	38	36	26	26	32	24	24	21	27	31	31	28	28	26	26	32	43	56	26	13	14	20	20	22	39	29	28.7
		MAX	37	51	52	57	61	67	62	40	33	53	53	41	35	42	35	44	41	52	40	61	64	68	69	58	37	32	45	48	53	50	44	49.2
		MIN	19	20	37	38	38	38	36	26	26	32	24	24	21	27	31	31	28	28	26	26	32	43	56	26	13	14	20	20	22	39	29	28.7
SOUTHWESTERN MOUNTAIN 06 ABINGDON 3S	22	MAX	48	51	49	58	68	69	58	40	40	46	36	43	34	44	42	34	44	50	40	51	62	71	55	53	31	40	42	47	46	48	37	47.6
		MIN	22	32	38	39	43	49	35	32	34	35	18	20	18	20	33	28	29	25	22	23	29	43	52	29	15	20	20	21	21	37	29	29.4

VIRGINIA
201312

DAILY TEMPERATURES (°F)

STATION	OB. TIME	MAX/MIN	DAY OF MONTH																															AVERAGE	
			01	02	03	04	05	06	07	08	09	10	11	12	13	14	15	16	17	18	19	20	21	22	23	24	25	26	27	28	29	30	31		
BIG STONE GAP	08	MAX	52	51	49	57	65	68	46	35	50	46	38	44	38	46	48	35	45	50	44	29	53	69	59	50	50	41	47	28 ^s	43	47	37	47.7	
		MIN	21	23	39	41	44	43	34	31	34	34	19	14	14	18	34	29	28	24	21	22	29	29	50	31	15	23	18	17	35	29	27.7		
BLACKSBURG NWSO	07	MAX	39	52	48	60	62	65	67	39	31	48	35	43	31	45	37	35	44	51	40	60	60	65	64	52	33	37	42	48	52	46	39	47.4	
		MIN	15	16	30	33	37	43	33	29	24	30	22	21	18	21	31	27	25	25	21	22	29	36	52	26	11	10	19	18	19	37	27	26.0	
BURKES GARDEN	07	MAX	37	46	44	51	59	61	59	31	47	48	32	36	27	39	41	28	38	43	40	50	54	63	54	48	24	34	36	43	49	42	35	43.2	
		MIN	15	35	30	31	30	43	30	25	28	31	19	19	17	20	28	24	24	21	20	34	36	48	48	22	3	12	15	14	18	34	24	25.7	
CHRISTIANSBURG	07	MAX	38	52	48	57	63	64	67	37	31	45	37	43	33	44	37	36	44	50	40	61	60	63	62	51	33	38	41	48	53	45	39	47.1	
		MIN	21	23	31	39	46	49	33	28	25	25	23	22	22	22	30	26	27	25	25	27	39	48	51	26	12	12	19	17	25	36	26	28.4	
CLINTWOOD 1 W	07	MAX	43	51	52	57	66	69	41	31	42	48	32	40	30	43	46	32	43	49	41	58	60	68	57	45	28	39	41	48	44	44	34	45.9	
		MIN	17	20	36	32	32	38	31	30	31	28	15	16	14	14	31	26	26	23	21	22	29	44	45	28	12	12	18	18	19	32	22	25.2	
COPPER HILL	07	MAX	33	48	45	52	57	65	65	33	37	44	44	40	28	40	34	32	39	47	35	57	58	62	63	50	35	30	40	44	51	42	36	44.7	
		MIN	20	25	35	37	44	49	31	24	22	34	21	20	20	21	28	24	24	23	22	31	40	50	50	22	10	11	24	24	29	33	25	28.2	
GALAX RADIO WBRF	07	MAX	47	54	46	54	57	63	68	38	38	54	38	47	33	46	39	34	48	51	39	58	60	63	56	50	32	32	44	48	49	47	39	47.5	
		MIN	17	22	28	38	48	56	35	28	27	32	19	20	18	32	22	24	24	21	25	36	52	50	25	10	11	17	17	21	33	23	27.8		
GALAX WTP	07	MAX	37	54	47	55	58	63	68	41	36	53	39	46	34	47	39	36	47	52	39	64	56	62	63	51	33	32	42	47	50	48	40	47.7	
		MIN	17	17	27	32	44	52	37	29	24	33	20	19	19	18	32	23	25	26	22	24	31	49	51	27	11	12	18	17	18	35	26	26.9	
GRUNDY	07	MAX	44	53	50	56	67	68	42	35	45	47	34	43	33	44	45	34	45	51	44	59	61	72	60	42	31	41	42	44	44	44	47.3		
		MIN	22	22	37	36	36	40	32	31	33	31	20	20	17	17	33	28	28	26	24	25	32	50	42	30	15	15	21	21	22	33	26	27.9	
JOHN FLANNAGAN LAKE	07	MAX		53	51	57	66	69			44	46	33	45	32				45	51	43	58													
		MIN	20	37	38	37	38			29	29	19	19	16			16	28	24	24	25														
LEBANON	07	MAX	50	51	48	58	67	69	48	39	50	50	43	34	44	50	34	44	48	41	55	60	72	60	51	29	39	42	48	46	47	46	48.8		
		MIN	19	19	38	36	36	45	32	30	37	32	16	16	15	33	28	29	22	21	24	30	53	50	28	12	12	18	17	18	36	24	27.2		
NORA 4 SSE	07	MAX	45	47	44	53	61	63	47	30	47	45	27	38	31	42	44	28	38	44	39	48	54	66	54	48	26	35	42	45	45	44	32	43.6	
		MIN	33	34	39	42	49	37	28	25	30	27	20	19	19	22	28	24	25	23	23	33	41	52	48	25	14	17	26	31	32	32	24	29.7	
NORTH FORK LAKE	08	MAX		53	51							52	33	46	32				47	45	52														
		MIN		11	37							28	17	17	16				15	27	24														
PULASKI 2 E	07	MAX	43	55	49	57	64	66			34	55	40	46	36	47	40	39	44	52			63	62	66										
		MIN	18	20	24	33	42	43			27	33	25	23	25	24	33	29	29	29	28	32	33	42											
RADFORD 3 N	07	MAX	40	53	50	56	62	63	67	36	32	49	38	45	33	46	38	37	45	52	42	63	61	66	62	54	34	38	42	50	51	45	41	48.1	
		MIN	16	21	32	36	42	43	35	29	26	32	23	24	20	27	33	28	25	28	19	24	28	38	53	29	11	12	18	16	20	39	27	27.5	
RICHLANDS	07	MAX	53	52	49	57	67	67	49	38	45	48	44	44	45	46	44	35	44	48	48	56	55	71	70	39	39	42	42	49	48	45	32	48.7	
		MIN	19	20	35	33	33	32	32	31	30	30	16	16	16	14	28	29	28	25	22	22	28	54	28	28	12	12	18	18	24	32	27	25.5	
SALTVILLE 1N	07	MAX	48	52	48	58	67	60	54	39	43	47	37	44	26	45	41	45	43	50	42	53	58	66	58	50	33	42	44	49	45	45	39	47.5	
		MIN	18	18	35	35	38	38	36	33	33	36	18	17	16	15	34	30	25	27	20	20	28	39	48	29	14	14	17	17	18	39	29	26.9	
STAFFORDSVILLE 3 ENE	07	MAX	39	53	50	55	62	64	56	36	32	47	36	45	33	46	39	37	45	53	41	62	62	67	65	52	34	37	43	48	49	46	41	47.6	
		MIN	16	16	33	34	42	43	34	30	26	32	22	21	21	22	31	30	26	26	20	19	29	37	52	29	10	10	17	16	16	38	25	26.5	
WISE 3E	17	MAX	49	50	54	61	64	63	35	41	47	41	40	37	42	43	44	41	45	41	53	55	65	65	65	29	37	38	47	48	43	40	35	47.0	
		MIN	31	40	41	44	57	34	26	25	41	24	15	19	16	31	26	24	34	22	30	40	50	52	29	20	9	27	19	24	34	27	24	30.2	

VIRGINIA
201312

SNOWFALL AND SNOW ON GROUND (INCHES)

STATION		DAY OF MONTH																															
		01	02	03	04	05	06	07	08	09	10	11	12	13	14	15	16	17	18	19	20	21	22	23	24	25	26	27	28	29	30	31	
VIRGINIA																																	
TIDEWATER 01																																	
DISPUTANTA	SNOWFALL																																
EASTVILLE	SNOWFALL																																
EMPORIA 1 WNW	SNOWFALL																																
FREDERICKSBURG SEWAGE	SNOWFALL																																
HOLLAND 1 E	SNOWFALL																																
HOPEWELL	SNOWFALL	-	-	-	-	-	-	-	-	-	-	-	-	-	-	-	-	-	-	-	-	-	-	-	-	-	-	-	-	-	-		
	SN ON GND	-	-	-	-	-	-	-	-	-	-	-	-	-	-	-	-	-	-	-	-	-	-	-	-	-	-	-	-	-	-		
NORFOLK INTL AP	SNOWFALL																																
	SN ON GND																										-	-					
NORFOLK SOUTH	SNOWFALL																																
NORTH	SNOWFALL																																
PAINTER 2W	SNOWFALL																																
STONY CREEK 2 N	SNOWFALL																																
	SN ON GND																																
SUFFOLK LAKE KILBY	SNOWFALL																																
	SN ON GND																																
WAKEFIELD 1NW	SNOWFALL																																
	SN ON GND																											T					T
WALKERTON 2 NW	SNOWFALL																																
	SN ON GND																																
WALLACETON LK DRUMMOND	SNOWFALL																																
WALLOPS ISLAND NASA TEST FACIL	SNOWFALL																																
	SN ON GND																																
WARSAW 2 NW	SNOWFALL																																
WEST POINT 2 NW	SNOWFALL																																
	SN ON GND																																
WILLIAMSBURG 2 N	SNOWFALL																																
EASTERN PIEDMONT 02																																	
ASHLAND	SNOWFALL	-	-	-	-	-	-	-	0.5	-	-	-	-	-	T	-	-	-	-	-	-	-	-	-	-	-	-	-	-	-	-		
	SN ON GND	-	-	-	-	-	-	-	T	T	-	-	-	-	-	-	-	-	-	-	-	-	-	-	-	-	-	-	-	-	-		
BREMO BLUFF	SNOWFALL																																
	SN ON GND																																
BUCKINGHAM	SNOWFALL																																
	SN ON GND																																
CAMP PICKETT	SNOWFALL																																
CHASE CITY	SNOWFALL																																
CLARKSVILLE	SNOWFALL																																
	SN ON GND																																
CORBIN	SNOWFALL																																
CROZIER	SNOWFALL																																

Snowfall: Includes snow and ice. Values for NWS stations (J index note) are Mid-Mid (LST).

Snow on ground: Includes snow, sleet, ice, and hail. Values for NWS stations (J index note) are observed at 12 UTC (GMT).

Water Equivalent: Given for NWS stations (J index note) only, when snow depth is 2 inches or more, and is measured at 18 UTC (GMT)

VIRGINIA
201312

SNOWFALL AND SNOW ON GROUND (INCHES)

STATION		DAY OF MONTH																													
		01	02	03	04	05	06	07	08	09	10	11	12	13	14	15	16	17	18	19	20	21	22	23	24	25	26	27	28	29	30
MONTEBELLO FISH CULTURAL STN	SN ON GND																														
	SNOWFALL																														
MONTICELLO	SNOWFALL	-	-	-	-	-	-	-	T	0.3	T	T	-	-	-	T	-	-	-	-	-	-	-	-	-	-	-	-	-	-	
	SN ON GND	-	-	-	-	-	-	-	T	T	T	-	-	-	-	-	-	-	-	-	-	-	-	-	-	-	-	-	-	-	
PEDLAR DAM	SNOWFALL								T	T																					
	SN ON GND								T	T																					
ROCKY MT	SNOWFALL																														
	SN ON GND									T																					
SOUTH BOSTON	SNOWFALL																														
	SN ON GND																														
STUART	SNOWFALL																														
	SN ON GND																														
TYE RIVER 1 SE	SNOWFALL																														
	SNOWFALL																														
WOOLWINE	SNOWFALL																														
	SN ON GND																														
NORTHERN 04																															
BOSTON 4 SE	SNOWFALL									0.7	1.0																				
	SN ON GND									1	1																				
	WTR EQUIV									0.7	0.9																				
EDINBURG	SNOWFALL	-	-	-	-	-	-	-	0.3	3.0	2.5	1.0			1.0	1.0															
	SN ON GND	-	-	-	-	-	-	-	T	2	4	4	4	3	4	4	2	2	2	1	T										
FRONT ROYAL	SNOWFALL	-	-	-	-	-	-	-	-	2.5	-	3.0	-	-	0.2	1.3	-	-	T	-	-	-	-	-	-	-	-	-	-		
	SN ON GND	-	-	-	-	-	-	-	-	-	-	3	2	1	-	1	-	1	1	-	-	-	-	-	-	-	-	-	-		
LINCOLN	SNOWFALL	-	-	-	-	-	-	-	4.0	1.0	3.0	-	-	-	-	-	-	-	-	-	-	-	-	-	-	-	-	-	-		
	SN ON GND	-	-	-	-	-	-	-	4	5	7	6	4	2	2	1	-	-	-	-	-	-	-	-	-	-	-	-	-		
LURAY 5 E	SNOWFALL									3.0	2.0				1.0																
	SN ON GND									3	5	5	4	3	3	2	2		1	1											
MADISON	WTR EQUIV	-	-	-	-	-	-	-	-	3.0	-	-	-	-	3.0	-	-	-	-	-	-	-	-	-	-	-	-	-	-		
	SNOWFALL	-	-	-	-	-	-	-	-	0.2	1.0				1.0	T															
MANASSAS	SN ON GND	-	-	-	-	-	-	-	-	T	T	T			T																
	SNOWFALL	-	-	-	-	-	-	-	-	1.2	2.0	1.0	-	-	-	-	-	-	1.0	-	-	-	-	-	-	-	-	-	-		
MT WEATHER	SN ON GND	-	-	-	-	-	-	-	-	1	2	1	-	-	-	-	-	-	1	1	-	-	-	-	-	-	-	-	-		
	WTR EQUIV	-	-	-	-	-	-	-	-	-	-	-	-	-	-	-	-	-	-	-	-	-	-	-	-	-	-	-	-		
PIEDMONT RSCH STN	SNOWFALL	-	-	-	-	-	-	-	-	3.0	3.0	1.0	-	-	T	1.0	-	-	-	-	-	-	-	-	-	-	-	-	-		
	SN ON GND	-	-	-	-	-	-	-	-	3	4	4	3	3	3	3	2	-	-	-	-	-	-	-	-	-	-	-	-		
SOMERSET	SNOWFALL																														
	SN ON GND										T				T	T															
SPERRYVILLE	SNOWFALL	-	-	-	-	-	-	-	-	T	T	T			T																
	SN ON GND	-	-	-	-	-	-	-	-	1.2	-	1.2	-	-	-	0.5	-	-	-	-	-	-	-	-	-	-	-	T	-		
STERLING RCS	SN ON GND	-	-	-	-	-	-	-	-	1	1	2	1	1	1	1	T	T	T	T							T	-	T		
	SNOWFALL	-	-	-	-	-	-	-	T	2.1	0.2	2.1			1	0.3											T	-	T		

Snowfall: Includes snow and ice. Values for NWS stations (J index note) are Mid-Mid (LST).

Snow on ground: Includes snow, sleet, ice, and hail. Values for NWS stations (J index note) are observed at 12 UTC (GMT).

Water Equivalent: Given for NWS stations (J index note) only, when snow depth is 2 inches or more, and is measured at 18 UTC (GMT)

VIRGINIA
201312

SNOWFALL AND SNOW ON GROUND (INCHES)

STATION		DAY OF MONTH																														
		01	02	03	04	05	06	07	08	09	10	11	12	13	14	15	16	17	18	19	20	21	22	23	24	25	26	27	28	29	30	31
VIENNA	SN ON GND	-	-	-	-	-	-	-	-	1	T	2	^I	2 ^I	2	1	1	T	-	-	-	-	-	-	-	-	-	-	-	-	-	-
	SNOWFALL	-	-	-	-	-	-	-	-	1.0	1.5	0.5	-	-	-	-	-	-	-	-	-	-	-	-	-	-	-	-	-	-	-	-
WASHGTN DULLES INTL AP	SN ON GND	-	-	-	-	-	-	-	-	-	2	1	1	1	-	-	-	-	-	-	-	-	-	-	-	-	-	-	-	-	-	
	WTR EQUIV	-	-	-	-	-	-	-	-	1.0	1.5	1.5	-	-	-	0.5	-	-	-	-	-	-	-	-	-	-	-	-	-	-	-	-
WASHINGTON REAGAN AP	SNOWFALL	-	-	-	-	-	-	-	2.1	2.1	2.1	-	-	0.3	-	-	0.2	T	-	-	-	-	-	-	T	-	T	-	-	-	-	
	SN ON GND	-	-	-	-	-	-	-	1	T	2	2	2	2	1	-	-	-	-	-	-	-	-	-	-	-	-	-	-	-	-	-
WINCHESTER	SNOWFALL	-	-	-	-	-	-	-	0.6	0.9	-	-	-	-	-	-	T	T	-	-	-	-	-	T	-	-	-	-	-	-	-	
	SN ON GND	-	-	-	-	-	-	-	T	T	-	-	-	-	-	-	-	-	-	-	-	-	-	-	-	-	-	-	-	-	-	-
WINCHESTER 7 SE	SNOWFALL	-	-	-	-	-	-	-	6.1	3.2	1.2	-	-	-	2.1	-	-	-	-	-	-	-	-	-	-	-	-	-	-	-	-	-
	SN ON GND	-	-	-	-	-	-	-	4	6	4	2	2	1	2	2	1	1	1	-	-	-	-	-	-	-	-	-	-	-	-	-
WOODSTOCK 2 NE	SNOWFALL	-	-	-	-	-	-	-	4.0	2.0	-	-	-	2.0	2.0	-	-	-	-	-	-	-	-	-	-	-	-	-	-	-	-	-
	SN ON GND	-	-	-	-	-	-	-	4	6	2	2	2	2	4	1	-	-	-	-	-	-	-	-	-	-	-	-	-	-	-	-
CENTRAL MOUNTAIN 05 BUENA VISTA	WTR EQUIV	-	-	-	-	-	-	-	4.0	6.0	-	2.0	2.0	2.0	-	-	-	-	-	-	-	-	-	-	-	-	-	-	-	-	-	
	SNOWFALL	-	-	-	-	-	-	-	-	2.0	2.2	-	-	1.0	-	-	-	-	-	-	-	-	-	-	-	-	-	-	-	-	-	-
COVINGTON FLTR PLT	SN ON GND	-	-	-	-	-	-	-	-	3	4	2	2	3	1	1	T	-	-	-	-	-	-	-	-	-	-	-	-	-	-	-
	SNOWFALL	-	-	-	-	-	-	-	T	-	-	-	-	0.5	-	-	-	-	-	-	-	-	-	-	-	-	-	-	-	-	-	-
CRAIGSVILLE 2 S DALE ENTERPRISE	SN ON GND	-	-	-	-	-	-	-	T	-	-	-	-	T	1.0	1	2	1	-	-	-	-	-	-	-	-	-	-	-	-	-	-
	SNOWFALL	-	-	-	-	-	-	-	T	-	-	-	-	1.0	0.7	2.0	-	-	-	-	-	-	-	-	-	-	-	-	-	-	-	-
GATHRIGHT DAM	SN ON GND	-	-	-	-	-	-	-	-	1	1	1	1	1	2	1	-	-	-	-	-	-	-	-	-	-	-	-	-	-	-	-
	SNOWFALL	-	-	-	-	-	-	-	-	1.0	2.0	1.0	-	1.0	-	1.0	-	-	-	-	-	-	-	-	-	-	-	-	-	-	-	-
GLASGOW 1 SE	SN ON GND	-	-	-	-	-	-	-	T	T	T	-	-	2	1	T	-	-	-	-	-	-	-	-	-	-	-	-	-	-	-	-
	SNOWFALL	-	-	-	-	-	-	-	T	0.1	-	-	-	0.2	T	-	-	-	-	-	-	-	-	-	-	-	-	-	-	-	-	-
HOT SPRINGS	SN ON GND	-	-	-	-	-	-	-	T	-	-	-	-	T	-	-	-	-	-	-	-	-	-	-	-	-	-	-	-	-	-	-
	SNOWFALL	-	-	-	-	-	-	-	T	-	-	-	-	3.0	-	-	-	-	T	-	-	-	-	-	-	-	-	-	-	-	-	-
LEXINGTON	SN ON GND	-	-	-	-	-	-	-	T	T	-	-	-	3	1	-	-	T	T	-	-	-	-	-	-	-	-	-	-	-	-	-
	SNOWFALL	-	-	-	-	-	-	-	T	T	-	-	-	0.5	-	-	-	-	-	-	-	-	-	-	-	-	-	-	-	-	-	-
MILLGAP	SN ON GND	-	-	-	-	-	-	-	T	0.5	2.0	1.0	-	1	1.8	1.7	0.1	-	2.2	-	-	-	-	-	-	-	-	-	-	-	-	-
	SNOWFALL	-	-	-	-	-	-	-	T	T	2	2	2	1	3	4	3	3	4	3	2	1	-	-	-	-	-	-	-	-	-	-
MTN GROVE	WTR EQUIV	-	-	-	-	-	-	-	-	-	-	-	-	-	-	-	-	-	-	-	-	-	-	-	-	-	-	-	-	-	-	-
	SNOWFALL	-	-	-	-	-	-	-	T	T	T	-	-	1.0	-	-	-	-	T	-	-	-	-	-	-	-	-	-	-	-	-	-
MUSTOE 1 SW	SN ON GND	-	-	-	-	-	-	-	T	T	T	T	1	T	-	-	-	T	T	-	-	-	-	-	-	-	-	-	-	-	-	-
	SNOWFALL	-	-	-	-	-	-	-	0.7	2.9	-	-	-	3.2	-	0.1	2.4	0.4	-	-	-	-	-	-	T	-	T	-	-	-	-	-
NEW CASTLE	SN ON GND	^I	^I	-	-	-	-	-	1	T	3	2	2	2	5	4	3	4	4	2	1	T	-	T	-	-	-	-	-	-	-	-
	SNOWFALL	-	-	-	-	-	-	-	-	-	-	-	-	-	-	-	-	-	-	-	-	-	-	-	-	-	-	-	-	-	-	-
ROANOKE 8 N	SN ON GND	-	-	-	-	-	-	-	-	-	-	-	-	-	-	-	-	-	-	-	-	-	-	-	-	-	-	-	-	-	-	-
	SNOWFALL	-	-	-	-	-	-	-	-	-	-	-	-	-	-	-	-	-	-	-	-	-	-	-	-	-	-	-	-	-	-	-

Snowfall: Includes snow and ice. Values for NWS stations (J index note) are Mid-Mid (LST).

Snow on ground: Includes snow, sleet, ice, and hail. Values for NWS stations (J index note) are observed at 12 UTC (GMT).

Water Equivalent: Given for NWS stations (J index note) only, when snow depth is 2 inches or more, and is measured at 18 UTC (GMT)

SNOWFALL AND SNOW ON GROUND (INCHES)

STATION		DAY OF MONTH																														
		01	02	03	04	05	06	07	08	09	10	11	12	13	14	15	16	17	18	19	20	21	22	23	24	25	26	27	28	29	30	31
ROANOKE INTL AP	SN ON GND								T																T							
	SNOWFALL														T																	
STAUNTON WATER TRMTMT PLT	SN ON GND																															
	SNOWFALL									0.3	0.3				0.5	0.5																
WAYNESBORO WTP	SN ON GND														1	1																
	SNOWFALL														T																	
	SN ON GND																															
SOUTHWESTERN MOUNTAIN 06	SN ON GND																															
	SNOWFALL																															
	SN ON GND																															
BLACKSBURG NWSO	SNOWFALL								T	T		T			T	T											T				T	
	SN ON GND																															
BURKES GARDEN	SNOWFALL							T		T		T			T	0.2	0.2								T	0.6					T	
	SN ON GND	T						T				T			T	T	T							T	1	T					T	
CHRISTIANSBURG	SNOWFALL														T																	
	SN ON GND								T	T																						
CLINTWOOD 1 W	SNOWFALL							0.2	T		1.0	T				T	0.1							T	0.1					T	T	
	SN ON GND	1						T	T		1	1	1	1	T	T	T							T								
COPPER HILL	SNOWFALL														T																	
	SN ON GND														T																	
GALAX RADIO WBRF	SNOWFALL																															
	SN ON GND																															
GALAX WTP	SNOWFALL																															
	SN ON GND																															
GRUNDY	SNOWFALL										0.3	0.2			T	T									0.1							
	SN ON GND										T	T	T																			
JOHN FLANNAGAN LAKE	SNOWFALL	-	-	-	-	-	-	-	-	-	0.5	-	-	-	-	-	-	-	-	-	-	-	-	-	-	-	-	-	-	-		
	SN ON GND	-	-	-	-	-	-	-	-	-	-	-	-	-	-	-	-	-	-	-	-	-	-	-	-	-	-	-	-	-		
LAFAYETTE 1 NE	SNOWFALL									0.2						T																
	SN ON GND									T																						
LEBANON	SNOWFALL																															
	SN ON GND																															
NORA 4 SSE	SNOWFALL							0.2	T		0.7	T				T	0.2	T						T	0.7						T	
	SN ON GND	T						T	T		1	T	T	T		T	T	T						T	T						T	
NORTH FORK LAKE	SNOWFALL	-	-	-	-	-	-	-	-	-	T	T	-	-	-	-	-	-	-	-	-	-	-	-	-	-	-	-	-	-	-	
	SN ON GND	-	-	-	-	-	-	-	-	-	T	T	-	-	-	-	-	-	-	-	-	-	-	-	-	-	-	-	-	-	-	
PULASKI 2 E	SNOWFALL	-	-	-	-	-	-	-	-	-	-	-	-	-	-	-	-	-	-	-	-	-	-	-	-	-	-	-	-	-	-	
	SN ON GND	-	-	-	-	-	-	-	-	-	-	-	-	-	-	-	-	-	-	-	-	-	-	-	-	-	-	-	-	-	-	
RADFORD 3 N	SNOWFALL									T																						
	SN ON GND									T																						
RICHLANDS	SNOWFALL									T																						
	SN ON GND									T																						

Snowfall: Includes snow and ice. Values for NWS stations (J index note) are Mid-Mid (LST).

Snow on ground: Includes snow, sleet, ice, and hail. Values for NWS stations (J index note) are observed at 12 UTC (GMT).

Water Equivalent: Given for NWS stations (J index note) only, when snow depth is 2 inches or more, and is measured at 18 UTC (GMT)

VIRGINIA
201312

SNOWFALL AND SNOW ON GROUND (INCHES)

STATION		DAY OF MONTH																														
		01	02	03	04	05	06	07	08	09	10	11	12	13	14	15	16	17	18	19	20	21	22	23	24	25	26	27	28	29	30	31
SALTVILLE 1N	SNOWFALL	-	-	-	-	-	-	-	-	-	-	-	-	-	-	-	-	-	-	-	-	-	-	-	-	-	-	-	-	-	-	-
	SN ON GND	-	-	-	-	-	-	-	-	-	-	-	-	-	-	-	-	-	-	-	-	-	-	-	-	-	-	-	-	-	-	-
STAFFORDSVILLE 3 ENE	SNOWFALL									T						T																
	SN ON GND																															
WILLIS	SNOWFALL																															
	SN ON GND																															
WISE 3E	SNOWFALL							0.3			0.5					1.0		T	T						2.7						0.4	
	SN ON GND							T	T	T	T	T				T	T							1			T	T			T	

Snowfall: Includes snow and ice. Values for NWS stations (J index note) are Mid-Mid (LST).

Snow on ground: Includes snow, sleet, ice, and hail. Values for NWS stations (J index note) are observed at 12 UTC (GMT).

Water Equivalent: Given for NWS stations (J index note) only, when snow depth is 2 inches or more, and is measured at 18 UTC (GMT)

VIRGINIA
201312

PAN EVAPORATION AND WIND

STATION		DAY OF MONTH																															TOTAL OR AVERAGE		
		01	02	03	04	05	06	07	08	09	10	11	12	13	14	15	16	17	18	19	20	21	22	23	24	25	26	27	28	29	30	31			
VIRGINIA EASTERN PIEDMONT 02 JOHN H KERR DAM	WIND	-	-	-	-	-	-	-	-	-	-	-	-	-	-	-	-	-	-	-	-	-	-	-	-	-	-	-	-	-	-	-	-	-	M
	EVAP	-	-	-	-	-	-	-	-	-	-	-	-	-	-	-	-	-	-	-	-	-	-	-	-	-	-	-	-	-	-	-	-	-	M
	MAX	-	-	-	-	-	-	-	-	-	-	-	-	-	-	-	-	-	-	-	-	-	-	-	-	-	-	-	-	-	-	-	-	-	M
	MIN	-	-	-	-	-	-	-	-	-	-	-	-	-	-	-	-	-	-	-	-	-	-	-	-	-	-	-	-	-	-	-	-	-	M

Evaporation: Is measured in hundreths of inches.

Wind: Is measured in miles.

Max and Min: The maximum and minimum temperatures (Fahrenheit) of the water in the evaporation pan.

STATION INDEX

STATION	INDEX NO.	DIVISION	COUNTY	LATITUDE	LONGITUDE	ELEVATION (IN FEET)	OBSERVATION TIME AND TABLES			
							LOCAL STD TIME			
							TEMP	PRECIP	EVAP	SPECIAL SEE (NOTES)
VIRGINIA										
ABINGDON 3S	0021	06	WASHINGTON	36 40	81 58W	1920	22	22		H
ALBERTA 5N	0079	02	BRUNSWICK	36 56	77 54W	376		08		H
ALTAVISTA	0166	03	CAMPBELL	37 7	79 17W	529		07		CH
AMELIA COURTHOUSE 1	0187	02	AMELIA	37 21	77 59W	345	08	08		H
APPOMATTOX	0243	03	APPOMATTOX	37 20	78 50W	850	07	07		H
ASHLAND	0327	02	HANOVER	37 45	77 29W	220	18	18		H
BEDFORD 4 NW	0561	03	BEDFORD	37 23	79 34W	1228		07		CH
BIG STONE GAP	0735	06	WISE	36 52	82 46W	1464	08	08		H
BLACKSBURG NWSO	0766	06	MONTGOMERY	37 12	80 25W	2100	07	07		CH
BOSTON 4 SE	0860	04	CULPEPER	38 33	78 6W	590	07	07		H
BREMO BLUFF	0993	02	FLUVANNA	37 43	78 17W	225		07		CH
BROOKNEAL	1082	03	CAMPBELL	37 4	78 57W	408	07	07		H
BUCKINGHAM	1136	02	BUCKINGHAM	37 30	78 32W	552		07		H
BUENA VISTA	1159	05	ROCKBRIDGE	37 44	79 22W	840		07		H
BURKES GARDEN	1209	06	TAZEWELL	37 6	81 20W	3068	07	07		H
CAMP PICKETT	1322	02	NOTTOWAY	37 2	77 57W	330	08	08		CH
CHARLOTTE COURT HOUSE	1585	03	CHARLOTTE	37 3	78 39W	569	07	07		H
CHARLOTTESVILLE 2W	1593	03	ALBEMARLE	38 2	78 31W	866	08	08		H
CHASE CITY	1606	02	MECKLENBURG	36 47	78 29W	510	17	17		H
CHATHAM	1614	03	PITTSYLVANIA	36 49	79 25W	651	07	07		CH
CHRISTIANSBURG	1692	06	MONTGOMERY	37 8	80 24W	2100	07	07		H
CLARKSVILLE	1746	02	MECKLENBURG	36 37	78 33W	330	07	07		H
CLINTWOOD 1 W	1825	06	DICKENSON	37 9	82 29W	1780	07	07		H
CONCORD 4 SSW	1955	03	CAMPBELL	37 17	78 58W	815		07		H
COPPER HILL	1999	06	FLOYD	37 5	80 9W	2690	07	07		H
CORBIN	2009	02	CAROLINE	38 12	77 22W	220	09	09		H
COVINGTON FLTR PLT	2044	05	ALLEGHANY	37 49	79 59W	1230	07	07		H
CRAIGSVILLE 2 S	2064	05	AUGUSTA	38 3	79 23W	1758		07		H
CROZIER	2142	02	GOOCHLAND	37 40	77 53W	350	07	07		H
DALE ENTERPRISE	2208	05	ROCKINGHAM	38 27	78 56W	1358	07	07		H
DANVILLE REGIONAL AP R	2250	03	PITTSYLVANIA	36 34	79 20W	571	24	24		H
DISPUTANTA	2400	01	PRINCE GEORGE	37 7	77 12W	15	07	07		H
EASTVILLE	2635	01	NORTHAMPTON	37 23	75 58W	10	07	07		H
EDINBURG	2663	04	SHENANDOAH	38 48	78 35W	928	07	07		H
EMPORIA 1 WNW	2790	01	GREENSVILLE	36 42	77 34W	100	08	08		H
FARMVILLE 2 N	2941	02	CUMBERLAND	37 20	78 23W	450	07	07		H
FREDERICKSBURG SEWAGE	3204	01	FREDERICKSBURG	38 17	77 27W	15	07	07		H
FREE UNION	3213	03	ALBEMARLE	38 5	78 35W	590	08	07		H
FRONT ROYAL	3229	04	WARREN	38 54	78 11W	930	07	07		H
GALAX RADIO WBRF	3267	06	CARROLL	36 40	80 55W	2385	07	07		H
GALAX WTP	3272	06	CARROLL	36 39	80 55W	2360	07	07		CH
GATHRIGHT DAM	3310	05	ALLEGHANY	37 57	79 57W	1770	07	07		CH
GLASGOW 1 SE	3375	05	ROCKBRIDGE	37 37	79 26W	737		07		H
GREENBAY 3 NE	3565	02	PRINCE EDWARD	37 11	78 17W	500	09	09		H
GRUNDY	3640	06	BUCHANAN	37 17	82 5W	1170	07	07		H
HOLCOMB ROCK	4039	03	BEDFORD	37 33	79 24W	620		07		H
HOLLAND 1 E	4044	01	SUFFOLK	36 41	76 46W	80	08	08		H
HOPEWELL	4101	01	PRINCE GEORGE	37 18	77 17W	40	16	16		H
HOT SPRINGS	4128	05	BATH	37 60	79 50W	2236	07	07		H
HUDDLESTON 4 SW	4148	03	BEDFORD	37 8	79 32W	898		07		H
JOHN FLANNAGAN LAKE	4410	06	DICKENSON	37 14	82 21W	1460	07	07		H
JOHN H KERR DAM	4414	02	MECKLENBURG	36 36	78 18W	250	08	08	08	CH
LAFAYETTE 1 NE	4676	06	MONTGOMERY	37 14	80 12W	1320		07		H
LEBANON	4777	06	RUSSELL	36 54	82 2W	1912	07	07		H
LEXINGTON	4876	05	ROCKBRIDGE	37 47	79 26W	1097	07	07		H
LINCOLN	4909	04	LOUDOUN	39 5	77 42W	500	07	07		H
LOUISA	5050	02	LOUISA	38 3	78 0W	420	18	18		H
LURAY 5 E	5096	04	PAGE	38 40	78 22W	1400	08	08		H
LYNCHBURG INTL AP R	5120	03	CAMPBELL	37 19	79 12W	940	24	24		HJ
MADISON	5150	04	MADISON	38 22	78 15W	577	08	08		H
MANASSAS	5204	04	MANASSAS	38 44	77 30W	245	07	07		H
MARTINSVILLE FLTR PLT	5300	03	HENRY	36 42	79 52W	760	07	07		H
MEADOWS OF DAN 5 SW	5453	03	PATRICK	36 40	80 27W	2225	07	07		H
MILLGAP	5595	05	HIGHLAND	38 18	79 43W	2421	07	07		CH
MONTEBELLO FISH CULTURAL STN	5690	03	NELSON	37 51	79 8W	2667	07	07		H

STATION INDEX

STATION	INDEX NO.	DIVISION	COUNTY	LATITUDE	LONGITUDE	ELEVATION (IN FEET)	OBSERVATION TIME AND TABLES			
							LOCAL STD TIME			
							TEMP	PRECIP	EVAP	SPECIAL SEE (NOTES)
MONTICELLO	5700	03	ALBEMARLE	38 1	78 27W	758	08	08		H
MT WEATHER	5851	04	LOUDOUN	39 4	77 53W	1659	07	07		H
MTN GROVE	5756	05	BATH	38 6	79 53W	1775		07		H
MUSTOE 1 SW	5880	05	HIGHLAND	38 20	79 40W	2380	24	24		H
NEW CASTLE	6012	05	CRAIG	37 18	80 3W	1258		07		H
NORA 4 SSE	6125	06	DICKENSON	37 1	82 19W	2650	07	07		H
NORFOLK INTL AP R	6139	01	NORFOLK (CITY)	36 54	76 12W	30	24	24		HJ
NORFOLK SOUTH	6147	01	NORFOLK (CITY)	36 52	76 14W	100	24	24		H
NORTH	6161	01	MATHEWS	37 26	76 26W	10	07	07		H
NORTH FORK LAKE	6173	06	WISE	37 7	82 38W	1675	08	08		H
PAINTER 2W	6475	01	ACCOMACK	37 35	75 49W	30	16	16		CH
PALMYRA 3S	6491	02	FLUVANNA	37 49	78 16W	410	06	06		H
PEDLAR DAM	6593	03	AMHERST	37 40	79 17W	1024		07		H
PETERSBURG	6656	02	PETERSBURG	37 14	77 24W	15	08	08		H
PIEDMONT RSCH STN	6712	04	ORANGE	38 14	78 7W	520	08	08		CH
PULASKI 2 E	6955	06	PULASKI	37 3	80 47W	1850	07	07		CH
RADFORD 3 N	6999	06	PULASKI	37 12	80 35W	1800	07	07		H
RICHLANDS	7174	06	TAZEWELL	37 6	81 48W	1910	07	07		H
RICHMOND INTL AP R	7201	02	HENRICO	37 30	77 19W	164	24	24		HJ
ROANOKE 8 N	7278	05	ROANOKE	37 22	79 58W	1190	07	07		H
ROANOKE INTL AP R	7285	05	ROANOKE	37 19	79 58W	1175	24	24		HJ
ROCKY MT	7338	03	FRANKLIN	36 59	79 54W	1315	07	07		CH
SALTVILLE 1N	7506	06	SMYTH	36 53	81 46W	1733	07	07		H
SANDSTON	7541	02	HENRICO	37 33	77 17W	165	07	07		H
SOMERSET	7904	04	ORANGE	38 15	78 16W	510	07	07		H
SOUTH BOSTON	7925	03	HALIFAX	36 42	78 53W	329	07	07		H
SPERRYVILLE	7985	04	RAPPAHANNOCK	38 39	78 14W	750	06	06		H
STAFFORDSVILLE 3 ENE	8022	06	GILES	37 16	80 43W	1950	07	07		CH
STAUNTON WATER TRMTMT PLT	8062	05	AUGUSTA	38 10	79 5W	169	08	08		H
STERLING RCS	8084	04	LOUDOUN	38 59	77 29W	288	07	07		H
STONY CREEK 2 N	8129	01	SUSSEX	36 58	77 24W	105	08	08		H
STUART	8170	03	PATRICK	36 38	80 15W	1375	07	07		H
SUFFOLK LAKE KILBY	8192	01	SUFFOLK	36 44	76 36W	22	24	24		H
TYE RIVER 1 SE	8600	03	NELSON	37 38	78 56W	720	07	07		H
VIENNA	8737	04	FAIRFAX	38 54	77 16W	418	07	07		H
WAKEFIELD 1NW	8800	01	SUSSEX	36 59	77 0W	113	24	24		CH
WALKERTON 2 NW	8829	01	KING AND QUEEN	37 45	77 2W	50	18	18		H
WALLACETON LK DRUMMOND	8837	01	CHESAPEAKE	36 36	76 26W	20	08	08		H
WALLOPS ISLAND NASA TEST FACIL R	8849	01	ACCOMACK	37 56	75 28W	46	24	24		HJ
WARSAW 2 NW	8894	01	RICHMOND	37 59	76 47W	140	18	18		H
WASHGTN DULLES INTL AP R	8903	04	LOUDOUN	38 56	77 28W	290	24	24		HJ
WASHINGTON REAGAN AP R	8906	04	ARLINGTON	38 51	77 2W	10	24	24		HJ
WAYNESBORO WTP	8941	05	WAYNESBORO	38 5	78 53W	1270	07	07		H
WEST POINT 2 NW	9025	01	KING WILLIAM	37 34	76 48W	20	17	17		H
WILLIAMSBURG 2 N	9151	01	YORK	37 18	76 42W	70	24	24		CH
WILLIS	9169	06	FLOYD	36 55	80 30W	2810		07		CH
WINCHESTER	9181	04	FREDERICK	39 11	78 9W	720	07	07		H
WINCHESTER 7 SE	9186	04	FREDERICK	39 11	78 7W	680	08	08		H
WINTERPOCK 4 W	9213	02	CHESTERFIELD	37 19	77 39W	300		07		H
WISE 3E	9215	06	WISE	36 60	82 32W	2549	17	17		CH
WOODSTOCK 2 NE	9263	04	SHENANDOAH	38 54	78 28W	675	07	07		H
WOOLWINE	9272	03	PATRICK	36 47	80 17W	1500		07		CH

REFERENCE NOTES

STATION NAMES: Name of the city, town or locality. Figures and letters following the station names indicate the distance in miles and direction from the post office or town community center.

DIVISIONS: Areas within a state of similar climatological characteristics. Division averages are calculated using data from stations that record temperature and/or precipitation. Station Precipitation totals flagged with an 'F' or 'M' are excluded from the Divisional Average calculations of precipitation. Stations with monthly Temperature averages flagged with an 'F' or 'M' are included in the Divisional Average if there are no more than 9 flagged or missing daily values in the month, else they are excluded from the divisional average for temperature.

NORMALS: The average value of the meteorological element over a time period. Effective 1 January 2012, the averaging period is 1981 to 2010. The normals for National Weather Service localities have been adjusted so as to be representative for the current observation site.

MONTHLY DEGREE DAY TOTALS: One heating (cooling) degree day is accumulated for each whole degree that the daily mean temperature is below (above) 65 degrees Fahrenheit.

PRECIPITATION: Values shown in hundredths of inches are water equivalent totals, i.e., total of liquid and melted frozen precipitation. In the "Monthly Summarized Data" table the total snow and sleet values shown in tenths of inches are unmelted amounts. The max depth on ground values of snow and sleet shown in whole inches are cumulative unmelted amounts. The number of days with .10, .50, 1.00 or more refers to water equivalents.

PRECIPITATION QUALITY CONTROL: The NCDC quality control process may flag precipitation data that are spatially inconsistent, exceed climatological limits, or are inconsistent with prevailing weather patterns.

TEMPERATURE: Original temperature values are given in the "Daily Temperature" table. Summary temperature information (averages, departures, extremes, monthly degree day totals) is based on the values labeled MAX/MIN.

WIND: (As shown in the "Evaporation and Wind" table) the total wind movement in miles over the evaporation pan as determined by an anemometer recorder located 6-8 inches above the pan.

SYMBOLS AND LETTERS USED IN THE STATION INDEX TABLE

C Station is equipped with recording rain gage (R) but values in this bulletin are from a non-recording rain gage unless indicated by an R.

G Observations appear in the "Soil Temperatures" table.

H Observations appear in the "Snowfall and Snow on the Ground" table.

J Station also published as a Local Climatological Data publication.

VAR Observation time varies.

SR Observation time near sunrise.

SS Observation time near sunset.

SYMBOLS AND LETTERS USED IN THE DATA TABLES

(DAILY DATA ARE FOR THE 24 HOURS IMMEDIATELY PRECEDING OBSERVATION TIME.)

BLANK Entries in the "Monthly Summarized Data" table indicate no record.

BLANK Entries in the "Daily Precipitation" and "Snowfall and Snow on the Ground" tables indicate zero.

BLANK Entries in the "Daily Temperature" table indicate a missing record

- No record. Data not recorded or not received in time for publication.

+ Precipitation or temperature extremes occurred on one or more previous dates during the month.

* Rain gage not read. Precipitation is included in the amount following the asterisks.

Time distribution may not be known. A * preceding the monthly total indicates precipitation amount is being carried forward to next month's total, and may include amounts from the previous month(s).

a As a subscript, indicates accumulated total.

A Amount of precipitation is the total of observer's entries for the current month. It may include precipitation that occurred during the previous month. Refer to earlier bulletin to determine date of last reading. (Hawaii stations)

B Divisional Departure from normals are computed using 1971-2000 normals.

E Normalized HDD/CDD Calculation. E is appended to the HDD/CDD Calculation when 1-9 individual daily TMAX and/or TMIN values are missing and a Normalized HDD/CDD Calculation is provided. M appears alone if 10 or more daily values are missing.

F Monthly calculation flagged value. F is appended to average and/or total values computed which exclude one or more daily data values that have been flagged by the GHCN-Daily Dataset

M Insufficient or partial data. M is appended to average and/or total values computed with 1-9 daily values missing. M appears alone if 10 or more daily values are missing, (8 or more for wind and evaporation).

N Indicates snow fall or Snowdepth totals are computed with one or more missing days.

R Amounts from recording rain gage.

T Trace. An amount too small to measure.

SEASONAL TABLES: Monthly and seasonal snowfall and heating degree days for the 12 months ending with the June data are published in the July issue of this bulletin. Cooling degree days for the calendar year are published in the "Climatological Data Annual Summary."

Information concerning the history of changes in locations, exposure, etc. of substations is kept on file at the National Climatic Data Center. Historical information of regular National Weather Service Offices may be obtained from the "Local Climatological Data" annual publication. The contents of this publication may be reprinted or otherwise used freely, with proper credit to the National Climatic Data Center. The data are also available digitally.

Effective with the January 2011 Data-Month, COOP Observer Names are no longer included in the Monthly and Annual Climatological Data Publications. This information is not published to ensure the privacy of personal information pursuant to Section 208 of the E-Government Act of 2002 (44 USC 3601).

As of the 2011 Data-Year, Station and Climate Division Maps are no longer being included in the CD Publications. NCDC's Product Development Branch provides updated Station Maps for various data networks via the Historical Observing Metadata Repository: <http://www.ncdc.noaa.gov/homr>.

The GHCN-Daily Quality Control Flags shown below are displayed as superscripts with the data. For more Information on Global Historical Climatology Network - Daily and flags, see: <http://www.ncdc.noaa.gov/oa/climate/ghcn-daily/> and

Comprehensive Automated Quality Assurance of Daily Surface Observations.

Durre, Imke, Matthew J. Menne, Byron E. Gleason, Tamara G. Houston,

Russell S. Vose, 2010: J. Appl. Meteor. Climatol., 49, 1615-1633.

doi: 10.1175/2010JAMC2375.1

Blank = Passed All checks

D = failed duplicate check

G = failed gap check

I = failed internal consistency check

K = failed streak/frequent-value check

L = failed check on length of multiday period

M = failed megaconsistency check

N = failed naught check

O = failed climatological outlier check

R = failed lagged range check

S = failed spatial consistency check

T = failed temporal consistency check

W = temperature too warm for snow

X = failed bounds check

Z = flagged as a result of an official Datzilla investigation

Beginning with the January 2013 CD Publication, monthly mean temperature calculations have changed to the National Data Stewardship Team standard. Monthly maximum and minimum temperatures are not rounded until after the monthly mean temperature is calculated. This is the most accurate outcome, but may be slightly different from the mean derived from rounded monthly maximum and minimum.

Processing Updates and Errata: The 2011 CD Publications were reproduced in May 2013. This update included the addition of late reports and corrections based on additional investigations of reported data issues through NCDC's Datzilla system. In addition, divisional averages for precipitation were recalculated using the method described in DIVISIONS above. Previous editions of the 2011 Publications included all precipitation stations regardless of missing data in the calculation of divisional averages. HDD/CDD values were recalculated to match the legacy method of calculation (truncation of monthly HDD/CDD values instead of rounding).

NOAA\National Climatic Data Center
Attn: User Engagement & Services Branch
151 Patton Avenue
Asheville, NC 28801-5001

Customer Services Number: (828) 271-4800, option 2
TDD : (828) 271-4010
Fax number: (828) 271-4876

NCDC now offers free online access to the *Climatological Data* publication.
Go to : www.ncdc.noaa.gov and choose Most Popular.