



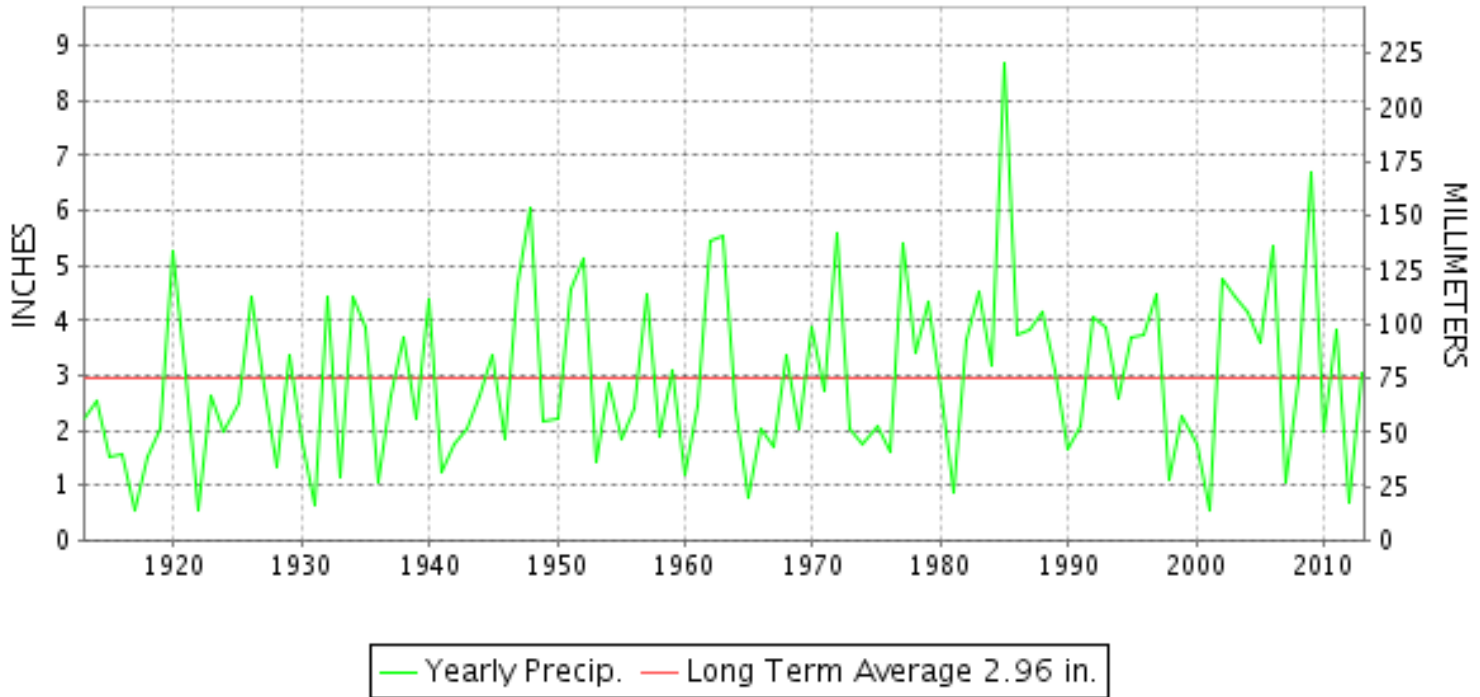
CLIMATOLOGICAL DATA

VIRGINIA

NOVEMBER 2013
VOLUME 123 NUMBER 11
ISSN 0364-5630

GHCND Ver: 3.12-upd-2014022606

NOVEMBER PRECIPITATION BY YEAR



TEMPERATURE AND PRECIPITATION EXTREMES

VIRGINIA

HIGHEST TEMPERATURE	78	NOVEMBER 02	MANASSAS
LOWEST TEMPERATURE	6	NOVEMBER 30+	2 STATIONS
GREATEST TOTAL PRECIPITATION	4.67		MONTEBELLO FISH CULTURAL STN
LEAST TOTAL PRECIPITATION	0.58		SPERRYVILLE
GREATEST 1 DAY PRECIPITATION	3.80	NOVEMBER 27	WOOLWINE
GREATEST TOTAL SNOWFALL	4.8		NORA 4 SSE
GREATEST DEPTH OF SNOW OR ICE	4		NORA 4 SSE

"I certify that this is an official publication of the National Oceanic and Atmospheric Administration (NOAA) It is compiled using information from weather observing sites supervised by NOAA/National Weather Service and received at the National Climatic Data Center(NCDC), Asheville, North Carolina 28801."

Director
National Climatic Data Center

noaa

National
Oceanic and
Atmospheric Administration

National
Environmental Satellite, Data
and Information Service

National
Climatic Data Center
Asheville, North Carolina

VIRGINIA
201311

MONTHLY STATION AND DIVISION SUMMARY

STATION	TEMPERATURE (°F)											PRECIPITATION (IN)													
	AVERAGE MAXIMUM	AVERAGE MINIMUM	AVERAGE	DEPARTURE FROM NORMAL	HIGHEST	DATE	LOWEST	DATE	HEATING DEG. DAYS	COOLING DEG. DAYS	NO. OF DAYS				TOTAL	DEPARTURE FROM NORMAL	GREATEST 24 HOURS	DATE	ICE PELLETS, SNOW			NO. OF DAYS			
											MAX		MIN						TOTAL	MAX DEPTH ON GROUND	DATE	.10 OR MORE	.50 OR MORE	1.00 OR MORE	
											>=90	<=32	<=32	<=0											
VIRGINIA TIDEWATER 01																									
DISPUTANTA	58.2M	32.1M	45.2M	-4.5	73	02	15	25	588E	1E	0	0	14	0	M 2.65	-0.72	1.69	27	0.0				4	2	1
EASTVILLE	M	M	M		68	02	28	29+	735E	0	0	0	6	0	M				0.0						
EMPORIA 1 WNW	60.7M	35.6M	48.1M	-2.4	73	18+	19	26+	500E	1E	0	0	12	0	M 2.85	-0.24	1.67	27	0.0				4	1	1
FREDERICKSBURG SEWAGE	55.6	31.7	43.7	-3.8	73	02	18	26+	633	0	0	1	17	0	3.35	-0.40	2.45	27	0.0				4	1	1
HOLLAND 1 E	M	M	M								0	0	0	0	M				0.0						
HOPEWELL	61.6M	41.5M	51.6M	-1.7	73	01	18	25	407E	12E	0	0	7	0	M 2.19	-1.32	1.97	27	M 0.0	0			1	1	1
NORFOLK INTL AP	59.7	43.0	51.4	-1.5	77	01	27	29	411	9	0	0	6	0	2.57	-0.58	1.01	27	0.0	0			4	3	1
NORFOLK SOUTH	58.0M	40.8M	49.4M	-3.2	76	01	24	29+	471E	7E	0	0	6	0	M 2.79	-0.62	1.09	27	0.0				4	2	1
NORTH	M	M	M								0	0	0	0	M				0.0						
PAINTER 2W	58.1M	40.5M	49.3M	-2.4	73	01	25	25	469E	7E	0	0	6	0	M 0.43	-2.68	0.14	02	0.0				2	0	0
STONY CREEK 2 N	M	M	M		73	25+	16	25	630E	0	0	0	8	0	M				M 0.0	0					
SUFFOLK LAKE KILBY	59.1M	37.7M	48.4M	-3.5	72	18	26	25+	491E	0	0	0	8	0	M 1.67	-1.87	0.79	07	M 0.0	0			3	2	0
WAKEFIELD 1NW	59.9M	35.1M	47.5M	-2.9	74	01	16	25	525E	6E	0	0	12	0	M 3.06	-0.05	1.21	27	M 0.0	0			6	2	1
WALKERTON 2 NW	M	M	M								0	0	0	0	M				0.0						
WALLACETON LK DRUMMOND	M	M	M								0	0	0	0	M				0.0						
WALLOPS ISLAND NASA TEST FACIL	58.4	38.9	48.7	-1.0	74	01	23	25	489	6	0	0	8	0	2.48	-0.39	0.96	27	T	0			7	2	0
WARSAW 2 NW	M	M	M		59	14	22	14	795E	0	0	0	2	0	M				0.0						
WEST POINT 2 NW	M	M	M		71	18	16	25	609E	0	0	0	5	0	M				M 0.0	0					
WILLIAMSBURG 2 N	58.4	37.0	47.7	-3.1	74	01	20	25	514	5	0	0	9	0	2.62	-0.65	1.12	27	0.0				5	2	1
--DIVISIONAL DATA----->			48.3	-1.8B											2.76	-0.38B									
EASTERN Piedmont 02																									
ALBERTA 5N															M 3.31		2.36	27	M 0.0	0			6	1	1
AMELIA COURTHOUSE 1	M	M	M		71	03+	16	25	562E	0	0	0	4	0	M				0.0						
ASHLAND	55.8M	36.2M	46.0M	-2.6	71	01	17	25	568E	4E	0	0	12	0	M 3.20	-0.38	1.98	27	M 0.0	0			4	2	1
BREMO BLUFF															M 3.77	0.01	2.68	27	M 0.0	0			4	2	1
BUCKINGHAM															3.45		2.73	27	0.0	0			3	1	1
CAMP PICKETT	58.3M	33.3M	45.8M	-2.4	72	01	16	25	571E	0	0	0	14	0	M 3.17	-0.26	2.25	27	0.0				5	1	1
CHASE CITY	M	M	M								0	0	0	0	M				0.0						
CLARKSVILLE	60.1	34.7	47.4	-3.0	73	01	18	26+	522	1	0	0	15	0	2.78	-0.46	1.72	27	0.0	0			5	1	1
CORBIN	M	M	M		72	01	21	30	557E	13E	0	0	3	0	M				0.0						
CROZIER	55.0	33.2	44.1	-4.0	70	03+	16	25	619	0	0	0	15	0	3.31	-0.37	2.22	27	M 0.0	0			4	2	1
FARMSVILLE 2 N	57.8M	31.9M	44.9M	-2.6	77	23	15	26+	596E	0	0	0	14	0	M 3.23	-0.42	2.40	27	0.0				4	1	1
GREENBAY 3 NE	56.8MF	36.3M	46.5MF	-1.8	71	01	16	25	546E	0	0	0	12	0	M 2.83	-0.76	1.75	27	M 0.0				3	2	1
JOHN H KERR DAM	60.6	36.0M	48.3M	-3.1	75	19+	17	25	502E	4E	0	0	10	0	3.93	0.84	1.93	27	0.0				4	2	2
LOUISA	55.2	32.5	43.9	-3.8	74	01	13	25	631	5	0	0	18	0	3.14	-0.99	1.79	27	0.0				4	2	1
PALMYRA 3S	M	M	M								0	0	0	0	M				0.0						

VIRGINIA
201311

MONTHLY STATION AND DIVISION SUMMARY

STATION	TEMPERATURE (°F)											PRECIPITATION (IN)												
	AVERAGE MAXIMUM	AVERAGE MINIMUM	AVERAGE	DEPARTURE FROM NORMAL	HIGHEST	DATE	LOWEST	DATE	HEATING DEG. DAYS	COOLING DEG. DAYS	NO. OF DAYS				TOTAL	DEPARTURE FROM NORMAL	GREATEST 24 HOURS	DATE	ICE PELLETS, SNOW			NO. OF DAYS		
											MAX		MIN						TOTAL	MAX DEPTH ON GROUND	DATE	.10 OR MORE	.50 OR MORE	1.00 OR MORE
											>=90	<=32	<=32	<=0										
PETERSBURG	58.8	35.6	47.2	-3.1	74	03+	19	26+	531	3	0	0	11	0	2.71	-0.53	1.95	27	M 0.0	0		3	2	1
RICHMOND INTL AP	59.2	38.1	48.7	-1.7	77	02	20	25	490	8	0	0	10	0	3.06	-0.18	1.31	26	T 0	0		3	2	2
SANDSTON	M	M	M		71	23	17	26+	704E	0	0	1	6	0	M				0.0					
WINTERPOCK 4 W															M				0.0					
--DIVISIONAL DATA-----> WESTERN PIEDMONT 03			46.3	-1.7B											3.20	-0.22B								
ALTAVISTA															3.83		3.18	27	0.0	0		4	1	1
APPOMATTOX	54.1	34.0M	44.0M	-3.2	70	01	16	25	615E	0	0	1	13	0	3.77	-0.21	2.91	27	T 0	0		4	1	1
BEDFORD 4 NW															3.31		2.30	27	0.0	0		4	2	1
BROOKNEAL	56.8M	30.4M	43.6M	1.3	73	02+	15	26+	636E	0	0	0	20	0	3.67	-0.01	3.07	27	0.0	0		4	1	1
CHARLOTTE COURT HOUSE	56.5	33.8	45.2	-2.5	72	01	16	26+	588	0	0	0	14	0	2.93	-0.77	2.20	27	T 0	0		4	1	1
CHARLOTTESVILLE 2W	54.3	35.2	44.8	-4.1	77	02	19	25	601	1	0	1	13	0	3.36	-0.73	2.71	27	T 0	0		3	1	1
CHATHAM	55.3	27.9M	41.6M	-4.2	70	19+	12	26+	695E	0	0	0	21	0	4.05	0.47	3.57	27	0.0	0		3	1	1
CONCORD 4 SSW															3.52		2.75	27	T 0	0		4	1	1
DANVILLE REGIONAL AP	58.0	34.5	46.2	-3.0	72	18+	15	25	558	0	0	0	14	0	M 2.89	-0.46	2.11	26	M T	0		3	2	1
FREE UNION	54.8	29.7	42.2		77	02	16	25	677	0	0	1	21	0	2.72		2.26	27	0.0	0		3	1	1
HOLCOMB ROCK															3.71		3.05	27	T 0	0		3	1	1
HUDDLESTON 4 SW															3.32		2.98	27	0.0	0		2	1	1
LYNCHBURG INTL AP	54.5	32.4	43.5	-3.3	73	01	14	25	639	0	0	0	15	0	3.35	-0.06	2.50	26	T 0	0		3	1	1
MARTINSVILLE FLTR PLT	56.3	29.5	42.9	-3.4	75	01	15	25	656	0	0	0	21	0	3.62	0.18	2.95	27	0.0	0		4	1	1
MEADOWS OF DAN 5 SW	M	M	M												3.63		3.10	27	0.0	0		3	1	1
MONTEBELLO FISH CULTURAL STN	M	M	M		59	18	11	27+	962E	0	0	1	15	0	A 4.67		3.55	27	0.0			1	1	1
MONTICELLO	54.7M	34.5M	44.6M	-1.7	73	02	19	25	604E	0	0	0	14	0	M 2.91	-0.95	2.71	27	0.0			1	1	1
PEDLAR DAM															3.48		2.70	27	T 0	0		3	1	1
ROCKY MT	55.9	31.3	43.6	-3.0	75	02	16	25	634	0	0	0	18	0	3.06	-0.51	2.46	27	0.0	0		4	1	1
SOUTH BOSTON	58.8	32.2M	45.5M	-2.3	74	01	16	26+	583E	0	0	0	16	0	2.06	-1.34	1.35	27	0.0	0		6	1	1
STUART	56.3	32.1	44.2	-4.2	73	02	17	25	618	0	0	0	18	0	1.85	-1.61	1.20	27	0.0	0		4	1	1
TYE RIVER 1 SE	57.9	31.8	44.9	-3.3	76	02	14	25	596	0	0	0	18	0	3.14	-0.47	2.52	27	0.0	0		3	1	1
WOOLWINE															4.23		3.80	27	0.0	0		4	1	1
--DIVISIONAL DATA-----> NORTHERN 04			44.1	-3.4B											3.39	0.04B								
BOSTON 4 SE	53.9M	29.3M	41.6M	-3.5	76	02	6	30	694E	0	0	1	19	0	A 0.76	-3.21	0.39	16	M 0.0	0		3	0	0
EDINBURG	52.1	28.6	40.3	-3.8	74	02	13	26+	733	0	0	1	21	0	1.80	-0.96	1.22	27	0.0			4	1	1
FRONT ROYAL	51.9M	31.6M	41.7M	-4.7	75	02	17	26+	691E	0	0	1	19	0	A 2.02	-1.73	1.55	27	M 0.0	0		3	1	1
LINCOLN	51.7	27.8	39.7	-4.7	76	02	15	30	750	0	0	1	25	0	2.52		2.10	27	0.0			2	1	1
LURAY 5 E	53.2	30.9	42.0	-4.9	74	02	11	25	680	0	0	1	16	0	2.56	-1.05	1.87	27	0.0	0		5	1	1
MADISON	55.6	35.5	45.6	-0.7	76	02	21	25	576	0	0	0	13	0	MA 2.76	-1.15	2.20	27	M 0.0	0		1	1	1
MANASSAS	55.5M	34.3M	44.9M	-1.8	78	02	21	30	586E	0	0	0	13	0	MA 3.35		0.25	18	0.0			2	0	0

VIRGINIA
201311

MONTHLY STATION AND DIVISION SUMMARY

STATION	TEMPERATURE (°F)											PRECIPITATION (IN)												
	AVERAGE MAXIMUM	AVERAGE MINIMUM	AVERAGE	DEPARTURE FROM NORMAL	HIGHEST	DATE	LOWEST	DATE	HEATING DEG. DAYS	COOLING DEG. DAYS	NO. OF DAYS				TOTAL	DEPARTURE FROM NORMAL	GREATEST 24 HOURS	DATE	ICE PELLETS, SNOW			NO. OF DAYS		
											MAX		MIN						TOTAL	MAX DEPTH ON GROUND	DATE	.10 OR MORE	.50 OR MORE	1.00 OR MORE
											>=90	<=32	<=32	<=0										
MT WEATHER	48.9	32.3	40.6	-4.5	72	02	16	25	723	0	0	2	16	0	2.50	-1.01	1.75	27	0.0			3	1	1
PIEDMONT RSCH STN	53.3	31.8	42.6	-4.9	76	02	13	25	664	0	0	1	18	0	3.07	-0.75	2.44	27	0.0	0		2	1	1
SOMERSET	54.6	31.1	42.9	-3.7	77	02	14	25	658	0	0	1	20	0	3.25	-0.60	2.60	27	0.0			3	1	1
SPERRYVILLE	56.8M	32.9M	44.8M	-2.1	77	02	15	25	599E	0	0	1	14	0	MA 0.58	-4.07	0.20	16	0.0			2	0	0
STERLING RCS	52.3M	31.1M	41.7M	-3.7	76	02	15	26	692E	0	0	1	18	0	A 2.99	-0.59	2.33	27	M T	0		4	1	1
VIENNA	50.0	30.4	40.2	-6.0	71	02	17	26+	739	0	0	1	20	0	2.30	-1.26	1.67	27	0.0			4	1	1
WASHGTN DULLES INTL AP	52.9	32.9	42.9	-3.5	77	01	16	25	655	1	0	1	17	0	2.79	-0.62	1.72	26	T	0		5	2	1
WASHINGTON REAGAN AP	54.8	38.5	46.6	-3.0	73	01	24	25	543	2	0	0	8	0	2.92	-0.25	1.46	26	T	0		5	2	1
WINCHESTER	51.4	31.9	41.7	-3.7	73	02	16	26+	691	0	0	1	19	0	1.90	-1.33	1.31	27	0.0			4	1	1
WINCHESTER 7 SE	52.6	M	M		77	02	13	25	793E	0	0	1	13	0	1.98	-1.17	1.37	27	0.0	0		4	1	1
WOODSTOCK 2 NE	52.9	28.7	40.8	-2.7	75	02	13	26	719	0	0	1	21	0	1.80	-1.05	1.33	27	0.0			4	1	1
--DIVISIONAL DATA-----> CENTRAL MOUNTAIN 05			42.4	-2.8B											2.34	-1.12B								
BUCHANAN															M				0.0					
BUENA VISTA															2.98		2.33	27	0.0	0		4	1	1
COVINGTON FLTR PLT	54.4	29.5M	42.0M	-3.7	76	02	16	26+	685E	0	0	1	20	0	2.79	-0.57	2.16	27	0.0	0		4	1	1
CRAIGSVILLE 2 S															M				0.0					
DALE ENTERPRISE	52.7	28.8	40.8	-2.4	73	02	11	25	721	0	0	1	21	0	2.35	-0.50	1.70	27	0.0	0		4	1	1
GATHRIGHT DAM	49.6	29.8	39.7	-3.9	68	02	11	25	752	0	0	1	20	0	2.76	-0.35	2.08	27	T	0		5	1	1
GLASGOW 1 SE															3.73		3.08	27	T	0		3	1	1
HOT SPRINGS	48.9	28.5	38.7	-3.8	69	02	13	25	779	0	0	2	23	0	3.06	-0.66	2.30	27	0.0	0		6	1	1
LEXINGTON	54.0	29.8	41.9	-3.8	75	02	14	25	686	0	0	1	21	0	2.72	-0.67	2.05	27	0.0	0		3	1	1
MILLGAP	48.7	23.3	36.0	-3.6	66	02	6	25	859	0	0	2	24	0	2.80	-0.74	2.01	27	1.2	T	30	4	1	1
MTN GROVE															2.76		2.26	27	T	0		3	1	1
MUSTOE 1 SW	47.1	24.0	35.6	-4.8	65	01	7	25	878	0	0	1	21	0	3.19	-0.62	2.05	26	2.0	F 1	27	6	1	1
NEW CASTLE															2.62		2.17	27	T	0		3	1	1
ROANOKE 8 N	54.5	33.4	44.0	-3.1	76	02	18	25	627	0	0	1	17	0	2.89	-0.37	2.10	27	0.0	0		4	1	1
ROANOKE INTL AP	53.9	34.4	44.1	-4.0	77	01	19	25	624	2	0	0	16	0	2.74	-0.66	2.08	26	T	0		3	1	1
STAUNTON WATER TRMTMT PLT	51.9	31.7	41.8	-3.4	72	02	13	25	688	0	0	1	17	0	1.99	-1.10	1.69	27	0.0	0		2	1	1
WAYNESBORO WTP	52.7	29.8	41.3	-3.2	73	02	13	25	703	0	0	1	21	0	2.50	-1.98	1.93	27	0.0	0		3	1	1
--DIVISIONAL DATA-----> SOUTHWESTERN MOUNTAIN 06			40.5	-3.8B											2.79	-0.40B								
ABINGDON 3S	52.9M	31.1M	42.0M	-3.1	71	07	13	29+	685E	0	0	2	15	0	M 3.35	0.05	1.86	27	M 1.2	1	27	7	1	1
BIG STONE GAP	53.7	27.2F	40.5F	-5.8	69	01	16	30+	713	0	0	1	23	0	2.89	-1.07	0.97	18	1.5	2	27	7	3	0
BLACKSBURG NWSO	50.5	28.2	39.4	-3.9	70	02	13	25	763	0	0	2	22	0	3.02	0.15	1.89	27	0.1	0		5	1	1
BURKES GARDEN	47.7M	24.5	36.1M	-4.4	64	02	9	29	856E	0	0	4	23	0	3.66	0.54	2.31	27	3.4	1	28	7	1	1
CHRISTIANSBURG	50.9	29.6	40.2	-5.2	70	02	14	25	737	0	0	2	21	0	3.08	0.18	2.09	27	T	T	28	4	1	1

MONTHLY STATION AND DIVISION SUMMARY

STATION	TEMPERATURE (°F)											PRECIPITATION (IN)												
	AVERAGE MAXIMUM	AVERAGE MINIMUM	AVERAGE	DEPARTURE FROM NORMAL	HIGHEST	DATE	LOWEST	DATE	HEATING DEG. DAYS	COOLING DEG. DAYS	NO. OF DAYS				TOTAL	DEPARTURE FROM NORMAL	GREATEST 24 HOURS	DATE	ICE PELLETS, SNOW			NO. OF DAYS		
											MAX		MIN						TOTAL	MAX DEPTH ON GROUND	DATE	.10 OR MORE	.50 OR MORE	1.00 OR MORE
											>=90	<=32	<=32	<=0										
CLINTWOOD 1 W	51.6	25.4	38.5	-4.8	71	07	11	29+	787	0	0	3	24	0	3.52	0.54	1.65	27	4.7	3	29	6	2	1
COPPER HILL	47.6	29.5	38.6		68	02	13	26+	784	0	0	3	22	0	3.42		2.00	27	1.0	1	28	6	2	1
GALAX RADIO WBRF	50.7	29.3	40.0	-3.1	73	02	12	25	741	0	0	3	19	0	3.32	-0.27	2.22	28	0.0			4	1	1
GALAX WTP	50.7M	28.1	39.4M	-3.5	70	02	13	25	755E	0	0	2	20	0	2.95		2.18	27	T	0		4	1	1
GRUNDY	53.3	28.9	41.1	-3.8	72	07	18	30+	710	0	0	2	22	0	3.57	0.66	1.70	27	1.9	1	28	7	1	1
JOHN FLANNAGAN LAKE	M	M	M		71	07	16	29+	776E	0	0	0	12	0	M				M 2.0	2	27			
LAFAYETTE 1 NE															2.94		1.89	27	T	T	26	4	1	1
LEBANON	53.8	26.9F	40.3F	-3.9	71	08	11	29	718	0	0	2	21	0	3.85	0.84	2.14	27	2.1	2	27	7	2	1
NORA 4 SSE	47.9	31.2	39.6	-4.9	66	07	12	25	758	0	0	3	15	0	3.40	0.04	1.70	27	4.8	4	28	6	1	1
NORTH FORK LAKE	M	M	M		72	07	16	25	642E	0	0	0	12	0	MA 1.79		0.55	01	0.0			2	1	0
PULASKI 2 E	54.6M	29.8M	42.2M	-2.5	72	02	12	25	673E	0	0	1	18	0	M 3.25	0.80	2.36	27	MT	0		4	1	1
RADFORD 3 N	51.1	30.3	40.7	-2.3	72	02	13	25	720	0	0	2	18	0	2.94	-0.41	2.01	27	T	T	28	5	1	1
RICHLANDS	53.3	25.3	39.3	-4.9	70	18+	12	29	764	0	0	1	24	0	3.11	0.13	1.62	27	4.1	3	28	7	2	1
SALTVILLE 1N	53.8	27.7M	40.8M	-3.8	70	07+	15	30+	725E	0	0	2	20	0	3.56	0.31	2.06	27	M 1.2	1	28	8	1	1
STAFFORDSVILLE 3 ENE	50.6	28.8	39.7	-4.2	70	02	12	25	752	0	0	2	19	0	3.22	0.38	2.19	27	T	T	28	5	1	1
WILLIS															FM 0.78		0.41	16	0.0	0		2	0	0
WISE 3E	52.0	30.7	41.4	-4.2	67	06	7	28	701	0	0	1	19	0	3.09	-0.37	1.25	26	2.0	T	27	7	1	1
--DIVISIONAL DATA----->			40.0	-3.5B											3.27	0.07B								

VIRGINIA
201311

DAILY PRECIPITATION (INCHES)

STATION	TOTAL	DAY OF MONTH																																
		01	02	03	04	05	06	07	08	09	10	11	12	13	14	15	16	17	18	19	20	21	22	23	24	25	26	27	28	29	30	31		
VIRGINIA																																		
TIDEWATER 01																																		
DISPUTANTA	M 2.65	-	0.18			-	-	-	-	-	-	-	-	-	-	0.04		0.20			-		0.03			-	1.69	0.51						
EASTVILLE	M	-	0.35	-	-	-	-	-	-	-	-	-	-	-	-	-	-	-	-	-	-	-	-	-	-	-	-	1.00	0.25					
EMPORIA 1 WNW	M 2.85		0.37					0.09	0.04	-		0.05	-			0.03		0.11					0.01				1.67	0.48						
FREDERICKSBURG SEWAGE	3.35	T											0.05			0.38	0.02	0.23								T	2.45	0.22						
HOLLAND 1 E	M	-	-	-	-	-	-	-	-	-	-	-	-	-	-	-	-	-	-	-	-	-	-	-	-	-	-	-	-	-	-	-	-	
HOPEWELL	M 2.19	0.07						0.08								0.05		0.02									-	1.97						
NORFOLK INTL AP	2.57	0.37	0.02					0.57								0.02	T	0.03				T	0.02	0.03			0.50	1.01						
NORFOLK SOUTH	M 2.79	0.38	0.04					0.64	-	-	-	-	-	-	-	0.05		0.06					0.03	0.02			0.48	1.09						
NORTH	M	-	-	-	-	-	-	-	-	-	-	-	-	-	-	-	-	-	-	-	-	-	-	-	-	-	-	-	-	-	-	-	-	
PAINTER 2W	M 0.43	0.09	0.14																0.11					0.03			0.06	-	-	-	-	-	-	
STONY CREEK 2 N	M	-	-	-	-	-	-	-	-	-	-	-	-	-	-	-	-	-	-	0.21	-	-	-	-	-	-	0.10	1.87	-	-	0.36			
SUFFOLK LAKE KILBY	M 1.67	-	0.02					0.79	-	-	-	-	-	-	-	0.03	0.05	0.04				0.04	0.10	0.01			0.59	-	-	-	-	-	-	
WAKEFIELD 1NW	M 3.06	0.39						0.11								0.31		0.20					0.02				0.82	1.21						
WALKERTON 2 NW	M	-	-	-	-	-	-	-	-	-	-	-	-	-	-	-	-	-	-	-	-	-	-	-	-	-	-	-	-	-	-	-	-	
WALLACETON LK DRUMMOND	M	-	-	-	-	-	-	-	-	-	-	-	-	-	-	-	-	-	-	-	-	-	-	-	-	-	-	-	-	-	-	-	-	
WALLOPS ISLAND NASA TEST FACIL	2.48	0.21	0.13					0.28				T				0.02	T	0.12					0.13	T			0.63	0.96						
WARSAW 2 NW	M	-	-	-	-	-	-	-	-	-	-	-	-	-	-	-	-	-	-	-	-	-	-	-	-	-	-	-	-	-	-	-	-	
WEST POINT 2 NW	M	-	-	-	-	-	-	-	-	-	-	-	-	-	-	-	-	-	-	-	-	-	-	-	-	-	0.50	1.66	-	-	-	-	-	
WILLIAMSBURG 2 N	2.62	0.21						0.20										0.19									0.90	1.12						
EASTERN PIEDMONT 02																																		
ALBERTA 5N	M 3.31		0.13					0.07								0.10		0.16			-						0.11	2.36	0.38					
AMELIA COURTHOUSE 1	M	-						-	-	-	-	-	-	-	-	0.25		0.08	-	-	-	-	-	-	-	-	0.01	-	-	-	-	-	-	
ASHLAND	M 3.20															0.46		0.24									0.52	1.98						
BREMO BLUFF	M 3.77								0.02							0.66	0.05	0.22										2.68	0.14					-
BUCKINGHAM	3.45		0.03						0.05							0.37	0.01	0.07									0.02	2.73	0.17					
CAMP PICKETT	M 3.17		0.10					0.03									0.10	0.25									0.06	2.25	0.38					
CHASE CITY	M	-	-	-	-	-	-	-	-	-	-	-	-	-	-	-	-	-	-	-	-	-	-	-	-	-	-	-	-	-	-	-	-	
CLARKSVILLE	2.78		0.28													0.17		0.18									0.08	1.72	0.35					
CORBIN	M		0.05													-	-	-	-	-	-	-	-	-	-	-	-	-	-	-	-	-	-	
CROZIER	3.31			0.03												0.50		0.25										2.22	0.31					
FARMVILLE 2 N	M 3.23		0.06	-												0.32	-	0.10										2.40	0.35					
GREENBAY 3 NE	M 2.83		0.06													0.30	0.01	0.03	0.03								0.65	1.75						
JOHN H KERR DAM	3.93		1.21					0.03								0.08		0.12									0.09	1.93	0.47					
LOUISA	3.14	0.02						0.01								0.48	0.01	0.32									0.51	1.79						
PALMYRA 3S	M	-	-	-	-	-	-	-	-	-	-	-	-	-	-	-	-	-	-	-	-	-	-	-	-	-	-	-	-	-	-	-	-	
PETERSBURG	2.71		0.07					0.04								0.02		0.11						0.02				1.95	0.50					
RICHMOND INTL AP	3.06	T						0.07					T		0.02	0.27	0.06	0.06						T			1.31	1.27						
SANDSTON	M	-	-	-	-	-	-	-	-	-	-	-	-	-	-	-	-	-	-	-	-	-	-	-	-	-	-	-	-	-	-	-	-	
WINTERPOCK 4 W	M	-	-	-	-	-	-	-	-	-	-	-	-	-	-	-	-	-	-	-	-	-	-	-	-	-	-	-	-	-	-	-	-	
WESTERN PIEDMONT 03																																		

VIRGINIA
201311

DAILY PRECIPITATION (INCHES)

STATION	TOTAL	DAY OF MONTH																														
		01	02	03	04	05	06	07	08	09	10	11	12	13	14	15	16	17	18	19	20	21	22	23	24	25	26	27	28	29	30	31
ALTAVISTA	3.83		0.03												0.01	0.25	0.01	0.15								0.01	0.18	3.18	0.01			
APPOMATTOX	3.77	T	0.08													0.41	T	0.19									0.11	2.91	0.07			
BEDFORD 4 NW	3.31	0.02	0.06				0.01									0.50	0.03	0.21									0.14	2.30	0.03			
BROOKNEAL	3.67		0.14													0.23	0.01	0.13									0.09	3.07				
CHARLOTTE COURT HOUSE	2.93		0.15													T	0.03	0.17									0.06	2.20	0.32			
CHARLOTTESVILLE 2W	3.36	0.01	0.05													0.42	0.05	0.10									T	2.71	0.01			
CHATHAM	4.05		0.09													0.19		0.10									0.06	3.57	0.04			
CONCORD 4 SSW	3.52		0.07													0.36	0.02	0.18									0.11	2.75	0.03			
DANVILLE REGIONAL AP	M 2.89	0.13													T	0.08	0.01	-					T				2.11	0.56				
FREE UNION	2.72	T	0.05													0.25	0.03	0.11									T	2.26	T			
HOLCOMB ROCK	3.71	0.04	0.02					T								0.33	0.07	0.20									T	3.05	T			
HUDDLESTON 4 SW	3.32	0.02														0.18	0.02	0.03									0.07	2.98	0.01			
LYNCHBURG INTL AP	3.35	0.02														0.22	0.09	0.07	0.08								2.50	0.37				
MARTINSVILLE FLTR PLT	3.62	0.06	0.09													0.12		0.23									0.17	2.95				
MEADOWS OF DAN 5 SW	3.63															0.18	0.02	0.28										3.10	0.05			
MONTEBELLO FISH CULTURAL STN	A 4.67	*	*	*	*	*	*	*	*	0.00 ^a				*	0.00 ^a	*	*	1.07 ^a		*	*	*	*	0.00 ^a		0.05	3.55					
MONTICELLO	M 2.91	0.05	0.02	T												0.02	0.02	0.08									2.71	-	-	-		
PEDLAR DAM	3.48	0.03	0.05													0.41	0.06	0.18									0.05	2.70	T			
ROCKY MT	3.06	T	0.04													0.14	0.04	0.11									0.24	2.46	T		0.03	
SOUTH BOSTON	2.06		0.18													0.11		0.15									0.13	1.35	0.12			
STUART	1.85		0.02													0.12	0.02	0.26									0.23	1.20				
TYE RIVER 1 SE	3.14															0.32	T	0.25									0.05	2.52				
WOOLWINE	4.23		0.06													0.10		0.13									0.11	3.80	0.01			
NORTHERN 04																																
BOSTON 4 SE	A 0.76	0.17														0.39	0.03	0.17										*	0.00 ^a			
EDINBURG	1.80	0.20														0.09		0.19									T	1.22				
FRONT ROYAL	A 2.02		0.14	*	0.00 ^a											0.05		0.26										1.55				
LINCOLN	2.52		0.42																									2.10				
LURAY 5 E	2.56	0.05	0.12													0.20		0.15									0.05	1.87	0.02			
MADISON	MA 2.76															-	*	*	0.56 ^a								T	2.20	-	-	-	
MANASSAS	MA 3.35	0.20 ^a														*	0.50 ^a	0.25									*	2.30 ^a				
MT WEATHER	2.50	0.03	0.22													0.08	0.07	0.27										1.75				
PIEDMONT RSCH STN	3.07	0.01	0.06													0.45	0.03	0.08									T	2.44	T			
SOMERSET	3.25	0.02	0.06													0.32	0.03	0.15									0.02	2.60	T			
SPERRYVILLE	MA 0.58	0.04	0.05	0.01				*	0.00 ^a	0.05						0.20	0.04	0.19									-	-	-	-		
STERLING RCS	A 2.99	0.02	0.18	*	0.00 ^a					0.06						0.22	0.02	0.16									T	2.33	T			
VIENNA	2.30	0.01	0.13							0.02						0.33	0.01	0.11									0.01	1.67				
WASHGTN DULLES INTL AP	2.79	0.14								0.07						0.08	0.13	0.01	0.14								1.72	0.50				
WASHINGTON REAGAN AP	2.92	0.14	T							0.01						0.08	0.34	T	0.15								1.46	0.74				
WINCHESTER	1.90	0.29								0.10							0.04	0.15										1.31	0.01			
WINCHESTER 7 SE	1.98	0.04	0.25							0.10						0.04		0.16										1.37	0.02			
WOODSTOCK 2 NE	1.80		0.12							0.14						0.05		0.16										1.33				

VIRGINIA
201311

DAILY PRECIPITATION (INCHES)

STATION	TOTAL	DAY OF MONTH																																
		01	02	03	04	05	06	07	08	09	10	11	12	13	14	15	16	17	18	19	20	21	22	23	24	25	26	27	28	29	30	31		
CENTRAL MOUNTAIN 05																																		
BUCHANAN	M	-	-	-	-	-	-	-	-	-	-	-	-	-	-	-	-	-	-	-	-	-	-	-	-	-	-	-	-	-	-	-	-	-
BUENA VISTA	2.98	0.02	0.10													0.39	T	0.12										0.02	2.33					
COVINGTON FLTR PLT	2.79	0.02	0.12													0.21		0.17						0.02			0.06	2.16						
CRAIGSVILLE 2 S	M	-	-	-	-	-	-	-	-	-	-	-	-	-	-	-	-	-	-	-	-	-	-	-	-	-	-	-	-	-	-	-	-	
DALE ENTERPRISE	2.35	0.02	0.20													0.18	0.02	0.15												1.70	0.02			
GATHRIGHT DAM	2.76	0.19	0.04													0.12		0.20					0.02				0.10	2.08	0.01					
GLASGOW 1 SE	3.73	0.02	0.04													0.40	0.02	0.10								0.06	3.08	0.01						
HOT SPRINGS	3.06	0.11	0.10		0.02											0.17		0.13					0.02			0.03	2.30							
LEXINGTON	2.72	0.03	0.06													0.31	T	0.18								0.03	2.05	0.04						
MILLGAP	2.80	0.12	0.21	T												0.09	T	0.27						T	0.01	0.06	2.01	0.01						
MTN GROVE	2.76	0.23																																2.26
MUSTOE 1 SW	3.19	0.30	0.05	0.03												0.15	0.02	0.22	0.10				0.01	0.03	T	T	2.05	0.08						
NEW CASTLE	2.62						0.03							0.01		0.19	0.01	0.13								0.07	2.17	0.01						
ROANOKE 8 N	2.89	0.03														0.34	0.02	0.25								0.15	2.10							
ROANOKE INTL AP	2.74	0.04														0.37	0.03	0.11	0.08					T	T	2.08	0.03							
STAUNTON WATER TRMTMT PLT	1.99	0.08														0.13	0.03	0.02								0.02	1.69	0.02						
WAYNESBORO WTP	2.50	0.02	0.08													0.27		0.13								0.01	1.93	0.06						
SOUTHWESTERN MOUNTAIN 06																																		
ABINGDON 3S	M 3.35	0.28														0.34		0.30						0.18		0.20	1.86	0.04						
BIG STONE GAP	2.89	0.58	0.02													0.10		0.97						0.17		0.35	0.15							
BLACKSBURG NWSO	3.02	0.01	0.15		T			0.01								0.38	T	0.30						0.02	T	0.20	1.89	0.03		T				
BURKES GARDEN	3.66	0.06	0.27													0.18		0.26						0.18	T	0.22	2.31	0.11						
CHRISTIANSBURG	3.08	0.03	0.09													0.31		0.29						0.05		0.12	2.09	0.03						
CLINTWOOD 1 W	3.52	0.54		0.01												0.11	0.08							0.30	T	0.15	1.65	0.06						
COPPER HILL	3.42		0.13					0.03								0.50	0.04	0.28						0.05		0.29	2.00	0.10						
GALAX RADIO WBRF	3.32	0.09														0.24							0.25		0.02	0.46		2.22						
GALAX WTP	2.95															0.14		0.28								0.24	2.18	0.09						
GRUNDY	3.57	0.48														0.12	0.08									0.22	1.70	0.04						
JOHN FLANNAGAN LAKE	M	-	-	-	-	-	-	0.06								*	*	0.54 _a							*	*	0.32 _a	0.24	1.76					-
LAFAYETTE 1 NE	2.94	0.01	0.09													0.38	0.02	0.23								0.27	1.89	0.02						
LEBANON	3.85	0.21														0.15		0.67							0.16	0.15	2.14							
NORA 4 SSE	3.40	0.47														0.06		0.49							0.24	0.01	T	0.11	1.70	0.08				
NORTH FORK LAKE	MA 1.79	0.55	*	*	0.00 _a											*	*	0.49 _a							*	*	0.43 _a	-	-	-	-	-	-	-
PULASKI 2 E	M 3.25	0.01	0.17													0.08	0.04	0.02								0.23	2.36							
RADFORD 3 N	2.94	0.13	T													T	0.08									0.15	2.01	0.02						
RICHLANDS	3.11	0.59														0.12	0.04							0.14	0.02	0.23	1.62	0.04						
SALTVILLE 1N	3.56	0.25														0.10		0.38						0.22		0.30	2.06	0.02						
STAFFORDSVILLE 3 ENE	3.22	0.02	0.10													0.16	0.01	0.34						0.05		0.26	2.19	0.02						
WILLIS	FM 0.78	0.02														0.41		0.30						0.05	-	-	-	-	-	-	-	-	-	2.55 ^s
WISE 3E	3.09	0.37														T		0.12	0.06	0.47				0.02	0.22		1.25	0.40						

VIRGINIA
201311

DAILY TEMPERATURES (°F)

STATION	OB. TIME	MAX/MIN	DAY OF MONTH																															AVERAGE
			01	02	03	04	05	06	07	08	09	10	11	12	13	14	15	16	17	18	19	20	21	22	23	24	25	26	27	28	29	30	31	
VIRGINIA																																		
TIDEWATER 01																																		
DISPUTANTA	07	MAX		73	72	61	51					69	58	53	44	60	61	61	71	70	53		61	72	57	35		65	44	44	46		58.2	
		MIN		58	38	32	32					29	30	25	21	21	32	48	52	34	34		39	44	27	15		32	21	21	21		32.1	
EASTVILLE	07	MAX		68																					58	52	34	41	66	47	38	46		M
		MIN																						46	31	28	29	40	32	28	29		M	
EMPORIA 1 WNW	08	MAX	72	73	71	63	63	62	71	68		58	69		56	56	60	63	61	73	72	56	55	63	72	60	37	41	66	46	44	48		60.7
		MIN	52	58	42	37	37	42	46	35		30	32		26	24	24	31	50	50	41	37	37	40	50	29	19	19	35	25	24	24		35.6
FREDERICKSBURG SEWAGE	07	MAX	71	73	71	58	48	56	71	63	54	57	68	59	47	45	60	60	61	69	69	49	46	50	67	54	32	39	44	43	41	43		55.6
		MIN	48	50	37	33	33	36	47	30	27	28	31	31	27	21	22	27	28	51	39	33	32	37	45	25	18	18	33	22	21	21		31.7
HOLLAND 1 E	08	MAX																																M
		MIN																																M
HOPEWELL	16	MAX	73	72	72	59	60	70	68	65	60	69	65	57	45		60	71	71	72	67	52	59	72	69	56	36		67	45	47	46		61.6
		MIN	68	62	44	38	42	49	59	37	31	44	35	39	31		35	50	52	63	45	38	38	45	51	29	18		35	28	26	30		41.5
NORFOLK INTL AP	24	MAX	77	72	60	53	63	70	68	57	59	69	55	56	44	59	64	61	69	74	57	52	61	74	63	45	38	67	69	42	46	47		59.7
		MIN	67	59	52	44	53	50	52	45	37	45	43	39	30	30	33	52	51	57	46	44	47	46	40	30	28	36	39	31	27	38		43.0
NORFOLK SOUTH	24	MAX	76	68	59	51	63	66	66			67		54	41	56	62	61	68	72	55	51	60	71	61	43	36	64	67	38	44	46		58.0
		MIN	66	58	49	42	49	47	50			43		35	29	26	33	49	51	54	44	41	44	43	39	27	24	34	38	26	24	36		40.8
NORTH	07	MAX																																M
		MIN																																M
PAINTER 2W	16	MAX	73	69	67	53	63				55	66	63	57	43		56	61	66	70	65	50	57		65	44	37	51			48		58.1	
		MIN	66	60	51	35	40				29	45	43	39	34		32	46	45	58	45	35	36		43	28	25	28			29		40.5	
STONY CREEK 2 N	08	MAX											58	54	45			61	61	73	72				54	73	38	65		46	47		M	
		MIN											30	36	23			30	50	50	44				19	16	19	33		20	21		M	
SUFFOLK LAKE KILBY	24	MAX		69	61	51	64		67		58	69	58	53	44	58	62	63	71	72	55	54	62	71	61	42	42	64			48		59.1	
		MIN		55	42	27	42		49		35	44	35	34	28	27	32	50	50	40	42	40	40	45	36	26	26	27			32		37.7	
WAKEFIELD 1NW	24	MAX	74	72	63	55	64	69	68	57	58	69		55		59	59	59	73	72	54	54	62	72	62	39	38	64	67	42	48	49		59.9
		MIN	67	51	33	32	36	44	43	29	27	41		33		33	47	51	41	34	33	41	46	35	19	16	31	32	22	22	23		35.1	
WALKERTON 2 NW	18	MAX																																M
		MIN																																M
WALLACETON LK DRUMMOND	08	MAX																																M
		MIN																																M
WALLOPS ISLAND NASA TEST FACIL	24	MAX	74	73	60	55	65	67	66	55	56	68	58	56	45	58	61	63	68	72	53	51	61	67	62	39	40	59	64	41	47	49		58.4
		MIN	67	55	42	34	42	43	48	36	32	45	37	37	29	27	37	50	50	52	40	35	36	44	39	27	23	39	36	27	26	31		38.9
WARSAW 2 NW	18	MAX																																M
		MIN																																M
WEST POINT 2 NW	17	MAX																																M
		MIN																																M
WILLIAMSBURG 2 N	24	MAX	74	72	61	52	63	69	67	56	58	68	57	54	44	59	59	59	69	72	52	52	60	71	62	41	41	63	67	41	43	47		58.4
		MIN	66	55	40	37	40	40	46	33	30	30	35	35	26	25	34	49	49	49	41	37	41	44	39	25	20	33	35	25	24	28		37.0
EASTERN PIEDMONT 02																																		
AMELIA COURTHOUSE 1	08	MAX		71	71	60	50											59	63	68						56	34	37				45		M

VIRGINIA
201311

DAILY TEMPERATURES (°F)

STATION	OB. TIME	MAX/MIN	DAY OF MONTH																															AVERAGE
			01	02	03	04	05	06	07	08	09	10	11	12	13	14	15	16	17	18	19	20	21	22	23	24	25	26	27	28	29	30	31	
ASHLAND	18	MIN		53	40	33	35										43	51	58						26	16	23					22		
		MAX	71	70	64	49	55	69	69			67	57	50	43	59	60	56	66	69	55	48	56		65	42	38	42	61	39	44	42		
CAMP PICKETT	08	MIN	66	53	39	33	37	43	51								40	31	38	24	23	32	48	49	55	40	32	34						
		MAX	72	71	71	61		58	69	68		57	69	57	52	44	60	60	57	69	70	54	51	59	70	70	35	36	62	43	41	46		
CHASE CITY	17	MIN	53	53	39	34		42	42	30						26	34	49	49	38	35	35	39	45	26	16	17	31	21	21	22			
		MAX																																
CLARKSVILLE	07	MIN																																
		MAX	73	72	72	65	56	60	69	71	57	71	60	54	48	62	63	59	68	72	57	53	58	70	61	38	41	61	60	44	51			
CORBIN	09	MIN	58	54	42	37	37	41	46	32	28	29	31			31	25	24	24	32	50	54	38	37	40	46	27	18	18	33	22	23		
		MAX	72	71	58																													40
CROZIER	07	MIN	63	51	38																											21		
		MAX	70	70	70	59	48	52	68	66	56	57	68	57	47	44	60	59	53	66	68	51	48	51	69	56	33	36	47	39	39	44		
FARMVILLE 2 N	07	MIN	56	51	37	33	34	35	50	31	26	27	29	38	21	22	26	37	50	52	37	31	33	40	46	24	16	22	31	23	20	19		
		MAX	72	76		71	50	55	71	69			69	60	52	46	62	61		74	69	52	48	55	77		35	39	45	44	43	51		
GREENBAY 3 NE	09	MIN	51	52		32	34	34	47	31						30	21	20	24	34		53	31	33	34	35	46	15	15	32	21	20		
		MAX	71	69	68	59	50	56	68	68	55	56		51	57	49	65	59	56	67	67	54 ¹	52	68	70	56	34	47	43	43	42	44		
JOHN H KERR DAM	08	MIN	58	36	36	31	32	40	42	31	28	41		35	30	32	33	37	51	54	54	32	43	45	48	25	16	25	34	42	21			
		MAX	75	74	74	64	54	61	74	71	59	58	73	60	55	48	62	63	57	69	75	58	53	64	71	63	39	43	63	46	45	48		
LOUISA	18	MIN	63	56	42	34	37	42	46	34	27	33	30	38	24	25	40	43	52		38	37	38	41	51	27	17	22	33	23	27			
		MAX	74	71	62	48	53	68	64	56	57	69	60	51	45	61	59	53	63	68	58	48	50	66	64	48	37	36	41	41	45	40		
PALMYRA 3S	06	MIN	65	46	32	27	32	47	46	27	23	34	26	37	19	19	32	45	51	52	30	29	26	39	43	23	13	28	34	20	16			
		MAX																																
PETERSBURG	08	MIN																																
		MAX	74	73	74	62	51	60	71	67	57	59	70	59	52	46	60	60	63	71	71	54	51	59	71	58	36	38	64	44	42	46		
RICHMOND INTL AP	24	MIN	57	61	43	35	37	42	46	35	29	29	33	33	27	25	26	33	49	49	42	38	37	40	49	27	19	19	34	26	24			
		MAX	76	77	65	53	61	72	70	59	60	71	58	54	47	62	62	60	69	72	54	51	59	73	63	41	38	64	51	42	48	45		
SANDSTON	07	MIN	67	54	42	36	41	48	45	34	32	41	32	34	28	25	31	50	50	54														
		MAX										56	66	55																				
WESTERN PIEDMONT 03 APPOMATTOX	07	MIN																																
		MAX	70	69	67	61	48	52	65	65	53	55	65	56	49	42	58	58	54	65	65	51	46	51	68	56	32	35	43	40	39	44		
BROOKNEAL	07	MIN	55	50	41	33	33	38	48	34	31		32	34	22	22	26	32	50	54	37	32	33	39	47	21	16	17	31	20	23			
		MAX	73	73	69	62		57	68	67	54	56	68	57	52	45	60	60	57	67	68													
CHARLOTTE COURT HOUSE	07	MIN	49	48	33	28	28	38	44	29	25	25	29	28	18	17	18		49	53	31	31	31	40	46	25	15	15	32	19	19			
		MAX	72	70	68	57	50	57	71	69	55	53	63	59	51	45	61	60	59	69	68	52	49	56	67	55	35	38	53	43	44	46		
CHARLOTTESVILLE 2W	08	MIN	57	51	38	34	34	39	49	33	31	31	31	32	22	22	23	34	51	54	38	35	34	38	46	26	16	16	31	21	23			
		MAX	67	77	69	58	47	52	68	63	53	57	67	61	45	43	63	61	54	60	67	49	46	48	67	56	30	37	41	40	40	43		
CHATHAM	07	MIN	54	54	45	31	32	34	48	37	33	36	38	40	28	29	35	43	44	51	38	31	32	36	44	22	19	21	31	23	24			
		MAX	70	69	70	61	50	55	67	66	56	55	70	57	54	43	58	58	55	63	70	52	46	51	65	58	34	37	43	41	40	46		
DANVILLE REGIONAL AP	24	MIN	50	50	32	27	31		42	26	22	22	27	26	17	16	16	21	47															
		MAX	72	70	63	56	60	72	67	57	56	72	61	61	47	61	63	60	66	72	56	52	55	69	60	40	42	46	45	42	50	46		
	MIN	56	46	37	34	36	47	37	29	26	36	28	32	22	21	30	50	55	50	37														

VIRGINIA
201311

DAILY TEMPERATURES (°F)

STATION	OB. TIME	MAX/MIN	DAY OF MONTH																															AVERAGE
			01	02	03	04	05	06	07	08	09	10	11	12	13	14	15	16	17	18	19	20	21	22	23	24	25	26	27	28	29	30	31	
FREE UNION	08	MAX	69	77	70	60	47	51	69	62	54	57	68	61	45	45	63	63	52	62	66	51	47	47	65	56	32	37	41	41	40	46	54.8	
		MIN	50	45	40	28	29	29	42	30	25	25	30	30	25	21	21	27	40	49	33	28	28	34	43	22	16	17	31	18	17	17	29.7	
LYNCHBURG INTL AP	24	MAX	73	68	61	50	53	67	63	54	56	67	58	53	46	59	60	55	60	68	52	47	50	70	60	35	36	44	44	40	46	40	54.5	
		MIN	52	40	37	32	35	46	38	26	24	36	25	25	21	23	27	48	53	50	35	33	37	46	35	22	14	30	25	17	18	22	32.4	
MARTINSVILLE FLTR PLT	07	MAX	75	73	69	60	57	57	69	64	53	55	69	59	56	46	60	60	57	62	69	52	49	52	64	56	35	38	44	40	42	47	56.3	
		MIN	53	44	35	27	27	36	43	27	23	23	25	25	19	17	18	22	48	53	30	29	31	41	50	26	15	16	32	18	17	16	29.5	
MEADOWS OF DAN 5 SW	07	MAX																															M	
		MIN																																M
MONTEBELLO FISH CULTURAL STN	07	MAX								40	45	54	57	57		43	54			59	57				47	24	39	43	34	34	40	M		
		MIN								29	22	22	26	27		16	26			35	28				13	11	11	11	16	16	12	M		
MONTICELLO	08	MAX	68	73	66	56	45	50	64	62	50	54	64	58	48	41	58	58	53	60	64	46	44	47	65	54	54	34	41			54.7		
		MIN	43	54	46	32	32	35	34	39	31	32	38	40	27	24	29	28	43	53	38	31	31	35	45	22	19	20	31			34.5		
ROCKY MT	07	MAX	73	75	67	59	51	53	69	67	53	55	66	66	55	46	62	61	54	62	65	52	47	49	67	54	34	36	44	44	43	48	55.9	
		MIN	51	51	39	28	28	34	34	29	25	28	27	27	24	21	21	27	48	54	39	33	33	40	46	24	16	17	32	20	21	23	31.3	
SOUTH BOSTON	07	MAX	74	70	72	64	54	58	71	69	58	58	71	59	54	46	60	61	58	71	72	56	51	55	70	63	38	40	57	44	42	48	58.8	
		MIN	51	53	39	31	36	39	48	33	26	29	29	20	20	20	24	49	52	41	37	36	39		28	16	16	32	22	21	20	32.2		
STUART	07	MAX	68	73	69	61	52	58	69	63	52	58	69	60	59	47	61	59	57	59	67	54	49	54	65	57	36	37	44	39	42	50	56.3	
		MIN	57	45	37	32	32	33	44	30	27	26	29	29	23	21	27	27	49	52	37	35	34	35	49	24	17	19	32	20	20	20	32.1	
TYE RIVER 1 SE	07	MAX	70	76	71	64	52	55	70	67	58	60	70	62	50	50	65	63	55	62	69	56	48	51	70	60	39	38	43	48	44	50	57.9	
		MIN	52	51	41	31	32	33	48	34	24	25	29	30	24	21	22	32	48	53	34	31	32	39	48	21	14	15	35	21	17	18	31.8	
NORTHERN 04																																		
BOSTON 4 SE	07	MAX	69	76	68	56	56	53	68	60	51	55	64	58	38	43	58	60	53	63	67	48	45	51	65	53	30	36		39	39	42	53.9	
		MIN	50	44	45	29	27	33	50	31	24	37	31	30	25	19	24	24	41	45	30	17	21	38	42	22	13	24		20	7	6	29.3	
EDINBURG	07	MAX	70	74	65	55	43	51	68	56	49	55	60	61	38	40	60	63	62	63	64	44	44	50	61	49	27	39	35	36	38	42	52.1	
		MIN	50	41	39	28	28	28	46	37	24	25	28	27	27	21	22	22	40	51	38	23	21	27	36	19	13	13	31	20	18	15	28.6	
FRONT ROYAL	07	MAX	70	75		55	44	52	70	62	50	55	60	58	41	41	60	61	58	63	64	46	44	50	64	49	29	36	34	36	37	40	51.9	
		MIN	56	48		29	28	32	47	40	28	29	34	33	27	21	27	32	43	50	39	29	28	30	40	20	17	17	30	23	22	18	31.6	
LINCOLN	07	MAX	69	76	66	54	43	54	68	58	49	56	59	58	41	41	57	61	52	62	65	45	44	46	62	47	29	37	39	39	35	39	51.7	
		MIN	54	43	26	25	25	30	30	32	23	23	30	39	29	19	20	24	41	50	24	22	22	25	29	21	17	18	32	25	20	15	27.8	
LURAY 5 E	08	MAX	71	74	65	55	46	53	71	61	50	57	62	61	36	41	60	64	62	65	63	45	45	52	63	50	28	38	41	36	38	42	53.2	
		MIN	56	41	38	25	27	35	46	34	25	34	29	35	24	21	28	40	45	48	36	25	28	37	37	19	11	18	32	17	18	18	30.9	
MADISON	08	MAX	69	76	69	59	48	55	68	65	54	57	67	59	49	46	61	57	57	64	68	51	47	51	67	56	35	39	42	43	43	46	55.6	
		MIN	54	47	45	35	34	34	50	39	30	30	35	35	32	26	27	43	43	53	42	32	32	38	46	28	21	23	35	26	25	25	35.5	
MANASSAS	07	MAX	73	78	68	56	46	59	70	59	52	56	65	59	41	43	59	62		63	70	47	47					38	39	39	42	55.5		
		MIN	55	51	45	30	30	38	52	34	26	30	35	41	29	22	22	27		53	42	30	29						25	23	21	34.3		
MT WEATHER	07	MAX	64	72	61	56	41	49	64	57	46	52	57	55	34	39	55	60	50	57	62	44	43	51	60	44	27	33	33	33	32	36	48.9	
		MIN	54	51	42	27	30	37	47	34	32	32	36	34	24	24	35	41	45	49	35	28	28	32	33	17	16	17	27	20	20	21	32.3	
PIEDMONT RSCH STN	08	MAX	69	76	68	58	45	52	66	62	52	55	66	58	43	43	60	60	52	61	67	49	45	48	64	54	30	36	38	40	39	43	53.3	
		MIN	54	47	35	31	32	34	48	34	26	26	30	29	26	20	29	30	40	51	36	33	32	37	45	23	13	18	31	21	21	22	31.8	
SOMERSET	07	MAX	70	77	70	58	46	53	68	65	54	56	68	59	44	44	62	62	53	61	68	49	46	50	66	55	31	37	39	41	41	44	54.6	
		MIN	52	45	37	30	29	31	47	31	23	30	31	37	24	21	26	30	38	52	38	27	30	35	46	23	14	17	32	24	17	17	31.1	
SPERRYVILLE	06	MAX	68	77	68	58	45		69	59	53	55	64	59	49	44	61	62	56	62	70	47	40	50	62	53	31					56.8		

VIRGINIA
201311

DAILY TEMPERATURES (°F)

STATION	OB. TIME	MAX/MIN	DAY OF MONTH																															AVERAGE							
			01	02	03	04	05	06	07	08	09	10	11	12	13	14	15	16	17	18	19	20	21	22	23	24	25	26	27	28	29	30	31								
STERLING RCS	07	MIN	51	46	46	27	28		45	35	26	26	32	39	25	20	21	29	41	51	40	25	28	32	41	21	15												32.9		
		MAX	71	76	67		44	54	68	58	51	54	62	58	42	42	58	61	52	62	67	46	46	47	63	48	30	36	38	39	36	40								52.3	
VIENNA	07	MIN	55	48	47		30	34	46	35	24	25	32	35	24	20	21	24	39	51	41	28	25	32	39	22	16	15	32	24	20	19								31.1	
		MAX	66	71	65	53	43	54	66	58	48	52	60	51	39	39	56	58	51	61	66	44	45	48	60	38	27	33	37	37	35	38								50.0	
WASHGTN DULLES INTL AP	24	MIN	54	49	42	27	27	33	47	33	27	27	34	27	27	24	24	29	41	49	40	28	26	26	26	20	17	17	27	24	21	19								30.4	
		MAX	77	69	57	46	56	69	59	52	55	63	59	52	44	58	62	52	62	68	48	48	48	63	57	32	37	37	40	38	42	37								52.9	
WASHINGTON REAGAN AP	24	MIN	55	47	40	31	34	47	41	28	25	38	32	30	25	21	25	39	51	47	37	24	27	44	31	21	16	33	29	25	23	20								32.9	
		MAX	73	72	59	49	59	68	65	54	56	66	58	53	45	55	61	54	65	71	52	49	51	63	59	34	38	49	42	40	44	39								54.8	
WINCHESTER	07	MIN	60	52	44	36	40	53	45	36	34	41	39	34	32	29	34	47	52	52	41	36	36	47	34	26	24	35	31	28	29	28								38.5	
		MAX	68	73	60	54	42	51	69	58	50	55	57	57	37	41	59	60	61	62	64	46	47	51	62	45	29	37	38	37	35	38								51.4	
WINCHESTER 7 SE	08	MIN	55	46	44	28	29	32	47	37	28	30	34	36	28	25	28	31	41	47	38	28	27	30	38	20	16	16	31	23	24	20								31.9	
		MAX	70	77	63	57	44	52	71	58	50	56	60	59	38	43	60	63	59	62	64	47	45	50	63	48	30	36	38	37	37	41								52.6	
WOODSTOCK 2 NE	07	MIN		40		25								28		23	23	41	41	39	22	23	28	37		13	14	31	24	20	15								M		
		MAX	71	75	64	57	45	51	69	58	49	57	60	61	39	42	61	64	61	64	64	46	47	50	61	50	29	40	36	36	38	43								52.9	
CENTRAL MOUNTAIN 05 COVINGTON FLTR PLT	07	MIN	52	42	42	27	27	29	46	38	27	27	27	27	26	20	21	25	42	47	39	24	20	23	37	17	14	13	26	20	18	17								28.7	
		MAX	70	76	65	54	49	53	71	57	50	65	63	66	49	44	59	65	58	64	63	47	49	53	61	49	30	41	42	36	39	45								54.4	
DALE ENTERPRISE	07	MIN	56	42	40	27	28	31	42	33	25	25	29	29	24	20	20	23	45	48	36	28	28	34		20	16	16	31	21	19	20								29.5	
		MAX	68	73	67	54	45	52	68	59	48	56	62	60	50	41	59	62	55	62	63	44	42	47	65	57	28	40	37	37	41	38								52.7	
GATHRIGHT DAM	07	MIN	53	40	35	27	28	30	48	37	23	31	27	28	23	23	23	26	37	50	34	26	25	33	27	17	11	14	32	17	19	21								28.8	
		MAX	67	68	58	50	48	50	65	54	44	58	56	60	42	39	54	58	52	61	57	43	45	48	57	43	25	37	41	33	34	41								49.6	
HOT SPRINGS	07	MIN	54	40	40	27	28	32	46	37	25	26	28	31	24	20	22	25	42	48	34	27	28	33	41	17	11	15	31	20	21	20								29.8	
		MAX	66	69	59	48	48	52	64	53	42	56	57	58	42	37	52	57	54	62	56	41	42	46	56	44	23	35	44	33	32	38								48.9	
LEXINGTON	07	MIN	51	40	37	27	27	31	43	30	25	25	29	29	21	20	21	26	40	45	32	28	27	32	41	15	13	14	31	17	17	20								28.5	
		MAX	70	75	66	58	49	51	69	60	50	57	64	62	50	45	60	62	55	62	63	50	48	49	65	52	30	36	42	39	38	43								54.0	
MILLGAP	07	MIN	53	42	41	27	27	31	43	31	24	24	29	29	24	18	18	23	45	52	38	32	30	35	45	21	14	15	30	20	16	16								29.8	
		MAX	64	66	55	47	47	53	64	51	41	56	52	60	43	38	57	58	61	57	55	41	45	45	55	42	21	38	42	32	35	40								48.7	
MUSTOE 1 SW	24	MIN	50	31	31	18	18	24	35	34	19	17	23	23	19	13	12	14	36	47	31	20	20	28	38	13	6	9	29	16	13	13								23.3	
		MAX	65	57	47	46	50	61	51	41	53	54	57	49	37	56	56	58	55	57	39	44	45	54	47	20	35	37	36	33	40	33								47.1	
ROANOKE 8 N	07	MIN	41	33	25	20	26	37	35	21	19	33	25	20	17	14	17	34	46	38	25	21	22	37	18	9	7	25	18	12	12	13								24.0	
		MAX	70	76	65	57	50	52	68	60	51	57	65	61	51	45	61	63	55	63	65	51	47	49	66	52	31	35	44	38	41	47								54.5	
ROANOKE INTL AP	24	MIN	56	48	47	31	32	34	46	36	27	31	30	27	24	25	29	47	53	39	33	33	40	47	22	18	21	32	23	23	22								33.4		
		MAX	77	65	58	49	52	68	60	51	58	65	60	54	45	60	62	54	60	64	51	47	50	66	58	33	35	42	45	41	47	39								53.9	
STAUNTON WATER TRMTMT PLT	08	MIN	57	49	38	29	34	46	41	29	28	41	32	27	26	26	29	46	52	48	37	33	39	46	32	20	19	31	26	22	25	23								34.4	
		MAX	67	72	63	57	45	53	65	61	48	53	62	62	40	44	58	61	55	60	62	47	45	50	62	51	28	36	38	34	37	41								51.9	
WAYNESBORO WTP	07	MIN	57	49	39	27	28	32	48	35	28	35	32	32	23	25	35	38	43	49	33	27	29	35	40	16	13	17	30	18	20	19								31.7	
		MAX	69	73	65	54	46	52	68	62	49	56	63	63	49	42	59	61	55	64	62	45	45	49	64	52	27	35	40	37	37	39								52.7	
SOUTHWESTERN MOUNTAIN 06 ABINGDON 3S	22	MIN	57	43	34	27	27	31	48	31	26	26	30	30	21	22	22	26	42	51	33	28	28	36	42	20	13	16	31	19	17								29.8		
		MAX	69	69	58	52	56	62	71	54	48	53	60	62	43	39	53	54	67	67		49	54	64	58	45	30	38	44	31	37	46								52.9	
																																									31.1

VIRGINIA
201311

DAILY TEMPERATURES (°F)

STATION	OB. TIME	MAX/MIN	DAY OF MONTH																															AVERAGE
			01	02	03	04	05	06	07	08	09	10	11	12	13	14	15	16	17	18	19	20	21	22	23	24	25	26	27	28	29	30	31	
BIG STONE GAP	08	MAX	69	67	67	48	52	57	63	49	53	56	64	65	44	44	55	55	64	66	62	49	58	67	56	49	34	39	44	31	39	46	53.7	
		MIN	54 ¹	39	25	24	27	32	38	29	27	27	29	25	21	20	20	26	45	45	31	20	25	34	43	19	17	23	30	16	16	16	27.2	
BLACKSBURG NWSO	07	MAX	65	70	59	52	50	54	66	51	45	53	58	61	49	39	55	59	52	59	59	44	44	53	63	45	27	35	40	30	37	42	50.5	
		MIN	53	39	40	26	26	30	39	31	22	22	26	27	20	18	19	25	42	48	32	29	29	35	41	17	13	15	29	18	18	16	28.2	
BURKES GARDEN	07	MAX	63	64	54	44	48	52	61	51	41	51	53	59	45	31	47	53	59	63	52	40	42	55	57	21	39	43	26	31	37	47.7		
		MIN	49	43	35	22	31	31	42	29	16	19	19	17	17	11	11	30	37	45	28	24	23	23	35	12	10	12	26	10	9	18	24.5	
CHRISTIANSBURG	07	MAX	65	70	60	53	50	55	65	54	46	55	59	61	45	39	55	57	51	61	59	46	46	52	64	47	28	36	39	29	36	43	50.9	
		MIN	57	46	40	29	29	31	38	30	25	30	31	19	19	21	29	44	49	33	29	28	35	40	16	14	17	28	18	18	20	29.6		
CLINTWOOD 1 W	07	MAX	67	68	58	50	59	62	71	49	46	57	58	64	38	35	53	55	65	67	58	44	52	65	60	42	26	42	38	28	32	40	51.6	
		MIN	52	38	37	27	27	30	31	27	23	23	24	24	17	16	16	21	39	39	28	25	25	26	36	18	15	15	28	11	11	14	25.4	
COPPER HILL	07	MAX	61	68	57	50	43	47	61	52	41	52	55	55	45	35	52	56	49	58	58	42	39	49	64	42	23	33	42	28	32	40	47.6	
		MIN	56	45	38	31	30	29	44	30	28	31	30	29	18	18	24	33	46	49	32	28	26	32	40	14	13	13	27	15	15	20	29.5	
GALAX RADIO WBRF	07	MAX	63	73	64	51	49	54	62	53	46	51	58	57	46	39	57	55	53	59	58	48	45	57	62	47	29	32	41	28	40	45	50.7	
		MIN	56	39	37	24	30	37	41	37	21	30	23	24	20	17	21	33	49	44	31	26	29	38	42	18	12	22	28	16	18	17	29.3	
GALAX WTP	07	MAX	63	70	59	54	48	53	61	54	45	49	58	56	48	37	56	56	51	59	59	46	45	52	63	46	27	32	42	38	44	50.7		
		MIN	53	40	39	24	25	31	40	34	22	22	24	24	21	17	17	21	44	48	33	27	27	36	45	18	13	17	29	17	17	18	28.1	
GRUNDY	07	MAX	71	70	59	52	61	60	72	52	49	59	60	66	41	37	55	57	64	67	59	45	54	67	62	42	30	43	40	30	35	40	53.3	
		MIN	55	42	40	30	30	34	34	30	26	26	27	28	22	19	19	25	41	43	30	28	28	29	39	20	18	20	29	19	18	18	28.9	
JOHN FLANNAGAN LAKE	07	MAX							71											67	39	38	56									M		
		MIN							37											27	20	20	20										M	
LEBANON	07	MAX	69	70	58	52	56	63	70	71	47	53	60	62	62	36	52	56	66	67	58	46	52	66	59	44	26	40	47	27	35	43	53.8	
		MIN	50	39	35	29	36	36	53 ^s	26	22	21	22	23	19	16	16	23	40	46	32	31	32	31	40	18	14	19	26	12	11	14	26.9	
NORA 4 SSE	07	MAX	64	65	52	49	53	57	66	51	45	48	57	57	35	34	47	51	59	53	56	42	47	59	53	40	22	37	45	24	32	38	47.9	
		MIN	55	46	36	36	39	39	50	29	29	35	33	35	13	18	28	37	47	45	28	28	31	40	35	13	12	22	24	13	14	26	31.2	
NORTH FORK LAKE	08	MAX	69			69	58	63	72	49										67	39	38	55										M	
		MIN	54			29	29	33	33	29										26	19	19	18											M
PULASKI 2 E	07	MAX	70	72	60	54	54	56	67		67	56	62	63	50		57	60	60	60	60	45	47	53	65	47	27	37	40		40	45	54.6	
		MIN	55	47	42	26	26	32	37	33	23	24	28	34	23	21	23	30	36	39	35	28	30	35	44	20	12	14	30		20	18	29.8	
RADFORD 3 N	07	MAX	66	72	61	52	51	54	65	53	45	56	60	63	42	39	58	58	52	61	60	44	45	53	65	46	27	35	40	31	38	42	51.1	
		MIN	56	49	44	25	27	34	48	36	21	25	28	33	23	18	20	25	45	51	35	27	32	37	42	17	13	15	30	20	18	16	30.3	
RICHLANDS	07	MAX	68	69	57	50	58	62	70	53	47	59	60	63	36	38	54	57	64	70	58	46	44	68	59	44	27	41	47	47	38	46	53.3	
		MIN	50	39	36	28	28	35	35	25	23	20	20	32	20	16	15	22	24	22	29	31	23	25	38	17	15	19	27	18	12	14	25.3	
SALTVILLE 1N	07	MAX	68	70	60	54	57	64	70	52	49	53	62	64	48	40	54	51	66	67	61	51	53	65	58	46	30	40	44	31	38	48	53.8	
		MIN	52	40	38	27	29	36	37	29	22	24	24	25	23	16	16	21	39	40	33	31	28	43	22	16	19	29	15	15	15	27.7		
STAFFORDSVILLE 3 ENE	07	MAX	68	70	57	51	50	54	65	52	46	56	59	62	46	38	56	58	54	60	60	43	44	53	63	47	26	35	41	30	34	40	50.6	
		MIN	53	46	42	26	26	33	43	36	21	21	27	27	22	15	15	20	44	46	35	28	27	37	41	18	12	15	30	20	20	17	28.8	
WISE 3E	17	MAX	65	59	47	57	61	67	64	44	51	55	63	51	34	50	53	62	62	60	51	51	63	58	53	32	37	45	42	35	40	49	52.0	
		MIN	54	42	37	31	31	38	38	30	26	39	27	23	16	20	28	42	52	45	28	28	36	53	32	13	14	28	19	7	19	24	30.7	

VIRGINIA
201311

SNOWFALL AND SNOW ON GROUND (INCHES)

STATION		DAY OF MONTH																														
		01	02	03	04	05	06	07	08	09	10	11	12	13	14	15	16	17	18	19	20	21	22	23	24	25	26	27	28	29	30	31
VIRGINIA																																
TIDEWATER 01																																
DISPUTANTA	SNOWFALL																															
EASTVILLE	SNOWFALL																															
EMPORIA 1 WNW	SNOWFALL																															
FREDERICKSBURG SEWAGE	SNOWFALL																															
HOLLAND 1 E	SNOWFALL																															
HOPEWELL	SNOWFALL	-	-	-	-	-	-	-	-	-	-	-	-	-	-	-	-	-	-	-	-	-	-	-	-	-	-	-	-	-	-	
	SN ON GND	-	-	-	-	-	-	-	-	-	-	-	-	-	-	-	-	-	-	-	-	-	-	-	-	-	-	-	-	-	-	
NORFOLK INTL AP	SNOWFALL																															
	SN ON GND																															
NORFOLK SOUTH	SNOWFALL																															
NORTH	SNOWFALL																															
PAINTER 2W	SNOWFALL																															
STONY CREEK 2 N	SNOWFALL	-	-	-	-	-	-	-	-	-	-	-	-	-	-	-	-	-	-	-	-	-	-	-	-	-	-	-	-	-	-	
	SN ON GND	-	-	-	-	-	-	-	-	-	-	-	-	-	-	-	-	-	-	-	-	-	-	-	-	-	-	-	-	-	-	
SUFFOLK LAKE KILBY	SNOWFALL	-	-	-	-	-	-	-	-	-	-	-	-	-	-	-	-	-	-	-	-	-	-	-	-	-	-	-	-	-	-	
	SN ON GND	-	-	-	-	-	-	-	-	-	-	-	-	-	-	-	-	-	-	-	-	-	-	-	-	-	-	-	-	-	-	
WAKEFIELD 1NW	SNOWFALL																															
	SN ON GND																															
WALKERTON 2 NW	SNOWFALL																															
WALLACETON LK DRUMMOND	SNOWFALL																															
WALLOPS ISLAND NASA TEST FACIL	SNOWFALL																															
	SN ON GND																															
WARSAW 2 NW	SNOWFALL																															
WEST POINT 2 NW	SNOWFALL	-	-	-	-	-	-	-	-	-	-	-	-	-	-	-	-	-	-	-	-	-	-	-	-	-	-	-	-	-	-	
	SN ON GND	-	-	-	-	-	-	-	-	-	-	-	-	-	-	-	-	-	-	-	-	-	-	-	-	-	-	-	-	-	-	
WILLIAMSBURG 2 N	SNOWFALL																															
EASTERN PIEDMONT 02																																
RICHMOND INTL AP	SNOWFALL																															
	SN ON GND																															
SANDSTON	SNOWFALL																															
WINTERPOCK 4 W	SNOWFALL																															
WESTERN PIEDMONT 03																																
APPOMATTOX	SNOWFALL																															
	SN ON GND																															
BEDFORD 4 NW	SNOWFALL																															
	SN ON GND																															
BROOKNEAL	SNOWFALL																															
	SN ON GND																															
CHARLOTTE COURT HOUSE	SNOWFALL																															
	SN ON GND																															

Snowfall: Includes snow and ice. Values for NWS stations (J index note) are Mid-Mid (LST).

Snow on ground: Includes snow, sleet, ice, and hail. Values for NWS stations (J index note) are observed at 12 UTC (GMT).

Water Equivalent: Given for NWS stations (J index note) only, when snow depth is 2 inches or more, and is measured at 18 UTC (GMT)

VIRGINIA
201311

SNOWFALL AND SNOW ON GROUND (INCHES)

STATION		DAY OF MONTH																																			
		01	02	03	04	05	06	07	08	09	10	11	12	13	14	15	16	17	18	19	20	21	22	23	24	25	26	27	28	29	30	31					
CHARLOTTESVILLE 2W	SNOWFALL																																		T		
	SN ON GND																																				
CHATHAM	SNOWFALL																																				
	SN ON GND																																				
CONCORD 4 SSW	SNOWFALL																																		T		
	SN ON GND																																				
DANVILLE REGIONAL AP	SNOWFALL																																				
	SN ON GND																																				
FREE UNION	SNOWFALL																																				
HOLCOMB ROCK	SNOWFALL																																				
	SN ON GND																																				
HUDDLESTON 4 SW	SNOWFALL																																				
	SN ON GND																																				
LYNCHBURG INTL AP	SNOWFALL																																				
	SN ON GND																																				
MARTINSVILLE FLTR PLT	SNOWFALL																																				
	SN ON GND																																				
MEADOWS OF DAN 5 SW	SNOWFALL																																				
	SN ON GND																																				
MONTEBELLO FISH CULTURAL STN	SNOWFALL																																				
MONTICELLO	SNOWFALL																																				
PEDLAR DAM	SNOWFALL																																				
	SN ON GND																																				
ROCKY MT	SNOWFALL																																				
	SN ON GND																																				
SOUTH BOSTON	SNOWFALL																																				
	SN ON GND																																				
STUART	SNOWFALL																																				
	SN ON GND																																				
TYE RIVER 1 SE	SNOWFALL																																				
WOOLWINE	SNOWFALL																																				
	SN ON GND																																				
NORTHERN 04																																					
STERLING RCS	SNOWFALL				-																																
	SN ON GND				-																																
VIENNA	SNOWFALL																																				
WASHGTN DULLES INTL AP	SNOWFALL																																				
	SN ON GND																																				
WASHINGTON REAGAN AP	SNOWFALL																																				
	SN ON GND																																				
WINCHESTER	SNOWFALL																																				
WINCHESTER 7 SE	SNOWFALL																																				

Snowfall: Includes snow and ice. Values for NWS stations (J index note) are Mid-Mid (LST).

Snow on ground: Includes snow, sleet, ice, and hail. Values for NWS stations (J index note) are observed at 12 UTC (GMT).

Water Equivalent: Given for NWS stations (J index note) only, when snow depth is 2 inches or more, and is measured at 18 UTC (GMT)

VIRGINIA
201311

SNOWFALL AND SNOW ON GROUND (INCHES)

STATION	DAY OF MONTH																																		
	01	02	03	04	05	06	07	08	09	10	11	12	13	14	15	16	17	18	19	20	21	22	23	24	25	26	27	28	29	30	31				
WOODSTOCK 2 NE CENTRAL MOUNTAIN 05 GATHRIGHT DAM	SN ON GND																																		
	WTR EQUIV																																		
	SNOWFALL																																		
GLASGOW 1 SE	SNOWFALL																																	T	
HOT SPRINGS	SN ON GND																																	T	
LEXINGTON	SNOWFALL																																		
MILLGAP	SN ON GND																																		
	SNOWFALL												0.2												0.4		0.2				0.4				
	WTR EQUIV											T												T	T	T				T		T			
MTN GROVE	SNOWFALL												-																					T	
MUSTOE 1 SW	SN ON GND											0.2	T										0.6	0.1	0.1		1.0								
	SNOWFALL										T	T	T										T	T	T	T	1	T	T	T	T	T	I		
NEW CASTLE	SNOWFALL																																		
ROANOKE 8 N	SN ON GND																																		
ROANOKE INTL AP	SNOWFALL												T																						
STAUNTON WATER TRMTMT PLT	SN ON GND																																		
WAYNESBORO WTP	SNOWFALL																																		
	SN ON GND																																		
	WTR EQUIV																																		
SOUTHWESTERN MOUNTAIN 06																																			
ABINGDON 3S	SNOWFALL	-																																	1.0
	SN ON GND																																		0.2
BIG STONE GAP	SNOWFALL																																		1
	SN ON GND																																		1.5
BLACKSBURG NWSO	SNOWFALL																																		2
	SN ON GND																																		1
BURKES GARDEN	SNOWFALL												T												T		0.1	T	T	T				T	
	SN ON GND																																		
CHRISTIANSBURG	SNOWFALL																																		
	SN ON GND																																		

Snowfall: Includes snow and ice. Values for NWS stations (J index note) are Mid-Mid (LST).

Snow on ground: Includes snow, sleet, ice, and hail. Values for NWS stations (J index note) are observed at 12 UTC (GMT).

Water Equivalent: Given for NWS stations (J index note) only, when snow depth is 2 inches or more, and is measured at 18 UTC (GMT)

VIRGINIA
201311

SNOWFALL AND SNOW ON GROUND (INCHES)

STATION		DAY OF MONTH																															
		01	02	03	04	05	06	07	08	09	10	11	12	13	14	15	16	17	18	19	20	21	22	23	24	25	26	27	28	29	30	31	
CLINTWOOD 1 W	SNOWFALL												0.2												0.2		0.5	2.7	1.1				
	SN ON GND												T												T			3	3	3	2		
COPPER HILL	SNOWFALL																												1.0				
	SN ON GND																												1				
GALAX RADIO WBRF	SNOWFALL																																
GALAX WTP	SNOWFALL												T																				
	SN ON GND																																
GRUNDY	SNOWFALL																																
	SN ON GND																											1.4	0.5				
JOHN FLANNAGAN LAKE	SNOWFALL	-	-	-	-	-	-	-	-	-	-	-	-	-	-	-	-	-	-	-	-	-	-	-	-	-	-	2.0	-	-	-		
	SN ON GND	-	-	-	-	-	-	-	-	-	-	-	-	-	-	-	-	-	-	-	-	-	-	-	-	-	-	2	-	-	-		
LAFAYETTE 1 NE	SNOWFALL																										T		T				
	SN ON GND																										T						
LEBANON	SNOWFALL												0.1																2.0				
	SN ON GND																											2	1				
NORA 4 SSE	SNOWFALL												0.7													T	T	T	2.6	1.5			
	SN ON GND												1												T	T		3	4	2	T		
NORTH FORK LAKE	SNOWFALL																																
PULASKI 2 E	SNOWFALL	-			-	-	-	-	-	-	-																		T	-	-	-	
	SN ON GND	-			-	-	-	-	-	-	-																		-	-	-	-	
RADFORD 3 N	SNOWFALL													T															T	T			
	SN ON GND																											T	T				
RICHLANDS	SNOWFALL													T															3.0	1.0			
	SN ON GND																											T	3	3	1		
SALTVILLE 1N	SNOWFALL	-	-	-	-	-	-	-	-	-	-	-	-	-	-	-	-	-	-	-	-	-	-	-	-	-	-	1.0	0.2	-	-		
	SN ON GND	-	-	-	-	-	-	-	-	-	-	-	-	-	-	-	-	-	-	-	-	-	-	-	-	-	-	1	1				
STAFFORDSVILLE 3 ENE	SNOWFALL													T														T	T				
	SN ON GND																											T	T				
WILLIS	SNOWFALL																																
	SN ON GND																																
WISE 3E	SNOWFALL												T																2.0				
	SN ON GND																												T				

Snowfall: Includes snow and ice. Values for NWS stations (J index note) are Mid-Mid (LST).

Snow on ground: Includes snow, sleet, ice, and hail. Values for NWS stations (J index note) are observed at 12 UTC (GMT).

Water Equivalent: Given for NWS stations (J index note) only, when snow depth is 2 inches or more, and is measured at 18 UTC (GMT)

VIRGINIA
201311

PAN EVAPORATION AND WIND

STATION		DAY OF MONTH																														TOTAL OR AVERAGE		
		01	02	03	04	05	06	07	08	09	10	11	12	13	14	15	16	17	18	19	20	21	22	23	24	25	26	27	28	29	30		31	
VIRGINIA EASTERN PIEDMONT 02 JOHN H KERR DAM	WIND	-	-	-	-	-	-	-	-	-	-	-	-	-	-	-	-	-	-	-	-	-	-	-	-	-	-	-	-	-	-	-	-	M M M M
	EVAP	-	-	-	-	-	-	-	-	-	-	-	-	-	-	-	-	-	-	-	-	-	-	-	-	-	-	-	-	-	-	-		
	MAX	-	-	-	-	-	-	-	-	-	-	-	-	-	-	-	-	-	-	-	-	-	-	-	-	-	-	-	-	-	-	-		
	MIN	-	-	-	-	-	-	-	-	-	-	-	-	-	-	-	-	-	-	-	-	-	-	-	-	-	-	-	-	-	-	-		

Evaporation: Is measured in hundreths of inches.

Wind: Is measured in miles.

Max and Min: The maximum and minimum temperatures (Fahrenheit) of the water in the evaporation pan.

STATION INDEX

STATION	INDEX NO.	DIVISION	COUNTY	LATITUDE	LONGITUDE	ELEVATION (IN FEET)	OBSERVATION TIME AND TABLES			
							LOCAL STD TIME			
							TEMP	PRECIP	EVAP	SPECIAL SEE (NOTES)
VIRGINIA										
ABINGDON 3S	0021	06	WASHINGTON	36 40	81 58W	1920	22	22		H
ALBERTA 5N	0079	02	BRUNSWICK	36 56	77 54W	376		08		H
ALTAVISTA	0166	03	CAMPBELL	37 7	79 17W	529		07		CH
AMELIA COURTHOUSE 1	0187	02	AMELIA	37 21	77 59W	345	08	08		H
APPOMATTOX	0243	03	APPOMATTOX	37 20	78 50W	850	07	07		H
ASHLAND	0327	02	HANOVER	37 45	77 29W	220	18	18		H
BEDFORD 4 NW	0561	03	BEDFORD	37 23	79 34W	1228		07		CH
BIG STONE GAP	0735	06	WISE	36 52	82 46W	1464	08	08		H
BLACKSBURG NWSO	0766	06	MONTGOMERY	37 12	80 25W	2100	07	07		CH
BOSTON 4 SE	0860	04	CULPEPER	38 33	78 6W	590	07	07		H
BREMO BLUFF	0993	02	FLUVANNA	37 43	78 17W	225		07		CH
BROOKNEAL	1082	03	CAMPBELL	37 4	78 57W	408	07	07		H
BUCHANAN	1121	05	BOTETOURT	37 31	79 41W	880		07		H
BUCKINGHAM	1136	02	BUCKINGHAM	37 30	78 32W	552		07		H
BUENA VISTA	1159	05	ROCKBRIDGE	37 44	79 22W	840		07		H
BURKES GARDEN	1209	06	TAZEWELL	37 6	81 20W	3068	07	07		H
CAMP PICKETT	1322	02	NOTTOWAY	37 2	77 57W	330	08	08		CH
CHARLOTTE COURT HOUSE	1585	03	CHARLOTTE	37 3	78 39W	569	07	07		H
CHARLOTTESVILLE 2W	1593	03	ALBEMARLE	38 2	78 31W	866	08	08		H
CHASE CITY	1606	02	MECKLENBURG	36 47	78 29W	510	17	17		H
CHATHAM	1614	03	PITTSYLVANIA	36 49	79 25W	651	07	07		CH
CHRISTIANSBURG	1692	06	MONTGOMERY	37 8	80 24W	2100	07	07		H
CLARKSVILLE	1746	02	MECKLENBURG	36 37	78 33W	330	07	07		H
CLINTWOOD 1 W	1825	06	DICKENSON	37 9	82 29W	1780	07	07		H
CONCORD 4 SSW	1955	03	CAMPBELL	37 17	78 58W	815		07		H
COPPER HILL	1999	06	FLOYD	37 5	80 9W	2690	07	07		H
CORBIN	2009	02	CAROLINE	38 12	77 22W	220	09	09		H
COVINGTON FLTR PLT	2044	05	ALLEGHANY	37 49	79 59W	1230	07	07		H
CRAIGSVILLE 2 S	2064	05	AUGUSTA	38 3	79 23W	1758		07		H
CROZIER	2142	02	GOOCHLAND	37 40	77 53W	350	07	07		H
DALE ENTERPRISE	2208	05	ROCKINGHAM	38 27	78 56W	1358	07	07		H
DANVILLE REGIONAL AP R	2250	03	PITTSYLVANIA	36 34	79 20W	571	24	24		H
DISPUTANTA	2400	01	PRINCE GEORGE	37 7	77 12W	15	07	07		H
EASTVILLE	2635	01	NORTHAMPTON	37 23	75 58W	10	07	07		H
EDINBURG	2663	04	SHENANDOAH	38 48	78 35W	928	07	07		H
EMPORIA 1 WNW	2790	01	GREENSVILLE	36 42	77 34W	100	08	08		H
FARMVILLE 2 N	2941	02	CUMBERLAND	37 20	78 23W	450	07	07		H
FREDERICKSBURG SEWAGE	3204	01	FREDERICKSBURG	38 17	77 27W	15	07	07		H
FREE UNION	3213	03	ALBEMARLE	38 5	78 35W	590	08	07		H
FRONT ROYAL	3229	04	WARREN	38 54	78 11W	930	07	07		H
GALAX RADIO WBRF	3267	06	CARROLL	36 40	80 55W	2385	07	07		H
GALAX WTP	3272	06	CARROLL	36 39	80 55W	2360	07	07		CH
GATHRIGHT DAM	3310	05	ALLEGHANY	37 57	79 57W	1770	07	07		CH
GLASGOW 1 SE	3375	05	ROCKBRIDGE	37 37	79 26W	737		07		H
GREENBAY 3 NE	3565	02	PRINCE EDWARD	37 11	78 17W	500	09	09		H
GRUNDY	3640	06	BUCHANAN	37 17	82 5W	1170	07	07		H
HOLCOMB ROCK	4039	03	BEDFORD	37 33	79 24W	620		07		H
HOLLAND 1 E	4044	01	SUFFOLK	36 41	76 46W	80	08	08		H
HOPEWELL	4101	01	PRINCE GEORGE	37 18	77 17W	40	16	16		H
HOT SPRINGS	4128	05	BATH	37 60	79 50W	2236	07	07		H
HUDDLESTON 4 SW	4148	03	BEDFORD	37 8	79 32W	898		07		H
JOHN FLANNAGAN LAKE	4410	06	DICKENSON	37 14	82 21W	1460	07	07		H
JOHN H KERR DAM	4414	02	MECKLENBURG	36 36	78 18W	250	08	08	08	CH
LAFAYETTE 1 NE	4676	06	MONTGOMERY	37 14	80 12W	1320		07		H
LEBANON	4777	06	RUSSELL	36 54	82 2W	1912	07	07		H
LEXINGTON	4876	05	ROCKBRIDGE	37 47	79 26W	1097	07	07		H
LINCOLN	4909	04	LOUDOUN	39 5	77 42W	500	07	07		H
LOUISA	5050	02	LOUISA	38 3	78 0W	420	18	18		H
LURAY 5 E	5096	04	PAGE	38 40	78 22W	1400	08	08		H
LYNCHBURG INTL AP R	5120	03	CAMPBELL	37 19	79 12W	940	24	24		HJ
MADISON	5150	04	MADISON	38 22	78 15W	577	08	08		H
MANASSAS	5204	04	MANASSAS	38 44	77 30W	245	07	07		H
MARTINSVILLE FLTR PLT	5300	03	HENRY	36 42	79 52W	760	07	07		H
MEADOWS OF DAN 5 SW	5453	03	PATRICK	36 40	80 27W	2225	07	07		H
MILLGAP	5595	05	HIGHLAND	38 18	79 43W	2421	07	07		CH

STATION INDEX

STATION	INDEX NO.	DIVISION	COUNTY	LATITUDE	LONGITUDE	ELEVATION (IN FEET)	OBSERVATION TIME AND TABLES			
							LOCAL STD TIME			
							TEMP	PRECIP	EVAP	SPECIAL SEE (NOTES)
MONTEBELLO FISH CULTURAL STN	5690	03	NELSON	37 51	79 8W	2667	07	07		H
MONTICELLO	5700	03	ALBEMARLE	38 1	78 27W	758	08	08		H
MT WEATHER	5851	04	LOUDOUN	39 4	77 53W	1659	07	07		H
MTN GROVE	5756	05	BATH	38 6	79 53W	1775		07		H
MUSTOE 1 SW	5880	05	HIGHLAND	38 20	79 40W	2380	24	24		H
NEW CASTLE	6012	05	CRAIG	37 18	80 3W	1258		07		H
NORA 4 SSE	6125	06	DICKENSON	37 1	82 19W	2650	07	07		H
NORFOLK INTL AP R	6139	01	NORFOLK (CITY)	36 54	76 12W	30	24	24		HJ
NORFOLK SOUTH	6147	01	NORFOLK (CITY)	36 52	76 14W	100	24	24		H
NORTH	6161	01	MATHEWS	37 26	76 26W	10	07	07		H
NORTH FORK LAKE	6173	06	WISE	37 7	82 38W	1675	08	08		H
PAINTER 2W	6475	01	ACCOMACK	37 35	75 49W	30	16	16		CH
PALMYRA 3S	6491	02	FLUVANNA	37 49	78 16W	410	06	06		H
PEDLAR DAM	6593	03	AMHERST	37 40	79 17W	1024		07		H
PETERSBURG	6656	02	PETERSBURG	37 14	77 24W	15	08	08		H
PIEDMONT RSCH STN	6712	04	ORANGE	38 14	78 7W	520	08	08		CH
PULASKI 2 E	6955	06	PULASKI	37 3	80 47W	1850	07	07		CH
RADFORD 3 N	6999	06	PULASKI	37 12	80 35W	1800	07	07		H
RICHLANDS	7174	06	TAZEWELL	37 6	81 48W	1910	07	07		H
RICHMOND INTL AP R	7201	02	HENRICO	37 30	77 19W	164	24	24		HJ
ROANOKE 8 N	7278	05	ROANOKE	37 22	79 58W	1190	07	07		H
ROANOKE INTL AP R	7285	05	ROANOKE	37 19	79 58W	1175	24	24		HJ
ROCKY MT	7338	03	FRANKLIN	36 59	79 54W	1315	07	07		CH
SALTVILLE 1N	7506	06	SMYTH	36 53	81 46W	1733	07	07		H
SANDSTON	7541	02	HENRICO	37 33	77 17W	165	07	07		H
SOMERSET	7904	04	ORANGE	38 15	78 16W	510	07	07		H
SOUTH BOSTON	7925	03	HALIFAX	36 42	78 53W	329	07	07		H
SPERRYVILLE	7985	04	RAPPAHANNOCK	38 39	78 14W	750	06	06		H
STAFFORDSVILLE 3 ENE	8022	06	GILES	37 16	80 43W	1950	07	07		CH
STAUNTON WATER TRMTMT PLT	8062	05	AUGUSTA	38 10	79 5W	169	08	08		H
STERLING RCS	8084	04	LOUDOUN	38 59	77 29W	288	07	07		H
STONY CREEK 2 N	8129	01	SUSSEX	36 58	77 24W	105	08	08		H
STUART	8170	03	PATRICK	36 38	80 15W	1375	07	07		H
SUFFOLK LAKE KILBY	8192	01	SUFFOLK	36 44	76 36W	22	24	24		H
TYE RIVER 1 SE	8600	03	NELSON	37 38	78 56W	720	07	07		H
VIENNA	8737	04	FAIRFAX	38 54	77 16W	418	07	07		H
WAKEFIELD 1NW	8800	01	SUSSEX	36 59	77 0W	113	24	24		CH
WALKERTON 2 NW	8829	01	KING AND QUEEN	37 45	77 2W	50	18	18		H
WALLACETON LK DRUMMOND	8837	01	CHESAPEAKE	36 36	76 26W	20	08	08		H
WALLOPS ISLAND NASA TEST FACIL R	8849	01	ACCOMACK	37 56	75 28W	46	24	24		HJ
WARSAW 2 NW	8894	01	RICHMOND	37 59	76 47W	140	18	18		H
WASHGTN DULLES INTL AP R	8903	04	LOUDOUN	38 56	77 28W	290	24	24		HJ
WASHINGTON REAGAN AP R	8906	04	ARLINGTON	38 51	77 2W	10	24	24		HJ
WAYNESBORO WTP	8941	05	WAYNESBORO	38 5	78 53W	1270	07	07		H
WEST POINT 2 NW	9025	01	KING WILLIAM	37 34	76 48W	20	17	17		H
WILLIAMSBURG 2 N	9151	01	YORK	37 18	76 42W	70	24	24		CH
WILLIS	9169	06	FLOYD	36 55	80 30W	2810		07		CH
WINCHESTER	9181	04	FREDERICK	39 11	78 9W	720	07	07		H
WINCHESTER 7 SE	9186	04	FREDERICK	39 11	78 7W	680	08	08		H
WINTERPOCK 4 W	9213	02	CHESTERFIELD	37 19	77 39W	300		07		H
WISE 3E	9215	06	WISE	36 60	82 32W	2549	17	17		CH
WOODSTOCK 2 NE	9263	04	SHENANDOAH	38 54	78 28W	675	07	07		H
WOOLWINE	9272	03	PATRICK	36 47	80 17W	1500		07		CH

REFERENCE NOTES

STATION NAMES: Name of the city, town or locality. Figures and letters following the station names indicate the distance in miles and direction from the post office or town community center.

DIVISIONS: Areas within a state of similar climatological characteristics. Division averages are calculated using data from stations that record temperature and/or precipitation. Station Precipitation totals flagged with an 'F' or 'M' are excluded from the Divisional Average calculations of precipitation. Stations with monthly Temperature averages flagged with an 'F' or 'M' are included in the Divisional Average if there are no more than 9 flagged or missing daily values in the month, else they are excluded from the divisional average for temperature.

NORMALS: The average value of the meteorological element over a time period. Effective 1 January 2012, the averaging period is 1981 to 2010. The normals for National Weather Service localities have been adjusted so as to be representative for the current observation site.

MONTHLY DEGREE DAY TOTALS: One heating (cooling) degree day is accumulated for each whole degree that the daily mean temperature is below (above) 65 degrees Fahrenheit.

PRECIPITATION: Values shown in hundredths of inches are water equivalent totals, i.e., total of liquid and melted frozen precipitation. In the "Monthly Summarized Data" table the total snow and sleet values shown in tenths of inches are unmelted amounts. The max depth on ground values of snow and sleet shown in whole inches are cumulative unmelted amounts. The number of days with .10, .50, 1.00 or more refers to water equivalents.

PRECIPITATION QUALITY CONTROL: The NCDC quality control process may flag precipitation data that are spatially inconsistent, exceed climatological limits, or are inconsistent with prevailing weather patterns.

TEMPERATURE: Original temperature values are given in the "Daily Temperature" table. Summary temperature information (averages, departures, extremes, monthly degree day totals) is based on the values labeled MAX/MIN.

WIND: (As shown in the "Evaporation and Wind" table) the total wind movement in miles over the evaporation pan as determined by an anemometer recorder located 6-8 inches above the pan.

SYMBOLS AND LETTERS USED IN THE STATION INDEX TABLE

C Station is equipped with recording rain gage (R) but values in this bulletin are from a non-recording rain gage unless indicated by an R.

G Observations appear in the "Soil Temperatures" table.

H Observations appear in the "Snowfall and Snow on the Ground" table.

J Station also published as a Local Climatological Data publication.

VAR Observation time varies.

SR Observation time near sunrise.

SS Observation time near sunset.

SYMBOLS AND LETTERS USED IN THE DATA TABLES

(DAILY DATA ARE FOR THE 24 HOURS IMMEDIATELY PRECEDING OBSERVATION TIME.)

BLANK Entries in the "Monthly Summarized Data" table indicate no record.

BLANK Entries in the "Daily Precipitation" and "Snowfall and Snow on the Ground" tables indicate zero.

BLANK Entries in the "Daily Temperature" table indicate a missing record

- No record. Data not recorded or not received in time for publication.

+ Precipitation or temperature extremes occurred on one or more previous dates during the month.

* Rain gage not read. Precipitation is included in the amount following the asterisks.

Time distribution may not be known. A * preceding the monthly total indicates precipitation amount is being carried forward to next month's total, and may include amounts from the previous month(s).

a As a subscript, indicates accumulated total.

A Amount of precipitation is the total of observer's entries for the current month. It may include precipitation that occurred during the previous month. Refer to earlier bulletin to determine date of last reading. (Hawaii stations)

B Divisional Departure from normals are computed using 1971-2000 normals.

E Normalized HDD/CDD Calculation. E is appended to the HDD/CDD Calculation when 1-9 individual daily TMAX and/or TMIN values are missing and a Normalized HDD/CDD Calculation is provided. M appears alone if 10 or more daily values are missing.

F Monthly calculation flagged value. F is appended to average and/or total values computed which exclude one or more daily data values that have been flagged by the GHCN-Daily Dataset

M Insufficient or partial data. M is appended to average and/or total values computed with 1-9 daily values missing. M appears alone if 10 or more daily values are missing, (8 or more for wind and evaporation).

N Indicates snow fall or Snowdepth totals are computed with one or more missing days.

R Amounts from recording rain gage.

T Trace. An amount too small to measure.

SEASONAL TABLES: Monthly and seasonal snowfall and heating degree days for the 12 months ending with the June data are published in the July issue of this bulletin. Cooling degree days for the calendar year are published in the "Climatological Data Annual Summary."

Information concerning the history of changes in locations, exposure, etc. of substations is kept on file at the National Climatic Data Center. Historical information of regular National Weather Service Offices may be obtained from the "Local Climatological Data" annual publication. The contents of this publication may be reprinted or otherwise used freely, with proper credit to the National Climatic Data Center. The data are also available digitally.

Effective with the January 2011 Data-Month, COOP Observer Names are no longer included in the Monthly and Annual Climatological Data Publications. This information is not published to ensure the privacy of personal information pursuant to Section 208 of the E-Government Act of 2002 (44 USC 3601).

As of the 2011 Data-Year, Station and Climate Division Maps are no longer being included in the CD Publications. NCDC's Product Development Branch provides updated Station Maps for various data networks via the Historical Observing Metadata Repository: <http://www.ncdc.noaa.gov/homr>.

The GHCN-Daily Quality Control Flags shown below are displayed as superscripts with the data. For more Information on Global Historical Climatology Network - Daily and flags, see: <http://www.ncdc.noaa.gov/oa/climate/ghcn-daily/> and Comprehensive Automated Quality Assurance of Daily Surface Observations. Durre, Imke, Matthew J. Menne, Byron E. Gleason, Tamara G. Houston, Russell S. Vose, 2010: J. Appl. Meteor. Climatol., 49, 1615-1633. doi: 10.1175/2010JAMC2375.1

Blank = Passed All checks

D = failed duplicate check

G = failed gap check

I = failed internal consistency check

K = failed streak/frequent-value check

L = failed check on length of multiday period

M = failed megaconsistency check

N = failed naught check

O = failed climatological outlier check

R = failed lagged range check

S = failed spatial consistency check

T = failed temporal consistency check

W = temperature too warm for snow

X = failed bounds check

Z = flagged as a result of an official Datzilla investigation

Beginning with the January 2013 CD Publication, monthly mean temperature calculations have changed to the National Data Stewardship Team standard. Monthly maximum and minimum temperatures are not rounded until after the monthly mean temperature is calculated. This is the most accurate outcome, but may be slightly different from the mean derived from rounded monthly maximum and minimum.

Processing Updates and Errata: The 2011 CD Publications were reproduced in May 2013. This update included the addition of late reports and corrections based on additional investigations of reported data issues through NCDC's Datzilla system. In addition, divisional averages for precipitation were recalculated using the method described in DIVISIONS above. Previous editions of the 2011 Publications included all precipitation stations regardless of missing data in the calculation of divisional averages. HDD/CDD values were recalculated to match the legacy method of calculation (truncation of monthly HDD/CDD values instead of rounding).

NOAA\National Climatic Data Center
Attn: User Engagement & Services Branch
151 Patton Avenue
Asheville, NC 28801-5001

Customer Services Number: (828) 271-4800, option 2
TDD : (828) 271-4010
Fax number: (828) 271-4876

NCDC now offers free online access to the *Climatological Data* publication.
Go to : www.ncdc.noaa.gov and choose Most Popular.