



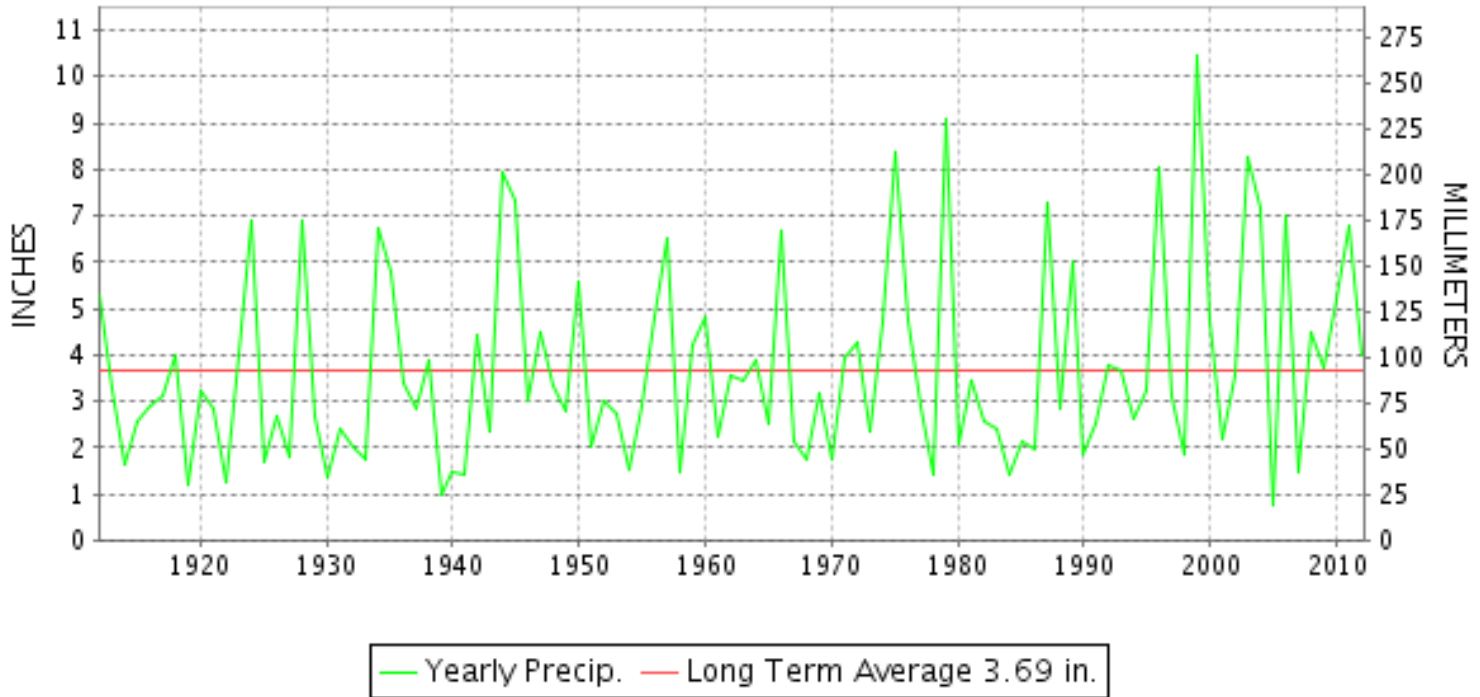
CLIMATOLOGICAL DATA

VIRGINIA

SEPTEMBER 2012
 VOLUME 122 NUMBER 09
 ISSN 0364-5630

GHCND Ver: 3.00-upd-2013012406

SEPTEMBER PRECIPITATION BY YEAR



TEMPERATURE AND PRECIPITATION EXTREMES

VIRGINIA

HIGHEST TEMPERATURE	99	SEPTEMBER 01	WALKERTON 2 NW
LOWEST TEMPERATURE	27	SEPTEMBER 25+	BURKES GARDEN
GREATEST TOTAL PRECIPITATION	10.74		MEADOWS OF DAN 5 SW
LEAST TOTAL PRECIPITATION	0.00		STONY CREEK 2 N
GREATEST 1 DAY PRECIPITATION	3.78	SEPTEMBER 19	MT WEATHER

"I certify that this is an official publication of the National Oceanic and Atmospheric Administration (NOAA) It is compiled using information from weather observing sites supervised by NOAA/National Weather Service and received at the National Climatic Data Center(NCDC), Asheville, North Carolina 28801."

Director
 National Climatic Data Center

noaa

National
 Oceanic and
 Atmospheric Administration

National
 Environmental Satellite, Data
 and Information Service

National
 Climatic Data Center
 Asheville, North Carolina

VIRGINIA
201209

MONTHLY STATION AND DIVISION SUMMARY

STATION	TEMPERATURE (°F)											PRECIPITATION (IN)												
	AVERAGE MAXIMUM	AVERAGE MINIMUM	AVERAGE	DEPARTURE FROM NORMAL	HIGHEST	DATE	LOWEST	DATE	HEATING DEG. DAYS	COOLING DEG. DAYS	NO. OF DAYS				TOTAL	DEPARTURE FROM NORMAL	GREATEST 24 HOURS	DATE	ICE PELLETS, SNOW			NO. OF DAYS		
											MAX		MIN						TOTAL	MAX DEPTH ON GROUND	DATE	.10 OR MORE	.50 OR MORE	1.00 OR MORE
											>=90	<=32	<=32	<=0										
PALMYRA 3S	78.8	53.9	66.4	0.8	92	01	38	26+	73	119	1	0	0	0	4.02	0.35	1.11	19	0.0			8	4	1
PETERSBURG	80.9	59.0	70.0	-0.6	92	01	47	25	22	177	2	0	0	0	6.35	2.09	2.06	03	M 0.0	0		8	4	3
RICHMOND INTL AP	80.6	60.0	70.3	-0.3	91	02+	49	25+	11	180	2	0	0	0	4.08	-0.05	1.57	02	0.0	0		6	3	2
SANDSTON	80.3	56.6	68.5	-1.1	94	01	43	26	37	152	2	0	0	0	3.04	-1.02	1.26	07	0.0			4	2	2
WINTERPOCK 4 W															3.72		1.86	19	0.0			6	2	1
--DIVISIONAL DATA-----> WESTERN PIEDMONT 03			69.0	0.5B										4.10	0.07B									
ALTAVISTA														4.68		2.03	19	0.0				6	3	2
APPOMATTOX														2.91	-1.39	1.17	19	0.0				5	2	1
BEDFORD 4 NW														2.48		0.90	19	0.0				6	2	0
BROOKNEAL	81.1	55.7	68.4	5.0	96	01	41	26+	38	148	3	0	0	0	3.07	-0.81	1.24	03	0.0	0		5	2	2
CHARLOTTE COURT HOUSE														2.90	-1.18	1.00	04	0.0	0			4	3	1
CHARLOTTESVILLE 2W	78.7	58.3	68.5	-0.3	93	01	48	26+	28	141	1	0	0	0	4.32	-0.58	1.07	03	0.0	0		7	4	1
CHATHAM	78.1	53.5	65.8	-0.3	92	01	37	26+	78	110	1	0	0	0	4.93	0.48	1.79	19	0.0			9	4	1
CONCORD 4 SSW														3.01		1.50	19	0.0				5	2	1
DANVILLE REGIONAL AP	81.8	58.3	70.1	0.2	93	01	41	25	22	178	5	0	0	0	3.87	-0.09	0.98	18	0.0	0		9	2	0
FREE UNION	77.3	53.8	65.6		91	01	39	26+	68	92	1	0	0	0	FA 1.67		0.91	19	0.0			4	1	0
HOLCOMB ROCK														3.61		1.52	19	0.0	0			6	3	1
HUDDLESTON 4 SW														2.60		0.88	03	0.0				6	2	0
LYNCHBURG #2	77.7	54.8	66.3	-0.4	92	01	39	25+	63	106	1	0	0	0	2.00	-1.72	0.82	19	0.0			5	1	0
LYNCHBURG INTL AP	78.3	55.8	67.1	0.1	90	01	40	25	46	114	1	0	0	0	2.35	-1.53	1.09	18	0.0	0		6	2	1
MARTINSVILLE FLTR PLT	79.8	54.6	67.2	0.6	94	01	38	26+	52	123	2	0	0	0	5.77	1.21	1.21	03	0.0			9	6	1
MEADOWS OF DAN 5 SW	75.6	53.6	64.6		86	03+	41	25+	72	70	0	0	0	0	10.74		2.30	19	M 0.0	0		9	6	5
MONTEBELLO FISH CULTURAL STN	73.3M	49.8M	61.6M		87	01	34	24	142E	58E	0	0	0	0	M 7.45		2.65	18	M 0.0	0		8	3	2
MONTECELLO	76.1	57.0	66.6	0.7	89	01	44	26+	50	105	0	0	0	0	7.04	2.57	2.04	19	0.0			9	4	3
PEDLAR DAM														3.51		1.44	19	0.0	0			6	2	1
ROCKY MT	79.4	55.0	67.2	0.8	94	01	38	25	47	119	2	0	0	0	3.96	-0.63	1.07	05	0.0			6	4	1
SOUTH BOSTON	80.8	57.2	69.0	0.6	95	01	43	26+	31	159	2	0	0	0	4.92	0.94	2.16	03	0.0	0		7	3	1
STUART	78.4	56.4	67.4	-0.7	90	02	42	26+	40	117	1	0	0	0	6.67	2.03	2.53	05	0.0			6	4	3
TYE RIVER 1 SE	79.4	56.5	68.0	0.2	90	01	41	25	33	127	1	0	0	0	2.39	-1.77	0.65	18	0.0	0		6	2	0
WOOLWINE														8.10		1.90	18	M 0.0	0			10	5	4
--DIVISIONAL DATA-----> NORTHERN 04			66.9	-0.7B										4.36	-0.02B									
BOSTON 4 SE	78.4	52.8	65.6	0.4	93	01	38	26+	83	107	1	0	0	0	FA 2.95	-1.40	2.21	28	0.0	0		3	1	1
EDINBURG	78.4	51.0	64.7	0.0	94	01	36	26	103	100	2	0	0	0	5.04	1.64	2.22	19	0.0			6	4	1
FRONT ROYAL	78.4	55.3	66.9	0.3	93	01	44	27+	61	125	1	0	0	0	FA 3.96	-0.54	2.12	19	M 0.0	0		5	2	2
LINCOLN	78.2	52.0	65.1	-0.5	93	01	37	25	98	108	3	0	0	0	4.98	4.98	1.78	26	0.0	0		5	4	2
LURAY 5 E	78.2	52.5	65.4	-1.1	91	01	40	25+	84	100	1	0	0	0	3.03	-1.50	1.40	19	0.0	0		7	2	1

MONTHLY STATION AND DIVISION SUMMARY

STATION	TEMPERATURE (°F)										PRECIPITATION (IN)													
	AVERAGE MAXIMUM	AVERAGE MINIMUM	AVERAGE	DEPARTURE FROM NORMAL	HIGHEST	DATE	LOWEST	DATE	HEATING DEG. DAYS	COOLING DEG. DAYS	NO. OF DAYS				TOTAL	DEPARTURE FROM NORMAL	GREATEST 24 HOURS	DATE	ICE PELLETS, SNOW			NO. OF DAYS		
											MAX		MIN						TOTAL	MAX DEPTH ON GROUND	DATE	.10 OR MORE	.50 OR MORE	1.00 OR MORE
											>=90	<=32	<=32	<=0										
MADISON	78.7	55.9	67.3	0.8	93	01	43	26	47	123	1	0	0	0	FA 3.36	-1.02	2.35	28	0.0	0		4	2	1
MANASSAS	80.6M	57.8M	69.2M	0.6	94	02	45	26+	33E	158E	3	0	0	0	MA 4.42	4.42	1.90	28	0.0	0		6	4	1
MT WEATHER	73.9	57.1	65.5	-0.1	89	01	46	23	75	98	0	0	0	0	FA 5.35	0.83	3.78	19	0.0		6	1	1	
PIEDMONT RSCH STN	77.7	56.6	67.2	-0.8	90	01	43	25	47	119	1	0	0	0	FA 3.57	-0.46	1.22	07	0.0		6	3	2	
SOMERSET	79.1	54.7	66.9	-0.4	92	01	41	25	59	121	1	0	0	0	3.74	-0.50	1.19	19	0.0		8	3	1	
SPERRYVILLE	77.6	54.0	65.8	-0.9	92	01	40	26	66	97	1	0	0	0	5.02	0.05	2.94	19	0.0		5	3	1	
STERLING RCS	80.4	54.5	67.5	0.7	95	01	42	27+	60	142	5	0	0	0	2.61	-1.39	0.85	19	0.0	0	5	3	0	
VIENNA	76.4	55.6	66.0	-0.1	89	08+	44	21+	77	114	0	0	0	0	2.30	-1.88	0.58	28+	0.0		6	3	0	
WARRENTON 3 SE	M	M	M											M					0.0					
WASHGTON DULLES INTL AP	79.8	56.4	68.1	0.2	92	01	45	30+	51	151	4	0	0	0	2.71	-1.21	1.17	18	0.0	0	5	2	1	
WASHINGTON REAGAN AP	80.7	63.7	72.2	1.2	95	01	53	25	5	229	3	0	0	0	4.29	0.57	1.64	01	0.0	0	7	2	1	
WINCHESTER	76.1	55.4	65.8	-0.3	91	01	44	25	80	112	1	0	0	0	4.61	0.87	2.67	19	0.0		5	2	1	
WINCHESTER 7 SE	78.7	52.4	65.6	0.5	94	01	39	26+	85	109	2	0	0	0	4.32	0.41	2.42	19	M 0.0	0	7	2	1	
WOODSTOCK 2 NE	77.3M	52.9M	65.1M	0.3	90	01	40	26+	86E	97E	1	0	0	0	M 7.10	3.22	2.22	19	0.0		6	5	3	
--DIVISIONAL DATA----->			66.7	0.7B										3.88	-0.19B									
CENTRAL MOUNTAIN 05																								
BUCHANAN														2.24	-1.51	1.30	18	0.0			3	2	1	
BUENA VISTA														4.11		1.85	04	0.0			4	3	2	
COVINGTON FLTR PLT	78.8	53.4	66.1	-0.2	93	02+	38	25+	71	111	2	0	0	0	5.13	1.89	1.74	06	M 0.0	0	9	3	2	
CRAIGSVILLE 2 S														M		0.0								
DALE ENTERPRISE	76.2M	52.4M	64.3M	-0.3	92	01	40	25	96E	84E	1	0	0	0	M 2.85	-0.69	1.08	19	M 0.0	0	6	2	1	
GATHRIGHT DAM	74.4	52.7	63.6	-0.4	87	01	38	25+	113	76	0	0	0	0	4.06	0.69	1.34	18	M 0.0	0	7	2	2	
GLASGOW 1 SE														3.76		1.39	19	0.0			5	2	2	
HOT SPRINGS	73.3	51.0	62.2	-0.5	86	01	35	25+	143	64	0	0	0	0	3.97	0.32	1.64	19	0.0		6	2	2	
LEXINGTON														3.63	0.11	1.28	18	0.0			7	2	2	
MILLGAP	73.1	46.4	59.8	0.2	84	01	29	24	204	54	0	0	4	0	5.10	1.51	2.00	19	0.0	0	8	3	2	
MTN GROVE														5.84		3.15	18	0.0			8	4	1	
MUSTOE 1 SW	70.8	46.7	58.8	-1.2	81	07+	29	25+	219	36	0	0	2	0	5.65	1.99	2.71	18	0.0	0	7	4	1	
NEW CASTLE														4.79		1.56	18	0.0			9	5	1	
ROANOKE 8 N	79.6M	55.8	67.7M	-0.3	94	01	41	25+	35E	129E	2	0	0	0	6.34	2.20	2.81	06	M 0.0	0	6	3	2	
ROANOKE INTL AP	78.4	58.1	68.3	0.2	90	01	41	24	34	138	1	0	0	0	3.60	-0.29	1.73	18	0.0	0	4	3	1	
STAUNTON WATER TRMTMT PLT	76.2	55.2	65.7	0.5	90	01	40	24	70	98	1	0	0	0	2.82	-0.97	0.89	18	M 0.0	0	7	1	0	
WAYNESBORO WTP	77.8	54.1	66.0	1.1	92	01	41	26+	63	101	1	0	0	0	3.27	-1.43	1.01	19	0.0	0	7	2	1	
--DIVISIONAL DATA----->			64.3	-0.8B										4.29	0.70B									
SOUTHWESTERN MOUNTAIN 06																								
ABINGDON 3S	76.4M	54.9M	65.7M	0.1	88	01	36	24	70E	95E	0	0	0	0	FMA 2.98	-0.37	0.90	02	M 0.0	0	6	3	0	
BIG STONE GAP	77.0	56.2F	66.6F	-0.6	88	02+	38	24	61	110	0	0	0	0	6.01	2.13	2.85	18	0.0		12	2	1	

MONTHLY STATION AND DIVISION SUMMARY

STATION	TEMPERATURE (°F)										PRECIPITATION (IN)													
	AVERAGE MAXIMUM	AVERAGE MINIMUM	AVERAGE	DEPARTURE FROM NORMAL	HIGHEST	DATE	LOWEST	DATE	HEATING DEG. DAYS	COOLING DEG. DAYS	NO. OF DAYS				TOTAL	DEPARTURE FROM NORMAL	GREATEST 24 HOURS	DATE	ICE PELLETS, SNOW			NO. OF DAYS		
											MAX		MIN						TOTAL	MAX DEPTH ON GROUND	DATE	.10 OR MORE	.50 OR MORE	1.00 OR MORE
											>=90	<=32	<=32	<=0										
BLACKSBURG NWSO	75.6	51.6	63.6	0.5	88	01	35	24	113	76	0	0	0	0	3.61	0.51	1.34	18	0.0	0		6	2	1
BURKES GARDEN	71.3	47.2	59.3	-0.3	83	03+	27	25+	214	48	0	0	2	0	5.47	2.16	1.60	18	0.0	0		9	4	2
CHRISTIANSBURG	74.9	52.9	63.9	-0.5	87	01	37	25+	102	76	0	0	0	0	3.04	-0.44	0.98	19	0.0			5	2	0
CLINTWOOD 1 W	73.5	51.5	62.5	-0.9	86	02	33	25+	135	69	0	0	0	0	4.21	0.93	2.02	18	0.0	0		9	2	1
COPPER HILL	70.4	53.1	61.8		85	01	36	25	138	47	0	0	0	0	4.53		1.31	19	0.0	0		5	4	2
GALAX RADIO WBRF	74.7	52.4	63.6	0.7	89	01	34	24	110	73	0	0	0	0	4.07	0.24	1.33	18	0.0			7	3	2
GALAX WTP	73.8	51.0	62.4	0.0	88	01	35	26+	135	62	0	0	0	0	5.13	5.13	1.36	03	M 0.0	0		10	4	2
GRUNDY	74.6	55.4	65.0	-0.6	88	02+	41	25+	86	92	0	0	0	0	6.42	3.28	2.25	18	0.0	0		9	4	2
JOHN FLANNAGAN LAKE	M	M	M		91	10	40	25+						M					0.0					
LAFAYETTE 1 NE														2.57		1.21	18	0.0				4	2	1
LEBANON	76.6	52.3	64.5	-0.3	89	02+	35	25+	93	89	0	0	0	0	7.33	4.24	2.54	18	M 0.0	0		8	4	2
NORA 4 SSE	71.7	55.4	63.6	-1.6	87	01	39	24+	105	68	0	0	0	0	5.74	2.43	2.62	18	0.0	0		9	3	1
NORTH FORK LAKE	M	M	M		89	04	37	25						MA 4.31		1.74	18	0.0				6	3	1
PULASKI 2 E	77.7	52.7	65.2	1.1	90	01	36	25	76	90	1	0	0	0	3.28	0.22	2.00	18	M 0.0	0		5	2	1
RADFORD 3 N	76.5	52.5	64.5	1.2	90	01	35	24	95	85	1	0	0	0	3.21	0.20	1.55	18	0.0			5	1	1
RICHLANDS	76.3	52.1	64.2	-0.2	89	01	36	25+	98	82	0	0	0	0	6.35	3.22	2.63	18	0.0			10	4	2
SALTVILLE 1N	76.9	53.1F	65.0F	-0.5	89	01	37	25+	80	89	0	0	0	0	6.65	3.37	2.24	18	M 0.0	0		8	4	2
STAFFORDSVILLE 3 ENE	76.1	52.4	64.3	0.6	90	01	35	26+	100	84	1	0	0	0	3.75	0.66	1.83	18	0.0			8	2	1
TROUT DALE 3 SSE	72.4	48.6	60.5		84	01	30	25	173	45	0	0	3	0	6.35		2.98	18	0.0	0		6	4	2
WILLIS														M					0.0					
WISE 3E	72.4	53.3F	62.9F	-1.3	83	08+	35	24	113	63	0	0	0	0	5.56	1.96	2.65	18	0.0			8	2	1
WYTHEVILLE 1 S	76.8	50.4	63.6	1.0	90	01	33	25	107	74	1	0	0	0	3.62	0.43	2.02	18	0.0	0		5	2	1
--DIVISIONAL DATA----->			63.6	0.0B											4.85	1.38B								

VIRGINIA
201209

DAILY PRECIPITATION (INCHES)

STATION	TOTAL	DAY OF MONTH																														
		01	02	03	04	05	06	07	08	09	10	11	12	13	14	15	16	17	18	19	20	21	22	23	24	25	26	27	28	29	30	31
VIRGINIA																																
TIDEWATER 01																																
DISPUTANTA	5.12			1.57	0.04			0.37		0.98								0.14	1.51				0.38							0.09	0.04	
EASTVILLE	0.63			0.05				0.01		0.13									0.41											0.01	0.02	
EMPORIA 1 WNW	4.23		T	1.60	0.03			0.25		0.37								0.46	0.80		0.02		0.17							0.18	0.35	
FREDERICKSBURG SEWAGE	M 2.04			0.01	0.28	0.01		0.79	T	0.33	-							0.23	0.27									T	0.12			
HAMPTON UNIV	1.06		0.34							0.52																				0.20		
HOLLAND 1 E	FA 4.14	0.00 ^L _a		0.30	0.68			0.30		0.78								0.07	1.30											0.57	0.14	
HOPEWELL	5.13			1.25	0.02	0.28				0.80								0.57	0.92				0.22							1.05		
NORFOLK INTL AP	1.27		0.07			0.01	0.46		0.07	0.08						T	T	0.46	0.04			T								0.07	0.01	
NORFOLK SOUTH	M 1.67		0.18	T		0.02	0.54		0.11	0.12	-					T	T	0.52	0.02				0.01							0.14	0.01	
NORTH	3.43			0.62	0.06			0.44		0.30								0.08	0.78				0.95							0.12	0.08	
PAINTER 2W	2.17			0.02	0.01		0.97		0.21	0.29								0.03	0.51				0.03							0.10		
STONY CREEK 2 N	FA 0.00	0.00 ^L _a	0.00 ^L	0.00 ^L	0.74 ^L _a	0.00 ^L	0.01 ^L _a	0.00 ^L	0.00 ^L	0.00 ^L	0.50 ^L _a							0.00 ^L	1.08 ^L _a	0.00 ^L	0.01 ^L _a	0.00 ^L	0.00 ^L	0.06 ^L _a	0.00 ^L	0.01 ^L _a		0.00 ^L	0.00 ^L			
SUFFOLK LAKE KILBY	2.22			0.19	0.31			0.17		0.40	0.08					T	0.13	0.59	0.03				T						T	0.32		
WAKEFIELD 1NW	4.97		1.83	0.01				0.05		0.72	0.01					0.01	0.08	0.99	0.15				0.78	0.01					0.02	0.31		
WALKERTON 2 NW	M			0.24		T	0.52		0.61								-	-	-	-	-	-	-	-	-	-	-	-	-	-	-	
WALLACETON LK DRUMMOND	M 2.90			0.25			0.15	1.05		0.33								0.05	0.40	0.04										0.06	0.57	
WALLOPS ISLAND NASA TEST FACIL	5.76		0.31	T	1.96	T	2.45		0.13	0.02								0.74	T				0.01						0.14	T		
WARSAW 2 NW	2.92			0.06			0.37			1.01								0.12	0.56											0.80		
WEST POINT 2 NW	FA 0.91	T	0.16 ^L	0.27 ^L _a			0.90	0.01	0.00 ^L	0.85 ^L _a	0.04						0.00 ^L	0.80 ^L _a	1.01 ^L _a									0.00 ^L	0.02 ^L _a			
WILLIAMSBURG 2 N	2.97			0.52			0.40		0.40	0.04						0.02	0.30	0.88	0.02				0.18	0.01					0.12	0.08		
EASTERN PIEDMONT 02																																
ALBERTA 5N	7.37		T	2.41	0.39		0.33	0.23		0.16						T	0.02	0.25	3.01				T							0.47	0.10	
AMELIA COURTHOUSE 1	M 5.04	0.77	-	1.29	0.29			0.70		-	0.65					-		0.04	1.12				-							0.18	-	
ASHLAND	1.77		0.55			0.07	0.24		0.17	0.05								0.64	T									0.05				
BREMO BLUFF	2.70		0.32	0.36	0.10		0.03		0.16								0.04	1.30										0.18	0.19	0.02		
BUCKINGHAM	2.81			0.99	0.48					0.09								0.05	1.16											0.01	0.03	
CAMP PICKETT	5.86		0.48	1.17	0.80			0.21		0.33							0.07	2.60					0.02						0.08	0.10		
CHASE CITY	6.29			2.46	0.75			0.06		0.13							0.06	0.03	1.33				0.62						0.62	0.23		
CLARKSVILLE	M 5.90			-	0.80			0.30		1.35						0.10	0.05	0.10	2.20				0.35						0.55	0.10		
CORBIN	3.65			0.05	0.52		0.69			0.29								0.27	0.59											1.24		
CROZIER	2.94		0.08	0.87	0.48			0.22		0.11								0.10	0.68										0.40			
FARMVILLE 2 N	4.08		0.12	0.96	0.50	T		1.53		0.11							T	0.19	0.52				T						0.15			
GREENBAY 3 NE	3.89	0.05	0.06	0.42	0.51		0.02	0.65		0.19								0.10	0.72				0.03						1.12	0.02		
JOHN H KERR DAM	4.01			0.26	0.10			0.12		0.43							0.50	0.05	2.00				0.21						0.25	0.09		
LOUISA	3.12		0.57	0.10	0.27	0.01	0.59		0.50									0.93	0.02								0.03	0.09	0.01			
PALMYRA 3S	4.02	0.02		0.72	0.53			0.20		0.43								0.28	1.11										0.60	0.13		
PETERSBURG	6.35			2.06	0.04			0.28		1.19								0.10	1.70				0.33						0.53	0.12		
RICHMOND INTL AP	4.08	T	1.57	0.03		0.17	1.03		0.21	T							0.05	0.84	0.04									0.10	0.04			
SANDSTON	3.04	0.03	0.29				0.03	1.26		0.29								0.04	1.05											0.05		
WINTERPOCK 4 W	3.72		T	0.35	0.19			0.27		0.54									1.86				0.01						0.49	0.01		

VIRGINIA
201209

DAILY PRECIPITATION (INCHES)

STATION	TOTAL	DAY OF MONTH																														
		01	02	03	04	05	06	07	08	09	10	11	12	13	14	15	16	17	18	19	20	21	22	23	24	25	26	27	28	29	30	31
WESTERN PIEDMONT 03																																
ALTAVISTA	4.68			1.22	0.06	0.15	0.10			0.03							0.02	0.18	2.03												0.89	
APPOMATTOX	2.91			0.33	0.22		0.03	0.91		0.04								0.10	1.17							0.04				0.07		
BEDFORD 4 NW	2.48		0.01	0.11	0.18	0.30	0.50	0.01		0.03							0.01	0.42	0.90							0.01						
BROOKNEAL	3.07			1.24			0.02			0.23							0.06	0.12	1.03												0.35	0.02
CHARLOTTE COURT HOUSE	2.90		0.10	0.80	1.00					0.03						T	0.08	0.03	0.75				T							T	0.02	
CHARLOTTESVILLE 2W	4.32	0.01	0.05	1.07	0.45	0.08	0.68	0.56		0.15								0.18	0.98							T		0.02	0.08	0.01		
CHATHAM	4.93		0.02	0.72	0.02	0.53				0.20						0.10	0.30	0.42	1.79											0.63	0.20	
CONCORD 4 SSW	3.01			0.80	0.30	0.06	0.16	0.03		0.02							0.02	0.11	1.50											0.01		
DANVILLE REGIONAL AP	3.87	T	0.43	0.15	0.13	T	0.32		0.04							0.87	0.35	0.98				T							0.36	0.24		
FREE UNION	FA 1.67	0.05	0.05 ^L	0.85 ^L	0.17 ^L	0.42 ^L	0.86 ^L	0.35 ^L	0.00 ^L	0.11								0.23	0.91							0.02		0.01	0.34	0.00 ^L		
HOLCOMB ROCK	3.61		0.05	0.24	0.71	0.51				0.08								0.27	1.52											0.18	0.05	
HUDDLESTON 4 SW	2.60		0.02	0.88	0.05	0.22	0.05	0.02		0.15							0.02	0.22	0.80							0.02				0.15		
LYNCHBURG #2	2.00		T	0.05	0.48	0.12	0.06			0.25							0.02	0.13	0.82							0.04			0.01	0.02		
LYNCHBURG INTL AP	2.35	T	0.06	0.51	0.19	0.14	0.03		0.21							T	0.11	1.09								0.01			T	T	T	
MARTINSVILLE FLTR PLT	5.77		0.06	1.21	0.06	0.62			0.83	0.10						0.94	0.07	0.20	0.65											0.85	0.18	
MEADOWS OF DAN 5 SW	10.74		0.15	2.22	1.15	1.45	0.79	0.03	0.05							0.46	0.01	1.58	2.30											0.07	0.48	
MONTEBELLO FISH CULTURAL STN	M 7.45		0.17	T	0.47	0.02	-	0.65		0.36								2.65	2.64									0.11	0.38	T		
MONTICELLO	7.04		0.03	0.48	0.90	0.18	0.29	1.02		1.64								0.13	2.04											0.33	T	
PEDLAR DAM	3.51		0.02	0.03	0.24	0.17	0.66	0.07		0.02							T	0.39	1.44							T			0.39	0.08		
ROCKY MT	3.96		0.11	0.71	1.07	0.02	0.05	0.01	0.09							0.14	0.02	0.72	0.96					T		0.03				0.03		
SOUTH BOSTON	4.92			2.16	0.34	0.26		0.09		0.08						0.01	0.10	0.03	0.84					0.30						0.68	0.03	
STUART	6.67			0.65	0.23	2.53		0.09	0.09	0.01						1.33		1.20	0.02											0.07	0.45	
TYE RIVER 1 SE	2.39			0.06	0.42	0.12				0.26								0.65	0.62											0.26		
WOOLWINE	8.10		1.15	1.60	0.34	0.90	0.15			0.03						0.16	0.04	1.90	1.40							0.02				0.23	0.18	
NORTHERN 04																																
BOSTON 4 SE	FA 2.95	0.04			0.26	0.11 ^L	0.08 ^L			0.04								0.54 ^L	0.68 ^L										2.21	0.40		
EDINBURG	5.04	0.01	0.01	0.18		0.05	0.02	0.01		0.90								0.37	2.22									0.52	0.75			
FRONT ROYAL	FA 3.96			0.02	0.19	0.00 ^L	0.15 ^L	0.04 ^L	0.00 ^L	0.74 ^L	0.00 ^L							0.21	2.12							0.01	0.31	1.10				
LINCOLN	4.98			0.07	0.08	0.13				0.52									1.58							1.78				0.82		
LURAY 5 E	3.03	0.03		0.10	0.11		0.22	0.02		0.14								0.39	1.40											0.60	0.02	
MADISON	FA 3.36		0.00 ^L	0.00 ^L	0.58 ^L		0.38											0.13	0.50											2.35		
MANASSAS	MA 4.42	-		0.50	0.10		*	0.30 ^a		0.80								-	0.65									0.05	1.90	0.12	-	
MT WEATHER	FA 5.35			0.11	0.45			T		0.48								0.34	3.78							0.19	0.01 ^L	0.74 ^L				
PIEDMONT RSCH STN	FA 3.57		0.00 ^L	0.00 ^L	0.37 ^L			1.22		0.21								0.15	1.11										0.10	0.78		
SOMERSET	3.74	0.05	0.02	0.03	0.24	0.05	0.64	0.12	0.02	0.10								0.29	1.19							T		0.13	0.86			
SPERRYVILLE	5.02			0.11	0.76	0.02		0.09		0.01								0.42	2.94										0.64	0.03		
STERLING RCS	2.61		T	0.52	0.03					0.42								0.19	0.85					T			0.04	0.06	0.50			
VIENNA	2.30	0.11	0.19	0.01	0.01			0.06		0.56								0.17	0.58									0.03	0.58			
WARRENTON 3 SE	M	-	-	-	-	-	-	-	-	-	-	-	-	-	-	-	-	-	-											-	-	
WASHGTN DULLES INTL AP	2.71	T	0.39		0.02		0.03		0.16								0.06	1.17										0.02	0.53	0.09		0.01
WASHINGTON REAGAN AP	4.29	1.64	0.05	T	T	0.02	0.24		0.49								0.14	0.93									0.05	0.49	0.24		T	

VIRGINIA
201209

DAILY PRECIPITATION (INCHES)

STATION	TOTAL	DAY OF MONTH																													
		01	02	03	04	05	06	07	08	09	10	11	12	13	14	15	16	17	18	19	20	21	22	23	24	25	26	27	28	29	30
STAFFORDSVILLE 3 ENE	3.75		0.10	0.11	0.02	0.03	0.23			0.14							0.12	1.83	0.93							0.06		0.16	0.02		
TROUT DALE 3 SSE	6.35		0.80	0.33	0.13		1.13	0.01										2.98	0.92							0.03				0.02	
WILLIS M				0.47	0.20	0.12	0.06	0.02		0.02						0.08	0.13	1.00	1.00	-	-	-	-	-	-	-	-	-	-	-	-
WISE 3E	5.56			0.18	0.05	0.48	0.26		0.78								0.12	2.65	0.07						0.09		0.08	0.42	0.38		
WYTHEVILLE 1 S	3.62		0.01	0.04	0.10		0.28	0.12		0.04							0.07	2.02	0.79							0.05		0.02	0.03	0.05	

VIRGINIA
201209

DAILY TEMPERATURES (°F)

STATION	OB. TIME	MAX/MIN	DAY OF MONTH																															AVERAGE		
			01	02	03	04	05	06	07	08	09	10	11	12	13	14	15	16	17	18	19	20	21	22	23	24	25	26	27	28	29	30	31			
VIRGINIA																																				
TIDEWATER 01																																				
DISPUTANTA	07	MAX	90	88	89	84	88	87	84	88	87	78	77	77	78	80	83	76	68	76	79	70	75	81	85	71	71	76	82	85	82	64			80.0	
		MIN	68	70	69	70	70	70	62	62	61	54	49	48	48	50	58	51	52	62	59	51	51	52	59	46	45	45	54	57	59	54			56.9	
EASTVILLE	07	MAX	87	85	84	81	86	86	86	84	86	77	75	74	78	78	80	80	72	78	83	72	74	75	81	70	71	74	79	80	79	67			78.7	
		MIN	71	75	74	74	76	76	68	69	67	66	58	56	57	60	63	57	57	65	65	58	54	58	65	53	54	57	68	69	64	58			63.7	
EMPORIA 1 WNW	08	MAX	90	90	90	86	87	87	85	87	87	79	78	79	80	82	84	84	66	80	80	71	77	81	84	84	84	76	82	85	85	62			81.7	
		MIN	69	69	71	72	71	71	66	67	64	56	53	52	52	52	62	57	57	63	60	53	53	55	60	48	48	48	54	58	55	55			59.1	
FREDERICKSBURG SEWAGE	07	MAX	94	92	85	85	89	89	82	89	89																									80.7
		MIN	71	72	71	71	74	73	65	66	57																									57.8
HAMPTON UNIV	17	MAX	93	88	87	89	88	87	83	89	87	77	76	76	79	78	77	75	79	84	77	75	77	84	81	71	76	82	82	83	80	74			81.1	
		MIN	76	73	74	76	75	71	70	67	66	62	61	54	62	66	64	60	67	70	62	62	61	66	58	57	61	65	66	68	60	60			65.3	
HOLLAND 1 E	08	MAX	90	91	90	84	90	90	92	91	90	79	78	88	80	82	85	78	74	80	86	72	81	84	75	75	77	83	87	85	70	76			82.8	
		MIN	70	69	68	69	67	69	63	60	61	54	48	46	50	57	58	50	59	66	57	51	52	59	50	45	45	53	57	57	55			57.4		
HOPEWELL	16	MAX	92	92	87	87	88	87	87	87	88	78	76	78	80	81	82	77	76	76	75	74	80	85	85	71	76	83	85	84	82	73			81.7	
		MIN	74	74	72	74	74	73	66	73	64	61	54	54	56	65	64	56	61	70	62	55	57	57	57	50	51	58	58	63	59	57			62.3	
NORFOLK INTL AP	24	MAX	91	89	85	89	89	89	83	89	77	76	74	76	78	81	75	76	80	87	73	74	76	85	73	70	77	83	85	85	72	75			80.4	
		MIN	75	73	73	75	73	70	69	70	68	65	59	55	61	65	60	57	67	70	66	63	59	62	63	54	51	60	65	64	59	58			64.3	
NORFOLK SOUTH	24	MAX	90	89	83	89	89	88	85	88	75																									79.6
		MIN	74	71	71	74	72	69	68	69	62																									61.7
NORTH	07	MAX	89	83	85	78	85	85	81	81	85	75	74	74	75	77	76	74	71	75	82	69	73	75	82	70	69	73	80	79	80	63			77.3	
		MIN	74	74	71	73	74	75	63	64	64	58	55	52	52	54	59	53	55	63	61	54	53	53	59	49	50	50	61	61	61	56			60.0	
PAINTER 2W	16	MAX	90	89	85	88	87	87	83	86	86	76	74	76	78	81	77	75	77	81	76	75	80	83	82	70	73	80	80	82	81	73			80.4	
		MIN	75	73	72	74	75	67	63	71	65	61	55	51	54	57	62	51	61	70	65	55	53	61	62	46	47	60	62	61	63	54			61.5	
STONY CREEK 2 N	08	MAX	90	87	89	86	88	88	84	86	88	78	76	77	78	80	83	76	67	77	78	70	76	81	85	71	71	76	83	86	84	67			80.2	
		MIN	68	69	70	71	72	71	66	63	65	57	54	49	49	49	58	53	52	62	60	54	51	53	58	48	46	44	53	57	58	57			57.9	
SUFFOLK LAKE KILBY	24	MAX	89	81	82	87	87	86	86	86	77	76	76	77	79	83	77	72	78	82	70	75	79	82	71	71	74	80	84	81	68	73			79.0	
		MIN	72	70	72	68	70	69	69	70	61	56	56	48	57	65	59	55	63	68	58	50	53	60	55	52	48	57	61	62	53	56			60.4	
WAKEFIELD 1NW	24	MAX	89	91	85	90	89	86	88	88	79	79	78	80	82	84	78	69	79	83	71	76	81	85	73	72	76	83	86	83	67	74			80.8	
		MIN	72	70	70	72	71	65	63	65	57	53	49	47	50	57	51	50	62	67	53	51	52	60	48	45	46	55	59	61	56				57.7	
WALKERTON 2 NW	18	MAX	99	96	93	89	93	91	92	88	80	82	83	85	86	81	78	81																		M
		MIN	72	76	74	76	77	76	77	63	61	53	53	62	63	54	60	70																		M
WALLACETON LK DRUMMOND	08	MAX	91	95	93	87	91	90	90	91	84	81	80	82	84	86	83	80	82	85	71	79	85	86	75										84.2	
		MIN	66	66	66	67	67	68	60	64	59	55	47	42	53	52	46	55	60	54	50	47	49	51	42										54.8	
WALLOPS ISLAND NASA TEST FACIL	24	MAX	91	82	84	86	88	79	83	85	79	77	74	76	79	80	78	75	78	83	75	75	77	83	75	73	74	83	81	80	67	74			79.1	
		MIN	78	72	77	72	75	67	64	66	62	59	53	53	55	59	61	54	59	70	59	56	56	67	56	49	51	65	66	65	59	54			62.0	
WARSAW 2 NW	18	MAX				90	90	89	88																											M
		MIN				74	74	72																												M
WEST POINT 2 NW	17	MAX	92	89	83	89	87	84	88	88	84	76	78	79	81	83	80	75	77	80	74	75	80	86	80	72	76	83	84	82	75	74			81.1	
		MIN	71	71	71	73	73	67	63	64	60	55	51	51	53	60	54	55	61	66	54	53	54	61	50	47	49	60	60	63	57	52			59.3	
WILLIAMSBURG 2 N	24	MAX	90	87	83	89	89	85	87	88	78	76	77	78	81	83	76	72	78	84	73	77	80	84	84	84	84	75	82	83	82	70	74			81.0
		MIN	73	71	71	71	73	69	66	67	62	57	55	54	56	61	56	54	62	70	61	59	58	64	56	54	52	60	61	62	61	58			61.8	

VIRGINIA
201209

DAILY TEMPERATURES (°F)

STATION	OB. TIME	MAX/MIN	DAY OF MONTH																															AVERAGE
			01	02	03	04	05	06	07	08	09	10	11	12	13	14	15	16	17	18	19	20	21	22	23	24	25	26	27	28	29	30	31	
EASTERN PIEDMONT 02 AMELIA COURTHOUSE 1	08	MAX	92		89	89	86	86	78	86		87	87	87	87	79	82		75	73	76	71	74	81		83	70	75	83	84	82			81.7
		MIN	72		69	69	73	73	63	67		54	51	51	51	57	59		54	61	60	48	52	57		45	45	51	57	59	58			58.2
ASHLAND	18	MAX	90	87	85	87	86	79	86	87	77	77	76	79	80	83	80	73	75	77	70	74	81	84	83	69	75	84	83	83	71	74		79.8
		MIN	73	70	70	72	75	69	64	65	58	56	49	50	51	58	61	52	55	66	59	48	53	62	55	46	44	59	61	61	59	50		59.0
CAMP PICKETT	08	MAX	91	86	89	88	85	86	80	86	85	85	85	76	77	78	80	75	75	74	75	70	74	79	82	82	69	74	81	84	82	64		79.9
		MIN	64	72	70	69	69	70	64	64	61	54	49	50	49	50	54	54	59	59	48	48	53	58	45	44	45	48	58	58	53		56.3	
CHASE CITY	17	MAX	90	86	89	85	86	85	85	87	85	78	78	77	79	81	81	76	65	75	76	72	75	82	83	73	71	75	81	84	84	66		79.7
		MIN	70	72	70	69	72	73	66	66	63	53	50	51	51	53	58	56	60	61	61	49	53	53	55	45	45	45	54	56	56	55		58.0
CLARKSVILLE	07	MAX	92	89		85	86	86	86	86	86	81	80	78	79	79	82	79	65	75	74	72	75	83	85	74	71	76	83	86	86	62		80.0
		MIN	72	73		70	70	72	66	68	64	55	52	52	52	59	60	59	60	59	62	50	50	55	60	48	48	49	55	57	57	54		58.9
CORBIN	09	MAX	91	85	83	88	89	81	88	89	78	74	76	79	80	82	75	73	73	78	69	76	80	84	73	70	77	85	83	80	70	74		79.4
		MIN	70	74	70	72	75	70	64	63	55	53	48	51	51	56	60	51	52	66	55	46	53	62	53	46	45	59	60	62	55	48		58.2
CROZIER	07	MAX	91	85	88	84	85	86	80	87	86	78	75	77	80	80	81	75	69	72	77	69	75	82	83	70	70	75	84	85	80	69		79.3
		MIN	68	64	69	69	72	72	64	67	59	51	48	48	49	49	56	50	53	62	59	45	52	52	53	43	42	55	58	57	50	51		56.2
FARMVILLE 2 N	07	MAX	91	85	89	89	83	84	79	85	86	77	75	75	78	77	81	74	74	71	76	68	75	82	83	69	68	75	83	83	81	65		78.7
		MIN	71	71	69	68	70	71	63	63	63	53	50	50	50	50	56	56	55	58	60	48	47	54	56	44	44	44	56	59	58	53		57.0
GREENBAY 3 NE	09	MAX	92	92	89	83	83	85	76	85	85	80	77	75	78	79	80	80	64	73	74	69	74	81	83	70	70	75	83	85	82	82		79.5
		MIN	71	71	69	69	71	73	62	67	61	62	48	49	50	53	58	54	54	61	58	47	55	62	54	43	47	55	60	59	56	51		58.3
JOHN H KERR DAM	08	MAX	94	91	93	91	92	90	88	90	92	81	82	80	81	82	85	79	66	80	79	73	80	85	87	75	75	80	87	89	86	62		83.2
		MIN	74	75	72	73	75	76	68	70	65	55	52	52	52	56	62	58	62	65	62	50	51	59	60	46	50	55	61	63	61	55		61.2
LOUISA	18	MAX	91	85	82	84	88	84	88	87	79	77	77	80	80	80	78	76	71	76	71	74	82	84	80	71	75	84	84	81	71	74		79.8
		MIN	68	71	70	69	73	71	63	66	53	49	44	45	46	50	54	48	49	66	55	43	51	62	45	42	41	56	59	61	57	45		55.7
PALMYRA 3S	06	MAX	92	85	82	82	84	87	81	87	88	78	76	75	79	78	81	75	73	71	76	70	74	81	84	68	69	75	84	84	78	68		78.8
		MIN	68	69	70	69	72	70	63	63	56	51	45	45	46	47	51	49	51	51	59	44	44	49	48	42	38	38	56	58	57	48		53.9
PETERSBURG	08	MAX	92	88	90	87	88	87	80	87	87	78	77	77	79	80	82	82	69	77	77	71	75	81	84	71	71	75	82	86	83	83		80.9
		MIN	71	72	71	71	73	72	64	64	63	54	52	52	52	52	61	54	55	61	50	51	55	61	48	47	51	57	60	60	54	54		59.0
RICHMOND INTL AP	24	MAX	91	91	83	88	89	80	87	88	80	77	78	80	81	83	79	73	77	78	74	76	81	85	73	72	76	84	85	85	70	75		80.6
		MIN	73	72	71	75	73	67	63	65	61	58	54	53	54	60	56	56	60	66	55	51	56	62	51	49	49	57	59	61	59	53		60.0
SANDSTON	07	MAX	94	90	89	85	88	88	80	87	87	79	76	77	78	83	83	77	73	76	78	71	75	80	84	70	71	76	82	83	82	68		80.3
		MIN	70	71	70	70	72	73	61	61	59	55	51	50	49	50	58	51	52	57	59	49	49	52	59	45	44	43	55	58	53	53		56.6
WESTERN PIEDMONT 03 BROOKNEAL	07	MAX	96	94	90	85	87	87	82	89	87	80	79	80	82	81	83	77	67	73	75	72	77	82	85	73	74	77	85	87	83	65		81.1
		MIN	70	70	69	69	71	72	63	63	60	50	47	48	48	48	54	57	59	61	59	47	50	53	49	41	41	41	50	54	56	52		55.7
CHARLOTTESVILLE 2W	08	MAX	93	83	85	78	82	87	82	89	86	77	75	77	80	80	80	76	72	69	71	70	74	81	83	69	70	75	83	85	77	71		78.7
		MIN	68	73	70	69	70	66	65	68	57	57	54	55	55	56	59	57	56	57	57	52	53	55	50	48	48	48	56	62	57	51		58.3
CHATHAM	07	MAX	92	87	88	81	83	84	85	85	84	76	76	75	78	78	79	76	63	71	75	69	73	81	81	70	69	74	81	84	83	63		78.1
		MIN	68	68	67	67	69	71	66	61	57	50	46	46	46	45	46	51	51	60	58	46	46	49	45	40	37	37	48	52	57	54		53.5
DANVILLE REGIONAL AP	24	MAX	93	92	85	88	88	90	90	90	82	82	81	82	82	84	82	67	75	77	73	78	83	86	75	73	77	84	89	84	69	72		81.8
		MIN	73	72	71	72	73	68	66	66	62	51	49	50	48	55	56	58	61	67	54	49	53	61	49	45	41	53	55	59	58	53		58.3
FREE UNION	08	MAX	91	80	81	76	81	85	81	87	83	77	75	76	79	79	77	75	69	69	71	71	73	81	82	70	70	73	82	84	73	67		77.3
		MIN	63	69	70	68	69	69	64	64	53	50	48	48	48	50	51	51	51	52	53	47	49	50	45	44	39	39	50	57	56	48		53.8

VIRGINIA
201209

DAILY TEMPERATURES (°F)

STATION	OB. TIME	MAX/MIN	DAY OF MONTH																															AVERAGE
			01	02	03	04	05	06	07	08	09	10	11	12	13	14	15	16	17	18	19	20	21	22	23	24	25	26	27	28	29	30	31	
LYNCHBURG #2	07	MAX	92	87	86	77	82	83	80	86	85	76	76	75	78	77	78	74	65	71	74	71	73	79	82	70	69	74	83	84	78	66	77.7	
		MIN	66	69	68	68	71	71	63	63	55	50	46	46	48	49	53	55	58	60	54	51	51	51	46	39	39	40	53	56	58	47		
LYNCHBURG INTL AP	24	MAX	90	88	79	85	84	81	87	86	78	77	77	80	80	80	76	64	68	75	73	74	81	84	72	69	75	84	85	78	66	74	78.3	
		MIN	69	69	67	69	70	65	62	63	52	51	47	49	50	53	54	56	60	64	55	50	51	58	43	41	40	52	55	57	55	47		
MARTINSVILLE FLTR PLT	07	MAX	94	92	87	81	84	83	87	88	88	79	78	78	80	79	80	79	63	71	75	73	78	80	83	72	70	75	83	85	82	67	79.8	
		MIN	64	68	69	69	71	71	70	62	56	50	48	48	48	48	52	53	57	61	55	48	49	49	45	38	38	38	52	52	57	51		
MEADOWS OF DAN 5 SW	07	MAX	85	86	86	77	74	75	80	80	78	74	75	73	78	75	78	77	63	69	69	71	72	77	78	78	69	70	78	78	78	68	75.6	
		MIN	65	66	67	68	68	68	63	63	52	51	48	49	50	50	51	56	59	60	55	52	51	51	46	41	41	43	43	43	46	46		
MONTEBELLO FISH CULTURAL STN	07	MAX	87	79	81	73	77		80	81	80	71	71	70	75		76	71	64		67	63	70	76	75	64		69	77	76	68	66	73.3	
		MIN	64	64	64	66	67		58	59	45	45	39	44	45		45	49	47		47	41	46	53	38	34	35		54	54	54	39		
MONTICELLO	08	MAX	89	81	82	78	80	83	78	85	85	73	70	72	76	75	76	77	70	68	72	66	70	77	80	64	65	71	80	81	80	80	76.1	
		MIN	67	68	70	68	69	70	65	66	57	55	52	51	54	55	58	56	55	55	56	51	50	53	51	49	44	44	54	58	57	51		
ROCKY MT	07	MAX	94	92	86	79	83	85	85	89	85	78	78	77	79	78	79	78	64	69	73	73	76	82	83	71	69	75	83	85	76	77	79.4	
		MIN	68	68	69	69	71	71	63	63	52	52	47	47	49	48	51	56	57	61	54	51	51	51	47	39	38	40	52	56	61	48		
SOUTH BOSTON	07	MAX	95	92	89	84	83	86	86	87	87	81	80	77	79	80	81	79	79	73	74	74	75	82	84	74	72	76	83	85	83	64	80.8	
		MIN	71	71	69	69	70	73	65	65	63	52	50	50	50	49	56	57	59	60	60	49	49	52	57	44	43	43	52	55	58	54		
STUART	07	MAX	89	90	85	80	80	81	83	86	83	76	79	78	80	77	80	79	63	71	73	72	75	80	81	73	70	74	83	85	80	66	78.4	
		MIN	67	68	69	70	70	71	63	64	57	56	51	52	51	51	52	58	57	59	56	53	53	53	48	45	42	42	54	54	61	46		
TYE RIVER 1 SE	07	MAX	90	87	85	73	85	85	80	88	86	87	78	79	80	80	81	75	70	72	75	71	75	80	80	75	70	75	85	85	80	70	79.4	
		MIN	67	71	69	69	70	71	64	65	54	51	48	49	50	52	53	57	58	59	64	62	49	50	48	44	41	42	55	57	58	49		
NORTHERN 04																																		
BOSTON 4 SE	07	MAX	93	89	82	80	85	87	83	88	86	78	74	76	79	80	79	79	74	72	73	68	73	79	82	82	68	62	82	66	76	76	78.4	
		MIN	67	71	70	69	69	69	64	66	52	50	44	45	48	47	47	47	47	48	50	43	43	52	46	43	38	38	57	58	51	45		
EDINBURG	07	MAX	94	85	82	78	83	90	87	89	82	76	74	76	80	82	83	75	73	77	69	68	75	81	80	66	69	73	83	81	72	68	78.4	
		MIN	59	69	69	67	67	70	65	63	50	47	44	44	45	48	48	47	46	46	50	41	41	47	41	40	37	36	54	57	47	44		
FRONT ROYAL	07	MAX	93	88	88	83	83	87	86	87	85	75	73	76	78	78	81	75	72	72	73	67	72	77	81	81	67	72	81	81	73	67	78.4	
		MIN	69	71	71	70	70	72	68	67	53	52	48	47	51	53	53	50	50	54	46	46	54	50	47	45	44	44	62	54	47	55.3		
LINCOLN	07	MAX	93	90	80	84	85	89	85	90	88	77	72	73	80	80	81	74	72	75	73	66	73	80	83	66	66	73	80	79	73	67	78.2	
		MIN	59	68	68	69	69	64	64	64	54	51	43	44	46	46	47	48	46	46	48	48	42	44	47	44	37	38	60	60	53	44		
LURAY 5 E	08	MAX	91	86	82	81	84	88	85	87	85	75	73	77	81	82	81	74	73	76	74	68	74	79	80	61	67	74	82	84	75	67	78.2	
		MIN	61	68	67	67	68	70	62	60	49	47	44	48	50	49	53	48	49	54	50	44	47	56	42	40	40	46	46	58	49	42		
MADISON	08	MAX	93	85	84	78	83	88	82	87	84	79	77	75	78	78	79	76	72	71	74	71	73	80	85	70	71	74	84	83	76	70	78.7	
		MIN	66	72	71	70	70	72	66	66	54	54	49	49	50	51	51	52	53	52	56	47	48	51	49	46	44	43	57	60	58	49		
MANASSAS	07	MAX	94	85	84	87		85	90	90	79	75	79	80	80	83	77	76		79	71	75	80	85	70	70	76	84	84	77		80.6		
		MIN		75	74	73	76	75	69	71	56	56	49	51	51	53	54	52	52		58	46	48	54	49	50	45	45	60	62	57			
MT WEATHER	07	MAX	89	84	76	77	77	85	81	85	81	72	69	71	76	76	77	70	68	70	67	64	69	75	77	62	64	69	76	77	69	63	73.9	
		MIN	67	70	69	67	67	70	68	66	55	52	52	52	57	59	54	54	56	56	50	50	51	57	46	47	47	54	59	61	50	50		
PIEDMONT RSCH STN	08	MAX	90	85	83	80	84	87	82	86	86	76	74	76	78	77	78	74	71	71	74	69	73	79	82	67	68	73	82	82	76	69	77.7	
		MIN	69	72	70	69	70	69	67	65	54	54	52	50	51	53	56	54	51	54	55	48	51	54	50	49	43	47	57	59	56	49		
SOMERSET	07	MAX	92	86	84	80	84	87	83	87	87	78	76	79	79	79	76	72	71	76	70	73	80	83	69	69	75	83	84	84	70	79.1		
		MIN	65	72	71	69	70	68	65	65	53	49	47	47	49	49	53	50	50	53	56	45	47	50	48	44	41	43	55	60	57		49	
SPERRYVILLE	06	MAX	92	89	82	78	80	85	82	87	82	77	74	76	79	79	76	72	72	71	68	72	78	83	68	69	73	79	82	75	68	77.6		

VIRGINIA
201209

DAILY TEMPERATURES (°F)

STATION	OB. TIME	MAX/MIN	DAY OF MONTH																															AVERAGE
			01	02	03	04	05	06	07	08	09	10	11	12	13	14	15	16	17	18	19	20	21	22	23	24	25	26	27	28	29	30	31	
STERLING RCS	07	MIN	62	70	69	70	70	70	64	62	56	53	48	48	49	50	49	50	51	51	58	45	47	50	46	46	41	40	51	58	52	45	54.0	
		MAX	95	91	83	85	87	91	86	91	91	79	75	78	81	82	83	76	75	73	77	69	76	81	85	67	67	76	84	83	76	68		
VIENNA	07	MIN	64	70	71	72	72	72	66	66	55	53	47	49	50	51	51	50	48	48	58	44	45	51	50	47	42	42	42	61	53	45	54.5	
		MAX	89	79	77	81	84	87	83	89	86	74	72	74	79	80	78	72	70	71	73	66	74	77	81	64	64	72	79	80	73	65		
WARRENTON 3 SE	08	MIN	70	70	70	70	70	72	67	67	54	52	47	48	52	53	55	51	51	51	55	44	44	53	48	46	46	46	59	60	52	45	55.6	
		MAX																																
WASHGTN DULLES INTL AP	24	MIN	92	83	84	88	91	86	91	91	79	76	78	81	82	82	78	75	72	77	70	75	79	85	68	68	76	83	84	77	70	73	79.8	
		MAX	70	71	73	71	72	70	65	62	59	52	46	47	50	50	51	50	47	62	49	46	51	63	48	45	45	60	61	61	50	45		
WASHINGTON REAGAN AP	24	MIN	95	84	85	89	90	84	89	91	80	77	78	81	81	83	78	76	75	80	72	75	80	85	71	70	76	84	85	81	73	74	80.7	
		MAX	73	74	75	76	78	73	72	66	62	60	57	60	60	64	64	60	59	66	59	54	59	66	55	56	53	65	67	65	58	54		
WINCHESTER	07	MIN	91	88	78	80	83	88	84	88	83	74	71	73	77	78	80	72	71	74	69	65	71	77	79	64	65	72	78	76	71	64	76.1	
		MAX	63	71	70	69	70	72	69	68	53	53	48	48	49	53	56	52	50	50	53	45	47	52	48	47	44	45	58	61	52	47		
WINCHESTER 7 SE	08	MIN	94	90	81	81	82	89	85	89	84	78	78	75	79	80	82	76	73	75	70	70	72	78	83	68	68	73	81	80	73	73	78.7	
		MAX	57	69	68	69	69	71	68	64	50	50	43	43	46	49	50	48	45	46	52	42	43	50	46	44	39	39	58	59	49	46		
WOODSTOCK 2 NE	07	MIN	90	86	83	79	84	89	85	82	74	73	76	80	80	82	74	72	76	70	67	75	80	80	66	67	71	81	81	72	67	77.3		
		MAX	63	69	69	69	69	70		65	52	50	46	46	50	52	52	50	49	49	52	44	44	51	45	43	40	40	53	57	49		47	
CENTRAL MOUNTAIN 05 COVINGTON FLTR PLT	07	MIN	93	93	86	78	81	86	85	89	79	76	75	76	81	80	83	83	81	72	69	73	74	81	82	71	71	58	82	82	70	73	78.8	
		MAX	63	67	70	70	70	69	66	65	49	49	45	46	49	50	51	50	54	54	51	49	53	55	43	38	38	41	51	51	52	44		
DALE ENTERPRISE	07	MIN	92	83	83	71	81	86	86		81	76	71	75	81	81	72	72	74	70	65	73	80	80	65	68	72	82	83	70	66	76.2		
		MAX	61	68	67	68	68	69	62		49	48	44	48	48	50	52	49	52	53	49	45	46	48	43	41	40	44	58	57	50		43	
GATHRIGHT DAM	07	MIN	87	83	83	77	80	82	82	84	76	75	71	73	77	78	78	75	69	68	68	65	71	75	75	64	65	68	76	75	65	67	74.4	
		MAX	62	68	68	69	68	67	62	63	49	49	45	45	49	50	49	52	52	54	48	48	49	52	42	38	38	40	50	56	55	43		
HOT SPRINGS	07	MIN	86	82	79	76	80	81	80	83	76	69	69	71	75	75	76	73	68	72	67	63	69	75	75	63	64	68	75	76	65	67	73.3	
		MAX	60	67	67	68	67	67	60	60	46	46	42	42	47	48	48	51	51	54	47	47	50	50	38	35	35	38	48	55	54	41		
MILLGAP	07	MIN	84	80	81	75	77	83	83	75	68	68	72	76	77	79	74	70	70	65	64	70	75	73	62	64	66	75	76	63	65	73.1		
		MAX	61	64	64	65	64	64	58	57	44	42	36	34	40	42	42	41	42	50	42	42	47	47	30	29	30	30	46	51	49		38	
MUSTOE 1 SW	24	MIN	77	78	73	76	81	80	81	74	67	67	70	75	74	76	72	65	68	64	63	69	73	73	61	62	64	74	75	62	63	70.8		
		MAX	61	62	65	65	66	62	52	49	41	39	35	39	42	42	44	43	46	51	43	43	45	47	33	29	29	44	50	53	46		34	
ROANOKE 8 N	07	MIN	94	90	87	76	83	84	85	89	84	76	77	78	80	80	78	81	81	69	73	72	74	82	81		71	73	83	83	75	70	79.6	
		MAX	68	69	68	70	71	69	65	66	52	52	48	48	52	52	53	53	53	61	53	54	55	46	41	41	43	53	59	61	45	55.8		
ROANOKE INTL AP	24	MIN	90	87	77	83	84	86	88	84	76	78	77	81	80	81	80	66	66	74	73	76	81	83	70	71	73	84	85	75	70	74	78.4	
		MAX	71	70	70	71	71	70	65	58	53	53	48	53	52	53	59	61	61	62	53	58	55	60	48	41	45	54	61	65	55	46		
STAUNTON WATER TRMTMT PLT	08	MIN	90	81	81	75	79	83	85	86	79	75	74	75	79	79	78	75	69	70	73	69	71	77	79	67	67	70	79	82	70	69	76.2	
		MAX	67	69	67	68	69	64	64	64	50	49	46	49	52	54	57	52	53	56	48	49	53	58	45	40	46	49	61	60	52	45		
WAYNESBORO WTP	07	MIN	92	82	83	78	83	86	85	87	85	75	74	77	79	78	80	75	72	70	73	67	73	80	82	66	69	74	82	84	74	70	77.8	
		MAX	63	70	69	69	69	69	63	63	52	49	46	45	50	51	51	51	53	56	52	50	52	51	47	42	41	41	51	57	56	45		
SOUTHWESTERN MOUNTAIN 06 ABINGDON 3S	22	MIN	88	86	84	84	83	82	87	87	72	73	77	80	79		76	75	70	66		74	75	75	66	68	69	78	76	73	66	69	76.4	
		MAX	67	67	66	66	70	68	63	57	50	49	48	53	51		54	58	59	60		49	52	52	44	36	40	48	51	58	54	46		

VIRGINIA
201209

DAILY TEMPERATURES (°F)

STATION	OB. TIME	MAX/MIN	DAY OF MONTH																															AVERAGE
			01	02	03	04	05	06	07	08	09	10	11	12	13	14	15	16	17	18	19	20	21	22	23	24	25	26	27	28	29	30	31	
BIG STONE GAP	08	MAX	88	88	86	71	85	85	81	87	74	76	76	80	82	82	80	78	79	68	68	71	75	78	78	70	69	63	79	72	72	70		77.0
		MIN	66	69	68	68	69	68	64	64	53	53	50	51	54	56	56	57	60	62	48	47	47	53	45	38	41 ¹	42	50	61	61	49		56.2
BLACKSBURG NWSO	07	MAX	88	86	84	79	79	83	83	85	79	71	73	75	79	78	79	75	65	66	70	67	74	76	76	64	65	69	79	80	71	70		75.6
		MIN	65	66	66	66	67	67	61	61	47	48	43	43	47	47	47	53	56	57	48	47	49	49	43	35	36	37	47	54	55	40		51.6
BURKES GARDEN	07	MAX	83	83	83	79	76	77	76	81	74	65	66	72	75	73	74	69	70	68	64	62	69	71	71	57	61	64	74	72	65	64		71.3
		MIN	53	63	63	65	66	65	60	62	41	42	37	36	42	42	44	49	53	52	47	40	42	53	33	27	27	35	44	47	52	35		47.2
CHRISTIANSBURG	07	MAX	87	86	84	79	78	81	81	84	80	71	73	74	78	78	77	76	65	67	70	67	72	74	76	63	64	70	77	78	70	66		74.9
		MIN	63	66	65	66	67	68	62	62	48	49	45	45	49	48	49	57	56	57	50	49	50	52	43	37	37	43	50	56	56	43		52.9
CLINTWOOD 1 W	07	MAX	85	86	84	79	84	79	77	84	71	71	71	74	77	77	76	70	73	67	67	65	72	74	76	64	63	59	74	74	67	65		73.5
		MIN	61	65	66	64	64	68	64	63	52	49	45	45	48	52	54	55	56	59	45	42	42	47	38	33	33	36	45	51	59	45		51.5
COPPER HILL	07	MAX	85	80	77	69	73	78	76	78	77	67	69	66	70	69	71	70	58	64	66	64	65	71	73	68	60	67	76	74	69	62		70.4
		MIN	63	65	65	65	66	66	61	63	48	49	49	51	52	51	53	54	52	54	49	48	50	52	42	38	36	44	53	56	56	42		53.1
GALAX RADIO WBRF	07	MAX	89	84	83	78	74	79	83	83	79	73	75	72	76	75	80	76	65	67	67	59	70	75	76	68	66	69	78	79	71	72		74.7
		MIN	64	64	66	66	66	65	62	63	46	45	44	47	44	47	57	56	56	61	47	49	47	53	44	34	36	41	50	54	58	41		52.4
GALAX WTP	07	MAX	88	84	83	77	73	79	80	82	78	71	73	70	75	74	78	75	64	66	68	67	69	72	76	67	65	69	78	77	71	64		73.8
		MIN	61	64	66	66	67	66	62	62	47	45	44	44	44	44	47	52	57	58	46	49	47	47	44	35	35	35	50	51	53	42		51.0
GRUNDY	07	MAX	88	88	83	84	82	81	82	84	73	72	76	78	78	77	77	70	72	67	65	67	73	76	76	64	65	58	76	74	66	66		74.6
		MIN	65	68	67	67	66	69	67	65	54	50	50	54	54	56	57	57	58	59	49	47	47	53	42	41	41	42	51	57	60	50		55.4
JOHN FLANNAGAN LAKE	07	MAX				90	87	87	83			91	75						68	68	66	77				68	64	82					M	
		MIN				66	67	69	66			53	50						59	47	46	46				40	41	51					M	
LEBANON	07	MAX	89	89	85	83	83	85	81	88	76	73	73	76	80	78	79	74	74	73	71	68	74	76	77	65	68	68	78	77	72	66		76.6
		MIN	61	67	66	68	68	67	62	61	49	48	45	45	45	49	54	55	58	60	52	45	45	49	42	35	35	39	47	52	57	43		52.3
NORA 4 SSE	07	MAX	87	83	82	75	79	79	77	81	72	71	69	74	75	74	77	68	74	64	63	62	69	72	74	61	63	59	71	70	67	60		71.7
		MIN	67	67	64	65	65	65	65	65	51	53	53	54	57	57	57	56	57	59	45	44	54	55	39	39	41	49	56	59	56	49		55.4
NORTH FORK LAKE	08	MAX				89	86	86	81			88	74	78	80					81	67	67	67	75			77	68	62	80	77		M	
		MIN				64	66	68	63			52	48	48	52					53	58	48	45	44			38	37	40	50	53		M	
PULASKI 2 E	07	MAX	90	89	88	83	79	84	83	82	81	70	73	76	79	79	80	79	72	78	71	74	76	77	75	66	68	74	80	80	73	73		77.7
		MIN	60	60	67	68	69	69	62	64	47	47	43	42	47	47	47	57	59	56	50	50	51	57	48	37	36	40	50	50	58	44		52.7
RADFORD 3 N	07	MAX	90	88	85	80	79	84	84	87	79	72	73	76	79	78	81	74	67	70	67	67	76	78	78	66	66	70	79	80	70	71		76.5
		MIN	65	69	65	68	66	68	62	62	47	49	40	44	46	46	49	55	57	58	51	48	52	52	46	35	36	40	46	54	58	40		52.5
RICHLANDS	07	MAX	89	88	86	82	82	84	84	88	75	71	72	78	80	78	78	78	74	72	66	68	74	76	75	64	68	67	78	75	70	70		76.3
		MIN	62	67	66	64	64	67	63	62	51	50	45	44	49	50	52	52	57	57	49	44	44	53	42	36	36	37	46	52	58	45		52.1
SALTVILLE 1N	07	MAX	89	88	85	85	83	82	83	88	76	73	74	79	81	78	79	75	75	71	66	70	75	76	77	67	68	68	78	79	73	67		76.9
		MIN	63	66	66	66	66	68	64	64	49	50	47	46	50	51	52	54	57	58	49	47	52	42	37	37	39	52 ¹	48	59	45		53.1	
STAFFORDSVILLE 3 ENE	07	MAX	90	86	82	81	79	85	82	86	81	73	74	76	78	79	80	75	66	67	68	66	74	78	77	66	64	69	81	80	70	69		76.1
		MIN	65	66	67	69	68	67	64	64	48	49	41	41	47	47	47	54	56	59	53	47	50	52	44	35	35	35	46	54	58	43		52.4
TROUT DALE 3 SSE	07	MAX	84	79	80	78	72	79	78	81	76	67	70	72	76	74	75	73	69	63	65	65	71	73	73	62	65	69	76	74	71	62		72.4
		MIN	58	63	65	65	65	66	56	57	41	42	41	40	46	46	46	46	51	57	50	48	47	48	42	32	30	31	44	45	51	38		48.6
WISE 3E	17	MAX	82	82	77	79	79	79	83	83	67	69	73	74	73	73	74	71	69	64	62	70	73	71	70	64	62	75	74	70	66	65		72.4
		MIN	69	69	66	65	69 ¹	65	58	57	47	49	47	51	52	52	54	55	56	60	44	44	55	59	38	35	43	53	53	56	54	40		53.3
WYTHEVILLE 1 S	07	MAX	90	88	88	83	79	82	81	87	78	72	74	78	79	78	80	77	70	68	69	71	75	77	76	66	69	71	79	78	73	68		76.8
		MIN	55	64	64	67	67	66	64	60	45	45	42	41	48	47	47	49	59	59	49	46	48	48	41	34	33	35	44	48	56	41		50.4

VIRGINIA
201209

SNOWFALL AND SNOW ON GROUND (INCHES)

STATION		DAY OF MONTH																														
		01	02	03	04	05	06	07	08	09	10	11	12	13	14	15	16	17	18	19	20	21	22	23	24	25	26	27	28	29	30	31
VIRGINIA																																
TIDEWATER 01																																
DISPUTANTA	SNOWFALL																															
EASTVILLE	SNOWFALL																															
EMPORIA 1 WNW	SNOWFALL																															
FREDERICKSBURG SEWAGE	SNOWFALL																															
HAMPTON UNIV	SNOWFALL																															
HOLLAND 1 E	SNOWFALL																															
HOPEWELL	SNOWFALL	-	-	-	-	-	-	-	-	-	-	-	-	-	-	-	-	-	-	-	-	-	-	-	-	-	-	-	-	-	-	
	SN ON GND	-	-	-	-	-	-	-	-	-	-	-	-	-	-	-	-	-	-	-	-	-	-	-	-	-	-	-	-	-	-	
NORFOLK INTL AP	SNOWFALL																															
NORFOLK SOUTH	SNOWFALL																															
NORTH	SNOWFALL																															
	SN ON GND																															
PAINTER 2W	SNOWFALL																															
STONY CREEK 2 N	SNOWFALL																															
	SN ON GND																															
SUFFOLK LAKE KILBY	SNOWFALL																															
	SN ON GND																															
WAKEFIELD 1NW	SNOWFALL	-																														
	SN ON GND	-																														
WALKERTON 2 NW	SNOWFALL																															
	SN ON GND																															
WALLACETON LK DRUMMOND	SNOWFALL																															
WALLOPS ISLAND NASA TEST FACIL	SNOWFALL																															
	SN ON GND																															
WARSAW 2 NW	SNOWFALL																															
WEST POINT 2 NW	SNOWFALL																															
	SN ON GND																															
WILLIAMSBURG 2 N	SNOWFALL																															

Snowfall: Includes snow and ice. Values for NWS stations (J index note) are Mid-Mid (LST).

Snow on ground: Includes snow, sleet, ice, and hail. Values for NWS stations (J index note) are observed at 12 UTC (GMT).

Water Equivalent: Given for NWS stations (J index note) only, when snow depth is 2 inches or more, and is measured at 18 UTC (GMT)

VIRGINIA
201209

PAN EVAPORATION AND WIND

STATION		DAY OF MONTH																														TOTAL OR AVERAGE			
		01	02	03	04	05	06	07	08	09	10	11	12	13	14	15	16	17	18	19	20	21	22	23	24	25	26	27	28	29	30		31		
VIRGINIA EASTERN PIEDMONT 02 JOHN H KERR DAM	WIND	-	-	-	-	-	-	-	-	-	-	-	-	-	-	-	-	-	-	-	-	-	-	-	-	-	-	-	-	-	-	-	-	-	M M M M
	EVAP	-	-	-	-	-	-	-	-	-	-	-	-	-	-	-	-	-	-	-	-	-	-	-	-	-	-	-	-	-	-	-	-		
	MAX	-	-	-	-	-	-	-	-	-	-	-	-	-	-	-	-	-	-	-	-	-	-	-	-	-	-	-	-	-	-	-	-		
	MIN	-	-	-	-	-	-	-	-	-	-	-	-	-	-	-	-	-	-	-	-	-	-	-	-	-	-	-	-	-	-	-	-		

Evaporation: Is measured in hundreths of inches.

Wind: Is measured in miles.

Max and Min: The maximum and minimum temperatures (Fahrenheit) of the water in the evaporation pan.

STATION INDEX

STATION	INDEX NO.	DIVISION	COUNTY	LATITUDE	LONGITUDE	ELEVATION (IN FEET)	OBSERVATION TIME AND TABLES			
							LOCAL STD TIME			
							TEMP	PRECIP	EVAP	SPECIAL SEE (NOTES)
VIRGINIA										
ABINGDON 3S	0021	06	WASHINGTON	36 40	81 58W	1920	22	22		H
ALBERTA 5N	0079	02	BRUNSWICK	36 56	77 54W	376		08		H
ALTAVISTA	0166	03	CAMPBELL	37 7	79 17W	529		07		CH
AMELIA COURTHOUSE 1	0187	02	AMELIA	37 21	77 59W	345	08	08		H
APPOMATTOX	0243	03	APPOMATTOX	37 20	78 50W	850		07		H
ASHLAND	0327	02	HANOVER	37 45	77 29W	220	18	18		H
BEDFORD 4 NW	0561	03	BEDFORD	37 23	79 34W	1228		07		CH
BIG STONE GAP	0735	06	WISE	36 52	82 46W	1464	08	08		H
BLACKSBURG NWSO	0766	06	MONTGOMERY	37 12	80 25W	2100	07	07		CH
BOSTON 4 SE	0860	04	CULPEPER	38 33	78 6W	590	07	07		H
BREMO BLUFF	0993	02	FLUVANNA	37 43	78 17W	225		24		CH
BROOKNEAL	1082	03	CAMPBELL	37 4	78 57W	408	07	07		H
BUCHANAN	1121	05	BOTETOURT	37 31	79 41W	880		07		H
BUCKINGHAM	1136	02	BUCKINGHAM	37 30	78 32W	552		07		H
BUENA VISTA	1159	05	ROCKBRIDGE	37 44	79 22W	840		07		H
BURKES GARDEN	1209	06	TAZEWELL	37 6	81 20W	3068	07	07		H
CAMP PICKETT	1322	02	NOTTOWAY	37 2	77 57W	330	08	08		CH
CHARLOTTE COURT HOUSE	1585	03	CHARLOTTE	37 3	78 39W	569		07		H
CHARLOTTESVILLE 2W	1593	03	ALBEMARLE	38 2	78 31W	866	08	08		H
CHASE CITY	1606	02	MECKLENBURG	36 47	78 29W	510	17	17		H
CHATHAM	1614	03	PITTSYLVANIA	36 49	79 25W	651	07	07		CH
CHRISTIANSBURG	1692	06	MONTGOMERY	37 8	80 24W	2100	07	07		H
CLARKSVILLE	1746	02	MECKLENBURG	36 37	78 33W	330	07	07		H
CLINTWOOD 1 W	1825	06	DICKENSON	37 9	82 29W	1780	07	07		H
CONCORD 4 SSW	1955	03	CAMPBELL	37 17	78 58W	720		07		H
COPPER HILL	1999	06	FLOYD	37 5	80 9W	2690	07	07		H
CORBIN	2009	02	CAROLINE	38 12	77 22W	220	09	09		H
COVINGTON FLTR PLT	2044	05	ALLEGHANY	37 49	79 59W	1230	07	07		H
CRAIGSVILLE 2 S	2064	05	AUGUSTA	38 3	79 23W	1758		07		H
CROZIER	2142	02	GOOCHLAND	37 40	77 53W	350	07	07		H
DALE ENTERPRISE	2208	05	ROCKINGHAM	38 27	78 56W	1358	07	07		H
DANVILLE REGIONAL AP R	2250	03	PITTSYLVANIA	36 34	79 20W	571	24	24		H
DISPUTANTA	2400	01	PRINCE GEORGE	37 7	77 12W	15	07	07		H
EASTVILLE	2635	01	NORTHAMPTON	37 23	75 58W	10	07	07		H
EDINBURG	2663	04	SHENANDOAH	38 48	78 35W	928	07	07		H
EMPORIA 1 WNW	2790	01	GREENSVILLE	36 42	77 34W	100	08	08		H
FARMVILLE 2 N	2941	02	CUMBERLAND	37 20	78 23W	450	07	07		CH
FREDERICKSBURG SEWAGE	3204	01	FREDERICKSBURG	38 17	77 27W	15	07	07		H
FREE UNION	3213	03	ALBEMARLE	38 5	78 35W	590	08	07		H
FRONT ROYAL	3229	04	WARREN	38 54	78 11W	930	07	07		H
GALAX RADIO WBRF	3267	06	CARROLL	36 40	80 55W	2385	07	07		H
GALAX WTP	3272	06	CARROLL	36 39	80 55W	2360	07	07		CH
GATHRIGHT DAM	3310	05	ALLEGHANY	37 57	79 57W	1770	07	07		CH
GLASGOW 1 SE	3375	05	ROCKBRIDGE	37 37	79 26W	737		07		H
GREENBAY 3 NE	3565	02	PRINCE EDWARD	37 11	78 17W	500	09	09		H
GRUNDY	3640	06	BUCHANAN	37 17	82 5W	1170	07	07		H
HAMPTON UNIV	3713	01	HAMPTON	37 1	76 20W	10	17	17		H
HOLCOMB ROCK	4039	03	BEDFORD	37 33	79 24W	620		07		H
HOLLAND 1 E	4044	01	SUFFOLK	36 41	76 46W	80	08	08		H
HOPEWELL	4101	01	PRINCE GEORGE	37 18	77 17W	40	16	16		H
HOT SPRINGS	4128	05	BATH	37 60	79 50W	2236	07	07		H
HUDDLESTON 4 SW	4148	03	BEDFORD	37 8	79 32W	960		07		H
JOHN FLANNAGAN LAKE	4410	06	DICKENSON	37 14	82 21W	1460	07	07		H
JOHN H KERR DAM	4414	02	MECKLENBURG	36 36	78 18W	250	08	08	08	CH
LAFAYETTE 1 NE	4676	06	MONTGOMERY	37 14	80 12W	1320		07		H
LEBANON	4777	06	RUSSELL	36 54	82 2W	1912	07	07		H
LEXINGTON	4876	05	ROCKBRIDGE	37 47	79 26W	1097		07		H
LINCOLN	4909	04	LOUDOUN	39 5	77 42W	500	07	07		H
LOUISA	5050	02	LOUISA	38 3	78 0W	420	18	18		H
LURAY 5 E	5096	04	PAGE	38 40	78 22W	1400	08	08		H
LYNCHBURG #2	5117	03	CAMPBELL	37 23	79 14W	736	07	07		H
LYNCHBURG INTL AP R	5120	03	CAMPBELL	37 19	79 12W	940	24	24		HJ
MADISON	5150	04	MADISON	38 22	78 15W	577	08	08		H
MANASSAS	5204	04	MANASSAS	38 44	77 30W	245	07	07		H
MARTINSVILLE FLTR PLT	5300	03	HENRY	36 42	79 52W	760	07	07		H

STATION INDEX

STATION	INDEX NO.	DIVISION	COUNTY	LATITUDE	LONGITUDE	ELEVATION (IN FEET)	OBSERVATION TIME AND TABLES			
							LOCAL STD TIME			
							TEMP	PRECIP	EVAP	SPECIAL SEE (NOTES)
MEADOWS OF DAN 5 SW	5453	03	PATRICK	36 40	80 27W	2225	07	07		H
MILLGAP	5595	05	HIGHLAND	38 18	79 43W	2421	07	07		CH
MONTEBELLO FISH CULTURAL STN #	5690	03	NELSON	37 51	79 8W	2667	07	07		H
MONTICELLO	5700	03	ALBEMARLE	38 1	78 27W	758	08	08		H
MT WEATHER	5851	04	LOUDOUN	39 4	77 53W	1659	07	07		H
MTN GROVE	5756	05	BATH	38 6	79 53W	1775		07		H
MUSTOE 1 SW	5880	05	HIGHLAND	38 20	79 40W	2380	24	24		H
NEW CASTLE	6012	05	CRAIG	37 18	80 3W	1258		07		H
NORA 4 SSE	6125	06	DICKENSON	37 1	82 19W	2650	07	07		H
NORFOLK INTL AP R	6139	01	NORFOLK (CITY)	36 54	76 12W	30	24	24		HJ
NORFOLK SOUTH	6147	01	NORFOLK (CITY)	36 52	76 14W	100	24	24		H
NORTH	6161	01	MATHEWS	37 26	76 26W	10	07	07		H
NORTH FORK LAKE	6173	06	WISE	37 7	82 38W	1675	08	08		H
PAINTER 2W	6475	01	ACCOMACK	37 35	75 49W	30	16	16		CH
PALMYRA 3S	6491	02	FLUVANNA	37 49	78 16W	410	06	06		H
PEDLAR DAM	6593	03	AMHERST	37 40	79 17W	1024		07		H
PETERSBURG	6656	02	PETERSBURG	37 14	77 24W	15	08	08		H
PIEDMONT RSCH STN	6712	04	ORANGE	38 14	78 7W	520	08	08		CH
PULASKI 2 E	6955	06	PULASKI	37 3	80 47W	1850	07	07		CH
RADFORD 3 N	6999	06	PULASKI	37 12	80 35W	1800	07	07		H
RICHLANDS	7174	06	TAZEWELL	37 6	81 48W	1910	07	07		H
RICHMOND INTL AP R	7201	02	HENRICO	37 30	77 19W	164	24	24		HJ
ROANOKE 8 N	7278	05	ROANOKE	37 22	79 58W	1190	07	07		H
ROANOKE INTL AP R	7285	05	ROANOKE	37 19	79 58W	1175	24	24		HJ
ROCKY MT	7338	03	FRANKLIN	36 59	79 54W	1315	07	07		CH
SALTVILLE 1N	7506	06	SMYTH	36 53	81 46W	1733	07	07		H
SANDSTON	7541	02	HENRICO	37 33	77 17W	165	07	07		H
SOMERSET	7904	04	ORANGE	38 15	78 16W	510	07	07		H
SOUTH BOSTON	7925	03	HALIFAX	36 42	78 53W	329	07	07		H
SPERRYVILLE	7985	04	RAPPAHANNOCK	38 39	78 14W	750	06	06		H
STAFFORDSVILLE 3 ENE	8022	06	GILES	37 16	80 43W	1950	07	07		CH
STAUNTON WATER TRMTMT PLT	8062	05	AUGUSTA	38 10	79 5W	169	08	08		H
STERLING RCS	8084	04	LOUDOUN	38 59	77 29W	288	07	07		H
STONY CREEK 2 N	8129	01	SUSSEX	36 58	77 24W	105	08	08		H
STUART	8170	03	PATRICK	36 38	80 15W	1375	07	07		H
SUFFOLK LAKE KILBY	8192	01	SUFFOLK	36 44	76 36W	22	24	24		H
TROUT DALE 3 SSE	8547	06	GRAYSON	36 39	81 24W	2839	07	07		CH
TYE RIVER 1 SE	8600	03	NELSON	37 38	78 56W	720	07	07		H
VIENNA	8737	04	FAIRFAX	38 54	77 16W	418	07	07		H
WAKEFIELD 1NW	8800	01	SUSSEX	36 59	77 0W	113	24	24		CH
WALKERTON 2 NW	8829	01	KING AND QUEEN	37 45	77 2W	50	18	18		H
WALLACETON LK DRUMMOND	8837	01	CHESAPEAKE	36 36	76 26W	20	08	08		H
WALLOPS ISLAND NASA TEST FACIL R	8849	01	ACCOMACK	37 56	75 28W	46	24	24		HJ
WARRENTON 3 SE	8888	04	FAUQUIER	38 41	77 46W	500	08	08		H
WARSAW 2 NW	8894	01	RICHMOND	37 59	76 47W	140	18	18		H
WASHGTN DULLES INTL AP R	8903	04	LOUDOUN	38 56	77 28W	290	24	24		HJ
WASHINGTON REAGAN AP R	8906	04	ARLINGTON	38 51	77 2W	10	24	24		HJ
WAYNESBORO WTP	8941	05	WAYNESBORO	38 5	78 53W	1270	07	07		H
WEST POINT 2 NW	9025	01	KING WILLIAM	37 34	76 48W	20	17	17		H
WILLIAMSBURG 2 N	9151	01	YORK	37 18	76 42W	70	24	24		CH
WILLIS	9169	06	FLOYD	36 55	80 30W	2810		07		CH
WINCHESTER	9181	04	FREDERICK	39 11	78 9W	720	07	07		H
WINCHESTER 7 SE	9186	04	FREDERICK	39 11	78 7W	680	08	08		H
WINTERPOCK 4 W	9213	02	CHESTERFIELD	37 19	77 39W	300		07		H
WISE 3E	9215	06	WISE	36 60	82 32W	2549	17	17		CH
WOODSTOCK 2 NE	9263	04	SHENANDOAH	38 54	78 28W	675	07	07		H
WOOLWINE	9272	03	PATRICK	36 47	80 17W	1500		07		CH
WYTHEVILLE 1 S	9301	06	WYTHE	36 56	81 6W	2450	07	07		CH

REFERENCE NOTES

STATION NAMES: Name of the city, town or locality. Figures and letters following the station names indicate the distance in miles and direction from the post office or town community center.

DIVISIONS: Areas within a state of similar climatological characteristics. Division averages are calculated using data from stations that record temperature and/or precipitation. Station Precipitation totals flagged with an 'F' or 'M' are excluded from the Divisional Average calculations of precipitation. Stations with monthly Temperature averages flagged with an 'F' or 'M' are included in the Divisional Average if there are no more than 9 flagged or missing daily values in the month, else they are excluded from the divisional average for temperature.

NORMALS: The average value of the meteorological element over a time period. Effective 1 January 2012, the averaging period is 1981 to 2010. The normals for National Weather Service localities have been adjusted so as to be representative for the current observation site.

MONTHLY DEGREE DAY TOTALS: One heating (cooling) degree day is accumulated for each whole degree that the daily mean temperature is below (above) 65 degrees Fahrenheit.

PRECIPITATION: Values shown in hundredths of inches are water equivalent totals, i.e., total of liquid and melted frozen precipitation. In the "Monthly Summarized Data" table the total snow and sleet values shown in tenths of inches are unmelted amounts. The max depth on ground values of snow and sleet shown in whole inches are cumulative unmelted amounts. The number of days with .10, .50, 1.00 or more refers to water equivalents.

PRECIPITATION QUALITY CONTROL: The NCDC quality control process may flag precipitation data that are spatially inconsistent, exceed climatological limits, or are inconsistent with prevailing weather patterns.

TEMPERATURE: Original temperature values are given in the "Daily Temperature" table. Summary temperature information (averages, departures, extremes, monthly degree day totals) is based on the values labeled MAX/MIN.

WIND: (As shown in the "Evaporation and Wind" table) the total wind movement in miles over the evaporation pan as determined by an anemometer recorder located 6-8 inches above the pan.

SYMBOLS AND LETTERS USED IN THE STATION INDEX TABLE

C Station is equipped with recording rain gage (R) but values in this bulletin are from a non-recording rain gage unless indicated by an R.

G Observations appear in the "Soil Temperatures" table.

H Observations appear in the "Snowfall and Snow on the Ground" table.

J Station also published as a Local Climatological Data publication.

VAR Observation time varies.

SR Observation time near sunrise.

SS Observation time near sunset.

SYMBOLS AND LETTERS USED IN THE DATA TABLES

(DAILY DATA ARE FOR THE 24 HOURS IMMEDIATELY PRECEDING OBSERVATION TIME.)

BLANK Entries in the "Monthly Summarized Data" table indicate no record.

BLANK Entries in the "Daily Precipitation" and "Snowfall and Snow on the Ground" tables indicate zero.

BLANK Entries in the "Daily Temperature" table indicate a missing record

- No record. Data not recorded or not received in time for publication.

+ Precipitation or temperature extremes occurred on one or more previous dates during the month.

* Rain gage not read. Precipitation is included in the amount following the asterisks.

Time distribution may not be known. A * preceding the monthly total indicates precipitation amount is being carried forward to next month's total, and may include amounts from the previous month(s).

a As a subscript, indicates accumulated total.

A Amount of precipitation is the total of observer's entries for the current month. It may include precipitation that occurred during the previous month. Refer to earlier bulletin to determine date of last reading. (Hawaii stations)

B Divisional Departure from normals are computed using 1971-2000 normals.

E Normalized HDD/CDD Calculation. E is appended to the HDD/CDD Calculation when 1-9 individual daily TMAX and/or TMIN values are missing and a Normalized HDD/CDD Calculation is provided. M appears alone if 10 or more daily values are missing.

F Monthly calculation flagged value. F is appended to average and/or total values computed which exclude one or more daily data values that have been flagged by the GHCN-Daily Dataset

M Insufficient or partial data. M is appended to average and/or total values computed with 1-9 daily values missing. M appears alone if 10 or more daily values are missing, (8 or more for wind and evaporation).

N Indicates snow fall or Snowdepth totals are computed with one or more missing days.

R Amounts from recording rain gage.

T Trace. An amount too small to measure.

SEASONAL TABLES: Monthly and seasonal snowfall and heating degree days for the 12 months ending with the June data are published in the July issue of this bulletin. Cooling degree days for the calendar year are published in the "Climatological Data Annual Summary."

Information concerning the history of changes in locations, exposure, etc. of substations is kept on file at the National Climatic Data Center. Historical information of regular National Weather Service Offices may be obtained from the "Local Climatological Data" annual publication. The contents of this publication may be reprinted or otherwise used freely, with proper credit to the National Climatic Data Center. The data are also available digitally.

Effective with the January 2011 Data-Month, COOP Observer Names are no longer included in the Monthly and Annual Climatological Data Publications. This information is not published to ensure the privacy of personal information pursuant to Section 208 of the E-Government Act of 2002 (44 USC 3601).

As of the 2011 Data-Year, Station and Climate Division Maps are no longer being included in the CD Publications. NCDC's Product Development Branch provides updated Station Maps for various data networks via the Historical Observing Metadata Repository: <http://www.ncdc.noaa.gov/homr>.

The GHCN-Daily Quality Control Flags shown below are displayed as superscripts with the data. For more Information on Global Historical Climatology Network - Daily and flags, see: <http://www.ncdc.noaa.gov/oa/climate/ghcn-daily/> and

Comprehensive Automated Quality Assurance of Daily Surface Observations.

Durre, Imke, Matthew J. Menne, Byron E. Gleason, Tamara G. Houston,

Russell S. Vose, 2010: J. Appl. Meteor. Climatol., 49, 1615-1633.

doi: 10.1175/2010JAMC2375.1

Blank = Passed All checks

D = failed duplicate check

G = failed gap check

I = failed internal consistency check

K = failed streak/frequent-value check

L = failed check on length of multiday period

M = failed megaconsistency check

N = failed naught check

O = failed climatological outlier check

R = failed lagged range check

S = failed spatial consistency check

T = failed temporal consistency check

W = temperature too warm for snow

X = failed bounds check

Z = flagged as a result of an official Datzilla investigation

NOAA\National Climatic Data Center
Attn: User Engagement & Services Branch
151 Patton Avenue
Asheville, NC 28801-5001

Customer Services Number: (828) 271-4800, option 2
TDD : (828) 271-4010
Fax number: (828) 271-4876

NCDC now offers free online access to the *Climatological Data* publication.
Go to : www.ncdc.noaa.gov and choose Most Popular.