



# CLIMATOLOGICAL DATA

## VIRGINIA



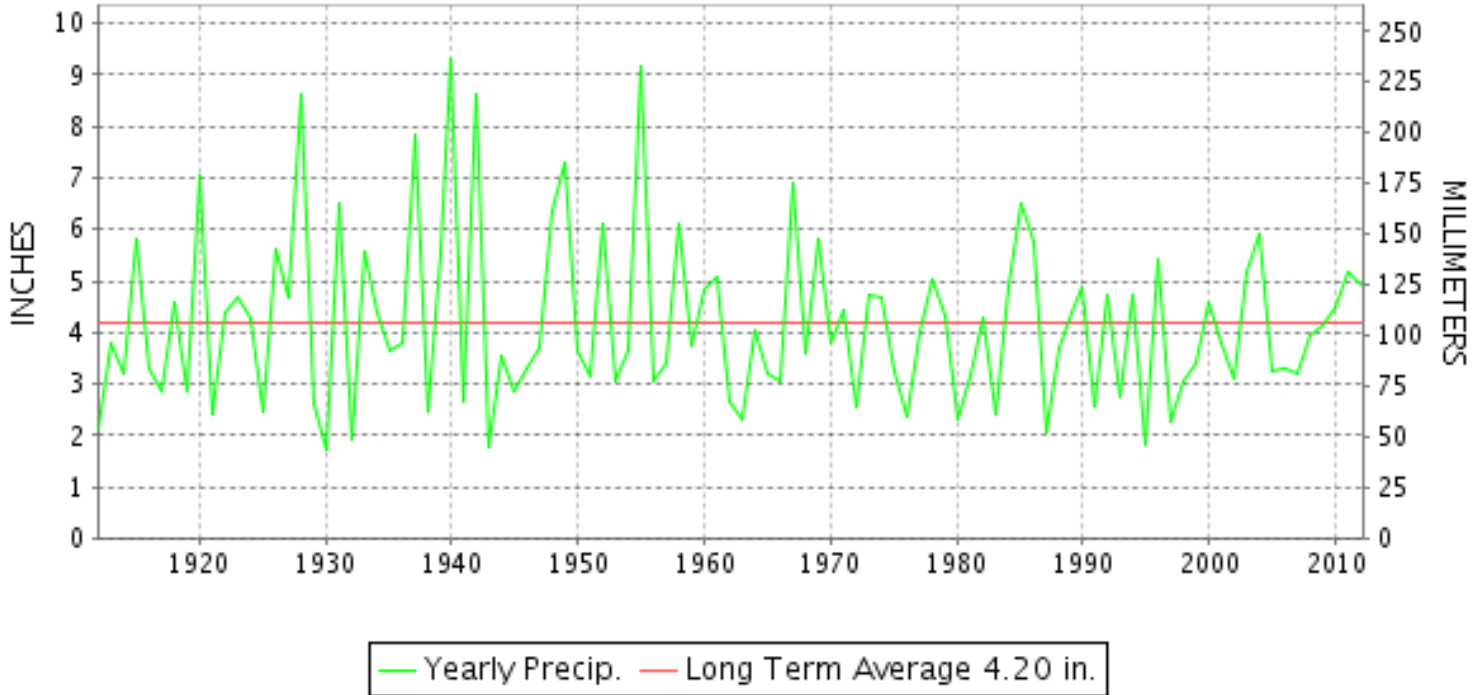
AUGUST 2012

VOLUME 122 NUMBER 08

ISSN 0364-5630

GHCND Ver: 3.00-upd-2013011606

### AUGUST PRECIPITATION BY YEAR



#### TEMPERATURE AND PRECIPITATION EXTREMES

##### VIRGINIA

HIGHEST TEMPERATURE	99	AUGUST 05	WALKERTON 2 NW
LOWEST TEMPERATURE	43	AUGUST 23+	BURKES GARDEN
GREATEST TOTAL PRECIPITATION	13.19		EMPORIA 1 WNW
LEAST TOTAL PRECIPITATION	1.47		DANVILLE REGIONAL AP
GREATEST 1 DAY PRECIPITATION	6.72	AUGUST 25	PAINTER 2W
GREATEST TOTAL SNOWFALL	T		2 STATIONS

"I certify that this is an official publication of the National Oceanic and Atmospheric Administration (NOAA) It is compiled using information from weather observing sites supervised by NOAA/National Weather Service and received at the National Climatic Data Center(NCDC), Asheville, North Carolina 28801."

Director  
National Climatic Data Center

noaa

National  
Oceanic and  
Atmospheric Administration

National  
Environmental Satellite, Data  
and Information Service

National  
Climatic Data Center  
Asheville, North Carolina



# MONTHLY STATION AND DIVISION SUMMARY

STATION	TEMPERATURE (°F)											PRECIPITATION (IN)												
	AVERAGE MAXIMUM	AVERAGE MINIMUM	AVERAGE	DEPARTURE FROM NORMAL	HIGHEST	DATE	LOWEST	DATE	HEATING DEG. DAYS	COOLING DEG. DAYS	NO. OF DAYS				TOTAL	DEPARTURE FROM NORMAL	GREATEST 24 HOURS	DATE	ICE PELLETS, SNOW			NO. OF DAYS		
											MAX		MIN						TOTAL	MAX DEPTH ON GROUND	DATE	.10 OR MORE	.50 OR MORE	1.00 OR MORE
											>=90	<=32	<=32	<=0										
PALMYRA 3S	85.8	64.2	75.0	2.3	93	06+	59	18+	0	316	7	0	0	0	3.48	-0.35	1.84	26	0.0			7	2	1
PETERSBURG	86.1	68.2	77.2	-0.3	92	05	59	10	0	383	7	0	0	0	2.62	-2.15	1.39	26	M 0.0	0		7	1	1
RICHMOND INTL AP	87.1	69.3	78.2	0.7	95	31	64	19	0	416	10	0	0	0	3.50	-1.16	1.75	25	0.0	0		7	2	1
SANDSTON	87.0	67.1	77.1	0.5	94	06+	62	20+	0	382	9	0	0	0	MA 3.02	-1.70	0.49	01	0.0			5	0	0
WINTERPOCK 4 W															4.99		1.96	26	0.0			9	1	1
--DIVISIONAL DATA-----> WESTERN PIEDMONT 03			76.5	1.4B										4.31	0.38B									
ALTAVISTA														2.24		1.00	11	0.0				5	2	1
APPOMATTOX														4.87	0.89	2.96	26	0.0				6	2	1
BEDFORD 4 NW														1.77		0.41	01	0.0				7	0	0
BROOKNEAL	87.3	64.6	76.0	4.8	93	06+	60	18+	0	347	11	0	0	0	3.85	-0.11	1.25	01	0.0	0		6	3	1
CHARLOTTE COURT HOUSE														4.40	0.47	2.26	26	0.0	0			9	3	1
CHARLOTTESVILLE 2W	85.5	65.8	75.7	0.0	95	10	61	22+	0	339	8	0	0	0	4.85	0.78	2.09	26	0.0	0		7	2	2
CHATHAM	83.7	61.8	72.8	-0.5	89	29+	57	28+	0	249	0	0	0	0	1.96	-1.86	0.56	11	0.0			8	1	0
CONCORD 4 SSW														5.19		2.10	01	0.0				8	2	2
DANVILLE REGIONAL AP	88.5	66.3	77.4	0.4	96	31+	60	27+	0	392	17	0	0	0	1.47	-2.50	0.73	19	0.0	0		3	1	0
FREE UNION	83.1	62.8	73.0		90	10	59	23+	1	255	1	0	0	0	FA 1.55		1.34	26	0.0	0		2	1	1
HOLCOMB ROCK														2.88		0.71	20	0.0	0			8	2	0
HUDDLESTON 4 SW														2.40		0.70	11	0.0				8	1	0
LYNCHBURG #2	83.5	63.5	73.5	0.5	89	10	57	22+	0	272	0	0	0	0	4.59	1.22	1.42	01	0.0			7	3	2
LYNCHBURG INTL AP	85.5	64.3	74.9	0.8	94	31	58	21	0	315	7	0	0	0	2.70	-0.56	0.93	25	0.0	0		6	1	0
MARTINSVILLE FLTR PLT	85.7	62.3	74.0	0.1	92	03	56	26+	0	285	4	0	0	0	1.61	-2.30	0.30	10+	0.0			6	0	0
MEADOWS OF DAN 5 SW	80.5M	61.1M	70.8M		87	03	54	26	0	192E	0	0	0	0	4.29		0.88	10	M 0.0	0		9	4	0
MONTEBELLO FISH CULTURAL STN	78.6M	56.3M	67.5M		87	08	50	25+	21E	103E	0	0	0	0	M 6.35		1.80	26	M 0.0	0		9	6	1
MONTICELLO	83.0	65.0	74.0	0.3	90	10	61	22	0	286	1	0	0	0	4.82	0.78	1.61	26	0.0			7	3	2
PEDLAR DAM														2.51		0.78	26	0.0	0			8	2	0
ROCKY MT	84.9	63.0	74.0	0.5	92	03	58	25+	0	284	4	0	0	0	3.19	-1.10	0.78	19	0.0			7	2	0
SOUTH BOSTON	86.1	65.5	75.8	0.4	94	02	60	13	0	344	7	0	0	0	3.34	-0.43	0.85	02	0.0	0		9	2	0
STUART	83.5	63.0	73.3	-1.2	89	29+	57	25	1	265	0	0	0	0	3.12	-1.87	1.11	19	0.0			7	2	1
TYE RIVER 1 SE	85.5	64.1	74.8	0.1	92	10	59	21+	0	310	6	0	0	0	5.73	1.96	2.41	26	0.0	0		7	3	2
WOOLWINE														3.39		1.48	19	M 0.0				7	2	1
--DIVISIONAL DATA-----> NORTHERN 04			73.8	-0.5B										3.42	-0.39B									
BOSTON 4 SE	84.2	63.0	73.6	1.0	91	06	57	30	0	276	3	0	0	0	5.86	2.30	2.63	16	0.0	0		8	4	1
EDINBURG	83.1	60.5	71.8	-0.2	90	10	55	23+	0	221	1	0	0	0	4.68	1.19	0.86	10	0.0			11	5	0
FRONT ROYAL	83.9	63.1	73.5	-0.4	90	05	58	23	0	271	1	0	0	0	3.33	0.27	1.27	27	M 0.0	0		7	2	1
LINCOLN	86.0	62.9	74.5	1.4	94	05	57	23+	0	302	7	0	0	0	3.94	3.94	1.28	27	0.0	0		4	3	3
LURAY 5 E	83.8	61.4	72.6	-0.5	90	10+	54	21	0	241	3	0	0	0	5.41	2.09	1.34	01	0.0	0		9	3	2

VIRGINIA  
201208

# MONTHLY STATION AND DIVISION SUMMARY

STATION	TEMPERATURE (°F)										PRECIPITATION (IN)													
	AVERAGE MAXIMUM	AVERAGE MINIMUM	AVERAGE	DEPARTURE FROM NORMAL	HIGHEST	DATE	LOWEST	DATE	HEATING DEG. DAYS	COOLING DEG. DAYS	NO. OF DAYS				TOTAL	DEPARTURE FROM NORMAL	GREATEST 24 HOURS	DATE	ICE PELLETS, SNOW			NO. OF DAYS		
											MAX		MIN						TOTAL	MAX DEPTH ON GROUND	DATE	.10 OR MORE	.50 OR MORE	1.00 OR MORE
											>=90	<=32	<=32	<=0										
MADISON	84.5	64.7	74.6	0.4	91	10+	60	30+	0	305	4	0	0	0	FA 2.83	-0.80	1.25	15	0.0	0		4	3	1
MANASSAS	M	M	M		95	06+	63	22+						M					0.0					
MT WEATHER	80.2M	64.4M	72.3M	-0.4	86	05	59	22	1E	234E	0	0	0	0	FMA 3.44	-0.01	1.70	27	0.0			6	1	1
PIEDMONT RSCH STN	83.6	65.6	74.6	-0.3	90	06	61	22	0	308	1	0	0	0	6.08	2.86	2.35	01	0.0			8	4	2
SOMERSET	85.1	64.8	75.0	0.3	92	10	60	29+	0	315	6	0	0	0	7.10	3.56	1.92	15	0.0			8	5	3
SPERRYVILLE	82.6	62.3	72.5	-1.0	88	10+	56	22	0	240	0	0	0	0	3.46	-0.45	0.81	01	0.0			10	3	0
STERLING RCS	87.5M	66.5	77.0M	2.6	96	05	59	22+	0	382E	10	0	0	0	M 3.81	0.32	0.94	10	M 0.0	0		10	2	0
VIENNA	84.7	65.8	75.3	2.2	92	31	60	22+	0	325	5	0	0	0	2.33	-1.36	0.41	10	0.0			7	0	0
WARRENTON 3 SE	M	M	M		91	12+	60	11						M					0.0					
WASHGTON DULLES INTL AP	87.4	66.8	77.1	1.7	95	31	60	21	0	382	8	0	0	0	3.02	-0.51	0.56	01	0.0	0		10	2	0
WASHINGTON REAGAN AP	89.5	72.4	81.0	2.9	98	05	66	21	0	501	15	0	0	0	2.78	-0.15	0.59	21+	0.0	0		8	2	0
WINCHESTER	82.4	64.0	73.2	-0.4	89	10+	58	23+	0	263	0	0	0	0	3.93	0.91	1.31	10	0.0			8	2	1
WINCHESTER 7 SE	84.7	61.7	73.2	0.7	91	09	56	22	0	265	2	0	0	0	3.20	-0.03	1.00	01	0.0	0		6	2	1
WOODSTOCK 2 NE	83.4M	62.0M	72.7M	0.4	91	03	57	23+	0	245E	2	0	0	0	M 7.23	4.07	1.75	04	0.0			13	7	2
--DIVISIONAL DATA----->			74.4	1.6B										4.24	0.58B									
CENTRAL MOUNTAIN 05																								
BUCHANAN														4.34	1.04	0.98	20	0.0				9	4	0
BUENA VISTA														4.69		0.98	26	0.0				9	4	0
COVINGTON FLTR PLT	84.7	60.3	72.5	-1.0	90	11+	55	23+	0	242	3	0	0	0	4.80	1.58	1.58	20	M 0.0	0		9	3	1
CRAIGSVILLE 2 S														M					0.0					
DALE ENTERPRISE	83.2	60.3	71.8	-0.3	90	10+	54	22+	0	216	3	0	0	0	5.44	2.00	1.05	15	M 0.0	0		9	5	2
GATHRIGHT DAM	M	M	M		86	04	53	21						2.95	-0.24	1.12	20	M 0.0	0			5	2	1
GLASGOW 1 SE														3.78		0.71	20	0.0				7	4	0
HOT SPRINGS	79.7	58.0	68.9	-0.9	88	24	51	22+	6	134	0	0	0	0	3.78	0.35	1.03	20	0.0			8	3	1
LEXINGTON														4.64	1.47	1.10	11	0.0				10	3	1
MILLGAP	78.5	53.8	66.2	-0.4	85	09+	47	18	25	70	0	0	0	0	FA 5.18	1.67	1.35	06	0.0	0		7	4	3
MTN GROVE														4.52		1.58	01	0.0				8	3	2
MUSTOE 1 SW	77.9	54.2	66.1	-0.4	86	01	44	21	37	77	0	0	0	0	5.09	1.71	1.80	05	0.0	0		6	3	3
NEW CASTLE														M					0.0					
ROANOKE 8 N	85.2	63.3	74.3	-0.3	91	03	56	11	0	296	2	0	0	0	5.49	1.90	1.44	02	M 0.0	0		9	4	1
ROANOKE INTL AP	84.9	65.5	75.2	-0.2	95	31	59	21	0	325	3	0	0	0	3.99	0.43	1.05	19	T	0		5	4	2
STAUNTON WATER TRMTMT PLT	82.3	61.5	71.9	-0.4	88	10+	54	21	0	223	0	0	0	0	5.64	2.01	1.10	01	M 0.0	0		13	3	1
WAYNESBORO WTP	84.2	62.1	73.2	0.9	91	06	56	22+	1	260	5	0	0	0	4.62	0.58	1.20	26	0.0	0		9	4	1
--DIVISIONAL DATA----->			71.1	-0.8B										4.56	1.14B									
SOUTHWESTERN MOUNTAIN 06																								
ABINGDON 3S	82.8M	60.2M	71.5M	-0.7	89	31	52	12	0	213E	0	0	0	0	M 1.27	-2.33	0.24	09	M 0.0	0		7	0	0
BIG STONE GAP	82.9	61.3F	72.1F	-1.9	90	09	49	22	0	227	1	0	0	0	5.71	1.43	1.26	29	0.0			9	5	2

VIRGINIA  
201208

## MONTHLY STATION AND DIVISION SUMMARY

STATION	TEMPERATURE (°F)										PRECIPITATION (IN)																
	AVERAGE MAXIMUM	AVERAGE MINIMUM	AVERAGE	DEPARTURE FROM NORMAL	HIGHEST	DATE	LOWEST	DATE	HEATING DEG. DAYS	COOLING DEG. DAYS	NO. OF DAYS				TOTAL	DEPARTURE FROM NORMAL	GREATEST 24 HOURS	DATE	ICE PELLETS, SNOW			NO. OF DAYS					
											MAX		MIN						TOTAL	MAX DEPTH ON GROUND	DATE	.10 OR MORE	.50 OR MORE	1.00 OR MORE			
											>=90	<=32	<=32	<=0													
BLACKSBURG NWSO	80.5	58.7	69.6	-0.4	87	03	51	22+	2	150	0	0	0	0	4.15	0.56	1.29	01	T	0			8	3	1		
BURKES GARDEN	77.0	51.4M	64.2M	-2.0	84	31	43	23+	53E	37E	0	0	0	0	1.91	-2.25	0.55	07	0.0	0			5	1	0		
CHRISTIANSBURG	79.9	59.3	69.6	-1.8	88	03	54	25+	4	153	0	0	0	0	3.31	0.01	0.92	06	0.0				6	4	0		
CLINTWOOD 1 W	79.6	57.8	68.7	-1.8	84	09+	50	22+	3	126	0	0	0	0	3.91	0.26	0.77	10	0.0	0			10	4	0		
COPPER HILL	76.0	59.1	67.6		82	09+	53	22+	15	100	0	0	0	0	2.22		0.56	20	0.0	0				6	2	0	
GALAX RADIO WBRF	80.6	58.6	69.6	-0.2	89	03	50	21	1	152	0	0	0	0	2.24	-1.80	0.81	04	0.0	0				5	2	0	
GALAX WTP	79.6	57.6	68.6	-0.6	87	09	50	22+	3	121	0	0	0	0	2.13	2.13	0.64	04	M 0.0	0				6	2	0	
GRUNDY	80.1M	61.4M	70.8M	-1.4	85	31+	56	23+	0	188E	0	0	0	0	MA 2.62	-1.24	0.89	06	M 0.0	0				6	2	0	
JOHN FLANNAGAN LAKE	83.9M	60.9M	72.4M		89	28+	54	22+	0	237E	0	0	0	0	M 2.63		1.31	07	0.0					5	2	1	
LAFAYETTE 1 NE															3.14		1.24	01	0.0					6	2	1	
LEBANON	81.9	57.5	69.7	-1.3	88	31+	49	23+	4	157	0	0	0	0	1.74	-1.93	0.38	06	0.0	0				6	0	0	
NORA 4 SSE	77.6	61.2	69.4	-1.9	84	31+	55	12	0	145	0	0	0	0	3.34	-0.94	1.26	06	0.0	0				7	1	1	
NORTH FORK LAKE	M	M	M		87	09	51	22							M		0.0										
PULASKI 2 E	82.0	58.5	70.3	-0.8	88	31+	51	24+	3	173	0	0	0	0	3.64	0.55	1.10	06	M 0.0	0				8	2	2	
RADFORD 3 N	81.7	59.8	70.8	-0.2	89	31+	53	21	4	190	0	0	0	0	M 3.62	0.22	1.10	20	0.0					7	3	1	
RICHLANDS	81.9	57.8	69.9	-1.0	88	31	50	23+	1	160	0	0	0	0	4.11	-0.02	2.30	01	M 0.0	0				6	1	1	
SALTVILLE 1N	83.0	58.6	70.8	-1.2	89	31	51	23+	0	189	0	0	0	0	4.64	0.46	1.30	06	0.0				10	4	2		
STAFFORDSVILLE 3 ENE	80.9M	58.0M	69.5M	-0.9	88	31	52	23+	6E	153E	0	0	0	0	3.13	-0.11	0.71	19	0.0					7	3	0	
TROUT DALE 3 SSE	78.1	53.5	65.8		83	29+	44	22	29	63	0	0	0	0	2.28		0.58	06	0.0	0				5	2	0	
WILLIS															3.03		1.25	11	0.0						7	1	1
WISE 3E	77.6	58.5	68.1	-1.9	83	27	49	21	12	115	0	0	0	0	8.15	4.10	2.36	20	0.0					12	6	2	
WYTHEVILLE 1 S	81.4	55.5	68.5	-1.0	87	03	50	27+	3	115	0	0	0	0	3.26	-0.18	0.96	06	0.0	0					8	2	0
--DIVISIONAL DATA----->			69.4	-0.4B											3.48	-0.09B											

VIRGINIA  
201208

## DAILY PRECIPITATION (INCHES)

STATION	TOTAL	DAY OF MONTH																																	
		01	02	03	04	05	06	07	08	09	10	11	12	13	14	15	16	17	18	19	20	21	22	23	24	25	26	27	28	29	30	31			
<b>VIRGINIA</b>																																			
<b>TIDEWATER 01</b>																																			
DISPUTANTA	6.91	0.10					0.57	0.02				0.18				1.17					0.21	0.09	0.05			1.73	2.18	0.61							
EASTVILLE	M 4.28						0.06	0.10				1.20									0.37	0.50			0.03	1.30	0.10	0.60	0.02						-
EMPORIA 1 WNW	13.19			0.42			0.84	0.87				0.83									0.84	0.11			3.28	2.18	0.77			3.05					
FREDERICKSBURG SEWAGE	M 3.00	0.26					-		0.16	0.04	1.05	0.01				0.01		0.10			0.08	0.29			T	0.80	0.20								
HAMPTON UNIV	FA 7.76				0.90		0.05				1.15				0.05					0.70	1.49	0.02		0.00 <sup>L</sup>	0.00 <sup>L</sup>	4.20 <sup>L</sup>	3.40								
HOLLAND 1 E	FA 9.39	0.14	0.42	0.01	0.10	1.46	0.02			0.01	1.05	0.03 <sup>L</sup>	0.00 <sup>L</sup>						0.05	1.10	0.14	0.02			2.12	2.00	0.75	0.10 <sup>L</sup>	0.91 <sup>L</sup>	0.00 <sup>L</sup>	0.00 <sup>L</sup>				
HOPEWELL	5.41	0.03	0.02	0.81		0.07					0.22	0.15	0.02	0.27					0.11	0.07		0.17			3.34	0.07	0.06								
NORFOLK INTL AP	6.13		T			0.57	0.43			0.12	0.38	0.01			0.61					0.56	0.82	0.08		T	0.54	0.02	0.11	1.88							
NORFOLK SOUTH	6.56		0.11			0.67	0.84			0.18	0.42	0.02			0.96				T	0.45	1.07	0.08		T	0.22	0.03	0.07	1.44			T				
NORTH	4.95				0.35		0.06	0.11				1.46				0.05					0.56	0.26			0.20	1.45	0.45								
PAINTER 2W	9.67						0.20				0.86	0.04				0.45	0.01			0.68				6.72	0.63	0.08									
STONY CREEK 2 N	FA 2.95	2.52	0.00 <sup>L</sup>	0.16 <sup>L</sup>			0.10		0.00 <sup>L</sup>	0.00 <sup>L</sup>	0.00 <sup>L</sup>	0.00 <sup>L</sup>	0.55 <sup>L</sup>	0.09	0.00 <sup>L</sup>	0.02 <sup>L</sup>	0.00 <sup>L</sup>	0.00 <sup>L</sup>	0.00 <sup>L</sup>	0.36 <sup>L</sup>	0.24	0.00 <sup>L</sup>	0.01 <sup>L</sup>	0.00 <sup>L</sup>	0.00 <sup>L</sup>	2.82 <sup>L</sup>	0.00 <sup>L</sup>	0.70 <sup>L</sup>	0.00 <sup>L</sup>	0.00 <sup>L</sup>					
SUFFOLK LAKE KILBY	10.62	T	0.05	T		0.15	0.41			0.02	1.06	0.01			T				0.30	0.67	0.55	0.82	T		T	2.35	0.48	3.71	0.04						
WAKEFIELD 1NW	10.43	0.13	1.81		T	0.14	0.02			T	0.48				T					0.49	0.52	0.05		0.01	6.41	0.28	0.09								
WALKERTON 2 NW	5.02	0.28					0.05	0.03		0.45	1.37								0.09	0.26	T	0.15		T	1.69	0.65									
WALLACETON LK DRUMMOND	5.00		0.10	0.07			0.70	0.30		0.14	1.45	0.20								0.50	0.20	0.11			0.38		0.50	0.15	0.20						
WALLOPS ISLAND NASA TEST FACIL	5.97	0.41				T	T	T	0.61	T	0.50	T		0.04					0.45	0.08	0.49			2.96	0.13	0.30							T		
WARSAW 2 NW	3.84	0.58	0.03			0.02				1.11	0.53								0.08		0.40	0.01					1.08								
WEST POINT 2 NW	FA 4.01	0.95	0.00 <sup>L</sup>	0.12 <sup>L</sup>			2.55		0.01	0.17 <sup>L</sup>	0.04 <sup>L</sup>				0.12				0.03	0.06	0.29			1.31 <sup>L</sup>	0.97 <sup>L</sup>	0.46 <sup>L</sup>			0.07					T	
WILLIAMSBURG 2 N	5.14	0.30	0.21			0.19	0.02			0.50									0.14	0.31	0.03			2.61	0.72	0.02	0.07			0.02					
<b>EASTERN PIEDMONT 02</b>																																			
ALBERTA 5N	3.33	0.01					0.16	0.05	0.03	0.02	T	0.12	T	0.03	0.31				T	0.02	0.30	0.03			0.52	1.73									
AMELIA COURTHOUSE 1	A 3.97	0.14		0.12			0.07			0.50	0.27	0.09							0.03	*	0.21 <sup>a</sup>	0.01			0.43	*	2.10 <sup>a</sup>								
ASHLAND	1.91	0.28								0.35	0.04								T	0.15	T	0.23			0.44	0.27	0.15								
BREMO BLUFF	5.03	1.80					0.22	0.43		0.22	0.43				0.05		0.01			0.10	0.33	0.02			2.02		0.05								
BUCKINGHAM	10.64	0.73		0.03	3.11				1.36	0.18	0.13								0.02		0.05	0.01			0.07	4.90					0.05		0.05		
CAMP PICKETT	2.63						0.02			0.03		0.15			0.75						0.25	0.03			0.50	0.90									
CHASE CITY	4.25	0.30					0.72		1.00	0.18	0.03	0.14								0.26	0.26			0.20	1.16										
CLARKSVILLE	M 7.05					1.85	0.60			-	0.15	-			-				-	0.30	0.35	0.10			-	-	1.00			2.70					
CORBIN	3.11	0.11					0.22	0.34		0.51	0.06								0.41		0.19	0.58	0.06			0.10	0.83	0.27							
CROZIER	2.77			0.25			0.20			0.08	0.13	0.39	0.61							0.15	0.58			0.12	0.90										
FARMVILLE 2 N	8.18	0.10		3.07			0.08		0.13	0.39	0.61								0.06	0.10	T	0.12			0.06	3.34					0.12				
GREENBAY 3 NE	3.69	0.04	T				1.06	T	0.11	0.18	0.05	0.05							0.08	0.05	0.19		0.09	T	0.24	1.53	0.02	T			T				
JOHN H KERR DAM	M 5.33	-					0.40		0.32	-	0.30	1.30								0.14	-	0.04			0.58	0.38					1.87		-		
LOUISA	4.84	0.54					0.28	0.29		0.16	0.76				0.06	0.19				0.02	0.06			0.52	1.61										
PALMYRA 3S	3.48	0.66					0.14	0.18	0.23			0.22							0.08		0.22	0.13				1.84									
PETERSBURG	2.62	0.18					0.10	0.02		0.08	0.22	T	0.22							0.12	0.03			0.05	0.41	1.39	0.10								
RICHMOND INTL AP	3.50	0.10	0.65			0.02	T	T		0.08	0.22	T		T		0.04		0.21	0.01	0.11	0.29			T	1.75	0.02							T		
SANDSTON	MA 3.02	0.49	0.09				0.02			*	0.24 <sup>a</sup>				*	0.02 <sup>a</sup>	0.20				0.25	0.42		T	-	*	1.14 <sup>a</sup>	0.15							
WINTERPOCK 4 W	4.99	0.20		0.26			0.47	0.48		0.03	0.02	0.07			0.30	0.48					0.17	0.03	0.01			0.49	1.96								

VIRGINIA  
201208

## DAILY PRECIPITATION (INCHES)

STATION	TOTAL	DAY OF MONTH																															
		01	02	03	04	05	06	07	08	09	10	11	12	13	14	15	16	17	18	19	20	21	22	23	24	25	26	27	28	29	30	31	
<b>WESTERN PIEDMONT 03</b>																																	
ALTAVISTA	2.24						0.02			0.58	1.00								0.01	0.10	0.20	0.07					0.26						
APPOMATTOX	4.87	0.61		0.02			T			0.19	0.49							0.04	0.12	0.04	T				0.04	2.96	0.03		0.33				
BEDFORD 4 NW	1.77	0.41	0.10		0.32	0.14	0.02			0.18	0.09							0.03	0.06	0.29	0.01					0.12							
BROOKNEAL	3.85	1.25			0.08		0.40			0.20	0.07							0.27	0.02	0.06	0.58				0.09	0.83							
CHARLOTTE COURT HOUSE	4.40	0.15		0.20			0.12		0.60	0.52		0.02					T	0.03		0.23	0.12				0.15	2.26							
CHARLOTTESVILLE 2W	4.85	0.42		0.07	T	0.01	T	0.01		0.26	1.14			0.04	0.06	0.16		0.04		0.22	0.27	0.04			0.01	2.09	0.01						
CHATHAM	1.96						0.08			0.17	0.56							0.03	0.08	0.12	0.20	0.17			0.13	0.30					0.12		
CONCORD 4 SSW	5.19	2.10	0.10	0.10						0.38	0.27							0.10		0.12	0.07	0.03				0.05	1.85	0.02					
DANVILLE REGIONAL AP	1.47		0.06	T		T	0.18		0.02	0.03	0.33	0.06			T					0.73	0.03	T			T	0.01	0.02		T				
FREE UNION	FA 1.55	0.09		0.76 <sup>L</sup>	0.01 <sup>L</sup>	T <sup>L</sup>	0.02 <sup>L</sup>	0.00 <sup>L</sup>	0.00 <sup>L</sup>	0.00 <sup>L</sup>	0.00 <sup>L</sup>	2.29 <sup>L</sup>	0.11	0.14 <sup>L</sup>	0.08 <sup>L</sup>	0.00 <sup>L</sup>	0.21 <sup>L</sup>	0.00 <sup>L</sup>	0.22 <sup>L</sup>	0.07 <sup>L</sup>	0.10 <sup>L</sup>	0.00 <sup>L</sup>	0.00 <sup>L</sup>	T <sup>a</sup>		1.34	0.01	T		T			
HOLCOMB ROCK	2.88	0.43	0.03	0.13	0.30	0.53	0.11			0.22	0.08									0.71	0.03				0.03	0.28							
HUDDLESTON 4 SW	2.40	0.18					0.04			0.25	0.70								0.02	0.15	0.43	0.25	0.10			0.28							
LYNCHBURG #2	4.59	1.42	0.01	1.18		0.19				0.27	0.08			T				0.02	0.02	0.36	0.03	0.25	0.03		0.67	0.05		T		0.01			
LYNCHBURG INTL AP	2.70	0.13		0.36	0.01	T				0.37	0.06				T		T		0.48	0.27	0.03	0.25	0.04		0.93	0.05		T					
MARTINSVILLE FLTR PLT	1.61		0.05		0.10		0.30			0.30	0.20	0.08		T	0.02			0.03	0.19	0.08	0.09		0.12								0.05		
MEADOWS OF DAN 5 SW	4.29			0.04	0.32	0.02		0.08		0.88	0.79						0.03	0.02	0.76	0.14	0.31		0.04	0.13	0.03					0.53	0.17		
MONTEBELLO FISH CULTURAL STN	M 6.35	0.69		0.12	0.67	0.90			0.45	0.68				0.02	0.35					0.50	0.05		0.06	T		1.80	0.06	-		-			
MONTICELLO	4.82	0.52	T							0.37	1.31	0.02		T		0.05		0.02		0.17	0.31	0.42			0.02	1.61							
PEDLAR DAM	2.51	0.14	0.05	0.13	0.03	0.18	T			0.11	0.05					0.19		T		0.50	0.35		T		T	0.78							
ROCKY MT	3.19		0.30				0.28	T		0.38	0.77								0.78	0.26	0.35	0.03									0.04		
SOUTH BOSTON	3.34		0.85	0.42	0.08		0.17			0.64	0.30	0.02							0.14	0.16		0.03			0.21	0.32							
STUART	3.12									0.30	0.28									0.11	0.14	0.22		0.12						0.92	0.02		
TYE RIVER 1 SE	5.73	0.21	T			T				0.78	1.18	0.03				0.04		0.35	T	0.48					T	2.41	0.25						
WOOLWINE	3.39				0.19	0.02				0.30	0.69									1.48	0.12	0.38	0.15	0.03			0.01				0.02		
<b>NORTHERN 04</b>																																	
BOSTON 4 SE	5.86	0.43				0.78							0.63		0.25	2.63				0.19	0.30						0.65						
EDINBURG	4.68	0.56	0.15	0.25	0.06	0.69				0.86				0.10	0.05	0.80		0.15		0.20	0.14				0.07	0.58			0.02				
FRONT ROYAL	3.33	0.10			0.12	0.01				0.60	0.08			0.01	0.04	0.04		0.02		0.34	0.38	0.02	0.02			0.25	1.27	0.03					
LINCOLN	3.94	0.48									1.10																1.28				0.08		
LURAY 5 E	5.41	1.34		0.01		0.43				1.21				0.09	0.08	0.18		0.40		0.18	0.48		0.40	0.01		0.59						0.01	
MADISON	FA 2.83		T			0.00 <sup>L</sup>	0.00 <sup>L</sup>	0.00 <sup>L</sup>	0.00 <sup>L</sup>	0.00 <sup>L</sup>	0.00 <sup>L</sup>	0.00 <sup>L</sup>	0.46 <sup>L</sup>	0.08	1.25	0.32				0.50	0.68					0.00 <sup>L</sup>	1.05 <sup>L</sup>	T					
MANASSAS	M 0.40	0.50		-		0.70	-		0.60	0.40	-	*	*	*	*	*	0.40 <sup>a</sup>	*	0.25 <sup>a</sup>	0.10	0.40				-	-	-	-	-	-	-	-	
MT WEATHER	FMA 3.44	-				0.45			0.00 <sup>L</sup>	0.66 <sup>L</sup>	0.05			0.09	0.04			0.06		0.46	0.23	0.16				0.15	1.70	0.05					
PIEDMONT RSCH STN	6.08	2.35			0.10	0.03	0.06			0.28	0.87			0.10	1.13	0.04		0.02		0.29	0.05					0.76							
SOMERSET	7.10	0.95	0.08		0.21	0.03				0.53	1.30			0.10	1.92	0.07		0.02		0.28	0.06	0.02	0.01			1.42	0.03		0.07				
SPERRYVILLE	3.46	0.81	0.04			0.16				0.75				0.12	0.26	0.23		0.10	0.03	0.16	0.28		T			0.52							
STERLING RCS	M 3.81	0.03	0.87		0.30	T			0.17	0.94	0.13	-		0.09	T	T		0.16		0.39	0.08		0.21			0.17	0.25	0.02					
VIENNA	2.33	0.01	0.02		0.02				0.38	0.41	0.30	0.03		0.08	0.09			0.33		0.16	0.07					0.13	0.28	0.02					
WARRENTON 3 SE	M -	-			-	0.58			-	-	0.47	0.05		0.07	0.03			-	-	-	-	-	-	-	-	-	-	-	-	-	-	-	-
WASHGTN DULLES INTL AP	3.02	0.56	T		0.15	T		0.01	0.07	0.55	0.26			0.13				0.32	T	0.32	0.20				0.12	0.32					0.01		
WASHINGTON REAGAN AP	2.78	T			0.03	0.02	T	T		0.59	0.10		T	0.20				0.01	0.16	0.36	T	0.59	0.35		0.06	0.28					0.03		

VIRGINIA  
201208

## DAILY PRECIPITATION (INCHES)

STATION	TOTAL	DAY OF MONTH																																
		01	02	03	04	05	06	07	08	09	10	11	12	13	14	15	16	17	18	19	20	21	22	23	24	25	26	27	28	29	30	31		
WINCHESTER	3.93	0.24	0.07			0.70				1.31	0.04			0.11	0.01			0.02		0.47	0.10					0.49	0.33	0.04						
WINCHESTER 7 SE	3.20	1.00				0.23				0.60	0.04			0.09	0.02	0.02		0.05		0.27	0.38					0.04	0.42	0.04						
WOODSTOCK 2 NE	M 7.23	0.10	0.01		1.75	0.02	0.68			1.01				0.14	0.90			0.14		0.55	0.56	0.22	0.33			0.25	0.53		0.04	-				
<b>CENTRAL MOUNTAIN 05</b>																																		
BUCHANAN	4.34	0.37	0.09			0.76	0.05			0.35				0.22		T			0.22	0.98	0.10			0.58		0.62								
BUENA VISTA	4.69	0.79	0.17			0.33	0.15			0.70	0.68			0.09	0.04	0.24	T		0.03	0.44	0.05					0.98								
COVINGTON FLTR PLT	4.80	0.28			0.11	0.89	0.48	0.01		0.31	0.51			0.24	0.26					1.58						0.07	0.06							
CRAIGSVILLE 2 S	M	0.57	0.02	-	-	0.01	0.57	0.04	0.01	-	0.24	0.05	-	-	0.35	0.90	0.02	-	-	0.06	0.54	0.03	-	0.01	-	-	0.37	0.03	0.01	-	0.01	-		
DALE ENTERPRISE	5.44	0.48	0.01			0.35	0.51	0.01	0.67		0.68			0.22	1.05	0.08				1.02	0.04		0.01			0.05	0.22	0.02						
GATHRIGHT DAM	2.95					0.23	0.36	0.03		0.45	0.04			0.06	0.52					T	1.12					0.09	0.05							
GLASGOW 1 SE	3.78	0.37	0.36		T	0.01	0.43	0.02		0.64	0.02							T	0.04	0.71	0.62				0.02	0.54	T							
HOT SPRINGS	3.78	0.74				0.14	0.46	0.04		0.65	0.02			0.22	0.06				0.11	1.03	0.05					0.18	0.06	T	0.02					
LEXINGTON	4.64	0.81	0.16			0.59	0.03			0.27	1.10			0.18	0.11	0.03			0.04	0.44	0.32		0.01		0.07	0.45						0.03		
MILLGAP	FA 5.18	1.00	0.34			0.02	1.35	0.12		0.46				0.05	0.00 <sup>L</sup>	0.00 <sup>L</sup>	0.00 <sup>L</sup>	0.00 <sup>L</sup>	0.10 <sup>L</sup>	0.65	0.05				1.11	0.02	0.01							
MTN GROVE	4.52	1.58			0.06	0.75	T			0.15	T			0.18				0.08	1.02	0.15	0.40				1.11	0.02	0.15	T						
MUSTOE 1 SW	5.09	0.34			0.05	1.80	0.10		0.05	0.21				0.06			0.02	0.07	1.15	0.04				1.17		0.03								
NEW CASTLE	M	-	-	-	-	-	-	-	-	-	-	-	-	-	-	-	-	-	-	-	-	-	-	-	-	-	-	-	-	-	-	-	T	
ROANOKE 8 N	5.49	0.12	1.44			0.62				0.24	0.04			0.32		0.02			0.95	0.48	0.08	0.07		0.96	0.13	0.02	T							
ROANOKE INTL AP	3.99	0.97			1.01	T			0.03	0.11	0.05		T	0.08	T			1.05	0.59			T	0.09	0.01		0.21	0.10							
STAUNTON WATER TRMTMT PLT	5.64	1.10	0.32	T	0.63	0.10	0.47	0.30	0.05	0.17				0.30	0.94	0.08				0.48	0.33		0.04	0.01		0.21	0.10			0.01		T		
WAYNESBORO WTP	4.62	0.33	0.01	0.12		0.65				0.57	0.88			0.10	0.47	0.19						0.01	0.05		1.20	0.02								
<b>SOUTHWESTERN MOUNTAIN 06</b>																																		
ABINGDON 3S	M 1.27			0.18	-	0.03	0.18	0.16	0.03	0.24	0.11	0.14				0.06				0.10	0.02	-			0.02									
BIG STONE GAP	5.71	0.25	0.17		1.05	0.03	0.75	0.15	0.09	0.82	0.93					0.21				0.05													1.26	
BLACKSBURG NWSO	4.15	1.29			0.32	0.27	0.63	0.01		0.27	0.11			0.08		0.05		T	0.40	0.71						0.01								
BURKES GARDEN	1.91	0.05			0.05	0.15	0.55	0.03	0.02	0.12	0.04	0.02		0.02	0.14	0.02	0.03	0.03	0.02	0.06	0.02	0.01	0.01	0.45	0.07	0.02	0.01							
CHRISTIANSBURG	3.31	0.64			0.06	0.92				0.18	0.08			0.12		0.03			0.65	0.62					0.01									
CLINTWOOD 1 W	3.91	0.33	T		0.15	0.51	0.50	0.20		0.77	0.65			0.03	0.03	0.20			0.01		0.29				0.24						T			
COPPER HILL	2.22	0.25	0.05			0.21		0.07		0.25	0.28			0.02					0.51	0.56						0.02								
GALAX RADIO WBRF	2.24	0.04	0.01		0.81		0.16	0.01		0.09	0.10			0.07	0.01					0.62			0.79	0.01	0.13		0.01							
GALAX WTP	2.13				0.64	0.18		0.01		0.09	0.10			0.07	0.07				0.04	0.62			0.19		0.12									
GRUNDY	MA 2.62	0.21 <sub>a</sub>	T		0.16	0.89	0.61			0.15	0.13			-	-	0.05	*	*	0.29 <sub>a</sub>		0.13													
JOHN FLANNAGAN LAKE	M 2.63	0.01	-		0.01	0.12	1.31			-	0.32					0.27										0.59								
LAFAYETTE 1 NE	3.14	1.24			0.02	0.59	0.02			0.30	0.04			0.10		0.06				0.35	0.42	T												
LEBANON	1.74	0.06	0.01		0.15	0.38	0.08	0.12		0.12	0.36					0.07			0.31	0.03											0.05			
NORA 4 SSE	3.34	0.07	0.02		0.23	1.26	0.34	0.35		0.45	0.21					0.04			0.03	0.01	0.31					0.02								
NORTH FORK LAKE	M	0.70	0.05	-	-	-	-	0.21	0.42	0.58	*	*	0.29 <sub>a</sub>			0.12	-	*	*	0.02 <sub>a</sub>						-	-	-	-	-	-	-	-	-
PULASKI 2 E	3.64	0.05	1.00			T	1.10	0.03		0.02	0.34	0.17		0.15	0.10				0.23	0.45						T								
RADFORD 3 N	M 3.62	0.20			0.72	0.91				0.06	0.20			0.11	0.08					-	1.10					0.22		0.02						
RICHLANDS	4.11	2.30			0.08	0.32	0.39			0.31	0.08					0.27			0.08	0.01	0.01	0.02				0.24								
SALTVILLE 1N	4.64	0.02			1.07	0.11	1.30	0.08	0.10	0.54	0.90					0.13			0.11	0.02	0.12				0.12	0.02								



VIRGINIA  
201208

## DAILY PRECIPITATION (INCHES)

STATION	TOTAL	DAY OF MONTH																																
		01	02	03	04	05	06	07	08	09	10	11	12	13	14	15	16	17	18	19	20	21	22	23	24	25	26	27	28	29	30	31		
STAFFORDSVILLE 3 ENE	3.13	0.54	0.04		0.04	0.16	0.70	0.09			0.09	0.16			0.08		0.18	0.02			0.71	0.22				0.09	0.01							
TROUT DALE 3 SSE	2.28	0.47			0.04	0.01	0.58	0.02	0.01		0.02	0.38	0.01		0.07						0.04			0.01	0.51	0.11								
WILLIS	3.03		0.05		0.05		0.20	0.02			0.40	1.25			0.09	0.25	T				0.32	0.11	0.04		0.19	T					0.04		0.02	
WISE 3E	8.15	1.48	0.27	0.12	0.18	0.67	0.58	0.68			0.78	0.05			0.24							2.36				0.06			0.37				0.31	
WYTHEVILLE 1 S	3.26	0.33	0.01		0.09	0.01	0.96	0.03	0.03		0.37	0.48			0.10		0.50				0.10	0.15	0.02		0.01						0.07			



VIRGINIA  
201208

## DAILY TEMPERATURES (°F)

STATION	OB. TIME	MAX/MIN	DAY OF MONTH																															AVERAGE
			01	02	03	04	05	06	07	08	09	10	11	12	13	14	15	16	17	18	19	20	21	22	23	24	25	26	27	28	29	30	31	
<b>EASTERN PIEDMONT 02</b> AMELIA COURTHOUSE 1	08	MAX	87	90	94	90	92	93	89	89	86	91	86	83	85	90	84	88	91		84	84	82	95	86	83		82	87	90	86	88	87.8	
		MIN	66	66	66	70	73	75	71	71	65	70	69	69	66	68	68	64	64	68		63	63	61	63	63	65		64	69	67	64	70	66.9
ASHLAND	18	MAX	86	91	89	91	92	89	91	85	92	88	84	83	88	90	88	88	91	87	81	78	80	82	85	82	74	82	86	88	86	88	86.4	
		MIN	65	70	68	72	75	76	73	73	67	70	71	69	65	70	68	65	64	67	62	66	63	65	65	63	65	67	66	70	65	68	71	67.9
CAMP PICKETT	08	MAX	88	87	91	91	89	88	86	84	85	88	83	83	84	87	87	87	87	88	83	71	78	82	82	84	78	69	82	86	89	87	84.5	
		MIN	67	67	67	68	71	73	71	71	64	65	71	68	67	67	68	64	63	65	64	66	65	65	65	63	64	64	64	65	68	64	64	66.4
CHASE CITY	17	MAX	87	89	92	90	90	89	88	85	86	87	83	80	85	88	88	85	86	88	83	71	79	84	82	85	78	68	81	87	91	87	84.9	
		MIN	67	67	67	69	71	74	71	72	64	67	71	70	60	62	68	64	63	63	66	66	63	64	65	62	62	63	63	66	68	64	67	66.1
CLARKSVILLE	07	MAX	90	91	95	93	93	91	92	86	88		83		88	90		89	91		89	71	79	83	84			67	82	89	92	87	86.9	
		MIN	68	68	69	69	72	73	71	72	65		70		62	62		67	65		65	67	66	66	67			61	65	65	70	66	67.1	
CORBIN	09	MAX	90	95	93	95	95	89	87	83	93	86	87	84	89	90	84	88	92	84	74	79	81	83	86	84	73	84	88	88	84	87	86.7	
		MIN	64	68	69	73	74	76	72	72	68	71	68	67	63	71	65	62	65	67	61	64	61	62	64	63	65	67	64	71	62	64	70	66.9
CROZIER	07	MAX	87	87	86	90	91	90	87	85	86	90	83	84	84	88	89	86	90	83	70	80	82	82	85	83	68	81	87	88	85	88	84.8	
		MIN	64	68	66	67	71	74	70	72	65	69	69	68	63	63	64	64	62	64	61	63	62	60	63	62	63	64	64	65	63	62	69	65.3
FARMVILLE 2 N	07	MAX	87	93	98	92	92	93	93	85	84	92	84	82	84	88	88	84	86	89	82	70	81	82	82	85	82	67	78	87	88	88	85.6	
		MIN	66	66	67	66	70	73	70	70	65	66	67	68	63	63	66	63	63	64	64	64	63	62	63	63	63	62	62	62	62	64	64	65.0
GREENBAY 3 NE	09	MAX	90	92	94	92	92	93	88	85	84	90	84	81	88	89	90	85	89	90	84	71	78	82	83	83	80	66	79	87	88	86	85.5	
		MIN	65	66	67	71	72	75	70	72	64	69	70	69	65	68	67	62	64	67	64	64	64	62	62	62	62	62	61	70	65	64	69	66.3
JOHN H KERR DAM	08	MAX	87	90	91	89	91	88	89	85	87	89	83	85	87	90	88	91	90	88	87	73	79	87	84	87	79	83	88	95	87	87	86.8	
		MIN	69	71	72	73	76	74	73	69	74	71	71	66	71	74	67	66	71	67	67	68	67	66	64	64	64	67	70	72	68	70	69.8	
LOUISA	18	MAX	90	92	91	92	93	91	89	87	92	91	85	85	88	89	85	87	89	86	83	80	82	83	86	84	78	83	88	90	88	87	87.3	
		MIN	64	66	67	67	73	73	71	72	63	71	68	66	62	68	63	59	61	64	60	64	62	58	60	61	66	65	66	66	58	62	69	65.0
PALMYRA 3S	06	MAX	90	88	92	91	93	93	88	87	88	92	86	84	85	88	89	83	88	91	85	69	80	82	83	86	84	69	80	87	87	85	85.8	
		MIN	66	66	67	67	68	73	71	71	63	64	70	70	61	62	64	60	59	59	61	62	62	60	62	62	62	65	62	64	64	62	62	64.2
PETERSBURG	08	MAX	88	88	91	88	92	90	88	86	89	91	86	84	85	91	90	86	88	90	83	75	77	83	83	86	79	75	85	89	89	87	86.1	
		MIN	68	68	69	70	72	74	73	72	69	59	73	68	69	70	70	66	66	68	66	68	66	66	67	66	67	66	66	69	68	68	68	68.2
RICHMOND INTL AP	24	MAX	89	92	90	92	92	89	86	88	91	86	85	86	88	91	87	91	92	84	75	78	83	85	87	81	75	85	89	91	87	89	87.1	
		MIN	67	70	69	72	75	74	74	73	69	74	69	70	69	71	69	68	67	67	64	65	66	65	69	66	67	67	68	73	69	70	69.3	
SANDSTON	07	MAX	88	89	94	91	94	94	88	89	89	93	88	84	84	90	93	86	89	93	83	75	78	82	83	86	81	74	85	89	91	86	87.0	
		MIN	67	67	67	68	71	75	73	72	69	69	73	69	67	68	69	65	62	62	62	62	64	64	64	64	64	66	67	67	67	67	68	67.1
<b>WESTERN PIEDMONT 03</b> BROOKNEAL	07	MAX	89	92	93	93	92	93	90	88	87	91	86	84	88	89	91	86	90	91	85	72	81	84	85	87	82	80	81	89	89	89	87.3	
		MIN	64	65	67	67	69	73	70	71	64	65	69	66	60	62	65	62	60	60	63	64	63	63	64	63	64	61	64	66	63	63	64.6	
CHARLOTTESVILLE 2W	08	MAX	90	90	92	92	91	91	84	88	91	95	84	84	84	88	88	82	86	89	84	69	80	81	84	85	85	70	78	87	88	85	85.5	
		MIN	65	65	69	70	71	72	72	67	68	66	65	64	65	65	63	65	66	64	62	61	61	63	65	66	64	64	64	65	65	66	65.8	
CHATHAM	07	MAX	85	86	89	88	87	89	86	85	86	88	82	81	81	85	87	82	85	87	81	69	78	83	82	82	80	75	77	86	89	87	83.7	
		MIN	60	63	64	65	67	68	69	69	62	62	68	61	57	57	63	61	58	58	62	62	63	60	60	60	59	61	59	57	59	61	61	61.8
DANVILLE REGIONAL AP	24	MAX	95	94	93	93	96	90	89	90	92	86	83	87	90	92	88	91	92	88	73	81	85	84	88	83	75	82	91	96	90	92	88.5	
		MIN	68	68	67	69	72	73	72	66	64	70	69	64	60	63	67	65	61	65	67	65	63	67	66	63	65	65	60	69	66	64	73	66.3
FREE UNION	08	MAX	87	87	88	87	88	88	82	86	88	90	83	82	83	85	84	79	84	87	82	67	78	79	82	84	80	69	76	86	87	84	83.1	
		MIN	63	63	66	67	68	70	69	70	64	65	66	61	60	60	60	60	60	61	61	61	61	59	59	61	62	64	61	61	60	62	62.8	

VIRGINIA  
201208

## DAILY TEMPERATURES (°F)

STATION	OB. TIME	MAX/MIN	DAY OF MONTH																															AVERAGE
			01	02	03	04	05	06	07	08	09	10	11	12	13	14	15	16	17	18	19	20	21	22	23	24	25	26	27	28	29	30	31	
LYNCHBURG #2	07	MAX	86	87	88	88	87	88	84	85	87	89	83	81	82	85	87	82	84	87	87	69	77	80	81	82	82	72	79	85	85	85	86	83.5
		MIN	64	64	65	67	68	71	69	69	66	67	68	61	60	60	64	60	60	61	61	62	57	57	64	62	62	64	61	63	63	64	65	63.5
LYNCHBURG INTL AP	24	MAX	89	91	91	90	90	86	88	90	91	85	82	85	86	89	83	88	89	85	69	79	83	82	84	82	72	80	87	87	86	88	94	85.5
		MIN	63	64	65	68	70	71	69	67	63	69	68	61	59	67	62	59	60	64	63	62	58	64	64	63	64	65	61	62	66	64	69	64.3
MARTINSVILLE FLTR PLT	07	MAX	85	91	92	90	89	91	85	85	87	89	89	83	86	87	88	83	88	89	83	68	79	84	84	83	83	78	82	88	89	89	89	85.7
		MIN	65	65	65	66	68	70	69	70	64	64	64	60	58	58	68	60	58	58	64	64	59	58	58	59	56	56	58	58	63	63	64	62.3
MEADOWS OF DAN 5 SW	07	MAX	83	86	87	83	81	82	84	81	85	83	77	77	80	81	82	79	80	81	80	68	77	80	74	74	78		84	82	82	83	80.5	
		MIN	62	62	62	65	69	68	67	68	66	66	64	58	57	57	59	58	60	63	62	57	57	60	59	55	54		57	60	60	65	61.1	
MONTEBELLO FISH CULTURAL STN	07	MAX	81	84	86	82	82	82	78	87	86	80	77	78	79	64	82	76	81	86	78	64	71	78	76	75	76	71	75	83	83	81	78.6	
		MIN	57	59	60	62	63	67	64	59	62	62	52	52	52	56	59	53	53	56	55	55	50	52	55	55	50	53	53		53	53	56.3	
MONTICELLO	08	MAX	87	86	89	89	89	89	83	86	87	90	83	82	82	85	85	80	83	87	87	67	77	78	80	83	81	68	76	84	84	82	83	83.0
		MIN	64	64	67	67	69	70	72	72	66	65	66	65	64	64	65	63	63	64	63	62	62	61	62	64	65	63	64	64	64	65	65	65.0
ROCKY MT	07	MAX	86	91	92	89	88	90	83	86	89	91	88	83	83	87	88	83	87	87	86	66	77	82	79	83	82	77	80	88	87	84	89	84.9
		MIN	64	65	66	68	69	70	68	68	65	65	68	59	58	59	65	61	60	60	65	63	58	59	62	61	58	60	60	61	64	64	63.0	
SOUTH BOSTON	07	MAX	87	94	92	90	91	92	89	86	89	89	84	82	87	88	90	88	89	88	87	72	78	84	82	85	80	70	80	88	92	87	88	86.1
		MIN	66	67	67	67	69	74	72	71	64	65	70	67	60	62	65	65	62	62	65	65	64	64	66	64	63	63	62	63	69	64	64	65.5
STUART	07	MAX	85	89	89	86	89	87	84	85	86	87	82	80	83	87	86	82	85	87	82	70	69	83	80	81	81	76	80	86	89	86	87	83.5
		MIN	63	65	66	66	62	72	68	67	65	66	67	63	59	65	64	63	60	60	65	63	59	59	61	60	57	58	60	62	64	64	63.0	
TYE RIVER 1 SE	07	MAX	87	88	90	90	91	90	87	88	91	92	85	84	85	87	88	82	86	89	84	70	80	84	83	85	85	71	85	86	85	85	87	85.5
		MIN	64	65	68	68	69	70	70	72	65	61	68	62	61	62	70	59	60	62	63	61	59	60	62	63	64	63	61	62	63	64	65	64.1
<b>NORTHERN 04</b>																																		
BOSTON 4 SE	07	MAX	87	86	90	89	90	91	86	85	88	89	84	84	83	86	87	80	86	71	87	71	79	79	80	85	83	75	81	86	88	87	86	84.2
		MIN	64	65	66	68	70	69	70	69	65	66	67	59	60	63	63	59	60	60	59	60	59	58	59	61	62	66	66	65	58	57	61	63.0
EDINBURG	07	MAX	84	84	89	85	88	86	85	85	89	90	83	83	81	84	84	78	85	85	79	71	79	80	82	84	81	73	81	85	86	81	85	83.1
		MIN	62	63	65	66	68	68	63	64	62	63	66	58	58	58	63	59	58	58	58	58	58	55	55	57	59	63	60	60	57	56	57	60.5
FRONT ROYAL	07	MAX	86	86	89	89	90	89	85	85	89	89	85	84	83	85	84	80	85	87	81	73	77	79	81	84	81	80	80	85	85	82	84	83.9
		MIN	63	63	66	70	72	70	68	68	66	67	67	60	59	61	64	60	59	62	61	62	59	59	58	60	62	64	63	63	61	60	60	63.1
LINCOLN	07	MAX	89	88	92	92	94	93	89	88	90	92	85	87	84	86	88	81	87	91	82	75	81	80	84	87	85	77	78	87	86	83	85	86.0
		MIN	66	64	65	68	71	72	66	64	64	68	60	60	62	65	63	61	60	61	60	63	58	57	57	60	61	63	69	68	58	58	59	62.9
LURAY 5 E	08	MAX	85	86	90	87	89	89	84	86	90	90	86	85	82	84	86	80	84	87	81	72	78	78	79	83	80	74	80	87	86	82	87	83.8
		MIN	60	60	66	67	69	68	68	69	62	66	66	56	58	63	61	57	58	57	60	57	54	56	58	59	64	64	59	65	56	59	60	61.4
MADISON	08	MAX	87	86	90	89	91	90	85	86	89	91	84	85	85	86	86	80	85	87	83	71	78	79	82	84	82	75	80	87	88	84	85	84.5
		MIN	64	65	68	69	71	71	71	71	66	66	68	63	62	62	65	61	61	63	63	63	61	60	62	63	64	66	66	66	60	60	64	64.7
MANASSAS	07	MAX	90	90	93		95	95	90												86	75	80	83	86								M	
		MIN	69	70	73		78	73													69	66	63	63	64								M	
MT WEATHER	07	MAX		81	85	84	86	85	83	81	84	85	79	81	79	81	82	76	81	84	78	68	75	77	80	82	79	72	73	83	82	79	81	80.2
		MIN		64	69	69	71	70	68	69	70	65	65	62	65	65	64	62	63	61	62	60	60	59	60	64	66	64	64	64	62	63	63	64.4
PIEDMONT RSCH STN	08	MAX	86	86	89	88	89	90	83	85	87	89	83	83	83	85	86	81	84	87	81	70	77	79	82	82	82	72	80	86	88	83	85	83.6
		MIN	63	66	68	69	71	71	70	72	64	68	66	65	64	68	64	64	62	64	64	63	62	61	63	64	67	66	65	66	65	65	65	65.6
SOMERSET	07	MAX	87	87	90	89	91	91	91	87	90	92	85	85	85	87	87	80	86	88	82	71	79	80	82	83	83	74	80	87	89	84	86	85.1
		MIN	64	65	68	70	71	75	70	72	64	68	67	64	61	64	65	60	61	64	63	63	62	60	62	62	63	66	63	66	60	64	62	64.8
SPERRYVILLE	06	MAX	84	84	87	87	88	87	85	83	87	88	82	83	82	82	84	77	84	85	79	72	76	78	81	84	81	75	81	84	86	81	84	82.6

VIRGINIA  
201208

## DAILY TEMPERATURES (°F)

STATION	OB. TIME	MAX/MIN	DAY OF MONTH																															AVERAGE	
			01	02	03	04	05	06	07	08	09	10	11	12	13	14	15	16	17	18	19	20	21	22	23	24	25	26	27	28	29	30	31		
STERLING RCS	07	MIN	62	62	67	68	68	69	69	64	67	67	59	60	61	60	63	62	60	60	61	60	57	56	58	59	61	64	64	63	61	60	60	62.3	
		MAX	91	88	94	92	96	95	90	90	90	94	87	88	85	88	88	83	88	92	84	77	80	82	86	86	86	79	84	89	85	88	87.5		
VIENNA	07	MIN	68	68	70	73	75	74	71	72	68	68	67	66	64	66	70	64	63	64	65	64	59	59	62	63	66	69	67	69	61	62	64	66.5	
		MAX	86	84	88	90	91	91	87	86	87	90	82	86	82	86	87	85	85	88	80	74	77	80	85	86	85	76	76	85	86	83	92	84.7	
WARRENTON 3 SE	08	MIN	68	68	68	71	75	73	70	70	70	68	67	65	65	65	67	63	63	63	63	63	60	60	62	62	64	68	66	66	62	62	62	65.8	
		MAX	86	86	91	91	90	90	90	90	90	89	91	82	84	86	86	87	87	87	87	87	87	87	87	87	87	87	87	87	87	87	87	87	M
WASHGTN DULLES INTL AP	24	MIN	65	65	69	70	70	70	66	60	65	65	64	65	65	65	65	65	65	63	63	63	63	63	62	62	63	69	68	67	66	62	61	63	M
		MAX	88	92	91	94	94	90	89	89	94	86	88	85	88	88	84	87	93	84	76	80	83	85	87	87	79	82	88	89	85	89	95	87.4	
WASHINGTON REAGAN AP	24	MIN	69	68	71	75	73	72	72	71	68	69	67	69	65	70	66	65	63	66	66	64	60	62	62	63	69	68	67	66	62	61	63	66.8	
		MAX	91	96	96	96	98	93	90	91	95	88	89	88	90	90	86	91	94	86	78	82	86	86	89	88	82	84	88	91	87	89	97	89.5	
WINCHESTER	07	MIN	73	75	75	79	78	78	77	77	76	72	71	72	72	72	73	69	72	69	69	69	66	68	70	72	72	71	71	75	69	69	73	72.4	
		MAX	83	84	88	87	89	89	85	85	87	89	82	83	81	81	82	78	84	86	79	71	76	77	81	83	81	77	76	84	84	80	82	82.4	
WINCHESTER 7 SE	08	MIN	65	65	65	70	72	70	65	68	68	67	67	61	60	62	64	61	63	64	63	62	60	58	58	60	63	66	65	65	64	60	62	64.0	
		MAX	86	85	90	88	89	89	88	86	91	89	84	86	84	85	84	82	86	88	83	72	76	81	82	85	83	77	77	88	89	86	86	84.7	
WOODSTOCK 2 NE	07	MIN	64	64	65	68	68	70	63	63	64	65	67	58	57	57	63	59	59	61	61	62	59	56	57	57	61	65	64	65	58	57	57	61.7	
		MAX	85	85	91	87	89	86	86	86	89	90	84	84	84	75	84	78	84	85	80	71	78	80	82	85	82	75	79	88	85	85	83.4		
CENTRAL MOUNTAIN 05 COVINGTON FLTR PLT	07	MIN	63	63	65	67	68	68	65	65	65	66	66	59	59	61	63	61	60	59	59	60	58	57	57	59	60	65	63	62	58	58	62.0		
		MAX	87	89	89	88	89	90	81	84	89	90	90	80	84	85	86	86	85	84	83	73	79	80	83	85	84	75	80	86	89	86	88	84.7	
DALE ENTERPRISE	07	MIN	64	65	64	64	66	67	68	66	61	61	55	55	56	64	58	58	57	59	61	57	55	55	59	59	61	62	63	56	56	57	60.3		
		MAX	84	88	90	90	88	88	82	85	86	90	83	85	82	85	84	79	84	85	78	72	79	80	81	85	81	72	78	86	85	82	81	83.2	
GATHRIGHT DAM	07	MIN	62	62	63	67	69	67	66	66	62	65	66	55	56	56	62	55	56	56	59	58	54	54	56	57	60	64	61	61	57	58	60.3		
		MAX	82	83	83	86	84	82	77	81	82	81	81	82	81	81	82	78	84	86	79	71	76	77	81	83	81	77	76	84	84	80	82	M	
HOT SPRINGS	07	MIN	62	62	63	63	66	66	56	58	63	58	58	58	58	58	58	58	58	58	58	53	54	56	57	57	60	60	61	56	57	57	M		
		MAX	83	83	83	86	85	85	77	81	83	85	78	78	76	80	81	76	79	81	78	67	74	76	78	88	79	71	75	81	82	80	82	79.7	
MILLGAP	07	MIN	60	60	60	64	67	67	66	63	61	60	53	53	55	62	55	55	55	56	56	51	51	54	55	55	60	58	58	55	55	56	58.0		
		MAX	78	82	84	85	82	82	77	80	85	84	77	76	76	79	79	75	81	77	75	67	72	75	77	78	78	71	76	82	81	79	82	78.5	
MUSTOE 1 SW	24	MIN	57	58	59	59	62	62	58	57	57	56	49	48	48	52	51	51	47	54	56	49	48	49	53	53	56	59	57	49	49	49	53.8		
		MAX	86	84	84	82	82	76	79	84	83	75	77	76	76	76	74	77	77	77	65	73	75	75	77	77	70	74	80	81	79	79	84	77.9	
ROANOKE 8 N	07	MIN	58	63	60	64	62	61	57	57	56	61	54	46	46	60	54	48	49	47	54	50	44	47	50	52	55	59	59	54	48	50	54	54.2	
		MAX	85	87	91	88	85	88	80	87	90	89	85	84	85	84	87	80	86	87	87	84	77	83	82	85	82	82	82	87	86	88	88	85.2	
ROANOKE INTL AP	24	MIN	64	64	66	69	68	69	68	69	67	56	60	59	63	66	60	61	61	61	61	61	58	58	64	63	60	60	62	62	65	65	65	63.3	
		MAX	86	91	88	86	87	81	88	92	89	88	83	84	84	87	80	87	88	85	72	76	84	80	84	81	75	81	86	89	88	95	84.9		
STAUNTON WATER TRMTMT PLT	08	MIN	64	65	68	72	71	72	69	72	68	66	67	60	60	66	68	62	64	67	63	64	59	66	63	62	60	65	63	66	63	65	72	65.5	
		MAX	82	85	87	88	88	85	80	83	88	88	80	81	82	83	83	78	83	82	81	79	76	81	78	83	80	70	77	84	87	85	84	82.3	
WAYNESBORO WTP	07	MIN	61	62	65	67	68	66	66	67	63	65	65	56	57	62	63	58	61	58	60	56	54	56	58	60	62	62	62	65	58	60	64	61.5	
		MAX	87	86	90	90	90	91	84	87	89	90	85	85	84	86	86	80	85	87	82	69	79	80	83	81	82	70	79	86	87	84	85	84.2	
SOUTHWESTERN MOUNTAIN 06 ABINGDON 3S	22	MIN	63	62	64	69	69	70	70	70	65	66	67	59	58	58	63	57	57	60	61	59	56	56	59	60	61	64	62	62	59	59	61	62.1	
		MAX	84	87	88	86	86	83	86	85	85	77	79	82	78	75	82	74	81	77	77	77	77	83	83	83	85	86	88	87	87	88	89	82.8	

VIRGINIA  
201208

## DAILY TEMPERATURES (°F)

STATION	OB. TIME	MAX/MIN	DAY OF MONTH																															AVERAGE	
			01	02	03	04	05	06	07	08	09	10	11	12	13	14	15	16	17	18	19	20	21	22	23	24	25	26	27	28	29	30	31		
BIG STONE GAP	08	MAX	88	85	88	85	87	71	80	84	90	83	74	80	80	80	78	83	76	80	80	78	81	83	85	85	86	88	89	88	87	88	82.9		
		MIN	63	63	65	67	67	67	69	69	65	64	61	56	56	59	63	59	60	62	62	63	53	49	54	58 <sup>1</sup>	58	59	59	61	62	61	62	61.3	
BLACKSBURG NWSO	07	MAX	82	84	87	85	82	85	76	82	85	86	81	77	77	81	82	74	81	79	79	69	77	79	78	80	74	78	84	82	84	86	80.5		
		MIN	58	59	61	63	65	66	66	66	62	62	61	53	54	56	60	56	56	56	59	59	51	51	56	56	55	57	58	58	58	63	58.7		
BURKES GARDEN	07	MAX	78	79	82	81	78	82	72	77	80	81	74	73	73	77	77	67	77	75	76	71	73	75	76	77	76	78	82	80	79	84	77.0		
		MIN	54	54	53	53	61	60	59	60	55	54	55	43	49	53	57	49	47	56	54	52	43	43	43		47	47	47	49	51	48	47	51.4	
CHRISTIANSBURG	07	MAX	81	85	88	87	80	84	74	81	85	85	80	75	77	81	81	72	82	81	78	66	77	77	75	79	80	73	76	83	83	85	85	79.9	
		MIN	59	59	59	61	67	68	65	65	63	63	61	55	56	56	61	56	58	58	61	59	54	54	54	56	54	55	58	59	60	60	63	59.3	
CLINTWOOD 1 W	07	MAX	84	81	84	84	83	81	76	78	84	82	76	76	77	79	79	73	81	73	78	76	74	79	81	79	80	82	81	82	82	83	79.6		
		MIN	61	61	61	64	65	65	67	68	62	59	58	55	55	56	60	58	57	58	57	57	50	50	51	52	54	54	55	59	55	55	55	57.8	
COPPER HILL	07	MAX	75	82	80	79	78	81	72	78	82	80	80	76	76	77	79	73	78	79	79	61	70	71	72	74	73	68	74	77	79	76	77	76.0	
		MIN	59	58	62	65	65	65	64	64	64	62	60	53	53	56	60	57	57	57	57	57	53	53	58	59	58	56	58	59	60	61	63	59.1	
GALAX RADIO WBRF	07	MAX	78	86	89	82	82	83	77	82	88	82	80	80	81	79	80	76	83	79	79	72	79	77	76	78	77	79	80	87	84	82	80.6		
		MIN	62	60	60	68	66	63	66	64	61	63	61	53	53	59	59	51	54	61	61	59	50	55	56	57	53	52	55	54	61	60	60	58.6	
GALAX WTP	07	MAX	78	85	86	81	79	82	77	80	87	81	80	75	79	79	78	76	81	80	77	72	78	77	75	78	76	76	80	83	86	84	81	79.6	
		MIN	62	60	60	61	65	64	64	65	61	63	61	54	54	54	59	53	54	54	61	60	50	50	55	56	54	52	53	53	60	61	57.6		
GRUNDY	07	MAX	84	85	83	81	83	78	73	77	81	81	75	78		80			80	77	78	79	78	79	80	82	82	82	83	78	81	85	80.1		
		MIN	63	64	65	65	67	67	67	68	66	62	62	58		63			61	59	60	56	56	56	57	58	57	57	60	64	60	61	61.4		
JOHN FLANNAGAN LAKE	07	MAX	87		89	88	89	82	81	89	88		87	78	80	83	82	78	85	75	80		78	81	83	84	87	86	86	89	84	84	86	83.9	
		MIN	62		63	67	68	68	68	66		61	57	56	59	62	60	60	62	60		54	54	56	56	59	59	58	60	63	60	60	60.9		
LEBANON	07	MAX	84	85	87	88	85	84	80	81	86	85	78	78	78	81	75	76	83	75	78	78	75	79	82	83	83	84	84	87	85	84	88	81.9	
		MIN	61	61	60	60	66	66	65	65	61	62	62	52	52	54	63	53	53	57	59	60	49	49	49	54	55	54	54	58	58	56	56	57.5	
NORA 4 SSE	07	MAX	79	76	81	81	79	78	74	77	82	80	73	74	74	75	75	71	77	73	76	73	73	75	77	80	80	80	81	84	82	84	77.6		
		MIN	61	62	62	64	67	65	65	67	67	61	56	55	57	62	61	61	61	59	58	56	56	58	58	62	61	61	62	64	64	61	62	61.2	
NORTH FORK LAKE	08	MAX	86	85					86	82	87	86																						M	
		MIN	62	61					64	66	63	60																							M
PULASKI 2 E	07	MAX	81	86	88	86	84	84	84	82	82	87	81	79	80	82	82	82	82	81	80	66	78	80	80	80	83	76	81	86	85	86	88	82.0	
		MIN	62	62	60	61	67	66	66	66	62	62	62	53	55	55	62	56	55	59	61	57	53	51	52	51	53	53	53	57	61	59	60	58.5	
RADFORD 3 N	07	MAX	83	87	89	88	83	86	77	83	87	87	82	79	80	82	83	73	82	82	79	68	78	79	80	81	80	74	78	85	83	85	89	81.7	
		MIN	61	63	60	63	67	70	67	67	61	64	62	58	55	59	61	54	57	60	60	57	53	54	58	57	56	54	58	58	58	61	62	59.8	
RICHLANDS	07	MAX	83	85	87	87	85	85	78	81	85	85	78	78	77	81	80	75	83	75	80	79	76	79	80	83	83	84	84	87	84	83	88	81.9	
		MIN	64	63	61	61	64	64	64	62	62	61	53	53	53	62	56	56	57	59	60	51	50	50	53	56	53	54	54	60	56	55	57.8		
SALTVILLE 1N	07	MAX	83	85	88	88	85	86	77	83	86	86	86	79	79	82	82	75	83	76	81	79	78	80	82	85	83	84	85	87	85	86	89	83.0	
		MIN	63	63	61	62	65	65	67	67	63	63	61	54	53	56	56	56	55	57	60	60	52	51	51	56	58	56	55	56	60	57	58	58.6	
STAFFORDSVILLE 3 ENE	07	MAX	84	85	86	85	82	87	76	87		86	82	80	80	83	83	72	82	79	80	70	80	70	79	82	77	74	80	83	81	84	88	80.9	
		MIN	62	62	60	61	66	66	67	67		61	61	52	53	54	54	56	56	56	59	59	52	52	52	58	57	54	55	58	58	56	57	58.0	
TROUT DALE 3 SSE	07	MAX	76	82	82	81	78	80	77	78	82	81	78	75	74	76	79	80	78	73	73	74	74	75	74	79	76	77	80	83	83	81	81	78.1	
		MIN	54	53	56	58	61	60	62	63	55	54	59	47	50	47	54	56	49	50	57	58	55	44	47	50	47	47	53	53	56	50	53.5		
WISE 3E	17	MAX	80	80	82	79	79	75	76	81	82	75	72	71	75	76	76	77	75	74	74	73	74	75	78	80	79	80	83	82	79	82	81	77.6	
		MIN	57	59	61	65	68	65	64	63	61	61	56	50	54	61	60	54	58	59	59	53	49	51	53	57	58	54	58	60	63	57	65	58.5	
WYTHEVILLE 1 S	07	MAX	80	85	87	86	84	83	77	83	86	85	80	78	79	81	80	74	82	79	79	73	77	80	80	82	81	78	84	85	85	85	86	81.4	
		MIN	62	60	59	59	55	53	65	56	58	58	60	51	50	53	58	52	52	54	60	59	50	50	52	56	55	52	55	55	55	55	55	55.5	

VIRGINIA  
201208

## SNOWFALL AND SNOW ON GROUND (INCHES)

STATION	DAY OF MONTH																																
	01	02	03	04	05	06	07	08	09	10	11	12	13	14	15	16	17	18	19	20	21	22	23	24	25	26	27	28	29	30	31		
<b>VIRGINIA</b>																																	
<b>TIDEWATER 01</b>																																	
DISPUTANTA																																	
EASTVILLE																																	
EMPORIA 1 WNW																																	
FREDERICKSBURG SEWAGE																																	
HAMPTON UNIV																																	
HOLLAND 1 E																																	
HOPEWELL																																	
NORFOLK INTL AP																																	
NORFOLK SOUTH																																	
NORTH																																	
PAINTER 2W																																	
STONY CREEK 2 N																																	
SUFFOLK LAKE KILBY																																	
WAKEFIELD 1NW																																	
WALKERTON 2 NW																																	
WALLACETON LK DRUMMOND																																	
WALLOPS ISLAND NASA TEST FACIL																																	
WARSAW 2 NW																																	
WEST POINT 2 NW																																	
WILLIAMSBURG 2 N																																	
<b>CENTRAL MOUNTAIN 05</b>																																	
ROANOKE INTL AP																																	
STAUNTON WATER TRMTMT PLT																																	
WAYNESBORO WTP																																	
<b>SOUTHWESTERN</b>																																	
<b>MOUNTAIN 06</b>																																	
BLACKSBURG NWSO																																	

Snowfall: Includes snow and ice. Values for NWS stations (J index note) are Mid-Mid (LST).

Snow on ground: Includes snow, sleet, ice, and hail. Values for NWS stations (J index note) are observed at 12 UTC (GMT).

Water Equivalent: Given for NWS stations (J index note) only, when snow depth is 2 inches or more, and is measured at 18 UTC (GMT)

VIRGINIA  
201208

## SNOWFALL AND SNOW ON GROUND (INCHES)

STATION		DAY OF MONTH																																			
		01	02	03	04	05	06	07	08	09	10	11	12	13	14	15	16	17	18	19	20	21	22	23	24	25	26	27	28	29	30	31					
BURKES GARDEN	SNOWFALL																																				
	SN ON GND																																				
CHRISTIANSBURG	SNOWFALL																																				
CLINTWOOD 1 W	SNOWFALL																																				
	SN ON GND																																				
COPPER HILL	SNOWFALL																																				
	SN ON GND																																				
GALAX RADIO WBRF	SNOWFALL																																				
	SN ON GND																																				
GALAX WTP	SNOWFALL																																				
	SN ON GND																																				
GRUNDY	SNOWFALL																																				
	SN ON GND																																				
JOHN FLANNAGAN LAKE	SNOWFALL																																				
LAFAYETTE 1 NE	SNOWFALL																																				
LEBANON	SNOWFALL																																				
	SN ON GND																																				
NORA 4 SSE	SNOWFALL																																				
	SN ON GND																																				
NORTH FORK LAKE	SNOWFALL																																				
PULASKI 2 E	SNOWFALL	-	-	-	-	-	-	-	-	-	-	-	-	-	-	-	-	-	-	-	-	-	-	-	-	-	-	-	-	-	-	-	-	-	-	-	
	SN ON GND	-	-	-	-	-	-	-	-	-	-	-	-	-	-	-	-	-	-	-	-	-	-	-	-	-	-	-	-	-	-	-	-	-	-	-	
RADFORD 3 N	SNOWFALL																																				
RICHLANDS	SNOWFALL	-	-	-	-	-	-	-	-	-	-	-	-	-	-	-	-	-	-	-	-	-	-	-	-	-	-	-	-	-	-	-	-	-	-	-	
	SN ON GND	-	-	-	-	-	-	-	-	-	-	-	-	-	-	-	-	-	-	-	-	-	-	-	-	-	-	-	-	-	-	-	-	-	-	-	
SALTVILLE 1N	SNOWFALL																																				
STAFFORDSVILLE 3 ENE	SNOWFALL																																				
TROUT DALE 3 SSE	SNOWFALL																																				
	SN ON GND																																				
WILLIS	SNOWFALL																																				
WISE 3E	SNOWFALL																																				
WYTHEVILLE 1 S	SNOWFALL																																				
	SN ON GND																																				

Snowfall: Includes snow and ice. Values for NWS stations (J index note) are Mid-Mid (LST).

Snow on ground: Includes snow, sleet, ice, and hail. Values for NWS stations (J index note) are observed at 12 UTC (GMT).

Water Equivalent: Given for NWS stations (J index note) only, when snow depth is 2 inches or more, and is measured at 18 UTC (GMT)



VIRGINIA  
201208

## PAN EVAPORATION AND WIND

STATION		DAY OF MONTH																															TOTAL OR AVERAGE		
		01	02	03	04	05	06	07	08	09	10	11	12	13	14	15	16	17	18	19	20	21	22	23	24	25	26	27	28	29	30	31			
VIRGINIA EASTERN PIEDMONT 02 JOHN H KERR DAM	WIND	-	-	-	-	-	-	-	-	-	-	-	-	-	-	-	-	-	-	-	-	-	-	-	-	-	-	-	-	-	-	-	-	-	M
	EVAP	-	-	-	-	-	-	-	-	-	-	-	-	-	-	-	-	-	-	-	-	-	-	-	-	-	-	-	-	-	-	-	-	-	M
	MAX	-	-	-	-	-	-	-	-	-	-	-	-	-	-	-	-	-	-	-	-	-	-	-	-	-	-	-	-	-	-	-	-	-	M
	MIN	-	-	-	-	-	-	-	-	-	-	-	-	-	-	-	-	-	-	-	-	-	-	-	-	-	-	-	-	-	-	-	-	-	M

Evaporation: Is measured in hundredths of inches.

Wind: Is measured in miles.

Max and Min: The maximum and minimum temperatures (Fahrenheit) of the water in the evaporation pan.

# STATION INDEX

STATION	INDEX NO.	DIVISION	COUNTY	LATITUDE	LONGITUDE	ELEVATION (IN FEET)	OBSERVATION TIME AND TABLES			
							LOCAL STD TIME			
							TEMP	PRECIP	EVAP	SPECIAL SEE (NOTES)
VIRGINIA										
ABINGDON 3S	0021	06	WASHINGTON	36 40	81 58W	1920	22	22		H
ALBERTA 5N	0079	02	BRUNSWICK	36 56	77 54W	376		08		H
ALTAVISTA	0166	03	CAMPBELL	37 7	79 17W	529		07		CH
AMELIA COURTHOUSE 1	0187	02	AMELIA	37 21	77 59W	345	08	08		H
APPOMATTOX	0243	03	APPOMATTOX	37 20	78 50W	850		07		H
ASHLAND	0327	02	HANOVER	37 45	77 29W	220	18	18		H
BEDFORD 4 NW	0561	03	BEDFORD	37 23	79 34W	1228		07		CH
BIG STONE GAP	0735	06	WISE	36 52	82 46W	1464	08	08		H
BLACKSBURG NWSO	0766	06	MONTGOMERY	37 12	80 25W	2100	07	07		CH
BOSTON 4 SE	0860	04	CULPEPER	38 33	78 6W	590	07	07		H
BREMO BLUFF	0993	02	FLUVANNA	37 43	78 17W	225		24		CH
BROOKNEAL	1082	03	CAMPBELL	37 4	78 57W	408	07	07		H
BUCHANAN	1121	05	BOTETOURT	37 31	79 41W	880		07		H
BUCKINGHAM	1136	02	BUCKINGHAM	37 30	78 32W	552		07		H
BUENA VISTA	1159	05	ROCKBRIDGE	37 44	79 22W	840		07		H
BURKES GARDEN	1209	06	TAZEWELL	37 6	81 20W	3068	07	07		H
CAMP PICKETT	1322	02	NOTTOWAY	37 2	77 57W	330	08	08		CH
CHARLOTTE COURT HOUSE	1585	03	CHARLOTTE	37 3	78 39W	569		07		H
CHARLOTTESVILLE 2W	1593	03	ALBEMARLE	38 2	78 31W	866	08	08		H
CHASE CITY	1606	02	MECKLENBURG	36 47	78 29W	510	17	17		H
CHATHAM	1614	03	PITTSYLVANIA	36 49	79 25W	651	07	07		CH
CHRISTIANSBURG	1692	06	MONTGOMERY	37 8	80 24W	2100	07	07		H
CLARKSVILLE	1746	02	MECKLENBURG	36 37	78 33W	330	07	07		H
CLINTWOOD 1 W	1825	06	DICKENSON	37 9	82 29W	1780	07	07		H
CONCORD 4 SSW	1955	03	CAMPBELL	37 17	78 58W	720		07		H
COPPER HILL	1999	06	FLOYD	37 5	80 9W	2690	07	07		H
CORBIN	2009	02	CAROLINE	38 12	77 22W	220	09	09		H
COVINGTON FLTR PLT	2044	05	ALLEGHANY	37 49	79 59W	1230	07	07		H
CRAIGSVILLE 2 S	2064	05	AUGUSTA	38 3	79 23W	1758		07		H
CROZIER	2142	02	GOOCHLAND	37 40	77 53W	350	07	07		H
DALE ENTERPRISE	2208	05	ROCKINGHAM	38 27	78 56W	1358	07	07		H
DANVILLE REGIONAL AP R	2250	03	PITTSYLVANIA	36 34	79 20W	571	24	24		H
DISPUTANTA	2400	01	PRINCE GEORGE	37 7	77 12W	15	07	07		H
EASTVILLE	2635	01	NORTHAMPTON	37 23	75 58W	10	07	07		H
EDINBURG	2663	04	SHENANDOAH	38 48	78 35W	928	07	07		H
EMPORIA 1 WNW	2790	01	GREENSVILLE	36 42	77 34W	100	08	08		H
FARMVILLE 2 N	2941	02	CUMBERLAND	37 20	78 23W	450	07	07		CH
FREDERICKSBURG SEWAGE	3204	01	FREDERICKSBURG	38 17	77 27W	15	07	07		H
FREE UNION	3213	03	ALBEMARLE	38 5	78 35W	590	08	07		H
FRONT ROYAL	3229	04	WARREN	38 54	78 11W	930	07	07		H
GALAX RADIO WBRF	3267	06	CARROLL	36 40	80 55W	2385	07	07		H
GALAX WTP	3272	06	CARROLL	36 39	80 55W	2360	07	07		CH
GATHRIGHT DAM	3310	05	ALLEGHANY	37 57	79 57W	1770	07	07		CH
GLASGOW 1 SE	3375	05	ROCKBRIDGE	37 37	79 26W	737		07		H
GREENBAY 3 NE	3565	02	PRINCE EDWARD	37 11	78 17W	500	09	09		H
GRUNDY	3640	06	BUCHANAN	37 17	82 5W	1170	07	07		H
HAMPTON UNIV	3713	01	HAMPTON	37 1	76 20W	10	17	17		H
HOLCOMB ROCK	4039	03	BEDFORD	37 33	79 24W	620		07		H
HOLLAND 1 E	4044	01	SUFFOLK	36 41	76 46W	80	08	08		H
HOPEWELL	4101	01	PRINCE GEORGE	37 18	77 17W	40	16	16		H
HOT SPRINGS	4128	05	BATH	37 60	79 50W	2236	07	07		H
HUDDLESTON 4 SW	4148	03	BEDFORD	37 8	79 32W	960		07		H
JOHN FLANNAGAN LAKE	4410	06	DICKENSON	37 14	82 21W	1460	07	07		H
JOHN H KERR DAM	4414	02	MECKLENBURG	36 36	78 18W	250	08	08	08	CH
LAFAYETTE 1 NE	4676	06	MONTGOMERY	37 14	80 12W	1320		07		H
LEBANON	4777	06	RUSSELL	36 54	82 2W	1912	07	07		H
LEXINGTON	4876	05	ROCKBRIDGE	37 47	79 26W	1097		07		H
LINCOLN	4909	04	LOUDOUN	39 5	77 42W	500	07	07		H
LOUISA	5050	02	LOUISA	38 3	78 0W	420	18	18		H
LURAY 5 E	5096	04	PAGE	38 40	78 22W	1400	08	08		H
LYNCHBURG #2	5117	03	CAMPBELL	37 23	79 14W	736	07	07		H
LYNCHBURG INTL AP R	5120	03	CAMPBELL	37 19	79 12W	940	24	24		HJ
MADISON	5150	04	MADISON	38 22	78 15W	577	08	08		H
MANASSAS	5204	04	MANASSAS	38 44	77 30W	245	07	07		H
MARTINSVILLE FLTR PLT	5300	03	HENRY	36 42	79 52W	760	07	07		H

# STATION INDEX

STATION	INDEX NO.	DIVISION	COUNTY	LATITUDE	LONGITUDE	ELEVATION (IN FEET)	OBSERVATION TIME AND TABLES			
							LOCAL STD TIME			
							TEMP	PRECIP	EVAP	SPECIAL SEE (NOTES)
MEADOWS OF DAN 5 SW	5453	03	PATRICK	36 40	80 27W	2225	07	07		H
MILLGAP	5595	05	HIGHLAND	38 18	79 43W	2421	07	07		CH
MONTEBELLO FISH CULTURAL STN #	5690	03	NELSON	37 51	79 8W	2667	07	07		H
MONTICELLO	5700	03	ALBEMARLE	38 1	78 27W	758	08	08		H
MT WEATHER	5851	04	LOUDOUN	39 4	77 53W	1659	07	07		H
MTN GROVE	5756	05	BATH	38 6	79 53W	1775		07		H
MUSTOE 1 SW	5880	05	HIGHLAND	38 20	79 40W	2380	24	24		H
NEW CASTLE	6012	05	CRAIG	37 18	80 3W	1258		07		H
NORA 4 SSE	6125	06	DICKENSON	37 1	82 19W	2650	07	07		H
NORFOLK INTL AP R	6139	01	NORFOLK (CITY)	36 54	76 12W	30	24	24		HJ
NORFOLK SOUTH	6147	01	NORFOLK (CITY)	36 52	76 14W	100	24	24		H
NORTH	6161	01	MATHEWS	37 26	76 26W	10	07	07		H
NORTH FORK LAKE	6173	06	WISE	37 7	82 38W	1675	08	08		H
PAINTER 2W	6475	01	ACCOMACK	37 35	75 49W	30	16	16		CH
PALMYRA 3S	6491	02	FLUVANNA	37 49	78 16W	410	06	06		H
PEDLAR DAM	6593	03	AMHERST	37 40	79 17W	1024		07		H
PETERSBURG	6656	02	PETERSBURG	37 14	77 24W	15	08	08		H
PIEDMONT RSCH STN	6712	04	ORANGE	38 14	78 7W	520	08	08		CH
PULASKI 2 E	6955	06	PULASKI	37 3	80 47W	1850	07	07		CH
RADFORD 3 N	6999	06	PULASKI	37 12	80 35W	1800	07	07		H
RICHLANDS	7174	06	TAZEWELL	37 6	81 48W	1910	07	07		H
RICHMOND INTL AP R	7201	02	HENRICO	37 30	77 19W	164	24	24		HJ
ROANOKE 8 N	7278	05	ROANOKE	37 22	79 58W	1190	07	07		H
ROANOKE INTL AP R	7285	05	ROANOKE	37 19	79 58W	1175	24	24		HJ
ROCKY MT	7338	03	FRANKLIN	36 59	79 54W	1315	07	07		CH
SALTVILLE 1N	7506	06	SMYTH	36 53	81 46W	1733	07	07		H
SANDSTON	7541	02	HENRICO	37 33	77 17W	165	07	07		H
SOMERSET	7904	04	ORANGE	38 15	78 16W	510	07	07		H
SOUTH BOSTON	7925	03	HALIFAX	36 42	78 53W	329	07	07		H
SPERRYVILLE	7985	04	RAPPAHANNOCK	38 39	78 14W	750	06	06		H
STAFFORDSVILLE 3 ENE	8022	06	GILES	37 16	80 43W	1950	07	07		CH
STAUNTON WATER TRMTMT PLT	8062	05	AUGUSTA	38 10	79 5W	169	08	08		H
STERLING RCS	8084	04	LOUDOUN	38 59	77 29W	288	07	07		H
STONY CREEK 2 N	8129	01	SUSSEX	36 58	77 24W	105	08	08		H
STUART	8170	03	PATRICK	36 38	80 15W	1375	07	07		H
SUFFOLK LAKE KILBY	8192	01	SUFFOLK	36 44	76 36W	22	24	24		H
TROUT DALE 3 SSE	8547	06	GRAYSON	36 39	81 24W	2839	07	07		CH
TYE RIVER 1 SE	8600	03	NELSON	37 38	78 56W	720	07	07		H
VIENNA	8737	04	FAIRFAX	38 54	77 16W	418	07	07		H
WAKEFIELD 1NW	8800	01	SUSSEX	36 59	77 0W	113	24	24		CH
WALKERTON 2 NW	8829	01	KING AND QUEEN	37 45	77 2W	50	18	18		H
WALLACETON LK DRUMMOND	8837	01	CHESAPEAKE	36 36	76 26W	20	08	08		H
WALLOPS ISLAND NASA TEST FACIL R	8849	01	ACCOMACK	37 56	75 28W	46	24	24		HJ
WARRENTON 3 SE	8888	04	FAUQUIER	38 41	77 46W	500	08	08		H
WARSAW 2 NW	8894	01	RICHMOND	37 59	76 47W	140	18	18		H
WASHGTN DULLES INTL AP R	8903	04	LOUDOUN	38 56	77 28W	290	24	24		HJ
WASHINGTON REAGAN AP R	8906	04	ARLINGTON	38 51	77 2W	10	24	24		HJ
WAYNESBORO WTP	8941	05	WAYNESBORO	38 5	78 53W	1270	07	07		H
WEST POINT 2 NW	9025	01	KING WILLIAM	37 34	76 48W	20	17	17		H
WILLIAMSBURG 2 N	9151	01	YORK	37 18	76 42W	70	24	24		CH
WILLIS	9169	06	FLOYD	36 55	80 30W	2810		07		CH
WINCHESTER	9181	04	FREDERICK	39 11	78 9W	720	07	07		H
WINCHESTER 7 SE	9186	04	FREDERICK	39 11	78 7W	680	08	08		H
WINTERPOCK 4 W	9213	02	CHESTERFIELD	37 19	77 39W	300		07		H
WISE 3E	9215	06	WISE	36 60	82 32W	2549	17	17		CH
WOODSTOCK 2 NE	9263	04	SHENANDOAH	38 54	78 28W	675	07	07		H
WOOLWINE	9272	03	PATRICK	36 47	80 17W	1500		07		CH
WYTHEVILLE 1 S	9301	06	WYTHE	36 56	81 6W	2450	07	07		CH

# REFERENCE NOTES

**STATION NAMES:** Name of the city, town or locality. Figures and letters following the station names indicate the distance in miles and direction from the post office or town community center.

**DIVISIONS:** Areas within a state of similar climatological characteristics. Division averages are calculated using data from stations that record temperature and/or precipitation. Station Precipitation totals flagged with an 'F' or 'M' are excluded from the Divisional Average calculations of precipitation. Stations with monthly Temperature averages flagged with an 'F' or 'M' are included in the Divisional Average if there are no more than 9 flagged or missing daily values in the month, else they are excluded from the divisional average for temperature.

**NORMALS:** The average value of the meteorological element over a time period. Effective 1 January 2012, the averaging period is 1981 to 2010. The normals for National Weather Service localities have been adjusted so as to be representative for the current observation site.

**MONTHLY DEGREE DAY TOTALS:** One heating (cooling) degree day is accumulated for each whole degree that the daily mean temperature is below (above) 65 degrees Fahrenheit.

**PRECIPITATION:** Values shown in hundredths of inches are water equivalent totals, i.e., total of liquid and melted frozen precipitation. In the "Monthly Summarized Data" table the total snow and sleet values shown in tenths of inches are unmelted amounts. The max depth on ground values of snow and sleet shown in whole inches are cumulative unmelted amounts. The number of days with .10, .50, 1.00 or more refers to water equivalents.

**PRECIPITATION QUALITY CONTROL:** The NCDC quality control process may flag precipitation data that are spatially inconsistent, exceed climatological limits, or are inconsistent with prevailing weather patterns.

**TEMPERATURE:** Original temperature values are given in the "Daily Temperature" table. Summary temperature information (averages, departures, extremes, monthly degree day totals) is based on the values labeled MAX/MIN.

**WIND:** (As shown in the "Evaporation and Wind" table) the total wind movement in miles over the evaporation pan as determined by an anemometer recorder located 6-8 inches above the pan.

## SYMBOLS AND LETTERS USED IN THE STATION INDEX TABLE

C Station is equipped with recording rain gage (R) but values in this bulletin are from a non-recording rain gage unless indicated by an R.

G Observations appear in the "Soil Temperatures" table.

H Observations appear in the "Snowfall and Snow on the Ground" table.

J Station also published as a Local Climatological Data publication.

VAR Observation time varies.

SR Observation time near sunrise.

SS Observation time near sunset.

## SYMBOLS AND LETTERS USED IN THE DATA TABLES

(DAILY DATA ARE FOR THE 24 HOURS IMMEDIATELY PRECEDING OBSERVATION TIME.)

BLANK Entries in the "Monthly Summarized Data" table indicate no record.

BLANK Entries in the "Daily Precipitation" and "Snowfall and Snow on the Ground" tables indicate zero.

BLANK Entries in the "Daily Temperature" table indicate a missing record

- No record. Data not recorded or not received in time for publication.

+ Precipitation or temperature extremes occurred on one or more previous dates during the month.

\* Rain gage not read. Precipitation is included in the amount following the asterisks.

Time distribution may not be known. A \* preceding the monthly total indicates precipitation amount is being carried forward to next month's total, and may include amounts from the previous month(s).

a As a subscript, indicates accumulated total.

A Amount of precipitation is the total of observer's entries for the current month. It may include precipitation that occurred during the previous month. Refer to earlier bulletin to determine date of last reading. (Hawaii stations)

B Divisional Departure from normals are computed using 1971-2000 normals.

E Normalized HDD/CDD Calculation. E is appended to the HDD/CDD Calculation when 1-9 individual daily TMAX and/or TMIN values are missing and a Normalized HDD/CDD Calculation is provided. M appears alone if 10 or more daily values are missing.

F Monthly calculation flagged value. F is appended to average and/or total values computed which exclude one or more daily data values that have been flagged by the GHCN-Daily Dataset

M Insufficient or partial data. M is appended to average and/or total values computed with 1-9 daily values missing. M appears alone if 10 or more daily values are missing, (8 or more for wind and evaporation).

N Indicates snow fall or Snowdepth totals are computed with one or more missing days.

R Amounts from recording rain gage.

T Trace. An amount too small to measure.

**SEASONAL TABLES:** Monthly and seasonal snowfall and heating degree days for the 12 months ending with the June data are published in the July issue of this bulletin. Cooling degree days for the calendar year are published in the "Climatological Data Annual Summary."

Information concerning the history of changes in locations, exposure, etc. of substations is kept on file at the National Climatic Data Center. Historical information of regular National Weather Service Offices may be obtained from the "Local Climatological Data" annual publication. The contents of this publication may be reprinted or otherwise used freely, with proper credit to the National Climatic Data Center. The data are also available digitally.

Effective with the January 2011 Data-Month, COOP Observer Names are no longer included in the Monthly and Annual Climatological Data Publications. This information is not published to ensure the privacy of personal information pursuant to Section 208 of the E-Government Act of 2002 (44 USC 3601).

As of the 2011 Data-Year, Station and Climate Division Maps are no longer being included in the CD Publications. NCDC's Product Development Branch provides updated Station Maps for various data networks via the Historical Observing Metadata Repository: <http://www.ncdc.noaa.gov/homr>.

The GHCN-Daily Quality Control Flags shown below are displayed as superscripts with the data. For more Information on Global Historical Climatology Network - Daily and flags, see: <http://www.ncdc.noaa.gov/oa/climate/ghcn-daily/> and Comprehensive Automated Quality Assurance of Daily Surface Observations. Durre, Imke, Matthew J. Menne, Byron E. Gleason, Tamara G. Houston, Russell S. Vose, 2010: J. Appl. Meteor. Climatol., 49, 1615-1633. doi: 10.1175/2010JAMC2375.1

Blank = Passed All checks

D = failed duplicate check

G = failed gap check

I = failed internal consistency check

K = failed streak/frequent-value check

L = failed check on length of multiday period

M = failed megaconsistency check

N = failed naught check

O = failed climatological outlier check

R = failed lagged range check

S = failed spatial consistency check

T = failed temporal consistency check

W = temperature too warm for snow

X = failed bounds check

Z = flagged as a result of an official Datzilla investigation

## **These and other publications are available from the National Climatic Data Center**

### **Hourly Precipitation Data**

This publication contains hourly precipitation amounts obtained from recording rain gages located at National Weather Service, Federal Aviation Administration, and cooperative observer stations. Published data are displayed in inches and tenths or inches and hundredths at local standard time. HPD includes maximum precipitation for nine (9) time periods from 15 minutes to 24 hours, for selected stations.

### **Climatological Data**

Monthly editions contain station daily maximum and minimum temperatures and precipitation. Some Stations provide daily snowfall, snow depth, evaporation, and soil temperature data. Each edition also contains monthly summaries for heating and cooling degree days (65 degree F base). The July issue contains a recap of monthly heating degree days and snow data for the preceding July through June.

The Annual issue contains monthly and annual averages of temperature, precipitation, temperature extremes, freeze data, soil temperatures, evaporation, and a recap of monthly cooling degree days.

### **Storm Data**

Monthly issues contain a chronological listing, by states, of occurrences of storms and unusual weather phenomena. Reports contain information on storm paths, deaths, injuries, and property damage. An "Outstanding storms of the month" section highlights severe weather events with photographs, illustrations, and narratives. The December issue includes annual tornado, lightning, flash flood, and tropical cyclone summaries.

### **Monthly Climatic Data for the World**

This publication contains monthly means for temperature, pressure, precipitation, vapor pressure, and sunshine for approximately 2,000 surface data collection stations worldwide and monthly mean upper air temperatures, dew point depressions, and wind velocities for approximately 500 observing sites.

### **Local Climatological Data**

LCD publications summarize temperature, relative humidity, precipitation, cloudiness, wind speed and direction observations for several hundred cities in the U.S. and its territories. Each monthly publication also contains 3 hourly weather observations for that month and a hourly summary of precipitation. Annual LCD publications contain a summary of the past calendar year as well as historical averages and extremes.

For Information Call:

(828) 271-4800 Option 2

(828) 271-4010 (TDD)

(828) 271-4876 (Fax)

NOAA\National Climatic Data Center  
Attn: User Engagement & Services Branch  
151 Patton Avenue  
Asheville, NC 28801-5001

Customer Services Number: (828) 271-4800, option 2  
TDD : (828) 271-4010  
Fax number: (828) 271-4876

NCDC now offers free online access to the *Climatological Data* publication.  
Go to : [www.ncdc.noaa.gov](http://www.ncdc.noaa.gov) and choose Most Popular.