



CLIMATOLOGICAL DATA

VIRGINIA



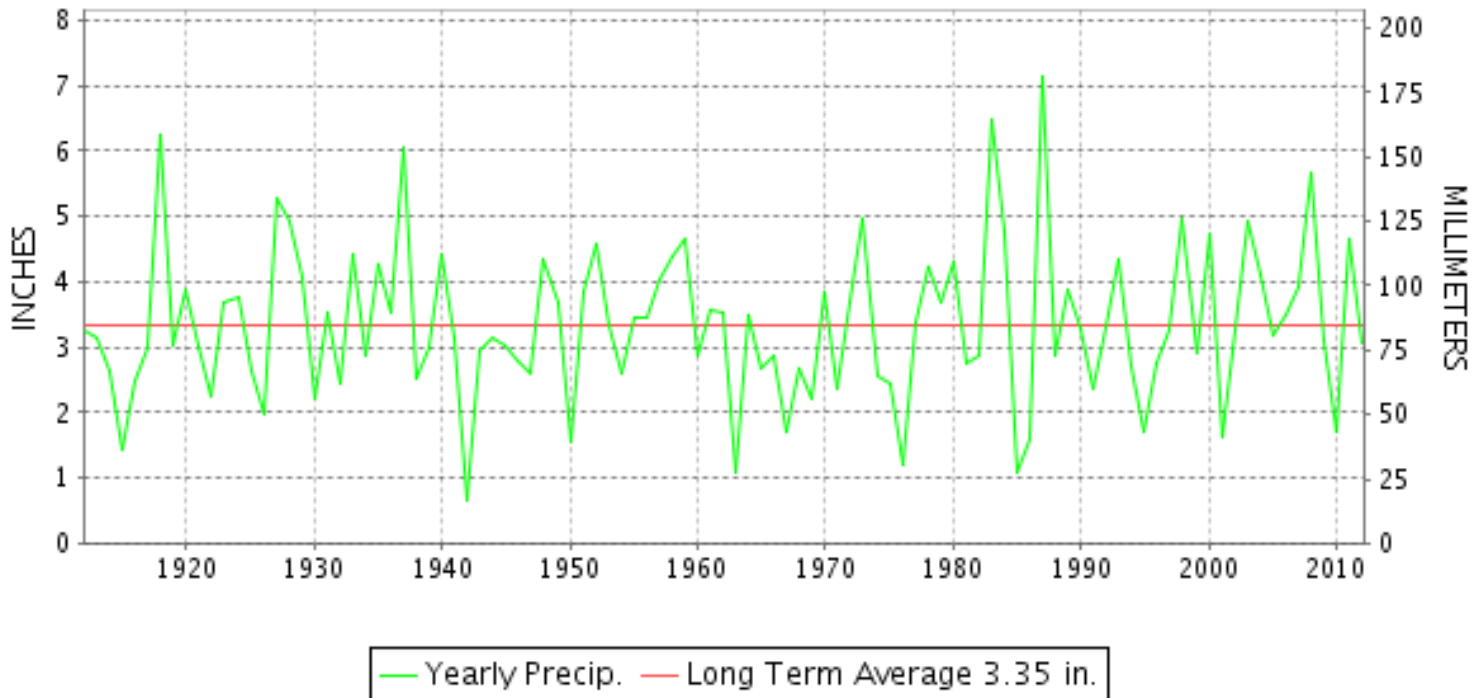
APRIL 2012

VOLUME 122 NUMBER 04

ISSN 0364-5630

GHCND Ver: 2.93-upd-2012091109

APRIL PRECIPITATION BY YEAR



TEMPERATURE AND PRECIPITATION EXTREMES

VIRGINIA

HIGHEST TEMPERATURE	91	APRIL 16+	3 STATIONS
LOWEST TEMPERATURE	17	APRIL 08+	MILLGAP
GREATEST TOTAL PRECIPITATION	6.10		PULASKI 2 E
LEAST TOTAL PRECIPITATION	1.68		LINCOLN
GREATEST 1 DAY PRECIPITATION	2.37	APRIL 22	NORFOLK SOUTH
GREATEST TOTAL SNOWFALL	1.5		BURKES GARDEN
GREATEST DEPTH OF SNOW OR ICE	T		4 STATIONS

"I certify that this is an official publication of the National Oceanic and Atmospheric Administration (NOAA) It is compiled using information from weather observing sites supervised by NOAA/National Weather Service and received at the National Climatic Data Center (NCDC), Asheville, North Carolina 28801."

Director
National Climatic Data Center

noaa

National
Oceanic and
Atmospheric Administration

National
Environmental Satellite, Data
and Information Service

National
Climatic Data Center
Asheville, North Carolina

MONTHLY STATION AND DIVISION SUMMARY

STATION	TEMPERATURE (°F)										PRECIPITATION (IN)													
	AVERAGE MAXIMUM	AVERAGE MINIMUM	AVERAGE	DEPARTURE FROM NORMAL	HIGHEST	DATE	LOWEST	DATE	HEATING DEG. DAYS	COOLING DEG. DAYS	NO. OF DAYS				TOTAL	DEPARTURE FROM NORMAL	GREATEST 24 HOURS	DATE	ICE PELLETS, SNOW			NO. OF DAYS		
											MAX		MIN						TOTAL	MAX DEPTH ON GROUND	DATE	.10 OR MORE	.50 OR MORE	1.00 OR MORE
											>=90	<=32	<=32	<=0										
PETERSBURG	69.5	45.0	57.3		88	17	35	25	253	27	0	0	0	0	2.96		1.06	23	M 0.0	0		7	2	1
POWHATAN	M	M	M												2.71		1.91	23				3	2	1
RICHMOND INTL AP	70.3	46.8	58.6		90	16	36	25+	222	35	1	0	0	0	2.40		1.59	22	0.0	0		5	1	1
SANDSTON	68.6	42.7	55.7		89	17	34	24	296	24	0	0	0	0	A 3.72		1.50	23				5	2	1
WINTERPOCK 4 W	M	M	M												2.14		0.90	22				6	1	0
--DIVISIONAL DATA-----> WESTERN PIEDMONT 03			57.0	1.1B											2.53	-0.80B								
ALTAVISTA	M	M	M												2.08		0.55	23				7	1	0
APPOMATTOX	70.3M	42.9M	56.6M		85	17	31	12	261E	14E	0	0	1	0	M 2.23		0.74	23				5	2	0
BEDFORD 4 NW	67.8	47.0	57.4		85	17	37	12	234	15	0	0	0	0	3.19		0.91	19				7	2	0
BROOKNEAL	70.5	42.4	56.5		87	17	29	12	270	20	0	0	5	0	1.96		0.63	23	0.0	0		6	1	0
CHARLOTTESVILLE 2W	68.0	45.2	56.6		87	17	38	24+	260	15	0	0	0	0	1.96		0.51	26	0.0	0		6	1	0
CHATHAM	68.4	41.2	54.8		84	05	25	13	307	8	0	0	9	0	3.47		0.85	18				7	3	0
CONCORD 4 SSW	M	M	M												2.53		0.60	23				7	2	0
DANVILLE	M	M	M												M		M	0						
DANVILLE REGIONAL AP	68.9	43.6	56.3		83	16+	28	12	273	17	0	0	3	0	2.76		1.15	26	0.0	0		4	2	1
FREE UNION	68.2	39.8	54.0		87	17	32	25+	331	10	0	0	3	0	1.74		0.53	26				6	1	0
HOLCOMB ROCK	69.1	44.4	56.8		86	17	35	26+	258	16	0	0	0	0	4.08		0.84	19	0.0	0		9	4	0
HUDDLESTON 4 SW	M	M	M												2.20		0.51	23				6	1	0
LYNCHBURG #2	68.0	41.7	54.9		86	17	30	12+	311	12	0	0	6	0	2.75		0.49	19				8	0	0
LYNCHBURG INTL AP	68.3	43.8	56.1		85	16	30	12	281	18	0	0	2	0	2.44		0.55	22	0.0	0		5	2	0
MARTINSVILLE FLTR PLT	70.6M	39.8M	55.2M		84	17+	27	12+	299E	10E	0	0	8	0	2.49		0.78	26				6	2	0
MEADOWS OF DAN 5 SW	68.7	42.2	55.5		83	05	30	25+	286	6	0	0	4	0	4.83		1.05	18	M	0		10	5	1
MONTEBELLO FISH CULTURAL STN	63.8M	35.1M	49.5M		82	17	23	08	466E	7E	0	0	13	0	M 3.25		0.79	26				7	3	0
MONTICELLO	65.9	43.9	54.9		84	17	35	24	305	10	0	0	0	0	2.37		0.51	19				8	2	0
PEDLAR DAM	67.0	44.4	55.7		84	17	32	12	283	10	0	0	1	0	2.74		0.98	26	0.0	0		8	2	0
ROCKY MT	69.0	43.9	56.5		85	17	33	12+	269	19	0	0	0	0	3.21		0.61	26				7	2	0
SOUTH BOSTON	69.2	43.0	56.1		84	17	31	13	277	17	0	0	4	0	2.78		0.58	26+	0.0	0		6	3	0
STUART	69.9	42.7	56.3		85	17	29	24	265	10	0	0	3	0	2.79		0.67	18				8	2	0
TYE RIVER 1 SE	69.7	42.4	56.1		85	17+	31	12	275	16	0	0	3	0	2.63		0.95	26	0.0	0		5	3	0
WOOLWINE	M	M	M												3.68		0.77	26	M			8	4	0
--DIVISIONAL DATA-----> NORTHERN 04			55.6	-0.1B											2.79	-0.94B								
BOSTON 4 SE	67.6	40.9M	54.3M		87	17	31	25+	334E	13E	0	0	3	0	1.69		0.53	23	0.0	0		5	1	0
EDINBURG	65.5	37.5	51.5		85	17	28	08	403	5	0	0	8	0	2.16		0.84	23				6	1	0
FRONT ROYAL	66.6	41.8	54.2		88	18+	35	10+	338	21	0	0	0	0	2.26		1.03	23				5	1	1
LINCOLN	65.4	38.4	51.9		89	04	29	08+	395	9	0	0	7	0	1.68		1.40	24	0.0	0		2	1	1
LURAY 5 E	66.0	40.3	53.2		89	17	29	11	361	13	0	0	5	0	2.43		0.75	23	0.0	0		6	2	0

VIRGINIA
201204

MONTHLY STATION AND DIVISION SUMMARY

STATION	TEMPERATURE (°F)										PRECIPITATION (IN)															
	AVERAGE MAXIMUM	AVERAGE MINIMUM	AVERAGE	DEPARTURE FROM NORMAL	HIGHEST	DATE	LOWEST	DATE	HEATING DEG. DAYS	COOLING DEG. DAYS	NO. OF DAYS				TOTAL	DEPARTURE FROM NORMAL	GREATEST 24 HOURS	DATE	ICE PELLETS, SNOW			NO. OF DAYS				
											MAX		MIN						TOTAL	MAX DEPTH ON GROUND	DATE	.10 OR MORE	.50 OR MORE	1.00 OR MORE		
											>=90	<=32	<=32	<=0												
MADISON	M	M	M											M				M	0				6	2	0	
MANASSAS	68.0M	42.1M	55.1M		90	17	33	08+	314E	23E	1	0	0	0	2.69		0.90	23								
MT WEATHER	61.9	41.0	51.5		84	17	32	25+	408	10	0	0	4	0	FA 2.74		1.35	23					5	2	1	
PIEDMONT RSCH STN	66.3	43.7	55.0		85	17	33	11	308	15	0	0	0	0	FA 1.05		0.48	19					3	0	0	
SOMERSET	67.5	41.2	54.4		86	17	30	03	327	16	0	0	3	0	1.92		0.60	23					5	1	0	
SPERRYVILLE	66.1	40.7	53.4		84	17+	32	25	348	6	0	0	1	0	1.98		0.48	23	M	0			6	0	0	
STERLING RCS	65.7M	40.3M	53.0M		88	17	33	25+	366E	16E	0	0	0	0	M 1.81		0.87	23	M 0.0	0			5	1	0	
VIENNA	64.1M	41.9M	53.0M		86	05	32	08+	362E	9E	0	0	2	0	M 1.45		1.05	23					3	1	1	
WARRENTON 3 SE	64.7M	41.9M	53.3M		85	17	34	12	350E	7E	0	0	0	0	M 1.70		0.60	29					4	2	0	
WASHGTN DULLES INTL AP	66.5	41.6	54.1		88	16	30	07	340	18	0	0	3	0	1.82		0.96	22	0.0	0			5	1	0	
WASHINGTON REAGAN AP	68.1	48.5	58.3		89	16	40	11	220	27	0	0	0	0	1.92		1.27	22	0.0	0			4	1	1	
WINCHESTER	64.3	41.3	52.8		87	17	26	12	371	13	0	0	1	0	2.39		0.82	23					5	2	0	
WINCHESTER 7 SE	66.0	36.8	51.4		88	17	29	08+	410	11	0	0	10	0	2.48		0.95	23	M 0.0	0			5	2	0	
WOODSTOCK 2 NE	64.8M	39.1M	52.0M		87	17	32	25+	394E	8E	0	0	2	0	M 2.09		0.88	23					4	1	0	
--DIVISIONAL DATA-----> CENTRAL MOUNTAIN 05			53.5	0.6B										2.09	-1.11B											
BUCHANAN	67.7	44.6	56.2		86	17	35	12	267	8	0	0	0	0	3.79		0.78	22						9	3	0
BUENA VISTA	M	M	M											3.33		0.90	26							8	3	0
COVINGTON FLTR PLT	69.1	39.9	54.5		88	17	29	08	318	7	0	0	5	0	4.33		1.65	26	M	0				10	2	1
CRAIGSVILLE 2 S	M	M	M											M												
DALE ENTERPRISE	65.1M	38.9M	52.0M		87	15	29	08+	391E	9E	0	0	7	0	M 2.84		0.67	23	M 0.0	0				7	3	0
GATHRIGHT DAM	65.4	39.3	52.4		86	17	30	07	377	5	0	0	3	0	2.99		1.05	26	M 0.0	0				7	2	1
GLASGOW 1 SE	69.0	42.9	56.0		88	17	31	13+	281	16	0	0	4	0	3.89		0.92	26						9	3	0
HOT SPRINGS	65.0	38.0	51.5		86	17	28	08+	399	4	0	0	5	0	3.04		0.88	26	M	MT	24			7	2	0
LEXINGTON	M	M	M											M												
MILLGAP	62.3	31.7	47.0		83	17	17	08+	532	0	0	0	17	0	1.71		0.60	19	0.1	T	12			4	1	0
MTN GROVE	69.0	M	M											2.63		1.00	26	M	0					6	2	1
MUSTOE 1 SW	62.8	35.9	49.4		84	16	23	07	463	0	0	0	11	0	2.19		0.83	18	T	T	12			5	2	0
ROANOKE 8 N	68.8	43.9	56.4		88	17	35	12+	266	14	0	0	0	0	3.09		0.96	22						8	2	0
ROANOKE INTL AP	69.4	46.8	58.1		89	16	34	07	226	27	0	0	0	0	3.04		0.91	18	T	0				5	4	0
STAUNTON WATER TRMTMT PLT	64.9	42.3	53.6		83	17	33	12	341	8	0	0	0	0	2.58		0.71	23	M	0				6	3	0
WAYNESBORO WTP	66.7	39.8	53.3		86	17	29	13+	353	7	0	0	4	0	2.77		0.70	23	0.0	0				7	3	0
--DIVISIONAL DATA-----> SOUTHWESTERN MOUNTAIN 06			53.4	0.7B										3.03	-0.17B											
ABINGDON 3S	68.1	44.0	56.1		83	30	26	12	267	6	0	0	4	0	4.82		1.10	02	0.0	0				8	4	2
BIG STONE GAP	69.2	40.3F	54.8F		83	30	28	12	310	8	0	0	5	0	3.19		1.02	05						8	2	1
BLACKSBURG NWSO	64.6	39.4	52.0		81	17+	28	07	385	1	0	0	5	0	4.68		1.09	22	T	0				8	5	1

MONTHLY STATION AND DIVISION SUMMARY

STATION	TEMPERATURE (°F)										PRECIPITATION (IN)													
	AVERAGE MAXIMUM	AVERAGE MINIMUM	AVERAGE	DEPARTURE FROM NORMAL	HIGHEST	DATE	LOWEST	DATE	HEATING DEG. DAYS	COOLING DEG. DAYS	NO. OF DAYS				TOTAL	DEPARTURE FROM NORMAL	GREATEST 24 HOURS	DATE	ICE PELLETS, SNOW			NO. OF DAYS		
											MAX		MIN						TOTAL	MAX DEPTH ON GROUND	DATE	.10 OR MORE	.50 OR MORE	1.00 OR MORE
											>=90	<=32	<=32	<=0										
BURKES GARDEN	61.0	37.2	49.1		77	16	22	14	470	0	0	0	12	0	5.94		1.55	27+	1.5	T	24	8	4	3
CHRISTIANSBURG	64.0	41.6	52.8		81	17	29	13	364	5	0	0	2	0	4.18		0.79	26	M T	0		7	6	0
CLINTWOOD 1 W	67.7	39.1	53.4		82	30+	25	12	340	3	0	0	10	0	4.81		0.80	26	T	0		10	4	0
COPPER HILL	61.2	40.9	51.1		79	17	29	13+	416	3	0	0	4	0	4.80		0.89	19	0.0	0		10	5	0
GALAX RADIO WBRF	66.0	40.5	53.3		80	17	26	12	345	1	0	0	6	0	4.53		1.89	18				8	3	1
GALAX WTP	64.1M	39.6M	51.9M		79	17	28	13+	383E	0	0	0	5	0	4.40		1.73	18	M	0		10	1	1
GRUNDY	67.8	41.0	54.4		83	16	27	12	318	7	0	0	7	0	4.99		1.19	05	0.0	0		11	3	1
JOHN FLANNAGAN LAKE	M	M	M											MA 3.82		1.16	26					5	2	1
LAFAYETTE 1 NE	M	M	M											3.80		0.75	22	M	0			9	3	0
LEBANON	67.0	40.6	53.8		80	30+	25	12	332	4	0	0	8	0	4.70		0.83	27	0.0	0		13	3	0
NORA 4 SSE	62.0	42.6	52.3		78	30	29	13+	374	2	0	0	5	0	4.87		1.10	27	0.3	0		9	5	2
NORTH FORK LAKE	M	M	M											MA 4.49		0.96	27	M	0			7	2	0
PULASKI 2 E	66.2M	40.5M	53.4M		82	17+	29	14+	349E	1E	0	0	5	0	6.10		1.85	27	M	0		8	5	3
RADFORD 3 N	65.6	41.1	53.4		83	17	29	07	347	5	0	0	5	0	M 4.55		0.95	23	M T	0		10	4	0
RICHLANDS	66.5	39.4	53.0		80	30	24	13+	360	1	0	0	10	0	5.56		1.68	26	M	0		8	4	2
SALTVILLE 1N	68.1	40.2	54.2		81	30+	26	13+	316	0	0	0	7	0	3.79		1.07	27				9	2	1
STAFFORDSVILLE 3 ENE	64.8	39.3M	52.1M		82	17+	29	08+	387E	1E	0	0	5	0	3.13		0.68	26				8	2	0
TROUT DALE 3 SSE	63.7	37.5M	50.6M		79	17	25	14+	425E	0	0	0	8	0	3.16		0.72	18	0.0	0		6	3	0
WILLIS	M	M	M											6.00		1.45	22					9	6	3
WISE 3E	64.9	44.1	54.5		77	30	25	12	315	8	0	0	4	0	4.45		1.00	26	M			11	3	1
WYTHEVILLE 1 S	66.2	39.0	52.6		81	30+	26	13	366	0	0	0	6	0	5.79		1.10	04	0.0	0		9	6	2
--DIVISIONAL DATA----->			52.9	1.6B										4.61	0.91B									

VIRGINIA
201204

DAILY PRECIPITATION (INCHES)

STATION	TOTAL	DAY OF MONTH																																	
		01	02	03	04	05	06	07	08	09	10	11	12	13	14	15	16	17	18	19	20	21	22	23	24	25	26	27	28	29	30	31			
VIRGINIA																																			
TIDEWATER 01																																			
DISPUTANTA	3.30	0.08	0.01		0.02														0.02	0.10			1.17	1.31								0.59			
EASTVILLE	2.87																		0.15				0.40	1.82	0.03		0.02	0.25		0.20					
EMPORIA 1 WNW	2.46	0.03			0.14	0.02												0.04	0.16	T		0.86	0.75	0.04		0.26	0.14		0.02						
FREDERICKSBURG SEWAGE	2.20		0.20																0.18				0.05	1.10	0.02		0.02	0.22		0.41					
HAMPTON UNIV	3.39		0.12		0.60													0.17				2.20	0.08			0.04		0.12	0.06						
HOLLAND 1 E	FA 3.80	0.39	0.01		0.35	0.03					0.00 ^L	0.00 ^L	0.00 ^L	0.00 ^L				0.00 ^L	0.35 ^L	0.01		1.18	1.30	0.05		0.12	0.18	0.01	0.17						
HOPEWELL	2.89	0.03	0.03		0.19														0.09				1.61	0.41			0.37	0.04	0.09	0.03					
NORFOLK INTL AP	2.95		0.08		0.25	T					T								T	0.10		0.08	2.24	0.02			0.05		0.09	0.04					
NORFOLK SOUTH	3.14		0.11		0.11	0.03													T	0.13		0.13	2.37	0.01			0.08		0.11	0.06					
NORTH	3.70		0.06																T	0.52			0.77	1.63			0.13	0.37		0.22					
PAINTER 2W	2.96										0.01									0.18			1.58	0.44	0.01		0.45	0.01	0.28						
STONY CREEK 2 N	FA 2.37	0.03		0.00 ^L	0.00 ^L	0.00 ^L	0.00 ^L	0.00 ^L	0.01 ^L												0.05					1.99	0.22	0.08	0.00 ^L	0.00 ^L	0.25 ^L				
SUFFOLK LAKE KILBY	3.23		0.04		0.14	0.01	T																2.33	0.09			0.31		0.15	T					
WAKEFIELD 1NW	3.10		T		0.25	0.01													0.03	0.18		0.26	1.97	0.09			0.15		0.16	T					
WALKERTON 2 NW	2.80																		0.41	0.06			1.57	0.13	0.03		0.60		0.15	0.05					
WALLACETON LK DRUMMOND	3.73	0.84			0.25	0.10														0.19			0.90	1.05	0.05		0.17	0.12		0.06					
WARSAW 2 NW	3.07																		0.21	0.01			2.21	0.02			0.43		0.19						
WEST POINT 2 NW	FA T			0.00 ^L	0.03 ^L						T								0.03 ^L	0.04 ^L			1.83 ^L	0.13 ^L			0.35 ^L	0.02 ^L	0.05 ^L	0.37 ^L		T			
WILLIAMSBURG 2 N	3.48		0.06		0.17	0.01														0.45	0.01		2.22	0.07			0.30		0.12	0.07					
EASTERN PIEDMONT 02																																			
ALBERTA 5N	2.45	0.19			0.02															T	0.05		0.69	0.81	0.08		0.20	0.19		0.22					
AMELIA COURTHOUSE 1	M 2.48	-	0.15		0.01			-											0.47	0.06			0.85	0.53	0.01		0.18		0.16	0.06					
ASHLAND	3.30				T						T								0.40	0.02			0.05	1.77	0.14		0.65		0.03	0.24					
BREMO BLUFF	2.07			0.01															0.28				0.27	0.59	0.18		0.44		0.10	0.15	0.05				
BUCKINGHAM	2.03																		0.10	0.31			0.32	0.48	0.08		0.12	0.38		0.12	0.12				
CAMP PICKETT	M 2.35	0.10	-		0.11														0.07	0.15			0.53	0.58			0.30	0.22		0.26	0.03				
CHASE CITY	2.87																		0.14	0.05			1.45	0.46	0.05		0.34	0.35		0.03					
CLARKSVILLE	2.98	0.03																	0.15				1.00	0.70	0.05		0.65	0.40							
CORBIN	2.44		0.02																				0.13		1.71	0.03		0.28		0.27					
CROZIER	M 2.09	0.01																	0.08	0.30			-	0.91			0.54		0.25						
FARMVILLE 2 N	2.14	0.04				0.04													T	0.59			0.15	0.56	0.05		0.13	0.18		0.40	T				
GREENBAY 3 NE	2.15	0.08																	0.22	0.01			0.60	0.48	0.07		0.27	0.20		0.17	0.05				
JOHN H KERR DAM	2.51				0.11		0.02													0.06	0.02		0.90	0.58			0.58	0.24							
LOUISA	2.08																			0.34	0.02			0.85	0.28			0.42		0.04	0.13				
PALMYRA 3S	2.13	0.20																	0.08	0.16			0.22	0.53	0.12		0.49	0.02		0.29	0.02				
PETERSBURG	2.96	0.20	0.02			0.10														0.19			0.85	1.06	0.06		0.07	0.24		0.17					
POWHATAN	2.71																			0.59										0.21					
RICHMOND INTL AP	2.40		T		0.01	T				T	T	T							0.13	0.03		0.01	1.59	0.02			0.41		0.10	0.10					
SANDSTON	A 3.72	0.7 _h			0.02															0.01	0.20			0.50	1.50			0.07	0.33		0.38				
WINTERPOCK 4 W	2.14	0.02			0.02	0.07														0.11	0.09		0.36	0.90	0.04		0.23	0.16		0.14	T				

VIRGINIA
201204

DAILY PRECIPITATION (INCHES)

STATION	TOTAL	DAY OF MONTH																														
		01	02	03	04	05	06	07	08	09	10	11	12	13	14	15	16	17	18	19	20	21	22	23	24	25	26	27	28	29	30	31
WESTERN PIEDMONT 03																																
ALTAVISTA	2.08					0.01												0.34	0.17			0.14	0.55	0.11		0.32	0.43			0.01		
APPOMATTOX	M 2.23					0.03	-	-										T	0.51	-	-	-	0.74	0.04		0.28	0.15	-	0.48	T		
BEDFORD 4 NW	3.19				0.03	0.02												0.18	0.91			0.53	0.44	0.08		0.38	0.25		0.35	0.02		
BROOKNEAL	1.96																	0.20	0.15			0.19	0.63	0.05		0.32	0.40			0.02		
CHARLOTTESVILLE 2W	1.96	T			0.03													0.06	0.44			0.13	0.46	0.15		0.51		0.18				
CHATHAM	3.47				0.10													0.85	0.35			0.40	0.75	0.07		0.60	0.32		0.03			
CONCORD 4 SSW	2.53																	0.22	0.43			0.22	0.60	0.07		0.25	0.22		0.52			
DANVILLE	M 0.21				0.05	0.01												0.20	0.08	-	-	-	-	-	-	0.25	0.22		0.52			
DANVILLE REGIONAL AP	2.76		T		0.05	0.01	T										0.08	0.18			0.39	0.76	0.06		0.08	1.15						
FREE UNION	1.74																	0.11	0.30			0.23	0.30	0.08		0.53	T		0.16	0.03		
HOLCOMB ROCK	4.08		0.06			0.02	0.27											0.10	0.84			0.40	0.70	0.24		0.50	0.53		0.42	T		
HUDDLESTON 4 SW	2.20					0.02												0.25	0.32			0.24	0.51	0.06		0.36	0.43			0.01		
LYNCHBURG #2	2.75					0.10												0.24	0.49			0.37	0.45	0.05		0.36	0.22		0.46	0.01		
LYNCHBURG INTL AP	2.44	0.01			T	0.01											T	0.53			0.37	0.55	0.05		T	0.47		0.40	T	0.05		
MARTINSVILLE FLTR PLT	2.49	0.01			0.01	0.01												0.63	0.23			0.15	0.24			0.78	0.43					
MEADOWS OF DAN 5 SW	4.83	0.07	0.11		0.57	0.34	0.32											1.05	0.51			0.34	0.14		0.05	0.65	0.68					
MONTEBELLO FISH CULTURAL STN	M 3.25	-			-	-												0.21	0.55			0.40	0.62	0.34		0.79				0.34		
MONTICELLO	2.37					T												0.20	0.51			0.11	0.50	0.15		0.44	0.14		0.30	0.02		
PEDLAR DAM	2.74		T				0.08											0.10	0.53			0.30	0.37	0.16		0.98	0.11		0.11	T		
ROCKY MT	3.21	0.02			0.03	T	0.03											0.28	0.57			0.44	0.44	0.05	T	0.61	0.37	0.01				
SOUTH BOSTON	2.78					0.07	0.02											0.31	0.12			0.58	0.57	0.05		0.58	0.48					
STUART	2.79				0.19	0.20												0.67	0.45			0.20	0.21	T		0.55	0.32					
TYE RIVER 1 SE	2.63						T											0.11	0.65			0.32	0.52	T		0.95		0.08	T			
WOOLWINE	3.68	0.01			0.24	0.02	0.19											0.70	0.75			0.34	0.15	T		0.77	0.51					
NORTHERN 04																																
BOSTON 4 SE	1.69		0.09					0.09										0.06	0.26			0.17	0.53			0.12			0.37			
EDINBURG	2.16		0.10							0.10								0.09	0.48			0.11	0.84	0.03		0.06			0.35			
FRONT ROYAL	2.26		0.08								0.04											0.34							0.27			
LINCOLN	1.68	0.28																							1.40							
LURAY 5 E	2.43		0.17							0.03												0.05	0.37			0.05			0.33			
MADISON	M	-	-	-	-	-												T	0.45	-	0.00 ^L	0.00 ^L	0.75 ^L _a		0.24			0.30				
MANASSAS	2.69		0.20							0.04												0.25	0.80	0.90	0.15	0.05			0.30			
MT WEATHER	FA 2.74		0.36							0.02												T	0.32			0.05		0.02	0.00 ^L	0.22 ^L _a		
PIEDMONT RSCH STN	FA 1.05		0.04			T							T									0.04	0.48		0.00 ^L	0.77 ^L _a	0.11	0.36	0.02	0.00 ^L	0.00 ^L	0.12 ^L _a
SOMERSET	1.92																				0.02	0.16	0.60	0.06		0.37			0.22	0.01		
SPERRYVILLE	1.98	0.03	0.17							0.05		0.01										0.37				0.27	0.48	0.17		0.35		
STERLING RCS	M 1.81		0.19							T												0.31	-		0.23	0.87	0.01		0.18			
VIENNA	M 1.45				-																				0.15	1.05	0.06		0.18			
WARRENTON 3 SE	M 1.70		0.05							T												T	0.25			0.13	0.55	0.05		0.60		
WASHGTN DULLES INTL AP	1.82	0.12	0.05							T		T															0.07		0.16	0.05		
WASHINGTON REAGAN AP	1.92	0.07	0.08							T		0.01									T	0.05	T		0.16	1.27	0.10		0.03	0.12	0.03	

VIRGINIA
201204

DAILY PRECIPITATION (INCHES)

STATION	TOTAL	DAY OF MONTH																													
		01	02	03	04	05	06	07	08	09	10	11	12	13	14	15	16	17	18	19	20	21	22	23	24	25	26	27	28	29	30
TROUT DALE 3 SSE	3.16	0.06	0.30		0.02	0.03												0.72	0.69			0.04	0.04		0.26	0.61	0.38		0.01		
WILLIS	6.00		0.08		0.68	0.15	0.31											1.00				0.53	1.45		0.22		1.00	0.58			
WISE 3E	4.45	0.03	0.23	0.05	0.22	0.79											0.12	0.87	0.04		0.20	0.11	0.13		0.34	1.00	0.32				
WYTHEVILLE 1 S	5.79	0.05	0.72		1.10	0.23	0.31											0.51	0.62				0.16	0.05		0.05	1.00	0.98		0.01	

VIRGINIA
201204

DAILY TEMPERATURES (°F)

STATION	OB. TIME	MAX/MIN	DAY OF MONTH																															AVERAGE
			01	02	03	04	05	06	07	08	09	10	11	12	13	14	15	16	17	18	19	20	21	22	23	24	25	26	27	28	29	30	31	
ASHLAND	18	MIN		47	36	46	52	41	34		36	45	34	33	39	37	61	59	60	51	50	47	53	57	44	35	39	41	51	52	45	48		45.5
		MAX	67	65	75	85	83	61	67	74	71	72	70	62	67	78	86	88	85	74	70	73	79	67	49	62	70	67	69	67	67	69		71.3
CAMP PICKETT	08	MIN	47	51	36	51	50	37	34	35	41	41	34	34	38	38	59	64	62	51	49	47	52	46	43	36	35	55	48	41	46	50		45.0
		MAX	77	68	66	76	85	56	60	66	75	73	73	53	62	67	76	82	85	80	58	67	72	79	53	49	63	69	65	71	71	71		68.9
CHASE CITY	17	MIN	46	46	35	35	55	44	32	32	34	42	25	33	35	35	44	44	59	52	49	50	52	52	44	35	34	35	53	48	45	45		42.3
		MAX	78	68	70	77	86	59	62	67	75	75	74	74	63	67	75	86	84	83	60	66	72	80	55	51	64	68	69	69	57	71		70.2
CLARKSVILLE	07	MIN	48	52	37	37	54	49	34	34	39	39	37	32	38	37	51	62	56	54	52	52	50	53	45	33	34	45	45	44	47	53		44.8
		MAX	78	69	73	78	86	60	64	69	77	73	74	55	65	69	76	81	85	84	63	65	72	82	80	50	64	69	70	72	59	72		71.1
CORBIN	09	MIN	49	51	40	40	57	48	37	37	43	43	42	34	36	39	54	60	59	55	51	51	54	52	44	37	35	36	57	49	48	50		46.3
		MAX	65	62	75	79	68	60	65	73	68	71	58	60	66	77	86	89	79	64	68	73	81	62	49	62	69	66	57	70	69	76		68.9
CROZIER	07	MIN	44	48	34	48	47	35	34	37	44	39	33	38	39	40	61	63	61	51	48	45	55	46	41	37	35	54	38	45	49	59		44.9
		MAX	75	67	64	75	85	52	60	72	74	71	71		61	67	76	84	86	74	55	67	72		50	48	62	70	64	69	67	65		68.0
FARMVILLE 2 N	07	MIN	45	45	34	40	50	34	32	32	32	40	33		34	35	45	58	57	49	49	45	51		42	33	34	38	47	41	41	51		41.7
		MAX	78	70	68	78	86	62	66	67	77	72	71	53	62	74	77	84	86	79	59	66	72	80	53	52	63	70	67	72	57	72		69.8
GREENBAY 3 NE	09	MIN	47	48	35	36	54	40	35	32	33	43	34	31	32	37	38	58	60	50	49	49	52	51	44	35	34	36	52	47	44	44		42.7
		MAX	77	69	67	77	85	53	60	67	75	73	72	53	62	67	75	83	86	81	56	65	72	79	52	47	63	69	65	70	54	68		68.1
JOHN H KERR DAM	08	MIN	46	48	36	52	53	41	32	33	41	43	33	31	35	38	40	58	58	49	49	50	54	50	44	37	35	51	53	46	44	46		44.2
		MAX	78	71	72	79	89	59	63	70	78	77	75	55	66	69	78	83	87	86	64	69	77	84	55	50	66	71	71	74	59	76		71.7
LOUISA	18	MIN	50	50	37	41	59	47	34	34	36	44	40	34	37	37	42	63	62	55	51	52	53	53	45	43	38	49	57	49	49	52		46.4
		MAX	68	67	77	83	81	63	69	76	75	71	68	63	68	77	86	87	85	76	70	72	79	69	47	63	71	70	72	70	72	71		72.2
PALMYRA 3S	06	MIN	47	49	30	47	43	31	27	29	39	36	28	28	33	35	59	63	54	50	47	40	47	42	35	33	55	43	36	44	47		41.5	
		MAX	77	69	66	77	85	56	61	68	76	71	72	54	61	67	78	85	88	78	52	67	73	80	52	47	63	70	68	70	54	69		68.5
PETERSBURG	08	MIN	47	47	32	31	48	40	28	28	31	35	33	31	33	32	32	57	58	51	48	42	42	46	42	31	31	33	48	39	43	45		39.5
		MAX	76	68	65	75	85	56	61	67	74	74	73	54	64	68	77	84	88	82	62	71	75	81	55	51	63	71	67	72	59	66		69.5
RICHMOND INTL AP	24	MIN	48	48	38	38	55	45	37	36	36	45	43	37	36	40	42	59	59	55	51	49	49	53	39	38	35	36	55	50	49	49		45.0
		MAX	67	66	76	86	66	62	67	75	74	74	55	64	68	78	87	90	82	62	72	75	82	58	52	64	72	67	73	59	65	70		70.3
SANDSTON	07	MIN	46	44	38	52	45	41	38	40	52	44	39	39	41	44	58	63	61	52	50	47	55	48	43	36	36	56	51	45	47	53		46.8
		MAX	73	67	63	75	85	55	60	65	72	72	72	53	61	66	77	87	89	82	60	70	75	82	53	52	62	71	65	71	58	66		68.6
WESTERN PIEDMONT 03 APPOMATTOX	07	MIN	46	46	36	36	51	41	35	35	37	41	36	36	37	36	37	58	58	51	49	45	45	52	44	34	35	37	51	44	44	47		42.7
		MAX	77	78	74	77	82	55		74	72	69	53	61			83	85	79	53					78	60	61	68	67		70			M
BROOKNEAL	07	MIN	47	47	40	41	53	40		36	43	34	31	42			41	59	49	47				42	34	37	38	52		47			M	
		MAX	79	71	74	80	85	57	65	70	77	75	73	53	64	69	76	84	87	83	58	67	75	82	55	50	65	69	70	72	55	74		70.5
CHARLOTTESVILLE 2W	08	MIN	51	52	35	35	53	44	30	33	37	37	34	29	30	34	33	56	56	52	50	55	49	49	44	32	31	39	52	47	46	46		42.4
		MAX	76	70	66	76	82	58	61	69	76	70	70	52	62	67	79	85	87	77	50	68	72	80	51	44	62	71	66	70	53	70		68.0
CHATHAM	07	MIN	46	46	43	43	47	39	39	42	49	44	39	38	41	44	47	57	61	49	47	48	51	49	41	38	39	45	50	44	45		45.2	
		MAX	77	70	71	77	84	60	62	68	76	72	73	54	62	64	73	80	83	81	55	63	71	78	57	51	63	66	68	67	55	71		68.4
DANVILLE	07	MIN	53	51	36	35	50	46	29	31	37	34	35	26	25	32	32	51	55	50	48	48	48	48	45	32	31	32	52	48	46	49		41.2
		MAX	74	68	73	77	83	62	63	68	75	70	71	53	62	66	74	80	83	82	59													
DANVILLE REGIONAL AP	24	MIN	50	52	37	42	55	47	30	33	39	42	40	28	33	33	33	50	57	51	50													M
		MAX	68	73	77	83	64	63	68	75	70	71	53	62	66	74	80	83	82	59	64	71	79	58	49	63	67	73	70	55	73	74		68.9
		MIN	50	45	37	57	47	37	30	33	40	42	33	28	35	35	50	59	57	50	50	54	50	46	33	29	33	54	45	46	46	57		43.6

VIRGINIA
201204

DAILY TEMPERATURES (°F)

STATION	OB. TIME	MAX/MIN	DAY OF MONTH																															AVERAGE
			01	02	03	04	05	06	07	08	09	10	11	12	13	14	15	16	17	18	19	20	21	22	23	24	25	26	27	28	29	30	31	
FREE UNION	08	MAX	77	70	69	77	82	57	63	69	75	72	70	54	61	68	75	84	87	75	50	68	72	80	52	43	63	69	68	70	58	69	68.2	
		MIN	48	47	33	33	45	33	33	32	37	36	36	34	36	34	34	54	54	50	47	41	41	47	41	32	32	34	46	40	40	44	39.8	
LYNCHBURG #2	07	MAX	78	70	72	79	83	54	62	69	74	71	69	52	62	66	74	83	86	78	52	64	73	78	52	48	62	67	68	70	54	69	68.0	
		MIN	51	51	36	36	54	42	30	31	38	37	39	30	32	35	35	50	55	51	46	46	51	51	43	32	32	35	48	44	44	46	41.7	
LYNCHBURG INTL AP	24	MAX	69	73	79	83	64	62	68	74	72	69	52	62	66	74	83	85	81	61	64	72	79	57	48	62	67	68	69	54	70	61	68.3	
		MIN	49	43	35	58	42	42	33	37	37	40	35	30	43	36	51	59	55	48	46	48	51	44	40	33	31	53	50	43	44	57	43.8	
MARTINSVILLE FLTR PLT	07	MAX	79	73	78	79	84	66	70	71	77	74	72	53	64	68	75		84	83	54		75	79	53	53	64	68	75	73	57	76	70.6	
		MIN	46	51	36	36	49	29	27	28		36	32	27	33	33	33		54	50	49		49	52	43	28	32	32	50	44	47	49	39.8	
MEADOWS OF DAN 5 SW	07	MAX	76	70	78	77	83	57	65	70	73	71	71	50	61	66	71	80	82	79	52	63	70	74	53	71	60	63	67	72	57	79	68.7	
		MIN	45	45	43	43	51	45	35	35	35	39	34	31	31	35	35	46	56	49	48	48	48	51	39	30	30	46	50	47	46	49	42.2	
MONTEBELLO FISH CULTURAL STN	07	MAX		71	67			78	54	65	68	62	62	40	54		71	81	82	69	69	57	67	70	70	39	55	63	62	64	52	67	63.8	
		MIN		43	31			29	24	23	30	41	31	26	28		34	57	51	44	44	36	36	45	33	31	29	29	29	29	36	43	35.1	
MONTICELLO	08	MAX	73	66	64	72	80	55	59	65	73	70	68	51	59	64	73	81	84	75	50	65	68	77	51	45	60	67	66	65	65	67	65.9	
		MIN	40	45	45	42	49	38	38	40	47	43	39	37	39	42	43	55	59	49	46	47	48	49	41	35	37	47	51	42	42	43	43.9	
ROCKY MT	07	MAX	75	73	78	81	83	55	69	72	74	72	70	51	62	68	75	84	85	81	52	63	78	57	53	51	62	68	74	72	57	74	69.0	
		MIN	41	42	39	41	55	45	33	38	43	40	40	33	34	37	37	55	62	50	48	48	51	52	42	35	34	46	53	51	45	47	43.9	
SOUTH BOSTON	07	MAX	76	69	73	78	81	60	64	69	76	72	73	56	64	68	73	81	84	83	58	65	71	80	53	50	64	68	70	70	56	71	69.2	
		MIN	50	49	37	37	55	47	32	32	35	40	37	32	31	36	36	59	59	51	50	50	48	48	44	34	34	35	53	47	46	46	43.0	
STUART	07	MAX	72	71	80	81	84	58	67	73	77	74	72	54	64	67	73	81	85	82	53	63	72	78	55	52	63	66	73	74	56	78	69.9	
		MIN	42	45	40	41	52	46	33	34	41	36	32	33	34	34	40	45	54	52	49	49	52	52	40	29	30	48	53	47	49	49	42.7	
TYE RIVER 1 SE	07	MAX	80	73	72	80	85	54	64	70	75	72	70	58	65	68	76	85	85	82	52	65	75	80	55	50	64	69	71	70	55	72	69.7	
		MIN	49	50	32	33	51	34	35	38	40	49	37	31	32	37	38	56	57	49	50	44	45	50	43	37	34	35	54	43	44	45	42.4	
NORTHERN 04																																		
BOSTON 4 SE	07	MAX	70	65	65	73	74	59	61	67	72	67	68	52	60	66	76	84	87	73	51	69	69	80	80	47	63	70	68	69	54	70	67.6	
		MIN	44	46	31	31	42	35	37	34	41	39	33	35	35	35		54	59	48	45	40	49	49	40	34	31		48	43	43	44	40.9	
EDINBURG	07	MAX	73	69	66	74	77	59	61	65	69	63	63	49	57	66	71	82	85	67	50	68	73	78	48	45	60	69	69	63	54	72	65.5	
		MIN	44	45	31	31	37	32	29	28	34	35	31	35	32	32	35	51	51	47	46	37	37	47	38	34	33	35	43	37	39	40	37.5	
FRONT ROYAL	07	MAX	67	63	65	74	76	58	62	67	71	71	68	49	59	66	74	84	88	88	53	69	69	77	48	45	60	69	71	63	54	71	66.6	
		MIN	46	44	38	37	44	36	35	36	35	35	40	36	37	37	46	60	60	52	46	45	45	48	37	37	36	41	45	40	40	40	41.8	
LINCOLN	07	MAX	63	62	60	89	74	58	59	63	70	63	63	52	59	63	74	83	87	70	54	68	72	80	50	45	62	69	68	60	53	69	65.4	
		MIN	44	44	30	36	39	36	29	29	45	33	35	32	32	33	39	52	55	46	45	38	41	46	36	36	30	32	44	38	38	40	38.4	
LURAY 5 E	08	MAX	73	71	64	74	76	59	60	64	69	64	64	48	57	65	74	85	89	73	50	69	71	79	48	43	60	68	72	64	55	72	66.0	
		MIN	46	43	33	46	38	30	30	33	40	33	29	34	32	37	51	54	56	47	46	41	49	46	37	31	33	49	45	36	41	42	40.3	
MADISON	08	MAX							62	68	75	72								77	59		70	80	55	48	65	72	71	69	56	70	M	
		MIN							50	40	42	47								51	48		51	51	44	39	39	46	48	44	46	48	M	
MANASSAS	07	MAX			63	74	77	60	61	67	75	70	69	53	60	68	77	85	90	77	54	72	72			46	63	71	70	65	54	74	68.0	
		MIN		46	33	37	43	37	33	33	42	41	36	40	37	40	44	60	64	52	48	45	45		39	38	34	36	48	39	43	46	42.1	
MT WEATHER	07	MAX	63	59	59	68	73	57	58	62	68	60	60	47	54	61	70	80	84	69	50	65	68	76	46	42	57	65	64	57	50	66	61.9	
		MIN	41	40	40	40	39	32	33	36	44	42	33	34	36	41	53	58	57	50	45	48	48	45	32	32	32	44	41	37	38	40	41.0	
PIEDMONT RSCH STN	08	MAX	70	66	64	74	80	57	61	67	73	68	69	51	60	65	75	83	85	75	52	67	69	78	51	44	61	68	67	53	69	66.3		
		MIN	46	46	36	44	45	38	37	38	46	39	33	36	40	39	46	58	62	51	46	43	47	50	41	35	41	51	49	41	43	45	43.7	
SOMERSET	07	MAX	74	67	65	74	80	57	61	67	74	69	70	52	60	66	76	84	86	83	50	67	70	79	52	52	62	69	69	68	53	69	67.5	

VIRGINIA
201204

DAILY TEMPERATURES (°F)

STATION	OB. TIME	MAX/MIN	DAY OF MONTH																															AVERAGE
			01	02	03	04	05	06	07	08	09	10	11	12	13	14	15	16	17	18	19	20	21	22	23	24	25	26	27	28	29	30	31	
			SPERRYVILLE	06	MIN MAX MIN	47 69 45	48 63 45	30 65 35	35 72 35	46 75 46	35 59 36	33 61 36	32 67 37	39 71 38	35 66 37	31 67 35	34 72 36	35 59 36	44 74 38	61 84 52	56 84 51	50 76 47	47 57 43	41 69 43	45 78 48	45 50 39	42 60 32	33 68 35	35 49 32	44 68 35	49 65 35	40 65 39	44 53 42	
STERLING RCS	07	MAX MIN	64 43	63 45	60 34	71 35	77 42	60 36	60 33	65 34	72 37	65 35	65 38	52 36	59 37	64 39	74 53	84 61	88 49	73 46	55 45	71 50	81 37	50 37	46 33	63 35	69 46	67 38	61 38	56 38	70 41	65.7 40.3		
VIENNA	07	MAX MIN	65 46	63 45	60 36		86 41	61 39	63 32	70 32	70 38	64 42	65 35	51 38	57 38	63 43	74 60	82 62	73 53	64 47	54 68	68 47	78 49	49 37	43 38	61 66	66 64	58 46	54 38	66 42	64.1 41.9			
WARRENTON 3 SE	08	MAX MIN	67 43	67 43	67 39	69 39		58 39		70 39	65 38	65 35	47 34	58 37	63 40	74 48		85 57	73 52	53 47	66 43	68 43	79 48	50 38	48 60	60 67	65 65	62 62	62 68	39 41	64.7 41.9			
WASHGTN DULLES INTL AP	24	MAX MIN	63 46	61 40	72 32	77 45	61 37	61 37	65 30	72 33	66 47	53 34	61 37	65 34	74 35	83 58	88 61	74 50	58 49	70 46	71 42	81 53	54 43	47 38	63 37	69 31	66 54	62 42	56 44	70 45	65 50	66.5 41.6		
WASHINGTON REAGAN AP	24	MAX MIN	64 47	62 47	73 42	76 53	63 47	62 42	65 48	74 53	69 45	68 40	56 40	63 42	75 45	83 60	89 63	77 61	62 53	72 50	76 52	82 57	50 46	64 42	71 44	65 44	64 56	56 48	71 45	67 50	68.1 48.5			
WINCHESTER	07	MAX MIN	66 44	66 43	63 37	72 42	75 36	57 37	60 41	64 44	69 40	61 37	61 40	50 26	56 37	64 38	73 44	81 58	87 59	67 47	51 46	65 45	70 49	78 35	49 35	45 38	59 38	67 40	70 40	58 38	53 40	71 40	64.3 41.3	
WINCHESTER 7 SE	08	MAX MIN	68 32	65 43	65 30	71 30	78 36	62 33	64 29	66 29	70 35	63 33	63 33	51 38	59 32	68 32	73 34	83 54	88 55	72 47	52 46	68 39	70 49	49 36	46 36	60 31	70 32	70 32	61 35	55 37	74 37	66.0 36.8		
WOODSTOCK 2 NE	07	MAX MIN	71 45	69 42	64 34		77 40	59 34	60 34	64 34	68 34	62 33	62 32	48 37	57 35	65 35	71 38	82 53	87 52	69 47	50 46	68 41	72 42	78 47	48 37	45 35	58 32	68 33	70 44	61 38	54 40	71 39	64.8 39.1	
CENTRAL MOUNTAIN 05																																		
COVINGTON FLTR PLT	07	MAX MIN	74 38	76 38	75 35	84 34	82 50	55 40	65 30	69 29	71 36	68 37	65 36	50 34	62 34	69 35	75 46	86 52	88 49	75 49	53 44	64 45	71 50	53 39	50 32	61 31	69 31	68 48	69 48	69 42	82 48	69.1 39.9		
DALE ENTERPRISE	07	MAX MIN	80 43	69 45	63 30	72 38	75 37	56 33	59 29	66 29	68 36	66 37	62 33	48 30	57 31	64 32	87 37	81 54	85 54	72 46		57 39	70 41	53 48	49 38	43 32		66 44	67 47	63 42	55 42	70 42	65.1 38.9	
GATHRIGHT DAM	07	MAX MIN	69 38	73 39	71 35	80 36	78 47	53 38	62 30	66 31	67 38	64 40	60 35	43 34	57 35	65 35	72 37	85 37	86 53	72 47	50 41	63 42	74 48	72 35	51 35	47 32	55 65	65 65	65 63	58 42	76 48	65.4 39.3		
HOT SPRINGS	07	MAX MIN	69 36	72 38	69 34	80 34	77 47	56 35	62 28	65 28	68 37	64 34	63 33	43 33	56 34	65 35	71 46	83 51	86 46	70 46	48 46	62 39	74 40	74 47	50 34	45 31	56 31	66 44	61 41	63 41	56 42	77 48	65.0 38.0	
LEXINGTON	07	MAX MIN																																M M
MILLGAP	07	MAX MIN	64 29	69 30	66 23	77 23	74 34	58 26	58 17	61 17	63 28	59 33	55 31	39 30	53 26	64 25	69 25	81 38	83 40	68 44	49 44	65 36	72 38	67 42	48 35	43 32	48 26	43 25	52 42	63 32	62 35	59 45	75 45	62.3 31.7
MUSTOE 1 SW	24	MAX MIN	69 29	66 35	79 45	74 33	57 30	58 23	61 28	64 40	59 37	58 31	39 31	53 29	61 28	69 40	81 43	64 48	66 44	49 40	64 35	71 42	78 39	49 34	43 31	52 28	64 46	63 36	58 36	52 42	73 48	69 48	62.8 35.9	
ROANOKE 8 N	07	MAX MIN	75 43	76 43	78 42	80 42	81 54	66 35	70 37	74 43	71 43	67 39	48 35	63 39	67 39	76 41	85 52	88 56	77 51	53 50	61 45	73 45	77 52	53 42	51 38	62 37	67 39	72 54	70 46	58 45	71 47	68.8 43.9		
ROANOKE INTL AP	24	MAX MIN	76 44	78 54	80 41	81 62	66 45	67 44	70 34	75 43	72 44	68 48	49 39	63 36	66 38	76 38	86 53	89 58	79 60	62 50	72 49	77 53	57 46	51 40	62 41	67 40	72 54	70 53	58 47	71 46	63 59	69.4 46.8		
STAUNTON WATER TRMTMT PLT	08	MAX MIN	72 46	71 46	65 35	76 42	78 35	57 42	61 35	66 34	71 35	60 46	64 35	46 33	59 35	65 37	70 49	83 58	71 58	50 46	67 47	72 44	75 47	47 38	67 40	58 46	66 46	65 46	66 44	57 41	70 42	64.9 42.3		
WAYNESBORO WTP	07	MAX MIN	75 49	72 48	65 33	78 33	80 43	56 34	60 30	67 29	72 37	68 36	68 36	47 29	59 29	66 37	72 37	84 52	86 52	72 50	50 47	67 42	73 42	77 49	49 40	59 33	69 33	68 34	69 49	56 43	71 43	66.7 39.8		

VIRGINIA
201204

DAILY TEMPERATURES (°F)

STATION	OB. TIME	MAX/MIN	DAY OF MONTH																															AVERAGE
			01	02	03	04	05	06	07	08	09	10	11	12	13	14	15	16	17	18	19	20	21	22	23	24	25	26	27	28	29	30	31	
WISE 3E	17	MAX	67	65	74	72	72	70	63	62	63	61	55	54	61	71	76	75	72	53	66	68	63	50	47	50	65	63	63	74	76	77	64.9	
		MIN	42	55	47	55	50	34	31	36	39	40	30	25	33	44	57	62	52	45	44	49	50	39	31	35	40	55	46	46	57	53	44.1	
WYTHEVILLE 1 S	07	MAX	70	67	74	80	74	60	63	66	67	65	62	46	59	63	73	81	80	72	51	63	72	71	50	49	57	67	65	68	69	81	66.2	
		MIN	40	40	36	36	51	43	29	28	32	34	36	27	26	29	36	36	45	49	48	45	46	49	36	35	36	43	50	44	37	47	39.0	

VIRGINIA
201204

SNOWFALL AND SNOW ON GROUND (INCHES)

STATION	DAY OF MONTH																															
	01	02	03	04	05	06	07	08	09	10	11	12	13	14	15	16	17	18	19	20	21	22	23	24	25	26	27	28	29	30	31	
VIRGINIA																																
TIDEWATER 01																																
DISPUTANTA																																
EASTVILLE																																
EMPORIA 1 WNW																																
FREDERICKSBURG SEWAGE																																
HAMPTON UNIV																																
HOLLAND 1 E																																
HOPEWELL		-	-	-	-	-	-	-	-	-	-	-	-	-	-	-	-	-	-	-	-	-	-	-	-	-	-	-	-	-	-	
		-	-	-	-	-	-	-	-	-	-	-	-	-	-	-	-	-	-	-	-	-	-	-	-	-	-	-	-	-	-	
NORFOLK INTL AP																																
NORFOLK SOUTH																																
NORTH																																
PAINTER 2W																																
STONY CREEK 2 N																																
SUFFOLK LAKE KILBY																																
WAKEFIELD 1NW				T																												
WALKERTON 2 NW																																
WALLACETON LK DRUMMOND																																
WARSAW 2 NW																																
WEST POINT 2 NW																																
WILLIAMSBURG 2 N																																
EASTERN PIEDMONT 02																																
BREMO BLUFF				T	-	-	-	-				-	-	-	-				-													
					-	-	-	-				-	-	-	-				-													
BUCKINGHAM																																
CAMP PICKETT																																
CHASE CITY																																
CLARKSVILLE																																
CORBIN																																
CROZIER																																
FARMVILLE 2 N																																
GREENBAY 3 NE																																
JOHN H KERR DAM																																

Snowfall: Includes snow and ice. Values for NWS stations (J index note) are Mid-Mid (LST).

Snow on ground: Includes snow, sleet, ice, and hail. Values for NWS stations (J index note) are observed at 12 UTC (GMT).

Water Equivalent: Given for NWS stations (J index note) only, when snow depth is 2 inches or more, and is measured at 18 UTC (GMT)

VIRGINIA
201204

SNOWFALL AND SNOW ON GROUND (INCHES)

STATION		DAY OF MONTH																																			
		01	02	03	04	05	06	07	08	09	10	11	12	13	14	15	16	17	18	19	20	21	22	23	24	25	26	27	28	29	30	31					
LOUISA	SNOWFALL																																				
PALMYRA 3S	SNOWFALL																																				
PETERSBURG	SNOWFALL				-																																
	SN ON GND				-																																
POWHATAN	SNOWFALL																																				
RICHMOND INTL AP	SNOWFALL																																				
	SN ON GND																																				
SANDSTON	SNOWFALL																																				
WINTERPOCK 4 W	SNOWFALL																																				
NORTHERN 04																																					
SPERRYVILLE	SNOWFALL	-	-	-	-	-	-	-	-	-	-	T	-	-	-	-	-	-	-	-	-	-	-	-	-	-	-	-	-	-	-	-	-	-			
	SN ON GND	-	-	-	-	-	-	-	-	-	-	-	-	-	-	-	-	-	-	-	-	-	-	-	-	-	-	-	-	-	-	-	-	-	-		
STERLING RCS	SNOWFALL																																				
	SN ON GND																																				
WTR EQUIV	WTR EQUIV	-				-	-			-	-	-	-	-	-	-	-	-	-	-	-	-	-	-	-	-	-	-	-	-	-	-	-	-	-		
	SNOWFALL																																				
VIENNA	SNOWFALL																																				
WARRENTON 3 SE	SNOWFALL																																				
WASHGTN DULLES INTL AP	SNOWFALL																																				
	SN ON GND																																				
WASHINGTON REAGAN AP	SNOWFALL																																				
	SN ON GND																																				
WINCHESTER	SNOWFALL																																				
WINCHESTER 7 SE	SNOWFALL																																				
	SN ON GND																																				
WTR EQUIV	WTR EQUIV																																				
	SNOWFALL																																				
WOODSTOCK 2 NE	SNOWFALL																																				
CENTRAL MOUNTAIN 05																																					
HOT SPRINGS	SNOWFALL	-	-	-	-	-	-	-	-	-	-	-	-	-	-	-	-	-	-	-	-	-	-	-	-	T	-	-	-	-	-	-	-	-	-	-	
	SN ON GND	-	-	-	-	-	-	-	-	-	-	-	-	-	-	-	-	-	-	-	-	-	-	-	-	T	-	-	-	-	-	-	-	-	-	-	-
LEXINGTON	SNOWFALL																																				
MILLGAP	SNOWFALL												0.1																								
	SN ON GND												T																								
WTR EQUIV	WTR EQUIV																																				
	SNOWFALL	-	-	-	-	-	-	-	-	-	-	-	-	-	-	-	-	-	-	-	-	-	-	-	-	-	-	-	-	-	-	-	-	-	-	-	-
MTN GROVE	SNOWFALL	-	-	-	-	-	-	-	-	-	-	-	-	-	-	-	-	-	-	-	-	-	-	-	-	-	-	-	-	-	-	-	-	-	-	-	-
	SN ON GND	-	-	-	-	-	-	-	-	-	-	-	-	-	-	-	-	-	-	-	-	-	-	-	-	-	-	-	-	-	-	-	-	-	-	-	-
MUSTOE 1 SW	SNOWFALL												T	T											T												
	SN ON GND												T	T																							
ROANOKE 8 N	SNOWFALL																																				
ROANOKE INTL AP	SNOWFALL												T																								
	SN ON GND																																				
STAUNTON WATER TRMTMT PLT	SNOWFALL	-	-	-																																	
	SN ON GND	-	-	-																																	

Snowfall: Includes snow and ice. Values for NWS stations (J index note) are Mid-Mid (LST).

Snow on ground: Includes snow, sleet, ice, and hail. Values for NWS stations (J index note) are observed at 12 UTC (GMT).

Water Equivalent: Given for NWS stations (J index note) only, when snow depth is 2 inches or more, and is measured at 18 UTC (GMT)

VIRGINIA
201204

SNOWFALL AND SNOW ON GROUND (INCHES)

STATION		DAY OF MONTH																															
		01	02	03	04	05	06	07	08	09	10	11	12	13	14	15	16	17	18	19	20	21	22	23	24	25	26	27	28	29	30	31	
WAYNESBORO WTP	SNOWFALL																																
	SN ON GND																																
	WTR EQUIV																																
SOUTHWESTERN MOUNTAIN 06																																	
BLACKSBURG NWSO	SNOWFALL																							T	T								
	SN ON GND																																
BURKES GARDEN	SNOWFALL											T																					
	SN ON GND																							T	1.5								
CHRISTIANSBURG	SNOWFALL																																
	SN ON GND																																-
CLINTWOOD 1 W	SNOWFALL																																
	SN ON GND																																-
COPPER HILL	SNOWFALL																																
	SN ON GND																																
GALAX RADIO WBRF	SNOWFALL																																
GALAX WTP	SNOWFALL				-			-	-	-	-	-	-	-	-	-	-	-	-	-	-	-	-	-	-	-	-	-	-	-	-	-	
	SN ON GND				-			-	-	-	-	-	-	-	-	-	-	-	-	-	-	-	-	-	-	-	-	-	-	-	-	-	
GRUNDY	SNOWFALL																																
	SN ON GND																																
JOHN FLANNAGAN LAKE	SNOWFALL																																
LAFAYETTE 1 NE	SNOWFALL	-	-	-	-	T	-	-	-	-	-	-	-	-	-	-	-	-	-	-	-	-	-	-	-	-	-	-	-	-	-	-	
	SN ON GND	-	-	-	-	-	-	-	-	-	-	-	-	-	-	-	-	-	-	-	-	-	-	-	-	-	-	-	-	-	-	-	
LEBANON	SNOWFALL																																
	SN ON GND																																
NORA 4 SSE	SNOWFALL																																
	SN ON GND																																
NORTH FORK LAKE	SNOWFALL	-						-	-		-	-	-	-	-	-	-	-	-	-	-	-	-	-	-	-	-	-	-	-	-	-	
	SN ON GND	-						-	-		-	-	-	-	-	-	-	-	-	-	-	-	-	-	-	-	-	-	-	-	-	-	
PULASKI 2 E	SNOWFALL	-	-	-	-	-	-	-	-	-	-	-	-	-	-	-	-	-	-	-	-	-	-	-	-	-	-	-	-	-	-	-	
	SN ON GND	-	-	-	-	-	-	-	-	-	-	-	-	-	-	-	-	-	-	-	-	-	-	-	-	-	-	-	-	-	-	-	
RADFORD 3 N	SNOWFALL																																
	SN ON GND																																
RICHLANDS	SNOWFALL	-	-	-	-	-	-	-	-	-	-	-	-	-	-	-	-	-	-	-	-	-	-	-	-	-	-	-	-	-	-	-	
	SN ON GND	-	-	-	-	-	-	-	-	-	-	-	-	-	-	-	-	-	-	-	-	-	-	-	-	-	-	-	-	-	-	-	
SALTVILLE 1N	SNOWFALL																																
STAFFORDSVILLE 3 ENE	SNOWFALL																																
TROUT DALE 3 SSE	SNOWFALL																																
	SN ON GND																																
WILLIS	SNOWFALL																																
WISE 3E	SNOWFALL	-	-	-	-	-	-	-	-	-	-	-	-	-	-	-	-	-	-	-	-	-	-	-	-	-	-	-	-	-	-	-	
WYTHEVILLE 1 S	SNOWFALL																																
	SNOWFALL																																

Snowfall: Includes snow and ice. Values for NWS stations (J index note) are Mid-Mid (LST).

Snow on ground: Includes snow, sleet, ice, and hail. Values for NWS stations (J index note) are observed at 12 UTC (GMT).

Water Equivalent: Given for NWS stations (J index note) only, when snow depth is 2 inches or more, and is measured at 18 UTC (GMT)

VIRGINIA
201204

SNOWFALL AND SNOW ON GROUND (INCHES)

STATION		DAY OF MONTH																															
		01	02	03	04	05	06	07	08	09	10	11	12	13	14	15	16	17	18	19	20	21	22	23	24	25	26	27	28	29	30	31	
	SN ON GND																																

Snowfall: Includes snow and ice. Values for NWS stations (J index note) are Mid-Mid (LST).

Snow on ground: Includes snow, sleet, ice, and hail. Values for NWS stations (J index note) are observed at 12 UTC (GMT).

Water Equivalent: Given for NWS stations (J index note) only, when snow depth is 2 inches or more, and is measured at 18 UTC (GMT)

VIRGINIA
201204

PAN EVAPORATION AND WIND

STATION		DAY OF MONTH																															TOTAL OR AVERAGE	
		01	02	03	04	05	06	07	08	09	10	11	12	13	14	15	16	17	18	19	20	21	22	23	24	25	26	27	28	29	30	31		
VIRGINIA EASTERN PIEDMONT 02 JOHN H KERR DAM	WIND	-	-	-	-	-	-	-	-	-	-	-	-	-	-	-	-	-	-	-	-	-	-	-	-	-	-	-	-	-	-	-	-	M
	EVAP	-	-	-	-	-	-	-	-	-	-	-	-	-	-	-	-	-	-	-	-	-	-	-	-	-	-	-	-	-	-	-	-	M
	MAX	-	-	-	-	-	-	-	-	-	-	-	-	-	-	-	-	-	-	-	-	-	-	-	-	-	-	-	-	-	-	-	-	M
	MIN	-	-	-	-	-	-	-	-	-	-	-	-	-	-	-	-	-	-	-	-	-	-	-	-	-	-	-	-	-	-	-	-	-
NORTHERN 04 PIEDMONT RSCH STN	WIND	-	-	-	-	-	-	-	-	-	-	-	-	-	-	-	-	-	-	-	-	-	-	-	-	-	-	-	-	-	-	-	-	M
	EVAP	-	-	-	-	-	-	-	-	-	-	-	-	-	-	-	-	-	-	-	-	-	-	-	-	-	-	-	-	-	-	-	-	M
	MAX	-	-	-	-	-	-	-	-	-	-	-	-	-	-	-	-	-	-	-	-	-	-	-	-	-	-	-	-	-	-	-	-	M
	MIN	-	-	-	-	-	-	-	-	-	-	-	-	-	-	-	-	-	-	-	-	-	-	-	-	-	-	-	-	-	-	-	-	-

Evaporation: Is measured in hundreths of inches.

Wind: Is measured in miles.

Max and Min: The maximum and minimum temperatures (Fahrenheit) of the water in the evaporation pan.

STATION INDEX

STATION	INDEX NO.	DIVISION	COUNTY	LATITUDE	LONGITUDE	ELEVATION (IN FEET)	OBSERVATION TIME AND TABLES			
							LOCAL STD TIME			
							TEMP	PRECIP	EVAP	SPECIAL SEE (NOTES)
VIRGINIA										
ABINGDON 3S	0021	06	WASHINGTON	36 40	81 58W	1920	22	22		H
ALBERTA 5N	0079	02	BRUNSWICK	36 56	77 54W	376		08		H
ALTAVISTA	0166	03	CAMPBELL	37 7	79 17W	515		07		CH
AMELIA COURTHOUSE 1	0187	02	AMELIA	37 21	77 59W	345	08	08		H
APPOMATTOX	0243	03	APPOMATTOX	37 21	78 50W	910	07	07		H
ASHLAND	0327	02	HANOVER	37 45	77 29W	220	18	18		H
BEDFORD 4 NW	0561	03	BEDFORD	37 23	79 34W	1220		07		CH
BIG STONE GAP	0735	06	WISE	36 52	82 46W	1464	08	08		H
BLACKSBURG NWSO	0766	06	MONTGOMERY	37 12	80 25W	2100	07	07		CH
BOSTON 4 SE	0860	04	CULPEPER	38 33	78 6W	590	07	07		H
BREMO BLUFF	0993	02	FLUVANNA	37 43	78 17W	225		24		CH
BROOKNEAL	1082	03	CAMPBELL	37 4	78 57W	428	07	07		H
BUCHANAN	1121	05	BOTETOURT	37 32	79 41W	865		07		H
BUCKINGHAM	1136	02	BUCKINGHAM	37 30	78 32W	552		07		H
BUENA VISTA	1159	05	ROCKBRIDGE	37 44	79 22W	830		07		H
BURKES GARDEN	1209	06	TAZEWELL	37 6	81 20W	3068	07	07		H
CAMP PICKETT	1322	02	NOTTOWAY	37 2	77 57W	330	08	08		CH
CHARLOTTESVILLE 2W	1593	03	ALBEMARLE	38 2	78 31W	866	08	08		H
CHASE CITY	1606	02	MECKLENBURG	36 47	78 29W	510	17	17		H
CHATHAM	1614	03	PITTSYLVANIA	36 49	79 25W	640	07	07		CH
CHRISTIANSBURG	1692	06	MONTGOMERY	37 8	80 24W	2100	07	07		H
CLARKSVILLE	1746	02	MECKLENBURG	36 37	78 33W	330	07	07		H
CLINTWOOD 1 W	1825	06	DICKENSON	37 9	82 29W	1780	07	07		H
CONCORD 4 SSW	1955	03	CAMPBELL	37 17	78 58W	635		07		H
COPPER HILL	1999	06	FLOYD	37 5	80 9W	2690	07	07		H
CORBIN	2009	02	CAROLINE	38 12	77 22W	220	09	09		H
COVINGTON FLTR PLT	2044	05	ALLEGHANY	37 49	79 59W	1230	07	07		H
CRAIGSVILLE 2 S	2064	05	AUGUSTA	38 3	79 23W	1758		07		H
CROZIER	2142	02	GOOCHLAND	37 40	77 53W	350	07	07		H
DALE ENTERPRISE	2208	05	ROCKINGHAM	38 27	78 56W	1400	07	07		H
DANVILLE	2245	03	PITTSYLVANIA	36 35	79 23W	410	07	07		H
DANVILLE REGIONAL AP R	2250	03	PITTSYLVANIA	36 34	79 20W	571	24	24		H
DISPUTANTA	2400	01	PRINCE GEORGE	37 7	77 12W	15	07	07		H
EASTVILLE	2635	01	NORTHAMPTON	37 23	75 58W	10	07	07		H
EDINBURG	2663	04	SHENANDOAH	38 48	78 35W	928	07	07		H
EMPORIA 1 WNW	2790	01	GREENSVILLE	36 42	77 34W	100	08	08		H
FARMVILLE 2 N	2941	02	CUMBERLAND	37 20	78 23W	450	07	07		CH
FREDERICKSBURG SEWAGE	3204	01	FREDERICKSBURG	38 17	77 27W	15	07	07		H
FREE UNION	3213	03	ALBEMARLE	38 5	78 35W	590	08	07		H
FRONT ROYAL	3229	04	WARREN	38 54	78 11W	930	07	07		H
GALAX RADIO WBRF	3267	06	CARROLL	36 40	80 55W	2385	07	07		H
GALAX WTP	3272	06	CARROLL	36 39	80 55W	2360	07	07		CH
GATHRIGHT DAM	3310	05	ALLEGHANY	37 57	79 57W	1770	07	07		CH
GLASGOW 1 SE	3375	05	ROCKBRIDGE	37 37	79 26W	740		07		H
GREENBAY 3 NE	3565	02	PRINCE EDWARD	37 11	78 17W	500	09	09		H
GRUNDY	3640	06	BUCHANAN	37 17	82 5W	1170	07	07		H
HAMPTON UNIV	3713	01	HAMPTON	37 1	76 20W	10	17	17		H
HOLCOMB ROCK	4039	03	BEDFORD	37 33	79 24W	620		07		H
HOLLAND 1 E	4044	01	SUFFOLK	36 41	76 46W	80	08	08		H
HOPEWELL	4101	01	PRINCE GEORGE	37 18	77 17W	40	16	16		H
HOT SPRINGS	4128	05	BATH	37 60	79 50W	2236	07	07		H
HUDDLESTON 4 SW	4148	03	BEDFORD	37 8	79 32W	1045		07		H
JOHN FLANNAGAN LAKE	4410	06	DICKENSON	37 14	82 21W	1460	07	07		H
JOHN H KERR DAM	4414	02	MECKLENBURG	36 36	78 18W	250	08	08		CH
LAFAYETTE 1 NE	4676	06	MONTGOMERY	37 14	80 12W	1320		07		H
LEBANON	4777	06	RUSSELL	36 54	82 2W	1912	07	07		H
LEXINGTON	4876	05	ROCKBRIDGE	37 48	79 25W	1125	07	07		H
LINCOLN	4909	04	LOUDOUN	39 5	77 42W	500	07	07		H
LOUISA	5050	02	LOUISA	38 3	78 0W	420	18	18		H
LURAY 5 E	5096	04	PAGE	38 40	78 22W	1400	08	08		H
LYNCHBURG #2	5117	03	CAMPBELL	37 23	79 14W	740	07	07		H
LYNCHBURG INTL AP R	5120	03	CAMPBELL	37 19	79 12W	940	24	24		HJ
MADISON	5150	04	MADISON	38 22	78 15W	577	08	08		H
MANASSAS	5204	04	MANASSAS	38 44	77 30W	245	07	07		H
MARTINSVILLE FLTR PLT	5300	03	HENRY	36 42	79 52W	760	07	07		H

STATION INDEX

STATION	INDEX NO.	DIVISION	COUNTY	LATITUDE	LONGITUDE	ELEVATION (IN FEET)	OBSERVATION TIME AND TABLES			
							LOCAL STD TIME			
							TEMP	PRECIP	EVAP	SPECIAL SEE (NOTES)
MEADOWS OF DAN 5 SW	5453	03	PATRICK	36 40	80 27W	2225	07	07		H
MILLGAP	5595	05	HIGHLAND	38 18	79 43W	2421	07	07		CH
MONTEBELLO FISH CULTURAL STN #	5690	03	NELSON	37 51	79 8W	2667	07	07		H
MONTICELLO	5700	03	ALBEMARLE	38 1	78 27W	758	08	08		H
MT WEATHER	5851	04	LOUDOUN	39 4	77 53W	1659	07	07		H
MTN GROVE	5756	05	BATH	38 6	79 53W	1775		07		H
MUSTOE 1 SW	5880	05	HIGHLAND	38 20	79 40W	2380	24	24		H
NORA 4 SSE	6125	06	DICKENSON	37 1	82 19W	2650	07	07		H
NORFOLK INTL AP R	6139	01	NORFOLK (CITY)	36 54	76 12W	30	24	24		HJ
NORFOLK SOUTH	6147	01	NORFOLK (CITY)	36 52	76 14W	100	24	24		H
NORTH	6161	01	MATHEWS	37 26	76 26W	10	07	07		H
NORTH FORK LAKE	6173	06	WISE	37 7	82 38W	1675	08	08		H
PAINTER 2W	6475	01	ACCOMACK	37 35	75 49W	30	16	16		CH
PALMYRA 3S	6491	02	FLUVANNA	37 49	78 16W	410	06	06		H
PEDLAR DAM	6593	03	AMHERST	37 40	79 17W	1010		07		H
PETERSBURG	6656	02	PETERSBURG	37 14	77 24W	15	08	08		H
PIEDMONT RSCH STN	6712	04	ORANGE	38 14	78 7W	520	08	08	08	CH
POWHATAN	6906	02	POWHATAN	37 31	77 53W	400		07		H
PULASKI 2 E	6955	06	PULASKI	37 3	80 47W	1850	07	07		CH
RADFORD 3 N	6999	06	PULASKI	37 12	80 35W	1800	07	07		H
RICHLANDS	7174	06	TAZEWELL	37 6	81 48W	1910	07	07		H
RICHMOND INTL AP R	7201	02	HENRICO	37 30	77 19W	164	24	24		HJ
ROANOKE 8 N	7278	05	ROANOKE	37 22	79 58W	1190	07	07		H
ROANOKE INTL AP R	7285	05	ROANOKE	37 19	79 58W	1175	24	24		HJ
ROCKY MT	7338	03	FRANKLIN	36 59	79 54W	1315	07	07		CH
SALTVILLE 1N	7506	06	SMYTH	36 53	81 46W	1733	07	07		H
SANDSTON	7541	02	HENRICO	37 33	77 17W	165	07	07		H
SOMERSET	7904	04	ORANGE	38 15	78 16W	510	07	07		H
SOUTH BOSTON	7925	03	HALIFAX	36 42	78 53W	340	07	07		H
SPERRYVILLE	7985	04	RAPPAHANNOCK	38 39	78 14W	750	06	06		H
STAFFORDSVILLE 3 ENE	8022	06	GILES	37 16	80 43W	1950	07	07		CH
STAUNTON WATER TRMTMT PLT	8062	05	AUGUSTA	38 10	79 5W	169	08	08		H
STERLING RCS	8084	04	LOUDOUN	38 59	77 29W	288	07	07		H
STONY CREEK 2 N	8129	01	SUSSEX	36 58	77 24W	105	08	08		H
STUART	8170	03	PATRICK	36 38	80 15W	1375	07	07		H
SUFFOLK LAKE KILBY	8192	01	SUFFOLK	36 44	76 36W	22	24	24		H
TROUT DALE 3 SSE	8547	06	GRAYSON	36 39	81 24W	2839	07	07		CH
TYE RIVER 1 SE	8600	03	NELSON	37 38	78 56W	720	07	07		H
VIENNA	8737	04	FAIRFAX	38 54	77 16W	418	07	07		H
WAKEFIELD 1NW	8800	01	SUSSEX	36 59	77 0W	113	24	24		CH
WALKERTON 2 NW	8829	01	KING AND QUEEN	37 45	77 2W	50	18	18		H
WALLACETON LK DRUMMOND	8837	01	CHESAPEAKE	36 36	76 26W	20	08	08		H
WARRENTON 3 SE	8888	04	FAUQUIER	38 41	77 46W	500	08	08		H
WARSAW 2 NW	8894	01	RICHMOND	37 59	76 47W	140	18	18		H
WASHGTN DULLES INTL AP R	8903	04	LOUDOUN	38 56	77 28W	290	24	24		HJ
WASHINGTON REAGAN AP R	8906	04	ARLINGTON	38 51	77 2W	10	24	24		HJ
WAYNESBORO WTP	8941	05	WAYNESBORO	38 5	78 53W	1270	07	07		H
WEST POINT 2 NW	9025	01	KING WILLIAM	37 34	76 48W	20	17	17		H
WILLIAMSBURG 2 N	9151	01	YORK	37 18	76 42W	70	24	24		CH
WILLIS	9169	06	FLOYD	36 55	80 30W	2810		07		CH
WINCHESTER	9181	04	FREDERICK	39 11	78 9W	720	07	07		H
WINCHESTER 7 SE	9186	04	FREDERICK	39 11	78 7W	680	08	08		H
WINTERPOCK 4 W	9213	02	CHESTERFIELD	37 19	77 39W	300		07		H
WISE 3E	9215	06	WISE	36 60	82 32W	2549	17	17		CH
WOODSTOCK 2 NE	9263	04	SHENANDOAH	38 54	78 28W	675	07	07		H
WOOLWINE	9272	03	PATRICK	36 47	80 17W	1500		07		CH
WYTHEVILLE 1 S	9301	06	WYTHE	36 56	81 6W	2450	07	07		CH

REFERENCE NOTES

STATION NAMES: Name of the city, town or locality. Figures and letters following the station names indicate the distance in miles and direction from the post office or town community center.

DIVISIONS: Areas within a state of similar climatological characteristics. Division averages are calculated using data from stations that record temperature and/or precipitation. Station Precipitation totals flagged with an 'F' or 'M' are excluded from the Divisional Average calculations of precipitation. Stations with monthly Temperature averages flagged with an 'F' or 'M' are included in the Divisional Average if there are no more than 9 flagged or missing daily values in the month, else they are excluded from the divisional average for temperature.

NORMALS: The average value of the meteorological element over a time period. Effective 1 January 2012, the averaging period is 1981 to 2010. The normals for National Weather Service localities have been adjusted so as to be representative for the current observation site.

MONTHLY DEGREE DAY TOTALS: One heating (cooling) degree day is accumulated for each whole degree that the daily mean temperature is below (above) 65 degrees Fahrenheit.

PRECIPITATION: Values shown in hundredths of inches are water equivalent totals, i.e., total of liquid and melted frozen precipitation. In the "Monthly Summarized Data" table the total snow and sleet values shown in tenths of inches are unmelted amounts. The max depth on ground values of snow and sleet shown in whole inches are cumulative unmelted amounts. The number of days with .10, .50, 1.00 or more refers to water equivalents.

PRECIPITATION QUALITY CONTROL: The NCDC quality control process may flag precipitation data that are spatially inconsistent, exceed climatological limits, or are inconsistent with prevailing weather patterns.

TEMPERATURE: Original temperature values are given in the "Daily Temperature" table. Summary temperature information (averages, departures, extremes, monthly degree day totals) is based on the values labeled MAX/MIN.

WIND: (As shown in the "Evaporation and Wind" table) the total wind movement in miles over the evaporation pan as determined by an anemometer recorder located 6-8 inches above the pan.

SYMBOLS AND LETTERS USED IN THE STATION INDEX TABLE

C Station is equipped with recording rain gage (R) but values in this bulletin are from a non-recording rain gage unless indicated by an R.

G Observations appear in the "Soil Temperatures" table.

H Observations appear in the "Snowfall and Snow on the Ground" table.

J Station also published as a Local Climatological Data publication.

VAR Observation time varies.

SR Observation time near sunrise.

SS Observation time near sunset.

SYMBOLS AND LETTERS USED IN THE DATA TABLES

(DAILY DATA ARE FOR THE 24 HOURS IMMEDIATELY PRECEDING OBSERVATION TIME.)

BLANK Entries in the "Monthly Summarized Data" table indicate no record.

BLANK Entries in the "Daily Precipitation" and "Snowfall and Snow on the Ground" tables indicate zero.

BLANK Entries in the "Daily Temperature" table indicate a missing record

- No record. Data not recorded or not received in time for publication.

+ Precipitation or temperature extremes occurred on one or more previous dates during the month.

* Rain gage not read. Precipitation is included in the amount following the asterisks.

Time distribution may not be known. A * preceding the monthly total indicates precipitation amount is being carried forward to next month's total, and may include amounts from the previous month(s).

a As a subscript, indicates accumulated total.

A Amount of precipitation is the total of observer's entries for the current month. It may include precipitation that occurred during the previous month. Refer to earlier bulletin to determine date of last reading. (Hawaii stations)

B Divisional Departure from normals are computed using 1971-2000 normals.

E Normalized HDD/CDD Calculation. E is appended to the HDD/CDD Calculation when 1-9 individual daily TMAX and/or TMIN values are missing and a Normalized HDD/CDD Calculation is provided. M appears alone if 10 or more daily values are missing.

F Monthly calculation flagged value. F is appended to average and/or total values computed which exclude one or more daily data values that have been flagged by the GHCN-Daily Dataset

M Insufficient or partial data. M is appended to average and/or total values computed with 1-9 daily values missing. M appears alone if 10 or more daily values are missing, (8 or more for wind and evaporation).

N Indicates snow fall or Snowdepth totals are computed with one or more missing days.

R Amounts from recording rain gage.

T Trace. An amount too small to measure.

SEASONAL TABLES: Monthly and seasonal snowfall and heating degree days for the 12 months ending with the June data are published in the July issue of this bulletin. Cooling degree days for the calendar year are published in the "Climatological Data Annual Summary."

Information concerning the history of changes in locations, exposure, etc. of substations is kept on file at the National Climatic Data Center. Historical information of regular National Weather Service Offices may be obtained from the "Local Climatological Data" annual publication. The contents of this publication may be reprinted or otherwise used freely, with proper credit to the National Climatic Data Center. The data are also available digitally.

Effective with the January 2011 Data-Month, COOP Observer Names are no longer included in the Monthly and Annual Climatological Data Publications. This information is not published to ensure the privacy of personal information pursuant to Section 208 of the E-Government Act of 2002 (44 USC 3601).

As of the 2011 Data-Year, Station and Climate Division Maps are no longer being included in the CD Publications. NCDC's Product Development Branch provides updated Station Maps for various data networks via the Historical Observing Metadata Repository: <http://www.ncdc.noaa.gov/homr>.

The GHCN-Daily Quality Control Flags shown below are displayed as superscripts with the data. For more Information on Global Historical Climatology Network - Daily and flags, see: <http://www.ncdc.noaa.gov/oa/climate/ghcn-daily/> and Comprehensive Automated Quality Assurance of Daily Surface Observations. Durre, Imke, Matthew J. Menne, Byron E. Gleason, Tamara G. Houston, Russell S. Vose, 2010: J. Appl. Meteor. Climatol., 49, 1615-1633. doi: 10.1175/2010JAMC2375.1

Blank = Passed All checks

D = failed duplicate check

G = failed gap check

I = failed internal consistency check

K = failed streak/frequent-value check

L = failed check on length of multiday period

M = failed megaconsistency check

N = failed naught check

O = failed climatological outlier check

R = failed lagged range check

S = failed spatial consistency check

T = failed temporal consistency check

W = temperature too warm for snow

X = failed bounds check

NOAA\National Climatic Data Center
Attn: User Engagement & Services Branch
151 Patton Avenue
Asheville, NC 28801-5001

Customer Services Number: (828) 271-4800, option 2
TDD : (828) 271-4010
Fax number: (828) 271-4876

NCDC now offers free online access to the *Climatological Data* publication.
Go to : www.ncdc.noaa.gov and choose Most Popular.