



CLIMATOLOGICAL DATA

VIRGINIA



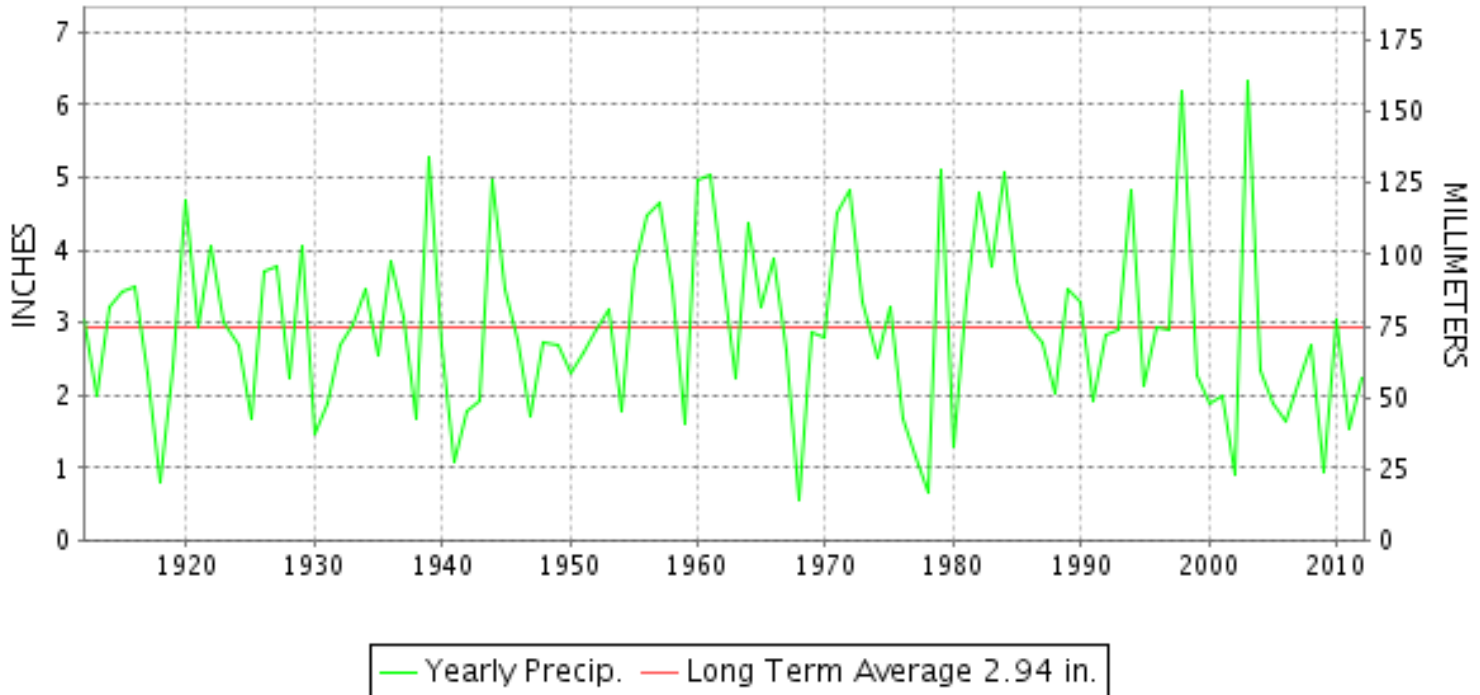
FEBRUARY 2012

VOLUME 122 NUMBER 02

ISSN 0364-5630

GHCND Ver: 2.93-upd-2012081707

FEBRUARY PRECIPITATION BY YEAR



TEMPERATURE AND PRECIPITATION EXTREMES

VIRGINIA

HIGHEST TEMPERATURE	85	FEBRUARY 25	FARMVILLE 2 N
LOWEST TEMPERATURE	7	FEBRUARY 12+	2 STATIONS
GREATEST TOTAL PRECIPITATION	6.85		CHASE CITY
LEAST TOTAL PRECIPITATION	0.62		FRONT ROYAL
GREATEST 1 DAY PRECIPITATION	5.50	FEBRUARY 20	FARMVILLE 2 N
GREATEST TOTAL SNOWFALL	14.2		NORA 4 SSE
GREATEST DEPTH OF SNOW OR ICE	8		7 STATIONS

"I certify that this is an official publication of the National Oceanic and Atmospheric Administration (NOAA) It is compiled using information from weather observing sites supervised by NOAA/National Weather Service and received at the National Climatic Data Center(NCDC), Asheville, North Carolina 28801."

Director
National Climatic Data Center

noaa

National
Oceanic and
Atmospheric Administration

National
Environmental Satellite, Data
and Information Service

National
Climatic Data Center
Asheville, North Carolina

VIRGINIA
201202

MONTHLY STATION AND DIVISION SUMMARY

STATION	TEMPERATURE (°F)											PRECIPITATION (IN)												
	AVERAGE MAXIMUM	AVERAGE MINIMUM	AVERAGE	DEPARTURE FROM NORMAL	HIGHEST	DATE	LOWEST	DATE	HEATING DEG. DAYS	COOLING DEG. DAYS	NO. OF DAYS				TOTAL	DEPARTURE FROM NORMAL	GREATEST 24 HOURS	DATE	ICE PELLETS, SNOW			NO. OF DAYS		
											MAX		MIN						TOTAL	MAX DEPTH ON GROUND	DATE	.10 OR MORE	.50 OR MORE	1.00 OR MORE
											>=90	<=32	<=32	<=0										
PALMYRA 3S	54.4	26.7	40.6	4.3	82	25	14	14+	702	0	0	0	22	0	2.04	-0.76	0.74	20	M	1	21	6	1	0
PETERSBURG	56.4M	31.4M	43.9M	3.0	81	25	18	15+	605E	0	0	0	18	0	M 2.94	0.26	0.88	20	M 2.0	2	20	7	2	0
POWHATAN	M	M	M											1.82		1.23	20				4	1	1	
RICHMOND INTL AP	56.0	33.4	44.7	3.8	81	24	18	13	578	0	0	0	14	0	3.22	0.46	0.96	29	4.0	4	20	6	2	0
SANDSTON	53.6M	30.3M	42.0M	2.5	81	25	16	14+	660E	0	0	0	18	0	M 2.35	-0.67	0.93	20	M	M 4	20	6	2	0
WINTERPOCK 4 W	M	M	M											2.23		0.75	20	M			7	1	0	
--DIVISIONAL DATA-----> WESTERN PIEDMONT 03			43.3	4.2B										2.95	-0.24B									
ALTAVISTA	M	M	M											1.26		0.45	20+	0.0	0		3	0	0	
APPOMATTOX	53.9	29.8	41.9	3.3	79	25	17	13+	662	0	0	0	20	0	1.31	-1.77	0.65	20	5.5	5	20	3	1	0
BEDFORD 4 NW	52.1	32.6	42.4		74	25	16	12	648	0	0	0	13	0	2.44		0.68	20	6.0	6	20	6	2	0
BROOKNEAL	54.9	28.7	41.8	8.0	71	25	17	13+	665	0	0	0	20	0	2.25	-0.89	0.65	05	2.0	2	20	6	2	0
CHARLOTTESVILLE 2W	53.5	33.7	43.6	4.5	76	25	17	12	614	0	0	0	13	0	1.97	-1.10	0.62	02	5.8	6	22	5	2	0
CHATHAM	54.1	25.8	40.0	2.5	81	25	16	13	721	0	0	0	24	0	1.03	-1.98	0.40	20	3.2	3	20	4	0	0
CONCORD 4 SSW	M	M	M											1.31		0.47	20	4.5	5	21	4	0	0	
DANVILLE	55.8	29.8	42.8	2.3	80	25	19	12	636	0	0	0	20	0	1.68	-1.46	0.42	20	2.8	3	20	6	0	0
DANVILLE REGIONAL AP	55.5	30.4	43.0	2.1	79	24	15	12	629	0	0	0	19	0	2.12	-0.89	0.45	19	3.0	3	19	8	0	0
FREE UNION	53.8	27.3	40.6		75	25	18	12	703	0	0	0	25	0	1.58		0.43	02	M	3	20	5	0	0
HOLCOMB ROCK	53.3	31.4	42.4		75	25	19	12	649	0	0	0	16	0	2.10		0.80	20	7.5	8	22	4	2	0
HUDDLESTON 4 SW	M	M	M											1.61		0.56	20	5.5	5	22	4	1	0	
LYNCHBURG #2	53.7	27.7	40.7	3.1	78	25	17	14+	698	0	0	0	21	0	2.23	-0.73	0.94	20	9.0	6	20	5	2	0
LYNCHBURG INTL AP	53.9	29.3	41.6	3.4	79	24	15	13	671	0	0	0	19	0	2.61	-0.32	0.67	19	7.7	8	19	7	3	0
MARTINSVILLE FLTR PLT	55.5	25.8	40.7	2.3	79	25	18	21+	697	0	0	0	24	0	1.57	-1.57	0.69	20	M	5	20	5	1	0
MEADOWS OF DAN 5 SW	55.0	28.2	41.6		71	25	16	13+	669	0	0	0	24	0	1.99		0.54	20	2.5	3	20	7	1	0
MONTEBELLO FISH CULTURAL STN	48.2M	24.6M	36.4M		69	25	8	13+	821E	0	0	4	24	0	M 2.75		0.55	17	M	6	20	7	2	0
MONTICELLO	51.1	32.2	41.7	5.5	71	25	16	13	668	0	0	0	15	0	2.55	-0.23	0.75	20	M	7	20	6	2	0
PEDLAR DAM	52.1	30.7	41.4		75	25	18	12	674	0	0	0	18	0	1.63		0.55	20	7.0	5	20	4	2	0
ROCKY MT	54.4	29.6	42.0	3.7	71	24	19	13+	661	0	0	0	20	0	1.74	-1.34	0.89	20	M	6	20	5	1	0
SOUTH BOSTON	55.8	27.9	41.9	2.5	80	25	19	14+	667	0	0	0	23	0	2.26	-0.86	0.90	20	2.0	2	20	6	1	0
STUART	55.2	28.4	41.8	2.0	76	25	17	13	667	0	0	0	20	0	1.34	-1.91	0.65	20	M	2	20	5	1	0
TYE RIVER 1 SE	56.9	29.0	43.0	4.0	80	25	17	12	631	0	0	0	18	0	1.76	-1.25	0.65	20	5.0	0		5	2	0
WOOLWINE	M	M	M											1.55		0.73	20	M	5	20	4	1	0	
--DIVISIONAL DATA-----> NORTHERN 04			41.6	2.7B										1.82	-1.47B									
BOSTON 4 SE	52.5M	28.9M	40.7M	5.3	70	02	16	14+	697E	0	0	1	20	0	FMA 0.99	-1.59	0.29	17	M 1.0	1	20	5	0	0
EDINBURG	50.1	26.9	38.5	4.6	66	01	16	12	759	0	0	1	23	0	0.82	-0.99	0.24	17	0.8	T	11	3	0	0
FRONT ROYAL	50.3	30.4	40.4	4.2	67	01	17	13+	709	0	0	1	22	0	0.62	-2.03	0.16	17	M	M 1	12	3	0	0
LINCOLN	50.2	27.0	38.6	5.0	67	02	18	13+	760	0	0	1	23	0	0.77	0.77	0.77	16	T	T	11	1	1	0

VIRGINIA
201202

MONTHLY STATION AND DIVISION SUMMARY

STATION	TEMPERATURE (°F)											PRECIPITATION (IN)												
	AVERAGE MAXIMUM	AVERAGE MINIMUM	AVERAGE	DEPARTURE FROM NORMAL	HIGHEST	DATE	LOWEST	DATE	HEATING DEG. DAYS	COOLING DEG. DAYS	NO. OF DAYS				TOTAL	DEPARTURE FROM NORMAL	GREATEST 24 HOURS	DATE	ICE PELLETS, SNOW			NO. OF DAYS		
											MAX		MIN						TOTAL	MAX DEPTH ON GROUND	DATE	.10 OR MORE	.50 OR MORE	1.00 OR MORE
											>=90	<=32	<=32	<=0										
LURAY 5 E	50.8	29.0	39.9	3.4	67	01	15	12	721	0	0	1	23	0	1.39	-1.27	0.53	25	0.0	0		5	1	0
MADISON	M	M	M											M				M	0					
MANASSAS	51.2M	31.4M	41.3M	5.3	71	02	16	13	678E	0	0	1	16	0	FMA 1.80	1.80	0.80	29	M	0		5	1	0
MT WEATHER	46.8	29.8	38.3	5.0	62	01	14	13+	766	0	0	1	23	0	FA 0.89	-2.07	0.40	11	M	1	09	4	0	0
PIEDMONT RSCH STN	52.0	30.8	41.4	4.1	75	25	17	12	676	0	0	0	16	0	1.54	-1.21	0.44	20	4.2	4	21	5	0	0
SOMERSET	52.8	29.9	41.4	4.9	73	25	18	12	679	0	0	0	20	0	A 1.98	-0.79	0.49	02	M	M 4	22	6	0	0
SPERRYVILLE	51.7	29.0	40.4	4.2	68	02+	17	12	707	0	0	0	24	0	1.59	-1.25	0.55	25	M	M 1	25	6	1	0
STAR TANNERY	M	M	M											M										
STERLING RCS	50.1M	28.7M	39.4M	4.8	67	02	17	14+	736E	0	0	1	20	0	M 0.93	-1.84	0.22	17	M 1.4	M T	13	5	0	0
VIENNA	49.8	31.7	40.8	5.1	69	02	19	14+	697	0	0	1	17	0	0.97	-1.84	0.43	25	M	0		2	0	0
WARRENTON 3 SE	50.6M	30.4M	40.5M	4.6	68	03+	17	13	704E	0	0	1	20	0	M 2.05	-0.73	0.86	29	M	1	20	6	1	0
WASHGTN DULLES INTL AP	51.1	30.8	41.0	4.8	69	01	17	13	691	0	0	1	17	0	2.24	-0.50	1.35	29	1.4	T	12	5	1	1
WASHINGTON REAGAN AP	52.4	36.3	44.4	5.4	72	01	23	12+	595	0	0	0	5	0	2.33	-0.29	1.44	29	0.3	T	12	4	1	1
WINCHESTER	50.1	30.3	40.2	5.3	67	01	17	12	713	0	0	1	19	0	1.21	-1.11	0.35	05	M	1	11	5	0	0
WINCHESTER 7 SE	50.3	26.4	38.4	4.9	67	01	17	12	764	0	0	1	25	0	0.95	-1.52	0.30	05	0.8	1	05	5	0	0
WOODSTOCK 2 NE	50.2	26.9	38.6	5.5	68	01	17	13+	760	0	0	1	25	0	0.83	-1.76	0.24	11	M	M T	05	4	0	0
--DIVISIONAL DATA-----> CENTRAL MOUNTAIN 05			40.2	5.1B										1.31	-1.34B									
BUCHANAN	52.2	31.4	41.8	2.8	73	25	17	12	666	0	0	0	14	0	1.44	-1.36	0.60	20	5.5	5	20	5	1	0
BUENA VISTA	M	M	M											1.67		0.57	20	3.0	3	20	5	1	0	
COVINGTON FLTR PLT	52.6	27.7	40.2	3.7	71	25	15	12	713	0	0	0	23	0	2.05	-0.32	0.80	20	8.0	8	20	7	1	0
CRAIGSVILLE 2 S	M	M	M											M				M	M 8	25				
DALE ENTERPRISE	50.2	27.2	38.7	5.8	65	25+	14	12	756	0	0	1	23	0	1.01	-1.21	0.30	25	0.5	0		5	0	0
GATHRIGHT DAM	48.6	26.1	37.4	3.3	67	25	12	12	795	0	0	1	24	0	1.68	-0.92	0.63	20	7.8	8	20	6	1	0
GLASGOW 1 SE	54.6	29.5	42.1	78	25	19	12	656	0	0	0	22	0	1.92		0.65	20	5.8	5	21	5	2	0	
HOT SPRINGS	48.3	25.6	37.0	4.0	67	25	10	12	808	0	0	1	24	0	1.81	-1.22	0.67	20	7.5	7	23	6	1	0
KERRS CREEK 6 WNW	M	M	M											1.92		0.61	20	7.0	7	20	6	2	0	
LEXINGTON	53.6	26.3	40.0	3.2	75	25	15	13+	720	0	0	0	23	0	1.83	-0.82	0.50	20	5.0	5	20	5	1	0
MILLGAP	46.7	19.1	32.9	2.8	64	29	8	14+	923	0	0	2	26	0	1.35	-1.63	0.44	17	3.8	2	25	5	0	0
MTN GROVE	52.5	M	M											2.21		0.45	20	5.0	3	25	7	0	0	
MUSTOE 1 SW	46.4	22.3	34.4	3.2	62	28	9	12+	881	0	0	3	27	0	3.68	0.43	1.85	29	4.4	2	26	7	2	1
ROANOKE 8 N	53.9	30.3	42.1	3.4	75	25	17	12	656	0	0	0	19	0	1.54	-1.10	0.50	20	M	4	20	4	1	0
ROANOKE INTL AP	54.9	33.6	44.3	4.7	74	24	19	12+	594	0	0	0	13	0	2.21	-0.68	0.64	19	5.5	5	19	6	1	0
STAUNTON WATER TRMTMT PLT	50.0	29.9	40.0	4.4	69	25	12	12	719	0	0	1	21	0	1.15	-1.40	0.53	20	M	7	20	4	1	0
WAYNESBORO WTP	52.7	26.7	39.7	4.8	74	26+	13	12	727	0	0	1	23	0	1.88	-1.04	0.57	20	7.4	7	20	5	1	0
--DIVISIONAL DATA-----> SOUTHWESTERN MOUNTAIN 06			39.3	3.7B										1.83	-0.91B									

VIRGINIA
201202

MONTHLY STATION AND DIVISION SUMMARY

STATION	TEMPERATURE (°F)											PRECIPITATION (IN)												
	AVERAGE MAXIMUM	AVERAGE MINIMUM	AVERAGE	DEPARTURE FROM NORMAL	HIGHEST	DATE	LOWEST	DATE	HEATING DEG. DAYS	COOLING DEG. DAYS	NO. OF DAYS				TOTAL	DEPARTURE FROM NORMAL	GREATEST 24 HOURS	DATE	ICE PELLETS, SNOW			NO. OF DAYS		
											MAX		MIN						TOTAL	MAX DEPTH ON GROUND	DATE	.10 OR MORE	.50 OR MORE	1.00 OR MORE
											>=90	<=32	<=32	<=0										
ABINGDON 3S	51.4M	29.9M	40.7M	3.9	69	28	14	13+	699E	0	0	1	17	0	M 4.62	0.88	0.78	19	M 2.1	2	19	9	4	0
BIG STONE GAP	52.3	28.5MF	40.4MF	2.6	70	24	13	13	679E	0	0	0	15	0	6.06	1.66	1.72	23				10	5	1
BLACKSBURG NWSO	49.0	25.6	37.3	3.1	68	25	12	13+	797	0	0	2	25	0	2.71	-0.10	0.85	20	7.2	7	20	6	2	0
BURKES GARDEN	44.6	25.0	34.8	3.2	61	29+	7	12	870	0	0	4	23	0	4.33	0.87	1.31	23	9.9	7	26	9	3	1
CHRISTIANSBURG	48.9	28.7	38.8	3.0	68	25	12	13+	753	0	0	1	19	0	2.94	0.11	1.01	23	8.5	6	25	6	2	1
CLINTWOOD 1 W	49.1	26.5	37.8	3.2	67	29	13	14+	783	0	0	2	25	0	4.10	0.45	1.32	20	12.7	6	20	8	3	1
COPPER HILL	46.3	28.0	37.2		68	25	9	13+	802	0	0	2	20	0	2.47		0.93	20	9.3	8	20	5	2	0
GALAX RADIO WBRF	51.2	28.0	39.6	4.8	69	25	11	12	728	0	0	2	23	0	1.85	-1.44	0.87	20	5.4	5	20	5	1	0
GALAX WTP	49.6	25.8	37.7	3.4	69	25	12	13+	784	0	0	1	25	0	1.34	1.34	0.70	23	3.0	3	21	3	1	0
GRUNDY	50.6	29.1	39.9	3.6	69	29	14	14+	721	0	0	2	22	0	2.69	-0.40	0.95	20	2.8	1	20	7	1	0
JOHN FLANNAGAN LAKE	M	M	M												M									
LAFAYETTE 1 NE	M	M	M												2.21		0.75	20	6.5	5	22	5	2	0
LEBANON	50.6	28.6	39.6	3.7	69	29	12	13	729	0	0	2	21	0	5.12	1.69	1.30	20	4.0	3	20	7	4	2
NORA 4 SSE	45.2	28.9	37.1	3.6	61	29+	7	13+	803	0	0	4	17	0	4.48	0.86	1.22	20	14.2	8	25	8	3	2
NORTH FORK LAKE	M	M	M												M				M	1	21			
PULASKI 2 E	51.1	28.3M	39.7M	4.0	70	25	13	12	724E	0	0	0	19	0	2.59	-0.10	1.44	23	M	M 7	20	3	2	1
RADFORD 3 N	50.9	28.0	39.5	5.4	70	25	13	12	733	0	0	0	21	0	2.41	-0.33	0.91	23	5.0	4	20	5	2	0
RICHLANDS	50.1	27.0	38.6	3.4	70	29	10	14	761	0	0	2	24	0	4.44	1.53	1.15	23	5.0	3	20	10	4	2
SALTVILLE 1N	51.0	26.5	38.8	2.7	70	29	14	14	754	0	0	0	24	0	5.60	2.13	1.67	05	M	M T	12	8	4	2
STAFFORDSVILLE 3 ENE	49.8	26.6	38.2	3.2	70	25	13	13+	771	0	0	1	23	0	2.74	0.01	1.04	23	7.2	5	25	6	2	1
TROUT DALE 3 SSE	48.1M	23.2M	35.7M		62	29	8	12	840E	0	0	2	23	0	M 1.84		0.61	20	M 8.0	M 4	20	5	1	0
WILLIS	M	M	M												2.16		0.81	20	6.0	6	20	6	1	0
WISE 3E	47.9	29.2	38.6	1.8	65	28	8	12	762	0	0	3	19	0	4.57	0.59	1.13	19	M	M 5	22	11	2	1
WYTHEVILLE 1 S	51.3	26.4	38.9	5.0	70	29+	14	13+	750	0	0	1	24	0	2.86	0.06	0.97	20	5.0	5	20	5	2	0
--DIVISIONAL DATA----->			38.4	3.2B											3.38	0.00B								

VIRGINIA
201202

DAILY PRECIPITATION (INCHES)

STATION	TOTAL	DAY OF MONTH																															
		01	02	03	04	05	06	07	08	09	10	11	12	13	14	15	16	17	18	19	20	21	22	23	24	25	26	27	28	29	30	31	
VIRGINIA																																	
TIDEWATER 01																																	
DISPUTANTA	1.76		0.28	0.07		0.49						0.03						0.37			0.04			0.18		0.30							
EASTVILLE	2.40		0.56	0.10		0.15				0.12		0.10						0.37			0.62			0.03		0.35							
EMPORIA 1 WNW	2.32		0.50			0.53			0.01	0.06								0.30			0.56			0.13		0.10				0.13			
FREDERICKSBURG SEWAGE	FMA 2.05	-	0.42	0.30		0.10						0.23	0.03				0.00 ^L	0.09 ^L	0.00 ^L	0.00 ^L	0.00 ^L	0.38	0.38	0.21									
HAMPTON UNIV	2.90		0.37		0.20				0.11			0.08					0.32			1.08			0.14							0.60			
HOLLAND 1 E	FA 2.24		0.21			0.69	0.01							0.01 ^L	0.00 ^L		0.32		0.02	0.81			0.05		0.13								
HOPEWELL	3.66		0.45		0.01	0.26			0.06							0.14	0.14		0.06	0.98			0.07		0.91						0.56		
NORFOLK INTL AP	2.67	0.06	0.23		0.32	0.29			0.11	T		0.10	T			T	0.32			0.56	0.15	T	0.01	0.13							0.39		
NORFOLK SOUTH	2.98	0.07	0.28		0.34	0.32			0.09			0.06	0.01				0.31			0.64	0.25		0.02	0.15							0.44		
NORTH	2.63		0.59		0.34						0.08		0.10					0.34			0.56		0.07		0.55								
PAINTER 2W	4.03		1.32		0.15				0.10	0.04		0.01	0.13				0.03	0.33		0.03	0.68		0.04		0.20						0.97		
STONY CREEK 2 N	FA 0.00	0.00 ^L	0.24 ^L	0.00 ^L	0.00 ^L	0.00 ^L	0.00 ^L	0.74 ^L	0.00 ^L	0.05 ^L	0.00 ^L	0.00 ^L	0.00 ^L	0.02 ^L	0.00 ^L	0.00 ^L	0.25 ^L	0.00 ^L	0.00 ^L	0.33 ^L	0.00 ^L	0.00 ^L	0.00 ^L	0.49 ^L	0.00 ^L	0.00 ^L	0.46 ^L	0.00 ^L	0.00 ^L	0.00 ^L	0.09		
SUFFOLK LAKE KILBY	1.94	0.02	0.17		0.39	0.26			T			T	T				0.26			0.37	0.25	0.01	0.04	0.08							0.09		
WAKEFIELD INW	2.96	0.03	0.27		0.35	0.31			0.08			0.08	T			T	0.31			0.67	0.07		0.08	0.19							0.52		
WALKERTON 2 NW	FA 2.73		1.02		0.10				0.04			0.12	T				0.12			0.00 ^L	0.93 ^L	0.00 ^L	0.23 ^L	0.49							0.84		
WALLACETON LK DRUMMOND	2.81		0.20			0.68				0.05		0.05	0.05				0.36			0.05	1.08		0.05		0.24								
WARSAW 2 NW	2.90		0.77		0.05				0.07			0.02	0.03				0.09			0.92			0.17									0.78	
WEST POINT 2 NW	FA 0.87	0.00 ^L	0.82 ^L	0.00 ^L	0.12 ^L	0.14			0.07	T	0.00 ^L	0.07 ^L	0.03 ^L				0.25	0.02		0.03 ^L	0.81 ^L		0.10		0.43						0.78 ^L		
WILLIAMSBURG 2 N	3.47	0.08	0.47		0.15	0.14			0.08			0.09	0.04				0.32			0.54	0.07		0.12	0.73								0.64	
EASTERN PIEDMONT 02																																	
ALBERTA 5N	2.70		0.23	T		0.72	T			0.05			T				T		0.19			0.75		0.17		0.56				T	0.03		
AMELIA COURTHOUSE 1	M		0.24	0.03		0.25						0.04	0.01		0.01	0.01	0.11	-	-	-	-	-	-	-	-	-	-	-	-	-	-	-	
ASHLAND	2.94		0.65		0.02	0.04			0.04			0.07	T				0.15			0.15	0.62		0.22		0.14						0.84		
BREMO BLUFF	3.29	0.03	0.34		0.05				0.06			0.04					0.14			0.72			0.21									1.70	
BUCKINGHAM	2.02		0.05	0.15		0.18				0.03		0.01					0.13				0.82		0.45		0.20								
CAMP PICKETT	2.26		0.20			0.75	0.10					0.03					0.25			0.25	0.04			0.64									
CHASE CITY	6.85		0.35			0.55						0.08						0.27			4.00		1.01		0.56					0.03			
CLARKSVILLE	2.03					0.53				0.05							0.15			0.75		0.20		0.35									
CORBIN	2.26		0.80		0.08					0.10		0.07					0.07			0.43		0.27	0.02	0.42									
CROZIER	2.11		0.18	0.29		0.06				0.01			0.11					0.18			0.90		0.24		0.14								
FARMVILLE 2 N	6.23		0.09	0.02		0.30				0.03							0.10			0.05	5.50		0.14		0.14								
GREENBAY 3 NE	2.17		0.28	T		0.59				0.03			T				0.25			0.52		0.10	T	0.33								0.06	
JOHN H KERR DAM	1.69		0.14			0.34	0.02								0.01	T		0.12			0.38		0.16		0.45				0.06		0.02		
KEYSVILLE 2 S	4.03		0.20			1.45	0.05				T		T			T		0.42			0.85		0.21	T	0.85								
LOUISA	3.21		0.64						0.03			0.05					0.13			0.47	0.40		0.42	0.38								0.69	
PALMYRA 3S	2.04		0.14	0.30		0.04				0.04		0.04	0.06				0.11				0.74		0.47		0.10								
PETERSBURG	M 2.94		0.25	0.12		0.37				0.09			0.07			0.01		0.26			0.88		-	0.19	0.70								
POWHATAN	1.82		0.15	0.22																	1.23			0.19								0.03	
RICHMOND INTL AP	3.22	0.12	0.43		0.06	0.06			0.02		T	0.09	T			T	0.19			0.82	0.04	0.09	0.06	0.28								0.96	
SANDSTON	M 2.35		0.55			0.22			0.03			0.02	0.07					0.20			0.93		0.15		0.18							-	

VIRGINIA
201202

DAILY PRECIPITATION (INCHES)

STATION	TOTAL	DAY OF MONTH																																		
		01	02	03	04	05	06	07	08	09	10	11	12	13	14	15	16	17	18	19	20	21	22	23	24	25	26	27	28	29	30	31				
WINTERPOCK 4 W	2.23		0.18	0.16		0.23				0.04		0.01	0.06			0.02		0.21				0.75		0.11		0.01	0.45									
WESTERN PIEDMONT 03																																				
ALTAVISTA	1.26		0.06		0.01	0.45	0.05					0.01										0.45			0.22									0.01		
APPOMATTOX	1.31		0.07			0.33	0.02			T												0.65			0.24		T									
BEDFORD 4 NW	2.44		0.17			0.25	0.08			0.05		0.03	0.01				0.07	0.16				0.68		0.57	0.03	0.31								0.03		
BROOKNEAL	2.25		0.13			0.65	0.03			0.04		0.06						0.13				0.58		0.16		0.45								0.02		
CHARLOTTESVILLE 2W	1.97		0.62	0.06		0.02				0.04		0.05	T				T	0.28				0.60		0.12	0.01	0.12								0.05		
CHATHAM	1.03		0.10	0.03		0.29				T								0.05				0.40		0.11		0.05										
CONCORD 4 SSW	1.31		0.05			0.41				0.03								0.11				0.47		0.24		T										
DANVILLE	1.68		0.15			0.26	0.05			T												0.25		0.42		0.15		0.40								
DANVILLE REGIONAL AP	2.12	0.10	0.04		0.24	0.10			T		T						0.27			0.45			0.17	0.03	0.36			0.03					0.33			
FREE UNION	1.58		0.43	0.11		0.03				0.04		0.07	T				T	0.29				0.40		0.02	0.01	0.13							0.05			
HOLCOMB ROCK	2.10		0.06	0.02		0.12	0.01			0.05		0.05					0.02	0.24				0.80		0.71		0.02								T		
HUDDLESTON 4 SW	1.61		0.04	0.02		0.40				0.02		0.05					0.02	0.11				0.56		0.33		0.06										
LYNCHBURG #2	2.23		0.08			0.26						0.02					0.03	0.14				0.94		0.62		0.13								0.01		
LYNCHBURG INTL AP	2.61	0.05	0.03		0.25	0.10			0.02		T	0.01			T		0.11				0.67	0.01	0.55	T	0.29			T					0.52			
MARTINSVILLE FLTR PLT	1.57		0.14			0.28	0.06			0.03								0.19				0.69		0.18		0.20								T		
MEADOWS OF DAN 5 SW	1.99		0.32			0.26	0.10			0.07		0.01						0.22		0.03		0.54		0.24		0.20								T		
MONTEBELLO FISH CULTURAL STN	M 2.75		0.36	-								0.20				0.28	0.09	0.55				0.54		0.34		0.39										
MONTICELLO	2.55		0.26	0.35		T				0.01		0.01					0.22					0.75		0.25		0.70								T		
PEDLAR DAM	1.63		0.09	T		0.04	T			T		0.03	T			T	T	0.30				0.55		0.50		0.12								T		
ROCKY MT	1.74		0.06		0.10	0.23	0.04			0.05							T	0.18			T	0.89		0.16	T	0.03										
SOUTH BOSTON	2.26		0.19			0.30	0.01			T		0.03						0.32				0.90		0.19		0.29						0.01		0.02		
STUART	1.34		0.12			0.24				0.03		0.02						T	0.17		0.01		0.65		0.10		0.21							T		
TYE RIVER 1 SE	1.76		0.21			T				0.03		T						T	0.12			0.65		0.54		0.21								T		
WOOLWINE	1.55	T	0.05			0.19				T								T	0.20			T	0.73		0.25	0.04	0.09									
NORTHERN 04																																				
BOSTON 4 SE	FMA 0.99				0.00 ^L	0.07 ^L _a				0.10	-		0.17				0.03	0.29					0.11			0.01	0.19								0.09	
EDINBURG	0.82		0.09	0.05		0.23	0.01			0.04		0.12						0.24							T	0.03									0.01	
FRONT ROYAL	0.62		0.01	0.11		0.10	0.05			0.05		0.05	0.02					0.16								0.07										
LINCOLN	0.77					T				T		T						0.77																		
LURAY 5 E	1.39		0.32			0.12				0.06		0.10	0.04					0.03	0.14				0.01			0.53									0.04	
MADISON	M 0.00 ^L	1.81 ^L _a	-	-	-	-	-	-	-	-	-	-	-	-	-	-	-	-	-	-	-	-	-	-	-	-	-	-	-	-	-	-	-	-	-	
MANASSAS	FMA 1.80					0.30				0.15					0.00 ^L	0.15 ^L _a	*	0.18 ^a _a				0.10				0.27								-	0.80	
MT WEATHER	FA 0.89			0.10	0.00 ^L	0.26 ^L _a				0.17		0.40	0.01					T	0.18							T	0.03									
PIEDMONT RSCH STN	1.54		0.40	0.30		0.02				0.05			T					0.19				0.44		0.02		0.10									0.02	
SOMERSET	A 1.98		0.49	*	0.24 ^a	0.04				0.06		0.10	0.04					0.01	0.25			0.34			T	0.24									0.17	
SPERRYVILLE	1.59		0.05	0.32		0.17	T			0.10		0.10	0.03					0.20				0.07			0.55											
STAR TANNERY	M	-	-	-	-	-	-	-	-	-	-	-	-	-	-	-	-	-	-	-	-	-	-	-	-	-	-	-	-	-	-	-	-	-	-	
STERLING RCS	M 0.93	T	0.05	0.05		0.12				0.10		0.21	0.04					T	0.22			-		-	-	0.14									T	
VIENNA	0.97	0.01	0.05	0.04		0.06				0.08		0.03	0.06					0.17						0.01		0.43									0.03	
WARRENTON 3 SE	M 2.05	T	0.25			0.09				0.10		0.11	0.03					0.01	0.18				0.08		-	0.09	0.25								0.86	

VIRGINIA
201202

DAILY PRECIPITATION (INCHES)

STATION	TOTAL	DAY OF MONTH																															
		01	02	03	04	05	06	07	08	09	10	11	12	13	14	15	16	17	18	19	20	21	22	23	24	25	26	27	28	29	30	31	
WASHGTN DULLES INTL AP	2.24	T	0.09		0.09	0.01			0.10		0.03	0.17	T			0.20							T	0.20	T							1.35	
WASHINGTON REAGAN AP	2.33	0.02	0.09		0.08	T		0.11		T	0.10	0.01				0.09				0.08			T	0.31	T							1.44	
WINCHESTER	1.21		T	0.03		0.35	T				0.12	0.15	0.01											0.22	0.08							0.03	
WINCHESTER 7 SE	0.95		0.01	0.07		0.30					0.11	0.15													0.11							T	
WOODSTOCK 2 NE	0.83		0.09	0.11		0.23						0.24													T							T	
CENTRAL MOUNTAIN 05																																	
BUCHANAN	1.44		0.11			0.10	T					0.05				T	T	0.18						0.60		T						T	
BUENA VISTA	1.67		0.14			0.05	T			0.03		T			0.01	0.01	0.41						0.57		0.25	0.48	0.20					T	
COVINGTON FLTR PLT	2.05		0.26			0.19				0.13						0.05	0.36							0.80		0.01	0.15	0.10					
CRAIGSVILLE 2 S	M	-	0.21	-	-	0.70	-	-	-	0.10	-	-	-	-	-	T	0.02	0.37	-	-	-	-	-	-	-	0.03	0.06	-	-	-	-	1.93	
DALE ENTERPRISE	1.01		0.20			0.01	0.10			0.10														0.02		0.08						0.30	
GATHRIGHT DAM	1.68		0.18			0.16				0.10		T	T				0.06	0.31						0.63			0.05	0.13				0.06	
GLASGOW 1 SE	1.92		0.09			0.10	0.03			0.03		0.01			0.01	0.02	0.25							0.65		T	0.54	0.01	0.18			T	
HOT SPRINGS	1.81		0.26	T		0.18				0.04		0.04	0.02			T	0.05	0.26						0.67			0.06	0.12				0.11	
KERRS CREEK 6 WNW	1.92		0.16			0.14				0.03		0.03				0.06	0.59							0.61		0.11	0.09	0.12				0.01	
LEXINGTON	1.83		0.23	0.05		0.05	0.02			0.08		0.03					0.48							0.50		0.15	0.22					0.02	
MILLGAP	1.35	T	0.09	0.03		0.10				0.10		0.09	0.01			0.01	0.02	0.44						0.14		0.06	0.02	0.22				0.02	
MTN GROVE	2.21		0.32							T						0.10	0.35							0.45	T		T	0.23	0.36			0.40	
MUSTOE 1 SW	3.68	T	0.19		0.12	0.02			0.15		0.09	0.05	T		0.03	0.05	0.52						0.23		0.06	0.08	0.24	T			1.85		
ROANOKE 8 N	1.54		0.12			0.24	0.06			0.02		0.01	0.01			0.06	0.09							0.50		0.43							
ROANOKE INTL AP	2.21	0.08	T		0.23	0.13			0.04		T	0.01	T			0.14							0.64	0.01	0.43		0.02	T		T	0.48		
STAUNTON WATER TRMTMT PLT	1.15		0.30			0.02						0.02				T	0.14							0.53								0.14	
WAYNESBORO WTP	1.88		0.30	0.37		0.03	0.02			0.08		0.07				T	0.21							0.57								0.06	
SOUTHWESTERN MOUNTAIN 06																																	
ABINGDON 3S	M 4.62	0.49	0.11	0.05	0.63	0.32			-		0.03	0.07	0.03		0.02		0.57						0.78			0.71	0.02	0.29	0.01			0.49	
BIG STONE GAP	6.06	0.06	0.52		0.03	0.90				0.04		0.12	0.02		0.13	0.17	0.10						0.04	0.98	0.02		1.72	0.48	0.61			0.07	
BLACKSBURG NWSO	2.71		0.23	T		0.37	0.05			0.09		T	0.01	T		T	0.09	0.19					T	0.85		0.66	0.04	0.12	T			0.01	
BURKES GARDEN	4.33		0.34	0.13		0.65	0.04			0.08		0.10	0.05			0.06	0.10	0.33					T	0.83		1.31	0.06	0.20	0.05				
CHRISTIANSBURG	2.94		0.27	0.02		0.30				0.08		T	0.02			0.02	0.07	0.17						0.83		1.01	0.04	0.10				0.01	
CLINTWOOD 1 W	4.10	0.05	0.31		T	0.79	T	0.01		0.04	T	0.19	0.08		T	0.15	0.12	0.30					T	1.32		0.61	0.04	0.03	0.04			0.02	
COPPER HILL	2.47		0.14			0.44	0.06			0.04		0.08					0.01	0.22						0.93		0.50		0.05					
GALAX RADIO WBRF	1.85		0.36		0.08		0.12		0.02							0.01	0.11							0.87		0.21						0.06	
GALAX WTP	1.34		0.05			0.14						T	T			T	0.03						0.07	0.25		0.70		0.02				0.08	
GRUNDY	2.69	T	0.30			0.37	T		T	0.03		0.16	0.03			0.05	0.08	0.19					0.10	0.95		0.33	0.09	T	T			0.01	
JOHN FLANNAGAN LAKE	M	0.01	0.25		-	-	0.61 ^L			0.04		-	-	0.28		0.11	0.16	0.17	-	-	-	-	-	-	-	0.41	0.09	-	-	0.05	-	0.02	
LAFAYETTE 1 NE	2.21		0.16			0.33	0.04			0.03		0.01	T			0.07	0.17							0.75		T	0.51		0.07			0.07	
LEBANON	5.12		0.71	0.02		0.80				0.05		0.14	0.02		0.04		0.09	0.07					0.01	1.30		1.27	0.47	0.10	0.01			0.02	
NORA 4 SSE	4.48	0.02	0.43			0.51	0.05		T	0.04	T	0.14	0.19		T	0.03	0.09	0.03						T	1.22	T	1.10	0.15	0.44	0.02			0.02
NORTH FORK LAKE	M	0.04	0.39		-	*	*	0.95 ^a		0.02	-	*	*	0.25 ^a	-	0.21	0.15	-	-	-	-	-	-	-	-	1.12	*	0.60 ^a	-	-	-	T	0.10
PULASKI 2 E	2.59		0.26			0.06	T			0.09						T	0.04	0.02						0.67		1.44		0.01					
RADFORD 3 N	2.41		0.30			0.35				0.06			0.02			0.01	0.08	0.12						0.51		0.91	0.01	0.01				0.03	

VIRGINIA
201202

DAILY PRECIPITATION (INCHES)

STATION	TOTAL	DAY OF MONTH																															
		01	02	03	04	05	06	07	08	09	10	11	12	13	14	15	16	17	18	19	20	21	22	23	24	25	26	27	28	29	30	31	
RICHLANDS	4.44		0.62			0.64	0.10			0.06		0.05	0.24			0.04	0.10	0.12		T	1.03			1.15	0.10	0.14	0.03			0.02			
SALTVILLE 1N	5.60		0.93			1.67						0.12	0.05			0.02	0.02	0.25		0.02	1.21			0.94	0.20	0.10	0.01			0.06			
STAFFORDSVILLE 3 ENE	2.74		0.27			0.46				0.11			0.02			0.01	0.06	0.10			0.63			1.04	T	0.03					0.01		
TROUT DALE 3 SSE	M 1.84		0.30	0.02		0.41	0.27	0.01		0.01		0.01	0.03			0.01	0.01	0.11			0.03	0.61			-		-				0.01		
WILLIS	2.16		0.33			0.28	0.08			0.10											0.18	0.81			0.38								
WISE 3E	4.57	0.22	0.37		0.32	0.37			0.01			0.20	0.05		0.06		0.12			1.13	0.37	T	0.06	0.86	0.28	T				0.15			
WYTHEVILLE 1 S	2.86		0.33			0.42	0.01	0.01		0.01		0.07	0.01			0.01	0.02	0.15			0.01	0.97			0.75	0.07	0.01				0.01		

VIRGINIA
201202

DAILY TEMPERATURES (°F)

STATION	OB. TIME	MAX/MIN	DAY OF MONTH																															AVERAGE	
			01	02	03	04	05	06	07	08	09	10	11	12	13	14	15	16	17	18	19	20	21	22	23	24	25	26	27	28	29	30	31		
VIRGINIA																																			
TIDEWATER 01																																			
DISPUTANTA	07	MAX	68	72	63	53	58	44	51	58	45	48	51	45	38	51	58	60	55	55	61	42	44	56	69	72	82	51	51	61	61			56.0	
		MIN	38	45	28	28	35	22	22	28	30	25	27	22	14	14	32	33	41	31	34	31	20	25	42	44	37	22	22	27	38			29.6	
EASTVILLE	07	MAX	60	64	54	48	54	43	46	53	49	42	48	43	35	43	53	54	51	49	52	44	44	52	63	65	75	47	44	57	49			51.1	
		MIN	45	50	39	32	36	29	30	35	37	30	39	25	26	30	41	38	41	34	37	33	28	29	47	47	44	36	36	36	37			36.1	
EMPORIA 1 WNW	08	MAX	68	71	65	55	57	45	50	60	46	50	51	47	47	51	58	64	54	59	62	43	47	58	69	72	80	48	52	50	65			56.7	
		MIN	37	51	31	31	35	27	27	31	27	28	21	20	20	36	36	41	39	43	32	24	24	37	42	40	27	28	31	37			32.1		
FREDERICKSBURG SEWAGE	07	MAX	70	61	52	44	43	53	58	41	49	48	48	35	49	55	56	47	56	60	41	48	51	64	68	73	48	50	65	65			53.5		
		MIN	47	30	29	33	24	24	31	29	29	30	20	17	17	34	36	38	28	28	31	23	24	44	45	38	26	28	35	40			30.6		
HAMPTON UNIV	17	MAX	70	68	54	59	51	49	55	50	47	51	49	41	49	56	57	54	54	58	52	46	53	67	73	76	53 ¹	49	59	53	62			55.8	
		MIN	50	50	38	41	40	31	39	37	35	39	40	22	24	38	36	41	42	40	35	33	30	49	50	53	38	32	39	46	42			39.0	
HOLLAND 1 E	08	MAX	69	73	62	58	64	45	52	59	52	49	55	47	39	53	60	61	58	56	62	43	48	57	70	76	81	52	53	59	62			57.8	
		MIN	43	50	32	27	32	22	32	26	31	23	36	21	13	28	35	30	41	36	39	30	20	40	42	51	32	22	22	40	35			32.1	
HOPEWELL	16	MAX	71	71	71	57	50	52	58	58	49	51	48	38	51	57	60	60	56	61	59	43	56	68	72	80	77	51	61	60	61			58.9	
		MIN	52	52	38	37	38	27	33	36	35	32	34	23	20	39	39	41	43	33	36	33	25	44	45	50	40	28	33	42	39			36.8	
NORFOLK INTL AP	24	MAX	73	58	48	62	45	50	53	52	47	55	47	39	51	59	53	58	52	60	54	46	57	70	75	82	56	48	63	53	68			56.3	
		MIN	50	46	35	34	42	30	38	36	33	30	29	25	22	37	37	38	41	42	38	32	28	51	51	56	40	37	33	41	39			37.6	
NORFOLK SOUTH	24	MAX	70	57	46	60	43	49	51	52	45	53	45	36	49	56	53	57	51	58	51	43	55	67	72	79	54	47	60	52	65			54.3	
		MIN	48	43	32	31	37	28	34	31	31	29	26	22	20	35	36	35	40	39	36	28	26	49	49	54	37	32	29	35	33			34.7	
NORTH	07	MAX	64	68	58	51	54	42	49	57	45	47	49	41	36	47	55	57	50	54	52	42	44	52	65	69	78	48	46	60	55			52.9	
		MIN	44	52	33	30	37	26	26	30	33	27	29	21	17	18	36	32	39	29	33	32	23	26	48	49	42	29	29	32	35			32.3	
PAINTER 2W	16	MAX	66	66	51	53	48	48	52	50	43	50	46	38	44	54	51	50	51	52	50	43	50	64	68	78	74	48	61	55	58			53.9	
		MIN	51	49	36	29	37	26	37	30	36	27	38	22	22	33	37	33	40	30	38	32	24	46	48	48	42	35	33	43	34			35.7	
STONY CREEK 2 N	08	MAX	68	72	63	55	58	43	54	59	45	49	51	44	39	52	58	61	54	57	63	50	45	58	69	73	81	50	52	58	63			56.7	
		MIN	36	46	30	29	30	26	24	30	28	28	27	22	18	16	33	35	37	37	35	32	26	22	42	44	42	29	25	27	33			30.7	
SUFFOLK LAKE KILBY	24	MAX	69	61	53	60	60	54	57	80 ^S	50	45	39	50	56	60	56	55	59	55	46	56	67	72	77	53	52	55	58	65			56.8		
		MIN	35	35	34	33	32	32	34	35	35	30	27	24	18	35	37	37	42	41	36	30	27	48	55	52	35	26	31	36	36			34.8	
WAKEFIELD 1NW	24	MAX	72	63	55	59	44	51	59	47	50	51	46	39	51	56	62	55	55	61	48	46	56	69	73	80	51	52	60	63	64			56.5	
		MIN	50	38	29	31	27	23	30	28	27	26	25	19	15	36	34	34	38	33	32	25	22	44	46	50	30	23	28	35	31			31.3	
WALKERTON 2 NW	18	MAX	74	64	57	55	49	56	63	48	53	54	48	43	53	61	62	54	60	63	53	49	58	69	73	83	67	54	66	63	60			59.0	
		MIN	50	50	35	35	33	29	34	34	31	32	28	22	34	36	38	39	33	38	34	28	40	48	56	44	29	32	39	37			36.3		
WALLACETON LK DRUMMOND	08	MAX	70	73	62	56	65	46	56	60	54	52	53	49	42	53	59	65	65	61	63	45	52	57	71	75	81	55	52	59	62			59.1	
		MIN	41	44	27	24	35	22	26	23	27	21	26	19	12	23	30	27	34	34	36	27	19	29	39	48	38	23	21	33	26			28.8	
WARSAW 2 NW	18	MAX	72	66	56	50	44	53	59	58	49	49	43	35	49	57	56	53	54	58	54	44	53	63	69	79	58	47	63	59	57			55.4	
		MIN	52	49	31	32	36	24	30	29	29	33	31	17	21	34	37	34	40	27	36	32	21	40	45	53	39	26	33	41	37			34.1	
WEST POINT 2 NW	17	MAX	71	64	56	54	49	51	58	51	48	51	46	37	50	58	59	52	56	59	52	44	54	67	72	81	69	49	64	59	59			56.6	
		MIN	49	38	30	32	28	24	30	30	29	28	25	19	16	37	33	35	32	28	31	26	23	43	45	48	34	26	32	34	34			31.7	
WILLIAMSBURG 2 N	24	MAX	71	62	52	57	43	51	58	46	48	51	43	38	50	57	60	53	55	59	50	45	54	68	72	81	51	50	64	59	61			55.5	
		MIN	50	44	32	31	29	27	32	30	28	28	26	23	18	35	35	35	35	32	32	28	24	46	46	50	34	27	29	34	33			32.9	
EASTERN PIEDMONT 02																																			
AMELIA COURTHOUSE 1	08	MAX	68	71	63	54	56	40	52	59	48	49	51	51	38	50	55	61	49																M

VIRGINIA
201202

DAILY TEMPERATURES (°F)

STATION	OB. TIME	MAX/MIN	DAY OF MONTH																															AVERAGE			
			01	02	03	04	05	06	07	08	09	10	11	12	13	14	15	16	17	18	19	20	21	22	23	24	25	26	27	28	29	30	31				
ASHLAND	18	MIN	44	53	29	31	36	26	31	30	29	28	36	18	18	29	35	36	39																		M
		MAX	71	63	53	49	45	51	58	48	47	49	45	37	49	56	58	50	57	60	55	42	52	65	60	80	63	47	63	59	59					54.9	
CAMP PICKETT	08	MIN	51	48	31	30	35	24	30	30	30	27	32	19	17	30	34	37	36	30	32	31	22	35	42	52	37	24	28	37	38					32.7	
		MAX	67	71	65	54	55	42	49	58	43	49	49	45	38	50	56	62	51	58	62	42	44	55	67	71	80	49	51	57	63					55.3	
CHASE CITY	17	MIN	41	50	28	28	33	23	25	27	28	25	26	19	17	17	33	32	41	32	32	30	21	22	39	42	38	23	24	26	39					29.7	
		MAX	68	69	67	56	56	43	49	59	46	51	51	50	42	50	55	63	52	62	63	44	48	56	66	70	79	52	52	51	64					56.3	
CLARKSVILLE	07	MIN	31	50	31	31	36	27	27	31	31	28	28	23	23	23	32	37	40	36	43	33	26	35	37	41	39	26	26	31	33					32.2	
		MAX	68	70	71	54	60	57	57	58	46	51	51	47	40	50	55	64	51	68	65	64	64	56	67	72	80	50	53	51	63					58.7	
CORBIN	09	MIN	28	28	28	34	37	26	26	29	30	27	27	20	25	25	36	36	39	38	39	31	25	27	43	38	25	31	33	34					31.3		
		MAX	70	64	51	43	43	52	57	45	46	48	43	35	48	55	55	47	55	59	53	47	51	64	67	77	60	49	65	56	56					53.8	
CROZIER	07	MIN	53	48	30	30	33	25	30	32	28	28	28	19	16	33	36	38	35	27	32	30	22	37	45	44	37	23	30	39	39					32.7	
		MAX	67	70	63	52	46	42	50	58	41	48	48	43	37	49	54	59	47	57	60	39	44	51	65	69	79	48	50	61	60					53.7	
FARMVILLE 2 N	07	MIN	48	49	28	29	35	22	25	29	29	25	33	18	15	15	33	36	34	28	34	30	20	34	42	45	37	22	26	29	39					30.7	
		MAX	69	71	66	60	52	44	51	60	42	51	51	47	40	51	55	62	49	63	63	42	47	54	67	72	85	51	54	60	66					56.7	
GREENBAY 3 NE	09	MIN	39	51	29	29	39	24	24	28	29	26	26	17	16	19	35	35	35	29	30	29	19	19	36	42	36	24	24	25	32					29.2	
		MAX	63	69	65	53	54	41	50	57	41	48	49	46	39	48	54	60	49	45	60	40	43	52	66	69	79	48	54	56	63					53.8	
JOHN H KERR DAM	08	MIN	46	52	28	31	36	23	28	26	28	27	36	39	17	31	33	38	38	0 ^s	0 ^s	27	22	35	42	42	37	21	27	32	39					32.6	
		MAX	66	69	70	58	54	41	47	59	47	50	50	48	41	52	56	63	53	66	64	43	50	56	67	71	77	52	55	49	67					56.6	
LOUISA	18	MIN	45	52	29	32	40	25	27	27	29	27	28	19	22	31	37	39	43	39	42	30	23	34	44	48	39	25	31	35	37					33.8	
		MAX	71	63	55	45	44	52	61	47	50	47	43	38	51	54	60	46	58	60	57	44	49	63	69	75	60	51	64	60	55					54.9	
PALMYRA 3S	06	MIN	50	49	28	29	36	23	30	30	27	23	29	18	14	33	29	38	35	25	32	28	17	33	40	42	37	20	24	29	31					30.3	
		MAX	69	72	64	53	44	43	52	60	42	49	48	41	38	51	54	59	45	58	61	40	46	50	64	70	82	48	50	62	62					54.4	
PETERSBURG	08	MIN	39	51	26	26	29	20	20	26	25	22	22	18	14	14	32	33	33	27	26	30	18	18	38	41	34	21	21	22	29					26.7	
		MAX	68	72	65	54	59	44	53	59	45	50	52	45	39	52	57	61	53	58	61	43	45		69	72	81	50	51	61	61					56.4	
RICHMOND INTL AP	24	MIN	40	52	33	32	37	25	26	30	30	30	32	23	18	18	18	33	42	32	32	32	24		39	45	40	24	25	31	36					31.4	
		MAX	72	63	54	55	46	52	59	44	49	52	45	38	51	58	61	52	58	61	51	44	55	67	72	81	50	49	63	60	62					56.0	
SANDSTON	07	MIN	53	42	35	33	29	25	34	32	32	30	26	21	18	37	38	36	32	32	29	23	38	45	48	35	25	30	38	35					33.4		
		MAX	66	70	59	50	53	44	50	56	43	46	51	42	36	48	56	57	51	55	59	42	41	52	65	70	81	49	47	62					53.6		
WESTERN PIEDMONT 03 APPOMATTOX	07	MIN	38	53	34	30	34	24	25	31	32	26	28	21	16	16	33	35	39	29	31	31	21	21	38	43	40	26	26	27					30.3		
		MAX	67	70	64	54	50	42	47	58	41	48	47	48	37	48	52	59	48	58	60	40	46	52	64	68	79	46	50	58	63					53.9	
BROOKNEAL	07	MIN	34	49	29	29	33	24	27	30	28	26	28	17	17	20	37	38	39	31	32	25	25	28	37	42	36	22	23	28	30					29.8	
		MAX	67	70	67	55	56	42	49	57	41	48	51	46	38	49	54	60	52	58	62	42	47	55	65	69	71	48	51	57	64					54.9	
CHARLOTTESVILLE 2W	08	MIN	35	44	27	27	35	22	22	26	26	22	25	17	17	30	29	39	35	27	38	27	20	22	32	39	37	22	22	28	40					28.7	
		MAX	68	69	62	55	42	41	52	60	40	50	46	42	36	50	53	59	46	56	61	39	47	50	63	68	76	45	50	64	62					53.5	
CHATHAM	07	MIN	44	48	36	35	34	30	31	34	32	32	32	17	19	28	36	40	41	40	35	30	28	30	41	42	34	28	29	33	38					33.7	
		MAX	67	68	65	54	48	39	44	57	41	47	47	46	38	48	53	59	53	59	62	44	45	52	66	67	81	51	50	54	63					54.1	
DANVILLE	07	MIN	26	46	27	26	34	22	22	24	27	22	21	18	16	20	28	28	37	29	29	22	18	18	23	36	33	23	21	26	27					25.8	
		MAX	66	68	66	56	53	41	48	57	44	49	50	46	40	50	54	61	55	61	63	46	48	56	66	71	80	49	53	55	66					55.8	
DANVILLE REGIONAL AP	24	MIN	30	49	31	33	36	25	28	27	30	25	26	19	20	21	31	30	41	34	36	26	23	31	40	38	23	26	28	34					29.8		
		MAX	68	66	56	53	40	50	57	43	49	49	46	40	49	53	61	55	60	62	51	48	55	66	70	79	49	52	53	65	64					55.5	
		MIN	46	39	29	31	27	25	26	26	28	24	22	15	16	37	30	42	41	33	32	26	21	33	39	44	32	21	26	29	42					30.4	

VIRGINIA
201202

DAILY TEMPERATURES (°F)

STATION	OB. TIME	MAX/MIN	DAY OF MONTH																															AVERAGE		
			01	02	03	04	05	06	07	08	09	10	11	12	13	14	15	16	17	18	19	20	21	22	23	24	25	26	27	28	29	30	31			
FREE UNION	08	MAX	70	70	64	55	42	41	52	60	41	50	46	40	36	50	52	59	45	57	61	39	47	51	63	69	75	46	51	66	63				53.8	
		MIN	30	44	27	26	32	22	22	28	27	25	25	18	19	25	32	30	34	29	26	27	21	21	28	37	35	26	22	22	31				27.3	
LYNCHBURG #2	07	MAX	69	69	65	56	50	39	49	58	40	47	47	44	37	47	51	60	40	57	60	39	47	53	64	69	78	45	51	61	64				53.7	
		MIN	29	45	28	28	34	24	26	28	30	23	23	19	17	17	33	33	37	32	33	23	20	20	29	35	36	24	23	26	29				27.7	
LYNCHBURG INTL AP	24	MAX	70	65	56	50	39	48	58	40	47	44	37	47	50	59	49	57	60	50	48	52	64	68	79	45	49	59	63	64				53.9		
		MIN	42	36	27	33	25	22	27	31	26	22	20	16	15	36	34	41	37	31	31	20	22	29	36	41	28	21	27	31	43				29.3	
MARTINSVILLE FLTR PLT	07	MAX	68	69	65	57	52	41	50	58	43	49	47	45	40	51	51	62	55	60	62	43	47	54	65	68	79	49	53	60	67				55.5	
		MIN	25	46	24	34	34	35	24	23	26	21	21	20	19	18	26	26	35	32	33	19	18	20	28	28	32	19	22	25	26				25.8	
MEADOWS OF DAN 5 SW	07	MAX	65	65	65	66	66	45	49	59	45	48	48	38	37	48	48	61	61	58	58	38	48	51	62	66	71	54	50	58	66				55.0	
		MIN	30	30	30	30	31	33	31	30	32	28	28	16	16	23	23	23	23	35	37	27	26	26	30	35	34	27	27	29	29				28.2	
MONTEBELLO FISH CULTURAL STN	07	MAX	61	59		55	50	32	45	55	55	43	42	28	26	41	46	55	55	50	54	29	44	43	52	62	69	36	45	58	60				48.2	
		MIN	42	43		24	30	18	18	24	24	21	21	8	8	19	29	29	29	25	25	16	15	21	37	43	26	19	21	26	27				24.6	
MONTICELLO	08	MAX	65	67	59	51	41	41	49	56	40	46	45	45	34	47	52	55	44	53	58	38	43	48	60	64	71	42	47	61	59				51.1	
		MIN	37	48	34	32	33	30	31	34	31	30	31	17	16	26	35	40	39	38	36	29	24	27	40	42	34	29	26	28	38				32.2	
ROCKY MT	07	MAX	69	67	62	58	52	40	51	58	40	49	44	42	38	54	49	61	52	63	55	41	49	53	63	71	62	49	53	65	69				54.4	
		MIN	28	48	28	28	30	33	28	27	32	24	20	19	19	26	39	39	43	35	41	23	20	22	33	37	32	24	23	25	31				29.6	
SOUTH BOSTON	07	MAX	68	70	67	56	53	41	48	58	43	49	50	46	40	49	54	63	52	61	63	44	48	56	66	71	80	51	53	52	65				55.8	
		MIN	30	48	29	25	33	23	23	25	25	24	24	20	19	19	28	30	37	31	31	28	20	20	37	39	38	23	22	27	31				27.9	
STUART	07	MAX	66	69	69	57	50	43	46	59	46	50	50	45	41	51	49	62	54	62	62	39	48	54	65	68	76	48	54	52	67				55.2	
		MIN	27	39	29	30	38	35	26	26	32	26	26	18	17	18	29	29	36	35	38	24	22	24	29	34	35	21	21	26	33				28.4	
TYE RIVER 1 SE	07	MAX	71	72	65	57	45	44	53	60	44	54	50	50	40	53	55	62	50	60	62	42	54	55	65	73	80	50	54	65	65				56.9	
		MIN	37	50	30	31	35	21	22	33	27	23	24	17	18	24	35	37	39	29	30	25	19	20	35	42	34	22	23	24	34				29.0	
NORTHERN 04																																				
BOSTON 4 SE	07	MAX	68	70	62	51	42	42	52	57	39		47	37	32	49	53	55	44	54	58	41	49	49	61	65	63	62	48	64	57				52.5	
		MIN	37	48	27	26	32	23	31	29	26		25	18	16	16	32	38	34	26	34	31	20	21	30	44	36	26	24	26	33				28.9	
EDINBURG	07	MAX	66	65	57	54	40	37	49	56	35	46	41	36	28	48	52	54	49	51	60	39	49	49	59	65	59	39	49	64	58				50.1	
		MIN	43	46	24	23	27	23	22	28	27	20	20	16	17	23	30	35	37	27	27	30	18	20	35	40	30	21	21	22	29				26.9	
FRONT ROYAL	07	MAX	67	65	59	51	39	39	51	55	38	46	42	33	28	48	51	53	47	52	60	42	49	52	61	64	59	39	49	66	53				50.3	
		MIN	45	49	31	28	29	27	25	30	28	25	25	17	17	27	32	37	39	32	31	31	25	23	34	42	32	29	27	31	33				30.4	
LINCOLN	07	MAX	65	67	55	47	42	41	52	52	37	43	45	38	29	46	52	50	48	51	58	46	48	61	62	62	57	41	47	64	51				50.2	
		MIN	26	39	33	24	30	20	20	20	20	26	29	18	18	27	30	32	38	26	32	19	20	31	30	34	34	29	21	21	35				27.0	
LURAY 5 E	08	MAX	67	66	52	51	40	38	49	56	39	45	44	37	30	47	51	56	47	52	59	41	50	51	62	65	63	41	49	64	60				50.8	
		MIN	44	47	26	27	32	21	26	29	24	22	30	15	18	27	34	36	37	26	32	30	23	30	32	32	29	20	26	28	37				29.0	
MADISON	08	MAX	69	72																																M
		MIN	43	51																																M
MANASSAS	07	MAX	68	71	58	51	43	43	53	56	41	48	47	42	31	47	55	55	45	54	54	43	49	50	63	65	61	43	48		50			51.2		
		MIN	35	49	30	29	32	25	32	33	28	28	32	19	16	17	38	38	35	27	34	31	22	33	38	44	35	31	31		38			31.4		
MT WEATHER	07	MAX	62	61	55	47	39	36	49	51	33	42	40	33	26	43	46	48	44	49	55	40	44	45	57	61	54	38	45	61	52				46.8	
		MIN	48	43	30	30	30	29	30	30	25	25	28	14	14	24	32	37	36	31	28	27	25	28	40	39	29	25	25	31	31				29.8	
PIEDMONT RSCH STN	08	MAX	66	70	61	52	41	42	50	58	39	48	45	40	34	48	52	57	44	54	58	38	46	49	62	67	75	44	48	63	58				52.0	
		MIN	41	48	29	29	33	22	24	35	26	27	30	17	19	25	37	39	34	30	33	28	22	30	40	43	35	22	27	34	35				30.8	
SOMERSET	07	MAX	68	71	63	53	42	42	51	58	40	48	45	40	36	50	53	58	45	56	59	39	45	50	63	68	73	45	48	64	59				52.8	

VIRGINIA
201202

DAILY TEMPERATURES (°F)

STATION	OB. TIME	MAX/MIN	DAY OF MONTH																															AVERAGE
			01	02	03	04	05	06	07	08	09	10	11	12	13	14	15	16	17	18	19	20	21	22	23	24	25	26	27	28	29	30	31	
SPERRYVILLE	06	MIN	42	50	29	27	31	24	26	34	26	27	27	18	20	30	33	39	33	28	31	28	20	25	34	43	35	23	24	29	32	29.9		
		MAX	68	68	62	52	42	42	52	58	38	48	43	38	33	48	51	57	45	54	57	40	50	48	61	66	66	43	48	63	58	51.7		
STAR TANNERY	07	MIN	29	47	32	27	29	24	24	28	31	26	24	17	19	28	31	38	38	30	30	31	23	21	29	42	33	29	25	24	32	29.0		
		MAX																															M	
STERLING RCS	07	MIN	65	67	56	48	42	42	52	54	39	45	44	40	29	48	53	52	46	52		42	47		61	65	55	44	48	64	53	50.1		
		MAX	32	32	34	26	31	21	21	30	27	27	26	19	17	17	32	34	41	26		31	20		33	43	35	29	26	30	35	28.7		
VIENNA	07	MIN	65	69	54	48	43	41	51	53	40	43	45	39	28	46	53	51	44	51	58	42	46	48	61	63	56	43	47	63	52	49.8		
		MAX	37	48	33	32	33	25	25	31	30	29	29	19	19	19	37	38	37	30	29	30	27	29	41	46	35	31	40	33	37	31.7		
WARRENTON 3 SE	08	MIN	63	68	68	48	42	40	49	54	38	54	45	45	27	45	51	52	44	52	56	56	46	48		64	58	43	46	62	53	50.6		
		MAX	43	47	31	28	32	23	32	32	28	27	32	19	17	25	37	38	36	28	28	28	23	31		31	34	26	26	34	36	30.4		
WASHGTN DULLES INTL AP	24	MIN	69	57	50	44	43	52	56	41	46	45	42	31	49	53	53	45	53	59	43	48	50	62	66	58	45	48	64	54	56	51.1		
		MAX	50	41	29	26	26	22	34	29	29	29	21	20	17	31	34	34	32	26	35	26	22	35	43	42	33	28	27	37	34	30.8		
WASHINGTON REAGAN AP	24	MIN	72	58	52	46	45	53	56	43	47	47	43	33	50	56	55	47	54	59	45	50	50	63	67	57	47	49	64	56	56	52.4		
		MAX	48	42	37	35	35	29	40	37	33	33	23	23	24	37	40	41	39	34	35	34	32	43	47	46	35	34	36	40	40	36.3		
WINCHESTER	07	MIN	67	64	57	51	42	39	51	55	35	45	42	36	27	47	49	51	49	52	61	42	49	51	59	63	57	41	49	66	55	50.1		
		MAX	43	46	29	30	31	27	29	30	28	25	25	17	19	27	33	37	37	28	28	28	24	25	36	40	33	28	29	33	34	30.3		
WINCHESTER 7 SE	08	MIN	67	64	57	52	40	40	51	55	35	46	46	37	28	48	50	53	46	52	61	41	50	50	59	64	58	40	48	65	55	50.3		
		MAX	36	41	24	24	29	26	27	25	27	19	19	17	19	25	31	32	37	23	23	27	18	19	29	41	31	24	21	23	30	26.4		
WOODSTOCK 2 NE	07	MIN	68	65	58	53	40	37	49	56	34	46	40	36	28	48	50	54	48	51	61	41	50	52	60	63	58	40	48	65	58	50.2		
		MAX	29	45	28	26	27	23	23	27	26	21	21	17	17	24	28	36	37	25	26	29	20	21	27	41	32	25	24	24	30	26.9		
CENTRAL MOUNTAIN 05 COVINGTON FLTR PLT	07	MIN	68	62	58	57	46	46	44	59	38	44	43	38	34	47	49	60	50	54	59	42	50	53	60	66	71	41	53	64	69	52.6		
		MAX	27	39	27	27	33	29	29	29	29	23	23	15	16	25	33	35	44	27	27	26	23	24	29	38	32	21	21	24	29	27.7		
DALE ENTERPRISE	07	MIN	64	64	55	50	46	36	47	54	55	43	43	40	28	46	51	53	44	51	58	39	47	47	59	65	65	39	46	62	58	50.2		
		MAX	43	44	26	26	31	18	18	28	25	22	24	14	15	22	31	35	40	25	25	26	21	26	36	36	29	20	22	30	32	27.2		
GATHRIGHT DAM	07	MIN	62	56	53	53	44	42	42	54	36	40	40	34	28	43	45	55	48	49	54	39	46	49	57	62	67	34	50	61	65	48.6		
		MAX	28	42	27	27	31	25	25	27	29	21	22	12	13	22	31	35	39	25	25	14	22	24	35	37	26	18	20	24	30	26.1		
HOT SPRINGS	07	MIN	62	56	53	52	46	40	44	53	35	40	40	34	26	44	46	56	46	48	55	37	47	47	56	60	67	35	49	61	65	48.3		
		MAX	32	45	26	26	33	21	20	26	27	21	21	10	12	18	32	30	40	26	26	17	17	28	36	36	28	18	18	25	27	25.6		
LEXINGTON	07	MIN	69	69	63	56	47	40	49	55	40	48	49	45	45	50	50	56	45	56	62	38	46	50	60	68	75	45	50	63	66	53.6		
		MAX	25	41	27	27	33	24	27	26	25	21	22	15	15	25	32	34	38	28	27	22	19	20	27	34	34	20	20	23	32	26.3		
MILLGAP	07	MIN	61	51	50	51	42	42	49	55	33	39	37	37	23	40	43	55	47	45	53	35	49	46	55	56	61	29	48	59	64	46.7		
		MAX	20	41	18	16	22	13	12	20	24	15	15	8	9	8	28	27	36	17	17	15	11	17	32	33	25	11	11	16	18	19.1		
MUSTOE 1 SW	24	MIN	51	52	51	41	39	46	55	33	40	37	32	23	41	44	55	47	47	54	36	47	44	56	57	60	31	46	60	62	58	46.4		
		MAX	33	27	20	24	22	15	22	25	24	18	9	9	11	27	28	34	25	20	27	16	18	28	32	28	23	13	18	22	29	22.3		
ROANOKE 8 N	07	MIN	67	67	61	56	50	40	51	59	41	47	45	40	37	49	49	60	53	55	62	41	50	53	62	70	75	43	51	63	66	53.9		
		MAX	31	44	31	30	36	31	32	30	32	27	28	17	18	25	34	33	43	32	33	26	23	23	34	38	35	26	25	26	35	30.3		
ROANOKE INTL AP	24	MIN	67	62	57	51	41	51	60	43	47	46	42	38	50	51	60	54	57	64	52	49	53	63	71	74	43	51	63	66	67	54.9		
		MAX	49	44	31	36	34	33	35	30	30	27	19	19	26	37	38	44	40	34	32	26	23	37	40	41	32	27	28	38	45	33.6		
STAUNTON WATER TRMTMT PLT	08	MIN	64	62	57	57	41	36	45	56	36	44	42	42	31	46	49	55	46	53	57	36	47	45	58	64	69	39	49	62	62	50.0		
		MAX	46	46	29	29	32	23	26	26	27	27	28	12	15	23	35	36	40	32	32	25	25	30	31	42	28	22	26	36	37	29.9		

VIRGINIA
201202

DAILY TEMPERATURES (°F)

STATION	OB. TIME	MAX/MIN	DAY OF MONTH																															AVERAGE		
			01	02	03	04	05	06	07	08	09	10	11	12	13	14	15	16	17	18	19	20	21	22	23	24	25	26	27	28	29	30	31			
WAYNESBORO WTP	07	MAX MIN	65 30	64 38	59 26	59 26	42 34	38 21	49 21	57 27	39 28	45 25	43 25	40 13	32 15	47 21	51 34	58 34	47 38	55 30	58 29	37 20	46 19	50 27	59 29	64 35	74 32	74 22	49 20	63 25	63 29			52.7 26.7		
SOUTHWESTERN MOUNTAIN 06																																				
ABINGDON 3S	22	MAX MIN	46 33	57 36	61 27	47 38	52 40	51 35	35 24		39 26	42 22	35 16	31 14	44 14	41 32	60 31	55 44	55 36	58 34	47 33	44 25	60 27	55 32	68 32	68 36	40 27	56 20	57 28	69 29	65 45			51.4 29.9		
BIG STONE GAP	08	MAX MIN	63 30	50 30	60 28	60 28	48 38	49 38	49 25	54 25	42 25	42 41	41 33	36 33	42 16	38 33	61 32	55 41	57 25	61 38	61 24	46 24	58 24	52 31	70 31	62 33	40 22	55 22	63 32	69 32			M			
BLACKSBURG NWSO	07	MAX MIN	61 28	58 42	55 26	56 25	45 34	43 23	46 26	52 26	36 27	38 21	41 21	32 12	31 12	43 19	42 31	57 31	48 39	50 44	58 44	39 44	48 48	53 53	64 64	68 36	36 20	51 19	59 24	66 28			49.0 25.6			
BURKES GARDEN	07	MAX MIN	55 40	48 42	50 24	50 22	45 42	46 23	46 26	47 23	33 23	31 18	37 18	26 7	24 8	37 11	38 29	54 28	49 38	45 27	53 28	33 23	34 19	49 29	47 35	59 42	61 25	31 11	48 13	53 26	61 24			44.6 25.0		
CHRISTIANSBURG	07	MAX MIN	60 36	58 46	56 32	55 31	46 33	44 24	49 26	52 26	36 27	38 23	41 27	33 12	41 20	33 32	43 40	56 34	51 33	51 35	59 32	35 22	41 28	46 36	54 40	64 27	68 21	37 23	50 29	58 36	63 36			48.9 28.7		
CLINTWOOD 1 W	07	MAX MIN	64 28	53 45	56 26	58 26	51 40	51 29	38 26	34 27	38 30	34 21	38 21	30 13	30 13	41 13	39 31	58 35	57 31	51 31	58 17	38 17	36 22	53 28	54 45	68 32	54 19	58 19	36 25	53 19	63 27	67 27			49.1 26.5	
COPPER HILL	07	MAX MIN	59 40	57 45	52 31	49 29	49 34	38 24	44 28	51 28	33 25	37 23	41 23	31 9	27 9	40 17	41 32	52 30	47 39	47 33	54 34	34 25	41 22	43 26	55 36	62 39	68 24	33 21	43 21	57 31	58 33	43 33	57 33			46.3 28.0
GALAX RADIO WBRF	07	MAX MIN	63 29	59 42	55 25	54 31	53 38	53 30	51 25	54 25	39 27	44 20	44 31	43 11	32 17	45 29	54 27	59 40	55 37	55 33	55 32	32 20	43 22	49 20	56 31	65 32	69 30	36 19	47 24	59 27	62 37			51.2 28.0		
GALAX WTP	07	MAX MIN	62 24	62 24	53 24	51 26	50 37	53 31	47 27	53 26	39 28	41 21	44 21	33 12	30 12	45 18	43 29	58 28	51 41	53 34	55 34	37 22	41 21	47 27	57 28	64 30	69 19	36 19	46 19	57 27	61 30			49.6 25.8		
GRUNDY	07	MAX MIN	58 29	64 47	64 29	61 30	48 39	48 30	45 30	50 30	38 30	36 30	37 23	32 16	32 14	42 14	43 31	58 33	56 42	56 40	56 30	41 26	38 26	58 29	58 33	66 41	62 31	35 21	54 21	63 28	69 29			50.6 29.1		
JOHN FLANNAGAN LAKE	07	MAX MIN	65 22	65 22	65 30			29	28	28	30	24			14	15	32	32	39			23	29	32	42				21		70		M			
LEBANON	07	MAX MIN	61 47	53 48	56 25	61 25	52 39	49 32	52 25	44 26	39 29	37 20	42 21	32 13	32 12	39 13	40 33	62 31	56 40	53 33	58 35	41 26	41 26	58 29	56 30	68 46	63 32	39 18	55 18	69 28	69 28			50.6 28.6		
NORA 4 SSE	07	MAX MIN	56 39	46 42	54 35	54 36	47 38	47 29	47 28	48 29	35 24	35 23	26 23	26 7	35 7	53 18	53 29	49 30	56 34	56 33	34 34	36 21	51 31	45 38	61 43	60 26	32 21	48 22	55 37	61 39			45.2 28.9			
NORTH FORK LAKE	08	MAX MIN	63 26	52 42	57 27				62	52	37				38		44	60				57		57				64	63	69		M				
PULASKI 2 E	07	MAX MIN	61 37	56 47	57 26	58 26	49 41	47 25	55 28	38 27	40 27	44 21	34 13	33 21	48 13	44 35	60 34	54 42	53 32	61 32	42 25	43 19	49 23	56 35	66 37	70 28	38 18	52 20	60 24	66 24			51.1 28.3			
RADFORD 3 N	07	MAX MIN	63 28	58 44	57 26	57 28	46 34	46 23	50 26	56 28	39 30	40 22	43 24	35 13	33 14	44 24	44 33	58 37	51 41	53 30	61 32	36 26	42 16	49 20	56 34	68 42	70 29	38 20	54 24	63 26	67 38			50.9 28.0		
RICHLANDS	07	MAX MIN	60 29	50 41	55 26	61 25	49 37	48 30	52 27	53 26	37 28	40 20	40 20	31 13	31 11	42 10	40 32	61 34	53 41	52 30	57 40	44 26	56 29	51 29	67 41	67 30	34 18	57 18	60 27	70 27			50.1 27.0			
SALTVILLE 1N	07	MAX MIN	61 23	47 34	60 26	61 26	47 37	51 35	51 25	53 24	40 30	42 21	33 15	33 15	43 14	40 29	61 29	50 42	54 32	54 33	41 25	45 26	60 29	54 29	68 32	62 30	39 20	56 19	58 27	70 27			51.0 26.5			
STAFFORDSVILLE 3 ENE	07	MAX MIN	64 27	56 45	55 27	56 26	44 33	46 22	45 23	52 27	37 28	39 20	41 20	33 13	32 13	43 21	45 32	56 34	51 42	52 28	59 28	42 24	48 21	56 28	65 38	70 28	39 19	51 18	62 24	65 33			49.8 26.6			

VIRGINIA
201202

SNOWFALL AND SNOW ON GROUND (INCHES)

STATION		DAY OF MONTH																															
		01	02	03	04	05	06	07	08	09	10	11	12	13	14	15	16	17	18	19	20	21	22	23	24	25	26	27	28	29	30	31	
VIRGINIA																																	
TIDEWATER 01																																	
DISPUTANTA	SNOWFALL																																
	SN ON GND	-	-	-	-	-	-	-	-	-	-	-	-	-	-	-	-	-	-	-	-	4	-	-	-	-	-	-	-	-	-	-	
EASTVILLE	SNOWFALL	-	-	-	-	-	-	-	-	-	-	1.0	-	-	-	-	-	-	-	-	-	-	-	-	-	-	-	-	-	-	-	-	
	SN ON GND	-	-	-	-	-	-	-	-	-	-	1	-	-	-	-	-	-	-	-	-	-	-	-	-	-	-	-	-	-	-	-	
EMPORIA 1 WNW	SNOWFALL	-	-	-	-	-	-	-	-	-	-	-	-	-	-	-	-	-	-	-	-	T	-	-	-	-	-	-	-	-	-	-	
	SN ON GND	-	-	-	-	-	-	-	-	-	-	-	-	-	-	-	-	-	-	-	-	T	-	-	-	-	-	-	-	-	-	-	
FREDERICKSBURG SEWAGE	SNOWFALL	-	-	-	-	-	-	-	-	-	-	T	-	-	-	-	-	-	-	-	-	-	-	-	-	-	-	-	-	-	-	-	
	SN ON GND	-	-	-	-	-	-	-	-	-	-	T	-	-	-	-	-	-	-	-	-	-	-	-	-	-	-	-	-	-	-	-	
HAMPTON UNIV	SNOWFALL																																
HOLLAND 1 E	SNOWFALL																																
HOPEWELL	SNOWFALL	-	-			-	-	-	-	-	-	-	-	-	-	-	-	-	-	-	-	1.5	-	-	-	-	-	-	-	-	-	-	
	SN ON GND	-	-			-	-	-	-	-	-	-	-	-	-	-	-	-	-	-	-	-	-	-	-	-	-	-	-	-	-	-	
NORFOLK INTL AP	SNOWFALL										0.3	0.2										T											
NORFOLK SOUTH	SNOWFALL	-	-	-	-	-	-	-	-	-	0.3	0.2	-	-	-	-	-	-	-	-	T	T	-	-	-	-	-	-	-	-	-	-	
	SN ON GND	-	-	-	-	-	-	-	-	-	T	-	-	-	-	-	-	-	-	-	-	-	-	-	-	-	-	-	-	-	-	-	
NORTH	SNOWFALL											1.5										T											
	SN ON GND											1	T									T											
PAINTER 2W	SNOWFALL	-	-	-	-	-	-	-	-	-	-	2.0	-	-	-	-	-	-	-	-	-	-	-	-	-	-	-	-	-	-	-	-	
	SN ON GND	-	-	-	-	-	-	-	-	-	-	-	-	-	-	-	-	-	-	-	-	-	-	-	-	-	-	-	-	-	-	-	
STONY CREEK 2 N	SNOWFALL																																
	SN ON GND																																
SUFFOLK LAKE KILBY	SNOWFALL											T									T	T											
	SN ON GND																																
WAKEFIELD 1NW	SNOWFALL										T	T									1.3	0.4											
	SN ON GND											-									1	T											
WALKERTON 2 NW	SNOWFALL										T	1.0																					
	SN ON GND										-	1																					
WALLACETON LK DRUMMOND	SNOWFALL																																
WARSAW 2 NW	SNOWFALL	-	-	-	-	-	-	-	-	-	-	0.7	-	-	-	-	-	-	-	-	-	-	-	-	-	-	-	-	-	-	-	-	
	SN ON GND	-	-	-	-	-	-	-	-	-	-	-	-	-	-	-	-	-	-	-	-	-	-	-	-	-	-	-	-	-	-	-	
WEST POINT 2 NW	SNOWFALL										0.4	0.3										T	3.3										
	SN ON GND										T	T										T	T										
WILLIAMSBURG 2 N	SNOWFALL	-	-	-	-	-	-	-	-	-	0.3	-	-	-	-	-	-	-	-	-	2.0	0.2	-	-	-	-	-	-	-	-	-	-	
	SN ON GND	-	-	-	-	-	-	-	-	-	T	T	T	-	-	-	-	-	-	-	2	T	-	-	-	-	-	-	-	-	-	-	
EASTERN PIEDMONT 02																																	
ALBERTA 5N	SNOWFALL											T										4.0											
	SN ON GND																					4	T										
AMELIA COURTHOUSE 1	SNOWFALL																																
	SN ON GND																																
ASHLAND	SNOWFALL	-	-	-	-	-	-	-	-	-	-	0.5	T	-	-	-	-	-	-	-	-	1.0	4.5	-	-	-	-	-	-	-	-	-	

Snowfall: Includes snow and ice. Values for NWS stations (J index note) are Mid-Mid (LST).

Snow on ground: Includes snow, sleet, ice, and hail. Values for NWS stations (J index note) are observed at 12 UTC (GMT).

Water Equivalent: Given for NWS stations (J index note) only, when snow depth is 2 inches or more, and is measured at 18 UTC (GMT)

VIRGINIA
201202

SNOWFALL AND SNOW ON GROUND (INCHES)

STATION		DAY OF MONTH																															
		01	02	03	04	05	06	07	08	09	10	11	12	13	14	15	16	17	18	19	20	21	22	23	24	25	26	27	28	29	30	31	
BREMO BLUFF	SN ON GND	-	-	-	-	-	-	-	-	-	-	T		-	-	-	-	-	-	1	1	T	-	-	-	-	-	-	-	-	-	-	-
	SNOWFALL																																
BUCKINGHAM	SN ON GND																																
	SNOWFALL																					7.0											
CAMP PICKETT	SN ON GND																				7	4	1										
	SNOWFALL																																
CHASE CITY	SNOWFALL	-	-	-	-	-	-	-	-	-	-	-	-	-	-	-	-	-	-	-	4.0	-	-	-	-	-	-	-	-	-	-		
	SNOWFALL																				2.0												
CLARKSVILLE	SN ON GND																				2												
	SNOWFALL	-	-	-	-	-	-	-	-	-	-	-	-	-	-	-	-	-	-	-	3.5	-	-	-	-	-	-	-	-	-	-		
CORBIN	SN ON GND	-	-	-	-	-	-	-	-	-	-	-	-	-	-	-	-	-	-	-	4	-	-	-	-	-	-	-	-	-	-		
	SNOWFALL																				4.0												
CROZIER	SN ON GND																				4	1											
	SNOWFALL	-	-	-	-	-	-	-	-	-	-	-	-	-	-	-	-	-	-	-	4												
FARMVILLE 2 N	SNOWFALL	-	-	-	-	-	-	-	-	-	-	-	-	-	-	-	-	-	-	-	5.5	-	-	-	-	-	-	-	-	-			
	SN ON GND	-	-	-	-	-	-	-	-	-	-	-	-	-	-	-	-	-	-	-	5	T											
GREENBAY 3 NE	SNOWFALL	-	-	-	-	-	-	-	-	-	-	-	-	-	-	-	-	-	-	-	4.0	-	-	-	-	-	-	-	-	-			
	SNOWFALL	-	-	-	-	-	-	-	-	-	-	-	-	-	-	-	-	-	-	-	0.8	-	-	-	-	-	-	-	-	-			
JOHN H KERR DAM	SNOWFALL	-	-	-	-	-	-	-	-	-	-	-	-	-	-	-	-	-	-	-	5.0												
	SN ON GND																				5	1	T										
LOUISA	SNOWFALL	-	-	-	-	-	-	-	-	-	-	-	-	-	-	-	-	-	-	4.6	2.3												
	SN ON GND	-	-	-	-	-	-	-	-	-	-	-	-	-	-	-	-	-	-	-	5	3											
PALMYRA 3S	SNOWFALL	-	-	-	-	-	-	-	-	-	-	-	-	-	-	-	-	-	-	-	4.2												
	SN ON GND	-	-	-	-	-	-	-	-	-	-	-	-	-	-	-	-	-	-	-	-	1	-	-	-	-	-	-	-	-			
PETERSBURG	SNOWFALL																				2.0												
	SN ON GND																				2		-										
POWHATAN	SNOWFALL																																
	SNOWFALL											T	T								3.9	0.1											
RICHMOND INTL AP	SNOWFALL																																
	SN ON GND												T	T								4	3										
SANDSTON	SNOWFALL	-	-	-	-	-	-	-	-	-	-	-	T	-	-	-	-	-	-	-	4.3												
	SN ON GND	-	-	-	-	-	-	-	-	-	-	-	T	-	-	-	-	-	-	-	4	3	1										
WINTERPOCK 4 W	SNOWFALL	-	-	-	-	-	-	-	-	-	-	-	-	-	-	-	-	-	-	-	4.0	-	-	-	-	-	-	-	-				
	SNOWFALL																																
WESTERN PIEDMONT 03	SNOWFALL																				5.5												
	SN ON GND																				5	2											
APPOMATTOX	SNOWFALL																				6.0												
	SN ON GND																				6	1											
BEDFORD 4 NW	SNOWFALL																				2.0												
	SN ON GND																				2												
BROOKNEAL	SNOWFALL																				5.8												
	SN ON GND												T								6	1	T										
CHARLOTTESVILLE 2W	SNOWFALL																																
	SN ON GND																				0.6												
CHATHAM	WTR EQUIV	-	-	-	-	-	-	-	-	-	-	-	-	-	-	-	-	-	-	-	0.6	-	-	-	-	-	-	-	-				
	SNOWFALL																				3.2												

Snowfall: Includes snow and ice. Values for NWS stations (J index note) are Mid-Mid (LST).

Snow on ground: Includes snow, sleet, ice, and hail. Values for NWS stations (J index note) are observed at 12 UTC (GMT).

Water Equivalent: Given for NWS stations (J index note) only, when snow depth is 2 inches or more, and is measured at 18 UTC (GMT)

VIRGINIA
201202

SNOWFALL AND SNOW ON GROUND (INCHES)

STATION		DAY OF MONTH																																	
		01	02	03	04	05	06	07	08	09	10	11	12	13	14	15	16	17	18	19	20	21	22	23	24	25	26	27	28	29	30	31			
CONCORD 4 SSW	SN ON GND																																	3	
	SNOWFALL																																	4.5	
DANVILLE	SN ON GND																																	5	
	SNOWFALL																																		2.8
DANVILLE REGIONAL AP	SN ON GND																																	3	
	SNOWFALL																																		3.0
FREE UNION	SN ON GND																																		3
	SNOWFALL	-	-	-	-	-	-	-	-	-	-	-	-	-	-	-	-	-	-	-	-	-	-	-	-	-	-	-	-	-	-	-	-	4.8	
HOLCOMB ROCK	SN ON GND	-	-	-	-	-	-	-	-	-	-	-	-	-	-	-	-	-	-	-	-	-	-	-	-	-	-	-	-	-	-	-	-	3	
	SNOWFALL																																		7.5
HUDDLESTON 4 SW	SN ON GND																																		8
	SNOWFALL																																		2
LYNCHBURG #2	SN ON GND																																		5
	SNOWFALL																																		1
LYNCHBURG INTL AP	SN ON GND																																		6
	SNOWFALL																																		3
MARTINSVILLE FLTR PLT	SN ON GND																																		8
	SNOWFALL	-	-	-	-	-	-	-	-	-	-	-	-	-	-	-	-	-	-	-	-	-	-	-	-	-	-	-	-	-	-	-	-	5.0	
MEADOWS OF DAN 5 SW	SN ON GND	-	-	-	-	-	-	-	-	-	-	-	-	-	-	-	-	-	-	-	-	-	-	-	-	-	-	-	-	-	-	-	-	5	
	SNOWFALL																																		2.5
MONTEBELLO FISH CULTURAL STN	SN ON GND																																		3
	SNOWFALL	-	-	-	-	-	-	-	-	-	-	-	-	-	-	-	-	-	-	-	-	-	-	-	-	-	-	-	-	-	-	-	-	6.5	
MONTICELLO	SN ON GND	-	-	-	-	-	-	-	-	-	-	-	-	-	-	-	-	-	-	-	-	-	-	-	-	-	-	-	-	-	-	-	-	6	
	SNOWFALL	-	-	-	-	-	-	-	-	-	-	-	-	-	-	-	-	-	-	-	-	-	-	-	-	-	-	-	-	-	-	-	-	7.0	
PEDLAR DAM	SN ON GND	-	-	-	-	-	-	-	-	-	-	-	-	-	-	-	-	-	-	-	-	-	-	-	-	-	-	-	-	-	-	-	-	7	
	SNOWFALL																																		4
ROCKY MT	SN ON GND																																		7
	SNOWFALL																																		4
SOUTH BOSTON	SN ON GND																																		5
	SNOWFALL	-	-	-	-	-	-	-	-	-	-	-	-	-	-	-	-	-	-	-	-	-	-	-	-	-	-	-	-	-	-	-	-	2	
STUART	SN ON GND	-	-	-	-	-	-	-	-	-	-	-	-	-	-	-	-	-	-	-	-	-	-	-	-	-	-	-	-	-	-	-	-	5	
	SNOWFALL	-	-	-	-	-	-	-	-	-	-	-	-	-	-	-	-	-	-	-	-	-	-	-	-	-	-	-	-	-	-	-	-	2	
TYE RIVER 1 SE	SN ON GND	-	-	-	-	-	-	-	-	-	-	-	-	-	-	-	-	-	-	-	-	-	-	-	-	-	-	-	-	-	-	-	-	5.0	
	SNOWFALL																																		-
WOOLWINE	SN ON GND																																		-
	SNOWFALL	-	-	-	-	-	-	-	-	-	-	-	-	-	-	-	-	-	-	-	-	-	-	-	-	-	-	-	-	-	-	-	-	5.0	
NORTHERN 04	SN ON GND	-	-	-	-	-	-	-	-	-	-	-	-	-	-	-	-	-	-	-	-	-	-	-	-	-	-	-	-	-	-	-	-	5	
	SNOWFALL	-	-	-	-	-	-	-	-	-	-	-	-	-	-	-	-	-	-	-	-	-	-	-	-	-	-	-	-	-	-	-	-	2	
BOSTON 4 SE	SN ON GND	-	-	-	-	-	-	-	-	-	-	-	-	-	-	-	-	-	-	-	-	-	-	-	-	-	-	-	-	-	-	-	-	0.7	
	SNOWFALL	-	-	-	-	-	-	-	-	-	-	-	-	-	-	-	-	-	-	-	-	-	-	-	-	-	-	-	-	-	-	-	-	1.0	
	SN ON GND	-	-	-	-	-	-	-	-	-	-	-	-	-	-	-	-	-	-	-	-	-	-	-	-	-	-	-	-	-	-	-	-	1	
	SNOWFALL	-	-	-	-	-	-	-	-	-	-	-	-	-	-	-	-	-	-	-	-	-	-	-	-	-	-	-	-	-	-	-	-	1.0	
	WTR EQUIV	-	-	-	-	-	-	-	-	-	-	-	-	-	-	-	-	-	-	-	-	-	-	-	-	-	-	-	-	-	-	-	-	1.0	

Snowfall: Includes snow and ice. Values for NWS stations (J index note) are Mid-Mid (LST).

Snow on ground: Includes snow, sleet, ice, and hail. Values for NWS stations (J index note) are observed at 12 UTC (GMT).

Water Equivalent: Given for NWS stations (J index note) only, when snow depth is 2 inches or more, and is measured at 18 UTC (GMT)

VIRGINIA
201202

SNOWFALL AND SNOW ON GROUND (INCHES)

STATION		DAY OF MONTH																														
		01	02	03	04	05	06	07	08	09	10	11	12	13	14	15	16	17	18	19	20	21	22	23	24	25	26	27	28	29	30	31
EDINBURG	SNOWFALL				0.4	T			T		0.4																					
	SN ON GND				T						T																					
	WTR EQUIV	-	-	-	-	-	-	-	-	-	-	-	-	-	-	-	-	-	-	-	-	-	-	-	-	-	-	-	-	-	-	
FRONT ROYAL	SNOWFALL	-	-	-	-	-	-	-	-	-	0.5	0.2	-	-	-	-	-	-	-	-	-	-	-	-	-	-	-	-	-	-		
	SN ON GND	-	-	-	-	-	-	-	-	-	1	T	-	-	-	-	-	-	-	-	-	-	-	-	-	-	-	-	-	-		
LINCOLN	SNOWFALL				T				T		T																					
	SN ON GND				T				T		T																					
LURAY 5 E	SNOWFALL																															
MADISON	SNOWFALL			-	-	-	-	-	-	-	-	-	-	-	-	-	-	-	-	-	-	-	-	-	-	-	-	-	-	-		
	SN ON GND			-	-	-	-	-	-	-	-	-	-	-	-	-	-	-	-	-	-	-	-	-	-	-	-	-	-	-		
MANASSAS	SNOWFALL																															
	SN ON GND																															
MT WEATHER	SNOWFALL	-	-	-	-	1.3	-	-	-	1.2	-	1.0	0.1	-	-	-	-	-	-	-	-	-	-	-	-	-	-	-	-	-		
	SN ON GND	-	-	-	-	1	-	-	-	1	-	-	-	-	-	-	-	-	-	-	-	-	-	-	-	-	-	-	-	-		
PIEDMONT RSCH STN	SNOWFALL											T																				
	SN ON GND																															
SOMERSET	SNOWFALL	-	-	-	-	-	-	-	-	-	-	-	-	-	-	-	-	-	-	-	-	-	-	-	-	-	-	-	-			
	SN ON GND	-	-	-	-	-	-	-	-	-	-	-	-	-	-	-	-	-	-	-	-	-	-	-	-	-	-	-	-	-		
	WTR EQUIV	-	-	-	-	-	-	-	-	-	-	-	-	-	-	-	-	-	-	-	-	-	-	-	-	-	-	-	-	-		
SPERRYVILLE	SNOWFALL	-	-	-	-	0.3	T	-	-	T	-	-	0.2	-	-	-	-	-	-	-	-	-	-	-	-	-	0.3	-	-	-		
	SN ON GND	-	-	-	-	T		-	-		-	-		-	-	-	-	-	-	-	-	-	-	-	-	-	T	-	-	-		
STAR TANNERY	SNOWFALL																															
	SN ON GND																															
STERLING RCS	SNOWFALL				T					0.2		0.4	0.8															T				
	SN ON GND										T	T	T	T																		
	WTR EQUIV	-	-	-	-	-	-	-	-	-	-	-	-	-	-	-	-	-	-	-	-	-	-	-	-	-	-	-	-	-		
VIENNA	SNOWFALL	-	-	-	-	-	-	-	-	-	0.5	0.2	-	-	-	-	-	-	-	-	-	-	-	-	-	-	-	-	-	-		
	SN ON GND	-	-	-	-	-	-	-	-	-	-	-	-	-	-	-	-	-	-	-	-	-	-	-	-	-	-	-	-	-		
WARRENTON 3 SE	SNOWFALL	-	-	-	-	-	-	-	-	-	-	-	-	-	-	-	-	-	-	-	-	-	-	-	-	-	-	-	-	-		
	SN ON GND	-	-	-	-	-	-	-	-	-	-	-	-	-	-	-	-	-	-	-	-	-	-	-	-	-	-	-	-	-		
WASHGTN DULLES INTL AP	SNOWFALL				T	T			0.2		1.2	T																				
	SN ON GND											T	T																			
WASHINGTON REAGAN AP	SNOWFALL								T		0.2	0.1									T											
	SN ON GND											T	T																			
WINCHESTER	SNOWFALL	-	-	-	-	1.3	T	-	-	0.3	-	1.4	-	-	-	-	-	-	-	-	-	-	-	-	-	-	-	-	-	-		
	SN ON GND	-	-	-	-	1	-	-	-		-	1	-	-	-	-	-	-	-	-	-	-	-	-	-	-	-	-	-	-		
	WTR EQUIV	-	-	-	-	0.7	-	-	-		-	0.1	-	-	-	-	-	-	-	-	-	-	-	-	-	-	-	-	-	-		
WOODSTOCK 2 NE	SNOWFALL	-	-	-	-	0.3	-	-	-	-	-	0.6	-	-	-	-	-	-	-	-	-	-	-	-	-	-	-	-	-	-		
	SN ON GND	-	-	-	-	T	-	-	-	-	-	-	-	-	-	-	-	-	-	-	-	-	-	-	-	-	-	-	-	-		

Snowfall: Includes snow and ice. Values for NWS stations (J index note) are Mid-Mid (LST).

Snow on ground: Includes snow, sleet, ice, and hail. Values for NWS stations (J index note) are observed at 12 UTC (GMT).

Water Equivalent: Given for NWS stations (J index note) only, when snow depth is 2 inches or more, and is measured at 18 UTC (GMT)

VIRGINIA
201202

SNOWFALL AND SNOW ON GROUND (INCHES)

STATION		DAY OF MONTH																																
		01	02	03	04	05	06	07	08	09	10	11	12	13	14	15	16	17	18	19	20	21	22	23	24	25	26	27	28	29	30	31		
WYTHEVILLE 1 S	SNOWFALL SN ON GND								T		T	T										5.0												
																						5	2	1										

Snowfall: Includes snow and ice. Values for NWS stations (J index note) are Mid-Mid (LST).

Snow on ground: Includes snow, sleet, ice, and hail. Values for NWS stations (J index note) are observed at 12 UTC (GMT).

Water Equivalent: Given for NWS stations (J index note) only, when snow depth is 2 inches or more, and is measured at 18 UTC (GMT)

VIRGINIA
201202

PAN EVAPORATION AND WIND

STATION		DAY OF MONTH																															TOTAL OR AVERAGE		
		01	02	03	04	05	06	07	08	09	10	11	12	13	14	15	16	17	18	19	20	21	22	23	24	25	26	27	28	29	30	31			
VIRGINIA EASTERN PIEDMONT 02 JOHN H KERR DAM	WIND	-	-	-	-	-	-	-	-	-	-	-	-	-	-	-	-	-	-	-	-	-	-	-	-	-	-	-	-	-	-	-	-	-	M
	EVAP	-	-	-	-	-	-	-	-	-	-	-	-	-	-	-	-	-	-	-	-	-	-	-	-	-	-	-	-	-	-	-	-	-	M
	MAX	-	-	-	-	-	-	-	-	-	-	-	-	-	-	-	-	-	-	-	-	-	-	-	-	-	-	-	-	-	-	-	-	-	M
	MIN	-	-	-	-	-	-	-	-	-	-	-	-	-	-	-	-	-	-	-	-	-	-	-	-	-	-	-	-	-	-	-	-	-	M
NORTHERN 04 PIEDMONT RSCH STN	WIND	-	-	-	-	-	-	-	-	-	-	-	-	-	-	-	-	-	-	-	-	-	-	-	-	-	-	-	-	-	-	-	-	M	
	EVAP	-	-	-	-	-	-	-	-	-	-	-	-	-	-	-	-	-	-	-	-	-	-	-	-	-	-	-	-	-	-	-	-	M	
	MAX	-	-	-	-	-	-	-	-	-	-	-	-	-	-	-	-	-	-	-	-	-	-	-	-	-	-	-	-	-	-	-	-	.	
	MIN	-	-	-	-	-	-	-	-	-	-	-	-	-	-	-	-	-	-	-	-	-	-	-	-	-	-	-	-	-	-	-	-	-	M

Evaporation: Is measured in hundreths of inches.

Wind: Is measured in miles.

Max and Min: The maximum and minimum temperatures (Fahrenheit) of the water in the evaporation pan.

STATION INDEX

STATION	INDEX NO.	DIVISION	COUNTY	LATITUDE	LONGITUDE	ELEVATION (IN FEET)	OBSERVATION TIME AND TABLES			
							LOCAL STD TIME			
							TEMP	PRECIP	EVAP	SPECIAL SEE (NOTES)
VIRGINIA										
ABINGDON 3S	0021	06	WASHINGTON	36 40	81 58W	1920	22	22		H
ALBERTA 5N	0079	02	BRUNSWICK	36 56	77 54W	376		08		H
ALTAVISTA	0166	03	CAMPBELL	37 7	79 17W	515		07		CH
AMELIA COURTHOUSE 1	0187	02	AMELIA	37 21	77 59W	345	08	08		H
APPOMATTOX	0243	03	APPOMATTOX	37 21	78 50W	910	07	07		H
ASHLAND	0327	02	HANOVER	37 45	77 29W	220	18	18		H
BEDFORD 4 NW	0561	03	BEDFORD	37 23	79 34W	1220		07		CH
BIG STONE GAP	0735	06	WISE	36 52	82 46W	1464	08	08		H
BLACKSBURG NWSO	0766	06	MONTGOMERY	37 12	80 25W	2100	07	07		CH
BOSTON 4 SE	0860	04	CULPEPER	38 33	78 6W	590	07	07		H
BREMO BLUFF	0993	02	FLUVANNA	37 43	78 17W	225		24		CH
BROOKNEAL	1082	03	CAMPBELL	37 4	78 57W	428	07	07		H
BUCHANAN	1121	05	BOTETOURT	37 32	79 41W	865		07		H
BUCKINGHAM	1136	02	BUCKINGHAM	37 30	78 32W	552		07		H
BUENA VISTA	1159	05	ROCKBRIDGE	37 44	79 22W	830		07		H
BURKES GARDEN	1209	06	TAZEWELL	37 6	81 20W	3068	07	07		H
CAMP PICKETT	1322	02	NOTTOWAY	37 2	77 57W	330	08	08		CH
CHARLOTTESVILLE 2W	1593	03	ALBEMARLE	38 2	78 31W	866	08	08		H
CHASE CITY	1606	02	MECKLENBURG	36 47	78 29W	510	17	17		H
CHATHAM	1614	03	PITTSYLVANIA	36 49	79 25W	640	07	07		CH
CHRISTIANSBURG	1692	06	MONTGOMERY	37 8	80 24W	2100	07	07		H
CLARKSVILLE	1746	02	MECKLENBURG	36 37	78 33W	330	07	07		H
CLINTWOOD 1 W	1825	06	DICKENSON	37 9	82 29W	1780	07	07		H
CONCORD 4 SSW	1955	03	CAMPBELL	37 17	78 58W	635		07		H
COPPER HILL	1999	06	FLOYD	37 5	80 9W	2690	07	07		H
CORBIN	2009	02	CAROLINE	38 12	77 22W	220	09	09		H
COVINGTON FLTR PLT	2044	05	ALLEGHANY	37 49	79 59W	1230	07	07		H
CRAIGSVILLE 2 S	2064	05	AUGUSTA	38 3	79 23W	1758		07		H
CROZIER	2142	02	GOOCHLAND	37 40	77 53W	350	07	07		H
DALE ENTERPRISE	2208	05	ROCKINGHAM	38 27	78 56W	1400	07	07		H
DANVILLE	2245	03	PITTSYLVANIA	36 35	79 23W	410	07	07		H
DANVILLE REGIONAL AP R	2250	03	PITTSYLVANIA	36 34	79 20W	571	24	24		H
DISPUTANTA	2400	01	PRINCE GEORGE	37 7	77 12W	15	07	07		H
EASTVILLE	2635	01	NORTHAMPTON	37 23	75 58W	10	07	07		H
EDINBURG	2663	04	SHENANDOAH	38 48	78 35W	928	07	07		H
EMPORIA 1 WNW	2790	01	GREENSVILLE	36 42	77 34W	100	08	08		H
FARMVILLE 2 N	2941	02	CUMBERLAND	37 20	78 23W	450	07	07		CH
FREDERICKSBURG SEWAGE	3204	01	FREDERICKSBURG	38 17	77 27W	15	07	07		H
FREE UNION	3213	03	ALBEMARLE	38 5	78 35W	590	08	07		H
FRONT ROYAL	3229	04	WARREN	38 54	78 11W	930	07	07		H
GALAX RADIO WBRF	3267	06	CARROLL	36 40	80 55W	2385	07	07		H
GALAX WTP	3272	06	CARROLL	36 39	80 55W	2360	07	07		CH
GATHRIGHT DAM	3310	05	ALLEGHANY	37 57	79 57W	1770	07	07		CH
GLASGOW 1 SE	3375	05	ROCKBRIDGE	37 37	79 26W	740		07		H
GREENBAY 3 NE	3565	02	PRINCE EDWARD	37 11	78 17W	500	09	09		H
GRUNDY	3640	06	BUCHANAN	37 17	82 5W	1170	07	07		H
HAMPTON UNIV	3713	01	HAMPTON	37 1	76 20W	10	17	17		H
HOLCOMB ROCK	4039	03	BEDFORD	37 33	79 24W	620		07		H
HOLLAND 1 E	4044	01	SUFFOLK	36 41	76 46W	80	08	08		H
HOPEWELL	4101	01	PRINCE GEORGE	37 18	77 17W	40	16	16		H
HOT SPRINGS	4128	05	BATH	37 60	79 50W	2236	07	07		H
HUDDLESTON 4 SW	4148	03	BEDFORD	37 8	79 32W	1045		07		H
JOHN FLANNAGAN LAKE	4410	06	DICKENSON	37 14	82 21W	1460	07	07		H
JOHN H KERR DAM	4414	02	MECKLENBURG	36 36	78 18W	250	08	08		CH
KERRS CREEK 6 WNW	4565	05	ROCKBRIDGE	37 52	79 34W	1500		07		H
KEYSVILLE 2 S	4568	02	CHARLOTTE	37 1	78 28W	530		07		H
LAFAYETTE 1 NE	4676	06	MONTGOMERY	37 14	80 12W	1320		07		H
LEBANON	4777	06	RUSSELL	36 54	82 2W	1912	07	07		H
LEXINGTON	4876	05	ROCKBRIDGE	37 48	79 25W	1125	07	07		H
LINCOLN	4909	04	LOUDOUN	39 5	77 42W	500	07	07		H
LOUISA	5050	02	LOUISA	38 3	78 0W	420	18	18		H
LURAY 5 E	5096	04	PAGE	38 40	78 22W	1400	08	08		H
LYNCHBURG #2	5117	03	CAMPBELL	37 23	79 14W	740	07	07		H
LYNCHBURG INTL AP R	5120	03	CAMPBELL	37 19	79 12W	940	24	24		HJ
MADISON	5150	04	MADISON	38 22	78 15W	577	08	08		H

STATION INDEX

STATION	INDEX NO.	DIVISION	COUNTY	LATITUDE	LONGITUDE	ELEVATION (IN FEET)	OBSERVATION TIME AND TABLES			
							LOCAL STD TIME			
							TEMP	PRECIP	EVAP	SPECIAL SEE (NOTES)
MANASSAS	5204	04	MANASSAS	38 44	77 30W	245	07	07		H
MARTINSVILLE FLTR PLT	5300	03	HENRY	36 42	79 52W	760	07	07		H
MEADOWS OF DAN 5 SW	5453	03	PATRICK	36 40	80 27W	2225	07	07		H
MILLGAP	5595	05	HIGHLAND	38 18	79 43W	2421	07	07		CH
MONTEBELLO FISH CULTURAL STN #	5690	03	NELSON	37 50	79 7W	2667	07	07		H
MONTICELLO	5700	03	ALBEMARLE	38 1	78 27W	758	08	08		H
MT WEATHER	5851	04	LOUDOUN	39 4	77 53W	1659	07	07		H
MTN GROVE	5756	05	BATH	38 6	79 53W	1775		07		H
MUSTOE 1 SW	5880	05	HIGHLAND	38 20	79 40W	2380	24	24		H
NORA 4 SSE	6125	06	DICKENSON	37 1	82 19W	2650	07	07		H
NORFOLK INTL AP R	6139	01	NORFOLK (CITY)	36 54	76 12W	30	24	24		HJ
NORFOLK SOUTH	6147	01	NORFOLK (CITY)	36 52	76 14W	100	24	24		H
NORTH	6161	01	MATHEWS	37 26	76 26W	10	07	07		H
NORTH FORK LAKE	6173	06	WISE	37 7	82 38W	1675	08	08		H
PAINTER 2W	6475	01	ACCOMACK	37 35	75 49W	30	16	16		CH
PALMYRA 3S	6491	02	FLUVANNA	37 49	78 16W	410	06	06		H
PEDLAR DAM	6593	03	AMHERST	37 40	79 17W	1010		07		H
PETERSBURG	6656	02	PETERSBURG	37 14	77 24W	15	08	08		H
PIEDMONT RSCH STN	6712	04	ORANGE	38 14	78 7W	520	08	08	08	CH
POWHATAN	6906	02	POWHATAN	37 31	77 53W	400		07		H
PULASKI 2 E	6955	06	PULASKI	37 3	80 47W	1850	07	07		CH
RADFORD 3 N	6999	06	PULASKI	37 12	80 35W	1800	07	07		H
RICHLANDS	7174	06	TAZEWELL	37 6	81 48W	1910	07	07		H
RICHMOND INTL AP R	7201	02	HENRICO	37 30	77 19W	164	24	24		HJ
ROANOKE 8 N	7278	05	ROANOKE	37 22	79 58W	1190	07	07		H
ROANOKE INTL AP R	7285	05	ROANOKE	37 19	79 58W	1175	24	24		HJ
ROCKY MT	7338	03	FRANKLIN	36 59	79 54W	1315	07	07		CH
SALTVILLE 1N	7506	06	SMYTH	36 53	81 46W	1733	07	07		H
SANDSTON	7541	02	HENRICO	37 33	77 17W	165	07	07		H
SOMERSET	7904	04	ORANGE	38 15	78 16W	510	07	07		H
SOUTH BOSTON	7925	03	HALIFAX	36 42	78 53W	340	07	07		H
SPERRYVILLE	7985	04	RAPPAHANNOCK	38 39	78 14W	750	06	06		H
STAFFORDSVILLE 3 ENE	8022	06	GILES	37 16	80 43W	1950	07	07		CH
STAR TANNERY	8046	04	FREDERICK	39 5	78 27W	950	07	07		CH
STAUNTON WATER TRMTMT PLT	8062	05	AUGUSTA	38 10	79 5W	169	08	08		H
STERLING RCS	8084	04	LOUDOUN	38 59	77 29W	288	07	07		H
STONY CREEK 2 N	8129	01	SUSSEX	36 58	77 24W	105	08	08		H
STUART	8170	03	PATRICK	36 38	80 15W	1375	07	07		H
SUFFOLK LAKE KILBY	8192	01	SUFFOLK	36 44	76 36W	22	24	24		H
TROUT DALE 3 SSE	8547	06	GRAYSON	36 39	81 24W	2839	07	07		CH
TYE RIVER 1 SE	8600	03	NELSON	37 38	78 56W	720	07	07		H
VIENNA	8737	04	FAIRFAX	38 54	77 16W	418	07	07		H
WAKEFIELD 1NW	8800	01	SUSSEX	36 59	77 0W	113	24	24		CH
WALKERTON 2 NW	8829	01	KING AND QUEEN	37 45	77 2W	50	18	18		H
WALLACETON LK DRUMMOND	8837	01	CHESAPEAKE	36 36	76 26W	20	08	08		H
WARRENTON 3 SE	8888	04	FAUQUIER	38 41	77 46W	500	08	08		H
WARSAW 2 NW	8894	01	RICHMOND	37 59	76 47W	140	18	18		H
WASHGTN DULLES INTL AP R	8903	04	LOUDOUN	38 56	77 28W	290	24	24		HJ
WASHINGTON REAGAN AP R	8906	04	ARLINGTON	38 51	77 2W	10	24	24		HJ
WAYNESBORO WTP	8941	05	WAYNESBORO	38 5	78 53W	1270	07	07		H
WEST POINT 2 NW	9025	01	KING WILLIAM	37 34	76 48W	20	17	17		H
WILLIAMSBURG 2 N	9151	01	YORK	37 18	76 42W	70	24	24		CH
WILLIS	9169	06	FLOYD	36 55	80 30W	2810		07		CH
WINCHESTER	9181	04	FREDERICK	39 11	78 9W	720	07	07		H
WINCHESTER 7 SE	9186	04	FREDERICK	39 11	78 7W	680	08	08		H
WINTERPOCK 4 W	9213	02	CHESTERFIELD	37 19	77 39W	300		07		H
WISE 3E	9215	06	WISE	36 60	82 32W	2549	17	17		CH
WOODSTOCK 2 NE	9263	04	SHENANDOAH	38 54	78 28W	675	07	07		H
WOOLWINE	9272	03	PATRICK	36 47	80 17W	1500		07		CH
WYTHEVILLE 1 S	9301	06	WYTHE	36 56	81 6W	2450	07	07		CH

REFERENCE NOTES

STATION NAMES: Name of the city, town or locality. Figures and letters following the station names indicate the distance in miles and direction from the post office or town community center.

DIVISIONS: Areas within a state of similar climatological characteristics. Division averages are calculated using data from stations that record temperature and/or precipitation. Station Precipitation totals flagged with an 'F' or 'M' are excluded from the Divisional Average calculations of precipitation. Stations with monthly Temperature averages flagged with an 'F' or 'M' are included in the Divisional Average if there are no more than 9 flagged or missing daily values in the month, else they are excluded from the divisional average for temperature.

NORMALS: The average value of the meteorological element over a time period. Effective 1 January 2012, the averaging period is 1981 to 2010. The normals for National Weather Service localities have been adjusted so as to be representative for the current observation site.

MONTHLY DEGREE DAY TOTALS: One heating (cooling) degree day is accumulated for each whole degree that the daily mean temperature is below (above) 65 degrees Fahrenheit.

PRECIPITATION: Values shown in hundredths of inches are water equivalent totals, i.e., total of liquid and melted frozen precipitation. In the "Monthly Summarized Data" table the total snow and sleet values shown in tenths of inches are unmelted amounts. The max depth on ground values of snow and sleet shown in whole inches are cumulative unmelted amounts. The number of days with .10, .50, 1.00 or more refers to water equivalents.

PRECIPITATION QUALITY CONTROL: The NCDC quality control process may flag precipitation data that are spatially inconsistent, exceed climatological limits, or are inconsistent with prevailing weather patterns.

TEMPERATURE: Original temperature values are given in the "Daily Temperature" table. Summary temperature information (averages, departures, extremes, monthly degree day totals) is based on the values labeled MAX/MIN.

WIND: (As shown in the "Evaporation and Wind" table) the total wind movement in miles over the evaporation pan as determined by an anemometer recorder located 6-8 inches above the pan.

SYMBOLS AND LETTERS USED IN THE STATION INDEX TABLE

C Station is equipped with recording rain gage (R) but values in this bulletin are from a non-recording rain gage unless indicated by an R.

G Observations appear in the "Soil Temperatures" table.

H Observations appear in the "Snowfall and Snow on the Ground" table.

J Station also published as a Local Climatological Data publication.

VAR Observation time varies.

SR Observation time near sunrise.

SS Observation time near sunset.

SYMBOLS AND LETTERS USED IN THE DATA TABLES

(DAILY DATA ARE FOR THE 24 HOURS IMMEDIATELY PRECEDING OBSERVATION TIME.)

BLANK Entries in the "Monthly Summarized Data" table indicate no record.

BLANK Entries in the "Daily Precipitation" and "Snowfall and Snow on the Ground" tables indicate zero.

BLANK Entries in the "Daily Temperature" table indicate a missing record

- No record. Data not recorded or not received in time for publication.

+ Precipitation or temperature extremes occurred on one or more previous dates during the month.

* Rain gage not read. Precipitation is included in the amount following the asterisks.

Time distribution may not be known. A * preceding the monthly total indicates precipitation amount is being carried forward to next month's total, and may include amounts from the previous month(s).

a As a subscript, indicates accumulated total.

A Amount of precipitation is the total of observer's entries for the current month. It may include precipitation that occurred during the previous month. Refer to earlier bulletin to determine date of last reading. (Hawaii stations)

B Divisional Departure from normals are computed using 1971-2000 normals.

E Normalized HDD/CDD Calculation. E is appended to the HDD/CDD Calculation when 1-9 individual daily TMAX and/or TMIN values are missing and a Normalized HDD/CDD Calculation is provided. M appears alone if 10 or more daily values are missing.

F Monthly calculation flagged value. F is appended to average and/or total values computed which exclude one or more daily data values that have been flagged by the GHCN-Daily Dataset

M Insufficient or partial data. M is appended to average and/or total values computed with 1-9 daily values missing. M appears alone if 10 or more daily values are missing, (8 or more for wind and evaporation).

N Indicates snow fall or Snowdepth totals are computed with one or more missing days.

R Amounts from recording rain gage.

T Trace. An amount too small to measure.

SEASONAL TABLES: Monthly and seasonal snowfall and heating degree days for the 12 months ending with the June data are published in the July issue of this bulletin. Cooling degree days for the calendar year are published in the "Climatological Data Annual Summary."

Information concerning the history of changes in locations, exposure, etc. of substations is kept on file at the National Climatic Data Center. Historical information of regular National Weather Service Offices may be obtained from the "Local Climatological Data" annual publication. The contents of this publication may be reprinted or otherwise used freely, with proper credit to the National Climatic Data Center. The data are also available digitally.

Effective with the January 2011 Data-Month, COOP Observer Names are no longer included in the Monthly and Annual Climatological Data Publications. This information is not published to ensure the privacy of personal information pursuant to Section 208 of the E-Government Act of 2002 (44 USC 3601).

As of the 2011 Data-Year, Station and Climate Division Maps are no longer being included in the CD Publications. NCDC's Product Development Branch provides updated Station Maps for various data networks via the Historical Observing Metadata Repository: <http://www.ncdc.noaa.gov/homr>.

The GHCN-Daily Quality Control Flags shown below are displayed as superscripts with the data. For more Information on Global Historical Climatology Network - Daily and flags, see: <http://www.ncdc.noaa.gov/oa/climate/ghcn-daily/> and Comprehensive Automated Quality Assurance of Daily Surface Observations. Durre, Imke, Matthew J. Menne, Byron E. Gleason, Tamara G. Houston, Russell S. Vose, 2010: J. Appl. Meteor. Climatol., 49, 1615-1633. doi: 10.1175/2010JAMC2375.1

Blank = Passed All checks

D = failed duplicate check

G = failed gap check

I = failed internal consistency check

K = failed streak/frequent-value check

L = failed check on length of multiday period

M = failed megaconsistency check

N = failed naught check

O = failed climatological outlier check

R = failed lagged range check

S = failed spatial consistency check

T = failed temporal consistency check

W = temperature too warm for snow

X = failed bounds check

These and other publications are available from the National Climatic Data Center

Hourly Precipitation Data

This publication contains hourly precipitation amounts obtained from recording rain gages located at National Weather Service, Federal Aviation Administration, and cooperative observer stations. Published data are displayed in inches and tenths or inches and hundredths at local standard time. HPD includes maximum precipitation for nine (9) time periods from 15 minutes to 24 hours, for selected stations.

Climatological Data

Monthly editions contain station daily maximum and minimum temperatures and precipitation. Some Stations provide daily snowfall, snow depth, evaporation, and soil temperature data. Each edition also contains monthly summaries for heating and cooling degree days (65 degree F base). The July issue contains a recap of monthly heating degree days and snow data for the preceding July through June.

The Annual issue contains monthly and annual averages of temperature, precipitation, temperature extremes, freeze data, soil temperatures, evaporation, and a recap of monthly cooling degree days.

Storm Data

Monthly issues contain a chronological listing, by states, of occurrences of storms and unusual weather phenomena. Reports contain information on storm paths, deaths, injuries, and property damage. An "Outstanding storms of the month" section highlights severe weather events with photographs, illustrations, and narratives. The December issue includes annual tornado, lightning, flash flood, and tropical cyclone summaries.

Monthly Climatic Data for the World

This publication contains monthly means for temperature, pressure, precipitation, vapor pressure, and sunshine for approximately 2,000 surface data collection stations worldwide and monthly mean upper air temperatures, dew point depressions, and wind velocities for approximately 500 observing sites.

Local Climatological Data

LCD publications summarize temperature, relative humidity, precipitation, cloudiness, wind speed and direction observations for several hundred cities in the U.S. and its territories. Each monthly publication also contains 3 hourly weather observations for that month and a hourly summary of precipitation. Annual LCD publications contain a summary of the past calendar year as well as historical averages and extremes.

For Information Call:

(828) 271-4800 Option 2

(828) 271-4010 (TDD)

(828) 271-4876 (Fax)

NOAA\National Climatic Data Center
Attn: User Engagement & Services Branch
151 Patton Avenue
Asheville, NC 28801-5001

Customer Services Number: (828) 271-4800, option 2
TDD : (828) 271-4010
Fax number: (828) 271-4876

NCDC now offers free online access to the *Climatological Data* publication.
Go to : www.ncdc.noaa.gov and choose Most Popular.