



CLIMATOLOGICAL DATA

VIRGINIA

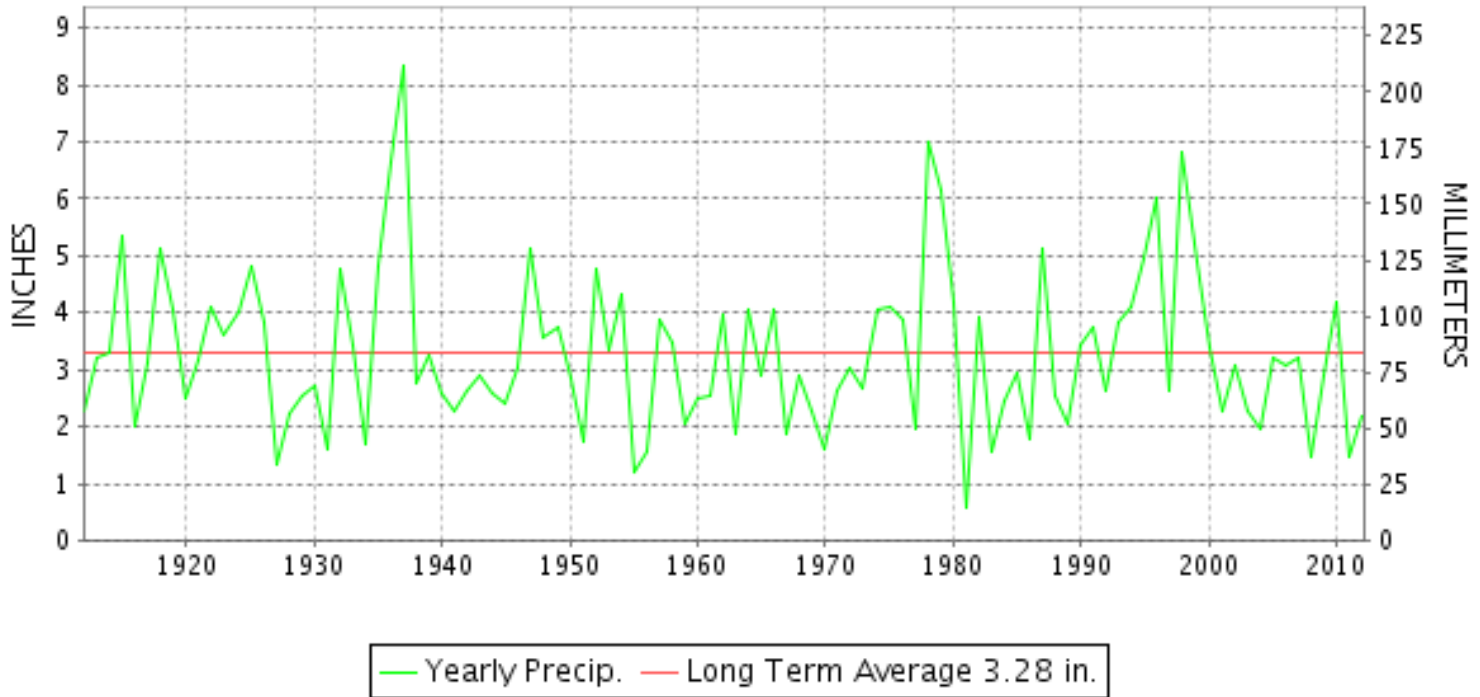
JANUARY 2012

VOLUME 122 NUMBER 01

ISSN 0364-5630

GHCND Ver: 2.93-upd-2012081707

JANUARY PRECIPITATION BY YEAR



TEMPERATURE AND PRECIPITATION EXTREMES

VIRGINIA

HIGHEST TEMPERATURE	74	JANUARY 31	WALKERTON 2 NW
LOWEST TEMPERATURE	3	JANUARY 02	BIG STONE GAP
GREATEST TOTAL PRECIPITATION	5.68		ABINGDON 3S
LEAST TOTAL PRECIPITATION	0.92		WARSAW 2 NW
GREATEST 1 DAY PRECIPITATION	2.00	JANUARY 12	MONTEBELLO FISH CULTURAL STN
GREATEST TOTAL SNOWFALL	10.3		RICHLANDS
GREATEST DEPTH OF SNOW OR ICE	6		RICHLANDS

"I certify that this is an official publication of the National Oceanic and Atmospheric Administration (NOAA) It is compiled using information from weather observing sites supervised by NOAA/National Weather Service and received at the National Climatic Data Center(NCDC), Asheville, North Carolina 28801."

Director
National Climatic Data Center

noaa

National
Oceanic and
Atmospheric Administration

National
Environmental Satellite, Data
and Information Service

National
Climatic Data Center
Asheville, North Carolina

VIRGINIA
201201

MONTHLY STATION AND DIVISION SUMMARY

STATION	TEMPERATURE (°F)											PRECIPITATION (IN)												
	AVERAGE MAXIMUM	AVERAGE MINIMUM	AVERAGE	DEPARTURE FROM NORMAL	HIGHEST	DATE	LOWEST	DATE	HEATING DEG. DAYS	COOLING DEG. DAYS	NO. OF DAYS				TOTAL	DEPARTURE FROM NORMAL	GREATEST 24 HOURS	DATE	ICE PELLETS, SNOW			NO. OF DAYS		
											MAX		MIN						TOTAL	MAX DEPTH ON GROUND	DATE	.10 OR MORE	.50 OR MORE	1.00 OR MORE
											>=90	<=32	<=32	<=0										
LINCOLN	44.5M	23.9M	34.2M	2.9	66	08	11	04	947E	0	0	5	27	0	M 2.27	2.27	1.73	12	M 1.0	0		2	2	1
LURAY 5 E	47.8	24.6	36.2	3.3	65	27	11	04	885	0	0	1	28	0	1.73	-0.95	1.01	12	0.5	0		4	1	1
MADISON	50.0M	31.8M	40.9M	7.6	67	28+	22	04	740E	0	0	0	15	0	M				M T	M T	03			
MANASSAS	48.3M	27.5M	37.9M	4.4	66	28+	13	04	831E	0	0	4	24	0	A 2.45	2.45	0.35	27	M	1	10	2	0	0
MT WEATHER	43.0M	25.6M	34.3M	3.6	60	08+	9	04	943E	0	0	6	25	0	FA 0.50	-2.38	0.16	27	M	1	23	2	0	0
PIEDMONT RSCH STN	47.8	26.7	37.3	3.0	66	08	13	04	853	0	0	3	27	0	FA 1.68	-1.08	1.10	12	1.3	T	23	3	1	1
SOMERSET	48.5	25.6	37.1	3.6	67	28+	13	04	859	0	0	3	28	0	2.19	-0.70	1.13	12	M	M T	23	5	1	1
SPERRYVILLE	46.3	24.9	35.6	2.5	66	07	12	05	902	0	0	3	28	0	2.14	-0.93	1.25	12	M	M 1	23	5	1	1
STAR TANNERY	M	M	M												M				M	0				
STERLING RCS	46.2	25.4	35.8	3.8	65	08	12	05+	898	0	0	5	28	0	2.05	-0.80	1.10	12	2.0	1	23	6	1	1
VIENNA	45.2	27.2	36.2	3.6	63	07	13	05+	885	0	0	6	25	0	2.79	-0.34	0.57	11	M	1	23	9	1	0
WARRENTON 3 SE	M	M	M												M									
WASHGTN DULLES INTL AP	47.8	27.7	37.8	4.6	66	31	14	04	835	0	0	3	24	0	1.85	-0.83	0.59	11	1.7	1	23	5	1	0
WASHINGTON REAGAN AP	49.3	32.2	40.8	4.8	68	07	17	04	746	0	0	1	16	0	2.19	-0.62	0.63	27	1.7	1	23	6	2	0
WINCHESTER	44.9	25.5	35.2	3.4	64	08+	8	04	916	0	0	3	26	0	1.74	-0.82	0.78	12	M	1	05	5	1	0
WINCHESTER 7 SE	45.0	22.8	33.9	3.0	63	08+	8	05+	954	0	0	4	30	0	1.41	-0.78	0.75	12	1.0	1	21	4	1	0
WOODSTOCK 2 NE	44.9	23.4	34.2	3.7	65	07	12	05+	945	0	0	5	29	0	1.48	-1.19	0.91	12	M	M T	22	3	1	0
--DIVISIONAL DATA-----> CENTRAL MOUNTAIN 05			36.3	4.5B											1.79	-1.38B								
BUCHANAN	48.4	29.6	39.0	3.6	62	08+	21	04	799	0	0	1	22	0	2.28	-0.62	1.10	12	0.0	0		7	1	1
BUENA VISTA	M	M	M												2.56		1.17	12	0.0	0		7	2	1
COVINGTON FLTR PLT	48.3	25.9	37.1	3.6	65	07	15	17+	856	0	0	1	26	0	2.18	-0.32	0.65	13	M	0		7	1	0
CRAIGSVILLE 2 S	M	M	M												M				M	1	21			
DALE ENTERPRISE	45.2	25.0	35.1	4.7	62	27+	15	19+	917	0	0	2	29	0	2.20	-0.09	1.10	12	M 1.0	1	21	7	1	1
GATHRIGHT DAM	43.8	24.0	33.9	2.5	58	27+	14	19	956	0	0	6	29	0	3.10	0.32	0.82	21	1.0	1	14	9	1	0
GLASGOW 1 SE	49.7	28.3	39.0		66	07	19	04	799	0	0	1	25	0	2.63		1.37	12	0.5	T	03	6	1	1
HOT SPRINGS	42.8M	23.7M	33.3M	3.3	59	27	11	04	974E	0	0	5	25	0	3.49	0.03	0.65	21	0.1	1	10	10	3	0
KERRS CREEK 6 WNW	M	M	M												2.50		0.78	12	T	0		7	2	0
LEXINGTON	49.4M	25.0M	37.2M	3.2	66	07	14	17+	853E	0	0	0	22	0	M 2.35	-0.44	1.00	12	M 0.0	0		7	1	1
MILLGAP	41.7	18.3	30.0	2.3	59	07	6	05+	1076	0	0	6	29	0	2.58	-0.67	0.62	12	5.3	2	21	9	1	0
MTN GROVE	45.7	M	M												3.10		1.00	14	T	T	14	6	3	1
MUSTOE 1 SW	42.8	20.9	31.9	3.8	62	31	5	04	1020	0	0	5	30	0	3.29	-0.09	0.69	11	5.2	3	30	10	1	0
ROANOKE 8 N	49.6M	28.3M	39.0M	3.7	65	07	17	04	796E	0	0	1	22	0	1.57	-1.45	0.66	12	M	0		5	1	0
ROANOKE INTL AP	51.2	31.6	41.4	4.8	68	31	20	19+	723	0	0	1	16	0	1.69	-1.23	0.68	11	0.4	T	02	5	1	0
STAUNTON WATER TRMTMT PLT	45.4	26.8	36.1	3.5	62	07	13	04	889	0	0	1	25	0	2.05	-0.62	1.15	12	M	0		4	2	1
WAYNESBORO WTP	47.3	25.7	36.5	3.7	63	07	12	04	877	0	0	1	28	0	1.86	-0.93	1.14	12	0.0	0		4	1	1
--DIVISIONAL DATA-----> SOUTHWESTERN MOUNTAIN 06			36.1	3.8B											2.47	-0.69B								

VIRGINIA
201201

MONTHLY STATION AND DIVISION SUMMARY

STATION	TEMPERATURE (°F)											PRECIPITATION (IN)												
	AVERAGE MAXIMUM	AVERAGE MINIMUM	AVERAGE	DEPARTURE FROM NORMAL	HIGHEST	DATE	LOWEST	DATE	HEATING DEG. DAYS	COOLING DEG. DAYS	NO. OF DAYS				TOTAL	DEPARTURE FROM NORMAL	GREATEST 24 HOURS	DATE	ICE PELLETS, SNOW			NO. OF DAYS		
											MAX		MIN						TOTAL	MAX DEPTH ON GROUND	DATE	.10 OR MORE	.50 OR MORE	1.00 OR MORE
											>=90	<=32	<=32	<=0										
ABINGDON 3S	49.2	28.7	39.0	5.9	65	25	11	04	799	0	0	3	21	0	5.68	2.01	1.95	11	1.3	1	14	9	5	1
BIG STONE GAP	47.7	24.5F	36.1F	2.1	60	24	3	02	872	0	0	3	25	0	4.40	0.21	0.80	27	M			10	4	0
BLACKSBURG NWSO	44.7	24.2	34.5	3.0	60	27	13	20+	938	0	0	4	29	0	2.08	-1.00	0.50	12	1.7	1	16	6	1	0
BLAND	M	M	M												M									
BURKES GARDEN	41.7	22.9	32.3	3.4	60	27	7	04	1007	0	0	7	26	0	3.31	-0.64	0.74	12	6.2	4	17	10	1	0
CHRISTIANSBURG	44.8	26.7	35.8	3.0	59	27+	14	04	897	0	0	4	26	0	2.27	-0.49	0.73	21	1.3	1	16	7	1	0
CLINTWOOD 1 W	46.8	23.9	35.4	4.3	62	27	8	05+	912	0	0	5	27	0	2.63	-0.98	0.60	21	10.1	3	15	10	1	0
COPPER HILL	43.6	25.5	34.6		57	27	11	04	936	0	0	6	26	0	2.81		0.63	12	2.5	2	15	9	1	0
GALAX RADIO WBRF	45.6	25.8	35.7	4.0	61	07	11	04	900	0	0	3	26	0	1.41	-1.95	0.42	18	0.7	1	05	5	0	0
GALAX WTP	45.2	24.6	34.9	3.9	59	07	12	05+	925	0	0	3	28	0	2.85	2.85	0.67	12	2.0	1	15	9	1	0
GRUNDY	48.5	25.9	37.2	4.3	64	27	10	05+	854	0	0	4	25	0	2.49	-0.70	0.71	21	5.1	3	15	8	1	0
JOHN FLANNAGAN LAKE	M	M	M												M				M	1	03			
LAFAYETTE 1 NE	M	M	M												1.78		0.51	12	0.8	T	15	6	1	0
LEBANON	47.8	25.0	36.4	3.4	66	27	11	05+	877	0	0	5	27	0	1.93	-1.11	0.62	21	M 2.2	1	15	6	1	0
NORA 4 SSE	43.0	26.7	34.9	4.8	60	26	10	04	927	0	0	7	24	0	2.40	-1.21	0.47	12	10.2	5	07	9	0	0
NORTH FORK LAKE	M	M	M												MA 3.40		0.39	27	M	2	03	6	0	0
PULASKI 2 E	47.0M	26.4M	36.7M	3.7	63	26	14	05+	868E	0	0	3	23	0	2.56	-0.29	0.70	12	0.7	1	16	7	2	0
RADFORD 3 N	46.8	25.4	36.1	5.8	62	27	13	19	892	0	0	3	27	0	2.35	-0.58	0.65	21	0.8	T	16	6	1	0
RICHLANDS	46.9	24.1	35.5	3.5	66	26	4	05+	906	0	0	5	28	0	2.62	-0.43	0.52	27	10.3	6	14	11	1	0
SALTVILLE 1N	47.1	25.0	36.1	3.2	66	26	9	05	890	0	0	3	25	0	3.39	-0.21	0.74	12	M	M 1	15	9	1	0
STAFFORDSVILLE 3 ENE	45.9	24.5	35.2	3.6	64	27	12	05+	915	0	0	5	27	0	2.11	-0.79	0.52	12	M	M 1	15	6	1	0
TROUT DALE 3 SSE	45.1	23.7	34.4		60	27	4	05+	941	0	0	4	25	0	4.58		1.11	12	8.0	2	16	9	2	1
WILLIS	M	M	M												2.90		0.49	12	4.0	4	15	10	0	0
WISE 3E	47.6	30.1	38.9	5.8	62	25	8	03	801	0	0	2	20	0	2.64	-1.24	0.55	21	M	M 3	18	9	1	0
WYTHEVILLE 1 S	46.4	24.6	35.5	4.8	65	27	12	04	906	0	0	4	26	0	3.40	0.50	0.86	12	4.0	2	15	7	3	0
--DIVISIONAL DATA----->			35.8	3.8B											2.87	-0.67B								

VIRGINIA
201201

DAILY PRECIPITATION (INCHES)

STATION	TOTAL	DAY OF MONTH																																
		01	02	03	04	05	06	07	08	09	10	11	12	13	14	15	16	17	18	19	20	21	22	23	24	25	26	27	28	29	30	31		
VIRGINIA																																		
TIDEWATER 01																																		
DISPUTANTA	1.70		0.01								0.04		0.62				0.02	0.01				0.18	0.29		0.02						0.51			
EASTVILLE	2.12										0.17		0.66				0.01	0.02				0.20	0.42	0.04	0.05						0.55			
EMPORIA 1 WNW	1.86									T	0.07		1.06									0.13	0.32	T	T									
FREDERICKSBURG SEWAGE	1.95										0.18		1.07	0.04								0.08	0.40	T	0.07		0.01							
HAMPTON UNIV	M 1.80										0.10		0.64									0.14	0.30	0.02		-	-			0.52				
HOLLAND 1 E	FA 1.93										0.02	0.08	0.75	0.01		0.00 ^L	0.00 ^L	0.00 ^L	0.01	0.09		0.35	0.26	0.28	0.05					0.04				
HOPEWELL	1.88										0.05	0.04	0.06	0.53								0.73										0.46		
NORFOLK INTL AP	1.80	T	T	T					T		0.13		0.60	0.01			T	0.01	0.03		0.06	0.49	0.01	T	0.03						0.43			
NORFOLK SOUTH	1.93										0.13		0.60	0.01			T				0.08	0.56	T	0.01	0.02						0.49			
NORTH	1.74											0.13		0.79									0.27	0.43	0.03	0.03								
PAINTER 2W	2.62										0.13	0.18		0.70								0.78	0.02	0.01	0.02						0.67			
STONY CREEK 2 N	FA 0.42										0.00 ^L	0.00 ^L	0.73 ^L	0.64 ^L								0.00 ^L	0.00 ^L	0.64 ^L	0.00 ^L	0.00 ^L	0.02 ^L	0.37	0.00 ^L	0.00 ^L	0.06 ^L	0.05		
SUFFOLK LAKE KILBY	2.17										0.15		0.82	T								0.12	0.06	0.01	0.02	0.03					0.56			
WAKEFIELD 1NW	1.86	0.01									0.08	T	0.71	0.05							0.01	0.01	T		T						0.55			
WALKERTON 2 NW	1.68										0.28		0.20	0.48								0.52		0.04							0.16			
WALLACETON LK DRUMMOND	M	-	-	-	-	-	-	-	-	-	-	-	-	-	-	-	-	-	-	-	-	-	-	-	-	-	-	-	-	-	-	-	-	
WARSAW 2 NW	0.92										0.14	0.05	0.09									0.39		0.01							0.04			
WEST POINT 2 NW	FA 0.39				T	T					0.19 ^L	0.01 ^L	0.20 ^L	0.40 ^L				T	0.01		0.00 ^L	0.70 ^L	0.01 ^L	0.04 ^L	0.01 ^L					0.38				
WILLIAMSBURG 2 N	2.29										0.07		0.76								0.05	0.02	0.05								0.65			
EASTERN PIEDMONT 02																																		
ALBERTA 5N	M 1.69										0.01	0.05		0.95	T								0.17	0.26	0.02	T				0.14	0.09			
AMELIA COURTHOUSE 1	MA 1.79		0.01								-	0.09	0.89								-	0.59	*	0.03 ^a	0.04					0.10		*	0.00 ^a	
ASHLAND	2.06	T				T					0.25		0.23	0.86								0.65	0.01	0.04						0.02				
BREMO BLUFF	M 2.05	0.03									0.16	0.03	0.87	-	-						-	0.16	0.67		-	-				0.08				
BUCKINGHAM	1.70										0.10		0.82										0.25	0.32	0.02	0.11				0.01	0.02			
CAMP PICKETT	M 1.52	-	-								-		0.97									-	0.17	0.19		0.02				-	0.13			
CHASE CITY	1.12										0.05	0.06	0.03	0.44									0.31								0.20			
CLARKSVILLE	1.30											0.20		0.45											0.40						0.20			
CORBIN	2.36	0.08									0.16		1.36									0.18		0.45	0.08					0.05				
CROZIER	FA 0.50										0.00 ^L	0.00 ^L	0.00 ^L	0.00 ^L	1.21 ^L								0.35		0.05	0.10								
FARMVILLE 2 N	M 1.30	-									-	0.08		0.75								-	0.38	-	T	0.06				T	-	-		
GREENBAY 3 NE	M 1.61		0.04	-							T	0.02	T	0.87									0.47	0.06	0.01	0.03	T	T		0.08				
JOHN H KERR DAM	M 1.27		0.04								0.06		0.56										0.16	0.22						0.21				
KEYSVILLE 2 S	2.64		0.10									0.01	T	1.07							0.06		T	0.20		0.10				0.10				
LOUISA	1.89	0.10									0.19		0.26	0.86									0.42											
PALMYRA 3S	M	-	-	-	-	-	-	-	-	-	-	-	-	-	-	-	-	-	-	-	-	-	-	-	-	-	-	-	-	-	-	-	-	
PETERSBURG	2.53		0.59									0.05		0.70									0.36	0.28						0.05	0.40			
POWHATAN	M	-	-	-	-	-	-	-	-	-	-	-	-	-	-	-	-	-	-	-	-	-	-	-	-	-	-	-	-	-	-	-	-	
RICHMOND INTL AP	1.73	T									0.19		0.68	0.02	T								0.37	T	0.02					0.35				
SANDSTON	1.79											0.23		0.66									0.45	0.08	0.03	0.03				0.20	0.08			

VIRGINIA
201201

DAILY PRECIPITATION (INCHES)

STATION	TOTAL	DAY OF MONTH																														
		01	02	03	04	05	06	07	08	09	10	11	12	13	14	15	16	17	18	19	20	21	22	23	24	25	26	27	28	29	30	31
WINTERPOCK 4 W	M	-	-	-	-	-	-	-	-	-	-	-	-	-	-	-	-	-	-	-	-	-	-	-	-	-	-	-	-	-	-	-
WESTERN PIEDMONT 03																																
ALTAVISTA	1.96									0.01		1.27	0.02	0.01			0.01					0.36	0.11	0.02	0.13				0.01	0.01		
APPOMATTOX	M 2.00	-	-	-					T	0.05		1.23					T	0.02				0.24	0.36	T	0.10			T				
BEDFORD 4 NW	2.43		0.01							0.14		1.17	0.06				0.04	0.03				0.47	0.12	0.04	0.15				0.20			
BROOKNEAL	2.07		0.12							0.03	0.03	1.25	0.05			0.02	0.01	0.03				0.42	0.01	0.05	0.05							
CHARLOTTESVILLE 2W	2.67		0.01	T	T						0.12	1.44	0.06				0.01	0.02				0.50	0.01	0.06	0.12				0.32			
CHATHAM	2.35		0.03						0.03	0.10		1.44				0.01		0.06				0.30	0.32		0.06							
CONCORD 4 SSW	2.06		0.02							0.06		1.21	0.01				T	0.04				0.31	0.28	0.04	0.09							
DANVILLE	1.97	T	0.04							0.01	0.05	1.10						0.16				0.15	0.20		0.23			0.01	0.02			
DANVILLE REGIONAL AP	1.99	0.04						0.02	0.10		1.23					T	0.18	0.03		0.14	0.22		0.03				T					
FREE UNION	FA 2.26		T		T						0.11	1.26	0.11				T	0.02				0.61	T	0.07	0.08			0.71 ^L	0.00 ^L	0.00 ^L		
HOLCOMB ROCK	3.15		0.02							0.09		1.51	0.21				0.03	0.13				0.32	0.19	0.07	0.22			0.34	0.02			
HUDDLESTON 4 SW	1.93		0.01							0.03		1.17	0.02				0.01	0.02				0.53			0.13			0.01				
LYNCHBURG #2	2.17			T						0.09	T	1.29	0.07					0.05				0.36	0.12	0.06	0.13			T				
LYNCHBURG INTL AP	2.22	0.01							0.08		1.32	0.05	0.01			T	0.03			0.22	0.34	T	0.15			T	0.01					
MARTINSVILLE FLTR PLT	2.49								0.10	0.07	0.01	1.15	T			0.09	0.14	0.14				0.35	0.30	0.02	0.10			0.02				
MEADOWS OF DAN 5 SW	3.44			T					0.05	0.15	0.08	0.78	0.14			0.05		0.52				0.33	0.38	0.10	0.16			0.70				
MONTEBELLO FISH CULTURAL STN	M 3.78	-				-	-					2.00	0.35									0.35	0.10	0.03	0.19			0.76				
MONTICELLO	2.19	0.04								0.10		1.15	T					T				0.47	0.15	0.02	0.08	T		0.10	0.08			
PEDLAR DAM	3.23		T	T						0.08		1.22	0.21				T	0.08				0.37	0.15	T	0.14			0.98				
ROCKY MT	2.24	0.01		T					0.02	0.08	0.02	1.07	0.09	0.02	0.05		0.02	0.05				0.40		0.03	0.13			0.25	T			
SOUTH BOSTON	1.35		0.03							0.03	0.11	0.52						0.08				0.20	0.22	0.01	0.03			0.08	0.04			
STUART	3.01			T					0.04	0.13	0.02	1.12						0.30				0.37	0.27	0.20	0.15			0.41				
TYE RIVER 1 SE	2.22									0.15		1.35										0.45	0.05	0.22			T					
WOOLWINE	3.56			T	T				T	0.03	0.17	T	1.50	0.09	0.09			0.41				0.35	0.21	0.06	0.21			0.41	0.03			
NORTHERN 04																																
BOSTON 4 SE	FA 1.62										0.13	1.03					0.08				0.00 ^L	0.21 ^L						0.38				
CASTLETON	M	-	-	-	-	-	-	-	-	-	-	-	-	-	-	-	-	-	-	-	-	-	-	-	-	-	-	-	-	-	-	
EDINBURG	1.37				T					0.08		0.83	0.12				0.01					0.10					0.01	0.22				
FRONT ROYAL	1.51		0.06		0.02					0.05		0.91	0.21				0.02					0.03	T				0.01	0.03	0.17			
LINCOLN	M 2.27			-		-					T	1.73										0.01				0.53						
LURAY 5 E	1.73		0.04	0.01				0.05		0.12		1.01	0.16				0.06					0.05			0.01		0.02	0.20				
MADISON	M			T	T	-	-	-												0.00 ^L	0.00 ^L	0.00 ^L	0.00 ^L	0.00 ^L	0.00 ^L	0.00 ^L	0.00 ^L	0.00 ^L	0.00 ^L	0.00 ^L	0.00 ^L	
MANASSAS	A 2.45										*	* 1.55 ^a					0.20					*	*	*	0.35 ^a			0.35				
MT WEATHER	FA 0.50				T						0.00 ^L	1.15 ^L					0.13	0.05		*		0.13 ^a	T ^L	0.08 ^L			0.16			0.03		
PIEDMONT RSCH STN	FA 1.68			T						0.15		1.10						0.01				0.00 ^L	0.00 ^L	0.52 ^a	0.06			0.36				
SOMERSET	2.19		T	T						0.16		1.13	0.13				0.01	0.04				0.42	T	0.04	0.04			0.22				
SPERRYVILLE	2.14		0.03		0.01					0.12		1.25	0.13					0.10				0.20		0.09	0.04			0.04	0.08			
STAR TANNERY	M			-	-	-	-	-	-	-	-	-	-	-	-	-	-	-	-	-	-	-	-	-	-	-	-	0.04				
STERLING RCS	2.05		0.05		T					0.04		1.10	0.12					0.05	0.13				0.18	0.14	0.02	0.03		T	0.18	0.01		T
VIENNA	2.79		0.05						0.01	0.11	0.57	0.35	0.35				0.08	0.16				0.30		0.01	0.34		0.01	0.24	0.21			

VIRGINIA
201201

DAILY PRECIPITATION (INCHES)

STATION	TOTAL	DAY OF MONTH																																	
		01	02	03	04	05	06	07	08	09	10	11	12	13	14	15	16	17	18	19	20	21	22	23	24	25	26	27	28	29	30	31			
WARRENTON 3 SE	M	-	-	-	-	-	-	-	-	-	-	-	-	-	-	-	0.83	-	-	-	-	0.12	T	0.12	-	-	0.32	0.70	-	-	-	-	-		
WASHGTN DULLES INTL AP	1.85	0.04	-	T	-	-	-	-	0.09	-	0.59	0.46	0.04	-	-	0.02	0.14	-	-	0.09	0.15	T	0.03	0.11	-	0.01	0.19	-	-	T	-	-			
WASHINGTON REAGAN AP	2.19	T	-	T	-	-	-	-	0.16	-	0.51	0.24	0.05	-	-	0.03	0.26	-	-	0.05	0.23	T	0.03	0.03	-	T	0.63	-	-	-	-	-			
WINCHESTER	1.74	-	-	T	0.09	-	-	-	-	-	-	0.78	0.20	-	-	-	0.01	0.11	-	-	-	0.22	T	T	T	-	-	0.33	-	-	T	-			
WINCHESTER 7 SE	1.41	-	-	0.01	-	-	-	-	-	-	-	0.75	0.22	-	-	-	0.01	-	-	-	-	0.17	-	-	-	-	0.24	-	-	0.01	-	-			
WOODSTOCK 2 NE	1.48	-	0.08	-	T	-	-	-	-	-	T	0.91	-	-	-	-	0.14	0.01	-	-	-	0.06	-	-	-	-	0.28	-	-	-	-	-			
CENTRAL MOUNTAIN 05																																			
BUCHANAN	2.28	-	-	-	-	-	-	-	-	-	0.15	T	1.10	T	-	-	0.12	0.16	-	-	-	0.41	-	T	0.12	-	-	0.22	-	-	-	-	-		
BUENA VISTA	2.56	-	-	-	-	-	-	-	-	-	0.11	-	1.17	0.16	-	-	-	0.17	-	-	-	0.62	-	T	0.14	-	-	0.19	-	-	-	-	-		
COVINGTON FLTR PLT	2.18	-	0.01	-	-	-	-	-	-	-	0.10	-	0.33	0.65	0.05	-	-	0.03	0.20	-	-	0.49	0.06	0.02	0.11	-	-	0.13	-	-	-	-	-		
CRAIGSVILLE 2 S	M	-	-	-	-	-	-	-	-	-	0.29	-	0.97	-	-	-	-	0.23	0.27	-	-	0.68	-	0.07	0.20	-	-	0.25	-	-	-	-	-		
DALE ENTERPRISE	2.20	-	-	T	-	-	-	-	-	-	0.20	0.10	1.10	0.20	-	-	-	-	-	0.20	-	0.07	0.03	-	0.10	-	-	0.20	-	-	-	-	-		
GATHRIGHT DAM	3.10	T	0.12	0.08	-	-	-	-	T	T	0.21	-	0.42	0.40	T	-	0.14	0.38	-	-	0.82	0.03	T	0.19	-	-	0.31	-	-	-	-	-	-		
GLASGOW 1 SE	2.63	-	0.02	0.02	T	-	-	-	-	-	0.11	-	1.37	0.10	-	T	0.09	-	-	-	0.29	0.06	0.02	0.13	-	-	0.42	-	-	-	-	-	-		
HOT SPRINGS	3.49	-	0.04	0.10	-	-	-	-	-	-	0.40	-	0.57	0.61	-	-	0.13	0.19	-	-	0.65	0.15	-	0.20	-	-	0.45	-	-	-	-	-	-		
KERRS CREEK 6 WNW	2.50	-	0.02	-	-	-	-	-	-	-	0.08	-	0.78	0.25	-	-	0.02	0.17	-	-	0.68	-	0.15	0.17	-	-	0.18	-	-	-	-	-	-		
LEXINGTON	M 2.35	-	-	-	-	-	-	-	-	-	0.10	-	1.00	0.16	-	-	0.03	0.16	-	-	0.46	0.05	-	0.16	-	-	0.23	-	-	-	-	-	-		
MILLGAP	2.58	-	0.11	0.05	0.01	-	-	-	-	T	T	0.23	-	0.62	0.33	T	-	0.10	0.33	-	-	0.32	-	0.05	0.18	-	T	0.25	-	-	-	-	-		
MTN GROVE	3.10	-	-	T	-	-	-	-	-	-	0.01	T	0.65	0.12	1.00	-	-	-	T	-	0.70	-	0.32	T	-	T	0.30	-	T	-	-	-	-		
MUSTOE 1 SW	3.29	0.10	0.01	0.10	-	-	-	-	T	-	0.29	-	0.69	0.46	0.04	0.02	-	0.09	0.45	T	-	0.16	0.26	0.22	0.16	0.08	0.32	-	-	-	-	T	-		
ROANOKE 8 N	1.57	-	-	T	-	-	-	-	-	-	0.03	0.10	0.66	0.08	-	-	T	0.04	-	-	0.30	0.08	0.01	0.16	-	-	0.11	-	-	-	-	-	-		
ROANOKE INTL AP	1.69	0.01	0.01	T	-	-	-	-	-	-	0.11	-	0.68	0.08	T	T	0.01	0.05	-	-	0.29	T	0.15	0.16	-	0.02	0.09	-	-	-	-	-	-		
STAUNTON WATER TRMTMT PLT	2.05	-	-	-	-	-	-	-	-	-	0.03	-	1.15	-	-	-	-	-	T	-	0.52	-	T	0.20	-	-	0.15	-	-	-	-	-	-	-	
WAYNESBORO WTP	1.86	-	-	-	-	-	-	-	-	-	0.04	-	1.14	0.15	-	-	-	-	-	-	0.27	-	-	0.24	-	-	0.02	-	-	-	-	-	-	-	
SOUTHWESTERN MOUNTAIN 06																																			
ABINGDON 3S	5.68	0.14	0.02	0.01	-	-	-	-	0.02	0.05	0.28	-	1.95	0.52	0.04	0.06	0.02	0.01	0.58	-	0.16	0.90	-	0.32	-	0.07	0.55	-	-	-	-	-	-	-	
BIG STONE GAP	4.40	-	0.25	0.08	-	-	-	-	0.02	0.05	0.25	0.05	0.15	0.61	0.20	-	-	0.05	0.56	-	-	0.70	0.07	0.22	0.34	-	-	0.80	-	-	-	-	-	-	
BLACKSBURG NWSO	2.08	-	0.06	0.06	T	T	-	-	-	T	T	0.09	0.06	0.50	0.26	T	0.03	T	T	0.11	T	-	0.33	0.22	T	0.28	0.07	0.01	T	-	-	-	-	-	
BLAND	M	-	-	-	-	-	-	-	-	-	-	-	-	-	-	-	-	-	-	-	-	-	-	-	-	-	-	-	-	-	-	-	-	-	-
BURKES GARDEN	3.31	-	0.06	0.11	0.04	-	-	-	-	0.04	-	0.20	0.20	0.74	0.06	0.02	0.15	-	-	0.06	-	0.44	0.35	0.02	0.24	-	-	0.44	0.14	-	-	-	-	-	
CHRISTIANSBURG	2.27	-	0.04	0.06	-	-	-	-	0.02	-	0.11	0.21	0.43	0.17	-	0.06	-	-	0.09	-	-	0.73	0.14	0.03	0.03	-	-	0.15	-	-	-	-	-	-	
CLINTWOOD 1 W	2.63	-	0.10	0.16	T	-	-	-	0.02	0.02	0.11	0.10	0.32	0.06	0.02	0.14	T	T	0.23	T	-	0.60	0.03	0.20	0.01	-	0.48	T	0.03	-	-	-	-	-	
COPPER HILL	2.81	-	-	0.06	T	-	-	-	-	0.05	0.14	-	0.63	0.19	-	0.18	-	-	0.18	-	-	0.41	0.40	0.02	0.11	-	0.44	-	-	-	-	-	-	-	
GALAX RADIO WBRF	1.41	-	0.01	0.01	0.01	-	-	-	-	0.18	-	0.25	-	0.12	-	-	0.04	0.01	0.42	-	0.02	-	-	0.11	-	-	0.34	-	-	-	-	-	-	-	-
GALAX WTP	2.85	-	-	0.02	-	-	-	-	-	0.05	0.20	0.12	0.67	0.18	0.01	0.04	-	-	0.41	-	-	0.38	T	0.22	0.17	-	0.38	-	-	-	-	-	-	-	-
GRUNDY	2.49	-	0.10	0.10	-	-	-	-	0.02	T	0.20	0.21	0.39	0.04	-	0.22	-	-	0.07	0.07	-	0.71	0.05	T	0.07	-	0.22	0.02	T	-	-	-	-	-	
JOHN FLANNAGAN LAKE	M	-	-	0.25	0.01	-	-	-	-	-	0.70	0.18	0.14	0.35	0.07	-	-	-	0.18	0.18	0.01	-	-	0.81	0.08	-	0.32	-	-	-	-	-	-	-	-
LAFAYETTE 1 NE	1.78	-	0.02	0.06	-	-	-	-	-	-	0.09	0.07	0.51	0.13	-	0.01	-	-	T	0.02	-	0.41	0.11	T	0.20	0.15	-	0.46	0.10	0.01	-	-	-	-	-
LEBANON	1.93	-	0.12	0.04	-	-	-	-	0.02	-	0.04	-	0.13	T	0.04	-	-	-	0.04	-	-	0.62	0.33	0.02	-	-	0.62	0.10	0.01	-	-	-	-	-	-
NORA 4 SSE	2.40	-	0.12	0.16	0.01	-	-	-	T	0.05	0.02	0.03	0.16	0.47	0.18	0.02	0.09	T	T	0.04	T	0.34	0.15	0.03	0.14	-	0.39	-	-	-	-	-	-	-	-
NORTH FORK LAKE	MA 3.40	*	*	0.87 _a	*	0.00 _a	-	-	*	*	0.05 _a	0.10	0.20	0.33	-	-	-	-	0.13	*	*	*	*	1.03 _a	0.20	-	0.39	*	*	0.10 _a	-	-	-	-	-

VIRGINIA
201201

DAILY PRECIPITATION (INCHES)

STATION	TOTAL	DAY OF MONTH																														
		01	02	03	04	05	06	07	08	09	10	11	12	13	14	15	16	17	18	19	20	21	22	23	24	25	26	27	28	29	30	31
PULASKI 2 E	2.56		T	T	T					0.16	0.13	0.70	0.35		0.07		T	T				0.59	0.30	0.03	0.21			0.02				
RADFORD 3 N	2.35		T	0.05				0.03		0.10	0.13	0.45	0.43		0.03			0.07				0.65	0.07	0.01	0.29			0.04				
RICHLANDS	2.62		0.11	0.24	0.01			0.07		0.08	0.19	0.33	0.20	0.10	0.19			0.08				0.22	0.18					0.52	0.10			
SALTVILLE 1N	3.39		0.13	0.04	T			0.02		0.16	0.21	0.74	0.42	0.01	0.07			0.08				0.44	0.43	0.01	0.20			0.40	0.03			
STAFFORDSVILLE 3 ENE	2.11			0.03	T			0.01		0.12	0.08	0.52	0.47		0.02			0.06				0.34	0.05	0.02	0.20			0.19		T		
TROUT DALE 3 SSE	4.58		0.03	0.07	0.02				0.07	0.05	0.31	1.11	0.23	0.02	0.04			0.42				0.91	0.21	0.21	0.47			0.37	0.04			
WILLIS	2.90			0.04	T			T	0.03	0.14	0.11	0.49	0.20	T	0.17		T	0.32				0.43	T	0.37	0.19			0.41	T			
WISE 3E	2.64	0.24	0.18	0.04			0.07		0.07		0.33	0.16	0.22	0.03			0.10	0.02				0.55		0.24		0.07		0.32				
WYTHEVILLE 1 S	3.40		0.02	0.06	0.02				0.01	0.09	0.06	0.25	0.86	0.59	T	0.10			0.12			0.55	0.49	0.03	0.09			0.06				

VIRGINIA
201201

DAILY TEMPERATURES (°F)

STATION	OB. TIME	MAX/MIN	DAY OF MONTH																															AVERAGE	
			01	02	03	04	05	06	07	08	09	10	11	12	13	14	15	16	17	18	19	20	21	22	23	24	25	26	27	28	29	30	31		
ASHLAND	18	MIN	29	34	22	14	14	35	35		33	34	29	29	32	23		17	22	43	19	25	31		29	32	31	31	31	28		26	31	28.1	
		MAX	64	59	35	37	51	66	68	57	44	55	48	62	56	40	36	45	64	58	43	42	36	33	42	61	53	66	69	58	51	51	67	52.2	
CAMP PICKETT	08	MIN	30	33		23	15	29	32	37	31	30	34	29	44	35	25	24	18	39	35	20	28	30	30	31	41	30	40	52	30	26	26	34	31.0
		MAX			44	35	42	53	67	68	55	42	56	57	60	42	42	39	51	62	48			46	42	33	51	63	56		67	59	51	54	51.3
CHASE CITY	17	MIN			22	14	14	30	30	36	35	30	40	33	22	22	18	18	46	20			32	29	29	32	29	31		29	25	25	31	28.0	
		MAX	64	65	47	37	44	55	67	69	57	44	59	54	60	44	44	43	49	63	51	47	50	46	36	49	62	58	66	67	60	52	57	53.7	
CLARKSVILLE	07	MIN	33	34	27	20	22	30	30	30	42	40	34	39	35	26	29	24	36	42	25	25	35	33	33	36	38	32	45	31	28	29	29	32.0	
		MAX	64	66	46	35	43	55	68	70	70	47	60	52	60	42	44	43	48	64	51	47	56	58	56	49	64	57	69	69	69	52	58	55.9	
CORBIN	09	MIN	32	35	24	17	18	32	34	34	34	34	34	35	41	32	25	29	22	23	44	25	25	31	30	31	30	40	30	29	28	28	30.2		
		MAX	63	54	36	35	51	65	68	59	42	54	46	62	55	39	34	43	60	59	42	41	33	31	41	61	52	62	70	56	53	50	67	51.1	
CROZIER	07	MIN	32	31	23	12	27	33	34	36	30	32	28	43	34	24	25	15	38	33	18	29	27	28	30	41	30	39	50	27	23	24	38	30.1	
		MAX	61	63	43	35	38	51	65	68	55	52	62	53	62	40	40	36	51	61	46	43	41	33	33	45	62	54	66	68	58	41	52	50.9	
FARMVILLE 2 N	07	MIN	28	29	23	14	16	35	35	31	31	27	42	32	27	22	21	16	26	39	17	24	29	28	28	28	27	36	43	28	23	24	29	27.7	
		MAX			65	47	32	45	57	72		56	41	56	45	60	45		39	48	63	50	46	44		33	47	64	58	68		60	56	51.9	
GREENBAY 3 NE	09	MIN	29	21		14	14	31	34		30	34	29	34	33	23		17	17	43	19	19	30		29	28	28	37			23	29	26.9		
		MAX	61	64		33	41	52	65	67	54	40	54	52	58	40	41	38	51	60	47	43	44	40	32	46	61	55	66	65	57	49	53	51.0	
JOHN H KERR DAM	08	MIN	30	30		13	23	32	38	32	35	34	30	41	31	23	24	18	24	40	18	23	32	29	29	32	28	35	42	28	23	27	36	29.3	
		MAX	66	64	46	36	43	55	67	72	59	43	63	57	60	44		43	49	63		48	51	47	35	53	64	62	68	70	62	52	55	55.1	
LOUISA	18	MIN	31	33	24	16	24	34	37	44	41	40	35	42	34	26		21	25	44		25	39	31	31	35	31	31	44	30	28	33	35	32.6	
		MAX	61	51	35	36	51	66	67	57	37	55	40	61	55	40	38	45	61	59	42	38	35	33	39	62	52	61	67	58	54	52	67	50.8	
PALMYRA 3S	06	MIN	26	26	21	12	26	29	30	27	24	32	28	39	32	22	23	13	39	33	14	27	31	29	32	39	24	39	52	28	23	25	32	28.3	
		MAX																																	
PETERSBURG	08	MIN																																M	
		MAX	64	65	46	35	40	53	68	69	55	43	57	58	63	43	43	38	48	61	61	46	45	40	35	56	65	56	66	69	60	52	54	53.4	
RICHMOND INTL AP	24	MIN	31	40	26	18	17	31	33	36	34	37	30	32	38	27	26	20	20	48	24	22	30	31	32	34	32	32	40	32	27	26	28	30.1	
		MAX	65	52	35	38	53	68	69	56	41	57	57	63	54	42	38	45	62	61	45	43	38	35	52	64	54	65	71	60	52	53	69	53.5	
SANDSTON	07	MIN	32	31	23	17	33	31	43	34	34	35	30	46	32	27	23	19	42	29	24	28	31	31	33	38	34	38	43	32	29	26	39	31.8	
		MAX	62	63	43	33	37	50	66	71	54	40	54	59	60	41	40	35	47	61	48	43	42	34	37	52	61	52	65	69	58	49	50	50.8	
WESTERN PIEDMONT 03 APPOMATTOX	07	MIN	31	30	25	15	15	28	28	38	32	36	29	30	37	26	25	18	18	47	22	22	29	30	30	32	33	32	37	30	27	27	27	28.6	
		MAX				32	39	51	65	68	55	37	53	43	60	38	40	42	46	60	45	43	42	38	34	42	61	55	64	66	58	49	53	49.3	
BROOKNEAL	07	MIN				15	22	37	37	34	35	30	32	37	29	22	23	18	19	35	18	18	29	30	32	32	34	36	28	26	27	31	28.4		
		MAX	60	65	42	32	41	52	67	69	55	41	55	44	58	41	42	39	51	60	46	44	47	43	35	46	62	60	66	65	59	50	56	51.4	
CHARLOTTESVILLE 2W	08	MIN	28	28	19	15	22	25	25	28	29	35	29	36	31	23	23	18	22	37	17	17	28	31	32	35	27	27	37	21	21	26	26.4		
		MAX	57	58	40	30	37	50	67	65	54	35	52	42	59	37	38	36	43	58	41	40	38	32	32	41	60	53	59	64	58	50	52	47.7	
CHATHAM	07	MIN	36	32	24	16	18	37	37	40	33	28	28	36	29	25	23	22	22	37	22	22	27	27	28	32	36	36	40	34	30	31	32	29.7	
		MAX	62	60	44	33	39	47	67	68	55	39	56	42	56	41	42	41	45	59	45	42	51	45	33	42	63	55	64	65	58	49	55	50.4	
DANVILLE	07	MIN	26	25	21	14	14	24	27	27	27	37	30	31	29	22	22	17	20	39	17	17	23	32	30	32	25	25	33	25	20	18	21	24.8	
		MAX	61	66	44	33	43	53	66	68	57	44	58	47	59	42	42	41	47	62	46	46	55	47	35	44	62	60	68	65	61	51	57	52.6	
DANVILLE REGIONAL AP	24	MIN	28	30	24	17	20	28	28	31	35	38	37	33	29	27	21	22	42	22	21	22	42	32	32	34	29	31	35	28	24	23	29	28.9	
		MAX	66	46	32	42	53	66	67	56	45	58	45	58	52	41	41	46	62	56	45	55	47	35	43	61	59	68	65	60	50	57	67	53.0	
		MIN	28	26	18	16	27	28	33	34	37	36	37	36	27	22	22	19	43	30	20	27	35	31	33	35	28	35	37	26	22	26	32	29.2	

VIRGINIA
201201

DAILY TEMPERATURES (°F)

STATION	OB. TIME	MAX/MIN	DAY OF MONTH																															AVERAGE		
			01	02	03	04	05	06	07	08	09	10	11	12	13	14	15	16	17	18	19	20	21	22	23	24	25	26	27	28	29	30	31			
FREE UNION	08	MAX	59	58	40	31	33	51	67	66	56	35	53	42	61	37	38	38	44	59	43	41	37	32	32	41	62	54	60	64	58	49	52	48.2		
		MIN	27	27	22	12	12	24	36	30	27	28	26	28	30	26	19	15	15	37	16	16	25	28	28	31	27	26	35	28	28	24	24	25.1		
LYNCHBURG #2	07	MAX	59	60	40	31	41	51	66	67	55	37	53	43	59	37	41	39	47	60	44	42	43	40	36	43	62	55	64	64	58	49	55	49.7		
		MIN	28	28	24	16	20	29	33	28	27	32	28	34	29	27	24	17	18	38	17	17	28	31	31	34	27	27	34	27	22	21	28	26.6		
LYNCHBURG INTL AP	24	MAX	59	45	31	41	51	66	67	55	42	54	44	60	43	41	40	45	60	55	42	43	43	35	42	62	55	59	64	59	49	54	68	50.8		
		MIN	27	24	14	13	31	34	32	27	34	30	30	35	27	26	21	17	40	24	16	25	30	30	33	32	26	36	32	24	21	29	31	27.5		
MARTINSVILLE FLTR PLT	07	MAX	60	58	42	31	42	53	68	68	54	40	57	43	57	37	44	40	57	57	44	44	53	47	36	43	64	58	64	64	60	51	57	51.4		
		MIN	25	26	23	15	16	21	23	27	30	30	32	29	19	19	17	23	38	15	17	24	32	32	34	25	24	33	24	18	19	22	24.5			
MEADOWS OF DAN 5 SW	07	MAX	66	57	38	38	38	49	62	63	53	42	56	45	56			44	43	54	41	39	49	49	37	41	59	59	60	58	56	48	55	50.2		
		MIN	32	29	19	17	19	26	27	32	32	32	31	35	26	25		22	25	25	24	23	29	32	33	33	32	32	38	30	27	27	28	28.1		
MONTEBELLO FISH CULTURAL STN	07	MAX		34	27	20	32			57	49	35	45	42	50	27	28	30	47	56	34	36	37	43	36	50	54	58	56	53	48	40	44	41.7		
		MIN		24	13	10	15			16	23	26	24	36	20	17	15	12	22	27	11	14	29	23	23	36	25	26	51	25	20	23	22	22.4		
MONTICELLO	08	MAX	56	57	38	29	36	48	64	65	52	35	50	44	58	35	36	34	42	58	39	39	36	31	31	41	58	50	60	61	55	47	49	46.3		
		MIN	36	33	25	15	14	32	36	32	32	28	29	34	31	25	22	22	21	39	22	21	26	27	27	31	35	34	39	31	32	31	30	28.8		
ROCKY MT	07	MAX	57	58	37	37	43	53	68	65		38	55	41	58	36	40	39	45	58	42	42	48		35	48	62	59	62	59	57	49	57	49.9		
		MIN	28	28	22	17	19	31	34	29	29	30	31	35	29	28	25	19	19	38	17	17	29		31	33	28	28	28	26	30	30	28	27.2		
SOUTH BOSTON	07	MAX	62	66	44	33	43	54	67	68	55	42	59	48	59	42	42	42	48	62	49	46	55	45	34	46	63	59	68	65	60	51	58	52.7		
		MIN	28	28	25	16	17	25	25	31	33	38	32	37	33	24	23	19	19	44	20	20	28	31	31	33	27	27	33	28	25	23	24	27.3		
STUART	07	MAX	59	60	49	32	43	54	67	65	52	41	61	45	59	60	42	43	44	56	45	43	51	48	36	42	65	64	65	61	59	50	58	52.2		
		MIN	30	30	21	14	17	24	25	29	30	32	32	36	28	27	27	21	20	34	21	20	25	32	31	32	30	29	30	26	23	25	27	26.7		
TYE RIVER 1 SE	07	MAX	60	60	45	35	40	54	68	70	58	40	55	45	62	40	41	42	49	62	50	44	40	38	36	40	65	56	64	67	60	51	57	51.4		
		MIN	27	28	21	11	12	35	40	34	33	29	30	34	29	24	20	18	19	34	17	18	27	28	30	34	29	30	35	27	28	30	32	27.2		
NORTHERN 04																																				
BOSTON 4 SE	07	MAX	58	53	39	30	33	50	66	65	64	36	52	44	61	38	37	37	44	58	41	39	33	36	32	41	58	51	60	67	56	48	49	47.6		
		MIN	28	33	27	12	12	22	29	32	26	27	25	28	28	21	20	15	16	38	17	18	26	24	28	32	25	25	25	27	28	22	22	24.5		
CASTLETON	08	MAX	58																																M	
		MIN	29																																	M
EDINBURG	07	MAX	53	56	36	26	36	49	63	60	50	35	50	39	58	35	35	33	42	59	38	38	31	32	34	49	59	54	53	59	54	45	47	45.4		
		MIN	24	24	24	11	12	28	35	26	26	25	21	23	27	22	18	12	12	34	12	12	22	25	26	30	22	23	38	27	26	20	20	22.8		
FRONT ROYAL	07	MAX	54	55	36	28	37	47	64	62	48	36	51	40	58	35	34	32	48	64	37	39	30	30	33	46	57	50	49	61	61	45	53	45.8		
		MIN	34	33	25	12	12	31	38	37	27	26	27	26	31	24	20	17	21	21	16	16	24	26	26	31	29	29	37	32	32	28	24	26.2		
LINCOLN	07	MAX	55	39		29		45	63	66	47	38	52	44	57	36	36	31	42	58	38	37	29	31	31	41	54	38	47	63	52	46	45	44.5		
		MIN	28	25		11		24	24	23	23	25	22	22	29	23	20	19	20	36	15	15	26	26	20	33	31	31	29	29	22	22	23.9			
LURAY 5 E	08	MAX	51	60	35	27	43	49	64	62	49	49	51	41	61	35	35	34	49	64	37	40	35	34	38	52	57	54	65	57	45	52	47.8			
		MIN	29	30	21	11	21	28	31	29	25	22	26	32	27	22	16	14	20	34	14	16	24	24	28	33	25	27	41	27	23	20	23	24.6		
MADISON	08	MAX	66	59	43	36			67	54	40	54	47	62	41	41	39	45	59	45	42	39	37	36	44	61	54	61	67	57	51	52	50.0			
		MIN	33	34	31	22			38	34	32	31	35	35	29	28	24	26	40	24	25	31	34	34	36	32	32	42	33	33	31	31	31.8			
MANASSAS	07	MAX	60	61	41	31	32	49	66	66	51	37	53	49	62	39		35	46	60	40	40	33	31	31	43	58	52	64	66	56	48	49	48.3		
		MIN	31	33	26	13	14	27	35	37	29	29	26	26	32	22		16	25	38	16	17	26	28	28	31	30	33	41	30	29	27	30	27.5		
MT WEATHER	07	MAX	50	50	34	25	33	45	60	60	45	34	41	40	53	32	29	30	41	54	35		33	26	29	48	53	47	54	58	58	44	49	43.0		
		MIN	36	28	20	9	11	31	45	35	28	27	32	33	25	20	17	17	17	31	19		20	22	22	22	30	30	35	31	27	24	24	25.6		
PIEDMONT RSCH STN	08	MAX	59	60	40	30	36	50	65	66	53	35	53	44	61	37	37	35	46	59	41	40	34	32	31	43	60	52	62	65	57	48	50	47.8		

VIRGINIA
201201

DAILY TEMPERATURES (°F)

STATION	OB. TIME	MAX/MIN	DAY OF MONTH																															AVERAGE	
			01	02	03	04	05	06	07	08	09	10	11	12	13	14	15	16	17	18	19	20	21	22	23	24	25	26	27	28	29	30	31		
SOMERSET	07	MIN	28	31	23	13	15	26	35	34	32	28	28	31	31	20	23	15	18	38	19	21	26	27	27	31	30	31	40	29	25	24	30	26.7	
		MAX	60	59	40	31	36	51	67	67	54	35	54	45	61	38	39	36	46	60	42	41	35	32	32	42	61	52	62	67	57	50	51	48.5	
SPERRYVILLE	06	MIN	28	28	26	13	15	25	34	30	28	29	25	28	30	22	21	14	15	38	15	17	26	28	28	32	26	27	40	28	26	25	27	25.6	
		MAX	56	55	38	28	29	49	66	64	51	35	53	43	59	38	36	35	40	59	42	38	33	34	31	41	59	50	58	63	57	47	49	46.3	
STAR TANNERY	07	MIN	29	29	26	13	12	21	28	33	26	23	21	29	32	25	19	15	21	35	17	16	23	27	28	30	26	26	39	28	26	26	23	24.9	
		MAX	50	56																								55	53	56	55	44	47	M	
STERLING RCS	07	MIN	25	27																							26	30	28	25	20	25	M		
		MAX	58	56	39	39	31	47	63	65	48	37	52	45	59	37	36	32	44	58	37	38	31	30	30	42	56	49	62	64	54	47	46	46.2	
VIENNA	07	MIN	30	29	26	12	12	25	28	31	25	27	24	24	31	21	20	15	16	37	16	16	24	26	26	30	31	33	39	27	28	28	29	25.4	
		MAX	57	57	38	28	32	45	63	48	38	51	46	46	57	38	34	31	43	58	37	38	31	30	31	42	54	60	60	62	53	48	45	45.2	
WARRENTON 3 SE	08	MIN	33	33	26	13	13	30	39	31	27	29	27	27	32	22	22	19	21	37	17	17	26	27	27	29	32	33	39	30	29	26	30	27.2	
		MAX													61		37	32	46	56	56	41	31	31	32		54	52	60	64	58	46	46	M	
WASHGTN DULLES INTL AP	24	MIN												31		22	16	16	36	18	18	25	25	27		32	38	48	29	28	25	25	M		
		MAX	57	46	31	33	47	63	64	50	39	53	47	59	52	36	34	41	58	55	38	35	31	31	43	57	50	52	64	54	48	47	66	47.8	
WASHINGTON REAGAN AP	24	MIN	31	29	18	14	25	27	32	30	26	28	24	40	25	23	18	17	40	22	16	25	26	28	30	34	33	40	39	29	29	28	33	27.7	
		MAX	60	49	34	35	50	63	68	52	40	54	49	57	51	39	36	42	60	58	41	40	34	32	44	56	49	55	62	55	49	48	66	49.3	
WINCHESTER	07	MIN	38	32	21	17	30	33	36	37	33	32	33	44	29	27	27	25	40	28	25	28	28	30	32	38	36	40	41	33	32	34	39	32.2	
		MAX	53	54	37	27	35	46	64	64	48	38	53	40	57	34	34	33	43	63	35	38	27	31	34	47	56	49	47	59	54	45	46	44.9	
WINCHESTER 7 SE	08	MIN	30	30	23	8	10	32	37	33	27	27	26	26	27	22	19	15	17	35	16	16	22	25	25	33	31	32	37	31	27	26	25	25.5	
		MAX	54	55	37	29	29	47	63	63	49	37	52	41	57	34	34	34	43	61	38	39	28	31	35	47	57	49	46	60	54	46	46	45.0	
WOODSTOCK 2 NE	07	MIN	26	26	22	8	8	25	30	26	22	22	21	22	22	24	21	12	13	32	12	12	23	25	25	31	30	32	37	28	25	23	21	22.8	
		MAX	52	56	36	26	31	47	65	61	49	35	52	39	56	34	35	33	44	63	37	38	29	31	32	49	57	51	48	59	54	46	48	44.9	
CENTRAL MOUNTAIN 05 COVINGTON FLTR PLT	07	MIN	27	27	24	12	12	24	24	26	27	27	23	24	27	22	19	14	14	36	14	15	22	26	26	30	24	24	37	28	28	22	21	23.4	
		MAX	53	53	33	26	40	48	65	59	53	38	52	42	55	44	37	35	47	60	38	45	47	46	40	52	58	58	63	56	52	48	55	48.3	
DALE ENTERPRISE	07	MIN	29	29	22	18	18	26	26	26	26	26	31	26	19	20	15	15	35	18	18	33	35	32	38	29	29	36	29	23	23	26	25.9		
		MAX	51	53	34	26	36	39	62	50	50	37	48	39	47	48	36	30	42	56	50	37	35	35	43	46	57	52	62	57	54	43	47	45.2	
GATHRIGHT DAM	07	MIN	26	28	19	15	15	28	31	28	27	22	22	27	25	21	20	15	18	31	15	17	29	27	27	31	24	25	38	28	29	25	43	25.0	
		MAX	54	49	32	22	37	44	58	55	50	34	46	40	50	25	32	30	41	57	32	40	44	44	37	48	53	53	58	53	47	43	49	43.8	
HOT SPRINGS	07	MIN	28	28	15	15	16	27	27	26	26	25	26	31	22	21	20	15	15	30	14	15	31	29	29	34	28	28	38	21	22	21	21	24.0	
		MAX	47	45	29	19	35	41	56	54	47	34		42	50		31	29	39	56	31	38	43	44		49	52	52	59		46	41	47	42.8	
LEXINGTON	07	MIN	28	26	15	11	13	27	28	26	26	27		31	22		19	16	16	29	14	15	30	27		36	27	27	38		21	21	24	23.7	
		MAX							66	63	55	37	52	40	55	35	37	40	46	59	46	39	44	45	37	43	61	54	61	63	56	48	53	49.4	
MILLGAP	07	MIN						24	27	26	28	25	29	28	25	18	14	14	36	15	15	27	30	31	33	25	25	34	28	23	21	23	25.0		
		MAX	42	46	26	16	33	43	59	52	48	36	46	40	47	23	29	28	41	50	31	35	42	44	44	45	51	54	56	51	49	40	47	41.7	
MUSTOE 1 SW	24	MIN	21	20	15	6	6	21	22	16	15	23	18	22	19	17	16	7	7	27	7	8	29	23	23	33	19	18	35	22	18	15	19	18.3	
		MAX	46	33	18	34	42	59	53	49	32	46	37	48	33	29	29	39	52	43	36	41	44	32	39	51	53	57	55	47	40	47	62	42.8	
ROANOKE 8 N	07	MIN	23	17	12	5	22	20	24	19	22	18	21	32	18	17	11	9	31	18		9	28	28	26	21	28	22	36	28	25	17	19	23	20.9
		MAX	55	55	35	28	43	51	65	63	56	41	55	41								40	43	47	48	36	42	61	56	63	58	54	49	56	49.6
ROANOKE INTL AP	24	MIN	30	30	23	17	19	32	31	30	30	28	29	36								19	19	32	31	31	33	30	32	36	29	26	29	28.3	
		MAX	55	44	28	42	52	65	65	56	44	56	42	58	40	41	39	47	59	56	43	47	50	37	43	62	57	64	64	56	49	58	68	51.2	
		MIN	29	24	21	20	37	40	45	31	35	29	32	39	28	28	25	20	43	28	20	34	33	32	34	34	34	38	39	30	29	33	36	31.6	

VIRGINIA
201201

DAILY TEMPERATURES (°F)

STATION	OB. TIME	MAX/MIN	DAY OF MONTH																															AVERAGE	
			01	02	03	04	05	06	07	08	09	10	11	12	13	14	15	16	17	18	19	20	21	22	23	24	25	26	27	28	29	30	31		
STAUNTON WATER TRMTMT PLT	08	MAX MIN	50 37	53 27	34 19	35 13	36 18	47 30	62 44	59 32	53 28	34 28	49 33	39 28	53 24	31 20	34 20	34 16	42 21	57 17	38 18	37 26	39 27	37 27	35 27	45 31	57 35	54 35	59 45	58 30	52 27	44 26	49 28	45.4	
WAYNESBORO WTP	07	MAX MIN	54 29	57 29	57 21	27 12	39 19	47 27	63 30	61 28	51 27	35 25	50 24	43 29	56 28	33 24	35 21	33 21	43 36	61 16	38 16	40 28	40 29	37 29	36 33	48 27	58 27	53 27	62 38	61 29	53 26	45 24	51 23	47.3	
SOUTHWESTERN MOUNTAIN 06																																			
ABINGDON 3S	22	MAX MIN	51 29	39 19	23 14	38 11	46 27	56 29	55 34	50 42	49 31	50 31	49 39	52 31	52 21	50 20	38 25	47 23	55 40	55 27	41 19	50 33	53 40	55 34	64 41	54 35	65 29	63 41	64 32	43 27	43 20	53 24	60 27	49.2	
BIG STONE GAP	08	MAX MIN	56 29	57 3	31 18	26 13	39 13	49 21	58 23	54 29	49 30	47 31	50 31	54 43	48 21	26 20	35 23	40 25	50 32	54 19	33 19	38 33	48 35	49 34	57 20	60 15	56 55 ¹	58 48	59 29	48 14	48 20	46 23	55 24.5		
BLACKSBURG NWSO	07	MAX MIN	51 25	53 25	30 15	20 13	38 15	46 26	58 27	57 24	49 24	42 32	50 27	42 35	52 22	26 21	34 22	33 16	41 18	53 30	35 14	39 13	44 30	46 29	32 28	49 31	55 29	59 28	60 35	51 24	48 24	42 21	52 26	44.7	
BLAND	07	MAX MIN																																	M
BURKES GARDEN	07	MAX MIN	48 32	52 24	24 10	13 7	32 12	41 28	50 37	52 22	46 20	45 32	47 27	44 38	42 18	18 16	26 18	27 9	43 12	51 27	27 13	37 19	47 30	48 33	43 33	56 39	49 23	57 23	60 23	47 23	47 22	40 17	36 17	46 29	41.7
CHRISTIANSBURG	07	MAX MIN	50 29	57 26	30 15	21 14	38 15	46 32	58 37	58 31	49 31	41 32	50 34	42 34	52 22	28 21	32 22	35 21	42 23	51 30	36 17	39 17	44 30	45 28	33 28	47 32	55 33	59 32	59 42	52 26	48 23	42 24	51 27	44.8	
CLINTWOOD 1 W	07	MAX MIN	52 28	56 28	30 17	22 8	39 8	46 22	55 23	60 24	47 24	44 28	50 28	52 37	50 20	25 22	33 17	31 17	52 30	58 31	42 48	48 47	58 58	61 34	53 27	61 33	62 27	46 40	43 19	44 19	54 22	46.8			
COPPER HILL	07	MAX MIN	47 37	54 24	54 12	18 11	36 12	42 30	56 37	55 31	47 30	38 29	45 30	41 34	51 20	25 18	31 19	31 19	42 21	56 29	30 17	37 16	40 28	45 24	31 34	49 34	51 32	52 44	57 28	54 23	47 23	39 24	50 24	43.6	
GALAX RADIO WBRF	07	MAX MIN	52 25	53 26	29 14	20 11	42 18	50 23	61 26	48 28	48 37	40 28	53 34	45 35	51 19	27 20	34 19	36 18	44 27	51 29	33 15	43 24	47 36	50 30	46 31	46 30	56 25	56 30	57 47	50 25	50 20	43 25	53 24	45.6	
GALAX WTP	07	MAX MIN	53 25	53 26	32 15	21 12	42 23	48 23	59 28	58 28	48 29	40 29	54 29	43 37	52 20	30 19	34 20	34 19	44 25	51 29	34 17	38 17	47 28	41 36	38 32	44 30	55 26	54 26	57 35	52 30	52 22	42 21	51 24	45.2	
GRUNDY	07	MAX MIN	52 29	57 30	31 18	24 10	39 10	46 23	58 24	60 32	49 29	41 32	48 32	51 36	51 23	27 22	34 25	32 18	59 18	53 19	43 19	49 33	48 34	58 36	63 36	55 29	58 29	64 42	49 31	45 21	46 21	56 24	48.5		
JOHN FLANNAGAN LAKE	07	MAX MIN			58 17	23 11	40 11	51 11			61 11	41 30	48 29	54 29	54 21				54 20	58 20	58 19	58 19			60 32	63 32	63 29	63 29	59 42				58 22	M	
LEBANON	07	MAX MIN	54 29	58 27	29 16	29 11	37 11	46 26	57 27	58 24	47 24	53 29	50 44	51 49	50 42	24 18	31 27	36 31	54 44	57 52	31 26	40 36	51 48	53 48	55 51	62 52	52 60	66 58	49 42	45 41	43 40	53 47	47.8		
NORA 4 SSE	07	MAX MIN	52 39	53 22	27 11	17 10	32 12	46 27	50 34	51 31	43 32	45 31	49 32	49 39	42 16	18 15	27 16	31 21	44 31	52 26	26 20	36 20	49 30	48 28	51 35	55 33	52 32	60 38	58 42	41 31	40 22	47 23	43.0		
NORTH FORK LAKE	08	MAX MIN			57 16		40 9	52 25			59 25	44 29	50 29	51 37					53 18						59 16	61 33		61 28	61 45			45 21	55 24	M	
PULASKI 2 E	07	MAX MIN	55 26	54 26	32 17	21 14	40 14	49 32	58 36	59 26	51 26	47 34	53 30	45 36	58 22	29 22	34 24	36 16	44 20	57 32	37 15	41 15	47 31	48 31	34 31	52 31	58 27	63 62	62 43			52 35	47.0		
RADFORD 3 N	07	MAX MIN	52 25	51 29	31 17	23 15	42 16	48 26	61 26	61 29	50 32	45 33	52 28	43 33	54 24	30 30	36 16	44 18	56 31	35 13	41 17	47 33	47 30	34 32	50 27	57 30	60 28	62 36	53 25	52 24	45 24	54 23	46.8		
RICHLANDS	07	MAX MIN	55 27	56 27	27 15	20 4	37 4	47 22	57 24	48 24	47 28	51 31	51 30	51 43	23 20	30 20	36 22	49 15	55 31	31 16	42 15	50 32	48 31	51 30	65 39	55 27	66 27	64 43	47 25	43 18	44 20	53 23	46.9		

VIRGINIA
201201

DAILY TEMPERATURES (°F)

STATION	OB. TIME	MAX/MIN	DAY OF MONTH																															AVERAGE
			01	02	03	04	05	06	07	08	09	10	11	12	13	14	15	16	17	18	19	20	21	22	23	24	25	26	27	28	29	30	31	
SALTVILLE 1N	07	MAX	55	50	31	23	38	49	56	54	51	48	51	48	47	26	33	38	45	51	33	41	47	51	52	65	55	66	63	50	46	44	54	47.1
		MIN	26	28	18	10	9	21	20	26	25	30	29	39	23	22	22	19	19	33	17	16	32	33	38	39	27	27	38	27	20	19	23	25.0
STAFFORDSVILLE 3 ENE	07	MAX	50	53	32	21	39	48	61	59	49	44	51	42	53	29	31	34	44	52	32	43	43	46	35	52	56	58	64	52	50	45	54	45.9
		MIN	24	24	17	12	12	25	28	27	26	31	21	35	23	22	25	16	17	31	14	14	33	32	31	35	27	26	35	26	24	23	25	24.5
TROUT DALE 3 SSE	07	MAX	51	59	27	18	40	48	58	57	48	50	52	45	50	25	33	33	39	54	31	42	45	48	41	52	53	59	60	48	41	41	51	45.1
		MIN	22	22	12	4	4	24	26	36	28	32	34	39	18	17	17	14	16	29	14	14	35	32	32	32	23	36	46	21	14	20	22	23.7
WISE 3E	17	MAX	53	44	27	38	46	55	54	45	46	50	49	48	43	28	34	46	52	52	36	48	50	54	56	54	62	58	58	40	41	50	59	47.6
		MIN	39	27	8	14	29	37	40	28	35	28	38	40	16	17	24	28	43	25	18	31	31	30	46	31	29	49	35	27	21	27	43	30.1
WYTHEVILLE 1 S	07	MAX	52	51	31	21	37	46	56	59	49	49	51	46	51	25	32	35	43	58	36	43	49	50	39	56	54	62	65	50	46	43	52	46.4
		MIN	25	24	15	12	17	27	28	27	26	28	27	37	22	22	22	15	15	33	17	17	30	35	30	37	26	27	33	25	20	19	25	24.6

VIRGINIA
201201

SNOWFALL AND SNOW ON GROUND (INCHES)

STATION		DAY OF MONTH																														
		01	02	03	04	05	06	07	08	09	10	11	12	13	14	15	16	17	18	19	20	21	22	23	24	25	26	27	28	29	30	31
VIRGINIA																																
TIDEWATER 01																																
DISPUTANTA	SNOWFALL																															
EASTVILLE	SNOWFALL																															
EMPORIA 1 WNW	SNOWFALL																															
FREDERICKSBURG SEWAGE	SNOWFALL	-	-	-	-	-	-	-	-	-	-	-	-	-	-	-	-	-	-	-	-	0.1	T	-	-	-	-	-	-	-	-	-
	SN ON GND	-	-	-	-	-	-	-	-	-	-	-	-	-	-	-	-	-	-	-	-	T	T	-	-	-	-	-	-	-	-	-
HAMPTON UNIV	SNOWFALL																															
HOLLAND 1 E	SNOWFALL																															
HOPEWELL	SNOWFALL	-	-	-	-	-																										
	SN ON GND	-	-	-	-	-																										
NORFOLK INTL AP	SNOWFALL			T																												
NORFOLK SOUTH	SNOWFALL	-	-	-	-	-	-	-	-	-	-	-	-	-	T	-	-	-	-	-	-	-	-	-	-	-	-	-	-	-	-	-
	SN ON GND	-	-	-	-	-	-	-	-	-	-	-	-	-	-	-	-	-	-	-	-	-	-	-	-	-	-	-	-	-	-	-
NORTH																																
	SNOWFALL																															
	SN ON GND																															
PAINTER 2W	SNOWFALL																															
STONY CREEK 2 N	SNOWFALL																															
	SN ON GND																															
SUFFOLK LAKE KILBY	SNOWFALL																															
	SN ON GND																															
WAKEFIELD 1NW	SNOWFALL																															
	SN ON GND																															
WALKERTON 2 NW	SNOWFALL																															
	SN ON GND																															
WALLACETON LK DRUMMOND	SNOWFALL																															
WARSAW 2 NW	SNOWFALL																															
WEST POINT 2 NW	SNOWFALL			T	T																	T	T									
	SN ON GND																															
WILLIAMSBURG 2 N	SNOWFALL																															
EASTERN PIEDMONT 02																																
ASHLAND	SNOWFALL	-	-	-	-	T	-	-	-	T	-	-	-	-	-	-	-	-	-	-	-	0.2	-	-	-	-	-	-	-	-	-	-
	SN ON GND	-	-	-	-	-	-	-	-	-	-	-	-	-	-	-	-	-	-	-	-	T	T	-	-	-	-	-	-	-	-	-
BREMO BLUFF	SNOWFALL																															
	SN ON GND																															
BUCKINGHAM	SNOWFALL																															
	SN ON GND																															
CAMP PICKETT	SNOWFALL																															
CHASE CITY	SNOWFALL																															
CLARKSVILLE	SNOWFALL																															
	SN ON GND																															
CORBIN	SNOWFALL																															

Snowfall: Includes snow and ice. Values for NWS stations (J index note) are Mid-Mid (LST).

Snow on ground: Includes snow, sleet, ice, and hail. Values for NWS stations (J index note) are observed at 12 UTC (GMT).

Water Equivalent: Given for NWS stations (J index note) only, when snow depth is 2 inches or more, and is measured at 18 UTC (GMT)

VIRGINIA
201201

SNOWFALL AND SNOW ON GROUND (INCHES)

STATION		DAY OF MONTH																																					
		01	02	03	04	05	06	07	08	09	10	11	12	13	14	15	16	17	18	19	20	21	22	23	24	25	26	27	28	29	30	31							
CROZIER	SNOWFALL									-	-	-	-																										
	SN ON GND									-	-	-	-																										
FARMVILLE 2 N	SNOWFALL																																						
GREENBAY 3 NE	SNOWFALL																																						
JOHN H KERR DAM	SNOWFALL																																						
KEYSVILLE 2 S	SNOWFALL																																						
	SN ON GND																																						
LOUISA	SNOWFALL	-	-	-	-	-	-	-	-	0.5	-	-	-	-	-	-	-	-	-	-	-	-	0.2	-	-	-	-	-	-	-	-	-	-	-	-	-			
	SN ON GND	-	-	-	-	-	-	-	-		-	-	-	-	-	-	-	-	-	-	-		-	-	-	-	-	-	-	-	-	-	-	-	-	-			
PALMYRA 3S	SNOWFALL																																						
PETERSBURG	SNOWFALL																																						
	SN ON GND																																						
POWHATAN	SNOWFALL																																						
RICHMOND INTL AP	SNOWFALL				T																		T																
	SN ON GND																																						
SANDSTON	SNOWFALL																																						
WINTERPOCK 4 W	SNOWFALL																																						
WESTERN PIEDMONT 03																																							
APPOMATTOX	SNOWFALL	-	-	-																			T	T															
	SN ON GND	-	-	-																																			
BEDFORD 4 NW	SNOWFALL																																						
	SN ON GND																																						
BROOKNEAL	SNOWFALL																																						
	SN ON GND																																						
CHARLOTTESVILLE 2W	SNOWFALL			T	T						0.4																												
	SN ON GND				-						T																												
CHATHAM	SNOWFALL																																						
	SN ON GND																																						
CONCORD 4 SSW	SNOWFALL																																						
	SN ON GND																																						
DANVILLE	SNOWFALL																																						
	SN ON GND																																						
DANVILLE REGIONAL AP	SNOWFALL																																						
	SN ON GND																																						
FREE UNION	SNOWFALL	-	-	-	-	-	-	-	-	-	0.2	-	-	-	-	-	-	-	-	-	-	-	0.2	-	-	-	-	-	-	-	-	-	-	-	-	-	-		
	SN ON GND	-	-	-	-	-	-	-	-	-	T	-	-	-	-	-	-	-	-	-	-	-	T	-	-	-	-	-	-	-	-	-	-	-	-	-	-		
HOLCOMB ROCK	SNOWFALL																																						
	SN ON GND																																						
HUDDLESTON 4 SW	SNOWFALL																																						
	SN ON GND																																						
LYNCHBURG #2	SNOWFALL			T																																			
	SN ON GND			T																																			

Snowfall: Includes snow and ice. Values for NWS stations (J index note) are Mid-Mid (LST).

Snow on ground: Includes snow, sleet, ice, and hail. Values for NWS stations (J index note) are observed at 12 UTC (GMT).

Water Equivalent: Given for NWS stations (J index note) only, when snow depth is 2 inches or more, and is measured at 18 UTC (GMT)

VIRGINIA
201201

SNOWFALL AND SNOW ON GROUND (INCHES)

STATION		DAY OF MONTH																														
		01	02	03	04	05	06	07	08	09	10	11	12	13	14	15	16	17	18	19	20	21	22	23	24	25	26	27	28	29	30	31
LYNCHBURG INTL AP	SNOWFALL																						T									
	SN ON GND																															
MARTINSVILLE FLTR PLT MEADOWS OF DAN 5 SW	SNOWFALL				T										1.0																	
	SN ON GND														1																	
MONTEBELLO FISH CULTURAL STN MONTICELLO	SNOWFALL																						T									
	SN ON GND																															
PEDLAR DAM	SNOWFALL				T								T										T									
	SN ON GND																															
ROCKY MT	SNOWFALL	-	-	-	-	-	-	-	-	-	-	-	-	-	1.0		-	-	-	-	-	-	-	-	-	-	-	-	-	-	-	
	SN ON GND	-	-	-	-	-	-	-	-	-	-	-	-	-	1	T	-	-	-	-	-	-	-	-	-	-	-	-	-	-	-	
SOUTH BOSTON	SNOWFALL																															
	SN ON GND																															
STUART	SNOWFALL	-	-	T	-	-	-	-	-	-	-	-	-	-	-	-	-	-	-	-	-	-	-	-	-	-	-	-	-	-	-	
	SN ON GND	-	-		-	-	-	-	-	-	-	-	-	-	-	-	-	-	-	-	-	-	-	-	-	-	-	-	-	-	-	
TYE RIVER 1 SE	SNOWFALL																															
	SN ON GND																															
WOOLWINE	SNOWFALL			T	T										1.2																	
	SN ON GND	-	-			-	-	-	-	-	-	-	-	-	1	-	-	-	-	-	-	-	-	-	-	-	-	-	-	-	-	
NORTHERN 04 BOSTON 4 SE	SNOWFALL																															
	SN ON GND														1.6																	
	WTR EQUIV														2																	
CASTLETON	SNOWFALL																															
	SN ON GND														0.5																	
EDINBURG	SNOWFALL				0.1																											
	SN ON GND				T										1									T								
FRONT ROYAL	SNOWFALL	-	-	-	0.2	-	-	-	-	-	-	-	-	-	-	-	-	-	-	-	-	-	-	-	-	-	-	-	-	-	-	
	SN ON GND	-	-	-	T	-	-	-	-	-	-	-	-	-	1	-	-	-	-	-	-	-	-	T	T	-	-	-	-	-	-	
LINCOLN	SNOWFALL																															
	SN ON GND																															
LURAY 5 E	SNOWFALL																															
	SN ON GND														0.5																	
	WTR EQUIV														0.5																	
MADISON	SNOWFALL				T	T	-	-	-																							
	SN ON GND				T		-	-	-																							
MANASSAS	SNOWFALL	-	-	-	-	-	-	-	-	-	-	-	-	-	1.0																	
	SN ON GND	-	-	-	-	-	-	-	-	-	-	-	-	-	1																	
	WTR EQUIV	-	-	-	-	-	-	-	-	-	-	-	-	-																		
MT WEATHER	SNOWFALL	-	-	-	-	-	-	-	-	-	-	-	-	-	-	-	-	-	-	-	-	-	-	-	-	-	-	-	-	-	-	
	SN ON GND	-	-	-	-	-	-	-	-	-	-	-	-	-	-	-	-	-	-	-	-	-	-	-	-	-	-	-	-	-	-	
PIEDMONT RSCH STN	SNOWFALL				T																											
	SN ON GND														0.8																	

Snowfall: Includes snow and ice. Values for NWS stations (J index note) are Mid-Mid (LST).

Snow on ground: Includes snow, sleet, ice, and hail. Values for NWS stations (J index note) are observed at 12 UTC (GMT).

Water Equivalent: Given for NWS stations (J index note) only, when snow depth is 2 inches or more, and is measured at 18 UTC (GMT)

VIRGINIA
201201

SNOWFALL AND SNOW ON GROUND (INCHES)

STATION		DAY OF MONTH																														
		01	02	03	04	05	06	07	08	09	10	11	12	13	14	15	16	17	18	19	20	21	22	23	24	25	26	27	28	29	30	31
SOMERSET	SN ON GND			T							T												T									
	SNOWFALL	-	-		-	-	-	-	-	-	0.2	-	-	-	-	-	-	-	-	-	-	-	T	0.1	-	-	-	-	-	-	-	-
SPERRYVILLE	SN ON GND	-	-	T	-	-	-	-	-	-	T	-	-	-	-	-	-	-	-	-	-	T	T	-	-	-	-	-	-	-	-	
	SNOWFALL				0.1	-	-	-	-	-	1.2	-	-	-	-	-	-	-	-	-	-	-	0.6	-	0.1	-	-	-	-	-	-	
STAR TANNERY	SN ON GND				T	-	-	-	-	-	1	T	-	-	-	-	-	-	-	-	-	1	1	T	-	-	-	-	-	-	-	
	SNOWFALL																															
STERLING RCS	SN ON GND																															
	SNOWFALL				T						0.5		T				T					1.1	0.4	T							T	
VIENNA	SN ON GND										T											1	1	1								
	SNOWFALL	-	-	-	-	-	-	-	-	-	-	-	-	-	-	-	-	-	-	-	-	-	1.0	-	-	-	-	-	-	-	-	
WARRENTON 3 SE	SN ON GND	-	-	-	-	-	-	-	-	-	-	-	-	-	-	-	-	-	-	-	-	1	1	1	-	-	-	-	-	-	-	
	SNOWFALL	-	-	-	-	-	-	-	-	-	-	-	-	-	-	-	-	-	-	-	-	-	1.0	0.5	0.5	-	-	-	-	-	-	
WASHINGTON REAGAN AP	SN ON GND																															
	SNOWFALL																															
WINCHESTER	SN ON GND																															
	SNOWFALL	-	-	T	1.6	-	-	-	-	-	-	-	-	-	-	-	-	-	-	-	-	-	0.7		T	-	-	-	-	-	-	
WINCHESTER 7 SE	SN ON GND	-	-	-	1	1	-	-	-	-	-	-	-	-	-	-	-	-	-	-	-	-	-	-	-	-	-	-	-	-	-	
	SNOWFALL	-	-	-	-	-	-	-	-	-	-	-	-	-	-	-	-	-	-	-	-	-	-	-	-	-	-	-	-	-	-	
WOODSTOCK 2 NE	SN ON GND																															
	SNOWFALL	-	-	-	T	-	-	-	-	-	T	-	-	-	-	-	-	-	-	-	-	-	0.3	-	-	-	-	-	-	-	-	
CENTRAL MOUNTAIN 05	SN ON GND																															
	SNOWFALL	-	-	-	-	-	-	-	-	-	-	-	-	-	-	-	-	-	-	-	-	-	T	T	-	-	-	-	-	-	-	
DALE ENTERPRISE	SN ON GND																															
	SNOWFALL	-	-	-	-	-	-	-	-	-	-	-	-	-	-	-	-	-	-	-	-	-	0.3	-	-	-	-	-	-	-	-	
GATHRIGHT DAM	SN ON GND																															
	SNOWFALL																															
GLASGOW 1 SE	SN ON GND																															
	SNOWFALL																															
HOT SPRINGS	SN ON GND																															
	SNOWFALL																															
KERRS CREEK 6 WNW	SN ON GND																															
	SNOWFALL																															
LEXINGTON	SN ON GND																															
	SNOWFALL	-	-	-	-	-	-	-	-	-	-	-	-	-	-	-	-	-	-	-	-	-	-	-	-	-	-	-	-	-	-	

Snowfall: Includes snow and ice. Values for NWS stations (J index note) are Mid-Mid (LST).

Snow on ground: Includes snow, sleet, ice, and hail. Values for NWS stations (J index note) are observed at 12 UTC (GMT).

Water Equivalent: Given for NWS stations (J index note) only, when snow depth is 2 inches or more, and is measured at 18 UTC (GMT)

VIRGINIA
201201

SNOWFALL AND SNOW ON GROUND (INCHES)

STATION		DAY OF MONTH																														
		01	02	03	04	05	06	07	08	09	10	11	12	13	14	15	16	17	18	19	20	21	22	23	24	25	26	27	28	29	30	31
LEBANON	SNOWFALL		-	1.0										0.2	1.0	-	-															
	SN ON GND		-		1										1	-	-															
NORA 4 SSE	SNOWFALL			4.6	0.6								0.9	2.0	2.1	T		T	T													
	SN ON GND			5	3	1	T	T					1	2	3	1																
NORTH FORK LAKE	SNOWFALL	-	-	2.0	-			-	-				-	-	-	-	-	-	-	-	-	-	-	-	-	-	-	-	-	-	-	
	SN ON GND	-	-	2	-			-	-				-	-	-	-	-	-	-	-	-	-	-	-	-	-	-	-	-	-	-	
PULASKI 2 E	SNOWFALL			T	T										0.7																	
	SN ON GND			T	T										1	T																
RADFORD 3 N	SNOWFALL			0.4									T		0.4																	
	SN ON GND			T									T		T	T																
RICHLANDS	SNOWFALL			6.0									0.6	0.2	3.5																	
	SN ON GND			6	3	1							1	T	3	1																
SALTVILLE 1N	SNOWFALL	-	-	0.5	T		-	-	-	-	-	-	T	0.3	1.0		-	-	-	-	-	-	-	-	-	-	-	-	-	-	-	
	SN ON GND	-	-	T	T		-	-	-	-	-	-	T	T	1		-	-	-	-	-	-	-	-	-	-	-	-	-	-	-	
STAFFORDSVILLE 3 ENE	SNOWFALL	-	-	0.5	T		-	-	-	-	-	-	T	-	0.6		-	-	-	-	-	-	-	-	-	-	-	-	-	-	-	
	SN ON GND	-	-	T		-	-	-	-	-	-	-	-	-	1		-	-	-	-	-	-	-	-	-	-	-	-	-	-	-	
TROUT DALE 3 SSE	SNOWFALL			2.0	1.0								2.0	1.0	2.0																	
	SN ON GND			2	1	T							2	T	2	T																
WILLIS	SNOWFALL			0.5											3.5																	
	SN ON GND			T											4	2																
WISE 3E	SNOWFALL	-	2.4	0.8			-	-	-	-	-	-	3.8	0.5			-	0.2	-	-	-	-	-	-	-	-	-	-	-	-		
	SN ON GND	-	2	2	1	T	-	-	-	-	-	-	3	3	1	T	-	T	-	-	-	-	-	-	-	-	-	-	-	-		
WYTHEVILLE 1 S	SNOWFALL			1.0	1.0									T	2.0																	
	SN ON GND			1	1										2	1																

Snowfall: Includes snow and ice. Values for NWS stations (J index note) are Mid-Mid (LST).

Snow on ground: Includes snow, sleet, ice, and hail. Values for NWS stations (J index note) are observed at 12 UTC (GMT).

Water Equivalent: Given for NWS stations (J index note) only, when snow depth is 2 inches or more, and is measured at 18 UTC (GMT)

VIRGINIA
201201

PAN EVAPORATION AND WIND

STATION		DAY OF MONTH																															TOTAL OR AVERAGE	
		01	02	03	04	05	06	07	08	09	10	11	12	13	14	15	16	17	18	19	20	21	22	23	24	25	26	27	28	29	30	31		
VIRGINIA EASTERN PIEDMONT 02 JOHN H KERR DAM	WIND	-	-	-	-	-	-	-	-	-	-	-	-	-	-	-	-	-	-	-	-	-	-	-	-	-	-	-	-	-	-	-	-	M
	EVAP	-	-	-	-	-	-	-	-	-	-	-	-	-	-	-	-	-	-	-	-	-	-	-	-	-	-	-	-	-	-	-	-	M
	MAX	-	-	-	-	-	-	-	-	-	-	-	-	-	-	-	-	-	-	-	-	-	-	-	-	-	-	-	-	-	-	-	-	M
	MIN	-	-	-	-	-	-	-	-	-	-	-	-	-	-	-	-	-	-	-	-	-	-	-	-	-	-	-	-	-	-	-	-	M
NORTHERN 04 PIEDMONT RSCH STN	WIND	-	-	-	-	-	-	-	-	-	-	-	-	-	-	-	-	-	-	-	-	-	-	-	-	-	-	-	-	-	-	-	M	
	EVAP	-	-	-	-	-	-	-	-	-	-	-	-	-	-	-	-	-	-	-	-	-	-	-	-	-	-	-	-	-	-	-	M	
	MAX	-	-	-	-	-	-	-	-	-	-	-	-	-	-	-	-	-	-	-	-	-	-	-	-	-	-	-	-	-	-	-	.	
	MIN	-	-	-	-	-	-	-	-	-	-	-	-	-	-	-	-	-	-	-	-	-	-	-	-	-	-	-	-	-	-	-	M	

Evaporation: Is measured in hundreths of inches.

Wind: Is measured in miles.

Max and Min: The maximum and minimum temperatures (Fahrenheit) of the water in the evaporation pan.

STATION INDEX

STATION	INDEX NO.	DIVISION	COUNTY	LATITUDE	LONGITUDE	ELEVATION (IN FEET)	OBSERVATION TIME AND TABLES			
							LOCAL STD TIME			
							TEMP	PRECIP	EVAP	SPECIAL SEE (NOTES)
VIRGINIA										
ABINGDON 3S	0021	06	WASHINGTON	36 40	81 58W	1920	22	22		H
ALBERTA 5N	0079	02	BRUNSWICK	36 56	77 54W	376		08		H
ALTAVISTA	0166	03	CAMPBELL	37 7	79 17W	515		07		CH
AMELIA COURTHOUSE 1	0187	02	AMELIA	37 21	77 59W	345	08	08		H
APPOMATTOX	0243	03	APPOMATTOX	37 21	78 50W	910	07	07		H
ASHLAND	0327	02	HANOVER	37 45	77 29W	220	18	18		H
BEDFORD 4 NW	0561	03	BEDFORD	37 23	79 34W	1220		07		CH
BIG STONE GAP	0735	06	WISE	36 52	82 46W	1464	08	08		H
BLACKSBURG NWSO	0766	06	MONTGOMERY	37 12	80 25W	2100	07	07		CH
BLAND	0792	06	BLAND	37 6	81 7W	2000	07	07		H
BOSTON 4 SE	0860	04	CULPEPER	38 33	78 6W	590	07	07		H
BREMO BLUFF	0993	02	FLUVANNA	37 43	78 17W	225		24		CH
BROOKNEAL	1082	03	CAMPBELL	37 4	78 57W	428	07	07		H
BUCHANAN	1121	05	BOTETOURT	37 32	79 41W	865		07		H
BUCKINGHAM	1136	02	BUCKINGHAM	37 30	78 32W	552		07		H
BUENA VISTA	1159	05	ROCKBRIDGE	37 44	79 22W	830		07		H
BURKES GARDEN	1209	06	TAZEWELL	37 6	81 20W	3068	07	07		H
CAMP PICKETT	1322	02	NOTTOWAY	37 2	77 57W	330	08	08		CH
CASTLETON	1434	04	RAPPAHANNOCK	38 36	78 7W	541	08	08		H
CHARLOTTESVILLE 2W	1593	03	ALBEMARLE	38 2	78 31W	866	08	08		H
CHASE CITY	1606	02	MECKLENBURG	36 47	78 29W	510	17	17		H
CHATHAM	1614	03	PITTSYLVANIA	36 49	79 25W	640	07	07		CH
CHRISTIANSBURG	1692	06	MONTGOMERY	37 8	80 24W	2100	07	07		H
CLARKSVILLE	1746	02	MECKLENBURG	36 37	78 33W	330	07	07		H
CLINTWOOD 1 W	1825	06	DICKENSON	37 9	82 29W	1780	07	07		H
CONCORD 4 SSW	1955	03	CAMPBELL	37 17	78 58W	635		07		H
COPPER HILL	1999	06	FLOYD	37 5	80 9W	2690	07	07		H
CORBIN	2009	02	CAROLINE	38 12	77 22W	220	09	09		H
COVINGTON FLTR PLT	2044	05	ALLEGHANY	37 49	79 59W	1230	07	07		H
CRAIGSVILLE 2 S	2064	05	AUGUSTA	38 3	79 23W	1758		07		H
CROZIER	2142	02	GOOCHLAND	37 40	77 53W	350	07	07		H
DALE ENTERPRISE	2208	05	ROCKINGHAM	38 27	78 56W	1400	07	07		H
DANVILLE	2245	03	PITTSYLVANIA	36 35	79 23W	410	07	07		H
DANVILLE REGIONAL AP R	2250	03	PITTSYLVANIA	36 34	79 20W	571	24	24		H
DISPUTANTA	2400	01	PRINCE GEORGE	37 7	77 12W	15	07	07		H
EASTVILLE	2635	01	NORTHAMPTON	37 23	75 58W	10	07	07		H
EDINBURG	2663	04	SHENANDOAH	38 48	78 35W	928	07	07		H
EMPORIA 1 WNW	2790	01	GREENSVILLE	36 42	77 34W	100	08	08		H
FARMVILLE 2 N	2941	02	CUMBERLAND	37 20	78 23W	450	07	07		CH
FREDERICKSBURG SEWAGE	3204	01	FREDERICKSBURG	38 17	77 27W	15	07	07		H
FREE UNION	3213	03	ALBEMARLE	38 5	78 35W	590	08	07		H
FRONT ROYAL	3229	04	WARREN	38 54	78 11W	930	07	07		H
GALAX RADIO WBRF	3267	06	CARROLL	36 40	80 55W	2385	07	07		H
GALAX WTP	3272	06	CARROLL	36 39	80 55W	2360	07	07		CH
GATHRIGHT DAM	3310	05	ALLEGHANY	37 57	79 57W	1770	07	07		CH
GLASGOW 1 SE	3375	05	ROCKBRIDGE	37 37	79 26W	740		07		H
GREENBAY 3 NE	3565	02	PRINCE EDWARD	37 11	78 17W	500	09	09		H
GRUNDY	3640	06	BUCHANAN	37 17	82 5W	1170	07	07		H
HAMPTON UNIV	3713	01	HAMPTON	37 1	76 20W	10	17	17		H
HOLCOMB ROCK	4039	03	BEDFORD	37 33	79 24W	620		07		H
HOLLAND 1 E	4044	01	SUFFOLK	36 41	76 46W	80	08	08		H
HOPEWELL	4101	01	PRINCE GEORGE	37 18	77 17W	40	16	16		H
HOT SPRINGS	4128	05	BATH	37 60	79 50W	2236	07	07		H
HUDDLESTON 4 SW	4148	03	BEDFORD	37 8	79 32W	1045		07		H
JOHN FLANNAGAN LAKE	4410	06	DICKENSON	37 14	82 21W	1460	07	07		H
JOHN H KERR DAM	4414	02	MECKLENBURG	36 36	78 18W	250	08	08	08	CH
KERRS CREEK 6 WNW	4565	05	ROCKBRIDGE	37 52	79 34W	1500		07		H
KEYSVILLE 2 S	4568	02	CHARLOTTE	37 1	78 28W	530		07		H
LAFAYETTE 1 NE	4676	06	MONTGOMERY	37 14	80 12W	1320		07		H
LEBANON	4777	06	RUSSELL	36 54	82 2W	1912	07	07		H
LEXINGTON	4876	05	ROCKBRIDGE	37 48	79 25W	1125	07	07		H
LINCOLN	4909	04	LOUDOUN	39 5	77 42W	500	07	07		H
LOUISA	5050	02	LOUISA	38 3	78 0W	420	18	18		H
LURAY 5 E	5096	04	PAGE	38 40	78 22W	1400	08	08		H
LYNCHBURG #2	5117	03	CAMPBELL	37 23	79 14W	740	07	07		H

STATION INDEX

STATION	INDEX NO.	DIVISION	COUNTY	LATITUDE	LONGITUDE	ELEVATION (IN FEET)	OBSERVATION TIME AND TABLES			
							LOCAL STD TIME			
							TEMP	PRECIP	EVAP	SPECIAL SEE (NOTES)
LYNCHBURG INTL AP R	5120	03	CAMPBELL	37 19	79 12W	940	24	24		HJ
MADISON	5150	04	MADISON	38 22	78 15W	577	08	08		H
MANASSAS	5204	04	MANASSAS	38 44	77 30W	245	07	07		H
MARTINSVILLE FLTR PLT	5300	03	HENRY	36 42	79 52W	760	07	07		H
MEADOWS OF DAN 5 SW	5453	03	PATRICK	36 40	80 27W	2225	07	07		H
MILLGAP	5595	05	HIGHLAND	38 18	79 43W	2421	07	07		CH
MONTEBELLO FISH CULTURAL STN #	5690	03	NELSON	37 50	79 7W	2667	07	07		H
MONTICELLO	5700	03	ALBEMARLE	38 1	78 27W	758	08	08		H
MT WEATHER	5851	04	LOUDOUN	39 4	77 53W	1659	07	07		H
MTN GROVE	5756	05	BATH	38 6	79 53W	1775		07		H
MUSTOE 1 SW	5880	05	HIGHLAND	38 20	79 40W	2380	24	24		H
NORA 4 SSE	6125	06	DICKENSON	37 1	82 19W	2650	07	07		H
NORFOLK INTL AP R	6139	01	NORFOLK (CITY)	36 54	76 12W	30	24	24		HJ
NORFOLK SOUTH	6147	01	NORFOLK (CITY)	36 52	76 14W	100	24	24		H
NORTH	6161	01	MATHEWS	37 26	76 26W	10	07	07		H
NORTH FORK LAKE	6173	06	WISE	37 7	82 38W	1675	08	08		H
PAINTER 2W	6475	01	ACCOMACK	37 35	75 49W	30	16	16		CH
PALMYRA 3S	6491	02	FLUVANNA	37 49	78 16W	410	06	06		H
PEDLAR DAM	6593	03	AMHERST	37 40	79 17W	1010		07		H
PETERSBURG	6656	02	PETERSBURG	37 14	77 24W	15	08	08		H
PIEDMONT RSCH STN	6712	04	ORANGE	38 14	78 7W	520	08	08	08	CH
POWHATAN	6906	02	POWHATAN	37 31	77 53W	400		07		H
PULASKI 2 E	6955	06	PULASKI	37 3	80 47W	1850	07	07		CH
RADFORD 3 N	6999	06	PULASKI	37 12	80 35W	1800	07	07		H
RICHLANDS	7174	06	TAZEWELL	37 6	81 48W	1910	07	07		H
RICHMOND INTL AP R	7201	02	HENRICO	37 30	77 19W	164	24	24		HJ
ROANOKE 8 N	7278	05	ROANOKE	37 22	79 58W	1190	07	07		H
ROANOKE INTL AP R	7285	05	ROANOKE	37 19	79 58W	1175	24	24		HJ
ROCKY MT	7338	03	FRANKLIN	36 59	79 54W	1315	07	07		CH
SALTVILLE 1N	7506	06	SMYTH	36 53	81 46W	1733	07	07		H
SANDSTON	7541	02	HENRICO	37 33	77 17W	165	07	07		H
SOMERSET	7904	04	ORANGE	38 15	78 16W	510	07	07		H
SOUTH BOSTON	7925	03	HALIFAX	36 42	78 53W	340	07	07		H
SPERRYVILLE	7985	04	RAPPAHANNOCK	38 39	78 14W	750	06	06		H
STAFFORDSVILLE 3 ENE	8022	06	GILES	37 16	80 43W	1950	07	07		CH
STAR TANNERY	8046	04	FREDERICK	39 5	78 27W	950	07	07		CH
STAUNTON WATER TRMTMT PLT	8062	05	AUGUSTA	38 10	79 5W	169	08	08		H
STERLING RCS	8084	04	LOUDOUN	38 59	77 29W	288	07	07		H
STONY CREEK 2 N	8129	01	SUSSEX	36 58	77 24W	105	08	08		H
STUART	8170	03	PATRICK	36 38	80 15W	1375	07	07		H
SUFFOLK LAKE KILBY	8192	01	SUFFOLK	36 44	76 36W	22	24	24		H
TROUT DALE 3 SSE	8547	06	GRAYSON	36 39	81 24W	2839	07	07		CH
TYE RIVER 1 SE	8600	03	NELSON	37 39	78 58W	720	07	07		H
VIENNA	8737	04	FAIRFAX	38 54	77 16W	418	07	07		H
WAKEFIELD 1NW	8800	01	SUSSEX	36 59	77 0W	113	24	24		CH
WALKERTON 2 NW	8829	01	KING AND QUEEN	37 45	77 2W	50	18	18		H
WALLACETON LK DRUMMOND	8837	01	CHESAPEAKE	36 36	76 26W	20	08	08		H
WARRENTON 3 SE	8888	04	FAUQUIER	38 41	77 46W	500	08	08		H
WARSAW 2 NW	8894	01	RICHMOND	37 59	76 47W	140	18	18		H
WASHGTN DULLES INTL AP R	8903	04	LOUDOUN	38 56	77 28W	290	24	24		HJ
WASHINGTON REAGAN AP R	8906	04	ARLINGTON	38 51	77 2W	10	24	24		HJ
WAYNESBORO WTP	8941	05	WAYNESBORO	38 5	78 53W	1270	07	07		H
WEST POINT 2 NW	9025	01	KING WILLIAM	37 34	76 48W	20	17	17		H
WILLIAMSBURG 2 N	9151	01	YORK	37 18	76 42W	70	24	24		CH
WILLIS	9169	06	FLOYD	36 55	80 30W	2810		07		CH
WINCHESTER	9181	04	FREDERICK	39 11	78 9W	720	07	07		H
WINCHESTER 7 SE	9186	04	FREDERICK	39 11	78 7W	680	08	08		H
WINTERPOCK 4 W	9213	02	CHESTERFIELD	37 19	77 39W	300		07		H
WISE 3E	9215	06	WISE	36 60	82 32W	2549	17	17		CH
WOODSTOCK 2 NE	9263	04	SHENANDOAH	38 54	78 28W	675	07	07		H
WOOLWINE	9272	03	PATRICK	36 47	80 17W	1500		07		CH
WYTHEVILLE 1 S	9301	06	WYTHE	36 56	81 6W	2450	07	07		CH

REFERENCE NOTES

STATION NAMES: Name of the city, town or locality. Figures and letters following the station names indicate the distance in miles and direction from the post office or town community center.

DIVISIONS: Areas within a state of similar climatological characteristics. Division averages are calculated using data from stations that record temperature and/or precipitation. Station Precipitation totals flagged with an 'F' or 'M' are excluded from the Divisional Average calculations of precipitation. Stations with monthly Temperature averages flagged with an 'F' or 'M' are included in the Divisional Average if there are no more than 9 flagged or missing daily values in the month, else they are excluded from the divisional average for temperature.

NORMALS: The average value of the meteorological element over a time period. Effective 1 January 2012, the averaging period is 1981 to 2010. The normals for National Weather Service localities have been adjusted so as to be representative for the current observation site.

MONTHLY DEGREE DAY TOTALS: One heating (cooling) degree day is accumulated for each whole degree that the daily mean temperature is below (above) 65 degrees Fahrenheit.

PRECIPITATION: Values shown in hundredths of inches are water equivalent totals, i.e., total of liquid and melted frozen precipitation. In the "Monthly Summarized Data" table the total snow and sleet values shown in tenths of inches are unmelted amounts. The max depth on ground values of snow and sleet shown in whole inches are cumulative unmelted amounts. The number of days with .10, .50, 1.00 or more refers to water equivalents.

PRECIPITATION QUALITY CONTROL: The NCDC quality control process may flag precipitation data that are spatially inconsistent, exceed climatological limits, or are inconsistent with prevailing weather patterns.

TEMPERATURE: Original temperature values are given in the "Daily Temperature" table. Summary temperature information (averages, departures, extremes, monthly degree day totals) is based on the values labeled MAX/MIN.

WIND: (As shown in the "Evaporation and Wind" table) the total wind movement in miles over the evaporation pan as determined by an anemometer recorder located 6-8 inches above the pan.

SYMBOLS AND LETTERS USED IN THE STATION INDEX TABLE

C Station is equipped with recording rain gage (R) but values in this bulletin are from a non-recording rain gage unless indicated by an R.

G Observations appear in the "Soil Temperatures" table.

H Observations appear in the "Snowfall and Snow on the Ground" table.

J Station also published as a Local Climatological Data publication.

VAR Observation time varies.

SR Observation time near sunrise.

SS Observation time near sunset.

SYMBOLS AND LETTERS USED IN THE DATA TABLES

(DAILY DATA ARE FOR THE 24 HOURS IMMEDIATELY PRECEDING OBSERVATION TIME.)

BLANK Entries in the "Monthly Summarized Data" table indicate no record.

BLANK Entries in the "Daily Precipitation" and "Snowfall and Snow on the Ground" tables indicate zero.

BLANK Entries in the "Daily Temperature" table indicate a missing record

- No record. Data not recorded or not received in time for publication.

+ Precipitation or temperature extremes occurred on one or more previous dates during the month.

* Rain gage not read. Precipitation is included in the amount following the asterisks.

Time distribution may not be known. A * preceding the monthly total indicates precipitation amount is being carried forward to next month's total, and may include amounts from the previous month(s).

a As a subscript, indicates accumulated total.

A Amount of precipitation is the total of observer's entries for the current month. It may include precipitation that occurred during the previous month. Refer to earlier bulletin to determine date of last reading. (Hawaii stations)

B Divisional Departure from normals are computed using 1971-2000 normals.

E Normalized HDD/CDD Calculation. E is appended to the HDD/CDD Calculation when 1-9 individual daily TMAX and/or TMIN values are missing and a Normalized HDD/CDD Calculation is provided. M appears alone if 10 or more daily values are missing.

F Monthly calculation flagged value. F is appended to average and/or total values computed which exclude one or more daily data values that have been flagged by the GHCN-Daily Dataset

M Insufficient or partial data. M is appended to average and/or total values computed with 1-9 daily values missing. M appears alone if 10 or more daily values are missing, (8 or more for wind and evaporation).

N Indicates snow fall or Snowdepth totals are computed with one or more missing days.

R Amounts from recording rain gage.

T Trace. An amount too small to measure.

SEASONAL TABLES: Monthly and seasonal snowfall and heating degree days for the 12 months ending with the June data are published in the July issue of this bulletin. Cooling degree days for the calendar year are published in the "Climatological Data Annual Summary."

Information concerning the history of changes in locations, exposure, etc. of substations is kept on file at the National Climatic Data Center. Historical information of regular National Weather Service Offices may be obtained from the "Local Climatological Data" annual publication. The contents of this publication may be reprinted or otherwise used freely, with proper credit to the National Climatic Data Center. The data are also available digitally.

Effective with the January 2011 Data-Month, COOP Observer Names are no longer included in the Monthly and Annual Climatological Data Publications. This information is not published to ensure the privacy of personal information pursuant to Section 208 of the E-Government Act of 2002 (44 USC 3601).

As of the 2011 Data-Year, Station and Climate Division Maps are no longer being included in the CD Publications. NCDC's Product Development Branch provides updated Station Maps for various data networks via the Historical Observing Metadata Repository: <http://www.ncdc.noaa.gov/homr>.

The GHCN-Daily Quality Control Flags shown below are displayed as superscripts with the data. For more Information on Global Historical Climatology Network - Daily and flags, see: <http://www.ncdc.noaa.gov/oa/climate/ghcn-daily/> and

Comprehensive Automated Quality Assurance of Daily Surface Observations.

Durre, Imke, Matthew J. Menne, Byron E. Gleason, Tamara G. Houston,

Russell S. Vose, 2010: J. Appl. Meteor. Climatol., 49, 1615-1633.

doi: 10.1175/2010JAMC2375.1

Blank = Passed All checks

D = failed duplicate check

G = failed gap check

I = failed internal consistency check

K = failed streak/frequent-value check

L = failed check on length of multiday period

M = failed megaconsistency check

N = failed naught check

O = failed climatological outlier check

R = failed lagged range check

S = failed spatial consistency check

T = failed temporal consistency check

W = temperature too warm for snow

X = failed bounds check

NOAA\National Climatic Data Center
Attn: User Engagement & Services Branch
151 Patton Avenue
Asheville, NC 28801-5001

Customer Services Number: (828) 271-4800, option 2
TDD : (828) 271-4010
Fax number: (828) 271-4876

NCDC now offers free online access to the *Climatological Data* publication.
Go to : www.ncdc.noaa.gov and choose Most Popular.