



CLIMATOLOGICAL DATA ANNUAL SUMMARY VIRGINIA

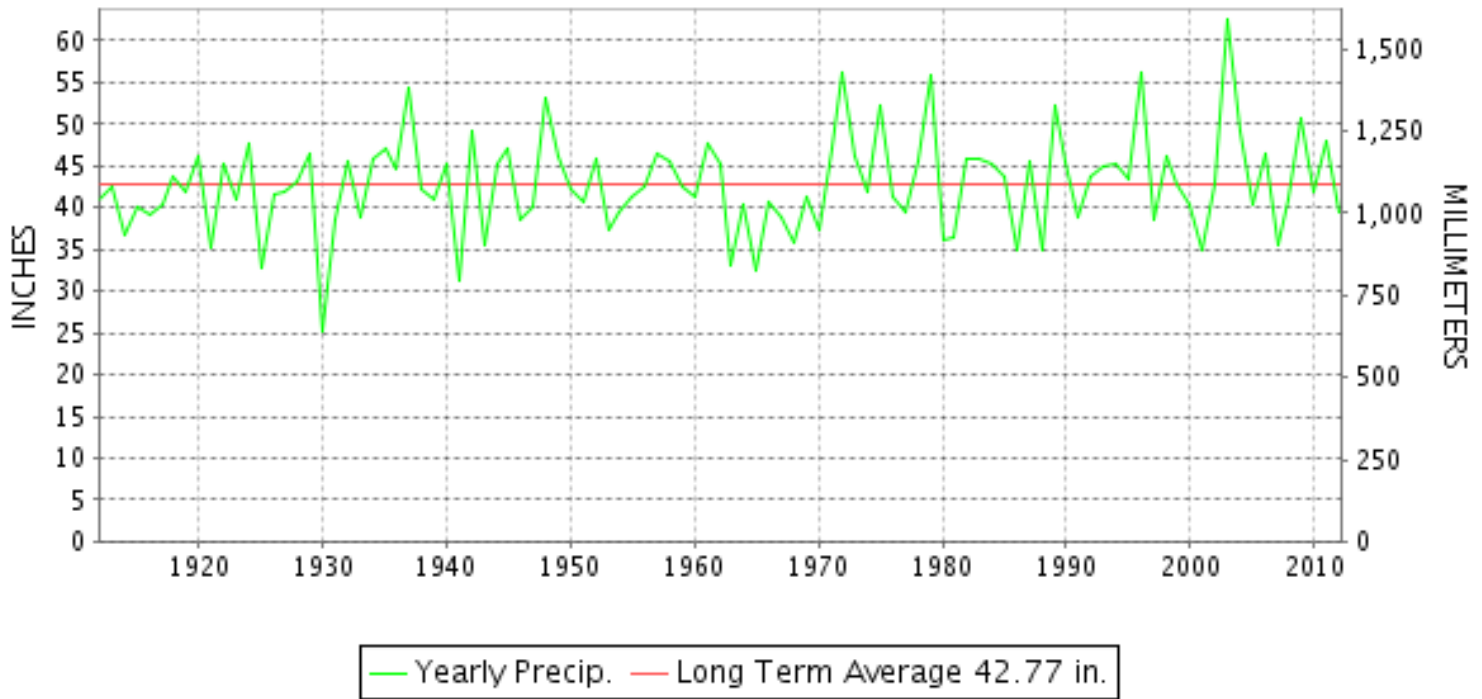
2012

VOLUME 122 NUMBER 13

ISSN 0364-5630

GHCND Ver: 3.03-upd-2013062605

YEARLY TOTAL PRECIPITATION



VIRGINIA PRECIPITATION 1912-2012

"I certify that this is an official publication of the National Oceanic and Atmospheric Administration (NOAA) It is compiled using information from weather observing sites supervised by NOAA/National Weather Service and received at the National Climatic Data Center(NCDC), Asheville, North Carolina 28801."

DIRECTOR
NATIONAL CLIMATIC DATA CENTER

noaa

National
Oceanic and
Atmospheric Administration

National
Environmental Satellite, Data
and Information Service

National
Climatic Data Center
Asheville, North Carolina

TOTAL PRECIPITATION AND DEPARTURE FROM NORMAL (INCHES)

VIRGINIA
2012

STATION	JAN		FEB		MAR		APR		MAY		JUN	
	PRECIP.	DEPART.	PRECIP.	DEPART.	PRECIP.	DEPART.	PRECIP.	DEPART.	PRECIP.	DEPART.	PRECIP.	DEPART.
VIRGINIA												
TIDEWATER 01												
EASTVILLE	2.12	-1.64	2.40	-0.56	FA 3.09	-0.76	2.87	-0.43	1.83	-1.71	FA 4.63	0.88
DISPUTANTA	1.70	-1.92	1.76	-1.33	3.02	-1.24	3.30	-0.31	3.16	-0.76	2.60	-1.00
EMPORIA 1 WNW	1.86	-1.65	2.32	-0.55	M 2.42	-1.65	2.46	-1.14	M 3.41	-0.41	2.61	-0.84
FREDERICKSBURG SEWAGE	1.95	-0.95	FMA 2.05	-0.46	M 2.98	-1.01	2.20	-1.15	M 5.79	1.71	M 2.06	-1.91
HAMPTON UNIV	M 1.80	1.80	2.90	2.90	M 2.50	2.50	3.39	3.39	FA 3.12	3.12	FA 5.36	5.36
HOLLAND 1 E	FA 1.93	-1.88	FA 2.24	-1.00	FA 3.47	-0.51	FA 3.80	0.36	5.74	1.82	FA 4.80	1.09
HOPEWELL	1.88	-1.59	3.66	0.48	M 2.05	-2.02	2.89	-0.87	5.51	1.68	M 2.87	-0.48
NORFOLK SOUTH	1.93	-1.78	2.98	-0.18	3.40	-0.62	3.14	-0.47	8.16	4.31	5.25	0.78
NORFOLK INTL AP	1.80	-1.60	2.67	-0.45	2.62	-1.06	2.95	-0.46	6.43	3.02	5.27	1.01
NORTH	1.74	-1.91	2.63	-0.40	3.91	-0.11	3.70	0.01	2.26	-1.95	3.72	-0.48
PAINTER 2W	2.62	-0.85	4.03	1.02	2.54	-1.59	2.96	-0.31	2.54	-0.78	4.05	0.11
STONY CREEK 2 N	FA 0.42	-3.21	FA 0.00	-3.07	FA 0.22	-4.07	FA 2.37	-1.14	FA 3.71	-0.60	FA 0.27	-3.85
SUFFOLK LAKE KILBY	2.17	-1.46	1.94	-1.29	3.89	-0.16	3.23	-0.32	5.41	1.58	5.03	0.66
WAKEFIELD 1NW	1.86	-1.84	2.96	0.04	2.05	-2.13	3.10	-0.61	2.28	-1.83	4.14	0.15
WALKERTON 2 NW	1.68	-1.50	FA 2.73	-0.18	4.19	0.08	2.80	-0.33	5.56	1.66	1.79	-1.56
WALLACETON LK DRUMMOND	M		2.81	2.81	5.68	5.68	3.73	3.73	5.16	5.16	3.67	3.67
WARSAW 2 NW	0.92	-2.16	2.90	0.20	1.97	-2.01	3.07	-0.06	2.79	-1.36	1.43	-2.12
WALLOPS ISLAND NASA TEST FACIL	2.12	-0.92	4.54	1.78	2.18	-1.82	3.78	0.71	3.69	0.74	2.72	-0.57
WEST POINT 2 NW	FA 0.39	-3.23	FA 0.87	-2.10	FA 0.94	-3.14	FA T		FA 0.74	-3.16	FA 0.05	-3.69
WILLIAMSBURG 2 N	2.29	-1.41	3.47	0.27	3.09	-1.25	3.48	-0.22	3.17	-0.84	3.93	0.59
--DIVISIONAL DATA----->	1.91	-2.06	2.93	-0.35	3.21	-1.15	3.12	-0.09	4.25	0.23	3.55	0.07
EASTERN PIEDMONT 02												
AMELIA COURTHOUSE 1	MA 1.79		M		M 3.66		M 2.48		M 2.67		1.03	
ALBERTA 5N	M 1.69		2.70		2.95		2.45		2.19		2.86	
ASHLAND	2.06	-1.19	2.94	-0.06	3.59	-0.36	3.30	-0.03	4.95	0.92	1.70	-1.92
BREMO BLUFF	M 2.05	-1.03	3.29	0.50	M 2.69	-1.28	2.07	-1.09	3.97	0.00	3.67	0.17
BUCKINGHAM	1.70		2.02		3.84		2.03		2.70		3.54	
CAMP PICKETT	M 1.52	-2.15	2.26	-0.92	M 2.04	-2.24	M 2.35	-1.25	2.62	-1.61	1.08	-2.85
CHASE CITY	1.12	-2.34	6.85	4.04	3.05	-1.28	2.87	-1.06	2.95	-1.01	0.93	-2.68
CLARKSVILLE	1.30	-1.98	2.03	-0.82	3.79	-0.14	2.98	-0.31	2.40	-1.71	M 1.01	-3.18
CROZIER	FA 0.50	-2.70	2.11	-0.73	M 4.82	1.18	M 2.09	-1.32	M 4.21	0.02	4.53	0.95
CORBIN	2.36	-0.78	2.26	-0.80	3.14	-0.88	2.44	-0.81	3.48	-0.48	4.10	0.38
FARMVILLE 2 N	M 1.30	-2.17	6.23	3.14	4.88	0.62	2.14	-1.13	2.25	-1.75	0.76	-2.52
GREENBAY 3 NE	M 1.61	-1.80	2.17	-1.00	3.69	-0.49	2.15	-1.06	2.22	-1.89	0.84	-2.55
JOHN H KERR DAM	M 1.27	-2.02	1.69	-1.06	2.25	-1.95	2.51	-0.79	2.29	-1.29	1.84	-1.69
KEYSVILLE 2 S	2.64		4.03		6.32		M		M		M	
LOUISA	1.89	-1.17	3.21	0.29	2.55	-1.25	2.08	-1.16	4.47	0.33	5.04	1.42
PALMYRA 3S	M		2.04	-0.76	5.10	1.39	2.13	-0.90	4.60	0.90	3.77	0.12
POWHATAN	M		1.82		M		2.71		M		M	
PETERSBURG	2.53	-0.73	M 2.94	0.26	2.42	-1.72	2.96	-0.27	4.44	0.58	1.78	-1.83
SANDSTON	1.79	-1.58	M 2.35	-0.67	MA 3.68	-0.47	3.72	0.31	3.71	-0.32	4.43	0.89
RICHMOND INTL AP	1.73	-1.31	3.22	0.46	2.51	-1.53	2.40	-0.87	2.45	-1.33	4.27	0.34
WINTERPOCK 4 W	M		2.23		2.54		2.14		2.50		0.83	
--DIVISIONAL DATA----->	1.91	-1.93	2.95	-0.24	3.51	-0.65	2.53	-0.80	3.19	-0.94	2.61	-0.97

TOTAL PRECIPITATION AND DEPARTURE FROM NORMAL (INCHES)

VIRGINIA
2012

STATION	JUL		AUG		SEP		OCT		NOV		DEC		ANNUAL	
	PRECIP.	DEPART.	PRECIP.	DEPART.	PRECIP.	DEPART.	PRECIP.	DEPART.	PRECIP.	DEPART.	PRECIP.	DEPART.	PRECIP.	DEPART.
VIRGINIA														
TIDEWATER 01														
EASTVILLE	3.59	-1.45	M 4.28	-1.03	0.63	-3.71	7.60	4.11	M 0.69	-2.39	FA 2.79	-0.81	M 36.52	
DISPUTANTA	6.71	1.49	6.91	2.08	5.12	0.41	5.26	1.89	0.28	-3.09	2.33	-1.13	42.15	
EMPORIA 1 WNW	M 5.39	0.75	13.19	8.63	4.23	-0.19	3.69	0.45	0.49	-2.60	2.99	-0.41	M 45.06	0.70
FREDERICKSBURG SEWAGE	5.04	0.51	M 3.00	-0.39	M 2.04	-2.28	M 5.14	1.76	0.63	-3.12	M 3.61	0.43	M 36.49	
HAMPTON UNIV	FA 1.58	1.58	FA 7.76	7.76	1.06	1.06	10.57	10.57	1.04	1.04	M			
HOLLAND 1 E	FA 2.65	-2.55	FA 9.39	4.19	FA 4.14	-1.01	FA 7.11	3.33	FA 0.83	-2.45	3.82	0.33	49.92	0.85
HOPEWELL	M 7.35	2.70	5.41	0.35	5.13	0.51	3.94	0.62	0.21	-3.30	2.87	-0.59	M 43.77	-1.49
NORFOLK SOUTH	5.91	0.77	6.56	-0.78	M 1.67	-3.40	M 10.16	6.74	1.12	-2.29	4.19	0.60	M 54.47	
NORFOLK INTL AP	4.81	-0.33	6.13	0.61	1.27	-3.49	8.98	5.56	0.94	-2.21	4.48	1.22	48.35	2.61
NORTH	5.37	0.54	4.95	0.48	3.43	-1.64	9.29	5.26	0.58	-2.75	3.55	0.18	45.13	
PAINTER 2W	4.84	-0.20	9.67	5.38	2.17	-1.79	9.94	6.35	0.83	-2.28	4.61	0.76	50.80	7.45
STONY CREEK 2 N	FA 1.47	-3.36	FA 2.95	-1.96	FA 0.00	-4.41	FA 1.70	-1.60	FA 0.00	-3.09	FA 0.30	-3.20	13.41	-33.65
SUFFOLK LAKE KILBY	5.86	0.72	10.62	4.91	2.22	-3.10	7.85	4.22	0.91	-2.63	4.30	0.81	53.43	4.72
WAKEFIELD 1NW	2.46	-2.35	10.43	5.33	4.97	-0.19	5.19	2.01	0.38	-2.73	2.84	-0.62	42.66	-2.39
WALKERTON 2 NW	3.76	-0.76	5.02	1.26	M		5.42	2.08	0.45	-2.88	3.28	-0.13		
WALLACETON LK DRUMMOND	4.57	4.57	5.00	5.00	M 2.90	2.90	9.89	9.89	1.11	1.11	4.11	4.11		
WARSAW 2 NW	4.15	-0.43	3.84	-0.79	2.92	-1.31	6.84	3.37	0.46	-2.88	1.66	-1.46	32.95	-10.90
WALLOPS ISLAND NASA TEST FACIL	3.46	-0.63	5.97	1.78	5.76	1.78	10.40	7.23	0.56	-2.31	3.85	0.42	49.03	
WEST POINT 2 NW	FA 0.01	-4.56	FA 4.01	-0.51	FA 0.91	-3.60	FA 0.20	-3.10	FA 0.27	-2.90	FA 1.76	-1.67	10.15	-35.61
WILLIAMSBURG 2 N	5.96	0.49	5.14	-0.23	2.97	-1.93	7.64	4.18	0.55	-2.72	2.84	-0.71	44.53	-4.51
--DIVISIONAL DATA----->	4.75	0.09	7.06	2.62	3.22	-1.15	7.50	4.03	0.66	-2.48	3.45	0.22	45.61	-0.02
EASTERN PIEDMONT 02														
AMELIA COURTHOUSE 1	M 2.74		3.97		M 5.04		FA 2.83		MA 0.54		M 3.82			
ALBERTA 5N	6.26		3.33		7.37		3.07		0.35		2.67		M 37.89	
ASHLAND	M 2.68	-1.89	1.91	-1.61	1.77	-1.99	3.32	0.05	0.48	-3.10	3.53	0.00	M 32.23	-11.81
BREMO BLUFF	4.50	0.27	5.03	1.18	2.70	-1.01	M 1.83	-1.87	0.61	-3.15	2.63	-0.63	M 35.04	-7.63
BUCKINGHAM	1.26		10.64		2.81		3.46		0.40		2.65		37.05	-7.97
CAMP PICKETT	10.67	6.54	2.63	-1.84	5.86	1.80	M		0.21	-3.22	2.96	-0.47		
CHASE CITY	6.73	2.30	4.25	-0.19	6.29	2.20	4.55	1.00	0.50	-3.03	2.74	-0.98	42.83	-2.43
CLARKSVILLE	2.91	-1.58	M 7.05	3.96	M 5.90	2.15	M 2.98	-0.45	0.55	-2.69	2.60	-0.81	M 35.50	-7.59
CROZIER	7.35	3.55	2.77	-1.37	2.94	-0.50	FA 2.22	-0.96	0.40	-3.28	M 3.20	-0.15	M 37.14	-6.90
CORBIN	1.74	-2.24	3.11	-0.24	3.65	-0.46	5.52	1.78	0.62	-2.99	3.86	0.52	36.28	-8.26
FARMVILLE 2 N	0.83	-3.29	8.18	4.27	4.08	0.10	3.10	-0.32	0.67	-2.98	3.04	-0.32	M 37.46	-7.41
GREENBAY 3 NE	0.85	-3.49	3.69	-0.48	3.89	-0.18	3.45	0.07	M 0.55	-3.04	2.66	-1.54	M 27.77	
JOHN H KERR DAM	5.90	0.80	M 5.33	1.40	4.01	0.54	M 2.11	-1.22	0.54	-2.55	2.41	-0.83	M 32.15	-11.93
KEYSVILLE 2 S	M		M		M		M		M		M			
LOUISA	2.04	-2.67	4.84	1.26	3.12	-1.06	3.92	0.30	0.49	-3.64	2.18	-1.00	35.83	-8.19
PALMYRA 3S	2.33	-2.03	3.48	-0.35	4.02	0.35	3.12	-0.32	0.61	-2.91	2.64	-0.55		
POWHATAN	M		M		M		M		M		M			
PETERSBURG	8.10	3.64	2.62	-2.15	6.35	2.09	M 3.99	0.77	M 0.35	-2.89	2.15	-1.05	M 40.63	
SANDSTON	FA 3.15	-1.14	MA 3.02	-1.70	3.04	-1.02	4.76	1.60	0.35	-3.32	3.02	-0.40	M 37.02	
RICHMOND INTL AP	5.29	0.78	3.50	-1.16	4.08	-0.05	4.00	1.02	0.27	-2.97	2.83	-0.43	36.55	-7.36
WINTERPOCK 4 W	3.30		4.99		3.72		3.33		0.20		3.02			
--DIVISIONAL DATA----->	4.38	0.02	4.31	0.38	4.10	0.07	3.80	-0.05	0.45	-2.97	2.80	-0.38	36.54	-8.46

TOTAL PRECIPITATION AND DEPARTURE FROM NORMAL (INCHES)

VIRGINIA
2012

STATION	JAN		FEB		MAR		APR		MAY		JUN	
	PRECIP.	DEPART.	PRECIP.	DEPART.	PRECIP.	DEPART.	PRECIP.	DEPART.	PRECIP.	DEPART.	PRECIP.	DEPART.
WESTERN PIEDMONT 03												
APPOMATTOX	M 2.00		1.31		5.79		M 2.23		M		M	
ALTAVISTA	1.96		1.26		4.51		2.08		2.56		1.68	
BEDFORD 4 NW	2.43		2.44		4.61		3.19		5.01		3.10	
CHARLOTTE COURT HOUSE	M		M		M		M		M		M	
BROOKNEAL	2.07	-1.60	2.25	-0.89	5.58	1.64	1.96	-1.75	2.16	-2.53	2.84	-0.13
CHARLOTTESVILLE 2W	2.67	-0.43	1.97	-1.10	FA 4.42	0.57	1.96	-1.44	4.78	0.15	2.99	-1.17
CONCORD 4 SSW	2.06		1.31		4.60		2.53		2.64		3.22	
CHATHAM	2.35	-1.43	1.03	-1.98	5.79	1.74	3.47	-0.08	3.35	-0.69	4.01	0.27
DANVILLE REGIONAL AP	1.99	-1.43	2.12	-0.89	3.55	-0.56	2.76	-0.70	2.12	-1.76	3.53	-0.31
DANVILLE	1.97	-1.64	1.68	-1.46	4.37	0.10	M		M		M	
FREE UNION	FA 2.26		1.58		7.55		1.74		2.78		FA 0.46	
HOLCOMB ROCK	3.15		2.10		4.69		4.08		7.50		2.45	
HUDDLESTON 4 SW	1.93		1.61		5.64		2.20		4.75		2.14	
LYNCHBURG #2	2.17	-1.00	2.23	-0.73	5.53	1.90	2.75	-0.92	3.97	0.09	3.52	0.47
LYNCHBURG INTL AP	2.22	-0.92	2.61	-0.32	5.78	2.20	2.44	-0.87	2.36	-1.37	1.71	-1.91
MARTINSVILLE FLTR PLT	2.49	-1.00	1.57	-1.57	4.84	0.69	2.49	-1.00	7.61	3.58	2.67	-1.08
MEADOWS OF DAN 5 SW	3.44		1.99		6.54		4.83		8.64		4.37	
MONTEBELLO FISH CULTURAL STN	M 3.78		M 2.75		M 5.94		M 3.25		M 5.43		M 2.57	
MONTICELLO	2.19	-0.17	2.55	-0.23	4.77	1.12	2.37	-0.88	M 5.96	1.86	2.45	-1.51
PEDLAR DAM	3.23		1.63		5.38		2.74		4.65		3.39	
ROCKY MT	2.24	-1.13	1.74	-1.34	3.35	-0.91	3.21	-0.56	4.42	0.35	3.32	-1.20
SOUTH BOSTON	1.35	-2.26	2.26	-0.86	3.81	-0.34	2.78	-0.70	2.20	-1.72	1.66	-2.63
STUART	3.01	-0.86	1.34	-1.91	5.01	0.93	2.79	-1.20	6.47	1.87	4.89	-0.10
TYE RIVER 1 SE	2.22	-0.99	1.76	-1.25	4.13	0.39	2.63	-0.78	4.23	-0.28	2.46	-1.13
WOOLWINE	3.56		1.55		5.30		3.68		5.15		3.90	
--DIVISIONAL DATA----->	2.41	-1.43	1.82	-1.47	5.05	0.82	2.79	-0.94	4.37	-0.02	3.02	-0.93
NORTHERN 04												
BOSTON 4 SE	FA 1.62		FMA 0.99		1.90		1.69		M 5.32		M 2.82	
CASTLETON	M		M		M		M		M		M	
EDINBURG	1.37	-0.71	0.82	-0.99	3.22	0.30	2.16	-0.65	3.35	-0.55	3.60	-0.18
FRONT ROYAL	1.51	-0.93	0.62	-2.03	3.13	-0.63	2.26	-1.00	2.73	-1.47	2.55	-1.48
LINCOLN	M 2.27	2.27	0.77	0.77	M 2.22	2.22	1.68	1.68	5.73	5.73	M 4.70	4.70
LURAY 5 E	1.73	-0.95	1.39	-1.27	2.36	-1.52	2.43	-1.01	3.50	-0.50	3.43	-0.52
MADISON	M		M		M		M		FMA 2.12	-2.36	FA 1.74	-2.62
MANASSAS	2.45	2.45	FMA 1.80	1.80	MA 1.30	1.30	2.69	2.69	10.83	10.83	M 3.60	3.60
MT WEATHER	FA 0.50	-2.38	FA 0.89	-2.07	FA 2.06	-1.50	FA 2.74	-0.95	FA 4.22	-0.26	3.81	-0.43
PIEDMONT RSCH STN	FA 1.68	-1.08	1.54	-1.21	FA 2.07	-1.44	FA 1.05	-2.35	FA 4.46	0.32	3.74	-0.43
SOMERSET	2.19	-0.70	1.98	-0.79	2.83	-0.90	1.92	-1.27	F 3.21	-1.01	FA 2.59	-1.48
SPERRYVILLE	2.14	-0.93	1.59	-1.25	2.76	-1.26	1.98	-1.79	4.31	-0.04	M 1.84	-2.50
STAR TANNERY	M		M		M		M		M		M	
STERLING RCS	2.05	-0.80	M 0.93	-1.84	2.69	-0.91	M 1.81	-1.81	8.14	3.42	2.28	-1.64
VIENNA	2.79	-0.34	0.97	-1.84	M 1.99	-1.83	M 1.45	-2.14	M 3.63	-0.90	3.18	-0.90
WARRENTON 3 SE	M		M 2.05	-0.73	M 1.38	-2.14	M 1.70	-1.98	M 5.16	0.60	M	
WASHGTN DULLES INTL AP	1.85	-0.83	2.24	-0.50	1.52	-1.86	1.82	-1.65	5.38	0.83	1.79	-2.19
WASHINGTON REAGAN AP	2.19	-0.62	2.33	-0.29	1.02	-2.46	1.92	-1.14	3.28	-0.71	2.38	-1.40

TOTAL PRECIPITATION AND DEPARTURE FROM NORMAL (INCHES)

VIRGINIA
2012

STATION	JUL		AUG		SEP		OCT		NOV		DEC		ANNUAL	
	PRECIP.	DEPART.	PRECIP.	DEPART.	PRECIP.	DEPART.	PRECIP.	DEPART.	PRECIP.	DEPART.	PRECIP.	DEPART.	PRECIP.	DEPART.
WESTERN PIEDMONT 03														
APPOMATTOX	3.49		4.87		2.91		2.36		0.69		2.94			
ALTAVISTA	3.92		2.24		4.68		1.51		0.15		3.22		29.77	-14.18
BEDFORD 4 NW	4.06		1.77		2.48		2.08		0.47		2.69		34.33	
CHARLOTTE COURT HOUSE	M		4.40	0.47	2.90	-1.18	4.53	1.16	0.20	-3.50	1.85	-1.61		
BROOKNEAL	2.82	-1.54	3.85	-0.11	3.07	-0.81	2.89	-0.72	0.60	-3.08	3.20	-0.15	33.29	-10.95
CHARLOTTESVILLE 2W	2.66	-2.66	4.85	0.78	4.32	-0.58	4.50	0.76	0.58	-3.51	2.95	-0.40	38.65	-10.22
CONCORD 4 SSW	6.41		5.19		3.01		1.92		0.40		2.21		35.50	-9.25
CHATHAM	5.82	1.33	1.96	-1.86	4.93	0.48	2.76	-0.53	0.42	-3.16	3.89	0.45	39.78	-5.50
DANVILLE REGIONAL AP	2.57	-2.10	1.47	-2.44	3.87	-0.12	1.91	-1.63	0.48	-2.87	2.46	-0.80	28.83	
DANVILLE	M		M		M		M		M		M			
FREE UNION	3.75		FA 1.55		FA 1.67		FA 0.86		FA 0.31		2.68		27.19	-19.59
HOLCOMB ROCK	3.41		2.88		3.61		2.96		0.74		3.18		40.75	-3.99
HUDDLESTON 4 SW	4.08		2.40		2.60		1.98		0.89		3.12		33.34	-9.55
LYNCHBURG #2	2.33	-1.80	4.59	1.22	2.00	-1.72	1.87	-1.49	0.77	-2.46	2.50	-0.81	34.23	
LYNCHBURG INTL AP	2.73	-1.63	2.70	-0.56	2.35	-1.53	1.68	-1.43	0.61	-2.80	2.65	-0.59	29.84	-13.47
MARTINSVILLE FLTR PLT	5.12	0.65	1.61	-2.30	5.77	1.21	2.10	-1.20	0.53	-2.91	3.65	0.26	40.45	-5.16
MEADOWS OF DAN 5 SW	5.52		4.29		10.74		2.12		1.10		3.55		57.13	1.34
MONTEBELLO FISH CULTURAL STN	M		M 6.35		M 7.45		FMA 1.85		M 1.06		3.65			
MONTICELLO	3.13	-2.36	4.82	0.78	7.04	2.57	4.21	0.53	0.61	-3.25	2.53	-0.51	M 42.63	0.07
PEDLAR DAM	4.97		2.51		3.51		1.91		0.65		2.43		37.00	-7.70
ROCKY MT	4.29	-0.58	3.19	-1.10	3.96	-0.63	2.50	-0.68	0.84	-2.73	3.53	0.04	36.59	-10.03
SOUTH BOSTON	1.90	-2.43	3.34	-0.43	4.92	0.94	2.98	-0.50	0.49	-2.91	2.39	-0.97	30.08	-14.33
STUART	7.97	2.40	3.12	-1.87	6.67	2.03	2.19	-1.13	0.90	-2.56	3.84	0.33	48.20	-3.15
TYE RIVER 1 SE	2.89	-1.15	5.73	1.96	2.39	-1.77	1.90	-1.74	0.67	-2.94	M			
WOOLWINE	5.15		3.39		8.10		2.79		0.84		3.62		47.03	-6.70
--DIVISIONAL DATA----->	4.05	-0.58	3.42	-0.39	4.36	-0.02	2.53	-1.23	0.62	-2.73	2.99	-0.26	37.43	-9.18
NORTHERN 04														
BOSTON 4 SE	M 3.67		5.86		FA 2.95		FA 4.10		FMA 0.00		M			
CASTLETON	M		M		M		M		M		M			
EDINBURG	3.74	0.07	4.68	1.19	5.04	1.64	5.60	3.26	1.04	-1.72	2.10	-0.22	36.72	
FRONT ROYAL	3.24	-0.06	3.33	0.27	FA 3.96	-0.54	4.94	1.79	1.35	-2.40	M 1.33	-1.49	M 30.95	
LINCOLN	2.26	2.26	3.94	3.94	4.98	4.98	M 7.30	7.30	0.97	0.97	MA 2.65	2.65	M 39.47	-3.74
LURAY 5 E	2.83	-1.28	5.41	2.09	3.03	-1.50	6.33	3.30	1.21	-2.40	2.42	-0.63	36.07	-5.54
MADISON	FA 1.49	-2.72	FA 2.83	-0.80	FA 3.36	-1.02	FA 4.32	0.96	0.50	-3.41	F 0.10	-3.41		
MANASSAS	M 1.56	1.56	M		MA 4.42	4.42	7.35	7.35	M 0.95	0.95	MA 3.25	3.25		
MT WEATHER	FA 3.13	-0.68	FMA 3.44	-0.01	FA 5.35	0.83	8.51	5.08	1.65	-1.86	M 3.26	0.31	M 39.56	-3.73
PIEDMONT RSCH STN	3.30	-1.40	6.08	2.86	FA 3.57	-0.46	5.55	2.13	0.58	-3.24	FA 1.37	-1.70	34.99	-9.65
SOMERSET	3.59	-2.11	7.10	3.56	3.74	-0.50	5.58	2.03	0.62	-3.23	2.62	-0.51	37.97	
SPERRYVILLE	3.49	-0.83	3.46	-0.45	5.02	0.05	7.30	3.74	1.36	-3.29	M 3.45	0.07	M 38.70	
STAR TANNERY	M		M		M		M		M		M			
STERLING RCS	3.07	-0.63	M 3.81	0.32	2.61	-1.39	9.55	5.96	1.11	-2.47	3.13	0.04	M 41.18	-1.00
VIENNA	M 2.85	-1.34	2.33	-1.36	2.30	-1.88	FA 2.77	-0.74	M 0.58	-2.98	3.14	-0.13	M 27.98	-17.14
WARRENTON 3 SE	M		M		M		M		M		M			
WASHGTN DULLES INTL AP	2.43	-1.24	3.02	-0.51	2.71	-1.21	8.88	5.63	1.12	-2.29	2.87	-0.09	35.63	-6.17
WASHINGTON REAGAN AP	2.81	-0.92	2.78	-0.15	4.29	0.57	5.82	2.42	0.60	-2.57	3.03	-0.02	32.45	-6.90

TOTAL PRECIPITATION AND DEPARTURE FROM NORMAL (INCHES)

VIRGINIA
2012

STATION	JAN		FEB		MAR		APR		MAY		JUN	
	PRECIP.	DEPART.	PRECIP.	DEPART.	PRECIP.	DEPART.	PRECIP.	DEPART.	PRECIP.	DEPART.	PRECIP.	DEPART.
WINCHESTER	1.74	-0.82	1.21	-1.11	4.03	0.58	2.39	-0.98	4.71	0.84	2.40	-1.21
WINCHESTER 7 SE	1.41	-0.78	0.95	-1.52	M 2.49	-0.93	2.48	-0.69	3.65	-0.17	2.77	-0.89
WOODSTOCK 2 NE	1.48	-1.19	0.83	-1.76	2.83	-0.43	M 2.09	-0.84	3.72	-0.29	M 2.85	-0.95
--DIVISIONAL DATA----->	1.92	-1.25	1.33	-1.32	2.57	-1.00	2.12	-1.08	4.94	0.71	2.90	-1.04
CENTRAL MOUNTAIN 05												
BUCHANAN	2.28		1.44		5.56		3.79		4.76		2.28	
BUENA VISTA	2.56		1.67		4.93		3.33		4.60		3.20	
COVINGTON FLTR PLT	2.18	-0.32	2.05	-0.32	5.01	1.73	4.33	1.11	3.84	-0.24	3.11	-0.19
CRAIGSVILLE 2 S	M		M		M		M		M		M	
DALE ENTERPRISE	2.20	-0.09	1.01	-1.21	4.64	1.72	M 2.84	-0.13	4.59	0.88	2.58	-0.83
GATHRIGHT DAM	3.10	0.32	1.68	-0.92	5.79	2.51	2.99	-0.18	4.00	-0.11	2.07	-1.57
GLASGOW 1 SE	2.63		1.92		5.45		3.89		4.73		2.72	
HOT SPRINGS	3.49	0.03	1.81	-1.22	5.16	1.07	3.04	-0.66	4.63	0.44	3.65	-0.01
KERRS CREEK 6 WNW	2.50		1.92		M 5.10		M		M		M	
LEXINGTON	M 2.35	-0.44	1.83	-0.82	5.08	1.93	M		M		M	
MILLGAP	2.58	-0.67	1.35	-1.63	5.40	1.53	1.71	-2.04	5.96	1.19	2.58	-1.48
MTN GROVE	3.10		2.21		F 4.71		2.63		4.94		2.09	
MUSTOE 1 SW	3.29	-0.09	3.68	0.43	3.66	-0.50	2.19	-1.62	6.20	1.50	2.45	-1.36
NEW CASTLE	M		M		M		M		M		M	
ROANOKE 8 N	1.57	-1.45	1.54	-1.10	4.46	0.73	3.09	-0.64	3.71	-0.72	3.09	-1.37
ROANOKE INTL AP	1.69	-1.23	2.21	-0.68	3.52	0.06	3.04	-0.33	4.03	-0.03	3.25	-0.58
STAUNTON WATER TRMTMT PLT	2.05	-0.62	1.15	-1.40	4.48	1.23	2.58	-0.57	5.56	1.82	2.35	-1.26
WAYNESBORO WTP	1.86	-0.93	1.88	-1.04	4.75	1.02	2.77	-0.78	3.64	-0.29	3.61	-0.26
--DIVISIONAL DATA----->	2.47	-0.69	1.83	-0.91	4.85	1.27	3.03	-0.17	4.66	0.54	2.79	-0.91
SOUTHWESTERN MOUNTAIN 06												
ABINGDON 3S	5.68		M 4.62		M 3.90		4.82		M 2.23		M 1.57	
BIG STONE GAP	4.40	0.21	6.06	1.66	7.45	2.76	3.19	-1.48	5.68	0.80	2.38	-1.47
BLACKSBURG NWSO	2.08	-1.00	2.71	-0.10	4.67	1.03	4.68	1.20	3.68	-0.65	2.91	-1.09
BLAND	M		M		M		M		M		M	
BURKES GARDEN	3.31	-0.64	4.33	0.87	5.44	1.42	5.94	2.26	M 4.29	-0.47	1.32	-2.90
CHRISTIANSBURG	2.27	-0.49	2.94	0.11	4.61	1.33	4.18	0.90	3.64	-1.26	2.54	-1.38
CLINTWOOD 1 W	2.63	-0.98	4.10	0.45	4.54	0.67	4.81	0.73	3.10	-1.49	1.83	-2.96
COPPER HILL	2.81		2.47		3.38		4.80		5.75		M 3.06	
GALAX RADIO WBRF	1.41	-1.95	1.85	-1.44	3.71	-0.08	4.53	0.99	3.42	-0.50	1.76	-2.11
GRUNDY	2.49	-0.70	2.69	-0.40	3.30	-0.13	4.99	0.93	3.12	-1.77	4.95	0.45
GALAX WTP	2.85	2.85	1.34	1.34	4.96	4.96	4.40	4.40	3.59	3.59	2.02	2.02
LAFAYETTE 1 NE	1.78		2.21		3.48		3.80		2.57		3.65	
JOHN FLANNAGAN LAKE	M		M		M		MA 3.82		M 3.28		M	
LEBANON	1.93	-1.11	5.12	1.69	5.71	1.87	4.70	1.27	3.05	-1.37	2.02	-2.56
NORA 4 SSE	2.40	-1.21	4.48	0.86	6.19	2.29	4.87	1.66	2.45	-3.05	2.75	-2.97
RADFORD 3 N	2.35	-0.58	2.41	-0.33	M 4.57	1.59	M 4.55	1.48	4.58	0.66	2.53	-0.54
PULASKI 2 E	2.56	-0.29	2.59	-0.10	3.12	-0.07	6.10	3.15	3.94	0.17	3.57	0.06
NORTH FORK LAKE	MA 3.40		M		MA 4.90		MA 4.49		MA 2.92		MA 2.37	
RICHLANDS	2.62	-0.43	4.44	1.53	5.06	1.12	5.56	1.77	4.27	-0.48	3.39	-0.56
SALTVILLE 1N	3.39	-0.21	5.60	2.13	4.09	0.23	3.79	0.17	3.95	-0.40	1.80	-2.35
STAFFORDSVILLE 3 ENE	2.11	-0.79	2.74	0.01	4.34	0.91	3.13	-0.22	4.90	0.66	2.81	-0.90

TOTAL PRECIPITATION AND DEPARTURE FROM NORMAL (INCHES)

VIRGINIA
2012

STATION	JUL		AUG		SEP		OCT		NOV		DEC		ANNUAL	
	PRECIP.	DEPART.	PRECIP.	DEPART.	PRECIP.	DEPART.	PRECIP.	DEPART.	PRECIP.	DEPART.	PRECIP.	DEPART.	PRECIP.	DEPART.
WINCHESTER	6.65	3.12	3.93	0.91	4.61	0.87	6.27	3.32	0.83	-2.40	M			
WINCHESTER 7 SE	M 6.61	3.02	3.20	-0.03	4.32	0.41	7.24	4.30	1.23	-1.92	3.07	0.60	M 39.42	0.32
WOODSTOCK 2 NE	2.27	-1.53	M 7.23	4.07	M 7.10	3.22	M 7.68	5.02	M 1.22	-1.63	2.37	-0.28	M 41.67	4.15
--DIVISIONAL DATA----->	3.31	-0.60	4.24	0.58	3.88	-0.19	6.84	3.28	1.01	-2.45	2.75	-0.27	37.81	-4.63
CENTRAL MOUNTAIN 05														
BUCHANAN	4.96		4.34		2.24		1.50		0.88		1.83		35.86	-6.49
BUENA VISTA	6.71		4.69		4.11		1.86		0.34		2.63		40.63	1.79
COVINGTON FLTR PLT	5.48	1.51	4.80	1.58	5.13	1.89	1.35	-1.19	0.77	-2.59	2.46	-0.25	40.51	3.28
CRAIGSVILLE 2 S	M		M		M		M		M		M			
DALE ENTERPRISE	4.81	0.81	5.44	2.00	M 2.85	-0.69	M 2.58	0.06	M 0.93	-1.92	1.69	-0.92	M 36.16	0.04
GATHRIGHT DAM	5.26	1.36	2.95	-0.24	4.06	0.69	1.98	-0.75	0.51	-2.60	2.53	-0.43	36.92	-1.78
GLASGOW 1 SE	4.31		3.78		3.76		2.01		0.45		3.10		38.75	-10.91
HOT SPRINGS	3.76	-0.45	3.78	0.35	3.97	0.32	2.00	-1.01	0.88	-2.84	2.33	-1.02	38.50	-4.41
KERRS CREEK 6 WNW	M		M		M		M		M		M			
LEXINGTON	M		4.64	1.47	3.63	0.11	1.84	-1.08	0.87	-2.52	2.70	-0.41		
MILLGAP	FA 2.62	-2.05	FA 5.18	1.67	5.10	1.51	2.98	0.04	0.44	-3.10	2.82	-0.53	38.72	-5.15
MTN GROVE	5.09		4.52		5.84		1.93		0.43		2.44		39.93	
MUSTOE 1 SW	4.96	0.35	5.09	1.71	5.65	1.99	2.25	-0.59	0.54	-3.27	2.88	-0.43	42.84	
NEW CASTLE	M		M		4.79		1.58		0.75		2.82			
ROANOKE 8 N	3.60	-1.58	5.49	1.90	6.34	2.20	1.51	-1.55	0.86	-2.40	2.42	-0.81	37.68	
ROANOKE INTL AP	3.14	-0.90	3.99	0.43	3.60	-0.29	1.30	-1.59	0.61	-2.79	2.58	-0.36	32.96	-9.53
STAUNTON WATER TRMTMT PLT	4.94	1.04	5.64	2.01	2.82	-0.97	1.76	-1.22	0.59	-2.50	1.93	-0.81	35.85	-3.00
WAYNESBORO WTP	M 3.37	-0.86	4.62	0.58	3.27	-1.43	4.74	1.53	M 2.74	-1.74	2.80	-0.14	M 40.05	
--DIVISIONAL DATA----->	4.75	0.78	4.56	1.14	4.29	0.70	2.04	-1.13	0.64	-2.55	2.50	-0.30	38.41	-2.23
SOUTHWESTERN MOUNTAIN 06														
ABINGDON 3S	M 6.42		M 1.27		FMA 2.98		FMA 1.82		FMA 0.65		M 3.69		M 39.65	-7.76
BIG STONE GAP	9.51	4.22	5.71	1.43	6.01	2.13	4.10	1.17	1.05	-2.91	5.59	0.50	61.13	8.77
BLACKSBURG NWSO	2.56	-1.70	4.15	0.56	3.61	0.51	1.72	-1.06	1.08	-1.79	2.41	-0.54	36.26	-6.37
BLAND	M		M		M		M		M		M			
BURKES GARDEN	5.61	1.13	1.91	-2.25	5.47	2.16	3.32	0.40	0.91	-2.21	3.91	0.11	M 45.76	0.01
CHRISTIANSBURG	1.96	-2.39	3.31	0.01	3.04	-0.44	1.85	-0.90	1.32	-1.58	2.55	-0.43	34.21	
CLINTWOOD 1 W	6.23	1.48	3.91	0.26	4.21	0.93	3.66	0.96	1.26	-1.72	3.90	0.24	44.18	
COPPER HILL	M		2.22		4.53		M 2.45		0.91		2.68			
GALAX RADIO WBRF	4.67	0.43	2.24	-1.80	4.07	0.24	2.20	-0.63	0.61	-2.98	3.35	0.08	33.82	-10.08
GRUNDY	MA 7.87	2.67	MA 2.62	-1.24	6.42	3.28	4.11	1.29	0.71	-2.20	2.74	-0.53	M 46.01	0.17
GALAX WTP	5.13	5.13	2.13	2.13	5.13	5.13	1.74	1.74	0.63	0.63	2.66	2.66	36.58	
LAFAYETTE 1 NE	4.31		3.14		2.57		1.48		1.00		2.60		32.59	-6.29
JOHN FLANNAGAN LAKE	MA 7.22		M 2.63		M		M		MA 0.88		M			
LEBANON	9.39	4.82	1.74	-1.93	7.33	4.24	2.10	-0.30	0.95	-2.06	3.07	-0.35	47.11	5.81
NORA 4 SSE	4.25	-0.50	3.34	-0.94	5.74	2.43	3.89	1.21	0.93	-2.43	FA 4.02	0.28	45.31	
RADFORD 3 N	3.33	-0.89	M 3.62	0.22	3.21	0.20	2.00	-0.64	1.18	-2.17	2.87	-0.07	M 37.20	0.72
PULASKI 2 E	3.97	0.04	3.64	0.55	3.28	0.22	M 2.39	-0.26	1.21	-1.24	2.36	-0.44	M 38.73	0.92
NORTH FORK LAKE	MA 4.18		M		MA 4.31		MA 5.16		MA 1.34		MA 3.91			
RICHLANDS	9.05	4.73	4.11	-0.02	6.35	3.22	3.13	0.69	0.82	-2.16	3.44	-0.01	52.24	11.79
SALTVILLE 1N	5.76	0.73	4.64	0.46	6.65	3.37	3.27	0.54	0.48	-2.77	3.32	-0.34	46.74	1.77
STAFFORDSVILLE 3 ENE	2.59	-1.50	3.13	-0.11	3.75	0.66	1.94	-0.71	0.75	-2.09	3.08	0.24	35.27	-4.38

TOTAL PRECIPITATION AND DEPARTURE FROM NORMAL (INCHES)

VIRGINIA
2012

STATION	JAN		FEB		MAR		APR		MAY		JUN	
	PRECIP.	DEPART.	PRECIP.	DEPART.	PRECIP.	DEPART.	PRECIP.	DEPART.	PRECIP.	DEPART.	PRECIP.	DEPART.
TROUT DALE 3 SSE	4.58		M 1.84		M 4.10		3.16		5.61		2.01	
WISE 3E	2.64	-1.24	4.57	0.59	5.42	1.30	4.45	0.32	2.87	-1.75	2.72	-1.74
WILLIS	2.90		2.16		M		6.00		5.26		2.87	
WYTHEVILLE 1 S	3.40	0.50	2.86	0.06	4.24	1.00	5.79	2.57	5.86	1.75	0.98	-2.59
--DIVISIONAL DATA----->	2.85	-0.69	3.38	0.00	4.65	0.59	4.65	0.95	4.06	-0.54	2.54	-1.57

TOTAL PRECIPITATION AND DEPARTURE FROM NORMAL (INCHES)

VIRGINIA
2012

STATION	JUL		AUG		SEP		OCT		NOV		DEC		ANNUAL	
	PRECIP.	DEPART.	PRECIP.	DEPART.	PRECIP.	DEPART.	PRECIP.	DEPART.	PRECIP.	DEPART.	PRECIP.	DEPART.	PRECIP.	DEPART.
TROUT DALE 3 SSE	7.35		2.28		6.35		2.42		0.55		3.03		M 43.28	-1.53
WISE 3E	10.69	5.39	8.15	4.10	5.56	1.96	3.35	0.78	0.83	-2.63	M 4.09	0.28	M 55.34	8.34
WILLIS	2.92		3.03		M		2.16		1.12		2.67			
WYTHEVILLE 1 S	6.58	2.83	3.26	-0.18	3.62	0.43	2.18	-0.51	0.63	-2.10	2.65	-0.13	42.05	4.20
--DIVISIONAL DATA----->	5.57	1.28	3.48	-0.09	4.85	1.38	2.66	-0.44	0.90	-2.30	3.10	-0.17	42.69	-1.60

AVERAGE TEMPERATURES AND DEPARTURES FROM NORMAL(°F)

VIRGINIA
2012

STATION	JAN		FEB		MAR		APR		MAY		JUN		JUL		AUG		SEP		OCT		NOV		DEC		ANNUAL		
	TEMPERATURE	DEPARTURE.	TEMPERATURE	DEPARTURE.	TEMPERATURE	DEPARTURE.	TEMPERATURE	DEPARTURE.	TEMPERATURE	DEPARTURE.	TEMPERATURE	DEPARTURE.	TEMPERATURE	DEPARTURE.	TEMPERATURE	DEPARTURE.	TEMPERATURE	DEPARTURE.	TEMPERATURE	DEPARTURE.	TEMPERATURE	DEPARTURE.	TEMPERATURE	DEPARTURE.	TEMPERATURE	DEPARTURE.	
VIRGINIA																											
TIDEWATER 01																											
EASTVILLE	42.1		43.6		55.4		56.7		68.4		73.7		81.7		77.9M		71.2		61.7		47.6M		46.9		M 60.6		
DISPUTANTA	40.6		42.8		55.9		55.3		68.6		71.3		81.5		76.4		68.5		58.5		43.1		44.7		58.9		
EMPORIA 1 WNW	42.3	4.6	44.4	4.0	57.2M	9.0	58.0	0.8	69.7M	4.1	73.0	-0.4	81.8M	3.9	76.9	0.7	70.4	0.4	59.7	1.1	45.6M	-3.8	46.4M	5.2	M 60.5	2.5	
FREDERICKSBURG SEWAGE	38.6M		42.1M		54.6M		56.0		68.6		72.0M		81.4		77.0M		69.3M		58.1M		43.3		43.6F		M 58.7		
HAMPTON UNIV	47.2M		47.4F		58.9M		60.6		71.1		75.1		83.8		79.6		73.2		64.3		48.9		M		M 64.6		
HOLLAND 1 E	42.8	5.1	45.0	4.7	58.8F	10.8	58.1	1.5	69.3	4.2	72.3	-0.6	81.4	4.3	77.4	2.0	70.1	0.3	61.6	2.9	46.0	-4.2	46.7	5.2	M 60.8	3.0	
HOPEWELL	45.7	6.0	47.9	5.1	62.2M	11.5	60.8	1.0	70.9	3.1	75.5M	-0.1	84.1M	4.5	79.1	1.1	72.0	-0.1	62.6	1.5	48.3	-3.6	49.3	5.8	M 63.2	3.0	
NORFOLK SOUTH	44.4		44.5		57.1		57.5		69.1		72.8		81.3		77.7		70.7M		61.4M		47.1		48.1		M 61.0		
NORFOLK INTL AP	47.2	7.1	47.0	5.0	59.3	10.3	60.6	3.2	70.3	4.0	74.4	-0.1	82.5	3.4	79.0	1.6	72.4	0.3	62.5	1.4	48.6	-3.7	49.7	5.5	M 62.8	3.2	
NORTH	40.9		42.6		54.6		55.3		67.7		71.3		80.7		76.5		68.7		59.5		44.6		44.9		58.9		
PAINTER 2W	43.3	4.6	44.8	4.4	57.0	9.4	57.4	1.2	68.9	3.7	73.4	-0.1	82.9	4.6	77.6	1.1	71.0	0.1	62.0	1.8	46.9	-4.4	47.0	4.1	M 61.0	2.5	
STONY CREEK 2 N	41.7	4.6	43.7	3.5	57.0	8.6	57.8	0.2	69.7	3.2	72.9	-2.0	82.4	3.6	76.8	0.6	69.1	-0.9	59.2	1.5	44.5	-4.4	45.6	5.3	M 60.0	1.9	
SUFFOLK LAKE KILBY	44.7	5.1	45.8F	3.6	58.3	8.6	58.6	0.5	70.0	3.4	72.8	-1.4	80.3	1.8	77.1	0.3	69.7	-1.6	59.6	-0.8	46.6	-4.8	48.5	5.1	M 61.0	1.6	
WAKEFIELD 1NW	43.1	4.4	43.9	2.6	57.6	8.6	57.6	0.0	69.4	3.8	72.1	-1.5	82.0	3.4	77.2	1.0	69.3	-1.5	59.7	0.1	45.0	-5.9	46.4	4.5	M 60.3	1.6	
WALKERTON 2 NW	46.8	9.7	47.7	7.5	61.2	13.1	61.3	4.0	72.5	6.8	76.7	3.3	85.6	8.2	81.2	5.3	M		63.8F	5.7	49.1	0.2	49.6	9.2	M 63.2	5.5	
WALLACETON LK DRUMMOND	M		44.0		56.3F		57.5		68.0		70.9		80.3		76.1		69.5M		58.6		44.3		45.7		M 61.0		
WARSAW 2 NW	42.3	5.5	44.8	5.0	58.1M	10.5	58.1M	1.3	70.6M	5.0	73.4M	-0.1	82.1M	4.5	M		M		62.4M	3.5	M		M		M		
WALLOPS ISLAND NASA TEST FACIL	42.4		43.2		54.0		56.0		67.9		73.2		82.1		77.9		70.6		61.9		47.4		46.9		60.3		
WEST POINT 2 NW	42.6	4.3	44.2	3.1	57.6	8.5	58.3	0.0	69.9	3.0	73.6	-1.1	82.6	3.8	78.0	1.0	70.2	-0.8	60.3	0.4	45.4	-5.3	45.1	3.0	M 60.7	1.7	
WILLIAMSBURG 2 N	43.2	4.7	44.2	3.0	57.6	8.8	58.0	0.2	69.1	2.9	72.9	-0.9	81.6	3.5	77.5	1.0	71.4	0.6	62.5	2.7	48.2	-2.7	48.4	5.9	M 61.2	2.5	
--DIVISIONAL DATA----->	43.3	5.6	44.7	4.6	57.4	9.7	58.0	1.6	69.5	4.2	73.2	-0.4	82.1	3.9	77.7	1.3	70.4	-0.1	61.0	1.7	46.3	-3.8	46.9	5.1	M 60.9	33.4	
EASTERN PIEDMONT 02																											
ASHLAND	41.6		43.8		58.4		58.2		69.4		72.4		81.2		77.2		69.4		59.9		44.5		45.0		60.1	3.5	
AMELIA COURTHOUSE 1	40.9M	5.9	M		56.9M	10.6	58.3M	3.3	68.8M	4.8	72.7M	0.4	82.9M	6.3	77.4M	2.6	70.0M	1.9	58.7M	2.0	44.7M	-2.7	45.9M	7.1	M 61.6	5.5	
CAMP PICKETT	39.7M	4.1	42.5	4.2	56.0M	9.6	55.6	0.2	68.2	4.1	71.5	-0.7	80.6	3.7	75.5	0.1	68.1	-0.8	56.6M	-0.3	43.2	-4.4	44.1	5.0	M 58.5	2.1	
CHASE CITY	42.9	7.2	44.3	5.7	57.2	10.1	57.5	1.1	68.9	3.7	71.7	-2.1	80.8	2.6	75.5	-0.6	68.9	-0.5	58.9	1.5	45.7	-2.2	46.7	7.7	M 59.9	2.8	
CLARKSVILLE	43.1		45.0		57.6		58.7		70.6		74.0M		83.2		77.0M		69.5M		59.6M		46.1		45.9		M 60.9		
CROZIER	39.3	4.4	42.2	4.3	55.8M	9.9	54.9M	-0.5	67.1M	3.0	70.2	-2.2	79.2	2.0	75.1	-0.6	67.8	-1.2	57.3	0.5	42.3	-5.4	42.3M	3.4	M 57.8	1.5	
CORBIN	40.6	5.8	43.3	5.2	56.9	10.6	56.9	1.3	68.9	4.6	71.7	-0.8	80.3	3.5	76.8	1.5	68.8	-0.1	58.5	1.2	44.3	-3.9	44.2	5.0	M 59.3	2.9	
FARMVILLE 2 N	39.4M	2.7	43.0	3.2	56.8	9.0	56.3	-0.6	68.4F	3.3	71.4	-1.7	81.7	4.5	75.3	-0.2	67.9	-1.0	57.3	-0.4	43.3	-5.3	44.0	4.0	M 58.7	1.4	
GREENBAY 3 NE	40.2M		43.2F		57.2		56.2		68.2		71.5		81.8		75.9		68.9		57.6		43.0M		44.7		M 59.0		
JOHN H KERR DAM	43.9M	6.1	45.2	4.8	59.1	10.9	59.1	1.9	71.5	5.7	75.3	1.4	83.7	5.3	78.3M	1.4	72.2	1.6	60.5F	1.5	46.3	-3.6	46.9	5.4	M 61.8	3.5	
LOUISA	39.6	6.7	42.6	6.2	56.7	12.0	56.9	2.8	68.8	6.4	71.2	0.9	80.1	5.7	76.2	3.5	67.8	1.6	57.6	2.8	42.8	-2.4	43.2	6.9	M 58.6	4.4	
PALMYRA 3S	M		40.6		54.1		54.0		67.1		69.3		79.8		75.0		66.4		55.8		41.5		41.4		58.6		
PETERSBURG	41.8		43.9M		57.9		57.3		69.0		73.1		82.5		77.2		70.0		59.8M		44.1M		45.7		M 60.2		
RICHMOND INTL AP	42.7	6.3	44.7	5.2	58.3	10.6	58.6	1.5	70.5	5.1	74.1	0.6	82.7	4.8	78.2	1.9	70.3	0.5	60.4	2.1	46.4	-2.6	46.7	6.3	M 61.1	3.5	
SANDSTON	39.7		42.0M		55.7		55.7		68.8		72.1		81.8		77.1		68.5		57.9		43.0		43.9		M 58.9		
--DIVISIONAL DATA----->	41.1	5.2	43.3	4.2	57.0	10.1	56.9	1.0	68.9	4.8	72.1	-0.3	81.5	4.7	76.5	1.4	69.0	0.5	58.4	1.5	44.1	-3.9	44.7	5.3	M 59.5	34.5	
WESTERN PIEDMONT 03																											
APPOMATTOX	38.9M		41.9		55.0		56.6M		M		M		M		M		M		M		42.7M		42.8		M		
BROOKNEAL	38.9	4.8	41.8	5.1	55.2	10.6	56.5	3.0	68.5	5.9	71.4	0.2	81.3	5.5	76.0	1.4	68.4	1.1	57.0	2.0	41.8	-3.4	42.9	6.2	M 58.3	3.5	
CHARLOTTE COURT HOUSE	M		M		M		M		M		M		M		M		M		M		43.6M		44.2		M		

AVERAGE TEMPERATURES AND DEPARTURES FROM NORMAL(°F)

VIRGINIA
2012

STATION	JAN		FEB		MAR		APR		MAY		JUN		JUL		AUG		SEP		OCT		NOV		DEC		ANNUAL		
	TEMPERATURE	DEPARTURE.	TEMPERATURE	DEPARTURE.	TEMPERATURE	DEPARTURE.	TEMPERATURE	DEPARTURE.	TEMPERATURE	DEPARTURE.	TEMPERATURE	DEPARTURE.	TEMPERATURE	DEPARTURE.	TEMPERATURE	DEPARTURE.	TEMPERATURE	DEPARTURE.	TEMPERATURE	DEPARTURE.	TEMPERATURE	DEPARTURE.	TEMPERATURE	DEPARTURE.	TEMPERATURE	DEPARTURE.	
CHARLOTTESVILLE 2W	38.7	3.2	43.6	4.9	56.3	9.4	56.6	-0.5	68.3	3.1	72.4	-0.5	82.0	5.1	75.7	0.3	68.5	-0.7	57.8	-0.5	44.7	-4.2	43.7	4.4	59.0	2.0	
CHATHAM	37.6	3.0	40.0	2.6	54.0	8.9	54.8	0.9	66.3	3.7	68.4	-2.6	77.4	2.2	72.8	-0.7	65.8	-1.1	55.4	0.5	40.8	-5.1	41.3	3.4	56.2	1.3	
DANVILLE	40.8	4.2	42.8	3.1	56.6	8.7	M	M	M	M	M	M	M	M	M	M	M	M	M	M	M	M	M	M	M	M	
DANVILLE REGIONAL AP	41.1		43.0		57.0		56.3		69.4		73.4		82.1		77.4		70.1		58.7		45.3		46.3		60.0		
FREE UNION	36.7		40.6		53.1		54.0		65.7		68.2		77.6		73.0		65.6		55.4		41.8		40.7		56.0		
LYNCHBURG #2	38.2		40.7		54.3		54.9		66.5		69.2		78.3		73.5		66.3		55.9		41.8		42.0		56.8		
MONTICELLO	37.6	3.5	41.7	4.1	54.7	9.0	54.9	-0.9	65.7M	1.9	70.1	-1.7	79.4	3.8	74.0	0.3	66.6	-0.3	56.3	0.5	43.1	-4.2	42.2	4.1	M 57.2	1.7	
MONTEBELLO FISH CULTURAL STN	32.1M		36.4M		49.0M		49.5M		60.9M		M		M		67.5M		61.6M		49.6MF		37.4M		37.8M		M		
MEADOWS OF DAN 5 SW	39.2M		41.6		53.4M		55.5		65.5M		67.5		74.6		70.8M		64.6		55.1		43.0		42.1		M 56.1		
LYNCHBURG INTL AP	39.2	4.7	41.6	3.8	56.3	10.3	56.1	0.8	67.9	4.5	70.8	-0.2	79.4	4.3	74.9	1.1	67.1	0.0	56.3	0.2	43.1	-3.5	43.2	5.0	58.0	2.6	
MARTINSVILLE FLTR PLT	38.0	4.1	40.7	4.4	54.3	9.9	55.2M	1.8	67.9	5.5	70.0	-0.6	78.6	3.6	74.0	0.7	67.2	0.4	56.2	1.0	41.9	-3.7	42.2	5.1	M 57.2	2.7	
ROCKY MT	38.6M	3.5	42.0	3.9	54.7M	9.0	56.5	1.8	67.6M	4.7	69.9M	-1.2	78.4M	2.9	74.0	0.1	67.2	0.0	55.8	-0.3	42.9	-4.0	42.2	3.8	M 57.5	2.0	
SOUTH BOSTON	40.0	4.1	41.9	2.8	56.1	9.4	56.1	0.8	68.6	4.7	72.1	-0.2	82.0	5.2	75.8	0.5	69.0	0.3	58.1	1.5	43.9	-3.4	44.8	5.3	59.0	2.5	
STUART	39.5	4.3	41.8	3.5	55.8	9.7	56.3	1.3	67.4	4.0	69.8	-0.9	77.3	2.6	73.3	0.0	67.4	0.2	56.9	0.6	43.8	-3.5	43.4	4.7	57.7	2.2	
TYE RIVER 1 SE	39.3	4.4	43.0	5.0	57.0	11.4	56.1	0.9	67.3	4.3	70.3	-0.7	79.5	4.1	74.8	0.9	68.0	0.8	58.1	1.9	44.3	-2.9	M		59.8	4.3	
--DIVISIONAL DATA----->	38.5	2.7	41.5	2.6	54.9	8.4	55.4	-0.3	66.9	3.4	70.3	-1.3	79.1	3.2	73.8	-0.5	66.9	-0.7	56.2	-0.1	42.7	-4.8	42.6	3.7	57.4	16.3	
NORTHERN 04																											
BOSTON 4 SE	36.1		40.7M		53.2MF		54.3M		66.6M		68.5M		77.7M		73.6		65.6		55.6		41.8M		M		M 57.6		
CASTLETON	M		M		M		M		M		M		M		M		M		M		M		M		M		
EDINBURG	34.1		38.5		50.8		51.5		65.7		68.1		76.5		71.8		64.7		53.3F		39.1		38.6		54.4		
FRONT ROYAL	36.0		40.4		53.1		54.2		66.4		69.8		78.2		73.5		66.9		55.5		41.1		41.3M		M 56.4		
LINCOLN	34.2M	2.7	38.6	4.4	50.0	7.1	51.9	0.0	66.7F	4.9	69.1	-1.2	77.9	2.7	74.5	0.9	65.1	-1.3	54.3	-0.8	39.4	-5.4	38.0	2.2	M 55.0	1.4	
LURAY 5 E	36.2	1.9	39.9	2.6	53.4	8.5	53.2	-1.7	66.2	3.3	68.8	-1.6	77.1	3.0	72.6	0.2	65.4	-1.2	54.6	-1.1	41.5	-5.6	41.4	3.9	55.9	1.1	
MADISON	40.9M		M		M		M		66.0M		70.9		79.3		74.6		67.3		57.9		45.0		44.4		M		
MANASSAS	37.9M		41.3M		52.6M		55.1M		69.5M		73.5M		83.2M		M		69.2M		57.4		42.5		42.6M		M 56.8		
MT WEATHER	34.3M	5.5	38.3	7.1	50.9	12.0	51.5	2.2	64.6	5.5	68.6	1.0	75.5	3.4	72.3M	1.5	65.5	1.4	54.4	1.4	40.4	-2.8	39.8M	6.3	M 54.7	3.7	
PIEDMONT RSCH STN	37.3	4.2	41.4	5.3	54.7	10.4	55.0	0.7	67.4	4.1	71.1	-0.7	79.5	3.4	74.6	0.2	67.2	-0.5	56.7	0.7	43.2	-3.3	41.8	4.6	57.5	2.4	
SOMERSET	37.1		41.4		53.7		54.4		67.5		70.6		79.9		75.0		66.9		56.1		42.1		41.6		57.2		
SPERRYVILLE	35.6		40.4		52.2		53.4		65.3		67.2M		76.7		72.5		65.8		55.5		42.6		40.6M		M 55.7		
STAR TANNERY	M		M		M		M		M		M		M		M		M		M		M		M		M		
STERLING RCS	35.8	5.3	39.4M	6.2	52.1	10.4	53.0M	1.5	68.0	6.6	70.9M	1.1	80.1	5.6	77.0M	4.0	67.5	1.7	56.2	2.3	40.4	-3.5	38.6	3.6	M 56.6	3.7	
VIENNA	36.2		40.8		52.4M		53.0M		66.7M		69.6		78.1M		75.3		66.0		54.5		39.5M		39.4		M 56.0		
WARRENTON 3 SE	M		40.5M	4.8	54.7M	10.9	53.3M	-0.4	66.6M	4.1	M		M		M		M		M		M		M		M		
WASHGTON DULLES INTL AP	37.8	6.1	41.0	6.2	54.3	10.9	54.1	1.0	68.5	6.2	71.9	1.0	80.6	4.9	77.1	2.7	68.1	0.8	56.8	1.8	42.5	-2.7	41.9	5.9	57.9	3.7	
WASHINGTON REAGAN AP	40.8	5.9	44.4	6.3	56.8	10.3	58.3	2.2	71.4	5.8	76.3	1.8	84.0	4.8	81.0	3.6	72.2	1.7	61.0	2.2	46.6	-2.1	45.4	5.9	61.5	4.0	
WINCHESTER	35.2	4.5	40.2	6.1	52.4	10.2	52.8	0.2	66.2	4.0	70.4	-0.2	77.6	2.4	73.2	-0.2	65.8	-0.1	54.8	0.6	41.2	-3.4	M		57.3	3.9	
WINCHESTER 7 SE	33.9	3.5	38.4	4.9	50.1M	8.0	51.4	-0.3	66.1	4.6	69.6	-0.4	78.2M	3.6	73.2	0.3	65.6	-0.3	54.0	-0.1	39.1	-5.3	38.5	3.4	M 54.8	1.8	
WOODSTOCK 2 NE	34.2	3.2	38.6	4.6	51.6	8.9	52.0M	0.3	65.4	3.7	67.7M	-2.4	76.7M	2.2	72.7M	-0.4	65.1M	-0.8	54.0M	-0.6	40.4M	-3.8	39.2	3.5	M 54.8	1.5	
--DIVISIONAL DATA----->	36.3	4.5	40.2	5.1	52.7	9.6	53.5	0.6	66.9	5.1	70.1	0.0	78.7	4.2	74.4	1.6	66.7	0.7	55.7	1.2	41.6	-3.6	40.8	4.8	56.5	33.8	
CENTRAL MOUNTAIN 05																											
COVINGTON FLTR PLT	37.1		40.2		53.3		54.5		67.2		68.2		78.0		72.5		66.1		55.4		41.6		41.8		56.3	2.5	
DALE ENTERPRISE	35.1	4.6	38.7	5.2	52.3	10.3	52.0M	1.2	65.7F	4.9	68.0	-1.4	77.2	3.7	71.8	0.0	64.3M	-0.5	53.9M	0.4	39.7MF	-3.6	40.0	5.1	M 54.9	2.5	
GATHRIGHT DAM	33.9	2.7	37.4	3.4	50.9	8.6	52.4	0.7	64.9	4.3	66.2	-2.3	74.7	2.2	M		63.6	-1.2	52.7	-1.3	40.1M	-3.9	38.8	3.6	M 52.3	-0.2	
HOT SPRINGS	33.3M	3.3	37.0	4.0	50.4M	9.3	51.5	0.9	64.6	5.1	65.4M	-1.9	M		68.9	-1.3	62.2	-1.2	51.8	-0.5	39.0	-3.4	38.4	4.8	M 51.1	-0.1	
LEXINGTON	37.2M	4.7	40.0	4.6	52.9	8.6	M		M		M		M		M		M		M		M		M		M		

AVERAGE TEMPERATURES AND DEPARTURES FROM NORMAL(°F)

VIRGINIA
2012

STATION	JAN		FEB		MAR		APR		MAY		JUN		JUL		AUG		SEP		OCT		NOV		DEC		ANNUAL	
	TEMPERATURE	DEPARTURE.	TEMPERATURE	DEPARTURE.	TEMPERATURE	DEPARTURE.	TEMPERATURE	DEPARTURE.	TEMPERATURE	DEPARTURE.	TEMPERATURE	DEPARTURE.	TEMPERATURE	DEPARTURE.	TEMPERATURE	DEPARTURE.	TEMPERATURE	DEPARTURE.	TEMPERATURE	DEPARTURE.	TEMPERATURE	DEPARTURE.	TEMPERATURE	DEPARTURE.	TEMPERATURE	DEPARTURE.
MILLGAP	30.0		32.9		45.8		47.0		60.5		61.9		71.2		66.2		59.8		48.6		35.7		35.1		49.6	
MUSTOE 1 SW	31.9		34.4		48.3		49.4		61.6		62.8		M		66.1		58.8		48.5		36.7		35.2		48.5	
ROANOKE 8 N	39.0M		42.1		55.3		56.4		68.1		71.0		79.5		74.3		67.7M		56.8		43.7		42.7		M 58.1	
ROANOKE INTL AP	41.4	5.6	44.3	5.2	57.4	10.2	58.1	2.0	69.0	4.9	72.7	0.8	80.8	4.6	75.2	0.5	68.3	0.6	57.2	0.6	44.9	-2.4	44.7	5.6	59.5	3.2
STAUNTON WATER TRMTMT PLT	36.1	5.4	40.0	6.4	53.3	11.6	53.6	2.8	65.7	5.9	68.6	0.7	76.8	4.7	71.9	1.4	65.7	1.8	54.4	2.3	41.8	-1.3	41.9	7.5	55.8	4.1
WAYNESBORO WTP	36.5		39.7		53.5		53.3		66.5		68.4		78.2M		73.2		66.0		55.1		40.7M		41.2		M 56.0	
--DIVISIONAL DATA----->	35.6	3.3	38.8	3.2	52.1	8.4	52.8	0.1	65.4	4.0	67.3	-2.0	77.1	3.7	71.1	-0.8	64.3	-0.8	53.4	-0.6	40.4	-3.9	40.0	4.1	54.9	18.7
SOUTHWESTERN MOUNTAIN 06																										
ABINGDON 3S	39.0		40.7M		55.1M		56.1		66.5M		69.5M		75.3M		71.5M		65.7M		53.6M		42.0M		41.4M		M 56.4	3.0
BIG STONE GAP	36.1F	2.5	40.4MF	3.0	54.7MF	9.1	54.8F	1.3	67.5F	4.7	70.1F	-0.1	76.8	2.5	72.1F	-1.8	66.6F	-0.7	54.2	-1.2	43.1	-2.7	42.2	5.2	M 56.6	1.9
BLACKSBURG NWSO	34.5	3.6	37.3	3.8	51.0	9.6	52.0	2.0	64.0	5.1	66.3	-0.6	74.6	3.5	69.6	0.0	63.6	0.6	51.8	0.1	38.6	-4.2	37.9	3.8	53.4	2.2
BLAND	M		M		M		M		M		M		M		M		M		M		M		M		M	
BURKES GARDEN	32.3	3.5	34.8	3.7	47.2F	8.1	49.1	2.3	60.2M	4.2	62.0	-1.5	70.1	2.8	64.2M	-1.4	59.3	-0.2	47.2	-1.4	34.7	-5.4	35.8	3.5	M 49.7	1.5
CHRISTIANSBURG	35.8		38.8		52.5		52.8		64.3		66.6		74.6		69.6		63.9		52.3		40.3		40.1		54.3	
CLINTWOOD 1 W	35.4		37.8		52.9		53.4		64.8		66.4		73.8		68.7		62.5		51.5		39.0		39.0		53.8	
COPPER HILL	34.6		37.2		50.7		51.1		62.0		65.5M		M		67.6		61.8		49.9M		38.6		38.8		M 50.7	
GALAX RADIO WBRF	35.7	5.3	39.6	6.4	51.6	10.8	53.3	4.2	63.8	5.4	66.5	0.8	73.7	3.8	69.6	1.3	63.6	1.6	52.0	1.1	39.4F	-2.3	39.2	5.4	54.0	3.6
GRUNDY	37.2	2.8	39.9	2.0	54.0	8.1	54.4	0.2	66.2	3.3	67.1	-3.7	74.6M	-0.6	70.8M	-3.4	65.0	-3.1	53.4	-2.7	41.0	-5.6	41.1	3.3	M 55.4	0.1
GALAX WTP	34.9		37.7		49.8		51.9M		62.4		65.1		73.0		68.6		62.4		51.5		38.5		38.4		M 52.9	
JOHN FLANNAGAN LAKE	M		M		M		M		67.3M		M		76.4M		72.4M		M		M		M		M		M	
LEBANON	36.4	3.7	39.6	3.8	53.0	9.6	53.8	2.4	65.4	4.9	67.8	-0.5	74.9	3.1	69.7	-0.9	64.5	0.0	52.4M	-0.5	39.7	-4.4	41.2F	5.2	M 54.9	2.2
NORA 4 SSE	34.9		37.1		52.9		52.3		65.4		68.1		73.4		69.4		63.6		52.0		40.7		39.3		54.1	
RADFORD 3 N	36.1		39.5		51.7M		53.4		65.7		67.6		76.1		70.8		64.5		52.4		39.4		38.9		M 54.7	
PULASKI 2 E	36.7M	5.1	39.7M	5.3	51.8M	9.5	53.4M	2.4	64.8M	4.8	68.1M	0.6	75.7	4.2	70.3	0.1	65.2	1.4	53.2M	0.5	40.5	-3.1	40.4	5.0	M 55.0	3.0
NORTH FORK LAKE	M		M		M		M		M		M		M		M		M		M		M		M		M	
RICHLANDS	35.5	3.8	38.6	3.8	52.0M	9.5	53.0	2.4	65.4M	5.4	67.3	-0.7	74.6	2.4	69.9	-0.7	64.2	-0.2	52.6	0.1	39.6	-3.9	39.7	4.8	M 54.4	2.3
SALTVILLE 1N	36.1	4.1	38.8	3.7	52.6M	9.1	54.2	1.9	65.8	4.4	67.9	-1.2	75.0	1.9	70.8	-1.0	65.0F	-0.4	53.1	-0.4	40.1	-3.8	40.2	5.0	M 55.0	2.0
TROUT DALE 3 SSE	34.4		35.7M		48.8		50.6M		60.8		63.1		70.9		65.8		60.5		49.5F		37.8		37.5		M 51.3	
STAFFORDSVILLE 3 ENE	35.2	4.5	38.2	4.3	51.2	8.9	52.1M	1.3	64.4M	4.8	66.6	-0.5	74.9	3.6	69.5M	-0.3	64.3	0.9	52.2	0.0	38.9	-4.2	38.9	4.1	M 53.9	2.3
WISE 3E	38.9	6.2	38.6	2.2	54.8	10.1	54.5	1.4	64.7	3.9	67.4	-0.4	72.9	1.5	68.1	-2.1	62.9F	-1.6	52.8	-1.8	42.0	-3.2	42.4M	5.8	M 55.0	1.8
WYTHEVILLE 1 S	35.5	4.6	38.9	5.1	51.2	9.6	52.6	2.8	64.1	5.2	66.5	0.1	73.3	2.5	68.5	-0.9	63.6	0.3	51.6	-0.3	38.5	-4.0	38.5	4.3	53.6	2.5
--DIVISIONAL DATA----->	35.8	32.6	38.4	34.9	52.0	47.7	52.9	47.8	64.5	58.5	66.8	60.1	74.2	67.1	69.4	62.4	63.6	57.2	52.0	46.7	39.6	35.3	39.5	36.0	54.1	586.3

TEMPERATURE EXTREMES AND FREEZE DATA (°F)

VIRGINIA
2012

STATION	HIGHEST	DATE	LOWEST	DATE	LAST SPRING MINIMUM OF										FIRST FALL MINIMUM OF										NUMBER OF DAYS BETWEEN DATES							
					16° OR BELOW		20° OR BELOW		24° OR BELOW		28° OR BELOW		32° OR BELOW		32° OR BELOW		28° OR BELOW		24° OR BELOW		20° OR BELOW		16° OR BELOW		16° OR BELOW	20° OR BELOW	24° OR BELOW	28° OR BELOW	32° OR BELOW			
					DATE	TEMP.	DATE	TEMP.	DATE	TEMP.	DATE	TEMP.	DATE	TEMP.	DATE	TEMP.	DATE	TEMP.	DATE	TEMP.	DATE	TEMP.	DATE	TEMP.								
VIRGINIA																																
TIDEWATER 01																																
DISPUTANTA	103	07/08	14	02/14	02/14	14	02/21	20	03/07	22	03/12	26	04/13	32	10/31	30	11/06	28	11/25	20	11/25	20	NONE	NONE	NONE	NONE	NONE	278	263	239	201	
EASTVILLE	97	07/01	22	01/16	MSG		MSG		01/17	23	02/21	28	03/10	31	11/29	31	12/31	27	NONE		NONE	20	NONE	NONE	NONE	NONE						
EMPORIA 1 WNW	103	06/30	17	01/05	MSG		02/14	20	02/22	24	03/07	26	03/12	29	11/03	32	11/25	25	12/31	24	NONE		NONE	NONE	NONE	NONE						
FREDERICKSBURG SEWAGE	102	07/08	12	01/04	01/05	15	02/14	17	03/07	24	03/07	24	03/12	29	11/06	28	11/06	28	11/29	23	NONE		NONE	NONE	NONE	NONE						
HAMPTON UNIV	99	07/08	21	01/04	MSG		MSG		02/13	24	02/13	24	02/26	32	11/25	32	NONE		NONE		NONE		NONE	NONE	NONE	NONE						
HOLLAND 1 E	101	07/09	13	02/13	02/13	13	02/21	20	03/06	22	03/11	25	04/08	30	11/02	31	11/06	27	11/25	17	11/25	17	NONE		NONE	NONE						
HOPEWELL	102	07/08	20	02/13	MSG		02/13	20	02/13	20	02/26	28	03/11	30	11/09	30	11/25	26	NONE		NONE		NONE	NONE	NONE	NONE						
NORFOLK INTL AP	102	07/08	22	02/13	MSG		MSG		02/13	22	02/21	28	03/05	32	11/25	28	11/25	28	NONE		NONE		NONE	NONE	NONE	NONE						
NORFOLK SOUTH	99	06/29	20	02/13	MSG		02/13	20	02/13	20	02/21	26	03/11	29	11/25	28	11/25	28	12/31	24	NONE		NONE	NONE	NONE	NONE						
NORTH	98	06/30	17	02/13	MSG		02/14	18	02/21	23	03/11	28	03/12	30	11/06	32	11/25	28	12/23	24	NONE		NONE	NONE	NONE	NONE						
PAINTER 2W	100	07/09	19	01/16	MSG		01/16	19	02/21	24	03/11	28	03/11	28	11/06	31	11/29	27	12/31	24	NONE		NONE	NONE	NONE	NONE						
STONY CREEK 2 N	106	06/30	16	02/14	02/14	16	02/14	16	03/07	23	03/12	27	03/12	27	11/03	32	11/07	28	11/26	22	NONE		NONE	NONE	NONE	NONE						
SUFFOLK LAKE KILBY	97	07/09	18	02/13	MSG		02/13	18	02/13	18	03/06	26	03/11	31	11/25	26	11/25	26	NONE		NONE		NONE	NONE	NONE	NONE						
WAKEFIELD 1NW	102	06/29	14	01/04	02/13	15	02/13	15	03/06	22	03/11	26	04/12	30	11/02	32	11/06	28	11/24	24	11/25	19	NONE		NONE	NONE						
WALKERTON 2 NW	108	07/08	21	01/04	MSG		MSG		02/13	22	02/21	28	03/06	29	11/06	31	11/24	27	NONE		NONE		NONE	NONE	NONE	NONE						
WALLACETON LK DRUMMOND	102	06/30	12	02/13	02/13	12	02/21	19	03/06	22	03/12	28	04/12	32	11/02	31	11/03	27	11/06	24	11/25	18	NONE		NONE	NONE						
WARSAW 2 NW	104	07/07	17	02/12	MSG		02/12	17	03/06	23	03/06	23	03/27	32	11/05	32	11/06	25	11/29	23	NONE		NONE	NONE	NONE	NONE						
WEST POINT 2 NW	104	07/08	16	02/13	02/13	16	02/13	16	03/06	24	03/11	28	03/11	28	11/03	32	11/24	27	11/25	23	NONE		NONE	NONE	NONE	NONE						
WILLIAMSBURG 2 N	101	07/08	17	01/04	MSG		02/13	18	02/21	24	03/06	27	03/11	29	11/24	31	11/25	28	12/31	24	NONE		NONE	NONE	NONE	NONE						
EASTERN PIEDMONT 02																																
AMELIA COURTHOUSE 1	106	07/09	14	01/05	01/05	14	02/13	18	03/06	23	03/11	27	03/11	27	11/03	32	11/06	27	11/29	24	NONE		NONE	NONE	NONE	NONE						
ASHLAND	101	07/08	15	01/04	01/04	15	02/13	17	03/06	23	03/06	23	03/11	29	11/03	32	11/06	27	11/25	24	NONE		NONE	NONE	NONE	NONE						
CAMP PICKETT	103	06/30	14	01/05	01/05	14	02/14	17	03/07	23	04/11	25	04/11	25	11/02	32	11/09	28	11/25	20	11/25	20	NONE		NONE	NONE						
CHASE CITY	103	06/30	20	01/04	MSG		01/04	20	02/14	23	03/07	28	04/12	32	11/06	32	11/25	23	11/25	23	NONE		NONE	NONE	NONE	NONE						
CLARKSVILLE	107	07/09	17	01/04	MSG		02/12	20	03/06	24	03/08	27	03/14	30	11/06	32	11/23	27	11/25	23	NONE		NONE	NONE	NONE	NONE						
CORBIN	100	07/08	12	01/04	02/13	16	02/13	16	03/06	21	03/11	28	03/27	32	11/06	26	11/06	26	11/25	23	NONE		NONE	NONE	NONE	NONE						
CROZIER	101	07/09	14	01/04	02/14	15	02/21	20	03/06	22	03/11	28	04/09	32	11/03	31	11/05	28	11/25	24	12/31	20	NONE		NONE	NONE						
FARMVILLE 2 N	106	07/09	14	01/05	02/13	16	02/22	19	03/07	23	03/12	27	04/13	32	11/04	32	11/06	27	11/25	21	NONE		NONE	NONE	NONE	NONE						
GREENBAY 3 NE	105	07/09	13	01/04	01/04	13	02/13	17	03/06	22	03/11	28	04/12	31	11/03	29	11/06	25	11/25	22	NONE		NONE	NONE	NONE	NONE						
JOHN H KERR DAM	107	06/30	16	01/04	01/04	16	02/12	19	02/21	23	03/06	25	03/12	31	11/06	29	11/23	28	11/25	24	NONE		NONE	NONE	NONE	NONE						
LOUISA	101	07/08	12	01/04	02/13	14	03/06	17	03/06	17	04/12	28	04/12	28	10/13	30	11/05	25	11/06	21	11/29	18	NONE		NONE	NONE						
PALMYRA 3S	103	07/09	14	02/14	02/14	14	02/22	18	03/12	23	04/08	28	04/25	31	10/14	32	11/03	28	11/06	24	11/29	18	NONE		NONE	NONE						
PETERSBURG	105	06/30	17	01/05	MSG		02/15	18	02/26	24	03/07	26	03/12	30	11/03	30	11/09	28	11/26	24	NONE		NONE	NONE	NONE	NONE						
RICHMOND INTL AP	104	07/07	17	01/04	MSG		02/13	18	03/06	24	03/06	24	03/11	30	11/03	31	11/25	26	12/23	23	NONE		NONE	NONE	NONE	NONE						
SANDSTON	102	07/09	15	01/05	02/14	16	02/14	16	03/07	24	03/12	28	03/12	28	11/03	31	11/06	28	11/25	23	NONE		NONE	NONE	NONE	NONE						
WESTERN PIEDMONT 03																																
APPOMATTOX	85	04/17	15	01/04	01/04	15	02/14	20	03/06	24	03/07	25	04/12	31	11/07	31	11/25	21	11/25	21	NONE		NONE	NONE	NONE	NONE						
BROOKNEAL	103	07/09	15	01/04	01/04	15	02/21	20	03/07	24	03/12	26	04/25	31	11/02	30	11/03	27	11/17	24	11/25	17	NONE		NONE	NONE						
CHARLOTTESVILLE 2W	105	07/09	16	01/04	01/04	16	02/13	19	02/13	19	03/06	26	03/11	32	11/05	32	11/25	28	NONE		NONE		NONE	NONE	NONE	NONE						
CHATHAM	97	07/01	14	01/05	02/13	16	03/07	19	03/12	24	04/13	25	04/26	32	10/22	32	11/02	28	11/06	24	11/25	16	11/25	16	NONE							
DANVILLE	83	04/17	17	01/04	MSG		02/13	20	03/06	23	04/12	28	04/12	28	NONE	NONE	NONE	NONE	NONE		NONE		NONE	NONE	NONE	NONE	16	286	263	239	203	179
DANVILLE REGIONAL AP	104	06/29	15	02/12	02/13	16	02/13	16	03/06	22	04/12	28	04/24	29	11/01	32	11/22	28	11/24	24	11/25	18	NONE		NONE	NONE						

MONTHLY AND SEASONAL COOLING DEGREE DAYS
BASE = 65 DEGREES FAHENHEIT

VIRGINIA
2012

STATION	JAN	FEB	MAR	APR	MAY	JUN	JUL	AUG	SEP	OCT	NOV	DEC	TOTAL	SEASONAL NORM
VIRGINIA														
TIDEWATER 01														
EASTVILLE	0	0	15	18	141	278	524	405E	204	54	0	0	1639E	
DISPUTANTA	0	0	25	21	143	205	521	360	148	36	0	0	1459	
EMPORIA 1 WNW	0	0	28E	26	172E	253	527E	376	185	34	0	0	1601E	1298
FREDERICKSBURG SEWAGE	0	0	17E	29	147	221E	515	380E	166E	28E	0	0	1503E	
HAMPTON UNIV	0	0	32E	36	201	314	593	460	257	85	0	0	-	
HOLLAND 1 E	0	0	30	31	164	235	517	393	179	50	0	0	1599	1210
HOPEWELL	0	0	65E	39	198	322E	595E	447	223	73	0	0	1962E	1619
NORFOLK SOUTH	0	2	26	26	150	254	514	400	192E	52E	0	0	1616E	
NORFOLK INTL AP	0	4	41	46	178	289	550	440	234	68	0	2	1852	1612
NORTH	0	0	10	17	127	212	494	364	150	35	0	0	1409	
PAINTER 2W	0	0	25	25	148	266	560	401	201	63	0	0	1689	1334
STONY CREEK 2 N	0	0	28	31	165	247	544	372	161	35	0	0	1583	1409
SUFFOLK LAKE KILBY	0	0	23	30	174	250	482	381	168	36	0	0	1544	1427
WAKEFIELD 1NW	0	0	33	35	168	230	535	386	166	52	0	0	1605	1356
WALKERTON 2 NW	0	5	57	41	245	357	645	510	-	89	0	2	-	
WALLACETON LK DRUMMOND	-	0	17	23	135	205	479	351	172E	28	0	0	-	
WARSAW 2 NW	0	1	28E	29E	195E	267E	549E	-	-	84E	-	-	-	
WALLOPS ISLAND NASA TEST FACIL	0	0	7	21	131	265	536	403	186	67	0	0	1616	
WEST POINT 2 NW	0	0	26	33	180	266	552	409	173	51	0	0	1690	1446
WILLIAMSBURG 2 N	0	1	26	32	153	252	523	398	198	67	0	0	1650	1364
EASTERN PIEDMONT 02														
ASHLAND	0	1	26	34	162	231	511	385	165	45	0	0	1560	1131
AMELIA COURTHOUSE 1	0	-	28E	27E	150E	246E	562E	389E	175E	30E	0	0	-	
CAMP PICKETT	0	0	24E	14	135	210	493	336	134	30E	0	0	1376E	1158
CHASE CITY	0	0	20	25	150	219	499	335	152	25	0	0	1425	1316
CLARKSVILLE	0	0	28	27	195	281E	570	379E	166E	34E	0	0	1680E	
CROZIER	0	0	18E	17E	115E	173	450	320	132	17	0	0	1242E	1193
CORBIN	0	0	18	31	154	216	484	376	155	38	0	0	1472	1155
FARMVILLE 2 N	0	0	29	20	137	212	526	327	138	16	0	0	1405	1218
GREENBAY 3 NE	0	0	28	17	135	217	528	346	155	19	0	0	1445	
JOHN H KERR DAM	0	0	30	37	222	318	589	423E	239	48	0	0	1906E	1383
LOUISA	0	0	17	23	157	201	475	351	139	28	0	0	1391	854
PALMYRA 3S	-	0	9	16	123	153	466	316	119	13	0	0	-	
PETERSBURG	0	0	36	27	153	252	547	383	177	41E	0	0	1616E	
RICHMOND INTL AP	0	0	33	35	185	285	555	416	180	55	0	0	1744	1435
SANDSTON	0	0	24	24	151	228	529	382	152	31	0	0	1521	
WESTERN PIEDMONT 03														
APPOMATTOX	0	0	5	14E	-	-	-	-	-	-	0	0	-	
BROOKNEAL	0	0	10	20	150	210	512	347	148	13	0	0	1410	1015
CHARLOTTE COURT HOUSE	-	-	-	-	-	-	-	-	-	-	0	0	-	
CHARLOTTESVILLE 2W	0	0	28	15	143	237	533	339	141	29	0	0	1465	1212
CHATHAM	0	0	2	8	93	134	392	249	110	8	0	0	996	971
DANVILLE	0	0	13	-	-	-	-	-	-	-	-	-	-	
DANVILLE REGIONAL AP	0	0	11	17	171	262	536	392	178	31	0	0	1598	
FREE UNION	0	0	6	10	96	127	399	255	92	9	0	0	994	
LYNCHBURG #2	0	0	7	12	105	148	418	272	106	7	0	0	1075	
MONTICELLO	0	0	14	10	79E	170	454	286	105	13	0	0	1131E	991
MONTEBELLO FISH CULTURAL STN	0	0	0	7E	24E	-	-	103E	58E	1E	0	0	-	
MEADOWS OF DAN 5 SW	0	0	0	6	82E	110	303	192E	70	3	0	0	766E	

MONTHLY AND SEASONAL COOLING DEGREE DAYS
BASE = 65 DEGREES FAHENHEIT

VIRGINIA
2012

STATION	JAN	FEB	MAR	APR	MAY	JUN	JUL	AUG	SEP	OCT	NOV	DEC	TOTAL	SEASONAL NORM
LYNCHBURG INTL AP	0	0	11	18	128	193	454	315	114	11	0	0	1244	1075
MARTINSVILLE FLTR PLT	0	0	6	10E	134	169	428	285	123	7	0	0	1162E	921
ROCKY MT	0	0	4E	19	132E	168E	422E	284	119	7	0	0	1155E	984
SOUTH BOSTON	0	0	12	17	141	225	535	344	159	21	0	0	1454	1159
STUART	0	0	6	10	123	169	391	265	117	8	0	0	1089	967
TYE RIVER 1 SE	0	0	18	16	119	173	458	310	127	23	0	0	-	-
NORTHERN 04														
BOSTON 4 SE	0	0	3E	13E	102E	137E	404E	276	107	12	0	0	-	-
CASTLETON	-	-	-	-	-	-	-	-	-	-	-	-	-	-
EDINBURG	0	0	0	5	96	124	363	221	100	9	0	0	918	-
FRONT ROYAL	0	0	11	21	104	166	414	271	125	13	0	0	1125	-
LINCOLN	0	0	1	9	117	154	407	302	108	8	0	0	1106	911
LURAY 5 E	0	0	3	13	104	147	382	241	100	7	0	0	997	862
MADISON	0	-	-	-	80E	191	449	305	123	18	0	0	-	-
MANASSAS	0	0	9E	23E	180E	241E	574E	-	158E	20	0	0	-	-
MT WEATHER	0	0	7	10	72	145	339	234E	98	14	0	0	919E	625
PIEDMONT RSCH STN	0	0	18	15	122	202	456	308	119	17	0	0	1257	1042
SOMERSET	0	0	6	16	134	184	468	315	121	13	0	0	1257	-
SPERRYVILLE	0	0	5	6	85	107E	370	240	97	9	0	0	919E	-
STAR TANNERY	-	-	-	-	-	-	-	-	-	-	-	-	-	-
STERLING RCS	0	0	10	16E	143	198E	474	382E	142	14	0	0	1379E	824
VIENNA	0	0	9E	9E	118E	168	413E	325	114	7	0	0	1163E	-
WARRENTON 3 SE	-	0	8E	7E	97E	-	-	-	-	-	-	-	-	-
WASHGTN DULLES INTL AP	0	0	10	18	146	223	490	382	151	16	0	0	1436	1075
WASHINGTON REAGAN AP	0	0	23	27	209	346	595	501	229	45	0	0	1975	1531
WINCHESTER	0	0	9	13	100	182	398	263	112	9	0	0	-	-
WINCHESTER 7 SE	0	0	1E	11	98	157	415E	265	109	8	0	0	1064E	855
WOODSTOCK 2 NE	0	0	2	8E	96	119E	371E	245E	97E	5E	0	0	943E	848
CENTRAL MOUNTAIN 05														
COVINGTON FLTR PLT	0	0	7	7	113	123	409	242	111	7	0	0	1019	846
DALE ENTERPRISE	0	0	3	9E	86	131	385	216	84E	8E	0	0	922E	758
GATHRIGHT DAM	0	0	2	5	70	93	312	-	76	3	0	0	-	-
HOT SPRINGS	0	0	1E	4	69	82E	-	134	64	2	0	0	-	-
LEXINGTON	0	0	5	-	-	-	-	-	-	-	-	-	-	-
MILLGAP	0	0	0	0	17	56	202	70	54	2	0	0	401	-
MUSTOE 1 SW	0	0	0	0	26	60	-	77	36	1	0	0	-	-
ROANOKE 8 N	0	0	11	14	137	195	457	296	129E	11	0	0	1250E	-
ROANOKE INTL AP	0	0	19	27	156	244	497	325	138	17	0	0	1423	1134
STAUNTON WATER TRMTMT PLT	0	0	5	8	86	141	374	223	98	2	0	0	937	622
WAYNESBORO WTP	0	0	4	7	108	143	416E	260	101	6	0	0	1045E	-
SOUTHWESTERN MOUNTAIN 06														
ABINGDON 3S	0	0	2E	6	95E	167E	327E	213E	95E	7E	0	0	912E	736
BIG STONE GAP	0	0	8E	8	118	182	376	227	110	9	0	0	1038E	937
BLACKSBURG NWSO	0	0	0	1	60	92	307	150	76	2	0	0	688	533
BLAND	-	-	-	-	-	-	-	-	-	-	-	-	-	-
BURKES GARDEN	0	0	0	0	18E	34	166	37E	48	0	0	0	303E	225
CHRISTIANSBURG	0	0	1	5	64	99	304	153	76	1	0	0	703	-
CLINTWOOD 1 W	0	0	0	3	60	89	277	126	69	4	0	0	628	-
COPPER HILL	0	0	0	3	39	87E	-	100	47	2E	0	0	-	-
GALAX RADIO WBRF	0	0	0	1	55	104	277	152	73	0	0	0	662	410
GRUNDY	0	0	5	7	85	100	303E	188E	92	5	0	0	785E	1035
GALAX WTP	0	0	0	0	38	72	255	121	62	0	0	0	548	-

VIRGINIA
2012

MONTHLY AND SEASONAL COOLING DEGREE DAYS BASE = 65 DEGREES FAHENHEIT

STATION	JAN	FEB	MAR	APR	MAY	JUN	JUL	AUG	SEP	OCT	NOV	DEC	TOTAL	SEASONAL NORM
JOHN FLANNAGAN LAKE	-	-	-	-	118E	-	362E	237E	-	-	-	-	-	-
LEBANON	0	0	0	4	76	120	315	157	89	8E	0	0	769E	631
NORA 4 SSE	0	0	9	2	82	144	265	145	68	3	0	0	718	
RADFORD 3 N	0	0	0	5	83	123	350	190	85	3	0	0	839	
PULASKI 2 E	0	0	0	1E	75E	136E	340	173	90	6E	0	0	821E	574
NORTH FORK LAKE	-	-	-	-	-	-	-	-	-	-	-	-	-	-
RICHLANDS	0	0	1E	1	72E	114	307	160	82	7	0	0	744E	622
SALTVILLE 1N	0	0	1E	0	82	126	316	189	89	9	0	0	812E	734
TROUT DALE 3 SSE	0	0	0	0	15	44	193	63	45	0	0	0	360	
STAFFORDSVILLE 3 ENE	0	0	0	1E	62E	98	315	153E	84	2	0	0	715E	564
WISE 3E	0	0	3	8	66	125	251	115	63	4	0	0	635	605
WYTHEVILLE 1 S	0	0	0	0	56	94	265	115	74	1	0	0	605	503

VIRGINIA
2012

TOTAL PAN EVAPORATION AND WIND MOVEMENT

STATION		JAN	FEB	MAR	APR	MAY	JUN	JUL	AUG	SEP	OCT	NOV	DEC	ANNUAL
VIRGINIA														
EASTERN PIEDMONT 02														
JOHN H KERR DAM	WIND	-	791E	-	990	747	751	-	-	-	-	-	-	-
	EVAP	-	-	-	-	5.04E	6.16	-	-	-	-	-	-	-
	MAX TEMP	-	-	-	-	-	-	-	-	-	-	-	-	-
	MIN TEMP	-	-	-	-	-	-	-	-	-	-	-	-	-
NORTHERN 04														
PIEDMONT RSCH STN	WIND	-	-	-	-	-	-	-	-	-	-	-	-	-
	EVAP	-	-	-	-	-	-	-	-	-	-	-	-	-
	MAX TEMP	-	-	-	-	-	-	-	-	-	-	-	-	-
	MIN TEMP	-	-	-	-	-	-	-	-	-	-	-	-	-

STATION INDEX

STATION	INDEX NO.	DIVISION NO.	COUNTY	LATITUDE	LONGITUDE	ELEVATION FEET	YEARS OF RECORD			OPENED OR CLOSED DURING YR		SEE REFERENCE NOTES
							TEMP.	PRECIP.	EVAP.	MONTH OPENED	MONTH CLOSED	
VIRGINIA												
ABINGDON 3S	0021	06	WASHINGTON	36 40	81 58W	1920	44	44	0			H
ALBERTA 5N	0079	02	BRUNSWICK	36 56	77 54W	376	0	9	0			H
ALTAVISTA	0166	03	CAMPBELL	37 7	79 17W	529	0	63	0			CH
AMELIA COURTHOUSE 1	0187	02	AMELIA	37 21	77 59W	345	36	36	0			H
APPOMATTOX	0243	03	APPOMATTOX	37 20	78 50W	850	52	76	0			H
ASHLAND	0327	02	HANOVER	37 45	77 29W	220	102	102	0			H
BEDFORD 4 NW	0561	03	BEDFORD	37 23	79 34W	1228	2	10	0			CH
BIG STONE GAP	0735	06	WISE	36 52	82 46W	1464	23	23	0			H
BLACKSBURG NWSO	0766	06	MONTGOMERY	37 12	80 25W	2100	61	61	0			CH
BLAND	0792	06	BLAND	37 6	81 7W	2000	22	64	0		JAN	H
BOSTON 4 SE	0860	04	CULPEPER	38 33	78 6W	590	15	15	0			H
BREMO BLUFF	0993	02	FLUVANNA	37 43	78 17W	225	34	74	0			CH
BROOKNEAL	1082	03	CAMPBELL	37 4	78 57W	408	31	54	0			H
BUCHANAN	1121	05	BOTETOURT	37 31	79 41W	880	87	110	0			H
BUCKINGHAM	1136	02	BUCKINGHAM	37 30	78 32W	552	11	83	0			H
BUENA VISTA	1159	05	ROCKBRIDGE	37 44	79 22W	840	18	75	0			H
BURKES GARDEN	1209	06	TAZEWELL	37 6	81 20W	3068	117	117	0			H
CAMP PICKETT	1322	02	NOTTOWAY	37 2	77 57W	330	41	41	0			CH
CASTLETON	1434	04	RAPPAHANNOCK	38 36	78 7W	541	3	3	0		JAN	H
CHARLOTTE COURT HOUSE	1585	03	CHARLOTTE	37 3	78 39W	569	61	66	0			H
CHARLOTTESVILLE 2W	1593	03	ALBEMARLE	38 2	78 31W	866	119	119	0			H
CHASE CITY	1606	02	MECKLENBURG	36 47	78 29W	510	66	66	0			H
CHATHAM	1614	03	PITTSYLVANIA	36 49	79 25W	651	91	91	0			CH
CHRISTIANSBURG	1692	06	MONTGOMERY	37 8	80 24W	2100	18	18	0			H
CLARKSVILLE	1746	02	MECKLENBURG	36 37	78 33W	330	16	122	0			H
CLINTWOOD 1 W	1825	06	DICKENSON	37 9	82 29W	1780	20	20	0			H
CONCORD 4 SSW	1955	03	CAMPBELL	37 17	78 58W	815	2	63	0			H
COPPER HILL	1999	06	FLOYD	37 5	80 9W	2690	3	73	0			H
CORBIN	2009	02	CAROLINE	38 12	77 22W	220	54	54	0			H
COVINGTON FLTR PLT	2044	05	ALLEGHANY	37 49	79 59W	1230	53	53	0			H
CRAIGSVILLE 2 S	2064	05	AUGUSTA	38 3	79 23W	1758	0	50	0			H
CROZIER	2142	02	GOOCHLAND	37 40	77 53W	350	37	37	0			H
DALE ENTERPRISE	2208	05	ROCKINGHAM	38 27	78 56W	1358	120	120	0			H
DANVILLE	2245	03	PITTSYLVANIA	36 35	79 23W	410	97	122	0			H
DANVILLE REGIONAL AP R	2250	03	PITTSYLVANIA	36 34	79 20W	571	31	31	0		APR	H
DISPUTANTA	2400	01	PRINCE GEORGE	37 7	77 12W	15	7	7	0			H
EASTVILLE	2635	01	NORTHAMPTON	37 23	75 58W	10	19	19	0			H
EDINBURG	2663	04	SHENANDOAH	38 48	78 35W	928	17	17	0			H
EMPORIA 1 WNW	2790	01	GREENSVILLE	36 42	77 34W	100	32	84	0			H
FARMVILLE 2 N	2941	02	CUMBERLAND	37 20	78 23W	450	94	94	0			H
FREDERICKSBURG SEWAGE	3204	01	FREDERICKSBURG	38 17	77 27W	15	18	18	0			H
FREE UNION	3213	03	ALBEMARLE	38 5	78 35W	590	6	57	0			H
FRONT ROYAL	3229	04	WARREN	38 54	78 11W	930	18	18	0			H

STATION INDEX

STATION	INDEX NO.	DIVISION NO.	COUNTY	LATITUDE	LONGITUDE	ELEVATION FEET	YEARS OF RECORD			OPENED OR CLOSED DURING YR		SEE REFERENCE NOTES
							TEMP.	PRECIP.	EVAP.	MONTH OPENED	MONTH CLOSED	
GALAX RADIO WBRF	3267	06	CARROLL	36 40	80 55W	2385	59	63	0			H
GALAX WTP	3272	06	CARROLL	36 39	80 55W	2360	16	16	0			CH
GATHRIGHT DAM	3310	05	ALLEGHANY	37 57	79 57W	1770	33	33	17			CH
GLASGOW 1 SE	3375	05	ROCKBRIDGE	37 37	79 26W	737	10	46	0			H
GREENBAY 3 NE	3565	02	PRINCE EDWARD	37 11	78 17W	500	9	9	0			H
GRUNDY	3640	06	BUCHANAN	37 17	82 5W	1170	53	64	0			H
HAMPTON UNIV	3713	01	HAMPTON	37 1	76 20W	10	11	11	0			H
HOLCOMB ROCK	4039	03	BEDFORD	37 33	79 24W	620	3	35	0			H
HOLLAND 1 E	4044	01	SUFFOLK	36 41	76 46W	80	80	80	19			H
HOPEWELL	4101	01	PRINCE GEORGE	37 18	77 17W	40	97	97	0			H
HOT SPRINGS	4128	05	BATH	37 60	79 50W	2236	118	118	0			H
HUDDLESTON 4 SW	4148	03	BEDFORD	37 8	79 32W	898	2	63	0			H
JOHN FLANNAGAN LAKE	4410	06	DICKENSON	37 14	82 21W	1460	20	44	0			H
JOHN H KERR DAM	4414	02	MECKLENBURG	36 36	78 18W	250	65	65	60			CH
KERRS CREEK 6 WNW	4565	05	ROCKBRIDGE	37 52	79 34W	1500	1	61	0		APR	H
KEYSVILLE 2 S	4568	02	CHARLOTTE	37 1	78 28W	530	2	34	0		APR	H
LAFAYETTE 1 NE	4676	06	MONTGOMERY	37 14	80 12W	1320	0	62	0			H
LEBANON	4777	06	RUSSELL	36 54	82 2W	1912	24	24	0			H
LEXINGTON	4876	05	ROCKBRIDGE	37 47	79 26W	1097	123	123	0			H
LINCOLN	4909	04	LOUDOUN	39 5	77 42W	500	113	113	0			H
LOUISA	5050	02	LOUISA	38 3	78 0W	420	97	97	0			H
LURAY 5 E	5096	04	PAGE	38 40	78 22W	1400	69	72	0			H
LYNCHBURG #2	5117	03	CAMPBELL	37 23	79 14W	736	15	15	0			H
LYNCHBURG INTL AP R	5120	03	CAMPBELL	37 19	79 12W	940	69	69	0			HJ
MADISON	5150	04	MADISON	38 22	78 15W	577	14	14	0			H
MANASSAS	5204	04	MANASSAS	38 44	77 30W	245	9	9	0			H
MARTINSVILLE FLTR PLT	5300	03	HENRY	36 42	79 52W	760	75	82	0			H
MEADOWS OF DAN 5 SW	5453	03	PATRICK	36 40	80 27W	2225	10	63	0			H
MILLGAP	5595	05	HIGHLAND	38 18	79 43W	2421	15	37	0			CH
MONTEBELLO FISH CULTURAL STN #	5690	03	NELSON	37 51	79 8W	2667	7	10	0			H
MONTICELLO	5700	03	ALBEMARLE	38 1	78 27W	758	31	31	0			H
MT WEATHER	5851	04	LOUDOUN	39 4	77 53W	1659	98	98	0			H
MTN GROVE	5756	05	BATH	38 6	79 53W	1775	4	32	0			H
MUSTOE 1 SW	5880	05	HIGHLAND	38 20	79 40W	2380	19	19	0			H
NEW CASTLE	6012	05	CRAIG	37 18	80 3W	1258	0	56	0			H
NORA 4 SSE	6125	06	DICKENSON	37 1	82 19W	2650	7	7	0			H
NORFOLK INTL AP R R	6139	01	NORFOLK (CITY)	36 54	76 12W	30	67	67	0			HJ
NORFOLK SOUTH	6147	01	NORFOLK (CITY)	36 52	76 14W	100	10	10	0			H
NORTH	6161	01	MATHEWS	37 26	76 26W	10	11	11	0			H
NORTH FORK LAKE	6173	06	WISE	37 7	82 38W	1675	21	44	0			H
PAINTER 2W	6475	01	ACCOMACK	37 35	75 49W	30	58	58	0			CH
PALMYRA 3S	6491	02	FLUVANNA	37 49	78 16W	410	19	56	0			H
PEDLAR DAM	6593	03	AMHERST	37 40	79 17W	1024	8	78	0			H
PETERSBURG	6656	02	PETERSBURG	37 14	77 24W	15	12	17	0			H

STATION INDEX

STATION	INDEX NO.	DIVISION NO.	COUNTY	LATITUDE	LONGITUDE	ELEVATION FEET	YEARS OF RECORD			OPENED OR CLOSED DURING YR		SEE REFERENCE NOTES
							TEMP.	PRECIP.	EVAP.	MONTH OPENED	MONTH CLOSED	
PIEDMONT RSCH STN	6712	04	ORANGE	38 14	78 7W	520	67	67	39			CH
POWHATAN	6906	02	POWHATAN	37 31	77 53W	400	20	74	0		MAY	H
PULASKI 2 E	6955	06	PULASKI	37 3	80 47W	1850	61	78	0			CH
RADFORD 3 N	6999	06	PULASKI	37 12	80 35W	1800	9	34	0			H
RICHLANDS	7174	06	TAZEWELL	37 6	81 48W	1910	24	24	0			H
RICHMOND INTL AP R	7201	02	HENRICO	37 30	77 19W	164	71	71	0			HJ
ROANOKE 8 N	7278	05	ROANOKE	37 22	79 58W	1190	15	15	0			H
ROANOKE INTL AP R	7285	05	ROANOKE	37 19	79 58W	1175	65	65	0			HJ
ROCKY MT	7338	03	FRANKLIN	36 59	79 54W	1315	119	119	0			CH
SALTVILLE 1N	7506	06	SMYTH	36 53	81 46W	1733	59	58	0			H
SANDSTON	7541	02	HENRICO	37 33	77 17W	165	11	11	0			H
SOMERSET	7904	04	ORANGE	38 15	78 16W	510	18	50	0			H
SOUTH BOSTON	7925	03	HALIFAX	36 42	78 53W	329	33	33	0			H
SPERRYVILLE	7985	04	RAPPAHANNOCK	38 39	78 14W	750	18	18	0			H
STAFFORDSVILLE 3 ENE	8022	06	GILES	37 16	80 43W	1950	43	62	0			CH
STAR TANNERY	8046	04	FREDERICK	39 5	78 27W	950	19	23	0			CH
STAUNTON WATER TRMTMT PLT	8062	05	AUGUSTA	38 10	79 5W	169	119	119	0			H
STERLING RCS	8084	04	LOUDOUN	38 59	77 29W	288	36	36	0			H
STONY CREEK 2 N	8129	01	SUSSEX	36 58	77 24W	105	51	55	0			H
STUART	8170	03	PATRICK	36 38	80 15W	1375	53	53	0			H
SUFFOLK LAKE KILBY	8192	01	SUFFOLK	36 44	76 36W	22	68	68	0			H
TROUT DALE 3 SSE	8547	06	GRAYSON	36 39	81 24W	2839	3	65	0			CH
TYE RIVER 1 SE	8600	03	NELSON	37 38	78 56W	720	50	76	0			H
VIENNA	8737	04	FAIRFAX	38 54	77 16W	418	20	76	0			H
WAKEFIELD 1NW	8800	01	SUSSEX	36 59	77 0W	113	31	31	0			CH
WALKERTON 2 NW	8829	01	KING AND QUEEN	37 45	77 2W	50	81	81	0			H
WALLACETON LK DRUMMOND	8837	01	CHESAPEAKE	36 36	76 26W	20	9	87	0			H
WALLOPS ISLAND NASA TEST FACIL R	8849	01	ACCOMACK	37 56	75 28W	46	47	47	0			HJ
WARRENTON 3 SE	8888	04	FAUQUIER	38 41	77 46W	500	65	65	0			H
WARSAW 2 NW	8894	01	RICHMOND	37 59	76 47W	140	105	105	0			H
WASHGTN DULLES INTL AP R	8903	04	LOUDOUN	38 56	77 28W	290	51	51	0			HJ
WASHINGTON REAGAN AP R	8906	04	ARLINGTON	38 51	77 2W	10	68	68	0			HJ
WAYNESBORO WTP	8941	05	WAYNESBORO	38 5	78 53W	1270	13	13	0			H
WEST POINT 2 NW	9025	01	KING WILLIAM	37 34	76 48W	20	59	59	0			H
WILLIAMSBURG 2 N	9151	01	YORK	37 18	76 42W	70	62	65	0			CH
WILLIS	9169	06	FLOYD	36 55	80 30W	2810	1	33	0			CH
WINCHESTER	9181	04	FREDERICK	39 11	78 9W	720	31	31	0			H
WINCHESTER 7 SE	9186	04	FREDERICK	39 11	78 7W	680	101	101	0			H
WINTERPOCK 4 W	9213	02	CHESTERFIELD	37 19	77 39W	300	0	34	0			H
WISE 3E	9215	06	WISE	36 60	82 32W	2549	58	58	0			CH
WOODSTOCK 2 NE	9263	04	SHENANDOAH	38 54	78 28W	675	117	123	0			H
WOOLWINE	9272	03	PATRICK	36 47	80 17W	1500	0	62	0			CH
WYTHEVILLE 1 S	9301	06	WYTHE	36 56	81 6W	2093	96	96	0			CH

REFERENCE NOTES

STATION NAMES: Name of the city, town or locality. Figures and letters following the station names indicate the distance in miles and direction from the post office or town community center.

DIVISIONS: Areas within a state of similar climatological characteristics. Division averages are calculated using data from stations that record temperature and/or precipitation. Station Precipitation totals flagged with an 'F' or 'M' are excluded from the Divisional Average calculations of precipitation. Stations with monthly Temperature averages flagged with an 'F' or 'M' are included in the Divisional Average if there are no more than 9 flagged or missing daily values in the month, else they are excluded from the divisional average for temperature.

NORMALS: The average value of the meteorological element over a time period. Effective 1 January 2002, the averaging period is 1971 to 2000. The normals for National Weather Service localities have been adjusted so as to be representative for the current observation site.

TEMPERATURE EXTREMES AND FREEZE DATA: Spring minimum dates are obtained from data for January through June; Fall dates are from July through December data. "NONE" indicates temperature threshold not reached. "MSG" indicates available data insufficient to determine date.

MONTHLY DEGREE DAY TOTALS: One heating (cooling) degree day is accumulated for each whole degree that the daily mean temperature is below (above) 65 degrees Fahrenheit.

SOIL TEMPERATURE EXTREMES: The highest and lowest Max and Min temperature for each month and the year.

WIND: (As shown in the "Evaporation and Wind" table) the total wind movement in miles over the evaporation pan as determined by an anemometer recorder located 6-8 inches above the pan.

SYMBOLS AND LETTERS USED IN THE DATA TABLES

- No record. Data not recorded, determined unreliable by quality control checks, or not received in time for publication.
- * Equipment gage not read. Precipitation is included in the amount following asterisks. Time distribution not known.
- // Equipment gage equipped with a windshield.
- A Amount of precipitation is the total of observer's entries for the current month. It may include precipitation that occurred during the previous month. Refer to monthly bulletins to determine date of last reading.
- E Normalized HDD/CDD Calculation. E is appended to the HDD/CDD Calculation when 1-9 individual daily TMAX and/or TMIN values are missing and a Normalized HDD/CDD Calculation is provided. M appears alone if 10 or more are missing or flagged.
- F Monthly Calculation Flagged Value. F is appended to the average of the monthly station values when 1-9 daily observations were determined to be invalid during the Quality Control process.
- M Insufficient or partial data. M is appended to average and/or total values computed with 1-9 daily values missing. M appears alone if 10 or more daily values are missing or flagged.
- R Amounts from recording rain gage.
- T Trace. An amount too small to measure.

SYMBOLS AND LETTERS USED IN THE STATION INDEX TABLE

- # Thermometers located in rooftop shelter.
- C Station is equipped with a recording rain gage (R), but values in this bulletin are from a non-recording rain gage unless indicated by an R.
- G Observations appear in "Soil Temperatures" table.
- H Observations appear in "Snowfall and Snow on the Ground" table in monthly "Climatological Data" publication.
- J Station also published as a "Local Climatological Data" bulletin.

Seasonal Tables: Monthly and seasonal snowfall and heating degree days for the 12 months ending with the June data are published in the July issue of "Climatological Data".

Cooling degree days for the calendar year are published in the "Climatological Data Annual Summary".

Additional precipitation data are contained in the "Hourly Precipitation Data" bulletin for each state.

Information concerning the history of changes in locations, exposure, etc. of substations is kept on file at the National Climatic Data Center. Historical information of regular National Weather Service Offices may be obtained from the "Local Climatological Data" annual publication. The contents of this publication may be reprinted or otherwise used freely, with proper credit to the National Climatic Data Center. The data are also available digitally.

ERRATA

Beginning in January of 2011, CD Publications are produced from the Global Historical Climatology Network data set. (<http://www.ncdc.noaa.gov/oa/climate/ghcn-daily/>) The GHCND data Version is printed on first page of the publication.

New flags were added to indicate:

- E Normalized HDD/CDD, Evap, and Wind Movement Calculations in 2011, previously was B.
- F Monthly calculation flagged value.

Station metadata is provided by NCDC's Product Development Branch from the Historical Observing Metadata Repository: <http://www.ncdc.noaa.gov/homr>

As of the 2011 Data-Year, Station and Climate Division Maps are no longer being included in the CD Publications. NCDC's Product Development Branch provides updated Station Maps for various data networks via the Historical Observing Metadata Repository: <http://www.ncdc.noaa.gov/homr>.

Beginning with the January 2013 CD Publication, monthly mean temperature calculations have changed to the National Data Stewardship Team standard. Monthly maximum and minimum temperatures are not rounded until after the monthly mean temperature is calculated. This is the most accurate outcome, but may be slightly different from the mean derived from rounded monthly maximum and minimum.

Processing Updates and Errata: The 2011 CD Publications were reproduced in June 2013. This update included the addition of late reports and corrections based on additional investigations of reported data issues through NCDC's Datzilla system. In addition, divisional averages for precipitation were recalculated using the method described in DIVISIONS above. Previous editions of the 2011 Publications included all precipitation stations regardless of missing data in the calculation of divisional averages. HDD/CDD values were recalculated to match the legacy method of calculation (truncation of monthly HDD/CDD values instead of rounding).

NOAA\National Climatic Data Center
Attn: User Engagement & Services Branch
151 Patton Avenue
Asheville, NC 28801-5001

Customer Services Number: (828) 271-4800, option 2
TDD : (828) 271-4010
Fax number: (828) 271-4876

NCDC now offers free online access to the *Climatological Data* publication.
Go to : www.ncdc.noaa.gov and choose Most Popular.