



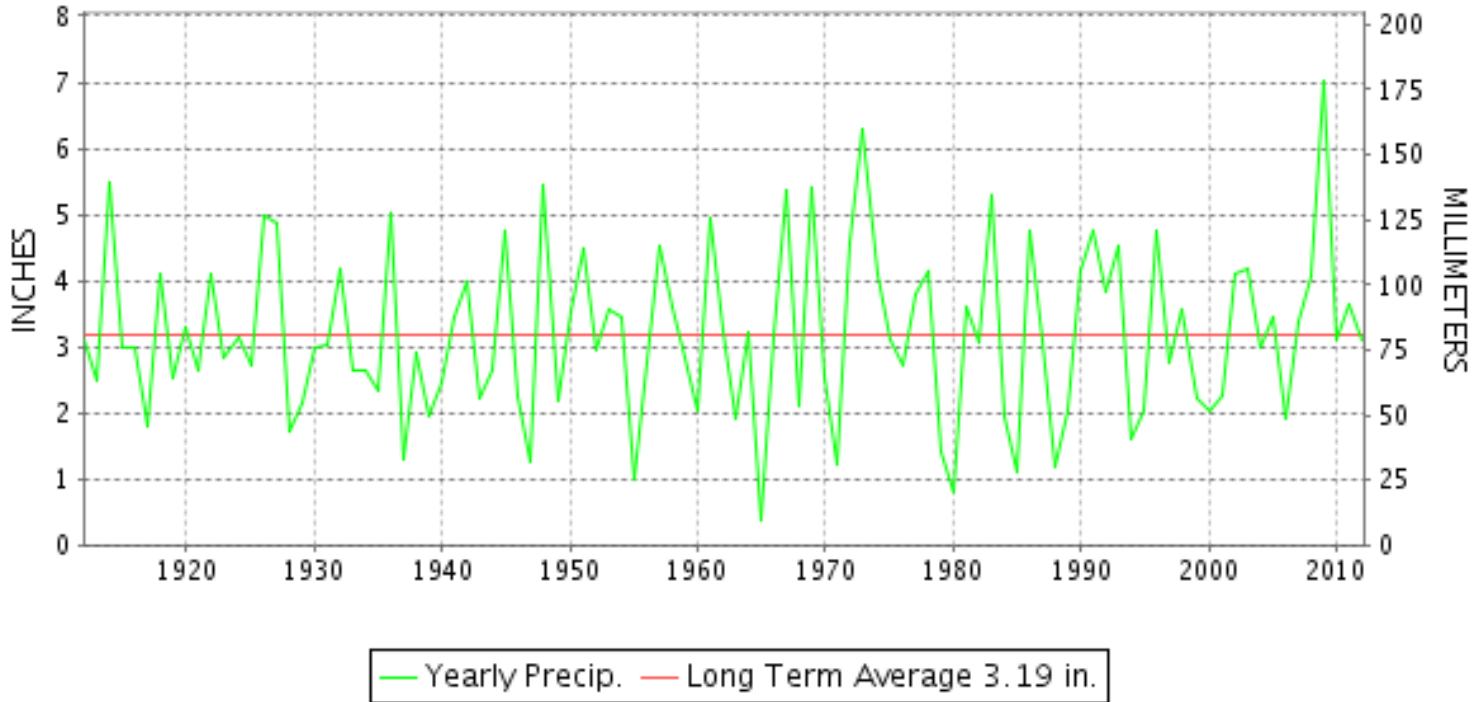
CLIMATOLOGICAL DATA

VIRGINIA

DECEMBER 2012
 VOLUME 122 NUMBER 12
 ISSN 0364-5630

GHCND Ver: 3.02-upd-2013043005

DECEMBER PRECIPITATION BY YEAR



TEMPERATURE AND PRECIPITATION EXTREMES

VIRGINIA

HIGHEST TEMPERATURE	77	DECEMBER 04	WALKERTON 2 NW
LOWEST TEMPERATURE	8	DECEMBER 31	MILLGAP
GREATEST TOTAL PRECIPITATION	5.59		BIG STONE GAP
LEAST TOTAL PRECIPITATION	0.30		STONY CREEK 2 N
GREATEST 1 DAY PRECIPITATION	2.80	DECEMBER 27	CORBIN
GREATEST TOTAL SNOWFALL	9.0		MILLGAP
GREATEST DEPTH OF SNOW OR ICE	4		3 STATIONS

"I certify that this is an official publication of the National Oceanic and Atmospheric Administration (NOAA) It is compiled using information from weather observing sites supervised by NOAA/National Weather Service and received at the National Climatic Data Center(NCDC), Asheville, North Carolina 28801."

Director
 National Climatic Data Center

noaa

National
 Oceanic and
 Atmospheric Administration

National
 Environmental Satellite, Data
 and Information Service

National
 Climatic Data Center
 Asheville, North Carolina

VIRGINIA
201212

MONTHLY STATION AND DIVISION SUMMARY

STATION	TEMPERATURE (°F)											PRECIPITATION (IN)												
	AVERAGE MAXIMUM	AVERAGE MINIMUM	AVERAGE	DEPARTURE FROM NORMAL	HIGHEST	DATE	LOWEST	DATE	HEATING DEG. DAYS	COOLING DEG. DAYS	NO. OF DAYS				TOTAL	DEPARTURE FROM NORMAL	GREATEST 24 HOURS	DATE	ICE PELLETS, SNOW			NO. OF DAYS		
											MAX		MIN						TOTAL	MAX DEPTH ON GROUND	DATE	.10 OR MORE	.50 OR MORE	1.00 OR MORE
											>=90	<=32	<=32	<=0										
PALMYRA 3S	52.5	30.2	41.4	5.3	74	05	18	31+	722	0	0	0	21	0	2.64	-0.55	0.94	27	M 0.0			8	2	0
PETERSBURG	56.0	35.4	45.7	4.7	75	05	22	31	589	0	0	0	11	0	2.15	-1.05	1.34	27	M 0.0	0		5	1	1
RICHMOND INTL AP	56.4	36.9	46.7	5.7	75	04	22	31	559	0	0	0	11	0	2.83	-0.43	1.32	26	0.0	0		7	1	1
SANDSTON	54.0	33.7	43.9	5.2	74	05	22	31+	648	0	0	0	15	0	A 3.02	-0.40	0.96	21	0.0			4	1	0
WINTERPOCK 4 W															3.02		1.13	27	0.0			6	2	1
--DIVISIONAL DATA-----> WESTERN PIEDMONT 03			44.7	5.3B										2.80	-0.38B									
ALTAVISTA														3.22		1.00	27	0.0	0		6	3	1	
APPOMATTOX	51.9	33.6	42.8	4.5	70	05	23	14	682	0	0	0	16	0	2.94	-0.49	0.80	26	T	0		7	2	0
BEDFORD 4 NW														2.69		0.83	27	T	T	26	7	1	0	
BROOKNEAL	54.0	31.7	42.9	8.4	73	05	20	23+	676	0	0	0	17	0	3.20	-0.15	0.87	27	0.0	0		7	3	0
CHARLOTTE COURT HOUSE	54.4	33.9	44.2	5.2	74	05	23	15+	639	0	0	0	13	0	1.85	-1.61	1.15	27	T	0		4	1	1
CHARLOTTESVILLE 2W	51.0	36.3	43.7	4.8	73	05	29	31+	656	0	0	0	13	0	2.95	-0.40	1.07	27	0.7	1	31	7	2	1
CHATHAM	52.9	29.6	41.3	4.2	72	05	17	15+	728	0	0	0	18	0	3.89	0.45	1.21	27	0.0	0		6	4	1
CONCORD 4 SSW														2.21		0.72	21	0.0	0		6	1	0	
DANVILLE REGIONAL AP	56.8	35.7	46.3	6.2	76	03	21	14	574	0	0	0	12	0	2.46	-0.80	1.07	26	0.0	0		6	1	1
FREE UNION	51.6	29.7	40.7		73	05	19	15+	746	0	0	1	21	0	2.68		1.06	27	M 1.3	M T	26	7	2	1
HOLCOMB ROCK														3.18		0.94	27	1.5	T	29	6	3	0	
HUDDLESTON 4 SW														3.12		0.87	25	T	T	29	7	3	0	
LYNCHBURG #2	52.7	31.3	42.0	4.7	71	05	20	15+	704	0	0	0	21	0	2.50	-0.81	0.60	21	0.2	T	29	6	3	0
LYNCHBURG INTL AP	52.9	33.4	43.2	5.6	71	04	19	14	669	0	0	0	16	0	2.65	-0.59	1.00	26	T	0		5	3	1
MARTINSVILLE FLTR PLT	53.8	30.6	42.2	4.5	74	04	18	15+	699	0	0	0	18	0	3.65	0.26	1.02	27	0.0	0		8	3	1
MEADOWS OF DAN 5 SW	51.2	32.9	42.1		71	05+	26	31+	702	0	0	0	16	0	3.55		0.75	27	0.0	0		10	4	0
MONTEBELLO FISH CULTURAL STN	46.6M	29.0M	37.8M		64	05	19	14	834E	0	0	4	22	0	3.65		1.07	21	M 3.2	3	27	6	4	1
MONTECELLO	49.8	34.5	42.2	5.5	70	05	26	31	699	0	0	0	17	0	2.53	-0.51	1.29	27	M 0.4			2	2	1
PEDLAR DAM														2.43		0.82	21	0.2	0		5	2	0	
ROCKY MT	53.2	31.1	42.2	4.3	72	05	19	15+	702	0	0	0	21	0	3.53	0.04	0.85	27	0.0	0		7	4	0
SOUTH BOSTON	56.3	33.2	44.8	5.5	74	04	22	24+	619	0	0	0	17	0	2.39	-0.97	1.12	27	0.0	0		6	1	1
STUART	54.1	32.7	43.4	4.2	70	05	21	29	663	0	0	0	14	0	3.84	0.33	1.04	25	0.0	0		7	4	1
TYE RIVER 1 SE	M	M	M												M				0.0					
WOOLWINE														3.62		1.07	26	T	0		8	3	1	
--DIVISIONAL DATA-----> NORTHERN 04			42.6	3.7B										2.99	-0.26B									
BOSTON 4 SE	M	M	M		73	05	19	24+						M				M 0.3	1	26				
EDINBURG	48.9	28.3	38.6	4.5	70	05	19	15+	810	0	0	1	22	0	2.10	-0.22	0.94	27	4.9	2	31	5	1	0
FRONT ROYAL	50.0M	32.5M	41.3M	5.0	73	06+	24	31+	730E	0	0	0	18	0	M 1.33	-1.49	0.59	21	M 2.2	2	27	4	1	0
LINCOLN	48.5	27.5	38.0	3.2	72	05	18	15+	829	0	0	0	26	0	MA 2.65	2.65	1.31	27	M 5.0	3	29	3	3	1
LURAY 5 E	51.2	31.6	41.4	4.5	72	05	19	31+	722	0	0	0	19	0	2.42	-0.63	1.12	27	3.8	3	27	5	1	1

VIRGINIA
201212

MONTHLY STATION AND DIVISION SUMMARY

STATION	TEMPERATURE (°F)											PRECIPITATION (IN)												
	AVERAGE MAXIMUM	AVERAGE MINIMUM	AVERAGE	DEPARTURE FROM NORMAL	HIGHEST	DATE	LOWEST	DATE	HEATING DEG. DAYS	COOLING DEG. DAYS	NO. OF DAYS				TOTAL	DEPARTURE FROM NORMAL	GREATEST 24 HOURS	DATE	ICE PELLETS, SNOW			NO. OF DAYS		
											MAX		MIN						TOTAL	MAX DEPTH ON GROUND	DATE	.10 OR MORE	.50 OR MORE	1.00 OR MORE
											>=90	<=32	<=32	<=0										
MADISON	52.8	35.9	44.4	6.9	74	05	27	15+	634	0	0	0	11	0	F 0.10	-3.41	0.10	10	0.0	0		1	0	0
MANASSAS	52.0M	33.1M	42.6M	5.5	75	05	22	31+	687E	0	0	0	16	0	MA 3.25	3.25	1.75	27	0.0			5	2	1
MT WEATHER	46.5M	33.0M	39.8M	5.4	69	05	22	31	774E	0	0	2	17	0	M 3.26	0.31	1.30	27	M 7.2	3	31	6	2	1
PIEDMONT RSCH STN	50.7	32.8	41.8	4.3	71	05	21	31	714	0	0	0	17	0	FA 1.37	-1.70	0.95	21	1.5	0		3	1	0
SOMERSET	51.4	31.8	41.6	4.9	74	05	19	14	720	0	0	0	21	0	2.62	-0.51	0.96	21	M 1.0	M 1	30	5	2	0
SPERRYVILLE	49.9M	31.3M	40.6M	4.0	73	05	21	31+	748E	0	0	0	18	0	M 3.45	0.07	1.20	27	M 5.0	M 2	31	7	2	2
STERLING RCS	48.4	28.8	38.6	3.0	70	06+	17	14	809	0	0	0	23	0	3.13	0.04	1.49	27	2.2	T	27	5	2	1
VIENNA	47.2	31.5	39.4	3.0	68	05	23	31+	789	0	0	0	22	0	3.14	-0.13	1.34	27	M 1.1	0		5	2	2
WARRENTON 3 SE	M	M	M												M				0.0					
WASHGTON DULLES INTL AP	50.4	33.4	41.9	5.3	71	04	21	23+	709	0	0	0	17	0	2.87	-0.09	1.41	26	2.2	T	27	5	2	1
WASHINGTON REAGAN AP	52.3	38.4	45.4	5.7	72	04	29	31+	603	0	0	0	5	0	3.03	-0.02	1.42	26	0.2	0		6	2	1
WINCHESTER	M	M	M		73	05	23	16							M				0.0					
WINCHESTER 7 SE	48.4	28.6	38.5	4.6	72	05	17	31	814	0	0	0	22	0	3.07	0.60	1.32	27	M 3.6	2	30	6	1	1
WOODSTOCK 2 NE	48.9	29.4	39.2	5.2	72	05	19	24+	793	0	0	0	22	0	2.37	-0.28	0.99	27	M 1.8	M 3	29	6	2	0
--DIVISIONAL DATA----->			40.8	4.8B											2.75	-0.27B								
CENTRAL MOUNTAIN 05																								
BUCHANAN															1.83	-1.26	0.62	27	T	T	29	5	1	0
BUENA VISTA															2.63		1.10	27	T	0		5	2	1
COVINGTON FLTR PLT	52.7	30.8	41.8	5.3	70	05+	20	24+	713	0	0	0	22	0	2.46	-0.25	0.78	27	0.0	0		8	1	0
CRAIGSVILLE 2 S															M				M 0.5	3	26			
DALE ENTERPRISE	50.0	29.9	40.0	6.3	69	05	21	31+	768	0	0	0	22	0	1.69	-0.92	0.53	21	M 2.0	2	28	5	1	0
GATHRIGHT DAM	47.7	29.8	38.8	4.9	67	04	18	23	804	0	0	4	21	0	2.53	-0.43	0.55	27	2.5	2	29	8	1	0
GLASGOW 1 SE															3.10		1.13	27	0.7	0		5	2	1
HOT SPRINGS	47.1	29.7	38.4	5.6	66	04	17	31+	817	0	0	3	20	0	2.33	-1.02	0.55	21	5.0	3	29	6	2	0
LEXINGTON															2.70	-0.41	1.11	27	1.1	T	27	5	2	1
MILLGAP	46.2	24.0	35.1	5.0	64	05	8	31	919	0	0	4	23	0	2.82	-0.53	0.74	21	9.0	4	31	7	2	0
MTN GROVE															2.44		0.38	29+	T	T	31	10	0	0
MUSTOE 1 SW	45.4	24.9	35.2	4.5	63	04	9	31	918	0	0	3	24	0	2.88	-0.43	0.91	26	8.2	4	27	7	1	0
NEW CASTLE															2.82		0.96	27	0.8	0		7	2	0
ROANOKE 8 N	52.7	32.7	42.7	4.0	72	04	22	14	683	0	0	0	15	0	2.42	-0.81	0.87	27	0.0	0		4	2	0
ROANOKE INTL AP	53.3	36.0	44.7	5.7	73	03	23	14	625	0	0	0	9	0	2.58	-0.36	1.20	26	0.3	T	28	5	2	1
STAUNTON WATER TRMTMT PLT	50.5	33.3	41.9	6.1	69	04	24	31+	707	0	0	0	20	0	1.93	-0.81	0.68	27	M 3.1	2	30	4	2	0
WAYNESBORO WTP	51.5	30.9	41.2	5.8	70	04	20	15+	729	0	0	0	21	0	2.80	-0.14	1.05	27	T	T	27	6	2	1
--DIVISIONAL DATA----->			40.0	4.1B											2.50	-0.30B								
SOUTHWESTERN MOUNTAIN 06																								
ABINGDON 3S	50.8M	32.0M	41.4M	5.6	67	05+	19	23	724E	0	0	1	18	0	M 3.69	-0.20	1.00	10	M 0.0	0		7	3	1
BIG STONE GAP	51.8	32.5	42.2	5.3	70	04	19	23	701	0	0	1	16	0	5.59	0.50	0.90	26	0.0			11	5	0

VIRGINIA
201212

MONTHLY STATION AND DIVISION SUMMARY

STATION	TEMPERATURE (°F)											PRECIPITATION (IN)													
	AVERAGE MAXIMUM	AVERAGE MINIMUM	AVERAGE	DEPARTURE FROM NORMAL	HIGHEST	DATE	LOWEST	DATE	HEATING DEG. DAYS	COOLING DEG. DAYS	NO. OF DAYS				TOTAL	DEPARTURE FROM NORMAL	GREATEST 24 HOURS	DATE	ICE PELLETS, SNOW			NO. OF DAYS			
											MAX		MIN						TOTAL	MAX DEPTH ON GROUND	DATE	.10 OR MORE	.50 OR MORE	1.00 OR MORE	
											>=90	<=32	<=32	<=0											
BLACKSBURG NWSO	48.1	27.6	37.9	4.1	66	05+	16	24+	834	0	0	3	22	0	2.41	-0.54	0.72	27	1.9	1	31	6	1	0	
BURKES GARDEN	44.9	26.6	35.8	4.2	62	10+	11	31	897	0	0	5	22	0	3.91	0.11	0.82	21	5.5	4	31	12	2	0	
CHRISTIANSBURG	48.7	31.5	40.1	4.4	67	05	19	31	761	0	0	3	17	0	2.55	-0.43	1.01	27	0.7	T	30	7	1	1	
CLINTWOOD 1 W	49.3	28.6	39.0	4.9	68	05+	16	24+	797	0	0	3	22	0	3.90	0.24	0.54	10	3.4	2	28	13	4	0	
COPPER HILL	45.7	31.9	38.8	6.4	64	05+	19	31	803	0	0	6	16	0	2.68	0.65	0.65	27	3.2	3	29	7	1	0	
GALAX RADIO WBRF	49.1	29.2	39.2	4.7	66	04	17	31+	794	0	0	1	22	0	3.35	0.08	1.49	26	0.4	0		6	2	1	
GALAX WTP	49.3	27.5	38.4	4.2	66	05+	17	15+	817	0	0	2	24	0	2.66	2.66	0.90	27	T	T	30	5	2	0	
GRUNDY	50.5	31.7	41.1	5.5	69	05+	19	24+	735	0	0	2	20	0	2.74	-0.53	0.75	11	0.4	T	30	9	1	0	
JOHN FLANNAGAN LAKE	M	M	M		71	04	26	14+							M				0.0						
LAFAYETTE 1 NE															2.60		0.65	27	1.7	T	29	7	1	0	
LEBANON	51.5F	30.9	41.2F	5.8	67	14	19	31	722	0	0	2	16	0	3.07	-0.35	0.70	26	M 0.0	0		9	2	0	
NORA 4 SSE	45.3	33.2	39.3	5.4	63	04	18	31+	790	0	0	5	13	0	FA 4.02	0.28	0.77	11	3.6	1	31	11	3	0	
NORTH FORK LAKE	M	M	M		70	04	19	31							MA 3.91		0.66	11	M 0.0	0		4	1	0	
PULASKI 2 E	51.6	29.1	40.4	5.0	69	10+	20	14	757	0	0	1	22	0	2.36	-0.44	0.85	27	T	T	29	5	2	0	
RADFORD 3 N	49.2	28.6	38.9	5.2	69	10+	16	14	802	0	0	3	22	0	2.87	-0.07	1.37	27	0.5	T	30	6	1	1	
RICHLANDS	50.4	29.0	39.7	5.1	68	04	16	23	778	0	0	2	21	0	3.44	-0.01	0.69	11	T	0		11	2	0	
SALTVILLE 1N	50.9	29.4	40.2	4.8	67	10+	18	24+	764	0	0	2	21	0	3.32	-0.34	0.80	11	T	T	30	9	2	0	
STAFFORDSVILLE 3 ENE	49.4	28.3	38.9	4.4	68	04	17	31+	804	0	0	3	21	0	3.08	0.24	0.96	21	0.1	T	29	6	2	0	
TROUT DALE 3 SSE	48.9	26.1	37.5		66	10	14	31+	844	0	0	2	22	0	3.03		0.80	21	3.0	1	30	9	2	0	
WILLIS															2.67		0.76	27	0.1	T	22	8	2	0	
WISE 3E	50.0M	34.8M	42.4M	6.3	67	03	19	31+	690E	0	0	1	12	0	M 4.09	0.28	1.12	10	M 5.5	M 3	28	11	3	1	
WYTHEVILLE 1 S	49.6	27.4	38.5	4.9	69	10	17	15	812	0	0	2	24	0	2.65	-0.13	0.72	27	T	T	30	8	2	0	
--DIVISIONAL DATA----->			39.5	4.2B											3.10	-0.17B									

VIRGINIA
201212

DAILY PRECIPITATION (INCHES)

STATION	TOTAL	DAY OF MONTH																															
		01	02	03	04	05	06	07	08	09	10	11	12	13	14	15	16	17	18	19	20	21	22	23	24	25	26	27	28	29	30	31	
WESTERN PIEDMONT 03																																	
ALTAVISTA	3.22					0.01	0.01	0.19	0.01	0.02					0.01	0.16	0.06				0.01	0.75			0.02	0.73	0.18	1.00		0.05	0.01		
APPOMATTOX	2.94					T 0.03	0.01	0.25	0.04	0.02						0.15	0.04	0.02						0.14	0.35	0.80	0.41		0.04				
BEDFORD 4 NW	2.69			0.01		0.01	T 0.01	0.02		0.01	0.01					0.22	0.11	0.05						0.01	0.48	0.24	0.83		0.14	0.08			
BROOKNEAL	3.20					0.01										0.23	0.06	0.02						0.14	0.63	0.38	0.87		0.02				
CHARLOTTE COURT HOUSE	1.85							0.12		0.10							0.08	T					0.06		0.30	0.04	1.15		T				
CHARLOTTESVILLE 2W	2.95			0.01		T		T 0.01	T	0.11	0.13					0.07	T	0.04							0.17	0.25	1.07		0.01	0.10			
CHATHAM	3.89					T 0.05		0.23	0.01	0.01	T					0.10	0.59	0.02							0.91	0.06	1.21		0.05				
CONCORD 4 SSW	2.21					0.02		0.30	0.02	0.05						0.15	0.06	0.03							0.04	0.49	0.18	0.10		0.02	0.03		
DANVILLE REGIONAL AP	2.46		T	T		0.01	T	0.15		0.06	0.11	0.01				0.20	0.01					0.37		0.42		1.07		0.05					
FREE UNION	2.68			T				T		0.03	0.06	0.11				0.12	0.01	0.02						T	0.17	0.10	1.06		T	0.10			
HOLCOMB ROCK	3.18						T		T		0.05	0.03				0.19	0.04	0.04		T					0.53	0.31	0.94		0.08	0.10			
HUDDLESTON 4 SW	3.12							0.08			0.01					0.15	0.11	0.01	0.01		0.01				0.87	0.31	0.80		0.15				
LYNCHBURG #2	2.50					0.02	0.08	0.03		0.03						0.22	0.06	0.03							0.50	0.16	0.54		0.11	0.09			
LYNCHBURG INTL AP	2.65					0.01		0.01		0.01	T					T 0.22	0.03								0.50	1.00		0.17					
MARTINSVILLE FLTR PLT	3.65					0.01		0.12		0.03	0.02					0.15	0.20	0.10							0.07	0.71	0.43	1.02		0.07			
MEADOWS OF DAN 5 SW	3.55					0.01		0.18			0.14					0.14	0.23	0.15							0.14	0.64	0.63	0.75		0.03			
MONTEBELLO FISH CULTURAL STN	3.65			0.01			0.04		0.02	0.01	0.07	0.18				0.02	0.04	0.10							0.69	0.70	0.70						
MONTICELLO	2.53			T		T 0.02	T		T		0.06					0.09	0.02	0.04								0.06	1.29						
PEDLAR DAM	2.43			T		T	T	T	T	T	T	0.05				0.18	T	0.07		T					0.82	0.29	0.24	0.78		T	T		
ROCKY MT	3.53					T 0.03		T		T	0.02	0.02	T		0.06	0.10	0.14	0.03		T			0.68	0.09	0.72	0.58	0.85		0.23				
SOUTH BOSTON	2.39							0.15	0.02	0.02	0.02					0.17	0.10	0.02							0.19	0.08	1.12		0.08				
STUART	3.84							0.05			0.08					0.17	0.22	0.02							0.01	1.04	0.62	0.78		0.09		0.15	
TYE RIVER 1 SE	M	-	-	-	-	-	-	-	-	-	-	-	-	-	-	-	-	-	-	-	-	-	-	-	-	-	-	-	-	-	-	-	
WOOLWINE	3.62						T		0.02		0.06					0.18	0.10								0.31	0.28	1.07	0.60		0.15			
NORTHERN 04																																	
BOSTON 4 SE	M							0.02		-	-	-	-	-	-	*	0.26 _a	0.04								-	0.43	-	1.69	0.01	0.58	-	
EDINBURG	2.10							0.01		0.27	0.07					0.04		0.12								0.11	0.08	0.94		0.04			
FRONT ROYAL	M 1.33			0.01				-		0.13	0.24	0.02				0.04		0.02								0.05	0.01	0.22					
LINCOLN	MA 2.65	*	*	*	*	*	0.00 _a				0.61						0.73										-	-	1.31		-		
LURAY 5 E	2.42			0.01						0.31						0.19	0.02	0.03								0.06	0.21	1.12		T	0.05		
MADISON	F 0.10			T						0.10	T													0.00 ^L	0.00 ^L	0.00 ^L	0.00 ^L	0.00 ^L	0.00 ^L	0.00 ^L	0.00 ^L	0.00 ^L	
MANASSAS	MA 3.25			0.05		0.05		0.05	-	*	0.10 _a						0.20	0.10								-	-	1.75			0.10		
MT WEATHER	M 3.26			0.01		0.01		0.02		0.27	0.12	0.02				0.02	0.02	0.05							-	0.35	0.03	1.30		0.11			
PIEDMONT RSCH STN	FA 1.37			T		0.01		T			0.10	0.18				0.00 ^L	0.10 ^L	0.06							0.95	0.00 ^L	0.00 ^L	1.20 ^L		0.07			
SOMERSET	2.62			0.01		T		0.02	0.02	T		0.26				0.09	0.03	0.05								0.19	0.19	0.70	0.02		0.08		
SPERRYVILLE	M 3.45									0.30	0.14	0.05				0.14	0.03	0.05		-	-					0.23	0.15	1.20		T	0.07		
STERLING RCS	3.13			0.02				T	T	0.20	0.07	0.03				T	0.01	0.05								0.24	0.01	1.49		T	0.12		
VIENNA	3.14			0.01				0.01		0.21	0.01	0.02				0.09	0.01	0.05								0.17	0.01	1.34			0.13		
WARRENTON 3 SE	M	-	-	-	-	-	-	-	-	-	-	-	-	-	-	-	-	-	-	-	-	-	-	-	-	-	-	-	-	-	-	-	
WASHGTN DULLES INTL AP	2.87			0.02				0.01		0.16		0.01				T	T	0.04	T								-	-	-	-	-	-	
WASHINGTON REAGAN AP	3.03			0.02			T	0.05		0.14	0.01	0.07				0.09	0.07	T								0.20	1.41	0.01		0.09			

VIRGINIA
201212

DAILY PRECIPITATION (INCHES)

STATION	TOTAL	DAY OF MONTH																														
		01	02	03	04	05	06	07	08	09	10	11	12	13	14	15	16	17	18	19	20	21	22	23	24	25	26	27	28	29	30	31
STAFFORDSVILLE 3 ENE	3.08					0.01		0.02	0.01	0.02	T	0.25					0.15	0.08	0.04	0.03		0.96	0.01		0.06	0.29	0.39	0.72		0.04		
TROUT DALE 3 SSE	3.03					0.12		0.03		0.01		0.12					0.12	0.14	0.21		0.80	0.06		0.04	0.22	0.45	0.68		0.02	0.01		
WILLIS	2.67					0.01		0.02		T		0.04					0.10	0.18	0.05		0.20	0.02		0.13	0.31	0.50	0.76		0.35			
WISE 3E	M 4.09					0.11	0.08	T		0.10	1.12	0.16	-				0.11	0.08	0.11		0.53	0.15	0.02		0.29	0.03	0.96	0.09		T	0.15	
WYTHEVILLE 1 S	2.65							0.02		0.01		0.11					0.03	0.18	0.11			0.65	0.02		0.09	0.17	0.43	0.72		0.10	0.01	

VIRGINIA
201212

DAILY TEMPERATURES (°F)

STATION	OB. TIME	MAX/MIN	DAY OF MONTH																															AVERAGE
			01	02	03	04	05	06	07	08	09	10	11	12	13	14	15	16	17	18	19	20	21	22	23	24	25	26	27	28	29	30	31	
VIRGINIA TIDEWATER 01 DISPUTANTA	07	MAX	61	62	64	70	74	58	47	55	61	62	71	54	46	52	55	52	55	59	62	61	60	48	49	55	48	52	53	50	46	45	46	55.9
		MIN	27	32	32	46	48	28	28	40	45	46	51	42	37	22	22	28	44	48	32	29	30	32	21	21	35	38	36	24	24	27	19	33.4
EASTVILLE	07	MAX	55	58	60	60	69	57	45	61	56	63	67	51	47	53	48	56	56	58	56	56	60	48	45	48	50	48	59	45	42	46	42	53.7
		MIN	36	37	39	51	51	33	33	40	49	51	51	43	41	32	32	47	49	51	46	37	37	39	29	34	35	39	41	38	35	38	27	40.0
EMPORIA 1 WNW	08	MAX	54	64	65	71	74	59	50	55	65	66	71	58	46	54	57	53	57	61	62	63	62	46	49	59	50	58	51	49	45	49	45	57.0
		MIN	25		34	42	42	33	33	41	44	47	58	44	38	27	26	31	46	46	33	33	33	35	27	39	39	38	27	27	32	24	35.7	
FREDERICKSBURG SEWAGE	07	MAX	50	54	63	73	73	61	44	52	63	62	67	50	46	49	56	56	50	55	63	63	59	59	42	40	49	48	45	44	45	43	54.3	
		MIN	28	28	30	44	45	29	29	38	45	44	44	36	33	24	23	30	43	45	30	30	32	33	23	23	28	32	32	27	27	34	32.8	
HAMPTON UNIV	17	MAX	60	62	69	73	67	53	59	59	66	69	67	49	50	55	52	55	60	63	61													M
		MIN	42	42	54	52	45	38	38	52	51	58	48	44	42	34	38	48	53	48	43													M
HOLLAND 1 E	08	MAX	61	65	67	72	76	62	50	62	65	70	72	56	48	63	57	54	58	64	64	62	63	48	49	56	56	57	60	50	45	46	45	58.8
		MIN	33	28	37	40	52	28	29	43	42	55	50	40	36	23	24	29	46	48	30	28	28	31	20	32	41	39	37	26	30	30	19	34.6
HOPEWELL	16	MAX	61	65	71	75	71	58	53	65	60	70	70	51	54	57	56	57	60	63	63	62	64	51	55	54	52	52	52	52	52	52	59.0	
		MIN	32	34	53	50	51	35	36	49	48	52	50	40	39	29	32	32	55	54	39	35	43	36	28	35	44	39	39	30	30	30	25	39.5
NORFOLK INTL AP	24	MAX	60	65	71	75	64	48	61	63	69	72	66	49	50	52	53	57	63	64	61	60	63	49	52	54	53	62	49	44	47	46	48	57.7
		MIN	35	37	52	49	42	37	41	49	47	61	49	45	43	35	32	50	55	48	37	44	37	36	29	39	43	44	39	36	39	34	25	41.6
NORFOLK SOUTH	24	MAX	61	63	68	73	63	47	61	61	67	70	65	48	49	52	54	56	61	62	59	58	61	47	51	53	52	60	48	43	46	44	47	56.5
		MIN	33	36	49	47	41	34	34	50	48	58	48	43	37	30	31	48	55	47	39	38	37	35	26	38	43	44	37	33	38	30	24	39.7
NORTH	07	MAX	55	58	61	73	71	60	44	56	57	60	67	52	45	51	54	52	56	58	59	59	60	45	48	48	50	58	47	43	43	44	54.3	
		MIN	30	32	34	46	45	31	29	38	42	44	50	43	41	28	28	34	47	52	37	32	32	36	24	24	31	39	37	30	30	33	23	35.5
PAINTER 2W	16	MAX	60	58	71	72	63	52	58	59	60	68	67	48	52	51	55	55	58	62	55	50	58	45	48	48	50	57	59	43	45	42	44	55.3
		MIN	33	35	50	48	41	33	28	50	43	50	48	42	40	27	30	39	52	52	37	33	43	37	26	31	42	38	40	36	33	38	24	38.7
STONY CREEK 2 N	08	MAX	61	63	66	73	74	59	48	53	61	62	71	64	47	52	57	54	55	59	62	62	59	61	49	57	49	54	50	49	47	48	46	57.2
		MIN	25	28	31	44	43	33	30	35	46	43	52	42	38	23	22	27	43	54	38	30	30	35	23	23	35	39	37	26	26	32	22	34.0
SUFFOLK LAKE KILBY	24	MAX	63	63	69	73	61	47	62	60	68	70	64	49	59	55	55	62	65	60	59	62	50	53	54	54	66	49	42	45	45	45	57.5	
		MIN	33	36	50	50	41	36	36	50	50	57	49	43	35	32	32	47	55	42	38	37	36	33	28	40	40	41	36	30	37	29	26	39.5
WAKEFIELD 1NW	24	MAX	64	64	71	74	60	49	58	60	65	70	66	46	54	55	53	57	60	62	62	60	62	50	54	50	55	57	50	46	44	46	45	57.1
		MIN	29	33	49	46	37	28	32	49	49	58	46	42	28	24	27	43	55	36	34	30	35	28	22	32	43	38	29	25	33	25	20	35.6
WALKERTON 2 NW	18	MAX	62	69	76	77	62	52	58	67	70	74	70	52	55	59	56	58	63	66	64	53	51	52	53	49	53	54	52	51	48	48	49	58.8
		MIN	34	50	47	57	31	34	39	47	53	51	43	39	27	34	41	46	50	56	34	47	43	26	31	41	43	36	30	36	37	28	37	40.3
WALLACETON LK DRUMMOND	08	MAX	62	65	68	72	76	64	53	65	64	71	72	60	48	55	60	58	57	65	63	65	64	50	53	55	58	58	63	53	48	48	50	60.1
		MIN	21	24	36	35	43	24	23	35	34	46	47	38	35	23	21	27	43	47	28	25	28	29	20	28	38	37	34	23	34	26	18	31.3
WALLOPS ISLAND NASA TEST FACIL	24	MAX	59	55	72	64	64	44	57	60	57	70	66	48	53	53	55	58	57	62	55	56	59	46	48	52	54	61	50	45	46	44	49	55.5
		MIN	35	37	49	51	42	29	29	45	44	54	44	41	37	28	32	49	51	46	34	34	39	35	27	34	39	39	37	34	35	32	25	38.3
WARSAW 2 NW	18	MAX			74	74	70	60				70	68	48	51	55	56		58	62	59	55											M	
		MIN	29			51	53	29	30				59	45	36	37	24	29		50	51	33	31										M	
WEST POINT 2 NW	17	MAX	62	63	73	74	64	49	53	62	57	71	66	47	51	55	53	54	58	64	60	57	60	48	49	47	50	55	54	44	42	45	44	55.8
		MIN	29	32	47	45	39	27	30	47	43	46	44	39	29	24	29	41	50	39	35	30	35	27	22	28	37	36	30	27	34	25	21	34.4
WILLIAMSBURG 2 N	24	MAX	63	64	74	75	62	48	61	61	67	72	67	48	53	57	54	60	63	65	63	61	63	51	53	50	53	59	59	46	43	43	47	58.2
		MIN	34	36	50	48	41	33	32	49	46	57	48	44	34	30	33	46	57	44	39	35	37	31	27	32	42	40	34	30	37	26	24	38.6

VIRGINIA
201212

DAILY TEMPERATURES (°F)

STATION	OB. TIME	MAX/MIN	DAY OF MONTH																															AVERAGE
			01	02	03	04	05	06	07	08	09	10	11	12	13	14	15	16	17	18	19	20	21	22	23	24	25	26	27	28	29	30	31	
EASTERN PIEDMONT 02 AMELIA COURTHOUSE 1	08	MAX	58	60	66	71	73	61	47	51	65	62	70	51	45	49	55		55	58	61	61	59	59		52		48	41	48	44	47	45	55.8
		MIN	30	32	47	44	55	28	33	41	41	51	49	40	31	23	28		38	49	35	31	35	32		37		36	35	27	29	30	21	36.0
ASHLAND	18	MAX	54	66	72	73	60	46	52	61	52	70	65	47	49	54	54	53	59	62	60	50	60	48	51	48	48	43	48	45	44	45	45	54.3
		MIN	29	31	48	45	45	28	31	46	46	50	45	38	32	23	29	42	50	46	34	30	37	30	22	30	38	34	31	27	33	32	21	35.6
CAMP PICKETT	08	MAX	59	60	64	74	74	59	48	51	62	63	70	55	45	51	55	55	55	55	60	62	59	44	48	54	46	51	43	48	44	48	45	55.1
		MIN	28	29	29	44	44	28	28	39	46	48	54	40	33	22	22	30	43	30	31	31	33	33	25	25	36	36	34	25	25	31	22	33.0
CHASE CITY	17	MAX	60	63	66	73	74	59	51	51	61	65	70	58	47	53	57	56	55	58	62	64	61	61	49	55	48	50	43	49	44	52	47	56.8
		MIN	30	35	37	41	41	31	31	44	42	50	52	43	39	27	27	36	47	46	32	32	41	36	27	33	40	39	36	28	30	33	28	36.6
CLARKSVILLE	07	MAX	63	65	67	73	74	60	50	49	62	64	70	57	46	55	54	54	54	58	61	64	60	44	49	56	48	54	42	48	44	49	46	56.1
		MIN	29	29	31	44	44	34	34	43	44	52	52	41	37	24	24	31	45	51	33	33	35	34	27	27	39	39	36	26	27	33	26	35.6
CORBIN	09	MAX	53	63	73	73	64	51	51	61	54	67	63	46	48	55	56	50	53	61	58	47	59	46	47	43	48	42	45	42	43	43	41	53.1
		MIN	29	30	48	50	50	27	31	47	45	49	42	35	31	22	30	42	47	49	33	32	38	29	21	26	34	32	31	26	32	31	22	35.2
CROZIER	07	MAX	52	57	65	71	72	61	45	49		55	68	50	45	49	55	52	52	56	60	60	58	41	48	49	38	47	38	47	42	42	44	52.3
		MIN	27	30	33	41	52	28	29	42		43	43	37	27	21	23	32	42	49	31	29	32	30	23	23	32	33	32	25	29	31	20	32.3
FARMVILLE 2 N	07	MAX	59	59	66	70	71	63	47	50	62	62	68	53	46	50	57	56	53	57	61	61	57	44	48	50	40	43	38	47	42	47	47	54.0
		MIN	30	31	30	46	45	30	30	42	47	47	53	39	33	22	22	30	41	49	31	31	31	33	26	26	34	36	33	26	26	32	22	34.0
GREENBAY 3 NE	09	MAX	58	57	64	70	72	60	47	52	63	64	69	53	45	48	55	50	54	57	60	62	58	43	46	51	51	44	38	46	42	46	44	53.8
		MIN	28	31	44	46	54	29	34	42	47	50	52	39	31	22	30	33	33	49	35	30	35	32	26	34	34	35	34	25	32	33	23	35.5
JOHN H KERR DAM	08	MAX	63	62	66	72	73	61	50	50	60	66	69	60	46	52	57	57	56	59	63	65	61	46	51	58	50	55	46	49	44	50	47	56.9
		MIN	30	32	35	42	45	31	34	43	44	54	53	42	37	24	26	30	46	54	38	33	34	35	31	33	41	39	37	26	30	34	28	36.8
LOUISA	18	MAX	56	64	71	71	61	46	50	63	54	66	59	46	49	57	54	49	52	60	62	47	57	48	49	42	47	43	47	43	46	45	42	53.1
		MIN	24	27	48	40	42	24	28	45	44	50	42	34	29	18	25	41	45	46	30	28	37	32	19	24	33	33	32	26	33	32	19	33.2
PALMYRA 3S	06	MAX	50	57	65	70	74	63	45	50	62	54	67	51	46	48	57	52	50	54	60	62	57	43	48	49	36	44	36	47	41	46	45	52.5
		MIN	21	26	29	39	39	25	24	39	43	48	48	38	32	18	18	27	41	45	27	27	28	30	20	20	26	33	30	25	25	27	18	30.2
PETERSBURG	08	MAX	60	61	66	72	75	62	48	55	65	64	72	54	47	51	56	54	56	59	63	62	50	48	47	54	47	51	47	50	47	47	46	56.0
		MIN	31	32	33	45	44	35	35	41	44	46	53	43	39	26	26	30	44	48	36	33	26	35	33	24	33	38	37	27	27	32	22	35.4
RICHMOND INTL AP	24	MAX	60	66	72	75	62	48	54	64	55	72	65	47	52	55	54	55	60	64	62	61	62	50	54	45	51	48	50	45	46	47	47	56.4
		MIN	31	34	50	48	42	31	35	49	44	51	44	40	32	26	31	45	51	45	37	33	36	30	23	31	41	37	35	29	35	27	22	36.9
SANDSTON	07	MAX	54	57	64	71	74	60	44	53	64	59	70	51	46	49	52	53	55	60	61	59	60	45	47	52	43	48	47	47	43	42	43	54.0
		MIN	26	29	31	46	45	29	29	38	43	44	48	40	35	24	24	29	43	51	35	31	30	33	23	22	33	36	36	28	28	33	22	33.7
WESTERN PIEDMONT 03 APPOMATTOX	07	MAX	58	58	65	69	70	60	45	47	59	57	63	51	45	47	56	54	50	54	57	60	55	39	43	48	38	46	39	44	40	46	46	51.9
		MIN	28	31	34	42	43	28	28	40	42	48	47	37	31	23	24	32	40	47	35	33	35	33	26	27	33	32	32	27	26	32	25	33.6
BROOKNEAL	07	MAX	61	58	67	70	73	63	47	49	61	57	67	53	48	50	56	56	53	56	56	63	57	43	46	53	42	48	41	45	43	49	43	54.0
		MIN	26	29	30	37	37	26	24	40	38	45	50	42	35	20	20	29	42	43	27	27	30	35	20	22	36	37	35	24	24	31	23	31.7
CHARLOTTE COURT HOUSE	07	MAX	61	59	62	70	74	63	49	49	59	60	68	54	47	50	59	55	53	56	61	63	54	48	49	51	45	51	36	45	43	48	43	54.4
		MIN	26	30	34	40	40	28	29	42	44	46	51	40	34	23	23	29	42	50	31	35	35	34	25	26	34	35	33	26	27	34	26	33.9
CHARLOTTESVILLE 2W	08	MAX	51	56	63	71	73	61	45	52	63	52	64	50	44	47	58	52	46	49	57	61	44	41	47	49	36	42	37	42	40	47	41	51.0
		MIN	35	35	39	54	54	29	30	38	45	48	44	35	33	29	31	39	39	43	41	37	38	33	31	32	30	30	31	31	31	29	29	36.3
CHATHAM	07	MAX	60	60	65	71	72	61	45	49	59	58	63	51	45	47	58	54	50	54	59	65	51	41	44	52	43	51	37	44	40	50	42	52.9
		MIN	22	24	25	36	36	23	22	41	38	43	47	38	37	17	17	27	39	43	26	26	29	30	18	18	35	33	33	24	23	30	19	29.6

VIRGINIA
201212

DAILY TEMPERATURES (°F)

STATION	OB. TIME	MAX/MIN	DAY OF MONTH																															AVERAGE	
			01	02	03	04	05	06	07	08	09	10	11	12	13	14	15	16	17	18	19	20	21	22	23	24	25	26	27	28	29	30	31		
DANVILLE REGIONAL AP	24	MAX	64	70	76	74	63	50	51	64	64	67	63	48	53	59	60	54	57	61	66	60	53	50	54	46	54	44	47	42	51	46	49	56.8	
		MIN	29	32	50	43	33	33	45	47	47	54	43	42	27	21	30	43	48	35	28	35	36	31	22	38	42	36	30	24	34	27	22	35.7	
FREE UNION	08	MAX	51	56	65	72	73	62	45	52	67	52	63	51	45	48	60	52	45	49	58	61	46	40	48	51	32	43	38	43	41	48	42	51.6	
		MIN	22	24	28	39	39	24	24	35	39	46	42	33	24	19	19	28	38	36	31	28	28	33	23	23	26	29	30	26	30	31	24	29.7	
LYNCHBURG #2	07	MAX	59	59	66	69	71	63	45	48	63	59	63	52	45	49	58	55	47	54	56	62	45	39	47	50	37	53	42	45	41	47	44	52.7	
		MIN	25	27	31	40	39	26	26	42	41	43	45	39	26	20	20	30	39	40	29	29	30	34	24	25	31	31	32	26	28	32	21	31.3	
LYNCHBURG INTL AP	24	MAX	61	67	69	71	63	47	48	63	59	63	59	45	50	59	56	49	54	57	62	44	44	46	49	42	54	40	45	40	46	43	44	52.9	
		MIN	29	33	50	39	34	28	40	44	41	51	38	38	25	19	31	40	44	36	30	31	34	33	26	32	30	32	27	23	31	26	21	33.4	
MARTINSVILLE FLTR PLT	07	MAX	62	64	66	74	72	62	46	50	64	59	63	51	46	49	58	58	51	55	57	65	45	40	47	50	43	54	40	43	41	52	42	53.8	
		MIN	23	26	29	36	37	24	23	43	39	46	44	38	37	18	18	29	41	41	27	29	29	34	21	21	31	34	34	22	23	31	20	30.6	
MEADOWS OF DAN 5 SW	07	MAX	59	63	63	71	71	50	43	48	64	62	60	46	47	49	59	57	47	52	50	59	47	46	42	45	40	52	38	39	39	42	38	51.2	
		MIN	27	34	40	40	41	30	30	40	41	45	40	34	34	26	26	35	42	40	29	30	33	29	27	27	31	31	33	27	27	26	26	32.9	
MONTEBELLO FISH CULTURAL STN	07	MAX	53	56	60	61	64	53	40	56	63	55	58	44	38	44	53	42	55	53		53	44	29	25	44	39	47	32	33	36	36	32	46.6	
		MIN	27	25	43	40	48	21	27	32	38	43	33	29	26	19	24	30	35	40		28	29	23	20	23	29	27	26	22	21	22	21	29.0	
MONTICELLO	08	MAX	48	53	62	67	70	58	43	60	59	53	61	49	43	44	53	49	46	50	55	59	43	39	44	48	39	40	38	47	40	46	39	49.8	
		MIN	29	31	37	51	50	29	28	35	43	48	45	34	31	30	28	34	39	40	33	35	38	32	30	30	31	30	31	30	31	31	26	34.5	
ROCKY MT	07	MAX	62	62	67	71	72	62	45	52	66	62	63	50	44	47	58	59	54	53	53	63	45	41	44	50	50	53	41	39	38	45	39	53.2	
		MIN	25	29	31	31	40	25	25	42	43	43	43	34	34	19	19	31	40	44	32	29	30	37	25	24	24	31	32	24	24	30	23	31.1	
SOUTH BOSTON	07	MAX	62	62	68	74	73	62	50	49	64	65	69	55	47	53	59	56	55	58	63	65	61	44	50	54	46	51	41	48	43	51	47	56.3	
		MIN	25	28	31	40	40	28	28	44	41	45	51	42	38	22	22	29	42	47	30	29	31	35	22	22	37	39	35	25	24	32	24	33.2	
STUART	07	MAX	63	65	66	63	70	62	45	50	64	59	61	61	45	50	59	58	54	54	55	64	47	47	46	49	53	54	41	44	43	49	36	54.1	
		MIN	31	31	35	39	39	28	28	40	42	46	44	36	37	22	22	34	44	38	35	34	34	31	24	24	31	36	34	24	21	28	23	32.7	
TYE RIVER 1 SE	07	MAX																																M	
		MIN																																	M
NORTHERN 04																																			
BOSTON 4 SE	07	MAX	51	52	58	71	73	59	43	51									45	48	58	58	57	58	44	47	33	46		41	41	43		M	
		MIN	22	28	28	42	54	23	24	38									39	41	28	31	30	31	19	19	23	29		27	27	28		M	
EDINBURG	07	MAX	58	54	59	68	70	57	46	55	66	49	59	45	39	46	56	50	47	46	51	55	42	38	42	50	32	41	36	36	40	43	40	48.9	
		MIN	24	25	30	37	38	22	21	36	38	42	37	27	20	19	19	27	34	34	32	29	29	33	21	20	22	28	26	28	28	30	20	28.3	
FRONT ROYAL	07	MAX	53	52	61	67	73	73		50	65	51	62	47	40	44	56	59	44	51	53	54	44	44	40	49	37	42	35	36	39	41	37	50.0	
		MIN	29	29	29	49	50	28		35	37	47	39	31	27	24	24	29	40	38	34	35	38	35	26	24	28	30	27	27	30	31	24	32.5	
LINCOLN	07	MAX	50	47	54	67	72	56	44	50	61	50	58	47	43	45	53	50	46	50	66	52	48	40	40	46	36	43	37	38	38	41	37	48.5	
		MIN	24	24	30	38	24	22	22	35	38	41	30	30	24	18	18	24	41	28	28	31	31	20	20	20	22	29	29	32	28	32	20	27.5	
LURAY 5 E	08	MAX	55	55	64	70	72	58	49	58	67	65	62	46	43	45	57	56	48	53	54	56	47	38	42	50	38	44	34	41	40	42	38	51.2	
		MIN	27	31	38	45	48	23	26	40	47	46	35	28	22	22	25	39	39	38	28	31	36	33	19	22	30	29	28	26	29	31	19	31.6	
MADISON	08	MAX	53	55	60	71	74	61	46	53	66	54	64	52	47	49	56	55	48	51	60	60	47	45	49	50	39	48	41	46	45	47	44	52.8	
		MIN	30	33	34	46	47	31	30	40	46	50	46	37	35	27	27	34	43	42	34	36	36	39	31	30	30	35	35	32	32	36	28	35.9	
MANASSAS	07	MAX	52	50	60	73	75	59	46	52	64	52	66	49	45	49	55		56	53	59	55	56	56	42	50	36	47	38	40	44	41	40	52.0	
		MIN	25	29	31	45	51	28	27	47	48	43	35	29	22	23		34	45	30	32	33	33	37	25	25	31	31	32	33	33	22	33.1	33.1	
MT WEATHER	07	MAX	48	44	58	64	69	54	40	47	59	48	56	45	45	43	52	48	48	49	51	48	45	45	38	44	40	31	31	31	36	36	46.5		
		MIN	32	32	41	51	47	26	26	31	45	43	35	31	28	30	33	36	36	41	38	35	34	30	24	29	27	26	27	27	27	27	22	33.0	
PIEDMONT RSCH STN	08	MAX	49	53	61	70	71	60	44	50	63	53	62	49	44	47	55	52	46	52	58	59	47	41	47	46	36	45	40	44	41	46	42	50.7	

VIRGINIA
201212

DAILY TEMPERATURES (°F)

STATION	OB. TIME	MAX/MIN	DAY OF MONTH																															AVERAGE	
			01	02	03	04	05	06	07	08	09	10	11	12	13	14	15	16	17	18	19	20	21	22	23	24	25	26	27	28	29	30	31		
SOMERSET	07	MIN	26	31	32	46	48	27	30	36	46	48	42	35	33	23	22	33	40	42	30	33	33	33	27	27	28	30	30	26	27	31	21	32.8	
		MAX	50	54	62	72	74	61	44	51	66	54	64	51	44	47	56	52	46	49	58	60	44	44	47	48	33	45	39	45	43	47	42	51.4	
SPERRYVILLE	06	MIN	24	27	30	43	47	25	26	38	46	49	43	33	32	19	21	30	40	42	30	29	30	34	25	25	28	30	31	27	27	31	23	31.8	
		MAX	53	55	57	70	73	59	44	51	65	50	60	50	44	47	56	53	44	49			48	40	44	48	34	46	40	41	41	44	40	49.9	
STERLING RCS	07	MIN	25	31	32	41	43	25	25	34	37	47	45	32	28	24	22	34	37	37			37	34	22	21	26	27	27	32	30	31	21	31.3	
		MAX	48	42	53	70	70	70	41	50	60	60	60	45	41	44	49	48	44	50	54	50	51	51	39	45	35	43	35	37	38	40	37	48.4	
VIENNA	07	MIN	21	25	29	42	45	25	26	36	36	36	39	31	28	17	18	25	38	42	25	27	29	29	18	18	22	29	28	31	29	30	20	28.8	
		MAX	50	46	55	67	68	54	41	47	59	51	61	45	45	51	49	45	45	50	55	50	48	39	38	43	36	44	35	37	38	35	36	47.2	
WARRENTON 3 SE	08	MIN	24	27	31	46	51	24	25	35	44	46	40	30	25	23	24	29	41	44	30	30	32	33	23	23	24	29	29	30	30	31	23	31.5	
		MAX																																	
WASHGTN DULLES INTL AP	24	MIN	47	56	69	71	61	45	51	62	53	63	52	45	49	53	53	48	53	58	53	52	55	42	47	38	47	39	41	41	42	40	36	50.4	
		MAX	28	29	41	48	37	26	36	42	47	48	38	35	26	21	28	43	45	31	29	32	36	32	21	23	31	31	34	31	33	29	23	33.4	
WASHINGTON REAGAN AP	24	MIN	51	57	71	72	63	44	50	54	52	63	63	47	50	52	54	52	55	62	54	53	59	45	47	41	51	45	43	45	44	42	41	52.3	
		MAX	37	37	44	49	40	35	37	48	49	49	41	39	35	30	37	46	48	43	36	41	39	35	29	31	34	33	37	36	34	29	29	38.4	
WINCHESTER	07	MIN	55	52	59	69	73	55	44	45	58	48	57	46	40	46			55	46															M
		MAX	27	30	32	48	48	26	27	35	37	45	39	33	24	24			23	37															M
WINCHESTER 7 SE	08	MIN	53	52	59	67	72	58	43	50	61	48	59	47	40	45	56	50	45	49	53	52	43	43	40	48	36	41	35	35	40	40	40	48.4	
		MAX	22	24	29	42	48	20	21	36	36	43	38	28	20	19	19	26	34	34	28	31	27	34	20	20	22	28	27	31	31	32	17	28.6	
WOODSTOCK 2 NE	07	MIN	55	53	59	69	72	58	45	55	64	49	59	45	40	46	57	51	46	45	54	56	42	38	42	48	33	42	38	37	40	42	37	48.9	
		MAX	26	26	32	40	44	23	23	37	39	43	38	29	22	22	23	27	35	34	29	30	29	34	19	19	24	29	27	29	28	30	20	29.4	
CENTRAL MOUNTAIN 05 COVINGTON FLTR PLT	07	MIN	60	63	69	70	70	59	56	55	67	65	57	57	42	50	56	56	46	53	49	58	44	34	38	54	53	54	39	34	42	42	42	52.7	
		MAX	23	28	32	40	42	28	28	39	41	48	40	29	24	20	20	30	41	39	30	31	34	28	20	20	30	30	32	29	29	29	21	30.8	
DALE ENTERPRISE	07	MIN	55	56	61	68	69	58	55	55	66	53	60	54	38	45	56	53	47	52	53	56	43	42	41	49	39	39	35	38	37	42	36	50.0	
		MAX	26	28	32	40	40	22	23	38	48	47	37	29	21	21	21	39	38	40	30	29	30	30	21	22	25	25	25	25	25	29	21	29.9	
GATHRIGHT DAM	07	MIN	55	57	64	67	66	54	46	54	64	61	54	39	39	44	51	52	45	49	46	53	44	31	32	47	36	52	37	31	39	38	31	47.7	
		MAX	25	30	35	41	41	27	26	37	41	46	36	28	24	20	20	29	39	39	29	31	31	26	18	19	29	33	29	26	26	25	19	29.8	
HOT SPRINGS	07	MIN	55	62	65	66	65	53	45	54	63	59	55	41	38	42	49	51	46	53	45	50	43	30	33	45	39	46	34	31	35	37	30	47.1	
		MAX	30	35	40	40	40	25	25	36	45	44	36	27	23	21	21	31	36	37	28	33	30	25	17	17	30	30	28	24	24	25	17	29.7	
MILLGAP	07	MIN	54	57	61	62	64	51	48	55	62	54	53	37	38	46	53	53	44	51	42	48	41	29	30	46	42	44	35	29	39	36	29	46.2	
		MAX	18	21	26	36	36	16	15	33	33	46	35	20	14	12	12	24	36	34	23	23	23	25	21	17	18	30	25	24	19	22	8	24.0	
MUSTOE 1 SW	24	MIN	56	58	61	63	56	45	53	61	52	39	36	45	53	51	43	48	42	49	40	40	31	47	31	43	33	36	36	37	29	40	45.4		
		MAX	23	26	38	33	24	17	33	34	44	39	23	16	14	23	35	31	28	25	25	24	20	12	18	29	25	24	21	25	12	9	24.9		
ROANOKE 8 N	07	MIN	61	62	68	72	71	61	47	52	67	63	62	47	43	48	59	55	54	53	53	62	45	37	42	54	40	53	40	39	39	47	39	52.7	
		MAX	28	31	35	42	42	30	30	38	41	44	38	31	28	22	23	35	39	41	33	37	36	32	24	24	36	33	33	27	27	30	25	32.7	
ROANOKE INTL AP	24	MIN	62	67	73	72	62	47	51	68	63	62	49	44	49	61	55	53	55	54	64	45	45	42	55	45	53	42	42	40	47	40	45	53.3	
		MAX	32	35	51	44	43	31	40	39	43	49	34	34	28	23	33	40	44	40	40	38	33	33	31	38	37	33	30	28	33	30	28	36.0	
STAUNTON WATER TRMTMT PLT	08	MIN	55	58	60	69	67	58	45	59	64	54	59	42	46	55	53	51	55	52	58	42	35	41	50	39	47	36	38	38	42	37	50.5		
		MAX	32	31	45	52	51	25	26	40	49	47	36	29	24	25	31	34	40	43	36	32	29	27	31	30	27	31	30	27	25	26	27	33.3	
WAYNESBORO WTP	07	MIN	54	58	65	70	69	59	45	56	66	54	66	66	41	44	57	51	50	57	54	58	46	38	42	51	37	47	36	39	40	44	38	51.5	
		MAX	24	28	33	42	42	25	23	39	39	48	39	31	25	20	20	31	40	42	30	31	37	31	23	22	28	28	29	25	26	32	26	30.9	

VIRGINIA
201212

DAILY TEMPERATURES (°F)

STATION	OB. TIME	MAX/MIN	DAY OF MONTH																															AVERAGE
			01	02	03	04	05	06	07	08	09	10	11	12	13	14	15	16	17	18	19	20	21	22	23	24	25	26	27	28	29	30	31	
WISE 3E	17	MAX	59	60	67	63	60	49	57	58	61	60	51		50	54	58	54	53	49	54	51	46	36	42	44	43	44	36	36	38	32	36	50.0
		MIN	41	38	54	49	39	29	41	50	52	50	28		23	26	34	45	40	36	31	40	23	21	36	37	36	36	23	23	26	19	19	34.8
WYTHEVILLE 1 S	07	MAX	59	61	64	67	67	57	58	58	61	69	59	39	38	47	55	56	48	53	45	54	40	30	35	48	45	47	36	31	37	40	35	49.6
		MIN	19	24	27	33	34	20	20	32	36	37	38	26	23	18	17	28	39	40	30	27	29	26	22	23	31	30	29	22	23	24	21	27.4

VIRGINIA
201212

SNOWFALL AND SNOW ON GROUND (INCHES)

STATION		DAY OF MONTH																															
		01	02	03	04	05	06	07	08	09	10	11	12	13	14	15	16	17	18	19	20	21	22	23	24	25	26	27	28	29	30	31	
VIRGINIA																																	
TIDEWATER 01																																	
DISPUTANTA	SNOWFALL																																
EASTVILLE	SNOWFALL																																
EMPORIA 1 WNW	SNOWFALL																																
FREDERICKSBURG SEWAGE	SNOWFALL																																
HAMPTON UNIV	SNOWFALL																																
HOLLAND 1 E	SNOWFALL																																
HOPEWELL	SNOWFALL	-	-	-	-	-	-				-	-	-	-	-							-	-	-	-	-	-	-	-	-	-	-	
	SN ON GND	-	-	-	-	-	-				-	-	-	-	-							-	-	-	-	-	-	-	-	-	-	-	
NORFOLK INTL AP	SNOWFALL																																
NORFOLK SOUTH	SNOWFALL																																
NORTH	SNOWFALL																																
	SN ON GND																																
PAINTER 2W	SNOWFALL																																
STONY CREEK 2 N	SNOWFALL																																
	SN ON GND																																
SUFFOLK LAKE KILBY	SNOWFALL																																
	SN ON GND																																
WAKEFIELD 1NW	SNOWFALL																																
	SN ON GND																																
WALKERTON 2 NW	SNOWFALL																																
	SN ON GND																																
WALLACETON LK DRUMMOND	SNOWFALL																																
WALLOPS ISLAND NASA TEST FACIL	SNOWFALL																																
	SN ON GND																																
WARSAW 2 NW	SNOWFALL																																
WEST POINT 2 NW	SNOWFALL																																
	SN ON GND																																
WILLIAMSBURG 2 N	SNOWFALL																																
EASTERN PIEDMONT 02																																	
ASHLAND	SNOWFALL	-	-	-	-	-	-	-	-	-	-	-	-	-	-	-	-	-	-	-	-	T	-	-	-	-	-	-	-	-	-	-	
	SN ON GND	-	-	-	-	-	-	-	-	-	-	-	-	-	-	-	-	-	-	-	-	-	-	-	-	-	-	-	-	-	-	-	
BREMO BLUFF	SNOWFALL																																
	SN ON GND																																
BUCKINGHAM	SNOWFALL																																
	SN ON GND																																
CAMP PICKETT	SNOWFALL																																
CHASE CITY	SNOWFALL																																
CLARKSVILLE	SNOWFALL																																
	SN ON GND																																
CORBIN	SNOWFALL																																

Snowfall: Includes snow and ice. Values for NWS stations (J index note) are Mid-Mid (LST).

Snow on ground: Includes snow, sleet, ice, and hail. Values for NWS stations (J index note) are observed at 12 UTC (GMT).

Water Equivalent: Given for NWS stations (J index note) only, when snow depth is 2 inches or more, and is measured at 18 UTC (GMT)

VIRGINIA
201212

SNOWFALL AND SNOW ON GROUND (INCHES)

STATION		DAY OF MONTH																														
		01	02	03	04	05	06	07	08	09	10	11	12	13	14	15	16	17	18	19	20	21	22	23	24	25	26	27	28	29	30	31
CROZIER	SNOWFALL									-																		-				
	SN ON GND									-			-															-				
FARMVILLE 2 N	SNOWFALL																															
GREENBAY 3 NE	SNOWFALL																															
JOHN H KERR DAM	SNOWFALL																															
LOUISA	SNOWFALL																															
PALMYRA 3S	SNOWFALL	-	-	-	-	-	-	-	-	-	-	-	-	-	-	-	-	-	-	-	-	-	-	-	-	-	-	-	-	-	-	-
PETERSBURG	SNOWFALL	-	-																													
	SN ON GND	-	-																													
RICHMOND INTL AP	SNOWFALL																															
	SN ON GND																															
SANDSTON	SNOWFALL																															
WINTERPOCK 4 W	SNOWFALL																															
WESTERN PIEDMONT 03	SNOWFALL																															
APPOMATTOX	SN ON GND																															T
BEDFORD 4 NW	SNOWFALL																															
	SN ON GND																											T				
BROOKNEAL	SNOWFALL																															
	SN ON GND																															
CHARLOTTE COURT HOUSE	SNOWFALL																							T								
	SN ON GND																															
CHARLOTTESVILLE 2W	SNOWFALL																									T	0.7					
	SN ON GND																										1	1	T			T
CHATHAM	SNOWFALL																															
	SN ON GND																															
CONCORD 4 SSW	SNOWFALL																															
	SN ON GND																															
DANVILLE REGIONAL AP	SNOWFALL																															
	SN ON GND																															
FREE UNION	SNOWFALL	-	-	-	-	-	-	-	-	-	-	-	-	-	-	-	-	-	-	-	-	-	-	-	T		0.2	0.5	-	-	0.6	-
	SN ON GND	-	-	-	-	-	-	-	-	-	-	-	-	-	-	-	-	-	-	-	-	-	-	T		T	T	-	-	-	-	
HOLCOMB ROCK	SNOWFALL																										0.5	0.5		0.3		0.2
	SN ON GND																										T	T		T		T
HUDDLESTON 4 SW	SNOWFALL																															
	SN ON GND																															
LYNCHBURG #2	SNOWFALL																															
	SN ON GND																															
LYNCHBURG INTL AP	SNOWFALL																															
	SN ON GND																															
MARTINSVILLE FLTR PLT	SNOWFALL																															
	SN ON GND																															

Snowfall: Includes snow and ice. Values for NWS stations (J index note) are Mid-Mid (LST).

Snow on ground: Includes snow, sleet, ice, and hail. Values for NWS stations (J index note) are observed at 12 UTC (GMT).

Water Equivalent: Given for NWS stations (J index note) only, when snow depth is 2 inches or more, and is measured at 18 UTC (GMT)

VIRGINIA
201212

SNOWFALL AND SNOW ON GROUND (INCHES)

STATION		DAY OF MONTH																																						
		01	02	03	04	05	06	07	08	09	10	11	12	13	14	15	16	17	18	19	20	21	22	23	24	25	26	27	28	29	30	31								
MEADOWS OF DAN 5 SW	SNOWFALL																																							
	SN ON GND																																							
MONTEBELLO FISH CULTURAL STN	SNOWFALL	-	-	-	-	-	-	-	-	-	-	-	-	-	-	-	-	-	-	-	-	-	-	-	-	-	1.3	1.9	-	-	-	-								
	SN ON GND	-	-	-	-	-	-	-	-	-	-	-	-	-	-	-	-	-	-	-	-	-	-	-	-	-	1	3	-	-	-	-								
MONTECELLO	SNOWFALL	-	-	-	-	-	-	-	-	-	-	-	-	-	-	-	-	-	-	-	-	-	-	-	-	-	0.1	0.3	-	-	-	-								
PEDLAR DAM	SNOWFALL																																							
	SN ON GND																																							
ROCKY MT	SNOWFALL																																							
	SN ON GND																																							
SOUTH BOSTON	SNOWFALL																																							
	SN ON GND																																							
STUART	SNOWFALL																																							
	SN ON GND																																							
TYE RIVER 1 SE	SNOWFALL																																							
WOOLWINE	SNOWFALL																																							
	SN ON GND																																							
NORTHERN 04																																								
BOSTON 4 SE	SNOWFALL																																							
	SN ON GND																																							
	WTR EQUIV																																							
EDINBURG	SNOWFALL																																							
	SN ON GND	-	-	-	-	-	-	-	-	-	-	-	-	-	-	-	-	-	-	-	-	-	-	-	-	-	1.2	0.7	2.2							0.8				
FRONT ROYAL	SNOWFALL	-	-	-	-	-	-	-	-	-	-	-	-	-	-	-	-	-	-	-	-	-	-	-	-	-	-	-	-	-	-	-	-	-	-	-	-	-		
	SN ON GND	-	-	-	-	-	-	-	-	-	-	-	-	-	-	-	-	-	-	-	-	-	-	-	-	-	-	-	-	-	-	-	-	-	-	-	-	-		
LINCOLN	SNOWFALL	-	-	-	-	-	-	-	-	-	-	-	-	-	-	-	-	-	-	-	-	-	-	-	-	-	-	-	-	-	-	-	-	-	-	-	-	-		
	SN ON GND	-	-	-	-	-	-	-	-	-	-	-	-	-	-	-	-	-	-	-	-	-	-	-	-	-	-	-	-	-	-	-	-	-	-	-	-	-		
LURAY 5 E	SNOWFALL																																							
	SN ON GND																																							
	WTR EQUIV	-	-	-	-	-	-	-	-	-	-	-	-	-	-	-	-	-	-	-	-	-	-	-	-	-	-	-	-	-	-	-	-	-	-	-	-	-	-	
MADISON	SNOWFALL																																							
	SN ON GND																																							
MANASSAS	SNOWFALL																																							
MT WEATHER	SNOWFALL	-	-	-	-	-	-	-	-	-	-	-	-	-	-	-	-	-	-	-	-	-	-	-	-	-	-	-	-	-	-	-	-	-	-	-	-	-	-	
	SN ON GND	-	-	-	-	-	-	-	-	-	-	-	-	-	-	-	-	-	-	-	-	-	-	-	-	-	-	-	-	-	-	-	-	-	-	-	-	-	-	
PIEDMONT RSCH STN	SNOWFALL																																							
	SN ON GND																																							
SOMERSET	SNOWFALL	-	-	-	-	-	-	-	-	-	-	-	-	-	-	-	-	-	-	-	-	-	-	-	-	-	-	-	-	-	-	-	-	-	-	-	-	-	-	
	SN ON GND	-	-	-	-	-	-	-	-	-	-	-	-	-	-	-	-	-	-	-	-	-	-	-	-	-	-	-	-	-	-	-	-	-	-	-	-	-	-	
SPERRYVILLE	SNOWFALL	-	-	-	-	-	-	-	-	-	-	-	-	-	-	-	-	-	-	-	-	-	-	-	-	-	-	-	-	-	-	-	-	-	-	-	-	-	-	
	SN ON GND	-	-	-	-	-	-	-	-	-	-	-	-	-	-	-	-	-	-	-	-	-	-	-	-	-	-	-	-	-	-	-	-	-	-	-	-	-	-	
STERLING RCS	SNOWFALL																																							
	SN ON GND																																							

Snowfall: Includes snow and ice. Values for NWS stations (J index note) are Mid-Mid (LST).

Snow on ground: Includes snow, sleet, ice, and hail. Values for NWS stations (J index note) are observed at 12 UTC (GMT).

Water Equivalent: Given for NWS stations (J index note) only, when snow depth is 2 inches or more, and is measured at 18 UTC (GMT)

VIRGINIA
201212

SNOWFALL AND SNOW ON GROUND (INCHES)

STATION		DAY OF MONTH																															
		01	02	03	04	05	06	07	08	09	10	11	12	13	14	15	16	17	18	19	20	21	22	23	24	25	26	27	28	29	30	31	
VIENNA	WTR EQUIV	-	-	-	-	-	-	-	-	-	-	-	-	-	-	-	-	-	-	-	-	-	-	-	-	-	-	-	-	-	-	-	
	SNOWFALL	-	-	-	-	-	-	-	-	-	-	-	-	-	-	-	-	-	-	-	-	-	-	-	-	-	0.3	0.5	-	-	-	0.3	-
	SN ON GND	-	-	-	-	-	-	-	-	-	-	-	-	-	-	-	-	-	-	-	-	-	-	-	-	-	-	-	-	-	-	-	-
WARRENTON 3 SE WASHGTN DULLES INTL AP	SNOWFALL																																
	SN ON GND																					T			0.2	1.1				0.9			
WASHINGTON REAGAN AP	SNOWFALL																								T								
	SN ON GND																								T	0.2	T			T			
WINCHESTER WINCHESTER 7 SE	SNOWFALL																																
	SNOWFALL																										1.3		2.3				
	SN ON GND																										1	1	2	2	2	2	1
WOODSTOCK 2 NE	WTR EQUIV																																
	SNOWFALL	-	-	-	-	-	-	-	-	-	-	-	-	-	-	-	-	-	-	-	-	-	-	-	-	-	0.8	T	-	-	-	1.0	-
	SN ON GND	-	-	-	-	-	-	-	-	-	-	-	-	-	-	-	-	-	-	-	-	-	-	-	-	-	1	T	-	3	3	2	1
CENTRAL MOUNTAIN 05 BUCHANAN	SNOWFALL																																
	SN ON GND																																T
BUENA VISTA	SNOWFALL																																
	SN ON GND																																T
COVINGTON FLTR PLT	SNOWFALL																																
	SN ON GND																																
CRAIGSVILLE 2 S	SNOWFALL	-	-	-	-	-	-	-	-	-	-	-	-	-	-	-	-	-	-	-	-	-	-	-	-	-	0.3	-	-	0.2	-	-	
	SN ON GND	-	-	-	-	-	-	-	-	-	-	-	-	-	-	-	-	-	-	-	-	-	-	-	-	-	3	-	-	2	-	-	
DALE ENTERPRISE	SNOWFALL																																
	SN ON GND																																
	WTR EQUIV																																
GATHRIGHT DAM	SNOWFALL																																
	SN ON GND																																
	WTR EQUIV																																
GLASGOW 1 SE	SNOWFALL																																
	SN ON GND																																
HOT SPRINGS	SNOWFALL																																
	SN ON GND																																
LEXINGTON	SNOWFALL																																
	SN ON GND																																
MILLGAP	SNOWFALL																																
	SN ON GND																																
	WTR EQUIV																																
MTN GROVE	SNOWFALL																																
	SN ON GND																																
MUSTOE 1 SW	SNOWFALL																																
	SN ON GND																																
NEW CASTLE	SNOWFALL																																
	SNOWFALL																																

Snowfall: Includes snow and ice. Values for NWS stations (J index note) are Mid-Mid (LST).

Snow on ground: Includes snow, sleet, ice, and hail. Values for NWS stations (J index note) are observed at 12 UTC (GMT).

Water Equivalent: Given for NWS stations (J index note) only, when snow depth is 2 inches or more, and is measured at 18 UTC (GMT)

SNOWFALL AND SNOW ON GROUND (INCHES)

STATION		DAY OF MONTH																																		
		01	02	03	04	05	06	07	08	09	10	11	12	13	14	15	16	17	18	19	20	21	22	23	24	25	26	27	28	29	30	31				
ROANOKE 8 N	SN ON GND																																			
	SNOWFALL																																			
ROANOKE INTL AP	SN ON GND																					T						0.3	T	T	T	T				
	SNOWFALL																					T														
STAUNTON WATER TRMTMT PLT	SN ON GND																																			
	SNOWFALL			-	-	-	-		-	-	-	-	-	-														2.0	1.1							
WAYNESBORO WTP	SN ON GND			-	-	-	-		-	-	-	-	-	-														2	2	2	2	2	1			
	SNOWFALL																																			
	SN ON GND																																			
	WTR EQUIV							-			-																	0.1	-							
SOUTHWESTERN MOUNTAIN 06																																				
BLACKSBURG NWSO	SNOWFALL																					T	T	T				0.5	1.0		0.2	0.2	T			
	SN ON GND																																			
BURKES GARDEN	SNOWFALL										T											T	4.0					T	1	1	1	T	T			
	SN ON GND																																			
CHRISTIANSBURG	SNOWFALL																					T	4	T	T	T		T	1	1	T	T	T			
	SN ON GND																																			
CLINTWOOD 1 W	SNOWFALL											T	T																							
	SN ON GND																																			
COPPER HILL	SNOWFALL																																			
	SN ON GND																																			
GALAX RADIO WBRF	SNOWFALL																																			
	SN ON GND																																			
GALAX WTP	SNOWFALL																																			
	SN ON GND																																			
GRUNDY	SNOWFALL																																			
	SN ON GND																																			
JOHN FLANNAGAN LAKE	SNOWFALL																																			
LAFAYETTE 1 NE	SNOWFALL																																			
	SN ON GND																																			
LEBANON	SNOWFALL																																			
	SN ON GND																																			
NORA 4 SSE	SNOWFALL											0.1	0.2																							
	SN ON GND																																			
NORTH FORK LAKE	SNOWFALL	-	-	-	-	-	-	-	-	-	-	-	-	-	-	-	-	-	-	-	-	-	-	-	-	-	-	-	-	-	-	-	-	-	-	
	SN ON GND	-	-	-	-	-	-	-	-	-	-	-	-	-	-	-	-	-	-	-	-	-	-	-	-	-	-	-	-	-	-	-	-	-	-	
PULASKI 2 E	SNOWFALL																																			
	SN ON GND																																			
RADFORD 3 N	SNOWFALL																																			
	SN ON GND																																			
RICHLANDS	SNOWFALL																																			

Snowfall: Includes snow and ice. Values for NWS stations (J index note) are Mid-Mid (LST).

Snow on ground: Includes snow, sleet, ice, and hail. Values for NWS stations (J index note) are observed at 12 UTC (GMT).

Water Equivalent: Given for NWS stations (J index note) only, when snow depth is 2 inches or more, and is measured at 18 UTC (GMT)

SNOWFALL AND SNOW ON GROUND (INCHES)

STATION		DAY OF MONTH																																	
		01	02	03	04	05	06	07	08	09	10	11	12	13	14	15	16	17	18	19	20	21	22	23	24	25	26	27	28	29	30	31			
SALTVILLE 1N	SN ON GND																																		
	SNOWFALL																						T										T		
STAFFORDSVILLE 3 ENE	SN ON GND																																		
	SNOWFALL										T												T					T	0.1				T		
TROUT DALE 3 SSE	SN ON GND																																		
	SNOWFALL																						T	3.0									T		
WILLIS	SN ON GND																																		
	SNOWFALL																						T	1									T		
WISE 3E	SN ON GND																																		
	SNOWFALL	-	-	-	-	-	-	-	-	-	-	-	-	-	-	-	-	-	-	-	-	-	4.2	0.3	-	-	-	-	1.0			T	-	-	
WYTHEVILLE 1 S	SN ON GND	-	-	-	-	-	-	-	-	-	-	-	-	-	-	-	-	-	-	-	-	3	T	-	-	-	-	T	T				-	-	
	SNOWFALL																						T	T											T
	SN ON GND																																		T

Snowfall: Includes snow and ice. Values for NWS stations (J index note) are Mid-Mid (LST).

Snow on ground: Includes snow, sleet, ice, and hail. Values for NWS stations (J index note) are observed at 12 UTC (GMT).

Water Equivalent: Given for NWS stations (J index note) only, when snow depth is 2 inches or more, and is measured at 18 UTC (GMT)

VIRGINIA
201212

PAN EVAPORATION AND WIND

STATION		DAY OF MONTH																															TOTAL OR AVERAGE		
		01	02	03	04	05	06	07	08	09	10	11	12	13	14	15	16	17	18	19	20	21	22	23	24	25	26	27	28	29	30	31			
VIRGINIA EASTERN PIEDMONT 02 JOHN H KERR DAM	WIND	-	-	-	-	-	-	-	-	-	-	-	-	-	-	-	-	-	-	-	-	-	-	-	-	-	-	-	-	-	-	-	-	-	M
	EVAP	-	-	-	-	-	-	-	-	-	-	-	-	-	-	-	-	-	-	-	-	-	-	-	-	-	-	-	-	-	-	-	-	-	M
	MAX	-	-	-	-	-	-	-	-	-	-	-	-	-	-	-	-	-	-	-	-	-	-	-	-	-	-	-	-	-	-	-	-	-	M
	MIN	-	-	-	-	-	-	-	-	-	-	-	-	-	-	-	-	-	-	-	-	-	-	-	-	-	-	-	-	-	-	-	-	-	M

Evaporation: Is measured in hundreths of inches.

Wind: Is measured in miles.

Max and Min: The maximum and minimum temperatures (Fahrenheit) of the water in the evaporation pan.

STATION INDEX

STATION	INDEX NO.	DIVISION	COUNTY	LATITUDE	LONGITUDE	ELEVATION (IN FEET)	OBSERVATION TIME AND TABLES			
							LOCAL STD TIME			
							TEMP	PRECIP	EVAP	SPECIAL SEE (NOTES)
VIRGINIA										
ABINGDON 3S	0021	06	WASHINGTON	36 40	81 58W	1920	22	22		H
ALBERTA 5N	0079	02	BRUNSWICK	36 56	77 54W	376		08		H
ALTAVISTA	0166	03	CAMPBELL	37 7	79 17W	529		07		CH
AMELIA COURTHOUSE 1	0187	02	AMELIA	37 21	77 59W	345	08	08		H
APPOMATTOX	0243	03	APPOMATTOX	37 20	78 50W	850	07	07		H
ASHLAND	0327	02	HANOVER	37 45	77 29W	220	18	18		H
BEDFORD 4 NW	0561	03	BEDFORD	37 23	79 34W	1228		07		CH
BIG STONE GAP	0735	06	WISE	36 52	82 46W	1464	08	08		H
BLACKSBURG NWSO	0766	06	MONTGOMERY	37 12	80 25W	2100	07	07		CH
BOSTON 4 SE	0860	04	CULPEPER	38 33	78 6W	590	07	07		H
BREMO BLUFF	0993	02	FLUVANNA	37 43	78 17W	225		24		CH
BROOKNEAL	1082	03	CAMPBELL	37 4	78 57W	408	07	07		H
BUCHANAN	1121	05	BOTETOURT	37 31	79 41W	880		07		H
BUCKINGHAM	1136	02	BUCKINGHAM	37 30	78 32W	552		07		H
BUENA VISTA	1159	05	ROCKBRIDGE	37 44	79 22W	840		07		H
BURKES GARDEN	1209	06	TAZEWELL	37 6	81 20W	3068	07	07		H
CAMP PICKETT	1322	02	NOTTOWAY	37 2	77 57W	330	08	08		CH
CHARLOTTE COURT HOUSE	1585	03	CHARLOTTE	37 3	78 39W	569	07	07		H
CHARLOTTESVILLE 2W	1593	03	ALBEMARLE	38 2	78 31W	866	08	08		H
CHASE CITY	1606	02	MECKLENBURG	36 47	78 29W	510	17	17		H
CHATHAM	1614	03	PITTSYLVANIA	36 49	79 25W	651	07	07		CH
CHRISTIANSBURG	1692	06	MONTGOMERY	37 8	80 24W	2100	07	07		H
CLARKSVILLE	1746	02	MECKLENBURG	36 37	78 33W	330	07	07		H
CLINTWOOD 1 W	1825	06	DICKENSON	37 9	82 29W	1780	07	07		H
CONCORD 4 SSW	1955	03	CAMPBELL	37 17	78 58W	720		07		H
COPPER HILL	1999	06	FLOYD	37 5	80 9W	2690	07	07		H
CORBIN	2009	02	CAROLINE	38 12	77 22W	220	09	09		H
COVINGTON FLTR PLT	2044	05	ALLEGHANY	37 49	79 59W	1230	07	07		H
CRAIGSVILLE 2 S	2064	05	AUGUSTA	38 3	79 23W	1758		07		H
CROZIER	2142	02	GOOCHLAND	37 40	77 53W	350	07	07		H
DALE ENTERPRISE	2208	05	ROCKINGHAM	38 27	78 56W	1358	07	07		H
DANVILLE REGIONAL AP R	2250	03	PITTSYLVANIA	36 34	79 20W	571	24	24		H
DISPUTANTA	2400	01	PRINCE GEORGE	37 7	77 12W	15	07	07		H
EASTVILLE	2635	01	NORTHAMPTON	37 23	75 58W	10	07	07		H
EDINBURG	2663	04	SHENANDOAH	38 48	78 35W	928	07	07		H
EMPORIA 1 WNW	2790	01	GREENSVILLE	36 42	77 34W	100	08	08		H
FARMVILLE 2 N	2941	02	CUMBERLAND	37 20	78 23W	450	07	07		H
FREDERICKSBURG SEWAGE	3204	01	FREDERICKSBURG	38 17	77 27W	15	07	07		H
FREE UNION	3213	03	ALBEMARLE	38 5	78 35W	590	08	07		H
FRONT ROYAL	3229	04	WARREN	38 54	78 11W	930	07	07		H
GALAX RADIO WBRF	3267	06	CARROLL	36 40	80 55W	2385	07	07		H
GALAX WTP	3272	06	CARROLL	36 39	80 55W	2360	07	07		CH
GATHRIGHT DAM	3310	05	ALLEGHANY	37 57	79 57W	1770	07	07		CH
GLASGOW 1 SE	3375	05	ROCKBRIDGE	37 37	79 26W	737		07		H
GREENBAY 3 NE	3565	02	PRINCE EDWARD	37 11	78 17W	500	09	09		H
GRUNDY	3640	06	BUCHANAN	37 17	82 5W	1170	07	07		H
HAMPTON UNIV	3713	01	HAMPTON	37 1	76 20W	10	17	17		H
HOLCOMB ROCK	4039	03	BEDFORD	37 33	79 24W	620		07		H
HOLLAND 1 E	4044	01	SUFFOLK	36 41	76 46W	80	08	08		H
HOPEWELL	4101	01	PRINCE GEORGE	37 18	77 17W	40	16	16		H
HOT SPRINGS	4128	05	BATH	37 60	79 50W	2236	07	07		H
HUDDLESTON 4 SW	4148	03	BEDFORD	37 8	79 32W	898		07		H
JOHN FLANNAGAN LAKE	4410	06	DICKENSON	37 14	82 21W	1460	07	07		H
JOHN H KERR DAM	4414	02	MECKLENBURG	36 36	78 18W	250	08	08	08	CH
LAFAYETTE 1 NE	4676	06	MONTGOMERY	37 14	80 12W	1320		07		H
LEBANON	4777	06	RUSSELL	36 54	82 2W	1912	07	07		H
LEXINGTON	4876	05	ROCKBRIDGE	37 47	79 26W	1097		07		H
LINCOLN	4909	04	LOUDOUN	39 5	77 42W	500	07	07		H
LOUISA	5050	02	LOUISA	38 3	78 0W	420	18	18		H
LURAY 5 E	5096	04	PAGE	38 40	78 22W	1400	08	08		H
LYNCHBURG #2	5117	03	CAMPBELL	37 23	79 14W	736	07	07		H
LYNCHBURG INTL AP R	5120	03	CAMPBELL	37 19	79 12W	940	24	24		HJ
MADISON	5150	04	MADISON	38 22	78 15W	577	08	08		H
MANASSAS	5204	04	MANASSAS	38 44	77 30W	245	07	07		H
MARTINSVILLE FLTR PLT	5300	03	HENRY	36 42	79 52W	760	07	07		H

STATION INDEX

STATION	INDEX NO.	DIVISION	COUNTY	LATITUDE	LONGITUDE	ELEVATION (IN FEET)	OBSERVATION TIME AND TABLES			
							LOCAL STD TIME			
							TEMP	PRECIP	EVAP	SPECIAL SEE (NOTES)
MEADOWS OF DAN 5 SW	5453	03	PATRICK	36 40	80 27W	2225	07	07		H
MILLGAP	5595	05	HIGHLAND	38 18	79 43W	2421	07	07		CH
MONTEBELLO FISH CULTURAL STN #	5690	03	NELSON	37 51	79 8W	2667	07	07		H
MONTICELLO	5700	03	ALBEMARLE	38 1	78 27W	758	08	08		H
MT WEATHER	5851	04	LOUDOUN	39 4	77 53W	1659	07	07		H
MTN GROVE	5756	05	BATH	38 6	79 53W	1775		07		H
MUSTOE 1 SW	5880	05	HIGHLAND	38 20	79 40W	2380	24	24		H
NEW CASTLE	6012	05	CRAIG	37 18	80 3W	1258		07		H
NORA 4 SSE	6125	06	DICKENSON	37 1	82 19W	2650	07	07		H
NORFOLK INTL AP R	6139	01	NORFOLK (CITY)	36 54	76 12W	30	24	24		HJ
NORFOLK SOUTH	6147	01	NORFOLK (CITY)	36 52	76 14W	100	24	24		H
NORTH	6161	01	MATHEWS	37 26	76 26W	10	07	07		H
NORTH FORK LAKE	6173	06	WISE	37 7	82 38W	1675	08	08		H
PAINTER 2W	6475	01	ACCOMACK	37 35	75 49W	30	16	16		CH
PALMYRA 3S	6491	02	FLUVANNA	37 49	78 16W	410	06	06		H
PEDLAR DAM	6593	03	AMHERST	37 40	79 17W	1024		07		H
PETERSBURG	6656	02	PETERSBURG	37 14	77 24W	15	08	08		H
PIEDMONT RSCH STN	6712	04	ORANGE	38 14	78 7W	520	08	08		CH
PULASKI 2 E	6955	06	PULASKI	37 3	80 47W	1850	07	07		CH
RADFORD 3 N	6999	06	PULASKI	37 12	80 35W	1800	07	07		H
RICHLANDS	7174	06	TAZEWELL	37 6	81 48W	1910	07	07		H
RICHMOND INTL AP R	7201	02	HENRICO	37 30	77 19W	164	24	24		HJ
ROANOKE 8 N	7278	05	ROANOKE	37 22	79 58W	1190	07	07		H
ROANOKE INTL AP R	7285	05	ROANOKE	37 19	79 58W	1175	24	24		HJ
ROCKY MT	7338	03	FRANKLIN	36 59	79 54W	1315	07	07		CH
SALTVILLE 1N	7506	06	SMYTH	36 53	81 46W	1733	07	07		H
SANDSTON	7541	02	HENRICO	37 33	77 17W	165	07	07		H
SOMERSET	7904	04	ORANGE	38 15	78 16W	510	07	07		H
SOUTH BOSTON	7925	03	HALIFAX	36 42	78 53W	329	07	07		H
SPERRYVILLE	7985	04	RAPPAHANNOCK	38 39	78 14W	750	06	06		H
STAFFORDSVILLE 3 ENE	8022	06	GILES	37 16	80 43W	1950	07	07		CH
STAUNTON WATER TRMTMT PLT	8062	05	AUGUSTA	38 10	79 5W	169	08	08		H
STERLING RCS	8084	04	LOUDOUN	38 59	77 29W	288	07	07		H
STONY CREEK 2 N	8129	01	SUSSEX	36 58	77 24W	105	08	08		H
STUART	8170	03	PATRICK	36 38	80 15W	1375	07	07		H
SUFFOLK LAKE KILBY	8192	01	SUFFOLK	36 44	76 36W	22	24	24		H
TROUT DALE 3 SSE	8547	06	GRAYSON	36 39	81 24W	2839	07	07		CH
TYE RIVER 1 SE	8600	03	NELSON	37 38	78 56W	720	07	07		H
VIENNA	8737	04	FAIRFAX	38 54	77 16W	418	07	07		H
WAKEFIELD 1NW	8800	01	SUSSEX	36 59	77 0W	113	24	24		CH
WALKERTON 2 NW	8829	01	KING AND QUEEN	37 45	77 2W	50	18	18		H
WALLACETON LK DRUMMOND	8837	01	CHESAPEAKE	36 36	76 26W	20	08	08		H
WALLOPS ISLAND NASA TEST FACIL R	8849	01	ACCOMACK	37 56	75 28W	46	24	24		HJ
WARRENTON 3 SE	8888	04	FAUQUIER	38 41	77 46W	500	08	08		H
WARSAW 2 NW	8894	01	RICHMOND	37 59	76 47W	140	18	18		H
WASHGTN DULLES INTL AP R	8903	04	LOUDOUN	38 56	77 28W	290	24	24		HJ
WASHINGTON REAGAN AP R	8906	04	ARLINGTON	38 51	77 2W	10	24	24		HJ
WAYNESBORO WTP	8941	05	WAYNESBORO	38 5	78 53W	1270	07	07		H
WEST POINT 2 NW	9025	01	KING WILLIAM	37 34	76 48W	20	17	17		H
WILLIAMSBURG 2 N	9151	01	YORK	37 18	76 42W	70	24	24		CH
WILLIS	9169	06	FLOYD	36 55	80 30W	2810		07		CH
WINCHESTER	9181	04	FREDERICK	39 11	78 9W	720	07	07		H
WINCHESTER 7 SE	9186	04	FREDERICK	39 11	78 7W	680	08	08		H
WINTERPOCK 4 W	9213	02	CHESTERFIELD	37 19	77 39W	300		07		H
WISE 3E	9215	06	WISE	36 60	82 32W	2549	17	17		CH
WOODSTOCK 2 NE	9263	04	SHENANDOAH	38 54	78 28W	675	07	07		H
WOOLWINE	9272	03	PATRICK	36 47	80 17W	1500		07		CH
WYTHEVILLE 1 S	9301	06	WYTHE	36 56	81 6W	2093	07	07		CH

REFERENCE NOTES

STATION NAMES: Name of the city, town or locality. Figures and letters following the station names indicate the distance in miles and direction from the post office or town community center.

DIVISIONS: Areas within a state of similar climatological characteristics. Division averages are calculated using data from stations that record temperature and/or precipitation. Station Precipitation totals flagged with an 'F' or 'M' are excluded from the Divisional Average calculations of precipitation. Stations with monthly Temperature averages flagged with an 'F' or 'M' are included in the Divisional Average if there are no more than 9 flagged or missing daily values in the month, else they are excluded from the divisional average for temperature.

NORMALS: The average value of the meteorological element over a time period. Effective 1 January 2012, the averaging period is 1981 to 2010. The normals for National Weather Service localities have been adjusted so as to be representative for the current observation site.

MONTHLY DEGREE DAY TOTALS: One heating (cooling) degree day is accumulated for each whole degree that the daily mean temperature is below (above) 65 degrees Fahrenheit.

PRECIPITATION: Values shown in hundredths of inches are water equivalent totals, i.e., total of liquid and melted frozen precipitation. In the "Monthly Summarized Data" table the total snow and sleet values shown in tenths of inches are unmelted amounts. The max depth on ground values of snow and sleet shown in whole inches are cumulative unmelted amounts. The number of days with .10, .50, 1.00 or more refers to water equivalents.

PRECIPITATION QUALITY CONTROL: The NCDC quality control process may flag precipitation data that are spatially inconsistent, exceed climatological limits, or are inconsistent with prevailing weather patterns.

TEMPERATURE: Original temperature values are given in the "Daily Temperature" table. Summary temperature information (averages, departures, extremes, monthly degree day totals) is based on the values labeled MAX/MIN.

WIND: (As shown in the "Evaporation and Wind" table) the total wind movement in miles over the evaporation pan as determined by an anemometer recorder located 6-8 inches above the pan.

SYMBOLS AND LETTERS USED IN THE STATION INDEX TABLE

C Station is equipped with recording rain gage (R) but values in this bulletin are from a non-recording rain gage unless indicated by an R.

G Observations appear in the "Soil Temperatures" table.

H Observations appear in the "Snowfall and Snow on the Ground" table.

J Station also published as a Local Climatological Data publication.

VAR Observation time varies.

SR Observation time near sunrise.

SS Observation time near sunset.

SYMBOLS AND LETTERS USED IN THE DATA TABLES

(DAILY DATA ARE FOR THE 24 HOURS IMMEDIATELY PRECEDING OBSERVATION TIME.)

BLANK Entries in the "Monthly Summarized Data" table indicate no record.

BLANK Entries in the "Daily Precipitation" and "Snowfall and Snow on the Ground" tables indicate zero.

BLANK Entries in the "Daily Temperature" table indicate a missing record

- No record. Data not recorded or not received in time for publication.

+ Precipitation or temperature extremes occurred on one or more previous dates during the month.

* Rain gage not read. Precipitation is included in the amount following the asterisks.

Time distribution may not be known. A * preceding the monthly total indicates precipitation amount is being carried forward to next month's total, and may include amounts from the previous month(s).

a As a subscript, indicates accumulated total.

A Amount of precipitation is the total of observer's entries for the current month. It may include precipitation that occurred during the previous month. Refer to earlier bulletin to determine date of last reading. (Hawaii stations)

B Divisional Departure from normals are computed using 1971-2000 normals.

E Normalized HDD/CDD Calculation. E is appended to the HDD/CDD Calculation when 1-9 individual daily TMAX and/or TMIN values are missing and a Normalized HDD/CDD Calculation is provided. M appears alone if 10 or more daily values are missing.

F Monthly calculation flagged value. F is appended to average and/or total values computed which exclude one or more daily data values that have been flagged by the GHCN-Daily Dataset

M Insufficient or partial data. M is appended to average and/or total values computed with 1-9 daily values missing. M appears alone if 10 or more daily values are missing, (8 or more for wind and evaporation).

N Indicates snow fall or Snowdepth totals are computed with one or more missing days.

R Amounts from recording rain gage.

T Trace. An amount too small to measure.

SEASONAL TABLES: Monthly and seasonal snowfall and heating degree days for the 12 months ending with the June data are published in the July issue of this bulletin. Cooling degree days for the calendar year are published in the "Climatological Data Annual Summary."

Information concerning the history of changes in locations, exposure, etc. of substations is kept on file at the National Climatic Data Center. Historical information of regular National Weather Service Offices may be obtained from the "Local Climatological Data" annual publication. The contents of this publication may be reprinted or otherwise used freely, with proper credit to the National Climatic Data Center. The data are also available digitally.

Effective with the January 2011 Data-Month, COOP Observer Names are no longer included in the Monthly and Annual Climatological Data Publications. This information is not published to ensure the privacy of personal information pursuant to Section 208 of the E-Government Act of 2002 (44 USC 3601).

As of the 2011 Data-Year, Station and Climate Division Maps are no longer being included in the CD Publications. NCDC's Product Development Branch provides updated Station Maps for various data networks via the Historical Observing Metadata Repository: <http://www.ncdc.noaa.gov/homr>.

The GHCN-Daily Quality Control Flags shown below are displayed as superscripts with the data. For more Information on Global Historical Climatology Network - Daily and flags, see: <http://www.ncdc.noaa.gov/oa/climate/ghcn-daily/> and Comprehensive Automated Quality Assurance of Daily Surface Observations. Durre, Imke, Matthew J. Menne, Byron E. Gleason, Tamara G. Houston, Russell S. Vose, 2010: J. Appl. Meteor. Climatol., 49, 1615-1633. doi: 10.1175/2010JAMC2375.1

Blank = Passed All checks

D = failed duplicate check

G = failed gap check

I = failed internal consistency check

K = failed streak/frequent-value check

L = failed check on length of multiday period

M = failed megaconsistency check

N = failed naught check

O = failed climatological outlier check

R = failed lagged range check

S = failed spatial consistency check

T = failed temporal consistency check

W = temperature too warm for snow

X = failed bounds check

Z = flagged as a result of an official Datzilla investigation

NOAA\National Climatic Data Center
Attn: User Engagement & Services Branch
151 Patton Avenue
Asheville, NC 28801-5001

Customer Services Number: (828) 271-4800, option 2
TDD : (828) 271-4010
Fax number: (828) 271-4876

NCDC now offers free online access to the *Climatological Data* publication.
Go to : www.ncdc.noaa.gov and choose Most Popular.