



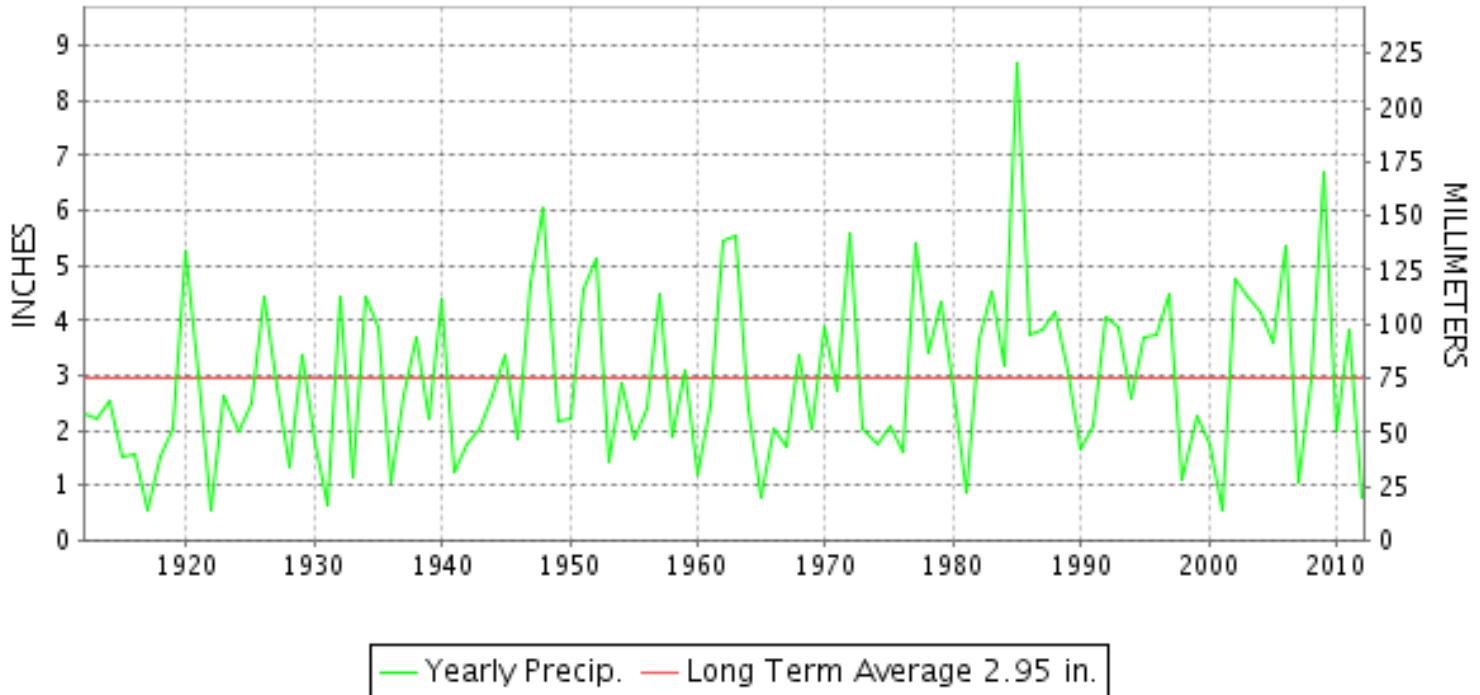
CLIMATOLOGICAL DATA

VIRGINIA

NOVEMBER 2012
VOLUME 122 NUMBER 11
ISSN 0364-5630

GHCND Ver: 3.02-upd-2013031905

NOVEMBER PRECIPITATION BY YEAR



TEMPERATURE AND PRECIPITATION EXTREMES

VIRGINIA

| | | | |
|-------------------------------|------|--------------|------------------|
| HIGHEST TEMPERATURE | 78 | NOVEMBER 13+ | 2 STATIONS |
| LOWEST TEMPERATURE | 11 | NOVEMBER 25 | TROUT DALE 3 SSE |
| GREATEST TOTAL PRECIPITATION | 1.65 | | MT WEATHER |
| LEAST TOTAL PRECIPITATION | 0.00 | | 2 STATIONS |
| GREATEST 1 DAY PRECIPITATION | 2.10 | NOVEMBER 08 | WAYNESBORO WTP |
| GREATEST TOTAL SNOWFALL | 0.1 | | MILLGAP |
| GREATEST DEPTH OF SNOW OR ICE | 7 | | NORA 4 SSE |

"I certify that this is an official publication of the National Oceanic and Atmospheric Administration (NOAA) It is compiled using information from weather observing sites supervised by NOAA/National Weather Service and received at the National Climatic Data Center(NCDC), Asheville, North Carolina 28801."

Director
National Climatic Data Center

noaa

National
Oceanic and
Atmospheric Administration

National
Environmental Satellite, Data
and Information Service

National
Climatic Data Center
Asheville, North Carolina

VIRGINIA
201211

MONTHLY STATION AND DIVISION SUMMARY

| STATION | TEMPERATURE (°F) | | | | | | | | | | | PRECIPITATION (IN) | | | | | | | | | | | | | |
|--|--------------------|--------------------|---------|--------------------------|---------|------|--------|------|----------------------|----------------------|-------------|--------------------|------|------|----------|--------------------------|----------------------|------|-------------------|------------------------|------|-------------|-------------|--------------|---|
| | AVERAGE MAXIMUM | AVERAGE MINIMUM | AVERAGE | DEPARTURE FROM NORMAL | HIGHEST | DATE | LOWEST | DATE | HEATING DEG. DAYS | COOLING DEG. DAYS | NO. OF DAYS | | | | TOTAL | DEPARTURE FROM NORMAL | GREATEST 24 HOURS | DATE | ICE PELLETS, SNOW | | | NO. OF DAYS | | | |
| | | | | | | | | | | | MAX | | MIN | | | | | | TOTAL | MAX DEPTH ON GROUND | DATE | .10 OR MORE | .50 OR MORE | 1.00 OR MORE | |
| | | | | | | | | | | | >=90 | <=32 | <=32 | <=0 | | | | | | | | | | | |
| PALMYRA 3S | 55.2 | 27.7 | 41.5 | -3.8 | 75 | 12 | 18 | 30+ | 696 | 0 | 0 | 0 | 26 | 0 | 0.61 | -2.91 | 0.25 | 14 | 0.0 | | | 3 | 0 | 0 | |
| PETERSBURG | 55.5M | 32.6M | 44.1M | -6.2 | 75 | 13 | 24 | 26 | 623E | 0 | 0 | 0 | 17 | 0 | M 0.35 | -2.89 | 0.11 | 28 | M 0.0 | 0 | | 2 | 0 | 0 | |
| RICHMOND INTL AP | 57.5 | 35.2 | 46.4 | -4.0 | 74 | 12 | 25 | 29 | 553 | 0 | 0 | 0 | 9 | 0 | 0.27 | -2.97 | 0.12 | 27+ | 0.0 | 0 | | 2 | 0 | 0 | |
| SANDSTON | 53.9 | 32.1 | 43.0 | -5.3 | 73 | 13 | 23 | 30+ | 653 | 0 | 0 | 0 | 19 | 0 | 0.35 | -3.32 | 0.13 | 13 | 0.0 | | | 2 | 0 | 0 | |
| WINTERPOCK 4 W | | | | | | | | | | | | | | | 0.20 | | 0.08 | 28+ | 0.0 | | | 0 | 0 | 0 | |
| --DIVISIONAL DATA-----> WESTERN PIEDMONT 03 | | | 44.1 | -3.9B | | | | | | | | | | 0.45 | -2.97B | | | | | | | | | | |
| ALTAVISTA | | | | | | | | | | | | | | 0.15 | | 0.11 | 13 | 0.0 | 0 | | | 1 | 0 | 0 | |
| APPOMATTOX | 53.5M | 31.8M | 42.7M | -4.5 | 70 | 12 | 21 | 26+ | 664E | 0 | 0 | 0 | 16 | 0 | 0.69 | -3.29 | 0.42 | 13 | 0.0 | 0 | | 2 | 0 | 0 | |
| BEDFORD 4 NW | | | | | | | | | | | | | | 0.47 | | 0.27 | 13 | 0.0 | 0 | | | 2 | 0 | 0 | |
| BROOKNEAL | 55.7 | 27.9 | 41.8 | -0.5 | 73 | 12 | 17 | 25 | 687 | 0 | 0 | 0 | 26 | 0 | 0.60 | -3.08 | 0.27 | 13 | 0.0 | 0 | | 1 | 0 | 0 | |
| CHARLOTTE COURT HOUSE | 56.2M | 30.9M | 43.6M | -4.1 | 74 | 12 | 21 | 26 | 634E | 0 | 0 | 0 | 17 | 0 | 0.20 | -3.50 | 0.10 | 28+ | 0.0 | 0 | | 2 | 0 | 0 | |
| CHARLOTTESVILLE 2W | 53.1 | 36.2 | 44.7 | -4.2 | 73 | 12 | 28 | 25 | 605 | 0 | 0 | 0 | 9 | 0 | 0.58 | -3.51 | 0.55 | 13 | 0.0 | 0 | | 1 | 1 | 0 | |
| CHATHAM | 54.7 | 26.8 | 40.8 | -5.0 | 71 | 12+ | 16 | 26+ | 720 | 0 | 0 | 0 | 25 | 0 | 0.42 | -3.16 | 0.21 | 04 | 0.0 | 0 | | 2 | 0 | 0 | |
| CONCORD 4 SSW | | | | | | | | | | | | | | 0.40 | | 0.18 | 04 | 0.0 | 0 | | | 2 | 0 | 0 | |
| DANVILLE REGIONAL AP | 58.6 | 31.9 | 45.3 | -3.9 | 75 | 11+ | 18 | 25 | 585 | 0 | 0 | 0 | 19 | 0 | 0.48 | -2.88 | 0.16 | 13 | 0.0 | 0 | | 3 | 0 | 0 | |
| FREE UNION | 54.7 | 28.8 | 41.8 | | 74 | 12 | 21 | 30+ | 692 | 0 | 0 | 0 | 22 | 0 | FA 0.31 | | 0.27 | 13 | 0.0 | 0 | | 1 | 0 | 0 | |
| HOLCOMB ROCK | | | | | | | | | | | | | | 0.74 | | 0.47 | 13 | 0.0 | 0 | | | 3 | 0 | 0 | |
| HUDDLESTON 4 SW | | | | | | | | | | | | | | 0.89 | | 0.63 | 13 | 0.0 | 0 | | | 2 | 1 | 0 | |
| LYNCHBURG #2 | 55.2 | 28.4 | 41.8 | -4.3 | 73 | 12 | 20 | 25 | 688 | 0 | 0 | 0 | 25 | 0 | 0.77 | -2.46 | 0.55 | 13 | 0.0 | 0 | | 2 | 1 | 0 | |
| LYNCHBURG INTL AP | 55.7 | 30.5 | 43.1 | -3.7 | 72 | 11 | 17 | 25 | 650 | 0 | 0 | 0 | 21 | 0 | 0.61 | -2.80 | 0.26 | 13 | 0.0 | 0 | | 3 | 0 | 0 | |
| MARTINSVILLE FLTR PLT | 56.7 | 27.0 | 41.9 | -4.4 | 75 | 11 | 17 | 25 | 689 | 0 | 0 | 0 | 25 | 0 | 0.53 | -2.91 | 0.23 | 13 | 0.0 | 0 | | 3 | 0 | 0 | |
| MEADOWS OF DAN 5 SW | 55.4 | 30.5 | 43.0 | | 73 | 13+ | 25 | 25 | 653 | 0 | 0 | 0 | 24 | 0 | 1.10 | | 0.64 | 13 | 0.0 | 0 | | 2 | 1 | 0 | |
| MONTEBELLO FISH CULTURAL STN | 50.0M | 24.8M | 37.4M | | 68 | 12+ | 18 | 29+ | 821E | 0 | 0 | 0 | 21 | 0 | M 1.06 | | 0.97 | 13 | 0.0 | | | 1 | 1 | 0 | |
| MONTICELLO | 51.8 | 34.3 | 43.1 | -3.2 | 70 | 12 | 28 | 25+ | 652 | 0 | 0 | 0 | 11 | 0 | 0.61 | -3.25 | 0.55 | 14 | 0.0 | | | 1 | 1 | 0 | |
| PEDLAR DAM | | | | | | | | | | | | | | 0.65 | | 0.54 | 13 | 0.0 | 0 | | | 1 | 1 | 0 | |
| ROCKY MT | 55.4 | 30.4 | 42.9 | -3.7 | 74 | 11 | 21 | 30+ | 657 | 0 | 0 | 0 | 21 | 0 | 0.84 | -2.73 | 0.40 | 13 | 0.0 | 0 | | 3 | 0 | 0 | |
| SOUTH BOSTON | 57.7 | 30.0 | 43.9 | -3.9 | 75 | 12+ | 20 | 26+ | 629 | 0 | 0 | 0 | 22 | 0 | 0.49 | -2.91 | 0.24 | 14 | 0.0 | 0 | | 2 | 0 | 0 | |
| STUART | 57.0 | 30.6 | 43.8 | -4.6 | 75 | 11 | 19 | 25 | 629 | 0 | 0 | 0 | 23 | 0 | 0.90 | -2.56 | 0.57 | 13 | 0.0 | 0 | | 3 | 1 | 0 | |
| TYE RIVER 1 SE | 57.7 | 30.8 | 44.3 | -3.9 | 75 | 12 | 21 | 29 | 617 | 0 | 0 | 0 | 20 | 0 | 0.67 | -2.94 | 0.48 | 13 | 0.0 | 0 | | 2 | 0 | 0 | |
| WOOLWINE | | | | | | | | | | | | | | 0.84 | | 0.53 | 13 | 0.0 | 0 | | | 2 | 1 | 0 | |
| --DIVISIONAL DATA-----> NORTHERN 04 | | | 42.7 | -4.8B | | | | | | | | | | 0.62 | -2.73B | | | | | | | | | | |
| BOSTON 4 SE | 53.7M | 29.9M | 41.8M | -3.3 | 67 | 13+ | 21 | 29 | 690E | 0 | 0 | 0 | 20 | 0 | FMA 0.00 | -3.97 | | | M 0.0 | 0 | | | 0 | 0 | 0 |
| EDINBURG | 51.2 | 27.0 | 39.1 | -5.0 | 72 | 12 | 21 | 14 | 769 | 0 | 0 | 0 | 25 | 0 | 1.04 | -1.72 | 0.80 | 13 | 0.0 | | | 2 | 1 | 0 | |
| FRONT ROYAL | 50.6 | 31.5 | 41.1 | -5.3 | 69 | 12 | 26 | 29 | 710 | 0 | 0 | 0 | 20 | 0 | 1.35 | -2.40 | 1.18 | 13 | M 0.0 | 0 | | 2 | 1 | 1 | |
| LINCOLN | 50.7 | 28.0 | 39.4 | -5.0 | 68 | 12 | 21 | 30+ | 764 | 0 | 0 | 0 | 24 | 0 | 0.97 | 0.97 | 0.97 | 13 | 0.0 | | | 1 | 1 | 0 | |
| LURAY 5 E | 52.7 | 30.2 | 41.5 | -5.4 | 74 | 12 | 22 | 29 | 698 | 0 | 0 | 0 | 21 | 0 | 1.21 | -2.40 | 0.97 | 13 | 0.0 | 0 | | 2 | 1 | 0 | |

VIRGINIA
201211

MONTHLY STATION AND DIVISION SUMMARY

| STATION | TEMPERATURE (°F) | | | | | | | | | | PRECIPITATION (IN) | | | | | | | | | | | | | |
|---------------------------------|--------------------|--------------------|---------|--------------------------|---------|------|--------|------|----------------------|----------------------|--------------------|------|------|-----|----------|--------------------------|----------------------|------|-------------------|------------------------|------|-------------|-------------|--------------|
| | AVERAGE MAXIMUM | AVERAGE MINIMUM | AVERAGE | DEPARTURE FROM NORMAL | HIGHEST | DATE | LOWEST | DATE | HEATING DEG. DAYS | COOLING DEG. DAYS | NO. OF DAYS | | | | TOTAL | DEPARTURE FROM NORMAL | GREATEST 24 HOURS | DATE | ICE PELLETS, SNOW | | | NO. OF DAYS | | |
| | | | | | | | | | | | MAX | | MIN | | | | | | TOTAL | MAX DEPTH ON GROUND | DATE | .10 OR MORE | .50 OR MORE | 1.00 OR MORE |
| | | | | | | | | | | | >=90 | <=32 | <=32 | <=0 | | | | | | | | | | |
| MADISON | 55.1 | 34.9 | 45.0 | -1.3 | 72 | 12 | 28 | 29 | 591 | 0 | 0 | 0 | 11 | 0 | 0.50 | -3.41 | 0.50 | 13 | 0.0 | 0 | | 1 | 1 | 0 |
| MANASSAS | 53.3 | 31.6 | 42.5 | -4.2 | 74 | 12 | 23 | 29 | 670 | 0 | 0 | 0 | 15 | 0 | M 0.95 | 0.95 | 0.75 | 13 | 0.0 | 0 | | 2 | 1 | 0 |
| MT WEATHER | 47.5 | 33.3 | 40.4 | -4.7 | 65 | 12 | 22 | 25 | 731 | 0 | 0 | 0 | 14 | 0 | 1.65 | -1.86 | 1.29 | 13 | 0.0 | 0 | | 2 | 1 | 1 |
| PIEDMONT RSCH STN | 53.0 | 33.3 | 43.2 | -4.3 | 71 | 12 | 24 | 29 | 651 | 0 | 0 | 0 | 11 | 0 | 0.58 | -3.24 | 0.48 | 13 | 0.0 | 0 | | 1 | 0 | 0 |
| SOMERSET | 54.0 | 30.1 | 42.1 | -4.5 | 72 | 12 | 22 | 30+ | 681 | 0 | 0 | 0 | 21 | 0 | 0.62 | -3.23 | 0.54 | 13 | 0.0 | 0 | | 1 | 1 | 0 |
| SPERRYVILLE | 52.8 | 32.3 | 42.6 | -4.3 | 70 | 12 | 24 | 30+ | 667 | 0 | 0 | 0 | 18 | 0 | 1.36 | -3.29 | 1.10 | 13 | 0.0 | 0 | | 2 | 1 | 1 |
| STERLING RCS | 50.8 | 29.9 | 40.4 | -5.0 | 70 | 12 | 20 | 29 | 733 | 0 | 0 | 0 | 20 | 0 | 1.11 | -2.47 | 0.96 | 13 | T | 0 | | 1 | 1 | 0 |
| VIENNA | 48.8M | 30.2M | 39.5M | -6.7 | 68 | 13 | 23 | 26 | 759E | 0 | 0 | 0 | 20 | 0 | M 0.58 | -2.98 | 0.45 | 13 | 0.0 | 0 | | 2 | 0 | 0 |
| WARRENTON 3 SE | M | M | M | | | | | | | | | | | | M | | | | 0.0 | | | | | |
| WASHGTON DULLES INTL AP | 52.8 | 32.2 | 42.5 | -3.9 | 70 | 12+ | 23 | 30+ | 666 | 0 | 0 | 0 | 14 | 0 | 1.12 | -2.29 | 0.87 | 13 | T | 0 | | 2 | 1 | 0 |
| WASHINGTON REAGAN AP | 54.9 | 38.3 | 46.6 | -3.0 | 72 | 12 | 31 | 29 | 543 | 0 | 0 | 0 | 2 | 0 | 0.60 | -2.57 | 0.50 | 13 | T | 0 | | 1 | 1 | 0 |
| WINCHESTER | 50.5 | 31.9 | 41.2 | -4.2 | 66 | 12 | 26 | 26+ | 709 | 0 | 0 | 0 | 16 | 0 | 0.83 | -2.40 | 0.57 | 13 | 0.0 | 0 | | 2 | 1 | 0 |
| WINCHESTER 7 SE | 51.0 | 27.2 | 39.1 | -5.0 | 67 | 12 | 21 | 26 | 769 | 0 | 0 | 0 | 26 | 0 | 1.23 | -1.92 | 0.93 | 13 | M 0.0 | 0 | | 2 | 1 | 0 |
| WOODSTOCK 2 NE | 51.7M | 29.1M | 40.4M | -3.1 | 70 | 12 | 23 | 29 | 733E | 0 | 0 | 0 | 23 | 0 | M 1.22 | -1.63 | 0.92 | 13 | 0.0 | 0 | | 2 | 1 | 0 |
| --DIVISIONAL DATA-----> | | | 41.6 | -3.6B | | | | | | | | | | | 1.01 | -2.45B | | | | | | | | |
| CENTRAL MOUNTAIN 05 | | | | | | | | | | | | | | | | | | | | | | | | |
| BUCHANAN | | | | | | | | | 0.88 | | | | | | -2.31 | 0.69 | 13 | 0.0 | 0 | | 2 | 1 | 0 | |
| BUENA VISTA | | | | | | | | | 0.34 | | | | | | 0.27 | 0.27 | 13 | 0.0 | 0 | | 1 | 0 | 0 | |
| COVINGTON FLTR PLT | 55.0 | 28.1 | 41.6 | -4.1 | 73 | 11 | 21 | 30+ | 697 | 0 | 0 | 0 | 25 | 0 | 0.77 | -2.59 | 0.69 | 13 | 0.0 | 0 | | 1 | 1 | 0 |
| CRAIGSVILLE 2 S | | | | | | | | | M | | | | | | 0.0 | | | | 0.0 | | | | | |
| DALE ENTERPRISE | 50.6M | 28.8MF | 39.7MF | -3.5 | 72 | 12 | 20 | 29 | 749E | 0 | 0 | 0 | 21 | 0 | M 0.93 | -1.92 | 0.75 | 13 | M 0.0 | 0 | | 2 | 1 | 0 |
| GATHRIGHT DAM | 51.4M | 28.8M | 40.1M | -3.5 | 69 | 12 | 21 | 30+ | 741E | 0 | 0 | 1 | 22 | 0 | 0.51 | -2.60 | 0.46 | 13 | 0.0 | 0 | | 1 | 0 | 0 |
| GLASGOW 1 SE | | | | | | | | | 0.45 | | | | | | 0.30 | 0.30 | 13 | 0.0 | 0 | | 2 | 0 | 0 | |
| HOT SPRINGS | 50.3 | 27.7 | 39.0 | -3.5 | 68 | 12 | 20 | 29+ | 772 | 0 | 0 | 0 | 25 | 0 | 0.88 | -2.84 | 0.73 | 13 | 0.0 | 0 | | 2 | 1 | 0 |
| LEXINGTON | | | | | | | | | 0.87 | | | | | | -2.52 | 0.78 | 13 | 0.0 | 0 | | 1 | 1 | 0 | |
| MILLGAP | 50.4 | 21.0 | 35.7 | -3.9 | 69 | 12 | 13 | 30+ | 871 | 0 | 0 | 1 | 27 | 0 | 0.44 | -3.10 | 0.24 | 13 | 0.1 | T | 25 | 2 | 0 | 0 |
| MTN GROVE | | | | | | | | | 0.43 | | | | | | 0.28 | 0.28 | 13 | 0.0 | 0 | | 2 | 0 | 0 | |
| MUSTOE 1 SW | 49.5 | 23.8 | 36.7 | -3.7 | 68 | 11 | 17 | 14+ | 841 | 0 | 0 | 0 | 26 | 0 | 0.54 | -3.27 | 0.24 | 12 | T | T | 25 | 2 | 0 | 0 |
| NEW CASTLE | | | | | | | | | 0.75 | | | | | | 0.57 | 0.57 | 13 | 0.0 | 0 | | 2 | 1 | 0 | |
| ROANOKE 8 N | 55.2 | 32.2 | 43.7 | -3.4 | 73 | 12+ | 24 | 25 | 629 | 0 | 0 | 0 | 18 | 0 | 0.86 | -2.40 | 0.60 | 13 | M 0.0 | 0 | | 2 | 1 | 0 |
| ROANOKE INTL AP | 56.1 | 33.6 | 44.9 | -3.2 | 73 | 11 | 25 | 29 | 597 | 0 | 0 | 0 | 14 | 0 | 0.61 | -2.79 | 0.28 | 12 | 0.0 | 0 | | 2 | 0 | 0 |
| STAUNTON WATER TRMTMT PLT | 51.6 | 32.0 | 41.8 | -3.4 | 71 | 12 | 22 | 25 | 686 | 0 | 0 | 0 | 18 | 0 | 0.59 | -2.50 | 0.51 | 13 | M 0.0 | 0 | | 1 | 1 | 0 |
| WAYNESBORO WTP | 52.4M | 29.0M | 40.7M | -3.8 | 73 | 12 | 22 | 29 | 722E | 0 | 0 | 0 | 24 | 0 | M 2.74 | -1.74 | 2.10 | 08 | M 0.0 | 0 | | 2 | 2 | 1 |
| --DIVISIONAL DATA-----> | | | 40.4 | -3.9B | | | | | 0.64 | | | | | | -2.55B | | | | | | | | | |
| SOUTHWESTERN MOUNTAIN 06 | | | | | | | | | | | | | | | | | | | | | | | | |
| ABINGDON 3S | 53.9M | 30.1M | 42.0M | -3.1 | 68 | 10 | 18 | 25 | 684E | 0 | 0 | 0 | 18 | 0 | FMA 0.65 | -2.65 | 0.42 | 12 | M 0.0 | 0 | | 2 | 0 | 0 |
| BIG STONE GAP | 57.1 | 29.1 | 43.1 | -3.2 | 73 | 12 | 20 | 25 | 649 | 0 | 0 | 0 | 27 | 0 | 1.05 | -2.91 | 0.62 | 13 | 0.0 | 0 | | 4 | 1 | 0 |

VIRGINIA
201211

MONTHLY STATION AND DIVISION SUMMARY

| STATION | TEMPERATURE (°F) | | | | | | | | | | | PRECIPITATION (IN) | | | | | | | | | | | | |
|-------------------------|--------------------|--------------------|---------|--------------------------|---------|------|--------|------|----------------------|----------------------|-------------|--------------------|------|---------|--------|--------------------------|----------------------|-------|-------------------|------------------------|------|-------------|-------------|--------------|
| | AVERAGE MAXIMUM | AVERAGE MINIMUM | AVERAGE | DEPARTURE FROM NORMAL | HIGHEST | DATE | LOWEST | DATE | HEATING DEG. DAYS | COOLING DEG. DAYS | NO. OF DAYS | | | | TOTAL | DEPARTURE FROM NORMAL | GREATEST 24 HOURS | DATE | ICE PELLETS, SNOW | | | NO. OF DAYS | | |
| | | | | | | | | | | | MAX | | MIN | | | | | | TOTAL | MAX DEPTH ON GROUND | DATE | .10 OR MORE | .50 OR MORE | 1.00 OR MORE |
| | | | | | | | | | | | >=90 | <=32 | <=32 | <=0 | | | | | | | | | | |
| BLACKSBURG NWSO | 51.2 | 26.0 | 38.6 | -4.7 | 70 | 11 | 19 | 30+ | 784 | 0 | 0 | 0 | 27 | 0 | 1.08 | -1.79 | 0.71 | 13 | 0.0 | 0 | | 3 | 1 | 0 |
| BURKES GARDEN | 47.0 | 22.4 | 34.7 | -5.8 | 65 | 11 | 12 | 25 | 899 | 0 | 0 | 1 | 30 | 0 | 0.91 | -2.21 | 0.43 | 04 | T | 5 | 01 | 2 | 0 | 0 |
| CHRISTIANSBURG | 50.8 | 29.7 | 40.3 | -5.1 | 69 | 12+ | 20 | 26+ | 736 | 0 | 0 | 0 | 21 | 0 | 1.32 | -1.58 | 0.85 | 13 | 0.0 | 0 | | 2 | 1 | 0 |
| CLINTWOOD 1 W | 52.9 | 25.1 | 39.0 | -4.3 | 72 | 12 | 18 | 29+ | 771 | 0 | 0 | 0 | 28 | 0 | 1.26 | -1.72 | 0.44 | 13 | T | 1 | 02 | 4 | 0 | 0 |
| COPPER HILL | 47.1 | 30.1 | 38.6 | | 66 | 11 | 19 | 26+ | 784 | 0 | 0 | 2 | 18 | 0 | 0.91 | | 0.49 | 13 | 0.0 | 0 | | 2 | 0 | 0 |
| GALAX RADIO WBRF | 52.3 | 26.4F | 39.4F | -3.7 | 69 | 11 | 18 | 29+ | 764 | 0 | 0 | 0 | 26 | 0 | 0.61 | -2.98 | 0.39 | 13 | 0.0 | 0 | | 2 | 0 | 0 |
| GALAX WTP | 51.9 | 25.1 | 38.5 | -4.4 | 69 | 11 | 18 | 30+ | 787 | 0 | 0 | 0 | 26 | 0 | 0.63 | 0.63 | 0.56 | 13 | 0.0 | 0 | | 1 | 1 | 0 |
| GRUNDY | 53.7 | 28.3 | 41.0 | -3.9 | 73 | 12 | 22 | 30+ | 712 | 0 | 0 | 0 | 27 | 0 | 0.71 | -2.20 | 0.28 | 04 | 0.0 | 0 | | 3 | 0 | 0 |
| JOHN FLANNAGAN LAKE | M | M | M | | 75 | 13 | 20 | 26 | | | | | | MA 0.88 | | 0.27 | 13 | 0.0 | 0 | | 3 | 0 | 0 | |
| LAFAYETTE 1 NE | | | | | | | | | | | | | | 1.00 | | 0.69 | 13 | 0.0 | 0 | | 2 | 1 | 0 | |
| LEBANON | 53.5 | 25.8 | 39.7 | -4.5 | 72 | 12 | 17 | 25 | 753 | 0 | 0 | 0 | 28 | 0 | 0.95 | -2.06 | 0.70 | 13 | M 0.0 | 0 | | 2 | 1 | 0 |
| NORA 4 SSE | 49.2 | 32.2 | 40.7 | -3.8 | 66 | 12 | 20 | 25 | 722 | 0 | 0 | 0 | 19 | 0 | 0.93 | -2.43 | 0.61 | 13 | T | 7 | 05 | 1 | 1 | 0 |
| NORTH FORK LAKE | M | M | M | | 72 | 13 | 19 | 26 | | | | | | MA 1.34 | | 0.20 | 28 | M 0.0 | 0 | | 4 | 0 | 0 | |
| PULASKI 2 E | 53.5 | 27.5 | 40.5 | -4.2 | 72 | 12 | 17 | 25 | 729 | 0 | 0 | 0 | 23 | 0 | 1.21 | -1.24 | 1.09 | 13 | 0.0 | | | 2 | 1 | 1 |
| RADFORD 3 N | 51.6 | 27.1 | 39.4 | -3.6 | 71 | 12 | 20 | 30+ | 761 | 0 | 0 | 0 | 22 | 0 | 1.18 | -2.17 | 0.81 | 13 | 0.0 | 0 | | 3 | 1 | 0 |
| RICHLANDS | 54.0 | 25.2 | 39.6 | -4.6 | 73 | 12 | 17 | 26+ | 754 | 0 | 0 | 0 | 27 | 0 | 0.82 | -2.16 | 0.43 | 13 | 0.0 | 0 | | 2 | 0 | 0 |
| SALTVILLE 1N | 54.7 | 25.4 | 40.1 | -4.5 | 73 | 12 | 16 | 26+ | 741 | 0 | 0 | 0 | 27 | 0 | 0.48 | -2.77 | 0.19 | 13 | 0.0 | | | 2 | 0 | 0 |
| STAFFORDSVILLE 3 ENE | 51.5 | 26.3 | 38.9 | -5.0 | 70 | 12 | 17 | 25 | 775 | 0 | 0 | 0 | 23 | 0 | 0.75 | -2.09 | 0.50 | 13 | 0.0 | 0 | | 2 | 1 | 0 |
| TROUT DALE 3 SSE | 52.2 | 23.3 | 37.8 | | 70 | 11 | 11 | 25 | 811 | 0 | 0 | 0 | 27 | 0 | 0.55 | | 0.28 | 13 | M 0.0 | 0 | | 2 | 0 | 0 |
| WILLIS | | | | | | | | | | | | | | 1.12 | | 0.71 | 13 | 0.0 | 0 | | 2 | 1 | 0 | |
| WISE 3E | 52.6 | 31.3 | 42.0 | -3.6 | 69 | 10 | 16 | 25 | 685 | 0 | 0 | 0 | 17 | 0 | 0.83 | -2.63 | 0.35 | 13 | 0.0 | 1 | 02 | 3 | 0 | 0 |
| WYTHEVILLE 1 S | 53.1 | 23.9 | 38.5 | -4.2 | 71 | 12+ | 15 | 25 | 789 | 0 | 0 | 0 | 27 | 0 | 0.63 | -2.10 | 0.35 | 04 | 0.0 | 0 | | 2 | 0 | 0 |
| --DIVISIONAL DATA-----> | | | 39.6 | -3.9B | | | | | | | | | | 0.90 | -2.30B | | | | | | | | | |

VIRGINIA
201211

DAILY PRECIPITATION (INCHES)

| STATION | TOTAL | DAY OF MONTH | | | | | | | | | | | | | | | | | | | | | | | | | | | | | | | | |
|--------------------------------|---------|-------------------|--------------------------------|-------------------|-------------------|--------------------------------|-------------------|--------------------------------|------|------|------|-------------------|-------------------|--------------------------------|-------------------|--------------------------------|-------------------|--------------------------------|------|------|------|----|----|----|----|------|------|-------------------|------|-------------------|--------------------------------|------|------|--|
| | | 01 | 02 | 03 | 04 | 05 | 06 | 07 | 08 | 09 | 10 | 11 | 12 | 13 | 14 | 15 | 16 | 17 | 18 | 19 | 20 | 21 | 22 | 23 | 24 | 25 | 26 | 27 | 28 | 29 | 30 | 31 | | |
| VIRGINIA | | | | | | | | | | | | | | | | | | | | | | | | | | | | | | | | | | |
| TIDEWATER 01 | | | | | | | | | | | | | | | | | | | | | | | | | | | | | | | | | | |
| DISPUTANTA | 0.28 | | | | | | | 0.03 | | | | | 0.02 | 0.09 | | 0.04 | | | | | | | | | | | | | | | | | 0.10 | |
| EASTVILLE | M 0.69 | | | | | | - | 0.18 | 0.15 | | | | 0.05 | 0.13 | | 0.10 | | | | | | | | | | | | | | | | | 0.08 | |
| EMPORIA 1 WNW | 0.49 | | | | | 0.04 | | T | 0.04 | | | 0.02 | 0.07 | 0.14 | | 0.05 | | | | 0.01 | | | | | | | | | | | | 0.12 | | |
| FREDERICKSBURG SEWAGE | 0.63 | | | | | | | | | | | | 0.40 | 0.15 | | | | | | | | | | | | | | | | | 0.05 | 0.03 | | |
| HAMPTON UNIV | 1.04 | | | | | | | 0.32 | 0.02 | | | | 0.32 | | | 0.16 | | | | | | | | | | | | | | | 0.12 | 0.10 | | |
| HOLLAND 1 E | FA 0.83 | 0.00 ^L | 0.00 ^L _a | | | 0.04 | | 0.04 | | | | | 0.18 | 0.35 | | 0.16 | | | | | | | | | | | | | | | | 0.06 | | |
| HOPEWELL | 0.21 | | | | | | | | | | | | 0.16 | | | T | | | | | | | | | | | | | | | | 0.05 | | |
| NORFOLK INTL AP | 0.94 | | | | | T | | 0.19 | 0.23 | T | | | 0.34 | | 0.09 | 0.01 | | | 0.01 | | | | | | | | | | | | | 0.07 | | |
| NORFOLK SOUTH | 1.12 | | | | | T | | 0.15 | 0.34 | | | | 0.41 | | 0.12 | 0.02 | | | T | | | | | | | | | | | | | 0.08 | | |
| NORTH | 0.58 | | | | | | | | 0.21 | 0.05 | | | T | 0.14 | | 0.02 | | | | | | | | | | | | | | | | 0.16 | | |
| PAINTER 2W | 0.83 | | | | | | | | 0.26 | 0.05 | | | 0.15 | 0.11 | | 0.11 | | | | | | | | | | | | | | | 0.03 | 0.12 | | |
| STONY CREEK 2 N | FA 0.00 | 0.00 ^L | 0.00 ^L | 0.00 ^L | 0.00 ^L | 0.05 ^L _a | 0.00 ^L | 0.02 ^L _a | | | | 0.00 ^L | 0.00 ^L | 0.01 ^L _a | 0.00 ^L | 0.15 ^L _a | 0.00 ^L | 0.07 ^L _a | | | | | | | | | | | | 0.00 ^L | 0.14 ^L _a | | | |
| SUFFOLK LAKE KILBY | 0.91 | | | | | T | | T | 0.05 | | | | 0.56 | 0.03 | 0.20 | 0.02 | | | | T | 0.02 | | | | | | | | | | 0.03 | | | |
| WAKEFIELD 1NW | 0.38 | | | | | T | | T | 0.01 | | | | 0.17 | | 0.03 | | | | 0.01 | | | | | | | | | | | | 0.14 | | | |
| WALKERTON 2 NW | 0.45 | | | | | | | | 0.10 | | | | 0.23 | | | | | | | | | | | | | | | | | | 0.12 | | | |
| WALLACETON LK DRUMMOND | 1.11 | | | | | | | | 0.14 | | | | 0.20 | 0.30 | | 0.35 | | | | | | | | | | | | | | | 0.12 | | | |
| WALLOPS ISLAND NASA TEST FACIL | 0.56 | | | | | | | | 0.37 | T | | | 0.12 | | | T | | | | | | | | T | | | | | | | 0.07 | | | |
| WARSAW 2 NW | 0.46 | 0.01 | | | | | | | 0.07 | 0.02 | | | 0.20 | | | 0.09 | | | | | | | | | | | | | | | 0.07 | | | |
| WEST POINT 2 NW | FA 0.27 | | | | | | | | | | | | 0.10 | | 0.00 ^L | 0.08 ^L _a | | | | | | | | | | 0.02 | | | | 0.08 | 0.07 | | | |
| WILLIAMSBURG 2 N | 0.55 | | | | | | | | 0.16 | 0.03 | | | 0.13 | | 0.06 | 0.04 | | | | | | | | | | | | | | | 0.13 | | | |
| EASTERN PIEDMONT 02 | | | | | | | | | | | | | | | | | | | | | | | | | | | | | | | | | | |
| ALBERTA 5N | 0.35 | | | | | T | 0.02 | | | T | | | 0.12 | 0.08 | | T | | | | | | | | | | | | | | | | 0.13 | | |
| AMELIA COURTHOUSE 1 | MA 0.54 | | | | | | 0.07 | | | | | | 0.14 | 0.17 | | | | | | - | | | | | | | * | 0.00 ^a | 0.02 | 0.14 | | | | |
| ASHLAND | 0.48 | | | | | T | | | | T | | | 0.39 | | | | | | | | | | | | | | | | | | 0.09 | | | |
| BREMO BLUFF | 0.61 | | | | | | 0.02 | | | | | | 0.45 | | | | | | | | | | | | | | | | | | 0.14 | | | |
| BUCKINGHAM | 0.40 | | | | | | 0.05 | | | T | | | 0.16 | 0.12 | | | | | | | | | | | | | | | | T | 0.07 | | | |
| CAMP PICKETT | 0.21 | | | | | | 0.04 | | | 0.01 | | | | 0.03 | | | | | | | | | | | | | | | | | | 0.13 | | |
| CHASE CITY | 0.50 | | | | | | 0.05 | | | | | | 0.28 | 0.05 | | | | | | | | | | | | | | | | | 0.02 | 0.10 | | |
| CLARKSVILLE | 0.55 | | | | | | | | | | | | 0.20 | 0.10 | | 0.05 | | | | | | | | | | | | | | | | 0.20 | | |
| CORBIN | 0.62 | 0.05 | | | | | | | | | | | 0.42 | 0.05 | | | | | | | | | | | | | | | | | | 0.10 | | |
| CROZIER | 0.40 | | | | | | | | | | | | 0.05 | 0.20 | | | | | | | | | | | | | | | | 0.09 | 0.06 | | | |
| FARMVILLE 2 N | 0.67 | T | | | | 0.07 | | | | T | | 0.13 | 0.13 | 0.25 | | | | | | | | | | | | | | | | | 0.09 | 0.09 | | |
| GREENBAY 3 NE | M 0.55 | | | | | 0.09 | | | | | | | 0.20 | 0.13 | | | | | | | | | | | | | | | | | 0.03 | 0.10 | | |
| JOHN H KERR DAM | 0.54 | | | | | 0.04 | | | | 0.01 | | | 0.11 | 0.12 | | 0.11 | | | | | | | | | | | 0.01 | | | | 0.14 | | | |
| LOUISA | 0.49 | | | | | | | | | | | | 0.49 | | | | | | | | | | | | | | | | | | | | | |
| PALMYRA 3S | 0.61 | | | | | | | | | | | | 0.20 | 0.25 | | | | | | | | | | | | | | | | | 0.15 | 0.01 | | |
| PETERSBURG | M 0.35 | | | | | 0.01 | | | | 0.04 | | | 0.10 | 0.07 | | 0.02 | | | | | | | | | | | | | | | 0.11 | | | |
| RICHMOND INTL AP | 0.27 | T | | | | T | | | | 0.03 | T | | 0.12 | | | T | | | | | | | | | | | | | | | 0.12 | | | |
| SANDSTON | 0.35 | | | | | | | | | 0.07 | 0.01 | | 0.13 | | | | | | | | | | | | | | | | | | 0.02 | 0.12 | | |
| WINTERPOCK 4 W | 0.20 | T | | | | 0.01 | | | | | | | 0.03 | 0.08 | | | | | | | | | | | | | | | | | 0.08 | | | |

VIRGINIA
201211

DAILY PRECIPITATION (INCHES)

| STATION | TOTAL | DAY OF MONTH | | | | | | | | | | | | | | | | | | | | | | | | | | | | | | | |
|------------------------------|----------|-------------------|-------------------|-------------------|-------------------|-------------------|----|------|------|----|------|-------------------|-------------------|------|----|----|----|----|-------------------|-------------------|-------------------|----|----|----|------|----|------|------|------|------|----|------|--|
| | | 01 | 02 | 03 | 04 | 05 | 06 | 07 | 08 | 09 | 10 | 11 | 12 | 13 | 14 | 15 | 16 | 17 | 18 | 19 | 20 | 21 | 22 | 23 | 24 | 25 | 26 | 27 | 28 | 29 | 30 | 31 | |
| WESTERN PIEDMONT 03 | | | | | | | | | | | | | | | | | | | | | | | | | | | | | | | | | |
| ALTAVISTA | 0.15 | | | | | | | | | | | | 0.11 | | | | | | | | | | | | | | 0.01 | 0.02 | 0.01 | | | | |
| APPOMATTOX | 0.69 | | | | 0.16 | | | | 0.01 | | | | 0.42 | 0.03 | | | | | | | | | | | | | | 0.06 | 0.01 | | | | |
| BEDFORD 4 NW | 0.47 | | | | 0.12 | | | | | | | | 0.27 | | | | | | | | | | | | | | | 0.08 | | | | | |
| BROOKNEAL | 0.60 | | | | 0.07 | | | | | | | | 0.27 | 0.09 | | | | | | | | | | | | | | 0.09 | 0.08 | | | | |
| CHARLOTTE COURT HOUSE | 0.20 | | | | | | | | T | | | | T | 0.10 | | | | | | | | | | | | | | T | 0.10 | | | | |
| CHARLOTTESVILLE 2W | 0.58 | | | | | | | | | | | | 0.55 | T | | | | | | | | | | | | | | 0.02 | 0.01 | | | | |
| CHATHAM | 0.42 | | | | 0.21 | | | | | | | | T | 0.03 | | | | | | | | | | | | | | 0.08 | 0.10 | | | | |
| CONCORD 4 SSW | 0.40 | | | | 0.18 | | | | | | | | 0.13 | 0.01 | | | | | | | | | | | | | | 0.06 | 0.02 | | | | |
| DANVILLE REGIONAL AP | 0.48 | | T | 0.10 | 0.03 | | | | | | | 0.05 | 0.16 | | | | | | | | | | | | | | | 0.14 | | | | | |
| FREE UNION | FA 0.31 | 0.00 ^L | 0.00 ^L | 0.00 ^L | 0.00 ^L | 0.00 ^L | | | | | | | 0.27 | 0.02 | | | | | 0.00 ^L | 0.00 ^L | 0.00 ^L | | | | | | 0.01 | 0.01 | | | | | |
| HOLCOMB ROCK | 0.74 | | | | 0.12 | | | | | | | | 0.47 | 0.10 | | | | | | | | | | | | | | 0.05 | T | | | | |
| HUDDLESTON 4 SW | 0.89 | | | | 0.14 | | | | | | | | 0.63 | 0.05 | | | | | | | | | | | | | | 0.03 | 0.04 | | | | |
| LYNCHBURG #2 | 0.77 | | | | 0.16 | | | | | | | | 0.55 | | | | | | | | | | | | | | | 0.06 | | | | | |
| LYNCHBURG INTL AP | 0.61 | T | | 0.06 | 0.10 | | | | | | | 0.13 | 0.26 | | | | | | | | | T | | | | | | 0.06 | | | | | |
| MARTINSVILLE FLTR PLT | 0.53 | | | | 0.10 | | | | | | | | 0.23 | | | | | | | | | | | | | | | 0.12 | 0.08 | | | | |
| MEADOWS OF DAN 5 SW | 1.10 | | | | 0.36 | | | | | | | | 0.64 | | | | | | | | | | | | | | | 0.09 | 0.01 | | | | |
| MONTEBELLO FISH CULTURAL STN | M 1.06 | | | | - | | | | - | | | | 0.97 | | | | | | | | | | | | | | - | 0.09 | - | | | | |
| MONTICELLO | 0.61 | | | | | | | | | | | | 0.02 | 0.55 | | | | | | | | | | | | | | T | 0.04 | | | | |
| PEDLAR DAM | 0.65 | | | | 0.06 | | | | | | | | 0.54 | 0.02 | | | | | | | | | | | | | | 0.03 | T | | | | |
| ROCKY MT | 0.84 | | | 0.10 | 0.25 | | | | | | 0.01 | | 0.40 | | | | | | 0.02 | | | | | | 0.01 | | | 0.05 | | | | | |
| SOUTH BOSTON | 0.49 | | | | 0.05 | | | | | | | | 0.08 | 0.24 | | | | | | | | | | | | | | | | 0.12 | | | |
| STUART | 0.90 | | | | 0.14 | 0.02 | | | | | | | 0.57 | | | | | | | | | | | | | | | 0.11 | 0.04 | | | 0.02 | |
| TYE RIVER 1 SE | 0.67 | | | | 0.04 | | | | | | | | 0.48 | | | | | | | | | | | | | | | 0.15 | | | | | |
| WOOLWINE | 0.84 | | | | 0.27 | | | | | | | | 0.53 | | | | | | | | | | | | | | | 0.04 | | | | | |
| NORTHERN 04 | | | | | | | | | | | | | | | | | | | | | | | | | | | | | | | | | |
| BOSTON 4 SE | FMA 0.00 | | | | | | | | | | | 0.00 ^L | 1.11 ^L | | | | | | | | | | | | | | | | | | | | |
| EDINBURG | 1.04 | | | | | | | | | | | | 0.80 | | | | | | | | | | | | | | | | 0.17 | 0.07 | | | |
| FRONT ROYAL | 1.35 | | | | | | | | | | | | 1.18 | 0.02 | | | | | | | | | | | | | | 0.12 | 0.03 | | | | |
| LINCOLN | 0.97 | | | | | | | | | | | | 0.97 | | | | | | | | | | | | | | | | | | | | |
| LURAY 5 E | 1.21 | | | | | | | | | | | | 0.97 | | | | | | | | | | | | | | | 0.23 | 0.01 | | | | |
| MADISON | 0.50 | | | | | | | | | | | | 0.50 | | | | | | | | | | | | | | | | | | | | |
| MANASSAS | M 0.95 | | | | | | | | | | | | 0.75 | 0.15 | | | | | | | | | | | | | | | - | 0.05 | | | |
| MT WEATHER | 1.65 | | | | | | | | | | | | 1.29 | 0.05 | | | | | | | | | | | | | | 0.23 | 0.08 | | | | |
| PIEDMONT RSCH STN | 0.58 | | | | | | | | | | | | 0.48 | 0.05 | | | | | | | | | | | | | | 0.04 | 0.01 | | | | |
| SOMERSET | 0.62 | | 0.03 | | | | | | | | | | 0.54 | | | | | | | | | | | | | | | 0.03 | 0.02 | | | | |
| SPERRYVILLE | 1.36 | | | | | | | | | | | | 1.10 | 0.14 | | | | | | | | | | | | | | 0.07 | 0.05 | | | | |
| STERLING RCS | 1.11 | | T | | | | | | | | | | 0.96 | 0.05 | | | | | | | | | | | | | | 0.08 | 0.02 | | | | |
| VIENNA | M 0.58 | | | | | | | | | | | | 0.45 | 0.10 | | | | | | | | | | | | | | 0.01 | 0.02 | | | | |
| WARRENTON 3 SE | M | - | - | - | - | - | - | - | - | - | - | - | - | - | - | - | - | - | - | - | - | - | - | - | - | - | - | - | - | - | - | - | |
| WASHGTN DULLES INTL AP | 1.12 | T | | | | | | | | | | | 0.19 | 0.87 | | | | | | | | | | | | | | 0.06 | | | | | |
| WASHINGTON REAGAN AP | 0.60 | T | | | | | | 0.02 | 0.01 | | | | 0.01 | 0.50 | | | | | | | | | | | | | | 0.06 | | | | | |

VIRGINIA
201211

DAILY PRECIPITATION (INCHES)

| STATION | TOTAL | DAY OF MONTH | | | | | | | | | | | | | | | | | | | | | | | | | | | | | | | |
|---------------------------------|----------|--------------|------|------|---------------------|------|----|------|------|----|----|------|---------------------|------|----|------|----|----|----|----|----|----|----|------|------|----|------|-------------------|-------------------|------|----|----|--|
| | | 01 | 02 | 03 | 04 | 05 | 06 | 07 | 08 | 09 | 10 | 11 | 12 | 13 | 14 | 15 | 16 | 17 | 18 | 19 | 20 | 21 | 22 | 23 | 24 | 25 | 26 | 27 | 28 | 29 | 30 | 31 | |
| WINCHESTER | 0.83 | | | | | | | | | | | | 0.57 | | | | | | | | | | | | | | | 0.18 | 0.08 | | | | |
| WINCHESTER 7 SE | 1.23 | | 0.02 | | | | | | | | | | 0.93 | | | | | | | | | | | | | | | 0.19 | 0.09 | | | | |
| WOODSTOCK 2 NE | M 1.22 | | | | | | | | | | | | 0.92 | | | | | | | | | | | | | | | 0.21 | 0.09 | | | | |
| CENTRAL MOUNTAIN 05 | | | | | | | | | | | | | | | | | | | | | | | | | | | | | | | | | |
| BUCHANAN | 0.88 | | | | 0.19 | | | | | | | | 0.69 | | | | | | | | | | | | | | | T | | | | | |
| BUENA VISTA | 0.34 | | | | 0.06 | | | | | | | | 0.27 | | | | | | | | | | | | | | | 0.01 | | | | | |
| COVINGTON FLTR PLT | 0.77 | | | | 0.08 | | | | | | | | 0.69 | | | | | | | | | | | | | | | T | | | | | |
| CRAIGSVILLE 2 S | M | - | - | - | 0.01 | - | - | - | - | - | - | - | 0.79 | - | - | - | - | - | - | - | - | - | - | - | - | - | - | 0.03 | 0.04 | - | - | | |
| DALE ENTERPRISE | M 0.93 | | | | | | | | | | | | 0.75 | | | | | | | | | | | | | | | 0.13 | 0.05 | | | | |
| GATHRIGHT DAM | 0.51 | | | | 0.05 | | | | | | | | 0.46 | | | | | | | | | | | | | | | T | | | | | |
| GLASGOW 1 SE | 0.45 | | | | 0.11 | | | | | | | | 0.30 | | | | | | | | | | | | | | | 0.04 | | | | | |
| HOT SPRINGS | 0.88 | | | | 0.11 | | | | | | | | 0.73 | | | | | | | | | | | | T | | | 0.04 | | | | | |
| LEXINGTON | 0.87 | | | | 0.06 | | | | | | | | 0.78 | | | | | | | | | | | | | | 0.03 | | | | | | |
| MILLGAP | 0.44 | | | | | | | | | | | | 0.24 | | | | | | | | | | | | | T | | 0.18 | 0.02 | | | | |
| MTN GROVE | 0.43 | T | | | | | | | | | | | 0.28 | | | | | | | | | | | | | | 0.15 | | | | | | |
| MUSTOE 1 SW | 0.54 | | T | | | | | | | | | 0.24 | 0.05 | | | | | | | | | | | | T | | 0.07 | 0.18 | | | | | |
| NEW CASTLE | 0.75 | | | | 0.18 | | | | | | | | 0.57 | | | | | | | | | | | | | | | 0.06 | | | | | |
| ROANOKE 8 N | 0.86 | | | | 0.20 | | | | | | | | 0.60 | | | | | | | | | | | | | | | 0.06 | | | | | |
| ROANOKE INTL AP | 0.61 | | T | 0.09 | 0.05 | | | | | | | 0.28 | 0.13 | | | | | | | | | | | | | | | 0.06 | | | | | |
| STAUNTON WATER TRMTMT PLT | 0.59 | T | | | | | | | | | | | 0.51 | | | | | | | | | | | | | | | 0.03 | 0.05 | | | | |
| WAYNESBORO WTP | M 2.74 | | 0.01 | | | | | 2.10 | | | | | 0.59 | | | | | | | | | | | | | | | T | 0.04 | | | - | |
| SOUTHWESTERN MOUNTAIN 06 | | | | | | | | | | | | | | | | | | | | | | | | | | | | | | | | | |
| ABINGDON 3S | FMA 0.65 | - | 0.04 | | 0.11 | 0.01 | | 0.03 | 0.04 | - | | - | 0.42 | - | | | | | | | | | | | | | | 0.00 ^L | 0.10 ^L | | | | |
| BIG STONE GAP | 1.05 | 0.05 | | | | | | 0.13 | | | | 0.10 | 0.62 | | | | | | | | | | | | | | | 0.15 | | | | | |
| BLACKSBURG NWSO | 1.08 | T | | | 0.24 | | | | | | | T | 0.71 | | | | | | | | | | | | | | | 0.13 | | | | | |
| BURKES GARDEN | 0.91 | 0.04 | | | 0.43 | | | | | | | | 0.38 | | | | | | | | | | | | | | | 0.04 | 0.02 | | | | |
| CHRISTIANSBURG | 1.32 | | | | 0.39 | | | | | | | | 0.85 | | | | | | | | | | | | | | | 0.08 | | | | | |
| CLINTWOOD 1 W | 1.26 | 0.10 | | | 0.39 | | | 0.12 | 0.08 | | | | 0.44 | | | | | | | | | | | | 0.03 | T | | 0.08 | 0.02 | | | | |
| COPPER HILL | 0.91 | | | | 0.37 | | | | | | | | 0.49 | | | | | | | | | | | | | | | 0.04 | 0.01 | | | | |
| GALAX RADIO WBRF | 0.61 | | | | 0.13 | | | | | | | | 0.39 | 0.01 | | 0.01 | | | | | | | | 0.04 | | | | 0.04 | | | | | |
| GALAX WTP | 0.63 | | | | 0.05 | | | | | | | 0.01 | 0.56 | | | | | | | | | | | | | | | T | | | | | |
| GRUNDY | 0.71 | 0.12 | | | 0.28 | | | | | | | | 0.26 | | | | | | | | | | | | | | | 0.05 | | | | | |
| JOHN FLANNAGAN LAKE | MA 0.88 | 0.14 | | * | * 0.30 _a | | | 0.02 | 0.11 | | - | - | - | 0.27 | | | | | | | | | | | | | | 0.04 | | | | | |
| LAFAYETTE 1 NE | 1.00 | | | | 0.22 | | | | | | | | 0.69 | | | | | | | | | | | | | | | 0.07 | 0.02 | | | | |
| LEBANON | 0.95 | 0.05 | | | 0.20 | | | | | | | | 0.70 | | | | | | | | | | | | | | | | | | | | |
| NORA 4 SSE | 0.93 | 0.03 | | | 0.06 | | | 0.08 | 0.06 | | | | 0.61 | | | | | | | | | | | | | | | 0.07 | 0.02 | | | | |
| NORTH FORK LAKE | MA 1.34 | 0.15 | - | * | * 0.21 _a | | | 0.07 | 0.16 | | * | * | * 0.39 _a | | | * | * | * | * | * | * | * | * | * | * | * | * | 0.00 _a | 0.16 | 0.20 | - | - | |
| PULASKI 2 E | 1.21 | | | | 0.02 | | | | | | | | 1.09 | | | | | | | | | | | | | | | 0.10 | | | | | |
| RADFORD 3 N | 1.18 | | | | 0.24 | | | | | | | | 0.81 | | | | | | | | | | | | | | | 0.12 | 0.01 | | | | |
| RICHLANDS | 0.82 | 0.05 | | | 0.24 | | | | | | | | 0.43 | | | | | | | | | | | | | | | 0.08 | 0.02 | | | | |
| SALTVILLE 1N | 0.48 | 0.08 | | | 0.16 | | | | | | | | 0.19 | | | | | | | | | | | | | | | 0.02 | 0.03 | | | | |

VIRGINIA
201211

DAILY PRECIPITATION (INCHES)

| STATION | TOTAL | DAY OF MONTH | | | | | | | | | | | | | | | | | | | | | | | | | | | | | | | | | |
|----------------------|-------|--------------|------|----|------|----|----|------|----|----|----|----|------|----|----|----|----|----|----|----|----|----|----|----|----|----|----|----|----|----|------|------|------|--|--|
| | | 01 | 02 | 03 | 04 | 05 | 06 | 07 | 08 | 09 | 10 | 11 | 12 | 13 | 14 | 15 | 16 | 17 | 18 | 19 | 20 | 21 | 22 | 23 | 24 | 25 | 26 | 27 | 28 | 29 | 30 | 31 | | | |
| STAFFORDSVILLE 3 ENE | 0.75 | T | | | 0.21 | | | | | | | | 0.50 | | | | | | | | | | | | | | | | | | | 0.04 | | | |
| TROUT DALE 3 SSE | 0.55 | 0.01 | | | 0.22 | | | | | | | | 0.28 | | | | | | | | | | | | | | | | | | | 0.01 | 0.03 | | |
| WILLIS | 1.12 | | | | 0.39 | | | | | | | | 0.71 | | | | | | | | | | | | | | | | | | 0.02 | T | | | |
| WISE 3E | 0.83 | | | | | | | 0.22 | | | | | 0.35 | | | | | | | | | | | | | | | | | | 0.09 | | | | |
| WYTHEVILLE 1 S | 0.63 | 0.01 | 0.01 | | 0.35 | | | | | | | | 0.17 | | | | | | | | | | | | | | | | | | 0.01 | 0.06 | | | |

VIRGINIA
201211

DAILY TEMPERATURES (°F)

| STATION | OB. TIME | MAX/MIN | DAY OF MONTH | | | | | | | | | | | | | | | | | | | | | | | | | | | | | | | AVERAGE |
|------------------------------|----------|---------|--------------|----|----|----|----|----|----|----|----|----|----|----|----|----|----|----|----|----|----|----|----|----|----|----|----|----|----|----|----|------|------|---------|
| | | | 01 | 02 | 03 | 04 | 05 | 06 | 07 | 08 | 09 | 10 | 11 | 12 | 13 | 14 | 15 | 16 | 17 | 18 | 19 | 20 | 21 | 22 | 23 | 24 | 25 | 26 | 27 | 28 | 29 | 30 | 31 | |
| DANVILLE REGIONAL AP | 24 | MAX | 57 | 60 | 61 | 55 | 56 | 43 | 53 | 62 | 65 | 75 | 75 | 69 | 65 | 50 | 48 | 56 | 57 | 57 | 57 | 59 | 62 | 62 | 67 | 50 | 52 | 65 | 50 | 54 | 54 | 63 | 58.6 | |
| | | MIN | 32 | 31 | 40 | 38 | 31 | 30 | 33 | 30 | 30 | 30 | 34 | 47 | 35 | 31 | 34 | 30 | 32 | 44 | 39 | 34 | 30 | 28 | 26 | 24 | 18 | 27 | 39 | 30 | 22 | 27 | 31.9 | |
| FREE UNION | 08 | MAX | 54 | 54 | 56 | 54 | 53 | 51 | 44 | 48 | 60 | 61 | 65 | 74 | 65 | 53 | 46 | 48 | 55 | 56 | 55 | 54 | 53 | 58 | 60 | 67 | 45 | 46 | 61 | 42 | 51 | 51 | 54.7 | |
| | | MIN | 40 | 32 | 33 | 39 | 26 | 23 | 23 | 33 | 34 | 29 | 29 | 31 | 41 | 24 | 24 | 29 | 24 | 24 | 35 | 30 | 27 | 25 | 25 | 25 | 26 | 26 | 30 | 34 | 21 | 21 | 28.8 | |
| LYNCHBURG #2 | 07 | MAX | 52 | 52 | 58 | 56 | 53 | 53 | 42 | 49 | 60 | 63 | 72 | 73 | 68 | 54 | 46 | 48 | 55 | 54 | 55 | 56 | 53 | 58 | 59 | 67 | 45 | 50 | 60 | 43 | 51 | 51 | 55.2 | |
| | | MIN | 42 | 36 | 28 | 29 | 28 | 25 | 26 | 29 | 28 | 28 | 29 | 32 | 43 | 25 | 25 | 26 | 24 | 24 | 45 | 31 | 27 | 26 | 26 | 29 | 20 | 21 | 25 | 34 | 21 | 21 | 28.4 | |
| LYNCHBURG INTL AP | 24 | MAX | 51 | 57 | 56 | 53 | 52 | 42 | 48 | 59 | 63 | 71 | 72 | 67 | 59 | 46 | 49 | 55 | 55 | 55 | 56 | 54 | 59 | 60 | 67 | 46 | 50 | 61 | 49 | 50 | 59 | 55.7 | | |
| | | MIN | 40 | 38 | 32 | 38 | 26 | 31 | 30 | 29 | 27 | 30 | 35 | 45 | 35 | 29 | 30 | 26 | 29 | 41 | 36 | 32 | 29 | 26 | 26 | 22 | 17 | 27 | 38 | 25 | 20 | 25 | 30.5 | |
| MARTINSVILLE FLTR PLT | 07 | MAX | 51 | 53 | 58 | 61 | 61 | 55 | 42 | 52 | 61 | 65 | 75 | 72 | 69 | 53 | 47 | 47 | 56 | 56 | 55 | 56 | 55 | 60 | 62 | 67 | 45 | 50 | 63 | 48 | 52 | 53 | 56.7 | |
| | | MIN | 39 | 29 | 33 | 34 | 27 | 25 | 26 | 27 | 27 | 27 | 27 | 29 | 43 | 24 | 24 | 24 | 22 | 22 | 45 | 31 | 26 | 24 | 24 | 24 | 17 | 19 | 23 | 30 | 19 | 19 | 27.0 | |
| MEADOWS OF DAN 5 SW | 07 | MAX | 47 | 50 | 56 | 60 | 42 | 55 | 43 | 52 | 58 | 64 | 73 | 73 | 73 | 51 | 47 | 47 | 57 | 57 | 53 | 55 | 60 | 62 | 64 | 65 | 42 | 49 | 60 | 48 | 49 | 51 | 55.4 | |
| | | MIN | 39 | 31 | 28 | 29 | 30 | 29 | 29 | 29 | 29 | 29 | 36 | 36 | 36 | 28 | 28 | 28 | 29 | 29 | 38 | 36 | 32 | 31 | 30 | 31 | 25 | 26 | 28 | 31 | 27 | 27 | 30.5 | |
| MONTEBELLO FISH CULTURAL STN | 07 | MAX | 42 | 43 | 48 | | 48 | 48 | | 48 | 51 | 56 | 68 | 68 | 54 | 54 | 41 | 44 | 47 | 47 | 48 | | 53 | 52 | 58 | 59 | 33 | | 52 | | 41 | 48 | 50.0 | |
| | | MIN | 33 | 33 | 30 | | 23 | 24 | | 19 | 21 | 30 | 32 | 34 | 36 | 18 | 18 | 22 | 23 | 23 | 30 | | 24 | 23 | 23 | 22 | 20 | | 22 | | 18 | 19 | 24.8 | |
| MONTICELLO | 08 | MAX | 52 | 51 | 52 | 49 | 50 | 48 | 43 | 46 | 56 | 58 | 63 | 70 | 65 | 47 | 47 | 50 | 50 | 51 | 53 | 52 | 53 | 56 | 63 | 42 | 46 | 57 | 41 | 47 | 48 | 51.8 | | |
| | | MIN | 40 | 40 | 38 | 39 | 31 | 28 | 29 | 35 | 39 | 36 | 36 | 36 | 45 | 29 | 28 | 34 | 33 | 35 | 39 | 36 | 35 | 33 | 32 | 28 | 28 | 30 | 38 | 36 | 31 | 31 | 34.3 | |
| ROCKY MT | 07 | MAX | 48 | 50 | 57 | 59 | 52 | 54 | 39 | 51 | 59 | 67 | 74 | 71 | 68 | 53 | 45 | 46 | 55 | 55 | 54 | 54 | 54 | 61 | 61 | 67 | 43 | 52 | 63 | 47 | 51 | 53 | 55.4 | |
| | | MIN | 42 | 36 | 42 | 38 | 28 | 25 | 25 | 29 | 31 | 30 | 32 | 33 | 42 | 25 | 25 | 25 | 24 | 43 | 44 | 32 | 27 | 26 | 26 | 27 | 26 | 26 | 28 | 33 | 21 | 21 | 30.4 | |
| SOUTH BOSTON | 07 | MAX | 55 | 56 | 60 | 60 | 54 | 56 | 44 | 51 | 62 | 65 | 75 | 75 | 70 | 54 | 50 | 49 | 56 | 57 | 56 | 55 | 58 | 61 | 63 | 67 | 49 | 52 | 65 | 49 | 54 | 54 | 57.7 | |
| | | MIN | 39 | 33 | 30 | 30 | 36 | 28 | 32 | 28 | 28 | 30 | 33 | 42 | 30 | 32 | 32 | 27 | 29 | 44 | 34 | 29 | 27 | 26 | 26 | 20 | 20 | 27 | 35 | 22 | 22 | 30.0 | | |
| STUART | 07 | MAX | 51 | 53 | 59 | 63 | 55 | 56 | 40 | 53 | 62 | 67 | 75 | 71 | 68 | 53 | 49 | 49 | 57 | 55 | 55 | 56 | 63 | 63 | 65 | 47 | 51 | 64 | 49 | 53 | 54 | 57.0 | | |
| | | MIN | 41 | 31 | 29 | 29 | 31 | 30 | 28 | 28 | 29 | 29 | 33 | 31 | 43 | 29 | 28 | 26 | 27 | 42 | 47 | 35 | 31 | 30 | 29 | 29 | 19 | 28 | 33 | 28 | 22 | 23 | 30.6 | |
| TYE RIVER 1 SE | 07 | MAX | 50 | 54 | 62 | 57 | 56 | 55 | 45 | 43 | 65 | 65 | 70 | 75 | 68 | 59 | 49 | 52 | 58 | 60 | 58 | 60 | 60 | 62 | 61 | 68 | 49 | 51 | 64 | 46 | 55 | 53 | 57.7 | |
| | | MIN | 44 | 40 | 36 | 37 | 27 | 26 | 27 | 36 | 37 | 29 | 30 | 36 | 44 | 27 | 28 | 27 | 28 | 29 | 46 | 31 | 27 | 28 | 24 | 25 | 24 | 25 | 28 | 34 | 21 | 22 | 30.8 | |
| NORTHERN 04 | | | | | | | | | | | | | | | | | | | | | | | | | | | | | | | | | | |
| BOSTON 4 SE | 07 | MAX | 55 | 53 | 54 | 50 | 53 | 50 | 51 | | | 60 | 64 | 67 | 67 | 50 | 43 | 46 | 52 | 54 | 52 | 53 | 54 | 56 | 52 | 65 | | | 56 | 41 | 49 | 49 | 53.7 | |
| | | MIN | 38 | 29 | 28 | 38 | 26 | 24 | 23 | | | 29 | 31 | 43 | 43 | 28 | 27 | 32 | 27 | 29 | 44 | 29 | 29 | 26 | 26 | 25 | | | 27 | 34 | 21 | 22 | 29.9 | |
| EDINBURG | 07 | MAX | 53 | 50 | 50 | 46 | 51 | 49 | 46 | 41 | 52 | 59 | 64 | 72 | 66 | 47 | 42 | 44 | 53 | 52 | 50 | 50 | 48 | 54 | 59 | 64 | 40 | 44 | 57 | 39 | 46 | 49 | 51.2 | |
| | | MIN | 39 | 33 | 32 | 35 | 25 | 22 | 23 | 30 | 28 | 27 | 30 | 30 | 41 | 21 | 22 | 24 | 22 | 22 | 27 | 26 | 26 | 23 | 24 | 25 | 27 | 23 | 24 | 33 | 23 | 22 | 27.0 | |
| FRONT ROYAL | 07 | MAX | 51 | 51 | 50 | 48 | 51 | 49 | 45 | 40 | 53 | 59 | 64 | 69 | 66 | 47 | 40 | 42 | 51 | 51 | 50 | 49 | 49 | 52 | 57 | 64 | 41 | 42 | 56 | 39 | 45 | 48 | 50.6 | |
| | | MIN | 40 | 36 | 36 | 38 | 33 | 27 | 27 | 32 | 31 | 34 | 33 | 39 | 41 | 31 | 27 | 28 | 30 | 29 | 31 | 31 | 30 | 29 | 29 | 32 | 30 | 27 | 29 | 33 | 26 | 27 | 31.5 | |
| LINCOLN | 07 | MAX | 53 | 49 | 50 | 45 | 49 | 47 | 42 | 52 | 52 | 55 | 64 | 68 | 66 | 46 | 43 | 46 | 50 | 52 | 51 | 50 | 50 | 53 | 56 | 60 | 41 | 41 | 54 | 40 | 45 | 50 | 50.7 | |
| | | MIN | 38 | 32 | 32 | 33 | 36 | 23 | 23 | 37 | 29 | 30 | 31 | 31 | 38 | 24 | 24 | 30 | 24 | 24 | 27 | 28 | 26 | 23 | 23 | 32 | 21 | 21 | 21 | 34 | 23 | 21 | 28.0 | |
| LURAY 5 E | 08 | MAX | 54 | 54 | 53 | 52 | 51 | 49 | 47 | 40 | 53 | 59 | 66 | 74 | 67 | 47 | 42 | 46 | 52 | 53 | 51 | 51 | 48 | 56 | 64 | 66 | 41 | 55 | 57 | 38 | 46 | 50 | 52.7 | |
| | | MIN | 33 | 30 | 39 | 33 | 25 | 24 | 30 | 28 | 28 | 33 | 39 | 44 | 40 | 24 | 25 | 27 | 26 | 31 | 32 | 28 | 28 | 27 | 29 | 31 | 28 | 27 | 35 | 33 | 22 | 26 | 30.2 | |
| MADISON | 08 | MAX | 57 | 54 | 57 | 53 | 55 | 54 | 47 | 47 | 59 | 61 | 67 | 72 | 67 | 53 | 47 | 49 | 54 | 56 | 53 | 56 | 55 | 57 | 59 | 67 | 47 | 45 | 59 | 45 | 51 | 51 | 55.1 | |
| | | MIN | 44 | 38 | 42 | 41 | 31 | 31 | 30 | 35 | 35 | 35 | 34 | 38 | 46 | 31 | 31 | 37 | 33 | 33 | 43 | 35 | 34 | 33 | 32 | 32 | 32 | 32 | 34 | 39 | 28 | 29 | 34.9 | |
| MANASSAS | 07 | MAX | 55 | 53 | 53 | 49 | 51 | 49 | 46 | 43 | 54 | 58 | 66 | 74 | 72 | 49 | 46 | 48 | 53 | 56 | 54 | 53 | 54 | 56 | 59 | 65 | 44 | 42 | 58 | 40 | 48 | 51 | 53.3 | |
| | | MIN | 39 | 34 | 35 | 33 | 33 | 26 | 26 | 36 | 38 | 33 | 34 | 36 | 40 | 29 | 30 | 36 | 31 | 31 | 33 | 36 | 30 | 28 | 27 | 28 | 29 | 26 | 30 | 35 | 23 | 24 | 31.6 | |
| MT WEATHER | 07 | MAX | 47 | 46 | 48 | 41 | 43 | 46 | 42 | 37 | 50 | 54 | 60 | 65 | 59 | 45 | 40 | 41 | 48 | 52 | 49 | 48 | 46 | 51 | 55 | 58 | 38 | 52 | 35 | 43 | 47 | 47.5 | | |
| | | MIN | 37 | 35 | 36 | 34 | 32 | 28 | 30 | 30 | 33 | 36 | 46 | 47 | 37 | 28 | 29 | 31 | 31 | 36 | 39 | 36 | 35 | 35 | 36 | 30 | 22 | 27 | 34 | 30 | 30 | 30 | 33.3 | |
| PIEDMONT RSCH STN | 08 | MAX | 52 | 51 | 54 | 51 | 52 | 50 | 44 | 44 | 57 | 60 | 67 | 71 | 68 | 51 | 44 | 47 | 52 | 54 | 52 | 52 | 53 | 55 | 58 | 64 | 43 | 44 | 60 | 41 | 49 | 49 | 53.0 | |

VIRGINIA
201211

DAILY TEMPERATURES (°F)

| STATION | OB. TIME | MAX/MIN | DAY OF MONTH | | | | | | | | | | | | | | | | | | | | | | | | | | | | | | | AVERAGE |
|---|----------|---------|--------------|----|----|----|----|----|----|----|----|----|----|----|----|----|----|----|----|----|----|----|----|----|----|----|----|----|----|----|----|------|------|---------|
| | | | 01 | 02 | 03 | 04 | 05 | 06 | 07 | 08 | 09 | 10 | 11 | 12 | 13 | 14 | 15 | 16 | 17 | 18 | 19 | 20 | 21 | 22 | 23 | 24 | 25 | 26 | 27 | 28 | 29 | 30 | 31 | |
| SOMERSET | 07 | MIN | 39 | 31 | 34 | 41 | 28 | 30 | 34 | 34 | 33 | 35 | 36 | 45 | 32 | 32 | 36 | 36 | 36 | 39 | 36 | 34 | 33 | 28 | 28 | 25 | 26 | 38 | 36 | 24 | 26 | 33.3 | | |
| | | MAX | 54 | 53 | 56 | 51 | 52 | 51 | 51 | 46 | 58 | 62 | 65 | 72 | 69 | 52 | 44 | 47 | 52 | 54 | 52 | 54 | 52 | 56 | 58 | 67 | 44 | 45 | 60 | 43 | 50 | | 50 | |
| SPERRYVILLE | 06 | MIN | 43 | 31 | 36 | 41 | 25 | 25 | 24 | 29 | 34 | 29 | 33 | 37 | 43 | 23 | 27 | 32 | 26 | 28 | 41 | 29 | 27 | 25 | 25 | 27 | 28 | 30 | 33 | 22 | 22 | 30.1 | | |
| | | MAX | 55 | 51 | 54 | 51 | 54 | 51 | 46 | 43 | 57 | 60 | 65 | 70 | 62 | 49 | 43 | 47 | 54 | 54 | 51 | 55 | 52 | 57 | 60 | 63 | 43 | 41 | 56 | 41 | 48 | | 50 | |
| STERLING RCS | 07 | MIN | 36 | 31 | 32 | 38 | 32 | 26 | 26 | 32 | 39 | 34 | 35 | 36 | 42 | 27 | 28 | 28 | 33 | 42 | 42 | 32 | 31 | 32 | 38 | 32 | 30 | 25 | 27 | 35 | 24 | 24 | 32.3 | |
| | | MAX | 53 | 50 | 50 | 48 | 49 | 48 | 45 | 42 | 54 | 56 | 64 | 70 | 69 | 47 | 44 | 45 | 50 | 54 | 52 | 51 | 52 | 54 | 57 | 60 | 40 | 39 | 52 | 38 | 44 | 46 | | |
| VIENNA | 07 | MIN | 38 | 34 | 34 | 33 | 33 | 25 | 26 | 36 | 31 | 30 | 31 | 33 | 39 | 28 | 27 | 34 | 31 | 31 | 34 | 32 | 30 | 26 | 25 | 26 | 28 | 22 | 26 | 32 | 20 | 21 | 29.9 | |
| | | MAX | 50 | 48 | 47 | 44 | 46 | 44 | 43 | 39 | 50 | 53 | 63 | 66 | 68 | 49 | 43 | 46 | 49 | 51 | | 50 | 49 | 52 | 55 | 57 | 37 | 38 | 51 | 37 | 43 | 46 | | |
| WARRENTON 3 SE | 08 | MIN | 37 | 35 | 37 | 32 | 32 | 25 | 25 | 34 | 34 | 31 | 31 | 36 | 38 | 27 | 27 | 35 | 28 | 28 | | 33 | 29 | 26 | 26 | 30 | 29 | 23 | 28 | 31 | 24 | 24 | 30.2 | |
| | | MAX | | | | | | | | | | | | | | | | | | | | | | | | | | | | | | | | |
| WASHGTN DULLES INTL AP | 24 | MIN | 51 | 52 | 48 | 51 | 49 | 47 | 43 | 55 | 57 | 66 | 70 | 70 | 52 | 46 | 48 | 53 | 55 | 53 | 53 | 54 | 56 | 59 | 62 | 46 | 41 | 55 | 42 | 48 | 49 | 54 | 52.8 | |
| | | MAX | 38 | 35 | 38 | 33 | 30 | 27 | 37 | 39 | 35 | 31 | 34 | 47 | 35 | 30 | 31 | 34 | 30 | 33 | 35 | 35 | 30 | 28 | 27 | 33 | 26 | 24 | 36 | 29 | 23 | 23 | | |
| WASHINGTON REAGAN AP | 24 | MIN | 53 | 55 | 50 | 53 | 50 | 48 | 46 | 56 | 58 | 65 | 71 | 72 | 65 | 49 | 51 | 55 | 55 | 53 | 57 | 57 | 58 | 60 | 61 | 50 | 43 | 56 | 45 | 50 | 54 | 54.9 | | |
| | | MAX | 43 | 41 | 41 | 38 | 38 | 34 | 40 | 40 | 39 | 38 | 43 | 49 | 38 | 36 | 38 | 41 | 36 | 40 | 45 | 44 | 39 | 35 | 36 | 36 | 33 | 32 | 36 | 37 | 31 | | 33 | |
| WINCHESTER | 07 | MIN | 49 | 49 | 47 | 46 | 49 | 47 | 45 | 41 | 52 | 57 | 64 | 66 | 65 | 47 | 42 | 43 | 53 | 53 | 52 | 51 | 49 | 55 | 59 | 62 | 38 | 43 | 56 | 40 | 45 | 49 | 50.5 | |
| | | MAX | 40 | 35 | 37 | 38 | 33 | 26 | 27 | 33 | 37 | 33 | 36 | 36 | 38 | 31 | 28 | 31 | 28 | 31 | 33 | 31 | 29 | 28 | 28 | 33 | 31 | 26 | 28 | 33 | 29 | 29 | | |
| WINCHESTER 7 SE | 08 | MIN | 50 | 49 | 49 | 47 | 51 | 49 | 44 | 44 | 53 | 60 | 65 | 67 | 65 | 48 | 42 | 43 | 54 | 54 | 51 | 50 | 48 | 55 | 58 | 62 | 40 | 43 | 55 | 40 | 46 | 49 | 51.0 | |
| | | MAX | 39 | 31 | 34 | 32 | 30 | 22 | 23 | 23 | 32 | 28 | 29 | 31 | 39 | 25 | 25 | 27 | 22 | 22 | 26 | 28 | 25 | 23 | 23 | 26 | 30 | 21 | 22 | 33 | 22 | 22 | | |
| WOODSTOCK 2 NE | 07 | MIN | 50 | 50 | 50 | 47 | 52 | 49 | 48 | 41 | 53 | 60 | 65 | 70 | 68 | 48 | 42 | 45 | | 55 | 53 | 50 | 46 | 56 | 60 | 64 | 40 | 45 | 58 | 39 | 45 | 49 | 51.7 | |
| | | MAX | 40 | 30 | 32 | 36 | 27 | 25 | 25 | 33 | 30 | 30 | 31 | 34 | 41 | 25 | 26 | 27 | | 24 | 28 | 29 | 28 | 27 | 26 | 28 | 30 | 25 | 24 | 34 | 23 | 25 | | |
| CENTRAL MOUNTAIN 05 COVINGTON FLTR PLT | 07 | MIN | 45 | 46 | 54 | 52 | 59 | 53 | 44 | 48 | 56 | 65 | 73 | 72 | 65 | 52 | 47 | 50 | 57 | 60 | 56 | 57 | 57 | 62 | 63 | 61 | 39 | 51 | 58 | 48 | 46 | 53 | 55.0 | |
| | | MAX | 40 | 35 | 37 | 39 | 27 | 25 | 25 | 28 | 26 | 28 | 29 | 32 | 37 | 24 | 24 | 25 | 25 | 25 | 30 | 29 | 28 | 25 | 25 | 26 | 25 | 25 | 26 | 32 | 21 | 21 | | |
| DALE ENTERPRISE | 07 | MIN | 53 | 52 | 47 | 47 | 48 | 46 | 46 | 40 | 53 | 57 | 65 | 72 | 63 | 50 | 40 | 45 | 49 | 49 | 49 | 47 | 47 | | 58 | 63 | 42 | 47 | 57 | 42 | 46 | 48 | 50.6 | |
| | | MAX | 39 | 39 | 36 | 38 | 27 | 23 | 32 | 29 | 26 | 26 | 29 | 35 | 39 | 24 | 26 | 26 | 27 | 31 | 35 | 27 | 24 | | 26 | 26 | 25 | 26 | 25 | 31 | 20 | 21 | | |
| GATHRIGHT DAM | 07 | MIN | 43 | 44 | 47 | 48 | 53 | 49 | 41 | 45 | 51 | 60 | 68 | 69 | 64 | 46 | 44 | 47 | 55 | 55 | 52 | 53 | 54 | 60 | 58 | 60 | 32 | 51 | 54 | | 41 | 47 | 51.4 | |
| | | MAX | 37 | 35 | 36 | 37 | 27 | 25 | 26 | 27 | 27 | 29 | 32 | 37 | 34 | 24 | 25 | 26 | 27 | 28 | 33 | 31 | 29 | 28 | 27 | 28 | 26 | 26 | 26 | | 21 | 21 | | |
| HOT SPRINGS | 07 | MIN | 42 | 44 | 47 | 45 | 51 | 48 | 42 | 45 | 48 | 58 | 66 | 68 | 60 | 42 | 45 | 52 | 52 | 50 | 52 | 54 | 57 | 57 | 58 | 53 | 43 | 53 | 42 | 40 | 44 | 52 | 50.3 | |
| | | MAX | 35 | 32 | 34 | 34 | 26 | 26 | 26 | 26 | 26 | 28 | 31 | 35 | 31 | 25 | 24 | 24 | 29 | 36 | 31 | 28 | 27 | 27 | 27 | 22 | 23 | 23 | 29 | 20 | 20 | 26 | | |
| MILLGAP | 07 | MIN | 41 | 41 | 44 | 42 | 52 | 49 | 45 | 42 | 48 | 60 | 68 | 69 | 62 | 44 | 45 | 47 | 56 | 54 | 54 | 55 | 57 | 60 | 61 | 60 | 31 | 46 | 54 | 39 | 38 | 48 | 50.4 | |
| | | MAX | 34 | 35 | 32 | 28 | 20 | 16 | 15 | 21 | 19 | 21 | 21 | 24 | 33 | 14 | 14 | 16 | 16 | 16 | 16 | 23 | 19 | 18 | 18 | 19 | 19 | 18 | 30 | 30 | 13 | 13 | | |
| MUSTOE 1 SW | 24 | MIN | 44 | 45 | 41 | 51 | 47 | 44 | 40 | 48 | 59 | 65 | 68 | 59 | 42 | 42 | 46 | 53 | 52 | 52 | 52 | 54 | 58 | 59 | 58 | 33 | 46 | 53 | 39 | 45 | 51 | 49.5 | | |
| | | MAX | 35 | 34 | 29 | 29 | 22 | 17 | 25 | 23 | 20 | 24 | 27 | 40 | 22 | 17 | 19 | 19 | 20 | 23 | 26 | 24 | 22 | 20 | 20 | 23 | 19 | 24 | 33 | 22 | 19 | | 18 | |
| ROANOKE 8 N | 07 | MIN | 47 | 48 | 56 | 58 | 53 | 55 | 40 | 50 | 57 | 66 | 73 | 73 | 67 | 52 | 46 | 48 | 56 | 56 | 54 | 55 | 54 | 61 | 62 | 63 | 39 | 54 | 61 | 49 | 50 | 54 | 55.2 | |
| | | MAX | 43 | 41 | 38 | 40 | 30 | 27 | 27 | 31 | 29 | 31 | 35 | 40 | 40 | 29 | 29 | 27 | 28 | 34 | 42 | 35 | 31 | 29 | 29 | 32 | 24 | 27 | 34 | 34 | 25 | 25 | | |
| ROANOKE INTL AP | 24 | MIN | 49 | 56 | 59 | 53 | 55 | 41 | 52 | 58 | 67 | 72 | 73 | 65 | 52 | 47 | 48 | 56 | 57 | 55 | 55 | 54 | 61 | 63 | 62 | 45 | 53 | 62 | 51 | 50 | 53 | 60 | 56.1 | |
| | | MAX | 42 | 42 | 38 | 40 | 31 | 28 | 29 | 38 | 33 | 35 | 37 | 51 | 34 | 28 | 28 | 27 | 28 | 38 | 37 | 35 | 30 | 29 | 30 | 28 | 26 | 40 | 37 | 34 | 25 | 30 | | |
| STAUNTON WATER TRMTMT PLT | 08 | MIN | 51 | 51 | 52 | 48 | 52 | 49 | 44 | 39 | 56 | 60 | 70 | 71 | 65 | 49 | 42 | 46 | 52 | 51 | 51 | 49 | 51 | 55 | 60 | 63 | 38 | 46 | 56 | 38 | 46 | 48 | 51.6 | |
| | | MAX | 38 | 38 | 36 | 36 | 26 | 26 | 29 | 29 | 33 | 36 | 45 | 54 | 38 | 24 | 25 | 27 | 30 | 32 | 38 | 29 | 30 | 31 | 35 | 27 | 22 | 28 | 37 | 30 | 25 | 27 | | |
| WAYNESBORO WTP | 07 | MIN | 50 | 52 | 54 | 49 | 50 | 48 | 44 | 42 | 56 | 61 | 69 | 73 | 63 | 47 | 43 | 48 | 51 | 52 | 51 | 50 | 51 | 55 | 59 | 65 | 41 | 48 | 57 | 42 | 48 | 52.4 | | |
| | | MAX | 41 | 30 | 32 | 39 | 25 | 25 | 25 | 31 | 27 | 28 | 28 | 36 | 40 | 23 | 23 | 26 | 25 | 25 | 37 | 30 | 28 | 26 | 25 | 27 | 26 | 29 | 29 | 32 | 22 | | | |

VIRGINIA
201211

DAILY TEMPERATURES (°F)

| STATION | OB. TIME | MAX/MIN | DAY OF MONTH | | | | | | | | | | | | | | | | | | | | | | | | | | | | | | | AVERAGE |
|---|----------|---------|-----------------|----|----|----|----|----|----|----|----|----|----|----|----|----|----|----|----|----|----|----|----|----|----|----|----|----|----|----|----|------|------|---------|
| | | | 01 | 02 | 03 | 04 | 05 | 06 | 07 | 08 | 09 | 10 | 11 | 12 | 13 | 14 | 15 | 16 | 17 | 18 | 19 | 20 | 21 | 22 | 23 | 24 | 25 | 26 | 27 | 28 | 29 | 30 | 31 | |
| SOUTHWESTERN MOUNTAIN 06 ABINGDON 3S | 22 | MAX | | 56 | 57 | 54 | 52 | 48 | 44 | 51 | | 68 | | 66 | | 50 | 52 | 54 | 57 | 54 | 61 | 59 | 62 | 62 | 55 | 43 | 47 | 52 | 44 | 46 | 53 | 55 | 53.9 | |
| | | MIN | | 38 | 29 | 41 | 28 | 32 | 33 | 32 | | 30 | | 44 | | 24 | 32 | 27 | 26 | 35 | 36 | 35 | 30 | 28 | 29 | 24 | 18 | 23 | 38 | 26 | 21 | 23 | 30.1 | |
| BIG STONE GAP | 08 | MAX | 45 | 54 | 58 | 60 | 54 | 55 | 48 | 45 | 57 | 62 | 70 | 73 | 68 | 50 | 55 | 60 | 59 | 65 | 64 | 64 | 64 | 67 | 55 | 66 | 43 | 50 | 54 | 43 | 49 | 55 | 57.1 | |
| | | MIN | 36 | 40 | 30 | 30 | 30 | 30 | 30 | 30 | 28 | 28 | 30 | 32 | 30 | 28 | 28 | 29 | 29 | 28 | 28 | 31 | 36 | 30 | 30 | 30 | 20 | 21 | 27 | 28 | 23 | 24 | 29.1 | |
| BLACKSBURG NWSO | 07 | MAX | 41 | 43 | 51 | 53 | 51 | 48 | 36 | 47 | 51 | 59 | 70 | 69 | 61 | 46 | 43 | 46 | 55 | 52 | 50 | 54 | 57 | 61 | 61 | 56 | 33 | 48 | 56 | 42 | 44 | 51 | 51.2 | |
| | | MIN | 35 | 32 | 33 | 32 | 25 | 25 | 21 | 21 | 29 | 26 | 27 | 31 | 31 | 22 | 22 | 21 | 22 | 23 | 33 | 31 | 25 | 24 | 23 | 25 | 20 | 22 | 30 | 31 | 19 | 19 | 26.0 | |
| BURKES GARDEN | 07 | MAX | 34 | 40 | 44 | 43 | 45 | 42 | 36 | 46 | 45 | 55 | 65 | 64 | 60 | 39 | 42 | 49 | 48 | 50 | 47 | 56 | 53 | 54 | 57 | 50 | 27 | 43 | 50 | 40 | 38 | 48 | 47.0 | |
| | | MIN | 31 | 31 | 30 | 29 | 28 | 21 | 19 | 21 | 26 | 22 | 22 | 29 | 29 | 14 | 14 | 16 | 16 | 19 | 25 | 28 | 20 | 18 | 18 | 24 | 12 | 25 | 32 | 28 | 13 | 13 | 22.4 | |
| CHRISTIANSBURG | 07 | MAX | 40 | 43 | 51 | 53 | 48 | 48 | 36 | 47 | 52 | 59 | 69 | 69 | 61 | 45 | 43 | 45 | 55 | 51 | 49 | 52 | 56 | 58 | 60 | 57 | 36 | 45 | 56 | 43 | 46 | 50 | 50.8 | |
| | | MIN | 35 | 36 | 33 | 34 | 30 | 27 | 23 | 23 | 32 | 32 | 35 | 45 | 32 | 25 | 25 | 24 | 25 | 29 | 37 | 34 | 30 | 31 | 28 | 28 | 20 | 20 | 35 | 32 | 26 | 26 | 29.7 | |
| CLINTWOOD 1 W | 07 | MAX | 41 | 49 | 55 | 54 | 46 | 47 | 55 | 45 | 49 | 59 | 70 | 72 | 68 | 44 | 47 | 53 | 51 | 57 | 58 | 60 | 61 | 61 | 63 | 54 | 34 | 48 | 53 | 41 | 43 | 50 | 52.9 | |
| | | MIN | 34 | 36 | 26 | 26 | 28 | 24 | 25 | 28 | 24 | 24 | 29 | 29 | 28 | 20 | 21 | 23 | 23 | 23 | 23 | 25 | 29 | 26 | 26 | 28 | 18 | 18 | 22 | 31 | 18 | 19 | 25.1 | |
| COPPER HILL | 07 | MAX | 37 | 39 | 46 | 49 | 45 | 46 | 32 | 44 | 47 | 56 | 66 | 65 | 57 | 42 | 38 | 41 | 49 | 48 | 46 | 48 | 51 | 55 | 55 | 56 | 30 | 44 | 53 | 42 | 40 | 47 | 47.1 | |
| | | MIN | 32 | 33 | 29 | 29 | 28 | 26 | 24 | 24 | 30 | 33 | 42 | 50 | 34 | 26 | 25 | 23 | 27 | 33 | 38 | 35 | 36 | 34 | 34 | 26 | 19 | 19 | 35 | 30 | 24 | 24 | 30.1 | |
| GALAX RADIO WBRF | 07 | MAX | 39 | 45 | 51 | 58 | 52 | 52 | 37 | 50 | 52 | 63 | 69 | 65 | 59 | 46 | 45 | 49 | 53 | 55 | 52 | 53 | 59 | 59 | 61 | 59 | 39 | 52 | 56 | 44 | 45 | 51 | 52.3 | |
| | | MIN | 17 ^s | 30 | 27 | 37 | 27 | 23 | 22 | 29 | 25 | 25 | 30 | 46 | 32 | 19 | 24 | 21 | 21 | 24 | 28 | 31 | 24 | 26 | 23 | 29 | 18 | 23 | 34 | 29 | 18 | 21 | 26.4 | |
| GALAX WTP | 07 | MAX | 40 | 45 | 51 | 58 | 52 | 49 | 37 | 50 | 51 | 60 | 69 | 64 | 59 | 59 | 43 | 46 | 51 | 53 | 52 | 52 | 54 | 58 | 60 | 59 | 36 | 51 | 58 | 45 | 44 | 50 | 51.9 | |
| | | MIN | 36 | 33 | 27 | 33 | 27 | 25 | 22 | 27 | 25 | 25 | 26 | 29 | 34 | 20 | 20 | 21 | 21 | 21 | 29 | 31 | 24 | 23 | 23 | 23 | 18 | 18 | 23 | 32 | 18 | 18 | 25.1 | |
| GRUNDY | 07 | MAX | 40 | 51 | 54 | 50 | 46 | 51 | 50 | 53 | 52 | 58 | 68 | 73 | 69 | 54 | 50 | 53 | 53 | 57 | 60 | 59 | 60 | 60 | 54 | 50 | 51 | 45 | 53 | 41 | 45 | 50 | 53.7 | |
| | | MIN | 35 | 36 | 28 | 28 | 32 | 32 | 27 | 27 | 27 | 30 | 32 | 31 | 24 | 25 | 26 | 26 | 26 | 27 | 28 | 30 | 28 | 28 | 30 | 32 | 24 | 24 | 34 | 22 | 22 | 28.3 | | |
| JOHN FLANNAGAN LAKE | 07 | MAX | 41 | 46 | | | 55 | 51 | 54 | 47 | 52 | | | 75 | 44 | 47 | 54 | | | 63 | 63 | 61 | | 64 | | | 54 | 51 | 40 | 45 | 56 | M | | |
| | | MIN | 35 | 32 | | | 30 | 30 | 29 | 31 | 29 | | | 29 | 24 | 25 | 28 | | | 28 | 30 | 33 | | 31 | | | 20 | 24 | 33 | 23 | 23 | M | | |
| LEBANON | 07 | MAX | 40 | 51 | 55 | 57 | 46 | 45 | 50 | 43 | 52 | 60 | 69 | 72 | 68 | 46 | 51 | 54 | 54 | 61 | 56 | 62 | 59 | 62 | 63 | 53 | 37 | 48 | 51 | 41 | 44 | 54 | 53.5 | |
| | | MIN | 32 | 32 | 27 | 26 | 28 | 28 | 27 | 27 | 24 | 24 | 28 | 31 | 33 | 21 | 21 | 23 | 23 | 22 | 29 | 28 | 28 | 25 | 26 | 29 | 17 | 18 | 25 | 33 | 19 | 19 | 25.8 | |
| NORA 4 SSE | 07 | MAX | 33 | 44 | 50 | 52 | 41 | 46 | 46 | 41 | 48 | 55 | 62 | 66 | 61 | 42 | 48 | 52 | 50 | 57 | 55 | 58 | 58 | 59 | 48 | 34 | 41 | 46 | 38 | 42 | 46 | 49.2 | | |
| | | MIN | 30 | 31 | 31 | 31 | 29 | 29 | 34 | 30 | 30 | 36 | 46 | 52 | 25 | 25 | 26 | 30 | 30 | 35 | 35 | 37 | 43 | 41 | 42 | 26 | 20 | 21 | 36 | 28 | 27 | 30 | 32.2 | |
| NORTH FORK LAKE | 08 | MAX | 41 | | | | 56 | 50 | 53 | 44 | 52 | | | 72 | 46 | 49 | | | | | | | | | | | | | | | | | M | |
| | | MIN | 34 | | | | 28 | 27 | 27 | 33 | 27 | | | | 27 | 23 | 23 | | | | | | | | | | | | | | | | | M |
| PULASKI 2 E | 07 | MAX | 43 | 47 | 53 | 56 | 56 | 52 | 51 | 50 | 53 | 64 | 63 | 72 | 64 | 51 | 44 | 46 | 54 | 54 | 54 | 53 | 60 | 59 | 61 | 56 | 35 | 49 | 57 | 44 | 48 | 55 | 53.5 | |
| | | MIN | 36 | 38 | 35 | 35 | 31 | 24 | 23 | 27 | 29 | 30 | 27 | 29 | 36 | 21 | 21 | 23 | 23 | 24 | 24 | 32 | 28 | 26 | 26 | 30 | 17 | 19 | 35 | 34 | 21 | 20 | 27.5 | |
| RADFORD 3 N | 07 | MAX | 42 | 44 | 51 | 53 | 48 | 48 | 38 | 49 | 52 | 60 | 70 | 71 | 62 | 44 | 43 | 47 | 54 | 53 | 49 | 55 | 57 | 60 | 62 | 56 | 37 | 46 | 57 | 44 | 45 | 51 | 51.6 | |
| | | MIN | 38 | 38 | 35 | 37 | 32 | 21 | 21 | 25 | 32 | 25 | 28 | 34 | 33 | 20 | 22 | 20 | 22 | 26 | 30 | 30 | 24 | 23 | 22 | 27 | 20 | 20 | 34 | 33 | 20 | 20 | 27.1 | |
| RICHLANDS | 07 | MAX | 39 | 49 | 53 | 53 | 44 | 52 | 49 | 50 | 51 | 61 | 72 | 73 | 66 | 47 | 53 | 55 | 56 | 61 | 57 | 65 | 61 | 62 | 66 | 51 | 33 | 49 | 51 | 41 | 45 | 56 | 54.0 | |
| | | MIN | 34 | 33 | 25 | 25 | 29 | 26 | 26 | 28 | 23 | 23 | 27 | 30 | 30 | 22 | 22 | 23 | 23 | 23 | 27 | 27 | 26 | 25 | 25 | 28 | 17 | 17 | 22 | 33 | 18 | 19 | 25.2 | |
| SALTVILLE 1N | 07 | MAX | 40 | 51 | 55 | 58 | 55 | 53 | 47 | 50 | 53 | 60 | 70 | 73 | 67 | 48 | 50 | 53 | 58 | 60 | 55 | 63 | 62 | 63 | 64 | 52 | 38 | 48 | 52 | 43 | 46 | 55 | 54.7 | |
| | | MIN | 35 | 33 | 28 | 28 | 28 | 28 | 28 | 28 | 24 | 24 | 26 | 28 | 32 | 23 | 23 | 22 | 22 | 25 | 31 | 33 | 26 | 24 | 24 | 26 | 16 | 16 | 19 | 27 | 17 | 17 | 25.4 | |
| STAFFORDSVILLE 3 ENE | 07 | MAX | 41 | 46 | 52 | 54 | 48 | 47 | 40 | 49 | 51 | 60 | 69 | 70 | 63 | 44 | 44 | 48 | 52 | 55 | 51 | 54 | 58 | 58 | 59 | 57 | 34 | 50 | 54 | 43 | 44 | 49 | 51.5 | |
| | | MIN | 37 | 37 | 35 | 35 | 34 | 23 | 22 | 22 | 30 | 26 | 26 | 31 | 34 | 20 | 20 | 21 | 21 | 22 | 29 | 30 | 24 | 24 | 23 | 24 | 17 | 19 | 31 | 34 | 19 | 19 | 26.3 | |
| TROUT DALE 3 SSE | 07 | MAX | 38 | 44 | 50 | 57 | 51 | 49 | 43 | 47 | 56 | 59 | 70 | 65 | 59 | 42 | 45 | 50 | 54 | 55 | 50 | 66 | 56 | 58 | 63 | 60 | 33 | 50 | 56 | 43 | 41 | 55 | 52.2 | |
| | | MIN | 32 | 34 | 24 | 31 | 32 | 22 | 20 | 34 | 22 | 23 | 23 | 25 | 34 | 15 | 14 | 18 | 19 | 19 | 25 | 28 | 26 | 21 | 21 | 27 | 11 | 16 | 29 | 25 | 13 | 17 | 23.3 | |

VIRGINIA
201211

DAILY TEMPERATURES (°F)

| STATION | OB. TIME | MAX/MIN | DAY OF MONTH | | | | | | | | | | | | | | | | | | | | | | | | | | | | | | | AVERAGE |
|----------------|----------|---------|--------------|----|----|----|----|----|----|----|----|----|----|----|----|----|----|----|----|----|----|----|----|----|----|----|----|----|----|----|----|----|------|---------|
| | | | 01 | 02 | 03 | 04 | 05 | 06 | 07 | 08 | 09 | 10 | 11 | 12 | 13 | 14 | 15 | 16 | 17 | 18 | 19 | 20 | 21 | 22 | 23 | 24 | 25 | 26 | 27 | 28 | 29 | 30 | 31 | |
| WISE 3E | 17 | MAX | 46 | 51 | 56 | 53 | 46 | 48 | 42 | 48 | 59 | 69 | 68 | 64 | 46 | 45 | 51 | 50 | 57 | 57 | 60 | 58 | 58 | 63 | 49 | 39 | 46 | 48 | 48 | 45 | 52 | 55 | 52.6 | |
| | | MIN | 34 | 39 | 28 | 37 | 27 | 28 | 37 | 27 | 27 | 35 | 43 | 46 | 26 | 23 | 27 | 26 | 28 | 31 | 31 | 37 | 37 | 32 | 31 | 26 | 16 | 36 | 34 | 34 | 21 | 36 | 31.3 | |
| WYTHEVILLE 1 S | 07 | MAX | 40 | 47 | 53 | 56 | 56 | 52 | 39 | 53 | 53 | 60 | 71 | 71 | 63 | 47 | 46 | 48 | 56 | 55 | 51 | 56 | 60 | 62 | 62 | 55 | 36 | 47 | 54 | 44 | 46 | 54 | 53.1 | |
| | | MIN | 34 | 33 | 25 | 24 | 24 | 22 | 21 | 21 | 25 | 25 | 25 | 26 | 35 | 20 | 19 | 21 | 20 | 20 | 26 | 30 | 25 | 23 | 23 | 27 | 15 | 18 | 25 | 32 | 16 | 16 | 23.9 | |

VIRGINIA
201211

SNOWFALL AND SNOW ON GROUND (INCHES)

| STATION | DAY OF MONTH | | | | | | | | | | | | | | | | | | | | | | | | | | | | | | | |
|--------------------------------|--------------|----|----|----|----|----|----|----|----|----|----|----|----|----|----|----|----|----|----|----|----|----|----|----|----|----|----|----|----|----|----|--|
| | 01 | 02 | 03 | 04 | 05 | 06 | 07 | 08 | 09 | 10 | 11 | 12 | 13 | 14 | 15 | 16 | 17 | 18 | 19 | 20 | 21 | 22 | 23 | 24 | 25 | 26 | 27 | 28 | 29 | 30 | 31 | |
| VIRGINIA | | | | | | | | | | | | | | | | | | | | | | | | | | | | | | | | |
| TIDEWATER 01 | | | | | | | | | | | | | | | | | | | | | | | | | | | | | | | | |
| DISPUTANTA | | | | | | | | | | | | | | | | | | | | | | | | | | | | | | | | |
| EASTVILLE | | | | | | | | | | | | | | | | | | | | | | | | | | | | | | | | |
| EMPORIA 1 WNW | | | | | | | | | | | | | | | | | | | | | | | | | | | | | | | | |
| FREDERICKSBURG SEWAGE | | | | | | | | | | | | | | | | | | | | | | | | | | | | | | | | |
| HAMPTON UNIV | | | | | | | | | | | | | | | | | | | | | | | | | | | | | | | | |
| HOLLAND 1 E | | | | | | | | | | | | | | | | | | | | | | | | | | | | | | | | |
| HOPEWELL | | | | | | | | | | | | | | | | | | | | | | | | | | | | | | | | |
| | | | | | | | | | | | | | | | | | | | | | | | | | | | | | | | | |
| NORFOLK INTL AP | | | | | | | | | | | | | | | | | | | | | | | | | | | | | | | | |
| NORFOLK SOUTH | | | | | | | | | | | | | | | | | | | | | | | | | | | | | | | | |
| NORTH | | | | | | | | | | | | | | | | | | | | | | | | | | | | | | | | |
| | | | | | | | | | | | | | | | | | | | | | | | | | | | | | | | | |
| PAINTER 2W | | | | | | | | | | | | | | | | | | | | | | | | | | | | | | | | |
| STONY CREEK 2 N | | | | | | | | | | | | | | | | | | | | | | | | | | | | | | | | |
| | | | | | | | | | | | | | | | | | | | | | | | | | | | | | | | | |
| SUFFOLK LAKE KILBY | | | | | | | | | | | | | | | | | | | | | | | | | | | | | | | | |
| | | | | | | | | | | | | | | | | | | | | | | | | | | | | | | | | |
| WAKEFIELD 1NW | | | | | | | | | | | | | | | | | | | | | | | | | | | | | | | | |
| | | | | | | | | | | | | | | | | | | | | | | | | | | | | | | | | |
| WALKERTON 2 NW | | | | | | | | | | | | | | | | | | | | | | | | | | | | | | | | |
| | | | | | | | | | | | | | | | | | | | | | | | | | | | | | | | | |
| WALLACETON LK DRUMMOND | | | | | | | | | | | | | | | | | | | | | | | | | | | | | | | | |
| WALLOPS ISLAND NASA TEST FACIL | | | | | | | | | | | | | | | | | | | | | | | | | | | | | | | | |
| | | | | | | | | | | | | | | | | | | | | | | | | | | | | | | | | |
| WARSAW 2 NW | | | | | | | | | | | | | | | | | | | | | | | | | | | | | | | | |
| WEST POINT 2 NW | | | | | | | | | | | | | | | | | | | | | | | | | | | | | | | | |
| | | | | | | | | | | | | | | | | | | | | | | | | | | | | | | | | |
| WILLIAMSBURG 2 N | | | | | | | | | | | | | | | | | | | | | | | | | | | | | | | | |
| EASTERN PIEDMONT 02 | | | | | | | | | | | | | | | | | | | | | | | | | | | | | | | | |
| BUCKINGHAM | | | | | | | | | | | | | | | | | | | | | | | | | | | | | | | | |
| | | | | | | | | | | | | | | | | | | | | | | | | | | | | | | | | |
| CAMP PICKETT | | | | | | | | | | | | | | | | | | | | | | | | | | | | | | | | |
| CHASE CITY | | | | | | | | | | | | | | | | | | | | | | | | | | | | | | | | |
| CLARKSVILLE | | | | | | | | | | | | | | | | | | | | | | | | | | | | | | | | |
| | | | | | | | | | | | | | | | | | | | | | | | | | | | | | | | | |
| CORBIN | | | | | | | | | | | | | | | | | | | | | | | | | | | | | | | | |
| CROZIER | | | | | | | | | | | | | | | | | | | | | | | | | | | | | | | | |
| | | | | | | | | | | | | | | | | | | | | | | | | | | | | | | | | |
| FARMVILLE 2 N | | | | | | | | | | | | | | | | | | | | | | | | | | | | | | | | |
| GREENBAY 3 NE | | | | | | | | | | | | | | | | | | | | | | | | | | | | | | | | |
| | | | | | | | | | | | | | | | | | | | | | | | | | | | | | | | | |

Snowfall: Includes snow and ice. Values for NWS stations (J index note) are Mid-Mid (LST).

Snow on ground: Includes snow, sleet, ice, and hail. Values for NWS stations (J index note) are observed at 12 UTC (GMT).

Water Equivalent: Given for NWS stations (J index note) only, when snow depth is 2 inches or more, and is measured at 18 UTC (GMT)

VIRGINIA
201211

SNOWFALL AND SNOW ON GROUND (INCHES)

| STATION | | DAY OF MONTH | | | | | | | | | | | | | | | | | | | | | | | | | | | | | | | | | | | | | |
|----------------------------|-----------|--------------|----|----|----|----|----|----|----|----|----|----|----|----|----|----|----|----|----|----|----|----|----|----|----|----|----|----|----|----|----|----|---|---|---|---|---|---|--|
| | | 01 | 02 | 03 | 04 | 05 | 06 | 07 | 08 | 09 | 10 | 11 | 12 | 13 | 14 | 15 | 16 | 17 | 18 | 19 | 20 | 21 | 22 | 23 | 24 | 25 | 26 | 27 | 28 | 29 | 30 | 31 | | | | | | | |
| JOHN H KERR DAM | SNOWFALL | | | | | | | | | | | | | | | | | | | | | | | | | | | | | | | | | | | | | | |
| LOUISA | SNOWFALL | | | | | | | | | | | | | | | | | | | | | | | | | | | | | | | | | | | | | | |
| PALMYRA 3S | SNOWFALL | | | | | | | | | | | | | | | | | | | | | | | | | | | | | | | | | | | | | | |
| PETERSBURG | SNOWFALL | - | | | | | | | | | - | | | | | | | | | | | | | | - | | | | | | | | | | | | | | |
| | SN ON GND | - | | | | | | | | | - | | | | | | | | | | | | | - | | | | | | | | | | | | | | | |
| RICHMOND INTL AP | SNOWFALL | | | | | | | | | | | | | | | | | | | | | | | | | | | | | | | | | | | | | | |
| | SN ON GND | | | | | | | | | | | | | | | | | | | | | | | | | | | | | | | | | | | | | | |
| SANDSTON | SNOWFALL | | | | | | | | | | | | | | | | | | | | | | | | | | | | | | | | | | | | | | |
| WINTERPOCK 4 W | SNOWFALL | | | | | | | | | | | | | | | | | | | | | | | | | | | | | | | | | | | | | | |
| NORTHERN 04 | | | | | | | | | | | | | | | | | | | | | | | | | | | | | | | | | | | | | | | |
| STERLING RCS | SNOWFALL | | | | | | | | | | | | | | | | | | | | | | | | | | | | | | | | | | | | | | |
| | SN ON GND | | | | | | | | | | | | | | | | | | | | | | | | | | | | | | | | | | | | | | |
| | WTR EQUIV | | | - | - | - | - | - | - | - | - | | | | | | | | | | | | | | | | | | | | | | | | | | | | |
| VIENNA | SNOWFALL | | | | | | | | | | | | | | | | | | | | | | | | | | | | | | | | | | | | | | |
| WARRENTON 3 SE | SNOWFALL | | | | | | | | | | | | | | | | | | | | | | | | | | | | | | | | | | | | | | |
| WASHGTN DULLES INTL AP | SNOWFALL | | | | | | | | | | | | | | | | | | | | | | | | | | | | | | | | | | | | | | |
| | SN ON GND | | | | | | | | | | | | | | | | | | | | | | | | | | | | | | | | | | | | | | |
| WASHINGTON REAGAN AP | SNOWFALL | | | | | | | | | | | | | | | | | | | | | | | | | | | | | | | | | | | | | | |
| | SN ON GND | | | | | | | | | | | | | | | | | | | | | | | | | | | | | | | | | | | | | | |
| WINCHESTER | SNOWFALL | | | | | | | | | | | | | | | | | | | | | | | | | | | | | | | | | | | | | | |
| WINCHESTER 7 SE | SNOWFALL | | | | | | | | | | | | | | | | | | | | | | | | | | | | | | | | | | | | | | |
| | SN ON GND | | | | | | | | | | | | | | | | | | | | | | | | | | | | | | | | | | | | | | |
| | WTR EQUIV | | | | | | | | | | | | | | | | | | | | | | | | | | | | | | | | | | | | | | |
| WOODSTOCK 2 NE | SNOWFALL | | | | | | | | | | | | | | | | | | | | | | | | | | | | | | | | | | | | | | |
| CENTRAL MOUNTAIN 05 | | | | | | | | | | | | | | | | | | | | | | | | | | | | | | | | | | | | | | | |
| MILLGAP | SNOWFALL | | | | | | | | | | | | | | | | | | | | | | | | | | | | | | | | | | | | | | |
| | SN ON GND | | | | | | | | | | | | | | | | | | | | | | | | | | | | | | | | | | | | | | |
| | WTR EQUIV | | | | | | | | | | | | | | | | | | | | | | | | | | | | | | | | | | | | | | |
| MTN GROVE | SNOWFALL | | | | | | | | | | | | | | | | | | | | | | | | | | | | | | | | | | | | | | |
| | SN ON GND | | | | | | | | | | | | | | | | | | | | | | | | | | | | | | | | | | | | | | |
| MUSTOE 1 SW | SNOWFALL | | | | | | | | | | | | | | | | | | | | | | | | | | | | | | | | | | | | | | |
| | SN ON GND | | | | | | | | | | | | | | | | | | | | | | | | | | | | | | | | | | | | | | |
| NEW CASTLE | SNOWFALL | | | | | | | | | | | | | | | | | | | | | | | | | | | | | | | | | | | | | | |
| | SN ON GND | | | | | | | | | | | | | | | | | | | | | | | | | | | | | | | | | | | | | | |
| ROANOKE 8 N | SNOWFALL | - | - | | | - | - | - | - | - | - | - | - | - | - | - | - | - | - | - | - | - | - | - | - | - | - | - | - | - | - | - | - | - | - | - | - | - | |
| | SN ON GND | - | - | | | - | - | - | - | - | - | - | - | - | - | - | - | - | - | - | - | - | - | - | - | - | - | - | - | - | - | - | - | - | - | - | - | - | |
| ROANOKE INTL AP | SNOWFALL | | | | | | | | | | | | | | | | | | | | | | | | | | | | | | | | | | | | | | |
| | SN ON GND | | | | | | | | | | | | | | | | | | | | | | | | | | | | | | | | | | | | | | |
| STAUNTON WATER TRMTMT PLT | SNOWFALL | - | | | - | - | - | - | - | - | - | - | - | - | - | - | - | - | - | - | - | - | - | - | - | - | - | - | - | - | - | - | - | - | - | - | - | - | |
| | SN ON GND | - | | | - | - | - | - | - | - | - | - | - | - | - | - | - | - | - | - | - | - | - | - | - | - | - | - | - | - | - | - | - | - | - | - | - | - | |
| WAYNESBORO WTP | SNOWFALL | | | | | | | | | | | | | | | | | | | | | | | | | | | | | | | | | | | | | | |
| | SN ON GND | | | | | | | | | | | | | | | | | | | | | | | | | | | | | | | | | | | | | | |

Snowfall: Includes snow and ice. Values for NWS stations (J index note) are Mid-Mid (LST).

Snow on ground: Includes snow, sleet, ice, and hail. Values for NWS stations (J index note) are observed at 12 UTC (GMT).

Water Equivalent: Given for NWS stations (J index note) only, when snow depth is 2 inches or more, and is measured at 18 UTC (GMT)

VIRGINIA
201211

PAN EVAPORATION AND WIND

| STATION | | DAY OF MONTH | | | | | | | | | | | | | | | | | | | | | | | | | | | | | | TOTAL OR AVERAGE | | | |
|--|------|--------------|----|----|----|----|----|----|----|----|----|----|----|----|----|----|----|----|----|----|----|----|----|----|----|----|----|----|----|----|----|---------------------|----|---|------------------|
| | | 01 | 02 | 03 | 04 | 05 | 06 | 07 | 08 | 09 | 10 | 11 | 12 | 13 | 14 | 15 | 16 | 17 | 18 | 19 | 20 | 21 | 22 | 23 | 24 | 25 | 26 | 27 | 28 | 29 | 30 | | 31 | | |
| VIRGINIA EASTERN PIEDMONT 02 JOHN H KERR DAM | WIND | - | - | - | - | - | - | - | - | - | - | - | - | - | - | - | - | - | - | - | - | - | - | - | - | - | - | - | - | - | - | - | - | - | M M M M |
| | EVAP | - | - | - | - | - | - | - | - | - | - | - | - | - | - | - | - | - | - | - | - | - | - | - | - | - | - | - | - | - | - | - | - | | |
| | MAX | - | - | - | - | - | - | - | - | - | - | - | - | - | - | - | - | - | - | - | - | - | - | - | - | - | - | - | - | - | - | - | - | | |
| | MIN | - | - | - | - | - | - | - | - | - | - | - | - | - | - | - | - | - | - | - | - | - | - | - | - | - | - | - | - | - | - | - | - | | |

Evaporation: Is measured in hundreths of inches.

Wind: Is measured in miles.

Max and Min: The maximum and minimum temperatures (Fahrenheit) of the water in the evaporation pan.

STATION INDEX

| STATION | INDEX NO. | DIVISION | COUNTY | LATITUDE | LONGITUDE | ELEVATION (IN FEET) | OBSERVATION TIME AND TABLES | | | |
|------------------------|-----------|----------|----------------|----------|-----------|------------------------|-----------------------------------|--------|------|------------------------|
| | | | | | | | LOCAL STD TIME | | | |
| | | | | | | | TEMP | PRECIP | EVAP | SPECIAL SEE (NOTES) |
| VIRGINIA | | | | | | | | | | |
| ABINGDON 3S | 0021 | 06 | WASHINGTON | 36 40 | 81 58W | 1920 | 22 | 22 | | H |
| ALBERTA 5N | 0079 | 02 | BRUNSWICK | 36 56 | 77 54W | 376 | | 08 | | H |
| ALTAVISTA | 0166 | 03 | CAMPBELL | 37 7 | 79 17W | 529 | | 07 | | CH |
| AMELIA COURTHOUSE 1 | 0187 | 02 | AMELIA | 37 21 | 77 59W | 345 | 08 | 08 | | H |
| APPOMATTOX | 0243 | 03 | APPOMATTOX | 37 20 | 78 50W | 850 | 07 | 07 | | H |
| ASHLAND | 0327 | 02 | HANOVER | 37 45 | 77 29W | 220 | 18 | 18 | | H |
| BEDFORD 4 NW | 0561 | 03 | BEDFORD | 37 23 | 79 34W | 1228 | | 07 | | CH |
| BIG STONE GAP | 0735 | 06 | WISE | 36 52 | 82 46W | 1464 | 08 | 08 | | H |
| BLACKSBURG NWSO | 0766 | 06 | MONTGOMERY | 37 12 | 80 25W | 2100 | 07 | 07 | | CH |
| BOSTON 4 SE | 0860 | 04 | CULPEPER | 38 33 | 78 6W | 590 | 07 | 07 | | H |
| BREMO BLUFF | 0993 | 02 | FLUVANNA | 37 43 | 78 17W | 225 | | 24 | | CH |
| BROOKNEAL | 1082 | 03 | CAMPBELL | 37 4 | 78 57W | 408 | 07 | 07 | | H |
| BUCHANAN | 1121 | 05 | BOTETOURT | 37 31 | 79 41W | 880 | | 07 | | H |
| BUCKINGHAM | 1136 | 02 | BUCKINGHAM | 37 30 | 78 32W | 552 | | 07 | | H |
| BUENA VISTA | 1159 | 05 | ROCKBRIDGE | 37 44 | 79 22W | 840 | | 07 | | H |
| BURKES GARDEN | 1209 | 06 | TAZEWELL | 37 6 | 81 20W | 3068 | 07 | 07 | | H |
| CAMP PICKETT | 1322 | 02 | NOTTOWAY | 37 2 | 77 57W | 330 | 08 | 08 | | CH |
| CHARLOTTE COURT HOUSE | 1585 | 03 | CHARLOTTE | 37 3 | 78 39W | 569 | 07 | 07 | | H |
| CHARLOTTESVILLE 2W | 1593 | 03 | ALBEMARLE | 38 2 | 78 31W | 866 | 08 | 08 | | H |
| CHASE CITY | 1606 | 02 | MECKLENBURG | 36 47 | 78 29W | 510 | 17 | 17 | | H |
| CHATHAM | 1614 | 03 | PITTSYLVANIA | 36 49 | 79 25W | 651 | 07 | 07 | | CH |
| CHRISTIANSBURG | 1692 | 06 | MONTGOMERY | 37 8 | 80 24W | 2100 | 07 | 07 | | H |
| CLARKSVILLE | 1746 | 02 | MECKLENBURG | 36 37 | 78 33W | 330 | 07 | 07 | | H |
| CLINTWOOD 1 W | 1825 | 06 | DICKENSON | 37 9 | 82 29W | 1780 | 07 | 07 | | H |
| CONCORD 4 SSW | 1955 | 03 | CAMPBELL | 37 17 | 78 58W | 720 | | 07 | | H |
| COPPER HILL | 1999 | 06 | FLOYD | 37 5 | 80 9W | 2690 | 07 | 07 | | H |
| CORBIN | 2009 | 02 | CAROLINE | 38 12 | 77 22W | 220 | 09 | 09 | | H |
| COVINGTON FLTR PLT | 2044 | 05 | ALLEGHANY | 37 49 | 79 59W | 1230 | 07 | 07 | | H |
| CRAIGSVILLE 2 S | 2064 | 05 | AUGUSTA | 38 3 | 79 23W | 1758 | | 07 | | H |
| CROZIER | 2142 | 02 | GOOCHLAND | 37 40 | 77 53W | 350 | 07 | 07 | | H |
| DALE ENTERPRISE | 2208 | 05 | ROCKINGHAM | 38 27 | 78 56W | 1358 | 07 | 07 | | H |
| DANVILLE REGIONAL AP R | 2250 | 03 | PITTSYLVANIA | 36 34 | 79 20W | 571 | 24 | 24 | | H |
| DISPUTANTA | 2400 | 01 | PRINCE GEORGE | 37 7 | 77 12W | 15 | 07 | 07 | | H |
| EASTVILLE | 2635 | 01 | NORTHAMPTON | 37 23 | 75 58W | 10 | 07 | 07 | | H |
| EDINBURG | 2663 | 04 | SHENANDOAH | 38 48 | 78 35W | 928 | 07 | 07 | | H |
| EMPORIA 1 WNW | 2790 | 01 | GREENSVILLE | 36 42 | 77 34W | 100 | 08 | 08 | | H |
| FARMVILLE 2 N | 2941 | 02 | CUMBERLAND | 37 20 | 78 23W | 450 | 07 | 07 | | H |
| FREDERICKSBURG SEWAGE | 3204 | 01 | FREDERICKSBURG | 38 17 | 77 27W | 15 | 07 | 07 | | H |
| FREE UNION | 3213 | 03 | ALBEMARLE | 38 5 | 78 35W | 590 | 08 | 07 | | H |
| FRONT ROYAL | 3229 | 04 | WARREN | 38 54 | 78 11W | 930 | 07 | 07 | | H |
| GALAX RADIO WBRF | 3267 | 06 | CARROLL | 36 40 | 80 55W | 2385 | 07 | 07 | | H |
| GALAX WTP | 3272 | 06 | CARROLL | 36 39 | 80 55W | 2360 | 07 | 07 | | CH |
| GATHRIGHT DAM | 3310 | 05 | ALLEGHANY | 37 57 | 79 57W | 1770 | 07 | 07 | | CH |
| GLASGOW 1 SE | 3375 | 05 | ROCKBRIDGE | 37 37 | 79 26W | 737 | | 07 | | H |
| GREENBAY 3 NE | 3565 | 02 | PRINCE EDWARD | 37 11 | 78 17W | 500 | 09 | 09 | | H |
| GRUNDY | 3640 | 06 | BUCHANAN | 37 17 | 82 5W | 1170 | 07 | 07 | | H |
| HAMPTON UNIV | 3713 | 01 | HAMPTON | 37 1 | 76 20W | 10 | 17 | 17 | | H |
| HOLCOMB ROCK | 4039 | 03 | BEDFORD | 37 33 | 79 24W | 620 | | 07 | | H |
| HOLLAND 1 E | 4044 | 01 | SUFFOLK | 36 41 | 76 46W | 80 | 08 | 08 | | H |
| HOPEWELL | 4101 | 01 | PRINCE GEORGE | 37 18 | 77 17W | 40 | 16 | 16 | | H |
| HOT SPRINGS | 4128 | 05 | BATH | 37 60 | 79 50W | 2236 | 07 | 07 | | H |
| HUDDLESTON 4 SW | 4148 | 03 | BEDFORD | 37 8 | 79 32W | 960 | | 07 | | H |
| JOHN FLANNAGAN LAKE | 4410 | 06 | DICKENSON | 37 14 | 82 21W | 1460 | 07 | 07 | | H |
| JOHN H KERR DAM | 4414 | 02 | MECKLENBURG | 36 36 | 78 18W | 250 | 08 | 08 | 08 | CH |
| LAFAYETTE 1 NE | 4676 | 06 | MONTGOMERY | 37 14 | 80 12W | 1320 | | 07 | | H |
| LEBANON | 4777 | 06 | RUSSELL | 36 54 | 82 2W | 1912 | 07 | 07 | | H |
| LEXINGTON | 4876 | 05 | ROCKBRIDGE | 37 47 | 79 26W | 1097 | | 07 | | H |
| LINCOLN | 4909 | 04 | LOUDOUN | 39 5 | 77 42W | 500 | 07 | 07 | | H |
| LOUISA | 5050 | 02 | LOUISA | 38 3 | 78 0W | 420 | 18 | 18 | | H |
| LURAY 5 E | 5096 | 04 | PAGE | 38 40 | 78 22W | 1400 | 08 | 08 | | H |
| LYNCHBURG #2 | 5117 | 03 | CAMPBELL | 37 23 | 79 14W | 736 | 07 | 07 | | H |
| LYNCHBURG INTL AP R | 5120 | 03 | CAMPBELL | 37 19 | 79 12W | 940 | 24 | 24 | | HJ |
| MADISON | 5150 | 04 | MADISON | 38 22 | 78 15W | 577 | 08 | 08 | | H |
| MANASSAS | 5204 | 04 | MANASSAS | 38 44 | 77 30W | 245 | 07 | 07 | | H |
| MARTINSVILLE FLTR PLT | 5300 | 03 | HENRY | 36 42 | 79 52W | 760 | 07 | 07 | | H |

STATION INDEX

| STATION | INDEX NO. | DIVISION | COUNTY | LATITUDE | LONGITUDE | ELEVATION (IN FEET) | OBSERVATION TIME AND TABLES | | | |
|----------------------------------|-----------|----------|----------------|----------|-----------|------------------------|-----------------------------------|--------|------|------------------------|
| | | | | | | | LOCAL STD TIME | | | |
| | | | | | | | TEMP | PRECIP | EVAP | SPECIAL SEE (NOTES) |
| MEADOWS OF DAN 5 SW | 5453 | 03 | PATRICK | 36 40 | 80 27W | 2225 | 07 | 07 | | H |
| MILLGAP | 5595 | 05 | HIGHLAND | 38 18 | 79 43W | 2421 | 07 | 07 | | CH |
| MONTEBELLO FISH CULTURAL STN # | 5690 | 03 | NELSON | 37 51 | 79 8W | 2667 | 07 | 07 | | H |
| MONTECELLO | 5700 | 03 | ALBEMARLE | 38 1 | 78 27W | 758 | 08 | 08 | | H |
| MT WEATHER | 5851 | 04 | LOUDOUN | 39 4 | 77 53W | 1659 | 07 | 07 | | H |
| MTN GROVE | 5756 | 05 | BATH | 38 6 | 79 53W | 1775 | | 07 | | H |
| MUSTOE 1 SW | 5880 | 05 | HIGHLAND | 38 20 | 79 40W | 2380 | 24 | 24 | | H |
| NEW CASTLE | 6012 | 05 | CRAIG | 37 18 | 80 3W | 1258 | | 07 | | H |
| NORA 4 SSE | 6125 | 06 | DICKENSON | 37 1 | 82 19W | 2650 | 07 | 07 | | H |
| NORFOLK INTL AP R | 6139 | 01 | NORFOLK (CITY) | 36 54 | 76 12W | 30 | 24 | 24 | | HJ |
| NORFOLK SOUTH | 6147 | 01 | NORFOLK (CITY) | 36 52 | 76 14W | 100 | 24 | 24 | | H |
| NORTH | 6161 | 01 | MATHEWS | 37 26 | 76 26W | 10 | 07 | 07 | | H |
| NORTH FORK LAKE | 6173 | 06 | WISE | 37 7 | 82 38W | 1675 | 08 | 08 | | H |
| PAINTER 2W | 6475 | 01 | ACCOMACK | 37 35 | 75 49W | 30 | 16 | 16 | | CH |
| PALMYRA 3S | 6491 | 02 | FLUVANNA | 37 49 | 78 16W | 410 | 06 | 06 | | H |
| PEDLAR DAM | 6593 | 03 | AMHERST | 37 40 | 79 17W | 1024 | | 07 | | H |
| PETERSBURG | 6656 | 02 | PETERSBURG | 37 14 | 77 24W | 15 | 08 | 08 | | H |
| PIEDMONT RSCH STN | 6712 | 04 | ORANGE | 38 14 | 78 7W | 520 | 08 | 08 | | CH |
| PULASKI 2 E | 6955 | 06 | PULASKI | 37 3 | 80 47W | 1850 | 07 | 07 | | CH |
| RADFORD 3 N | 6999 | 06 | PULASKI | 37 12 | 80 35W | 1800 | 07 | 07 | | H |
| RICHLANDS | 7174 | 06 | TAZEWELL | 37 6 | 81 48W | 1910 | 07 | 07 | | H |
| RICHMOND INTL AP R | 7201 | 02 | HENRICO | 37 30 | 77 19W | 164 | 24 | 24 | | HJ |
| ROANOKE 8 N | 7278 | 05 | ROANOKE | 37 22 | 79 58W | 1190 | 07 | 07 | | H |
| ROANOKE INTL AP R | 7285 | 05 | ROANOKE | 37 19 | 79 58W | 1175 | 24 | 24 | | HJ |
| ROCKY MT | 7338 | 03 | FRANKLIN | 36 59 | 79 54W | 1315 | 07 | 07 | | CH |
| SALTVILLE 1N | 7506 | 06 | SMYTH | 36 53 | 81 46W | 1733 | 07 | 07 | | H |
| SANDSTON | 7541 | 02 | HENRICO | 37 33 | 77 17W | 165 | 07 | 07 | | H |
| SOMERSET | 7904 | 04 | ORANGE | 38 15 | 78 16W | 510 | 07 | 07 | | H |
| SOUTH BOSTON | 7925 | 03 | HALIFAX | 36 42 | 78 53W | 329 | 07 | 07 | | H |
| SPERRYVILLE | 7985 | 04 | RAPPAHANNOCK | 38 39 | 78 14W | 750 | 06 | 06 | | H |
| STAFFORDSVILLE 3 ENE | 8022 | 06 | GILES | 37 16 | 80 43W | 1950 | 07 | 07 | | CH |
| STAUNTON WATER TRMTMT PLT | 8062 | 05 | AUGUSTA | 38 10 | 79 5W | 169 | 08 | 08 | | H |
| STERLING RCS | 8084 | 04 | LOUDOUN | 38 59 | 77 29W | 288 | 07 | 07 | | H |
| STONY CREEK 2 N | 8129 | 01 | SUSSEX | 36 58 | 77 24W | 105 | 08 | 08 | | H |
| STUART | 8170 | 03 | PATRICK | 36 38 | 80 15W | 1375 | 07 | 07 | | H |
| SUFFOLK LAKE KILBY | 8192 | 01 | SUFFOLK | 36 44 | 76 36W | 22 | 24 | 24 | | H |
| TROUT DALE 3 SSE | 8547 | 06 | GRAYSON | 36 39 | 81 24W | 2839 | 07 | 07 | | CH |
| TYE RIVER 1 SE | 8600 | 03 | NELSON | 37 38 | 78 56W | 720 | 07 | 07 | | H |
| VIENNA | 8737 | 04 | FAIRFAX | 38 54 | 77 16W | 418 | 07 | 07 | | H |
| WAKEFIELD 1NW | 8800 | 01 | SUSSEX | 36 59 | 77 0W | 113 | 24 | 24 | | CH |
| WALKERTON 2 NW | 8829 | 01 | KING AND QUEEN | 37 45 | 77 2W | 50 | 18 | 18 | | H |
| WALLACETON LK DRUMMOND | 8837 | 01 | CHESAPEAKE | 36 36 | 76 26W | 20 | 08 | 08 | | H |
| WALLOPS ISLAND NASA TEST FACIL R | 8849 | 01 | ACCOMACK | 37 56 | 75 28W | 46 | 24 | 24 | | HJ |
| WARRENTON 3 SE | 8888 | 04 | FAUQUIER | 38 41 | 77 46W | 500 | 08 | 08 | | H |
| WARSAW 2 NW | 8894 | 01 | RICHMOND | 37 59 | 76 47W | 140 | 18 | 18 | | H |
| WASHGTN DULLES INTL AP R | 8903 | 04 | LOUDOUN | 38 56 | 77 28W | 290 | 24 | 24 | | HJ |
| WASHINGTON REAGAN AP R | 8906 | 04 | ARLINGTON | 38 51 | 77 2W | 10 | 24 | 24 | | HJ |
| WAYNESBORO WTP | 8941 | 05 | WAYNESBORO | 38 5 | 78 53W | 1270 | 07 | 07 | | H |
| WEST POINT 2 NW | 9025 | 01 | KING WILLIAM | 37 34 | 76 48W | 20 | 17 | 17 | | H |
| WILLIAMSBURG 2 N | 9151 | 01 | YORK | 37 18 | 76 42W | 70 | 24 | 24 | | CH |
| WILLIS | 9169 | 06 | FLOYD | 36 55 | 80 30W | 2810 | | 07 | | CH |
| WINCHESTER | 9181 | 04 | FREDERICK | 39 11 | 78 9W | 720 | 07 | 07 | | H |
| WINCHESTER 7 SE | 9186 | 04 | FREDERICK | 39 11 | 78 7W | 680 | 08 | 08 | | H |
| WINTERPOCK 4 W | 9213 | 02 | CHESTERFIELD | 37 19 | 77 39W | 300 | | 07 | | H |
| WISE 3E | 9215 | 06 | WISE | 36 60 | 82 32W | 2549 | 17 | 17 | | CH |
| WOODSTOCK 2 NE | 9263 | 04 | SHENANDOAH | 38 54 | 78 28W | 675 | 07 | 07 | | H |
| WOOLWINE | 9272 | 03 | PATRICK | 36 47 | 80 17W | 1500 | | 07 | | CH |
| WYTHEVILLE 1 S | 9301 | 06 | WYTHE | 36 56 | 81 6W | 2450 | 07 | 07 | | CH |

REFERENCE NOTES

STATION NAMES: Name of the city, town or locality. Figures and letters following the station names indicate the distance in miles and direction from the post office or town community center.

DIVISIONS: Areas within a state of similar climatological characteristics. Division averages are calculated using data from stations that record temperature and/or precipitation. Station Precipitation totals flagged with an 'F' or 'M' are excluded from the Divisional Average calculations of precipitation. Stations with monthly Temperature averages flagged with an 'F' or 'M' are included in the Divisional Average if there are no more than 9 flagged or missing daily values in the month, else they are excluded from the divisional average for temperature.

NORMALS: The average value of the meteorological element over a time period. Effective 1 January 2012, the averaging period is 1981 to 2010. The normals for National Weather Service localities have been adjusted so as to be representative for the current observation site.

MONTHLY DEGREE DAY TOTALS: One heating (cooling) degree day is accumulated for each whole degree that the daily mean temperature is below (above) 65 degrees Fahrenheit.

PRECIPITATION: Values shown in hundredths of inches are water equivalent totals, i.e., total of liquid and melted frozen precipitation. In the "Monthly Summarized Data" table the total snow and sleet values shown in tenths of inches are unmelted amounts. The max depth on ground values of snow and sleet shown in whole inches are cumulative unmelted amounts. The number of days with .10, .50, 1.00 or more refers to water equivalents.

PRECIPITATION QUALITY CONTROL: The NCDC quality control process may flag precipitation data that are spatially inconsistent, exceed climatological limits, or are inconsistent with prevailing weather patterns.

TEMPERATURE: Original temperature values are given in the "Daily Temperature" table. Summary temperature information (averages, departures, extremes, monthly degree day totals) is based on the values labeled MAX/MIN.

WIND: (As shown in the "Evaporation and Wind" table) the total wind movement in miles over the evaporation pan as determined by an anemometer recorder located 6-8 inches above the pan.

SYMBOLS AND LETTERS USED IN THE STATION INDEX TABLE

C Station is equipped with recording rain gage (R) but values in this bulletin are from a non-recording rain gage unless indicated by an R.

G Observations appear in the "Soil Temperatures" table.

H Observations appear in the "Snowfall and Snow on the Ground" table.

J Station also published as a Local Climatological Data publication.

VAR Observation time varies.

SR Observation time near sunrise.

SS Observation time near sunset.

SYMBOLS AND LETTERS USED IN THE DATA TABLES

(DAILY DATA ARE FOR THE 24 HOURS IMMEDIATELY PRECEDING OBSERVATION TIME.)

BLANK Entries in the "Monthly Summarized Data" table indicate no record.

BLANK Entries in the "Daily Precipitation" and "Snowfall and Snow on the Ground" tables indicate zero.

BLANK Entries in the "Daily Temperature" table indicate a missing record

- No record. Data not recorded or not received in time for publication.

+ Precipitation or temperature extremes occurred on one or more previous dates during the month.

* Rain gage not read. Precipitation is included in the amount following the asterisks.

Time distribution may not be known. A * preceding the monthly total indicates precipitation amount is being carried forward to next month's total, and may include amounts from the previous month(s).

a As a subscript, indicates accumulated total.

A Amount of precipitation is the total of observer's entries for the current month. It may include precipitation that occurred during the previous month. Refer to earlier bulletin to determine date of last reading. (Hawaii stations)

B Divisional Departure from normals are computed using 1971-2000 normals.

E Normalized HDD/CDD Calculation. E is appended to the HDD/CDD Calculation when 1-9 individual daily TMAX and/or TMIN values are missing and a Normalized HDD/CDD Calculation is provided. M appears alone if 10 or more daily values are missing.

F Monthly calculation flagged value. F is appended to average and/or total values computed which exclude one or more daily data values that have been flagged by the GHCN-Daily Dataset

M Insufficient or partial data. M is appended to average and/or total values computed with 1-9 daily values missing. M appears alone if 10 or more daily values are missing, (8 or more for wind and evaporation).

N Indicates snow fall or Snowdepth totals are computed with one or more missing days.

R Amounts from recording rain gage.

T Trace. An amount too small to measure.

SEASONAL TABLES: Monthly and seasonal snowfall and heating degree days for the 12 months ending with the June data are published in the July issue of this bulletin. Cooling degree days for the calendar year are published in the "Climatological Data Annual Summary."

Information concerning the history of changes in locations, exposure, etc. of substations is kept on file at the National Climatic Data Center. Historical information of regular National Weather Service Offices may be obtained from the "Local Climatological Data" annual publication. The contents of this publication may be reprinted or otherwise used freely, with proper credit to the National Climatic Data Center. The data are also available digitally.

Effective with the January 2011 Data-Month, COOP Observer Names are no longer included in the Monthly and Annual Climatological Data Publications. This information is not published to ensure the privacy of personal information pursuant to Section 208 of the E-Government Act of 2002 (44 USC 3601).

As of the 2011 Data-Year, Station and Climate Division Maps are no longer being included in the CD Publications. NCDC's Product Development Branch provides updated Station Maps for various data networks via the Historical Observing Metadata Repository: <http://www.ncdc.noaa.gov/homr>.

The GHCN-Daily Quality Control Flags shown below are displayed as superscripts with the data. For more Information on Global Historical Climatology Network - Daily and flags, see: <http://www.ncdc.noaa.gov/oa/climate/ghcn-daily/> and

Comprehensive Automated Quality Assurance of Daily Surface Observations.

Durre, Imke, Matthew J. Menne, Byron E. Gleason, Tamara G. Houston,

Russell S. Vose, 2010: J. Appl. Meteor. Climatol., 49, 1615-1633.

doi: 10.1175/2010JAMC2375.1

Blank = Passed All checks

D = failed duplicate check

G = failed gap check

I = failed internal consistency check

K = failed streak/frequent-value check

L = failed check on length of multiday period

M = failed megaconsistency check

N = failed naught check

O = failed climatological outlier check

R = failed lagged range check

S = failed spatial consistency check

T = failed temporal consistency check

W = temperature too warm for snow

X = failed bounds check

Z = flagged as a result of an official Datzilla investigation

These and other publications are available from the National Climatic Data Center

Hourly Precipitation Data

This publication contains hourly precipitation amounts obtained from recording rain gages located at National Weather Service, Federal Aviation Administration, and cooperative observer stations. Published data are displayed in inches and tenths or inches and hundredths at local standard time. HPD includes maximum precipitation for nine (9) time periods from 15 minutes to 24 hours, for selected stations.

Climatological Data

Monthly editions contain station daily maximum and minimum temperatures and precipitation. Some Stations provide daily snowfall, snow depth, evaporation, and soil temperature data. Each edition also contains monthly summaries for heating and cooling degree days (65 degree F base). The July issue contains a recap of monthly heating degree days and snow data for the preceding July through June.

The Annual issue contains monthly and annual averages of temperature, precipitation, temperature extremes, freeze data, soil temperatures, evaporation, and a recap of monthly cooling degree days.

Storm Data

Monthly issues contain a chronological listing, by states, of occurrences of storms and unusual weather phenomena. Reports contain information on storm paths, deaths, injuries, and property damage. An "Outstanding storms of the month" section highlights severe weather events with photographs, illustrations, and narratives. The December issue includes annual tornado, lightning, flash flood, and tropical cyclone summaries.

Monthly Climatic Data for the World

This publication contains monthly means for temperature, pressure, precipitation, vapor pressure, and sunshine for approximately 2,000 surface data collection stations worldwide and monthly mean upper air temperatures, dew point depressions, and wind velocities for approximately 500 observing sites.

Local Climatological Data

LCD publications summarize temperature, relative humidity, precipitation, cloudiness, wind speed and direction observations for several hundred cities in the U.S. and its territories. Each monthly publication also contains 3 hourly weather observations for that month and a hourly summary of precipitation. Annual LCD publications contain a summary of the past calendar year as well as historical averages and extremes.

For Information Call:

(828) 271-4800 Option 2

(828) 271-4010 (TDD)

(828) 271-4876 (Fax)

NOAA\National Climatic Data Center
Attn: User Engagement & Services Branch
151 Patton Avenue
Asheville, NC 28801-5001

Customer Services Number: (828) 271-4800, option 2
TDD : (828) 271-4010
Fax number: (828) 271-4876

NCDC now offers free online access to the *Climatological Data* publication.
Go to : www.ncdc.noaa.gov and choose Most Popular.