



CLIMATOLOGICAL DATA

VIRGINIA

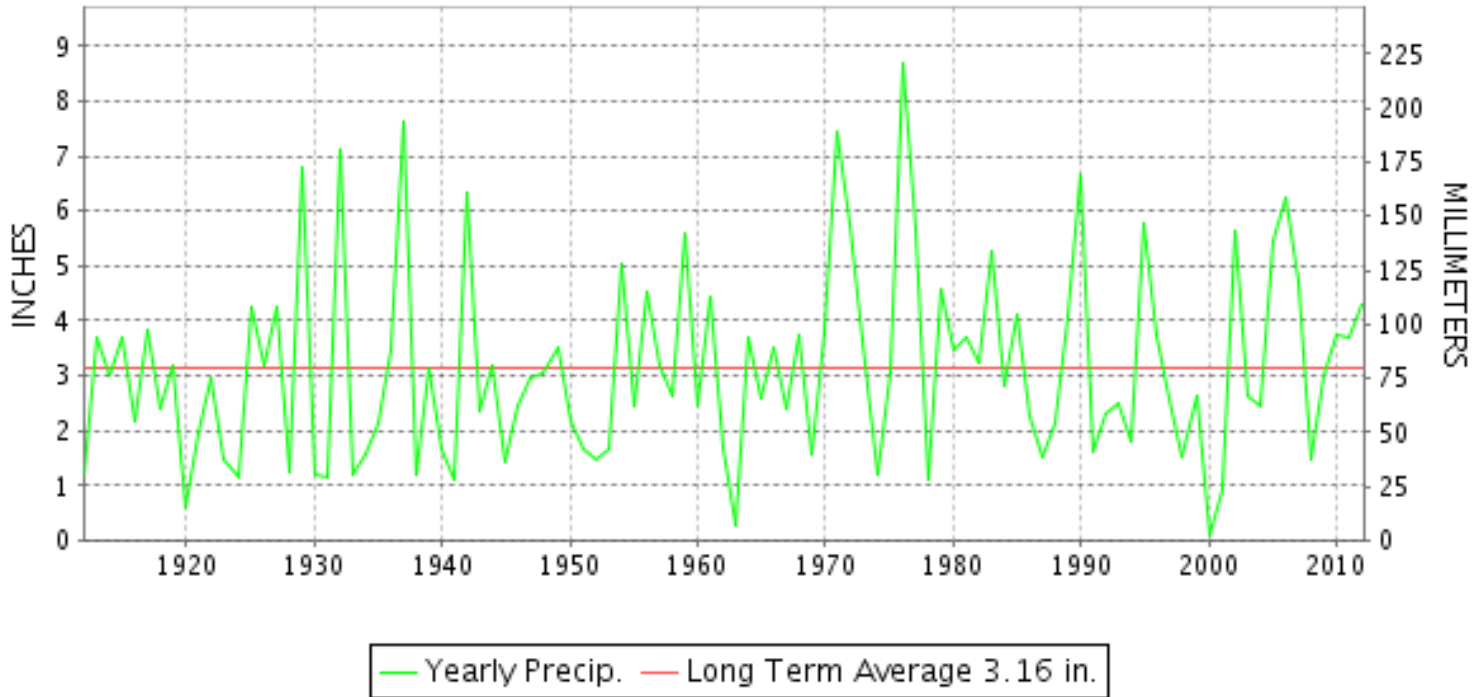
OCTOBER 2012

VOLUME 122 NUMBER 10

ISSN 0364-5630

GHCND Ver: 3.01-upd-2013022706

OCTOBER PRECIPITATION BY YEAR



TEMPERATURE AND PRECIPITATION EXTREMES

VIRGINIA

HIGHEST TEMPERATURE	88	OCTOBER 03+	2 STATIONS
LOWEST TEMPERATURE	25	OCTOBER 18	MILLGAP
GREATEST TOTAL PRECIPITATION	10.57		HAMPTON UNIV
LEAST TOTAL PRECIPITATION	0.20		WEST POINT 2 NW
GREATEST 1 DAY PRECIPITATION	6.58	OCTOBER 29	WALLOPS ISLAND NASA TEST FACIL
GREATEST TOTAL SNOWFALL	17.5		WISE 3E
GREATEST DEPTH OF SNOW OR ICE	10		NORA 4 SSE

"I certify that this is an official publication of the National Oceanic and Atmospheric Administration (NOAA) It is compiled using information from weather observing sites supervised by NOAA/National Weather Service and received at the National Climatic Data Center(NCDC), Asheville, North Carolina 28801."

Director
National Climatic Data Center

noaa

National
Oceanic and
Atmospheric Administration

National
Environmental Satellite, Data
and Information Service

National
Climatic Data Center
Asheville, North Carolina

VIRGINIA
201210

MONTHLY STATION AND DIVISION SUMMARY

STATION	TEMPERATURE (°F)											PRECIPITATION (IN)												
	AVERAGE MAXIMUM	AVERAGE MINIMUM	AVERAGE	DEPARTURE FROM NORMAL	HIGHEST	DATE	LOWEST	DATE	HEATING DEG. DAYS	COOLING DEG. DAYS	NO. OF DAYS				TOTAL	DEPARTURE FROM NORMAL	GREATEST 24 HOURS	DATE	ICE PELLETS, SNOW			NO. OF DAYS		
											MAX		MIN						TOTAL	MAX DEPTH ON GROUND	DATE	.10 OR MORE	.50 OR MORE	1.00 OR MORE
											>=90	<=32	<=32	<=0										
PALMYRA 3S	68.8	42.8	55.8	1.3	84	25+	32	23+	290	13	0	0	2	0	3.12	-0.32	1.35	30	0.0			7	3	1
PETERSBURG	70.4M	49.1M	59.8M	0.5	85	04	38	31	195E	41E	0	0	0	0	M 3.99	0.77	1.92	30	M 0.0	0		8	1	1
RICHMOND INTL AP	70.3	50.5	60.4	0.7	85	03+	37	31	191	55	0	0	0	0	4.00	1.02	1.96	29	M 0.0	0		6	2	1
SANDSTON	68.7	47.0	57.9	0.4	85	04	36	31	245	31	0	0	0	0	A 4.76	1.60	2.38	30	0.0			5	2	1
WINTERPOCK 4 W															3.33		1.55	30	0.0			7	1	1
--DIVISIONAL DATA-----> WESTERN PIEDMONT 03			58.4	1.5B										3.80	-0.05B									
ALTAVISTA														1.51		0.32	02	0.0				6	0	0
APPOMATTOX														2.36	-1.40	0.86	02	0.0				6	1	0
BEDFORD 4 NW														2.08		0.43	02	0.0				7	0	0
BROOKNEAL	69.2	44.8	57.0	5.5	83	04	34	23+	254	13	0	0	0	0	2.89	-0.72	0.63	02	0.0	0		8	2	0
CHARLOTTE COURT HOUSE														4.53	1.16	0.93	08	0.0	0			9	4	0
CHARLOTTESVILLE 2W	67.5	48.1	57.8	-0.5	84	25	37	31+	244	29	0	0	0	0	4.50	0.76	1.32	19	T	T	30	6	5	1
CHATHAM	67.6	43.1	55.4	0.4	82	25	32	22	298	8	0	0	1	0	2.76	-0.53	0.70	09	0.0			9	2	0
CONCORD 4 SSW														1.92		0.53	02	0.0				6	1	0
DANVILLE REGIONAL AP	70.4	47.0	58.7	-0.8	84	24+	36	21	220	31	0	0	0	0	1.91	-1.62	0.46	07	0.0	0		6	0	0
FREE UNION	67.5	43.2	55.4		84	25	32	14+	298	9	0	0	2	0	FA 0.86		0.42	19	0.0	0		3	0	0
HOLCOMB ROCK														2.96		0.60	02	T	0			6	4	0
HUDDLESTON 4 SW														1.98		0.50	16	0.0				9	1	0
LYNCHBURG #2	67.8	43.9	55.9	0.6	83	25	34	23+	283	7	0	0	0	0	1.87	-1.49	0.42	02	0.0			8	0	0
LYNCHBURG INTL AP	67.6	45.0	56.3	0.1	83	24	35	22+	273	11	0	0	0	0	1.68	-1.43	0.35	29	0.0	0		7	0	0
MARTINSVILLE FLTR PLT	69.5	42.9	56.2	0.4	83	25	32	22	274	7	0	0	1	0	2.10	-1.20	0.70	07	0.0			7	2	0
MEADOWS OF DAN 5 SW	66.3	43.9	55.1		81	26+	36	22+	303	3	0	0	0	0	2.12		0.48	16	0.0	0		6	0	0
MONTEBELLO FISH CULTURAL STN	60.3M	38.9MF	49.6MF		77	25	28	14+	488E	1E	0	0	8	0	FMA 1.85		0.75	02	M 6.4	5	30	5	1	0
MONTICELLO	65.4	47.2	56.3	0.7	80	25	36	30	276	13	0	0	0	0	4.21	0.53	1.14	03	0.0			6	4	1
PEDLAR DAM														1.91		0.54	02	T	0			7	1	0
ROCKY MT	68.2	43.4	55.8	-0.1	83	24	35	22+	286	7	0	0	0	0	2.50	-0.68	0.89	02	0.0			8	1	0
SOUTH BOSTON	70.0	46.1	58.1	0.9	84	04	36	23	232	21	0	0	0	0	2.98	-0.50	0.55	08	0.0	0		8	2	0
STUART	68.9	44.9	56.9	-0.8	83	25	35	21	250	8	0	0	0	0	2.19	-1.13	0.60	02	0.0			5	2	0
TYE RIVER 1 SE	70.3	45.8	58.1	0.9	86	25	36	22	229	23	0	0	0	0	1.90	-1.74	0.62	08	0.0	0		5	1	0
WOOLWINE														2.79		1.02	02	M 0.0				6	2	1
--DIVISIONAL DATA-----> NORTHERN 04			56.2	-0.1B										2.53	-1.23B									
BOSTON 4 SE	67.1	44.0	55.6	1.6	85	24	30	13	296	12	0	0	1	0	FA 4.10	0.62	2.15	30	0.0	0		7	3	1
EDINBURG	65.6F	41.0	53.3F	0.0	80	25+	28	14+	351	9	0	0	2	0	5.60	3.26	3.46	30	M 0.0	0		5	2	2
FRONT ROYAL	65.9	45.0	55.5	-0.6	81	04	31	14	300	13	0	0	1	0	4.94	1.79	2.76	30	M 0.0	0		7	2	1
LINCOLN	66.0	42.5	54.3	0.0	79	24+	27	14+	335	8	0	0	2	0	M 7.30	7.30	4.00	31	0.0	0		4	3	2
LURAY 5 E	66.5	42.7	54.6	-1.9	81	26+	30	13	320	7	0	0	1	0	6.33	3.30	3.78	30	0.0	0		7	3	2

VIRGINIA
201210

MONTHLY STATION AND DIVISION SUMMARY

STATION	TEMPERATURE (°F)										PRECIPITATION (IN)													
	AVERAGE MAXIMUM	AVERAGE MINIMUM	AVERAGE	DEPARTURE FROM NORMAL	HIGHEST	DATE	LOWEST	DATE	HEATING DEG. DAYS	COOLING DEG. DAYS	NO. OF DAYS				TOTAL	DEPARTURE FROM NORMAL	GREATEST 24 HOURS	DATE	ICE PELLETS, SNOW			NO. OF DAYS		
											MAX		MIN						TOTAL	MAX DEPTH ON GROUND	DATE	.10 OR MORE	.50 OR MORE	1.00 OR MORE
											>=90	<=32	<=32	<=0										
MADISON	68.5	47.2	57.9	2.3	83	25	37	14+	230	18	0	0	0	0	FA 4.32	0.96	2.00	30	M 0.0	0		5	2	2
MANASSAS	68.0	46.8	57.4	1.0	82	04	34	13	246	20	0	0	0	0	7.35	7.35	3.80	30	0.0	0		9	4	1
MT WEATHER	62.5	46.3	54.4	-0.3	76	25+	34	31+	338	14	0	0	0	0	8.51	5.08	4.45	30	0.0	0		7	5	3
PIEDMONT RSCH STN	67.0	46.4	56.7	0.0	82	25	37	13	267	17	0	0	0	0	5.55	2.13	1.85	30	0.0	0		6	4	2
SOMERSET	67.7	44.4	56.1	0.4	83	25	32	13	281	13	0	0	1	0	5.58	2.03	1.41	30	0.0	0		6	5	3
SPERRYVILLE	66.0	44.9	55.5	-0.4	81	25+	32	13	297	9	0	0	1	0	7.30	3.74	3.92	30	0.0	0		7	4	1
STERLING RCS	67.4	44.9	56.2	1.0	82	25	30	14	283	14	0	0	2	0	9.55	5.96	5.80	30	M 0.0	0		8	3	2
VIENNA	64.0	44.9	54.5	-0.5	80	25	30	14+	325	7	0	0	2	0	FA 2.77	-0.74	1.46	03	0.0	0		4	1	1
WARRENTON 3 SE	M	M	M												M				0.0					
WASHGTON DULLES INTL AP	66.8	46.7	56.8	0.8	81	24+	30	13	262	16	0	0	1	0	8.88	5.63	4.26	29	0.0	0		6	3	3
WASHINGTON REAGAN AP	68.9	53.0	61.0	1.5	84	24	41	13	163	45	0	0	0	0	5.82	2.42	3.85	29	0.0	0		6	2	1
WINCHESTER	64.2	45.3	54.8	0.2	78	25	31	13	319	9	0	0	2	0	6.27	3.32	2.97	30	0.0	0		7	3	2
WINCHESTER 7 SE	66.1	41.9	54.0	0.4	80	24	27	13	340	8	0	0	1	0	7.24	4.30	4.10	30	M 0.0	0		7	3	2
WOODSTOCK 2 NE	65.5M	42.5M	54.0M	0.3	80	25	30	14+	337E	5E	0	0	2	0	M 7.68	5.02	5.24	30	0.0	0		6	2	2
--DIVISIONAL DATA----->			55.7	1.2B											6.84	3.28B								
CENTRAL MOUNTAIN 05																								
BUCHANAN															1.50	-1.71	0.62	02	0.0			4	1	0
BUENA VISTA															1.86	0.58	0.58	02	0.0			5	1	0
COVINGTON FLTR PLT	68.2	42.6	55.4	-0.7	82	26+	33	13	296	7	0	0	0	0	1.35	-1.19	0.41	02	M 0.0	0		5	0	0
CRAIGSVILLE 2 S															M				0.0					
DALE ENTERPRISE	65.3M	42.5M	53.9M	0.5	81	24	31	14+	346E	8E	0	0	3	0	M 2.58	0.06	0.72	30	M 0.0	0		5	3	0
GATHRIGHT DAM	63.4	41.9	52.7	-0.6	77	25+	33	31	380	3	0	0	0	0	1.98	-0.75	0.61	19	M 0.0	0		5	2	0
GLASGOW 1 SE															2.01	0.73	0.73	02	MT	0		7	1	0
HOT SPRINGS	63.1	40.4	51.8	-0.2	76	26+	32	31+	405	2	0	0	2	0	2.00	-1.01	0.63	02	0.0			8	1	0
LEXINGTON															1.84	-1.08	0.79	02	MT	0		6	1	0
MILLGAP	61.6	35.5	48.6	-0.3	76	04	25	18	506	2	0	0	13	0	2.98	0.04	1.19	08	0.3	T	31	7	2	1
MTN GROVE															1.93	0.75	0.75	02	M 0.0	0		7	1	0
MUSTOE 1 SW	60.4	36.6	48.5	-1.1	75	25+	26	13	506	1	0	0	9	0	2.25	-0.59	0.71	02	T	T	31	8	1	0
NEW CASTLE															1.58	0.44	0.44	02	M 0.0	0		5	0	0
ROANOKE 8 N	67.9	45.6	56.8	-0.3	83	25	36	31	258	11	0	0	0	0	1.51	-1.55	0.61	02	M 0.0	0		3	1	0
ROANOKE INTL AP	67.3	47.0	57.2	-0.5	83	24	37	30	256	17	0	0	0	0	1.30	-1.59	0.48	02	T	0		3	0	0
STAUNTON WATER TRMTMT PLT	65.2	43.5	54.4	0.2	79	26+	33	31+	323	2	0	0	0	0	1.76	-1.22	0.65	02	M 0.0	0		5	1	0
WAYNESBORO WTP	67.2	43.0	55.1	0.9	81	25+	33	13	308	6	0	0	0	0	4.74	1.53	2.10	21	0.0	0		6	3	1
--DIVISIONAL DATA----->			53.4	-0.6B											2.04	-1.13B								
SOUTHWESTERN MOUNTAIN 06																								
ABINGDON 3S	63.7M	43.4M	53.6M	-1.0	82	02	32	30	352E	7E	0	0	1	0	FMA 1.82	-0.59	0.52	30	M T	M T	29	5	1	0
BIG STONE GAP	65.6	42.8	54.2	-1.8	82	03	33	31+	335	9	0	0	0	0	4.10	1.17	0.70	15	0.0			9	5	0

VIRGINIA
201210

MONTHLY STATION AND DIVISION SUMMARY

STATION	TEMPERATURE (°F)											PRECIPITATION (IN)												
	AVERAGE MAXIMUM	AVERAGE MINIMUM	AVERAGE	DEPARTURE FROM NORMAL	HIGHEST	DATE	LOWEST	DATE	HEATING DEG. DAYS	COOLING DEG. DAYS	NO. OF DAYS				TOTAL	DEPARTURE FROM NORMAL	GREATEST 24 HOURS	DATE	ICE PELLETS, SNOW			NO. OF DAYS		
											MAX		MIN						TOTAL	MAX DEPTH ON GROUND	DATE	.10 OR MORE	.50 OR MORE	1.00 OR MORE
											>=90	<=32	<=32	<=0										
BLACKSBURG NWSO	63.5	40.0	51.8	-0.5	78	25	30	30	406	2	0	0	2	0	1.72	-1.06	0.57	02	0.6	T	30	6	1	0
BURKES GARDEN	58.7	35.7	47.2	-1.9	74	03	26	18	546	0	0	2	12	0	3.32	0.40	1.14	02	8.4	9	31	9	2	1
CHRISTIANSBURG	62.5	42.1	52.3	-2.2	78	26	31	30	388	1	0	0	2	0	1.85	-0.90	0.55	02	M T	M T	30	5	1	0
CLINTWOOD 1 W	63.4	39.5	51.5	-1.4	79	26	32	31+	418	4	0	0	4	0	3.66	0.96	1.30	30	7.0	5	30	9	2	1
COPPER HILL	58.9M	40.9M	49.9M		74	28+	28	31+	464E	2E	0	1	3	0	M 2.45	0.53	0.53	02	M 1.0	1	31	8	1	0
GALAX RADIO WBRF	63.6	40.3	52.0	-0.3	78	25	32	30+	399	0	0	0	4	0	2.20	-0.63	0.77	02	0.0			5	2	0
GALAX WTP	63.0	40.0	51.5	-0.3	76	25	33	31+	414	0	0	0	0	0	1.74	1.74	0.80	02	M T	0		5	1	0
GRUNDY	63.9	42.8	53.4	-1.5	81	27	32	31+	358	5	0	0	2	0	4.11	1.29	1.19	30	1.0	1	30	8	3	1
JOHN FLANNAGAN LAKE	M	M	M		84	03	32	31+							M				M 1.0	1	30			
LAFAYETTE 1 NE															1.48		0.31	02	M T	0		6	0	0
LEBANON	64.6M	40.2	52.4M	-0.8	83	03	31	30+	390E	8E	0	0	4	0	2.10	-0.30	0.50	02	5.0	5	30	8	1	0
NORA 4 SSE	59.5	44.5	52.0	-2.7	77	03	27	30	397	3	0	2	3	0	3.89	1.21	1.34	30	13.4	10	31	8	3	1
NORTH FORK LAKE	M	M	M		82	03	31	31+							MA 5.16		1.52	30	M 4.0	M 4	31	3	2	1
PULASKI 2 E	65.5	40.8M	53.2M	-0.4	79	26+	33	22+	374E	6E	0	0	0	0	M 2.39	-0.26	0.98	02	M T	0		4	2	0
RADFORD 3 N	64.3	40.5	52.4	0.2	78	26+	31	21+	387	3	0	0	4	0	2.00	-0.64	0.84	02	M T	0		5	1	0
RICHLANDS	65.1	40.1	52.6	-0.6	83	03	31	31+	385	7	0	0	2	0	3.13	0.69	0.84	30	M 9.0	7	30	7	3	0
SALTVILLE 1N	66.4	39.8	53.1	-1.2	83	06+	32	30+	371	9	0	0	2	0	3.27	0.54	0.86	02	M 1.4	1	30	8	2	0
STAFFORDSVILLE 3 ENE	64.0	40.3	52.2	-1.0	77	26+	31	18	393	2	0	0	4	0	1.94	-0.71	0.78	02	M T	M T	30	5	1	0
TROUT DALE 3 SSE	62.6	36.4F	49.5F		75	25	28	18+	473	0	0	0	8	0	2.42		1.22	02	3.0	2	30	6	1	1
WILLIS															2.16		0.91	02	0.0			7	1	0
WISE 3E	61.8	43.7	52.8	-2.1	81	25	29	11	374	4	0	0	3	0	3.35	0.78	0.65	15	M 17.5	M 7	30	8	4	0
WYTHEVILLE 1 S	64.8	38.3	51.6	-0.3	80	25	30	22+	413	1	0	0	7	0	2.18	-0.51	1.24	02	0.0	0		5	1	1
--DIVISIONAL DATA----->			52.0	-0.7B											2.66	-0.44B								

VIRGINIA
201210

DAILY PRECIPITATION (INCHES)

STATION	TOTAL	DAY OF MONTH																															
		01	02	03	04	05	06	07	08	09	10	11	12	13	14	15	16	17	18	19	20	21	22	23	24	25	26	27	28	29	30	31	
VIRGINIA																																	
TIDEWATER 01																																	
DISPUTANTA	5.26			0.18				0.28	0.56	0.18	0.03					0.16															0.69	2.95	0.23
EASTVILLE	7.60		0.01					0.10	0.66	1.10	0.10					0.62				0.01								0.03	0.40	3.20	1.35	0.02	
EMPORIA 1 WNW	3.69		0.14	0.05	0.10			0.13	0.51	0.34						0.98				0.02										0.60	0.74	0.06	
FREDERICKSBURG SEWAGE	M 5.14		0.05	0.09	T			T	0.19	0.12	T					0.21				0.12					T		-		0.51	3.65	0.20		
HAMPTON UNIV	10.57	0.03						0.51	1.19	0.10					0.56						0.02							1.61	3.14	3.15	0.26		
HOLLAND 1 E	FA 7.11		0.03	0.11	0.03			0.03	0.30	1.28	0.06					0.46				0.03					0.00 ^L	0.00 ^L	0.04	0.01	3.40		1.38		
HOPEWELL	3.94		0.02					0.79	0.20	0.18	0.01					0.08	0.04			0.09							0.04	0.01	1.20	1.28			
NORFOLK INTL AP	8.98	T	0.20	T				0.49	0.92	0.29						0.68			T							T	0.15	1.89	3.87	0.49			
NORFOLK SOUTH	M 10.16	T	0.07	T	T			0.51	1.02	0.30	T					0.75			T	T					0.18	0.35	-	2.66	4.20	0.12			
NORTH	9.29		0.01	0.02				0.21	0.49	0.34	0.08																		1.05	4.58	2.10	0.02	
PAINTER 2W	9.94	0.01	0.03					0.63	0.13	0.81	0.02					0.39				0.03									0.76	5.84	1.25	0.04	
STONY CREEK 2 N	FA 1.70	0.24 ^L	0.00 ^L	0.00 ^L	0.00 ^L	0.00 ^L	0.00 ^L	1.08 ^L	0.00 ^L	0.30 ^L	0.00 ^L	0.01 ^L				0.00 ^L	0.23 ^L	0.01	0.00 ^L	0.00 ^L	0.00 ^L	0.00 ^L	0.12 ^L			0.00 ^L	0.00 ^L	0.00 ^L	0.27 ^L	1.51	0.18		
SUFFOLK LAKE KILBY	7.85	0.02						0.38	1.47	0.27						0.62				T						T	0.37	2.37	1.78	0.57			
WAKEFIELD 1NW	5.19	0.05	0.01		T			0.91	0.48	0.09	T					0.34				0.01					T	0.01	1.03	1.91	0.35				
WALKERTON 2 NW	5.42		0.15		0.05	T	0.51		0.13							0.14													T	2.86	1.56		
WALLACETON LK DRUMMOND	9.89		0.01	0.30	0.15				0.35	3.10	0.08																		1.44	1.67	1.40	0.07	
WALLOPS ISLAND NASA TEST FACIL	10.40	T	0.19				T	0.58	0.45	0.23						0.42				0.01	0.04						T	1.79	6.58	0.11			
WARSAW 2 NW	6.84		0.21	0.64				0.28	0.06	0.01						0.07	0.13				0.04											5.40	
WEST POINT 2 NW	FA 0.20	0.01 ^L	0.01 ^L	T	0.01		0.00 ^L	0.61 ^L	0.20 ^L	0.19 ^L						0.07	0.07			0.05							T	0.42 ^L	3.35 ^L	0.83 ^L			
WILLIAMSBURG 2 N	7.64	0.02	0.08					0.65	0.27	0.11	0.05					0.32					0.05					0.13	0.04	1.87	3.55	0.50			
EASTERN PIEDMONT 02																																	
ALBERTA 5N	3.07	T	0.04	0.10	T	T		0.22	0.46	0.39	T					0.31				0.10	T							0.05	T	0.11	1.12	0.17	
AMELIA COURTHOUSE 1	FA 2.83	0.04	0.02	0.05	0.01			0.00 ^L	1.00 ^L	0.24	0.01					0.01	0.10			0.57	0.00 ^L	0.00 ^L					0.10	0.00 ^L	0.24 ^L	1.51	0.17		
ASHLAND	3.32		0.10					0.30	0.03	0.07						0.01	0.06				0.21							0.02	T	1.50	1.02		
BREMO BLUFF	M 1.83	-	-	-				0.15	0.02	0.02						0.01				-	-	-						0.01	0.26	1.13	0.23	-	
BUCKINGHAM	3.46		0.29	0.69	0.01			0.16	0.15	0.05											0.34							0.02		0.64	0.91	0.11	
CAMP PICKETT	M		-	-				-	-	-											0.03							-	-	0.18	1.30	0.15	
CHASE CITY	4.55	0.03	0.11	0.03				0.67	0.17	0.21						0.02	0.47				1.21									0.70	0.83	0.10	
CLARKSVILLE	M 2.98							0.30		0.30	-										0.45									0.65	0.75		
CORBIN	5.52		0.18	0.05	0.02				0.24	0.14											0.20									1.01	3.21	0.24	
CROZIER	FA 2.22		0.17		0.04			0.00 ^L	0.00 ^L	0.00 ^L	0.00 ^L	0.00 ^L	0.00 ^L	0.00 ^L	0.00 ^L	0.00 ^L	0.00 ^L	0.00 ^L	0.00 ^L	0.00 ^L	0.82 ^L	0.02					0.02		0.15	1.72	0.12		
FARMVILLE 2 N	3.10	T	0.53	0.07				0.27	0.23	0.11	T										0.34	0.02					0.04		0.53	0.77	0.19		
GREENBAY 3 NE	3.45	0.02	0.06	0.07	0.02			0.60	0.62	0.07						0.01	0.25				0.22	T						0.01	T	0.22	1.20	0.08	
JOHN H KERR DAM	M 2.11		0.02					0.41	0.50	0.34																		0.01		0.27	0.50	0.05	
LOUISA	3.92		0.82					0.20	0.02	0.02																				1.49	1.14		
PALMYRA 3S	3.12		0.55	0.11					0.18	0.02											0.07									0.52	1.35	0.04	
PETERSBURG	M 3.99		0.05	0.47				0.12	0.26	0.33	0.09										0.23							0.01		0.27	1.92	0.28	
RICHMOND INTL AP	4.00	0.01	0.20		T			0.67	0.08	0.09		-				0.15	0.13				0.02	0.05							0.27	1.92	0.28		
SANDSTON	A 4.76		0.17	0.07	0.02			*	0.80	0.08	0.09										0.03	0.02				T	0.09		0.21	1.96	0.49		
WINTERPOCK 4 W	3.33	0.02	0.01	0.25	0.01			0.38	0.35	0.17	0.02										0.17							0.01	0.06	0.61	2.38	0.25	
																													0.02	0.07	1.55	0.27	

VIRGINIA
201210

DAILY PRECIPITATION (INCHES)

STATION	TOTAL	DAY OF MONTH																															
		01	02	03	04	05	06	07	08	09	10	11	12	13	14	15	16	17	18	19	20	21	22	23	24	25	26	27	28	29	30	31	
WESTERN PIEDMONT 03																																	
ALTAVISTA	1.51		0.32	0.20	0.03			0.05	0.22		0.01				0.01	0.25			0.05								0.01	0.01	0.25	0.10			
APPOMATTOX	2.36	0.05	0.86	0.15	T			0.29		0.06						0.11			0.04									0.06		0.31	0.41	0.02	
BEDFORD 4 NW	2.08	0.01	0.43	0.18	0.02			0.22	0.07	0.07					0.17	0.22			0.07											0.38	0.22	0.02	
BROOKNEAL	2.89	0.05	0.63	0.03				0.32	0.23	0.15						0.52			0.39								0.05		0.32	0.15	0.05		
CHARLOTTE COURT HOUSE	4.53	0.37	0.56	0.05	0.01			T	0.93	0.15						0.20			0.35							0.06	T	0.65	0.80	0.40			
CHARLOTTESVILLE 2W	4.50		0.90	0.53				0.09	0.05	0.26						0.01			1.32							T		0.53	0.79	0.02			
CHATHAM	2.76	0.20	0.50	0.25	0.03			0.20		0.70						0.25			0.15									0.28	0.20				
CONCORD 4 SSW	1.92	0.04	0.53	0.14	0.02			0.06	0.27	0.03	0.01					0.13			0.04							0.05		0.21	0.36	0.03			
DANVILLE REGIONAL AP	1.91	0.03	0.25		T		0.19	0.46	0.20	0.02								0.04	0.01									0.06	0.28	T			
FREE UNION	FA 0.86	0.00 ^L	0.49 ^L	0.17	0.02 ^L	0.00 ^L	0.00 ^L	0.00 ^L	0.06	0.20					T	0.18			0.42							0.00 ^L	0.00 ^L	0.70 ^L	0.63 ^L	T ^L			
HOLCOMB ROCK	2.96		0.60	0.56					0.31	0.05					0.02	0.34			0.04								T		0.53	0.51			
HUDDLESTON 4 SW	1.98		0.37	0.22	0.03			0.12	0.13	0.15						0.50			0.12										0.22	0.10	0.02		
LYNCHBURG #2	1.87	0.02	0.42	0.21	0.02			0.05	0.20	0.14						0.27			0.13									T	0.29	0.10	0.02		
LYNCHBURG INTL AP	1.68	0.11	0.34	T	0.01			0.29	0.04	T					0.14			0.26								0.03	0.10	0.35	T	0.01			
MARTINSVILLE FLTR PLT	2.10	0.03	0.50	0.19	0.04			0.70	0.10	0.05						0.28													0.11	0.10			
MEADOWS OF DAN 5 SW	2.12	0.12	0.41	0.17	0.02			0.42	0.02	0.04					0.28	0.48										0.01	0.05	0.01	0.09				
MONTEBELLO FISH CULTURAL STN	FMA 1.85		0.75	0.42	-			0.02	0.28	0.06					0.14				0.14							0.04	0.00 ^L	0.51 ^L	1.12 ^L	0.23 ^L			
MONTICELLO	4.21		0.31	1.14	0.03				0.13	0.07									0.85	0.03								0.66	0.95	0.04			
PEDLAR DAM	1.91		0.54	0.17	0.02			0.22	0.05	0.11					T	0.21			0.04								T	0.17	0.35	0.03			
ROCKY MT	2.50	0.11	0.89	0.24				0.24	0.16	0.15					0.05				0.35	0.02						0.07		0.18	0.04				
SOUTH BOSTON	2.98		0.43					0.33	0.55	0.14						0.48			0.14							0.01		0.33	0.53	0.04			
STUART	2.19	0.08	0.60	0.22				0.50		0.16					0.09	0.40	0.01		0.08										0.02	0.03			
TYE RIVER 1 SE	1.90		0.48		T			0.03	0.62	0.11					T				0.21									0.42	0.03				
WOOLWINE	2.79	0.12	1.02	0.25	0.02			0.36	0.03	0.12					0.03	0.70			0.05							0.05		0.02	0.02				
NORTHERN 04																																	
BOSTON 4 SE	FA 4.10	0.00 ^L	1.90 ^L	0.40					0.13	0.07						0.15			0.54										0.54	2.15	0.12		
EDINBURG	5.60		0.30	0.20	0.02			0.02	0.06	0.04						0.02			1.03								0.05	0.34	3.46	0.06			
FRONT ROYAL	4.94		0.50	0.37	0.02				0.05	0.03						0.31			0.17	0.01								0.47	2.76	0.25			
LINCOLN	M 7.30					1.97										0.40			0.93										-	-	4.00		
LURAY 5 E	6.33		0.81	0.11	0.03			0.02	0.12	0.02					0.01				0.19										1.09	3.78	0.15		
MADISON	FA 4.32		1.40	0.34	T			0.00 ^L	0.00 ^L	0.16 ^L						0.08			0.40									0.10	2.00	T			
MANASSAS	7.35		0.85	0.90	0.03	0.02		0.01	0.22	0.20						0.20			0.42									0.50	3.80	0.20			
MT WEATHER	8.51	0.05	0.62	0.52				0.05	0.04	0.03						0.32			1.03	T								1.05	4.45	0.35			
PIEDMONT RSCH STN	5.55		0.78	1.24	T				0.09	0.10						0.02			0.98									0.45	1.85	0.04			
SOMERSET	5.58		0.65	1.00	0.03			0.08	0.04	0.39						0.09			T	1.30	0.02				0.01		0.53	1.41	0.03				
SPERRYVILLE	7.30		0.73	0.68	0.02				0.09	0.07						0.40			0.84	0.02								0.37	3.92	0.16			
STERLING RCS	9.55	0.02	0.55	1.61	0.01			T	0.10	0.06	T					0.43			0.36	0.02								0.26	5.80	0.33			
VIENNA	FA 2.77		0.33	1.46				0.01	0.09	0.08									0.39	0.03						0.01		0.52 ^L	4.51 ^L	0.37			
WARRENTON 3 SE	M	-	-	-	-	-	-	-	-	-	-	-	-	-	-	-	-	-	-	-	-	-	-	-	-	-	-	-	-	-	-		
WASHGTN DULLES INTL AP	8.88	0.01	2.35	T	0.01			0.08	0.05	0.03	T					0.26			0.40	0.03								T	0.40	4.26	1.00	T	
WASHINGTON REAGAN AP	5.82	T	0.43	T	0.01			0.11	0.04	0.09	T					0.06			T	0.24								T	0.15	3.85	0.84	T	

VIRGINIA
201210

DAILY PRECIPITATION (INCHES)

STATION	TOTAL	DAY OF MONTH																														
		01	02	03	04	05	06	07	08	09	10	11	12	13	14	15	16	17	18	19	20	21	22	23	24	25	26	27	28	29	30	31
WINCHESTER	6.27	0.07	0.27	0.41	0.03				0.06	0.11								T	1.26	T									0.69	2.97	0.40	
WINCHESTER 7 SE	7.24	0.10	0.44	0.27	0.03			0.02	0.07	0.08						0.03			1.05									0.63	4.10	0.42		
WOODSTOCK 2 NE	M 7.68	0.02	0.30	0.15	0.02		-	0.02	0.05	0.04					0.01	0.03			1.29								0.02	0.36	5.24	0.13		
CENTRAL MOUNTAIN 05																																
BUCHANAN	1.50	T	0.62	0.12	T			0.22	0.07	T					T	0.08			T									0.32	0.07	T		
BUENA VISTA	1.86		0.58	0.29	0.02			0.20	0.09	0.05						0.08			0.08							0.01	0.30	0.13	0.03			
COVINGTON FLTR PLT	1.35		0.41	0.04				0.15	0.12	0.07					0.05													0.38	0.10	0.03		
CRAIGSVILLE 2 S	M	-	0.68	0.13	0.03	-	-	0.17	0.18	0.04	0.01	-	-	-	0.03	-	0.08	-	0.07	-	-	-	-	-	-	-	-	-	0.21	0.21	-	
DALE ENTERPRISE	M 2.58		0.57	0.08				-	0.02	0.03					0.02	0.02			0.60							0.02	-	0.40	0.72	0.10		
GATHRIGHT DAM	1.98		0.60	0.03	0.01			0.10	0.10	0.05					0.02				0.61								0.01	0.41	0.04	T		
GLASGOW 1 SE	2.01	T	0.73	0.22	0.01			0.13	0.18	0.06					T	0.15			0.07							T	0.35	0.11	T			
HOT SPRINGS	2.00		0.63	0.15				0.10	0.25	0.06						0.15			0.20								T	0.36	0.10			
LEXINGTON	1.84		0.79	0.18	0.02			0.13	0.17	0.04						0.07			0.02									0.17	0.22	0.03		
MILLGAP	2.98		0.56	0.17				0.04	1.19	0.17						T			0.24								0.01	0.27	0.31	0.02		
MTN GROVE	1.93		0.75	0.10				0.10	0.11	0.05						0.15			0.30							T	0.37	T	T			
MUSTOE 1 SW	2.25	0.12	0.71		0.02			0.23	0.20						0.10			0.21								T	0.12	0.49	0.05	T		
NEW CASTLE	1.58		0.44	0.02	T			0.22	0.13	0.05					0.01	0.21									0.03	0.02	0.35	0.09	0.01			
ROANOKE 8 N	1.51	0.01	0.61	0.07	T			0.34	0.08	0.05					0.05	0.09											0.17	0.04				
ROANOKE INTL AP	1.30	0.19	0.48	T	T			0.36	0.08						0.09											0.01	0.02	0.07	T			
STAUNTON WATER TRMTMT PLT	1.76		0.65	0.07	0.01			0.11	0.07	0.08	T				0.03				0.25							0.01	T	0.18	0.24	0.06		
WAYNESBORO WTP	4.74		0.50	0.23	0.02			0.07	0.04	0.08	0.01					0.08			0.07		2.10				0.02	0.08	0.36	0.92	0.16			
SOUTHWESTERN MOUNTAIN 06																																
ABINGDON 3S	FMA 1.82	0.22 ^L	0.50 ^L _a					0.32	0.07		0.03	-			-	-		0.10	0.01								0.37	0.35	0.52	0.05		
BIG STONE GAP	4.10	0.21	0.51	0.03				0.10	0.20	0.35					0.70			0.02	0.08								0.02	0.67	0.60	0.61		
BLACKSBURG NWSO	1.72	0.04	0.57	0.04	T			0.25	0.20	0.08					0.09	0.12									T	0.06	0.11	0.15	0.01			
BURKES GARDEN	3.32	0.06	1.14	0.26				0.25	0.17	0.08					0.14	0.04			0.28							0.01	0.01	0.14	0.60	0.15		
CHRISTIANSBURG	1.85	0.05	0.55	0.06				0.22	0.12	0.19					0.49	0.03										0.01	0.02	0.03	0.07	0.01		
CLINTWOOD 1 W	3.66	0.07	0.27	0.02				0.10	0.15	0.41		0.01			0.29				0.03								0.12	0.50	1.30	0.39		
COPPER HILL	M 2.45	0.05	0.53	0.05				0.36	0.14	0.19					0.03	0.32			0.02								-	0.32	0.14	0.30		
GALAX RADIO WBRF	2.20	0.61	0.77	0.01	0.01	0.01		0.17		0.12					0.36										0.02		0.09	0.03				
GALAX WTP	1.74	0.18	0.80	0.05				0.18	0.02					0.29	0.04												0.11	0.05	0.02	T		
GRUNDY	4.11	0.01	0.63					0.19	0.18	0.34					0.27				0.03								0.06	0.86	1.19	0.35		
JOHN FLANNAGAN LAKE	M	0.21	0.27	0.04		-	-	-	-	0.69					0.28				0.07								-	0.89	1.43	0.42		
LAFAYETTE 1 NE	1.48	0.03	0.31	0.04				0.27	0.12	0.09					0.12	0.11										0.07	0.06	0.15	0.09	0.02		
LEBANON	2.10	0.20	0.50					0.12	0.10	0.18					0.10												0.05	0.04	0.43	0.38		
NORA 4 SSE	3.89	0.11	0.64	0.06				0.09	0.14	0.36		T			0.27	T			T								0.09	0.54	1.34	0.25		
NORTH FORK LAKE	MA 5.16	0.4 _a	0.32	0.02		-	*	*	*	0.63 _a			-	*	*	0.21 _a			0.03		-	-				-	*	*	1.37 _a	1.52	0.59	
PULASKI 2 E	M 2.39	0.08	0.98	0.07	T			0.25	0.70						0.16	0.07										T	0.08	-				
RADFORD 3 N	2.00	0.05	0.84	0.03				0.30	0.20	0.08					0.16	0.01									0.03	0.04	0.07	0.18	0.01			
RICHLANDS	3.13	0.08	0.60	0.03				0.17	0.09	0.18					0.07				0.16								0.01	0.61	0.84	0.29		
SALTVILLE 1N	3.27	0.20	0.86	0.11				0.16	0.09	0.09					0.28	0.03			0.02								0.01	0.32	0.72	0.38		

VIRGINIA
201210

DAILY PRECIPITATION (INCHES)

STATION	TOTAL	DAY OF MONTH																															
		01	02	03	04	05	06	07	08	09	10	11	12	13	14	15	16	17	18	19	20	21	22	23	24	25	26	27	28	29	30	31	
STAFFORDSVILLE 3 ENE	1.94	0.03	0.78	0.05				0.23	0.20	0.07						0.03	0.08												T	0.20	0.02	0.24	0.01
TROUT DALE 3 SSE	2.42	0.19	1.22	0.14				0.19	0.09	0.04						0.34	0.15														0.01	0.03	0.02
WILLIS	2.16		0.91	0.08	0.02			0.18	0.10	0.18						0.17	0.21				0.02							0.05		0.09	0.15		
WISE 3E	3.35	0.20	0.45			T		0.12	0.54		0.02					0.65					0.03							T	0.55	0.22	0.50	0.07	
WYTHEVILLE 1 S	2.18	0.10	1.24	0.04				0.16	0.20	0.08						0.24	0.01				0.02										0.08	0.01	

VIRGINIA
201210

DAILY TEMPERATURES (°F)

STATION	OB. TIME	MAX/MIN	DAY OF MONTH																															AVERAGE	
			01	02	03	04	05	06	07	08	09	10	11	12	13	14	15	16	17	18	19	20	21	22	23	24	25	26	27	28	29	30	31		
VIRGINIA																																			
TIDEWATER 01																																			
DISPUTANTA	07	MAX	74	68	84	86	78	81	83	55	49	57	70	64	69	69	75	70	66	69	75	77	71	71	71	79	81	79	72	67	58	52	46	69.9	
		MIN	54	56	67	69	58	57	49	47	47	48	42	41	38	38	42	44	41	42	42	44	39	37	37	43	50	54	59	57	51	38	30	47.1	
EASTVILLE	07	MAX	71	72	82	83	79	78	80	57	56	61	66	61	67	61	74	71	63	66	72	74	65	65	67	73	74	72	70	66	60	56	48	68.1	
		MIN	58	61	71	74	69	67	54	50	50	55	56	47	44	44	53	57	48	48	53	60	54	49	53	56	58	61	63	57	54	43	43	55.2	
EMPORIA 1 WNW	08	MAX	75	68	84	85	78	82	82	55	50	58	70	66	72	67	76	69	68	71	76	79	72	68	73	80	83	81	72	67	58	51	52	70.6	
		MIN	55	59	59	69	59	57	51	49	48	48	46	44	42	42	43	45	44	44	44	45	44	42	42	42	48	51	61	58	51	40	39	48.7	
FREDERICKSBURG SEWAGE	07	MAX	76	69	73	86	80	83	78	54	52	62	71	64	68	64	75	72	66	71	74	76	68	67	73	83	83	67	68	59	54	43	69.3		
		MIN	51	51	65	69	55	55	51	42	42	46	45	40	36	35	44	44	41	41	46	45	39	39	39	47	52		57	56	53	41	37	46.8	
HAMPTON UNIV	17	MAX	71	84	86	84	80	84	81	58	61	70	69	69	68	77	76	71	68	72	76	75	71	68	76	81	80	69	67	62	60	47	54	71.5	
		MIN	61	65	75	70	67	64	52	53	55	59	54	55	51	58	60	52	52	55	66	57	53	50	54	60	59	64	61	57	42	42	43	57.0	
HOLLAND 1 E	08	MAX	76	75	84	87	82	82	85	60	55	60	70	70	71	67	78	76	67	71	78	79	80	79	72	80	82	81	80	65	69	70	57	73.8	
		MIN	52	59	69	67	58	54	50	47	49	50	43	53	53	40	54	46	40	44	48	45	36	38	44	46	58	55	47	49	50	38	49.4		
HOPEWELL	16	MAX	73	83	84	84	81	82	80	54	56	70	70	70	71	76	74	66	71	76	78	78	71	71	81	82	82	78	70	67	57	47	54	72.2	
		MIN	58	58	75	71	61	61	52	48	49	56	47	46	46	46	63	49	46	48	64	48	43	42	47	54	56	64	62	56	47	39	40	53.0	
NORFOLK INTL AP	24	MAX	71	84	88	85	80	84	66	59	63	70	62	68	63	79	76	65	68	76	78	74	65	67	77	80	72	71	67	63	59	46	57	70.4	
		MIN	59	69	74	69	63	61	53	55	59	57	49	45	49	49	61	48	48	51	58	51	51	46	48	55	56	64	62	58	43	38	40	54.5	
NORFOLK SOUTH	24	MAX	70	82	85	83	76	83	66	57	61	69	60	65	62	77	73	63	67	74	76	71	63	66	75	78	74	69	66		61	57	46	69.2	
		MIN	58	65	73	66	61	60	51	54	57	55	47	45	47	46	59	47	47	46	60	50	48	44	46	54	54	63	61		56	42	42	53.5	
NORTH	07	MAX	71	72	78	82	78	79	80	58	55	59	66	61	67	61	73	73	64	65	70	73	69	65	68	76	77	73	67	66	60	54	45	67.9	
		MIN	54	57	72	74	61	60	54	48	49	53	49	46	42	42	46	49	44	45	46	50	47	43	43	47	52	56	62	58	54	42	40	51.1	
PAINTER 2W	16	MAX	73	81	85	85	82	82	81	55	61	68	68	67	65	74	76	70	66	70	75	73	70	67	77	77	73	72	68	64	58	51	55	70.6	
		MIN	53	63	73	74	60	59	50	48	50	59	53	42	40	44	64	54	42	47	65	48	51	42	46	57	55	61	62	57	51	42	42	53.4	
STONY CREEK 2 N	08	MAX	73	67	83	84	80	82	83	60	50	57	71	66	70	66	77	70	67	71	77	79	72	67	72	81	82	81	71	67	61	53	48	70.6	
		MIN	54	55	65	70	59	57	51	48	46	48	49	41	40	39	39	49	42	41	41	49	40	38	37	41	46	50	61	58	51	39	38	47.8	
SUFFOLK LAKE KILBY	24	MAX	67	83	84	79	77	81	65	55	58	68	65	69	64	76	73	66	69	73	77	71	66	71	76	79	76	70	68	60	56	44	53	69.0	
		MIN	52	57	73	62	60	62	51	52	53	54	46	46	47	47	48	47	47	49	47	49	43	43	46	45	47	48	54	56	41	41	39	50.1	
WAKEFIELD 1NW	24	MAX	67	85	86	79	82	83	58	51	57	71	66	71	66	77	71	67	71	78	79	72	68	72	80	82	81	73	68	62	53	46	55	70.2	
		MIN	54	64	74	64	59	58	49	48	49	50	40	42	37	40	54	43	41	43	49	46	40	37	44	53	52	62	59	52	41	40	38	49.1	
WALKERTON 2 NW	18	MAX	89 ^Z	88	85	85	87	59	59	72	75	71	74	75	79	73	73	71	71	76	78	81	76	72	82	86	86	83	76	71	62	54	60	74.7	
		MIN	75	73	59	60	56	47	53	58	44	41	45	57	57	48	52	45	47	65	47	44	41	47	54	56	63	62	61	54	44	41	52.9		
WALLACETON LK DRUMMOND	08	MAX	62	69	86	87	85	80	85	63	60	61	72	70	72	70	80	77	70	72	80	80	76	71	74	79	84	82	75	69	60	54	47	72.6	
		MIN	54	52	60	63	55	51	51	45	45	50	39	35	35	36	40	42	38	37	43	41	40	35	36	38	44	46	56	54	47	36	34	44.5	
WALLOPS ISLAND NASA TEST FACIL	24	MAX	71	80	85	86	83	84	60	57	64	70	64	71	62	74	79	66	66	69	76	73	69	70	77	77	68	72	68	62	58	48	57	69.9	
		MIN	54	69	73	67	63	60	49	47	54	54	45	46	42	48	59	45	44	50	65	55	48	46	52	59	63	62	61	58	46	44	41	53.8	
WARSAW 2 NW	18	MAX	70	85	86	83	82	83		52	60	72	71	69	63	75	75	66	71	76	78	76		72	82	83	82	73					55	73.6	
		MIN	50	64	73	70	56		43	49	55	43	42	37	45	62	47	41	43	64			38	47	57	55	60						37	51.2	
WEST POINT 2 NW	17	MAX	70	84	87	81	82	84		57	54	57	70	66	70	65	75	72	67	70	74	78	72	68	72	80	81	77	71	68	59	55	50	55	70.7
		MIN	53	65	74	64	58	57	48	45	49	54	43	42	37	44	54	44	43	46	54	47	42	39	45	53	54	62	56	54	41	39	37	49.8	
WILLIAMSBURG 2 N	24	MAX	70	84	87	81	81	83	63	59	71	66	70	64	76	75	69	71	76	78	78	78	68	71	78	79	76	76	70	62	59	48	57	71.3	
		MIN	57	67	74	67	63	59	53	51	53	56	47	46	44	47	60	50	48	49	62	51	46	44	47	54	55	65	62	57	45	43	43	53.7	

VIRGINIA
201210

DAILY TEMPERATURES (°F)

STATION	OB. TIME	MAX/MIN	DAY OF MONTH																															AVERAGE
			01	02	03	04	05	06	07	08	09	10	11	12	13	14	15	16	17	18	19	20	21	22	23	24	25	26	27	28	29	30	31	
LYNCHBURG #2	07	MAX	73	61	67	80	79	79	78	54	47	61	67	65	69	62	73	71	68	69	67	71	65	65	73	82	83	80	68	68	65	47	44	67.8
		MIN	46	54	59	64	49	49	50	41	43	45	40	38	35	35	39	40	38	37	44	42	37	34	34	42	47	47	58	56	44	38	37	43.9
LYNCHBURG INTL AP	24	MAX	61	68	82	80	79	78	57	48	63	69	64	71	62	74	71	68	69	68	71	65	65	73	81	83	80	69	68	64	49	44	52	67.6
		MIN	52	57	66	53	49	52	39	41	44	46	37	40	36	39	51	38	39	43	45	42	35	35	43	47	49	55	58	49	40	36	39	45.0
MARTINSVILLE FLTR PLT	07	MAX	72	60	73	80	79	80	79	52	48	68	70	70	73	64	72	73	70	71	70	71	67	67	75	81	83	79	79	70	66	46	48	69.5
		MIN	53	57	59	62	48	48	47	42	44	34	35	36	35	35	38	40	38	38	44	39	33	32	34	40	43	43	51	56	43	42	40	42.9
MEADOWS OF DAN 5 SW	07	MAX	70	61	68	76	75	76	72	51	46	58	63	65	70	62	64	69	66	69	63	69	63	66	76	79	81	81	75	68	68	42	42	66.3
		MIN	46	54	54	59	51	51	47	39	42	42	37	36	37	38	45	41	41	42	45	42	36	36	41	45	48	49	53	51	38	37	38	43.9
MONTEBELLO FISH CULTURAL STN	07	MAX	67	60	73		73	72	67	43	42	52	51	61	63	55	62	65	63	63	59	57	60	59	71	76	77	76	65	57	50	37	34	60.3
		MIN	3 ^G 45	59		48	47	40	33	35	40	34	34	28	28	48	41	33	32	49	39	32	32	32	45	44	43	43	48	37	29	29	38.9	
MONTICELLO	08	MAX	69	63	65	78	76	76	75	50	50	58	67	60	64	64	71	69	63	65	68	68	62	62	68	79	80	74	67	65	60	47	43	65.4
		MIN	50	50	56	65	59	54	49	41	41	42	43	42	39	38	38	47	45	44	44	47	48	44	44	50	55	54	57	56	47	36	37	47.2
ROCKY MT	07	MAX	72	59	66	82	75	78	80	49	49	60	67	66	71	65	71	75	70	71	71	72	66	67	75	83	82	81	66	68	64	43	49	68.2
		MIN	48	56	58	62	49	47	48	39	43	41	36	36	38	36	36	41	37	37	47	48	35	35	36	41	47	46	52	52	41	38	38	43.4
SOUTH BOSTON	07	MAX	73	65	83	84	80	81	54	47	61	72	66	74	65	75	69	70	72	71	75	70	68	74	81	83	80	74	66	63	46	49	70.0	
		MIN	54	58	63	66	52	52	49	46	45	46	42	40	38	39	39	45	42	41	41	42	38	37	36	42	47	48	58	58	45	39	40	46.1
STUART	07	MAX	71	60	71	80	80	79	80	52	52	61	69	67	74	70	71	72	71	71	68	70	66	68	77	80	83	79	69	70	66	45	45	68.9
		MIN	48	56	59	61	51	50	47	40	45	40	37	38	39	40	44	42	41	41	47	40	35	37	41	47	48	49	53	54	42	40	40	44.9
TYE RIVER 1 SE	07	MAX	74	63	68	82	82	80	75	52	55	62	70	68	73	65	75	75	72	73	66	75	70	71	75	85	86	83	70	70	67	50	47	70.3
		MIN	50	54	60	65	62	53	49	41	42	45	39	37	37	38	46	41	37	38	48	45	37	36	37	45	49	50	60	57	47	37	38	45.8
NORTHERN 04																																		
BOSTON 4 SE	07	MAX	72	66	67	80	79	79	76	50	50	61	63	61	67	58	72	70	66	69	66	71	65	66	70	85	81	69	67	68	60	60	45	67.1
		MIN	45	45	58	66	50	50	47	35	40	41	40	35	30	42	55	41	38	33	46	40	36	35	35	50	50	47	55	57	47	40	35	44.0
EDINBURG	07	MAX	69	66	64	79	79	78	70	49	45	59	68	62	62	61	73	89 ^S	67	70	67	69	62	64	74	80	80	76	70	62	57	46	41	65.6
		MIN	42	42	56	62	51	51	40	35	38	38	36	34	28	28	46	46	33	33	36	39	34	33	34	44	45	45	50	55	45	37	36	41.0
FRONT ROYAL	07	MAX	70	66	64	81	79	78	70	50	47	60	69	63	62	58	73	70	63	67	65	70	65	74	80	79	69	67	67	57	47	43	65.9	
		MIN	45	45	56	61	55	57	45	37	38	40	42	38	33	31	50	49	39	38	48	45	40	39	38	51	53	51	57	55	46	37	36	45.0
LINCOLN	07	MAX	71	70	70	79	77	79	75	53	48	61	69	60	62	58	73	70	61	67	68	69	64	63	69	79	78	68	68	67	58	49	42	66.0
		MIN	42	42	58	64	50	52	37	37	40	41	41	33	27	27	42	50	33	34	47	44	42	33	33	34	44	51	56	57	48	40	37	42.5
LURAY 5 E	08	MAX	70	65	66	80	77	78	70	48	46	59	69	69	65	62	74	72	65	68	67	70	64	64	74	81	80	81	68	67	57	44	40	66.5
		MIN	43	44	57	57	50	53	41	35	40	41	35	35	30	39	46	43	37	38	45	40	35	35	37	48	49	53	53	53	44	36	33	42.7
MADISON	08	MAX	77	66	69	82	82	80	77	53	52	62	72	64	69	62	72	71	68	69	66	72	69	68	72	82	83	72	68	68	61	51	46	68.5
		MIN	48	50	60	67	54	54	48	43	43	47	42	41	37	37	49	48	42	41	48	45	40	39	40	48	52	51	57	58	51	43	41	47.2
MANASSAS	07	MAX	75	70	68	82	80	81	79	52	51	61	70	62	64	60	75	72	64	69	71	73	67	64	72	81	81	72	71	70	59	50	42	68.0
		MIN	48	48	61	66	55	55	46	39	41	44	45	38	34	35	52	49	39	39	50	45	41	38	38	50	55	59	56	50	41	39	46.8	
MT WEATHER	07	MAX	66	66	67	76	75	75	70	48	44	59	65	55	59	59	69	64	59	64	63	65	61	60	68	76	76	63	63	65	54	45	39	62.5
		MIN	48	48	57	63	59	59	42	39	39	39	39	39	39	35	34	45	44	45	45	45	46	43	44	46	61	56	55	54	53	44	34	34
PIEDMONT RSCH STN	08	MAX	71	65	66	81	80	78	78	51	50	59	69	62	68	60	72	70	66	67	69	72	66	65	71	81	82	73	68	66	59	49	42	67.0
		MIN	49	50	59	66	57	55	46	40	42	44	38	40	37	40	46	43	42	43	45	43	38	39	46	48	52	53	58	56	48	38	38	46.4
SOMERSET	07	MAX	73	65	67	82	81	80	80	51	50	60	70	63	69	60	73	72	66	68	68	72	68	66	72	82	83	71	68	67	60	49	43	67.7
		MIN	46	48	59	66	53	51	45	40	41	42	38	36	32	33	47	45	37	37	47	42	37	36	41	42	48	50	56	57	48	38	38	44.4
SPERRYVILLE	06	MAX	70	64	66	79	78	78	75	48	49	62	70	62	65	58	72	68	66	67	62	71	66	66	72	81	81	70	65	66	59	48	42	66.0

DAILY TEMPERATURES (°F)

STATION	OB. TIME	MAX/MIN	DAY OF MONTH																															AVERAGE	
			01	02	03	04	05	06	07	08	09	10	11	12	13	14	15	16	17	18	19	20	21	22	23	24	25	26	27	28	29	30	31		
			STERLING RCS	07	MIN	45	45	57	64	52	52	48	38	42	43	40	38	32	37	42	46	40	39	40	44	44	39	39	48	53	51	56	56		48
		MAX	73	71	65	81	80	81	78	52	49	60	69	60	63	63	74	69	62	68	71	72	66	64	72	80	82	70	69	68	58	58	42	67.4	
		MIN	43	45	60	64	52	53	44	36	41	44	43	36	31	30	45	47	37	37	47	44	42	36	38	45	54	59	56	56	49	40	37	44.9	
VIENNA	07	MAX	69	68	66	78	74	76	73	48	49	57	65	58	60	56	71	65	60	65	67	70	63	60	68	78	80	67	66	65	55	47	39	64.0	
		MIN	45	45	59	63	53	53	44	38	38	43	42	39	30	30	47	46	39	39	48	45	40	40	40	51	51	54	55	55	47	37	36	44.9	
WARRENTON 3 SE	08	MAX																																M	
		MIN																																	M
WASHGTN DULLES INTL AP	24	MAX	70	67	81	80	81	77	52	51	62	69	61	64	59	74	70	64	67	71	72	67	65	72	79	81	70	69	69	59	52	43	54	66.8	
		MIN	45	60	64	58	52	51	42	37	45	48	41	36	30	43	53	39	37	50	52	43	39	36	46	53	57	60	58	52	42	40	39	46.7	
WASHINGTON REAGAN AP	24	MAX	72	72	82	81	83	80	56	55	64	71	63	67	60	76	72	65	69	72	76	69	67	73	78	84	71	71	70	62	55	46	55	68.9	
		MIN	54	65	70	66	61	54	49	45	48	55	49	46	41	52	57	49	46	54	57	51	49	48	52	59	62	61	59	54	46	42	42	53.0	
WINCHESTER	07	MAX	69	66	64	77	77	77	68	50	46	57	67	60	57	57	71	68	61	67	65	68	63	63	71	76	78	70	66	65	56	48	41	64.2	
		MIN	44	45	57	62	56	56	46	38	40	41	41	40	31	32	52	49	38	38	43	46	42	38	38	53	52	51	57	56	46	38	37	45.3	
WINCHESTER 7 SE	08	MAX	68	67	64	79	79	78	69	50	45	60	68	61	58	72	72	64	67	66	69	64	65	72	80	79	70	70	66	57	57	40	66.1		
		MIN	42	42	57	62	53	53	41	35	37	37	37	35	27	51	51	47	34	34	45	41	37	34	34	47	48	47	39	40	37	37	41.9		
WOODSTOCK 2 NE	07	MAX	70	67	63	78	78		70	50	45	59	68	62	63	61	73	71	66	69	67	70	63	63	73	79	80	75	71	64	57	47	43	65.5	
		MIN	44	44	56	62	51		42	38	39	41	37	35	30	30	47	46	36	36	40	41	36	36	37	48	48	48	52	55	47	37	37	42.5	
CENTRAL MOUNTAIN 05																																			
COVINGTON FLTR PLT	07	MAX	72	59	73	81	79	80	68	50	48	59	64	68	70	65	73	74	72	72	66	73	59	67	80	82	82	82	79	66	66	43	43	68.2	
		MIN	45	49	58	61	50	50	47	39	40	43	36	36	33	36	42	46	35	34	45	43	39	34	35	44	45	44	49	52	40	36	36	42.6	
DALE ENTERPRISE	07	MAX	69	63	66	80	78	77		46	45	58	68	64	66	61	74	72	65	70	66	64	64	72	81	79	79	72	60	53	43	41	65.3		
		MIN	44	45	57	62	55	53		38	40	40	38	36	31	31	32	44	37	37	46	41	35	34	36	47	47	53	53	39	38	38	42.5		
GATHRIGHT DAM	07	MAX	67	57	69	76	72	73	63	47	48	56	59	62	66	60	69	66	64	66	63	66	61	61	73	77	77	76	73	64	56	40	37	63.4	
		MIN	43	48	57	60	48	48	42	36	38	41	34	34	36	36	41	46	36	35	44	42	37	35	36	44	48	47	50	52	37	34	33	41.9	
HOT SPRINGS	07	MAX	67	59	70	76	72	73	64	46	44	57	60	62	63	59	70	67	64	65	60	65	65	61	72	76	76	76	72	62	58	39	36	63.1	
		MIN	41	46	57	57	46	46	40	35	36	37	33	33	35	34	40	40	34	34	46	40	36	36	36	44	46	46	49	49	36	32	32	40.4	
MILLGAP	07	MAX	65	59	69	76	71	74	60	44	40	55	57	62	63	61	71	64	63	66	59	63	59	73	75	75	75	73	59	52	39	35	61.6		
		MIN	37	40	55	57	41	42	32	31	35	37	29	27	27	26	32	44	26	25	33	38	35	26	26	37	37	38	49	38	31	31	35.5		
MUSTOE 1 SW	24	MAX	58	67	74	71	73	61	44	40	55	58	60	62	58	69	69	62	65	58	61	55	58	72	75	74	75	72	58	52	40	34	42	60.4	
		MIN	39	52	57	45	39	35	32	32	38	37	27	30	26	33	47	35	28	33	39	35	31	28	38	42	35	39	44	40	34	31	33	36.6	
ROANOKE 8 N	07	MAX	73	60	67	80	79	79	75	55	47	62	65	65	71	63	69	74	69	71	70	72	62	67	78	82	83	79	71	68	62	44	43	67.9	
		MIN	46	55	59	64	52	52	47	40	43	44	42	42	39	40	41	49	40	39	47	46	41	39	39	46	51	50	54	52	42	37	36	45.6	
ROANOKE INTL AP	24	MAX	60	68	80	78	79	75	55	47	61	66	65	71	63	73	73	69	70	69	72	65	67	77	82	83	80	67	68	64	47	44	48	67.3	
		MIN	54	58	65	56	54	52	40	39	45	44	41	43	39	41	53	45	39	47	49	45	39	39	47	56	50	52	58	46	41	37	42	47.0	
STAUNTON WATER TRMTMT PLT	08	MAX	69	62	65	78	77	76	72	46	45	58	65	63	69	59	70	71	67	68	67	68	62	65	73	78	79	79	69	61	57	43	40	65.2	
		MIN	46	46	46	46	52	52	44	35	38	40	38	38	33	36	51	45	38	39	50	46	38	38	41	56	50	50	54	52	42	34	33	43.5	
WAYNESBORO WTP	07	MAX	72	64	69	81	79	78	74	49	47	59	67	63	67	61	72	72	72	78	72	71	63	65	74	79	81	78	68	63	58	45	42	67.2	
		MIN	45	48	57	61	50	50	46	39	39	42	41	37	33	35	43	45	39	38	38	42	34	34	34	45	49	48	55	53	44	35	34	43.0	
SOUTHWESTERN																																			
MOUNTAIN 06																																			
ABINGDON 3S	22	MAX	64	82	73	73	75	62	52	47	59	58		64	71		64	72	72	65	56	63	75	74	77	81	77	65	50	37	36	40	63.7		
		MIN	53	60	57	54	47	51	42	40	45	43		33	40		37	37	47	40	46	39	39	44	45	44	48	48	37	33	32	35	43.4		

VIRGINIA
201210

DAILY TEMPERATURES (°F)

STATION	OB. TIME	MAX/MIN	DAY OF MONTH																															AVERAGE
			01	02	03	04	05	06	07	08	09	10	11	12	13	14	15	16	17	18	19	20	21	22	23	24	25	26	27	28	29	30	31	
BIG STONE GAP	08	MAX	71	66	82	76	76	76	60	53	49	55	57	66	68	73	70	66	68	73	67	66	57	67	76	76	79	80	77	56	48	42	37	65.6
		MIN	48	55	62	57	50	50	47	40	43	40	35	35	39	39	45	39	39	40	41	41	36	35	42	46	44	45	42	47	38	33	33	42.8
BLACKSBURG NWSO	07	MAX	68	56	71	76	73	75	66	47	42	55	60	66	65	62	70	68	63	67	66	66	55	62	74	77	78	77	73	63	54	38	36	63.5
		MIN	40	52	56	58	45	45	43	35	39	40	34	33	33	34	39	42	33	34	42	41	33	35	36	40	43	42	51	46	34	30	31	40.0
BURKES GARDEN	07	MAX	63	60	74	71	68	70	59	44	41	52	53	61	57	60	68	61	56	63	63	57	48	57	68	70	71	71	68	61	43	31	32	58.7
		MIN	35	48	53	52	40	37	40	32	36	40	31	28	31	38	40	36	28	26	41	33	37	30	30	32	35	33	40	41	29	27	27	35.7
CHRISTIANSBURG	07	MAX	69	56	72	74	71	73	67	46	41	57	59	62	63	61	68	68	62	67	63	65	57	60	70	75	77	78	71	61	52	35	36	62.5
		MIN	44	52	55	58	47	47	43	36	39	40	36	36	36	37	48	44	36	36	46	42	35	37	40	48	48	47	52	45	33	31	32	42.1
CLINTWOOD 1 W	07	MAX	68	62	78	75	73	76	55	50	46	54	56	62	61	70	72	64	64	72	72	66	55	65	75	74	75	79	76	52	45	37	35	63.4
		MIN	45	53	57	56	46	46	43	36	40	36	32	32	33	33	44	34	34	35	38	38	34	34	36	42	40	40	43	44	35	32	32	39.5
COPPER HILL	07	MAX	64	57	68	74	68	71	66	43	40	50	56	57	61	55	65	65	59	61	60	62	54	58	70	74			74	53	31	33	58.9	
		MIN	42	50	56	59	48	48	41	34	36	38	36	33	33	36	45	42	39	45	47	41	36	36	41	51			44	31	28	28	40.9	
GALAX RADIO WBRF	07	MAX	67	64	71	72	73	74	74	49	44	59	60	61	66	61	64	67	66	65	59	64	64	65	75	75	78	73	71	62	55	37	37	63.6
		MIN	51	52	57	56	43	48	44	35	40	38	33	35	32	38	38	39	33	41	37	38	32	32	38	42	39	46	48	46	33	32	33	40.3
GALAX WTP	07	MAX	68	61	69	73	72	73	73	49	42	58	59	61	65	65	70	64	68	64	60	64	57	61	73	75	76	72	71	61	55	37	37	63.0
		MIN	42	53	57	56	43	43	43	36	40	38	37	36	33	33	52	46	33	33	39	38	33	33	33	38	38	38	48	47	34	33	33	40.0
GRUNDY	07	MAX	69	60	79	73	74	73	56	50	47	57	58	63	64	71	73	65	64	72	73	67	55	64	74	72	76	78	81	53	46	39	36	63.9
		MIN	50	54	59	59	51	51	44	40	42	42	39	37	40	40	46	42	38	37	44	43	38	39	38	38	44	43	46	45	34	32	32	42.8
JOHN FLANNAGAN LAKE	07	MAX	72	63	84	74						53	57				79	64	67	73	74	66	67	70	78		83	78		52	45	35	M	
		MIN	47	54	61	59				40	39	35					39	40	40	40	45	44		39	40	47		45	47		35	32	32	M
LEBANON	07	MAX	69	67	83	76	74	75	63	49	49	56	58	65	64	70	72	65	65	71	74	65	56	65	74	75		80	76	55	46	46	35	64.6
		MIN	42	56	58	58	46	46	46	38	38	37	31	31	36	37	45	36	35	35	39	37	37	36	36	41	40	40	47	44	34	31	32	40.2
NORA 4 SSE	07	MAX	64	61	77	69	71	70	59	44	41	49	53	60	59	64	67	62	61	64	67	60	50	61	69	72	74	74	72	49	40	31	30	59.5
		MIN	49	51	56	56	55	55	41	37	37	41	33	34	46	48	50	41	42	47	46	43	39	40	53	55	58	55	48	40	30	27	28	44.5
NORTH FORK LAKE	08	MAX	70	64	82	75					76 ^s	54	57				72	63	66	73	69		67	77	77	79				76	37	35	M	
		MIN	44	53	60	56				38	37	34				33	38	38	39	41			37	39	45	44				35	31	31	M	
PULASKI 2 E	07	MAX	69	58	79	79	74	77	69	45	49	56	61	68	66	63	71	71	65	69	69	68	59	64	76	79	79	79	74	64	54	38	39	65.5
		MIN	43	53	57	57	49	49	44	39	36	40	39	39	35	34	39	34	35	33	34	42	38	33	36		43	43	47	48	36	34	34	40.8
RADFORD 3 N	07	MAX	68	59	74	78	74	76	67	48	44	59	61	64	64	63	71	69	63	69	65	67	56	62	74	77	78	78	73	63	52	37	39	64.3
		MIN	45	53	56	57	45	46	45	37	40	39	38	35	34	37	42	44	31	32	41	41	31	32	34	42	39	41	48	46	35	33	35	40.5
RICHLANDS	07	MAX	69	64	83	77	73	75	57	48	47	56	57	66	65	71	73	65	65	72	73	65	53	64	75	75	80	81	78	60	60	36	34	65.1
		MIN	44	53	57	57	47	47	45	38	41	40	34	33	34	35	42	37	34	34	41	41	34	35	35	40	40	40	45	44	33	31	31	40.1
SALTVILLE 1N	07	MAX	69	61	83	78	83	83	61	49	48	57	58	66	66	71	73	66	66	72	74	65	57	65	75	76	80	81	81	67	50	39	37	66.4
		MIN	45	45	56	56	48	48	46	39	42	43	33	32	34	34	41	37	34	34	41	43	35	33	35	39	39	38	38	46	36	32	33	39.8
STAFFORDSVILLE 3 ENE	07	MAX	70	58	72	77	74	76	67	48	45	56	60	64	63	62	70	68	63	69	67	67	58	63	73	77	76	77	74	64	50	37	38	64.0
		MIN	44	50	57	57	46	46	45	38	40	37	38	36	36	35	41	40	32	31	44	43	33	32	32	38	41	41	47	47	36	33	33	40.3
TROUT DALE 3 SSE	07	MAX	65	62	72	73	69	74	66	47	42	58	53	65	62	60	68	65	60	64	63	62	53	60	72	73	75	72	71	66	48	62	38	62.6
		MIN	38	49	52	52	40	40	43	33	38	34	28	29	33	34	38	36	29	28	33	37	29	33	32	33	34	34	49	43	32	38 ¹	30	36.4
WISE 3E	17	MAX	62	78	73	70	72	72	47	46	51	51	62	61	67	68	63	62	67	66	58	55	64	69	73	77	81	76	71	46	35	34	38	61.8
		MIN	52	58	58	54	48	45	42	35	42	40	29	40	39	51	54	35	38	52	46	47	37	42	48	52	47	50	46	35	33	30	31	43.7
WYTHEVILLE 1 S	07	MAX	69	58	77	76	73	77	67	47	43	56	58	67	67	65	73	67	65	69	67	65	57	64	76	76	80	77	75	66	54	39	39	64.8
		MIN	41	52	54	54	44	43	46	36	40	40	32	31	34	33	37	37	33	31	39	37	30	30	34	34	38	37	43	47	35	32	32	38.3

VIRGINIA
201210

SNOWFALL AND SNOW ON GROUND (INCHES)

STATION		DAY OF MONTH																																
		01	02	03	04	05	06	07	08	09	10	11	12	13	14	15	16	17	18	19	20	21	22	23	24	25	26	27	28	29	30	31		
VIRGINIA																																		
TIDEWATER 01																																		
DISPUTANTA	SNOWFALL																																	
EASTVILLE	SNOWFALL																																	
EMPORIA 1 WNW	SNOWFALL																																	
FREDERICKSBURG SEWAGE	SNOWFALL																																	
HAMPTON UNIV	SNOWFALL																																	
HOLLAND 1 E	SNOWFALL																																	
HOPEWELL	SNOWFALL		-	-	-	-	-	-	-	-	-	-	-	-	-	-	-	-	-	-	-	-	-	-	-	-	-	-	-	-	-	-	-	
	SN ON GND		-	-	-	-	-	-	-	-	-	-	-	-	-	-	-	-	-	-	-	-	-	-	-	-	-	-	-	-	-	-	-	
NORFOLK INTL AP	SNOWFALL																																	
NORFOLK SOUTH	SNOWFALL																																	
NORTH	SNOWFALL																																	
	SN ON GND																																	
PAINTER 2W	SNOWFALL																																	
STONY CREEK 2 N	SNOWFALL																																	
	SN ON GND																																	
SUFFOLK LAKE KILBY	SNOWFALL																																	
	SN ON GND																																	
WAKEFIELD 1NW	SNOWFALL																																	
	SN ON GND																																	
WALKERTON 2 NW	SNOWFALL																																	
	SN ON GND																																	
WALLACETON LK DRUMMOND	SNOWFALL																																	
WALLOPS ISLAND NASA TEST FACIL	SNOWFALL																																	
	SN ON GND																																	
WARSAW 2 NW	SNOWFALL																																	
WEST POINT 2 NW	SNOWFALL																																	
	SN ON GND																																	
WILLIAMSBURG 2 N	SNOWFALL																																	
WESTERN PIEDMONT 03																																		
CHARLOTTESVILLE 2W	SNOWFALL																																	
	SN ON GND																																	
CHATHAM	SNOWFALL																																	
CONCORD 4 SSW	SNOWFALL																																	
DANVILLE REGIONAL AP	SNOWFALL																																	
	SN ON GND																																	
FREE UNION	SNOWFALL																																	
HOLCOMB ROCK	SNOWFALL																																	
	SN ON GND																																	
HUDDLESTON 4 SW	SNOWFALL																																	
LYNCHBURG #2	SNOWFALL																																	

Snowfall: Includes snow and ice. Values for NWS stations (J index note) are Mid-Mid (LST).

Snow on ground: Includes snow, sleet, ice, and hail. Values for NWS stations (J index note) are observed at 12 UTC (GMT).

Water Equivalent: Given for NWS stations (J index note) only, when snow depth is 2 inches or more, and is measured at 18 UTC (GMT)

VIRGINIA
201210

SNOWFALL AND SNOW ON GROUND (INCHES)

STATION		DAY OF MONTH																															
		01	02	03	04	05	06	07	08	09	10	11	12	13	14	15	16	17	18	19	20	21	22	23	24	25	26	27	28	29	30	31	
LYNCHBURG INTL AP	SNOWFALL																																
	SN ON GND																																
MARTINSVILLE FLTR PLT MEADOWS OF DAN 5 SW	SNOWFALL																																
	SN ON GND																																
MONTEBELLO FISH CULTURAL STN	SNOWFALL	-	-	-	-	-	-	-	-	-	-	-	-	-	-	-	-	-	-	-	-	-	-	-	-	-	-	-	-	5.3	1.1		
	SN ON GND	-	-	-	-	-	-	-	-	-	-	-	-	-	-	-	-	-	-	-	-	-	-	-	-	-	-	-	-	5	4		
MONTICELLO PEDLAR DAM	SNOWFALL																																
	SN ON GND																															T	
ROCKY MT SOUTH BOSTON	SNOWFALL																																
	SN ON GND																																
STUART TYE RIVER 1 SE	SNOWFALL																																
	SN ON GND																																
WOOLWINE CENTRAL MOUNTAIN 05 GLASGOW 1 SE	SNOWFALL	-	-	-	-	-	-	-	-	-	-	-	-	-	-	-	-	-	-	-	-	-	-	-	-	-	-	-	-	-	-		
	SN ON GND	-	-	-	-	-	-	-	-	-	-	-	-	-	-	-	-	-	-	-	-	-	-	-	-	-	-	-	-	-	-	T	
HOT SPRINGS LEXINGTON	SNOWFALL	-	-	-	-	-	-	-	-	-	-	-	-	-	-	-	-	-	-	-	-	-	-	-	-	-	-	-	-	-	-		
	SN ON GND	-	-	-	-	-	-	-	-	-	-	-	-	-	-	-	-	-	-	-	-	-	-	-	-	-	-	-	-	-	-	T	
MILLGAP	SNOWFALL																														0.2	0.1	
	SN ON GND																														T	T	
	WTR EQUIV																														-	-	
MTN GROVE	SNOWFALL	-	-	-	-	-	-	-	-	-	-	-	-	-	-	-	-	-	-	-	-	-	-	-	-	-	-	-	-	-	-		
	SN ON GND	-	-	-	-	-	-	-	-	-	-	-	-	-	-	-	-	-	-	-	-	-	-	-	-	-	-	-	-	-	-	-	
MUSTOE 1 SW	SNOWFALL																																
	SN ON GND																														T	T	T
NEW CASTLE	SNOWFALL	-	-	-	-	-	-	-	-	-	-	-	-	-	-	-	-	-	-	-	-	-	-	-	-	-	-	-	-	-	-		
	SN ON GND	-	-	-	-	-	-	-	-	-	-	-	-	-	-	-	-	-	-	-	-	-	-	-	-	-	-	-	-	-	-	-	
ROANOKE 8 N	SNOWFALL	-	-	-	-	-	-	-	-	-	-	-	-	-	-	-	-	-	-	-	-	-	-	-	-	-	-	-	-	-	-		
	SN ON GND	-	-	-	-	-	-	-	-	-	-	-	-	-	-	-	-	-	-	-	-	-	-	-	-	-	-	-	-	-	-	-	
ROANOKE INTL AP	SNOWFALL																																
	SN ON GND																																T
	WTR EQUIV																																
STAUNTON WATER TRMTMT PLT	SNOWFALL			-	-	-		-	-	-		-	-					-	-	-			-	-	-	-	-	-	-	-	-	-	
	SN ON GND			-	-	-		-	-	-		-	-					-	-	-			-	-	-	-	-	-	-	-	-	-	
WAYNESBORO WTP	SNOWFALL																																
	SN ON GND																																
	WTR EQUIV																																

Snowfall: Includes snow and ice. Values for NWS stations (J index note) are Mid-Mid (LST).

Snow on ground: Includes snow, sleet, ice, and hail. Values for NWS stations (J index note) are observed at 12 UTC (GMT).

Water Equivalent: Given for NWS stations (J index note) only, when snow depth is 2 inches or more, and is measured at 18 UTC (GMT)

SNOWFALL AND SNOW ON GROUND (INCHES)

STATION		DAY OF MONTH																																
		01	02	03	04	05	06	07	08	09	10	11	12	13	14	15	16	17	18	19	20	21	22	23	24	25	26	27	28	29	30	31		
SOUTHWESTERN MOUNTAIN 06	SNOWFALL																																	
	SN ON GND																																	
ABINGDON 3S	SNOWFALL																																	T
	SN ON GND																																	T
BIG STONE GAP	SNOWFALL																																	
BLACKSBURG NWSO	SNOWFALL																																	T
	SN ON GND																																	T
BURKES GARDEN	SNOWFALL																																	
	SN ON GND																																	
CHRISTIANSBURG	SNOWFALL	-	-	-	-	-	-	-	-	-	-	-	-	-	-	-	-	-	-	-	-	-	-	-	-	-	-	-	-	-	-	-	T	
	SN ON GND	-	-	-	-	-	-	-	-	-	-	-	-	-	-	-	-	-	-	-	-	-	-	-	-	-	-	-	-	-	-	-	-	T
CLINTWOOD 1 W	SNOWFALL																																	
	SN ON GND																																	
COPPER HILL	SNOWFALL																																	
	SN ON GND																																	
GALAX RADIO WBRF	SNOWFALL																																	
GALAX WTP	SNOWFALL																																	
	SN ON GND																																	
GRUNDY	SNOWFALL																																	
	SN ON GND																																	
JOHN FLANNAGAN LAKE	SNOWFALL	-	-	-	-	-	-	-	-	-	-	-	-	-	-	-	-	-	-	-	-	-	-	-	-	-	-	-	-	-	-	-	-	
	SN ON GND	-	-	-	-	-	-	-	-	-	-	-	-	-	-	-	-	-	-	-	-	-	-	-	-	-	-	-	-	-	-	-	-	
LAFAYETTE 1 NE	SNOWFALL	-	-	-	-	-	-	-	-	-	-	-	-	-	-	-	-	-	-	-	-	-	-	-	-	-	-	-	-	-	-	-	-	
	SN ON GND	-	-	-	-	-	-	-	-	-	-	-	-	-	-	-	-	-	-	-	-	-	-	-	-	-	-	-	-	-	-	-	-	
LEBANON	SNOWFALL																																	
	SN ON GND																																	
NORA 4 SSE	SNOWFALL																																	
	SN ON GND																																	
NORTH FORK LAKE	SNOWFALL	-	-	-	-	-	-	-	-	-	-	-	-	-	-	-	-	-	-	-	-	-	-	-	-	-	-	-	-	-	-	-	-	
	SN ON GND	-	-	-	-	-	-	-	-	-	-	-	-	-	-	-	-	-	-	-	-	-	-	-	-	-	-	-	-	-	-	-	-	
PULASKI 2 E	SNOWFALL	-	-	-	-	-	-	-	-	-	-	-	-	-	-	-	-	-	-	-	-	-	-	-	-	-	-	-	-	-	-	-	-	
	SN ON GND	-	-	-	-	-	-	-	-	-	-	-	-	-	-	-	-	-	-	-	-	-	-	-	-	-	-	-	-	-	-	-	-	
RADFORD 3 N	SNOWFALL	-	-	-	-	-	-	-	-	-	-	-	-	-	-	-	-	-	-	-	-	-	-	-	-	-	-	-	-	-	-	-	-	
	SN ON GND	-	-	-	-	-	-	-	-	-	-	-	-	-	-	-	-	-	-	-	-	-	-	-	-	-	-	-	-	-	-	-	-	
RICHLANDS	SNOWFALL	-	-	-	-	-	-	-	-	-	-	-	-	-	-	-	-	-	-	-	-	-	-	-	-	-	-	-	-	-	-	-	-	
	SN ON GND	-	-	-	-	-	-	-	-	-	-	-	-	-	-	-	-	-	-	-	-	-	-	-	-	-	-	-	-	-	-	-	-	
SALTVILLE 1N	SNOWFALL	-	-	-	-	-	-	-	-	-	-	-	-	-	-	-	-	-	-	-	-	-	-	-	-	-	-	-	-	-	-	-	-	
	SN ON GND	-	-	-	-	-	-	-	-	-	-	-	-	-	-	-	-	-	-	-	-	-	-	-	-	-	-	-	-	-	-	-	-	
STAFFORDSVILLE 3 ENE	SNOWFALL	-	-	-	-	-	-	-	-	-	-	-	-	-	-	-	-	-	-	-	-	-	-	-	-	-	-	-	-	-	-	-	-	
	SN ON GND	-	-	-	-	-	-	-	-	-	-	-	-	-	-	-	-	-	-	-	-	-	-	-	-	-	-	-	-	-	-	-	-	
TROUT DALE 3 SSE	SNOWFALL	-	-	-	-	-	-	-	-	-	-	-	-	-	-	-	-	-	-	-	-	-	-	-	-	-	-	-	-	-	-	-	-	
	SN ON GND	-	-	-	-	-	-	-	-	-	-	-	-	-	-	-	-	-	-	-	-	-	-	-	-	-	-	-	-	-	-	-	-	

Snowfall: Includes snow and ice. Values for NWS stations (J index note) are Mid-Mid (LST).

Snow on ground: Includes snow, sleet, ice, and hail. Values for NWS stations (J index note) are observed at 12 UTC (GMT).

Water Equivalent: Given for NWS stations (J index note) only, when snow depth is 2 inches or more, and is measured at 18 UTC (GMT)

VIRGINIA
201210

PAN EVAPORATION AND WIND

STATION		DAY OF MONTH																															TOTAL OR AVERAGE		
		01	02	03	04	05	06	07	08	09	10	11	12	13	14	15	16	17	18	19	20	21	22	23	24	25	26	27	28	29	30	31			
VIRGINIA EASTERN PIEDMONT 02 JOHN H KERR DAM	WIND	-	-	-	-	-	-	-	-	-	-	-	-	-	-	-	-	-	-	-	-	-	-	-	-	-	-	-	-	-	-	-	-	-	M
	EVAP	-	-	-	-	-	-	-	-	-	-	-	-	-	-	-	-	-	-	-	-	-	-	-	-	-	-	-	-	-	-	-	-	-	M
	MAX	-	-	-	-	-	-	-	-	-	-	-	-	-	-	-	-	-	-	-	-	-	-	-	-	-	-	-	-	-	-	-	-	-	M
	MIN	-	-	-	-	-	-	-	-	-	-	-	-	-	-	-	-	-	-	-	-	-	-	-	-	-	-	-	-	-	-	-	-	-	M

Evaporation: Is measured in hundredths of inches.

Wind: Is measured in miles.

Max and Min: The maximum and minimum temperatures (Fahrenheit) of the water in the evaporation pan.

STATION INDEX

STATION	INDEX NO.	DIVISION	COUNTY	LATITUDE	LONGITUDE	ELEVATION (IN FEET)	OBSERVATION TIME AND TABLES			
							LOCAL STD TIME			
							TEMP	PRECIP	EVAP	SPECIAL SEE (NOTES)
VIRGINIA										
ABINGDON 3S	0021	06	WASHINGTON	36 40	81 58W	1920	22	22		H
ALBERTA 5N	0079	02	BRUNSWICK	36 56	77 54W	376		08		H
ALTAVISTA	0166	03	CAMPBELL	37 7	79 17W	529		07		CH
AMELIA COURTHOUSE 1	0187	02	AMELIA	37 21	77 59W	345	08	08		H
APPOMATTOX	0243	03	APPOMATTOX	37 20	78 50W	850		07		H
ASHLAND	0327	02	HANOVER	37 45	77 29W	220	18	18		H
BEDFORD 4 NW	0561	03	BEDFORD	37 23	79 34W	1228		07		CH
BIG STONE GAP	0735	06	WISE	36 52	82 46W	1464	08	08		H
BLACKSBURG NWSO	0766	06	MONTGOMERY	37 12	80 25W	2100	07	07		CH
BOSTON 4 SE	0860	04	CULPEPER	38 33	78 6W	590	07	07		H
BREMO BLUFF	0993	02	FLUVANNA	37 43	78 17W	225		24		CH
BROOKNEAL	1082	03	CAMPBELL	37 4	78 57W	408	07	07		H
BUCHANAN	1121	05	BOTETOURT	37 31	79 41W	880		07		H
BUCKINGHAM	1136	02	BUCKINGHAM	37 30	78 32W	552		07		H
BUENA VISTA	1159	05	ROCKBRIDGE	37 44	79 22W	840		07		H
BURKES GARDEN	1209	06	TAZEWELL	37 6	81 20W	3068	07	07		H
CAMP PICKETT	1322	02	NOTTOWAY	37 2	77 57W	330	08	08		CH
CHARLOTTE COURT HOUSE	1585	03	CHARLOTTE	37 3	78 39W	569		07		H
CHARLOTTESVILLE 2W	1593	03	ALBEMARLE	38 2	78 31W	866	08	08		H
CHASE CITY	1606	02	MECKLENBURG	36 47	78 29W	510	17	17		H
CHATHAM	1614	03	PITTSYLVANIA	36 49	79 25W	651	07	07		CH
CHRISTIANSBURG	1692	06	MONTGOMERY	37 8	80 24W	2100	07	07		H
CLARKSVILLE	1746	02	MECKLENBURG	36 37	78 33W	330	07	07		H
CLINTWOOD 1 W	1825	06	DICKENSON	37 9	82 29W	1780	07	07		H
CONCORD 4 SSW	1955	03	CAMPBELL	37 17	78 58W	720		07		H
COPPER HILL	1999	06	FLOYD	37 5	80 9W	2690	07	07		H
CORBIN	2009	02	CAROLINE	38 12	77 22W	220	09	09		H
COVINGTON FLTR PLT	2044	05	ALLEGHANY	37 49	79 59W	1230	07	07		H
CRAIGSVILLE 2 S	2064	05	AUGUSTA	38 3	79 23W	1758		07		H
CROZIER	2142	02	GOOCHLAND	37 40	77 53W	350	07	07		H
DALE ENTERPRISE	2208	05	ROCKINGHAM	38 27	78 56W	1358	07	07		H
DANVILLE REGIONAL AP R	2250	03	PITTSYLVANIA	36 34	79 20W	571	24	24		H
DISPUTANTA	2400	01	PRINCE GEORGE	37 7	77 12W	15	07	07		H
EASTVILLE	2635	01	NORTHAMPTON	37 23	75 58W	10	07	07		H
EDINBURG	2663	04	SHENANDOAH	38 48	78 35W	928	07	07		H
EMPORIA 1 WNW	2790	01	GREENSVILLE	36 42	77 34W	100	08	08		H
FARMVILLE 2 N	2941	02	CUMBERLAND	37 20	78 23W	450	07	07		H
FREDERICKSBURG SEWAGE	3204	01	FREDERICKSBURG	38 17	77 27W	15	07	07		H
FREE UNION	3213	03	ALBEMARLE	38 5	78 35W	590	08	07		H
FRONT ROYAL	3229	04	WARREN	38 54	78 11W	930	07	07		H
GALAX RADIO WBRF	3267	06	CARROLL	36 40	80 55W	2385	07	07		H
GALAX WTP	3272	06	CARROLL	36 39	80 55W	2360	07	07		CH
GATHRIGHT DAM	3310	05	ALLEGHANY	37 57	79 57W	1770	07	07		CH
GLASGOW 1 SE	3375	05	ROCKBRIDGE	37 37	79 26W	737		07		H
GREENBAY 3 NE	3565	02	PRINCE EDWARD	37 11	78 17W	500	09	09		H
GRUNDY	3640	06	BUCHANAN	37 17	82 5W	1170	07	07		H
HAMPTON UNIV	3713	01	HAMPTON	37 1	76 20W	10	17	17		H
HOLCOMB ROCK	4039	03	BEDFORD	37 33	79 24W	620		07		H
HOLLAND 1 E	4044	01	SUFFOLK	36 41	76 46W	80	08	08		H
HOPEWELL	4101	01	PRINCE GEORGE	37 18	77 17W	40	16	16		H
HOT SPRINGS	4128	05	BATH	37 60	79 50W	2236	07	07		H
HUDDLESTON 4 SW	4148	03	BEDFORD	37 8	79 32W	960		07		H
JOHN FLANNAGAN LAKE	4410	06	DICKENSON	37 14	82 21W	1460	07	07		H
JOHN H KERR DAM	4414	02	MECKLENBURG	36 36	78 18W	250	08	08	08	CH
LAFAYETTE 1 NE	4676	06	MONTGOMERY	37 14	80 12W	1320		07		H
LEBANON	4777	06	RUSSELL	36 54	82 2W	1912	07	07		H
LEXINGTON	4876	05	ROCKBRIDGE	37 47	79 26W	1097		07		H
LINCOLN	4909	04	LOUDOUN	39 5	77 42W	500	07	07		H
LOUISA	5050	02	LOUISA	38 3	78 0W	420	18	18		H
LURAY 5 E	5096	04	PAGE	38 40	78 22W	1400	08	08		H
LYNCHBURG #2	5117	03	CAMPBELL	37 23	79 14W	736	07	07		H
LYNCHBURG INTL AP R	5120	03	CAMPBELL	37 19	79 12W	940	24	24		HJ
MADISON	5150	04	MADISON	38 22	78 15W	577	08	08		H
MANASSAS	5204	04	MANASSAS	38 44	77 30W	245	07	07		H
MARTINSVILLE FLTR PLT	5300	03	HENRY	36 42	79 52W	760	07	07		H

STATION INDEX

STATION	INDEX NO.	DIVISION	COUNTY	LATITUDE	LONGITUDE	ELEVATION (IN FEET)	OBSERVATION TIME AND TABLES			
							LOCAL STD TIME			
							TEMP	PRECIP	EVAP	SPECIAL SEE (NOTES)
MEADOWS OF DAN 5 SW	5453	03	PATRICK	36 40	80 27W	2225	07	07		H
MILLGAP	5595	05	HIGHLAND	38 18	79 43W	2421	07	07		CH
MONTEBELLO FISH CULTURAL STN #	5690	03	NELSON	37 51	79 8W	2667	07	07		H
MONTICELLO	5700	03	ALBEMARLE	38 1	78 27W	758	08	08		H
MT WEATHER	5851	04	LOUDOUN	39 4	77 53W	1659	07	07		H
MTN GROVE	5756	05	BATH	38 6	79 53W	1775		07		H
MUSTOE 1 SW	5880	05	HIGHLAND	38 20	79 40W	2380	24	24		H
NEW CASTLE	6012	05	CRAIG	37 18	80 3W	1258		07		H
NORA 4 SSE	6125	06	DICKENSON	37 1	82 19W	2650	07	07		H
NORFOLK INTL AP R	6139	01	NORFOLK (CITY)	36 54	76 12W	30	24	24		HJ
NORFOLK SOUTH	6147	01	NORFOLK (CITY)	36 52	76 14W	100	24	24		H
NORTH	6161	01	MATHEWS	37 26	76 26W	10	07	07		H
NORTH FORK LAKE	6173	06	WISE	37 7	82 38W	1675	08	08		H
PAINTER 2W	6475	01	ACCOMACK	37 35	75 49W	30	16	16		CH
PALMYRA 3S	6491	02	FLUVANNA	37 49	78 16W	410	06	06		H
PEDLAR DAM	6593	03	AMHERST	37 40	79 17W	1024		07		H
PETERSBURG	6656	02	PETERSBURG	37 14	77 24W	15	08	08		H
PIEDMONT RSCH STN	6712	04	ORANGE	38 14	78 7W	520	08	08		CH
PULASKI 2 E	6955	06	PULASKI	37 3	80 47W	1850	07	07		CH
RADFORD 3 N	6999	06	PULASKI	37 12	80 35W	1800	07	07		H
RICHLANDS	7174	06	TAZEWELL	37 6	81 48W	1910	07	07		H
RICHMOND INTL AP R	7201	02	HENRICO	37 30	77 19W	164	24	24		HJ
ROANOKE 8 N	7278	05	ROANOKE	37 22	79 58W	1190	07	07		H
ROANOKE INTL AP R	7285	05	ROANOKE	37 19	79 58W	1175	24	24		HJ
ROCKY MT	7338	03	FRANKLIN	36 59	79 54W	1315	07	07		CH
SALTVILLE 1N	7506	06	SMYTH	36 53	81 46W	1733	07	07		H
SANDSTON	7541	02	HENRICO	37 33	77 17W	165	07	07		H
SOMERSET	7904	04	ORANGE	38 15	78 16W	510	07	07		H
SOUTH BOSTON	7925	03	HALIFAX	36 42	78 53W	329	07	07		H
SPERRYVILLE	7985	04	RAPPAHANNOCK	38 39	78 14W	750	06	06		H
STAFFORDSVILLE 3 ENE	8022	06	GILES	37 16	80 43W	1950	07	07		CH
STAUNTON WATER TRMTMT PLT	8062	05	AUGUSTA	38 10	79 5W	169	08	08		H
STERLING RCS	8084	04	LOUDOUN	38 59	77 29W	288	07	07		H
STONY CREEK 2 N	8129	01	SUSSEX	36 58	77 24W	105	08	08		H
STUART	8170	03	PATRICK	36 38	80 15W	1375	07	07		H
SUFFOLK LAKE KILBY	8192	01	SUFFOLK	36 44	76 36W	22	24	24		H
TROUT DALE 3 SSE	8547	06	GRAYSON	36 39	81 24W	2839	07	07		CH
TYE RIVER 1 SE	8600	03	NELSON	37 38	78 56W	720	07	07		H
VIENNA	8737	04	FAIRFAX	38 54	77 16W	418	07	07		H
WAKEFIELD 1NW	8800	01	SUSSEX	36 59	77 0W	113	24	24		CH
WALKERTON 2 NW	8829	01	KING AND QUEEN	37 45	77 2W	50	18	18		H
WALLACETON LK DRUMMOND	8837	01	CHESAPEAKE	36 36	76 26W	20	08	08		H
WALLOPS ISLAND NASA TEST FACIL R	8849	01	ACCOMACK	37 56	75 28W	46	24	24		HJ
WARRENTON 3 SE	8888	04	FAUQUIER	38 41	77 46W	500	08	08		H
WARSAW 2 NW	8894	01	RICHMOND	37 59	76 47W	140	18	18		H
WASHGTN DULLES INTL AP R	8903	04	LOUDOUN	38 56	77 28W	290	24	24		HJ
WASHINGTON REAGAN AP R	8906	04	ARLINGTON	38 51	77 2W	10	24	24		HJ
WAYNESBORO WTP	8941	05	WAYNESBORO	38 5	78 53W	1270	07	07		H
WEST POINT 2 NW	9025	01	KING WILLIAM	37 34	76 48W	20	17	17		H
WILLIAMSBURG 2 N	9151	01	YORK	37 18	76 42W	70	24	24		CH
WILLIS	9169	06	FLOYD	36 55	80 30W	2810		07		CH
WINCHESTER	9181	04	FREDERICK	39 11	78 9W	720	07	07		H
WINCHESTER 7 SE	9186	04	FREDERICK	39 11	78 7W	680	08	08		H
WINTERPOCK 4 W	9213	02	CHESTERFIELD	37 19	77 39W	300		07		H
WISE 3E	9215	06	WISE	36 60	82 32W	2549	17	17		CH
WOODSTOCK 2 NE	9263	04	SHENANDOAH	38 54	78 28W	675	07	07		H
WOOLWINE	9272	03	PATRICK	36 47	80 17W	1500		07		CH
WYTHEVILLE 1 S	9301	06	WYTHE	36 56	81 6W	2450	07	07		CH

REFERENCE NOTES

STATION NAMES: Name of the city, town or locality. Figures and letters following the station names indicate the distance in miles and direction from the post office or town community center.

DIVISIONS: Areas within a state of similar climatological characteristics. Division averages are calculated using data from stations that record temperature and/or precipitation. Station Precipitation totals flagged with an 'F' or 'M' are excluded from the Divisional Average calculations of precipitation. Stations with monthly Temperature averages flagged with an 'F' or 'M' are included in the Divisional Average if there are no more than 9 flagged or missing daily values in the month, else they are excluded from the divisional average for temperature.

NORMALS: The average value of the meteorological element over a time period. Effective 1 January 2012, the averaging period is 1981 to 2010. The normals for National Weather Service localities have been adjusted so as to be representative for the current observation site.

MONTHLY DEGREE DAY TOTALS: One heating (cooling) degree day is accumulated for each whole degree that the daily mean temperature is below (above) 65 degrees Fahrenheit.

PRECIPITATION: Values shown in hundredths of inches are water equivalent totals, i.e., total of liquid and melted frozen precipitation. In the "Monthly Summarized Data" table the total snow and sleet values shown in tenths of inches are unmelted amounts. The max depth on ground values of snow and sleet shown in whole inches are cumulative unmelted amounts. The number of days with .10, .50, 1.00 or more refers to water equivalents.

PRECIPITATION QUALITY CONTROL: The NCDC quality control process may flag precipitation data that are spatially inconsistent, exceed climatological limits, or are inconsistent with prevailing weather patterns.

TEMPERATURE: Original temperature values are given in the "Daily Temperature" table. Summary temperature information (averages, departures, extremes, monthly degree day totals) is based on the values labeled MAX/MIN.

WIND: (As shown in the "Evaporation and Wind" table) the total wind movement in miles over the evaporation pan as determined by an anemometer recorder located 6-8 inches above the pan.

SYMBOLS AND LETTERS USED IN THE STATION INDEX TABLE

C Station is equipped with recording rain gage (R) but values in this bulletin are from a non-recording rain gage unless indicated by an R.

G Observations appear in the "Soil Temperatures" table.

H Observations appear in the "Snowfall and Snow on the Ground" table.

J Station also published as a Local Climatological Data publication.

VAR Observation time varies.

SR Observation time near sunrise.

SS Observation time near sunset.

SYMBOLS AND LETTERS USED IN THE DATA TABLES

(DAILY DATA ARE FOR THE 24 HOURS IMMEDIATELY PRECEDING OBSERVATION TIME.)

BLANK Entries in the "Monthly Summarized Data" table indicate no record.

BLANK Entries in the "Daily Precipitation" and "Snowfall and Snow on the Ground" tables indicate zero.

BLANK Entries in the "Daily Temperature" table indicate a missing record

- No record. Data not recorded or not received in time for publication.

+ Precipitation or temperature extremes occurred on one or more previous dates during the month.

* Rain gage not read. Precipitation is included in the amount following the asterisks.

Time distribution may not be known. A * preceding the monthly total indicates precipitation amount is being carried forward to next month's total, and may include amounts from the previous month(s).

a As a subscript, indicates accumulated total.

A Amount of precipitation is the total of observer's entries for the current month. It may include precipitation that occurred during the previous month. Refer to earlier bulletin to determine date of last reading. (Hawaii stations)

B Divisional Departure from normals are computed using 1971-2000 normals.

E Normalized HDD/CDD Calculation. E is appended to the HDD/CDD Calculation when 1-9 individual daily TMAX and/or TMIN values are missing and a Normalized HDD/CDD Calculation is provided. M appears alone if 10 or more daily values are missing.

F Monthly calculation flagged value. F is appended to average and/or total values computed which exclude one or more daily data values that have been flagged by the GHCN-Daily Dataset

M Insufficient or partial data. M is appended to average and/or total values computed with 1-9 daily values missing. M appears alone if 10 or more daily values are missing, (8 or more for wind and evaporation).

N Indicates snow fall or Snowdepth totals are computed with one or more missing days.

R Amounts from recording rain gage.

T Trace. An amount too small to measure.

SEASONAL TABLES: Monthly and seasonal snowfall and heating degree days for the 12 months ending with the June data are published in the July issue of this bulletin. Cooling degree days for the calendar year are published in the "Climatological Data Annual Summary."

Information concerning the history of changes in locations, exposure, etc. of substations is kept on file at the National Climatic Data Center. Historical information of regular National Weather Service Offices may be obtained from the "Local Climatological Data" annual publication. The contents of this publication may be reprinted or otherwise used freely, with proper credit to the National Climatic Data Center. The data are also available digitally.

Effective with the January 2011 Data-Month, COOP Observer Names are no longer included in the Monthly and Annual Climatological Data Publications. This information is not published to ensure the privacy of personal information pursuant to Section 208 of the E-Government Act of 2002 (44 USC 3601).

As of the 2011 Data-Year, Station and Climate Division Maps are no longer being included in the CD Publications. NCDC's Product Development Branch provides updated Station Maps for various data networks via the Historical Observing Metadata Repository: <http://www.ncdc.noaa.gov/homr>.

The GHCN-Daily Quality Control Flags shown below are displayed as superscripts with the data. For more Information on Global Historical Climatology Network - Daily and flags, see: <http://www.ncdc.noaa.gov/oa/climate/ghcn-daily/> and

Comprehensive Automated Quality Assurance of Daily Surface Observations.

Durre, Imke, Matthew J. Menne, Byron E. Gleason, Tamara G. Houston,

Russell S. Vose, 2010: J. Appl. Meteor. Climatol., 49, 1615-1633.

doi: 10.1175/2010JAMC2375.1

Blank = Passed All checks

D = failed duplicate check

G = failed gap check

I = failed internal consistency check

K = failed streak/frequent-value check

L = failed check on length of multiday period

M = failed megaconsistency check

N = failed naught check

O = failed climatological outlier check

R = failed lagged range check

S = failed spatial consistency check

T = failed temporal consistency check

W = temperature too warm for snow

X = failed bounds check

Z = flagged as a result of an official Datzilla investigation

These and other publications are available from the National Climatic Data Center

Hourly Precipitation Data

This publication contains hourly precipitation amounts obtained from recording rain gages located at National Weather Service, Federal Aviation Administration, and cooperative observer stations. Published data are displayed in inches and tenths or inches and hundredths at local standard time. HPD includes maximum precipitation for nine (9) time periods from 15 minutes to 24 hours, for selected stations.

Climatological Data

Monthly editions contain station daily maximum and minimum temperatures and precipitation. Some Stations provide daily snowfall, snow depth, evaporation, and soil temperature data. Each edition also contains monthly summaries for heating and cooling degree days (65 degree F base). The July issue contains a recap of monthly heating degree days and snow data for the preceding July through June.

The Annual issue contains monthly and annual averages of temperature, precipitation, temperature extremes, freeze data, soil temperatures, evaporation, and a recap of monthly cooling degree days.

Storm Data

Monthly issues contain a chronological listing, by states, of occurrences of storms and unusual weather phenomena. Reports contain information on storm paths, deaths, injuries, and property damage. An "Outstanding storms of the month" section highlights severe weather events with photographs, illustrations, and narratives. The December issue includes annual tornado, lightning, flash flood, and tropical cyclone summaries.

Monthly Climatic Data for the World

This publication contains monthly means for temperature, pressure, precipitation, vapor pressure, and sunshine for approximately 2,000 surface data collection stations worldwide and monthly mean upper air temperatures, dew point depressions, and wind velocities for approximately 500 observing sites.

Local Climatological Data

LCD publications summarize temperature, relative humidity, precipitation, cloudiness, wind speed and direction observations for several hundred cities in the U.S. and its territories. Each monthly publication also contains 3 hourly weather observations for that month and a hourly summary of precipitation. Annual LCD publications contain a summary of the past calendar year as well as historical averages and extremes.

For Information Call:

(828) 271-4800 Option 2

(828) 271-4010 (TDD)

(828) 271-4876 (Fax)

NOAA\National Climatic Data Center
Attn: User Engagement & Services Branch
151 Patton Avenue
Asheville, NC 28801-5001

Customer Services Number: (828) 271-4800, option 2
TDD : (828) 271-4010
Fax number: (828) 271-4876

NCDC now offers free online access to the *Climatological Data* publication.
Go to : www.ncdc.noaa.gov and choose Most Popular.