



# CLIMATOLOGICAL DATA

## VIRGINIA



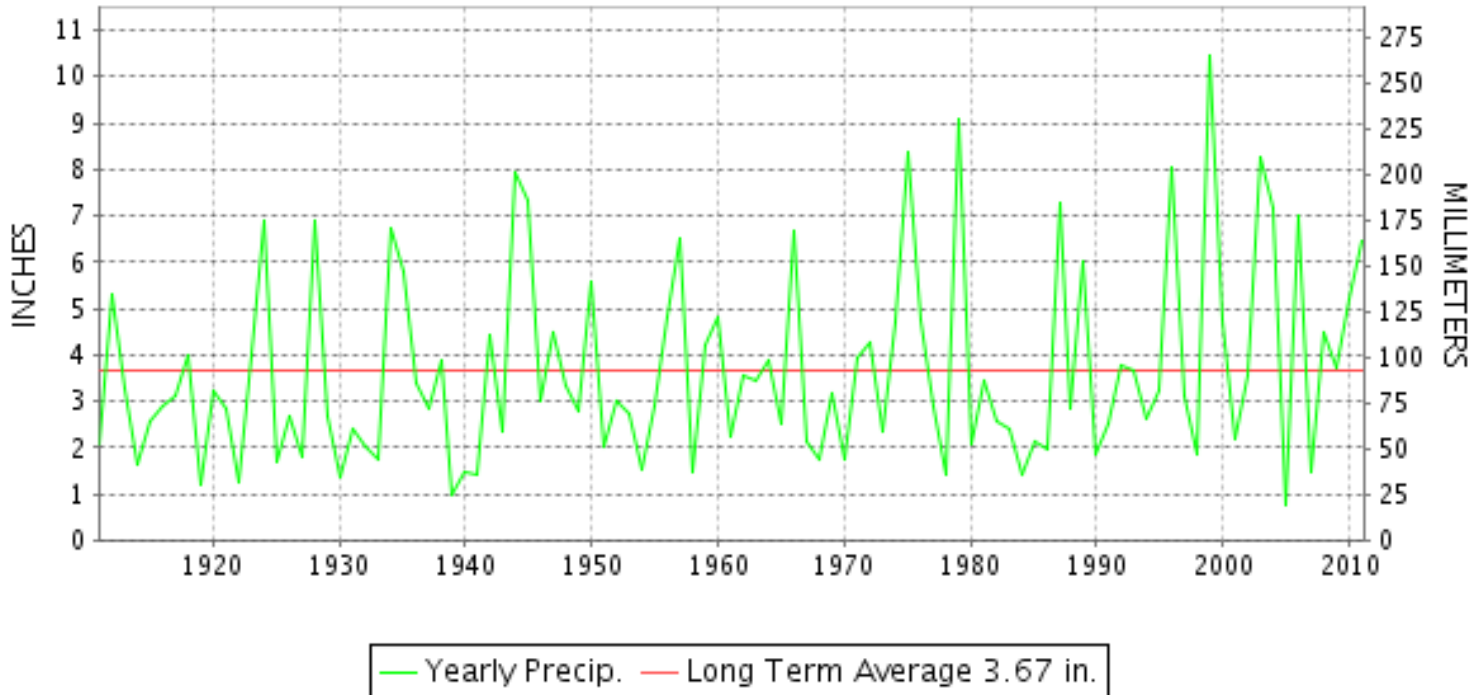
SEPTEMBER 2011

VOLUME 121 NUMBER 09

ISSN 0364-5630

GHCND Ver: 2.92-upd-2012041307

### SEPTEMBER PRECIPITATION BY YEAR



#### TEMPERATURE AND PRECIPITATION EXTREMES

##### VIRGINIA

HIGHEST TEMPERATURE	97	SEPTEMBER 05+	EARLEHURST
LOWEST TEMPERATURE	30	SEPTEMBER 17++	2 STATIONS
GREATEST TOTAL PRECIPITATION	11.49		WALKERTON 2 NW
LEAST TOTAL PRECIPITATION	3.09		CAMP PICKETT
GREATEST 1 DAY PRECIPITATION	5.62	SEPTEMBER 06	GALAX RADIO WBRF
GREATEST TOTAL SNOWFALL	T		ROANOKE INTL AP

"I certify that this is an official publication of the National Oceanic and Atmospheric Administration (NOAA) It is compiled using information from weather observing sites supervised by NOAA/National Weather Service and received at the National Climatic Data Center(NCDC), Asheville, North Carolina 28801."

Director  
National Climatic Data Center

noaa

National  
Oceanic and  
Atmospheric Administration

National  
Environmental Satellite, Data  
and Information Service

National  
Climatic Data Center  
Asheville, North Carolina



VIRGINIA  
201109

# MONTHLY STATION AND DIVISION SUMMARY

STATION	TEMPERATURE (°F)										PRECIPITATION (IN)													
	AVERAGE MAXIMUM	AVERAGE MINIMUM	AVERAGE	DEPARTURE FROM NORMAL	HIGHEST	DATE	LOWEST	DATE	HEATING DEG. DAYS	COOLING DEG. DAYS	NO. OF DAYS				TOTAL	DEPARTURE FROM NORMAL	GREATEST 24 HOURS	DATE	ICE PELLETS, SNOW			NO. OF DAYS		
											MAX		MIN						TOTAL	MAX DEPTH ON GROUND	DATE	.10 OR MORE	.50 OR MORE	1.00 OR MORE
											>=90	<=32	<=32	<=0										
PALMYRA 3S	77.4	59.0F	68.2F		87	15+	42	17	34	141	0	0	0	0	6.32	2.49	1.86	06	0.0	0		8	3	3
PETERSBURG	80.6	63.7	72.2		88	16+	53	17+	16	241	0	0	0	0	9.12		3.42	08	M 0.0	0		10	4	2
POWHATAN	M	M	M											M 5.05		1.77	24	0.0	0		6	3	2	
RICHMOND INTL AP	80.6	64.5	72.6	2.8	89	04	49	16	17	250	0	0	0	0	8.95	4.97	3.76	07	0.0	0		6	5	4
SANDSTON	79.8	62.8	71.3		88	15+	48	17+	20	216	0	0	0	0	10.91		3.54	08	0.0	0		9	7	6
WINTERPOCK 4 W	M	M	M											7.40	3.30	1.52	07	0.0	0		8	6	4	
--DIVISIONAL DATA-----> WESTERN PIEDMONT 03			70.7	2.2										7.09	3.06									
ALTAVISTA	M	M	M											5.96	2.30	1.72	07	0.0	0		6	5	2	
APPOMATTOX	77.0	60.0	68.5	0.8	88	05	44	17	36	150	0	0	0	0	5.39	0.94	1.97	07	0.0	0		7	3	3
BEDFORD 4 NW	78.6	61.2	69.9		94	05	50	17+	23	177	2	0	0	0	8.74		5.52	06	0.0	0		6	3	2
BROOKNEAL	78.9	59.1	69.0	1.7	91	05	47	16	23	150	1	0	0	0	7.06	3.44	2.64	07	0.0	0		5	4	3
CHARLOTTESVILLE 2W	76.5	61.1	68.8	-0.4	89	05	45	16	35	160	0	0	0	0	7.96	3.11	3.05	06	0.0	0		12	4	2
CHATHAM	77.5	57.2	67.4	0.5	89	05	48	17	32	111	0	0	0	0	6.79	2.27	2.65	07	0.0	0		8	4	2
CONCORD 4 SSW	M	M	M											7.01	2.78	2.70	06	0.0	0		7	4	2	
DANVILLE	80.0	61.3	70.7	0.3	93	04	54	16	22	197	4	0	0	0	5.51	1.43	1.57	07	0.0	0		9	3	3
DANVILLE REGIONAL AP	80.4	60.0	70.2		92	02+	51	18	21	184	4	0	0	0	5.52		2.62	23	0.0	0		6	3	2
FREE UNION	75.0	59.0	67.0		86	15+	40	17+	45	110	0	0	0	0	F 5.37		2.75	06	0.0	0		9	2	2
HOLCOMB ROCK	77.9	60.0	69.0		92	05+	45	17+	28	151	3	0	0	0	9.92	5.93	5.38	06	0.0	0		6	3	3
HUDDLESTON 4 SW	78.7	61.1	69.9		90	04	49	17	18	174	1	0	0	0	5.18	0.95	1.97	24	0.0	0		5	3	2
LYNCHBURG #2	77.0	58.7	67.9		88	05	42	17+	32	127	0	0	0	0	6.41		2.80	06	0.0	0		9	3	3
LYNCHBURG INTL AP	77.4	59.3	68.4	1.3	89	04	44	16	30	138	0	0	0	0	4.49	0.61	1.69	06	0.0	0		7	2	2
MARTINSVILLE FLTR PLT	79.5	57.5	68.5	1.7	91	03	47	17+	24	138	2	0	0	0	4.97	0.70	1.40	24	0.0	0		7	5	2
MEADOWS OF DAN 5 SW	75.3	57.2	66.3		87	04+	46	17+	38	86	0	0	0	0	8.04	2.90	2.38	07	M 0.0	0		8	5	2
MONTEBELLO FISH CULTURAL STN	71.5M	52.6M	62.1M		83	05	37	18+	108	32	0	0	0	0	M 6.83		2.20	06	0.0	0		9	3	3
MONTECELLO	73.5	60.0	66.8	-0.1	85	05	45	17+	46	106	0	0	0	0	9.28	4.94	3.86	06	0.0	0		12	5	2
PEDLAR DAM	77.2	61.0	69.1		90	05	48	17+	26	159	1	0	0	0	7.08	2.93	3.48	06	0.0	0		7	3	2
ROCKY MT	77.3	57.3	67.3	0.1	91	04+	45	17	41	118	3	0	0	0	7.06	2.73	2.52	06	0.0	0		6	4	3
SOUTH BOSTON	79.8	59.6	69.7	1.0	90	05	53	30+	24	173	1	0	0	0	6.32	2.48	2.83	07	0.0	0		7	4	2
STUART	78.2	58.7	68.5	1.3	90	03+	49	17+	26	138	2	0	0	0	5.77	1.03	1.38	07	0.0	0		7	4	4
TYE RIVER 1 SE	77.6	59.6	68.6	1.4	89	05	41	16	24	142	0	0	0	0	9.52	5.17	5.45	06	0.0	0		10	5	2
WOOLWINE	M	M	M											9.15	3.92	3.33	06	M 0.0	0		9	4	2	
--DIVISIONAL DATA-----> NORTHERN 04			68.3	0.7										6.89	2.51									
BIG MEADOWS	M	M	M											M					0.0	0				
BOSTON 4 SE	75.6M	59.2M	67.4M		87	15	40	17+	45	123	0	0	0	0	F 2.51		0.84	03	0.0	0		6	1	0
CASTLETON	75.3MF	61.0MF	68.2MF		87	05	44	16	26	110	0	0	0	0	M				M 0.0	0				
EDINBURG	75.0	57.0	66.0		89	04	38	17	66	102	0	0	0	0	4.90		1.48	06	0.0	0		9	3	2

VIRGINIA  
201109

# MONTHLY STATION AND DIVISION SUMMARY

STATION	TEMPERATURE (°F)										PRECIPITATION (IN)													
	AVERAGE MAXIMUM	AVERAGE MINIMUM	AVERAGE	DEPARTURE FROM NORMAL	HIGHEST	DATE	LOWEST	DATE	HEATING DEG. DAYS	COOLING DEG. DAYS	NO. OF DAYS				TOTAL	DEPARTURE FROM NORMAL	GREATEST 24 HOURS	DATE	ICE PELLETS, SNOW			NO. OF DAYS		
											MAX		MIN						TOTAL	MAX DEPTH ON GROUND	DATE	.10 OR MORE	.50 OR MORE	1.00 OR MORE
											>=90	<=32	<=32	<=0										
FRONT ROYAL	74.6	58.7	66.7		86	15+	43	17	58	116	0	0	0	0	4.82		1.78	07	0.0	0		9	2	2
LINCOLN	78.0	58.5	68.3	1.9	88	14+	39	16	39	146	0	0	0	0	6.68	2.52	2.33	07	0.0	0		5	5	4
LURAY 5 E	75.0	57.4	66.2	-0.4	87	05	38	16	59	105	0	0	0	0	5.24	0.89	1.42	06	0.0	0		9	3	2
MADISON	76.4	61.0	68.7		87	15+	44	17+	33	152	0	0	0	0	F 3.03		1.24	07	0.0	0		6	2	1
MANASSAS	78.8M	63.9M	71.4M		89	15+	44	16	16	200	0	0	0	0	FM 9.45		4.15	09	0.0	0		10	5	3
MT WEATHER	71.1	58.8	65.0	0.9	84	15	43	17+	71	77	0	0	0	0	F 2.02		0.59	15	0.0	0		6	1	0
PIEDMONT RSCH STN	76.0	60.8	68.4	0.7	85	15+	45	16	28	137	0	0	0	0	F 6.43		2.81	06	0.0	0		8	4	2
SOMERSET	76.5	59.8	68.2		88	15+	39	16	39	141	0	0	0	0	F 6.07		3.22	06	0.0	0		8	3	2
SPERRYVILLE	74.2	58.4	66.3		86	15+	44	17	51	96	0	0	0	0	6.77		1.81	06	0.0	0		10	4	2
STAR TANNERY	72.9	56.2	64.6		88	05	40	16	79	75	0	0	0	0	9.21		2.32	05	0.0	0		11	6	4
STERLING RCS	77.1	60.5	68.8	3.0	89	15+	44	16	37	158	0	0	0	0	11.09	7.10	2.91	06	M 0.0	0		14	6	4
VIENNA	76.0	60.1	68.1		89	15	44	17+	48	148	0	0	0	0	9.26	4.77	4.26	09	0.0	0		9	5	3
WARRENTON 3 SE	76.3M	60.7M	68.5M		87	15	44	16	25	131	0	0	0	0	M 7.49		2.20	06	0.0	0		13	5	2
WASHGTN DULLES INTL AP	76.8	61.3	69.1	1.8	88	14+	42	16	33	160	0	0	0	0	7.93	4.11	2.27	08	0.0	0		11	4	4
WASHINGTON REAGAN AP	77.6	64.9	71.3	0.8	87	14+	49	16	14	208	0	0	0	0	8.84	5.05	2.82	07	M 0.0	0		9	5	3
WINCHESTER	73.8	59.3	66.6	0.7	86	15+	45	16	56	110	0	0	0	0	5.51	2.16	1.96	07	0.0	0		9	3	1
WINCHESTER 7 SE	75.4	57.7	66.6	0.7	88	05	40	17+	62	115	0	0	0	0	6.22	2.63	1.89	07	0.0	0		11	4	1
WOODSTOCK 2 NE	74.4	57.1	65.8	-0.1	88	05	39	18+	74	101	0	0	0	0	5.53	1.87	1.50	07	0.0	0		9	4	2
<b>--DIVISIONAL DATA-----&gt;</b>			67.6	1.6											6.45	2.38								
<b>CENTRAL MOUNTAIN 05</b>																								
BUCHANAN	76.8	60.6	68.7	0.1	89	03	47	16	24	144	0	0	0	0	6.91	3.14	4.00	06	0.0	0		7	3	1
BUENA VISTA	M	M	M												5.97	2.55	2.57	06	0.0	0		8	3	2
COVINGTON FLTR PLT	78.5	55.8	67.2	1.3	96	03	39	17+	49	120	2	0	0	0	4.95	1.93	2.25	06	M 0.0	0		6	3	1
CRAIGSVILLE 2 S	M	M	M												M				0.0	0				
DALE ENTERPRISE	74.0	56.9	65.5	0.7	89	04+	38	17	70	89	0	0	0	0	5.31	1.81	1.75	06	0.0	0		8	4	2
EARLEHURST	77.9M	54.5M	66.2M		97	05+	37	16	55	86	4	0	0	0	4.72	1.44	2.53	06	0.0	0		9	2	1
GATHRIGHT DAM	73.0	55.6	64.3	-0.5	91	03	38	17+	81	67	1	0	0	0	3.95	0.76	2.01	06	M 0.0	0		6	2	1
GLASGOW 1 SE	78.5	59.4	69.0		91	05+	42	17	33	158	3	0	0	0	6.63	2.05	2.92	06	0.0	0		7	3	3
HOT SPRINGS	72.1M	53.7M	62.9M		89	03	36	17+	94	34	0	0	0	0	5.11	1.41	2.50	06	0.0	0		6	3	2
KERRS CREEK 6 WNW	M	M	M												5.61	1.86	2.42	06	0.0	0		7	4	1
LEXINGTON	77.3	57.0	67.2	1.1	90	04	40	17+	42	115	1	0	0	0	4.71	1.23	1.98	06	0.0	0		4	3	2
MILLGAP	71.8	50.7	61.3		89	03	30	17+	139	34	0	0	2	0	6.16	2.85	3.20	06	0.0	0		6	4	1
MTN GROVE	75.5M	55.0M	65.3M		95	05	38	16	60	73	3	0	0	0	4.39		2.30	06	0.0	0		6	2	2
MUSTOE 1 SW	70.0	51.0	60.5		87	03	30	16	156	30	0	0	1	0	6.06		2.55	05	0.0	0		6	4	2
ROANOKE 8 N	77.7	59.0	68.4		92	03+	44	16	36	143	2	0	0	0	7.08		2.98	06	0.0	0		9	4	3
ROANOKE INTL AP	77.2	60.4	68.8	1.1	93	01	46	16	33	156	2	0	0	0	7.39	3.54	2.51	05	M T	0		7	5	3
STAUNTON WATER TRMTMT PLT	74.5	57.3	65.9	2.0	88	03	37	16	64	97	0	0	0	0	6.23	2.45	1.70	06	M 0.0	0		9	4	2
WAYNESBORO WTP	77.6	57.3	67.5		86	15+	38	16+	37	117	0	0	0	0	8.37		2.30	06	M 0.0	0		11	5	3

## MONTHLY STATION AND DIVISION SUMMARY

STATION	TEMPERATURE (°F)											PRECIPITATION (IN)														
	AVERAGE MAXIMUM	AVERAGE MINIMUM	AVERAGE	DEPARTURE FROM NORMAL	HIGHEST	DATE	LOWEST	DATE	HEATING DEG. DAYS	COOLING DEG. DAYS	NO. OF DAYS				TOTAL	DEPARTURE FROM NORMAL	GREATEST 24 HOURS	DATE	ICE PELLETS, SNOW			NO. OF DAYS				
											MAX		MIN						TOTAL	MAX DEPTH ON GROUND	DATE	.10 OR MORE	.50 OR MORE	1.00 OR MORE		
											>=90	<=32	<=32	<=0												
<b>--DIVISIONAL DATA-----&gt;</b>			65.9	0.8										5.86	2.27											
<b>SOUTHWESTERN</b>																										
<b>MOUNTAIN 06</b>																										
ABINGDON 3S	77.7	56.7	67.2	1.8	91	03+	47	16	26	101	2	0	0	0	M 3.31		1.72	05	M 0.0	0			8	1	1	
BIG STONE GAP	77.4	57.2	67.3	0.0	95	04	48	17	27	105	2	0	0	0	7.01	3.06	3.35	06	0.0	0			5	3	2	
BLACKSBURG NWSO	74.5	54.6	64.6	1.6	92	03	40	16	71	67	2	0	0	0	4.84	1.45	2.62	06	0.0	0			6	2	1	
BLAND	73.7	52.1F	62.9F	0.8	88	04+	34	16	125	45	0	0	0	0	6.11	2.99	2.37	06	0.0	0			11	3	1	
BURKES GARDEN	69.8	50.8	60.3	0.8	82	05	33	17	146	10	0	0	0	0	6.30	2.83	2.36	06	0.0	0			7	3	3	
CHRISTIANSBURG	73.3	55.1	64.2		92	03	40	17+	81	64	2	0	0	0	6.22		3.41	06	0.0	0			8	3	1	
CLINTWOOD 1 W	74.0	54.4	64.2		89	04	42	17+	74	57	0	0	0	0	7.06		4.10	06	0.0	0			10	3	1	
COPPER HILL	69.5	54.3	61.9		83	02	40	17	117	29	0	0	0	0	7.71	3.06	4.63	06	0.0	0			6	3	2	
GALAX RADIO WBRF	73.8	53.8	63.8	1.8	90	03	41	16	75	48	1	0	0	0	10.15	6.42	5.62	06	0.0	0			10	3	3	
GALAX WTP	72.0	54.0	63.0		88	03	43	19+	93	40	0	0	0	0	9.80		5.20	06	M 0.0	0			9	3	3	
GRUNDY	74.8	56.7	65.8	-2.3	89	04	44	17+	50	81	0	0	0	0	5.99	2.53	3.44	06	0.0	0			6	3	1	
JOHN FLANNAGAN LAKE	M	M	M											M					0.0	0						
LAFAYETTE 1 NE	M	M	M											7.30	4.07	3.48	06	0.0	0				8	5	2	
LEBANON	76.7	54.1	65.4	0.9	90	04+	43	17+	54	73	2	0	0	0	7.22	4.34	4.60	06	0.0	0			9	2	1	
NORA 4 SSE	72.2	55.8	64.0		90	04	40	17+	96	73	1	0	0	0	7.55		4.55	06	0.0	0			9	3	1	
NORTH FORK LAKE	M	M	M											M					0.0	0						
PULASKI 2 E	75.3	55.4	65.4	1.6	93	03	40	17+	61	81	1	0	0	0	4.27	1.16	1.96	06	0.0	0			7	2	2	
RADFORD 3 N	76.0	55.5	65.8		95	03	37	16	62	89	3	0	0	0	M 4.59		2.85	06	0.0	0			3	2	2	
RICHLANDS	77.2	54.3	65.8	1.4	91	04	42	17+	53	83	2	0	0	0	7.13	3.26	3.64	06	M 0.0	0			9	4	2	
SALTVILLE 1N	77.2	54.8	66.0	0.6	91	04+	42	17+	46	81	2	0	0	0	3.87	0.71	2.33	06	0.0	0			7	1	1	
STAFFORDSVILLE 3 ENE	75.1	55.3	65.2	1.8	94	03	37	16	72	84	2	0	0	0	4.31	1.11	2.58	06	0.0	0			4	2	1	
TROUT DALE 3 SSE	72.3	51.0	61.7		87	03	40	16	122	31	0	0	0	0	6.13	2.97	1.94	06	M 0.0	0			10	4	2	
WILLIS	M	M	M											8.86	5.21	4.63	06	0.0	0				7	3	3	
WISE 3E	72.0	54.5	63.3	-1.2	88	03	41	16	92	47	0	0	0	0	9.44	5.86	3.91	05	0.0	0			10	3	3	
WYTHEVILLE 1 S	75.6	54.5	65.1	1.8	91	04+	39	17+	61	72	3	0	0	0	3.97	0.88	1.65	06	0.0	0			9	1	1	
<b>--DIVISIONAL DATA-----&gt;</b>			64.4	0.8										6.48	3.01											



VIRGINIA  
201109

## DAILY PRECIPITATION (INCHES)

STATION	TOTAL	DAY OF MONTH																															
		01	02	03	04	05	06	07	08	09	10	11	12	13	14	15	16	17	18	19	20	21	22	23	24	25	26	27	28	29	30	31	
WINTERPOCK 4 W <b>WESTERN PIEDMONT 03</b>	7.40					0.53	1.52	1.19	1.45	0.01						0.02	T	0.07				0.28	0.17	0.84	0.02			1.30					
ALTAVISTA R	5.96		0.90			0.95	1.72	0.02										0.02				0.08	0.06	0.30	1.22	0.02		0.01	0.65	0.01			
APPOMATTOX	5.39		0.02	0.17		1.35	1.97									0.08						0.10	0.24	0.03	1.07		0.04		0.32				
BEDFORD 4 NW R	8.74		0.11	0.01		5.52	0.70						0.20								0.07	0.06	0.05	0.09	1.67	0.09	0.02	0.11	0.02	0.02			
BROOKNEAL	7.06		0.04			1.89	2.64															0.07	0.05	1.05	0.93	0.02			0.35	0.02			
CHARLOTTESVILLE 2W	7.96		0.35			3.05	1.83	0.01	0.05	0.14		0.02	0.51			0.01	T			0.09	0.15	T	0.11	0.55	0.15	0.27	0.18	0.49			T		
CHATHAM	6.79		0.10		0.03	0.63	2.65	0.02										0.06				0.03	0.22	0.20	1.65	0.31	0.04	0.01	0.84				
CONCORD 4 SSW	7.01		0.18			2.70	2.29	T														0.12	0.06	0.71	0.74			0.09	0.10	0.02			
DANVILLE	5.51		0.05			0.23	1.57	0.03											0.06			0.10	0.35	1.30	1.20	0.12	0.10		0.40				
DANVILLE REGIONAL AP	5.52	T	0.19		0.16	1.53									T	T	0.04				0.26	0.02	2.62	0.09			0.02	0.59					
FREE UNION	F 5.37		0.24	0.01		2.75	1.27		0.02				0.01			0.11					0.14	0.17	T	0.23	0.31	0.11	0.42 <sup>L</sup>	0.21 <sup>L</sup>	0.26 <sup>L</sup>	T <sup>L</sup>	0.00 <sup>L</sup>		
HOLCOMB ROCK	9.92					5.38	1.61	0.03				0.03				0.02			T		0.03	0.14	0.06	0.02	2.07	0.08	0.02	0.13	0.27	0.02	0.01		
HUDDLESTON 4 SW	5.18		0.20			0.80	1.70															0.02	0.03	0.09	1.97	0.03	0.02	0.09	0.23				
LYNCHBURG #2	6.41		0.37		0.05	2.80	1.07														T	0.10	0.01	0.14	1.16	0.07	0.20	0.14	0.28		0.02		
LYNCHBURG INTL AP R	4.49	0.26	T		0.22	1.69	0.02					T					T				0.08	0.01	0.27	1.37	T	0.08	0.02	T	0.29	0.01			
MARTINSVILLE FLTR PLT	4.97		0.09	0.11		0.03	0.57	1.17					0.06									0.04	0.18	0.67	1.40			0.60					
MEADOWS OF DAN 5 SW	8.04		0.55	0.35		0.41	2.23	2.38					0.04									0.03	0.44	0.02	0.94	0.02		0.58					
MONTEBELLO FISH CULTURAL STN	M 6.83		0.11		0.06	2.20	1.43				-	0.04				0.12					0.12	0.09	0.01	0.03		1.70	0.27	0.43	0.18	0.04			
MONTICELLO	9.28		0.11	0.19		3.86	1.77	0.03	0.04			0.24	0.23			0.01						0.25	0.05	0.03	0.62	0.71	0.67	0.13	0.31		0.03		
PEDLAR DAM	7.08		0.47		0.03	3.48	0.91					0.07				0.15		T			0.02	0.14	T	T	1.31	0.06	0.03	0.34	0.05		0.02		
ROCKY MT R	7.06		0.39	0.01	T	0.04	2.52	1.48	T	T										T	0.03	0.06	0.42	0.08	1.28	0.04		0.64	0.06	T			
SOUTH BOSTON	6.32		0.03			1.00	2.83									0.56							0.39	0.19	0.72	0.06			0.48				
STUART	5.77			0.18		0.25	1.26	1.38														0.02	0.40	0.03	1.06			1.15					
TYE RIVER 1 SE	9.52		0.55			5.45	1.11														T		0.12	0.65	0.81	0.15	0.12	0.21	0.35	T			
WOOLWINE	9.15		0.22	0.11	0.02	0.16	3.33	3.05	0.02			0.08						0.04	T		T	0.04	0.25	0.01	0.82	0.02	0.08	0.73	0.17				
<b>NORTHERN 04</b>																																	
BIG MEADOWS	M	-	-	-	*	*	*	*	4.38 <sup>a</sup>	-	-	-	-	0.02		-	*	*	0.62 <sup>a</sup>	-	-	0.53		-	-	0.18	-	-	-	-	-	-	
BOSTON 4 SE	F 2.51		0.02	0.84		1.96 <sup>L</sup>	1.31 <sup>L</sup>	0.04		0.10											0.18	0.39			0.45	0.09	0.40	0.00 <sup>L</sup>	0.42 <sup>L</sup>				
CASTLETON	M	-	0.67	-	0.02	0.15	-	1.11	0.02	-	0.02	-	0.17	0.02		-	0.02	-	0.01		0.14	-	0.02	-	-	0.24	0.14	0.18	0.40	0.02	-		
EDINBURG	4.90		0.12			0.13	1.48	1.27	0.01	0.09					0.35	0.02					0.20	0.12			0.79	0.07	0.04	0.04	0.06	0.01			
FRONT ROYAL	4.82					0.22	1.24	1.78	0.05	0.17	0.14				0.36	0.03					0.03	0.19						0.28	0.20	0.07	0.04		
LINCOLN	6.68						2.33	1.01								0.84									1.14				0.20	0.07	0.04		1.36
LURAY 5 E	5.24		0.29			0.01	1.42	1.14	0.01	0.22					0.73		0.22				0.31	0.03	0.07	0.04	0.41	0.04		0.10	0.08	0.04		0.02	
MADISON	F 3.03		0.45		0.00 <sup>L</sup>	0.00 <sup>L</sup>	3.33 <sup>L</sup>	1.24			0.00 <sup>L</sup>	0.00 <sup>L</sup>	1.46 <sup>L</sup>			0.20					0.15	0.19		T	0.00 <sup>L</sup>	0.00 <sup>L</sup>	1.05 <sup>L</sup>	0.06	0.74				
MANASSAS	FM 9.45			0.10		1.45	0.93	1.10	4.15			0.25				0.05					0.35		0.12		0.75	-		0.20	0.05 <sup>L</sup>	0.50 <sup>L</sup>			
MT WEATHER	F 2.02		0.19		0.46 <sup>L</sup>	1.34 <sup>L</sup>	1.28 <sup>L</sup>	0.16 <sup>L</sup>	0.53 <sup>L</sup>	0.03		0.11	0.01		0.59	0.08	T	0.02	T		0.04	0.15	0.47		0.24	0.01	0.04	0.09 <sup>L</sup>	0.20 <sup>L</sup>	0.45 <sup>L</sup>	0.04		
PIEDMONT RSCH STN	F 6.43		0.97	0.00 <sup>L</sup>	0.00 <sup>L</sup>	1.19 <sup>L</sup>	2.81	1.16	0.00 <sup>L</sup>	0.00 <sup>L</sup>	0.00 <sup>L</sup>	0.08 <sup>L</sup>	0.25			0.07				0.01	0.11	0.21	0.08	0.01	0.00 <sup>L</sup>	0.00 <sup>L</sup>	2.82 <sup>L</sup>	0.16	0.57	0.02			
SOMERSET	F 6.07		0.70	0.02	T	3.22	1.28	0.02			0.15	0.15				0.12					0.18	0.22	0.01	0.00 <sup>L</sup>	0.00 <sup>L</sup>	0.00 <sup>L</sup>	0.00 <sup>L</sup>	0.00 <sup>L</sup>	0.00 <sup>L</sup>	0.00 <sup>L</sup>	0.00 <sup>L</sup>	0.00 <sup>L</sup>	
SPERRYVILLE	6.77			0.30		0.49	1.81	1.42	0.08	0.12			0.04		0.85	0.04						0.40			0.52	0.07	0.19	0.32	0.06	0.05			
STAR TANNERY	9.21		0.22		0.22	2.32	1.77	1.53		0.60					0.63										1.23	0.30			0.10				
STERLING RCS	11.09		0.16	0.16	0.60	0.03	2.91	1.13	1.69	1.75	0.45		0.57		0.21	0.01			T			T	0.20	0.20	0.09	0.45	0.05	0.04	0.07	0.01	0.31		





VIRGINIA  
201109

## DAILY PRECIPITATION (INCHES)

STATION	TOTAL	DAY OF MONTH																														
		01	02	03	04	05	06	07	08	09	10	11	12	13	14	15	16	17	18	19	20	21	22	23	24	25	26	27	28	29	30	31
NORA 4 SSE	7.55				0.05	0.58	4.55	0.24	0.10	0.29	0.03		0.04	T		T	0.18				0.09	T	0.04	0.37	0.22	T		0.68		0.09	T	
NORTH FORK LAKE	M 4.27	0.08	-	-	-	4.79 <sup>L</sup>	-	0.48 <sup>L</sup>	0.11	-	-	0.38 <sup>L</sup>			0.02	0.09	-	-	0.00 <sup>L</sup>	0.09	0.01		-	-	-	-	0.62		0.05			
PULASKI 2 E	4.27	0.10			0.28	0.12	1.96	1.30	0.02							T	0.02				0.03	0.02	0.01		0.30	0.01	0.10					
RADFORD 3 N	M 4.59		-	-	-	2.85	1.30											0.01			0.06	0.03	0.02	T	-	-	0.31	0.01				
RICHLANDS	7.13	0.07			0.73	0.69	3.64	0.24	0.07	0.01						0.12				0.10		0.04	0.01	0.26	0.01		1.04		0.10			
SALTVILLE 1N	3.87				0.11	0.47	2.33	0.15	0.04							0.02				0.17		0.09	0.02	0.26	T	0.08	0.12		0.01			
STAFFORDSVILLE 3 ENE	4.31				0.38	0.02	2.58	0.88	0.02							0.01				0.04	0.05	0.04	0.01	0.24	0.01				0.03			
TROUT DALE 3 SSE R	6.13	0.12	0.53	0.07	0.16	1.94	0.91	0.09								0.03			0.11		0.08	0.03	0.31	0.42	T	1.23	0.10					
WILLIS	8.86		0.16	0.04	0.15	4.63	1.68						0.45	0.03		0.03			0.05	0.02	0.05	0.06	0.06		1.07	0.03		0.35				
WISE 3E	9.44					3.91	2.33	0.30		0.15		0.22				0.01					0.07	0.32	0.02	0.20	0.01		1.60		0.11			
WYTHEVILLE 1 S R	3.97	0.09	0.41	0.20	0.07	1.65	0.49	0.02							0.19	0.07					0.10	0.11	0.12	0.01	0.23	0.40						



VIRGINIA  
201109

## DAILY TEMPERATURES (°F)

STATION	OB. TIME	MAX/MIN	DAY OF MONTH																															AVERAGE
			01	02	03	04	05	06	07	08	09	10	11	12	13	14	15	16	17	18	19	20	21	22	23	24	25	26	27	28	29	30	31	
ASHLAND	18	MIN	58	63	64	87	84	62	62	62	65	63	62	59	63	47	51	52	53	57	63	65	69	64		67	68	66	65	57		61.3		
		MAX	81	80	84	87	84	77	76	78	81	82	84	82	84	86	84	65	63	65	71	75	76	77	74	74	77	80	81	80	77	76	78.0	
BREM0 BLUFF	07	MIN	59	65	64	69	70	62	64	70	69	65	64	63	60	62	65	46	54	53	56	62	65	68	69	67	69	68	69	65	67	57	63.5	
		MAX	88	85	87	90	84	68	80	80	88	88	89	89	89	92	83	68	66	69	75	79	78	79	79	76	80	84	89	80	80	78	81.3	
CAMP PICKETT	08	MIN	59	63	66	69	67	60	61	61	65	64	60	61	58	59	56	43	52	51	54	61	62	62	63	61	67	66	69	63	56	53	60.4	
		MAX	81	83	81	83	86	82	76	80	83	83	84	85	83	85	86	85	63	60	63	72	76	75	77	73	75	79	82	83	82	78	78.8	
CHASE CITY	17	MIN	56	59	63	64	68	64	63	69	66	61	61	61	61	62	62	49	52	54	53	52	62	65	69	67	67	67	66	64	55	61.6		
		MAX	83	86	83	86	88	93	72	81	83	84	84	85	84	85	87	86	62	60	65	72	77	76	77	74	76	76	82	85	81	80	79.8	
CLARKSVILLE	07	MIN	57	58	64	67	69	63	63	64	63	61	59	61	60	60	53	52	54	55	58	59	68	68	63	67	68	68	65	59	54	61.3		
		MAX	85	86	84	87	90	85	74	83	85	85	87	90	86	87	89	88	63	59	66	72	78	79	77	74	76	78	82	86	83	81	80.8	
CORBIN	09	MIN	59	59	65	70	70	68	64	65	65	64	62	63	62	62	64	53	53	55	56	58	57	67	69	65	66	68	69	65	61	56	62.7	
		MAX	82	80	84	89	83	74	75	77	85	83	85	83	85	88	79	65	66	67	70	75	76	80	71	74	76	82	81	81	77	78	78.4	
CROZIER	07	MIN	59	64	63	69	69	61	63	69	69	65	61	61	59	63	57	42	53	49	56	60	63	69	68	67	68	67	68	63	62	57	62.1	
		MAX	83	83	80	85	87	83	64	73	79	83	84	85	83	84	86	86	63	61	66	72	76	74	74	70	73	82	82	82	80	78	78.0	
FARMVILLE 2 N	07	MIN	57	58	60	57	69	60	60	63	66	61	60	60	59	60	61	43	43	49	55	60	62	63	63	66	63	63	67	67	55	59.8		
		MAX	81	84	81	84	88	81	63	79	81	82	84	84	82	84	87	82	63	63	65	73	75	75	76	74	74	78	81	85	80	79	78.3	
GREENBAY 3 NE	09	MIN	59	59	63	66	66	62	61	61	67	61	59	59	59	59	61	48	47	47	52	55	62	64	67	63	65	66	61	66	61	55	60.0	
		MAX	81	83	81	83	86	81	66	80	83	83	83	85	83	85	86	85	61	58	62	70	72	72	74	72	74	75	80	83	80	78	77.5	
JOHN H KERR DAM	08	MIN	57	64	65	68	69	62	61	63	66	61	59	60	59	62	66	46	52	51	53	57	63	65	67	63	65	66	67	65	62	56	61.3	
		MAX	86	89	86	90	92	87	78	86	88	86	90	92	89	91	92	92	64	60	66	77	81	81	81	75	76	80	88	90	86	85	83.5	
LOUISA	18	MIN	59	63	67	70	73	70	65	68	66	66	64	66	66	68	70	54	54	55	57	60	64	69	72	68	68	70	70	68	67	59	65.2	
		MAX	85	82	81	88	86	78	75	82	85	86	86	85	86	90	85	68	65	69	72	76	78	78	75	75	76	82	82	81	79	76	79.7	
PALMYRA 3S	06	MIN	58	62	68	68	68	61	61	68	69	63	58	58	56	59	63	40	52	47	55	62	60	68	68	65	68	68	69	63	55	61.4		
		MAX	81	83	80	82	87	79	63	75	76	82	83	84	81	84	87	80	64	63	66	70	75	76	77	73	73	76	80	84	80	78	77.4	
PETERSBURG	08	MIN	55	59	63	66	67	61	61	62	69	62	59	58	56	57	57	43	42	51	51	56	60	61	66 <sup>1</sup>	62	62	67	67	66	60	52	59.0	
		MAX	83	84	82	84	87	85	78	84	84	83	86	87	85	86	88	88	65	61	65	73	78	80	81	77	73	77	83	85	84	81	80.6	
RICHMOND INTL AP	24	MIN	58	59	65	67	67	66	66	71	69	64	64	65	64	64	65	53	53	57	56	56	63	67	70	67	68	68	66	67	59	63.7		
		MAX	85	81	86	89	86	78	80	83	84	86	87	86	87	88	88	66	61	65	74	76	79	80	76	75	78	83	84	83	82	82	80.6	
SANDSTON	07	MIN	59	65	66	69	71	65	71	72	69	65	66	65	63	66	59	49	57	57	57	62	66	70	68	67	68	69	66	61	60	64.5		
		MAX	82	83	81	85	88	87	76	78	82	83	84	86	83	85	88	85	64	60	65	74	76	80	80	77	75	78	82	84	83	80	79.8	
<b>WESTERN PIEDMONT 03</b>																																		
APPOMATTOX	07	MIN	59	61	64	64	68	61	59	61	65	62	60	59	59	60	60	47	44	52	53	56	59	63	67	62	62	66	67	65	59	56	60.0	
		MAX	85	88	88	88	91	71	66	80	83	84	85	86	85	86	88	72	63	62	70	71	75	76	75	73	77	75	81	85	79	78	78.9	
CHARLOTTESVILLE 2W	08	MIN	58	58	58	67	68	63	62	62	64	48	56	57	57	57	61	47	55	51	56	57	59	64	66	59	62	65	66	61	58	52	59.1	
		MAX	83	85	79	84	89	75	61	76	74	83	84	83	82	85	88	77	64	62	66	67	74	73	78	69	72	71	76	82	78	75	76.5	
CHATHAM	07	MIN	62	64	64	67	70	59	58	61	65	66	63	63	63	63	65	45	47	51	51	57	59	63	66	62	63	67	67	65	61	56	61.1	
		MAX	82	86	88	87	89	80	64	78	78	82	83	83	82	84	86	86	59	59	68	68	72	70	73	72	74	77	78	82	77	78	77.5	
DANVILLE	07	MIN	55	57	65	64	65	64	60	54	53	54	53	55	55	55	52	48	49	53	55	57	60	64	58	58	64	65	63	55	51	57.2		
		MAX	88	90	91	93	90	87	69	84	83	86	85	86	85	87	81	61	60	61	72	76	76	72	74	75	77	81	82	85	83	80	80.0	
		MIN	58	61	62	71	71	68	63	58	59	59	61	60	58	58	59	54	55	55	56	60	59	64	68	64	63	67	68	63	61	55	61.3	

VIRGINIA  
201109

## DAILY TEMPERATURES (°F)

STATION	OB. TIME	MAX/MIN	DAY OF MONTH																															AVERAGE	
			01	02	03	04	05	06	07	08	09	10	11	12	13	14	15	16	17	18	19	20	21	22	23	24	25	26	27	28	29	30	31		
DANVILLE REGIONAL AP	24	MAX	92	92	91	91	84	75	81	82	84	86	87	85	87	89	60	60	70	71	77	71	74	74	77	79	82	85	81	79	77		80.4		
		MIN	59	65	67	69	70	62	61	54	58	59	56	58	57	57	59	52	53	51	58	55	63	66	61	60	68	66	67	61	56	53		60.0	
FREE UNION	08	MAX	81	81	76	81	86	74	61	73	73	80	82	82	81	83	86	76	63	61	67	65	72	71	77	70	70	71	73	81	77	75		75.0	
		MIN	57	63	65	67	68	60	58	60	65	64	60	58	57	57	59	40	40	51	50	57	59	63	64	60	60	66	67	65	58	52		59.0	
LYNCHBURG #2	07	MAX	81	85	85	85	88	77	77	76	77	82	82	82	81	83	85	79	60	62	67	67	75	71	75	72	71	76	75	82	77	76		77.0	
		MIN	56	61	66	66	68	61	59	62	64	59	55	55	56	56	57	42	42	53	54	56	60	62	66	60	60	66	67	62	57	53		58.7	
LYNCHBURG INTL AP	24	MAX	86	86	87	89	79	68	78	80	82	83	83	83	84	87	81	61	61	68	67	75	71	74	73	73	76	76	84	78	77	73		77.4	
		MIN	61	65	65	65	69	59	60	61	62	58	55	56	56	56	44	54	54	55	58	61	66	62	59	66	67	64	60	53	52		59.3		
MARTINSVILLE FLTR PLT	07	MAX	86	89	91	87	90	79	72	78	81	85	84	85	84	86	87	83	60	60	71	69	75	71	76	78	76	81	78	84	80	79		79.5	
		MIN	56	58	65	64	65	67	61	55	55	56	53	55	55	55	47	47	49	54	58	59	61	65	60	60	60	63	63	54	51		57.5		
MEADOWS OF DAN 5 SW	07	MAX	84	87	87	87	82	73	73	69	76	81	78	78	79	79	84	84	57	59	62	66	73	68	73	74	67	77	69	79	77	77		75.3	
		MIN	59	60	60	60	65	68	60	56	58	57	54	54	54	54	56	46	46	50	53	54	57	61	61	61	61	64	64	58	54	52		57.2	
MONTEBELLO FISH CULTURAL STN	07	MAX	78	78	80	82	83	69	58	71	74	79		78	79	80	82	71	58	54	60	58	70	64	73	68	64	73	71	76	73	70		71.5	
		MIN	49	59	61	60	60	53	54	53	54	54		51	52	50	53	37	37	37	47	51	53	56	56	54	57	58	58	57	54	50		52.6	
MONTICELLO	08	MAX	80	80	74	80	85	74	59	71	71	79	80	79	78	80	84	76	60	59	64	67	71	72	75	68	70	71	73	79	74	73		73.5	
		MIN	60	61	62	65	67	59	57	59	65	66	62	63	62	60	65	45	45	50	50	57	57	63	66	61	62	66	66	65	60	54		60.0	
ROCKY MT	07	MAX	85	91	91	91	89	76	62	76	79	80	83	83	83	85	86	80	57	59	58	66	76	69	75	77	72	80	74	82	77	78		77.3	
		MIN	58	58	58	58	64	60	59	55	56	58	54	54	57	56	56	46	45	53	55	56	58	64	65	60	60	64	65	56	57	54		57.3	
SOUTH BOSTON	07	MAX	85	89	85	89	90	84	65	81	82	84	85	86	86	86	87	84	61	59	67	72	77	77	74	74	76	77	82	86	86	79		79.8	
		MIN	57	57	64	65	67	64	62	60	58	61	58	58	60	58	58	53	53	53	53	56	58	58	66	62	63	65	67	65	57	53		59.6	
STUART	07	MAX	85	90	90	86	87	75	74	72	80	84	84	83	84	85	86	82	60	60	68	67	77	69	75	78	71	79	73	82	81	79		78.2	
		MIN	58	61	66	66	68	66	60	55	55	60	55	55	57	57	58	49	49	53	54	57	59	63	63	63	63	62	62	60	56	52		58.7	
TYE RIVER 1 SE	06	MAX	82	75	84	85	89	76	65	76	82	83	85	85	84	83	86	82	65	66	70	67	76	75	76	71	72	75	75	84	77	78		77.6	
		MIN	57	64	64	65	70	59	60	62	61	62	57	58	57	58	60	41	42	55	56	58	62	64	65	61	62	67	68	63	59	51		59.6	
<b>NORTHERN 04</b>																																			
BIG MEADOWS	09	MAX								76																								M	
		MIN								50																									M
BOSTON 4 SE	07	MAX	81	80	74	77	86	76	62	68	74	83	82	82	80	83	87	72	61	62														75.6	
		MIN	57	59	65	68	69	60	59	61	65	64	60	57	56	56	60	40	40	41														59.2	
CASTLETON	08	MAX		80	76	77	87		63	68		81	82	74	81	84		71		61	67	66	74	70 <sup>1</sup>	80		74	72	80	82	77	76		75.3	
		MIN		63	67 <sup>1</sup>	70	69		59	63		65	62	59	58	58		44		50	56	58	58	65	67		66	65	69	65	60	53		61.0	
EDINBURG	07	MAX	84	79	82	89	88	73	59	69	72	81	80	81	80	82	86	67	60	61	63	64	75	74	79	69	71	75	79	82	74	72		75.0	
		MIN	55	60	65	69	66	58	57	58	62	63	60	55	55	56	58	39	38	48	49	52	58	59	61	60	59	62	63	60	55	49		57.0	
FRONT ROYAL	07	MAX	81	79	75	85	86	73	60	66	69	81	80	81	81	83	86	67	63	61	64	63	73	72	79	71	73	74	79	81	81	72		74.6	
		MIN	52	64	64	68	67	58	58	58	64	63	62	60	58	59	61	45	43	46	48	55	59	60	60	62	61	65	64	63	60	54		58.7	
LINCOLN	07	MAX	84	81	79	80	88	85	76	72	81	79	81	82	84	88	84	84	61	61	67	67	76	75	79	77	76	76	80	82	80	76		78.0	
		MIN	55	56	63	65	67	60	59	61	67	62	59	56	55	58	62	39	40	47	48	54	60	64	63	60	61	65	65	66	60	58		58.5	
LURAY 5 E	08	MAX	80	81	80	85	87	72	61	71	72	80	80	82	82	82	86	67	58	62	63	63	73	73	78	69	73	74	78	85	79	74		75.0	
		MIN	59	62	67	67	66	57	58	59	62	62	57	55	54	56	60	38	43	44	48	56	58	58	61	60	63	61	65	61	55	51		57.4	
MADISON	08	MAX	81	81	73	78	87	77	64	70	74	84	83	84	82	84	87	74	63	63	68	68	74	74	79	71	75	73	79	83	80	79		76.4	
		MIN	60	64	66	69	70	60	60	63	66	66	61	59	58	59	61	44	44	52	53	58	62	65	67	63	64	67	68	66	60	55		61.0	
MANASSAS	07	MAX	83	82	81	81	89	81	63	73	73	85	85	84	85	85	89	76	63															78.8	



VIRGINIA  
201109

## DAILY TEMPERATURES (°F)

STATION	OB. TIME	MAX/MIN	DAY OF MONTH																															AVERAGE
			01	02	03	04	05	06	07	08	09	10	11	12	13	14	15	16	17	18	19	20	21	22	23	24	25	26	27	28	29	30	31	
ROANOKE 8 N	07	MAX	86	92	92	89	89	73	62	76	79	83	83	83	80	84	86	76	60	62	66	64	77	71	78	78	70	81	73	84	79	75	77.7	
		MIN	59	64	67	65	65	60	60	59	59	59	56	57	58	58	59	44	46	54	55	57	59	64	65	60	61	65	65	59	57	55	59.0	
ROANOKE INTL AP	24	MAX	93	92	87	89	77	63	75	79	82	83	84	80	84	86	77	59	62	66	65	76	70	78	77	71	78	73	83	79	76	72	77.2	
		MIN	64	67	69	66	63	60	60	60	61	61	58	59	60	59	54	46	55	56	57	59	64	65	64	60	67	66	64	59	58	50	60.4	
STAUNTON WATER TRMTMT PLT	08	MAX	81	84	88	87	85	71	58	70	77	81	81	80	77	80	85	70	59	59	63	61	74	71	75	75	68	75	70	81	76	72	74.5	
		MIN	59	65	68	65	66	56	56	56	61	60	57	56	55	58	60	37	40	48	51	54	57	59	63	58	59	62	64	53	58	58	57.3	
WAYNESBORO WTP	07	MAX	86	86	86	86	86	69	71	77	82	83	83	81	83	86	86	73	63	65	65	76	71	78	78	70	75	76	76	82	76	74	77.6	
		MIN	64	66	65	66	58	58	58	67	61	57	57	55	55	55	38	38	49	50	50	54	58	60	60	60	64	64	63	56	53	57.3		
<b>SOUTHWESTERN MOUNTAIN 06</b>																																		
ABINGDON 3S	22	MAX	89	91	91	85	71	82	82	69	74	77	78	78	80	84	73	73	71	72	77	76	79	79	75	71	82	84	75	74	73	66	77.7	
		MIN	61	65	66	61	62	62	61	58	59	52	53	55	53	54	54	47	50	51	52	57	60	59	61	57	58	59	60	50	54	50	56.7	
BIG STONE GAP	08	MAX	87	89	93	95	83	67	70	68	71	72	78	77	76	82	84	67	65	74	76	72	76	78	82	74	77	82	83	75	74	75	77.4	
		MIN	60	63	67	67	66	59	59	58	58	55	55	55	56	56	57	49	48	52	52	55	61	61	63	57	55	55	60	52	52	54	57.2	
BLACKSBURG NWSO	07	MAX	86	90	92	87	86	70	60	70	76	77	77	78	77	79	83	74	54	58	60	62	74	68	76	75	69	78	73	80	74	71	74.5	
		MIN	57	59	61	61	61	57	57	53	55	55	50	53	52	52	55	40	42	49	51	53	55	59	59	55	57	59	62	54	53	51	54.6	
BLAND	07	MAX	85	88	88	88	84	70	62	67	71	75	75	78	75	78	83	70	56	58	57	63	73	70	76	74	70	78	78	78	72	70	73.7	
		MIN	55	55	61	60	59	59	58	58	55	52	47	47	47	47	48	34	35	48	50	50	54	1 <sup>G</sup>	55	57	57	56	56	51	50	50	52.1	
BURKES GARDEN	07	MAX	74	78	78	79	82	68	64	64	66	74	71	75	74	75	78	68	51	56	55	61	67	66	72	71	68	74	74	73	71	66	69.8	
		MIN	50	50	53	55	55	57	57	55	55	47	47	47	48	47	46	34	33	46	49	50	53	55	55	54	54	60	58	50	49	54	50.8	
CHRISTIANSBURG	07	MAX	85	90	92	88	85	70	58	71	76	76	75	77	76	78	82	73	53	56	58	61	71	67	74	72	66	77	71	78	73	70	73.3	
		MIN	56	61	65	59	60	56	56	54	54	54	53	55	54	54	55	40	40	48	50	53	55	60	61	56	57	60	61	55	54	56	55.1	
CLINTWOOD 1 W	07	MAX	84	86	88	89	84	66	65	68	68	67	74	70	77	78	80	64	60	71	72	74	71	74	77	71	70	79	79	73	69	71	74.0	
		MIN	55	58	64	64	64	58	58	57	57	55	54	54	54	53	53	42	42	49	49	52	59	59	60	55	51	51	56	48	48	53	54.4	
COPPER HILL	07	MAX	77	83	82	79	79	67	67	65	69	72	75	72	74	77	79	70	49	52	56	57	68	63	70	72	64	69	66	74	70	67	69.5	
		MIN	57	59	63	61	61	57	55	53	55	55	53	53	52	54	55	42	40	46	47	50	54	60	59	55	56	57	57	56	54	53	54.3	
GALAX RADIO WBRF	07	MAX	80	87	90	83	82	70	71	65	75	77	77	78	77	77	82	74	68	56	57	59	72	69	73	71	74	75	73	78	73	72	73.8	
		MIN	57	60	64	59	58	58	58	55	54	52	50	44	51	51	53	41	43	46	48	53	53	55	57	62	57	60	60	53	52	49	53.8	
GALAX WTP	07	MAX	79	84	88	81	81	81	72	63	72	73	75	75	75	76	79	73	54	56	57	59	70	65	72	73	68	73	68	76	71	70	72.0	
		MIN	58	58	61	59	59	59	59	55	53	54	50	50	50	50	50	43	43	43	43	53	55	60	60	57	58	61	61	55	53	49	54.0	
GRUNDY	07	MAX	84	88	88	89	85	67	70	69	67	72	73	76	77	79	80	64	61	71	70	75	71	74	75	71	68	80	82	75	70	73	74.8	
		MIN	59	62	67	63	64	58	58	58	58	59	58	58	58	58	44	44	51	50	52	60	60	61	56	56	57	57	52	52	53	56.7		
JOHN FLANNAGAN LAKE	07	MAX	88	91				95	70	76	67			77		83		85		76	75	77	78	82			83	84	76	73	73	M		
		MIN	61	63				58	58	58	58			56		57		43		44	54	60	61	58			55	57	52	53	55	M		
LEBANON	07	MAX	86	88	90	90	84	67	77	70	70	74	75	78	78	80	83	67	58	71	71	76	75	79	79	75	73	81	83	75	74	73	76.7	
		MIN	58	58	63	62	62	58	58	59	58	53	50	50	52	52	51	43	43	46	47	50	58	58	59	55	55	56	60	48	48	54	54.1	
NORA 4 SSE	07	MAX	82	88	88	90	79	63	64	63	64	70	75	74	75	75	80	61	57	67	71	69	70	72	73	69	67	75	78	67	70	70	72.2	
		MIN	64	66	70	67	61	54	54	54	54	54	55	59	59	61	60	40	40	48	50	52	55	61	61	50	51	61	53	53	54	55.8		
NORTH FORK LAKE	08	MAX	87	89				92			67	70			76	76	81	82	62			75	74	75				79	74	73	72	M		
		MIN	57	61				57			57	57			53	54	53	55	43			42	53	60	58				52	51	51	53	M	
PULASKI 2 E	07	MAX	86	89	93	88	86	72	61	70	75	78	78	80	79	81	85	74	53	57	59	63	73	69	77	77	77	74	75	82	75	73	75.3	
		MIN	56	59	59	61	61	59	58	56	56	55	51	51	54	54	54	40	40	50	52	55	56	59	61	56	56	63	63	57	54	55	55.4	

VIRGINIA  
201109

## DAILY TEMPERATURES (°F)

STATION	OB. TIME	MAX/MIN	DAY OF MONTH																															AVERAGE
			01	02	03	04	05	06	07	08	09	10	11	12	13	14	15	16	17	18	19	20	21	22	23	24	25	26	27	28	29	30	31	
RADFORD 3 N	07	MAX	87	92	95	90	88	71	62	72	76	79	79	80	78	81	84	73	56	60	60	64	74	70	78	78	69	79	75	82	74	73	76.0	
		MIN	55	62	65	64	65	58	58	54	55	56	51	54	50	51	53	37	41	52	54	55	56	61	62	55	60	61	63	56	52	48		
RICHLANDS	07	MAX	87	88	90	91	85	85	76	69	70	75	76	78	77	80	84	65	57	72	72	75	76	76	78	75	74	81	83	75	75	72	77.2	
		MIN	56	59	65	60	61	59	59	57	58	57	52	52	53	52	52	42	42	46	46	49	58	59	59	55	56	58	58	50	49	51		
SALTVILLE 1N	07	MAX	86	89	91	91	84	70	76	71	70	76	77	79	78	81	85	72	57	69	69	75	75	76	79	76	74	82	83	76	74	74	77.2	
		MIN	54	58	63	62	62	61	61	59	59	53	52	52	53	53	53	42	42	49	48	49	57	60	61	58	58	57	57	50	50	50		
STAFFORDSVILLE 3 ENE	07	MAX	87	90	94	89	89	70	62	72	76	76	79	79	80	82	84	69	55	58	59	61	71	69	77	74	68	79	75	82	74	72	75.1	
		MIN	59	58	61	63	63	59	57	58	58	54	53	53	52	53	52	37	38	50	52	55	55	60	60	56	57	64	64	55	52	49		
TROUT DALE 3 SSE	07	MAX	84	85	87	84	86	68	76	64	69	70	72	76	74	77	80	71	53	54	56	62	69	66	73	73	71	74	72	75	78	69	72.3	
		MIN	55	54	55	55	57	59	57	55	49	44	44	51	47	45	45	40	41	45	50	51	52	57	56	54	56	58	56	46	48	48		
WISE 3E	17	MAX	84	86	88	80	76	61	63	65	67	70	74	73	76	80	66	57	70	70	70	70	71	75	70	68	75	77	70	70	69	68	72.0	
		MIN	62	63	64	64	59	55	57	54	57	49	50	51	51	53	49	41	50	49	54	58	57	58	59	52	52	60	53	49	55	51		
WYTHEVILLE 1 S	07	MAX	86	90	91	91	84	71	63	70	74	79	79	79	79	81	85	74	55	58	59	65	74	72	76	78	72	80	77	80	74	73	75.6	
		MIN	57	57	64	62	62	61	60	59	54	51	50	50	51	50	50	39	39	49	50	54	55	59	60	58	58	59	60	54	50	53		

VIRGINIA  
201109

## SNOWFALL AND SNOW ON GROUND (INCHES)

STATION		DAY OF MONTH																																
		01	02	03	04	05	06	07	08	09	10	11	12	13	14	15	16	17	18	19	20	21	22	23	24	25	26	27	28	29	30	31		
<b>VIRGINIA</b> <b>TIDEWATER 01</b> <b>CENTRAL MOUNTAIN 05</b> ROANOKE INTL AP	SNOWFALL	-	T	-	-	-	-	-	-	-	-	-	-	-	-	-	-	-	-	-	-	-	-	-	-	-	-	-	-	-	-	-	-	-

Snowfall: Includes snow and ice. Values for NWS stations (J index note) are Mid-Mid (LST).

Snow on ground: Includes snow, sleet, ice, and hail. Values for NWS stations (J index note) are observed at 12 UTC (GMT).

Water Equivalent: Given for NWS stations (J index note) only, when snow depth is 2 inches or more, and is measured at 18 UTC (GMT)



VIRGINIA  
201109

## PAN EVAPORATION AND WIND

STATION		DAY OF MONTH																															TOTAL OR AVERAGE
		01	02	03	04	05	06	07	08	09	10	11	12	13	14	15	16	17	18	19	20	21	22	23	24	25	26	27	28	29	30	31	
VIRGINIA EASTERN PIEDMONT 02 JOHN H KERR DAM	WIND	10	22	16	34	33	32	16	8	12	16	11	18	14	15	50	39	29	24	12	12	9	7	22	17	22	21	24	28	27	15	615	
	EVAP	0.15	0.13	0.17	0.21	0.10	0.00	0.10	0.18	0.14	0.15	0.17	0.14	0.16	0.18	0.11	0.14	0.00	0.04	0.08	0.09	0.00	0.06	0.00	0.01	0.05	0.11	0.14	0.16	0.12	0.17	3.26	
	MAX	-	-	-	-	-	-	-	-	-	-	-	-	-	-	-	-	-	-	-	-	-	-	-	-	-	-	-	-	-	-	-	M
	MIN	-	-	-	-	-	-	-	-	-	-	-	-	-	-	-	-	-	-	-	-	-	-	-	-	-	-	-	-	-	-	-	M
NORTHERN 04 PIEDMONT RSCH STN	WIND	28	45	-	-	134	35	38	-	-	-	-	170	24	29	34	42	-	-	96	36	26	21	35	-	-	91	19	40	31	51	1025	
	EVAP	0.19	0.12	-	-	0.44	0.00	0.05	-	-	-	-	0.71	0.19	0.26	0.22	0.16	-	-	0.23	0.06	0.05	0.04	0.06	-	-	0.28	0.08	0.19	0.10	0.16	3.59	
	MAX	90	85	-	-	91	81	65	-	-	-	-	92	90	90	92	85	-	-	75	73	75	77	74	-	-	81	82	85	81	79	-	
	MIN	66	66	-	-	67	63	61	-	-	-	-	63	64	64	67	50	-	-	50	60	62	64	68	-	-	65	67	67	66	58	62.9	

Evaporation: Is measured in hundreths of inches.

Wind: Is measured in miles.

Max and Min: The maximum and minimum temperatures (Fahrenheit) of the water in the evaporation pan.

# STATION INDEX

STATION	INDEX NO.	DIVISION	COUNTY	LATITUDE	LONGITUDE	ELEVATION (IN FEET)	OBSERVATION TIME AND TABLES			
							LOCAL STD TIME			
							TEMP	PRECIP	EVAP	SPECIAL SEE (NOTES)
VIRGINIA										
ABINGDON 3S	0021	06	WASHINGTON	36 40	81 58W	1920	22	22		H
ALBERTA 5N	0079	02	BRUNSWICK	36 56	77 54W	376		08		H
ALTAVISTA R	0166	03	CAMPBELL	37 7	79 17W	515		07		CH
AMELIA COURTHOUSE 1	0187	02	AMELIA	37 21	77 59W	345	08	08		H
APPOMATTOX	0243	03	APPOMATTOX	37 21	78 50W	910	07	07		H
ASHLAND	0327	02	HANOVER	37 45	77 29W	220	18	18		H
BEDFORD 4 NW R	0561	03	BEDFORD	37 23	79 34W	1220		07		CH
BIG MEADOWS	0720	04	MADISON	38 31	78 26W	3540	09	09		H
BIG STONE GAP	0735	06	WISE	36 52	82 46W	1464	08	08		H
BLACKSBURG NWSO R	0766	06	MONTGOMERY	37 12	80 25W	2100	07	07		CH
BLAND	0792	06	BLAND	37 6	81 7W	2000	07	07		H
BOSTON 4 SE	0860	04	CULPEPER	38 33	78 6W	590	07	07		H
BREMO BLUFF R	0993	02	FLUVANNA	37 43	78 17W	225	07	24		CH
BROOKNEAL	1082	03	CAMPBELL	37 4	78 57W	428	07	07		H
BUCHANAN	1121	05	BOTETOURT	37 32	79 41W	865		07		H
BUCKINGHAM	1136	02	BUCKINGHAM	37 30	78 32W	552		07		H
BUENA VISTA	1159	05	ROCKBRIDGE	37 44	79 22W	830		07		H
BURKES GARDEN	1209	06	TAZEWELL	37 6	81 20W	3068	07	07		H
CAMP PICKETT R	1322	02	NOTTOWAY	37 2	77 57W	330	08	08		CH
CASTLETON	1434	04	RAPPAHANNOCK	38 36	78 7W	541	08	08		H
CHARLOTTESVILLE 2W	1593	03	ALBEMARLE	38 2	78 31W	866	08	08		H
CHASE CITY	1606	02	MECKLENBURG	36 47	78 29W	510	17	17		H
CHATHAM R	1614	03	PITTSYLVANIA	36 49	79 25W	640	07	07		CH
CHRISTIANSBURG	1692	06	MONTGOMERY	37 8	80 24W	2100	07	07		H
CLARKSVILLE	1746	02	MECKLENBURG	36 37	78 33W	330	07	07		H
CLINTWOOD 1 W	1825	06	DICKENSON	37 9	82 29W	1780	07	07		H
CONCORD 4 SSW	1955	03	CAMPBELL	37 17	78 58W	635		07		H
COPPER HILL	1999	06	FLOYD	37 5	80 9W	2690	07	07		H
CORBIN	2009	02	CAROLINE	38 12	77 22W	220	09	09		H
COVINGTON FLTR PLT	2044	05	ALLEGHANY	37 49	79 59W	1230	07	07		H
CRAIGSVILLE 2 S	2064	05	AUGUSTA	38 3	79 23W	1758		07		H
CROZIER	2142	02	GOOCHLAND	37 40	77 53W	350	07	07		H
DALE ENTERPRISE	2208	05	ROCKINGHAM	38 27	78 56W	1400	07	07		H
DANVILLE	2245	03	PITTSYLVANIA	36 35	79 23W	410	07	07		H
DANVILLE REGIONAL AP R	2250	03	PITTSYLVANIA	36 34	79 20W	571	24	24		CH
DISPUTANTA	2400	01	PRINCE GEORGE	37 7	77 12W	15	07	07		H
EARLEHURST	2600	05	ALLEGHANY	37 40	80 15W	2037		07		H
EASTVILLE	2635	01	NORTHAMPTON	37 23	75 58W	10	07	07		H
EDINBURG	2663	04	SHENANDOAH	38 48	78 35W	928	07	07		H
EMPORIA 1 WNW	2790	01	GREENSVILLE	36 42	77 34W	100	08	08		H
FARMVILLE 2 N R	2941	02	CUMBERLAND	37 20	78 23W	450	07	07		CH
FREDERICKSBURG SEWAGE	3204	01	FREDERICKSBURG	38 17	77 27W	15	07	07		H
FREE UNION	3213	03	ALBEMARLE	38 5	78 35W	590	08	07		H
FRONT ROYAL	3229	04	WARREN	38 54	78 11W	930	07	07		H
GALAX RADIO WBRF	3267	06	CARROLL	36 40	80 55W	2385	07	07		H
GALAX WTP R	3272	06	CARROLL	36 39	80 55W	2360	07	07		CH
GATHRIGHT DAM R	3310	05	ALLEGHANY	37 57	79 57W	1770	07	07		CH
GLASGOW 1 SE	3375	05	ROCKBRIDGE	37 37	79 26W	740		07		H
GREENBAY 3 NE	3565	02	PRINCE EDWARD	37 11	78 17W	500	09	09		H
GRUNDY	3640	06	BUCHANAN	37 17	82 5W	1170	07	07		H
HAMPTON UNIV	3713	01	HAMPTON	37 1	76 20W	10	17	17		H
HOLCOMB ROCK	4039	03	BEDFORD	37 33	79 24W	620		07		H
HOLLAND 1 E	4044	01	SUFFOLK	36 41	76 46W	80	08	08		H
HOPEWELL	4101	01	PRINCE GEORGE	37 18	77 17W	40	16	16		H
HOT SPRINGS	4128	05	BATH	37 60	79 50W	2236	07	07		H
HUDDLESTON 4 SW	4148	03	BEDFORD	37 8	79 32W	1045		07		H
JOHN FLANNAGAN LAKE	4410	06	DICKENSON	37 14	82 21W	1460	07	07		H
JOHN H KERR DAM R	4414	02	MECKLENBURG	36 36	78 18W	250	08	08	08	CH
KERRS CREEK 6 WNW	4565	05	ROCKBRIDGE	37 52	79 34W	1500		07		H
KEYSVILLE 2 S	4568	02	CHARLOTTE	37 1	78 28W	530		07		H
LAFAYETTE 1 NE	4676	06	MONTGOMERY	37 14	80 12W	1320		07		H
LEBANON	4777	06	RUSSELL	36 54	82 2W	1912	07	07		H
LEXINGTON	4876	05	ROCKBRIDGE	37 48	79 25W	1125	07	07		H
LINCOLN	4909	04	LOUDOUN	39 5	77 42W	500	07	07		H
LOUISA	5050	02	LOUISA	38 3	78 0W	420	18	18		H

# STATION INDEX

STATION	INDEX NO.	DIVISION	COUNTY	LATITUDE	LONGITUDE	ELEVATION (IN FEET)	OBSERVATION TIME AND TABLES			
							LOCAL STD TIME			
							TEMP	PRECIP	EVAP	SPECIAL SEE (NOTES)
LURAY 5 E	5096	04	PAGE	38 40	78 22W	1400	08	08		H
LYNCHBURG #2	5117	03	CAMPBELL	37 23	79 14W	740	07	07		H
LYNCHBURG INTL AP R	5120	03	CAMPBELL	37 19	79 12W	940	24	24		CHJ
MADISON	5150	04	MADISON	38 22	78 15W	577	08	08		H
MANASSAS	5204	04	MANASSAS	38 44	77 30W	245	07	07		H
MARTINSVILLE FLTR PLT	5300	03	HENRY	36 42	79 52W	760	07	07		H
MEADOWS OF DAN 5 SW	5453	03	PATRICK	36 40	80 27W	2225	07	07		H
MILLGAP R	5595	05	HIGHLAND	38 18	79 43W	2421	07	07		CH
MONTEBELLO FISH CULTURAL STN	5690	03	NELSON	37 50	79 7W	2667	07	07		H
MONTICELLO	5700	03	ALBEMARLE	38 1	78 27W	758	08	08		H
MT WEATHER	5851	04	LOUDOUN	39 4	77 53W	1659	07	07		H
MTN GROVE	5756	05	BATH	38 6	79 53W	1775		07		H
MUSTOE 1 SW	5880	05	HIGHLAND	38 20	79 40W	2380	24	24		H
NORA 4 SSE	6125	06	DICKENSON	37 1	82 19W	2650	07	07		H
NORFOLK INTL AP R	6139	01	NORFOLK (CITY)	36 54	76 12W	30	24	24		CHJ
NORFOLK SOUTH	6147	01	NORFOLK (CITY)	36 52	76 14W	100	24	24		H
NORTH	6161	01	MATHEWS	37 26	76 26W	10	07	07		H
NORTH FORK LAKE	6173	06	WISE	37 7	82 38W	1675	08	08		H
PAINTER 2W R	6475	01	ACCOMACK	37 35	75 49W	30	16	16		CH
PALMYRA 3S	6491	02	FLUVANNA	37 49	78 16W	410	06	06		H
PEDLAR DAM	6593	03	AMHERST	37 40	79 17W	1010		07		H
PETERSBURG	6656	02	PETERSBURG	37 14	77 24W	15	08	08		H
PIEDMONT RSCH STN R	6712	04	ORANGE	38 14	78 7W	520	08	08	08	CH
POWHATAN	6906	02	POWHATAN	37 31	77 53W	400		07		H
PULASKI 2 E R	6955	06	PULASKI	37 3	80 47W	1850	07	07		CH
RADFORD 3 N	6999	06	PULASKI	37 12	80 35W	1800	07	07		H
RICHLANDS	7174	06	TAZEWELL	37 6	81 48W	1910	07	07		H
RICHMOND INTL AP R	7201	02	HENRICO	37 30	77 19W	164	24	24		CHJ
ROANOKE 8 N	7278	05	ROANOKE	37 22	79 58W	1190	07	07		H
ROANOKE INTL AP R	7285	05	ROANOKE	37 19	79 58W	1175	24	24		CHJ
ROCKY MT R	7338	03	FRANKLIN	36 59	79 54W	1315	07	07		CH
SALTVILLE 1N	7506	06	SMYTH	36 53	81 46W	1733	07	07		H
SANDSTON	7541	02	HENRICO	37 33	77 17W	165	07	07		H
SOMERSET	7904	04	ORANGE	38 15	78 16W	510	07	07		H
SOUTH BOSTON	7925	03	HALIFAX	36 42	78 53W	340	07	07		H
SPERRYVILLE	7985	04	RAPPAHANNOCK	38 39	78 14W	750	06	06		H
STAFFORDSVILLE 3 ENE R	8022	06	GILES	37 16	80 43W	1950	07	07		CH
STAR TANNERY R	8046	04	FREDERICK	39 5	78 27W	950	07	07		CH
STAUNTON WATER TRMTMT PLT	8062	05	AUGUSTA	38 10	79 5W	169	08	08		H
STERLING RCS	8084	04	LOUDOUN	38 59	77 29W	288	07	07		H
STONY CREEK 2 N	8129	01	SUSSEX	36 58	77 24W	105	08	08		H
STUART	8170	03	PATRICK	36 38	80 15W	1375	07	07		H
SUFFOLK LAKE KILBY	8192	01	SUFFOLK	36 44	76 36W	22	24	24		H
TROUT DALE 3 SSE R	8547	06	GRAYSON	36 39	81 24W	2839	07	07		CH
TYE RIVER 1 SE	8600	03	NELSON	37 38	78 56W	720	06	06		H
VIENNA	8737	04	FAIRFAX	38 54	77 16W	418	07	07		H
WAKEFIELD 1NW R	8800	01	SUSSEX	36 59	77 0W	113	24	24		CH
WALKERTON 2 NW	8829	01	KING AND QUEEN	37 45	77 2W	50	18	18		H
WALLACETON LK DRUMMOND	8837	01	CHESAPEAKE	36 36	76 26W	20	08	08		H
WARRENTON 3 SE	8888	04	FAUQUIER	38 41	77 46W	500	08	08		H
WARSAW 2 NW	8894	01	RICHMOND	37 59	76 47W	140	18	18		H
WASHGTN DULLES INTL AP R	8903	04	LOUDOUN	38 56	77 28W	290	24	24		CHJ
WASHINGTON REAGAN AP R	8906	04	ARLINGTON	38 51	77 2W	10	24	24		CHJ
WAYNESBORO WTP	8941	05	WAYNESBORO	38 5	78 53W	1270	07	07		H
WEST POINT 2 NW	9025	01	KING WILLIAM	37 34	76 48W	20	17	17		H
WILLIAMSBURG 2 N R	9151	01	YORK	37 18	76 42W	70	24	24		CH
WILLIS R	9169	06	FLOYD	36 55	80 30W	2810		07		CH
WINCHESTER	9181	04	FREDERICK	39 11	78 9W	720	07	07		H
WINCHESTER 7 SE	9186	04	FREDERICK	39 11	78 7W	680	08	08		H
WINTERPOCK 4 W	9213	02	CHESTERFIELD	37 19	77 39W	300		07		H
WISE 3E R	9215	06	WISE	36 60	82 32W	2549	17	17		CH
WOODSTOCK 2 NE	9263	04	SHENANDOAH	38 54	78 28W	675	07	07		H
WOOLWINE R	9272	03	PATRICK	36 47	80 17W	1500		07		CH
WYTHEVILLE 1 S R	9301	06	WYTHE	36 56	81 6W	2450	07	07		CH

# REFERENCE NOTES

**STATION NAMES:** Name of the city, town or locality. Figures and letters following the station names indicate the distance in miles and direction from the post office or town community center.

**DIVISIONS:** Areas within a state of similar climatological characteristics. Division averages are calculated using data from stations that record both temperature and precipitation (i.e. not precipitation alone).

**NORMALS:** The average value of the meteorological element over a time period. Effective 1 January 2002, the averaging period is 1971 to 2000. The normals for National Weather Service localities have been adjusted so as to be representative for the current observation site.

**MONTHLY DEGREE DAY TOTALS:** One heating (cooling) degree day is accumulated for each whole degree that the daily mean temperature is below (above) 65 degrees Fahrenheit.

**PRECIPITATION:** Values shown in hundredths of inches are water equivalent totals, i.e., total of liquid and melted frozen precipitation. In the "Monthly Summarized Data" table the total snow and sleet values shown in tenths of inches are unmelted amounts. The max depth on ground values of snow and sleet shown in whole inches are cumulative unmelted amounts. The number of days with .10, .50, 1.00 or more refers to water equivalents.

**PRECIPITATION QUALITY CONTROL:** The NCDC quality control process may flag precipitation data that are spatially inconsistent, exceed climatological limits, or are inconsistent with prevailing weather patterns.

**TEMPERATURE:** Original temperature values are given in the "Daily Temperature" table. Summary temperature information (averages, departures, extremes, monthly degree day totals) is based on the values labeled MAX/MIN.

**WIND:** (As shown in the "Evaporation and Wind" table) the total wind movement in miles over the evaporation pan as determined by an anemometer recorder located 6-8 inches above the pan.

## SYMBOLS AND LETTERS USED IN THE STATION INDEX TABLE

- C Station is equipped with recording rain gage (R) but values in this bulletin are from a non-recording rain gage unless indicated by an R.
- G Observations appear in the "Soil Temperatures" table.
- H Observations appear in the "Snowfall and Snow on the Ground" table.
- J Station also published as a Local Climatological Data publication.
- VAR Observation time varies.
- SR Observation time near sunrise.
- SS Observation time near sunset.

## SYMBOLS AND LETTERS USED IN THE DATA TABLES

(DAILY DATA ARE FOR THE 24 HOURS IMMEDIATELY PRECEDING OBSERVATION TIME.)

**BLANK** Entries in the "Monthly Summarized Data" table indicate no record.

**BLANK** Entries in the "Daily Precipitation" and "Snowfall and Snow on the Ground" tables indicate zero.

**BLANK** Entries in the "Daily Temperature" table indicate a missing record

- No record. Data not recorded or not received in time for publication.

+ Precipitation or temperature extremes occurred on one or more previous dates during the month.

\* Rain gage not read. Precipitation is included in the amount following the asterisks. Time distribution may not be known. A \* preceding the monthly total indicates precipitation amount is being carried forward to next month's total, and may include amounts from the previous month(s).  
a As a subscript, indicates accumulated total.

A Amount of precipitation is the total of observer's entries for the current month. It may include precipitation that occurred during the previous month. Refer to earlier bulletin to determine date of last reading. (Hawaii stations)

F Monthly calculation flagged value. F is appended to average and/or total values computed which exclude one or more daily data values that have been flagged by the GHCN-Daily Dataset

M Insufficient or partial data. M is appended to average and/or total values computed with 1-9 daily values missing. M appears alone if 10 or more daily values are missing, (8 or more for wind and evaporation).

N Indicates snow fall or Snowdepth totals are computed with one or more missing days.

R Amounts from recording rain gage.

T Trace. An amount too small to measure.

**SEASONAL TABLES:** Monthly and seasonal snowfall and heating degree days for the 12 months ending with the June data are published in the July issue of this bulletin. Cooling degree days for the calendar year are published in the "Climatological Data Annual Summary."

Information concerning the history of changes in locations, exposure, etc. of substations is kept on file at the National Climatic Data Center. Historical information of regular National Weather Service Offices may be obtained from the "Local Climatological Data" annual publication. The contents of this publication may be reprinted or otherwise used freely, with proper credit to the National Climatic Data Center. The data are also available digitally.

Effective with the January 2011 Data-Month, COOP Observer Names are no longer included in the Monthly and Annual Climatological Data Publications. This information is not published to ensure the privacy of personal information pursuant to Section 208 of the E-Government Act of 2002 (44 USC 3601).

The GHCN-Daily Quality Control Flags shown below are displayed as superscripts with the data. For more Information on Global Historical Climatology Network - Daily and flags, see:  
<http://www.ncdc.noaa.gov/oa/climate/ghcn-daily/>  
and

Comprehensive Automated Quality Assurance of Daily Surface Observations.  
Durre, Imke, Matthew J. Menne, Byron E. Gleason, Tamara G. Houston, Russell S. Vose, 2010: J. Appl. Meteor. Climatol., 49, 16151633.  
doi: 10.1175/2010JAMC2375.1

Blank = Passed All checks

D = failed duplicate check

G = failed gap check

I = failed internal consistency check

K = failed streak/frequent-value check

L = failed check on length of multiday period

M = failed megaconsistency check

N = failed naught check

O = failed climatological outlier check

R = failed lagged range check

S = failed spatial consistency check

T = failed temporal consistency check

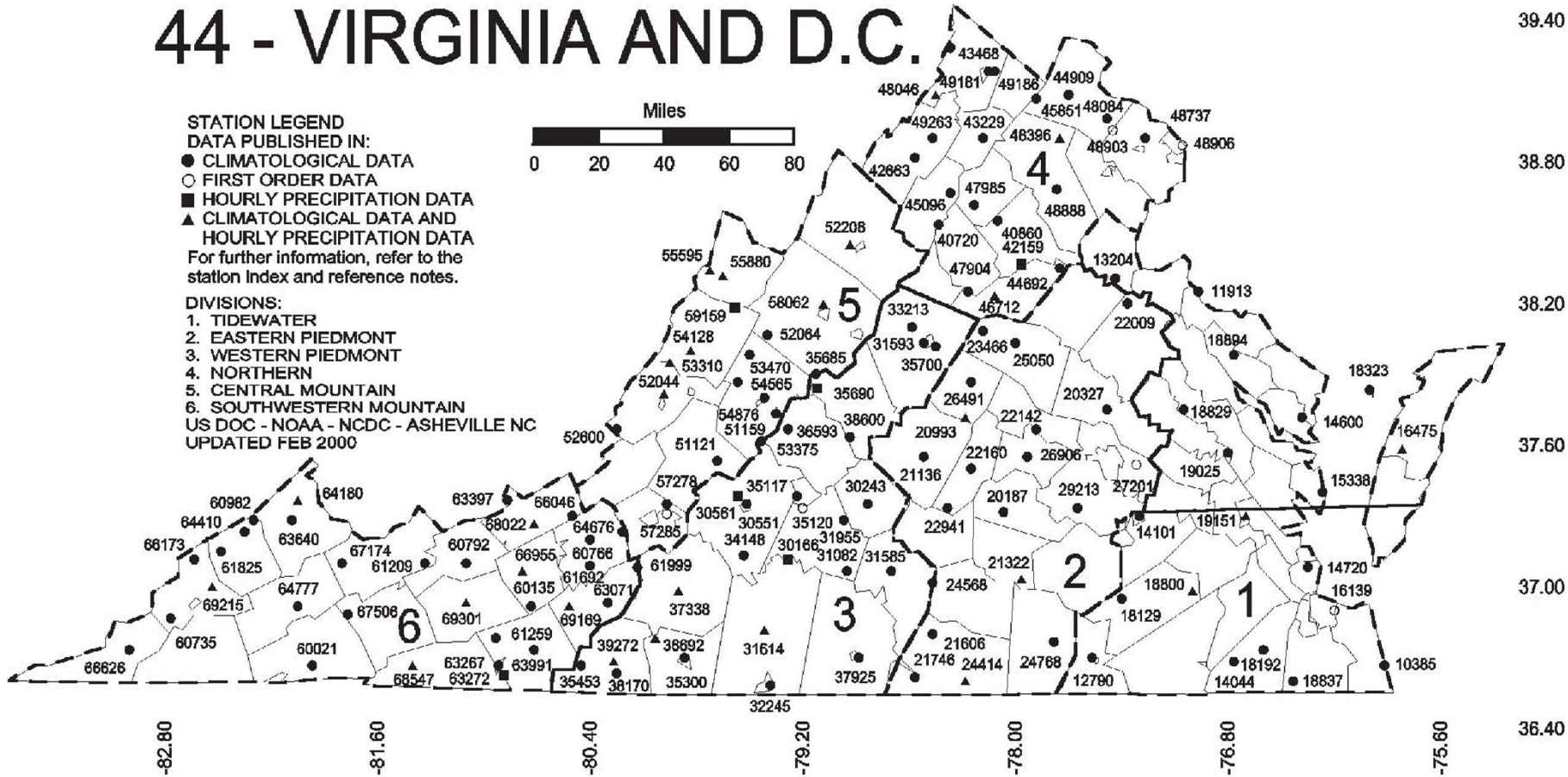
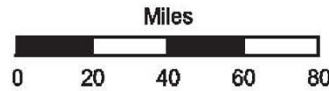
W = temperature too warm for snow

X = failed bounds check

# 44 - VIRGINIA AND D.C.

**STATION LEGEND**  
**DATA PUBLISHED IN:**  
 ● CLIMATOLOGICAL DATA  
 ○ FIRST ORDER DATA  
 ■ HOURLY PRECIPITATION DATA  
 ▲ CLIMATOLOGICAL DATA AND HOURLY PRECIPITATION DATA  
 For further information, refer to the station index and reference notes.

**DIVISIONS:**  
 1. TIDEWATER  
 2. EASTERN PIEDMONT  
 3. WESTERN PIEDMONT  
 4. NORTHERN  
 5. CENTRAL MOUNTAIN  
 6. SOUTHWESTERN MOUNTAIN  
 US DOC - NOAA - NCDC - ASHEVILLE NC  
 UPDATED FEB 2000



NOAA\National Climatic Data Center  
Attn: User Engagement & Services Branch  
151 Patton Avenue  
Asheville, NC 28801-5001

Customer Services Number: (828) 271-4800, option 2  
TDD : (828) 271-4010  
Fax number: (828) 271-4876

NCDC now offers free online access to the *Climatological Data* publication.  
Go to : [www.ncdc.noaa.gov](http://www.ncdc.noaa.gov) and choose Most Popular.