



CLIMATOLOGICAL DATA

VIRGINIA

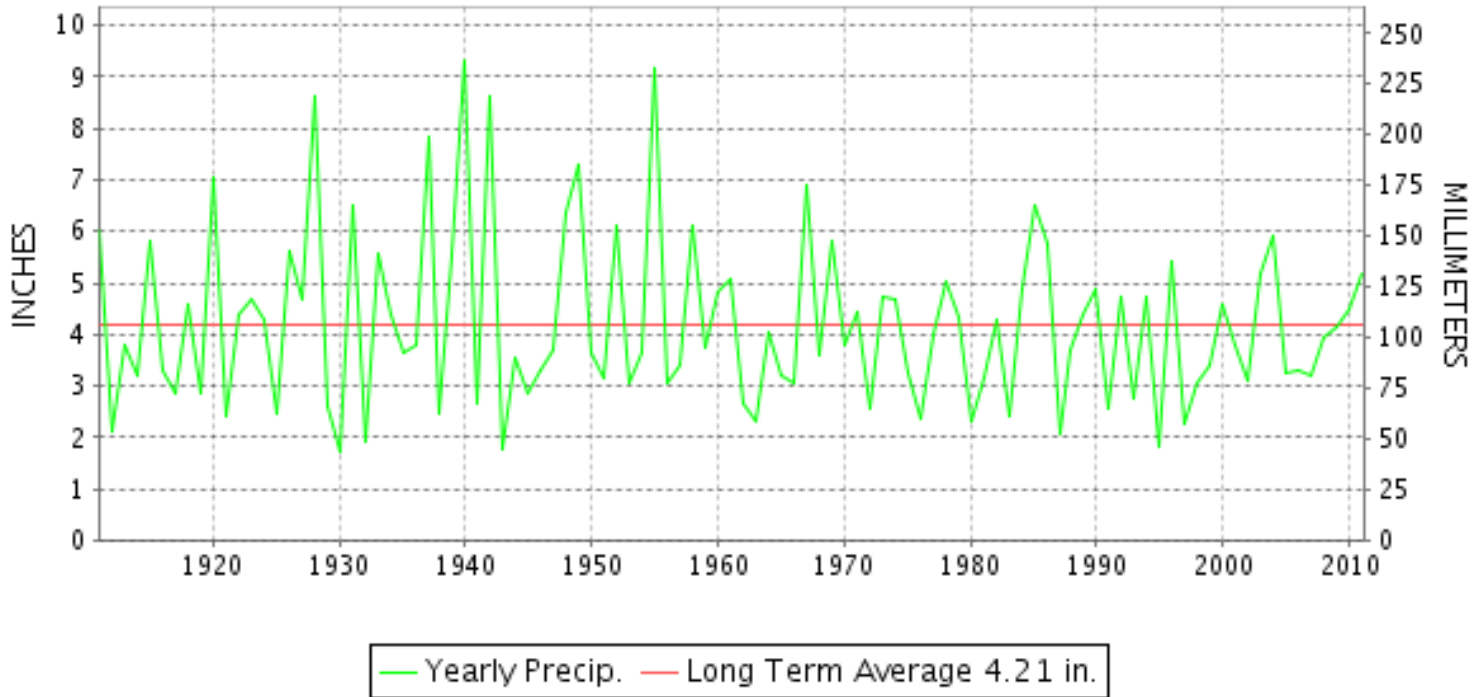
AUGUST 2011

VOLUME 121 NUMBER 08

ISSN 0364-5630

GHCND Ver: 2.91-upd-2012021008

AUGUST PRECIPITATION BY YEAR



TEMPERATURE AND PRECIPITATION EXTREMES

VIRGINIA

HIGHEST TEMPERATURE	100	AUGUST 02++	2 STATIONS
LOWEST TEMPERATURE	37	AUGUST 26	STAR TANNERY
GREATEST TOTAL PRECIPITATION	15.76		WARSAW 2 NW
LEAST TOTAL PRECIPITATION	0.60		LAFAYETTE 1 NE
GREATEST 1 DAY PRECIPITATION	10.98	AUGUST 27	SUFFOLK LAKE KILBY

"I certify that this is an official publication of the National Oceanic and Atmospheric Administration (NOAA) It is compiled using information from weather observing sites supervised by NOAA/National Weather Service and received at the National Climatic Data Center(NCDC), Asheville, North Carolina 28801."

Director
National Climatic Data Center

noaa

National
Oceanic and
Atmospheric Administration

National
Environmental Satellite, Data
and Information Service

National
Climatic Data Center
Asheville, North Carolina

MONTHLY STATION AND DIVISION SUMMARY

STATION	TEMPERATURE (°F)													PRECIPITATION (IN)										
	AVERAGE MAXIMUM	AVERAGE MINIMUM	AVERAGE	DEPARTURE FROM NORMAL	HIGHEST	DATE	LOWEST	DATE	HEATING DEG. DAYS	COOLING DEG. DAYS	NO. OF DAYS				TOTAL	DEPARTURE FROM NORMAL	GREATEST 24 HOURS	DATE	ICE PELLETS, SNOW			NO OF DAYS		
											MAX		MIN						TOTAL	MAX DEPTH ON GROUND	DATE	10 OR MORE	50 OR MORE	1 00 OR MORE
											>=90	<=32	<=32	<=0										
PALMYRA 3S	85.6	63.5	74.6		93	09	52	24	0	302	8	0	0	0	7.17	3.19	2.36	26	0.0	0		8	4	3
PETERSBURG	88.0M	67.8M	77.9M		95	09+	60	31+	0	393	10	0	0	0	M 8.92		6.00	28	N 0.0	0		8	4	1
POWHATAN	M	M	M											5.81	2.08	2.21	28	0.0	0		9	3	1	
RICHMOND INTL AP	89.5	68.4	79.0	2.7	99	07	60	31+	0	439	13	0	0	0	7.10	2.92	5.36	27	0.0	0		5	2	1
SANDSTON	88.3	65.6	77.0		97	08	56	24+	0	374	11	0	0	0	F 10.25		6.38	28	0.0	0		7	5	2
WINTERPOCK 4 W	M	M	M											5.25	1.70	3.37	28	0.0	0		7	2	1	
--DIVISIONAL DATA-----> WESTERN PIEDMONT 03			77.1	2.0										6.05	2.12									
ALTAVISTA	M	M	M											M				0.0	0					
APPOMATTOX	85.5	65.4	75.5	1.2	92	09	55	24	0	333	7	0	0	0	5.71	1.94	1.90	01	0.0	0		6	5	2
BEDFORD 4 NW	87.7	67.3	77.5		97	10	57	24	0	395	11	0	0	0	6.23		4.77	14	0.0	0		4	2	1
BROOKNEAL	89.2	65.3	77.3	2.7	95	09+	55	25+	0	387	15	0	0	0	4.50	0.67	2.97	26	0.0	0		4	2	1
CHARLOTTESVILLE 2W	86.9	67.0	77.0	1.6	97	02	59	24	0	376	11	0	0	0	3.49	-0.65	0.95	15	0.0	0		8	2	0
CHATHAM	87.7	62.9	75.3	1.8	96	04	51	25+	0	323	12	0	0	0	2.49	-0.85	0.93	26	0.0	0		6	1	0
CONCORD 4 SSW	M	M	M											M				0.0	0					
DANVILLE	90.7	67.5	79.1	2.0	97	05	56	23	0	443	21	0	0	0	1.35	-2.19	0.50	22	0.0	0		5	1	0
DANVILLE REGIONAL AP	90.3	65.3	77.8		97	08+	54	23	0	402	19	0	0	0	1.47		0.91	06	0.0	0		3	1	0
FREE UNION	84.2	63.0	73.6		92	03+	53	24+	0	270	5	0	0	0	3.74	-0.16	1.57	15	0.0	0		6	2	1
HOLCOMB ROCK	88.1	65.1	76.6		98	03	54	24+	0	366	11	0	0	0	2.69	-0.64	0.70	05	0.0	0		6	2	0
HUDDLESTON 4 SW	87.9	67.6	77.8		94	09+	56	24	0	402	10	0	0	0	1.86	-1.37	1.46	26	0.0	0		2	1	1
LYNCHBURG #2	85.4	63.2	74.3		91	09	51	24+	0	295	8	0	0	0	2.90		1.27	01	0.0	0		3	2	2
LYNCHBURG INTL AP	87.8	64.3	76.1	2.3	96	08	51	23	0	351	13	0	0	0	2.06	-1.35	1.42	25	0.0	0		3	1	1
MARTINSVILLE FLTR PLT	89.1	61.9	75.5	2.2	96	09+	50	23	0	331	13	0	0	0	1.09	-2.41	0.86	25	0.0	0		2	1	0
MEADOWS OF DAN 5 SW	83.1	61.6	72.4		89	09	53	24+	3	241	0	0	0	0	2.28	-2.34	0.53	01	N 0.0	0		7	1	0
MONTEBELLO FISH CULTURAL STN	80.4M	57.7M	69.1M		91	03	46	23	18	131	1	0	0	0	M 3.24		1.19	15	0.0	0		7	3	1
MONTICELLO	84.6	63.3	74.0	0.3	95	02	54	13	0	285	5	0	0	0	5.76	1.88	0.91	08	0.0	0		11	6	0
PEDLAR DAM	86.2	66.3	76.3		93	05+	57	24+	0	354	10	0	0	0	2.95	-0.33	1.08	26	0.0	0		7	2	1
ROCKY MT	87.6	63.0M	75.3M		96	09	51	27+	0	314	11	0	0	0	1.64	-2.15	0.65	07	0.0	0		4	1	0
SOUTH BOSTON	88.7	65.1	76.9	1.6	95	11+	57	24	0	376	13	0	0	0	1.35	-2.07	0.61	14	0.0	0		4	1	0
STUART	88.0	62.7	75.4	2.1	95	05+	52	24+	0	326	8	0	0	0	2.98	-1.41	0.88	14	0.0	0		8	2	0
TYE RIVER 1 SE	86.2	64.7	75.5	1.6	95	05+	53	23	0	331	8	0	0	0	4.39	0.82	1.35	22	0.0	0		6	4	2
WOOLWINE	M	M	M											2.58	-1.46	0.51	14	N 0.0	0		6	1	0	
--DIVISIONAL DATA-----> NORTHERN 04			75.6	1.3										3.03	-0.78									
BIG MEADOWS	M	M	M											M				0.0	0					
BOSTON 4 SE	85.9	62.0	74.0		97	02	51	24+	0	283	7	0	0	0	4.32		1.25	14	0.0	0		6	3	2
CASTLETON	86.3M	65.0MF	75.7MF		97	02	54	24	0	328	7	0	0	0	M 5.30		1.66	19	0.0	0		9	5	2
EDINBURG	85.6	60.8	73.2		97	02	49	23	2	263	6	0	0	0	2.61		1.13	28	0.0	0		5	2	1

VIRGINIA
201108

MONTHLY STATION AND DIVISION SUMMARY

STATION	TEMPERATURE (°F)										PRECIPITATION (IN)													
	AVERAGE MAXIMUM	AVERAGE MINIMUM	AVERAGE	DEPARTURE FROM NORMAL	HIGHEST	DATE	LOWEST	DATE	HEATING DEG. DAYS	COOLING DEG. DAYS	NO. OF DAYS				TOTAL	DEPARTURE FROM NORMAL	GREATEST 24 HOURS	DATE	ICE PELLETS, SNOW			NO OF DAYS		
											MAX		MIN						TOTAL	MAX DEPTH ON GROUND	DATE	10 OR MORE	50 OR MORE	1 00 OR MORE
											>=90	<=32	<=32	<=0										
FRONT ROYAL	85.3M	63.4M	74.4M		95	03+	52	31	0	288	4	0	0	0	FM 1.71		0.48	14	0.0	0		5	0	0
LINCOLN	M	M	M											5.00	1.18	1.70	02	0.0	0		5	4	2	
LURAY 5 E	85.1	61.9	73.5	1.1	96	02	50	23	2	268	4	0	0	0	5.08	1.57	1.09	14	0.0	0		8	5	1
MADISON	86.0	65.0	75.5		96	02	54	23	0	333	7	0	0	0	F 4.28		2.10	15	0.0	0		4	3	2
MANASSAS	89.1M	67.9M	78.5M		100	02+	56	23	0	386	11	0	0	0	M 3.70		1.75	28	0.0	0		9	1	1
MT WEATHER	82.0	64.3	73.2	2.4	92	02	57	23	1	261	3	0	0	0	2.90	-0.76	1.46	28	0.0	0		7	1	1
PIEDMONT RSCH STN	85.5	66.0	75.8	1.4	96	02	55	23	0	340	9	0	0	0	F 1.53		0.78	26	0.0	0		3	2	0
SOMERSET	86.4	64.3	75.4		96	02	51	23	0	325	8	0	0	0	4.81		1.17	28	0.0	0		7	4	1
SPERRYVILLE	84.0	62.3	73.2		94	02	52	24	1	259	5	0	0	0	2.86		0.95	28	0.0	0		9	1	0
STAR TANNERY	84.4	57.5	71.0		95	02	37	26	20	209	4	0	0	0	2.94		1.16	28	0.0	0		7	2	1
STERLING RCS	86.9	64.9	75.9	2.9	98	02	54	23	0	344	7	0	0	0	5.60	1.96	1.68	19	0.0	0		8	4	2
VIENNA	85.4M	66.6M	76.0M		95	02	56	30+	0	314	5	0	0	0	M 5.33		2.02	28	0.0	0		8	3	2
WARRENTON 3 SE	85.6	65.1	75.4	1.7	95	03+	55	30	0	329	6	0	0	0	2.30	-1.37	0.85	28	0.0	0		6	1	0
WASHGTN DULLES INTL AP	87.3	65.3	76.3	1.9	99	01	52	23	0	359	8	0	0	0	3.74	-0.04	1.17	27	0.0	0		7	3	1
WASHINGTON REAGAN AP	88.6	71.3	80.0	2.6	100	01	63	30+	0	468	12	0	0	0	8.92	5.48	3.33	27	0.0	0		9	5	3
WINCHESTER	84.5	64.7	74.6	1.2	95	02	54	30	0	305	4	0	0	0	2.12	-0.70	0.63	28	0.0	0		6	2	0
WINCHESTER 7 SE	86.0	60.9	73.5	0.6	96	01	51	31+	3	272	5	0	0	0	2.37	-1.23	0.78	28	0.0	0		6	2	0
WOODSTOCK 2 NE	84.1M	61.1M	72.6M		94	02+	51	24+	3	226	3	0	0	0	M 5.06		1.72	19	0.0	0		7	4	1
--DIVISIONAL DATA----->			74.9	2.1											3.93	0.27								
CENTRAL MOUNTAIN 05																								
BUCHANAN	86.6	66.3	76.5	1.2	94	05+	56	24+	0	357	7	0	0	0	2.08	-1.38	0.82	22	0.0	0		5	2	0
BUENA VISTA	M	M	M												3.52	0.55	1.45	15	0.0	0		8	2	1
COVINGTON FLTR PLT	86.8	60.8	73.8	1.2	94	09+	50	24+	0	279	6	0	0	0	1.56	-1.78	0.48	20	N 0.0	0		6	0	0
CRAIGSVILLE 2 S	M	M	M												3.58	0.22	2.09	14	0.0	0		8	1	1
DALE ENTERPRISE	83.9	61.2	72.6	0.8	95	03	49	23	4	244	5	0	0	0	5.86	2.44	2.75	14	0.0	0		12	2	1
EARLEHURST	87.5M	59.9M	73.7M		94	14+	46	23	1	259	10	0	0	0	1.20	-2.24	0.39	07	0.0	0		4	0	0
GATHRIGHT DAM	82.5	60.8	71.7	0.4	91	05	50	23	3	215	1	0	0	0	2.51	-0.66	0.89	07	N 0.0	0		6	2	0
GLASGOW 1 SE	88.4	64.3	76.4		98	03	51	24	0	360	13	0	0	0	3.47	-0.01	1.40	26	0.0	0		8	1	1
HOT SPRINGS	82.3	59.8	71.1	0.9	91	05	48	24+	7	199	3	0	0	0	1.30	-2.11	0.45	19	0.0	0		5	0	0
KERRS CREEK 6 WNW	M	M	M												3.47	-0.16	1.31	07	0.0	0		8	2	2
LEXINGTON	87.7	61.8	74.8	1.7	97	09	49	23	0	308	13	0	0	0	2.90	-0.15	0.90	26	0.0	0		7	3	0
MILLGAP	80.7	54.6	67.7		90	02	43	23	20	109	1	0	0	0	4.68	0.89	1.60	14	0.0	0		10	3	1
MTN GROVE	84.4	M	M												2.37		1.35	19	0.0	0		4	1	1
MUSTOE 1 SW	78.3	55.8M	67.1M		87	04+	42	23	24	93	0	0	0	0	6.62		2.12	13	N 0.0	0		10	3	2
ROANOKE 8 N	87.6	65.6	76.6		95	03	53	23	0	367	7	0	0	0	1.47		0.59	19	N 0.0	0		4	1	0
ROANOKE INTL AP	88.4	67.1	77.8	3.1	97	04	54	23	0	402	11	0	0	0	1.45	-2.29	0.57	18	0.0	0		3	2	0
STAUNTON WATER TRMTMT PLT	83.8	62.9	73.4	2.9	94	03	53	30+	1	267	5	0	0	0	4.93	1.43	1.96	14	N 0.0	0		7	3	1
WAYNESBORO WTP	85.8	60.8	73.3		96	02	50	22	0	265	7	0	0	0	4.01		2.10	13	0.0	0		6	2	2

MONTHLY STATION AND DIVISION SUMMARY

STATION	TEMPERATURE (°F)													PRECIPITATION (IN)												
	AVERAGE MAXIMUM	AVERAGE MINIMUM	AVERAGE	DEPARTURE FROM NORMAL	HIGHEST	DATE	LOWEST	DATE	HEATING DEG. DAYS	COOLING DEG. DAYS	NO. OF DAYS				TOTAL	DEPARTURE FROM NORMAL	GREATEST 24 HOURS	DATE	ICE PELLETS, SNOW			NO OF DAYS				
											MAX		MIN						TOTAL	MAX DEPTH ON GROUND	DATE	10 OR MORE	50 OR MORE	1 00 OR MORE		
											>=90	<=32	<=32	<=0												
--DIVISIONAL DATA----->			73.3	1.4										3.17	-0.25											
SOUTHWESTERN																										
MOUNTAIN 06																										
ABINGDON 3S	84.5M	62.4M	73.5M		93	05	53	29	0	258	3	0	0	0	M 2.70	0.65	14	N 0.0	0		8	2	0			
BIG STONE GAP	84.7	62.6	73.7	-0.2	92	02	54	23	0	277	4	0	0	0	5.08	1.19	1.80	14	0.0	0	7	5	1			
BLACKSBURG NWSO	83.9	60.5	72.2	2.6	90	02	48	24+	1	230	1	0	0	0	1.25	-2.43	0.51	07	0.0	0	4	1	0			
BLAND	82.0	56.5	69.3	0.9	88	21	44	24+	18	154	0	0	0	0	2.22	-1.21	0.57	26	0.0	0	8	1	0			
BURKES GARDEN	72.5	52.3	62.4	-3.2	78	21	39	23	92	19	0	0	0	0	2.69	-1.35	0.51	22	0.0	0	8	1	0			
CHRISTIANSBURG	82.7	61.0	71.9		90	03	50	24+	0	219	1	0	0	0	2.17		1.23	15	0.0	0	4	1	1			
CLINTWOOD 1 W	81.8	59.9	70.9		88	06	52	30+	0	188	0	0	0	0	1.73		0.67	09	0.0	0	4	2	0			
COPPER HILL	79.2	60.5	69.9		88	01	51	24	5	161	0	0	0	0	3.02	-0.89	1.07	19	0.0	0	5	2	1			
GALAX RADIO WBRF	M	M	M												M				0.0	0						
GALAX WTP	80.8	58.8	69.8		88	05	49	24	7	162	0	0	0	0	5.28		2.57	26	N 0.0	0	8	3	1			
GRUNDY	81.7	62.3	72.0	-2.2	90	06	54	24+	0	225	1	0	0	0	2.63	-1.30	1.06	14	0.0	0	6	1	1			
JOHN FLANNAGAN LAKE	M	M	M												M				0.0	0						
LAFAYETTE 1 NE	M	M	M												0.60	-2.56	0.23	26	0.0	0	3	0	0			
LEBANON	83.5	59.7	71.6	1.0	92	06	47	24+	3	215	1	0	0	0	2.73	-0.98	0.97	14	N 0.0	0	9	1	0			
NORA 4 SSE	79.5M	62.3M	70.9M		86	26+	57	30+	1	185	0	0	0	0	M 2.24		0.67	08	N 0.0	0	5	1	0			
NORTH FORK LAKE	M	M	M												M				0.0	0						
PULASKI 2 E	84.4	60.5	72.5	2.3	90	26+	48	23	1	235	4	0	0	0	0.78	-2.05	0.25	14	0.0	0	4	0	0			
RADFORD 3 N	84.8	61.7	73.3		90	26+	49	23	0	260	6	0	0	0	1.77	-1.45	0.48	01	0.0	0	3	0	0			
RICHLANDS	83.5	59.1	71.3	0.7	92	06	49	24+	2	207	1	0	0	0	2.50	-0.47	0.60	26	N 0.0	0	8	1	0			
SALTVILLE 1N	84.4	59.9	72.2	0.4	91	06+	49	25+	0	229	4	0	0	0	2.89	-1.26	1.11	14	0.0	0	5	2	1			
STAFFORDSVILLE 3 ENE	84.1	59.2	71.7	1.9	89	26+	46	23	2	214	0	0	0	0	1.25	-1.99	0.40	14	0.0	0	4	0	0			
TROUT DALE 3 SSE	79.6	55.5	67.6		87	02	43	24+	31	113	0	0	0	0	2.83	-0.75	0.90	27	0.0	0	8	2	0			
WILLIS	M	M	M												1.04	-2.93	0.48	01	0.0	0	3	0	0			
WISE 3E	79.3	60.7F	70.0F	-0.2	85	05	51	23	3	171	0	0	0	0	4.06	0.24	0.93	07	0.0	0	9	3	0			
WYTHEVILLE 1 S	84.1	58.1	71.1	1.7	90	05+	48	24+	2	199	3	0	0	0	3.78	0.64	1.38	19	0.0	0	7	3	1			
--DIVISIONAL DATA----->			70.9	1.1											2.51	-1.06										

VIRGINIA
201108

DAILY PRECIPITATION (INCHES)

STATION	TOTAL	DAY OF MONTH																														
		01	02	03	04	05	06	07	08	09	10	11	12	13	14	15	16	17	18	19	20	21	22	23	24	25	26	27	28	29	30	31
WINTERPOCK 4 W	5.25	0.05	0.09		0.03			0.01	T			0.02	0.15		0.06	0.22	0.20						0.18				0.58	0.28	3.37		0.01	
WESTERN PIEDMONT 03																																
ALTAVISTA	M	-	-	-	-	-	-	-	-	-	-	-	-	-	-	-	-	-	-	-	-	-	-	-	-	-	-	-	-	-	-	-
APPOMATTOX	5.71	1.90		0.02			0.79							1.30						0.02			0.57			0.89		0.22				
BEDFORD 4 NW	6.23	0.02			0.03		0.29						0.01	4.77								0.14			0.94		0.03					
BROOKNEAL	4.50	0.32		0.02			0.85					0.15	0.01	0.05	0.01	0.05						0.01			2.97		0.06					
CHARLOTTESVILLE 2W	3.49		T		0.15	T		0.03	0.24				T		0.68	0.95	0.03			T		0.14	0.39			0.40	0.02	0.46				
CHATHAM	2.49					0.07	0.33						0.35	0.15	0.22	0.01				0.05		0.33			0.93		0.05					
CONCORD 4 SSW	M	-	-	-	-	-	-	-	-	-	-	-	-	-	-	-	-	-	-	-	-	-	-	-	-	-	-	-	-	-	-	
DANVILLE	1.35						0.30						0.01	0.25	0.10							0.50					0.10	0.01	0.08			
DANVILLE REGIONAL AP R	1.47			0.01			0.91				T	0.16	T	0.06								0.01			0.09	0.15	0.08					
FREE UNION	3.74		T		0.05	T		T	0.09					0.66	1.57	0.27					0.05	0.47			0.27		0.31					
HOLCOMB ROCK	2.69	0.09				0.70	T	0.40					0.01	0.30	0.05					0.01	0.04	0.41			0.57		0.11		T			
HUDDLESTON 4 SW	1.86	0.01					0.02						0.28	0.03	0.04							0.02			1.46							
LYNCHBURG #2	2.90	1.27		0.01			0.08						0.03	0.14	0.02							0.08			1.20		0.07					
LYNCHBURG INTL AP	2.06			0.02			0.01						0.05	0.01	T			T				0.44			1.42	T	0.11					
MARTINSVILLE FLTR PLT	1.09						0.01					T	T	0.03	0.01							0.18			0.86							
MEADOWS OF DAN 5 SW	2.28	0.53		0.01		0.16	0.15		0.01		0.01	0.29	0.28	0.26	0.09					0.01		0.05			0.43							
MONTEBELLO FISH CULTURAL STN	M 3.24		-			0.12	0.03	0.08	0.10	-	0.13			-	1.19	0.02						0.07	0.24			0.72		0.50		0.04		
MONTICELLO	5.76			0.12	0.13		0.44	0.91	T					0.71	0.64	0.22						0.70	0.66			0.35		0.88				
PEDLAR DAM	2.95			T	0.14	T	0.30	0.15	T	0.05			0.01	0.20	0.03	T				T	0.04	0.80			1.08		0.12		0.03			
ROCKY MT R	1.64						0.65							0.03	0.42	T				0.10		0.01			0.43		T					
SOUTH BOSTON	1.35	0.02					0.10						0.07	0.61								0.14			0.03		0.38					
STUART	2.98	0.07		0.05		0.05	0.47	0.06				0.15	0.12	0.88	0.73						0.10	0.03			0.11		0.16					
TYE RIVER 1 SE	4.39				T	T	0.03						T	0.81	1.15	0.11					0.04	1.35			0.75		0.15					
WOOLWINE	2.58	0.46				0.27	0.07				T		0.31	0.51	0.03	T				0.46		0.07			0.39		0.01					
NORTHERN 04																																
BIG MEADOWS	M	-	-	-	-	-	-	-	-	-	-	-	-	-	-	-	-	-	-	-	-	-	-	-	-	-	-	-	-	-	-	
BOSTON 4 SE	4.32		0.57	0.04		0.04	0.04	0.29						1.25	0.06							0.34			0.45		1.24					
CASTLETON	M 5.30		0.12	0.04	0.12	0.04	0.02	0.08	0.11					0.52	0.08					-	1.66	0.55	0.75	-	-	0.13	-	1.07		0.01		
EDINBURG	2.61			0.05	0.10	0.09	0.36	0.06						0.51	0.10	0.01					0.04	0.01	0.07			0.05		1.13		0.03		
FRONT ROYAL	FM 1.71			0.30		0.09	0.31							0.48	0.10						0.35	0.05			0.03	0.00 ^L	1.00 ^L		-			
LINCOLN	5.00		1.70											0.35	0.84												1.17					
LURAY 5 E	5.08			0.03	0.20	0.06	0.82						1.09	0.11	0.27					0.73		0.92				0.03	0.75		0.07			
MADISON	F 4.28			T	T	0.04	0.00 ^L	0.00 ^L	1.47 ^L					2.10									0.31			0.78		1.05				
MANASSAS	M 3.70		0.25	0.10			0.20	-	-					0.20	0.10	0.05					0.30	0.30				0.45		1.75		-		
MT WEATHER	2.90			0.05	0.06		0.09	0.18		0.21				0.27	0.06	0.09					0.15	0.03	0.12			0.03		1.46			0.10	
PIEDMONT RSCH STN	F 1.53		T	T	0.14	0.01	0.00 ^L	0.00 ^L	3.04 ^L				0.00 ^L	0.00 ^L	1.59 ^L	0.02							0.58			0.78		0.00 ^L	1.43 ^L			
SOMERSET	4.81		0.08	0.05	0.03	0.02	0.93	0.43						0.50	0.88	0.01						0.34			0.37		1.17					
SPERRYVILLE	2.86		0.07		0.10	0.04	0.14	0.20	0.27					0.27	0.08	T					0.21	0.36			0.14		0.95		0.03			
STAR TANNERY	2.94		0.22				0.86	0.16	0.04					0.14	0.26							0.10					1.16					
STERLING RCS	5.60		0.62	T	0.02		0.78	0.22						0.36	0.09						1.68	0.03			0.11	0.01	1.37	0.31				

VIRGINIA
201108

DAILY PRECIPITATION (INCHES)

STATION	TOTAL	DAY OF MONTH																																			
		01	02	03	04	05	06	07	08	09	10	11	12	13	14	15	16	17	18	19	20	21	22	23	24	25	26	27	28	29	30	31					
VIENNA	M 5.33		0.05	0.03	0.20			0.24	0.21			-		1.01	0.21			0.37		0.94		0.04					-	0.01	2.02								
WARRENTON 3 SE	2.30			0.02	T	T		0.19	0.27					0.27	0.19	0.03			0.29	T		0.08				0.09	0.02	0.85									
WASHGTN DULLES INTL AP	3.74	0.14		0.03			0.55	0.01		T			0.36	0.08				0.65	0.04		0.39	T			0.08		1.17	0.24									
WASHINGTON REAGAN AP	8.92			0.28	0.01		0.04	0.67					0.41	1.37	T			T	1.61		0.27	T			0.42	0.01	3.33	0.50									
WINCHESTER	2.12			0.13	0.05			0.33			0.03			0.05	0.61	0.11					0.01					0.12	T	0.63			0.05						
WINCHESTER 7 SE	2.37			0.22	0.05			0.63			0.02			0.07	0.06	0.16				0.18						0.07		0.78			0.13						
WOODSTOCK 2 NE	M 5.06			0.19	0.05	0.04		0.68			0.04			0.64	0.03	0.41				1.72	-	-	0.37			0.04		0.85									
CENTRAL MOUNTAIN 05																																					
BUCHANAN	2.08							0.54		T			0.22	0.17													0.26						0.07				
BUENA VISTA	3.52	0.01				0.02			0.12					0.32	1.45	0.01				0.25	0.27		0.15			0.64							0.28				
COVINGTON FLTR PLT R	1.56	0.07						0.10	0.10	T				0.20						0.14	0.48	T	0.41			0.06							T				
CRAIGSVILLE 2 S	3.58					0.25	0.14	0.03	0.06	0.02	0.03			2.09	0.13	0.03				0.20	0.12		0.24			0.19		0.03			0.02						
DALE ENTERPRISE	5.86			T	0.05	0.13	0.18	0.48	0.30	0.03	0.02			2.75	0.37	0.16					0.12	0.13	0.06			0.07	0.23	0.27			0.51						
EARLEHURST	1.20							0.39		0.27	0.17			0.03						0.07	0.09		0.08			0.10											
GATHRIGHT DAM	2.51							0.89	0.03	0.06	0.02			T						0.28	0.58		0.16			0.22	T							0.27			
GLASGOW 1 SE	3.47	0.26			0.35	T	0.14	0.03	T	0.02			0.01	0.24	0.44	T				0.14	0.05		0.35			1.40		0.04									
HOT SPRINGS R	1.30							0.03	0.10	0.02						0.07				0.45	0.25		0.08			0.11		0.02						0.17			
KERRS CREEK 6 WNW	3.47					0.02		1.31	0.02					1.20	0.21						0.12		0.11			0.17		0.10						0.21			
LEXINGTON	2.90		0.03					0.11	0.12		0.03			0.59	0.27					0.02	0.12		0.09			0.90		0.02						0.60			
MILLGAP R	4.68				0.05	0.03		0.77	0.17		0.07			1.60	0.17					0.12	0.14		0.32			0.26		0.37						0.61			
MTN GROVE	2.37				T				T		0.32				T					1.35			0.35										T		0.35		
MUSTOE 1 SW	6.62			0.07	0.28		0.70	0.06		0.09			2.12	1.09				0.23	0.34		0.49				0.22		0.48				0.45						
ROANOKE 8 N	1.47	0.04						0.29						0.07						0.59			0.19			0.28		0.01									
ROANOKE INTL AP	1.45			T			0.52			T		0.02	T	0.05	T			0.57			0.28				T	T	T		0.01								
STAUNTON WATER TRMTMT PLT	4.93				0.05	0.43	0.03	0.04	0.09	T				1.96	0.74	0.06					0.43		0.69			0.16		0.25									
WAYNESBORO WTP	4.01			0.05	0.05							0.03	2.10	1.08	0.06					0.16		0.18			0.19		0.11										
WILLIAMSVILLE 2 S R	M	-	-	-	-	-	-	-	-	-	-	-	-	-	-	-	-	-	-	-	-	-	-	-	-	-	-	-	-	-	-	-	-	-	-	-	
SOUTHWESTERN MOUNTAIN 06																																					
ABINGDON 3S	M 2.70			0.17				0.36	0.22	0.20	0.24			0.08	0.65								0.58		-	0.20											
BIG STONE GAP	5.08	0.02			0.32			0.01	0.85	0.73		0.05		1.80	0.10						0.52	0.01		0.66		0.01											
BLACKSBURG NWSO R	1.25	0.02			T		T	0.51	0.01		0.01	T		T	0.37	0.15					0.01		0.03			0.14							T				
BLAND	2.22	0.26			0.09			0.15		0.02				0.16	0.03	0.13					0.17	0.05		0.22			0.57	0.37									
BURKES GARDEN	2.69	0.03			0.02			0.03	0.34	0.04	0.13	0.03		0.25	0.23	0.24					0.07	0.02	0.51	0.02		0.23	0.48	0.02									
CHRISTIANSBURG	2.17	0.13						0.40			T			0.32	1.23											0.09											
CLINTWOOD 1 W	1.73	0.01			0.02				0.28	0.67		T		0.51	0.02	T							0.13		T	0.09		T	T								
COPPER HILL	3.02	0.05				0.03	0.95						0.22	0.06	0.24	0.01						1.07		0.04			0.35										
GALAX RADIO WBRF	M	-	-	-	-	-	-	-	-	-	-	-	-	-	-	-	-	-	-	-	-	-	-	-	-	-	-	-	-	-	-	-	-	-	-	-	
GALAX WTP	5.28	0.48			0.06					0.04				0.15	0.79	0.13						0.79		0.11			2.57	0.15	0.01								
GRUNDY	2.63				0.24				0.45	0.31				1.06	0.26	T						0.09				0.22										T	
JOHN FLANNAGAN LAKE	M	1.21			0.10		-	-	0.20	0.74				-	-	1.56						0.26		-	-	0.12		-	-	-							
LAFAYETTE 1 NE	0.60					T		0.12						0.04									0.11				0.23		0.01								

VIRGINIA
201108

DAILY PRECIPITATION (INCHES)

STATION	TOTAL	DAY OF MONTH																															
		01	02	03	04	05	06	07	08	09	10	11	12	13	14	15	16	17	18	19	20	21	22	23	24	25	26	27	28	29	30	31	
LEBANON	2.73				0.21				0.30	0.20		0.13			0.97	0.38				0.32	0.12		0.10										
NORA 4 SSE	M 2.24				0.02			T	0.67	0.36		0.31			0.46	T				0.22	0.02	-	0.07				0.09	0.02					
NORTH FORK LAKE	M 0.12 ^L				0.11		-	-	1.48 ^L	0.63				-	-	0.75 ^L				0.14	-	-	0.42 ^L				-	*	*	0.00 ^a	-	-	
PULASKI 2 E R	0.78	0.12									0.05				0.25					0.20			0.02				0.14						
RADFORD 3 N	1.77	0.48						0.18			T			*	*	0.77 ^a	0.03			0.23	*	*	0.04 ^a				0.04						
RICHLANDS	2.50								0.29	0.11	0.01	0.17			0.46	0.38	0.07			0.28			0.13				0.60						
SALTVILLE 1N	2.89	0.04				0.04			0.17	0.73		0.06			1.11	0.30				0.27	0.08		0.02					0.07					
STAFFORDSVILLE 3 ENE	1.25	0.08			0.10			0.34	0.02	0.01				0.01	0.40	0.16				0.04			0.02				0.07						
TROUT DALE 3 SSE	2.83	0.19			0.04					0.22		0.17		0.54	0.31	0.19	0.03					0.02							0.90				
WILLIS R	1.04	0.48			0.11				0.07					0.02	0.25							0.09					0.02						
WISE 3E R	4.06			0.12				0.93		0.55	0.30	0.04		0.46	0.78	0.02			0.39				0.30					0.17					
WYTHEVILLE 1 S R	3.78	0.29			0.04				0.10						0.90	0.17				1.38			0.54				0.31	0.05					

VIRGINIA
201108

DAILY TEMPERATURES (°F)

STATION	OB. TIME	MAX/MIN	DAY OF MONTH																															AVERAGE		
			01	02	03	04	05	06	07	08	09	10	11	12	13	14	15	16	17	18	19	20	21	22	23	24	25	26	27	28	29	30	31			
			ASHLAND	18	MIN MAX MIN	67 90 68	67 89 67	72 87 74	72 84 74	72 86 71	69 84 69	69 86 75	70 90 72	70 90 69	66 85 65	65 85 68	67 84 70	68 84 70	63 83 65	63 86 64	66 89 64	66 85 66	66 85 70	64 88 65	68 81 70	58 80 56	58 86 68	59 91 68	67 85 68	71 81 68	68 84 68	63 81 64	63 79 62		63 81 62	59 81 58
BREMO BLUFF	07	MAX MIN	99 73	97 68	93 73	94 70	90 74	91 70	96 73	99 69	95 69	96 62	91 61	88 64	85 69	91 66	84 64	89 61	90 65	93 65	85 63	93 62	94 69	87 62	86 54	90 54	95 69	89 66	79 69	89 62	84 60	87 59	87 68	87 68	90.5 65.3 65.8	
CAMP PICKETT	08	MAX MIN	94 68	91 67	90 68	90 70	85 72	86 70	92 71	93 70	92 64	91 65	91 65	83 67	80 69	86 64	81 63	85 63	87 66	89 64	89 65	87 62	89 68	85 60	82 58	86 59	90 67	87 68	74 68	87 64	78 64	81 58	86.8 65.8 65.8			
CHASE CITY	17	MAX MIN	78 65	90 66	90 70	92 70	92 72	86 74	87 70	92 69	93 64	91 65	92 66	86 69	84 72	86 64	82 61	85 62	88 66	89 64	88 65	89 65	88 69	90 61	87 58	87 62	83 67	87 62	88 68	74 67	88 62	82 65	82 58	86.9 66.0 66.0		
CLARKSVILLE	07	MAX MIN	79 69	93 69	95 70	95 75	94 75	89 73	87 76	96 73	98 68	97 71	89 71	90 72	89 70	85 64	90 63	90 64	91 67	92 67	90 68	92 69	90 68	93 70	91 63	91 62	89 62	89 73	93 70	93 67	85 66	85 61	90.4 69.0 69.0			
CORBIN	09	MAX MIN	95 69	91 67	84 73	85 72	83 70	89 67	93 75	91 70	92 65	91 64	85 62	85 68	83 71	81 62	80 63	86 63	89 67	90 65	86 62	88 62	90 72	82 68	81 53	88 58	93 66	85 70	76 70	85 60	78 56	80 56	82 65.9 65.9			
CROZIER	07	MAX MIN	86 67	93 65	91 72	81 71	87 66	86 68	89 67	93 70	92 66	92 63	86 65	86 69	85 68	87 64	79 62	86 65	89 63	89 63	91 65	82 63	89 65	89 61	89 68	84 54	82 63	88 67	88 68	93 67	85 68	72 67	85 62	78 58	80 65.3	
FARMVILLE 2 N	07	MAX MIN	92 67	92 67	91 68	91 68	81 72	84 69	84 69	91 69	93 69	93 66	94 64	94 64	90 64	84 69	80 63	86 63	88 65	90 64	83 65	89 65	89 67	84 57	82 56	88 56	88 68	93 68	86 69	76 62	87 64	80 59	81 64	87.4 65.1 65.1		
GREENBAY 3 NE	09	MAX MIN	78 66	90 67	91 73	89 70	89 73	84 69	86 74	92 72	94 70	92 65	91 64	87 67	81 68	79 71	85 64	77 62	85 63	87 69	89 66	86 64	87 66	88 70	84 57	82 60	86 69	92 67	84 70	73 68	86 61	79 62	81 57	85.6 66.6 66.6		
JOHN H KERR DAM	08	MAX MIN	80 67	94 71	94 76	96 75	94 73	91 76	88 78	96 78	98 78	99 71	92 71	87 72	87 74	87 69	84 67	88 66	88 68	90 69	93 69	89 73	88 62	88 67	86 71	86 62	86 67	86 71	91 74	88 71	93 78	83 83	85 85	89.8 70.2 70.2		
LOUISA	18	MAX MIN	97 67	95 65	92 73	91 73	88 67	87 73	91 70	95 68	94 66	93 60	91 61	87 67	86 70	87 64	88 61	88 65	90 62	88 61	89 65	88 62	89 69	88 51	85 53	83 70	83 66	92 70	87 69	86 57	88 55	86 54	88 54	88.8 64.8 64.8		
PALMYRA 3S	06	MAX MIN	85 65	92 64	91 63	90 69	88 68	84 70	88 70	78 68	93 63	92 62	92 62	86 65	85 69	82 64	86 64	80 62	84 62	86 63	88 63	81 61	87 61	90 68	82 53	80 52	86 53	92 67	85 69	78 69	85 61	79 58	80 55	85.6 63.5 63.5		
PETERSBURG	08	MAX MIN	82 69	93 68	92 68	90 73	85 74	85 71	95 72	95 74	93 67	94 68	89 68	87 69	87 65	87 65	83 65	87 65	89 65	90 69	89 67	88 71	88 60	85 60	85 61	87 61	87 60	91 61	89 70	79 72	77 66	83 65	88.0 67.8 67.8			
RICHMOND INTL AP	24	MAX MIN	96 68	93 72	93 76	91 74	88 71	90 68	99 75	97 73	96 73	97 73	91 66	89 70	87 69	87 68	84 66	88 68	88 65	91 69	88 68	89 65	89 68	89 66	85 60	85 62	89 69	95 69	88 69	78 69	89 69	82 66	83 64	84 60	89.5 68.4 68.4	
SANDSTON	07	MAX MIN	87 67	96 68	93 69	91 73	87 71	89 67	90 68	97 71	95 70	96 66	95 65	88 67	88 67	88 67	87 65	83 65	86 63	89 63	91 65	87 65	86 65	90 69	83 56	82 56	87 57	92 67	87 67	76 70	88 64	81 63	82 59	88.3 65.6 65.6		
WESTERN PIEDMONT 03																																				
APPOMATTOX	07	MAX MIN	83 65	91 68	91 67	89 72	91 72	85 70	86 70	89 71	92 69	90 68	90 63	86 65	82 66	81 69	85 64	80 62	85 61	86 65	88 64	79 63	88 69	84 56	84 55	81 58	86 68	91 69	84 69	76 63	85 63	79 63	81 60	85.5 65.4 65.4		
BROOKNEAL	07	MAX MIN	84 66	93 67	94 71	93 71	89 74	90 72	93 70	95 68	93 64	93 64	91 66	85 67	84 72	89 63	89 60	89 64	90 64	88 64	87 63	92 67	91 70	87 55	86 55	90 55	92 69	86 69	79 67	88 59	84 60	85 57	89.2 65.3 65.3			
CHARLOTTESVILLE 2W	08	MAX MIN	91 71	97 70	95 73	92 74	87 71	87 71	92 73	94 73	94 71	93 67	88 67	86 68	82 68	85 63	80 65	86 67	87 67	89 65	89 64	75 65	88 65	84 70	81 60	85 61	92 66	85 67	76 67	84 63	78 60	82 60	86.9 67.0 67.0			
CHATHAM	07	MAX MIN	83 64	91 64	93 64	96 74	83 71	87 69	92 68	93 65	92 65	94 64	89 67	83 68	82 68	86 61	82 59	86 59	89 60	91 60	86 60	90 62	87 68	87 51	85 51	87 63	92 64	87 64	78 66	87 60	82 55	82 55	87.7 62.9 62.9			
DANVILLE	07	MAX MIN	86 68	93 68	95 70	96 75	89 74	90 75	94 72	96 73	95 73	94 67	92 67	86 69	91 71	85 66	88 65	88 64	90 66	92 64	92 67	93 69	92 68	91 56	84 57	90 59	95 69	89 69	81 73	85 64	91 63	88 61	90.7 67.5 67.5			

VIRGINIA
201108

DAILY TEMPERATURES (°F)

STATION	OB. TIME	MAX/MIN	DAY OF MONTH																															AVERAGE	
			01	02	03	04	05	06	07	08	09	10	11	12	13	14	15	16	17	18	19	20	21	22	23	24	25	26	27	28	29	30	31		
DANVILLE REGIONAL AP	24	MAX	94	97	96	97	88	90	93	97	95	95	92	88	83	87	84	88	90	91	90	92	92	90	86	90	95	89	80	90	87	86	87	90.3	
FREE UNION	08	MIN	64	65	71	70	74	72	71	72	68	61	67	66	68	66	62	60	59	64	62	64	69	69	54	58	67	69	71	62	59	63	57	65.3	
		MAX	87	92	92	87	88	82	84	89	91	90	90	86	83	80	84	77	84	84	87	73	86	86	81	79	83	86	82	76	83	78	81	84.2	
LYNCHBURG #2	07	MIN	67	66	66	70	70	71	71	70	67	67	61	62	63	66	62	61	61	63	63	61	61	66	53	53	55	55	64	67	58	56	56	63.0	
		MAX	82	90	90	88	90	83	85	90	91	90	90	86	81	82	85	82	85	85	88	79	89	87	84	82	87	90	83	79	85	79	80	85.4	
LYNCHBURG INTL AP	24	MIN	66	65	66	69	69	72	72	69	66	62	62	62	66	70	63	60	60	62	62	59	60	66	51	51	55	66	66	70	58	58	56	63.2	
		MAX	93	94	91	93	85	87	92	96	94	93	90	83	83	89	84	88	87	91	83	91	91	86	84	88	94	85	78	86	81	82	87.8		
MARTINSVILLE FLTR PLT	07	MIN	66	64	71	68	72	72	71	69	66	61	61	69	69	66	62	58	66	62	61	61	66	59	51	56	66	66	71	62	64	61	57	64.3	
		MAX	88	95	96	95	95	83	90	92	96	95	94	90	86	87	86	82	89	90	89	87	92	91	88	87	86	87	83	85	88	85	84	89.1	
MEADOWS OF DAN 5 SW	07	MIN	65	62	62	65	67	73	69	67	66	62	62	62	63	68	59	57	56	56	60	59	61	67	50	59	57	68	73	56	55	58	56	61.9	
		MAX	85	86	87	87	87	77	85	85	89	87	88	84	82	82	65	76	82	84	83	84	86	85	86	81	81	87	75	83	83	82	83	83.1	
MONTEBELLO FISH CULTURAL STN	07	MIN	64	63	63	65	66	70	69	67	64	64	65	62	62	63	59	59	57	57	59	60	62	64	53	53	60	60	68	62	57	57	57	61.6	
		MAX	82		91	84	88	80	80	85		89	88		89		78	83	83	80	74	74	80	82	77	75	81	76	79	66	79	72	75	80.4	
MONTICELLO	08	MIN	59		60	67	68	67	66	67		60	63		54		62	56	55	58	56	52	54	62	46	47	47	59	59	63	52	49	49	57.7	
		MAX	94	95	93	92	88	84	86	90	89	88	87	87	83	80	83	77	81	84	87	87	84	88	78	78	83	88	81	73	81	75	78	84.6	
ROCKY MT	07	MIN	65	68	65	65	67	59	65	64	67	65	62	69	54	68	60	63	65	65	65	58	58	66	59	59	60	67	66	66	62	60	60	63.3	
		MAX	84	90	94	90	92	84	89	88	96	90	90	90	84	84	88	79	86	88	87	83	89	87	87	83	87	92	92	85	92	83	83	87.6	
SOUTH BOSTON	07	MIN	65	65	65	71	73	72	71	71	64	67	66	64		67	64	62	58	58	61	61	61	66	51	51	57	66	51	71	57	57	56	63.0	
		MAX	80	92	92	94	93	87	88	93	95	95	95	89	87	80	86	82	87	88	90	89	90	92	89	87	88	93	89	76	90	89	84	88.7	
STUART	07	MIN	67	66	68	71	73	72	72	71	69	64	64	67	67	67	64	60	60	61	63	64	64	64	58	57	58	68	68	68	62	64	58	65.1	
		MAX	88	93	95	95	95	78	87	89	94	94	93	87	87	86	87	81	85	87	86	85	89	88	87	83	85	91	88	88	88	85	84	88.0	
TYE RIVER 1 SE	06	MIN	64	61	65	65	70	72	69	68	66	66	67	62	63	65	61	59	58	58	58	60	62	68	52	59	59	68	68	61	61	58	62.7		
		MAX	85	86	95	86	95	85	85	92	93	93	91	90	84	83	85	80	86	85	88	76	88	89	85	82	86	91	84	78	85	80	80	86.2	
NORTHERN 04 BIG MEADOWS	09	MIN	66	65	66	69	70	71	72	73	70	71	64	65	68	69	61	62	63	64	63	61	62	66	53	54	56	66	67	71	59	60	58	64.7	
		MAX																																	
BOSTON 4 SE	07	MIN																																	M
		MAX	94	97	93	79	88	88	87	94	94	92	91	85	84	83	84	81	86	85	89	83	87	89	83	79	85	80	84	77	85	77	80	85.9	
CASTLETON	08	MIN	65	64	68	70	70	70	72	67	66	65	59	58	59	66	61	62	59	59	60	60	63	68	51	51	53	53	66	69	62	53	54	62.0	
		MAX	95	97	94	80	87	83	87	91	93	91	91	87	86	81	87	81	86	87	88	81	87	88	82	87		78	86	85	85	76	82	86.3	
EDINBURG	07	MIN	67	68	70	71	70	70	72	70	68	64	63	64	69	63	65	61	66	62	61	68	68	55	54			77	69	63	55	57	65.0		
		MAX	93	97	95	79	88	87	86	93	91	88	88	86	86	86	84	78	87	87	89	82	90	85	82	82	85	83	87	76	84	71	80	85.6	
FRONT ROYAL	07	MIN	63	63	65	68	68	70	69	69	66	67	56	56	58	62	63	61	57	57	59	58	58	62	49	50	51	60	60	67	63	54	55	60.8	
		MAX	94	95	95	79	86	83	85	89	90	88	87	85	85	83	85	78	85	87	87	83	86	87	81	81	86	84	86	76	82	81	81	85.3	
LINCOLN	07	MIN	66	67	68	70	71	72	72	68	69	61	60	60	63	63	63	61	60	62	60	59	59	54	53	59	65	64	67	64		52	52	63.4	
		MAX	93											85	84	84	84	84	85	89	86	88	86	88	81	79	85	82	88	83	82	70	82	M	
LURAY 5 E	08	MIN	62										56	56	60	63	65	58	60	62	58	58	67	50	52	53	63	64	68	61	52	52	M		
		MAX	95	96	95	79	87	84	89	89	90	89	87	83	84	85	85	77	83	88	89	81	87	86	80	81	84	84	87	78	82	74	79	85.1	
MADISON	08	MIN	63	64	69	70	70	68	69	65	65	63	57	57	62	65	60	59	57	62	60	58	65	62	50	53	62	61	68	68	60	51	55	61.9	
		MAX	92	96	94	83	88	83	88	95	93	91	92	83	83	84	84	83	85	86	88	79	87	88	83	79	85	87	84	77	87	78	80	86.0	
MANASSAS	07	MIN	67	66	68	72	72	72	72	69	70	61	63	66	68	63	64	62	64	63	62	64	69	54	56	59	66	68	69	61	57	57	65.0		
		MAX	100	100	98	83	90	86	88			96	95	90	89	84	88	86	90	91	93	89	89	90	86	86	87	81	88	80	87	84	89.1		

VIRGINIA
201108

DAILY TEMPERATURES (°F)

STATION	OB. TIME	MAX/MIN	DAY OF MONTH																															AVERAGE
			01	02	03	04	05	06	07	08	09	10	11	12	13	14	15	16	17	18	19	20	21	22	23	24	25	26	27	28	29	30	31	
MT WEATHER	07	MIN	72	69	73	73	72	72	74		71	66	67	68	72	66	67	63	72	68	64	72	73	56	59	62	68	71	71	63		57	67.9	
		MAX	90	92	91	75	84	81	82	85	86	86	84	81	82	78	82	75	82	85	85	81	85	81	80	77	81	79	80	85	80	77	82.0	
PIEDMONT RSCH STN	08	MIN	71	71	68	69	67	67	69	70	68	62	62	62	65	62	62	63	67	63	63	64	64	57	58	64	66	60	65	60	58	64.3		
		MAX	91	96	93	86	90	84	92	92	92	91	90	84	83	84	84	79	85	85	86	85	86	79	80	78	84	88	83	83	77	85.5		
SOMERSET	07	MIN	67	68	74	72	72	70	73	71	70	69	64	64	66	70	62	63	65	66	64	63	69	70	55	57	63	66	68	69	63	66.0		
		MAX	92	96	95	87	89	85	90	94	94	92	92	84	83	84	85	82	85	86	89	78	87	86	83	80	86	88	85	78	86	86.4		
SPERRYVILLE	06	MIN	67	66	73	71	71	71	72	69	67	68	60	62	64	67	63	62	65	62	61	65	70	51	53	57	66	67	69	59	55	64.3		
		MAX	93	94	93	78	86	80	84	91	90	88	88	85	84	80	85	79	83	85	85	86	85	80	79	83	76	84	77	83	74	84.0		
STAR TANNERY	07	MIN	66	65	65	70	70	70	69	67	69	61	60	61	64	61	61	59	59	60	60	59	65	53	52	54	62	62	68	63	54	62.3		
		MAX	94	95	93	79	87	83	83	88	86	86	85	84	84	84	84	84	85	88	90	84	86	80	79	81	86	82	85	85	79	84.4		
STERLING RCS	07	MIN	63	65	69	69	69	69	68	67	66	68	59	55	58	53	60	60	57	63	58	65	44	56	48	50	56	37	38	38	54	57.5		
		MAX	96	98	94	84	88	87	88	92	91	92	89	86	86	84	87	82	86	89	91	86	89	88	82	82	86	80	87	79	84	86.9		
VIENNA	07	MIN	69	66	74	72	68	71	72	73	70	68	63	62	63	65	64	67	61	63	63	69	54	57	60	64	67	69	65	55	64.9			
		MAX	92	95	91	80	85	84	87	92	88	88	86		84	80	84	79		90	85	85	88	86	79	85	84		88	77	82	85.4		
WARRENTON 3 SE	08	MIN	70	69	70	71	68	69	73	72	70	70	63		68	71	65	66		68	66	67	69	70	56	58	61		67	68	66	66.6		
		MAX	94	95	95	83	87	84	87	91	91	90	89	85	84	82	85	80	85	86	89	82	86	88	88	88	83	78	85	76	83	76	85.6	
WASHGTN DULLES INTL AP	24	MIN	67	66	66	66	70	70	73	70	69	69	64	63	64	68	63	65	62	67	62	62	69	69	56	56	70	66	66	68	61	65.1		
		MAX	99	95	84	88	86	89	93	92	93	92	87	88	84	88	84	87	90	92	87	89	89	83	82	87	81	88	79	85	78	83	87.3	
WASHINGTON REAGAN AP	24	MIN	68	66	72	73	66	72	74	73	69	68	66	62	63	67	66	66	59	69	65	63	73	60	52	56	66	64	70	67	61	65.3		
		MAX	100	98	87	88	88	93	97	94	95	93	89	90	86	85	86	88	90	91	89	88	90	84	81	87	85	90	79	87	81	83	88.6	
WINCHESTER	07	MIN	75	74	76	75	72	74	77	76	77	75	72	70	74	69	68	72	71	74	69	69	76	70	63	65	71	70	72	71	66	63	71.3	
		MAX	92	95	94	78	85	83	83	90	88	87	86	83	83	83	85	78	84	86	87	84	86	87	80	79	86	84	86	78	81	79	84.5	
WINCHESTER 7 SE	08	MIN	71	71	70	70	70	70	71	72	71	70	66	59	62	66	64	65	61	62	62	60	60	67	55	55	62	65	67	68	64	64.7		
		MAX	96	95	95	77	86	84	80	91	91	89	87	86	86	82	87	81	89	86	89	86	88	88	83	81	86	86	86	87	85	73	86.0	
WOODSTOCK 2 NE	07	MIN	63	65	67	69	70	70	71	70	65	64	58	56	56	63	63	62	57	57	60	58		63	51	51	53	61	62	62	61	60.9		
		MAX	94	94	93	78	88	85	85	89	89	86	85	84	85	85	84	77	85	86	88			83	77	79	84	83	86	75	80	71	84.1	
CENTRAL MOUNTAIN 05 COVINGTON FLTR PLT	07	MIN	64	64	65	68	70	70	70	66	67	64	57	56	56	61	62	61	58	58	61			62	51	51	54	61	61	67	60	61.1		
		MAX	88	93	94	88	94	86	88	89	94	87	89	88	87	89	88	80	87	90	88	79	90	83	82	83	84	87	85	85	84	78	86.8	
DALE ENTERPRISE	07	MIN	60	58	63	67	67	75	68	68	66	62	58	57	57	67	60	58	57	56	59	60	58	63	50	50	54	65	65	68	57	60.8		
		MAX	92	92	95	82	91	85	85	85	90	88	86	83	85	85	83	76	82	84	87	80	87	83	78	78	83	83	82	82	81	71	83.9	
GATHRIGHT DAM	07	MIN	60	62	67	65	71	71	70	71	67	67	59	59	60	64	61	58	58	61	63	57	57	61	49	52	53	61	63	63	61	61.2		
		MAX	85	89	89	84	91	85	83	84	86	86	82	82	83	86	84	75	82	85	86	76	85	80	76	77	84	84	82	75	78	75	82.5	
HOT SPRINGS	07	MIN	62	62	64	68	70	73	70	68	66	61	57	58	59	65	58	56	57	58	60	58	59	63	50	51	55	62	63	58	56	60.8		
		MAX	87	90	90	84	91	86	86	84	88	81	82	81	82	85	85	74	80	85	84	72	84	83	76	76	83	83	81	78	78	75	82.3	
LEXINGTON	07	MIN	61	62	63	68	68	71	71	67	66	62	56	56	57	64	57	56	56	56	59	56	56	62	48	48	53	61	61	66	56	59.8		
		MAX	88	94	96	90	94	86	86	94	97	91	92	91	83	84	87	84	87	85	90	75	90	90	89	79	85	91	87	78	87	87	87.7	
MILLGAP	07	MIN	67	62	62	68	67	70	71	68	66	62	58	58	67	66	62	58	59	60	59	60	60	64	49	53	53	65	68	69	57	61.8		
		MAX	87	90	89	78	89	85	82	83	84	82	80	81	82	85	81	73	80	81	83	80	82	80	73	75	80	78	81	76	75	69	80.7	
MUSTOE 1 SW	24	MIN	50	49	55	65	64	66	66	65	61	55	48	49	48	60	55	54	50	54	54	53	57	43	44	45	55	55	62	55	53	54.6		
		MAX	87	86	74	87	82	80	81	82	79	79	79	79	79	82	80	71	77	79	81	75	81	78	72	73	77	75	74	75	70	76	78.3	
		MIN	52	56	66	65	67	68	67	63	59	54	49	51	59	59	54	53	51	54	55	51	56	48	42	46	57	53	61	58	52	55.8		

VIRGINIA
201108

DAILY TEMPERATURES (°F)

STATION	OB. TIME	MAX/MIN	DAY OF MONTH																															AVERAGE	
			01	02	03	04	05	06	07	08	09	10	11	12	13	14	15	16	17	18	19	20	21	22	23	24	25	26	27	28	29	30	31		
ROANOKE 8 N	07	MAX	88	94	95	88	94	85	86	89	94	89	90	88	88	87	88	80	87	89	89	83	90	89	85	82	88	94	87	82	84	82	83	87.6	
		MIN	69	69	70	71	72	73	71	72	71	68	65	64	64	69	66	64	62	62	63	63	64	67	53	54	59	68	68	72	61	61	58	65.6	
ROANOKE INTL AP	24	MAX	94	96	89	97	85	86	90	96	90	92	89	85	87	91	82	88	89	90	85	90	88	86	82	88	95	88	84	87	81	84	86	88.4	
		MIN	68	70	75	74	74	73	73	75	73	70	65	68	70	68	66	63	62	64	63	62	68	62	54	58	69	69	73	69	62	62	59	67.1	
STAUNTON WATER TRMTMT PLT	08	MAX	89	92	94	85	92	83	85	88	90	90	86	87	85	86	84	75	81	83	85	78	85	82	78	78	82	83	83	74	81	74	80	83.8	
		MIN	64	67	71	70	70	70	70	71	68	66	60	61	62	64	59	58	61	63	61	58	61	63	53	55	62	63	64	66	60	53	55	62.9	
WAYNESBORO WTP	07	MAX	94	96	90	91	84	88	91	93	93	89	87	84	83	85	76	84	86	86	86	87	87	81	79	85	87	84	76	82	82	80	84	85.8	
		MIN	64	64	64	71	70	70	69	68	61	59	58	59	64	62	58	58	61	61	58	58	58	50	51	51	58	65	65	57	57	57	59	60.8	
SOUTHWESTERN MOUNTAIN 06																																			
ABINGDON 3S	22	MAX	91	90	86	89	93	86	85	89	85	84	83	87	87	81	75	81	86	84	79	87		78	82	85	87	87	77	78	81	86	86	84.5	
		MIN	65	62	63	69	67	69	72	67	66	64	64	60	60	63	61	60	58	64	61	64		60	57	55	62	67	65	57	53	58	58	62.4	
BIG STONE GAP	08	MAX	88	92	91	80	90	90	87	85	81	89	84	84	87	85	78	78	83	85	86	84	89	84	81	82	84	83	89	81	79	82	85	84.7	
		MIN	66	64	64	65	69	69	71	70	68	68	66	60	61	64	63	59	57	58	63	65	66	67	54	56	56	64	65	56	55	56	57	62.6	
BLACKSBURG NWSO	07	MAX	85	90	89	84	89	83	85	83	89	84	85	83	84	84	84	70	82	85	85	83	87	83	82	80	84	89	85	83	81	80	82	83.9	
		MIN	66	63	63	65	68	69	69	69	69	64	62	59	59	63	63	61	59	54	54	58	58	58	63	48	48	52	65	67	64	54	57	54	60.5
BLAND	07	MAX	83	87	86	81	86	86	83	82	86	80	82	81	86	85	79	69	80	84	85	81	88	81	76	78	84	86	86	78	76	76	81	82.0	
		MIN	62	57	57	58	63	70	68	66	60	55	56	53	53	62	59	54	47	48	56	56	56	58	44	44	49	60	64	61	49	50	57	56.5	
BURKES GARDEN	07	MAX	74	77	75	74	77	76	75	73	76	70	71	71	75	76	72	61	69	72	75	72	78	72	67	69	75	77	75	68	67	69	70	72.5	
		MIN	55	51	51	55	56	64	63	62	53	56	55	47	47	56	55	54	45	45	50	51	52	54	39	43	48	58	57	55	44	44	55	52.3	
CHRISTIANSBURG	07	MAX	85	88	90	84	89	80	85	83	88	84	85	82	83	85	82	69	80	82	83	80	87	81	80	79	81	88	83	81	78	79	79	82.7	
		MIN	65	65	64	66	66	70	69	68	65	63	61	59	61	62	58	60	55	56	58	59	61	65	50	50	56	60	66	65	55	56	56	61.0	
CLINTWOOD 1 W	07	MAX	83	86	86	77	86	88	86	82	86	82	80	81	83	84	76	73	79	83	84	82	84	81	77	79	82	86	84	77	78	79	82	81.8	
		MIN	65	62	63	63	67	67	69	69	66	60	60	58	59	60	60	57	55	55	59	63	64	64	52	52	52	61	61	57	52	52	53	59.9	
COPPER HILL	07	MAX	88	84	87	81	86	74	79	80	85	82	82	80	76	75	81	69	80	79	81	77	79	79	77	74	77	85	78	75	77	73	74	79.2	
		MIN	63	62	62	66	66	67	67	64	62	61	59	61	61	58	57	57	58	58	58	58	59	63	52	51	60	64	64	62	54	55	56	60.5	
GALAX RADIO WBRF	07	MAX																																M	
		MIN																																	M
GALAX WTP	07	MAX	83	87	87	85	88	77	84	84	86	86	83	82	81	78	81	71	78	80	79	79	81	80	80	74	77	84	81	78	77	76	80.8		
		MIN	66	59	59	60	64	70	66	66	62	60	61	60	62	61	58	58	51	51	56	56	60	61	50	49	50	61	66	60	50	51	58	58.8	
GRUNDY	07	MAX	84	87	88	75	83	90	85	83	83	83	81	82	83	85	75	73	77	83	80	80	83	85	79	78	84	86	83	76	79	76	84	81.7	
		MIN	66	66	68	68	67	67	70	66	65	65	64	60	62	62	62	58	58	62	65	65	66	54	54	56	63	65	59	56	57	56	62.3		
JOHN FLANNAGAN LAKE	07	MAX	90	91	90	80	89			92	88		85	83		88	75	81	86	87			87	79	83	84	88			81	88		M		
		MIN	68	67	66	67	69			69	67		63	60		60	60	58	58	63			66	55	55	56	64				55	57		M	
LEBANON	07	MAX	85	89	88	84	87	92	87	82	88	84	82	81	87	87	80	73	79	84	84	82	86	82	78	80	84	87	88	76	78	80	85	83.5	
		MIN	63	61	61	62	65	66	72	69	65	60	61	57	57	62	62	59	53	54	61	64	61	62	47	47	54	63	65	61	51	51	55	59.7	
NORA 4 SSE	07	MAX	81	82	85	81	85	86	83	82	86	79	82	77	81	82	75	69	75	80	81	80		78	75	77	77	86	83	72	71	76	78	79.5	
		MIN	65	67	67	68	67	70	67	67	64	61	59	60	59	58	58	59	65	61	60		63	59	59	62	66	61	57	58	57	60	62.3		
NORTH FORK LAKE	08	MAX	89	88	87	80	86			91	88	84	81	81		87	74	79	84	85			86	78	81	84							M		
		MIN	64	63	63	63	66			66	65	63	62	58		58	59	56	56	60			63	53	53	54								M	
PULASKI 2 E	07	MAX	85	89	90	84	90	84	87	86	90	84	85	84	86	86	83	72	81	85	85	83	88	84	82	79	84	90	86	83	79	81	82	84.4	
		MIN	63	63	64	66	66	69	69	70	66	65	62	58	59	63	61	60	53	53	56	58	58	64	48	49	52	62	67	65	54	57	56	60.5	

VIRGINIA
201108

DAILY TEMPERATURES (°F)

STATION	OB. TIME	MAX/MIN	DAY OF MONTH																															AVERAGE
			01	02	03	04	05	06	07	08	09	10	11	12	13	14	15	16	17	18	19	20	21	22	23	24	25	26	27	28	29	30	31	
RADFORD 3 N	07	MAX	86	90	90	85	90	84	85	86	90	85	86	84	86	83	83	72	82	84	86	83	90	85	81	82	86	90	87	84	80	81	82	84.8
		MIN	68	62	64	66	69	70	69	71	66	59	60	58	67	64	62	62	54	58	59	58	63	67	49	50	55	66	68	67	54	53	54	61.7
RICHLANDS	07	MAX	86	89	87	81	88	92	86	84	86	85	81	81	87	87	87	71	81	84	82	83	87	82	78	82	84	86	87	76	76	79	84	83.5
		MIN	63	62	62	63	64	65	69	66	63	63	62	56	56	56	56	61	54	54	61	62	62	62	49	49	52	61	64	57	52	52	53	59.1
SALTVILLE 1N	07	MAX	87	91	90	86	90	91	86	84	87	84	83	83	87	87	82	74	80	86	83	82	87	81	80	81	84	87	88	78	80	81	85	84.4
		MIN	64	62	62	63	65	65	68	69	64	63	63	58	58	62	60	61	56	57	61	62	62	63	49	49	49	60	64	60	51	52	55	59.9
STAFFORDSVILLE 3 ENE	07	MAX	83	89	89	84	88	81	87	84	89	83	86	84	86	84	83	71	81	84	85	81	88	85	82	81	86	89	88	83	80	81	82	84.1
		MIN	67	59	60	63	63	70	67	67	64	60	58	55	55	62	61	62	52	52	58	59	60	62	46	47	50	62	66	66	52	53	56	59.2
TROUT DALE 3 SSE	07	MAX	84	87	84	83	84	81	83	81	84	78	80	79	78	83	83	70	76	77	79	78	81	80	75	75	80	85	81	74	74	74	76	79.6
		MIN	62	56	53	56	61	66	63	68	57	55	62	54	54	59	56	57	48	47	53	58	57	59	43	43	45	56	65	60	46	46	54	55.5
WISE 3E	17	MAX	83	83	82	84	85	84	81	84	80	78	75	80	80	74	73	74	79	80	78	81	79	77	77	79	81	81	78	73	75	80	80	79.3
		MIN	61	61	61	67	64	70	68	70	65	64	60	56	60	60	60	56	54	61	61	69 [†]	64	62	51	56	56	67	63	54	52	54	63	60.7
WYTHEVILLE 1 S	07	MAX	83	90	90	82	90	85	87	85	88	84	86	82	86	87	87	73	82	83	85	83	87	83	79	79	86	88	87	80	79	80	82	84.1
		MIN	65	59	59	61	62	69	70	65	63	60	60	56	55	55	55	58	52	52	52	59	59	62	48	48	49	60	67	62	50	51	57	58.1

VIRGINIA
201108

PAN EVAPORATION AND WIND

STATION		DAY OF MONTH																															TOTAL OR AVERAGE			
		01	02	03	04	05	06	07	08	09	10	11	12	13	14	15	16	17	18	19	20	21	22	23	24	25	26	27	28	29	30	31				
VIRGINIA EASTERN PIEDMONT 02 JOHN H KERR DAM	WIND	-	-	-	-	-	-	-	-	-	-	-	-	-	-	-	-	-	-	-	-	-	-	-	-	-	-	-	-	-	-	-	-	-	-	M
	EVAP	-	-	-	-	-	-	-	-	-	-	-	-	-	-	-	-	-	-	-	-	-	-	-	-	-	-	-	-	-	-	-	-	-	-	M
	MAX	-	-	-	-	-	-	-	-	-	-	-	-	-	-	-	-	-	-	-	-	-	-	-	-	-	-	-	-	-	-	-	-	-	-	M
	MIN	-	-	-	-	-	-	-	-	-	-	-	-	-	-	-	-	-	-	-	-	-	-	-	-	-	-	-	-	-	-	-	-	-	-	M
NORTHERN 04 PIEDMONT RSCH STN	WIND	179	62	52	41	68	-	-	205	32	77	67	29	-	-	150	46	31	37	48	-	-	135	52	28	82	64	-	-	203	30	26	1744			
	EVAP	1.28	0.33	0.32	0.11	0.28	-	-	1.59	0.27	0.30	0.34	0.25	-	-	0.77	0.16	0.21	0.19	0.25	-	-	0.55	0.32	0.20	0.23	0.27	-	-	0.62	0.17	0.21	9.22			
	MAX	100	100	97	85	95	-	-	94	0.27	93	91	94	-	-	95	87	92	90	92	-	-	96	91	92	89	90	-	-	92	89	91	91			
	MIN	72	71	72	75	72	-	-	69	74	70	68	68	-	-	67	67	68	70	70	-	-	67	62	62	65	69	-	-	66	65	64	68.4			

Evaporation: Is measured in hundreths of inches.

Wind: Is measured in miles.

Max and Min: The maximum and minimum temperatures (Fahrenheit) of the water in the evaporation pan.

STATION INDEX

STATION	INDEX NO.	DIVISION	COUNTY	LATITUDE	LONGITUDE	ELEVATION (IN FEET)	OBSERVATION TIME AND TABLES			
							LOCAL STD TIME			
							TEMP	PRECIP	EVAP	SPECIAL SEE (NOTES)
VIRGINIA										
ABINGDON 3S	0021	06	WASHINGTON	36 40	81 58W	1920	22	22		H
ALBERTA 5N	0079	02	BRUNSWICK	36 56	77 54W	376		08		H
ALTAVISTA R	0166	03	CAMPBELL	37 7	79 17W	515		07		CH
AMELIA COURTHOUSE 1	0187	02	AMELIA	37 21	77 59W	345	08	08		H
APPOMATTOX	0243	03	APPOMATTOX	37 21	78 50W	910	07	07		H
ASHLAND	0327	02	HANOVER	37 45	77 29W	220	18	18		H
BEDFORD 4 NW R	0561	03	BEDFORD	37 23	79 34W	1220		07		CH
BIG MEADOWS	0720	04	MADISON	38 31	78 26W	3540	09	09		H
BIG STONE GAP	0735	06	WISE	36 52	82 46W	1464	08	08		H
BLACKSBURG NWSO R	0766	06	MONTGOMERY	37 12	80 25W	2100	07	07		CH
BLAND	0792	06	BLAND	37 6	81 7W	2000	07	07		H
BOSTON 4 SE	0860	04	CULPEPER	38 33	78 6W	590	07	07		H
BREMO BLUFF R	0993	02	FLUVANNA	37 43	78 17W	225	07	24		CH
BROOKNEAL	1082	03	CAMPBELL	37 4	78 57W	428	07	07		H
BUCHANAN	1121	05	BOTETOURT	37 32	79 41W	865		07		H
BUCKINGHAM	1136	02	BUCKINGHAM	37 30	78 32W	552		07		H
BUENA VISTA	1159	05	ROCKBRIDGE	37 44	79 22W	830		07		H
BURKES GARDEN	1209	06	TAZEWELL	37 6	81 20W	3068	07	07		H
CAMP PICKETT R	1322	02	NOTTOWAY	37 2	77 57W	330	08	08		CH
CASTLETON	1434	04	RAPPAHANNOCK	38 36	78 7W	541	08	08		H
CHARLOTTESVILLE 2W	1593	03	ALBEMARLE	38 2	78 31W	866	08	08		H
CHASE CITY	1606	02	MECKLENBURG	36 47	78 29W	510	17	17		H
CHATHAM R	1614	03	PITTSYLVANIA	36 49	79 25W	640	07	07		CH
CHRISTIANSBURG	1692	06	MONTGOMERY	37 8	80 24W	2100	07	07		H
CLARKSVILLE	1746	02	MECKLENBURG	36 37	78 33W	330	07	07		H
CLINTWOOD 1 W	1825	06	DICKENSON	37 9	82 29W	1780	07	07		H
CONCORD 4 SSW	1955	03	CAMPBELL	37 17	78 58W	635		07		H
COPPER HILL	1999	06	FLOYD	37 5	80 9W	2690	07	07		H
CORBIN	2009	02	CAROLINE	38 12	77 22W	220	09	09		H
COVINGTON FLTR PLT R	2044	05	ALLEGHANY	37 49	79 59W	1230	07	07		CH
CRAIGSVILLE 2 S	2064	05	AUGUSTA	38 3	79 23W	1758		07		H
CROZIER	2142	02	GOOCHLAND	37 40	77 53W	350	07	07		H
DALE ENTERPRISE	2208	05	ROCKINGHAM	38 27	78 56W	1400	07	07		H
DANVILLE	2245	03	PITTSYLVANIA	36 35	79 23W	410	07	07		H
DANVILLE REGIONAL AP R	2250	03	PITTSYLVANIA	36 34	79 20W	571	24	24		CH
DISPUTANTA	2400	01	PRINCE GEORGE	37 7	77 12W	15	07	07		H
EARLEHURST	2600	05	ALLEGHANY	37 40	80 15W	2037		07		H
EASTVILLE	2635	01	NORTHAMPTON	37 23	75 58W	10	07	07		H
EDINBURG	2663	04	SHENANDOAH	38 48	78 35W	928	07	07		H
EMPORIA 1 WNW	2790	01	GREENSVILLE	36 42	77 34W	100	08	08		H
FARMVILLE 2 N R	2941	02	CUMBERLAND	37 20	78 23W	450	07	07		CH
FREDERICKSBURG SEWAGE	3204	01	FREDERICKSBURG	38 17	77 27W	15	07	07		H
FREE UNION	3213	03	ALBEMARLE	38 5	78 35W	590	08	07		H
FRONT ROYAL	3229	04	WARREN	38 54	78 11W	930	07	07		H
GALAX RADIO WBRF	3267	06	CARROLL	36 40	80 55W	2385	07	07		H
GALAX WTP R	3272	06	CARROLL	36 39	80 55W	2360	07	07		CH
GATHRIGHT DAM R	3310	05	ALLEGHANY	37 57	79 57W	1770	07	07		CH
GLASGOW 1 SE	3375	05	ROCKBRIDGE	37 37	79 26W	740		07		H
GREENBAY 3 NE	3565	02	PRINCE EDWARD	37 11	78 17W	500	09	09		H
GRUNDY	3640	06	BUCHANAN	37 17	82 5W	1170	07	07		H
HAMPTON UNIV	3713	01	HAMPTON	37 1	76 20W	10	17	17		H
HOLCOMB ROCK	4039	03	BEDFORD	37 33	79 24W	620		07		H
HOLLAND 1 E	4044	01	SUFFOLK	36 41	76 46W	80	08	08		H
HOPEWELL	4101	01	PRINCE GEORGE	37 18	77 17W	40	16	16		H
HOT SPRINGS R	4128	05	BATH	37 60	79 50W	2236	07	07		CH
HUDDLESTON 4 SW	4148	03	BEDFORD	37 8	79 32W	1045		07		H
JOHN FLANNAGAN LAKE	4410	06	DICKENSON	37 14	82 21W	1460	07	07		H
JOHN H KERR DAM R	4414	02	MECKLENBURG	36 36	78 18W	250	08	08	EV	CH
KERRS CREEK 6 WNW	4565	05	ROCKBRIDGE	37 52	79 34W	1500		07		H
KEYSVILLE 2 S	4568	02	CHARLOTTE	37 1	78 28W	530		07		H
LAFAYETTE 1 NE	4676	06	MONTGOMERY	37 14	80 12W	1320		07		H
LEBANON	4777	06	RUSSELL	36 54	82 2W	1912	07	07		H
LEXINGTON	4876	05	ROCKBRIDGE	37 48	79 25W	1125	07	07		H
LINCOLN	4909	04	LOUDOUN	39 5	77 42W	500	07	07		H
LOUISA	5050	02	LOUISA	38 3	78 0W	420	18	18		H

STATION INDEX

STATION	INDEX NO.	DIVISION	COUNTY	LATITUDE	LONGITUDE	ELEVATION (IN FEET)	OBSERVATION TIME AND TABLES			
							LOCAL STD TIME			
							TEMP	PRECIP	EVAP	SPECIAL SEE (NOTES)
LURAY 5 E	5096	04	PAGE	38 40	78 22W	1400	08	08		H
LYNCHBURG #2	5117	03	CAMPBELL	37 23	79 14W	740	07	07		H
LYNCHBURG INTL AP R	5120	03	CAMPBELL	37 19	79 12W	940	24	24		CHJ
MADISON	5150	04	MADISON	38 22	78 15W	577	08	08		H
MANASSAS	5204	04	MANASSAS	38 44	77 30W	245	07	07		H
MARTINSVILLE FLTR PLT	5300	03	HENRY	36 42	79 52W	760	07	07		H
MEADOWS OF DAN 5 SW	5453	03	PATRICK	36 40	80 27W	2225	07	07		H
MILLGAP R	5595	05	HIGHLAND	38 18	79 43W	2421	07	07		CH
MONTEBELLO FISH CULTURAL STN	5690	03	NELSON	37 50	79 7W	2667	07	07		H
MONTICELLO	5700	03	ALBEMARLE	38 1	78 27W	758	08	08		H
MT WEATHER	5851	04	LOUDOUN	39 4	77 53W	1659	07	07		H
MTN GROVE	5756	05	BATH	38 6	79 53W	1775		07		H
MUSTOE 1 SW	5880	05	HIGHLAND	38 20	79 40W	2380	24	24		H
NORA 4 SSE	6125	06	DICKENSON	37 1	82 19W	2650	07	07		H
NORFOLK INTL AP R	6139	01	NORFOLK (CITY)	36 54	76 12W	30	24	24		CHJ
NORFOLK SOUTH	6147	01	NORFOLK (CITY)	36 52	76 14W	100	24	24		H
NORTH	6161	01	MATHEWS	37 26	76 26W	10	07	07		H
NORTH FORK LAKE	6173	06	WISE	37 7	82 38W	1675	08	08		H
PAINTER 2W R	6475	01	ACCOMACK	37 35	75 49W	30	16	16		CH
PALMYRA 3S	6491	02	FLUVANNA	37 49	78 16W	410	06	06		H
PEDLAR DAM	6593	03	AMHERST	37 40	79 17W	1010		07		H
PETERSBURG	6656	02	PETERSBURG	37 14	77 24W	15	08	08		H
PIEDMONT RSCH STN R	6712	04	ORANGE	38 14	78 7W	520	08	08	EV	CH
POWHATAN	6906	02	POWHATAN	37 31	77 53W	400		07		H
PULASKI 2 E R	6955	06	PULASKI	37 3	80 47W	1850	07	07		CH
RADFORD 3 N	6999	06	PULASKI	37 12	80 35W	1800	07	07		H
RICHLANDS	7174	06	TAZEWELL	37 6	81 48W	1910	07	07		H
RICHMOND INTL AP R	7201	02	HENRICO	37 30	77 19W	164	24	24		CHJ
ROANOKE 8 N	7278	05	ROANOKE	37 22	79 58W	1190	07	07		H
ROANOKE INTL AP R	7285	05	ROANOKE	37 19	79 58W	1175	24	24		CHJ
ROCKY MT R	7338	03	FRANKLIN	36 59	79 54W	1315	07	07		CH
SALTVILLE 1N	7506	06	SMYTH	36 53	81 46W	1733	07	07		H
SANDSTON	7541	02	HENRICO	37 33	77 17W	165	07	07		H
SOMERSET	7904	04	ORANGE	38 15	78 16W	510	07	07		H
SOUTH BOSTON	7925	03	HALIFAX	36 42	78 53W	340	07	07		H
SPERRYVILLE	7985	04	RAPPAHANNOCK	38 39	78 14W	750	06	06		H
STAFFORDSVILLE 3 ENE R	8022	06	GILES	37 16	80 43W	1950	07	07		CH
STAR TANNERY R	8046	04	FREDERICK	39 5	78 27W	950	07	07		CH
STAUNTON WATER TRMTMT PLT	8062	05	AUGUSTA	38 10	79 5W	169	08	08		H
STERLING RCS	8084	04	LOUDOUN	38 59	77 29W	288	07	07		H
STONY CREEK 2 N	8129	01	SUSSEX	36 58	77 24W	105	08	08		H
STUART	8170	03	PATRICK	36 38	80 15W	1375	07	07		H
SUFFOLK LAKE KILBY	8192	01	SUFFOLK	36 44	76 36W	22	24	24		H
TROUT DALE 3 SSE R	8547	06	GRAYSON	36 39	81 24W	2839	07	07		CH
TYE RIVER 1 SE	8600	03	NELSON	37 38	78 56W	720	06	06		H
VIENNA	8737	04	FAIRFAX	38 54	77 16W	418	07	19		H
WAKEFIELD 1NW R	8800	01	SUSSEX	36 59	77 0W	113	24	24		CH
WALKERTON 2 NW	8829	01	KING AND QUEEN	37 45	77 2W	50	18	18		H
WALLACETON LK DRUMMOND	8837	01	CHESAPEAKE	36 36	76 26W	20	08	08		H
WARRENTON 3 SE	8888	04	FAUQUIER	38 41	77 46W	500	08	08		H
WARSAW 2 NW	8894	01	RICHMOND	37 59	76 47W	140	18	18		H
WASHGTN DULLES INTL AP R	8903	04	LOUDOUN	38 56	77 28W	290	24	24		CHJ
WASHINGTON REAGAN AP R	8906	04	ARLINGTON	38 51	77 2W	10	24	24		CHJ
WAYNESBORO WTP	8941	05	WAYNESBORO	38 5	78 53W	1270	07	07		H
WEST POINT 2 NW	9025	01	KING WILLIAM	37 34	76 48W	20	17	17		H
WILLIAMSBURG 2 N R	9151	01	YORK	37 18	76 42W	70	24	24		CH
WILLIS R	9169	06	FLOYD	36 55	80 30W	2810		07		CH
WINCHESTER	9181	04	FREDERICK	39 11	78 9W	720	07	07		H
WINCHESTER 7 SE	9186	04	FREDERICK	39 11	78 7W	680	08	08		H
WINTERPOCK 4 W	9213	02	CHESTERFIELD	37 19	77 39W	300		07		H
WISE 3E R	9215	06	WISE	36 60	82 32W	2549	17	17		CH
WOODSTOCK 2 NE	9263	04	SHENANDOAH	38 54	78 29W	675	07	07		H
WOOLWINE R	9272	03	PATRICK	36 47	80 17W	1500		07		CH
WYTHEVILLE 1 S R	9301	06	WYTHE	36 56	81 6W	2450	07	07		CH

REFERENCE NOTES

STATION NAMES: Name of the city, town or locality. Figures and letters following the station names indicate the distance in miles and direction from the post office or town community center.

DIVISIONS: Areas within a state of similar climatological characteristics. Division averages are calculated using data from stations that record both temperature and precipitation (i.e. not precipitation alone).

NORMALS: The average value of the meteorological element over a time period. Effective 1 January 2002, the averaging period is 1971 to 2000. The normals for National Weather Service localities have been adjusted so as to be representative for the current observation site.

MONTHLY DEGREE DAY TOTALS: One heating (cooling) degree day is accumulated for each whole degree that the daily mean temperature is below (above) 65 degrees Fahrenheit.

PRECIPITATION: Values shown in hundredths of inches are water equivalent totals, i.e., total of liquid and melted frozen precipitation. In the "Monthly Summarized Data" table the total snow and sleet values shown in tenths of inches are unmelted amounts. The max depth on ground values of snow and sleet shown in whole inches are cumulative unmelted amounts. The number of days with .10, .50, 1.00 or more refers to water equivalents.

PRECIPITATION QUALITY CONTROL: The NCDC quality control process may flag precipitation data that are spatially inconsistent, exceed climatological limits, or are inconsistent with prevailing weather patterns.

TEMPERATURE: Original temperature values are given in the "Daily Temperature" table. Summary temperature information (averages, departures, extremes, monthly degree day totals) is based on the values labeled MAX/MIN.

WIND: (As shown in the "Evaporation and Wind" table) the total wind movement in miles over the evaporation pan as determined by an anemometer recorder located 6-8 inches above the pan.

SYMBOLS AND LETTERS USED IN THE STATION INDEX TABLE

- C Station is equipped with recording rain gage (R) but values in this bulletin are from a non-recording rain gage unless indicated by an R.
- G Observations appear in the "Soil Temperatures" table.
- H Observations appear in the "Snowfall and Snow on the Ground" table.
- J Station also published as a Local Climatological Data publication.
- VAR Observation time varies.
- SR Observation time near sunrise.
- SS Observation time near sunset.

SYMBOLS AND LETTERS USED IN THE DATA TABLES

(DAILY DATA ARE FOR THE 24 HOURS IMMEDIATELY PRECEDING OBSERVATION TIME.)

BLANK Entries in the "Monthly Summarized Data" table indicate no record.

BLANK Entries in the "Daily Precipitation" and "Snowfall and Snow on the Ground" tables indicate zero.

BLANK Entries in the "Daily Temperature" table indicate a missing record

- No record. Data not recorded or not received in time for publication.

+ Precipitation or temperature extremes occurred on one or more previous dates during the month.

* Rain gage not read. Precipitation is included in the amount following the asterisks. Time distribution may not be known. A * preceding the monthly total indicates precipitation amount is being carried forward to next month's total, and may include amounts from the previous month(s).
a As a subscript, indicates accumulated total.

A Amount of precipitation is the total of observer's entries for the current month. It may include precipitation that occurred during the previous month. Refer to earlier bulletin to determine date of last reading. (Hawaii stations)

F Monthly calculation flagged value. F is appended to average and/or total values computed which exclude one or more daily data values that have been flagged by the GHCN-Daily Dataset

M Insufficient or partial data. M is appended to average and/or total values computed with 1-9 daily values missing. M appears alone if 10 or more daily values are missing, (8 or more for wind and evaporation).

N Indicates snow fall or Snowdepth totals are computed with one or more missing days.

R Amounts from recording rain gage.

T Trace. An amount too small to measure.

SEASONAL TABLES: Monthly and seasonal snowfall and heating degree days for the 12 months ending with the June data are published in the July issue of this bulletin. Cooling degree days for the calendar year are published in the "Climatological Data Annual Summary."

Information concerning the history of changes in locations, exposure, etc. of substations is kept on file at the National Climatic Data Center. Historical information of regular National Weather Service Offices may be obtained from the "Local Climatological Data" annual publication. The contents of this publication may be reprinted or otherwise used freely, with proper credit to the National Climatic Data Center. The data are also available digitally.

Effective with the January 2011 Data-Month, COOP Observer Names are no longer included in the Monthly and Annual Climatological Data Publications. This information is not published to ensure the privacy of personal information pursuant to Section 208 of the E-Government Act of 2002 (44 USC 3601).

The GHCN-Daily Quality Control Flags shown below are displayed as superscripts with the data. For more Information on Global Historical Climatology Network - Daily and flags, see:
<http://www.ncdc.noaa.gov/oa/climate/ghcn-daily/>
and

Comprehensive Automated Quality Assurance of Daily Surface Observations.

Durre, Imke, Matthew J. Menne, Byron E. Gleason, Tamara G. Houston,

Russell S. Vose, 2010: J. Appl. Meteor. Climatol., 49, 16151633.

doi: 10.1175/2010JAMC2375.1

Blank = Passed All checks

D = failed duplicate check

G = failed gap check

I = failed internal consistency check

K = failed streak/frequent-value check

L = failed check on length of multiday period

M = failed megaconsistency check

N = failed naught check

O = failed climatological outlier check

R = failed lagged range check

S = failed spatial consistency check

T = failed temporal consistency check

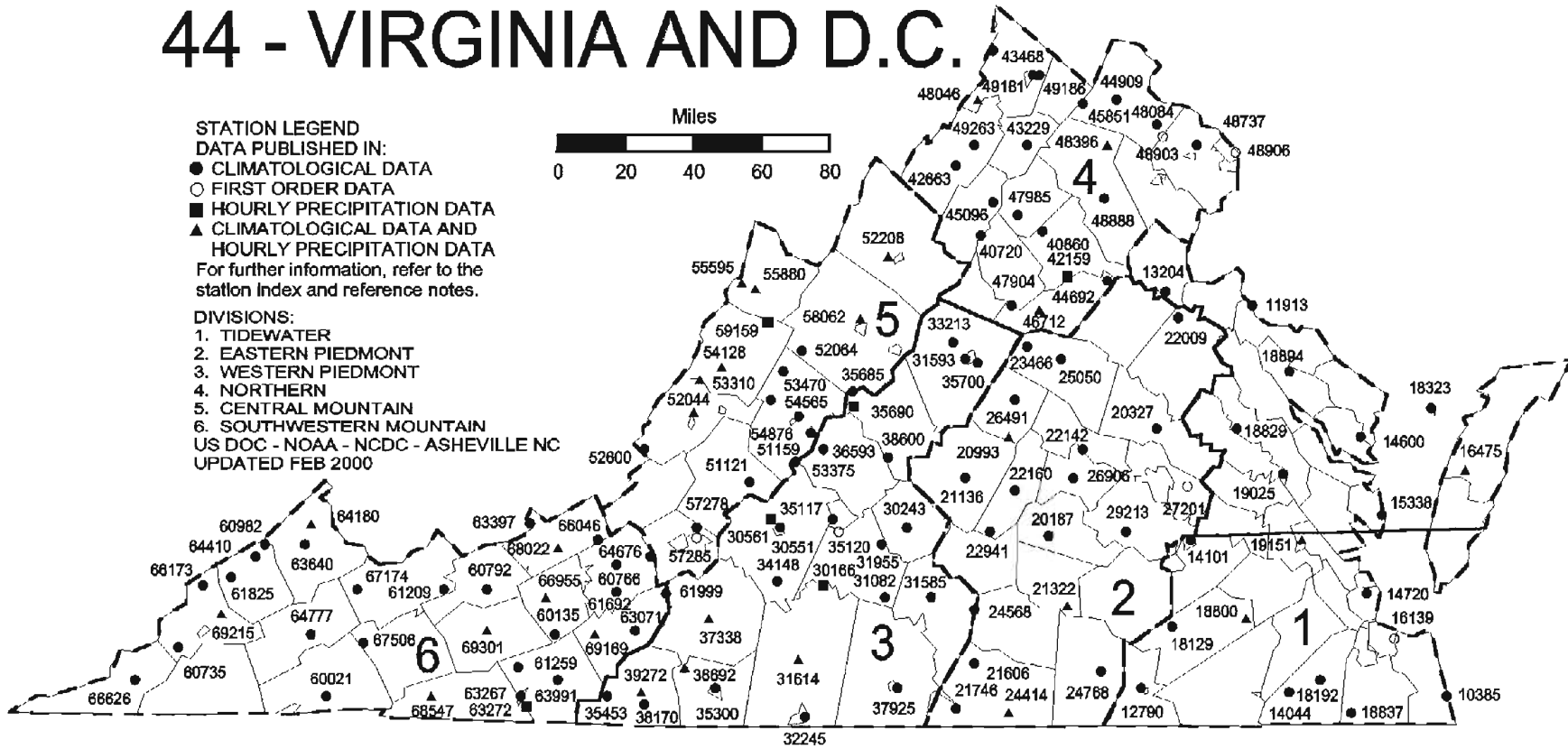
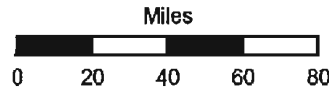
W = temperature too warm for snow

X = failed bounds check

44 - VIRGINIA AND D.C.

STATION LEGEND
DATA PUBLISHED IN:
 ● CLIMATOLOGICAL DATA
 ○ FIRST ORDER DATA
 ■ HOURLY PRECIPITATION DATA
 ▲ CLIMATOLOGICAL DATA AND HOURLY PRECIPITATION DATA
 For further information, refer to the station index and reference notes.

DIVISIONS:
 1. TIDEWATER
 2. EASTERN PIEDMONT
 3. WESTERN PIEDMONT
 4. NORTHERN
 5. CENTRAL MOUNTAIN
 6. SOUTHWESTERN MOUNTAIN
 US DOC - NOAA - NCDC - ASHEVILLE NC
 UPDATED FEB 2000



-84.00

-82.80

-81.60

-80.40

-79.20

-78.00

-76.80

-75.60

40.60

40.00

39.40

38.80

38.20

37.60

37.00

36.40

NOAA\National Climatic Data Center
Attn: User Engagement & Services Branch
151 Patton Avenue
Asheville, NC 28801-5001

PRSRT STD
POSTAGE & FEES PAID
United States Department of Commerce
NOAA Permit No. G-19

OFFICIAL BUSINESS
PENALTY FOR PRIVATE USE \$300
ADDRESS CORRECTION REQUESTED

To change your address, please return a copy of the mailing label along with your new address to:

NOAA\National Climatic Data Center
Attn: User Engagement & Services Branch
151 Patton Avenue
Asheville, NC 28801-5001

Customer Services Number: (828) 271-4800, option 2
TDD : (828) 271-4010
Fax number: (828) 271-4876

NCDC now offers an annual online subscription for the *Climatological Data* publication. When you purchase this subscription service, you will have **immediate online access** to all previous Climatological Data publications. Your subscription is valid for one year after purchase.

The total cost is \$42 for online delivery (including back issues).

To order this and other subscriptions online with your credit card, go to:

<http://www.ncdc.noaa.gov/oa/mpp/> and choose subscription.