



# CLIMATOLOGICAL DATA

## VIRGINIA



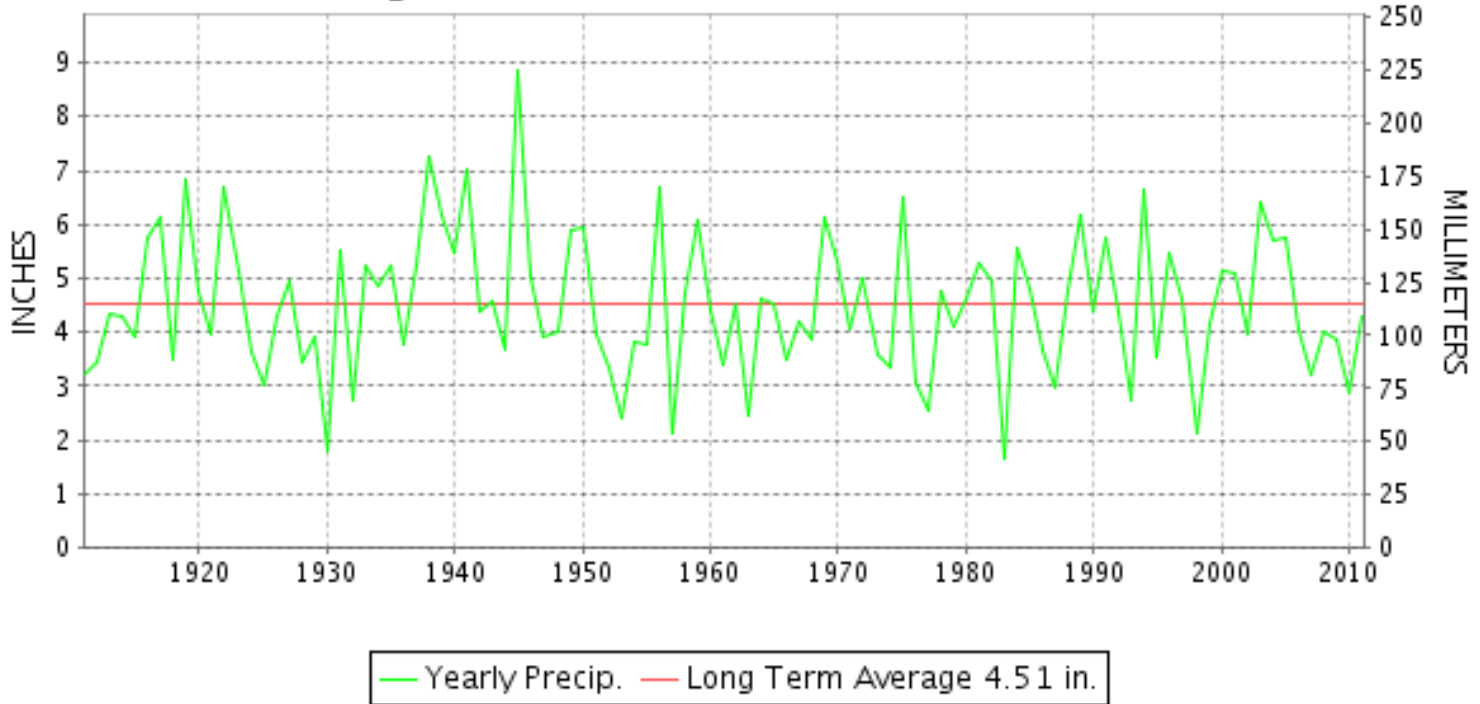
JULY 2011

VOLUME 121 NUMBER 07

ISSN 0364-5630

GHCND Ver: 2.91-upd-2012021008

### JULY PRECIPITATION BY YEAR



#### TEMPERATURE AND PRECIPITATION EXTREMES

##### VIRGINIA

HIGHEST TEMPERATURE	105	JULY 24++	2 STATIONS
LOWEST TEMPERATURE	42	JULY 01	BURKES GARDEN
GREATEST TOTAL PRECIPITATION	11.08		NORTH
LEAST TOTAL PRECIPITATION	0.86		EDINBURG
GREATEST 1 DAY PRECIPITATION	5.24	JULY 08	WILLIAMSBURG 2 N

"I certify that this is an official publication of the National Oceanic and Atmospheric Administration (NOAA) It is compiled using information from weather observing sites supervised by NOAA/National Weather Service and received at the National Climatic Data Center(NCDC), Asheville, North Carolina 28801."

Director  
National Climatic Data Center

noaa

National  
Oceanic and  
Atmospheric Administration

National  
Environmental Satellite, Data  
and Information Service

National  
Climatic Data Center  
Asheville, North Carolina



# MONTHLY STATION AND DIVISION SUMMARY

STATION	TEMPERATURE (°F)											PRECIPITATION (IN)												
	AVERAGE MAXIMUM	AVERAGE MINIMUM	AVERAGE	DEPARTURE FROM NORMAL	HIGHEST	DATE	LOWEST	DATE	HEATING DEG. DAYS	COOLING DEG. DAYS	NO. OF DAYS				TOTAL	DEPARTURE FROM NORMAL	GREATEST 24 HOURS	DATE	ICE PELLETS, SNOW			NO OF DAYS		
											MAX		MIN						TOTAL	MAX DEPTH ON GROUND	DATE	10 OR MORE	50 OR MORE	1 00 OR MORE
											>=90	<=32	<=32	<=0										
PALMYRA 3S	87.5	64.8	76.2		97	23	54	16+	0	351	12	0	0	0	2.87	-1.41	1.59	24	0.0	0		4	2	1
PETERSBURG	91.7M	70.3M	81.0M		100	23	60	15	0	487	20	0	0	0	M 7.38		2.49	09	N 0.0	0		6	5	3
POWHATAN	M	M	M											7.53	3.28	3.54	07	0.0	0		3	3	3	
RICHMOND INTL AP	92.8	71.1	82.0	4.1	103	29	61	15	0	529	23	0	0	0	3.63	-1.04	1.72	08	N 0.0	0		5	2	1
SANDSTON	91.8	68.4	80.1		101	23	58	15	0	473	21	0	0	0	6.04		1.73	09	0.0	0		6	5	3
WINTERPOCK 4 W	M	M	M											5.90	1.44	2.69	09	0.0	0		5	3	3	
--DIVISIONAL DATA-----> WESTERN PIEDMONT 03			80.1	3.3										4.87	0.51									
ALTAVISTA	M	M	M											2.84	-1.09	1.00	04	0.0	0		6	1	1	
APPOMATTOX	90.2	67.5	78.9	3.0	100	23	58	16	0	436	18	0	0	0	4.02	-0.46	1.25	09	0.0	0		4	3	3
BEDFORD 4 NW	90.4	70.3	80.4		96	23	62	15	0	480	20	0	0	0	6.12		1.65	24	0.0	0		8	4	3
BROOKNEAL	92.5	66.6	79.6	3.8	98	30+	57	15	0	457	25	0	0	0	4.17	-0.17	2.01	26	0.0	0		5	3	2
CHARLOTTESVILLE 2W	90.4	70.1	80.3	3.4	101	23	60	15	0	480	18	0	0	0	3.48	-1.46	1.16	04	0.0	0		6	3	1
CHATHAM	90.3	64.9	77.6	2.4	99	23	56	15	0	400	18	0	0	0	2.25	-1.80	1.00	25	0.0	0		5	2	1
CONCORD 4 SSW	M	M	M											3.40	-0.78	1.22	24	0.0	0		8	2	1	
DANVILLE	92.3	70.8	81.6	2.8	98	30+	62	01	0	520	25	0	0	0	1.12	-3.32	0.50	06	0.0	0		3	1	0
DANVILLE REGIONAL AP	91.7	68.1	79.9		100	29	58	15+	0	469	22	0	0	0	3.88		2.17	08	N 0.0	0		3	3	1
FREE UNION	86.0M	64.7M	75.4M		95	23	56	17+	0	253	6	0	0	0	M 3.20		0.96	09	0.0	0		6	3	0
HOLCOMB ROCK	91.5	66.1	78.8		101	23	58	16+	0	433	20	0	0	0	2.23	-2.39	0.68	09	0.0	0		5	2	0
HUDDLESTON 4 SW	91.9	68.9	80.4		101	30+	62	16+	0	483	19	0	0	0	0.94	-2.79	0.40	09	0.0	0		4	0	0
LYNCHBURG #2	88.1	65.8	77.0		96	23	57	16+	0	378	14	0	0	0	2.04		0.56	21	0.0	0		5	2	0
LYNCHBURG INTL AP	90.7	66.4	78.6	3.5	100	22	56	15	0	428	19	0	0	0	2.99	-1.40	1.39	13	N 0.0	0		5	2	1
MARTINSVILLE FLTR PLT	91.3	64.9	78.1	3.1	100	30	56	01	0	413	20	0	0	0	1.04	-3.38	0.54	07	0.0	0		2	1	0
MEADOWS OF DAN 5 SW	85.2	63.4	74.3		93	23	56	01	0	297	3	0	0	0	3.63	-1.27	1.00	26	N 0.0	0		8	4	1
MONTEBELLO FISH CULTURAL STN	85.9M	59.7M	72.8M		93	30	51	16+	2	210	7	0	0	0	M 5.34		1.90	31	0.0	0		5	4	2
MONTICELLO	87.6	67.1	77.4	1.8	99	30	59	16	0	387	11	0	0	0	3.11	-2.08	1.16	05	0.0	0		6	2	1
PEDLAR DAM	89.6	69.2	79.4		99	23	60	01	0	456	18	0	0	0	4.24	0.08	1.36	05	0.0	0		5	3	2
ROCKY MT	90.1	66.2	78.2	2.7	99	24+	57	02+	0	415	17	0	0	0	10.96	6.09	4.10	26	N 0.0	0		7	5	5
SOUTH BOSTON	91.0	67.4	79.2	2.4	99	30+	57	15	0	446	18	0	0	0	4.07	-0.28	1.50	31	0.0	0		4	3	2
STUART	89.3	66.5	77.9	3.2	97	30	60	03+	0	407	16	0	0	0	2.35	-2.81	0.92	26	0.0	0		6	1	0
TYE RIVER 1 SE	89.7	67.2	78.5	3.1	99	23	57	16	0	424	17	0	0	0	2.19	-2.11	1.03	05	0.0	0		5	1	1
WOOLWINE	M	M	M											2.00	-2.15	0.63	31	N 0.0	0		6	1	0	
--DIVISIONAL DATA-----> NORTHERN 04			78.3	2.4										3.40	-1.23									
BIG MEADOWS	M	M	M											M					0.0	0				
BOSTON 4 SE	90.5	64.2	77.4		100	23	55	18+	0	392	18	0	0	0	0.93		0.25	04	0.0	0		5	0	0
CASTLETON	89.2	67.2	78.2		100	30+	57	16	0	415	17	0	0	0	2.64		1.09	04	0.0	0		5	2	1
EDINBURG	89.1	63.0	76.1		100	23	52	16	0	344	16	0	0	0	0.86		0.39	05	0.0	0		3	0	0

VIRGINIA  
201107

# MONTHLY STATION AND DIVISION SUMMARY

STATION	TEMPERATURE (°F)										PRECIPITATION (IN)													
	AVERAGE MAXIMUM	AVERAGE MINIMUM	AVERAGE	DEPARTURE FROM NORMAL	HIGHEST	DATE	LOWEST	DATE	HEATING DEG. DAYS	COOLING DEG. DAYS	NO. OF DAYS				TOTAL	DEPARTURE FROM NORMAL	GREATEST 24 HOURS	DATE	ICE PELLETS, SNOW			NO OF DAYS		
											MAX		MIN						TOTAL	MAX DEPTH ON GROUND	DATE	10 OR MORE	50 OR MORE	1 00 OR MORE
											>=90	<=32	<=32	<=0										
FRONT ROYAL	89.7M	65.8M	77.8M		100	23	57	03+	0	391	17	0	0	0	FM 1.29		0.83	09	0.0	0		2	1	0
LINCOLN	90.8	64.5	77.7	2.5	100	22	53	02	0	398	21	0	0	0	M 4.70		1.25	03	0.0	0		2	1	1
LURAY 5 E	89.5	63.3	76.4	2.3	99	23	54	01	0	362	16	0	0	0	2.94	-0.83	0.77	09	0.0	0		6	2	0
MADISON	90.0	67.5	78.8		101	23	58	16	0	435	18	0	0	0	1.37		0.59	14	0.0	0		3	1	0
MANASSAS	M	M	M												M				0.0	0				
MT WEATHER	86.5	68.2	77.4	5.3	97	23	60	14+	0	388	8	0	0	0	1.85	-2.05	0.80	09	0.0	0		4	1	0
PIEDMONT RSCH STN	90.1	68.7	79.4	3.3	100	23	57	15	0	453	18	0	0	0	F 2.43		0.84	14	0.0	0		7	1	0
SOMERSET	89.7	67.0	78.4		100	23	55	15	0	418	17	0	0	0	1.92		0.51	09	0.0	0		7	1	0
SPERRYVILLE	87.4	64.8	76.1		97	30+	55	16	0	351	11	0	0	0	2.26		1.00	04	0.0	0		6	1	1
STAR TANNERY	88.5	64.6	76.6		100	23	51	02	0	365	13	0	0	0	2.94		1.62	08	0.0	0		5	2	1
STERLING RCS	92.2	68.9	80.6	6.1	104	23	57	02	0	486	22	0	0	0	3.38	-0.05	1.86	14	0.0	0		4	2	2
VIENNA	87.0	69.2	78.1		98	24+	59	14	0	413	9	0	0	0	2.70	-1.63	2.05	14	0.0	0		3	1	1
WARRENTON 3 SE	89.6M	68.3M	79.0M		99	23	59	02	0	412	16	0	0	0	FM 1.00		0.35	14	0.0	0		4	0	0
WASHGTN DULLES INTL AP	92.8	69.1	81.0	5.3	105	22	56	02	0	501	24	0	0	0	2.58	-0.99	1.27	08	N 0.0	0		5	2	1
WASHINGTON REAGAN AP	93.6	75.4	84.5	5.3	104	29	67	16	0	613	25	0	0	0	3.03	-0.63	1.05	13	0.0	0		5	3	1
WINCHESTER	88.7	67.5	78.1	2.9	101	23	58	16+	0	415	17	0	0	0	4.21	1.16	1.21	05	0.0	0		7	3	1
WINCHESTER 7 SE	90.9	63.7	77.3	2.7	103	23	53	02	0	386	20	0	0	0	2.61	-1.05	1.42	09	0.0	0		3	2	1
WOODSTOCK 2 NE	88.2M	63.6M	75.9M		99	23	55	02	0	332	14	0	0	0	M 1.10		0.44	09	0.0	0		3	0	0
--DIVISIONAL DATA----->			78.2	3.7											2.34	-1.57								
<b>CENTRAL MOUNTAIN 05</b>																								
BUCHANAN	88.3M	69.3M	78.8M		96	30	60	02	0	394	13	0	0	0	2.15	-2.41	0.93	09	0.0	0		5	2	0
BUENA VISTA	89.9M	66.0M	78.0M		98	23	55	01	0	342	14	0	0	0	2.04	-1.82	1.25	09	0.0	0		3	2	1
COVINGTON FLTR PLT	90.1	63.2	76.7	2.4	98	23+	45	01	0	366	17	0	0	0	4.86	1.20	1.56	24	N 0.0	0		7	4	2
CRAIGSVILLE 2 S	M	M	M												M				0.0	0				
DALE ENTERPRISE	88.9	63.5	76.2	2.7	98	23	54	17+	0	353	15	0	0	0	2.48	-1.30	0.75	09	0.0	0		4	3	0
EARLEHURST	88.3M	61.6M	75.0M		102	23	48	01	0	280	11	0	0	0	4.01	0.20	1.25	04	0.0	0		9	3	1
GATHRIGHT DAM	85.9	63.3	74.6	2.1	96	23	55	01	0	304	6	0	0	0	1.82	-1.81	0.50	24	N 0.0	0		6	1	0
GLASGOW 1 SE	92.1	66.4	79.3		100	23+	57	01	0	445	23	0	0	0	1.92	-2.09	0.82	05	0.0	0		3	2	0
HOT SPRINGS	86.1	61.9	74.0	2.6	96	23	52	01	0	287	6	0	0	0	3.88	-0.41	1.10	26	0.0	0		7	3	1
KERRS CREEK 6 WNW	M	M	M												1.51	-2.85	0.47	26	0.0	0		6	0	0
LEXINGTON	89.8	64.3	77.1	2.4	99	30+	55	16	0	379	17	0	0	0	2.69	-1.19	1.26	09	0.0	0		7	1	1
MILLGAP	84.8	55.6	70.2		96	23	44	16	15	184	4	0	0	0	1.04	-3.28	0.39	05	0.0	0		5	0	0
MTN GROVE	M	M	M												1.71		0.36	21	0.0	0		7	0	0
MUSTOE 1 SW	82.8	57.3F	70.1F		91	22	45	01	13	181	1	0	0	0	3.63		1.55	17	N 0.0	0		6	2	2
ROANOKE 8 N	90.0	67.8	78.9		98	23+	59	01	0	432	18	0	0	0	3.49		1.82	26	N 0.0	0		5	3	1
ROANOKE INTL AP	90.5	69.9	80.2	4.0	99	29+	59	01	0	481	18	0	0	0	3.76	-0.24	1.48	04	N 0.0	0		6	3	1
STAUNTON WATER TRMTMT PLT	88.4	65.5	77.0	4.9	98	23	55	16	0	379	13	0	0	0	4.20	0.38	2.41	25	N 0.0	0		7	2	1
WAYNESBORO WTP	89.6	64.0	76.8		99	22	55	01	0	372	15	0	0	0	2.50		0.70	03	0.0	0		5	2	0

# MONTHLY STATION AND DIVISION SUMMARY

STATION	TEMPERATURE (°F)													PRECIPITATION (IN)											
	AVERAGE MAXIMUM	AVERAGE MINIMUM	AVERAGE	DEPARTURE FROM NORMAL	HIGHEST	DATE	LOWEST	DATE	HEATING DEG. DAYS	COOLING DEG. DAYS	NO. OF DAYS				TOTAL	DEPARTURE FROM NORMAL	GREATEST 24 HOURS	DATE	ICE PELLETS, SNOW			NO OF DAYS			
											MAX		MIN						TOTAL	MAX DEPTH ON GROUND	DATE	10 OR MORE	50 OR MORE	1 00 OR MORE	
											>=90	<=32	<=32	<=0											
<b>--DIVISIONAL DATA-----&gt;</b>			76.2	2.8										2.81	-1.16										
<b>SOUTHWESTERN</b>																									
<b>MOUNTAIN 06</b>																									
ABINGDON 3S	86.2	65.1	75.7	2.9	92	28	55	01	0	339	10	0	0	0	1.50	-3.32	0.30	16	0.0	0		6	0	0	
BIG STONE GAP	86.5	66.8	76.7	2.4	92	29	56	01	0	367	7	0	0	0	3.75	-0.56	0.87	12	0.0	0		9	3	0	
BLACKSBURG NWSO	85.6	63.6	74.6	3.5	93	23	53	01	1	305	6	0	0	0	3.93	-0.24	2.01	09	0.0	0		7	2	1	
BLAND	84.5	59.5	72.0	2.3	92	22	44	01	7	232	4	0	0	0	5.63	2.16	1.66	18	0.0	0		10	3	1	
BURKES GARDEN	75.9	55.3	65.6	-1.7	82	04	42	01	32	60	0	0	0	0	3.71	-0.67	0.87	09	0.0	0		10	3	0	
CHRISTIANSBURG	84.8	64.1	74.5		92	31+	55	01	0	300	6	0	0	0	1.55		0.64	05	0.0	0		3	2	0	
CLINTWOOD 1 W	82.6	64.4	73.5		88	30	52	01	0	274	0	0	0	0	9.20		2.12	05	0.0	0		11	4	4	
COPPER HILL	82.5M	62.7M	72.6M		91	22	53	01	0	234	2	0	0	0	M 3.22		1.40	05	N 0.0	0		6	2	1	
GALAX RADIO WBRF	84.7	62.5	73.6	3.7	92	29	53	01	4	278	7	0	0	0	2.11	-1.80	0.75	07	0.0	0		6	2	0	
GALAX WTP	82.8	61.9	72.4		90	30+	53	02+	5	241	3	0	0	0	1.95		0.71	05	N 0.0	0		6	1	0	
GRUNDY	81.5	66.0	73.8	-1.4	89	12	57	02+	0	277	0	0	0	0	6.05	1.18	1.46	05	0.0	0		8	5	2	
JOHN FLANNAGAN LAKE	M	M	M											M			0.0		0						
LAFAYETTE 1 NE	M	M	M											4.95	1.24	2.14	09	0.0	0		6	5	1		
LEBANON	85.3	63.3	74.3	2.5	90	29+	52	02+	0	296	5	0	0	0	5.82	1.70	2.10	23	N 0.0	0		10	3	2	
NORA 4 SSE	80.8	65.7	73.3		88	29+	58	16	3	269	0	0	0	0	6.15		1.11	12	0.0	0		8	6	1	
NORTH FORK LAKE	M	M	M											M			0.0		0						
PULASKI 2 E	87.1	63.9	75.5	4.0	94	22	52	01	0	328	12	0	0	0	5.93	2.25	2.06	08	0.0	0		8	5	2	
RADFORD 3 N	86.9	64.0	75.5		94	23+	52	01	0	328	14	0	0	0	M 4.47		1.63	05	0.0	0		5	3	2	
RICHLANDS	84.9	63.6	74.3	2.1	90	31+	52	01	1	295	5	0	0	0	4.91	0.53	1.86	23	N 0.0	0		8	2	1	
SALTVILLE 1N	85.7	63.4	74.6	1.5	91	29+	51	01	1	304	8	0	0	0	3.52	-1.19	1.01	09	0.0	0		9	2	1	
STAFFORDSVILLE 3 ENE	85.7	62.8	74.3	3.0	92	30+	51	01	0	293	8	0	0	0	4.21	0.30	1.73	09	0.0	0		5	3	2	
TROUT DALE 3 SSE	81.8	58.1	70.0		87	31+	45	01	14	175	0	0	0	0	7.00	3.00	3.47	31	0.0	0		8	3	2	
WILLIS	M	M	M											3.22	-0.75	0.86	24	0.0	0		7	3	0		
WISE 3E	80.9	63.9	72.4	1.0	86	28	56	01	2	240	0	0	0	0	9.84	4.97	4.85	25	0.0	0		9	5	3	
WYTHEVILLE 1 S	86.8	61.7	74.3	3.5	93	30+	49	01	1	297	13	0	0	0	2.53	-1.20	0.64	31	0.0	0		6	2	0	
<b>--DIVISIONAL DATA-----&gt;</b>			73.5	2.3										4.57	0.28										

VIRGINIA  
201107

## DAILY PRECIPITATION (INCHES)

STATION	TOTAL	DAY OF MONTH																																		
		01	02	03	04	05	06	07	08	09	10	11	12	13	14	15	16	17	18	19	20	21	22	23	24	25	26	27	28	29	30	31				
<b>VIRGINIA</b>																																				
<b>TIDEWATER 01</b>																																				
DISPUTANTA	9.31				1.24		1.63		3.30				0.07												0.21	2.86										
EASTVILLE	4.63		0.13	0.45	0.57		0.58		2.60				0.03														0.27									
EMPORIA 1 WNW	4.61				0.86		1.52	0.06	1.30																0.32	0.55										
FREDERICKSBURG SEWAGE	M 2.62		T	-	0.40	-	-	0.03	0.69		T	0.41		0.79		0.01	-				0.06				0.01	0.22						-				
HAMPTON UNIV	8.61		0.11	0.85		1.41			2.50				0.29											0.21		3.10									0.14	
HOLLAND 1 E	F 7.83		0.13	0.00 <sup>L</sup>	0.71		0.30	0.96	1.58	1.57															1.76	0.40									0.55	
HOPEWELL	7.97				1.55	2.35	0.11	0.62	2.10																0.15	1.09									T	
NORFOLK INTL AP R	10.89		T	1.52	T	1.32		0.01	0.73				0.15										0.05	1.04	2.37	2.35									1.35	
NORFOLK SOUTH	8.33		T	1.49	T	1.15	0.39		0.56				0.35										0.14	0.08	0.68	1.37	T							2.12		
NORTH	11.08			1.91	0.49		0.23	0.83	3.99				0.05	1.45													2.13									
PAINTER 2W R	3.63		0.10	0.27	0.42	0.12	0.16	0.28	1.80					0.10													0.38									
STONY CREEK 2 N	M 0.00 <sup>L</sup>	0.00 <sup>L</sup>	0.00 <sup>L</sup>	0.00 <sup>L</sup>	0.62 <sup>L</sup>		1.63	0.07	0.00 <sup>L</sup>	0.00 <sup>L</sup>	2.41 <sup>L</sup>		0.02										0.00 <sup>L</sup>	0.00 <sup>L</sup>	0.00 <sup>L</sup>	0.22 <sup>L</sup>	0.00 <sup>L</sup>	0.00 <sup>L</sup>	0.25 <sup>L</sup>					0.42		
SUFFOLK LAKE KILBY	4.01		T	0.85		1.10	0.01		0.40				0.05								0.07				0.15	1.10	0.01								0.27	
WAKEFIELD INW R	7.51			0.24		2.13		1.59	0.82				0.01												0.58	1.97									0.17	
WALKERTON 2 NW	6.21		0.45	1.24		1.35			1.43				0.63																							
WALLACETON LK DRUMMOND	4.42				1.10	0.05	0.24	0.18	0.65	0.05			0.05													1.95	0.15									
WARSAW 2 NW	3.81			0.20	0.41	0.28	0.11	0.24	0.80					0.13													0.42									
WEST POINT 2 NW	M		T	0.95 <sup>L</sup>	0.53 <sup>L</sup>	0.02	0.08 <sup>L</sup>	1.95 <sup>L</sup>	1.17 <sup>L</sup>					0.11						0.00 <sup>L</sup>	1.25 <sup>L</sup>					0.00 <sup>L</sup>	0.62 <sup>L</sup>								0.02	
WILLIAMSBURG 2 N	10.69		0.03	1.02		1.08		5.24	0.82				0.62											0.38	1.50											
<b>EASTERN PIEDMONT 02</b>																																				
ALBERTA 5N	4.82				0.01		0.65	0.04	3.60					0.06											T	0.31	0.08								0.07	
AMELIA COURTHOUSE 1	M 7.54		-		2.25		1.62		3.20	-																*	0.41 <sup>a</sup>	0.06								-
ASHLAND	6.54		0.35	0.94	0.20	0.27			0.83				0.03	0.09										2.05	0.04		0.05								1.69	
BREMO BLUFF	M 4.04			0.50		1.25	-	-	-	-	0.17		0.06											1.90	0.10											
BUCKINGHAM	4.79			0.04	0.15		1.08		1.10				0.81													0.14	0.01	1.41							0.05	
CAMP PICKETT R	M 4.80	-	-	-	-		1.40		2.56	-	-		0.03													0.12	0.30	0.22								0.17
CHASE CITY	5.02				0.13		0.90	0.13	2.10				0.96														0.52	0.18								0.10
CLARKSVILLE	M 5.05				0.10		1.70	0.05	0.75				0.10													0.15	1.00									1.20
CORBIN	2.49		0.02	0.21	0.05		0.04		0.79			0.20	0.62															0.56								
CROZIER	2.91				0.63		0.18		1.96				0.07													0.07										
FARMVILLE 2 N R	4.44				0.16		0.11		1.02				0.11												1.26	1.67	0.11									
GREENBAY 3 NE	4.55				0.09		0.16		1.90				T	0.44													1.35	0.21								0.40
JOHN H KERR DAM R	2.61				0.07	0.01	0.02	0.67	0.82																		0.19	0.75								0.08
KEYSVILLE 2 S	6.47			T	1.25	T	0.57	0.15	0.82					0.03												1.30	1.95	0.10								0.30
LOUISA	2.85		0.27	0.32	0.12			1.56				0.05	0.29											0.24												
PALMYRA 3S	2.87			0.02	0.07		0.18		0.69					0.29												1.59	0.02	0.01								
PETERSBURG	M 7.38				0.67		2.00	0.08	2.49					0.22													1.16	0.76								
POWHATAN	7.53				1.80		3.54	1.93						0.04																						0.07
RICHMOND INTL AP R	3.63		0.18	0.93		0.31		1.72	0.01				0.01						0.08	0.07					0.03		0.41								T	0.03
SANDSTON	6.04			0.80	1.51		0.56	0.19	1.73					0.04												0.08		1.13								

VIRGINIA  
201107

## DAILY PRECIPITATION (INCHES)

STATION	TOTAL	DAY OF MONTH																															
		01	02	03	04	05	06	07	08	09	10	11	12	13	14	15	16	17	18	19	20	21	22	23	24	25	26	27	28	29	30	31	
WINTERPOCK 4 W <b>WESTERN PIEDMONT 03</b>	5.90			T		1.15		1.30		2.69			0.02	0.26										0.04	0.42	0.02							
ALTAVISTA	2.84			0.01	1.00	0.14	0.05		0.01	0.48		0.01	0.15										0.41	0.48		0.03						0.07	
APPOMATTOX	4.02				0.18	0.04				1.25				0.02									0.06			1.21	0.04					1.22	
BEDFORD 4 NW	6.12			0.24	0.04	0.15	1.27	0.14		0.80			0.02									1.64			1.65	0.01					0.16		
BROOKNEAL	4.17				0.01	0.05		0.17	0.02	1.01			0.02													0.02	2.01				0.14		
CHARLOTTESVILLE 2W	3.48			0.54	1.16	0.78	T	0.05		0.35			T												0.13	0.05	0.02				T		
CHATHAM	2.25					0.30	0.02	0.10		0.22								0.01							0.05	1.00	0.55						
CONCORD 4 SSW	3.40				0.13	0.08		0.73		0.35					0.45										1.22	0.18	0.16				0.10		
DANVILLE	1.12						0.50		0.20																0.31	0.09	0.02						
DANVILLE REGIONAL AP R	3.88				0.67	0.02	T	0.04	2.17	0.05			T										0.09	0.07					0.77	T			
FREE UNION	M 3.20			0.33	0.75	0.33	0.04	0.19		0.96				0.58							T			0.02	-	-	-	-	-	-	-		
HOLCOMB ROCK	2.23					0.36	0.04			0.68											0.05	0.32		0.56	0.15	0.05				0.02			
HUDDLESTON 4 SW	0.94				0.10	0.27		0.12		0.40																0.03					0.02		
LYNCHBURG #2	2.04			T	0.05	0.02	0.22	0.03		0.51				0.40							0.02	0.56				0.05					T		
LYNCHBURG INTL AP	2.99			0.09	0.03		0.18		0.40			0.20		1.39			0.01			T	0.04		T	T	0.02	0.05				0.63			
MARTINSVILLE FLTR PLT	1.04					0.25	0.01	0.54		0.07																0.09	0.08				T		
MEADOWS OF DAN 5 SW	3.63					0.05	0.64	0.52	0.04	0.13						0.06	0.10				0.02	0.22		0.32	0.53	1.00							
MONTEBELLO FISH CULTURAL STN	M 5.34					0.39	0.03		0.96		-	-	-	-	1.26					-	0.03	0.60			0.09	0.08					1.90		
MONTECELLO	3.11			0.18	0.79	1.16		0.26		0.35				0.33											0.04								
PEDLAR DAM	4.24					1.36	0.02	0.29		0.91				0.02							0.04				0.29						1.31		
ROCKY MT R	10.96		0.01			1.42	0.03	1.32	0.18	1.00	T														2.40	4.10		T			0.48		
SOUTH BOSTON	4.07					0.62			0.41	1.31			0.09													0.08	0.06				1.50		
STUART	2.35					0.08	0.47	0.13	0.08	0.13													0.09		0.12	0.07	0.92						
TYE RIVER 1 SE	2.19					1.03	T	0.16		0.43				0.45											0.12								
WOOLWINE	2.00				T	0.04	0.02	0.15	0.03	0.15						0.18					T			0.08	0.46	0.06	0.20				0.63		
<b>NORTHERN 04</b>																																	
BIG MEADOWS	M	-	-	-	-	0.10	-	-	-	-	-	-	-	-	-	-	-	-	-	-	-	-	-	-	-	-	-	-	-	-	-		
BOSTON 4 SE	0.93				0.04	0.25	0.12			0.11				0.17												0.24							
CASTLETON	2.64				0.04	1.09	0.08	0.57	0.15	0.42				0.29																			
EDINBURG	0.86					0.02	0.39	0.02		0.06	0.23			0.11							T					0.03							
FRONT ROYAL	FM 1.29			0.15 <sup>L</sup>	0.52 <sup>L</sup>	0.04 <sup>L</sup>				0.02	0.83			0.02											0.08	0.07	0.20						
LINCOLN	M 4.70	-	-	1.25	*	*	*	*	*	1.60 <sup>a</sup>	*	*	*	*	*	*	*	*	*	*	*	*	*	*	1.75 <sup>a</sup>	-	0.10	-	-	-	-	-	
LURAY 5 E	2.94			0.49	0.43	0.19	0.65			0.77				0.40							T				0.01								
MADISON	1.37					0.45	T	T					T	0.59																	0.33		
MANASSAS	M	-	-	-	-	-	-	-	-	0.30 <sup>L</sup>	-	-	0.40	0.80	-	-	-	-	-	-	-	-	-	-	-	0.30					0.30		
MT WEATHER	1.85			0.10	0.47					0.80				0.48																			
PIEDMONT RSCH STN	F 2.43				0.16	0.05	0.07	0.13	0.12	0.31			0.46	0.84								0.01		0.00 <sup>L</sup>	0.00 <sup>L</sup>	0.20 <sup>L</sup>	0.28						
SOMERSET	1.92				0.05	0.15	0.13	0.03	0.11	0.51			0.02	0.30							T			0.36		0.26							
SPERRYVILLE	2.26			0.10	1.00	0.11		0.46		0.37			0.01	0.21							T												
STAR TANNERY	2.94				0.16	0.40				1.62	0.64			0.12																			
STERLING RCS	3.38			0.08	0.12	T		0.12		1.20				1.86																	T		

VIRGINIA  
201107

## DAILY PRECIPITATION (INCHES)

STATION	TOTAL	DAY OF MONTH																																
		01	02	03	04	05	06	07	08	09	10	11	12	13	14	15	16	17	18	19	20	21	22	23	24	25	26	27	28	29	30	31		
VIENNA	2.70			0.25						0.32				2.05									0.08											
WARRENTON 3 SE	FM 1.00			0.18	-	0.59 <sup>L</sup>	0.20			0.03		0.19		0.35		-									0.05									
WASHGTN DULLES INTL AP	2.58			0.14	T		0.10		1.27		0.01		0.69												0.37									
WASHINGTON REAGAN AP	3.03			0.87	T	T	0.07		0.60				1.05							0.24		T			0.20									
WINCHESTER	4.21			0.29	0.39	1.21			0.17	0.84	T			0.81						T			0.42			0.08								
WINCHESTER 7 SE	2.61			0.07	0.80	0.04			0.13	1.42				0.07						0.01			0.03			0.04								
WOODSTOCK 2 NE	M 1.10				0.01	0.22			0.42	0.44				0.01								-												
<b>CENTRAL MOUNTAIN 05</b>																																		
BUCHANAN	2.15					0.25	T	0.60		0.93												T			0.11	0.21	0.05							
BUENA VISTA	2.04					0.50	0.02			1.25												0.08			0.04	0.05								0.10
COVINGTON FLTR PLT R	4.86					0.93				0.52				0.10									0.21	1.56	T	0.23								1.31
CRAIGSVILLE 2 S	M	-	-	-	0.02	1.61	0.38	0.02	0.01	0.48	-	-	-	-	-	-	-	-	-	-	0.15	-	-	-	-	0.56	2.06	-	-	-	-	-	0.18	
DALE ENTERPRISE	2.48			0.05	0.04	0.68	0.08		0.01	0.75											0.67				0.17	0.03								
EARLEHURST	4.01				1.25	0.57		0.10		0.56		0.05									0.17			0.26	0.35	0.35								0.35
GATHRIGHT DAM	1.82				0.02	0.15				0.09										0.01	0.09	0.16	T	0.50	0.15	0.38								0.27
GLASGOW 1 SE	1.92				T	0.82	0.01	T		0.50				0.01							0.07			0.01	0.40	0.05								0.05
HOT SPRINGS R	3.88					0.93	0.92			0.10											0.22	0.11		0.46		1.10								0.04
KERRS CREEK 6 WNW	1.51					0.25	0.31	0.04		0.21											0.10	0.13				0.47								
LEXINGTON	2.69					0.17	0.14			1.26	0.02			0.47							0.11	0.13				0.34								0.05
MILLGAP R	1.04				0.05	0.39				0.19		0.01							0.04		0.12			0.12		0.12								
MTN GROVE	1.71				0.20	0.18	T			0.15		T		T				0.30		0.18	0.36		0.08		0.26									
MUSTOE 1 SW	3.63				1.23		0.12		0.21		0.01		0.02				1.55		0.19			0.23	0.01		0.04								0.02	
ROANOKE 8 N	3.49					0.60	0.08			0.60														0.01	T	1.82								0.26
ROANOKE INTL AP	3.76				1.48		0.40		0.85	T			T					T		0.12	T		T	T	0.35						0.56	T		
STAUNTON WATER TRMTMT PLT	4.20				0.02	0.46	0.10	0.05		0.19											0.52	0.10			2.41	0.30								0.05
WAYNESBORO WTP	2.50			0.70	0.34		0.05		0.09		0.01									0.50				0.28	0.49									0.04
WILLIAMSVILLE 2 S R	M	-	-	-	-	-	-	-	-	-	-	-	-	-	-	-	-	-	-	-	-	-	-	-	-	-	-	-	-	-	-	-	-	-
<b>SOUTHWESTERN MOUNTAIN 06</b>																																		
ABINGDON 3S	1.50				0.20	0.22		0.06	0.11			0.19		0.05	0.30							0.07			0.27								0.03	
BIG STONE GAP	3.75					0.53	0.05	0.41		0.28		0.87	0.03	0.09	0.10	0.01						0.07	0.01		0.57	0.15	0.38						0.20	
BLACKSBURG NWSO R	3.93					0.92	0.17	0.17	T	2.01		T		T	T	T						0.11	0.18		0.06	T	0.04						0.27	
BLAND	5.63					0.34		0.18	0.21	0.43		0.16		0.07	0.03	0.03	1.66	0.32				0.07	0.45	0.04	0.79								0.85	
BURKES GARDEN	3.71					0.11	0.01	0.05	0.61	0.87	T	0.09	0.03	0.07	0.17	0.02						0.27	0.02	0.21	0.12	0.10	0.45						0.51	
CHRISTIANSBURG	1.55					0.64	0.10			0.59									0.03		0.06	0.02		0.07	0.01	0.03								
CLINTWOOD 1 W	9.20				0.01	2.12		0.23	0.01	0.24		T	1.53	T	0.05	0.01	0.32	1.66	0.14	T	0.11	0.41	0.01		T	2.00							0.35	
COPPER HILL	M 3.22					1.40	0.30			0.80											0.05			0.19	0.14	0.24	0.05							-
GALAX RADIO WBRF	2.11							0.75	0.64								0.02	0.10	0.22				0.17	0.11	0.01									0.09
GALAX WTP	1.95					T	0.71		0.30	0.18				T			0.02	0.11	0.19				0.34											0.07
GRUNDY	6.05				0.44	1.46		0.01		0.70			0.74	0.03	0.02		0.21	0.41	0.57				0.05	0.06	0.09	1.24							0.02	
JOHN FLANNAGAN LAKE	M	-	-	-	-	0.48	0.01	0.37	-	-	-	0.43	0.91	0.01	0.04	-	-	-	0.03			0.07	0.03	-	-	0.04	3.04						-	
LAFAYETTE 1 NE	4.95					0.73	0.09			2.14														0.53	0.65	0.04								0.64



VIRGINIA  
201107

## DAILY PRECIPITATION (INCHES)

STATION	TOTAL	DAY OF MONTH																															
		01	02	03	04	05	06	07	08	09	10	11	12	13	14	15	16	17	18	19	20	21	22	23	24	25	26	27	28	29	30	31	
LEBANON	5.82				0.07	0.31		0.21	0.03	1.05			0.38		0.10		0.03	0.73	0.12	0.02	0.11	0.01		2.10		0.02	0.48	0.03					0.02
NORA 4 SSE	6.15				0.02	0.70	0.07	0.89	T	0.36	T		1.11	0.02	0.07		0.06	0.87	0.06		0.05	0.02			T		0.82	0.91				T	0.12
NORTH FORK LAKE	M		-	-	-	-	0.82 <sup>L</sup>	0.33											1.48 <sup>L</sup>					-	-	0.87 <sup>L</sup>	-	2.58 <sup>L</sup>					-
PULASKI 2 E R	5.93					0.57	T	T	2.06	0.10						0.02	0.06	T							0.65	0.20	1.28						0.79
RADFORD 3 N	M 4.47					1.63	0.01		0.08	0.81									0.02		0.11	1.51				0.03	0.27						-
RICHLANDS	4.91					0.32	0.05	0.20		0.93			0.23		0.07		0.38	0.09	0.05		0.03	0.01		1.86	0.23	0.02	0.38					0.06	
SALTVILLE 1N	3.52				0.01	0.06		0.31	0.03	1.01			0.21		0.05		0.40	0.11					0.54	0.19	0.04	0.25	0.31						
STAFFORDSVILLE 3 ENE	4.21					0.10	0.02		0.02	1.73			0.02		0.01				0.03		0.85			T		1.06	0.33						0.04
TROUT DALE 3 SSE	7.00				0.08	1.07	0.41	0.03	0.02	0.04						0.94	0.15	0.14						0.47	0.03	0.04	0.11						3.47
WILLIS R	3.22					0.36		0.04	0.10	0.72						0.07	0.14				0.03	0.02		0.07	0.86	0.60	0.05						0.16
WISE 3E R	9.84				0.81	0.03	1.33	0.13	0.24	0.05			1.00	0.02		0.80	0.02	T				0.11	0.05		0.25	4.85	0.02				0.06	0.07	
WYTHEVILLE 1 S R	2.53					0.24	0.02	0.52		0.38			0.01			0.02	0.01	0.24				0.03				0.37	0.05						0.64



VIRGINIA  
201107

## DAILY TEMPERATURES (°F)

STATION	OB. TIME	MAX/MIN	DAY OF MONTH																															AVERAGE	
			01	02	03	04	05	06	07	08	09	10	11	12	13	14	15	16	17	18	19	20	21	22	23	24	25	26	27	28	29	30	31		
			ASHLAND	18	MIN MAX MIN	61 85 62	62 87 63	90 87 68	69 86 68	67 86 69	71 83 70	66 89 67	66 88 71	69 85 65	65 91 69	75 94 77	72 92 73	64 84 64	58 81 59	58 84 61	67 85 69	72 90 71	72 92 70	73 95 74	75 98 76	75 95 72	89 89 72	72 91 72	72 89 71	69 92 71	71 95 72	69 88 71	75 91 74		75 85 71
BREMO BLUFF	07	MAX MIN	92 60	94 62	98 67	95 68	93 68	89 72	89 89	89 89	87 87		90 71	94 73	86 66	88 58	88 90	90 62	85 85	89 89	89 93	96 96	102 98	104 98	102 98	96 98	96 94	96 92	94 92	96 92	96 91	99 94	91 94	94.9 67.8 90.5	
CAMP PICKETT	08	MAX MIN						89 70	89 66	89 66	87 69		90 71	94 73	89 66	82 59	82 60	85 65	85 68	89 89	89 70	93 73	96 74	98 74	98 94	98 94	94 92	92 92	91 91	94 72	94 70	94 75	90.5 69.1 90.2		
CHASE CITY	17	MAX MIN	86 61	88 62	90 65	91 70	92 68	89 66	88 69	88 70	86 66	88 68	91 71	93 71	91 67	82 58	84 60	84 65	84 65	89 68	88 71	88 72	94 73	96 74	98 97	98 73	96 71	92 90	96 73	91 69	95 70	97 70	94 73	90.2 68.3 93.1	
CLARKSVILLE	07	MAX MIN	89 64	89 66	93 66	94 73	95 68	90 70	89 68	91 69	88 71	90 68	90 72	93 72	97 74	93 69	86 65	83 70	88 69	85 70	93 70	92 72	98 74	100 75		100 78	100 72	100 73	100 73	92 72	96 73	99 73	102 76	97 73	93.1 70.6 90.5
CORBIN	09	MAX MIN	86 59	90 59	92 69	85 67	89 69	82 68	92 69	86 70	87 66	90 64	93 68	94 73	90 71	80 62	85 61	87 66	91 67	92 72	94 68	98 74	101 76	97 78	91 74	93 72	91 70	90 69	94 73	99 74	92 74	92 72	92 72	90.5 68.7 89.8	
CROZIER	07	MAX MIN	83 60	86 60	89 66	92 67	87 67	87 65	81 68	90 84	85 63	84 64	88 74	91 72	90 62	79 56	85 57	85 66	85 64	90 70	91 70	94 72	97 73	99 75	98 71	98 71	92 70	93 71	91 68	92 70	96 68	99 70	94 71	89.8 67.4 90.9	
FARMVILLE 2 N	07	MAX MIN	85 60	87 62	91 63	94 67	94 66	88 66	87 66	92 67	88 69	85 64	88 64	93 68	96 71	90 64	81 58	81 58	84 57	85 66	92 66	91 71	94 71	100 74	101 76	99 72	93 72	94 71	91 69	90 69	95 71	95 71	95 71	90.9 67.1 90.7	
GREENBAY 3 NE	09	MAX MIN	85 59	88 61	92 69	94 69	96 67	88 71	88 67	89 69	87 68	84 64	88 69	92 76	94 71	89 63	81 57	81 59	84 66	86 66	90 70	91 73	94 75	97 78	101 74	100 71	96 72	92 70	89 69	90 72	94 72	98 103	94 100	90.7 68.7 95.6	
JOHN H KERR DAM	08	MAX MIN	90 68	91 68	95 70	96 78	99 70	93 72	74 <sup>1</sup> 73	94 73	90 69	91 73	94 79	94 76	91 70	86 61	85 63	91 67	90 72	94 75	96 75	99 79	102 81	105 82 <sup>1</sup>	105 77	102 76	90 77	94 72	96 75	96 75	102 75	103 75	100 75	95.6 72.9 91.8	
LOUISA	18	MAX MIN	89 58	91 57	93 66	89 68	90 68	88 70	91 68	88 65	91 61	93 66	93 77	96 71	94 59	83 52	83 54	85 60	91 64	91 68	94 68	96 71	99 71	99 74	99 72	93 70	94 67	93 68	96 66	100 67	100 66	98 70	93 71	91.8 66.3 87.5	
PALMYRA 3S	06	MAX MIN	80 58	83 58	86 58	89 67	86 68	84 68	81 68	87 67	85 68	83 61	86 61	90 64	92 69	92 60	78 54	79 54	84 55	87 62	87 63	90 69	91 71	95 71	97 71	94 70	89 69	90 68	88 67	88 67	91 66	95 66	90 71	87.5 64.8 91.7	
PETERSBURG	08	MAX MIN	95 63	88 65	91 65	92 70	92 70	89 68	87 68	90 71	85 67	87 67	89 71	91 75	96 70	84 60		85 64	86 67	89 68	91 75	95 75	96 79	100 79	99 75	99 74	97 73	97 73	91 72	91 72	95 75	98 75	93 75	91.7 70.3 92.8	
RICHMOND INTL AP	24	MAX MIN	90 63	92 65	95 71	93 70	91 69	84 69	92 66	87 73	88 72	90 66	93 71	97 81	94 73	83 65	82 61	86 62	89 69	91 68	94 72	96 72	99 75	102 79	101 76	99 75	95 74	94 74	99 76	94 73	99 75	103 79	97 71	87 71	92.8 71.1 91.8
SANDSTON	07	MAX MIN	87 61	88 61	93 64	96 68	90 68	84 70	93 66	88 68	87 70	89 67	94 69	97 75	94 65	82 58	84 59	88 62	88 64	91 65	93 69	94 70	98 75	101 77	100 73	95 73	93 72	93 73	91 71	96 71	97 74	92 76	91.8 68.4 90.2		
<b>WESTERN PIEDMONT 03</b>																																			
APPOMATTOX	07	MAX MIN	84 61	87 62	90 64	91 69	91 66	88 67	88 68	90 69	87 65	88 65	93 68	94 73	89 65	82 59	81 58	81 60	83 66	92 65	89 71	94 73	98 74	100 74	98 73	94 71	93 71	93 69	91 69	91 69	93 70	96 70	95 70	90.2 67.5 92.5	
BROOKNEAL	07	MAX MIN	89 58	92 59	95 61	96 67	97 68	90 69	88 66	91 67	91 70	92 66	92 70	95 71	90 64	85 57	84 58	85 58	85 62	93 58	91 70	95 74	96 73	98 73	97 73	95 71	94 68	94 68	94 68	96 71	98 71	97 71	92.5 66.6 90.4		
CHARLOTTESVILLE 2W	08	MAX MIN	85 65	87 64	90 67	93 68	87 68	88 69	84 69	90 69	86 67	85 68	89 70	93 72	94 76	81 60	82 62	83 64	85 68	90 69	89 73	94 76	98 78	101 79	95 77	94 73	94 72	92 73	92 70	96 72	100 77	94 73	90.4 70.1 90.3		
CHATHAM	07	MAX MIN	84 57	86 57	89 62	91 64	93 64	86 65	87 65	90 66	88 62	88 62	87 66	92 66	91 64	83 56	81 60	81 60	83 60	91 62	87 65	93 69	97 70	99 70	98 70	97 70	97 70	90 67	91 66	94 66	95 68	95 68	92.3 64.9 92.3		
DANVILLE	07	MAX MIN	89 62	90 64	93 67	94 70	91 67	93 69	90 71	92 71	87 70	87 69	91 69	96 76	92 71	84 63	88 65	83 67	88 67	91 67	90 67	94 74	97 75	98 77	98 75	95 74	94 74	95 74	95 73	97 74	97 74	95 75	92.3 64.9 92.3		

VIRGINIA  
201107

## DAILY TEMPERATURES (°F)

STATION	OB. TIME	MAX/MIN	DAY OF MONTH																															AVERAGE
			01	02	03	04	05	06	07	08	09	10	11	12	13	14	15	16	17	18	19	20	21	22	23	24	25	26	27	28	29	30	31	
DANVILLE REGIONAL AP	24	MAX	89	91	93	94	87	88	92	90	87	90	91	95	92	83	84	82	84	90	90	95	97	98	98	97	94	95	95	97	100	99	86	91.7
		MIN	58	61	66	67	65	70	67	69	70	65	69	75	73	65	58	65	62	65	68	70	72	74	73	74	71	73	69	68	70	71	69	68.1
FREE UNION	08	MAX	83	85	87	89	83	85	79	87	83	84	86	90	91	88	79	80	81	84	88	85	90	93	95	90							86.0	
		MIN	58	59	60	67	67	67	66	66	66	63	64	66	68	59	56	56	56	64	64	71	71	73	73	72							64.7	
LYNCHBURG #2	07	MAX	82	84	87	90	88	86	85	88	86	84	87	92	95	86	80	79	77	81	88	86	92	94	96	94	92	90	91	91	93	95	93	88.1
		MIN	58	59	61	68	66	67	66	66	67	64	65	68	70	62	57	57	59	64	64	70	71	72	72	71	70	69	67	66	67	68	70	65.8
LYNCHBURG INTL AP	24	MAX	87	90	91	93	89	86	92	88	86	90	93	95	89	82	81	79	82	90	88	95	97	100	97	96	95	94	93	96	98	96	84	90.7
		MIN	60	61	66	67	64	68	65	67	65	63	67	73	69	61	56	58	64	63	68	71	72	72	71	70	68	66	66	68	70	67	66.4	
MARTINSVILLE FLTR PLT	07	MAX	87	88	90	93	93	88	87	91	89	86	89	94	97	90	85	82	78	85	90	92	94	98	96	98	93	94	95	97	100	96	91.3	
		MIN	56	57	57	57	65	66	66	67	68	63	64	70	70	66	59	63	65	62	61	64	70	70	69	68	69	69	65	65	66	66	64.9	
MEADOWS OF DAN 5 SW	07	MAX	83	86	86	87	87	83	79	87	87	87	85	88	91	86	81	73	67	79	83	84	89	89	93	88	88	84	87	87	89	89	85.2	
		MIN	56	57	59	60	61	62	64	64	64	63	63	63	63	60	61	62	62	62	62	62	68	68	69	68	68	68	65	65	66	65	63.4	
MONTEBELLO FISH CULTURAL STN	07	MAX	79	84	84	88	89	84	84	88	81																						85.9	
		MIN	51	51	54	64	61	61	59	58	56																						59.7	
MONTICELLO	08	MAX	79	82	85	87	84	83	87	86	83	87	85	89	90	86	78	80	83	86	86	89	93	95	97	97	92	90	90	96	99	95	87.6	
		MIN	61	61	63	65	66	66	67	68	66	64	65	67	74	62	60	59	60	60	66	72	72	75	76	76	76	67	67	66	70	71	67.1	
ROCKY MT	07	MAX	88	88	91	94	91	87	83	89	86	86	87	91	96	85	85	82	82	84	90	88	93	97	99	99	97	91	90	90	93	95	90.1	
		MIN	57	57	58	69	64	66	67	67	67	64	64	70	71	67	58	62	62	65	65	68	68	71	72	72	70	69	66	66	66	66.2		
SOUTH BOSTON	07	MAX	86	88	92	92	93	89	87	88	87	86	89	91	94	91	82	82	84	84	90	89	95	97	99	98	97	94	92	94	96	99	91.0	
		MIN	60	62	62	66	67	68	67	69	70	65	65	69	70	68	57	60	60	62	66	70	72	73	74	75	71	72	70	68	69	71	67.4	
STUART	07	MAX	87	89	91	92	92	87	85	90	87	88	89	92	96	89	85	75	70	84	88	89	93	95	94	93	92	89	91	91	95	97	89.3	
		MIN	60	60	60	67	62	68	64	66	67	64	68	71	70	67	63	63	64	64	68	68	70	72	69	70	70	68	66	66	67	69	66.5	
TYE RIVER 1 SE	06	MAX	85	87	90	92	90	85	88	89	88	85	89	92	94	86	82	80	81	82	90	88	92	95	99	98	93	92	92	91	90	89.7		
		MIN	60	62	63	68	69	69	67	68	67	64	65	68	75	64	59	57	58	64	65	70	72	74	75	71	72	69	67	68	69	67.2		
<b>NORTHERN 04</b>																																		
BIG MEADOWS	09	MAX					70																										M	
		MIN					60																											M
BOSTON 4 SE	07	MAX	84	87	89	92	82	86	85	91	84	87	90	95	96	96	80	83	84	89	92	91	91	98	100	98	95	94	93	89	93	99	90.5	
		MIN	56	57	57	57	67	67	66	67	63	61	61	71	68	59	58	55	55	55	62	70	70	71	73	73	70	67	68	66	66	70	64.2	
CASTLETON	08	MAX	83	86	90	92	83	86	85	89	82	85	87	92	94	89	79	82	83	86	90	90	91	97	100	95	92	91	92	90	93	100	89.2	
		MIN	60	59	68	65	68	68	66	68	65	63	67	71	70	63	58	57	62	62	71	72	73	73	74	75	71	70	70	66	69	70	67.2	
EDINBURG	07	MAX	81	87	86	90	81	85	87	89	80	84	87	92	93	88	78	81	83	88	90	91	93	97	100	96	93	90	95	92	95	99	89.1	
		MIN	54	53	57	66	65	65	63	64	64	61	63	68	67	56	54	52	56	62	64	68	69	69	70	72	69	67	63	60	61	69	63.0	
FRONT ROYAL	07	MAX	82	87	88	92	82	87	86	90	90	87	87	93	93	86	81	80	83		91	92	93	99	100	95	95	89	94	90	91	97	89.7	
		MIN	57	57	57	65	65	65	69	67	64	64	64	64	72	60	60	60	60		69	71	71	74	73	74	72	69	68	65	65	68	65.8	
LINCOLN	07	MAX	85	86	91	92	91	88	88	92	92	90	94	93	92	82	82	85	88	91	92	93	97	100	95	95	92	85	93	89	91	99	90.8	
		MIN	55	53	59	64	64	67	66	66	66	62	62	66	67	57	56	56	56	60	63	69	69	73	74	74	71	69	68	63	69	72	64.5	
LURAY 5 E	08	MAX	82	85	88	91	83	86	86	89	82	85	87	93	94	89	88	80	82	85	90	93	93	98	99	96	91	91	93	93	95	98	89.5	
		MIN	54	55	65	64	62	64	62	65	61	59	64	67	56	55	55	60	63	63	68	70	69	69	70	68	66	63	61	66	69	63.3		
MADISON	08	MAX	84	87	89	93	83	86	84	90	84	86	88	94	97	92	81	83	87	90	91	93	97	101	99	93	94	92	90	93	99	90	90.0	
		MIN	59	60	64	69	68	70	66	69	65	63	67	75	70	62	59	58	62	65	68	71	74	74	76	75	72	69	68	67	68	72	67.5	
MANASSAS	07	MAX																															M	



VIRGINIA  
201107

## DAILY TEMPERATURES (°F)

STATION	OB. TIME	MAX/MIN	DAY OF MONTH																															AVERAGE
			01	02	03	04	05	06	07	08	09	10	11	12	13	14	15	16	17	18	19	20	21	22	23	24	25	26	27	28	29	30	31	
ROANOKE 8 N	07	MAX	86	87	90	93	91	88	85	90	86	86	87	94	95	87	83	82	76	83	92	87	94	98	98	95	95	91	93	93	96	96	92	90.0
		MIN	59	61	64	69	65	66	67	68	66	65	67	71	75	67	61	64	67	67	67	72	72	74	74	72	71	69	69	65	66	70	72	67.8
ROANOKE INTL AP	24	MAX	87	92	95	93	89	84	90	85	85	86	95	95	88	82	80	76	83	92	87	95	99	98	97	95	92	93	95	97	99	95	90.5	
		MIN	59	61	70	66	67	70	67	69	66	65	71	78	77	67	63	66	68	69	74	72	73	78	76	76	74	70	70	66	73	74	72	69.9
STAUNTON WATER TRMTMT PLT	08	MAX	84	87	88	92	92	87	85	89	81	85	87	91	94	88	82	79	79	83	89	89	91	95	98	94	88	89	90	90	91	94	90	88.4
		MIN	57	57	66	68	65	66	62	65	63	61	67	74	71	58	56	55	62	64	71	67	70	72	71	73	70	66	65	65	69	71	65	65.5
WAYNESBORO WTP	07	MAX	86	87	92	86	88	84	89	84	85	87	94	96	89	89	80	81	83	91	88	93	98	99	95	90	89	92	90	95	97	90	90	89.6
		MIN	55	56	59	66	67	65	64	65	61	63	63	67	58	58	58	58	59	64	69	69	69	71	70	68	68	65	65	65	67	67	65	64.0
<b>SOUTHWESTERN MOUNTAIN 06</b>																																		
ABINGDON 3S	22	MAX	86	87	91	88	88	84	88	82	86	89	91	86	85	86	73	70	79	86	84	90	87	90	90	87	77	90	90	92	91	91	88	86.2
		MIN	55	59	63	65	61	64	62	66	69	66	68	69	70	65	60	59	63	67	65	70	70	68	67	67	70	71	65	62	63	63	67	65.1
BIG STONE GAP	08	MAX	85	88	89	90	87	84	85	86	83	86	89	91	85	87	89	77	73	77	87	85	90	82	87	88	89	89	91	91	92	91	89	86.5
		MIN	56	61	61	64	66	67	65	67	67	66	67	67	68	68	67	65	65	65	66	70	71	73	70	70	70	69	68	66	67	69	69	66.8
BLACKSBURG NWSO	07	MAX	82	86	87	89	85	82	83	87	81	84	86	90	89	82	81	74	67	82	86	84	89	91	93	88	89	85	89	89	91	92	91	85.6
		MIN	53	55	64	64	63	64	63	63	61	61	65	67	72	60	57	62	61	61	66	67	67	69	67	68	66	66	64	61	62	65	68	63.6
BLAND	07	MAX	83	86	88	90	87	83	82	84	84	84	87	89	87	79	84	65	67	80	84	83	89	92	90	86	86	81	87	86	89	88	90	84.5
		MIN	44	48	51	59	59	59	59	59	63	61	62	63	66	59	58	58	59	60	61	64	64	64	63	63	64	62	59	55	55	59	64	59.5
BURKES GARDEN	07	MAX	75	77	80	82	81	75	77	78	76	76	79	81	79	71	73	58	60	73	75	76	78	81	78	76	76	74	76	76	78	78	79	75.9
		MIN	42	45	49	57	54	54	57	56	59	57	59	58	61	56	54	51	53	54	58	61	59	59	57	57	59	58	55	51	51	52	60	55.3
CHRISTIANSBURG	07	MAX	83	82	89	88	87	79	82	84	82	82	84	89	90	80	79	72	67	80	84	81	87	91	92	89	89	85	87	89	91	92	92	84.8
		MIN	55	57	64	65	62	63	63	62	61	67	67	71	63	61	62	63	63	63	67	68	69	66	67	66	66	65	62	63	65	68	64.1	
CLINTWOOD 1 W	07	MAX	81	83	84	85	80	81	79	83	81	83	87	87	85	79	85	74	70	72	83	83	87	80	85	87	83	80	85	87	87	88	87	82.6
		MIN	52	55	57	62	65	66	65	65	65	64	64	67	67	64	64	62	61	61	66	68	68	71	68	68	68	68	66	64	64	64	67	64.4
COPPER HILL	07	MAX	81	82	84	88	85	80	79	80	79	79	78	88	86	80	74	71	71	76	84	80	87	91	87	84	86	84	85	86	89	90	82.5	
		MIN	53	56	61	64	61	62	63	62	61	62	64	66	69	62	57	58	58	62	62	66	67	67	67	66	65	65	64	63	64	65	62.7	
GALAX RADIO WBRF	07	MAX	83	85	88	87	85	81	83	82	83	85	84	88	91	84	78	65	68	78	86	87	90	90	88	86	85	85	90	89	92	91	90	84.7
		MIN	53	55	55	61	61	61	60	64	60	60	65	69	70	64	59	58	61	62	62	65	65	67	65	66	67	66	62	61	61	65	65	62.5
GALAX WTP	07	MAX	81	82	84	85	84	78	81	80	79	82	81	86	90	85	77	65	65	76	84	85	88	88	86	86	84	83	87	87	90	90	89	82.8
		MIN	53	53	55	61	61	61	60	60	65	60	60	66	71	65	60	59	60	62	61	63	65	65	66	65	66	65	61	60	61	62	66	61.9
GRUNDY	07	MAX	79	82	81	84	77	77	81	82	81	80	86	89	83	80	82	70	68	69	80	83	85	85	87	87	82	75	84	85	86	87	88	81.5
		MIN	57	57	61	65	65	66	66	67	65	65	66	68	69	65	63	60	62	62	66	69	71	72	69	69	71	70	67	67	68	69	70	66.0
JOHN FLANNAGAN LAKE	07	MAX					91	84	82				90	93	90	85				75	88	86	92	85		91	80	90	92	94	92	M		
		MIN					59	67	67				66	69	70	66				62	68	70	71	72		70	70	69	66	66	70	M		
LEBANON	07	MAX	83	86	86	90	90	83	85	87	84	85	88	90	86	86	86	71	70	75	85	85	90	86	89	88	87	80	88	89	90	88	89	85.3
		MIN	52	52	57	62	60	61	61	62	66	66	67	67	68	65	65	62	60	62	66	66	66	68	67	66	66	68	62	60	63	63	67	63.3
NORA 4 SSE	07	MAX	77	81	83	84	81	77	78	83	78	78	82	86	84	79	82	70	64	68	80	82	87	81	86	88	79	79	84	85	88	87	85	80.8
		MIN	61	65	67	67	63	64	63	66	62	61	69	65	66	64	63	58	61	61	66	69	70	71	69	69	68	67	68	69	72	70	64	65.7
NORTH FORK LAKE	08	MAX	84					89	85	85			89	90	86	83	85			77	86	84	89	82		86		87	88	90		M		
		MIN	53					58	65	65			64	65	66	67	66			61	63	68	68	70		69		66	63	63		M		
PULASKI 2 E	07	MAX	82	86	88	92	91	82	84	87	85	84	87	90	91	83	82	70	79	82	88	87	91	94	93	90	88	88	89	90	93	92	91	87.1
		MIN	52	54	57	66	63	66	62	63	63	60	61	67	73	65	59	60	61	61	64	69	69	72	68	69	67	66	65	60	65	66	68	63.9

VIRGINIA  
201107

## DAILY TEMPERATURES (°F)

STATION	OB. TIME	MAX/MIN	DAY OF MONTH																															AVERAGE
			01	02	03	04	05	06	07	08	09	10	11	12	13	14	15	16	17	18	19	20	21	22	23	24	25	26	27	28	29	30	31	
RADFORD 3 N	08	MAX	84	88	90	91	87	83	81	88	82	84	88	92	91	83	81	74	68	83	88	86	92	94	94	90	90	84	90	91	93	93	92	86.9
		MIN	52	56	64	63	63	65	63	64	63	62	67	69	71	62	55	60	62	64	60	66	68	71	68	68	70	68	64	61	61	65	70	64.0
RICHLANDS	07	MAX	83	86	87	89	86	82	81	86	83	86	89	90	88	81	86	69	70	75	85	85	90	87	90	87	86	80	88	88	90	89	90	84.9
		MIN	52	55	56	62	64	65	63	63	64	63	63	67	68	64	64	58	60	61	66	68	69	71	66	66	68	68	64	62	62	65	66	63.6
SALTVILLE 1N	07	MAX	85	87	87	91	86	84	83	89	85	87	89	90	87	84	86	68	69	77	86	85	91	87	91	88	86	80	90	89	91	90	90	85.7
		MIN	51	53	56	62	62	62	64	64	67	63	63	68	67	64	65	59	60	61	61	67	68	69	67	67	69	70	64	61	62	63	67	63.4
STAFFORDSVILLE 3 ENE	07	MAX	82	85	88	89	87	83	84	87	85	83	86	92	90	82	80	74	68	84	88	84	90	92	92	88	90	83	89	89	92	92	80	85.7
		MIN	51	55	56	61	63	64	62	62	61	60	61	67	69	61	58	62	62	63	65	67	67	68	67	67	68	66	63	60	61	62	67	62.8
TROUT DALE 3 SSE	07	MAX	81	83	86	86	82	77	81	82	83	81	82	87	86	82	74	62	61	76	81	82	85	86	87	86	84	83	85	85	87	86	87	81.8
		MIN	45	46	55	55	55	54	56	56	62	59	64	65	71	62	60	55	56	58	57	59	61	61	61	61	62	64	56	53	52	58	62	58.1
WISE 3E	17	MAX	80	81	85	82	76	80	80	78	77	83	84	84	81	82	80	66	71	80	80	85	83	83	83	82	81	83	84	86	84	84	79	80.9
		MIN	56	58	60	64	61	63	60	67	62	64	67	64	67	65	63	59	60	62	67	66	68	67	70	69	67	67	64	61	65	65	63	63.9
WYTHEVILLE 1 S	07	MAX	85	87	88	90	88	84	83	85	86	85	88	91	90	86	83	67	68	81	87	87	92	93	93	91	90	85	91	90	93	93	90	86.8
		MIN	49	52	54	61	61	63	60	60	64	61	65	66	71	63	61	60	61	62	63	64	65	66	64	64	67	65	60	58	58	61	65	61.7

# TOTAL SNOWFALL AND NUMBER OF DAYS WITH ONE INCH OR MORE ON GROUND

VIRGINIA  
201107

STATION	JUL		AUG		SEP		OCT		NOV		DEC		JAN		FEB		MAR		APR		MAY		JUN		TOTAL		TOTAL PRECIPITATION		
	SNOWFALL	1 IN ON GD	SNOWFALL	1 IN ON GD	SNOWFALL	1 IN ON GD	SNOWFALL	1 IN ON GD	SNOWFALL	1 IN ON GD	SNOWFALL	1 IN ON GD	SNOWFALL	1 IN ON GD	SNOWFALL	1 IN ON GD	SNOWFALL	1 IN ON GD	SNOWFALL	1 IN ON GD	SNOWFALL	1 IN ON GD	SNOWFALL	1 IN ON GD	SNOWFALL	1 IN ON GD		TOTAL	
<b>VIRGINIA</b>																													
<b>TIDEWATER 01</b>																													
DISPUTANTA											N 11.2	1													N 11.2	N 1	40.55		
EASTVILLE											13.0	3				N 2.0	2								N 15.0	N 5	20.19		
EMPORIA 1 WNW											7.0	2	NT		NT										7.0	N 2	35.90		
FREDERICKSBURG SEWAGE											-	2	N 1.0	2	FT		N 0.2								N 1.2	N 4	M 25.70		
HAMPTON UNIV																									0.0	N 0	M 14.48		
HOLLAND 1 E											11.4				N 2.0										N 13.4	N 0	30.67		
HOPEWELL											7.1	3			-										N 7.1	N 3	M 39.07		
NORFOLK INTL AP											17.8			0.2	3.8		T								21.8	0	44.21		
NORFOLK SOUTH											17.0	9	N 0.2		N 3.8	2	-								N 21.0	N 11	49.42		
NORTH											12.0	7			T										12.0	7	45.42		
PAINTER 2W											FN 11.5	8			1	N 3.0	1	N 0.5							N 3.5	N 10	42.44		
STONY CREEK 2 N											F 6.7	3													0.0	3	20.46		
SUFFOLK LAKE KILBY											18.0	8			2.3	1									20.3	9	41.07		
WAKEFIELD INW											15.7	8			T		NT								15.8	N 8	43.70		
WALKERTON 2 NW											F 4.6	9	N 0.1		NT		1.0	1							N 1.1	N 10	M 30.02		
WALLACETON LK DRUMMOND											-	1													N 0.0	N 1	47.71		
WARSAW 2 NW											8.0	11					N 1.0								N 9.0	N 11	41.81		
WEST POINT 2 NW											10.0	7		0.3			N 0.4		T						N 10.8	N 7	19.67		
WILLIAMSBURG 2 N											6.7	6	N 0.6		N 0.2										N 7.5	N 6	M 41.09		
<b>EASTERN PIEDMONT 02</b>																													
ASHLAND											9.5	9	N 1.7	1	N 0.2		N 1.0									N 12.4	N 10	38.27	
CAMP PICKETT											5.9	8			NT		NT									N 5.9	N 8	32.99	
CHASE CITY											8.7				NT		NT									8.7	N 0	42.91	
CLARKSVILLE											5.5	5		0.5	N 1.0	1										N 7.0	N 6	M 41.91	
CORBIN											4.3	3	N 0.1				N 1.0	1								N 5.4	N 4	M 31.86	
CROZIER											4.8	8		2.5	4	N 0.2										N 7.5	N 12	M 28.46	
FARMVILLE 2 N											6.0	4	N 1.0	1	NT											N 7.0	N 5	M 37.72	
GREENBAY 3 NE											7.1	5														7.1	N 5	37.02	
JOHN H KERR DAM																										0.0	N 0	M 32.34	
LOUISA											5.6	6		4.4	4	0.9		0.9								11.8	10	38.32	
PALMYRA 3S											4.5	1	N 1.7		N 0.5		N 0.3									N 7.0	N 1	39.58	
PETERSBURG											8.0	2														N 8.0	N 2	M 36.87	
RICHMOND INTL AP											8.0	6		2.7	1	0.1		T								N 10.8	N 7	37.13	
SANDSTON											8.5	14	N 2.5	1	NT		NT									N 11.0	N 15	25.49	
<b>WESTERN PIEDMONT 03</b>																													
APPOMATTOX											N 3.4	4	N 1.5	2			-										N 4.9	N 6	M 37.69
CHARLOTTESVILLE 2W											3.4	10		4.3	4	0.7	1	0.9	1							9.3	16	42.51	
CHATHAM											N 2.0	3		1.0	2											N 3.0	N 5	41.13	
DANVILLE											5.4	8		1.0	3											N 6.4	N 11	M 39.06	
DANVILLE REGIONAL AP											7.4	6		3.3	3		0.3		T							N 11.0	N 9	36.48	
FREE UNION											3.4	7	N 2.3	2	N 0.3		N 0.7	1								N 6.7	N 10	19.54	
LYNCHBURG #2											6.5	10		2.0	2		T									8.7	12	41.54	
LYNCHBURG INTL AP											6.3	10		1.9	2		T									N 8.4	N 12	41.44	
MARTINSVILLE FLTR PLT											9.0	4	N 3.0	3												N 12.0	N 7	47.12	
MEADOWS OF DAN 5 SW											7.8	9		4.1	9	0.2		T								N 12.1	N 18	64.43	
MONTEBELLO FISH HTCHY											3.0	1	N 8.0	4												N 11.0	N 5	M 54.13	
MONTICELLO											3.6	4	N 4.0	1		N 2.0	1	N 2.5	1							N 12.1	N 7	47.15	
ROCKY MT											7.4	6	N 2.4	2												N 9.8	N 8	49.05	
SOUTH BOSTON											9.0	8		1.5	1	0.1										10.6	9	39.23	



# TOTAL SNOWFALL AND NUMBER OF DAYS WITH ONE INCH OR MORE ON GROUND

VIRGINIA  
201107

STATION	JUL		AUG		SEP		OCT		NOV		DEC		JAN		FEB		MAR		APR		MAY		JUN		TOTAL		TOTAL PRECIPITATION	
	SNOWFALL	1 IN ON GD	SNOWFALL	1 IN ON GD	SNOWFALL	1 IN ON GD	SNOWFALL	1 IN ON GD	SNOWFALL	1 IN ON GD	SNOWFALL	1 IN ON GD	SNOWFALL	1 IN ON GD	SNOWFALL	1 IN ON GD	SNOWFALL	1 IN ON GD	SNOWFALL	1 IN ON GD	SNOWFALL	1 IN ON GD	SNOWFALL	1 IN ON GD	SNOWFALL	1 IN ON GD		TOTAL
STUART											5.5	6	N 3.5	8			NT								N 9.0	N 14	52.21	
TYE RIVER 1 SE											-	4	-	1											N 0.0	N 5	47.19	
<b>NORTHERN 04</b>																												
BIG MEADOWS											N 3.0	1	N 12.0	4		3	-		-						N 15.0	N 8	M 23.36	
BOSTON 4 SE	-		-								2.3	1	N 5.8	1		-	T		-						N 8.1	N 2	M 37.81	
CASTLETON											2.5	1	N 10.8	3	N 0.5	2	N 1.0	1							N 14.8	N 7	M 47.74	
EDINBURG											2.6	3	7.4	7	N 0.6	3	1.7	1							N 12.3	N 14	M 39.45	
FRONT ROYAL											2.1	2	N 9.0	6	N 0.6	7	N 1.0	1							N 12.7	N 16	M 45.32	
LINCOLN											2.0	1			N 1.0	1									N 3.0	N 2	16.81	
LURAY 5 E											1.8	3				2	0.5								N 2.3	N 5	44.07	
MADISON											3.0	4	NT		N 0.5	1									N 3.5	N 5	M 16.68	
MANASSAS			-								N 2.0	4	NT	2	N 0.5	3	N 1.0								N 3.5	N 9	M 17.14	
MT WEATHER											N 2.0	4	N 12.4	7	N 0.8		N 2.2	2	NT						N 17.4	N 13	31.20	
PIEDMONT RSCH STN											3.2	7	6.6	6	0.2	1	1.3	1							N 11.3	N 15	37.08	
REMINGTON 2											-		N 0.5		-										N 0.5	N 0	0.00	
SOMERSET											2.4	5	N 3.9	5	N 0.5	1	N 0.5								N 7.3	N 11	36.70	
SPERRYVILLE											N 1.0	1	4.8	6	0.6	2	1.0	1	NT						N 7.4	N 10	M 50.82	
STAR TANNERY											1.8	1	FN 2.3	7	N 1.1		N 1.2	2							N 4.1	N 10	M 38.84	
STERLING RCS											1.5	5	N 10.3	7	N 0.7	7	N 0.1								N 12.6	N 19	M 44.29	
VIENNA											2.2	3	N 11.0	7	N 0.9	4	N 0.3								N 14.4	N 14	M 39.17	
WARRENTON 3 SE											1.7	1			N 0.5										N 2.2	N 1	M 31.45	
WASHGTN DULLES INTL AP											1.5	4	10.3	6	0.7	7	0.1								12.6	17	40.14	
WASHINGTON REAGAN AP									T		2.1	1	7.3	6	0.5	3	0.2								N 10.1	N 10	36.53	
WINCHESTER											1.5	2	N 11.4	9	N 1.1	3	N 0.3								N 14.3	N 14	36.61	
WINCHESTER 7 SE											N 1.5	1	N 14.8	8											N 16.3	N 9	M 33.99	
WOODSTOCK 2 NE											2.0	3	F 7.4	5	N 0.7	2	N 0.7	1							N 3.4	N 11	M 36.81	
<b>CENTRAL MOUNTAIN 05</b>																												
COVINGTON FLTR PLT											6.7	12	1.0	1												N 7.7	N 13	37.60
DALE ENTERPRISE											3.9	8	7.0	3	N 0.3		2.0	1								N 13.2	N 12	M 37.81
GATHRIGHT DAM											9.0	17	2.8	6	T		T									N 11.8	N 23	39.32
HOT SPRINGS	-										N 10.5	15	N 4.7	6	N 0.5	2	N 0.5	1								N 16.2	N 24	M 44.26
LEXINGTON											8.5	8	2.1	2	0.5	1	T									11.1	11	39.69
MILLGAP 2 NNW											7.5	16	9.2	10	0.5	2	2.4	1	0.6							20.2	N 29	35.81
MUSTOE 1 SW											8.0	21	12.4	13	0.8		2.8	1	0.5							N 24.5	35	50.89
ROANOKE 8 N											7.1	9	N 0.5	1	NT											N 7.6	N 10	47.60
ROANOKE INTL AP											7.2	9	2.4	1	0.6		0.2									N 10.4	N 10	44.68
STAUNTON WATER TRMTMT PLT											5.3	15	8.6	5	N 0.2	1	N 1.0									N 15.1	N 21	38.34
WAYNESBORO WTP											3.5	1	13.4	3	N 0.5		NT									N 17.4	N 4	M 40.28
<b>SOUTHWESTERN MOUNTAIN 06</b>																												
ABINGDON 3S											N 10.5	16	N 11.1	10			N 2.0	1								N 23.6	N 27	M 43.33
BIG STONE GAP											-	7	N 8.0		N 1.0											N 9.0	N 7	M 58.00
BLACKSBURG NWSO											10.3	22	6.7	11	1.2	1	0.4									N 18.6	N 34	45.23
BLAND											N 26.5	26	14.0	14	NT		N 3.5	1								N 44.0	N 41	40.67
BREAKS INTERSTATE PARK											1.0	35.5	23	N 20.0	16	N 5.0	3	N 6.0	1							N 67.5	N 43	24.07
BURKES GARDEN											0.4	N 25.8	25	19.5	22	0.8	1	F 1.2	1							N 46.5	N 49	46.31
CHRISTIANSBURG												10.0	20	3.5	7	T		0.3								N 13.8	N 27	43.04
CLINTWOOD 1 W												T	36.2	27	21.4	19	6.3	5	3.8	2						67.7	53	50.29
GALAX RADIO WBRF												11.7	17	N 6.0	10	NT	1	N 2.0	2							N 19.7	N 30	35.83
GALAX WTP												9.5	12	6.1	9			2.5	1							N 18.1	N 22	M 49.42
GRUNDY												N 22.6	23	7.3	11	1.9	1	2.1	1							N 33.9	N 36	45.34
JOHN FLANNAGAN LAKE												N 6.8	3	N 4.9	1	N 0.3	1	NT	1							N 12.0	N 6	M 8.51



MONTHLY AND SEASONAL HEATING DEGREE DAYS

STATION	JUL	AUG	SEP	OCT	NOV	DEC	JAN	FEB	MAR	APR	MAY	JUN	TOTAL	SEASONAL NORM
<b>VIRGINIA</b>														
<b>TIDEWATER 01</b>														
DISPUTANTA	0	0	4	210	528	1049	956	639	569	223	82	1	4261	
EASTVILLE	0	0	0	129	423	810		656	568	192	53	0	M 2831	
EMPORIA 1 WNW	0	0	0	148	463	983	923	609	497	199	49	0	3871	3839
FREDERICKSBURG SEWAGE	0	0	0	198	467	1028	991	705	600	267	76	0	4332	
HAMPTON UNIV	0	0	0					453	411	115	25	0	M 1004	
HOLLAND 1 E	0	0	1	143	447	978	909	575	498	166	58	0	3775	3820
HOPEWELL	0	0	0	88	391	902	835	456	373	105	22	0	3172	3334
NORFOLK INTL AP	0	0	0	94	367	922	892	538	479	145	38	0	3475	3368
NORFOLK SOUTH	0	0	0	120	406	952	912	549	508	160	52	0	3659	
NORTH	0	0	0	178	460	974	967	642	577	232	78	0	4108	
PAINTER 2W	0	0	0	117	421	962	945	579	533	168	49	0	3774	3698
STONY CREEK 2 N	0	0	0	171	504	1006	938	632	530	211	56	0	4048	3926
SUFFOLK LAKE KILBY	0	0	0	141	421	962	903	532	486	150	44	0	3639	3467
WAKEFIELD 1NW	0	0	0	175	481	1017	948	559	539	180	57	0	3956	3652
WALKERTON 2 NW	0	0	0	87	362	875	811	484	406	115	16	0	M 3156	3908
WALLACETON LK DRUMMOND	0	0	0	149	449	969	915	591	535	176		0	M 3784	
WARSAW 2 NW	0	0	0	145	448	979	968	580	508	166	49	0	3843	3902
WEST POINT 2 NW	0	0	0	155	463	993	965	561	510	166	41	0	3854	3619
WILLIAMSBURG 2 N	0	0	0	160	447	971	917	577	538	180	56	0	3846	3629
<b>EASTERN PIEDMONT 02</b>														
ASHLAND	0	0	0	167	483	1029	974	558	502	162	54	0	3929	4170
CAMP PICKETT	0	0	3	175	540	1025	941	617	556	235	72	0	M 4164	4272
CHASE CITY	0	0	0	174	478	913	852	584	485	209	58	0	3753	4188
CLARKSVILLE	0	0	0	163	425	957	873	539	458	167	34	0	3616	
CORBIN	0	0	0	178		1029	847	616	559	198	70	1	M 3498	
CROZIER	0	0	3	234	566	1063	996	669	566	228	83	2	4410	4335
FARMVILLE 2 N	0	0	8	202	562	1032	994	679	564	250	85	0	4376	4023
GREENBAY 3 NE	0	0	2	212	544	1029	947	627	538	216	66	0	4181	
JOHN H KERR DAM	0	0	0	132	446	940	893	585	484	159	26	0	3665	3806
LOUISA	1	0	6	195	557	1057	984	617	539	181	66	0	4203	4779
PALMYRA 3S	4	0	18	264	614	1096	1037	743	637	305	110	5	4833	
PETERSBURG	0	0	0	174	493	953	948	599	524	200	60	0	3951	
RICHMOND INTL AP	0	0	1	159	443	976	943	561	503	170	35	0	3791	3919
SANDSTON	0	0	0	220	535	1039	1004	635	573	232	69	0	4307	
<b>WESTERN PIEDMONT 03</b>														
APPOMATTOX	0	0	11	206	533	1056	970	639	532	218	93	0	4258	4510
CHARLOTTESVILLE 2W	0	0	10	169	480	1031	977	669	582	245	60	0	4223	4103
CHATHAM	0	0	19	249	619	1054	998	716	602	267	114	0	4638	4628
DANVILLE	0	0	4	135	499	985	920	605	470	173	48	0	3839	3970
DANVILLE REGIONAL AP	0	0	3	154	496	984	927	589	504	190	70	0	3917	
FREE UNION	0	0	0		595	1060	1035	693	651		92		M 4126	
LYNCHBURG #2	0	0	25	232	600	1053	995	702	600	267	96	0	4570	
LYNCHBURG INTL AP	0	0	16	209	550	1069	986	664	562	214	76	0	4346	4354
MARTINSVILLE FLTR PLT	0	0	9	240	597	1035	993	702	601	242	89	0	4508	4734
MEADOWS OF DAN 5 SW				240	535	1082	964	679	560	270	117	2	M 4449	
MONTEBELLO FISH HTCHY	8	8		251	694	1015	1005	771		330	165	18	M 4265	
MONTECELLO	0	0	12	181	564	1088	1025	714	653	287	101	2	4627	4428
ROCKY MT	0	0	22	214	557	1047	945	692	570	237	92	0	M 4376	4444
SOUTH BOSTON	0	0	5	199	550	1025	955	658	537	230	68	0	4227	4252
STUART	0	0	11	188	518	1010	941	637	542	238	87	0	4172	
TYE RIVER 1 SE	0	0	8	173	528	1039	953	657	566	233	68	0	4225	4425
<b>NORTHERN 04</b>														
BIG MEADOWS				311			1039				261		M 1611	6898
BOSTON 4 SE	0	0	30		582	1045	1060		676	294	95		M 3782	
CASTLETON	0	0	12	236	579	1015	1026	740	616	275	81	1	4581	
EDINBURG	3	0	47	288	684	1145	1130	775	692	363	123	6	5256	
FRONT ROYAL	0	0	18	211	560	1079	1024	748	617	262	81	2	4602	
LINCOLN	3	0	32	297	639	1014		795	626	324	93	9	M 3832	5031
LURAY 5 E	2	1	35	278	607	1122		696	656	295	106	10	M 3808	4548
MADISON	0	0	6	131	500	672			371	228	56	0	M 1964	
MANASSAS	0	0	5	180	459	929		677	529		51	0	M 2830	
MT WEATHER	0	1	22	266	589	1151	1146	848	724	367	127	11	5252	5716
PIEDMONT RSCH STN	0	0	6	213	527	1053	1017	705	601	270	71	0	4463	4643
SOMERSET	1	0	14	191	594	1056	1029	713	621	279	88	2	4588	
SPERRYVILLE	1	0	24	231	596	1004	1068	764	662	334	115	2	4801	
STAR TANNERY	3	2	61	480	1145	1149		768	702	352	119	7	M 4788	
STERLING RCS	0	0	13	234	600	1073	1129	813	669	303	83	3	4920	5237
VIENNA	0	0	17	224	553	1009	1057	758	642	296	95	11	4662	
WARRENTON 3 SE	0	0	9	230	547	945	904	738	638	214	78	4	M 4307	4744
WASHGTN DULLES INTL AP	0	0	10	232	559	1052	1081	750	638	270	75	0	4667	4925
WASHINGTON REAGAN AP	0	0	0	145	430	933	965	650	594	225	48	0	3990	4055
WINCHESTER	0	0	18	240	614	1024	1093	771	671	331	91	2	4855	5103
WINCHESTER 7 SE	1	0	40	280	577	1005	1160	797	728	340		7	M 4935	5204
WOODSTOCK 2 NE	1	0	37	303	667	1127	1114	798	692	342	120	10	5211	5099
<b>CENTRAL MOUNTAIN 05</b>														

MONTHLY AND SEASONAL HEATING DEGREE DAYS

STATION	JUL	AUG	SEP	OCT	NOV	DEC	JAN	FEB	MAR	APR	MAY	JUN	TOTAL	SEASONAL NORM
COVINGTON FLTR PLT	0	0	37	247	592	1118	1034	723	642	275	119	11	4798	4920
DALE ENTERPRISE	4	0	38	309	685	1178	1130	762	728	335	120	5	5294	5333
GATHRIGHT DAM	2	0	64	331	651	1206	1144	781	698	318	150	13	5358	5215
HOT SPRINGS	11	0	72	334	623	1239	1135	761	712	314	147	16	5364	5585
LEXINGTON	0	0	31	243	621	1096	1034	729	647	259	97	0	4757	
MILLGAP 2 NNW			160	461	786	1349	1241	901	852	443	222	62	M 6477	
MUSTOE 1 SW	25	12	146	447	740			873	828	419	202	51	M 3743	
ROANOKE 8 N	0	0	18	180	528	1060	977	680	548	236	78	0	4305	
ROANOKE INTL AP	0	0	20	155	528	1040	934	606	544	191	69	0	4087	4284
STAUNTON WATER TRMTMT PLT	0	3	39	250	596	1161	1080	736	664	301	110	4	4944	5447
WAYNESBORO WTP	2		39	225	648	1130	1083	713	566	294	106	7	M 4813	
<b>SOUTHWESTERN MOUNTAIN 06</b>														
ABINGDON 3S	0	0	23	284	519	1009	1023	681	527	219	138	3	4426	4940
BIG STONE GAP	0	0	15	271	534	1125	1036	687	543	251	137	2	4601	
BLACKSBURG NWSO	4	2	61	323	664	1219	1118	780	689	316	157	8	5341	5559
BLAND	11	0	86	385	671	1255	1143	784	702	364	200	27	5628	5754
BREAKS INTERSTATE PARK	10	0	65	361	592	1221	1108	747					M 4104	
BURKES GARDEN	26	5	139	444	765	1230	1229	838	731	429	305	76	6217	6320
CHRISTIANSBURG	1	3	47	283	615	1199	1094	732	664	303	157	10	5108	
CLINTWOOD 1 W	5	0	52	362	630	1205	1131	760	647	305	164	12	5273	
GALAX RADIO WBRF	2	1	51	312	657	1168	1062	740	664	301	182	5	5145	5728
GALAX WTP	6	4	55	364	684	1202	1105	778	691	354	180	15	5438	
GRUNDY	1	0	25	292	594	1064	1075	703	617	264	136	4	4775	4535
JOHN FLANNAGAN LAKE										212			M 212	
LEBANON	2	0	39	343	596	1194	1088	712	592	275	166	6	5013	5106
NORA 4 SSE	4	1	38	294	563	1287	1165	763	699	323	192	7	5336	
NORTH FORK LAKE												7	M 7	
PENNINGTON GAP	1	0	20	368									M 389	4902
PULASKI 2 E	5	0	41	263	618	1184	1065	706	656	293	143	7	4981	5293
RADFORD 3 N	2	0	53	304	645	1187	1085	731	658	294	150	7	5116	
RICHLANDS	3	0	41	353	603	1190	1092	729	617	311	155	9	5103	5290
SALTVILLE 1N	0	0	36	326	611	1164	1101	719	609	293	147	5	5011	5082
STAFFORDSVILLE 3 ENE	4	0	58	313	649	1204	1093	747	679	303	165	8	5223	5438
WISE 3E	3	0	43	297	535	1201	1086	685	608	236	147	11	4852	4901
WYTHEVILLE 1 S	7	0	45	315	667	1175	1120	752	657	321	165	10	5234	5542

VIRGINIA  
201107

## SNOWFALL AND SNOW ON GROUND (INCHES)

STATION		DAY OF MONTH																															
		01	02	03	04	05	06	07	08	09	10	11	12	13	14	15	16	17	18	19	20	21	22	23	24	25	26	27	28	29	30	31	
<b>VIRGINIA</b> <b>TIDEWATER 01</b> <b>NORTHERN 04</b> BOSTON 4 SE	SNOWFALL SN ON GND WTR EQUIV						0.20																										

Snowfall: Includes snow and ice Values for NWS stations (J index note) are Mid-Mid (LST)

Snow on ground: Includes snow, sleet, ice, and hail Values for NWS stations (J index note) are observed at 12 UTC (GMT)

Water Equivalent: Given for NWS stations (J index note) only, when snow depth is 2 inches or more, and is measured at 18 UTC (GMT)

VIRGINIA  
201107

## PAN EVAPORATION AND WIND

STATION		DAY OF MONTH																															TOTAL OR AVERAGE	
		01	02	03	04	05	06	07	08	09	10	11	12	13	14	15	16	17	18	19	20	21	22	23	24	25	26	27	28	29	30	31		
VIRGINIA EASTERN PIEDMONT 02 JOHN H KERR DAM	WIND	15	13	46	49	30	31	36	39	21	14	25	43	12	39	31	18	20	27	29	15	16	33	49	33	27	24	25	14	20	22	17	833	
	EVAP	0.20	0.22	0.25	0.25	0.20	0.06	0.18	0.11	0.10	0.21	0.25	0.11	0.23	0.25	0.23	0.21	0.18	0.24	0.17	0.21	0.23	0.27	0.35	0.18	0.05	0.17	0.22	0.23	0.24	0.20	0.00	6.00	
	MAX	-	-	-	-	-	-	-	-	-	-	-	-	-	-	-	-	-	-	-	-	-	-	-	-	-	-	-	-	-	-	-	-	M
	MIN	-	-	-	-	-	-	-	-	-	-	-	-	-	-	-	-	-	-	-	-	-	-	-	-	-	-	-	-	-	-	-	-	M
NORTHERN 04 PIEDMONT RSCH STN	WIND	41	37	35	50	35	25	39	44	74	-	74	73	52	60	33	-	-	147	35	48	25	38	-	-	131	49	68	34	-	-	-	1247	
	EVAP	0.26	0.29	0.33	0.27	0.19	0.26	0.16	0.28	0.18	-	0.60	0.46	0.34	0.42	0.25	-	-	0.97	0.35	0.22	0.28	0.10	-	-	0.80	0.21	0.37	0.28	-	-	-	7.87	
	MAX	88	92	92	94	86	94	86	94	0.18	-	93	94	98	90	90	-	-	92	96	91	102	101	-	-	103	101	93	96	-	-	-	-	
	MIN	62	62	65	67	67	68	69	68	64	-	67	68	69	67	62	-	-	63	69	75	75	77	-	-	74	73	72	70	-	-	-	68.4	

Evaporation: Is measured in hundreths of inches.

Wind: Is measured in miles.

Max and Min: The maximum and minimum temperatures (Fahrenheit) of the water in the evaporation pan.

# STATION INDEX

STATION	INDEX NO.	DIVISION	COUNTY	LATITUDE	LONGITUDE	ELEVATION (IN FEET)	OBSERVATION TIME AND TABLES			
							LOCAL STD TIME			
							TEMP	PRECIP	EVAP	SPECIAL SEE (NOTES)
VIRGINIA										
ABINGDON 3S	0021	06	WASHINGTON	36 40	81 58W	1920	22	22		H
ALBERTA 5N	0079	02	BRUNSWICK	36 56	77 54W	376		08		H
ALTAVISTA R	0166	03	CAMPBELL	37 7	79 17W	515		07		CH
AMELIA COURTHOUSE 1	0187	02	AMELIA	37 21	77 59W	345	08	08		H
APPOMATTOX	0243	03	APPOMATTOX	37 21	78 50W	910	07	07		H
ASHLAND	0327	02	HANOVER	37 45	77 29W	220	18	18		H
BEDFORD 4 NW R	0561	03	BEDFORD	37 23	79 34W	1220		07		CH
BIG MEADOWS	0720	04	MADISON	38 31	78 26W	3540	09	09		H
BIG STONE GAP	0735	06	WISE	36 52	82 46W	1464	08	08		H
BLACKSBURG NWSO R	0766	06	MONTGOMERY	37 12	80 25W	2100	07	07		CH
BLAND	0792	06	BLAND	37 6	81 7W	2000	07	07		H
BOSTON 4 SE	0860	04	CULPEPER	38 33	78 6W	590	07	07		H
BREMO BLUFF R	0993	02	FLUVANNA	37 43	78 17W	225	07	24		CH
BROOKNEAL	1082	03	CAMPBELL	37 4	78 57W	428	07	07		H
BUCHANAN	1121	05	BOTETOURT	37 32	79 41W	865		07		H
BUCKINGHAM	1136	02	BUCKINGHAM	37 30	78 32W	552		07		H
BUENA VISTA	1159	05	ROCKBRIDGE	37 44	79 22W	830		07		H
BURKES GARDEN	1209	06	TAZEWELL	37 6	81 20W	3068	07	07		H
CAMP PICKETT R	1322	02	NOTTOWAY	37 2	77 57W	330	08	08		CH
CASTLETON	1434	04	RAPPAHANNOCK	38 36	78 7W	541	08	08		H
CHARLOTTESVILLE 2W	1593	03	ALBEMARLE	38 2	78 31W	866	08	08		H
CHASE CITY	1606	02	MECKLENBURG	36 47	78 29W	510	17	17		H
CHATHAM R	1614	03	PITTSYLVANIA	36 49	79 25W	640	07	07		CH
CHRISTIANSBURG	1692	06	MONTGOMERY	37 8	80 24W	2100	07	07		H
CLARKSVILLE	1746	02	MECKLENBURG	36 37	78 33W	330	07	07		H
CLINTWOOD 1 W	1825	06	DICKENSON	37 9	82 29W	1780	07	07		H
CONCORD 4 SSW	1955	03	CAMPBELL	37 17	78 58W	635		07		H
COPPER HILL	1999	06	FLOYD	37 5	80 9W	2690	07	07		H
CORBIN	2009	02	CAROLINE	38 12	77 22W	220	09	09		H
COVINGTON FLTR PLT R	2044	05	ALLEGHANY	37 49	79 59W	1230	07	07		CH
CRAIGSVILLE 2 S	2064	05	AUGUSTA	38 3	79 23W	1758		07		H
CROZIER	2142	02	GOOCHLAND	37 40	77 53W	350	07	07		H
DALE ENTERPRISE	2208	05	ROCKINGHAM	38 27	78 56W	1400	07	07		H
DANVILLE	2245	03	PITTSYLVANIA	36 35	79 23W	410	07	07		H
DANVILLE REGIONAL AP R	2250	03	PITTSYLVANIA	36 34	79 20W	571	24	24		CH
DISPUTANTA	2400	01	PRINCE GEORGE	37 7	77 12W	15	07	07		H
EARLEHURST	2600	05	ALLEGHANY	37 40	80 15W	2037		07		H
EASTVILLE	2635	01	NORTHAMPTON	37 23	75 58W	10	07	07		H
EDINBURG	2663	04	SHENANDOAH	38 48	78 35W	928	07	07		H
EMPORIA 1 WNW	2790	01	GREENSVILLE	36 42	77 34W	100	08	08		H
FARMVILLE 2 N R	2941	02	CUMBERLAND	37 20	78 23W	450	07	07		CH
FREDERICKSBURG SEWAGE	3204	01	FREDERICKSBURG	38 17	77 27W	15	07	07		H
FREE UNION	3213	03	ALBEMARLE	38 5	78 35W	590	08	07		H
FRONT ROYAL	3229	04	WARREN	38 54	78 11W	930	07	07		H
GALAX RADIO WBRF	3267	06	CARROLL	36 40	80 55W	2385	07	07		H
GALAX WTP R	3272	06	CARROLL	36 39	80 55W	2360	07	07		CH
GATHRIGHT DAM R	3310	05	ALLEGHANY	37 57	79 57W	1770	07	07		CH
GLASGOW 1 SE	3375	05	ROCKBRIDGE	37 37	79 26W	740		07		H
GREENBAY 3 NE	3565	02	PRINCE EDWARD	37 11	78 17W	500	09	09		H
GRUNDY	3640	06	BUCHANAN	37 17	82 5W	1170	07	07		H
HAMPTON UNIV	3713	01	HAMPTON	37 1	76 20W	10	17	17		H
HOLCOMB ROCK	4039	03	BEDFORD	37 33	79 24W	620		07		H
HOLLAND 1 E	4044	01	SUFFOLK	36 41	76 46W	80	08	08		H
HOPEWELL	4101	01	PRINCE GEORGE	37 18	77 17W	40	16	16		H
HOT SPRINGS R	4128	05	BATH	37 60	79 50W	2236	07	07		CH
HUDDLESTON 4 SW	4148	03	BEDFORD	37 8	79 32W	1045		07		H
JOHN FLANNAGAN LAKE	4410	06	DICKENSON	37 14	82 21W	1460	07	07		H
JOHN H KERR DAM R	4414	02	MECKLENBURG	36 36	78 18W	250	08	08	EV	CH
KERRS CREEK 6 WNW	4565	05	ROCKBRIDGE	37 52	79 34W	1500		07		H
KEYSVILLE 2 S	4568	02	CHARLOTTE	37 1	78 28W	530		07		H
LAFAYETTE 1 NE	4676	06	MONTGOMERY	37 14	80 12W	1320		07		H
LEBANON	4777	06	RUSSELL	36 54	82 2W	1912	07	07		H
LEXINGTON	4876	05	ROCKBRIDGE	37 48	79 25W	1125	07	07		H
LINCOLN	4909	04	LOUDOUN	39 5	77 42W	500	07	07		H
LOUISA	5050	02	LOUISA	38 3	78 0W	420	18	18		H

# STATION INDEX

STATION	INDEX NO.	DIVISION	COUNTY	LATITUDE	LONGITUDE	ELEVATION (IN FEET)	OBSERVATION TIME AND TABLES			
							LOCAL STD TIME			
							TEMP	PRECIP	EVAP	SPECIAL SEE (NOTES)
LURAY 5 E	5096	04	PAGE	38 40	78 22W	1400	08	08		H
LYNCHBURG #2	5117	03	CAMPBELL	37 23	79 14W	740	07	07		H
LYNCHBURG INTL AP R	5120	03	CAMPBELL	37 19	79 12W	940	24	24		CHJ
MADISON	5150	04	MADISON	38 22	78 15W	577	08	08		H
MANASSAS	5204	04	MANASSAS	38 44	77 30W	245	07	07		H
MARTINSVILLE FLTR PLT	5300	03	HENRY	36 42	79 52W	760	07	07		H
MEADOWS OF DAN 5 SW	5453	03	PATRICK	36 40	80 27W	2225	07	07		H
MILLGAP R	5595	05	HIGHLAND	38 18	79 43W	2421	07	07		CH
MONTEBELLO FISH CULTURAL STN	5690	03	NELSON	37 50	79 7W	2667	07	07		H
MONTICELLO	5700	03	ALBEMARLE	38 1	78 27W	758	08	08		H
MT WEATHER	5851	04	LOUDOUN	39 4	77 53W	1659	07	07		H
MTN GROVE	5756	05	BATH	38 6	79 53W	1775		07		H
MUSTOE 1 SW	5880	05	HIGHLAND	38 20	79 40W	2380	24	24		H
NORA 4 SSE	6125	06	DICKENSON	37 1	82 19W	2650	07	07		H
NORFOLK INTL AP R	6139	01	NORFOLK (CITY)	36 54	76 12W	30	24	24		CHJ
NORFOLK SOUTH	6147	01	NORFOLK (CITY)	36 52	76 14W	100	24	24		H
NORTH	6161	01	MATHEWS	37 26	76 26W	10	07	07		H
NORTH FORK LAKE	6173	06	WISE	37 7	82 38W	1675	08	08		H
PAINTER 2W R	6475	01	ACCOMACK	37 35	75 49W	30	16	16		CH
PALMYRA 3S	6491	02	FLUVANNA	37 49	78 16W	410	06	06		H
PEDLAR DAM	6593	03	AMHERST	37 40	79 17W	1010		07		H
PETERSBURG	6656	02	PETERSBURG	37 14	77 24W	15	08	08		H
PIEDMONT RSCH STN R	6712	04	ORANGE	38 14	78 7W	520	08	08	EV	CH
POWHATAN	6906	02	POWHATAN	37 31	77 53W	400		07		H
PULASKI 2 E R	6955	06	PULASKI	37 3	80 47W	1850	07	07		CH
RADFORD 3 N	6999	06	PULASKI	37 12	80 35W	1800	08	08		H
RICHLANDS	7174	06	TAZEWELL	37 6	81 48W	1910	07	07		H
RICHMOND INTL AP R	7201	02	HENRICO	37 30	77 19W	164	24	24		CHJ
ROANOKE 8 N	7278	05	ROANOKE	37 22	79 58W	1190	07	07		H
ROANOKE INTL AP R	7285	05	ROANOKE	37 19	79 58W	1175	24	24		CHJ
ROCKY MT R	7338	03	FRANKLIN	36 59	79 54W	1315	07	07		CH
SALTVILLE 1N	7506	06	SMYTH	36 53	81 46W	1733	07	07		H
SANDSTON	7541	02	HENRICO	37 33	77 17W	165	07	07		H
SOMERSET	7904	04	ORANGE	38 15	78 16W	510	07	07		H
SOUTH BOSTON	7925	03	HALIFAX	36 42	78 53W	340	07	07		H
SPERRYVILLE	7985	04	RAPPAHANNOCK	38 39	78 14W	750	06	06		H
STAFFORDSVILLE 3 ENE R	8022	06	GILES	37 16	80 43W	1950	07	07		CH
STAR TANNERY R	8046	04	FREDERICK	39 5	78 27W	950	07	07		CH
STAUNTON WATER TRMTMT PLT	8062	05	AUGUSTA	38 10	79 5W	169	08	08		H
STERLING RCS	8084	04	LOUDOUN	38 59	77 29W	288	07	07		H
STONY CREEK 2 N	8129	01	SUSSEX	36 58	77 24W	105	08	08		H
STUART	8170	03	PATRICK	36 38	80 15W	1375	07	07		H
SUFFOLK LAKE KILBY	8192	01	SUFFOLK	36 44	76 36W	22	24	24		H
TROUT DALE 3 SSE R	8547	06	GRAYSON	36 39	81 24W	2839	07	07		CH
TYE RIVER 1 SE	8600	03	NELSON	37 38	78 56W	720	06	06		H
VIENNA	8737	04	FAIRFAX	38 54	77 16W	418	07	19		H
WAKEFIELD 1NW R	8800	01	SUSSEX	36 59	77 0W	113	24	24		CH
WALKERTON 2 NW	8829	01	KING AND QUEEN	37 45	77 2W	50	18	18		H
WALLACETON LK DRUMMOND	8837	01	CHESAPEAKE	36 36	76 26W	20	08	08		H
WARRENTON 3 SE	8888	04	FAUQUIER	38 41	77 46W	500	08	08		H
WARSAW 2 NW	8894	01	RICHMOND	37 59	76 47W	140	18	18		H
WASHGTON DULLES INTL AP R	8903	04	LOUDOUN	38 56	77 28W	290	24	24		CHJ
WASHINGTON REAGAN AP R	8906	04	ARLINGTON	38 51	77 2W	10	24	24		CHJ
WAYNESBORO WTP	8941	05	WAYNESBORO	38 5	78 53W	1270	07	07		H
WEST POINT 2 NW	9025	01	KING WILLIAM	37 34	76 48W	20	17	17		H
WILLIAMSBURG 2 N R	9151	01	YORK	37 18	76 42W	70	24	24		CH
WILLIS R	9169	06	FLOYD	36 55	80 30W	2810		07		CH
WINCHESTER	9181	04	FREDERICK	39 11	78 9W	720	07	07		H
WINCHESTER 7 SE	9186	04	FREDERICK	39 11	78 7W	680	08	08		H
WINTERPOCK 4 W	9213	02	CHESTERFIELD	37 19	77 39W	300		07		H
WISE 3E R	9215	06	WISE	36 60	82 32W	2549	17	17		CH
WOODSTOCK 2 NE	9263	04	SHENANDOAH	38 54	78 29W	675	07	07		H
WOOLWINE R	9272	03	PATRICK	36 47	80 17W	1500		07		CH
WYTHEVILLE 1 S R	9301	06	WYTHE	36 56	81 6W	2450	07	07		CH



# REFERENCE NOTES

**STATION NAMES:** Name of the city, town or locality. Figures and letters following the station names indicate the distance in miles and direction from the post office or town community center.

**DIVISIONS:** Areas within a state of similar climatological characteristics. Division averages are calculated using data from stations that record both temperature and precipitation (i.e. not precipitation alone).

**NORMALS:** The average value of the meteorological element over a time period. Effective 1 January 2002, the averaging period is 1971 to 2000. The normals for National Weather Service localities have been adjusted so as to be representative for the current observation site.

**MONTHLY DEGREE DAY TOTALS:** One heating (cooling) degree day is accumulated for each whole degree that the daily mean temperature is below (above) 65 degrees Fahrenheit.

**PRECIPITATION:** Values shown in hundredths of inches are water equivalent totals, i.e., total of liquid and melted frozen precipitation. In the "Monthly Summarized Data" table the total snow and sleet values shown in tenths of inches are unmelted amounts. The max depth on ground values of snow and sleet shown in whole inches are cumulative unmelted amounts. The number of days with .10, .50, 1.00 or more refers to water equivalents.

**PRECIPITATION QUALITY CONTROL:** The NCDC quality control process may flag precipitation data that are spatially inconsistent, exceed climatological limits, or are inconsistent with prevailing weather patterns.

**TEMPERATURE:** Original temperature values are given in the "Daily Temperature" table. Summary temperature information (averages, departures, extremes, monthly degree day totals) is based on the values labeled MAX/MIN.

**WIND:** (As shown in the "Evaporation and Wind" table) the total wind movement in miles over the evaporation pan as determined by an anemometer recorder located 6-8 inches above the pan.

## SYMBOLS AND LETTERS USED IN THE STATION INDEX TABLE

- C Station is equipped with recording rain gage (R) but values in this bulletin are from a non-recording rain gage unless indicated by an R.
- G Observations appear in the "Soil Temperatures" table.
- H Observations appear in the "Snowfall and Snow on the Ground" table.
- J Station also published as a Local Climatological Data publication.
- VAR Observation time varies.
- SR Observation time near sunrise.
- SS Observation time near sunset.

## SYMBOLS AND LETTERS USED IN THE DATA TABLES

(DAILY DATA ARE FOR THE 24 HOURS IMMEDIATELY PRECEDING OBSERVATION TIME.)

**BLANK** Entries in the "Monthly Summarized Data" table indicate no record.

**BLANK** Entries in the "Daily Precipitation" and "Snowfall and Snow on the Ground" tables indicate zero.

**BLANK** Entries in the "Daily Temperature" table indicate a missing record

- No record. Data not recorded or not received in time for publication.

+ Precipitation or temperature extremes occurred on one or more previous dates during the month.

\* Rain gage not read. Precipitation is included in the amount following the asterisks. Time distribution may not be known. A \* preceding the monthly total indicates precipitation amount is being carried forward to next month's total, and may include amounts from the previous month(s).  
a As a subscript, indicates accumulated total.

A Amount of precipitation is the total of observer's entries for the current month. It may include precipitation that occurred during the previous month. Refer to earlier bulletin to determine date of last reading. (Hawaii stations)

F Monthly calculation flagged value. F is appended to average and/or total values computed which exclude one or more daily data values that have been flagged by the GHCN-Daily Dataset

M Insufficient or partial data. M is appended to average and/or total values computed with 1-9 daily values missing. M appears alone if 10 or more daily values are missing, (8 or more for wind and evaporation).

N Indicates snow fall or Snowdepth totals are computed with one or more missing days.

R Amounts from recording rain gage.

T Trace. An amount too small to measure.

**SEASONAL TABLES:** Monthly and seasonal snowfall and heating degree days for the 12 months ending with the June data are published in the July issue of this bulletin. Cooling degree days for the calendar year are published in the "Climatological Data Annual Summary."

Information concerning the history of changes in locations, exposure, etc. of substations is kept on file at the National Climatic Data Center. Historical information of regular National Weather Service Offices may be obtained from the "Local Climatological Data" annual publication. The contents of this publication may be reprinted or otherwise used freely, with proper credit to the National Climatic Data Center. The data are also available digitally.

Effective with the January 2011 Data-Month, COOP Observer Names are no longer included in the Monthly and Annual Climatological Data Publications. This information is not published to ensure the privacy of personal information pursuant to Section 208 of the E-Government Act of 2002 (44 USC 3601).

The GHCN-Daily Quality Control Flags shown below are displayed as superscripts with the data. For more Information on Global Historical Climatology Network - Daily and flags, see:  
<http://www.ncdc.noaa.gov/oa/climate/ghcn-daily/>  
and

Comprehensive Automated Quality Assurance of Daily Surface Observations.

Durre, Imke, Matthew J. Menne, Byron E. Gleason, Tamara G. Houston,

Russell S. Vose, 2010: J. Appl. Meteor. Climatol., 49, 16151633.

doi: 10.1175/2010JAMC2375.1

Blank = Passed All checks

D = failed duplicate check

G = failed gap check

I = failed internal consistency check

K = failed streak/frequent-value check

L = failed check on length of multiday period

M = failed megaconsistency check

N = failed naught check

O = failed climatological outlier check

R = failed lagged range check

S = failed spatial consistency check

T = failed temporal consistency check

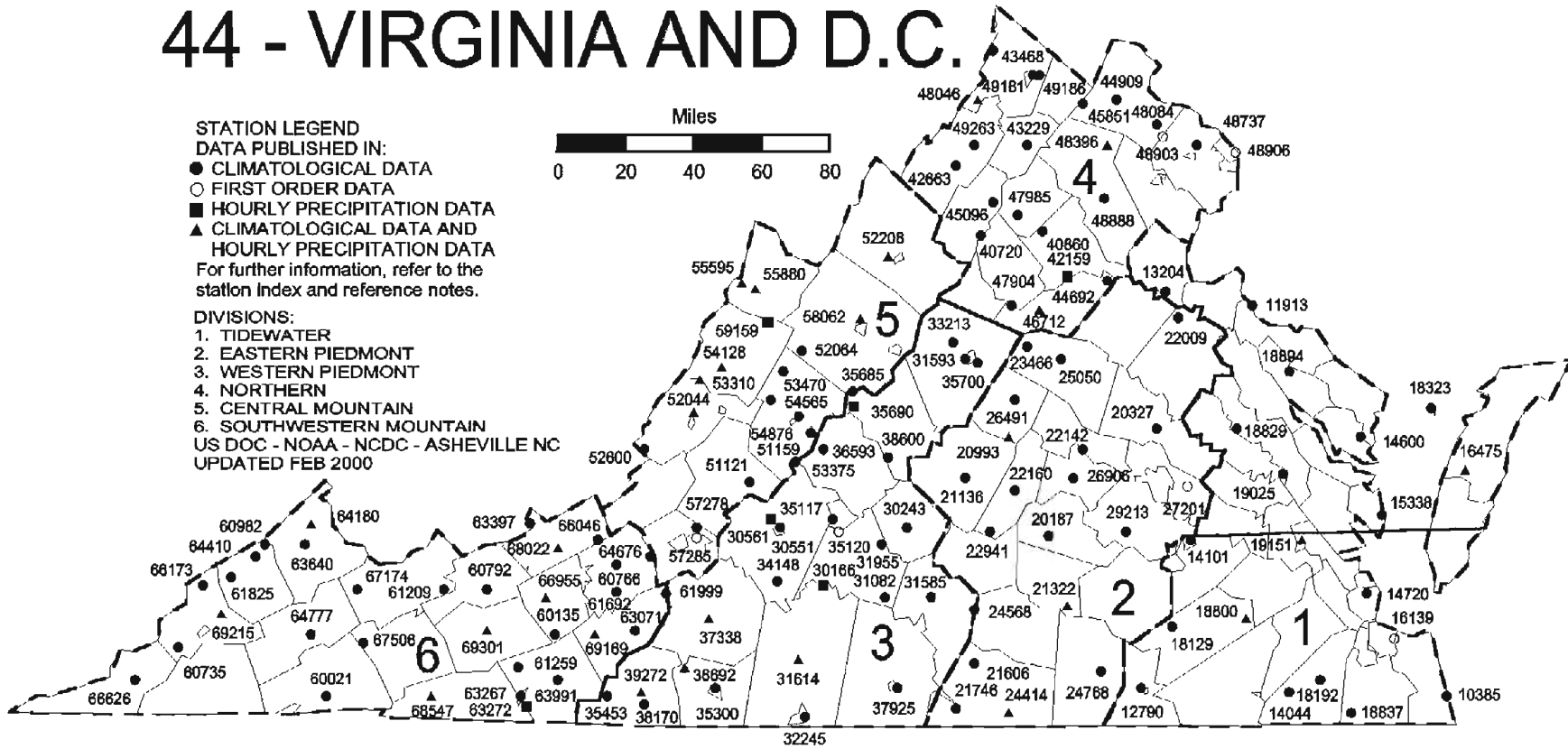
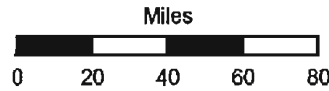
W = temperature too warm for snow

X = failed bounds check

# 44 - VIRGINIA AND D.C.

**STATION LEGEND**  
**DATA PUBLISHED IN:**  
 ● CLIMATOLOGICAL DATA  
 ○ FIRST ORDER DATA  
 ■ HOURLY PRECIPITATION DATA  
 ▲ CLIMATOLOGICAL DATA AND  
 HOURLY PRECIPITATION DATA  
 For further information, refer to the  
 station index and reference notes.

**DIVISIONS:**  
 1. TIDEWATER  
 2. EASTERN PIEDMONT  
 3. WESTERN PIEDMONT  
 4. NORTHERN  
 5. CENTRAL MOUNTAIN  
 6. SOUTHWESTERN MOUNTAIN  
 US DOC - NOAA - NCDC - ASHEVILLE NC  
 UPDATED FEB 2000



-84.00

-82.80

-81.60

-80.40

-79.20

-78.00

-76.80

-75.60

40.60

40.00

39.40

38.80

38.20

37.60

37.00

36.40

## **These and other publications are available from the National Climatic Data Center**

### **Hourly Precipitation Data**

This publication contains hourly precipitation amounts obtained from recording rain gages located at National Weather Service, Federal Aviation Administration, and cooperative observer stations. Published data are displayed in inches and tenths or inches and hundredths at local standard time. HPD includes maximum precipitation for nine (9) time periods from 15 minutes to 24 hours, for selected stations.

### **Climatological Data**

Monthly editions contain station daily maximum and minimum temperatures and precipitation. Some Stations provide daily snowfall, snow depth, evaporation, and soil temperature data. Each edition also contains monthly summaries for heating and cooling degree days (65 degree F base). The July issue contains a recap of monthly heating degree days and snow data for the preceding July through June.

The Annual issue contains monthly and annual averages of temperature, precipitation, temperature extremes, freeze data, soil temperatures, evaporation, and a recap of monthly cooling degree days.

### **Storm Data**

Monthly issues contain a chronological listing, by states, of occurrences of storms and unusual weather phenomena. Reports contain information on storm paths, deaths, injuries, and property damage. An "Outstanding storms of the month" section highlights severe weather events with photographs, illustrations, and narratives. The December issue includes annual tornado, lightning, flash flood, and tropical cyclone summaries.

### **Monthly Climatic Data for the World**

This publication contains monthly means for temperature, pressure, precipitation, vapor pressure, and sunshine for approximately 2,000 surface data collection stations worldwide and monthly mean upper air temperatures, dew point depressions, and wind velocities for approximately 500 observing sites.

### **Local Climatological Data**

LCD publications summarize temperature, relative humidity, precipitation, cloudiness, wind speed and direction observations for several hundred cities in the U.S. and its territories. Each monthly publication also contains 3 hourly weather observations for that month and a hourly summary of precipitation. Annual LCD publications contain a summary of the past calendar year as well as historical averages and extremes.

For Information Call:

(828) 271-4800 Option 2

(828) 271-4010 (TDD)

(828) 271-4876 (Fax)

NOAA\National Climatic Data Center  
Attn: User Engagement & Services Branch  
151 Patton Avenue  
Asheville, NC 28801-5001

PRSRT STD  
POSTAGE & FEES PAID  
United States Department of Commerce  
NOAA Permit No. G-19

**OFFICIAL BUSINESS**  
**PENALTY FOR PRIVATE USE \$300**  
**ADDRESS CORRECTION REQUESTED**

To change your address, please return a copy of the mailing label along with your new address to:

NOAA\National Climatic Data Center  
Attn: User Engagement & Services Branch  
151 Patton Avenue  
Asheville, NC 28801-5001

Customer Services Number: (828) 271-4800, option 2  
TDD : (828) 271-4010  
Fax number: (828) 271-4876

NCDC now offers an annual online subscription for the *Climatological Data* publication. When you purchase this subscription service, you will have **immediate online access** to all previous Climatological Data publications. Your subscription is valid for one year after purchase.

**The total cost is \$42 for online delivery (including back issues).**

To order this and other subscriptions online with your credit card, go to:

**<http://www.ncdc.noaa.gov/oa/mpp/>** and choose subscription.