



CLIMATOLOGICAL DATA

VIRGINIA

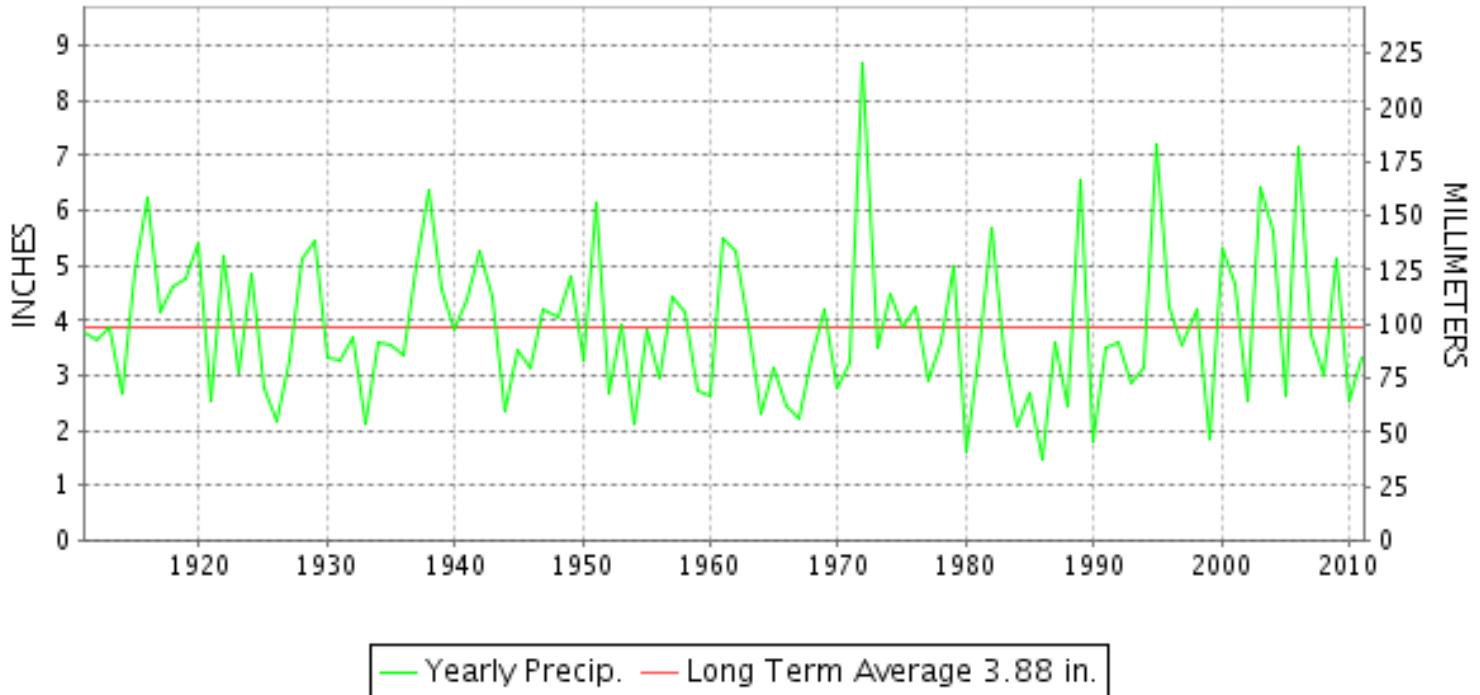
JUNE 2011

VOLUME 121 NUMBER 06

ISSN 0364-5630

GHCND Ver: 2.91-upd-2012021008

JUNE PRECIPITATION BY YEAR



TEMPERATURE AND PRECIPITATION EXTREMES

VIRGINIA

HIGHEST TEMPERATURE	102	JUNE 09	WASHINGTON REAGAN AP
LOWEST TEMPERATURE	38	JUNE 05+	MILLGAP
GREATEST TOTAL PRECIPITATION	10.28		PAINTER 2W
LEAST TOTAL PRECIPITATION	0.70		EMPORIA 1 WNW
GREATEST 1 DAY PRECIPITATION	5.03	JUNE 17	PAINTER 2W
GREATEST TOTAL SNOWFALL	T		ALBERTA 5N

"I certify that this is an official publication of the National Oceanic and Atmospheric Administration (NOAA) It is compiled using information from weather observing sites supervised by NOAA/National Weather Service and received at the National Climatic Data Center(NCDC), Asheville, North Carolina 28801."

Director
National Climatic Data Center

noaa

National
Oceanic and
Atmospheric Administration

National
Environmental Satellite, Data
and Information Service

National
Climatic Data Center
Asheville, North Carolina

MONTHLY STATION AND DIVISION SUMMARY

STATION	TEMPERATURE (°F)													PRECIPITATION (IN)										
	AVERAGE MAXIMUM	AVERAGE MINIMUM	AVERAGE	DEPARTURE FROM NORMAL	HIGHEST	DATE	LOWEST	DATE	HEATING DEG. DAYS	COOLING DEG. DAYS	NO. OF DAYS				TOTAL	DEPARTURE FROM NORMAL	GREATEST 24 HOURS	DATE	ICE PELLETS, SNOW			NO OF DAYS		
											MAX		MIN						TOTAL	MAX DEPTH ON GROUND	DATE	10 OR MORE	50 OR MORE	1 00 OR MORE
											>=90	<=32	<=32	<=0										
PALMYRA 3S	83.4	59.8	71.6		94	10	47	05+	5	207	5	0	0	0	6.61	2.98	2.86	20	0.0	0		6	4	3
PETERSBURG	87.7	65.8	76.8		97	10	53	04	0	360	14	0	0	0	5.07		1.67	12	N 0.0	0		6	3	3
POWHATAN	M	M	M												3.03	-0.02	1.85	12	0.0	0		5	1	1
RICHMOND INTL AP	88.9	67.2	78.1	4.6	98	28+	56	04	0	398	14	0	0	0	3.03	-0.51	1.08	28	0.0	0		6	3	1
SANDSTON	88.8	64.2	76.5		100	10	51	04	0	350	13	0	0	0	3.85		1.37	12	0.0	0		6	2	2
WINTERPOCK 4 W	M	M	M												2.67	-0.37	1.25	29	0.0	0		4	2	1
--DIVISIONAL DATA-----> WESTERN PIEDMONT 03			76.0	3.6											3.26	-0.32								
ALTAVISTA	M	M	M												1.88	-1.74	0.45	21	0.0	0		5	0	0
APPOMATTOX	85.9	63.1	74.5	2.9	95	10	55	15	0	293	8	0	0	0	2.64	-0.91	1.10	13	0.0	0		4	2	1
BEDFORD 4 NW	88.0	65.2	76.6		95	02	60	15+	0	353	10	0	0	0	4.77		1.05	21	0.0	0		8	4	1
BROOKNEAL	88.7	62.3	75.5	4.3	98	10	55	12+	0	322	11	0	0	0	1.98	-1.27	1.43	13	0.0	0		4	1	1
CHARLOTTESVILLE 2W	86.1	65.5	75.8	2.9	98	10+	55	15	0	331	8	0	0	0	3.82	-0.64	1.62	20	0.0	0		8	2	1
CHATHAM	85.8	60.2	73.0	2.0	92	10	53	05+	0	246	7	0	0	0	1.95	-1.81	1.14	22	0.0	0		7	1	1
CONCORD 4 SSW	M	M	M												2.15	-1.47	0.57	13	0.0	0		8	1	0
DANVILLE	90.1	66.7	78.4	4.0	95	10+	59	04	0	409	19	0	0	0	2.45	-1.05	1.00	28	0.0	0		3	3	1
DANVILLE REGIONAL AP	88.3	63.0	75.7		96	09	54	04	0	322	12	0	0	0	1.56		0.98	28	0.0	0		3	1	0
FREE UNION	M	M	M												M				0.0	0				
HOLCOMB ROCK	88.0	62.3	75.2		98	10	54	16+	0	313	11	0	0	0	2.78	-0.83	0.86	10	0.0	0		4	3	0
HUDDLESTON 4 SW	88.2	64.7	76.5		98	10	57	15+	0	349	10	0	0	0	1.88	-1.50	0.52	13	0.0	0		7	1	0
LYNCHBURG #2	84.6	61.3	73.0		92	10+	53	15+	0	244	5	0	0	0	4.15		1.25	29	0.0	0		8	3	2
LYNCHBURG INTL AP	86.2	62.0	74.1	3.1	97	09	52	14	0	279	8	0	0	0	3.81	0.02	1.20	12	N 0.0	0		9	3	1
MARTINSVILLE FLTR PLT	88.0	59.7	73.9	3.3	95	10	52	15	0	273	10	0	0	0	4.09	0.14	1.52	11	0.0	0		5	3	2
MEADOWS OF DAN 5 SW	83.7	58.0	70.9		90	02+	51	15	2	180	2	0	0	0	5.39	0.41	1.57	08	N 0.0	0		9	4	2
MONTEBELLO FISH CULTURAL STN	81.4M	54.7M	68.1M		90	10	44	15	18	100	1	0	0	0	M 4.70		1.84	13	0.0	0		8	3	2
MONTECELLO	81.4	62.5	72.0	0.2	93	10	54	16+	2	215	3	0	0	0	5.02	1.44	1.68	20	0.0	0		8	3	1
PEDLAR DAM	86.2	63.9	75.1		96	10	55	30+	0	309	8	0	0	0	3.31	-0.49	1.14	20	0.0	0		8	2	1
ROCKY MT	87.7	61.2	74.5	3.4	95	29	52	18+	0	288	11	0	0	0	1.39	-2.72	0.33	12	0.0	0		6	0	0
SOUTH BOSTON	87.9	62.6	75.3	3.0	95	10	55	05+	0	312	12	0	0	0	1.65	-2.36	1.25	29	0.0	0		2	1	1
STUART	86.3	60.9	73.6	2.9	93	02+	52	15	0	263	8	0	0	0	2.99	-1.48	0.90	13	0.0	0		8	2	0
TYE RIVER 1 SE	85.4	62.3	73.9	2.9	93	01	54	15+	0	271	7	0	0	0	5.12	1.56	2.56	20	0.0	0		6	3	2
WOOLWINE	M	M	M												1.39	-3.22	0.58	19	N 0.0	0		4	1	0
--DIVISIONAL DATA-----> NORTHERN 04			74.3	2.7											3.08	-0.87								
BIG MEADOWS	M	M	M												M				N 0.0	0				
BOSTON 4 SE	M	M	M												M				N 0.0	0				
CASTLETON	83.8M	63.3	73.6M		95	10	52	04	1	260	5	0	0	0	1.67		0.98	20	0.0	0		3	1	0
EDINBURG	82.5	59.0	70.8		94	10+	48	04	6	187	4	0	0	0	3.43		1.24	20	0.0	0		7	2	1

VIRGINIA
201106

MONTHLY STATION AND DIVISION SUMMARY

STATION	TEMPERATURE (°F)											PRECIPITATION (IN)												
	AVERAGE MAXIMUM	AVERAGE MINIMUM	AVERAGE	DEPARTURE FROM NORMAL	HIGHEST	DATE	LOWEST	DATE	HEATING DEG. DAYS	COOLING DEG. DAYS	NO. OF DAYS				TOTAL	DEPARTURE FROM NORMAL	GREATEST 24 HOURS	DATE	ICE PELLETS, SNOW			NO OF DAYS		
											MAX		MIN						TOTAL	MAX DEPTH ON GROUND	DATE	10 OR MORE	50 OR MORE	1 00 OR MORE
											>=90	<=32	<=32	<=0										
FRONT ROYAL	83.7	61.1	72.4		96	01	51	05+	2	228	4	0	0	0	3.92		1.45	19	0.0	0		8	3	1
LINCOLN	82.7	59.9F	71.3F	1.0	95	10+	46	04	9	214	4	0	0	0	M				0.0	0				
LURAY 5 E	82.7	59.2	71.0	0.6	95	09	47	04	10	196	3	0	0	0	3.32	-0.66	1.64	20	0.0	0		4	2	1
MADISON	85.3	63.4	74.4		96	10+	52	04	0	288	6	0	0	0	M				0.0	0				
MANASSAS	87.7M	66.5M	77.1M		100	10	51	04	0	295	9	0	0	0	M 2.79		0.75	10	0.0	0		6	2	0
MT WEATHER	79.6	62.3	71.0	3.4	91	10+	51	15	11	198	2	0	0	0	2.39	-1.74	1.51	10	0.0	0		6	1	1
PIEDMONT RSCH STN	84.9	64.5	74.7	2.9	96	09	56	15+	0	297	6	0	0	0	3.42	-0.64	1.54	20	0.0	0		7	2	1
SOMERSET	84.9	62.5M	73.7M		96	10	49	04	2	258	6	0	0	0	4.10		1.65	29	0.0	0		5	2	2
SPERRYVILLE	82.1	61.3	71.7		93	10+	51	04	2	209	4	0	0	0	2.75		1.19	20	0.0	0		5	2	1
STAR TANNERY	80.4	59.4F	69.9F		93	10	46	04	7	163	3	0	0	0	M 4.99		1.18	20+	0.0	0		6	4	3
STERLING RCS	85.4	63.6	74.5	4.7	97	10	49	04	3	293	7	0	0	0	2.21	-1.38	0.99	17	N 0.0	0		7	1	0
VIENNA	81.2M	63.3M	72.3M		92	10	48	07	11	229	2	0	0	0	M 2.22		1.15	17	0.0	0		4	1	1
WARRENTON 3 SE	83.3M	63.5M	73.4M		94	10	52	15+	4	243	5	0	0	0	M 1.23		0.41	17	0.0	0		3	0	0
WASHGTN DULLES INTL AP	85.8	64.0	74.9	4.0	97	09	48	04	0	305	7	0	0	0	1.40	-2.67	0.58	16	0.0	0		3	1	0
WASHINGTON REAGAN AP	87.9	69.6	78.8	4.3	102	09	59	15	0	420	10	0	0	0	1.68	-1.45	0.83	16	N 0.0	0		4	1	0
WINCHESTER	83.1	62.6	72.9	2.3	96	10	52	04	2	245	5	0	0	0	2.04	-1.61	0.70	19	0.0	0		8	1	0
WINCHESTER 7 SE	84.2	58.9	71.6	1.6	96	09	45	05	7	211	7	0	0	0	2.23	-1.87	0.67	19	N 0.0	0		5	2	0
WOODSTOCK 2 NE	82.2M	58.6M	70.4M		94	09	49	04	10	173	4	0	0	0	M 5.27		1.74	11	0.0	0		8	3	2
--DIVISIONAL DATA----->			73.0	2.9											2.84	-1.10								
CENTRAL MOUNTAIN 05																								
BUCHANAN	85.7M	64.4M	75.1M		92	10	56	15	0	298	6	0	0	0	M 1.97		0.77	29	0.0	0		4	2	0
BUENA VISTA	87.6	60.2	73.9		95	01	51	15+	0	270	11	0	0	0	1.58	-1.79	0.46	20	0.0	0		5	0	0
COVINGTON FLTR PLT	86.1F	55.8	71.0F	0.9	95	10	42	26+	11	191	6	0	0	0	2.89	-0.37	1.80	22	N 0.0	0		6	1	1
CRAIGSVILLE 2 S	M	M	M												M				0.0	0				
DALE ENTERPRISE	82.6	59.5	71.1	1.7	94	10	49	04	5	192	4	0	0	0	3.65	0.09	1.13	20	0.0	0		6	3	1
EARLEHURST	88.0M	56.4M	72.2M		98	13+	44	14	0	207	9	0	0	0	2.39	-0.84	0.64	22	0.0	0		9	1	0
GATHRIGHT DAM	80.7	57.4	69.1	0.6	89	01	48	14+	13	137	0	0	0	0	2.28	-1.14	0.81	22	N 0.0	0		5	2	0
GLASGOW 1 SE	87.7	61.6	74.7		96	10	53	16+	0	297	12	0	0	0	2.14	-2.27	0.50	20	0.0	0		5	1	0
HOT SPRINGS	81.0	56.3	68.7	1.4	90	01	47	05+	16	132	1	0	0	0	3.42	-0.11	0.84	22	0.0	0		8	3	0
KERRS CREEK 6 WNW	M	M	M												2.28	-1.76	0.90	20	0.0	0		5	2	0
LEXINGTON	87.5	59.6	73.6	3.2	96	01	51	15+	0	262	12	0	0	0	2.86	-1.22	1.68	29	0.0	0		3	2	1
MILLGAP	79.0	50.4	64.7		90	01	38	05+	62	57	1	0	0	0	F 1.29		0.37	11	0.0	0		5	0	0
MTN GROVE	81.3M	58.0M	69.7M		96	10	49	04	4	107	4	0	0	0	3.12		1.02	20	0.0	0		6	3	1
MUSTOE 1 SW	77.5	52.7	65.1		87	08	39	04	51	63	0	0	0	0	3.05		1.33	19	N 0.0	0		5	2	1
ROANOKE 8 N	86.5	62.6	74.6		94	01	55	15+	0	296	8	0	0	0	4.94		1.38	12	N 0.0	0		9	4	1
ROANOKE INTL AP	87.0	64.6	75.8	3.9	96	09	54	15+	0	334	9	0	0	0	3.51	-0.17	1.14	21	N 0.0	0		7	2	1
STAUNTON WATER TRMTMT PLT	83.1	60.9	72.0	4.1	92	10+	49	15	4	220	5	0	0	0	2.85	-0.72	1.58	20	N 0.0	0		6	1	1
WAYNESBORO WTP	83.8	57.3	70.6		94	09	49	03	7	179	5	0	0	0	2.92		0.93	12	0.0	0		6	2	0

VIRGINIA
201106

DAILY PRECIPITATION (INCHES)

STATION	TOTAL	DAY OF MONTH																																		
		01	02	03	04	05	06	07	08	09	10	11	12	13	14	15	16	17	18	19	20	21	22	23	24	25	26	27	28	29	30	31				
VIRGINIA																																				
TIDEWATER 01																																				
DISPUTANTA	3.74				0.78						0.21	0.37	0.04				0.37			0.12	0.03							0.63		1.19						
EASTVILLE	F 4.13										0.03	0.80					0.47		0.00 ^L	0.27 ^L	0.56						1.35		0.92							
EMPORIA 1 WNW	0.70				0.16							0.03	0.07				0.12			0.12	0.05												0.15			
FREDERICKSBURG SEWAGE	M 2.87		T		T							0.15	0.20					0.15	0.84	1.01	0.08				-		0.23		0.21							
HAMPTON UNIV	F 1.97				1.10					0.00 ^L	1.72 ^L				0.11		0.07	0.02	0.21			0.01											0.45			
HOLLAND 1 E	F 4.25				0.38	0.04	0.03				0.67	1.67	0.09				0.03	0.00 ^L	0.03 ^L	0.19			0.01	0.07	0.35		0.07	0.06	0.59							
HOPEWELL	M 2.61	-			0.53	-					0.19	0.02	0.46					0.00 ^L	0.10	0.15	0.02			0.01	0.07	0.35		0.14		1.00						
NORFOLK INTL AP R	4.63				0.65						0.12	2.11	0.59				0.02	T	0.15	0.06	T	T	T	T			0.49	0.43	0.01							
NORFOLK SOUTH	4.35				0.59						0.19	1.37	0.04				0.06	T	0.23	0.17	T	T	T	0.06	0.03		0.81	0.72	0.08							
NORTH	4.18										0.10	0.59	0.22				0.38			0.47					0.34		0.84		1.24							
PAINTER 2W R	10.28				0.12							0.46					5.03		0.70	0.90				0.07	0.21		1.08		1.71							
STONY CREEK 2 N	M			0.00 ^L	0.00 ^L	0.71 ^L					0.00 ^L	0.00 ^L	1.28 ^L				1.10	0.00 ^L	0.00 ^L	0.13 ^L					0.00 ^L	0.00 ^L	0.17 ^L		3.50							
SUFFOLK LAKE KILBY	3.76				0.44						0.12	1.15	0.60			0.01	0.03	T	0.21						0.08	0.05	0.05	0.97	0.05							
WAKEFIELD 1NW R	3.35				0.94						0.25	0.73	0.05	T		0.03	0.29		0.12	0.10	0.02	0.01		0.02		T	0.23	0.54	0.02							
WALKERTON 2 NW	4.30				0.21						0.44	0.88							0.42	1.49	0.06	0.01					0.15		0.64							
WALLACETON LK DRUMMOND	3.70				0.35	0.06						0.90	0.38	0.90					0.17									0.72	0.22							
WARSAW 2 NW	6.49				0.02							0.86	0.06	0.05			0.02	0.10	3.10	1.34			0.05				0.23	0.02	0.64							
WEST POINT 2 NW	F 1.67				0.45	0.05					1.83 ^L	0.77 ^L	0.60 ^L	0.14 ^L		0.01 ^L	0.04 ^L	0.07 ^L	0.10	0.60	0.03	T	0.07			0.37	0.00 ^L	0.51 ^L								
WILLIAMSBURG 2 N	4.07				1.20						0.02	0.82	0.08			0.08	0.02	0.07	0.26	0.03	0.02					0.62	0.83	0.02								
EASTERN PIEDMONT 02																																				
ALBERTA 5N	4.65				0.84						T	1.94	0.51				T		0.13	0.02	T		T		T		0.46		0.75							
AMELIA COURTHOUSE 1	M				0.14							0.52	0.10		-	-	-	-	-	-	-	-	-	-	-	-	-	-	-	-	-	-	-	-		
ASHLAND	4.89				0.29							0.45				0.37	0.09		0.37	1.06		0.75	T				0.12		1.39							
BREMO BLUFF	M	-	-	-	0.09	-	-	-	-	-	0.65	0.79	T	-	-	0.06	0.41	T	0.11	3.43	0.14	-	0.05	-	-	0.03	0.07	0.09	-	-	-	-	-	-		
BUCKINGHAM	3.74											1.06	1.51	0.08				0.11	0.07					0.03					0.80							
CAMP PICKETT R	M				0.42							-	-	-	-	-	-	-		0.27	0.03						0.14		1.20							
CHASE CITY	1.35				0.18							T					0.06			0.04							0.07		1.00							
CLARKSVILLE	M 2.08				0.10							0.20	0.22					-	-	0.20		0.10						-	1.26							
CORBIN	3.80																0.47	0.90		2.00							0.38		0.05							
CROZIER	2.19				0.10						0.01	0.05	0.02					0.12		1.25	0.04					0.05	0.43		0.12							
FARMVILLE 2 N R	1.43				T							0.06	0.40					0.51		0.23	0.02				T		0.11		0.10							
GREENBAY 3 NE	1.62				0.07	T							0.15	0.04			0.01	0.75	0.08	T							0.24	T	0.28				T			
JOHN H KERR DAM R	2.30				0.16	0.01							0.51				0.96			0.30									0.36							
KEYSVILLE 2 S	2.25				0.25								1.50							T		T		T			0.20	T	0.30							
LOUISA	4.10				0.44						0.04	0.42	0.08					0.02	0.99	1.86	0.02							0.01		0.22						
PALMYRA 3S	6.61											0.13	1.12					0.56		2.86	0.05	0.05		0.03			1.45		0.36							
PETERSBURG	5.07				1.14	0.06					0.19	1.67	0.08					0.08		0.11							0.34		1.40							
POWHATAN	3.03				0.25							1.85	0.06					0.29		0.36		0.03							1.40							
RICHMOND INTL AP R	3.03				0.57							0.57	T	T			0.25	0.06		0.06	0.22	T		T				0.21	1.08					T		
SANDSTON	3.85				0.39								1.37	T				0.31	0.03		0.32	0.06					0.19		1.18							

VIRGINIA
201106

DAILY PRECIPITATION (INCHES)

STATION	TOTAL	DAY OF MONTH																															
		01	02	03	04	05	06	07	08	09	10	11	12	13	14	15	16	17	18	19	20	21	22	23	24	25	26	27	28	29	30	31	
LEBANON	3.19											0.39	0.46							0.38	0.35	0.52	0.11	0.24	0.07								
NORA 4 SSE	3.88								0.04	0.09	0.13	0.02	0.76				0.12		T	0.36	0.27	0.59	0.24	0.36	T								
NORTH FORK LAKE	M 0.00 ^L				-	-	0.00 ^L			T	-	-	0.48 ^L			0.47		-	-	1.35 ^L	0.63	0.54	0.22			-	-	0.25 ^L	0.11				
PULASKI 2 E R	1.51											0.08	0.55							0.25	0.01		0.60	0.02									
RADFORD 3 N	M 1.21										0.45	-	-	0.35			T		0.15				0.13	0.02	0.08						0.03		
RICHLANDS	2.53										0.23		0.28			0.03			0.44	0.42	0.34	0.08	0.02	0.01					0.23	0.45			
SALTVILLE 1N	2.99										0.29	0.26	0.67						0.53	0.22	0.31	0.11	0.19	0.02					0.27	0.12			
STAFFORDSVILLE 3 ENE	1.18				0.05	0.01		0.08		0.06	0.02	0.14							0.11	0.03		0.17	0.03	0.02				0.01	0.16	0.29			
TROUT DALE 3 SSE	1.41							0.01				0.03							0.12	0.19	0.19	0.19	0.41	0.02					0.19	0.06			
WILLIS R	M 2.82							0.10		0.49	T	0.27				T		0.43	0.31		T	0.10			-	-	0.36		0.76				
WISE 3E R	4.57								0.18	0.20	0.38	0.22			0.21			0.68	0.36	1.02	0.04	0.68	0.17			0.21		0.22					
WYTHEVILLE 1 S R	2.98								0.26	1.34		0.02	0.16						0.26	0.05	0.07	0.64	0.10	0.08									

VIRGINIA
201106

DAILY TEMPERATURES (°F)

STATION	OB. TIME	MAX/MIN	DAY OF MONTH																															AVERAGE		
			01	02	03	04	05	06	07	08	09	10	11	12	13	14	15	16	17	18	19	20	21	22	23	24	25	26	27	28	29	30	31			
VIRGINIA																																				
TIDEWATER 01																																				
DISPUTANTA	07	MAX	95	94	92	80	85	80	88	94	97	97	92	90	90	80	76	78	82	89	82	86	75	91	90	90	93	89	88	84	97	88			87.7	
		MIN	66	66	56	47	49	61	61	64	66	66	66	66	65	57	58	59	65	65	65	70	63	64	72	67	65	61	63	69	68	62			63.2	
EASTVILLE	07	MAX	91	92	85	75	78	82	82	86	91	95	89	88	88	77	76	76	81	86	91	78	73	82	86	87	85	83	84	83	92	81			84.1	
		MIN	70	72	63	61	63	65	65	72	74	77	74	68	73	66	64	63	67	73	73	69	61	71	75	76	72	70	70	71	73	70			69.4	
EMPORIA 1 WNW	08	MAX	97	94	93	82	84	83	86	90	95	97	93	90	94	82	82	81	82	90	92	87	80	92	91	89	92	87	89	89	97	97			89.2	
		MIN	69	69	62	53	55	64	65	63	70	71	68	69	67	62	61	62	64	67	69	71	66	66	74	71	69	64	67	71	71	69			66.3	
FREDERICKSBURG SEWAGE	07	MAX	94	95	90	78	85	80	85	87	97	99	93	91	90	78	76	80	79	89	89	80	78	90	89	89	88	84	83	84	92	87			86.6	
		MIN	71	64	57	54	55	62	62	65	72	71	71	67	62	58	59	59	63	65	67	65	65	67	71	70	66	62	64	66	70	63			64.4	
HAMPTON UNIV	17	MAX	90	93	92	81	80	86	85	90	96	96	88	90	88	79	79	84	90	94	94	79	87	89	93	91	85	84	87	96	88	85			88.0	
		MIN	76	70	63	67	68	69	73	77	77	77	71	70	71	67	66	68	74	73	72	65	67	75	77	74	75	70	72	73	72	71			71.3	
HOLLAND 1 E	08	MAX	97	97	95	83	87	80	89	91	98	100	96	90	91	81	80	81	86	90	95	88	79	92	90	91	90	90	89	92	98	88			89.8	
		MIN	64	68	61	47	61	62	57	65	69	69	64	63	65	58	58	55	67	65	67	68	60	69	69	67	65	60	67	69	68	65			63.7	
HOPEWELL	16	MAX		96	93	84	86		89	94	97	97	91	89	89	80	80	83	90	92	92	80	91	92	88	92	91	88	84	96	96	88			89.6	
		MIN		71	66	55	57		66	70	74	74	70	69	68	63	63	65	69	71	71	67	67	75	76	73	73	67	72	72	72	71			68.8	
NORFOLK INTL AP	24	MAX	93	93	78	85	78	81	87	94	98	95	91	91	78	79	77	84	90	95	85	80	88	91	93	89	86	84	88	96	85	83			87.2	
		MIN	71	76	63	59	69	68	66	72	76	72	69	70	73	70	64	63	74	74	73	66	67	75	76	74	72	71	73	72	72	71			70.4	
NORFOLK SOUTH	24	MAX	93	92	77	84	78	82	88	94	98	94	90	90	77	79	77	83	90	94	86	79	88	90	93	89	85	83	87	95	85	84			86.8	
		MIN	68	71	61	56	66	64	63	70	74	70	67	67	70	65	63	60	69	70	69	63	62	73	75	73	68	65	71	70	70	67			67.3	
NORTH	07	MAX	93	89	88	77	80	81	84	84	92	95	90	87	85	78	76	78	79	85	89	79	74	79	85	87	86	84	82	83	92	85			84.2	
		MIN	69	69	59	55	64	63	61	65	71	72	68	69	69	62	61	59	66	67	71	67	63	67	76	74	66	64	69	71	71	65			66.4	
PAINTER 2W	16	MAX	93	88	88	81	82	84	88	95	99	96	90	87	84	78	78	80	86	91	90	78	80	88	89	88	86	86	84	92	92	85			86.9	
		MIN	68	73	61	54	66	62	62	72	74	74	72	68	73	60	62	60	65	68	72	61	63	71	77	74	69	65	69	70	71	66			67.4	
STONY CREEK 2 N	08	MAX	96	95	93	81	87	81	86	89	95	98	93	92	90	80	79	79	82	88	92	85	76	92	90	87	92	87	88	85	97	87			88.1	
		MIN	68	67	59	54	50	65	61	61	68	71	71	68	67	62	62	59	64	66	66	69	66	67	74	70	69	67	62	70	71	64			65.3	
SUFFOLK LAKE KILBY	24	MAX	92	91	81	84	78	85	88	94	95	96	87	88	79	79	78	82	85	91	76	78	87	87	90	85	86	86	88	93	85	86			86.0	
		MIN	69	72	62	57	66	64	63	69	73	64	67	65	68	64	62	62	67	69	56	56	64	72	60	71	68	67	71	70	70	69			65.9	
WAKEFIELD 1NW	24	MAX	95	94	82	87	79	86	89	96	98	93	91	90	81	80	80	83	91	93	86	75	91	90	91	90	88	88	87	96	87	87			88.1	
		MIN	67	64	53	47	64	61	58	69	70	68	67	67	63	58	56	58	68	67	69	63	63	72	73	71	64	59	71	70	69	63			64.4	
WALKERTON 2 NW	18	MAX	96	94	87	85	88	88	91	98	100	97	92	92	83	83	83	84	90	93	84	80	89	91	88	93	90	88	88	97	90	88			89.7	
		MIN	66	68	66	67	66	64	69	67	70	72	70	70	68	60	61	60	68	67	74	69	66	74	75	73	67	64	72	73	74	66			68.2	
WALLACETON LK DRUMMOND	08	MAX	97	96	95	83	87	80	87	92	98	100	95	90	90	82	82	85	90	95	90	82	90	91	94	84	92	90	94	96	90			90.0		
		MIN	61	68	54	48	57	58	56	63	67	68	68	63	65	57	53	56	66	72	67	66	56	63	68	67	64	60	68	65	67	62			62.4	
WARSAW 2 NW	18	MAX	94	90	81	86	83	86	89	97	100	99	92	90	82	78	81	82	87	92	83	77	87	90	89	89	87	89	87	93	89	87			87.9	
		MIN	71	64	62	51	58	66	59	67	73	71	72	70	66	59	59	58	65	70	68	64	64	72	74	71	67	63	72	70	69	63			65.9	
WEST POINT 2 NW	17	MAX	95	92	86	86	82	86	88	96	99	94	92	90	85	79	81	84	88	93	86	77	89	90	88	92	89	87	87	96	90	86			88.4	
		MIN	70	64	55	51	66	63	61	69	70	69	68	67	66	58	58	60	67	67	69	63	64	73	73	71	65	64	70	71	69	63			65.5	
WILLIAMSBURG 2 N	24	MAX	93	91	80	84	79	84	87	93	96	92	88	88	79	77	79	82	88	91	81	75	87	87	90	90	87	86	85	93	87	85			86.1	
		MIN	68	70	56	54	65	63	61	69	71	71	67	67	65	60	61	59	68	67	69	63	62	73	73	72	67	64	65	70	70	64			65.8	
EASTERN PIEDMONT 02																																				
AMELIA COURTHOUSE 1	08	MAX	93	94	94	79	85	81	84	88	95	97	92	91	91	91																				M

VIRGINIA
201106

DAILY TEMPERATURES (°F)

STATION	OB. TIME	MAX/MIN	DAY OF MONTH																															AVERAGE		
			01	02	03	04	05	06	07	08	09	10	11	12	13	14	15	16	17	18	19	20	21	22	23	24	25	26	27	28	29	30	31			
ASHLAND	18	MIN	68	66	56	52	66	62	61	65	70	70	67	66	65	58																				M
		MAX	92	89	86	82	80	83	85	93	95	90	90	88	82	77	78	81	85	89	86	74	88	88	81	86	85	82	83	92	87	85			85.4	
BREMEO BLUFF	07	MIN	70	64	60	52	64	62	60	65	71	72	69	67	64	57	56	60	64	65	70	64	65	71	74	71	65	62	66	70	70	63			65.1	
		MAX	99	97	84	90	89	88	92	100	101	97	96	93	85	82	84	86	91	93	85	77	96	94	83	92	89	88	89	97	93	90			90.7	
CAMP PICKETT	08	MIN	70	62	55	52	66	62	60	62	69	69	67	66	64	58	53	62	62	62	69	67	66	69	74	68	67	58	68	70	68	60			64.2	
		MAX	92	92	92	78	83	81	84											87	89	84	76			83	90	90	85	84	94	87			M	
CHASE CITY	17	MIN	68	65	56	50	58	63	61										64	68	69	65			72	65	61	66	68	69	63			M		
		MAX	92	91	88	75	83	82	85	86	93	93	93	90	89	81	81	78	84	87	89	88	84	89	89	89	89	82	86	84	93	88			86.7	
CLARKSVILLE	07	MIN	67	65	59	54	64	64	61	64	67	67	67	64	66	59	59	60	61	63	67	67	64	67	72	74	63	61	67	68	69	64			64.5	
		MAX	96	96	96	83	88	87	90	90	94	96	94	92	91	91	91	84	86					92	89	92	91	85	92	85	90			98	92	90.8
CORBIN	09	MIN	70	68	66	60	69	67	65	65	69	69	69	66	68	62	62	64	65				68	68	69	72	70	68	63	69			70	68	67.0	
		MAX	94	87	76	83	79	84	86	96	97	90	90	89	77	75	79	80	87	89	79	76	90	89	81	86	83	82	82	93	86	83			84.9	
CROZIER	07	MIN	72	62	56	49	64	60	61	71	72	69	68	66	63	53	55	59	63	64	69	64	65	71	75	70	63	60	66	69	69	60			64.3	
		MAX	90	92	89	76	84	78	82	85	94	96	90	90	88	77	75	77	82	86	89	79	73	89	88	80	86	83	83	82	91	86			84.7	
FARMVILLE 2 N	07	MIN	68	63	57	51	61	60	59	63	68	67	65	63	55	53	59	62	63	68	65	65	69	74	67	64	59	60	66	69	60			63.0		
		MAX	92	93	90	79	84	81	84	84	95	96	92	92	89	81	78	77	83	86	88	84	75	91	88	81	88	83	84	83	94	88			86.1	
GREENBAY 3 NE	09	MIN	66	65	55	54	54	64	59	59	59	69	67	66	64	59	57	58	62	64	64	67	66	66	69	70	64	61	61	66	66	62			62.8	
		MAX	92	93	91	78	84	80	85	88	93	96	96	92	90	80	79	79	83	90	91	85	76	91	90	83	90	83	86	82	96	87			87.0	
JOHN H KERR DAM	08	MIN	69	64	55	53	65	62	61	65	69	68	68	66	65	57	55	62	63	68	68	69	65	70	75	71	63	61	61	68	69	60			64.5	
		MAX	95	92	91	83	84	85	91	92	93	98	93	96	90	84	81	82	91	87	95	91	85	91	91	85	92	88	89	91	95	88			89.6	
LOUISA	18	MIN	70	73	63	59	66	68	63	68	73	72	73	69	68	63	64	64	66	72	73	73	69	72	77	74	70	63	70	71	72	69			68.9	
		MAX	95	91	89	86	85	86	86	98	96	95	91	89	82	78	79	82	82	89	84	80	90	89	87	87	86	83	84	91	88	88			87.2	
PALMYRA 3S	06	MIN	70	59	54	46	63	57	57	62	70	65	65	64	62	52	50	56	60	61	69	67	66	68	74	70	62	56	65	69	66	56			62.0	
		MAX	90	92	88	76	82	80	82	85	92	94	89	90	87	76	76	76	81	83	86	79	72	88	87	78	84	80	79	79	88	83			83.4	
PETERSBURG	08	MIN	64	61	54	47	47	59	56	56	61	67	65	63	63	53	52	53	59	60	62	66	64	64	67	68	61	55	56	65	67	58			59.8	
		MAX	95	94	92	80	86	81	86	88	95	97	90	90	90	80	79	79	83	88	91	83	76	90	90	87	91	86	88	87	95	95			87.7	
RICHMOND INTL AP	24	MIN	71	68	63	53	57	64	63	63	70	71	68	68	61	62	62	66	68	69	69	66	66	66	71	67	63	65	71	70	64			65.8		
		MAX	96	93	82	87	83	88	89	98	98	93	92	91	81	80	81	85	89	93	83	78	92	92	90	93	88	89	88	98	90	87			88.9	
SANDSTON	07	MIN	71	68	57	56	67	64	62	68	72	71	68	68	67	64	60	63	66	70	71	66	66	74	74	70	67	67	70	71	71	66			67.2	
		MAX	96	96	93	81	88	83	86	89	97	100	92	94	89	81	79	80	85	90	93	82	77	91	92	89	92	89	92	89	86	86	98	89		
WESTERN PIEDMONT 03		MIN	68	67	59	51	56	62	59	62	67	71	67	67	66	58	58	57	60	65	67	68	64	65	74	71	65	62	66	69	71	64			64.2	
		MAX	91	91	85	79	84	84	85	85	93	95	90	91	91	81	78	77	82	85	86	85	88	88	87	79	86	81	83	86	93	87			85.9	
APPOMATTOX	07	MIN	68	66	61	57	56	65	60	60	66	70	66	65	56	55	56	62	61	65	66	65	66	68	69	65	60	59	64	68	62			63.1		
		MAX	95	80	92	84	87	87	89	89	97	98	94	94	94	84	82	81	85	87	88	89	86	92	90	83	92	84	87	89	93	89			88.7	
CHARLOTTESVILLE 2W	08	MIN	67	65	56	55	56	64	58	58	66	69	65	55	64	57	56	56	59	61	66	67	64	64	70	71	63	59	61	68	70	59			62.3	
		MAX	94	95	90	81	85	85	86	87	98	98	94	93	89	79	77	79	82	84	88	81	75	89	89	76	85	81	82	82	91	87			86.1	
CHATHAM	07	MIN	73	70	59	59	62	66	65	67	74	70	68	65	64	61	55	58	64	66	69	66	66	68	70	68	66	63	65	66	67	65			65.5	
		MAX	91	91	87	79	83	85	85	87	91	92	89	90	89	82	79	78	83	86	87	85	88	90	86	79	86	80	83	88	91	85			85.8	
DANVILLE	07	MIN	62	62	61	53	53	63	57	57	62	64	64	63	62	55	54	55	55	55	65	64	66	67	67	58	56	56	64	65	57			60.2		
		MAX	95	95	92	85	88	89	90	90	93	95	93	95	93	94	94	87	83	80	87	88	89	90	92	93	92	83	94	86	90	94	93	90		
		MIN	70	70	68	59	62	69	64	63	68	73	69	69	69	63	61	61	64	65	67	69	69	70	70	72	65	64	64	70	69	65			66.7	

VIRGINIA
201106

DAILY TEMPERATURES (°F)

STATION	OB. TIME	MAX/MIN	DAY OF MONTH																															AVERAGE
			01	02	03	04	05	06	07	08	09	10	11	12	13	14	15	16	17	18	19	20	21	22	23	24	25	26	27	28	29	30	31	
DANVILLE REGIONAL AP	24	MAX	93	90	81	85	87	88	88	94	96	91	93	90	85	81	81	85	89	89	89	91	94	88	81	90	83	86	90	95	89	86	88.3	
		MIN	66	62	60	54	65	64	58	64	68	65	66	64	64	58	55	57	58	63	65	65	66	68	69	66	61	58	65	68	66	63.0		
FREE UNION	08	MAX	93	92																												M		
		MIN	67	64																												M		
LYNCHBURG #2	07	MAX	91	92	89	78	84	83	84	84	92	92	88	88	80	77	76	81	86	83	84	83	88	87	78	84	80	80	84	90	85	84.6		
		MIN	64	65	55	55	56	63	58	59	66	68	65	65	62	53	53	55	61	62	65	65	64	67	69	67	56	56	57	64	67	57	61.3	
LYNCHBURG INTL AP	24	MAX	93	91	81	85	84	87	87	95	97	91	90	91	82	79	79	82	87	84	85	83	89	86	78	87	81	81	86	92	87	85	86.2	
		MIN	68	63	56	54	67	62	58	63	66	66	63	63	61	52	55	61	59	62	65	66	63	67	68	66	58	54	64	68	64	58	62.0	
MARTINSVILLE FLTR PLT	07	MAX	93	94	91	83	88	88	88	89	94	95	92	90	88	84	81	79	84	88	87	85	89	93	89	80	89	83	82	89	92	92	88.0	
		MIN	62	61	60	53	53	63	57	59	61	62	62	62	61	53	52	53	55	58	61	62	63	63	68	67	58	57	62	62	65	55	59.7	
MEADOWS OF DAN 5 SW	07	MAX	90	90	88	82	84	85	86	87	87	87	87	87	79	80	78	74	79	83	81	81	82	84	85	86	83	83	80	84	85	83	83.7	
		MIN	62	63	58	55	54	55	58	58	61	59	61	58	61	52	51	52	56	58	59	58	60	58	61	59	58	59	57	59	64	55	58.0	
MONTEBELLO FISH CULTURAL STN	07	MAX	89		87	78	84	82	82	79	89	90	87	85	83	83	71	71	75	77	78	78	79	86								81.4		
		MIN	60		47	48	54	54	51	53	61	61	58	59	57	47	44	48	53	53	61	61	59	63								54.7		
MONTICELLO	08	MAX	89	91	86	75	80	79	81	82	91	93	87	86	85	75	73	74	78	79	83	76	71	86	85	74	81	77	78	77	82	81.4		
		MIN	70	69	57	54	55	64	62	62	68	66	65	64	63	57	54	54	60	63	67	64	63	64	66	66	65	61	62	63	63	63	62.5	
ROCKY MT	07	MAX	92	94	91	81	86	87	88	88	94	94	89	90	90	84	79	79	85	87	87	90	89	91	90	78	88	88	82	88	95	86	87.7	
		MIN	65	63	62	55	55	63	59	60	61	67	65	64	64	52	52	52	60	52	63	68	67	66	68	67	64	57	59	64	67	56	61.2	
SOUTH BOSTON	07	MAX	94	93	90	81	81	85	87	88	93	95	91	92	91	83	83	80	85	89	89	90	88	92	88	82	90	80	87	87	94	89	87.9	
		MIN	65	65	58	55	55	65	59	62	62	67	68	64	64	58	60	57	57	61	61	61	65	66	71	71	64	60	60	67	69	61	62.6	
STUART	07	MAX	93	93	90	83	87	89	87	88	92	90	90	80	88	83	81	76	82	86	86	84	86	91	87	78	87	83	82	88	91	87	86.3	
		MIN	65	63	60	55	55	63	59	60	60	63	64	64	63	57	52	59	57	61	59	60	62	63	67	68	59	58	63	63	66	60	60.9	
TYE RIVER 1 SE	06	MAX	93	90	89	78	84	83	86	85	90	91	89	90	90	80	78	80	82	88	89	83	82	90	87	80	85	82	81	83	88	85	85.4	
		MIN	67	67	54	55	58	64	65	64	65	69	65	64	63	54	54	55	61	64	65	65	64	65	70	67	61	57	58	64	66	59	62.3	
NORTHERN 04																																		
BIG MEADOWS	09	MAX																															M	
		MIN																															M	
BOSTON 4 SE	07	MAX															74	78	60 ^s	86	86	76	77	88	87	80	83	83	82	81	91	87	M	
		MIN															55	56	56	60	64	65	64	66	66	66	59	56	55	65	66	55	M	
CASTLETON	08	MAX	91	93	87	77	83	81	84	84	94	95	90	86	87		74	78	78	86	86	76	76	86	85	78	82	78	79	82	88	86	83.8	
		MIN	70	66	56	52	64	62	57	65	72	70	66	66	60	56	54	58	60	63	67	64	65	68	72	67	62	61	63	65	68	61	63.3	
EDINBURG	07	MAX	90	92	84	78	83	82	86	80	94	94	89	82	83	75	73	76	77	84	83	75	78	87	84	79	79	79	79	87	84	82.5		
		MIN	65	64	50	48	51	57	55	57	64	64	64	63	58	52	51	53	57	57	66	62	63	66	67	64	57	56	59	63	62	55	59.0	
FRONT ROYAL	07	MAX	96	92	85	79	85	84	86	84	95	95	89	84	87	76	73	77	79	84	82	77	77	88	87	80	80	78	80	79	88	84	83.7	
		MIN	68	72	55	51	51	59	58	58	66	66	65	64	57	56	53	53	59	59	66	64	63	67	67	69	60	60	59	63	67	58	61.1	
LINCOLN	07	MAX	93	93	82	76	81	80	84	85	95	95	89	87	75	75	69	78	78	83	81	80	78	88	87	81	81	77	81	78	88	84	82.7	
		MIN	69 ¹	62	55	46	51	58	54	62	63	69	68	68	58	55	50	51	56	60	68 ¹	66	66	67	70	66	59	57	57	64	55	59.9		
LURAY 5 E	08	MAX	91	92	84	77	83	82	82	83	95	87	89	83	85	73	73	78	80	83	84	76	79	88	86	77	79	79	78	81	89	84	82.7	
		MIN	66	60	48	47	64	55	55	61	66	62	63	60	56	49	50	55	55	61	66	63	64	63	69	64	56	55	63	64	62	54	59.2	
MADISON	08	MAX	93	96	90	81	86	83	84	86	96	96	89	87	87	78	75	78	81	85	87	77	76	89	89	80	86	83	81	81	88	85.3		
		MIN	70	63	57	52	56	61	59	65	70	67	69	65	62	60	55	59	62	64	68	65	65	69	74	68	61	59	65	67	66	59	63.4	
MANASSAS	07	MAX	98	97	89	81	86	83	88	87	99	100	94	90	91	79	77	83	81	87	88	81	80	90	92	84						87.7		

VIRGINIA
201106

DAILY TEMPERATURES (°F)

STATION	OB. TIME	MAX/MIN	DAY OF MONTH																															AVERAGE
			01	02	03	04	05	06	07	08	09	10	11	12	13	14	15	16	17	18	19	20	21	22	23	24	25	26	27	28	29	30	31	
MT WEATHER	07	MIN	74	75	57	51	67	64	62	68	71	71	75	70	61	59	55	61	62	66	71	67	68	72	77	72	78	74	78	73	84	82	66.5	
		MAX	88	89	81	73	78	76	79	79	91	91	89	83	83	70	69	75	75	79	78	75	72	85	82	78	78	74	78	73	84	82		
PIEDMONT RSCH STN	08	MIN	73	66	52	53	59	61	64	69	71	66	64	68	54	54	51	53	60	63	66	63	66	71	69	61	60	61	62	65	60	62.3		
		MAX	92	93	89	79	85	82	84	86	96	95	90	89	87	77	75	77	82	86	88	79	77	89	87	78	85	81	80	81	90		87	
SOMERSET	07	MIN	71	67	59	58	64	66	58	67	73	66	68	65	63	56	56	60	64	62	68	66	65	69	72	68	62	61	65	67	68	61	64.5	
		MAX	92	93	89	79	84	83	84	86	95	96	90	88	88	78	75	77	82	85	88	79	76	89	88	79	85	81	81	81	90	87		
SPERRYVILLE	06	MIN	70	66	55	49	60	59	58	65	71	67	66	62	56	52	55	63	62	68	65	65	68	73	68	59	57	65	67	66	56	62.5		
		MAX	90	91	86	77	82	81	83	83	93	93	88	82	85	75	73	77	78	84	84	75	74	85	84	77	80	77	76	78	87		84	
STAR TANNERY	07	MIN	64	69	56	51	63	61	56	56	64	68	67	62	62	54	55	56	58	57	67	64	63	64	66	64	60	59	64	64	68	58	61.3	
		MAX	91	90	82	76	68	80	82	82	88	93	71	85	85	74	76	79	75	82	81	75	74	87	82	78	79	76	78	75	86	81		
STERLING RCS	07	MIN	69	65	50	46	61	56	51	51	67	64	68	61	56	56	49	56	57	60	65 ¹	62	63	66	68	63	56	59	60	62	64	58	59.4	
		MAX	94	94	85	77	81	81	85	86	96	97	93	89	88	76	75	80	81	85	84	82	79	89	89	83	85	81	82	80	92	92		
VIENNA	07	MIN	72	69	56	49	55	62	60	65	67	69	70	69	59	58	53	57	61	63	68	67	67	68	73	68	64	58	63	66	70	62	63.6	
		MAX	89	89	82	74	77	76	69	82	90	92	89	89	89	74	70	76	77	80	80	80	74	83	85	80	81	81	77	87	83			
WARRENTON 3 SE	08	MIN	70	68	55	52	54	54	48	52	69	69	69	74	74	58	54	59	62	65	67	64	67	72	70	66	60	67	69	61	63.3			
		MAX	92	93	85	74	80	78	82	84	93	94	88	87	87	78	73	77	79	82	84	79	74	86	86	84	79	80	90	85				
WASHGTN DULLES INTL AP	24	MIN	73	66	55	52	62	62	58	63	73	67	70	67	58	57	52	59	59	64	67	65	65	69	74	59	64	68	67	62	63.5			
		MAX	95	86	78	82	81	86	87	96	97	93	90	90	78	76	83	80	85	86	83	78	88	89	83	87	83	85	81	93		88	86	
WASHINGTON REAGAN AP	24	MIN	72	67	53	48	66	62	61	64	71	70	71	69	61	53	53	58	62	64	70	67	67	71	73	68	62	56	66	68	68	59	64.0	
		MAX	98	88	81	85	82	88	90	99	102	94	93	90	81	78	84	83	88	89	84	80	87	90	86	90	85	86	84	95	89	88		
WINCHESTER	07	MIN	76	69	63	61	70	66	68	72	79	74	74	71	65	64	59	66	64	69	75	67	70	73	76	73	72	67	70	74	74	67	69.6	
		MAX	92	92	83	77	83	81	84	82	94	96	91	85	86	75	72	79	77	83	84	78	75	89	85	80	81	78	79	78	89	85		
WINCHESTER 7 SE	08	MIN	71	69	53	52	55	60	62	65	70	68	66	66	57	57	53	56	61	62	61	65	64	69	71	69	63	60	63	64	67	59	62.6	
		MAX	94	93	86	79	85	80	86	86	96	95	90	85	88	77	73	79	76	85	83	79	77	90	85	85	81	80	79	79	91	85		
WOODSTOCK 2 NE	07	MIN	66	62	47	46	45	54	56	57	65	64	64	63	58	51	48	55	59	60	65	64	64	67	68	65	57	55	60	64	54	58.9		
		MAX	92	90	77	82	81	82	81	94	92	89	82	84	73	73	74	76	78	84	84	80	87	85	79	79	77	79	79	88	83			
CENTRAL MOUNTAIN 05 COVINGTON FLTR PLT	07	MIN	66	60	49	50	56	57	59	63	64	64	63	56	51	51	51	58	59	59	59	56	66	66	64	57	56	57	63	65	55	58.6		
		MAX	94	94	89	84	88	88	88	84	93	95	90	91	85	83	80	77	85	86	87	82	87	69 ^s	89	80	84	73	78	87	89		87	
DALE ENTERPRISE	07	MIN	58	57	52	47	48	58	55	55	60	64	64	66	58	42	49	48	55	55	55	51	60	62	64	55	60	42	52	65	64	54	55.8	
		MAX	92	92	85	78	85	85	82	82	93	94	89	85	83	75	72	75	81	82	83	75	76	85	85	78	79	78	78	80	88	84		
GATHRIGHT DAM	07	MIN	63	65	54	49	54	59	56	61	63	64	63	61	61	52	51	55	58	59	65	64	66	67	65	58	53	58	63	61	54	59.5		
		MAX	89	86	84	81	84	82	81	87	88	84	84	83	76	72	74	78	80	78	76	81	85	83	76	77	73	73	82	82	81			
HOT SPRINGS	07	MIN	62	58	52	48	49	58	56	58	61	62	64	63	58	48	50	52	55	58	60	63	53	61	65	62	58	53	53	65	62	54	57.4	
		MAX	90	89	84	81	84	83	83	81	88	89	84	84	83	77	74	74	76	80	79	74	81	87	82	76	77	72	73	79	84	81		
LEXINGTON	07	MIN	62	56	51	47	47	57	56	57	58	60	61	62	57	48	48	48	55	55	60	62	59	60	65	61	59	52	53	63	59	52	56.3	
		MAX	96	94	95	82	85	85	87	86	95	95	92	92	88	82	82	79	82	88	86	85	90	93	90	77	87	83	79	87	93	90		
MILLGAP	07	MIN	64	62	53	55	58	60	58	58	63	66	66	64	63	51	51	54	57	58	60	66	64	65	68	64	59	54	57	57	55	59.6		
		MAX	90	84	80	80	83	81	82	78	88	87	86	81	80	73	73	72	76	77	76	75	78	84	81	75	72	68	71	80	81		79	
MUSTOE 1 SW	24	MIN	54	53	43	38	38	50	45	46	54	54	54	52	41	41	42	50	51	53	61	58	58	54	54	47	49	60	52	45	50.4			
		MAX	84	80	78	82	80	81	76	87	86	84	79	79	73	70	70	74	77	75	74	77	81	79	73	70	68	70	80	81		78	79	
		MIN	55	53	45	39	58	51	46	52	57	55	58	56	47	42	41	55	50	53	61	61	56	59	59	57	51	47	60	61	52	44	52.7	

VIRGINIA
201106

DAILY TEMPERATURES (°F)

STATION	OB. TIME	MAX/MIN	DAY OF MONTH																															AVERAGE	
			01	02	03	04	05	06	07	08	09	10	11	12	13	14	15	16	17	18	19	20	21	22	23	24	25	26	27	28	29	30	31		
ROANOKE 8 N	07	MAX	94	92	89	84	89	88	85	87	93	93	90	89	90	82	78	78	84	88	87	84	87	90	88	79	84	81	79	87	91	85		86.5	
		MIN	66	69	60	57	61	61	60	61	65	68	65	66	63	55	55	58	59	61	64	66	67	66	68	66	61	57	62	67	65	60		62.6	
ROANOKE INTL AP	24	MAX	93	90	83	90	88	86	87	95	96	92	89	91	83	78	79	85	89	89	84	89	91	87	79	87	82	79	86	92	86	86		87.0	
		MIN	68	71	63	57	66	62	61	66	71	68	66	68	63	54	54	62	61	66	67	71	66	68	71	68	63	57	66	69	67	59		64.6	
STAUNTON WATER TRMTMT PLT	08	MAX	91	92	92	78	87	85	85	80	92	92	88	85	84	78	73	76	79	81	80	81	77	86	86	76	79	77	76	83	88	86		83.1	
		MIN	67	66	55	51	58	60	59	64	68	64	65	62	60	54	49	55	58	58	64	64	65	67	67	65	61	56	61	64	64	56		60.9	
WAYNESBORO WTP	07	MAX	92	88	78	86	85	84	83	93	94	90	88	87	76	74	76	81	83	83	79	80	90	88	78	82	78	80	81	89	86	83		83.8	
		MIN	60	52	49	50	50	58	58	58	63	65	63	62	51	50	50	50	58	58	62	62	65	65	64	60	54	54	54	64	55	55		57.3	
SOUTHWESTERN MOUNTAIN 06																																			
ABINGDON 3S	22	MAX	88	85	85	86	88	86	88	89		89	88	82		77		76	79	83	78	75	75	89	89	79	82	80	81	85	85	81	84		83.3
		MIN	63	60	58	55	62	63	58	61		59	63	62	60		49	57	54	60	60	62	63	63	63	63	63	56	59	63	64	63	54		59.9
BIG STONE GAP	08	MAX	91	90	91	88	90	91	89	90	90	88	89	89	85	79	77	73	81	84	77	75	79	88	77	81	83	83	81	83	84	83		84.3	
		MIN	65	63	61	57	58	63	60	64	66	62	63	63	61	53	53	53	55	58	64	63	64	64	66	66	58	58	61	64	63	56		60.8	
BLACKSBURG NWSO	07	MAX	92	88	83	82	84	85	83	85	88	90	86	84	84	78	74	80	84	82	77	82	89	83	75	79	78	78	86	87	82		82.7		
		MIN	60	60	55	50	51	56	56	58	60	59	61	62	61	48	48	51	54	58	60	62	61	64	65	62	61	53	56	63	61	52		57.6	
BLAND	07	MAX	88	86	82	81	83	84	85	86	88	87	84	85	81	76	72	74	78	83	79	79	74	88	88	73	79	78	80	85	85	80		81.7	
		MIN	54	53	50	46	46	55	49	50	49	56	57	57	55	44	42	42	48	48	57	64	59	59	61	65	54	49	52	60	56	44		52.7	
BURKES GARDEN	07	MAX	81	78	76	77	76	77	77	80	82	80	79	79	76	69	67	68	72	76	74	75	67	80	74	69	75	72	73	77	79	72		75.2	
		MIN	50	52	46	44	43	52	46	46	49	54	53	55	55	43	41	41	45	45	59	61	57	57	59	60	55	47	52	52	58	43		50.7	
CHRISTIANSBURG	07	MAX	88	88	82	82	83	83	82	84	88	88	85	84	88	75	72	73	77	81	77	75	80	87	80	74	79	75	79	87	85	80		81.4	
		MIN	62	62	57	52	55	59	57	57	61	59	59	63	61	49	50	51	56	58	59	63	62	62	63	65	58	54	63	66	62	54		58.6	
CLINTWOOD 1 W	07	MAX	89	88	85	83	87	88	86	88	89	86	85	83	82	76	74	70	80	83	74	74	70	85	75	79	82	80	79	84	82	80		81.5	
		MIN	60	61	54	52	52	61	56	56	60	62	62	59	59	50	48	48	52	52	59	59	62	62	65	63	55	55	57	62	60	52		57.2	
COPPER HILL	07	MAX	88	84	82	77	81	80	81	81	87	84	85																						
		MIN	64	62	58	56	58	60	59	60	60	61	61																						
GALAX RADIO WBRF	07	MAX	91	89	86	84	86	85	85	81	89	88	86	87	84	80	75	70	80	83	83	76	78	87	82	74	82	82	77	86	86	83		82.8	
		MIN	59	59	56	53	61	59	56	58	61	56	57	60	58	49	47	57	52	56	58	62	60	63	65	61	57	55	60	63	60	51		57.6	
GALAX WTP	07	MAX	89	87	83	81	84	82	82	85	85	86	83	83	82	77	73	69	79	81	79	74	76	85	80	73	81	78	78	84	84	80		80.8	
		MIN	58	59	57	52	52	59	55	56	60	56	57	57	60	50	47	47	47	54	56	58	60	61	65	61	57	54	54	61	61	52		56.1	
GRUNDY	07	MAX	88	86	80	80	84	85	83	86	87	86	82	85	83	83	74	72	81	82	80	77	70	84	77	80	82	77	76	82	81	80		81.1	
		MIN	64	66	56	54	55	62	59	59	61	61	62	61	61	53	52	53	55	55	55	55	63	62	63	65	65	59	57	59	64	63	57		59.4
JOHN FLANNAGAN LAKE	07	MAX	92	92				92	92																										
		MIN	59	59				56	56																										
LEBANON	07	MAX	90	88	84	84	86	87	87	88	88	90	89	88	81	77	74	80	75	83	78	78	74	88	79	78	85	80	76	83	85	80		82.8	
		MIN	59	60	53	53	55	61	55	55	59	56	58	61	62	50	48	48	58	58	60	61	62	63	64	66	55	55	59	61	62	53		57.7	
NORA 4 SSE	07	MAX	87	85	80	80	83	83	83	85	87	86	82	83	76	72	71	68	76	78	71	68	70	82	72	74	78	78	75	81	78	75		78.2	
		MIN	68	63	59	63	64	63	66	68	69	64	62	64	59	51	55	57	57	63	60	61	59	61	62	61	57	60	61	63	59	59		61.3	
NORTH FORK LAKE	08	MAX	89	88	84			88	87	88	91	89																							
		MIN	55	59	56			55	58	58	63	62																							
PULASKI 2 E	07	MAX	92	92	94	84	86	86	85	86	90	90	86	85	85	79	76	76	80	84	83	78	81	90	90	84	83	83	81	88	88	83		84.9	
		MIN	61	60	55	49	50	50	54	54	63	59	60	64	59	49	48	48	57	60	62	64	61	64	64	63	60	60	56	63	61	51		57.6	

VIRGINIA
201106

DAILY TEMPERATURES (°F)

STATION	OB. TIME	MAX/MIN	DAY OF MONTH																															AVERAGE
			01	02	03	04	05	06	07	08	09	10	11	12	13	14	15	16	17	18	19	20	21	22	23	24	25	26	27	28	29	30	31	
RADFORD 3 N	08	MAX	91	89	83	83	86	85	84	87	91	90	86	86	84	74	75	74	80	83	81	76	83	89	81	76	84	80	80	89	89	83	83.4	
		MIN	60	64	52	49	54	58	56	60	62	58	59	61	64	50	50	52	51	56	60	62	62	62	64	64	61	54	63	64	66	51	58.3	
RICHLANDS	07	MAX	89	87	85	83	86	85	85	88	89	88	88	86	81	77	74	76	80	83	77	78	70	88	80	79	81	79	79	84	83	81	82.3	
		MIN	59	60	53	52	60	60	55	56	59	58	59	60	61	50	47	48	52	55	58	62	61	61	65	66	56	56	57	62	62	52	57.4	
SALTVILLE 1N	07	MAX	91	89	87	86	88	88	88	88	89	89	89	88	82	79	76	75	79	83	77	75	76	88	81	76	82	81	81	82	85	81	83.3	
		MIN	61	60	54	52	53	60	55	56	59	59	59	61	61	51	49	50	51	51	59	62	61	61	64	64	55	55	59	62	62	51	57.2	
STAFFORDSVILLE 3 ENE	07	MAX	89	88	83	82	85	84	84	86	88	88	85	85	85	78	74	74	81	83	84	77	83	89	83	76	83	79	80	87	88	82	83.1	
		MIN	59	59	52	48	50	58	53	55	59	60	60	59	60	48	48	52	51	56	57	64	60	60	65	63	58	52	55	61	61	50	56.4	
TROUT DALE 3 SSE	07	MAX	86	83	82	81	81	82	82	85	85	84	84	83	81	75	72	71	78	80	79	75	73	86	80	72	78	77	80	83	84	77	80.0	
		MIN	54	53	50	47	46	57	50	49	54	53	53	53	59	52	41	40	47	45	53	63	58	58	60	59	52	51	52	59	61	47	52.5	
WISE 3E	17	MAX	83	79	79	82	83	82	84	84	83	82	82	81	77	70	70	75	78	77	71	71	83	80	80	77	77	76	79	80	75	77	78.6	
		MIN	62	57	56	54	63	59	58	60	63	57	59	61	60	48	49	59	57	62	62	60	65	63	63	62	54	57	60	63	58	52	58.8	
WYTHEVILLE 1 S	07	MAX	92	89	89	79	86	87	86	88	91	89	87	87	84	79	75	75	80	83	79	79	76	90	82	75	82	79	82	87	86	82	83.5	
		MIN	57	57	54	49	49	57	53	54	58	59	59	59	60	49	46	47	52	52	57	62	62	61	63	62	55	54	55	61	59	50	55.7	

VIRGINIA
201106

SNOWFALL AND SNOW ON GROUND (INCHES)

STATION		DAY OF MONTH																															
		01	02	03	04	05	06	07	08	09	10	11	12	13	14	15	16	17	18	19	20	21	22	23	24	25	26	27	28	29	30	31	
VIRGINIA TIDEWATER 01 EASTERN PIEDMONT 02 ALBERTA 5N	SNOWFALL SN ON GND											T																					
SOUTHWESTERN MOUNTAIN 06 LAFAYETTE 1 NE	SNOWFALL SN ON GND	-	-	-	-	-	-	-	-	-	-	-	-	-	-	-	-	-	-	-	-	T	-	-	-	-	-	-	-	-	-		

Snowfall: Includes snow and ice Values for NWS stations (J index note) are Mid-Mid (LST)

Snow on ground: Includes snow, sleet, ice, and hail Values for NWS stations (J index note) are observed at 12 UTC (GMT)

Water Equivalent: Given for NWS stations (J index note) only, when snow depth is 2 inches or more, and is measured at 18 UTC (GMT)

STATION INDEX

STATION	INDEX NO.	DIVISION	COUNTY	LATITUDE	LONGITUDE	ELEVATION (IN FEET)	OBSERVATION TIME AND TABLES			
							LOCAL STD TIME			
							TEMP	PRECIP	EVAP	SPECIAL SEE (NOTES)
VIRGINIA										
ABINGDON 3S	0021	06	WASHINGTON	36 40	81 58W	1920	22	22		H
ALBERTA 5N	0079	02	BRUNSWICK	36 56	77 54W	376		08		H
ALTAVISTA R	0166	03	CAMPBELL	37 7	79 17W	515		07		CH
AMELIA COURTHOUSE 1	0187	02	AMELIA	37 21	77 59W	345	08	08		H
APPOMATTOX	0243	03	APPOMATTOX	37 21	78 50W	910	07	07		H
ASHLAND	0327	02	HANOVER	37 45	77 29W	220	18	18		H
BEDFORD 4 NW R	0561	03	BEDFORD	37 23	79 34W	1220		07		CH
BIG MEADOWS	0720	04	MADISON	38 31	78 26W	3540	09	09		H
BIG STONE GAP	0735	06	WISE	36 52	82 46W	1464	08	08		H
BLACKSBURG NWSO R	0766	06	MONTGOMERY	37 12	80 25W	2100	07	07		CH
BLAND	0792	06	BLAND	37 6	81 7W	2000	07	07		H
BOSTON 4 SE	0860	04	CULPEPER	38 33	78 6W	590	07	07		H
BREMO BLUFF R	0993	02	FLUVANNA	37 43	78 17W	225	07	24		CH
BROOKNEAL	1082	03	CAMPBELL	37 4	78 57W	428	07	07		H
BUCHANAN	1121	05	BOTETOURT	37 32	79 41W	865		07		H
BUCKINGHAM	1136	02	BUCKINGHAM	37 30	78 32W	552		07		H
BUENA VISTA	1159	05	ROCKBRIDGE	37 44	79 22W	830		07		H
BURKES GARDEN	1209	06	TAZEWELL	37 6	81 20W	3068	07	07		H
CAMP PICKETT R	1322	02	NOTTOWAY	37 2	77 57W	330	08	08		CH
CASTLETON	1434	04	RAPPAHANNOCK	38 36	78 7W	541	08	08		H
CHARLOTTESVILLE 2W	1593	03	ALBEMARLE	38 2	78 31W	866	08	08		H
CHASE CITY	1606	02	MECKLENBURG	36 47	78 29W	510	17	17		H
CHATHAM R	1614	03	PITTSYLVANIA	36 49	79 25W	640	07	07		CH
CHRISTIANSBURG	1692	06	MONTGOMERY	37 8	80 24W	2100	07	07		H
CLARKSVILLE	1746	02	MECKLENBURG	36 37	78 33W	330	07	07		H
CLINTWOOD 1 W	1825	06	DICKENSON	37 9	82 29W	1780	07	07		H
CONCORD 4 SSW	1955	03	CAMPBELL	37 17	78 58W	635		07		H
COPPER HILL	1999	06	FLOYD	37 5	80 9W	2690	07	07		H
CORBIN	2009	02	CAROLINE	38 12	77 22W	220	09	09		H
COVINGTON FLTR PLT R	2044	05	ALLEGHANY	37 49	79 59W	1230	07	07		CH
CRAIGSVILLE 2 S	2064	05	AUGUSTA	38 3	79 23W	1758		07		H
CROZIER	2142	02	GOOCHLAND	37 40	77 53W	350	07	07		H
DALE ENTERPRISE	2208	05	ROCKINGHAM	38 27	78 56W	1400	07	07		H
DANVILLE	2245	03	PITTSYLVANIA	36 35	79 23W	410	07	07		H
DANVILLE REGIONAL AP R	2250	03	PITTSYLVANIA	36 34	79 20W	571	24	24		CH
DISPUTANTA	2400	01	PRINCE GEORGE	37 7	77 12W	15	07	07		H
EARLEHURST	2600	05	ALLEGHANY	37 40	80 15W	2037		07		H
EASTVILLE	2635	01	NORTHAMPTON	37 23	75 58W	10	07	07		H
EDINBURG	2663	04	SHENANDOAH	38 48	78 35W	928	07	07		H
EMPORIA 1 WNW	2790	01	GREENSVILLE	36 42	77 34W	100	08	08		H
FARMVILLE 2 N R	2941	02	CUMBERLAND	37 20	78 23W	450	07	07		CH
FREDERICKSBURG SEWAGE	3204	01	FREDERICKSBURG	38 17	77 27W	15	07	07		H
FREE UNION	3213	03	ALBEMARLE	38 5	78 35W	590	08	07		H
FRONT ROYAL	3229	04	WARREN	38 54	78 11W	930	07	07		H
GALAX RADIO WBRF	3267	06	CARROLL	36 40	80 55W	2385	07	07		H
GALAX WTP R	3272	06	CARROLL	36 39	80 55W	2360	07	07		CH
GATHRIGHT DAM R	3310	05	ALLEGHANY	37 57	79 57W	1770	07	07		CH
GLASGOW 1 SE	3375	05	ROCKBRIDGE	37 37	79 26W	740		07		H
GREENBAY 3 NE	3565	02	PRINCE EDWARD	37 11	78 17W	500	09	09		H
GRUNDY	3640	06	BUCHANAN	37 17	82 5W	1170	07	07		H
HAMPTON UNIV	3713	01	HAMPTON	37 1	76 20W	10	17	17		H
HOLCOMB ROCK	4039	03	BEDFORD	37 33	79 24W	620		07		H
HOLLAND 1 E	4044	01	SUFFOLK	36 41	76 46W	80	08	08		H
HOPEWELL	4101	01	PRINCE GEORGE	37 18	77 17W	40	16	16		H
HOT SPRINGS R	4128	05	BATH	37 60	79 50W	2236	07	07		CH
HUDDLESTON 4 SW	4148	03	BEDFORD	37 8	79 32W	1045		07		H
JOHN FLANNAGAN LAKE	4410	06	DICKENSON	37 14	82 21W	1460	07	07		H
JOHN H KERR DAM R	4414	02	MECKLENBURG	36 36	78 18W	250	08	08	EV	CH
KERRS CREEK 6 WNW	4565	05	ROCKBRIDGE	37 52	79 34W	1500		07		H
KEYSVILLE 2 S	4568	02	CHARLOTTE	37 1	78 28W	530		07		H
LAFAYETTE 1 NE	4676	06	MONTGOMERY	37 14	80 12W	1320		07		H
LEBANON	4777	06	RUSSELL	36 54	82 2W	1912	07	07		H
LEXINGTON	4876	05	ROCKBRIDGE	37 48	79 25W	1125	07	07		H
LINCOLN	4909	04	LOUDOUN	39 5	77 42W	500	07	07		H
LOUISA	5050	02	LOUISA	38 3	78 0W	420	18	18		H

STATION INDEX

STATION	INDEX NO.	DIVISION	COUNTY	LATITUDE	LONGITUDE	ELEVATION (IN FEET)	OBSERVATION TIME AND TABLES			
							LOCAL STD TIME			
							TEMP	PRECIP	EVAP	SPECIAL SEE (NOTES)
LURAY 5 E	5096	04	PAGE	38 40	78 22W	1400	08	08		H
LYNCHBURG #2	5117	03	CAMPBELL	37 23	79 14W	740	07	07		H
LYNCHBURG INTL AP R	5120	03	CAMPBELL	37 19	79 12W	940	24	24		CHJ
MADISON	5150	04	MADISON	38 22	78 15W	577	08	08		H
MANASSAS	5204	04	MANASSAS	38 44	77 30W	245	07	07		H
MARTINSVILLE FLTR PLT	5300	03	HENRY	36 42	79 52W	760	07	07		H
MEADOWS OF DAN 5 SW	5453	03	PATRICK	36 40	80 27W	2225	07	07		H
MILLGAP R	5595	05	HIGHLAND	38 18	79 43W	2421	07	07		CH
MONTEBELLO FISH CULTURAL STN	5690	03	NELSON	37 50	79 7W	2667	07	07		H
MONTICELLO	5700	03	ALBEMARLE	38 1	78 27W	758	08	08		H
MT WEATHER	5851	04	LOUDOUN	39 4	77 53W	1659	07	07		H
MTN GROVE	5756	05	BATH	38 6	79 53W	1775		07		H
MUSTOE 1 SW	5880	05	HIGHLAND	38 20	79 40W	2380	24	24		H
NORA 4 SSE	6125	06	DICKENSON	37 1	82 19W	2650	07	07		H
NORFOLK INTL AP R	6139	01	NORFOLK (CITY)	36 54	76 12W	30	24	24		CHJ
NORFOLK SOUTH	6147	01	NORFOLK (CITY)	36 52	76 14W	100	24	24		H
NORTH	6161	01	MATHEWS	37 26	76 26W	10	07	07		H
NORTH FORK LAKE	6173	06	WISE	37 7	82 38W	1675	08	08		H
PAINTER 2W R	6475	01	ACCOMACK	37 35	75 49W	30	16	16		CH
PALMYRA 3S	6491	02	FLUVANNA	37 49	78 16W	410	06	06		H
PEDLAR DAM	6593	03	AMHERST	37 40	79 17W	1010		07		H
PETERSBURG	6656	02	PETERSBURG	37 14	77 24W	15	08	08		H
PIEDMONT RSCH STN R	6712	04	ORANGE	38 14	78 7W	520	08	08	EV	CH
POWHATAN	6906	02	POWHATAN	37 31	77 53W	400		07		H
PULASKI 2 E R	6955	06	PULASKI	37 3	80 47W	1850	07	07		CH
RADFORD 3 N	6999	06	PULASKI	37 12	80 35W	1800	08	08		H
RICHLANDS	7174	06	TAZEWELL	37 6	81 48W	1910	07	07		H
RICHMOND INTL AP R	7201	02	HENRICO	37 30	77 19W	164	24	24		CHJ
ROANOKE 8 N	7278	05	ROANOKE	37 22	79 58W	1190	07	07		H
ROANOKE INTL AP R	7285	05	ROANOKE	37 19	79 58W	1175	24	24		CHJ
ROCKY MT R	7338	03	FRANKLIN	36 59	79 54W	1315	07	07		CH
SALTVILLE 1N	7506	06	SMYTH	36 53	81 46W	1733	07	07		H
SANDSTON	7541	02	HENRICO	37 33	77 17W	165	07	07		H
SOMERSET	7904	04	ORANGE	38 15	78 16W	510	07	07		H
SOUTH BOSTON	7925	03	HALIFAX	36 42	78 53W	340	07	07		H
SPERRYVILLE	7985	04	RAPPAHANNOCK	38 39	78 14W	750	06	06		H
STAFFORDSVILLE 3 ENE R	8022	06	GILES	37 16	80 43W	1950	07	07		CH
STAR TANNERY R	8046	04	FREDERICK	39 5	78 27W	950	07	07		CH
STAUNTON WATER TRMTMT PLT	8062	05	AUGUSTA	38 10	79 5W	169	08	08		H
STERLING RCS	8084	04	LOUDOUN	38 59	77 29W	288	07	07		H
STONY CREEK 2 N	8129	01	SUSSEX	36 58	77 24W	105	08	08		H
STUART	8170	03	PATRICK	36 38	80 15W	1375	07	07		H
SUFFOLK LAKE KILBY	8192	01	SUFFOLK	36 44	76 36W	22	24	24		H
TROUT DALE 3 SSE R	8547	06	GRAYSON	36 39	81 24W	2839	07	07		CH
TYE RIVER 1 SE	8600	03	NELSON	37 38	78 56W	720	06	06		H
VIENNA	8737	04	FAIRFAX	38 54	77 16W	418	07	19		H
WAKEFIELD 1NW R	8800	01	SUSSEX	36 59	77 0W	113	24	24		CH
WALKERTON 2 NW	8829	01	KING AND QUEEN	37 45	77 2W	50	18	18		H
WALLACETON LK DRUMMOND	8837	01	CHESAPEAKE	36 36	76 26W	20	08	08		H
WARRENTON 3 SE	8888	04	FAUQUIER	38 41	77 46W	500	08	08		H
WARSAW 2 NW	8894	01	RICHMOND	37 59	76 47W	140	18	18		H
WASHGTN DULLES INTL AP R	8903	04	LOUDOUN	38 56	77 28W	290	24	24		CHJ
WASHINGTON REAGAN AP R	8906	04	ARLINGTON	38 51	77 2W	10	24	24		CHJ
WAYNESBORO WTP	8941	05	WAYNESBORO	38 5	78 53W	1270	07	07		H
WEST POINT 2 NW	9025	01	KING WILLIAM	37 34	76 48W	20	17	17		H
WILLIAMSBURG 2 N R	9151	01	YORK	37 18	76 42W	70	24	24		CH
WILLIS R	9169	06	FLOYD	36 55	80 30W	2810		07		CH
WINCHESTER	9181	04	FREDERICK	39 11	78 9W	720	07	07		H
WINCHESTER 7 SE	9186	04	FREDERICK	39 11	78 7W	680	08	08		H
WINTERPOCK 4 W	9213	02	CHESTERFIELD	37 19	77 39W	300		07		H
WISE 3E R	9215	06	WISE	36 60	82 32W	2549	17	17		CH
WOODSTOCK 2 NE	9263	04	SHENANDOAH	38 54	78 29W	675	07	07		H
WOOLWINE R	9272	03	PATRICK	36 47	80 17W	1500		07		CH
WYTHEVILLE 1 S R	9301	06	WYTHE	36 56	81 6W	2450	07	07		CH

REFERENCE NOTES

STATION NAMES: Name of the city, town or locality. Figures and letters following the station names indicate the distance in miles and direction from the post office or town community center.

DIVISIONS: Areas within a state of similar climatological characteristics. Division averages are calculated using data from stations that record both temperature and precipitation (i.e. not precipitation alone).

NORMALS: The average value of the meteorological element over a time period. Effective 1 January 2002, the averaging period is 1971 to 2000. The normals for National Weather Service localities have been adjusted so as to be representative for the current observation site.

MONTHLY DEGREE DAY TOTALS: One heating (cooling) degree day is accumulated for each whole degree that the daily mean temperature is below (above) 65 degrees Fahrenheit.

PRECIPITATION: Values shown in hundredths of inches are water equivalent totals, i.e., total of liquid and melted frozen precipitation. In the "Monthly Summarized Data" table the total snow and sleet values shown in tenths of inches are unmelted amounts. The max depth on ground values of snow and sleet shown in whole inches are cumulative unmelted amounts. The number of days with .10, .50, 1.00 or more refers to water equivalents.

PRECIPITATION QUALITY CONTROL: The NCDC quality control process may flag precipitation data that are spatially inconsistent, exceed climatological limits, or are inconsistent with prevailing weather patterns.

TEMPERATURE: Original temperature values are given in the "Daily Temperature" table. Summary temperature information (averages, departures, extremes, monthly degree day totals) is based on the values labeled MAX/MIN.

WIND: (As shown in the "Evaporation and Wind" table) the total wind movement in miles over the evaporation pan as determined by an anemometer recorder located 6-8 inches above the pan.

SYMBOLS AND LETTERS USED IN THE STATION INDEX TABLE

- C Station is equipped with recording rain gage (R) but values in this bulletin are from a non-recording rain gage unless indicated by an R.
- G Observations appear in the "Soil Temperatures" table.
- H Observations appear in the "Snowfall and Snow on the Ground" table.
- J Station also published as a Local Climatological Data publication.
- VAR Observation time varies.
- SR Observation time near sunrise.
- SS Observation time near sunset.

SYMBOLS AND LETTERS USED IN THE DATA TABLES

(DAILY DATA ARE FOR THE 24 HOURS IMMEDIATELY PRECEDING OBSERVATION TIME.)

BLANK Entries in the "Monthly Summarized Data" table indicate no record.

BLANK Entries in the "Daily Precipitation" and "Snowfall and Snow on the Ground" tables indicate zero.

BLANK Entries in the "Daily Temperature" table indicate a missing record

- No record. Data not recorded or not received in time for publication.

+ Precipitation or temperature extremes occurred on one or more previous dates during the month.

* Rain gage not read. Precipitation is included in the amount following the asterisks. Time distribution may not be known. A * preceding the monthly total indicates precipitation amount is being carried forward to next month's total, and may include amounts from the previous month(s).
a As a subscript, indicates accumulated total.

A Amount of precipitation is the total of observer's entries for the current month. It may include precipitation that occurred during the previous month. Refer to earlier bulletin to determine date of last reading. (Hawaii stations)

F Monthly calculation flagged value. F is appended to average and/or total values computed which exclude one or more daily data values that have been flagged by the GHCN-Daily Dataset

M Insufficient or partial data. M is appended to average and/or total values computed with 1-9 daily values missing. M appears alone if 10 or more daily values are missing, (8 or more for wind and evaporation).

N Indicates snow fall or Snowdepth totals are computed with one or more missing days.

R Amounts from recording rain gage.

T Trace. An amount too small to measure.

SEASONAL TABLES: Monthly and seasonal snowfall and heating degree days for the 12 months ending with the June data are published in the July issue of this bulletin. Cooling degree days for the calendar year are published in the "Climatological Data Annual Summary."

Information concerning the history of changes in locations, exposure, etc. of substations is kept on file at the National Climatic Data Center. Historical information of regular National Weather Service Offices may be obtained from the "Local Climatological Data" annual publication. The contents of this publication may be reprinted or otherwise used freely, with proper credit to the National Climatic Data Center. The data are also available digitally.

Effective with the January 2011 Data-Month, COOP Observer Names are no longer included in the Monthly and Annual Climatological Data Publications. This information is not published to ensure the privacy of personal information pursuant to Section 208 of the E-Government Act of 2002 (44 USC 3601).

The GHCN-Daily Quality Control Flags shown below are displayed as superscripts with the data. For more Information on Global Historical Climatology Network - Daily and flags, see:
<http://www.ncdc.noaa.gov/oa/climate/ghcn-daily/>
and

Comprehensive Automated Quality Assurance of Daily Surface Observations.

Durre, Imke, Matthew J. Menne, Byron E. Gleason, Tamara G. Houston,

Russell S. Vose, 2010: J. Appl. Meteor. Climatol., 49, 16151633.

doi: 10.1175/2010JAMC2375.1

Blank = Passed All checks

D = failed duplicate check

G = failed gap check

I = failed internal consistency check

K = failed streak/frequent-value check

L = failed check on length of multiday period

M = failed megaconsistency check

N = failed naught check

O = failed climatological outlier check

R = failed lagged range check

S = failed spatial consistency check

T = failed temporal consistency check

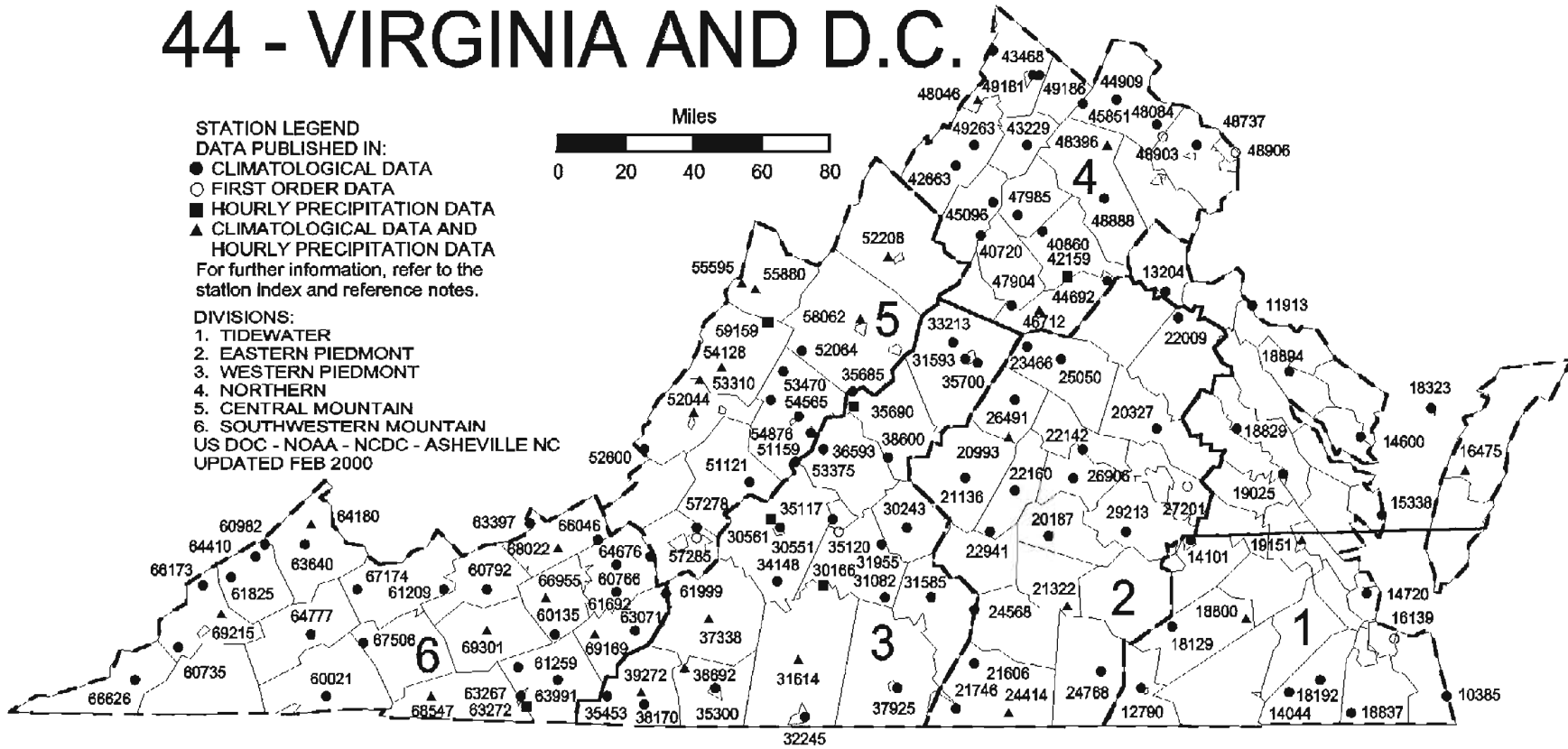
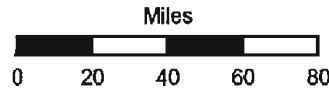
W = temperature too warm for snow

X = failed bounds check

44 - VIRGINIA AND D.C.

STATION LEGEND
DATA PUBLISHED IN:
 ● CLIMATOLOGICAL DATA
 ○ FIRST ORDER DATA
 ■ HOURLY PRECIPITATION DATA
 ▲ CLIMATOLOGICAL DATA AND HOURLY PRECIPITATION DATA
 For further information, refer to the station index and reference notes.

DIVISIONS:
 1. TIDEWATER
 2. EASTERN PIEDMONT
 3. WESTERN PIEDMONT
 4. NORTHERN
 5. CENTRAL MOUNTAIN
 6. SOUTHWESTERN MOUNTAIN
 US DOC - NOAA - NCDC - ASHEVILLE NC
 UPDATED FEB 2000



-84.00

-82.80

-81.60

-80.40

-79.20

-78.00

-76.80

-75.60

40.60

40.00

39.40

38.80

38.20

37.60

37.00

36.40

NOAA\National Climatic Data Center
Attn: User Engagement & Services Branch
151 Patton Avenue
Asheville, NC 28801-5001

PRSRT STD
POSTAGE & FEES PAID
United States Department of Commerce
NOAA Permit No. G-19

OFFICIAL BUSINESS
PENALTY FOR PRIVATE USE \$300
ADDRESS CORRECTION REQUESTED

To change your address, please return a copy of the mailing label along with your new address to:

NOAA\National Climatic Data Center
Attn: User Engagement & Services Branch
151 Patton Avenue
Asheville, NC 28801-5001

Customer Services Number: (828) 271-4800, option 2
TDD : (828) 271-4010
Fax number: (828) 271-4876

NCDC now offers an annual online subscription for the *Climatological Data* publication. When you purchase this subscription service, you will have **immediate online access** to all previous Climatological Data publications. Your subscription is valid for one year after purchase.

The total cost is \$42 for online delivery (including back issues).

To order this and other subscriptions online with your credit card, go to:

<http://www.ncdc.noaa.gov/oa/mpp/> and choose subscription.