



CLIMATOLOGICAL DATA

VIRGINIA

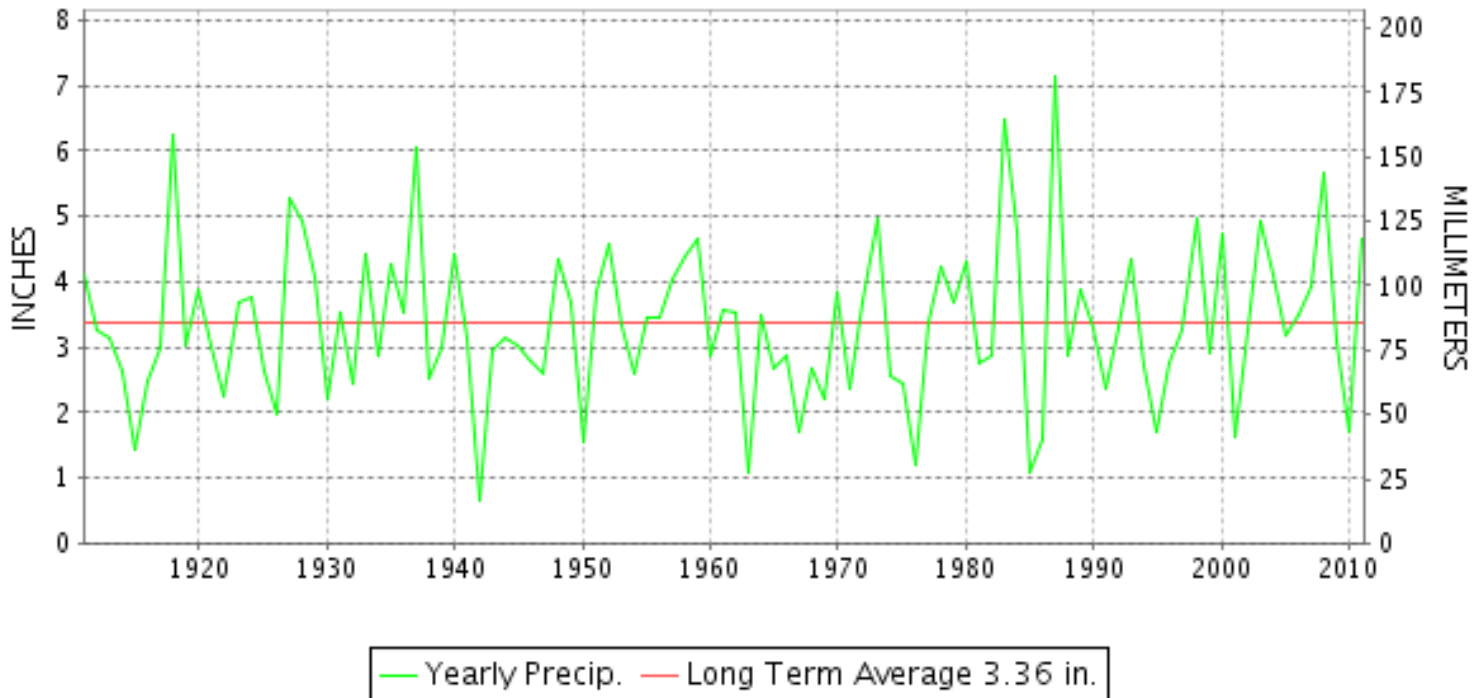
APRIL 2011

VOLUME 121 NUMBER 04

ISSN 0364-5630

GHCND Ver: 2.91-upd-2012021008

APRIL PRECIPITATION BY YEAR



TEMPERATURE AND PRECIPITATION EXTREMES

VIRGINIA

HIGHEST TEMPERATURE	92	APRIL 26+	BUENA VISTA
LOWEST TEMPERATURE	24	APRIL 03+	2 STATIONS
GREATEST TOTAL PRECIPITATION	10.24		MUSTOE 1 SW
LEAST TOTAL PRECIPITATION	1.21		NORFOLK INTL AP
GREATEST 1 DAY PRECIPITATION	3.93	APRIL 17	SPERRYVILLE
GREATEST TOTAL SNOWFALL	0.6		MILLGAP
GREATEST DEPTH OF SNOW OR ICE	T		5 STATIONS

"I certify that this is an official publication of the National Oceanic and Atmospheric Administration (NOAA) It is compiled using information from weather observing sites supervised by NOAA/National Weather Service and received at the National Climatic Data Center(NCDC), Asheville, North Carolina 28801."

Director
National Climatic Data Center

noaa

National
Oceanic and
Atmospheric Administration

National
Environmental Satellite, Data
and Information Service

National
Climatic Data Center
Asheville, North Carolina

VIRGINIA
201104

MONTHLY STATION AND DIVISION SUMMARY

STATION	TEMPERATURE (°F)										PRECIPITATION (IN)													
	AVERAGE MAXIMUM	AVERAGE MINIMUM	AVERAGE	DEPARTURE FROM NORMAL	HIGHEST	DATE	LOWEST	DATE	HEATING DEG. DAYS	COOLING DEG. DAYS	NO. OF DAYS				TOTAL	DEPARTURE FROM NORMAL	GREATEST 24 HOURS	DATE	ICE PELLETS, SNOW			NO OF DAYS		
											MAX		MIN						TOTAL	MAX DEPTH ON GROUND	DATE	10 OR MORE	50 OR MORE	1 00 OR MORE
											>=90	<=32	<=32	<=0										
PALMYRA 3S	69.3	42.5	55.9		86	25	27	04+	305	37	0	0	5	0	4.28	1.24	1.40	28	0.0	0		8	4	1
PETERSBURG	71.4M	48.2M	59.8M		87	25	34	07+	200	60	0	0	0	0	M 3.79		2.34	17	N 0.0	0		7	1	1
POWHATAN	M	M	M											1.91	-1.41	1.04	17	0.0	0		5	1	1	
RICHMOND INTL AP	73.6	49.9	61.8	4.7	88	25+	32	06	170	80	0	0	1	0	2.63	-0.55	0.90	16	N 0.0	0		6	2	0
SANDSTON	71.9	46.7	59.3		89	25	30	07+	232	68	0	0	2	0	F 2.06		1.24	17	0.0	0		5	1	1
WINTERPOCK 4 W	M	M	M											3.05	-0.18	1.11	17	0.0	0		7	2	1	
--DIVISIONAL DATA-----> WESTERN PIEDMONT 03			60.2	4.3										3.12	-0.21									
ALTAVISTA	M	M	M											4.92	1.28	1.00	28	0.0	0		11	4	1	
APPOMATTOX	71.1M	45.9M	58.5M		85	25	32	07	218	43	0	0	1	0	M 3.99		1.50	17	N 0.0	0		9	2	1
BEDFORD 4 NW	M	M	M											5.03		0.79	05	0.0	0		12	6	0	
BROOKNEAL	76.3M	47.5M	61.9M		89	25	36	16+	107	44	0	0	0	0	3.27	-0.25	0.60	05	0.0	0		8	4	0
CHARLOTTESVILLE 2W	69.0	47.7	58.4	1.3	87	26+	36	02+	245	51	0	0	0	0	4.21	0.87	0.86	17	T	0		10	3	0
CHATHAM	70.4	43.8	57.1	3.2	85	25	27	04+	267	38	0	0	5	0	4.17	0.44	1.05	28	0.0	0		10	3	1
CONCORD 4 SSW	M	M	M											3.60	0.16	0.91	17	0.0	0		10	1	0	
DANVILLE	74.8	48.6	61.7	4.4	90	25	33	06+	173	80	1	0	0	0	3.23	-0.60	1.10	17	N 0.0	0		9	3	1
DANVILLE REGIONAL AP	73.0	47.7	60.4		86	24	30	06+	190	56	0	0	2	0	3.16		1.20	16	N 0.0	0		8	2	1
FREE UNION	M	M	M											M					0.0	0				
HOLCOMB ROCK	74.0M	49.8M	61.9M		88	25	39	15	111	44	0	0	0	0	6.62	3.00	1.95	17	T	0		14	5	1
HUDDLESTON 4 SW	M	M	M											4.24	0.68	0.93	29	0.0	0		8	4	0	
LYNCHBURG #2	70.1	44.1	57.1		87	25	31	04	267	37	0	0	4	0	4.60		1.11	29	0.0	0		11	2	1
LYNCHBURG INTL AP	71.5	46.8	59.2	3.9	86	24	30	06	214	45	0	0	2	0	5.36	1.90	1.75	28	N 0.0	0		9	3	1
MARTINSVILLE FLTR PLT	73.0	43.1	58.1	4.7	88	29	27	06+	242	41	0	0	5	0	3.53	-0.20	0.68	10	0.0	0		9	2	0
MEADOWS OF DAN 5 SW	69.0	43.5	56.3		84	25	30	07+	270	14	0	0	4	0	7.54	2.75	1.52	16	0.0	0		11	6	3
MONTEBELLO FISH CULTURAL STN	66.5M	40.2M	53.4M		82	24	27	07+	330	10	0	0	6	0	M 9.75		3.50	16	0.0	0		9	6	3
MONTECELLO	66.6	45.9	56.3	0.5	83	26+	35	02+	287	30	0	0	0	0	5.71	2.82	1.29	27	0.0	0		10	5	2
PEDLAR DAM	69.9	45.8	57.9		86	26+	32	01	245	38	0	0	1	0	5.95	2.31	1.70	17	0.0	0		13	4	1
ROCKY MT	71.8	45.1	58.5	3.8	87	25	29	07+	237	47	0	0	3	0	6.59	2.46	1.15	16	0.0	0		11	8	1
SOUTH BOSTON	71.7	46.4	59.1	3.8	86	25	30	06+	230	58	0	0	5	0	3.98	0.06	0.89	10	0.0	0		7	4	0
STUART	71.6	44.7	58.2	3.2	86	26+	29	06	238	37	0	0	5	0	5.58	1.06	1.30	10	0.0	0		11	5	1
TYE RIVER 1 SE	71.9	45.6	58.8	3.6	88	25	31	06	233	51	0	0	2	0	4.55	1.09	0.91	28	0.0	0		11	3	0
WOOLWINE	M	M	M											6.35	1.76	1.56	16	N T	0		11	5	2	
--DIVISIONAL DATA-----> NORTHERN 04			58.5	2.8										5.04	1.31									
BIG MEADOWS	M	M	M											M					N 0.0	0				
BOSTON 4 SE	68.5M	43.1M	55.8M		86	27+	29	07+	294	33	0	0	3	0	M 7.53		1.97	17	N 0.0	0		10	6	3
CASTLETON	68.3	46.1	57.2		87	26	32	06	275	48	0	0	1	0	7.33		2.78	17	0.0	0		9	4	3
EDINBURG	65.1	41.7	53.4		85	26	29	07	363	19	0	0	2	0	7.30		1.80	28	0.0	0		10	5	3

MONTHLY STATION AND DIVISION SUMMARY

STATION	TEMPERATURE (°F)											PRECIPITATION (IN)												
	AVERAGE MAXIMUM	AVERAGE MINIMUM	AVERAGE	DEPARTURE FROM NORMAL	HIGHEST	DATE	LOWEST	DATE	HEATING DEG. DAYS	COOLING DEG. DAYS	NO. OF DAYS				TOTAL	DEPARTURE FROM NORMAL	GREATEST 24 HOURS	DATE	ICE PELLETS, SNOW			NO OF DAYS		
											MAX		MIN						TOTAL	MAX DEPTH ON GROUND	DATE	10 OR MORE	50 OR MORE	1 00 OR MORE
											>=90	<=32	<=32	<=0										
FRONT ROYAL	69.1M	45.5M	57.3M		88	13+	32	01	262	47	0	0	1	0	M 8.06		3.15	17	0.0	0		12	5	2
LINCOLN	66.2	44.5	55.4	3.5	85	26	28	02	324	39	0	0	3	0	M				0.0	0				
LURAY 5 E	67.7	44.7	56.2	1.3	87	12	28	06	295	37	0	0	2	0	6.61	3.46	1.31	17	0.0	0		10	6	2
MADISON	69.9	48.2	59.1		88	25	36	06+	228	56	0	0	0	0	F 4.60		2.40	17	0.0	0		4	4	1
MANASSAS	M	M	M												M				0.0	0				
MT WEATHER	62.7	44.2	53.5	4.2	83	26	31	01	367	27	0	0	2	0	F 7.10		2.70	17	N T	N T	01	11	3	2
PIEDMONT RSCH STN	68.0	46.8	57.4	3.1	85	26+	31	06	270	46	0	0	1	0	3.74	0.52	0.76	17	N 0.0	0		10	2	0
SOMERSET	68.2	45.7	57.0		85	26+	29	06	279	44	0	0	1	0	5.37		1.30	17	0.0	0		10	3	2
SPERRYVILLE	66.1	43.5	54.8		84	25	30	07	334	30	0	0	4	0	9.87		3.93	17	N T	0		9	5	3
STAR TANNERY	65.2	41.6F	53.4F		88	26	27	06	352	33	0	0	4	0	9.19		2.10	17	0.0	0		12	6	3
STERLING RCS	67.7	45.4	56.6	5.1	88	26	29	02	303	56	0	0	3	0	4.55	1.27	1.44	17	N 0.0	0		9	2	2
VIENNA	66.4	46.8	56.6		85	25+	32	06+	296	52	0	0	2	0	4.50	1.13	1.62	17	0.0	0		8	3	1
WARRENTON 3 SE	69.6M	45.8M	57.7M		84	26+	33	02	214	37	0	0	0	0	M				0.0	0				
WASHGTN DULLES INTL AP	68.7	45.9	57.3	4.2	86	25+	30	06	270	44	0	0	4	0	5.21	1.99	1.33	27	0.0	0		8	3	2
WASHINGTON REAGAN AP	68.6	49.0	58.8	2.7	86	20	36	06+	225	43	0	0	0	0	3.20	0.43	0.74	24	N 0.0	0		7	2	0
WINCHESTER	65.0	45.1	55.1	2.5	86	12	32	02	331	35	0	0	1	0	7.71	4.83	1.86	17	0.0	0		11	4	3
WINCHESTER 7 SE	66.3F	41.7	54.0F	2.3	86	11	28	05+	340	26	0	0	5	0	M 7.27		1.88	15	0.0	0		11	4	2
WOODSTOCK 2 NE	65.3M	41.5M	53.4M		86	26	29	07	342	21	0	0	5	0	M 6.47		1.86	17	0.0	0		7	4	3
--DIVISIONAL DATA----->			56.0	3.1											6.42	3.22								
CENTRAL MOUNTAIN 05																								
BUCHANAN	74.3M	51.0M	62.7M		86	26+	42	15+	86	37	0	0	0	0	6.15	2.80	2.45	17	0.0	0		10	4	1
BUENA VISTA	78.3M	47.4M	62.9M		92	26+	36	14	99	57	4	0	0	0	6.37	3.17	2.11	17	0.0	0		12	3	1
COVINGTON FLTR PLT	70.9	42.1	56.5	3.5	88	26	24	03	275	29	0	0	5	0	6.89	3.86	1.60	28	N 0.0	0		12	5	3
CRAIGSVILLE 2 S	M	M	M												M				0.0	0				
DALE ENTERPRISE	66.4	42.3	54.4	3.6	85	26	28	06	335	22	0	0	5	0	7.04	4.40	1.89	17	0.0	0		9	5	2
EARLEHURST	M	M	M												7.47	4.03	1.45	28	0.0	0		12	5	3
GATHRIGHT DAM	67.0	42.4	54.7	3.0	85	26	28	06	318	15	0	0	4	0	7.82	4.74	1.69	13	N 0.0	0		13	6	2
GLASGOW 1 SE	71.3	46.3	58.8		89	25	33	07+	230	52	0	0	0	0	8.39	4.29	3.04	17	0.0	0		11	5	2
HOT SPRINGS	66.5M	41.4MF	54.0MF		86	26	29	07+	314	12	0	0	6	0	8.64	5.29	1.92	28	0.0	0		12	8	2
KERRS CREEK 6 WNW	M	M	M												6.69	2.94	1.68	17	0.0	0		11	5	2
LEXINGTON	71.0	43.6	57.3	4.2	87	25	29	03	259	35	0	0	4	0	5.44	2.27	1.94	17	0.0	0		11	3	1
MILLGAP	63.1	37.0	50.1		81	26+	25	07	443	1	0	0	13	0	9.23	5.63	2.16	13	0.6	T	02	12	7	3
MTN GROVE	M	M	M												8.61	2.40	1.30	13	0.0	0		11	5	3
MUSTOE 1 SW	63.4	38.2	50.8		81	11	26	06	419	0	0	0	10	0	10.24		3.23	12	0.5	T	02	12	6	3
ROANOKE 8 N	70.4	45.9	58.2		87	25	31	07+	236	37	0	0	2	0	5.36		0.96	17	N 0.0	0		10	5	0
ROANOKE INTL AP	71.9	48.3	60.1	4.0	88	24	32	16+	191	49	0	0	2	0	5.33	1.72	1.95	16	N 0.0	0		8	4	1
STAUNTON WATER TRMTMT PLT	66.3	44.8	55.6	4.8	84	26	31	01	301	27	0	0	1	0	5.73	2.81	1.57	17	N 0.0	0		10	5	1
WAYNESBORO WTP	69.4	42.0	55.7		86	25	31	06+	294	20	0	0	6	0	7.78		3.72	17	N 0.0	0		9	5	2

VIRGINIA
201104

DAILY PRECIPITATION (INCHES)

STATION	TOTAL	DAY OF MONTH																														
		01	02	03	04	05	06	07	08	09	10	11	12	13	14	15	16	17	18	19	20	21	22	23	24	25	26	27	28	29	30	31
VIRGINIA																																
TIDEWATER 01																																
DISPUTANTA	1.68	0.06			0.37			0.49		0.08			0.04				0.30						0.15	0.02					0.07	0.10		
EASTVILLE	F 1.01	0.20		0.10	0.01	0.05		0.00 ^L	0.00 ^L	0.00 ^L	0.16 ^L		0.05				0.30						0.05	0.02					0.18	0.05		
EMPORIA 1 WNW	1.66	0.07			0.10	0.10			0.38	0.10			0.06				0.48						0.22					0.10	0.05			
FREDERICKSBURG SEWAGE	M	0.13	-	0.02	-	0.34	0.32	-	-	0.40	-	-	0.29	-	-	-	0.47	0.01	-	-	-	-	0.43	-	-	-	-	-	0.03	0.30	0.01	
HAMPTON UNIV	M 0.58	0.21	0.04			0.11			0.17														0.05									
HOLLAND 1 E	2.01	0.21		0.06	0.45	0.23	0.07			0.45	0.07												0.03				0.10	0.34				
HOPEWELL	F 1.47	0.07	0.03			0.33			0.12	0.07		0.24				0.02 ^L	1.80 ^L					0.07	0.15			0.06	0.10			0.23		
NORFOLK INTL AP R	1.21	T	0.01			0.14		0.16	0.05			T				0.61						0.02				0.11	T	0.11				
NORFOLK SOUTH	1.35	0.02	0.01			0.21		0.21	0.04	T		0.01				0.58						0.04	0.01			0.05	0.01	0.16				
NORTH	2.35	0.10		0.19		0.29			0.05				0.12										0.11						0.42			
PAINTER 2W R	1.97	0.24	0.04	0.06		0.52		0.04	0.39				0.07			0.04	0.29						0.08					0.18	0.02			
STONY CREEK 2 N	M	0.05	0.00 ^L	0.00 ^L	T ^L	0.20	0.06	0.01		0.00 ^L	0.00 ^L	0.61 ^L	T	0.05	0.01	0.00 ^L	0.00 ^L	0.60 ^L				0.00 ^L	0.00 ^L	0.00 ^L	0.12 ^L		0.10	0.03	0.01			
SUFFOLK LAKE KILBY	1.27	0.02				0.05			0.60	0.06	0.02		T			0.13						0.03	0.02			0.05	0.06	0.23				
WAKEFIELD INW R	2.46	0.03	T			0.20			0.45	0.03	0.01		0.05	0.02		1.04						0.07				0.04	0.51	0.01				
WALKERTON 2 NW	3.10		0.02			0.38		0.22				0.19				1.50						0.06	0.18			T	0.55					
WALLACETON LK DRUMMOND	3.36	0.35	0.05	0.10		0.10	0.10			0.51	0.09						1.65										0.05		0.36			
WARSAW 2 NW	3.43	0.02	0.04	0.03		0.47			0.50	0.22			0.30	0.07		0.27	0.81						0.02	0.15			0.38	0.03	0.12			
WEST POINT 2 NW	F 1.95	0.01 ^L	0.10			0.45			0.01				0.95	0.01		T ^L	1.67 ^L						T ^L	0.13 ^L			0.10	0.30				
WILLIAMSBURG 2 N	2.29	0.04	0.02			0.57			0.03	0.04			0.01			1.43						0.03				0.03	0.07	0.05				
EASTERN PIEDMONT 02																																
ALBERTA 5N	2.78	0.04	T	T		0.26	0.07			0.21	0.09			0.13		T	1.32						0.22				0.25	0.13	0.06			
AMELIA COURTHOUSE 1	M 3.48	0.06				0.54	0.04			0.60	-	0.11		0.13	0.05	0.28	0.94						0.30	-				0.02	0.41			
ASHLAND	2.17	0.04	0.02			0.17			T	0.01			0.07	0.07		0.74						0.01	0.15				T	0.77	0.12			
BREMO BLUFF	3.60					0.60			0.10	0.07	0.02		0.38	0.72		0.84							0.18	0.04		0.01	0.24	0.40				
BUCKINGHAM	2.86	0.21				0.38	0.07			0.28	0.17			0.40		0.28	0.27					0.01	0.30				0.03	0.10	0.36			
CAMP PICKETT R	2.78					0.30				0.13	0.13			0.15		1.70							0.03					0.04	0.30			
CHASE CITY	2.49	0.03				0.38				0.28				0.23		0.15	1.20													0.22		
CLARKSVILLE	2.35	0.05				0.20				0.25	0.65			0.10			0.65						0.45									
CORBIN	3.52	0.16		0.04		0.48	0.14			0.66				0.09			0.81						0.52						0.08	0.54		
CROZIER	M 3.06	0.06		0.11		0.12	0.13	-		0.03	0.04			0.09		0.12	0.72						0.20	0.02					0.67	0.75		
FARMVILLE 2 N R	4.89	0.06	T			0.24	0.04			0.18	0.34			1.18		0.95							0.25				T	1.00	0.65			
GREENBAY 3 NE	2.70	0.03				0.33				0.24	0.15	0.01		0.08		0.10	1.13						0.28		0.01			T	0.34			
JOHN H KERR DAM R	3.17	0.05				0.08				0.23	0.34			0.15		2.00							0.31				0.01					
KEYSVILLE 2 S	4.26	T	0.02			0.03	0.02			0.05	0.04	T	T	0.85		T	1.95						0.50				T	T	0.80			
LOUISA	3.72	0.07				0.74			0.34	0.01			0.02	0.23		1.12							0.08	0.34			0.03	0.74				
PALMYRA 3S	4.28	0.13				0.53	0.11			0.05	0.03			0.47			0.74						0.27					1.40	0.55			
PETERSBURG	M 3.79	0.06				0.32	0.06			0.20	0.15	-		0.26		2.34							0.20	0.02			-		0.18			
POWHATAN	1.91	0.05				0.15				0.24						1.04							0.21							0.22		
RICHMOND INTL AP R	2.63	0.01	0.05			0.15		0.01	0.05				0.47			0.90							0.18	T			T	0.14	0.67			
SANDSTON	F 2.06	0.11		0.03		0.13	0.04			0.02	0.02			0.25			1.24						0.20					0.02	0.00 ^L	0.64 ^L		

VIRGINIA
201104

DAILY PRECIPITATION (INCHES)

STATION	TOTAL	DAY OF MONTH																														
		01	02	03	04	05	06	07	08	09	10	11	12	13	14	15	16	17	18	19	20	21	22	23	24	25	26	27	28	29	30	31
WINTERPOCK 4 W WESTERN PIEDMONT 03	3.05	0.22	0.01	T		0.21	0.02			0.34	0.07	T		0.02				1.11					0.24						0.13	0.68		
ALTAVISTA	4.92	0.05			0.48	0.10				0.17	0.58		0.06	0.43		0.01	0.35	0.10					0.37					0.59	1.00	0.63		
APPOMATTOX	M 3.99	0.10			-	0.45	0.04			0.15	0.20	-		0.21				1.50					0.30	0.02				0.02	0.60	0.40		
BEDFORD 4 NW	5.03	0.10	0.03	0.03		0.79				0.14	0.71		0.53	0.17			0.63	0.77					0.28					0.12	0.51	0.22		
BROOKNEAL	3.27	0.04				0.60				0.53	0.54		0.01	0.25			0.11	0.58				0.01	0.33				0.01	0.26				
CHARLOTTESVILLE 2W	4.21	0.09		0.02		0.33	0.02			0.20	0.03	T	0.30	0.57			0.28	0.86				T	0.55				0.43	0.35	0.18			
CHATHAM	4.17	0.10	0.01			0.50	0.11			0.40	0.60	0.01		0.10			0.36	0.48	0.01			0.05	0.37	0.01				1.05	0.01			
CONCORD 4 SSW	3.60	0.05				0.46	0.05			0.34	0.30			0.11			0.14	0.91					0.35					0.22	0.31	0.36		
DANVILLE	3.23	0.05				0.21				0.26	0.55		0.01	0.12			0.10	1.10					0.01	0.15				0.52	0.15			
DANVILLE REGIONAL AP R	3.16		T			0.15			0.42	0.54			0.15				1.20					0.36	0.02			0.15	0.12	0.05				
FREE UNION	M	0.15		0.01		0.38		-	-	-	-	-	-	*	*	*	*	*	*	*	*	*	0.03 _a	-	-	-	-	-	-	-	-	
HOLCOMB ROCK	6.62	0.19		0.18		0.83	0.16			0.22	0.62		0.51	0.25			0.25	1.95			T		T	0.26			0.33	0.34	0.53			
HUDDLESTON 4 SW	4.24	0.08				0.40	0.05			0.31	0.68		0.05	0.61			0.12	0.62					0.33				0.03	0.03	0.03	0.93		
LYNCHBURG #2	4.60	0.09				0.39	0.11			0.44	0.46		0.23	0.46			0.14	0.57					0.30				0.03	0.27	1.11			
LYNCHBURG INTL AP	5.36		T		0.03	0.76			0.44	0.44			0.59	T			0.43						0.26	0.03		0.32	0.31	1.75				
MARTINSVILLE FLTR PLT	3.53	0.06				0.57				0.48	0.68		0.21	0.20			0.39	0.43					0.05	0.28			T	0.18				
MEADOWS OF DAN 5 SW	7.54	0.04	0.08			1.33	0.07			0.78	0.62		0.68	0.26			1.52	0.33					0.01	0.20				0.22	1.10	0.30		
MONTEBELLO FISH CULTURAL STN	M 9.75	0.28				1.27				0.03	0.03		0.48	0.73		0.57	3.50	-									-	0.62	2.00	0.24		
MONTICELLO	5.71			0.11		0.34	0.03			0.17	0.20		0.06	1.14	0.02		0.10	0.90						0.50				1.29	0.85			
PEDLAR DAM	5.95	0.28		0.02		0.73	0.12			0.18	0.37	T	0.28	0.49			0.22	1.70					T	0.15				0.28	0.59	0.54		
ROCKY MT R	6.59	0.04	T	0.01		0.70	0.01			0.58	0.63		0.35	0.12			1.15	0.61					0.02	0.36				0.53	0.78	0.70		
SOUTH BOSTON	3.98	0.05				0.30	0.20			0.17	0.89			0.08			0.05	0.84						0.55					0.05	0.80		
STUART	5.58	0.04	0.03			0.92				0.65	1.30		0.28	0.13			0.74	0.55					0.06	0.19				0.13	0.44	0.12		
TYE RIVER 1 SE	4.55	0.12				0.52				0.25	0.26		0.32	0.45			0.55							0.26				0.45	0.91	0.46		
WOOLWINE	6.35	0.06				0.75	0.21			1.14	0.52		0.24	0.18			1.56	0.08					T	0.18				0.34	0.23	0.86		
NORTHERN 04																																
BIG MEADOWS	M					1.10	1.15			0.43	0.01		1.28	1.33			0.72	-	-	-	-	-	-	-	-	-	-	-	-	-	-	-
BOSTON 4 SE	M 7.53	0.17				0.45		0.62	-	0.21				1.47			1.97							0.68		0.24			1.02	0.70		
CASTLETON	7.33	0.23	0.02			0.37		0.13		0.35	0.02		0.46	1.07	0.02			2.78					0.01	0.70	0.04	0.02		1.11				
EDINBURG	7.30	0.17		T		0.38				0.24			0.50	1.44			0.02	1.57			0.04			0.73	0.04	0.18	0.19	1.80				
FRONT ROYAL	M 8.06	0.20	0.04	0.10	0.02	0.42	0.19			0.51				1.75	0.06	-	0.03	3.15			0.09			0.55	0.08	0.12	0.10	0.55	0.10			
LINCOLN	M	-	-	-	-	-	-	-	-	-	-	-	-	2.12	-	-	-	1.68	-	-	-	-	-	0.28	-	0.80	-	-	-	2.73	-	
LURAY 5 E	6.61	0.17		0.05		0.88	0.10			0.18			0.96	0.78			1.02	1.31			0.01		0.01	0.69	0.07	0.01		0.37				
MADISON	F 4.60			T		0.60							0.54				2.40						0.05	0.00 ^L	0.00 ^L	0.70 ^L		0.06	0.95			
MANASSAS	M	0.15		0.07	0.02	0.40				0.50	-		0.30	-	-	-	-	-	-	-	-	-	-	1.45 ^L	-	0.65		0.30	-			
MT WEATHER	F 7.10	0.15	0.02		0.03	0.41	0.20			0.47			0.08	1.64 ^L	0.12 ^L			2.70			0.24			0.53	0.13	0.34	0.01		1.30	0.49		
PIEDMONT RSCH STN	3.74	0.12		0.03		0.36	0.03			0.39			0.36	0.58			0.12	0.76					T	0.46				0.01	0.38	0.14		
SOMERSET	5.37	0.10		0.01		0.38	0.03			0.37	0.01		0.39	1.02			0.19	1.30					T	0.43	0.02			0.01	0.89	0.22		
SPERRYVILLE	9.87	0.25		0.03	0.01	0.29	0.08			0.22	0.01			1.76	0.04			3.93				T		0.79	0.02	0.11	T		0.74	1.59		
STAR TANNERY	9.19	0.22		0.09		0.54	0.09			0.62			0.66	1.82	0.09		0.18	2.10						0.47	0.20	0.21	0.04		1.40			
STERLING RCS	4.55	0.18	0.01	0.02	T	0.31	0.10		0.01	0.36			T	1.13	0.01		T	1.44		T	T	0.06		0.40	0.08	0.01		0.16	0.27			

VIRGINIA
201104

DAILY PRECIPITATION (INCHES)

STATION	TOTAL	DAY OF MONTH																														
		01	02	03	04	05	06	07	08	09	10	11	12	13	14	15	16	17	18	19	20	21	22	23	24	25	26	27	28	29	30	31
VIENNA	4.50	0.45		0.03	0.07	0.26			0.23	0.42		0.01	0.02	0.62			1.62				0.02			0.52	0.02				0.21			
WARRENTON 3 SE	M 0.12	0.12		T	0.28					0.43	-		0.42 ^L	0.52 ^L			-	1.34 ^L					T	-	-	0.89			0.78 ^L	0.13 ^L		
WASHGTN DULLES INTL AP	5.21	0.07	0.02	T	0.31			0.42	T		T	0.69	0.30			1.24				0.02			0.40	0.08	0.01			1.33	0.32			
WASHINGTON REAGAN AP	3.20	0.08	0.04	T	0.42			0.35	0.01		T	0.19	0.31			0.60				0.01			0.36	0.05	0.74	T	T	0.01	0.03			
WINCHESTER	7.71	0.23	T	0.09	0.43	0.04		T	0.39			0.35	1.06	0.04		0.03	1.86				0.76			0.40	0.12	0.22	0.02		1.67			
WINCHESTER 7 SE	M 7.27	0.01	0.05	-	0.38	0.06	-	-	0.45	0.02	-	0.13	1.51	0.05	-	1.88	-	-		0.43			0.42	0.25	0.55	0.09	0.02	0.75	0.20	-	0.02	
WOODSTOCK 2 NE	M 6.47	0.20		T	0.35	0.01						-	1.44			0.01	1.86				0.08			0.57	0.01	0.27	0.07		1.60			
CENTRAL MOUNTAIN 05																																
BUCHANAN	6.15	0.23			0.65				0.28	0.66		0.26	0.18			0.38	2.45					T	0.15					0.09	0.82			
BUENA VISTA	6.37	0.19			0.73				0.35	0.38		0.22	0.28			0.48	2.11					T	0.13					0.29	0.86	0.35		
COVINGTON FLTR PLT R	6.89	0.10	T	0.14	0.78	0.02			0.19	0.64		0.38	1.25			0.25	1.05					0.02	0.27					0.20	1.60			
CRAIGSVILLE 2 S	M 0.23	0.01	0.02	-	0.91	-	-	-	0.27	0.19	-	-	1.04	-	-	2.00	2.48	-	-	0.02	-	-	-	0.76	0.01	-	-	0.02	2.01	0.01	-	
DALE ENTERPRISE	7.04	0.11	0.01		0.45	0.03			0.28	0.08		0.58	0.95	0.01		0.05	1.89	0.01		0.01		0.02	0.53	0.02	0.05	0.14	0.08	1.72	0.02			
EARLEHURST	7.47	0.14	0.14	0.50	1.15	0.09			0.46	0.76		0.43	0.45			0.42	1.20					0.22						0.06	1.45			
GATHRIGHT DAM	7.82	0.16	0.03	0.18	0.70	0.02			0.20	0.59	0.01	0.72	1.69			0.20	0.71					0.03	0.49			0.12	0.35	1.62				
GLASGOW 1 SE	8.39	0.26	T		0.77	0.02			0.25	0.53		0.27	0.42			0.70	3.04					T	0.18					0.46	1.40	0.09		
HOT SPRINGS R	8.64	0.26	T	0.21	0.72				0.26	0.55	0.02	0.81	0.76			0.57	1.53					0.02	0.60			0.03	0.38	1.92				
KERRS CREEK 6 WNW	6.69	0.11		0.08	0.81	0.02			0.24	0.38		0.89	0.19			1.16	1.68					0.26	0.26					0.61				
LEXINGTON	5.44	0.20		0.06	0.78				0.43	0.35		0.55	0.42			0.13	1.94						0.14					0.02	0.21	0.21		
MILLGAP R	9.23	0.14	0.04	0.08	0.68	0.03			0.16	0.19		0.13	2.16			0.26	1.12					0.02	0.89	0.01		0.59	0.64	2.08	0.01			
MTN GROVE	8.61	T	T		0.98	T			0.38	0.52		0.48	2.40			0.35	0.40					T	1.10			0.30	0.35	1.35				
MUSTOE 1 SW	10.24	0.04	0.17	0.04	0.14	0.69		0.21	0.19			3.23	0.12			1.77	0.02					0.86	0.08	T	0.52	0.14		2.02				
ROANOKE 8 N	5.36	0.18	0.04	0.06	0.81	0.02			0.27	0.70	0.01	0.25	0.08			0.59	0.96	0.02					0.27					0.21	0.89			
ROANOKE INTL AP	5.33		0.04		0.06	0.73		0.24	0.76			0.21				1.95						0.23	0.03			0.20	0.02	0.86				
STAUNTON WATER TRMTMT PLT	5.73	0.15		T	0.60	T			0.12	0.11		0.83	0.80			0.45	1.57						0.70				T	0.40				
WAYNESBORO WTP	7.78	0.24			0.60			0.23	0.08		0.01	1.33				0.11	3.72					0.57					0.69	0.20				
WILLIAMSVILLE 2 S R	M	-	-	-	-	-	-	-	-	-	-	-	-	-	-	-	-	-	-	-	-	-	-	-	-	-	-	-	-	-	-	
SOUTHWESTERN MOUNTAIN 06																																
ABINGDON 3S	M 5.39	0.05	0.20		0.49	1.24			0.80			0.78	0.02			0.28	0.08					-	-			0.26			1.19			
BIG STONE GAP	8.02	0.19	0.12		1.57	0.06				0.35		0.74	0.35			1.70					0.43	0.11	0.05	0.17		0.09	0.03	2.02	0.04			
BLACKSBURG NWSO R	5.15	0.08	0.05	T	0.92	0.07			0.70	0.53	T	0.60	0.28			0.11	0.56			T			0.01	0.22	T		0.01	1.01				
BLAND	4.60	0.10	0.05	0.09	0.86	0.09			0.53	0.60		0.54	0.03			0.10	0.53					T		0.15		0.03		0.90				
BURKES GARDEN	5.04	0.14	0.11		1.33	0.21			0.57	0.60		0.38	0.05			0.21	0.44							0.16		0.01		0.83				
CHRISTIANSBURG	5.01	0.05	0.09	0.02	1.05	0.04			0.74	0.57		0.61	0.25			0.24	0.16							0.21				0.26	0.72			
CLINTWOOD 1 W	6.73	0.19	0.08	T	1.05	0.06			0.18	0.40		0.36	0.40			1.29	0.38			0.07	0.24	0.06		0.16		0.13		1.68				
COPPER HILL	8.60	0.09	0.07	0.02	0.67	0.30			0.95	0.15		0.21	0.25			0.90	2.83						0.01	0.28			0.10	0.76	1.01			
GALAX RADIO WBRF	M	-	0.09	-	-	0.95	-	-	-	0.45	-	0.32	0.04	-	-	1.58	0.55	-	-	-	-	-	-	0.04	-	-	0.03	0.29	0.77	-	-	
GALAX WTP	5.34		0.14		0.73	0.02			0.31	0.23		0.32	0.06			1.60	0.76							0.05			0.20	0.92				
GRUNDY	6.50	0.22	0.14	0.02	1.75	0.25			0.16	0.93		0.32	0.24			0.57	0.36					0.10	0.05			0.05	0.04				1.30	
JOHN FLANNAGAN LAKE	FM 5.23	0.21	-	-	0.20	-	0.25		-	-	3.00 ^L	0.45	0.33			1.29	0.24					0.15	0.05		0.12	0.21	0.24		1.48	0.01		
LAFAYETTE 1 NE	5.35	0.10	0.03	0.02	0.85	0.03			1.24	0.69		0.34	0.19			0.11	0.20				T		0.03	0.23			0.27	1.02				

VIRGINIA
201104

DAILY PRECIPITATION (INCHES)

STATION	TOTAL	DAY OF MONTH																														
		01	02	03	04	05	06	07	08	09	10	11	12	13	14	15	16	17	18	19	20	21	22	23	24	25	26	27	28	29	30	31
LEBANON	7.58	0.08	0.23			1.70	0.20			0.77	0.58		0.44	0.15		0.92	0.23				0.10		0.06			0.05	0.03	2.00	0.04			
NORA 4 SSE	6.92	0.18	0.13	T		1.95	0.08			0.37	0.79		0.40	0.39		0.83	0.19			0.01	0.02		0.08			0.20	0.12	1.18				
NORTH FORK LAKE	M	0.12	-	-		1.22			-	-	-	0.98 ^L	0.74	-	0.34 ^L	-	-	-		0.40	0.05		-		0.20 ^L	0.05	T	1.99	-	-		
PULASKI 2 E R	4.88	T	0.10			0.90	T			0.32	0.52		0.59	0.33		0.02	0.55					T	0.17				0.08	1.30				
RADFORD 3 N	5.80	0.10	0.04	0.02		1.10	0.04			0.60	0.50		0.66	0.24		0.10	0.50						0.27				0.11	1.52				
RICHLANDS	6.14	0.10	0.10			1.40	0.14			0.09	0.38		0.18	0.08		0.76	0.28	0.01		0.01		0.01	0.25			0.32	0.11	1.92				
SALTVILLE 1N	6.06	0.01	0.21			1.50	0.13			0.13	1.21		0.38	0.15		0.33	0.18				0.05		0.06			0.34		1.38				
STAFFORDSVILLE 3 ENE	4.93	0.06	0.01			0.84	0.03			0.30	0.54		0.29	0.16		0.20	0.70						0.25				0.10	1.44	0.01			
TROUT DALE 3 SSE	4.97	0.18	0.19			1.02	0.11			0.25	0.36		0.41	0.12		0.95	0.54						0.15			0.04		0.65				
WILLIS R	7.94	0.08			T	0.97				0.98	0.78		0.31	0.43		1.25	0.32					0.06	0.10				0.68	1.27	0.71			
WISE 3E R	8.25	0.05	0.17		0.22	1.57				0.67	0.03		0.94			2.15	0.13			0.23		0.17			0.07	0.11	0.07	1.67				
WYTHEVILLE 1 S R	4.95	0.15	0.11			1.20	0.05			0.56	0.70		0.54	0.06		0.37	0.65						0.14			0.02		0.40				

VIRGINIA
201104

DAILY TEMPERATURES (°F)

STATION	OB. TIME	MAX/MIN	DAY OF MONTH																															AVERAGE
			01	02	03	04	05	06	07	08	09	10	11	12	13	14	15	16	17	18	19	20	21	22	23	24	25	26	27	28	29	30	31	
ASHLAND	18	MIN	38	34	37	37	37	31	35	46	43		43	63	52	40	41	53	43	51	58	64	57	42	42		54	65	66	66	49	44		47.5
		MAX	50	61	64	88	84	67	80	70	55	75	86	81	67	73	72	69	70	80	81	86	78	63	77	88	87	87	83	80	72	68		74.7
BREM0 BLUFF	07	MIN	38	33	31	49	48	31	49	45	43	50	58	65	53	39	42	53	43	50	59	67	55	41	45	59	62	67	67	64	49	44		50.0
		MAX	55	60	68	88	76	69	84	56	51	73	88	78	65	77	78	69	74	82	85	88	71	59	77	90	89	90	89	81	76	77		75.4
CAMP PICKETT	08	MIN	35	30	29	46	43	30	43	47	43	47	59	57	45	37	39	56	43	47	55	36	44	39	47	52	56	67	56	54	43	41		45.5
		MAX	44	51	59	66	86	64	66	78	57	51	65	80	79	67	72	73	68	69	79	83	84	69	55	77	86	85	84	80	79	79		71.2
CHASE CITY	17	MIN	38	32	33	33	54	30	30	46	44	44	48	60	51	38	39	43	43	43	50	60	57	45	46	49	62	67	66	67	47	42		46.9
		MAX	47	54	61	67	84	63	67	78	60	52	67	81	74	70	74	72	67	69	79	82	83	71	57	75	85	83	82	82	79	72		71.2
CLARKSVILLE	07	MIN	41	32	32	44	57	33	36	44	46	46	46	62	50	38	39	51	43	44	55	66	55	49	50	56	62	67	67	69	46	43		49.0
		MAX	46	54	63	69	85	63	67	79	79	52	66	84	74	71	76	73	69	70	80	84	85	70	58	75	87	84	83	83	79	75		72.8
CORBIN	09	MIN	39	38	37	42	56	36	35	48	46	46	50	62	50	41	50	54	47	50	51	57	60	52	50	52	66	66	66	68	51	47		50.4
		MAX	50	56	62	88	80	66	74	59	52	72	86	77	60	71	71	66	70	80	72	86	80	53	76	88	88	86	85	78	71	66		72.3
CROZIER	07	MIN	37	36	29	48	45	30	47	46	43	48	59	59	52	39	40	51	45	55	61	56	52	38	45	60	58	66	67	65	49	42		48.9
		MAX	42	51	57	63	86	62		80	54	66	67	84	71	62	72	74	66	69	79	81	84	67	54	79	86	85	83	85	85	71		71.2
FARMVILLE 2 N	07	MIN	37	34	32	35	54	29		44	42	43	50	53	50	36	38	51	42	43	57	60	53	38	45	48	58	65	65	65	45	41		46.7
		MAX	45	51	57	65	85	61	66	78	55	55	66	82	73	66	72	73	68	70	80	82	82	70	56	75	86	86	84	82	74	73		70.6
GREENBAY 3 NE	09	MIN	37	33	33	32	55	32	32	46	42	42	46	46	49	39	38	41	44	45	47	58	56	45	46	46	59	59	66	67	46	42		45.6
		MAX	44	51	58	66	85	58	66	79	54	49	67	82	73	68	73	73	67	69	80	82	83	72	55	76	86	85	84	85	75	73		70.6
JOHN H KERR DAM	08	MIN	38	33	33	45	54	33	45	45	43	46	49	62	50	37	44	54	45	50	58	64	57	44	47	50	50	65	66	69	48	41		48.8
		MAX	46	53	64	71	83	64	68	80	65	53	68	82	74	73	75	74	52 ¹	71	80	84	85	71	58	77	87	88	85	85	80	75		73.1
LOUISA	18	MIN	40	40	38	42	61	35	40	48	46	46	50	62	53	40	46	51	71 ¹	52 ¹	59	63	58	51	51	52	68	68	68	70	55	45		51.6
		MAX	51	57	63	87	86	66	79	77	48	69	86	83	71	73	73	68	71	79	79	86	85	66	75	87	87	86	83	80	79	70		75.0
PALMYRA 3S	06	MIN	38	31	31	41	47	27	50	45	42	44	57	60	50	33	37	52	45	55	60	61	52	35	45	58	54	65	66	65	43	39		47.6
		MAX	44	51	57	63	82	58	65	78	51	47	68	84	73	61	71	71	65	70	79	81	85	66	53	73	86	85	84	82	76	71		69.3
PETERSBURG	08	MIN	37	31	27	27	37	28	28	46	42	42	46	60	49	33	33	36	39	43	49	51	51	36	42	46	50	54	66	66	42	39		42.5
		MAX	46	52	60	65	86	66	66	79	57	54		82	77	67	72	71	69	69	80	82	85	69	56	78	87	86		84	82	73		71.4
RICHMOND INTL AP	24	MIN	40	34	40	37	55	35	34	47	46	46	60	55	42	42	42	46	46	54	57	56	43	48	50	63	67		67	51	46		48.2	
		MAX	52	59	65	87	72	67	80	57	57	72	84	79	66	73	71	69	70	81	83	86	70	55	79	88	88	87	84	82	74	71		73.6
SANDSTON	07	MIN	36	36	37	51	45	32	49	46	45	50	56	58	50	42	43	54	46	52	56	63	46	42	48	57	66	67	67	63	50	44		49.9
		MAX	43	50	58	65	87	64	66	79	57	57	73	83	81	64	72	71	68	68	80	83	86	68	55	78	89	88	86	83	80	74		71.9
WESTERN PIEDMONT 03		MIN	38	34	34	34	54	30	30	44	44	44	48	60	55	40	40	40	45	45	50	55	57	40	44	48	57	65	66	67	50	44		46.7
		MAX	46	51	57		84	58	65	77	54	69		82	73	67	72	73	70	70	78	82	83	70	55	73	85	84	83	82	77	72		71.1
APPOMATTOX	07	MIN	37	36	36		34	34	32	46	42	41		46	48	41	40	40	47	44	47	57	57	46	47	47	57	61	66	66	48	42		45.9
		MAX	45	51	54	62	87	55	66	79	50	46	70	85	67	62	72	73	66	70	79	72	86	66	51	72	87	87	83	79	78	69		69.0
CHARLOTTESVILLE 2W	08	MIN	36	36	38	40	45	37	38	45	41	41	44	58	49	46	48	50	44	44	57	57	55	43	43	47	58	63	64	65	53	47		47.7
		MAX	46	52	61	68	83	57	65	77	58	49	69	82	73	67	72	71	72	71	78	84	81	69	54	71	85	84	79	83	78	74		70.4
DANVILLE	07	MIN	34	30	27	27	53	28	28	42	45	44	48	60	48	35	35	38	43	42	43	54	53	47	46	48	51	53	65	64	42	42		43.8
		MAX	47	54	63	73	87	63	69	81	68	52	74	88	75	70	77	76	76	74	82	89	85	74	57	78	90	87	88	87	82	78		74.8
DANVILLE REGIONAL AP	24	MIN	38	36	33	33	58	33	34	44	48	47	49	63	50	43	42	44	49	47	47	57	60	53	50	55	59	68	69	53	47		48.6	
		MAX	53	62	69	83	71	66	77	66	50	71	84	73	69	74	73	72	70	78	84	81	70	55	74	86	83	85	84	79	73	74		73.0
		MIN	34	34	30	56	43	30	42	48	45	47	57	52	45	37	42	52	43	46	55	59	50	48	47	54	60	66	67	55	45	41		47.7

VIRGINIA
201104

DAILY TEMPERATURES (°F)

STATION	OB. TIME	MAX/MIN	DAY OF MONTH																															AVERAGE		
			01	02	03	04	05	06	07	08	09	10	11	12	13	14	15	16	17	18	19	20	21	22	23	24	25	26	27	28	29	30	31			
FREE UNION	08	MAX	46	51	57	64	88	58																											M	
		MIN	35	35	29	31	36	29																											M	
LYNCHBURG #2	07	MAX	46	51	55	56	84	57	66	78	56	48	71	83	73	65	72	71	72	72	78	83	84	70	54	75	87	85	82	79	77	73		70.1		
		MIN	34	33	32	31	43	32	32	39	43	42	46	58	44	36	37	39	45	44	44	50	53	44	47	48	52	54	66	67	48	41		44.1		
LYNCHBURG INTL AP	24	MAX	50	55	66	85	61	65	77	59	48	70	82	74	64	73	72	72	70	78	84	84	70	54	74	86	85	83	82	77	73	72		71.5		
		MIN	32	33	34	48	39	30	44	46	42	45	54	51	42	36	41	50	45	45	52	61	53	47	47	52	56	63	66	58	52	39		46.8		
MARTINSVILLE FLTR PLT	07	MAX	45	52	60	70	84	56	67	79	74	51	73	85	74	69	75	75	74	72	79	85	83	73	55	72	87	84	84	82	88	82		73.0		
		MIN	36	30	27	50	27	28	36	47	46	48	62	47	34	34	39	39	41	41	49	52	46	46	48	48	52	66	64	43	40		43.1			
MEADOWS OF DAN 5 SW	07	MAX	43	47	56	68	81	48	64	77	70	52	73	81	68	69	72	70	71	68	76	81	83	73	52	66	84	79	73	76	74	74		69.0		
		MIN	33	33	30	30	43	30	30	40	47	45	47	48	43	38	38	47	41	41	43	48	53	50	46	48	51	52	62	61	44	42		43.5		
MONTEBELLO FISH CULTURAL STN	07	MAX	40	43	46	60	80	47	63	73	73	46	73	81	65	54	69	64		64	65	76	81	81	76	82		81	74	73	70	63		66.5		
		MIN	30	32	28	28	42	27	27	40	39	38	44	55	41	36	35	35		35	35	53	47	39	41	45		50	62	62	45	34		40.2		
MONTICELLO	08	MAX	44	48	53	60	82	55	63	75	49	44	67	81	67	60	68	68	63	68	76	71	82	64	51	70	83	83	80	78	76	68		66.6		
		MIN	35	35	37	38	44	37	36	37	39	40	40	56	48	43	44	44	46	46	53	54	57	43	43	44	56	59	60	63	54	47		45.9		
ROCKY MT	07	MAX	44	50	57	71	84	54	67	79	62	62	76	84	74	67	74	73	71	79	85	84	72	55	75	87	85	82	79	76	74		71.8			
		MIN	36	37	31	34	49	29	29	43	46	44	44	59	46	36	36	39	39	44	48	55	56	47	47	46	52	60	65	62	52	41		45.1		
SOUTH BOSTON	07	MAX	46	52	62	69	84	62	67	78	60	51	71	83	73	69	74	72	72	70	79	84	82	72	56	75	86	83	84	83	78	74		71.7		
		MIN	38	31	30	30	55	30	31	47	45	45	48	62	50	37	37	41	43	44	45	56	55	50	49	50	54	65	67	69	46	42		46.4		
STUART	07	MAX	45	52	57	70	83	56	66	79	71	50	75	84	73	73	74	72	73	71	78	84	84	74	53	68	86	86	79	78	79	75		71.6		
		MIN	35	32	30	30	48	29	30	41	47	47	47	62	45	36	36	44	43	42	43	49	55	50	46	48	50	50	66	66	51	42		44.7		
TYE RIVER 1 SE	06	MAX	50	53	60	68	85	60	68	80	57	50	70	85	72	70	75	73	72	72	80	82	85	73	55	75	88	87	80	81	80	70		71.9		
		MIN	37	35	34	35	48	31	32	41	41	42	45	60	47	36	37	40	44	45	50	56	57	43	44	49	56	57	64	65	54	43		45.6		
NORTHERN 04																																				
BIG MEADOWS	09	MAX	34	33	36	67	74	46	54	65	39	57	57	75	50	48	57	56																	M	
		MIN	25	24	24	31	30	27	44	34	33	37	53	36	39	37	43	39																	M	
BOSTON 4 SE	07	MAX	36	49	56	61	85	57	66		49	48	66	84	62	62	71	71	63	70	77	68	86	86	46	70	86	86	86	81	79	79		68.5		
		MIN	35	32	34	34	37	29	29		40	40	45	49	50	37	39	38	43	45	55	48	48	36	41	41	58	56	56	66	45	45		43.1		
CASTLETON	08	MAX	44	51	57	61	85	71	66	73	54	48	64	85	61	58	72	71	61	69	77	67	86	65	46	71	86	87	84	81	80	68		68.3		
		MIN	35	34	36	40	46	32	34	42	40	41	44	57	49	41	42	49	43	49	50	49	49	41	43	45	59	59	66	68	53	46		46.1		
EDINBURG	07	MAX	44	46	50	59	82	49	65	72	49	47	70	83	56	54	70	68	60	66	74	60	81	63	48	74	80	85	81	81	75	60		65.1		
		MIN	33	33	33	34	34	30	29	35	39	39	45	52	47	35	36	35	41	42	47	45	46	35	42	48	55	55	58	58	49	40		41.7		
FRONT ROYAL	07	MAX	42	47	48	58	87	59	68	72	48	48	65	88	88	56				71	65	69	76	70	85	64	64	76	84	87	86	82	76	76		69.1
		MIN	32	34	39	38	46	38	34	41	41	40	40	57	49	44				41	47	44	48	51	50	41	41	43	44	60	66	66	55	50		45.5
LINCOLN	07	MAX	41	48	52	58	83	51	63	66	44	49	65	83	58	55	68	66	62	66	75	62	83	63	62	72	84	85	84	83	81	73		66.2		
		MIN	35	28	33	38	43	31	31	41	40	41	45	59	49	42	39	48	45	43	43	46	48	38	43	45	55	58	67	67	47	47		44.5		
LURAY 5 E	08	MAX	43	45	49	59	86	46	65	74	52	49	72	87	57	69	70	70	67	68	76	74	83	63	57	76	85	85	83	82	77	63		67.7		
		MIN	33	31	34	40	46	28	38	45	40	38	46	56	48	34	40	47	43	45	52	51	47	39	43	52	55	62	60	64	48	37		44.7		
MADISON	08	MAX	48	54	57	65	87	59	67	76	53	50	68	86	65	63	73	71	66	71	79	70	87	67	50	73	88	87	84	82	81	71		69.9		
		MIN	39	36	39	41	43	36	40	47	44	44	48	58	51	41	42	46	48	50	56	55	54	41	45	49	57	61	67	67	53	48		48.2		
MANASSAS	07	MAX	42	49	53	61	88	54	66	75	52		72	87																				M		
		MIN	36	34	38	39	48	32	37	45	42		52	59																					M	
MT WEATHER	07	MAX	42	43	47	54	80	55	59	72	45	44	59	80	55	52	67	67	58	63	72	64	81	59	43	67	78	83	81	77	75	60		62.7		

VIRGINIA
201104

DAILY TEMPERATURES (°F)

STATION	OB. TIME	MAX/MIN	DAY OF MONTH																															AVERAGE
			01	02	03	04	05	06	07	08	09	10	11	12	13	14	15	16	17	18	19	20	21	22	23	24	25	26	27	28	29	30	31	
PIEDMONT RSCH STN	08	MIN	31	32	35	37	44	33	34	40	38	41	55	47	42	44	44	40	53	49	44	40	39	42	60	63	63	63	51	43	44.2			
		MAX	44	49	55	61	85	58	65	77	50	46	68	83	67	60	70	70	66	68	77	69	84	64	49	73	85	85	84	81		78	68	
SOMERSET	07	MIN	36	34	35	41	45	31	36	45	41	42	44	58	50	37	44	49	45	49	55	53	52	44	43	46	60	65	66	66	44	47	46.8	
		MAX	45	50	56	61	84	58	65	78	50	46	69	83	66	61	70	70	67	69	77	69	85	65	50	72	85	85	82	81	79	69		
SPERRYVILLE	06	MIN	37	34	33	38	39	29	40	45	41	42	44	58	50	36	38	43	46	49	56	49	52	37	44	47	57	62	64	68	49	45	45.7	
		MAX	45	48	54	59	82	57	66	72	49	46	64	82	63	59	71	69	61	67	74	66	83	65	45	70	84	83	81	79	77	63		
STAR TANNERY	07	MIN	35	31	32	37	36	31	30	38	40	40	42	53	50	39	42	41	46	45	45	48	47	38	39	44	56	61	63	66	49	40	43.5	
		MAX	41	47	55	55	83	50	63	68	47	52	76	86	52	51	69	64	65	66	74	53	57	61	61	75	79	88	84	82	76	76		
STERLING RCS	07	MIN	32	31	36	32	38	27	32	44	38	40	53	51	47	42	35	45	39	41	44	43	44	33	39	56	54	64	61	61	47	44	41.6	
		MAX	47	48	51	59	86	58	64	69	51	50	68	86	63	56	69	67	63	68	78	69	87	63	48	73	86	88	86	84	79	67		
VIENNA	07	MIN	35	29	35	39	51	30	31	42	41	41	46	61	48	40	41	45	47	43	44	49	49	41	42	45	57	59	68	69	46	48	45.4	
		MAX	41	48	51	59	85	58	64	70	50	49	64	85	64	56	68	67	61	67	76	67	84	62	47	72	85	84	83	80	78	66		
WARRENTON 3 SE	08	MIN	35	32	34	39	52	32	33	43	41	42	47	61	48	42	43	48	44	46	48	53	50	44	42	45	61	67	67	67	51	48	46.8	
		MAX	50	48	59	83	57	63	70	70	70	82	63	57	68	64	68	75	66	84	62	84	84	83	81	81	81	81	81	81	81	68		
WASHGTN DULLES INTL AP	24	MIN	35	33	37	48	34	41	42	40	40	40	40	43	41	42	44	47	58	50	49	41	49	65	49	49	65	65	67	52	42	45.8		
		MAX	50	51	59	85	71	64	70	51	50	66	85	70	57	70	67	63	69	76	68	86	64	49	73	85	86	84	82	78	66		66	
WASHINGTON REAGAN AP	24	MIN	32	31	32	48	36	30	43	42	42	46	59	52	46	38	40	48	45	42	53	48	41	43	43	56	56	67	68	53	47	49	45.9	
		MAX	50	52	60	85	72	64	69	51	51	63	84	72	59	71	65	63	67	74	68	86	65	50	70	85	83	83	80	77	70	68		
WINCHESTER	07	MIN	37	36	40	49	41	36	45	43	42	49	56	52	49	46	48	49	47	51	56	52	48	43	44	57	58	64	66	61	54	51	49.0	
		MAX	41	45	48	58	85	51	64	68	49	49	65	86	56	55	71	69	58	66	75	60	84	62	45	75	79	85	83	82	75	60		
WINCHESTER 7 SE	08	MIN	34	32	37	37	40	33	35	40	39	39	46	56	49	43	45	47	44	44	47	47	42	41	45	59	61	63	64	53	44	45.1		
		MAX	46	48	57	85	51	64	68	48	48	65	86	57	56	71	67	89 ^s	67	75	62	83	63	45	76	80	85	82	80	76	63		68	
WOODSTOCK 2 NE	07	MIN	28	31	32	39	28	29	33	40	40	44	56	49	37	36	41	44	40	40	44	44	35	41	45	54	54	57	63	45	40	43	41.7	
		MAX	44	46	49	57	85	51	66	71	46	69	56	57	70	69	59	66	75	59	82	63	47	76	81	86	81	81	81	74	62	65.3		
CENTRAL MOUNTAIN 05																																		
COVINGTON FLTR PLT	07	MIN	32	31	31	35	35	31	29	37	39	45	47	35	35	38	43	41	41	46	46	37	41	47	55	55	60	60	48	41	41.5			
		MAX	46	47	50	67	87	51	68	77	65	61	80	87	64	59	76	74	74	74	75	79	80	68	55	81	87	88	82	82		74	69	
DALE ENTERPRISE	07	MIN	35	35	24	33	35	28	28	31	49	49	48	50	44	38	37	39	43	39	40	46	47	50	46	48	50	51	65	62	46	28	42.1	
		MAX	42	44	50	60	81	51	66	76	48	48	82	83	55	67	69	69	64	66	75	65	81	63	49	74	82	85	80	79	74	63		
GATHRIGHT DAM	07	MIN	33	29	30	34	40	28	30	42	38	38	41	54	46	32	37	48	41	41	49	52	46	36	40	47	52	53	61	63	51	38	42.3	
		MAX	42	43	45	62	84	46	64	74	60	58	80	84	61	56	71	68	69	64	74	81	77	65	53	78	82	85	77	78	67	62		
HOT SPRINGS	07	MIN	33	33	31	32	39	28	29	37	46	48	51	43	37	39	42	39	40	43	48	46	43	44	47	50	54	59	59	48	37	42.4		
		MAX	41	42	45	61	84	46	65	74	57	58	80	85	61	53	73	69	65	75	80	78	63	51	76	82	86	75	69	69	69			
LEXINGTON	07	MIN	31	31	30	30	41	29	29	44	45	47	48	52	42	37	38	38	18 ^s	38	44	50	45	44	43	45	45	51	62	44	36	41.4		
		MAX	44	50	53	66	83	59	71	79	59	52	82	86	71	64	71	71	70	72	76	81	86	71	54	75	87	86	79	82	78		73	
MILLGAP	07	MIN	37	34	29	36	53	30	31	30	44	44	47	52	46	36	36	36	43	43	42	47	52	45	46	47	50	52	65	66	52	38	43.6	
		MAX	40	39	41	59	80	45	62	69	52	56	77	81	56	56	69	69	64	59	70	74	72	60	46	74	77	81	72	73	64	56		
MUSTOE 1 SW	24	MIN	30	29	32	28	31	28	25	32	43	44	45	44	42	30	29	29	35	35	37	39	42	31	39	41	42	45	52	59	42	29	37.0	
		MAX	38	40	57	80	54	62	71	52	51	74	81	55	48	68	65	63	58	69	72	74	58	46	73	76	80	71	72	68	57	70		
ROANOKE 8 N	07	MIN	29	32	27	32	33	26	31	42	42	42	44	46	36	30	41	36	38	41	45	35	31	41	42	45	53	57	46	44	30	38.2		
		MAX	44	49	53	69	85	52	68	77	55	51	74	85	70	64	73	70	75	69	77	83	82	69	54	75	87	86	80	81	75		81	
		MIN	37	36	36	37	44	31	31	41	46	45	47	54	47	41	41	43	43	44	47	53	55	52	46	47	55	57	62	63	52	44	45.9	

VIRGINIA
201104

DAILY TEMPERATURES (°F)

STATION	OB. TIME	MAX/MIN	DAY OF MONTH																															AVERAGE
			01	02	03	04	05	06	07	08	09	10	11	12	13	14	15	16	17	18	19	20	21	22	23	24	25	26	27	28	29	30	31	
ROANOKE INTL AP	24	MAX	49	56	69	86	60	68	77	60	50	73	85	71	63	73	70	75	70	77	83	83	69	55	76	88	87	80	81	75	72	75	71.9	
		MIN	37	39	37	46	41	32	49	49	45	47	54	50	46	43	45	32	44	52	54	60	53	47	47	56	59	64	66	58	52	45	48.3	
STAUNTON WATER TRMTMT PLT	08	MAX	40	44	50	60	81	50	64	75	50	46	74	83	61	55	69	67	68	65	74	70	80	64	64	74	82	84	79	78	73	66.3		
		MIN	31	33	33	38	45	34	36	44	38	39	45	55	42	40	44	46	39	41	55	59	47	41	41	48	56	59	62	63	49	44.8		
WAYNESBORO WTP	07	MAX	47	52	63	84	59	67	77	53	49	71	85	64	60	69	70	67	67	76	74	82	69	54	75	84	86	81	81	74	69.4			
		MIN	33	32	31	32	31	31	32	40	41	41	48	48	36	36	36	42	42	43	46	52	52	45	46	47	52	55	65	47	42.0			
SOUTHWESTERN MOUNTAIN 06																																		
ABINGDON 3S	22	MAX	47	54	72	80	57	65	72	71	75	83	81	69	64	73	68	63	62	74	81			64	80	82	82	81	82	76	71.6			
		MIN	33	34	29	41	38	28	36	46	50	49	55	43	41	35	46	45	38	39	48			51	46	53	52	59	61	48	43.9			
BIG STONE GAP	08	MAX	40	49	57	75	73	50	66	75	75	78	84	82	55	66	74	71	63	65	74	81	75	67	69	80	82	84	81	70.8				
		MIN	30	31	30	31	38	29	29	36	52	54	55	55	37	37	39	46	38	38	43	53	50	50	53	53	52	53	58	43.7				
BLACKSBURG NWSO	07	MAX	41	44	49	66	80	47	64	73	61	52	79	80	64	61	71	66	70	65	71	79	75	64	50	77	82	81	66.7					
		MIN	31	31	30	37	38	30	31	42	46	45	45	53	41	36	40	45	38	37	40	48	47	45	44	47	49	52	59	42.3				
BLAND	07	MAX	41	43	43	70	80	45	63	71	63	74	80	79	61	61	72	64	64	63	70	78	74	65	52	73	80	81	66.8					
		MIN	30	30	29	28	38	27	27	37	36	43	43	52	40	30	30	39	36	36	36	44	47	44	44	42	44	44	64	39.0				
BURKES GARDEN	07	MAX	39	39	44	62	74	39	57	65	63	68	75	73	58	55	65	58	59	57	66	74	67	59	59	72	74	76	62.0					
		MIN	26	26	30	39	39	30	28	41	39	39	39	52	35	29	27	47	31	32	42	50	45	42	42	48	47	41	39.0					
CHRISTIANSBURG	07	MAX	40	43	48	64	77	47	67	71	62	53	78	79	61	60	72	66	69	67	71	77	75	63	51	77	82	66.0						
		MIN	31	30	34	41	41	32	33	48	45	44	47	57	41	41	41	45	37	38	46	54	48	46	43	48	55	44.2						
CLINTWOOD 1 W	07	MAX	37	46	54	72	77	47	67	76	76	75	85	84	55	64	73	71	61	67	76	82	74	64	66	82	84	69.8						
		MIN	30	30	29	29	38	27	27	32	44	52	55	55	36	31	31	37	37	37	38	47	48	47	48	51	49	40.8						
COPPER HILL	07	MAX	37	41	47	62	76	52	59	70	59	49	70	76	63	58	65	61	66	63	70	76	74	64	52	72	80	63.8						
		MIN	28	27	31	33	51	31	30	46	41	42	44	58	38	38	40	47	34	34	48	48	49	44	40	52	57	43.2						
GALAX RADIO WBRF	07	MAX	41	45	51	67	78	44	62	73	71	66	73	79	79	64	69	67	70	63	74	79	75	69	59	70	82	67.7						
		MIN	31	30	31	38	37	24	26	43	49	44	51	55	41	32	39	51	36	37	44	54	50	46	42	46	62	42.7						
GALAX WTP	07	MAX	40	43	50	65	77	45	61	71	70	64	71	78	60	61	67	64	68	62	72	78	75	67	50	69	80	65.4						
		MIN	31	31	29	31	39	29	28	34	45	42	42	52	41	32	32	39	36	37	37	45	52	48	43	46	48	40.6						
GRUNDY	07	MAX	37	47	54	73	79	46	66	75	76	73	84	84	61	64	74	71	71	71	75	84	75	67	65	83	83	70.8						
		MIN	33	32	29	29	40	30	30	36	47	52	52	55	43	36	36	40	39	41	41	50	50	49	50	51	51	42.9						
JOHN FLANNAGAN LAKE	07	MAX	35			75		47	68	77			85	83	60	63	75	72	65	67	76	84	75	65	68	83	84	71.5						
		MIN	30			29		29	29	37			48	56	39	36	36	40	40	39	42	51	48	47	52	53	52	43.4						
LEBANON	07	MAX	60	46	53	71	79	48	65	72	73	75	83	81	57	64	73	68	64	64	73	81	74	65	63	80	82	69.8						
		MIN	32	32	29	30	38	29	29	46	46	48	48	54	36	34	34	48	38	38	41	55	49	48	53	55	50	43.1						
NORA 4 SSE	07	MAX	31	43	49	64	73	44	58	68	70	69	77	77	52	59	67	64	60	61	69	76	71	59	59	75	77	64.1						
		MIN	26	26	34	39	31	31	34	48	55	57	58	52	35	35	47	51	33	34	50	56	42	42	50	54	61	44.7						
NORTH FORK LAKE	08	MAX	36			72	75	48	65				84	82								74	81	81	63		81	M						
		MIN	31			30	36	28	28				34	56									37	57	47	47		50	M					
PULASKI 2 E	07	MAX	41	45	50	68	82	47	66	75	64	62	81	83	60	64	70	68	71	66	74	81	81	65	53	79	84	68.6						
		MIN	32	32	31	31	40	29	29	47	50	48	44	54	42	34	38	41	38	39	38	50	50	46	45	49	51	42.8						
RADFORD 3 N	08	MAX	42	45	49	67	81	49	66	73	62	56	80	83	63	61	72	65	71	66	71	80	77	62	51	79	83	67.7						
		MIN	33	32	33	40	40	27	31	44	49	46	51	54	43	35	38	46	40	41	44	52	48	42	44	45	50	43.3						

VIRGINIA
201104

DAILY TEMPERATURES (°F)

STATION	OB. TIME	MAX/MIN	DAY OF MONTH																															AVERAGE
			01	02	03	04	05	06	07	08	09	10	11	12	13	14	15	16	17	18	19	20	21	22	23	24	25	26	27	28	29	30	31	
RICHLANDS	07	MAX	40	46	52	71	78	45	64	74	73	74	84	81	60	63	75	69	65	65	72	80	74	66	59	79	81	83	81	80	64	68	68.9	
		MIN	31	31	27	27	37	28	28	34	46	49	50	55	40	32	32	42	38	38	38	47	47	47	48	48	48	49	58	57	41	38		
SALTVILLE 1N	07	MAX	47	45	54	72	81	47	66	72	71	75	84	82	60	66	76	69	65	65	73	82	75	68	58	82	82	84	81	78	66	70	69.9	
		MIN	34	34	28	28	37	28	28	32	44	49	48	51	42	33	32	41	39	38	39	45	51	50	46	46	47	48	56	59	41	38		
STAFFORDSVILLE 3 ENE	07	MAX	41	46	51	68	83	49	65	74	65	61	78	82	62	61	69	66	70	65	73	80	76	62	51	79	83	81	76	77	69	67	67.7	
		MIN	32	32	31	40	41	28	28	46	49	47	48	51	42	34	34	41	38	39	40	46	48	43	45	46	46	49	64	58	48	37		
TROUT DALE 3 SSE	07	MAX	43	49	50	68	79	45	64	69	67	74	78	79	61	58	67	60	67	64	71	78	71	66	49	78	80	76	75	71	65	65	66.2	
		MIN	28	28	32	31	42	30	30	39	48	42	46	49	38	28	27	32	33	32	32	39	49	47	42	43	44	43	59	57	42	34		
WISE 3E	17	MAX	43	50	65	72	64	60	70	70	72	79	79	72 ¹	59	68	68	62	61	68	77	75	62	60	75	77	76	77	75	74	65	72	68.1	
		MIN	27	34	32	60	33	31	50	54	54	49	63	40	35	37	48	48	34	51	58	55	43	47	55	55	56	59	52	44	41			
WYTHEVILLE 1 S	07	MAX	43	45	52	72	83	47	65	72	62	76	82	81	63	65	71	67	66	63	72	80	73	68	54	80	81	82	78	77	66	68	68.5	
		MIN	32	32	29	29	36	30	28	28	38	47	48	49	41	33	32	42	37	38	36	42	50	48	46	46	46	65	58	41	36			

VIRGINIA
201104

SNOWFALL AND SNOW ON GROUND (INCHES)

STATION		DAY OF MONTH																														
		01	02	03	04	05	06	07	08	09	10	11	12	13	14	15	16	17	18	19	20	21	22	23	24	25	26	27	28	29	30	31
VIRGINIA TIDEWATER 01 WEST POINT 2 NW	SNOWFALL		T																													
	SN ON GND																															
WESTERN PIEDMONT 03 CHARLOTTESVILLE 2W	SNOWFALL	T																														
	SN ON GND																															
HOLCOMB ROCK	SNOWFALL			T																												
	SN ON GND																															
WOOLWINE	WTR EQUIV									-	-	-	-	-	-	-	-	-	-	-	-	-	-	-	-	-	-	-	-	-		
	SNOWFALL	-				T		-		-	-	-	-	-	-	-	-	-	-	-	-	-	-	-	-	-	-	-	-	-		
SN ON GND		-	-	-	-			-	-	-	-	-	-	-	-	-	-	-	-	-	-	-	-	-	-	-	-	-	-	-		
NORTHERN 04 MT WEATHER	SNOWFALL	T	-	-	-	-	-	-	-	-	-	-	-	-	-	-	-	-	-	-	-	-	-	-	-	-	-	-	-	-		
	SN ON GND	T	-	-	-	-	-	-	-	-	-	-	-	-	-	-	-	-	-	-	-	-	-	-	-	-	-	-	-	-		
SPERRYVILLE	SNOWFALL	-	-	T	-	-	-	-	-	-	-	-	-	-	-	-	-	-	-	-	-	-	-	-	-	-	-	-	-	-		
CENTRAL MOUNTAIN 05 MILLGAP R	SNOWFALL	T	0.2	0.4																												
	SN ON GND	T	T																													
MUSTOE 1 SW	WTR EQUIV																															
	SNOWFALL	0.1	0.4	T		T																										
SN ON GND		T	T																													
SOUTHWESTERN MOUNTAIN 06 BLACKSBURG NWSO R	SNOWFALL	T	T					T																								
	SN ON GND																															
BLAND	SNOWFALL		T																													
	SN ON GND																															
BURKES GARDEN	SNOWFALL	T	T															T														
	SN ON GND	T	T															T														
CLINTWOOD 1 W	SNOWFALL	T	T	T				T																								
	SN ON GND																															
COPPER HILL	SNOWFALL		0.4																													
	SN ON GND		T																													
LAFAYETTE 1 NE	SNOWFALL	-	T	-	-	-	-	-	-	-	-	-	-	-	-	-	-	-	-	-	-	-	-	-	-	-	-	-	-			
	SN ON GND	-		-	-	-	-	-	-	-	-	-	-	-	-	-	-	-	-	-	-	-	-	-	-	-	-	-	-	-		
NORA 4 SSE	SNOWFALL	T	T	T		T	T																									
	SN ON GND	T				T																										
PULASKI 2 E R	SNOWFALL	-	-	-	-	-	T																									
	SN ON GND	-	-	-	-	-																										
RADFORD 3 N	SNOWFALL			T																												
	SN ON GND																															

Snowfall: Includes snow and ice Values for NWS stations (J index note) are Mid-Mid (LST)

Snow on ground: Includes snow, sleet, ice, and hail Values for NWS stations (J index note) are observed at 12 UTC (GMT)

Water Equivalent: Given for NWS stations (J index note) only, when snow depth is 2 inches or more, and is measured at 18 UTC (GMT)

VIRGINIA
201104

SNOWFALL AND SNOW ON GROUND (INCHES)

STATION		DAY OF MONTH																														
		01	02	03	04	05	06	07	08	09	10	11	12	13	14	15	16	17	18	19	20	21	22	23	24	25	26	27	28	29	30	31
STAFFORDSVILLE 3 ENE	SNOWFALL	-	-	-	-	-	T	-	-	-	-	-	-	-	-	-	-	-	-	-	-	-	-	-	-	-	-	-	-	-	-	-
	SN ON GND	-	-	-	-	-	-	-	-	-	-	-	-	-	-	-	-	-	-	-	-	-	-	-	-	-	-	-	-	-	-	
WISE 3E R	SNOWFALL	0.5	-	-	-	0.4	-	-	-	-	-	-	-	-	-	-	-	-	-	-	-	-	-	-	-	-	T	-	-	-	-	
	SN ON GND	-	-	-	-	-	-	-	-	-	-	-	-	-	-	-	-	-	-	-	-	-	-	-	-	-	-	-	-	-	-	

Snowfall: Includes snow and ice Values for NWS stations (J index note) are Mid-Mid (LST)

Snow on ground: Includes snow, sleet, ice, and hail Values for NWS stations (J index note) are observed at 12 UTC (GMT)

Water Equivalent: Given for NWS stations (J index note) only, when snow depth is 2 inches or more, and is measured at 18 UTC (GMT)

VIRGINIA
201104

PAN EVAPORATION AND WIND

STATION		DAY OF MONTH																															TOTAL OR AVERAGE
		01	02	03	04	05	06	07	08	09	10	11	12	13	14	15	16	17	18	19	20	21	22	23	24	25	26	27	28	29	30	31	
VIRGINIA EASTERN PIEDMONT 02 JOHN H KERR DAM	WIND	28	54	24	87	66	28	42	35	30	17	29	41	32	13	52	85	53	42	42	52	25	25	33	40	34	33	40	79	26	16	1203	
	EVAP	-	-	-	-	-	-	-	-	-	-	-	-	-	-	-	-	-	-	-	-	-	-	-	-	-	-	-	-	-	-	M	
	MAX	-	-	-	-	-	-	-	-	-	-	-	-	-	-	-	-	-	-	-	-	-	-	-	-	-	-	-	-	-	-	M	
	MIN	-	-	-	-	-	-	-	-	-	-	-	-	-	-	-	-	-	-	-	-	-	-	-	-	-	-	-	-	-	-	M	
NORTHERN 04 PIEDMONT RSCH STN	WIND	-	71	94	58	173	128	126	70	48	30	83	114	74	39	29	156	152	106	101	50	111	44	59	98	60	93	109	122	78	85	2561	
	EVAP	0.03	0.12	0.12	0.16	0.46	0.18	0.28	0.21	0.04	0.04	0.07	0.24	0.11	0.08	0.18	0.27	0.17	0.27	0.24	0.08	0.29	0.21	0.05	0.07	0.22	0.30	0.17	0.15	0.24	0.23	5.28	
	MAX	44	50	52	62	73	63	64	77	0.04	42	65	80	62	59	75	72	59	67	67	76	73	49	68	83	86	79	78	78	66	-		
	MIN	35	34	34	34	41	34	33	41	40	40	41	53	49	39	39	46	41	41	46	49	50	43	41	41	56	60	59	62	49	43	43.8	

Evaporation: Is measured in hundreths of inches.

Wind: Is measured in miles.

Max and Min: The maximum and minimum temperatures (Fahrenheit) of the water in the evaporation pan.

STATION INDEX

STATION	INDEX NO.	DIVISION	COUNTY	LATITUDE	LONGITUDE	ELEVATION (IN FEET)	OBSERVATION TIME AND TABLES			
							LOCAL STD TIME			
							TEMP	PRECIP	EVAP	SPECIAL SEE (NOTES)
VIRGINIA										
ABINGDON 3S	0021	06	WASHINGTON	36 40	81 58W	1920	22	22		H
ALBERTA 5N	0079	02	BRUNSWICK	36 56	77 54W	376		08		H
ALTAVISTA R	0166	03	CAMPBELL	37 7	79 17W	515		07		CH
AMELIA COURTHOUSE 1	0187	02	AMELIA	37 21	77 59W	345	08	08		H
APPOMATTOX	0243	03	APPOMATTOX	37 21	78 50W	910	07	07		H
ASHLAND	0327	02	HANOVER	37 45	77 29W	220	18	18		H
BEDFORD 4 NW R	0561	03	BEDFORD	37 23	79 34W	1220		07		CH
BIG MEADOWS	0720	04	MADISON	38 31	78 26W	3540	09	09		H
BIG STONE GAP	0735	06	WISE	36 52	82 46W	1464	08	08		H
BLACKSBURG NWSO R	0766	06	MONTGOMERY	37 12	80 25W	2100	07	07		CH
BLAND	0792	06	BLAND	37 6	81 7W	2000	07	07		H
BOSTON 4 SE	0860	04	CULPEPER	38 33	78 6W	590	07	07		H
BREMO BLUFF R	0993	02	FLUVANNA	37 43	78 17W	225	07	24		CH
BROOKNEAL	1082	03	CAMPBELL	37 4	78 57W	428		07		H
BUCHANAN	1121	05	BOTETOURT	37 32	79 41W	865		07		H
BUCKINGHAM	1136	02	BUCKINGHAM	37 30	78 32W	552		07		H
BUENA VISTA	1159	05	ROCKBRIDGE	37 44	79 22W	830		07		H
BURKES GARDEN	1209	06	TAZEWELL	37 6	81 20W	3068	07	07		H
CAMP PICKETT R	1322	02	NOTTOWAY	37 2	77 57W	330	08	08		CH
CASTLETON	1434	04	RAPPAHANNOCK	38 36	78 7W	541	08	08		H
CHARLOTTESVILLE 2W	1593	03	ALBEMARLE	38 2	78 31W	870	08	08		H
CHASE CITY	1606	02	MECKLENBURG	36 47	78 29W	510	17	17		H
CHATHAM R	1614	03	PITTSYLVANIA	36 49	79 25W	640	07	07		CH
CHRISTIANSBURG	1692	06	MONTGOMERY	37 8	80 24W	2100	07	07		H
CLARKSVILLE	1746	02	MECKLENBURG	36 37	78 33W	330	07	07		H
CLINTWOOD 1 W	1825	06	DICKENSON	37 9	82 29W	1780	07	07		H
CONCORD 4 SSW	1955	03	CAMPBELL	37 17	78 58W	635		07		H
COPPER HILL	1999	06	FLOYD	37 5	80 9W	2690	07	07		H
CORBIN	2009	02	CAROLINE	38 12	77 22W	220	09	09		H
COVINGTON FLTR PLT R	2044	05	ALLEGHANY	37 49	79 59W	1230	07	07		CH
CRAIGSVILLE 2 S	2064	05	AUGUSTA	38 3	79 23W	1758		07		H
CROZIER	2142	02	GOOCHLAND	37 40	77 53W	350	07	07		H
DALE ENTERPRISE	2208	05	ROCKINGHAM	38 27	78 56W	1400	07	07		H
DANVILLE	2245	03	PITTSYLVANIA	36 35	79 23W	410	07	07		H
DANVILLE REGIONAL AP R	2250	03	PITTSYLVANIA	36 34	79 20W	571	24	24		CH
DISPUTANTA	2400	01	PRINCE GEORGE	37 7	77 12W	15	07	07		H
EARLEHURST	2600	05	ALLEGHANY	37 40	80 15W	2037		07		H
EASTVILLE	2635	01	NORTHAMPTON	37 23	75 58W	10	07	07		H
EDINBURG	2663	04	SHENANDOAH	38 49	78 36W	928	07	07		H
EMPORIA 1 WNW	2790	01	GREENSVILLE	36 42	77 34W	100	08	08		H
FARMVILLE 2 N R	2941	02	CUMBERLAND	37 20	78 23W	450	07	07		CH
FREDERICKSBURG SEWAGE	3204	01	FREDERICKSBURG	38 17	77 27W	15	07	07		H
FREE UNION	3213	03	ALBEMARLE	38 5	78 35W	590	08	07		H
FRONT ROYAL	3229	04	WARREN	38 54	78 11W	930	07	07		H
GALAX RADIO WBRF	3267	06	CARROLL	36 40	80 55W	2385	07	07		H
GALAX WTP R	3272	06	CARROLL	36 39	80 55W	2360	07	07		CH
GATHRIGHT DAM R	3310	05	ALLEGHANY	37 57	79 57W	1770	07	07		CH
GLASGOW 1 SE	3375	05	ROCKBRIDGE	37 37	79 26W	740		07		H
GREENBAY 3 NE	3565	02	PRINCE EDWARD	37 11	78 17W	500	09	09		H
GRUNDY	3640	06	BUCHANAN	37 17	82 5W	1170	07	07		H
HAMPTON UNIV	3713	01	HAMPTON	37 1	76 20W	10	17	17		H
HOLCOMB ROCK	4039	03	BEDFORD	37 33	79 24W	620		07		H
HOLLAND 1 E	4044	01	SUFFOLK	36 41	76 46W	80	08	08		H
HOPEWELL	4101	01	PRINCE GEORGE	37 18	77 17W	40	16	16		H
HOT SPRINGS R	4128	05	BATH	37 60	79 50W	2236	07	07		CH
HUDDLESTON 4 SW	4148	03	BEDFORD	37 8	79 32W	1045		07		H
JOHN FLANNAGAN LAKE	4410	06	DICKENSON	37 14	82 21W	1460	07	07		H
JOHN H KERR DAM R	4414	02	MECKLENBURG	36 36	78 18W	250	08	08	EV	CH
KERRS CREEK 6 WNW	4565	05	ROCKBRIDGE	37 52	79 34W	1500		07		H
KEYSVILLE 2 S	4568	02	CHARLOTTE	37 1	78 28W	530		07		H
LAFAYETTE 1 NE	4676	06	MONTGOMERY	37 14	80 12W	1320		07		H
LEBANON	4777	06	RUSSELL	36 54	82 2W	1912	07	07		H
LEXINGTON	4876	05	ROCKBRIDGE	37 48	79 25W	1125	07	07		H
LINCOLN	4909	04	LOUDOUN	39 5	77 42W	500	07	07		H
LOUISA	5050	02	LOUISA	38 3	78 0W	420	18	18		H

STATION INDEX

STATION	INDEX NO.	DIVISION	COUNTY	LATITUDE	LONGITUDE	ELEVATION (IN FEET)	OBSERVATION TIME AND TABLES			
							LOCAL STD TIME			
							TEMP	PRECIP	EVAP	SPECIAL SEE (NOTES)
LURAY 5 E	5096	04	PAGE	38 40	78 22W	1400	08	08		H
LYNCHBURG #2	5117	03	CAMPBELL	37 23	79 14W	740	07	07		H
LYNCHBURG INTL AP R	5120	03	CAMPBELL	37 19	79 12W	940	24	24		CHJ
MADISON	5150	04	MADISON	38 23	78 15W	580	08	08		H
MANASSAS	5204	04	MANASSAS	38 44	77 30W	245	07	07		H
MARTINSVILLE FLTR PLT	5300	03	HENRY	36 42	79 52W	760	07	07		H
MEADOWS OF DAN 5 SW	5453	03	PATRICK	36 40	80 27W	2225	07	07		H
MILLGAP R	5595	05	HIGHLAND	38 18	79 43W	2421	07	07		CH
MONTEBELLO FISH CULTURAL STN	5690	03	NELSON	37 51	79 8W	2649	07	07		H
MONTICELLO	5700	03	ALBEMARLE	38 1	78 27W	758	08	08		H
MT WEATHER	5851	04	LOUDOUN	39 4	77 53W	1659	07	07		H
MTN GROVE	5756	05	BATH	38 6	79 53W	1775		07		H
MUSTOE 1 SW	5880	05	HIGHLAND	38 20	79 40W	2380	24	24		H
NORA 4 SSE	6125	06	DICKENSON	37 1	82 19W	2650	07	07		H
NORFOLK INTL AP R	6139	01	NORFOLK (CITY)	36 54	76 12W	30	24	24		CHJ
NORFOLK SOUTH	6147	01	NORFOLK (CITY)	36 52	76 14W	100	24	24		H
NORTH	6161	01	MATHEWS	37 26	76 26W	10	07	07		H
NORTH FORK LAKE	6173	06	WISE	37 7	82 38W	1675	08	08		H
PAINTER 2W R	6475	01	ACCOMACK	37 35	75 49W	30	16	16		CH
PALMYRA 3S	6491	02	FLUVANNA	37 49	78 16W	410	06	06		H
PEDLAR DAM	6593	03	AMHERST	37 40	79 17W	1010		07		H
PETERSBURG	6656	02	PETERSBURG	37 14	77 24W	15	08	08		H
PIEDMONT RSCH STN R	6712	04	ORANGE	38 14	78 7W	520	08	08	EV	CH
POWHATAN	6906	02	POWHATAN	37 31	77 53W	400		07		H
PULASKI 2 E R	6955	06	PULASKI	37 3	80 47W	1850	07	07		CH
RADFORD 3 N	6999	06	PULASKI	37 12	80 35W	1800	08	08		H
RICHLANDS	7174	06	TAZEWELL	37 6	81 48W	1910	07	07		H
RICHMOND INTL AP R	7201	02	HENRICO	37 30	77 19W	164	24	24		CHJ
ROANOKE 8 N	7278	05	ROANOKE	37 22	79 58W	1190	07	07		H
ROANOKE INTL AP R	7285	05	ROANOKE	37 19	79 58W	1175	24	24		CHJ
ROCKY MT R	7338	03	FRANKLIN	36 59	79 54W	1315	07	07		CH
SALTVILLE 1N	7506	06	SMYTH	36 53	81 46W	1733	07	07		H
SANDSTON	7541	02	HENRICO	37 33	77 17W	165	07	07		H
SOMERSET	7904	04	ORANGE	38 15	78 16W	510	07	07		H
SOUTH BOSTON	7925	03	HALIFAX	36 42	78 53W	340	07	07		H
SPERRYVILLE	7985	04	RAPPAHANNOCK	38 39	78 14W	750	06	06		H
STAFFORDSVILLE 3 ENE R	8022	06	GILES	37 16	80 43W	1950	07	07		CH
STAR TANNERY R	8046	04	FREDERICK	39 5	78 27W	950	07	07		CH
STAUNTON WATER TRMTMT PLT	8062	05	AUGUSTA	38 11	79 5W	1640	08	08		H
STERLING RCS	8084	04	LOUDOUN	38 59	77 29W	288	07	07		H
STONY CREEK 2 N	8129	01	SUSSEX	36 58	77 24W	105	08	08		H
STUART	8170	03	PATRICK	36 38	80 15W	1375	07	07		H
SUFFOLK LAKE KILBY	8192	01	SUFFOLK	36 44	76 36W	22	24	24		H
TROUT DALE 3 SSE R	8547	06	GRAYSON	36 39	81 24W	2839	07	07		CH
TYE RIVER 1 SE	8600	03	NELSON	37 38	78 56W	720	06	06		H
VIENNA	8737	04	FAIRFAX	38 54	77 16W	418	07	19		H
WAKEFIELD 1NW R	8800	01	SUSSEX	36 59	77 0W	113	24	24		CH
WALKERTON 2 NW	8829	01	KING AND QUEEN	37 45	77 2W	50	18	18		H
WALLACETON LK DRUMMOND	8837	01	CHESAPEAKE	36 36	76 26W	20	08	08		H
WARRENTON 3 SE	8888	04	FAUQUIER	38 41	77 46W	500	08	08		H
WARSAW 2 NW	8894	01	RICHMOND	37 59	76 47W	140	18	18		H
WASHGTN DULLES INTL AP R	8903	04	LOUDOUN	38 56	77 28W	290	24	24		CHJ
WASHINGTON REAGAN AP R	8906	04	ARLINGTON	38 51	77 2W	10	24	24		CHJ
WAYNESBORO WTP	8941	05	WAYNESBORO	38 5	78 53W	1280	07	07		H
WEST POINT 2 NW	9025	01	KING WILLIAM	37 34	76 48W	20	17	17		H
WILLIAMSBURG 2 N R	9151	01	YORK	37 18	76 42W	70	24	24		CH
WILLIS R	9169	06	FLOYD	36 55	80 30W	2810		07		CH
WINCHESTER	9181	04	FREDERICK	39 11	78 9W	720	07	07		H
WINCHESTER 7 SE	9186	04	FREDERICK	39 11	78 7W	680	08	08		H
WINTERPOCK 4 W	9213	02	CHESTERFIELD	37 19	77 39W	300		07		H
WISE 3E R	9215	06	WISE	36 60	82 32W	2549	17	17		CH
WOODSTOCK 2 NE	9263	04	SHENANDOAH	38 54	78 29W	675	07	07		H
WOOLWINE R	9272	03	PATRICK	36 47	80 17W	1500		07		CH
WYTHEVILLE 1 S R	9301	06	WYTHE	36 56	81 6W	2450	07	07		CH

REFERENCE NOTES

STATION NAMES: Name of the city, town or locality. Figures and letters following the station names indicate the distance in miles and direction from the post office or town community center.

DIVISIONS: Areas within a state of similar climatological characteristics. Division averages are calculated using data from stations that record both temperature and precipitation (i.e. not precipitation alone).

NORMALS: The average value of the meteorological element over a time period. Effective 1 January 2002, the averaging period is 1971 to 2000. The normals for National Weather Service localities have been adjusted so as to be representative for the current observation site.

MONTHLY DEGREE DAY TOTALS: One heating (cooling) degree day is accumulated for each whole degree that the daily mean temperature is below (above) 65 degrees Fahrenheit.

PRECIPITATION: Values shown in hundredths of inches are water equivalent totals, i.e., total of liquid and melted frozen precipitation. In the "Monthly Summarized Data" table the total snow and sleet values shown in tenths of inches are unmelted amounts. The max depth on ground values of snow and sleet shown in whole inches are cumulative unmelted amounts. The number of days with .10, .50, 1.00 or more refers to water equivalents.

PRECIPITATION QUALITY CONTROL: The NCDC quality control process may flag precipitation data that are spatially inconsistent, exceed climatological limits, or are inconsistent with prevailing weather patterns.

TEMPERATURE: Original temperature values are given in the "Daily Temperature" table. Summary temperature information (averages, departures, extremes, monthly degree day totals) is based on the values labeled MAX/MIN.

WIND: (As shown in the "Evaporation and Wind" table) the total wind movement in miles over the evaporation pan as determined by an anemometer recorder located 6-8 inches above the pan.

SYMBOLS AND LETTERS USED IN THE STATION INDEX TABLE

- C Station is equipped with recording rain gage (R) but values in this bulletin are from a non-recording rain gage unless indicated by an R.
- G Observations appear in the "Soil Temperatures" table.
- H Observations appear in the "Snowfall and Snow on the Ground" table.
- J Station also published as a Local Climatological Data publication.
- VAR Observation time varies.
- SR Observation time near sunrise.
- SS Observation time near sunset.

SYMBOLS AND LETTERS USED IN THE DATA TABLES

(DAILY DATA ARE FOR THE 24 HOURS IMMEDIATELY PRECEDING OBSERVATION TIME.)

BLANK Entries in the "Monthly Summarized Data" table indicate no record.

BLANK Entries in the "Daily Precipitation" and "Snowfall and Snow on the Ground" tables indicate zero.

BLANK Entries in the "Daily Temperature" table indicate a missing record

- No record. Data not recorded or not received in time for publication.

+ Precipitation or temperature extremes occurred on one or more previous dates during the month.

* Rain gage not read. Precipitation is included in the amount following the asterisks. Time distribution may not be known. A * preceding the monthly total indicates precipitation amount is being carried forward to next month's total, and may include amounts from the previous month(s).
a As a subscript, indicates accumulated total.

A Amount of precipitation is the total of observer's entries for the current month. It may include precipitation that occurred during the previous month. Refer to earlier bulletin to determine date of last reading. (Hawaii stations)

F Monthly calculation flagged value. F is appended to average and/or total values computed which exclude one or more daily data values that have been flagged by the GHCN-Daily Dataset

M Insufficient or partial data. M is appended to average and/or total values computed with 1-9 daily values missing. M appears alone if 10 or more daily values are missing, (8 or more for wind and evaporation).

N Indicates snow fall or Snowdepth totals are computed with one or more missing days.

R Amounts from recording rain gage.

T Trace. An amount too small to measure.

SEASONAL TABLES: Monthly and seasonal snowfall and heating degree days for the 12 months ending with the June data are published in the July issue of this bulletin. Cooling degree days for the calendar year are published in the "Climatological Data Annual Summary."

Information concerning the history of changes in locations, exposure, etc. of substations is kept on file at the National Climatic Data Center. Historical information of regular National Weather Service Offices may be obtained from the "Local Climatological Data" annual publication. The contents of this publication may be reprinted or otherwise used freely, with proper credit to the National Climatic Data Center. The data are also available digitally.

Effective with the January 2011 Data-Month, COOP Observer Names are no longer included in the Monthly and Annual Climatological Data Publications. This information is not published to ensure the privacy of personal information pursuant to Section 208 of the E-Government Act of 2002 (44 USC 3601).

The GHCN-Daily Quality Control Flags shown below are displayed as superscripts with the data. For more Information on Global Historical Climatology Network - Daily and flags, see:
<http://www.ncdc.noaa.gov/oa/climate/ghcn-daily/>
and

Comprehensive Automated Quality Assurance of Daily Surface Observations.

Durre, Imke, Matthew J. Menne, Byron E. Gleason, Tamara G. Houston,

Russell S. Vose, 2010: J. Appl. Meteor. Climatol., 49, 16151633.

doi: 10.1175/2010JAMC2375.1

Blank = Passed All checks

D = failed duplicate check

G = failed gap check

I = failed internal consistency check

K = failed streak/frequent-value check

L = failed check on length of multiday period

M = failed megaconsistency check

N = failed naught check

O = failed climatological outlier check

R = failed lagged range check

S = failed spatial consistency check

T = failed temporal consistency check

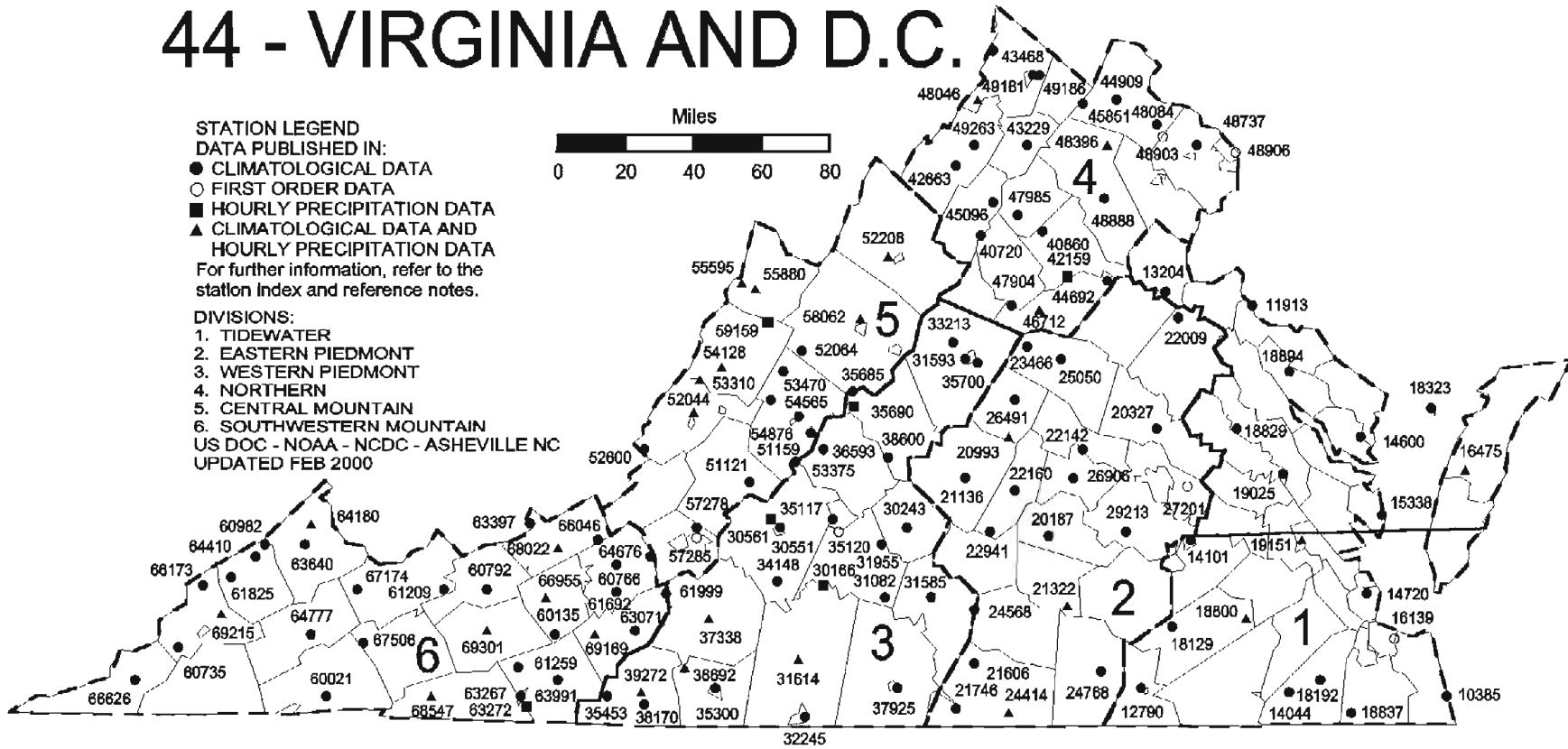
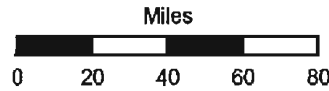
W = temperature too warm for snow

X = failed bounds check

44 - VIRGINIA AND D.C.

STATION LEGEND
DATA PUBLISHED IN:
 ● CLIMATOLOGICAL DATA
 ○ FIRST ORDER DATA
 ■ HOURLY PRECIPITATION DATA
 ▲ CLIMATOLOGICAL DATA AND
 HOURLY PRECIPITATION DATA
 For further information, refer to the
 station index and reference notes.

DIVISIONS:
 1. TIDEWATER
 2. EASTERN PIEDMONT
 3. WESTERN PIEDMONT
 4. NORTHERN
 5. CENTRAL MOUNTAIN
 6. SOUTHWESTERN MOUNTAIN
 US DOC - NOAA - NCDC - ASHEVILLE NC
 UPDATED FEB 2000



-84.00

-82.80

-81.60

-80.40

-79.20

-78.00

-76.80

-75.60

40.60

40.00

39.40

38.80

38.20

37.60

37.00

36.40

These and other publications are available from the National Climatic Data Center

Hourly Precipitation Data

This publication contains hourly precipitation amounts obtained from recording rain gages located at National Weather Service, Federal Aviation Administration, and cooperative observer stations. Published data are displayed in inches and tenths or inches and hundredths at local standard time. HPD includes maximum precipitation for nine (9) time periods from 15 minutes to 24 hours, for selected stations.

Climatological Data

Monthly editions contain station daily maximum and minimum temperatures and precipitation. Some Stations provide daily snowfall, snow depth, evaporation, and soil temperature data. Each edition also contains monthly summaries for heating and cooling degree days (65 degree F base). The July issue contains a recap of monthly heating degree days and snow data for the preceding July through June.

The Annual issue contains monthly and annual averages of temperature, precipitation, temperature extremes, freeze data, soil temperatures, evaporation, and a recap of monthly cooling degree days.

Storm Data

Monthly issues contain a chronological listing, by states, of occurrences of storms and unusual weather phenomena. Reports contain information on storm paths, deaths, injuries, and property damage. An "Outstanding storms of the month" section highlights severe weather events with photographs, illustrations, and narratives. The December issue includes annual tornado, lightning, flash flood, and tropical cyclone summaries.

Monthly Climatic Data for the World

This publication contains monthly means for temperature, pressure, precipitation, vapor pressure, and sunshine for approximately 2,000 surface data collection stations worldwide and monthly mean upper air temperatures, dew point depressions, and wind velocities for approximately 500 observing sites.

Local Climatological Data

LCD publications summarize temperature, relative humidity, precipitation, cloudiness, wind speed and direction observations for several hundred cities in the U.S. and its territories. Each monthly publication also contains 3 hourly weather observations for that month and a hourly summary of precipitation. Annual LCD publications contain a summary of the past calendar year as well as historical averages and extremes.

For Information Call:

(828) 271-4800 Option 2

(828) 271-4010 (TDD)

(828) 271-4876 (Fax)

NOAA\National Climatic Data Center
Attn: User Engagement & Services Branch
151 Patton Avenue
Asheville, NC 28801-5001

PRSRT STD
POSTAGE & FEES PAID
United States Department of Commerce
NOAA Permit No. G-19

OFFICIAL BUSINESS
PENALTY FOR PRIVATE USE \$300
ADDRESS CORRECTION REQUESTED

To change your address, please return a copy of the mailing label along with your new address to:

NOAA\National Climatic Data Center
Attn: User Engagement & Services Branch
151 Patton Avenue
Asheville, NC 28801-5001

Customer Services Number: (828) 271-4800, option 2
TDD : (828) 271-4010
Fax number: (828) 271-4876

NCDC now offers an annual online subscription for the *Climatological Data* publication. When you purchase this subscription service, you will have **immediate online access** to all previous Climatological Data publications. Your subscription is valid for one year after purchase.

The total cost is \$42 for online delivery (including back issues).

To order this and other subscriptions online with your credit card, go to:

<http://www.ncdc.noaa.gov/oa/mpp/> and choose subscription.