



CLIMATOLOGICAL DATA ANNUAL SUMMARY VIRGINIA

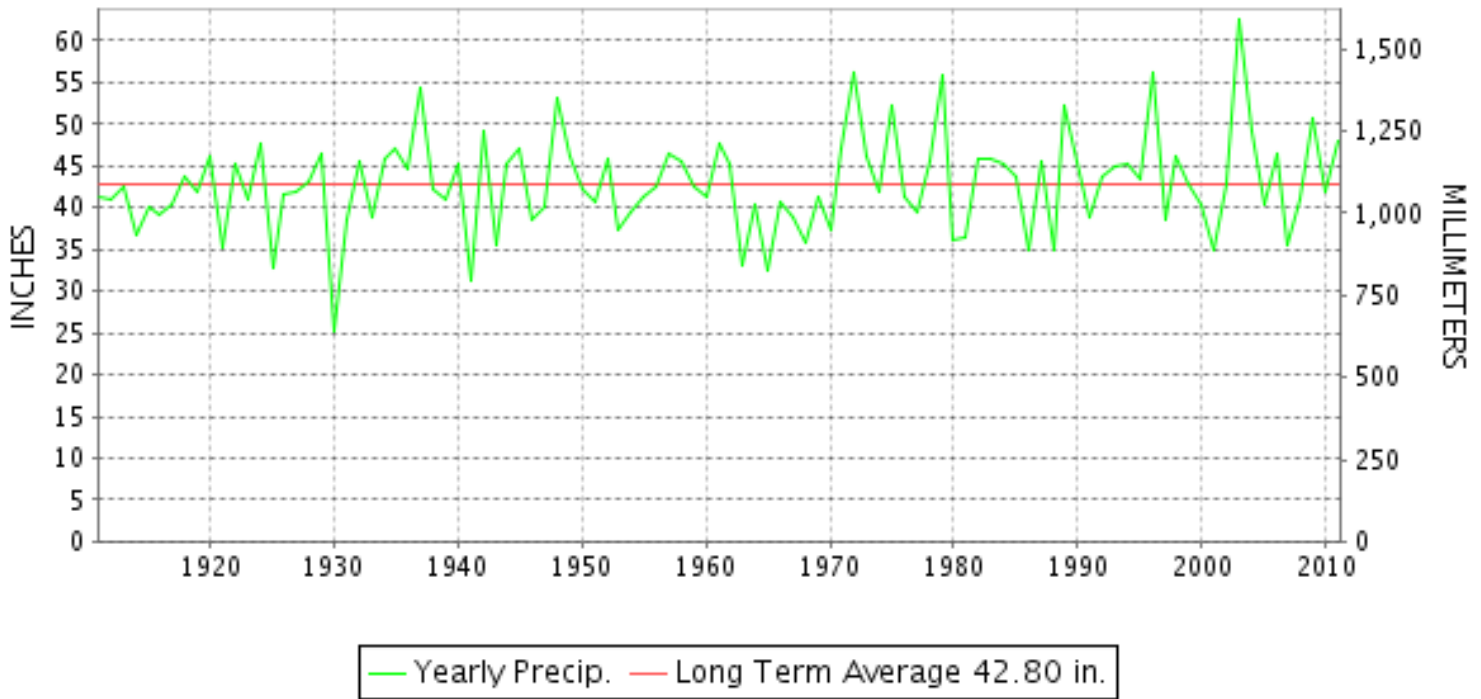
2011

VOLUME 121 NUMBER 13

ISSN 0364-5630

GHCND Ver: 2.93-upd-2012091905

YEARLY TOTAL PRECIPITATION



VIRGINIA PRECIPITATION 1911-2011

"I certify that this is an official publication of the National Oceanic and Atmospheric Administration (NOAA) It is compiled using information from weather observing sites supervised by NOAA/National Weather Service and received at the National Climatic Data Center(NCDC), Asheville, North Carolina 28801."

DIRECTOR
NATIONAL CLIMATIC DATA CENTER

noaa

National
Oceanic and
Atmospheric Administration

National
Environmental Satellite, Data
and Information Service

National
Climatic Data Center
Asheville, North Carolina

TOTAL PRECIPITATION AND DEPARTURE FROM NORMAL (INCHES)

VIRGINIA
2011

STATION	JAN		FEB		MAR		APR		MAY		JUN	
	PRECIP.	DEPART.	PRECIP.	DEPART.	PRECIP.	DEPART.	PRECIP.	DEPART.	PRECIP.	DEPART.	PRECIP.	DEPART.
VIRGINIA												
TIDEWATER 01												
EASTVILLE	M		1.05		3.25		F 1.01		0.75		F 4.13	
DISPUTANTA	1.45		1.28		4.43		1.68		3.16		3.74	
EMPORIA 1 WNW	1.51	-2.45	0.99	-2.15	4.85	0.69	1.66	-1.68	2.30	-1.58	0.70	-2.60
FREDERICKSBURG SEWAGE	M 1.73		0.78		M		M		M		M 2.87	
HAMPTON UNIV	M		0.98		FM 2.55		M 0.58		1.63		F 1.97	
HOLLAND 1 E	F 2.66		F 0.60		2.92	-1.47	2.01	-1.39	2.23	-1.84	F 4.25	
HOPEWELL	M 1.65		M 1.01		M 4.47		F 1.47		3.90	-0.15	M 2.61	
NORFOLK SOUTH	3.54		2.07		3.70		1.35		2.41		4.35	
NORFOLK INTL AP	3.64	-0.29	2.24	-1.10	2.96	-1.12	1.21	-2.17	1.95	-1.79	4.63	0.86
NORTH	2.33		1.28		3.76		2.35		3.29		4.18	
PAINTER 2W	3.08	-0.91	1.66	-1.63	3.74	-0.70	1.97	-1.14	1.24	-2.27	10.28	7.22
STONY CREEK 2 N	F 1.50		M		F 3.86		M		M		M	
SUFFOLK LAKE KILBY	3.24	-0.83	1.87	-1.70	3.65	-0.76	1.27	-2.05	3.07	-0.79	3.76	-0.26
WAKEFIELD 1NW	2.28	-1.86	1.54	-1.33	4.12	-0.20	2.46	-0.93	2.53	-1.70	3.35	-0.27
WALKERTON 2 NW	M 1.71		1.50	-1.64	4.14	-0.09	3.10	0.07	3.17	-0.89	4.30	0.72
WALLACETON LK DRUMMOND	3.71	-1.13	2.14	-1.98	4.96	0.32	3.36	-0.35	M		3.70	0.01
WARSAW 2 NW	2.03	-1.46	1.00	-1.82	4.24	0.25	3.43	0.52	2.51	-2.00	6.49	3.09
WEST POINT 2 NW	M		F 0.06		M		F 1.95		M		F 1.67	
WILLIAMSBURG 2 N	M 2.01		1.69	-1.76	3.25	-1.39	2.29	-0.95	2.16	-2.35	4.07	0.69
--DIVISIONAL DATA----->	2.68	-1.29	1.47	-1.81	3.86	-0.50	2.16	-1.05	2.42	-1.60	4.46	0.98
EASTERN PIEDMONT 02												
AMELIA COURTHOUSE 1	M		M		M		M 3.48		FM 2.46		M	
ALBERTA 5N	1.20		1.01		4.17		2.78		2.96		4.65	
ASHLAND	2.16	-1.58	1.39	-1.84	4.41	0.17	2.17	-1.09	3.81	-0.34	4.89	1.60
BREMO BLUFF	M		M		4.45	0.53	3.60	0.47	4.22	0.11	M	
BUCKINGHAM	1.18	-2.48	1.23	-1.97	4.12	0.24	2.86	-0.40	3.66	-0.79	3.74	0.32
CAMP PICKETT	1.64	-2.67	1.51	-1.71	4.42	0.16	2.78	-0.88	4.04	-0.07	M	
CHASE CITY	1.38	-2.49	M		4.37	0.23	2.49	-1.21	5.16	1.10	1.35	-2.33
CLARKSVILLE	1.63	-2.46	M 1.53		5.56	1.63	2.35	-0.96	5.55	1.52	M 2.08	
CROZIER	1.75	-2.06	1.05	-1.90	M		M 3.06		FM 2.94		2.19	-1.52
CORBIN	M 1.25		1.00	-2.17	6.50	2.29	3.52	0.26	3.83	-0.19	3.80	0.20
FARMVILLE 2 N	1.69	-2.34	M 0.90		4.15	-0.11	4.89	1.54	4.26	0.00	1.43	-1.80
GREENBAY 3 NE	2.42		0.95		4.05		2.70		3.05		1.62	
JOHN H KERR DAM	1.17	-2.70	1.02	-1.98	4.24	-0.02	3.17	-0.09	4.25	0.27	2.30	-1.24
KEYSVILLE 2 S	M 1.08		1.80	-0.74	6.85	3.57	4.26	1.37	3.98	0.64	2.25	-0.07
LOUISA	1.60	-1.88	1.59	-1.41	5.21	1.36	3.72	0.65	5.10	1.18	4.10	0.35
PALMYRA 3S	1.29	-1.95	1.31	-1.61	4.96	1.35	4.28	1.24	5.01	1.12	6.61	2.98
POWHATAN	1.35	-2.42	1.01	-2.16	3.62	-0.36	1.91	-1.41	2.84	-0.98	3.03	-0.02
PETERSBURG	1.66		0.93		4.72		M 3.79		M 3.61		5.07	
SANDSTON	1.83		1.21		F 3.88		F 2.06		F 3.88		3.85	
RICHMOND INTL AP	2.48	-1.07	2.09	-0.89	4.28	0.19	2.63	-0.55	4.35	0.39	3.03	-0.51
WINTERPOCK 4 W	M		1.26	-2.03	4.46	0.17	3.05	-0.18	3.19	-0.66	2.67	-0.37
--DIVISIONAL DATA----->	1.65	-2.19	1.27	-1.92	4.70	0.54	3.13	-0.20	4.07	-0.06	3.33	-0.25
WESTERN PIEDMONT 03												

TOTAL PRECIPITATION AND DEPARTURE FROM NORMAL (INCHES)

VIRGINIA
2011

STATION	JUL		AUG		SEP		OCT		NOV		DEC		ANNUAL	
	PRECIP.	DEPART.	PRECIP.	DEPART.	PRECIP.	DEPART.	PRECIP.	DEPART.	PRECIP.	DEPART.	PRECIP.	DEPART.	PRECIP.	DEPART.
VIRGINIA														
TIDEWATER 01														
EASTVILLE	4.63		M		4.60		2.15		2.25		M			
DISPUTANTA	9.31		10.69		7.79		2.34		M 4.18		1.67		M 51.72	
EMPORIA 1 WNW	4.61	0.07	11.19	6.85	4.04	-0.17	2.58	-0.88	3.80	0.82	2.01	-1.04	40.24	-4.12
FREDERICKSBURG SEWAGE	M 2.62		M		M 6.61		M 3.27		2.84		5.60			
HAMPTON UNIV	8.61		9.29		6.19		F 1.68		1.82		1.40			
HOLLAND 1 E	FA 7.83	2.58	F 13.46		F 8.96		F 3.32		2.40	-0.72	F 1.84		52.48	3.41
HOPEWELL	7.97	3.47	8.05	3.82	11.13	6.40	2.86	-0.71	M 4.20		2.30	-0.85	M 51.62	6.36
NORFOLK SOUTH	8.33		12.01		7.84		2.44		2.50		1.73		52.27	
NORFOLK INTL AP	10.89	5.72	10.79	6.00	7.26	3.20	2.13	-1.34	1.84	-1.14	1.56	-1.47	51.10	5.36
NORTH	11.08		M 12.64		6.85		M 2.97		M 2.75		1.21		M 54.69	
PAINTER 2W	3.63	-0.74	8.01	4.08	3.71	0.02	3.17	-0.35	3.09	-0.01	1.39	-1.95	44.97	1.62
STONY CREEK 2 N	M		M		M		M		M		M			
SUFFOLK LAKE KILBY	4.01	-0.98	13.13	7.64	8.00	3.04	2.11	-1.53	2.90	-0.21	1.26	-2.01	48.27	-0.44
WAKEFIELD 1NW	7.51	3.00	12.96	8.61	10.07	5.33	3.94	0.66	3.29	0.53	1.53	-1.31	55.58	10.53
WALKERTON 2 NW	6.21	1.69	M		11.49	7.53	4.12	0.76	3.80	0.62	2.70	-0.56		
WALLACETON LK DRUMMOND	4.42	-1.51	12.34	7.17	10.11	5.87	1.51	-2.69	2.64	-0.86	1.79	-1.94		
WARSAW 2 NW	3.81	-0.84	15.76	11.64	7.10	2.75	2.96	-0.55	4.08	1.01	2.08	-0.95	55.49	11.64
WEST POINT 2 NW	M		M		M		M		F 0.47		F 0.52			
WILLIAMSBURG 2 N	10.69	5.35	12.29	7.30	8.61	3.65	4.24	0.63	3.58	0.19	1.63	-1.71	M 56.51	7.47
--DIVISIONAL DATA----->	7.05	2.39	11.38	6.94	7.65	3.28	2.81	-0.66	2.92	-0.22	1.99	-1.24	50.85	5.22
EASTERN PIEDMONT 02														
AMELIA COURTHOUSE 1	MA 7.54	3.21	FM 4.33		FM 5.52		FM 3.97		FM 4.74		M 3.48			
ALBERTA 5N	4.82		8.35		3.85		4.22		4.94		2.41		45.36	
ASHLAND	6.54	2.28	6.06	2.22	M 7.53		3.06	-0.36	M 2.84		3.18	-0.17	M 48.04	4.00
BREMO BLUFF	M 4.04		6.35	2.60	6.69	3.24	4.81	0.82	3.04	-0.27	4.85	1.87		
BUCKINGHAM	4.79	0.56	5.51	1.52	6.49	2.29	5.89	1.96	3.87	0.20	4.28	1.15	47.62	2.60
CAMP PICKETT	M 4.80		5.89	1.70	3.09	-1.07	5.85	1.88	5.27	2.03	2.90	-0.28		
CHASE CITY	5.02	0.93	3.79	0.08	7.45	3.24	3.81	-0.07	3.60	0.22	3.14	-0.11		
CLARKSVILLE	M 5.05		M 2.55		6.76	2.80	2.79	-0.68	M 4.05		2.38	-0.61	M 42.28	-0.81
CROZIER	2.91	-0.82	M 6.58		F 5.96		3.65	-0.22	M 3.91		3.62	0.40		
CORBIN	2.49	-1.85	7.99	4.29	10.01	6.04	M 3.51		3.26	-0.07	4.43	1.10	M 51.59	7.05
FARMVILLE 2 N	4.44	0.25	3.91	0.05	8.91	4.97	4.28	0.46	4.44	1.03	2.62	-0.58	M 45.92	1.05
GREENBAY 3 NE	4.55		6.06		7.35		4.92		4.57		2.48		44.72	
JOHN H KERR DAM	2.61	-2.02	3.43	-0.58	3.67	-0.09	3.36	-0.31	3.12	0.02	2.21	-0.79	34.55	-9.53
KEYSVILLE 2 S	6.47	2.79	6.37	3.89	9.90	6.47	4.56	1.74	8.85	6.24	4.39	1.78	M 60.76	25.64
LOUISA	2.85	-1.60	5.43	1.80	7.95	3.90	4.13	0.25	3.11	-0.71	4.81	1.69	49.60	5.58
PALMYRA 3S	2.87	-1.41	7.17	3.19	6.32	2.49	4.69	0.82	3.36	0.17	5.01	2.17	52.88	10.56
POWHATAN	7.53	3.28	5.81	2.08	M 5.05		M 3.39		3.56	0.10	3.50	0.20	M 42.60	-0.03
PETERSBURG	M 7.38		M 8.92		9.12		3.43		4.57		M 1.64		M 54.84	
SANDSTON	6.04		F 10.25		10.91		FM 2.52		4.73		2.26		M 53.42	
RICHMOND INTL AP	3.63	-1.04	7.10	2.92	8.95	4.97	2.79	-0.81	4.18	1.12	2.03	-1.09	47.54	3.63
WINTERPOCK 4 W	5.90	1.44	5.25	1.70	7.40	3.30	3.01	-0.78	4.63	1.30	2.04	-1.17		
--DIVISIONAL DATA----->	4.59	0.23	5.90	1.97	7.34	3.31	4.07	0.22	4.30	0.88	3.29	0.11	47.64	2.64
WESTERN PIEDMONT 03														

TOTAL PRECIPITATION AND DEPARTURE FROM NORMAL (INCHES)

VIRGINIA
2011

STATION	JAN		FEB		MAR		APR		MAY		JUN	
	PRECIP.	DEPART.	PRECIP.	DEPART.	PRECIP.	DEPART.	PRECIP.	DEPART.	PRECIP.	DEPART.	PRECIP.	DEPART.
ALTAVISTA	1.08	-2.67	1.09	-2.15	2.64	-1.44	4.92	1.28	2.80	-1.47	1.88	-1.74
APPOMATTOX	M 1.17		M 1.41		M 4.16		M 3.99		3.89	-0.62	2.64	-0.91
BEDFORD 4 NW	1.00		1.56		5.13		5.03		3.84		4.77	
BROOKNEAL	1.22	-2.94	0.99	-2.30	4.35	0.22	3.27	-0.25	4.24	0.16	1.98	-1.27
CHARLOTTESVILLE 2W	0.97	-2.74	1.51	-1.79	6.84	2.79	4.21	0.87	6.15	1.29	3.82	-0.64
CONCORD 4 SSW	1.05	-2.87	1.19	-2.19	3.69	-0.41	3.60	0.16	4.47	0.29	2.15	-1.47
CHATHAM	2.35	-1.57	1.06	-2.21	4.15	-0.25	4.17	0.44	4.94	0.87	1.95	-1.81
DANVILLE REGIONAL AP	1.24		1.98		4.22		3.16		5.31		1.56	
DANVILLE	1.31	-2.72	1.28	-2.13	4.77	0.52	3.23	-0.60	4.69	0.73	2.45	-1.05
FREE UNION	1.09	-2.32	1.55	-1.36	F 3.32		M		6.02	1.44	M	
HOLCOMB ROCK	1.01	-2.45	2.10	-1.06	6.51	2.48	6.62	3.00	3.68	-0.93	2.78	-0.83
HUDDLESTON 4 SW	0.97	-2.73	1.21	-1.96	4.38	0.38	4.24	0.68	3.23	-0.75	1.88	-1.50
LYNCHBURG #2	1.18		1.41		3.60		4.60		4.32		4.15	
LYNCHBURG INTL AP	1.30	-2.24	2.12	-0.98	2.69	-1.14	5.36	1.90	3.33	-0.78	3.81	0.02
MARTINSVILLE FLTR PLT	1.22	-2.58	1.14	-2.24	6.46	2.00	3.53	-0.20	5.35	1.03	4.09	0.14
MEADOWS OF DAN 5 SW	0.92	-3.67	1.92	-1.79	8.61	3.48	7.54	2.75	8.48	3.23	5.39	0.41
MONTEBELLO FISH CULTURAL STN	M		M 1.05		M 9.96		M 9.75		M 4.74		M 4.70	
MONTICELLO	1.13	-1.44	1.56	-0.84	7.78	4.04	5.71	2.82	7.60	3.54	5.02	1.44
PEDLAR DAM	0.84	-2.73	1.77	-1.32	6.57	2.64	5.95	2.31	3.98	-0.66	3.31	-0.49
ROCKY MT	1.13	-2.60	1.35	-1.85	5.95	1.74	6.59	2.46	4.91	0.59	1.39	-2.72
SOUTH BOSTON	1.43	-2.73	1.38	-1.96	4.68	0.54	3.98	0.06	3.91	0.57	1.65	-2.36
STUART	1.34	-2.69	1.56	-1.92	7.18	2.59	5.58	1.06	5.54	0.52	2.99	-1.48
TYE RIVER 1 SE	0.62	-3.13	1.52	-1.74	5.42	1.37	4.55	1.09	4.15	-0.66	5.12	1.56
WOOLWINE	1.00	-3.59	1.55	-2.27	10.29	5.20	6.35	1.76	5.49	0.15	1.39	-3.22
--DIVISIONAL DATA----->	1.15	-2.69	1.49	-1.80	5.52	1.29	4.87	1.14	4.80	0.41	3.01	-0.94
NORTHERN 04												
BIG MEADOWS	M 1.32		M		M		M		M 11.67		M	
BOSTON 4 SE	2.20		M		F 4.05		M 7.53		M 4.31		M	
CASTLETON	M 1.37		1.57		7.25		7.33		5.41		1.67	
EDINBURG	0.93		M 1.23		3.65		7.30		7.23		3.43	
FRONT ROYAL	M 1.27		1.67		M 4.80		M 8.06		M 5.82		3.92	
LINCOLN	M		M		M		M		M		M	
LURAY 5 E	M		2.13	-0.51	5.62	2.24	6.61	3.46	5.87	1.95	3.32	-0.66
MADISON	M		M		M		F 4.60		F 3.24		M	
MANASSAS	M		FM 1.00		FM 3.53		M		FM 5.65		M 2.79	
MT WEATHER	F 3.38		F 1.18		FM 4.06		F 7.10		5.64	1.10	2.39	-1.74
PIEDMONT RSCH STN	1.43	-1.89	1.29	-1.53	6.79	3.07	3.74	0.52	4.67	0.34	3.42	-0.64
REMINGTON 2	M		M		M		M		M		M	
SPERRYVILLE	1.44		1.68		7.00		9.87		4.59		2.75	
SOMERSET	1.19		1.41		F 6.11		5.37		4.72		4.10	
STAR TANNERY	M 0.40		0.98		5.29		9.19		5.91		M 4.99	
STERLING RCS	2.08	-1.17	2.62	-0.09	6.50	2.83	4.55	1.27	M 3.69		2.21	-1.38
VIENNA	M 2.06		1.93	-0.92	M 4.78		4.50	1.13	M 4.02		M 2.22	
WARRENTON 3 SE	M 1.81		M 2.15		5.65	2.06	M		M 3.82		M 1.23	
WASHGTN DULLES INTL AP	1.87	-1.18	2.21	-0.56	5.07	1.52	5.21	1.99	3.28	-0.94	1.40	-2.67
WASHINGTON REAGAN AP	2.25	-0.96	2.12	-0.51	4.40	0.80	3.20	0.43	1.70	-2.12	1.68	-1.45
WINCHESTER 7 SE	1.32	-1.34	1.34	-1.06	4.45	1.12	M 7.27		M		2.23	-1.87

TOTAL PRECIPITATION AND DEPARTURE FROM NORMAL (INCHES)

VIRGINIA
2011

STATION	JUL		AUG		SEP		OCT		NOV		DEC		ANNUAL	
	PRECIP.	DEPART.	PRECIP.	DEPART.	PRECIP.	DEPART.	PRECIP.	DEPART.	PRECIP.	DEPART.	PRECIP.	DEPART.	PRECIP.	DEPART.
ALTAVISTA	2.84	-1.09	2.57	-1.06	5.96	2.30	2.86	-0.81	5.07	1.81	3.43	0.23	37.14	-6.81
APPOMATTOX	4.02	-0.46	5.71	1.94	5.39	0.94	3.72	-0.14	M 3.51		5.00	1.93	M 44.61	-1.27
BEDFORD 4 NW	6.12		6.23		8.74		3.70		4.42		5.34		55.88	
BROOKNEAL	4.17	-0.17	4.50	0.67	7.06	3.44	3.49	-0.23	4.73	1.59	2.73	-0.43	42.73	-1.51
CHARLOTTESVILLE 2W	3.48	-1.46	3.49	-0.65	7.96	3.11	6.03	1.81	3.42	-0.32	5.11	1.85	52.99	4.12
CONCORD 4 SSW	3.40	-0.78	6.56	3.34	7.01	2.78	3.62	-0.13	3.80	0.24	4.01	0.84	44.55	-0.20
CHATHAM	2.25	-1.80	2.49	-0.85	6.79	2.27	3.43	-0.24	5.69	2.43	3.00	-0.29	42.27	-3.01
DANVILLE REGIONAL AP	3.88		1.47		5.52		3.45		4.98		2.19		38.96	
DANVILLE	1.12	-3.32	1.35	-2.19	5.51	1.43	3.87	0.16	5.51	2.44	2.19	-0.97	37.28	-7.70
FREE UNION	M 3.20		3.74	-0.16	F 5.37		FA 3.88	-0.09	3.16	-0.79	4.42	1.27		
HOLCOMB ROCK	2.23	-2.39	2.69	-0.64	9.92	5.93	5.31	1.71	4.44	0.96	6.89	3.66	54.18	9.44
HUDDLESTON 4 SW	0.94	-2.79	1.86	-1.37	5.18	0.95	4.46	0.95	3.65	0.31	4.64	1.58	36.64	-6.25
LYNCHBURG #2	2.04		2.90		6.41		3.74		3.21		5.65		43.21	
LYNCHBURG INTL AP	2.99	-1.40	2.06	-1.35	4.49	0.61	2.95	-0.44	3.27	0.09	4.61	1.38	38.98	-4.33
MARTINSVILLE FLTR PLT	1.04	-3.38	1.09	-2.41	4.97	0.70	3.92	0.45	5.50	2.45	3.55	0.29	41.86	-3.75
MEADOWS OF DAN 5 SW	3.63	-1.27	2.28	-2.34	8.04	2.90	4.73	0.35	7.70	3.33	9.65	5.72	68.89	13.10
MONTEBELLO FISH CULTURAL STN	M 5.34		M 3.24		M 6.83		M 5.84		6.21		M 6.66			
MONTICELLO	3.11	-2.08	5.76	1.88	9.28	4.94	6.91	3.02	3.71	0.41	5.66	2.94	63.23	20.67
PEDLAR DAM	4.24	0.08	2.95	-0.33	7.08	2.93	3.51	0.05	3.66	0.09	6.12	2.71	49.98	5.28
ROCKY MT	10.96	6.09	1.64	-2.15	7.06	2.73	4.12	0.61	5.95	2.69	6.26	3.10	57.31	10.69
SOUTH BOSTON	4.07	-0.28	1.35	-2.07	6.32	2.48	2.62	-1.02	4.62	1.51	2.29	-0.85	38.30	-6.11
STUART	2.35	-2.81	2.98	-1.41	5.77	1.03	3.41	-0.38	4.02	0.44	5.94	2.36	48.66	-2.69
TYE RIVER 1 SE	2.19	-2.11	4.39	0.82	9.52	5.17	4.77	0.82	4.26	0.77	M 4.63		M 51.14	5.20
WOOLWINE	2.00	-2.15	2.58	-1.46	9.15	3.92	5.41	1.17	5.45	1.32	6.91	3.01	57.57	3.84
--DIVISIONAL DATA----->	3.32	-1.31	3.16	-0.65	6.96	2.58	4.09	0.33	4.63	1.28	4.80	1.55	47.80	1.19
NORTHERN 04														
BIG MEADOWS	M		M		M		M		M		M			
BOSTON 4 SE	0.93		4.32		FA 2.51		FA 2.65		FMA 1.16		FA 2.14			
CASTLETON	2.64		M 5.30		M		M 6.03		M 2.14		M 4.55			
EDINBURG	0.86		2.61		4.90		2.51		2.91		2.84		M 40.40	
FRONT ROYAL	FM 1.29		FM 1.71		4.82		4.25		2.43		2.99		M 43.03	
LINCOLN	MA 4.70	1.02	5.00	1.18	6.68	2.52	4.96	1.58	M 2.72		M 2.78			
LURAY 5 E	2.94	-0.83	5.08	1.57	5.24	0.89	3.84	0.35	2.07	-1.42	3.80	0.95		
MADISON	1.37		F 4.28		FA 3.03		FA 5.02		FA 0.20		M 2.47			
MANASSAS	M		M 3.70		FMA 9.45		MA 6.71		1.85		M 3.99			
MT WEATHER	1.85	-2.05	2.90	-0.76	FA 2.02	-2.28	FA 6.32	2.65	2.90	-0.50	FA 2.45	-0.56	M 42.19	-1.10
PIEDMONT RSCH STN	F 2.43		F 1.53		FA 6.43	2.57	FA 6.13	2.20	3.47	-0.24	FA 1.49	-1.59	42.82	-1.82
REMINGTON 2	M		M		M		M		M		M			
SPERRYVILLE	2.26		2.86		6.77		M 6.72		2.41		3.90		M 52.25	
SOMERSET	1.92		4.81		F 6.07		FA 6.34		3.27		4.48		49.79	
STAR TANNERY	2.94		2.94		9.21		M 4.95		5.70		3.09		M 55.59	
STERLING RCS	3.38	-0.05	5.60	1.96	11.09	7.10	5.33	1.63	2.35	-1.10	4.59	1.54	M 53.99	11.81
VIENNA	2.70	-1.63	M 5.33		9.26	4.77	M 4.09		M 1.84		M 3.39		M 46.12	1.00
WARRENTON 3 SE	FM 1.00		2.30	-1.37	M 7.49		M 5.76		M 2.68		M			
WASHGTON DULLES INTL AP	2.58	-0.99	3.74	-0.04	7.93	4.11	6.27	2.90	2.18	-1.13	4.46	1.39	46.20	4.40
WASHINGTON REAGAN AP	3.03	-0.63	8.92	5.48	8.84	5.05	3.91	0.69	1.94	-1.09	4.90	1.85	46.89	7.54
WINCHESTER 7 SE	2.61	-1.05	2.37	-1.23	6.22	2.63	M 3.56		3.48	0.42	M 2.52			

TOTAL PRECIPITATION AND DEPARTURE FROM NORMAL (INCHES)

VIRGINIA
2011

STATION	JAN		FEB		MAR		APR		MAY		JUN	
	PRECIP.	DEPART.	PRECIP.	DEPART.	PRECIP.	DEPART.	PRECIP.	DEPART.	PRECIP.	DEPART.	PRECIP.	DEPART.
WINCHESTER	1.12	-1.62	1.83	-0.32	4.41	0.96	7.71	4.83	4.49	0.84	2.04	-1.61
WOODSTOCK 2 NE	1.04	-1.86	1.73	-0.69	3.23	0.14	M 6.47		4.89	1.07	M 5.27	
--DIVISIONAL DATA----->	1.53	-1.64	1.75	-0.90	5.33	1.76	6.22	3.02	4.87	0.64	2.66	-1.28
CENTRAL MOUNTAIN 05												
BROWNSBURG 2 W	0.74		1.65		5.11		M		M		M	
BUCHANAN	1.47	-2.00	1.74	-1.31	4.78	1.01	6.15	2.80	5.45	1.34	M 1.97	
BUENA VISTA	0.94	-1.85	1.18	-1.48	5.35	1.86	6.37	3.17	2.70	-1.19	1.58	-1.79
COVINGTON FLTR PLT	0.64	-1.92	1.05	-1.37	4.56	1.22	6.89	3.86	4.65	0.55	2.89	-0.37
CRAIGSVILLE 2 S	0.81	-2.61	M		0.81		M		M		M	
EARLEHURST	1.35	-1.35	1.61	-1.12	5.81	2.09	7.47	4.03	5.85	1.70	2.39	-0.84
DALE ENTERPRISE	1.01	-1.54	M 1.95		4.35	1.49	7.04	4.40	5.84	2.17	3.65	0.09
GATHRIGHT DAM	0.68	-2.44	1.39	-1.28	5.25	1.80	7.82	4.74	5.22	1.17	2.28	-1.14
GLASGOW 1 SE	1.20	-3.10	1.68	-1.87	8.68	4.13	8.39	4.29	3.32	-1.64	2.14	-2.27
HOT SPRINGS	M 1.21		1.49	-1.45	6.40	2.33	8.64	5.29	6.74	2.42	3.42	-0.11
LEXINGTON	0.69	-2.33	1.66	-1.11	5.49	1.96	5.44	2.27	4.23	0.27	2.86	-1.22
KERRS CREEK 6 WNW	0.43	-3.22	1.25	-1.75	5.40	1.43	6.69	2.94	4.62	0.05	2.28	-1.76
MILLGAP	0.83	-2.65	1.55	-1.33	6.46	2.43	9.23	5.63	6.15	1.50	F 1.29	
MTN GROVE	M		M 0.95		7.26		8.61		6.98		3.12	
MUSTOE 1 SW	1.22		3.21		6.87		10.24		5.28		3.05	
ROANOKE 8 N	0.75		1.54		5.31		5.36		5.13		4.94	
ROANOKE INTL AP	0.82	-2.41	2.20	-0.88	4.23	0.39	5.33	1.72	3.79	-0.45	3.51	-0.17
STAUNTON WATER TRMTMT PLT	1.04	-1.87	1.63	-0.87	4.95	1.72	5.73	2.81	4.76	0.95	2.85	-0.72
WAYNESBORO WTP	0.78		1.51		M 3.34		7.78		5.69		2.92	
--DIVISIONAL DATA----->	0.91	-2.25	1.65	-1.09	5.66	2.08	7.25	4.05	5.08	0.96	2.93	-0.77
SOUTHWESTERN MOUNTAIN 06												
ABINGDON 3S	M 1.80		4.07	0.21	M 5.54		M 5.39		M 4.80		M 2.67	
BIG STONE GAP	M 2.28		M 3.04		8.20	3.25	8.02	3.37	4.64	-1.19	5.83	1.97
BLACKSBURG NWSO	0.82	-2.55	1.97	-1.05	5.60	1.77	5.15	1.32	7.39	3.00	2.78	-1.15
BLAND	1.83	-1.73	1.92	-1.18	7.39	3.64	4.60	1.25	4.27	-0.02	1.15	-2.76
BREAKS INTERSTATE PARK	FA 2.31		2.07		M		M		M		M	
BURKES GARDEN	1.82	-2.07	2.69	-0.73	7.95	3.79	5.04	1.46	4.20	-0.69	3.29	-0.97
CHRISTIANSBURG	1.57		1.75		6.51		5.01		7.94		2.83	
CLINTWOOD 1 W	2.32		2.38		6.35		6.73		6.27		6.25	
COPPER HILL	1.21	-2.22	1.50	-1.48	6.34	2.34	8.60	4.28	5.44	0.87	1.26	-3.23
GALAX RADIO WBRF	0.96	-2.32	M		7.42	3.39	M		M		2.96	-1.10
GRUNDY	1.56	-1.95	1.84	-1.28	6.47	2.49	6.50	2.47	6.87	2.00	3.32	-1.18
GALAX WTP	0.65		1.16		7.27		5.34		7.07		3.15	
LAFAYETTE 1 NE	0.79	-2.42	1.52	-1.32	4.80	1.37	5.35	1.91	4.76	0.80	2.51	-1.00
JOHN FLANNAGAN LAKE	M		M		M		FM 5.23		M 5.81		M	
LEBANON	1.20	-1.66	2.09	-1.43	8.25	4.18	7.58	4.35	4.10	-0.41	3.19	-0.70
NORA 4 SSE	2.13		1.93		7.39		6.92		6.02		3.88	
RADFORD 3 N	0.64	-2.20	1.89	-0.71	6.96	3.81	5.80	2.54	M 7.85		M 1.21	
PULASKI 2 E	0.46	-2.47	1.35	-1.46	6.35	3.01	4.88	1.79	4.11	0.11	1.51	-2.44
NORTH FORK LAKE	M		M		M		M		M		M	
RICHLANDS	1.47	-1.56	2.01	-0.90	6.40	2.08	6.14	3.41	5.41	0.88	2.53	-0.69
SALTVILLE 1N	1.05	-2.74	2.38	-1.23	7.44	3.11	6.06	2.21	4.49	-0.03	2.99	-0.45

TOTAL PRECIPITATION AND DEPARTURE FROM NORMAL (INCHES)

VIRGINIA
2011

STATION	JUL		AUG		SEP		OCT		NOV		DEC		ANNUAL	
	PRECIP.	DEPART.	PRECIP.	DEPART.	PRECIP.	DEPART.	PRECIP.	DEPART.	PRECIP.	DEPART.	PRECIP.	DEPART.	PRECIP.	DEPART.
WINCHESTER	4.21	1.16	2.12	-0.70	5.51	2.16	3.35	0.39	3.19	0.00	2.96	0.45	42.94	6.54
WOODSTOCK 2 NE	M 1.10		M 5.06		5.53	1.87	2.77	-0.35	3.01	0.16	2.61	0.16	M 42.71	5.19
--DIVISIONAL DATA----->	2.41	-1.50	3.97	0.31	7.08	3.01	4.13	0.57	2.88	-0.58	3.69	0.67	46.52	4.08
CENTRAL MOUNTAIN 05														
BROWNSBURG 2 W	M		M		M		M		M		M			
BUCHANAN	2.15	-2.41	2.08	-1.38	6.91	3.14	4.55	1.26	3.52	0.32	4.92	2.08	M 45.69	3.34
BUENA VISTA	2.04	-1.82	3.52	0.55	5.97	2.55	3.23	0.05	3.79	0.62	4.86	2.02	41.53	2.69
COVINGTON FLTR PLT	4.86	1.20	1.56	-1.78	4.95	1.93	2.44	-0.41	3.10	-0.03	4.20	1.68	41.79	4.56
CRAIGSVILLE 2 S	M		3.58	0.22	M		M		3.37	0.02	M			
EARLEHURST	4.01	0.20	1.20	-2.24	4.72	1.44	2.65	-0.34	M		M			
DALE ENTERPRISE	2.48	-1.30	5.86	2.44	5.31	1.81	3.37	0.55	2.47	-0.29	FA 3.23	0.81	M 46.56	10.44
GATHRIGHT DAM	1.82	-1.81	2.51	-0.66	3.95	0.76	2.48	-0.54	3.10	0.08	4.27	1.39	40.77	2.07
GLASGOW 1 SE	1.92	-2.09	3.47	-0.01	6.63	2.05	5.62	1.74	4.36	0.11	5.13	1.54	52.54	2.88
HOT SPRINGS	3.88	-0.41	1.30	-2.11	5.11	1.41	4.13	0.80	5.06	1.46	4.60	1.85	M 51.98	9.07
LEXINGTON	2.69	-1.19	2.90	-0.15	4.71	1.23	3.41	0.33	4.05	1.02	4.99	2.08	43.12	3.16
KERRS CREEK 6 WNW	1.51	-2.85	3.47	-0.16	5.61	1.86	3.56	-0.08	3.12	-0.67	4.98	1.84	42.92	-2.37
MILLGAP	1.04	-3.28	4.68	0.89	6.16	2.85	3.44	0.31	3.93	0.53	4.14	0.93	48.90	5.03
MTN GROVE	1.71		2.37		4.39		2.55		3.27		5.29			
MUSTOE 1 SW	3.63		6.62		6.06		3.27		4.12		4.34		57.91	
ROANOKE 8 N	3.49		1.47		7.08		4.31		3.74		4.38		47.50	
ROANOKE INTL AP	3.76	-0.24	1.45	-2.29	7.39	3.54	4.06	0.91	4.30	1.09	4.19	1.33	45.03	2.54
STAUNTON WATER TRMTMT PLT	4.20	0.38	4.93	1.43	6.23	2.45	2.82	-0.55	2.43	-0.52	3.89	1.40	45.46	6.61
WAYNESBORO WTP	2.50		4.01		8.37		3.54		3.59		4.61		M 48.64	
--DIVISIONAL DATA----->	2.81	-1.16	3.17	-0.25	5.86	2.27	3.50	0.33	3.61	0.42	4.59	1.79	47.02	6.38
SOUTHWESTERN MOUNTAIN 06														
ABINGDON 3S	1.50	-3.32	M 2.70		M 3.31		M 3.43		5.41	2.08	4.69	0.62	M 45.31	-2.10
BIG STONE GAP	3.75	-0.56	5.08	1.19	7.01	3.06	3.34	-0.11	7.69	3.69	5.65	1.13	M 64.53	12.17
BLACKSBURG NWSO	3.93	-0.24	1.25	-2.43	4.84	1.45	2.96	-0.23	4.13	1.17	3.62	0.75	44.44	1.81
BLAND	5.63	2.16	2.22	-1.21	6.11	2.99	2.35	-0.41	4.22	1.59	4.06	1.17	45.75	5.49
BREAKS INTERSTATE PARK	M		M		M		M		M		M			
BURKES GARDEN	3.71	-0.67	2.69	-1.35	6.30	2.83	3.91	0.80	4.64	1.50	4.46	1.05	50.70	4.95
CHRISTIANSBURG	1.55		2.17		6.22		3.32		M 3.76		3.71		M 46.34	
CLINTWOOD 1 W	9.20		1.73		7.06		3.74		4.78		4.17		60.98	
COPPER HILL	M 3.22		3.02	-0.89	7.71	3.06	4.69	0.68	7.22	3.40	4.68	1.89	M 54.89	7.73
GALAX RADIO WBRF	2.11	-1.80	5.18	1.77	10.15	6.42	2.41	-1.13	5.31	1.82	4.22	1.31		
GRUNDY	6.05	1.18	2.63	-1.30	5.99	2.53	3.55	0.40	4.07	0.90	3.86	0.61	52.71	6.87
GALAX WTP	1.95		5.28		9.80		2.67		4.54		4.20		53.08	
LAFAYETTE 1 NE	4.95	1.24	0.60	-2.56	7.30	4.07	3.08	0.21	4.57	1.72	4.31	1.64	44.54	5.66
JOHN FLANNAGAN LAKE	M		M		M		M		M		M			
LEBANON	5.82	1.70	2.73	-0.98	7.22	4.34	2.58	0.43	5.29	2.41	6.20	2.72	56.25	14.95
NORA 4 SSE	6.15		M 2.24		7.55		3.38		5.45		4.39		M 57.43	
RADFORD 3 N	M 4.47		1.77	-1.45	M 4.59		2.98	-0.08	M 3.54		3.74	1.45	M 45.44	8.96
PULASKI 2 E	5.93	2.25	0.78	-2.05	4.27	1.16	2.79	-0.14	3.39	0.84	3.31	0.72	39.13	1.32
NORTH FORK LAKE	M		M		M		4.14	1.11	M		M			
RICHLANDS	4.91	0.53	2.50	-0.47	7.13	3.26	2.90	0.82	4.67	1.96	4.61	0.91	50.68	10.23
SALTVILLE 1N	3.52	-1.19	2.89	-1.26	3.87	0.71	2.68	0.17	4.15	1.11	4.61	0.75	46.13	1.16

TOTAL PRECIPITATION AND DEPARTURE FROM NORMAL (INCHES)

VIRGINIA
2011

STATION	JAN		FEB		MAR		APR		MAY		JUN	
	PRECIP.	DEPART.	PRECIP.	DEPART.	PRECIP.	DEPART.	PRECIP.	DEPART.	PRECIP.	DEPART.	PRECIP.	DEPART.
STAFFORDSVILLE 3 ENE	0.57	-2.59	1.61	-1.26	7.23	3.67	4.93	1.46	5.22	1.06	1.18	-2.75
TROUT DALE 3 SSE	1.38	-2.49	2.18	-1.38	7.62	3.42	4.97	1.32	5.62	0.89	1.41	-2.98
WISE 3E	2.44	-1.46	4.14	0.40	5.49	1.10	8.25	4.31	5.11	0.55	4.57	0.56
WILLIS	0.81	-2.76	M 1.64		M 7.11		7.94	3.67	5.77	1.39	M 2.82	
WYTHEVILLE 1 S	1.33	-1.61	1.45	-1.41	6.41	3.16	4.95	1.76	4.49	0.22	2.98	-0.42
--DIVISIONAL DATA----->	1.29	-2.25	2.09	-1.29	6.85	2.79	6.13	2.43	5.46	0.86	2.98	-1.13

TOTAL PRECIPITATION AND DEPARTURE FROM NORMAL (INCHES)

VIRGINIA
2011

STATION	JUL		AUG		SEP		OCT		NOV		DEC		ANNUAL	
	PRECIP.	DEPART.	PRECIP.	DEPART.	PRECIP.	DEPART.	PRECIP.	DEPART.	PRECIP.	DEPART.	PRECIP.	DEPART.	PRECIP.	DEPART.
STAFFORDSVILLE 3 ENE	4.21	0.30	1.25	-1.99	4.31	1.11	2.58	-0.17	2.53	-0.29	4.15	1.57	39.77	0.12
TROUT DALE 3 SSE	7.00	3.00	2.83	-0.75	6.13	2.97	3.08	-0.17	3.73	0.39	4.32	1.24	50.27	5.46
WISE 3E	9.84	4.97	4.06	0.24	9.44	5.86	4.10	1.10	6.15	2.55	4.22	0.63	67.81	20.81
WILLIS	3.22	-0.75	1.04	-2.93	8.86	5.21	3.76	0.41	4.34	0.96	4.85	1.60	M 52.16	7.05
WYTHEVILLE 1 S	2.53	-1.20	3.78	0.64	3.97	0.88	2.17	-0.71	3.71	1.03	3.73	1.31	41.50	3.65
--DIVISIONAL DATA----->	4.64	0.35	2.64	-0.93	6.73	3.26	3.18	0.08	4.76	1.56	4.34	1.07	51.09	6.80

AVERAGE TEMPERATURES AND DEPARTURES FROM NORMAL(°F)

VIRGINIA
2011

STATION	JAN		FEB		MAR		APR		MAY		JUN		JUL		AUG		SEP		OCT		NOV		DEC		ANNUAL			
	TEMPERATURE	DEPARTURE.	TEMPERATURE	DEPARTURE.	TEMPERATURE	DEPARTURE.	TEMPERATURE	DEPARTURE.	TEMPERATURE	DEPARTURE.	TEMPERATURE	DEPARTURE.	TEMPERATURE	DEPARTURE.	TEMPERATURE	DEPARTURE.	TEMPERATURE	DEPARTURE.	TEMPERATURE	DEPARTURE.	TEMPERATURE	DEPARTURE.	TEMPERATURE	DEPARTURE.	TEMPERATURE	DEPARTURE.		
VIRGINIA																												
TIDEWATER 01																												
EASTVILLE	M		41.4	0.9	46.5	-0.1	60.8	4.2	67.8	2.9	76.8	2.1	80.7	1.3	78.5	1.0	73.0	1.5	60.9	-0.6	54.0	1.8	46.8	4.0	62.5			
DISPUTANTA	33.9	-5.1	42.1	1.8	46.4	-0.9	59.7	3.1	66.1	0.5	75.5	1.1	79.5	1.2	76.0	-0.6	71.6	1.7	57.5	-1.1	50.7M	1.0	44.5	3.7	M 58.6			
EMPORIA 1 WNW	34.9	-3.6	43.1	1.7	48.8	0.3	60.6	2.7	67.6	1.5	77.8	3.1	81.1	2.4	78.2	1.0	72.4	1.6	58.6	-1.2	53.0	2.5	45.7	4.1	60.2	2.2		
FREDERICKSBURG SEWAGE	31.9MF	-2.9	39.6F	2.2	45.5	0.5	58.5MF	3.3	66.1	1.9	75.5	2.0	80.7M	3.3	77.0M	0.9	68.7M	-0.3	57.0	-0.4	50.3	2.8	42.9M	4.7	M 57.8			
HAMPTON UNIV	M		48.6	4.1	51.4M	-0.1	64.1M	3.2	70.7	2.2	79.7	2.6	83.4	2.5	80.6	1.3	75.3	1.4	62.9	-0.4	56.8	1.9	50.8	5.4	M 65.8			
HOLLAND 1 E	35.5	-4.3	44.2	1.4	48.9	-0.7	62.2	3.7	68.9	1.9	76.8	1.4	80.7	1.6	77.2	-0.2	72.9	1.6	58.4	-2.4	53.8	1.7	47.8	4.8	60.6	2.8		
HOPEWELL	37.0M	-4.2	48.0M	3.8	52.8M	1.2	65.2	4.1	70.2	1.2	79.2M	2.0	83.1	2.3	80.2	1.0	74.0	1.2	61.5	-0.9	54.9M	1.6	50.1	6.1	M 63.0	2.8		
NORFOLK SOUTH	35.4	-5.4	45.2	1.9	48.4	-1.8	62.5	3.1	68.8	0.9	77.1	1.1	80.9	0.8	78.2	0.2	73.7	1.6	59.4	-2.6	53.6	1.0	47.3	3.6	60.9			
NORFOLK INTL AP	36.0	-4.4	45.6	3.0	49.3	-0.1	63.4	5.2	69.9	3.3	78.8	3.5	82.3	2.7	80.0	2.1	74.9	2.6	62.3	0.2	56.4	3.5	50.4	6.3	62.4	2.8		
NORTH	33.7	-4.2	41.9	1.6	46.2	-0.5	59.5	3.1	66.7	1.8	75.3	1.9	78.9	1.3	76.7M	0.4	71.6	1.2	60.2M	0.4	53.6M	3.2	45.0	3.5	M 59.1			
PAINTER 2W	34.3	-4.8	44.2	3.3	47.7	0.1	62.0	5.1	68.2	2.7	77.2	2.9	81.0	2.4	77.9	1.2	72.6	1.7	60.8	0.0	54.2	2.5	47.8	5.3	60.7	2.2		
STONY CREEK 2 N	34.5	-3.1	42.3	0.9	47.7	-0.8	60.2	1.7	67.5	0.4	76.7	0.8	80.2	0.6	77.6M	0.2	71.9	1.2	58.3	-0.5	52.1	2.2	45.1	4.3	M 59.5	1.4		
SUFFOLK LAKE KILBY	35.6	-4.4	45.8	3.0	49.1	-0.7	61.6	3.0	68.5	1.8	76.0	1.1	80.7	1.9	78.6	1.5	72.7	1.3	59.9	-1.3	53.5	1.6	48.0	4.8	60.8	1.4		
WAKEFIELD 1NW	34.3	-3.9	44.9	3.9	47.4	-0.6	61.7	4.5	68.3	2.5	76.3	2.1	80.6	2.1	77.7	1.2	72.6	2.6	58.7	-0.7	53.3	2.9	45.7	4.8	60.1	1.4		
WALKERTON 2 NW	37.7M	-0.4	47.7	6.5	51.6	2.6	64.3	5.4	71.0	4.1	79.0	3.8	82.3	3.5	M		74.3	3.4	62.2	2.4	56.0	5.4	49.1	8.1	M 61.4	3.7		
WALLACETON LK DRUMMOND	34.9F	-2.2	43.5F	3.5	47.4F	1.2	61.4F	5.5	M		76.2	3.4	79.8	2.6	76.8	2.0	71.9F	3.4	59.2F	0.7	53.5	3.5	46.7F	5.9	59.2			
WARSAW 2 NW	33.6	-4.7	44.1	3.0	48.5	-0.1	62.0	3.8	69.0M	2.4	76.9	1.9	80.8	2.6	77.5	0.4	72.3	1.8	60.6M	0.6	53.5	2.6	46.6	5.2	M 60.5	2.7		
WEST POINT 2 NW	33.7	-4.8	44.8	3.4	48.4	-0.4	62.1	3.6	68.9	2.0	77.0	1.7	81.5	2.5	78.1	0.9	72.6	2.0	59.0	-1.1	53.3	2.5	45.4	3.9	60.4	1.4		
WILLIAMSBURG 2 N	34.2M	-4.3	44.3	3.0	47.5	-0.9	61.6	3.7	68.2	2.2	76.0	1.9	79.9	1.9	77.2	0.7	72.7	2.3	59.1	-0.8	53.9	3.1	46.3	4.6	M 60.1	1.4		
--DIVISIONAL DATA----->	30.3	-7.4	37.6	-2.5	46.3	-1.4	55.3	-1.1	62.0	-3.3	73.8	0.2	78.7	0.5	77.8	1.4	70.0	-0.5	56.6	-2.7	46.0	-4.1	37.3	-4.5	56.0	-25.4		
EASTERN PIEDMONT 02																												
AMELIA COURTHOUSE 1	M		M		M		61.3M	6.3	66.6M	2.6	M		80.2M	3.6	77.2M	2.4	70.0M	1.9	58.1M	1.4	52.2M	4.8	46.3M	7.5	M			
ASHLAND	33.4	-2.9	44.7	5.0	48.6	1.0	62.4	4.9	67.6	2.5	75.3	1.9	79.1	2.0	76.4	0.7	70.8	1.9	57.9	0.2	52.6M	4.0	45.0	5.9	M 59.5	2.9		
BREMO BLUFF	M		M		48.2	0.5	60.7F	3.4	68.2	2.0	77.5	2.4	81.4M	2.6	77.9	0.4	70.9	0.9	57.8	-0.4	51.0	2.7	44.3	5.1	M			
CAMP PICKETT	34.4	-1.7	42.7	3.7	46.8	0.5	59.1	3.3	65.8	1.5	M		79.8M	2.8	76.3	1.0	70.2	1.7	56.7	-0.5	50.4	2.2	43.8	4.8	M 56.9	0.5		
CHASE CITY	37.2	-0.4	44.0	3.3	49.3	1.4	60.1	2.9	66.6	1.0	75.6	1.1	79.3	1.0	76.5	-0.2	70.6	0.9	58.1	-0.4	52.4	2.9	46.2	5.9	59.7	2.6		
CLARKSVILLE	36.6	-1.4	44.9M	4.0	50.1	1.1	61.6	3.1	68.3	1.4	78.9M	3.8	81.9M	2.8	79.7M	2.3	71.8	1.0	59.9F	0.7	53.5M	3.1	46.3	5.2	M 61.1			
CORBIN	32.1M	-2.6	42.8	4.9	46.8	1.3	60.6	5.1	66.5	2.7	74.6	1.9	79.6	2.8	76.0	0.7	70.3	2.0	57.6M	0.4	51.6	3.7	44.1	5.8	M 58.6	2.2		
CROZIER	32.6	-3.3	41.0	2.2	46.6	1.0	59.0M	3.6	65.2M	1.5	73.9	1.3	78.6	1.6	76.1M	0.5	68.9	0.5	55.9	-1.1	49.9M	1.8	43.0	4.0	M 57.6	1.3		
FARMVILLE 2 N	33.2F	-2.1	40.5	2.5	46.7	0.9	58.1	3.2	64.9	0.9	74.5	1.2	79.0	1.6	76.3	0.4	69.2	1.0	57.1M	-0.2	52.2	4.7	45.1	6.7	M 58.1	0.8		
GREENBAY 3 NE	34.2	-2.2	42.4	3.2	47.6	0.0	59.7	2.4	66.0	0.9	75.8	2.6	79.7	2.1	76.1	0.3	69.4	0.5	56.5	-1.3	51.0	2.7	45.0M	6.1	M 58.6			
JOHN H KERR DAM	35.9	-3.1	43.9	2.0	49.5	0.4	62.4F	3.6	69.9	2.5	79.3	3.2	84.3F	4.2	80.0	1.3	74.4	2.7	60.7	0.2	53.9	2.5	46.2F	4.1	61.7	3.4		
LOUISA	33.0	-3.0	42.7	3.6	47.4	0.7	61.3	4.7	66.6	1.8	74.6	1.4	79.1	2.0	76.8	1.3	70.6	2.2	57.1	-0.3	49.8	2.1	42.1	3.7	58.4	4.2		
PALMYRA 3S	31.4	-2.5	38.3	2.0	43.5M	-0.3	55.9	2.2	63.5	2.3	71.6	1.7	76.2	2.1	74.6	1.9	68.2F	2.6	55.5	1.0	48.4	3.1	41.2	5.1	M 55.7			
PETERSBURG	34.2	-3.6	43.4	2.5	48.0	-0.4	59.8M	1.9	67.0M	0.5	76.8	1.8	81.0M	1.8	77.9M	0.4	72.2	1.6	58.8	-0.5	52.9	2.6	45.6M	4.6	M 59.8			
RICHMOND INTL AP	34.4	-3.5	44.8	3.9	48.7	0.1	61.8	3.6	69.1	2.7	78.1	2.8	82.0	2.7	79.0	1.5	72.6	2.0	59.4	-0.3	53.5	3.1	46.3	5.3	60.8	3.2		
SANDSTON	32.6	-3.9	41.4M	1.9	46.4	-0.3	59.3	2.6	67.1	1.7	76.5	2.0	80.1	1.5	77.0	0.4	71.3	1.7	57.3M	-0.2	50.4	2.1	43.7	5.0	M 58.6			
--DIVISIONAL DATA----->	33.9	-2.0	42.7	3.6	47.6	0.7	60.2	4.3	66.8	2.7	75.9	3.5	80.1	3.3	77.1	2.0	70.7	2.2	57.8	0.9	51.6	3.6	44.6	5.2	59.1	30.0		
WESTERN PIEDMONT 03																												
APPOMATTOX	33.5	-0.8	41.3M	3.9	45.9M	0.5	58.5M	3.6	64.4	1.1	74.5	2.9	78.9	3.0	75.5	1.2	68.5	0.8	56.6	0.6	49.5M	2.8	42.9	4.9	M 57.5	2.0		
BROOKNEAL	M		M		M		61.9M	10.7	65.7	6.1	75.5	6.3	79.6	7.5	77.3	6.1	69.0	5.6	55.9	4.4	48.2	5.9	42.4	7.9	M			
CHARLOTTESVILLE 2W	33.2	-2.7	41.0	1.9	46.1	-0.7	58.4	1.2	66.2	1.2	75.8	2.2	80.3	3.1	77.0	1.3	68.8	0.0	57.2	-1.1	51.6	2.7	43.7	4.8	58.3	1.3		

AVERAGE TEMPERATURES AND DEPARTURES FROM NORMAL(°F)

VIRGINIA
2011

STATION	JAN		FEB		MAR		APR		MAY		JUN		JUL		AUG		SEP		OCT		NOV		DEC		ANNUAL		
	TEMPERATURE	DEPARTURE.	TEMPERATURE	DEPARTURE.	TEMPERATURE	DEPARTURE.	TEMPERATURE	DEPARTURE.	TEMPERATURE	DEPARTURE.	TEMPERATURE	DEPARTURE.	TEMPERATURE	DEPARTURE.	TEMPERATURE	DEPARTURE.	TEMPERATURE	DEPARTURE.	TEMPERATURE	DEPARTURE.	TEMPERATURE	DEPARTURE.	TEMPERATURE	DEPARTURE.	TEMPERATURE	DEPARTURE.	
CHATHAM	32.6	-2.0	39.3	1.8	45.4	0.7	57.1	3.2	63.5	1.3	73.0	2.1	77.6	2.9	75.3	2.0	67.4	1.3	54.4	-0.6	47.7	1.9	40.9	3.8	56.2	1.3	
DANVILLE	35.2	-2.0	43.1	2.6	49.9	2.2	61.7	4.4	68.1	2.0	78.4	3.4	81.6	2.7	79.1	1.7	70.7	0.6	56.8	-1.8	50.3	1.3	44.2	4.2	59.9	2.0	
DANVILLE REGIONAL AP	34.8	-2.9	43.8	2.9	48.6	-0.1	60.4	2.1	66.2	-0.2	75.7	0.9	79.9	1.6	77.8	0.8	70.2	0.3	56.0	-3.5	50.5	1.3	44.4	4.3	59.0		
FREE UNION	31.4		38.2M		43.7		M		64.1		M		75.4M		73.6		67.0		55.0		47.8		40.5		M		
LYNCHBURG #2	32.8	-2.0	39.8	2.2	45.4	0.3	57.1	3.2	64.0	1.9	73.0	2.4	77.0	3.1	74.3	1.3	67.9	1.2	55.0	-0.3	47.9	1.8	41.3	4.0	56.3		
LYNCHBURG INTL AP	32.9	-2.2	41.1	2.9	46.7	0.8	59.2	3.8	65.5	2.4	74.1	2.5	78.6	3.3	76.1	2.0	68.4	1.4	55.7	-0.5	49.2	2.4	42.8	5.2	57.5	2.1	
MONTICELLO	31.8	-1.7	39.3	3.1	43.7	-0.7	56.3	2.0	63.5	0.7	72.0	0.5	77.4	2.1	74.0	0.3	66.8	0.9	55.0	-0.6	49.4	3.1	42.4	5.7	56.0	0.5	
MONTEBELLO FISH CULTURAL STN	27.6M		35.7MF		M		53.4M		58.7M		68.1M		72.8M		69.1M		62.1M		50.2M		44.3		37.2M		M 52.7		
MEADOWS OF DAN 5 SW	33.7		40.6		46.6		56.3		62.9		70.9		74.3		72.4		66.3		55.1M		49.0		43.4M		M 56.0		
MARTINSVILLE FLTR PLT	32.8	-2.7	39.8	1.4	45.4	-0.6	58.1	2.9	64.7	1.4	73.9	2.2	78.1	2.7	75.5	1.6	68.5	1.9	54.7	-1.1	48.2	1.9	41.8	4.1	56.8	2.3	
SOUTH BOSTON	34.0	-2.4	41.4	2.0	47.4	0.8	59.1	3.3	65.6	1.8	75.3	2.5	79.2	2.4	76.9	1.5	69.7	1.3	56.6	-0.6	49.7	1.9	43.7	4.4	58.2	1.7	
ROCKY MT	33.4M	-2.2	40.1	1.8	46.4	1.0	58.5	3.8	64.5	1.9	74.5	3.4	78.2	3.3	75.3M	1.8	67.3	0.9	55.6	-0.3	48.4	1.8	41.9	4.0	M 57.0	1.5	
STUART	34.4F	-2.4	41.6F	1.8	47.4	0.5	58.2	2.0	65.0	0.9	73.6	1.6	77.9	2.6	75.4	0.9	68.5	0.4	56.5	-1.2	49.6	1.2	43.9	4.7	57.7	2.2	
TYE RIVER 1 SE	34.1	-2.0	41.1F	2.1	46.7	0.6	58.8	3.0	65.2	1.6	73.9	1.8	78.5	2.4	75.5	0.8	68.6	0.8	57.1	-0.1	49.6	1.4	42.2M	3.6	M 57.6	2.1	
--DIVISIONAL DATA----->	33.0	-2.8	40.5	1.6	46.4	-0.1	58.3	2.6	64.6	1.1	73.9	2.3	78.0	2.1	75.3	1.0	68.0	0.4	55.5	-0.8	48.9	1.4	42.3	3.4	57.1	12.2	
NORTHERN 04																											
BIG MEADOWS	21.5M	-4.3	M		M		M		53.5M	-1.0	M		M		M		M		M		M		M		M		M
BOSTON 4 SE	30.7	-2.0	M		43.6F	0.4	55.8M	2.7	62.3M	0.7	M		77.4	3.0	74.0	1.4	67.4M	2.2	53.4M	-0.6	M		40.3	4.9	M 5	M	
CASTLETON	30.6M		38.3		44.9		57.2		65.3		73.6M		78.2		75.7MF		68.2MF		54.7M		49.1		42.0M		M 56.5		
EDINBURG	28.2	-2.9	36.1M	2.2	42.5	1.0	53.4	2.0	63.1	2.4	70.8	1.3	76.1	3.0	73.2	1.2	66.0	1.3	52.9	-0.4	45.7	1.6	38.1	4.0	M 53.8		
FRONT ROYAL	30.6M	-2.3	38.1	1.9	44.2M	1.0	57.3M	3.0	65.1M	2.7	72.4	1.2	77.8M	2.8	74.4M	0.5	66.7	0.1	54.3	-1.8	48.8	2.4	41.2	4.9	M 55.9		
LINCOLN	M		36.4	2.8	43.8M	2.1	55.4	3.5	64.9	4.0	71.3F	1.2	77.7	2.8	M		68.3	2.7	53.2	-1.1	46.8M	2.4	37.7	2.9	M		
LURAY 5 E	M		39.6F	3.1	43.7	-0.6	56.2	1.6	63.9	1.1	71.0	0.1	76.4	1.9	73.5	0.4	66.2	-0.3	53.5	-3.0	49.0	2.1	40.4	3.5	57.6	2.8	
MADISON	M		M		48.0M	3.9	59.1	5.0	66.4	3.2	74.4	2.3	78.8	3.0	75.5	1.3	68.7	2.2	57.0	1.4	51.2	4.9	44.3M	6.8	M		
MANASSAS	M		38.8M	2.8	43.8M	-0.2	M		66.7M	2.7	77.1M	3.3	M		78.5M	1.6	71.4M	2.8	55.7M	-0.7	50.9M	4.2	41.9M	4.8	M		
MT WEATHER	27.8	-2.9	34.6	1.3	40.5M	-0.2	53.5	1.8	63.1	2.2	71.0	0.9	77.4	3.4	73.2	0.5	65.0	-0.6	53.5	-1.2	49.0	3.9	39.3	4.9	M 54.0	3.0	
PIEDMONT RSCH STN	31.9	-2.4	39.6	2.3	45.4	0.4	57.4	2.1	65.6	1.9	74.7	2.1	79.4	3.0	75.8	0.9	68.4	0.4	55.7	-1.0	49.2	1.7	41.8	4.3	57.1	2.0	
REMINGTON 2	M		M		M		M		M		M		M		M		M		M		M		M		M		M
SPERRYVILLE	30.4	-2.7	37.5	1.3	43.5	-0.1	54.8	1.1	63.0	1.0	71.7	0.7	76.1	1.5	73.2	-0.3	66.3	-0.4	54.3M	-1.6	47.9	1.0	40.4	3.8	M 54.9		
SOMERSET	31.7	-1.8	39.3	2.8	44.8	0.3	57.0	3.1	64.9	1.5	73.7M	1.9	78.4	3.1	75.4	0.7	68.2	0.9	54.8	-0.9	48.7	2.1	40.7	4.0	M 56.5		
STAR TANNERY	27.6F	-2.5	36.3F	2.7	41.2F	0.0	53.4F	1.9	62.3F	2.3	69.9F	0.9	76.6	3.4	71.3F	-0.5	64.6	0.2	51.7	-1.0	45.5	1.4	37.8	3.7	53.2		
STERLING RCS	28.4	-3.6	35.8	1.2	42.9M	0.2	56.6	3.5	65.8M	3.5	74.5	3.0	80.6	4.7	75.9	1.5	68.8	2.0	54.7	-0.5	47.9	2.5	39.7	4.1	M 56.0	3.1	
VIENNA	29.6M	-3.0	37.7	2.0	43.4M	0.6	56.6	2.7	64.5M	3.0	72.3M	1.8	78.1	3.5	76.0M	2.9	68.1	2.0	54.9M	-0.1	49.2M	3.0	41.2M	4.8	M 56.0		
WARRENTON 3 SE	30.1M	-3.1	37.4M	1.5	44.2	0.2	57.7M	3.4	64.8M	1.9	73.4M	1.8	79.0M	3.3	75.4	1.0	68.5M	0.7	55.0M	-1.4	48.1M	1.3	M		M 57.6	3.0	
WASHGTN DULLES INTL AP	30.0	-3.2	38.1	1.9	44.2	0.0	57.3	2.9	66.3	3.1	74.9	2.5	81.0	4.3	76.3	0.9	69.1	1.2	55.1	-0.9	49.1	2.7	41.5	4.9	56.9	2.7	
WASHINGTON REAGAN AP	33.7	-2.3	41.8	2.8	45.6	-1.2	58.8	2.0	68.4	2.4	78.8	3.6	84.5	4.7	80.0	1.9	71.3	0.3	58.4	-1.1	52.4	2.8	45.0	5.3	59.9	2.4	
WINCHESTER 7 SE	27.4	-3.5	36.5	3.0	41.3	0.3	54.0F	2.5	M		71.6	1.8	77.3	3.2	73.5	1.0	66.6	1.5	52.2M	-1.4	46.3	2.2	38.3M	4.4	M 53.2	0.2	
WINCHESTER	29.4F	-2.4	37.3	2.4	43.2	0.9	55.1	2.0	64.4	2.4	72.9	1.9	78.1	2.9	74.6	1.0	66.6	0.5	53.5	-1.1	48.1	2.7	40.0	4.7	55.3	1.9	
WOODSTOCK 2 NE	28.9	-1.6	36.2	3.1	42.4	1.3	53.4M	2.9	63.1	2.7	70.4M	1.0	75.9M	2.4	72.6M	0.3	65.8	1.0	52.8	-0.9	46.8	3.3	38.6	4.6	M 53.9	0.6	
--DIVISIONAL DATA----->	29.4	-2.4	37.7	2.6	43.7	0.6	56.0	3.1	64.2	2.4	73.0	2.9	78.2	3.7	74.9	2.1	67.6	1.6	54.3	-0.2	48.5	3.3	40.5	4.5	55.7	24.2	
CENTRAL MOUNTAIN 05																											
COVINGTON FLTR PLT	31.5	-0.5	39.0	3.6	44.1	0.5	56.5	3.5	64.0	1.5	71.0F	0.9	76.7	2.4	73.8	1.2	67.2	1.3	54.4	-0.7	47.4	2.9	40.9	4.8	55.5	1.7	
DALE ENTERPRISE	28.0F	-2.4	36.6M	3.7	41.4	0.4	54.4	3.9	63.1	2.8	71.1	1.4	76.2	2.7	72.6	0.5	65.5	0.9	52.4	-1.0	45.7	2.5	38.4	4.7	M 53.8	1.4	
GATHRIGHT DAM	28.0	-3.4	36.9	2.8	42.2	0.3	54.7	3.0	61.4	1.1	69.1	0.6	74.6	2.6	71.7	0.7	64.3	0.3	51.7	-1.6	45.2	1.6	37.7	3.8	53.1	0.6	
HOT SPRINGS	26.9M	-3.1	36.4M	3.4	41.8	0.9	54.0MF	3.1	61.5M	2.1	68.7	1.3	74.0	3.2	71.1	1.3	62.9M	0.2	51.6	-0.4	44.3	1.8	37.1	4.3	M 52.5	1.3	

AVERAGE TEMPERATURES AND DEPARTURES FROM NORMAL(°F)

VIRGINIA
2011

STATION	JAN		FEB		MAR		APR		MAY		JUN		JUL		AUG		SEP		OCT		NOV		DEC		ANNUAL	
	TEMPERATURE	DEPARTURE.	TEMPERATURE	DEPARTURE.	TEMPERATURE	DEPARTURE.	TEMPERATURE	DEPARTURE.	TEMPERATURE	DEPARTURE.	TEMPERATURE	DEPARTURE.	TEMPERATURE	DEPARTURE.	TEMPERATURE	DEPARTURE.	TEMPERATURE	DEPARTURE.	TEMPERATURE	DEPARTURE.	TEMPERATURE	DEPARTURE.	TEMPERATURE	DEPARTURE.	TEMPERATURE	DEPARTURE.
LEXINGTON	31.5	-2.5	38.7	1.9	43.9	-0.8	57.3	3.3	63.9	1.1	73.6	2.2	77.1	1.9	74.8	0.6	67.2	0.5	54.1	-1.7	46.3	0.6	39.6	2.9	55.7	1.8
MILLGAP	24.6	-3.1	32.7	2.6	37.3	-0.8	50.1	2.7	58.2	1.8	64.7	1.3	70.2	2.8	67.7	1.1	61.3	1.7	48.0	-0.9	41.1	1.5	34.2	4.1	49.2	
MUSTOE 1 SW	M		33.7	2.5	38.1	-0.2	50.8	2.6	58.9	2.3	65.1	0.7	70.1F	2.3	67.1M	0.6	60.5	0.5	49.1	-0.5	42.8	2.4	36.3	5.6	M 52.0	
ROANOKE 8 N	33.3	-2.0	40.6	1.9	46.6M	0.8	58.2	3.2	65.1	1.8	74.6	2.9	78.9	3.6	76.6	2.0	68.4	0.4	56.4	-0.7	49.5	2.4	42.3	3.6	M 57.5	
ROANOKE INTL AP	34.7	-1.9	43.2	3.6	47.5	0.2	60.1	3.4	66.1	1.5	75.8	2.9	80.2	3.5	77.8	2.4	68.8	0.7	56.9	-0.8	50.5	2.4	44.0	5.0	58.8	2.5
STAUNTON WATER TRMTMT PLT	30.0	-2.6	38.5	2.9	43.4	0.2	55.6	2.7	63.6	2.1	72.0	2.0	77.0	3.4	73.4	1.1	65.9	0.7	53.9	-0.3	49.2	4.0	41.7	5.9	55.4	3.7
WAYNESBORO WTP	29.8	-3.0	39.3	4.4	44.6M	2.3	55.7	4.2	63.5	2.6	70.6	0.7	76.8	3.3	73.3	1.0	67.5	2.6	54.5	0.3	47.5	3.0	40.1	4.7	M 55.3	
--DIVISIONAL DATA----->	29.8	-2.5	37.8	2.2	42.8	-0.9	55.2	2.5	62.7	1.3	70.6	1.3	75.6	2.2	72.7	0.8	65.4	0.3	53.0	-1.0	46.3	2.0	39.3	3.4	54.3	11.6
SOUTHWESTERN MOUNTAIN 06																										
ABINGDON 3S	30.7M	-1.8	40.6	4.3	46.6M	2.0	57.8M	4.9	62.5M	1.1	71.6M	2.6	75.7	2.9	73.5M	2.0	67.2	1.8	53.3M	-0.7	48.2	3.5	42.0	6.0	M 55.8	2.4
BIG STONE GAP	31.5	-2.5	40.3	2.5	46.8M	1.1	57.3	3.0	63.3F	0.3	72.6	1.6	76.7	2.3	73.7	-0.3	67.3	0.1	54.4	-1.6	48.2F	1.9	41.0F	4.1	M 56.1	1.4
BLACKSBURG NWSO	28.8	-2.7	37.1	2.9	42.5	0.9	54.5	3.8	61.5	2.2	70.2	2.5	74.6	3.4	72.2	2.2	64.6	1.5	52.0	-0.3	45.4	2.1	38.6	4.8	53.5	2.3
BLAND	27.9	-3.0	37.3F	3.6	42.1	1.5	52.9	3.2	59.3	1.4	67.2	1.2	72.0	2.3	69.3	0.4	62.9F	0.6	50.3	-1.3	44.7	2.0	38.4	4.7	52.0	1.7
BREAKS INTERSTATE PARK	29.2	-2.8	38.1	2.1	M		M		M		M		M		M		M		M		M		M		M	
BURKES GARDEN	25.3	-3.6	34.9	3.3	39.6M	0.5	50.5	2.6	55.1	-1.1	63.0	-1.1	65.6	-1.8	62.4	-3.8	60.3	0.7	48.4	-0.7	42.1	1.6	36.8	5.2	M 48.7	0.5
CHRISTIANSBURG	29.5	-3.3	38.7	2.9	43.4	0.1	55.1	2.4	61.2	0.2	70.0	1.4	74.5	2.1	71.9	0.5	64.2	-0.2	52.5	-2.0	46.8	1.4	40.5	4.8	54.0	
CLINTWOOD 1 W	28.3	-2.8	37.7	3.1	44.0	1.6	55.3	3.4	61.2	1.4	69.4	1.8	73.5	2.4	70.9	0.4	64.2	0.8	51.5	-1.4	45.5	2.2	38.9	4.8	53.4	
COPPER HILL	27.4		36.0		40.7		53.5		59.0		70.0M		72.6M		69.9		61.9		51.4M		46.5		39.0		M 52.3	
GALAX RADIO WBRF	31.0F	-0.7	38.7F	3.9	44.0F	2.0	55.2	4.3	60.3F	0.5	70.2	2.6	73.6	2.6	70.9	1.1	63.8	0.9	51.6F	-0.7	46.2	3.1	39.3	4.8	53.7	3.3
GRUNDY	30.1	-2.8	39.6	3.3	44.9	1.2	56.9	4.1	62.3	1.2	70.3	1.1	73.8	1.0	72.0	-0.2	65.8	0.2	53.5	-1.4	47.1	2.2	40.0	4.4	54.7	-0.6
GALAX WTP	29.2	-1.8	37.0	2.7	42.5	1.7	53.0	3.0	59.8	0.9	68.5	1.6	72.4	2.0	69.8	0.6	63.0	0.6	51.1	-0.7	44.6	1.7	38.3	4.1	52.4	
JOHN FLANNAGAN LAKE	M		M		M		57.5M		M		M		M		M		M		M		M		M		M	
LEBANON	29.7	-3.3	39.4	3.5	45.7	2.5	56.5	4.6	61.3	0.6	70.3	1.8	74.3	2.4	71.6	0.6	65.4	0.6	52.2	-1.0	45.9	1.7	40.3	4.9	54.4	1.7
NORA 4 SSE	27.2	-2.9	37.5	4.0	42.3	0.9	54.4	4.1	60.2	-0.5	69.8	0.8	73.3	1.6	70.9M	-0.4	64.0	-1.2	52.3	-2.4	46.2	1.7	38.7	4.8	M 53.1	
RADFORD 3 N	29.8	-0.5	38.7	4.6	43.7	2.8	55.5	5.3	62.0	2.4	70.9	2.7	75.5	3.1	73.3	2.3	65.8	2.5	52.9	0.7	46.6	3.6	40.0	6.3	54.6	
PULASKI 2 E	30.4	-2.6	39.5	3.8	43.7	0.8	55.7	3.8	62.3F	1.7	71.3	2.5	75.5	3.2	72.5	1.4	65.4	1.3	53.8	0.2	47.0	2.3	40.4F	5.0	54.8	2.8
NORTH FORK LAKE	M		M		M		M		M		70.3M		M		M		M		M		M		M		M	
RICHLANDS	29.6	-2.4	38.9	3.7	44.9	2.8	55.0	3.5	61.7	1.5	69.9	1.8	74.3	2.8	71.3	0.4	65.8	1.4	52.1	-1.1	46.5	2.3	40.0	5.4	54.2	2.1
SALTVILLE 1N	29.3	-3.6	39.2	3.1	45.2	1.4	55.5	2.6	62.0	0.4	70.3	0.8	74.6	1.7	72.2	0.2	66.0	0.5	52.9	-1.4	46.0	1.4	39.7	4.3	54.4	1.4
TROUT DALE 3 SSE	27.0		36.2		41.9		52.6		57.6		66.3		70.0		67.6		61.7		49.5		43.1		37.3		50.9	
STAFFORDSVILLE 3 ENE	29.5	-2.1	38.1	3.1	43.0	0.3	55.1	3.5	61.1	1.5	69.8	2.0	74.3	2.8	71.7	1.3	65.2	1.5	52.4	-0.8	45.1MF	1.2	38.9	4.4	M 53.7	2.1
WISE 3E	29.8	-3.3	40.0F	3.2	45.1	0.4	57.3MF	3.7	61.8	1.0	68.7	0.8	72.4	1.5	70.0F	0.0	63.3	-0.9	52.9	-2.0	48.1F	2.5	42.2F	6.1	M 54.3	1.1
WYTHEVILLE 1 S	28.6	-2.1	37.9	4.0	43.6	2.5	54.4	4.5	61.3	2.6	69.6	3.0	74.3	3.9	71.1	1.6	65.1	2.5	51.7	-0.2	45.2	2.5	40.1	6.5	53.6	2.5
--DIVISIONAL DATA----->	29.1	25.9	38.2	34.7	43.6	39.3	55.1	50.0	60.8	54.8	69.6	62.9	73.5	66.4	70.9	63.9	64.4	58.0	52.0	46.7	46.0	41.7	39.5	36.0	53.6	580.3

TEMPERATURE EXTREMES AND FREEZE DATA (°F)

VIRGINIA
2011

STATION	HIGHEST	DATE	LOWEST	DATE	LAST SPRING MINIMUM OF										FIRST FALL MINIMUM OF										NUMBER OF DAYS BETWEEN DATES				
					16° OR BELOW		20° OR BELOW		24° OR BELOW		28° OR BELOW		32° OR BELOW		32° OR BELOW		28° OR BELOW		24° OR BELOW		20° OR BELOW		16° OR BELOW		16° OR BELOW	20° OR BELOW	24° OR BELOW	28° OR BELOW	32° OR BELOW
					DATE	TEMP.	DATE	TEMP.	DATE	TEMP.	DATE	TEMP.	DATE	TEMP.	DATE	TEMP.	DATE	TEMP.	DATE	TEMP.	DATE	TEMP.	DATE	TEMP.					
VIRGINIA																													
TIDEWATER 01																													
DISPUTANTA	99	07/23	9	01/23	01/24	12	02/13	19	03/30	24	03/30	24	04/07	30	10/30	30	10/31	28	11/19	24	NONE	NONE	NONE	NONE	NONE	NONE	234	215	206
EASTVILLE	98	07/23	19	01/25	MSG		01/25	19	02/12	24	02/24	28	03/29	31	12/11	31	12/18	28	NONE	NONE	NONE	NONE	NONE	NONE	NONE	234	297	257	
EMPORIA 1 WNW	100	07/23	13	01/24	01/24	13	02/11	20	02/12	21	03/30	28	03/30	28	10/30	31	11/19	28	NONE	NONE	NONE	NONE	NONE	NONE	234	214	204		
FREDERICKSBURG SEWAGE	102	07/24	10	01/24	02/12	11	02/21	20	03/10	24	03/30	27	04/09	32	10/30	30	11/12	27	12/11	23	NONE	NONE	NONE	NONE	276	227	204		
HAMPTON UNIV	102	07/23	20	01/23	MSG		01/23	20	01/23	20	02/11	28	02/23	29	12/29	31	NONE	NONE	NONE	NONE	NONE	NONE	NONE	NONE	234	227	309		
HOLLAND 1 E	104	07/24	10	01/23	02/11	11	02/17	20	03/29	23	03/29	23	04/06	29	10/29	29	11/18	27	11/19	24	12/19	20	NONE	NONE	305	235	234		
HOPEWELL	103	07/07	14	01/23	01/23	14	02/11	24	03/04	28	03/04	28	03/29	30	11/12	32	12/29	27	NONE	NONE	NONE	NONE	NONE	NONE	300	228	228		
NORFOLK INTL AP	103	07/23	19	02/11	MSG		02/11	19	02/11	19	03/29	28	03/29	28	11/12	32	12/29	28	NONE	NONE	NONE	NONE	NONE	NONE	275	228	228		
NORFOLK SOUTH	101	07/22	17	02/11	MSG		02/11	17	02/11	17	03/29	28	03/29	28	11/12	32	12/19	26	NONE	NONE	NONE	NONE	NONE	NONE	265	228	228		
NORTH	96	07/24	16	01/23	01/23	16	01/25	17	02/13	23	03/29	27	04/06	32	11/12	31	12/12	28	NONE	NONE	NONE	NONE	NONE	NONE	258	220	220		
PAINTER 2W	99	07/22	15	01/24	02/11	16	02/11	16	02/23	21	03/29	27	03/29	27	10/31	32	11/19	28	NONE	NONE	NONE	NONE	NONE	NONE	235	216	216		
STONY CREEK 2 N	100	07/24	12	01/24	01/25	15	02/12	20	02/17	24	03/30	26	04/07	32	10/30	31	11/19	26	NONE	NONE	NONE	NONE	NONE	NONE	234	206	206		
SUFFOLK LAKE KILBY	99	07/22	16	01/23	01/23	16	01/24	20	02/11	22	02/23	28	03/29	30	11/03	31	12/18	24	12/18	24	NONE	NONE	NONE	NONE	310	298	219		
WAKEFIELD INW	101	07/23	10	01/23	01/24	15	02/09	20	03/29	24	04/06	28	04/06	28	10/30	30	11/12	28	12/11	24	NONE	NONE	NONE	NONE	257	220	207		
WALKERTON 2 NW	100	06/09	17	01/23	MSG		01/24	18	02/12	24	02/16	28	03/29	30	11/18	32	12/10	28	NONE	NONE	NONE	NONE	NONE	NONE	297	234	234		
WALLACETON LK DRUMMOND	103	07/23	12	01/24	02/11	13	03/04	20	03/29	22	04/03	28	04/03	28	10/31	28	10/31	28	11/19	23	12/19	19	NONE	NONE	290	235	211		
WARSAW 2 NW	100	06/09	10	01/24	01/24	10	02/11	19	02/26	24	03/29	27	04/06	31	10/31	29	11/12	28	12/12	23	NONE	NONE	NONE	NONE	289	228	208		
WEST POINT 2 NW	101	07/22	11	01/23	01/24	13	02/11	20	03/29	24	03/29	24	04/06	30	10/30	32	11/18	28	12/19	24	NONE	NONE	NONE	NONE	265	234	207		
WILLIAMSBURG 2 N	98	07/22	14	01/23	01/23	14	01/24	17	02/23	24	03/29	28	04/06	32	11/12	30	11/19	28	NONE	NONE	NONE	NONE	NONE	NONE	235	220	220		
EASTERN PIEDMONT 02																													
AMELIA COURTHOUSE 1	100	07/26	24	12/11	MSG		MSG		MSG		03/31	27	04/06	31	10/31	29	11/12	28	12/11	24	NONE	NONE	NONE	NONE	226	208	208		
ASHLAND	98	07/22	11	01/23	01/24	12	02/12	19	02/12	19	03/29	25	04/06	31	10/30	31	11/12	28	12/12	24	NONE	NONE	NONE	NONE	303	228	207		
BREMO BLUFF	104	07/22	24	03/08	MSG		MSG		03/08	24	03/29	25	04/06	30	10/29	31	10/30	27	NONE	NONE	NONE	NONE	NONE	NONE	215	206	206		
CAMP PICKETT	98	07/24	11	01/23	02/12	16	02/12	16	02/26	23	03/30	28	04/07	30	10/30	28	10/30	28	12/11	24	NONE	NONE	NONE	NONE	288	214	206		
CHASE CITY	98	07/23	18	01/23	MSG		02/11	19	02/12	22	03/08	27	04/03	32	10/30	32	11/19	28	NONE	NONE	NONE	NONE	NONE	NONE	256	210	210		
CLARKSVILLE	102	07/30	14	01/23	01/23	14	02/12	17	02/12	17	03/04	27	03/29	31	10/31	31	11/19	27	NONE	NONE	NONE	NONE	NONE	NONE	260	216	216		
CORBIN	101	07/22	8	01/24	02/11	12	02/12	20	02/12	20	03/29	27	04/06	30	10/30	29	11/12	27	12/11	22	NONE	NONE	NONE	NONE	302	228	207		
CROZIER	99	07/30	10	01/23	02/12	16	02/12	16	03/29	23	03/29	23	04/06	29	10/30	27	10/30	27	12/02	24	NONE	NONE	NONE	NONE	248	215	207		
FARMVILLE 2 N	101	07/23	12	01/23	02/12	14	02/12	14	03/04	24	03/30	26	04/07	32	10/30	30	11/12	27	12/12	24	NONE	NONE	NONE	NONE	283	227	206		
GREENBAY 3 NE	101	07/23	11	01/23	02/11	15	02/11	15	03/08	24	03/29	27	03/31	32	10/30	28	10/30	28	12/11	22	NONE	NONE	NONE	NONE	278	215	213		
JOHN H KERR DAM	105	07/23	12	01/23	01/23	12	02/12	20	02/12	20	03/29	28	03/30	30	10/30	30	11/19	27	NONE	NONE	NONE	NONE	NONE	NONE	235	214	214		
LOUISA	100	07/29	8	01/24	02/11	10	02/20	20	03/29	24	04/06	27	04/06	27	10/23	32	10/30	25	11/12	23	12/11	17	NONE	NONE	294	228	207		
PALMYRA 3S	97	07/23	8	02/12	02/12	8	02/13	17	03/30	21	04/07	28	04/07	28	10/30	27	10/30	27	11/12	23	12/03	20	NONE	NONE	293	227	206		
PETERSBURG	100	07/23	12	01/23	01/24	16	01/24	16	02/12	22	03/30	27	03/30	27	10/30	31	11/19	28	NONE	NONE	NONE	NONE	NONE	NONE	234	214	214		
RICHMOND INTL AP	103	07/29	11	01/23	01/24	16	01/24	16	02/12	23	03/04	28	04/06	32	10/31	31	11/18	28	NONE	NONE	NONE	NONE	NONE	NONE	259	208	208		
SANDSTON	101	07/23	11	01/23	01/25	14	02/12	18	02/12	18	03/30	26	04/07	30	10/30	31	11/12	27	12/19	24	NONE	NONE	NONE	NONE	310	227	206		
WESTERN PIEDMONT 03																													
APPOMATTOX	100	07/23	14	01/23	01/23	14	02/12	17	03/05	24	03/08	28	04/07	32	10/30	31	11/18	25	12/13	24	NONE	NONE	NONE	NONE	283	255	206		
CHARLOTTESVILLE 2W	101	07/23	15	01/25	01/25	15	02/09	20	02/12	24	03/04	26	03/29	31	10/29	32	12/11	25	NONE	NONE	NONE	NONE	NONE	NONE	282	214	214		
CHATHAM	99	07/23	10	02/12	02/13	15	02/13	15	03/09	22	04/07	28	04/07	28	10/23	32	10/30	27	11/12	23	12/11	20	NONE	NONE	301	248	206		
DANVILLE	98	07/30	17	02/12	MSG		02/13	20	02/13	20	03/02	28	03/02	28	10/30	29	11/11	28	11/19	23	NONE	NONE	NONE	NONE	279	254	214		
DANVILLE REGIONAL AP	100	07/29	13	01/23	02/11	14	02/11	14	02/13	24	03/29	28	04/06	30	10/29	32	10/30	27	11/19	22	NONE	NONE	NONE	NONE	279	215	206		

TEMPERATURE EXTREMES AND FREEZE DATA (°F)

VIRGINIA
2011

STATION	HIGHEST	DATE	LOWEST	DATE	LAST SPRING MINIMUM OF										FIRST FALL MINIMUM OF										NUMBER OF DAYS BETWEEN DATES										
					16° OR BELOW		20° OR BELOW		24° OR BELOW		28° OR BELOW		32° OR BELOW		32° OR BELOW		28° OR BELOW		24° OR BELOW		20° OR BELOW		16° OR BELOW		16° OR BELOW	20° OR BELOW	24° OR BELOW	28° OR BELOW	32° OR BELOW						
					DATE	TEMP.	DATE	TEMP.	DATE	TEMP.	DATE	TEMP.	DATE	TEMP.	DATE	TEMP.	DATE	TEMP.	DATE	TEMP.	DATE	TEMP.	DATE	TEMP.											
STAUNTON WATER TRMTMT PLT WAYNESBORO WTP	98 99	07/23 07/22	10 10	01/24 02/12	02/09 02/12	16 10	02/11 02/12	19 10	03/28 03/30	24 22	03/30 03/30	27 22	04/01 04/07	31 32	10/29 10/29	31 32	10/30 10/30	28 26	11/18 11/19	24 24	12/11 12/11	20 19	NONE NONE							303 302	235 234	214 214	211 205		
SOUTHWESTERN MOUNTAIN 06																																			
ABINGDON 3S	93	08/05	-1	01/09	02/11	13	02/11	13	02/13	21	04/06	28	05/05	32	10/22	31	10/30	27	11/18	21	12/11	18	NONE							303	278	207	170		
BIG STONE GAP	95	09/04	2	01/10	02/12	14	02/14	19	02/14	19	03/13	26	04/07	29	10/30	29	11/06	28	11/18	24	12/01	8	12/01	8		8	292	290	277	238	206				
BLACKSBURG NWSO	93	07/23	6	01/10	02/12	9	02/12	9	03/30	23	03/30	23	04/07	31	10/22	31	10/30	26	11/06	23	12/11	15	12/11	15		302	302	221	214	198					
BLAND	92	07/22	3	01/15	02/12	6	02/21	20	03/30	22	04/07	27	05/08	32	10/22	28	10/22	28	10/30	23	11/18	20	12/11	12		302	270	214	198	167					
BREAKS INTERSTATE PARK	67	02/19	6	01/09	02/12	9	02/14	20	02/14	20	03/16	25	03/16	25	NONE		NONE		NONE		NONE		NONE												
BURKES GARDEN	82	09/05	-4	01/15	02/12	8	03/30	19	03/30	19	05/06	28	05/07	30	10/22	25	10/22	25	10/23	24	11/01	19	12/02	15		293	216	207	169	168					
CHRISTIANSBURG	92	09/03	7	01/10	02/12	14	02/12	14	02/12	14	03/30	27	04/06	32	10/22	32	11/06	27	11/19	24	12/11	18	NONE					302	280	221	199				
CLINTWOOD 1 W	90	05/31	-2	01/10	02/12	3	02/14	18	03/12	24	04/07	27	04/15	31	10/22	30	10/30	26	11/12	24	11/18	20	12/11	16		302	277	245	206	190					
COPPER HILL	91	07/22	3	01/10	02/11	14	02/12	18	03/08	24	04/02	27	04/07	30	10/29	30	11/11	27	11/18	23	NONE		NONE												
GALAX RADIO WBRF	92	07/29	5	01/09	02/12	14	02/12	14	04/06	24	04/07	26	05/06	31	10/08	27	10/08	27	11/06	24	11/18	20	12/11	16		302	279	214	184	155					
GALAX WTP	90	07/30	6	01/10	02/12	10	02/12	10	03/10	24	04/07	28	05/05	32	10/22	29	10/30	26	11/12	23	12/02	20	12/12	16		303	293	247	206	170					
GRUNDY	90	08/06	7	01/15	02/12	9	02/14	19	02/14	19	03/30	28	04/07	30	10/30	31	11/05	27	11/18	23	12/11	20	NONE					300	277	220	206				
JOHN FLANNAGAN LAKE	95	09/06	7	02/15	02/15	7	02/15	7	02/15	7	03/30	28	04/07	29	10/31	31	11/14	27	11/21	22	NONE		NONE						279	229	207				
LEBANON	92	08/06	0	01/10	02/12	10	02/13	19	02/21	23	03/30	26	04/07	29	10/22	31	10/30	26	11/18	20	11/18	20	12/11	16		302	278	270	214	198					
NORA 4 SSE	90	09/04	1	01/10	02/12	16	02/12	16	03/12	24	04/02	26	04/06	31	10/29	30	11/11	25	11/18	23	12/08	19	NONE					299	251	223	206				
NORTH FORK LAKE	92	09/06	0	01/10	02/14	5	02/14	5	02/22	24	04/07	28	04/07	28	10/31	30	11/07	28	11/18	22	12/12	18	NONE					301	269	214	207				
PULASKI 2 E	94	07/22	8	01/10	02/12	9	02/12	9	03/30	24	03/31	25	04/07	29	10/22	32	11/02	28	11/06	24	12/11	16	12/11	16		302	302	221	216	198					
RADFORD 3 N	95	09/03	7	02/11	02/11	7	02/13	20	03/29	24	04/06	27	04/07	31	10/22	30	10/23	28	11/06	23	11/19	20	12/11	15		303	279	222	200	198					
RICHLANDS	92	08/06	2	01/15	02/12	8	02/14	18	02/20	22	04/07	28	04/15	32	10/22	29	10/30	26	11/06	24	11/18	19	12/11	16		302	277	259	206	190					
SALTVILLE 1N	91	09/04	1	01/10	02/12	10	02/14	18	02/21	24	04/07	28	04/15	32	10/22	31	10/30	26	11/12	21	12/02	20	12/11	16		302	291	264	206	190					
STAFFORDSVILLE 3 ENE	94	09/03	7	02/12	02/12	7	02/12	7	03/30	23	04/07	28	04/07	28	10/22	30	10/23	28	11/13	21	12/02	18	12/11	16		302	293	228	199	198					
TROUT DALE 3 SSE	87	09/03	-1	01/14	02/12	9	03/03	20	03/30	22	04/15	27	05/08	32	10/17	32	10/23	25	10/30	21	11/18	18	11/19	15		280	260	214	191	162					
WISE 3E	88	09/03	-2	01/09	02/11	10	02/11	10	02/12	22	04/01	27	04/06	31	10/22	31	10/30	26	11/01	24	11/18	19	NONE					280	262	212	199				
WYTHEVILLE 1 S	93	07/30	-1	01/10	02/12	9	03/03	19	03/29	24	04/08	28	05/06	32	10/22	29	10/23	28	10/25	18	10/25	18	12/11	16		302	236	210	198	169					

MONTHLY AND SEASONAL COOLING DEGREE DAYS
BASE = 65 DEGREES FAHENHEIT

VIRGINIA
2011

STATION	JAN	FEB	MAR	APR	MAY	JUN	JUL	AUG	SEP	OCT	NOV	DEC	TOTAL	SEASONAL NORM
VIRGINIA														
TIDEWATER 01														
EASTVILLE	-	0	0	69	146	361	494	425	260	31	0	0	-	
DISPUTANTA	0	0	0	73	120	322	455	345	224	18	3E	0	1560E	
EMPORIA 1 WNW	0	0	0	70	137	392	503	418	246	22	5	0	1793	1298
FREDERICKSBURG SEWAGE	0	0	0	65E	112	322	497E	376E	154E	7	1	0	1534E	
HAMPTON UNIV	-	0	7E	96E	209	446	578	493	318	62	9	0	-	
HOLLAND 1 E	0	0	5	87	187	360	495	383	250	35	5	2	1809	1210
HOPEWELL	0	1E	12E	114	189	436E	568	479	287	51	3E	3	2143E	1619
NORFOLK SOUTH	0	0	0	93	178	369	500	417	273	32	6	0	1868	
NORFOLK INTL AP	0	1	1	103	197	422	543	471	303	57	17	2	2117	1612
NORTH	0	0	2	72	139	316	437	371E	222	19E	2E	0	1580E	
PAINTER 2W	0	0	3	83	155	373	502	408	247	40	3	0	1814	1334
STONY CREEK 2 N	0	0	0	72	141	356	477	397E	233	23	2	0	1701E	1409
SUFFOLK LAKE KILBY	0	0	0	57	159	337	495	426	244	35	0	0	1753	1427
WAKEFIELD 1NW	0	1	0	87	164	344	489	403	249	28	6	0	1771	1356
WALKERTON 2 NW	0	3	0	104	207	423	540	-	291	43	6	0	-	
WALLACETON LK DRUMMOND	0	0	1	80	-	344	465	374	230	22	3	0	-	
WARSAW 2 NW	0	0	3	83	182E	363	498	394	237	34E	6	0	1800E	1282
WEST POINT 2 NW	0	0	1	85	169	370	516	412	242	24	1	0	1820	1446
WILLIAMSBURG 2 N	0	1	0	84	160	336	469	387	247	25	3	0	1712	1364
EASTERN PIEDMONT 02														
AMELIA COURTHOUSE 1	-	-	-	70E	112E	-	478E	385E	185E	16E	2E	0	-	
ASHLAND	0	0	1	87	139	314	446	361	203	18	3E	0	1572E	1131
BREMO BLUFF	-	-	1	58	149	380	513E	405	206	14	1	0	-	
CAMP PICKETT	0	0	0	62	104	-	468E	357	187	15	1	0	-	
CHASE CITY	0	0	4	69	113	323	450	363	194	16	1	0	1533	1316
CLARKSVILLE	0	0	2	72	142	426E	529E	462E	229	19	1E	0	1882E	
CORBIN	0	1	1	72	124	295	460	346	190	9E	1	0	1499E	1155
CROZIER	0	0	2	60E	100E	273	429	351E	154	9	2E	0	1380E	1193
FARMVILLE 2 N	0	0	2	50	86	292	444	358	162	12E	2	0	1408E	1218
GREENBAY 3 NE	0	0	5	64	104	330	463	352	170	9	1	0	1498	
JOHN H KERR DAM	0	0	7	89	185	435	599	472	303	43	10	0	2143	1383
LOUISA	0	0	1	79	120	295	446	374	198	17	0	0	1530	854
PALMYRA 3S	0	0	0	38	69	210	352	303	141	4	0	0	1117	
PETERSBURG	0	0	0	65E	129E	360	503E	406E	241	25	4	0	1733E	
RICHMOND INTL AP	0	1	1	81	169	398	531	439	250	28	2	0	1900	1435
SANDSTON	0	0	1	68	138	354	474	376	216	13E	1	0	1641E	
WESTERN PIEDMONT 03														
APPOMATTOX	0	0	0	46E	83	293	438	333	150	5	0	0	1348E	1052
BROOKNEAL	-	-	-	60E	103	323	458	388	150	7	1	0	-	
CHARLOTTESVILLE 2W	0	0	1	52	101	331	481	377	160	5	0	0	1508	1212
CHATHAM	0	0	1	38	72	247	402	325	111	0	0	0	1196	971
DANVILLE	0	0	6	80	150	410	520	444	197	12	1	0	1820	1418
DANVILLE REGIONAL AP	0	0	3	57	115	324	471	403	184	6	1	0	1564	
FREE UNION	0	0	0	-	72	-	328E	273	110	0	0	0	-	
LYNCHBURG #2	0	0	0	39	71	246	378	297	127	1	0	0	1159	
LYNCHBURG INTL AP	0	0	1	46	96	282	429	352	138	2	0	0	1346	1075
MONTICELLO	0	0	0	31	61	215	389	287	106	0	0	0	1089	991
MONTEBELLO FISH CULTURAL STN	0	0	-	11E	25E	120E	253E	152E	33E	0	0	0	-	
MEADOWS OF DAN 5 SW	0	0	0	14	59	183	298	241	86	0	0	0	881	

MONTHLY AND SEASONAL COOLING DEGREE DAYS
BASE = 65 DEGREES FAHENHEIT

VIRGINIA
2011

STATION	JAN	FEB	MAR	APR	MAY	JUN	JUL	AUG	SEP	OCT	NOV	DEC	TOTAL	SEASONAL NORM
MARTINSVILLE FLTR PLT	0	0	0	41	85	274	414	334	138	2	0	0	1288	921
SOUTH BOSTON	0	0	1	58	90	314	446	376	173	10	2	0	1470	1159
ROCKY MT	0	0	2	47	78	291	416	328E	118	3	0	0	1283E	984
STUART	0	0	1	37	92	264	408	327	138	1	0	0	1268	967
TYE RIVER 1 SE	0	0	5	51	84	273	426	332	142	5	0	0	1318	976
NORTHERN 04														
BIG MEADOWS	0	-	-	-	0	-	-	-	-	-	-	-	-	-
BOSTON 4 SE	0	-	0	34E	35E	-	393	287	127E	0	-	0	-	-
CASTLETON	0	0	0	48	99	271E	416	351E	138E	0	0	0	1323E	-
EDINBURG	0	0	0	21	73	188	346	264	102	0	0	0	994	-
FRONT ROYAL	0	0	1E	49E	95E	228	406E	299E	116	0	0	0	1194E	-
LINCOLN	-	0	0	40	94	214	400	-	146	0	0	0	-	-
LURAY 5 E	-	0	0	37	80	198	363	269	105	1	1	0	-	-
MADISON	-	-	0	56	107	289	438	334	152	0	0	0	-	-
MANASSAS	-	0	0	-	111E	369E	-	428E	214E	5E	1E	0	-	-
MT WEATHER	0	0	0	27	76	198	388	261	77	4	0	0	1031	625
PIEDMONT RSCH STN	0	0	0	47	98	297	454	340	137	2	0	0	1375	1042
REMINGTON 2	-	-	-	-	-	-	-	-	-	-	-	-	-	-
SPERRYVILLE	0	0	0	30	61	211	352	261	96	0	0	0	1011	-
SOMERSET	0	0	1	45	91	268E	421	327	141	0	0	0	1294E	-
STAR TANNERY	0	0	0	33	51	165	366	210	75	0	0	0	900	-
STERLING RCS	0	0	0	56	114E	295	489	344	158	0	0	0	1456E	824
VIENNA	0	0	0	52	90E	238E	413	349E	148	3E	0	0	1293E	-
WARRENTON 3 SE	0	0	0	44E	84E	264E	440E	330	140E	3E	0	0	-	-
WASHGTN DULLES INTL AP	0	0	0	45	121	306	504	359	160	2	0	0	1497	1075
WASHINGTON REAGAN AP	0	0	0	44	156	421	613	468	208	15	0	0	1925	1531
WINCHESTER 7 SE	0	0	0	27	-	213	388	272	115	0	0	0	-	-
WINCHESTER	0	0	0	35	80	245	417	305	110	0	0	0	1192	907
WOODSTOCK 2 NE	0	0	0	23E	67	180E	346E	244E	101	0	0	0	961E	848
CENTRAL MOUNTAIN 05														
COVINGTON FLTR PLT	0	0	0	29	94	192	370	281	120	1	0	0	1087	846
DALE ENTERPRISE	0	0	0	22	68	196	354	245	89	0	0	0	974	758
GATHRIGHT DAM	0	0	0	16	45	140	305	216	67	0	0	0	789	679
HOT SPRINGS	0	0	0	13E	50E	133	289	200	36E	0	0	0	721E	579
LEXINGTON	0	0	0	35	71	263	383	309	115	0	0	0	1176	881
MILLGAP	0	0	0	1	18	58	184	110	34	0	0	0	405	-
MUSTOE 1 SW	-	0	0	0	18	63	181	96E	30	0	0	0	-	-
ROANOKE 8 N	0	0	2E	38	89	296	434	368	143	3	0	0	1373E	-
ROANOKE INTL AP	0	0	6	50	109	334	482	403	156	9	0	0	1549	1134
STAUNTON WATER TRMTMT PLT	0	0	0	27	73	222	380	268	97	0	0	0	1067	622
WAYNESBORO WTP	0	0	0	20	67	183	376	266	117	0	0	0	1029	-
SOUTHWESTERN MOUNTAIN 06														
ABINGDON 3S	0	0	0	23E	75E	207E	340	268E	101	0	0	0	1014E	736
BIG STONE GAP	0	0	0	28	86	235	369	278	105	1	0	0	1102	937
BLACKSBURG NWSO	0	0	0	10	55	170	307	233	67	0	0	0	842	533
BLAND	0	0	0	8	31	101	232	157	45	0	0	0	574	400
BREAKS INTERSTATE PARK	0	0	-	-	-	-	-	-	-	-	-	-	-	-
BURKES GARDEN	0	0	0	1	3	23	61	19	10	0	0	0	117	225
CHRISTIANSBURG	0	0	0	15	44	168	301	220	64	0	0	0	812	-
CLINTWOOD 1 W	0	0	0	22	52	150	274	189	57	0	0	0	744	-
COPPER HILL	0	0	0	11	27	157E	242E	164	29	1E	0	0	631E	-
GALAX RADIO WBRF	0	0	0	11	35	170	279	191	48	0	0	0	734	410

VIRGINIA
2011

MONTHLY AND SEASONAL COOLING DEGREE DAYS BASE = 65 DEGREES FAHENHEIT

STATION	JAN	FEB	MAR	APR	MAY	JUN	JUL	AUG	SEP	OCT	NOV	DEC	TOTAL	SEASONAL NORM
GRUNDY	0	0	0	25	55	167	278	227	81	0	0	0	833	1035
GALAX WTP	0	0	0	2	24	124	241	163	40	0	0	0	594	
JOHN FLANNAGAN LAKE	-	-	-	34E	-	-	-	-	-	-	-	-	-	
LEBANON	0	0	0	25	58	172	297	215	73	0	0	0	840	631
NORA 4 SSE	0	0	0	14	50	159	269	191E	73	0	0	0	756E	
RADFORD 3 N	0	0	3	16	62	192	328	261	89	0	0	0	951	
PULASKI 2 E	0	0	2	21	68	203	329	237	81	0	0	0	941	574
NORTH FORK LAKE	-	-	-	-	-	177E	-	-	-	-	-	-	-	
RICHLANDS	0	0	0	15	58	161	296	208	83	0	0	0	821	622
SALTVILLE 1N	0	0	0	12	60	169	305	230	81	0	0	0	857	734
TROUT DALE 3 SSE	0	0	0	2	18	72	176	116	31	0	0	0	415	
STAFFORDSVILLE 3 ENE	0	0	1	10	50	160	296	215	84	0	0	0	816	564
WISE 3E	0	0	0	16E	58	131	241	171	47	1	0	0	665E	605
WYTHEVILLE 1 S	0	0	0	10	56	156	299	199	72	0	0	0	792	503

VIRGINIA
2011

TOTAL PAN EVAPORATION AND WIND MOVEMENT

STATION		JAN	FEB	MAR	APR	MAY	JUN	JUL	AUG	SEP	OCT	NOV	DEC	ANNUAL
VIRGINIA														
EASTERN PIEDMONT 02														
JOHN H KERR DAM	WIND	697	810	999	1203	751	-	833	-	615	931	-	829	-
	EVAP	-	-	-	-	4.83E	-	6.00	-	3.26	3.12	-	-	-
	MAX TEMP	-	-	-	-	-	-	-	-	-	-	-	-	-
	MIN TEMP	-	-	-	-	-	-	-	-	-	-	-	-	-
NORTHERN 04														
PIEDMONT RSCH STN	WIND	-	-	-	2649E	1573	1364	1681E	2351E	-	-	-	-	-
	EVAP	-	-	-	5.28	5.95	7.66	10.61E	12.43E	-	-	-	-	-
	MAX TEMP	-	-	40.0	66.2	78.7	88.4	93.6	92.7	82.2	69.2	-	-	-
	MIN TEMP	-	-	36.0	43.8	55.3	63.0	68.4	68.4	62.9	49.7	-	-	-

STATION INDEX

STATION	INDEX NO.	DIVISION NO.	COUNTY	LATITUDE	LONGITUDE	ELEVATION FEET	YEARS OF RECORD			OPENED OR CLOSED DURING YR		SEE REFERENCE NOTES
							TEMP.	PRECIP.	EVAP.	MONTH OPENED	MONTH CLOSED	
VIRGINIA												
ABINGDON 3S	0021	06	WASHINGTON	36 40	81 58W	1920	43	43	0			H
ALBERTA 5N	0079	02	BRUNSWICK	36 56	77 54W	376	0	8	0			H
ALTAVISTA	0166	03	CAMPBELL	37 7	79 17W	515	0	62	0			CH
AMELIA COURTHOUSE 1	0187	02	AMELIA	37 21	77 59W	345	35	35	0			H
APPOMATTOX	0243	03	APPOMATTOX	37 21	78 50W	910	51	75	0			H
ASHLAND	0327	02	HANOVER	37 45	77 29W	220	101	101	0			H
BEDFORD 4 NW	0561	03	BEDFORD	37 23	79 34W	1220	1	9	0			CH
BIG MEADOWS	0720	04	MADISON	38 31	78 26W	3540	74	74	0		DEC	H
BIG STONE GAP	0735	06	WISE	36 52	82 46W	1464	22	22	0			H
BLACKSBURG NWSO	0766	06	MONTGOMERY	37 12	80 25W	2100	60	60	0			CH
BLAND	0792	06	BLAND	37 6	81 7W	2000	22	64	0			H
BOSTON 4 SE	0860	04	CULPEPER	38 33	78 6W	590	14	14	0			H
BREAKS INTERSTATE PARK	0982	06	DICKENSON	37 17	82 18W	1893	13	13	0		APR	H
BREMO BLUFF	0993	02	FLUVANNA	37 43	78 17W	225	33	73	0			CH
BROOKNEAL	1082	03	CAMPBELL	37 4	78 57W	428	30	53	0			H
BROWNSBURG 2 W	1099	05	ROCKBRIDGE	37 56	79 21W	1250	0	8	0		APR	H
BUCHANAN	1121	05	BOTETOURT	37 32	79 41W	865	86	109	0			H
BUCKINGHAM	1136	02	BUCKINGHAM	37 30	78 32W	552	11	82	0			H
BUENA VISTA	1159	05	ROCKBRIDGE	37 44	79 22W	830	18	74	0			H
BURKES GARDEN	1209	06	TAZEWELL	37 6	81 20W	3068	116	116	0			H
CAMP PICKETT	1322	02	NOTTOWAY	37 2	77 57W	330	40	40	0			CH
CASTLETON	1434	04	RAPPAHANNOCK	38 36	78 7W	541	2	2	0			H
CHARLOTTESVILLE 2W	1593	03	ALBEMARLE	38 2	78 31W	866	118	118	0			H
CHASE CITY	1606	02	MECKLENBURG	36 47	78 29W	510	65	65	0			H
CHATHAM	1614	03	PITTSYLVANIA	36 49	79 25W	640	90	90	0			CH
CHRISTIANSBURG	1692	06	MONTGOMERY	37 8	80 24W	2100	17	17	0			H
CLARKSVILLE	1746	02	MECKLENBURG	36 37	78 33W	330	15	121	0			H
CLINTWOOD 1 W	1825	06	DICKENSON	37 9	82 29W	1780	19	19	0			H
CONCORD 4 SSW	1955	03	CAMPBELL	37 17	78 58W	635	2	62	0			H
COPPER HILL	1999	06	FLOYD	37 5	80 9W	2690	2	72	0			H
CORBIN	2009	02	CAROLINE	38 12	77 22W	220	53	53	0			H
COVINGTON FLTR PLT	2044	05	ALLEGHANY	37 49	79 59W	1230	52	52	0			CH
CRAIGSVILLE 2 S	2064	05	AUGUSTA	38 3	79 23W	1758	0	49	0			H
CROZIER	2142	02	GOOCHLAND	37 40	77 53W	350	36	36	0			H
DALE ENTERPRISE	2208	05	ROCKINGHAM	38 27	78 56W	1400	119	119	0			H
DANVILLE	2245	03	PITTSYLVANIA	36 35	79 23W	410	96	121	0			H
DANVILLE REGIONAL AP R	2250	03	PITTSYLVANIA	36 34	79 20W	571	30	30	0			H
DISPUTANTA	2400	01	PRINCE GEORGE	37 7	77 12W	15	6	6	0			H
EARLEHURST	2600	05	ALLEGHANY	37 40	80 15W	2037	5	36	0		NOV	H
EASTVILLE	2635	01	NORTHAMPTON	37 23	75 58W	10	18	18	0			H
EDINBURG	2663	04	SHENANDOAH	38 48	78 35W	928	16	16	0			H
EMPORIA 1 WNW	2790	01	GREENSVILLE	36 42	77 34W	100	31	83	0			H
FARMSVILLE 2 N	2941	02	CUMBERLAND	37 20	78 23W	450	93	93	0			CH

STATION INDEX

STATION	INDEX NO.	DIVISION NO.	COUNTY	LATITUDE	LONGITUDE	ELEVATION FEET	YEARS OF RECORD			OPENED OR CLOSED DURING YR		SEE REFERENCE NOTES
							TEMP.	PRECIP.	EVAP.	MONTH OPENED	MONTH CLOSED	
FREDERICKSBURG SEWAGE	3204	01	FREDERICKSBURG	38 17	77 27W	15	17	17	0			H
FREE UNION	3213	03	ALBEMARLE	38 5	78 35W	590	5	56	0			H
FRONT ROYAL	3229	04	WARREN	38 54	78 11W	930	17	17	0			H
GALAX RADIO WBRF	3267	06	CARROLL	36 40	80 55W	2385	58	62	0			H
GALAX WTP	3272	06	CARROLL	36 39	80 55W	2360	15	15	0			CH
GATHRIGHT DAM	3310	05	ALLEGHANY	37 57	79 57W	1770	32	32	17			CH
GLASGOW 1 SE	3375	05	ROCKBRIDGE	37 37	79 26W	740	9	45	0			H
GREENBAY 3 NE	3565	02	PRINCE EDWARD	37 11	78 17W	500	8	8	0			H
GRUNDY	3640	06	BUCHANAN	37 17	82 5W	1170	52	63	0			H
HAMPTON UNIV	3713	01	HAMPTON	37 1	76 20W	10	10	10	0			H
HOLCOMB ROCK	4039	03	BEDFORD	37 33	79 24W	620	2	34	0			H
HOLLAND 1 E	4044	01	SUFFOLK	36 41	76 46W	80	79	79	19			H
HOPEWELL	4101	01	PRINCE GEORGE	37 18	77 17W	40	96	96	0			H
HOT SPRINGS	4128	05	BATH	37 60	79 50W	2236	117	117	0			CH
HUDDLESTON 4 SW	4148	03	BEDFORD	37 8	79 32W	1045	2	62	0			H
JOHN FLANNAGAN LAKE	4410	06	DICKENSON	37 14	82 21W	1460	19	43	0			H
JOHN H KERR DAM	4414	02	MECKLENBURG	36 36	78 18W	250	64	64	59			CH
KERRS CREEK 6 WNW	4565	05	ROCKBRIDGE	37 52	79 34W	1500	1	60	0			H
KEYSVILLE 2 S	4568	02	CHARLOTTE	37 1	78 28W	530	1	33	0			H
LAFAYETTE 1 NE	4676	06	MONTGOMERY	37 14	80 12W	1320	0	61	0			H
LEBANON	4777	06	RUSSELL	36 54	82 2W	1912	23	23	0			H
LEXINGTON	4876	05	ROCKBRIDGE	37 48	79 25W	1125	122	122	0			H
LINCOLN	4909	04	LOUDOUN	39 5	77 42W	500	112	112	0			H
LOUISA	5050	02	LOUISA	38 3	78 0W	420	96	96	0			H
LURAY 5 E	5096	04	PAGE	38 40	78 22W	1400	68	71	0			H
LYNCHBURG #2	5117	03	CAMPBELL	37 23	79 14W	740	14	14	0			H
LYNCHBURG INTL AP R	5120	03	CAMPBELL	37 19	79 12W	940	68	68	0			HJ
MADISON	5150	04	MADISON	38 22	78 15W	577	13	13	0			H
MANASSAS	5204	04	MANASSAS	38 44	77 30W	245	8	8	0			H
MARTINSVILLE FLTR PLT	5300	03	HENRY	36 42	79 52W	760	74	81	0			H
MEADOWS OF DAN 5 SW	5453	03	PATRICK	36 40	80 27W	2225	9	62	0			H
MILLGAP	5595	05	HIGHLAND	38 18	79 43W	2421	14	36	0			CH
MONTEBELLO FISH CULTURAL STN #	5690	03	NELSON	37 50	79 7W	2667	6	9	0			H
MONTICELLO	5700	03	ALBEMARLE	38 1	78 27W	758	30	30	0			H
MT WEATHER	5851	04	LOUDOUN	39 4	77 53W	1659	97	97	0			H
MTN GROVE	5756	05	BATH	38 6	79 53W	1775	3	31	0			H
MUSTOE 1 SW	5880	05	HIGHLAND	38 20	79 40W	2380	18	18	0			H
NORA 4 SSE	6125	06	DICKENSON	37 1	82 19W	2650	6	6	0			H
NORFOLK INTL AP R R	6139	01	NORFOLK (CITY)	36 54	76 12W	30	66	66	0			HJ
NORFOLK SOUTH	6147	01	NORFOLK (CITY)	36 52	76 14W	100	9	9	0			H
NORTH	6161	01	MATHEWS	37 26	76 26W	10	10	10	0			H
NORTH FORK LAKE	6173	06	WISE	37 7	82 38W	1675	20	43	0			H
PAINTER 2W	6475	01	ACCOMACK	37 35	75 49W	30	57	57	0			CH
PALMYRA 3S	6491	02	FLUVANNA	37 49	78 16W	410	18	55	0			H

STATION INDEX

STATION	INDEX NO.	DIVISION NO.	COUNTY	LATITUDE	LONGITUDE	ELEVATION FEET	YEARS OF RECORD			OPENED OR CLOSED DURING YR		SEE REFERENCE NOTES
							TEMP.	PRECIP.	EVAP.	MONTH OPENED	MONTH CLOSED	
PEDLAR DAM	6593	03	AMHERST	37 40	79 17W	1010	7	77	0			H
PETERSBURG	6656	02	PETERSBURG	37 14	77 24W	15	11	16	0			H
PIEDMONT RSCH STN	6712	04	ORANGE	38 14	78 7W	520	66	66	39			CH
POWHATAN	6906	02	POWHATAN	37 31	77 53W	400	20	73	0			H
PULASKI 2 E	6955	06	PULASKI	37 3	80 47W	1850	60	77	0			CH
RADFORD 3 N	6999	06	PULASKI	37 12	80 35W	1800	8	33	0			H
REMIINGTON 2	7130	04	FAUQUIER	38 32	77 49W	280	5	5	0		FEB	H
RICHLANDS	7174	06	TAZEWELL	37 6	81 48W	1910	23	23	0			H
RICHMOND INTL AP R	7201	02	HENRICO	37 30	77 19W	164	70	70	0			HJ
ROANOKE 8 N	7278	05	ROANOKE	37 22	79 58W	1190	14	14	0			H
ROANOKE INTL AP R	7285	05	ROANOKE	37 19	79 58W	1175	64	64	0			HJ
ROCKY MT	7338	03	FRANKLIN	36 59	79 54W	1315	118	118	0			CH
SALTVILLE 1N	7506	06	SMYTH	36 53	81 46W	1733	58	57	0			H
SANDSTON	7541	02	HENRICO	37 33	77 17W	165	10	10	0			H
SOMERSET	7904	04	ORANGE	38 15	78 16W	510	17	49	0			H
SOUTH BOSTON	7925	03	HALIFAX	36 42	78 53W	340	32	32	0			H
SPERRYVILLE	7985	04	RAPPAHANNOCK	38 39	78 14W	750	17	17	0			H
STAFFORDSVILLE 3 ENE	8022	06	GILES	37 16	80 43W	1950	42	61	0			CH
STAR TANNERY	8046	04	FREDERICK	39 5	78 27W	950	18	22	0			CH
STAUNTON WATER TRMTMT PLT	8062	05	AUGUSTA	38 10	79 5W	169	118	118	0			H
STERLING RCS	8084	04	LOUDOUN	38 59	77 29W	288	35	35	0			H
STONY CREEK 2 N	8129	01	SUSSEX	36 58	77 24W	105	50	54	0			H
STUART	8170	03	PATRICK	36 38	80 15W	1375	52	52	0			H
SUFFOLK LAKE KILBY	8192	01	SUFFOLK	36 44	76 36W	22	67	67	0			H
TROUT DALE 3 SSE	8547	06	GRAYSON	36 39	81 24W	2839	2	64	0			CH
TYE RIVER 1 SE	8600	03	NELSON	37 39	78 58W	720	49	75	0			H
VIENNA	8737	04	FAIRFAX	38 54	77 16W	418	19	75	0			H
WAKEFIELD 1NW	8800	01	SUSSEX	36 59	77 0W	113	30	30	0			CH
WALKERTON 2 NW	8829	01	KING AND QUEEN	37 45	77 2W	50	80	80	0			H
WALLACETON LK DRUMMOND	8837	01	CHESAPEAKE	36 36	76 26W	20	8	86	0			H
WARRENTON 3 SE	8888	04	FAUQUIER	38 41	77 46W	500	64	64	0			H
WARSAW 2 NW	8894	01	RICHMOND	37 59	76 47W	140	104	104	0			H
WASHGTN DULLES INTL AP R	8903	04	LOUDOUN	38 56	77 28W	290	50	50	0			HJ
WASHINGTON REAGAN AP R	8906	04	ARLINGTON	38 51	77 2W	10	67	67	0			HJ
WAYNESBORO WTP	8941	05	WAYNESBORO	38 5	78 53W	1270	12	12	0			H
WEST POINT 2 NW	9025	01	KING WILLIAM	37 34	76 48W	20	58	58	0			H
WILLIAMSBURG 2 N	9151	01	YORK	37 18	76 42W	70	61	64	0			CH
WILLIS	9169	06	FLOYD	36 55	80 30W	2810	1	32	0			CH
WINCHESTER	9181	04	FREDERICK	39 11	78 9W	720	30	30	0			H
WINCHESTER 7 SE	9186	04	FREDERICK	39 11	78 7W	680	100	100	0			H
WINTERPOCK 4 W	9213	02	CHESTERFIELD	37 19	77 39W	300	0	33	0			H
WISE 3E	9215	06	WISE	36 60	82 32W	2549	57	57	0			CH
WOODSTOCK 2 NE	9263	04	SHENANDOAH	38 54	78 28W	675	116	122	0			H
WOOLWINE	9272	03	PATRICK	36 47	80 17W	1500	0	61	0			CH

STATION INDEX

STATION	INDEX NO.	DIVISION NO.	COUNTY	LATITUDE	LONGITUDE	ELEVATION FEET	YEARS OF RECORD			OPENED OR CLOSED DURING YR		SEE REFERENCE NOTES
							TEMP.	PRECIP.	EVAP.	MONTH OPENED	MONTH CLOSED	
WYTHEVILLE 1 S	9301	06	WYTHE	36 56	81 6W	2450	95	95	0			CH

REFERENCE NOTES

STATION NAMES: Name of the city, town or locality. Figures and letters following the station names indicate the distance in miles and direction from the post office or town community center.

DIVISIONS: Areas within a state of similar climatological characteristics. Division averages are calculated using data from stations that record temperature and/or precipitation. Station Precipitation totals flagged with an 'F' or 'M' are excluded from the Divisional Average calculations of precipitation. Stations with monthly Temperature averages flagged with an 'F' or 'M' are included in the Divisional Average if there are no more than 9 flagged or missing daily values in the month, else they are excluded from the divisional average for temperature.

NORMALS: The average value of the meteorological element over a time period. Effective 1 January 2002, the averaging period is 1971 to 2000. The normals for National Weather Service localities have been adjusted so as to be representative for the current observation site.

TEMPERATURE EXTREMES AND FREEZE DATA: Spring minimum dates are obtained from data for January through June; Fall dates are from July through December data. "NONE" indicates temperature threshold not reached. "MSG" indicates available data insufficient to determine date.

MONTHLY DEGREE DAY TOTALS: One heating (cooling) degree day is accumulated for each whole degree that the daily mean temperature is below (above) 65 degrees Fahrenheit.

SOIL TEMPERATURE EXTREMES: The highest and lowest Max and Min temperature for each month and the year.

WIND: (As shown in the "Evaporation and Wind" table) the total wind movement in miles over the evaporation pan as determined by an anemometer recorder located 6-8 inches above the pan.

SYMBOLS AND LETTERS USED IN THE DATA TABLES

- No record. Data not recorded, determined unreliable by quality control checks, or not received in time for publication.
- * Equipment gage not read. Precipitation is included in the amount following asterisks. Time distribution not known.
- // Equipment gage equipped with a windshield.
- A Amount of precipitation is the total of observer's entries for the current month. It may include precipitation that occurred during the previous month. Refer to monthly bulletins to determine date of last reading.
- E Normalized HDD/CDD Calculation. E is appended to the HDD/CDD Calculation when 1-9 individual daily TMAX and/or TMIN values are missing and a Normalized HDD/CDD Calculation is provided. M appears alone if 10 or more are missing or flagged.
- F Monthly Calculation Flagged Value. F is appended to the average of the monthly station values when 1-9 daily observations were determined to be invalid during the Quality Control process.
- M Insufficient or partial data. M is appended to average and/or total values computed with 1-9 daily values missing. M appears alone if 10 or more daily values are missing or flagged.
- R Amounts from recording rain gage.
- T Trace. An amount too small to measure.

SYMBOLS AND LETTERS USED IN THE STATION INDEX TABLE

- # Thermometers located in rooftop shelter.
- C Station is equipped with a recording rain gage (R), but values in this bulletin are from a non-recording rain gage unless indicated by an R.
- G Observations appear in "Soil Temperatures" table.
- H Observations appear in "Snowfall and Snow on the Ground" table in monthly "Climatological Data" publication.
- J Station also published as a "Local Climatological Data" bulletin.

Seasonal Tables: Monthly and seasonal snowfall and heating degree days for the 12 months ending with the June data are published in the July issue of "Climatological Data".

Cooling degree days for the calendar year are published in the "Climatological Data Annual Summary".

Additional precipitation data are contained in the "Hourly Precipitation Data" bulletin for each state.

Information concerning the history of changes in locations, exposure, etc. of substations is kept on file at the National Climatic Data Center. Historical information of regular National Weather Service Offices may be obtained from the "Local Climatological Data" annual publication. The contents of this publication may be reprinted or otherwise used freely, with proper credit to the National Climatic Data Center. The data are also available digitally.

ERRATA

Beginning in January of 2011, CD Publications are produced from the Global Historical Climatology Network data set. (<http://www.ncdc.noaa.gov/oa/climate/ghcn-daily/>) The GHCND data Version is printed on first page of the publication.

New flags were added to indicate:

- E Normalized HDD/CDD, Evap, and Wind Movement Calculations in 2011, previously was B.
- F Monthly calculation flagged value.

Station metadata is provided by NCDC's Product Development Branch from the Historical Observing Metadata Repository: <http://www.ncdc.noaa.gov/homr>

As of the 2011 Data-Year, Station and Climate Division Maps are no longer being included in the CD Publications. NCDC's Product Development Branch provides updated Station Maps for various data networks via the Historical Observing Metadata Repository: <http://www.ncdc.noaa.gov/homr>.

These and other publications are available from the National Climatic Data Center

Hourly Precipitation Data

This publication contains hourly precipitation amounts obtained from recording rain gages located at National Weather Service, Federal Aviation Administration, and cooperative observer stations. Published data are displayed in inches and tenths or inches and hundredths at local standard time. HPD includes maximum precipitation for nine (9) time periods from 15 minutes to 24 hours, for selected stations.

Climatological Data

Monthly editions contain station daily maximum and minimum temperatures and precipitation. Some Stations provide daily snowfall, snow depth, evaporation, and soil temperature data. Each edition also contains monthly summaries for heating and cooling degree days (65 degree F base). The July issue contains a recap of monthly heating degree days and snow data for the preceding July through June.

The Annual issue contains monthly and annual averages of temperature, precipitation, temperature extremes, freeze data, soil temperatures, evaporation, and a recap of monthly cooling degree days.

Storm Data

Monthly issues contain a chronological listing, by states, of occurrences of storms and unusual weather phenomena. Reports contain information on storm paths, deaths, injuries, and property damage. An "Outstanding storms of the month" section highlights severe weather events with photographs, illustrations, and narratives. The December issue includes annual tornado, lightning, flash flood, and tropical cyclone summaries.

Monthly Climatic Data for the World

This publication contains monthly means for temperature, pressure, precipitation, vapor pressure, and sunshine for approximately 2,000 surface data collection stations worldwide and monthly mean upper air temperatures, dew point depressions, and wind velocities for approximately 500 observing sites.

Local Climatological Data

LCD publications summarize temperature, relative humidity, precipitation, cloudiness, wind speed and direction observations for several hundred cities in the U.S. and its territories. Each monthly publication also contains 3 hourly weather observations for that month and a hourly summary of precipitation. Annual LCD publications contain a summary of the past calendar year as well as historical averages and extremes.

For Information Call:

(828) 271-4800 Option 2

(828) 271-4010 (TDD)

(828) 271-4876 (Fax)

NOAA\National Climatic Data Center
Attn: User Engagement & Services Branch
151 Patton Avenue
Asheville, NC 28801-5001

Customer Services Number: (828) 271-4800, option 2
TDD : (828) 271-4010
Fax number: (828) 271-4876

NCDC now offers free online access to the *Climatological Data* publication.
Go to : www.ncdc.noaa.gov and choose Most Popular.