



CLIMATOLOGICAL DATA

VIRGINIA

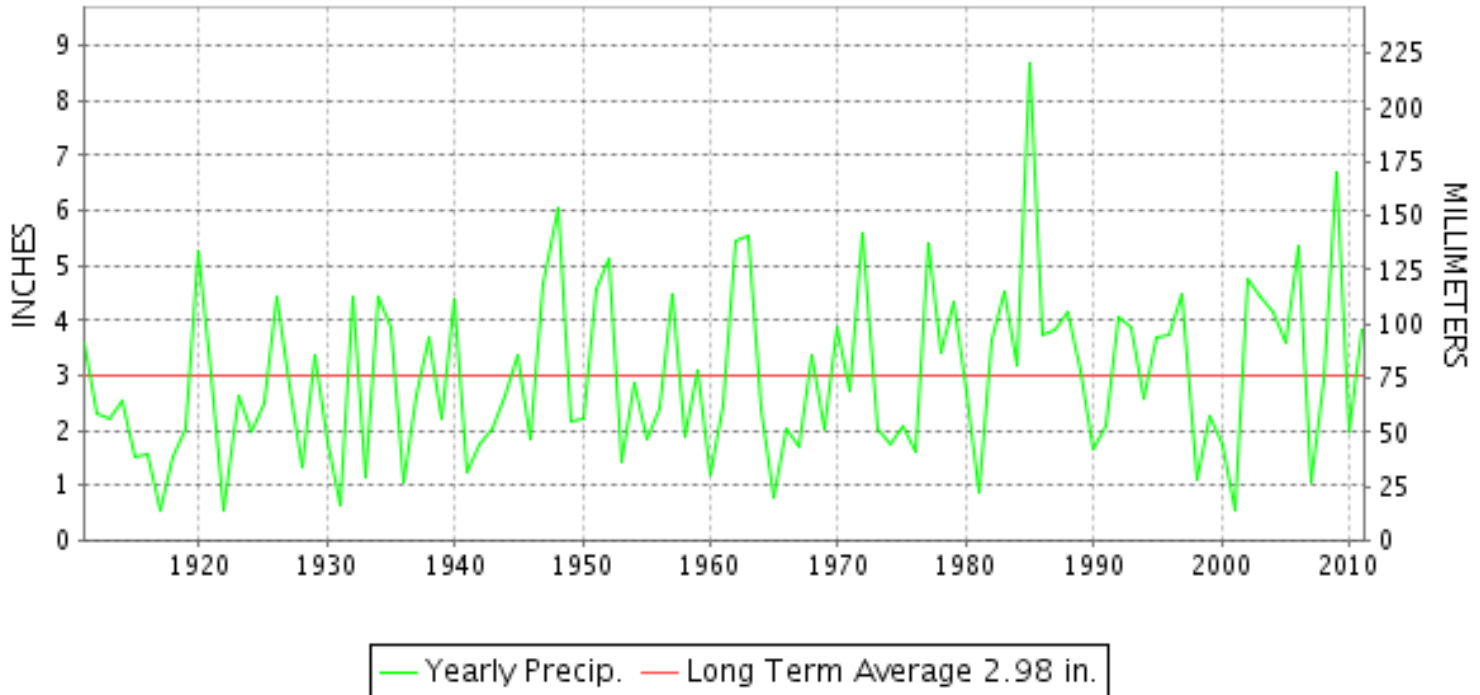


NOVEMBER 2011
VOLUME 121 NUMBER 11

ISSN 0364-5630

GHCND Ver: 2.92-upd-2012052114

NOVEMBER PRECIPITATION BY YEAR



TEMPERATURE AND PRECIPITATION EXTREMES

VIRGINIA

HIGHEST TEMPERATURE	81	NOVEMBER 15	NORFOLK INTL AP
LOWEST TEMPERATURE	14	NOVEMBER 20	MILLGAP
GREATEST TOTAL PRECIPITATION	8.85		KEYSVILLE 2 S
LEAST TOTAL PRECIPITATION	1.82		HAMPTON UNIV
GREATEST 1 DAY PRECIPITATION	4.02	NOVEMBER 29	COPPER HILL
GREATEST TOTAL SNOWFALL	3.0		WISE 3E
GREATEST DEPTH OF SNOW OR ICE	2		BURKES GARDEN

"I certify that this is an official publication of the National Oceanic and Atmospheric Administration (NOAA) It is compiled using information from weather observing sites supervised by NOAA/National Weather Service and received at the National Climatic Data Center (NCDC), Asheville, North Carolina 28801."

Director
National Climatic Data Center

noaa

National
Oceanic and
Atmospheric Administration

National
Environmental Satellite, Data
and Information Service

National
Climatic Data Center
Asheville, North Carolina

VIRGINIA
201111

MONTHLY STATION AND DIVISION SUMMARY

STATION	TEMPERATURE (°F)											PRECIPITATION (IN)												
	AVERAGE MAXIMUM	AVERAGE MINIMUM	AVERAGE	DEPARTURE FROM NORMAL	HIGHEST	DATE	LOWEST	DATE	HEATING DEG. DAYS	COOLING DEG. DAYS	NO. OF DAYS				TOTAL	DEPARTURE FROM NORMAL	GREATEST 24 HOURS	DATE	ICE PELLETS, SNOW			NO. OF DAYS		
											MAX		MIN						TOTAL	MAX DEPTH ON GROUND	DATE	.10 OR MORE	.50 OR MORE	1.00 OR MORE
											>=90	<=32	<=32	<=0										
PALMYRA 3S	63.6	33.1	48.4		76	15	23	20+	491	0	0	0	19	0	3.36	0.17	1.18	17	0.0			5	2	2
PETERSBURG	65.3	40.5	52.9		76	16+	28	19	361	4	0	0	6	0	4.57		1.65	17	M 0.0	0		8	3	1
POWHATAN	M	M	M												3.56	0.10	1.82	17	0.0			5	2	1
RICHMOND INTL AP	65.0	41.9	53.5	4.5	75	15+	28	18	340	2	0	0	3	0	4.18	1.12	2.47	16	M 0.0	0		6	2	1
SANDSTON	62.6	38.1	50.4		74	15	27	20+	434	1	0	0	8	0	4.73		2.53	17	0.0			7	3	1
WINTERPOCK 4 W	M	M	M												4.63	1.30	1.82	17	0.0			9	3	1
--DIVISIONAL DATA-----> WESTERN PIEDMONT 03			51.6	3.6											4.22	0.80								
ALTAVISTA	M	M	M												5.07	1.81	1.42	23	0.0	0		5	4	3
APPOMATTOX	61.5M	37.4M	49.5M		72	15	25	19+	442	0	0	0	9	0	M 3.51		1.40	17	0.0	0		7	3	1
BEDFORD 4 NW	60.3	37.1	48.7		71	15	24	19	481	0	0	0	10	0	4.42		1.65	29	0.0	0		5	3	3
BROOKNEAL	63.0	33.4	48.2	3.0	75	16	23	20+	500	1	0	0	18	0	4.73	1.59	1.08	17	0.0	0		9	4	2
CHARLOTTESVILLE 2W	62.0	41.1	51.6	2.7	73	26+	30	19+	398	0	0	0	3	0	3.42	-0.32	0.97	17	0.0	0		6	3	0
CHATHAM	62.2	33.2	47.7	1.8	74	16	22	20+	510	0	0	0	20	0	5.69	2.43	1.63	04	0.0	0		6	4	3
CONCORD 4 SSW	M	M	M												3.80	0.24	1.22	17	0.0	0		6	3	1
DANVILLE	63.9	36.6	50.3	1.7	77	16	23	19	434	1	0	0	13	0	5.51	2.44	2.35	17	0.0	0		6	3	3
DANVILLE REGIONAL AP	63.6	37.3	50.5		74	21+	22	19	430	1	0	0	14	0	4.98		1.48	16	M 0.0	0		6	4	2
FREE UNION	62.4	33.2	47.8		75	15	22	20+	508	0	0	0	19	0	3.16	-0.79	1.10	23	0.0			6	3	1
HOLCOMB ROCK	62.6	36.6	49.6		73	15+	25	20	454	0	0	0	12	0	4.44	0.96	1.73	29	0.0	0		7	3	1
HUDDLESTON 4 SW	M	M	M												3.65	0.31	0.85	29	0.0	0		6	4	0
LYNCHBURG #2	62.1	33.7	47.9		73	15	23	20+	506	0	0	0	18	0	3.21		1.12	29	0.0	0		7	3	1
LYNCHBURG INTL AP	62.6	35.7	49.2	2.6	73	21	21	18	466	0	0	0	14	0	3.27	0.09	1.28	29	M 0.0	0		6	3	1
MARTINSVILLE FLTR PLT	64.1	32.3	48.2	2.6	74	22+	20	19	496	0	0	0	22	0	5.50	2.45	1.75	29	M 0.0	0		7	4	3
MEADOWS OF DAN 5 SW	61.6	36.3	49.0		72	23+	26	19+	473	0	0	0	9	0	7.70	3.33	2.49	29	M 0.0	0		6	4	4
MONTEBELLO FISH CULTURAL STN	56.5	32.0	44.3		69	15	19	20+	615	0	0	0	20	0	6.21		2.20	29	0.0			5	4	2
MONTICELLO	59.5	39.2	49.4	2.1	71	15	26	20	462	0	0	0	6	0	3.71	0.41	1.68	17	0.0			4	3	1
PEDLAR DAM	61.9	37.8	49.9		75	15	23	19	447	0	0	0	7	0	3.66	0.09	1.42	29	0.0	0		5	3	1
ROCKY MT	62.4	34.3	48.4	1.5	74	22	22	20+	492	0	0	0	17	0	5.95	2.69	1.65	29	M 0.0	0		7	4	4
SOUTH BOSTON	64.2	35.2	49.7	2.4	75	22+	23	20	454	2	0	0	18	0	4.62	1.51	1.46	04	0.0	0		5	4	2
STUART	63.9	35.2	49.6	2.3	74	15	23	20	456	0	0	0	15	0	4.02	0.44	1.42	23	M 0.0	0		5	3	3
TYE RIVER 1 SE	64.4	34.8	49.6	2.4	75	26+	25	18	451	0	0	0	19	0	4.26	0.77	1.51	17	0.0	0		5	3	3
WOOLWINE	M	M	M												5.45	1.32	1.85	29	M T	0		6	4	3
--DIVISIONAL DATA-----> NORTHERN 04			49.0	1.5											4.58	1.23								
BIG MEADOWS	M	M	M												M				0.0					
BOSTON 4 SE	61.4	M	M												FM 1.16		0.76	30	M 0.0	0		3	1	0
CASTLETON	59.9	38.3	49.1		72	15	25	12	473	0	0	0	10	0	M 2.14		0.79	30	M 0.0	0		5	2	0
EDINBURG	59.6	31.8	45.7		72	15	20	06	570	0	0	0	21	0	2.91		1.00	23	0.0	0		6	3	1

VIRGINIA
201111

MONTHLY STATION AND DIVISION SUMMARY

STATION	TEMPERATURE (°F)											PRECIPITATION (IN)												
	AVERAGE MAXIMUM	AVERAGE MINIMUM	AVERAGE	DEPARTURE FROM NORMAL	HIGHEST	DATE	LOWEST	DATE	HEATING DEG. DAYS	COOLING DEG. DAYS	NO. OF DAYS				TOTAL	DEPARTURE FROM NORMAL	GREATEST 24 HOURS	DATE	ICE PELLETS, SNOW			NO. OF DAYS		
											MAX		MIN						TOTAL	MAX DEPTH ON GROUND	DATE	.10 OR MORE	.50 OR MORE	1.00 OR MORE
											>=90	<=32	<=32	<=0										
FRONT ROYAL	59.8	37.7	48.8		75	15	27	02	481	0	0	0	11	0	2.43		1.03	23	M 0.0	0		5	2	1
LINCOLN	60.8M	32.7M	46.8M		70	09	20	20	468	0	0	0	16	0	M 2.72		2.01	22	M 0.0	0		2	2	1
LURAY 5 E	61.0	36.9	49.0	1.9	74	15	22	18	475	1	0	0	13	0	2.07	-1.42	0.68	29	0.0	0		6	1	0
MADISON	62.3	40.1	51.2		73	15	31	18+	407	0	0	0	3	0	F 0.20		0.20	16	0.0	0		1	0	0
MANASSAS	62.6M	39.2M	50.9M		75	15	25	12	385	1	0	0	11	0	1.85		0.45	30	0.0			4	0	0
MT WEATHER	57.5	40.4	49.0	5.8	68	15	26	19+	474	0	0	0	5	0	2.90	-0.50	0.98	23	0.0			6	2	0
PIEDMONT RSCH STN	60.6	37.8	49.2	2.7	71	26+	24	18	466	0	0	0	8	0	3.47	-0.24	1.21	23	0.0	0		6	2	1
SOMERSET	61.6	35.7	48.7		72	26+	24	18+	483	0	0	0	16	0	3.27		1.06	23	0.0			6	2	1
SPERRYVILLE	60.9	34.8	47.9		71	15	22	20+	507	0	0	0	12	0	2.41		0.96	30	0.0			4	2	0
STAR TANNERY	58.2	32.8	45.5		72	15	21	13+	577	0	0	0	17	0	5.70		2.20	17	M 0.0	0		4	3	3
STERLING RCS	60.1	35.7	47.9	4.0	72	15	25	12	503	0	0	0	15	0	2.35	-1.10	0.98	23	M 0.0	0		5	2	0
VIENNA	60.4M	38.0M	49.2M		74	15	29	19+	451	0	0	0	8	0	M 1.84		0.68	23	0.0			4	2	0
WARRENTON 3 SE	58.6M	37.6M	48.1M		70	16+	26	12	468	0	0	0	12	0	M 2.68		0.75	23	0.0			5	3	0
WASHGTN DULLES INTL AP	60.7	37.5	49.1	3.9	73	14	27	18+	469	0	0	0	14	0	2.18	-1.13	0.70	22	0.0	0		5	2	0
WASHINGTON REAGAN AP	61.5	43.3	52.4	3.7	73	14	33	12	369	0	0	0	0	0	1.94	-1.09	0.55	22	0.0	0		4	2	0
WINCHESTER	58.5	37.7	48.1	3.5	73	15	27	06	501	0	0	0	11	0	3.19	0.00	1.11	23	0.0			6	3	1
WINCHESTER 7 SE	59.5	33.1	46.3	1.9	73	15	22	20+	554	0	0	0	18	0	3.48	0.42	1.51	23	M 0.0	0		6	3	1
WOODSTOCK 2 NE	59.8	33.8	46.8	2.6	74	15	24	19+	539	0	0	0	18	0	3.01	0.16	1.10	23	0.0	0		6	3	1
--DIVISIONAL DATA----->			48.5	3.3											2.57	-0.89								
CENTRAL MOUNTAIN 05																								
BUCHANAN	60.3	35.9	48.1	1.6	74	15	26	12	502	0	0	0	10	0	3.52	0.32	1.80	29	0.0	0		5	3	1
BUENA VISTA	M	M	M												3.79	0.62	1.88	29	0.0	0		5	3	1
COVINGTON FLTR PLT	62.1	32.7	47.4	2.9	77	15	24	20+	521	0	0	0	19	0	3.10	-0.03	1.76	29	M 0.0	0		4	1	1
CRAIGSVILLE 2 S	M	M	M												3.37	0.02	1.85	29	0.0	0		4	2	1
DALE ENTERPRISE	57.8	33.6	45.7	2.4	72	15	22	18	575	0	0	0	19	0	2.47	-0.29	0.80	23	0.0	0		7	2	0
GATHRIGHT DAM	57.4	32.9	45.2	1.2	73	15	23	19+	590	0	0	0	19	0	3.10	0.08	1.79	29	T	T	11	3	3	1
GLASGOW 1 SE	62.4	34.1	48.3		77	15	23	20+	495	0	0	0	18	0	4.36	0.11	1.95	29	0.0	0		5	3	2
HOT SPRINGS	56.9	31.7	44.3	1.9	73	15	21	19	613	0	0	0	21	0	5.06	1.46	2.94	29	M 0.1	M T	18	5	3	1
KERRS CREEK 6 WNW	M	M	M												3.12	-0.67	2.11	29	0.0	0		5	1	1
LEXINGTON	61.4	31.1	46.3	2.1	75	15	20	20	558	0	0	0	22	0	4.05	1.02	1.37	17	0.0	0		5	3	2
MILLGAP	57.1	25.0	41.1		70	15	14	20	712	0	0	0	25	0	3.93	0.53	1.53	29	0.7	T	11	5	4	1
MTN GROVE	59.6	M	M												3.27		1.65	29	M T	M T	11	4	3	1
MUSTOE 1 SW	56.8	28.7	42.8		71	14	17	19	661	0	0	0	23	0	4.12		1.73	29	1.3	1	18	7	3	1
ROANOKE 8 N	62.0	36.9	49.5		77	15	24	19	456	0	0	0	12	0	3.74		1.57	29	M 0.0	0		5	3	1
ROANOKE INTL AP	62.2	38.8	50.5	3.2	78	14	24	19	427	0	0	0	6	0	4.30	1.09	1.40	29	M 0.0	0		8	4	1
STAUNTON WATER TRMTMT PLT	60.2	38.1	49.2	6.1	72	15	24	18	468	0	0	0	7	0	2.43	-0.52	1.14	29	M 0.0	0		5	2	1
WAYNESBORO WTP	61.5	33.4	47.5		74	15	24	19	519	0	0	0	18	0	3.59		0.90	23	0.0	0		6	3	0
--DIVISIONAL DATA----->			46.6	2.3											3.61	0.42								

VIRGINIA
201111

DAILY PRECIPITATION (INCHES)

STATION	TOTAL	DAY OF MONTH																															
		01	02	03	04	05	06	07	08	09	10	11	12	13	14	15	16	17	18	19	20	21	22	23	24	25	26	27	28	29	30	31	
VIRGINIA																																	
TIDEWATER 01																																	
DISPUTANTA	M 4.18	0.89			0.41	0.08					0.05						1.27	0.44					0.28	0.76	-	-	-	-	-	-	-	-	
EASTVILLE	2.25	0.49		0.12	0.01						0.05						0.47	0.25					0.03	0.25								0.58	
EMPORIA 1 WNW	3.80	0.80		0.70							0.28					0.27	0.50	0.25					0.23	0.10						0.17	0.50		
FREDERICKSBURG SEWAGE	2.84	0.01		0.03							0.03					0.12	1.23	0.03				0.04	0.08	0.78				0.01	0.01	0.47			
HAMPTON UNIV	1.82			0.17												0.60	0.28						0.11	0.09						0.57			
HOLLAND 1 E	2.40	0.71		0.31	0.01						0.03	0.06					0.42	0.03	0.01				0.78	0.02	0.01	0.01							
HOPEWELL	M 4.20	0.81		0.37							0.01	0.03			-	-	0.23	1.45					0.50	0.32						0.48			
NORFOLK INTL AP R	1.84	0.28		0.06							0.01						0.08	0.28				T	0.33	0.21						0.59			
NORFOLK SOUTH	2.50	0.38	0.37								T					0.15	0.29						0.40	0.25						0.66			
NORTH	M 2.75	-	-	-	-	-					0.01						1.64	0.28					0.11	0.37							0.34		
PAINTER 2W	3.09	0.59		0.10							0.02						1.22					0.01	0.10	0.34					0.52	0.19			
STONY CREEK 2 N	M 0.00 ^L	0.87 ^L	0.00 ^L	1.52 ^L	0.00 ^L	0.00 ^L	0.05 ^L				0.08						0.00 ^L	1.10 ^L	0.00 ^L	0.00 ^L	0.02 ^L	0.00 ^L	1.91 ^L					0.00 ^L	0.50 ^L				
SUFFOLK LAKE KILBY	2.90	0.37		0.22							0.04					T	0.30					T	1.22	0.24						0.51			
WAKEFIELD INW	3.29	0.03		0.50							0.09					0.63	0.60					0.01	0.99	0.05						0.39			
WALKERTON 2 NW	3.80										0.09					1.11	1.77						0.12	0.25						0.46			
WALLACETON LK DRUMMOND	2.64	0.90		0.05								0.04					0.10	0.25					0.21	0.41						0.10	0.58		
WARSAW 2 NW	4.08	0.08		0.12						0.01						0.96	1.74						0.09	0.71						0.37			
WEST POINT 2 NW	F 0.47	0.73 ^L		0.12							0.00 ^L	0.07 ^L				0.25 ^L	1.32 ^L						0.02 ^L	0.53 ^L							0.35		
WILLIAMSBURG 2 N R	3.58	0.34		0.22							0.04					1.14	0.71						0.31	0.44						0.38			
EASTERN PIEDMONT 02																																	
ALBERTA 5N	4.94	0.43		1.11	T							0.11				T	1.30	0.26					0.02	0.52	0.28					0.41	0.50		
AMELIA COURTHOUSE 1	FM 4.74	0.01		0.84		-						0.08			-	0.10	1.70	0.38				-	0.02 ^L	0.21	0.60					0.58	0.24		
ASHLAND	M 2.84			0.16							0.04	T				0.43	1.28						T	0.08	0.36	-				0.49	-		
BREMO BLUFF	3.04			0.10							0.15					1.08	0.10						0.01	0.07	0.86					0.67			
BUCKINGHAM	3.87			0.17	0.04							0.12				0.02	1.76	0.17					0.01	0.02	0.67					0.42	0.47		
CAMP PICKETT R	5.27	0.21		1.03											0.10	1.40	0.31						0.20	0.72	0.40					0.58	0.32		
CHASE CITY	3.60			1.26	0.15							0.08				0.06	0.94							0.28	0.06					0.77			
CLARKSVILLE	M 4.05	0.10		1.25	0.40							-	-			-	1.15	0.25						0.05	0.05		-	-	-	0.80			
CORBIN	3.26			0.09												0.61	0.83								1.11						0.62		
CROZIER	M 3.91			0.26								0.12				0.40	1.37	0.40							0.55					0.53	0.28		
FARMVILLE 2 N R	4.44			0.88								0.14				T	1.43	0.28					T	0.09	0.81					0.49	0.32		
GREENBAY 3 NE	4.57	0.04		1.03								0.06				0.09	1.76	0.32						0.05	0.06	0.39				0.70			
JOHN H KERR DAM R	3.12	0.32		1.01	0.10							T	0.07	T		0.09	0.60	0.20							0.06					0.69	0.14		
KEYSVILLE 2 S	8.85			2.00	0.12							0.08				0.09	2.71	0.68					T	0.35	1.14					1.28	0.40		
LOUISA	3.11			0.05							0.12					0.79	0.77							0.16	0.43					0.79			
PALMYRA 3S	3.36			0.05								0.13				0.03	1.18	0.05						0.09	1.04					0.47	0.32		
PETERSBURG	4.57	0.73		0.34	0.15							0.06					1.65	0.28						0.03	0.33	0.52					0.48		
POWHATAN	3.56			0.66													1.82	0.44													0.38	0.26	
RICHMOND INTL AP R	4.18	T		0.31							0.05					2.47	0.28						T	T	0.11	0.52				0.44			
SANDSTON	4.73	0.40		0.25	0.03							0.09				0.10	2.53	0.20						0.02	0.06	0.50				0.04	0.51		

VIRGINIA
201111

DAILY PRECIPITATION (INCHES)

STATION	TOTAL	DAY OF MONTH																															
		01	02	03	04	05	06	07	08	09	10	11	12	13	14	15	16	17	18	19	20	21	22	23	24	25	26	27	28	29	30	31	
WINTERPOCK 4 W	4.63	0.33			0.57	0.08						0.12				0.03	1.82	0.32				0.01	0.26	0.36	0.01					0.15	0.57		
WESTERN PIEDMONT 03																																	
ALTAVISTA	5.07			0.88	0.07											0.01	1.22	0.19					0.01	1.42							1.27		
APPOMATTOX	M 3.51			0.21							0.10						1.40	0.21			0.05	-	0.59							0.15	0.80		
BEDFORD 4 NW	4.42			0.26												0.10	1.10	0.08					0.02	1.18						1.65	0.03		
BROOKNEAL	4.73			0.93	0.14							0.12				0.21	1.08	0.27	0.09				0.11	0.70						1.04	0.04		
CHARLOTTESVILLE 2W	3.42			0.02	0.02							0.05				0.34	0.97						0.16	0.89						0.85	0.12		
CHATHAM R	5.69			1.63	0.05							0.06				0.08	1.17	0.45					0.70							1.30	0.25		
CONCORD 4 SSW	3.80			0.31						0.03	0.09					0.29	1.22	0.15				T	T	0.77						0.87	0.07		
DANVILLE	5.51			1.21	0.16											0.01	2.35	0.30						0.06						1.32	0.10		
DANVILLE REGIONAL AP R	4.98		0.39	0.95						T					T	1.48	0.69					0.04	0.02	0.10				T	1.31				
FREE UNION	3.16			0.09							0.03					0.24	0.58						0.16	1.10						0.76	0.20		
HOLCOMB ROCK	4.44			0.12												0.12	0.35	0.79					T	0.88						1.73	0.45		
HUDDLESTON 4 SW	3.65			0.84	0.02											0.06	0.54	0.22				0.02	0.74					0.03	0.85	0.33			
LYNCHBURG #2	3.21			0.23	0.02							0.01			T	0.11	0.64	0.15					0.02	0.79					1.12	0.12			
LYNCHBURG INTL AP R	3.27		0.13	0.13						0.02					0.06	0.51	0.27					T	0.02	0.77				0.08	1.28				
MARTINSVILLE FLTR PLT	5.50			1.25	0.05							0.12				0.20	1.08							0.94				0.10	1.75	0.01			
MEADOWS OF DAN 5 SW	7.70			1.15	0.01											0.20	2.06						0.01	1.61			0.06	2.49	0.11				
MONTEBELLO FISH CULTURAL STN	6.21			0.07												0.30							0.90	0.97			0.09	2.20	1.68				
MONTICELLO	3.71															0.03	1.68	0.07				T	0.06	0.87					0.47	0.53			
PEDLAR DAM	3.66			0.05												0.12	0.81	0.06					0.02	0.91				T	1.42	0.27			
ROCKY MT R	5.95			1.17	0.18										T	0.05	1.18	0.10				0.02	0.02	1.37			0.01	0.20	1.65				
SOUTH BOSTON	4.62			1.46							0.05						1.14	0.44					0.52	0.03					0.98				
STUART	4.02			1.00												0.07	1.28							1.42				0.10	0.15				
TYE RIVER 1 SE	4.26			0.15												0.11	1.51	0.06					0.03	1.11					1.21	0.08			
WOOLWINE R	5.45			1.25	0.02						T					0.04	0.63	0.10						1.38				0.18	1.85				
NORTHERN 04																																	
BIG MEADOWS	M	-	-	-	-	-	-	-	-	-	-	-	-	-	-	-	-	-	-	-	-	-	-	1.48		-	-	-	-	-	-	-	
BOSTON 4 SE	FM 1.16			-	-											-	0.30					0.00 ^L	0.21 ^L	0.71 ^L _a				0.10	0.76				
CASTLETON	M 2.14			-												0.14	0.21	-				0.02	0.25	0.72	0.01 ^a				0.79				
EDINBURG	2.91														T	0.24	0.51					0.09	0.18	1.00				0.33	0.56				
FRONT ROYAL	2.43															0.12	0.43					0.04	0.23	1.03	0.02				0.56				
LINCOLN	M 2.72															-	-	-					2.01						0.71				
LURAY 5 E	2.07			0.01							0.02	0.01				0.21	0.26					0.03	0.10	0.46			0.01	0.68	0.28				
MADISON	F 0.20															0.20												0.00 ^L	0.00 ^L	2.25 ^L _a			
MANASSAS	1.85										0.10					0.25	0.20					*	*	0.85 _a					0.45				
MT WEATHER	2.90										0.11					0.29	0.48					0.08	0.18	0.98					0.78				
PIEDMONT RSCH STN	3.47			T							0.03					0.31	0.89					0.01	0.18	1.21				0.37	0.47				
SOMERSET	3.27										0.05					0.28	0.63	0.01					0.37	1.06				0.47	0.40				
SPERRYVILLE	2.41										0.02					0.08	0.33	0.01					0.24	0.75	0.02				0.96				
STAR TANNERY	5.70																2.20						1.30				0.09	1.91	0.20				
STERLING RCS	2.35															0.22	0.30					0.07	0.18	0.98	0.07			T	0.53				

VIRGINIA
201111

DAILY PRECIPITATION (INCHES)

STATION	TOTAL	DAY OF MONTH																														
		01	02	03	04	05	06	07	08	09	10	11	12	13	14	15	16	17	18	19	20	21	22	23	24	25	26	27	28	29	30	31
VIENNA	M 1.84															0.09	0.22					0.04	0.20	0.68	0.01	-				0.01	0.59	
WARRENTON 3 SE	M 2.68										0.02					0.70	0.21					0.04	0.26	0.75	-					-	0.70	
WASHGTON DULLES INTL AP R	2.18									0.07					0.05	0.34	T				0.01	0.21	0.70	0.30						0.50		
WASHINGTON REAGAN AP	1.94									0.06					T	0.54	0.01				0.02	0.07	0.55	0.28						0.41		
WINCHESTER	3.19										0.02				0.03	0.56	0.48		T		T	0.22	0.13	1.11					0.03	0.61		
WINCHESTER 7 SE	3.48														0.01	0.60	0.46					0.17	0.16	1.51					0.01	0.56		
WOODSTOCK 2 NE	3.01															0.21	0.50					0.05	0.30	1.10					0.15	0.70		
CENTRAL MOUNTAIN 05																																
BUCHANAN	3.52			0.22												0.18	0.82						T	0.50					T	1.80		
BUENA VISTA	3.79			0.05												0.22	0.92	0.05					0.02	0.55						1.88	0.10	
COVINGTON FLTR PLT	3.10			0.02							0.04	0.02				0.25	0.43					0.02	0.04	0.48						1.76	0.04	
CRAIGSVILLE 2 S	3.37			0.01												0.32	0.29	0.03				0.01	0.05	0.71			0.02		1.85	0.08		
DALE ENTERPRISE	2.47									0.10						0.16	0.31						0.10	0.80					0.70	0.30		
GATHRIGHT DAM R	3.10									0.08	T						0.60					T	0.04	0.50				T	1.79	0.09		
GLASGOW 1 SE	4.36			0.09												0.22	1.01	0.05					0.01	0.76				0.05	1.95	0.22		
HOT SPRINGS	5.06			T						0.04	0.01					0.33	0.73	0.01				0.04	0.05	0.60				0.06	2.94	0.25		
KERRS CREEK 6 WNW	3.12			0.12												0.11	0.21							0.48					2.11	0.09		
LEXINGTON	4.05			0.08												0.27	1.37	0.02					0.05	0.98					1.15	0.13		
MILLGAP R	3.93									0.01	0.01				T	0.26	0.58	0.01				0.03	0.01	0.85					1.53	0.64		
MTN GROVE	3.27										T					0.30	0.52	T				T	T	0.80				T	1.65	T		
MUSTOE 1 SW	4.12									0.06	0.10				0.22	0.72	0.03				0.03	0.01	0.90	0.11			0.21	1.73				
ROANOKE 8 N	3.74			0.42						T						0.15	0.98	0.06					0.56					T	1.57	T		
ROANOKE INTL AP R	4.30			0.26	0.20						T				T	0.69	0.40					T	T	0.18	0.50			0.67	1.40	T		
STAUNTON WATER TRMTMT PLT	2.43															0.14	0.39						0.16	0.58					1.14	0.02		
WAYNESBORO WTP	3.59			0.30	0.08											0.20	0.76						0.01	0.90					0.87	0.47		
SOUTHWESTERN MOUNTAIN 06																																
ABINGDON 3S	5.41			0.41	0.80				0.02	0.02						0.57	1.09	0.11				0.01	0.30	0.89	0.16				0.31	0.68	0.04	
BIG STONE GAP	7.69	0.03	0.02		0.75	0.02				0.06						0.82	1.62	1.45	0.05				0.10	0.39	1.11	0.02		0.02	0.26	0.87	0.10	
BLACKSBURG NWSO	4.13	T			0.65					0.03	T	T				0.14	0.14	0.60	0.05				0.02	T	1.01			T	1.43	0.06		
BLAND	4.22				0.63						T					0.17	0.55	0.74	T				0.25	0.09	0.66	0.03		T	1.06	0.04		
BURKES GARDEN	4.64				0.54					0.01	0.02					0.14	0.91	0.68	0.07				0.10	0.10	0.63	0.12		0.02	1.16	0.14		
CHRISTIANSBURG	M 3.76				0.89	0.02				0.02	T	T				0.19	-	0.71	0.04				0.01	0.02	0.54			T	1.32	T		
CLINTWOOD 1 W	4.78	0.01			0.71					0.06	T					0.07	0.85	1.20	0.05				0.40	0.08	0.70	T		0.08	0.54	0.03		
COPPER HILL	7.22				0.85	0.05					0.01					0.18	0.82	0.22					0.06	0.82				0.12	4.02	0.07		
GALAX RADIO WBRF	5.31				1.40											0.13	0.66							0.05	0.84			0.25	1.95	0.03		
GALAX WTP	4.54				0.81	0.01										0.06	0.62						0.02	0.78			0.20	2.04	T			
GRUNDY	4.07				0.39					0.03					T	0.71	1.19						0.56	0.08	0.60	0.05		T	0.46	T		
JOHN FLANNAGAN LAKE	M	0.01		-	0.45	-	-			0.09	-	-	-			-	0.73	-	-	-	-	-	0.47	0.07	0.65	-	-	-	0.03	0.41	0.03	
LAFAYETTE 1 NE	4.57	0.02			0.65	0.02					T					0.13	0.17	0.77	0.03				0.02	0.65	0.02				2.05	0.04		
LEBANON	5.29	0.02			0.66	0.01				0.05						0.38	1.26	1.23	0.04				0.03	0.14	0.52			0.90	0.05			
NORA 4 SSE	5.45	T			0.82	0.02				0.02						0.17	1.06	1.66	0.12				0.16	0.21	0.41	0.02		0.02	0.71	0.05		

VIRGINIA
201111

DAILY PRECIPITATION (INCHES)

STATION	TOTAL	DAY OF MONTH																														
		01	02	03	04	05	06	07	08	09	10	11	12	13	14	15	16	17	18	19	20	21	22	23	24	25	26	27	28	29	30	31
NORTH FORK LAKE	M	-	-	*	*	*	*	0.86 _a			0.13	*	*	*	0.00 _a	0.05	0.80	*	1.13 _a	-	*	*	0.62 _a	-	-	-	-	-	-	-	0.43	-
PULASKI 2 E	3.39				0.74	T						T	T		0.13	0.37	0.70	T			0.01	0.01	0.50	0.02				0.01	0.90	T		
RADFORD 3 N	M 3.54				0.61	0.02					0.01	T	T		-	0.44	0.98	0.03			0.01		0.45						T	0.99	T	
RICHLANDS	4.67				0.44						0.03				0.36	1.26	0.95				0.39	0.12	0.29	0.02					0.74	0.07		
SALTVILLE 1N	4.15				0.56	0.05									0.53	0.71	0.67				0.09	0.13	0.72						0.59	0.10		
STAFFORDSVILLE 3 ENE R	2.53				0.44							0.01			T	0.23	0.46	T			0.06	T	0.38						0.94	0.01		
TROUT DALE 3 SSE	3.73	0.01			0.91	0.01									0.12	0.11	0.51	0.03			0.02	0.04	0.43					0.04	1.48	0.02		
WILLIS R	4.34				1.01										0.06	0.13	0.96				0.05		0.88					0.03	1.20	0.02		
WISE 3E	6.15	0.05		0.12	0.98				0.04	T					0.37	2.05	0.36				0.37	0.10	0.72					0.41	0.52	0.06		
WYTHEVILLE 1 S R	3.71	0.01			0.66	0.01					0.03	0.01			0.17	0.31	0.83	0.11			0.07	0.08	0.30					0.05	1.06	0.01		

VIRGINIA
201111

DAILY TEMPERATURES (°F)

STATION	OB. TIME	MAX/MIN	DAY OF MONTH																															AVERAGE	
			01	02	03	04	05	06	07	08	09	10	11	12	13	14	15	16	17	18	19	20	21	22	23	24	25	26	27	28	29	30	31		
VIRGINIA																																			
TIDEWATER 01																																			
DISPUTANTA	07	MAX	59	60	62	65	57	55	62	67	67	68	70	52	65	67	76	75	73	49	48	59	73	66	65									63.5	
		MIN	29	33	33	34	38	38	35	35	35	42	34	27	28	39	57	54	49	26	24	24	43	56	56									37.8	
EASTVILLE	07	MAX	59	59	58	62	60	56	64	61	60	60	59	50	60	64	71	69	72	52	46	59	68	62	67	65	55	62	64	68	69	65		61.5	
		MIN	38	42	41	41	43	43	44	42	43	48	45	39	40	50	59	57	52	40	33	34	55	55	57	45	43	51	52	55	60	44		46.4	
EMPORIA 1 WNW	08	MAX	59	62	65	66	58	57	66	70	70	73	71	52	65	67	76	77	74	74	50	60	74	72	68	71	62	71	70	74	72	55		66.7	
		MIN	31	34	34	34	40	40	37	37	37	40	35	29	29	40	55	60	49	30	28	28	42	56	56	40	32	32	33	46	55	36		39.2	
FREDERICKSBURG SEWAGE	07	MAX	57	60	64	66	59	53	62	67	70	67	59	51	65	66	75	67	67	47	48	57	68	64	64	60	62	70	63	73	73	62		63.2	
		MIN	30	34	33	37	36	30	35	33	33	33	32	27	28	46	56	55	44	27	27	29	51	53	53	34	31	31	36	36	53	37		37.3	
HAMPTON UNIV	17	MAX	60	60	63	61	57	61	64	64	65	66	62	63	67	74	77	74	73	48	61	73	68	64	73	61	69	68	70	72	67	53		65.3	
		MIN	48	43	43	50	47	49	45	44	44	46	42	47	47	57	62	59	40	35	38	52	59	56	57	45	43	49	53	60	49	41		48.3	
HOLLAND 1 E	08	MAX	63	62	64	67	64	59	65	70	69	72	72	66	65	71	78	80	77	53	58	73	76	68	69	75	64	72	71	73	65	54		67.8	
		MIN	41	32	30	36	43	43	35	35	39	39	35	40	40	29	54	57	49	27	24	40	40	55	55	37	29	30	42	54	48	34		39.7	
HOPEWELL	16	MAX	61	61	65	65	57	63	69	69	66	64	54	66	67																				66.1
		MIN	46	37	37	45	40	45	39	39	42	48	37	32	43																				43.7
NORFOLK INTL AP	24	MAX	60	61	67	63	58	61	67	63	62	66	53	65	71	77	81	79	58	48	62	76	69	68	74	60	71	71	72	74	69	54		66.0	
		MIN	51	44	39	48	49	48	44	43	46	50	37	32	41	58	63	58	43	36	33	49	58	58	52	41	39	42	48	62	49	41		46.7	
NORFOLK SOUTH	24	MAX	61	58	58	64	56	59	64	61	64	65	51	62	68	74	78	76	56	45	61	73	66	67	72	56	68	68	70	73	67	52		63.8	
		MIN	35	45	39	37	47	44	41	39	44	47	34	32	39	55	60	56	40	31	29	47	56	56	49	39	34	41	45	58	47	37		43.4	
NORTH	07	MAX						55	61	65	67	69	69	51	62	65	73	71	73	51	47	58	70	65	66	71	61	67	68	70	68	64		64.3	
		MIN						42	38	36	37	48	39	31	35	49	60	53	51	31	29	30	47	53	56	41	35	37	41	53	59	40		42.8	
PAINTER 2W	16	MAX	60	61	62	58	56	60	67	66	69	67	56	61	65	73	71	73	71	45	59	69	67	64	70	55	64	66	68	71	68	53		63.8	
		MIN	48	35	36	41	41	44	38	37	41	51	43	30	44	59	63	53	41	37	28	45	58	54	54	43	36	42	46	58	49	42		44.6	
STONY CREEK 2 N	08	MAX	59	61	63	67	57	55	64	69	68	68	69	52	66	68	76	76	73	53	49	60	74	69	65	71	61	71	70	73	72	64		65.4	
		MIN	29	33	33	34	42	39	41	36	36	40	37	30	29	39	54	57	49	29	26	25	41	57	56	38	33	33	33	45	54	37		38.8	
SUFFOLK LAKE KILBY	24	MAX	61	63	65	61	55	62	69	68	67	71	52	63	67	74	77	76	58	49	62	73	68	67	72	60	68	67	71	77	66	52		65.4	
		MIN	33	40	31	45	47	37	44	39	45	46	34	32	41	38	53	54	37	31	30	46	50	56	48	39	36	39	46	44	45	38		41.5	
WAKEFIELD 1NW	24	MAX	63	64	66	58	58	65	69	70	74	71	53	64	67	76	77	74	55	49	60	73	67	65	73	63	70	70	72	74	64	53		65.9	
		MIN	37	33	35	39	38	40	36	35	41	44	30	28	41	55	60	55	31	27	25	43	55	56	47	36	32	37	48	57	45	33		40.6	
WALKERTON 2 NW	18	MAX	65	67	69	62	59	72	71	69	67	55	56	68	69	78	78	72	71	52	61	74	68	66	74	65	72	72	76	76	68	57		67.6	
		MIN	43	37	40	43	40	40	39	39	47	50	36	33	42	53	59	56	40	32	32	47	59	58	54	40	35	37	48	56	52	42		44.3	
WALLACETON LK DRUMMOND	08	MAX	62	65	67	70	65	62	68	74	68	74	74	56	67	72	78	80	79	53	53	66	77	71	70	75	68	72	73	73	75	58		68.8	
		MIN	30	32	28	29	43	41	38	33	33	45	34	25	30	46	56	52	46	26	23	33	52	49	53	48	26	28	34	44	50	36		38.1	
WARSAW 2 NW	18	MAX	59	63	65	64	55	63	69	69	67	65	50	64	67	76	71	68	67	47	57	68	64	61	71	59	67	67	71	74	69	53		64.3	
		MIN	45	33	39	42	39	32	36	33	35	43	37	28	46	57	63	54	38	29	29	48	56	52	48	42	37	39	51	60	49	37		42.6	
WEST POINT 2 NW	17	MAX	61	63	65	60	54	62	68	67	68	65	61	65	67	75	73	70	62	47	58	73	65	63	72	62	68	70	72	72	66	60		65.1	
		MIN	38	35	37	42	39	41	37	36	38	45	31	29	44	56	56	53	37	28	29	46	54	53	45	36	33	36	51	57	45	37		41.5	
WILLIAMSBURG 2 N	24	MAX	61	62	64	59	55	62	68	67	69	70	53	65	67	75	74	74	55	48	59	73	67	65	73	62	69	70	72	74	67	53		65.1	
		MIN	42	37	38	42	42	45	40	38	41	46	33	30	44	56	57	54	33	29	28	45	55	55	47	38	34	41	47	57	47	38		42.6	
EASTERN PIEDMONT 02																																			
AMELIA COURTHOUSE 1	08	MAX	59	60	63	65	57		62	68	68	67	67	56		66	75	73	69	44	53		71	68	65	68	71	61	68	73	71	71		65.1	

VIRGINIA
201111

DAILY TEMPERATURES (°F)

STATION	OB. TIME	MAX/MIN	DAY OF MONTH																															AVERAGE
			01	02	03	04	05	06	07	08	09	10	11	12	13	14	15	16	17	18	19	20	21	22	23	24	25	26	27	28	29	30	31	
ASHLAND	18	MIN	29	34	34	42	35		36	36	34	34	32	28		41	59	55	44	27	28		38	56	56	34	31	32	45	53	50	36		39.2
		MAX	59	60	64	62	54	60	66	65	64	63	50	64	66	74	74	68	60	45	57	70	67	62	69		68	67	68	72	65		63.7	
BREM0 BLUFF	07	MIN	39	34	40	43	34	33	36	35	35	43	34	28	44	55	62	55	37	27	28	45	57	55	50		32	35	45	53	49		41.5	
		MAX	63	68	69	60	55	65	71	72	71	57	53	67	66	77	74	64	54	51	59	73	73	60	69	66	74	68	73	76	65	71		66.1
CAMP PICKETT	08	MIN	31	31	32	43	31	29	30	30	29	34	28	27	34	52	57	52	30	25	25	33	49	51	45	29	28	29	38	52	42	32		35.9
		MAX	56	60	64	65	56	54	63	68	67	68	67	51	65	66	73	75	68	49	48	58	73	71	70	69	62	71	69	72	72	55		64.2
CHASE CITY	17	MIN	28	30	30	34	37	37	35	34	34	38	31	28	28	41	40	56	48	26	25	25	39	56	55	33	31	32	40	40	50	35		36.5
		MAX	56	62	64	65	56	54	64	68	69	68	63	53	65	64	74	75	69	51	51	59	73	72	67	70	64	70	69	71	70	56		64.4
CLARKSVILLE	07	MIN	34	33	33	35	39	37	36	36	37	40	32	30		37	50	56	56	51	29	28	35	47	55	58	34	33	32	43		56	38	40.3
		MAX	56	64	62	66	54	56	63	70	69	66			66	66	76		70	70	70	60	74	75	67	71				74	70	56		66.3
CORBIN	09	MIN	35	33	34	34	38	34	36	36	36	41			42	42	50		51	29	27	36	53	56	58	37				55	48	35		40.7
		MAX	59	63	66	58	52	61	67	69	67	60	50	64	66	75	67	64	55	47	56	68	64	61	69	60	70	64	72	74	64	50		62.7
CROZIER	07	MIN	38	32	40	45	31	29	35	33	33	43	33	27	45	54	57	55	36	25	30	43	55	54	49	35	32	37	47	57	46	37		40.4
		MAX	56	59	63	65	57	52	62	68	68	67	59	51	65	65	75	72	67	44	41	56	69	67	64	70		71	67	72	72	55		62.7
FARMVILLE 2 N	07	MIN	30	30	30	38	33	31	32	30	30	35	33	26	30	43	59	54	42	26	29	29	43	54	55	32		30	35	50	51	36		37.1
		MAX	62	65	69	70	62	56	67	72	72	67	65	65	72	65	77	80	68	51	59	57	72	70	63	69	64	72	68	72	71	71		67.1
GREENBAY 3 NE	09	MIN	29	31	30	36	37	33	34	32	32	32	31	27	32	46	52	54	48	26	26	26	44	56	56	33	32	32	32	49	52	37		37.2
		MAX	55	58	61	64	55	51	60	65	69	65	62	49	64	65	73	73	68	45	46	57	69	69	65	67	67	62	69	71	70	55		62.3
JOHN H KERR DAM	08	MIN	31	31	35	42	35	34	38	34	34	42	31	31	42	49	59	55	42	25	27	39	57	56	56	31	31	33	35	52	47	36		39.7
		MAX	60	63	67	69	56	54	68	71	72	71	66	54	66	67	76	75	73	50	51	62	74	73	69	74	65	72	73	73	72	57		66.4
LOUISA	18	MIN	30	32	33	33	37	37	37	37	42	36	37	43	51	60	65	50	29	27	30	52	59	59	36	32	33	40	58	50	38		41.3	
		MAX	60	64	65	58	53	61	68	68	66	54	51	65	65	75	67	61	57	47	55	70	67	62	68	62	70	66	72	72	65	50		62.8
PALMYRA 3S	06	MIN	29	28	33	45	30	25	31	27	28	38	31	23	44	52	57	54	36	23	22	39	53	50	48	27	27	29	39	50	49	35		36.7
		MAX	57	61	64	66	59	52	61	67	68	68	54	51	66	64	76	73	73	46	48	56	71	70	62	68	63	72	69	73	73	57		63.6
PETERSBURG	08	MIN	26	29	28	30	36	28	29	28	28	29	23	23	37	48	54	46	23	23	23	41	51	51	29	26	26	28	34	51	36		33.1	
		MAX	59	60	63	67	57	55	64	70	69	66	68	53	67	68	76	76	71	51	49	59	73	68	68	71	62	73	70	73	72	60		65.3
RICHMOND INTL AP	24	MIN	31	35	35	40	40	40	38	37	39	42	37	30	31	43	57	55	50	29	28	29	45	56	56	44	34	33	36	47	60	37		40.5
		MAX	61	63	65	59	55	63	69	68	66	70	52	66	68	75	75	70	53	49	57	74	69	65	72	62	70	73	72	65	53		65.0	
SANDSTON	07	MIN	41	37	41	43	37	38	37	38	39	43	33	29	41	53	58	53	37	28	30	44	56	56	47	42	34	37	48	55	45	38		41.9
		MAX	57	58	60	62	57	52	60	65	65	64	65	49	63	66	74	73	68	46	44	55	72	70	65	69	58	66	67	72	71	65		62.6
WESTERN PIEDMONT 03	07	MIN	29	34	34	34	36	36	35	35	35	39	36	27	27	42	57	55	46	28	28	27	43	55	44	42	31	31	34	48	58	36		38.1
		MAX	54	58	61	63	58	51	59	66	67	66	58	48	64	61	72	71	67	50	47	55	70		62	66	62	70	65	69	69	54		61.5
APPOMATTOX	07	MIN	31	32	34	38	37	33	32	37	37	38	31	30	30	41	51	55	50	25	25	28	48		55	35	33	33	35	44	54	34		37.4
		MAX	57	60	63	65	57	53	60	65	67	67	57	49	65	65	74	75	70	50	47	56	70	72	65	67	61	68	68	71	70	55		63.0
BROOKNEAL	07	MIN	27	29	29	32	33	31	31	30	31	35	29	25	25	33	44	56	49	25	23	23	34	34	58	31	27	26	28	40	49	35		33.4
		MAX	56	60	65	65	58	52	60	68	71	68	59	49	65	61	73	67	59	44	48	55	70	65	59	63	64	73	68	70	68	56		62.0
CHARLOTTESVILLE 2W	08	MIN	37	38	40	41	35	34	35	40	42	44	34	33	35	43	51	54	43	30	30	32	50	49	49	42	43	47	48	51	49	34		41.1
		MAX	55	58	62	63	54	50	58	68	66	67	57	51	64	63	72	74	69	50	47	54	69	72	64	68	63	69	67	69	69	53		62.2
CHATHAM	07	MIN	26	27	27	27	36	29	29	29	29	29	26	23	23	35	51	56	49	23	22	36	52	55	29	26	26	27	44	49	32		33.2	
		MAX	57	61	64	66	55	53	62	67	69	68	57	52	64	63	74	77	70	52	48	57	70	71	69	69	63	70	68	71	72	57		63.9
DANVILLE		MIN	30	30	31	33	30	34	35	34	35	36	28	26	28	38	49	54	52	29	23	25	41	53	53	40	29	29	31	56	49	37		36.6

VIRGINIA
201111

DAILY TEMPERATURES (°F)

STATION	OB. TIME	MAX/MIN	DAY OF MONTH																															AVERAGE	
			01	02	03	04	05	06	07	08	09	10	11	12	13	14	15	16	17	18	19	20	21	22	23	24	25	26	27	28	29	30	31		
DANVILLE REGIONAL AP	24	MAX	60	63	65	54	52	62	68	68	67	59	50	64	63	74	74	69	55	49	56	72	74	68	68	62	69	67	70	71	65	51	63.6		
		MIN	29	29	30	43	33	35	32	31	32	32	28	25	37	46	58	55	28	25	22	39	54	55	47	34	27	31	53	57	37	34	37.3		
FREE UNION	08	MAX	54	61	65	66	60	55	60	68	70	68	60	50	66	63	75	62	59	46	48	56	70	64	59	64	64	73	72	70	69	56	62.4		
		MIN	30	29	29	32	29	26	26	29	29	29	34	25	25	35	47	54	44	24	22	22	39	50	50	31	27	27	27	35	54	36	33.2		
LYNCHBURG #2	07	MAX	55	59	63	65	59	52	60	67	69	67	57	48	65	62	73	70	61	49	47	55	71	71	61	64	62	70	66	71	70	53	62.1		
		MIN	29	29	29	32	30	26	26	29	30	30	36	27	28	33	43	54	48	24	23	23	38	51	54	33	28	28	28	38	49	35	33.7		
LYNCHBURG INTL AP	24	MAX	60	63	64	58	52	59	68	69	66	59	48	65	62	72	71	67	53	47	55	71	73	62	64	63	70	65	71	69	62	49	62.6		
		MIN	29	30	34	42	29	28	31	32	34	36	27	26	35	45	56	53	33	21	23	36	50	54	41	30	28	30	39	54	35	31	35.7		
MARTINSVILLE FLTR PLT	07	MAX	55	62	65	65	56	53	61	68	69	68	57	50	65	61	73	74	71	49	49	60	71	74	66	65	65	71	67	71	71	71	64.1		
		MIN	27	27	27	28	31	27	29	29	29	30	29	22	22	32	53	55	49	22	20	27	27	51	53	27	24	24	24	41	48	34	32.3		
MEADOWS OF DAN 5 SW	07	MAX	53	61	64	63	57	55	60	68	69	69	54	48	64	56	70	70	66	46	46	52	68	72	72	56	61	67	63	66	63	68	61.6		
		MIN	33	33	33	36	32	32	33	33	33	38	29	29	29	36	45	53	44	26	26	27	43	50	50	38	34	33	34	54	42	32	36.3		
MONTEBELLO FISH CULTURAL STN	07	MAX	50	54	60	62	46	47	55	66	66	65	52	38	58	45	69	68	57	42	54	58	62	60	60	54	57	64	60	61	56	48	56.5		
		MIN	26	26	28	31	24	22	24	24	24	43	26	27	32	36	41	41	39	19	19	19	49	49	50	31	27	27	51	48	31	32.0			
MONTICELLO	08	MAX	52	56	60	62	55	47	56	63	64	64	49	61	60	71	66	59	45	44	52	67	64	59	62	60	67	63	68	68	57	59.5			
		MIN	35	36	38	37	36	31	31	36	39	39	35	28	41	41	48	54	45	29	28	26	48	48	48	43	39	41	41	46	54	35	39.2		
ROCKY MT	07	MAX	54	54	66	66	55	52	61	64	69	69	56	48	65	62	72	73	69	48	48	57	72	74	64	62	65	72	67	69	69	51	62.4		
		MIN	29	29	29	31	30	28	28	31	31	33	33	29	29	35	37	37	47	25	22	22	42	52	56	30	28	28	47	49	46	35	34.3		
SOUTH BOSTON	07	MAX	56	61	64	67	54	54	62	68	69	68	59	52	66	65	75	75	69	51	50	58	73	75	66	69	64	71	69	72	69	54	64.2		
		MIN	27	29	29	30	38	33	32	31	30	30	27	26	26	37	55	58	51	26	24	23	38	53	57	31	29	28	28	47	47	36	35.2		
STUART	07	MAX	56	64	67	65	60	54	60	69	69	68	53	49	65	60	74	72	72	51	52	57	70	72	72	63	64	72	66	68	64	69	63.9		
		MIN	29	31	32	32	37	30	30	32	30	37	33	27	27	36	54	36	37	24	24	23	48	48	49	33	31	32	45	54	42	34	35.2		
TYE RIVER 1 SE	07	MAX	56	65	67	68	60	55	62	68	70	71	60	53	67	60	75	72	61	48	50	60	72	72	62	68	66	75	70	72	73	55	64.4		
		MIN	29	30	31	35	30	28	29	29	29	30	31	29	30	40	50	54	42	25	26	28	45	51	52	29	29	28	29	46	47	34	34.8		
NORTHERN 04																																			
BIG MEADOWS	09	MAX																																M	
		MIN																																	M
BOSTON 4 SE	07	MAX	54	58	63			64	57	65	68	65																						61.4	
		MIN	27	29	29				25	29	29	29																							M
CASTLETON	08	MAX	53	57	61	63	56	50	56	64	67	64	50	49	65	62	72	64	57	45	47	58	61	64	51	61	62	69	69	70	69	60	59.9		
		MIN	35	32	32	34	34	28	32	32	33	44	32	25	37	49	57	54	44	27	26	46	53	47	47	38	32	35	37	50	41	35	38.3		
EDINBURG	07	MAX	53	57	65	67	57	49	59	69	71	69	53	45	63	65	72	57	55	43	44	56	60	58	52	56	62	66	67	68	69	60	59.6		
		MIN	27	28	28	30	25	20	23	28	27	27	31	25	28	34	50	52	41	24	21	21	45	45	45	30	25	25	26	32	56	36	31.8		
FRONT ROYAL	07	MAX	52	55	61	63	56	50	57	68	68	66	54	44	64	64	75	62	56	44	45	59	64	59	54	57	61	69	67	71	68	60	59.8		
		MIN	28	27	32	43	30	29	28	35	35	33	37	30	32	41	52	54	42	29	28	28	52	45	45	36	33	36	39	57	58	36	37.7		
LINCOLN	07	MAX	54	56	62	63	61	54	57	66	70	65	62	48	61	60	69																	60.8	
		MIN	25	28	28	31	30	23	26	29	28	29	37	23	27	28	50																	32.7	
LURAY 5 E	08	MAX	52	58	65	67	56	51	60	70	72	71	54	47	64	66	74	61	58	42	46	58	64	64	60	60	61	67	66	69	69	58	61.0		
		MIN	29	30	33	38	25	27	32	33	31	43	32	26	37	48	58	53	39	22	25	36	48	46	46	29	28	29	39	55	54	37	36.9		
MADISON	08	MAX	56	61	66	64	58	53	61	67	70	67	58	51	66	63	73	63	60	48	48	55	68	65	60	67	62	72	69	70	69	58	62.3		
		MIN	36	35	35	35	40	31	32	35	35	35	40	33	35	48	53	56	46	31	33	38	53	50	50	37	33	36	36	51	57	38	40.1		
MANASSAS	07	MAX	55	59	63	66		52	60	67	70	67	53	49	64	65	75	64	59	47	47												62.6		

VIRGINIA
201111

DAILY TEMPERATURES (°F)

STATION	OB. TIME	MAX/MIN	DAY OF MONTH																															AVERAGE
			01	02	03	04	05	06	07	08	09	10	11	12	13	14	15	16	17	18	19	20	21	22	23	24	25	26	27	28	29	30	31	
MT WEATHER	07	MIN	38	32	34	41	32	27	30	32	32	38	37	25	32	55	56	56	45	30	33		53	48	51	33	30	31	41	53	55	36		39.2
		MAX	50	54	59	60	54	48	54	65	66	66	54	48	61	56	68	59	53	40	42	56	61	59	57	58	58	67	64	66	65	56		57.5
PIEDMONT RSCH STN	08	MIN	36	37	44	44	30	30	37	46	45	45	33	33	38	47	50	52	39	26	26	30	51	44	44	37	39	45	48	50	51	36		40.4
		MAX	55	58	62	64	58	50	59	66	68	65	53	48	63	62	71	63	59	45	46	53	67	64	60	67	61	71	66	69	70	56		60.6
SOMERSET	07	MIN	33	34	36	38	35	30	33	35	35	41	35	25	32	44	53	53	44	24	27	31	52	47	48	32	32	34	35	48	54	34		37.8
		MAX	54	60	64	65	58	50	59	68	68	67	57	49	65	62	72	63	58	46	46	53	69	65	62	67	64	72	69	71	69	56		61.6
SPERRYVILLE	06	MIN	29	30	31	34	35	24	29	29	29	35	35	24	30	45	53	54	44	24	27	29	51	49	49	29	30	30	31	42	53	37		35.7
		MAX	53	58	63	64	57	52	58	67	69	67	57	48	67	68	71	61	56	45	48	54	62	64	58	63	64	69	70	69	67	59		60.9
STAR TANNERY	07	MIN	28	32	33	33	33	27	30	31	35	35	37	25	27	34	34	53	45	24	22	22	48	47	31	31	37	37	38	53	36		34.8	
		MAX	53	55	60	64	56	46	52	69	66	65	47	56	58	63	72	55	55	41	45	58	68	52	55	56	59	61	67	67	69	56		58.2
STERLING RCS	07	MIN	28	27	32	29	24	21	24	27	27	34	21	21	30	51	52	39	36	25	31	48	41	43	40	25	27	34	44	40	35		32.8	
		MAX	55	58	62	65	55	51	58	67	69	65	53	48	63	63	72	62	57	45	45	55	64	59	56	58	60	68	66	70	71	64		60.1
VIENNA	07	MIN	29	32	31	38	34	26	26	33	31	32	38	25	28	36	53	54	45	28	27	27	51	46	47	36	29	28	31	43	52	35		35.7
		MAX	55	58	62	64	54	51	57	64	70	63	54	47	62	64	74	64	58	45	44	54	66	62	60	60		68	67	70	69	65		60.4
WARRENTON 3 SE	08	MIN	34	34	34	42	31	31	31	36	37	38	38	32	32	33	55	56	45	29	29	35	35	49	49	34		32	39	43	52	37		38.0
		MAX	53	57	59	62	55	48	56	63	65	63	53	47	61	62	70	70	57	45	45	54	63	63	59		62	64	64	67		53		58.6
WASHGTN DULLES INTL AP	24	MIN	29	33	34	34	32	29	32	32	32	41	35	26	32	50	55	54	44	27	27	27	53	47	48		32	38	44	51		34		37.6
		MAX	60	61	65	56	53	58	67	69	65	54	50	62	63	73	66	58	52	46	55	64	62	53	61	61	66	67	70	70	64	50		60.7
WASHINGTON REAGAN AP	24	MIN	36	31	37	41	30	27	32	31	30	38	30	29	32	53	56	52	36	27	29	48	49	48	44	32	29	31	37	51	43	36		37.5
		MAX	61	60	64	59	53	59	67	68	64	59	50	63	64	73	68	59	53	48	55	65	64	61	64	61	63	61	72	71	66	51		61.5
WINCHESTER	07	MIN	44	41	44	44	38	37	40	41	42	46	38	33	44	54	57	53	39	34	37	50	50	50	45	38	38	39	46	51	47	40		43.3
		MAX	51	56	61	63	55	48	56	65	67	65	52	44	63	64	73	59	56	43	46	54	60	54	54	56	59	66	66	70	69	59		58.5
WINCHESTER 7 SE	08	MIN	30	31	31	37	31	27	29	35	32	34	36	30	37	48	54	53	42	29	28	29	52	44	44	33	34	36	39	49	58	38		37.7
		MAX	52	58	62	65	57	50	57	67	69	66	66	45	64	63	73	59	56	43	45	54	59	55	50	57	61	67	65	70	70	60		59.5
WOODSTOCK 2 NE	07	MIN	28	29	29	33	27	23	23	27	27	27	24	34	45	50	54	42	26	22	22	51	45	45	28	29	31	32	38	38	37		33.1	
		MAX	53	58	64	67	58	50	59	68	70	70	52	45	65	66	74	58	55	42	46	57	58	57	49	54	61	65	68	68	69	69		59.8
CENTRAL MOUNTAIN 05 COVINGTON FLTR PLT	07	MIN	29	28	31	35	29	24	24	31	29	30	34	25	29	37	48	52	41	25	24	27	43	44	44	32	30	30	29	34	58	37		33.8
		MAX	53	63	68	68	68	58	61	70	71	70	53	44	66	64	77	63	61	44	49	59	65	64	63	59	65	67	61	67	66	56		62.1
DALE ENTERPRISE	07	MIN	31	29	29	33	29	26	26	29	29	30	35	24	24	30	40	52	43	24	24	24	34	50	51	29	27	26	26	40	50	37		32.7
		MAX	51	57	67	66	54	46	43	63	67	67	55	43	63	64	72	60	59	42	43	54	62	59	56	54	57	54	70	66	66	53		57.8
GATHRIGHT DAM	07	MIN	28	23	29	35	27	24	23	29	30	31	32	29	29	44	49	52	40	22	25	28	44	44	44	28	28	28	28	46	53	35		33.6
		MAX	49	57	62	64	57	52	56	64	65	66	47	40	60	62	73	59	58	41	43	54	63	62	59	55	57	62	57	64	63	50		57.4
HOT SPRINGS	07	MIN	30	30	30	34	29	26	28	31	32	33	30	24	26	31	40	51	40	23	23	24	36	50	51	29	27	28	29	40	48	35		32.9
		MAX	48	59	57	64	57	51	55	62	66	65	52	39	60	60	73	59	59	39	39	53	63	63	61	55	54	59	59	64	61	51		56.9
LEXINGTON	07	MIN	28	28	30	30	27	26	26	30	31	34	29	25	25	30	40	51	38	22	21	23	37	48	52	28	27	27	29	29	47	33		31.7
		MAX	54	61	65	65	55	56	59	68	71	68	56	49	64	61	75	67	67	43	47	55	68	65	63	62	64	65	59	70	67	53		61.4
MILLGAP	07	MIN	29	27	27	30	31	23	23	26	27	28	32	21	21	30	38	53	43	25	21	20	32	49	53	29	24	24	25	34	50	37		31.1
		MAX	46	59	63	65	56	54	57	66	68	67	48	37	58	59	70	59	58	39	43	54	59	58	58	53	58	63	61	62	59	56		57.1
MUSTOE 1 SW	24	MIN	23	21	20	24	20	16	16	16	21	22	27	17	17	23	32	49	37	18	15	14	30	48	49	23	16	18	18	51	32		25.0	
		MAX	57	62	64	54	52	56	65	68	66	49	35	59	60	71	62	57	44	42	52	59	58	57	59	63	62	61	59	57	37		56.8	
		MIN	24	24	27	28	24	18	22	25	25	32	22	18	26	32	49	41	24	18	17	29	47	49	33	24	19	22	29	52	33	27		28.7

VIRGINIA
201111

DAILY TEMPERATURES (°F)

STATION	OB. TIME	MAX/MIN	DAY OF MONTH																															AVERAGE
			01	02	03	04	05	06	07	08	09	10	11	12	13	14	15	16	17	18	19	20	21	22	23	24	25	26	27	28	29	30	31	
ROANOKE 8 N	07	MAX	54	62	65	65	57	54	59	69	70	68	55	49	65	62	77	67	64	47	47	56	71	68	61	62	63	69	65	70	66	53		62.0
		MIN	32	32	32	36	37	28	28	34	35	37	36	31	32	35	46	55	47	28	24	25	38	55	56	40	33	31	32	50	49	34		36.9
ROANOKE INTL AP	24	MAX	62	64	65	58	53	58	69	68	68	57	49	65	62	78	68	65	53	46	56	72	69	60	62	63	69	65	70	65	61	47		62.2
		MIN	31	32	35	46	34	28	33	35	35	40	36	32	34	46	55	53	35	28	24	36	58	57	43	40	36	33	40	56	38	34		38.8
STAUNTON WATER TRMTMT PLT	08	MAX	51	57	63	66	47	51	57	66	69	67	56	43	62	61	72	62	61	61	44	54	65	62	60	59	61	66	65	66	66	66		60.2
		MIN	31	32	36	43	29	29	37	36	38	48	31	35	33	47	52	51	39	24	27	35	34	35	46	35	38	43	41	52	50	35		38.1
WAYNESBORO WTP	07	MAX	53	57	63	64	65	50	58	67	68	68	57	56	62	65	74	66	65	44	44	55	66	64	63	61	59	67	67	68	68	61		61.5
		MIN	29	29	30	34	27	27	27	30	30	32	33	25	25	36	46	53	44	26	24	25	37	49	48	29	28	28	31	41	41	37		33.4
SOUTHWESTERN MOUNTAIN 06																																		
ABINGDON 3S	22	MAX	60	66	66	58	57	63	66	67	67	55	45	60	63	69	63	66	49	50	62	68	61	70	60	59	64	64	66	64	58	38		60.8
		MIN	28	31	32	43	30	32	32	33	33	38	30	25	34	42	56	48	28	21	25	41	53	50	37	29	27	28	44	57	33	29		35.6
BIG STONE GAP	08	MAX	51	64	68	66	55	65	64	69	70	66	52	49	62	61	67	62	61	44	51	62	63	60	69	53	61	64	65	67	69	41		60.7
		MIN	29	29	31	32	33	28	28	32	35	36	34	27	28 ¹	37	60	55	36	24	24	26	50 ¹	54	51	33	4 ^s	30	32	53	37	34		35.6
BLACKSBURG NWSO	07	MAX	50	58	64	64	57	51	60	66	68	70	46	43	60	59	72	61	64	40	46	57	67	63	63	54	57	65	60	63	61	57		58.9
		MIN	26	26	27	31	29	23	27	27	30	33	29	24	26	29	43	51	38	22	21	21	36	51	51	34	26	25	25	52	42	31		31.9
BLAND	07	MAX	50	61	67	66	57	54	63	67	70	66	43	44	59	59	71	61	67	38	47	60	66	60	66	53	58	66	64	64	60	54		59.4
		MIN	23	22	24	27	24	23	22	24	25	28	28	28	31	31	45	50	38	20	18	17	33	49	49	27	21	20	21	54	44	32		29.9
BURKES GARDEN	07	MAX	46	53	60	61	53	47	59	60	64	62	40	38	53	55	65	58	60	37	41	54	63	58	62	53	54	60	58	59	57	42		54.4
		MIN	19	19	22	25	22	21	23	22	20	28	25	25	34	43	52	50	37	21	17	17	46	49	49	28	18	17	21	52	41	29		29.7
CHRISTIANSBURG	07	MAX	50	56	61	64	54	49	59	63	67	69	48	42	60	59	71	61	65	38	45	57	67	64	63	54	58	64	60	63	62	47		58.0
		MIN	29	29	30	35	30	27	30	29	33	34	29	30	38	38	47	52	38	25	24	32	46	52	53	34	30	29	37	53	42	31		35.5
CLINTWOOD 1 W	07	MAX	47	60	66	67	52	59	62	65	68	67	48	45	60	61	69	56	58	41	47	61	65	61	65	49	55	62	64	67	65	42		58.5
		MIN	25	26	28	29	32	26	26	28	30	31	29	24	24	36	54	53	33	20	20	24	42	51	48	34	25	25	29	49	36	34		32.4
COPPER HILL	07	MAX	46	54	58	58	58	45	53	60	61	62	48	39	58	60	68	64	65	41	39	54	67	63	58	53	53	61	61	61	55	44		55.6
		MIN	31	31	37	41	30	29	31	37	42	42	27	27	36	45	51	54	41	23	21	30	49	53	52	33	33	37	37	51	42	29		37.4
GALAX RADIO WBRF	07	MAX	48	59	61	59	55	53	56	66	65	65	45	61	59	54	68	68	65	65	54	51	67	66	61	58	60	67	61	60	59	38		59.1
		MIN	25	26	29	26	26	24	27	27	29	36	29	22	40	43	53	57	37	20	23	37	39	48	51	30	23	24	28	52	37	29		33.2
GALAX WTP	07	MAX	47	56	60	57	54	51	55	63	63	61	46	43	59	55	67	66	64	64	43	55	66	66	61	54	59	66	60	60	60	41		57.4
		MIN	26	26	27	29	28	25	28	28	28	32	30	23	25	37	38	56	38	22	22	24	39	49	50	31	23	23	26	51	38	30		31.7
GRUNDY	07	MAX	49	60	64	67	62	62	62	64	68	67	50	47	61	63	70	59	58	42	48	62	66	60	64	50	55	64	63	68	64	45		59.5
		MIN	32	29	29	31	27	27	28	30	33	33	30	25	26	38	58	53	37	23	23	25	41	53	49	37	31	29	29	53	45	34		34.6
JOHN FLANNAGAN LAKE	07	MAX	49	63		69			65	67	73	70				63		54					65	63	67				68	65	43	M		
		MIN	31	31		34			29	33	36	36				27		48					22	53	45				29	40	32	M		
LEBANON	07	MAX	50	60	63	67	57	58	63	66	68	67	48	46	59	62	69	62	66	40	51	62	65	62	70	70	60	64	64	63	43	39		59.5
		MIN	26	25	27	29	29	29	28	28	29	29	30	30	34	38	57	54	36	20	20	22	47	47	49	37	25	24	26	38	33	20		32.2
NORA 4 SSE	07	MAX	42	57	61	60	51	55	56	63	64	60	45	44	53	54	63	58	58	36	43	55	60	58	62	44	54	57	57	62	58	35		54.2
		MIN	38	39	44	42	34	33	35	43	46	35	25	25	36	43	52	49	30	23	25	34	49	52	44	33	33	40	45	54	35	28		38.1
NORTH FORK LAKE	08	MAX							68	68	70	70				62	69	57												67			M	
		MIN							28	31	34	34				27	57	53											36				M	
PULASKI 2 E	07	MAX	53	58	65	64	65	52	60	66	68	69	48	46	62	60	74	63	68	41	48	60	69	69	65	65	58	68	62	65	63	63		61.2
		MIN	30	28	27	31	28	24	29	29	29	31	30	26	34	31	45	52	41	26	21	22	33	33	52	34	28	26	27	55	43	35		32.7

VIRGINIA
201111

DAILY TEMPERATURES (°F)

STATION	OB. TIME	MAX/MIN	DAY OF MONTH																												AVERAGE		
			01	02	03	04	05	06	07	08	09	10	11	12	13	14	15	16	17	18	19	20	21	22	23	24	25	26	27	28		29	30
RADFORD 3 N	07	MAX	52	58	64	65	58	52	60	65	68	68	49	46	64	60	74	63	66	40	48	60	68	65	66	53	60	66	63	66	61	48	59.9
		MIN	28	25	25	28	27	23	29	29	30	32	32	22	31	36	49	54	37	27	20	28	38	53	52	36	23	23	30	58	42	31	
RICHLANDS	07	MAX	50	63	67	68	58	59	67	69	70	68	47	46	59	60	69	60	64	39	55	62	65	62	69	49	62	65	64	66	63	43	60.3
		MIN	28	27	27	29	30	24	27	28	29	30	30	25	25	34	49	52	36	19	22	24	41	51	49	34	25	26	26	58	42	33	
SALTVILLE 1N	07	MAX	50	62	67	70	61	58	65	68	70	68	49	47	61	58	72	59	62	40	52	61	66	62	67	54	60	66	63	67	63	44	60.4
		MIN	27	27	26	28	30	27	27	28	28	29	32	21	21	30	40	54	40	22	21	21	40	52	52	29	28	25	25	38	42	34	
STAFFORDSVILLE 3 ENE	07	MAX	51	56	64	65	58	51	58	63	66	65	48		61	60	74	60	65	39	44	58	66	62	65	55	57	63	60	64	62	47	58.9
		MIN	29	26	26	30	27	25	26	27	27	31	31	21	21	31	52 ¹	52	38	28	21	21	34	51	51	33	23	23	56	44	32		
TROUT DALE 3 SSE	07	MAX	46	58	63	60	56	52	51	65	66	63	43	42	59	59	69	69	66	42	46	60	72	62	63	57	60	68	60	59	58	39	57.8
		MIN	23	22	23	24	27	24	23	21	25	36	28	22	28	28	35	35	42	18	15	15	46	45	45	29	17	17	21	52	37	29	
WISE 3E	17	MAX	59	64	63	60	59	62	65	66	63	54 ¹	44	57	55	64	62	59	46	48	57	60	57	62	60	58	61	60	62	65	56	35	58.2
		MIN	24	33	40	35	29	35	35	36	42	35	27	36	45	54	50	46	28	19	33	50	54	53	39	30	34	36	51	53	31	27	
WYTHEVILLE 1 S	07	MAX	52	61	67	67	59	53	62	69	67	65	47	45	60	60	72	64	69	42	49	59	67	62	67	58	59	65	61	63	63	46	60.0
		MIN	26	19	21	25	27	24	22	25	27	30	29	24	26	31	40	51	42	23	20	19	32	49	51	33	23	18	25	56	39	33	

VIRGINIA
201111

SNOWFALL AND SNOW ON GROUND (INCHES)

STATION		DAY OF MONTH																															
		01	02	03	04	05	06	07	08	09	10	11	12	13	14	15	16	17	18	19	20	21	22	23	24	25	26	27	28	29	30	31	
VIRGINIA																																	
TIDEWATER 01																																	
DISPUTANTA	SNOWFALL																																
EASTVILLE	SNOWFALL																																
EMPORIA 1 WNW	SNOWFALL																																
FREDERICKSBURG SEWAGE	SNOWFALL																																
HAMPTON UNIV	SNOWFALL																																
HOLLAND 1 E	SNOWFALL																																
HOPEWELL	SNOWFALL	-	-	-	-	-	-	-	-	-	-	-	-	-	-	-	-	-	-	-	-	-	-	-	-	-	-	-	-	-	-	-	
	SN ON GND	-	-	-	-	-	-	-	-	-	-	-	-	-	-	-	-	-	-	-	-	-	-	-	-	-	-	-	-	-	-	-	
NORFOLK INTL AP R	SNOWFALL																																
NORFOLK SOUTH	SNOWFALL																																
NORTH	SNOWFALL	-	-	-	-	-																											
	SN ON GND	-	-	-	-	-																											
PAINTER 2W	SNOWFALL																																
STONY CREEK 2 N	SNOWFALL																																
	SN ON GND																																
SUFFOLK LAKE KILBY	SNOWFALL																																
	SN ON GND																																
WAKEFIELD 1NW	SNOWFALL																																
	SN ON GND																																
WALKERTON 2 NW	SNOWFALL																																
	SN ON GND																																
WALLACETON LK DRUMMOND	SNOWFALL																																
WARSAW 2 NW	SNOWFALL																																
WEST POINT 2 NW	SNOWFALL																																
	SN ON GND																																
WILLIAMSBURG 2 N R	SNOWFALL																																
WESTERN PIEDMONT 03																																	
WOOLWINE R	SNOWFALL				-	-																											
	SN ON GND	-	-	-	-	-	-	-	-	-	-	-	-	-	-	-	-	-	-	-	-	-	-	-	-	-	-	-	-	-	-	-	
CENTRAL MOUNTAIN 05																																	
GATHRIGHT DAM R	SNOWFALL																																
	SN ON GND																																
GLASGOW 1 SE	SNOWFALL																																
	SN ON GND																																
HOT SPRINGS	SNOWFALL	-	-	-	-	-	-	-	-	-	-	-	-	-	-	-	-	-	-	0.1	-	-	-	-	-	-	-	-	-	-	-	-	
	SN ON GND	-	-	-	-	-	-	-	-	-	-	-	-	-	-	-	-	-	-	T	-	-	-	-	-	-	-	-	-	-	-	-	
KERRS CREEK 6 WNW	SNOWFALL																																
	SN ON GND																																
LEXINGTON	SNOWFALL																																
	SN ON GND																																

Snowfall: Includes snow and ice. Values for NWS stations (J index note) are Mid-Mid (LST).

Snow on ground: Includes snow, sleet, ice, and hail. Values for NWS stations (J index note) are observed at 12 UTC (GMT).

Water Equivalent: Given for NWS stations (J index note) only, when snow depth is 2 inches or more, and is measured at 18 UTC (GMT)

VIRGINIA
201111

SNOWFALL AND SNOW ON GROUND (INCHES)

STATION		DAY OF MONTH																														
		01	02	03	04	05	06	07	08	09	10	11	12	13	14	15	16	17	18	19	20	21	22	23	24	25	26	27	28	29	30	31
MILLGAP R	SNOWFALL										0.4							0.3														
	SN ON GND										T																					
	WTR EQUIV																															
MTN GROVE	SNOWFALL	-	-	-	-	-	-	-	-	-	T	-	-	-	-	-	-	-	-	-	-	-	-	-	-	-	-	-	-	-	T	
	SN ON GND	-	-	-	-	-	-	-	-	-	T	-	-	-	-	-	-	-	-	-	-	-	-	-	-	-	-	-	-	-		
MUSTOE 1 SW	SNOWFALL										1.3							T														
	SN ON GND										1	T					T	T														
ROANOKE 8 N	SNOWFALL	-	-	-	-	-	-	-	-	-	-	-	-	-	-	-	-	-	-	-	-	-	-	-	-	-	-	-	-	-	-	
	SN ON GND	-	-	-	-	-	-	-	-	-	-	-	-	-	-	-	-	-	-	-	-	-	-	-	-	-	-	-	-	-	-	
ROANOKE INTL AP R	SNOWFALL																															
	SN ON GND																															
STAUNTON WATER TRMTMT PLT	SNOWFALL	-	-			-	-			-	-									-	-	-	-	-	-	-	-	-	-	-	-	
	SN ON GND	-	-			-	-			-	-									-	-	-	-	-	-	-	-	-	-	-	-	
WAYNESBORO WTP	SNOWFALL																															
	SN ON GND																															
	WTR EQUIV																															
SOUTHWESTERN MOUNTAIN 06																																
BLACKSBURG NWSO	SNOWFALL										T	T							T												T	
	SN ON GND										T	T							T													
BLAND	SNOWFALL	-	-	-	-	-	-	-	-	-	T		-	-	-	-	-	T	-	-	-	-	-	-	-	-	-	-	-	-	T	
	SN ON GND	-	-	-	-	-	-	-	-	-	T		-	-	-	-	-	T	-	-	-	-	-	-	-	-	-	-	-	-		
BURKES GARDEN	SNOWFALL										T								T												1.7	
	SN ON GND										T								T												2	
CHRISTIANSBURG	SNOWFALL										T	T							T												T	
	SN ON GND										T	T							T													
CLINTWOOD 1 W	SNOWFALL										T							T	0.1												T	
	SN ON GND										T							T	0.1													
COPPER HILL	SNOWFALL										T								T												T	
	SN ON GND										T								T													
GALAX RADIO WBRF	SNOWFALL																															
	SN ON GND																															
GALAX WTP	SNOWFALL																															T
	SN ON GND																															
GRUNDY	SNOWFALL																															
	SN ON GND																															
JOHN FLANNAGAN LAKE	SNOWFALL	-	-	-	-	-	-	-	-	-	-	-	-	-	-	-	-	-	-	-	-	-	-	-	-	-	-	-	-	-	T	
	SN ON GND	-	-	-	-	-	-	-	-	-	-	-	-	-	-	-	-	-	-	-	-	-	-	-	-	-	-	-	-	-	-	
LAFAYETTE 1 NE	SNOWFALL	-	-	-	-	-	-	-	-	-	T	-	-	-	-	-	-	-	T	-	-	-	-	-	-	-	-	-	-	-	-	
	SN ON GND	-	-	-	-	-	-	-	-	-	T	-	-	-	-	-	-	-	T	-	-	-	-	-	-	-	-	-	-	-	-	
LEBANON	SNOWFALL																															
	SN ON GND																															
NORA 4 SSE	SNOWFALL																	T	1.6												0.2	

Snowfall: Includes snow and ice. Values for NWS stations (J index note) are Mid-Mid (LST).

Snow on ground: Includes snow, sleet, ice, and hail. Values for NWS stations (J index note) are observed at 12 UTC (GMT).

Water Equivalent: Given for NWS stations (J index note) only, when snow depth is 2 inches or more, and is measured at 18 UTC (GMT)

VIRGINIA
201111

SNOWFALL AND SNOW ON GROUND (INCHES)

STATION		DAY OF MONTH																														
		01	02	03	04	05	06	07	08	09	10	11	12	13	14	15	16	17	18	19	20	21	22	23	24	25	26	27	28	29	30	31
NORTH FORK LAKE	SN ON GND																	T	T													T
	SNOWFALL	-	-	-	-	-	-	-	-	-	-	-	-	-	-	-	-	-	-	-	-	-	-	-	-	-	-	-	-	-	-	-
PULASKI 2 E	SN ON GND																															
	SNOWFALL	-	-	-	-	-	-	-	-	-	-	T	T	-	-	-	-	-	T	-	-	-	-	-	-	-	-	-	-	-	-	T
RADFORD 3 N	SN ON GND																															
	SNOWFALL	-	-	-	-	-	-	-	-	-	-	T	T	-	-	-	-	-	-	-	-	-	-	-	-	-	-	-	-	-	-	T
RICHLANDS	SN ON GND																															
	SNOWFALL	-	-	-	-	-	-	-	-	-	-	-	-	-	-	-	-	-	-	-	-	-	-	-	-	-	-	-	-	-	-	T
SALTVILLE 1N	SN ON GND																															
	SNOWFALL	-	-	-	-	-	-	-	-	-	-	-	-	-	-	-	-	-	-	-	-	-	-	-	-	-	-	-	-	-	-	T
STAFFORDSVILLE 3 ENE R	SN ON GND																															
	SNOWFALL	-	-	-	-	-	-	-	-	-	-	T	-	-	-	-	-	-	T	-	-	-	-	-	-	-	-	-	-	-	-	-
TROUT DALE 3 SSE	SN ON GND																															
	SNOWFALL	-	-	-	-	-	-	-	-	-	-	T	-	-	-	-	-	-	-	-	-	-	-	-	-	-	-	-	-	-	-	1.0
WILLIS R	SN ON GND																															
	SNOWFALL	-	-	-	-	-	-	-	-	-	-	-	-	-	-	-	-	-	-	-	-	-	-	-	-	-	-	-	-	-	-	1
WISE 3E	SN ON GND																															
	SNOWFALL	-	-	-	-	-	-	-	-	-	-	-	-	-	-	-	-	2.5	-	-	-	-	-	-	-	-	-	-	-	-	-	0.5
WYTHEVILLE 1 S R	SN ON GND																	T	-	-	-	-	-	-	-	-	-	-	-	-	-	
	SNOWFALL	-	-	-	-	-	-	-	-	-	-	T	-	-	-	-	-	-	-	-	-	-	-	-	-	-	-	-	-	-	-	T
	SN ON GND																	T	T													

Snowfall: Includes snow and ice. Values for NWS stations (J index note) are Mid-Mid (LST).

Snow on ground: Includes snow, sleet, ice, and hail. Values for NWS stations (J index note) are observed at 12 UTC (GMT).

Water Equivalent: Given for NWS stations (J index note) only, when snow depth is 2 inches or more, and is measured at 18 UTC (GMT)

VIRGINIA
201111

PAN EVAPORATION AND WIND

STATION		DAY OF MONTH																														TOTAL OR AVERAGE			
		01	02	03	04	05	06	07	08	09	10	11	12	13	14	15	16	17	18	19	20	21	22	23	24	25	26	27	28	29	30		31		
VIRGINIA EASTERN PIEDMONT 02 JOHN H KERR DAM	WIND	-	-	-	-	-	-	-	-	-	-	-	-	-	-	-	-	-	-	-	-	-	-	-	-	-	-	-	-	-	-	-	-	M	
	EVAP	-	-	-	-	-	-	-	-	-	-	-	-	-	-	-	-	-	-	-	-	-	-	-	-	-	-	-	-	-	-	-	-	M	
	MAX	-	-	-	-	-	-	-	-	-	-	-	-	-	-	-	-	-	-	-	-	-	-	-	-	-	-	-	-	-	-	-	-	M	
	MIN	-	-	-	-	-	-	-	-	-	-	-	-	-	-	-	-	-	-	-	-	-	-	-	-	-	-	-	-	-	-	-	-	-	M
NORTHERN 04 PIEDMONT RSCH STN	WIND	-	-	-	-	-	-	-	-	-	-	-	-	-	-	-	-	-	-	-	-	-	-	-	-	-	-	-	-	-	-	-	-	M	
	EVAP	-	-	-	-	-	-	-	-	-	-	-	-	-	-	-	-	-	-	-	-	-	-	-	-	-	-	-	-	-	-	-	-	M	
	MAX	-	-	-	-	-	-	-	-	-	-	-	-	-	-	-	-	-	-	-	-	-	-	-	-	-	-	-	-	-	-	-	-	-	M
	MIN	-	-	-	-	-	-	-	-	-	-	-	-	-	-	-	-	-	-	-	-	-	-	-	-	-	-	-	-	-	-	-	-	-	M

Evaporation: Is measured in hundreths of inches.

Wind: Is measured in miles.

Max and Min: The maximum and minimum temperatures (Fahrenheit) of the water in the evaporation pan.

STATION INDEX

STATION	INDEX NO.	DIVISION	COUNTY	LATITUDE	LONGITUDE	ELEVATION (IN FEET)	OBSERVATION TIME AND TABLES			
							LOCAL STD TIME			
							TEMP	PRECIP	EVAP	SPECIAL SEE (NOTES)
VIRGINIA										
ABINGDON 3S	0021	06	WASHINGTON	36 40	81 58W	1920	22	22		H
ALBERTA 5N	0079	02	BRUNSWICK	36 56	77 54W	376		08		H
ALTAVISTA R	0166	03	CAMPBELL	37 7	79 17W	515		07		CH
AMELIA COURTHOUSE 1	0187	02	AMELIA	37 21	77 59W	345	08	08		H
APPOMATTOX	0243	03	APPOMATTOX	37 21	78 50W	910	07	07		H
ASHLAND	0327	02	HANOVER	37 45	77 29W	220	18	18		H
BEDFORD 4 NW R	0561	03	BEDFORD	37 23	79 34W	1220		07		CH
BIG MEADOWS	0720	04	MADISON	38 31	78 26W	3540	09	09		H
BIG STONE GAP	0735	06	WISE	36 52	82 46W	1464	08	08		H
BLACKSBURG NWSO R	0766	06	MONTGOMERY	37 12	80 25W	2100	07	07		CH
BLAND	0792	06	BLAND	37 6	81 7W	2000	07	07		H
BOSTON 4 SE	0860	04	CULPEPER	38 33	78 6W	590	07	07		H
BREMO BLUFF R	0993	02	FLUVANNA	37 43	78 17W	225	07	24		CH
BROOKNEAL	1082	03	CAMPBELL	37 4	78 57W	428	07	07		H
BUCHANAN	1121	05	BOTETOURT	37 32	79 41W	865		07		H
BUCKINGHAM	1136	02	BUCKINGHAM	37 30	78 32W	552		07		H
BUENA VISTA	1159	05	ROCKBRIDGE	37 44	79 22W	830		07		H
BURKES GARDEN	1209	06	TAZEWELL	37 6	81 20W	3068	07	07		H
CAMP PICKETT R	1322	02	NOTTOWAY	37 2	77 57W	330	08	08		CH
CASTLETON	1434	04	RAPPAHANNOCK	38 36	78 7W	541	08	08		H
CHARLOTTESVILLE 2W	1593	03	ALBEMARLE	38 2	78 31W	866	08	08		H
CHASE CITY	1606	02	MECKLENBURG	36 47	78 29W	510	17	17		H
CHATHAM R	1614	03	PITTSYLVANIA	36 49	79 25W	640	07	07		CH
CHRISTIANSBURG	1692	06	MONTGOMERY	37 8	80 24W	2100	07	07		H
CLARKSVILLE	1746	02	MECKLENBURG	36 37	78 33W	330	07	07		H
CLINTWOOD 1 W	1825	06	DICKENSON	37 9	82 29W	1780	07	07		H
CONCORD 4 SSW	1955	03	CAMPBELL	37 17	78 58W	635		07		H
COPPER HILL	1999	06	FLOYD	37 5	80 9W	2690	07	07		H
CORBIN	2009	02	CAROLINE	38 12	77 22W	220	09	09		H
COVINGTON FLTR PLT	2044	05	ALLEGHANY	37 49	79 59W	1230	07	07		H
CRAIGSVILLE 2 S	2064	05	AUGUSTA	38 3	79 23W	1758		07		H
CROZIER	2142	02	GOOCHLAND	37 40	77 53W	350	07	07		H
DALE ENTERPRISE	2208	05	ROCKINGHAM	38 27	78 56W	1400	07	07		H
DANVILLE	2245	03	PITTSYLVANIA	36 35	79 23W	410	07	07		H
DANVILLE REGIONAL AP R	2250	03	PITTSYLVANIA	36 34	79 20W	571	24	24		CH
DISPUTANTA	2400	01	PRINCE GEORGE	37 7	77 12W	15	07	07		H
EASTVILLE	2635	01	NORTHAMPTON	37 23	75 58W	10	07	07		H
EDINBURG	2663	04	SHENANDOAH	38 48	78 35W	928	07	07		H
EMPORIA 1 WNW	2790	01	GREENSVILLE	36 42	77 34W	100	08	08		H
FARMVILLE 2 N R	2941	02	CUMBERLAND	37 20	78 23W	450	07	07		CH
FREDERICKSBURG SEWAGE	3204	01	FREDERICKSBURG	38 17	77 27W	15	07	07		H
FREE UNION	3213	03	ALBEMARLE	38 5	78 35W	590	08	07		H
FRONT ROYAL	3229	04	WARREN	38 54	78 11W	930	07	07		H
GALAX RADIO WBRF	3267	06	CARROLL	36 40	80 55W	2385	07	07		H
GALAX WTP R	3272	06	CARROLL	36 39	80 55W	2360	07	07		CH
GATHRIGHT DAM R	3310	05	ALLEGHANY	37 57	79 57W	1770	07	07		CH
GLASGOW 1 SE	3375	05	ROCKBRIDGE	37 37	79 26W	740		07		H
GREENBAY 3 NE	3565	02	PRINCE EDWARD	37 11	78 17W	500	09	09		H
GRUNDY	3640	06	BUCHANAN	37 17	82 5W	1170	07	07		H
HAMPTON UNIV	3713	01	HAMPTON	37 1	76 20W	10	17	17		H
HOLCOMB ROCK	4039	03	BEDFORD	37 33	79 24W	620		07		H
HOLLAND 1 E	4044	01	SUFFOLK	36 41	76 46W	80	08	08		H
HOPEWELL	4101	01	PRINCE GEORGE	37 18	77 17W	40	16	16		H
HOT SPRINGS	4128	05	BATH	37 60	79 50W	2236	07	07		H
HUDDLESTON 4 SW	4148	03	BEDFORD	37 8	79 32W	1045		07		H
JOHN FLANNAGAN LAKE	4410	06	DICKENSON	37 14	82 21W	1460	07	07		H
JOHN H KERR DAM R	4414	02	MECKLENBURG	36 36	78 18W	250	08	08	08	CH
KERRS CREEK 6 WNW	4565	05	ROCKBRIDGE	37 52	79 34W	1500		07		H
KEYSVILLE 2 S	4568	02	CHARLOTTE	37 1	78 28W	530		07		H
LAFAYETTE 1 NE	4676	06	MONTGOMERY	37 14	80 12W	1320		07		H
LEBANON	4777	06	RUSSELL	36 54	82 2W	1912	07	07		H
LEXINGTON	4876	05	ROCKBRIDGE	37 48	79 25W	1125	07	07		H
LINCOLN	4909	04	LOUDOUN	39 5	77 42W	500	07	07		H
LOUISA	5050	02	LOUISA	38 3	78 0W	420	18	18		H
LURAY 5 E	5096	04	PAGE	38 40	78 22W	1400	08	08		H

STATION INDEX

STATION	INDEX NO.	DIVISION	COUNTY	LATITUDE	LONGITUDE	ELEVATION (IN FEET)	OBSERVATION TIME AND TABLES			
							LOCAL STD TIME			
							TEMP	PRECIP	EVAP	SPECIAL SEE (NOTES)
LYNCHBURG #2	5117	03	CAMPBELL	37 23	79 14W	740	07	07		H
LYNCHBURG INTL AP R	5120	03	CAMPBELL	37 19	79 12W	940	24	24		CHJ
MADISON	5150	04	MADISON	38 22	78 15W	577	08	08		H
MANASSAS	5204	04	MANASSAS	38 44	77 30W	245	07	07		H
MARTINSVILLE FLTR PLT	5300	03	HENRY	36 42	79 52W	760	07	07		H
MEADOWS OF DAN 5 SW	5453	03	PATRICK	36 40	80 27W	2225	07	07		H
MILLGAP R	5595	05	HIGHLAND	38 18	79 43W	2421	07	07		CH
MONTEBELLO FISH CULTURAL STN	5690	03	NELSON	37 50	79 7W	2667	07	07		H
MONTECELLO	5700	03	ALBEMARLE	38 1	78 27W	758	08	08		H
MT WEATHER	5851	04	LOUDOUN	39 4	77 53W	1659	07	07		H
MTN GROVE	5756	05	BATH	38 6	79 53W	1775		07		H
MUSTOE 1 SW	5880	05	HIGHLAND	38 20	79 40W	2380	24	24		H
NORA 4 SSE	6125	06	DICKENSON	37 1	82 19W	2650	07	07		H
NORFOLK INTL AP R	6139	01	NORFOLK (CITY)	36 54	76 12W	30	24	24		CHJ
NORFOLK SOUTH	6147	01	NORFOLK (CITY)	36 52	76 14W	100	24	24		H
NORTH	6161	01	MATHEWS	37 26	76 26W	10	07	07		H
NORTH FORK LAKE	6173	06	WISE	37 7	82 38W	1675	08	08		H
PAINTER 2W R	6475	01	ACCOMACK	37 35	75 49W	30	16	16		CH
PALMYRA 3S	6491	02	FLUVANNA	37 49	78 16W	410	06	06		H
PEDLAR DAM	6593	03	AMHERST	37 40	79 17W	1010		07		H
PETERSBURG	6656	02	PETERSBURG	37 14	77 24W	15	08	08		H
PIEDMONT RSCH STN R	6712	04	ORANGE	38 14	78 7W	520	08	08	08	CH
POWHATAN	6906	02	POWHATAN	37 31	77 53W	400		07		H
PULASKI 2 E R	6955	06	PULASKI	37 3	80 47W	1850	07	07		CH
RADFORD 3 N	6999	06	PULASKI	37 12	80 35W	1800	07	07		H
RICHLANDS	7174	06	TAZEWELL	37 6	81 48W	1910	07	07		H
RICHMOND INTL AP R	7201	02	HENRICO	37 30	77 19W	164	24	24		CHJ
ROANOKE 8 N	7278	05	ROANOKE	37 22	79 58W	1190	07	07		H
ROANOKE INTL AP R	7285	05	ROANOKE	37 19	79 58W	1175	24	24		CHJ
ROCKY MT R	7338	03	FRANKLIN	36 59	79 54W	1315	07	07		CH
SALTVILLE 1N	7506	06	SMYTH	36 53	81 46W	1733	07	07		H
SANDSTON	7541	02	HENRICO	37 33	77 17W	165	07	07		H
SOMERSET	7904	04	ORANGE	38 15	78 16W	510	07	07		H
SOUTH BOSTON	7925	03	HALIFAX	36 42	78 53W	340	07	07		H
SPERRYVILLE	7985	04	RAPPAHANNOCK	38 39	78 14W	750	06	06		H
STAFFORDSVILLE 3 ENE R	8022	06	GILES	37 16	80 43W	1950	07	07		CH
STAR TANNERY R	8046	04	FREDERICK	39 5	78 27W	950	07	07		CH
STAUNTON WATER TRMTMT PLT	8062	05	AUGUSTA	38 10	79 5W	169	08	08		H
STERLING RCS	8084	04	LOUDOUN	38 59	77 29W	288	07	07		H
STONY CREEK 2 N	8129	01	SUSSEX	36 58	77 24W	105	08	08		H
STUART	8170	03	PATRICK	36 38	80 15W	1375	07	07		H
SUFFOLK LAKE KILBY	8192	01	SUFFOLK	36 44	76 36W	22	24	24		H
TROUT DALE 3 SSE R	8547	06	GRAYSON	36 39	81 24W	2839	07	07		CH
TYE RIVER 1 SE	8600	03	NELSON	37 39	78 58W	720	07	07		H
VIENNA	8737	04	FAIRFAX	38 54	77 16W	418	07	07		H
WAKEFIELD 1NW R	8800	01	SUSSEX	36 59	77 0W	113	24	24		CH
WALKERTON 2 NW	8829	01	KING AND QUEEN	37 45	77 2W	50	18	18		H
WALLACETON LK DRUMMOND	8837	01	CHESAPEAKE	36 36	76 26W	20	08	08		H
WARRENTON 3 SE	8888	04	FAUQUIER	38 41	77 46W	500	08	08		H
WARSAW 2 NW	8894	01	RICHMOND	37 59	76 47W	140	18	18		H
WASHGTN DULLES INTL AP R	8903	04	LOUDOUN	38 56	77 28W	290	24	24		CHJ
WASHINGTON REAGAN AP R	8906	04	ARLINGTON	38 51	77 2W	10	24	24		CHJ
WAYNESBORO WTP	8941	05	WAYNESBORO	38 5	78 53W	1270	07	07		H
WEST POINT 2 NW	9025	01	KING WILLIAM	37 34	76 48W	20	17	17		H
WILLIAMSBURG 2 N R	9151	01	YORK	37 18	76 42W	70	24	24		CH
WILLIS R	9169	06	FLOYD	36 55	80 30W	2810		07		CH
WINCHESTER	9181	04	FREDERICK	39 11	78 9W	720	07	07		H
WINCHESTER 7 SE	9186	04	FREDERICK	39 11	78 7W	680	08	08		H
WINTERPOCK 4 W	9213	02	CHESTERFIELD	37 19	77 39W	300		07		H
WISE 3E R	9215	06	WISE	36 60	82 32W	2549	17	17		CH
WOODSTOCK 2 NE	9263	04	SHENANDOAH	38 54	78 28W	675	07	07		H
WOOLWINE R	9272	03	PATRICK	36 47	80 17W	1500		07		CH
WYTHEVILLE 1 S R	9301	06	WYTHE	36 56	81 6W	2450	07	07		CH

REFERENCE NOTES

STATION NAMES: Name of the city, town or locality. Figures and letters following the station names indicate the distance in miles and direction from the post office or town community center.

DIVISIONS: Areas within a state of similar climatological characteristics. Division averages are calculated using data from stations that record both temperature and precipitation (i.e. not precipitation alone).

NORMALS: The average value of the meteorological element over a time period. Effective 1 January 2002, the averaging period is 1971 to 2000. The normals for National Weather Service localities have been adjusted so as to be representative for the current observation site.

MONTHLY DEGREE DAY TOTALS: One heating (cooling) degree day is accumulated for each whole degree that the daily mean temperature is below (above) 65 degrees Fahrenheit.

PRECIPITATION: Values shown in hundredths of inches are water equivalent totals, i.e., total of liquid and melted frozen precipitation. In the "Monthly Summarized Data" table the total snow and sleet values shown in tenths of inches are unmelted amounts. The max depth on ground values of snow and sleet shown in whole inches are cumulative unmelted amounts. The number of days with .10, .50, 1.00 or more refers to water equivalents.

PRECIPITATION QUALITY CONTROL: The NCDC quality control process may flag precipitation data that are spatially inconsistent, exceed climatological limits, or are inconsistent with prevailing weather patterns.

TEMPERATURE: Original temperature values are given in the "Daily Temperature" table. Summary temperature information (averages, departures, extremes, monthly degree day totals) is based on the values labeled MAX/MIN.

WIND: (As shown in the "Evaporation and Wind" table) the total wind movement in miles over the evaporation pan as determined by an anemometer recorder located 6-8 inches above the pan.

SYMBOLS AND LETTERS USED IN THE STATION INDEX TABLE

- C Station is equipped with recording rain gage (R) but values in this bulletin are from a non-recording rain gage unless indicated by an R.
- G Observations appear in the "Soil Temperatures" table.
- H Observations appear in the "Snowfall and Snow on the Ground" table.
- J Station also published as a Local Climatological Data publication.
- VAR Observation time varies.
- SR Observation time near sunrise.
- SS Observation time near sunset.

SYMBOLS AND LETTERS USED IN THE DATA TABLES

(DAILY DATA ARE FOR THE 24 HOURS IMMEDIATELY PRECEDING OBSERVATION TIME.)

BLANK Entries in the "Monthly Summarized Data" table indicate no record.
BLANK Entries in the "Daily Precipitation" and "Snowfall and Snow on the Ground" tables indicate zero.
BLANK Entries in the "Daily Temperature" table indicate a missing record

- No record. Data not recorded or not received in time for publication.
- + Precipitation or temperature extremes occurred on one or more previous dates during the month.

- * Rain gage not read. Precipitation is included in the amount following the asterisks. Time distribution may not be known. A * preceding the monthly total indicates precipitation amount is being carried forward to next month's total, and may include amounts from the previous month(s).
- a As a subscript, indicates accumulated total.
- A Amount of precipitation is the total of observer's entries for the current month. It may include precipitation that occurred during the previous month. Refer to earlier bulletin to determine date of last reading. (Hawaii stations)
- F Monthly calculation flagged value. F is appended to average and/or total values computed which exclude one or more daily data values that have been flagged by the GHCN-Daily Dataset
- g Indicates there were no stations reporting within climate division. Spatial interpolation based on stations in surrounding climate divisions was used to estimate the divisional value.
- M Insufficient or partial data. M is appended to average and/or total values computed with 1-9 daily values missing. M appears alone if 10 or more daily values are missing, (8 or more for wind and evaporation).
- N Indicates snow fall or Snowdepth totals are computed with one or more missing days.
- R Amounts from recording rain gage.
- T Trace. An amount too small to measure.

SEASONAL TABLES: Monthly and seasonal snowfall and heating degree days for the 12 months ending with the June data are published in the July issue of this bulletin. Cooling degree days for the calendar year are published in the "Climatological Data Annual Summary."

Information concerning the history of changes in locations, exposure, etc. of substations is kept on file at the National Climatic Data Center. Historical information of regular National Weather Service Offices may be obtained from the "Local Climatological Data" annual publication. The contents of this publication may be reprinted or otherwise used freely, with proper credit to the National Climatic Data Center. The data are also available digitally.

Effective with the January 2011 Data-Month, COOP Observer Names are no longer included in the Monthly and Annual Climatological Data Publications. This information is not published to ensure the privacy of personal information pursuant to Section 208 of the E-Government Act of 2002 (44 USC 3601).

The GHCN-Daily Quality Control Flags shown below are displayed as superscripts with the data. For more information on Global Historical Climatology Network - Daily and flags, see:

<http://www.ncdc.noaa.gov/oa/climate/ghcn-daily/>
and

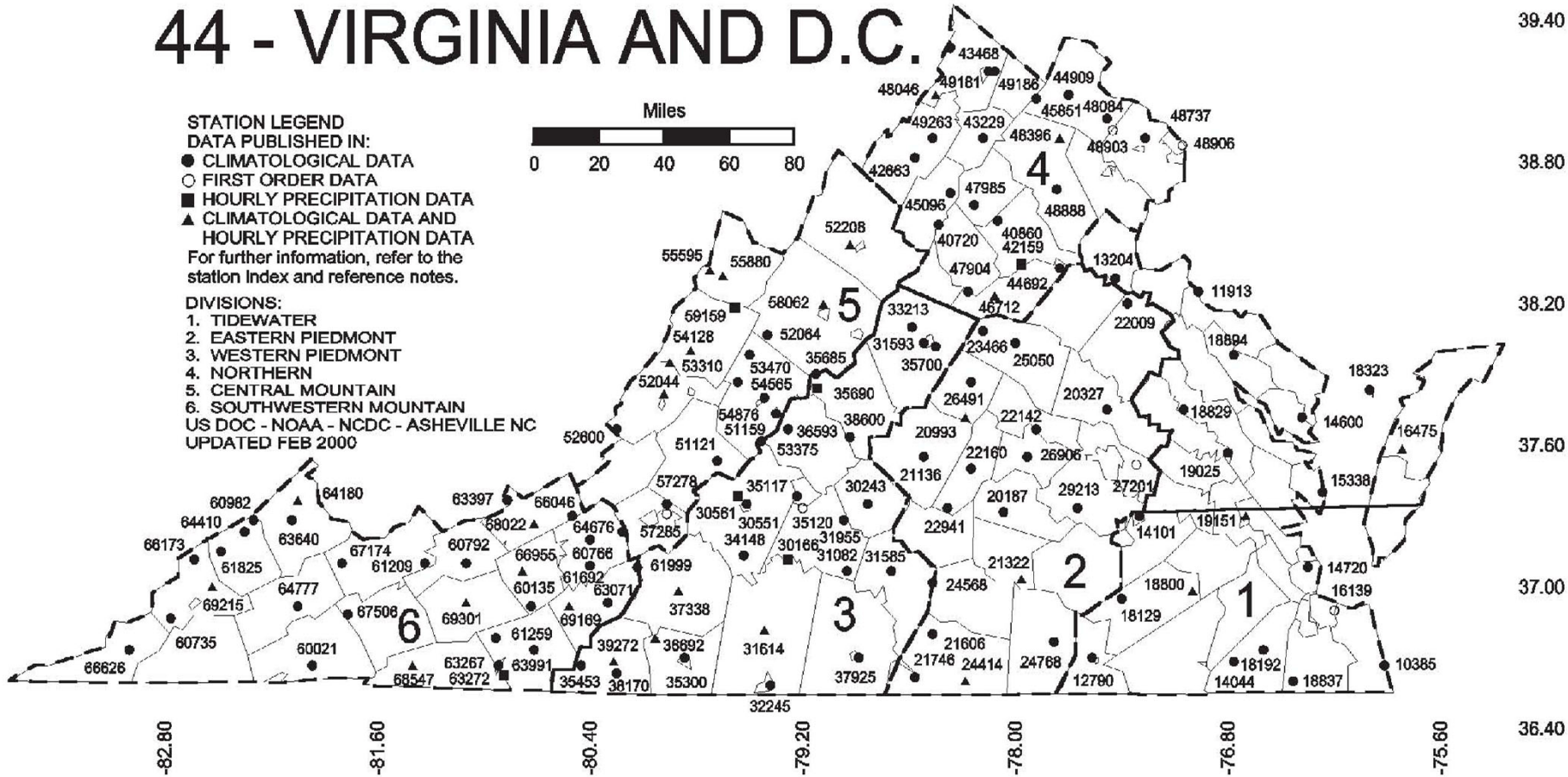
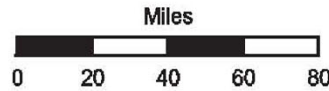
Comprehensive Automated Quality Assurance of Daily Surface Observations.
Durre, Imke, Matthew J. Menne, Byron E. Gleason, Tamara G. Houston,
Russell S. Vose, 2010: J. Appl. Meteor. Climatol., 49, 16151633.
doi: 10.1175/2010JAMC2375.1

- | | |
|---|---|
| Blank = Passed All checks | N = failed naught check |
| D = failed duplicate check | O = failed climatological outlier check |
| G = failed gap check | R = failed lagged range check |
| I = failed internal consistency check | S = failed spatial consistency check |
| K = failed streak/frequent-value check | T = failed temporal consistency check |
| L = failed check on length of multiday period | W = temperature too warm for snow |
| M = failed megaconsistency check | X = failed bounds check |

44 - VIRGINIA AND D.C.

STATION LEGEND
DATA PUBLISHED IN:
 ● CLIMATOLOGICAL DATA
 ○ FIRST ORDER DATA
 ■ HOURLY PRECIPITATION DATA
 ▲ CLIMATOLOGICAL DATA AND
 HOURLY PRECIPITATION DATA
 For further information, refer to the
 station index and reference notes.

DIVISIONS:
 1. TIDEWATER
 2. EASTERN PIEDMONT
 3. WESTERN PIEDMONT
 4. NORTHERN
 5. CENTRAL MOUNTAIN
 6. SOUTHWESTERN MOUNTAIN
 US DOC - NOAA - NCDC - ASHEVILLE NC
 UPDATED FEB 2000



NOAA\National Climatic Data Center
Attn: User Engagement & Services Branch
151 Patton Avenue
Asheville, NC 28801-5001

Customer Services Number: (828) 271-4800, option 2
TDD : (828) 271-4010
Fax number: (828) 271-4876

NCDC now offers free online access to the *Climatological Data* publication.
Go to : www.ncdc.noaa.gov and choose Most Popular.