



CLIMATOLOGICAL DATA

VIRGINIA

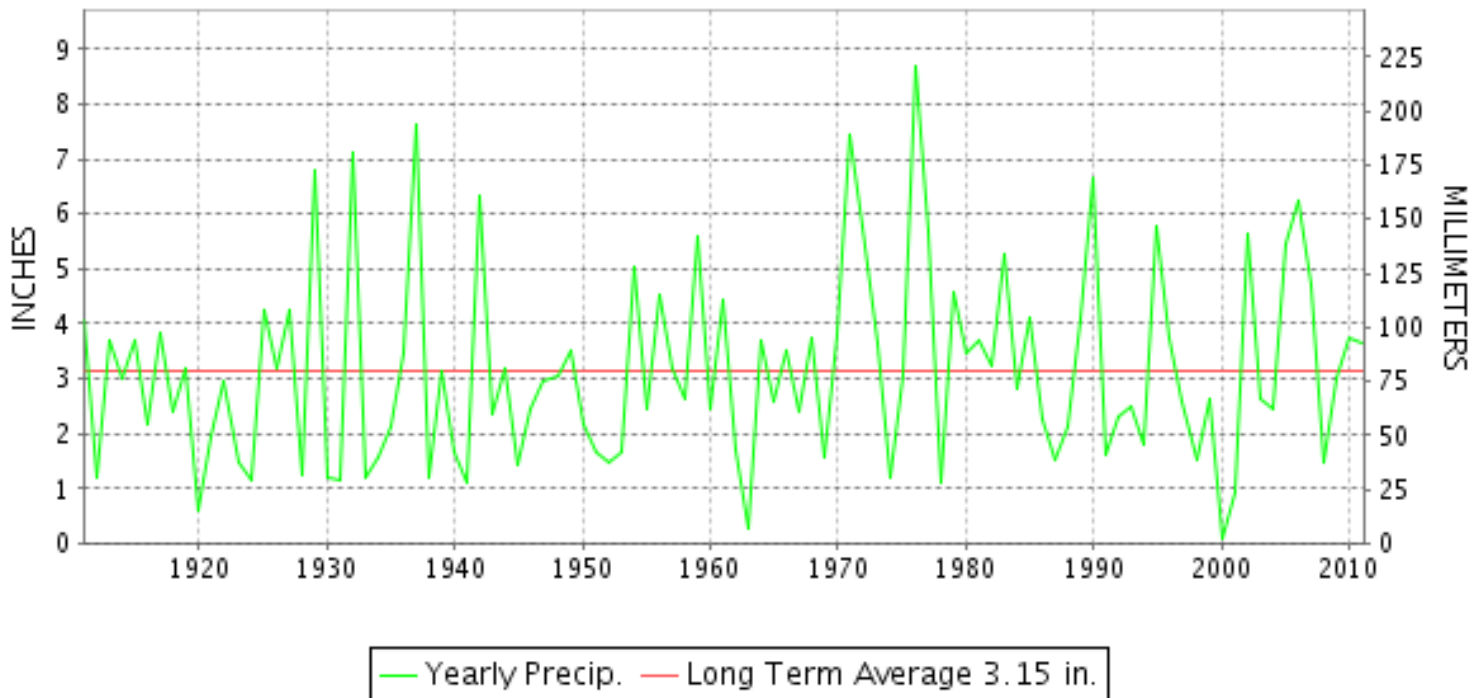
OCTOBER 2011

VOLUME 121 NUMBER 10

ISSN 0364-5630

GHCND Ver: 2.92-upd-2012041805

OCTOBER PRECIPITATION BY YEAR



TEMPERATURE AND PRECIPITATION EXTREMES

VIRGINIA

HIGHEST TEMPERATURE	88	OCTOBER 01+	2 STATIONS
LOWEST TEMPERATURE	18	OCTOBER 25	WYTHEVILLE 1 S
GREATEST TOTAL PRECIPITATION	6.91		MONTICELLO
LEAST TOTAL PRECIPITATION	1.51		WALLACETON LK DRUMMOND
GREATEST 1 DAY PRECIPITATION	4.10	OCTOBER 13	MONTICELLO
GREATEST TOTAL SNOWFALL	7.2		BIG MEADOWS
GREATEST DEPTH OF SNOW OR ICE	7		BIG MEADOWS

"I certify that this is an official publication of the National Oceanic and Atmospheric Administration (NOAA) It is compiled using information from weather observing sites supervised by NOAA/National Weather Service and received at the National Climatic Data Center(NCDC), Asheville, North Carolina 28801."

Director
National Climatic Data Center

noaa

National
Oceanic and
Atmospheric Administration

National
Environmental Satellite, Data
and Information Service

National
Climatic Data Center
Asheville, North Carolina

VIRGINIA
201110

MONTHLY STATION AND DIVISION SUMMARY

STATION	TEMPERATURE (°F)										PRECIPITATION (IN)													
	AVERAGE MAXIMUM	AVERAGE MINIMUM	AVERAGE	DEPARTURE FROM NORMAL	HIGHEST	DATE	LOWEST	DATE	HEATING DEG. DAYS	COOLING DEG. DAYS	NO. OF DAYS				TOTAL	DEPARTURE FROM NORMAL	GREATEST 24 HOURS	DATE	ICE PELLETS, SNOW			NO. OF DAYS		
											MAX		MIN						TOTAL	MAX DEPTH ON GROUND	DATE	.10 OR MORE	.50 OR MORE	1.00 OR MORE
											>=90	<=32	<=32	<=0										
PALMYRA 3S	68.0	42.9	55.5		80	11	26	31	292	4	0	0	2	0	4.69	0.82	1.74	13	0.0	0		7	4	1
PETERSBURG	69.9	47.6	58.8		82	19+	30	31	212	25	0	0	2	0	3.43		1.00	01	0.0	0		5	4	1
POWHATAN	M	M	M											M 3.39		1.21	29	0.0	0		6	2	1	
RICHMOND INTL AP	69.3	49.4	59.4	1.1	82	17	31	31	197	28	0	0	1	0	2.79	-0.81	1.32	29	0.0	0		5	2	1
SANDSTON	67.8M	46.8M	57.3M		80	01	31	30	234	13	0	0	1	0	FM 2.52		1.24	29	0.0	0		3	2	1
WINTERPOCK 4 W	M	M	M											3.01	-0.78	1.33	29	0.0	0		6	2	1	
--DIVISIONAL DATA-----> WESTERN PIEDMONT 03			57.8	0.9										3.94	0.09									
ALTAVISTA	M	M	M											2.86	-0.81	0.90	13	0.0	0		5	3	0	
APPOMATTOX	67.1	46.0	56.6	0.6	80	19	31	31+	259	5	0	0	2	0	3.72	-0.14	1.24	13	0.0	0		7	3	1
BEDFORD 4 NW	67.4	47.3F	57.4F		79	19	31	30	232	3	0	0	1	0	3.70		1.11	12	0.0	0		6	3	2
BROOKNEAL	68.7	43.0	55.9	0.9	81	19	27	31+	286	7	0	0	2	0	3.49	-0.23	1.22	29	0.0	0		6	3	1
CHARLOTTESVILLE 2W	66.5	47.9	57.2	-1.1	79	11	32	29	240	5	0	0	1	0	6.03	1.81	3.12	13	0.1	T	29	6	3	1
CHATHAM	67.9	40.9	54.4	-0.5	81	19	26	31	320	0	0	0	4	0	3.43	-0.24	1.00	29	0.0	0		8	3	1
CONCORD 4 SSW	M	M	M											3.62	-0.13	1.03	13	0.0	0		7	4	1	
DANVILLE	69.7	43.8	56.8	-1.4	83	19	29	31+	261	12	0	0	2	0	3.87	0.16	0.84	29	0.0	0		6	4	0
DANVILLE REGIONAL AP	68.7	43.3	56.0		82	18	27	30	276	6	0	0	3	0	3.45		0.77	29	0.0	0		7	4	0
FREE UNION	66.4	43.6	55.0		78	11	27	31+	302	0	0	0	3	0	FA 3.88		1.62	13	0.0	0		7	3	1
HOLCOMB ROCK	68.4	45.9	57.2		82	19	32	31+	238	4	0	0	2	0	5.31	1.71	2.18	13	T	0		9	4	1
HUDDLESTON 4 SW	M	M	M											4.46	0.95	1.78	13	0.0	0		6	3	1	
LYNCHBURG #2	67.1	42.9	55.0		80	19	28	31+	300	1	0	0	2	0	3.74		1.22	13	0.0	0		6	3	1
LYNCHBURG INTL AP	67.4	43.9	55.7	-0.4	80	18	27	30	286	2	0	0	3	0	2.95	-0.44	1.33	12	T	0		7	1	1
MARTINSVILLE FLTR PLT	68.8	40.6	54.7	-0.5	81	19	26	31+	314	2	0	0	4	0	3.92	0.45	1.87	12	0.0	0		6	2	1
MEADOWS OF DAN 5 SW	68.1M	42.1M	55.1M		79	19	31	31+	254	0	0	0	2	0	4.73	0.35	2.54	12	M 0.0	0		5	4	1
MONTEBELLO FISH CULTURAL STN	61.3M	39.0M	50.2M		74	20+	25	30	439	0	0	0	6	0	M 5.84		1.55	13	M 2.0	2	29	8	5	3
MONTECELLO	63.3	46.6	55.0	-0.8	75	11	31	29	303	0	0	0	1	0	6.91	3.02	4.10	13	0.0	0		7	4	1
PEDLAR DAM	69.4	47.0	58.2		82	18	33	30	212	11	0	0	0	0	3.51	0.05	1.27	13	0.0	0		8	3	1
ROCKY MT	67.9	43.2	55.6	-0.5	81	18	30	31+	289	3	0	0	2	0	4.12	0.61	1.76	12	0.0	0		6	4	1
SOUTH BOSTON	69.7	43.5	56.6	0.0	83	19	28	31	262	10	0	0	2	0	2.62	-1.02	0.92	29	0.0	0		7	2	0
STUART	69.7	43.2	56.5	0.2	81	19	29	31	257	1	0	0	2	0	3.41	-0.38	1.69	12	0.0	0		6	2	1
TYE RIVER 1 SE	69.7	44.5	57.1	0.9	81	18	27	30	244	5	0	0	2	0	4.77	0.82	2.41	13	0.0	0		6	3	1
WOOLWINE	M	M	M											5.41	1.17	2.67	12	M 0.0	0		6	3	1	
--DIVISIONAL DATA-----> NORTHERN 04			55.8	-0.5										4.16	0.40									
BIG MEADOWS	M	M	M											M				M 7.2	7	30				
BOSTON 4 SE	64.4M	42.4M	53.4M		79	11	27	31	315	0	0	0	3	0	F 2.65		1.14	30	M 0.0	0		4	2	1
CASTLETON	64.1M	45.3M	54.7M		77	10	29	31	292	0	0	0	2	0	M 6.03		2.97	13	M 2.0	0		7	3	2
EDINBURG	64.0	41.7	52.9		77	19+	24	31	371	0	0	0	6	0	2.51		0.48	29	M 4.2	M 2	31	7	0	0

VIRGINIA
201110

MONTHLY STATION AND DIVISION SUMMARY

STATION	TEMPERATURE (°F)										PRECIPITATION (IN)													
	AVERAGE MAXIMUM	AVERAGE MINIMUM	AVERAGE	DEPARTURE FROM NORMAL	HIGHEST	DATE	LOWEST	DATE	HEATING DEG. DAYS	COOLING DEG. DAYS	NO. OF DAYS				TOTAL	DEPARTURE FROM NORMAL	GREATEST 24 HOURS	DATE	ICE PELLETS, SNOW			NO. OF DAYS		
											MAX		MIN						TOTAL	MAX DEPTH ON GROUND	DATE	.10 OR MORE	.50 OR MORE	1.00 OR MORE
											>=90	<=32	<=32	<=0										
FRONT ROYAL	64.2	44.4	54.3		77	10	28	31	324	0	0	0	3	0	4.25		1.07	14	M 4.0	2	30	10	3	2
LINCOLN	64.0	42.4	53.2	-1.9	77	10	25	31	359	0	0	0	5	0	4.96	1.58	2.10	19	0.0	0		3	2	2
LURAY 5 E	64.2	42.7	53.5	-2.2	78	10	26	30	350	1	0	0	3	0	3.84	0.35	0.84	13	4.0	4	30	10	4	0
MADISON	67.2	46.8	57.0		80	11	34	31+	244	0	0	0	0	0	F 5.02		3.45	13	T	0		4	3	1
MANASSAS	66.1M	45.3M	55.7M		80	11	29	31	222	4	0	0	2	0	M 6.71		3.00	14	0.0	0		7	5	1
MT WEATHER	60.7	46.2	53.5	0.5	80	10	28	30	359	4	0	1	4	0	F 6.32		2.10	30	M 5.7	5	30	10	4	2
PIEDMONT RSCH STN	65.2	46.2	55.7	-0.3	78	11	28	30	285	2	0	0	3	0	F 6.13		2.64	13	T	0		7	5	2
SOMERSET	65.6	44.0	54.8		79	11	27	30	305	0	0	0	3	0	FA 6.34		3.13	13	0.0	0		8	4	1
SPERRYVILLE	64.9M	43.6M	54.3M		78	11+	29	31	315	0	0	0	3	0	M 6.72		3.27	13	M 1.2	F M T	30	10	4	1
STAR TANNERY	61.0	42.3	51.7		73	10	26	31	406	0	0	0	5	0	M 4.95		1.70	29	M 2.2	0		8	3	2
STERLING RCS	64.6	44.7	54.7	0.8	79	11+	28	31	314	0	0	0	2	0	5.33	1.63	0.81	02	M 0.6	M T	30	11	5	0
VIENNA	64.4M	45.3M	54.9M		80	10	31	31	300	3	0	0	1	0	M 4.09		0.76	30	M T	0		10	4	0
WARRENTON 3 SE	64.4M	45.5M	55.0M		78	11	29	31	278	3	0	0	2	0	M 5.76		1.70	13	0.0	0		9	4	2
WASHGTN DULLES INTL AP	64.9	45.2	55.1	0.1	81	10	28	31	303	2	0	0	2	0	6.27	2.90	1.92	13	0.6	0		9	5	2
WASHINGTON REAGAN AP	66.5	50.2	58.4	-0.4	83	10	34	29	212	15	0	0	0	0	3.91	0.69	1.18	29	T	0		9	3	1
WINCHESTER	62.1	44.8	53.5	-0.7	76	10	29	31	349	0	0	0	3	0	3.35	0.39	0.65	13	M 3.0	3	30	9	4	0
WINCHESTER 7 SE	62.6M	41.8M	52.2M		78	10	26	31+	351	0	0	0	6	0	M 3.56		0.75	30	M 1.6	M 1	30	7	3	0
WOODSTOCK 2 NE	63.0	42.5	52.8	-1.8	77	10	27	31+	371	0	0	0	4	0	2.77	-0.35	0.55	30+	M 3.2	3	30	9	2	0
--DIVISIONAL DATA----->			54.3	-0.2											4.83	1.27								
CENTRAL MOUNTAIN 05																								
BUCHANAN	66.5	46.1	56.3	-1.0	78	19+	30	30	264	2	0	0	2	0	4.55	1.26	1.23	14+	0.0	0		7	4	2
BUENA VISTA	M	M	M												3.23	0.05	1.20	13	0.0	0		6	3	1
COVINGTON FLTR PLT	67.2	41.6	54.4	-0.7	81	17	28	31+	322	1	0	0	3	0	2.44	-0.41	0.50	14	0.0	0		9	1	0
CRAIGSVILLE 2 S	M	M	M												M				M 1.0	1	29			
DALE ENTERPRISE	62.7	42.1	52.4	-1.1	76	09	25	30	381	0	0	0	3	0	3.37	0.55	0.72	29	5.0	3	29	9	3	0
EARLEHURST	64.5	38.4M	51.5M		78	19	25	30	400	0	0	0	6	0	2.65	-0.34	0.78	12	M T	0		6	1	0
GATHRIGHT DAM	62.0	41.3	51.7	-2.3	76	19	28	31+	407	0	0	0	4	0	2.48	-0.54	0.74	14	1.7	2	29	5	1	0
GLASGOW 1 SE	68.2	44.1	56.2		82	18	29	31+	265	1	0	0	2	0	5.62	1.74	2.27	13	M T	0		8	3	2
HOT SPRINGS	62.5	40.6	51.6	-0.7	74	19+	27	31+	408	0	0	0	5	0	4.13	0.80	1.05	12	2.0	2	29	8	3	2
KERRS CREEK 6 WNW	M	M	M												3.56	-0.08	2.05	13	M 1.0	1	29	6	1	1
LEXINGTON	67.3	40.8	54.1	-0.6	80	18	25	31+	332	0	0	0	6	0	3.41	0.33	1.15	13	0.0	0		8	3	1
MILLGAP	60.4	35.6	48.0		76	11	23	31+	519	0	0	0	10	0	3.44	0.31	0.76	13	3.2	2	30	9	2	0
MTN GROVE	65.0M	38.8M	51.9M		78	11+	23	30	387	0	0	0	7	0	2.55		0.98	12	T	T	29	6	1	0
MUSTOE 1 SW	60.5	37.7	49.1		75	09	26	30	486	0	0	0	7	0	3.27		1.05	12	4.1	2	29	9	1	1
ROANOKE 8 N	67.4	45.3	56.4		80	18	31	31+	263	3	0	0	2	0	4.31		1.23	12	0.0	0		7	4	2
ROANOKE INTL AP	67.2	46.5	56.9	0.3	81	17	31	30	253	9	0	0	1	0	4.06	0.91	1.29	12	T	0		8	3	1
STAUNTON WATER TRMTMT PLT	63.9	43.8	53.9	1.8	77	18	28	31+	336	0	0	0	3	0	2.82	-0.55	0.99	13	M 0.8	1	29	7	2	0
WAYNESBORO WTP	67.1	41.8	54.5		78	18+	25	31	319	0	0	0	3	0	3.54		0.97	12	M 2.0	1	29	9	2	0

VIRGINIA
201110

MONTHLY STATION AND DIVISION SUMMARY

STATION	TEMPERATURE (°F)													PRECIPITATION (IN)												
	AVERAGE MAXIMUM	AVERAGE MINIMUM	AVERAGE	DEPARTURE FROM NORMAL	HIGHEST	DATE	LOWEST	DATE	HEATING DEG. DAYS	COOLING DEG. DAYS	NO. OF DAYS				TOTAL	DEPARTURE FROM NORMAL	GREATEST 24 HOURS	DATE	ICE PELLETS, SNOW			NO. OF DAYS				
											MAX		MIN						TOTAL	MAX DEPTH ON GROUND	DATE	.10 OR MORE	.50 OR MORE	1.00 OR MORE		
											>=90	<=32	<=32	<=0												
--DIVISIONAL DATA-----> SOUTHWESTERN MOUNTAIN 06			53.3	-0.7										3.50	0.33											
ABINGDON 3S	64.9M	41.7M	53.3M		80	18	27	30	342	0	0	0	4	0	M 3.43		0.90	14	M 0.0	0			9	3	0	
BIG STONE GAP	67.4	41.4	54.4	-1.0	83	08+	29	31+	322	1	0	0	2	0	3.34	-0.11	1.00	20	0.0	0			5	3	1	
BLACKSBURG NWSO	63.3	40.6	52.0	0.3	77	19	26	31+	397	0	0	0	6	0	2.96	-0.23	1.10	12	T	0			5	3	1	
BLAND	63.0	37.5	50.3	-0.7	78	19	23	30	448	0	0	0	5	0	2.35	-0.41	0.65	12	M 0.1	0			6	2	0	
BURKES GARDEN	58.5	38.2	48.4	-0.2	73	19	23	31+	510	0	0	0	6	0	3.91	0.80	0.99	14	T	0			9	4	0	
CHRISTIANSBURG	62.3	42.7	52.5		78	19	29	30	380	0	0	0	3	0	3.32		1.30	12	M T	0			6	3	1	
CLINTWOOD 1 W	64.4	38.5	51.5		78	19+	26	31+	411	0	0	0	5	0	3.74		1.10	20	T	0			7	4	1	
COPPER HILL	59.8M	43.0M	51.4M		73	18	30	31+	402	1	0	0	3	0	4.69	0.68	1.47	12	0.0	0			8	5	1	
GALAX RADIO WBRF	63.2F	39.9	51.6F	0.7	77	17	26	31+	418	0	0	0	5	0	2.41	-1.13	1.21	12	0.0	0			5	1	1	
GALAX WTP	62.7	39.4	51.1		75	17	26	31+	423	0	0	0	5	0	2.67		1.10	12	M 0.0	0			4	3	1	
GRUNDY	64.2	42.7	53.5	-2.6	78	19	31	31+	350	0	0	0	2	0	3.55	0.40	0.86	20	0.0	0			8	3	0	
JOHN FLANNAGAN LAKE	M	M	M											M					0.0	0						
LAFAYETTE 1 NE	M	M	M											3.08	0.21	1.11	12	M T	0				5	2	1	
LEBANON	64.8	39.5	52.2	-0.7	79	19+	25	31	391	0	0	0	6	0	2.58	0.43	0.66	29	0.0	0			6	2	0	
NORA 4 SSE	61.0	43.5	52.3		76	08	30	30+	384	0	0	0	2	0	3.38		0.90	29	0.4	T	29			7	3	0
NORTH FORK LAKE	M	M	M											4.14	1.11	1.08	14	M 0.0	0				4	3	1	
PULASKI 2 E	66.3	41.2	53.8	1.1	80	19	29	31+	342	0	0	0	5	0	2.79	-0.14	1.50	12	0.0	0			3	2	1	
RADFORD 3 N	64.0	41.7	52.9		78	19	26	30	370	0	0	0	4	0	2.98	-0.08	1.14	12	M T	0			6	2	1	
RICHLANDS	65.1	39.0	52.1	-0.4	80	19+	25	31	395	0	0	0	5	0	2.90	0.82	0.74	14	0.0	0			7	2	0	
SALTVILLE 1N	66.3	39.4	52.9	-0.6	81	19	26	31+	370	0	0	0	5	0	2.68	0.17	0.79	14	0.0	0			7	2	0	
STAFFORDSVILLE 3 ENE	64.1	40.6	52.4	0.2	77	19	26	31	385	0	0	0	5	0	2.58	-0.17	1.10	12	0.0	0			6	2	1	
TROUT DALE 3 SSE	61.9	37.1	49.5		74	19+	21	30	471	0	0	0	5	0	3.08	-0.17	0.90	12	T	T	29			5	3	0
WILLIS	M	M	M											3.76	0.41	1.63	12	0.0	0				4	4	1	
WISE 3E	63.1	42.7	52.9	-1.7	75	08+	26	30	369	1	0	0	4	0	4.10	1.10	1.08	19	M 0.8	0			9	3	1	
WYTHEVILLE 1 S	65.1	38.2	51.7	-0.2	78	19	18	25	406	0	0	0	6	0	2.17	-0.71	0.80	29+	0.0	0			4	2	0	
--DIVISIONAL DATA----->			52.0	-0.7										3.19	0.09											

VIRGINIA
201110

DAILY PRECIPITATION (INCHES)

STATION	TOTAL	DAY OF MONTH																																	
		01	02	03	04	05	06	07	08	09	10	11	12	13	14	15	16	17	18	19	20	21	22	23	24	25	26	27	28	29	30	31			
VIRGINIA																																			
TIDEWATER 01																																			
DISPUTANTA	2.34	0.33		0.03								0.08	0.28	0.02							0.51	0.14									0.95				
EASTVILLE	2.15	0.20										0.02	0.03	0.02							0.98	0.10									0.10	0.70			
EMPORIA 1 WNW	2.58	0.15		0.02								0.05	0.75	0.03							0.46	0.10									0.80	0.22			
FREDERICKSBURG SEWAGE	M 3.27		0.07	0.07		0.02						0.31	0.54	0.94	-						0.33	0.18			0.08	0.01	0.01	0.02	0.07	0.60	0.02				
HAMPTON UNIV	F 1.68			0.03								0.07	0.10								0.96							0.32 ^L	0.81 ^L		0.15	0.52			
HOLLAND 1 E	F 3.32	0.48	0.02 ^L	0.00	0.02		0.02		0.02	0.00 ^L	0.00 ^L	0.02	0.03	0.23							1.58	0.38		0.01	0.01						0.39	0.01			
HOPEWELL	2.86	0.09		0.03								0.64	0.30								0.25	0.04									1.50	0.01			
NORFOLK INTL AP R	2.13	0.22	T	T							T	T	0.17						T	0.74									0.08	0.41		0.51			
NORFOLK SOUTH	2.44	0.22	T	T							0.01	0.02	0.78	T					0.15	0.77									0.06	0.43					
NORTH	M 2.97	1.12											0.23	0.04							1.14	0.44						-	-	-	-	-			
PAINTER 2W	3.17	0.95	0.06	0.04							0.01	0.01	0.01	0.03							1.08	0.02							0.05	0.88	0.03				
STONY CREEK 2 N	M 0.00 ^L	0.00 ^L	0.26 ^L		0.00 ^L	0.00 ^L	0.00 ^L	0.00 ^L	0.01 ^L	0.01	0.01	0.03	0.89	0.03	0.00 ^L	0.00 ^L	0.00 ^L	0.00 ^L	0.00 ^L	0.00 ^L	0.47 ^L					0.00 ^L	0.03 ^L	0.00 ^L	0.00 ^L	0.00 ^L	1.05 ^L				
SUFFOLK LAKE KILBY	2.11	T	T	0.02							T	0.14	0.04	T						T	0.87							0.00 ^L	0.12	0.57		0.35			
WAKEFIELD 1N W R	3.94	0.03	T	0.04							0.01	0.53	0.26	0.01						0.09	1.13						T	0.11	1.17		0.56				
WALKERTON 2 NW	4.12	0.10		0.10							T	0.74	1.13								0.23							0.08	1.41		0.33				
WALLACETON LK DRUMMOND	1.51	0.25										0.05	0.06	0.15							0.45	0.05									0.40	0.10			
WARSAW 2 NW	2.96	0.05	0.16	0.10	0.03							0.38	0.07	0.15							0.31				0.03						1.68				
WEST POINT 2 NW	M 0.33 ^L	0.04 ^L	0.08								0.03 ^L	0.04 ^L	0.10 ^L	0.20 ^L							0.44	0.02					0.00 ^L	0.14 ^L	1.07 ^L	0.01	0.00 ^L				
WILLIAMSBURG 2 N R	4.24	0.02		0.02								0.38	0.40	0.02						0.03	1.71						0.03	0.08	1.19	T	0.36				
EASTERN PIEDMONT 02																																			
ALBERTA 5N	4.22	0.08	0.01	T							T	0.42	1.78	0.02							0.56	0.07							T	1.18	0.10				
AMELIA COURTHOUSE 1	FM 3.97	0.01		0.01				-	-	0.00 ^L		0.77	0.62	0.12	0.07	-	0.00 ^L				0.58	0.25			-	0.00 ^L				1.54	-	0.06 ^L			
ASHLAND	3.06		0.03	0.03							T	0.93	0.08	0.47							0.21	0.09							T	1.22					
BREMO BLUFF R	4.81			0.06	0.05						0.02	1.33	0.77	0.16							1.28				0.07				0.14	0.93					
BUCKINGHAM	5.89			0.10	0.02							0.31	2.85	0.30	0.17						0.61	0.34						0.03	1.04	0.12					
CAMP PICKETT R	5.85			0.03								0.21	2.91	0.07							1.02	0.11							1.30	0.20					
CHASE CITY	3.81			0.01							0.02	0.21	0.88	0.09							1.14	0.29							1.17						
CLARKSVILLE	2.79										0.05	0.20	0.94	0.10							1.12	0.30						0.08							
CORBIN	M 3.51	0.05	0.06	0.03								0.36	0.79	0.36								0.25			0.12	0.02	0.02		0.15	1.30	-				
CROZIER	3.65											0.52	0.80	0.30							0.40	0.25							1.26	0.12					
FARMVILLE 2 N	4.28			0.05								0.18	1.98	0.16							0.60	0.34							0.97						
GREENBAY 3 NE	4.92		T	0.05						T	0.01	0.58	1.05	0.30							0.78	0.88			0.01				1.22	0.04					
JOHN H KERR DAM R	3.36	0.02			0.02							0.50	0.58								1.07	0.08							0.99	0.10					
KEYSVILLE 2 S	4.56										T	0.30	1.25	0.20	0.10						1.68	0.30							0.73	T					
LOUISA	4.13	0.05	0.03	0.01								1.47	0.26	0.12							1.24				0.03				0.92						
PALMYRA 3S	4.69			0.08	0.04							0.42	1.74	0.11	0.01						0.62	0.65			0.02				0.80	0.20					
PETERSBURG	3.43	1.00		0.02	0.02							0.03	0.50								0.25	0.06							0.76	0.79					
POWHATAN	M 3.39			0.03								0.43	0.86								0.47	0.22							1.21	0.17	-				
RICHMOND INTL AP R	2.79	0.03	T	0.02	T						0.03	0.71	0.02	T						T	0.21						T	0.14	1.32		0.31				
SANDSTON	FM 2.52	0.08		0.05								0.23	0.87	0.05	T						0.00 ^L	0.21 ^L						T	1.24		-				

VIRGINIA
201110

DAILY PRECIPITATION (INCHES)

STATION	TOTAL	DAY OF MONTH																														
		01	02	03	04	05	06	07	08	09	10	11	12	13	14	15	16	17	18	19	20	21	22	23	24	25	26	27	28	29	30	31
WINTERPOCK 4 W	3.01	0.14		0.03	T							0.33	0.62	0.02						0.34	0.08									1.33	0.12	
WESTERN PIEDMONT 03																																
ALTAVISTA R	2.86			0.06								0.65	0.90	0.10						0.09	0.21	0.01								0.77	0.07	
APPOMATTOX	3.72		0.02	0.07								0.25	1.24	0.28	0.04					0.73	0.13									0.60	0.36	
BEDFORD 4 NW R	3.70		0.03	0.01								1.11	1.02	0.32	0.02					0.14	0.21							0.01	0.80	0.03		
BROOKNEAL	3.49			0.05							0.01	0.50	0.38	0.32						0.78	0.13							0.05	1.22	0.05		
CHARLOTTESVILLE 2W	6.03		0.08	0.02	0.07							0.90	3.12	0.07	0.05					0.36	0.22				0.01				0.84	0.29		
CHATHAM	3.43			0.12								0.75	0.85	0.16						0.20	0.25								1.00	0.10		
CONCORD 4 SSW	3.62		0.01	0.06	0.01						T	0.70	1.03	0.22	0.03					0.50	0.16								0.79	0.11		
DANVILLE	3.87										0.05	0.70	0.45	0.70	0.02					0.80	0.30								0.84	0.01		
DANVILLE REGIONAL AP	3.45		0.01	0.02							0.29	0.61	0.08	0.24					0.54	0.64							T	0.25	0.77			
FREE UNION	FA 3.88	0.02 ^L	0.04 ^L	0.01 ^L	0.05 ^L _a							0.76	1.62	0.15	0.02					0.28	0.13				0.04				0.59	0.29		
HOLCOMB ROCK	5.31		0.10	0.12	0.02							0.95	2.18	0.19	0.03					0.13	0.51							0.02	0.92	0.14		
HUDDLESTON 4 SW	4.46			0.04	0.02							0.96	1.78	0.16	0.03					0.30	0.33				0.02				0.78	0.04		
LYNCHBURG #2	3.74			0.04							T	0.49	1.22	0.58	0.04					0.34	0.26							T	0.70	0.07		
LYNCHBURG INTL AP R	2.95	T	0.05	0.01							0.16	1.33	0.43	0.11					0.02	0.21				T				0.16	0.47			
MARTINSVILLE FLTR PLT	3.92				0.04						T	1.87	0.37	0.36						0.28	0.20			T					0.80			
MEADOWS OF DAN 5 SW	4.73		0.05		0.01							2.54	0.06	0.62	0.03					0.72	0.13								0.56	0.01		
MONTEBELLO FISH CULTURAL STN	M 5.84		0.30	0.12								1.07	1.55	0.91						0.30	0.52							-	1.07			
MONTICELLO	6.91		0.05	0.02	0.09		T	T				0.48	4.10	0.29	0.05				0.60	0.20					T				0.53	0.50		
PEDLAR DAM	3.51		0.24	0.02	0.03							0.54	1.27	0.14	0.08					0.10	0.22								0.76	0.11		
ROCKY MT R	4.12		T	T							T	1.76	0.28	0.65			T			0.16	0.57	0.03		T	T			T	0.66	0.01		
SOUTH BOSTON	2.62			0.02							0.01	0.33	0.15	0.12						0.72	0.23								0.92	0.12		
STUART	3.41										T	1.69	0.14	0.28						0.21	0.45								0.64	T		
TYE RIVER 1 SE	4.77			0.03								0.95	2.41	0.11						0.31	0.11								0.85			
WOOLWINE	5.41		0.01								T	2.67	0.34	0.35						0.47	0.90	0.02							T	0.65		
NORTHERN 04																																
BIG MEADOWS	M	-	0.82	0.20	-	-	-	-	-	-	-	-	3.90	0.58					-	-	-	-	-	-	-	-	-	-	0.72	0.25	0.40	-
BOSTON 4 SE	F 2.65										0.00 ^L	0.64 ^L _a	3.42 ^L _a	0.35 ^L _a						0.43	0.25					0.08		-	-	0.75	1.14	
CASTLETON	M 6.03	0.01	0.42	0.18	0.06							0.30	2.97	0.51	0.04				0.01	-	0.27				0.04			-	0.01	1.21		
EDINBURG	2.51		0.46	0.08	0.08							0.12	0.31	0.30	0.15						0.08								0.48	0.45		
FRONT ROYAL	4.25		0.62	0.05	0.15							0.16	1.06	1.07	0.24					0.20	0.13								0.17	0.40		
LINCOLN	4.96			0.13											1.53					2.10			*	*	*	*	*	*	*	*	1.20 _a	
LURAY 5 E	3.84	0.02	0.63	0.15	0.21							0.61	0.84	0.24					0.19	0.05	0.13					0.02		0.01	0.24	0.50		
MADISON	F 5.02	0.00 ^L	0.00 ^L	0.18 ^L _a	0.11							0.80	3.45								0.66								0.00 ^L	0.00 ^L	1.07 ^L _a	
MANASSAS	M 6.71	-	*	*	0.50 _a							0.10	0.90	3.00					-	-	0.60	0.25						0.06	-	0.70	0.60	
MT WEATHER	F 6.32	T ^L	0.76 ^L _a	0.06 ^L _a	0.35							0.10	1.60	0.15	0.27					0.10	0.66					0.07	0.04	0.14	0.74	2.10		
PIEDMONT RSCH STN	F 6.13	0.00 ^L	0.00 ^L	0.09 ^L _a	0.06							0.35	2.64	0.53	0.12					0.63	0.57					0.08				1.15		
SOMERSET	FA 6.34	0.00 ^L	0.00 ^L	2.24 ^L _a	0.13							0.96	3.13	0.33	0.03					0.53	0.16					0.08			0.86	0.13		
SPERRYVILLE	M 6.72		0.33	0.12	0.17							-	3.27	0.74	0.18					0.10	0.33					0.04		0.03	0.83	0.58		
STAR TANNERY	M 4.95		1.35	0.21	0.12	0.08						0.09	0.64	0.35							0.30						0.11		-	1.70		
STERLING RCS	5.33	0.02	0.81	0.12	0.05	T						0.03	0.78	0.66	0.41					0.49	0.52	T				T	0.21	0.20	0.30	0.73		

VIRGINIA
201110

DAILY PRECIPITATION (INCHES)

STATION	TOTAL	DAY OF MONTH																																
		01	02	03	04	05	06	07	08	09	10	11	12	13	14	15	16	17	18	19	20	21	22	23	24	25	26	27	28	29	30	31		
VIENNA	M 4.09		0.52	0.04	0.03							0.03	0.50	0.60	0.22			-	0.42	0.18						0.09		0.15	0.15	0.40	0.76			
WARRENTON 3 SE	M 5.76	T	0.17	-	0.10							0.19	1.70	0.43	-	-			0.54	1.48					0.01		0.02	0.05	0.81	0.26				
WASHGTN DULLES INTL AP	6.27	0.80	0.16	0.03							T	0.44	1.92	0.61				T	0.81					0.09		0.19	0.12	0.07	1.03					
WASHINGTON REAGAN AP	3.91	0.29	0.18	T	T						T	0.44	0.72	0.25					0.50	T				0.13		0.01	0.13	0.08	1.18		T			
WINCHESTER	3.35		0.64	0.11	0.10						T	0.04	0.65	0.33	0.20				0.02	0.10	T				0.02		0.04	0.06	0.53	0.51				
WINCHESTER 7 SE	M 3.56		0.63	0.04	0.17		0.04					0.07	0.72	0.42	-	-	-			0.10					0.05		0.03	0.05	0.49	0.75				
WOODSTOCK 2 NE	2.77		0.43	0.10	0.14							0.17	0.33	0.10	0.30					0.02	0.08								0.55	0.55				
CENTRAL MOUNTAIN 05																																		
BUCHANAN	4.55		0.15	T							T	1.23	0.59	1.23					0.20	0.26										0.89				
BUENA VISTA	3.23		0.16	T	0.05							0.53	1.20	0.07					0.24	0.23								0.02		0.73	T			
COVINGTON FLTR PLT	2.44	T	0.12	0.04	0.02							0.43	0.25	0.50	0.11				0.14	0.35	T				0.03		0.02	0.03	0.30	0.10				
CRAIGSVILLE 2 S	M	-	0.21	0.02	-	0.01	-	-	-	-	0.01	-	1.06	1.19	0.27	0.03	-	-	-	0.10	-	-	-	-	-	-	-	0.01	-	0.54	0.08	-		
DALE ENTERPRISE	3.37		0.30	0.01	0.42							0.30	0.62	0.20	0.10					0.20									0.72	0.50				
EARLEHURST	2.65	0.04	0.30	0.07								0.78	0.10	0.48					0.07	0.46						0.06		0.06	0.23					
GATHRIGHT DAM	2.48		0.07	0.03								0.49	0.30	0.74	0.01				0.28	0.03								0.08	0.03	0.37	0.05			
GLASGOW 1 SE	5.62		0.11	T	0.01							1.24	2.27	0.36	0.03				0.17	0.43								T	T	0.87	0.13			
HOT SPRINGS	4.13		0.18	0.03	0.02							1.05	0.61	1.00	0.05				0.14	0.43	0.04				0.02		0.11	0.02	0.35	0.08				
KERRS CREEK 6 WNW	3.56		0.21	0.09								0.05	2.05	0.45					0.20	0.30					0.02				0.19					
LEXINGTON	3.41		0.05									0.55	1.15	0.13	0.28				0.14	0.30					0.02				0.57	0.22				
MILLGAP	3.44	T	0.23	0.04	0.01							0.45	0.76	0.72	0.15					0.41	0.01				T		0.02	0.11	0.43	0.10				
MTN GROVE	2.55			0.37	T							0.98	0.26	0.45					T	0.32	0.07						T	0.10	T					
MUSTOE 1 SW	3.27	0.25	0.06	0.07							0.14	1.05	0.37	0.18					0.30	0.06	0.01			0.01			0.18	0.23	0.36					
ROANOKE 8 N	4.31		0.04		0.03						0.01	1.23	0.28	0.66	0.10				0.38	0.50								T	1.05	0.03				
ROANOKE INTL AP	4.06	T	0.01	T							0.28	1.29	0.43	0.17				0.30	0.54					T			T	0.73	0.31					
STAUNTON WATER TRMTMT PLT	2.82		0.18	0.05	T							0.42	0.99	0.11	0.01				T	0.23	T							T	0.68	0.15				
WAYNESBORO WTP	3.54	0.02	0.20	0.13	0.01						0.43	0.97	0.40	0.30	0.03				0.10	0.15									0.80					
SOUTHWESTERN MOUNTAIN 06																																		
ABINGDON 3S	M 3.43	0.08	0.03							-	0.12	0.27	0.47	0.90					0.53	0.22				0.01			0.17	0.50	0.11	0.02				
BIG STONE GAP	3.34	0.06	0.02								0.08			0.90					0.05	1.00	0.15							0.25	0.83					
BLACKSBURG NWSO	2.96	0.02	0.03		0.01						0.02	1.10	0.05	0.55					0.19	0.24	T				T		0.02	0.71	0.02					
BLAND	2.35	0.03	0.08		T							0.65		0.35	T					0.33	0.18							0.15	0.54	0.04				
BURKES GARDEN	3.91	0.16	0.27	0.02	0.03	0.01						0.50	0.02	0.99	0.19					0.72	0.17							0.18	0.63	0.02				
CHRISTIANSBURG	3.32	0.03	0.01		0.01						0.01	1.30	0.10	0.53					0.20	0.20	0.01						0.02	0.90						
CLINTWOOD 1 W	3.74	0.10	0.11								T	0.68		0.54						1.10	0.03				0.01			0.25	0.92	T				
COPPER HILL	4.69	0.04	0.03	0.06	T						0.01	1.47	0.27	0.67	0.17				0.52	0.52								0.04	0.61	0.28				
GALAX RADIO WBRF	2.41											1.21	0.13	0.40					0.30	0.32								0.05						
GALAX WTP R	2.67	0.03			T						0.01	1.10	0.01	0.55					0.05	0.36								T	0.56					
GRUNDY	3.55	0.10	0.29		0.05							0.43		0.59					0.10	0.86						0.03		0.37	0.70	0.03				
JOHN FLANNAGAN LAKE	M	-	-	0.44						-	-	0.53		0.39	-	-			0.97	0.01	-	-			0.03	-		0.36	-	-	-	-	0.71	
LAFAYETTE 1 NE	3.08		0.03								0.02	1.11	0.07	0.36					0.31	0.27	0.01								0.86	0.04				
LEBANON	2.58	0.07	0.14		0.03							0.20		0.58						0.46	0.04							0.37	0.66	0.03				

VIRGINIA
201110

DAILY PRECIPITATION (INCHES)

STATION	TOTAL	DAY OF MONTH																																
		01	02	03	04	05	06	07	08	09	10	11	12	13	14	15	16	17	18	19	20	21	22	23	24	25	26	27	28	29	30	31		
NORA 4 SSE	3.38	0.10	0.17		T						T	0.57	T	0.42						T	0.88	0.02												
NORTH FORK LAKE	4.14	*	*	0.31 _a					*	*	*	0.00 _a	0.64	1.08	*	*	0.00 _a			0.02	0.88		*	*	0.00 _a									
PULASKI 2 E R	2.79	T	0.08	T							0.01	1.50	0.01	0.23						0.02	0.05	T												
RADFORD 3 N	2.98	T	0.20	T							0.03	1.14	0.16	0.32						0.06	0.37	0.01												
RICHLANDS	2.90	0.19	0.24									0.43		0.74								0.28	0.08			0.03								
SALTVILLE 1N	2.68	0.11	0.11		0.04							0.49		0.79								0.34	0.10											
STAFFORDSVILLE 3 ENE R	2.58	0.11	0.08		0.01							1.10	0.11	0.22	0.01						0.03	0.28	0.02											
TROUT DALE 3 SSE R	3.08	0.11									0.01	0.90	0.05	0.49							0.01	0.70												
WILLIS R	3.76	0.04	0.04								0.02	1.63	0.05	0.56									0.73											
WISE 3E R	4.10	0.26	0.07								0.01	0.60	0.28	0.39							1.08	0.11												
WYTHEVILLE 1 S R	2.17	0.08	0.01								0.01	0.80		0.20							0.01	0.26												

VIRGINIA
201110

DAILY TEMPERATURES (°F)

STATION	OB. TIME	MAX/MIN	DAY OF MONTH																															AVERAGE
			01	02	03	04	05	06	07	08	09	10	11	12	13	14	15	16	17	18	19	20	21	22	23	24	25	26	27	28	29	30	31	
VIRGINIA																																		
	TIDEWATER 01																																	
DISPUTANTA	07	MAX	82	82	59	59	69	72	75	72	72	76	77	68	69	80	74	72	72	81	82	71	62	65	62	66	69	68	76	78	48	46	55	69.6
		MIN	52	43	44	44	44	44	41	43	45	47	53	60	66	62	46	42	42	55	55	49	41	41	37	38	40	42	44	46	42	30	28	45.4
EASTVILLE	07	MAX	80	62	56	58	66	69	70	67	72	71	72	69	71	77	72	71	69	72	81	74	62	63	62	65	67	64	70	72	57	60	52	67.5
		MIN	60	52	51	54	56	55	48	49	54	57	57	63	66	65	64	61	60	64	64	56	54	50	46	47	49	52	60	46	44	43	37	54.3
EMPORIA 1 WNW	08	MAX	83	64	60	64	71	76	74	74	75	78	78	70	71	81	73	72	74	82	84	70	62	66	64	68	71	71	76	78	48	47	57	70.4
		MIN	53	46	46	45	45	50	43	43	45	52	52	62	66	62	49	48	47	51	55	48	42	43	40	40	43	44	44	42	31	31	46.7	
FREDERICKSBURG SEWAGE	07	MAX	77	60	53	54	69	75	71	73	73	78	79	70	67	78	78	70	72	74	76	66	59	63	63	66	70	71	74	74	47	47	55	67.8
		MIN	52	45	46	46	46	47	45	45	46	46	46	59	64	63	47	47	54	53	53	51	43	42	39	38	43	40	42	41	39	30	30	46.1
HAMPTON UNIV	17	MAX	77	59	61	69	76	73	69	71	74	76	73	70	79	76	74	74	83	83	77	75	66	64	64	67	70	75	77	75	62	55	60	71.1
		MIN	56	49	51	51	55	60	52	55	57	58	64	67	68	67	59	56	63	64	65	52	50	54	40	50	52	56	60	47	41	35	39	54.6
HOLLAND 1 E	08	MAX	85	66	58	62	70	76	75	74	78	80	79	74	72	81	74	74	76	85	87	78	65	67	67	68	71	69	77	78	52	52	57	71.8
		MIN	50	40	40	41	47	39	43	46	58	54	62	64	60	43	40	41	54	61	46	39	42	37	39	44	40	49	42	29	29	29	45.0	
HOPEWELL	16	MAX	78	62	58	71	75	76	76	74	77	78	78	69	80	78	73	73	82	82	69	65	65	66	71	71	77	79	77	48	54	58	71.7	
		MIN	53	49	48	46	51	54	46	49	50	53	65	66	68	64	55	48	63	58	62	51	46	53	42	45	46	51	59	44	40	33	33	51.3
NORFOLK INTL AP	24	MAX	66	61	63	71	76	71	70	72	73	75	71	73	82	76	76	76	84	86	78	71	68	64	65	67	69	77	80	58	64	55	62	71.0
		MIN	52	49	48	50	60	53	50	54	54	57	68	69	67	54	52	49	63	63	68	52	48	49	48	49	52	54	58	49	42	38	38	53.5
NORFOLK SOUTH	24	MAX	64	59	61	68	73	70	68	70	71	75	71	70	79	73	73	76	81	83	76	72	63	62	64	66	66	74	77	57	61	52	52	68.6
		MIN	49	46	47	46	55	50	45	49	50	53	62	67	67	55	51	46	60	59	66	47	45	47	43	45	48	46	52	47	38	36	36	50.1
NORTH	07	MAX	80	62	55	57	68	73	70	71	71	76	77	69	70	75	71	70	71	77	79	70	62	64	61	65	68	67						69.2
		MIN	55	47	47	46	51	53	44	45	48	52	53	61	66	64	57	48	54	56	56	55	48	48	41	42	44	48						51.1
PAINTER 2W	16	MAX	81	61	60	67	71	71	71	71	77	80	75	73	77	73	73	71	76	78	77	72	64	63	65	68	66	73	75	75	60	53	59	70.2
		MIN	58	48	44	47	58	51	43	48	48	52	56	65	66	65	54	54	62	59	64	55	50	46	40	43	48	46	62	44	45	39	32	51.4
STONY CREEK 2 N	08	MAX	83	64	60	60	71	75	72	72	73	76	78	69	69	81	74	73	74	82	84	70	63	66	63	68	71	69	77	78	56	47	55	70.1
		MIN	54	46	46	46	46	50	42	41	45	45	53	63	66	62	49	47	44	54	53	51	43	42	38	38	41	43	43	46	42	31	29	46.4
SUFFOLK LAKE KILBY	24	MAX	65	59	60	69	75	75	71	72	75	77	72	70	77	73	73	81	82	83	67	67	64	66	68	71	73	77	59	57	55	60	69.9	
		MIN	50	45	46	46	54	50	44	50	51	54	63	66	63	41	52	48	58	62	65	50	48	42	46	43	48	56	45	37	34	38	49.8	
WAKEFIELD 1NW	24	MAX	64	60	62	71	76	74	74	75	79	78	71	69	82	74	73	74	83	85	72	63	67	66	69	71	70	76	79	55	52	58	62	70.5
		MIN	46	43	46	44	46	47	41	44	46	50	59	66	66	51	48	43	60	57	59	48	43	42	38	40	44	46	55	42	35	30	30	46.9
WALKERTON 2 NW	18	MAX	70	62	63	74	78	77	77	77	81	81	74	71	82	77	76	75	80	84	75	73	69	67	70	74	73	78	81	77	52	59	62	73.2
		MIN	52	51	51	52	52	50	46	48	49	52	61	68	70	54	51	46	59	56	64	57	48	48	42	45	45	48	61	45	41	37	34	51.1
WALLACETON LK DRUMMOND	08	MAX	88	64	65	65	71	78	75	76	77	80	77	75	72	81	77	76	77	85	86	75	58	72	71	71	74	73	77	80	60	53 ¹	60	73.9
		MIN	51	42	41	42	45	46	38	41	47	46	53	58	62	58	42	40	52	51	53	45	40	45	37	38	40	38	41	44	43	30	28	44.4
WARSAW 2 NW	18	MAX	79	57	56	70	75	75	74	72	79	80	78	71	79	79	72	74	75	81	80	71	66	64	67	70	70	76	77	75	53		60	71.8
		MIN	50	46	45	48	50	50	41	44	44	48	57	64	65	63	51	49	58	52	59	52	44	46	38	42	44	51	60	43		29	49.4	
WEST POINT 2 NW	17	MAX	76	56	59	70	76	71	72	72	78	78	75	69	79	74	73	73	81	82	75	67	66	63	66	69	70	76	78	70	48	55	59	70.2
		MIN	48	45	46	47	48	49	44	47	46	50	60	65	67	51	50	44	56	55	61	49	44	44	39	43	43	48	52	43	35	32	31	47.8
WILLIAMSBURG 2 N	24	MAX	64	58	58	70	74	70	71	71	74	77	69	69	78	72	71	72	80	82	73	68	65	62	66	69	69	75	78	54	52	55	59	68.5
		MIN	49	47	46	47	52	49	45	50	51	52	61	65	68	53	52	46	59	58	64	52	46	45	43	45	47	48	54	43	36	33	34	49.7
EASTERN PIEDMONT 02																																		
AMELIA COURTHOUSE 1	08	MAX	79	60	59	59	70	76	71			75	76	69	69	79	79		72	80	80	65	60	63	64		69	68	76	76	44		55	69.0

VIRGINIA
201110

DAILY TEMPERATURES (°F)

STATION	OB. TIME	MAX/MIN	DAY OF MONTH																															AVERAGE
			01	02	03	04	05	06	07	08	09	10	11	12	13	14	15	16	17	18	19	20	21	22	23	24	25	26	27	28	29	30	31	
			ASHLAND	18	MIN MAX MIN	50 62 50	44 59 46	45 56 46	45 68 46	48 73 48	48 68 50	44 70 45	70 73 45	73 76 51	60 70 59	65 78 63	61 76 63	48 74 49	70 72 44	44 72 60	54 78 54	55 72 61	48 66 50	42 62 44	42 61 43	38 64 39	67 66 43	43 72 43	43 58 47	47 76 42	43 72 42	37 44 31	29 52 30	
BREMO BLUFF	07	MAX MIN	64 46	57 46	60 45	73 42	80 44	75 44	76 44	78 43	79 43	82 48	73 56	68 62	80 47	75 45	73 47	76 56	80 52	67 53	65 47	67 39	66 39	70 35	74 40	72 38	78 41	81 54	57 37	50 31	59 27	61 28	70.9 44.7	
CAMP PICKETT	08	MAX MIN	79 50	63 43	63 44	60 43	70 47	75 42	71 42	73 42	73 42	76 45	76 45	68 58	71 65	79 62	72 45	70 41	76 55	81 55	81 48	66 41	66 41	64 37	62 37	66 40	69 40	68 44	75 44	77 39	45 28	46 28	55 44.4	
CHASE CITY	17	MAX MIN	76 49	64 47	60 47	64 48	70 47	75 43	72 43	74 43	73 46	77 50	75 61	67 67	72 65	77 61	71 44	75 42	81 53	82 53	66 49	61 40	65 39	64 40	67 39	71 41	70 41	75 47	48 48	52 40	57 32	69.5 46.7		
CLARKSVILLE	07	MAX MIN	81 49	63 46	62 46	65 44	72 45	78 47	76 45	74 45	74 51	79 52	76 56	67 62	71 60	79 48	74 47	72 52	77 56	82 56	83 46	65 43	66 43	66 43	66 43	67 43	74 42	72 42	76 46	79 50	78 38	78 ^s 30	58 31	72.4 47.4
CORBIN	09	MAX MIN	63 49	53 45	55 44	68 45	74 45	70 48	72 44	72 46	78 44	71 50	67 57	79 63	72 65	74 56	69 46	72 50	74 50	75 55	67 56	63 49	60 43	65 40	69 37	67 42	65 42	69 49	74 59	74 40	59 36	55 29	67.4 47.7	
CROZIER	07	MAX MIN	76 49	61 44	57 45	56 44	65 44	75 48	70 42	72 43	76 42	75 42	77 55	70 58	66 64	76 61	72 48	69 43	71 53	77 59	64 47	57 41	63 42	62 36	65 36	68 39	67 53	73 40	78 36	45 27	55 27	67.0 44.8		
FARMVILLE 2 N	07	MAX MIN	77 49	62 42	58 44	61 44	71 45	77 46	70 44	72 43	71 44	75 44	77 48	69 59	71 64	78 61	70 43	73 43	80 54	80 53	65 47	61 42	65 41	64 37	67 36	72 41	73 43	81 43	84 45	48 36	52 30	59 29	69.4 44.7	
GREENBAY 3 NE	09	MAX MIN	76 49	61 44	56 45	58 43	69 46	75 47	70 44	72 44	71 43	73 46	74 51	67 59	69 64	75 59	76 50	69 45	71 50	78 55	80 56	64 47	64 42	62 43	61 37	65 39	68 40	67 43	73 55	76 42	48 28	53 29	67.2 45.8	
JOHN H KERR DAM	08	MAX MIN	84 53	66 48	62 50	68 46	75 48	81 50	75 43	77 46	75 46	79 54	78 62	69 67	73 64	81 55	75 50	74 45	80 52	84 65	88 61	69 49	68 44	67 38	71 43	73 45	73 56	78 48	79 39	48 30	53 30	59 49.0		
LOUISA	18	MAX MIN	72 50	60 45	52 45	69 41	77 43	73 44	76 41	74 42	79 41	82 45	76 56	68 63	77 65	74 61	68 46	72 58	78 51	76 58	73 47	62 39	62 36	66 32	66 39	70 38	69 45	74 56	77 41	70 36	44 25	55 26	69.1 45.1	
PALMYRA 3S	06	MAX MIN	77 49	62 43	56 43	54 44	68 43	76 43	70 43	73 43	73 42	80 41	71 44	67 58	76 64	73 60	70 45	73 42	78 52	77 51	64 48	60 39	64 38	61 34	66 33	71 38	69 37	77 38	79 43	45 36	48 27	55 26	68.0 42.9	
PETERSBURG	08	MAX MIN	82 61	70 47	60 48	60 46	71 47	77 48	73 45	74 46	76 47	78 60	78 66	69 64	81 64	74 52	71 43	73 44	82 55	82 54	69 51	62 46	65 41	64 41	67 44	67 44	71 49	69 47	77 47	79 42	47 31	55 30	69.9 47.6	
RICHMOND INTL AP	24	MAX MIN	64 51	58 49	60 48	71 48	77 51	72 50	74 47	74 49	78 48	78 54	71 62	68 65	81 67	75 51	73 52	82 43	81 61	70 58	63 61	66 46	64 42	66 44	70 44	77 47	79 53	53 42	45 36	56 33	59 31	69.3 49.4		
SANDSTON	07	MAX MIN	80 53	62 47	58 47	57 46	71 47	74 48	68 43	70 43	71 45	75 51	76 60	70 65	68 63	79 50	71 43	69 43	69 56	78 55	77 51	60 43	62 43	61 38	63 38	68 41	66 43	74 43	77 43	46 41	44 31	67.8 46.8		
WESTERN PIEDMONT 03																																		
APPOMATTOX	07	MAX MIN	74 50	61 43	57 44	66 41	69 41	74 46	70 49	73 48	71 48	73 47	76 60	69 62	74 60	69 47	71 48	74 50	80 55	64 55	58 44	61 40	60 39	64 38	69 45	66 44	66 46	74 46	77 46	47 35	50 31	54 31	67.1 46.0	
BROOKNEAL	07	MAX MIN	78 46	62 44	58 44	64 42	70 40	74 42	71 42	74 42	74 42	77 51	69 59	71 64	76 58	71 44	71 40	75 44	80 51	81 51	65 47	60 40	63 37	62 34	66 34	70 37	68 38	74 38	78 47	47 38	53 27	55 27	68.7 43.0	
CHARLOTTESVILLE 2W	08	MAX MIN	73 48	61 44	53 43	56 44	69 49	74 52	71 52	74 51	73 52	79 53	69 60	63 61	68 60	69 50	68 51	75 51	76 55	76 45	61 42	56 44	62 44	63 42	66 42	69 47	70 47	75 47	74 40	44 32	46 34	56 35	66.5 47.9	
CHATHAM	07	MAX MIN	74 42	62 41	61 43	66 37	70 43	75 43	70 42	72 41	70 39	71 41	74 42	64 57	68 61	72 58	71 41	73 38	80 49	81 48	63 43	58 33	64 32	64 32	65 40	69 37	69 73	76 76	51 52	52 26	54 26	67.9 40.9		
DANVILLE	07	MAX MIN	77 46	61 41	61 43	66 41	73 40	77 46	75 42	74 42	74 42	76 45	78 56	71 60	77 63	73 61	71 43	78 43	79 54	83 51	64 46	63 40	64 36	66 34	68 36	70 41	75 41	78 47	51 38	53 29	58 29	69.7 43.8		

VIRGINIA
201110

DAILY TEMPERATURES (°F)

STATION	OB. TIME	MAX/MIN	DAY OF MONTH																															AVERAGE
			01	02	03	04	05	06	07	08	09	10	11	12	13	14	15	16	17	18	19	20	21	22	23	24	25	26	27	28	29	30	31	
DANVILLE REGIONAL AP	24	MAX	60	60	66	72	77	73	74	73	74	76	65	71	76	72	71	76	79	82	64	59	63	63	67	71	69	75	77	58	53	57	57	68.7
		MIN	42	40	41	39	44	46	41	41	47	51	59	60	60	48	42	39	51	51	54	43	38	36	34	40	38	41	48	39	32	27	29	43.3
FREE UNION	08	MAX	72	62	53	56	65	75	70	74	73	75	78	68	63	66	69	69	75	77	76	60	57	60	63	66	70	69	75	45	47	56	66.4	
		MIN	48	44	42	42	45	46	44	44	44	43	46	55	60	60	48	47	46	49	49	49	46	38	34	34	40	40	40	42	32	27	27	43.6
LYNCHBURG #2	07	MAX	73	59	54	61	69	76	70	72	71	73	75	68	67	71	69	69	74	77	80	61	59	63	62	66	71	68	76	75	45	51	55	67.1
		MIN	46	46	44	40	40	41	44	44	42	42	46	57	62	59	42	42	45	51	51	46	42	35	33	33	40	40	40	45	36	28	28	42.9
LYNCHBURG INTL AP	24	MAX	61	55	62	71	77	72	74	73	73	75	68	68	73	70	69	73	76	80	63	58	63	61	66	70	68	75	77	54	52	57	54	67.4
		MIN	43	41	44	39	40	49	45	45	45	51	59	60	59	47	44	47	51	50	44	41	35	35	41	39	40	52	36	30	27	30	43.9	
MARTINSVILLE FLTR PLT	07	MAX	75	59	59	64	72	79	73	75	72	75	75	67	71	73	71	72	77	79	81	59	59	64	64	67	72	70	76	78	47	51	58	68.8
		MIN	42	45	39	38	38	40	42	40	38	40	48	57	61	58	40	38	38	47	47	43	39	32	32	33	33	37	37	47	37	26	26	40.6
MEADOWS OF DAN 5 SW	07	MAX	77		58	60	69	74	72	74	71	71	74	64	72	66	68	68	70	71	79	60	54	61	63	66	70	70	73	75		58	68.1	
		MIN	42	40	38	38	45	46	46	46	45	45	45	54	57	55	42	41	41	41	51	42	41	37	37	37		37	37	37	31	31	42.1	
MONTEBELLO FISH CULTURAL STN	07	MAX	66	52	44	51	63	73	67	71	69	72	73	57	61	64	64	62	71	74	74	47	54	57	62	65	66		66	37	33	50	61.3	
		MIN	37	36	35	36	40	39	40	40	37	37	42	56	55	53	44	44	45	47	48	40	38	32	30	30	36	38		34	29	25	26	39.0
MONTICELLO	08	MAX	71	57	52	53	65	69	66	69	69	72	75	68	64	68	68	66	71	73	72	61	57	57	62	66	66	58	74	43	42	51	63.3	
		MIN	48	45	43	42	43	52	51	50	50	49	53	59	61	60	54	49	51	53	53	44	42	41	40	40	45	44	46	40	31	33	33	46.6
ROCKY MT	07	MAX	73	57	57	61	71	77	72	73	71	71	73	68	70	71	68	70	76	81	79	61	59	63	63	68	73	71	77	78	46	50	57	67.9
		MIN	44	45	42	42	42	42	44	43	42	42	42	56	60	57	45	44	50	53	53	43	43	33	33	33	42	40	40	46	37	30	30	43.2
SOUTH BOSTON	07	MAX	78	63	60	66	72	77	73	74	73	76	76	65	70	78	72	71	77	80	83	65	60	64	64	68	72	70	76	78	50	53	56	69.7
		MIN	48	44	45	42	42	44	42	42	42	45	49	60	64	61	43	40	40	51	51	47	39	38	36	36	39	38	38	50	37	29	28	43.5
STUART	07	MAX	76	58	61	63	74	79	79	76	73	72	74	68	73	73	72	72	77	79	81	60	61	67	65	68	74	73	79	77	48	52	58	69.7
		MIN	46	45	40	40	45	44	44	45	45	46	50	56	58	54	41	44	47	49	49	42	42	34	34	37	43	41	41	37	30	29	43.2	
TYE RIVER 1 SE	07	MAX	75	64	59	62	70	77	70	75	74	73	77	71	68	74	74	73	77	81	79	62	60	68	66	71	75	70	78	79	47	52	60	69.7
		MIN	44	41	42	44	44	45	44	45	44	45	50	60	62	59	49	50	53	51	52	44	43	44	34	35	41	40	41	41	37	27	28	44.5
NORTHERN 04																																		
BIG MEADOWS	09	MAX		69	37					61					68	60	59	54	63					47					58	46	32		M	
		MIN		32	31					37					49	45	40	41	42					37					35	26	24		M	
BOSTON 4 SE	07	MAX	73	60	52	50	64	74	68	71	72	76	79	69	64	67	70	70	72	71	72	62	59	59	59	63	66	67		47	40	53	64.4	
		MIN	48	44	39	41	41	44	43	42	43	43	47	56		60	44	45	44	50	50	46	41	38	34	34	40	42		32	29	27	42.4	
CASTLETON	08	MAX	71	60	54	51	65	75	69	73	73	77		66	61	65	69	69	73	71		62	61	59	60	64	66	69	63	72	48	39	53	64.1
		MIN	48	44	41	43	50	48	46	47	47	48		58	58	60	47	45	47	51		45	42	40	37	42	48	46	56	36	32	33	29	45.3
EDINBURG	07	MAX	71	56	49	52	64	74	70	73	74	77	73	66	61	63	67	67	71	75	77	63	55	55	61	64	67	67	65	70	46	39	52	64.0
		MIN	46	42	41	41	44	44	44	42	42	43	45	49	56	55	45	46	45	43	46	46	44	46	31	31	39	39	45	32	31	25	24	41.7
FRONT ROYAL	07	MAX	70	54	49	52	63	72	69	72	72	77	71	66	61	64	67	67	74	74	73	72	57	58	60	63	65	69	67	72	46	46	49	64.2
		MIN	48	42	42	42	48	47	46	45	46	45	50	52	56	56	49	49	46	47	49	49	45	39	37	35	35	50	56	36	31	30	28	44.4
LINCOLN	07	MAX	74	66	48	52	66	72	65	72	73	77	75	74	68	65	69	71	68	73	63	53	53	57	57	64	62	65	64	63	62	46	47	64.0
		MIN	51	46	42	42	42	43	40	40	42	44	49	55	59	59	45	43	43	56	51	39	39	43	32	32	38	41	41	34	32	27	25	42.4
LURAY 5 E	08	MAX	70	55	48	49	61	73	70	74	73	78	76	68	63	69	66	68	72	76	75	67	57	55	60	64	66	67	70	48	35	51	64.2	
		MIN	46	41	41	41	42	42	45	45	44	46	46	57	57	55	44	41	43	46	56	46	40	44	35	37	38	40	45	34	32	26	28	42.7
MADISON	08	MAX	75	62	55	54	69	75	71	74	74	79	80	70	64	68	71	72	75	73	74	62	61	62	66	69	69	73	74	48	46	56	67.2	
		MIN	49	47	45	46	47	48	46	47	46	47	46	47	50	58	62	62	48	50	52	50	45	41	38	39	45	45	52	41	36	34	46.8	
MANASSAS	07	MAX				51	68	75	71	74	74	79	80	72																				

VIRGINIA
201110

DAILY TEMPERATURES (°F)

STATION	OB. TIME	MAX/MIN	DAY OF MONTH																															AVERAGE	
			01	02	03	04	05	06	07	08	09	10	11	12	13	14	15	16	17	18	19	20	21	22	23	24	25	26	27	28	29	30	31		
MT WEATHER	07	MIN				45	47	48	44	46	49	51	63		63	44		45		53	51	42	41	36	36	45	49	50		35	30	29	45.3		
		MAX	70	46	46	47	61	69	65	70	70	80	71	66	60	63	64	65	67	65	70	61	61	52	55	60	59	65	64	66	46	32	45	60.7	
PIEDMONT RSCH STN	08	MIN	44	38	38	39	47	48	48	53	54	56	61	56	56	58	48	48	49	49	54	47	41	44	44	44	45	45	56	32	31	28	30	46.2	
		MAX	72	58	51	53	67	74	69	72	72	76	78	67	64	68	70	68	71	74	73	63	58	59	60	64	68	67	72	73	45	42	53	65.2	
SOMERSET	07	MIN	54	44	42	45	50	51	45	45	47	50	56	61	61	60	48	45	54	52	56	43	40	40	38	38	43	47	48	39	32	28	29	46.2	
		MAX	62	54	52	52	68	76	69	73	72	78	79	69	64	69	71	69	71	74	73	62	59	61	60	65	70	69	74	75	45	45	54	65.6	
SPERRYVILLE	06	MIN	45	45	43	44	47	47	43	44	43	45	49	56	62	60	48	48	49	50	51	47	42	36	33	34	39	42	47	39	32	27	28	44.0	
		MAX	72	59	51	52	66	74	69	73	74	78	78		62	65	69	70	74	72	73	61	59	60	60	63	66	69	65	73	46	40	55	64.9	
STAR TANNERY	07	MIN	48	43	42	41	49	51	46	45	46	46	50		59	59	45	41	43	48	49	48	41	38	36	37	41	42	44	39	32	31	29	43.6	
		MAX	68	50	42	54	61	69	63	70	72	73	72	67	59	59	62	67	70	70	70	60	57	52	57	61	64	65	66	70	41	37	43	61.0	
STERLING RCS	07	MIN	44	40	40	41	49	43	44	42	42	46	47	50	55	50	44	52	44	44	50	45	43	43	32	36	42	41	47	31	31	28	26	42.3	
		MAX	73	51	49	50	67	74	69	73	75	79	79	70	64	71	70	70	71	71	74	66	59	51	59	64	66	67	60	63	63	35	50	64.6	
VIENNA	07	MIN	51	42	43	44	45	48	43	44	46	51	58	59	59	46	45	46	47	50	52	41	40	36	35	43	48	48	36	33	32	28	28	44.7	
		MAX	73	53	49	50	65	71	75	75	76	80	79	69	62	75	69	70	69		73	66	59	58	58	64	67	65	63	63	50	36	51	64.4	
WARRENTON 3 SE	08	MIN	51	42	43	44	46	46	46	47	48	48	49	55	61	60	49	45	49		52	52	45	42	39	39	45	45	36	36	35	33	31	45.3	
		MAX	71	59		54	66	72	72	71	70	75	78	68	68	68			69	68	71	71	56	59	59	62	64	66	64	69	47	37	50	64.4	
WASHGTN DULLES INTL AP	24	MIN	49	42		41	49	46	45	48	47	47	58	61	61	61			45	51	51	48	41	39	37	42	42	42	52	35	33	31	29	45.5	
		MAX	57	50	51	68	74	70	74	74	80	81	70	65	73	70	71	71	71	73	66	65	59	59	65	67	68	61	64	51	39	51	55	64.9	
WASHINGTON REAGAN AP	24	MIN	46	44	44	44	52	46	42	45	45	49	55	62	61	55	47	44	47	48	60	45	42	39	35	42	44	49	42	36	33	31	28	45.2	
		MAX	61	52	53	70	74	69	75	75	78	83	71	66	77	73	71	71	69	74	70	68	62	62	64	67	68	68	66	52	42	55	56	66.5	
WINCHESTER	07	MIN	49	45	46	51	53	51	53	53	56	62	64	64	56	50	50	57	54	61	52	47	47	43	49	49	52	45	41	34	35	36	50.2		
		MAX	69	48	47	50	62	72	67	71	73	76	72	66	60	63	66	67	70	73	71	62	57	52	58	62	63	67	65	67	46	35	48	62.1	
WINCHESTER 7 SE	08	MIN	48	41	42	42	50	46	44	44	46	46	50	54	56	56	45	46	50	48	50	50	46	47	36	35	46	45	55	34	32	30	29	44.8	
		MAX	71	49	48	49	63	74	68	73	73	78	73	67	60	64				74	72	62	58	53	59	63	64	69	65	69	48	35	51	62.6	
WOODSTOCK 2 NE	07	MIN	48	41	42	42	45	44	42	41	42	42	46	51	56	55				41	46	51	41	44	32	32	40	40	51	32	32	26	26	41.8	
		MAX	70	52	49	53	63	73	69	73	74	77	70	66	61	61	65	66	72	72	75	62	56	55	60	64	65	69	63	69	41	37	52	63.0	
CENTRAL MOUNTAIN 05 COVINGTON FLTR PLT	07	MIN	47	42	41	41	44	44	45	44	44	45	47	49	56	56	45	43	42	45	46	49	43	46	33	32	41	40	47	34	31	27	27	42.5	
		MAX	71	54	51	54	66	76	75	77	75	78	79	71	65	74	68	69	81	79	80	64	53	58	66	67	72	73	70	68	46	46	58	67.2	
DALE ENTERPRISE	07	MIN	38	38	40	41	43	43	43	49	46	45	45	51	57	57	43	41	41	47	46	47	46	33	29	33	39	37	37	44	34	28	28	41.6	
		MAX	68	55	50	55	62	71	67	70	76	73	74	67	61	64	64	65	70	75	75	60	53	54	57	62	66	65	66	68	43	40	48	62.7	
GATHRIGHT DAM	07	MIN	43	41	41	41	39	45	44	40	43	44	47	53	57	57	45	47	47	50	50	44	42	33	33	38	40	45	33	31	25	26	26	42.1	
		MAX	63	49	46	50	60	71	70	72	71	73	73	68	62	68	61	62	74	73	76	61	51	49	60	63	67	67	66	61	42	42	52	62.0	
HOT SPRINGS	07	MIN	39	39	40	42	41	42	43	46	45	45	47	54	56	55	44	42	42	48	47	43	43	32	33	33	38	38	38	39	31	28	28	28	41.3
		MAX	65	51	46	52	59	74	72	73	71	73	74	71	63	71	61	63	73	73	74	60	50	51	60	63	68	69	64	62	40	40	52	62.5	
LEXINGTON	07	MIN	40	39	38	39	40	40	43	44	42	42	47	54	56	55	44	42	43	47	45	42	41	33	32	32	38	38	38	38	32	27	27	27	40.6
		MAX	74	61	53	63	71	78	73	75	74	75	77	73	66	71	62	68	76	80	78	63	55	62	60	65	69	67	73	71	45	51	57	67.3	
MILLGAP	07	MIN	42	41	44	40	39	39	44	43	40	41	44	53	58	57	48	41	41	47	46	46	46	35	31	31	31	36	37	42	25	25	25	40.8	
		MAX	61	47	42	46	56	73	71	73	74	75	76	67	61	66	59	59	72	69	74	59	46	44	60	61	63	68	65	58	40	38	50	60.4	
MUSTOE 1 SW	24	MIN	38	37	37	36	34	34	34	40	34	32	36	46	54	52	37	42	45	39	39	41	39	28	24	23	34	30	29	32	28	27	23	35.6	
		MAX	48	42	49	57	73	70	74	73	75	74	67	62	65	60	61	71	71	74	60	48	46	59	61	66	68	65	60	40	39	50	46	60.5	
		MIN	35	36	36	40	36	37	39	38	35	41	44	52	56	39	45	41	42	42	48	40	40	29	27	34	34	31	40	30	30	26	27	37.7	

VIRGINIA
201110

DAILY TEMPERATURES (°F)

STATION	OB. TIME	MAX/MIN	DAY OF MONTH																															AVERAGE
			01	02	03	04	05	06	07	08	09	10	11	12	13	14	15	16	17	18	19	20	21	22	23	24	25	26	27	28	29	30	31	
ROANOKE 8 N	07	MAX	71	57	53	60	69	78	73	75	73	74	76	72	67	71	68	68	78	80	79	60	56	62	63	66	73	71	73	71	47	48	57	67.4
		MIN	44	44	46	46	45	49	47	47	47	47	47	47	57	59	58	46	46	47	53	53	46	45	36	36	37	45	44	43	46	36	31	31
ROANOKE INTL AP	24	MAX	57	56	60	68	78	72	75	72	75	76	72	68	72	69	68	78	81	79	60	56	63	63	65	73	69	74	73	52	49	57	67.2	
		MIN	45	45	46	47	47	48	48	46	46	49	55	58	60	55	49	48	60	55	49	47	42	37	37	44	46	43	51	36	36	31	35	46.5
STAUNTON WATER TRMTMT PLT	08	MAX	69	55	47	55	65	74	71	74	73	76	75	66	61	66	66	66	72	77	76	59	53	56	59	63	68	68	68	67	42	43	52	63.9
		MIN	42	41	40	40	39	45	46	47	45	45	51	55	57	56	49	47	48	51	51	45	42	39	35	38	43	44	54	36	31	28	28	43.8
WAYNESBORO WTP	07	MAX	71	58	57	67	71	73	73	73	76	78	78	78	78	69	68	67	75	78	76	61	54	56	61	65	70	68	70	70	44	44	52	67.1
		MIN	44	43	43	41	41	42	46	43	43	45	45	45	45	58	44	43	51	49	48	48	47	37	34	33	39	38	38	40	32	26	25	41.8
SOUTHWESTERN MOUNTAIN 06																																		
ABINGDON 3S	22	MAX	50	55	61	71	77	78	79	76		72	69	70	64	67	64	73	76	80	66	44	56	60	65	66	73	69	63	48	48	55	51	64.9
		MIN	41	40	35	35	43	45	49	47		51	54	54	52	48	42	38	49	49	43	40	39	31	32	39	38	39	48	39	32	27	33	41.7
BIG STONE GAP	08	MAX	65	47	59	67	74	82	83	83	82	76	78	70	65	68	67	67	74	78	79	60	45	58	64	68	70	74	73	59	45	51	58	67.4
		MIN	45	41	35	37	42	44	47	45	45	47	54	54	50	40	38	37	45	49	41	36	33	33	34	41	40	40	42	36	29	29	41.4	
BLACKSBURG NWSO	07	MAX	65	49	52	55	63	74	71	73	71	71	70	66	69	70	62	63	73	76	77	58	49	57	58	64	68	68	69	65	41	43	53	63.3
		MIN	38	38	39	41	39	39	43	42	41	42	49	53	56	52	48	44	45	48	48	40	40	31	30	30	38	38	41	41	32	26	26	40.6
BLAND	07	MAX	64	45	51	52	62	74	73	75	72	72	69	65	71	71	61	62	71	72	78	58	43	55	61	65	67	72	69	65	41	43	55	63.0
		MIN	41	38	38	41	36	36	37	38	37	38	41	52	51	52	48	36	36	43	43	39	39	28	27	26	34	33	35	39	33	23	24	37.5
BURKES GARDEN	07	MAX	61	42	46	49	58	70	70	71	67	67	64	61	64	63	56	57	67	69	73	56	39	50	54	59	62	66	66	60	38	40	48	58.5
		MIN	37	34	34	37	36	35	36	39	41	47	44	50	49	49	44	40	50	48	54	36	35	25	24	23	37	37	49	36	31	23	23	38.2
CHRISTIANSBURG	07	MAX	65	49	50	55	61	72	70	73	70	69	68	64	65	69	61	62	72	74	78	59	49	55	55	61	70	66	67	65	41	43	52	62.3
		MIN	40	39	41	43	44	43	44	42	43	48	48	52	55	52	47	44	46	52	52	40	40	32	33	34	45	45	44	41	32	29	34	42.7
CLINTWOOD 1 W	07	MAX	62	44	55	58	69	72	76	76	75	74	78	70	64	66	64	64	74	74	78	59	47	54	61	65	70	72	71	58	43	47	56	64.4
		MIN	39	39	33	33	38	40	40	41	41	43	48	53	54	50	40	34	35	47	47	41	34	30	29	30	35	35	38	41	35	26	26	38.5
COPPER HILL	07	MAX	63	46	47	56	59	70	63	64	63	64	66	62	63	64	59	60	72	73	71	55	49		56	58	65	63	67	68	39	39	49	59.8
		MIN	39	36	35	39	43	44	49	46	46	52	54	51	55	52	44	44	45	59	51	38	37		33	37	42	42	48	39	30	30	43.0	
GALAX RADIO WBRF	07	MAX	68	44	55	57	67	76	69	60	71	58	69	60	71	67	65	64	77	76	74	59	48	59	62	44 ^s	68	68	71	69	44	45	54	63.2
		MIN	37	39	38	46	40	40	41	27	37	41	50	52	52	50	44	39	45	44	50	40	40	36	29	30	39	38	46	40	34	26	26	39.9
GALAX WTP	07	MAX	72	49	52	56	65	73	67	70	68	67	68	62	69	66	65	67	75	73	73	58	48	54	59	61	67	67	69	69	41	43	52	62.7
		MIN	42	39	39	43	40	40	40	37	37	40	45	52	54	53	38	38	43	45	45	40	41	29	29	30	40	37	37	41	34	26	26	39.4
GRUNDY	07	MAX	62	45	55	56	68	70	73	76	72	74	75	72	63	64	63	65	76	75	78	59	48	56	60	64	71	70	72	58	45	49	55	64.2
		MIN	43	40	39	39	47	48	47	48	46	46	48	53	55	54	54	37	37	50	49	42	39	35	34	34	42	40	39	41	36	31	31	42.7
JOHN FLANNAGAN LAKE	07	MAX			60	58	70	74	81			80	72	65	68					78	77	80	57	47		66	74	74	74		59	M		
		MIN			36	37	46	45	46			47	53	54	53					38	52	51	42	40		34	42		42	40		31	M	
LEBANON	07	MAX	65	46	55	54	69	75	78	79	77	75	71	69	64	64	65	65	72	76	79	63	45	56	61	65	66	73	70	64	45	47	55	64.8
		MIN	43	39	35	34	42	39	40	42	47	47	47	54	54	51	40	35	35	46	48	40	40	31	30	30	30	37	42	41	35	26	25	39.5
NORA 4 SSE	07	MAX	62	42	50	57	66	71	74	76	73	70	71	65	60	62	60	62	68	72	73	56	41	53	59	62	66	66	66	56	40	43	50	61.0
		MIN	37	34	35	37	46	50	55	50	50	50	54	50	50	47	45	45	45	55	55	36	36	36	38	43	46	45	51	35	30	30	43.5	
NORTH FORK LAKE	08	MAX			61	60	71	75	80			79	69	63	65					76	76	79	58	46		67	71	75	73	59		59	M	
		MIN			37	37	37	44	44			43	53	53	51					38	38	49	40	36		33	40	40	43	40		30	M	
PULASKI 2 E	07	MAX	68	68	68	55	65	77	77	75	70	72	72	65	70	71	71	65	74	77	80	60	48	59	61	66	70	71	70	67	42	45	55	66.3
		MIN	41	39	39	44	41	41	41	43	40	41	41	54	54	54	47	44	44	48	48	40	41	32	30	30	43	41	44	41	34	29	29	41.2

VIRGINIA
201110

DAILY TEMPERATURES (°F)

STATION	OB. TIME	MAX/MIN	DAY OF MONTH																															AVERAGE
			01	02	03	04	05	06	07	08	09	10	11	12	13	14	15	16	17	18	19	20	21	22	23	24	25	26	27	28	29	30	31	
RADFORD 3 N	07	MAX	66	48	53	56	63	73	72	74	71	70	69	66	68	72	65	63	73	74	78	61	50	58	60	65	70	69	70	66	44	43	54	
		MIN	42	41	42	44	41	40	42	46	39	43	50	54	56	56	47	41	48	46	47	42	41	30	28	34	47	35	36	43	36	26	30	
RICHLANDS	07	MAX	63	44	54	56	67	76	80	80	77	78	73	68	68	67	63	63	73	76	80	62	44	57	62	67	68	73	71	61	45	46	56	
		MIN	41	38	34	34	42	41	41	43	41	46	47	53	52	52	39	34	34	47	47	40	37	29	29	29	38	37	37	40	35	26	25	
SALTVILLE 1N	07	MAX	68	47	56	61	70	78	79	80	77	77	72	69	70	67	66	66	74	76	81	62	44	57	63	66	69	75	71	63	45	49	56	
		MIN	41	41	35	34	44	41	41	40	40	44	49	54	54	54	39	34	34	45	45	41	40	31	29	29	37	35	35	44	38	26	26	
STAFFORDSVILLE 3 ENE	07	MAX	66	48	52	54	62	72	72	74	72	71	71	66	68	69	65	65	75	76	77	61	49	57	60	63	69	68	71	67	47	45	54	
		MIN	41	41	41	44	41	40	40	42	40	41	43	54	55	55	50	44	44	46	45	43	42	30	28	28	38	37	37	42	34	27	26	
TROUT DALE 3 SSE	07	MAX	65	45	50	57	64	73	71	72	70	66	69	60	69	69	61	60	74	74	74	55	41	53	58	64	64	71	67	66	41	43	53	
		MIN	37	36	36	39	39	36	36	33	35	46	44	50	52	49	47	33	32	42	40	38	38	34	25	33	35	33	33	41	32	21	26	
WISE 3E	17	MAX	52	50	57	65	69	75	73	75	73	74	67	66	61	62	60	69	73	74	72	43	53	59	63	66	72	70	65	49	44	54	50	
		MIN	34	37	38	41	42	45	47	49	48	52	54	52	52	49	45	41	56	57	43	36	34	31	32	44	38	50	49	36	31	26	34	
WYTHEVILLE 1 S	07	MAX	73	48	55	56	67	77	74	75	74	73	71	66	72	71	65	65	72	75	78	61	46	57	62	66	67	73	70	63	43	46	56	
		MIN	41	41	39	38	40	39	39	43	39	39	42	53	53	54	41	37	37	44	43	41	41	29	28	28	18	34	35	43	34	26	26	

VIRGINIA
201110

SNOWFALL AND SNOW ON GROUND (INCHES)

STATION		DAY OF MONTH																															
		01	02	03	04	05	06	07	08	09	10	11	12	13	14	15	16	17	18	19	20	21	22	23	24	25	26	27	28	29	30	31	
VIRGINIA																																	
TIDEWATER 01																																	
DISPUTANTA	SNOWFALL																																
EASTVILLE	SNOWFALL																																
EMPORIA 1 WNW	SNOWFALL																																
FREDERICKSBURG SEWAGE	SNOWFALL																																
HAMPTON UNIV	SNOWFALL																																
HOLLAND 1 E	SNOWFALL																																
HOPEWELL	SNOWFALL	-	-	-	-	-	-	-	-	-	-	-	-	-	-	-	-	-	-	-	-	-	-	-	-	-	-	-	-	-	-	-	
	SN ON GND	-	-	-	-	-	-	-	-	-	-	-	-	-	-	-	-	-	-	-	-	-	-	-	-	-	-	-	-	-	-	-	
NORFOLK INTL AP R	SNOWFALL																																
NORFOLK SOUTH	SNOWFALL																																
NORTH	SNOWFALL																																
	SN ON GND																																
PAINTER 2W	SNOWFALL																																
STONY CREEK 2 N	SNOWFALL																																
	SN ON GND																																
SUFFOLK LAKE KILBY	SNOWFALL																																
	SN ON GND																																
WAKEFIELD 1NW R	SNOWFALL																																
	SN ON GND																																
WALKERTON 2 NW	SNOWFALL				-																												
	SN ON GND				-																												
WALLACETON LK DRUMMOND	SNOWFALL																																
WARSAW 2 NW	SNOWFALL																																
WEST POINT 2 NW	SNOWFALL																																
	SN ON GND																																
WILLIAMSBURG 2 N R	SNOWFALL																																
WESTERN PIEDMONT 03																																	
CHARLOTTESVILLE 2W	SNOWFALL																																
	SN ON GND																																
CHATHAM	SNOWFALL																																
CONCORD 4 SSW	SNOWFALL																																
DANVILLE	SNOWFALL																																
	SN ON GND																																
DANVILLE REGIONAL AP	SNOWFALL																																
	SN ON GND																																
FREE UNION	SNOWFALL																																
HOLCOMB ROCK	SNOWFALL																																
	SN ON GND																																
HUDDLESTON 4 SW	SNOWFALL																																
LYNCHBURG #2	SNOWFALL																																
	SN ON GND																																

Snowfall: Includes snow and ice. Values for NWS stations (J index note) are Mid-Mid (LST).

Snow on ground: Includes snow, sleet, ice, and hail. Values for NWS stations (J index note) are observed at 12 UTC (GMT).

Water Equivalent: Given for NWS stations (J index note) only, when snow depth is 2 inches or more, and is measured at 18 UTC (GMT)

SNOWFALL AND SNOW ON GROUND (INCHES)

STATION		DAY OF MONTH																															
		01	02	03	04	05	06	07	08	09	10	11	12	13	14	15	16	17	18	19	20	21	22	23	24	25	26	27	28	29	30	31	
LYNCHBURG INTL AP R	SNOWFALL																																
	SN ON GND																															T	
MARTINSVILLE FLTR PLT	SNOWFALL																																
MEADOWS OF DAN 5 SW	SNOWFALL																																
	SN ON GND																																
MONTEBELLO FISH CULTURAL STN	SNOWFALL	-	-	-	-	-	-	-	-	-	-	-	-	-	-	-	-	-	-	-	-	-	-	-	-	-	-	-	-	2.0	-	-	
	SN ON GND	-	-	-	-	-	-	-	-	-	-	-	-	-	-	-	-	-	-	-	-	-	-	-	-	-	-	-	-	2	-	-	
MONTECELLO	SNOWFALL																																
PEDLAR DAM	SNOWFALL																																
	SN ON GND																																
ROCKY MT R	SNOWFALL																																
SOUTH BOSTON	SNOWFALL																																
STUART	SNOWFALL																																
TYE RIVER 1 SE	SNOWFALL																																
WOOLWINE	SNOWFALL		-																		-	-											
NORTHERN 04																																	
BIG MEADOWS	SNOWFALL	-	-	0.2	-	-	-	-	-	-	-	-	-	-	-	-	-	-	-	-	-	-	-	-	-	-	-	-	-	6.0	1.0	-	
	SN ON GND	-	-	-	-	-	-	-	-	-	-	-	-	-	-	-	-	-	-	-	-	-	-	-	-	-	-	-	-	6	7	-	
	WTR EQUIV	-	-	-	-	-	-	-	-	-	-	-	-	-	-	-	-	-	-	-	-	-	-	-	-	-	-	-	-	-	-	-	
BOSTON 4 SE	SNOWFALL																																
	SN ON GND																																
	WTR EQUIV																																
CASTLETON	SNOWFALL	-	-	-	-	-	-	-	-	-	-	-	-	-	-	-	-	-	-	-	-	-	-	-	-	-	-	-	-	2.0	-	-	
	SN ON GND	-	-	-	-	-	-	-	-	-	-	-	-	-	-	-	-	-	-	-	-	-	-	-	-	-	-	-	-	2	-	-	
EDINBURG	SNOWFALL	-	-	-	-	-	-	-	-	-	-	-	-	-	-	-	-	-	-	-	-	-	-	-	-	-	-	-	-	1.4	2.8		
	SN ON GND	-	-	-	-	-	-	-	-	-	-	-	-	-	-	-	-	-	-	-	-	-	-	-	-	-	-	-	-	1	2	T	
FRONT ROYAL	SNOWFALL	-	-	-	-	-	-	-	-	-	-	-	-	-	-	-	-	-	-	-	-	-	-	-	-	-	-	-	-	-	4.0	-	
	SN ON GND	-	-	-	-	-	-	-	-	-	-	-	-	-	-	-	-	-	-	-	-	-	-	-	-	-	-	-	-	-	2	1	
LINCOLN	SNOWFALL																																
LURAY 5 E	SNOWFALL																														1.0	3.0	
	SN ON GND																														1	4	
	WTR EQUIV	-	-	-	-	-	-	-	-	-	-	-	-	-	-	-	-	-	-	-	-	-	-	-	-	-	-	-	-	-	-	-	-
MADISON	SNOWFALL																																
	SN ON GND																																
MANASSAS	SNOWFALL																																
MT WEATHER	SNOWFALL	-	-	-	-	-	-	-	-	-	-	-	-	-	-	-	-	-	-	-	-	-	-	-	-	-	-	-	-	1.2	4.5	-	
	SN ON GND	-	-	-	-	-	-	-	-	-	-	-	-	-	-	-	-	-	-	-	-	-	-	-	-	-	-	-	-	-	5	3	
	WTR EQUIV	-	-	-	-	-	-	-	-	-	-	-	-	-	-	-	-	-	-	-	-	-	-	-	-	-	-	-	-	-	-	-	
PIEDMONT RSCH STN	SNOWFALL																																
	SN ON GND																														T		
SOMERSET	SNOWFALL																																
SPERRYVILLE	SNOWFALL	-	-	-	-	-	-	-	-	-	-	-	-	-	-	-	-	-	-	-	-	-	-	-	-	-	-	-	-	-	1.1	0.1	-

Snowfall: Includes snow and ice. Values for NWS stations (J index note) are Mid-Mid (LST).

Snow on ground: Includes snow, sleet, ice, and hail. Values for NWS stations (J index note) are observed at 12 UTC (GMT).

Water Equivalent: Given for NWS stations (J index note) only, when snow depth is 2 inches or more, and is measured at 18 UTC (GMT)

VIRGINIA
201110

SNOWFALL AND SNOW ON GROUND (INCHES)

STATION		DAY OF MONTH																																
		01	02	03	04	05	06	07	08	09	10	11	12	13	14	15	16	17	18	19	20	21	22	23	24	25	26	27	28	29	30	31		
STAR TANNERY	SN ON GND	-	-	-	-	-	-	-	-	-	-	-	-	-	-	-	-	-	-	-	-	-	-	-	-	-	-	-	-	-	-	P	T	
	SNOWFALL	-	-	-	-	-	-	-	-	-	-	-	-	-	-	-	-	-	-	-	-	-	-	-	-	-	-	-	-	-	-	-		
STERLING RCS	SNOWFALL	-	-	-	-	-	-	-	-	-	-	-	-	-	-	-	-	-	-	-	-	-	-	-	-	-	-	-	-	-	2.2	-	-	
	SN ON GND	-	-	-	-	-	-	-	-	-	-	-	-	-	-	-	-	-	-	-	-	-	-	-	-	-	-	-	-	-	-	T	0.6	
VIENNA	WTR EQUIV	-	-	-	-	-	-	-	-	-	-	-	-	-	-	-	-	-	-	-	-	-	-	-	-	-	-	-	-	-	-	-	-	
	SNOWFALL	-	-	-	-	-	-	-	-	-	-	-	-	-	-	-	-	-	-	-	-	-	-	-	-	-	-	-	-	-	-	-	T	
WARRENTON 3 SE	SNOWFALL	-	-	-	-	-	-	-	-	-	-	-	-	-	-	-	-	-	-	-	-	-	-	-	-	-	-	-	-	-	-	-		
WASHGTN DULLES INTL AP	SNOWFALL	-	-	-	-	-	-	-	-	-	-	-	-	-	-	-	-	-	-	-	-	-	-	-	-	-	-	-	-	-	-	0.6		
WASHINGTON REAGAN AP	SN ON GND	-	-	-	-	-	-	-	-	-	-	-	-	-	-	-	-	-	-	-	-	-	-	-	-	-	-	-	-	-	-	T		
	SNOWFALL	-	-	-	-	-	-	-	-	-	-	-	-	-	-	-	-	-	-	-	-	-	-	-	-	-	-	-	-	-	-	-		
WINCHESTER	SNOWFALL	-	-	-	-	-	-	-	-	-	-	-	-	-	-	-	-	-	-	-	-	-	-	-	-	-	-	-	-	-	-	1.5	1.5	
	SN ON GND	-	-	-	-	-	-	-	-	-	-	-	-	-	-	-	-	-	-	-	-	-	-	-	-	-	-	-	-	-	-	2	3	
WINCHESTER 7 SE	SNOWFALL	-	-	-	-	-	-	-	-	-	-	-	-	-	-	-	-	-	-	-	-	-	-	-	-	-	-	-	-	-	-	0.2	1.4	
	SN ON GND	-	-	-	-	-	-	-	-	-	-	-	-	-	-	-	-	-	-	-	-	-	-	-	-	-	-	-	-	-	-	T	1	
WOODSTOCK 2 NE	WTR EQUIV	-	-	-	-	-	-	-	-	-	-	-	-	-	-	-	-	-	-	-	-	-	-	-	-	-	-	-	-	-	-	-	-	
	SNOWFALL	-	-	-	-	-	-	-	-	-	-	-	-	-	-	-	-	-	-	-	-	-	-	-	-	-	-	-	-	-	-	-	1.4	1.8
CENTRAL MOUNTAIN 05	SN ON GND	-	-	-	-	-	-	-	-	-	-	-	-	-	-	-	-	-	-	-	-	-	-	-	-	-	-	-	-	-	-	1	3	1
	SNOWFALL	-	-	-	-	-	-	-	-	-	-	-	-	-	-	-	-	-	-	-	-	-	-	-	-	-	-	-	-	-	-	-	-	
CRAIGSVILLE 2 S	SNOWFALL	-	-	-	-	-	-	-	-	-	-	-	-	-	-	-	-	-	-	-	-	-	-	-	-	-	-	-	-	-	-	-	1.0	-
	SN ON GND	-	-	-	-	-	-	-	-	-	-	-	-	-	-	-	-	-	-	-	-	-	-	-	-	-	-	-	-	-	-	-	1	-
DALE ENTERPRISE	SNOWFALL	-	-	-	-	-	-	-	-	-	-	-	-	-	-	-	-	-	-	-	-	-	-	-	-	-	-	-	-	-	-	-	3.5	1.5
	SN ON GND	-	-	-	-	-	-	-	-	-	-	-	-	-	-	-	-	-	-	-	-	-	-	-	-	-	-	-	-	-	-	-	3	1
EARLEHURST	WTR EQUIV	-	-	-	-	-	-	-	-	-	-	-	-	-	-	-	-	-	-	-	-	-	-	-	-	-	-	-	-	-	-	-	-	
	SNOWFALL	-	-	-	-	-	-	-	-	-	-	-	-	-	-	-	-	-	-	-	-	-	-	-	-	-	-	-	-	-	-	-	T	-
GATHRIGHT DAM	SN ON GND	-	-	-	-	-	-	-	-	-	-	-	-	-	-	-	-	-	-	-	-	-	-	-	-	-	-	-	-	-	-	-	-	
	SNOWFALL	-	-	-	-	-	-	-	-	-	-	-	-	-	-	-	-	-	-	-	-	-	-	-	-	-	-	-	-	-	-	-	1.7	2
GLASGOW 1 SE	SN ON GND	-	-	-	-	-	-	-	-	-	-	-	-	-	-	-	-	-	-	-	-	-	-	-	-	-	-	-	-	-	-	-	-	
	SNOWFALL	-	-	-	-	-	-	-	-	-	-	-	-	-	-	-	-	-	-	-	-	-	-	-	-	-	-	-	-	-	-	-	-	T
HOT SPRINGS	SN ON GND	-	-	-	-	-	-	-	-	-	-	-	-	-	-	-	-	-	-	-	-	-	-	-	-	-	-	-	-	-	-	-	-	
	SNOWFALL	-	-	-	-	-	-	-	-	-	-	-	-	-	-	-	-	-	-	-	-	-	-	-	-	-	-	-	-	-	-	-	-	2.0
KERRS CREEK 6 WNW	SN ON GND	-	-	-	-	-	-	-	-	-	-	-	-	-	-	-	-	-	-	-	-	-	-	-	-	-	-	-	-	-	-	-	2	
	SNOWFALL	-	-	-	-	-	-	-	-	-	-	-	-	-	-	-	-	-	-	-	-	-	-	-	-	-	-	-	-	-	-	-	1.0	-
LEXINGTON	SN ON GND	-	-	-	-	-	-	-	-	-	-	-	-	-	-	-	-	-	-	-	-	-	-	-	-	-	-	-	-	-	-	-	1	-
	SNOWFALL	-	-	-	-	-	-	-	-	-	-	-	-	-	-	-	-	-	-	-	-	-	-	-	-	-	-	-	-	-	-	-	-	2.0
MILLGAP	SNOWFALL	-	-	-	-	-	-	-	-	-	-	-	-	-	-	-	-	-	-	-	-	-	-	-	-	-	-	-	-	-	-	-	2.0	1.2
	SN ON GND	-	-	-	-	-	-	-	-	-	-	-	-	-	-	-	-	-	-	-	-	-	-	-	-	-	-	-	-	-	-	-	2	T
MTN GROVE	WTR EQUIV	-	-	-	-	-	-	-	-	-	-	-	-	-	-	-	-	-	-	-	-	-	-	-	-	-	-	-	-	-	-	-	-	-
	SNOWFALL	-	-	-	-	-	-	-	-	-	-	-	-	-	-	-	-	-	-	-	-	-	-	-	-	-	-	-	-	-	-	-	-	T
MUSTOE 1 SW	SN ON GND	-	-	-	-	-	-	-	-	-	-	-	-	-	-	-	-	-	-	-	-	-	-	-	-	-	-	-	-	-	-	-	-	
	SNOWFALL	-	-	-	-	-	-	-	-	-	-	-	-	-	-	-	-	-	-	-	-	-	-	-	-	-	-	-	-	-	-	-	1.5	2.6
	SN ON GND	-	-	-	-	-	-	-	-	-	-	-	-	-	-	-	-	-	-	-	-	-	-	-	-	-	-	-	-	-	-	-	1	2

Snowfall: Includes snow and ice. Values for NWS stations (J index note) are Mid-Mid (LST).

Snow on ground: Includes snow, sleet, ice, and hail. Values for NWS stations (J index note) are observed at 12 UTC (GMT).

Water Equivalent: Given for NWS stations (J index note) only, when snow depth is 2 inches or more, and is measured at 18 UTC (GMT)

VIRGINIA
201110

SNOWFALL AND SNOW ON GROUND (INCHES)

STATION		DAY OF MONTH																																		
		01	02	03	04	05	06	07	08	09	10	11	12	13	14	15	16	17	18	19	20	21	22	23	24	25	26	27	28	29	30	31				
ROANOKE 8 N	SNOWFALL																																			
ROANOKE INTL AP	SNOWFALL																																			
	SN ON GND																																			
STAUNTON WATER TRMTMT PLT	SNOWFALL			-	-	-		-	-	-		-	-	-		-	-	-	-	-	-	-	-	-	-		-	-	-							
	SN ON GND			-	-	-		-	-	-		-	-	-		-	-	-	-	-	-	-	-	-	-		-	-	-							
WAYNESBORO WTP	SNOWFALL																																			
	SN ON GND																																			
	WTR EQUIV																																			
SOUTHWESTERN																																				
MOUNTAIN 06																																				
BLACKSBURG NWSO	SNOWFALL																																			
	SN ON GND																																			
BLAND	SNOWFALL	-	-	-	-	-	-	-	-	-	-	-	-	-	-	-	-	-	-	-	-	-	-	-	-	-	-	-	-	-	-	-	-	-		
	SN ON GND	-	-	-	-	-	-	-	-	-	-	-	-	-	-	-	-	-	-	-	-	-	-	-	-	-	-	-	-	-	-	-	-	-		
BURKES GARDEN	SNOWFALL																																			
	SN ON GND																																			
CHRISTIANSBURG	SNOWFALL	-	-	-	-	-	-	-	-	-	-	-	-	-	-	-	-	-	-	-	-	-	-	-	-	-	-	-	-	-	-	-	-	-		
	SN ON GND	-	-	-	-	-	-	-	-	-	-	-	-	-	-	-	-	-	-	-	-	-	-	-	-	-	-	-	-	-	-	-	-	-	-	
CLINTWOOD 1 W	SNOWFALL																																			
	SN ON GND																																			
COPPER HILL	SNOWFALL																																			
	SN ON GND																																			
GALAX RADIO WBRF	SNOWFALL																																			
GALAX WTP R	SNOWFALL																																			
	SN ON GND																																			
GRUNDY	SNOWFALL																																			
	SN ON GND																																			
JOHN FLANNAGAN LAKE	SNOWFALL																																			
LAFAYETTE 1 NE	SNOWFALL	-	-	-	-	-	-	-	-	-	-	-	-	-	-	-	-	-	-	-	-	-	-	-	-	-	-	-	-	-	-	-	-	-	-	
	SN ON GND	-	-	-	-	-	-	-	-	-	-	-	-	-	-	-	-	-	-	-	-	-	-	-	-	-	-	-	-	-	-	-	-	-	-	
LEBANON	SNOWFALL																																			
	SN ON GND																																			
NORA 4 SSE	SNOWFALL																																			
	SN ON GND																																			
NORTH FORK LAKE	SNOWFALL	-	-	-	-	-	-	-	-	-	-	-	-	-	-	-	-	-	-	-	-	-	-	-	-	-	-	-	-	-	-	-	-	-	-	
	SN ON GND	-	-	-	-	-	-	-	-	-	-	-	-	-	-	-	-	-	-	-	-	-	-	-	-	-	-	-	-	-	-	-	-	-	-	
PULASKI 2 E R	SNOWFALL																																			
RADFORD 3 N	SNOWFALL	-	-	-	-	-	-	-	-	-	-	-	-	-	-	-	-	-	-	-	-	-	-	-	-	-	-	-	-	-	-	-	-	-	-	
	SN ON GND	-	-	-	-	-	-	-	-	-	-	-	-	-	-	-	-	-	-	-	-	-	-	-	-	-	-	-	-	-	-	-	-	-	-	
RICHLANDS	SNOWFALL																																			
SALTVILLE 1N	SNOWFALL																																			
STAFFORDSVILLE 3 ENE R	SNOWFALL																																			

Snowfall: Includes snow and ice. Values for NWS stations (J index note) are Mid-Mid (LST).

Snow on ground: Includes snow, sleet, ice, and hail. Values for NWS stations (J index note) are observed at 12 UTC (GMT).

Water Equivalent: Given for NWS stations (J index note) only, when snow depth is 2 inches or more, and is measured at 18 UTC (GMT)

VIRGINIA
201110

SNOWFALL AND SNOW ON GROUND (INCHES)

STATION		DAY OF MONTH																														
		01	02	03	04	05	06	07	08	09	10	11	12	13	14	15	16	17	18	19	20	21	22	23	24	25	26	27	28	29	30	31
TROUT DALE 3 SSE R	SNOWFALL																															T
	SN ON GND																														T	
WILLIS R	SNOWFALL																															
WISE 3E R	SNOWFALL	-	-	-	-	-	-	-	-	-	-	-	-	-	-	-	-	-	-	-	-	-	-	-	-	-	-	-	-	0.8		
	SN ON GND	-	-	-	-	-	-	-	-	-	-	-	-	-	-	-	-	-	-	-	-	-	-	-	-	-	-	-	-			
WYTHEVILLE 1 S R	SNOWFALL																															
	SN ON GND																															

Snowfall: Includes snow and ice. Values for NWS stations (J index note) are Mid-Mid (LST).

Snow on ground: Includes snow, sleet, ice, and hail. Values for NWS stations (J index note) are observed at 12 UTC (GMT).

Water Equivalent: Given for NWS stations (J index note) only, when snow depth is 2 inches or more, and is measured at 18 UTC (GMT)

VIRGINIA
201110

PAN EVAPORATION AND WIND

STATION		DAY OF MONTH																															TOTAL OR AVERAGE	
		01	02	03	04	05	06	07	08	09	10	11	12	13	14	15	16	17	18	19	20	21	22	23	24	25	26	27	28	29	30	31		
VIRGINIA EASTERN PIEDMONT 02 JOHN H KERR DAM	WIND	30	27	27	12	10	20	11	17	14	14	22	27	25	52	49	38	46	28	50	118	21	10	6	10	9	67	66	56	22	13	14	931	
	EVAP	0.17	0.11	0.10	0.11	0.20	0.11	0.09	0.11	0.10	0.07	0.00	0.00	0.08	0.16	0.19	0.19	0.12	0.01	0.00	0.15	0.09	0.05	0.05	0.06	0.08	0.17	0.15	0.01	0.06	0.06	0.27	3.12	
	MAX	-	-	-	-	-	-	-	-	-	-	-	-	-	-	-	-	-	-	-	-	-	-	-	-	-	-	-	-	-	-	-	-	M
	MIN	-	-	-	-	-	-	-	-	-	-	-	-	-	-	-	-	-	-	-	-	-	-	-	-	-	-	-	-	-	-	-	-	M
NORTHERN 04 PIEDMONT RSCH STN	WIND	-	-	222	50	79	57	20	-	-	-	100	45	42	41	-	-	313	37	34	57	113	-	-	-	140	46	72	111	-	-	124	1703	
	EVAP	-	-	0.36	0.04	0.13	0.16	0.13	-	-	-	0.47	0.05	0.14	0.10	-	-	0.52	0.20	0.12	0.08	0.13	-	-	-	0.35	0.12	0.10	0.15	-	-	0.21	3.56	
	MAX	-	-	72	54	71	77	78	-	-	-	80	70	64	71	-	-	73	76	77	64	61	-	-	-	69	69	66	66	-	-	57	57	
	MIN	-	-	45	46	48	52	54	-	-	-	53	61	62	61	-	-	46	53	56	51	41	-	-	-	42	47	47	43	-	-	36	49.7	

Evaporation: Is measured in hundreths of inches.

Wind: Is measured in miles.

Max and Min: The maximum and minimum temperatures (Fahrenheit) of the water in the evaporation pan.

STATION INDEX

STATION	INDEX NO.	DIVISION	COUNTY	LATITUDE	LONGITUDE	ELEVATION (IN FEET)	OBSERVATION TIME AND TABLES			
							LOCAL STD TIME			
							TEMP	PRECIP	EVAP	SPECIAL SEE (NOTES)
VIRGINIA										
ABINGDON 3S	0021	06	WASHINGTON	36 40	81 58W	1920	22	22		H
ALBERTA 5N	0079	02	BRUNSWICK	36 56	77 54W	376		08		H
ALTAVISTA R	0166	03	CAMPBELL	37 7	79 17W	515		07		CH
AMELIA COURTHOUSE 1	0187	02	AMELIA	37 21	77 59W	345	08	08		H
APPOMATTOX	0243	03	APPOMATTOX	37 21	78 50W	910	07	07		H
ASHLAND	0327	02	HANOVER	37 45	77 29W	220	18	18		H
BEDFORD 4 NW R	0561	03	BEDFORD	37 23	79 34W	1220		07		CH
BIG MEADOWS	0720	04	MADISON	38 31	78 26W	3540	09	09		H
BIG STONE GAP	0735	06	WISE	36 52	82 46W	1464	08	08		H
BLACKSBURG NWSO R	0766	06	MONTGOMERY	37 12	80 25W	2100	07	07		CH
BLAND	0792	06	BLAND	37 6	81 7W	2000	07	07		H
BOSTON 4 SE	0860	04	CULPEPER	38 33	78 6W	590	07	07		H
BREMO BLUFF R	0993	02	FLUVANNA	37 43	78 17W	225	07	24		CH
BROOKNEAL	1082	03	CAMPBELL	37 4	78 57W	428	07	07		H
BUCHANAN	1121	05	BOTETOURT	37 32	79 41W	865		07		H
BUCKINGHAM	1136	02	BUCKINGHAM	37 30	78 32W	552		07		H
BUENA VISTA	1159	05	ROCKBRIDGE	37 44	79 22W	830		07		H
BURKES GARDEN	1209	06	TAZEWELL	37 6	81 20W	3068	07	07		H
CAMP PICKETT R	1322	02	NOTTOWAY	37 2	77 57W	330	08	08		CH
CASTLETON	1434	04	RAPPAHANNOCK	38 36	78 7W	541	08	08		H
CHARLOTTESVILLE 2W	1593	03	ALBEMARLE	38 2	78 31W	866	08	08		H
CHASE CITY	1606	02	MECKLENBURG	36 47	78 29W	510	17	17		H
CHATHAM R	1614	03	PITTSYLVANIA	36 49	79 25W	640	07	07		CH
CHRISTIANSBURG	1692	06	MONTGOMERY	37 8	80 24W	2100	07	07		H
CLARKSVILLE	1746	02	MECKLENBURG	36 37	78 33W	330	07	07		H
CLINTWOOD 1 W	1825	06	DICKENSON	37 9	82 29W	1780	07	07		H
CONCORD 4 SSW	1955	03	CAMPBELL	37 17	78 58W	635		07		H
COPPER HILL	1999	06	FLOYD	37 5	80 9W	2690	07	07		H
CORBIN	2009	02	CAROLINE	38 12	77 22W	220	09	09		H
COVINGTON FLTR PLT	2044	05	ALLEGHANY	37 49	79 59W	1230	07	07		H
CRAIGSVILLE 2 S	2064	05	AUGUSTA	38 3	79 23W	1758		07		H
CROZIER	2142	02	GOOCHLAND	37 40	77 53W	350	07	07		H
DALE ENTERPRISE	2208	05	ROCKINGHAM	38 27	78 56W	1400	07	07		H
DANVILLE	2245	03	PITTSYLVANIA	36 35	79 23W	410	07	07		H
DANVILLE REGIONAL AP R	2250	03	PITTSYLVANIA	36 34	79 20W	571	24	24		CH
DISPUTANTA	2400	01	PRINCE GEORGE	37 7	77 12W	15	07	07		H
EARLEHURST	2600	05	ALLEGHANY	37 40	80 15W	2037		07		H
EASTVILLE	2635	01	NORTHAMPTON	37 23	75 58W	10	07	07		H
EDINBURG	2663	04	SHENANDOAH	38 48	78 35W	928	07	07		H
EMPORIA 1 WNW	2790	01	GREENSVILLE	36 42	77 34W	100	08	08		H
FARMVILLE 2 N R	2941	02	CUMBERLAND	37 20	78 23W	450	07	07		CH
FREDERICKSBURG SEWAGE	3204	01	FREDERICKSBURG	38 17	77 27W	15	07	07		H
FREE UNION	3213	03	ALBEMARLE	38 5	78 35W	590	08	07		H
FRONT ROYAL	3229	04	WARREN	38 54	78 11W	930	07	07		H
GALAX RADIO WBRF	3267	06	CARROLL	36 40	80 55W	2385	07	07		H
GALAX WTP R	3272	06	CARROLL	36 39	80 55W	2360	07	07		CH
GATHRIGHT DAM R	3310	05	ALLEGHANY	37 57	79 57W	1770	07	07		CH
GLASGOW 1 SE	3375	05	ROCKBRIDGE	37 37	79 26W	740		07		H
GREENBAY 3 NE	3565	02	PRINCE EDWARD	37 11	78 17W	500	09	09		H
GRUNDY	3640	06	BUCHANAN	37 17	82 5W	1170	07	07		H
HAMPTON UNIV	3713	01	HAMPTON	37 1	76 20W	10	17	17		H
HOLCOMB ROCK	4039	03	BEDFORD	37 33	79 24W	620		07		H
HOLLAND 1 E	4044	01	SUFFOLK	36 41	76 46W	80	08	08		H
HOPEWELL	4101	01	PRINCE GEORGE	37 18	77 17W	40	16	16		H
HOT SPRINGS	4128	05	BATH	37 60	79 50W	2236	07	07		H
HUDDLESTON 4 SW	4148	03	BEDFORD	37 8	79 32W	1045		07		H
JOHN FLANNAGAN LAKE	4410	06	DICKENSON	37 14	82 21W	1460	07	07		H
JOHN H KERR DAM R	4414	02	MECKLENBURG	36 36	78 18W	250	08	08	08	CH
KERRS CREEK 6 WNW	4565	05	ROCKBRIDGE	37 52	79 34W	1500		07		H
KEYSVILLE 2 S	4568	02	CHARLOTTE	37 1	78 28W	530		07		H
LAFAYETTE 1 NE	4676	06	MONTGOMERY	37 14	80 12W	1320		07		H
LEBANON	4777	06	RUSSELL	36 54	82 2W	1912	07	07		H
LEXINGTON	4876	05	ROCKBRIDGE	37 48	79 25W	1125	07	07		H
LINCOLN	4909	04	LOUDOUN	39 5	77 42W	500	07	07		H
LOUISA	5050	02	LOUISA	38 3	78 0W	420	18	18		H

STATION INDEX

STATION	INDEX NO.	DIVISION	COUNTY	LATITUDE	LONGITUDE	ELEVATION (IN FEET)	OBSERVATION TIME AND TABLES			
							LOCAL STD TIME			
							TEMP	PRECIP	EVAP	SPECIAL SEE (NOTES)
LURAY 5 E	5096	04	PAGE	38 40	78 22W	1400	08	08		H
LYNCHBURG #2	5117	03	CAMPBELL	37 23	79 14W	740	07	07		H
LYNCHBURG INTL AP R	5120	03	CAMPBELL	37 19	79 12W	940	24	24		CHJ
MADISON	5150	04	MADISON	38 22	78 15W	577	08	08		H
MANASSAS	5204	04	MANASSAS	38 44	77 30W	245	07	07		H
MARTINSVILLE FLTR PLT	5300	03	HENRY	36 42	79 52W	760	07	07		H
MEADOWS OF DAN 5 SW	5453	03	PATRICK	36 40	80 27W	2225	07	07		H
MILLGAP R	5595	05	HIGHLAND	38 18	79 43W	2421	07	07		CH
MONTEBELLO FISH CULTURAL STN	5690	03	NELSON	37 50	79 7W	2667	07	07		H
MONTICELLO	5700	03	ALBEMARLE	38 1	78 27W	758	08	08		H
MT WEATHER	5851	04	LOUDOUN	39 4	77 53W	1659	07	07		H
MTN GROVE	5756	05	BATH	38 6	79 53W	1775		07		H
MUSTOE 1 SW	5880	05	HIGHLAND	38 20	79 40W	2380	24	24		H
NORA 4 SSE	6125	06	DICKENSON	37 1	82 19W	2650	07	07		H
NORFOLK INTL AP R	6139	01	NORFOLK (CITY)	36 54	76 12W	30	24	24		CHJ
NORFOLK SOUTH	6147	01	NORFOLK (CITY)	36 52	76 14W	100	24	24		H
NORTH	6161	01	MATHEWS	37 26	76 26W	10	07	07		H
NORTH FORK LAKE	6173	06	WISE	37 7	82 38W	1675	08	08		H
PAINTER 2W R	6475	01	ACCOMACK	37 35	75 49W	30	16	16		CH
PALMYRA 3S	6491	02	FLUVANNA	37 49	78 16W	410	06	06		H
PEDLAR DAM	6593	03	AMHERST	37 40	79 17W	1010		07		H
PETERSBURG	6656	02	PETERSBURG	37 14	77 24W	15	08	08		H
PIEDMONT RSCH STN R	6712	04	ORANGE	38 14	78 7W	520	08	08	08	CH
POWHATAN	6906	02	POWHATAN	37 31	77 53W	400		07		H
PULASKI 2 E R	6955	06	PULASKI	37 3	80 47W	1850	07	07		CH
RADFORD 3 N	6999	06	PULASKI	37 12	80 35W	1800	07	07		H
RICHLANDS	7174	06	TAZEWELL	37 6	81 48W	1910	07	07		H
RICHMOND INTL AP R	7201	02	HENRICO	37 30	77 19W	164	24	24		CHJ
ROANOKE 8 N	7278	05	ROANOKE	37 22	79 58W	1190	07	07		H
ROANOKE INTL AP R	7285	05	ROANOKE	37 19	79 58W	1175	24	24		CHJ
ROCKY MT R	7338	03	FRANKLIN	36 59	79 54W	1315	07	07		CH
SALTVILLE 1N	7506	06	SMYTH	36 53	81 46W	1733	07	07		H
SANDSTON	7541	02	HENRICO	37 33	77 17W	165	07	07		H
SOMERSET	7904	04	ORANGE	38 15	78 16W	510	07	07		H
SOUTH BOSTON	7925	03	HALIFAX	36 42	78 53W	340	07	07		H
SPERRYVILLE	7985	04	RAPPAHANNOCK	38 39	78 14W	750	06	06		H
STAFFORDSVILLE 3 ENE R	8022	06	GILES	37 16	80 43W	1950	07	07		CH
STAR TANNERY R	8046	04	FREDERICK	39 5	78 27W	950	07	07		CH
STAUNTON WATER TRMTMT PLT	8062	05	AUGUSTA	38 10	79 5W	169	08	08		H
STERLING RCS	8084	04	LOUDOUN	38 59	77 29W	288	07	07		H
STONY CREEK 2 N	8129	01	SUSSEX	36 58	77 24W	105	08	08		H
STUART	8170	03	PATRICK	36 38	80 15W	1375	07	07		H
SUFFOLK LAKE KILBY	8192	01	SUFFOLK	36 44	76 36W	22	24	24		H
TROUT DALE 3 SSE R	8547	06	GRAYSON	36 39	81 24W	2839	07	07		CH
TYE RIVER 1 SE	8600	03	NELSON	37 38	78 56W	720	07	07		H
VIENNA	8737	04	FAIRFAX	38 54	77 16W	418	07	07		H
WAKEFIELD 1NW R	8800	01	SUSSEX	36 59	77 0W	113	24	24		CH
WALKERTON 2 NW	8829	01	KING AND QUEEN	37 45	77 2W	50	18	18		H
WALLACETON LK DRUMMOND	8837	01	CHESAPEAKE	36 36	76 26W	20	08	08		H
WARRENTON 3 SE	8888	04	FAUQUIER	38 41	77 46W	500	08	08		H
WARSAW 2 NW	8894	01	RICHMOND	37 59	76 47W	140	18	18		H
WASHGTN DULLES INTL AP R	8903	04	LOUDOUN	38 56	77 28W	290	24	24		CHJ
WASHINGTON REAGAN AP R	8906	04	ARLINGTON	38 51	77 2W	10	24	24		CHJ
WAYNESBORO WTP	8941	05	WAYNESBORO	38 5	78 53W	1270	07	07		H
WEST POINT 2 NW	9025	01	KING WILLIAM	37 34	76 48W	20	17	17		H
WILLIAMSBURG 2 N R	9151	01	YORK	37 18	76 42W	70	24	24		CH
WILLIS R	9169	06	FLOYD	36 55	80 30W	2810		07		CH
WINCHESTER	9181	04	FREDERICK	39 11	78 9W	720	07	07		H
WINCHESTER 7 SE	9186	04	FREDERICK	39 11	78 7W	680	08	08		H
WINTERPOCK 4 W	9213	02	CHESTERFIELD	37 19	77 39W	300		07		H
WISE 3E R	9215	06	WISE	36 60	82 32W	2549	17	17		CH
WOODSTOCK 2 NE	9263	04	SHENANDOAH	38 54	78 28W	675	07	07		H
WOOLWINE R	9272	03	PATRICK	36 47	80 17W	1500		07		CH
WYTHEVILLE 1 S R	9301	06	WYTHE	36 56	81 6W	2450	07	07		CH

REFERENCE NOTES

STATION NAMES: Name of the city, town or locality. Figures and letters following the station names indicate the distance in miles and direction from the post office or town community center.

DIVISIONS: Areas within a state of similar climatological characteristics. Division averages are calculated using data from stations that record both temperature and precipitation (i.e. not precipitation alone).

NORMALS: The average value of the meteorological element over a time period. Effective 1 January 2002, the averaging period is 1971 to 2000. The normals for National Weather Service localities have been adjusted so as to be representative for the current observation site.

MONTHLY DEGREE DAY TOTALS: One heating (cooling) degree day is accumulated for each whole degree that the daily mean temperature is below (above) 65 degrees Fahrenheit.

PRECIPITATION: Values shown in hundredths of inches are water equivalent totals, i.e., total of liquid and melted frozen precipitation. In the "Monthly Summarized Data" table the total snow and sleet values shown in tenths of inches are unmelted amounts. The max depth on ground values of snow and sleet shown in whole inches are cumulative unmelted amounts. The number of days with .10, .50, 1.00 or more refers to water equivalents.

PRECIPITATION QUALITY CONTROL: The NCDC quality control process may flag precipitation data that are spatially inconsistent, exceed climatological limits, or are inconsistent with prevailing weather patterns.

TEMPERATURE: Original temperature values are given in the "Daily Temperature" table. Summary temperature information (averages, departures, extremes, monthly degree day totals) is based on the values labeled MAX/MIN.

WIND: (As shown in the "Evaporation and Wind" table) the total wind movement in miles over the evaporation pan as determined by an anemometer recorder located 6-8 inches above the pan.

SYMBOLS AND LETTERS USED IN THE STATION INDEX TABLE

- C Station is equipped with recording rain gage (R) but values in this bulletin are from a non-recording rain gage unless indicated by an R.
- G Observations appear in the "Soil Temperatures" table.
- H Observations appear in the "Snowfall and Snow on the Ground" table.
- J Station also published as a Local Climatological Data publication.
- VAR Observation time varies.
- SR Observation time near sunrise.
- SS Observation time near sunset.

SYMBOLS AND LETTERS USED IN THE DATA TABLES

(DAILY DATA ARE FOR THE 24 HOURS IMMEDIATELY PRECEDING OBSERVATION TIME.)

BLANK Entries in the "Monthly Summarized Data" table indicate no record.

BLANK Entries in the "Daily Precipitation" and "Snowfall and Snow on the Ground" tables indicate zero.

BLANK Entries in the "Daily Temperature" table indicate a missing record

- No record. Data not recorded or not received in time for publication.
- + Precipitation or temperature extremes occurred on one or more previous dates during the month.

* Rain gage not read. Precipitation is included in the amount following the asterisks. Time distribution may not be known. A * preceding the monthly total indicates precipitation amount is being carried forward to next month's total, and may include amounts from the previous month(s).

a As a subscript, indicates accumulated total.

A Amount of precipitation is the total of observer's entries for the current month. It may include precipitation that occurred during the previous month. Refer to earlier bulletin to determine date of last reading. (Hawaii stations)

F Monthly calculation flagged value. F is appended to average and/or total values computed which exclude one or more daily data values that have been flagged by the GHCN-Daily Dataset

g Indicates there were no stations reporting within climate division.

Spatial interpolation based on stations in surrounding climate divisions was used to estimate the divisional value.

M Insufficient or partial data. M is appended to average and/or total values computed with 1-9 daily values missing. M appears alone if 10 or more daily values are missing, (8 or more for wind and evaporation).

N Indicates snow fall or Snowdepth totals are computed with one or more missing days.

R Amounts from recording rain gage.

T Trace. An amount too small to measure.

SEASONAL TABLES: Monthly and seasonal snowfall and heating degree days for the 12 months ending with the June data are published in the July issue of this bulletin. Cooling degree days for the calendar year are published in the "Climatological Data Annual Summary."

Information concerning the history of changes in locations, exposure, etc. of substations is kept on file at the National Climatic Data Center. Historical information of regular National Weather Service Offices may be obtained from the "Local Climatological Data" annual publication. The contents of this publication may be reprinted or otherwise used freely, with proper credit to the National Climatic Data Center. The data are also available digitally.

Effective with the January 2011 Data-Month, COOP Observer Names are no longer included in the Monthly and Annual Climatological Data Publications. This information is not published to ensure the privacy of personal information pursuant to Section 208 of the E-Government Act of 2002 (44 USC 3601).

The GHCN-Daily Quality Control Flags shown below are displayed as superscripts with the data. For more information on Global Historical Climatology Network - Daily and flags, see:

<http://www.ncdc.noaa.gov/oa/climate/ghcn-daily/>
and

Comprehensive Automated Quality Assurance of Daily Surface Observations.

Durre, Imke, Matthew J. Menne, Byron E. Gleason, Tamara G. Houston,

Russell S. Vose, 2010: J. Appl. Meteor. Climatol., 49, 16151633.

doi: 10.1175/2010JAMC2375.1

Blank = Passed All checks

D = failed duplicate check

G = failed gap check

I = failed internal consistency check

K = failed streak/frequent-value check

L = failed check on length of multiday period

M = failed megaconsistency check

N = failed naught check

O = failed climatological outlier check

R = failed lagged range check

S = failed spatial consistency check

T = failed temporal consistency check

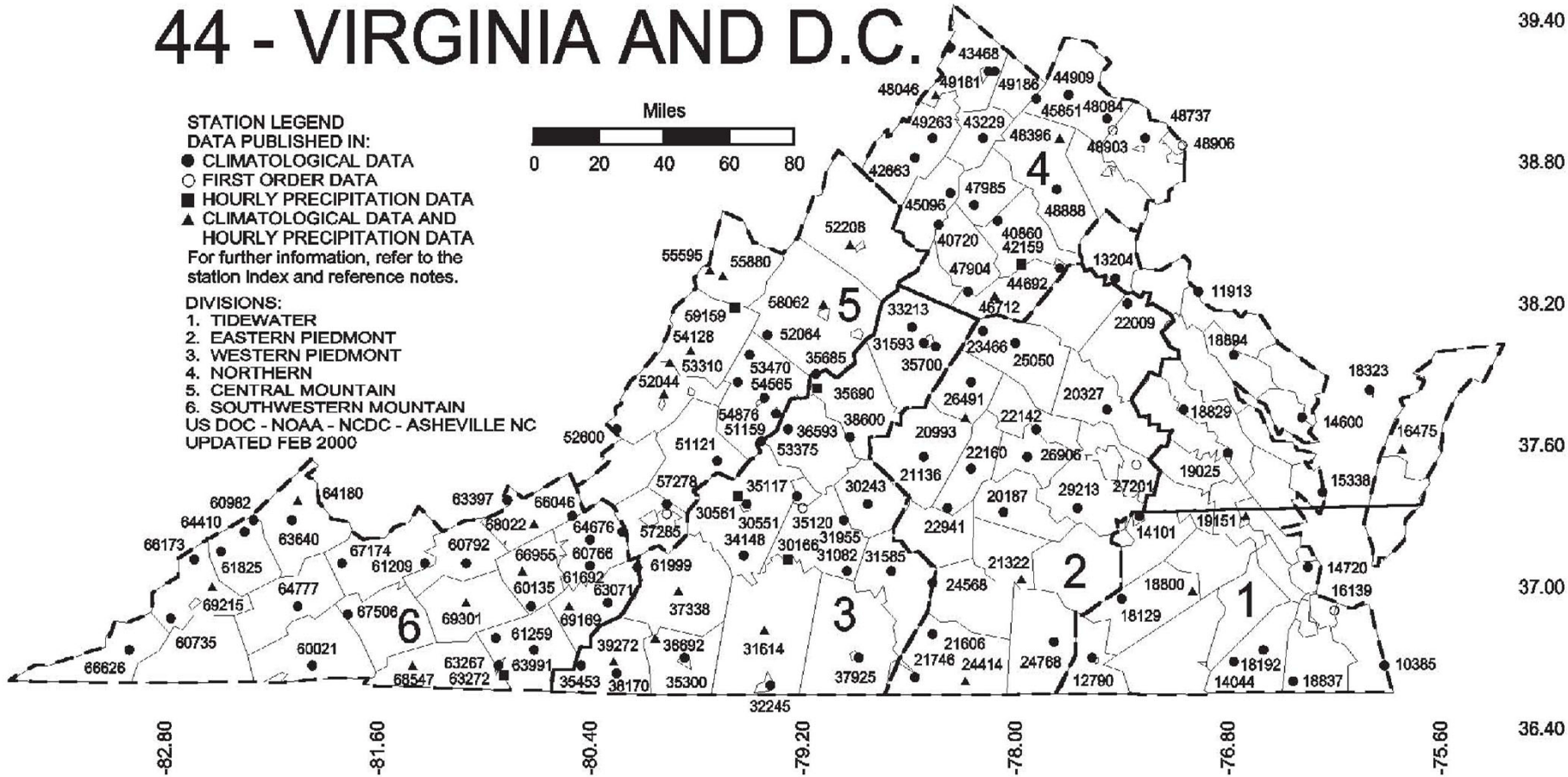
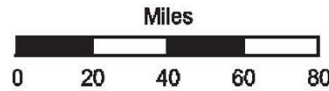
W = temperature too warm for snow

X = failed bounds check

44 - VIRGINIA AND D.C.

STATION LEGEND
DATA PUBLISHED IN:
 ● CLIMATOLOGICAL DATA
 ○ FIRST ORDER DATA
 ■ HOURLY PRECIPITATION DATA
 ▲ CLIMATOLOGICAL DATA AND HOURLY PRECIPITATION DATA
 For further information, refer to the station index and reference notes.

DIVISIONS:
 1. TIDEWATER
 2. EASTERN PIEDMONT
 3. WESTERN PIEDMONT
 4. NORTHERN
 5. CENTRAL MOUNTAIN
 6. SOUTHWESTERN MOUNTAIN
 US DOC - NOAA - NCDC - ASHEVILLE NC
 UPDATED FEB 2000



NOAA\National Climatic Data Center
Attn: User Engagement & Services Branch
151 Patton Avenue
Asheville, NC 28801-5001

Customer Services Number: (828) 271-4800, option 2
TDD : (828) 271-4010
Fax number: (828) 271-4876

NCDC now offers free online access to the *Climatological Data* publication.
Go to : www.ncdc.noaa.gov and choose Most Popular.