



CLIMATOLOGICAL DATA

MARYLAND AND DELAWARE

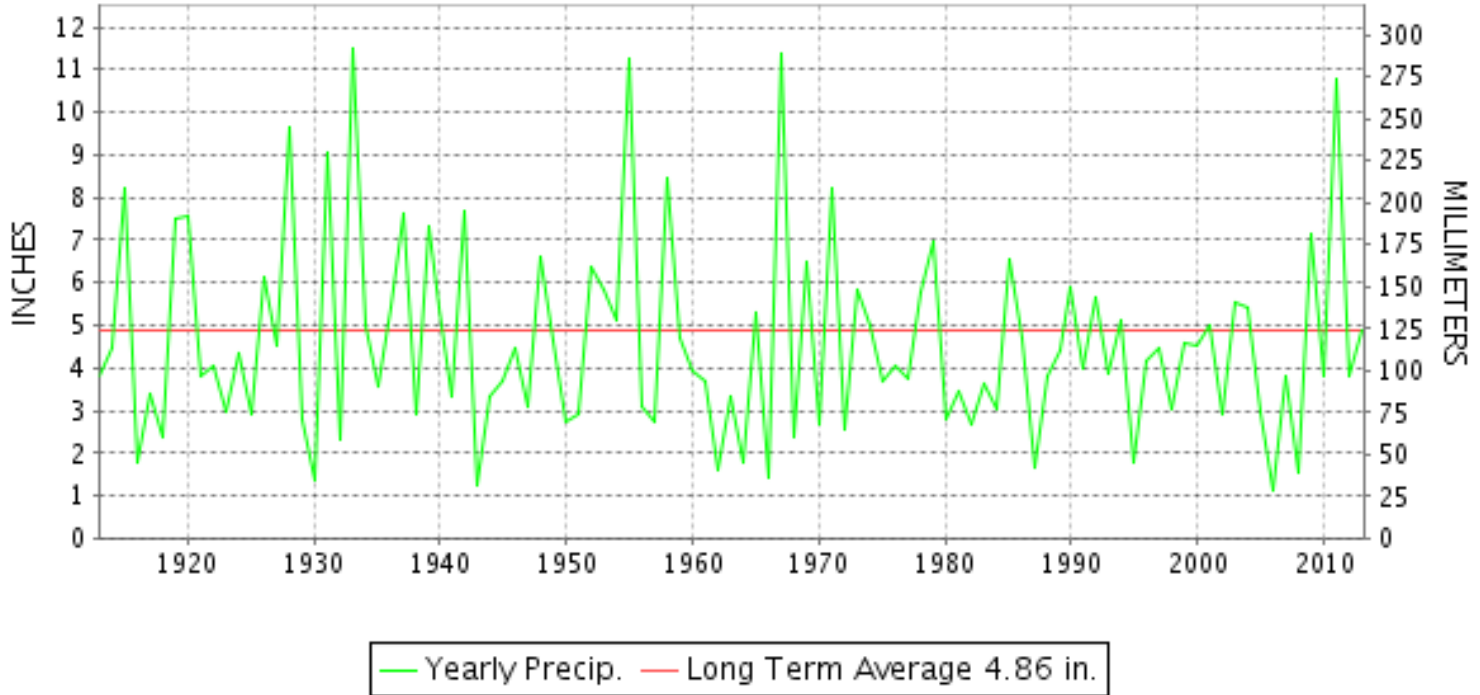
AUGUST 2013

VOLUME 117 NUMBER 08

ISSN 0145-0549

GHCND Ver: 3.12-upd-2013122706

AUGUST PRECIPITATION BY YEAR



TEMPERATURE AND PRECIPITATION EXTREMES

MARYLAND

HIGHEST TEMPERATURE	95	AUGUST 31	MARYLAND SCIENCE CENTER
LOWEST TEMPERATURE	45	AUGUST 16+	2 STATIONS
GREATEST TOTAL PRECIPITATION	9.67		SINES DEEP CREEK
LEAST TOTAL PRECIPITATION	1.13		BALTIMORE WASH INTL AP
GREATEST 1 DAY PRECIPITATION	5.32	AUGUST 01	SALISBURY FAA AP

"I certify that this is an official publication of the National Oceanic and Atmospheric Administration (NOAA) It is compiled using information from weather observing sites supervised by NOAA/National Weather Service and received at the National Climatic Data Center(NCDC), Asheville, North Carolina 28801."

Director
National Climatic Data Center

noaa

National
Oceanic and
Atmospheric Administration

National
Environmental Satellite, Data
and Information Service

National
Climatic Data Center
Asheville, North Carolina

DELAWARE

HIGHEST TEMPERATURE	90	AUGUST 27	WILMINGTON NEW CASTLE CO AP
LOWEST TEMPERATURE	53	AUGUST 15	WILMINGTON NEW CASTLE CO AP
GREATEST TOTAL PRECIPITATION	5.22		WILMINGTON NEW CASTLE CO AP
LEAST TOTAL PRECIPITATION	4.29		DOVER
GREATEST 1 DAY PRECIPITATION	3.10	AUGUST 13	WILMINGTON NEW CASTLE CO AP

MONTHLY STATION AND DIVISION SUMMARY

STATION	TEMPERATURE (°F)										PRECIPITATION (IN)																				
	AVERAGE MAXIMUM	AVERAGE MINIMUM	AVERAGE	DEPARTURE FROM NORMAL	HIGHEST	DATE	LOWEST	DATE	HEATING DEG. DAYS	COOLING DEG. DAYS	NO. OF DAYS				TOTAL	DEPARTURE FROM NORMAL	GREATEST 24 HOURS	DATE	ICE PELLETS, SNOW			NO. OF DAYS									
											MAX		MIN						TOTAL	MAX DEPTH ON GROUND	DATE	.10 OR MORE	.50 OR MORE	1.00 OR MORE							
											>=90	<=32	<=32	<=0																	
--DIVISIONAL DATA-----> APPALACHIAN MOUNTAIN 07			71.3	-2.2B										4.58	0.74B																
CUMBERLAND 2	84.4	61.5	72.9	-2.5	91	31	50	16+	4	257	2	0	0	0	5.07	1.90	0.92	28	0.0					8	6	0					
FROSTBURG 2	74.9	56.4	65.7	-2.1	84	31	46	15	47	73	0	0	0	0	5.64	2.04	0.89	13	0.0				11	5	0						
SHARPSBURG 5 S	80.9	59.3	70.1	-2.7	88	31	48	16+	12	178	0	0	0	0	* 3.60		0.60	08	0.0				9	2	0						
WILLIAMSPORT	81.8M	61.8M	71.8M	-2.3	88	13	50	16	2E	220E	0	0	0	0	A 2.86	-0.06	0.73	10	M 0.0	0			10	1	0						
--DIVISIONAL DATA-----> ALLEGHENY PLATEAU 08			70.1	-1.1B										4.29	0.84B																
OAKLAND 1 SE	75.7	55.2	65.5	-1.4	85	08	45	16	51	73	0	0	0	0	8.49	4.71	2.08	29	0.0	0			12	4	3						
SAVAGE RIVER DAM	75.9M	57.3M	66.6M	-2.5	82	12	48	17	28E	86E	0	0	0	0	M				0.0												
SINES DEEP CREEK	74.4	53.7	64.0		82	08	45	17+	66	45	0	0	0	0	9.67		3.04	29	0.0				13	6	3						
--DIVISIONAL DATA-----> DELAWARE NORTHERN 01			65.4	-1.7B										9.08	5.17B																
WILMINGTON NEW CASTLE CO AP	81.7	65.3	73.5	-1.7	90	27	53	15	0	270	1	0	0	0	5.22	1.97	3.10	13	0.0	0			6	2	2						
WILMINGTON PORTER RES	81.9	63.8	72.8	-1.8	88	21	57	15	0	250	0	0	0	0	4.55	0.88	2.10	13	0.0	0			7	2	2						
--DIVISIONAL DATA-----> SOUTHERN 02			73.2	-1.3B										4.89	1.17B																
DOVER	82.4	65.4	73.9	-2.2	89	09	55	16	0	282	0	0	0	0	A 4.29	-0.07	2.02	29	M 0.0	0			5	3	1						
--DIVISIONAL DATA----->			73.9	-0.9B										4.29	-0.60B																

DAILY PRECIPITATION (INCHES)

STATION	TOTAL	DAY OF MONTH																															
		01	02	03	04	05	06	07	08	09	10	11	12	13	14	15	16	17	18	19	20	21	22	23	24	25	26	27	28	29	30	31	
MARYLAND																																	
SOUTHERN																																	
EASTERN SHORE 01																																	
ASSATEAGUE	M	-	-	-	-	-	-	-	-	-	-	-	-	-	-	-	-	-	-	-	-	-	-	-	-	-	-	-	-	-	-	-	-
PRINCESS ANNE	M	2.17	-	-	-	0.82	0.08	-	-	-	-	0.12	-	-	-	-	-	-	-	-	-	0.15	-	-	-	-	-	-	-	-	-	-	-
SALISBURY 2N	M	-	-	-	-	-	-	-	-	-	-	-	-	-	-	-	-	-	-	-	-	-	-	-	-	-	-	-	-	-	-	-	
SALISBURY FAA AP	7.30	5.32	-	T	-	0.20	0.16	-	0.58	T	T	T	T	0.02	-	-	-	-	0.08	T	T	0.13	T	-	-	-	-	-	0.81	T	-	-	
SNOW HILL 4 N	M	-	-	-	-	-	-	-	-	-	-	-	-	-	-	-	-	-	-	-	-	-	-	-	-	-	-	-	-	-	-	-	
CENTRAL																																	
EASTERN SHORE 02																																	
ROYAL OAK 2 SSW	2.84	0.60	-	T	0.03	0.06	0.06	-	-	0.43	-	-	T	0.45	-	-	-	-	0.22	0.05	-	-	0.24	0.03	-	-	-	0.06	0.58	0.03	-	-	
LOWER SOUTHERN 03																																	
MECHANICSVILLE 5 NE	6.99	0.29	0.44	T	0.03	T	0.16	0.03	-	3.95	0.08	T	T	0.91	-	-	-	0.56	0.02	0.04	-	0.29	T	0.13	-	-	-	T	0.06	T	0.14		
SOLOMONS	MA 3.94	0.15	0.26	*	0.09 _a	0.06	0.12	-	-	1.59	0.10	-	-	0.20	-	-	-	0.51	0.10	0.02	-	0.53	-	-	0.01	-	-	-	0.06	0.14	-	-	
UPPER SOUTHERN 04																																	
BALTIMORE WASH INTL AP	1.13	0.38	-	0.03	-	0.13	0.10	0.08	0.01	0.01	-	-	0.33	-	-	-	-	0.02	-	-	0.01	-	0.02	-	-	-	T	0.01	T	-	-		
BELTSVILLE	3.14	0.37	0.03	0.11	-	0.06	0.03	0.02	0.17	-	-	-	0.08	1.29	-	-	-	0.02	0.05	-	-	0.02	0.02	0.06	-	T	-	0.83	-	-	-		
DALECARLIA RSVR	M 2.80	0.30	-	0.14	0.02	0.01	0.04	-	-	-	-	-	0.18	1.20	-	-	-	0.03	0.06	-	-	-	0.10	-	-	-	0.02	0.70	-	-	-		
LAUREL 3 W	1.96	0.34	0.07	0.07	0.14	0.04	0.15	0.31	-	-	-	-	0.46	-	-	-	-	0.05	-	-	-	0.03	0.02	-	-	-	0.28	-	-	-	-		
MARYLAND SCIENCE CENTER	1.67	0.47	0.12	-	0.08	0.17	0.35	0.33	-	-	-	-	0.07	-	-	-	-	0.02	-	-	-	0.01	0.01	-	-	0.02	0.03	-	-	-	-		
NATL ARBORETUM DC	M 2.51	0.39	0.11	0.12	0.07	-	-	-	T	-	-	-	T	1.40	-	-	-	0.09	0.11	-	-	0.06	-	0.04	-	T	0.02	0.10	-	-	-		
OXON HILL	2.08	0.48	0.63	0.02	T	0.05	-	T	0.05	T	0.05	T	0.31	-	-	-	0.13	0.06	-	-	0.21	-	0.13	-	-	0.13	T	0.01	0.01	-	-		
UPPER MARLBORO 3 NNW	A 2.43	0.34	0.71	0.10	0.06	0.13	-	*	*	0.00 _a	-	-	0.44	-	-	-	-	0.11	-	-	-	0.13	-	-	-	0.01	0.40	-	-	-	-		
NORTHERN CENTRAL 06																																	
ABERDEEN PHILLIPS FLD	6.68	0.54	2.02	0.05	-	2.44	0.61	0.08	0.05	-	-	0.01	0.07	-	-	-	-	0.01	-	-	-	0.04	-	0.04	-	0.02	0.74	-	-	-	-		
BRIGHTON DAM	2.63	0.35	-	0.19	0.15	0.18	0.30	0.05	0.24	-	-	0.09	0.05	-	-	-	-	0.03	-	-	-	-	0.06	-	-	-	0.94	-	-	-	-		
CONOWINGO DAM	7.38	0.26	1.57	-	0.49	0.69	0.15	0.36	-	-	-	0.66	0.50	-	-	-	-	-	-	-	-	-	-	-	-	-	2.70	-	-	-	-		
CYLBURN	A 3.13	0.44	0.09	-	0.16	0.14	0.80	0.48	0.80	*	*	0.13 _a	-	-	-	-	-	-	0.02	-	-	-	T	-	0.03	0.04	-	-	-	-	-		
DAMASCUS 3 SSW	M 2.10	0.11	0.30	-	0.38	0.13	0.47	0.02	T	-	-	0.28	-	-	-	-	-	0.02	-	-	0.02	0.02	0.09	-	T	0.26	-	-	-	-			
EMMITSBURG 2 SE	2.35	0.17	T	0.01	0.42	0.11	0.07	0.22	-	-	-	1.00	0.10	-	-	-	-	0.03	0.04	0.01	-	0.01	-	0.03	-	0.01	0.12	-	-	-	-		
FREDERICK 2 NNE	M	-	-	-	-	-	-	-	-	-	-	-	-	-	-	-	-	-	-	-	-	-	-	-	-	-	-	-	-	-	-	-	
MILLERS 4 NE	5.33	0.30	0.04	-	0.20	0.03	3.14	0.05	T	-	-	T	1.43	-	-	-	-	0.02	T	-	-	0.01	0.02	-	-	T	T	0.09	-	-	-		
SMITHSBURG 2NW	M	-	-	-	-	-	-	-	-	-	-	-	-	-	-	-	-	-	-	-	-	-	-	-	-	-	-	-	-	-	-	-	
WESTMINSTER	M	-	-	*	* 0.04 _a	-	-	-	-	-	-	-	-	-	-	-	-	-	-	-	-	-	-	-	-	-	-	-	-	-	-	-	
APPALACHIAN																																	
MOUNTAIN 07																																	
CUMBERLAND 2	5.07	0.09	-	0.01	0.09	0.55	0.70	0.52	0.01	-	-	0.80	0.03	-	-	-	-	0.09	0.26	-	-	0.02	-	0.61	-	0.92	0.37	-	-	-	-		
FROSTBURG 2	5.64	T	T	0.07	0.12	0.78	0.40	0.77	-	-	-	0.89	0.03	-	-	-	-	0.41	0.23	T	-	0.71	0.08	0.50	-	0.41	0.24	-	-	-	-		
SHARPSBURG 5 S	* 3.60	0.16	0.08	0.23	0.56	T	0.60	0.18	0.35	T	-	0.26	0.09	-	-	-	-	0.05	0.07	0.08	-	0.02	-	0.42	T	0.07	0.38	-	-	-	-		
WILLIAMSPORT	A 2.86	*	* 0.00 _a	0.13	0.01	0.21	0.22	0.22	0.73	0.02	-	0.40	0.25	-	-	-	-	0.06	0.22	0.07	-	-	-	0.22	-	0.10	*	0.00 _a	-	-	-		
ALLEGHENY PLATEAU 08																																	
OAKLAND 1 SE	8.49	0.07	0.11	0.02	0.11	0.28	0.74	0.33	-	-	-	2.00	0.02	-	-	-	-	0.45	0.06	0.13	-	0.40	0.02	0.42	-	1.25	2.08	-	-	-	-		

DAILY PRECIPITATION (INCHES)

STATION	TOTAL	DAY OF MONTH																															
		01	02	03	04	05	06	07	08	09	10	11	12	13	14	15	16	17	18	19	20	21	22	23	24	25	26	27	28	29	30	31	
SAVAGE RIVER DAM SINES DEEP CREEK	M 9.67	0.07	T 0.04	- -	- 0.25				- 0.51	0.56 1.45	- 0.67			- 2.00	0.06 0.25	-	-		0.19 0.12	0.18 0.13	-		0.45 0.16	T 0.19	0.39 0.29			T	0.25 0.50	0.56 3.04	-	-	
DELAWARE NORTHERN 01																																	
WILMINGTON NEW CASTLE CO AP	5.22	1.17		T		0.13	0.05	0.12	T	T		T	3.10						0.03	T			0.08	T				0.06	0.32		0.16		
WILMINGTON PORTER RES	4.55			T			0.20	0.25	T				2.10						0.45				0.12						1.28		0.15		
SOUTHERN 02																																	
DOVER	A 4.29	0.82	0.01	0.04		0.08	0.35		0.04			0.07		0.51				*	*	0.04 _a		0.06	0.17					0.06	2.02	0.02			

DAILY TEMPERATURES (°F)

STATION	OB. TIME	MAX/MIN	DAY OF MONTH																															AVERAGE	
			01	02	03	04	05	06	07	08	09	10	11	12	13	14	15	16	17	18	19	20	21	22	23	24	25	26	27	28	29	30	31		
MARYLAND SOUTHERN EASTERN SHORE 01 ASSATEAGUE	VA	MAX MIN																																	M M
PRINCESS ANNE	17	MAX MIN	83 71	88 69			82 63	80 64	85 68			90 72	90 76	88 61	78 59	78 54				78 66	85 69	88 69	87 73				83 59	90 70						M M	
SALISBURY 2N	17	MAX MIN																																	M M
SALISBURY FAA AP	24	MAX MIN	79 71	89 68	87 71	84 65	83 62	75 65	84 69	88 74	91 76	89 69	83 68	90 72	87 73	78 59	79 56	79 54	81 63	72 67	76 66	86 69	89 68	88 73	83 72	83 64	81 58	84 58	91 70	88 72	83 67	84 65	89 70	84.0 66.9	
SNOW HILL 4 N	17	MAX MIN																																	M M
CENTRAL EASTERN SHORE 02 ROYAL OAK 2 SSW	17	MAX MIN	80 70	85 67	82 68	83 67	80 60	75 65	84 67	86 75	92 76	83 69	84 66	88 68	85 72	78 61	75 57	80 53	80 56	77 64	76 60	83 62	87 68	87 70	79 70	82 59	80 55	85 60	88 71	87 70	84 70	85 63	88 72	82.8 65.5	
LOWER SOUTHERN 03 MECHANICSVILLE 5 NE	07	MAX MIN	79 62	77 66	83 65	80 65	80 56	77 56	72 63	81 65	83 70	89 72	80 68	86 68	82 60	72 54	73 53	76 53	75 57	71 62	71 62	82 68	84 68	84 58	76 58	78 58	76 58	81 60	86 68	81 70	86 63	81 63	81 63	79.3 62.6	
SOLOMONS	08	MAX MIN	82 70	79 70	87 73	82 69	81 65	80 66	80 66	84 72	87 77	93 72	83 72	81 73	87 75	84 64	75 61	76 63	78 66	79 65	71 68	71 71	82 87	84 88	84 79	76 80	78 80	81 79	86 84	81 88	86 84	81 73	81 73	81 69	79.3 69.0
UPPER SOUTHERN 04 BALTIMORE WASH INTL AP	24	MAX MIN	81 67	87 65	78 66	83 62	80 56	72 65	81 68	86 71	90 75	85 69	85 68	90 69	86 72	76 60	79 53	78 53	80 55	73 65	77 61	90 62	89 69	91 71	80 60	83 59	81 57	89 61	92 73	84 71	86 70	88 68	91 70	83.6 64.9	
BELTSVILLE	08	MAX MIN	80 67	82 68	86 65	77 64	80 56	80 63	72 68	84 71	86 76	90 67	85 67	83 67	88 73	86 59	74 53	78 54	78 56	78 66	72 60	75 61	87 66	89 70	87 67	87 60	81 56	81 58	87 67	89 72	82 71	84 69	85 71	85 71	82.0 65.1
DALECARLIA RSVR	08	MAX MIN	81 67	82 66	85 67	85 65	80 58	82 62	82 65	85 70	80 76	89 73	83 70	85 69	87 70	86 59	74 55	78 56	78 57	78 60	72 61	75 64	87 64	87 70	87 69	87 60	73 59	82 62	82 66	84 73	93 84	85 85	85 71	85 71	82.4 65.1
LAUREL 3 W	24	MAX MIN	82 67	86 69	78 68	82 63	82 60	72 65	83 68	86 72	89 75	85 73	86 71	91 70	86 72	76 58	79 56	81 58	74 64	76 62	90 62	90 70	90 70	79 65	85 61	85 59	89 63	92 72	82 72	87 71	87 69	87 71	90 71	83.9 66.3	
MARYLAND SCIENCE CENTER	24	MAX MIN	86 70	91 72	82 71	84 70	83 67	75 70	83 71	91 73	92 79	88 77	87 76	91 76	89 65	78 66	78 66	82 66	82 70	83 79	79 80	92 92	93 92	81 76	86 73	84 67	86 67	84 67	92 75	93 77	89 75	89 74	92 75	95 75	86.6 71.6
NATL ARBORETUM DC	07	MAX MIN	85 67	84 67	88 69	80 64	84 57	83 65	83 70	86 71	87 77	93 77	86 71	86 69	92 75	88 62	80 60	81 56	81 55	81 62	81 65	82 70	89 73	91 70	89 59	89 59	85 62	84 67	89 72	93 72	83 72	87 68	87 68	87 68	85.0 66.4
OXON HILL	08	MAX MIN	80 67	82 66	86 67	81 67	81 61	81 63	72 67	84 69	85 73	91 75	83 70	85 69	90 70	86 61	76 57	79 56	78 60	78 63	72 62	73 62	88 65	90 69	88 70	77 61	83 60	82 61	87 61	91 70	80 72	84 67	84 70	87 68	82.6 65.5
UPPER MARLBORO 3 NNW	08	MAX MIN	82 67	83 64	86 65	79 64	82 56	82 63	72 66	84 70	86 74			84 67	89 71	86 59	75 53	78 53	79 55	79 60	72 60	74 61	86 65	88 69	89 66	89 66	76 57	81 59	88 64	90 70	83 71	84 65	86 68	82.5 63.7	
NORTHERN CENTRAL 06 ABERDEEN PHILLIPS FLD	07	MAX MIN	83 65	81 64	83 64	76 64	80 59	78 60	68 66	79 68	87 70	88 72	82 65	84 67	88 72	85 61	76 57	79 59	79 58	78 60	74 62	75 65	85 68	87 68	85 71	79 62	81 57	80 58	84 65	89 71	84 72	89 69	84 69	85 69	81.5 64.6

DAILY TEMPERATURES (°F)

STATION	OB. TIME	MAX/MIN	DAY OF MONTH																															AVERAGE		
			01	02	03	04	05	06	07	08	09	10	11	12	13	14	15	16	17	18	19	20	21	22	23	24	25	26	27	28	29	30	31			
BRIGHTON DAM	08	MAX	80	82	83	75	79	78	71	80	83	86	81	83	85	82	82	76	77	71	74	85	85	85	74	80	80	84	87	77	82	84	80.4			
		MIN	62	62	64	60	54	61	64	64	69	69	66	66	71	55	51	52	53	62	59	59	61	68	65	56	54	57	69	69	67	67	61.7			
CONOWINGO DAM	07	MAX	78	77	82	81	78	77	68	77	84	84	80	81	83	80	73	74	76	78	73	74	82	85	86	76	79	77	83	85	81	82	83	79.3		
		MIN	62	65	64	64	57	58	61	66	67	69	65	65	68	59	55	54	55	57	60	61	63	66	67	60	58	58	58	67	70	67	67	62.4		
CYLBURN	08	MAX	78	78	82	73	77	75	69	78	85	87	83	86	84	80	75	73	76	78	70	74	84	86	84	73	77	79	84	84	80	80	86	79.3		
		MIN	64	67	67	62	58	63	64	68	73	76	71	71	71	58	55	55	56	58	62	63	65	66	68	59	58	61	69	70	70	69	70	64.7		
DAMASCUS 3 SSW	22	MAX	80	82	70	76	76	72	80	82	83	80	83	83	82	72	75	75	76	69	73	83	81	81	70	77	79	83	85	73	81	84	78.2			
		MIN	66	62	64	59	54	62	66	69	73	69	65	68	68	54	52	54	54	62	58	62	67	67	61	58	58	59	70	69	68	68	62.9			
EMMITSBURG 2 SE	07	MAX	80	82	88	87	82	82	74	83	83	84	85	87	88	83	76	77	79	81	69	75	86	87	85	77	80	82	85	89	76	84	86	82.0		
		MIN	59	62	64	59	55	55	60	66	67	65	63	68	68	54	48	48	48	56	57	57	58	59	66	56	51	58	57	71	68	64	67	59.8		
FREDERICK 2 NNE	07	MAX																																M		
		MIN																																	M	
MILLERS 4 NE	18	MAX	81	81	80	76	76	74	78	82	82	81	82	84	82	75	74	78	80	77	73	84	85	83	81	79	79	83	86	84	82	84	88	80.5		
		MIN	64	60	61	60	52	59	63	64	71	66	63	66	64	52	48	49	51	61	57	61	60	67	64	57	52	56	67	69	66	65	65	60.6		
SMITHSBURG 2NW	08	MAX																																	M	
		MIN																																	M	
WESTMINSTER	07	MAX					84							82		72																			M	
		MIN					56							55		50																				M
APPALACHIAN MOUNTAIN 07																																				
CUMBERLAND 2	18	MAX	85	88	87	76	83	84	84	88	85	85	88	89	89	86	73	77	83	81	75	83	87	87	89	79	86	86	90	89	75	88	91	84.4		
		MIN	61	62	63	58	56	57	63	69	69	66	64	64	66	54	50	50	53	56	61	64	61	61	68	63	56	56	61	71	71	66	66	61.5		
FROSTBURG 2	07	MAX	75	75	75	68	71	74	76	77	79	77	78	78	80	76	64	69	75	71	62	74	80	77	78	71	75	77	79	76	71	81	84	74.9		
		MIN	56	58	61	54	51	51	56	62	64	61	59	60	61	48	46	47	49	51	54	56	56	59	63	55	52	53	55	67	65	59	60	56.4		
SHARPSBURG 5 S	07	MAX	81	81	85	71	79	80	78	84	82	84	83	86	86	84	72	76	78	80	68	78	85	85	85	72	81	82	86	87	76	84	88	80.9		
		MIN	60	60	60	58	51	51	63	67	68	67	63	65	67	51	48	48	49	51	57	59	61	61	65	56	55	55	58	66	69	64	64	59.3		
WILLIAMSPORT	06	MAX			80	74	79	79	77	84	84	82	84	85	88	84	75	78	80	80	71	85	86	87	86	75	82	81	87	86		85	86	81.8		
		MIN			59	60	60	61	61	68	68	72	67	67	66	55	52	50	53	54	63	63	61	62	67	64	57	55	63	69		69	65	61.8		
ALLEGHENY PLATEAU 08																																				
OAKLAND 1 SE	07	MAX	72	77	75	70	72	73	78	85	80	76	80	82	79	74	64	67	72	72	68	74	78	81	78	78	76	77	79	74	75	79	83	75.7		
		MIN	54	57	60	57	46	49	53	62	64	64	59	54	63	48	46	45	47	47	59	56	54	58	62	50	50	50	52	67	66	56	56	55.2		
SAVAGE RIVER DAM	08	MAX	74	80		71	74	75	76		76		81	82		79			73	70	64		80	78	80	69	73	76	80	77	76	81	75.9			
		MIN	56	59		57	52	52	56		64		62	62		53			48	52	56		57	58	63	56	52	53	53	69	67	62	57.3			
SINES DEEP CREEK	07	MAX	73	74	74	66	70	72	78	82	78	76	77	80	78	74	67	68	73	69	70	74	75	79	77	71	75	75	77	73	73	78	81	74.4		
		MIN	52	55	57	55	47	46	53	55	60	62	58	57	60	45	46	45	45	46	56	54	54	54	61	51	49	49	50	63	64	58	57	53.7		
DELAWARE NORTHERN 01																																				
WILMINGTON NEW CASTLE CO AP	24	MAX	77	84	79	80	79	73	77	87	87	84	83	87	83	75	78	79	80	77	77	86	87	86	79	81	79	85	90	79	83	84	88	81.7		
		MIN	69	66	66	62	59	60	68	70	76	70	65	71	69	58	53	57	59	65	63	64	69	71	64	62	56	61	70	71	70	68	71	65.3		
WILMINGTON PORTER RES	24	MAX	81	84	84	84	84	84	84	87	87	82	84	84	80	73	76	79	79	74	75	86	88	86	76	79	81	86	87	77	79	82	86	81.9		
		MIN	62	62	62	62	60	60	60	60	60	71	67	67	67	59	57	59	61	64	63	63	63	72	69	63	59	61	70	69	69	67	70	63.8		

MARYLAND AND DELAWARE
201308

DAILY TEMPERATURES (°F)

STATION	OB. TIME	MAX/MIN	DAY OF MONTH																															AVERAGE
			01	02	03	04	05	06	07	08	09	10	11	12	13	14	15	16	17	18	19	20	21	22	23	24	25	26	27	28	29	30	31	
SOUTHERN 02 DOVER	16	MAX MIN	77 67	86 65	84 67	80 64	77 59	77 62	79 63	86 71	89 74	84 70	80 66	86 66	86 74	82 60	78 57	80 55	78 60	75 64	76 64	88 64	88 70	87 71	84 70	80 60	78 57	84 60	88 70	86 71	81 70	82 67	88 69	82.4 65.4

SNOWFALL AND SNOW ON GROUND (INCHES)

STATION		DAY OF MONTH																																
		01	02	03	04	05	06	07	08	09	10	11	12	13	14	15	16	17	18	19	20	21	22	23	24	25	26	27	28	29	30	31		
MARYLAND SOUTHERN EASTERN SHORE 01 ASSATEAGUE PRINCESS ANNE SALISBURY 2N SALISBURY FAA AP SNOW HILL 4 N	SNOWFALL SNOWFALL SNOWFALL SNOWFALL SN ON GND SNOWFALL																																	
DELAWARE NORTHERN 01 WILMINGTON NEW CASTLE CO AP WILMINGTON PORTER RES	SNOWFALL SN ON GND SNOWFALL SN ON GND																																	

Snowfall: Includes snow and ice. Values for NWS stations (J index note) are Mid-Mid (LST).
 Snow on ground: Includes snow, sleet, ice, and hail. Values for NWS stations (J index note) are observed at 12 UTC (GMT).
 Water Equivalent: Given for NWS stations (J index note) only, when snow depth is 2 inches or more, and is measured at 18 UTC (GMT)

PAN EVAPORATION AND WIND

STATION		DAY OF MONTH																															TOTAL OR AVERAGE
		01	02	03	04	05	06	07	08	09	10	11	12	13	14	15	16	17	18	19	20	21	22	23	24	25	26	27	28	29	30	31	
MARYLAND UPPER SOUTHERN 04 BELTSVILLE	WIND	52	28	37	36	66	23	38	58	74	67	21	33	47	62	75	26	22	36	25	38	21	50	44	21	49	35	53	53	46	35	79	1350
	EVAP	0.13	0.13	0.22	0.09	0.20	0.20	0.14	0.10	0.17	0.19	0.17	0.17	0.22	0.27	0.24	0.21	0.17	0.18	0.04	0.11	0.15	0.20	0.23	0.06	0.17	0.21	0.26	0.22	0.07	0.14	0.22	5.28
	MAX	82	82	87	74	82	83	71	82	86	88	82	81	86	72	68	70	70	82	73	76	88	90	87	74	78	77	86	88	78	85	86	80.4
	MIN	67	73	66	62	59	59	65	68	72	72	69	67	68	59	55	56	58	58	61	61	61	68	66	57	57	57	68	68	69	69	68	64.0
UPPER MARLBORO 3 NNW	WIND	-	-	-	-	-	-	-	-	-	-	-	-	-	-	-	-	-	-	-	-	-	-	-	-	-	-	-	-	-	-	M	
	EVAP	-	-	-	-	-	-	-	-	-	-	-	-	-	-	-	-	-	-	-	-	-	-	-	-	-	-	-	-	-	-	M	
	MAX	-	-	-	-	-	-	-	-	-	-	-	-	-	-	-	-	-	-	-	-	-	-	-	-	-	-	-	-	-	-	M	
	MIN	-	-	-	-	-	-	-	-	-	-	-	-	-	-	-	-	-	-	-	-	-	-	-	-	-	-	-	-	-	-	M	
ALLEGHENY PLATEAU 08 SAVAGE RIVER DAM	WIND	-	-	-	-	-	-	-	-	-	-	-	-	-	-	-	-	-	-	-	-	-	-	-	-	-	-	-	-	-	-	M	
	EVAP	-	-	-	-	-	-	-	-	-	-	-	-	-	-	-	-	-	-	-	-	-	-	-	-	-	-	-	-	-	-	M	
	MAX	-	-	-	-	-	-	-	-	-	-	-	-	-	-	-	-	-	-	-	-	-	-	-	-	-	-	-	-	-	-	-	
	MIN	-	-	-	-	-	-	-	-	-	-	-	-	-	-	-	-	-	-	-	-	-	-	-	-	-	-	-	-	-	-	M	

Evaporation: Is measured in hundredths of inches.

Wind: Is measured in miles.

Max and Min: The maximum and minimum temperatures (Fahrenheit) of the water in the evaporation pan.

STATION INDEX

STATION	INDEX NO.	DIVISION	COUNTY	LATITUDE	LONGITUDE	ELEVATION (IN FEET)	OBSERVATION TIME AND TABLES			
							LOCAL STD TIME			
							TEMP	PRECIP	EVAP	SPECIAL SEE (NOTES)
MARYLAND										
ABERDEEN PHILLIPS FLD	0015	06	HARFORD	39 28	76 10W	57	07	07		CH
ASSATEAGUE	0335	01	WORCESTER	38 4	75 13W	10	VAR	VAR		H
BALTIMORE WASH INTL AP R	0465	04	ANNE ARUNDEL	39 10	76 41W	156	24	24		HJ
BELTSVILLE	0700	04	PRINCE GEORGE'S	39 2	76 56W	145	08	08	08	CH
BRIGHTON DAM	1125	06	MONTGOMERY	39 11	77 0W	330	08	08		H
CONOWINGO DAM	2060	06	HARFORD	39 39	76 11W	40	07	07		H
CUMBERLAND 2	2282	07	ALLEGANY	39 39	78 45W	730	18	18		H
CYLBURN	2308	06	BALTIMORE	39 21	76 39W	235	08	08		H
DALECARLIA RSVR	2325	04	DISTRICT OF COLUMBIA	38 56	77 7W	150	08	08		H
DAMASCUS 3 SSW	2336	06	MONTGOMERY	39 16	77 14W	700	22	22		H
EMMITSBURG 2 SE	2906	06	FREDERICK	39 41	77 17W	403	07	07		H
FREDERICK 2 NNE	3353	06	FREDERICK	39 26	77 24W	280	07	07		H
FROSTBURG 2	3415	07	ALLEGANY	39 40	78 56W	2170	07	07		H
LAUREL 3 W	5111	04	PRINCE GEORGE'S	39 5	76 54W	400	24	24		H
MARYLAND SCIENCE CENTER R	5718	04	BALTIMORE (CITY)	39 17	76 37W	20	24	24		H
MECHANICSVILLE 5 NE	5865	03	ST. MARY'S	38 28	76 42W	100	07	07		H
MILLERS 4 NE	5934	06	CARROLL	39 43	76 48W	860	18	18		CH
NATL ARBORETUM DC	6350	04	DISTRICT OF COLUMBIA	38 55	76 58W	50	07	07		H
OAKLAND 1 SE	6620	08	GARRETT	39 25	79 24W	2420	07	07		H
OXON HILL	6800	04	PRINCE GEORGE'S	38 47	76 60W	120	08	08		H
PRINCESS ANNE	7330	01	SOMERSET	38 13	75 41W	20	17	17		H
ROYAL OAK 2 SSW	7806	02	TALBOT	38 43	76 11W	10	17	17		H
SALISBURY 2N	8004	01	WICOMICO	38 24	75 36W	20	17	17		H
SALISBURY FAA AP	8005	01	WICOMICO	38 20	75 31W	48	24	24		H
SAVAGE RIVER DAM	8065	08	GARRETT	39 31	79 8W	1495	08	08	08	CH
SHARPSBURG 5 S	8207	07	WASHINGTON	39 24	77 43W	500	07	07		H
SINES DEEP CREEK	8315	08	GARRETT	39 31	79 25W	2040	07	07		H
SMITHSBURG 2NW	8371	06	WASHINGTON	39 40	77 35W	670	08	08		H
SNOW HILL 4 N	8380	01	WORCESTER	38 14	75 23W	30	17	17		H
SOLOMONS	8405	03	CALVERT	38 19	76 27W	12	08	08		H
UPPER MARLBORO 3 NNW	9070	04	PRINCE GEORGE'S	38 51	76 46W	130	08	08	08	H
WESTMINSTER	9440	06	CARROLL	39 34	76 59W	750	07	07		H
WILLIAMSPORT	9570	07	WASHINGTON	39 37	77 51W	360	06	06		H
DELAWARE										
DOVER	2730	02	KENT	39 15	75 31W	30	16	16		H
WILMINGTON NEW CASTLE CO AP R	9595	01	NEW CASTLE	39 40	75 36W	79	24	24		HJ
WILMINGTON PORTER RES	9605	01	NEW CASTLE	39 46	75 32W	270	24	24		H

REFERENCE NOTES

STATION NAMES: Name of the city, town or locality. Figures and letters following the station names indicate the distance in miles and direction from the post office or town community center.

DIVISIONS: Areas within a state of similar climatological characteristics. Division averages are calculated using data from stations that record temperature and/or precipitation. Station Precipitation totals flagged with an 'F' or 'M' are excluded from the Divisional Average calculations of precipitation. Stations with monthly Temperature averages flagged with an 'F' or 'M' are included in the Divisional Average if there are no more than 9 flagged or missing daily values in the month, else they are excluded from the divisional average for temperature.

NORMALS: The average value of the meteorological element over a time period. Effective 1 January 2012, the averaging period is 1981 to 2010. The normals for National Weather Service localities have been adjusted so as to be representative for the current observation site.

MONTHLY DEGREE DAY TOTALS: One heating (cooling) degree day is accumulated for each whole degree that the daily mean temperature is below (above) 65 degrees Fahrenheit.

PRECIPITATION: Values shown in hundredths of inches are water equivalent totals, i.e., total of liquid and melted frozen precipitation. In the "Monthly Summarized Data" table the total snow and sleet values shown in tenths of inches are unmelted amounts. The max depth on ground values of snow and sleet shown in whole inches are cumulative unmelted amounts. The number of days with .10, .50, 1.00 or more refers to water equivalents.

PRECIPITATION QUALITY CONTROL: The NCDC quality control process may flag precipitation data that are spatially inconsistent, exceed climatological limits, or are inconsistent with prevailing weather patterns.

TEMPERATURE: Original temperature values are given in the "Daily Temperature" table. Summary temperature information (averages, departures, extremes, monthly degree day totals) is based on the values labeled MAX/MIN.

WIND: (As shown in the "Evaporation and Wind" table) the total wind movement in miles over the evaporation pan as determined by an anemometer recorder located 6-8 inches above the pan.

SYMBOLS AND LETTERS USED IN THE STATION INDEX TABLE

C Station is equipped with recording rain gage (R) but values in this bulletin are from a non-recording rain gage unless indicated by an R.

G Observations appear in the "Soil Temperatures" table.

H Observations appear in the "Snowfall and Snow on the Ground" table.

J Station also published as a Local Climatological Data publication.

VAR Observation time varies.

SR Observation time near sunrise.

SS Observation time near sunset.

SYMBOLS AND LETTERS USED IN THE DATA TABLES

(DAILY DATA ARE FOR THE 24 HOURS IMMEDIATELY PRECEDING OBSERVATION TIME.)

BLANK Entries in the "Monthly Summarized Data" table indicate no record.

BLANK Entries in the "Daily Precipitation" and "Snowfall and Snow on the Ground" tables indicate zero.

BLANK Entries in the "Daily Temperature" table indicate a missing record

- No record. Data not recorded or not received in time for publication.

+ Precipitation or temperature extremes occurred on one or more previous dates during the month.

* Rain gage not read. Precipitation is included in the amount following the asterisks.

Time distribution may not be known. A * preceding the monthly total indicates precipitation amount is being carried forward to next month's total, and may include amounts from the previous month(s).

a As a subscript, indicates accumulated total.

A Amount of precipitation is the total of observer's entries for the current month. It may include precipitation that occurred during the previous month. Refer to earlier bulletin to determine date of last reading. (Hawaii stations)

B Divisional Departure from normals are computed using 1971-2000 normals.

E Normalized HDD/CDD Calculation. E is appended to the HDD/CDD Calculation when 1-9 individual daily TMAX and/or TMIN values are missing and a Normalized HDD/CDD Calculation is provided. M appears alone if 10 or more daily values are missing.

F Monthly calculation flagged value. F is appended to average and/or total values computed which exclude one or more daily data values that have been flagged by the GHCN-Daily Dataset

M Insufficient or partial data. M is appended to average and/or total values computed with 1-9 daily values missing. M appears alone if 10 or more daily values are missing, (8 or more for wind and evaporation).

N Indicates snow fall or Snowdepth totals are computed with one or more missing days.

R Amounts from recording rain gage.

T Trace. An amount too small to measure.

SEASONAL TABLES: Monthly and seasonal snowfall and heating degree days for the 12 months ending with the June data are published in the July issue of this bulletin. Cooling degree days for the calendar year are published in the "Climatological Data Annual Summary."

Information concerning the history of changes in locations, exposure, etc. of substations is kept on file at the National Climatic Data Center. Historical information of regular National Weather Service Offices may be obtained from the "Local Climatological Data" annual publication. The contents of this publication may be reprinted or otherwise used freely, with proper credit to the National Climatic Data Center. The data are also available digitally.

Effective with the January 2011 Data-Month, COOP Observer Names are no longer included in the Monthly and Annual Climatological Data Publications. This information is not published to ensure the privacy of personal information pursuant to Section 208 of the E-Government Act of 2002 (44 USC 3601).

As of the 2011 Data-Year, Station and Climate Division Maps are no longer being included in the CD Publications. NCDC's Product Development Branch provides updated Station Maps for various data networks via the Historical Observing Metadata Repository: <http://www.ncdc.noaa.gov/homr>.

The GHCN-Daily Quality Control Flags shown below are displayed as superscripts with the data. For more Information on Global Historical Climatology Network - Daily and flags, see: <http://www.ncdc.noaa.gov/oa/climate/ghcn-daily/> and

Comprehensive Automated Quality Assurance of Daily Surface Observations.

Durre, Imke, Matthew J. Menne, Byron E. Gleason, Tamara G. Houston,

Russell S. Vose, 2010: J. Appl. Meteor. Climatol., 49, 1615-1633.

doi: 10.1175/2010JAMC2375.1

Blank = Passed All checks

D = failed duplicate check

G = failed gap check

I = failed internal consistency check

K = failed streak/frequent-value check

L = failed check on length of multiday period

M = failed megaconsistency check

N = failed naught check

O = failed climatological outlier check

R = failed lagged range check

S = failed spatial consistency check

T = failed temporal consistency check

W = temperature too warm for snow

X = failed bounds check

Z = flagged as a result of an official Datzilla investigation

Beginning with the January 2013 CD Publication, monthly mean temperature calculations have changed to the National Data Stewardship Team standard. Monthly maximum and minimum temperatures are not rounded until after the monthly mean temperature is calculated. This is the most accurate outcome, but may be slightly different from the mean derived from rounded monthly maximum and minimum.

Processing Updates and Errata: The 2011 CD Publications were reproduced in May 2013. This update included the addition of late reports and corrections based on additional investigations of reported data issues through NCDC's Datzilla system. In addition, divisional averages for precipitation were recalculated using the method described in DIVISIONS above. Previous editions of the 2011 Publications included all precipitation stations regardless of missing data in the calculation of divisional averages. HDD/CDD values were recalculated to match the legacy method of calculation (truncation of monthly HDD/CDD values instead of rounding).

These and other publications are available from the National Climatic Data Center

Hourly Precipitation Data

This publication contains hourly precipitation amounts obtained from recording rain gages located at National Weather Service, Federal Aviation Administration, and cooperative observer stations. Published data are displayed in inches and tenths or inches and hundredths at local standard time. HPD includes maximum precipitation for nine (9) time periods from 15 minutes to 24 hours, for selected stations.

Climatological Data

Monthly editions contain station daily maximum and minimum temperatures and precipitation. Some Stations provide daily snowfall, snow depth, evaporation, and soil temperature data. Each edition also contains monthly summaries for heating and cooling degree days (65 degree F base). The July issue contains a recap of monthly heating degree days and snow data for the preceding July through June.

The Annual issue contains monthly and annual averages of temperature, precipitation, temperature extremes, freeze data, soil temperatures, evaporation, and a recap of monthly cooling degree days.

Storm Data

Monthly issues contain a chronological listing, by states, of occurrences of storms and unusual weather phenomena. Reports contain information on storm paths, deaths, injuries, and property damage. An "Outstanding storms of the month" section highlights severe weather events with photographs, illustrations, and narratives. The December issue includes annual tornado, lightning, flash flood, and tropical cyclone summaries.

Monthly Climatic Data for the World

This publication contains monthly means for temperature, pressure, precipitation, vapor pressure, and sunshine for approximately 2,000 surface data collection stations worldwide and monthly mean upper air temperatures, dew point depressions, and wind velocities for approximately 500 observing sites.

Local Climatological Data

LCD publications summarize temperature, relative humidity, precipitation, cloudiness, wind speed and direction observations for several hundred cities in the U.S. and its territories. Each monthly publication also contains 3 hourly weather observations for that month and a hourly summary of precipitation. Annual LCD publications contain a summary of the past calendar year as well as historical averages and extremes.

For Information Call:

(828) 271-4800 Option 2

(828) 271-4010 (TDD)

(828) 271-4876 (Fax)

NOAA\National Climatic Data Center
Attn: User Engagement & Services Branch
151 Patton Avenue
Asheville, NC 28801-5001

Customer Services Number: (828) 271-4800, option 2
TDD : (828) 271-4010
Fax number: (828) 271-4876

NCDC now offers free online access to the *Climatological Data* publication.
Go to : www.ncdc.noaa.gov and choose Most Popular.