



CLIMATOLOGICAL DATA

MARYLAND AND DELAWARE

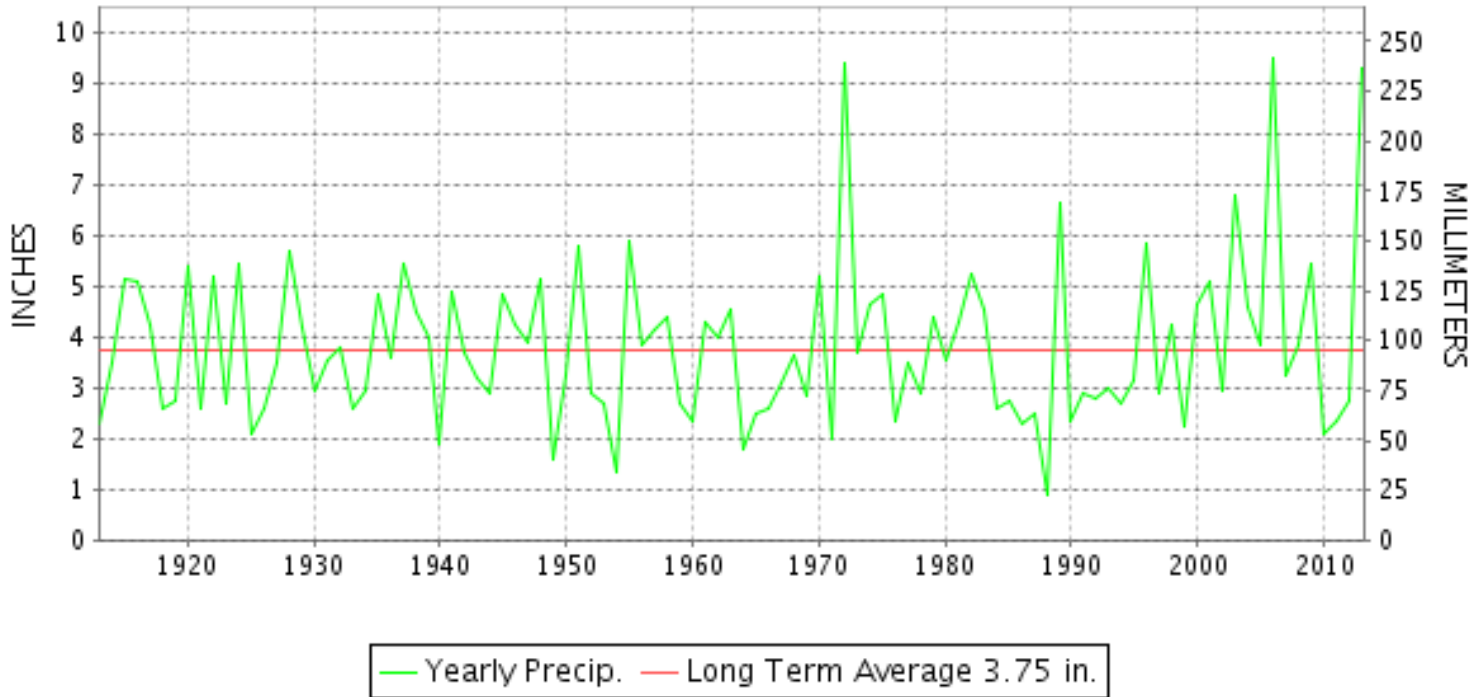
JUNE 2013

VOLUME 117 NUMBER 06

ISSN 0145-0549

GHCND Ver: 3.12-upd-2013102505

JUNE PRECIPITATION BY YEAR



TEMPERATURE AND PRECIPITATION EXTREMES

MARYLAND

| | | | |
|------------------------------|-------|----------|-------------------------|
| HIGHEST TEMPERATURE | 96 | JUNE 25+ | MARYLAND SCIENCE CENTER |
| LOWEST TEMPERATURE | 41 | JUNE 05 | SINES DEEP CREEK |
| GREATEST TOTAL PRECIPITATION | 10.92 | | OXON HILL |
| LEAST TOTAL PRECIPITATION | 3.83 | | SHARPSBURG 5 S |
| GREATEST 1 DAY PRECIPITATION | 5.07 | JUNE 10 | DAMASCUS 3 SSW |

"I certify that this is an official publication of the National Oceanic and Atmospheric Administration (NOAA) It is compiled using information from weather observing sites supervised by NOAA/National Weather Service and received at the National Climatic Data Center(NCDC), Asheville, North Carolina 28801."

Director
National Climatic Data Center

noaa

National
Oceanic and
Atmospheric Administration

National
Environmental Satellite, Data
and Information Service

National
Climatic Data Center
Asheville, North Carolina

DELAWARE

| | | |
|------------------------------|-------|----------|
| HIGHEST TEMPERATURE | 92 | JUNE 25+ |
| LOWEST TEMPERATURE | 50 | JUNE 06 |
| GREATEST TOTAL PRECIPITATION | 13.66 | |
| LEAST TOTAL PRECIPITATION | 12.23 | |
| GREATEST 1 DAY PRECIPITATION | 3.47 | JUNE 07 |

2 STATIONS
DOVER
WILMINGTON NEW CASTLE CO AP
WILMINGTON PORTER RES
WILMINGTON PORTER RES

MONTHLY STATION AND DIVISION SUMMARY

| STATION | TEMPERATURE (°F) | | | | | | | | | | | PRECIPITATION (IN) | | | | | | | | | | | | | | | |
|---|--------------------|--------------------|---------|--------------------------|---------|------|--------|------|----------------------|----------------------|-------------|--------------------|------|-------|--------|--------------------------|----------------------|------|-------------------|------------------------|------|-------------|-------------|--------------|---|---|--|
| | AVERAGE MAXIMUM | AVERAGE MINIMUM | AVERAGE | DEPARTURE FROM NORMAL | HIGHEST | DATE | LOWEST | DATE | HEATING DEG. DAYS | COOLING DEG. DAYS | NO. OF DAYS | | | | TOTAL | DEPARTURE FROM NORMAL | GREATEST 24 HOURS | DATE | ICE PELLETS, SNOW | | | NO. OF DAYS | | | | | |
| | | | | | | | | | | | MAX | | MIN | | | | | | TOTAL | MAX DEPTH ON GROUND | DATE | .10 OR MORE | .50 OR MORE | 1.00 OR MORE | | | |
| | | | | | | | | | | | >=90 | <=32 | <=32 | <=0 | | | | | | | | | | | | | |
| --DIVISIONAL DATA-----> APPALACHIAN MOUNTAIN 07 | | | 71.5 | 0.8B | | | | | | | | | | 7.23 | 3.18B | | | | | | | | | | | | |
| CUMBERLAND 2 | 84.0 | 61.2 | 72.6 | 0.0 | 95 | 01 | 49 | 04 | 2 | 236 | 7 | 0 | 0 | 0 | 3.96 | 0.68 | 1.28 | 28 | 0.0 | | | | 8 | 3 | 1 | | |
| FROSTBURG 2 | 75.4 | 57.1 | 66.3 | 1.2 | 87 | 01 | 43 | 04 | 43 | 88 | 0 | 0 | 0 | 0 | 4.22 | 0.22 | 0.96 | 28 | 0.0 | | | | 10 | 2 | 0 | | |
| SHARPSBURG 5 S | 81.6 | 59.9 | 70.8 | 0.6 | 90 | 26+ | 47 | 05+ | 6 | 186 | 2 | 0 | 0 | 0 | A 3.83 | -0.05 | 0.81 | 07 | 0.0 | | | | 6 | 3 | 0 | | |
| WILLIAMSPORT | 83.5M | 61.3M | 72.4M | 1.9 | 94 | 26 | 51 | 06+ | 2E | 233E | 4 | 0 | 0 | 0 | A 4.13 | 0.35 | 0.99 | 11 | M 0.0 | 0 | | | | 6 | 3 | 0 | |
| --DIVISIONAL DATA-----> ALLEGHENY PLATEAU 08 | | | 70.5 | 2.0B | | | | | | | | | | 4.04 | 0.52B | | | | | | | | | | | | |
| OAKLAND 1 SE | 76.1 | 56.8 | 66.4 | 2.0 | 85 | 24+ | 42 | 04 | 39 | 90 | 0 | 0 | 0 | 0 | 6.37 | 1.95 | 1.25 | 29 | 0.0 | 0 | | | | 10 | 6 | 4 | |
| SAVAGE RIVER DAM | 76.5M | 57.2M | 66.9M | 0.7 | 87 | 01 | 44 | 04 | 33E | 93E | 0 | 0 | 0 | 0 | M 3.88 | -0.02 | 0.81 | 07 | 0.0 | | | | 8 | 4 | 0 | | |
| SINES DEEP CREEK | 74.6 | 53.8 | 64.2 | | 86 | 02 | 41 | 05 | 62 | 43 | 0 | 0 | 0 | 0 | 4.98 | | 1.00 | 28 | 0.0 | | | | 13 | 2 | 1 | | |
| --DIVISIONAL DATA-----> | | | 65.8 | 1.4B | | | | | | | | | | 5.68 | 1.47B | | | | | | | | | | | | |
| DELAWARE NORTHERN 01 | | | | | | | | | | | | | | | | | | | | | | | | | | | |
| WILMINGTON NEW CASTLE CO AP | 82.5 | 63.9 | 73.2 | 1.0 | 92 | 25 | 52 | 05 | 0 | 253 | 4 | 0 | 0 | 0 | 13.66 | 9.78 | 3.36 | 07 | 0.0 | 0 | | | | 12 | 8 | 6 | |
| WILMINGTON PORTER RES | 81.5 | 63.5 | 72.5 | 0.8 | 90 | 26+ | 55 | 14 | 0 | 233 | 4 | 0 | 0 | 0 | 12.23 | 8.04 | 3.47 | 07 | 0.0 | | | | | 16 | 8 | 5 | |
| --DIVISIONAL DATA-----> | | | 72.9 | 1.5B | | | | | | | | | | 12.95 | 9.05B | | | | | | | | | | | | |
| SOUTHERN 02 | | | | | | | | | | | | | | | | | | | | | | | | | | | |
| DOVER | 82.7 | 64.3 | 73.5 | 0.2 | 92 | 26+ | 50 | 06 | 1 | 263 | 4 | 0 | 0 | 0 | * 9.41 | | 2.69 | 07 | 0.0 | | | | | 12 | 5 | 5 | |
| --DIVISIONAL DATA-----> | | | 73.5 | 1.8B | | | | | | | | | | 9.41 | 6.00B | | | | | | | | | | | | |

DAILY PRECIPITATION (INCHES)

| STATION | TOTAL | DAY OF MONTH | | | | | | | | | | | | | | | | | | | | | | | | | | | | | | | | | | |
|-----------------------------|---------|--------------|------|-------------------|-------------------|----|------|------|------|-------------------|-------------------|-------------------|------|------|-------------------|------|-------------------|-------------------|------|-------------------|------|------|------|-------------------|------|-------------------|------|------|------|------|-------------------|------|------|------|-------------------|--|
| | | 01 | 02 | 03 | 04 | 05 | 06 | 07 | 08 | 09 | 10 | 11 | 12 | 13 | 14 | 15 | 16 | 17 | 18 | 19 | 20 | 21 | 22 | 23 | 24 | 25 | 26 | 27 | 28 | 29 | 30 | 31 | | | | |
| MARYLAND | | | | | | | | | | | | | | | | | | | | | | | | | | | | | | | | | | | | |
| SOUTHERN | | | | | | | | | | | | | | | | | | | | | | | | | | | | | | | | | | | | |
| EASTERN SHORE 01 | | | | | | | | | | | | | | | | | | | | | | | | | | | | | | | | | | | | |
| ASSATEAGUE | M | - | - | - | - | - | - | - | - | - | - | - | - | - | - | - | - | - | - | - | - | - | - | - | - | - | - | - | - | - | - | - | - | - | | |
| PRINCESS ANNE | MA 5.95 | - | - | 0.57 | | | | 2.04 | - | - | 0.51 | | 0.56 | | - | * | 0.16 _a | 1.42 | | | | | | | | | | | | | | 0.69 | - | - | | |
| SALISBURY 2N | 8.96 | | | 0.92 | | | | 1.04 | 1.55 | 0.01 | 0.35 | 0.03 | 0.55 | 0.20 | | | 0.05 | 0.25 | 0.81 | 0.02 | | | | | | | | | | 0.05 | 1.78 | 1.35 | | | | |
| SALISBURY FAA AP | 9.92 | | 0.09 | 1.19 | T | | T | 1.58 | 0.56 | | 0.55 | | 0.67 | 0.04 | | 1.03 | 0.04 | 1.10 | | | | | T | | | | | T | 2.29 | 0.07 | 0.71 | | | | | |
| SNOW HILL 4 N | 6.45 | | 0.30 | | | | | 1.20 | 0.74 | | 0.35 | 0.14 | | | | | 0.50 | 0.06 | 2.20 | | | | 0.50 | | | | | | | 0.07 | 0.08 | | | | | |
| CENTRAL | | | | | | | | | | | | | | | | | | | | | | | | | | | | | | | | | | | | |
| EASTERN SHORE 02 | | | | | | | | | | | | | | | | | | | | | | | | | | | | | | | | | | | | |
| ROYAL OAK 2 SSW | 9.23 | | T | 1.15 | | | | 2.65 | 0.75 | | 0.35 | 0.52 | | 0.09 | 0.25 | | | 0.20 | 0.79 | | | | | 0.19 | 0.11 | | 0.09 | 0.09 | 1.25 | 0.75 | | | | | | |
| LOWER SOUTHERN 03 | | | | | | | | | | | | | | | | | | | | | | | | | | | | | | | | | | | | |
| MECHANICSVILLE 5 NE | 7.09 | | | 1.02 | | | | 1.44 | 0.73 | | 0.54 | 0.80 | | 0.52 | 0.12 | T | | 0.14 | | 0.74 | | | | 0.05 | 0.23 | 0.08 | | T | 0.04 | 0.64 | | | | | | |
| SOLOMONS | A 7.12 | | | 0.14 | 0.07 | | | 0.15 | * | 2.52 _a | 0.07 | 1.02 | | 0.03 | 0.62 | | | 0.04 | 0.01 | 1.69 | | | | 0.06 | 0.15 | T | | | T | * | 0.55 _a | | | | | |
| UPPER SOUTHERN 04 | | | | | | | | | | | | | | | | | | | | | | | | | | | | | | | | | | | | |
| BALTIMORE WASH INTL AP | 7.81 | | 0.24 | 0.44 | | | 0.18 | 2.25 | T | T | 1.80 | | T | 1.30 | 0.04 | | 0.01 | | 0.35 | T | | | 0.04 | 0.02 | 0.06 | 0.34 | 0.66 | 0.02 | | | | | 0.06 | | | |
| BELTSVILLE | 7.60 | | | 0.85 | 0.12 | | | 1.90 | 0.73 | | 0.61 | 1.55 | | | 0.45 | | | | | | | | | | 0.39 | T | 0.02 | 0.31 | 0.02 | 0.49 | | | | | | |
| DALECARLIA RSVR | 8.40 | | | 0.86 | 0.03 | | | 1.90 | 0.80 | | 0.52 | 1.41 | | | 0.28 | | | | | | | | | T | 0.49 | 0.02 | 0.02 | 0.35 | 0.30 | 1.19 | | | | | | |
| LAUREL 3 W | 5.76 | | 0.60 | 0.46 | | | 0.25 | 2.26 | | | 0.20 | | | 0.57 | | | | | 0.43 | | | | 0.29 | 0.05 | | 0.46 | 0.01 | 0.10 | | | | | | 0.08 | | |
| MARYLAND SCIENCE CENTER | 8.68 | | 0.24 | 0.84 | | | 0.16 | 2.05 | | | 3.22 | | 1.06 | 0.03 | | | | | 0.14 | | | | 0.06 | | 0.18 | 0.46 | 0.07 | 0.10 | | | | | | 0.07 | | |
| NATL ARBORETUM DC | 8.76 | | | 0.97 | 0.06 | | | 1.65 | 0.80 | | 0.59 | 1.86 | | 0.41 | | | | | | | | | T | 0.46 | | 0.06 | 0.10 | 0.24 | 1.33 | | | T | | | | |
| OXON HILL | 10.92 | | | 1.07 | 0.36 | | | 1.24 | 0.99 | 0.02 | 1.14 | 2.19 | | 0.05 | | T | | T | | 0.02 | 0.38 | | | T | 0.30 | 0.05 | T | 0.02 | 0.78 | 2.31 | | | | | | |
| UPPER MARLBORO 3 NNW | 9.05 | | | 1.65 | 1.01 | | | 1.39 | 1.13 | | 0.46 | 0.98 | | | 0.13 | | | | | 0.03 | 0.31 | | | | 0.04 | 0.08 | 0.20 | 0.01 | 0.11 | 0.35 | 1.17 | | | | | |
| NORTHERN CENTRAL 06 | | | | | | | | | | | | | | | | | | | | | | | | | | | | | | | | | | | | |
| ABERDEEN PHILLIPS FLD | A 9.44 | | | 0.69 | 0.65 | | | 2.31 | * | * | 2.05 _a | 0.87 | | | 1.52 | 0.05 | | | | | | | | | T | | 0.06 | 0.03 | 0.73 | 0.34 | | | | | | |
| BRIGHTON DAM | 8.03 | | | 1.27 | 0.52 | | | 1.30 | 0.76 | | 0.43 | 1.45 | | 0.01 | 1.10 | | | | | | | | | | 0.26 | 0.24 | 0.37 | 0.13 | 0.10 | | | | | | | |
| CONOWINGO DAM | 8.74 | | | 0.50 | 0.10 | | | 1.45 | 1.77 | | 0.38 | 1.29 | | | 0.90 | | | 0.26 | | | | | | | | 0.45 | | | 0.48 | 0.77 | | | | | | |
| CYLBURN | A* 7.69 | | * | * | 0.84 _a | | | 1.65 | 0.78 | * | * | 2.73 _a | | 0.01 | * | * | * | * | * | 0.96 _a | | | | | T | | 0.16 | 0.29 | 0.22 | 0.05 | - | | | | | |
| DAMASCUS 3 SSW | 9.93 | | 0.20 | 0.42 | | | 0.51 | 1.32 | T | 0.01 | 5.07 | T | | 0.46 | | | T | | 0.21 | 0.03 | | | 0.07 | 0.95 | | 0.68 | | 0.18 | | | | | T | | | |
| EMMITSBURG 2 SE | 3.86 | | | 0.46 | | | | 0.75 | 0.52 | | 0.14 | 0.42 | | | 0.52 | | | 0.03 | | 0.66 | | | | | | | 0.05 | 0.02 | | 0.18 | 0.11 | | | | 0.11 | |
| FREDERICK 2 NNE | M | - | - | - | - | - | - | - | - | - | - | - | - | - | - | - | - | - | - | - | - | - | - | - | - | - | - | - | - | - | - | - | - | - | - | |
| MILLERS 4 NE | 5.64 | | | 0.19 | | | 0.33 | 1.23 | 0.06 | | 1.36 | 0.15 | | 0.91 | 0.05 | | 0.20 | | 0.07 | 0.08 | | T | | | 0.05 | | 0.05 | 0.20 | 0.62 | 0.04 | 0.05 | | | | | |
| SMITHSBURG 2NW | M | - | - | - | - | - | - | - | - | - | - | - | - | - | - | - | - | - | - | - | - | - | - | - | - | - | - | - | - | - | - | - | - | - | - | |
| WESTMINSTER | A* 4.47 | * | * | 0.27 _a | 0.06 | | | 1.04 | 0.40 | * | 0.75 _a | 0.66 | 0.01 | | 0.05 | * | * | 0.16 _a | 0.35 | 0.44 | | | | * | * | 0.05 _a | | 0.23 | | | | | | | | |
| APPALACHIAN | | | | | | | | | | | | | | | | | | | | | | | | | | | | | | | | | | | | |
| MOUNTAIN 07 | | | | | | | | | | | | | | | | | | | | | | | | | | | | | | | | | | | | |
| CUMBERLAND 2 | 3.96 | | | | | | T | 0.69 | 0.12 | | 0.18 | 0.49 | | 0.39 | 0.14 | | | | | | | | | | | 0.07 | | | | 1.28 | 0.03 | | | | | |
| FROSTBURG 2 | 4.22 | | | | 0.05 | | 0.04 | 0.91 | 0.23 | | 0.17 | 0.48 | 0.04 | 0.25 | 0.21 | | T | 0.03 | T | 0.49 | | | | | | 0.15 | | 0.06 | | 0.96 | 0.15 | | | | | |
| SHARPSBURG 5 S | A 3.83 | | | 0.63 | | | | 0.81 | 0.46 | | 0.25 | 0.59 | | 0.08 | 0.36 | | | * | * | * | * | * | * | * | * | * | * | * | * | * | * | * | * | * | 0.65 _a | |
| WILLIAMSPORT | A 4.13 | | | 0.37 | | | | 0.82 | * | * | 0.07 _a | 0.99 | | * | 0.52 _a | | | 0.03 | | 0.18 | | | | 0.00 _a | | | 0.01 | | 0.77 | 0.01 | 0.36 | | | | | |
| ALLEGHENY PLATEAU 08 | | | | | | | | | | | | | | | | | | | | | | | | | | | | | | | | | | | | |
| OAKLAND 1 SE | 6.37 | | | 0.02 | 0.05 | | 1.00 | 0.60 | 0.50 | | 0.14 | 0.02 | 0.05 | 0.09 | 1.00 | | | | 0.03 | 0.02 | 0.07 | 0.01 | | | | 0.18 | 0.17 | 0.12 | 1.00 | 1.25 | 0.05 | | | | | |

MARYLAND AND DELAWARE
201306

DAILY PRECIPITATION (INCHES)

| STATION | TOTAL | DAY OF MONTH | | | | | | | | | | | | | | | | | | | | | | | | | | | | | | | | | | |
|-----------------------------|--------|--------------|------|------|----|----|------|------|------|----|------|------|------|------|------|----|----|------|------|------|------|----|----|------|------|------|----|------|------|----|----|------|------|------|---|---|
| | | 01 | 02 | 03 | 04 | 05 | 06 | 07 | 08 | 09 | 10 | 11 | 12 | 13 | 14 | 15 | 16 | 17 | 18 | 19 | 20 | 21 | 22 | 23 | 24 | 25 | 26 | 27 | 28 | 29 | 30 | 31 | | | | |
| SAVAGE RIVER DAM | M 3.88 | | | | T | | T | 0.81 | 0.25 | | 0.65 | 0.37 | | 0.60 | 0.54 | | | | 0.09 | 0.42 | | | | | | | | | | | | | 0.15 | - | - | - |
| SINES DEEP CREEK | 4.98 | | | 0.10 | | | 0.09 | 0.40 | 0.35 | | 0.14 | 0.15 | 0.10 | 0.33 | 0.94 | | | 0.06 | 0.15 | 0.45 | | | | | | | | | | | | 0.35 | 1.00 | 0.37 | | |
| DELAWARE | | | | | | | | | | | | | | | | | | | | | | | | | | | | | | | | | | | | |
| NORTHERN 01 | | | | | | | | | | | | | | | | | | | | | | | | | | | | | | | | | | | | |
| WILMINGTON NEW CASTLE CO AP | 13.66 | | 0.04 | 1.66 | | | 0.26 | 3.36 | T | | 1.81 | | | 0.85 | 0.11 | | | 0.35 | 0.49 | 1.06 | | | | 0.06 | 0.02 | 0.02 | T | 0.57 | 1.25 | | | 1.75 | | | | |
| WILMINGTON PORTER RES | 12.23 | | T | 1.62 | | | 0.08 | 3.47 | 0.15 | | 1.28 | 0.30 | | 1.10 | 0.17 | | | 0.22 | 1.00 | 0.66 | | | | 0.11 | 0.23 | 0.11 | | 0.22 | 0.89 | | | 0.62 | | | | |
| SOUTHERN 02 | | | | | | | | | | | | | | | | | | | | | | | | | | | | | | | | | | | | |
| DOVER | * 9.41 | | | 1.45 | | | | 2.69 | 1.18 | | 0.11 | 0.23 | | 1.24 | 0.15 | | | | | 1.37 | 0.13 | | | | 0.18 | | | | | | | 0.36 | 0.32 | - | - | |

DAILY TEMPERATURES (°F)

| STATION | OB. TIME | MAX/MIN | DAY OF MONTH | | | | | | | | | | | | | | | | | | | | | | | | | | | | | | | AVERAGE | | |
|---|----------|------------|--------------|----------|----------|----------|----------|----------|----------|----------|----------|----------|----------|----------|----------|----------|----------|----------|----------|----------|----------|----------|----------|----------|----------|----------|----------|----------|----------|----------|----------|----------|----------|------------------|------|------------------|
| | | | 01 | 02 | 03 | 04 | 05 | 06 | 07 | 08 | 09 | 10 | 11 | 12 | 13 | 14 | 15 | 16 | 17 | 18 | 19 | 20 | 21 | 22 | 23 | 24 | 25 | 26 | 27 | 28 | 29 | 30 | 31 | | | |
| MARYLAND SOUTHERN EASTERN SHORE 01 ASSATEAGUE | VA | MAX MIN | | | | | | | | | | | | | | | | | | | | | | | | | | | | | | | | | | M M M M |
| PRINCESS ANNE | 17 | MAX MIN | | | 83 71 | 80 61 | 81 56 | 79 55 | 79 69 | | | 83 70 | 85 73 | 89 71 | 93 60 | 90 | | | 84 60 | 80 66 | 78 60 | 80 56 | 81 56 | | | 92 74 | 93 74 | 92 73 | 90 74 | 90 68 | | | | M M M M | | |
| SALISBURY 2N | 17 | MAX MIN | 89 71 | 89 73 | 84 70 | 77 61 | 79 53 | 78 54 | 78 68 | 77 67 | 83 61 | 82 68 | 83 71 | 85 66 | 89 57 | 73 57 | 81 | 84 65 | 84 70 | 82 63 | 75 54 | 78 53 | 81 60 | 85 67 | 83 67 | 79 73 | 90 71 | 88 70 | 89 72 | 90 74 | 88 69 | 88 72 | 85 84 | 84 | 83.1 | |
| SALISBURY FAA AP | 24 | MAX MIN | 91 71 | 89 73 | 82 72 | 79 58 | 81 54 | 79 54 | 80 70 | 78 65 | 84 61 | 85 71 | 86 73 | 90 70 | 92 60 | 76 59 | 84 64 | 88 72 | 84 66 | 81 60 | 77 56 | 80 56 | 81 56 | 87 63 | 88 67 | 92 74 | 93 74 | 92 74 | 90 74 | 93 70 | 88 71 | 85 74 | 85 | 85.2 | | |
| SNOW HILL 4 N | 17 | MAX MIN | 90 58 | 86 62 | 81 78 | 82 65 | 81 54 | 78 52 | 78 60 | 81 68 | 82 60 | 85 68 | 85 69 | 89 67 | 92 70 | 90 59 | 84 57 | 86 53 | 85 70 | 83 75 | 77 62 | 78 53 | 79 53 | 84 59 | 85 65 | 89 72 | 92 72 | 91 74 | 89 72 | 90 75 | 89 70 | 85 73 | 85 | 84.9 | | |
| CENTRAL EASTERN SHORE 02 ROYAL OAK 2 SSW | 17 | MAX MIN | 89 70 | 87 73 | 81 68 | 76 63 | 80 62 | 80 58 | 73 67 | 78 65 | 84 61 | 82 60 | 85 70 | 88 70 | 90 71 | 77 58 | 82 60 | 85 63 | 86 70 | 82 65 | 79 61 | 79 57 | 83 54 | 86 58 | 82 66 | 91 70 | 91 67 | 91 67 | 86 71 | 90 68 | 87 66 | 85 75 | 85 | 83.8 | | |
| LOWER SOUTHERN 03 MECHANICSVILLE 5 NE | 07 | MAX MIN | 89 68 | 86 68 | 84 68 | 74 57 | 77 51 | 73 51 | 71 55 | 75 64 | 80 62 | 78 62 | 82 68 | 85 65 | 88 59 | 88 58 | 74 60 | 81 62 | 85 67 | 84 61 | 75 58 | 75 53 | 78 54 | 79 54 | 83 61 | 78 67 | 88 67 | 88 70 | 89 68 | 82 68 | 87 68 | 82 70 | 87 68 | 84 | 81.3 | |
| SOLOMONS | 08 | MAX MIN | 90 71 | 91 73 | 88 70 | 81 63 | 75 60 | 78 65 | 75 69 | 72 67 | 76 65 | 79 72 | 80 70 | 85 70 | 88 73 | 90 59 | 76 65 | 83 70 | 87 73 | 87 72 | 76 65 | 77 65 | 78 62 | 79 67 | 82 72 | 84 74 | 90 73 | 92 75 | 91 71 | 85 74 | 89 72 | 88 75 | 88 | 83.1 | | |
| UPPER SOUTHERN 04 BALTIMORE WASH INTL AP | 24 | MAX MIN | 91 69 | 85 69 | 81 66 | 76 58 | 78 53 | 73 60 | 71 66 | 81 64 | 80 63 | 79 69 | 83 67 | 88 66 | 86 60 | 79 58 | 83 62 | 85 68 | 88 70 | 78 63 | 78 63 | 80 58 | 82 61 | 86 66 | 83 66 | 92 70 | 93 68 | 92 68 | 85 69 | 87 68 | 87 69 | 87 71 | 86 73 | 86 | 83.2 | |
| BELTSVILLE | 08 | MAX MIN | 90 65 | 91 74 | 85 67 | 80 60 | 75 52 | 78 59 | 73 64 | 71 66 | 80 61 | 79 66 | 82 64 | 88 70 | 86 63 | 78 60 | 81 63 | 85 68 | 86 70 | 86 63 | 76 63 | 77 58 | 79 56 | 81 60 | 86 66 | 84 69 | 90 67 | 92 68 | 91 68 | 84 69 | 87 65 | 87 70 | 87 | 82.7 | | |
| DALECARLIA RSVR | 08 | MAX MIN | 91 69 | 91 74 | 83 66 | 79 58 | 79 59 | 80 64 | 74 65 | 71 66 | 79 66 | 82 63 | 80 65 | 84 66 | 88 66 | 76 66 | 78 66 | 82 66 | 83 66 | 89 66 | 73 63 | 77 61 | 79 58 | 83 63 | 88 69 | 88 69 | 81 68 | 94 68 | 86 65 | 81 69 | 86 69 | 81 71 | 83 66 | 88 | 82.3 | |
| LAUREL 3 W | 24 | MAX MIN | 91 70 | 91 68 | 82 67 | 76 58 | 79 56 | 78 62 | 71 63 | 80 64 | 82 64 | 83 65 | 88 66 | 86 64 | 79 57 | 83 63 | 84 65 | 87 70 | 78 68 | 77 63 | 82 61 | 81 62 | 86 62 | 83 66 | 91 71 | 92 70 | 90 67 | 85 70 | 88 70 | 88 67 | 88 70 | 86 72 | 86 | 83.6 | | |
| MARYLAND SCIENCE CENTER | 24 | MAX MIN | 96 75 | 89 73 | 83 70 | 80 65 | 82 65 | 77 68 | 74 69 | 84 69 | 83 71 | 81 72 | 87 70 | 90 71 | 82 63 | 86 68 | 88 72 | 92 76 | 83 70 | 81 69 | 84 67 | 84 67 | 87 70 | 86 73 | 96 76 | 96 72 | 95 73 | 87 75 | 87 75 | 92 73 | 92 78 | 88 | 86.5 | | | |
| NATL ARBORETUM DC | 07 | MAX MIN | 92 71 | 93 74 | 86 67 | 83 62 | 78 55 | 81 61 | 77 65 | 72 66 | 83 64 | 83 70 | 81 68 | 85 70 | 92 67 | 89 | 85 66 | 87 72 | 88 65 | 78 62 | 88 58 | 78 63 | 83 58 | 84 63 | 87 63 | 93 72 | 94 71 | 93 69 | 87 70 | 89 72 | 89 68 | 89 | 85.4 | | | |
| OXON HILL | 08 | MAX MIN | 91 67 | 91 69 | 85 68 | 81 60 | 78 59 | 79 65 | 75 66 | 71 65 | 82 65 | 82 69 | 80 67 | 84 67 | 89 67 | 87 60 | 79 65 | 83 66 | 85 70 | 86 64 | 76 61 | 77 57 | 79 62 | 82 68 | 88 70 | 85 68 | 91 70 | 91 68 | 89 70 | 84 69 | 88 67 | 88 65 | 88 | 83.5 | | |
| UPPER MARLBORO 3 NNW | 08 | MAX MIN | 91 68 | 91 73 | 88 67 | 82 57 | 76 51 | 79 57 | 75 65 | 71 64 | 80 62 | 81 67 | 81 67 | 84 67 | 89 71 | 89 59 | 79 62 | 83 67 | 84 67 | 86 69 | 77 62 | 77 58 | 81 55 | 81 59 | 86 66 | 84 69 | 92 67 | 92 67 | 92 68 | 86 69 | 89 65 | 87 70 | 87 | 83.8 | | |
| NORTHERN CENTRAL 06 ABERDEEN PHILLIPS FLD | 07 | MAX MIN | 89 70 | 88 73 | 84 68 | 79 59 | 76 52 | 80 58 | 77 64 | 72 65 | 77 62 | 80 63 | 80 67 | 83 65 | 84 67 | 87 59 | 79 60 | 81 63 | 86 69 | 77 65 | 78 59 | 81 59 | 82 61 | 84 63 | 80 68 | 90 68 | 92 70 | 90 68 | 86 72 | 86 68 | 86 70 | 86 | 86 | 82.5 | | |

DAILY TEMPERATURES (°F)

| STATION | OB. TIME | MAX/MIN | DAY OF MONTH | | | | | | | | | | | | | | | | | | | | | | | | | | | | | | | AVERAGE | |
|--------------------------------|----------|---------|--------------|----|----|----|----|----|----|----|----|----|----|----|----|----|----|----|----|----|----|----|----|----|----|----|----|----|----|----|----|------|------|---------|---|
| | | | 01 | 02 | 03 | 04 | 05 | 06 | 07 | 08 | 09 | 10 | 11 | 12 | 13 | 14 | 15 | 16 | 17 | 18 | 19 | 20 | 21 | 22 | 23 | 24 | 25 | 26 | 27 | 28 | 29 | 30 | 31 | | |
| BRIGHTON DAM | 08 | MAX | 89 | 89 | 82 | 79 | 74 | 76 | 72 | 70 | 70 | 78 | 78 | 81 | 86 | 84 | 77 | 80 | 81 | 86 | 75 | 71 | 77 | 80 | 85 | 84 | 90 | 89 | 88 | 82 | 85 | 85 | 80.8 | | |
| | | MIN | 64 | 71 | 66 | 54 | 51 | 52 | 60 | 63 | 60 | 65 | 65 | 63 | 63 | 58 | 56 | 59 | 65 | 68 | 62 | 62 | 55 | 57 | 63 | 66 | 64 | 65 | 66 | 68 | 64 | 67 | 62.1 | | |
| CONOWINGO DAM | 07 | MAX | 88 | 86 | 85 | 80 | 75 | 77 | 72 | 70 | 77 | 79 | 76 | 80 | 81 | 84 | 77 | 81 | 81 | 84 | 74 | 78 | 78 | 79 | 82 | 81 | 85 | 90 | 89 | 84 | 90 | 84 | 80.9 | | |
| | | MIN | 65 | 67 | 65 | 60 | 52 | 52 | 58 | 64 | 61 | 61 | 64 | 64 | 68 | 59 | 56 | 58 | 59 | 64 | 63 | 56 | 56 | 58 | 59 | 67 | 65 | 65 | 65 | 65 | 64 | 65 | 61.5 | | |
| CYLBURN | 08 | MAX | 88 | 88 | 84 | 76 | 71 | 75 | 72 | 70 | 76 | 78 | 76 | 80 | 81 | 85 | 75 | 79 | 82 | 84 | 76 | 75 | 77 | 79 | 83 | 81 | 89 | 87 | 86 | 82 | 86 | 84 | 80.2 | | |
| | | MIN | 68 | 68 | 65 | 56 | 53 | 56 | 62 | 64 | 62 | 68 | 67 | 67 | 69 | 59 | 59 | 61 | 70 | 64 | 62 | 60 | 58 | 60 | 66 | 71 | 68 | 66 | 68 | 72 | 67 | 70 | 64.2 | | |
| DAMASCUS 3 SSW | 22 | MAX | 88 | 80 | 77 | 73 | 76 | 65 | 67 | 76 | 79 | 76 | 76 | 84 | 83 | 75 | 78 | 78 | 84 | 73 | 75 | 77 | 80 | 85 | 83 | 87 | 88 | 85 | 78 | 79 | 84 | 82 | 79.0 | | |
| | | MIN | 68 | 67 | 64 | 51 | 53 | 58 | 61 | 62 | 58 | 66 | 64 | 64 | 66 | 57 | 56 | 64 | 65 | 63 | 60 | 58 | 56 | 61 | 65 | 66 | 66 | 63 | 67 | 69 | 64 | 67 | 62.3 | | |
| EMMITSBURG 2 SE | 07 | MAX | 87 | 87 | 80 | 79 | 73 | 76 | 70 | 68 | 75 | 78 | 78 | 83 | 80 | 76 | 78 | 79 | 83 | 76 | 75 | 77 | 80 | 83 | 83 | 88 | 88 | 86 | 85 | 83 | 83 | 79.8 | | | |
| | | MIN | 63 | 69 | 65 | 53 | 50 | 54 | 61 | 62 | 59 | 63 | 64 | 63 | 64 | 60 | 55 | 59 | 62 | 64 | 58 | 56 | 56 | 57 | 63 | 67 | 66 | 65 | 65 | 68 | 66 | 66 | 61.4 | | |
| FREDERICK 2 NNE | 07 | MAX | | | | | | | | | | | | | | | | | | | | | | | | | | | | | | | M | | |
| | | MIN | | | | | | | | | | | | | | | | | | | | | | | | | | | | | | | | M | |
| MILLERS 4 NE | 18 | MAX | 88 | 86 | 79 | 75 | 76 | 75 | 68 | 75 | 79 | 76 | 78 | 81 | 81 | 75 | 79 | 78 | 84 | 81 | 75 | 78 | 80 | 84 | 83 | 89 | 88 | 87 | 85 | 82 | 83 | 84 | 80.4 | | |
| | | MIN | 64 | 68 | 63 | 51 | 48 | 58 | 60 | 62 | 57 | 65 | 63 | 63 | 63 | 55 | 54 | 56 | 63 | 65 | 59 | 54 | 54 | 56 | 62 | 68 | 67 | 63 | 65 | 65 | 61 | 64 | 60.5 | | |
| SMITHSBURG 2NW | 08 | MAX | | | | | | | | | | | | | | | | | | | | | | | | | | | | | | | | M | |
| | | MIN | | | | | | | | | | | | | | | | | | | | | | | | | | | | | | | | | M |
| WESTMINSTER | 07 | MAX | | | 90 | 79 | 74 | 77 | 69 | 71 | | 79 | 78 | 80 | 87 | 82 | | 82 | 84 | 73 | 77 | 78 | | 87 | 90 | 91 | 88 | | | | | | M | | |
| | | MIN | | | 65 | 53 | 51 | 60 | 61 | 65 | | 59 | 64 | 67 | 68 | 58 | | 57 | 67 | 60 | 59 | 58 | | 62 | 69 | 66 | 68 | | | | | | | M | |
| APPALACHIAN MOUNTAIN 07 | | | | | | | | | | | | | | | | | | | | | | | | | | | | | | | | | | | |
| CUMBERLAND 2 | 18 | MAX | 95 | 94 | 85 | 79 | 81 | 82 | 66 | 72 | 81 | 82 | 82 | 81 | 90 | 80 | 81 | 84 | 81 | 88 | 76 | 81 | 85 | 88 | 92 | 91 | 86 | 94 | 90 | 81 | 86 | 86 | 84.0 | | |
| | | MIN | 64 | 69 | 63 | 49 | 50 | 54 | 62 | 62 | 58 | 65 | 63 | 64 | 66 | 59 | 55 | 56 | 61 | 65 | 54 | 57 | 58 | 62 | 64 | 65 | 66 | 66 | 67 | 67 | 61 | 64 | 61.2 | | |
| FROSTBURG 2 | 07 | MAX | 87 | 85 | 77 | 69 | 70 | 75 | 60 | 64 | 71 | 75 | 74 | 74 | 80 | 71 | 70 | 74 | 73 | 78 | 71 | 71 | 78 | 82 | 83 | 82 | 82 | 85 | 77 | 71 | 76 | 78 | 75.4 | | |
| | | MIN | 60 | 66 | 59 | 43 | 49 | 50 | 56 | 54 | 54 | 56 | 60 | 60 | 62 | 53 | 51 | 55 | 59 | 61 | 53 | 54 | 56 | 57 | 59 | 61 | 63 | 63 | 60 | 62 | 58 | 58 | 57.1 | | |
| SHARPSBURG 5 S | 07 | MAX | 89 | 90 | 81 | 79 | 75 | 79 | 68 | 69 | 77 | 80 | 81 | 79 | 87 | 82 | 78 | 81 | 79 | 85 | 75 | 78 | 80 | 83 | 87 | 87 | 89 | 90 | 87 | 81 | 87 | 86 | 81.6 | | |
| | | MIN | 62 | 64 | 64 | 47 | 47 | 53 | 62 | 60 | 57 | 60 | 62 | 61 | 64 | 61 | 53 | 54 | 60 | 64 | 60 | 58 | 57 | 59 | 62 | 66 | 65 | 62 | 63 | 65 | 62 | 62 | 59.9 | | |
| WILLIAMSPORT | 06 | MAX | 90 | 91 | 82 | 79 | 77 | 79 | 67 | | 81 | 79 | 81 | 81 | 80 | 83 | 83 | 88 | 78 | 78 | 82 | | 88 | 89 | 91 | 94 | 89 | 86 | 88 | 88 | 88 | 83.5 | | | |
| | | MIN | 62 | 64 | 64 | 51 | 51 | 51 | 60 | | 61 | 63 | 64 | | 64 | 58 | 58 | 61 | 61 | 62 | 61 | 57 | | 59 | 66 | 68 | 66 | 65 | 67 | 66 | 65 | 61.3 | | | |
| ALLEGHENY PLATEAU 08 | | | | | | | | | | | | | | | | | | | | | | | | | | | | | | | | | | | |
| OAKLAND 1 SE | 07 | MAX | 84 | 85 | 73 | 71 | 71 | 73 | 64 | 68 | 71 | 73 | 76 | 76 | 80 | 80 | 70 | 74 | 71 | 79 | 73 | 73 | 80 | 82 | 84 | 85 | 82 | 83 | 78 | 70 | 76 | 77 | 76.1 | | |
| | | MIN | 57 | 63 | 59 | 42 | 45 | 50 | 60 | 56 | 53 | 64 | 61 | 61 | 63 | 54 | 47 | 50 | 60 | 60 | 59 | 50 | 52 | 56 | 57 | 58 | 63 | 64 | 61 | 64 | 59 | 55 | 56.8 | | |
| SAVAGE RIVER DAM | 08 | MAX | 87 | 85 | 77 | 72 | 73 | 73 | 61 | 67 | 73 | 75 | 74 | 73 | 82 | 72 | 73 | 76 | 75 | 79 | 71 | 72 | 78 | 80 | 85 | 83 | 85 | 85 | 80 | | | | 76.5 | | |
| | | MIN | 57 | 57 | 59 | 44 | 45 | 49 | 59 | 58 | 55 | 56 | 60 | 63 | 62 | 56 | 52 | 53 | 59 | 59 | 60 | 54 | 56 | 60 | 60 | 63 | 64 | 64 | | | | | 57.2 | | |
| SINES DEEP CREEK | 07 | MAX | 85 | 86 | 75 | 68 | 70 | 75 | 62 | 65 | 70 | 75 | 72 | 70 | 79 | 67 | 69 | 73 | 71 | 77 | 70 | 73 | 79 | 83 | 82 | 85 | 82 | 83 | 76 | 68 | 73 | 75 | 74.6 | | |
| | | MIN | 51 | 58 | 57 | 43 | 41 | 45 | 57 | 55 | 52 | 53 | 57 | 58 | 59 | 53 | 47 | 47 | 59 | 57 | 50 | 50 | 55 | 56 | 56 | 53 | 57 | 60 | 60 | 56 | 55 | 53.8 | | | |
| DELAWARE NORTHERN 01 | | | | | | | | | | | | | | | | | | | | | | | | | | | | | | | | | | | |
| WILMINGTON NEW CASTLE CO AP | 24 | MAX | 90 | 88 | 79 | 76 | 77 | 75 | 72 | 79 | 80 | 77 | 83 | 84 | 85 | 78 | 82 | 84 | 86 | 78 | 80 | 78 | 80 | 84 | 82 | 91 | 92 | 90 | 88 | 87 | 86 | 83 | 82.5 | | |
| | | MIN | 69 | 70 | 65 | 57 | 52 | 59 | 63 | 63 | 63 | 68 | 69 | 66 | 62 | 57 | 56 | 60 | 67 | 63 | 62 | 59 | 58 | 60 | 66 | 69 | 68 | 69 | 73 | 68 | 67 | 68 | 63.9 | | |
| WILMINGTON PORTER RES | 24 | MAX | 90 | 88 | 88 | 73 | 77 | 76 | 69 | 75 | 80 | 73 | 80 | 81 | 83 | 75 | 79 | 82 | 84 | 76 | 77 | 78 | 80 | 84 | 84 | 90 | 90 | 90 | 87 | 87 | 86 | 84 | 81.5 | | |
| | | MIN | 68 | 70 | 67 | 58 | 57 | 56 | 61 | 61 | 63 | 66 | 67 | 64 | 62 | 55 | 59 | 58 | 65 | 64 | 60 | 58 | 65 | 59 | 66 | 68 | 67 | 67 | 71 | 67 | 67 | 70 | 63.5 | | |

MARYLAND AND DELAWARE
201306

DAILY TEMPERATURES (°F)

| STATION | OB. TIME | MAX/MIN | DAY OF MONTH | | | | | | | | | | | | | | | | | | | | | | | | | | | | | | | AVERAGE |
|----------------------|----------|------------|--------------|----------|----------|----------|----------|----------|----------|----------|----------|----------|----------|----------|----------|----------|----------|----------|----------|----------|----------|----------|----------|----------|----------|----------|----------|----------|----------|----------|----------|----------|--------------|---------|
| | | | 01 | 02 | 03 | 04 | 05 | 06 | 07 | 08 | 09 | 10 | 11 | 12 | 13 | 14 | 15 | 16 | 17 | 18 | 19 | 20 | 21 | 22 | 23 | 24 | 25 | 26 | 27 | 28 | 29 | 30 | 31 | |
| SOUTHERN 02 DOVER | 16 | MAX MIN | 89 69 | 87 69 | 78 67 | 78 60 | 79 54 | 77 50 | 70 64 | 77 63 | 80 62 | 78 69 | 82 68 | 85 68 | 87 66 | 73 56 | 81 57 | 84 63 | 87 69 | 86 66 | 78 62 | 79 56 | 79 55 | 81 59 | 83 63 | 92 73 | 91 70 | 92 70 | 90 70 | 88 72 | 86 67 | 84 73 | 82.7 64.3 | |

SNOWFALL AND SNOW ON GROUND (INCHES)

| STATION | | DAY OF MONTH | | | | | | | | | | | | | | | | | | | | | | | | | | | | | | | |
|---|-----------|--------------|----|----|----|----|----|----|----|----|----|----|----|----|----|----|----|----|----|----|----|----|----|----|----|----|----|----|----|----|----|----|--|
| | | 01 | 02 | 03 | 04 | 05 | 06 | 07 | 08 | 09 | 10 | 11 | 12 | 13 | 14 | 15 | 16 | 17 | 18 | 19 | 20 | 21 | 22 | 23 | 24 | 25 | 26 | 27 | 28 | 29 | 30 | 31 | |
| MARYLAND SOUTHERN EASTERN SHORE 01 ASSATEAGUE PRINCESS ANNE SALISBURY 2N SALISBURY FAA AP SNOW HILL 4 N | SNOWFALL | | | | | | | | | | | | | | | | | | | | | | | | | | | | | | | | |
| | SNOWFALL | | | | | | | | | | | | | | | | | | | | | | | | | | | | | | | | |
| | SNOWFALL | | | | | | | | | | | | | | | | | | | | | | | | | | | | | | | | |
| | SNOWFALL | | | | | | | | | | | | | | | | | | | | | | | | | | | | | | | | |
| | SN ON GND | | | | | | | | | | | | | | | | | | | | | | | | | | | | | | | | |
| | SNOWFALL | | | | | | | | | | | | | | | | | | | | | | | | | | | | | | | | |
| DELAWARE NORTHERN 01 WILMINGTON NEW CASTLE CO AP WILMINGTON PORTER RES | SNOWFALL | | | | | | | | | | | | | | | | | | | | | | | | | | | | | | | | |
| | SN ON GND | | | | | | | | | | | | | | | | | | | | | | | | | | | | | | | | |
| | SNOWFALL | | | | | | | | | | | | | | | | | | | | | | | | | | | | | | | | |

Snowfall: Includes snow and ice. Values for NWS stations (J index note) are Mid-Mid (LST).

Snow on ground: Includes snow, sleet, ice, and hail. Values for NWS stations (J index note) are observed at 12 UTC (GMT).

Water Equivalent: Given for NWS stations (J index note) only, when snow depth is 2 inches or more, and is measured at 18 UTC (GMT)

PAN EVAPORATION AND WIND

| STATION | | DAY OF MONTH | | | | | | | | | | | | | | | | | | | | | | | | | | | | | | | TOTAL OR AVERAGE |
|---|------|--------------|------|------|------|------|------|----|------|------|------|----|------|------|------|------|------|------|------|------|------|------|------|------|------|------|------|------|------|------|------|-------|---------------------|
| | | 01 | 02 | 03 | 04 | 05 | 06 | 07 | 08 | 09 | 10 | 11 | 12 | 13 | 14 | 15 | 16 | 17 | 18 | 19 | 20 | 21 | 22 | 23 | 24 | 25 | 26 | 27 | 28 | 29 | 30 | 31 | |
| MARYLAND UPPER SOUTHERN 04 BELTSVILLE | WIND | 86 | 110 | 83 | 57 | 39 | 46 | 55 | 56 | 35 | 31 | 55 | 65 | 46 | 118 | 84 | 44 | 62 | 45 | 30 | 31 | 51 | 28 | 62 | 25 | 40 | 55 | 44 | 65 | 56 | 43 | 1647 | |
| | EVAP | 0.12 | 0.27 | 0.25 | 0.23 | 0.25 | 0.25 | - | 0.04 | 0.17 | 0.18 | - | 0.25 | 0.24 | 0.33 | 0.28 | 0.26 | 0.21 | 0.20 | 0.05 | 0.15 | 0.26 | 0.23 | 0.28 | 0.10 | 0.20 | 0.30 | 0.21 | 0.15 | 0.17 | 0.24 | 6.29E | |
| | MAX | 95 | 95 | 84 | 84 | 84 | 85 | 72 | 71 | 86 | 84 | 80 | 73 | 89 | 86 | 83 | 86 | 82 | 90 | 76 | 80 | 86 | 88 | 93 | 90 | 95 | 96 | 92 | 88 | 90 | 93 | 85.8 | |
| | MIN | 64 | 68 | 66 | 59 | 59 | 59 | 62 | 64 | 64 | 66 | 68 | 66 | 69 | 60 | 60 | 64 | 65 | 68 | 64 | 62 | 59 | 60 | 63 | 67 | 68 | 69 | 69 | 69 | 66 | 66 | 64.4 | |
| UPPER MARLBORO 3 NNW | WIND | - | - | - | - | - | - | - | - | - | - | - | - | - | - | - | - | - | - | - | - | - | - | - | - | - | - | - | - | - | - | M | |
| | EVAP | - | - | - | - | - | - | - | - | - | - | - | - | - | - | - | - | - | - | - | - | - | - | - | - | - | - | - | - | - | - | M | |
| | MAX | - | - | - | - | - | - | - | - | - | - | - | - | - | - | - | - | - | - | - | - | - | - | - | - | - | - | - | - | - | - | M | |
| | MIN | - | - | - | - | - | - | - | - | - | - | - | - | - | - | - | - | - | - | - | - | - | - | - | - | - | - | - | - | - | - | M | |
| ALLEGHENY PLATEAU 08 SAVAGE RIVER DAM | WIND | - | - | - | - | - | - | - | - | - | - | - | - | - | - | - | - | - | - | - | - | - | - | - | - | - | - | - | - | - | - | M | |
| | EVAP | - | - | - | - | - | - | - | - | - | - | - | - | - | - | - | - | - | - | - | - | - | - | - | - | - | - | - | - | - | - | M | |
| | MAX | - | - | - | - | - | - | - | - | - | - | - | - | - | - | - | - | - | - | - | - | - | - | - | - | - | - | - | - | - | - | - | |
| | MIN | - | - | - | - | - | - | - | - | - | - | - | - | - | - | - | - | - | - | - | - | - | - | - | - | - | - | - | - | - | - | M | |

Evaporation: Is measured in hundreths of inches.

Wind: Is measured in miles.

Max and Min: The maximum and minimum temperatures (Fahrenheit) of the water in the evaporation pan.

STATION INDEX

| STATION | INDEX NO. | DIVISION | COUNTY | LATITUDE | LONGITUDE | ELEVATION (IN FEET) | OBSERVATION TIME AND TABLES | | | |
|-------------------------------|-----------|----------|----------------------|----------|-----------|------------------------|-----------------------------------|--------|------|------------------------|
| | | | | | | | LOCAL STD TIME | | | |
| | | | | | | | TEMP | PRECIP | EVAP | SPECIAL SEE (NOTES) |
| MARYLAND | | | | | | | | | | |
| ABERDEEN PHILLIPS FLD | 0015 | 06 | HARFORD | 39 28 | 76 10W | 57 | 07 | 07 | | CH |
| ASSATEAGUE | 0335 | 01 | WORCESTER | 38 4 | 75 13W | 10 | VAR | VAR | | H |
| BALTIMORE WASH INTL AP R | 0465 | 04 | ANNE ARUNDEL | 39 10 | 76 41W | 156 | 24 | 24 | | HJ |
| BELTSVILLE | 0700 | 04 | PRINCE GEORGE'S | 39 2 | 76 56W | 145 | 08 | 08 | 08 | CH |
| BRIGHTON DAM | 1125 | 06 | MONTGOMERY | 39 11 | 77 0W | 330 | 08 | 08 | | H |
| CONOWINGO DAM | 2060 | 06 | HARFORD | 39 39 | 76 11W | 40 | 07 | 07 | | H |
| CUMBERLAND 2 | 2282 | 07 | ALLEGANY | 39 39 | 78 45W | 730 | 18 | 18 | | H |
| CYLBURN | 2308 | 06 | BALTIMORE | 39 21 | 76 39W | 235 | 08 | 08 | | H |
| DALECARLIA RSVR | 2325 | 04 | DISTRICT OF COLUMBIA | 38 56 | 77 7W | 150 | 08 | 08 | | H |
| DAMASCUS 3 SSW | 2336 | 06 | MONTGOMERY | 39 16 | 77 14W | 700 | 22 | 22 | | H |
| EMMITSBURG 2 SE | 2906 | 06 | FREDERICK | 39 41 | 77 17W | 403 | 07 | 07 | | H |
| FREDERICK 2 NNE | 3353 | 06 | FREDERICK | 39 26 | 77 24W | 280 | 07 | 07 | | H |
| FROSTBURG 2 | 3415 | 07 | ALLEGANY | 39 40 | 78 56W | 2170 | 07 | 07 | | H |
| LAUREL 3 W | 5111 | 04 | PRINCE GEORGE'S | 39 5 | 76 54W | 400 | 24 | 24 | | H |
| MARYLAND SCIENCE CENTER R | 5718 | 04 | BALTIMORE (CITY) | 39 17 | 76 37W | 20 | 24 | 24 | | H |
| MECHANICSVILLE 5 NE | 5865 | 03 | ST. MARY'S | 38 28 | 76 42W | 100 | 07 | 07 | | H |
| MILLERS 4 NE | 5934 | 06 | CARROLL | 39 43 | 76 48W | 860 | 18 | 18 | | CH |
| NATL ARBORETUM DC | 6350 | 04 | DISTRICT OF COLUMBIA | 38 55 | 76 58W | 50 | 07 | 07 | | H |
| OAKLAND 1 SE | 6620 | 08 | GARRETT | 39 25 | 79 24W | 2420 | 07 | 07 | | H |
| OXON HILL | 6800 | 04 | PRINCE GEORGE'S | 38 47 | 76 60W | 120 | 08 | 08 | | H |
| PRINCESS ANNE | 7330 | 01 | SOMERSET | 38 13 | 75 41W | 20 | 17 | 17 | | H |
| ROYAL OAK 2 SSW | 7806 | 02 | TALBOT | 38 43 | 76 11W | 10 | 17 | 17 | | H |
| SALISBURY 2N | 8004 | 01 | WICOMICO | 38 24 | 75 36W | 20 | 17 | 17 | | H |
| SALISBURY FAA AP | 8005 | 01 | WICOMICO | 38 20 | 75 31W | 48 | 24 | 24 | | H |
| SAVAGE RIVER DAM | 8065 | 08 | GARRETT | 39 31 | 79 8W | 1495 | 08 | 08 | 08 | CH |
| SHARPSBURG 5 S | 8207 | 07 | WASHINGTON | 39 24 | 77 43W | 500 | 07 | 07 | | H |
| SINES DEEP CREEK | 8315 | 08 | GARRETT | 39 31 | 79 25W | 2040 | 07 | 07 | | H |
| SMITHSBURG 2NW | 8371 | 06 | WASHINGTON | 39 40 | 77 35W | 670 | 08 | 08 | | H |
| SNOW HILL 4 N | 8380 | 01 | WORCESTER | 38 14 | 75 23W | 30 | 17 | 17 | | H |
| SOLOMONS | 8405 | 03 | CALVERT | 38 19 | 76 27W | 12 | 08 | 08 | | H |
| UPPER MARLBORO 3 NNW | 9070 | 04 | PRINCE GEORGE'S | 38 51 | 76 46W | 130 | 08 | 08 | 08 | H |
| WESTMINSTER | 9440 | 06 | CARROLL | 39 34 | 76 59W | 750 | 07 | 07 | | H |
| WILLIAMSPORT | 9570 | 07 | WASHINGTON | 39 37 | 77 51W | 360 | 06 | 06 | | H |
| DELAWARE | | | | | | | | | | |
| DOVER | 2730 | 02 | KENT | 39 15 | 75 31W | 30 | 16 | 16 | | H |
| WILMINGTON NEW CASTLE CO AP R | 9595 | 01 | NEW CASTLE | 39 40 | 75 36W | 79 | 24 | 24 | | HJ |
| WILMINGTON PORTER RES | 9605 | 01 | NEW CASTLE | 39 46 | 75 32W | 270 | 24 | 24 | | H |

REFERENCE NOTES

STATION NAMES: Name of the city, town or locality. Figures and letters following the station names indicate the distance in miles and direction from the post office or town community center.

DIVISIONS: Areas within a state of similar climatological characteristics. Division averages are calculated using data from stations that record temperature and/or precipitation. Station Precipitation totals flagged with an 'F' or 'M' are excluded from the Divisional Average calculations of precipitation. Stations with monthly Temperature averages flagged with an 'F' or 'M' are included in the Divisional Average if there are no more than 9 flagged or missing daily values in the month, else they are excluded from the divisional average for temperature.

NORMALS: The average value of the meteorological element over a time period. Effective 1 January 2012, the averaging period is 1981 to 2010. The normals for National Weather Service localities have been adjusted so as to be representative for the current observation site.

MONTHLY DEGREE DAY TOTALS: One heating (cooling) degree day is accumulated for each whole degree that the daily mean temperature is below (above) 65 degrees Fahrenheit.

PRECIPITATION: Values shown in hundredths of inches are water equivalent totals, i.e., total of liquid and melted frozen precipitation. In the "Monthly Summarized Data" table the total snow and sleet values shown in tenths of inches are unmelted amounts. The max depth on ground values of snow and sleet shown in whole inches are cumulative unmelted amounts. The number of days with .10, .50, 1.00 or more refers to water equivalents.

PRECIPITATION QUALITY CONTROL: The NCDC quality control process may flag precipitation data that are spatially inconsistent, exceed climatological limits, or are inconsistent with prevailing weather patterns.

TEMPERATURE: Original temperature values are given in the "Daily Temperature" table. Summary temperature information (averages, departures, extremes, monthly degree day totals) is based on the values labeled MAX/MIN.

WIND: (As shown in the "Evaporation and Wind" table) the total wind movement in miles over the evaporation pan as determined by an anemometer recorder located 6-8 inches above the pan.

SYMBOLS AND LETTERS USED IN THE STATION INDEX TABLE

C Station is equipped with recording rain gage (R) but values in this bulletin are from a non-recording rain gage unless indicated by an R.

G Observations appear in the "Soil Temperatures" table.

H Observations appear in the "Snowfall and Snow on the Ground" table.

J Station also published as a Local Climatological Data publication.

VAR Observation time varies.

SR Observation time near sunrise.

SS Observation time near sunset.

SYMBOLS AND LETTERS USED IN THE DATA TABLES

(DAILY DATA ARE FOR THE 24 HOURS IMMEDIATELY PRECEDING OBSERVATION TIME.)

BLANK Entries in the "Monthly Summarized Data" table indicate no record.

BLANK Entries in the "Daily Precipitation" and "Snowfall and Snow on the Ground" tables indicate zero.

BLANK Entries in the "Daily Temperature" table indicate a missing record

- No record. Data not recorded or not received in time for publication.

+ Precipitation or temperature extremes occurred on one or more previous dates during the month.

* Rain gage not read. Precipitation is included in the amount following the asterisks.

Time distribution may not be known. A * preceding the monthly total indicates precipitation amount is being carried forward to next month's total, and may include amounts from the previous month(s).

a As a subscript, indicates accumulated total.

A Amount of precipitation is the total of observer's entries for the current month. It may include precipitation that occurred during the previous month. Refer to earlier bulletin to determine date of last reading. (Hawaii stations)

B Divisional Departure from normals are computed using 1971-2000 normals.

E Normalized HDD/CDD Calculation. E is appended to the HDD/CDD Calculation when 1-9 individual daily TMAX and/or TMIN values are missing and a Normalized HDD/CDD Calculation is provided. M appears alone if 10 or more daily values are missing.

F Monthly calculation flagged value. F is appended to average and/or total values computed which exclude one or more daily data values that have been flagged by the GHCN-Daily Dataset

M Insufficient or partial data. M is appended to average and/or total values computed with 1-9 daily values missing. M appears alone if 10 or more daily values are missing, (8 or more for wind and evaporation).

N Indicates snow fall or Snowdepth totals are computed with one or more missing days.

R Amounts from recording rain gage.

T Trace. An amount too small to measure.

SEASONAL TABLES: Monthly and seasonal snowfall and heating degree days for the 12 months ending with the June data are published in the July issue of this bulletin. Cooling degree days for the calendar year are published in the "Climatological Data Annual Summary."

Information concerning the history of changes in locations, exposure, etc. of substations is kept on file at the National Climatic Data Center. Historical information of regular National Weather Service Offices may be obtained from the "Local Climatological Data" annual publication. The contents of this publication may be reprinted or otherwise used freely, with proper credit to the National Climatic Data Center. The data are also available digitally.

Effective with the January 2011 Data-Month, COOP Observer Names are no longer included in the Monthly and Annual Climatological Data Publications. This information is not published to ensure the privacy of personal information pursuant to Section 208 of the E-Government Act of 2002 (44 USC 3601).

As of the 2011 Data-Year, Station and Climate Division Maps are no longer being included in the CD Publications. NCDC's Product Development Branch provides updated Station Maps for various data networks via the Historical Observing Metadata Repository: <http://www.ncdc.noaa.gov/homr>.

The GHCN-Daily Quality Control Flags shown below are displayed as superscripts with the data. For more Information on Global Historical Climatology Network - Daily and flags, see: <http://www.ncdc.noaa.gov/oa/climate/ghcn-daily/> and

Comprehensive Automated Quality Assurance of Daily Surface Observations.

Durre, Imke, Matthew J. Menne, Byron E. Gleason, Tamara G. Houston,

Russell S. Vose, 2010: J. Appl. Meteor. Climatol., 49, 1615-1633.

doi: 10.1175/2010JAMC2375.1

Blank = Passed All checks

D = failed duplicate check

G = failed gap check

I = failed internal consistency check

K = failed streak/frequent-value check

L = failed check on length of multiday period

M = failed megaconsistency check

N = failed naught check

O = failed climatological outlier check

R = failed lagged range check

S = failed spatial consistency check

T = failed temporal consistency check

W = temperature too warm for snow

X = failed bounds check

Z = flagged as a result of an official Datzilla investigation

Beginning with the January 2013 CD Publication, monthly mean temperature calculations have changed to the National Data Stewardship Team standard. Monthly maximum and minimum temperatures are not rounded until after the monthly mean temperature is calculated. This is the most accurate outcome, but may be slightly different from the mean derived from rounded monthly maximum and minimum.

Processing Updates and Errata: The 2011 CD Publications were reproduced in May 2013. This update included the addition of late reports and corrections based on additional investigations of reported data issues through NCDC's Datzilla system. In addition, divisional averages for precipitation were recalculated using the method described in DIVISIONS above. Previous editions of the 2011 Publications included all precipitation stations regardless of missing data in the calculation of divisional averages. HDD/CDD values were recalculated to match the legacy method of calculation (truncation of monthly HDD/CDD values instead of rounding).

These and other publications are available from the National Climatic Data Center

Hourly Precipitation Data

This publication contains hourly precipitation amounts obtained from recording rain gages located at National Weather Service, Federal Aviation Administration, and cooperative observer stations. Published data are displayed in inches and tenths or inches and hundredths at local standard time. HPD includes maximum precipitation for nine (9) time periods from 15 minutes to 24 hours, for selected stations.

Climatological Data

Monthly editions contain station daily maximum and minimum temperatures and precipitation. Some Stations provide daily snowfall, snow depth, evaporation, and soil temperature data. Each edition also contains monthly summaries for heating and cooling degree days (65 degree F base). The July issue contains a recap of monthly heating degree days and snow data for the preceding July through June.

The Annual issue contains monthly and annual averages of temperature, precipitation, temperature extremes, freeze data, soil temperatures, evaporation, and a recap of monthly cooling degree days.

Storm Data

Monthly issues contain a chronological listing, by states, of occurrences of storms and unusual weather phenomena. Reports contain information on storm paths, deaths, injuries, and property damage. An "Outstanding storms of the month" section highlights severe weather events with photographs, illustrations, and narratives. The December issue includes annual tornado, lightning, flash flood, and tropical cyclone summaries.

Monthly Climatic Data for the World

This publication contains monthly means for temperature, pressure, precipitation, vapor pressure, and sunshine for approximately 2,000 surface data collection stations worldwide and monthly mean upper air temperatures, dew point depressions, and wind velocities for approximately 500 observing sites.

Local Climatological Data

LCD publications summarize temperature, relative humidity, precipitation, cloudiness, wind speed and direction observations for several hundred cities in the U.S. and its territories. Each monthly publication also contains 3 hourly weather observations for that month and a hourly summary of precipitation. Annual LCD publications contain a summary of the past calendar year as well as historical averages and extremes.

For Information Call:

(828) 271-4800 Option 2

(828) 271-4010 (TDD)

(828) 271-4876 (Fax)

NOAA\National Climatic Data Center
Attn: User Engagement & Services Branch
151 Patton Avenue
Asheville, NC 28801-5001

Customer Services Number: (828) 271-4800, option 2
TDD : (828) 271-4010
Fax number: (828) 271-4876

NCDC now offers free online access to the *Climatological Data* publication.
Go to : www.ncdc.noaa.gov and choose Most Popular.