



CLIMATOLOGICAL DATA MARYLAND AND DELAWARE



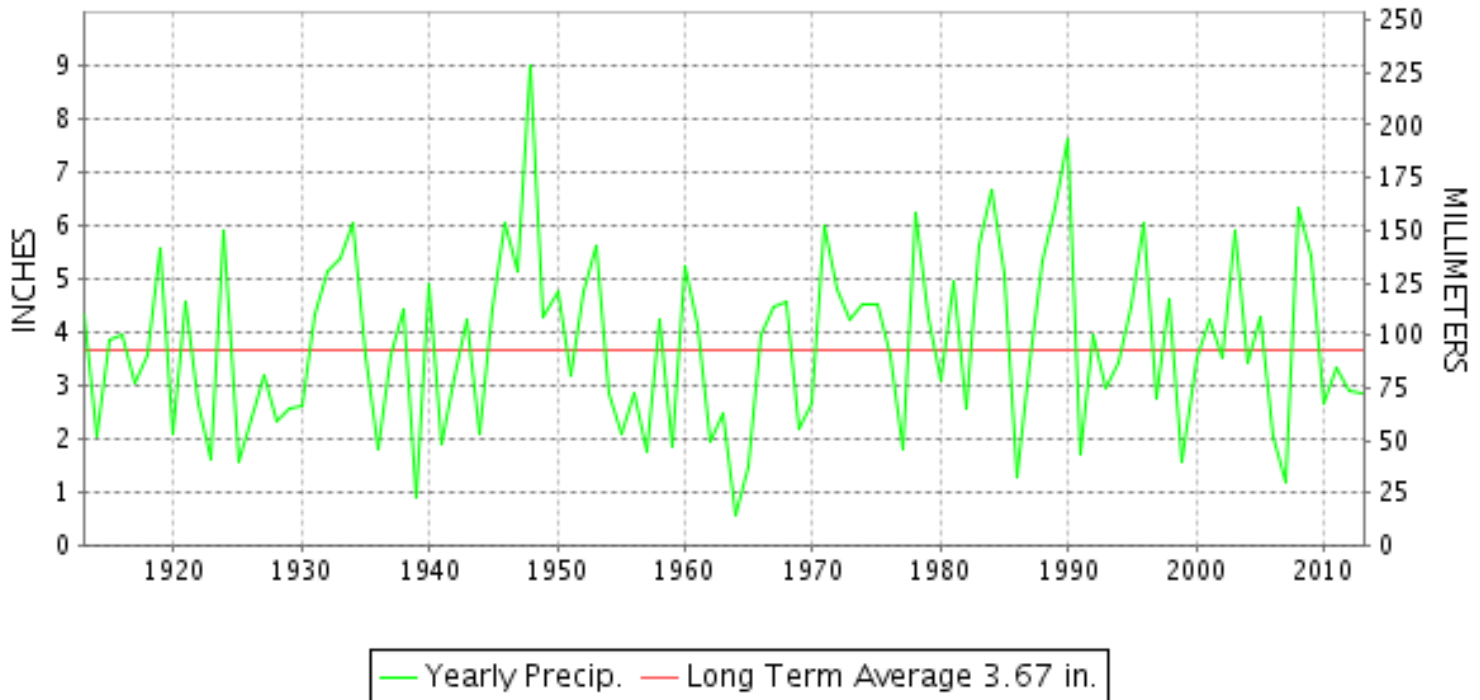
MAY 2013

VOLUME 117 NUMBER 05

ISSN 0145-0549

GHCND Ver: 3.11-upd-2013090504

MAY PRECIPITATION BY YEAR



TEMPERATURE AND PRECIPITATION EXTREMES

MARYLAND

HIGHEST TEMPERATURE	96	MAY 31	MARYLAND SCIENCE CENTER
LOWEST TEMPERATURE	25	MAY 14	OAKLAND 1 SE
GREATEST TOTAL PRECIPITATION	5.80		OAKLAND 1 SE
LEAST TOTAL PRECIPITATION	2.15		NATL ARBORETUM DC
GREATEST 1 DAY PRECIPITATION	2.23	MAY 08	FROSTBURG 2

"I certify that this is an official publication of the National Oceanic and Atmospheric Administration (NOAA) It is compiled using information from weather observing sites supervised by NOAA/National Weather Service and received at the National Climatic Data Center(NCDC), Asheville, North Carolina 28801."

Director
National Climatic Data Center

noaa

National
Oceanic and
Atmospheric Administration

National
Environmental Satellite, Data
and Information Service

National
Climatic Data Center
Asheville, North Carolina

DELAWARE

HIGHEST TEMPERATURE	91	MAY 31++	2 STATIONS
LOWEST TEMPERATURE	36	MAY 14	WILMINGTON NEW CASTLE CO AP
GREATEST TOTAL PRECIPITATION	4.00		DOVER
LEAST TOTAL PRECIPITATION	2.16		WILMINGTON NEW CASTLE CO AP
GREATEST 1 DAY PRECIPITATION	1.46	MAY 09	DOVER

MONTHLY STATION AND DIVISION SUMMARY

STATION	TEMPERATURE (°F)													PRECIPITATION (IN)															
	AVERAGE MAXIMUM	AVERAGE MINIMUM	AVERAGE	DEPARTURE FROM NORMAL	HIGHEST	DATE	LOWEST	DATE	HEATING DEG. DAYS	COOLING DEG. DAYS	NO. OF DAYS				TOTAL	DEPARTURE FROM NORMAL	GREATEST 24 HOURS	DATE	ICE PELLETS, SNOW			NO. OF DAYS							
											MAX		MIN						TOTAL	MAX DEPTH ON GROUND	DATE	.10 OR MORE	.50 OR MORE	1.00 OR MORE					
											>=90	<=32	<=32	<=0															
--DIVISIONAL DATA-----> APPALACHIAN MOUNTAIN 07			61.4	-0.9B										3.54	-1.08B														
CUMBERLAND 2	75.2	49.6	62.4	-1.4	95	31	28	13	164	91	5	0	2	0	2.77	-1.25	1.51	08	0.0				5	1	1				
FROSTBURG 2	67.8	45.4	56.6	0.0	85	31+	28	14	284	33	0	0	2	0	4.23	-0.65	2.23	08	0.0				7	2	1				
SHARPSBURG 5 S	72.3M	47.2M	59.8M	-1.3	91	31	29	14	213E	56E	1	0	2	0	A 3.39	-0.77	1.02	11+	0.0				5	3	2				
WILLIAMSPORT	73.2M	48.3M	60.7M	-0.8	92	31	33	15+	181E	55E	2	0	0	0	A 2.68	-1.47	1.25	08	M 0.0	0				3	2	1			
--DIVISIONAL DATA-----> ALLEGHENY PLATEAU 08			59.9	-0.4B											3.27	-0.94B													
OAKLAND 1 SE	68.9	45.2	57.0	0.9	85	31	25	14	266	28	0	0	3	0	5.80	0.66	1.45	08	0.0	0				10	4	2			
SAVAGE RIVER DAM	68.0M	46.9M	57.4M	-0.3	86	31	30	15+	257E	30E	0	0	2	0	M 4.04	-0.48	1.99	08	0.0				8	2	1				
SINES DEEP CREEK	67.9	42.9	55.4		85	31	27	15+	309	18	0	0	7	0	4.47		1.20	08	0.0				8	4	1				
--DIVISIONAL DATA-----> DELAWARE NORTHERN 01			56.6	0.1B											5.14	0.60B													
WILMINGTON NEW CASTLE CO AP	73.8	53.5	63.7	0.9	91	31+	36	14	125	90	2	0	0	0	2.16	-1.79	0.47	10	0.0	0				8	0	0			
WILMINGTON PORTER RES	71.9M	52.5M	62.2M	-0.2	91	30	37	14	154E	74E	2	0	0	0	3.05	-1.33	0.75	11	0.0				10	2	0				
--DIVISIONAL DATA-----> SOUTHERN 02			63.0	0.4B											2.61	-1.81B													
DOVER	73.6	54.5	64.0	-0.2	90	31+	38	14	123	101	2	0	0	0	A 4.00	-0.25	1.46	09	0.0				3	1	1				
--DIVISIONAL DATA-----> DOVER			64.0	1.1B											4.00	-0.12B													

DAILY PRECIPITATION (INCHES)

STATION	TOTAL	DAY OF MONTH																															
		01	02	03	04	05	06	07	08	09	10	11	12	13	14	15	16	17	18	19	20	21	22	23	24	25	26	27	28	29	30	31	
MARYLAND																																	
SOUTHERN																																	
EASTERN SHORE 01																																	
ASSATEAGUE	M	-	-	-	-	-	-	-	-	-	-	-	-	-	-	-	-	-	-	-	-	-	-	-	-	-	-	-	-	-	-	-	
PRINCESS ANNE	M				-	-	1.14	-	0.26																								
SALISBURY 2N	2.93	0.02						0.92	0.02	0.26		0.33	0.26	0.01		0.01			0.28	0.46	0.16	T		0.01	0.19								
SALISBURY FAA AP	3.32					T	0.87	0.08	0.02		0.40	0.46		T	0.01	T		0.57	0.32	0.01			0.15	0.43				T					
SNOW HILL 4 N	3.59	0.04					0.39		0.34		0.16	0.79			0.03	0.01		1.10	0.65		0.01			0.07	T								
CENTRAL																																	
EASTERN SHORE 02																																	
ROYAL OAK 2 SSW	M	-	-	-	-	-	-	-	-	-	-	-	-	-	-	-	-	-	-	-	-	-	-	-	-	-	-	-	-	-	-	-	
LOWER SOUTHERN 03																																	
MECHANICSVILLE 5 NE	2.52	0.02					0.82		0.47	0.03	0.02	0.37	0.28					0.04	0.01	0.02			0.01	0.03							0.40		
SOLOMONS	MA 2.59	0.11					0.08	0.33	0.21	0.72		*	*	0.27 _a			T	-	0.15	0.02	T			T	*	0.70 _a							
UPPER SOUTHERN 04																																	
BALTIMORE WASH INTL AP	3.43						0.03	0.80	0.17		0.62	0.61	T		T	T		0.02	T			0.01	0.99	0.03						0.15			
BELTSVILLE	3.66	0.05					0.02	0.96	0.29		0.40	0.60								0.02			0.09	0.96					0.03	0.24			
DALECARLIA RSVR	3.83	0.10						0.75	0.03	0.15	0.61	0.45							0.05			0.25	1.05	0.04							0.35		
LAUREL 3 W	3.89						1.16	0.34		0.54	0.89								0.05			0.71								0.20			
MARYLAND SCIENCE CENTER	3.83						0.52	0.64	0.01	0.54	0.27				0.04			0.01	0.01			1.31	0.04						0.44				
NATL ARBORETUM DC	2.15	0.05					T	0.67	0.09	0.05	0.34	0.20	T		T			0.20	T	T		T	0.46	0.03					0.01	0.06			
OXON HILL	2.47	T					0.02	0.43	0.08	0.15	0.54	0.31						0.05	0.01	T		0.15	0.17	T				0.01	0.55				
UPPER MARLBORO 3 NNW	2.40	0.09					0.01	0.75	0.24	0.02	0.49	0.30				T		0.06	0.01			T	0.09					T	0.34				
NORTHERN CENTRAL 06																																	
ABERDEEN PHILLIPS FLD	A 2.67	0.05						T	0.43	0.10	0.05	*	1.30 _a		0.03	0.01		*	0.08 _a				0.02	0.43	0.07				0.01	0.09			
BRIGHTON DAM	4.58	0.10					0.03	1.17	0.02		0.78	0.73							0.03			0.22	1.30						0.20				
CONOWINGO DAM	3.89							0.55	0.05	0.80	1.00											1.29							0.10	0.10			
CYLBURN	3.80	0.06					T	0.43	0.11	T	1.23	0.66			0.02	T			0.11			0.05	0.99	0.03				0.02	0.09				
DAMASCUS 3 SSW	5.18					0.09	1.00	0.36	T	0.42	0.48			T	T	T		0.03			0.46	2.01	0.17			T	0.16						
EMMITSBURG 2 SE	3.03	0.03					0.01	0.76	0.02	0.03	0.83	0.12			0.03	0.02		0.01	0.21			0.47	0.27	0.07				0.01	0.14				
FREDERICK 2 NNE	M	-	-	-	-	-	-	-	-	-	-	-	-	-	-	-	-	-	-	-	-	-	-	-	-	-	-	-	-	-	-	-	
MILLERS 4 NE	2.88						0.35	0.49	T		1.42				0.03	0.01		T	0.03	T		0.15	0.26					0.14					
SMITHSBURG 2NW	M	-	-	-	-	-	-	-	-	-	-	-	-	-	-	-	-	-	-	-	-	-	-	-	-	-	-	-	-	-	-	-	
WESTMINSTER	A 2.32	*	0.00 _a		*	*	0.00 _a	*	0.55 _a	0.01	0.01	*	*	1.33 _a	0.02	0.01	T	*	*	T _a		0.02	0.32	*	*	*	0.04 _a	0.01					
APPALACHIAN																																	
MOUNTAIN 07																																	
CUMBERLAND 2	2.77	0.02					0.09	1.51	0.05		0.38	0.25				0.10	0.05						0.27	0.02				T	0.03				
FROSTBURG 2	4.23	0.09					0.24	2.23	0.05	0.02	0.51	0.39				0.20	0.11		0.03	0.03	0.04		0.20	0.07				0.02					
SHARPSBURG 5 S	A 3.39	0.03					0.09	1.02	T	0.06	1.02	0.14			T						0.05	*	0.00 _a	0.67	0.24		0.06		0.01				
WILLIAMSPORT	A 2.68	0.03	*	0.00 _a			0.02	1.25	0.03	0.01	0.78	0.22				0.01	0.09				0.01		*	0.18 _a						0.05			
ALLEGHENY PLATEAU 08																																	
OAKLAND 1 SE	5.80						1.30	1.45	0.45	0.02	0.65	0.80			0.03	0.16	0.20		0.35	0.02													

DAILY PRECIPITATION (INCHES)

STATION	TOTAL	DAY OF MONTH																															
		01	02	03	04	05	06	07	08	09	10	11	12	13	14	15	16	17	18	19	20	21	22	23	24	25	26	27	28	29	30	31	
SAVAGE RIVER DAM	M 4.04	0.03					0.34	1.99	0.20	-	0.33	0.54			T	0.11	0.09		0.05		0.07		0.13	T							0.16		
SINES DEEP CREEK	4.47						0.07	1.20	0.53		0.51	0.80			0.03	0.45	0.20		0.05				0.43	0.14	0.03				0.03				
DELAWARE NORTHERN 01																																	
WILMINGTON NEW CASTLE CO AP	2.16						0.13	0.46	0.18	0.47	0.25	0.09	T	0.01	0.04	0.01		0.05	0.13			T	0.18	0.11					0.05				
WILMINGTON PORTER RES	3.05						0.21	0.65	0.10	0.25	0.75	0.20			0.08	0.08		T	0.23				0.20	0.18	T				0.12				
SOUTHERN 02																																	
DOVER	A 4.00	T				T	0.07	0.02	1.46		*	1.28 _a			0.07			*	0.54 _a					0.34					0.22				

DAILY TEMPERATURES (°F)

STATION	OB. TIME	MAX/MIN	DAY OF MONTH																															AVERAGE		
			01	02	03	04	05	06	07	08	09	10	11	12	13	14	15	16	17	18	19	20	21	22	23	24	25	26	27	28	29	30	31			
MARYLAND SOUTHERN EASTERN SHORE 01 ASSATEAGUE	VA	MAX MIN																																		M M
PRINCESS ANNE	17	MAX MIN	66 49	69 41	66 46			70 57		73 54	74 59	86 56		63 40	62 38	76 45	88 64	85 57				83 66	83 68	84 69	82 67	84 57	83 67					88 68	89 70	91 68	M M	
SALISBURY 2N	17	MAX MIN	65 46	66 48	64 44	63 47	60 43	63 48	66 54	74 54	74 57	83 65	78 58	66 40	63 36	80 53	85 65	84 58	80 57	78 56	82 65	81 66	81 69	81 71	75 53	64 46	64 44	70 46	74 46	80 60	87 67	86 66	89 66	75.1		
SALISBURY FAA AP	24	MAX MIN	66 48	68 46	60 46	65 45	63 46	65 51	67 57	74 54	75 59	86 56	83 66	70 40	64 37	64 56	83 90	84 84	67 57	79 57	83 64	83 66	84 72	80 69	70 53	67 49	72 45	77 46	83 62	88 68	89 70	91 68	75.5 56.0			
SNOW HILL 4 N	17	MAX MIN	64 48	66 48	64 44	63 47	60 47	64 51	67 56	74 52	75 55	84 56	82 60	72 40	66 36	63 54	82 66	89 62	87 58	73 60	76 65	83 66	81 70	85 69	82 52	71 47	65 45	72 46	77 46	80 60	88 64	90 66	91 65	75.4 55.5		
CENTRAL EASTERN SHORE 02 ROYAL OAK 2 SSW	17	MAX MIN																																	M M	
LOWER SOUTHERN 03 MECHANICSVILLE 5 NE	07	MAX MIN	66 47	65 44	64 42	64 43	60 45	61 45	64 50	69 56	73 52	83 53	78 55	61 38	63 34	84 45	84 52	80 57	80 57	75 60	80 60	80 64	84 68	78 69	75 54	65 44	67 44	72 44	83 44	86 56	88 65	88 66	74.3 51.8			
SOLOMONS	08	MAX MIN	67 51	66 47	67 50	63 47	65 46	63 51	65 53	66 56	66 55	75 58		81 47	61 46	71 49	85 69	88 63	77 61	66 62	72 65	77 67	83 69	78 69	70 64		66 47	72 52	78 63	83 68	90 70	87 69	73.1 57.6			
UPPER SOUTHERN 04 BALTIMORE WASH INTL AP	24	MAX MIN	68 47	67 43	65 44	67 46	62 45	62 47	64 57	71 55	75 51	83 52	78 63	64 38	63 34	79 54	81 67	82 55	67 59	70 59	80 62	83 66	87 69	80 65	65 49	66 44	72 47	73 46	77 58	89 65	92 69	90 66	73.6 53.8			
BELTSVILLE	08	MAX MIN	59 44	69 41	68 43	66 44	67 45	62 51	63 58	69 52	74 63	83 59	77 58	63 38	59 34	63 50	85 60	82 54	83 62	65 59	74 62	82 67	84 68	87 65	81 56	56 45	66 49	72 47	71 56	80 62	88 64	91 63	72.6 53.4			
DALECARLIA RSVR	08	MAX MIN	58 44	69 42	68 45	64 48	66 46	62 47	59 50	63 57	62 54	75 57	84 55	79 41	62 37	58 37	87 60	81 56	82 64	64 58	76 60	83 67	85 69	89 65	88 57	57 65	71 44	70 44	84 46	88 46	91 61	72.7 53.1				
LAUREL 3 W	24	MAX MIN	71 43	70 44	67 45	67 45	64 46	61 56	61 55	65 53	75 56	84 62	78 54	64 42	59 38	64 53	84 67	81 61	83 58	70 58	74 64	81 63	83 69	81 65	65 51	65 42	72 49	71 51	80 57	89 66	91 69	90 68	74.1 54.6			
MARYLAND SCIENCE CENTER	24	MAX MIN	73 53	73 52	69 53	72 51	67 50	67 52	69 61	74 59	79 58	86 67	83 54	68 48	63 46	67 59	81 70	85 66	83 62	73 63	73 69	83 71	88 73	90 68	84 53	69 49	69 53	75 58	75 63	78 69	94 76	94 75	96 60.1			
NATL ARBORETUM DC	07	MAX MIN	60 46	73 44	69 47	69 48	69 46	63 49	61 51	63 59	64 54	73 55	76 61	86 59	85 44	66 36	62 49	67 60	88 85	85 86	90 77	84 85	88 84	84 59	68 68	53 49	59 68	68 74	73 84	84 91	93 88	76.0 55.3				
OXON HILL	08	MAX MIN	59 46	69 42	68 48	66 47	67 44	63 46	63 51	64 57	72 54	85 60	80 58	65 41	62 37	65 43	87 54	85 59	84 61	64 59	79 60	83 65	85 87	87 84	84 65	65 44	67 47	74 50	71 56	85 60	90 66	91 66	74.3 53.9			
UPPER MARLBORO 3 NNW	08	MAX MIN	59 43	68 40	67 43	65 45	67 42	61 46	62 50	63 57	71 51	84 61	79 56	65 39	61 33	65 46	86 60	86 56	82 61	65 59	75 62	82 65	83 68	87 66	82 60	60 44	67 48	72 44	72 56	84 62	90 68	82 65	73.1 53.2			
NORTHERN CENTRAL 06 ABERDEEN PHILLIPS FLD	07	MAX MIN	67 46	70 43	69 44	65 44	68 46	63 46	66 48	68 57	74 54	83 52	77 56	63 40	58 35	62 38	77 55	83 58	79 57	71 57	79 60	79 66	81 68	85 71	81 65							70 60	87 65	90 66	73.3 53.8	

DAILY TEMPERATURES (°F)

STATION	OB. TIME	MAX/MIN	DAY OF MONTH																															AVERAGE	
			01	02	03	04	05	06	07	08	09	10	11	12	13	14	15	16	17	18	19	20	21	22	23	24	25	26	27	28	29	30	31		
BRIGHTON DAM	08	MAX	59	68	67	65	66	61	60	62	70	74	73	76	63	58	61	81	79	81	65	71	79	82	85	78	78	64	71	69	77	86	89	71.5	
		MIN	43	39	42	44	43	43	47	56	52	51	55	52	36	32	32	32	59	52	57	60	62	64	63	54	43	45	42	54	60	64	63	49.7	
CONOWINGO DAM	07	MAX	66	69	69	55	69	64	66	66	71	74	80	77	63	57	60	73	81	76	69	65	77	79	84	78	62	65	70	70	68	89	86	70.9	
		MIN	43	40	41	41	42	42	45	55	52	52	52	53	39	35	40	52	54	54	50	58	63	65	65	62	45	45	45	50	54	61	64	50.3	
CYLBURN	08	MAX	60	68	67	65	66	60	61	62	70	72	80	75	62	57	60	75	78	78	69	65	77	82	86	79	58	62	68	69	73	86	88	70.3	
		MIN	41	42	45	44	42	44	56	56	52	54	56	49	41	36	42	56	57	58	58	63	65	67	65	58	44	46	45	57	58	69	68	52.7	
DAMASCUS 3 SSW	22	MAX	68	68	67	65	61	59	61	70	71	82	74	62	57	59	82	76	81	68	70	79	84	87	79	63	62	69	66	76	85	89	88	71.9	
		MIN	43	40	44	41	40	44	56	54	51	53	60	47	38	32	50	67	55	57	56	63	65	66	63	47	40	44	47	54	64	64	64	51.9	
EMMITSBURG 2 SE	07	MAX	61	70	70	68	68	65	62	62	69	71	81	72	60	57	59	79	78	78	60	69	78	84	86	77	57	63	68	68	73	85	88	70.5	
		MIN	44	39	41	38	40	38	41	54	53	49	49	52	40	32	34	48	53	53	58	58	62	65	64	57	43	47	41	43	56	59	63	48.8	
FREDERICK 2 NNE	07	MAX																																M	
		MIN																																	M
MILLERS 4 NE	18	MAX	69	69	67	68	66	64	64	70	71	81	75	70	56	58	77	79	79	72	65	79	84	88	83	75	63	68	70	73	85	89	88	73.1	
		MIN	40	40	44	38	39	38	53	56	50	51	59	52	37	31	47	62	55	55	56	61	63	66	62	48	40	43	40	53	61	65	67	50.7	
SMITHSBURG 2NW	08	MAX																																	M
		MIN																																	M
WESTMINSTER	07	MAX		68	70			67		61	61	74			82	56	59	80	80			80	80	86	88	79			69	76	88	91		M	
		MIN		38	41			39		55	52	51			42	32	37	53	53			56	66	66	64	56			42	58	65	67		M	
APPALACHIAN MOUNTAIN 07																																			
CUMBERLAND 2	18	MAX	64	76	75	73	72	72	60	62	74	77	84	72	58	58	64	92	82	86	74	66	89	93	91	86	58	67	73	65	81	91	95	75.2	
		MIN	54	44	45	44	43	44	49	51	53	52	55	43	28	32	33	48	54	58	59	59	63	65	64	50	42	43	43	44	54	61	62	49.6	
FROSTBURG 2	07	MAX	58	69	70	66	65	65	53	54	67	71	75	65	52	51	60	85	73	78	65	60	81	85	84	78	48	56	63	59	78	82	85	67.8	
		MIN	47	40	40	41	40	41	42	42	48	51	54	40	33	28	29	44	55	52	54	54	59	62	59	42	33	33	38	40	50	58	58	45.4	
SHARPSBURG 5 S	07	MAX	60	71	71	70	69	65	63	63	70	73	83	74	61	58	62	86	79	82	66	73		87	89	79	55	65	70	67	79	89	91	72.3	
		MIN	48	39	39	40	39	43	47	53	48	50	51	47	35	29	32	51	51	52	58	59		61	63	54	36	37	39	40	54	60	61	47.2	
WILLIAMSPORT	06	MAX	62		73	70	71	71	61	62	71	75	83	75	61	61	64	84	82	82	67	69	83	88		79	64	66	72	67	77	90	92	73.2	
		MIN	42		41	40	39	39	43	53	51	50	50	51	39	33	33	47	54	53	59	59	59	61		57	45	43	42	42	55	59	61	48.3	
ALLEGHENY PLATEAU 08																																			
OAKLAND 1 SE	07	MAX	60	66	66	64	61	61	54	57	64	71	77	77	77	48	63	82	67	80	78	70	82	82	81	76	49	56	63	61	78	81	85	68.9	
		MIN	48	41	41	39	40	43	43	49	48	47	53	40	34	25	33	58	53	51	55	54	55	58	61	41	32	31	33	41	51	52	50	45.2	
SAVAGE RIVER DAM	08	MAX	61	67	68	64	63	63	63	58	65		77	65	51	51	60	83	71	79	67	62	80	83	83	77	51	57	64	60	79	81	86	68.0	
		MIN	51	42	41	42	43	44	45	51	50		51	46	36	30	30	45	52	53	54	56	60	59	61	46	38	38	42	50	56	56	46.9		
SINES DEEP CREEK	07	MAX	61	67	68	67	63	64	60	58	66	71	77	61	51	50	59	82	68	79	73	67	82	82	76	46	56	63	61	78	81	85	67.9		
		MIN	48	39	38	39	39	45	46	47	46	47	40	31	27	27	28	52	49	48	52	53	55	57	42	30	30	31	50	50	52	52	42.9		
DELAWARE NORTHERN 01																																			
WILMINGTON NEW CASTLE CO AP	24	MAX	70	72	66	71	65	70	71	72	72	79	78	65	58	62	76	82	79	71	66	79	82	86	83	67	65	71	73	67	89	91	91	73.8	
		MIN	42	41	48	42	47	45	54	58	57	54	63	48	39	36	52	59	53	59	60	63	64	68	65	48	47	47	45	57	60	68	69	53.5	
WILMINGTON PORTER RES	24	MAX		69	63	67	61	67	68	73	69	80	76	63	54	59	72	79	79	68	63	77	79	85	82	65	61	67	71	72	88	91	90	71.9	
		MIN		44	47	44	45	44	53	57	56	61	50	41	37	49	60	55	56	57	57	57	57	65	47	45	46	46	46	60	67	69	69	52.5	

MARYLAND AND DELAWARE
201305

DAILY TEMPERATURES (°F)

STATION	OB. TIME	MAX/MIN	DAY OF MONTH																															AVERAGE
			01	02	03	04	05	06	07	08	09	10	11	12	13	14	15	16	17	18	19	20	21	22	23	24	25	26	27	28	29	30	31	
SOUTHERN 02 DOVER	16	MAX MIN	67 45	66 45	65 44	67 44	60 45	62 47	66 56	72 56	73 55	80 56	78 62	67 53	60 41	62 38	76 50	82 51	80 57	78 58	69 59	81 66	83 66	84 69	81 70	76 50	64 47	69 46	75 48	71 59	88 65	90 70	90 70	73.6 54.5

SNOWFALL AND SNOW ON GROUND (INCHES)

STATION		DAY OF MONTH																														
		01	02	03	04	05	06	07	08	09	10	11	12	13	14	15	16	17	18	19	20	21	22	23	24	25	26	27	28	29	30	31
MARYLAND SOUTHERN EASTERN SHORE 01 ASSATEAGUE PRINCESS ANNE SALISBURY 2N SALISBURY FAA AP SNOW HILL 4 N	SNOWFALL																															
	SNOWFALL																															
	SNOWFALL																															
	SNOWFALL																															
	SN ON GND																															
	SNOWFALL																															
DELAWARE NORTHERN 01 WILMINGTON NEW CASTLE CO AP WILMINGTON PORTER RES	SNOWFALL																															
	SN ON GND																															
	SNOWFALL																															

Snowfall: Includes snow and ice. Values for NWS stations (J index note) are Mid-Mid (LST).

Snow on ground: Includes snow, sleet, ice, and hail. Values for NWS stations (J index note) are observed at 12 UTC (GMT).

Water Equivalent: Given for NWS stations (J index note) only, when snow depth is 2 inches or more, and is measured at 18 UTC (GMT)

PAN EVAPORATION AND WIND

STATION		DAY OF MONTH																															TOTAL OR AVERAGE
		01	02	03	04	05	06	07	08	09	10	11	12	13	14	15	16	17	18	19	20	21	22	23	24	25	26	27	28	29	30	31	
MARYLAND UPPER SOUTHERN 04 BELTSVILLE	WIND	44	48	33	60	55	51	74	57	32	37	55	60	63	70	39	51	62	40	46	24	51	64	83	80	137	99	62	20	31	45	37	1710
	EVAP	0.03	0.22	0.17	0.21	0.22	0.18	0.01	0.01	0.13	0.14	0.23	0.23	0.22	0.19	0.17	0.17	0.23	0.27	0.05	0.04	0.15	0.20	0.28	0.17	0.17	0.26	0.26	0.12	0.13	0.20	0.27	5.33
	MAX	76	76	77	75	76	74	60	63	78	79	85	78	73	65	70	80	81	89	65	76	85	90	92	82	62	71	77	73	83	92	94	76.9
	MIN	48	48	49	48	47	46	50	58	56	56	60	60	44	41	42	56	59	60	59	60	66	68	54	62	40	41	46	50	59	67	66	53.7
UPPER MARLBORO 3 NNW	WIND	-	-	-	-	-	-	-	-	-	-	-	-	-	-	-	-	-	-	-	-	-	-	-	-	-	-	-	-	-	-	M	
	EVAP	-	-	-	-	-	-	-	-	-	-	-	-	-	-	-	-	-	-	-	-	-	-	-	-	-	-	-	-	-	-	M	
	MAX	-	-	-	-	-	-	-	-	-	-	-	-	-	-	-	-	-	-	-	-	-	-	-	-	-	-	-	-	-	-	M	
	MIN	-	-	-	-	-	-	-	-	-	-	-	-	-	-	-	-	-	-	-	-	-	-	-	-	-	-	-	-	-	-	M	
ALLEGHENY PLATEAU 08 SAVAGE RIVER DAM	WIND	-	-	-	-	-	-	-	-	-	-	-	-	-	-	-	-	-	-	-	-	-	-	-	-	-	-	-	-	-	M		
	EVAP	-	-	-	-	-	-	-	-	-	-	-	-	-	-	-	-	-	-	-	-	-	-	-	-	-	-	-	-	-	M		
	MAX	-	-	-	-	-	-	-	-	-	-	-	-	-	-	-	-	-	-	-	-	-	-	-	-	-	-	-	-	-	-		
	MIN	-	-	-	-	-	-	-	-	-	-	-	-	-	-	-	-	-	-	-	-	-	-	-	-	-	-	-	-	-	M		

Evaporation: Is measured in hundredths of inches.

Wind: Is measured in miles.

Max and Min: The maximum and minimum temperatures (Fahrenheit) of the water in the evaporation pan.

STATION INDEX

STATION	INDEX NO.	DIVISION	COUNTY	LATITUDE	LONGITUDE	ELEVATION (IN FEET)	OBSERVATION TIME AND TABLES			
							LOCAL STD TIME			
							TEMP	PRECIP	EVAP	SPECIAL SEE (NOTES)
MARYLAND										
ABERDEEN PHILLIPS FLD	0015	06	HARFORD	39 28	76 10W	57	07	07		CH
ASSATEAGUE	0335	01	WORCESTER	38 4	75 13W	10	VAR	VAR		H
BALTIMORE WASH INTL AP R	0465	04	ANNE ARUNDEL	39 10	76 41W	156	24	24		HJ
BELTSVILLE	0700	04	PRINCE GEORGE'S	39 2	76 56W	145	08	08	08	CH
BRIGHTON DAM	1125	06	MONTGOMERY	39 11	77 0W	330	08	08		H
CONOWINGO DAM	2060	06	HARFORD	39 39	76 11W	40	07	07		H
CUMBERLAND 2	2282	07	ALLEGANY	39 39	78 45W	730	18	18		H
CYLBURN	2308	06	BALTIMORE	39 21	76 39W	235	08	08		H
DALECARLIA RSVR	2325	04	DISTRICT OF COLUMBIA	38 56	77 7W	150	08	08		H
DAMASCUS 3 SSW	2336	06	MONTGOMERY	39 16	77 14W	700	22	22		H
EMMITSBURG 2 SE	2906	06	FREDERICK	39 41	77 17W	403	07	07		H
FREDERICK 2 NNE	3353	06	FREDERICK	39 26	77 24W	280	07	07		H
FROSTBURG 2	3415	07	ALLEGANY	39 40	78 56W	2170	07	07		H
LAUREL 3 W	5111	04	PRINCE GEORGE'S	39 5	76 54W	400	24	24		H
MARYLAND SCIENCE CENTER R	5718	04	BALTIMORE (CITY)	39 17	76 37W	20	24	24		H
MECHANICSVILLE 5 NE	5865	03	ST. MARY'S	38 28	76 42W	100	07	07		H
MILLERS 4 NE	5934	06	CARROLL	39 43	76 48W	860	18	18		CH
NATL ARBORETUM DC	6350	04	DISTRICT OF COLUMBIA	38 55	76 58W	50	07	07		H
OAKLAND 1 SE	6620	08	GARRETT	39 25	79 24W	2420	07	07		H
OXON HILL	6800	04	PRINCE GEORGE'S	38 47	76 60W	120	08	08		H
PRINCESS ANNE	7330	01	SOMERSET	38 13	75 41W	20	17	17		H
ROYAL OAK 2 SSW	7806	02	TALBOT	38 43	76 11W	10	17	17		H
SALISBURY 2N	8004	01	WICOMICO	38 24	75 36W	20	17	17		H
SALISBURY FAA AP	8005	01	WICOMICO	38 20	75 31W	48	24	24		H
SAVAGE RIVER DAM	8065	08	GARRETT	39 31	79 8W	1495	08	08	08	CH
SHARPSBURG 5 S	8207	07	WASHINGTON	39 24	77 43W	500	07	07		H
SINES DEEP CREEK	8315	08	GARRETT	39 31	79 25W	2040	07	07		H
SMITHSBURG 2NW	8371	06	WASHINGTON	39 40	77 35W	670	08	08		H
SNOW HILL 4 N	8380	01	WORCESTER	38 14	75 23W	30	17	17		H
SOLOMONS	8405	03	CALVERT	38 19	76 27W	12	08	08		H
UPPER MARLBORO 3 NNW	9070	04	PRINCE GEORGE'S	38 51	76 46W	130	08	08	08	H
WESTMINSTER	9440	06	CARROLL	39 34	76 59W	750	07	07		H
WILLIAMSPORT	9570	07	WASHINGTON	39 37	77 51W	360	06	06		H
DELAWARE										
DOVER	2730	02	KENT	39 15	75 31W	30	16	16		H
WILMINGTON NEW CASTLE CO AP R	9595	01	NEW CASTLE	39 40	75 36W	79	24	24		HJ
WILMINGTON PORTER RES	9605	01	NEW CASTLE	39 46	75 32W	270	24	24		H

REFERENCE NOTES

STATION NAMES: Name of the city, town or locality. Figures and letters following the station names indicate the distance in miles and direction from the post office or town community center.

DIVISIONS: Areas within a state of similar climatological characteristics. Division averages are calculated using data from stations that record temperature and/or precipitation. Station Precipitation totals flagged with an 'F' or 'M' are excluded from the Divisional Average calculations of precipitation. Stations with monthly Temperature averages flagged with an 'F' or 'M' are included in the Divisional Average if there are no more than 9 flagged or missing daily values in the month, else they are excluded from the divisional average for temperature.

NORMALS: The average value of the meteorological element over a time period. Effective 1 January 2012, the averaging period is 1981 to 2010. The normals for National Weather Service localities have been adjusted so as to be representative for the current observation site.

MONTHLY DEGREE DAY TOTALS: One heating (cooling) degree day is accumulated for each whole degree that the daily mean temperature is below (above) 65 degrees Fahrenheit.

PRECIPITATION: Values shown in hundredths of inches are water equivalent totals, i.e., total of liquid and melted frozen precipitation. In the "Monthly Summarized Data" table the total snow and sleet values shown in tenths of inches are unmelted amounts. The max depth on ground values of snow and sleet shown in whole inches are cumulative unmelted amounts. The number of days with .10, .50, 1.00 or more refers to water equivalents.

PRECIPITATION QUALITY CONTROL: The NCDC quality control process may flag precipitation data that are spatially inconsistent, exceed climatological limits, or are inconsistent with prevailing weather patterns.

TEMPERATURE: Original temperature values are given in the "Daily Temperature" table. Summary temperature information (averages, departures, extremes, monthly degree day totals) is based on the values labeled MAX/MIN.

WIND: (As shown in the "Evaporation and Wind" table) the total wind movement in miles over the evaporation pan as determined by an anemometer recorder located 6-8 inches above the pan.

SYMBOLS AND LETTERS USED IN THE STATION INDEX TABLE

C Station is equipped with recording rain gage (R) but values in this bulletin are from a non-recording rain gage unless indicated by an R.

G Observations appear in the "Soil Temperatures" table.

H Observations appear in the "Snowfall and Snow on the Ground" table.

J Station also published as a Local Climatological Data publication.

VAR Observation time varies.

SR Observation time near sunrise.

SS Observation time near sunset.

SYMBOLS AND LETTERS USED IN THE DATA TABLES

(DAILY DATA ARE FOR THE 24 HOURS IMMEDIATELY PRECEDING OBSERVATION TIME.)

BLANK Entries in the "Monthly Summarized Data" table indicate no record.

BLANK Entries in the "Daily Precipitation" and "Snowfall and Snow on the Ground" tables indicate zero.

BLANK Entries in the "Daily Temperature" table indicate a missing record

- No record. Data not recorded or not received in time for publication.

+ Precipitation or temperature extremes occurred on one or more previous dates during the month.

* Rain gage not read. Precipitation is included in the amount following the asterisks.

Time distribution may not be known. A * preceding the monthly total indicates precipitation amount is being carried forward to next month's total, and may include amounts from the previous month(s).

a As a subscript, indicates accumulated total.

A Amount of precipitation is the total of observer's entries for the current month. It may include precipitation that occurred during the previous month. Refer to earlier bulletin to determine date of last reading. (Hawaii stations)

B Divisional Departure from normals are computed using 1971-2000 normals.

E Normalized HDD/CDD Calculation. E is appended to the HDD/CDD Calculation when 1-9 individual daily TMAX and/or TMIN values are missing and a Normalized HDD/CDD Calculation is provided. M appears alone if 10 or more daily values are missing.

F Monthly calculation flagged value. F is appended to average and/or total values computed which exclude one or more daily data values that have been flagged by the GHCN-Daily Dataset

M Insufficient or partial data. M is appended to average and/or total values computed with 1-9 daily values missing. M appears alone if 10 or more daily values are missing, (8 or more for wind and evaporation).

N Indicates snow fall or Snowdepth totals are computed with one or more missing days.

R Amounts from recording rain gage.

T Trace. An amount too small to measure.

SEASONAL TABLES: Monthly and seasonal snowfall and heating degree days for the 12 months ending with the June data are published in the July issue of this bulletin. Cooling degree days for the calendar year are published in the "Climatological Data Annual Summary."

Information concerning the history of changes in locations, exposure, etc. of substations is kept on file at the National Climatic Data Center. Historical information of regular National Weather Service Offices may be obtained from the "Local Climatological Data" annual publication. The contents of this publication may be reprinted or otherwise used freely, with proper credit to the National Climatic Data Center. The data are also available digitally.

Effective with the January 2011 Data-Month, COOP Observer Names are no longer included in the Monthly and Annual Climatological Data Publications. This information is not published to ensure the privacy of personal information pursuant to Section 208 of the E-Government Act of 2002 (44 USC 3601).

As of the 2011 Data-Year, Station and Climate Division Maps are no longer being included in the CD Publications. NCDC's Product Development Branch provides updated Station Maps for various data networks via the Historical Observing Metadata Repository: <http://www.ncdc.noaa.gov/homr>.

The GHCN-Daily Quality Control Flags shown below are displayed as superscripts with the data. For more Information on Global Historical Climatology Network - Daily and flags, see: <http://www.ncdc.noaa.gov/oa/climate/ghcn-daily/> and

Comprehensive Automated Quality Assurance of Daily Surface Observations.

Durre, Imke, Matthew J. Menne, Byron E. Gleason, Tamara G. Houston,

Russell S. Vose, 2010: J. Appl. Meteor. Climatol., 49, 1615-1633.

doi: 10.1175/2010JAMC2375.1

Blank = Passed All checks

D = failed duplicate check

G = failed gap check

I = failed internal consistency check

K = failed streak/frequent-value check

L = failed check on length of multiday period

M = failed megaconsistency check

N = failed naught check

O = failed climatological outlier check

R = failed lagged range check

S = failed spatial consistency check

T = failed temporal consistency check

W = temperature too warm for snow

X = failed bounds check

Z = flagged as a result of an official Datzilla investigation

Beginning with the January 2013 CD Publication, monthly mean temperature calculations have changed to the National Data Stewardship Team standard. Monthly maximum and minimum temperatures are not rounded until after the monthly mean temperature is calculated. This is the most accurate outcome, but may be slightly different from the mean derived from rounded monthly maximum and minimum.

Processing Updates and Errata: The 2011 CD Publications were reproduced in May 2013. This update included the addition of late reports and corrections based on additional investigations of reported data issues through NCDC's Datzilla system. In addition, divisional averages for precipitation were recalculated using the method described in DIVISIONS above. Previous editions of the 2011 Publications included all precipitation stations regardless of missing data in the calculation of divisional averages. HDD/CDD values were recalculated to match the legacy method of calculation (truncation of monthly HDD/CDD values instead of rounding).

These and other publications are available from the National Climatic Data Center

Hourly Precipitation Data

This publication contains hourly precipitation amounts obtained from recording rain gages located at National Weather Service, Federal Aviation Administration, and cooperative observer stations. Published data are displayed in inches and tenths or inches and hundredths at local standard time. HPD includes maximum precipitation for nine (9) time periods from 15 minutes to 24 hours, for selected stations.

Climatological Data

Monthly editions contain station daily maximum and minimum temperatures and precipitation. Some Stations provide daily snowfall, snow depth, evaporation, and soil temperature data. Each edition also contains monthly summaries for heating and cooling degree days (65 degree F base). The July issue contains a recap of monthly heating degree days and snow data for the preceding July through June.

The Annual issue contains monthly and annual averages of temperature, precipitation, temperature extremes, freeze data, soil temperatures, evaporation, and a recap of monthly cooling degree days.

Storm Data

Monthly issues contain a chronological listing, by states, of occurrences of storms and unusual weather phenomena. Reports contain information on storm paths, deaths, injuries, and property damage. An "Outstanding storms of the month" section highlights severe weather events with photographs, illustrations, and narratives. The December issue includes annual tornado, lightning, flash flood, and tropical cyclone summaries.

Monthly Climatic Data for the World

This publication contains monthly means for temperature, pressure, precipitation, vapor pressure, and sunshine for approximately 2,000 surface data collection stations worldwide and monthly mean upper air temperatures, dew point depressions, and wind velocities for approximately 500 observing sites.

Local Climatological Data

LCD publications summarize temperature, relative humidity, precipitation, cloudiness, wind speed and direction observations for several hundred cities in the U.S. and its territories. Each monthly publication also contains 3 hourly weather observations for that month and a hourly summary of precipitation. Annual LCD publications contain a summary of the past calendar year as well as historical averages and extremes.

For Information Call:

(828) 271-4800 Option 2

(828) 271-4010 (TDD)

(828) 271-4876 (Fax)

NOAA\National Climatic Data Center
Attn: User Engagement & Services Branch
151 Patton Avenue
Asheville, NC 28801-5001

Customer Services Number: (828) 271-4800, option 2
TDD : (828) 271-4010
Fax number: (828) 271-4876

NCDC now offers free online access to the *Climatological Data* publication.
Go to : www.ncdc.noaa.gov and choose Most Popular.