



CLIMATOLOGICAL DATA

MARYLAND AND DELAWARE

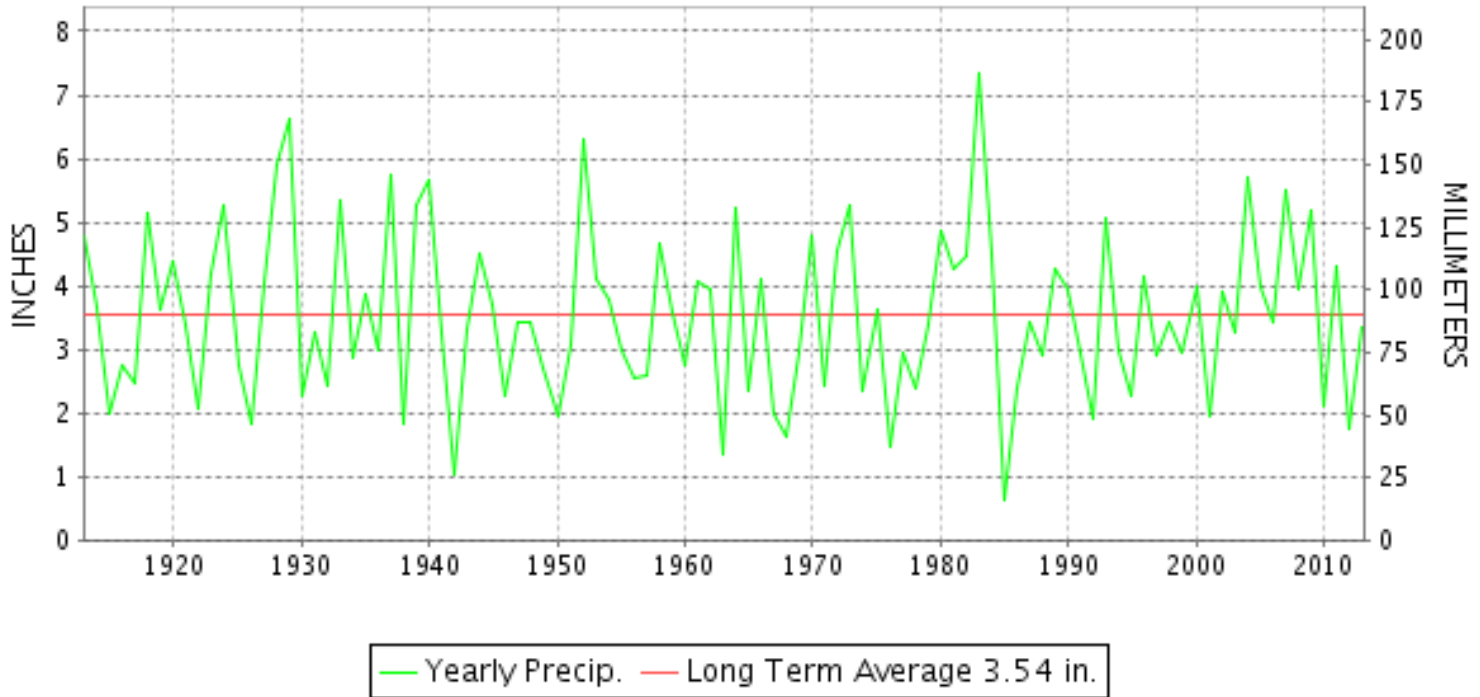
APRIL 2013

VOLUME 117 NUMBER 04

ISSN 0145-0549

GHCND Ver: 3.11-upd-2013080705

APRIL PRECIPITATION BY YEAR



TEMPERATURE AND PRECIPITATION EXTREMES

MARYLAND

HIGHEST TEMPERATURE	96	APRIL 10	MARYLAND SCIENCE CENTER
LOWEST TEMPERATURE	15	APRIL 04	OAKLAND 1 SE
GREATEST TOTAL PRECIPITATION	4.53		SALISBURY 2N
LEAST TOTAL PRECIPITATION	1.76		EMMITSBURG 2 SE
GREATEST 1 DAY PRECIPITATION	1.35	APRIL 29	SALISBURY 2N
GREATEST TOTAL SNOWFALL	T		2 STATIONS
GREATEST DEPTH OF SNOW OR ICE	T		FROSTBURG 2

"I certify that this is an official publication of the National Oceanic and Atmospheric Administration (NOAA) It is compiled using information from weather observing sites supervised by NOAA/National Weather Service and received at the National Climatic Data Center(NCDC), Asheville, North Carolina 28801."

Director
National Climatic Data Center

noaa

National
Oceanic and
Atmospheric Administration

National
Environmental Satellite, Data
and Information Service

National
Climatic Data Center
Asheville, North Carolina

DELAWARE

HIGHEST TEMPERATURE	90	APRIL 10	WILMINGTON NEW CASTLE CO AP
LOWEST TEMPERATURE	24	APRIL 04	WILMINGTON NEW CASTLE CO AP
GREATEST TOTAL PRECIPITATION	4.24		DOVER
LEAST TOTAL PRECIPITATION	1.62		WILMINGTON PORTER RES
GREATEST 1 DAY PRECIPITATION	1.35	APRIL 12	DOVER

MONTHLY STATION AND DIVISION SUMMARY

STATION	TEMPERATURE (°F)											PRECIPITATION (IN)															
	AVERAGE MAXIMUM	AVERAGE MINIMUM	AVERAGE	DEPARTURE FROM NORMAL	HIGHEST	DATE	LOWEST	DATE	HEATING DEG. DAYS	COOLING DEG. DAYS	NO. OF DAYS				TOTAL	DEPARTURE FROM NORMAL	GREATEST 24 HOURS	DATE	ICE PELLETS, SNOW			NO. OF DAYS					
											MAX		MIN						TOTAL	MAX DEPTH ON GROUND	DATE	.10 OR MORE	.50 OR MORE	1.00 OR MORE			
											>=90	<=32	<=32	<=0													
--DIVISIONAL DATA-----> APPALACHIAN MOUNTAIN 07			53.1	0.8B										2.48	-1.05B												
CUMBERLAND 2	68.1	42.3	55.2	0.7	89	11	22	05+	320	36	0	0	6	0	2.61	-0.69	1.30	12	0.0						5	1	1
FROSTBURG 2	61.1	36.3	48.7	1.2	82	11	17	04	487	8	0	0	13	0	3.27	-0.60	1.13	12	MT	MT	01			6	2	1	
SHARPSBURG 5 S	65.8	39.0	52.4	1.1	90	11	19	04	386	15	1	0	8	0	2.15	-1.47	0.75	20	0.0						7	1	0
WILLIAMSPORT	66.1M	40.4M	53.3M	1.2	85	10	22	05	354E	10E	0	0	4	0	M 2.51	-0.69	0.83	13	M 0.0	0				6	2	0	
--DIVISIONAL DATA-----> ALLEGHENY PLATEAU 08			52.4	1.7B											2.68	-0.71B											
OAKLAND 1 SE	60.2	35.6	47.9	1.3	82	11	15	04	510	3	0	0	13	0	3.38	-0.49	0.68	17	0.0	0				7	2	0	
SAVAGE RIVER DAM	63.7M	38.3M	51.0M	2.3	81	11	20	05	416E	4E	0	0	6	0	M 2.44	-0.89	0.79	12	0.0						6	2	0
SINES DEEP CREEK	61.2M	33.9M	47.6M		81	11	17	04	519E	2E	0	0	16	0	M 3.05		0.65	12	0.0						9	2	0
--DIVISIONAL DATA-----> DELAWARE NORTHERN 01			48.8	1.8B											3.38	-0.46B											
WILMINGTON NEW CASTLE CO AP	64.4	43.5	54.0	0.7	90	10	24	04	340	17	1	0	3	0	2.69	-0.81	1.07	12	0.0	0					6	2	1
WILMINGTON PORTER RES	M	M	M		87	10	28	04	418E	28E	0	0	3	0	1.62	-2.59	0.45	29+	0.0	0					5	0	0
--DIVISIONAL DATA-----> SOUTHERN 02			54.0	1.6B											2.16	-1.47B											
DOVER	66.2	44.7	55.5	0.5	88	10	26	04+	307	31	0	0	3	0	4.24	0.36	1.35	12	0.0						6	5	1
--DIVISIONAL DATA----->			55.5	2.3B											4.24	0.77B											

DAILY PRECIPITATION (INCHES)

STATION	TOTAL	DAY OF MONTH																															
		01	02	03	04	05	06	07	08	09	10	11	12	13	14	15	16	17	18	19	20	21	22	23	24	25	26	27	28	29	30	31	
MARYLAND																																	
SOUTHERN																																	
EASTERN SHORE 01																																	
ASSATEAGUE	M	-	-	-	-	-	-	-	-	-	-	-	-	-	-	-	-	-	-	-	-	-	-	-	-	-	-	-	-	-	-	-	
PRINCESS ANNE	M					1.07	-	-	-	-	-	-	-	-	-	-	-	-	-	1.20	-	-	-	-	-	-	-	-	-	-	1.15	0.57	
SALISBURY 2N	4.53	0.06	0.02			1.18						0.32	0.17								1.08	0.01				0.04				1.35	0.30		
SALISBURY FAA AP	3.78	0.02			0.30	0.80						0.42							0.30	0.58					0.02			0.01	1.16	0.17			
SNOW HILL 4 N	M 3.85		T			1.00						-								1.03									1.13	0.69			
CENTRAL																																	
EASTERN SHORE 02																																	
ROYAL OAK 2 SSW	3.89	T				1.10						0.53			0.03				0.05	T	1.21					T			0.80	0.17			
LOWER SOUTHERN 03																																	
MECHANICSVILLE 5 NE	4.49	0.03	T			0.99	T					T	1.20		T			T	0.02	1.22				T					0.80	0.23			
SOLOMONS	A 4.50	0.04	T			1.17						0.07	0.52		T	T		T	0.02	*	1.30 _a		T		T			0.50	0.88				
UPPER SOUTHERN 04																																	
BALTIMORE WASH INTL AP	2.20	T			0.04	0.11						0.67			T		T	0.04	0.79	0.07					T	T			T	0.26	0.22		
BELTSVILLE	2.00	0.01				0.27						0.41	0.04		0.01			0.23	0.04	0.74					T				0.13	0.12			
DALECARLIA RSVR	1.97	0.04				0.36						0.72	0.05		0.02		0.04	0.06	0.07	0.27	0.02				0.01				0.18	0.13			
LAUREL 3 W	2.77					0.20						0.58			0.06			0.26	0.95	0.25	0.02								0.23	0.24			
MARYLAND SCIENCE CENTER	2.21	0.01			0.04	0.08						0.67						0.07	0.76	0.05									0.34	0.19			
NATL ARBORETUM DC	M 2.89	0.02	T			0.27						0.56	0.24		0.01	T	0.01	0.07	0.03	1.33							-	-	0.16	0.19			
OXON HILL	2.84	0.02	T			0.28						0.26	0.70		T	T	T	T	0.08	1.18						0.02			0.14	0.16			
UPPER MARLBORO 3 NNW	2.77	0.01				0.35						0.45	0.50		0.01	T		0.01	0.01	0.91					T	0.05			0.23	0.24			
NORTHERN CENTRAL 06																																	
ABERDEEN PHILLIPS FLD	2.60	0.10				0.12					0.07	0.03	0.95			T			0.05	0.79						0.02			0.18	0.29			
BRIGHTON DAM	2.89	0.05				0.15						0.40	0.48		0.02		0.01		0.30	1.15									0.06	0.27			
CONOWINGO DAM	2.30	0.14				0.03						0.08	0.50					0.06	1.00										0.14	0.35			
CYLBURN	A 2.82					0.11						*	0.68 _a			0.01	T	0.01	0.14	1.14	T								*	0.73 _a			
DAMASCUS 3 SSW	2.47	T				0.03						0.62			0.02		0.07	0.07	1.24	0.03					0.01	0.02		0.02	0.25	0.09			
EMMITSBURG 2 SE	1.76	0.02	0.08						T			0.01	0.56		T		0.10		0.15	0.42						0.07		0.06	0.29				
FREDERICK 2 NNE	M	-	-	-	-	-	-	-	-	-	-	-	-	-	-	-	-	-	-	-	-	-	-	-	-	-	-	-	-	-	-		
MILLERS 4 NE	2.51	T									0.02	0.40	0.12		T		0.04	0.05	0.01	1.33						0.11		T	0.33	0.10			
SMITHSBURG 2NW	M	-	-	-	-	-	-	-	-	-	-	-	-	-	-	-	-	-	-	-	-	-	-	-	-	-	-	-	-	-	-		
WESTMINSTER	MA 2.79	0.03 _a					*	*	0.00 _a			T	0.12	*	*	0.62 _a	T	0.03	T	-	*	*	1.63 _a			0.10		-	-	-	0.26		
APPALACHIAN																																	
MOUNTAIN 07																																	
CUMBERLAND 2	2.61	0.30											1.30	0.04				0.22		0.36						0.03			0.34	0.02			
FROSTBURG 2	3.27	0.33	0.01								0.02	1.13	0.08			0.01	0.38		0.51						0.31				0.42	0.07			
SHARPSBURG 5 S	2.15	0.16	0.02									0.44	0.05		T	T	0.20		0.07	0.75				0.13				0.21	0.12				
WILLIAMSPORT	M 2.51	0.25	0.01									-	0.05	0.83			0.25		0.01	0.77								0.22	0.12				
ALLEGHENY PLATEAU 08																																	
OAKLAND 1 SE	3.38	0.46										0.64	0.05			0.03	0.68			0.45						0.32			0.35	0.40			

DAILY PRECIPITATION (INCHES)

STATION	TOTAL	DAY OF MONTH																														
		01	02	03	04	05	06	07	08	09	10	11	12	13	14	15	16	17	18	19	20	21	22	23	24	25	26	27	28	29	30	31
SAVAGE RIVER DAM	M 2.44	-			-							0.79	-				0.36		-	0.40		-	-		0.12					0.60	0.17	
SINES DEEP CREEK	M 3.05	0.46	0.19			-			0.02			0.65	0.20			-	0.60			0.30					0.15				0.38	0.10		
DELAWARE NORTHERN 01																																
WILMINGTON NEW CASTLE CO AP	2.69	T			0.01	0.12				0.06	T	1.07			T			0.13	0.67	0.12			T	T	0.01			T	0.47	0.03		
WILMINGTON PORTER RES	1.62					0.05				0.20	0.04	0.33						0.10	0.45						T			T	0.45			
SOUTHERN 02																																
DOVER	4.24	0.11				0.73						1.35					0.01	T	T	0.85									0.60	0.59		

DAILY TEMPERATURES (°F)

STATION	OB. TIME	MAX/MIN	DAY OF MONTH																															AVERAGE		
			01	02	03	04	05	06	07	08	09	10	11	12	13	14	15	16	17	18	19	20	21	22	23	24	25	26	27	28	29	30	31			
MARYLAND SOUTHERN EASTERN SHORE 01 ASSATEAGUE	VA	MAX MIN																																		M M M
PRINCESS ANNE	17	MAX MIN	69 42	64 30	54 27	51 29	62 38									63 55	75 50	80 59	77 57	83 62			57 37	59 48	74 39	71 43	70 39				68 55	65 55	M M M			
SALISBURY 2N	17	MAX MIN	68 43	60 29	52 27	51 26	60 36	61 35	65 34	76 34	83 60	87 63	87 59	82 51	76 45	67 40	65 52	74 50	78 58	78 55	81 61	75 49	58 38	54 32	56 45	73 40	71 47	68 38	40 40	70 40	70 40	55 55	68.9 44.5			
SALISBURY FAA AP	24	MAX MIN	69 42	53 29	55 26	51 27	62 38	57 36	67 33	79 53	85 62	90 65	85 54	78 54	68 49	70 41	63 53	76 50	82 59	78 57	83 62	68 48	57 37	56 36	60 46	75 40	66 41	71 38	72 41	71 38	60 56	59 53	68.9 45.5			
SNOW HILL 4 N	17	MAX MIN	68 38	67 26	53 25	59 25	59 37	59 34	62 26	78 50	84 60	89 62	84 60		72 46	71 39	69 52	73 48	81 57	73 55	79 53	75 37	58 33	55 46	54 38	68 49	66 36	69 38	69 36	68 36	63 55	68 55	68.7 43.9			
CENTRAL EASTERN SHORE 02 ROYAL OAK 2 SSW	17	MAX MIN	65 40	55 35	52 31	47 26	62 37	61 39	63 40	77 43	83 58	88 57	84 57	75 50	66 44	65 41	61 52	72 50	62 56	75 57	76 62	74 46	52 36	55 33	59 44	69 43	68 47	65 40	70 41	70 42	62 52	60 54	66.4 45.1			
LOWER SOUTHERN 03 MECHANICSVILLE 5 NE	07	MAX MIN	59 40	69 29	53 24	54 24	49 26	64 36	54 34	70 34	79 39	87 57	91 60	88 52	76 44	68 39	70 39	62 53	74 53	78 58	75 58	80 47	61 35	52 31	54 33	60 40	77 40	66 38	67 40	68 40	67 42	56 53	67.6 41.3			
SOLOMONS	08	MAX MIN	53 41	68 38	52 33	52 33	45 37	62 41	51 41	65 50	72 56	84 61	89 57	81 53	72 49	61 47	63 54	60 54	70 56	70 57	69 58	79 49	61 44	53 41	56 46	59 47	75 49	59 46	65 50	67 50	65 54	58 55	64.5 48.2			
UPPER SOUTHERN 04 BALTIMORE WASH INTL AP	24	MAX MIN	65 37	48 28	50 27	50 25	65 38	54 37	68 38	78 50	85 61	91 64	82 53	62 50	67 40	67 40	62 52	74 51	74 58	74 57	78 52	59 46	54 39	55 35	62 46	73 41	65 46	66 41	69 39	68 41	59 53	61 49	66.2 44.5			
BELTSVILLE	08	MAX MIN	56 34	64 27	47 25	50 23	49 36	64 35	56 40	69 45	79 54	89 57	85 51	69 41	68 39	85 57	69 51	66 41	62 39	75 56	76 59	76 47	78 34	59 45	55 40	62 44	77 44	64 39	65 40	70 52	68 55	59 55	66.5 43.6			
DALECARLIA RSVR	08	MAX MIN	52 36	66 36	47 28	50 26	48 30	65 37	57 40	71 44	81 55	88 60	91 55	81 51	86 51	71 44	66 48	62 55	76 56	77 58	78 60	79 46	59 39	55 36	57 36	61 46	77 45	77 45	66 45	72 45	77 45	66 45	71 45	68.2 45.0		
LAUREL 3 W	24	MAX MIN	64 42	47 33	50 31	48 27	64 36	55 36	68 35	68 53	86 60	90 66	86 56	70 50	67 44	65 44	63 51	74 52	78 60	75 55	78 62	66 44	56 38	57 35	66 44	77 44	73 44	65 44	71 45	67 44	58 50	58 50	67.0 45.8			
MARYLAND SCIENCE CENTER	24	MAX MIN	69 45	51 39	53 37	52 34	68 42	57 42	70 44	80 55	90 63	85 57	65 53	71 50	70 52	64 57	77 57	77 63	76 61	79 56	64 50	58 44	60 44	65 49	77 50	69 50	70 53	72 51	72 53	63 57	67 57	69.6 51.0				
NATL ARBORETUM DC	07	MAX MIN	58 39	67 35	50 31	54 27	50 32	67 39	59 40	72 44	82 57	87 63	93 60	88 52	74 45	71 43	69 49	62 54	76 55	78 54	79 59	80 48	62 40	56 37	58 44	63 44	58 47	63 43	79 43	67 43	69 53	61 54	69.0 46.0			
OXON HILL	08	MAX MIN	56 40	66 37	52 30	54 27	66 38	58 37	72 38	82 52	87 60	91 60	88 51	78 45	71 43	68 45	61 53	77 54	80 57	80 51	62 45	55 39	55 35	63 45	63 44	79 45	66 45	68 44	72 44	69 51	60 53	68.4 44.5				
UPPER MARLBORO 3 NNW	08	MAX MIN	57 36	66 33	49 25	52 23	64 28	55 37	70 37	80 40	85 57	90 64	86 59	72 51	68 42	67 39	61 45	75 51	78 58	76 59	79 47	60 35	54 32	55 42	62 39	77 45	65 39	67 39	69 40	68 48	59 54	67.2 43.3				
NORTHERN CENTRAL 06 ABERDEEN PHILLIPS FLD	07	MAX MIN	52 39	65 28	47 27	50 25	47 27	65 37	52 37	64 40	78 49	84 55	90 58	80 48	56 40	63 40	64 42	60 52	73 55	70 57	67 47	79 37	58 37	53 37	56 39	61 40	72 46	63 46	66 40	67 42	68 45	61 54	64.4 42.7			

DAILY TEMPERATURES (°F)

STATION	OB. TIME	MAX/MIN	DAY OF MONTH																															AVERAGE
			01	02	03	04	05	06	07	08	09	10	11	12	13	14	15	16	17	18	19	20	21	22	23	24	25	26	27	28	29	30	31	
BRIGHTON DAM	08	MAX	49	63	63	50	48	63	55	68	78	83	90	85	68	65	64	64	73	73	73	76	59	53	54	59	76	62	63	70	66	57	65.7	
		MIN	33	28	24	21	22	34	35	45	46	46	50	41	40	50	50	53	56	56	44	37	32	32	40	44	37	36	40	50	51	40.6		
CONOWINGO DAM	07	MAX	50	64	48	45	47	60	53	63	75	84	89	79	53	64	64	59	71	68	65	75	58	53	55	58	70	62	63	67	67	58	62.9	
		MIN	33	25	25	25	25	36	37	39	45	50	53	47	40	39	42	39	52	54	55	46	36	33	33	40	41	40	37	37	42	53	40.0	
CYLBURN	08	MAX	53	64	46	49	47	64	54	64	77	85	91	83	61	65	65	61	72	72	72	73	59	53	56	60	71	63	64	68	68	57	64.6	
		MIN	40	31	30	25	26	35	36	52	63	64	60	48	41	41	51	51	53	55	56	45	35	33	44	44	43	41	39	42	51	53	44.3	
DAMASCUS 3 SSW	22	MAX	61	46	47	47	62	54	67	79	82	89	84	68	67	63	61	73	70	74	74	57	52	54	58	75	61	62	61	69	58	59	64.5	
		MIN	38	27	27	22	34	32	37	54	56	62	54	48	41	40	48	52	56	54	51	41	34	32	41	41	40	43	46	52	52	43.2		
EMMITSBURG 2 SE	07	MAX	47	60	45	49	49	64	53	68	79	83	89	84	56	66	65	63	75	67	71	75	57	52	57	57	75	62	62	69	65	59	64.1	
		MIN	35	27	26	19	19	30	33	39	48	59	56	50	41	37	43	49	53	56	55	43	32	31	33	37	40	38	34	36	47	50	39.9	
FREDERICK 2 NNE	07	MAX																															M	
		MIN																															M	
MILLERS 4 NE	18	MAX	59	46	45	48	62	59	66	77	80	87	85	70	62	63	62	71	71	70	72	69	53	57	58	73	70	61	68	67	58	63	65.1	
		MIN	39	24	24	21	34	31	36	52	57	61	56	46	38	36	48	50	55	53	57	41	32	33	39	40	40	40	36	41	48	52	42.0	
SMITHSBURG 2NW	08	MAX																															M	
		MIN																															M	
WESTMINSTER	07	MAX	56	59	43	45	47			68	78	82	90	84			64	60	72	68				72	54	58	72	61			56	M		
		MIN	30	30	25	20	20			34	52	60	59	49			38	50	52	57				32	33	42	41	39			50	M		
APPALACHIAN MOUNTAIN 07																																		
CUMBERLAND 2	18	MAX	44	54	47	47	53	63	61	76	81	87	89	87	74	67	70	66	84	74	81	77	58	58	62	71	82	67	68	76	56	62	68.1	
		MIN	37	29	26	22	22	30	33	42	50	58	57	53	45	40	43	55	57	58	62	42	32	33	37	38	41	40	40	45	50	51	42.3	
FROSTBURG 2	07	MAX	43	45	38	39	45	55	54	71	73	80	82	79	68	60	65	57	79	67	76	70	49	51	55	63	74	59	61	69	51	56	61.1	
		MIN	35	23	23	17	18	24	24	38	46	57	53	51	36	32	32	49	51	54	56	33	26	26	30	30	33	32	33	38	44	46	36.3	
SHARPSBURG 5 S	07	MAX	48	59	46	48	48	64	56	71	80	85	90	84	73	68	66	65	76	72	76	75	58	54	58	60	77	63	63	71	61	60	65.8	
		MIN	35	24	22	19	20	27	27	40	48	50	53	52	40	36	36	54	54	54	58	41	29	29	34	38	41	35	35	35	51	53	39.0	
WILLIAMSPORT	06	MAX	47	59	46		49	64	64	71	80	85		84	62	68	66	66	74	70	74	74	58	55	59	62	76	77	66	72	62	62	66.1	
		MIN	35	27	25		22	33	31	42	46	50		54	48	40	40	53	55	55	59	43	35	34	33	35	40	39	37	36	42	42	40.4	
ALLEGHENY PLATEAU 08																																		
OAKLAND 1 SE	07	MAX	47	47	37	40	45	55	55	67	72	78	82	77	64	56	65	56	77	72	61	71	49	50	52	66	74	55	61	65	53	58	60.2	
		MIN	35	23	23	15	18	21	26	42	47	58	46	47	36	32	34	49	52	56	33	33	23	30	32	36	32	30	30	34	47	47	35.6	
SAVAGE RIVER DAM	08	MAX		48	48		47	56	55	69	73	78	81	79		59	65	60	79	72		74	51			62	76	56	61	68	53	58	63.7	
		MIN		28	27		20	28	27	38	42	47	50	50		35	35	52	54	53		38	28			34	38	34	34	34	45	49	38.3	
SINES DEEP CREEK	07	MAX	43	43	37	38		54	56	69	71	77	81	78	65	58	63		78	71	80	71	48	53	54	58	71	55	61	69	54	58	61.2	
		MIN	31	25	21	17		24	23	33	38	43	46	46	37	32	30			44	50	53	33	25	25	31	30	31	30	30	45	46	33.9	
DELAWARE NORTHERN 01																																		
WILMINGTON NEW CASTLE CO AP	24	MAX	67	47	50	49	64	54	64	76	84	90	79	50	63	63	60	68	73	67	78	60	54	55	55	69	64	65	68	68	59	70	64.4	
		MIN	37	30	29	24	38	35	39	46	56	61	50	45	43	39	49	50	53	55	54	44	35	36	44	42	44	40	40	45	53	49	43.5	
WILMINGTON PORTER RES	24	MAX	63	43	46	50	61	52	62	76	81	87	75	51	62																		M	
		MIN	40	32	30	28	36	35	37	48	53	63	48	44	42																		M	

MARYLAND AND DELAWARE
201304

DAILY TEMPERATURES (°F)

STATION	OB. TIME	MAX/MIN	DAY OF MONTH																															AVERAGE
			01	02	03	04	05	06	07	08	09	10	11	12	13	14	15	16	17	18	19	20	21	22	23	24	25	26	27	28	29	30	31	
SOUTHERN 02 DOVER	16	MAX MIN	66 47	53 26	52 28	49 26	62 36	62 33	64 35	77 53	84 61	88 64	86 55	70 47	63 42	64 40	56 49	71 49	74 59	64 53	79 58	77 49	53 38	55 38	56 43	72 41	71 45	66 41	70 39	64 42	57 53	62 52	66.2 44.7	

SNOWFALL AND SNOW ON GROUND (INCHES)

STATION		DAY OF MONTH																														
		01	02	03	04	05	06	07	08	09	10	11	12	13	14	15	16	17	18	19	20	21	22	23	24	25	26	27	28	29	30	31
MARYLAND																																
SOUTHERN																																
EASTERN SHORE 01																																
ASSATEAGUE	SNOWFALL																															
PRINCESS ANNE	SNOWFALL																															
SALISBURY 2N	SNOWFALL																															
SALISBURY FAA AP	SNOWFALL																															
	SN ON GND																															
SNOW HILL 4 N	SNOWFALL																															
UPPER SOUTHERN 04																																
BALTIMORE WASH INTL AP	SNOWFALL				T																											
	SN ON GND																															
BELTSVILLE	SNOWFALL																															
	SN ON GND																															
DALECARLIA RSVR	SNOWFALL																															
	SN ON GND																															
	WTR EQUIV																															
LAUREL 3 W	SNOWFALL																															
MARYLAND SCIENCE CENTER	SNOWFALL																															
NATL ARBORETUM DC	SNOWFALL																															
OXON HILL	SNOWFALL																															
	SN ON GND																															
UPPER MARLBORO 3 NNW	SNOWFALL																															
APPALACHIAN																																
MOUNTAIN 07																																
FROSTBURG 2	SNOWFALL		T		-	-	-	-	-	-	-	-	-	-	-	-	-	-	-	-	-	-	-	-	-	-	-	-	-	-	-	
	SN ON GND	T			-	-	-	-	-	-	-	-	-	-	-	-	-	-	-	-	-	-	-	-	-	-	-	-	-	-	-	
SHARPSBURG 5 S	SNOWFALL																															
WILLIAMSPORT	SNOWFALL	-	-	-	-	-	-	-	-	-	-	-	-	-	-	-	-	-	-	-	-	-	-	-	-	-	-	-	-	-	-	
	SN ON GND	-	-	-	-	-	-	-	-	-	-	-	-	-	-	-	-	-	-	-	-	-	-	-	-	-	-	-	-	-	-	
	WTR EQUIV	-	-	-	-	-	-	-	-	-	-	-	-	-	-	-	-	-	-	-	-	-	-	-	-	-	-	-	-	-	-	
DELAWARE																																
NORTHERN 01																																
WILMINGTON NEW CASTLE CO AP	SNOWFALL																															
	SN ON GND																															
WILMINGTON PORTER RES	SNOWFALL																															
	SN ON GND																															

Snowfall: Includes snow and ice. Values for NWS stations (J index note) are Mid-Mid (LST).

Snow on ground: Includes snow, sleet, ice, and hail. Values for NWS stations (J index note) are observed at 12 UTC (GMT).

Water Equivalent: Given for NWS stations (J index note) only, when snow depth is 2 inches or more, and is measured at 18 UTC (GMT)

PAN EVAPORATION AND WIND

STATION		DAY OF MONTH																															TOTAL OR AVERAGE
		01	02	03	04	05	06	07	08	09	10	11	12	13	14	15	16	17	18	19	20	21	22	23	24	25	26	27	28	29	30	31	
MARYLAND UPPER SOUTHERN 04 BELTSVILLE	WIND	31	97	91	90	56	118	48	116	53	56	71	74	49	55	38	49	71	40	66	113	83	36	65	24	137	51	33	29	66	52	1958	
	EVAP	0.00	0.19	0.21	0.17	0.11	0.23	0.19	0.23	0.21	0.25	0.30	0.22	0.00	0.18	0.14	0.09	0.12	0.17	0.07	0.13	0.22	0.15	0.15	0.09	0.26	0.21	0.19	0.19	0.06	0.09	4.82	
	MAX	61	61	56	57	53	66	67	66	78	86	88	88	74	73	72	66	76	80	74	73	69	69	68	70	80	76	74	76	64	60	70.5	
	MIN	40	36	36	34	34	39	39	40	50	56	60	53	47	44	47	49	53	58	58	46	39	39	39	44	46	43	46	48	48	52	45.4	
UPPER MARLBORO 3 NNW	WIND	-	-	-	-	-	-	-	-	-	-	-	-	-	-	-	-	-	-	-	-	-	-	-	-	-	-	-	-	-	M		
	EVAP	-	-	-	-	-	-	-	-	-	-	-	-	-	-	-	-	-	-	-	-	-	-	-	-	-	-	-	-	-	M		
	MAX	-	-	-	-	-	-	-	-	-	-	-	-	-	-	-	-	-	-	-	-	-	-	-	-	-	-	-	-	-	M		
	MIN	-	-	-	-	-	-	-	-	-	-	-	-	-	-	-	-	-	-	-	-	-	-	-	-	-	-	-	-	-	M		
ALLEGHENY PLATEAU 08 SAVAGE RIVER DAM	WIND	-	-	-	-	-	-	-	-	-	-	-	-	-	-	-	-	-	-	-	-	-	-	-	-	-	-	-	-	-	M		
	EVAP	-	-	-	-	-	-	-	-	-	-	-	-	-	-	-	-	-	-	-	-	-	-	-	-	-	-	-	-	-	M		
	MAX	-	-	-	-	-	-	-	-	-	-	-	-	-	-	-	-	-	-	-	-	-	-	-	-	-	-	-	-	-	-		
	MIN	-	-	-	-	-	-	-	-	-	-	-	-	-	-	-	-	-	-	-	-	-	-	-	-	-	-	-	-	-	M		

Evaporation: Is measured in hundredths of inches.

Wind: Is measured in miles.

Max and Min: The maximum and minimum temperatures (Fahrenheit) of the water in the evaporation pan.

STATION INDEX

STATION	INDEX NO.	DIVISION	COUNTY	LATITUDE	LONGITUDE	ELEVATION (IN FEET)	OBSERVATION TIME AND TABLES			
							LOCAL STD TIME			
							TEMP	PRECIP	EVAP	SPECIAL SEE (NOTES)
MARYLAND										
ABERDEEN PHILLIPS FLD	0015	06	HARFORD	39 28	76 10W	57	07	07		CH
ASSATEAGUE	0335	01	WORCESTER	38 4	75 13W	10	VAR	VAR		H
BALTIMORE WASH INTL AP R	0465	04	ANNE ARUNDEL	39 10	76 41W	156	24	24		HJ
BELTSVILLE	0700	04	PRINCE GEORGE'S	39 2	76 56W	145	08	08	08	CH
BRIGHTON DAM	1125	06	MONTGOMERY	39 11	77 0W	330	08	08		H
CONOWINGO DAM	2060	06	HARFORD	39 39	76 11W	40	07	07		H
CUMBERLAND 2	2282	07	ALLEGANY	39 39	78 45W	730	18	18		H
CYLBURN	2308	06	BALTIMORE	39 21	76 39W	235	08	08		H
DALECARLIA RSVR	2325	04	DISTRICT OF COLUMBIA	38 56	77 7W	150	08	08		H
DAMASCUS 3 SSW	2336	06	MONTGOMERY	39 16	77 14W	700	22	22		H
EMMITSBURG 2 SE	2906	06	FREDERICK	39 41	77 17W	403	07	07		H
FREDERICK 2 NNE	3353	06	FREDERICK	39 26	77 24W	280	07	07		H
FROSTBURG 2	3415	07	ALLEGANY	39 40	78 56W	2170	07	07		H
LAUREL 3 W	5111	04	PRINCE GEORGE'S	39 5	76 54W	400	24	24		H
MARYLAND SCIENCE CENTER R	5718	04	BALTIMORE (CITY)	39 17	76 37W	20	24	24		H
MECHANICSVILLE 5 NE	5865	03	ST. MARY'S	38 28	76 42W	100	07	07		H
MILLERS 4 NE	5934	06	CARROLL	39 43	76 48W	860	18	18		CH
NATL ARBORETUM DC	6350	04	DISTRICT OF COLUMBIA	38 55	76 58W	50	07	07		H
OAKLAND 1 SE	6620	08	GARRETT	39 25	79 24W	2420	07	07		H
OXON HILL	6800	04	PRINCE GEORGE'S	38 47	76 60W	120	08	08		H
PRINCESS ANNE	7330	01	SOMERSET	38 13	75 41W	20	17	17		H
ROYAL OAK 2 SSW	7806	02	TALBOT	38 43	76 11W	10	17	17		H
SALISBURY 2N	8004	01	WICOMICO	38 24	75 36W	20	17	17		H
SALISBURY FAA AP	8005	01	WICOMICO	38 20	75 31W	48	24	24		H
SAVAGE RIVER DAM	8065	08	GARRETT	39 31	79 8W	1495	08	08	08	CH
SHARPSBURG 5 S	8207	07	WASHINGTON	39 24	77 43W	500	07	07		H
SINES DEEP CREEK	8315	08	GARRETT	39 31	79 25W	2040	07	07		H
SMITHSBURG 2NW	8371	06	WASHINGTON	39 40	77 35W	670	08	08		H
SNOW HILL 4 N	8380	01	WORCESTER	38 14	75 23W	30	17	17		H
SOLOMONS	8405	03	CALVERT	38 19	76 27W	12	08	08		H
UPPER MARLBORO 3 NNW	9070	04	PRINCE GEORGE'S	38 51	76 46W	130	08	08	08	H
WESTMINSTER	9440	06	CARROLL	39 34	76 59W	750	07	07		H
WILLIAMSPORT	9570	07	WASHINGTON	39 37	77 51W	360	06	06		H
DELAWARE										
DOVER	2730	02	KENT	39 15	75 31W	30	16	16		H
WILMINGTON NEW CASTLE CO AP R	9595	01	NEW CASTLE	39 40	75 36W	79	24	24		HJ
WILMINGTON PORTER RES	9605	01	NEW CASTLE	39 46	75 32W	270	24	24		H

REFERENCE NOTES

STATION NAMES: Name of the city, town or locality. Figures and letters following the station names indicate the distance in miles and direction from the post office or town community center.

DIVISIONS: Areas within a state of similar climatological characteristics. Division averages are calculated using data from stations that record temperature and/or precipitation. Station Precipitation totals flagged with an 'F' or 'M' are excluded from the Divisional Average calculations of precipitation. Stations with monthly Temperature averages flagged with an 'F' or 'M' are included in the Divisional Average if there are no more than 9 flagged or missing daily values in the month, else they are excluded from the divisional average for temperature.

NORMALS: The average value of the meteorological element over a time period. Effective 1 January 2012, the averaging period is 1981 to 2010. The normals for National Weather Service localities have been adjusted so as to be representative for the current observation site.

MONTHLY DEGREE DAY TOTALS: One heating (cooling) degree day is accumulated for each whole degree that the daily mean temperature is below (above) 65 degrees Fahrenheit.

PRECIPITATION: Values shown in hundredths of inches are water equivalent totals, i.e., total of liquid and melted frozen precipitation. In the "Monthly Summarized Data" table the total snow and sleet values shown in tenths of inches are unmelted amounts. The max depth on ground values of snow and sleet shown in whole inches are cumulative unmelted amounts. The number of days with .10, .50, 1.00 or more refers to water equivalents.

PRECIPITATION QUALITY CONTROL: The NCDC quality control process may flag precipitation data that are spatially inconsistent, exceed climatological limits, or are inconsistent with prevailing weather patterns.

TEMPERATURE: Original temperature values are given in the "Daily Temperature" table. Summary temperature information (averages, departures, extremes, monthly degree day totals) is based on the values labeled MAX/MIN.

WIND: (As shown in the "Evaporation and Wind" table) the total wind movement in miles over the evaporation pan as determined by an anemometer recorder located 6-8 inches above the pan.

SYMBOLS AND LETTERS USED IN THE STATION INDEX TABLE

C Station is equipped with recording rain gage (R) but values in this bulletin are from a non-recording rain gage unless indicated by an R.

G Observations appear in the "Soil Temperatures" table.

H Observations appear in the "Snowfall and Snow on the Ground" table.

J Station also published as a Local Climatological Data publication.

VAR Observation time varies.

SR Observation time near sunrise.

SS Observation time near sunset.

SYMBOLS AND LETTERS USED IN THE DATA TABLES

(DAILY DATA ARE FOR THE 24 HOURS IMMEDIATELY PRECEDING OBSERVATION TIME.)

BLANK Entries in the "Monthly Summarized Data" table indicate no record.

BLANK Entries in the "Daily Precipitation" and "Snowfall and Snow on the Ground" tables indicate zero.

BLANK Entries in the "Daily Temperature" table indicate a missing record

- No record. Data not recorded or not received in time for publication.

+ Precipitation or temperature extremes occurred on one or more previous dates during the month.

* Rain gage not read. Precipitation is included in the amount following the asterisks.

Time distribution may not be known. A * preceding the monthly total indicates precipitation amount is being carried forward to next month's total, and may include amounts from the previous month(s).

a As a subscript, indicates accumulated total.

A Amount of precipitation is the total of observer's entries for the current month. It may include precipitation that occurred during the previous month. Refer to earlier bulletin to determine date of last reading. (Hawaii stations)

B Divisional Departure from normals are computed using 1971-2000 normals.

E Normalized HDD/CDD Calculation. E is appended to the HDD/CDD Calculation when 1-9 individual daily TMAX and/or TMIN values are missing and a Normalized HDD/CDD Calculation is provided. M appears alone if 10 or more daily values are missing.

F Monthly calculation flagged value. F is appended to average and/or total values computed which exclude one or more daily data values that have been flagged by the GHCN-Daily Dataset

M Insufficient or partial data. M is appended to average and/or total values computed with 1-9 daily values missing. M appears alone if 10 or more daily values are missing, (8 or more for wind and evaporation).

N Indicates snow fall or Snowdepth totals are computed with one or more missing days.

R Amounts from recording rain gage.

T Trace. An amount too small to measure.

SEASONAL TABLES: Monthly and seasonal snowfall and heating degree days for the 12 months ending with the June data are published in the July issue of this bulletin. Cooling degree days for the calendar year are published in the "Climatological Data Annual Summary."

Information concerning the history of changes in locations, exposure, etc. of substations is kept on file at the National Climatic Data Center. Historical information of regular National Weather Service Offices may be obtained from the "Local Climatological Data" annual publication. The contents of this publication may be reprinted or otherwise used freely, with proper credit to the National Climatic Data Center. The data are also available digitally.

Effective with the January 2011 Data-Month, COOP Observer Names are no longer included in the Monthly and Annual Climatological Data Publications. This information is not published to ensure the privacy of personal information pursuant to Section 208 of the E-Government Act of 2002 (44 USC 3601).

As of the 2011 Data-Year, Station and Climate Division Maps are no longer being included in the CD Publications. NCDC's Product Development Branch provides updated Station Maps for various data networks via the Historical Observing Metadata Repository: <http://www.ncdc.noaa.gov/homr>.

The GHCN-Daily Quality Control Flags shown below are displayed as superscripts with the data. For more Information on Global Historical Climatology Network - Daily and flags, see: <http://www.ncdc.noaa.gov/oa/climate/ghcn-daily/> and

Comprehensive Automated Quality Assurance of Daily Surface Observations.

Durre, Imke, Matthew J. Menne, Byron E. Gleason, Tamara G. Houston,

Russell S. Vose, 2010: J. Appl. Meteor. Climatol., 49, 1615-1633.

doi: 10.1175/2010JAMC2375.1

Blank = Passed All checks

D = failed duplicate check

G = failed gap check

I = failed internal consistency check

K = failed streak/frequent-value check

L = failed check on length of multiday period

M = failed megaconsistency check

N = failed naught check

O = failed climatological outlier check

R = failed lagged range check

S = failed spatial consistency check

T = failed temporal consistency check

W = temperature too warm for snow

X = failed bounds check

Z = flagged as a result of an official Datzilla investigation

Beginning with the January 2013 CD Publication, monthly mean temperature calculations have changed to the National Data Stewardship Team standard. Monthly maximum and minimum temperatures are not rounded until after the monthly mean temperature is calculated. This is the most accurate outcome, but may be slightly different from the mean derived from rounded monthly maximum and minimum.

Processing Updates and Errata: The 2011 CD Publications were reproduced in May 2013. This update included the addition of late reports and corrections based on additional investigations of reported data issues through NCDC's Datzilla system. In addition, divisional averages for precipitation were recalculated using the method described in DIVISIONS above. Previous editions of the 2011 Publications included all precipitation stations regardless of missing data in the calculation of divisional averages. HDD/CDD values were recalculated to match the legacy method of calculation (truncation of monthly HDD/CDD values instead of rounding).

These and other publications are available from the National Climatic Data Center

Hourly Precipitation Data

This publication contains hourly precipitation amounts obtained from recording rain gages located at National Weather Service, Federal Aviation Administration, and cooperative observer stations. Published data are displayed in inches and tenths or inches and hundredths at local standard time. HPD includes maximum precipitation for nine (9) time periods from 15 minutes to 24 hours, for selected stations.

Climatological Data

Monthly editions contain station daily maximum and minimum temperatures and precipitation. Some Stations provide daily snowfall, snow depth, evaporation, and soil temperature data. Each edition also contains monthly summaries for heating and cooling degree days (65 degree F base). The July issue contains a recap of monthly heating degree days and snow data for the preceding July through June.

The Annual issue contains monthly and annual averages of temperature, precipitation, temperature extremes, freeze data, soil temperatures, evaporation, and a recap of monthly cooling degree days.

Storm Data

Monthly issues contain a chronological listing, by states, of occurrences of storms and unusual weather phenomena. Reports contain information on storm paths, deaths, injuries, and property damage. An "Outstanding storms of the month" section highlights severe weather events with photographs, illustrations, and narratives. The December issue includes annual tornado, lightning, flash flood, and tropical cyclone summaries.

Monthly Climatic Data for the World

This publication contains monthly means for temperature, pressure, precipitation, vapor pressure, and sunshine for approximately 2,000 surface data collection stations worldwide and monthly mean upper air temperatures, dew point depressions, and wind velocities for approximately 500 observing sites.

Local Climatological Data

LCD publications summarize temperature, relative humidity, precipitation, cloudiness, wind speed and direction observations for several hundred cities in the U.S. and its territories. Each monthly publication also contains 3 hourly weather observations for that month and a hourly summary of precipitation. Annual LCD publications contain a summary of the past calendar year as well as historical averages and extremes.

For Information Call:

(828) 271-4800 Option 2

(828) 271-4010 (TDD)

(828) 271-4876 (Fax)

NOAA\National Climatic Data Center
Attn: User Engagement & Services Branch
151 Patton Avenue
Asheville, NC 28801-5001

Customer Services Number: (828) 271-4800, option 2
TDD : (828) 271-4010
Fax number: (828) 271-4876

NCDC now offers free online access to the *Climatological Data* publication.
Go to : www.ncdc.noaa.gov and choose Most Popular.