



# CLIMATOLOGICAL DATA

## MARYLAND AND DELAWARE



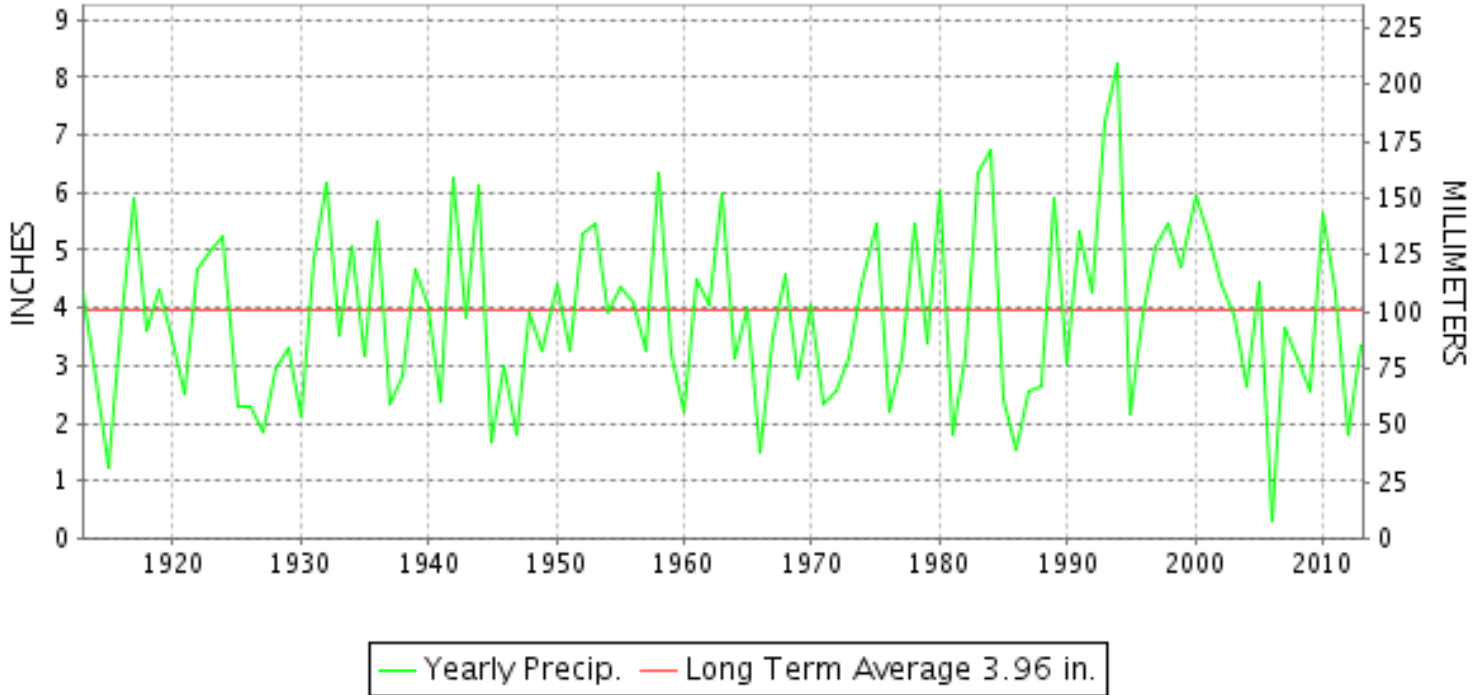
**MARCH 2013**

VOLUME 117 NUMBER 03

ISSN 0145-0549

GHCND Ver: 3.11-upd-2013073005

### MARCH PRECIPITATION BY YEAR



#### TEMPERATURE AND PRECIPITATION EXTREMES

##### MARYLAND

HIGHEST TEMPERATURE	69	MARCH 11	CUMBERLAND 2
LOWEST TEMPERATURE	7	MARCH 09	OAKLAND 1 SE
GREATEST TOTAL PRECIPITATION	5.71		SNOW HILL 4 N
LEAST TOTAL PRECIPITATION	1.43		WILLIAMSPORT
GREATEST 1 DAY PRECIPITATION	3.09	MARCH 06	SALISBURY FAA AP
GREATEST TOTAL SNOWFALL	46.5		OAKLAND 1 SE
GREATEST DEPTH OF SNOW OR ICE	18		SINES DEEP CREEK

"I certify that this is an official publication of the National Oceanic and Atmospheric Administration (NOAA) It is compiled using information from weather observing sites supervised by NOAA/National Weather Service and received at the National Climatic Data Center(NCDC), Asheville, North Carolina 28801."

Director  
National Climatic Data Center

**noaa**

National  
Oceanic and  
Atmospheric Administration

National  
Environmental Satellite, Data  
and Information Service

National  
Climatic Data Center  
Asheville, North Carolina

**DELAWARE**

HIGHEST TEMPERATURE	64	MARCH 09	WILMINGTON NEW CASTLE CO AP
LOWEST TEMPERATURE	25	MARCH 22+	2 STATIONS
GREATEST TOTAL PRECIPITATION	2.71		DOVER
LEAST TOTAL PRECIPITATION	2.40		WILMINGTON PORTER RES
GREATEST 1 DAY PRECIPITATION	1.09	MARCH 12	WILMINGTON PORTER RES
GREATEST TOTAL SNOWFALL	2.0		DOVER
GREATEST DEPTH OF SNOW OR ICE	1		WILMINGTON NEW CASTLE CO AP





DAILY PRECIPITATION (INCHES)

STATION	TOTAL	DAY OF MONTH																														
		01	02	03	04	05	06	07	08	09	10	11	12	13	14	15	16	17	18	19	20	21	22	23	24	25	26	27	28	29	30	31
<b>MARYLAND</b>																																
<b>SOUTHERN</b>																																
<b>EASTERN SHORE 01</b>																																
ASSATEAGUE	M	-	-	-	-	-	-	-	-	-	-	-	-	-	-	-	-	-	-	-	-	-	-	-	-	-	-	-	-	-	-	-
PRINCESS ANNE	M	-	-	-	0.23	3.00						0.63					0.08	0.15			0.04			0.36	0.38							0.37
SALISBURY 2N	5.17					2.30	0.68					0.85	0.02				0.03	0.07	0.24		0.05	0.01			0.63	0.13					0.16	
SALISBURY FAA AP	4.85				T	3.09	0.01	T				0.70	T				0.01	0.13	0.06		T			0.08	0.52		T	T			0.25	
SNOW HILL 4 N	5.71					2.50	1.10	T				0.65	0.09			T	0.02	0.15	0.16		T			T	0.51	0.08					0.45	
<b>CENTRAL</b>																																
<b>EASTERN SHORE 02</b>																																
ROYAL OAK 2 SSW	3.49	0.01	T	T		1.33	0.10					0.78	T			T	T	0.09	0.32		T				0.80	0.02	T	T			0.04	
<b>LOWER SOUTHERN 03</b>																																
MECHANICSVILLE 5 NE	3.96			T		0.70	1.05					0.46	0.42	T		T	T	0.22	0.46	T	T				0.30	0.35						
SOLOMONS	3.25			T	T	0.41	1.28					0.21	0.40				T	0.20	0.19			T			0.34	0.18					0.04	
<b>UPPER SOUTHERN 04</b>																																
BALTIMORE WASH INTL AP	2.64		T	T		0.75					0.01	0.63	T			T		0.39	T		T			T	0.82	T	T	T			0.04	
BELTSVILLE	2.31					0.33	0.57					0.20	0.52						0.36							0.33	T					
DALECARLIA RSVR	3.38		0.05			0.32	0.70					0.02	0.95				0.01		0.42						0.20	0.70					0.01	
LAUREL 3 W	3.04					1.00						0.90						0.35		0.42					0.60						0.19	
MARYLAND SCIENCE CENTER	2.27					0.54						0.60						0.40							0.68		0.01				0.04	
NATL ARBORETUM DC	A 2.67			* 0.00 <sub>a</sub>		*	1.21 <sub>a</sub>					0.11	0.63			*	*	0.00 <sub>a</sub>	0.30						0.42	*	0.00 <sub>a</sub>	T	T			
OXON HILL	2.95	T		T		0.24	0.92		T			0.04	0.81	T			0.01	T	0.34						0.36	0.23		T				
UPPER MARLBORO 3 NNW	2.99					0.29	1.21					0.11	0.56					T	0.14			T			0.42	0.26				T		
<b>NORTHERN CENTRAL 06</b>																																
ABERDEEN PHILLIPS FLD	2.94					0.22	0.30					0.16	0.99				T		0.63						0.24	0.40						
BRIGHTON DAM	2.74					0.35	0.45					0.27	0.75	0.05					0.35						0.52							
CONOWINGO DAM	3.11					0.16	0.33					0.17	1.21				0.20		0.58							0.46						
CYLBURN	MA 2.28					0.33	0.38					0.20	0.63						-						*	0.74 <sub>a</sub>						
DAMASCUS 3 SSW	M 2.84	T	T	T		0.78		T				1.17	T			T	T	0.35			T		T	0.54	T	T		-	-	-		
EMMITSBURG 2 SE	2.40					0.25	0.17					0.17	1.07				0.10		0.10	0.18					0.20	0.16						
FREDERICK 2 NNE	M					0.52	0.35																									
MILLERS 4 NE	3.24	T	T	T		0.74	T					1.32	T	T		0.14	T	0.18	0.21		T	T			0.53	0.01	0.04	T	T		0.07	
SMITHSBURG 2NW	M	-	-	-	-	-	-	-	-	-	-	-	-	-	-	-	-	-	-	-	-	-	-	-	-	-	-	-	-	-	-	
WESTMINSTER	MA 2.66	-	*	* 0.00 <sub>a</sub>	-	*	0.51 <sub>a</sub>	T	*	*	0.00 <sub>a</sub>	*	1.27 <sub>a</sub>			*	*	T <sub>a</sub>	0.28				*	*	0.30 <sub>a</sub>	0.30		T	-	-	-	
<b>APPALACHIAN</b>																																
<b>MOUNTAIN 07</b>																																
CUMBERLAND 2	1.99					0.43	0.10	T				0.25	0.03	T			0.02	0.18	0.43		T				0.41	0.14						
FROSTBURG 2	3.05	0.08	0.01	0.01	T	0.73	0.07	T	T			0.38	0.01	0.03			0.01	0.25	0.52		0.03	T			0.62	0.21	0.05	0.04				
SHARPSBURG 5 S	M 2.52	T		T	T	0.41	0.30	T	T			0.17	0.65	T			-	T	T	0.33					0.41	0.25						
WILLIAMSPORT	A 1.43					0.25	0.39	*	0.00 <sub>a</sub>				0.51				0.01		0.27		*	0.00 <sub>a</sub>			*	*	0.00 <sub>a</sub>					
<b>ALLEGHENY PLATEAU 08</b>																																
OAKLAND 1 SE	5.38	0.40	0.02	0.05	0.50	0.66	0.15	0.02				0.42	0.04	0.25			0.10	0.21	0.46		0.17	0.03			1.50	0.05	0.20	0.15				

DAILY PRECIPITATION (INCHES)

STATION	TOTAL	DAY OF MONTH																														
		01	02	03	04	05	06	07	08	09	10	11	12	13	14	15	16	17	18	19	20	21	22	23	24	25	26	27	28	29	30	31
SAVAGE RIVER DAM	M 1.86	T	T	T			-	0.85	T	-	-	-	0.20	T	T				0.13	0.68		T				-	T	T	T	-	-	
SINES DEEP CREEK	M 4.06	0.22	0.08	0.09	0.03		0.50	0.15	0.04				0.50	0.07	0.15		0.04	-	0.22	0.66		0.06	0.03			0.73	0.15	0.19	0.15			
DELAWARE																																
NORTHERN 01																																
WILMINGTON NEW CASTLE CO AP	2.54						0.24		T				0.81	T			0.05		0.50	0.20		0.02	T			0.58			T		0.14	
WILMINGTON PORTER RES	2.40					0.14	0.05						1.09				0.05		0.50	0.05		T				0.48					0.04	
SOUTHERN 02																																
DOVER	2.71	T					0.54	0.03	0.01				0.56		T				0.04	0.68		T				0.80	0.05					

DAILY TEMPERATURES (°F)

STATION	OB. TIME	MAX/MIN	DAY OF MONTH																															AVERAGE			
			01	02	03	04	05	06	07	08	09	10	11	12	13	14	15	16	17	18	19	20	21	22	23	24	25	26	27	28	29	30	31				
<b>MARYLAND SOUTHERN EASTERN SHORE 01</b> ASSATEAGUE	VA	MAX MIN																																			M M M
PRINCESS ANNE	17	MAX MIN	48 32			43 31	50 27	48 36	48 37	46 36		66 36	64 45	60 35	52 34	53 29										40 34	50 34	53 37	50 37	56 34					61 38 M		
SALISBURY 2N	17	MAX MIN	47 31	42 34	38 27	42 26	49 37	45 35	45 34	60 33	58 28	64 36	61 53	57 31	46 28	50 41	58 36	55 35	45 33	56 40	54 35	51 30	45 26	51 26	50 26	40 32	51 30	53 32	52 31	54 30	61 32	61 38	51.2 32.7				
SALISBURY FAA AP	24	MAX MIN	47 34	42 35	41 31	43 26	50 35	48 38	49 36	62 32	59 27	66 35	64 44	53 32	47 34	53 28	59 36	42 37	51 35	59 36	53 27	43 32	47 29	54 26	45 27	39 35	51 34	54 38	51 37	56 33	61 31	61 35	51.5 33.1				
SNOW HILL 4 N	17	MAX MIN	47 32	44 35	39 28	42 29	49 23	45 30	48 34	46 33	60 34	60 25	61 32	58 51	60 32	52 29	53 37	56 37	44 33	59 42	58 26	52 28	46 22	52 24	52 26	42 33	51 32	53 33	51 32	56 32	60 31	57 33	51.9 31.5				
<b>CENTRAL EASTERN SHORE 02</b> ROYAL OAK 2 SSW	17	MAX MIN	47 39	41 33	39 30	42 29	48 30	44 31	50 36	49 34	58 36	61 28	60 35	58 51	55 31	46 32	53 32	60 35	55 35	42 32	56 38	54 34	45 35	47 30	52 27	50 27	45 32	50 32	51 38	50 36	55 36	60 34	59 39	51.0 33.8			
<b>LOWER SOUTHERN 03</b> MECHANICSVILLE 5 NE	07	MAX MIN	49 38	47 32	39 25	41 26	44 23	48 23	35 32	51 33	49 33	61 27	58 27	60 40	52 30	48 26	57 26	58 33	41 31	38 32	58 29	55 30	41 25	48 24	55 25	41 27	36 30	49 32	53 33	49 33	57 30	61 32	49.6 29.6				
SOLOMONS	08	MAX MIN	49 38	45 34	36 30	40 29	43 28	43 33	41 35	49 36	46 35	57 33	51 40	54 40	58 35	51 32	45 33	56 36	51 37	40 31	50 35	57 36	54 34	38 28	47 28	53 33	41 32	37 33	48 36	50 38	47 39	54 37	55 44	47.9 34.5			
<b>UPPER SOUTHERN 04</b> BALTIMORE WASH INTL AP	24	MAX MIN	45 33	41 30	39 29	42 27	48 27	40 33	49 35	49 33	62 35	59 28	57 43	58 40	50 29	45 31	55 25	52 37	41 34	38 35	58 36	51 31	40 28	46 27	52 26	42 28	36 32	50 30	50 37	50 35	56 40	60 34	54 36	48.9 32.4			
BELTSVILLE	08	MAX MIN	47 39	44 32	37 29	39 28	42 27	50 33	49 30	48 36	61 29	63 36	60 45	57 30	49 32	44 26	56 33	56 31	40 32	38 32	58 40	51 32	36 28	45 24	52 27	43 32	37 32	49 37	48 34	48 40	55 32	58 36	48.4 32.5				
DALECARLIA RSVR	08	MAX MIN	55 39	44 33	42 31	40 28	43 26	51 33	39 32	47 35	48 33	60 30	62 41	60 45	48 32	45 32	57 29	62 36	40 32	40 32	59 32	52 32	34 27	47 27	53 27	42 31	42 32	50 37	47 37	47 37	57 37	59 34	49.5 32.8				
LAUREL 3 W	24	MAX MIN	42 36	37 29	39 28	42 26	50 29	50 30	49 35	48 33	59 34	62 36	57 40	57 43	44 30	55 31	50 38	39 32	36 31	58 34	55 33	46 29	45 26	44 29	52 28	36 31	50 32	49 33	49 35	55 39	59 38	54 40	49.1 32.9				
MARYLAND SCIENCE CENTER	24	MAX MIN	49 41	42 36	41 35	44 32	51 34	45 36	52 41	52 39	65 40	61 41	60 46	55 46	47 36	59 35	54 40	45 39	42 39	62 41	56 38	44 33	49 31	54 33	46 39	41 35	54 37	54 43	52 41	58 46	65 45	58 47	52.2 38.8				
NATL ARBORETUM DC	07	MAX MIN	49 38	46 32		42 29	46 30		41 33	52 37	52 36	63 31	64 32	63 45	60 33	52 33	48 30			42 35	39 34	60 33	53 33	40 30	62 27	55 29	44 32		52 37	53 38	50 41	58 35	62 30	51.8 33.6			
OXON HILL	08	MAX MIN	48 39	45 31	38 29	42 28	45 28	52 32	39 33	51 36	51 34	62 32	64 33	62 43	61 32	52 31	47 29	58 30	62 34	41 34	38 31	60 35	54 32	40 27	49 28	55 29	42 32	37 32	50 34	51 35	49 40	57 35	62 39	50.5 32.8			
UPPER MARLBORO 3 NNW	08	MAX MIN	48 38	45 30	37 28	41 28	43 26	51 29	39 32	50 34	50 35	62 27	62 27	59 43	59 30	46 27	57 28	57 32	41 33	38 33	59 35	53 32	40 28	48 23	54 27	42 29	37 32	50 33	50 36	49 39	56 31	60 34	49.5 31.3				
<b>NORTHERN CENTRAL 06</b> ABERDEEN PHILLIPS FLD	07	MAX MIN	48 34	45 34	40 30	38 27	43 28	47 30	41 36	49 34	47 35	61 34	59 35	59 42	58 31	48 31	45 24	54 26	45 34	41 34	40 35	56 28	52 33	39 27	44 28	49 27	42 30	37 32	51 36	51 36	49 36	54 30	48.1 31.7				

DAILY TEMPERATURES (°F)

STATION	OB. TIME	MAX/MIN	DAY OF MONTH																															AVERAGE		
			01	02	03	04	05	06	07	08	09	10	11	12	13	14	15	16	17	18	19	20	21	22	23	24	25	26	27	28	29	30	31			
BRIGHTON DAM	08	MAX MIN								46 32	46 30	57 26	61 32	59 44	56 28	49 30	43 26	55 30	52 34	52 33	36 32	57 30	57 25	37 24	37 24	45 27	50 31	41 28	37 29	47 31	49 31	49 31	54 29	57 35	49.7	
CONOWINGO DAM	07	MAX MIN	46 31	45 33	38 29	37 26	40 27	45 28	40 35	45 33	44 34	35 27	56 28	55 40	58 31	48 30	42 25	53 25	42 32	39 32	37 32	54 28	54 24	36 24	42 26	48 24	43 26	43 31	37 31	46 31	49 33	43 33	53 29	57 29	45.4	
CYLBURN	08	MAX MIN	46 37	43 31	38 29	37 25	40 26	46 27	38 33	47 33	48 33	58 30	55 41	56 49	56 32	41 29	54 30	50 35	40 32	36 33	56 31	49 27	41 26	43 27	49 27	43 31	43 31	35 31	49 31	48 35	47 37	54 32	58 32	47.1		
DAMASCUS 3 SSW	22	MAX MIN	39 33	34 27	37 26	38 25	46 28	37 32	43 33	45 33	56 28	61 33	57 38	55 40	46 30	54 29	51 27	38 35	36 32	56 31	48 32	36 24	41 25	48 27	40 31	34 30	46 30	44 35	44 33					44.6		
EMMITSBURG 2 SE	07	MAX MIN	45 36	43 31	36 29	38 25	40 24	45 24	40 31	49 32	49 27	58 25	62 27	59 39	54 34	48 29	42 30	54 29	43 33	41 33	36 30	55 31	50 28	36 26	49 26	50 26	42 25	37 30	52 32	49 35	50 37	56 28	58 29	47.3		
FREDERICK 2 NNE	07	MAX MIN	45 37	43 32	36 29	39 27	41 26	47 26	40 32	49 35	48 27	61 29	64 29	60 44	54 35																					M
MILLERS 4 NE	18	MAX MIN	40 34	37 29	35 27	38 23	44 22	38 31	45 32	46 31	58 30	61 29	56 38	54 47	40 27	51 25	50 32	39 30	37 29	53 32	50 29	45 28	39 23	47 27	45 24	39 30	48 26	47 34	46 31	53 36	56 30	54 37	46.4			
SMITHSBURG 2NW	08	MAX MIN																																		M
WESTMINSTER	07	MAX MIN				42 24			44 24	45 32		61 28		57 30	46 28	40 30				52 28	35 30	54 32	48 28	34 25		46 28	35 28	48 28	46 34					M		
<b>APPALACHIAN MOUNTAIN 07</b>																																				
CUMBERLAND 2	18	MAX MIN	41 34	42 27	33 28	37 25	44 25	53 27	42 31	47 33	45 27	59 31	69 44	60 31	49 44	45 28	43 28	57 32	47 37	43 30	35 30	52 32	48 24	34 25	45 23	53 23	48 28	37 31	46 34	48 34	47 35	61 29	47.3			
FROSTBURG 2	07	MAX MIN	33 26	30 20	26 20	26 16	32 17	45 24	35 27	36 25	36 19	52 20	59 33	51 39	38 28	35 20	49 27	42 29	35 25	35 24	44 24	38 15	25 15	34 20	43 21	34 24	33 26	41 24	37 27	48 28	47 28	47 26	55 26	46.9		
SHARPSBURG 5 S	07	MAX MIN	43 29	41 30	35 28	38 26	41 22	50 22	37 27	46 27	48 24	59 27	64 42	60 27	54 27	48 23	43 23	56 33	49 33	39 30	33 26	57 25	51 19	33 21	43 21	52 25	41 30	37 25	48 30	47 29	47 33	55 27	59 27	46.9		
WILLIAMSPORT	06	MAX MIN	44 34	42 31	36 29	39 27	41 25	49 25	42 32		49 27	60 26	64 28	60 41	56 30	47 29	43 26	56 26	44 35	41 34	35 31	56 32		35 27	43 26	52 25		50 31	48 32	47 37	56 29	61 28	48.0			
<b>ALLEGHENY PLATEAU 08</b>																																				
OAKLAND 1 SE	07	MAX MIN	32 26	30 20	30 20	30 17	33 13	44 14	34 27	34 25	34 7	50 10	59 27	54 38	38 27	38 19	46 19	56 26	34 30	38 26	43 25	39 15	25 15	35 19	44 22	33 25	33 26	40 28	37 28	37 28	47 28	49 22	39.0			
SAVAGE RIVER DAM	08	MAX MIN	35 30	33 24	29 24	28 21	34 21		41 34	37 29			56 37	42 29	38 24	36 24	48 31	46 34	37 28	37 28	45 29	42 21	37 20	47 21	47 21	35 31	40 31	39 32					39.1			
SINES DEEP CREEK	07	MAX MIN	31 26	30 21	26 20	25 16	35 15	41 15	35 27	33 26	31 11	51 11	61 26	49 33	47 26	36 20	45 20	46 21	35 27	35 27	44 26	40 17	24 17	34 17	43 17	34 24	35 27	37 28	37 28	37 28	47 25	50 24	38.1			
<b>DELAWARE NORTHERN 01</b>																																				
WILMINGTON NEW CASTLE CO AP	24	MAX MIN	48 33	42 28	39 28	41 29	48 28	41 35	47 37	46 33	64 34	54 31	57 38	60 40	44 34	53 29	43 30	42 33	40 37	53 30	50 29	41 27	44 27	49 28	46 26	38 33	53 32	53 35	50 34	55 34	59 30	54 36	48.5			
WILMINGTON PORTER RES	24	MAX MIN	45 34	40 31	40 27	38 28	45 28	39 33	44 36	43 29	58 33	55 34	56 37	56 41	48 34	40 29	49 27	49 27	38 30	49 30	49 30	47 48	48 41	45 28	44 29	44 29	49 33	48 36	48 36	51 36	56 36	56 36	47.0			



MARYLAND AND DELAWARE  
201303

## DAILY TEMPERATURES (°F)

STATION	OB. TIME	MAX/MIN	DAY OF MONTH																															AVERAGE
			01	02	03	04	05	06	07	08	09	10	11	12	13	14	15	16	17	18	19	20	21	22	23	24	25	26	27	28	29	30	31	
SOUTHERN 02 DOVER	16	MAX MIN	44 33	43 33	38 30	42 27	49 26	45 38	47 35	43 32	60 26	58 31	56 38	59 48	54 31	44 30	53 34	52 36	40 33	40 32	55 37	52 32	40 30	45 26	49 25	42 30	33 31	50 30	51 36	50 34	55 30	60 35	60 39	48.7 32.5

## SNOWFALL AND SNOW ON GROUND (INCHES)

STATION		DAY OF MONTH																														
		01	02	03	04	05	06	07	08	09	10	11	12	13	14	15	16	17	18	19	20	21	22	23	24	25	26	27	28	29	30	31
<b>MARYLAND SOUTHERN EASTERN SHORE 01</b>	ASSATEAGUE	SNOWFALL																														
	PRINCESS ANNE	SNOWFALL																														
SALISBURY 2N	SNOWFALL																															
	SNOWFALL																															
SALISBURY FAA AP	SNOWFALL																															
	SNOWFALL																															
SNOW HILL 4 N	SNOWFALL																															
	SN ON GND																															
<b>CENTRAL EASTERN SHORE 02</b>	ROYAL OAK 2 SSW	SNOWFALL																														
	SN ON GND																															
<b>LOWER SOUTHERN 03</b>	MECHANICSVILLE 5 NE	SNOWFALL																														
	SN ON GND																															
SOLOMONS	SNOWFALL																															
	SN ON GND																															
<b>UPPER SOUTHERN 04</b>	BALTIMORE WASH INTL AP	SNOWFALL																														
	SN ON GND																															
BELTSVILLE	SNOWFALL																															
	SN ON GND																															
DALECARLIA RSVR	WTR EQUIV																															
	SNOWFALL																															
LAUREL 3 W	SNOWFALL																															
	SN ON GND																															
MARYLAND SCIENCE CENTER	SNOWFALL																															
	SN ON GND																															
NATL ARBORETUM DC	WTR EQUIV																															
	SNOWFALL																															
OXON HILL	SNOWFALL																															
	SN ON GND																															
UPPER MARLBORO 3 NNW	WTR EQUIV																															
	SNOWFALL																															
<b>NORTHERN CENTRAL 06</b>	SN ON GND																															
	SNOWFALL																															
ABERDEEN PHILLIPS FLD	SNOWFALL																															
	SN ON GND																															
BRIGHTON DAM	SNOWFALL																															
	SN ON GND																															

Snowfall: Includes snow and ice. Values for NWS stations (J index note) are Mid-Mid (LST).

Snow on ground: Includes snow, sleet, ice, and hail. Values for NWS stations (J index note) are observed at 12 UTC (GMT).

Water Equivalent: Given for NWS stations (J index note) only, when snow depth is 2 inches or more, and is measured at 18 UTC (GMT)

## SNOWFALL AND SNOW ON GROUND (INCHES)

STATION		DAY OF MONTH																														
		01	02	03	04	05	06	07	08	09	10	11	12	13	14	15	16	17	18	19	20	21	22	23	24	25	26	27	28	29	30	31
CONOWINGO DAM CYLBURN	WTR EQUIV	-	-	-	-	-	-	-	-	-	-	-	-	-	-	-	-	-	-	-	-	-	-	-	-	-	-	-	-	-	-	-
	SNOWFALL	-	-	-	-	-	1.3	-	-	-	-	-	-	-	-	-	-	-	-	-	-	-	-	-	-	-	-	-	-	-	-	-
DAMASCUS 3 SSW	SN ON GND	-	-	-	-	-	-	-	-	-	-	-	-	-	-	-	-	-	-	-	-	-	-	-	-	3	-	-	-	-	-	
	SNOWFALL	T	T	T	-	-	5.0	-	T	-	-	-	T	-	-	-	T	T	-	-	0.1	-	-	T	4.1	-	T	T	-	-	-	
EMMITSBURG 2 SE	SN ON GND	-	-	-	-	-	4	T	T	T	-	-	-	-	-	-	-	-	-	-	-	-	-	-	-	2	T	-	-	-	-	
	SNOWFALL	-	-	-	-	-	2.0	-	-	-	-	-	-	-	-	-	-	-	-	1.0	-	-	-	-	2.0	2.0	-	-	-	-	-	
FREDERICK 2 NNE	WTR EQUIV	-	-	-	-	-	-	-	-	-	-	-	-	-	-	-	-	-	-	-	-	-	-	-	-	-	-	-	-	-	-	
	SNOWFALL	-	-	-	-	-	1.7	-	-	-	-	-	-	-	-	-	-	-	-	-	-	-	-	-	-	-	-	-	-	-	-	
MILLERS 4 NE	SN ON GND	-	-	-	-	-	2	-	-	-	-	-	-	-	-	-	-	-	-	-	-	-	-	-	-	-	-	-	-	-	-	
	SNOWFALL	T	T	T	-	-	5.0	T	-	-	-	-	T	T	-	T	T	0.5	0.2	-	T	T	-	-	5.5	0.3	-	T	-	-	-	
SMITHSBURG 2NW WESTMINSTER	SN ON GND	-	-	-	-	-	3	1	-	-	-	-	-	-	-	-	-	-	1	-	-	-	-	-	3	-	-	-	-	-	-	
	SNOWFALL	-	-	-	-	-	0.7	0.2	-	-	-	-	-	-	-	-	-	-	0.2	-	-	-	-	-	0.5	-	-	-	-	-	-	
APPALACHIAN MOUNTAIN 07	SN ON GND	-	-	-	-	-	2.1	T	-	-	-	-	-	-	-	-	-	-	-	-	-	-	-	-	3.0	1.0	-	-	-	-	-	
	SNOWFALL	-	-	-	-	-	-	-	-	-	-	-	-	-	-	-	-	-	-	-	-	-	-	-	3	1	-	-	-	-	-	
CUMBERLAND 2	SN ON GND	-	-	-	-	-	6.0	2.0	-	-	-	-	-	T	-	-	-	2.3	1.4	-	T	-	-	-	6.0	0.2	-	-	-	-	-	
	SNOWFALL	-	-	-	-	-	6	2	-	-	-	-	-	-	-	-	-	2	3	-	-	-	-	6	2	-	-	-	-	-	-	
FROSTBURG 2	SN ON GND	0.8	0.4	1.1	T	-	8.0	0.8	0.2	T	-	-	-	0.4	0.5	-	-	2.8	1.7	-	1.2	0.1	-	-	7.1	1.6	1.4	0.3	-	-	-	
	SNOWFALL	2	2	2	2	T	8	7	7	6	3	1	-	T	1	-	-	3	4	3	3	3	1	T	7	8	7	5	4	2	T	
SHARPSBURG 5 S	SN ON GND	-	-	-	-	-	-	-	0.8	-	-	-	-	-	-	-	-	-	-	0.7	-	-	-	-	0.9	-	-	-	-	-	-	
	SNOWFALL	-	-	T	T	-	2.5	0.2	T	T	-	-	-	T	-	-	-	T	0.4	-	-	-	-	-	3.4	0.4	-	-	-	-	-	
WILLIAMSPORT ALLEGHENY PLATEAU 08	SN ON GND	-	-	-	-	-	2	1	-	-	-	-	-	-	-	-	-	-	-	T	-	-	-	-	3	1	-	-	-	-	-	
	SNOWFALL	-	-	-	-	-	1.5	-	-	-	-	-	-	-	-	-	-	-	-	-	-	-	-	-	-	-	-	-	-	-	-	
OAKLAND 1 SE	SN ON GND	3.0	1.0	2.5	3.5	-	8.0	2.4	0.5	-	-	-	0.5	3.5	-	-	-	2.5	-	-	3.0	0.3	-	10.0	1.0	3.3	1.5	-	-	-		
	SNOWFALL	-	4	6	7	6	14	8	8	7	3	-	-	-	-	-	-	2	1.0	-	1	1	1	10	11	12	9	8	-	-	-	
SAVAGE RIVER DAM	SN ON GND	T	-	-	-	-	8.0	T	-	-	-	-	T	T	-	-	-	2.0	1.0	-	T	-	-	-	T	T	T	-	-	-	-	
	SNOWFALL	T	-	T	-	-	8	4	-	-	-	-	T	T	-	-	-	2	3	1	1	-	-	-	6	5	3	-	-	-	-	
SINES DEEP CREEK	SN ON GND	2.5	1.4	2.5	2.0	-	10.0	2.0	0.4	-	-	-	1.0	3.0	-	-	-	2.3	1.0	-	1.5	0.2	-	-	8.0	1.6	2.5	1.5	-	-	-	
	SNOWFALL	4	5	7	8	7	18	14	12	10	9	4	1	1	4	-	-	3	1	-	1	1	-	-	8	13	8	8	-	4	2	
DELAWARE NORTHERN 01	SN ON GND	-	-	-	-	-	-	-	-	-	-	-	-	-	-	-	-	-	-	-	-	-	-	-	-	-	-	-	-	-	-	
	SNOWFALL	-	-	-	-	-	-	-	-	-	-	-	-	-	-	-	-	-	-	-	-	-	-	-	-	-	-	-	-	-	-	
WILMINGTON NEW CASTLE CO AP	SN ON GND	-	-	-	-	-	-	-	-	-	-	-	-	-	-	-	-	-	-	-	-	-	-	-	-	-	-	-	-	-	-	
	SNOWFALL	-	-	-	-	-	-	-	-	-	-	-	-	-	-	-	-	-	-	-	-	-	-	-	-	-	-	-	-	-	-	
WILMINGTON PORTER RES	SN ON GND	-	-	-	-	-	-	-	-	-	-	-	-	-	-	-	-	-	-	-	-	-	-	-	-	-	-	-	-	-	-	
	SNOWFALL	-	-	-	-	-	-	-	-	-	-	-	-	-	-	-	-	-	-	-	-	-	-	-	-	-	-	-	-	-	-	

Snowfall: Includes snow and ice. Values for NWS stations (J index note) are Mid-Mid (LST).

Snow on ground: Includes snow, sleet, ice, and hail. Values for NWS stations (J index note) are observed at 12 UTC (GMT).

Water Equivalent: Given for NWS stations (J index note) only, when snow depth is 2 inches or more, and is measured at 18 UTC (GMT)

## SNOWFALL AND SNOW ON GROUND (INCHES)

STATION		DAY OF MONTH																														
		01	02	03	04	05	06	07	08	09	10	11	12	13	14	15	16	17	18	19	20	21	22	23	24	25	26	27	28	29	30	31
SOUTHERN 02 DOVER	SNOWFALL	-	-	-	-	-	-	-	T	-	-	-	-	-	-	-	-	-	-	-	-	T	-	-	-	2.0	-	-	-	-	-	-

Snowfall: Includes snow and ice. Values for NWS stations (J index note) are Mid-Mid (LST).

Snow on ground: Includes snow, sleet, ice, and hail. Values for NWS stations (J index note) are observed at 12 UTC (GMT).

Water Equivalent: Given for NWS stations (J index note) only, when snow depth is 2 inches or more, and is measured at 18 UTC (GMT)

# PAN EVAPORATION AND WIND

STATION		DAY OF MONTH																															TOTAL OR AVERAGE
		01	02	03	04	05	06	07	08	09	10	11	12	13	14	15	16	17	18	19	20	21	22	23	24	25	26	27	28	29	30	31	
MARYLAND UPPER SOUTHERN 04 BELTSVILLE	WIND	-	-	-	-	-	-	-	-	-	-	-	-	-	-	-	-	-	-	-	-	-	-	-	-	-	-	-	-	-	-	0	M
	EVAP	-	-	-	-	-	-	-	-	-	-	-	-	-	-	-	-	-	-	-	-	-	-	-	-	-	-	-	-	-	0.00	M	
	MAX	-	-	-	-	-	-	-	-	-	-	-	-	-	-	-	-	-	-	-	-	-	-	-	-	-	-	-	-	-	47	47.0	
	MIN	-	-	-	-	-	-	-	-	-	-	-	-	-	-	-	-	-	-	-	-	-	-	-	-	-	-	-	-	-	-	47	47.0
UPPER MARLBORO 3 NNW	WIND	-	-	-	-	-	-	-	-	-	-	-	-	-	-	-	-	-	-	-	-	-	-	-	-	-	-	-	-	-	-	M	
	EVAP	-	-	-	-	-	-	-	-	-	-	-	-	-	-	-	-	-	-	-	-	-	-	-	-	-	-	-	-	-	-	M	
	MAX	-	-	-	-	-	-	-	-	-	-	-	-	-	-	-	-	-	-	-	-	-	-	-	-	-	-	-	-	-	-	M	
	MIN	-	-	-	-	-	-	-	-	-	-	-	-	-	-	-	-	-	-	-	-	-	-	-	-	-	-	-	-	-	-	M	
ALLEGHENY PLATEAU 08 SAVAGE RIVER DAM	WIND	-	-	-	-	-	-	-	-	-	-	-	-	-	-	-	-	-	-	-	-	-	-	-	-	-	-	-	-	-	-	M	
	EVAP	-	-	-	-	-	-	-	-	-	-	-	-	-	-	-	-	-	-	-	-	-	-	-	-	-	-	-	-	-	-	M	
	MAX	-	-	-	-	-	-	-	-	-	-	-	-	-	-	-	-	-	-	-	-	-	-	-	-	-	-	-	-	-	-	-	
	MIN	-	-	-	-	-	-	-	-	-	-	-	-	-	-	-	-	-	-	-	-	-	-	-	-	-	-	-	-	-	-	M	

Evaporation: Is measured in hundreths of inches.

Wind: Is measured in miles.

Max and Min: The maximum and minimum temperatures (Fahrenheit) of the water in the evaporation pan.

STATION INDEX

STATION	INDEX NO.	DIVISION	COUNTY	LATITUDE	LONGITUDE	ELEVATION (IN FEET)	OBSERVATION TIME AND TABLES			
							LOCAL STD TIME			
							TEMP	PRECIP	EVAP	SPECIAL SEE (NOTES)
MARYLAND										
ABERDEEN PHILLIPS FLD	0015	06	HARFORD	39 28	76 10W	57	07	07		CH
ASSATEAGUE	0335	01	WORCESTER	38 4	75 13W	10	VAR	VAR		H
BALTIMORE WASH INTL AP R	0465	04	ANNE ARUNDEL	39 10	76 41W	156	24	24		HJ
BELTSVILLE	0700	04	PRINCE GEORGE'S	39 2	76 56W	145	08	08	08	CH
BRIGHTON DAM	1125	06	MONTGOMERY	39 11	77 0W	330	08	08		H
CONOWINGO DAM	2060	06	HARFORD	39 39	76 11W	40	07	07		H
CUMBERLAND 2	2282	07	ALLEGANY	39 39	78 45W	730	18	18		H
CYLBURN	2308	06	BALTIMORE	39 21	76 39W	235	08	08		H
DALECARLIA RSVR	2325	04	DISTRICT OF COLUMBIA	38 56	77 7W	150	08	08		H
DAMASCUS 3 SSW	2336	06	MONTGOMERY	39 16	77 14W	700	22	22		H
EMMITSBURG 2 SE	2906	06	FREDERICK	39 41	77 17W	403	07	07		H
FREDERICK 2 NNE	3353	06	FREDERICK	39 26	77 24W	280	07	07		H
FROSTBURG 2	3415	07	ALLEGANY	39 40	78 56W	2170	07	07		H
LAUREL 3 W	5111	04	PRINCE GEORGE'S	39 5	76 54W	400	24	24		H
MARYLAND SCIENCE CENTER R	5718	04	BALTIMORE (CITY)	39 17	76 37W	20	24	24		H
MECHANICSVILLE 5 NE	5865	03	ST. MARY'S	38 28	76 42W	100	07	07		H
MILLERS 4 NE	5934	06	CARROLL	39 43	76 48W	860	18	18		CH
NATL ARBORETUM DC	6350	04	DISTRICT OF COLUMBIA	38 55	76 58W	50	07	07		H
OAKLAND 1 SE	6620	08	GARRETT	39 25	79 24W	2420	07	07		H
OXON HILL	6800	04	PRINCE GEORGE'S	38 47	76 60W	120	08	08		H
PRINCESS ANNE	7330	01	SOMERSET	38 13	75 41W	20	17	17		H
ROYAL OAK 2 SSW	7806	02	TALBOT	38 43	76 11W	10	17	17		H
SALISBURY 2N	8004	01	WICOMICO	38 24	75 36W	20	17	17		H
SALISBURY FAA AP	8005	01	WICOMICO	38 20	75 31W	48	24	24		H
SAVAGE RIVER DAM	8065	08	GARRETT	39 31	79 8W	1495	08	08	08	CH
SHARPSBURG 5 S	8207	07	WASHINGTON	39 24	77 43W	500	07	07		H
SINES DEEP CREEK	8315	08	GARRETT	39 31	79 25W	2040	07	07		H
SMITHSBURG 2NW	8371	06	WASHINGTON	39 40	77 35W	670	08	08		H
SNOW HILL 4 N	8380	01	WORCESTER	38 14	75 23W	30	17	17		H
SOLOMONS	8405	03	CALVERT	38 19	76 27W	12	08	08		H
UPPER MARLBORO 3 NNW	9070	04	PRINCE GEORGE'S	38 51	76 46W	130	08	08	08	H
WESTMINSTER	9440	06	CARROLL	39 34	76 59W	750	07	07		H
WILLIAMSPORT	9570	07	WASHINGTON	39 37	77 51W	360	06	06		H
DELAWARE										
DOVER	2730	02	KENT	39 15	75 31W	30	16	16		H
WILMINGTON NEW CASTLE CO AP R	9595	01	NEW CASTLE	39 40	75 36W	79	24	24		HJ
WILMINGTON PORTER RES	9605	01	NEW CASTLE	39 46	75 32W	270	24	24		H

# REFERENCE NOTES

**STATION NAMES:** Name of the city, town or locality. Figures and letters following the station names indicate the distance in miles and direction from the post office or town community center.

**DIVISIONS:** Areas within a state of similar climatological characteristics. Division averages are calculated using data from stations that record temperature and/or precipitation. Station Precipitation totals flagged with an 'F' or 'M' are excluded from the Divisional Average calculations of precipitation. Stations with monthly Temperature averages flagged with an 'F' or 'M' are included in the Divisional Average if there are no more than 9 flagged or missing daily values in the month, else they are excluded from the divisional average for temperature.

**NORMALS:** The average value of the meteorological element over a time period. Effective 1 January 2012, the averaging period is 1981 to 2010. The normals for National Weather Service localities have been adjusted so as to be representative for the current observation site.

**MONTHLY DEGREE DAY TOTALS:** One heating (cooling) degree day is accumulated for each whole degree that the daily mean temperature is below (above) 65 degrees Fahrenheit.

**PRECIPITATION:** Values shown in hundredths of inches are water equivalent totals, i.e., total of liquid and melted frozen precipitation. In the "Monthly Summarized Data" table the total snow and sleet values shown in tenths of inches are unmelted amounts. The max depth on ground values of snow and sleet shown in whole inches are cumulative unmelted amounts. The number of days with .10, .50, 1.00 or more refers to water equivalents.

**PRECIPITATION QUALITY CONTROL:** The NCDC quality control process may flag precipitation data that are spatially inconsistent, exceed climatological limits, or are inconsistent with prevailing weather patterns.

**TEMPERATURE:** Original temperature values are given in the "Daily Temperature" table. Summary temperature information (averages, departures, extremes, monthly degree day totals) is based on the values labeled MAX/MIN.

**WIND:** (As shown in the "Evaporation and Wind" table) the total wind movement in miles over the evaporation pan as determined by an anemometer recorder located 6-8 inches above the pan.

## SYMBOLS AND LETTERS USED IN THE STATION INDEX TABLE

C Station is equipped with recording rain gage (R) but values in this bulletin are from a non-recording rain gage unless indicated by an R.

G Observations appear in the "Soil Temperatures" table.

H Observations appear in the "Snowfall and Snow on the Ground" table.

J Station also published as a Local Climatological Data publication.

VAR Observation time varies.

SR Observation time near sunrise.

SS Observation time near sunset.

## SYMBOLS AND LETTERS USED IN THE DATA TABLES

(DAILY DATA ARE FOR THE 24 HOURS IMMEDIATELY PRECEDING OBSERVATION TIME.)

BLANK Entries in the "Monthly Summarized Data" table indicate no record.

BLANK Entries in the "Daily Precipitation" and "Snowfall and Snow on the Ground" tables indicate zero.

BLANK Entries in the "Daily Temperature" table indicate a missing record

- No record. Data not recorded or not received in time for publication.

+ Precipitation or temperature extremes occurred on one or more previous dates during the month.

\* Rain gage not read. Precipitation is included in the amount following the asterisks.

Time distribution may not be known. A \* preceding the monthly total indicates precipitation amount is being carried forward to next month's total, and may include amounts from the previous month(s).

a As a subscript, indicates accumulated total.

A Amount of precipitation is the total of observer's entries for the current month. It may include precipitation that occurred during the previous month. Refer to earlier bulletin to determine date of last reading. (Hawaii stations)

B Divisional Departure from normals are computed using 1971-2000 normals.

E Normalized HDD/CDD Calculation. E is appended to the HDD/CDD Calculation when 1-9 individual daily TMAX and/or TMIN values are missing and a Normalized HDD/CDD Calculation is provided. M appears alone if 10 or more daily values are missing.

F Monthly calculation flagged value. F is appended to average and/or total values computed which exclude one or more daily data values that have been flagged by the GHCN-Daily Dataset

M Insufficient or partial data. M is appended to average and/or total values computed with 1-9 daily values missing. M appears alone if 10 or more daily values are missing, (8 or more for wind and evaporation).

N Indicates snow fall or Snowdepth totals are computed with one or more missing days.

R Amounts from recording rain gage.

T Trace. An amount too small to measure.

**SEASONAL TABLES:** Monthly and seasonal snowfall and heating degree days for the 12 months ending with the June data are published in the July issue of this bulletin. Cooling degree days for the calendar year are published in the "Climatological Data Annual Summary."

Information concerning the history of changes in locations, exposure, etc. of substations is kept on file at the National Climatic Data Center. Historical information of regular National Weather Service Offices may be obtained from the "Local Climatological Data" annual publication. The contents of this publication may be reprinted or otherwise used freely, with proper credit to the National Climatic Data Center. The data are also available digitally.

Effective with the January 2011 Data-Month, COOP Observer Names are no longer included in the Monthly and Annual Climatological Data Publications. This information is not published to ensure the privacy of personal information pursuant to Section 208 of the E-Government Act of 2002 (44 USC 3601).

As of the 2011 Data-Year, Station and Climate Division Maps are no longer being included in the CD Publications. NCDC's Product Development Branch provides updated Station Maps for various data networks via the Historical Observing Metadata Repository: <http://www.ncdc.noaa.gov/homr>.

The GHCN-Daily Quality Control Flags shown below are displayed as superscripts with the data. For more Information on Global Historical Climatology Network - Daily and flags, see: <http://www.ncdc.noaa.gov/oa/climate/ghcn-daily/> and

Comprehensive Automated Quality Assurance of Daily Surface Observations.

Durre, Imke, Matthew J. Menne, Byron E. Gleason, Tamara G. Houston,

Russell S. Vose, 2010: J. Appl. Meteor. Climatol., 49, 1615-1633.

doi: 10.1175/2010JAMC2375.1

Blank = Passed All checks

D = failed duplicate check

G = failed gap check

I = failed internal consistency check

K = failed streak/frequent-value check

L = failed check on length of multiday period

M = failed megaconsistency check

N = failed naught check

O = failed climatological outlier check

R = failed lagged range check

S = failed spatial consistency check

T = failed temporal consistency check

W = temperature too warm for snow

X = failed bounds check

Z = flagged as a result of an official Datzilla investigation

Beginning with the January 2013 CD Publication, monthly mean temperature calculations have changed to the National Data Stewardship Team standard. Monthly maximum and minimum temperatures are not rounded until after the monthly mean temperature is calculated. This is the most accurate outcome, but may be slightly different from the mean derived from rounded monthly maximum and minimum.

Processing Updates and Errata: The 2011 CD Publications were reproduced in May 2013. This update included the addition of late reports and corrections based on additional investigations of reported data issues through NCDC's Datzilla system. In addition, divisional averages for precipitation were recalculated using the method described in DIVISIONS above. Previous editions of the 2011 Publications included all precipitation stations regardless of missing data in the calculation of divisional averages. HDD/CDD values were recalculated to match the legacy method of calculation (truncation of monthly HDD/CDD values instead of rounding).

## **These and other publications are available from the National Climatic Data Center**

### **Hourly Precipitation Data**

This publication contains hourly precipitation amounts obtained from recording rain gages located at National Weather Service, Federal Aviation Administration, and cooperative observer stations. Published data are displayed in inches and tenths or inches and hundredths at local standard time. HPD includes maximum precipitation for nine (9) time periods from 15 minutes to 24 hours, for selected stations.

### **Climatological Data**

Monthly editions contain station daily maximum and minimum temperatures and precipitation. Some Stations provide daily snowfall, snow depth, evaporation, and soil temperature data. Each edition also contains monthly summaries for heating and cooling degree days (65 degree F base). The July issue contains a recap of monthly heating degree days and snow data for the preceding July through June.

The Annual issue contains monthly and annual averages of temperature, precipitation, temperature extremes, freeze data, soil temperatures, evaporation, and a recap of monthly cooling degree days.

### **Storm Data**

Monthly issues contain a chronological listing, by states, of occurrences of storms and unusual weather phenomena. Reports contain information on storm paths, deaths, injuries, and property damage. An "Outstanding storms of the month" section highlights severe weather events with photographs, illustrations, and narratives. The December issue includes annual tornado, lightning, flash flood, and tropical cyclone summaries.

### **Monthly Climatic Data for the World**

This publication contains monthly means for temperature, pressure, precipitation, vapor pressure, and sunshine for approximately 2,000 surface data collection stations worldwide and monthly mean upper air temperatures, dew point depressions, and wind velocities for approximately 500 observing sites.

### **Local Climatological Data**

LCD publications summarize temperature, relative humidity, precipitation, cloudiness, wind speed and direction observations for several hundred cities in the U.S. and its territories. Each monthly publication also contains 3 hourly weather observations for that month and a hourly summary of precipitation. Annual LCD publications contain a summary of the past calendar year as well as historical averages and extremes.

For Information Call:

(828) 271-4800 Option 2

(828) 271-4010 (TDD)

(828) 271-4876 (Fax)



NOAA\National Climatic Data Center  
Attn: User Engagement & Services Branch  
151 Patton Avenue  
Asheville, NC 28801-5001

Customer Services Number: (828) 271-4800, option 2  
TDD : (828) 271-4010  
Fax number: (828) 271-4876

NCDC now offers free online access to the *Climatological Data* publication.  
Go to : [www.ncdc.noaa.gov](http://www.ncdc.noaa.gov) and choose Most Popular.