



CLIMATOLOGICAL DATA

MARYLAND AND DELAWARE

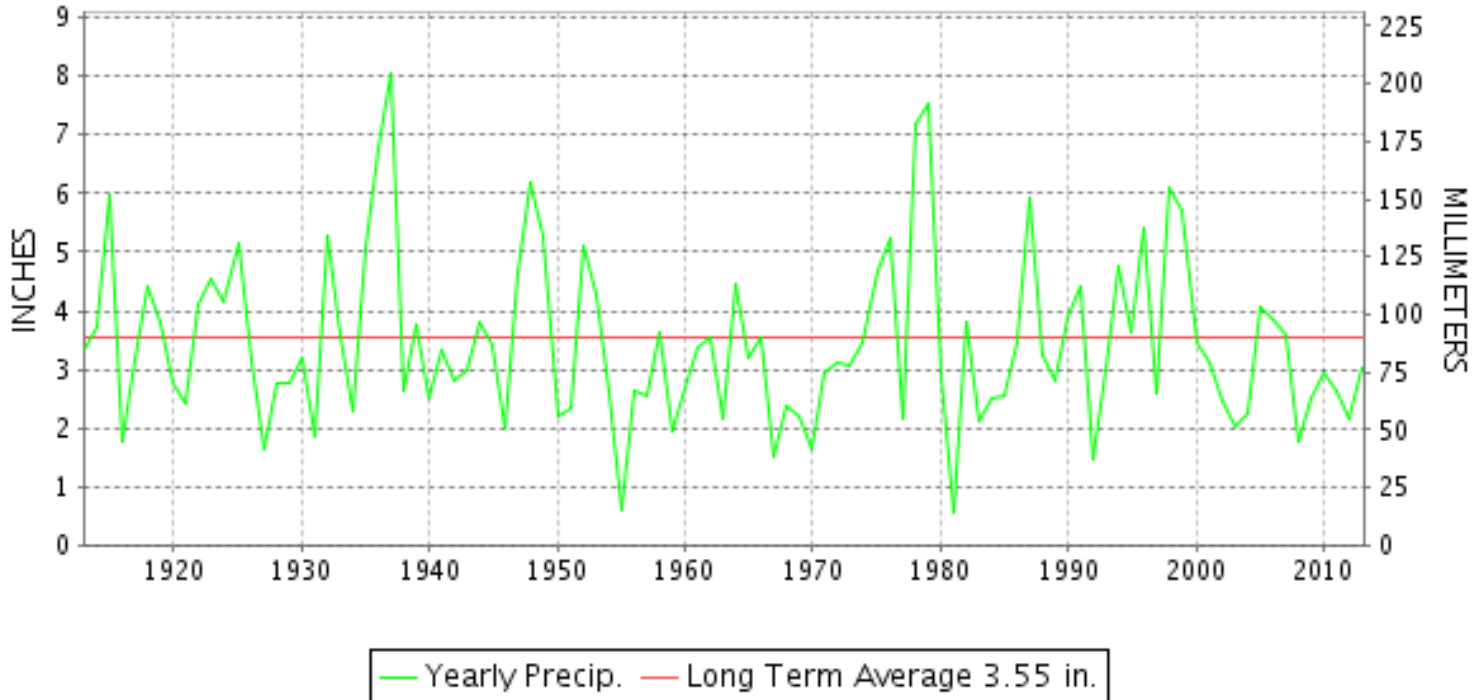
JANUARY 2013

VOLUME 117 NUMBER 01

ISSN 0145-0549

GHCND Ver: 3.03-upd-2013062705

JANUARY PRECIPITATION BY YEAR



TEMPERATURE AND PRECIPITATION EXTREMES

MARYLAND

HIGHEST TEMPERATURE	75	JANUARY 30+	2 STATIONS
LOWEST TEMPERATURE	-1	JANUARY 25	OAKLAND 1 SE
GREATEST TOTAL PRECIPITATION	6.17		CONOWINGO DAM
LEAST TOTAL PRECIPITATION	0.94		BRIGHTON DAM
GREATEST 1 DAY PRECIPITATION	3.56	JANUARY 31	FREDERICK 2 NNE
GREATEST TOTAL SNOWFALL	12.9		OAKLAND 1 SE
GREATEST DEPTH OF SNOW OR ICE	15		OAKLAND 1 SE

"I certify that this is an official publication of the National Oceanic and Atmospheric Administration (NOAA) It is compiled using information from weather observing sites supervised by NOAA/National Weather Service and received at the National Climatic Data Center(NCDC), Asheville, North Carolina 28801."

Director
National Climatic Data Center

noaa

National
Oceanic and
Atmospheric Administration

National
Environmental Satellite, Data
and Information Service

National
Climatic Data Center
Asheville, North Carolina

DELAWARE

HIGHEST TEMPERATURE	70	JANUARY 30+	2 STATIONS
LOWEST TEMPERATURE	9	JANUARY 26	WILMINGTON NEW CASTLE CO AP
GREATEST TOTAL PRECIPITATION	4.01		WILMINGTON PORTER RES
LEAST TOTAL PRECIPITATION	2.39		DOVER
GREATEST 1 DAY PRECIPITATION	0.97	JANUARY 16	WILMINGTON PORTER RES
GREATEST TOTAL SNOWFALL	2.0		DOVER
GREATEST DEPTH OF SNOW OR ICE	1		WILMINGTON NEW CASTLE CO AP

MONTHLY STATION AND DIVISION SUMMARY

STATION	TEMPERATURE (°F)											PRECIPITATION (IN)																	
	AVERAGE MAXIMUM	AVERAGE MINIMUM	AVERAGE	DEPARTURE FROM NORMAL	HIGHEST	DATE	LOWEST	DATE	HEATING DEG. DAYS	COOLING DEG. DAYS	NO. OF DAYS				TOTAL	DEPARTURE FROM NORMAL	GREATEST 24 HOURS	DATE	ICE PELLETS, SNOW			NO. OF DAYS							
											MAX		MIN						TOTAL	MAX DEPTH ON GROUND	DATE	.10 OR MORE	.50 OR MORE	1.00 OR MORE					
											>=90	<=32	<=32	<=0															
MARYLAND SOUTHERN EASTERN SHORE 01	M	M	M							0	0	0	0	M					0.0										
ASSATEAGUE	52.4M	31.3M	41.8M	5.6	75	30	9	25	712E	0	0	1	12	0	M 2.96	-0.62	1.12	15	0.0				7	2	1				
PRINCESS ANNE	48.8	30.7	39.8	5.6	73	30	11	25	776	0	0	3	18	0	3.53		0.73	17	M 1.2	M 1	25	9	3	0					
SALISBURY 2N	49.9	30.2	40.1	4.7	75	30	8	25	765	0	0	4	18	0	3.00	-0.61	0.87	17	2.8			7	2	0					
SALISBURY FAA AP	50.0	29.4	39.7	2.4	71	30+	4	25	772	0	0	3	18	0	2.76	-0.81	0.55	15	M 3.5	M 1	27	5	2	0					
SNOW HILL 4 N																													
--DIVISIONAL DATA----->			40.4	4.4B											3.10	-0.90B													
CENTRAL EASTERN SHORE 02																													
ROYAL OAK 2 SSW	47.2	30.8	39.0	2.7	66	30	15	24	802	0	0	3	18	0	2.73	-0.87	0.72	31	1.1	T	27	6	3	0					
--DIVISIONAL DATA----->			39.0	4.2B											2.73	-1.25B													
LOWER SOUTHERN 03																													
MECHANICSVILLE 5 NE	45.7	27.3	36.5	2.5	72	31	10	25	875	0	0	4	22	0	3.03	-0.20	1.00	16	M 2.7	M 2	28	7	2	1					
SOLOMONS	46.3	33.4	39.8	2.5	69	31	17	23	775	0	0	3	12	0	A 3.64	3.64	0.72	16	4.7	4	28	7	5	0					
--DIVISIONAL DATA----->			38.2	4.2B											3.34	-0.38B													
UPPER SOUTHERN 04																													
BALTIMORE WASH INTL AP	45.2	28.6	36.9	4.0	70	30	11	25	862	0	0	4	20	0	3.64	0.59	1.22	30	2.9	2	28	6	3	1					
BELTSVILLE	44.7	28.2	36.4	3.5	70	31	12	23	877	0	0	4	21	0	2.71	-0.15	1.22	31	2.0	1	28	3	2	1					
DALECARLIA RSVR	45.7	29.3	37.5	3.3	69	31	15	24+	846	0	0	3	21	0	3.33	0.31	1.69	31	T	T	24	6	2	1					
LAUREL 3 W	45.0	30.2	37.6	4.0	70	30	10	23	842	0	0	5	18	0	4.38	1.22	1.30	16	0.0			5	4	3					
MARYLAND SCIENCE CENTER	48.0	35.0	41.5	5.7	74	30	17	23	719	0	0	3	8	0	3.90	0.98	1.51	30	0.0			7	4	1					
NATL ARBORETUM DC	46.4	29.9	38.1	2.6	72	31	15	23	824	0	0	4	19	0	2.60	-0.49	1.05	31	M 1.4	M 1	25	4	2	1					
OXON HILL	45.8	29.9	37.8	2.7	71	31	14	24+	836	0	0	4	20	0	2.61	-0.41	0.89	31	1.3	1	26	5	2	0					
UPPER MARLBORO 3 NNW	46.3	28.0	37.1	3.6	71	31	10	24+	856	0	0	4	21	0	2.70	-0.18	1.17	31	M 1.3	M 1	28	5	2	1					
--DIVISIONAL DATA----->			37.9	4.6B											3.23	-0.32B													
NORTHERN CENTRAL 06																													
ABERDEEN PHILLIPS FLD	42.8	27.5	35.2	1.6	67	31	10	26	918	0	0	5	19	0	A 3.30	0.14	1.25	31	1.2	1	28	5	2	1					
BRIGHTON DAM	M	M	M												FA 0.94		0.41	15	2.0	1	24	4	0	0					
CONOWINGO DAM	40.1	25.2	32.6	0.7	66	31	9	24+	996	0	0	5	25	0	6.17	2.73	1.87	31	M 1.9			8	4	3					
CYLBURN	42.6	28.1	35.4	2.8	69	31	11	24+	910	0	0	4	22	0	MA 5.99	5.99	0.98	16	M 0.6			3	1	0					
DAMASCUS 3 SSW	41.8	28.5	35.2	3.8	66	30	8	23	917	0	0	5	22	0	5.57	2.20	2.11	30	2.3	2	28	6	3	2					
EMMITSBURG 2 SE	41.3	25.8	33.6	3.4	67	31	11	24+	966	0	0	7	24	0	3.84	0.66	1.80	31	3.0	0		8	2	2					
FREDERICK 2 NNE	43.6	27.3	35.4	3.9	70	31	11	23	909	0	0	5	22	0	5.55	2.56	3.56	31	2.3	1	26	6	2	2					
MILLERS 4 NE	41.8	26.8	34.3	4.2	66	30	7	23	944	0	0	5	20	0	5.32	2.11	2.68	31	2.4	2	28	7	3	2					
SMITHSBURG 2NW	40.0M	24.2M	32.1M	2.1	67	31	8	24	1012E	0	0	6	17	0	MA 2.61	-0.05	1.80	31	M 2.5			5	1	1					
WESTMINSTER	M	M	M		67	31	8	24+	977E	0	0	5	14	0	A 5.40	2.52	3.48	31	M 0.6			4	2	1					

MONTHLY STATION AND DIVISION SUMMARY

STATION	TEMPERATURE (°F)											PRECIPITATION (IN)													
	AVERAGE MAXIMUM	AVERAGE MINIMUM	AVERAGE	DEPARTURE FROM NORMAL	HIGHEST	DATE	LOWEST	DATE	HEATING DEG. DAYS	COOLING DEG. DAYS	NO. OF DAYS				TOTAL	DEPARTURE FROM NORMAL	GREATEST 24 HOURS	DATE	ICE PELLETS, SNOW			NO. OF DAYS			
											MAX		MIN						TOTAL	MAX DEPTH ON GROUND	DATE	.10 OR MORE	.50 OR MORE	1.00 OR MORE	
											>=90	<=32	<=32	<=0											
--DIVISIONAL DATA-----> APPALACHIAN MOUNTAIN 07			34.2	3.0B										5.02	1.42B										
CUMBERLAND 2	42.7	25.2	34.0	2.1	71	31	10	24+	955	0	0	5	24	0	2.71	0.05	1.09	31	M 3.3	5	01	6	2	1	
FROSTBURG 2	37.1	21.8	29.4	3.4	64	31	1	24	1093	0	0	12	26	0	3.09	-0.23	1.12	31	M 7.2	M 9	31	7	2	1	
SHARPSBURG 5 S	43.3	25.2	34.3	3.5	70	31+	7	23	945	0	0	5	23	0	3.97	1.09	2.17	31	M 1.8	M 1	28	5	2	2	
WILLIAMSPORT	42.3M	24.5M	33.4M	2.5	67	30	10	24+	970E	0	0	4	20	0	MA 2.82	-0.18	0.90	16	M 2.4	0		5	1	0	
--DIVISIONAL DATA-----> ALLEGHENY PLATEAU 08			32.8	3.8B										3.26	0.16B										
OAKLAND 1 SE	39.4	20.8	30.1	5.0	70	31	-1	25	1073	0	0	9	25	1	3.38	-0.16	1.10	31	12.9	15	01	10	1	1	
SAVAGE RIVER DAM	38.4M	22.5M	30.4M	3.1	66	31	7	25	1064E	0	0	9	25	0	M 2.36	-0.39	0.79	31	FM 1.0	FM 7	13	5	2	0	
SINES DEEP CREEK	35.2M	19.2M	27.2M		68	31	2	25+	1163E	0	0	13	26	0	M 4.10		1.20	31	M 12.0	13	01	11	3	1	
--DIVISIONAL DATA-----> DELAWARE NORTHERN 01			29.2	3.4B										3.38	-0.17B										
BEAR 2 SW	M	M	M								0	0	0	0	M				0.0						
WILMINGTON NEW CASTLE CO AP	43.6	27.6	35.6	3.2	70	30	9	26	903	0	0	5	20	0	3.70	0.69	0.82	16	1.9	1	28	7	4	0	
WILMINGTON PORTER RES	41.0	28.1	34.5	2.7	66	30	10	23	937	0	0	5	21	0	4.01	0.30	0.97	16	1.1	T	25	7	3	0	
--DIVISIONAL DATA-----> SOUTHERN 02			35.1	3.4B										3.86	0.16B										
DOVER	45.6	29.9	37.7	2.5	70	30	10	26	838	0	0	5	17	0	2.39	-1.02	0.79	16	M 2.0	MT	21	4	3	0	
--DIVISIONAL DATA----->			37.7	3.1B										2.39	-1.60B										

DAILY PRECIPITATION (INCHES)

STATION	TOTAL	DAY OF MONTH																																	
		01	02	03	04	05	06	07	08	09	10	11	12	13	14	15	16	17	18	19	20	21	22	23	24	25	26	27	28	29	30	31			
MARYLAND																																			
SOUTHERN																																			
EASTERN SHORE 01																																			
ASSATEAGUE	M	-	-	-	-	-	-	-	-	-	-	-	-	-	-	-	-	-	-	-	-	-	-	-	-	-	-	-	-	-	-	-	-		
PRINCESS ANNE	M 2.96					-	-								0.38	1.12	0.33	0.62									0.11	-	-		0.15	0.25			
SALISBURY 2N	3.53		0.02				0.01					0.02	0.12	0.02	0.12	0.67	0.68	0.73	0.40						0.06	0.25	0.08		0.10		0.01	0.24			
SALISBURY FAA AP	3.00	T	T				T					0.09			0.25	0.76	0.36	0.87	0.07						0.04	0.14			0.10			0.32			
SNOW HILL 4 N	2.76	0.01	T				T				0.01	0.01	0.09		0.08	0.55	0.53	0.37	0.43						0.07		0.07		0.09			0.45			
CENTRAL																																			
EASTERN SHORE 02																																			
ROYAL OAK 2 SSW	2.73	T								T		0.04	0.04		0.12	0.60	0.70	0.23	0.05						T	T	T	0.05		0.18			0.72		
LOWER SOUTHERN 03																																			
MECHANICSVILLE 5 NE	3.03	0.01					T				T		0.06	T	0.02	0.35	1.00	0.28	0.19							0.15		0.04		0.02	0.11		0.80		
SOLOMONS	A 3.64	T	0.01				T				T	T	*	0.10 _a	0.02	0.68	0.72	0.50	0.68							0.11		0.05		0.11			0.66		
UPPER SOUTHERN 04																																			
BALTIMORE WASH INTL AP	3.64					T	T				T		0.07		T	0.15	0.66	0.49	T							T		0.08	0.07	T		0.17		1.22	0.73
BELTSVILLE	2.71						0.01						0.06		0.01	0.34	0.80	0.09								0.02		0.05		0.07	0.04			1.22	
DALECARLIA RSVR	3.33						0.02						0.10		0.02	0.37	0.78	0.12	0.01							0.02				0.20				1.69	
LAUREL 3 W	4.38						0.01						0.09			0.03	1.30	0.02									1.00			0.17			1.18	0.58	
MARYLAND SCIENCE CENTER	3.90												0.17		0.01	0.19	0.56	0.58								0.03	0.06		0.14			1.51	0.65		
NATL ARBORETUM DC	2.60									T		T	0.04	T	0.02	0.44	0.73	0.09	T							0.04	T	0.02		0.17	T		1.05		
OXON HILL	2.61						0.01				0.01		0.05	T	0.02	0.46	0.77	0.15	T							0.04	T	0.02	T	0.07	0.12	T	0.89		
UPPER MARLBORO 3 NNW	2.70										T				0.05	0.41	0.73	0.12	T							0.03		0.03		0.05	0.11		1.17		
NORTHERN CENTRAL 06																																			
ABERDEEN PHILLIPS FLD	A 3.30						T						*	*	0.33 _a	0.42	0.99	0.10								T		0.08		T	0.13		1.25		
BRIGHTON DAM	FA 0.94											0.00 ^L	0.35 ^L _a		0.03	0.41	0.87 ^L	0.32 ^L _a								0.10		0.20		0.13	0.07	0.00 ^L	3.00 ^L _a		
CONOWINGO DAM	6.17									0.05			0.30		0.04	0.44	1.00	0.12									0.05	0.70	*	*	*	1.40	*	1.87	
CYLBURN	MA 5.99	*	1.60 _a								T		0.26	*	*	0.44 _a	0.98	0.13									0.03		*	*	*	0.20 _a	*	2.35 _a	
DAMASCUS 3 SSW	5.57										T		0.16		0.01	0.05	0.40	0.59									0.07	0.07	T		0.21		2.11	1.90	
EMMITSBURG 2 SE	3.84										T		0.22	0.01	0.04	0.22	1.00	0.11								0.10		0.20		0.01	0.13		1.80		
FREDERICK 2 NNE	5.55										0.02		0.16	0.01	0.04	0.26	1.00	0.17								0.04		0.08		0.09	0.12		3.56		
MILLERS 4 NE	5.32						0.01			0.01		0.30	0.02	0.01	0.01	0.32	1.15		T							T	0.12	0.01	T	0.13		0.55	2.68		
SMITHSBURG 2NW	MA 2.61												0.28		0.15	-	-	-	-							T	0.10	*	*	0.10 _a	0.13	-	1.80		
WESTMINSTER	A 5.40	*	0.18 _a			*	*	T _a	*	0.00 _a	T		*	*	0.21 _a	0.27	0.96	0.15	*	*	*	*	0.00 _a			T	*	*	*	0.15 _a	T	T	3.48		
APPALACHIAN																																			
MOUNTAIN 07																																			
CUMBERLAND 2	2.71										0.01		0.28		0.01	0.30	0.57	0.01									0.04		0.14	0.01	0.20	0.05		1.09	
FROSTBURG 2	3.09	T											0.31		0.07	0.24	0.65	0.02								0.07	T	0.21	0.01	0.19	0.18		1.12		
SHARPSBURG 5 S	3.97							T					0.09		0.03	0.25	1.01	0.11								0.04	T	0.07	T	0.15	0.05		2.17		
WILLIAMSPORT	MA 2.82					*	0.00 _a						0.19		*	0.04 _a	0.90	0.01									0.10	*	1.38 _a		0.10	0.10		-	
ALLEGHENY PLATEAU 08																																			
OAKLAND 1 SE	3.38	0.10											0.32	0.01	0.15	0.28	0.49	0.01								0.01		0.15	0.02	0.18	0.04	0.20	0.30	0.01	1.10

DAILY PRECIPITATION (INCHES)

STATION	TOTAL	DAY OF MONTH																														
		01	02	03	04	05	06	07	08	09	10	11	12	13	14	15	16	17	18	19	20	21	22	23	24	25	26	27	28	29	30	31
SAVAGE RIVER DAM	M 2.36	T		T					-			0.22		0.07	0.26	0.50	-								0.07	T	0.08	T	0.08	0.29		0.79
SINES DEEP CREEK	M 4.10	0.13					0.05			0.05		0.35		0.15	0.17	0.65	0.11				-		0.05		0.11	0.02	0.10	0.05	0.15	0.76		1.20
DELAWARE NORTHERN 01																																
BEAR 2 SW	M	-	-	-	-	-	-	-	-	-	-	-	-	-	-	-	-	-	-	-	-	-	-	-	-	-	-	-	-	-	-	-
WILMINGTON NEW CASTLE CO AP	3.70					0.04			T		0.69		0.03	0.21	0.42	0.82									T	0.04			0.12		0.71	0.55
WILMINGTON PORTER RES	4.01					0.05					0.75		0.03	0.22	0.44	0.97									T	0.05			0.13		0.40	0.90
SOUTHERN 02																																
DOVER	2.39										0.16			0.01	0.72	0.79	0.06	0.01						T		0.05			0.07	0.01	T	0.51

DAILY TEMPERATURES (°F)

STATION	OB. TIME	MAX/MIN	DAY OF MONTH																															AVERAGE				
			01	02	03	04	05	06	07	08	09	10	11	12	13	14	15	16	17	18	19	20	21	22	23	24	25	26	27	28	29	30	31					
			MARYLAND SOUTHERN EASTERN SHORE 01 ASSATEAGUE	VA	MAX MIN																																	
PRINCESS ANNE	17	MAX MIN	48 42	46 30	40 26	45 23				52 30	58 25	63 33	60 37	68 48			67 41	65 39	47 34	46 27	43 27					47 19	44 16	39 12	35 9	28 27				48 23	71 44	75 52	70 35	52.4 31.3
SALISBURY 2N	17	MAX MIN	45 25	44 33	35 25	43 23	44 28	50 31	55 31	61 27	56 35	52 36	59 32	58 43	63 42	52 40	37 38	31 26	51 38	58 38	53 26	43 22	47 14	27 17	25 11	34 15	37 15	37 15	34 15	23 22	43 19	69 23	73 39	68 51	48.8 30.7			
SALISBURY FAA AP	24	MAX MIN	48 42	43 30	38 25	45 22	47 31	53 33	53 28	57 25	66 34	55 35	57 32	63 45	61 44	67 47	47 41	47 39	46 34	40 26	52 27	60 39	48 26	32 19	29 16	28 10	27 8	36 15	39 15	49 22	72 43	75 52	67 32	49.9 30.2				
SNOW HILL 4 N	17	MAX MIN	47 39	45 32	38 25	45 21	47 22	54 28	52 31	57 24	64 33	59 34	51 26	63 44	56 42	65 48	56 41	45 38	47 42	42 30	52 23	59 38	57 23	45 24	29 10	26 17	26 4	34 15	39 10	44 19	71 40	71 45	65 44	50.0 29.4				
CENTRAL EASTERN SHORE 02 ROYAL OAK 2 SSW	17	MAX MIN	45 39	42 32	36 22	45 27	43 29	52 30	49 35	53 25	59 30	56 38	49 31	52 42	52 39	63 49	51 39	43 35	43 38	41 29	52 24	58 40	53 25	42 20	26 16	28 15	27 19	35 22	35 17	42 23	65 38	66 49	61 37	47.2 30.8				
LOWER SOUTHERN 03 MECHANICSVILLE 5 NE	07	MAX MIN	42 24	44 33	40 26	36 21	44 21	46 29	51 30	47 25	52 25	60 29	55 30	44 31	50 36	61 41	61 40	41 35	42 35	42 31	34 26	53 34	60 27	46 19	26 11	27 11	26 10	26 12	35 19	37 19	49 26	68 40	72 49	45.7 27.3				
SOLOMONS	08	MAX MIN	45 39	45 35	39 30	37 29	44 33	45 37	49 39	53 32	55 35	61 41	51 35	47 41	48 42	62 44	40 40	43 36	43 37	38 34	53 32	59 38	44 22	26 17	28 18	27 19	35 20	34 24	37 30	50 33	66 42	69 48	46.3 33.4					
UPPER SOUTHERN 04 BALTIMORE WASH INTL AP	24	MAX MIN	44 34	37 26	38 22	42 23	43 31	51 28	47 27	52 23	51 27	53 36	45 32	57 42	49 40	58 41	40 35	45 34	38 37	54 28	58 35	41 29	29 15	25 12	26 14	22 11	34 20	42 24	41 30	66 37	70 39	63 28	45.2 28.6					
BELTSVILLE	08	MAX MIN	40 29	44 31	36 22	38 22	43 26	43 27	51 28	45 23	52 26	53 29	46 32	58 42	54 45	58 39	40 34	44 35	44 33	35 26	52 34	58 29	43 18	32 12	25 14	26 16	23 18	23 18	33 23	37 32	41 32	69 35	70 42	44.7 28.2				
DALECARLIA RSVR	08	MAX MIN	40 32	43 32	34 24	43 24	43 24	44 28	53 28	43 25	51 29	50 32	52 33	55 36	55 42	53 39	51 35	42 35	43 35	38 33	51 32	58 30	41 18	54 15	60 15	45 16	45 19	25 19	24 19	33 27	40 32	42 36	68 42	69 29.3				
LAUREL 3 W	24	MAX MIN	42 36	37 28	38 23	42 28	43 30	51 32	47 38	51 29	53 34	44 40	44 36	58 40	49 41	58 45	49 37	43 32	36 28	51 28	58 34	41 28	30 15	25 10	25 14	24 14	29 17	36 22	41 27	68 39	70 48	63 28	45.0 30.2					
MARYLAND SCIENCE CENTER	24	MAX MIN	47 41	41 33	42 30	45 33	47 36	55 38	49 37	57 34	53 36	45 43	48 45	58 46	51 45	62 45	45 39	45 38	49 43	43 34	57 33	61 40	43 32	33 17	28 20	29 22	27 25	36 25	42 29	43 34	61 47	74 37	63 48	48.0 35.0				
NATL ARBORETUM DC	07	MAX MIN	44 30	45 30	38 25	39 25	45 23	45 30	51 31	47 27	53 30	52 31	56 34	47 40	55 43	61 45	61 41	45 45	45 38	45 54	38 60	54 47	25 20	27 28	26 26	33 30	40 19	34 15	47 17	28 19	33 19	40 34	47 42	71 44	72 29.9			
OXON HILL	08	MAX MIN	41 26	43 34	36 26	37 23	44 29	45 30	52 30	51 27	54 32	53 32	55 35	45 34	51 41	61 42	60 39	41 35	42 34	44 34	42 29	54 32	59 31	47 19	24 14	26 17	27 17	24 17	35 24	38 27	48 32	70 44	71 43	45.8 29.9				
UPPER MARLBORO 3 NNW	08	MAX MIN	44 27	44 33	39 23	38 20	44 29	45 30	53 28	48 23	55 27	55 30	56 30	44 30	59 41	62 43	40 39	41 34	43 35	37 35	55 25	60 30	45 19	25 10	27 10	26 15	24 16	35 18	39 20	49 32	70 46	71 39	46.3 28.0					
NORTHERN CENTRAL 06 ABERDEEN PHILLIPS FLD	07	MAX MIN	39 29	42 30	36 23	37 24	41 24	43 26	51 30	47 22	50 24	49 29	51 34	47 37	54 39	50 41	41 40	42 35	45 35	36 33	50 34	57 27	36 18	23 11	24 11	26 16	23 10	31 13	36 14	36 32	59 34	67 43	42.8 27.5					

DAILY TEMPERATURES (°F)

STATION	OB. TIME	MAX/MIN	DAY OF MONTH																															AVERAGE		
			01	02	03	04	05	06	07	08	09	10	11	12	13	14	15	16	17	18	19	20	21	22	23	24	25	26	27	28	29	30	31			
BRIGHTON DAM	08	MAX MIN																																	M M	
CONOWINGO DAM	07	MAX MIN	40 26	40 26	41 24	41 21	38 25	37 26	47 27	43 23	46 23	42 27	43 30	44 32	41 40	49 38	50 38	50 33	38 32	41 31	34 23	47 30	55 26	33 16	21 9	20 9	25 15	21 11	28 12	33 12	34 28	54 33	66 34	40.1 25.2		
CYLBURN	08	MAX MIN	38 35	42 28	33 22	36 23	40 30	41 30	49 29	43 26	52 28	48 30	50 36	43 37	56 41	47 39	56 37	39 32	43 32	42 31	33 27	51 30	56 25	37 14	28 11	22 11	24 12	30 16	35 18	37 27	42 35	60 37	69 41	42.6 28.1		
DAMASCUS 3 SSW	22	MAX MIN	39 31	35 26	34 19	38 29	39 30	46 30	41 31	49 30	49 32	48 35	43 34	56 39	52 44	57 39	37 34	42 32	34 28	42 27	52 32	54 25	39 12	27 8	21 13	22 11	19 16	28 19	33 16	37 19	65 26	66 54	56 26	41.8 28.5		
EMMITSBURG 2 SE	07	MAX MIN	40 25	39 28	32 15	35 15	39 30	39 25	46 27	41 23	48 23	50 24	49 32	42 33	52 38	52 43	52 38	40 32	43 33	41 31	32 26	52 29	54 23	38 15	21 11	23 11	25 14	20 16	30 15	35 20	40 35	64 35	67 39	41.3 25.8		
FREDERICK 2 NNE	07	MAX MIN	41 27	42 29	35 21	38 21	41 32	41 28	48 28	43 23	53 23	48 26	52 34	45 34	57 40	55 43	57 39	40 33	45 33	42 31	35 27	55 26	55 16	42 11	22 12	24 12	26 15	23 17	31 20	36 21	43 31	67 36	70 41	43.6 27.3		
MILLERS 4 NE	18	MAX MIN	39 33	36 24	35 16	38 26	40 26	46 26	40 32	50 25	47 27	48 36	42 33	57 38	48 42	55 45	57 35	40 31	45 41	42 35	35 53	53 53	38 38	32 20	20 24	19 19	30 12	34 15	33 22	63 33	66 44	55 30	41.8 26.8			
SMITHSBURG 2NW	08	MAX MIN	39 26	37 23	30 14	33 14	36 28	36 27	42 34	43 25	45 24	50 26	50 26	43 35	53 38	55 42	55 42	43 38	55 42	55 24	42 24	51 24	51 24	20 8	23 8	20 12	23 13	15 14	17 14	20 14	31 29	48 29	67 36	40.0 24.2		
WESTMINSTER	07	MAX MIN		38 23	31 16	35 16			47 27		51 24	47 26	48 35				54 36	36 32	40 30				48 14	18 8	18 8	22 12				32 12	45 30	64 42	67 38	M M		
APPALACHIAN MOUNTAIN 07																																				
CUMBERLAND 2	18	MAX MIN	42 20	38 26	34 16	41 17	37 29	44 29	43 31	42 20	47 20	45 27	51 36	45 37	57 38	52 42	49 35	40 32	41 33	39 27	39 22	60 23	50 28	42 11	20 10	23 10	26 13	27 14	32 17	37 16	41 30	65 39	71 32	42.7 25.2		
FROSTBURG 2	07	MAX MIN	36 21	32 19	24 14	30 15	28 23	37 23	36 28	31 18	44 23	47 28	45 30	50 33	59 43	62 41	41 31	33 28	35 29	31 19	36 17	50 35	41 20	33 2	10 2	13 1	16 5	20 8	25 9	30 9	48 27	62 47	64 27	37.1 21.8		
SHARPSBURG 5 S	07	MAX MIN	38 20	41 28	35 18	38 17	41 23	43 23	47 27	43 24	54 23	47 26	51 29	45 37	61 40	58 47	52 37	40 33	37 33	40 28	35 24	59 25	54 14	42 7	22 8	24 10	26 15	21 16	30 15	35 31	44 41	70 39	70 39	43.3 25.2		
WILLIAMSPORT	06	MAX MIN	42 19	41 29	36 18	40 17		43 28	47 27	43 21	49 20	46 25	52 33	44 33	56 38		53 36	43 34	41 33	42 33	36 23	58 25	53 15	41 10	21 10	24 10		20 15	30 18	37 16	38 30	67 30		42.3 24.5		
ALLEGHENY PLATEAU 08																																				
OAKLAND 1 SE	07	MAX MIN	35 28	34 25	30 11	33 13	34 13	37 25	36 27	31 6	46 6	49 20	48 29	57 39	64 40	65 39	42 32	42 32	43 30	32 17	38 17	51 37	41 21	31 1	10 1	13 2	18 -1	20 10	23 13	34 11	51 33	64 43	70 25	39.4 20.8		
SAVAGE RIVER DAM	08	MAX MIN	37 19	36 24	27 14	32 14	33 14	36 28	38 30		44 15	48 25	45 30	40 35	53 35	57 39	44 32	35 30		35 22	31 24	51 24	44 8	35 8	14 9	18 7	20 10	24 18	28 17	31 31	49 36	63 31	66 31	38.4 22.5		
SINES DEEP CREEK	07	MAX MIN	33 17	31 21	21 8	29 7	28 24	34 24	35 27	30 7	42 7	47 20	44 25	39 33	53 34	54 33	40 30	33 30	37 30	23 21	28 18	40 22	31 4	10 2	14 3	17 2	20 7	24 17	34 12	48 31	68 35	68 26	35.2 19.2			
DELAWARE NORTHERN 01																																				
BEAR 2 SW	24	MAX MIN																																		M M
WILMINGTON NEW CASTLE CO AP	24	MAX MIN	42 34	35 24	37 23	40 29	41 26	50 29	48 29	50 23	51 29	50 35	48 33	55 41	49 41	57 42	42 36	39 35	43 37	38 28	51 31	58 25	36 13	25 11	22 14	27 14	23 13	29 9	37 14	37 23	56 35	70 37	65 29	43.6 27.6		

DAILY TEMPERATURES (°F)

STATION	OB. TIME	MAX/MIN	DAY OF MONTH																															AVERAGE
			01	02	03	04	05	06	07	08	09	10	11	12	13	14	15	16	17	18	19	20	21	22	23	24	25	26	27	28	29	30	31	
WILMINGTON PORTER RES	24	MAX MIN	40 32	41 26	33 23	37 28	37 27	46 29	44 31	47 28	49 28	46 38	46 36	52 42	49 41	53 40	40 34	37 33	41 36	36 27	47 27	54 31	33 25	25 13	19 10	23 14	21 14	25 13	33 18	36 26	52 34	66 40	62 28	41.0 28.1
SOUTHERN 02 DOVER	16	MAX MIN	44 36	36 29	36 23	41 24	41 29	50 32	47 38	54 28	59 33	53 39	46 33	60 38	53 39	59 51	51 38	41 34	42 38	39 32	52 27	58 39	52 25	25 18	24 12	26 14	25 14	28 10	38 18	40 28	56 31	70 42	67 35	45.6 29.9

SNOWFALL AND SNOW ON GROUND (INCHES)

STATION		DAY OF MONTH																														
		01	02	03	04	05	06	07	08	09	10	11	12	13	14	15	16	17	18	19	20	21	22	23	24	25	26	27	28	29	30	31
MARYLAND SOUTHERN EASTERN SHORE 01																																
ASSATEAGUE	SNOWFALL																															
PRINCESS ANNE	SNOWFALL																															
SALISBURY 2N	SNOWFALL	-	-	-	-	-	-	-	-	-	-	-	-	-	-	-	-	-	-	-	-	-	-	-	-	0.4	0.8	-	-	-	-	-
	SN ON GND	-	-	-	-	-	-	-	-	-	-	-	-	-	-	-	-	-	-	-	-	-	-	-	1	T	-	-	-	-	-	
SALISBURY FAA AP	SNOWFALL		T											T				1.0	T						1.3	0.5						
SNOW HILL 4 N	SNOWFALL	-	-	-	-	-	T	-	-	-	-	-	-	-	-	-	-	1.0	1.0	-	-	-	-	-	1.5		1.0		T	-	-	
	SN ON GND	-	-	-	-	-	T	-	-	-	-	-	-	-	-	-	-	-	-	-	-	-	-	1	1	1	1	T		-	-	
CENTRAL EASTERN SHORE 02																																
ROYAL OAK 2 SSW	SNOWFALL																															
	SN ON GND																															
LOWER SOUTHERN 03																																
MECHANICSVILLE 5 NE	SNOWFALL	-				-					-								T						2.2		0.5		T	-	-	
	SN ON GND	-	-	-	-	-	-	-	-	-	-	-	-	-	-	-	-	-	-	-	-	-	-	-	2	1	1	1	T	-	-	
	WTR EQUIV	-	-	-	-	-	-	-	-	-	-	-	-	-	-	-	-	-	-	-	-	-	-	-	2.2	-	-	-	-	-	-	
SOLOMONS	SNOWFALL																		T						3.7		1.0		T			
	SN ON GND																								4	2	1	1	T			
UPPER SOUTHERN 04																																
BALTIMORE WASH INTL AP	SNOWFALL																															
	SN ON GND																															
BELTSVILLE	SNOWFALL																															
	SN ON GND																															
DALECARLIA RSVR	SNOWFALL																															
	SN ON GND																															
	WTR EQUIV																															
LAUREL 3 W	SNOWFALL																															
MARYLAND SCIENCE CENTER	SNOWFALL																															
NATL ARBORETUM DC	SNOWFALL	-	-	-	-	-	-	-	-	-	-	-	-	-	-	-	-	-	-	-	-	-	-	-	0.9	T	0.5		-	-		
	SN ON GND	-	-	-	-	-	-	-	-	-	-	-	-	-	-	-	-	-	-	-	-	-	-	-	1	T	-	-	-	-	-	
	WTR EQUIV	-	-	-	-	-	-	-	-	-	-	-	-	-	-	-	-	-	-	-	-	-	-	-	-	-	-	-	-	-	-	
OXON HILL	SNOWFALL																															
	SN ON GND																															
UPPER MARLBORO 3 NNW	SNOWFALL	-	-	-	-	-	-	-	-	-	-	-	-	-	-	-	-	-	-	-	-	-	-	-	0.9	-	0.4	-	-	-	-	
	SN ON GND	-	-	-	-	-	-	-	-	-	-	-	-	-	-	-	-	-	-	-	-	-	-	-	1	1	1	T	T		-	
NORTHERN CENTRAL 06																																
ABERDEEN PHILLIPS FLD	SNOWFALL																															
	SN ON GND																															
BRIGHTON DAM	SNOWFALL																															
	SN ON GND																															

Snowfall: Includes snow and ice. Values for NWS stations (J index note) are Mid-Mid (LST).

Snow on ground: Includes snow, sleet, ice, and hail. Values for NWS stations (J index note) are observed at 12 UTC (GMT).

Water Equivalent: Given for NWS stations (J index note) only, when snow depth is 2 inches or more, and is measured at 18 UTC (GMT)

SNOWFALL AND SNOW ON GROUND (INCHES)

STATION		DAY OF MONTH																														
		01	02	03	04	05	06	07	08	09	10	11	12	13	14	15	16	17	18	19	20	21	22	23	24	25	26	27	28	29	30	31
CONOWINGO DAM	WTR EQUIV	-	-	-	-	-	-	-	-	-	-	-	-	-	-	-	-	-	-	-	-	-	0.2	-	1.0	-	1.0	0.7	-	-	-	-
	SNOWFALL	-	-	-	-	-	-	-	-	-	-	-	-	-	-	-	-	-	-	-	-	-	-	-	-	0.6	-	-	-	-	-	
CYLBURN	SNOWFALL	-	-	-	-	-	-	-	-	-	-	-	-	-	-	-	-	-	-	-	-	-	-	-	1.1	1.1	T	0.1	-	-	-	
DAMASCUS 3 SSW	SNOWFALL	-	-	-	-	-	-	-	-	-	-	-	-	-	-	-	-	-	-	-	-	-	-	-	1.1	1.1	T	0.1	-	-	T	
EMMITSBURG 2 SE	SN ON GND	T	T	T	T	T	T	T	T	T															1	2	1	T	T			
	SNOWFALL																								1.0		2.0					
FREDERICK 2 NNE	WTR EQUIV																															
	SNOWFALL																									1.0		1.3				
MILLERS 4 NE	SN ON GND																								1		1					
	SNOWFALL						0.2											T					T			0.2	1.6	0.3	T	0.1		T
SMITHSBURG 2NW	WTR EQUIV																										0.1	0.1				
	SNOWFALL																									0.5	-	2.0	-	-	-	-
WESTMINSTER	WTR EQUIV																															
	SNOWFALL		0.5	-	-	-	-	T	-	-	-	-	-	-	-	-	-	-	-	-	-	-	-	-	0.1	-	-	-	-	-	-	
APPALACHIAN MOUNTAIN 07	WTR EQUIV																															
	SNOWFALL																															
CUMBERLAND 2	SNOWFALL	-	-	-	-	-	-	-	-	-	-	-	-	-	-	-	-	-	-	-	-	-	-	-	0.7	-	2.6	T	-	-	-	T
	SN ON GND	5	4	3	3	3	2	2	1	1	-	-	-	-	-	-	-	-	-	-	-	-	-	-	1	-	2	2	-	-	-	-
FROSTBURG 2	SNOWFALL	0.1						T								0.8	0.4	T					0.7		1.2	T	3.3	0.7				T
	SN ON GND	9	9	8	8	7	6	6	5	5	3	2	2	T		1	T	T					1	1	2	2	5	6	4			T
SHARPSBURG 5 S	WTR EQUIV	1.4	-	-	1.2	-	-	-	1.0	-	-	-	-	-	-	-	-	-	-	-	-	-	-	-	-	-	-	-	-	-	-	
	SNOWFALL																															
WILLIAMSPORT	SN ON GND	T	T	T	T	T																										
	SNOWFALL																															
ALLEGHENY PLATEAU 08	WTR EQUIV																															
	SNOWFALL																															
OAKLAND 1 SE	SNOWFALL	2.5						0.9																								
	SN ON GND	15	12	10	10	8	5	4	5	3																						
SAVAGE RIVER DAM	SNOWFALL	T	-	T	-	-	-	-	-	-	-	-	-	-	-	-	-	-	-	-	-	-	-	-	-	1.0	T	0.3 ^I	T	-	-	-
	SN ON GND	5	5	7	7	6	6	5	-	5	4	2	2	T		-	-	-	-	-	-	-	-	-	-	1	1 ^I	3 ^I	2	2	-	-
SINES DEEP CREEK	SNOWFALL	2.0	-	-	-	-	-	0.2	-	-	-	-	-	-	-	1.0	-	-	-	-	-	-	-	1.0	-	1.5	0.3	4.0	2.0	-	-	-
	SN ON GND	13	-	-	-	8	7	-	-	-	-	-	-	-	-	-	-	-	-	-	-	-	-	1	1	2	2	4	5	-	-	-
DELAWARE NORTHERN 01	WTR EQUIV																															
	SNOWFALL																															
BEAR 2 SW	WTR EQUIV																															
	SNOWFALL																															
WILMINGTON NEW CASTLE CO AP	SNOWFALL						0.3																									
	SN ON GND						T																				1.0					
WILMINGTON PORTER RES	WTR EQUIV																															
	SNOWFALL							0.9																								

Snowfall: Includes snow and ice. Values for NWS stations (J index note) are Mid-Mid (LST).

Snow on ground: Includes snow, sleet, ice, and hail. Values for NWS stations (J index note) are observed at 12 UTC (GMT).

Water Equivalent: Given for NWS stations (J index note) only, when snow depth is 2 inches or more, and is measured at 18 UTC (GMT)

SNOWFALL AND SNOW ON GROUND (INCHES)

STATION		DAY OF MONTH																															
		01	02	03	04	05	06	07	08	09	10	11	12	13	14	15	16	17	18	19	20	21	22	23	24	25	26	27	28	29	30	31	
SOUTHERN 02 DOVER	SN ON GND						T																T	T									
	SNOWFALL	-	-	-	-	-	-	-	-	-	-	-	-	-	-	-	-	-	-	-	-	-	T	-	-	0.2	1.5	-	-	0.3	-	-	-
	SN ON GND	-	-	-	-	-	-	-	-	-	-	-	-	-	-	-	-	-	-	-	-	-	T	-	-								

Snowfall: Includes snow and ice. Values for NWS stations (J index note) are Mid-Mid (LST).

Snow on ground: Includes snow, sleet, ice, and hail. Values for NWS stations (J index note) are observed at 12 UTC (GMT).

Water Equivalent: Given for NWS stations (J index note) only, when snow depth is 2 inches or more, and is measured at 18 UTC (GMT)

STATION INDEX

STATION	INDEX NO.	DIVISION	COUNTY	LATITUDE	LONGITUDE	ELEVATION (IN FEET)	OBSERVATION TIME AND TABLES			
							LOCAL STD TIME			
							TEMP	PRECIP	EVAP	SPECIAL SEE (NOTES)
MARYLAND										
ABERDEEN PHILLIPS FLD	0015	06	HARFORD	39 28	76 10W	57	07	07		CH
ASSATEAGUE	0335	01	WORCESTER	38 4	75 13W	10	VAR	VAR		H
BALTIMORE WASH INTL AP R	0465	04	ANNE ARUNDEL	39 10	76 41W	156	24	24		HJ
BELTSVILLE	0700	04	PRINCE GEORGE'S	39 2	76 56W	145	08	08	08	CH
BRIGHTON DAM	1125	06	MONTGOMERY	39 11	77 0W	330	08	08		H
CONOWINGO DAM	2060	06	HARFORD	39 39	76 11W	40	07	07		H
CUMBERLAND 2	2282	07	ALLEGANY	39 39	78 45W	730	18	18		H
CYLBURN	2308	06	BALTIMORE	39 21	76 39W	235	08	08		H
DALECARLIA RSVR	2325	04	DISTRICT OF COLUMBIA	38 56	77 7W	150	08	08		H
DAMASCUS 3 SSW	2336	06	MONTGOMERY	39 16	77 14W	700	22	22		H
EMMITSBURG 2 SE	2906	06	FREDERICK	39 41	77 17W	403	07	07		H
FREDERICK 2 NNE	3353	06	FREDERICK	39 26	77 24W	280	07	07		H
FROSTBURG 2	3415	07	ALLEGANY	39 40	78 56W	2170	07	07		H
LAUREL 3 W	5111	04	PRINCE GEORGE'S	39 5	76 54W	400	24	24		H
MARYLAND SCIENCE CENTER R	5718	04	BALTIMORE (CITY)	39 17	76 37W	20	24	24		H
MECHANICSVILLE 5 NE	5865	03	ST. MARY'S	38 28	76 42W	100	07	07		H
MILLERS 4 NE	5934	06	CARROLL	39 43	76 48W	860	18	18		CH
NATL ARBORETUM DC	6350	04	DISTRICT OF COLUMBIA	38 55	76 58W	50	07	07		H
OAKLAND 1 SE	6620	08	GARRETT	39 25	79 24W	2420	07	07		H
OXON HILL	6800	04	PRINCE GEORGE'S	38 47	76 60W	120	08	08		H
PRINCESS ANNE	7330	01	SOMERSET	38 13	75 41W	20	17	17		H
ROYAL OAK 2 SSW	7806	02	TALBOT	38 43	76 11W	10	17	17		H
SALISBURY 2N	8004	01	WICOMICO	38 24	75 36W	20	17	17		H
SALISBURY FAA AP	8005	01	WICOMICO	38 20	75 31W	48	24	24		H
SAVAGE RIVER DAM	8065	08	GARRETT	39 31	79 8W	1495	08	08	08	CH
SHARPSBURG 5 S	8207	07	WASHINGTON	39 24	77 43W	500	07	07		H
SINES DEEP CREEK	8315	08	GARRETT	39 31	79 25W	2040	07	07		H
SMITHSBURG 2NW	8371	06	WASHINGTON	39 40	77 35W	670	08	08		H
SNOW HILL 4 N	8380	01	WORCESTER	38 14	75 23W	30	17	17		H
SOLOMONS	8405	03	CALVERT	38 19	76 27W	12	08	08		H
UPPER MARLBORO 3 NNW	9070	04	PRINCE GEORGE'S	38 51	76 46W	130	08	08	08	H
WESTMINSTER	9440	06	CARROLL	39 34	76 59W	750	07	07		H
WILLIAMSPORT	9570	07	WASHINGTON	39 37	77 51W	360	06	06		H
DELAWARE										
BEAR 2 SW	1200	01	NEW CASTLE	39 36	75 44W	80	24	24		H
DOVER	2730	02	KENT	39 15	75 31W	30	16	16		H
WILMINGTON NEW CASTLE CO AP R	9595	01	NEW CASTLE	39 40	75 36W	79	24	24		HJ
WILMINGTON PORTER RES	9605	01	NEW CASTLE	39 46	75 32W	270	24	24		H

REFERENCE NOTES

STATION NAMES: Name of the city, town or locality. Figures and letters following the station names indicate the distance in miles and direction from the post office or town community center.

DIVISIONS: Areas within a state of similar climatological characteristics. Division averages are calculated using data from stations that record temperature and/or precipitation. Station Precipitation totals flagged with an 'F' or 'M' are excluded from the Divisional Average calculations of precipitation. Stations with monthly Temperature averages flagged with an 'F' or 'M' are included in the Divisional Average if there are no more than 9 flagged or missing daily values in the month, else they are excluded from the divisional average for temperature.

NORMALS: The average value of the meteorological element over a time period. Effective 1 January 2012, the averaging period is 1981 to 2010. The normals for National Weather Service localities have been adjusted so as to be representative for the current observation site.

MONTHLY DEGREE DAY TOTALS: One heating (cooling) degree day is accumulated for each whole degree that the daily mean temperature is below (above) 65 degrees Fahrenheit.

PRECIPITATION: Values shown in hundredths of inches are water equivalent totals, i.e., total of liquid and melted frozen precipitation. In the "Monthly Summarized Data" table the total snow and sleet values shown in tenths of inches are unmelted amounts. The max depth on ground values of snow and sleet shown in whole inches are cumulative unmelted amounts. The number of days with .10, .50, 1.00 or more refers to water equivalents.

PRECIPITATION QUALITY CONTROL: The NCDC quality control process may flag precipitation data that are spatially inconsistent, exceed climatological limits, or are inconsistent with prevailing weather patterns.

TEMPERATURE: Original temperature values are given in the "Daily Temperature" table. Summary temperature information (averages, departures, extremes, monthly degree day totals) is based on the values labeled MAX/MIN.

WIND: (As shown in the "Evaporation and Wind" table) the total wind movement in miles over the evaporation pan as determined by an anemometer recorder located 6-8 inches above the pan.

SYMBOLS AND LETTERS USED IN THE STATION INDEX TABLE

C Station is equipped with recording rain gage (R) but values in this bulletin are from a non-recording rain gage unless indicated by an R.

G Observations appear in the "Soil Temperatures" table.

H Observations appear in the "Snowfall and Snow on the Ground" table.

J Station also published as a Local Climatological Data publication.

VAR Observation time varies.

SR Observation time near sunrise.

SS Observation time near sunset.

SYMBOLS AND LETTERS USED IN THE DATA TABLES

(DAILY DATA ARE FOR THE 24 HOURS IMMEDIATELY PRECEDING OBSERVATION TIME.)

BLANK Entries in the "Monthly Summarized Data" table indicate no record.

BLANK Entries in the "Daily Precipitation" and "Snowfall and Snow on the Ground" tables indicate zero.

BLANK Entries in the "Daily Temperature" table indicate a missing record

- No record. Data not recorded or not received in time for publication.

+ Precipitation or temperature extremes occurred on one or more previous dates during the month.

* Rain gage not read. Precipitation is included in the amount following the asterisks.

Time distribution may not be known. A * preceding the monthly total indicates precipitation amount is being carried forward to next month's total, and may include amounts from the previous month(s).

a As a subscript, indicates accumulated total.

A Amount of precipitation is the total of observer's entries for the current month. It may include precipitation that occurred during the previous month. Refer to earlier bulletin to determine date of last reading. (Hawaii stations)

B Divisional Departure from normals are computed using 1971-2000 normals.

E Normalized HDD/CDD Calculation. E is appended to the HDD/CDD Calculation when 1-9 individual daily TMAX and/or TMIN values are missing and a Normalized HDD/CDD Calculation is provided. M appears alone if 10 or more daily values are missing.

F Monthly calculation flagged value. F is appended to average and/or total values computed which exclude one or more daily data values that have been flagged by the GHCN-Daily Dataset

M Insufficient or partial data. M is appended to average and/or total values computed with 1-9 daily values missing. M appears alone if 10 or more daily values are missing, (8 or more for wind and evaporation).

N Indicates snow fall or Snowdepth totals are computed with one or more missing days.

R Amounts from recording rain gage.

T Trace. An amount too small to measure.

SEASONAL TABLES: Monthly and seasonal snowfall and heating degree days for the 12 months ending with the June data are published in the July issue of this bulletin. Cooling degree days for the calendar year are published in the "Climatological Data Annual Summary."

Information concerning the history of changes in locations, exposure, etc. of substations is kept on file at the National Climatic Data Center. Historical information of regular National Weather Service Offices may be obtained from the "Local Climatological Data" annual publication. The contents of this publication may be reprinted or otherwise used freely, with proper credit to the National Climatic Data Center. The data are also available digitally.

Effective with the January 2011 Data-Month, COOP Observer Names are no longer included in the Monthly and Annual Climatological Data Publications. This information is not published to ensure the privacy of personal information pursuant to Section 208 of the E-Government Act of 2002 (44 USC 3601).

As of the 2011 Data-Year, Station and Climate Division Maps are no longer being included in the CD Publications. NCDC's Product Development Branch provides updated Station Maps for various data networks via the Historical Observing Metadata Repository: <http://www.ncdc.noaa.gov/homr>.

The GHCN-Daily Quality Control Flags shown below are displayed as superscripts with the data. For more Information on Global Historical Climatology Network - Daily and flags, see: <http://www.ncdc.noaa.gov/oa/climate/ghcn-daily/> and

Comprehensive Automated Quality Assurance of Daily Surface Observations.

Durre, Imke, Matthew J. Menne, Byron E. Gleason, Tamara G. Houston,

Russell S. Vose, 2010: J. Appl. Meteor. Climatol., 49, 1615-1633.

doi: 10.1175/2010JAMC2375.1

Blank = Passed All checks

D = failed duplicate check

G = failed gap check

I = failed internal consistency check

K = failed streak/frequent-value check

L = failed check on length of multiday period

M = failed megaconsistency check

N = failed naught check

O = failed climatological outlier check

R = failed lagged range check

S = failed spatial consistency check

T = failed temporal consistency check

W = temperature too warm for snow

X = failed bounds check

Z = flagged as a result of an official Datzilla investigation

Beginning with the January 2013 CD Publication, monthly mean temperature calculations have changed to the National Data Stewardship Team standard. Monthly maximum and minimum temperatures are not rounded until after the monthly mean temperature is calculated. This is the most accurate outcome, but may be slightly different from the mean derived from rounded monthly maximum and minimum.

Processing Updates and Errata: The 2011 CD Publications were reproduced in May 2013. This update included the addition of late reports and corrections based on additional investigations of reported data issues through NCDC's Datzilla system. In addition, divisional averages for precipitation were recalculated using the method described in DIVISIONS above. Previous editions of the 2011 Publications included all precipitation stations regardless of missing data in the calculation of divisional averages. HDD/CDD values were recalculated to match the legacy method of calculation (truncation of monthly HDD/CDD values instead of rounding).

These and other publications are available from the National Climatic Data Center

Hourly Precipitation Data

This publication contains hourly precipitation amounts obtained from recording rain gages located at National Weather Service, Federal Aviation Administration, and cooperative observer stations. Published data are displayed in inches and tenths or inches and hundredths at local standard time. HPD includes maximum precipitation for nine (9) time periods from 15 minutes to 24 hours, for selected stations.

Climatological Data

Monthly editions contain station daily maximum and minimum temperatures and precipitation. Some Stations provide daily snowfall, snow depth, evaporation, and soil temperature data. Each edition also contains monthly summaries for heating and cooling degree days (65 degree F base). The July issue contains a recap of monthly heating degree days and snow data for the preceding July through June.

The Annual issue contains monthly and annual averages of temperature, precipitation, temperature extremes, freeze data, soil temperatures, evaporation, and a recap of monthly cooling degree days.

Storm Data

Monthly issues contain a chronological listing, by states, of occurrences of storms and unusual weather phenomena. Reports contain information on storm paths, deaths, injuries, and property damage. An "Outstanding storms of the month" section highlights severe weather events with photographs, illustrations, and narratives. The December issue includes annual tornado, lightning, flash flood, and tropical cyclone summaries.

Monthly Climatic Data for the World

This publication contains monthly means for temperature, pressure, precipitation, vapor pressure, and sunshine for approximately 2,000 surface data collection stations worldwide and monthly mean upper air temperatures, dew point depressions, and wind velocities for approximately 500 observing sites.

Local Climatological Data

LCD publications summarize temperature, relative humidity, precipitation, cloudiness, wind speed and direction observations for several hundred cities in the U.S. and its territories. Each monthly publication also contains 3 hourly weather observations for that month and a hourly summary of precipitation. Annual LCD publications contain a summary of the past calendar year as well as historical averages and extremes.

For Information Call:

(828) 271-4800 Option 2

(828) 271-4010 (TDD)

(828) 271-4876 (Fax)

NOAA\National Climatic Data Center
Attn: User Engagement & Services Branch
151 Patton Avenue
Asheville, NC 28801-5001

Customer Services Number: (828) 271-4800, option 2
TDD : (828) 271-4010
Fax number: (828) 271-4876

NCDC now offers free online access to the *Climatological Data* publication.
Go to : www.ncdc.noaa.gov and choose Most Popular.