



CLIMATOLOGICAL DATA

MARYLAND AND DELAWARE

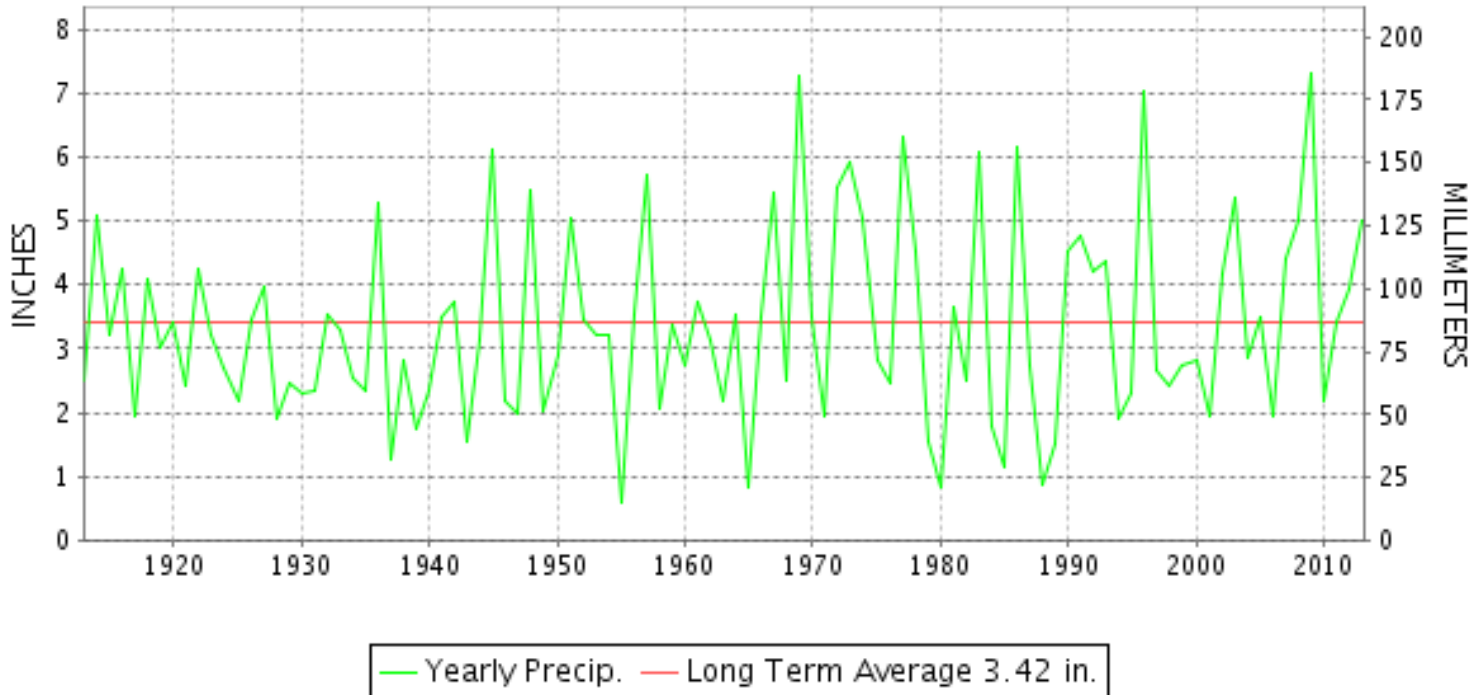
DECEMBER 2013

VOLUME 117 NUMBER 12

ISSN 0145-0549

GHCND Ver: 3.12-upd-2014041505

DECEMBER PRECIPITATION BY YEAR



TEMPERATURE AND PRECIPITATION EXTREMES

MARYLAND

HIGHEST TEMPERATURE	77	DECEMBER 22	SALISBURY FAA AP
LOWEST TEMPERATURE	7	DECEMBER 25	OAKLAND 1 SE
GREATEST TOTAL PRECIPITATION	6.80		DALECARLIA RSVR
LEAST TOTAL PRECIPITATION	2.94		CONOWINGO DAM
GREATEST 1 DAY PRECIPITATION	2.22	DECEMBER 07	EMMITSBURG 2 SE
GREATEST TOTAL SNOWFALL	22.5		OAKLAND 1 SE
GREATEST DEPTH OF SNOW OR ICE	8		FROSTBURG 2

"I certify that this is an official publication of the National Oceanic and Atmospheric Administration (NOAA) It is compiled using information from weather observing sites supervised by NOAA/National Weather Service and received at the National Climatic Data Center(NCDC), Asheville, North Carolina 28801."

Director
National Climatic Data Center

noaa

National
Oceanic and
Atmospheric Administration

National
Environmental Satellite, Data
and Information Service

National
Climatic Data Center
Asheville, North Carolina

DELAWARE

HIGHEST TEMPERATURE	70
LOWEST TEMPERATURE	16
GREATEST TOTAL PRECIPITATION	5.28
LEAST TOTAL PRECIPITATION	4.69
GREATEST 1 DAY PRECIPITATION	1.37
GREATEST TOTAL SNOWFALL	11.9
GREATEST DEPTH OF SNOW OR ICE	6

DECEMBER 22+
DECEMBER 13

DECEMBER 29

2 STATIONS
WILMINGTON NEW CASTLE CO AP
DOVER
WILMINGTON PORTER RES
WILMINGTON NEW CASTLE CO AP
WILMINGTON NEW CASTLE CO AP
WILMINGTON NEW CASTLE CO AP

MONTHLY STATION AND DIVISION SUMMARY

STATION	TEMPERATURE (°F)											PRECIPITATION (IN)												
	AVERAGE MAXIMUM	AVERAGE MINIMUM	AVERAGE	DEPARTURE FROM NORMAL	HIGHEST	DATE	LOWEST	DATE	HEATING DEG. DAYS	COOLING DEG. DAYS	NO. OF DAYS				TOTAL	DEPARTURE FROM NORMAL	GREATEST 24 HOURS	DATE	ICE PELLETS, SNOW			NO. OF DAYS		
											MAX		MIN						TOTAL	MAX DEPTH ON GROUND	DATE	.10 OR MORE	.50 OR MORE	1.00 OR MORE
											>=90	<=32	<=32	<=0										
APPALACHIAN MOUNTAIN 07																								
CUMBERLAND 2	44.8	28.4	36.6	1.0	69	23	15	25	871	0	0	2	22	0	3.59	0.74	0.83	07	M 8.5	3	17	7	3	0
FROSTBURG 2	38.5	25.0	31.7	1.8	62	22	9	25	1024	0	0	12	22	0	4.13	0.84	0.95	07	M 10.3	8	17	8	4	0
SHARPSBURG 5 S	44.7M	25.3M	35.0M	1.4	68	23+	12	14+	922E	0	0	4	24	0	M 5.74	2.59	1.75	07	M 12.6	6	11	10	4	2
WILLIAMSPORT	44.0	28.8	36.4	2.0	66	23	18	26	878	0	0	4	21	0	4.87	1.77	1.95	07	M 5.3	5	15	7	3	2
--DIVISIONAL DATA----->																								
ALLEGHENY PLATEAU 08																								
OAKLAND 1 SE	42.8	24.7	33.8	4.0	73	06	7	25	961	0	0	9	25	0	5.28	1.43	1.08	30	22.5	7	17	12	4	1
SAVAGE RIVER DAM	40.8M	25.9M	33.3M	2.0	63	23	15	26+	974E	0	0	8	24	0	M 3.89	1.09	0.96	07	M 2.2	4	19	8	4	0
SINES DEEP CREEK	38.7	22.8	30.8	59	22	9	25	1054	0	0	13	28	0	5.58	0.95	30+	M 19.5	5	18	11	5	0	0	
--DIVISIONAL DATA----->																								
DELAWARE NORTHERN 01																								
WILMINGTON NEW CASTLE CO AP	45.8	29.3	37.6	0.9	70	22	16	13	843	0	0	3	22	0	5.22	1.74	1.37	29	M 11.9	6	09	8	5	1
WILMINGTON PORTER RES	43.6	29.9	36.7	0.5	67	22	17	01	870	0	0	5	21	0	4.69	0.59	1.35	29	7.5	5	08	8	4	1
--DIVISIONAL DATA----->																								
SOUTHERN 02																								
DOVER	49.5	32.8	41.2	2.0	70	22	19	26	732	1	0	0	18	0	A 5.28	1.63	1.20	29	M 1.0	0		3	1	1
--DIVISIONAL DATA----->																								

DAILY PRECIPITATION (INCHES)

STATION	TOTAL	DAY OF MONTH																															
		01	02	03	04	05	06	07	08	09	10	11	12	13	14	15	16	17	18	19	20	21	22	23	24	25	26	27	28	29	30	31	
MARYLAND																																	
SOUTHERN																																	
EASTERN SHORE 01																																	
ASSATEAGUE	M	-	-	-	-	-	-	-	-	-	-	-	-	-	-	-	-	-	-	-	-	-	-	-	-	-	-	-	-	-	-	-	
PRINCESS ANNE	M	-				-	-	-	-	-								0.20															
SALISBURY 2N	6.11				0.02	0.03	0.01	0.33	0.30	1.41	0.26	0.04			0.11	0.86	0.02		0.32	0.01			0.56	0.57	0.16							1.10	
SALISBURY FAA AP	3.18					T	T	0.16	0.42	0.83	0.09				0.46	T		0.07	0.03				0.20	0.20	T							0.72	
SNOW HILL 4 N	4.38					0.02	0.01	0.30	0.40	0.80	0.23				0.04	0.75			0.23				0.12	0.30	0.28							0.90	
CENTRAL																																	
EASTERN SHORE 02																																	
ROYAL OAK 2 SSW	5.33			0.02		0.01	0.48	0.54	0.30	1.15	0.35				0.08	0.65		0.05	0.10				0.20	0.44	0.04							0.92	
LOWER SOUTHERN 03																																	
MECHANICSVILLE 5 NE	5.66						T	1.10	T	1.42	0.22	0.29				0.65			0.17			T	0.44	0.39	T					0.22	0.76		
SOLOMONS	A 5.43	*	0.00 _a		0.01				0.37	T	1.51	0.12	0.29		0.06	0.82			0.44	*	0.06 _a	0.01		0.58	*	*	0.25 _a	0.01			0.90		
UPPER SOUTHERN 04																																	
BALTIMORE WASH INTL AP	5.27					T	0.90	0.17	0.56	0.52	0.31				0.61			0.01					0.24	0.86	T		T				1.09		
BELTSVILLE	4.97						0.02	0.95		1.11	0.13	0.26				0.45								0.65	0.19						0.22	0.99	
DALECARLIA RSVR	A 6.80				0.02		0.09	1.50		1.30	1.20	0.11				0.50		0.02						0.58	0.25	*	0.00 _a				0.23	1.00	
LAUREL 3 W	5.28						1.03	0.20	0.11	0.85	0.15	0.03	0.02		0.43	0.04							0.37	0.85							1.20		
MARYLAND SCIENCE CENTER	5.06						0.74	0.21	0.61	0.42	0.31				0.70								0.11	0.92							1.04		
NATL ARBORETUM DC	MA 4.91						0.07	0.80		1.38	*	0.24 _a	-			0.50			T				T	0.51	0.40			-			0.10	0.91	
OXON HILL	5.56						0.12	0.64		1.67	0.10	0.33				0.45			0.02					0.62	0.40	T		T			0.21	1.00	
UPPER MARLBORO 3 NNW	4.78						0.07	0.50		1.47	0.22	0.10				0.58			0.02					0.40	0.43						0.19	0.80	
NORTHERN CENTRAL 06																																	
ABERDEEN PHILLIPS FLD	5.45						0.08	0.97		1.12	0.08	0.28				0.90									0.35	0.53		T			0.04	1.10	
BRIGHTON DAM	5.16						0.20	1.10		0.93	0.10	0.33				0.46							0.11	0.72	0.26						0.19	0.76	
CONOWINGO DAM	2.94						0.16	0.89		0.15						1.24								0.50									
CYLBURN	M 5.54						0.22	1.06	-	1.26	-	0.26			-	0.75							T	-	0.94						0.11	0.94	
DAMASCUS 3 SSW	5.65					T	1.04	0.27	0.73	0.55	0.31				0.42	0.01		0.01					0.25	0.93	T		T				1.13		
EMMITSBURG 2 SE	5.15							2.22		0.25	T	0.20				0.33	0.38	0.10	0.02					0.46	0.28	T	T	0.01			0.08	0.82	
FREDERICK 2 NNE	M	-	-	-	-	-	-	-	-	-	-	-	-	-	-	-	-	-	-	-	-	-	-	-	-	-	-	-	-	-	-	-	
MILLERS 4 NE	5.66					0.01	0.91	0.73	0.55	0.44	0.43		T		0.38	0.54	T	0.04						0.15	0.59	T					0.85		
SMITHSBURG 2NW	FA 4.35	0.00 ^L	0.00 ^L	0.00 ^L	0.00 ^L	0.00 ^L	0.28 ^L	1.65		*	0.25 _a					0.40					*	*	0.10 _a	0.90							0.45	0.60	
APPALACHIAN																																	
MOUNTAIN 07																																	
CUMBERLAND 2	3.59						0.33	0.83		0.54		T			0.02	0.49		0.07	0.03					0.03	0.18		T				0.47	0.60	
FROSTBURG 2	4.13			T			0.42	0.95		0.52		T	0.01		T	0.70	0.03	0.12	0.07	T		T	0.04	0.10			T				0.29	0.85	0.03
SHARPSBURG 5 S	M 5.74						0.26	1.75		1.09	0.36	0.13			T	0.39		T	T				0.12	0.59	0.08	T					0.26	0.71	-
WILLIAMSPORT	4.87						0.02	1.95		0.65						0.43		0.02	0.05					0.40	0.15	0.15	0.01					0.02	1.02
ALLEGHENY PLATEAU 08																																	
OAKLAND 1 SE	5.28						0.65	0.10		0.90	0.03	0.10	0.03		0.03	0.42	0.08	0.13	0.19				0.05	0.23	0.24	0.07	0.05	0.02	0.02		0.75	1.08	0.11
SAVAGE RIVER DAM	M 3.89						0.33	0.96		0.55					T	0.56	T	0.07	T					0.14	0.11		T				0.45	0.72	-

MARYLAND AND DELAWARE
201312

DAILY PRECIPITATION (INCHES)

STATION	TOTAL	DAY OF MONTH																														
		01	02	03	04	05	06	07	08	09	10	11	12	13	14	15	16	17	18	19	20	21	22	23	24	25	26	27	28	29	30	31
SINES DEEP CREEK	5.58						0.81	0.95		0.55		0.05	0.03		0.02	0.61	0.10	T	0.40			0.02	0.30	0.31	0.12	0.06	0.03	0.02		0.25	0.95	T
DELAWARE NORTHERN 01																																
WILMINGTON NEW CASTLE CO AP	5.22						0.77	0.12	0.76	0.39	0.26				0.85	0.01		0.06					0.02	0.61	T		T			1.37		
WILMINGTON PORTER RES	4.69					T	0.66	0.04	0.55	0.40	0.27				0.43	0.24		0.05			T		T	0.70					1.35			
SOUTHERN 02																																
DOVER	A 5.28			T		T	0.41	*	*	2.03 _a	0.22	0.02			*	0.93 _a		0.06				*	*	0.41 _a						1.20		

MARYLAND AND DELAWARE
201312

DAILY TEMPERATURES (°F)

STATION	OB. TIME	MAX/MIN	DAY OF MONTH																															AVERAGE		
			01	02	03	04	05	06	07	08	09	10	11	12	13	14	15	16	17	18	19	20	21	22	23	24	25	26	27	28	29	30	31			
			MARYLAND SOUTHERN EASTERN SHORE 01 ASSATEAGUE	VA	MAX MIN																															
PRINCESS ANNE	17	MAX MIN		58 27	60 31	59 38					43 37	43 37	44 24	42 22			41 28	53 34	51 28																M M M	
SALISBURY 2N	17	MAX MIN	51 27	55 28	57 31	56 37	63 46	67 51	38 29	38 40	40 40	44 35	23 25	20 29	39 27	33 33	28 26	44 44	47 29	58 39	41 27	60 33	46 28	56 26	59 44	69 53	74 61	66 53	38 21	45 20	49 24	55 30	64 41	52 37	45 29	52.2 34.0
SALISBURY FAA AP	24	MAX MIN	52 28	58 27	60 31	59 39	66 47	70 43	47 34	44 33	42 36	40 30	45 23	35 21	46 22	61 31	60 30	43 28	53 33	41 27	57 26	63 45	70 54	77 63	69 44	44 36	47 47	51 51	57 64	57 64	64 51	57 35	47 27	53.4 33.3		
SNOW HILL 4 N	17	MAX MIN	55 25	57 23	61 29	57 34	60 46	69 55	40 38	45 28	41 33	45 35	40 20	46 22	48 17	58 26	46 34	51 29	49 28	56 23	60 46	70 51	75 58	68 59	65 36	41 20	48 18	57 20	57 27	61 35	57 33	46 30	54.3 32.3			
CENTRAL EASTERN SHORE 02 ROYAL OAK 2 SSW	17	MAX MIN	46 22	50 26	56 39	57 34	61 44	63 45	47 36	41 28	40 30	39 33	41 28	36 24	42 19	44 27	51 36	42 26	42 26	40 28	57 22	59 35	69 45	70 55	63 50	50 35	38 22	43 20	48 23	55 26	56 40	49 33	47 26	49.7 31.7		
LOWER SOUTHERN 03 MECHANICSVILLE 5 NE	07	MAX MIN	39 21	48 23	52 30	57 37	58 39	67 45	67 36	43 28	43 28	36 32	36 21	41 21	32 20	41 20	43 23	49 27	37 27	41 28	41 25	59 30	61 40	70 55	72 58	63 31	41 19	31 19	45 22	48 25	55 28	52 40	48 28	48.9 29.9		
SOLOMONS	08	MAX MIN	47 29	53 39	54 41	50 47	63 48	64 38	43 32	36 30	38 33	38 28	43 26	43 27	45 33	48 27	48 27	49 27	49 27	59 26	60 50	71 51	73 48					63 22	45 28	49 28	56 42	49 37	49 31	51.3 34.2		
UPPER SOUTHERN 04 BALTIMORE WASH INTL AP	24	MAX MIN	49 24	49 39	56 36	51 35	66 49	65 38	43 31	37 27	36 31	38 22	31 22	41 22	38 30	46 32	37 30	37 31	40 24	58 22	59 45	71 54	71 62	63 38	40 23	32 18	44 19	49 22	58 28	47 39	47 32	43 25	47 25	47.5 31.6		
BELTSVILLE	08	MAX MIN	37 23	42 25	48 40	50 36	58 41	70 52	70 35	42 29	33 26	35 32	37 24	40 23	41 20	42 28	39 33	46 29	35 31	38 29	40 24	58 25	57 34	70 54	68 60	63 29	39 19	33 20	44 23	48 24	56 25	48 33	46 30	47.1 30.8		
DALECARLIA RSVR	08	MAX MIN	37 24	42 24	48 38	50 38	58 36	70 51	70 35	42 28	33 26	35 32	37 21	40 24	41 22	42 22	39 33	46 27	36 33	36 33	41 24	43 25	60 34	72 54	72 60	61 32	40 19		43 24	50 26	58 27	48 34	44 30	47.8 31.2		
LAUREL 3 W	24	MAX MIN	47 28	48 38	56 40	53 38	68 49	63 38	42 31	34 25	36 29	39 30	34 25	41 23	37 32	44 31	35 29	36 30	39 29	57 27	56 42	70 51	70 60	62 36	36 23	31 17	43 22	48 28	58 30	47 39	42 31	42 28	46.6 32.3			
MARYLAND SCIENCE CENTER	24	MAX MIN	51 33	52 43	59 45	54 53	63 40	68 35	45 29	35 35	40 33	41 29	39 31	47 31						39 31	54 29	59 43	72 53	63 41	40 26	33 22	45 26	50 31	59 41	48 33	48 33	43 29	50.3 36.0			
NATL ARBORETUM DC	07	MAX MIN	38 24	49 41	56 38	57 41	69 54	55 38	40 31	49 29	49 25	43 25	43 25	35 24	42 30	42 30	52 30	38 33	39 31	41 25	60 34	59 47	71 57	70 63	41 34	46 22	32 22	46 29	71 29	46 29	52 38	50 31	50.2 34.4			
OXON HILL	08	MAX MIN	38 25	47 25	49 40	56 41	57 43	68 54	43 37	33 29	35 27	38 22	41 21	33 23	41 28	43 35	48 29	38 32	38 29	41 26	59 32	59 45	72 54	72 61	71 32	41 20	32 20	44 26	48 26	56 28	48 37	45 31	48.0 32.6			
UPPER MARLBORO 3 NNW	08	MAX MIN	39 20	52 22	48 38	59 36	58 38	70 52	64 35	43 27	32 27	35 20	38 20	42 19	33 28	43 32	41 27	48 31	37 28	38 22	41 26	62 46	72 55	71 60	64 31	41 20	35 19	46 22	51 22	59 25	48 34	45 30	48.9 30.5			
NORTHERN CENTRAL 06 ABERDEEN PHILLIPS FLD	07	MAX MIN	43 24	47 24	47 38	55 40	51 40	63 49	59 36	42 29	32 26	37 32	35 20	38 21	31 21	40 29	40 33	45 31	36 30	34 27	39 24	49 24	55 32	67 44	65 57	59 32	40 20	30 20	41 24	47 26	53 29	48 39	47 27	45.6 30.6		

DAILY TEMPERATURES (°F)

STATION	OB. TIME	MAX/MIN	DAY OF MONTH																															AVERAGE	
			01	02	03	04	05	06	07	08	09	10	11	12	13	14	15	16	17	18	19	20	21	22	23	24	25	26	27	28	29	30	31		
BRIGHTON DAM	08	MAX	35	44	48	54	53	66	66	40	32	34	35	35	27	39	37	43	33	35	37	56	55	68	62	58		38	41	47	56	45	43	45.4	
		MIN	21	25	37	32	36	49	33	26	25	30	21	20	16	16	31	28	29	28	22	25	32	32	57	27	17	20	23	27	35	28	28.3		
CONOWINGO DAM	07	MAX	36	41	48	52	49	57	54	38	32	36	33	32	26	36	35	41	31	30	36	41	46	58	57	55	37	28	39	46	47	44	38	41.3	
		MIN	20	23	34	34	33	45	35	27	25	30	18	16	15	22	27	26	26	24	21	21	29	34	46	32	20	21	22	21	33	33	22	26.9	
CYLBURN	08	MAX	35	46	47	56	52	63	61												36	55	57	69	69	61	38	30	42	48	57	46	45	M	
		MIN	22	25	39	36	38	50	46			24	24	22							24	27	41	53	39	37	22	18	26	27	35	39	30	32.3	
DAMASCUS 3 SSW	22	MAX	42	46	53	54	66	61	38	29	32	33	33	29	37	36	42	32	34	35	52	53	66	68	60	35	28	40	45	54	44	44	39	43.9	
		MIN	22	36	37	39	49	36	29	23	27	27	23	20	19	31	29	28	29	25	25	41	50	60	35	20	15	20	24	31	38	28	25	30.4	
EMMITSBURG 2 SE	07	MAX	35	38	44	53	54	63	65	38	28	35	35	34	28	38	33	41	35	31	37	46	48	63	68	60	38	29	42	49	57	46	47	43.8	
		MIN	18	19	35	32	30	49	35	26	25	28	24	16	16	22	26	28	26	26	21	19	33	35	58	29	17	17	21	26	31	39	27	27.5	
FREDERICK 2 NNE	07	MAX																																	M
		MIN																																	M
MILLERS 4 NE	18	MAX	42	45	53	53	60	62	39	31	35	33	32	28	35	33	38	32	32	34	49	51	65	68	59	41	29	39	46	54	47	42	37	43.4	
		MIN	21	34	35	33	45	38	30	21	24	25	12	16	15	25	27	22	24	20	19	36	46	59	41	26	14	20	21	28	37	29	22	27.9	
SMITHSBURG 2NW	08	MAX						65	52	42		34	33	31	25	35	34	37	32	32	48		68	68	34	28	39	47	54	44	41	41	42.0		
		MIN					41	34	21		22	13	13	16	22	27	24	23	20	19			36		24	13	17	19	19	38	38	24	23.8		
APPALACHIAN MOUNTAIN 07																																			
CUMBERLAND 2	18	MAX	37	43	49	58	57	55	45	38	30	42	37	40	29	44	38	37	35	40	36	60	48	65	69	52	37	35	41	49	58	47	38	44.8	
		MIN	20	22	36	35	35	39	34	25	30	24	21	22	24	30	28	28	29	22	22	32	42	52	33	15	16	23	23	29	38	26	26	28.4	
FROSTBURG 2	07	MAX	27	44	46	48	51	58	36	27	26	38	27	28	19	32	34	30	26	34	42	51	53	62	61	47	26	26	33	40	49	42	30	38.5	
		MIN	17	23	34	34	33	36	25	18	18	26	16	13	12	17	25	20	20	21	21	38	40	47	47	24	9	12	21	22	35	30	20	25.0	
SHARPSBURG 5 S	07	MAX	35	42	44	54	58	68	45	38	31	35	37	36	30	40	35	40	32	38	39	51	52	68	68	57	38	31	45	50	58	46		44.7	
		MIN	16	19	32	29	29	45	33	22	24	29	13	13	12	12	29	25	27	25	20	21	33	38	53	25	17	16	20	20	26	36		25.3	
WILLIAMSPORT	06	MAX	37	42	46	52	54	65	57	39	29	37	34	38	29	39	34	34	32	36	36	52	54	64	66	57	37	30	40	48	56	46	44	44.0	
		MIN	21	22	34	34	34	46	34	24	24	27	25	22	20	20	27	27	26	26	26	23	35	45	57	34	23	18	23	23	27	38	27	28.8	
ALLEGHENY PLATEAU 08																																			
OAKLAND 1 SE	07	MAX	32	47	49	53	60	73	43	25	33	43	26	30	20	33	51	29	43	45	43	52	57	71	63	52	25	32	33	39	49	47	29	42.8	
		MIN	15	15	30	32	32	41	25	17	18	25	16	13	12	17	28	20	21	21	20	33	44	54	51	23	7	11	20	20	35	29	21	24.7	
SAVAGE RIVER DAM	08	MAX	31	44	48	50	52	53	40	30	28	39	31		24	35	36	34	30	36	44	51	42	61	63	50	30	29	36	42	49	44		40.8	
		MIN	18	18	34	31	31	37	30	21	20	28	22		18	20	28	25	25	26	20	31	31	37	46	29	15	15	19	19	23	34		25.9	
SINES DEEP CREEK	07	MAX	31	44	47	52	57	57	36	26	31	39	27	28	20	31	37	32	32	33	31	50	50	59	58	48	25	31	33	38	45	41	31	38.7	
		MIN	17	17	29	30	31	36	26	18	20	27	17	14	13	16	26	21	21	22	17	27	28	37	44	25	9	12	16	16	24	31	21	22.8	
DELAWARE NORTHERN 01																																			
WILMINGTON NEW CASTLE CO AP	24	MAX	49	50	56	53	58	63	42	32	37	35	35	28	38	37	43	34	36	39	49	56	68	70	61	41	32	42	47	56	49	45	40	45.8	
		MIN	28	37	35	35	48	37	30	26	32	27	18	18	16	26	31	25	27	22	22	30	42	55	40	25	18	22	23	25	39	26	24	29.3	
WILMINGTON PORTER RES	24	MAX	59	48	52	51	58	61	39	31	36	35	32	25	35	34	40	32	33	36	45	51	64	67	59	39	29	38	43	52	48	43	37	43.6	
		MIN	17	38	38	38	49	36	31	25	30	26	22	19	20	28	29	24	23	23	25	35	44	57	39	24	19	22	27	27	39	28	24	29.9	
DELAWARE SOUTHERN 02																																			
DOVER	16	MAX	50	49	57	56	62	63	47	38	38	38	41	37	41	42	49	40	39	40	55	58	68	70	64	52	39	45	49	57	57	50	45	49.5	

MARYLAND AND DELAWARE
201312

DAILY TEMPERATURES (°F)

STATION	OB. TIME	MAX/MIN	DAY OF MONTH																															AVERAGE
			01	02	03	04	05	06	07	08	09	10	11	12	13	14	15	16	17	18	19	20	21	22	23	24	25	26	27	28	29	30	31	
		MIN	28	31	33	34	46	47	38	27	33	32	22	21	21	28	33	26	30	24	23	44	53	61	52	29	20	19	28	26	40	39	30	32.8

SNOWFALL AND SNOW ON GROUND (INCHES)

STATION	DAY OF MONTH																														
	01	02	03	04	05	06	07	08	09	10	11	12	13	14	15	16	17	18	19	20	21	22	23	24	25	26	27	28	29	30	31
MARYLAND SOUTHERN EASTERN SHORE 01																															
ASSATEAGUE	SNOWFALL																														
PRINCESS ANNE	SNOWFALL																														
SALISBURY 2N	SNOWFALL																														
SALISBURY FAA AP	SNOWFALL																														
	SN ON GND																														
SNOW HILL 4 N	SNOWFALL	-	-	-	-	-	-	-	T	-	-	-	-	-	-	-	-	T	-	-	-	-	-	-	-	-	-	-	-	-	
CENTRAL EASTERN SHORE 02																															
ROYAL OAK 2 SSW	SNOWFALL																														
	SN ON GND																														
LOWER SOUTHERN 03																															
MECHANICSVILLE 5 NE	SNOWFALL																														
	SN ON GND	-	-	-	-	-	-	-	-	-	-	-	-	-	-	-	-	-	T	-	-	-	-	-	-	-	-	-	-	-	-
SOLOMONS	SNOWFALL	-	-	-	-	-	-	-	-	-	-	-	-	-	-	-	-	-	0.5	-	-	-	-	-	-	-	-	-	-	-	-
UPPER SOUTHERN 04																															
BALTIMORE WASH INTL AP	SNOWFALL																														
	SN ON GND																														
BELTSVILLE	SNOWFALL																														
	SN ON GND																														
DALECARLIA RSVR	SNOWFALL																														
	SN ON GND																														
	WTR EQUIV																														
LAUREL 3 W	SNOWFALL	-	-	-	-	-	-	-	0.4	-	1.0	-	-	-	-	-	-	-	-	-	-	-	-	-	-	-	-	-	-	-	
MARYLAND SCIENCE CENTER	SNOWFALL																														
	SN ON GND	-	-	-	-	-	-	-	-	-	-	-	-	-	-	-	-	-	-	-	-	-	-	-	-	-	-	-	-	-	-
NATL ARBORETUM DC	SNOWFALL	-	-	-	-	-	-	-	-	0.6	-	1.0	-	-	-	-	-	-	T	-	-	-	-	-	-	-	-	-	-	-	
	SN ON GND	-	-	-	-	-	-	-	-	-	-	1	-	-	-	-	-	-	-	-	-	-	-	-	-	-	-	-	-	-	
OXON HILL	SNOWFALL																														
	SN ON GND																														
UPPER MARLBORO 3 NNW	SNOWFALL	-	-	-	-	-	-	-	-	0.9	1.0	-	-	-	-	-	-	-	-	-	-	-	-	-	-	-	-	-	-	-	
	SN ON GND	-	-	-	-	-	-	-	-	1	T	1	T	-	-	-	-	-	-	-	-	-	-	-	-	-	-	-	-	-	
NORTHERN CENTRAL 06																															
ABERDEEN PHILLIPS FLD	SNOWFALL																														
	SN ON GND																														
BRIGHTON DAM	SNOWFALL																														
	SN ON GND																														
	WTR EQUIV																														
CONOWINGO DAM	SNOWFALL	-	-	-	-	-	-	-	-	6.0	-	-	-	-	-	-	-	-	-	-	-	-	-	-	-	-	-	-	-	-	
	SN ON GND	-	-	-	-	-	-	-	-	6	4	4	3	2	2	2	1	1	1	-	-	-	-	-	-	-	-	-	-	-	

Snowfall: Includes snow and ice. Values for NWS stations (J index note) are Mid-Mid (LST).

Snow on ground: Includes snow, sleet, ice, and hail. Values for NWS stations (J index note) are observed at 12 UTC (GMT).

Water Equivalent: Given for NWS stations (J index note) only, when snow depth is 2 inches or more, and is measured at 18 UTC (GMT)

SNOWFALL AND SNOW ON GROUND (INCHES)

STATION		DAY OF MONTH																														
		01	02	03	04	05	06	07	08	09	10	11	12	13	14	15	16	17	18	19	20	21	22	23	24	25	26	27	28	29	30	31
CYLBURN DAMASCUS 3 SSW	SNOWFALL	-	-	-	-	-	-	-	-	-	2.0	-	-	-	-	-	-	-	-	-	-	-	-	-	-	-	-	-	-	-	-	
	SNOWFALL							4.6		3.3				1.3			0.1								T		0.1					
	SN ON GND							5	3	5	5	4	3	4	3	2	2	1	T													
EMMITSBURG 2 SE	SNOWFALL								6.0	T	3.0			-	2.0		1.0	1.0														
	SN ON GND								6	T	-			-	6																	
	WTR EQUIV								-		-			-										-								
FREDERICK 2 NNE MILLERS 4 NE	SNOWFALL							6.3		5.3		0.2		3.4	0.2	T	0.5								T		1.1					
	SN ON GND							6	2	7	5	5	4	7	5	5	5	5	4	2												
	WTR EQUIV							0.5	0.6	0.9	0.9	0.8	0.7	1.0	1.0	0.9	0.9	0.8	0.7	0.5												
SMITHSBURG 2NW APPALACHIAN MOUNTAIN 07	SNOWFALL	-	-	-	-	-	-	-	-	-	3.5	-	-	-	2.0	-	-	-	-	-	-	-	-	-	-	-	-	-	-	-		
	SN ON GND									3.5	-	-	-	0.2	3.5	-	1.0	0.3	-	-	-	-	-	-	-	T	-	-	-	-		
	WTR EQUIV																															
CUMBERLAND 2	SNOWFALL	-	-	-	-	-	-	-	-	3.5	-	-	-	0.2	3.5	-	1.0	0.3	-	-	-	-	-	-	-	T	-	-	-	-		
	SN ON GND									3	1	1	-	-	2	2	3	2	2	-	-	-	-	-	-	-	-	-	-	-		
	WTR EQUIV																															
FROSTBURG 2	SNOWFALL							T		2.9		T	0.4		0.3	3.0	0.5	1.9	0.7	T												
	SN ON GND	1						T	T	3	2	2	2	2	2	6	6	8	7	6	4	1										
	WTR EQUIV																	1.0	-	-	0.9	-	-	-	-	-	-	-	-	-		
SHARPSBURG 5 S	SNOWFALL	-	-	-	-	-	-	-	-	7.0	3.0	1.8	-		T	0.8		T	T													
	SN ON GND									4	6	6	-	5	4	5	4	3	3	3	2	T										
	WTR EQUIV																															
WILLIAMSPORT ALLEGHENY PLATEAU 08	SNOWFALL	-	-	-	-	-	-	-	-	-	-	-	-	-	5.2			0.1														
	SN ON GND														5																	
	WTR EQUIV														0.4																	
OAKLAND 1 SE	SNOWFALL							1.0		3.0	5.0	1.1	1.2		1.0	1.0	5.0	0.8	1.4							0.5	1.0	0.2		0.3		
	SN ON GND							1	1	4	5	3	4	4	5	6	7	7	6	3							1					
	WTR EQUIV																															
SAVAGE RIVER DAM	SNOWFALL	-	-	-	-	-	-	-	-	0.2	-	-	-	-	T	2.0	T	T	T													
	SN ON GND									3	2	2	-	2	2	3	4	4	4	4	3	1	T									
	WTR EQUIV																															
SINES DEEP CREEK	SNOWFALL	-	-	-	-	-	-	0.2	-	4.0	-	2.0	1.0	-	0.2	2.7	2.0	-	4.0	-	-	-	-	T	1.0	1.4	1.0	-	-	-		
	SN ON GND									4	-	3	3	-	1	3	5	-	5	-	-	-	-	T	1	2	1	-	-	-		
	WTR EQUIV																															
WILMINGTON NEW CASTLE CO AP DELAWARE NORTHERN 01	SNOWFALL									8.5		2.9			0.5			T							T		T					
	SN ON GND										6	1	3	2	2	2	T		T													
	WTR EQUIV									0.3	-	0.1	-	-	-	-	-	-	-	-	-	-	-	-	-	-	-	-	-	-		
WILMINGTON PORTER RES SOUTHERN 02	SNOWFALL									5.2		2.2						0.1														
	SN ON GND									5	2	3						T														
	WTR EQUIV																															
DOVER	SNOWFALL	-	-	-	-	-	-	-	1.0	-	T	-	-	-	-	-	-	-	T	-	-	-	-	-	-	-	-	-	-	-		
	SN ON GND																															

Snowfall: Includes snow and ice. Values for NWS stations (J index note) are Mid-Mid (LST).

Snow on ground: Includes snow, sleet, ice, and hail. Values for NWS stations (J index note) are observed at 12 UTC (GMT).

Water Equivalent: Given for NWS stations (J index note) only, when snow depth is 2 inches or more, and is measured at 18 UTC (GMT)

PAN EVAPORATION AND WIND

STATION		DAY OF MONTH																															TOTAL OR AVERAGE				
		01	02	03	04	05	06	07	08	09	10	11	12	13	14	15	16	17	18	19	20	21	22	23	24	25	26	27	28	29	30	31					
MARYLAND UPPER SOUTHERN 04 BELTSVILLE	WIND	-	-	-	-	-	-	-	-	-	-	-	-	-	-	-	-	-	-	-	-	-	-	-	-	-	-	-	-	-	-	-	-	-	-	M	
	EVAP	-	-	-	-	-	-	-	-	-	-	-	-	-	-	-	-	-	-	-	-	-	-	-	-	-	-	-	-	-	-	-	-	-	-	M	
	MAX	-	-	-	-	-	-	-	-	-	-	-	-	-	-	-	-	-	-	-	-	-	-	-	-	-	-	-	-	-	-	-	-	-	-	M	
	MIN	-	-	-	-	-	-	-	-	-	-	-	-	-	-	-	-	-	-	-	-	-	-	-	-	-	-	-	-	-	-	-	-	-	-	-	M
UPPER MARLBORO 3 NNW	WIND	-	-	-	-	-	-	-	-	-	-	-	-	-	-	-	-	-	-	-	-	-	-	-	-	-	-	-	-	-	-	-	-	-	-	M	
	EVAP	-	-	-	-	-	-	-	-	-	-	-	-	-	-	-	-	-	-	-	-	-	-	-	-	-	-	-	-	-	-	-	-	-	-	M	
	MAX	-	-	-	-	-	-	-	-	-	-	-	-	-	-	-	-	-	-	-	-	-	-	-	-	-	-	-	-	-	-	-	-	-	-	-	M
	MIN	-	-	-	-	-	-	-	-	-	-	-	-	-	-	-	-	-	-	-	-	-	-	-	-	-	-	-	-	-	-	-	-	-	-	-	M
ALLEGHENY PLATEAU 08 SAVAGE RIVER DAM	WIND	-	-	-	-	-	-	-	-	-	-	-	-	-	-	-	-	-	-	-	-	-	-	-	-	-	-	-	-	-	-	-	-	-	-	M	
	EVAP	-	-	-	-	-	-	-	-	-	-	-	-	-	-	-	-	-	-	-	-	-	-	-	-	-	-	-	-	-	-	-	-	-	-	-	M
	MAX	-	-	-	-	-	-	-	-	-	-	-	-	-	-	-	-	-	-	-	-	-	-	-	-	-	-	-	-	-	-	-	-	-	-	-	M
	MIN	-	-	-	-	-	-	-	-	-	-	-	-	-	-	-	-	-	-	-	-	-	-	-	-	-	-	-	-	-	-	-	-	-	-	-	-

Evaporation: Is measured in hundreths of inches.

Wind: Is measured in miles.

Max and Min: The maximum and minimum temperatures (Fahrenheit) of the water in the evaporation pan.

STATION INDEX

STATION	INDEX NO.	DIVISION	COUNTY	LATITUDE	LONGITUDE	ELEVATION (IN FEET)	OBSERVATION TIME AND TABLES			
							LOCAL STD TIME			
							TEMP	PRECIP	EVAP	SPECIAL SEE (NOTES)
MARYLAND										
ABERDEEN PHILLIPS FLD	0015	06	HARFORD	39 28	76 10W	57	07	07		CH
ASSATEAGUE	0335	01	WORCESTER	38 4	75 13W	10	VAR	VAR		H
BALTIMORE WASH INTL AP R	0465	04	ANNE ARUNDEL	39 10	76 41W	156	24	24		HJ
BELTSVILLE	0700	04	PRINCE GEORGE'S	39 2	76 56W	145	08	08	08	CH
BRIGHTON DAM	1125	06	MONTGOMERY	39 11	77 0W	330	08	08		H
CONOWINGO DAM	2060	06	HARFORD	39 39	76 11W	40	07	07		H
CUMBERLAND 2	2282	07	ALLEGANY	39 39	78 45W	730	18	18		H
CYLBURN	2308	06	BALTIMORE	39 21	76 39W	235	08	08		H
DALECARLIA RSVR	2325	04	DISTRICT OF COLUMBIA	38 56	77 7W	150	08	08		H
DAMASCUS 3 SSW	2336	06	MONTGOMERY	39 16	77 14W	700	22	22		H
EMMITSBURG 2 SE	2906	06	FREDERICK	39 41	77 17W	403	07	07		H
FREDERICK 2 NNE	3353	06	FREDERICK	39 26	77 24W	280	07	07		H
FROSTBURG 2	3415	07	ALLEGANY	39 40	78 56W	2170	07	07		H
LAUREL 3 W	5111	04	PRINCE GEORGE'S	39 5	76 54W	400	24	24		H
MARYLAND SCIENCE CENTER R	5718	04	BALTIMORE (CITY)	39 17	76 37W	20	24	24		H
MECHANICSVILLE 5 NE	5865	03	ST. MARY'S	38 28	76 42W	100	07	07		H
MILLERS 4 NE	5934	06	CARROLL	39 43	76 48W	860	18	18		CH
NATL ARBORETUM DC	6350	04	DISTRICT OF COLUMBIA	38 55	76 58W	50	07	07		H
OAKLAND 1 SE	6620	08	GARRETT	39 25	79 24W	2420	07	07		H
OXON HILL	6800	04	PRINCE GEORGE'S	38 47	76 60W	120	08	08		H
PRINCESS ANNE	7330	01	SOMERSET	38 13	75 41W	20	17	17		H
ROYAL OAK 2 SSW	7806	02	TALBOT	38 43	76 11W	10	17	17		H
SALISBURY 2N	8004	01	WICOMICO	38 24	75 36W	20	17	17		H
SALISBURY FAA AP	8005	01	WICOMICO	38 20	75 31W	48	24	24		H
SAVAGE RIVER DAM	8065	08	GARRETT	39 31	79 8W	1495	08	08	08	CH
SHARPSBURG 5 S	8207	07	WASHINGTON	39 24	77 43W	500	07	07		H
SINES DEEP CREEK	8315	08	GARRETT	39 31	79 25W	2040	07	07		H
SMITHSBURG 2NW	8371	06	WASHINGTON	39 40	77 35W	670	08	08		H
SNOW HILL 4 N	8380	01	WORCESTER	38 14	75 23W	30	17	17		H
SOLOMONS	8405	03	CALVERT	38 19	76 27W	12	08	08		H
UPPER MARLBORO 3 NNW	9070	04	PRINCE GEORGE'S	38 51	76 46W	130	08	08	08	H
WILLIAMSPORT	9570	07	WASHINGTON	39 37	77 51W	360	06	06		H
DELAWARE										
DOVER	2730	02	KENT	39 15	75 31W	30	16	16		H
WILMINGTON NEW CASTLE CO AP R	9595	01	NEW CASTLE	39 40	75 36W	79	24	24		HJ
WILMINGTON PORTER RES	9605	01	NEW CASTLE	39 46	75 32W	270	24	24		H

REFERENCE NOTES

STATION NAMES: Name of the city, town or locality. Figures and letters following the station names indicate the distance in miles and direction from the post office or town community center.

DIVISIONS: Areas within a state of similar climatological characteristics. Division averages are calculated using data from stations that record temperature and/or precipitation. Station Precipitation totals flagged with an 'F' or 'M' are excluded from the Divisional Average calculations of precipitation. Stations with monthly Temperature averages flagged with an 'F' or 'M' are included in the Divisional Average if there are no more than 9 flagged or missing daily values in the month, else they are excluded from the divisional average for temperature.

NORMALS: The average value of the meteorological element over a time period. Effective 1 January 2012, the averaging period is 1981 to 2010. The normals for National Weather Service localities have been adjusted so as to be representative for the current observation site.

MONTHLY DEGREE DAY TOTALS: One heating (cooling) degree day is accumulated for each whole degree that the daily mean temperature is below (above) 65 degrees Fahrenheit.

PRECIPITATION: Values shown in hundredths of inches are water equivalent totals, i.e., total of liquid and melted frozen precipitation. In the "Monthly Summarized Data" table the total snow and sleet values shown in tenths of inches are unmelted amounts. The max depth on ground values of snow and sleet shown in whole inches are cumulative unmelted amounts. The number of days with .10, .50, 1.00 or more refers to water equivalents.

PRECIPITATION QUALITY CONTROL: The NCDC quality control process may flag precipitation data that are spatially inconsistent, exceed climatological limits, or are inconsistent with prevailing weather patterns.

TEMPERATURE: Original temperature values are given in the "Daily Temperature" table. Summary temperature information (averages, departures, extremes, monthly degree day totals) is based on the values labeled MAX/MIN.

WIND: (As shown in the "Evaporation and Wind" table) the total wind movement in miles over the evaporation pan as determined by an anemometer recorder located 6-8 inches above the pan.

SYMBOLS AND LETTERS USED IN THE STATION INDEX TABLE

C Station is equipped with recording rain gage (R) but values in this bulletin are from a non-recording rain gage unless indicated by an R.

G Observations appear in the "Soil Temperatures" table.

H Observations appear in the "Snowfall and Snow on the Ground" table.

J Station also published as a Local Climatological Data publication.

VAR Observation time varies.

SR Observation time near sunrise.

SS Observation time near sunset.

SYMBOLS AND LETTERS USED IN THE DATA TABLES

(DAILY DATA ARE FOR THE 24 HOURS IMMEDIATELY PRECEDING OBSERVATION TIME.)

BLANK Entries in the "Monthly Summarized Data" table indicate no record.

BLANK Entries in the "Daily Precipitation" and "Snowfall and Snow on the Ground" tables indicate zero.

BLANK Entries in the "Daily Temperature" table indicate a missing record

- No record. Data not recorded or not received in time for publication.

+ Precipitation or temperature extremes occurred on one or more previous dates during the month.

* Rain gage not read. Precipitation is included in the amount following the asterisks.

Time distribution may not be known. A * preceding the monthly total indicates precipitation amount is being carried forward to next month's total, and may include amounts from the previous month(s).

a As a subscript, indicates accumulated total.

A Amount of precipitation is the total of observer's entries for the current month. It may include precipitation that occurred during the previous month. Refer to earlier bulletin to determine date of last reading. (Hawaii stations)

B Divisional Departure from normals are computed using 1971-2000 normals.

E Normalized HDD/CDD Calculation. E is appended to the HDD/CDD Calculation when 1-9 individual daily TMAX and/or TMIN values are missing and a Normalized HDD/CDD Calculation is provided. M appears alone if 10 or more daily values are missing.

F Monthly calculation flagged value. F is appended to average and/or total values computed which exclude one or more daily data values that have been flagged by the GHCN-Daily Dataset

M Insufficient or partial data. M is appended to average and/or total values computed with 1-9 daily values missing. M appears alone if 10 or more daily values are missing, (8 or more for wind and evaporation).

N Indicates snow fall or Snowdepth totals are computed with one or more missing days.

R Amounts from recording rain gage.

T Trace. An amount too small to measure.

SEASONAL TABLES: Monthly and seasonal snowfall and heating degree days for the 12 months ending with the June data are published in the July issue of this bulletin. Cooling degree days for the calendar year are published in the "Climatological Data Annual Summary."

Information concerning the history of changes in locations, exposure, etc. of substations is kept on file at the National Climatic Data Center. Historical information of regular National Weather Service Offices may be obtained from the "Local Climatological Data" annual publication. The contents of this publication may be reprinted or otherwise used freely, with proper credit to the National Climatic Data Center. The data are also available digitally.

Effective with the January 2011 Data-Month, COOP Observer Names are no longer included in the Monthly and Annual Climatological Data Publications. This information is not published to ensure the privacy of personal information pursuant to Section 208 of the E-Government Act of 2002 (44 USC 3601).

As of the 2011 Data-Year, Station and Climate Division Maps are no longer being included in the CD Publications. NCDC's Product Development Branch provides updated Station Maps for various data networks via the Historical Observing Metadata Repository: <http://www.ncdc.noaa.gov/homr>.

The GHCN-Daily Quality Control Flags shown below are displayed as superscripts with the data. For more Information on Global Historical Climatology Network - Daily and flags, see: <http://www.ncdc.noaa.gov/oa/climate/ghcn-daily/> and Comprehensive Automated Quality Assurance of Daily Surface Observations. Durre, Imke, Matthew J. Menne, Byron E. Gleason, Tamara G. Houston, Russell S. Vose, 2010: J. Appl. Meteor. Climatol., 49, 1615-1633. doi: 10.1175/2010JAMC2375.1

Blank = Passed All checks

D = failed duplicate check

G = failed gap check

I = failed internal consistency check

K = failed streak/frequent-value check

L = failed check on length of multiday period

M = failed megaconsistency check

N = failed naught check

O = failed climatological outlier check

R = failed lagged range check

S = failed spatial consistency check

T = failed temporal consistency check

W = temperature too warm for snow

X = failed bounds check

Z = flagged as a result of an official Datzilla investigation

Beginning with the January 2013 CD Publication, monthly mean temperature calculations have changed to the National Data Stewardship Team standard. Monthly maximum and minimum temperatures are not rounded until after the monthly mean temperature is calculated. This is the most accurate outcome, but may be slightly different from the mean derived from rounded monthly maximum and minimum.

Processing Updates and Errata: The 2011 CD Publications were reproduced in May 2013. This update included the addition of late reports and corrections based on additional investigations of reported data issues through NCDC's Datzilla system. In addition, divisional averages for precipitation were recalculated using the method described in DIVISIONS above. Previous editions of the 2011 Publications included all precipitation stations regardless of missing data in the calculation of divisional averages. HDD/CDD values were recalculated to match the legacy method of calculation (truncation of monthly HDD/CDD values instead of rounding).

NOAA\National Climatic Data Center
Attn: User Engagement & Services Branch
151 Patton Avenue
Asheville, NC 28801-5001

Customer Services Number: (828) 271-4800, option 2
TDD : (828) 271-4010
Fax number: (828) 271-4876

NCDC now offers free online access to the *Climatological Data* publication.
Go to : www.ncdc.noaa.gov and choose Most Popular.