



CLIMATOLOGICAL DATA

MARYLAND AND DELAWARE

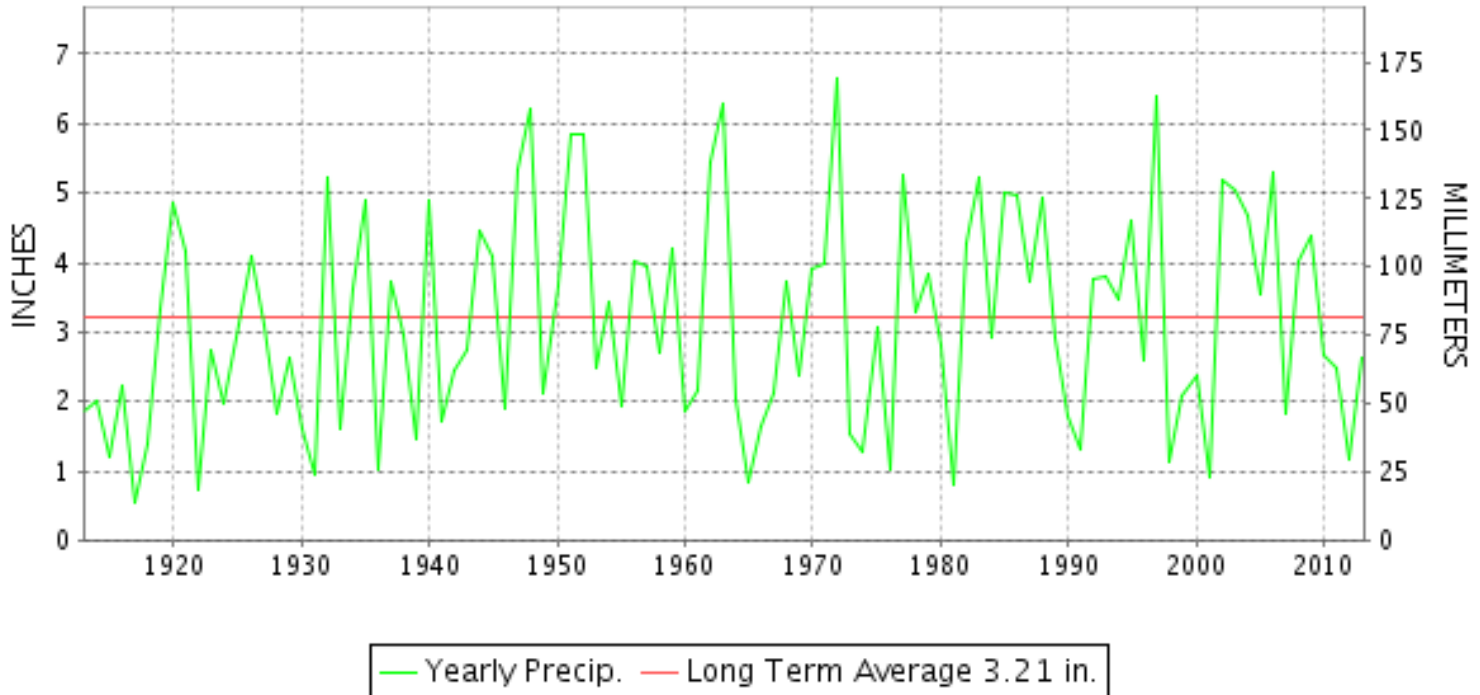
NOVEMBER 2013

VOLUME 117 NUMBER 11

ISSN 0145-0549

GHCND Ver: 3.12-upd-2014022606

NOVEMBER PRECIPITATION BY YEAR



TEMPERATURE AND PRECIPITATION EXTREMES

MARYLAND

HIGHEST TEMPERATURE	78	NOVEMBER 01	PRINCESS ANNE
LOWEST TEMPERATURE	6	NOVEMBER 25	SINES DEEP CREEK
GREATEST TOTAL PRECIPITATION	3.37		MECHANICSVILLE 5 NE
LEAST TOTAL PRECIPITATION	1.48		SALISBURY FAA AP
GREATEST 1 DAY PRECIPITATION	2.39	NOVEMBER 27	ABERDEEN PHILLIPS FLD
GREATEST TOTAL SNOWFALL	9.1		OAKLAND 1 SE
GREATEST DEPTH OF SNOW OR ICE	4		OAKLAND 1 SE

"I certify that this is an official publication of the National Oceanic and Atmospheric Administration (NOAA) It is compiled using information from weather observing sites supervised by NOAA/National Weather Service and received at the National Climatic Data Center(NCDC), Asheville, North Carolina 28801."

Director
National Climatic Data Center

noaa

National
Oceanic and
Atmospheric Administration

National
Environmental Satellite, Data
and Information Service

National
Climatic Data Center
Asheville, North Carolina

DELAWARE

HIGHEST TEMPERATURE	71	NOVEMBER 01+	2 STATIONS
LOWEST TEMPERATURE	17	NOVEMBER 29+	WILMINGTON PORTER RES
GREATEST TOTAL PRECIPITATION	2.91		WILMINGTON NEW CASTLE CO AP
LEAST TOTAL PRECIPITATION	2.03		WILMINGTON PORTER RES
GREATEST 1 DAY PRECIPITATION	1.63	NOVEMBER 27	WILMINGTON NEW CASTLE CO AP
GREATEST TOTAL SNOWFALL	T		2 STATIONS

MONTHLY STATION AND DIVISION SUMMARY

STATION	TEMPERATURE (°F)											PRECIPITATION (IN)													
	AVERAGE MAXIMUM	AVERAGE MINIMUM	AVERAGE	DEPARTURE FROM NORMAL	HIGHEST	DATE	LOWEST	DATE	HEATING DEG. DAYS	COOLING DEG. DAYS	NO. OF DAYS				TOTAL	DEPARTURE FROM NORMAL	GREATEST 24 HOURS	DATE	ICE PELLETS, SNOW			NO. OF DAYS			
											MAX		MIN						TOTAL	MAX DEPTH ON GROUND	DATE	.10 OR MORE	.50 OR MORE	1.00 OR MORE	
											>=90	<=32	<=32	<=0											
MARYLAND SOUTHERN EASTERN SHORE 01																									
ASSATEAGUE	M	M	M		78	01	24	25	471E	9E	0	0	0	0	M										
PRINCESS ANNE	M	M	M		78	01	24	25	471E	9E	0	0	2	0	M										
SALISBURY 2N	M	M	M		78	01	24	25	471E	9E	0	0	0	0	M										
SALISBURY FAA AP	58.7	36.8	47.8	-0.4	76	01	23	25	517	8	0	0	10	0	1.48	-1.95	0.65	27	0.0	0		4	1	0	
SNOW HILL 4 N	M	M	M		76	01	23	25	517	8	0	0	0	0	M										
--DIVISIONAL DATA----->			47.8	-1.0B											1.48	-1.70B									
CENTRAL EASTERN SHORE 02																									
ROYAL OAK 2 SSW	55.5	36.9	46.2	-3.8	72	02	21	29	557	2	0	0	12	0	3.32	-0.33	2.08	27	T	0		4	1	1	
--DIVISIONAL DATA----->			46.2	-1.9B											3.32	0.03B									
LOWER SOUTHERN 03																									
MECHANICSVILLE 5 NE	54.4	32.3	43.3	-3.8	71	02	18	26+	644	0	0	0	19	0	3.37	-0.22	2.31	27	M 0.0			4	1	1	
SOLOMONS	57.4M	39.1M	48.2M	-3.5	72	03+	24	25	499E	1E	0	0	5	0	A 2.86		0.54	16	0.0			3	1	0	
--DIVISIONAL DATA----->			45.8	-1.5B											3.12	-0.15B									
UPPER SOUTHERN 04																									
BALTIMORE WASH INTL AP	53.1	34.1	43.6	-2.9	73	01	19	25	636	0	0	1	17	0	2.82	-0.48	1.61	26	T	0		5	2	1	
BELTSVILLE	52.8	33.8	43.3	-3.5	73	02	19	25	642	0	0	1	17	0	2.80	-0.44	2.07	27	T	0		3	1	1	
DALECARLIA RSVR	54.6	34.0	44.3	-3.3	75	02	20	25	613	1	0	1	17	0	2.90	-0.72	2.01	27	0.0	0		4	1	1	
LAUREL 3 W	52.6	35.9	44.3	-3.5	74	01	18	25	618	2	0	0	13	0	2.01	-2.20	0.87	26	0.0			5	2	0	
MARYLAND SCIENCE CENTER	55.8	40.8	48.3	-2.0	75	01	25	25	498	4	0	0	4	0	2.62	-0.35	1.52	26	0.0			5	2	1	
NATL ARBORETUM DC	54.9	36.1	45.5	-3.3	75	02	23	30+	575	0	0	0	11	0	2.99	-0.48	2.07	27	M 0.0	0		5	1	1	
OXON HILL	53.7	35.3	44.5	-3.9	72	02	22	26+	610	0	0	1	12	0	2.87	-0.73	1.93	27	T	0		5	1	1	
UPPER MARLBORO 3 NNW	57.0M	33.2M	45.1M	-2.0	74	02	20	26+	588E	0	0	0	18	0	M 2.73	-0.74	2.27	27	0.0			3	1	1	
--DIVISIONAL DATA----->			44.9	-1.8B											2.72	-0.66B									
NORTHERN CENTRAL 06																									
ABERDEEN PHILLIPS FLD	53.2	34.3	43.8	-3.2	70	03+	21	25	629	0	0	0	14	0	3.21	-0.21	2.39	27	0.0	0		5	1	1	
BRIGHTON DAM	51.7M	32.3M	42.0M		70	02	18	25	683E	0	0	1	16	0	2.99		2.10	27	F 0.0	0		5	1	1	
CONOWINGO DAM	50.1	31.7	40.9	-5.3	67	02	18	26+	716	0	0	1	19	0	2.88	-0.66	2.15	27	0.0			5	1	1	
CYLBURN	52.1	34.1	43.1	-2.6	72	02	20	25	648	0	0	2	17	0	2.58		2.06	27	0.0			4	1	1	
DAMASCUS 3 SSW	49.1	33.6	41.4	-3.8	71	01	15	25	700	0	0	1	16	0	2.76	-1.16	1.20	26	0.1	0		5	2	1	
EMMITSBURG 2 SE	52.0	31.7	41.8	-2.1	73	02	18	30+	687	0	0	1	17	0	2.79	-0.82	2.00	27	0.0	0		3	1	1	
FREDERICK 2 NNE	M	M	M												M										
MILLERS 4 NE	50.4	32.3	41.4	-3.0	71	01	16	30+	703	0	0	1	18	0	2.88	-0.71	1.57	27	0.5	T	27	5	1	1	
SMITHSBURG 2NW	M	M	M												M										
--DIVISIONAL DATA----->			42.1	-2.8B											2.87	-0.75B									

MONTHLY STATION AND DIVISION SUMMARY

STATION	TEMPERATURE (°F)											PRECIPITATION (IN)												
	AVERAGE MAXIMUM	AVERAGE MINIMUM	AVERAGE	DEPARTURE FROM NORMAL	HIGHEST	DATE	LOWEST	DATE	HEATING DEG. DAYS	COOLING DEG. DAYS	NO. OF DAYS				TOTAL	DEPARTURE FROM NORMAL	GREATEST 24 HOURS	DATE	ICE PELLETS, SNOW			NO. OF DAYS		
											MAX		MIN						TOTAL	MAX DEPTH ON GROUND	DATE	.10 OR MORE	.50 OR MORE	1.00 OR MORE
											>=90	<=32	<=32	<=0										
APPALACHIAN MOUNTAIN 07																								
CUMBERLAND 2	52.2	30.8	41.5	-3.9	72	07+	15	26+	698	0	0	1	17	0	1.92	-1.06	1.36	27	0.0			3	1	1
FROSTBURG 2	43.9	26.5	35.2	-5.3	64	07+	10	26+	887	0	0	8	23	0	1.91	-1.76	1.25	27	M 2.5	1	30	3	1	1
SHARPSBURG 5 S	51.7M	28.6M	40.1M	-4.4	75	02	13	26+	739E	0	0	1	22	0	A 2.58	-0.82	1.84	27	M T	0		4	1	1
WILLIAMSPORT	52.0M	32.0M	42.0M	-2.7	73	02	17	26	684E	0	0	1	17	0	M 2.13	-1.29	1.60	27	M 0.0	0		3	1	1
--DIVISIONAL DATA----->																								
ALLEGHENY PLATEAU 08																								
OAKLAND 1 SE	47.9M	26.3M	37.1M	-2.2	67	07	7	25	830E	0	0	4	24	0	M 2.43	-1.40	0.35	23+	M 9.1	4	24	10	0	0
SAVAGE RIVER DAM	45.6M	27.7M	36.6M	-4.6	65	07	13	26+	843E	0	0	2	21	0	M 1.37	-1.63	1.13	27	M T	M T	25	2	1	1
SINES DEEP CREEK	43.9	24.7	34.3		66	07+	6	25	913	0	0	6	26	0	2.89		1.10	27	M 2.2	1	24	9	1	1
--DIVISIONAL DATA----->																								
DELAWARE NORTHERN 01																								
WILMINGTON NEW CASTLE CO AP	53.7	34.1	43.9	-2.7	71	01	19	25	625	0	0	1	17	0	2.91	-0.19	1.63	27	T	0		4	2	1
WILMINGTON PORTER RES	54.9MF	33.4M	44.2MF	-2.0	68	02+	17	29+	617E	0	0	0	13	0	2.03	-1.45	1.58	27	0.0	0		3	1	1
--DIVISIONAL DATA----->																								
SOUTHERN 02																								
DOVER	55.3	36.4	45.9	-3.3	71	02	18	25	568	0	0	0	13	0	2.36	-1.12	1.48	27	M T			4	1	1
--DIVISIONAL DATA----->																								

DAILY PRECIPITATION (INCHES)

STATION	TOTAL	DAY OF MONTH																																
		01	02	03	04	05	06	07	08	09	10	11	12	13	14	15	16	17	18	19	20	21	22	23	24	25	26	27	28	29	30	31		
MARYLAND																																		
SOUTHERN																																		
EASTERN SHORE 01																																		
ASSATEAGUE	M	-	-	-	-	-	-	-	-	-	-	-	-	-	-	-	-	-	-	-	-	-	-	-	-	-	-	-	-	-	-	-	-	-
PRINCESS ANNE	M	0.19	-	-	-	-	-	-	-	-	-	-	-	-	-	-	-	-	-	-	-	-	0.07	-	-	-	-	-	-	-	-	-	-	-
SALISBURY 2N	M	-	-	-	-	-	-	-	-	-	-	-	-	-	-	-	-	-	-	-	-	-	-	-	-	-	-	-	-	-	-	-	-	-
SALISBURY FAA AP	1.48	T	T	-	-	-	T	0.04	-	-	-	T	-	-	-	0.26	T	0.13	-	-	-	-	T	-	-	-	0.40	0.65	-	-	-	-	-	-
SNOW HILL 4 N	M	-	-	-	-	-	-	-	-	-	-	-	-	-	-	-	-	-	-	-	-	-	-	-	-	-	-	-	-	-	-	-	-	-
CENTRAL																																		
EASTERN SHORE 02																																		
ROYAL OAK 2 SSW	3.32	0.06	0.08	0.06	-	-	-	0.06	-	-	-	0.03	-	-	-	0.33	0.02	0.23	-	-	-	-	0.04	0.08	-	-	0.25	2.08	-	-	-	-	-	
LOWER SOUTHERN 03																																		
MECHANICSVILLE 5 NE	3.37	0.07	0.08	0.07	-	-	-	T	0.02	-	-	T	-	-	0.30	T	0.25	-	-	-	-	-	0.01	-	-	T	2.31	0.26	-	-	-	-	-	
SOLOMONS	A 2.86	-	0.03	0.01	-	-	-	0.11	-	*	*	0.00 _a	-	-	0.54	*	0.22 _a	-	-	-	-	*	*	0.03 _a	-	-	*	1.67 _a	0.25	-	-	-	-	-
UPPER SOUTHERN 04																																		
BALTIMORE WASH INTL AP	2.82	0.17	-	-	-	-	-	0.05	-	-	-	T	-	-	0.02	0.15	0.04	0.11	-	-	-	0.01	-	-	-	1.61	0.66	-	-	-	-	-	-	
BELTSVILLE	2.80	0.02	0.25	-	-	-	-	-	-	-	-	-	-	-	0.28	-	0.09	-	-	-	-	-	-	-	T	2.07	0.09	-	-	-	-	-	-	
DALECARLIA RSVR	2.90	0.03	0.18	-	-	-	-	0.02	-	-	-	-	-	-	-	0.40	0.16	-	-	-	0.01	-	-	-	-	2.01	0.09	-	-	-	-	-	-	
LAUREL 3 W	2.01	0.14	-	-	-	-	-	0.03	-	-	-	-	-	-	0.22	0.02	0.13	-	-	-	-	0.02	-	-	-	0.87	0.58	-	-	-	-	-	-	
MARYLAND SCIENCE CENTER	2.62	0.13	-	-	-	-	-	0.06	-	-	-	-	-	-	0.13	0.02	0.10	-	-	-	-	-	-	-	1.52	0.66	-	-	-	-	-	-	-	
NATL ARBORETUM DC	2.99	0.02	0.17	T	-	-	-	-	-	-	-	-	-	-	0.42	0.01	0.17	-	-	-	-	T	-	-	-	2.07	0.13	-	-	-	-	-	-	
OXON HILL	2.87	0.02	0.10	0.02	-	-	-	0.02	-	-	-	-	-	-	0.41	T	0.20	-	-	-	-	-	T	T	-	T	1.93	0.17	-	-	-	-	-	
UPPER MARLBORO 3 NNW	M 2.73	-	-	-	-	-	-	T	-	-	-	-	-	-	0.31	-	0.15	-	-	-	-	-	-	-	-	-	2.27	-	-	-	-	-	-	
NORTHERN CENTRAL 06																																		
ABERDEEN PHILLIPS FLD	3.21	0.02	0.36	-	-	-	-	-	0.11	-	-	-	-	-	0.07	-	0.15	-	-	-	-	-	T	-	-	2.39	0.11	-	-	-	-	-	-	
BRIGHTON DAM	2.99	0.15	0.05	-	-	-	-	0.10	-	-	-	-	-	-	0.25	-	0.23	-	-	-	-	0.05	-	-	0.06	2.10	-	-	-	-	-	-	-	
CONOWINGO DAM	2.88	-	0.20	-	-	-	-	0.20	-	-	-	-	-	-	-	-	0.14	-	-	-	-	-	-	-	2.15	0.19	-	-	-	-	-	-	-	
CYLBURN	2.58	0.04	-	-	-	-	0.18	0.10	-	-	-	-	-	-	0.10	0.05	-	-	-	-	-	-	-	-	2.06	0.05	-	-	-	-	-	-	-	
DAMASCUS 3 SSW	2.76	0.28	-	T	-	-	0.09	-	-	-	-	-	-	-	0.10	T	0.27	-	-	-	-	T	T	T	1.20	0.82	-	-	-	-	-	-	-	
EMMITSBURG 2 SE	2.79	0.40	-	-	-	-	-	0.22	-	-	-	-	-	-	0.04	0.04	0.09	-	-	-	-	T	T	-	2.00	-	-	-	-	-	-	-	-	
FREDERICK 2 NNE	M	-	-	-	-	-	-	-	-	-	-	-	-	-	-	-	-	-	-	-	-	-	-	-	-	-	-	-	-	-	-	-	-	-
MILLERS 4 NE	2.88	0.34	-	0.01	-	-	-	0.17	T	-	-	T	-	-	0.05	0.03	0.25	-	-	-	-	0.01	-	T	0.45	1.57	-	-	-	-	-	-	-	-
SMITHSBURG 2NW	M	-	-	-	-	-	-	-	-	-	-	-	-	-	-	-	-	-	-	-	-	-	-	-	-	-	-	-	-	-	-	-	-	-
APPALACHIAN																																		
MOUNTAIN 07																																		
CUMBERLAND 2	1.92	0.26	0.02	-	-	-	0.03	0.05	-	-	-	T	T	-	0.02	-	0.17	-	-	-	-	-	0.01	T	-	1.36	T	-	-	-	-	-	-	
FROSTBURG 2	1.91	0.15	T	0.01	-	-	0.03	0.02	-	-	0.04	T	-	-	0.04	T	0.21	-	-	-	-	0.01	0.06	0.03	T	1.25	0.06	T	-	-	-	-	-	
SHARPSBURG 5 S	A 2.58	0.28	0.08	-	*	0.00 _a	-	0.18	-	-	-	T	-	-	0.04	-	0.15	-	-	-	-	0.01	-	T	1.84	T	-	-	-	-	-	-	-	
WILLIAMSPORT	M 2.13	0.08	0.02	-	-	-	-	0.25	-	-	-	-	-	-	0.03	-	0.10	-	-	-	-	-	0.02	-	-	1.60	-	0.03	-	-	-	-	-	-
ALLEGHENY PLATEAU 08																																		
OAKLAND 1 SE	M 2.43	0.35	-	0.15	-	0.02	0.25	0.16	-	-	-	0.25	0.05	-	0.11	-	0.23	-	-	-	-	-	0.35	0.10	0.09	0.05	0.27	-	-	-	-	-	-	
SAVAGE RIVER DAM	M 1.37	-	-	T	-	-	T	-	-	-	-	T	-	-	0.05	T	0.14	-	-	-	-	-	0.05	T	-	1.13	-	-	-	-	-	-	-	-

DAILY PRECIPITATION (INCHES)

STATION	TOTAL	DAY OF MONTH																																	
		01	02	03	04	05	06	07	08	09	10	11	12	13	14	15	16	17	18	19	20	21	22	23	24	25	26	27	28	29	30	31			
SINES DEEP CREEK	2.89	0.27	0.05	0.10				0.20	0.20				T	0.04							0.02			0.40	0.06			1.10	0.10						
DELAWARE NORTHERN 01																																			
WILMINGTON NEW CASTLE CO AP	2.91	0.10					0.05					0.01				0.04	T	0.19					0.01				0.88	1.63							
WILMINGTON PORTER RES	2.03	T					0.18					T				0.04	0.03	0.20											1.58						
DELAWARE SOUTHERN 02																																			
DOVER	2.36	0.07					0.09					0.05				0.25		0.18					T	0.04			0.20	1.48							

DAILY TEMPERATURES (°F)

STATION	OB. TIME	MAX/MIN	DAY OF MONTH																															AVERAGE		
			01	02	03	04	05	06	07	08	09	10	11	12	13	14	15	16	17	18	19	20	21	22	23	24	25	26	27	28	29	30	31			
MARYLAND SOUTHERN EASTERN SHORE 01 ASSATEAGUE	VA	MAX MIN																																		M M
PRINCESS ANNE	17	MAX MIN	78 60			60 35	64 41	68 40				58 38	55 37	53 28						71 48	61 39	50 33	62 35	64 41			39 24							M M		
SALISBURY 2N	17	MAX MIN																																	M M	
SALISBURY FAA AP	24	MAX MIN	76 69	74 55	60 40	54 33	66 41	70 40	67 48	56 33	56 29	68 42	59 36	54 34	46 28	58 24	60 31	60 48	70 47	71 49	54 38	51 31	62 34	65 40	61 37	37 27	40 23	64 35	68 35	41 26	46 24	48 28	58.7 36.8			
SNOW HILL 4 N	17	MAX MIN																																	M M	
CENTRAL EASTERN SHORE 02 ROYAL OAK 2 SSW	17	MAX MIN	71 62	72 51	57 46	49 35	63 32	67 45	66 52	54 40	55 28	67 45	56 39	53 38	45 29	55 26	53 30	68 41	69 51	59 42	48 33	55 29	61 38	58 41	45 29	37 24	44 30	61 36	39 28	43 21	40 23	55.5 36.9				
LOWER SOUTHERN 03 MECHANICSVILLE 5 NE	07	MAX MIN	70 54	71 54	70 41	56 31	45 31	58 34	67 47	67 33	52 28	54 32	66 32	56 32	45 27	45 24	54 24	54 36	53 43	68 47	69 39	50 30	45 28	53 28	64 41	51 24	33 18	37 18	60 28	39 25	38 22	42 21	54.4 32.3			
SOLOMONS	08	MAX MIN	70 62	72 57	72 49	56 37	56 37	65 39	65 37	67 37		67 37	58 50	51 33	42 33	56 37	54 43		66 48	68 44	68 37			58 44	50 26	33 24		60 40	41 29	41 29	41 29	57.4 39.1				
UPPER SOUTHERN 04 BALTIMORE WASH INTL AP	24	MAX MIN	73 54	68 45	56 39	46 32	57 35	68 45	61 43	53 32	53 29	61 39	55 37	52 28	44 26	58 25	60 27	64 50	68 50	50 37	44 29	49 27	60 45	57 31	32 22	36 19	49 32	49 30	38 24	42 22	37 25	53.1 34.1				
BELTSVILLE	08	MAX MIN	71 56	73 48	68 41	55 31	45 34	58 41	68 48	61 30	50 27	53 32	62 30	43 30	41 23	55 26	60 30	53 46	64 53	67 42	48 29	46 28	49 37	60 40	48 24	31 19	37 23	46 33	40 27	42 22	41 23	52.8 33.8				
DALECARLIA RSVR	08	MAX MIN	71 61	75 51	67 42	56 31	45 34	54 35	69 54	62 33	62 32	55 32	63 32	63 34	57 28	42 24	56 26	54 28	63 45	63 52	69 42	47 32	48 32	50 34	62 40	62 23	31 20	37 23	44 30	38 25	44 24	39 22	41 22	54.6 34.0		
LAUREL 3 W	24	MAX MIN	74 60	68 52	56 41	45 31	56 35	68 46	60 47	51 36	53 34	62 40	56 36	51 31	47 27	58 28	60 35	63 43	68 49	53 53	43 40	48 31	60 44	58 33	33 21	34 18	41 31	46 30	37 26	42 25	36 23	52.6 35.9				
MARYLAND SCIENCE CENTER	24	MAX MIN	75 62	70 54	58 43	49 38	60 45	68 52	64 48	54 41	57 39	65 44	59 42	55 36	45 33	60 38	56 48	64 53	71 53	54 42	48 38	52 38	63 50	61 35	35 25	40 25	52 36	53 34	41 31	44 33	40 31	55.8 40.8				
NATL ARBORETUM DC	07	MAX MIN	72 56	75 52	72 45	58 33	47 36	59 42	69 54	64 36	51 30	55 38	64 35	61 35	43 31	43 27	56 29	60 37	56 48	67 53	73 44	49 34	47 30	52 36	62 41	50 25	33 23	38 25	47 33	43 29	40 24	42 23	54.9 36.1			
OXON HILL	08	MAX MIN	70 56	72 51	68 45	56 33	45 33	57 41	68 50	61 35	50 30	55 32	63 35	57 35	51 31	42 26	54 27	60 34	53 45	68 51	51 39	46 34	49 33	62 45	59 41	50 24	31 22	36 22	57 32	41 27	42 25	53.7 35.3				
UPPER MARLBORO 3 NNW	08	MAX MIN	71 54	74 49	71 43	56 29	46 29	60 37	71 48	62 32	52 25	56 26	65 32	59 32	49 28	45 22	60 26	61 45	53 50	67 43	71 30	49 27	47 31	51 41	63 24	51 20	33 20	38 20	57 32				57.0 33.2			
NORTHERN CENTRAL 06 ABERDEEN PHILLIPS FLD	07	MAX MIN	69 53	70 49	70 47	55 33	47 33	61 41	67 46	60 34	51 28	53 30	62 35	51 36	43 26	44 27	56 28	54 29	51 45	65 51	68 43	50 29	45 29	52 34	57 42	47 25	33 21	37 22	57 37	43 27	37 24	42 25	53.2 34.3			

DAILY TEMPERATURES (°F)

STATION	OB. TIME	MAX/MIN	DAY OF MONTH																															AVERAGE	
			01	02	03	04	05	06	07	08	09	10	11	12	13	14	15	16	17	18	19	20	21	22	23	24	25	26	27	28	29	30	31		
BRIGHTON DAM	08	MAX	69	70	65	54	44	56	66	59	48	52	59	55	39	40	55	58	58	61	64	46	43	48	59	45	30	34	44		39	39		51.7	
		MIN	54	48	43	31	32	38	49	32	26	26	34	38	26	23	25	33	33	49	41	28	24	34	37	22	18	21	32		21	19		32.3	
CONOWINGO DAM	07	MAX	66	67	64	52	45	56	56	58	49	50	59	53	42	40	55	50	52	62	64	46	43	45	53	43	31	34	55	41	35	37		50.1	
		MIN	51	48	43	32	32	37	38	34	29	29	34	33	28	25	26	31	30	50	42	29	27	27	32	25	18	18	33	26	23	21		31.7	
CYLBURN	08	MAX	69	72	66	53	45	56	64	61	55	52	60	54	39	41	57	56	52	61	66	49	44	48	60	57	31	35	51	39	31	40		52.1	
		MIN	53	50	38	30	39	39	47	42	30	31	36	39	28	29	28	30	45	49	34	28	27	44	31	22	20	30	32	26	23	22		34.1	
DAMASCUS 3 SSW	22	MAX	71	60	53	43	54	64	56	46	50	58	54	48	38	53	58	53	59	64	49	42	46	58	54	30	33	37	37	33	38	33		49.1	
		MIN	57	49	41	27	33	44	43	33	28	40	35	29	26	28	37	42	48	49	32	27	29	43	30	20	15	30	28	24	22	20		33.6	
EMMITSBURG 2 SE	07	MAX	68	73	66	56	44	54	65	58	51	51	58	55	51	43	56	60	59	59	64	49	44	45	57	53	31	36	38	39	36	41		52.0	
		MIN	43	47	45	30	29	35	49	36	28	28	35	35	29	27	26	25	37	49	41	30	24	24	36	22	19	18	33	26	26	18		31.7	
FREDERICK 2 NNE	07	MAX																																M	
		MIN																																M	
MILLERS 4 NE	18	MAX	71	65	55	44	56	66	58	47	52	56	52	48	40	55	58	57	57	62	54	46	46	58	54	37	33	32	46	34	38	34		50.4	
		MIN	57	45	40	26	30	43	46	32	28	36	32	31	26	25	28	37	46	51	36	25	23	42	33	19	16	27	32	23	19	16		32.3	
SMITHSBURG 2NW	08	MAX																																M	
		MIN																																M	
APPALACHIAN MOUNTAIN 07																																			
CUMBERLAND 2	18	MAX	71	72	59	58	45	54	72	55	50	58	57	60	42	48	56	59	65	61	63	44	49	49	53	44	31	41	39	38	35	39		52.2	
		MIN	54	44	42	28	29	33	34	40	28	28	34	34	29	28	26	26	40	48	37	24	25	30	34	20	15	15	34	22	24	18		30.8	
FROSTBURG 2	07	MAX	63	64	50	47	40	46	64	53	39	52	46	55	30	32	49	53	56	55	53	35	38	44	53	34	20	32	32	29	24	30		43.9	
		MIN	52	42	34	23	23	28	37	32	24	26	30	26	20	20	30	37	37	44	30	21	21	24	26	11	10	10	28	15	16	17		26.5	
SHARPSBURG 5 S	07	MAX	69	75	62		45	53	68	58	49	55	58	58	38	42	58	60	58	63	65	46	46	49	60	45	29	38	37	38	36	40		51.7	
		MIN	57	43	39		24	29	47	29	25	26	27	27	21	21	22	24	41	43	40	23	23	29	30	21	13	13	32	22	21	16		28.6	
WILLIAMSPORT	06	MAX	68	73	62	53	46	54	67	58	50	54	57	56	42	41	57	60	60	60	62	47	46	48	57	50	31	37	37		35	39		52.0	
		MIN	52	50	46	35	27	27	47	37	29	28	37	34	28	26	24	27	40	40	41	28	26	26	35	22	20	17	32		24	22		32.0	
ALLEGHENY PLATEAU 08																																			
OAKLAND 1 SE	07	MAX	66	55	53	48	41	47	67	49	40	55	55	57	28	29	48	64	59	61	52	33	39	53	58	58	36	39	47	27	26		47.9		
		MIN	53	36	36	22	25	29	31	32	20	25	23	24	20	19	24	26	42	45	29	20	24	27	28	28	7	9	27	16	17		26.3		
SAVAGE RIVER DAM	08	MAX		64	53	50	39	46	65		44	57	49	55	33	34	49	54	56	59	55	37	40	44	53	38	23	36	35		28	34		45.6	
		MIN		39	40	26	27	30	30		25	26	32	30	25	25	27	28	40	44	34	23	22	26	33	17	13	13	30		23	19		27.7	
SINES DEEP CREEK	07	MAX	66	60	48	45	40	47	66	52	44	55	45	51	28	28	44	46	58	57	51	34	39	52	52	33	18	38	35	29	25	32		43.9	
		MIN	48	36	37	24	25	29	29	31	23	24	25	24	21	20	22	24	23	40	31	21	23	24	29	12	6	8	29	16	18	18		24.7	
DELAWARE NORTHERN 01																																			
WILMINGTON NEW CASTLE CO AP	24	MAX	71	69	56	47	60	63	62	53	53	64	55	51	43	55	57	52	65	68	51	47	54	54	54	32	35	58	60	38	43	41		53.7	
		MIN	52	47	35	31	35	43	45	35	28	40	36	28	24	31	28	42	50	50	32	25	27	48	31	22	19	32	31	28	25	24		34.1	
WILMINGTON PORTER RES	24	MAX	68	68	51	43	56	62	60	49	50	60	53	49	39	52	54	53	64	64	49	49	52	55	55	55	55	55	59	59	59 ^s				54.9
		MIN	56	50	34	31	38	45	43	37	37	39	35	28	28	28	34	43	50	49	32	29	33	33	30	22	17	17	17	17	17				33.4
SOUTHERN 02																																			
DOVER	16	MAX	70	71	55	49	61	67	63	54	55	64	56	50	43	58	63	56	68	68	63	48	55	60	58	40	36	39	64	40	42	43		55.3	

MARYLAND AND DELAWARE
201311

DAILY TEMPERATURES (°F)

STATION	OB. TIME	MAX/MIN	DAY OF MONTH																															AVERAGE
			01	02	03	04	05	06	07	08	09	10	11	12	13	14	15	16	17	18	19	20	21	22	23	24	25	26	27	28	29	30	31	
		MIN	60	53	44	32	37	38	54	36	27	42	36	34	26	26	32	44	48	50	40	32	30	45	40	27	18	29	36	29	24	24		36.4

SNOWFALL AND SNOW ON GROUND (INCHES)

STATION		DAY OF MONTH																														
		01	02	03	04	05	06	07	08	09	10	11	12	13	14	15	16	17	18	19	20	21	22	23	24	25	26	27	28	29	30	31
MARYLAND SOUTHERN EASTERN SHORE 01	ASSATEAGUE	SNOWFALL																														
	PRINCESS ANNE	SNOWFALL																														
SALISBURY 2N	SALISBURY FAA AP	SNOWFALL																														
		SN ON GND																														
SNOW HILL 4 N		SNOWFALL																														
		SN ON GND																														
CENTRAL EASTERN SHORE 02	ROYAL OAK 2 SSW	SNOWFALL											T																			
		SN ON GND																														
UPPER SOUTHERN 04	BALTIMORE WASH INTL AP	SNOWFALL											T														T		T			
		SN ON GND																														
BELTSVILLE		SNOWFALL																									T					
		SN ON GND																														
DALECARLIA RSVR		SNOWFALL																														
		SN ON GND																														
LAUREL 3 W		WTR EQUIV																														
		SNOWFALL																														
MARYLAND SCIENCE CENTER		SNOWFALL																														
		SN ON GND	-	-	-	-	-	-	-	-	-	-	-	-	-	-	-	-	-	-	-	-	-	-	-	-	-	-	-	-	-	-
NATL ARBORETUM DC		SN ON GND	-	-	-	-	-	-	-	-	-	-	-	-	-	-	-	-	-	-	-	-	-	-	-	-	-	-	-	-	-	-
		WTR EQUIV	-	-	-	-	-	-	-	-	-	-	-	-	-	-	-	-	-	-	-	-	-	-	-	-	-	-	-	-	-	-
OXON HILL		SNOWFALL																														
		SN ON GND																								T				T		
UPPER MARLBORO 3 NNW		SNOWFALL																														
		SN ON GND																														
NORTHERN CENTRAL 06	BRIGHTON DAM	SNOWFALL																														
		SN ON GND																														
CONOWINGO DAM		WTR EQUIV																														
		SNOWFALL																														
CYLBURN		SNOWFALL																														
		SN ON GND																														
DAMASCUS 3 SSW		SNOWFALL																														
		SN ON GND																														
EMMITSBURG 2 SE		SNOWFALL																														
		SN ON GND																														
FREDERICK 2 NNE		WTR EQUIV																														
		SNOWFALL																														
MILLERS 4 NE		SNOWFALL																														
		SN ON GND											T																			

Snowfall: Includes snow and ice. Values for NWS stations (J index note) are Mid-Mid (LST).

Snow on ground: Includes snow, sleet, ice, and hail. Values for NWS stations (J index note) are observed at 12 UTC (GMT).

Water Equivalent: Given for NWS stations (J index note) only, when snow depth is 2 inches or more, and is measured at 18 UTC (GMT)

SNOWFALL AND SNOW ON GROUND (INCHES)

STATION		DAY OF MONTH																														
		01	02	03	04	05	06	07	08	09	10	11	12	13	14	15	16	17	18	19	20	21	22	23	24	25	26	27	28	29	30	31
SMITHSBURG 2NW APPALACHIAN MOUNTAIN 07	SN ON GND																										T	T				
	WTR EQUIV																															
	SNOWFALL																															
FROSTBURG 2	SNOWFALL	-	-	-	-	-	-	-	-	-	-	0.8	T												0.9	T	T	0.8	T			
SHARPSBURG 5 S	SN ON GND	-	-	-	-	-	-	-	-	-	-	1	1	T											1	1	T	T	1	1	1	
	SNOWFALL	-	-	-	-	-	-	-	-	-	-	-	-	-	-	-	-	-	-	-	-	-	-	-	T	-	-	-	T	-	-	
	SN ON GND	-	-	-	-	-	-	-	-	-	-	-	-	-	-	-	-	-	-	-	-	-	-	-	-	-	-	-	-	-	-	
WILLIAMSPORT	SNOWFALL	-	-	-	-	-	-	-	-	-	-	-	-	-	-	-	-	-	-	-	-	-	-	-	-	-	-	-	-	-	-	
	SN ON GND	-	-	-	-	-	-	-	-	-	-	-	-	-	-	-	-	-	-	-	-	-	-	-	-	-	-	-	-	-	-	
	WTR EQUIV	-	-	-	-	-	-	-	-	-	-	-	-	-	-	-	-	-	-	-	-	-	-	-	-	-	-	-	-	-	-	
ALLEGHENY PLATEAU 08	SNOWFALL																															
	SN ON GND											1.5	1.5												4.0	0.6	0.5	1.0				
	SN ON GND											1	1												4		1	2	1			
SAVAGE RIVER DAM	SNOWFALL	-	-	-	-	-	-	-	-	-	-	-	-	-	-	-	-	-	-	-	-	-	-	-	T	-	-	-	-	-	-	
	SN ON GND	-	-	-	-	-	-	-	-	-	-	T	-	-	-	-	-	-	-	-	-	-	-	-	T	T	-	-	-	-	-	
	SNOWFALL	-	-	-	-	-	-	-	-	-	-	-	-	-	-	-	-	-	-	-	-	-	-	-	-	-	-	-	-	-	-	
SINES DEEP CREEK	SNOWFALL	-	-	-	-	-	-	-	-	-	-	0.2	T	-	-	-	-	-	-	-	-	T	-	-	1.0	-	-	-	1.0	-	-	
	SN ON GND	-	-	-	-	-	-	-	-	-	-	-	1	1	-	-	-	-	-	-	-	-	-	-	1	-	-	-	-	-		
	SN ON GND																															
DELAWARE NORTHERN 01	SNOWFALL																															
	SN ON GND																															
	SNOWFALL																															
WILMINGTON NEW CASTLE CO AP	SNOWFALL																															
	SN ON GND																															
	SNOWFALL																															
WILMINGTON PORTER RES	SNOWFALL																															
	SN ON GND																															
	SNOWFALL																															
SOUTHERN 02	SNOWFALL																															
	SN ON GND																															
	SNOWFALL	-	-	-	-	-	-	-	-	-	-	T	-	-	-	-	-	-	-	-	-	-	-	-	-	-	-	-	-	-	-	
DOVER	SNOWFALL	-	-	-	-	-	-	-	-	-	T	-	-	-	-	-	-	-	-	-	-	-	-	-	-	-	-	-	-	-		

Snowfall: Includes snow and ice. Values for NWS stations (J index note) are Mid-Mid (LST).

Snow on ground: Includes snow, sleet, ice, and hail. Values for NWS stations (J index note) are observed at 12 UTC (GMT).

Water Equivalent: Given for NWS stations (J index note) only, when snow depth is 2 inches or more, and is measured at 18 UTC (GMT)

PAN EVAPORATION AND WIND

STATION		DAY OF MONTH																															TOTAL OR AVERAGE			
		01	02	03	04	05	06	07	08	09	10	11	12	13	14	15	16	17	18	19	20	21	22	23	24	25	26	27	28	29	30	31				
MARYLAND UPPER SOUTHERN 04 BELTSVILLE	WIND	-	-	-	-	-	-	-	-	-	-	-	-	-	-	-	-	-	-	-	-	-	-	-	-	-	-	-	-	-	-	-	-	-	M	
	EVAP	-	-	-	-	-	-	-	-	-	-	-	-	-	-	-	-	-	-	-	-	-	-	-	-	-	-	-	-	-	-	-	-	-	M	
	MAX	-	-	-	-	-	-	-	-	-	-	-	-	-	-	-	-	-	-	-	-	-	-	-	-	-	-	-	-	-	-	-	-	-	M	
	MIN	-	-	-	-	-	-	-	-	-	-	-	-	-	-	-	-	-	-	-	-	-	-	-	-	-	-	-	-	-	-	-	-	-	-	M
UPPER MARLBORO 3 NNW	WIND	-	-	-	-	-	-	-	-	-	-	-	-	-	-	-	-	-	-	-	-	-	-	-	-	-	-	-	-	-	-	-	-	-	M	
	EVAP	-	-	-	-	-	-	-	-	-	-	-	-	-	-	-	-	-	-	-	-	-	-	-	-	-	-	-	-	-	-	-	-	-	M	
	MAX	-	-	-	-	-	-	-	-	-	-	-	-	-	-	-	-	-	-	-	-	-	-	-	-	-	-	-	-	-	-	-	-	-	-	M
	MIN	-	-	-	-	-	-	-	-	-	-	-	-	-	-	-	-	-	-	-	-	-	-	-	-	-	-	-	-	-	-	-	-	-	-	M
ALLEGHENY PLATEAU 08 SAVAGE RIVER DAM	WIND	-	-	-	-	-	-	-	-	-	-	-	-	-	-	-	-	-	-	-	-	-	-	-	-	-	-	-	-	-	-	-	-	-	M	
	EVAP	-	-	-	-	-	-	-	-	-	-	-	-	-	-	-	-	-	-	-	-	-	-	-	-	-	-	-	-	-	-	-	-	-	-	M
	MAX	-	-	-	-	-	-	-	-	-	-	-	-	-	-	-	-	-	-	-	-	-	-	-	-	-	-	-	-	-	-	-	-	-	-	M
	MIN	-	-	-	-	-	-	-	-	-	-	-	-	-	-	-	-	-	-	-	-	-	-	-	-	-	-	-	-	-	-	-	-	-	-	M

Evaporation: Is measured in hundreths of inches.

Wind: Is measured in miles.

Max and Min: The maximum and minimum temperatures (Fahrenheit) of the water in the evaporation pan.

STATION INDEX

STATION	INDEX NO.	DIVISION	COUNTY	LATITUDE	LONGITUDE	ELEVATION (IN FEET)	OBSERVATION TIME AND TABLES			
							LOCAL STD TIME			
							TEMP	PRECIP	EVAP	SPECIAL SEE (NOTES)
MARYLAND										
ABERDEEN PHILLIPS FLD	0015	06	HARFORD	39 28	76 10W	57	07	07		CH
ASSATEAGUE	0335	01	WORCESTER	38 4	75 13W	10	VAR	VAR		H
BALTIMORE WASH INTL AP R	0465	04	ANNE ARUNDEL	39 10	76 41W	156	24	24		HJ
BELTSVILLE	0700	04	PRINCE GEORGE'S	39 2	76 56W	145	08	08	08	CH
BRIGHTON DAM	1125	06	MONTGOMERY	39 11	77 0W	330	08	08		H
CONOWINGO DAM	2060	06	HARFORD	39 39	76 11W	40	07	07		H
CUMBERLAND 2	2282	07	ALLEGANY	39 39	78 45W	730	18	18		H
CYLBURN	2308	06	BALTIMORE	39 21	76 39W	235	08	08		H
DALECARLIA RSVR	2325	04	DISTRICT OF COLUMBIA	38 56	77 7W	150	08	08		H
DAMASCUS 3 SSW	2336	06	MONTGOMERY	39 16	77 14W	700	22	22		H
EMMITSBURG 2 SE	2906	06	FREDERICK	39 41	77 17W	403	07	07		H
FREDERICK 2 NNE	3353	06	FREDERICK	39 26	77 24W	280	07	07		H
FROSTBURG 2	3415	07	ALLEGANY	39 40	78 56W	2170	07	07		H
LAUREL 3 W	5111	04	PRINCE GEORGE'S	39 5	76 54W	400	24	24		H
MARYLAND SCIENCE CENTER R	5718	04	BALTIMORE (CITY)	39 17	76 37W	20	24	24		H
MECHANICSVILLE 5 NE	5865	03	ST. MARY'S	38 28	76 42W	100	07	07		H
MILLERS 4 NE	5934	06	CARROLL	39 43	76 48W	860	18	18		CH
NATL ARBORETUM DC	6350	04	DISTRICT OF COLUMBIA	38 55	76 58W	50	07	07		H
OAKLAND 1 SE	6620	08	GARRETT	39 25	79 24W	2420	07	07		H
OXON HILL	6800	04	PRINCE GEORGE'S	38 47	76 60W	120	08	08		H
PRINCESS ANNE	7330	01	SOMERSET	38 13	75 41W	20	17	17		H
ROYAL OAK 2 SSW	7806	02	TALBOT	38 43	76 11W	10	17	17		H
SALISBURY 2N	8004	01	WICOMICO	38 24	75 36W	20	17	17		H
SALISBURY FAA AP	8005	01	WICOMICO	38 20	75 31W	48	24	24		H
SAVAGE RIVER DAM	8065	08	GARRETT	39 31	79 8W	1495	08	08	08	CH
SHARPSBURG 5 S	8207	07	WASHINGTON	39 24	77 43W	500	07	07		H
SINES DEEP CREEK	8315	08	GARRETT	39 31	79 25W	2040	07	07		H
SMITHSBURG 2NW	8371	06	WASHINGTON	39 40	77 35W	670	08	08		H
SNOW HILL 4 N	8380	01	WORCESTER	38 14	75 23W	30	17	17		H
SOLOMONS	8405	03	CALVERT	38 19	76 27W	12	08	08		H
UPPER MARLBORO 3 NNW	9070	04	PRINCE GEORGE'S	38 51	76 46W	130	08	08	08	H
WILLIAMSPORT	9570	07	WASHINGTON	39 37	77 51W	360	06	06		H
DELAWARE										
DOVER	2730	02	KENT	39 15	75 31W	30	16	16		H
WILMINGTON NEW CASTLE CO AP R	9595	01	NEW CASTLE	39 40	75 36W	79	24	24		HJ
WILMINGTON PORTER RES	9605	01	NEW CASTLE	39 46	75 32W	270	24	24		H

REFERENCE NOTES

STATION NAMES: Name of the city, town or locality. Figures and letters following the station names indicate the distance in miles and direction from the post office or town community center.

DIVISIONS: Areas within a state of similar climatological characteristics. Division averages are calculated using data from stations that record temperature and/or precipitation. Station Precipitation totals flagged with an 'F' or 'M' are excluded from the Divisional Average calculations of precipitation. Stations with monthly Temperature averages flagged with an 'F' or 'M' are included in the Divisional Average if there are no more than 9 flagged or missing daily values in the month, else they are excluded from the divisional average for temperature.

NORMALS: The average value of the meteorological element over a time period. Effective 1 January 2012, the averaging period is 1981 to 2010. The normals for National Weather Service localities have been adjusted so as to be representative for the current observation site.

MONTHLY DEGREE DAY TOTALS: One heating (cooling) degree day is accumulated for each whole degree that the daily mean temperature is below (above) 65 degrees Fahrenheit.

PRECIPITATION: Values shown in hundredths of inches are water equivalent totals, i.e., total of liquid and melted frozen precipitation. In the "Monthly Summarized Data" table the total snow and sleet values shown in tenths of inches are unmelted amounts. The max depth on ground values of snow and sleet shown in whole inches are cumulative unmelted amounts. The number of days with .10, .50, 1.00 or more refers to water equivalents.

PRECIPITATION QUALITY CONTROL: The NCDC quality control process may flag precipitation data that are spatially inconsistent, exceed climatological limits, or are inconsistent with prevailing weather patterns.

TEMPERATURE: Original temperature values are given in the "Daily Temperature" table. Summary temperature information (averages, departures, extremes, monthly degree day totals) is based on the values labeled MAX/MIN.

WIND: (As shown in the "Evaporation and Wind" table) the total wind movement in miles over the evaporation pan as determined by an anemometer recorder located 6-8 inches above the pan.

SYMBOLS AND LETTERS USED IN THE STATION INDEX TABLE

C Station is equipped with recording rain gage (R) but values in this bulletin are from a non-recording rain gage unless indicated by an R.

G Observations appear in the "Soil Temperatures" table.

H Observations appear in the "Snowfall and Snow on the Ground" table.

J Station also published as a Local Climatological Data publication.

VAR Observation time varies.

SR Observation time near sunrise.

SS Observation time near sunset.

SYMBOLS AND LETTERS USED IN THE DATA TABLES

(DAILY DATA ARE FOR THE 24 HOURS IMMEDIATELY PRECEDING OBSERVATION TIME.)

BLANK Entries in the "Monthly Summarized Data" table indicate no record.

BLANK Entries in the "Daily Precipitation" and "Snowfall and Snow on the Ground" tables indicate zero.

BLANK Entries in the "Daily Temperature" table indicate a missing record

- No record. Data not recorded or not received in time for publication.

+ Precipitation or temperature extremes occurred on one or more previous dates during the month.

* Rain gage not read. Precipitation is included in the amount following the asterisks.

Time distribution may not be known. A * preceding the monthly total indicates precipitation amount is being carried forward to next month's total, and may include amounts from the previous month(s).

a As a subscript, indicates accumulated total.

A Amount of precipitation is the total of observer's entries for the current month. It may include precipitation that occurred during the previous month. Refer to earlier bulletin to determine date of last reading. (Hawaii stations)

B Divisional Departure from normals are computed using 1971-2000 normals.

E Normalized HDD/CDD Calculation. E is appended to the HDD/CDD Calculation when 1-9 individual daily TMAX and/or TMIN values are missing and a Normalized HDD/CDD Calculation is provided. M appears alone if 10 or more daily values are missing.

F Monthly calculation flagged value. F is appended to average and/or total values computed which exclude one or more daily data values that have been flagged by the GHCN-Daily Dataset

M Insufficient or partial data. M is appended to average and/or total values computed with 1-9 daily values missing. M appears alone if 10 or more daily values are missing, (8 or more for wind and evaporation).

N Indicates snow fall or Snowdepth totals are computed with one or more missing days.

R Amounts from recording rain gage.

T Trace. An amount too small to measure.

SEASONAL TABLES: Monthly and seasonal snowfall and heating degree days for the 12 months ending with the June data are published in the July issue of this bulletin. Cooling degree days for the calendar year are published in the "Climatological Data Annual Summary."

Information concerning the history of changes in locations, exposure, etc. of substations is kept on file at the National Climatic Data Center. Historical information of regular National Weather Service Offices may be obtained from the "Local Climatological Data" annual publication. The contents of this publication may be reprinted or otherwise used freely, with proper credit to the National Climatic Data Center. The data are also available digitally.

Effective with the January 2011 Data-Month, COOP Observer Names are no longer included in the Monthly and Annual Climatological Data Publications. This information is not published to ensure the privacy of personal information pursuant to Section 208 of the E-Government Act of 2002 (44 USC 3601).

As of the 2011 Data-Year, Station and Climate Division Maps are no longer being included in the CD Publications. NCDC's Product Development Branch provides updated Station Maps for various data networks via the Historical Observing Metadata Repository: <http://www.ncdc.noaa.gov/homr>.

The GHCN-Daily Quality Control Flags shown below are displayed as superscripts with the data. For more Information on Global Historical Climatology Network - Daily and flags, see: <http://www.ncdc.noaa.gov/oa/climate/ghcn-daily/> and

Comprehensive Automated Quality Assurance of Daily Surface Observations.

Durre, Imke, Matthew J. Menne, Byron E. Gleason, Tamara G. Houston,

Russell S. Vose, 2010: J. Appl. Meteor. Climatol., 49, 1615-1633.

doi: 10.1175/2010JAMC2375.1

Blank = Passed All checks

D = failed duplicate check

G = failed gap check

I = failed internal consistency check

K = failed streak/frequent-value check

L = failed check on length of multiday period

M = failed megaconsistency check

N = failed naught check

O = failed climatological outlier check

R = failed lagged range check

S = failed spatial consistency check

T = failed temporal consistency check

W = temperature too warm for snow

X = failed bounds check

Z = flagged as a result of an official Datzilla investigation

Beginning with the January 2013 CD Publication, monthly mean temperature calculations have changed to the National Data Stewardship Team standard. Monthly maximum and minimum temperatures are not rounded until after the monthly mean temperature is calculated. This is the most accurate outcome, but may be slightly different from the mean derived from rounded monthly maximum and minimum.

Processing Updates and Errata: The 2011 CD Publications were reproduced in May 2013. This update included the addition of late reports and corrections based on additional investigations of reported data issues through NCDC's Datzilla system. In addition, divisional averages for precipitation were recalculated using the method described in DIVISIONS above. Previous editions of the 2011 Publications included all precipitation stations regardless of missing data in the calculation of divisional averages. HDD/CDD values were recalculated to match the legacy method of calculation (truncation of monthly HDD/CDD values instead of rounding).

NOAA\National Climatic Data Center
Attn: User Engagement & Services Branch
151 Patton Avenue
Asheville, NC 28801-5001

Customer Services Number: (828) 271-4800, option 2
TDD : (828) 271-4010
Fax number: (828) 271-4876

NCDC now offers free online access to the *Climatological Data* publication.
Go to : www.ncdc.noaa.gov and choose Most Popular.