



CLIMATOLOGICAL DATA

MARYLAND AND DELAWARE

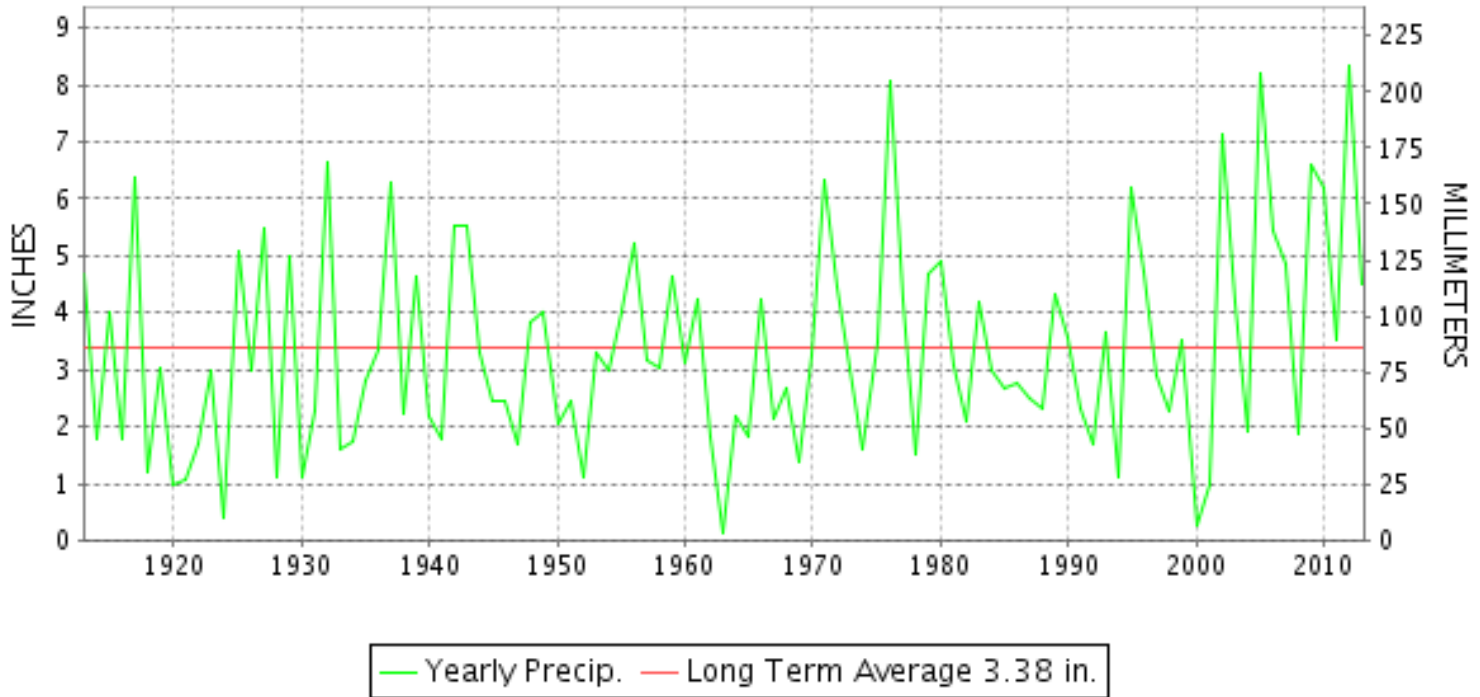
OCTOBER 2013

VOLUME 117 NUMBER 10

ISSN 0145-0549

GHCND Ver: 3.12-upd-2014012106

OCTOBER PRECIPITATION BY YEAR



TEMPERATURE AND PRECIPITATION EXTREMES

MARYLAND

HIGHEST TEMPERATURE	92	OCTOBER 05+	2 STATIONS
LOWEST TEMPERATURE	25	OCTOBER 29++	2 STATIONS
GREATEST TOTAL PRECIPITATION	8.05		MILLERS 4 NE
LEAST TOTAL PRECIPITATION	1.76		OAKLAND 1 SE
GREATEST 1 DAY PRECIPITATION	3.91	OCTOBER 11	MILLERS 4 NE
GREATEST TOTAL SNOWFALL	1.5		OAKLAND 1 SE
GREATEST DEPTH OF SNOW OR ICE	1		SINES DEEP CREEK

"I certify that this is an official publication of the National Oceanic and Atmospheric Administration (NOAA) It is compiled using information from weather observing sites supervised by NOAA/National Weather Service and received at the National Climatic Data Center(NCDC), Asheville, North Carolina 28801."

Director
National Climatic Data Center

noaa

National
Oceanic and
Atmospheric Administration

National
Environmental Satellite, Data
and Information Service

National
Climatic Data Center
Asheville, North Carolina

DELAWARE

HIGHEST TEMPERATURE	87	OCTOBER 04+	2 STATIONS
LOWEST TEMPERATURE	32	OCTOBER 31++	2 STATIONS
GREATEST TOTAL PRECIPITATION	5.80		DOVER
LEAST TOTAL PRECIPITATION	1.97		WILMINGTON NEW CASTLE CO AP
GREATEST 1 DAY PRECIPITATION	2.04	OCTOBER 11	WILMINGTON PORTER RES

MONTHLY STATION AND DIVISION SUMMARY

STATION	TEMPERATURE (°F)														PRECIPITATION (IN)									
	AVERAGE MAXIMUM	AVERAGE MINIMUM	AVERAGE	DEPARTURE FROM NORMAL	HIGHEST	DATE	LOWEST	DATE	HEATING DEG. DAYS	COOLING DEG. DAYS	NO. OF DAYS				TOTAL	DEPARTURE FROM NORMAL	GREATEST 24 HOURS	DATE	ICE PELLETS, SNOW			NO. OF DAYS		
											MAX		MIN						TOTAL	MAX DEPTH ON GROUND	DATE	.10 OR MORE	.50 OR MORE	1.00 OR MORE
											>=90	<=32	<=32	<=0										
APPALACHIAN MOUNTAIN 07																								
CUMBERLAND 2	68.0	46.0	57.0	1.0	92	07	26	27+	288	47	1	0	4	0	2.36	-0.21	0.61	11	0.0			6	2	0
FROSTBURG 2	60.1	43.5	51.8	1.8	84	07	27	27+	423	22	0	0	6	0	3.25	0.21	0.75	12	M 0.1	M T	24	7	3	0
SHARPSBURG 5 S	67.4	43.5	55.4	0.8	89	07	26	26+	324	36	0	0	6	0	6.35	2.94	3.54	11	0.0			6	3	2
WILLIAMSPORT	67.3	46.7	57.0	2.4	87	07	30	27	278	40	0	0	3	0	7.67	4.61	3.65	11	M 0.0	0		6	3	2
--DIVISIONAL DATA----->			55.3	2.6B																				
ALLEGHENY PLATEAU 08																								
OAKLAND 1 SE	61.4	39.9	50.7	1.3	84	07	25	29+	443	8	0	0	11	0	1.76	-1.39	0.37	18	1.5	0		6	0	0
SAVAGE RIVER DAM	60.5M	40.5M	50.5M	-0.3	78	04+	28	27+	442E	3E	0	0	7	0	M 0.89	-1.77	0.33	08	0.0			3	0	0
SINES DEEP CREEK	59.9M	40.3M	50.1M		82	07	25	27+	460E	5E	0	0	12	0	M 2.05		0.54	24	M 1.0	1	25	8	1	0
--DIVISIONAL DATA----->			50.4	1.2B																				
DELAWARE NORTHERN 01																								
WILMINGTON NEW CASTLE CO AP	69.1	49.0	59.0	2.8	87	04	33	28+	227	49	0	0	0	0	1.97	-1.45	0.93	11	0.0	0		3	2	0
WILMINGTON PORTER RES	66.5	49.0	57.8	2.0	84	04	32	31+	263	46	0	0	3	0	3.45	-0.36	2.04	11	0.0			3	2	1
--DIVISIONAL DATA----->			58.4	2.6B																				
SOUTHERN 02																								
DOVER	69.0	50.5	59.7	1.0	87	04	32	26	207	54	0	0	1	0	A 5.80	2.38	1.51	10	0.0			4	3	2
--DIVISIONAL DATA----->			59.7	2.4B																				

MARYLAND AND DELAWARE
201310

DAILY PRECIPITATION (INCHES)

STATION	TOTAL	DAY OF MONTH																																			
		01	02	03	04	05	06	07	08	09	10	11	12	13	14	15	16	17	18	19	20	21	22	23	24	25	26	27	28	29	30	31					
MARYLAND																																					
SOUTHERN																																					
EASTERN SHORE 01																																					
ASSATEAGUE	M	-	-	-	-	-	-	-	-	-	-	-	-	-	-	-	-	-	-	-	-	-	-	-	-	-	-	-	-	-	-	-	-	-	-		
PRINCESS ANNE	M	-	-	-	-	-	-	0.18	1.25	-	-	-	-	-	-	-	-	-	-	-	-	-	-	0.09	-	-	-	-	-	-	-	-	-	-	-	-	
SALISBURY 2N	M	-	-	-	-	-	-	-	-	-	-	-	-	-	-	-	-	-	-	-	-	-	-	-	-	-	-	-	-	-	-	-	-	-	-		
SALISBURY FAA AP	3.68							0.58		0.67	1.14	0.46	0.27	0.49					T		T			0.07										T			
SNOW HILL 4 N	M	-	-	-	-	-	-	-	-	-	-	-	-	-	-	-	-	-	-	-	-	-	-	-	-	-	-	-	-	-	-	-	-	-	-		
CENTRAL																																					
EASTERN SHORE 02																																					
ROYAL OAK 2 SSW	3.33							0.58	0.06	0.12	1.13	0.61	0.37	0.08		0.01	T	0.02		0.04			T	0.25									0.05	0.01			
LOWER SOUTHERN 03																																					
MECHANICSVILLE 5 NE	4.74								0.71		1.80	1.05	0.58	0.25	0.06		0.03	T	0.02			T		0.11	0.13												
SOLOMONS	A 4.63								0.51		1.45	1.26	0.22	0.54			0.14	*	0.04 _a					0.47									*	*	0.00 _a	T	
UPPER SOUTHERN 04																																					
BALTIMORE WASH INTL AP	7.62							0.84		0.07	2.35	3.66	0.41	0.10		T		0.07			T		T	T										0.11	0.01		
BELTSVILLE	MA 5.38	-	*	*	*	*	*	*	*	*	*	*	*	*	*	*	*	5.27 _a	0.09																	0.02	
DALECARLIA RSVR	M 7.91								1.56		0.86	2.20	2.78	0.18	0.13		0.02		0.07					0.01										0.10	-		
LAUREL 3 W	5.69								1.02		0.10	1.67	1.40	1.09	0.24				0.05		0.03			0.02										0.04	0.03		
MARYLAND SCIENCE CENTER	4.69								0.73		0.03	2.12	1.53	0.03	0.03				0.05		0.06													0.10	0.01		
NATL ARBORETUM DC	6.49								1.26	0.01	1.32	1.23	2.37	0.17	0.01				0.02					0.06				T						0.03	0.01		
OXON HILL	6.04								1.00		1.25	0.72	2.75	0.09			0.01	T	T			T		0.16									0.01	0.05			
UPPER MARLBORO 3 NNW	7.33								0.87		1.25	1.67	3.05	0.29		0.03																		0.05			
NORTHERN CENTRAL 06																																					
ABERDEEN PHILLIPS FLD	4.97									0.79	0.80	2.25	0.78	0.11									0.03											0.03	0.18		
BRIGHTON DAM	6.35									1.06	0.49	2.55	1.63	0.38	0.04					0.10														0.10			
CONOWINGO DAM	5.05									0.53	0.19	3.40	0.93																								
CYLBURN	5.88									1.08	0.46	2.22	1.70	0.24									0.05											0.08	0.03		
DAMASCUS 3 SSW	7.50				0.04					2.08	0.10	1.44	2.47	0.64	0.39		0.02	0.02	0.10		0.07			0.01	T	T							0.08	0.04			
EMMITSBURG 2 SE	6.51									0.70		T	3.58	1.67	0.35	0.04			T		0.10		0.07			T							T	T			
FREDERICK 2 NNE	M	-	-	-	-	-	-	-	-	-	-	-	-	-	-	-	-	-	-	-	-	-	-	-	-	-	-	-	-	-	-	-	-	-	-		
MILLERS 4 NE	8.05				T					1.40		1.95	3.91	0.25	0.25					0.02	0.04	T	0.13										0.08	0.02			
SMITHSBURG 2NW	M	-	-	-	-	-	-	-	-	-	-	-	-	-	-	-	-	-	-	-	-	-	-	-	-	-	-	-	-	-	-	-	-	-	-		
APPALACHIAN																																					
MOUNTAIN 07																																					
CUMBERLAND 2	2.36								0.20	0.42		0.61	0.55	0.02	0.12						0.36		0.02												0.01		
FROSTBURG 2	3.25								0.07	0.41		0.72	0.75	0.26	0.50	0.02					0.30		0.04										T	T			
SHARPSBURG 5 S	6.35									0.62		0.10	3.54	1.36	0.35	0.19					0.08		0.04										0.07	T			
WILLIAMSPORT	7.67									0.85		3.65	2.32	0.42	0.22						0.16		0.05														
ALLEGHENY PLATEAU 08																																					
OAKLAND 1 SE	1.76								0.21	0.22		0.35	0.15	0.05		0.01		0.03	0.37		0.08			0.15	0.05	0.01	0.05						0.02	0.01			
SAVAGE RIVER DAM	M 0.89										0.33	-	T	0.27	-	-	-	-	-	-	-	-	-	-	-	-	-	-	-	-	-	-	-	-	-		

DAILY PRECIPITATION (INCHES)

STATION	TOTAL	DAY OF MONTH																																	
		01	02	03	04	05	06	07	08	09	10	11	12	13	14	15	16	17	18	19	20	21	22	23	24	25	26	27	28	29	30	31			
SINES DEEP CREEK	M 2.05	-						0.03	0.35			0.30	0.10	0.02				0.05	0.25		0.13			0.18	0.54	0.10									
DELAWARE NORTHERN 01																																			
WILMINGTON NEW CASTLE CO AP	1.97							0.39		T	0.57	0.93	0.01					T		0.02				T	T							0.03	0.02		
WILMINGTON PORTER RES	3.45							0.49			0.83	2.04	0.09											T								T	T		
SOUTHERN 02																																			
DOVER	A 5.80							0.66	0.01		1.51	1.47	*	1.66 _a			T			0.02			T		0.47										

DAILY TEMPERATURES (°F)

STATION	OB. TIME	MAX/MIN	DAY OF MONTH																															AVERAGE		
			01	02	03	04	05	06	07	08	09	10	11	12	13	14	15	16	17	18	19	20	21	22	23	24	25	26	27	28	29	30	31			
MARYLAND SOUTHERN EASTERN SHORE 01 ASSATEAGUE	VA	MAX MIN																																		M M
PRINCESS ANNE	17	MAX MIN				89			88	86											69	72	69	58	58				69	69				M M		
SALISBURY 2N	17	MAX MIN				61			61	57											51	51	45	39	34				36	48				M M		
SALISBURY FAA AP	24	MAX MIN	83	87	87	89	92	90	87	67	66	71	72	70	70	72	69	77	79	72	65	66	69	73	58	58	58	61	64	70	70	65	75	72.6		
SNOW HILL 4 N	17	MAX MIN	51	59	61	61	64	65	63	57	59	63	69	65	64	56	55	60	62	49	47	42	40	50	40	35	33	30	38	36	45	47	52	52.2		
CENTRAL EASTERN SHORE 02 ROYAL OAK 2 SSW	17	MAX MIN	80	84	82	85	87	88	81	65	60	61	68	66	66	70	72	71	77	70	63	64	68	69	57	55	58	59	62	65	65	65	69	69.4		
LOWER SOUTHERN 03 MECHANICSVILLE 5 NE	07	MAX MIN	71	77	81	80	82	83	84	77	62	60	59	63	65	62	65	68	67	74	64	61	64	64	65	56	52	54	55	63	62	64	66	66.8		
SOLOMONS	08	MAX MIN	74	75	82	79	83	84	85	85	63	63	63	66	66	64	66	65		67	66	63	66	67	54	57	54			63	64	65	68.3			
UPPER SOUTHERN 04 BALTIMORE WASH INTL AP	24	MAX MIN	83	86	83	89	90	86	75	68	60	58	64	68	65	69	71	69	75	66	65	63	67	64	58	53	56	56	60	65	62	65	69	68.6		
BELTSVILLE	08	MAX MIN	75															87	75	65	64	62	66	63	57	50	54	54	59	64	64	66	M			
DALECARLIA RSVR	08	MAX MIN	77	81	85	84	86	88	88	88	65	61	61	62	67	63	70	70	74	76	65	66	62	67	64	57	51	51	56	60	63	64		69.1		
LAUREL 3 W	24	MAX MIN	82	85	84	88	89	89	75	70	68	57	62	69	64	71	73	70	77	69	65	68	66	66	57	57	56	55	60	65	64	66	68	69.5		
MARYLAND SCIENCE CENTER	24	MAX MIN	85	89	84	91	89	88	78	69	64	61	68	72	69	72	75	70	76	69	70	66	71	66	60	55	58	59	62	67	65	66	72	71.2		
NATL ARBORETUM DC	07	MAX MIN	62	68	69	69	74	70	61	57	59	57	61	63	60	60	58	62	64	57	54	50	49	52	48	44	40	40	46	46	50	53	57	56.8		
OXON HILL	08	MAX MIN	74	83	86	88	88	91	89	78	69	62	63	68	74	71	74	73	78	67	64	68	66	59	52	56	56	61	66	64	66	66	70.8			
			51	58	61	61	66	66	70	50	54	55	55	63	66	62	51	54	61	52	47	46	40	41	44	42	37	32	37	38	39	40	52	51.3		
UPPER MARLBORO 3 NNW	08	MAX MIN	76	82	85	84	88	89	88	75	65	60	59	63	66	64	68	71	71	75	66	64	63	66	64	57	51	54	56	61	63	63	65	68.5		
			53	58	58	60	63	66	66	51	51	53	53	59	59	56	51	52	60	53	47	48	42	42	47	44	37	32	32	40	41	43	51	50.6		
NORTHERN CENTRAL 06 ABERDEEN PHILLIPS FLD	07	MAX MIN	78	83	86	85	89	90	89	76	65	60	58	62	66	64	69	72	72	76	68	64	65	68	66	58	54	57	58	61	67	67	66	69.6		
			49	55	56	58	59	62	63	47	47	53	53	58	59	55	47	47	58	50	43	45	37	37	44	36	34	28	29	34	34	36	49	47.2		
			72	80	85	81	85	87	86	75	67	65	60	66	70	66	65	72	70	71	67	66	63	66	63	57	53	55	56	60	62	63	59	68.2		
			49	51	59	59	61	63	69	48	50	55	55	60	60	55	47	47	59	51	46	47	38	39	43	39	35	33	33	33	33	44	47	48.6		

DAILY TEMPERATURES (°F)

STATION	OB. TIME	MAX/MIN	DAY OF MONTH																															AVERAGE	
			01	02	03	04	05	06	07	08	09	10	11	12	13	14	15	16	17	18	19	20	21	22	23	24	25	26	27	28	29	30	31		
BRIGHTON DAM	08	MAX	71	78	81	81	83	84	85	70	65	59	58	62	65	63	67	70	68	74	63	64	60	64	60	60	50	52	54	56	61	61	66	66.3	
		MIN	46	53	53	53	60	62	66	44	44	52	53	57	57	54	47	47	57	48	42	43	35	36	42	36	33	27	31	31	31	40	48	46.1	
CONOWINGO DAM	07	MAX	69	75	80	77	79	82	81	75	65	60	59	64	69	65	65	68	65	70	63	63	61	64	65	64	64	54	56	58	57	56	66.4		
		MIN	50	51	55	59	61	63	66	48	47	50	53	59	59	52	49	48	56	49	43	43	38	37	38	38	34	33	31	31	34	39	44	47.0	
CYLBURN	08	MAX	72	78	82	80	85	86	83	73	63	59	59	63	63	64	67	70	66	72	64	64	60	65	59	54	50	53	54	57	61	61	61	66.1	
		MIN	50	63	61	61	61	66	55	47	47	51	51	57	54	54	51	51	57	47	44	43	39	46	44	39	35	35	36	34	39	39	49	48.6	
DAMASCUS 3 SSW	22	MAX	77	82	80	82	84	84	71	64	58	54	60	64	59	66	68	67	71	62	60	58	64	58	53	46	51	58	56	59	59	65	65	64.7	
		MIN	54	56	60	60	63	64	53	45	47	50	52	59	56	50	48	54	59	48	46	39	42	45	42	36	33	30	36	34	36	46	53	48.3	
EMMITSBURG 2 SE	07	MAX	74	80	85	84	85	87	88	73	67	62	61	67	72	67	67	71	69	75	65	62	62	67	60	54	51	54	55	59	63	61	67	68.2	
		MIN	44	51	51	55	57	60	60	47	46	47	47	55	57	52	45	45	55	48	39	39	34	34	37	34	36	31	31	29	30	36	45	44.4	
FREDERICK 2 NNE	07	MAX																																M	
		MIN																																	M
MILLERS 4 NE	18	MAX	79	82	81	85	86	84	79	66	62	55	59	69	64	68	72	65	71	63	61	59	65	58	53	48	53	53	56	60	60	64	64	65.9	
		MIN	51	56	57	58	63	61	58	43	45	49	53	57	53	49	44	50	56	48	39	40	36	44	37	33	33	29	37	30	33	41	49	46.2	
SMITHSBURG 2NW	08	MAX																																	M
		MIN																																	M
APPALACHIAN MOUNTAIN 07																																			
CUMBERLAND 2	18	MAX	79	82	86	84	88	89	92	66	70	65	59	61	66	62	63	72	67	69	67	61	64	73	60	49	48	53	59	59	64	65	66	68.0	
		MIN	48	54	54	58	62	61	63	47	43	43	53	54	58	58	56	51	51	52	39	39	35	35	40	39	37	26	26	32	32	35	45	46.0	
FROSTBURG 2	07	MAX	68	72	77	77	79	82	84	58	63	58	53	55	58	55	55	64	64	61	58	56	55	65	50	41	41	40	50	50	56	58	60	60.1	
		MIN	46	53	57	56	62	60	58	41	42	43	47	50	52	52	51	48	49	43	38	37	36	35	36	32	30	27	27	32	32	33	44	43.5	
SHARPSBURG 5 S	07	MAX	76	81	84	84	86	88	89	71	68	61	54	61	68	58	68	71	70	77	65	63	62	68	60	49	49	53	56	59	60	62	68	67.4	
		MIN	46	51	52	55	58	61	60	42	41	42	51	54	56	52	46	47	56	46	40	36	35	35	36	33	26	26	27	29	29	31	48	43.5	
WILLIAMSPORT	06	MAX	75	80	83	82	85	86	87	73	68	64	57	68	67	61	68	71	70	72	64	61	61	66	60	53	50	51	56	59	61	60	66	67.3	
		MIN	48	53	56	57	60	63	62	54	45	46	52	52	59	52	51	50	53	54	44	41	41	36	39	37	35	32	30	33	32	37	45	46.7	
ALLEGHENY PLATEAU 08																																			
OAKLAND 1 SE	07	MAX	65	73	75	79	78	79	84	65	61	61	64	65	60	59	67	65	66	67	57	56	53	65	49	42	37	37	48	51	59	60	57	61.4	
		MIN	42	42	49	51	55	54	53	36	38	38	46	54	53	53	52	46	48	41	31	32	28	28	39	31	29	26	26	25	25	27	40	39.9	
SAVAGE RIVER DAM	08	MAX	67	75	78	78				60		58	57			60	65	67	64	60	60	55	64			42	41	51	51	59	58	62	60.5		
		MIN	45	52	53	54				40		41	48			54	49	50	48	35	35	32	32			33	28	28	31	30	32	42	40.5		
SINES DEEP CREEK	07	MAX		71	72	76	76	77	82	58	65	62	61	57	63	61	66	66	68	63	58	55	51	62	47	38	37	37	48	48	56	57	58	59.9	
		MIN		46	47	50	55	55	54	40	40	40	46	50	54	54	54	47	48	44	32	31	30	30	31	32	31	25	25	27	26	29	37	40.3	
DELAWARE NORTHERN 01																																			
WILMINGTON NEW CASTLE CO AP	24	MAX	81	84	80	87	86	83	82	68	63	62	65	73	70	69	74	69	72	67	66	64	67	67	59	54	56	57	60	64	63	58	71	69.1	
		MIN	53	57	58	61	65	67	54	47	53	54	59	61	56	48	47	57	61	48	44	44	39	42	42	37	34	33	38	33	38	43	46	49.0	
WILMINGTON PORTER RES	24	MAX	78	81	81	84	83	83	79	64	60	59	62	69	66	65	69	68	71	67	65	65	65	65	56	50	52	53	55	60	60	60	68	66.5	
		MIN	55	62	63	62	65	65	57	50	54	52	58	59	55	51	51	55	60	50	48	46	45	47	43	38	34	33	32	32	33	33	32	49.0	
SOUTHERN 02																																			
DOVER	16	MAX	81	84	82	87	85	84	81	64	63	61	64	67	67	67	73	71	74	71	65	62	69	70	56	54	56	57	59	67	67	60	70	69.0	

MARYLAND AND DELAWARE
201310

DAILY TEMPERATURES (°F)

STATION	OB. TIME	MAX/MIN	DAY OF MONTH																															AVERAGE
			01	02	03	04	05	06	07	08	09	10	11	12	13	14	15	16	17	18	19	20	21	22	23	24	25	26	27	28	29	30	31	
		MIN	54	60	61	61	66	64	60	53	54	55	59	60	56	52	50	56	59	50	46	45	39	47	45	39	34	32	37	35	40	48	48	50.5

SNOWFALL AND SNOW ON GROUND (INCHES)

STATION		DAY OF MONTH																														
		01	02	03	04	05	06	07	08	09	10	11	12	13	14	15	16	17	18	19	20	21	22	23	24	25	26	27	28	29	30	31
MARYLAND																																
SOUTHERN																																
EASTERN SHORE 01																																
ASSATEAGUE	SNOWFALL																															
PRINCESS ANNE	SNOWFALL																															
SALISBURY 2N	SNOWFALL																															
SALISBURY FAA AP	SNOWFALL																															
	SN ON GND																															
SNOW HILL 4 N	SNOWFALL																															
APPALACHIAN																																
MOUNTAIN 07																																
FROSTBURG 2	SNOWFALL	-	-	-	-	-	-	-	-	-	-	-	-	-	-	-	-	-	-	-	-	-	-	-	0.1	T	-	-	-	-	-	
	SN ON GND	-	-	-	-	-	-	-	-	-	-	-	-	-	-	-	-	-	-	-	-	-	-	T	-	-	-	-	-	-	-	
SHARPSBURG 5 S	SNOWFALL																															
WILLIAMSPORT	SNOWFALL																															
	SN ON GND																															
	WTR EQUIV																															
ALLEGHENY PLATEAU 08																																
OAKLAND 1 SE	SNOWFALL																															
	SN ON GND																									1.5						
SAVAGE RIVER DAM	SNOWFALL																															
SINES DEEP CREEK	SNOWFALL	-	-	-	-	-	-	-	-	-	-	-	-	-	-	-	-	-	-	-	-	-	-	-	-	1.0	-	-	-	-	-	
	SN ON GND	-	-	-	-	-	-	-	-	-	-	-	-	-	-	-	-	-	-	-	-	-	-	-	-	1	-	-	-	-	-	
DELAWARE																																
NORTHERN 01																																
WILMINGTON NEW CASTLE CO AP	SNOWFALL																															
	SN ON GND																															
WILMINGTON PORTER RES	SNOWFALL																															

Snowfall: Includes snow and ice. Values for NWS stations (J index note) are Mid-Mid (LST).

Snow on ground: Includes snow, sleet, ice, and hail. Values for NWS stations (J index note) are observed at 12 UTC (GMT).

Water Equivalent: Given for NWS stations (J index note) only, when snow depth is 2 inches or more, and is measured at 18 UTC (GMT)

PAN EVAPORATION AND WIND

STATION		DAY OF MONTH																															TOTAL OR AVERAGE	
		01	02	03	04	05	06	07	08	09	10	11	12	13	14	15	16	17	18	19	20	21	22	23	24	25	26	27	28	29	30	31		
MARYLAND UPPER SOUTHERN 04 BELTSVILLE	WIND	15	-	-	-	-	-	-	-	-	-	-	-	-	-	-	-	-	-	-	-	-	-	-	-	-	-	-	-	-	-	-	-	M
	EVAP	0.14	-	-	-	-	-	-	-	-	-	-	-	-	-	-	-	-	-	-	-	-	-	-	-	-	-	-	-	-	-	-	-	M
	MAX	-	-	-	-	-	-	-	-	-	-	-	-	-	-	-	-	-	-	-	-	-	-	-	-	-	-	-	-	-	-	-	-	77.0
	MIN	50	-	-	-	-	-	-	-	-	-	-	-	-	-	-	-	-	-	-	-	-	-	-	-	-	-	-	-	-	-	-	-	50.0
UPPER MARLBORO 3 NNW	WIND	-	-	-	-	-	-	-	-	-	-	-	-	-	-	-	-	-	-	-	-	-	-	-	-	-	-	-	-	-	-	-	M	
	EVAP	-	-	-	-	-	-	-	-	-	-	-	-	-	-	-	-	-	-	-	-	-	-	-	-	-	-	-	-	-	-	-	M	
	MAX	-	-	-	-	-	-	-	-	-	-	-	-	-	-	-	-	-	-	-	-	-	-	-	-	-	-	-	-	-	-	-	M	
	MIN	-	-	-	-	-	-	-	-	-	-	-	-	-	-	-	-	-	-	-	-	-	-	-	-	-	-	-	-	-	-	-	-	M
ALLEGHENY PLATEAU 08 SAVAGE RIVER DAM	WIND	-	-	-	-	-	-	-	-	-	-	-	-	-	-	-	-	-	-	-	-	-	-	-	-	-	-	-	-	-	-	-	M	
	EVAP	-	-	-	-	-	-	-	-	-	-	-	-	-	-	-	-	-	-	-	-	-	-	-	-	-	-	-	-	-	-	-	M	
	MAX	-	-	-	-	-	-	-	-	-	-	-	-	-	-	-	-	-	-	-	-	-	-	-	-	-	-	-	-	-	-	-	-	-
	MIN	-	-	-	-	-	-	-	-	-	-	-	-	-	-	-	-	-	-	-	-	-	-	-	-	-	-	-	-	-	-	-	-	M

Evaporation: Is measured in hundreths of inches.

Wind: Is measured in miles.

Max and Min: The maximum and minimum temperatures (Fahrenheit) of the water in the evaporation pan.

STATION INDEX

STATION	INDEX NO.	DIVISION	COUNTY	LATITUDE	LONGITUDE	ELEVATION (IN FEET)	OBSERVATION TIME AND TABLES			
							LOCAL STD TIME			
							TEMP	PRECIP	EVAP	SPECIAL SEE (NOTES)
MARYLAND										
ABERDEEN PHILLIPS FLD	0015	06	HARFORD	39 28	76 10W	57	07	07		CH
ASSATEAGUE	0335	01	WORCESTER	38 4	75 13W	10	VAR	VAR		H
BALTIMORE WASH INTL AP R	0465	04	ANNE ARUNDEL	39 10	76 41W	156	24	24		HJ
BELTSVILLE	0700	04	PRINCE GEORGE'S	39 2	76 56W	145	08	08	08	CH
BRIGHTON DAM	1125	06	MONTGOMERY	39 11	77 0W	330	08	08		H
CONOWINGO DAM	2060	06	HARFORD	39 39	76 11W	40	07	07		H
CUMBERLAND 2	2282	07	ALLEGANY	39 39	78 45W	730	18	18		H
CYLBURN	2308	06	BALTIMORE	39 21	76 39W	235	08	08		H
DALECARLIA RSVR	2325	04	DISTRICT OF COLUMBIA	38 56	77 7W	150	08	08		H
DAMASCUS 3 SSW	2336	06	MONTGOMERY	39 16	77 14W	700	22	22		H
EMMITSBURG 2 SE	2906	06	FREDERICK	39 41	77 17W	403	07	07		H
FREDERICK 2 NNE	3353	06	FREDERICK	39 26	77 24W	280	07	07		H
FROSTBURG 2	3415	07	ALLEGANY	39 40	78 56W	2170	07	07		H
LAUREL 3 W	5111	04	PRINCE GEORGE'S	39 5	76 54W	400	24	24		H
MARYLAND SCIENCE CENTER R	5718	04	BALTIMORE (CITY)	39 17	76 37W	20	24	24		H
MECHANICSVILLE 5 NE	5865	03	ST. MARY'S	38 28	76 42W	100	07	07		H
MILLERS 4 NE	5934	06	CARROLL	39 43	76 48W	860	18	18		CH
NATL ARBORETUM DC	6350	04	DISTRICT OF COLUMBIA	38 55	76 58W	50	07	07		H
OAKLAND 1 SE	6620	08	GARRETT	39 25	79 24W	2420	07	07		H
OXON HILL	6800	04	PRINCE GEORGE'S	38 47	76 60W	120	08	08		H
PRINCESS ANNE	7330	01	SOMERSET	38 13	75 41W	20	17	17		H
ROYAL OAK 2 SSW	7806	02	TALBOT	38 43	76 11W	10	17	17		H
SALISBURY 2N	8004	01	WICOMICO	38 24	75 36W	20	17	17		H
SALISBURY FAA AP	8005	01	WICOMICO	38 20	75 31W	48	24	24		H
SAVAGE RIVER DAM	8065	08	GARRETT	39 31	79 8W	1495	08	08	08	CH
SHARPSBURG 5 S	8207	07	WASHINGTON	39 24	77 43W	500	07	07		H
SINES DEEP CREEK	8315	08	GARRETT	39 31	79 25W	2040	07	07		H
SMITHSBURG 2NW	8371	06	WASHINGTON	39 40	77 35W	670	08	08		H
SNOW HILL 4 N	8380	01	WORCESTER	38 14	75 23W	30	17	17		H
SOLOMONS	8405	03	CALVERT	38 19	76 27W	12	08	08		H
UPPER MARLBORO 3 NNW	9070	04	PRINCE GEORGE'S	38 51	76 46W	130	08	08	08	H
WILLIAMSPORT	9570	07	WASHINGTON	39 37	77 51W	360	06	06		H
DELAWARE										
DOVER	2730	02	KENT	39 15	75 31W	30	16	16		H
WILMINGTON NEW CASTLE CO AP R	9595	01	NEW CASTLE	39 40	75 36W	79	24	24		HJ
WILMINGTON PORTER RES	9605	01	NEW CASTLE	39 46	75 32W	270	24	24		H

REFERENCE NOTES

STATION NAMES: Name of the city, town or locality. Figures and letters following the station names indicate the distance in miles and direction from the post office or town community center.

DIVISIONS: Areas within a state of similar climatological characteristics. Division averages are calculated using data from stations that record temperature and/or precipitation. Station Precipitation totals flagged with an 'F' or 'M' are excluded from the Divisional Average calculations of precipitation. Stations with monthly Temperature averages flagged with an 'F' or 'M' are included in the Divisional Average if there are no more than 9 flagged or missing daily values in the month, else they are excluded from the divisional average for temperature.

NORMALS: The average value of the meteorological element over a time period. Effective 1 January 2012, the averaging period is 1981 to 2010. The normals for National Weather Service localities have been adjusted so as to be representative for the current observation site.

MONTHLY DEGREE DAY TOTALS: One heating (cooling) degree day is accumulated for each whole degree that the daily mean temperature is below (above) 65 degrees Fahrenheit.

PRECIPITATION: Values shown in hundredths of inches are water equivalent totals, i.e., total of liquid and melted frozen precipitation. In the "Monthly Summarized Data" table the total snow and sleet values shown in tenths of inches are unmelted amounts. The max depth on ground values of snow and sleet shown in whole inches are cumulative unmelted amounts. The number of days with .10, .50, 1.00 or more refers to water equivalents.

PRECIPITATION QUALITY CONTROL: The NCDC quality control process may flag precipitation data that are spatially inconsistent, exceed climatological limits, or are inconsistent with prevailing weather patterns.

TEMPERATURE: Original temperature values are given in the "Daily Temperature" table. Summary temperature information (averages, departures, extremes, monthly degree day totals) is based on the values labeled MAX/MIN.

WIND: (As shown in the "Evaporation and Wind" table) the total wind movement in miles over the evaporation pan as determined by an anemometer recorder located 6-8 inches above the pan.

SYMBOLS AND LETTERS USED IN THE STATION INDEX TABLE

C Station is equipped with recording rain gage (R) but values in this bulletin are from a non-recording rain gage unless indicated by an R.

G Observations appear in the "Soil Temperatures" table.

H Observations appear in the "Snowfall and Snow on the Ground" table.

J Station also published as a Local Climatological Data publication.

VAR Observation time varies.

SR Observation time near sunrise.

SS Observation time near sunset.

SYMBOLS AND LETTERS USED IN THE DATA TABLES

(DAILY DATA ARE FOR THE 24 HOURS IMMEDIATELY PRECEDING OBSERVATION TIME.)

BLANK Entries in the "Monthly Summarized Data" table indicate no record.

BLANK Entries in the "Daily Precipitation" and "Snowfall and Snow on the Ground" tables indicate zero.

BLANK Entries in the "Daily Temperature" table indicate a missing record

- No record. Data not recorded or not received in time for publication.

+ Precipitation or temperature extremes occurred on one or more previous dates during the month.

* Rain gage not read. Precipitation is included in the amount following the asterisks.

Time distribution may not be known. A * preceding the monthly total indicates precipitation amount is being carried forward to next month's total, and may include amounts from the previous month(s).

a As a subscript, indicates accumulated total.

A Amount of precipitation is the total of observer's entries for the current month. It may include precipitation that occurred during the previous month. Refer to earlier bulletin to determine date of last reading. (Hawaii stations)

B Divisional Departure from normals are computed using 1971-2000 normals.

E Normalized HDD/CDD Calculation. E is appended to the HDD/CDD Calculation when 1-9 individual daily TMAX and/or TMIN values are missing and a Normalized HDD/CDD Calculation is provided. M appears alone if 10 or more daily values are missing.

F Monthly calculation flagged value. F is appended to average and/or total values computed which exclude one or more daily data values that have been flagged by the GHCN-Daily Dataset

M Insufficient or partial data. M is appended to average and/or total values computed with 1-9 daily values missing. M appears alone if 10 or more daily values are missing, (8 or more for wind and evaporation).

N Indicates snow fall or Snowdepth totals are computed with one or more missing days.

R Amounts from recording rain gage.

T Trace. An amount too small to measure.

SEASONAL TABLES: Monthly and seasonal snowfall and heating degree days for the 12 months ending with the June data are published in the July issue of this bulletin. Cooling degree days for the calendar year are published in the "Climatological Data Annual Summary."

Information concerning the history of changes in locations, exposure, etc. of substations is kept on file at the National Climatic Data Center. Historical information of regular National Weather Service Offices may be obtained from the "Local Climatological Data" annual publication. The contents of this publication may be reprinted or otherwise used freely, with proper credit to the National Climatic Data Center. The data are also available digitally.

Effective with the January 2011 Data-Month, COOP Observer Names are no longer included in the Monthly and Annual Climatological Data Publications. This information is not published to ensure the privacy of personal information pursuant to Section 208 of the E-Government Act of 2002 (44 USC 3601).

As of the 2011 Data-Year, Station and Climate Division Maps are no longer being included in the CD Publications. NCDC's Product Development Branch provides updated Station Maps for various data networks via the Historical Observing Metadata Repository: <http://www.ncdc.noaa.gov/homr>.

The GHCN-Daily Quality Control Flags shown below are displayed as superscripts with the data. For more Information on Global Historical Climatology Network - Daily and flags, see: <http://www.ncdc.noaa.gov/oa/climate/ghcn-daily/> and Comprehensive Automated Quality Assurance of Daily Surface Observations. Durre, Imke, Matthew J. Menne, Byron E. Gleason, Tamara G. Houston, Russell S. Vose, 2010: J. Appl. Meteor. Climatol., 49, 1615-1633. doi: 10.1175/2010JAMC2375.1

Blank = Passed All checks

D = failed duplicate check

G = failed gap check

I = failed internal consistency check

K = failed streak/frequent-value check

L = failed check on length of multiday period

M = failed megaconsistency check

N = failed naught check

O = failed climatological outlier check

R = failed lagged range check

S = failed spatial consistency check

T = failed temporal consistency check

W = temperature too warm for snow

X = failed bounds check

Z = flagged as a result of an official Datzilla investigation

Beginning with the January 2013 CD Publication, monthly mean temperature calculations have changed to the National Data Stewardship Team standard. Monthly maximum and minimum temperatures are not rounded until after the monthly mean temperature is calculated. This is the most accurate outcome, but may be slightly different from the mean derived from rounded monthly maximum and minimum.

Processing Updates and Errata: The 2011 CD Publications were reproduced in May 2013. This update included the addition of late reports and corrections based on additional investigations of reported data issues through NCDC's Datzilla system. In addition, divisional averages for precipitation were recalculated using the method described in DIVISIONS above. Previous editions of the 2011 Publications included all precipitation stations regardless of missing data in the calculation of divisional averages. HDD/CDD values were recalculated to match the legacy method of calculation (truncation of monthly HDD/CDD values instead of rounding).

These and other publications are available from the National Climatic Data Center

Hourly Precipitation Data

This publication contains hourly precipitation amounts obtained from recording rain gages located at National Weather Service, Federal Aviation Administration, and cooperative observer stations. Published data are displayed in inches and tenths or inches and hundredths at local standard time. HPD includes maximum precipitation for nine (9) time periods from 15 minutes to 24 hours, for selected stations.

Climatological Data

Monthly editions contain station daily maximum and minimum temperatures and precipitation. Some Stations provide daily snowfall, snow depth, evaporation, and soil temperature data. Each edition also contains monthly summaries for heating and cooling degree days (65 degree F base). The July issue contains a recap of monthly heating degree days and snow data for the preceding July through June.

The Annual issue contains monthly and annual averages of temperature, precipitation, temperature extremes, freeze data, soil temperatures, evaporation, and a recap of monthly cooling degree days.

Storm Data

Monthly issues contain a chronological listing, by states, of occurrences of storms and unusual weather phenomena. Reports contain information on storm paths, deaths, injuries, and property damage. An "Outstanding storms of the month" section highlights severe weather events with photographs, illustrations, and narratives. The December issue includes annual tornado, lightning, flash flood, and tropical cyclone summaries.

Monthly Climatic Data for the World

This publication contains monthly means for temperature, pressure, precipitation, vapor pressure, and sunshine for approximately 2,000 surface data collection stations worldwide and monthly mean upper air temperatures, dew point depressions, and wind velocities for approximately 500 observing sites.

Local Climatological Data

LCD publications summarize temperature, relative humidity, precipitation, cloudiness, wind speed and direction observations for several hundred cities in the U.S. and its territories. Each monthly publication also contains 3 hourly weather observations for that month and a hourly summary of precipitation. Annual LCD publications contain a summary of the past calendar year as well as historical averages and extremes.

For Information Call:

(828) 271-4800 Option 2

(828) 271-4010 (TDD)

(828) 271-4876 (Fax)

NOAA\National Climatic Data Center
Attn: User Engagement & Services Branch
151 Patton Avenue
Asheville, NC 28801-5001

Customer Services Number: (828) 271-4800, option 2
TDD : (828) 271-4010
Fax number: (828) 271-4876

NCDC now offers free online access to the *Climatological Data* publication.
Go to : www.ncdc.noaa.gov and choose Most Popular.