



CLIMATOLOGICAL DATA

MARYLAND AND DELAWARE

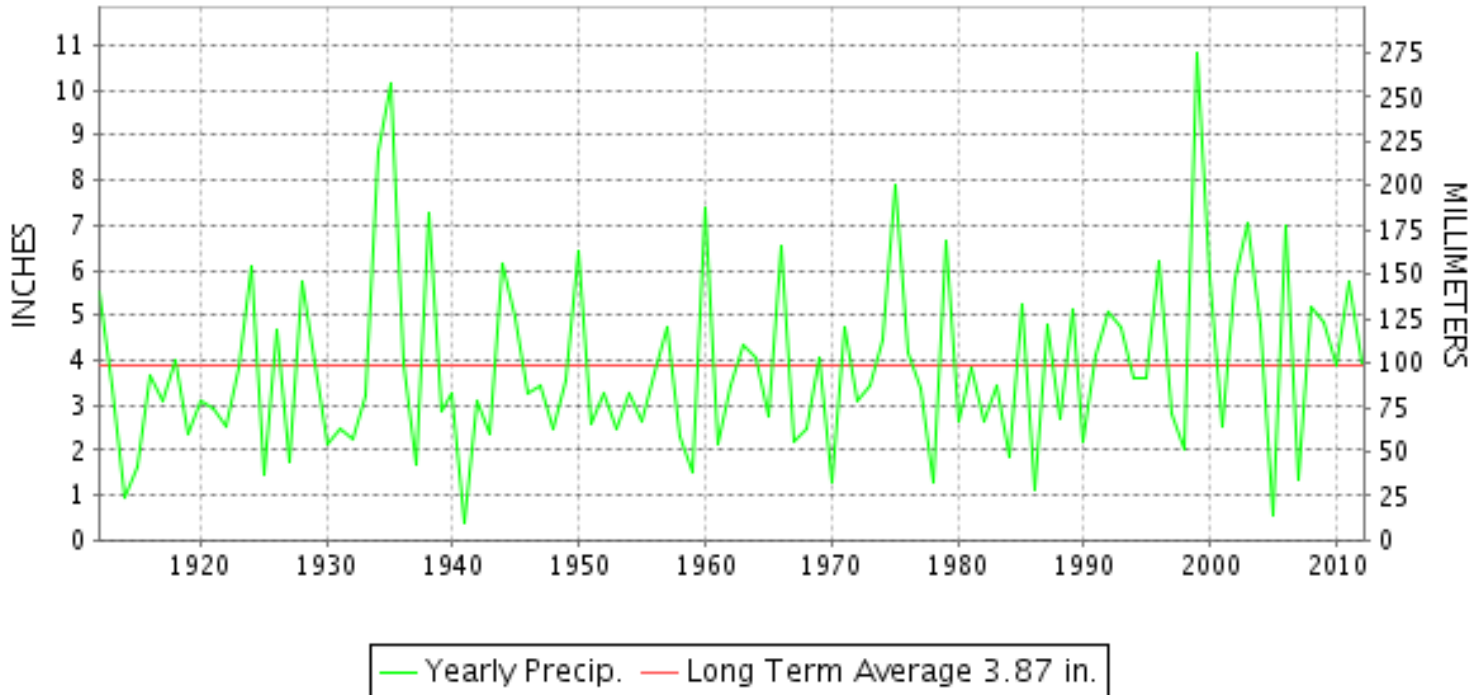
SEPTEMBER 2012

VOLUME 116 NUMBER 09

ISSN 0145-0549

GHCND Ver: 3.00-upd-2013012406

SEPTEMBER PRECIPITATION BY YEAR



TEMPERATURE AND PRECIPITATION EXTREMES

MARYLAND

HIGHEST TEMPERATURE	96	SEPTEMBER 01+	3 STATIONS
LOWEST TEMPERATURE	31	SEPTEMBER 26+	SINES DEEP CREEK
GREATEST TOTAL PRECIPITATION	10.66		SALISBURY 2N
LEAST TOTAL PRECIPITATION	1.64		MECHANICSVILLE 5 NE
GREATEST 1 DAY PRECIPITATION	4.65	SEPTEMBER 02	SALISBURY 2N

"I certify that this is an official publication of the National Oceanic and Atmospheric Administration (NOAA) It is compiled using information from weather observing sites supervised by NOAA/National Weather Service and received at the National Climatic Data Center(NCDC), Asheville, North Carolina 28801."

Director
National Climatic Data Center

noaa

National
Oceanic and
Atmospheric Administration

National
Environmental Satellite, Data
and Information Service

National
Climatic Data Center
Asheville, North Carolina

DELAWARE

HIGHEST TEMPERATURE	93	SEPTEMBER 01	WILMINGTON NEW CASTLE CO AP
LOWEST TEMPERATURE	43	SEPTEMBER 25	BEAR 2 SW
GREATEST TOTAL PRECIPITATION	6.48		WILMINGTON PORTER RES
LEAST TOTAL PRECIPITATION	3.73		DOVER
GREATEST 1 DAY PRECIPITATION	3.09	SEPTEMBER 03	WILMINGTON PORTER RES

MONTHLY STATION AND DIVISION SUMMARY

STATION	TEMPERATURE (°F)											PRECIPITATION (IN)														
	AVERAGE MAXIMUM	AVERAGE MINIMUM	AVERAGE	DEPARTURE FROM NORMAL	HIGHEST	DATE	LOWEST	DATE	HEATING DEG. DAYS	COOLING DEG. DAYS	NO. OF DAYS				TOTAL	DEPARTURE FROM NORMAL	GREATEST 24 HOURS	DATE	ICE PELLETS, SNOW			NO. OF DAYS				
											MAX		MIN						TOTAL	MAX DEPTH ON GROUND	DATE	.10 OR MORE	.50 OR MORE	1.00 OR MORE		
											>=90	<=32	<=32	<=0												
--DIVISIONAL DATA-----> APPALACHIAN MOUNTAIN 07			66.0	-0.6B										4.23	-0.10B											
CUMBERLAND 2	80.5	53.3	66.9	-0.5	96	01	38	26+	79	140	5	0	0	0	3.05	-0.18	1.45	18	0.0			5	2	1		
FROSTBURG 2	72.3	50.7	61.5	0.5	86	08+	38	26+	165	69	0	0	0	0	3.75	0.07	1.47	18	0.0			7	3	1		
SHARPSBURG 5 S	78.3	52.6	65.5	-0.1	92	01	41	26+	88	109	4	0	0	0	A 5.09	1.09	2.86	19	0.0			6	2	1		
WILLIAMSPORT	80.0M	54.2M	67.1M	0.5	94	01	39	24	71E	144E	6	0	0	0	FMA 4.56	0.70	1.64	19	M 0.0	0		6	4	1		
--DIVISIONAL DATA-----> ALLEGHENY PLATEAU 08			65.3	1.2B										3.96	0.47B											
OAKLAND 1 SE	74.2M	47.8M	61.0M	1.0	86	01	35	24	186E	74E	0	0	0	0	M 3.87	0.42	1.38	18	M 0.0	0		6	3	1		
SAVAGE RIVER DAM	73.8M	50.4M	62.1M	0.1	88	01	35	26+	151E	69E	0	0	0	0	M 3.57	0.25	1.18	18	0.0			6	3	1		
SINES DEEP CREEK	70.2	45.8	58.0		84	01	31	26+	240	37	0	0	2	0	4.37		1.03	18	0.0			8	3	1		
--DIVISIONAL DATA-----> DELAWARE NORTHERN 01			60.4	-0.1B										4.37	0.77B											
BEAR 2 SW	77.5	56.8	67.2	0.7	91	01	43	25	60	128	1	0	0	0	5.59	0.96	2.34	03	0.0	0		8	4	1		
WILMINGTON NEW CASTLE CO AP	78.0	58.5	68.3	0.5	93	01	47	25	41	143	1	0	0	0	5.29	0.97	2.26	03	0.0	0		7	2	2		
WILMINGTON PORTER RES	75.2	59.3	67.3	0.1	89	01	49	25	42	117	0	0	0	0	6.48	1.58	3.09	03	0.0			7	4	2		
--DIVISIONAL DATA-----> SOUTHERN 02			67.6	0.2B										5.79	1.47B											
DOVER	78.9	59.2	69.1	-0.6	90	01	48	24+	33	162	1	0	0	0	A 3.73	-0.40	0.98	06	0.0			5	2	0		
--DIVISIONAL DATA----->			69.1	0.8B										3.73	-0.42B											

DAILY PRECIPITATION (INCHES)

STATION	TOTAL	DAY OF MONTH																																
		01	02	03	04	05	06	07	08	09	10	11	12	13	14	15	16	17	18	19	20	21	22	23	24	25	26	27	28	29	30	31		
MARYLAND																																		
SOUTHERN																																		
EASTERN SHORE 01																																		
ASSATEAGUE	M	-	-	-	-	-	-	-	-	-	-	-	-	-	-	-	-	-	-	-	-	-	-	-	-	-	-	-	-	-	-	-	-	
PRINCESS ANNE	FMA 3.96	-	-	0.00	0.96 ^L _a		2.82		-	0.20									0.78													0.16	-	-
SALISBURY 2N	10.66		4.65	1.22			2.30		0.03	0.35									0.03	0.54				0.43								1.10	0.01	
SALISBURY FAA AP	7.74	0.41	0.46	1.13		1.70	2.39		0.17	0.03								T	0.49			0.02	T		T					0.81	0.13			
SNOW HILL 4 N	7.45		0.80	0.62		0.16	3.77		0.30	0.20									T	0.54											1.06			
CENTRAL																																		
EASTERN SHORE 02																																		
ROYAL OAK 2 SSW	2.82		1.11	0.07	0.02	T	0.16		0.20	0.17										0.81	0.20											0.08		
LOWER SOUTHERN 03																																		
MECHANICSVILLE 5 NE	1.64		0.07	T	0.02	0.03	T	0.13		0.43									0.19	0.51										T	0.26		T	
SOLOMONS	3.81		0.02	0.04				2.18		0.39									0.02	0.79				T							0.37		T	
UPPER SOUTHERN 04																																		
BALTIMORE WASH INTL AP	2.21	0.32		T	0.01	0.46	0.02		0.44									0.02	0.60			0.04				0.09	0.11	0.06				0.04		
BELTSVILLE	2.41		0.16	0.04	0.01			0.06	T	0.69									0.28	0.58			0.17			0.05	T	0.37						
DALECARLIA RSVR	3.18		0.19	0.30	0.03			0.12		0.86									0.16	0.85											0.66	0.01		
LAUREL 3 W	2.16						0.05		0.51										0.90			0.02				0.15	0.15	0.23				0.15		
MARYLAND SCIENCE CENTER	3.00	0.03	1.31	0.19	0.02		0.03		0.27										0.76			0.01				0.12	0.13	0.04				0.09		
NATL ARBORETUM DC	3.75		0.10	1.05	0.01			0.17		0.82									0.26	0.75					0.01		0.12	0.13	0.04			T		
OXON HILL	4.68		1.27	0.07	T		0.19	0.25		0.82									0.26	1.07						0.01				0.58	0.17			
UPPER MARLBORO 3 NNW	3.16		0.71	0.10	T		0.22	0.15			0.54								0.04	0.86						0.02				0.38	0.14			
NORTHERN CENTRAL 06																																		
ABERDEEN PHILLIPS FLD	2.14				0.43	0.01		0.04		0.62									0.25	0.45			0.20			0.06	0.05	0.03						
BRIGHTON DAM	FA 2.48	0.00 ^L	T ^L _a	0.02	0.03		0.00 ^L	0.10 ^L _a	T ^L	0.45 ^L _a	0.03								0.20	1.38			0.02		0.20	0.00 ^L	0.58 ^L _a	0.60						
CONOWINGO DAM	4.14				0.68	0.03	0.10			0.83									0.40	1.30			0.18			0.01	0.48	0.13						
CYLBURN	MA 3.70	*	*	*	*	1.38 ^a	0.07			0.60									0.24	1.00				-	-	0.28	0.11					0.02		
DAMASCUS 3 SSW	3.02	T	0.01		0.12	0.01	0.03		0.24	T									1.33	0.26			0.03			0.21	0.39	0.24				0.15		
EMMITSBURG 2 SE	6.41	T	0.08	0.10	0.54			T	0.05	0.86									0.67	3.55						0.07	0.23	0.26						
FREDERICK 2 NNE	M	-	-	-	-	-	-	-	-	-	-	-	-	-	-	-	-	-	-	-	-	-	-	-	-	-	-	-	-	-	-	-		
MILLERS 4 NE	5.25		0.02	2.19	0.31	T	T		0.68	T									1.46	0.08			0.02			0.03	0.25	0.16				0.05		
SMITHSBURG 2NW	4.43			0.10	0.10					0.85									0.70	1.85						0.05	0.30	0.48						
WESTMINSTER	M	-	-	-	-	-	-	-	-	-	-	-	-	-	-	-	-	-	-	-	-	-	-	-	-	-	-	-	-	-	-	-		
APPALACHIAN																																		
MOUNTAIN 07																																		
CUMBERLAND 2	3.05	0.05	0.05	0.07		0.02	T			0.14									1.45	0.48						0.04	0.16	0.59						
FROSTBURG 2	3.75	0.03	0.06	0.09	0.02	0.35	T			0.12	T								1.47	0.70						0.13	0.23	0.53				0.01		
SHARPSBURG 5 S	A 5.09		0.01	0.18	0.02					0.72	*	*	*	0.00 ^L _a	*	0.00 ^L _a			0.42	2.86						0.09	0.37	0.42						
WILLIAMSPORT	FMA 4.56			0.85		0.15				0.96									0.63	1.64							0.33	-	-					
ALLEGHENY PLATEAU 08																																		
OAKLAND 1 SE	M 3.87		0.84	0.29		0.48				0.03	0.29	0.01							1.38	0.55						-	-	-	-	-	-	-		

DAILY PRECIPITATION (INCHES)

STATION	TOTAL	DAY OF MONTH																														
		01	02	03	04	05	06	07	08	09	10	11	12	13	14	15	16	17	18	19	20	21	22	23	24	25	26	27	28	29	30	31
SAVAGE RIVER DAM	M 3.57	T	0.08	0.31		0.22				0.05			-					1.18	0.56			T				0.03	0.22	0.92		T		
SINES DEEP CREEK	4.37	0.02	0.30	0.20		0.35				0.38					0.02			1.03	0.90							0.05	0.38	0.74				
DELAWARE NORTHERN 01																																
BEAR 2 SW	5.59		0.29	2.34	0.02	0.63	0.01		0.55									0.97	0.01			0.40			T	0.02	0.21	0.01		0.13		
WILMINGTON NEW CASTLE CO AP	5.29		0.20	2.26	0.08	0.31	0.01		0.42					T				1.41	T		0.34				T	0.23	0.01		T	0.02		
WILMINGTON PORTER RES	6.48		0.11	3.09	0.70	0.08			0.34									1.34	0.05		0.57				T	0.15	0.05					
SOUTHERN 02																																
DOVER	A 3.73		*	*	1.64 _a		0.98	T		0.29								0.51				0.10										

DAILY TEMPERATURES (°F)

STATION	OB. TIME	MAX/MIN	DAY OF MONTH																															AVERAGE			
			01	02	03	04	05	06	07	08	09	10	11	12	13	14	15	16	17	18	19	20	21	22	23	24	25	26	27	28	29	30	31				
MARYLAND SOUTHERN EASTERN SHORE 01 ASSATEAGUE	VA	MAX MIN																																			M M M
PRINCESS ANNE	17	MAX MIN			87 75	84 72	88 72	87 63	87 61			76 55	73 47	78 48	82 48	84 52					79 53	84 69	80 58	69 47	80 53			72 48	77 46	82 63	85 64	84 63			M M M		
SALISBURY 2N	17	MAX MIN	89 73	86 71	84 72	85 75	84 76	85 67	84 63	85 71	84 63	76 56	75 50	79 51	80 52	81 56	77 61	74 54	77 61	79 50	77 61	74 50	79 81	79 81	74 52	79 61	81 55	81 47	69 66	73 63	80 83	83 81	81 64	76 58	72 50	79.8	
SALISBURY FAA AP	24	MAX MIN	90 73	84 73	86 74	90 77	87 75	78 66	87 62	88 67	81 62	78 56	78 50	81 51	83 54	84 56	79 53	78 52	80 54	83 70	76 57	78 54	81 52	84 59	73 50	72 47	76 46	83 63	85 64	85 62	69 54	74 50	81.0				
SNOW HILL 4 N	17	MAX MIN	89 64	89 68	85 71	89 67	87 74	84 66	86 58	86 69	86 64	76 56	77 46	79 46	81 48	82 52	77 56	75 48	79 45	83 66	77 61	78 48	80 48	83 54	81 57	71 41	76 42	80 56	81 59	84 60	79 57	73 48	81.1				
CENTRAL EASTERN SHORE 02 ROYAL OAK 2 SSW	17	MAX MIN	89 73	84 69	83 73	89 73	85 77	82 68	86 63	88 73	85 62	76 60	77 48	79 51	79 52	81 58	77 62	76 51	78 51	79 68	72 60	75 46	78 50	84 60	77 56	71 44	75 46	83 65	82 62	81 64	69 58	73 49	79.8				
LOWER SOUTHERN 03 MECHANICSVILLE 5 NE	07	MAX MIN	81 70	86 70	82 70	82 72	85 74	85 74	77 64	83 64	84 58	75 55	72 48	72 48	75 49	75 52	77 54	73 51	72 50	72 58	76 47	68 47	71 51	74 53	80 45	66 45	66 46	71 46	70 61	79 61	77 57	68 49	75.8				
SOLOMONS	08	MAX MIN	92 76	90 75	84 75	87 76	89 77	89 69	79 75	86 63	87 60	78 61	75 60	75 61	77 63	77 65	79 66	74 62	75 63	76 65	80 62	70 58	73 61	75 66	85 58	68 55	71 57	76 65	83 68	83 67	79 61	69 57	79.4				
UPPER SOUTHERN 04 BALTIMORE WASH INTL AP	24	MAX MIN	93 73	83 72	84 75	89 75	91 75	85 70	88 68	89 65	79 59	75 56	79 51	79 53	81 55	82 55	77 57	76 53	74 53	79 65	71 52	73 49	77 53	84 63	69 50	68 50	75 46	82 61	81 63	79 63	70 55	73 51	79.5				
BELTSVILLE	08	MAX MIN	94 68	91 70	83 72	86 72	88 74	90 65	82 72	90 57	78 48	74 50	74 52	78 53	80 60	81 51	81 49	76 62	75 59	73 62	78 69	69 54	74 58	78 51	84 49	67 43	67 56	75 62	83 64	82 64	78 54	69 47	79.8				
DALECARLIA RSVR	08	MAX MIN	95 70	95 70	81 72	86 72	87 74	88 75	83 67	89 69	75 63	77 55	73 51	72 52	81 53	81 57	82 57	82 56	75 54	74 53	71 57	68 49	75 51	79 58	82 50	66 50	67 50	74 58	82 62	79 63	79 55	73 50	79.0				
LAUREL 3 W	24	MAX MIN	93 73	83 72	86 73	88 73	91 77	82 74	92 69	90 65	80 59	76 56	80 54	81 58	82 57	82 58	79 59	76 55	74 66	78 66	72 57	76 51	75 54	84 62	71 51	69 52	75 50	82 61	83 64	79 66	70 54	74 52	80.1				
MARYLAND SCIENCE CENTER	24	MAX MIN	95 80	85 76	87 78	94 74	94 80	86 74	91 73	93 70	83 66	78 64	81 59	82 62	83 65	86 65	79 63	78 62	79 69	82 73	76 61	79 58	88 62	71 57	72 58	80 55	86 65	82 70	81 67	71 60	76 57	82.4					
NATL ARBORETUM DC	07	MAX MIN	96 73	93 73	84 72	87 73	91 76	91 68	84 73	91 59	81 60	76 51	76 54	79 55	82 57	83 63	78 55	76 53	74 56	80 60	72 49	77 52	85 58	86 55	65 48	69 51	76 48	85 52	69 62	85 64	88 57	72 48	82.6				
OXON HILL	08	MAX MIN	95 71	92 71	81 72	84 72	88 73	84 75	82 68	90 68	88 60	80 59	75 51	79 52	81 53	82 58	76 63	76 53	74 54	78 54	71 61	76 49	79 49	84 54	69 49	69 49	76 49	84 62	83 64	78 57	70 49	80.2					
UPPER MARLBORO 3 NNW	08	MAX MIN	96 71	92 68	82 71	84 72	90 74	87 74	82 65	89 68	89 57	80 54	75 49	79 49	80 51	82 53	84 56	78 51	76 49	74 53	79 59	72 46	75 48	80 52	85 52	69 47	70 45	76 50	85 62	84 64	81 57	72 47	80.9				
NORTHERN CENTRAL 06 ABERDEEN PHILLIPS FLD	07	MAX MIN	92 67	90 71	80 72	81 74	88 76	87 72	81 68	87 68	85 59	78 58	75 49	76 49	79 51	81 55	81 55	75 52	73 49	76 49	79 60	70 48	74 48	78 54	82 51	69 49	68 44	74 45	80 63	76 65	79 53	72 48	78.9				

DAILY TEMPERATURES (°F)

STATION	OB. TIME	MAX/MIN	DAY OF MONTH																															AVERAGE
			01	02	03	04	05	06	07	08	09	10	11	12	13	14	15	16	17	18	19	20	21	22	23	24	25	26	27	28	29	30	31	
BRIGHTON DAM	08	MAX	89	88	79	83	84	87	79	87	85	77	77	77	76	78	78	78	69	75	67	72	75	75	65	65	70	78	78	75	67	77.0		
		MIN	60	69	71	70	70	70	65	65	56	53	47	47	47	47	55	50	60	56	45	45	59	47	46	41	49	58	62	51	46	55.2		
CONOWINGO DAM	07	MAX	89	88	79	77	85	83	80	86	85	76	73	74	76	77	78	73	76	76	67	71	74	80	66	66	71	79	74	74	64	76.3		
		MIN	66	68	70	67	71	68	68	66	58	56	49	48	51	56	56	52	49	49	59	47	47	51	52	46	44	44	60	62	56	50	56.2	
CYLBURN	08	MAX	86	85	79	81	85	83	79	88	86	73	70	71	77	78	77	71	70	73	75	65	70	74	80	63	63	72	78	74	73	64	75.4	
		MIN	69	69	73	74	75	71	67	68	58	54	49	50	52	54	56	52	51	67	57	47	47	52	49	48	45	45	60	61	53	51	57.5	
DAMASCUS 3 SSW	22	MAX	87	76	83	83	86	80	87	84	74	70	74	79	79	78	72	69	72	73	66	72	76	81	64	64	71	78	76	72	65	68	75.3	
		MIN	70	68	72	70	72	69	66	63	54	50	46	51	55	55	56	52	51	66	51	46	53	61	47	45	45	58	60	61	50	46	57.0	
EMMITSBURG 2 SE	07	MAX	89	88	79	83	82	84	83	87	82	74	71	72	77	78	78	73	71	75	71	66	70	76	79	65	64	71	77	74	72	65	75.9	
		MIN	59	67	69	69	71	70	66	65	53	54	45	45	46	49	50	48	45	46	54	43	49	53	46	46	42	42	59	62	48	48	53.6	
FREDERICK 2 NNE	07	MAX																															M	
		MIN																															M	
MILLERS 4 NE	18	MAX	87	82	83	84	85	83	89	83	75	71	74	78	79	80	75	72	74	71	67	72	76	80	69	64	71	76	74	74	68	68	76.1	
		MIN	69	66	70	68	71	68	66	66	54	50	45	49	51	51	55	50	49	65	53	42	51	60	45	43	43	58	59	61	50	45	55.8	
SMITHSBURG 2NW	08	MAX	90	88	87	83	83	87	85	88	80	73	71	73	78	79	79	73	72	76	70	66	72	78	80	64	64	71	76	75	71	65	76.6	
		MIN	51	61	66	69	70	69	65	65	51	48	43	43	46	50	48	47	45	47	49	41	43	61	43	41	40	40	59	60	45	45	51.7	
WESTMINSTER	07	MAX																															M	
		MIN																															M	
APPALACHIAN MOUNTAIN 07																																		
CUMBERLAND 2	18	MAX	96	90	81	85	88	94	95	95	77	77	73	81	85	86	89	77	76	80	69	71	78	84	83	67	70	74	79	78	70	66	80.5	
		MIN	57	70	71	71	71	69	66	65	51	50	45	45	49	54	53	49	48	49	50	41	42	54	49	43	38	38	56	61	46	47	53.3	
FROSTBURG 2	07	MAX	86	82	76	77	81	84	86	86	70	69	64	74	79	79	80	67	69	73	64	61	72	75	73	58	60	69	70	69	60	57	72.3	
		MIN	58	65	66	67	68	65	63	63	51	49	43	43	47	51	47	46	46	48	44	40	40	51	43	41	38	38	58	56	43	42	50.7	
SHARPSBURG 5 S	07	MAX	92	90	80	85	84	90	86	90	83	76	73	75	80	81	82	74	73	76	72	67	74	79	83	66	67	73	79	77	74	67	78.3	
		MIN	59	66	67	70	71	70	66	66	51	48	44	44	47	50	50	48	46	46	51	42	45	52	45	44	41	41	57	59	47	46	52.6	
WILLIAMSPORT	06	MAX	94	90	89	84	84	90	87	91	90	90	74	76	80	82	81	75	74	76	71	72	74	80	83	67	67	73	80		67	80.0		
		MIN	60	68	68	71	71	71	67	66	56	53	49	48	49	53	52	52	48	47	52	45	46	51	49	39	40	41	58		48	54.2		
ALLEGHENY PLATEAU 08																																		
OAKLAND 1 SE	07	MAX	86	78	80	78	81	85	85	84	71	67	66	73	79	78	78	68	70	74	65	60	72	73	71	59						74.2		
		MIN	47	66	68	66	67	64	61	59	52	42	37	38	42	47	42	41	39	40	40	36	38	38	41	35						47.8		
SAVAGE RIVER DAM	08	MAX	88	82	74	78	80	84	86	87	71	71	69		77	78	80	69	69	73	73	63	69	75	75	75	61	70	73	63	64	62	73.8	
		MIN	51	67	67	68	68	66	63	61	53	47	42		45	51	48	46	45	44	44	39	39	50	46	39	35	55	59	44	44	50.4		
SINES DEEP CREEK	07	MAX	84	83	77	77	80	82	82	82	65	66	65	70	75	77	76	63	68	72	63	58	68	71	72	60	56	66	69	68	59	57	70.2	
		MIN	47	47	64	65	65	63	59	58	50	44	35	35	41	46	46	41	40	40	42	36	37	45	43	36	31	31	54	56	38	38	45.8	
DELAWARE NORTHERN 01																																		
BEAR 2 SW	24	MAX	91	78	79	87	86	80	87	86	78	74	76	79	79	80	75	75	76	79	70	73	77	83	68	68	73	79	76	78	65	70	77.5	
		MIN	67	70	71	72	70	68	65	66	60	52	46	50	52	53	53	50	46	67	50	45	49	57	47	45	43	61	63	64	53	48	56.8	
WILMINGTON NEW CASTLE CO AP	24	MAX	93	79	78	87	85	80	86	87	80	75	77	77	78	81	77	75	76	80	72	73	77	84	69	68	74	80	78	78	64	71	78.0	
		MIN	71	71	71	73	71	68	66	66	59	53	49	52	55	56	55	53	50	68	52	48	51	60	49	48	47	62	63	63	54	50	58.5	

DAILY TEMPERATURES (°F)

STATION	OB. TIME	MAX/MIN	DAY OF MONTH																															AVERAGE
			01	02	03	04	05	06	07	08	09	10	11	12	13	14	15	16	17	18	19	20	21	22	23	24	25	26	27	28	29	30	31	
WILMINGTON PORTER RES	24	MAX	89	78	75	83	84	79	86	85	75	71	72	76	77	78	72	73	75	77	68	71	75	81	66	64	72	77	72	76	62	67	75.2	
		MIN	74	70	69	71	73	68	67	64	60	56	52	55	56	58	59	56	52	56	53	55	60	52	50	49	61	63	62	54	51			
SOUTHERN 02 DOVER	16	MAX	90	80	82	88	86	86	87	86	76	75	77	81	80	81	76	75	78	80	74	72	76	84	69	70	75	84	82	79	67	71	78.9	
		MIN	74	69	71	75	76	70	64	64	61	58	50	52	54	57	58	53	50	68	51	48	49	60	50	48	49	61	65	64	56	51		59.2

SNOWFALL AND SNOW ON GROUND (INCHES)

STATION		DAY OF MONTH																														
		01	02	03	04	05	06	07	08	09	10	11	12	13	14	15	16	17	18	19	20	21	22	23	24	25	26	27	28	29	30	31
MARYLAND SOUTHERN EASTERN SHORE 01 ASSATEAGUE PRINCESS ANNE SALISBURY 2N SALISBURY FAA AP SNOW HILL 4 N	SNOWFALL																															
	SNOWFALL																															
	SNOWFALL																															
	SNOWFALL																															
	SNOWFALL																															
DELAWARE NORTHERN 01 BEAR 2 SW WILMINGTON NEW CASTLE CO AP WILMINGTON PORTER RES	SNOWFALL																															
	SN ON GND																															
	SNOWFALL																															
	SN ON GND																															
	SNOWFALL																															

Snowfall: Includes snow and ice. Values for NWS stations (J index note) are Mid-Mid (LST).

Snow on ground: Includes snow, sleet, ice, and hail. Values for NWS stations (J index note) are observed at 12 UTC (GMT).

Water Equivalent: Given for NWS stations (J index note) only, when snow depth is 2 inches or more, and is measured at 18 UTC (GMT)

PAN EVAPORATION AND WIND

STATION		DAY OF MONTH																															TOTAL OR AVERAGE
		01	02	03	04	05	06	07	08	09	10	11	12	13	14	15	16	17	18	19	20	21	22	23	24	25	26	27	28	29	30	31	
MARYLAND UPPER SOUTHERN 04 BELTSVILLE	WIND	45	38	35	37	114	50	32	72	98	61	56	22	33	27	53	57	30	78	116	41	29	42	85	42	38	88	66	32	50	39	1606	
	EVAP	0.30	0.16	0.14	0.10	0.23	0.17	0.07	0.28	0.37	0.24	0.22	0.18	0.18	0.19	0.14	0.26	0.11	0.08	0.07	0.15	0.17	0.15	0.25	0.15	0.17	0.19	0.15	0.16	0.16	5.32		
	MAX	92	92	90	91	92	92	86	92	89	81	79	82	84	86	83	80	77	75	75	78	80	83	85	75	75	78	82	86	83	77	83.4	
	MIN	67	69	69	61	72	72	65	66	58	55	50	51	53	54	56	52	51	51	57	49	49	43	51	49	44	45	58	61	53	48	56.0	
UPPER MARLBORO 3 NNW	WIND	-	-	-	-	-	-	-	-	-	-	-	-	-	-	-	-	-	-	-	-	-	-	-	-	-	-	-	-	-	M		
	EVAP	-	-	-	-	-	-	-	-	-	-	-	-	-	-	-	-	-	-	-	-	-	-	-	-	-	-	-	-	-	M		
	MAX	-	-	-	-	-	-	-	-	-	-	-	-	-	-	-	-	-	-	-	-	-	-	-	-	-	-	-	-	-	M		
	MIN	-	-	-	-	-	-	-	-	-	-	-	-	-	-	-	-	-	-	-	-	-	-	-	-	-	-	-	-	-	M		
ALLEGHENY PLATEAU 08 SAVAGE RIVER DAM	WIND	-	-	-	-	-	-	-	-	-	-	-	-	-	-	-	-	-	-	-	-	-	-	-	-	-	-	-	-	-	M		
	EVAP	-	-	-	-	-	-	-	-	-	-	-	-	-	-	-	-	-	-	-	-	-	-	-	-	-	-	-	-	-	M		
	MAX	-	-	-	-	-	-	-	-	-	-	-	-	-	-	-	-	-	-	-	-	-	-	-	-	-	-	-	-	-	-		
	MIN	-	-	-	-	-	-	-	-	-	-	-	-	-	-	-	-	-	-	-	-	-	-	-	-	-	-	-	-	-	M		

Evaporation: Is measured in hundredths of inches.

Wind: Is measured in miles.

Max and Min: The maximum and minimum temperatures (Fahrenheit) of the water in the evaporation pan.

STATION INDEX

STATION	INDEX NO.	DIVISION	COUNTY	LATITUDE	LONGITUDE	ELEVATION (IN FEET)	OBSERVATION TIME AND TABLES			
							LOCAL STD TIME			
							TEMP	PRECIP	EVAP	SPECIAL SEE (NOTES)
MARYLAND										
ABERDEEN PHILLIPS FLD	0015	06	HARFORD	39 28	76 10W	57	07	07		CH
ASSATEAGUE	0335	01	WORCESTER	38 4	75 13W	10	VAR	VAR		H
BALTIMORE WASH INTL AP R	0465	04	ANNE ARUNDEL	39 10	76 41W	156	24	24		HJ
BELTSVILLE	0700	04	PRINCE GEORGE'S	39 2	76 56W	145	08	08	08	CH
BRIGHTON DAM	1125	06	MONTGOMERY	39 11	77 0W	330	08	08		H
CONOWINGO DAM	2060	06	HARFORD	39 39	76 11W	40	07	07		H
CUMBERLAND 2	2282	07	ALLEGANY	39 39	78 45W	730	18	18		H
CYLBURN	2308	06	BALTIMORE	39 21	76 39W	235	08	08		H
DALECARLIA RSVR	2325	04	DISTRICT OF COLUMBIA	38 56	77 7W	150	08	08		H
DAMASCUS 3 SSW	2336	06	MONTGOMERY	39 16	77 14W	700	22	22		H
EMMITSBURG 2 SE	2906	06	FREDERICK	39 41	77 17W	403	07	07		H
FREDERICK 2 NNE	3353	06	FREDERICK	39 26	77 24W	280	07	07		H
FROSTBURG 2	3415	07	ALLEGANY	39 40	78 56W	2170	07	07		H
LAUREL 3 W	5111	04	PRINCE GEORGE'S	39 5	76 54W	400	24	24		H
MARYLAND SCIENCE CENTER R	5718	04	BALTIMORE (CITY)	39 17	76 37W	20	24	24		H
MECHANICSVILLE 5 NE	5865	03	ST. MARY'S	38 28	76 42W	100	07	07		H
MILLERS 4 NE	5934	06	CARROLL	39 43	76 48W	860	18	18		CH
NATL ARBORETUM DC	6350	04	DISTRICT OF COLUMBIA	38 55	76 58W	50	07	07		H
OAKLAND 1 SE	6620	08	GARRETT	39 25	79 24W	2420	07	07		H
OXON HILL	6800	04	PRINCE GEORGE'S	38 47	76 60W	120	08	08		H
PRINCESS ANNE	7330	01	SOMERSET	38 13	75 41W	20	17	17		H
ROYAL OAK 2 SSW	7806	02	TALBOT	38 43	76 11W	10	17	17		H
SALISBURY 2N	8004	01	WICOMICO	38 24	75 36W	20	17	17		H
SALISBURY FAA AP	8005	01	WICOMICO	38 20	75 31W	48	24	24		H
SAVAGE RIVER DAM	8065	08	GARRETT	39 31	79 8W	1495	08	08	08	CH
SHARPSBURG 5 S	8207	07	WASHINGTON	39 24	77 43W	500	07	07		H
SINES DEEP CREEK	8315	08	GARRETT	39 31	79 25W	2040	07	07		H
SMITHSBURG 2NW	8371	06	WASHINGTON	39 40	77 35W	670	08	08		H
SNOW HILL 4 N	8380	01	WORCESTER	38 14	75 23W	30	17	17		H
SOLOMONS	8405	03	CALVERT	38 19	76 27W	12	08	08		H
UPPER MARLBORO 3 NNW	9070	04	PRINCE GEORGE'S	38 51	76 46W	130	08	08	08	H
WESTMINSTER	9440	06	CARROLL	39 34	76 59W	750	07	07		H
WILLIAMSPORT	9570	07	WASHINGTON	39 37	77 51W	360	06	06		H
DELAWARE										
BEAR 2 SW	1200	01	NEW CASTLE	39 36	75 44W	80	24	24		H
DOVER	2730	02	KENT	39 15	75 31W	30	16	16		H
WILMINGTON NEW CASTLE CO AP R	9595	01	NEW CASTLE	39 40	75 36W	79	24	24		HJ
WILMINGTON PORTER RES	9605	01	NEW CASTLE	39 46	75 32W	270	24	24		H

REFERENCE NOTES

STATION NAMES: Name of the city, town or locality. Figures and letters following the station names indicate the distance in miles and direction from the post office or town community center.

DIVISIONS: Areas within a state of similar climatological characteristics. Division averages are calculated using data from stations that record temperature and/or precipitation. Station Precipitation totals flagged with an 'F' or 'M' are excluded from the Divisional Average calculations of precipitation. Stations with monthly Temperature averages flagged with an 'F' or 'M' are included in the Divisional Average if there are no more than 9 flagged or missing daily values in the month, else they are excluded from the divisional average for temperature.

NORMALS: The average value of the meteorological element over a time period. Effective 1 January 2012, the averaging period is 1981 to 2010. The normals for National Weather Service localities have been adjusted so as to be representative for the current observation site.

MONTHLY DEGREE DAY TOTALS: One heating (cooling) degree day is accumulated for each whole degree that the daily mean temperature is below (above) 65 degrees Fahrenheit.

PRECIPITATION: Values shown in hundredths of inches are water equivalent totals, i.e., total of liquid and melted frozen precipitation. In the "Monthly Summarized Data" table the total snow and sleet values shown in tenths of inches are unmelted amounts. The max depth on ground values of snow and sleet shown in whole inches are cumulative unmelted amounts. The number of days with .10, .50, 1.00 or more refers to water equivalents.

PRECIPITATION QUALITY CONTROL: The NCDC quality control process may flag precipitation data that are spatially inconsistent, exceed climatological limits, or are inconsistent with prevailing weather patterns.

TEMPERATURE: Original temperature values are given in the "Daily Temperature" table. Summary temperature information (averages, departures, extremes, monthly degree day totals) is based on the values labeled MAX/MIN.

WIND: (As shown in the "Evaporation and Wind" table) the total wind movement in miles over the evaporation pan as determined by an anemometer recorder located 6-8 inches above the pan.

SYMBOLS AND LETTERS USED IN THE STATION INDEX TABLE

C Station is equipped with recording rain gage (R) but values in this bulletin are from a non-recording rain gage unless indicated by an R.

G Observations appear in the "Soil Temperatures" table.

H Observations appear in the "Snowfall and Snow on the Ground" table.

J Station also published as a Local Climatological Data publication.

VAR Observation time varies.

SR Observation time near sunrise.

SS Observation time near sunset.

SYMBOLS AND LETTERS USED IN THE DATA TABLES

(DAILY DATA ARE FOR THE 24 HOURS IMMEDIATELY PRECEDING OBSERVATION TIME.)

BLANK Entries in the "Monthly Summarized Data" table indicate no record.

BLANK Entries in the "Daily Precipitation" and "Snowfall and Snow on the Ground" tables indicate zero.

BLANK Entries in the "Daily Temperature" table indicate a missing record

- No record. Data not recorded or not received in time for publication.

+ Precipitation or temperature extremes occurred on one or more previous dates during the month.

* Rain gage not read. Precipitation is included in the amount following the asterisks.

Time distribution may not be known. A * preceding the monthly total indicates precipitation amount is being carried forward to next month's total, and may include amounts from the previous month(s).

a As a subscript, indicates accumulated total.

A Amount of precipitation is the total of observer's entries for the current month. It may include precipitation that occurred during the previous month. Refer to earlier bulletin to determine date of last reading. (Hawaii stations)

B Divisional Departure from normals are computed using 1971-2000 normals.

E Normalized HDD/CDD Calculation. E is appended to the HDD/CDD Calculation when 1-9 individual daily TMAX and/or TMIN values are missing and a Normalized HDD/CDD Calculation is provided. M appears alone if 10 or more daily values are missing.

F Monthly calculation flagged value. F is appended to average and/or total values computed which exclude one or more daily data values that have been flagged by the GHCN-Daily Dataset

M Insufficient or partial data. M is appended to average and/or total values computed with 1-9 daily values missing. M appears alone if 10 or more daily values are missing, (8 or more for wind and evaporation).

N Indicates snow fall or Snowdepth totals are computed with one or more missing days.

R Amounts from recording rain gage.

T Trace. An amount too small to measure.

SEASONAL TABLES: Monthly and seasonal snowfall and heating degree days for the 12 months ending with the June data are published in the July issue of this bulletin. Cooling degree days for the calendar year are published in the "Climatological Data Annual Summary."

Information concerning the history of changes in locations, exposure, etc. of substations is kept on file at the National Climatic Data Center. Historical information of regular National Weather Service Offices may be obtained from the "Local Climatological Data" annual publication. The contents of this publication may be reprinted or otherwise used freely, with proper credit to the National Climatic Data Center. The data are also available digitally.

Effective with the January 2011 Data-Month, COOP Observer Names are no longer included in the Monthly and Annual Climatological Data Publications. This information is not published to ensure the privacy of personal information pursuant to Section 208 of the E-Government Act of 2002 (44 USC 3601).

As of the 2011 Data-Year, Station and Climate Division Maps are no longer being included in the CD Publications. NCDC's Product Development Branch provides updated Station Maps for various data networks via the Historical Observing Metadata Repository: <http://www.ncdc.noaa.gov/homr>.

The GHCN-Daily Quality Control Flags shown below are displayed as superscripts with the data. For more Information on Global Historical Climatology Network - Daily and flags, see: <http://www.ncdc.noaa.gov/oa/climate/ghcn-daily/> and

Comprehensive Automated Quality Assurance of Daily Surface Observations.

Durre, Imke, Matthew J. Menne, Byron E. Gleason, Tamara G. Houston,

Russell S. Vose, 2010: J. Appl. Meteor. Climatol., 49, 1615-1633.

doi: 10.1175/2010JAMC2375.1

Blank = Passed All checks

D = failed duplicate check

G = failed gap check

I = failed internal consistency check

K = failed streak/frequent-value check

L = failed check on length of multiday period

M = failed megaconsistency check

N = failed naught check

O = failed climatological outlier check

R = failed lagged range check

S = failed spatial consistency check

T = failed temporal consistency check

W = temperature too warm for snow

X = failed bounds check

Z = flagged as a result of an official Datzilla investigation

These and other publications are available from the National Climatic Data Center

Hourly Precipitation Data

This publication contains hourly precipitation amounts obtained from recording rain gages located at National Weather Service, Federal Aviation Administration, and cooperative observer stations. Published data are displayed in inches and tenths or inches and hundredths at local standard time. HPD includes maximum precipitation for nine (9) time periods from 15 minutes to 24 hours, for selected stations.

Climatological Data

Monthly editions contain station daily maximum and minimum temperatures and precipitation. Some Stations provide daily snowfall, snow depth, evaporation, and soil temperature data. Each edition also contains monthly summaries for heating and cooling degree days (65 degree F base). The July issue contains a recap of monthly heating degree days and snow data for the preceding July through June.

The Annual issue contains monthly and annual averages of temperature, precipitation, temperature extremes, freeze data, soil temperatures, evaporation, and a recap of monthly cooling degree days.

Storm Data

Monthly issues contain a chronological listing, by states, of occurrences of storms and unusual weather phenomena. Reports contain information on storm paths, deaths, injuries, and property damage. An "Outstanding storms of the month" section highlights severe weather events with photographs, illustrations, and narratives. The December issue includes annual tornado, lightning, flash flood, and tropical cyclone summaries.

Monthly Climatic Data for the World

This publication contains monthly means for temperature, pressure, precipitation, vapor pressure, and sunshine for approximately 2,000 surface data collection stations worldwide and monthly mean upper air temperatures, dew point depressions, and wind velocities for approximately 500 observing sites.

Local Climatological Data

LCD publications summarize temperature, relative humidity, precipitation, cloudiness, wind speed and direction observations for several hundred cities in the U.S. and its territories. Each monthly publication also contains 3 hourly weather observations for that month and a hourly summary of precipitation. Annual LCD publications contain a summary of the past calendar year as well as historical averages and extremes.

For Information Call:

(828) 271-4800 Option 2

(828) 271-4010 (TDD)

(828) 271-4876 (Fax)

NOAA\National Climatic Data Center
Attn: User Engagement & Services Branch
151 Patton Avenue
Asheville, NC 28801-5001

Customer Services Number: (828) 271-4800, option 2
TDD : (828) 271-4010
Fax number: (828) 271-4876

NCDC now offers free online access to the *Climatological Data* publication.
Go to : www.ncdc.noaa.gov and choose Most Popular.