



CLIMATOLOGICAL DATA MARYLAND AND DELAWARE



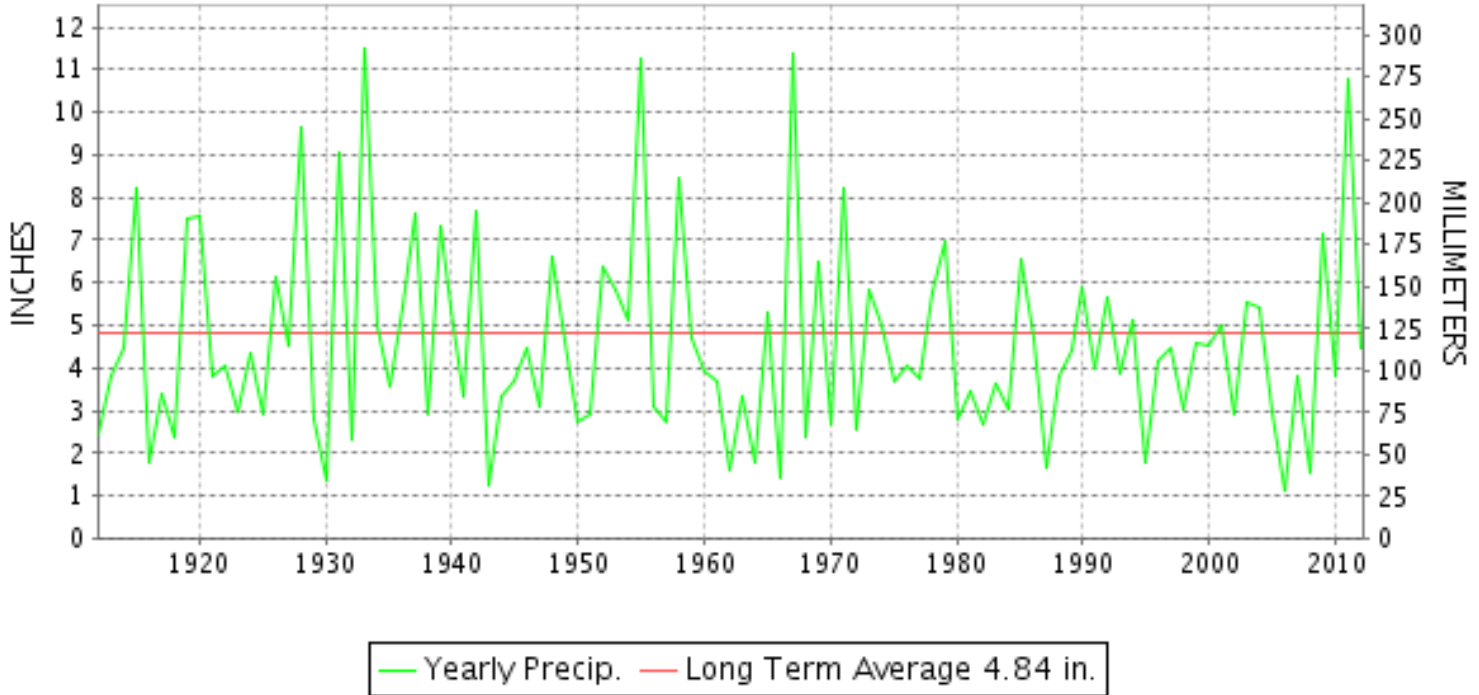
AUGUST 2012

VOLUME 116 NUMBER 08

ISSN 0145-0549

GHCND Ver: 3.00-upd-2013011606

AUGUST PRECIPITATION BY YEAR



TEMPERATURE AND PRECIPITATION EXTREMES

MARYLAND

HIGHEST TEMPERATURE	99	AUGUST 05	MARYLAND SCIENCE CENTER
LOWEST TEMPERATURE	46	AUGUST 30+	2 STATIONS
GREATEST TOTAL PRECIPITATION	8.55		ROYAL OAK 2 SSW
LEAST TOTAL PRECIPITATION	2.05		BRIGHTON DAM
GREATEST 1 DAY PRECIPITATION	5.04	AUGUST 26	ROYAL OAK 2 SSW

"I certify that this is an official publication of the National Oceanic and Atmospheric Administration (NOAA) It is compiled using information from weather observing sites supervised by NOAA/National Weather Service and received at the National Climatic Data Center(NCDC), Asheville, North Carolina 28801."

Director
National Climatic Data Center

noaa

National
Oceanic and
Atmospheric Administration

National
Environmental Satellite, Data
and Information Service

National
Climatic Data Center
Asheville, North Carolina

DELAWARE

HIGHEST TEMPERATURE	95	AUGUST 05	WILMINGTON PORTER RES
LOWEST TEMPERATURE	58	AUGUST 30	BEAR 2 SW
GREATEST TOTAL PRECIPITATION	4.10		BEAR 2 SW
LEAST TOTAL PRECIPITATION	2.68		DOVER
GREATEST 1 DAY PRECIPITATION	1.35	AUGUST 14	WILMINGTON PORTER RES

MONTHLY STATION AND DIVISION SUMMARY

STATION	TEMPERATURE (°F)													PRECIPITATION (IN)											
	AVERAGE MAXIMUM	AVERAGE MINIMUM	AVERAGE	DEPARTURE FROM NORMAL	HIGHEST	DATE	LOWEST	DATE	HEATING DEG. DAYS	COOLING DEG. DAYS	NO. OF DAYS				TOTAL	DEPARTURE FROM NORMAL	GREATEST 24 HOURS	DATE	ICE PELLETS, SNOW			NO. OF DAYS			
											MAX		MIN						TOTAL	MAX DEPTH ON GROUND	DATE	.10 OR MORE	.50 OR MORE	1.00 OR MORE	
											>=90	<=32	<=32	<=0											
MARYLAND SOUTHERN EASTERN SHORE 01	M	M	M											M					0.0						
ASSATEAGUE	88.3M	64.9M	76.6M	2.2	93	10	56	24+	0	367E	9	0	0	0	FMA 6.39	1.73	1.60	14	0.0				4	3	1
PRINCESS ANNE	86.0F	68.9	77.5F		95	09	61	19	0	396	6	0	0	0	8.51		2.80	25	0.0				6	4	4
SALISBURY 2N	88.2	69.4	78.8	3.9	95	09+	61	19	0	436	13	0	0	0	5.38	0.95	3.06	25	0.0				7	2	2
SALISBURY FAA AP	86.7	66.9	76.8	1.1	97	04	57	19	0	375	5	0	0	0	6.52	1.62	3.30	26	0.0				8	3	2
SNOW HILL 4 N			77.4	2.1B											6.80	2.06B									
--DIVISIONAL DATA----->																									
CENTRAL EASTERN SHORE 02																									
ROYAL OAK 2 SSW	87.4	69.2	78.3	1.4	95	05	61	23	0	417	8	0	0	0	8.55	4.28	5.04	26	0.0				9	4	2
--DIVISIONAL DATA----->			78.3	2.4B											8.55	4.29B									
LOWER SOUTHERN 03																									
MECHANICSVILLE 5 NE	83.4	66.1	74.8	1.1	92	10	61	23+	0	309	5	0	0	0	6.06	2.18	2.10	27	M 0.0				8	4	2
SOLOMONS	85.1	72.5	78.8	0.3	93	06	67	21	0	435	5	0	0	0	MA 7.52	7.52	1.58	27+	0.0				4	3	2
--DIVISIONAL DATA----->			76.8	2.1B											6.06	1.93B									
UPPER SOUTHERN 04																									
BALTIMORE WASH INTL AP	87.0	67.6	77.3	2.2	96	05	61	22+	0	391	8	0	0	0	5.82	2.53	3.36	26	0.0	0			7	3	1
BELTSVILLE	86.1	67.3	76.7	0.9	94	10+	60	21	0	371	6	0	0	0	2.18	-1.09	0.42	27+	0.0	0			6	0	0
DALECARLIA RSVR	86.2	68.7	77.5	0.7	95	10+	63	29+	0	393	8	0	0	0	3.45	-0.41	0.85	20	0.0	0			10	1	0
LAUREL 3 W	87.5	68.9	78.2	1.1	95	31	60	21	0	417	8	0	0	0	2.75	-0.68	0.67	05	0.0				7	2	0
MARYLAND SCIENCE CENTER	90.1	74.5	82.3	3.3	99	05	67	21	0	544	19	0	0	0	5.89	2.50	3.37	26	0.0				6	3	2
NATL ARBORETUM DC	88.7	69.6	79.2	1.2	97	06+	62	21	0	447	16	0	0	0	2.41	-1.00	0.81	11	0.0				8	1	0
OXON HILL	87.4	68.7	78.1	1.2	96	05	63	22+	0	414	7	0	0	0	2.96	-0.66	1.11	11	0.0	0			7	2	1
UPPER MARLBORO 3 NNW	87.4	67.0	77.2	2.1	94	10+	60	22	0	386	9	0	0	0	2.33	-1.39	0.89	27	0.0				7	1	0
--DIVISIONAL DATA----->			78.3	2.9B											3.47	-0.48B									
NORTHERN CENTRAL 06																									
ABERDEEN PHILLIPS FLD	85.3M	67.4M	76.4M	1.1	92	10+	61	22+	0	346E	3	0	0	0	FA 6.48	2.72	1.74	06	0.0	0			8	5	3
BRIGHTON DAM	83.8	67.2	75.5		90	07+	59	24	0	333	2	0	0	0	FA 2.05		1.00	01	0.0	0			3	2	1
CONOWINGO DAM	83.7	65.1	74.4	-2.1	93	06	59	31+	0	300	2	0	0	0	4.77	0.86	1.04	18	0.0				10	4	1
CYLBURN	M	M	M		88	04	59	21							MA 7.55	7.55	0.65	06	0.0				1	1	0
DAMASCUS 3 SSW	82.4	65.7	74.1	1.1	92	05	58	21	0	290	2	0	0	0	4.40	0.11	1.85	09	0.0				9	1	1
EMMITSBURG 2 SE	82.4	62.9	72.7	0.0	90	04	57	22+	0	247	1	0	0	0	4.05	0.65	0.92	11	0.0	0			10	3	0
FREDERICK 2 NNE	86.1	65.1	75.6	0.7	94	05	59	22	0	338	6	0	0	0	2.74	-0.77	0.75	27	0.0				7	2	0
MILLERS 4 NE	83.5	62.9	73.2	1.2	91	03	55	19	0	263	2	0	0	0	5.03	1.31	1.92	26	0.0	0			12	3	1
SMITHSBURG 2NW	82.3M	60.9M	71.6M	-1.5	91	06	51	31	0	214E	2	0	0	0	M 4.82	1.68	1.20	11	M 0.0	0			11	4	1
WESTMINSTER	85.1	65.8	75.5	2.2	92	06+	57	22+	0	331	5	0	0	0	2.15	-1.57	0.67	27	0.0	0			6	2	0

DAILY PRECIPITATION (INCHES)

STATION	TOTAL	DAY OF MONTH																																
		01	02	03	04	05	06	07	08	09	10	11	12	13	14	15	16	17	18	19	20	21	22	23	24	25	26	27	28	29	30	31		
MARYLAND																																		
SOUTHERN																																		
EASTERN SHORE 01																																		
ASSATEAGUE	M	-	-	-	-	-	-	-	-	-	-	-	-	-	-	-	-	-	-	-	-	-	-	-	-	-	-	-	-	-	-	-	-	
PRINCESS ANNE	FMA 6.39	0.98			-	-		0.78	0.48	0.05					1.60		0.00 ^L										*	*	2.50 _a					
SALISBURY 2N	8.51	0.12				0.02		0.06	0.08	1.40	2.42	0.05							0.42	0.01	0.03					2.80	1.05	0.05						
SALISBURY FAA AP	5.38	0.10				T	T	0.09		0.31	0.21			0.13	0.01				0.33	0.03	0.05					3.06	1.02	0.04						
SNOW HILL 4 N	6.52	0.52	0.02					0.05		0.35	0.34	T		1.28					0.31	T	0.14					0.05	3.30	0.10	0.06					
CENTRAL																																		
EASTERN SHORE 02																																		
ROYAL OAK 2 SSW	8.55	0.20				T	0.96	0.01		0.50	0.13	0.07							1.10	T	0.16	0.13				0.25	5.04							
LOWER SOUTHERN 03																																		
MECHANICSVILLE 5 NE	6.06	0.15				0.04	T			1.30	0.63	0.40							0.73		0.08	0.15				T	0.48	2.10		T				
SOLOMONS	MA 7.52	0.09						0.93	1.58	0.41	*	0.84 _a							-	0.06	0.02	T	0.02			*	1.99 _a	1.58						
UPPER SOUTHERN 04																																		
BALTIMORE WASH INTL AP	5.82	T	0.06			T	0.01			0.19	0.29	0.71		0.16				0.18	0.08	0.03	0.71					0.01	3.36		0.03					
BELTSVILLE	2.18					0.21				0.35	0.42	0.08		0.08					0.42		0.04	0.12					0.01	0.42	0.03					
DALECARLIA RSVR	3.45					0.44	0.01		T	0.15		0.14		0.14	T				0.28		0.85	0.29		0.35			0.05	0.45	0.30					
LAUREL 3 W	2.75			0.26		0.67				0.03	0.65	0.10			0.09						0.23	0.24				0.01	0.47							
MARYLAND SCIENCE CENTER	5.89	0.09	0.17			0.04				0.01	0.28	1.05		0.02				0.09	0.12		0.63						3.37		0.02					
NATL ARBORETUM DC	2.41	0.08	T	T		0.06				0.11	0.81	0.05		0.15	T			0.19	T	0.16	0.18	0.17				T	0.05	0.36	0.04					
OXON HILL	2.96	T	0.01			0.05	T			0.04	1.11	0.13		0.01	0.35			0.19		0.23	0.02						0.17	0.65	T	T				
UPPER MARLBORO 3 NNW	2.33		0.03	0.07		0.03	0.01			0.21	0.41	0.17									0.06	0.17					0.14	0.89	0.01	0.02				
NORTHERN CENTRAL 06																																		
ABERDEEN PHILLIPS FLD	FA 6.48	0.61	0.06			1.74						1.37		0.22	1.43						0.81	0.11				0.00 ^L	0.00 ^L	0.72 _a	0.13					
BRIGHTON DAM	FA 2.05	1.00				0.45			0.39 ^L	1.40 _a	0.20 ^L	0.15 _a		0.02				0.00 ^L	0.25 _a	0.01			0.01					0.55	0.01					
CONOWINGO DAM	4.77	0.16				0.41				0.68	0.78	0.64			0.25				1.04		0.23							0.46	0.12					
CYLBURN	MA 7.55					0.65	*	*	*	*	*	*	*	*	2.65 _a						*	0.55 _a			0.04		-	*	3.66 _a					
DAMASCUS 3 SSW	4.40	0.19				0.22	0.05		0.22	1.85	0.35	0.07		0.20				0.02	0.01	0.38	0.32		0.02			T	0.43	0.02	0.05					
EMMITSBURG 2 SE	4.05	0.07	0.01	0.01		0.23	0.62				0.10	0.92		0.24	0.32				0.22		0.12	0.38				T	0.04	0.71	0.06					
FREDERICK 2 NNE	2.74	0.07	0.10			0.42					0.37	0.03		0.03		0.13			0.07		0.14	0.57						0.75	0.06					
MILLERS 4 NE	5.03	0.22	T		0.01	0.12	0.16		0.01		0.33	0.42		0.21	0.67			T	0.11	T	0.14	0.57				T	1.92	0.04	0.10					
SMITHSBURG 2NW	M 4.82	0.42				-	0.92			0.20	1.20			0.62	0.11				0.55		0.30	0.30						0.10	0.10					
WESTMINSTER	2.15					0.16				0.12	0.18			0.54					0.02		0.35						0.09	0.67	0.02					
APPALACHIAN																																		
MOUNTAIN 07																																		
CUMBERLAND 2	2.42	0.20	0.04			0.12	0.06				0.73			0.04	0.06					0.12		0.35	0.14				0.14	0.42						
FROSTBURG 2	2.43	0.13				0.44	0.17				0.75	0.02		0.03	0.08				0.06		0.17	0.18					0.04	0.36						
SHARPSBURG 5 S	4.64	0.04	0.08			0.41				0.29	0.02			0.20	0.02				0.07		0.08	0.20					0.04	3.13	0.06					
WILLIAMSPORT	M 5.66	1.08	0.09			0.02				0.98	1.45			0.40	0.04				0.60		0.50	0.45	0.03		T	-	-	-	-	-	0.02			
ALLEGHENY PLATEAU 08																																		
OAKLAND 1 SE	2.70	0.85				0.13	0.68				0.35	0.04									0.35		0.16				0.04	0.05	0.05					

DAILY PRECIPITATION (INCHES)

STATION	TOTAL	DAY OF MONTH																														
		01	02	03	04	05	06	07	08	09	10	11	12	13	14	15	16	17	18	19	20	21	22	23	24	25	26	27	28	29	30	31
SAVAGE RIVER DAM	M 0.57	-	0.06		-	-	0.16		-		-	-							0.07								0.10	0.18	-			
SINES DEEP CREEK	2.35	0.50			0.18	0.07	0.61				0.30	0.02							0.25		0.27	0.11						0.04				
DELAWARE NORTHERN 01																																
BEAR 2 SW	4.10	0.04			0.07	1.21	0.03				0.78	T			0.69			0.11	0.48	T	0.07					T	0.18	0.36	0.08			
WILMINGTON NEW CASTLE CO AP	2.81	0.10		T		0.75	0.04				0.55	T			0.54	T		0.16	0.21	T	0.02					T	0.19	0.16	0.09			
WILMINGTON PORTER RES	A 4.07	0.08				0.93				0.02	0.75	0.03			1.35			0.16	0.49								*	0.08 _a	0.18			
SOUTHERN 02																																
DOVER	A 2.68	0.08	0.02				0.36			0.01	*	*	*	0.63 _a	0.14	T			0.63							*	*	0.76 _a	0.05			

DAILY TEMPERATURES (°F)

STATION	OB. TIME	MAX/MIN	DAY OF MONTH																															AVERAGE		
			01	02	03	04	05	06	07	08	09	10	11	12	13	14	15	16	17	18	19	20	21	22	23	24	25	26	27	28	29	30	31			
MARYLAND SOUTHERN EASTERN SHORE 01 ASSATEAGUE	VA	MAX MIN																																		M M
PRINCESS ANNE	17	MAX MIN	86 70	91 69	91 64			90 78	89 63	86 60	91 68	93 70			90 64	90 62	88 66	87 60	89 59																	88.3 64.9
SALISBURY 2N	17	MAX MIN	81 69	90 68	90 71	91 74	91 76	90 77	86 72	88 73	95 74	87 72	83 73	85 71	87 64	87 71	84 71	86 66	87 66	86 69	82 61	79 64	82 64	85 64	86 64	85 64	79 67	84 68	86 73	86 74	85 64	83 65	85 63	89 70	86.0 68.9	
SALISBURY FAA AP	24	MAX MIN	85 70	92 69	94 73	95 74	95 77	90 73	87 73	90 74	95 74	91 76	86 74	87 69	90 64	88 68	89 72	91 69	92 66	85 66	84 61	81 66	85 66	86 64	87 65	86 65	75 69	85 70	87 74	90 70	87 67	88 64	92 70	88.2 69.4		
SNOW HILL 4 N	17	MAX MIN	84 62	89 66	90 70	97 70	91 66	88 73	88 71	89 70	91 70	88 75	86 73	84 72	86 62	87 70	88 62	88 63	88 69	86 57	80 65	79 63	84 59	84 61	84 61	85 67	79 68	84 73	87 74	89 64	89 59	86 68	90 68	86.7 66.9		
CENTRAL EASTERN SHORE 02 ROYAL OAK 2 SSW	17	MAX MIN	83 71	92 67	92 74	92 76	95 79	92 80	88 73	88 71	94 70	88 72	87 75	85 71	89 65	88 73	86 70	88 68	93 67	88 70	82 65	81 64	82 64	87 62	88 61	86 65	78 67	81 67	87 67	88 75	84 64	86 62	91 72	87.4 69.2		
LOWER SOUTHERN 03 MECHANICSVILLE 5 NE	07	MAX MIN	83 68	85 67	90 67	90 70	91 73	91 76	84 73	83 71	84 70	92 69	84 69	84 65	81 64	85 64	87 68	82 64	84 66	86 62	80 62	73 63	76 61	78 61	80 64	82 64	82 64	82 66	76 66	82 66	82 62	85 62	80 64	82 64	83.4 66.1	
SOLOMONS	08	MAX MIN	85 72	85 73	88 74	92 77	91 78	93 79	88 73	83 73	86 76	90 73	87 73	86 72	84 73	84 75	86 75	84 71	86 73	86 71	91 71	82 71	78 67	80 69	83 69	84 72	82 69	77 71	80 68	87 75	87 71	84 70	86 74	85.1 72.5		
UPPER SOUTHERN 04 BALTIMORE WASH INTL AP	24	MAX MIN	88 71	90 69	92 71	93 76	96 76	92 73	87 70	89 71	92 70	86 70	87 69	85 68	88 65	86 69	85 68	88 64	92 64	84 61	76 64	80 61	83 61	84 61	86 64	87 66	80 70	79 68	87 68	89 68	86 64	87 64	93 69	87.0 67.6		
BELTSVILLE	08	MAX MIN	86 70	87 68	92 70	92 73	94 78	93 75	89 70	86 71	88 68	94 69	84 69	86 67	84 71	87 68	83 63	87 64	91 65	81 61	74 65	79 60	83 62	84 63	87 64	86 69	78 70	80 67	87 72	80 63	87 63	84 61	88 65	86.1 67.3		
DALECARLIA RSVR	08	MAX MIN	89 71	89 70	87 73	94 73	95 79	91 74	87 74	91 74	95 74	86 74	89 68	85 68	88 71	91 65	82 65	88 65	90 65	82 65	70 65	81 63	81 63	83 64	86 66	84 66	75 70	72 69	88 68	86 72	84 63	84 64	88 68	86.2 68.7		
LAUREL 3 W	24	MAX MIN	88 71	90 71	92 72	93 75	94 72	90 75	88 72	88 72	93 70	85 69	87 69	84 69	87 72	87 70	83 67	88 69	90 67	85 65	75 63	80 60	85 64	86 65	89 69	87 70	87 69	84 68	88 72	89 66	88 63	88 71	95 68.9	87.5		
MARYLAND SCIENCE CENTER	24	MAX MIN	89 77	93 77	95 78	97 82	99 79	93 80	90 77	92 79	94 79	90 74	92 73	89 74	90 74	90 76	87 74	91 73	96 72	86 72	79 68	84 67	85 67	88 70	89 73	91 75	84 72	83 70	92 73	92 77	88 73	90 72	96 75	90.1 74.5		
NATL ARBORETUM DC	07	MAX MIN	89 72	92 71	94 73	94 76	97 79	97 75	92 76	89 73	91 73	95 71	87 69	90 67	87 71	91 67	90 69	86 66	93 66	86 66	76 62	83 64	85 66	86 66	87 66	80 69	80 70	83 69	90 71	93 66	87 65	91 70	88.7 69.6			
OXON HILL	08	MAX MIN	87 70	89 70	93 71	94 75	96 75	91 76	86 73	89 73	95 72	87 74	88 69	86 68	89 69	89 68	84 67	88 67	92 67	83 66	75 65	81 63	84 63	83 64	86 66	86 66	79 69	82 67	89 68	89 67	87 64	88 69	88 65	87.4 68.7		
UPPER MARLBORO 3 NNW	08	MAX MIN	88 69	88 68	90 69	91 74	94 76	90 75	86 71	89 70	94 69	85 71	87 69	87 66	88 65	90 69	86 65	89 64	91 65	85 61	76 64	81 61	85 60	86 63	87 64	88 67	80 68	81 68	88 70	90 62	86 61	89 65	87.4 67.0			
NORTHERN CENTRAL 06 ABERDEEN PHILLIPS FLD	07	MAX MIN	85 71	84 69	90 70				88 75	85 72	88 71	92 71	83 71	86 66	83 63	85 65	83 67	86 67	89																	85.3 67.4

DAILY TEMPERATURES (°F)

STATION	OB. TIME	MAX/MIN	DAY OF MONTH																															AVERAGE	
			01	02	03	04	05	06	07	08	09	10	11	12	13	14	15	16	17	18	19	20	21	22	23	24	25	26	27	28	29	30	31		
BRIGHTON DAM	08	MAX	84	84	89	89	89	90	90	85	85	89	89	84	82	84	84	80	84	86	80	73	78	80	83	84	82	76	79	85	86	82	83	83.8	
		MIN	68	69	73	65	73	73	67	74	72	68	67	64	67	71	71	70	66	63	60	66	63	64	63	59	67	68	69	71	62	63	66	67.2	
CONOWINGO DAM	07	MAX	84	82	88	90	87	93	86	83	87	88	83	86	83	84	83	81	84	87	80	74	78	80	82	84	85	79	81	85	84	81	83	83.7	
		MIN	67	67	67	70	74	72	66	67	69	68	70	65	62	62	66	66	65	65	59	59	60	60	61	62	64	67	67	70	63	59	59	65.1	
CYLBURN	08	MAX	82	81	86	88															72	77	77	81	84	83	77	76	84	83	80	82	M		
		MIN	69	68	69	72														61	63	59	60	63	65	66	67	68	68	63	62	63	M		
DAMASCUS 3 SSW	22	MAX	82	87	88	89	92	84	82	86	88	82	84	80	82	83	78	82	85	77	72	76	77	80	83	82	74	78	84	80	82	90	82.4		
		MIN	67	68	69	73	73	71	67	70	67	67	67	63	63	70	65	62	63	63	61	61	58	60	61	70	67	67	68	62	62	65	65.7		
EMMITSBURG 2 SE	07	MAX	84	82	87	90	88	89	85	83	86	86	82	82	79	82	83	79	82	84	79	69	76	78	81	83	84	79	83	84	80	82	82.4		
		MIN	67	64	64	66	72	72	64	64	66	67	67	61	59	60	64	61	61	62	57	60	58	57	58	58	62	66	68	68	61	58	59	62.9	
FREDERICK 2 NNE	07	MAX	87	86	93	93	94	92	88	87	89	93	86	86	84	87	82	86	87	90	82	71	78	81	85	88	87	79	83	89	87	83	86	86.1	
		MIN	68	67	66	70	72	73	66	66	70	69	69	64	63	64	63	64	64	65	60	61	60	59	62	62	65	68	68	69	62	60	60	65.1	
MILLERS 4 NE	18	MAX	83	87	91	88	90	85	84	86	89	85	83	82	83	84	80	83	86	79	76	78	80	81	85	84	79	79	84	84	82	82	88	83.5	
		MIN	65	64	67	71	71	70	62	66	67	67	60	58	65	62	60	61	61	55	61	57	57	58	60	64	65	65	68	59	56	61	62.9		
SMITHSBURG 2NW	08	MAX	85	85	88	90	91	86	81	88	83	82	79	82	82	78	83	84	78	69	77	79	82	84	83	79	80	85	83	80	81	82.3			
		MIN	63	63	67	67	70	61	66	65	61	58	58	63	62	57	57	62	57	60	55	57	58	59	63	68	63	65	56	55	51	60.9			
WESTMINSTER	07	MAX	85	84	90	92	90	92	87	85	89	91	83	85	82	85	85	80	84	88	80	73	79	80	84	89	88	80	83	88	88	84	86	85.1	
		MIN	68	68	70	72	75	72	65	68	69	69	69	63	62	62	65	62	62	63	59	64	57	57	61	65	68	70	71	71	65	63	66	65.8	
APPALACHIAN MOUNTAIN 07																																			
CUMBERLAND 2	18	MAX	86	87	93	95	94	91	90	89	95	93	87	84	83	86	87	85	89	83	83	80	79	83	84	89	87	87	81	91	88	85	87	87.1	
		MIN	65	66	66	67	68	70	62	61	61	66	64	61	57	59	64	58	59	60	59	61	55	55	56	59	61	68	67	67	58	55	56	61.6	
FROSTBURG 2	07	MAX	77	80	84	86	83	81	79	81	84	83	79	74	74	78	79	73	79	76	74	75	72	75	76	80	80	77	73	83	78	76	81	78.4	
		MIN	62	61	61	64	65	65	60	58	58	62	58	57	55	55	59	57	59	55	56	55	51	51	51	55	55	60	62	62	56	52	52	57.7	
SHARPSBURG 5 S	07	MAX	87	87	90	92	92	91	87	86	91	91	85	86	82	86	86	80	86	89	82	71	80	82	86	87	85	79	78	87	85	83	85	85.3	
		MIN	64	64	66	68	72	71	62	63	66	66	66	58	58	59	62	58	58	61	56	60	61	58	57	57	61	66	64	64	57	57	57	61.8	
WILLIAMSPORT	06	MAX	87	87	91	91	92	91	91	86	92	92	83	85	85	84	84	82	87	88	81	71	78	82										85.9	
		MIN	66	65	66	69	70	72	64	64	67	66	67	62	61	61	66	62	61	63	59	60	59	58											63.7
ALLEGHENY PLATEAU 08																																			
OAKLAND 1 SE	07	MAX	80	84	85	86	83	80	80	82	85	84	78	71	73	79	80	75	79	77	75	75	74	76	79	82	81	78	75	85	81	79	83	79.5	
		MIN	59	61	58	61	67	67	59	52	54	62	59	53	50	53	59	51	53	56	55	58	50	47	49	51	51	56	55	57	49	46	47	55.0	
SAVAGE RIVER DAM	08	MAX		85	86			83	83	86				75	76	79	79	79	81	78	76	74		78	80	83	83	78	75		82	80	80	80.0	
		MIN	62	61				67	61		58			57	55	56	61	56	56	56	56	57		53	53	54	54	61	64		55	51	51	57.2	
SINES DEEP CREEK	07	MAX	78	80	82	82	81	77	77	78	80	82	76	70	71	76	77	73	77	73	73	74	71	75	75	79	79	77	75	81	78	75	81	76.9	
		MIN	58	58	58	57	60	63	57	53	52	59	59	52	50	51	56	50	50	55	54	54	49	48	47	49	51	54	56	55	50	46	46	53.5	
DELAWARE NORTHERN 01																																			
BEAR 2 SW	24	MAX	82	88	92	89	93	88	84	87	89	83	86	84	85	85	83	85	88	81	76	79	81	84	85	86	79	84	86	87	83	84	90	85.0	
		MIN	69	65	70	70	73	72	66	68	69	70	73	66	61	70	70	65	64	62	59	65	61	60	62	62	68	70	68	66	61	58	63	66.0	
WILMINGTON NEW CASTLE CO AP	24	MAX	81	88	90	91	94	90	83	87	89	83	85	85	86	83	84	86	89	82	76	78	83	85	85	87	80	86	86	88	84	85	92	85.5	
		MIN	69	68	73	74	73	74	68	71	70	71	74	67	63	69	70	65	67	64	60	64	61	60	64	64	68	70	71	67	63	59	66	67.3	

DAILY TEMPERATURES (°F)

STATION	OB. TIME	MAX/MIN	DAY OF MONTH																															AVERAGE
			01	02	03	04	05	06	07	08	09	10	11	12	13	14	15	16	17	18	19	20	21	22	23	24	25	26	27	28	29	30	31	
WILMINGTON PORTER RES	24	MAX MIN	81 69	89 68	91 73	91 73	95 71	86 73	83 69	87 70	89 71	81 69	86 73	84 68	84 67	80 67	82 70	83 68	88 68	79 63	74 63	77 65	80 62	83 62	84 65	86 65	78 70	84 69	86 70	85 73	80 66	83 64	89 68	84.1 68.1
SOUTHERN 02 DOVER	16	MAX MIN	81 70	89 68	94 73	90 74	94 75	88 75	89 71	86 72	90 72	86 71	84 73	84 71	87 64	86 70	86 70	87 67	89 68	81 67	79 62	81 65	81 63	86 64	86 65	86 67	82 67	82 70	84 73	87 73	84 66	86 63	90 70	86.0 69.0

SNOWFALL AND SNOW ON GROUND (INCHES)

STATION		DAY OF MONTH																														
		01	02	03	04	05	06	07	08	09	10	11	12	13	14	15	16	17	18	19	20	21	22	23	24	25	26	27	28	29	30	31
MARYLAND SOUTHERN EASTERN SHORE 01 ASSATEAGUE PRINCESS ANNE SALISBURY 2N SALISBURY FAA AP SNOW HILL 4 N	SNOWFALL SNOWFALL SNOWFALL SNOWFALL SNOWFALL																															
DELAWARE NORTHERN 01 BEAR 2 SW WILMINGTON NEW CASTLE CO AP WILMINGTON PORTER RES	SNOWFALL SN ON GND SNOWFALL SN ON GND SNOWFALL																															

Snowfall: Includes snow and ice. Values for NWS stations (J index note) are Mid-Mid (LST).
 Snow on ground: Includes snow, sleet, ice, and hail. Values for NWS stations (J index note) are observed at 12 UTC (GMT).
 Water Equivalent: Given for NWS stations (J index note) only, when snow depth is 2 inches or more, and is measured at 18 UTC (GMT)

PAN EVAPORATION AND WIND

STATION		DAY OF MONTH																															TOTAL OR AVERAGE
		01	02	03	04	05	06	07	08	09	10	11	12	13	14	15	16	17	18	19	20	21	22	23	24	25	26	27	28	29	30	31	
MARYLAND UPPER SOUTHERN 04 BELTSVILLE	WIND	36	21	47	53	61	72	30	28	30	48	67	45	30	31	35	40	32	74	39	17	29	23	25	22	24	50	39	48	47	29	21	1193
	EVAP	0.18	0.17	0.22	0.28	2.77	0.24	0.20	0.16	0.18	0.24	0.16	0.18	0.23	0.21	0.19	0.16	0.26	0.33	0.25	0.02	0.19	0.18	0.11	0.19	0.18	0.07	0.08	0.21	0.25	0.20	0.17	8.46
	MAX	96	96	95	95	97	94	92	92	90	96	87	92	92	94	95	90	93	91	89	74	84	90	88	89	91	79	85	94	91	91	90	90.6
	MIN	70	68	69	71	69	74	71	70	70	68	69	69	65	66	65	64	64	66	64	64	62	60	64	65	66	67	63	66	63	62	64	66.4
UPPER MARLBORO 3 NNW	WIND	-	-	-	-	-	-	-	-	-	-	-	-	-	-	-	-	-	-	-	-	-	-	-	-	-	-	-	-	-	-	M	
	EVAP	-	-	-	-	-	-	-	-	-	-	-	-	-	-	-	-	-	-	-	-	-	-	-	-	-	-	-	-	-	-	M	
	MAX	-	-	-	-	-	-	-	-	-	-	-	-	-	-	-	-	-	-	-	-	-	-	-	-	-	-	-	-	-	-	M	
	MIN	-	-	-	-	-	-	-	-	-	-	-	-	-	-	-	-	-	-	-	-	-	-	-	-	-	-	-	-	-	-	M	
ALLEGHENY PLATEAU 08 SAVAGE RIVER DAM	WIND	-	-	-	-	-	-	-	-	-	-	-	-	-	-	-	-	-	-	-	-	-	-	-	-	-	-	-	-	-	M		
	EVAP	-	-	-	-	-	-	-	-	-	-	-	-	-	-	-	-	-	-	-	-	-	-	-	-	-	-	-	-	-	M		
	MAX	-	-	-	-	-	-	-	-	-	-	-	-	-	-	-	-	-	-	-	-	-	-	-	-	-	-	-	-	-	-		
	MIN	-	-	-	-	-	-	-	-	-	-	-	-	-	-	-	-	-	-	-	-	-	-	-	-	-	-	-	-	-	M		

Evaporation: Is measured in hundredths of inches.

Wind: Is measured in miles.

Max and Min: The maximum and minimum temperatures (Fahrenheit) of the water in the evaporation pan.

STATION INDEX

STATION	INDEX NO.	DIVISION	COUNTY	LATITUDE	LONGITUDE	ELEVATION (IN FEET)	OBSERVATION TIME AND TABLES			
							LOCAL STD TIME			
							TEMP	PRECIP	EVAP	SPECIAL SEE (NOTES)
MARYLAND										
ABERDEEN PHILLIPS FLD	0015	06	HARFORD	39 28	76 10W	57	07	07		CH
ASSATEAGUE	0335	01	WORCESTER	38 4	75 13W	10	VAR	VAR		H
BALTIMORE WASH INTL AP R	0465	04	ANNE ARUNDEL	39 10	76 41W	156	24	24		HJ
BELTSVILLE	0700	04	PRINCE GEORGE'S	39 2	76 56W	145	08	08	08	CH
BRIGHTON DAM	1125	06	MONTGOMERY	39 11	77 0W	330	08	08		H
CONOWINGO DAM	2060	06	HARFORD	39 39	76 11W	40	07	07		H
CUMBERLAND 2	2282	07	ALLEGANY	39 39	78 45W	730	18	18		H
CYLBURN	2308	06	BALTIMORE	39 21	76 39W	235	08	08		H
DALECARLIA RSVR	2325	04	DISTRICT OF COLUMBIA	38 56	77 7W	150	08	08		H
DAMASCUS 3 SSW	2336	06	MONTGOMERY	39 16	77 14W	700	22	22		H
EMMITSBURG 2 SE	2906	06	FREDERICK	39 41	77 17W	403	07	07		H
FREDERICK 2 NNE	3353	06	FREDERICK	39 26	77 24W	280	07	07		H
FROSTBURG 2	3415	07	ALLEGANY	39 40	78 56W	2170	07	07		H
LAUREL 3 W	5111	04	PRINCE GEORGE'S	39 5	76 54W	400	24	24		H
MARYLAND SCIENCE CENTER R	5718	04	BALTIMORE (CITY)	39 17	76 37W	20	24	24		H
MECHANICSVILLE 5 NE	5865	03	ST. MARY'S	38 28	76 42W	100	07	07		H
MILLERS 4 NE	5934	06	CARROLL	39 43	76 48W	860	18	18		CH
NATL ARBORETUM DC	6350	04	DISTRICT OF COLUMBIA	38 55	76 58W	50	07	07		H
OAKLAND 1 SE	6620	08	GARRETT	39 25	79 24W	2420	07	07		H
OXON HILL	6800	04	PRINCE GEORGE'S	38 47	76 60W	120	08	08		H
PRINCESS ANNE	7330	01	SOMERSET	38 13	75 41W	20	17	17		H
ROYAL OAK 2 SSW	7806	02	TALBOT	38 43	76 11W	10	17	17		H
SALISBURY 2N	8004	01	WICOMICO	38 24	75 36W	20	17	17		H
SALISBURY FAA AP	8005	01	WICOMICO	38 20	75 31W	48	24	24		H
SAVAGE RIVER DAM	8065	08	GARRETT	39 31	79 8W	1495	08	08	08	CH
SHARPSBURG 5 S	8207	07	WASHINGTON	39 24	77 43W	500	07	07		H
SINES DEEP CREEK	8315	08	GARRETT	39 31	79 25W	2040	07	07		H
SMITHSBURG 2NW	8371	06	WASHINGTON	39 40	77 35W	670	08	08		H
SNOW HILL 4 N	8380	01	WORCESTER	38 14	75 23W	30	17	17		H
SOLOMONS	8405	03	CALVERT	38 19	76 27W	12	08	08		H
UPPER MARLBORO 3 NNW	9070	04	PRINCE GEORGE'S	38 51	76 46W	130	08	08	08	H
WESTMINSTER	9440	06	CARROLL	39 34	76 59W	750	07	07		H
WILLIAMSPORT	9570	07	WASHINGTON	39 37	77 51W	360	06	06		H
DELAWARE										
BEAR 2 SW	1200	01	NEW CASTLE	39 36	75 44W	80	24	24		H
DOVER	2730	02	KENT	39 15	75 31W	30	16	16		H
WILMINGTON NEW CASTLE CO AP R	9595	01	NEW CASTLE	39 40	75 36W	79	24	24		HJ
WILMINGTON PORTER RES	9605	01	NEW CASTLE	39 46	75 32W	270	24	24		H

REFERENCE NOTES

STATION NAMES: Name of the city, town or locality. Figures and letters following the station names indicate the distance in miles and direction from the post office or town community center.

DIVISIONS: Areas within a state of similar climatological characteristics. Division averages are calculated using data from stations that record temperature and/or precipitation. Station Precipitation totals flagged with an 'F' or 'M' are excluded from the Divisional Average calculations of precipitation. Stations with monthly Temperature averages flagged with an 'F' or 'M' are included in the Divisional Average if there are no more than 9 flagged or missing daily values in the month, else they are excluded from the divisional average for temperature.

NORMALS: The average value of the meteorological element over a time period. Effective 1 January 2012, the averaging period is 1981 to 2010. The normals for National Weather Service localities have been adjusted so as to be representative for the current observation site.

MONTHLY DEGREE DAY TOTALS: One heating (cooling) degree day is accumulated for each whole degree that the daily mean temperature is below (above) 65 degrees Fahrenheit.

PRECIPITATION: Values shown in hundredths of inches are water equivalent totals, i.e., total of liquid and melted frozen precipitation. In the "Monthly Summarized Data" table the total snow and sleet values shown in tenths of inches are unmelted amounts. The max depth on ground values of snow and sleet shown in whole inches are cumulative unmelted amounts. The number of days with .10, .50, 1.00 or more refers to water equivalents.

PRECIPITATION QUALITY CONTROL: The NCDC quality control process may flag precipitation data that are spatially inconsistent, exceed climatological limits, or are inconsistent with prevailing weather patterns.

TEMPERATURE: Original temperature values are given in the "Daily Temperature" table. Summary temperature information (averages, departures, extremes, monthly degree day totals) is based on the values labeled MAX/MIN.

WIND: (As shown in the "Evaporation and Wind" table) the total wind movement in miles over the evaporation pan as determined by an anemometer recorder located 6-8 inches above the pan.

SYMBOLS AND LETTERS USED IN THE STATION INDEX TABLE

C Station is equipped with recording rain gage (R) but values in this bulletin are from a non-recording rain gage unless indicated by an R.

G Observations appear in the "Soil Temperatures" table.

H Observations appear in the "Snowfall and Snow on the Ground" table.

J Station also published as a Local Climatological Data publication.

VAR Observation time varies.

SR Observation time near sunrise.

SS Observation time near sunset.

SYMBOLS AND LETTERS USED IN THE DATA TABLES

(DAILY DATA ARE FOR THE 24 HOURS IMMEDIATELY PRECEDING OBSERVATION TIME.)

BLANK Entries in the "Monthly Summarized Data" table indicate no record.

BLANK Entries in the "Daily Precipitation" and "Snowfall and Snow on the Ground" tables indicate zero.

BLANK Entries in the "Daily Temperature" table indicate a missing record

- No record. Data not recorded or not received in time for publication.

+ Precipitation or temperature extremes occurred on one or more previous dates during the month.

* Rain gage not read. Precipitation is included in the amount following the asterisks.

Time distribution may not be known. A * preceding the monthly total indicates precipitation amount is being carried forward to next month's total, and may include amounts from the previous month(s).

a As a subscript, indicates accumulated total.

A Amount of precipitation is the total of observer's entries for the current month. It may include precipitation that occurred during the previous month. Refer to earlier bulletin to determine date of last reading. (Hawaii stations)

B Divisional Departure from normals are computed using 1971-2000 normals.

E Normalized HDD/CDD Calculation. E is appended to the HDD/CDD Calculation when 1-9 individual daily TMAX and/or TMIN values are missing and a Normalized HDD/CDD Calculation is provided. M appears alone if 10 or more daily values are missing.

F Monthly calculation flagged value. F is appended to average and/or total values computed which exclude one or more daily data values that have been flagged by the GHCN-Daily Dataset

M Insufficient or partial data. M is appended to average and/or total values computed with 1-9 daily values missing. M appears alone if 10 or more daily values are missing, (8 or more for wind and evaporation).

N Indicates snow fall or Snowdepth totals are computed with one or more missing days.

R Amounts from recording rain gage.

T Trace. An amount too small to measure.

SEASONAL TABLES: Monthly and seasonal snowfall and heating degree days for the 12 months ending with the June data are published in the July issue of this bulletin. Cooling degree days for the calendar year are published in the "Climatological Data Annual Summary."

Information concerning the history of changes in locations, exposure, etc. of substations is kept on file at the National Climatic Data Center. Historical information of regular National Weather Service Offices may be obtained from the "Local Climatological Data" annual publication. The contents of this publication may be reprinted or otherwise used freely, with proper credit to the National Climatic Data Center. The data are also available digitally.

Effective with the January 2011 Data-Month, COOP Observer Names are no longer included in the Monthly and Annual Climatological Data Publications. This information is not published to ensure the privacy of personal information pursuant to Section 208 of the E-Government Act of 2002 (44 USC 3601).

As of the 2011 Data-Year, Station and Climate Division Maps are no longer being included in the CD Publications. NCDC's Product Development Branch provides updated Station Maps for various data networks via the Historical Observing Metadata Repository: <http://www.ncdc.noaa.gov/homr>.

The GHCN-Daily Quality Control Flags shown below are displayed as superscripts with the data. For more Information on Global Historical Climatology Network - Daily and flags, see: <http://www.ncdc.noaa.gov/oa/climate/ghcn-daily/> and Comprehensive Automated Quality Assurance of Daily Surface Observations. Durre, Imke, Matthew J. Menne, Byron E. Gleason, Tamara G. Houston, Russell S. Vose, 2010: J. Appl. Meteor. Climatol., 49, 1615-1633. doi: 10.1175/2010JAMC2375.1

Blank = Passed All checks

D = failed duplicate check

G = failed gap check

I = failed internal consistency check

K = failed streak/frequent-value check

L = failed check on length of multiday period

M = failed megaconsistency check

N = failed naught check

O = failed climatological outlier check

R = failed lagged range check

S = failed spatial consistency check

T = failed temporal consistency check

W = temperature too warm for snow

X = failed bounds check

Z = flagged as a result of an official Datzilla investigation

These and other publications are available from the National Climatic Data Center

Hourly Precipitation Data

This publication contains hourly precipitation amounts obtained from recording rain gages located at National Weather Service, Federal Aviation Administration, and cooperative observer stations. Published data are displayed in inches and tenths or inches and hundredths at local standard time. HPD includes maximum precipitation for nine (9) time periods from 15 minutes to 24 hours, for selected stations.

Climatological Data

Monthly editions contain station daily maximum and minimum temperatures and precipitation. Some Stations provide daily snowfall, snow depth, evaporation, and soil temperature data. Each edition also contains monthly summaries for heating and cooling degree days (65 degree F base). The July issue contains a recap of monthly heating degree days and snow data for the preceding July through June.

The Annual issue contains monthly and annual averages of temperature, precipitation, temperature extremes, freeze data, soil temperatures, evaporation, and a recap of monthly cooling degree days.

Storm Data

Monthly issues contain a chronological listing, by states, of occurrences of storms and unusual weather phenomena. Reports contain information on storm paths, deaths, injuries, and property damage. An "Outstanding storms of the month" section highlights severe weather events with photographs, illustrations, and narratives. The December issue includes annual tornado, lightning, flash flood, and tropical cyclone summaries.

Monthly Climatic Data for the World

This publication contains monthly means for temperature, pressure, precipitation, vapor pressure, and sunshine for approximately 2,000 surface data collection stations worldwide and monthly mean upper air temperatures, dew point depressions, and wind velocities for approximately 500 observing sites.

Local Climatological Data

LCD publications summarize temperature, relative humidity, precipitation, cloudiness, wind speed and direction observations for several hundred cities in the U.S. and its territories. Each monthly publication also contains 3 hourly weather observations for that month and a hourly summary of precipitation. Annual LCD publications contain a summary of the past calendar year as well as historical averages and extremes.

For Information Call:

(828) 271-4800 Option 2

(828) 271-4010 (TDD)

(828) 271-4876 (Fax)

NOAA\National Climatic Data Center
Attn: User Engagement & Services Branch
151 Patton Avenue
Asheville, NC 28801-5001

Customer Services Number: (828) 271-4800, option 2
TDD : (828) 271-4010
Fax number: (828) 271-4876

NCDC now offers free online access to the *Climatological Data* publication.
Go to : www.ncdc.noaa.gov and choose Most Popular.