



CLIMATOLOGICAL DATA

MARYLAND AND DELAWARE

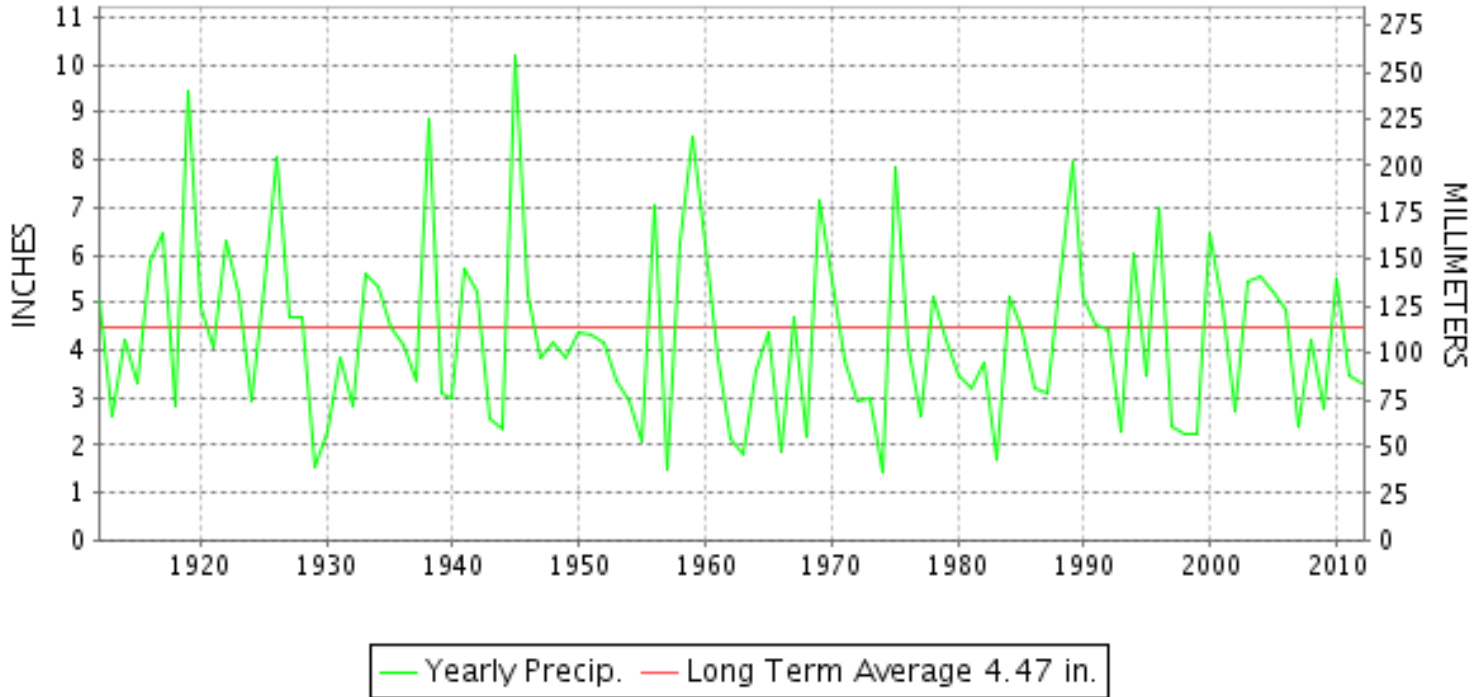
JULY 2012

VOLUME 116 NUMBER 07

ISSN 0145-0549

GHCND Ver: 3.00-upd-2012112906

JULY PRECIPITATION BY YEAR



TEMPERATURE AND PRECIPITATION EXTREMES

MARYLAND

HIGHEST TEMPERATURE	108	JULY 07	MARYLAND SCIENCE CENTER
LOWEST TEMPERATURE	51	JULY 11+	SINES DEEP CREEK
GREATEST TOTAL PRECIPITATION	8.29		FREDERICK 2 NNE
LEAST TOTAL PRECIPITATION	2.33		CONOWINGO DAM
GREATEST 1 DAY PRECIPITATION	3.27	JULY 20	WESTMINSTER

"I certify that this is an official publication of the National Oceanic and Atmospheric Administration (NOAA) It is compiled using information from weather observing sites supervised by NOAA/National Weather Service and received at the National Climatic Data Center(NCDC), Asheville, North Carolina 28801."

Director
National Climatic Data Center

noaa

National
Oceanic and
Atmospheric Administration

National
Environmental Satellite, Data
and Information Service

National
Climatic Data Center
Asheville, North Carolina

DELAWARE

HIGHEST TEMPERATURE	101	JULY 18++	3 STATIONS
LOWEST TEMPERATURE	63	JULY 12++	2 STATIONS
GREATEST TOTAL PRECIPITATION	3.36		BEAR 2 SW
LEAST TOTAL PRECIPITATION	3.05		WILMINGTON NEW CASTLE CO AP
GREATEST 1 DAY PRECIPITATION	1.74	JULY 20	DOVER

MONTHLY STATION AND DIVISION SUMMARY

STATION	TEMPERATURE (°F)														PRECIPITATION (IN)												
	AVERAGE MAXIMUM	AVERAGE MINIMUM	AVERAGE	DEPARTURE FROM NORMAL	HIGHEST	DATE	LOWEST	DATE	HEATING DEG. DAYS	COOLING DEG. DAYS	NO. OF DAYS				TOTAL	DEPARTURE FROM NORMAL	GREATEST 24 HOURS	DATE	ICE PELLETS, SNOW			NO. OF DAYS					
											MAX		MIN						TOTAL	MAX DEPTH ON GROUND	DATE	.10 OR MORE	.50 OR MORE	1.00 OR MORE			
											>=90	<=32	<=32	<=0													
MARYLAND SOUTHERN EASTERN SHORE 01																											
ASSATEAGUE	M	M	M											M													
PRINCESS ANNE	93.9M	71.1M	82.5M	5.6	101	24+	60	03	0	550E	15	0	0	0	MA 3.57	-0.76	1.42	31	0.0				4	2	1		
SALISBURY 2N	91.6	71.2	81.4		101	08	64	13	0	513	19	0	0	0	FA 3.74		1.60	09	0.0				7	3	1		
SALISBURY FAA AP	92.8	72.8	82.8	6.0	102	07+	65	13	0	558	19	0	0	0	2.35	-2.03	0.88	09	0.0				5	2	0		
SNOW HILL 4 N	92.8	70.5	81.7	4.3	102	07+	61	14+	0	524	22	0	0	0	3.58	-0.81	1.43	31	0.0				6	3	1		
--DIVISIONAL DATA----->			82.1	5.4B											2.97	-1.34B											
CENTRAL EASTERN SHORE 02																											
ROYAL OAK 2 SSW	92.3	72.4	82.4	3.8	102	07	65	13	0	547	20	0	0	0	2.70	-1.67	0.74	20	0.0				6	3	0		
--DIVISIONAL DATA----->			82.4	4.7B											2.70	-1.49B											
LOWER SOUTHERN 03																											
MECHANICSVILLE 5 NE	88.2	69.6	78.9	3.4	98	08	65	13	0	439	14	0	0	0	3.86	-0.45	1.55	09	M 0.0				5	3	1		
SOLOMONS	90.8	75.1	83.0	3.4	102	08	69	02	0	561	19	0	0	0	A 1.98	1.98	1.30	02	0.0				2	1	1		
--DIVISIONAL DATA----->			81.0	4.7B											2.92	-1.30B											
UPPER SOUTHERN 04																											
BALTIMORE WASH INTL AP	91.7	71.2	81.5	4.5	104	18+	64	21+	0	517	21	0	0	0	3.27	-0.80	1.24	21	0.0	0			6	2	1		
BELTSVILLE	90.1	69.5	79.8	2.5	101	08	63	25+	0	466	16	0	0	0	2.98	-0.96	0.88	20	0.0	0			6	2	0		
DALECARLIA RSVR	91.0	70.9	81.0	2.7	102	19+	65	22+	0	504	16	0	0	0	3.37	-1.22	1.37	20	0.0	0			7	2	1		
LAUREL 3 W	91.1	71.9	81.5	2.9	102	18+	63	21	0	521	17	0	0	0	3.60	-0.45	1.10	18	0.0				6	3	1		
MARYLAND SCIENCE CENTER	95.2	77.3	86.3	5.6	108	07	67	21	0	665	27	0	0	0	5.98	1.36	3.02	19	0.0				7	3	1		
NATL ARBORETUM DC	92.5M	72.3M	82.4M	2.8	104	09+	65	21	0	546E	20	0	0	0	M 3.43	-0.89	1.13	20	0.0				8	3	1		
OXON HILL	91.5	71.9	81.7	3.4	103	08	65	21	0	528	18	0	0	0	2.96	-1.39	1.23	20	M 0.0	0			6	2	1		
UPPER MARLBORO 3 NNW	92.0	70.1	81.1	4.1	105	08	63	12	0	507	18	0	0	0	3.57	-0.45	1.60	20	0.0				5	2	2		
--DIVISIONAL DATA----->			81.9	4.8B											3.68	-0.46B											
NORTHERN CENTRAL 06																											
ABERDEEN PHILLIPS FLD	89.3M	70.5M	79.9M	2.7	100	19+	64	22+	0	471E	15	0	0	0	FA 1.57	-2.84	0.81	20	0.0	0			3	1	0		
BRIGHTON DAM	M	68.5	M		100	08	63	27+							FA 4.90		1.42	20	M 0.0	0			7	4	2		
CONOWINGO DAM	87.8	67.8	77.8	-0.4	98	18	63	03	0	404	11	0	0	0	2.33	-1.96	0.86	27	0.0				5	3	0		
CYLBURN	85.7M	69.3M	77.5M	3.2	96	19	62	21	0	398E	6	0	0	0	A 4.14	4.14	0.46	27+	0.0				5	0	0		
DAMASCUS 3 SSW	85.5	68.1	76.8	2.5	96	07	62	25+	0	375	9	0	0	0	6.18	2.06	2.58	09	0.0				9	3	2		
EMMITSBURG 2 SE	86.6	65.9	76.3	1.8	97	08	52	03	0	357	10	0	0	0	3.82	0.17	1.81	20	0.0	0			7	2	1		
FREDERICK 2 NNE	89.7	69.1	79.4	3.0	99	08	63	22+	0	454	15	0	0	0	8.29	4.06	2.97	09	0.0				9	4	3		
MILLERS 4 NE	87.5	66.6	77.1	3.7	97	07	60	21+	0	381	13	0	0	0	5.27	1.28	2.17	27	0.0	0			11	2	1		
SMITHSBURG 2NW	86.7	65.0	75.9	1.4	97	08	58	25	0	345	10	0	0	0	3.39	-0.35	1.57	19	0.0				6	2	1		
WESTMINSTER	88.3	68.1	78.2	2.7	99	19+	61	22	1	417	14	0	0	0	5.27	0.95	3.27	20	0.0	0			7	3	1		

MONTHLY STATION AND DIVISION SUMMARY

STATION	TEMPERATURE (°F)											PRECIPITATION (IN)														
	AVERAGE MAXIMUM	AVERAGE MINIMUM	AVERAGE	DEPARTURE FROM NORMAL	HIGHEST	DATE	LOWEST	DATE	HEATING DEG. DAYS	COOLING DEG. DAYS	NO. OF DAYS				TOTAL	DEPARTURE FROM NORMAL	GREATEST 24 HOURS	DATE	ICE PELLETS, SNOW			NO. OF DAYS				
											MAX		MIN						TOTAL	MAX DEPTH ON GROUND	DATE	.10 OR MORE	.50 OR MORE	1.00 OR MORE		
											>=90	<=32	<=32	<=0												
--DIVISIONAL DATA-----> APPALACHIAN MOUNTAIN 07			77.7	2.4B										4.84	0.88B											
CUMBERLAND 2	91.5	66.4	79.0	2.2	104	08	60	30	0	440	20	0	0	0	2.52	-1.04	0.50	26	0.0				8	1	0	
FROSTBURG 2	82.0	62.7	72.4	3.4	91	08+	56	25	4	242	2	0	0	0	4.61	0.61	0.86	15	0.0				9	4	0	
SHARPSBURG 5 S	88.3	65.5	76.9	2.8	98	08	59	26+	0	374	15	0	0	0	A 4.39	0.29	1.49	20	0.0				6	2	1	
WILLIAMSPORT	M	M	M		97	19+	62	31						M					M 0.0	0						
--DIVISIONAL DATA-----> ALLEGHENY PLATEAU 08			76.1	3.3B										3.84	0.20B											
OAKLAND 1 SE	83.5	61.8	72.7	4.3	94	08	53	25+	1	247	3	0	0	0	3.45	-2.01	0.63	27	0.0	0				11	3	0
SAVAGE RIVER DAM	84.8M	63.6M	74.2M	4.0	94	08	56	11+	0	292E	7	0	0	0	M 3.61	-0.71	2.22	27	0.0				6	2	1	
SINES DEEP CREEK	80.9M	59.3M	70.1M		90	08	51	11+	1E	168E	1	0	0	0	M 4.75		1.74	27	0.0				11	2	1	
--DIVISIONAL DATA-----> DELAWARE NORTHERN 01			72.3	3.7B										3.45	-1.42B											
BEAR 2 SW	88.9	69.2	79.1	3.1	100	18	63	12+	0	443	14	0	0	0	3.36	-1.19	1.40	19	0.0	0				4	2	2
WILMINGTON NEW CASTLE CO AP	90.2	70.5	80.4	3.6	101	18+	64	12	0	482	17	0	0	0	3.05	-1.52	1.11	26	M 0.0	0				6	2	1
WILMINGTON PORTER RES	90.1	71.2	80.7	4.5	101	18	63	21+	0	494	17	0	0	0	M 1.39	-3.97	0.96	26	0.0					2	1	0
--DIVISIONAL DATA-----> SOUTHERN 02			80.1	3.9B										3.21	-1.29B											
DOVER	90.3	72.0	81.2	3.5	101	07	66	22+	0	509	17	0	0	0	3.17	-0.92	1.74	20	0.0					5	2	1
--DIVISIONAL DATA----->			81.2	4.7B										3.17	-0.75B											

DAILY PRECIPITATION (INCHES)

STATION	TOTAL	DAY OF MONTH																															
		01	02	03	04	05	06	07	08	09	10	11	12	13	14	15	16	17	18	19	20	21	22	23	24	25	26	27	28	29	30	31	
MARYLAND																																	
SOUTHERN																																	
EASTERN SHORE 01																																	
ASSATEAGUE	M	-	-	-	-	-	-	-	-	-	-	-	-	-	-	-	-	-	-	-	-	-	-	-	-	-	-	-	-	-	-		
PRINCESS ANNE	MA 3.57	-	0.23							0.47	0.08				*	0.21 _a			0.51			*	0.65 _a								1.42		
SALISBURY 2N	FA 3.74		0.25		0.50					1.60	0.02			0.14	0.01				0.17	0.07	0.07 ^L	0.02 ^L	0.00 _a						0.54	0.44			
SALISBURY FAA AP	2.35		0.27					0.01		0.88	T			0.11	T	0.07		0.08	0.02	0.08	0.15	T					T	0.05	0.60	0.01	0.02		
SNOW HILL 4 N	3.58		0.09							0.62	0.05			0.39			0.18				T	0.22							0.60		1.43		
CENTRAL																																	
EASTERN SHORE 02																																	
ROYAL OAK 2 SSW	2.70		0.02							0.64				0.25						0.07	0.74	0.10	0.14	0.01	T				0.73				
LOWER SOUTHERN 03																																	
MECHANICSVILLE 5 NE	3.86		0.80			0.01				1.55				T	0.84	0.02	0.07			0.05	0.14	0.29		T			0.08		0.01				
SOLOMONS	A 1.98		1.30							0.28						0.01			T		*	0.16 _a					*	0.23 _a					
UPPER SOUTHERN 04																																	
BALTIMORE WASH INTL AP	3.27		0.04	T						0.33			T	0.26	0.06	T		0.02	0.86	0.20	1.24		T	T		0.23			0.03				
BELTSVILLE	2.98				0.03					0.19	0.04	0.02		0.41		0.04			0.16	0.88	0.80	0.40			T		0.01						
DALECARLIA RSVR	3.37	0.20								0.28		0.31		0.10			0.08		0.09	1.37	0.75	0.18									0.01		
LAUREL 3 W	3.60		0.50															1.10	0.38	0.35	0.98	0.22				0.06				0.01	0.01		
MARYLAND SCIENCE CENTER	5.98		0.36							0.33				0.56	0.02				3.02	0.30	0.92	0.01				0.45				0.01			
NATL ARBORETUM DC	M 3.43		-	-	0.12					0.40	T	0.50		0.07	0.10	0.05			0.50	1.13	0.35	0.18							0.03				
OXON HILL	2.96				0.11					0.77	0.02			T	0.08	0.04				1.23	0.18	0.28			T		T	T	0.25				
UPPER MARLBORO 3 NNW	3.57		0.10							0.17	T	0.07				0.05			0.03	1.60			0.22						1.33				
NORTHERN CENTRAL 06																																	
ABERDEEN PHILLIPS FLD	FA 1.57	0.00 ^L	1.63 _a ^L							0.09	T					0.05			T	0.81	*	0.10 _a						0.42	0.10				
BRIGHTON DAM	FA 4.90		0.08							0.88				1.08		0.17			1.42	0.89	0.27	0.01				0.00 ^L	0.25 _a ^L	0.10					
CONOWINGO DAM	2.33		0.10			0.03										0.70			0.12	0.52							0.86						
CYLBURN	A 4.14		0.27							0.46				0.12	0.20						*	*	*	2.63 _a			0.46						
DAMASCUS 3 SSW	6.18		0.12	0.02	T					2.58	T		T	0.02	T	T			1.50	0.11	0.41			0.46		0.17		0.66		0.13			
EMMITSBURG 2 SE	3.82		0.01		0.04	0.07				0.20				0.27		0.30			0.08	1.81	0.65	0.18			0.07		0.14						
FREDERICK 2 NNE	8.29		0.57		0.12	0.02				2.97				0.06			0.03		0.26	2.35	1.23	0.20		0.01	0.34		0.13						
MILLERS 4 NE	5.27		0.22		0.09	T	0.12			T	0.24			0.43	0.29	0.12		0.21	0.03	0.89	0.26	0.01	T	0.16		0.03	2.17	T	T	T			
SMITHSBURG 2NW	3.39		0.05		0.22					0.20	0.10			0.20	0.10			0.05	1.57	0.45							0.75						
WESTMINSTER	5.27				0.06	0.02				0.29				0.10	0.04	0.05			0.10	3.27	0.32	0.50					0.52						
APPALACHIAN																																	
MOUNTAIN 07																																	
CUMBERLAND 2	2.52	0.01			0.17	0.03				0.05				0.13	0.38	0.05			0.07	0.33	0.49	T			0.11	0.50	0.20						
FROSTBURG 2	4.61	T			0.30	0.39								0.28	0.86	0.04			0.05	0.61	0.72	0.04			0.32	0.64	0.36						
SHARPSBURG 5 S	A 4.39		0.19		0.17	0.04		*	*	0.64 _a	0.03			0.04		0.01	*	*	0.42 _a	1.49	0.83	0.18			*	0.01 _a	0.34						
WILLIAMSPORT	M		0.11		0.24	0.10				0.25				0.05	-	0.48			0.08	-	-	-	-	-	-	-	-	-	-	-	-		
ALLEGHENY PLATEAU 08																																	
OAKLAND 1 SE	3.45		0.54			0.02				0.20				0.24	0.12	0.22			0.20	0.37	0.61				0.10	0.15	0.63	0.05					

DAILY PRECIPITATION (INCHES)

STATION	TOTAL	DAY OF MONTH																																			
		01	02	03	04	05	06	07	08	09	10	11	12	13	14	15	16	17	18	19	20	21	22	23	24	25	26	27	28	29	30	31					
SAVAGE RIVER DAM	M 3.61	0.62	-		T	0.16				0.13	T				0.28	0.08	-			0.12	-	-															
SINES DEEP CREEK	M 4.75	-			0.41	0.20				0.40					0.27	0.17	0.20			0.10	0.70	0.07					-	0.35	2.22	1.74	0.14			-	-		
DELAWARE NORTHERN 01																																					
BEAR 2 SW	3.36		0.01		T					0.09	0.01			T	0.01	0.02			T	1.40	0.43	T		T	0.03		1.00		T	0.36							
WILMINGTON NEW CASTLE CO AP	3.05				T					0.02	T				T	0.32	T		T	0.26	0.17	0.01		T	0.92		1.11		0.24	T							
WILMINGTON PORTER RES	M 1.39				T										T	T		-					T	0.01			0.96	0.06	0.36								
SOUTHERN 02																																					
DOVER	3.17		0.37							0.26						0.03				0.58	1.74	0.07							0.12								

DAILY TEMPERATURES (°F)

STATION	OB. TIME	MAX/MIN	DAY OF MONTH																															AVERAGE				
			01	02	03	04	05	06	07	08	09	10	11	12	13	14	15	16	17	18	19	20	21	22	23	24	25	26	27	28	29	30	31					
MARYLAND SOUTHERN EASTERN SHORE 01 ASSATEAGUE	24	MAX MIN																																		M M		
PRINCESS ANNE	17	MAX MIN		94 71	93 60	98 78	101 81	98 76			86 72	86 71	85 72	85 68	89 68			96 77	98 69	99 75	99 70	97 69			95 69	101 70	94 68	97 67	99 75				88 72	87 66	93.9 71.1			
SALISBURY 2N	17	MAX MIN	96 73	95 69	92 67	94 76	99 77	98 75	100 101	101 81	94 72	85 71	85 67	84 65	88 64	87 67	91 74	92 74	96 74	97 74	94 75	93 75	77 68	84 66	89 69	94 74	89 67	95 68	96 71	96 68	96 74	94 67	89 68	89 71	94 74	89 66	86 68	91.6 71.2
SALISBURY FAA AP	24	MAX MIN	98 77	94 72	94 67	95 78	102 81	99 77	102 100	100 84	84 72	87 70	85 68	89 65	86 67	95 77	94 77	99 75	100 78	97 76	87 73	77 71	86 70	92 68	98 76	89 69	98 70	98 74	100 71	97 67	93 71	87 67	87 72	87 72	92.8 72.8			
SNOW HILL 4 N	17	MAX MIN	99 75	96 63	95 65	96 75	102 78	100 75	102 71	100 81	92 74	85 72	85 68	83 64	87 61	87 61	93 75	94 76	98 73	99 73	97 74	93 79	81 70	84 68	91 67	95 73	92 67	95 66	97 71	95 75	93 65	86 69	84 63	92.8 70.5				
CENTRAL EASTERN SHORE 02 ROYAL OAK 2 SSW	17	MAX MIN	96 75	92 72	94 67	95 74	99 77	97 75	102 76	100 81	90 73	88 71	89 75	87 67	89 65	88 73	94 76	94 76	98 73	101 80	94 74	90 73	76 67	85 68	88 71	93 75	87 67	97 68	95 71	94 75	92 69	89 71	94 75	92 69	88 71	92.3 72.4		
LOWER SOUTHERN 03 MECHANICSVILLE 5 NE	07	MAX MIN	96 68	94 68	89 68	90 68	91 70	95 74	93 74	98 78	96 72	86 71	84 66	84 67	82 65	85 67	83 68	89 72	88 74	94 72	96 73	90 73	79 68	71 68	79 68	85 71	89 69	83 67	93 69	91 71	90 67	85 66	86 68	88.2 69.6				
SOLOMONS	08	MAX MIN	94 76	97 69	91 76	90 77	95 79	98 79	94 72	102 76	94 76	83 76	85 76	86 72	86 72	87 72	88 72	94 76	92 78	96 80	98 78	91 76	81 70	77 70	85 75	93 75	94 76	85 75	99 76	94 75	93 75	86 73	86 74	90.8 75.1				
UPPER SOUTHERN 04 BALTIMORE WASH INTL AP	24	MAX MIN	97 73	94 71	96 67	97 74	99 78	99 75	104 76	100 82	86 71	90 67	90 70	88 64	90 69	84 67	96 75	95 73	100 74	104 76	95 72	79 67	69 64	81 71	91 74	91 69	87 69	97 72	91 69	91 72	88 69	87 72	86 69	86 70	91.7 71.2			
BELTSVILLE	08	MAX MIN	93 71	95 71	91 67	94 72	95 72	97 73	97 74	101 79	97 71	85 68	88 69	87 63	86 68	87 66	84 72	94 71	93 73	98 74	100 74	93 72	79 64	69 64	81 69	87 72	87 63	86 65	97 71	89 70	90 67	86 67	86 70	90.1 69.5				
DALECARLIA RSVR	08	MAX MIN	95 73	95 74	95 71	93 72	98 74	98 76	98 76	102 79	87 72	85 72	88 69	87 66	87 70	84 67	84 71	91 71	94 72	99 76	102 72	94 65	94 65	76 70	82 71	88 71	86 66	86 66	95 76	98 72	88 69	86 72	88 69	86 69	91.0 70.9			
LAUREL 3 W	24	MAX MIN	96 76	93 70	94 75	96 79	98 76	98 77	102 79	99 81	87 70	89 68	90 70	89 66	88 71	84 65	94 75	94 74	99 76	102 74	94 76	80 69	70 63	82 65	88 72	87 73	88 67	97 71	92 73	91 74	88 64	88 70	87 70	91.1 71.9				
MARYLAND SCIENCE CENTER	24	MAX MIN	101 82	96 76	100 78	100 80	103 83	103 83	108 84	99 87	92 75	93 77	95 77	93 75	95 78	90 69	99 79	99 80	103 83	107 75	97 70	79 67	73 67	84 71	95 76	97 75	90 75	101 78	95 78	96 75	95 78	96 77	90 76	95.2 77.3				
NATL ARBORETUM DC	07	MAX MIN	95 75			94 72	98 75	99 74	100 81	104 83	104 72	87 69	92 67	89 71	89 68	90 74	88 74	95 74	95 74	100 79	103 74	95 73	103 65	80 66	84 70	88 74	90 69	89 71	98 74	92 73	94 71	90 74	90 73	92.5 72.3				
OXON HILL	08	MAX MIN	95 71	97 74	92 71	96 71	97 75	98 79	98 77	103 80	100 73	85 72	88 72	87 69	86 70	88 70	87 70	95 73	93 73	99 74	101 74	96 76	80 65	69 66	84 67	89 72	90 71	88 70	98 71	91 73	93 70	88 70	87 71	91.5 71.9				
UPPER MARLBORO 3 NNW	08	MAX MIN	95 72	97 71	92 67	97 70	98 74	100 76	99 75	105 79	101 72	84 69	89 68	88 63	89 67	86 70	96 68	96 71	101 71	102 75	96 72	80 65	68 65	81 68	88 72	90 65	88 68	96 71	94 73	95 67	85 67	87 68	92.0 70.1					
NORTHERN CENTRAL 06 ABERDEEN PHILLIPS FLD	07	MAX MIN			91 70	92 65	97 68	97 76	94 76	100 77	92 71	85 71	85 68	90 67	88 68	87 69	83 71	93 74	92 71	99 73	100 76	88 73	74 64	72 64	81 68	89 72	94 70	86 67	94 73	91 72	86 69	85 69	86 71	89.3 70.5				

DAILY TEMPERATURES (°F)

STATION	OB. TIME	MAX/MIN	DAY OF MONTH																															AVERAGE		
			01	02	03	04	05	06	07	08	09	10	11	12	13	14	15	16	17	18	19	20	21	22	23	24	25	26	27	28	29	30	31			
BRIGHTON DAM	08	MAX MIN	96 75	92 73	95 69				95 76	100 85			89			64	64	64	66	69	69	70	72	73	64	65	68	70	63	63	69	66	65	68	84	M
CONOWINGO DAM	07	MAX MIN	89 68	93 67	88 63	90 65	92 70	94 71	91 71	96 73	89 71	87 65	83 64	87 66	86 67	87 68	81 70	91 68	89 68	98 72	95 70	89 64	72 64	64 67	64 67	69 74	64 64	66 66	71 71	68 68	67 69	70 74	65 66	66 70	67 67	67
CYLBURN	08	MAX MIN			87 66	87 72	88 75	89 72	93 74	94 77	89 68	81 67	84 67	83 64	83 66	84 67	85 67	88 72	91 68	95 72	96 69	87 66	70 67	74 66	82 69	84 66	87 66	81 71	92 71	84 68	85 68	80 69	81 68	81 69	85	
DAMASCUS 3 SSW	22	MAX MIN	90 70	86 66	88 68	91 68	92 71	92 72	96 74	91 77	80 67	85 66	85 66	82 64	80 67	82 67	89 72	88 68	93 72	94 69	88 66	75 66	67 67	77 67	83 66	84 65	81 69	94 62	84 66	85 69	81 68	84 64	85 67	81 68	85	
EMMITSBURG 2 SE	07	MAX MIN	86 67	91 66	89 52	90 63	90 68	90 69	93 70	92 74	85 70	85 67	85 61	85 61	85 66	80 70	88 67	89 70	94 67	95 67	89 72	89 66	76 62	70 62	77 65	85 67	87 64	81 64	92 66	84 69	85 68	84 64	85 63	84		
FREDERICK 2 NNE	07	MAX MIN	92 71	95 69	91 67	93 71	94 71	95 74	96 75	99 79	94 70	87 68	89 67	88 65	86 68	85 67	86 67	92 72	91 70	98 71	97 72	93 71	80 63	69 63	83 67	87 71	87 65	86 67	96 70	87 70	87 68	89 66	87 67	89		
MILLERS 4 NE	18	MAX MIN	92 66	91 64	91 63	93 66	94 72	92 68	97 74	93 74	87 69	84 66	84 63	85 60	85 65	80 64	89 70	90 67	93 71	95 70	88 67	82 67	70 60	78 63	87 66	89 66	82 61	92 63	91 69	86 66	85 65	84 67	84			
SMITHSBURG 2NW	08	MAX MIN	87 66	91 64	88 62	89 65	91 65	92 68	93 70	97 71	90 71	86 64	86 64	86 61	86 65	82 64	89 64	90 68	95 69	89 68	75 60	70 62	79 64	78 65	84 68	86 58	82 60	94 69	86 66	82 62	84 62	85 62	84			
WESTMINSTER	07	MAX MIN	90 70	93 68	90 65	93 69	93 69	96 71	94 75	99 77	92 69	86 68	86 65	87 63	87 66	87 66	81 64	91 71	92 69	96 72	99 70	89 62	74 61	67 66	79 66	87 70	89 63	83 65	95 71	86 69	87 67	84				
APPALACHIAN MOUNTAIN 07																																				
CUMBERLAND 2	18	MAX MIN	95 66	95 67	94 65	95 66	98 68	98 71	101 73	104 75	98 70	90 61	90 62	89 63	89 64	77 64	84 65	92 69	96 67	100 68	98 69	93 69	79 64	72 64	88 67	90 70	88 62	87 63	98 70	90 69	89 65	89 60	89			
FROSTBURG 2	07	MAX MIN	91 60	84 65	84 65	85 62	87 62	86 67	88 71	91 71	86 66	81 57	81 58	82 60	81 61	71 60	74 60	83 67	83 66	88 70	87 65	85 65	73 58	64 58	81 62	78 65	79 56	83 58	87 66	81 66	87 62	81 58	79 58	77		
SHARPSBURG 5 S	07	MAX MIN	90 65	92 66	90 64	91 65	94 66	94 68	94 70	98 72	92 72	85 64	87 65	87 64	85 64	82 66	84 67	91 67	91 65	97 67	96 69	90 69	79 63	69 62	82 66	85 67	85 59	84 59	96 68	86 66	88 62	85				
WILLIAMSPORT	06	MAX MIN	89 67	94 67	91 65	93 65	94 67	95 70	96 72	96 74	94 73	86 66	89 66	87 64	87 64	84 66		93 69	92 68	97 68	97 68														88	
ALLEGHENY PLATEAU 08																																				
OAKLAND 1 SE	07	MAX MIN	86 61	87 60	83 60	86 63	88 64	89 68	91 66	94 68	90 66	83 53	82 54	81 57	80 62	68 60	84 64	83 67	85 63	89 63	89 64	86 65	75 62	74 61	83 61	81 64	84 53	82 56	88 67	80 65	78 63	81 56	80			
SAVAGE RIVER DAM	08	MAX MIN	77 62		86 64	89 64	90 66	89 66	92 70	94 70	92 67	91 56	85 56	83 59	72 61	78 62		86 66	91 65	90 65				71 61	84 64	82 65		81 59	89 67	80 66	81 63					
SINES DEEP CREEK	07	MAX MIN		83 59	82 59	83 59	85 61	86 61	88 65	90 65	80 63	80 51	79 51	68 53	80 56	79 60	83 60	86 64	86 61	86 61	82 61	71 62	73 61	80 60	77 60	84 54	79 54	86 66	77 63	77 62	77	78	79			
DELAWARE NORTHERN 01																																				
BEAR 2 SW	24	MAX MIN	94 69	88 67	92 63	92 70	96 77	95 69	98 75	91 76	87 70	85 67	87 64	87 63	88 66	81 71	91 71	93 69	97 68	100 75	87 72	75 65	76 65	83 67	88 69	94 74	86 65	92 64	89 71	91 73	85 70	84 70	84			
WILMINGTON NEW CASTLE CO AP	24	MAX MIN	95 70	91 70	94 65	95 73	99 78	97 71	101 76	93 75	89 73	83 69	88 67	88 64	89 70	82 73	93 71	93 72	98 76	101 73	86 65	75 65	77 68	83 71	91 74	96 67	87 68	93 72	92 70	92 69	86 71	84 71	84			

DAILY TEMPERATURES (°F)

STATION	OB. TIME	MAX/MIN	DAY OF MONTH																															AVERAGE
			01	02	03	04	05	06	07	08	09	10	11	12	13	14	15	16	17	18	19	20	21	22	23	24	25	26	27	28	29	30	31	
WILMINGTON PORTER RES	24	MAX	94	88	93	93	94	93	99	89	86	87	89	89	100	100	92	90	97	101	83	73	76	82	91	94	94	93	89	92	82	86	83	
		MIN	71	72	71	72	79	74	77	76	73	70	68	67	77	76	71	71	74	74	72	63	63	67	70	74	68	68	73	69	68	70	68	
SOUTHERN 02 DOVER	16	MAX	96	90	94	94	96	96	101	92	85	86	86	85	88	84	94	93	99	100	95	87	75	83	89	93	88	94	92	91	85	84	84	
		MIN	73	71	67	75	79	76	77	77	74	70	69	70	66	71	74	75	74	80	73	70	68	66	72	73	68	68	72	73	70	70	71	

TOTAL SNOWFALL AND NUMBER OF DAYS WITH ONE INCH OR MORE ON GROUND

MARYLAND AND DELAWARE

201207

STATION	JUL		AUG		SEP		OCT		NOV		DEC		JAN		FEB		MAR		APR		MAY		JUN		TOTAL		TOTAL PRECIPITATION			
	SNOWFALL	1 IN ON GD	SNOWFALL	1 IN ON GD	SNOWFALL	1 IN ON GD	SNOWFALL	1 IN ON GD	SNOWFALL	1 IN ON GD	SNOWFALL	1 IN ON GD	SNOWFALL	1 IN ON GD	SNOWFALL	1 IN ON GD	SNOWFALL	1 IN ON GD	SNOWFALL	1 IN ON GD	SNOWFALL	1 IN ON GD	SNOWFALL	1 IN ON GD	SNOWFALL	1 IN ON GD				
MARYLAND																														
SOUTHERN EASTERN SHORE 01																														
ASSATEAGUE																										0.0	0	33.67		
PRINCESS ANNE																	1									0.0	1	18.36		
SALISBURY 2N															M 2.5											M 2.5	0	13.76		
SALISBURY FAA AP																										0.0	0	42.15		
SNOW HILL 4 N															M 2.5		M 0.1									M 2.6	M 0	41.47		
CENTRAL EASTERN SHORE 02																														
ROYAL OAK 2 SSW												T	1.6	1	1.0												2.6	M 1	27.13	
LOWER SOUTHERN 03																														
MECHANICSVILLE 5 NE	M 0.0		M 0.0		M 0.0		M T		M 0.0		M 0.0		M 0.2		M 1.2		M 0.0		M 0.0							M 1.4	M 0	33.79		
SOLOMONS													M 0.3		M 0.7		M 0.4									M 1.4	M 0	12.62		
UPPER SOUTHERN 04																														
BALTIMORE WASH INTL AP				T		M T		T			T	1.3	3	0.5	1		T										1.8	M 4	50.11	
BELTSVILLE												1.5	4	0.5													2.0	4	50.21	
DALECARLIA RSVR												1.0	1														1.0	1	43.79	
LAUREL 3 W												T			M T		T										0.0	M 0	48.96	
MD SCI CTR BALTIMORE																											0.0	0	48.79	
NATL ARBORETUM DC								M 0.0		M 0.0		M 0.0		M 0.7	1	M T		M T								M 0.7	M 1	45.59		
OXON HILL	M 0.0						M 0.0	M 0.1				T	2.3	1	0.4		T									M 2.8	M 1	51.01		
UPPER MARLBORO 3 NNW								T		M 0.0		M 0.0	2.6	3	0.6					M 0.0						M 3.2	M 3	38.51		
NORTHERN EASTERN SHORE 05																														
CHESTERTOWN																											0.0	0	0.00	
NORTHERN CENTRAL 06																														
ABERDEEN PHILLIPS FLD																														
CATOCTIN MTN PARK								T						M 1.3	1	M 0.5											M 1.8	M 1	16.66	
CONOWINGO DAM								M 15.0	3		1	M 3.5															M 18.5	M 4	28.32	
CYLBURN														M 0.8		0.5											M 1.3	0	59.39	
DAMASCUS 3 SSW														M 1.5													M 1.5	0	6.04	
EMMITSBURG 2 SE								M 3.8	1			M 0.3		M 1.9	2	M 5.5	3	M T		M T						M 11.5	M 6	54.46		
FREDERICK 2 NNE								3.0				T		2.0		M 2.0											M 7.0	M 0	56.68	
MILLERS 4 NE								M 0.5						M 3.2	3	2.2	3										M 5.9	M 6	39.57	
SMITHSBURG 2NW								6.1	2			1.7		3.9	3	6.4	3	T		T							18.1	8	56.40	
WESTMINSTER								M 4.5	1				M 3.0							M 0.0							M 7.5	M 1	45.71	
APPALACHIAN MOUNTAIN 07																												0.0	0	38.97
CUMBERLAND 2																														
FROSTBURG 2								M 3.0	1					M 1.5	4	M 1.0	1											M 5.5	M 6	39.31
SHARPSBURG 5 S								M 9.1	3	M 0.4	1	M 3.3	7	M 9.3	16	M 9.1	11	M 1.1	1	M 2.2	1						M 34.5	M 40	45.57	
WILLIAMSPORT	M 0.0		M 0.0		M 0.0			M 3.0	2	M 0.0		M 0.0		M 2.0	1	M 1.0	1	M 0.0		M 0.0							M 3.0	M 2	16.55	
ALLEGHENY PLATEAU 08																														
OAKLAND 1 SE																														
SAVAGE RIVER DAM								5.8	2	0.7		9.4	2	32.6	14	17.4	6	M 0.9		5.8	1	M 0.0					M 72.6	M 25	50.82	
DELAWARE																														
NORTHERN 01																														
BEAR 2 SW																														
WILMINGTON NEW CASTLE	M 0.0		M 0.0					0.3				0.1		2.5	2	2.3												5.2	2	56.52
WILMINGTON PORTER RES								0.3				0.1		2.5	3	2.3												M 5.2	M 4	49.99
								1.3						M 0.8	1	M 0.6												M 2.7	M 1	51.58

TOTAL SNOWFALL AND NUMBER OF DAYS WITH ONE INCH OR MORE ON GROUND

MARYLAND AND DELAWARE

201207

STATION	JUL		AUG		SEP		OCT		NOV		DEC		JAN		FEB		MAR		APR		MAY		JUN		TOTAL		TOTAL PRECIPITATION		
	SNOWFALL	1 IN ON GD	SNOWFALL	1 IN ON GD	SNOWFALL	1 IN ON GD	SNOWFALL	1 IN ON GD	SNOWFALL	1 IN ON GD	SNOWFALL	1 IN ON GD	SNOWFALL	1 IN ON GD	SNOWFALL	1 IN ON GD	SNOWFALL	1 IN ON GD	SNOWFALL	1 IN ON GD	SNOWFALL	1 IN ON GD	SNOWFALL	1 IN ON GD	SNOWFALL	1 IN ON GD			
SOUTHERN 02 DOVER LEWES	M 0.0		M 0.0		M 0.0		M 0.0						M 0.8		M 1.2	1											M 2.0 M 0.0	M 1 M 0	M 20.87 0.00

MONTHLY AND SEASONAL HEATING DEGREE DAYS

STATION	JUL	AUG	SEP	OCT	NOV	DEC	JAN	FEB	MAR	APR	MAY	JUN	TOTAL	SEASONAL NORM
MARYLAND														
SOUTHERN EASTERN SHORE 01														
ASSATEAGUE	0	0	8	141	333	497			367	21		7	M 1374	
PRINCESS ANNE		0	4E					592E		294E	38E	11E	M 939E	
SALISBURY 2N								627	298	267	33	11	M 1236	
SALISBURY FAA AP	0	0	16	212	359	598	718	645	341	283	30	11	3213	
SNOW HILL 4 N	0	0	13	203	364E	588		621	319	272	40	13E	M 2433E	
CENTRAL EASTERN SHORE 02														
ROYAL OAK 2 SSW	0			189	379	608	770	622	307	261	19	1	M 3156	
LOWER SOUTHERN 03														
MECHANICSVILLE 5 NE	0	0	29	294	452	718	856	701	375	342		10	M 3777	
SOLOMONS	0	0	7	151	338	570	745	620	335	254	22	0	3042	
UPPER SOUTHERN 04														
BALTIMORE WASH INTL AP	0	0	27	261	426	698	822	670	350	305	27	6	3592	
BELTSVILLE	0	0	22	265	439	727	855	694	381	336	40	11	3770	
DALECARLIA RSVR	0	0	32	298	444	714	831	669	331	288	30	8	3645	
LAUREL 3 W		0	26	264	394	678	831	662	336	283	20	5	M 3499	
MD SCI CTR BALTIMORE	0	0	6	160	303	547	707	546	265	195	4	0	2733	
NATL ARBORYTUM DC	0	0	0	224E	388E	688E	808	625E	299	243E	16	3E	M 3294E	
OXON HILL	0	0	21	246	419	673	812	647	334	289	31	5	3477	
UPPER MARLBORO 3 NNW	0	0	25	270	446	718	841	684	376	319	39	8	3726	
NORTHERN EASTERN SHORE 05														
NORTHERN CENTRAL 06														
ABERDEEN PHILLIPS FLD	0	0	33	277	473	712	883	724	437	358	56	10	3963	
CATOCTIN MTN PARK		3	63	378	489	793	945						M 2671	
CONOWINGO DAM	0	0	32	265E	513	779	915		438	367	52	17	M 3378E	
CYLBURN	0	1	37	317	438	736	879	708	416	381	67	23E	4003E	
DAMASCUS 3 SSW	0	0	56	331	469	731	879	740	383	365	43E	28	4025E	
EMMITSBURG 2 SE	0	2	50	362	551	813	952	777	453	405	64	24	4453	
FREDERICK 2 NNE		0	36	312		767	901	725	394	359	40	13E	M 3547E	
MILLERS 4 NE	0	0	40	337	481	757	908	756	386	363	37	18	4083	
SMITHSBURG 2NW	0	3	40E	375E	553	834	985			461E	74E	37E	M 3362E	
WESTMINSTER	0	1	43		492	763		745	431	404	61	20	M 2960	
APPALACHIAN MOUNTAIN 07														
CUMBERLAND 2	0	0	51	342	513	828	940	733	394	350	46	11	4208	
FROSTBURG 2	1	17	116	481	606	950	1100	911	528	512	110	73	5405	
SHARPSBURG 5 S	0	1	53	377	540				464	433	68	33	M 1969	
WILLIAMSPORT	0	0	33E	327	537E	793E	939E	735E	432E	365E	51E	19E	4231E	
ALLEGHENY PLATEAU 08														
OAKLAND 1 SE	7	24	133	512	639	963	1053	936	545E	560	125E	76	5573E	
SAVAGE RIVER DAM	0	13	99E	451	614	913	1048	851	523	482	102	58	5154E	
DELAWARE														
NORTHERN 01														
BEAR 2 SW	0	0	31	291	471	735	862	739	427	371	63	15	4005	
WILMINGTON NEW CASTLE	0	0	30	276	457	728	854	719	419	355	51	9	3898	4888
WILMINGTON PORTER RES	0	0	38	293	454	723	907	742	452	359	59	14	4041	
SOUTHERN 02														
DOVER	0	0	16	217	383	614	743	646	362	303	47	10	3341	4212

SNOWFALL AND SNOW ON GROUND (INCHES)

STATION		DAY OF MONTH																																
		01	02	03	04	05	06	07	08	09	10	11	12	13	14	15	16	17	18	19	20	21	22	23	24	25	26	27	28	29	30	31		
MARYLAND SOUTHERN EASTERN SHORE 01 ASSATEAGUE PRINCESS ANNE SALISBURY 2N SALISBURY FAA AP SNOW HILL 4 N	SNOWFALL SNOWFALL SNOWFALL SNOWFALL SNOWFALL																																	
DELAWARE NORTHERN 01 BEAR 2 SW WILMINGTON NEW CASTLE CO AP WILMINGTON PORTER RES	SNOWFALL SN ON GND SNOWFALL SN ON GND SNOWFALL																																-	-

Snowfall: Includes snow and ice. Values for NWS stations (J index note) are Mid-Mid (LST).

Snow on ground: Includes snow, sleet, ice, and hail. Values for NWS stations (J index note) are observed at 12 UTC (GMT).

Water Equivalent: Given for NWS stations (J index note) only, when snow depth is 2 inches or more, and is measured at 18 UTC (GMT)

PAN EVAPORATION AND WIND

STATION		DAY OF MONTH																															TOTAL OR AVERAGE
		01	02	03	04	05	06	07	08	09	10	11	12	13	14	15	16	17	18	19	20	21	22	23	24	25	26	27	28	29	30	31	
MARYLAND UPPER SOUTHERN 04 BELTSVILLE	WIND	40	68	49	48	57	62	31	52	50	29	37	41	13	36	39	46	47	45	46	47	66	30	14	36	65	36	61	40	43	40	46	1360
	EVAP	0.27	0.34	0.31	0.31	0.31	0.38	0.32	0.36	0.28	0.14	0.20	0.28	0.22	0.27	0.14	0.23	0.30	0.37	0.18	0.40	0.07	0.03	0.09	0.16	0.17	0.27	0.26	0.26	0.26	0.21	0.22	7.61
	MAX	96	96	96	96	97	98	100	100	102	88	94	95	92	90	88	97	98	100	102	99	83	75	84	90	85	92	97	95	96	94	95	93.9
	MIN	69	70	68	69	70	74	75	76	72	69	68	64	65	69	69	63	73	74	73	72	64	64	71	72	66	66	70	72	69	68	69	69.5
UPPER MARLBORO 3 NNW	WIND	-	-	-	-	-	-	-	-	-	-	-	-	-	-	-	-	-	-	-	-	-	-	-	-	-	-	-	-	-	-	M	
	EVAP	-	-	-	-	-	-	-	-	-	-	-	-	-	-	-	-	-	-	-	-	-	-	-	-	-	-	-	-	-	-	M	
	MAX	-	-	-	-	-	-	-	-	-	-	-	-	-	-	-	-	-	-	-	-	-	-	-	-	-	-	-	-	-	-	M	
	MIN	-	-	-	-	-	-	-	-	-	-	-	-	-	-	-	-	-	-	-	-	-	-	-	-	-	-	-	-	-	-	M	
ALLEGHENY PLATEAU 08 SAVAGE RIVER DAM	WIND	-	-	-	-	-	-	-	-	-	-	-	-	-	-	-	-	-	-	-	-	-	-	-	-	-	-	-	-	-	-	M	
	EVAP	-	-	-	-	-	-	-	-	-	-	-	-	-	-	-	-	-	-	-	-	-	-	-	-	-	-	-	-	-	-	M	
	MAX	-	-	-	-	-	-	-	-	-	-	-	-	-	-	-	-	-	-	-	-	-	-	-	-	-	-	-	-	-	-	-	
	MIN	-	-	-	-	-	-	-	-	-	-	-	-	-	-	-	-	-	-	-	-	-	-	-	-	-	-	-	-	-	-	M	

Evaporation: Is measured in hundredths of inches.

Wind: Is measured in miles.

Max and Min: The maximum and minimum temperatures (Fahrenheit) of the water in the evaporation pan.

STATION INDEX

STATION	INDEX NO.	DIVISION	COUNTY	LATITUDE	LONGITUDE	ELEVATION (IN FEET)	OBSERVATION TIME AND TABLES			
							LOCAL STD TIME			
							TEMP	PRECIP	EVAP	SPECIAL SEE (NOTES)
MARYLAND										
ABERDEEN PHILLIPS FLD	0015	06	HARFORD	39 28	76 10W	57	07	07		CH
ASSATEAGUE	0335	01	WORCESTER	38 4	75 13W	10	24	24		H
BALTIMORE WASH INTL AP R	0465	04	ANNE ARUNDEL	39 10	76 41W	156	24	24		HJ
BELTSVILLE	0700	04	PRINCE GEORGE'S	39 2	76 56W	145	08	08	08	CH
BRIGHTON DAM	1125	06	MONTGOMERY	39 11	77 0W	330	08	08		H
CONOWINGO DAM	2060	06	HARFORD	39 39	76 11W	40	07	07		H
CUMBERLAND 2	2282	07	ALLEGANY	39 39	78 45W	730	18	18		H
CYLBURN	2308	06	BALTIMORE	39 21	76 39W	235	08	08		H
DALECARLIA RSVR	2325	04	DISTRICT OF COLUMBIA	38 56	77 7W	150	08	08		H
DAMASCUS 3 SSW	2336	06	MONTGOMERY	39 16	77 14W	700	22	22		H
EMMITSBURG 2 SE	2906	06	FREDERICK	39 41	77 17W	403	07	07		H
FREDERICK 2 NNE	3353	06	FREDERICK	39 26	77 24W	280	07	07		H
FROSTBURG 2	3415	07	ALLEGANY	39 40	78 56W	2170	07	07		H
LAUREL 3 W	5111	04	PRINCE GEORGE'S	39 5	76 54W	400	24	24		H
MARYLAND SCIENCE CENTER R	5718	04	BALTIMORE (CITY)	39 17	76 37W	20	24	24		H
MECHANICSVILLE 5 NE	5865	03	ST. MARY'S	38 28	76 42W	100	07	07		H
MILLERS 4 NE	5934	06	CARROLL	39 43	76 48W	860	18	18		CH
NATL ARBORETUM DC	6350	04	DISTRICT OF COLUMBIA	38 55	76 58W	50	07	07		H
OAKLAND 1 SE	6620	08	GARRETT	39 25	79 24W	2420	07	07		H
OXON HILL	6800	04	PRINCE GEORGE'S	38 47	76 60W	120	08	08		H
PRINCESS ANNE	7330	01	SOMERSET	38 13	75 41W	20	17	17		H
ROYAL OAK 2 SSW	7806	02	TALBOT	38 43	76 11W	10	17	17		H
SALISBURY 2N	8004	01	WICOMICO	38 24	75 36W	20	17	17		H
SALISBURY FAA AP	8005	01	WICOMICO	38 20	75 31W	48	24	24		H
SAVAGE RIVER DAM	8065	08	GARRETT	39 31	79 8W	1495	08	08	08	CH
SHARPSBURG 5 S	8207	07	WASHINGTON	39 24	77 43W	500	07	07		H
SINES DEEP CREEK	8315	08	GARRETT	39 31	79 25W	2040	07	07		H
SMITHSBURG 2NW	8371	06	WASHINGTON	39 40	77 35W	670	08	08		H
SNOW HILL 4 N	8380	01	WORCESTER	38 14	75 23W	30	17	17		H
SOLOMONS	8405	03	CALVERT	38 19	76 27W	12	08	08		H
UPPER MARLBORO 3 NNW	9070	04	PRINCE GEORGE'S	38 51	76 46W	130	08	08	08	H
WESTMINSTER	9440	06	CARROLL	39 34	76 59W	750	07	07		H
WILLIAMSPORT	9570	07	WASHINGTON	39 37	77 51W	360	06	06		H
DELAWARE										
BEAR 2 SW	1200	01	NEW CASTLE	39 36	75 44W	80	24	24		H
DOVER	2730	02	KENT	39 15	75 31W	30	16	16		H
WILMINGTON NEW CASTLE CO AP R	9595	01	NEW CASTLE	39 40	75 36W	79	24	24		HJ
WILMINGTON PORTER RES	9605	01	NEW CASTLE	39 46	75 32W	270	24	24		H

REFERENCE NOTES

STATION NAMES: Name of the city, town or locality. Figures and letters following the station names indicate the distance in miles and direction from the post office or town community center.

DIVISIONS: Areas within a state of similar climatological characteristics. Division averages are calculated using data from stations that record temperature and/or precipitation. Station Precipitation totals flagged with an 'F' or 'M' are excluded from the Divisional Average calculations of precipitation. Stations with monthly Temperature averages flagged with an 'F' or 'M' are included in the Divisional Average if there are no more than 9 flagged or missing daily values in the month, else they are excluded from the divisional average for temperature.

NORMALS: The average value of the meteorological element over a time period. Effective 1 January 2012, the averaging period is 1981 to 2010. The normals for National Weather Service localities have been adjusted so as to be representative for the current observation site.

MONTHLY DEGREE DAY TOTALS: One heating (cooling) degree day is accumulated for each whole degree that the daily mean temperature is below (above) 65 degrees Fahrenheit.

PRECIPITATION: Values shown in hundredths of inches are water equivalent totals, i.e., total of liquid and melted frozen precipitation. In the "Monthly Summarized Data" table the total snow and sleet values shown in tenths of inches are unmelted amounts. The max depth on ground values of snow and sleet shown in whole inches are cumulative unmelted amounts. The number of days with .10, .50, 1.00 or more refers to water equivalents.

PRECIPITATION QUALITY CONTROL: The NCDC quality control process may flag precipitation data that are spatially inconsistent, exceed climatological limits, or are inconsistent with prevailing weather patterns.

TEMPERATURE: Original temperature values are given in the "Daily Temperature" table. Summary temperature information (averages, departures, extremes, monthly degree day totals) is based on the values labeled MAX/MIN.

WIND: (As shown in the "Evaporation and Wind" table) the total wind movement in miles over the evaporation pan as determined by an anemometer recorder located 6-8 inches above the pan.

SYMBOLS AND LETTERS USED IN THE STATION INDEX TABLE

C Station is equipped with recording rain gage (R) but values in this bulletin are from a non-recording rain gage unless indicated by an R.

G Observations appear in the "Soil Temperatures" table.

H Observations appear in the "Snowfall and Snow on the Ground" table.

J Station also published as a Local Climatological Data publication.

VAR Observation time varies.

SR Observation time near sunrise.

SS Observation time near sunset.

SYMBOLS AND LETTERS USED IN THE DATA TABLES

(DAILY DATA ARE FOR THE 24 HOURS IMMEDIATELY PRECEDING OBSERVATION TIME.)

BLANK Entries in the "Monthly Summarized Data" table indicate no record.

BLANK Entries in the "Daily Precipitation" and "Snowfall and Snow on the Ground" tables indicate zero.

BLANK Entries in the "Daily Temperature" table indicate a missing record

- No record. Data not recorded or not received in time for publication.

+ Precipitation or temperature extremes occurred on one or more previous dates during the month.

* Rain gage not read. Precipitation is included in the amount following the asterisks.

Time distribution may not be known. A * preceding the monthly total indicates precipitation amount is being carried forward to next month's total, and may include amounts from the previous month(s).

a As a subscript, indicates accumulated total.

A Amount of precipitation is the total of observer's entries for the current month. It may include precipitation that occurred during the previous month. Refer to earlier bulletin to determine date of last reading. (Hawaii stations)

B Divisional Departure from normals are computed using 1971-2000 normals.

E Normalized HDD/CDD Calculation. E is appended to the HDD/CDD Calculation when 1-9 individual daily TMAX and/or TMIN values are missing and a Normalized HDD/CDD Calculation is provided. M appears alone if 10 or more daily values are missing.

F Monthly calculation flagged value. F is appended to average and/or total values computed which exclude one or more daily data values that have been flagged by the GHCN-Daily Dataset

M Insufficient or partial data. M is appended to average and/or total values computed with 1-9 daily values missing. M appears alone if 10 or more daily values are missing, (8 or more for wind and evaporation).

N Indicates snow fall or Snowdepth totals are computed with one or more missing days.

R Amounts from recording rain gage.

T Trace. An amount too small to measure.

SEASONAL TABLES: Monthly and seasonal snowfall and heating degree days for the 12 months ending with the June data are published in the July issue of this bulletin. Cooling degree days for the calendar year are published in the "Climatological Data Annual Summary."

Information concerning the history of changes in locations, exposure, etc. of substations is kept on file at the National Climatic Data Center. Historical information of regular National Weather Service Offices may be obtained from the "Local Climatological Data" annual publication. The contents of this publication may be reprinted or otherwise used freely, with proper credit to the National Climatic Data Center. The data are also available digitally.

Effective with the January 2011 Data-Month, COOP Observer Names are no longer included in the Monthly and Annual Climatological Data Publications. This information is not published to ensure the privacy of personal information pursuant to Section 208 of the E-Government Act of 2002 (44 USC 3601).

As of the 2011 Data-Year, Station and Climate Division Maps are no longer being included in the CD Publications. NCDC's Product Development Branch provides updated Station Maps for various data networks via the Historical Observing Metadata Repository: <http://www.ncdc.noaa.gov/homr>.

The GHCN-Daily Quality Control Flags shown below are displayed as superscripts with the data. For more Information on Global Historical Climatology Network - Daily and flags, see: <http://www.ncdc.noaa.gov/oa/climate/ghcn-daily/> and Comprehensive Automated Quality Assurance of Daily Surface Observations. Durre, Imke, Matthew J. Menne, Byron E. Gleason, Tamara G. Houston, Russell S. Vose, 2010: J. Appl. Meteor. Climatol., 49, 1615-1633. doi: 10.1175/2010JAMC2375.1

Blank = Passed All checks

D = failed duplicate check

G = failed gap check

I = failed internal consistency check

K = failed streak/frequent-value check

L = failed check on length of multiday period

M = failed megaconsistency check

N = failed naught check

O = failed climatological outlier check

R = failed lagged range check

S = failed spatial consistency check

T = failed temporal consistency check

W = temperature too warm for snow

X = failed bounds check

Z = flagged as a result of an official Datzilla investigation

NOAA\National Climatic Data Center
Attn: User Engagement & Services Branch
151 Patton Avenue
Asheville, NC 28801-5001

Customer Services Number: (828) 271-4800, option 2
TDD : (828) 271-4010
Fax number: (828) 271-4876

NCDC now offers free online access to the *Climatological Data* publication.
Go to : www.ncdc.noaa.gov and choose Most Popular.