



CLIMATOLOGICAL DATA MARYLAND AND DELAWARE



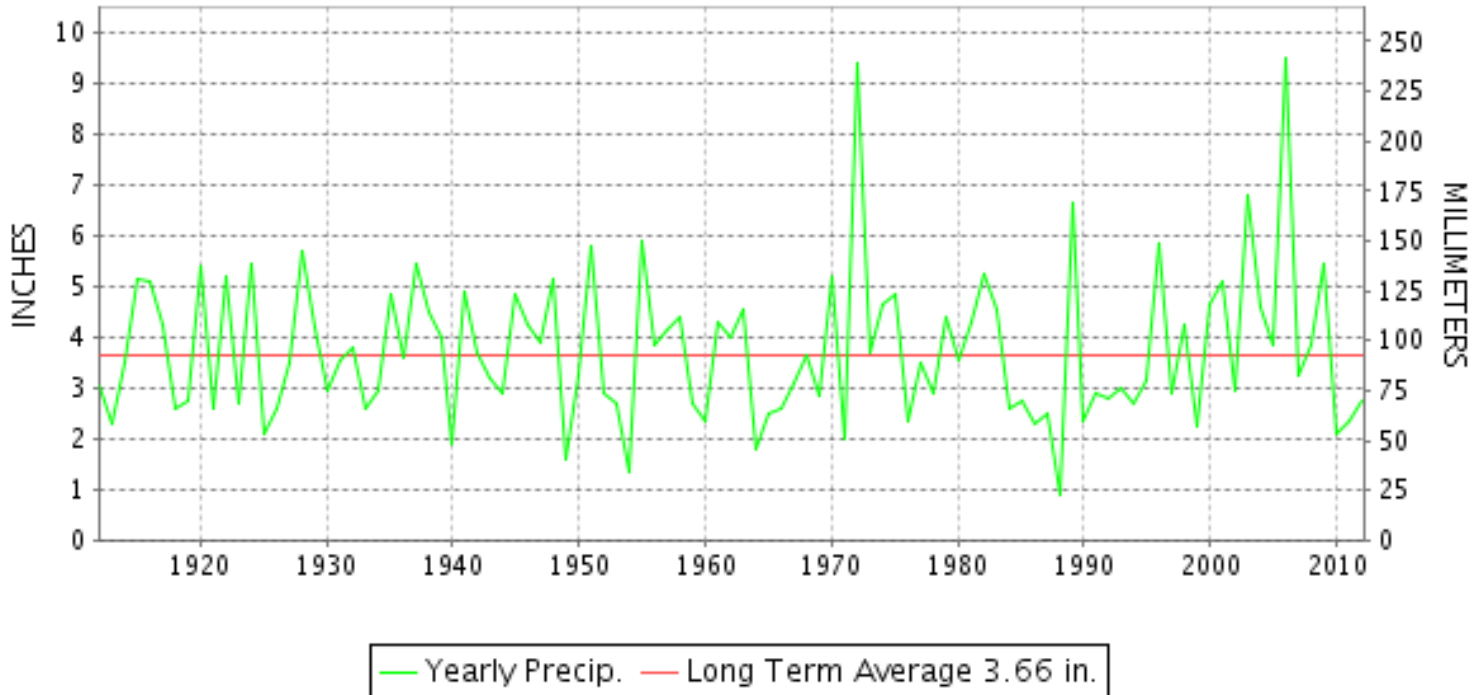
JUNE 2012

VOLUME 116 NUMBER 06

ISSN 0145-0549

GHCND Ver: 3.00-upd-2012103005

JUNE PRECIPITATION BY YEAR



TEMPERATURE AND PRECIPITATION EXTREMES

MARYLAND

HIGHEST TEMPERATURE	106	JUNE 29	MARYLAND SCIENCE CENTER
LOWEST TEMPERATURE	41	JUNE 27+	SINES DEEP CREEK
GREATEST TOTAL PRECIPITATION	5.98		CONOWINGO DAM
LEAST TOTAL PRECIPITATION	1.88		MARYLAND SCIENCE CENTER
GREATEST 1 DAY PRECIPITATION	3.84	JUNE 02	CYLBURN

"I certify that this is an official publication of the National Oceanic and Atmospheric Administration (NOAA) It is compiled using information from weather observing sites supervised by NOAA/National Weather Service and received at the National Climatic Data Center(NCDC), Asheville, North Carolina 28801."

Director
National Climatic Data Center

noaa

National
Oceanic and
Atmospheric Administration

National
Environmental Satellite, Data
and Information Service

National
Climatic Data Center
Asheville, North Carolina

DELAWARE

HIGHEST TEMPERATURE	98	JUNE 21+	2 STATIONS
LOWEST TEMPERATURE	47	JUNE 06	BEAR 2 SW
GREATEST TOTAL PRECIPITATION	7.24		BEAR 2 SW
LEAST TOTAL PRECIPITATION	3.64		WILMINGTON NEW CASTLE CO AP
GREATEST 1 DAY PRECIPITATION	4.04	JUNE 12	BEAR 2 SW

MONTHLY STATION AND DIVISION SUMMARY

STATION	TEMPERATURE (°F)													PRECIPITATION (IN)										
	AVERAGE MAXIMUM	AVERAGE MINIMUM	AVERAGE	DEPARTURE FROM NORMAL	HIGHEST	DATE	LOWEST	DATE	HEATING DEG. DAYS	COOLING DEG. DAYS	NO. OF DAYS				TOTAL	DEPARTURE FROM NORMAL	GREATEST 24 HOURS	DATE	ICE PELLETS, SNOW			NO. OF DAYS		
											MAX		MIN						TOTAL	MAX DEPTH ON GROUND	DATE	.10 OR MORE	.50 OR MORE	1.00 OR MORE
											>=90	<=32	<=32	<=0										
--DIVISIONAL DATA-----> APPALACHIAN MOUNTAIN 07			69.8	-0.9B										4.68	0.63B									
CUMBERLAND 2	84.0	57.4	70.7		103	30	46	26	11	189	7	0	0	0	1.97	0.64	30	0.0			4	1	0	
FROSTBURG 2	75.4	54.4	64.9		91	30	47	07+	73	77	1	0	0	0	3.75	1.47	30	0.0			8	2	1	
SHARPSBURG 5 S	81.3	55.6	68.5		99	30	45	06	33	144	4	0	0	0	A 3.41	1.04	30+	0.0			4	3	2	
WILLIAMSPORT	82.4M	57.5M	70.0M		101	30	48	07+	19E	176E	5	0	0	0	M 2.49	0.99	02	0.0			4	2	0	
--DIVISIONAL DATA-----> ALLEGHENY PLATEAU 08			68.5	0.0B										3.04	-0.48B									
OAKLAND 1 SE	76.8	53.8	65.3		92	30+	43	26	76	93	2	0	0	0	3.26	1.00	18	0.0	0		6	3	1	
SAVAGE RIVER DAM	76.5	54.1	65.3		88	29+	47	14+	58	73	0	0	0	0	3.63	1.30	18	0.0			8	2	1	
SINES DEEP CREEK	74.7	48.3	61.5		89	30	41	27+	133	36	0	0	0	0	4.16	1.69	18	0.0			7	2	1	
--DIVISIONAL DATA----->			64.0	-0.4B										3.68	-0.53B									
DELAWARE NORTHERN 01																								
BEAR 2 SW	82.3	59.3	70.8		95	29+	47	06	15	198	7	0	0	0	7.24	4.04	12	0.0	0		6	3	2	
WILMINGTON NEW CASTLE CO AP	83.5	61.1	72.3		98	21	49	06	9	236	8	0	0	0	3.64	1.48	12	0.0	0		7	2	1	
WILMINGTON PORTER RES	81.1	62.1	71.6		95	29	50	05	14	221	6	0	0	0	4.02	2.39	12	0.0			7	2	1	
--DIVISIONAL DATA-----> SOUTHERN 02			71.6	0.2B										4.97	1.07B									
DOVER	82.9	63.2	73.1		98	28	50	06	10	260	7	0	0	0	A 1.46	0.45	04	0.0			3	0	0	
--DIVISIONAL DATA----->			73.1	1.4B										1.46	-1.95B									

DAILY PRECIPITATION (INCHES)

STATION	TOTAL	DAY OF MONTH																																			
		01	02	03	04	05	06	07	08	09	10	11	12	13	14	15	16	17	18	19	20	21	22	23	24	25	26	27	28	29	30	31					
MARYLAND																																					
SOUTHERN																																					
EASTERN SHORE 01																																					
ASSATEAGUE	2.78	0.75	0.33		0.01	0.04						0.13		0.01																			0.09				
PRINCESS ANNE	M 2.25	0.66	-	-		0.05						0.25	0.62				-	-																			
SALISBURY 2N	2.89		0.73			0.02						0.25	0.17	0.05																		0.14	-				
SALISBURY FAA AP	3.52	0.37	0.16		T	T						0.91		T																							
SNOW HILL 4 N	M 3.33	-	1.70									0.20	0.44																				0.25				
CENTRAL																																					
EASTERN SHORE 02																																					
ROYAL OAK 2 SSW	2.07	0.05	0.57		T	T	0.75	T					0.67																								
LOWER SOUTHERN 03																																					
MECHANICSVILLE 5 NE	2.42	0.23	0.68			0.04	0.10	0.02	0.03				0.63	T																				0.59			
SOLOMONS	A 1.39	T	0.51			0.25				0.04			0.09	0.10																				0.23			
UPPER SOUTHERN 04																																					
BALTIMORE WASH INTL AP	2.68	1.55		T	0.06	T				0.04			0.33																					0.51	0.01		
BELTSVILLE	3.13		1.45										0.17	0.13																				0.54			
DALECARLIA RSVR	3.02		2.00												0.21																			0.47			
LAUREL 3 W	3.37	2.00	0.10	0.03						0.05			0.35																					0.62			
MARYLAND SCIENCE CENTER	1.88	1.09			0.05								0.59																					0.03			
NATL ARBORETUM DC	M 2.85		1.65										0.11	0.14																				0.65			
OXON HILL	3.62	0.01	2.60							0.06			0.11	0.16																				0.68			
UPPER MARLBORO 3 NNW	2.26	T	0.92											0.11	0.24																			0.55			
NORTHERN CENTRAL 06																																					
ABERDEEN PHILLIPS FLD	FMA 2.59		-	0.00 ^L	0.71 ^L	0.18							0.02	1.70																				0.08	-		
BRIGHTON DAM	FA 0.16	0.00 ^L	1.29 ^L																															0.00 ^L	1.00 ^L		
CONOWINGO DAM	5.98		1.17		0.21	0.38							0.16	2.56																					0.30		
CYLBURN	FA 6.97		3.84		0.10								0.11	1.23																					1.65		
DAMASCUS 3 SSW	4.79	2.51	0.10		0.03					0.03			0.46	0.50																					0.88		
EMMITSBURG 2 SE	4.09		2.08		0.05								T	1.19																					0.01	0.61	
FREDERICK 2 NNE	M 3.64		2.30		0.01								0.05	1.11																					-	-	
MILLERS 4 NE	4.66	1.32	1.46	T	0.18	0.02							0.86	0.06																						-	-
SMITHSBURG 2NW	M 3.12		1.20		0.10									1.17																						0.15	0.10
WESTMINSTER	3.86		2.28		0.24								0.02	0.50																						0.55	
APPALACHIAN																																				0.13	
MOUNTAIN 07																																					
CUMBERLAND 2	1.97		0.33		0.05		0.07	0.01					0.08	0.27																						0.64	
FROSTBURG 2	3.75		0.45		0.06	0.02	0.20						0.16	0.27																						1.47	
SHARPSBURG 5 S	A 3.41		1.04		0.01	T							0.03	0.98						*	*	*	*	*	*	*	*	*	*	*	*	*	*	*	0.20 ^a	1.04	
WILLIAMSPORT	M 2.49		0.99		0.07									0.82																						0.38	
ALLEGHENY PLATEAU 08																																					
OAKLAND 1 SE	3.26		0.20										0.26	0.26																						0.91	

DAILY PRECIPITATION (INCHES)

STATION	TOTAL	DAY OF MONTH																													
		01	02	03	04	05	06	07	08	09	10	11	12	13	14	15	16	17	18	19	20	21	22	23	24	25	26	27	28	29	30
SAVAGE RIVER DAM	3.63		0.39				0.20		0.10			0.23	0.40					1.30	0.23			0.07	0.09								0.62
SINES DEEP CREEK	4.16		0.20						0.26			0.21	0.40					1.69	0.08			0.03	0.30			0.03				0.96	
DELAWARE NORTHERN 01																															
BEAR 2 SW	7.24	0.30	0.10	0.04	0.12							4.04						0.01	0.01			1.66		T	T				0.06	0.90	
WILMINGTON NEW CASTLE CO AP	3.64	0.41	0.06	0.16	0.14	0.02		0.04				1.48						0.01	0.02			0.36		T	T	0.02			0.77	0.15	
WILMINGTON PORTER RES	4.02	0.48	0.11		0.57							2.39										0.22		T					0.10	0.15	
SOUTHERN 02																															
DOVER	A 1.46	T			0.45	0.01					0.01	0.40	0.16	T				T					*	*	0.40 _a		0.03				

DAILY TEMPERATURES (°F)

STATION	OB. TIME	MAX/MIN	DAY OF MONTH																															AVERAGE		
			01	02	03	04	05	06	07	08	09	10	11	12	13	14	15	16	17	18	19	20	21	22	23	24	25	26	27	28	29	30	31			
MARYLAND SOUTHERN EASTERN SHORE 01																																				
ASSATEAGUE	24	MAX	81	81	81	79	72	75	77	84	92	92	87	74	87	78	77	75	76	80	90	97	90	88	87	85	84	88	94	87	87			83.4		
		MIN	65	63	65	61	55	49	51	63	69	69	65	67	69	64	63	60	62	50	64	66	73	69	70	68	68	62	57	64	71	71			63.8	
PRINCESS ANNE	17	MAX	85			78	74	71	80	85			91	86	83	81	78			75	83	97	97	95			89	85	87	93	101			M		
		MIN	64			58	55	49	53	56			66	68	71	60	50			50	57	67	75	73			71	60	57	65	71			M		
SALISBURY 2N	17	MAX	86	77	77	76	71	71	78	83	89	93	90	85	80	79	78	77	76	73	82	95	96	95	89	90	87	82	84	90	99	97			84.2	
		MIN	64	62	55	58	55	49	52	55	61	64	67	66	69	65	56	53	54	48	63	63	73	75	69	66	69	56	55	62	73	69			61.5	
SALISBURY FAA AP	24	MAX	87	77	80	78	71	72	81	86	92	96	93	78	84	78	79	78	75	74	85	97	98	97	92	92	90	80	87	92	101	93			85.4	
		MIN	64	56	54	59	52	49	51	55	63	65	67	69	68	63	58	57	53	49	65	67	75	72	69	68	70	59	55	63	71	72			61.9	
SNOW HILL 4 N	17	MAX	85	78	81	79	75	73	81	87	92	95	91	85	84	82	77	76	75	74	83	96	98	96	91	90	90	82	88	93	101	97			85.8	
		MIN	62	63	52	58	56	47	47	56	63	62	64	68		65	57	52	52	45	64	63	72	71	71	66	65	55	51	60	70	70			60.2	
CENTRAL EASTERN SHORE 02																																				
ROYAL OAK 2 SSW	17	MAX	85	73	79	73	71	74	79	83	88	92	90	81	78	78	80	80	77	75	86	94	97	94	87	91	85	81	88	92	101	93			84.2	
		MIN	62	60	59	59	56	55	61	58	65	65	67	68	67	67	58	55	56	55	64	68	72	76	71	65	75	63	56	64	73	70			63.7	
LOWER SOUTHERN 03																																				
MECHANICSVILLE 5 NE	07	MAX	82	81	72	76	75	67	70	77	81	87	89	86	78	77	73	77	77	76	70	83	93	94	91	90	87	87	79	84	90	99			81.6	
		MIN	62	61	58	53	53	56	54	53	53	60	60	62	65	64	62	59	53	53	53	55	63	68	70	67	62	62	57	55	55	63			59.0	
SOLOMONS	08	MAX	82	81	73	78	75	69	72	78	82	88	91	85	76	77	77	78	78	74	73	82	91	94	94	87	87	88	78	92	93	96			82.3	
		MIN	71	63	61	64	57	60	60	62	67	69	71	69	71	69	63	62	61	61	65	72	75	78	71	71	73	63	64	69	78	71			67.0	
UPPER SOUTHERN 04																																				
BALTIMORE WASH INTL AP	24	MAX	81	75	79	74	70	77	80	85	90	94	89	76	80	82	81	81	75	70	88	98	100	98	90	92	88	81	90	96	103	95			85.3	
		MIN	60	56	53	57	53	50	56	52	62	65	66	68	67	65	57	55	53	58	67	70	75	71	68	64	66	58	59	64	71	70			61.9	
BELTSVILLE	08	MAX	82	80	73	78	72	68	74	79	83	89	92	89	76	78	80	79	79	74	71	90	96	97	94	86	90	84	78	86	94	100			83.0	
		MIN	60	57	51	55	57	49	52	53	60	60	63	67	67	65	59	55	53	60	62	69	70	76	68	63	67	58	56	60	71	69			61.1	
DALECARLIA RSVR	08	MAX	81	72	73	79	79	67	72	80	83	90	92	87	78	79	80	79	80	80	75	90	94	96	85	88	91	83	79	86	95	100			83.1	
		MIN	64	57	54	58	58	52	54	54	55	60	66	68	66	66	60	58	58	55	61	69	72	76	69	69	71	57	58	63	63	69			62.0	
LAUREL 3 W	24	MAX	81	74	77	73	67	77	78	84	89	92	88	77	80	82	82	83	76	68	88	97	98	96	89	92	86	79	89	93	101	93			84.3	
		MIN	64	55	57	57	54	52	56	59	67	71	67	65	66	63	60	58	57	60	66	73	79	71	70	69	71	57	63	71	77	70			64.2	
MARYLAND SCIENCE CENTER	24	MAX	84	77	83	77	73	80	84	88	95	96	94	80	83	84	85	85	78	75	89	100	103	100	92	94	91	83	92	99	106	100			88.3	
		MIN	63	63	62	62	59	59	62	63	70	75	76	71	73	69	67	68	67	65	70	77	82	78	76	75	75	64	68	74	74	75			69.4	
NATL ARBORETUM DC	07	MAX	86	81	75	81	75	71	76	82	87	92	94	90	78	82	83			83	78	71	91	98	99	101	94	96	87	82	89	94	103			86.2
		MIN	66	51	55	59	58	53	56	57	59	63	68	68	69	66	61			56	61	62	70	74	80	68	66	67	61	64	65	77	70			63.8
OXON HILL	08	MAX	84	81	74	78	75	70	75	80	84	89	91	87	76	81	79	80	80	74	69	89	96	97	94	89	91	86	80	87	93	102			83.7	
		MIN	67	60	54	55	57	52	54	56	61	64	67	67	67	66	60	57	55	59	66	69	73	71	70	66	70	60	63	63	65	70			62.8	
UPPER MARLBORO 3 NNW	08	MAX	85	82	74	80	73	69	75	81	85	91	92	90	74	79	80	80	80	74	71	88	97	99	96	88	92	87	80	87	94	104			84.2	
		MIN	61	57	52	56	56	50	52	52	60	62	64	68	67	65	58	54	52	56	59	69	70	75	68	63	69	58	57	60	72	69			61.0	
NORTHERN CENTRAL 06																																				
ABERDEEN PHILLIPS FLD	07	MAX	83	77	74	79	70	67	74	79	85	91	94	88	74	80	81	81	80	74	72	82	95	96	96	88	90	84	79	86	92	99			83.0	
		MIN	67	58	54	57	55	51	54	54	56	64	65	71	68	64	60	58	57	56	61	67	72	75	70	65	68	58	60	62	66	72			62.2	

DAILY TEMPERATURES (°F)

STATION	OB. TIME	MAX/MIN	DAY OF MONTH																															AVERAGE		
			01	02	03	04	05	06	07	08	09	10	11	12	13	14	15	16	17	18	19	20	21	22	23	24	25	26	27	28	29	30	31			
BRIGHTON DAM	08	MAX MIN				79 53	74 57					91 72	89 68		77	77	75	78	78	74	86	92	93	93	94	94	82	87	93		100		M			
CONOWINGO DAM	07	MAX MIN	78 58	75 55	72 52	76 53	70 52	67 51	74 53	78 52	81 54	86 62	88 66	85 66	70 63	78 57	79	79	79	73	69	80	92	92	90	85	85	81	78	83	94	89	80.2			
CYLBURN	08	MAX MIN	76 60	74 55	68 57	74 56	67 53	64 50	70 52	74 54	77 61	83 64	88 65	85 66	71 64	73 61	74	75	75	70	67	82	87	89	87	81	85	79	74	82	87	60	60	77.2		
DAMASCUS 3 SSW	22	MAX MIN	72 59	70 52	75 51	67 54	65 53	71 48	74 53	79 53	86 58	89 62	86 65	74 66	76 58	76	78	76	75	65	86	89	90	86	83	85	80	75	82	89	95	87	79.3			
EMMITSBURG 2 SE	07	MAX MIN	78 58	72 53	70 52	74 55	68 48	67 49	71 53	77 52	80 59	84 61	87 64	85 63	74 59	76	78	76	75	66	85	91	91	88	84	84	80	77	83	88	96	66	79.4			
FREDERICK 2 NNE	07	MAX MIN	81 61	75 56	73 53	78 57	71 55	69 49	76 52	79 55	83 56	88 61	91 64	90 68	80 65	79	81	81	81	79	68	90	94	96	91	87	88						82.0			
MILLERS 4 NE	18	MAX MIN	77 58	71 52	74 51	74 53	68 50	74 45	78 54	81 51	85 59	89 62	88 63	82 65	75 58	80	79	78	77	71	85	92	93	91	83	85	80	76	82	88	95	93	81.5			
SMITHSBURG 2NW	08	MAX MIN	77 59	74 51	69 50	74 53	68 44	65 50	72 50	75 54	80 54	84 56	87 58	87 53	77 57	75	79	78	78	67	86	90	91	87	83	78	76	83	89	96	64	79.4				
WESTMINSTER	07	MAX MIN	78 63	73 52	72 52	76 55	69 48	66 53	74 53	77 58	81 61	87 64	90 66	88 64	74 60	75	79	79	78	75	66	88	93	95	91	85	87	82	77	84	91	98	80.9			
APPALACHIAN MOUNTAIN 07																																				
CUMBERLAND 2	18	MAX MIN	82 58	75 58	74 52	79 53	73 56	65 50	75 50	82 51	83 53	89 58	91 60	81 63	84 62	81	82	82	84	71	93	97	94	91	88	89	83	81	87	98	103	84.0				
FROSTBURG 2	07	MAX MIN	77 53	77 49	65 49	70 50	64 47	56 47	67 51	71 53	75 55	80 59	84 62	73 55	77 48	71	74	75	74	77	65	84	87	86	81	77	79	71	69	77	88	91	75.4			
SHARPSBURG 5 S	07	MAX MIN	80 58	74 49	72 47	77 49	69 45	67 46	74 50	78 51	82 53	87 59	89 62	85 55	81 48	77	80	80	78	77	67	89	92	93	89	85	86	80	77	84	91	99	81.3			
WILLIAMSPORT	06	MAX MIN	79 58	73 53	73 51	77 51	70 54	69 48	75 48	78 53	83 54	88 57	89 57	86 62	80						80	80	78	68	87	93	94	90	86	85	83	83	87	93	101	82.4
ALLEGHENY PLATEAU 08																																				
OAKLAND 1 SE	07	MAX MIN	76 55	70 52	64 52	69 54	67 49	59 50	63 46	73 47	75 54	80 55	81 55	92 63	85 65	74	71	73	73	74	79	85	87	86	83	79	80	74	71	80	89	92	76.8			
SAVAGE RIVER DAM	08	MAX MIN	76 52	70 53	67 50	72 52	69 51	59 50	67 47	75 47	77 51	81 53	83 54	73 58	80 47	76	72	75	74	77	71	85	88	87	85	81	81	75	73	79	88	79	76.5			
SINES DEEP CREEK	07	MAX MIN	74 48	68 47	64 43	69 43	65 44	59 46	65 42	71 42	74 44	79 46	82 47	73 52	78 55	71	72	74	74	74	76	82	85	83	81	77	78	72	69	77	86	89	74.7			
DELAWARE NORTHERN 01																																				
BEAR 2 SW	24	MAX MIN	77 56	73 54	78 49	72 57	68 51	75 47	80 52	84 52	90 54	92 60	86 67	72 67	80 67	80	80	80	75	70	83	94	95	94	86	87	82	78	84	89	95	91	82.3			
WILMINGTON NEW CASTLE CO AP	24	MAX MIN	79 61	74 58	79 52	70 57	76 50	81 49	84 53	90 54	93 61	85 64	73 68	82 66	82 64	82	82	82	76	71	79	97	98	96	88	86	85	79	87	92	97	93	83.5			

DAILY TEMPERATURES (°F)

STATION	OB. TIME	MAX/MIN	DAY OF MONTH																															AVERAGE
			01	02	03	04	05	06	07	08	09	10	11	12	13	14	15	16	17	18	19	20	21	22	23	24	25	26	27	28	29	30	31	
WILMINGTON PORTER RES	24	MAX	76	70	76	68	68	73	78	79	86	89	83	83	83	83	77	77	71	69	80	93	94	92	84	86	80	75	83	90	95	92	81.1	
		MIN	63	59	55	55	50	52	55	58	64	65	67	66	65	62	58	58	59	55	63	62	75	71	68	68	67	56	61	68	69	70		
SOUTHERN 02 DOVER	16	MAX	81	73	78	72	69	74	80	83	89	91	83	76	80	78	79	79	72	70	82	96	97	96	87	85	84	78	86	98	95	96	82.9	
		MIN	60	61	57	59	54	50	55	58	64	66	69	68	67	65	60	56	57	52	64	69	75	77	69	65	66	59	58	73	69	73		63.2

SNOWFALL AND SNOW ON GROUND (INCHES)

STATION		DAY OF MONTH																														
		01	02	03	04	05	06	07	08	09	10	11	12	13	14	15	16	17	18	19	20	21	22	23	24	25	26	27	28	29	30	31
MARYLAND SOUTHERN EASTERN SHORE 01 ASSATEAGUE PRINCESS ANNE SALISBURY 2N SALISBURY FAA AP SNOW HILL 4 N	SNOWFALL																															
	SNOWFALL																															
	SNOWFALL																															
	SNOWFALL																															
	SNOWFALL																															
DELAWARE NORTHERN 01 BEAR 2 SW WILMINGTON NEW CASTLE CO AP WILMINGTON PORTER RES	SNOWFALL																															
	SN ON GND																															
	SNOWFALL																															
	SN ON GND																															
	SNOWFALL																															

Snowfall: Includes snow and ice. Values for NWS stations (J index note) are Mid-Mid (LST).

Snow on ground: Includes snow, sleet, ice, and hail. Values for NWS stations (J index note) are observed at 12 UTC (GMT).

Water Equivalent: Given for NWS stations (J index note) only, when snow depth is 2 inches or more, and is measured at 18 UTC (GMT)

PAN EVAPORATION AND WIND

STATION		DAY OF MONTH																															TOTAL OR AVERAGE
		01	02	03	04	05	06	07	08	09	10	11	12	13	14	15	16	17	18	19	20	21	22	23	24	25	26	27	28	29	30	31	
MARYLAND UPPER SOUTHERN 04 BELTSVILLE	WIND	46	64	54	57	98	30	23	48	48	40	25	61	43	103	51	39	36	-	82	24	35	39	46	37	31	104	91	66	57	66	1597E	
	EVAP	0.28	0.21	0.22	0.27	0.29	0.15	0.15	0.23	0.27	0.30	0.26	0.25	0.00	0.37	0.23	0.27	0.27	-	0.25	0.20	0.29	0.30	0.34	0.27	0.22	0.38	0.34	0.31	0.33	0.42	7.93E	
	MAX	80	80	80	84	79	77	81	85	88	92	95	91	79	84	88	89	89	-	87	98	102	102	98	95	91	85	80	87	92	101	88.6	
	MIN	64	59	55	56	56	52	53	46	56	63	65	66	66	61	61	59	57	-	58	65	72	73	68	65	68	54	55	58	64	69	60.8	
UPPER MARLBORO 3 NNW	WIND	-	-	-	-	-	-	-	-	-	-	-	-	-	-	-	-	-	-	-	-	-	-	-	-	-	-	-	-	-	-	M	
	EVAP	-	-	-	-	-	-	-	-	-	-	-	-	-	-	-	-	-	-	-	-	-	-	-	-	-	-	-	-	-	-	M	
	MAX	-	-	-	-	-	-	-	-	-	-	-	-	-	-	-	-	-	-	-	-	-	-	-	-	-	-	-	-	-	-	M	
	MIN	-	-	-	-	-	-	-	-	-	-	-	-	-	-	-	-	-	-	-	-	-	-	-	-	-	-	-	-	-	-	M	
ALLEGHENY PLATEAU 08 SAVAGE RIVER DAM	WIND	-	-	-	-	-	-	-	-	-	-	-	-	-	-	-	-	-	-	-	-	-	-	-	-	-	-	-	-	-	-	M	
	EVAP	-	-	-	-	-	-	-	-	-	-	-	-	-	-	-	-	-	-	-	-	-	-	-	-	-	-	-	-	-	-	M	
	MAX	-	-	-	-	-	-	-	-	-	-	-	-	-	-	-	-	-	-	-	-	-	-	-	-	-	-	-	-	-	-	-	
	MIN	-	-	-	-	-	-	-	-	-	-	-	-	-	-	-	-	-	-	-	-	-	-	-	-	-	-	-	-	-	-	M	

Evaporation: Is measured in hundredths of inches.

Wind: Is measured in miles.

Max and Min: The maximum and minimum temperatures (Fahrenheit) of the water in the evaporation pan.

STATION INDEX

STATION	INDEX NO.	DIVISION	COUNTY	LATITUDE	LONGITUDE	ELEVATION (IN FEET)	OBSERVATION TIME AND TABLES			
							LOCAL STD TIME			
							TEMP	PRECIP	EVAP	SPECIAL SEE (NOTES)
MARYLAND										
ABERDEEN PHILLIPS FLD	0015	06	HARFORD	39 28	76 10W	57	07	07		CH
ASSATEAGUE	0335	01	WORCESTER	38 4	75 13W	10	24	24		H
BALTIMORE WASH INTL AP R	0465	04	ANNE ARUNDEL	39 10	76 41W	156	24	24		HJ
BELTSVILLE	0700	04	PRINCE GEORGE'S	39 2	76 56W	145	08	08	08	CH
BRIGHTON DAM	1125	06	MONTGOMERY	39 11	77 0W	330	08	08		H
CONOWINGO DAM	2060	06	HARFORD	39 39	76 11W	40	07	07		H
CUMBERLAND 2	2282	07	ALLEGANY	39 39	78 45W	730	18	18		H
CYLBURN	2308	06	BALTIMORE	39 21	76 39W	235	08	08		H
DALECARLIA RSVR	2325	04	DISTRICT OF COLUMBIA	38 56	77 7W	150	08	08		H
DAMASCUS 3 SSW	2336	06	MONTGOMERY	39 16	77 14W	700	22	22		H
EMMITSBURG 2 SE	2906	06	FREDERICK	39 41	77 17W	403	07	07		H
FREDERICK 2 NNE	3353	06	FREDERICK	39 26	77 24W	280	07	07		H
FROSTBURG 2	3415	07	ALLEGANY	39 40	78 56W	2170	07	07		H
LAUREL 3 W	5111	04	PRINCE GEORGE'S	39 5	76 54W	400	24	24		H
MARYLAND SCIENCE CENTER R	5718	04	BALTIMORE (CITY)	39 17	76 37W	20	24	24		H
MECHANICSVILLE 5 NE	5865	03	ST. MARY'S	38 28	76 42W	100	07	07		H
MILLERS 4 NE	5934	06	CARROLL	39 43	76 48W	860	18	18		CH
NATL ARBORETUM DC	6350	04	DISTRICT OF COLUMBIA	38 55	76 58W	50	07	07		H
OAKLAND 1 SE	6620	08	GARRETT	39 25	79 24W	2420	07	07		H
OXON HILL	6800	04	PRINCE GEORGE'S	38 47	76 60W	120	08	08		H
PRINCESS ANNE	7330	01	SOMERSET	38 13	75 41W	20	17	17		H
ROYAL OAK 2 SSW	7806	02	TALBOT	38 43	76 11W	10	17	17		H
SALISBURY 2N	8004	01	WICOMICO	38 24	75 36W	20	17	17		H
SALISBURY FAA AP	8005	01	WICOMICO	38 20	75 31W	48	24	24		H
SAVAGE RIVER DAM	8065	08	GARRETT	39 31	79 8W	1495	08	08	08	CH
SHARPSBURG 5 S	8207	07	WASHINGTON	39 24	77 43W	500	07	07		H
SINES DEEP CREEK	8315	08	GARRETT	39 31	79 25W	2040	07	07		H
SMITHSBURG 2NW	8371	06	WASHINGTON	39 40	77 35W	670	08	08		H
SNOW HILL 4 N	8380	01	WORCESTER	38 14	75 23W	30	17	17		H
SOLOMONS	8405	03	CALVERT	38 19	76 27W	12	08	08		H
UPPER MARLBORO 3 NNW	9070	04	PRINCE GEORGE'S	38 51	76 46W	130	08	08	08	H
WESTMINSTER	9440	06	CARROLL	39 34	76 59W	750	07	07		H
WILLIAMSPORT	9570	07	WASHINGTON	39 37	77 51W	360	06	06		H
DELAWARE										
BEAR 2 SW	1200	01	NEW CASTLE	39 36	75 44W	80	24	24		H
DOVER	2730	02	KENT	39 15	75 31W	30	16	16		H
WILMINGTON NEW CASTLE CO AP R	9595	01	NEW CASTLE	39 40	75 36W	79	24	24		HJ
WILMINGTON PORTER RES	9605	01	NEW CASTLE	39 46	75 32W	270	24	24		H

REFERENCE NOTES

STATION NAMES: Name of the city, town or locality. Figures and letters following the station names indicate the distance in miles and direction from the post office or town community center.

DIVISIONS: Areas within a state of similar climatological characteristics. Division averages are calculated using data from stations that record temperature and/or precipitation. Station Precipitation totals flagged with an 'F' or 'M' are excluded from the Divisional Average calculations of precipitation. Stations with monthly Temperature averages flagged with an 'F' or 'M' are included in the Divisional Average if there are no more than 9 flagged or missing daily values in the month, else they are excluded from the divisional average for temperature.

NORMALS: The average value of the meteorological element over a time period. Effective 1 January 2012, the averaging period is 1981 to 2010. The normals for National Weather Service localities have been adjusted so as to be representative for the current observation site.

MONTHLY DEGREE DAY TOTALS: One heating (cooling) degree day is accumulated for each whole degree that the daily mean temperature is below (above) 65 degrees Fahrenheit.

PRECIPITATION: Values shown in hundredths of inches are water equivalent totals, i.e., total of liquid and melted frozen precipitation. In the "Monthly Summarized Data" table the total snow and sleet values shown in tenths of inches are unmelted amounts. The max depth on ground values of snow and sleet shown in whole inches are cumulative unmelted amounts. The number of days with .10, .50, 1.00 or more refers to water equivalents.

PRECIPITATION QUALITY CONTROL: The NCDC quality control process may flag precipitation data that are spatially inconsistent, exceed climatological limits, or are inconsistent with prevailing weather patterns.

TEMPERATURE: Original temperature values are given in the "Daily Temperature" table. Summary temperature information (averages, departures, extremes, monthly degree day totals) is based on the values labeled MAX/MIN.

WIND: (As shown in the "Evaporation and Wind" table) the total wind movement in miles over the evaporation pan as determined by an anemometer recorder located 6-8 inches above the pan.

SYMBOLS AND LETTERS USED IN THE STATION INDEX TABLE

C Station is equipped with recording rain gage (R) but values in this bulletin are from a non-recording rain gage unless indicated by an R.

G Observations appear in the "Soil Temperatures" table.

H Observations appear in the "Snowfall and Snow on the Ground" table.

J Station also published as a Local Climatological Data publication.

VAR Observation time varies.

SR Observation time near sunrise.

SS Observation time near sunset.

SYMBOLS AND LETTERS USED IN THE DATA TABLES

(DAILY DATA ARE FOR THE 24 HOURS IMMEDIATELY PRECEDING OBSERVATION TIME.)

BLANK Entries in the "Monthly Summarized Data" table indicate no record.

BLANK Entries in the "Daily Precipitation" and "Snowfall and Snow on the Ground" tables indicate zero.

BLANK Entries in the "Daily Temperature" table indicate a missing record

- No record. Data not recorded or not received in time for publication.

+ Precipitation or temperature extremes occurred on one or more previous dates during the month.

* Rain gage not read. Precipitation is included in the amount following the asterisks.

Time distribution may not be known. A * preceding the monthly total indicates precipitation amount is being carried forward to next month's total, and may include amounts from the previous month(s).

a As a subscript, indicates accumulated total.

A Amount of precipitation is the total of observer's entries for the current month. It may include precipitation that occurred during the previous month. Refer to earlier bulletin to determine date of last reading. (Hawaii stations)

B Divisional Departure from normals are computed using 1971-2000 normals.

E Normalized HDD/CDD Calculation. E is appended to the HDD/CDD Calculation when 1-9 individual daily TMAX and/or TMIN values are missing and a Normalized HDD/CDD Calculation is provided. M appears alone if 10 or more daily values are missing.

F Monthly calculation flagged value. F is appended to average and/or total values computed which exclude one or more daily data values that have been flagged by the GHCN-Daily Dataset

M Insufficient or partial data. M is appended to average and/or total values computed with 1-9 daily values missing. M appears alone if 10 or more daily values are missing, (8 or more for wind and evaporation).

N Indicates snow fall or Snowdepth totals are computed with one or more missing days.

R Amounts from recording rain gage.

T Trace. An amount too small to measure.

SEASONAL TABLES: Monthly and seasonal snowfall and heating degree days for the 12 months ending with the June data are published in the July issue of this bulletin. Cooling degree days for the calendar year are published in the "Climatological Data Annual Summary."

Information concerning the history of changes in locations, exposure, etc. of substations is kept on file at the National Climatic Data Center. Historical information of regular National Weather Service Offices may be obtained from the "Local Climatological Data" annual publication. The contents of this publication may be reprinted or otherwise used freely, with proper credit to the National Climatic Data Center. The data are also available digitally.

Effective with the January 2011 Data-Month, COOP Observer Names are no longer included in the Monthly and Annual Climatological Data Publications. This information is not published to ensure the privacy of personal information pursuant to Section 208 of the E-Government Act of 2002 (44 USC 3601).

As of the 2011 Data-Year, Station and Climate Division Maps are no longer being included in the CD Publications. NCDC's Product Development Branch provides updated Station Maps for various data networks via the Historical Observing Metadata Repository: <http://www.ncdc.noaa.gov/homr>.

The GHCN-Daily Quality Control Flags shown below are displayed as superscripts with the data. For more Information on Global Historical Climatology Network - Daily and flags, see: <http://www.ncdc.noaa.gov/oa/climate/ghcn-daily/> and Comprehensive Automated Quality Assurance of Daily Surface Observations. Durre, Imke, Matthew J. Menne, Byron E. Gleason, Tamara G. Houston, Russell S. Vose, 2010: J. Appl. Meteor. Climatol., 49, 1615-1633. doi: 10.1175/2010JAMC2375.1

Blank = Passed All checks

D = failed duplicate check

G = failed gap check

I = failed internal consistency check

K = failed streak/frequent-value check

L = failed check on length of multiday period

M = failed megaconsistency check

N = failed naught check

O = failed climatological outlier check

R = failed lagged range check

S = failed spatial consistency check

T = failed temporal consistency check

W = temperature too warm for snow

X = failed bounds check

These and other publications are available from the National Climatic Data Center

Hourly Precipitation Data

This publication contains hourly precipitation amounts obtained from recording rain gages located at National Weather Service, Federal Aviation Administration, and cooperative observer stations. Published data are displayed in inches and tenths or inches and hundredths at local standard time. HPD includes maximum precipitation for nine (9) time periods from 15 minutes to 24 hours, for selected stations.

Climatological Data

Monthly editions contain station daily maximum and minimum temperatures and precipitation. Some Stations provide daily snowfall, snow depth, evaporation, and soil temperature data. Each edition also contains monthly summaries for heating and cooling degree days (65 degree F base). The July issue contains a recap of monthly heating degree days and snow data for the preceding July through June.

The Annual issue contains monthly and annual averages of temperature, precipitation, temperature extremes, freeze data, soil temperatures, evaporation, and a recap of monthly cooling degree days.

Storm Data

Monthly issues contain a chronological listing, by states, of occurrences of storms and unusual weather phenomena. Reports contain information on storm paths, deaths, injuries, and property damage. An "Outstanding storms of the month" section highlights severe weather events with photographs, illustrations, and narratives. The December issue includes annual tornado, lightning, flash flood, and tropical cyclone summaries.

Monthly Climatic Data for the World

This publication contains monthly means for temperature, pressure, precipitation, vapor pressure, and sunshine for approximately 2,000 surface data collection stations worldwide and monthly mean upper air temperatures, dew point depressions, and wind velocities for approximately 500 observing sites.

Local Climatological Data

LCD publications summarize temperature, relative humidity, precipitation, cloudiness, wind speed and direction observations for several hundred cities in the U.S. and its territories. Each monthly publication also contains 3 hourly weather observations for that month and a hourly summary of precipitation. Annual LCD publications contain a summary of the past calendar year as well as historical averages and extremes.

For Information Call:

(828) 271-4800 Option 2

(828) 271-4010 (TDD)

(828) 271-4876 (Fax)

NOAA\National Climatic Data Center
Attn: User Engagement & Services Branch
151 Patton Avenue
Asheville, NC 28801-5001

Customer Services Number: (828) 271-4800, option 2
TDD : (828) 271-4010
Fax number: (828) 271-4876

NCDC now offers free online access to the *Climatological Data* publication.
Go to : www.ncdc.noaa.gov and choose Most Popular.