



# CLIMATOLOGICAL DATA

## MARYLAND AND DELAWARE



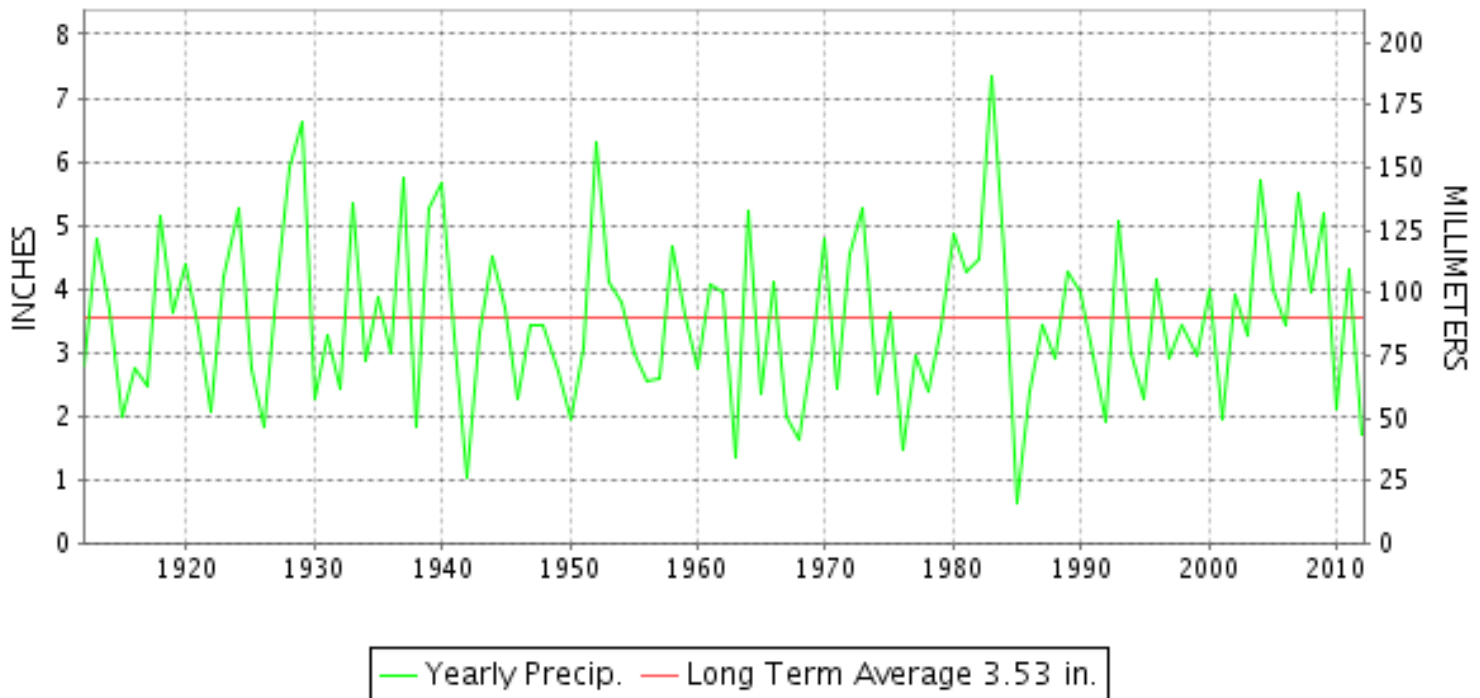
APRIL 2012

VOLUME 116 NUMBER 04

ISSN 0145-0549

GHCND Ver: 2.93-upd-2012091109

### APRIL PRECIPITATION BY YEAR



#### TEMPERATURE AND PRECIPITATION EXTREMES

##### MARYLAND

HIGHEST TEMPERATURE	92	APRIL 17	CUMBERLAND 2
LOWEST TEMPERATURE	25	APRIL 07	OAKLAND 1 SE
GREATEST TOTAL PRECIPITATION	4.66		ASSATEAGUE
LEAST TOTAL PRECIPITATION	1.00		CUMBERLAND 2
GREATEST 1 DAY PRECIPITATION	2.42	APRIL 09	ASSATEAGUE
GREATEST TOTAL SNOWFALL	5.8		OAKLAND 1 SE
GREATEST DEPTH OF SNOW OR ICE	4		SINES DEEP CREEK

"I certify that this is an official publication of the National Oceanic and Atmospheric Administration (NOAA) It is compiled using information from weather observing sites supervised by NOAA/National Weather Service and received at the National Climatic Data Center(NCDC), Asheville, North Carolina 28801."

Director  
National Climatic Data Center

noaa

National  
Oceanic and  
Atmospheric Administration

National  
Environmental Satellite, Data  
and Information Service

National  
Climatic Data Center  
Asheville, North Carolina

**DELAWARE**

HIGHEST TEMPERATURE	88	APRIL 16
LOWEST TEMPERATURE	30	APRIL 08+
GREATEST TOTAL PRECIPITATION	2.82	
LEAST TOTAL PRECIPITATION	2.56	
GREATEST 1 DAY PRECIPITATION	2.02	APRIL 22

DOVER
BEAR 2 SW
BEAR 2 SW
WILMINGTON NEW CASTLE CO AP
BEAR 2 SW





DAILY PRECIPITATION (INCHES)

STATION	TOTAL	DAY OF MONTH																																
		01	02	03	04	05	06	07	08	09	10	11	12	13	14	15	16	17	18	19	20	21	22	23	24	25	26	27	28	29	30	31		
<b>MARYLAND</b>																																		
<b>SOUTHERN</b>																																		
<b>EASTERN SHORE 01</b>																																		
ASSATEAGUE	4.66	0.23	0.69						2.42	0.03					0.45	0.24					0.04											0.56		
PRINCESS ANNE	M 0.38	-					-	-	0.07					-	-					0.16		-	-				0.15		-	-				
SALISBURY 2N	3.41	T	0.15							0.06									0.07	0.10	T		1.62	0.70		0.05				0.66				
SALISBURY FAA AP	2.96	0.02	0.14						0.02		T								0.01	0.09		0.14	1.93	0.01		0.06		0.42	0.12					
SNOW HILL 4 N	3.22		0.15							0.10		T							T	0.15			1.22	0.85		0.10		T	0.65					
<b>CENTRAL</b>																																		
<b>EASTERN SHORE 02</b>																																		
ROYAL OAK 2 SSW	3.30		0.12						T		T				T				0.07	0.02		T	1.48	1.10		0.06		T	0.45					
<b>LOWER SOUTHERN 03</b>																																		
MECHANICSVILLE 5 NE	2.32		0.06							T										0.13			0.15	1.53	0.04			0.08	0.05	0.28				
SOLOMONS	A 3.47		0.04							0.01									T	0.09			1.09	1.50	T		T	0.11	*	0.63 <sub>a</sub>				
<b>UPPER SOUTHERN 04</b>																																		
BALTIMORE WASH INTL AP	1.99	0.04	0.02								T			T	T				0.16	T		0.05	1.33	0.02		0.29		0.06	0.02					
BELTSVILLE	2.02		0.10																	0.17			0.14	1.30	0.04	0.06	0.02			0.19				
DALECARLIA RSVR	2.35		0.16																	0.20			0.23	1.37	0.12					0.27				
LAUREL 3 W	2.18	0.02	0.15								0.03								0.22	0.02		0.13	1.25	0.19		0.09	0.02	0.06						
MARYLAND SCIENCE CENTER	2.25	0.08	0.08								0.03				0.01				0.17	0.01		0.02	1.31	0.02		0.38		0.12	0.02					
NATL ARBORETUM DC	M 2.06		0.13				-			T		T							0.08				0.18	1.34	0.06		T	0.02	-	0.25				
OXON HILL	2.16		0.16							T		T			T				0.06				0.15	1.44	0.06	0.02	0.05		0.22					
UPPER MARLBORO 3 NNW	1.98		0.12									T								0.03	T		0.04	1.27	0.05	0.01	0.16		0.30					
<b>NORTHERN CENTRAL 06</b>																																		
ABERDEEN PHILLIPS FLD	2.41		0.36												0.02					0.09				1.80	0.01	0.03	0.08		0.02					
BRIGHTON DAM	2.23		0.10																	0.25			0.30	1.22	0.06	0.10			0.20					
CONOWINGO DAM	3.32		0.36		0.05										0.03					0.25			0.20	2.00	0.02	0.01	0.38		0.02					
CYLBURN	A 2.61		0.19									T								0.28				*	1.90 <sub>a</sub>	0.05	0.19		0.02	0.10				
DAMASCUS 3 SSW	1.82	0.08	0.05								T				T				0.29			0.11	1.04	0.11	0.02		T	0.02	0.10					
EMMITSBURG 2 SE	2.49		0.30								T				0.03					0.24			0.34	1.30	0.06		T	0.17		0.05				
FREDERICK 2 NNE	1.95		0.18		0.02										0.03					0.26			0.17	1.08	0.04	0.01	0.04		0.12					
MILLERS 4 NE	2.77		0.44		0.01						0.01	T			0.07				0.09	0.12			0.73	0.83	0.01	0.01	0.41	T	0.04					
SMITHSBURG 2NW	3.78		0.25									0.15			0.10					0.25			0.90	1.80	0.15		0.11		0.07					
WESTMINSTER	1.88		0.22									0.02			0.01					0.20			0.15	1.01	0.13		T	0.06		0.08				
<b>APPALACHIAN</b>																																		
<b>MOUNTAIN 07</b>																																		
CUMBERLAND 2	1.00		0.16		T					0.01		0.01			0.06				0.01	0.05			0.14	0.44	0.02		0.02		0.08					
FROSTBURG 2	1.27	T	0.37							0.03	T	T			0.21				0.01	0.04			0.13	0.22	0.10		0.07		0.09					
SHARPSBURG 5 S	2.75		0.12		0.03							T			0.02				T	0.49			0.51	1.30	0.18		T		0.10					
WILLIAMSPORT	M 2.34		-			0.18						-			0.10					0.13			0.82	0.76	0.27				0.08					
<b>ALLEGHENY PLATEAU 08</b>																																		
OAKLAND 1 SE	1.82		0.30		0.01	0.03				0.17	0.02	0.26			0.13				0.06	0.05			0.12	0.05	0.30		0.05	0.07		0.20				

DAILY PRECIPITATION (INCHES)

STATION	TOTAL	DAY OF MONTH																														
		01	02	03	04	05	06	07	08	09	10	11	12	13	14	15	16	17	18	19	20	21	22	23	24	25	26	27	28	29	30	31
SAVAGE RIVER DAM	1.31		0.38		T						0.09	T	0.08			0.12		T	0.06			0.06	0.16	0.15		T	0.04	0.17				
SINES DEEP CREEK	M 1.99		0.23								0.15		0.18			0.08	-		0.04			0.06	0.37	0.52		0.04	0.16	0.16				
DELAWARE																																
NORTHERN 01																																
BEAR 2 SW	2.82	0.22	0.09		T							T	T		0.02			0.03			T	2.02	0.10	T		0.31		0.01	0.02			
WILMINGTON NEW CASTLE CO AP	2.56	0.26	0.07		T						0.02			T	T			0.03	T		0.01	1.90	0.08		0.18		0.01					
WILMINGTON PORTER RES	2.63	0.14	0.14															0.06			0.09	1.71	0.30		0.11	0.08	T					
SOUTHERN 02																																
DOVER	FA 0.35											0.08						0.03	0.03		0.00 <sup>L</sup>	0.00 <sup>L</sup>	2.39 <sup>J</sup>	0.01		0.04					0.16	
LEWES	M	-	-	-	-	-	-	-	-	-	-	-	-	-	-	-	-	-	-	-	-	-	-	-	-	-	-	-	-	-	-	



DAILY TEMPERATURES (°F)

STATION	OB. TIME	MAX/MIN	DAY OF MONTH																															AVERAGE	
			01	02	03	04	05	06	07	08	09	10	11	12	13	14	15	16	17	18	19	20	21	22	23	24	25	26	27	28	29	30	31		
BRIGHTON DAM	08	MAX		62	57	68	72	57	57	63	70	65	63	53	58	63	65	81	86	73	54	69	73	79	47	47	60	67	63	59	59	50		63.4	
		MIN		43	30	33	33	38	31	31	33	37	34	36	34	35	37	49	57	50	48	42	51	47	37	35	34	45	45	34	34	42		39.1	
CONOWINGO DAM	07	MAX	48	60	61	65	75	64	61	64	72	68	64	56	62	67	72	85	85	72	59	73	71	80	52	50	64	69	63	60	55	69		65.5	
		MIN	42	44	33	36	37	42	35	32	35	40	37	35	35	37	40	55	60	55	47	44	48	50	40	34	34	39	43	33	37	36		40.5	
CYLBURN	08	MAX	53	59	53	67	73	59	59	63	70	66	62	52	59	63	73	83	85	74	55	67	69	76	46	47	60	65	61	57	52	65		63.1	
		MIN	42	41	34	35	39	35	36	41	48	43	36	38	39	39	43	57	61	54	47	44	46	46	38	36	39	45	45	37	39	39		42.1	
DAMASCUS 3 SSW	22	MAX	60	58	66	71	58	58	61	67	64	61	51	56	62	72	81	86	75	53	69	70	78	53	44	59	63	63	61	50	66	61		63.2	
		MIN	42	41	39	50	37	34	33	38	49	40	35	34	37	43	55	60	52	49	48	48	49	42	36	36	39	49	44	38	39	43		42.6	
EMMITSBURG 2 SE	07	MAX	50	62	60	69	74	57	60	64	70	66	61	53	60	64	73	79	86	72	54	68	72	79	47	46	60	66	66	57	50	67		63.7	
		MIN	43	43	31	31	36	34	30	37	43	40	34	36	35	34	37	55	55	50	47	42	41	45	38	37	38	39	42	35	34	37		39.3	
FREDERICK 2 NNE	07	MAX	55	64	61	72	76	60	61	65	71	65	62	52	59	66	74	82	88	77	55	72	73	81	48	46	61	69	67	59	54	69		65.5	
		MIN	44	44	34	34	40	35	32	32	38	40	37	40	37	36	39	54	54	50	48	45	45	47	39	38	38	38	46	39	38	38		40.6	
MILLERS 4 NE	18	MAX	61	58	66	71	71	58	62	68	63	59	55	58	62	71	78	86	84	66	70	73	78	66	45	58	66	65	62	54	66	66		65.5	
		MIN	41	39	33	48	37	32	34	35	43	37	32	37	34	41	53	58	60	49	46	44	52	43	37	37	43	41	32	34	36		40.8		
SMITHSBURG 2NW	08	MAX	52	64	59	69	70	57	59			66	57	48	56	63	71	78	85	67	54	68	71	77	48	42	57	65	68	55	49	67		62.2	
		MIN	43	40	28	29	36	30	27			29	29	29	29	31	36	54	57	46	44	42	44	47	33	33	35	41	41	32	32	40		37.0	
WESTMINSTER	07	MAX	50	62	58	67	73	58	58	62	69	64	59	49	58	63	74	80	87	72	56	69	72	78	46	47	61	66	64	57	51	67		63.2	
		MIN	42	40	32	32	39	34	34	35	40	41	33	35	35	36	41	57	62	50	48	45	46	44	37	37	39	44	43	37	36	37		40.4	
<b>APPALACHIAN MOUNTAIN 07</b>																																			
CUMBERLAND 2	18	MAX	60	73	66	78	74	63	63	65	68	62	59	51	58	69	73	86	92	71	57	75	80	75	51	47	58	70	75	60	54	76		67.0	
		MIN	47	44	35	35	40	36	34	34	36	35	35	38	35	38	38	52	53	48	48	43	43	47	36	36	35	36	43	38	38	39		39.8	
FROSTBURG 2	07	MAX	54	67	58	71	66	55	53	57	62	56	53	44	49	62	67	80	85	63	51	69	74	66	43	37	52	61	70	51	49	68		59.8	
		MIN	40	37	32	31	33	30	30	31	39	37	29	29	29	32	38	55	47	46	42	42	42	40	31	31	33	37	36	31	33	35		35.9	
SHARPSBURG 5 S	07	MAX	61	65	62	70	75	58	61	64	69	64	61	51	58	65	74	83	87	69	53	70	72	79	49	44	60	69	70	59	52	71		64.8	
		MIN	44	43	30	29	34	29	28	28	31	34	29	30	30	32	36	52	54	45	45	42	42	49	36	32	32	34	43	33	34	34		36.5	
WILLIAMSPORT	06	MAX	57		66	72	77	60	63	66	72	64	65			58	68	75	82	87	70	54	69	72	78	51	45	60	69	70	57	52	73		66.1
		MIN	44		35	33	41	38	34	32	35	44	34			34	34	37	52	50	50	48	43	42	50	38	35	34	35	46	37	38	37		39.6
<b>ALLEGHENY PLATEAU 08</b>																																			
OAKLAND 1 SE	07	MAX	56	65	58	71	64	57	53	57	59	47	50	38	51	61	63	77	82	62	50	68	74	61	43	37	50	61	68	52	56	68		58.6	
		MIN	40	36	28	30	30	31	25	26	32	35	28	29	29	29	31	48	45	41	40	36	38	38	31	31	32	35	35	29	33	37		33.6	
SAVAGE RIVER DAM	08	MAX	55	67	59	72	67	67	56	59	62	53	54	42	51	63	67	77	83	62	50	68	73	67	48	41	54	63	70	52	45	69		60.5	
		MIN	44	41	32	32	34	31	30	30	34	37	34	34	32	32	32	49	49	42	45	41	41	43	35	36	35	36	41	33	34	36		36.8	
SINES DEEP CREEK	07	MAX	53	64	56	70	63	55	53	56	60	46	51	39	49	62	64			81	62	52	70	75	69	44	35	51	61	69	51	53	68		58.0
		MIN	40	39	29	29	30	28	26	26	30	32	28	30	28	28	29			46	42	42	36	36	39	32	28	29	30	36	29	31	34		32.5
<b>DELAWARE NORTHERN 01</b>																																			
BEAR 2 SW	24	MAX	58	59	66	74	60	60	62	70	66	63	54	59	64	71	81	87	76	59	70	73	80	58	49	61	66	63	59	53	66	59		64.9	
		MIN	43	43	30	45	33	36	31	30	45	46	38	39	35	35	55	57	50	49	46	41	47	47	42	42	35	39	38	31	36	34		40.6	
WILMINGTON NEW CASTLE CO AP	24	MAX	58	59	66	72	61	60	62	70	65	63	56	61	64	72	82	86	77	58	70	72	77	54	50	62	67	63	57	55	66	59		64.8	
		MIN	43	42	32	48	37	34	33	34	44	41	36	39	36	42	56	59	57	49	47	47	52	47	40	40	38	41	38	32	37	38		42.0	



# DAILY TEMPERATURES (°F)

STATION	OB. TIME	MAX/MIN	DAY OF MONTH																															AVERAGE
			01	02	03	04	05	06	07	08	09	10	11	12	13	14	15	16	17	18	19	20	21	22	23	24	25	26	27	28	29	30	31	
WILMINGTON PORTER RES	24	MAX MIN	56 41	56 41	63 39	69 51	58 41	57 36	60 38	67 42	63 47	60 44	52 38	57 39	61 39	71 39	78 39	85 39	84 39	65 39	68 48	74 48	78 52	56 44	60 37	60 37	64 40	63 47	58 42	58 38	63 40	60 43	64.1 41.6	
<b>SOUTHERN 02</b>																																		
DOVER	16	MAX MIN	58 42	58 43	63 38	72 52	72 36	60 36	62 37	69 36	66 42	65 46	64 39	59 40	63 40	72 46	83 56	88 65	86 64	77 52	70 50	69 42	81 53	58 48	51 41	62 39	67 37	65 43	61 48	57 35	67 42	60 43	66.8 44.4	
LEWES	08	MAX MIN																																M M

## SNOWFALL AND SNOW ON GROUND (INCHES)

STATION		DAY OF MONTH																																	
		01	02	03	04	05	06	07	08	09	10	11	12	13	14	15	16	17	18	19	20	21	22	23	24	25	26	27	28	29	30	31			
<b>MARYLAND</b>																																			
<b>SOUTHERN</b>																																			
<b>EASTERN SHORE 01</b>																																			
ASSATEAGUE	SNOWFALL																																		
PRINCESS ANNE	SNOWFALL																																		
SALISBURY 2N	SNOWFALL																																		
SALISBURY FAA AP	SNOWFALL																																		
SNOW HILL 4 N	SNOWFALL																																		
<b>NORTHERN CENTRAL 06</b>																																			
DAMASCUS 3 SSW	SNOWFALL	-	-	-	-	-	-	-	-	-	-	T	-	-	-	-	-	-	-	-	-	-	-	T	-	-	-	-	-	-	-	-			
	SN ON GND	-	-	-	-	-	-	-	-	-	-	-	-	-	-	-	-	-	-	-	-	-	-	-	-	-	-	-	-	-	-	-			
EMMITSBURG 2 SE	SNOWFALL																																		
	SN ON GND																																		
	WTR EQUIV																																		
FREDERICK 2 NNE	SNOWFALL																																		
MILLERS 4 NE	SNOWFALL											T																							
	SN ON GND																																		
	WTR EQUIV																																		
SMITHSBURG 2NW	SNOWFALL																							-	-										
	SN ON GND																							-	-	-									
WESTMINSTER	SNOWFALL																																		
	SN ON GND																																		
<b>APPALACHIAN</b>																																			
<b>MOUNTAIN 07</b>																																			
FROSTBURG 2	SNOWFALL	-	-	-	-	-	-	-	-	-	-	T	T	-	-	-	-	-	-	-	-	-	-	2.2	T	-	-	-	-	-	-	-			
	SN ON GND	-	-	-	-	-	-	-	-	-	-	T		-	-	-	-	-	-	-	-	-	2	T	-	-	-	-	-	-	-	-			
SHARPSBURG 5 S	SNOWFALL																																		
WILLIAMSPORT	SNOWFALL	-	-																																
	SN ON GND	-	-																																
	WTR EQUIV	-	-																																
<b>ALLEGHENY PLATEAU 08</b>																																			
OAKLAND 1 SE	SNOWFALL											0.5	0.8											2.5	2.0										
	SN ON GND																						2												
SAVAGE RIVER DAM	SNOWFALL																																		
SINES DEEP CREEK	SNOWFALL	-	-	-	-	-	-	-	-	-	-	-	0.2	-	-	-	-	-	-	-	-	-	-	2.0	3.2	-	-	-	-	-	-	-	-		
	SN ON GND	-	-	-	-	-	-	-	-	-	-	-	T	-	-	-	-	-	-	-	-	-	2	4	-	-	-	-	-	-	-	-	-		
<b>DELAWARE</b>																																			
<b>NORTHERN 01</b>																																			
BEAR 2 SW	SNOWFALL																																		
	SN ON GND																																		

Snowfall: Includes snow and ice. Values for NWS stations (J index note) are Mid-Mid (LST).

Snow on ground: Includes snow, sleet, ice, and hail. Values for NWS stations (J index note) are observed at 12 UTC (GMT).

Water Equivalent: Given for NWS stations (J index note) only, when snow depth is 2 inches or more, and is measured at 18 UTC (GMT)

## SNOWFALL AND SNOW ON GROUND (INCHES)

STATION		DAY OF MONTH																														
		01	02	03	04	05	06	07	08	09	10	11	12	13	14	15	16	17	18	19	20	21	22	23	24	25	26	27	28	29	30	31
WILMINGTON NEW CASTLE CO AP	SNOWFALL																															
WILMINGTON PORTER RES	SN ON GND																															
	SNOWFALL																															

Snowfall: Includes snow and ice. Values for NWS stations (J index note) are Mid-Mid (LST).

Snow on ground: Includes snow, sleet, ice, and hail. Values for NWS stations (J index note) are observed at 12 UTC (GMT).

Water Equivalent: Given for NWS stations (J index note) only, when snow depth is 2 inches or more, and is measured at 18 UTC (GMT)

# PAN EVAPORATION AND WIND

STATION		DAY OF MONTH																															TOTAL OR AVERAGE		
		01	02	03	04	05	06	07	08	09	10	11	12	13	14	15	16	17	18	19	20	21	22	23	24	25	26	27	28	29	30	31			
MARYLAND UPPER SOUTHERN 04 BELTSVILLE	WIND	-	-	-	-	-	-	-	-	-	-	-	-	-	-	-	-	-	-	-	-	-	-	-	-	-	-	-	-	-	-	-	-	-	M
	EVAP	-	-	-	-	-	-	-	-	-	-	-	-	-	-	-	-	-	-	-	-	-	-	-	-	-	-	-	-	-	-	-	-	-	M
	MAX	-	-	-	-	-	-	-	-	-	-	-	-	-	-	-	-	-	-	-	-	-	-	-	-	-	-	-	-	-	-	-	-	-	M
	MIN	-	-	-	-	-	-	-	-	-	-	-	-	-	-	-	-	-	-	-	-	-	-	-	-	-	-	-	-	-	-	-	-	-	M
UPPER MARLBORO 3 NNW	WIND	-	-	-	-	-	-	-	-	-	-	-	-	-	-	-	-	-	-	-	-	-	-	-	-	-	-	-	-	-	-	-	-	M	
	EVAP	-	-	-	-	-	-	-	-	-	-	-	-	-	-	-	-	-	-	-	-	-	-	-	-	-	-	-	-	-	-	-	-	M	
	MAX	-	-	-	-	-	-	-	-	-	-	-	-	-	-	-	-	-	-	-	-	-	-	-	-	-	-	-	-	-	-	-	-	M	
	MIN	-	-	-	-	-	-	-	-	-	-	-	-	-	-	-	-	-	-	-	-	-	-	-	-	-	-	-	-	-	-	-	-	-	M
ALLEGHENY PLATEAU 08 SAVAGE RIVER DAM	WIND	-	-	-	-	-	-	-	-	-	-	-	-	-	-	-	-	-	-	-	-	-	-	-	-	-	-	-	-	-	-	-	-	M	
	EVAP	-	-	-	-	-	-	-	-	-	-	-	-	-	-	-	-	-	-	-	-	-	-	-	-	-	-	-	-	-	-	-	-	M	
	MAX	-	-	-	-	-	-	-	-	-	-	-	-	-	-	-	-	-	-	-	-	-	-	-	-	-	-	-	-	-	-	-	-	M	
	MIN	-	-	-	-	-	-	-	-	-	-	-	-	-	-	-	-	-	-	-	-	-	-	-	-	-	-	-	-	-	-	-	-	-	M

Evaporation: Is measured in hundreths of inches.

Wind: Is measured in miles.

Max and Min: The maximum and minimum temperatures (Fahrenheit) of the water in the evaporation pan.

# STATION INDEX

STATION	INDEX NO.	DIVISION	COUNTY	LATITUDE	LONGITUDE	ELEVATION (IN FEET)	OBSERVATION TIME AND TABLES			
							LOCAL STD TIME			
							TEMP	PRECIP	EVAP	SPECIAL SEE (NOTES)
MARYLAND										
ABERDEEN PHILLIPS FLD	0015	06	HARFORD	39 28	76 10W	57	07	07		CH
ASSATEAGUE	0335	01	WORCESTER	38 4	75 13W	10	24	24		H
BALTIMORE WASH INTL AP R	0465	04	ANNE ARUNDEL	39 10	76 41W	156	24	24		HJ
BELTSVILLE	0700	04	PRINCE GEORGE'S	39 2	76 56W	145	08	08	08	CH
BRIGHTON DAM	1125	06	MONTGOMERY	39 11	77 0W	330	08	08		H
CONOWINGO DAM	2060	06	HARFORD	39 39	76 11W	40	07	07		H
CUMBERLAND 2	2282	07	ALLEGANY	39 39	78 45W	730	18	18		H
CYLBURN	2308	06	BALTIMORE	39 21	76 39W	235	08	08		H
DALECARLIA RSVR	2325	04	DISTRICT OF COLUMBIA	38 56	77 7W	150	08	08		H
DAMASCUS 3 SSW	2336	06	MONTGOMERY	39 16	77 14W	700	22	22		H
EMMITSBURG 2 SE	2906	06	FREDERICK	39 41	77 17W	403	07	07		H
FREDERICK 2 NNE	3353	06	FREDERICK	39 26	77 24W	280	07	07		H
FROSTBURG 2	3415	07	ALLEGANY	39 40	78 56W	2170	07	07		H
LAUREL 3 W	5111	04	PRINCE GEORGE'S	39 5	76 54W	400	24	24		H
MARYLAND SCIENCE CENTER R	5718	04	BALTIMORE (CITY)	39 17	76 37W	20	24	24		H
MECHANICSVILLE 5 NE	5865	03	ST. MARY'S	38 28	76 42W	100	07	07		H
MILLERS 4 NE	5934	06	CARROLL	39 43	76 48W	860	18	18		CH
NATL ARBORETUM DC	6350	04	DISTRICT OF COLUMBIA	38 55	76 58W	50	07	07		H
OAKLAND 1 SE	6620	08	GARRETT	39 25	79 24W	2420	07	07		H
OXON HILL	6800	04	PRINCE GEORGE'S	38 47	76 60W	120	08	08		H
PRINCESS ANNE	7330	01	SOMERSET	38 13	75 41W	20	17	17		H
ROYAL OAK 2 SSW	7806	02	TALBOT	38 43	76 11W	10	17	17		H
SALISBURY 2N	8004	01	WICOMICO	38 24	75 36W	20	17	17		H
SALISBURY FAA AP	8005	01	WICOMICO	38 20	75 31W	48	24	24		H
SAVAGE RIVER DAM	8065	08	GARRETT	39 31	79 8W	1495	08	08	08	CH
SHARPSBURG 5 S	8207	07	WASHINGTON	39 24	77 43W	500	07	07		H
SINES DEEP CREEK	8315	08	GARRETT	39 31	79 25W	2040	07	07		H
SMITHSBURG 2NW	8371	06	WASHINGTON	39 40	77 35W	670	08	08		H
SNOW HILL 4 N	8380	01	WORCESTER	38 14	75 23W	30	17	17		H
SOLOMONS	8405	03	CALVERT	38 19	76 27W	12	08	08		H
UPPER MARLBORO 3 NNW	9070	04	PRINCE GEORGE'S	38 51	76 46W	130	08	08	08	H
WESTMINSTER	9440	06	CARROLL	39 34	76 59W	750	07	07		H
WILLIAMSPORT	9570	07	WASHINGTON	39 37	77 51W	360	06	06		H
DELAWARE										
BEAR 2 SW	1200	01	NEW CASTLE	39 36	75 44W	80	24	24		H
DOVER	2730	02	KENT	39 15	75 31W	30	16	16		H
LEWES	5320	02	SUSSEX	38 47	75 8W	15	08	08		H
WILMINGTON NEW CASTLE CO AP R	9595	01	NEW CASTLE	39 40	75 36W	79	24	24		HJ
WILMINGTON PORTER RES	9605	01	NEW CASTLE	39 46	75 32W	270	24	24		H

# REFERENCE NOTES

**STATION NAMES:** Name of the city, town or locality. Figures and letters following the station names indicate the distance in miles and direction from the post office or town community center.

**DIVISIONS:** Areas within a state of similar climatological characteristics. Division averages are calculated using data from stations that record temperature and/or precipitation. Station Precipitation totals flagged with an 'F' or 'M' are excluded from the Divisional Average calculations of precipitation. Stations with monthly Temperature averages flagged with an 'F' or 'M' are included in the Divisional Average if there are no more than 9 flagged or missing daily values in the month, else they are excluded from the divisional average for temperature.

**NORMALS:** The average value of the meteorological element over a time period. Effective 1 January 2012, the averaging period is 1981 to 2010. The normals for National Weather Service localities have been adjusted so as to be representative for the current observation site.

**MONTHLY DEGREE DAY TOTALS:** One heating (cooling) degree day is accumulated for each whole degree that the daily mean temperature is below (above) 65 degrees Fahrenheit.

**PRECIPITATION:** Values shown in hundredths of inches are water equivalent totals, i.e., total of liquid and melted frozen precipitation. In the "Monthly Summarized Data" table the total snow and sleet values shown in tenths of inches are unmelted amounts. The max depth on ground values of snow and sleet shown in whole inches are cumulative unmelted amounts. The number of days with .10, .50, 1.00 or more refers to water equivalents.

**PRECIPITATION QUALITY CONTROL:** The NCDC quality control process may flag precipitation data that are spatially inconsistent, exceed climatological limits, or are inconsistent with prevailing weather patterns.

**TEMPERATURE:** Original temperature values are given in the "Daily Temperature" table. Summary temperature information (averages, departures, extremes, monthly degree day totals) is based on the values labeled MAX/MIN.

**WIND:** (As shown in the "Evaporation and Wind" table) the total wind movement in miles over the evaporation pan as determined by an anemometer recorder located 6-8 inches above the pan.

## SYMBOLS AND LETTERS USED IN THE STATION INDEX TABLE

C Station is equipped with recording rain gage (R) but values in this bulletin are from a non-recording rain gage unless indicated by an R.

G Observations appear in the "Soil Temperatures" table.

H Observations appear in the "Snowfall and Snow on the Ground" table.

J Station also published as a Local Climatological Data publication.

VAR Observation time varies.

SR Observation time near sunrise.

SS Observation time near sunset.

## SYMBOLS AND LETTERS USED IN THE DATA TABLES

(DAILY DATA ARE FOR THE 24 HOURS IMMEDIATELY PRECEDING OBSERVATION TIME.)

BLANK Entries in the "Monthly Summarized Data" table indicate no record.

BLANK Entries in the "Daily Precipitation" and "Snowfall and Snow on the Ground" tables indicate zero.

BLANK Entries in the "Daily Temperature" table indicate a missing record

- No record. Data not recorded or not received in time for publication.

+ Precipitation or temperature extremes occurred on one or more previous dates during the month.

\* Rain gage not read. Precipitation is included in the amount following the asterisks.

Time distribution may not be known. A \* preceding the monthly total indicates precipitation amount is being carried forward to next month's total, and may include amounts from the previous month(s).

a As a subscript, indicates accumulated total.

A Amount of precipitation is the total of observer's entries for the current month. It may include precipitation that occurred during the previous month. Refer to earlier bulletin to determine date of last reading. (Hawaii stations)

B Divisional Departure from normals are computed using 1971-2000 normals.

E Normalized HDD/CDD Calculation. E is appended to the HDD/CDD Calculation when 1-9 individual daily TMAX and/or TMIN values are missing and a Normalized HDD/CDD Calculation is provided. M appears alone if 10 or more daily values are missing.

F Monthly calculation flagged value. F is appended to average and/or total values computed which exclude one or more daily data values that have been flagged by the GHCN-Daily Dataset

M Insufficient or partial data. M is appended to average and/or total values computed with 1-9 daily values missing. M appears alone if 10 or more daily values are missing, (8 or more for wind and evaporation).

N Indicates snow fall or Snowdepth totals are computed with one or more missing days.

R Amounts from recording rain gage.

T Trace. An amount too small to measure.

**SEASONAL TABLES:** Monthly and seasonal snowfall and heating degree days for the 12 months ending with the June data are published in the July issue of this bulletin. Cooling degree days for the calendar year are published in the "Climatological Data Annual Summary."

Information concerning the history of changes in locations, exposure, etc. of substations is kept on file at the National Climatic Data Center. Historical information of regular National Weather Service Offices may be obtained from the "Local Climatological Data" annual publication. The contents of this publication may be reprinted or otherwise used freely, with proper credit to the National Climatic Data Center. The data are also available digitally.

Effective with the January 2011 Data-Month, COOP Observer Names are no longer included in the Monthly and Annual Climatological Data Publications. This information is not published to ensure the privacy of personal information pursuant to Section 208 of the E-Government Act of 2002 (44 USC 3601).

As of the 2011 Data-Year, Station and Climate Division Maps are no longer being included in the CD Publications. NCDC's Product Development Branch provides updated Station Maps for various data networks via the Historical Observing Metadata Repository: <http://www.ncdc.noaa.gov/homr>.

The GHCN-Daily Quality Control Flags shown below are displayed as superscripts with the data. For more Information on Global Historical Climatology Network - Daily and flags, see: <http://www.ncdc.noaa.gov/oa/climate/ghcn-daily/> and

Comprehensive Automated Quality Assurance of Daily Surface Observations.

Durre, Imke, Matthew J. Menne, Byron E. Gleason, Tamara G. Houston,

Russell S. Vose, 2010: J. Appl. Meteor. Climatol., 49, 1615-1633.

doi: 10.1175/2010JAMC2375.1

Blank = Passed All checks

D = failed duplicate check

G = failed gap check

I = failed internal consistency check

K = failed streak/frequent-value check

L = failed check on length of multiday period

M = failed megaconsistency check

N = failed naught check

O = failed climatological outlier check

R = failed lagged range check

S = failed spatial consistency check

T = failed temporal consistency check

W = temperature too warm for snow

X = failed bounds check

NOAA\National Climatic Data Center  
Attn: User Engagement & Services Branch  
151 Patton Avenue  
Asheville, NC 28801-5001

Customer Services Number: (828) 271-4800, option 2  
TDD : (828) 271-4010  
Fax number: (828) 271-4876

NCDC now offers free online access to the *Climatological Data* publication.  
Go to : [www.ncdc.noaa.gov](http://www.ncdc.noaa.gov) and choose Most Popular.