



# CLIMATOLOGICAL DATA

## MARYLAND AND DELAWARE

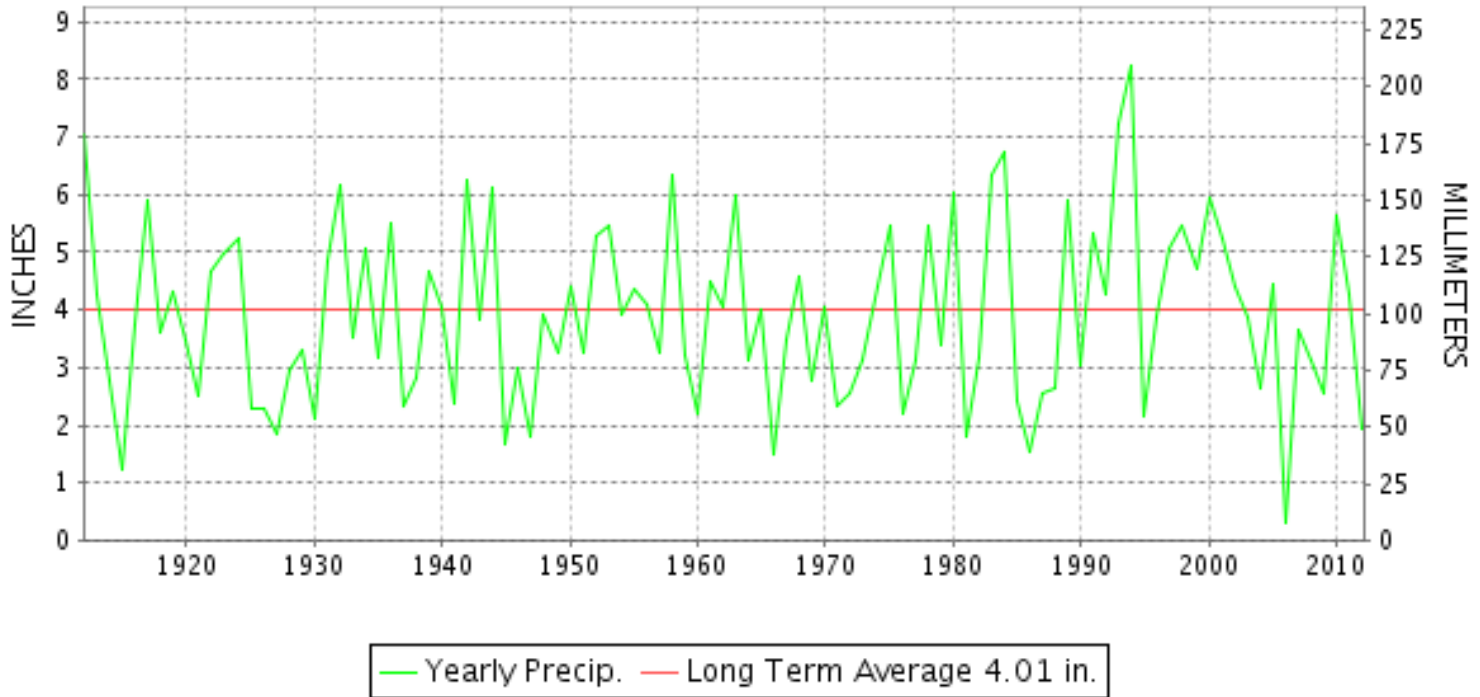
MARCH 2012

VOLUME 116 NUMBER 03

ISSN 0145-0549

GHCND Ver: 2.93-upd-2012082905

### MARCH PRECIPITATION BY YEAR



#### TEMPERATURE AND PRECIPITATION EXTREMES

##### MARYLAND

HIGHEST TEMPERATURE	87	MARCH 24	NATL ARBORETUM DC
LOWEST TEMPERATURE	13	MARCH 06	OAKLAND 1 SE
GREATEST TOTAL PRECIPITATION	5.70		SINES DEEP CREEK
LEAST TOTAL PRECIPITATION	1.10		SALISBURY FAA AP
GREATEST 1 DAY PRECIPITATION	3.07	MARCH 01	OAKLAND 1 SE
GREATEST TOTAL SNOWFALL	0.9		OAKLAND 1 SE
GREATEST DEPTH OF SNOW OR ICE	1		FROSTBURG 2

"I certify that this is an official publication of the National Oceanic and Atmospheric Administration (NOAA) It is compiled using information from weather observing sites supervised by NOAA/National Weather Service and received at the National Climatic Data Center(NCDC), Asheville, North Carolina 28801."

Director  
National Climatic Data Center

noaa

National  
Oceanic and  
Atmospheric Administration

National  
Environmental Satellite, Data  
and Information Service

National  
Climatic Data Center  
Asheville, North Carolina

**DELAWARE**

HIGHEST TEMPERATURE	81	MARCH 23+	2 STATIONS
LOWEST TEMPERATURE	23	MARCH 06+	2 STATIONS
GREATEST TOTAL PRECIPITATION	1.33		DOVER
LEAST TOTAL PRECIPITATION	0.79		BEAR 2 SW
GREATEST 1 DAY PRECIPITATION	0.76	MARCH 01	DOVER





DAILY PRECIPITATION (INCHES)

STATION	TOTAL	DAY OF MONTH																																		
		01	02	03	04	05	06	07	08	09	10	11	12	13	14	15	16	17	18	19	20	21	22	23	24	25	26	27	28	29	30	31				
<b>MARYLAND</b>																																				
<b>SOUTHERN</b>																																				
<b>EASTERN SHORE 01</b>																																				
ASSATEAGUE	1.87	0.11	0.69	0.06	0.12	0.24			0.31			0.13		0.11	0.03	0.01								0.04	0.02											
PRINCESS ANNE	M 0.85			-	-	0.10			0.19	-	-	0.30									0.18			-	-									-		
SALISBURY 2N	2.03	0.51		0.26	0.01	0.15			0.13			0.19		0.01		0.05								0.70	0.02									T		
SALISBURY FAA AP	1.10	0.01	0.15	0.08	T	0.18			0.15			0.24		0.11	0.03									0.15								T		T	T	
SNOW HILL 4 N	2.07	0.76		0.41	0.01	0.24			0.22			0.19				0.05	0.05							0.04	0.10								T	T	T	
<b>CENTRAL</b>																																				
<b>EASTERN SHORE 02</b>																																				
ROYAL OAK 2 SSW	1.21	0.26	0.09	0.30	T	0.01			0.04			0.07				T								0.38							T		T		0.06	
<b>LOWER SOUTHERN 03</b>																																				
MECHANICSVILLE 5 NE	2.37	1.56		0.35	T		0.01		0.04			0.06					T				T	0.04		T	0.25	T				0.03			0.03	0.03		
SOLOMONS	A 3.13	1.39		* 0.41 <sub>a</sub>		0.10			0.05			0.28				*	T <sub>a</sub>	*		0.22 <sub>a</sub>	0.01	0.01		*	0.61 <sub>a</sub>	0.01				0.01				0.03		
<b>UPPER SOUTHERN 04</b>																																				
BALTIMORE WASH INTL AP	1.76	0.04	0.42	0.49		T			0.01			0.01				T		T	0.04	0.01		T		0.69	0.02				0.03			T				
BELTSVILLE	3.08	1.50		0.95					0.01			T											0.34		0.01	0.27										
DALECARLIA RSVR	2.91	1.00		0.80				0.01	0.02			0.01					0.03					0.68	T		0.35						0.01					
LAUREL 3 W	1.89	0.20	0.17	0.91		T												0.02	T		0.01	0.26		0.22					0.10							
MARYLAND SCIENCE CENTER	1.17	0.04	0.21	0.22					0.02			0.01									0.01		0.58	0.03					0.04			0.01				
NATL ARBORETUM DC	4.01	1.62		1.86	0.02		T		T			T					0.03	0.02		0.10	T			0.36												
OXON HILL	2.28	1.41		0.42	0.04		T		0.03			0.02				0.02	T		T		0.03	T		0.30			T				0.01			T		
UPPER MARLBORO 3 NNW	2.51	1.55		0.47		0.03			0.06			0.05	T										0.10	0.01		0.23					0.01					
<b>NORTHERN CENTRAL 06</b>																																				
ABERDEEN PHILLIPS FLD	A 1.72	1.04		* 0.26 <sub>a</sub>					0.01			0.02														*	0.33 <sub>a</sub>				0.03			0.03	0.03	
BRIGHTON DAM	FMA 1.30	2.00 <sub>a</sub>		0.50					0.02			0.02										0.45			0.28						0.05				-	
CONOWINGO DAM	1.78	1.04	0.02	0.18	0.10				0.05			0.01												0.39												
CYLBURN	2.28	1.17		0.31	0.04																			0.29	0.33							0.11			0.01	
DAMASCUS 3 SSW	1.86	0.06	0.29	0.16	T	T										T	T						0.77	T	0.47	0.08				0.02			0.01			
EMMITSBURG 2 SE	3.63	1.10		0.35					0.01			0.02										T	0.63	0.46	0.13	0.77				0.08					0.08	0.08
FREDERICK 2 NNE	3.87	1.43	0.01	0.43					0.07			0.02					0.01						1.02	0.01	0.02	0.70									0.15	
MILLERS 4 NE	1.70	0.36	0.01	0.24	T	T			0.02			0.01						T	T		0.11		0.01	0.69	0.23				0.02					T		
SMITHSBURG 2NW	M	-	-	-	-	-	-	-	-	-	-	-	-	-	-	-	-	-	-	-	-	-	-	-	-	-	-	-	-	-	-	-	-	-	-	-
WESTMINSTER	1.89	0.95		0.12																			0.33		0.01	0.37					0.11					
<b>APPALACHIAN</b>																																				
<b>MOUNTAIN 07</b>																																				
CUMBERLAND 2	3.97	1.45		0.48		T	T		0.05			0.06							0.01		0.10	0.01			0.51	0.88									0.42	
FROSTBURG 2	4.17	1.60		0.52	0.01	T			0.04			0.09					T				0.09	T		0.02	0.85	0.43	0.01			0.05				0.46		
SHARPSBURG 5 S	M	-	-	-	-	-	-	-	-	-	-	-	-	-	-	0.02							0.33		0.20	0.01				0.04					0.02	
WILLIAMSPORT	M 2.71	1.35		0.35					0.10			0.01				0.05	0.01						-	0.27		0.02	0.04	0.29	0.02			0.17			0.03	
<b>ALLEGHENY PLATEAU 08</b>																																				
OAKLAND 1 SE	M 5.14	3.07		0.53	0.01	0.01			0.30			0.29											0.10	0.01		0.61	0.19							0.02	-	

DAILY PRECIPITATION (INCHES)

STATION	TOTAL	DAY OF MONTH																														
		01	02	03	04	05	06	07	08	09	10	11	12	13	14	15	16	17	18	19	20	21	22	23	24	25	26	27	28	29	30	31
SAVAGE RIVER DAM	4.02	1.86		0.53		T				0.10										0.10	0.02				0.42	0.22				0.05		0.54
SINES DEEP CREEK	5.70	2.06		0.53		0.03	0.04			0.50						0.04				0.25	0.15				0.70	0.22	0.02			0.06		0.71
DELAWARE NORTHERN 01																																
BEAR 2 SW	0.79	0.04	0.10	0.23						0.04		T	0.05												0.23				T		0.10	
WILMINGTON NEW CASTLE CO AP	0.92	0.10	0.17	0.25						T		T	0.03												0.30	T		0.01			0.06	
WILMINGTON PORTER RES	1.23	0.10	0.30	0.21						0.08			0.07		T										0.27	0.02					0.18	
DELAWARE SOUTHERN 02																																
DOVER	1.33	0.76		0.22									0.06												0.20							0.09
LEWES	M	-	-	-	-	-	-	-	-	-	-	-	-	-	-	-	-	-	-	-	-	-	-	-	-	-	-	-	-	-	-	-



DAILY TEMPERATURES (°F)

STATION	OB. TIME	MAX/MIN	DAY OF MONTH																															AVERAGE	
			01	02	03	04	05	06	07	08	09	10	11	12	13	14	15	16	17	18	19	20	21	22	23	24	25	26	27	28	29	30	31		
BRIGHTON DAM	08	MAX	56	63	63	63	44	40	48	66	71	55	43	60	68	78	76	79	63	71	65	73	69	66	78	80	57	59	59	52	74	59		63.3	
		MIN	39	29	29	29	26	22	31	31	42	24	25	34	40	47	45	48	44	48	46	53	53	54	51	56	48	46	28	34	50	33		39.5	
CONOWINGO DAM	07	MAX	47	59	50	62	46	45	46	64	65	57	57	59	65	77	77	68	66	69	60	72	73	73	82	60	60	61	56	68	61	54	62.3		
		MIN	42	28	30	38	26	25	26	32	43	35	25	28	37	45	45	46	45	45	41	47	52	55	51	52	48	47	34	38	42	32	36	39.2	
CYLBURN	08	MAX	56	62	50	57	45	43	43	64	71	54	53	61	66	78	77	74	62	69	68	72	70	66	73	81	56	58	56	52	71	59	46	61.7	
		MIN	38	31	33	37	29	25	26	36	41	29	30	34	55	56	48	47	47	47	48	59	57	56	51	52	48	50	30	31	41	33	35	41.3	
DAMASCUS 3 SSW	22	MAX	62	50	57	44	41	45	64	69	64	44	60	67	78	75	82	62	72	64	72	69	65	75	81	67	60	56	50	70	60	47	57	62.2	
		MIN	42	32	42	33	28	22	35	52	39	28	33	41	56	57	53	48	49	49	51	59	56	59	55	53	47	40	26	40	44	33	41	43.3	
EMMITSBURG 2 SE	07	MAX	45	57	51	58	43	43	46	65	70	54	45	61	68	79	78	81	66	74	67	73	70	66	73	79	59	63	57	54	70	58	52	62.1	
		MIN	35	29	29	33	26	23	23	34	40	27	28	29	31	53	43	43	45	46	50	52	54	54	51	50	46	47	29	29	42	33	31	38.2	
FREDERICK 2 NNE	07	MAX	51	62	52	59	43	43	48	67	71	56	47	64	70	80	79	83	69	76	69	74	73	66	77	83	60	65	56	55	75	59	53	64.0	
		MIN	38	31	31	35	30	24	24	34	42	29	29	29	38	50	46	46	48	48	52	53	55	57	53	53	47	47	32	32	42	35	34	40.1	
MILLERS 4 NE	18	MAX	56	50	56	51	41	46	64	70	66	43	62	68	77	76	78	67	73	69	73	73	71	71	80	77	61	59	51	70	70	54	50	63.6	
		MIN	42	28	41	32	23	19	30	50	38	26	30	36	53	51	48	45	46	46	49	57	56	55	47	51	45	48	27	38	47	28	42	41.1	
SMITHSBURG 2NW	08	MAX																																M	
		MIN																																	M
WESTMINSTER	07	MAX	57	62	52	56	43	42	46	65	71	53	44	62	69	79	77	80	69	73	68	71	72	67	73	82	58	61	55	52	72	57	52	62.6	
		MIN	39	26	27	32	28	23	24	37	39	28	29	35	36	52	47	47	46	46	48	53	56	56	50	50	46	46	30	30	44	33	33	39.2	
<b>APPALACHIAN MOUNTAIN 07</b>																																			
CUMBERLAND 2	18	MAX	51	59	52	55	39	42	52	74	68	52	52	73	74	79	82	80	76	81	75	73	77	66	86	86	64	66	56	59	79	61	59	66.1	
		MIN	33	29	29	32	26	22	22	28	36	28	26	26	38	50	45	45	48	49	52	53	55	56	55	55	52	50	29	29	37	37	37	39.0	
FROSTBURG 2	07	MAX	51	49	46	48	32	32	45	65	62	44	46	67	69	70	73	74	68	73	69	67	71	58	80	78	60	65	48	56	72	54	55	59.6	
		MIN	31	27	27	25	19	15	15	33	29	20	20	29	40	44	45	49	47	48	48	51	54	55	52	52	48	43	22	22	43	30	33	36.0	
SHARPSBURG 5 S	07	MAX	53	48	62	51	58	42	41	49	67	71	55	46	65	80	80	82	70	77	67	76	73	65	77	82	62	61	57	54	75	59	52	63.1	
		MIN	27	36	28	28	28	23	20	20	29	40	24	24	28	36	43	43	45	44	52	52	52	54	52	52	49	45	26	27	41	31	31	36.5	
WILLIAMSPORT	06	MAX	42	62	50	55	46	43	50	67	72	56	53	64	69	79	81	82	71	76		73	74	67	78	82	61	62	58	55	76	76	53	64.4	
		MIN	37	30	29	33	28	23	22	26	42	27	26	26	32	45	44	42	47	45		51	51	51	53	52	48	48	29	29	38	36	34	37.5	
<b>ALLEGHENY PLATEAU 08</b>																																			
OAKLAND 1 SE	07	MAX	60	49	55	46	30	31	52	64	65	43	47	64	66	68	72	70	68	71	75	75	74	67	80	77	59	62	49	59	59	55		60.4	
		MIN	41	26	31	25	23	13	15	29	29	20	22	22	30	40	36	37	39	42	45	46	45	46	44	45	50	42	30	30	42	31		33.9	
SAVAGE RIVER DAM	08	MAX	54	45	49	48	33	33	44	65	66	45	46	64	69	69	73	70	69	73	67	70	70	62	80	80	62	66	51	55	73	55	56	60.1	
		MIN	33	28	28	30	25	18	18	18	34	26	26	26	26	42	41	41	44	43	49	50	52	53	49	49	51	48	26	26	35	34	36	35.6	
SINES DEEP CREEK	07	MAX	59	47	47	47	31	30	50	62	64	44	43	62	65	67	70	69	60	71	69	72	75	66	78	77	58	60	47	57	72	53	64	59.2	
		MIN	32	27	27	27	23	14	14	25	30	21	21	21	29	38	37	37	40	40	47	45	45	45	44	50	44	22	22	40	30	34	32.8		
<b>DELAWARE NORTHERN 01</b>																																			
BEAR 2 SW	24	MAX	59	48	58	46	44	45	63	71	65	44	58	68	76	75	62	62	68	62	72	75	71	71	81	59	59	58	53	67	63	54	49	61.5	
		MIN	35	29	46	33	27	23	30	53	38	28	27	31	55	45	43	48	43	47	42	56	57	54	49	52	49	38	31	35	43	29	43	40.6	
WILMINGTON NEW CASTLE CO AP	24	MAX	59	49	59	46	45	44	63	70	65	45	58	69	76	74	61	62	67	61	72	76	71	72	81	59	58	57	54	66	62	54	48	61.4	
		MIN	39	30	45	34	29	23	34	52	36	29	31	35	52	49	47	47	47	47	45	57	54	54	51	51	47	35	28	40	40	32	43	41.4	



# DAILY TEMPERATURES (°F)

STATION	OB. TIME	MAX/MIN	DAY OF MONTH																															AVERAGE	
			01	02	03	04	05	06	07	08	09	10	11	12	13	14	15	16	17	18	19	20	21	22	23	24	25	26	27	28	29	30	31		
WILMINGTON PORTER RES	24	MAX MIN	55 40	46 33	55 43	44 34	41 29	42 27	60 33	68 50	62 37	41 29	56 29	67 38	73 53	71 54	61 46	61 45	67 45	67 45	72 45	73 45	73 45	77 56	59 49	57 45	55 35	50 30	64 39	65 43	54 34	54 34	60.1 40.5		
<b>SOUTHERN 02</b>																																			
DOVER	16	MAX MIN	64 40	60 31	57 45	54 35	50 30	43 26	64 34	71 53	68 38	63 31	60 31	70 42	76 55	74 53	70 49	62 49	60 44	58 47	68 43	69 51	68 54	80 53	78 53	56 50	60 37	57 32	71 37	69 38	65 35	52 44	64.0 42.4		
LEWES	08	MAX MIN																																	M M

## SNOWFALL AND SNOW ON GROUND (INCHES)

STATION		DAY OF MONTH																														
		01	02	03	04	05	06	07	08	09	10	11	12	13	14	15	16	17	18	19	20	21	22	23	24	25	26	27	28	29	30	31
<b>MARYLAND SOUTHERN EASTERN SHORE 01</b>																																
ASSATEAGUE	SNOWFALL																															
PRINCESS ANNE	SNOWFALL																															
SALISBURY 2N	SNOWFALL																															
SALISBURY FAA AP	SNOWFALL																															
SNOW HILL 4 N	SNOWFALL	-	-	-	-	0.1	-	-	-	-	-	-	-	-	-	-	-	-	-	-	-	-	-	-	-	-	-	-	-	-	-	
	SN ON GND	-	-	-	-	-	-	-	-	-	-	-	-	-	-	-	-	-	-	-	-	-	-	-	-	-	-	-	-	-	-	
<b>LOWER SOUTHERN 03</b>																																
SOLOMONS	SNOWFALL	-					0.4																									
	SN ON GND	-					-																									
<b>UPPER SOUTHERN 04</b>																																
BALTIMORE WASH INTL AP	SNOWFALL					T																										
	SN ON GND					-																										
BELTSVILLE	SNOWFALL																															
	SN ON GND																															
DALECARLIA RSVR	SNOWFALL																															
	SN ON GND																															
	WTR EQUIV																															
LAUREL 3 W	SNOWFALL					T																										
	SN ON GND					-																										
MARYLAND SCIENCE CENTER	SNOWFALL						T																									
NATL ARBORETUM DC	SNOWFALL	-	-	-	-		T																									
	SN ON GND	-	-	-	-	-	-																									
	WTR EQUIV	-	-	-	-	-	-																									
OXON HILL	SNOWFALL						T																									
	SN ON GND						-																									
UPPER MARLBORO 3 NNW	SNOWFALL																															
	SN ON GND																															
<b>NORTHERN CENTRAL 06</b>																																
DAMASCUS 3 SSW	SNOWFALL	-	-	-	T	T	-	-	-	-	-	-	-	-	-	-	-	-	-	-	-	-	-	-	-	-	-	-	-	-		
	SN ON GND	-	-	-	-	-	-	-	-	-	-	-	-	-	-	-	-	-	-	-	-	-	-	-	-	-	-	-	-	-		
EMMITSBURG 2 SE	SNOWFALL																															
	SN ON GND																															
	WTR EQUIV																															
FREDERICK 2 NNE	SNOWFALL																															
MILLERS 4 NE	SNOWFALL				T	T																										
	SN ON GND				-	-																										
	WTR EQUIV																															
SMITHSBURG 2NW	SNOWFALL																															
WESTMINSTER	SNOWFALL																															

Snowfall: Includes snow and ice. Values for NWS stations (J index note) are Mid-Mid (LST).

Snow on ground: Includes snow, sleet, ice, and hail. Values for NWS stations (J index note) are observed at 12 UTC (GMT).

Water Equivalent: Given for NWS stations (J index note) only, when snow depth is 2 inches or more, and is measured at 18 UTC (GMT)

## SNOWFALL AND SNOW ON GROUND (INCHES)

STATION		DAY OF MONTH																														
		01	02	03	04	05	06	07	08	09	10	11	12	13	14	15	16	17	18	19	20	21	22	23	24	25	26	27	28	29	30	31
<b>APPALACHIAN MOUNTAIN 07</b> FROSTBURG 2	SN ON GND																															
	SNOWFALL	-	-	-	-	0.7	0.4	-	-	-	-	-	-	-	-	-	-	-	-	-	-	-	-	-	-	-	-	-	-	-	-	-
SHARPSBURG 5 S	SN ON GND	-	-	-	-	1	T	-	-	-	-	-	-	-	-	-	-	-	-	-	-	-	-	-	-	-	-	-	-	-	-	
	SNOWFALL	-	-	-	-	-	-	-	-	-	-	-	-	-	-	-	-	-	-	-	-	-	-	-	-	-	-	-	-	-	-	-
WILLIAMSPORT	SN ON GND	-	-	-	-	-	-	-	-	-	-	-	-	-	-	-	-	-	-	-	-	-	-	-	-	-	-	-	-	-	-	
	SNOWFALL	-	-	-	-	-	-	-	-	-	-	-	-	-	-	-	-	-	-	-	-	-	-	-	-	-	-	-	-	-	-	-
<b>ALLEGHENY PLATEAU 08</b> OAKLAND 1 SE	SN ON GND	-	-	-	-	-	-	-	-	-	-	-	-	-	-	-	-	-	-	-	-	-	-	-	-	-	-	-	-	-	-	
	SNOWFALL	-	-	-	-	-	-	-	-	-	-	-	-	-	-	-	-	-	-	-	-	-	-	-	-	-	-	-	-	-	-	-
SAVAGE RIVER DAM SINES DEEP CREEK	SN ON GND	-	-	-	-	0.2	0.1	-	-	-	-	-	-	-	-	-	-	-	-	-	-	-	-	-	-	-	-	-	-	-	-	
	SNOWFALL	-	-	-	-	-	-	-	-	-	-	-	-	-	-	-	-	-	-	-	-	-	-	-	-	-	-	-	-	-	-	-
<b>DELAWARE NORTHERN 01</b> BEAR 2 SW	SN ON GND	-	-	-	-	T	T	-	-	-	-	-	-	-	-	-	-	-	-	-	-	-	-	-	-	-	-	-	-	-	-	
	SNOWFALL	-	-	-	-	-	-	-	-	-	-	-	-	-	-	-	-	-	-	-	-	-	-	-	-	-	-	-	-	-	-	-
WILMINGTON NEW CASTLE CO AP	SN ON GND																															
	SNOWFALL																															
WILMINGTON PORTER RES	SN ON GND																															
	SNOWFALL																															

Snowfall: Includes snow and ice. Values for NWS stations (J index note) are Mid-Mid (LST).

Snow on ground: Includes snow, sleet, ice, and hail. Values for NWS stations (J index note) are observed at 12 UTC (GMT).

Water Equivalent: Given for NWS stations (J index note) only, when snow depth is 2 inches or more, and is measured at 18 UTC (GMT)

# PAN EVAPORATION AND WIND

STATION		DAY OF MONTH																															TOTAL OR AVERAGE					
		01	02	03	04	05	06	07	08	09	10	11	12	13	14	15	16	17	18	19	20	21	22	23	24	25	26	27	28	29	30	31						
MARYLAND UPPER SOUTHERN 04 BELTSVILLE	WIND	-	-	-	-	-	-	-	-	-	-	-	-	-	-	-	-	-	-	-	-	-	-	-	-	-	-	-	-	-	-	-	-	-	-	M		
	EVAP	-	-	-	-	-	-	-	-	-	-	-	-	-	-	-	-	-	-	-	-	-	-	-	-	-	-	-	-	-	-	-	-	-	-	M		
	MAX	-	-	-	-	-	-	-	-	-	-	-	-	-	-	-	-	-	-	-	-	-	-	-	-	-	-	-	-	-	-	-	-	-	-	-	M	
	MIN	-	-	-	-	-	-	-	-	-	-	-	-	-	-	-	-	-	-	-	-	-	-	-	-	-	-	-	-	-	-	-	-	-	-	-	M	
UPPER MARLBORO 3 NNW	WIND	-	-	-	-	-	-	-	-	-	-	-	-	-	-	-	-	-	-	-	-	-	-	-	-	-	-	-	-	-	-	-	-	-	-	M		
	EVAP	-	-	-	-	-	-	-	-	-	-	-	-	-	-	-	-	-	-	-	-	-	-	-	-	-	-	-	-	-	-	-	-	-	-	M		
	MAX	-	-	-	-	-	-	-	-	-	-	-	-	-	-	-	-	-	-	-	-	-	-	-	-	-	-	-	-	-	-	-	-	-	-	-	M	
	MIN	-	-	-	-	-	-	-	-	-	-	-	-	-	-	-	-	-	-	-	-	-	-	-	-	-	-	-	-	-	-	-	-	-	-	-	M	
ALLEGHENY PLATEAU 08 SAVAGE RIVER DAM	WIND	-	-	-	-	-	-	-	-	-	-	-	-	-	-	-	-	-	-	-	-	-	-	-	-	-	-	-	-	-	-	-	-	-	-	M		
	EVAP	-	-	-	-	-	-	-	-	-	-	-	-	-	-	-	-	-	-	-	-	-	-	-	-	-	-	-	-	-	-	-	-	-	-	-	M	
	MAX	-	-	-	-	-	-	-	-	-	-	-	-	-	-	-	-	-	-	-	-	-	-	-	-	-	-	-	-	-	-	-	-	-	-	-	-	M
	MIN	-	-	-	-	-	-	-	-	-	-	-	-	-	-	-	-	-	-	-	-	-	-	-	-	-	-	-	-	-	-	-	-	-	-	-	-	M

Evaporation: Is measured in hundreths of inches.

Wind: Is measured in miles.

Max and Min: The maximum and minimum temperatures (Fahrenheit) of the water in the evaporation pan.

# STATION INDEX

STATION	INDEX NO.	DIVISION	COUNTY	LATITUDE	LONGITUDE	ELEVATION (IN FEET)	OBSERVATION TIME AND TABLES			
							LOCAL STD TIME			
							TEMP	PRECIP	EVAP	SPECIAL SEE (NOTES)
MARYLAND										
ABERDEEN PHILLIPS FLD	0015	06	HARFORD	39 28	76 10W	57	07	07		CH
ASSATEAGUE	0335	01	WORCESTER	38 4	75 13W	10	24	24		H
BALTIMORE WASH INTL AP R	0465	04	ANNE ARUNDEL	39 10	76 41W	156	24	24		HJ
BELTSVILLE	0700	04	PRINCE GEORGE'S	39 2	76 56W	145	08	08	08	CH
BRIGHTON DAM	1125	06	MONTGOMERY	39 11	77 0W	330	08	08		H
CONOWINGO DAM	2060	06	HARFORD	39 39	76 11W	40	07	07		H
CUMBERLAND 2	2282	07	ALLEGANY	39 39	78 45W	730	18	18		H
CYLBURN	2308	06	BALTIMORE	39 21	76 39W	235	08	08		H
DALECARLIA RSVR	2325	04	DISTRICT OF COLUMBIA	38 56	77 7W	150	08	08		H
DAMASCUS 3 SSW	2336	06	MONTGOMERY	39 16	77 14W	700	22	22		H
EMMITSBURG 2 SE	2906	06	FREDERICK	39 41	77 17W	403	07	07		H
FREDERICK 2 NNE	3353	06	FREDERICK	39 26	77 24W	280	07	07		H
FROSTBURG 2	3415	07	ALLEGANY	39 40	78 56W	2170	07	07		H
LAUREL 3 W	5111	04	PRINCE GEORGE'S	39 5	76 54W	400	24	24		H
MARYLAND SCIENCE CENTER R	5718	04	BALTIMORE (CITY)	39 17	76 37W	20	24	24		H
MECHANICSVILLE 5 NE	5865	03	ST. MARY'S	38 28	76 42W	100	07	07		H
MILLERS 4 NE	5934	06	CARROLL	39 43	76 48W	860	18	18		CH
NATL ARBORETUM DC	6350	04	DISTRICT OF COLUMBIA	38 55	76 58W	50	07	07		H
OAKLAND 1 SE	6620	08	GARRETT	39 25	79 24W	2420	07	07		H
OXON HILL	6800	04	PRINCE GEORGE'S	38 47	76 60W	120	08	08		H
PRINCESS ANNE	7330	01	SOMERSET	38 13	75 41W	20	17	17		H
ROYAL OAK 2 SSW	7806	02	TALBOT	38 43	76 11W	10	17	17		H
SALISBURY 2N	8004	01	WICOMICO	38 24	75 36W	20	17	17		H
SALISBURY FAA AP	8005	01	WICOMICO	38 20	75 31W	48	24	24		H
SAVAGE RIVER DAM	8065	08	GARRETT	39 31	79 8W	1495	08	08	08	CH
SHARPSBURG 5 S	8207	07	WASHINGTON	39 24	77 43W	500	07	07		H
SINES DEEP CREEK	8315	08	GARRETT	39 31	79 25W	2040	07	07		H
SMITHSBURG 2NW	8371	06	WASHINGTON	39 40	77 35W	670	08	08		H
SNOW HILL 4 N	8380	01	WORCESTER	38 14	75 23W	30	17	17		H
SOLOMONS	8405	03	CALVERT	38 19	76 27W	12	08	08		H
UPPER MARLBORO 3 NNW	9070	04	PRINCE GEORGE'S	38 51	76 46W	130	08	08	08	H
WESTMINSTER	9440	06	CARROLL	39 34	76 59W	750	07	07		H
WILLIAMSPORT	9570	07	WASHINGTON	39 36	77 50W	360	06	06		H
DELAWARE										
BEAR 2 SW	1200	01	NEW CASTLE	39 36	75 44W	80	24	24		H
DOVER	2730	02	KENT	39 15	75 31W	30	16	16		H
LEWES	5320	02	SUSSEX	38 47	75 8W	15	08	08		H
WILMINGTON NEW CASTLE CO AP R	9595	01	NEW CASTLE	39 40	75 36W	79	24	24		HJ
WILMINGTON PORTER RES	9605	01	NEW CASTLE	39 46	75 32W	270	24	24		H

# REFERENCE NOTES

**STATION NAMES:** Name of the city, town or locality. Figures and letters following the station names indicate the distance in miles and direction from the post office or town community center.

**DIVISIONS:** Areas within a state of similar climatological characteristics. Division averages are calculated using data from stations that record temperature and/or precipitation. Station Precipitation totals flagged with an 'F' or 'M' are excluded from the Divisional Average calculations of precipitation. Stations with monthly Temperature averages flagged with an 'F' or 'M' are included in the Divisional Average if there are no more than 9 flagged or missing daily values in the month, else they are excluded from the divisional average for temperature.

**NORMALS:** The average value of the meteorological element over a time period. Effective 1 January 2012, the averaging period is 1981 to 2010. The normals for National Weather Service localities have been adjusted so as to be representative for the current observation site.

**MONTHLY DEGREE DAY TOTALS:** One heating (cooling) degree day is accumulated for each whole degree that the daily mean temperature is below (above) 65 degrees Fahrenheit.

**PRECIPITATION:** Values shown in hundredths of inches are water equivalent totals, i.e., total of liquid and melted frozen precipitation. In the "Monthly Summarized Data" table the total snow and sleet values shown in tenths of inches are unmelted amounts. The max depth on ground values of snow and sleet shown in whole inches are cumulative unmelted amounts. The number of days with .10, .50, 1.00 or more refers to water equivalents.

**PRECIPITATION QUALITY CONTROL:** The NCDC quality control process may flag precipitation data that are spatially inconsistent, exceed climatological limits, or are inconsistent with prevailing weather patterns.

**TEMPERATURE:** Original temperature values are given in the "Daily Temperature" table. Summary temperature information (averages, departures, extremes, monthly degree day totals) is based on the values labeled MAX/MIN.

**WIND:** (As shown in the "Evaporation and Wind" table) the total wind movement in miles over the evaporation pan as determined by an anemometer recorder located 6-8 inches above the pan.

## SYMBOLS AND LETTERS USED IN THE STATION INDEX TABLE

C Station is equipped with recording rain gage (R) but values in this bulletin are from a non-recording rain gage unless indicated by an R.

G Observations appear in the "Soil Temperatures" table.

H Observations appear in the "Snowfall and Snow on the Ground" table.

J Station also published as a Local Climatological Data publication.

VAR Observation time varies.

SR Observation time near sunrise.

SS Observation time near sunset.

## SYMBOLS AND LETTERS USED IN THE DATA TABLES

(DAILY DATA ARE FOR THE 24 HOURS IMMEDIATELY PRECEDING OBSERVATION TIME.)

BLANK Entries in the "Monthly Summarized Data" table indicate no record.

BLANK Entries in the "Daily Precipitation" and "Snowfall and Snow on the Ground" tables indicate zero.

BLANK Entries in the "Daily Temperature" table indicate a missing record

- No record. Data not recorded or not received in time for publication.

+ Precipitation or temperature extremes occurred on one or more previous dates during the month.

\* Rain gage not read. Precipitation is included in the amount following the asterisks.

Time distribution may not be known. A \* preceding the monthly total indicates precipitation amount is being carried forward to next month's total, and may include amounts from the previous month(s).

a As a subscript, indicates accumulated total.

A Amount of precipitation is the total of observer's entries for the current month. It may include precipitation that occurred during the previous month. Refer to earlier bulletin to determine date of last reading. (Hawaii stations)

B Divisional Departure from normals are computed using 1971-2000 normals.

E Normalized HDD/CDD Calculation. E is appended to the HDD/CDD Calculation when 1-9 individual daily TMAX and/or TMIN values are missing and a Normalized HDD/CDD Calculation is provided. M appears alone if 10 or more daily values are missing.

F Monthly calculation flagged value. F is appended to average and/or total values computed which exclude one or more daily data values that have been flagged by the GHCN-Daily Dataset

M Insufficient or partial data. M is appended to average and/or total values computed with 1-9 daily values missing. M appears alone if 10 or more daily values are missing, (8 or more for wind and evaporation).

N Indicates snow fall or Snowdepth totals are computed with one or more missing days.

R Amounts from recording rain gage.

T Trace. An amount too small to measure.

**SEASONAL TABLES:** Monthly and seasonal snowfall and heating degree days for the 12 months ending with the June data are published in the July issue of this bulletin. Cooling degree days for the calendar year are published in the "Climatological Data Annual Summary."

Information concerning the history of changes in locations, exposure, etc. of substations is kept on file at the National Climatic Data Center. Historical information of regular National Weather Service Offices may be obtained from the "Local Climatological Data" annual publication. The contents of this publication may be reprinted or otherwise used freely, with proper credit to the National Climatic Data Center. The data are also available digitally.

Effective with the January 2011 Data-Month, COOP Observer Names are no longer included in the Monthly and Annual Climatological Data Publications. This information is not published to ensure the privacy of personal information pursuant to Section 208 of the E-Government Act of 2002 (44 USC 3601).

As of the 2011 Data-Year, Station and Climate Division Maps are no longer being included in the CD Publications. NCDC's Product Development Branch provides updated Station Maps for various data networks via the Historical Observing Metadata Repository: <http://www.ncdc.noaa.gov/homr>.

The GHCN-Daily Quality Control Flags shown below are displayed as superscripts with the data. For more Information on Global Historical Climatology Network - Daily and flags, see: <http://www.ncdc.noaa.gov/oa/climate/ghcn-daily/> and

Comprehensive Automated Quality Assurance of Daily Surface Observations.

Durre, Imke, Matthew J. Menne, Byron E. Gleason, Tamara G. Houston,

Russell S. Vose, 2010: J. Appl. Meteor. Climatol., 49, 1615-1633.

doi: 10.1175/2010JAMC2375.1

Blank = Passed All checks

D = failed duplicate check

G = failed gap check

I = failed internal consistency check

K = failed streak/frequent-value check

L = failed check on length of multiday period

M = failed megaconsistency check

N = failed naught check

O = failed climatological outlier check

R = failed lagged range check

S = failed spatial consistency check

T = failed temporal consistency check

W = temperature too warm for snow

X = failed bounds check

NOAA\National Climatic Data Center  
Attn: User Engagement & Services Branch  
151 Patton Avenue  
Asheville, NC 28801-5001

Customer Services Number: (828) 271-4800, option 2  
TDD : (828) 271-4010  
Fax number: (828) 271-4876

NCDC now offers free online access to the *Climatological Data* publication.  
Go to : [www.ncdc.noaa.gov](http://www.ncdc.noaa.gov) and choose Most Popular.