



CLIMATOLOGICAL DATA

MARYLAND AND DELAWARE



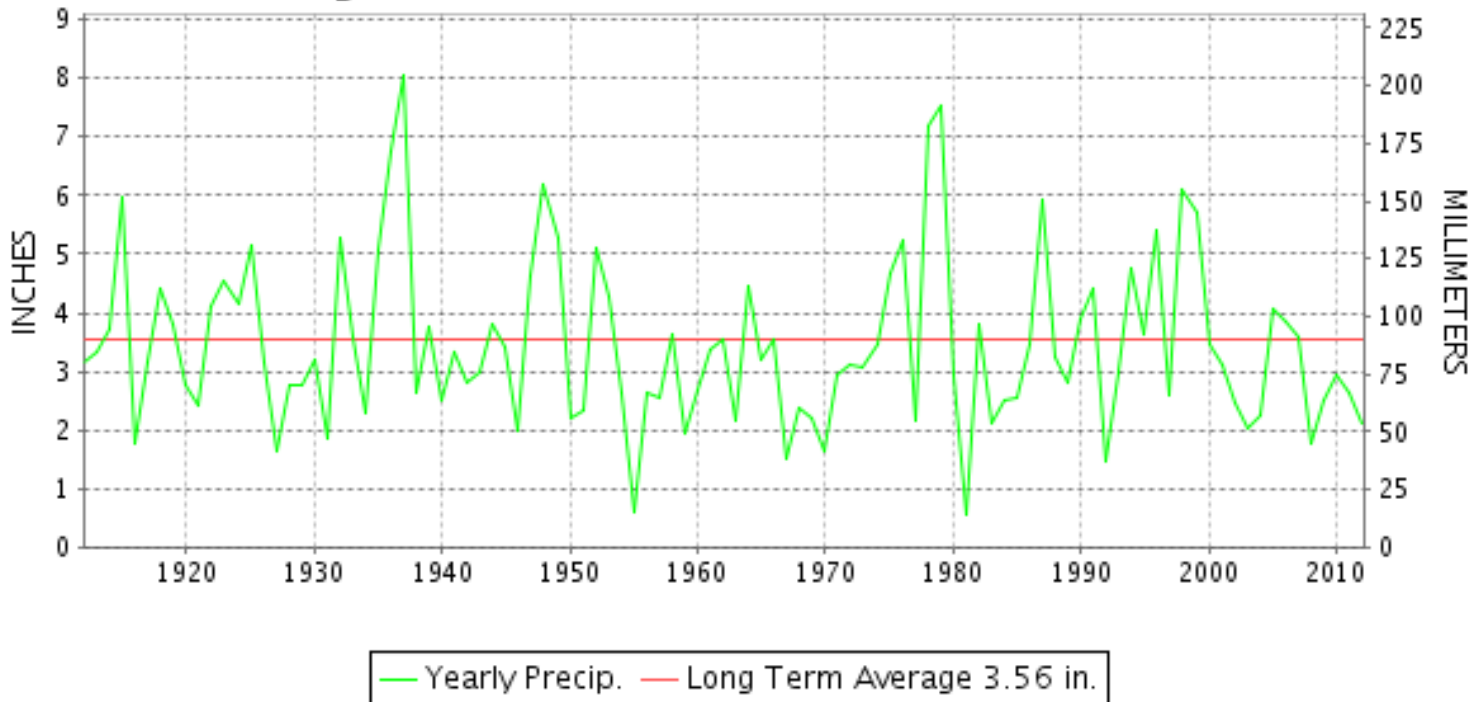
JANUARY 2012

VOLUME 116 NUMBER 01

ISSN 0145-0549

GHCND Ver: 2.93-upd-2012081707

JANUARY PRECIPITATION BY YEAR



TEMPERATURE AND PRECIPITATION EXTREMES

MARYLAND

HIGHEST TEMPERATURE	72	JANUARY 28	OXON HILL
LOWEST TEMPERATURE	-2	JANUARY 16	OAKLAND 1 SE
GREATEST TOTAL PRECIPITATION	5.76		OAKLAND 1 SE
LEAST TOTAL PRECIPITATION	1.62		MECHANICSVILLE 5 NE
GREATEST 1 DAY PRECIPITATION	1.61	JANUARY 12	DALECARLIA RSVR
GREATEST TOTAL SNOWFALL	32.6		OAKLAND 1 SE
GREATEST DEPTH OF SNOW OR ICE	12		OAKLAND 1 SE

"I certify that this is an official publication of the National Oceanic and Atmospheric Administration (NOAA) It is compiled using information from weather observing sites supervised by NOAA/National Weather Service and received at the National Climatic Data Center(NCDC), Asheville, North Carolina 28801."

Director
National Climatic Data Center

noaa

National
Oceanic and
Atmospheric Administration

National
Environmental Satellite, Data
and Information Service

National
Climatic Data Center
Asheville, North Carolina

DELAWARE

HIGHEST TEMPERATURE	66	JANUARY 27	DOVER
LOWEST TEMPERATURE	12	JANUARY 04	WILMINGTON PORTER RES
GREATEST TOTAL PRECIPITATION	3.01		WILMINGTON PORTER RES
LEAST TOTAL PRECIPITATION	1.65		DOVER
GREATEST 1 DAY PRECIPITATION	0.87	JANUARY 12	WILMINGTON PORTER RES
GREATEST TOTAL SNOWFALL	2.5		2 STATIONS
GREATEST DEPTH OF SNOW OR ICE	2		2 STATIONS

DAILY PRECIPITATION (INCHES)

STATION	TOTAL	DAY OF MONTH																																				
		01	02	03	04	05	06	07	08	09	10	11	12	13	14	15	16	17	18	19	20	21	22	23	24	25	26	27	28	29	30	31						
MARYLAND																																						
SOUTHERN																																						
EASTERN SHORE 01																																						
ASSATEAGUE	M	-	-	-	-	-	-	-	-	-	-	-	-	-	-	-	-	-	-	-	-	-	-	-	-	-	-	-	-	-	-	-	-	-				
PRINCESS ANNE	M 2.82	-	-	-	-	-	-	-	-	0.17	0.69	-	-	0.14	-	0.14	0.36	-	-	0.15	0.42	-	0.10	-	-	-	-	-	0.65	-	-	-	-	-				
SALISBURY 2N	M	-	-	-	-	-	-	-	-	0.05	0.02	0.58	-	-	-	-	0.40	0.03	-	-	-	-	-	-	-	-	-	-	-	-	-	-	-	-				
SALISBURY FAA AP	2.09	-	-	T	-	T	-	-	0.06	-	0.33	0.21	-	-	-	0.04	0.37	0.01	-	-	-	0.48	T	0.03	-	-	T	0.56	-	-	-	-	-					
SNOW HILL 4 N	M	-	-	-	-	-	-	-	-	-	-	-	-	-	-	-	-	-	-	-	-	-	-	-	-	-	-	-	-	-	-	-	-	-				
CENTRAL																																						
EASTERN SHORE 02																																						
ROYAL OAK 2 SSW	1.63	-	T	T	-	0.01	-	-	0.09	0.10	0.04	0.51	0.01	-	-	-	0.45	-	-	-	-	0.25	-	0.04	-	-	T	0.13	-	-	-	-	-					
LOWER SOUTHERN 03																																						
MECHANICSVILLE 5 NE	1.62	-	-	-	T	T	-	-	T	0.20	-	0.68	T	-	-	-	0.21	0.11	-	-	0.33	0.02	T	T	-	T	T	T	0.07	-	-	-	-					
SOLOMONS	A 1.39	-	-	-	-	T	-	-	-	0.11	-	0.55	-	-	-	-	0.22	T	-	-	*	0.45 _a	0.01	0.02	-	-	0.03	-	-	-	-	-	-					
UPPER SOUTHERN 04																																						
BALTIMORE WASH INTL AP	2.54	0.03	-	T	T	-	-	-	0.03	-	0.56	0.55	0.01	-	-	0.06	0.08	-	-	0.01	0.28	T	0.04	-	-	T	0.89	-	-	T	-	-	-					
BELTSVILLE	2.37	-	0.02	-	-	T	-	-	-	0.07	-	1.09	0.03	-	-	-	0.08	0.12	-	0.29	-	-	T	0.28	-	-	0.17	0.22	-	-	-	-	-	-				
DALECARLIA RSVR	2.78	-	0.06	-	-	-	-	-	-	0.12	-	1.61	-	-	-	-	0.26	0.06	-	-	-	0.30	-	0.07	-	-	0.30	-	-	-	-	-	-	-				
LAUREL 3 W	2.28	0.04	-	T	-	-	-	-	-	T	-	0.69	0.05	-	-	0.08	0.19	-	-	-	-	0.02	0.08	-	0.01	0.57	-	-	-	-	-	-	-	-				
MARYLAND SCIENCE CENTER	1.75	0.04	-	-	-	-	-	-	0.01	-	0.45	0.49	0.02	-	-	0.01	0.11	-	-	-	-	0.33	0.06	-	0.01	0.22	-	-	-	-	-	-	-	-	-			
NATL ARBORETUM DC	1.98	-	-	-	T	-	-	-	-	0.13	-	0.86	0.02	-	-	-	0.08	0.12	-	-	-	T	T	0.04	-	T	0.21	0.20	-	-	-	-	-	-	-			
OXON HILL	2.10	-	T	-	T	T	-	-	-	0.17	-	0.71	0.18	-	-	-	0.15	0.22	-	-	-	0.26	0.03	T	0.04	T	0.03	0.31	-	-	-	-	-	-	-			
UPPER MARLBORO 3 NNW	2.21	-	T	T	T	-	-	-	-	0.16	0.01	1.00	0.14	-	-	-	0.22	0.09	-	-	-	0.25	0.01	-	0.03	-	-	0.30	-	-	-	-	-	-	-	-		
NORTHERN CENTRAL 06																																						
ABERDEEN PHILLIPS FLD	A 2.16	-	0.03	-	-	0.01	-	-	-	-	-	0.93	0.08	-	-	-	0.09	0.04	-	-	*	*	0.41 _a	0.16	-	-	0.02	0.39	-	-	-	-	-	-	-			
BRIGHTON DAM	M 2.02	-	-	-	-	-	-	-	-	-	-	1.15	0.15	-	-	-	0.10	0.10	-	-	-	0.20	-	0.12	-	0.20	-	-	-	-	-	-	-	-	-	-		
CATOCTIN MTN PARK	2.99	0.03	0.04	-	-	-	-	-	-	-	0.10	0.98	0.32	-	-	-	0.27	-	-	-	-	-	0.39	0.20	0.07	0.56	-	-	-	-	-	-	-	-	0.03			
CONOWINGO DAM	3.07	-	0.02	-	-	-	-	-	-	-	-	1.38	0.12	-	-	-	0.09	0.20	-	-	-	0.50	0.30	0.26	-	0.06	0.14	-	-	-	-	-	-	-	-	-		
CYLBURN	MA 1.55	-	-	-	-	-	-	-	-	-	-	1.06	0.12	-	-	-	0.07	0.07	-	-	-	-	*	*	0.13 _a	0.10	-	-	-	-	-	-	-	-	-	-	-	
DAMASCUS 3 SSW	2.14	0.04	T	0.01	T	-	-	-	0.02	-	0.31	0.63	0.18	-	-	0.02	0.33	T	-	-	-	0.31	T	0.07	0.02	0.20	-	-	-	-	-	-	-	T	-	-		
EMMITSBURG 2 SE	2.44	-	0.04	T	T	-	-	-	-	-	-	1.18	0.12	-	-	-	0.09	0.12	-	-	-	0.25	-	0.12	-	0.36	0.16	-	-	-	-	-	-	-	-	-		
FREDERICK 2 NNE	M 2.15	-	0.02	0.01	-	-	-	-	-	-	-	1.00	0.04	-	-	-	0.12	0.21	-	-	-	0.35	-	0.01	0.01	0.34	0.02	-	-	-	-	-	-	0.02	T	-	-	
MILLERS 4 NE	2.73	0.03	T	0.01	T	-	-	-	-	0.06	1.05	0.13	-	-	-	0.22	T	-	-	-	0.54	T	0.19	0.01	0.10	0.36	0.03	-	-	-	-	-	-	-	-	-		
SMITHSBURG 2NW	2.97	-	0.10	-	-	-	-	-	-	-	0.85	0.35	-	-	-	0.15	0.17	-	-	-	0.35	-	-	0.20	-	0.75	0.05	-	-	-	-	-	-	-	-	-	-	
WESTMINSTER	M	-	-	-	-	-	-	-	-	-	-	-	-	-	-	-	-	-	-	-	-	-	-	-	-	-	-	-	-	-	-	-	-	-	-	-	-	-
APPALACHIAN																																						
MOUNTAIN 07																																						
CUMBERLAND 2	3.10	-	0.03	0.01	0.05	-	-	-	-	-	-	1.42	0.27	-	-	-	0.15	0.16	T	T	0.40	0.01	-	0.09	-	0.48	-	-	0.01	0.02	-	-	-	-	-	-		
FROSTBURG 2	3.38	-	0.05	0.06	0.04	-	-	-	-	-	-	1.21	0.19	0.02	T	-	0.28	0.31	0.05	0.08	0.41	0.02	T	0.07	-	0.53	T	T	0.06	-	-	-	-	-	-	-		
WILLIAMSPORT	M 1.68	-	0.04	0.01	-	-	-	-	-	-	-	-	0.28	-	-	0.09	0.12	-	-	-	0.55	-	0.12	-	0.47	-	-	-	-	-	-	-	-	-	-	-	-	
ALLEGHENY PLATEAU 08																																						
OAKLAND 1 SE	5.76	0.04	0.10	0.45	-	0.02	-	-	-	-	-	0.75	0.34	0.20	0.10	-	0.60	0.02	-	-	0.73	1.11	0.04	0.05	0.10	-	0.85	0.05	0.04	0.17	-	-	-	-	-	-		

DAILY PRECIPITATION (INCHES)

STATION	TOTAL	DAY OF MONTH																														
		01	02	03	04	05	06	07	08	09	10	11	12	13	14	15	16	17	18	19	20	21	22	23	24	25	26	27	28	29	30	31
SAVAGE RIVER DAM	3.28		T	0.05	0.03							1.12	0.11	T			0.62	0.11		0.05	0.50	T			0.07			0.62	T	T	T	
SINES DEEP CREEK	5.54		0.10	0.32	0.12							0.80	0.38	0.13	0.03		0.51	0.81	T	0.21	0.50			0.20			0.94	0.38	0.04	0.07		
DELAWARE NORTHERN 01																																
BEAR 2 SW	2.84	0.02		T	0.01	T					0.59	0.83	0.08			0.05	0.20				0.48	0.13				0.02	0.43		T			
WILMINGTON NEW CASTLE CO AP	2.55	0.02		T	0.01	T					0.53	0.56	0.03		T	0.06	0.24				0.53	0.22				0.05	0.30		T			
WILMINGTON PORTER RES	3.01	0.05			0.03						0.36	0.87	0.12			0.09	0.07				0.20	0.80				0.06	0.36		T			
DELAWARE SOUTHERN 02																																
DOVER	1.65					0.02					0.05		0.82	0.04			0.19				0.42	0.06					0.05					
LEWES	M	-	-	-	-	-	-	-	-	-	-	-	-	-	-	-	-	-	-	-	-	-	-	-	-	-	-	-	-	-	-	-

DAILY TEMPERATURES (°F)

STATION	OB. TIME	MAX/MIN	DAY OF MONTH																															AVERAGE		
			01	02	03	04	05	06	07	08	09	10	11	12	13	14	15	16	17	18	19	20	21	22	23	24	25	26	27	28	29	30	31			
MARYLAND SOUTHERN EASTERN SHORE 01 ASSATEAGUE	24	MAX MIN																																		M M
PRINCESS ANNE	17	MAX MIN		55 37	52 23	33 10	47 23	61 21			45 29	62 29	59 29	60 49	58 38	56 17		56 41	61 32	62 25	45 31			59 43	61 43	61 22	59 25	67 48							M M	
SALISBURY 2N	17	MAX MIN	59 32	57 37	38 27	31 15	44 28	60 29	65 35	57 31	45 28	53 33	51 28	58 46	39 38	36 27	43 16	59 38	58 38	42 21															M M	
SALISBURY FAA AP	24	MAX MIN	60 31	55 37	37 21	33 18	47 27	63 29	67 38	54 29	44 29	53 29	58 26	60 47	56 36	40 27	34 21	45 15	61 41	60 31	44 30	45 31	51 31	43 31	58 43	61 36	50 31	58 36	65 44	54 30	49 26	47 32	63 37	52.1 31.1		
SNOW HILL 4 N	17	MAX MIN																																	M M	
CENTRAL EASTERN SHORE 02 ROYAL OAK 2 SSW	17	MAX MIN	57 33	53 37	38 27	32 17	46 28	62 28	65 30	59 31	40 29	52 33	48 27	59 44	53 36	39 28	41 17	56 38	57 37	40 22	42 31	32 27	32 28	43 31	56 42	46 30	57 35	59 50	51 29	48 29	46 34	62 34	48.6 31.3			
LOWER SOUTHERN 03 MECHANICSVILLE 5 NE	07	MAX MIN	62 30	61 32	43 27	32 14	35 14	42 22	63 28	68 32	52 29	38 29	54 26	54 26	59 37	41 23	38 23	35 18	41 18	59 31	43 19	40 20	37 27	32 28	32 28	49 29	58 28	48 28	65 38	65 28	54 25	49 25	49 27	48.3 26.1		
SOLOMONS	08	MAX MIN	60 37	58 38	44 29	32 18	37 19	47 36	64 40	67 39	47 35	38 33	53 33	55 40	61 38	41 29	39 28	37 26	45 37	60 43	43 37	34 30	37 30	34 30	53 34	52 33	45 38	61 41	65 33	52 32	49 35	48 35	48.5 33.0			
UPPER SOUTHERN 04 BALTIMORE WASH INTL AP	24	MAX MIN	57 31	47 31	32 19	31 13	46 26	63 27	66 33	51 31	38 27	53 29	46 27	57 44	53 28	38 25	41 20	59 39	57 26	39 21	36 27	32 26	31 27	44 31	59 35	49 32	50 38	63 39	53 28	48 31	45 30	66 30	47.9 28.6			
BELTSVILLE	08	MAX MIN	59 33	59 33	40 27	30 16	32 16	46 26	62 30	66 27	49 30	38 27	53 26	48 28	38 24	58 18	38 34	33 32	43 44	58 59	40 38	39 33	31 25	32 28	44 32	58 34	50 34	62 40	64 29	53 29	48 32	46 31	46.7 27.7			
DALECARLIA RSVR	08	MAX MIN	53 34	58 34	58 28	28 14	31 14	47 28	63 30	64 34	47 28	47 30	51 28	47 32	58 33	38 25	34 20	42 25	44 38	59 22	59 21	38 27	33 28	32 28	43 31	55 31	55 31	61 41	57 30	54 30	47 29	45 32	47.4 28.4			
LAUREL 3 W	24	MAX MIN	57 38	51 30	31 20	30 11	45 28	61 34	65 42	50 35	36 29	50 30	53 29	56 41	35 27	34 22	39 20	57 20	56 20	37 20	37 27	30 24	29 25	40 28	57 28	48 34	51 37	62 42	52 33	46 32	44 29	63 36	46.9 28.9			
MARYLAND SCIENCE CENTER	24	MAX MIN	58 40	50 34	34 22	34 17	46 31	64 34	68 38	52 39	40 35	54 34	48 38	61 46	55 30	40 27	34 26	61 41	60 32	41 27	41 30	34 29	34 29	46 34	59 43	52 40	65 42	51 45	65 37	50 36	46 34	68 38	49.9 34.2			
NATL ARBORETUM DC	07	MAX MIN	60 34	61 34	43 27	33 15	34 18	49 27	63 34	68 36	51 29	41 30	43 27	50 29	60 34	42 25	38 18	38 22	45 39	45 18	42 24	38 28	34 28	35 33	46 35	59 33	52 35	63 39	66 31	56 28	51 29	48 32	48.8 28.6			
OXON HILL	08	MAX MIN	60 34	60 34	43 27	32 15	33 15	47 31	62 36	66 37	51 32	38 31	52 31	52 30	59 35	41 25	38 19	34 20	43 38	57 20	41 20	39 26	32 28	32 28	44 32	57 37	50 36	62 40	72 30	54 30	48 31	48 32	48.0 29.2			
UPPER MARLBORO 3 NNW	08	MAX MIN	62 32	60 31	42 27	32 14	32 14	48 26	64 34	68 33	51 27	39 29	55 25	52 25	60 37	41 25	39 24	34 16	44 16	59 40	42 18	40 18	35 26	32 27	31 27	46 31	58 32	51 31	63 39	65 28	54 28	49 29	48 31	48.3 27.1		
NORTHERN CENTRAL 06 ABERDEEN PHILLIPS FLD	07	MAX MIN	54 31	56 31	39 26	32 13	30 13	44 26	58 28	63 29	51 26	40 27	52 25	50 27	56 37	37 27	30 15	43 17	54 42	42 23	37 23	34 24	29 24	35 23	42 35	52 34	46 35	59 38	63 31	48 29	46 30	44 29	45.3 27.2			

DAILY TEMPERATURES (°F)

STATION	OB. TIME	MAX/MIN	DAY OF MONTH																															AVERAGE		
			01	02	03	04	05	06	07	08	09	10	11	12	13	14	15	16	17	18	19	20	21	22	23	24	25	26	27	28	29	30	31			
BRIGHTON DAM	08	MAX							62	63	47	37	50	50	54	54	26	30	38	56	37	37	31	29	30	40	53	47	59	61	50	45	42	45.1		
		MIN		35					28	30	24	29	24	24	29	23	24	15	22	36	17	17	24	25	25	30	30	31	31	27	31	28	30	26.5		
CATOCTIN MTN PARK	07	MAX	49	48	29	23	40	57	59	52	36	48	42	52	49	27	29	33	50	51	30	33	30	27	41	47	44	38	58	46	42	38	62	42.3		
		MIN	33	28	17	7	23	34	47	32	25	28	31	37	23	18	16	14	32	26	14	17	21	21	24	35	30	33	36	30	28	24	33	26.4		
CONOWINGO DAM	07	MAX	55	54	40	33	31	42	42	64	49	39	52	50	58	41	41	31	38	48	46	36	34	31	46	41	51	51	47	59	50	49	45	45.0		
		MIN	30	30	24	11	11	25	25	25	25	24	24	26	35	40	22	13	18	36	18	20	24	22	23	34	32	32	32	30	26	26	27	25.5		
CYLBURN	08	MAX	57	57	52	38	31	42	60	64	48	48	49	49	54	33	34	33	40	56	37	37	37	28	34	41	53	45	53	59	50	45	41	45.3		
		MIN	34	32	25	11	13	27	37	39	27	30	27	30	29	24	22	16	33	36	19	20	19	23	25	34	30	31	37	29	29	28	31	27.3		
DAMASCUS 3 SSW	22	MAX	53	47	29	29	44	61	62	45	37	49	42	53	49	33	30	36	55	52	35	35	28	28	37	53	45	46	60	50	43	41	62	44.2		
		MIN	36	29	17	10	29	26	42	33	28	28	34	39	26	22	20	18	34	25	19	25	24	25	27	37	32	37	39	30	32	28	36	28.6		
EMMITSBURG 2 SE	07	MAX	54	54	37	29	28	43	62	65	46	37	51	43	54	31	35	32	39	54	37	37	30	30	28	38	50	44	42	61	49	44	41	42.7		
		MIN	33	32	24	11	13	28	31	33	24	23	23	24	31	24	21	15	15	37	16	15	24	21	25	26	32	33	35	32	29	28	27	25.3		
FREDERICK 2 NNE	07	MAX	55	55	38	28	30	45	62	65	47	39	53	43	57	34	33	33	40	57	38	38	31	30	27	41	55	48	48	62	52	51	51	44.7		
		MIN	33	33	25	15	15	27	30	30	27	26	25	26	30	25	24	16	17	37	17	17	24	24	26	26	34	32	37	33	32	29	30	26.5		
MILLERS 4 NE	18	MAX	54	49	31	26	41	58	63	53	37	48	47	55	48	33	30	38	55	53	33	36	27	28	37	50	46	39	61	50	45	42	63	44.4		
		MIN	31	30	19	9	25	28	40	33	23	28	28	39	27	22	18	12	32	29	15	19	21	22	26	33	32	33	39	29	29	25	29	26.6		
SMITHSBURG 2NW	08	MAX	48	52	34	25	32	41	59	61	43	37	48	43	52	29	30	29	44	57	34	35	27	29	30	42	49	42	56	56	48	43	46	42.0		
		MIN	33	30	22	8	12	27	38	27	21	23	23	29	27	21	18	15	20	34	14	16	18	16	23	29	29	32	36	28	27	25	26	24.1		
WESTMINSTER	07	MAX																																	M	
		MIN																																		M
APPALACHIAN MOUNTAIN 07																																				
CUMBERLAND 2	18	MAX	47	53	36	26	36	46	64	61	47	43	54	39	49	29	31	34	34	58	34	41	33	33	34	47	56	51	41	50	47	48	54	43.7		
		MIN	31	31	22	10	13	28	32	30	28	26	25	25	25	22	20	15	15	32	17	17	19	20	22	31	36	36	38	31	29	26	27	25.1		
FROSTBURG 2	07	MAX	40	48	26	16	31	40	54	52	37	35	43	35	46	18	22	22	45	53	26	34	25	31	29	47	44	44	49	50	44	38	44	37.7		
		MIN	30	23	14	5	13	26	39	28	24	24	27	30	17	14	11	11	11	26	10	10	9	15	20	29	29	29	32	28	23	19	19	20.8		
WILLIAMSPORT	06	MAX		56	38	29	28	46	67	64	47	47	54		55	31	33	34	39	55	39	37	31	31	31	39	56	47	41		56	47	46	43.7		
		MIN	31	26	11	13	25	24	28	26	27	24		31	24	23	15	16	38	16	16	21	23	24	30	32	34	36		33	28	27	25.1			
ALLEGHENY PLATEAU 08																																				
OAKLAND 1 SE	07	MAX	42	53	24	14	30	40	55	52	39	42	44	40	50	15	22	22	59	59	25	35	35	35	36	56	47	54	61	53	43	43	45	41.0		
		MIN	27	23	13	5	9	27	39	30	24	26	21	33	14	12	10	-2	2	24	10	10	10	22	22	36	29	29	39	29	23	20	20	20.5		
SAVAGE RIVER DAM	08	MAX	43	50	29	21	34	41	52	53	40	37	44	38	29 ⁱ	22	25	24	35	50	29 ⁱ	38	28	33	32	43	47	46	44	52	46	40	40	38.9		
		MIN	31	28	19	10	16	27	37	27	27	27	24	24	22	19	17	10	10	29	15	15	15	21	24	32	34	33	35	30	28	25	23	23.7		
SINES DEEP CREEK	07	MAX	40	50	26	17	30	37	50	50	37	41	41	38	43	17	20	20	40	52	26	35	31	31	32	47	45	52	49	50	42	38	39	37.6		
		MIN	28	25	16	5	7	24	29	25	25	27	23	23	17	14	10	4	4	26	14	14	11	11	23	32	30	30	37	30	23	21	19	20.2		
DELAWARE NORTHERN 01																																				
BEAR 2 SW	24	MAX	56	48	33	31	43	58	64	48	40	51	50	54	52	36	29	38	56	56	37	35	33	33	49	53	46	48	62	50	45	42	62	46.4		
		MIN	30	31	21	14	25	23	28	27	25	28	23	41	29	25	15	14	38	22	17	27	26	23	33	32	32	37	43	31	30	31	29	27.4		
WILMINGTON NEW CASTLE CO AP	24	MAX	53	47	32	30	43	57	64	49	39	51	50	53	51	36	28	38	55	56	35	34	32	33	49	54	46	46	62	50	45	42	62	45.9		
		MIN	35	30	19	13	27	25	31	30	26	29	26	44	28	27	19	16	37	24	18	27	25	21	33	36	34	37	41	32	28	31	33	28.5		

DAILY TEMPERATURES (°F)

STATION	OB. TIME	MAX/MIN	DAY OF MONTH																															AVERAGE		
			01	02	03	04	05	06	07	08	09	10	11	12	13	14	15	16	17	18	19	20	21	22	23	24	25	26	27	28	29	30	31			
WILMINGTON PORTER RES	24	MAX MIN	56 34	39 29	29 18	27 12	39 26	54 28	59 38	45 34	37 29	47 31	48 31	52 42	48 27	33 26	27 18	36 16	53 35	54 25	33 19	34 26	34 23	34 18	47 18	51 18	51 ^s 18	45 36	58 40	47 32	43 28	39 30	59 34	43.8 27.4		
SOUTHERN 02																																				
DOVER	16	MAX MIN	58 34	56 30	36 20	29 14	41 27	61 27	64 30	62 37	50 29	50 31	50 27	56 45	54 30	51 27	51 19	41 18	58 38	56 25	55 19	39 29	39 28	39 25	56 37	55 37	55 34	53 36	66 42	63 32	52 31	45 32	64 34	51.8 29.8		
LEWES	08	MAX MIN																																		M M

SNOWFALL AND SNOW ON GROUND (INCHES)

STATION	DAY OF MONTH																														
	01	02	03	04	05	06	07	08	09	10	11	12	13	14	15	16	17	18	19	20	21	22	23	24	25	26	27	28	29	30	31
MARYLAND SOUTHERN EASTERN SHORE 01																															
ASSATEAGUE	SNOWFALL																														
PRINCESS ANNE	SNOWFALL																														
SALISBURY 2N	SNOWFALL																														
SALISBURY FAA AP	SNOWFALL																														
SNOW HILL 4 N	SNOWFALL																														
CENTRAL EASTERN SHORE 02																															
ROYAL OAK 2 SSW	SNOWFALL			T	0.2				1.0	0.4												T									
	SN ON GND	-	-			-	-	-	1		-	-	-	-	-	-	-	-	-	-	-		-	-	-	-	-	-	-	-	-
LOWER SOUTHERN 03																															
MECHANICSVILLE 5 NE	SNOWFALL									T												0.2									
	SN ON GND	-	-	-	-	-	-	-	-	T	-	-	-	-	-	-	-	-	-	-	-		-	-	-	-	-	-	-	-	-
SOLOMONS	SNOWFALL				T					T													0.3								
	SN ON GND	-	-	-	T	-	-	-	-	T	-	-	-	-	-	-	-	-	-	-	-	-	T	-	-	-	-	-	-	-	-
UPPER SOUTHERN 04																															
BALTIMORE WASH INTL AP	SNOWFALL			T	T				0.4				T								T	0.9	T							T	
	SN ON GND									T												1	1	1							
BELTSVILLE	SNOWFALL				T					0.5												1.0									
	SN ON GND									T												1	1	1							
DALECARLIA RSVR	SNOWFALL																					1.0									
	SN ON GND																					1									
	WTR EQUIV																														
LAUREL 3 W	SNOWFALL			T						T																					
	SN ON GND									T																					
MARYLAND SCIENCE CENTER	SNOWFALL																														
NATL ARBORETUM DC	SNOWFALL	-	-	T				-		T			-	-	-	-						0.7	T		-				-	-	
	SN ON GND	-	-	-	-	-	-	-	-	-	-	-	-	-	-	-	-	-	-	-	-	-	1	-	-	-	-	-	-	-	-
	WTR EQUIV	-	-	-	-	-	-	-	-	-	-	-	-	-	-	-	-	-	-	-	-	-	-	-	-	-	-	-	-	-	-
OXON HILL	SNOWFALL			T	T					1.5												0.8		T							
	SN ON GND									T												1	T	T							
UPPER MARLBORO 3 NNW	SNOWFALL									1.4												1.2									
	SN ON GND									1												1	1	T							
NORTHERN CENTRAL 06																															
ABERDEEN PHILLIPS FLD	SNOWFALL				T																										
	SN ON GND				T																										
BRIGHTON DAM	SNOWFALL																														
	SN ON GND																														
	WTR EQUIV	-	-	-	-	-	-	-	-	-	-	-	-	-	-	-	-	-	-	-	-	1.5									
CATOCTIN MTN PARK	SNOWFALL																														
	SN ON GND																														

Snowfall: Includes snow and ice. Values for NWS stations (J index note) are Mid-Mid (LST).

Snow on ground: Includes snow, sleet, ice, and hail. Values for NWS stations (J index note) are observed at 12 UTC (GMT).

Water Equivalent: Given for NWS stations (J index note) only, when snow depth is 2 inches or more, and is measured at 18 UTC (GMT)

SNOWFALL AND SNOW ON GROUND (INCHES)

STATION		DAY OF MONTH																																				
		01	02	03	04	05	06	07	08	09	10	11	12	13	14	15	16	17	18	19	20	21	22	23	24	25	26	27	28	29	30	31						
CONOWINGO DAM	SNOWFALL	-	-	-	-	-	-	-	-	-	-	-	-	-	-	-	-	-	-	-	-	0.5	0.3	-	-	-	-	-	-	-	-	-	-	-				
CYLBURN	SNOWFALL	-	-	-	-	-	-	-	-	-	-	-	-	-	-	-	-	-	-	-	-	1.5	-	-	-	-	-	-	-	-	-	-	-	-				
DAMASCUS 3 SSW	SNOWFALL	-	T	0.2	T	-	-	-	-	0.1	-	-	-	T	-	-	-	-	T	-	-	1.6	T	T	-	-	-	-	-	-	-	-	T	-				
	SN ON GND	-				-	-	-	-	T	-	-	-	-	-	-	-	-	-	-	-	1	1	T	-	-	-	-	-	-	-	-	-	-				
EMMITSBURG 2 SE	SNOWFALL			T	T																	2.0																
	SN ON GND			T																																		
	WTR EQUIV																					-	-	-	-													
FREDERICK 2 NNE	SNOWFALL	-		0.5																		1.6	1.1												-			
	SN ON GND	-		1																		2	1	-	-										-			
MILLERS 4 NE	SNOWFALL		T	0.3	T								0.3					T	T			2.8											0.5					
	SN ON GND			T	T								T	T								3	2	1														
	WTR EQUIV																					0.6	0.5															
SMITHSBURG 2NW	SNOWFALL																					3.0			-													
	SN ON GND																																					
	SNOWFALL																																					
WESTMINSTER APPALACHIAN MOUNTAIN 07	SNOWFALL																																					
CUMBERLAND 2	SNOWFALL	-	-	0.1	0.9	-	-	-	-	-	-	-	-	-	-	-	-	-	-	-	-	0.5	-	-	-	-	-	-	-	-	-	-	-	T	-	-		
	SN ON GND	-	-	-	1	-	-	-	-	-	-	-	-	-	-	-	-	-	-	-	-	1	1	1	-	-	-	-	-	-	-	-	-	-	-	-	-	
FROSTBURG 2	SNOWFALL		0.2	2.2	1.1	-	-	-	-	-	-	-	1.0	0.6	T				0.4	0.5	1.2	0.8													T	1.3		
	SN ON GND		T	2	3	3	2						1	2	2	1			T	1	2	2	2	2	2	2	1	T					T	1	T			
WILLIAMSPORT	SNOWFALL	-																				2.0																
	SN ON GND	-																				2																
	WTR EQUIV	-																				2.0		2.1														
ALLEGHENY PLATEAU 08	SNOWFALL																																					
OAKLAND 1 SE	SNOWFALL		1.5	12.0									2.8	4.0	1.5				1.0		7.8														2.0			
	SN ON GND		1	12	12	6							2	5	6	6		1		7	3	2	1												2			
SAVAGE RIVER DAM	SNOWFALL	-	T	2.0	3.0	1.0	-	-	-	-	-	-	-	-	-	-	-	-	-	-	1.5	1.0	T	-	-	-	-	-	-	-	-	-	-	-	-	-		
SINES DEEP CREEK	SNOWFALL	-	-	8.5	1.6	-	-	-	-	-	-	-	0.5	7.5	1.0	-	-	0.1	T	4.6	-	-	-	-	-	-	-	-	-	-	-	-	0.3	-	0.7	-		
	SN ON GND	-	-	9	7	4	2	-	-	-	-	-	1	8	-	4	-	-	-	5	-	2	1	-	-	-	-	-	-	-	-	T	-	1	-	-		
DELAWARE NORTHERN 01	SNOWFALL																																					
BEAR 2 SW	SNOWFALL			T	0.1	T																2.4														T		
	SN ON GND				T																	2	2															
WILMINGTON NEW CASTLE CO AP	SNOWFALL			T	0.1	T									T							2.4														T		
	SN ON GND					T																2	2	1														
WILMINGTON PORTER RES	SNOWFALL	-	-	-	-	-	-	-	-	-	-	-	-	-	-	-	-	-	-	-	-	0.8	-	-	-	-	-	-	-	-	-	-	-	-	-	-	-	
	SN ON GND	-	-	-	-	-	-	-	-	-	-	-	-	-	-	-	-	-	-	-	-	1	-	-	-	-	-	-	-	-	-	-	-	-	-	-	-	-
SOUTHERN 02	SNOWFALL																																					
DOVER	SNOWFALL	-	-	-	-	0.2	-	-	-	-	-	-	-	-	-	-	-	-	-	-	-	0.6	-	-	-	-	-	-	-	-	-	-	-	-	-	-	-	

Snowfall: Includes snow and ice. Values for NWS stations (J index note) are Mid-Mid (LST).

Snow on ground: Includes snow, sleet, ice, and hail. Values for NWS stations (J index note) are observed at 12 UTC (GMT).

Water Equivalent: Given for NWS stations (J index note) only, when snow depth is 2 inches or more, and is measured at 18 UTC (GMT)

SNOWFALL AND SNOW ON GROUND (INCHES)

STATION		DAY OF MONTH																															
		01	02	03	04	05	06	07	08	09	10	11	12	13	14	15	16	17	18	19	20	21	22	23	24	25	26	27	28	29	30	31	
LEWES	SNOWFALL																																

Snowfall: Includes snow and ice. Values for NWS stations (J index note) are Mid-Mid (LST).

Snow on ground: Includes snow, sleet, ice, and hail. Values for NWS stations (J index note) are observed at 12 UTC (GMT).

Water Equivalent: Given for NWS stations (J index note) only, when snow depth is 2 inches or more, and is measured at 18 UTC (GMT)

PAN EVAPORATION AND WIND

STATION		DAY OF MONTH																															TOTAL OR AVERAGE					
		01	02	03	04	05	06	07	08	09	10	11	12	13	14	15	16	17	18	19	20	21	22	23	24	25	26	27	28	29	30	31						
MARYLAND UPPER SOUTHERN 04 BELTSVILLE	WIND	-	-	-	-	-	-	-	-	-	-	-	-	-	-	-	-	-	-	-	-	-	-	-	-	-	-	-	-	-	-	-	-	-	M			
	EVAP	-	-	-	-	-	-	-	-	-	-	-	-	-	-	-	-	-	-	-	-	-	-	-	-	-	-	-	-	-	-	-	-	-	M			
	MAX	-	-	-	-	-	-	-	-	-	-	-	-	-	-	-	-	-	-	-	-	-	-	-	-	-	-	-	-	-	-	-	-	-	-	M		
	MIN	-	-	-	-	-	-	-	-	-	-	-	-	-	-	-	-	-	-	-	-	-	-	-	-	-	-	-	-	-	-	-	-	-	-	M		
UPPER MARLBORO 3 NNW	WIND	-	-	-	-	-	-	-	-	-	-	-	-	-	-	-	-	-	-	-	-	-	-	-	-	-	-	-	-	-	-	-	-	-	M			
	EVAP	-	-	-	-	-	-	-	-	-	-	-	-	-	-	-	-	-	-	-	-	-	-	-	-	-	-	-	-	-	-	-	-	-	-	M		
	MAX	-	-	-	-	-	-	-	-	-	-	-	-	-	-	-	-	-	-	-	-	-	-	-	-	-	-	-	-	-	-	-	-	-	-	-	M	
	MIN	-	-	-	-	-	-	-	-	-	-	-	-	-	-	-	-	-	-	-	-	-	-	-	-	-	-	-	-	-	-	-	-	-	-	-	M	
ALLEGHENY PLATEAU 08 SAVAGE RIVER DAM	WIND	-	-	-	-	-	-	-	-	-	-	-	-	-	-	-	-	-	-	-	-	-	-	-	-	-	-	-	-	-	-	-	-	-	-	M		
	EVAP	-	-	-	-	-	-	-	-	-	-	-	-	-	-	-	-	-	-	-	-	-	-	-	-	-	-	-	-	-	-	-	-	-	-	-	M	
	MAX	-	-	-	-	-	-	-	-	-	-	-	-	-	-	-	-	-	-	-	-	-	-	-	-	-	-	-	-	-	-	-	-	-	-	-	-	M
	MIN	-	-	-	-	-	-	-	-	-	-	-	-	-	-	-	-	-	-	-	-	-	-	-	-	-	-	-	-	-	-	-	-	-	-	-	-	M

Evaporation: Is measured in hundreths of inches.

Wind: Is measured in miles.

Max and Min: The maximum and minimum temperatures (Fahrenheit) of the water in the evaporation pan.

STATION INDEX

STATION	INDEX NO.	DIVISION	COUNTY	LATITUDE	LONGITUDE	ELEVATION (IN FEET)	OBSERVATION TIME AND TABLES			
							LOCAL STD TIME			
							TEMP	PRECIP	EVAP	SPECIAL SEE (NOTES)
MARYLAND										
ABERDEEN PHILLIPS FLD	0015	06	HARFORD	39 28	76 10W	57	07	07		CH
ASSATEAGUE	0335	01	WORCESTER	38 4	75 13W	10	24	24		H
BALTIMORE WASH INTL AP R	0465	04	ANNE ARUNDEL	39 10	76 41W	156	24	24		HJ
BELTSVILLE	0700	04	PRINCE GEORGE'S	39 2	76 56W	145	08	08	08	CH
BRIGHTON DAM	1125	06	MONTGOMERY	39 11	77 0W	330	08	08		H
CATOCTIN MTN PARK	1530	06	FREDERICK	39 39	77 29W	1610	07	07		H
CONOWINGO DAM	2060	06	HARFORD	39 39	76 11W	40	07	07		H
CUMBERLAND 2	2282	07	ALLEGANY	39 39	78 45W	730	18	18		H
CYLBURN	2308	06	BALTIMORE	39 21	76 39W	235	08	08		H
DALECARLIA RSVR	2325	04	PRINCE GEORGE'S	38 56	77 6W	150	08	08		H
DAMASCUS 3 SSW	2336	06	MONTGOMERY	39 15	77 13W	700	22	22		H
EMMITSBURG 2 SE	2906	06	FREDERICK	39 41	77 17W	403	07	07		H
FREDERICK 2 NNE	3353	06	FREDERICK	39 26	77 24W	280	07	07		H
FROSTBURG 2	3415	07	ALLEGANY	39 40	78 56W	2170	07	07		H
LAUREL 3 W	5111	04	PRINCE GEORGE'S	39 5	76 54W	400	24	24		H
MARYLAND SCIENCE CENTER R	5718	04	BALTIMORE (CITY)	39 17	76 37W	20	24	24		H
MECHANICSVILLE 5 NE	5865	03	ST. MARY'S	38 28	76 42W	100	07	07		H
MILLERS 4 NE	5934	06	CARROLL	39 43	76 48W	860	18	18		CH
NATL ARBORETUM DC	6350	04	DISTRICT OF COLUMBIA	38 55	76 58W	50	07	07		H
OAKLAND 1 SE	6620	08	GARRETT	39 25	79 24W	2420	07	07		H
OXON HILL	6800	04	PRINCE GEORGE'S	38 47	76 60W	120	08	08		H
PRINCESS ANNE	7330	01	SOMERSET	38 13	75 41W	20	17	17		H
ROYAL OAK 2 SSW	7806	02	TALBOT	38 43	76 11W	10	17	17		H
SALISBURY 2N	8004	01	WICOMICO	38 24	75 36W	20	17	17		H
SALISBURY FAA AP	8005	01	WICOMICO	38 20	75 31W	48	24	24		H
SAVAGE RIVER DAM	8065	08	GARRETT	39 31	79 8W	1495	08	08	08	CH
SINES DEEP CREEK	8315	08	GARRETT	39 31	79 25W	2040	07	07		H
SMITHSBURG 2NW	8371	06	WASHINGTON	39 40	77 35W	670	08	08		H
SNOW HILL 4 N	8380	01	WORCESTER	38 14	75 23W	30	17	17		H
SOLOMONS	8405	03	CALVERT	38 19	76 27W	12	08	08		H
UPPER MARLBORO 3 NNW	9070	04	PRINCE GEORGE'S	38 51	76 46W	130	08	08	08	H
WESTMINSTER	9440	06	CARROLL	39 34	76 59W	750	07	07		H
WILLIAMSPORT	9570	07	WASHINGTON	39 36	77 50W	360	06	06		H
DELAWARE										
BEAR 2 SW	1200	01	NEW CASTLE	39 36	75 44W	80	24	24		H
DOVER	2730	02	KENT	39 15	75 31W	30	16	16		H
LEWES	5320	02	SUSSEX	38 47	75 8W	15	08	08		H
WILMINGTON NEW CASTLE CO AP R	9595	01	NEW CASTLE	39 40	75 36W	79	24	24		HJ
WILMINGTON PORTER RES	9605	01	NEW CASTLE	39 46	75 32W	270	24	24		H

REFERENCE NOTES

STATION NAMES: Name of the city, town or locality. Figures and letters following the station names indicate the distance in miles and direction from the post office or town community center.

DIVISIONS: Areas within a state of similar climatological characteristics. Division averages are calculated using data from stations that record temperature and/or precipitation. Station Precipitation totals flagged with an 'F' or 'M' are excluded from the Divisional Average calculations of precipitation. Stations with monthly Temperature averages flagged with an 'F' or 'M' are included in the Divisional Average if there are no more than 9 flagged or missing daily values in the month, else they are excluded from the divisional average for temperature.

NORMALS: The average value of the meteorological element over a time period. Effective 1 January 2012, the averaging period is 1981 to 2010. The normals for National Weather Service localities have been adjusted so as to be representative for the current observation site.

MONTHLY DEGREE DAY TOTALS: One heating (cooling) degree day is accumulated for each whole degree that the daily mean temperature is below (above) 65 degrees Fahrenheit.

PRECIPITATION: Values shown in hundredths of inches are water equivalent totals, i.e., total of liquid and melted frozen precipitation. In the "Monthly Summarized Data" table the total snow and sleet values shown in tenths of inches are unmelted amounts. The max depth on ground values of snow and sleet shown in whole inches are cumulative unmelted amounts. The number of days with .10, .50, 1.00 or more refers to water equivalents.

PRECIPITATION QUALITY CONTROL: The NCDC quality control process may flag precipitation data that are spatially inconsistent, exceed climatological limits, or are inconsistent with prevailing weather patterns.

TEMPERATURE: Original temperature values are given in the "Daily Temperature" table. Summary temperature information (averages, departures, extremes, monthly degree day totals) is based on the values labeled MAX/MIN.

WIND: (As shown in the "Evaporation and Wind" table) the total wind movement in miles over the evaporation pan as determined by an anemometer recorder located 6-8 inches above the pan.

SYMBOLS AND LETTERS USED IN THE STATION INDEX TABLE

C Station is equipped with recording rain gage (R) but values in this bulletin are from a non-recording rain gage unless indicated by an R.

G Observations appear in the "Soil Temperatures" table.

H Observations appear in the "Snowfall and Snow on the Ground" table.

J Station also published as a Local Climatological Data publication.

VAR Observation time varies.

SR Observation time near sunrise.

SS Observation time near sunset.

SYMBOLS AND LETTERS USED IN THE DATA TABLES

(DAILY DATA ARE FOR THE 24 HOURS IMMEDIATELY PRECEDING OBSERVATION TIME.)

BLANK Entries in the "Monthly Summarized Data" table indicate no record.

BLANK Entries in the "Daily Precipitation" and "Snowfall and Snow on the Ground" tables indicate zero.

BLANK Entries in the "Daily Temperature" table indicate a missing record

- No record. Data not recorded or not received in time for publication.

+ Precipitation or temperature extremes occurred on one or more previous dates during the month.

* Rain gage not read. Precipitation is included in the amount following the asterisks.

Time distribution may not be known. A * preceding the monthly total indicates precipitation amount is being carried forward to next month's total, and may include amounts from the previous month(s).

a As a subscript, indicates accumulated total.

A Amount of precipitation is the total of observer's entries for the current month. It may include precipitation that occurred during the previous month. Refer to earlier bulletin to determine date of last reading. (Hawaii stations)

B Divisional Departure from normals are computed using 1971-2000 normals.

E Normalized HDD/CDD Calculation. E is appended to the HDD/CDD Calculation when 1-9 individual daily TMAX and/or TMIN values are missing and a Normalized HDD/CDD Calculation is provided. M appears alone if 10 or more daily values are missing.

F Monthly calculation flagged value. F is appended to average and/or total values computed which exclude one or more daily data values that have been flagged by the GHCN-Daily Dataset

M Insufficient or partial data. M is appended to average and/or total values computed with 1-9 daily values missing. M appears alone if 10 or more daily values are missing, (8 or more for wind and evaporation).

N Indicates snow fall or Snowdepth totals are computed with one or more missing days.

R Amounts from recording rain gage.

T Trace. An amount too small to measure.

SEASONAL TABLES: Monthly and seasonal snowfall and heating degree days for the 12 months ending with the June data are published in the July issue of this bulletin. Cooling degree days for the calendar year are published in the "Climatological Data Annual Summary."

Information concerning the history of changes in locations, exposure, etc. of substations is kept on file at the National Climatic Data Center. Historical information of regular National Weather Service Offices may be obtained from the "Local Climatological Data" annual publication. The contents of this publication may be reprinted or otherwise used freely, with proper credit to the National Climatic Data Center. The data are also available digitally.

Effective with the January 2011 Data-Month, COOP Observer Names are no longer included in the Monthly and Annual Climatological Data Publications. This information is not published to ensure the privacy of personal information pursuant to Section 208 of the E-Government Act of 2002 (44 USC 3601).

As of the 2011 Data-Year, Station and Climate Division Maps are no longer being included in the CD Publications. NCDC's Product Development Branch provides updated Station Maps for various data networks via the Historical Observing Metadata Repository: <http://www.ncdc.noaa.gov/homr>.

The GHCN-Daily Quality Control Flags shown below are displayed as superscripts with the data. For more Information on Global Historical Climatology Network - Daily and flags, see: <http://www.ncdc.noaa.gov/oa/climate/ghcn-daily/> and

Comprehensive Automated Quality Assurance of Daily Surface Observations.

Durre, Imke, Matthew J. Menne, Byron E. Gleason, Tamara G. Houston,

Russell S. Vose, 2010: J. Appl. Meteor. Climatol., 49, 1615-1633.

doi: 10.1175/2010JAMC2375.1

Blank = Passed All checks

D = failed duplicate check

G = failed gap check

I = failed internal consistency check

K = failed streak/frequent-value check

L = failed check on length of multiday period

M = failed megaconsistency check

N = failed naught check

O = failed climatological outlier check

R = failed lagged range check

S = failed spatial consistency check

T = failed temporal consistency check

W = temperature too warm for snow

X = failed bounds check

These and other publications are available from the National Climatic Data Center

Hourly Precipitation Data

This publication contains hourly precipitation amounts obtained from recording rain gages located at National Weather Service, Federal Aviation Administration, and cooperative observer stations. Published data are displayed in inches and tenths or inches and hundredths at local standard time. HPD includes maximum precipitation for nine (9) time periods from 15 minutes to 24 hours, for selected stations.

Climatological Data

Monthly editions contain station daily maximum and minimum temperatures and precipitation. Some Stations provide daily snowfall, snow depth, evaporation, and soil temperature data. Each edition also contains monthly summaries for heating and cooling degree days (65 degree F base). The July issue contains a recap of monthly heating degree days and snow data for the preceding July through June.

The Annual issue contains monthly and annual averages of temperature, precipitation, temperature extremes, freeze data, soil temperatures, evaporation, and a recap of monthly cooling degree days.

Storm Data

Monthly issues contain a chronological listing, by states, of occurrences of storms and unusual weather phenomena. Reports contain information on storm paths, deaths, injuries, and property damage. An "Outstanding storms of the month" section highlights severe weather events with photographs, illustrations, and narratives. The December issue includes annual tornado, lightning, flash flood, and tropical cyclone summaries.

Monthly Climatic Data for the World

This publication contains monthly means for temperature, pressure, precipitation, vapor pressure, and sunshine for approximately 2,000 surface data collection stations worldwide and monthly mean upper air temperatures, dew point depressions, and wind velocities for approximately 500 observing sites.

Local Climatological Data

LCD publications summarize temperature, relative humidity, precipitation, cloudiness, wind speed and direction observations for several hundred cities in the U.S. and its territories. Each monthly publication also contains 3 hourly weather observations for that month and a hourly summary of precipitation. Annual LCD publications contain a summary of the past calendar year as well as historical averages and extremes.

For Information Call:

(828) 271-4800 Option 2

(828) 271-4010 (TDD)

(828) 271-4876 (Fax)

NOAA\National Climatic Data Center
Attn: User Engagement & Services Branch
151 Patton Avenue
Asheville, NC 28801-5001

Customer Services Number: (828) 271-4800, option 2
TDD : (828) 271-4010
Fax number: (828) 271-4876

NCDC now offers free online access to the *Climatological Data* publication.
Go to : www.ncdc.noaa.gov and choose Most Popular.