



# CLIMATOLOGICAL DATA

## MARYLAND AND DELAWARE

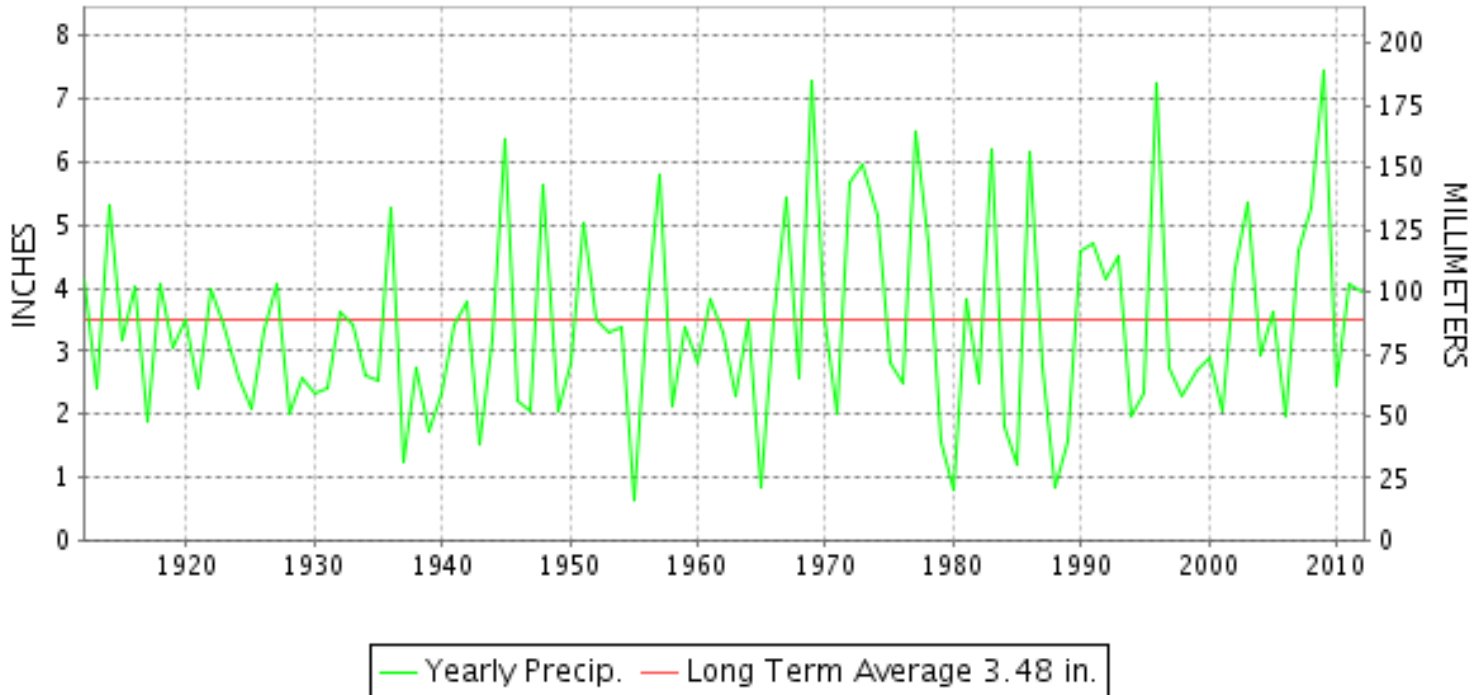
DECEMBER 2012

VOLUME 116 NUMBER 12

ISSN 0145-0549

GHCND Ver: 3.02-upd-2013043005

### DECEMBER PRECIPITATION BY YEAR



#### TEMPERATURE AND PRECIPITATION EXTREMES

##### MARYLAND

HIGHEST TEMPERATURE	74	DECEMBER 04+	2 STATIONS
LOWEST TEMPERATURE	15	DECEMBER 31+	SINES DEEP CREEK
GREATEST TOTAL PRECIPITATION	6.86		SINES DEEP CREEK
LEAST TOTAL PRECIPITATION	2.10		CYLBURN
GREATEST 1 DAY PRECIPITATION	1.86	DECEMBER 27	SNOW HILL 4 N
GREATEST TOTAL SNOWFALL	28.0		OAKLAND 1 SE
GREATEST DEPTH OF SNOW OR ICE	18		OAKLAND 1 SE

"I certify that this is an official publication of the National Oceanic and Atmospheric Administration (NOAA) It is compiled using information from weather observing sites supervised by NOAA/National Weather Service and received at the National Climatic Data Center(NCDC), Asheville, North Carolina 28801."

Director  
National Climatic Data Center

noaa

National  
Oceanic and  
Atmospheric Administration

National  
Environmental Satellite, Data  
and Information Service

National  
Climatic Data Center  
Asheville, North Carolina

**DELAWARE**

HIGHEST TEMPERATURE	71	DECEMBER 04+	DOVER
LOWEST TEMPERATURE	23	DECEMBER 24	WILMINGTON NEW CASTLE CO AP
GREATEST TOTAL PRECIPITATION	4.11		DOVER
LEAST TOTAL PRECIPITATION	3.92		WILMINGTON NEW CASTLE CO AP
GREATEST 1 DAY PRECIPITATION	1.86	DECEMBER 26	DOVER
GREATEST TOTAL SNOWFALL	0.4		WILMINGTON NEW CASTLE CO AP





DAILY PRECIPITATION (INCHES)

STATION	TOTAL	DAY OF MONTH																																		
		01	02	03	04	05	06	07	08	09	10	11	12	13	14	15	16	17	18	19	20	21	22	23	24	25	26	27	28	29	30	31				
<b>MARYLAND</b>																																				
<b>SOUTHERN</b>																																				
<b>EASTERN SHORE 01</b>																																				
ASSATEAGUE	M	-	-	-	-	-	-	-	-	-	-	-	-	-	-	-	-	-	-	-	-	-	-	-	-	-	-	-	-	-	-	-	-	-		
PRINCESS ANNE	M	-	-	0.04	-	-	-	-	-	-	-	-	-	-	-	*	0.25 <sub>a</sub>	0.07	-	-	-	-	-	-	-	-	-	-	-	-	-	-	-	-	-	
SALISBURY 2N	4.10							0.06	0.09	0.05	0.03					0.10	0.07	0.08						0.18	0.02	1.39	0.93			0.27						
SALISBURY FAA AP	3.25		T			T		0.03	0.02		0.04				T	0.16	0.04	0.05			0.16	0.61		0.10		1.75			0.29							
SNOW HILL 4 N	4.81					T		0.01	0.04	0.02	0.02					0.14	0.10	0.05					0.68		0.03	1.55	1.86			0.31						
<b>CENTRAL</b>																																				
<b>EASTERN SHORE 02</b>																																				
ROYAL OAK 2 SSW	5.04			0.03		0.05		0.02	1.65	0.02	0.24	0.02				0.08	0.20	0.24					0.88		0.01	0.12	0.05	0.95	0.33		0.15			T		
<b>LOWER SOUTHERN 03</b>																																				
MECHANICSVILLE 5 NE	4.20			T		T	0.01	T	1.12	0.01	0.10	0.02				0.12	0.01	0.02					1.15	T		0.15	0.02	1.36		T	0.11					
SOLOMONS	A 4.14		0.02			*	T <sub>a</sub>	0.04	1.13	0.01	0.16	0.10			0.01	0.07	0.03	0.05					1.00		0.13	0.01	0.35	0.85		0.18	T					
<b>UPPER SOUTHERN 04</b>																																				
BALTIMORE WASH INTL AP	3.11		T					0.02	0.03	0.19	T	0.09			T	0.07	0.14	T			0.69	0.47		0.17		1.05	0.03		0.16							
BELTSVILLE	2.80			0.01					0.01	0.03		0.07					0.05	0.08								0.14		1.37			0.09					
DALECARLIA RSVR	4.38			0.07				0.02	0.03	0.25		0.07					0.12	0.08						0.01		0.20		1.80			0.18					
LAUREL 3 W	3.34									0.16	0.01					0.07	0.17				0.35	0.73			0.20	0.02	1.10	0.30		0.23						
MARYLAND SCIENCE CENTER	3.19							0.03		0.29		0.10				0.02	0.10				0.67	0.58		0.20		0.96	0.10		0.14							
NATL ARBORETUM DC	3.28			T		T		0.03	0.01	0.20	0.04	0.05				T	0.12	0.05								0.13	0.12	1.51			0.16					
OXON HILL	3.26			0.01		T	0.01	0.01	0.10	0.03	0.10	0.12				0.05	0.05	0.03							T		0.16	0.01	1.56			0.21				
UPPER MARLBORO 3 NNW	3.71			0.01				0.03	0.43	0.06	0.09	0.18				0.04	0.05	0.05								0.17	0.04	1.43			0.17					
<b>NORTHERN CENTRAL 06</b>																																				
ABERDEEN PHILLIPS FLD	A 3.34			0.02		T			*	*	0.58 <sub>a</sub>	0.12						0.09	0.14							0.15		0.83			0.11					
BRIGHTON DAM	M 3.41							T	0.05	0.26	0.04	0.06	-				0.04	0.05						T		0.30	0.10	1.15			0.11					
CONOWINGO DAM	4.12								0.29	0.01	0.28	0.30					0.17	0.20								0.15		0.85			0.12					
CYLBURN	MA 2.10		T	-				0.03	0.06	*	*	*	*	*	*	*	*	0.51 <sub>a</sub>									-	-	-	-	-	-	-	-	-	
DAMASCUS 3 SSW	3.59							0.08		0.29		0.04				0.02	0.05	0.01				0.31	0.66		0.38		1.34	0.17		0.24	T					
EMMITSBURG 2 SE	3.60			0.03				T	0.14	0.23	0.27	0.03				0.01		0.32								T	0.29	0.60		T	0.11	0.24				
FREDERICK 2 NNE	3.37							0.04	0.08	0.12	0.24	0.02						0.01	0.15					0.73	0.02	0.37		1.41		0.18			0.18			
MILLERS 4 NE	4.12		0.01					0.11	0.01	0.34	0.06	0.03				0.01	0.03	0.18				0.03	1.41	T	0.24	0.10	0.99	0.31		0.26	T					
SMITHSBURG 2NW	M 3.67			-		-		0.10	0.10	0.25	0.20	0.08					0.30									0.23										
WESTMINSTER	A* 3.68	*	*	*	T <sub>a</sub>			0.02	*	*	0.34 <sub>a</sub>	0.03			*	*	0.02 <sub>a</sub>	0.12		T			1.46	*	*	*	*	0.23 <sub>a</sub>	1.46	-	-	-	-	-	-	
<b>APPALACHIAN</b>																																				
<b>MOUNTAIN 07</b>																																				
CUMBERLAND 2	3.59			0.03		0.01		0.05	0.06	0.30	0.28	0.12				0.03	0.02	0.20	0.01				0.84	T		0.25	T	1.08		0.21	0.10					
FROSTBURG 2	4.51			0.14		0.01		0.13	0.10	0.24	0.37	0.15	T			0.02	0.03	0.32	0.05				0.93	0.15	T	0.20		1.10	0.12	0.27	0.18		T			
SHARPSBURG 5 S	3.33			T				0.07	0.07	0.23	0.17	0.04					T	0.15								0.31	T	1.36		T	0.08					
WILLIAMSPORT	M 2.98	-						0.02	0.08	0.10	0.34	0.05				0.02		0.14																		
<b>ALLEGHENY PLATEAU 08</b>																																				
OAKLAND 1 SE	5.94			0.35		0.16		0.06	0.40	0.48	0.57	0.34				0.03	0.04	0.13	0.75	0.10				0.64	0.20	0.10		0.15		0.50	0.10	0.27	0.42	0.15		

MARYLAND AND DELAWARE  
201212

## DAILY PRECIPITATION (INCHES)

STATION	TOTAL	DAY OF MONTH																															
		01	02	03	04	05	06	07	08	09	10	11	12	13	14	15	16	17	18	19	20	21	22	23	24	25	26	27	28	29	30	31	
SAVAGE RIVER DAM SINES DEEP CREEK	M 6.86			0.09 0.35		T 0.14		T 0.15	0.20 0.45	0.41 0.50	0.45 0.50	0.15 0.41	0.02			-	T	-	0.04 0.68	-	0.11		-	-	-	-	-	-	-	-	0.27 0.41	-	T 0.03
DELAWARE NORTHERN 01 BEAR 2 SW	M 3.92		0.02	-	-	-	-	-	-	-	-	-	-	-	-	-	-	-	-	-	-	-	-	-	-	-	-	-	-	-	-	-	
WILMINGTON NEW CASTLE CO AP WILMINGTON PORTER RES	M 4.81		0.02 0.07			T		0.22 0.21	0.10 0.28	0.31 0.28	0.05 0.14	0.09 0.15				0.05 0.10	0.07 0.30	0.22 0.17		0.39 1.20	1.05 1.55			0.14 0.11	0.98 -	0.08		0.23 0.17					
SOUTHERN 02 DOVER	FA 4.11		0.02			0.02		0.03	0.00 <sup>L</sup>	1.75 <sup>L</sup> <sub>a</sub>	0.03	0.08					0.20	0.32	T		1.25			0.14	1.86			0.16					



DAILY TEMPERATURES (°F)

STATION	OB. TIME	MAX/MIN	DAY OF MONTH																															AVERAGE		
			01	02	03	04	05	06	07	08	09	10	11	12	13	14	15	16	17	18	19	20	21	22	23	24	25	26	27	28	29	30	31			
BRIGHTON DAM	08	MAX	48	47	54	67	68	55	41																											M
		MIN	27	30	36	41	48	27	28																										M	
CONOWINGO DAM	07	MAX	49	51	47	58	61	52	53	54	50	46	54	47	43	45	50	48	49	48	56	47	55	43	40	44	37	42	46	38	39	35	37	47.2		
		MIN	26	38	41	42	45	32	27	27	43	43	43	30	30	24	25	29	42	44	31	30	31	31	27	26	25	31	31	34	28	30	26	32.6		
CYLBURN	08	MAX	48	51	49	68	64	64	40	45	55	50	59	58	44	45	53	49	49	51	57	51	44	56	40	46	37	44	45	43	40	36	37	49.0		
		MIN	28	36	44	49	49	27	27	27	44	44	38	32	29	26	32	42	46	46	26	33	35	36	28	27	31	29	34	30	31	29	27	34.3		
DAMASCUS 3 SSW	22	MAX	46	52	67	68	62	40	46	59	51	58	57	42	45	50	50	47	48	54	48	43	51	38	44	36	42	37	36	37	34	35	34	47.0		
		MIN	32	32	46	53	39	27	30	40	44	45	34	32	27	30	39	42	44	39	32	35	35	31	24	29	30	28	32	30	31	28	23	34.3		
EMMITSBURG 2 SE	07	MAX	50	44	50	67	71	56	40	42	54	47	56	49	42	45	53	50	47	48	54	50	49	41	40	46	36	41	35	37	38	36	35	46.7		
		MIN	24	34	36	40	46	24	24	33	41	43	41	29	24	21	20	38	41	40	34	30	31	35	25	24	24	27	28	31	27	29	24	31.2		
FREDERICK 2 NNE	07	MAX	52	46	52	67	71	56	44	47	59	49	61	48	43	46	55	53	49	50	56	52	52	41	41	47	38	43	37	38	40	39	37	48.7		
		MIN	26	36	36	40	50	26	26	35	41	45	42	32	27	24	26	30	42	44	34	34	34	36	22	25	27	30	28	34	30	31	26	32.9		
MILLERS 4 NE	18	MAX	53	55	67	71	61	42	43	62	54	57	56	42	46	51	51	48	47	54	49	44	54	39	48	37	43	36	40	38	35	36	35	48.2		
		MIN	35	35	46	49	42	26	28	41	43	43	36	29	28	25	31	40	44	42	33	29	35	32	24	26	30	28	32	29	26	29	23	33.5		
SMITHSBURG 2NW	08	MAX	51	47		64		68		40	55	47	57	44	37	41	48	49	50	50	47	49	37	36	44	36	38	34	35				35	45.7		
		MIN	27	27		29		20		20	36	43	32	27	20	20	20	27	36	36	31	29	36	33	25	23	22	28	26	27			23	27.8		
WESTMINSTER	07	MAX			67	71	54	40																											M	
		MIN			27	49	25	25																											M	
<b>APPALACHIAN MOUNTAIN 07</b>																																				
CUMBERLAND 2	18	MAX	49	54	48	67	72	52	44	39	52	47	51	42	41	45	56	48	46	49	49	47	43	35	37	52	36	41	33	34	41	37	35	45.9		
		MIN	26	30	32	45	46	24	24	34	38	44	38	29	21	21	21	28	38	40	37	35	34	32	25	24	27	28	26	29	28	29	20	30.7		
FROSTBURG 2	07	MAX	52	48	60	58	65	44	38	44	55	48	53	36	36	37	46	44	42	49	41	39	36	36	27	41	36	35	28	26	31	33	26	41.6		
		MIN	28	28	33	47	38	19	19	32	42	40	32	25	20	20	30	31	36	40	32	32	27	23	21	21	24	24	21	23	23	22	21	28.2		
SHARPSBURG 5 S	07	MAX	54	51	58	66	73	55	44	46	57	51	59	47	41	46	55	53	47	51	53	50	50	39	40	49	36	41	34	37	39	39	37	48.3		
		MIN	23	26	31	41	48	23	22	36	37	45	32	28	22	21	21	26	37	38	28	30	31	36	20	20	23	29	28	30	28	33	20	29.5		
WILLIAMSPORT	06	MAX		48	54	65	72	72	43	39	51	47	52	46	40	46	52	51	47	48	54	51	45												48.4	
		MIN		31	35	35	43	27	25	36	37	42	39	32	24	22	22	22	38	38	31	33	33												31.3	
<b>ALLEGHENY PLATEAU 08</b>																																				
OAKLAND 1 SE	07	MAX	51	56	58	57	65	47	43	52	55	56	58	34	37	43	47	50	53	54	42	40	40	26	29	42	39	37	33	26	34	37	28	44.2		
		MIN	23	23	47	36	38	17	21	42	45	44	30	22	18	18	19	26	41	42	34	29	25	24	22	17	18	26	23	25	25	25	24	28.0		
SAVAGE RIVER DAM	08	MAX	53	49	56	60	66	46	38	40	54	46	57	37	36	36				44															M	
		MIN	25	28	28	44	41	22	21	33	40	43	36	24	20	19				28															M	
SINES DEEP CREEK	07	MAX	50	53	57	56	62	42	41	47	54	45	53	32	35	37	43	48	46	52	42	40	39	28	26	39	35	35	30	27	31	33	24	41.4		
		MIN	24	26	31	37	36	19	19	36	38	40	32	23	18	18	20	26	36	40	34	30	28	24	16	15	19	27	23	24	24	23	15	26.5		
<b>DELAWARE NORTHERN 01</b>																																				
BEAR 2 SW	24	MAX	55	55																															M	
		MIN	39	43																															M	
WILMINGTON NEW CASTLE CO AP	24	MAX	53	51	68	64	59	42	46	52	49	58	56	46	48	51	50	51	49	60	50	50	56	44	46	40	45	47	44	43	35	39	41	49.5		
		MIN	38	43	45	49	35	27	29	46	43	45	36	32	30	25	29	43	45	39	34	30	38	33	28	23	32	33	35	30	32	29	29	35.0		



## DAILY TEMPERATURES (°F)

STATION	OB. TIME	MAX/MIN	DAY OF MONTH																															AVERAGE
			01	02	03	04	05	06	07	08	09	10	11	12	13	14	15	16	17	18	19	20	21	22	23	24	25	26	27	28	29	30	31	
WILMINGTON PORTER RES	24	MAX MIN	49 38	50 40	64 45	62 49	57 35	39 29	45	51 44	50 42	57 43		43 35	44 32	48 29	46 35	49 41	49 41	56 40	47 34	45 32	56 32	56 32	43 27	38 31	39 31	43 30	43 30	39 31	33 30	36 29	37 27	47.1 35.0
<b>SOUTHERN 02</b> DOVER	16	MAX MIN	57 36	60 44	71 48	71 47	65 53	53 28	48 29	53 48	50 46	64 48	62 45	46 33	48 36	52 24	50 30	53 43	50 47	60 46	52 36	48 30	58 40	43 32	46 28	40 26	45 29	46 32	51 37	41 32	41 33	40 32	43 28	51.8 37.0

SNOWFALL AND SNOW ON GROUND (INCHES)

STATION		DAY OF MONTH																																			
		01	02	03	04	05	06	07	08	09	10	11	12	13	14	15	16	17	18	19	20	21	22	23	24	25	26	27	28	29	30	31					
<b>MARYLAND SOUTHERN EASTERN SHORE 01</b>																																					
ASSATEAGUE	SNOWFALL																																				
PRINCESS ANNE	SNOWFALL																																				
SALISBURY 2N	SNOWFALL																																				
	SN ON GND																																				
SALISBURY FAA AP	SNOWFALL																																				
SNOW HILL 4 N	SNOWFALL																																				
<b>CENTRAL EASTERN SHORE 02</b>																																					
ROYAL OAK 2 SSW	SNOWFALL																																				
	SN ON GND																																				
<b>LOWER SOUTHERN 03</b>																																					
MECHANICSVILLE 5 NE	SNOWFALL			-		-	-	-	-	-	-	-	-	-	-	-	-	-	-	-	-	-	-	-	-	-	-	-	-	-	-	-	-	-	-		
SOLOMONS	SNOWFALL																																				
	SN ON GND																																				
	WTR EQUIV	-	-	-	-	-	-	-	-	-	-	-	-	-	-	-	-	-	-	-	-	-	-	-	-	-	-	-	-	-	-	-	-	-	-		
<b>UPPER SOUTHERN 04</b>																																					
BALTIMORE WASH INTL AP	SNOWFALL																																				
	SN ON GND																																				
BELTSVILLE	SNOWFALL																																				
	SN ON GND																																				
DALECARLIA RSVR	SNOWFALL																																				
	SN ON GND																																				
	WTR EQUIV																																				
LAUREL 3 W	SNOWFALL																																				
MARYLAND SCIENCE CENTER	SNOWFALL																																				
NATL ARBORETUM DC	SNOWFALL	-	-	-	-	-	-	-	-	-	-	-	-	-	-	-	-	-	-	-	-	-	-	-	-	-	-	-	-	-	-	-	-	-	-	-	
	SN ON GND	-	-	-	-	-	-	-	-	-	-	-	-	-	-	-	-	-	-	-	-	-	-	-	-	-	-	-	-	-	-	-	-	-	-	-	
	WTR EQUIV	-	-	-	-	-	-	-	-	-	-	-	-	-	-	-	-	-	-	-	-	-	-	-	-	-	-	-	-	-	-	-	-	-	-	-	
OXON HILL	SNOWFALL																																				
	SN ON GND																																				
	WTR EQUIV	-	-	-	-	-	-	-	-	-	-	-	-	-	-	-	-	-	-	-	-	-	-	-	-	-	-	-	-	-	-	-	-	-	-	-	-
UPPER MARLBORO 3 NNW	SNOWFALL	-	-	-	-	-	-	-	-	-	-	-	-	-	-	-	-	-	-	-	-	-	-	-	-	-	-	-	-	-	-	-	-	-	-	-	
	SN ON GND	-	-	-	-	-	-	-	-	-	-	-	-	-	-	-	-	-	-	-	-	-	-	-	-	-	-	-	-	-	-	-	-	-	-	-	
<b>NORTHERN CENTRAL 06</b>																																					
ABERDEEN PHILLIPS FLD	SNOWFALL																																				
	SN ON GND																																				
BRIGHTON DAM	SNOWFALL																																				
	SN ON GND																																				
	WTR EQUIV																																				

Snowfall: Includes snow and ice. Values for NWS stations (J index note) are Mid-Mid (LST).

Snow on ground: Includes snow, sleet, ice, and hail. Values for NWS stations (J index note) are observed at 12 UTC (GMT).

Water Equivalent: Given for NWS stations (J index note) only, when snow depth is 2 inches or more, and is measured at 18 UTC (GMT)



## SNOWFALL AND SNOW ON GROUND (INCHES)

STATION		DAY OF MONTH																														
		01	02	03	04	05	06	07	08	09	10	11	12	13	14	15	16	17	18	19	20	21	22	23	24	25	26	27	28	29	30	31
WILMINGTON PORTER RES SOUTHERN 02 DOVER	SNOWFALL																															
	SNOWFALL	-	-	-	-	-	-	-	-	-	-	-	-	-	-	-	-	-	-	-	-	-	-	-	T	-	-	-	-	-	-	-

Snowfall: Includes snow and ice. Values for NWS stations (J index note) are Mid-Mid (LST).

Snow on ground: Includes snow, sleet, ice, and hail. Values for NWS stations (J index note) are observed at 12 UTC (GMT).

Water Equivalent: Given for NWS stations (J index note) only, when snow depth is 2 inches or more, and is measured at 18 UTC (GMT)

# PAN EVAPORATION AND WIND

STATION		DAY OF MONTH																															TOTAL OR AVERAGE				
		01	02	03	04	05	06	07	08	09	10	11	12	13	14	15	16	17	18	19	20	21	22	23	24	25	26	27	28	29	30	31					
MARYLAND UPPER SOUTHERN 04 BELTSVILLE	WIND	-	-	-	-	-	-	-	-	-	-	-	-	-	-	-	-	-	-	-	-	-	-	-	-	-	-	-	-	-	-	-	-	-	-	M	
	EVAP	-	-	-	-	-	-	-	-	-	-	-	-	-	-	-	-	-	-	-	-	-	-	-	-	-	-	-	-	-	-	-	-	-	-	M	
	MAX	-	-	-	-	-	-	-	-	-	-	-	-	-	-	-	-	-	-	-	-	-	-	-	-	-	-	-	-	-	-	-	-	-	-	M	
	MIN	-	-	-	-	-	-	-	-	-	-	-	-	-	-	-	-	-	-	-	-	-	-	-	-	-	-	-	-	-	-	-	-	-	-	M	
UPPER MARLBORO 3 NNW	WIND	-	-	-	-	-	-	-	-	-	-	-	-	-	-	-	-	-	-	-	-	-	-	-	-	-	-	-	-	-	-	-	-	-	-	M	
	EVAP	-	-	-	-	-	-	-	-	-	-	-	-	-	-	-	-	-	-	-	-	-	-	-	-	-	-	-	-	-	-	-	-	-	-	M	
	MAX	-	-	-	-	-	-	-	-	-	-	-	-	-	-	-	-	-	-	-	-	-	-	-	-	-	-	-	-	-	-	-	-	-	-	M	
	MIN	-	-	-	-	-	-	-	-	-	-	-	-	-	-	-	-	-	-	-	-	-	-	-	-	-	-	-	-	-	-	-	-	-	-	M	
ALLEGHENY PLATEAU 08 SAVAGE RIVER DAM	WIND	-	-	-	-	-	-	-	-	-	-	-	-	-	-	-	-	-	-	-	-	-	-	-	-	-	-	-	-	-	-	-	-	-	-	M	
	EVAP	-	-	-	-	-	-	-	-	-	-	-	-	-	-	-	-	-	-	-	-	-	-	-	-	-	-	-	-	-	-	-	-	-	-	M	
	MAX	-	-	-	-	-	-	-	-	-	-	-	-	-	-	-	-	-	-	-	-	-	-	-	-	-	-	-	-	-	-	-	-	-	-	-	M
	MIN	-	-	-	-	-	-	-	-	-	-	-	-	-	-	-	-	-	-	-	-	-	-	-	-	-	-	-	-	-	-	-	-	-	-	-	M

Evaporation: Is measured in hundreths of inches.

Wind: Is measured in miles.

Max and Min: The maximum and minimum temperatures (Fahrenheit) of the water in the evaporation pan.

# STATION INDEX

STATION	INDEX NO.	DIVISION	COUNTY	LATITUDE	LONGITUDE	ELEVATION (IN FEET)	OBSERVATION TIME AND TABLES			
							LOCAL STD TIME			
							TEMP	PRECIP	EVAP	SPECIAL SEE (NOTES)
MARYLAND										
ABERDEEN PHILLIPS FLD	0015	06	HARFORD	39 28	76 10W	57	07	07		CH
ASSATEAGUE	0335	01	WORCESTER	38 4	75 13W	10	VAR	VAR		H
BALTIMORE WASH INTL AP R	0465	04	ANNE ARUNDEL	39 10	76 41W	156	24	24		HJ
BELTSVILLE	0700	04	PRINCE GEORGE'S	39 2	76 56W	145	08	08	08	CH
BRIGHTON DAM	1125	06	MONTGOMERY	39 11	77 0W	330	08	08		H
CONOWINGO DAM	2060	06	HARFORD	39 39	76 11W	40	07	07		H
CUMBERLAND 2	2282	07	ALLEGANY	39 39	78 45W	730	18	18		H
CYLBURN	2308	06	BALTIMORE	39 21	76 39W	235	08	08		H
DALECARLIA RSVR	2325	04	DISTRICT OF COLUMBIA	38 56	77 7W	150	08	08		H
DAMASCUS 3 SSW	2336	06	MONTGOMERY	39 16	77 14W	700	22	22		H
EMMITSBURG 2 SE	2906	06	FREDERICK	39 41	77 17W	403	07	07		H
FREDERICK 2 NNE	3353	06	FREDERICK	39 26	77 24W	280	07	07		H
FROSTBURG 2	3415	07	ALLEGANY	39 40	78 56W	2170	07	07		H
LAUREL 3 W	5111	04	PRINCE GEORGE'S	39 5	76 54W	400	24	24		H
MARYLAND SCIENCE CENTER R	5718	04	BALTIMORE (CITY)	39 17	76 37W	20	24	24		H
MECHANICSVILLE 5 NE	5865	03	ST. MARY'S	38 28	76 42W	100	07	07		H
MILLERS 4 NE	5934	06	CARROLL	39 43	76 48W	860	18	18		CH
NATL ARBORETUM DC	6350	04	DISTRICT OF COLUMBIA	38 55	76 58W	50	07	07		H
OAKLAND 1 SE	6620	08	GARRETT	39 25	79 24W	2420	07	07		H
OXON HILL	6800	04	PRINCE GEORGE'S	38 47	76 60W	120	08	08		H
PRINCESS ANNE	7330	01	SOMERSET	38 13	75 41W	20	17	17		H
ROYAL OAK 2 SSW	7806	02	TALBOT	38 43	76 11W	10	17	17		H
SALISBURY 2N	8004	01	WICOMICO	38 24	75 36W	20	17	17		H
SALISBURY FAA AP	8005	01	WICOMICO	38 20	75 31W	48	24	24		H
SAVAGE RIVER DAM	8065	08	GARRETT	39 31	79 8W	1495	08	08	08	CH
SHARPSBURG 5 S	8207	07	WASHINGTON	39 24	77 43W	500	07	07		H
SINES DEEP CREEK	8315	08	GARRETT	39 31	79 25W	2040	07	07		H
SMITHSBURG 2NW	8371	06	WASHINGTON	39 40	77 35W	670	08	08		H
SNOW HILL 4 N	8380	01	WORCESTER	38 14	75 23W	30	17	17		H
SOLOMONS	8405	03	CALVERT	38 19	76 27W	12	08	08		H
UPPER MARLBORO 3 NNW	9070	04	PRINCE GEORGE'S	38 51	76 46W	130	08	08	08	H
WESTMINSTER	9440	06	CARROLL	39 34	76 59W	750	07	07		H
WILLIAMSPORT	9570	07	WASHINGTON	39 37	77 51W	360	06	06		H
DELAWARE										
BEAR 2 SW	1200	01	NEW CASTLE	39 36	75 44W	80	24	24		H
DOVER	2730	02	KENT	39 15	75 31W	30	16	16		H
WILMINGTON NEW CASTLE CO AP R	9595	01	NEW CASTLE	39 40	75 36W	79	24	24		HJ
WILMINGTON PORTER RES	9605	01	NEW CASTLE	39 46	75 32W	270	24	24		H

# REFERENCE NOTES

**STATION NAMES:** Name of the city, town or locality. Figures and letters following the station names indicate the distance in miles and direction from the post office or town community center.

**DIVISIONS:** Areas within a state of similar climatological characteristics. Division averages are calculated using data from stations that record temperature and/or precipitation. Station Precipitation totals flagged with an 'F' or 'M' are excluded from the Divisional Average calculations of precipitation. Stations with monthly Temperature averages flagged with an 'F' or 'M' are included in the Divisional Average if there are no more than 9 flagged or missing daily values in the month, else they are excluded from the divisional average for temperature.

**NORMALS:** The average value of the meteorological element over a time period. Effective 1 January 2012, the averaging period is 1981 to 2010. The normals for National Weather Service localities have been adjusted so as to be representative for the current observation site.

**MONTHLY DEGREE DAY TOTALS:** One heating (cooling) degree day is accumulated for each whole degree that the daily mean temperature is below (above) 65 degrees Fahrenheit.

**PRECIPITATION:** Values shown in hundredths of inches are water equivalent totals, i.e., total of liquid and melted frozen precipitation. In the "Monthly Summarized Data" table the total snow and sleet values shown in tenths of inches are unmelted amounts. The max depth on ground values of snow and sleet shown in whole inches are cumulative unmelted amounts. The number of days with .10, .50, 1.00 or more refers to water equivalents.

**PRECIPITATION QUALITY CONTROL:** The NCDC quality control process may flag precipitation data that are spatially inconsistent, exceed climatological limits, or are inconsistent with prevailing weather patterns.

**TEMPERATURE:** Original temperature values are given in the "Daily Temperature" table. Summary temperature information (averages, departures, extremes, monthly degree day totals) is based on the values labeled MAX/MIN.

**WIND:** (As shown in the "Evaporation and Wind" table) the total wind movement in miles over the evaporation pan as determined by an anemometer recorder located 6-8 inches above the pan.

## SYMBOLS AND LETTERS USED IN THE STATION INDEX TABLE

C Station is equipped with recording rain gage (R) but values in this bulletin are from a non-recording rain gage unless indicated by an R.

G Observations appear in the "Soil Temperatures" table.

H Observations appear in the "Snowfall and Snow on the Ground" table.

J Station also published as a Local Climatological Data publication.

VAR Observation time varies.

SR Observation time near sunrise.

SS Observation time near sunset.

## SYMBOLS AND LETTERS USED IN THE DATA TABLES

(DAILY DATA ARE FOR THE 24 HOURS IMMEDIATELY PRECEDING OBSERVATION TIME.)

BLANK Entries in the "Monthly Summarized Data" table indicate no record.

BLANK Entries in the "Daily Precipitation" and "Snowfall and Snow on the Ground" tables indicate zero.

BLANK Entries in the "Daily Temperature" table indicate a missing record

- No record. Data not recorded or not received in time for publication.

+ Precipitation or temperature extremes occurred on one or more previous dates during the month.

\* Rain gage not read. Precipitation is included in the amount following the asterisks.

Time distribution may not be known. A \* preceding the monthly total indicates precipitation amount is being carried forward to next month's total, and may include amounts from the previous month(s).

a As a subscript, indicates accumulated total.

A Amount of precipitation is the total of observer's entries for the current month. It may include precipitation that occurred during the previous month. Refer to earlier bulletin to determine date of last reading. (Hawaii stations)

B Divisional Departure from normals are computed using 1971-2000 normals.

E Normalized HDD/CDD Calculation. E is appended to the HDD/CDD Calculation when 1-9 individual daily TMAX and/or TMIN values are missing and a Normalized HDD/CDD Calculation is provided. M appears alone if 10 or more daily values are missing.

F Monthly calculation flagged value. F is appended to average and/or total values computed which exclude one or more daily data values that have been flagged by the GHCN-Daily Dataset

M Insufficient or partial data. M is appended to average and/or total values computed with 1-9 daily values missing. M appears alone if 10 or more daily values are missing, (8 or more for wind and evaporation).

N Indicates snow fall or Snowdepth totals are computed with one or more missing days.

R Amounts from recording rain gage.

T Trace. An amount too small to measure.

**SEASONAL TABLES:** Monthly and seasonal snowfall and heating degree days for the 12 months ending with the June data are published in the July issue of this bulletin. Cooling degree days for the calendar year are published in the "Climatological Data Annual Summary."

Information concerning the history of changes in locations, exposure, etc. of substations is kept on file at the National Climatic Data Center. Historical information of regular National Weather Service Offices may be obtained from the "Local Climatological Data" annual publication. The contents of this publication may be reprinted or otherwise used freely, with proper credit to the National Climatic Data Center. The data are also available digitally.

Effective with the January 2011 Data-Month, COOP Observer Names are no longer included in the Monthly and Annual Climatological Data Publications. This information is not published to ensure the privacy of personal information pursuant to Section 208 of the E-Government Act of 2002 (44 USC 3601).

As of the 2011 Data-Year, Station and Climate Division Maps are no longer being included in the CD Publications. NCDC's Product Development Branch provides updated Station Maps for various data networks via the Historical Observing Metadata Repository: <http://www.ncdc.noaa.gov/homr>.

The GHCN-Daily Quality Control Flags shown below are displayed as superscripts with the data. For more Information on Global Historical Climatology Network - Daily and flags, see: <http://www.ncdc.noaa.gov/oa/climate/ghcn-daily/> and Comprehensive Automated Quality Assurance of Daily Surface Observations. Durre, Imke, Matthew J. Menne, Byron E. Gleason, Tamara G. Houston, Russell S. Vose, 2010: J. Appl. Meteor. Climatol., 49, 1615-1633. doi: 10.1175/2010JAMC2375.1

Blank = Passed All checks

D = failed duplicate check

G = failed gap check

I = failed internal consistency check

K = failed streak/frequent-value check

L = failed check on length of multiday period

M = failed megaconsistency check

N = failed naught check

O = failed climatological outlier check

R = failed lagged range check

S = failed spatial consistency check

T = failed temporal consistency check

W = temperature too warm for snow

X = failed bounds check

Z = flagged as a result of an official Datzilla investigation

**These and other publications are available from the National Climatic Data Center**

### **Hourly Precipitation Data**

This publication contains hourly precipitation amounts obtained from recording rain gages located at National Weather Service, Federal Aviation Administration, and cooperative observer stations. Published data are displayed in inches and tenths or inches and hundredths at local standard time. HPD includes maximum precipitation for nine (9) time periods from 15 minutes to 24 hours, for selected stations.

### **Climatological Data**

Monthly editions contain station daily maximum and minimum temperatures and precipitation. Some Stations provide daily snowfall, snow depth, evaporation, and soil temperature data. Each edition also contains monthly summaries for heating and cooling degree days (65 degree F base). The July issue contains a recap of monthly heating degree days and snow data for the preceding July through June.

The Annual issue contains monthly and annual averages of temperature, precipitation, temperature extremes, freeze data, soil temperatures, evaporation, and a recap of monthly cooling degree days.

### **Storm Data**

Monthly issues contain a chronological listing, by states, of occurrences of storms and unusual weather phenomena. Reports contain information on storm paths, deaths, injuries, and property damage. An "Outstanding storms of the month" section highlights severe weather events with photographs, illustrations, and narratives. The December issue includes annual tornado, lightning, flash flood, and tropical cyclone summaries.

### **Monthly Climatic Data for the World**

This publication contains monthly means for temperature, pressure, precipitation, vapor pressure, and sunshine for approximately 2,000 surface data collection stations worldwide and monthly mean upper air temperatures, dew point depressions, and wind velocities for approximately 500 observing sites.

### **Local Climatological Data**

LCD publications summarize temperature, relative humidity, precipitation, cloudiness, wind speed and direction observations for several hundred cities in the U.S. and its territories. Each monthly publication also contains 3 hourly weather observations for that month and a hourly summary of precipitation. Annual LCD publications contain a summary of the past calendar year as well as historical averages and extremes.

For Information Call:

(828) 271-4800 Option 2

(828) 271-4010 (TDD)

(828) 271-4876 (Fax)



NOAA\National Climatic Data Center  
Attn: User Engagement & Services Branch  
151 Patton Avenue  
Asheville, NC 28801-5001

Customer Services Number: (828) 271-4800, option 2  
TDD : (828) 271-4010  
Fax number: (828) 271-4876

NCDC now offers free online access to the *Climatological Data* publication.  
Go to : [www.ncdc.noaa.gov](http://www.ncdc.noaa.gov) and choose Most Popular.