



CLIMATOLOGICAL DATA

MARYLAND AND DELAWARE

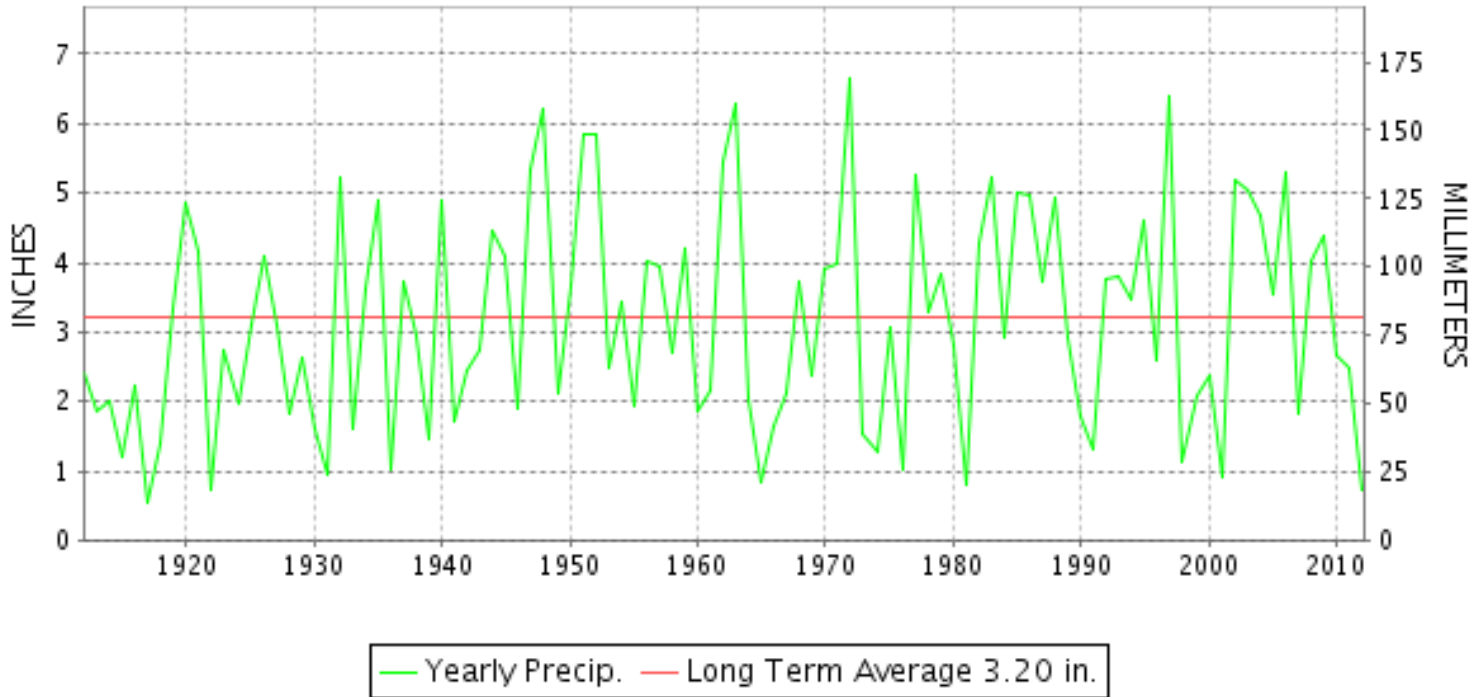
NOVEMBER 2012

VOLUME 116 NUMBER 11

ISSN 0145-0549

GHCND Ver: 3.02-upd-2013031905

NOVEMBER PRECIPITATION BY YEAR



TEMPERATURE AND PRECIPITATION EXTREMES

MARYLAND

HIGHEST TEMPERATURE	75	NOVEMBER 12	SALISBURY FAA AP
LOWEST TEMPERATURE	16	NOVEMBER 29	PRINCESS ANNE
GREATEST TOTAL PRECIPITATION	5.17		SINES DEEP CREEK
LEAST TOTAL PRECIPITATION	0.24		UPPER MARLBORO 3 NNW
GREATEST 1 DAY PRECIPITATION	0.92	NOVEMBER 13	DAMASCUS 3 SSW
GREATEST TOTAL SNOWFALL	20.1		SINES DEEP CREEK
GREATEST DEPTH OF SNOW OR ICE	19		OAKLAND 1 SE

"I certify that this is an official publication of the National Oceanic and Atmospheric Administration (NOAA) It is compiled using information from weather observing sites supervised by NOAA/National Weather Service and received at the National Climatic Data Center(NCDC), Asheville, North Carolina 28801."

Director
National Climatic Data Center

noaa

National
Oceanic and
Atmospheric Administration

National
Environmental Satellite, Data
and Information Service

National
Climatic Data Center
Asheville, North Carolina

DELAWARE

HIGHEST TEMPERATURE	72
LOWEST TEMPERATURE	22
GREATEST TOTAL PRECIPITATION	1.39
LEAST TOTAL PRECIPITATION	0.96
GREATEST 1 DAY PRECIPITATION	0.61
GREATEST TOTAL SNOWFALL	T

NOVEMBER 12
NOVEMBER 29

NOVEMBER 27

DOVER
BEAR 2 SW
WILMINGTON PORTER RES
BEAR 2 SW
WILMINGTON NEW CASTLE CO AP
3 STATIONS

DAILY PRECIPITATION (INCHES)

STATION	TOTAL	DAY OF MONTH																																
		01	02	03	04	05	06	07	08	09	10	11	12	13	14	15	16	17	18	19	20	21	22	23	24	25	26	27	28	29	30	31		
MARYLAND																																		
SOUTHERN																																		
EASTERN SHORE 01																																		
ASSATEAGUE	M	-	-	-	-	-	-	-	-	-	-	-	-	-	-	-	-	-	-	-	-	-	-	-	-	-	-	-	-	-	-	-		
PRINCESS ANNE	M					0.15		0.08					0.11																			0.10		
SALISBURY 2N	0.67	0.01						0.29	0.11				0.08	0.02													0.08	0.08						
SALISBURY FAA AP	0.44							0.27	0.01				0.09															0.07						
SNOW HILL 4 N	0.51							0.26	0.08				0.08	0.02														0.05	0.02					
CENTRAL																																		
EASTERN SHORE 02																																		
ROYAL OAK 2 SSW	0.93		T					0.15	0.23				0.22	0.02	0.03									0.01				0.27						
LOWER SOUTHERN 03																																		
MECHANICSVILLE 5 NE	0.89	T						T	0.18				0.40	0.18		0.02	T											0.06	0.05					
SOLOMONS	0.57							0.06	0.16				0.10	0.09		T												0.06	0.10					
UPPER SOUTHERN 04																																		
BALTIMORE WASH INTL AP	0.71	T	T					0.06	T			T	0.44																0.21					
BELTSVILLE	0.67								0.04				0.47	0.06															0.04	0.06				
DALECARLIA RSVR	0.87												0.66		0.15														0.06					
LAUREL 3 W	0.71											0.04	0.52																0.15					
MARYLAND SCIENCE CENTER	0.64								0.01				0.39																0.24					
NATL ARBORETUM DC	M 0.62							T	0.07			-	0.38	0.11														T	0.06					
OXON HILL	0.58		T						0.06				0.20	0.24															0.01	0.07				
UPPER MARLBORO 3 NNW	FA 0.24								0.14				0.00 ^L	0.32 ^L _a														0.01	0.09					
NORTHERN CENTRAL 06																																		
ABERDEEN PHILLIPS FLD	0.83	T	0.01										0.14	0.15															0.14	0.27				
BRIGHTON DAM	0.66												0.54																0.12					
CONOWINGO DAM	0.87												0.20	0.24															0.13	0.30				
CYLBURN	0.92	T	0.01										0.52	0.13															0.14	0.12				
DAMASCUS 3 SSW	1.16	T						T	T				0.92															0.24						
EMMITSBURG 2 SE	1.10		T										0.61															0.24	0.25					
FREDERICK 2 NNE	1.09	0.02											0.73												0.02			0.21	0.11					
MILLERS 4 NE	1.08	0.03	T						T				0.63															0.42						
SMITHSBURG 2NW	M 1.43	0.10	0.08		-								0.80														T	0.35	0.10					
WESTMINSTER	MA 1.02	-	-	-	-	-	-	-	-		*	*	* 0.63 _a				*	*	0.00 _a				*	*	*	*	0.00 _a	0.24	0.15					
APPALACHIAN																																		
MOUNTAIN 07																																		
CUMBERLAND 2	0.39										0.01		0.16																0.20	0.02				
FROSTBURG 2	0.35		T										0.13															0.22	T					
SHARPSBURG 5 S	1.16	0.02	T										0.78															0.28	0.06					
WILLIAMSPORT	M 0.82					0.02					-		0.48												0.02			0.20	0.12					
ALLEGHENY PLATEAU 08																																		
OAKLAND 1 SE	M 0.64			0.24	0.01								0.22												0.07	0.04		0.05	0.01					-

DAILY PRECIPITATION (INCHES)

STATION	TOTAL	DAY OF MONTH																															
		01	02	03	04	05	06	07	08	09	10	11	12	13	14	15	16	17	18	19	20	21	22	23	24	25	26	27	28	29	30	31	
SAVAGE RIVER DAM	M 0.12	-	-	-	-		-		-				-	0.06											T								
SINES DEEP CREEK	A 5.17	*	4.61 _a										0.15											0.02	0.03			-	0.06				
DELAWARE NORTHERN 01																																	
BEAR 2 SW	0.96	T	T					0.27	0.01					0.14												T		0.54					
WILMINGTON NEW CASTLE CO AP	0.98	T						0.24	T					0.13												T		0.61					
WILMINGTON PORTER RES	1.39							0.30	0.05					0.48														0.56					
DELAWARE SOUTHERN 02																																	
DOVER	1.28	T						0.55	0.22					0.22			T											0.29					

DAILY TEMPERATURES (°F)

STATION	OB. TIME	MAX/MIN	DAY OF MONTH																															AVERAGE	
			01	02	03	04	05	06	07	08	09	10	11	12	13	14	15	16	17	18	19	20	21	22	23	24	25	26	27	28	29	30	31		
			MARYLAND SOUTHERN EASTERN SHORE 01 ASSATEAGUE	VA	MAX MIN																														
PRINCESS ANNE	17	MAX MIN	54 41	56 43			50 21	48 31	44 34	54 34	55 31		73 48	70 41	61 33	54 35	52 35			54 47	57 40	58 36				58 30	59 25	50 28	53 16				M M M		
SALISBURY 2N	17	MAX MIN	57 39	55 41	50 38	51 33	47 32	50 28	45 37	52 35	53 32	65 34	71 46	73 50	65 42	49 33	52 40	49 30	54 56	56 44	51 47	55 36	58 34	59 32	53 37	43 29	55 29	55 34	44 34	49 25	56 31		54.3 35.9		
SALISBURY FAA AP	24	MAX MIN	58 41	56 44	51 44	53 33	49 32	53 31	47 38	54 38	56 36	67 42	73 45	75 40	67 36	51 44	53 32	53 31	56 45	58 48	53 39	58 37	58 37	61 35	62 36	53 28	46 28	58 35	57 28	47 24	52 27	58 27		56.4 36.3	
SNOW HILL 4 N	17	MAX MIN	59 38	57 41	53 38	57 31	48 31	52 27	49 38	53 36	57 24	66 25	70 40	73 40	65 43	50 32	52 34	55 41	57 29	54 43	58 48	57 48	59 34	61 36	53 36	46 28	58 29	58 29	49 32	51 22	59 26		56.3 34.4		
CENTRAL EASTERN SHORE 02 ROYAL OAK 2 SSW	17	MAX MIN	53 44	53 45	50 43	50 36	46 32	46 28	42 36	53 36	55 38	65 33	67 45	71 49	62 37	47 34	49 31	50 37	54 31	55 40	50 42	54 46	53 35	55 33	59 32	53 38	43 34	52 27	46 31	45 34	48 30	54 28		52.7 36.2	
LOWER SOUTHERN 03 MECHANICSVILLE 5 NE	07	MAX MIN	51 36	54 36	54 36	49 32	57 32	48 27	45 27	44 34	53 36	54 32	69 32	70 38	72 42	47 29	46 29	49 38	51 29	50 38	53 30	52 28	55 28	55 28	56 28	62 28	44 27	46 27	57 28	45 31	46 25	49 25		52.8 31.7	
SOLOMONS	08	MAX MIN	53 42	55 43	53 43	49 40	50 40	45 34	45 34	53 37	55 43	56 40	63 46	63 44	46 38	44 43	44 38	49 44	51 45	50 45	53 45	50 39	55 40	52 38	58 38	58 33	43 40	47 46	53 36	49 34	46 37	50 37		51.6 40.4	
UPPER SOUTHERN 04 BALTIMORE WASH INTL AP	24	MAX MIN	50 44	52 41	48 40	51 33	48 30	45 28	44 38	54 39	57 35	63 32	66 36	69 40	63 35	48 30	47 31	52 35	53 29	51 34	55 44	53 39	57 31	58 28	61 28	47 36	41 26	54 25	42 32	46 27	49 26	50 25		52.5 33.2	
BELTSVILLE	08	MAX MIN	53 38	49 37	52 41	48 34	51 34	48 28	47 35	44 38	54 35	56 33	66 36	71 40	71 42	48 34	47 32	48 36	52 36	54 41	52 38	55 29	54 31	57 33	59 29	61 33	60 25	42 30	41 34	56 25	42 26	47 26	49 26		52.5 34.0
DALECARLIA RSVR	08	MAX MIN	52 40	50 37	49 40	46 33	50 37	49 33	45 33	43 38	51 37	55 37	63 37	71 37	71 37	47 37	45 37	47 37	50 37	51 37	54 37	54 37	55 30	57 29	59 34	59 32	40 26	41 27	56 34	40 26	47 27	49 27		51.2 34.4	
LAUREL 3 W	24	MAX MIN	50 40	50 39	48 41	51 36	49 34	48 34	42 30	54 37	56 36	65 41	72 42	72 45	63 36	48 32	50 34	57 37	56 35	52 37	55 43	54 41	58 36	60 39	60 35	53 31	41 31	51 34	43 33	46 32	49 32	51 31		53.5 36.3	
MARYLAND SCIENCE CENTER	24	MAX MIN	54 48	56 45	51 46	52 41	50 37	47 42	43 43	42 44	64 47	67 47	71 51	64 43	50 42	51 44	54 43	58 45	55 47	58 49	57 45	59 45	61 42	61 40	51 39	44 37	56 36	47 39	49 39	52 36	54 36	54 36		55.3 42.3	
NATL ARBORETUM DC	07	MAX MIN	54 41	52 40	53 43	50 35	52 39	48 29	45 36	56 39	58 39	58 34	72 38	72 43	50 31	49 33	54 39	55 30	53 30	56 40	56 42	59 36	59 38	59 30	43 38	42 33	42 27	55 35	43 35	48 27	48 27	49 27		53.3 35.4	
OXON HILL	08	MAX MIN	53 40	51 39	53 40	48 34	51 36	49 31	46 33	43 38	54 41	56 36	65 41	71 41	71 44	51 33	47 34	49 40	52 36	53 36	51 36	54 43	54 38	56 33	58 32	61 33	44 31	42 28	55 34	42 28	47 28	48 28		52.5 35.7	
UPPER MARLBORO 3 NNW	08	MAX MIN	54 38	50 38	53 39	51 33	52 33	49 27	47 28	43 36	55 38	57 31	66 31	71 35	74 42	48 30	47 30	49 37	52 28	53 29	52 37	55 40	55 30	56 27	58 27	63 27	44 31	42 23	57 30	42 34	48 23	51 23		53.1 31.8	
NORTHERN CENTRAL 06 ABERDEEN PHILLIPS FLD	07	MAX MIN	50 41	51 38	52 40	47 41	48 38	47 29	45 33	43 40	54 39	58 32	61 33	67 42	70 43	49 32	49 35	51 37	55 37	52 34	54 38	54 42	57 31	58 29	58 31	41 32	39 25	53 31	40 34	45 27	49 26		51.6 34.8		

DAILY TEMPERATURES (°F)

STATION	OB. TIME	MAX/MIN	DAY OF MONTH																															AVERAGE	
			01	02	03	04	05	06	07	08	09	10	11	12	13	14	15	16	17	18	19	20	21	22	23	24	25	26	27	28	29	30	31		
BRIGHTON DAM	08	MAX		51	50	46	48	46	44	42	52	54	64	67	69	46	44	47	49		50	51	51		56	58	41	39	50	39	43	47		49.8	
		MIN	35	41	29	29	25	34	35	35	30	34	38	40	28	28	33	26		42	33	29		26	32	30	23	30	31	22	23		31.1		
CONOWINGO DAM	07	MAX	49	49	51	47	48	46	42	50	52	54	60	66	45	45	47	48	52	50	51	51	52	53	54	41	37	46	37	41	45		48.4		
		MIN	38	37	37	41	40	27	27	36	36	32	33	35	39	36	30	31	29	32	33	38	32	29	28	31	31	24	26	30	27	26		32.4	
CYLBURN	08	MAX	51	49	50	50	48	45	44	41	51	55	59	62	67	45	44	46	50	53	51	53	52	54	56	58	49	39	51	39	44	47		50.1	
		MIN	39	39	40	36	32	27	35	36	36	35	37	47	39	30	30	33	32	32	41	40	32	29	30	32	28	26	36	32	29	27		33.9	
DAMASCUS 3 SSW	22	MAX	47	48	44	47	45	41	40	50	52	63	66	67	60	42	45	48	52	49	48	49	52	55	60	48	37	49	40	42	45	49		49.3	
		MIN	43	37	39	31	32	26	32	34	37	36	40	46	33	29	30	33	31	37	38	37	31	31	37	32	30	29	33	31	26	28		33.6	
EMMITSBURG 2 SE	07	MAX	48	48	50	47	49	47	42	52	56	59	65	67	47	45	45	51	53	52	50	50	53	56	60	39	42	50	38	44	47		49.8		
		MIN	39	38	39	36	37	23	23	34	35	30	32	33	40	30	28	32	32	29	33	31	26	25	25	25	32	21	22	31	23	24		30.3	
FREDERICK 2 NNE	07	MAX	51	50	50	48	50	48	44	43	53	57	64	68	68	48	46	47	52	54	53	51	52	55	59	61	40	42	53	40	46	48		51.4	
		MIN	40	39	39	33	36	26	27	36	38	32	34	35	41	28	29	34	29	29	31	32	28	27	28	28	33	24	25	33	25	25		31.5	
MILLERS 4 NE	18	MAX	46	50	46	47	45	45	39	49	55	60	68	67	63	45	45	50	54	51	52	51	55	58	61	53	38	49	39	43	45	52		50.7	
		MIN	40	35	38	38	34	23	32	36	33	33	37	44	37	30	28	31	34	31	35	33	30	28	34	33	31	26	32	30	25	28		32.6	
SMITHSBURG 2NW	08	MAX	45	46	47		46	46	42	40	49	53	60		66	43	43	42	50	49	53	47	47	51	52	61		38	46	37	42	44		47.6	
		MIN	37	33	27		32	22	24	26	29	31	33		33	24	26	29	24	25	26	29	25	26	25	28		22	24	31	24	24		27.4	
WESTMINSTER	07	MAX									50																								M
		MIN									32																								M
APPALACHIAN MOUNTAIN 07																																			
CUMBERLAND 2	18	MAX	48	47	46	47	48	47	49	45	50	60	70	70	72	46	44	50	59	57	56	51	50	61	62	56	38	46	57	44	45	51		52.4	
		MIN	41	41	39	39	37	24	25	32	32	33	35	35	36	35	27	27	28	27	27	32	28	28	28	31	30	28	28	35	26	25		31.3	
FROSTBURG 2	07	MAX	37	39	39	37	38	38	41	38	41	49	64	65	65	37	36	40	49	47	46	45	48	52	55	57	29	37	46	35	36	42		44.3	
		MIN	32	33	31	32	30	22	22	27	29	33	39	40	29	27	25	24	28	27	28	30	31	31	31	24	23	23	30	29	26	26		28.7	
SHARPSBURG 5 S	07	MAX	49	49	48	45	48	48	44	43	53	57	64	68	67	48	46	44	53	57	53	51	49	54	57	65	38	42	54	40	46	49		51.0	
		MIN	39	31	35	31	31	24	25	29	28	30	32	33	40	24	24	29	24	24	27	29	27	25	25	26	29	23	23	31	23	23		28.1	
WILLIAMSPORT	06	MAX	48	50	50	47	49	48	46	42	54	63	67	67	48	46	45	56																	51.7
		MIN	39	35	35	35	38	25	24	33	32		33	34	38	36	29	29	31																30.9
ALLEGHENY PLATEAU 08																																			
OAKLAND 1 SE	07	MAX	38	39	39	36	39	36	41	36	39	59	60	70	66	44	37	47	51	49	48	50	49	57	60	52	25	37	47	36	35		45.6		
		MIN	30	33	32	32	30	21	27	27	22	29	29	32	28	20	22	20	21	25	31	27	24	21	23	23	22	23	32	28	26		26.2		
SAVAGE RIVER DAM	08	MAX					42		40		41	50	62		67	39	37	42	49	46	46	46	50	52	52	55	33	40		39	38	41		45.8	
		MIN					34		24		31	32	33		33	31	25	25	25	25	26	30	28	28	31	29	28	28		32	25	25		28.5	
SINES DEEP CREEK	07	MAX		39	37	36	37	36	40	36	38	46	55	57	64	35	36	45	47	47	47	49	49	53	55	51	27	36	45	34	34	39		43.1	
		MIN		30	30	32	29	23	22	21	21	26	29	29	29	27	26	24	22	22	25	26	27	24	24	25	24	24	26	29	21	20		25.4	
DELAWARE NORTHERN 01																																			
BEAR 2 SW	24	MAX	51	52	48	46	46	45	41	51	56	59	67	71	64	49	49	50	55	52	56	53	56	57	58	50	40	50	40	43	48	51		51.8	
		MIN	41	43	43	39	28	25	36	37	34	31	34	38	35	29	29	30	27	32	38	36	29	27	29	33	24	23	33	25	22	24		31.8	
WILMINGTON NEW CASTLE CO AP	24	MAX	52	52	49	47	47	46	41	52	56	59	65	67	58	50	49	51	55	53	55	53	57	57	57	50	41	50	41	43	48	51		51.7	
		MIN	42	43	43	36	30	26	35	36	34	32	37	40	35	31	30	33	29	32	38	35	32	30	30	33	27	26	34	27	28	25		33.0	

MARYLAND AND DELAWARE
201211

DAILY TEMPERATURES (°F)

STATION	OB. TIME	MAX/MIN	DAY OF MONTH																															AVERAGE
			01	02	03	04	05	06	07	08	09	10	11	12	13	14	15	16	17	18	19	20	21	22	23	24	25	26	27	28	29	30	31	
WILMINGTON PORTER RES	24	MAX	49	49	47	44	43	41	39	49	53	57	64	67	67	45	46	47	52	50	51	50	53	53	54	47	47	46	40	39	44	48	49.4	
		MIN	39	41	40	36	34	30	33	35	36	37	42	45	38	34	35	35	36	38	38	39	38	36	36	34	29	28	34	31	29	30		
SOUTHERN 02 DOVER	16	MAX	52	53	50	47	47	49	40	51	55	60	69	72	63	50	50	52	52	50	51	54	55	61	49	40	51	46	44	50	53	52.2		
		MIN	36	40	43	37	34	29	34	34	36	32	44	44	42	34	38	37	29	36	39	39	33	30	33	34	31	25	37	28	24		26	34.6

SNOWFALL AND SNOW ON GROUND (INCHES)

STATION		DAY OF MONTH																															
		01	02	03	04	05	06	07	08	09	10	11	12	13	14	15	16	17	18	19	20	21	22	23	24	25	26	27	28	29	30	31	
MARYLAND SOUTHERN EASTERN SHORE 01																																	
ASSATEAGUE	SNOWFALL																																
PRINCESS ANNE	SNOWFALL																																
SALISBURY 2N	SNOWFALL																																
SALISBURY FAA AP	SNOWFALL																																
SNOW HILL 4 N	SNOWFALL																																
UPPER SOUTHERN 04																																	
BALTIMORE WASH INTL AP	SNOWFALL																																
	SN ON GND																																
BELTSVILLE	SNOWFALL																																
	SN ON GND																																
DALECARLIA RSVR	SNOWFALL																																
	SN ON GND																																
	WTR EQUIV																																
LAUREL 3 W	SNOWFALL																																
MARYLAND SCIENCE CENTER	SNOWFALL																																
NATL ARBORETUM DC	SNOWFALL	-	-	-	-	-	-	-	-	-	-	-	-	-	-	-	-	-	-	-	-	-	-	-	-	-	-	-	-	-	-	-	
	SN ON GND	-	-	-	-	-	-	-	-	-	-	-	-	-	-	-	-	-	-	-	-	-	-	-	-	-	-	-	-	-	-	-	
	WTR EQUIV	-	-	-	-	-	-	-	-	-	-	-	-	-	-	-	-	-	-	-	-	-	-	-	-	-	-	-	-	-	-	-	
OXON HILL	SNOWFALL																																
	SN ON GND																																
UPPER MARLBORO 3 NNW	SNOWFALL																																
NORTHERN CENTRAL 06																																	
DAMASCUS 3 SSW	SNOWFALL	-	-	-	-	-	-	T	T	-	-	-	-	T	-	-	-	-	-	-	-	-	-	-	T	-	-	T	-	-	-	-	
	SN ON GND	-	-	-	-	-	-	-	-	-	-	-	-	-	-	-	-	-	-	-	-	-	-	-	-	-	-	-	-	-	-	-	
EMMITSBURG 2 SE	SNOWFALL																																
	SN ON GND																																
	WTR EQUIV																																
FREDERICK 2 NNE	SNOWFALL																																
	SN ON GND																																
MILLERS 4 NE	SNOWFALL																																
	SN ON GND																																
	WTR EQUIV																																
SMITHSBURG 2NW	SNOWFALL																																
WESTMINSTER	SNOWFALL	-	-	-	-	-	-	-	-	-	-	-	-	-	-	-	-	-	-	-	-	-	-	-	-	-	-	-	-	-	-	-	
	SN ON GND	-	-	-	-	-	-	-	-	-	-	-	-	-	-	-	-	-	-	-	-	-	-	-	-	-	-	-	-	-	-	-	
APPALACHIAN MOUNTAIN 07																																	
FROSTBURG 2	SNOWFALL		0.1																														
	SN ON GND	3	1	T																													

Snowfall: Includes snow and ice. Values for NWS stations (J index note) are Mid-Mid (LST).

Snow on ground: Includes snow, sleet, ice, and hail. Values for NWS stations (J index note) are observed at 12 UTC (GMT).

Water Equivalent: Given for NWS stations (J index note) only, when snow depth is 2 inches or more, and is measured at 18 UTC (GMT)

SNOWFALL AND SNOW ON GROUND (INCHES)

STATION		DAY OF MONTH																															
		01	02	03	04	05	06	07	08	09	10	11	12	13	14	15	16	17	18	19	20	21	22	23	24	25	26	27	28	29	30	31	
SHARPSBURG 5 S	SNOWFALL	-	-	-	-	-	-	-	-	-	-	-	-	-	-	-	-	-	-	-	-	-	-	-	-	-	-	-	-	-	T	-	-
	SN ON GND	-	-	-	-	-	-	-	-	-	-	-	-	-	-	-	-	-	-	-	-	-	-	-	-	-	-	-	-	-	-	-	
WILLIAMSPORT	SNOWFALL	-	-	-	-	-	-	-	-	-	-	-	-	-	-	-	-	-	-	-	-	-	-	-	-	-	-	-	-	-	-	-	
	SN ON GND	-	-	-	-	-	-	-	-	-	-	-	-	-	-	-	-	-	-	-	-	-	-	-	-	-	-	-	-	-	-	-	
	WTR EQUIV	-	-	-	-	-	-	-	-	-	-	-	-	-	-	-	-	-	-	-	-	-	-	-	-	-	-	-	-	-	-	-	
ALLEGHENY PLATEAU 08																																	
OAKLAND 1 SE	SNOWFALL																									1.5		0.5	0.5		-		
	SN ON GND	19	15	11	10	7	5	1	1																								
SAVAGE RIVER DAM	SNOWFALL																																
SINES DEEP CREEK	SNOWFALL	-	18.5	-	-	-	-	-	-	-	-	-	-	-	-	-	-	-	-	-	-	-	-	-	T	0.5	-	1.0	0.1	-	-		
	SN ON GND	-	18	-	-	-	-	-	-	-	-	-	-	-	-	-	-	-	-	-	-	-	-	-	T	-	-	1	-	-	-		
DELAWARE																																	
NORTHERN 01																																	
BEAR 2 SW	SNOWFALL								T	T																							
	SN ON GND																																
WILMINGTON NEW CASTLE CO AP	SNOWFALL								T	T																							
	SN ON GND																																
WILMINGTON PORTER RES	SNOWFALL																																
SOUTHERN 02																																	
DOVER	SNOWFALL	-	-	-	-	-	-	T	-	-	-	-	-	-	-	-	-	-	-	-	-	-	-	-	-	-	-	-	-	-	-	-	
	SN ON GND	-	-	-	-	-	-	-	-	-	-	-	-	-	-	-	-	-	-	-	-	-	-	-	-	-	-	-	-	-	-	-	-

Snowfall: Includes snow and ice. Values for NWS stations (J index note) are Mid-Mid (LST).

Snow on ground: Includes snow, sleet, ice, and hail. Values for NWS stations (J index note) are observed at 12 UTC (GMT).

Water Equivalent: Given for NWS stations (J index note) only, when snow depth is 2 inches or more, and is measured at 18 UTC (GMT)

PAN EVAPORATION AND WIND

STATION		DAY OF MONTH																															TOTAL OR AVERAGE		
		01	02	03	04	05	06	07	08	09	10	11	12	13	14	15	16	17	18	19	20	21	22	23	24	25	26	27	28	29	30	31			
MARYLAND UPPER SOUTHERN 04 BELTSVILLE	WIND	53	-	-	-	-	-	-	-	-	-	-	-	-	-	-	-	-	-	-	-	-	-	-	-	-	-	-	-	-	-	-	-	-	M
	EVAP	0.07	-	-	-	-	-	-	-	-	-	-	-	-	-	-	-	-	-	-	-	-	-	-	-	-	-	-	-	-	-	-	-	-	M
	MAX	-	-	-	-	-	-	-	-	-	-	-	-	-	-	-	-	-	-	-	-	-	-	-	-	-	-	-	-	-	-	-	-	-	55.0
	MIN	38	-	-	-	-	-	-	-	-	-	-	-	-	-	-	-	-	-	-	-	-	-	-	-	-	-	-	-	-	-	-	-	-	38.0
UPPER MARLBORO 3 NNW	WIND	-	-	-	-	-	-	-	-	-	-	-	-	-	-	-	-	-	-	-	-	-	-	-	-	-	-	-	-	-	-	-	-	M	
	EVAP	-	-	-	-	-	-	-	-	-	-	-	-	-	-	-	-	-	-	-	-	-	-	-	-	-	-	-	-	-	-	-	-	M	
	MAX	-	-	-	-	-	-	-	-	-	-	-	-	-	-	-	-	-	-	-	-	-	-	-	-	-	-	-	-	-	-	-	-	-	M
	MIN	-	-	-	-	-	-	-	-	-	-	-	-	-	-	-	-	-	-	-	-	-	-	-	-	-	-	-	-	-	-	-	-	-	M
ALLEGHENY PLATEAU 08 SAVAGE RIVER DAM	WIND	-	-	-	-	-	-	-	-	-	-	-	-	-	-	-	-	-	-	-	-	-	-	-	-	-	-	-	-	-	-	-	-	M	
	EVAP	-	-	-	-	-	-	-	-	-	-	-	-	-	-	-	-	-	-	-	-	-	-	-	-	-	-	-	-	-	-	-	-	M	
	MAX	-	-	-	-	-	-	-	-	-	-	-	-	-	-	-	-	-	-	-	-	-	-	-	-	-	-	-	-	-	-	-	-	-	-
	MIN	-	-	-	-	-	-	-	-	-	-	-	-	-	-	-	-	-	-	-	-	-	-	-	-	-	-	-	-	-	-	-	-	-	M

Evaporation: Is measured in hundreths of inches.

Wind: Is measured in miles.

Max and Min: The maximum and minimum temperatures (Fahrenheit) of the water in the evaporation pan.

STATION INDEX

STATION	INDEX NO.	DIVISION	COUNTY	LATITUDE	LONGITUDE	ELEVATION (IN FEET)	OBSERVATION TIME AND TABLES			
							LOCAL STD TIME			
							TEMP	PRECIP	EVAP	SPECIAL SEE (NOTES)
MARYLAND										
ABERDEEN PHILLIPS FLD	0015	06	HARFORD	39 28	76 10W	57	07	07		CH
ASSATEAGUE	0335	01	WORCESTER	38 4	75 13W	10	VAR	VAR		H
BALTIMORE WASH INTL AP R	0465	04	ANNE ARUNDEL	39 10	76 41W	156	24	24		HJ
BELTSVILLE	0700	04	PRINCE GEORGE'S	39 2	76 56W	145	08	08	08	CH
BRIGHTON DAM	1125	06	MONTGOMERY	39 11	77 0W	330	08	08		H
CONOWINGO DAM	2060	06	HARFORD	39 39	76 11W	40	07	07		H
CUMBERLAND 2	2282	07	ALLEGANY	39 39	78 45W	730	18	18		H
CYLBURN	2308	06	BALTIMORE	39 21	76 39W	235	08	08		H
DALECARLIA RSVR	2325	04	DISTRICT OF COLUMBIA	38 56	77 7W	150	08	08		H
DAMASCUS 3 SSW	2336	06	MONTGOMERY	39 16	77 14W	700	22	22		H
EMMITSBURG 2 SE	2906	06	FREDERICK	39 41	77 17W	403	07	07		H
FREDERICK 2 NNE	3353	06	FREDERICK	39 26	77 24W	280	07	07		H
FROSTBURG 2	3415	07	ALLEGANY	39 40	78 56W	2170	07	07		H
LAUREL 3 W	5111	04	PRINCE GEORGE'S	39 5	76 54W	400	24	24		H
MARYLAND SCIENCE CENTER R	5718	04	BALTIMORE (CITY)	39 17	76 37W	20	24	24		H
MECHANICSVILLE 5 NE	5865	03	ST. MARY'S	38 28	76 42W	100	07	07		H
MILLERS 4 NE	5934	06	CARROLL	39 43	76 48W	860	18	18		CH
NATL ARBORETUM DC	6350	04	DISTRICT OF COLUMBIA	38 55	76 58W	50	07	07		H
OAKLAND 1 SE	6620	08	GARRETT	39 25	79 24W	2420	07	07		H
OXON HILL	6800	04	PRINCE GEORGE'S	38 47	76 60W	120	08	08		H
PRINCESS ANNE	7330	01	SOMERSET	38 13	75 41W	20	17	17		H
ROYAL OAK 2 SSW	7806	02	TALBOT	38 43	76 11W	10	17	17		H
SALISBURY 2N	8004	01	WICOMICO	38 24	75 36W	20	17	17		H
SALISBURY FAA AP	8005	01	WICOMICO	38 20	75 31W	48	24	24		H
SAVAGE RIVER DAM	8065	08	GARRETT	39 31	79 8W	1495	08	08	08	CH
SHARPSBURG 5 S	8207	07	WASHINGTON	39 24	77 43W	500	07	07		H
SINES DEEP CREEK	8315	08	GARRETT	39 31	79 25W	2040	07	07		H
SMITHSBURG 2NW	8371	06	WASHINGTON	39 40	77 35W	670	08	08		H
SNOW HILL 4 N	8380	01	WORCESTER	38 14	75 23W	30	17	17		H
SOLOMONS	8405	03	CALVERT	38 19	76 27W	12	08	08		H
UPPER MARLBORO 3 NNW	9070	04	PRINCE GEORGE'S	38 51	76 46W	130	08	08	08	H
WESTMINSTER	9440	06	CARROLL	39 34	76 59W	750	07	07		H
WILLIAMSPORT	9570	07	WASHINGTON	39 37	77 51W	360	06	06		H
DELAWARE										
BEAR 2 SW	1200	01	NEW CASTLE	39 36	75 44W	80	24	24		H
DOVER	2730	02	KENT	39 15	75 31W	30	16	16		H
WILMINGTON NEW CASTLE CO AP R	9595	01	NEW CASTLE	39 40	75 36W	79	24	24		HJ
WILMINGTON PORTER RES	9605	01	NEW CASTLE	39 46	75 32W	270	24	24		H

REFERENCE NOTES

STATION NAMES: Name of the city, town or locality. Figures and letters following the station names indicate the distance in miles and direction from the post office or town community center.

DIVISIONS: Areas within a state of similar climatological characteristics. Division averages are calculated using data from stations that record temperature and/or precipitation. Station Precipitation totals flagged with an 'F' or 'M' are excluded from the Divisional Average calculations of precipitation. Stations with monthly Temperature averages flagged with an 'F' or 'M' are included in the Divisional Average if there are no more than 9 flagged or missing daily values in the month, else they are excluded from the divisional average for temperature.

NORMALS: The average value of the meteorological element over a time period. Effective 1 January 2012, the averaging period is 1981 to 2010. The normals for National Weather Service localities have been adjusted so as to be representative for the current observation site.

MONTHLY DEGREE DAY TOTALS: One heating (cooling) degree day is accumulated for each whole degree that the daily mean temperature is below (above) 65 degrees Fahrenheit.

PRECIPITATION: Values shown in hundredths of inches are water equivalent totals, i.e., total of liquid and melted frozen precipitation. In the "Monthly Summarized Data" table the total snow and sleet values shown in tenths of inches are unmelted amounts. The max depth on ground values of snow and sleet shown in whole inches are cumulative unmelted amounts. The number of days with .10, .50, 1.00 or more refers to water equivalents.

PRECIPITATION QUALITY CONTROL: The NCDC quality control process may flag precipitation data that are spatially inconsistent, exceed climatological limits, or are inconsistent with prevailing weather patterns.

TEMPERATURE: Original temperature values are given in the "Daily Temperature" table. Summary temperature information (averages, departures, extremes, monthly degree day totals) is based on the values labeled MAX/MIN.

WIND: (As shown in the "Evaporation and Wind" table) the total wind movement in miles over the evaporation pan as determined by an anemometer recorder located 6-8 inches above the pan.

SYMBOLS AND LETTERS USED IN THE STATION INDEX TABLE

C Station is equipped with recording rain gage (R) but values in this bulletin are from a non-recording rain gage unless indicated by an R.

G Observations appear in the "Soil Temperatures" table.

H Observations appear in the "Snowfall and Snow on the Ground" table.

J Station also published as a Local Climatological Data publication.

VAR Observation time varies.

SR Observation time near sunrise.

SS Observation time near sunset.

SYMBOLS AND LETTERS USED IN THE DATA TABLES

(DAILY DATA ARE FOR THE 24 HOURS IMMEDIATELY PRECEDING OBSERVATION TIME.)

BLANK Entries in the "Monthly Summarized Data" table indicate no record.

BLANK Entries in the "Daily Precipitation" and "Snowfall and Snow on the Ground" tables indicate zero.

BLANK Entries in the "Daily Temperature" table indicate a missing record

- No record. Data not recorded or not received in time for publication.

+ Precipitation or temperature extremes occurred on one or more previous dates during the month.

* Rain gage not read. Precipitation is included in the amount following the asterisks.

Time distribution may not be known. A * preceding the monthly total indicates precipitation amount is being carried forward to next month's total, and may include amounts from the previous month(s).

a As a subscript, indicates accumulated total.

A Amount of precipitation is the total of observer's entries for the current month. It may include precipitation that occurred during the previous month. Refer to earlier bulletin to determine date of last reading. (Hawaii stations)

B Divisional Departure from normals are computed using 1971-2000 normals.

E Normalized HDD/CDD Calculation. E is appended to the HDD/CDD Calculation when 1-9 individual daily TMAX and/or TMIN values are missing and a Normalized HDD/CDD Calculation is provided. M appears alone if 10 or more daily values are missing.

F Monthly calculation flagged value. F is appended to average and/or total values computed which exclude one or more daily data values that have been flagged by the GHCN-Daily Dataset

M Insufficient or partial data. M is appended to average and/or total values computed with 1-9 daily values missing. M appears alone if 10 or more daily values are missing, (8 or more for wind and evaporation).

N Indicates snow fall or Snowdepth totals are computed with one or more missing days.

R Amounts from recording rain gage.

T Trace. An amount too small to measure.

SEASONAL TABLES: Monthly and seasonal snowfall and heating degree days for the 12 months ending with the June data are published in the July issue of this bulletin. Cooling degree days for the calendar year are published in the "Climatological Data Annual Summary."

Information concerning the history of changes in locations, exposure, etc. of substations is kept on file at the National Climatic Data Center. Historical information of regular National Weather Service Offices may be obtained from the "Local Climatological Data" annual publication. The contents of this publication may be reprinted or otherwise used freely, with proper credit to the National Climatic Data Center. The data are also available digitally.

Effective with the January 2011 Data-Month, COOP Observer Names are no longer included in the Monthly and Annual Climatological Data Publications. This information is not published to ensure the privacy of personal information pursuant to Section 208 of the E-Government Act of 2002 (44 USC 3601).

As of the 2011 Data-Year, Station and Climate Division Maps are no longer being included in the CD Publications. NCDC's Product Development Branch provides updated Station Maps for various data networks via the Historical Observing Metadata Repository: <http://www.ncdc.noaa.gov/homr>.

The GHCN-Daily Quality Control Flags shown below are displayed as superscripts with the data. For more Information on Global Historical Climatology Network - Daily and flags, see: <http://www.ncdc.noaa.gov/oa/climate/ghcn-daily/> and Comprehensive Automated Quality Assurance of Daily Surface Observations. Durre, Imke, Matthew J. Menne, Byron E. Gleason, Tamara G. Houston, Russell S. Vose, 2010: J. Appl. Meteor. Climatol., 49, 1615-1633. doi: 10.1175/2010JAMC2375.1

Blank = Passed All checks

D = failed duplicate check

G = failed gap check

I = failed internal consistency check

K = failed streak/frequent-value check

L = failed check on length of multiday period

M = failed megaconsistency check

N = failed naught check

O = failed climatological outlier check

R = failed lagged range check

S = failed spatial consistency check

T = failed temporal consistency check

W = temperature too warm for snow

X = failed bounds check

Z = flagged as a result of an official Datzilla investigation

NOAA\National Climatic Data Center
Attn: User Engagement & Services Branch
151 Patton Avenue
Asheville, NC 28801-5001

Customer Services Number: (828) 271-4800, option 2
TDD : (828) 271-4010
Fax number: (828) 271-4876

NCDC now offers free online access to the *Climatological Data* publication.
Go to : www.ncdc.noaa.gov and choose Most Popular.