



CLIMATOLOGICAL DATA MARYLAND AND DELAWARE



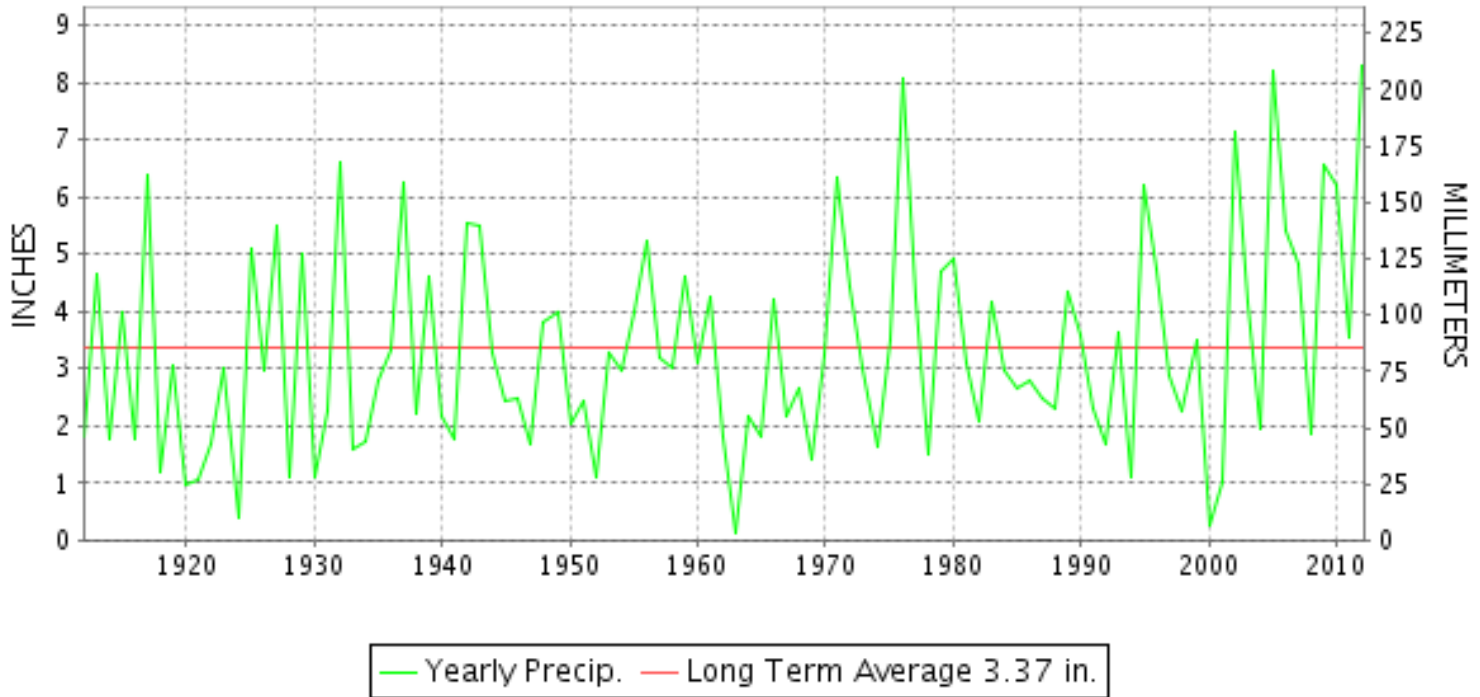
OCTOBER 2012

VOLUME 116 NUMBER 10

ISSN 0145-0549

GHCND Ver: 3.01-upd-2013022706

OCTOBER PRECIPITATION BY YEAR



TEMPERATURE AND PRECIPITATION EXTREMES

MARYLAND

HIGHEST TEMPERATURE	88	OCTOBER 03	SNOW HILL 4 N
LOWEST TEMPERATURE	26	OCTOBER 12	OAKLAND 1 SE
GREATEST TOTAL PRECIPITATION	12.09		MILLERS 4 NE
LEAST TOTAL PRECIPITATION	2.60		BRIGHTON DAM
GREATEST 1 DAY PRECIPITATION	6.50	OCTOBER 29	SNOW HILL 4 N
GREATEST TOTAL SNOWFALL	24.0		OAKLAND 1 SE
GREATEST DEPTH OF SNOW OR ICE	24		OAKLAND 1 SE

"I certify that this is an official publication of the National Oceanic and Atmospheric Administration (NOAA) It is compiled using information from weather observing sites supervised by NOAA/National Weather Service and received at the National Climatic Data Center(NCDC), Asheville, North Carolina 28801."

Director
National Climatic Data Center

noaa

National
Oceanic and
Atmospheric Administration

National
Environmental Satellite, Data
and Information Service

National
Climatic Data Center
Asheville, North Carolina

DELAWARE

HIGHEST TEMPERATURE	84	OCTOBER 03	DOVER
LOWEST TEMPERATURE	30	OCTOBER 13	BEAR 2 SW
GREATEST TOTAL PRECIPITATION	8.36		BEAR 2 SW
LEAST TOTAL PRECIPITATION	0.89		DOVER
GREATEST 1 DAY PRECIPITATION	5.27	OCTOBER 29	BEAR 2 SW

MONTHLY STATION AND DIVISION SUMMARY

STATION	TEMPERATURE (°F)														PRECIPITATION (IN)																								
	AVERAGE MAXIMUM	AVERAGE MINIMUM	AVERAGE	DEPARTURE FROM NORMAL	HIGHEST	DATE	LOWEST	DATE	HEATING DEG. DAYS	COOLING DEG. DAYS	NO. OF DAYS				TOTAL	DEPARTURE FROM NORMAL	GREATEST 24 HOURS	DATE	ICE PELLETS, SNOW			NO. OF DAYS																	
											MAX		MIN						TOTAL	MAX DEPTH ON GROUND	DATE	.10 OR MORE	.50 OR MORE	1.00 OR MORE															
											>=90	<=32	<=32	<=0																									
															TOTAL	TOTAL	TOTAL																						
MARYLAND SOUTHERN EASTERN SHORE 01																																							
ASSATEAGUE	M	M	M												M											0.0													
PRINCESS ANNE	M	M	M		86	03	42	22							M										0.0														
SALISBURY 2N	M	M	M												M										0.0														
SALISBURY FAA AP	71.2	51.5	61.4	4.2	87	03	35	13	175	70	0	0	0	0	9.20	5.71	5.80	29						0.0			7	4	2										
SNOW HILL 4 N	72.2	49.4	60.8	1.7	88	03	32	13	183	61	0	0	1	0	10.67	7.14	6.50	29						0.0			10	5	2										
--DIVISIONAL DATA----->			61.1	2.8B											9.94	6.57B																							
CENTRAL EASTERN SHORE 02																																							
ROYAL OAK 2 SSW	68.8	50.9	59.9	0.3	83	03	33	13	199	48	0	0	0	0	10.39	6.67	5.43	29						0.0			8	4	2										
--DIVISIONAL DATA----->			59.9	1.7B											10.39	7.15B																							
LOWER SOUTHERN 03																																							
MECHANICSVILLE 5 NE	65.7	46.9	56.3	0.7	80	04	35	14+	279	19	0	0	0	0	8.24	4.54	5.18	30			M	0.0				7	2	2											
SOLOMONS	68.3	53.9	61.1	-0.3	84	04	39	30	153	40	0	0	0	0	10.27	10.27	3.88	30						0.0			6	4	3										
--DIVISIONAL DATA----->			58.7	1.8B											9.26	5.78B																							
UPPER SOUTHERN 04																																							
BALTIMORE WASH INTL AP	67.3	49.3	58.3	2.2	81	24+	35	13	228	28	0	0	0	0	8.92	5.59	5.51	29						0.0	0		7	5	1										
BELTSVILLE	67.2	48.4	57.8	1.4	82	25+	32	13	240	24	0	0	1	0	8.33	4.66	5.15	30						0.0	0		9	4	1										
DALECARLIA RSVR	66.1	47.7	56.9	-0.9	82	04	34	14	260	17	0	0	0	0	9.66	5.82	4.61	30						0.0	0		10	5	4										
LAUREL 3 W	67.3	50.5	58.9	0.8	82	24	35	13	218	34	0	0	0	0	10.60	6.62	5.86	29						0.0			6	4	3										
MARYLAND SCIENCE CENTER	70.0	55.2	62.6	2.5	85	05+	44	31+	127	62	0	0	0	0	9.36	6.31	6.08	29						0.0			7	4	1										
NATL ARBORETUM DC	71.2M	49.3M	60.3M	1.8	85	06	34	14	169E	30E	0	0	0	0	M 6.76	2.97	3.04	31						0.0			6	2	2										
OXON HILL	68.3	49.2	58.8	0.9	82	04	36	14+	210	26	0	0	0	0	6.79	3.07	5.79	31			M	0.0	0			5	1	1											
UPPER MARLBORO 3 NNW	68.7	46.5	57.6	1.2	84	25	31	13	250	27	0	0	2	0	8.35	4.75	5.65	30						0.0			8	2	2										
--DIVISIONAL DATA----->			58.9	2.5B											8.86	5.38B																							
NORTHERN CENTRAL 06																																							
ABERDEEN PHILLIPS FLD	66.6	47.8	57.2	0.8	82	06	33	14+	256	23	0	0	0	0	A 9.53	5.77	0.88	20						0.0	0		6	1	0										
BRIGHTON DAM	66.3M	45.8M	56.1M		78	25+	30	13	280E	9E	0	0	1	0	FA 2.60		1.42	03						0.0	0		4	2	1										
CONOWINGO DAM	65.5	46.1	55.8	-1.1	79	06	32	14	285	9	0	0	1	0	8.20	4.08	4.70	30						0.0			7	5	1										
CYLBURN	64.1	47.7	55.9	0.4	78	04	32	13	286	14	0	0	1	0	MA 11.44	11.44	1.01	03						0.0			5	3	1										
DAMASCUS 3 SSW	63.7M	48.3M	56.0M	1.2	77	23+	31	13	283E	12E	0	0	1	0	M 10.36	6.64	5.45	29			M	T				7	3	3											
EMMITSBURG 2 SE	63.7	44.5	54.1	0.1	78	25	29	14+	334	6	0	0	2	0	7.59	4.21	3.10	30						0.0	0		9	3	2										
FREDERICK 2 NNE	65.9	46.0	56.0	0.2	81	04	32	13	289	14	0	0	1	0	8.06	4.53	4.34	30						0.0			8	3	2										
MILLERS 4 NE	65.1	47.9	56.5	2.3	79	24	28	13	270	14	0	0	1	0	12.09	8.34	4.05	29						0.0	0		7	5	3										
SMITHSBURG 2NW	62.4M	42.6M	52.5M	-1.2	76	25+	33	13	381E	3E	0	0	0	0	8.34	5.10	5.20	29						0.0	0		10	3	1										
WESTMINSTER	M	M	M												M									0.0															

MONTHLY STATION AND DIVISION SUMMARY

STATION	TEMPERATURE (°F)													PRECIPITATION (IN)											
	AVERAGE MAXIMUM	AVERAGE MINIMUM	AVERAGE	DEPARTURE FROM NORMAL	HIGHEST	DATE	LOWEST	DATE	HEATING DEG. DAYS	COOLING DEG. DAYS	NO. OF DAYS				TOTAL	DEPARTURE FROM NORMAL	GREATEST 24 HOURS	DATE	ICE PELLETS, SNOW			NO. OF DAYS			
											MAX		MIN						TOTAL	MAX DEPTH ON GROUND	DATE	.10 OR MORE	.50 OR MORE	1.00 OR MORE	
											>=90	<=32	<=32	<=0											
--DIVISIONAL DATA-----> APPALACHIAN MOUNTAIN 07			55.6	0.3B										8.97	5.46B										
CUMBERLAND 2	66.1M	42.8M	54.5M	-1.5	83	25	29	14+	327E	6E	0	0	2	0	M 4.42	1.85	2.67	30	0.0				8	1	1
FROSTBURG 2	60.1	41.1	50.6	0.6	75	26+	28	14+	439	0	0	0	4	0	4.89	1.85	2.61	30	M 5.7	6	31	10	1	1	
SHARPSBURG 5 S	65.2	43.3	54.3	-0.3	79	25+	28	14	331	7	0	0	2	0	FA 8.78	5.37	4.56	30	0.0			8	3	1	
WILLIAMSPORT	65.4M	44.0M	54.7M	0.1	80	25+	30	14+	321E	9E	0	0	2	0	M 3.67	0.61	1.20	30	M 0.0	0		7	3	1	
--DIVISIONAL DATA-----> ALLEGHENY PLATEAU 08			53.5	0.8B										4.89	1.81B										
OAKLAND 1 SE	61.1	37.6	49.4	0.0	78	26	26	12	478	0	0	0	11	0	3.98	0.83	1.00	30	24.0	24	31	9	3	1	
SAVAGE RIVER DAM	M	M	M		75	15	34	18						M					0.0						
SINES DEEP CREEK	59.9M	37.9M	48.9M		72	24+	27	14+	490E	0	0	0	8	0	M 2.75		0.57	29	0.0			10	1	0	
--DIVISIONAL DATA-----> DELAWARE NORTHERN 01			49.2	0.0B										3.98	0.95B										
BEAR 2 SW	66.3	47.8	57.1	2.2	81	05	30	13	259	23	0	0	1	0	8.36	4.85	5.27	29	0.0	0		6	4	1	
WILMINGTON NEW CASTLE CO AP	66.5	49.5	58.0	1.8	82	05	33	13	234	26	0	0	0	0	6.25	2.83	3.79	29	0.0	0		8	3	1	
WILMINGTON PORTER RES	63.8M	50.3M	57.1M	1.3	79	03	36	13	247E	11E	0	0	0	0	M 7.40	3.59	4.00	30	0.0			7	4	2	
--DIVISIONAL DATA-----> SOUTHERN 02			57.4	1.6B										7.31	3.95B										
DOVER	68.6	51.4	60.0	1.3	84	03	39	31+	197	49	0	0	0	0	FA 0.89	-2.53	0.22	19	0.0			4	0	0	
--DIVISIONAL DATA----->			60.0	2.7B										M	B										

DAILY PRECIPITATION (INCHES)

STATION	TOTAL	DAY OF MONTH																																			
		01	02	03	04	05	06	07	08	09	10	11	12	13	14	15	16	17	18	19	20	21	22	23	24	25	26	27	28	29	30	31					
MARYLAND																																					
SOUTHERN																																					
EASTERN SHORE 01																																					
ASSATEAGUE	M	-	-	-	-	-	-	-	-	-	-	-	-	-	-	-	-	-	-	-	-	-	-	-	-	-	-	-	-	-	-	-	-	-	-	-	-
PRINCESS ANNE	M	1.00	0.09						0.09																												
SALISBURY 2N	M	-	-	-	-	-	-	-	-	-	-	-	-	-	-	-	-	-	-	-	-	-	-	-	-	-	-	-	-	-	-	-	-	-	-	-	
SALISBURY FAA AP	9.20	T	0.21			0.03	0.47	0.06	0.02						0.65					0.21								0.02	1.23	5.80	0.50						
SNOW HILL 4 N	10.67		0.41				0.50	0.14	0.23	0.02	0.02					0.61		T	0.10										0.52	6.50	1.50	0.12					
CENTRAL																																					
EASTERN SHORE 02																																					
ROYAL OAK 2 SSW	10.39	0.03	0.20		0.02			0.11	0.07	0.02					0.10	0.07				0.55	0.05			T					0.62	5.43	2.99	0.13					
LOWER SOUTHERN 03																																					
MECHANICSVILLE 5 NE	8.24		0.01	0.31	T	0.03		0.02	0.14	0.05	T					0.25				T	0.25									1.65	5.18	0.35					
SOLOMONS	10.27		0.06	0.93	0.03			1.70	0.05	0.05	0.01					0.24	T			0.10	0.02							0.01	3.10	3.88	0.09						
UPPER SOUTHERN 04																																					
BALTIMORE WASH INTL AP	8.92	T	0.54	0.01	0.01			0.15	T	0.08	T				0.53				0.01	0.92									0.24	5.51	0.92						
BELTSVILLE	8.33	0.08	0.03	0.64	0.02			T	0.19	0.12	T					0.15				0.25	0.61			T					0.90	5.15	0.19						
DALECARLIA RSVR	9.66	0.03	0.15	1.00	0.02			0.05	0.20	0.01	0.15					0.13				0.66	1.05									1.35	4.61	0.25					
LAUREL 3 W	10.60		0.96	0.02				0.12								0.40				1.12									0.05	5.86	2.07						
MARYLAND SCIENCE CENTER	9.36		0.73	0.01	0.01			0.13		0.03						0.30			0.01	0.96									0.20	6.08	0.90						
NATL ARBORETUM DC	M 6.76	0.06	0.08	0.38	0.02			0.02	0.14	0.12						0.08				0.01	0.31	0.01							2.49	-	3.04						
OXON HILL	6.79	T	0.01	0.18	0.02	0.01		T	0.12	0.13						0.07				T	0.46				T										5.79		
UPPER MARLBORO 3 NNW	8.35		0.07	0.14	0.01	0.01			0.19	0.16	0.04					0.06				T	0.21	0.11								1.38	5.65	0.32					
NORTHERN CENTRAL 06																																					
ABERDEEN PHILLIPS FLD	A 9.53	0.17		0.42	0.02	0.02			0.20	0.11	0.02					0.35				0.09	0.88								*	*	*	7.25 _a					
BRIGHTON DAM	FA 2.60	0.08	0.23	1.42					0.11	0.07						0.69		0.00 ^L	0.85 ^L _a	1.38 ^L _a							0.11 ^L	5.90 ^L _a	1.29 ^L _a	0.40 ^L _a							
CONOWINGO DAM	8.20			0.83												0.56				0.23	0.43								0.94	4.70	0.51						
CYLBURN	MA 11.44		0.48	1.01	0.04			*	*	0.17 _a	0.06					-	0.62			0.48	0.77								-	*	*	7.81 _a					
DAMASCUS 3 SSW	M 10.36	0.01	2.22		0.02			0.08	0.01	0.02						0.40				0.17	0.35				T				0.10	5.45	1.53	-					
EMMITSBURG 2 SE	7.59	0.13	0.23	0.97	0.03			T	0.06	0.05						T	0.23				1.75				T	0.11				0.44	3.10	0.49					
FREDERICK 2 NNE	8.06	0.20	0.39	1.00	0.02				0.09	0.03						0.01	0.27				0.84	0.01								0.46	4.34	0.40					
MILLERS 4 NE	12.09	0.03	2.53	0.05	0.02			0.04	0.06	0.02	0.05					0.27					0.50	0.88							0.02	4.05	3.36	0.15					
SMITHSBURG 2NW	8.34	0.15	0.20	0.35	0.07				0.22							0.30					0.90								0.55	5.20	0.30						
WESTMINSTER	M	-	-	-	-	-	-	-	-	-	-	-	-	-	-	-	-	-	-	-	-	-	-	-	-	-	-	-	-	-	-	-	-	-	-	-	-
APPALACHIAN																																					
MOUNTAIN 07																																					
CUMBERLAND 2	M 4.42	0.13	0.16	0.13	-	T			0.04	0.18						0.04	0.04				0.37		0.02		0.01					0.38	2.67	0.25					
FROSTBURG 2	4.89	0.20	0.26	0.33	0.01				T	0.10	0.19		0.05			0.07	0.13				0.27		0.05		T			0.03	T	0.41	2.61	0.18					
SHARPSBURG 5 S	FA 8.78	0.30	0.39	0.58	0.02		0.00 ^L	0.00 ^L _a	0.10	0.06							0.23				*	1.14 _a							0.95	4.56	0.45						
WILLIAMSPORT	M 3.67	0.18	0.06	0.55	0.03	-			0.05	0.10						0.05					0.85				T	0.24			-	1.20	0.36						
ALLEGHENY PLATEAU 08																																					
OAKLAND 1 SE	3.98	0.24	0.33	0.13			0.03	0.08	0.05	0.26	0.02	0.04				0.07	0.26				0.50	0.05	0.04						0.07	0.66	1.00	0.15					

DAILY PRECIPITATION (INCHES)

STATION	TOTAL	DAY OF MONTH																														
		01	02	03	04	05	06	07	08	09	10	11	12	13	14	15	16	17	18	19	20	21	22	23	24	25	26	27	28	29	30	31
SAVAGE RIVER DAM	M 0.15	0.22	0.35			-	T	0.04	-	-	-	-	-	-	0.05	0.06				-	0.07				-				0.04	-	2.15	0.16
SINES DEEP CREEK	M 2.75	0.24	0.19	0.28				0.25	0.18						0.10	0.20				0.48	0.05	0.15	0.02			-		0.04	0.57	-	-	
DELAWARE NORTHERN 01																																
BEAR 2 SW	8.36	T	0.09	0.03	0.04	0.01		0.19	0.02	0.08					0.22					0.80								0.93	5.27	0.68		
WILMINGTON NEW CASTLE CO AP	6.25	T	0.14	0.01	0.02			0.18	T	0.10					0.15			0.01		0.63			T					0.80	3.79	0.42	T	
WILMINGTON PORTER RES	M 7.40	T	0.25		-	-	-	-	0.05	0.17	T				0.13					0.69			T					-	0.90	4.00	1.21	
SOUTHERN 02																																
DOVER	FA 0.89		0.02	0.03	0.02	T		0.19	0.02	0.01	0.01				0.03	0.21				0.22		0.01						0.00 ^L	0.00 ^L	8.77 ^L _a	0.12	

DAILY TEMPERATURES (°F)

STATION	OB. TIME	MAX/MIN	DAY OF MONTH																															AVERAGE		
			01	02	03	04	05	06	07	08	09	10	11	12	13	14	15	16	17	18	19	20	21	22	23	24	25	26	27	28	29	30	31			
MARYLAND SOUTHERN EASTERN SHORE 01 ASSATEAGUE	VA	MAX MIN																																		M M
PRINCESS ANNE	17	MAX MIN	73 60	84 67	86 65	85 69	84 61			57 45	60 43												70 42	79 46	80 59	78 61	76 55							M M		
SALISBURY 2N	17	MAX MIN																																	M M	
SALISBURY FAA AP	24	MAX MIN	73 50	85 67	87 75	85 65	84 59	83 59	59 50	56 45	62 53	70 55	64 41	71 41	65 35	77 44	80 61	66 42	69 40	74 44	79 62	73 51	69 45	70 43	79 46	81 58	73 59	77 56	70 60	62 57	58 47	47 44	58 42	71.2 51.5		
SNOW HILL 4 N	17	MAX MIN	72 47	80 63	88 72	86 71	82 57	82 53	81 50	55 42	61 50	69 51	70 52	70 38	68 32	77 34	79 62	70 45	70 37	71 41	79 63	75 50	73 41	71 39	80 43	80 54	75 58	70 58	70 58	65 38	60 50	50 43	59 38	72.2 49.4		
CENTRAL EASTERN SHORE 02 ROYAL OAK 2 SSW	17	MAX MIN	73 50	82 62	83 73	80 70	80 55	81 60	65 50	53 44	62 48	69 56	65 46	67 42	59 33	74 41	70 63	65 48	67 40	74 47	75 62	68 50	65 45	69 41	77 46	77 54	74 60	72 54	67 56	60 52	56 48	49 41	54 41	68.8 50.9		
LOWER SOUTHERN 03 MECHANICSVILLE 5 NE	07	MAX MIN	69 49	68 49	77 65	80 65	76 56	77 56	78 47	53 40	51 41	58 43	66 43	59 39	64 35	56 35	71 51	65 46	61 39	64 39	68 47	73 48	66 41	63 40	67 40	67 44	75 56	77 58	70 57	69 56	65 56	57 50	65 40	57 38	65.7 46.9	
SOLOMONS	08	MAX MIN	74 56	77 61	78 72	84 67	78 64	79 58	82 51	60 47	53 50	69 51	60 47	66 49	64 44	74 53	71 53	63 53	68 50	67 60	74 55	67 52	65 50	78 52	70 60	72 60	72 60	72 60	66 60	57 56	52 51	45 39	68.3 53.9			
UPPER SOUTHERN 04 BALTIMORE WASH INTL AP	24	MAX MIN	72 48	71 63	81 70	80 62	81 59	79 48	53 45	54 41	61 47	69 50	62 43	67 39	58 35	74 45	71 53	63 43	66 41	69 44	76 55	66 48	66 45	71 43	76 48	81 54	67 61	69 60	68 58	61 54	54 46	46 41	53 40	67.3 49.3		
BELTSVILLE	08	MAX MIN	72 47	71 54	70 63	82 69	79 55	80 56	78 44	52 38	60 44	68 49	61 42	65 38	59 32	73 39	70 55	62 46	68 39	71 43	74 52	65 46	64 48	70 46	79 52	82 57	69 60	69 57	68 58	58 50	51 41	42 40	67.2 48.4			
DALECARLIA RSVR	08	MAX MIN	72 48	72 48	69 60	82 66	82 55	77 59	79 43	63 41	50 42	52 46	59 44	69 41	60 35	58 34	72 53	72 47	60 42	67 43	72 51	69 47	63 40	62 41	70 48	78 54	81 61	68 58	65 58	58 49	57 41	42 39	66.1 47.7			
LAUREL 3 W	24	MAX MIN	72 50	69 50	80 68	80 68	81 62	73 50	54 46	54 40	64 44	68 54	61 43	65 45	59 35	74 49	70 57	64 49	67 45	71 49	72 61	66 48	65 47	71 48	78 54	82 59	71 59	70 60	71 55	61 44	52 38	50 38	52 38	67.3 50.5		
MARYLAND SCIENCE CENTER	24	MAX MIN	76 54	74 66	85 72	83 69	85 65	82 53	59 47	58 51	63 55	72 49	66 45	68 45	61 51	78 58	74 53	66 50	68 55	72 61	78 54	69 51	68 52	73 57	75 62	80 64	69 64	71 61	71 57	64 49	64 44	57 44	56 44	70.0 55.2		
NATL ARBORETUM DC	07	MAX MIN	79 50	79 50	71 65	83 70	80 56	85 48	82 48	53 42	54 45	62 48	70 47	63 41	66 36	65 34	75 53	71 49	65 42	70 43	73 49	70 49	66 44	67 42	73 44	70 51	66 58	73 61	80 56	83 70	70 60	60 50	60 50	71.2 49.3		
OXON HILL	08	MAX MIN	74 49	70 51	72 65	82 70	79 56	81 56	77 51	52 43	53 43	60 47	70 47	62 42	65 36	60 36	75 50	71 49	63 43	69 43	71 50	76 48	66 47	65 43	72 43	79 50	81 56	69 60	69 57	68 57	65 53	55 46	46 39	68.3 49.2		
UPPER MARLBORO 3 NNW	08	MAX MIN	73 48	71 48	73 65	82 69	80 55	82 56	80 44	53 40	54 42	61 47	70 42	63 37	65 31	61 32	76 45	70 48	66 38	70 39	73 50	77 45	69 43	66 39	72 39	80 47	84 55	70 60	69 55	69 55	58 50	50 40	42 38	68.7 46.5		
NORTHERN CENTRAL 06 ABERDEEN PHILLIPS FLD	07	MAX MIN	72 45	71 46	72 65	81 69	79 56	82 56	76 45	53 39	54 39	59 49	68 44	61 40	64 33	56 33	71 56	68 46	63 39	65 40	71 50	75 48	66 46	65 42	70 42	74 46	77 57	65 61	68 58	67 56	56 51	52 44	44 41	66.6 47.8		

DAILY TEMPERATURES (°F)

STATION	OB. TIME	MAX/MIN	DAY OF MONTH																															AVERAGE	
			01	02	03	04	05	06	07	08	09	10	11	12	13	14	15	16	17	18	19	20	21	22	23	24	25	26	27	28	29	30	31		
BRIGHTON DAM	08	MAX	70	69	67	77	77	78	75	52	50	58	65	58	62	56	71	68	60	65	68	71	71	64	68	77	78	66	67	67	57	57		66.3	
		MIN	44	49	61	66	53	56	43	39	43	45	40	37	30	35	51	45	37	37	50	44	41	36	36	36	52	59	55	56	49	48		45.8	
CONOWINGO DAM	07	MAX	70	69	67	78	75	79	76	74	52	56	66	66	57	56	69	64	65	64	68	71	64	64	66	68	72	63	66	66	53	53	53	65.5	
		MIN	45	46	59	66	54	54	45	47	42	42	42	39	33	32	44	48	41	41	40	50	45	41	41	45	53	54	53	52	52	44	38	46.1	
CYLBURN	08	MAX	68	68	70	78	75	77	73	52	50	57	64	58	61	53	72	68	58	62	66	71	62	61	66	71	77	64	66	67	58	51	44	64.1	
		MIN	47	60	60	68	58	58	49	45	40	46	43	41	32	33	52	45	40	41	51	48	46	44	45	50	54	59	53	51	44	39	38	47.7	
DAMASCUS 3 SSW	22	MAX	68	65	76	74	77	73	53	47	57	64	57	61	57	71	65	60	64	67	67	61	61	65	77	76	67	65	65	58	50	44		63.7	
		MIN	46	57	63	61	55	52	44	38	43	51	38	40	31	44	53	44	40	46	56	46	43	39	57	56	58	58	50	44	38		48.3		
EMMITSBURG 2 SE	07	MAX	67	68	63	76	75	77	69	51	48	59	66	58	60	56	71	65	60	64	68	66	62	63	67	72	78	64	66	66	57	50	42	63.7	
		MIN	42	42	58	63	53	54	44	36	41	45	40	36	29	29	48	49	36	34	41	47	41	38	38	47	51	57	57	55	49	40	39	44.5	
FREDERICK 2 NNE	07	MAX	70	70	64	81	78	79	72	54	50	61	69	61	60	58	73	66	62	68	68	68	63	64	71	78	80	66	68	68	58	51	43	65.9	
		MIN	44	44	58	63	57	57	45	38	39	46	45	39	32	33	48	49	38	38	41	48	43	40	40	48	52	55	58	57	50	41	40	46.0	
MILLERS 4 NE	18	MAX	70	65	77	76	77	74	57	48	58	65	62	61	57	70	68	61	66	67	73	67	63	68	75	79	73	66	66	61	51	51	46	65.1	
		MIN	45	57	63	65	55	56	44	37	43	51	41	39	28	44	58	47	36	47	56	46	42	42	50	55	55	57	55	51	47	38	36	47.9	
SMITHSBURG 2NW	08	MAX	65	67	66	73	75	76	67	50	58	55	59	56	49	56	70	65	58	65	66	66	59	60	68	70	76		65	64	47	50	51	62.4	
		MIN	39	40	57	62	50	50	42	34	34	38	36	37	33	36	54	47	34	34	51	41	38	35	35	48	52		57	47	38	38	42	42.6	
WESTMINSTER	07	MAX																																	M
		MIN																																	M
APPALACHIAN MOUNTAIN 07																																			
CUMBERLAND 2	18	MAX	64	68	64		80	81	64	54	47	62	66	65	59	63	78	68	62	72	70	70	60	63	77	79	83	81	72	66	57	46	42	66.1	
		MIN	44	44	57		50	52	42	37	37	41	40	36	29	29	43	49	36	36	42	50	37	35	35	52	50	49	60	55	45	38	35	42.8	
FROSTBURG 2	07	MAX	63	64	59	71	71	74	59	48	42	58	59	61	49	57	75	59	53	65	64	64	53	56	69	75	74	75	66	57	51	38	33	60.1	
		MIN	38	39	53	58	49	50	37	34	34	37	33	33	28	28	46	42	36	36	41	43	40	40	41	55	52	50	54	47	38	31	30	41.1	
SHARPSBURG 5 S	07	MAX	69	67	66	79	78	79	71	52	46	60	68	61	60	59	73	66	62	67	68	66	63	64	71	76	79	69	68	67	59	48	41	65.2	
		MIN	42	42	58	62	51	51	41	35	36	43	35	34	29	28	50	46	35	35	50	42	37	36	36	47	53	53	56	54	48	40	38	43.3	
WILLIAMSPORT	06	MAX	67	68	65	77		80	68	52	47	62	69	62	60	59	72	69	67	67	66	68	68	64	73	80	67	66	68		49	43	65.4		
		MIN	46	46	58	62		53	45	38	39	43	40	36	30	30	46	52	37	36	40	40	38	37	36	46	52	53	58	57		43	38	44.0	
ALLEGHENY PLATEAU 08																																			
OAKLAND 1 SE	07	MAX	63	65	72	73	70	72	55	49	42	58	55	50	59	65	74	57	50	69	67	65	49	54	69	74	73	78	73	60	49	47	38	61.1	
		MIN	36	37	57	53	46	46	35	32	33	33	32	26	31	30	44	43	30	30	44	42	40	30	31	31	41	41	44	44	37	37	29	37.6	
SAVAGE RIVER DAM	08	MAX	66	62	61	74	71		57	50						75	61	55	63		61	53	56	70		72	74	66	60		43	37	M		
		MIN	42	41	55	59	49		39	36						43	47	35	34		48	41	37	37		49	47	48	49		36	36	M		
SINES DEEP CREEK	07	MAX	53	64	69	71	67	70	53	50	43	55	55	55	48	62	72	57	52	66	65	62	49	53	66	72	70	71	60	47			59.9		
		MIN	35	36	55	56	46	46	34	32	33	36	29	28	27	27	41	43	31	30	38	42	36	38	30	44	42		44	45	38		37.9		
DELAWARE NORTHERN 01																																			
BEAR 2 SW	24	MAX	71	74	80	78	81	77	52	54	59	68	60	63	59	73	69	62	64	68	75	66	66	68	71	76	65	68	66	60	59	51	51	66.3	
		MIN	46	61	69	59	54	46	42	38	49	53	38	36	30	47	58	40	37	41	60	45	42	39	44	51	60	58	53	53	51	42	41	47.8	
WILMINGTON NEW CASTLE CO AP	24	MAX	72	71	81	79	82	78	53	54	59	68	61	64	57	74	68	62	63	70	74	67	67	69	69	76	66	68	67	60	61	49	52	66.5	
		MIN	47	64	68	62	57	49	44	39	50	49	43	38	33	50	57	41	39	45	60	49	44	44	46	53	60	59	57	54	49	42	42	49.5	

MARYLAND AND DELAWARE
201210

DAILY TEMPERATURES (°F)

STATION	OB. TIME	MAX/MIN	DAY OF MONTH																															AVERAGE
			01	02	03	04	05	06	07	08	09	10	11	12	13	14	15	16	17	18	19	20	21	22	23	24	25	26	27	28	29	30	31	
WILMINGTON PORTER RES	24	MAX MIN	69 49	68 61	79 66					52 41	56 47	65 51	65 46	60 43	55 36	71 48	66 58	59 49	61 43	69 48	71 60	63 50	63 47	64 47	67 50	72 56	62 57	65 58	64 56		58 51	59 50	55 40	63.8 50.3
SOUTHERN 02 DOVER	16	MAX MIN	73 50	77 63	84 73	80 70	82 59	83 55	55 47	55 41	60 49	69 56	67 44	67 43	64 39	74 46	72 58	66 49	65 39	69 46	76 62	72 53	66 44	69 48	78 47	80 56	75 60	72 56	67 58	58 54	54 46	46 42	53 39	68.6 51.4

SNOWFALL AND SNOW ON GROUND (INCHES)

STATION		DAY OF MONTH																																		
		01	02	03	04	05	06	07	08	09	10	11	12	13	14	15	16	17	18	19	20	21	22	23	24	25	26	27	28	29	30	31				
MARYLAND																																				
SOUTHERN																																				
EASTERN SHORE 01																																				
ASSATEAGUE	SNOWFALL																																			
PRINCESS ANNE	SNOWFALL																																			
SALISBURY 2N	SNOWFALL																																			
SALISBURY FAA AP	SNOWFALL																																			
SNOW HILL 4 N	SNOWFALL																																			
NORTHERN CENTRAL 06																																				
DAMASCUS 3 SSW	SNOWFALL	-	-	-	-	-	-	-	-	-	-	-	-	-	-	-	-	-	-	-	-	-	-	-	-	-	-	-	-	-	-	T	-			
EMMITSBURG 2 SE	SNOWFALL																																			
	SN ON GND																																			
	WTR EQUIV																																			
FREDERICK 2 NNE	SNOWFALL																																			
MILLERS 4 NE	SNOWFALL																																			
	SN ON GND																																			
	WTR EQUIV																																			
SMITHSBURG 2NW	SNOWFALL																																			
	SN ON GND																																			
	SNOWFALL																																			
WESTMINSTER																																				
APPALACHIAN																																				
MOUNTAIN 07																																				
FROSTBURG 2	SNOWFALL	-	-	-	-	-	-	-	-	T	-	-	-	-	-	-	-	-	-	-	-	-	-	-	-	-	-	-	-	-	-	-	-	3.6	2.1	
	SN ON GND	-	-	-	-	-	-	-	-	-	-	-	-	-	-	-	-	-	-	-	-	-	-	-	-	-	-	-	-	-	-	-	4	6		
SHARPSBURG 5 S	SNOWFALL																																			
WILLIAMSPORT	SNOWFALL	-		-	-	-	-	-	-		-	-	-	-	-	-	-	-	-	-	-	-	-	-	-	-	-	-	-	-	-	-	-	-	-	
	SN ON GND	-		-	-	-	-	-	-		-	-	-	-	-	-	-	-	-	-	-	-	-	-	-	-	-	-	-	-	-	-	-	-	-	
	WTR EQUIV	-		-	-	-	-	-	-		-	-	-	-	-	-	-	-	-	-	-	-	-	-	-	-	-	-	-	-	-	-	-	-	-	
ALLEGHENY PLATEAU 08																																				
OAKLAND 1 SE	SNOWFALL																																			
	SN ON GND																																		19.0	5.0
	SNOWFALL																																	19	24	
	SNOWFALL																																			
DELAWARE																																				
NORTHERN 01																																				
BEAR 2 SW	SNOWFALL																																			
	SN ON GND																																			
WILMINGTON NEW CASTLE CO AP	SNOWFALL																																			
	SN ON GND																																			
WILMINGTON PORTER RES	SNOWFALL																																			

Snowfall: Includes snow and ice. Values for NWS stations (J index note) are Mid-Mid (LST).

Snow on ground: Includes snow, sleet, ice, and hail. Values for NWS stations (J index note) are observed at 12 UTC (GMT).

Water Equivalent: Given for NWS stations (J index note) only, when snow depth is 2 inches or more, and is measured at 18 UTC (GMT)

PAN EVAPORATION AND WIND

STATION		DAY OF MONTH																														TOTAL OR AVERAGE			
		01	02	03	04	05	06	07	08	09	10	11	12	13	14	15	16	17	18	19	20	21	22	23	24	25	26	27	28	29	30		31		
MARYLAND UPPER SOUTHERN 04 BELTSVILLE	WIND	55	31	27	25	34	37	61	17	61	20	75	33	56	30	135	53	44	31	66	44	54	44	29	14	19	30	32	60	124	261	67	1669		
	EVAP	0.18	0.09	0.00	0.09	0.13	0.17	0.16	0.03	0.06	0.02	0.19	0.14	0.15	0.13	0.17	0.05	0.13	0.10	0.13	0.15	0.13	0.14	0.11	0.09	0.11	0.08	0.03	0.12	0.13	-	0.00	3.32E		
	MAX	73	73	70	82	80	81	73	53	53	61	73	68	57	64	71	70	66	69	70	78	67	68	70	76	80	64	70	71	56	51	44	67.9		
	MIN	49	49	60	67	57	56	47	40	40	49	42	41	37	37	42	47	41	41	45	49	43	41	42	48	55	60	54	52	48	40	38	47.0		
UPPER MARLBORO 3 NNW	WIND	-	-	-	-	-	-	-	-	-	-	-	-	-	-	-	-	-	-	-	-	-	-	-	-	-	-	-	-	-	-	-	-	M	
	EVAP	-	-	-	-	-	-	-	-	-	-	-	-	-	-	-	-	-	-	-	-	-	-	-	-	-	-	-	-	-	-	-	-	M	
	MAX	-	-	-	-	-	-	-	-	-	-	-	-	-	-	-	-	-	-	-	-	-	-	-	-	-	-	-	-	-	-	-	-	M	
	MIN	-	-	-	-	-	-	-	-	-	-	-	-	-	-	-	-	-	-	-	-	-	-	-	-	-	-	-	-	-	-	-	-	M	
ALLEGHENY PLATEAU 08 SAVAGE RIVER DAM	WIND	-	-	-	-	-	-	-	-	-	-	-	-	-	-	-	-	-	-	-	-	-	-	-	-	-	-	-	-	-	-	-	-	M	
	EVAP	-	-	-	-	-	-	-	-	-	-	-	-	-	-	-	-	-	-	-	-	-	-	-	-	-	-	-	-	-	-	-	-	M	
	MAX	-	-	-	-	-	-	-	-	-	-	-	-	-	-	-	-	-	-	-	-	-	-	-	-	-	-	-	-	-	-	-	-	-	M
	MIN	-	-	-	-	-	-	-	-	-	-	-	-	-	-	-	-	-	-	-	-	-	-	-	-	-	-	-	-	-	-	-	-	-	M

Evaporation: Is measured in hundreths of inches.

Wind: Is measured in miles.

Max and Min: The maximum and minimum temperatures (Fahrenheit) of the water in the evaporation pan.

STATION INDEX

STATION	INDEX NO.	DIVISION	COUNTY	LATITUDE	LONGITUDE	ELEVATION (IN FEET)	OBSERVATION TIME AND TABLES			
							LOCAL STD TIME			
							TEMP	PRECIP	EVAP	SPECIAL SEE (NOTES)
MARYLAND										
ABERDEEN PHILLIPS FLD	0015	06	HARFORD	39 28	76 10W	57	07	07		CH
ASSATEAGUE	0335	01	WORCESTER	38 4	75 13W	10	VAR	VAR		H
BALTIMORE WASH INTL AP R	0465	04	ANNE ARUNDEL	39 10	76 41W	156	24	24		HJ
BELTSVILLE	0700	04	PRINCE GEORGE'S	39 2	76 56W	145	08	08	08	CH
BRIGHTON DAM	1125	06	MONTGOMERY	39 11	77 0W	330	08	08		H
CONOWINGO DAM	2060	06	HARFORD	39 39	76 11W	40	07	07		H
CUMBERLAND 2	2282	07	ALLEGANY	39 39	78 45W	730	18	18		H
CYLBURN	2308	06	BALTIMORE	39 21	76 39W	235	08	08		H
DALECARLIA RSVR	2325	04	DISTRICT OF COLUMBIA	38 56	77 7W	150	08	08		H
DAMASCUS 3 SSW	2336	06	MONTGOMERY	39 16	77 14W	700	22	22		H
EMMITSBURG 2 SE	2906	06	FREDERICK	39 41	77 17W	403	07	07		H
FREDERICK 2 NNE	3353	06	FREDERICK	39 26	77 24W	280	07	07		H
FROSTBURG 2	3415	07	ALLEGANY	39 40	78 56W	2170	07	07		H
LAUREL 3 W	5111	04	PRINCE GEORGE'S	39 5	76 54W	400	24	24		H
MARYLAND SCIENCE CENTER R	5718	04	BALTIMORE (CITY)	39 17	76 37W	20	24	24		H
MECHANICSVILLE 5 NE	5865	03	ST. MARY'S	38 28	76 42W	100	07	07		H
MILLERS 4 NE	5934	06	CARROLL	39 43	76 48W	860	18	18		CH
NATL ARBORETUM DC	6350	04	DISTRICT OF COLUMBIA	38 55	76 58W	50	07	07		H
OAKLAND 1 SE	6620	08	GARRETT	39 25	79 24W	2420	07	07		H
OXON HILL	6800	04	PRINCE GEORGE'S	38 47	76 60W	120	08	08		H
PRINCESS ANNE	7330	01	SOMERSET	38 13	75 41W	20	17	17		H
ROYAL OAK 2 SSW	7806	02	TALBOT	38 43	76 11W	10	17	17		H
SALISBURY 2N	8004	01	WICOMICO	38 24	75 36W	20	17	17		H
SALISBURY FAA AP	8005	01	WICOMICO	38 20	75 31W	48	24	24		H
SAVAGE RIVER DAM	8065	08	GARRETT	39 31	79 8W	1495	08	08	08	CH
SHARPSBURG 5 S	8207	07	WASHINGTON	39 24	77 43W	500	07	07		H
SINES DEEP CREEK	8315	08	GARRETT	39 31	79 25W	2040	07	07		H
SMITHSBURG 2NW	8371	06	WASHINGTON	39 40	77 35W	670	08	08		H
SNOW HILL 4 N	8380	01	WORCESTER	38 14	75 23W	30	17	17		H
SOLOMONS	8405	03	CALVERT	38 19	76 27W	12	08	08		H
UPPER MARLBORO 3 NNW	9070	04	PRINCE GEORGE'S	38 51	76 46W	130	08	08	08	H
WESTMINSTER	9440	06	CARROLL	39 34	76 59W	750	07	07		H
WILLIAMSPORT	9570	07	WASHINGTON	39 37	77 51W	360	06	06		H
DELAWARE										
BEAR 2 SW	1200	01	NEW CASTLE	39 36	75 44W	80	24	24		H
DOVER	2730	02	KENT	39 15	75 31W	30	16	16		H
WILMINGTON NEW CASTLE CO AP R	9595	01	NEW CASTLE	39 40	75 36W	79	24	24		HJ
WILMINGTON PORTER RES	9605	01	NEW CASTLE	39 46	75 32W	270	24	24		H

REFERENCE NOTES

STATION NAMES: Name of the city, town or locality. Figures and letters following the station names indicate the distance in miles and direction from the post office or town community center.

DIVISIONS: Areas within a state of similar climatological characteristics. Division averages are calculated using data from stations that record temperature and/or precipitation. Station Precipitation totals flagged with an 'F' or 'M' are excluded from the Divisional Average calculations of precipitation. Stations with monthly Temperature averages flagged with an 'F' or 'M' are included in the Divisional Average if there are no more than 9 flagged or missing daily values in the month, else they are excluded from the divisional average for temperature.

NORMALS: The average value of the meteorological element over a time period. Effective 1 January 2012, the averaging period is 1981 to 2010. The normals for National Weather Service localities have been adjusted so as to be representative for the current observation site.

MONTHLY DEGREE DAY TOTALS: One heating (cooling) degree day is accumulated for each whole degree that the daily mean temperature is below (above) 65 degrees Fahrenheit.

PRECIPITATION: Values shown in hundredths of inches are water equivalent totals, i.e., total of liquid and melted frozen precipitation. In the "Monthly Summarized Data" table the total snow and sleet values shown in tenths of inches are unmelted amounts. The max depth on ground values of snow and sleet shown in whole inches are cumulative unmelted amounts. The number of days with .10, .50, 1.00 or more refers to water equivalents.

PRECIPITATION QUALITY CONTROL: The NCDC quality control process may flag precipitation data that are spatially inconsistent, exceed climatological limits, or are inconsistent with prevailing weather patterns.

TEMPERATURE: Original temperature values are given in the "Daily Temperature" table. Summary temperature information (averages, departures, extremes, monthly degree day totals) is based on the values labeled MAX/MIN.

WIND: (As shown in the "Evaporation and Wind" table) the total wind movement in miles over the evaporation pan as determined by an anemometer recorder located 6-8 inches above the pan.

SYMBOLS AND LETTERS USED IN THE STATION INDEX TABLE

C Station is equipped with recording rain gage (R) but values in this bulletin are from a non-recording rain gage unless indicated by an R.

G Observations appear in the "Soil Temperatures" table.

H Observations appear in the "Snowfall and Snow on the Ground" table.

J Station also published as a Local Climatological Data publication.

VAR Observation time varies.

SR Observation time near sunrise.

SS Observation time near sunset.

SYMBOLS AND LETTERS USED IN THE DATA TABLES

(DAILY DATA ARE FOR THE 24 HOURS IMMEDIATELY PRECEDING OBSERVATION TIME.)

BLANK Entries in the "Monthly Summarized Data" table indicate no record.

BLANK Entries in the "Daily Precipitation" and "Snowfall and Snow on the Ground" tables indicate zero.

BLANK Entries in the "Daily Temperature" table indicate a missing record

- No record. Data not recorded or not received in time for publication.

+ Precipitation or temperature extremes occurred on one or more previous dates during the month.

* Rain gage not read. Precipitation is included in the amount following the asterisks.

Time distribution may not be known. A * preceding the monthly total indicates precipitation amount is being carried forward to next month's total, and may include amounts from the previous month(s).

a As a subscript, indicates accumulated total.

A Amount of precipitation is the total of observer's entries for the current month. It may include precipitation that occurred during the previous month. Refer to earlier bulletin to determine date of last reading. (Hawaii stations)

B Divisional Departure from normals are computed using 1971-2000 normals.

E Normalized HDD/CDD Calculation. E is appended to the HDD/CDD Calculation when 1-9 individual daily TMAX and/or TMIN values are missing and a Normalized HDD/CDD Calculation is provided. M appears alone if 10 or more daily values are missing.

F Monthly calculation flagged value. F is appended to average and/or total values computed which exclude one or more daily data values that have been flagged by the GHCN-Daily Dataset

M Insufficient or partial data. M is appended to average and/or total values computed with 1-9 daily values missing. M appears alone if 10 or more daily values are missing, (8 or more for wind and evaporation).

N Indicates snow fall or Snowdepth totals are computed with one or more missing days.

R Amounts from recording rain gage.

T Trace. An amount too small to measure.

SEASONAL TABLES: Monthly and seasonal snowfall and heating degree days for the 12 months ending with the June data are published in the July issue of this bulletin. Cooling degree days for the calendar year are published in the "Climatological Data Annual Summary."

Information concerning the history of changes in locations, exposure, etc. of substations is kept on file at the National Climatic Data Center. Historical information of regular National Weather Service Offices may be obtained from the "Local Climatological Data" annual publication. The contents of this publication may be reprinted or otherwise used freely, with proper credit to the National Climatic Data Center. The data are also available digitally.

Effective with the January 2011 Data-Month, COOP Observer Names are no longer included in the Monthly and Annual Climatological Data Publications. This information is not published to ensure the privacy of personal information pursuant to Section 208 of the E-Government Act of 2002 (44 USC 3601).

As of the 2011 Data-Year, Station and Climate Division Maps are no longer being included in the CD Publications. NCDC's Product Development Branch provides updated Station Maps for various data networks via the Historical Observing Metadata Repository: <http://www.ncdc.noaa.gov/homr>.

The GHCN-Daily Quality Control Flags shown below are displayed as superscripts with the data. For more Information on Global Historical Climatology Network - Daily and flags, see: <http://www.ncdc.noaa.gov/oa/climate/ghcn-daily/> and

Comprehensive Automated Quality Assurance of Daily Surface Observations.

Durre, Imke, Matthew J. Menne, Byron E. Gleason, Tamara G. Houston,

Russell S. Vose, 2010: J. Appl. Meteor. Climatol., 49, 1615-1633.

doi: 10.1175/2010JAMC2375.1

Blank = Passed All checks

D = failed duplicate check

G = failed gap check

I = failed internal consistency check

K = failed streak/frequent-value check

L = failed check on length of multiday period

M = failed megaconsistency check

N = failed naught check

O = failed climatological outlier check

R = failed lagged range check

S = failed spatial consistency check

T = failed temporal consistency check

W = temperature too warm for snow

X = failed bounds check

Z = flagged as a result of an official Datzilla investigation

These and other publications are available from the National Climatic Data Center

Hourly Precipitation Data

This publication contains hourly precipitation amounts obtained from recording rain gages located at National Weather Service, Federal Aviation Administration, and cooperative observer stations. Published data are displayed in inches and tenths or inches and hundredths at local standard time. HPD includes maximum precipitation for nine (9) time periods from 15 minutes to 24 hours, for selected stations.

Climatological Data

Monthly editions contain station daily maximum and minimum temperatures and precipitation. Some Stations provide daily snowfall, snow depth, evaporation, and soil temperature data. Each edition also contains monthly summaries for heating and cooling degree days (65 degree F base). The July issue contains a recap of monthly heating degree days and snow data for the preceding July through June.

The Annual issue contains monthly and annual averages of temperature, precipitation, temperature extremes, freeze data, soil temperatures, evaporation, and a recap of monthly cooling degree days.

Storm Data

Monthly issues contain a chronological listing, by states, of occurrences of storms and unusual weather phenomena. Reports contain information on storm paths, deaths, injuries, and property damage. An "Outstanding storms of the month" section highlights severe weather events with photographs, illustrations, and narratives. The December issue includes annual tornado, lightning, flash flood, and tropical cyclone summaries.

Monthly Climatic Data for the World

This publication contains monthly means for temperature, pressure, precipitation, vapor pressure, and sunshine for approximately 2,000 surface data collection stations worldwide and monthly mean upper air temperatures, dew point depressions, and wind velocities for approximately 500 observing sites.

Local Climatological Data

LCD publications summarize temperature, relative humidity, precipitation, cloudiness, wind speed and direction observations for several hundred cities in the U.S. and its territories. Each monthly publication also contains 3 hourly weather observations for that month and a hourly summary of precipitation. Annual LCD publications contain a summary of the past calendar year as well as historical averages and extremes.

For Information Call:

(828) 271-4800 Option 2

(828) 271-4010 (TDD)

(828) 271-4876 (Fax)

NOAA\National Climatic Data Center
Attn: User Engagement & Services Branch
151 Patton Avenue
Asheville, NC 28801-5001

Customer Services Number: (828) 271-4800, option 2
TDD : (828) 271-4010
Fax number: (828) 271-4876

NCDC now offers free online access to the *Climatological Data* publication.
Go to : www.ncdc.noaa.gov and choose Most Popular.