



CLIMATOLOGICAL DATA

MARYLAND AND DELAWARE

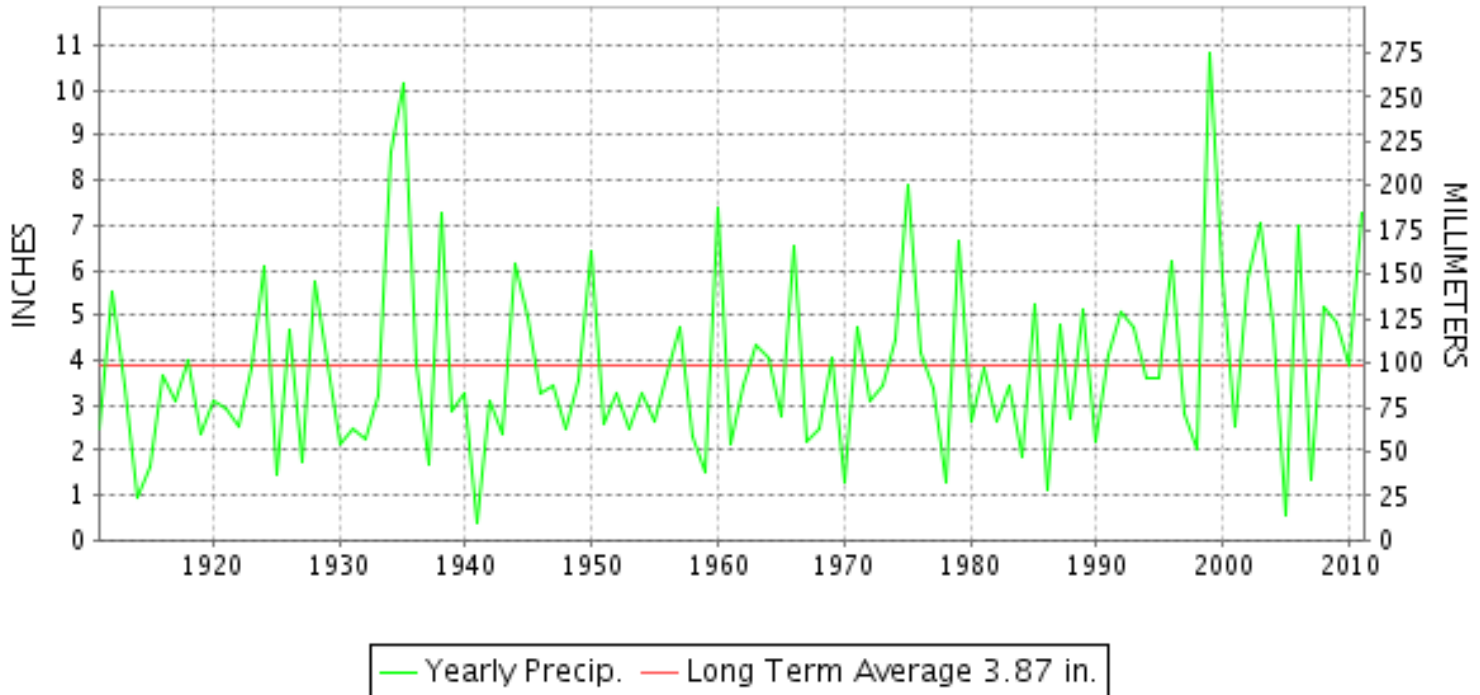
SEPTEMBER 2011

VOLUME 115 NUMBER 09

ISSN 0145-0549

GHCND Ver: 2.92-upd-2012041307

SEPTEMBER PRECIPITATION BY YEAR



TEMPERATURE AND PRECIPITATION EXTREMES

MARYLAND

HIGHEST TEMPERATURE	95	SEPTEMBER 04	CUMBERLAND 2
LOWEST TEMPERATURE	33	SEPTEMBER 17+	OAKLAND 1 SE
GREATEST TOTAL PRECIPITATION	16.46		EMMITSBURG 2 SE
LEAST TOTAL PRECIPITATION	3.12		SNOW HILL 4 N
GREATEST 1 DAY PRECIPITATION	7.46	SEPTEMBER 08	UPPER MARLBORO 3 NNW
GREATEST TOTAL SNOWFALL	T		BALTIMORE WASH INTL AP

"I certify that this is an official publication of the National Oceanic and Atmospheric Administration (NOAA) It is compiled using information from weather observing sites supervised by NOAA/National Weather Service and received at the National Climatic Data Center(NCDC), Asheville, North Carolina 28801."

Director
National Climatic Data Center

noaa

National
Oceanic and
Atmospheric Administration

National
Environmental Satellite, Data
and Information Service

National
Climatic Data Center
Asheville, North Carolina

DELAWARE

HIGHEST TEMPERATURE	87	SEPTEMBER 14+	2 STATIONS
LOWEST TEMPERATURE	43	SEPTEMBER 16	BEAR 2 SW
GREATEST TOTAL PRECIPITATION	6.41		BEAR 2 SW
LEAST TOTAL PRECIPITATION	3.84		DOVER
GREATEST 1 DAY PRECIPITATION	2.51	SEPTEMBER 06	WILMINGTON PORTER RES

MONTHLY STATION AND DIVISION SUMMARY

STATION	TEMPERATURE (°F)											PRECIPITATION (IN)												
	AVERAGE MAXIMUM	AVERAGE MINIMUM	AVERAGE	DEPARTURE FROM NORMAL	HIGHEST	DATE	LOWEST	DATE	HEATING DEG. DAYS	COOLING DEG. DAYS	NO. OF DAYS				TOTAL	DEPARTURE FROM NORMAL	GREATEST 24 HOURS	DATE	ICE PELLETS, SNOW			NO. OF DAYS		
											MAX		MIN						TOTAL	MAX DEPTH ON GROUND	DATE	.10 OR MORE	.50 OR MORE	1.00 OR MORE
											>=90	<=32	<=32	<=0										
EMMITSBURG 2 SE	74.1	59.3	66.7	0.3	85	05	42	17	50	111	0	0	0	0	16.46	12.20	2.22	22	0.0	0		14	11	7
FREDERICK 2 NNE	76.7	59.5	68.1		89	15	46	16	36	137	0	0	0	0	10.25		3.06	22	0.0	0		13	7	3
MILLERS 4 NE	75.6	59.7	67.7	2.1	85	14+	44	16	40	128	0	0	0	0	11.64	7.50	3.62	07	0.0	0		10	5	3
SMITHSBURG 2NW	75.3M	58.0	66.7M		86	05	38	17+	39	104	0	0	0	0	6.22		1.65	07	0.0	0		14	5	1
WESTMINSTER	75.9	60.4	68.2	1.3	88	05	43	16	43	143	0	0	0	0	9.73	5.71	3.22	08	0.0	0		12	6	3
--DIVISIONAL DATA-----> APPALACHIAN MOUNTAIN 07			67.7	1.1											10.28	5.95								
CUMBERLAND 2	77.6	58.4	68.0	2.2	95	04	40	17	51	152	2	0	0	0	9.68	6.50	3.25	07	0.0	0		10	8	3
FROSTBURG 2	70.0	54.7	62.4	2.1	89	04	36	16	116	44	0	0	0	0	7.78	4.16	3.20	07	0.0	0		10	4	2
SHARPSBURG 5 S	75.8	58.6	67.2		87	15+	39	17+	53	125	0	0	0	0	6.18		1.55	07	0.0	0		11	3	1
WILLIAMSPORT	77.0M	60.7M	68.9M		87	15+	44	17+	32	152	0	0	0	0	M 7.39		2.06	07	M 0.0	0		15	4	2
--DIVISIONAL DATA-----> ALLEGHENY PLATEAU 08			66.6	2.5											7.76	4.27								
OAKLAND 1 SE	70.8	53.1	62.0	1.2	90	04	33	17+	133	46	1	0	0	0	6.24	2.68	1.77	07	0.0	0		12	4	2
SAVAGE RIVER DAM	70.5	56.6MF	63.6MF		90	04	38	16	96	56	1	0	0	0	6.46	2.98	3.24	07	0.0	0		7	4	1
SINES DEEP CREEK	69.7	52.0	60.9		86	04	34	16	146	30	0	0	0	0	6.34		2.26	07	0.0	0		10	4	2
--DIVISIONAL DATA-----> DELAWARE NORTHERN 01			62.2	1.7											6.35	2.75								
BEAR 2 SW	77.4	61.5	69.5		87	14	43	16	31	171	0	0	0	0	6.41		2.46	06	0.0	0		8	2	2
WILMINGTON NEW CASTLE CO AP	77.3	62.2	69.8	2.1	86	14+	45	16	30	183	0	0	0	0	5.93	1.92	2.18	06	0.0	0		9	3	2
WILMINGTON PORTER RES	76.0	61.6	68.8		85	14+	44	17+	38	160	0	0	0	0	5.96		2.51	06	0.0	0		9	3	2
--DIVISIONAL DATA-----> SOUTHERN 02			69.4	2.0											6.10	1.78								
DOVER	79.3	64.1	71.7	1.8	87	14	49	16	16	223	0	0	0	0	3.84	-0.72	0.84	08	0.0	0		8	3	0
LEWES	M	M	M											M 1.82		0.22	22	M 0.0	0			3	0	0
--DIVISIONAL DATA----->			71.7	3.4											2.83	-1.32								

DAILY PRECIPITATION (INCHES)

STATION	TOTAL	DAY OF MONTH																																				
		01	02	03	04	05	06	07	08	09	10	11	12	13	14	15	16	17	18	19	20	21	22	23	24	25	26	27	28	29	30	31						
MARYLAND																																						
SOUTHERN																																						
EASTERN SHORE 01																																						
ASSATEAGUE	3.99																1.34	0.08			0.06	0.01	0.77	0.04							0.02	1.67						
PRINCESS ANNE	FM 3.51			-	-	-	0.15		1.29	0.13	-	0.03				0.49	-				0.49	0.39	-	-	0.41	0.13			0.00 ^L	0.53 ^L								
SALISBURY 2N	M	-	-	-	-	-	-	-	-	-	-	-	-	-	-	-	-	-	-	-	-	-	-	-	-	-	-	-	-	-	-	-	-	-				
SALISBURY FAA AP	4.75						0.13	0.28	1.67		T					0.43	0.02				0.01	0.95	0.58	0.01			0.03	0.05	0.31	0.28								
SNOW HILL 4 N	3.12						0.05		0.43			0.03				0.81	0.25				0.01	0.40	0.30	0.72	T	0.04		0.04	0.04									
CENTRAL																																						
EASTERN SHORE 02																																						
FEDERALSBURG R	M	-	-	-	-	-	-	-	-	-	-	-	-	-	-	-	-	-	-	-	-	-	-	-	-	-	-	-	-	-	-	-	-	-	-			
ROYAL OAK 2 SSW	M	-	-	-	-	-	-	-	-	-	-	-	-	-	-	-	-	-	-	-	-	-	-	-	-	-	-	-	-	-	-	-	-	-	-			
LOWER SOUTHERN 03																																						
MECHANICSVILLE 5 NE	F 8.47		0.21		T	0.02	0.79	0.74	3.61	0.56	T		T			0.04					0.05	0.08	T	1.80	0.04	T	T	0.11	0.42	0.00 ^L								
SOLOMONS	M 5.11						0.29	1.19	0.88	1.07	0.01							0.04	0.01	0.02	0.02	-	*	*	*	*	1.07 _a	0.50	0.01									
UPPER SOUTHERN 04																																						
BALTIMORE WASH INTL AP	13.32	T	0.02	0.14		1.43	1.84	3.40	1.44	0.43		0.68			0.13		T			0.04	0.01	0.01	3.19		0.02	0.02	T	0.52										
BELTSVILLE	9.80		0.08		0.31		1.32	0.85	4.13	0.99	0.16					0.06				T	0.12	0.01		0.90		0.01	T	0.29	0.57									
DALECARLIA RSVR	10.17		0.11				1.35	1.35	3.40	2.37	0.20					0.05				0.01	0.15	0.01	0.01	0.68	0.04	0.03		0.10	0.31									
LAUREL 3 W	10.87					0.60	1.78	4.15	1.65	0.36		0.13			0.12					0.10	0.02		0.87					1.08	0.01									
MD SCI CTR BALTIMORE R	10.73		0.01			1.20	1.30	3.17	1.23	0.32		0.14								0.05	0.01	0.04	3.02			0.03		0.21										
NATL ARBORETUM DC	M 9.09		0.29		0.21		1.51	0.88	2.68	0.92	0.42	0.01	0.12			-	-	-	-		0.14	0.03	0.01	1.27	0.02	0.01	T	0.20	0.37									
OXON HILL	11.23		0.12			0.07	1.67	0.91	3.74	0.95	0.56		0.02			0.09		T			T	0.24	0.05		2.29	0.02		0.28	0.22									
UPPER MARLBORO 3 NNW	13.89		0.06				1.90	0.76	7.46	1.32						0.02					0.15	T	0.02	1.67		0.04	T	0.05	0.44									
NORTHERN																																						
EASTERN SHORE 05																																						
CHESTERTOWN	M	-	-	-	-	-	-	-	-	-	-	-	-	-	-	-	-	-	-	-	-	-	-	-	-	-	-	-	-	-	-	-	-	-	-			
NORTHERN CENTRAL 06																																						
ABERDEEN PHILLIPS FLD	F 6.03				0.00 ^L	0.00 ^L	1.96 ^L	1.80	0.88	0.30	*	*	0.39 _a			0.06					0.06	0.12	T	2.09		0.03	T	0.02	0.16	0.12								
BRIGHTON DAM	9.14		0.15	0.15		0.03	1.98	1.35	3.45	0.18		0.10	0.28		0.10						0.08			0.55		0.04	0.20	0.50										
CATOCTIN MTN PARK	9.23	0.08				0.29	1.38	1.37	1.14	0.74	0.27		0.07		0.71		0.05			0.06		0.23	0.80	0.01		0.01	1.32	0.66	0.04									
CONOWINGO DAM	12.26					0.70	1.60	1.91	1.50	1.11	0.04	0.02	0.37		0.06	0.03		0.01				0.03	0.07	0.60	3.25	0.20	0.07	0.08	0.61									
CYLBURN	10.99		T		*	1.37 _a	0.80	3.75	1.19	0.08	*	*		1.28 _a	0.02	*	0.05 _a				T	0.42	0.24	1.51	*	*	0.03 _a		0.25									
DAMASCUS 3 SSW	11.12	0.02	0.23	0.78		1.27	1.56	1.11	3.30	0.43		0.11	0.35		0.20	0.20	0.04			0.09	T	0.28		0.28	T	*	0.02	0.52	0.01									
EMMITSBURG 2 SE	16.46		0.12		0.02	1.91	0.91	1.61	1.61	1.27	0.75	T	0.04		0.65	0.10	0.01	0.06		0.05		2.22	2.18	0.04		0.02	0.15	2.01	0.70	0.03								
FREDERICK 2 NNE	10.25		0.04			0.04	0.93	0.84	1.22	1.75	0.18		0.33		0.51	0.01		0.03		0.05	0.10	3.06		0.70		0.01	0.10	0.10	0.23	0.02								
MILLERS 4 NE R	11.64	0.01	0.09	0.16	0.01	0.12	2.20	3.62	3.35	0.57	0.02	T			0.69	T	0.05			0.06	0.01	0.21	0.20	0.01	0.01	0.01	0.03	0.14	0.07									
SMITHSBURG 2NW	6.22				0.15	0.30	0.80	1.65	0.50	0.45	0.65		0.10		0.54	0.27				0.10		0.20		0.23			0.20						0.08					
WESTMINSTER	9.73		0.12		0.75		1.15	1.36	3.22	0.62	0.33	0.07	0.12		0.83	0.06		0.03		0.04	0.08	0.12		0.37			0.06	0.04	0.36									
APPALACHIAN																																						
MOUNTAIN 07																																						
CUMBERLAND 2	9.68		0.67			0.53	1.09	3.25		0.53	0.85		0.03		0.66	0.15										0.04	0.01		1.69	0.04								

MARYLAND AND DELAWARE
201109

DAILY PRECIPITATION (INCHES)

STATION	TOTAL	DAY OF MONTH																														
		01	02	03	04	05	06	07	08	09	10	11	12	13	14	15	16	17	18	19	20	21	22	23	24	25	26	27	28	29	30	31
FROSTBURG 2	7.78		1.31			0.35	0.91	3.20	0.02	0.35	0.27				0.62	0.13		0.02		0.18	0.08	0.04		0.08	0.02	T		0.15		0.05		
SHARPSBURG 5 S	6.18		0.19	*	*	*	1.03 _a	1.55	0.27	*	0.44 _a		0.71		0.44		*	0.06 _a		0.12	0.11	0.34		0.15		T	0.54	T	0.16	0.07		
WILLIAMSPORT	M 7.39		0.27			0.55	1.40	2.06	0.25	0.29	0.78		0.03		0.32	0.42			-	0.02	0.10	0.20	0.10	0.14			0.30	0.03	0.03	0.10		
ALLEGHENY PLATEAU 08																																
OAKLAND 1 SE	6.24		0.49			1.18	0.90	1.77	0.10	0.12					0.75	0.10				0.23				0.20	0.05		0.18		0.05	0.12		
SAVAGE RIVER DAM	6.46		0.31			0.84	0.98	3.24	T	0.12	T				0.53	0.08				0.18		T		0.09	T			0.09	T	T		
SINES DEEP CREEK	6.34		0.43			0.65	1.00	2.26		0.02					0.67	0.19				0.32	0.03	0.15		0.20			0.29	0.06	0.03	0.04		
DELAWARE																																
NORTHERN 01																																
BEAR 2 SW	6.41		T			0.10	2.46	0.39	0.31		0.02	0.24	0.06		0.01		T	T		0.03	0.04	0.01	2.20	T			T	0.22	0.24	0.08		
NEWARK UNIV FARM R	M	-	-	-	-	-	-	-	-	-	-	-	-	-	-	-	-	-	-	-	-	-	-	-	-	-	-	-	-	-	-	
WILMINGTON NEW CASTLE CO AP R	5.93					0.25	2.18	0.46	0.11		T	0.61			0.02					0.04	0.10	0.01	1.65	T	T		0.03	0.13	0.28	0.06		
WILMINGTON PORTER RES	5.96					0.27	2.51	0.89	0.13		T	0.20	0.11		0.07					0.08	T	0.05	1.34				0.14	0.10	0.07			
SOUTHERN 02																																
DOVER	3.84		0.01				0.80	0.09	0.84	0.01	0.47	0.16	0.24		0.03			0.01	0.06				0.01	0.51	0.01	0.01	0.04	0.15		0.39		
LEWES	M 1.82		0.03	*	*	*	0.11 _a	0.02	0.06	0.08	-	-	0.02			0.10	*	*	0.31 _a		0.03	0.22	0.19	*	*	0.60 _a	0.01	-		0.04		

DAILY TEMPERATURES (°F)

STATION	OB. TIME	MAX/MIN	DAY OF MONTH																															AVERAGE	
			01	02	03	04	05	06	07	08	09	10	11	12	13	14	15	16	17	18	19	20	21	22	23	24	25	26	27	28	29	30	31		
NORTHERN CENTRAL 06		MIN																																	M
ABERDEEN PHILLIPS FLD	07	MAX	85	81	78	81	87	80	69	82	74	77	85	80	83	84	88	76	65	63	68	70	73	76	78	75	75	79	79	81	81	76	77.6		
		MIN	58	60	63	65	71	63	63	69	71	68	65	61	62	63	66	45	45	51	50	50	63	64	70	67	65	67	69	70	70	57	62.4		
CATOCTIN MTN PARK	07	MAX	77	74	83	86	81	69	65	66	69	78	77	77	80	84	72	60	58	65	61	71	70	75	71	75	75	74	74	69	67	72.6			
		MIN	58	61	65	68	66	56	57	64	66	63	59	57	59	62	50	40	44	46	49	58	61	65	64	59	63	64	67	66	60	52	59.0		
CONOWINGO DAM	07	MAX	84	83	78	84	87	81	75	77	74	75	82	79	80	82	84	74	67	62	70	70	72	75	78	72	74	78	78	81	78	78	77.1		
		MIN	55	57	64	66	66	62	64	68	67	66	64	59	60	62	61	47	47	48	48	52	58	60	67	64	63	64	67	67	67	54	60.5		
CYLBURN	08	MAX	80	80	74	83	83	76	69	75	71	72	77	76	77	80	83	68	60	63	66	66	70	71	76	71	73	74	74	75	71	73.6			
		MIN	57	58	65	67	69	60	59	68	69	68	64	59	61	62	63	46	49	49	51	61	61	63	68	65	64	67	67	69	65	55	61.6		
DAMASCUS 3 SSW	22	MAX	78	75	78	86	75	63	69	70	76	80	79	78	82	85	67	59	59	63	64	73	71	77	70	73	74	77	75	76	71	67	73.0		
		MIN	61	61	66	68	63	59	60	68	68	65	63	59	60	63	49	41	49	48	55	60	63	67	67	61	66	67	68	67	57	55	60.8		
EMMITSBURG 2 SE	07	MAX	80	77	76	80	85	76	61	68	69	73	80	78	78	81	84	68	63	61	67	66	72	74	78	73	76	77	78	76	72	74.1			
		MIN	51	56	63	68	68	59	59	61	67	64	61	57	57	58	61	43	42	48	49	52	60	64	67	62	62	65	67	68	65	55	59.3		
FREDERICK 2 NNE	07	MAX	84	80	80	82	88	79	61	68	70	77	82	81	82	84	89	71	66	62	69	68	77	76	80	74	78	79	81	78	81	74	76.7		
		MIN	58	59	64	68	69	61	59	61	64	66	63	60	60	62	62	46	47	49	50	57	61	55	55	60	63	49	68	68	64	56	59.5		
MILLERS 4 NE	18	MAX	79	77	81	85	82	73	72	72	74	81	80	80	81	85	78	63	62	69	66	75	73	80	74	78	76	78	75	77	73	70	75.6		
		MIN	56	61	65	68	66	57	58	67	67	66	62	58	59	60	53	44	45	45	51	58	62	66	67	62	62	63	65	67	61	51	59.7		
SMITHSBURG 2NW	08	MAX	81	78	79	80	86	74	60	68	69	75	79	79	79	82	85	65	68	68	66	75	77	77	77	75	77	79	80	77	70	75.3			
		MIN	54	61	64	66	67	58	58	58	64	62	59	55	55	56	59	38	38	49	50	56	59	62	62	58	61	62	67	66	60	55	58.0		
WESTMINSTER	07	MAX	83	80	76	82	88	77	64	73	71	76	80	79	81	84	87	71	63	61	69	68	75	74	80	73	77	78	79	75	79	74	75.9		
		MIN	55	58	66	66	69	60	59	64	68	66	64	59	59	60	64	43	45	48	48	54	61	64	68	64	63	65	67	69	63	54	60.4		
APPALACHIAN MOUNTAIN 07																																			
CUMBERLAND 2	18	MAX	87	83	79	95	93	80	61	67	77	77	83	81	84	86	88	78	63	67	69	64	75	83	75	75	79	80	82	77	73	67	77.6		
		MIN	57	61	66	70	66	57	57	59	64	62	61	59	59	59	59	41	40	48	49	49	58	62	61	58	62	65	66	64	60	54	58.4		
FROSTBURG 2	07	MAX	80	77	74	89	81	67	55	61	72	71	74	76	75	77	80	57	57	60	62	57	68	70	74	65	67	71	75	72	73	63	70.0		
		MIN	56	59	64	65	62	53	53	55	60	61	56	55	55	58	56	36	38	45	45	46	55	59	58	54	53	60	63	58	54	50	54.7		
SHARPSBURG 5 S	07	MAX	82	79	79	81	87	75	61	68	71	76	81	82	80	84	87	68	64	62	69	66	76	76	79	73	78	79	80	81	78	72	75.8		
		MIN	53	59	65	67	68	60	59	60	66	64	61	56	56	58	60	39	39	47	47	57	60	64	63	59	59	64	68	68	60	52	58.6		
WILLIAMSPORT	06	MAX	83	79	77	85	75	75	64	71	78	82	87	83	83	85	87	68	66	65	66	77	74	81	74	79	79	80	79	78	74	77.0			
		MIN	55	59	64	68	62	62	61	63	71	69	65	60	60	60	61	44	44	49	57	60	62	65	64	64	61	67	65	63	55	60.7			
ALLEGHENY PLATEAU 08																																			
OAKLAND 1 SE	07	MAX	81	78	88	90	83	69	58	64	72	74	74	76	74	77	81	61	56	56	60	62	68	74	73	68	68	70	76	62	70	61	70.8		
		MIN	55	56	62	65	65	54	54	58	60	58	52	50	51	52	57	33	33	45	46	46	50	50	55	54	54	59	60	57	54	49	53.1		
SAVAGE RIVER DAM	08	MAX	79	76	76	90	82	69	57	63	72	72	74	72	77	78	82	62	58	57	60	60	71	72	75	67	67	70	70	74	67	65	70.5		
		MIN	57	60	65	68	63	55	56	57	62	61	57	54	54	55	59	38	44	46	47	47	56	60	59	56	57	61	64	60	51	56.6			
SINES DEEP CREEK	07	MAX	79	74	83	86	83	68	57	65	72	71	70	72	71	75	78	58	55	58	60	63	66	73	71	66	67	69	76	73	69	62	69.7		
		MIN	52	56	60	65	61	53	54	56	59	57	54	50	49	49	55	34	35	43	43	43	53	52	54	55	52	53	55	57	54	48	52.0		
DELAWARE NORTHERN 01																																			

DAILY TEMPERATURES (°F)

STATION	OB. TIME	MAX/MIN	DAY OF MONTH																															AVERAGE
			01	02	03	04	05	06	07	08	09	10	11	12	13	14	15	16	17	18	19	20	21	22	23	24	25	26	27	28	29	30	31	
BEAR 2 SW	24	MAX	81	75	82	85	84	73	81	76	81	83	79	81	83	87	77	65	66	68	70	71	76	78	73	75	80	80	81	78	77	76	77.4	
		MIN	59	61	61	67	70	61	65	70	71	68	64	64	60	64	51	43	48	52	47	59	58	69	68	64	64	66	66	71	59	55	61.5	
WILMINGTON NEW CASTLE CO AP	24	MAX	80	74	82	84	83	65	82	75	83	86	80	82	82	86	77	65	67	69	69	71	77	79	74	75	81	80	80	78	77	77	77.3	
		MIN	63	64	64	69	65	60	65	69	70	69	64	61	63	65	49	45	49	52	50	60	58	69	69	65	66	67	69	71	60	56	62.2	
WILMINGTON PORTER RES	24	MAX	82	75	82	85	83	66	81	75	81	81	76	79	82	85	74	63	64	66	68	68	75	78	73	74	78	77	81	77	76	75	76.0	
		MIN	61	63	65	68	66	59	63	67	69	68	63	60	60	66	51	44	44	52	52	59	59	68	68	66	66	66	68	69	61	57	61.6	
SOUTHERN 02																																		
DOVER	16	MAX	82	79	83	86	86	83	85	85	78	83	83	81	84	87	86	75	65	68	69	72	74	82	82	74	79	78	77	77	79	78	79.3	
		MIN	62	61	63	69	70	63	71	71	69	70	68	64	64	70	52	49	51	58	52	59	60	72	70	69	69	67	69	71	63	57	64.1	
LEWES	08	MAX	82	81				87	73	85	77			82	82	87	89	84			66	69	75	75	82		77	77		80	82	M		
		MIN	59	59				62	67	72	69			65	66	66	68	56			53	57	57	67	70		69	69		69	58	M		

PAN EVAPORATION AND WIND

STATION		DAY OF MONTH																															TOTAL OR AVERAGE
		01	02	03	04	05	06	07	08	09	10	11	12	13	14	15	16	17	18	19	20	21	22	23	24	25	26	27	28	29	30	31	
MARYLAND UPPER SOUTHERN 04 BELTSVILLE	WIND	16	19	-	43	33	42	66	16	50	23	31	27	19	15	26	61	39	28	30	33	16	24	15	15	17	15	21	32	33	34	839	
	EVAP	0.18	0.12	-	0.21	0.17	0.16	0.01	-	0.07	0.06	0.14	0.06	0.24	0.16	0.20	0.12	0.06	0.07	0.08	0.09	0.00	0.03	0.08	0.01	0.05	0.06	0.08	0.01	0.20	0.15	2.87	
	MAX	84	84	-	86	92	86	66	75	77	86	86	90	88	90	92	77	70	64	73	72	73	77	85	76	78	81	84	78	83	80	80.7	
	MIN	60	62	-	67	70	63	61	64	70	69	68	63	63	64	65	45	43	50	50	56	61	63	69	65	68	78	69	68	67	57	62.7	
UPPER MARLBORO 3 NNW	WIND	-	-	-	-	-	-	-	-	-	-	-	-	-	-	-	-	-	-	-	-	-	-	-	-	-	-	-	-	-	M		
	EVAP	2.30	2.22	-	-	-	3.72	4.45	-	4.12	-	-	2.44	-	-	-	1.85	-	-	1.66	-	-	-	1.62	-	-	3.21	3.11	3.10	3.45	3.30	40.55	
	MAX	86	86	79	87	95	90	66	76	79	84	90	92	94	94	93	83	74	68	71	76	73	79	83	75	77	81	84	82	83	82	82.2	
	MIN	61	63	67	67	70	66	64	65	71	71	69	66	66	66	66	48	48	54	54	58	62	64	69	68	68	69	70	68	68	60	64.2	
ALLEGHENY PLATEAU 08 SAVAGE RIVER DAM	WIND	-	-	-	-	-	-	-	-	-	-	-	-	-	-	-	-	-	-	-	-	-	-	-	-	-	-	-	-	-	M		
	EVAP	-	-	-	-	-	-	-	-	-	-	-	-	-	-	-	-	-	-	-	-	-	-	-	-	-	-	-	-	-	M		
	MAX	-	-	-	-	-	-	-	-	-	-	-	-	-	-	-	-	-	-	-	-	-	-	-	-	-	-	-	-	-	-		
	MIN	-	-	-	-	-	-	-	-	-	-	-	-	-	-	-	-	-	-	-	-	-	-	-	-	-	-	-	-	-	M		

Evaporation: Is measured in hundredths of inches.

Wind: Is measured in miles.

Max and Min: The maximum and minimum temperatures (Fahrenheit) of the water in the evaporation pan.

STATION INDEX

STATION	INDEX NO.	DIVISION	COUNTY	LATITUDE	LONGITUDE	ELEVATION (IN FEET)	OBSERVATION TIME AND TABLES			
							LOCAL STD TIME			
							TEMP	PRECIP	EVAP	SPECIAL SEE (NOTES)
MARYLAND										
ABERDEEN PHILLIPS FLD R	0015	06	HARFORD	39 28	76 10W	57	07	07		CH
ASSATEAGUE	0335	01	WORCESTER	38 4	75 13W	10	24	24		H
BALTIMORE WASH INTL AP R	0465	04	ANNE ARUNDEL	39 10	76 41W	156	24	24		CHJ
BELTSVILLE R	0700	04	PRINCE GEORGE'S	39 2	76 56W	145	08	08	08	CH
BRIGHTON DAM	1125	06	MONTGOMERY	39 11	77 0W	330		07		H
CATOCTIN MTN PARK	1530	06	FREDERICK	39 39	77 29W	1610	07	07		H
CHESTERTOWN	1750	05	KENT	39 13	76 3W	40	23	23		H
CONOWINGO DAM	2060	06	HARFORD	39 39	76 11W	40	07	07		H
CUMBERLAND 2	2282	07	ALLEGANY	39 39	78 45W	730	18	18		H
CYLBURN	2308	06	BALTIMORE	39 21	76 39W	235	08	08		H
DALECARLIA RSVR	2325	04	PRINCE GEORGE'S	38 56	77 6W	150	08	08		H
DAMASCUS 3 SSW	2336	06	MONTGOMERY	39 15	77 13W	700	22	22		H
EMMITSBURG 2 SE	2906	06	FREDERICK	39 41	77 17W	403	07	07		H
FREDERICK 2 NNE	3353	06	FREDERICK	39 26	77 24W	280	07	07		H
FROSTBURG 2	3415	07	ALLEGANY	39 40	78 56W	2170	07	07		H
LAUREL 3 W	5111	04	PRINCE GEORGE'S	39 5	76 54W	400	24	24		H
MD SCI CTR BALTIMORE R	5718	04	BALTIMORE (CITY)	39 17	76 37W	20	24	24		CH
MECHANICSVILLE 5 NE	5865	03	ST. MARY'S	38 28	76 42W	100	07	07		H
MILLERS 4 NE R	5934	06	CARROLL	39 43	76 48W	860	18	18		CH
NATL ARBORETUM DC	6350	04	DISTRICT OF COLUMBIA	38 55	76 58W	50	07	07		H
OAKLAND 1 SE	6620	08	GARRETT	39 25	79 24W	2420	07	07		H
OXON HILL	6800	04	PRINCE GEORGE'S	38 47	76 60W	120	08	08		H
PRINCESS ANNE	7330	01	SOMERSET	38 13	75 41W	20	17	17		H
ROYAL OAK 2 SSW	7806	02	TALBOT	38 43	76 11W	10	17	17		H
SALISBURY 2N	8004	01	WICOMICO	38 24	75 36W	20	17	17		H
SALISBURY FAA AP	8005	01	WICOMICO	38 20	75 31W	48	24	24		H
SAVAGE RIVER DAM R	8065	08	GARRETT	39 31	79 8W	1495	08	08	08	CH
SHARPSBURG 5 S	8207	07	WASHINGTON	39 24	77 43W	500	07	07		H
SINES DEEP CREEK	8315	08	GARRETT	39 31	79 25W	2040	07	07		H
SMITHSBURG 2NW	8371	06	WASHINGTON	39 40	77 35W	670	08	08		H
SNOW HILL 4 N	8380	01	WORCESTER	38 14	75 23W	30	17	17		H
SOLOMONS	8405	03	CALVERT	38 19	76 27W	12	08	08		H
UPPER MARLBORO 3 NNW	9070	04	PRINCE GEORGE'S	38 51	76 46W	130	08	08	08	H
WESTMINSTER	9440	06	CARROLL	39 34	76 59W	765	07	07		H
WILLIAMSPORT	9570	07	WASHINGTON	39 36	77 50W	360	06	06		H
DELAWARE										
BEAR 2 SW	1200	01	NEW CASTLE	39 36	75 44W	80	24	24		H
DOVER	2730	02	KENT	39 15	75 31W	30	16	16		H
LEWES	5320	02	SUSSEX	38 47	75 8W	15	08	08		H
WILMINGTON NEW CASTLE R	9595	01	NEW CASTLE	39 40	75 36W	79	24	24		CHJ
WILMINGTON PORTER RES	9605	01	NEW CASTLE	39 46	75 32W	270	24	24		H

REFERENCE NOTES

STATION NAMES: Name of the city, town or locality. Figures and letters following the station names indicate the distance in miles and direction from the post office or town community center.

DIVISIONS: Areas within a state of similar climatological characteristics. Division averages are calculated using data from stations that record both temperature and precipitation (i.e. not precipitation alone).

NORMALS: The average value of the meteorological element over a time period. Effective 1 January 2002, the averaging period is 1971 to 2000. The normals for National Weather Service localities have been adjusted so as to be representative for the current observation site.

MONTHLY DEGREE DAY TOTALS: One heating (cooling) degree day is accumulated for each whole degree that the daily mean temperature is below (above) 65 degrees Fahrenheit.

PRECIPITATION: Values shown in hundredths of inches are water equivalent totals, i.e., total of liquid and melted frozen precipitation. In the "Monthly Summarized Data" table the total snow and sleet values shown in tenths of inches are unmelted amounts. The max depth on ground values of snow and sleet shown in whole inches are cumulative unmelted amounts. The number of days with .10, .50, 1.00 or more refers to water equivalents.

PRECIPITATION QUALITY CONTROL: The NCDC quality control process may flag precipitation data that are spatially inconsistent, exceed climatological limits, or are inconsistent with prevailing weather patterns.

TEMPERATURE: Original temperature values are given in the "Daily Temperature" table. Summary temperature information (averages, departures, extremes, monthly degree day totals) is based on the values labeled MAX/MIN.

WIND: (As shown in the "Evaporation and Wind" table) the total wind movement in miles over the evaporation pan as determined by an anemometer recorder located 6-8 inches above the pan.

SYMBOLS AND LETTERS USED IN THE STATION INDEX TABLE

- C Station is equipped with recording rain gage (R) but values in this bulletin are from a non-recording rain gage unless indicated by an R.
- G Observations appear in the "Soil Temperatures" table.
- H Observations appear in the "Snowfall and Snow on the Ground" table.
- J Station also published as a Local Climatological Data publication.
- VAR Observation time varies.
- SR Observation time near sunrise.
- SS Observation time near sunset.

SYMBOLS AND LETTERS USED IN THE DATA TABLES

(DAILY DATA ARE FOR THE 24 HOURS IMMEDIATELY PRECEDING OBSERVATION TIME.)

BLANK Entries in the "Monthly Summarized Data" table indicate no record.

BLANK Entries in the "Daily Precipitation" and "Snowfall and Snow on the Ground" tables indicate zero.

BLANK Entries in the "Daily Temperature" table indicate a missing record

- No record. Data not recorded or not received in time for publication.

+ Precipitation or temperature extremes occurred on one or more previous dates during the month.

* Rain gage not read. Precipitation is included in the amount following the asterisks. Time distribution may not be known. A * preceding the monthly total indicates precipitation amount is being carried forward to next month's total, and may include amounts from the previous month(s).
a As a subscript, indicates accumulated total.

A Amount of precipitation is the total of observer's entries for the current month. It may include precipitation that occurred during the previous month. Refer to earlier bulletin to determine date of last reading. (Hawaii stations)

F Monthly calculation flagged value. F is appended to average and/or total values computed which exclude one or more daily data values that have been flagged by the GHCN-Daily Dataset

M Insufficient or partial data. M is appended to average and/or total values computed with 1-9 daily values missing. M appears alone if 10 or more daily values are missing, (8 or more for wind and evaporation).

N Indicates snow fall or Snowdepth totals are computed with one or more missing days.

R Amounts from recording rain gage.

T Trace. An amount too small to measure.

SEASONAL TABLES: Monthly and seasonal snowfall and heating degree days for the 12 months ending with the June data are published in the July issue of this bulletin. Cooling degree days for the calendar year are published in the "Climatological Data Annual Summary."

Information concerning the history of changes in locations, exposure, etc. of substations is kept on file at the National Climatic Data Center. Historical information of regular National Weather Service Offices may be obtained from the "Local Climatological Data" annual publication. The contents of this publication may be reprinted or otherwise used freely, with proper credit to the National Climatic Data Center. The data are also available digitally.

Effective with the January 2011 Data-Month, COOP Observer Names are no longer included in the Monthly and Annual Climatological Data Publications. This information is not published to ensure the privacy of personal information pursuant to Section 208 of the E-Government Act of 2002 (44 USC 3601).

The GHCN-Daily Quality Control Flags shown below are displayed as superscripts with the data. For more Information on Global Historical Climatology Network - Daily and flags, see:
<http://www.ncdc.noaa.gov/oa/climate/ghcn-daily/>
and

Comprehensive Automated Quality Assurance of Daily Surface Observations.

Durre, Imke, Matthew J. Menne, Byron E. Gleason, Tamara G. Houston,

Russell S. Vose, 2010: J. Appl. Meteor. Climatol., 49, 16151633.

doi: 10.1175/2010JAMC2375.1

Blank = Passed All checks

D = failed duplicate check

G = failed gap check

I = failed internal consistency check

K = failed streak/frequent-value check

L = failed check on length of multiday period

M = failed megaconsistency check

N = failed naught check

O = failed climatological outlier check

R = failed lagged range check

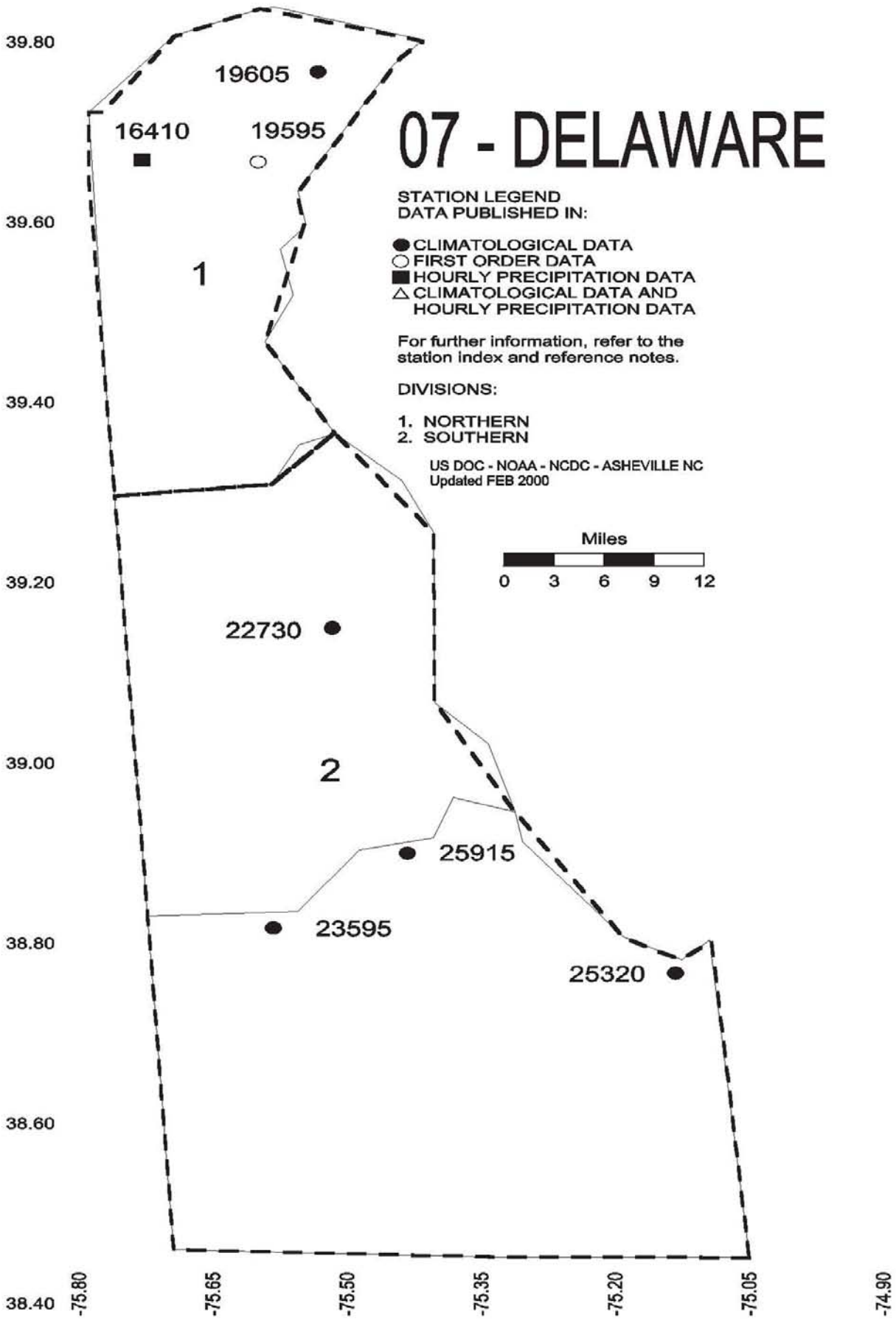
S = failed spatial consistency check

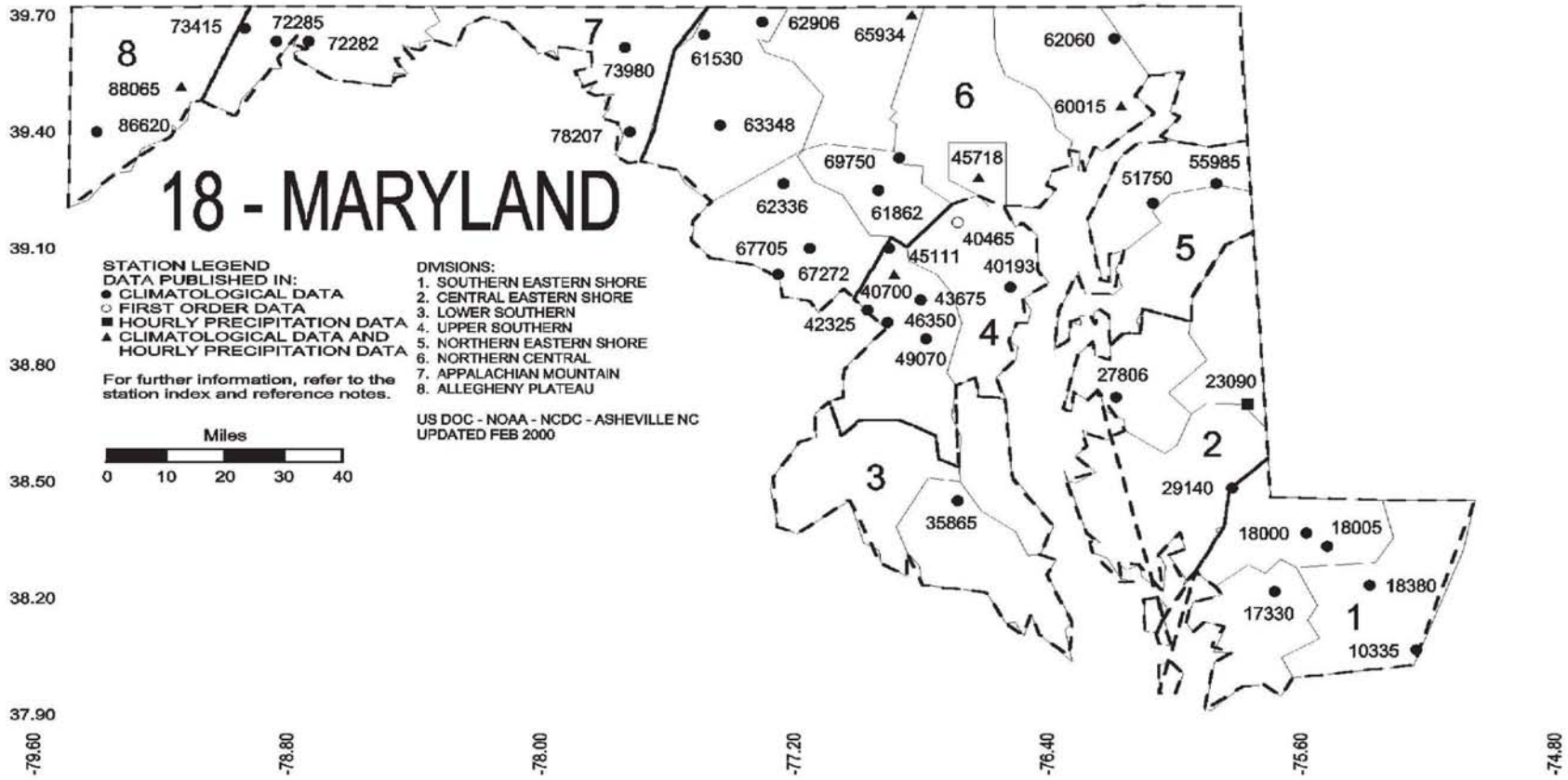
T = failed temporal consistency check

W = temperature too warm for snow

X = failed bounds check

07 - DELAWARE





These and other publications are available from the National Climatic Data Center

Hourly Precipitation Data

This publication contains hourly precipitation amounts obtained from recording rain gages located at National Weather Service, Federal Aviation Administration, and cooperative observer stations. Published data are displayed in inches and tenths or inches and hundredths at local standard time. HPD includes maximum precipitation for nine (9) time periods from 15 minutes to 24 hours, for selected stations.

Climatological Data

Monthly editions contain station daily maximum and minimum temperatures and precipitation. Some Stations provide daily snowfall, snow depth, evaporation, and soil temperature data. Each edition also contains monthly summaries for heating and cooling degree days (65 degree F base). The July issue contains a recap of monthly heating degree days and snow data for the preceding July through June.

The Annual issue contains monthly and annual averages of temperature, precipitation, temperature extremes, freeze data, soil temperatures, evaporation, and a recap of monthly cooling degree days.

Storm Data

Monthly issues contain a chronological listing, by states, of occurrences of storms and unusual weather phenomena. Reports contain information on storm paths, deaths, injuries, and property damage. An "Outstanding storms of the month" section highlights severe weather events with photographs, illustrations, and narratives. The December issue includes annual tornado, lightning, flash flood, and tropical cyclone summaries.

Monthly Climatic Data for the World

This publication contains monthly means for temperature, pressure, precipitation, vapor pressure, and sunshine for approximately 2,000 surface data collection stations worldwide and monthly mean upper air temperatures, dew point depressions, and wind velocities for approximately 500 observing sites.

Local Climatological Data

LCD publications summarize temperature, relative humidity, precipitation, cloudiness, wind speed and direction observations for several hundred cities in the U.S. and its territories. Each monthly publication also contains 3 hourly weather observations for that month and a hourly summary of precipitation. Annual LCD publications contain a summary of the past calendar year as well as historical averages and extremes.

For Information Call:

(828) 271-4800 Option 2

(828) 271-4010 (TDD)

(828) 271-4876 (Fax)

NOAA\National Climatic Data Center
Attn: User Engagement & Services Branch
151 Patton Avenue
Asheville, NC 28801-5001

Customer Services Number: (828) 271-4800, option 2
TDD : (828) 271-4010
Fax number: (828) 271-4876

NCDC now offers free online access to the *Climatological Data* publication.
Go to : www.ncdc.noaa.gov and choose Most Popular.